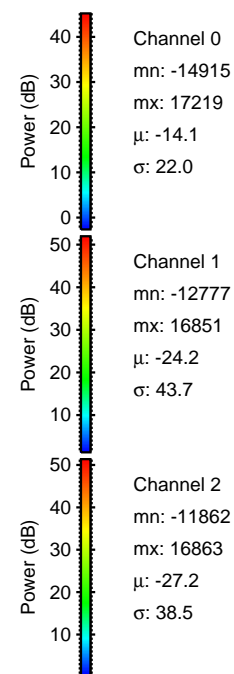
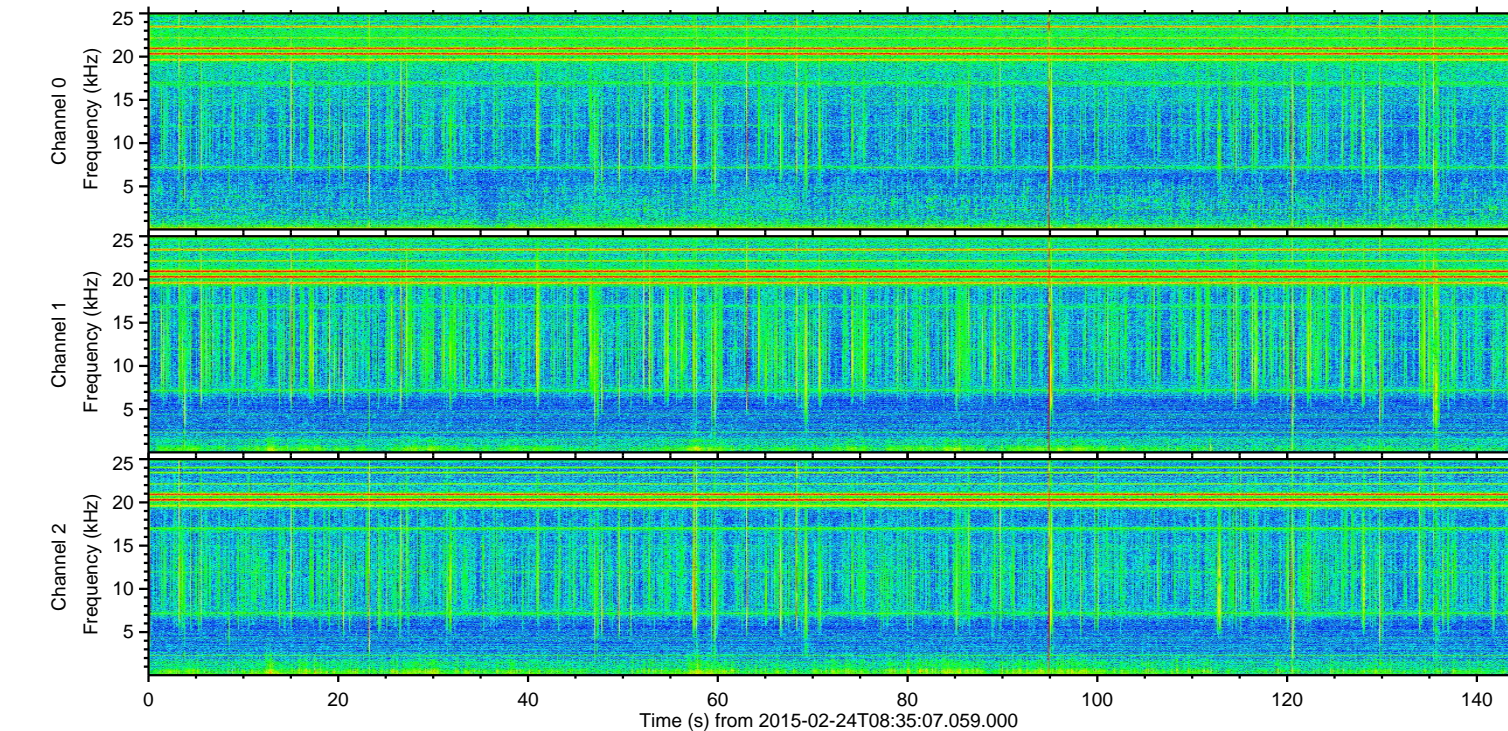
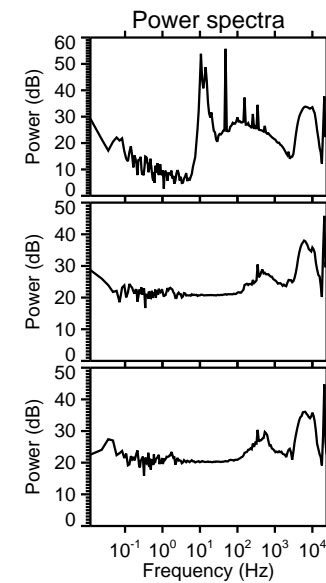
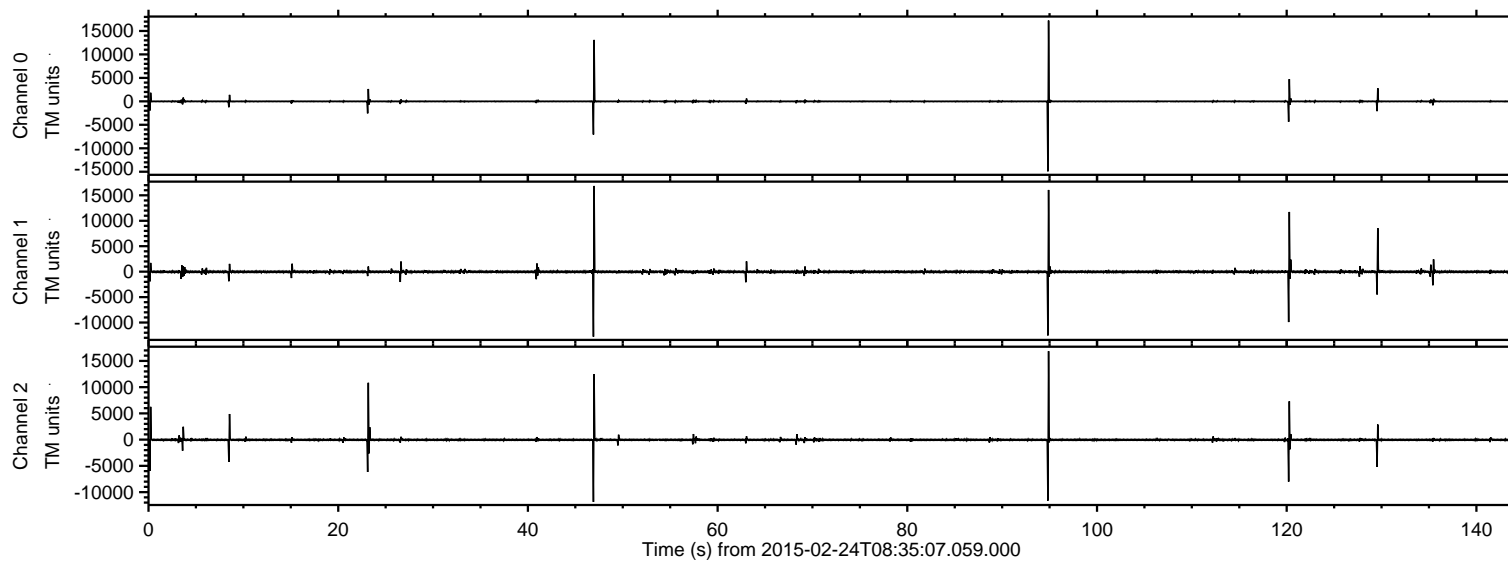
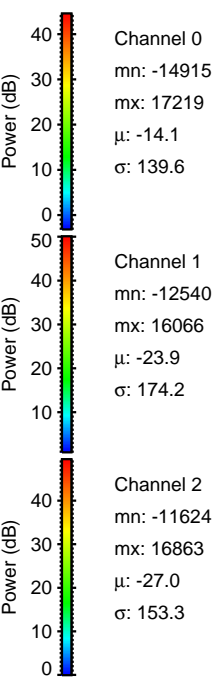
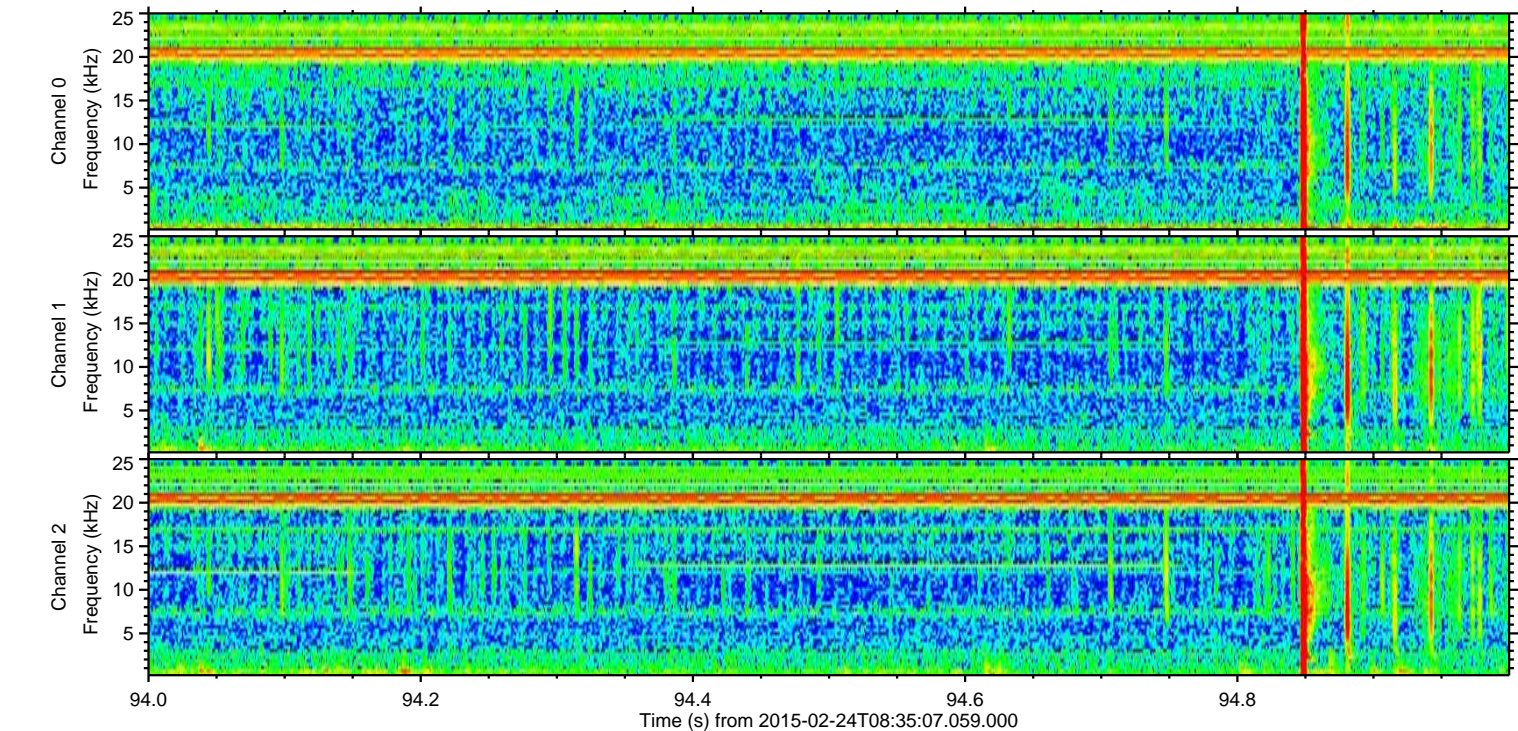
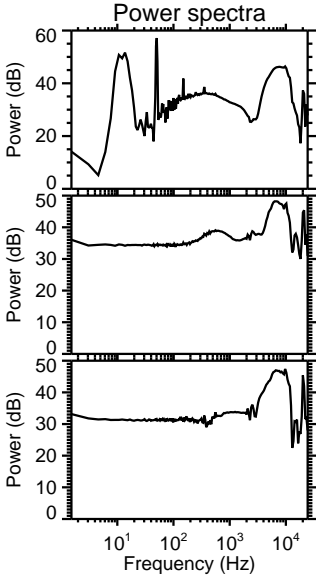
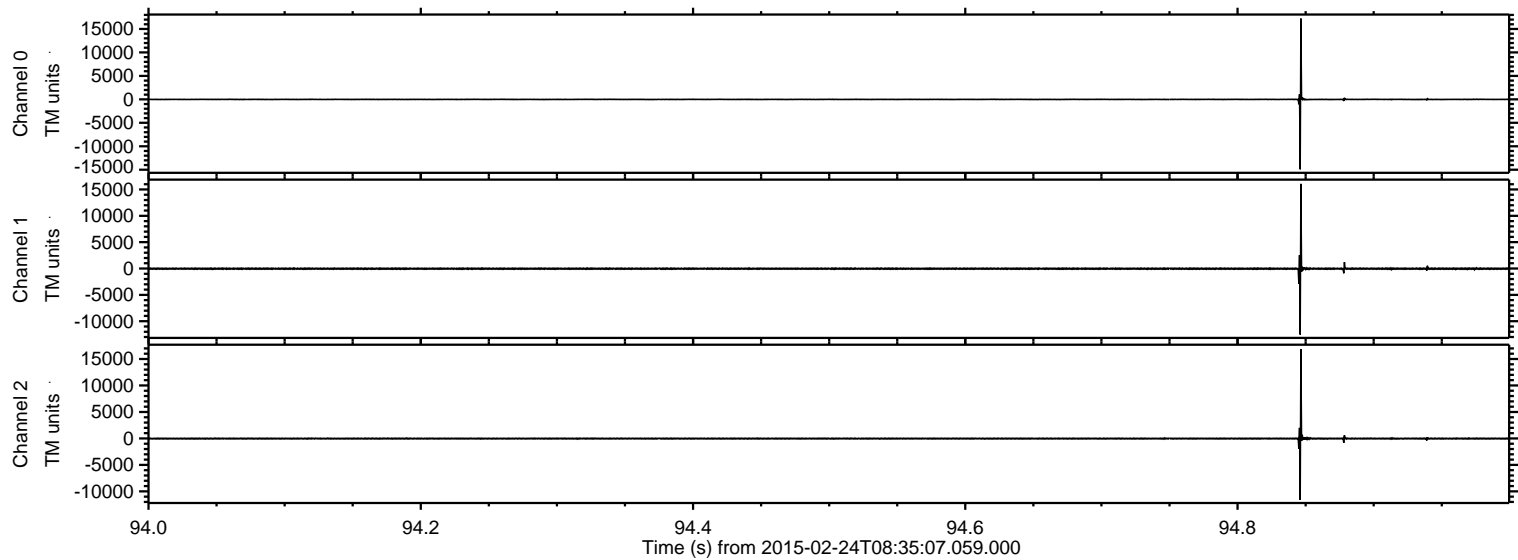


ELMAVAN 3D WAVEFORMS (Measured data sampled at 50 kHz) 49810 packets of 144 samples from 2015-02-24T08:35:07.059.000.

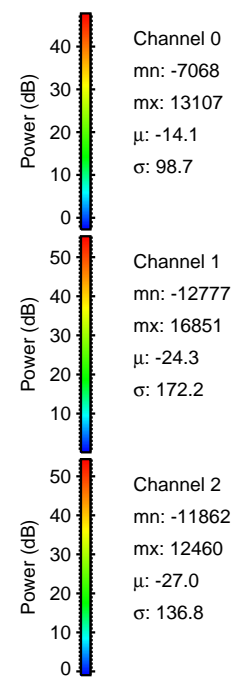
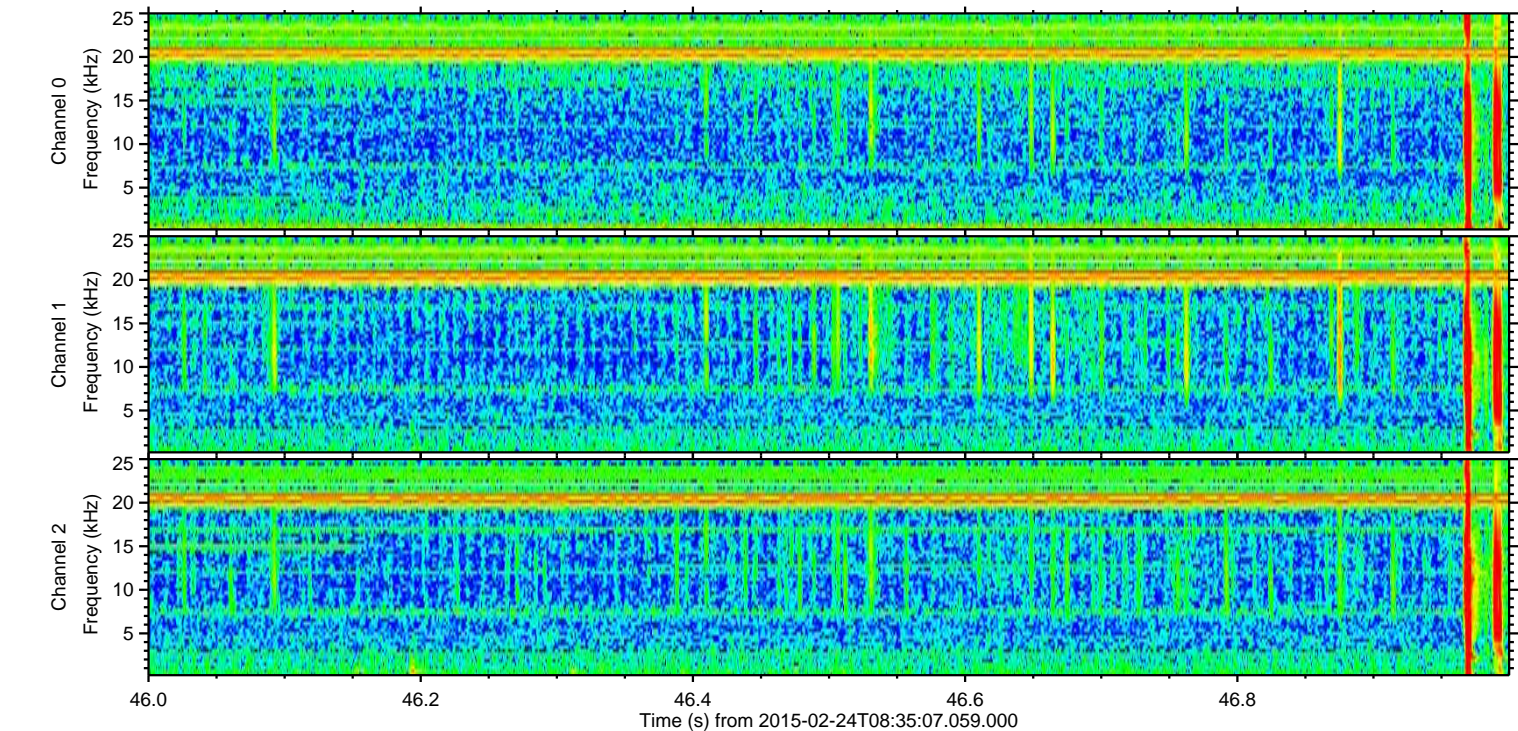
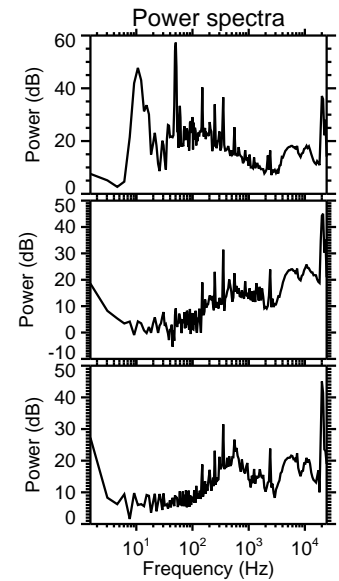
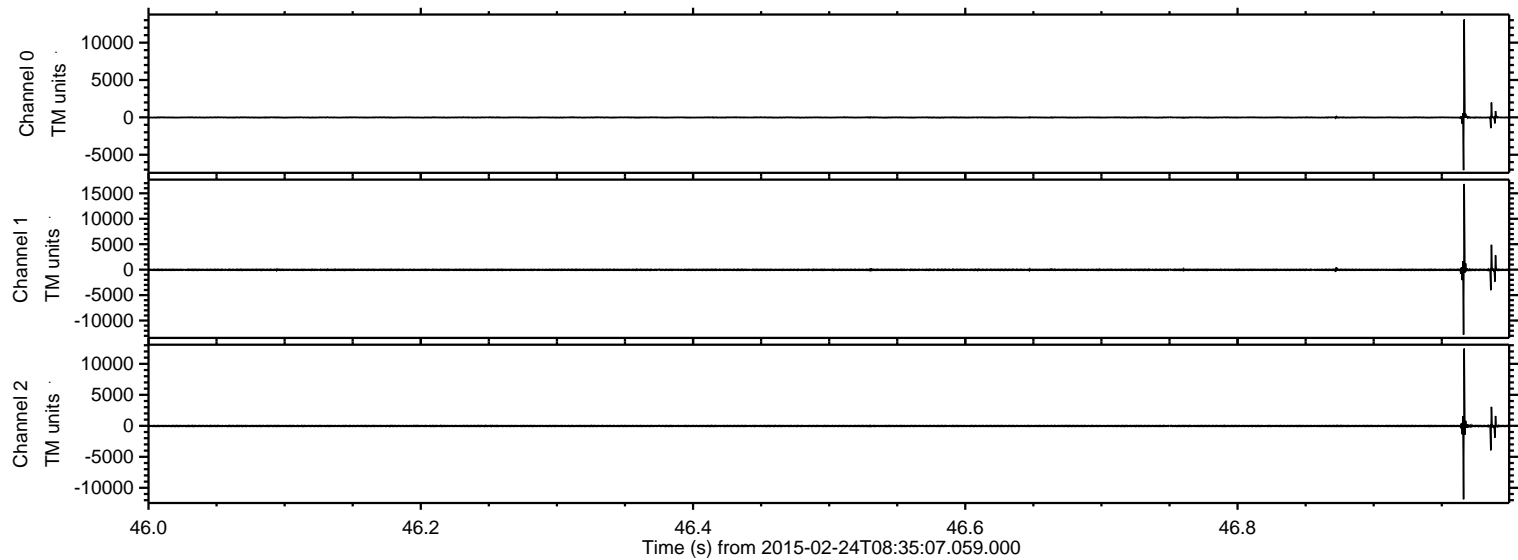
Processed Tue Mar 3 13:20:56 2015 by ELM ver.2012-10-06 from 001__elm20150224_083506__dat00.bin



Processed Tue Mar 3 13:21:07 2015 by ELM ver.2012-10-06 from 001__elm20150224_083506__dat00.bin

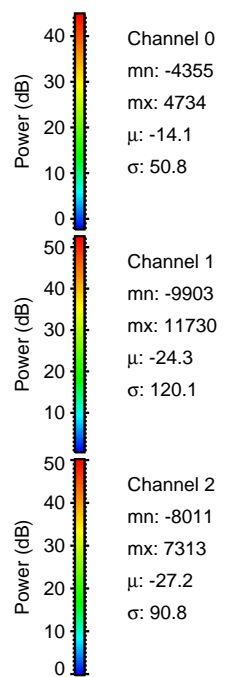
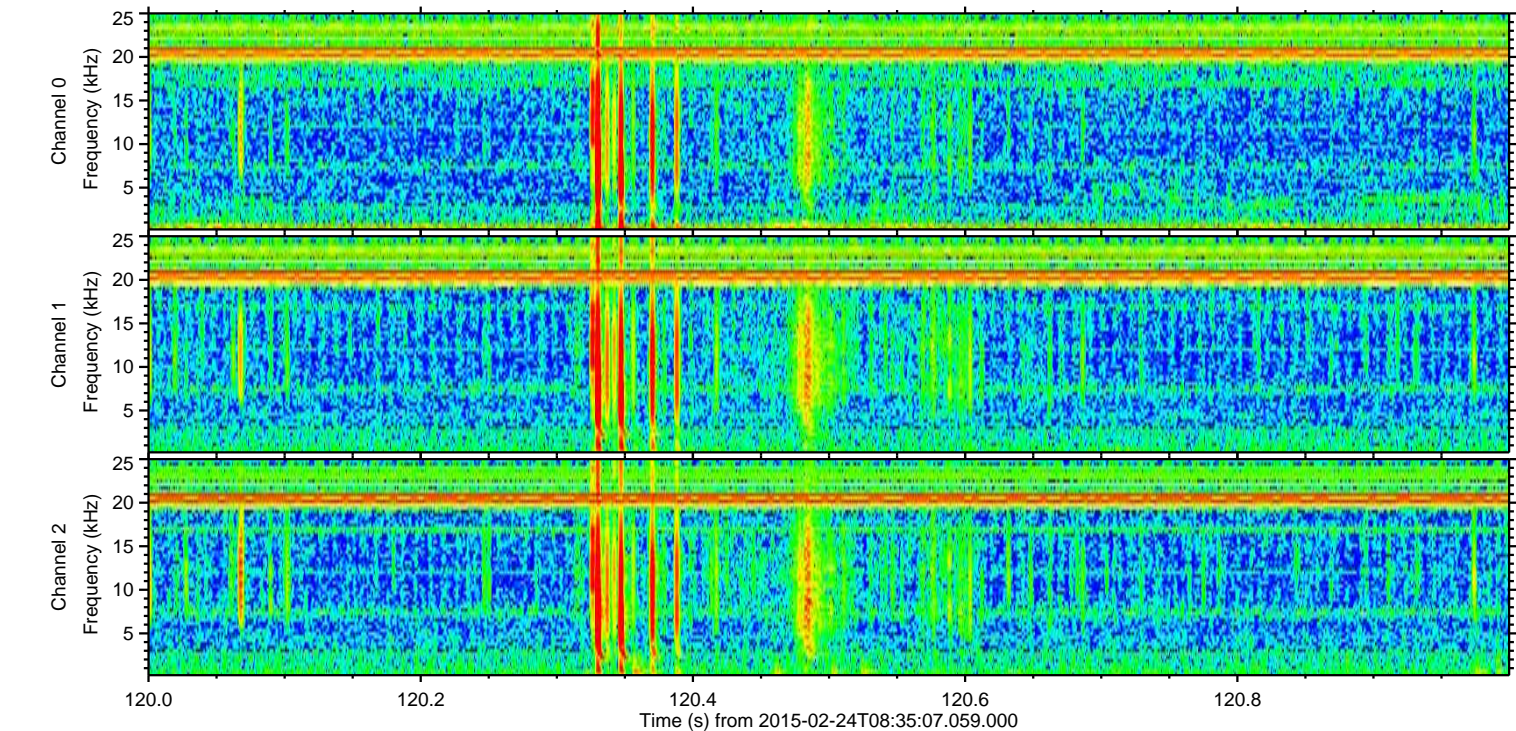
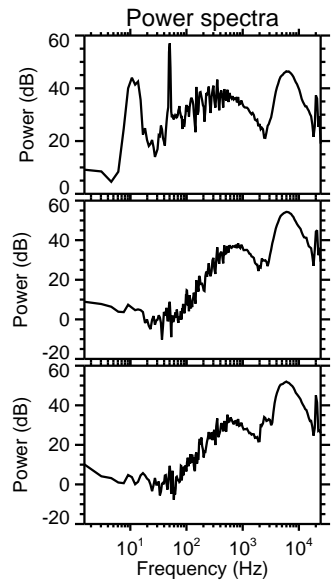
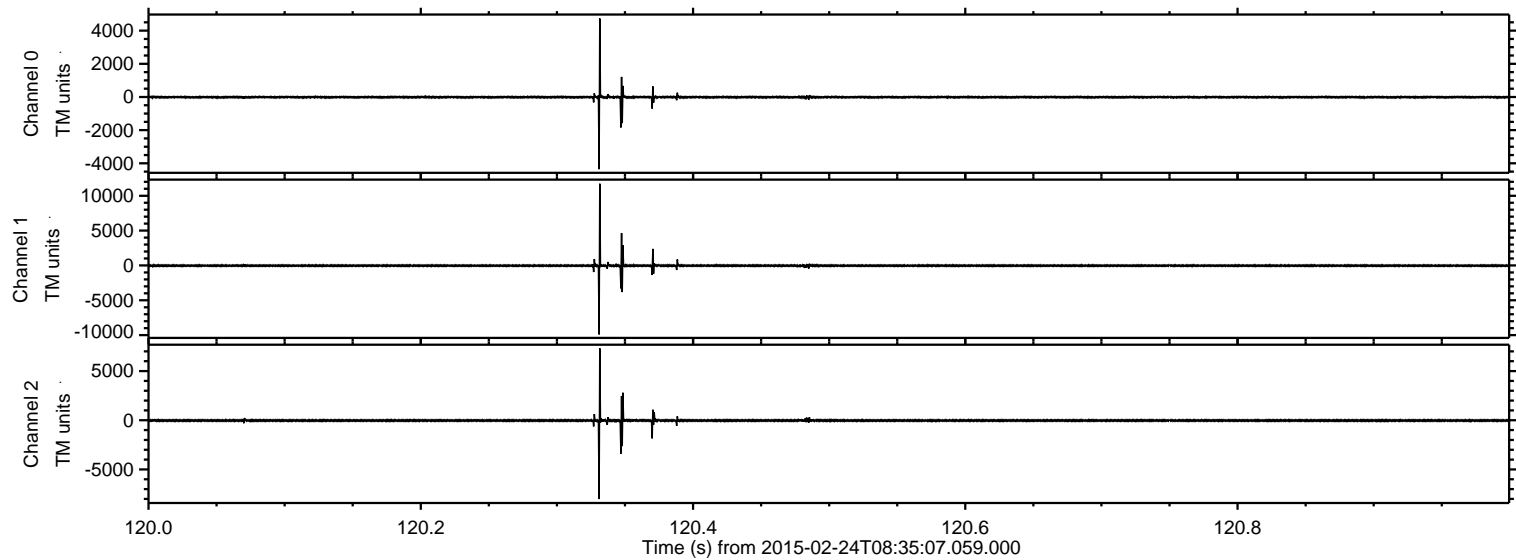


Processed Tue Mar 3 13:21:08 2015 by ELM ver.2012-10-06 from 001__elm20150224_083506__dat00.bin

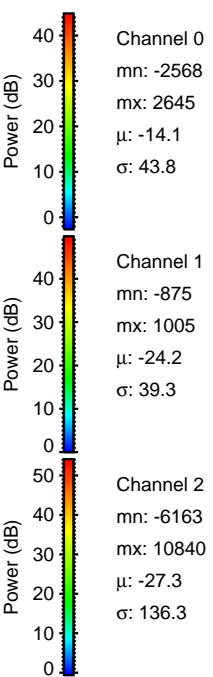
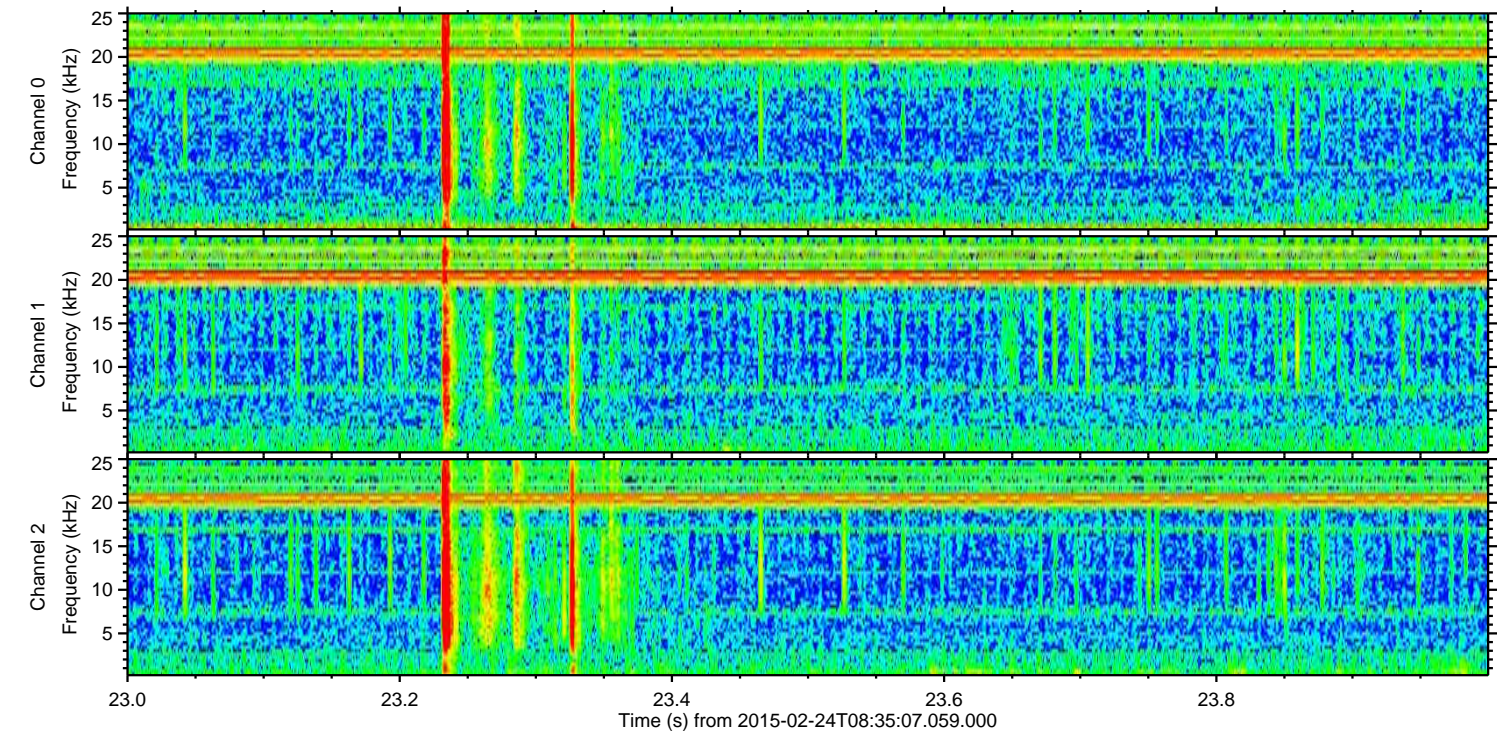
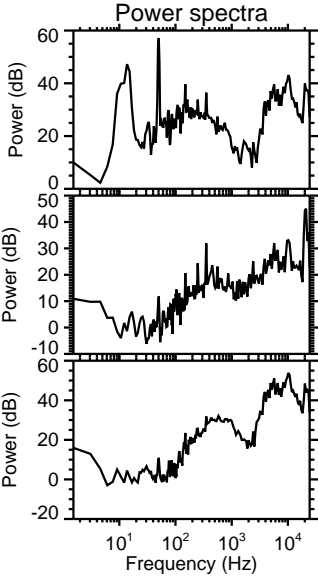
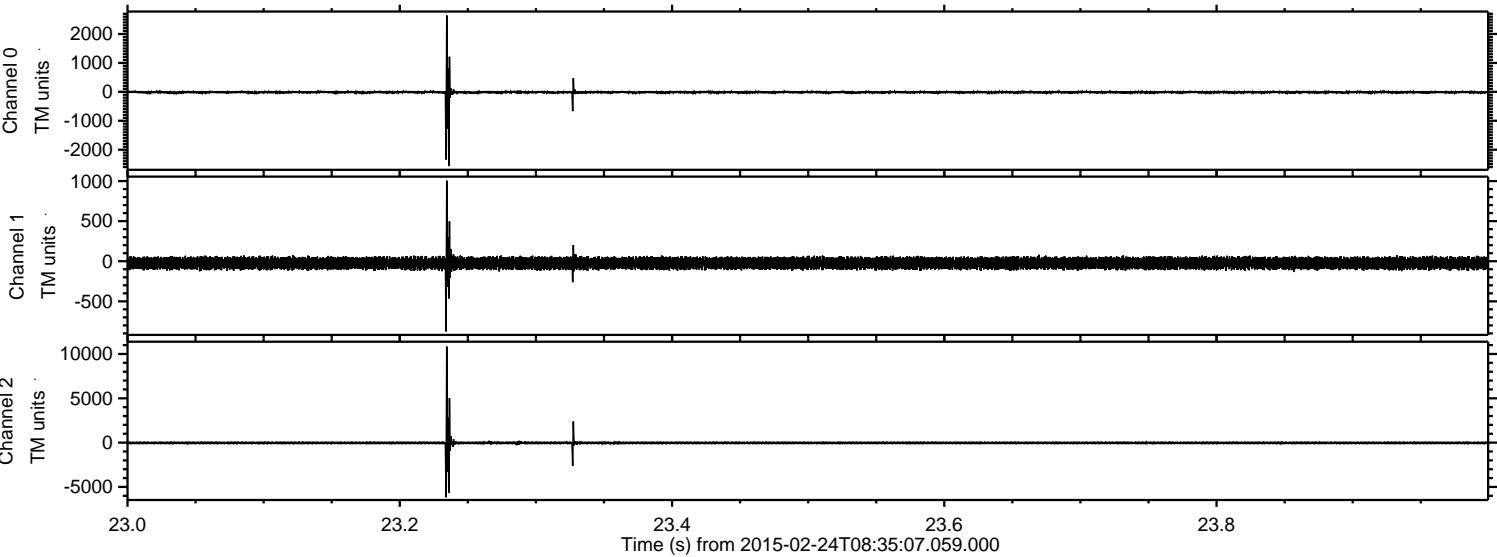


ELMAVAN 3D WAVEFORMS (Measured data sampled at 50 kHz) 49810 packets of 144 samples from 2015-02-24T08:35:07.059.000. Part 121/144

Processed Tue Mar 3 13:21:09 2015 by ELM ver.2012-10-06 from 001__elm20150224_083506__dat00.bin

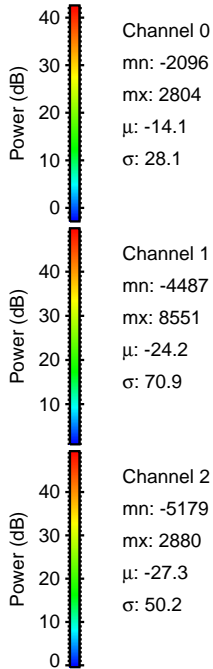
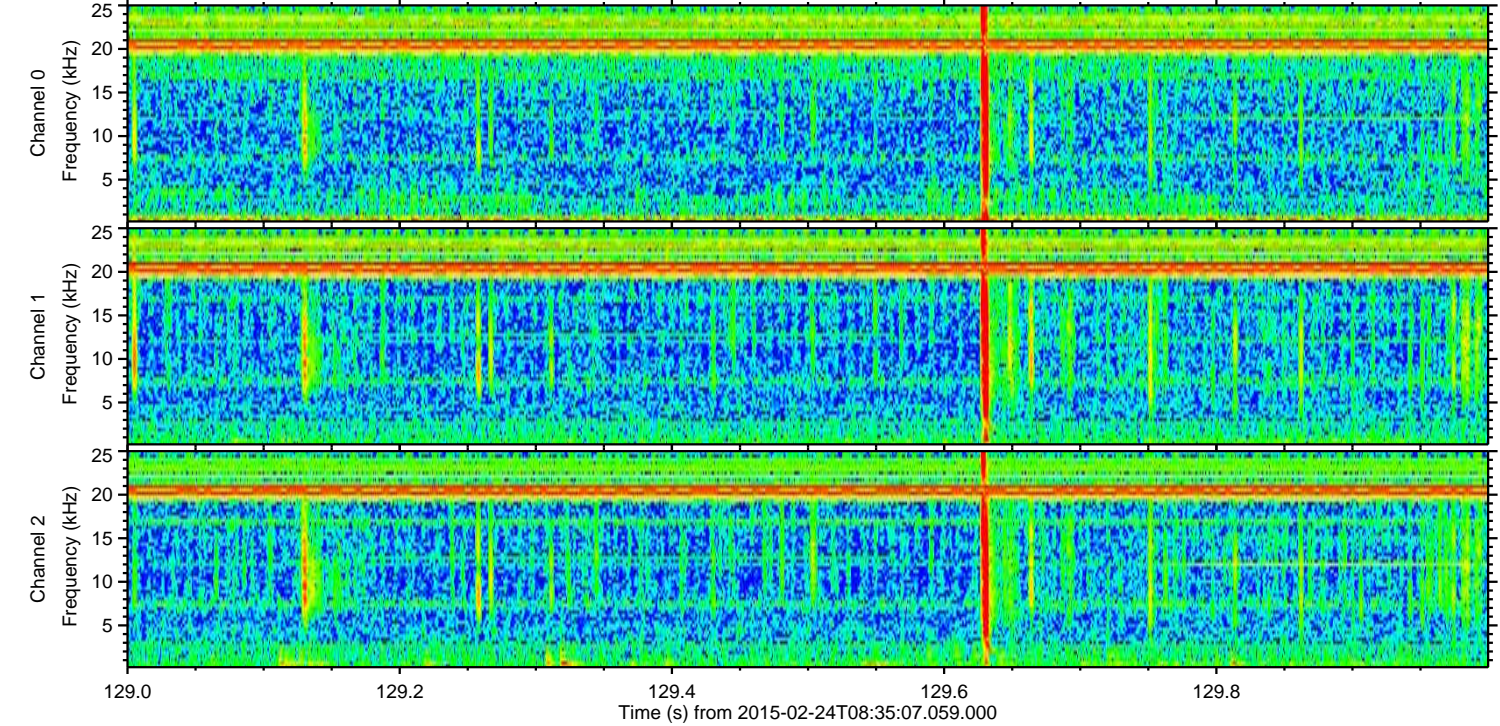
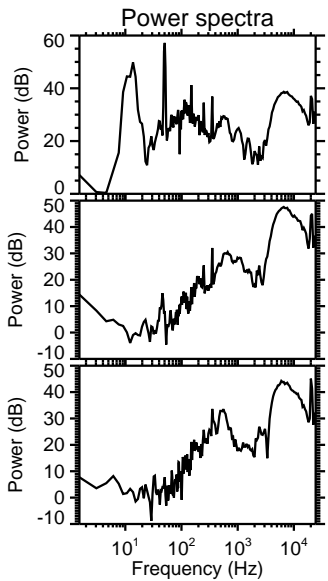
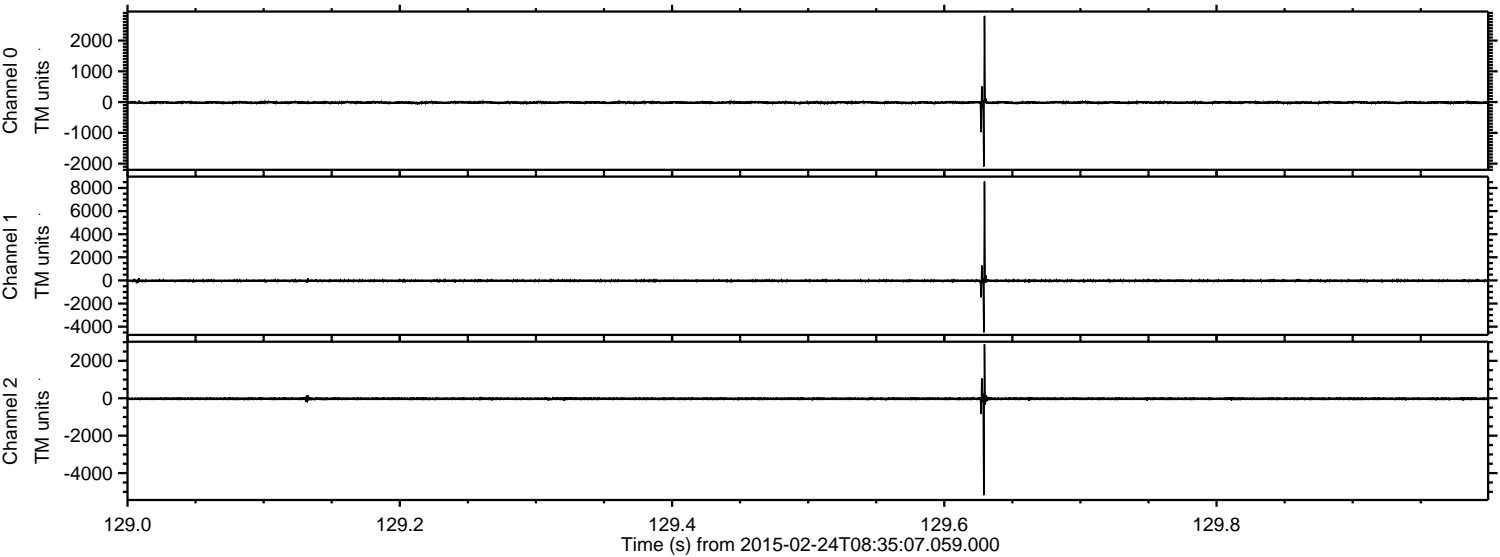


Processed Tue Mar 3 13:21:10 2015 by ELM ver.2012-10-06 from 001__elm20150224_083506__dat00.bin

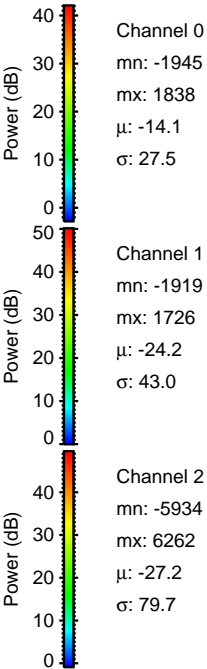
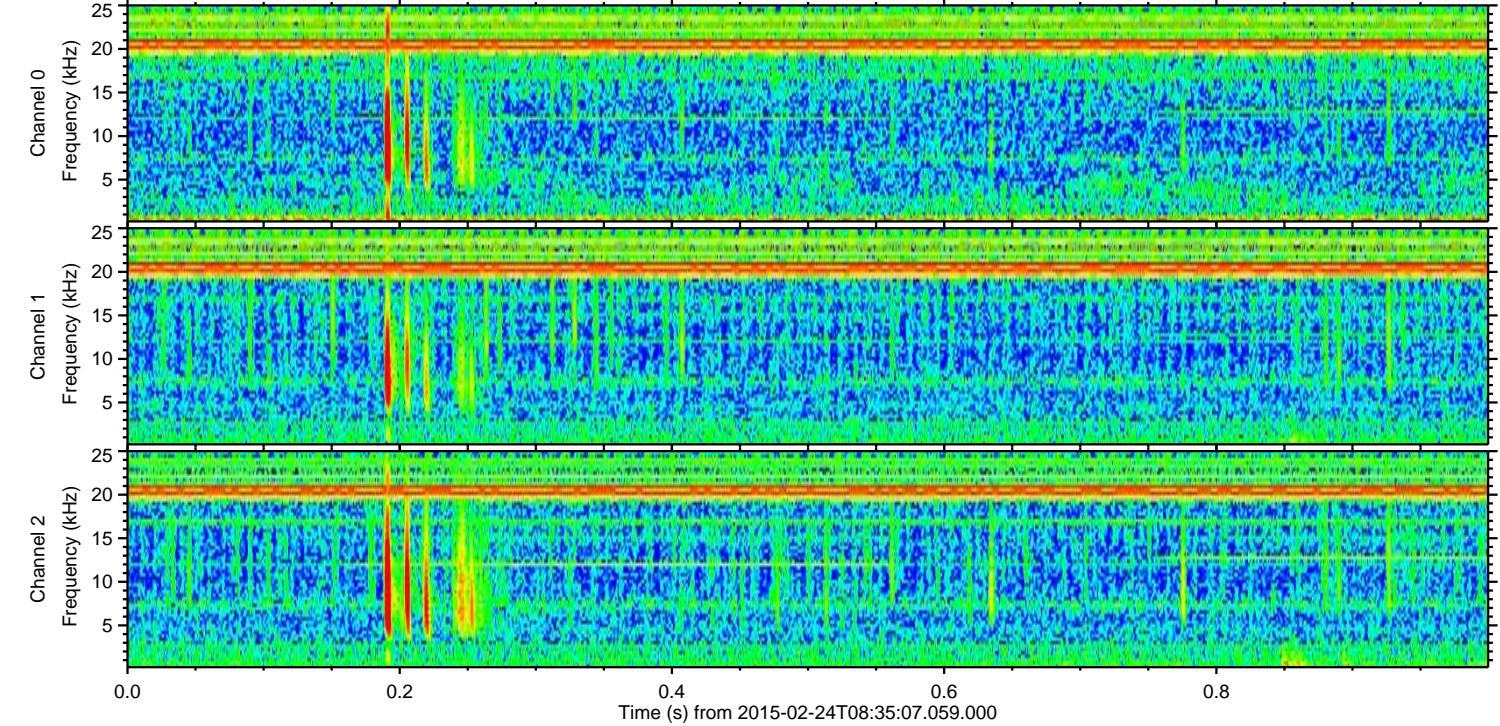
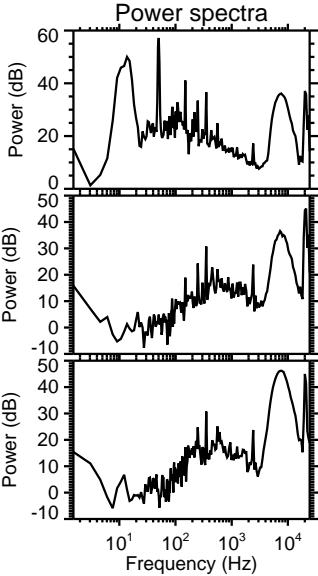
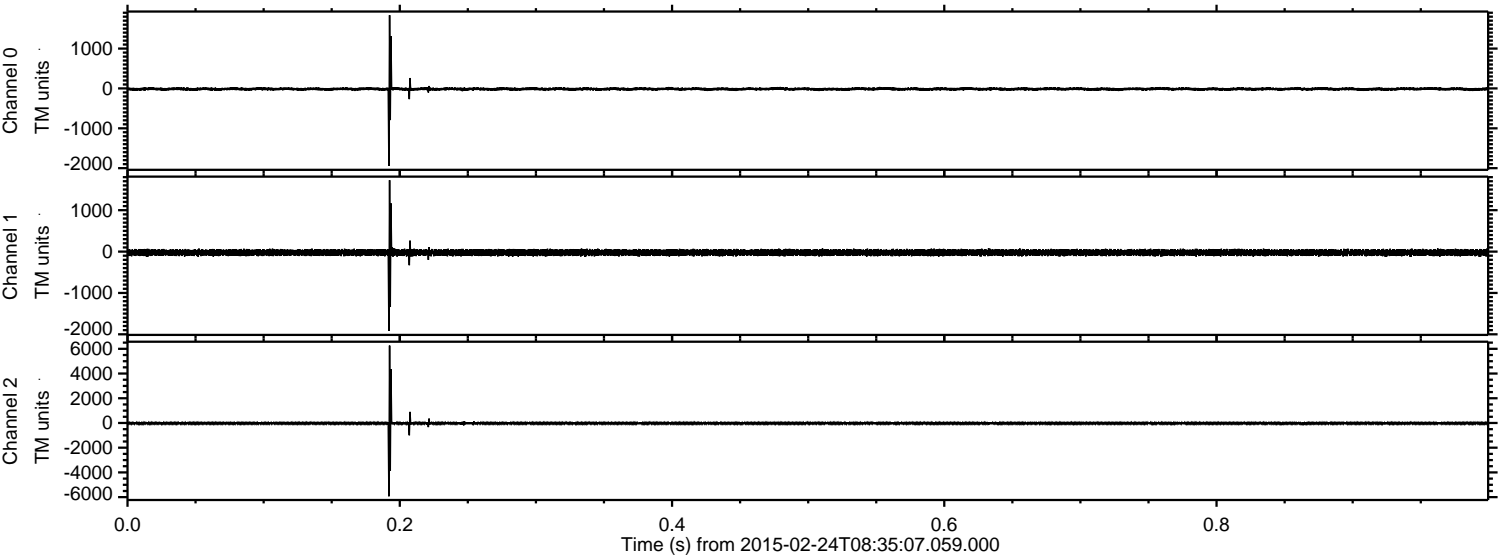


ELMAVAN 3D WAVEFORMS (Measured data sampled at 50 kHz) 49810 packets of 144 samples from 2015-02-24T08:35:07.059.000. Part 130/144

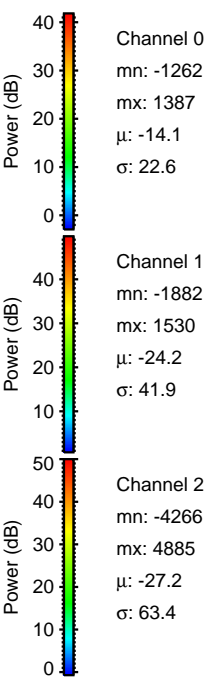
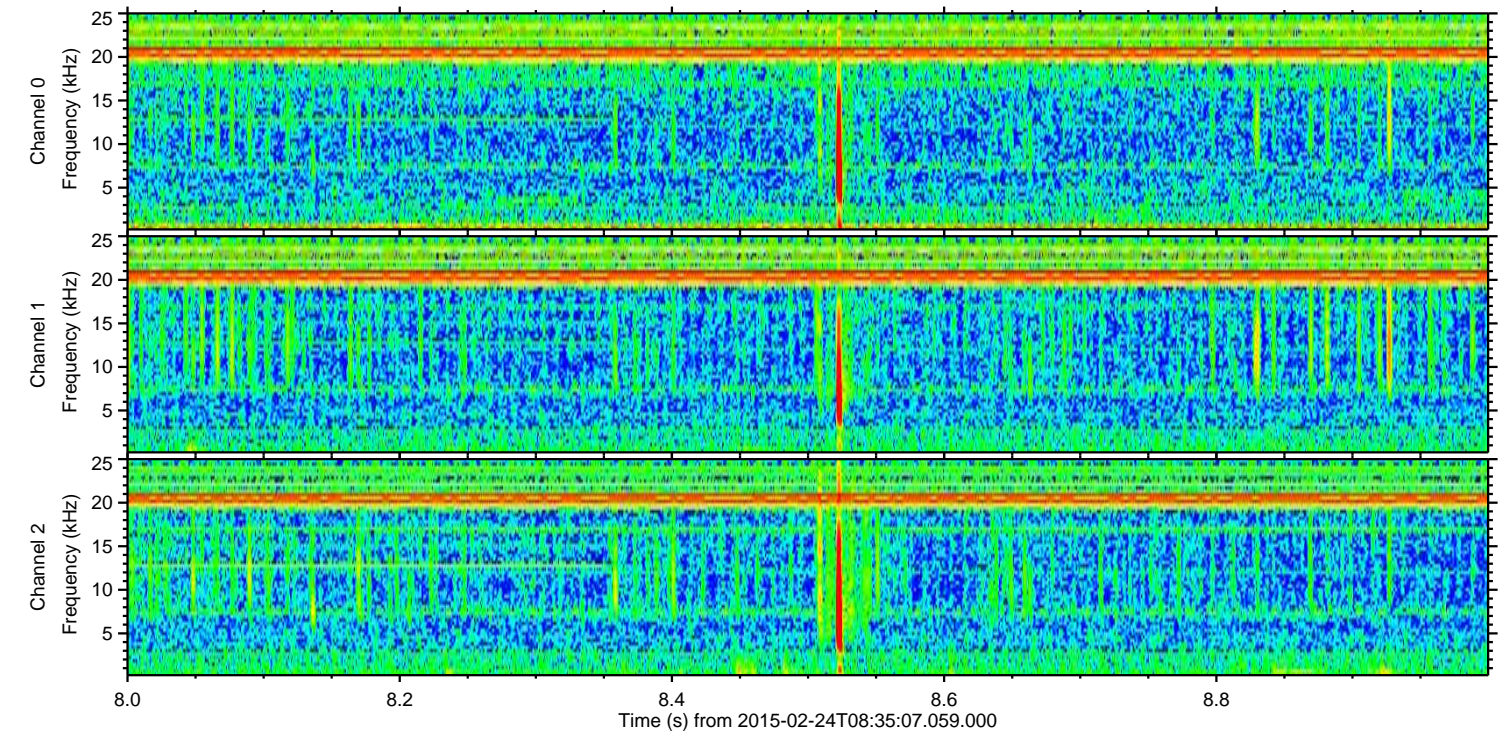
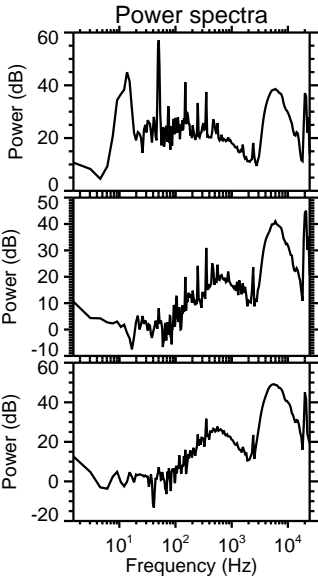
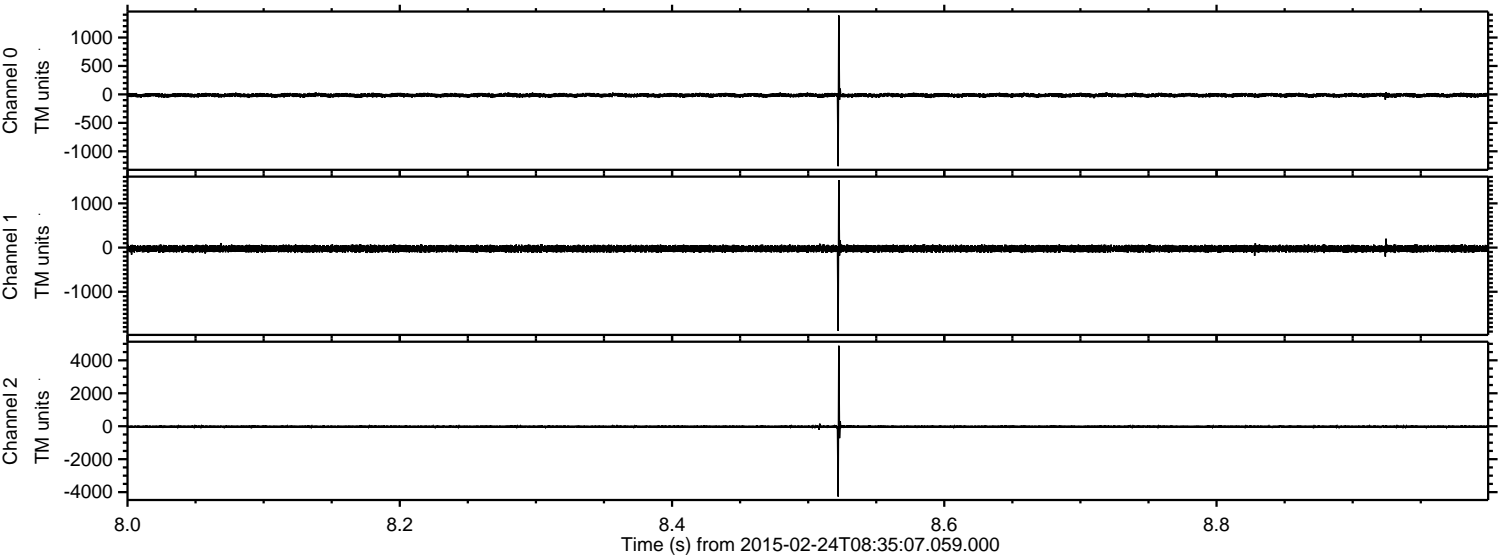
Processed Tue Mar 3 13:21:11 2015 by ELM ver.2012-10-06 from 001__elm20150224_083506__dat00.bin



Processed Tue Mar 3 13:21:12 2015 by ELM ver.2012-10-06 from 001__elm20150224_083506__dat00.bin



Processed Tue Mar 3 13:21:13 2015 by ELM ver.2012-10-06 from 001__elm20150224_083506__dat00.bin

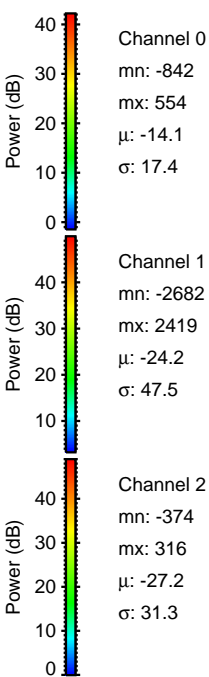
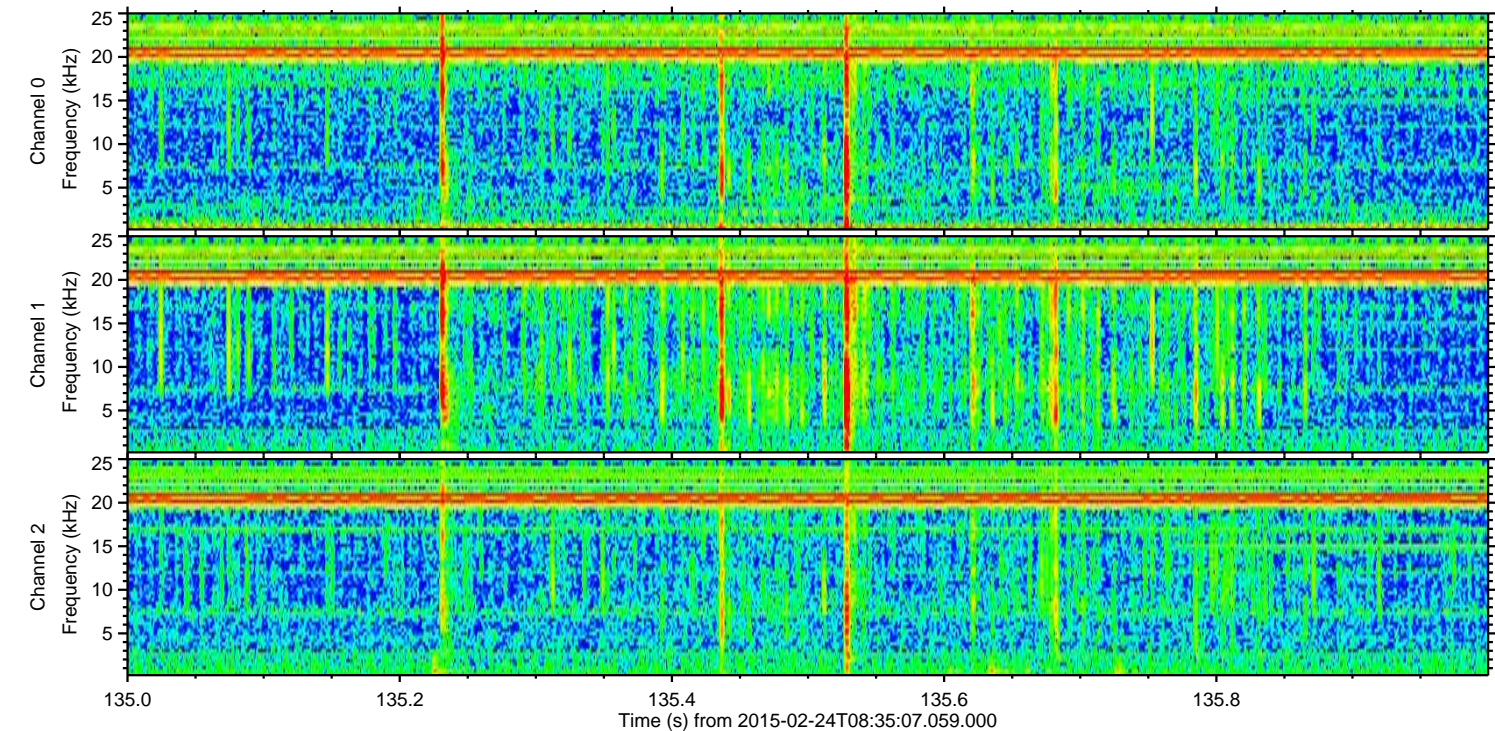
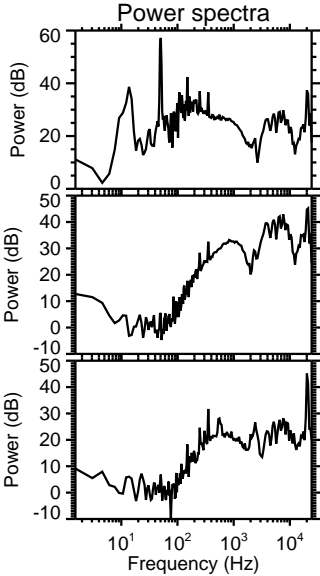
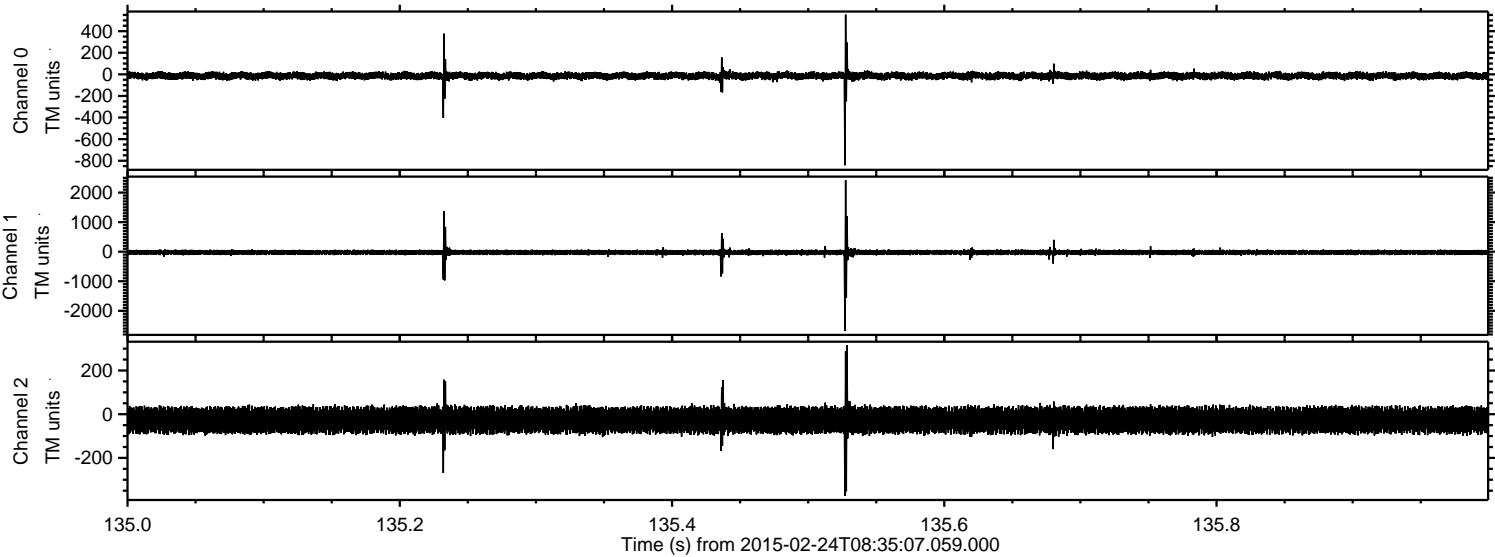


Channel 0
mn: -1262
mx: 1387
 μ : -14.1
 σ : 22.6

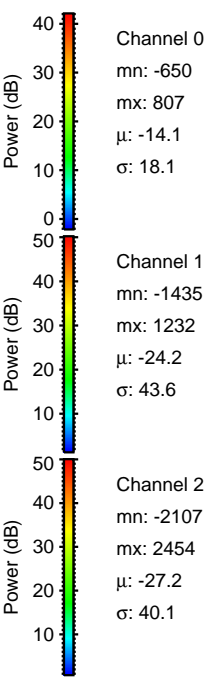
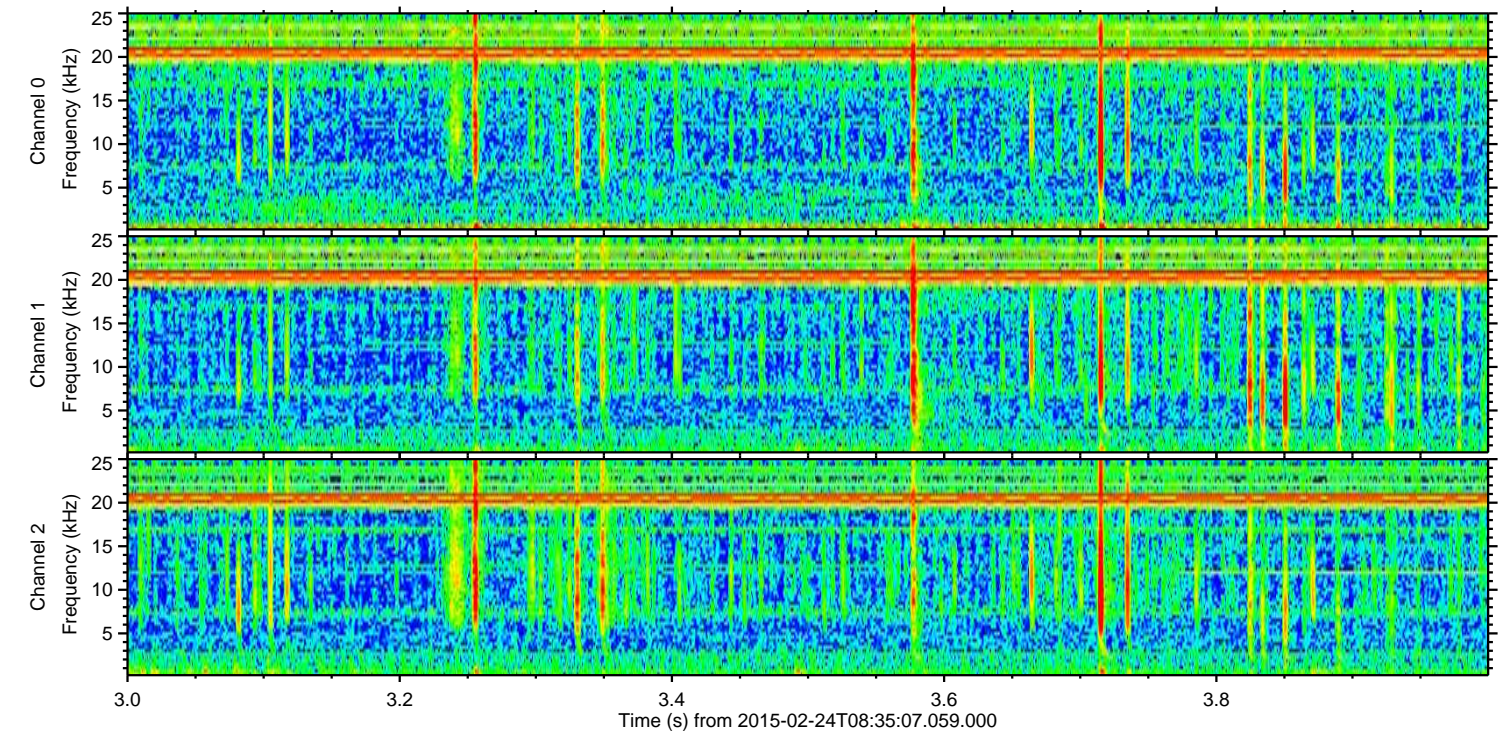
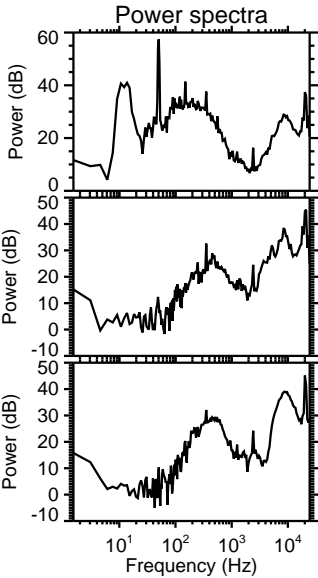
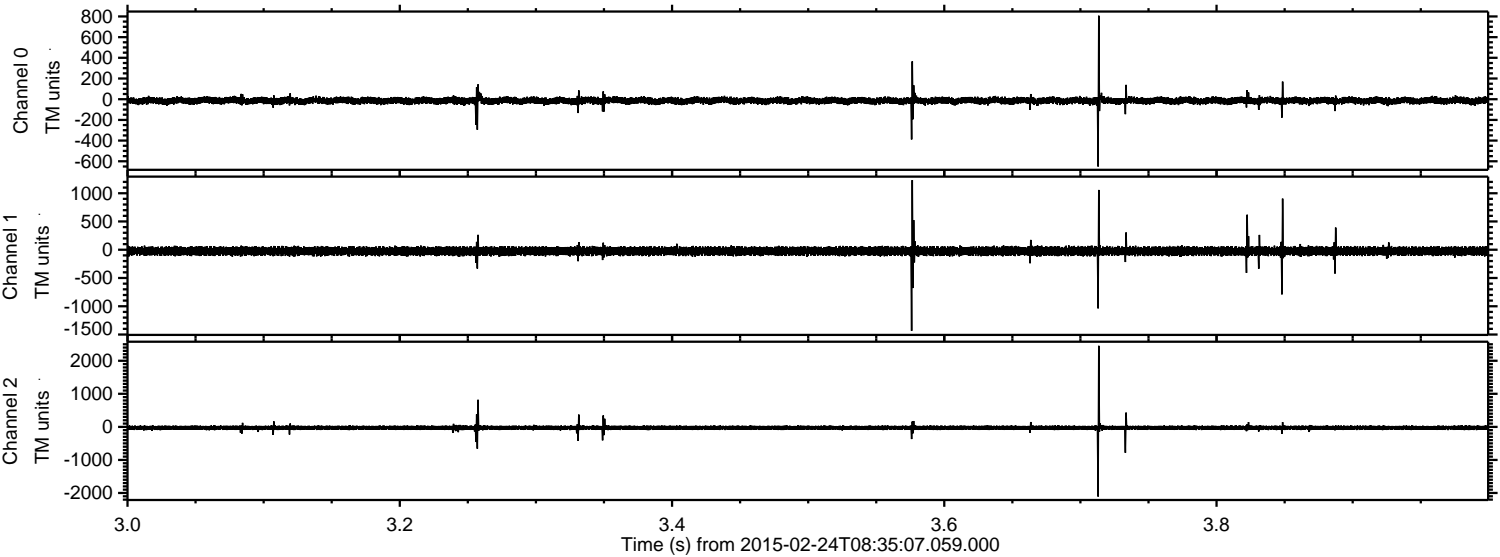
Channel 1
mn: -1882
mx: 1530
 μ : -24.2
 σ : 41.9

Channel 2
mn: -4266
mx: 4885
 μ : -27.2
 σ : 63.4

Processed Tue Mar 3 13:21:14 2015 by ELM ver.2012-10-06 from 001__elm20150224_083506__dat00.bin



Processed Tue Mar 3 13:21:15 2015 by ELM ver.2012-10-06 from 001__elm20150224_083506__dat00.bin



Channel 0
mn: -650
mx: 807
 μ : -14.1
 σ : 18.1

Channel 1
mn: -1435
mx: 1232
 μ : -24.2
 σ : 43.6

Channel 2
mn: -2107
mx: 2454
 μ : -27.2
 σ : 40.1

