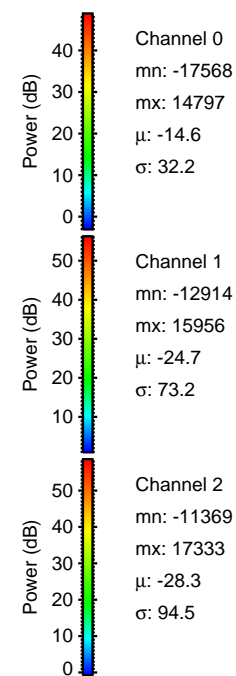
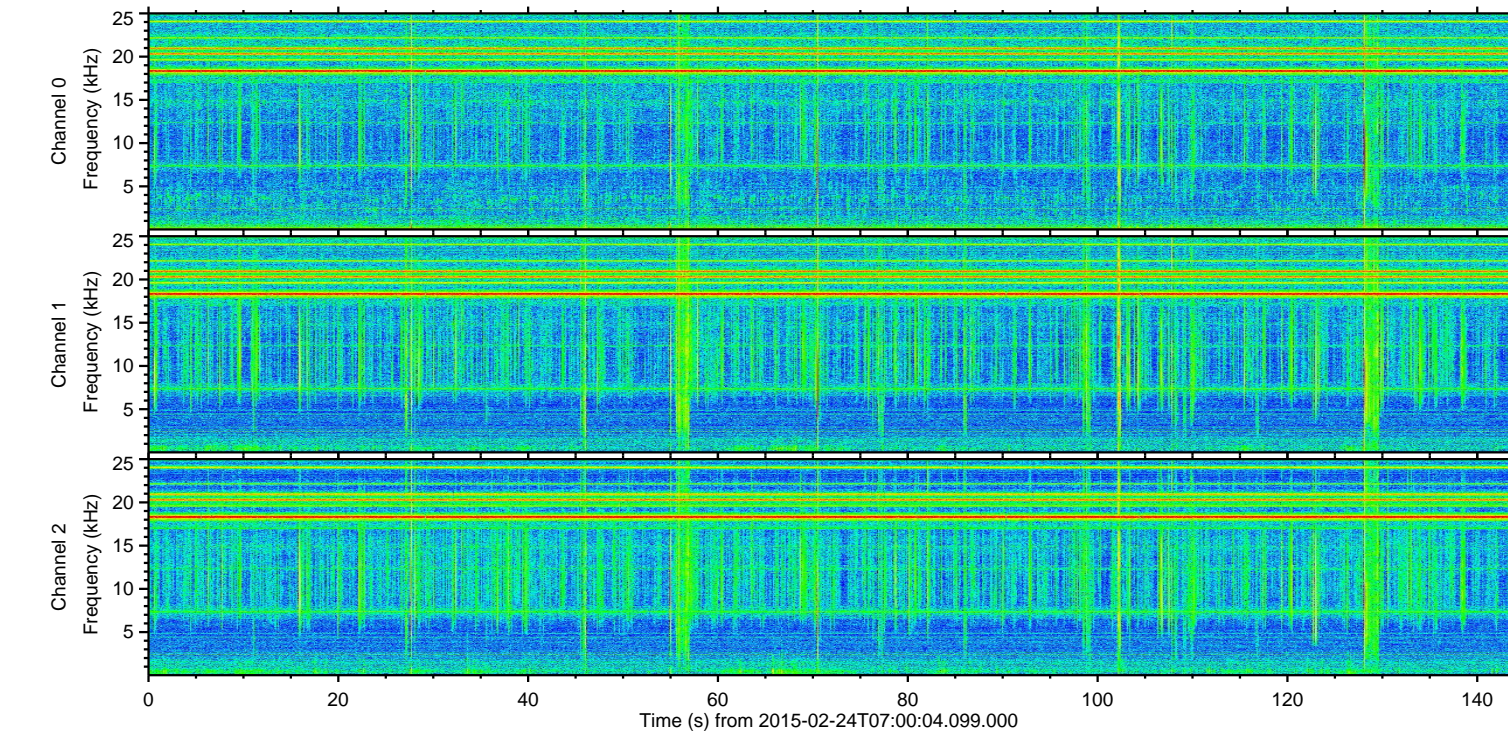
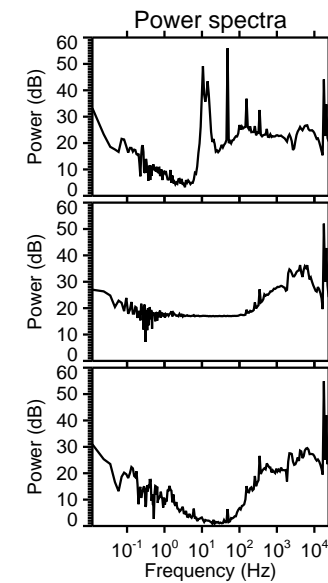
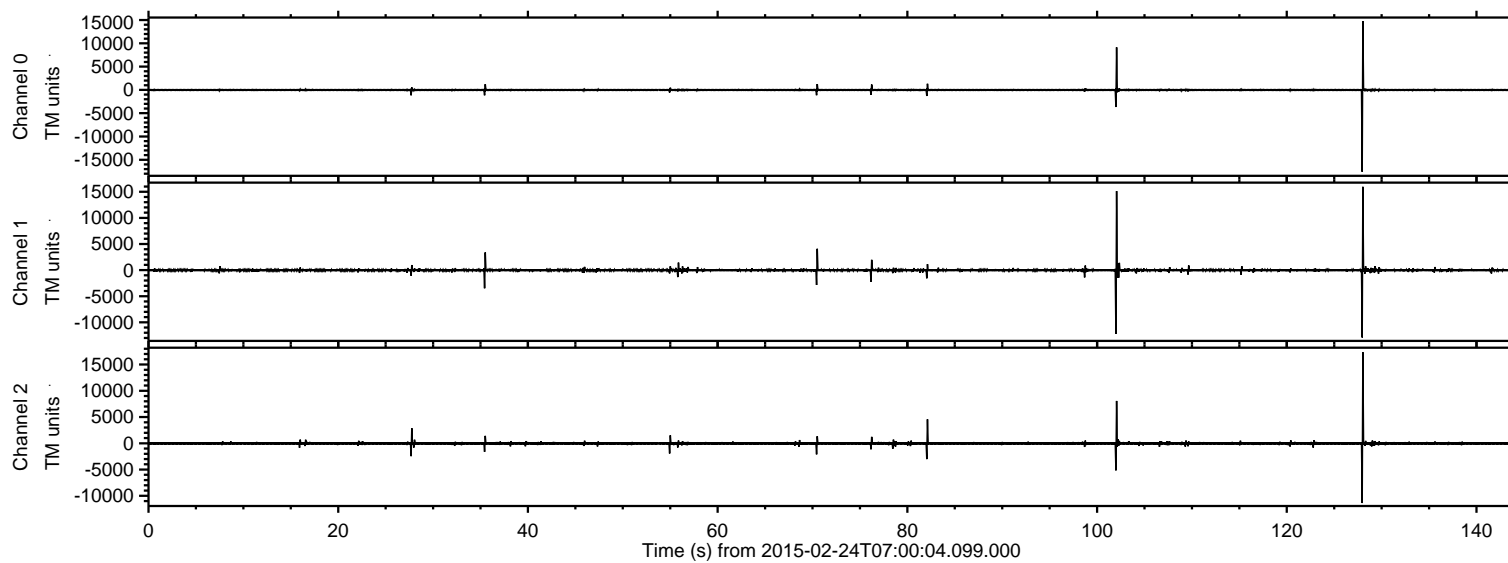


# ELMAVAN 3D WAVEFORMS (Measured data sampled at 50 kHz) 49806 packets of 144 samples from 2015-02-24T07:00:04.099.000.

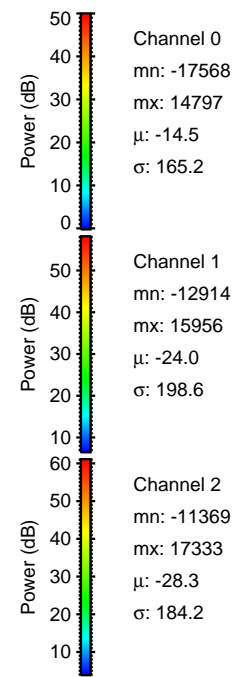
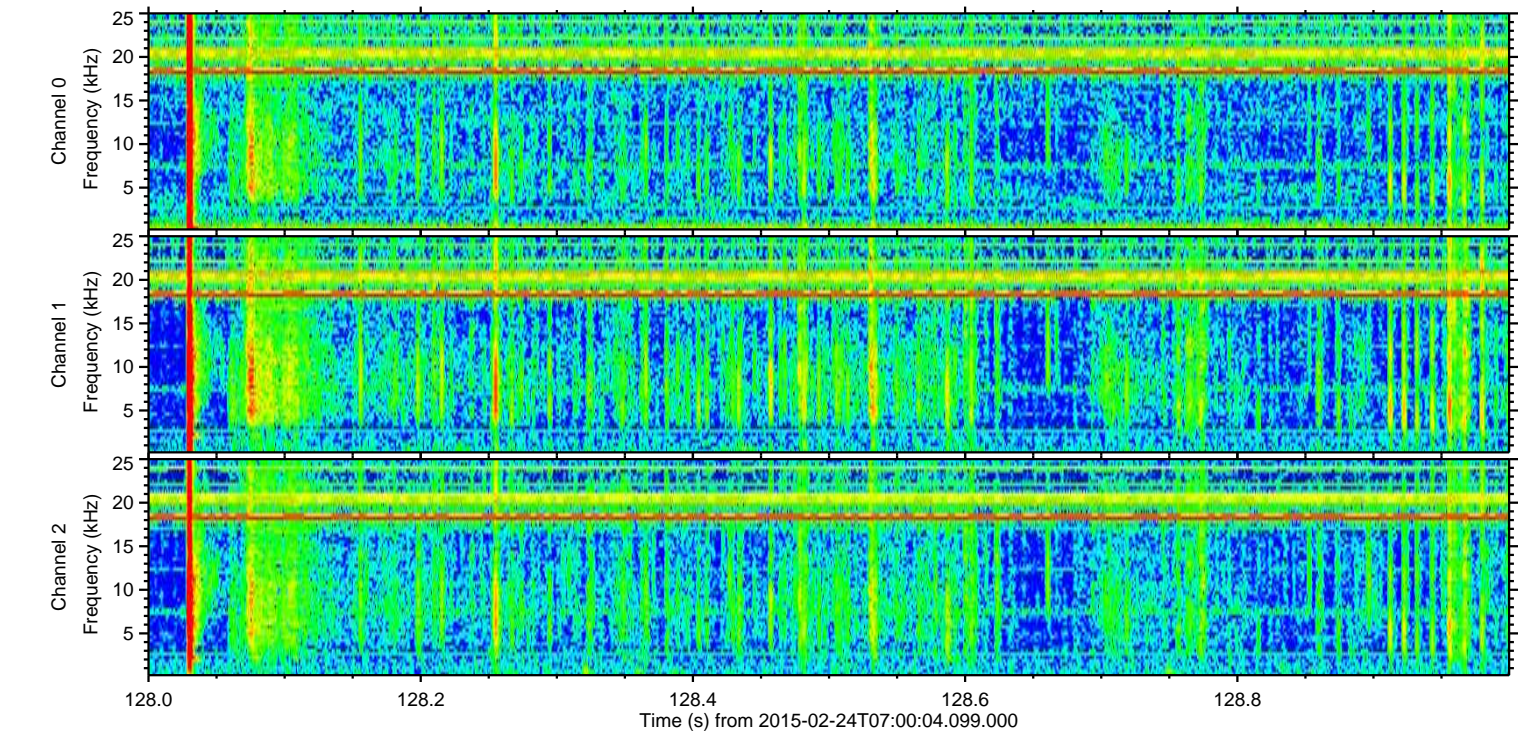
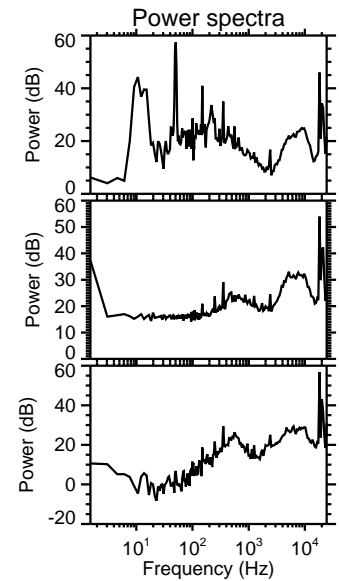
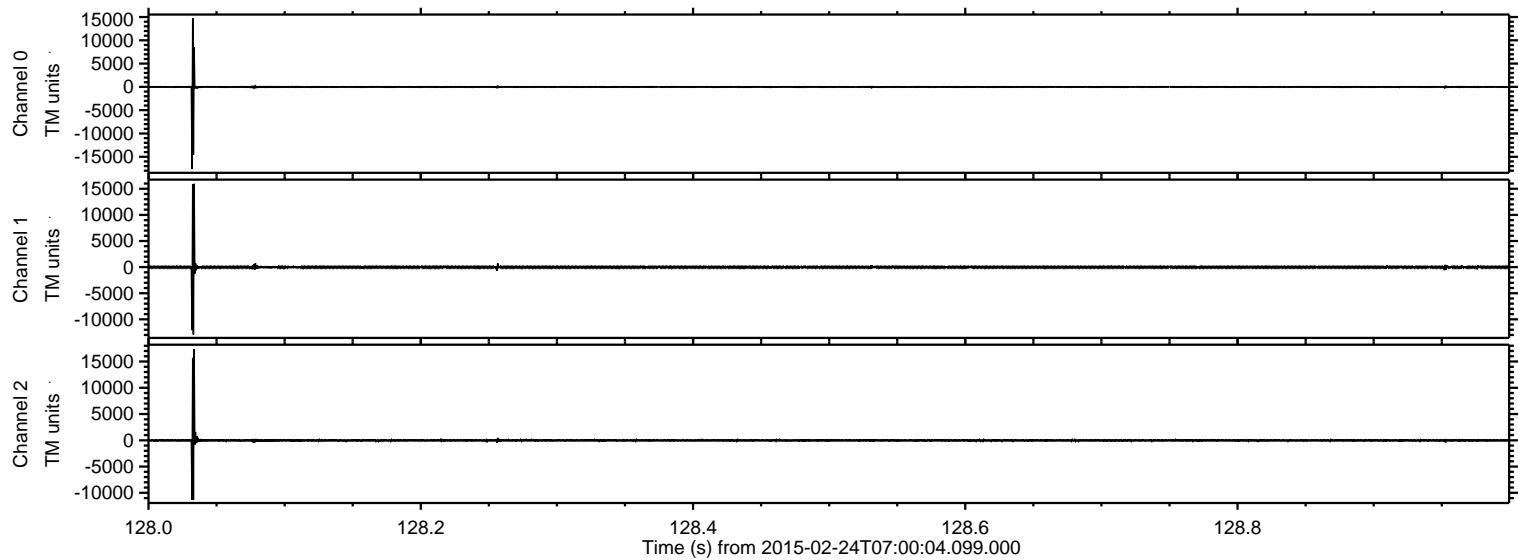
Processed Tue Mar 3 12:48:45 2015 by ELM ver.2012-10-06 from 001\_\_elm20150224\_070003\_\_dat00.bin





ELMAVAN 3D WAVEFORMS (Measured data sampled at 50 kHz) 49806 packets of 144 samples from 2015-02-24T07:00:04.099.000. Part 129/144

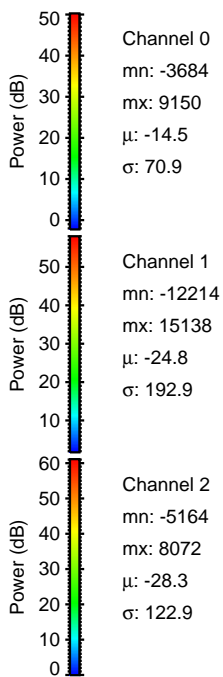
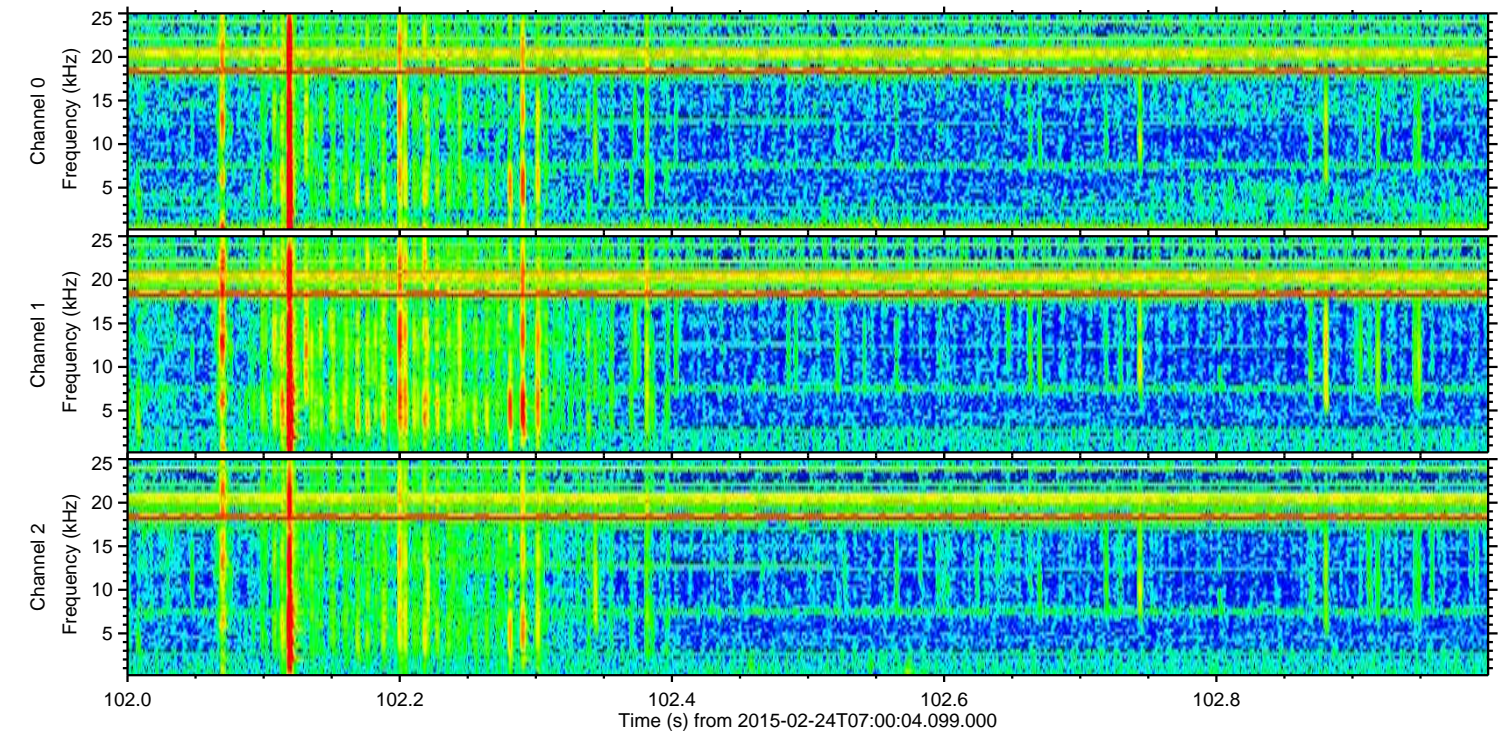
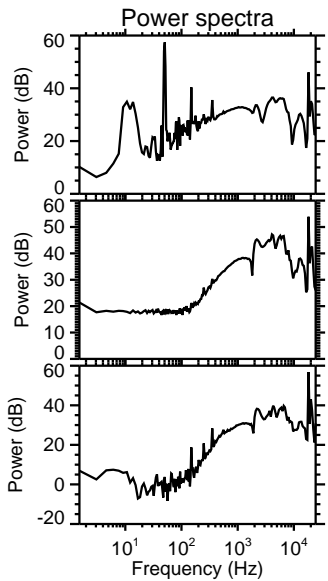
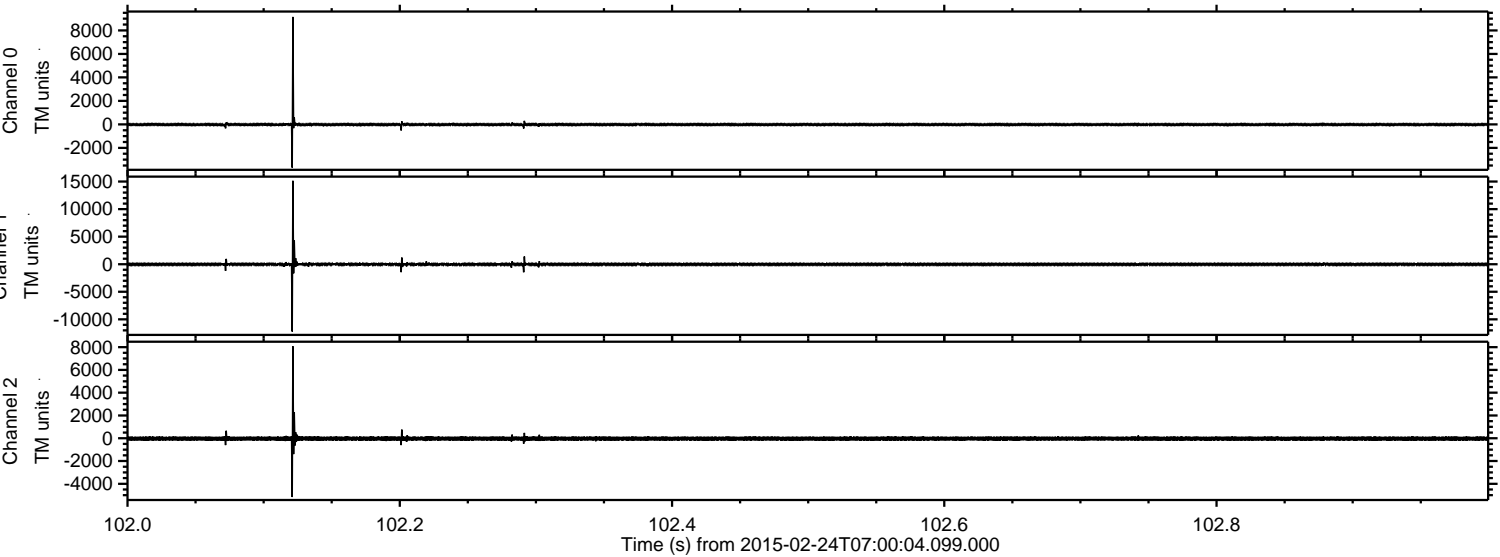
Processed Tue Mar 3 12:48:58 2015 by ELM ver.2012-10-06 from 001\_\_elm20150224\_070003\_\_dat00.bin





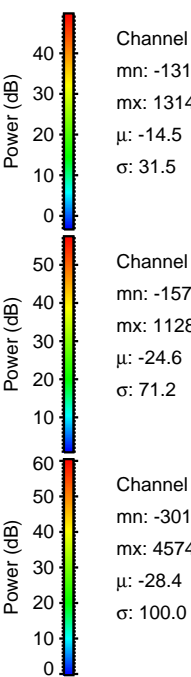
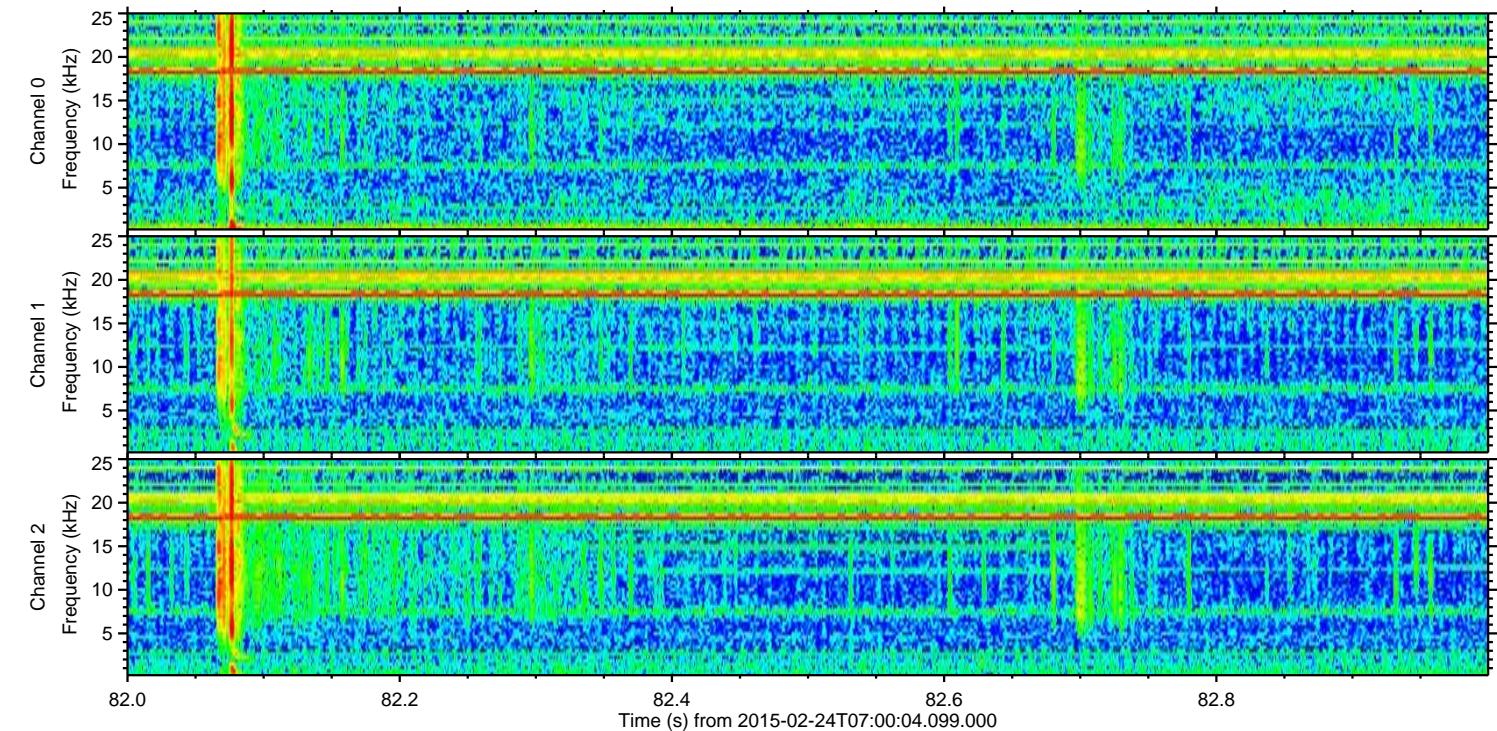
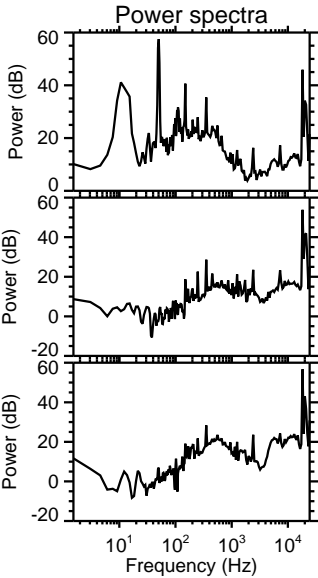
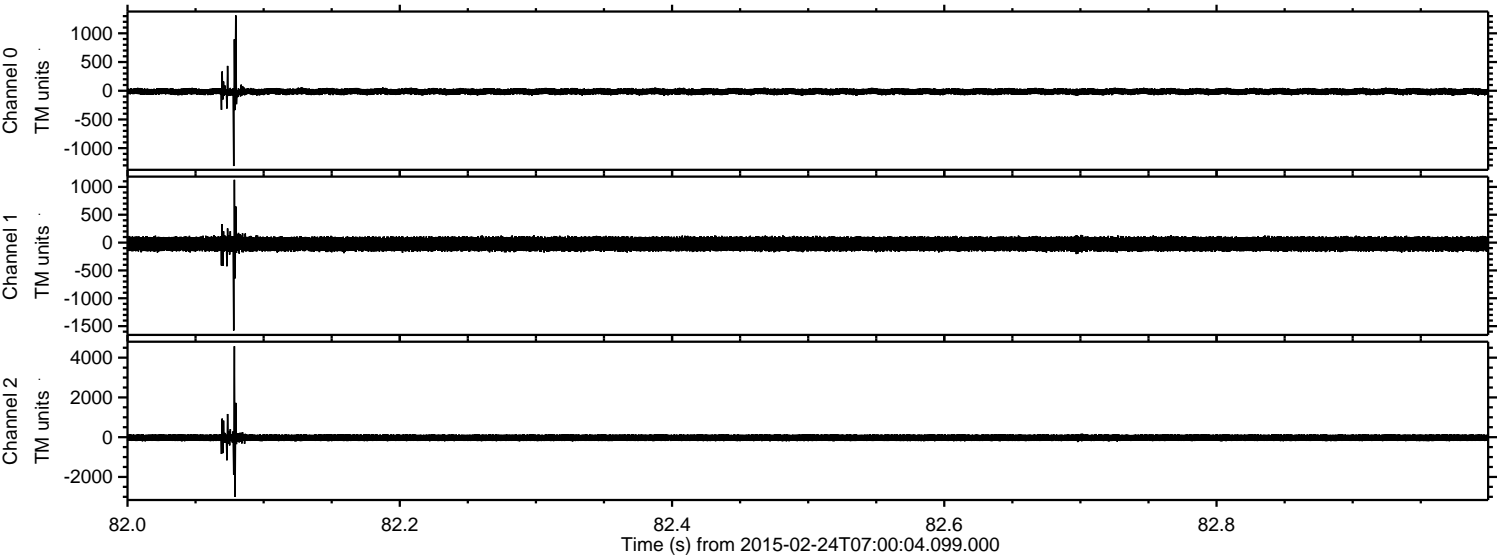
ELMAVAN 3D WAVEFORMS (Measured data sampled at 50 kHz) 49806 packets of 144 samples from 2015-02-24T07:00:04.099.000. Part 103/144

Processed Tue Mar 3 12:48:58 2015 by ELM ver.2012-10-06 from 001\_\_elm20150224\_070003\_\_dat00.bin



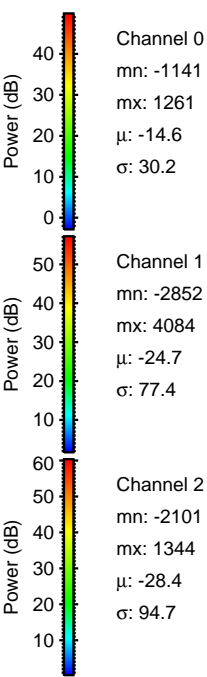
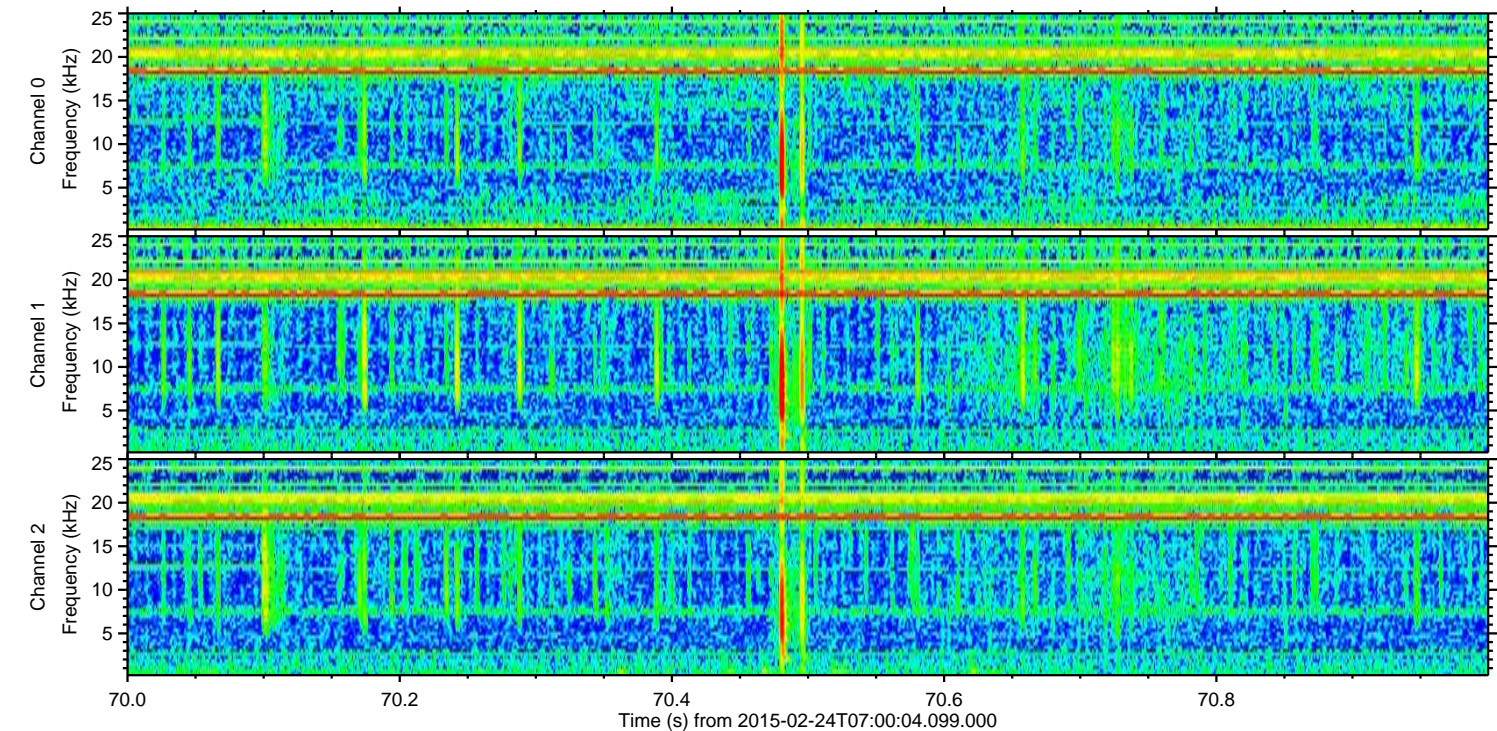
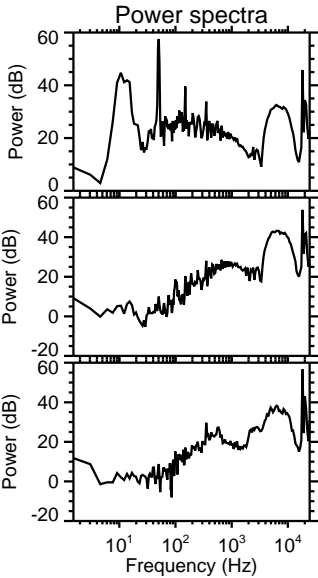
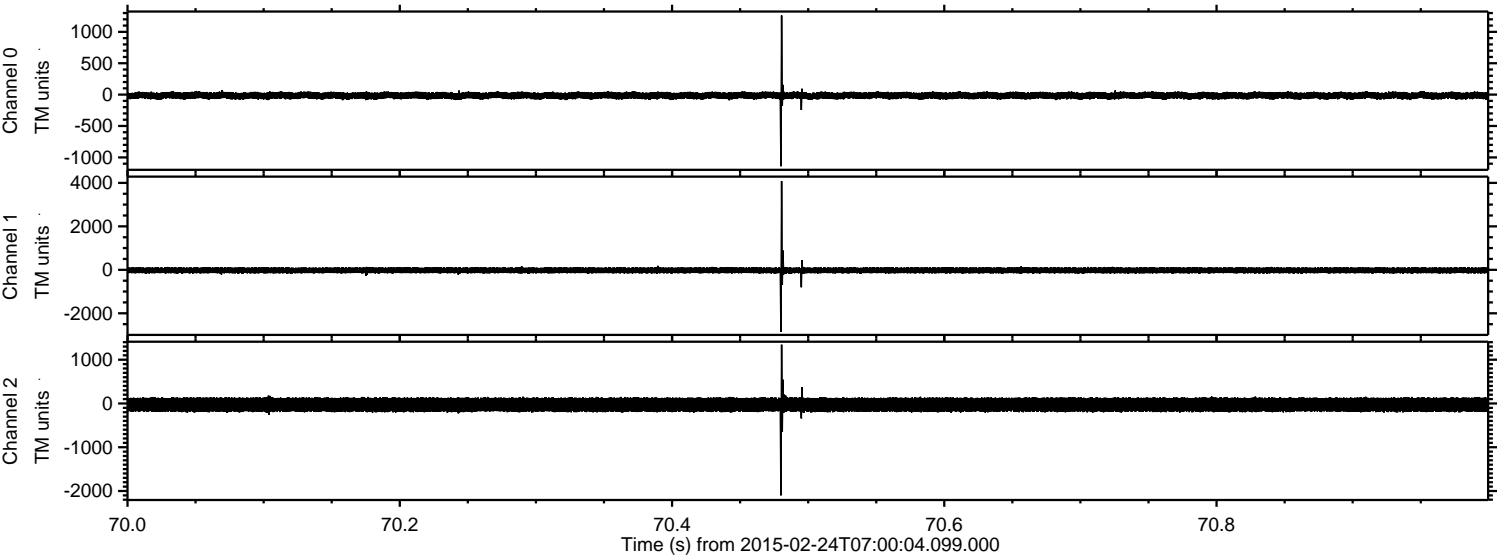


Processed Tue Mar 3 12:48:59 2015 by ELM ver.2012-10-06 from 001\_\_elm20150224\_070003\_\_dat00.bin



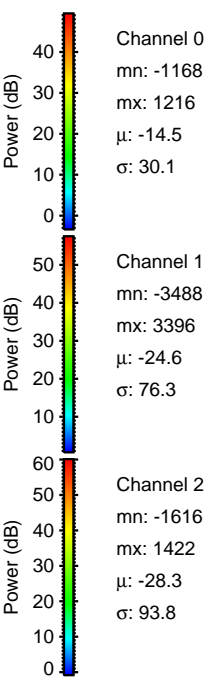
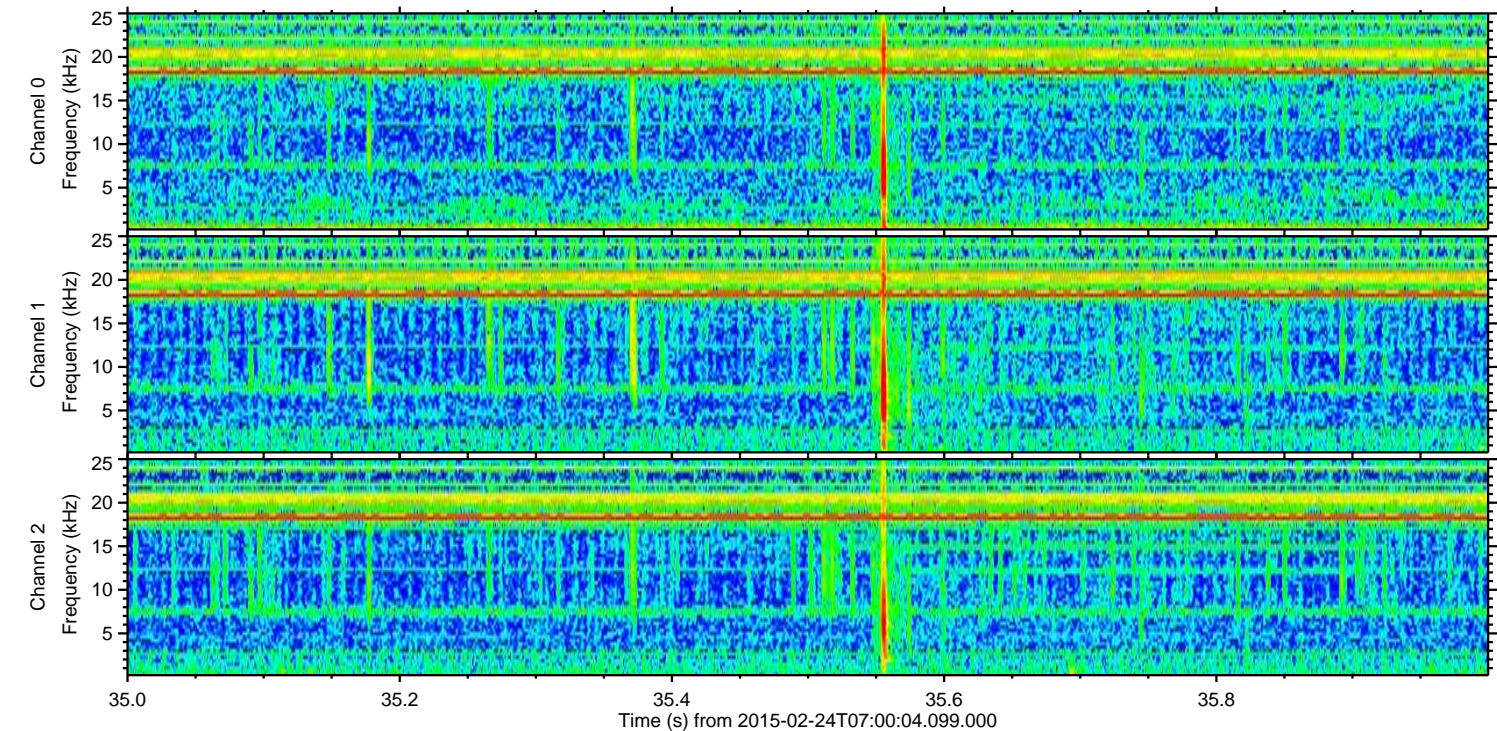
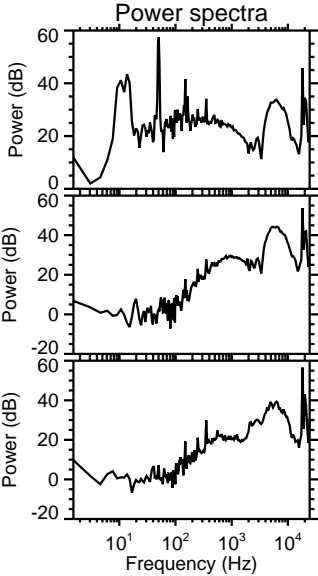
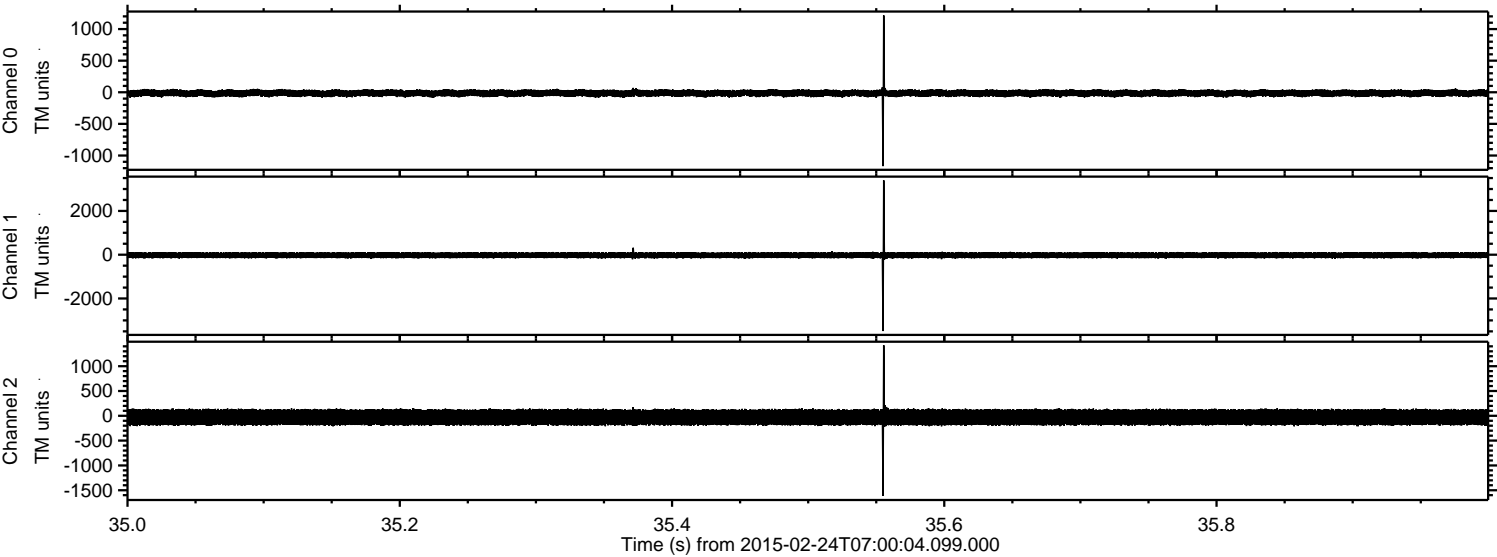


Processed Tue Mar 3 12:49:00 2015 by ELM ver.2012-10-06 from 001\_\_elm20150224\_070003\_\_dat00.bin





Processed Tue Mar 3 12:49:01 2015 by ELM ver.2012-10-06 from 001\_\_elm20150224\_070003\_\_dat00.bin



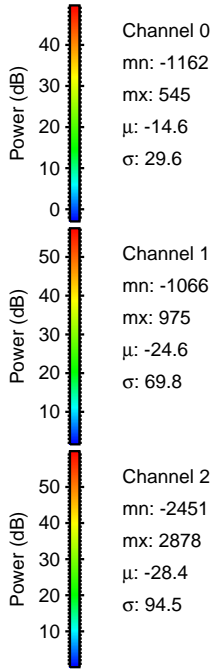
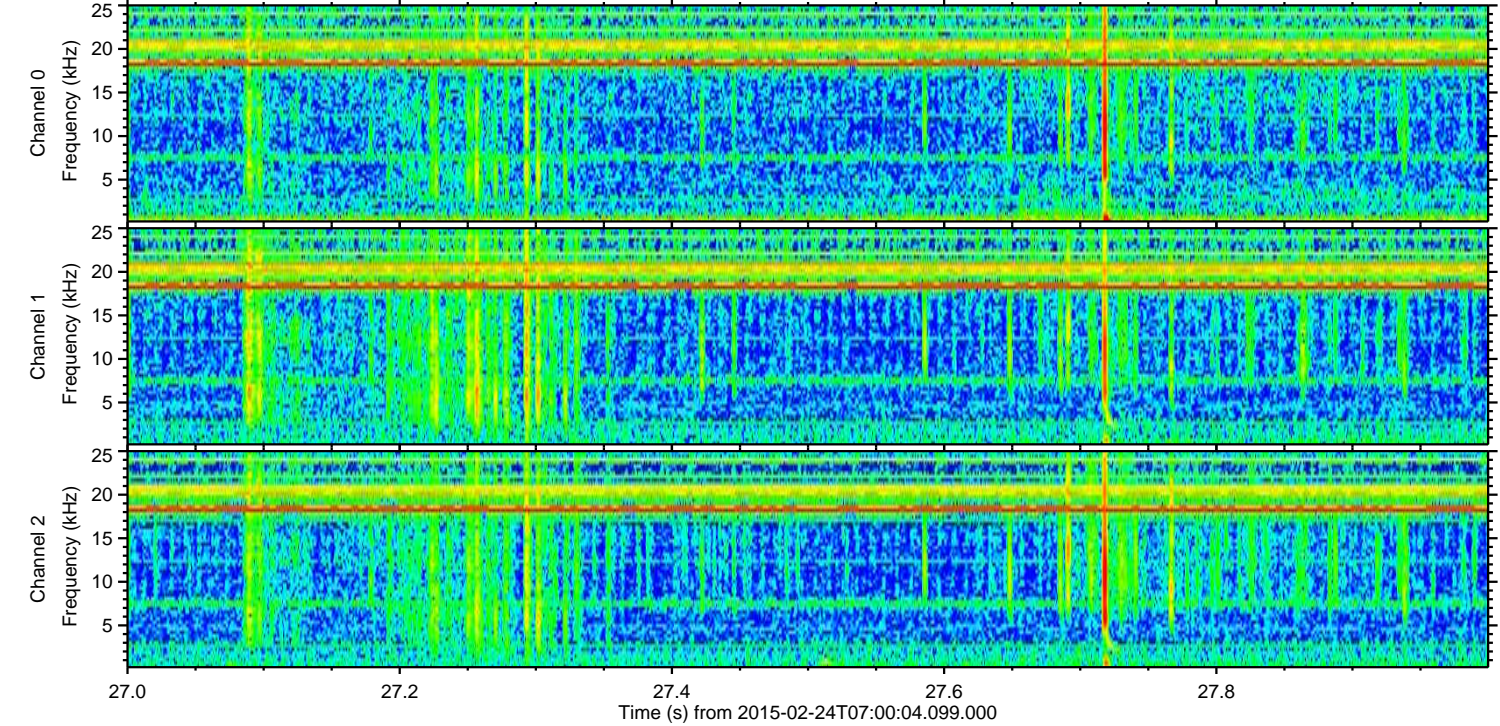
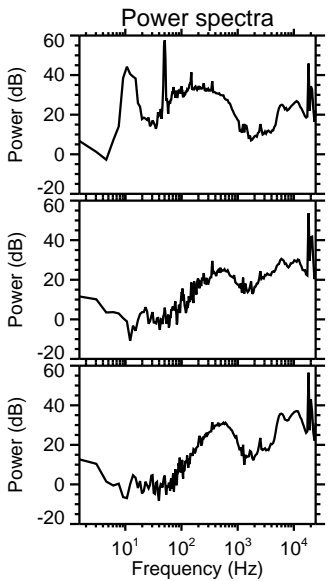
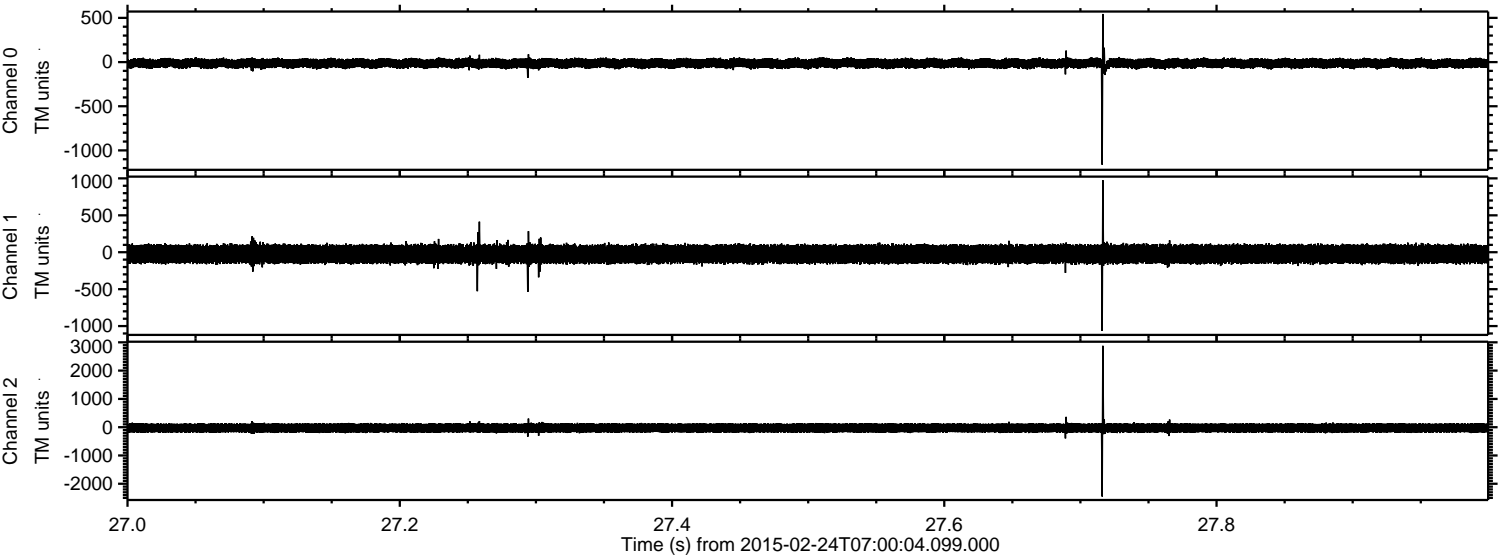
Channel 0  
mn: -1168  
mx: 1216  
 $\mu$ : -14.5  
 $\sigma$ : 30.1

Channel 1  
mn: -3488  
mx: 3396  
 $\mu$ : -24.6  
 $\sigma$ : 76.3

Channel 2  
mn: -1616  
mx: 1422  
 $\mu$ : -28.3  
 $\sigma$ : 93.8

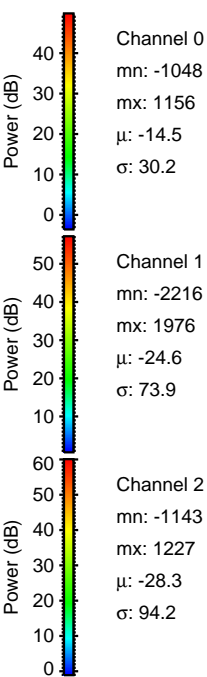
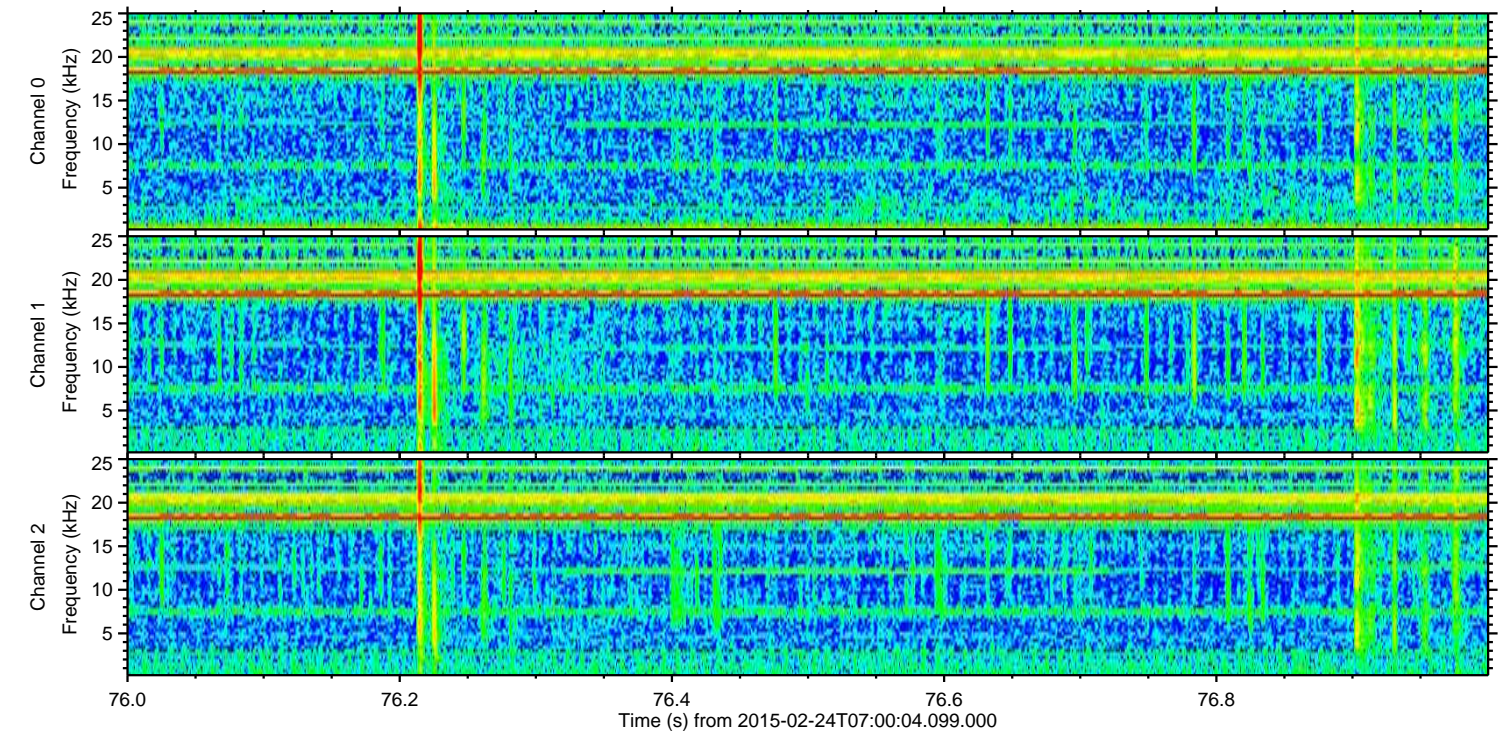
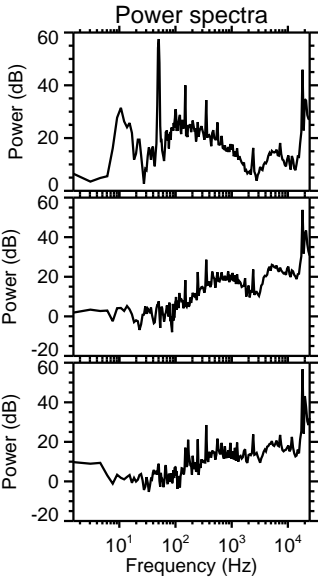
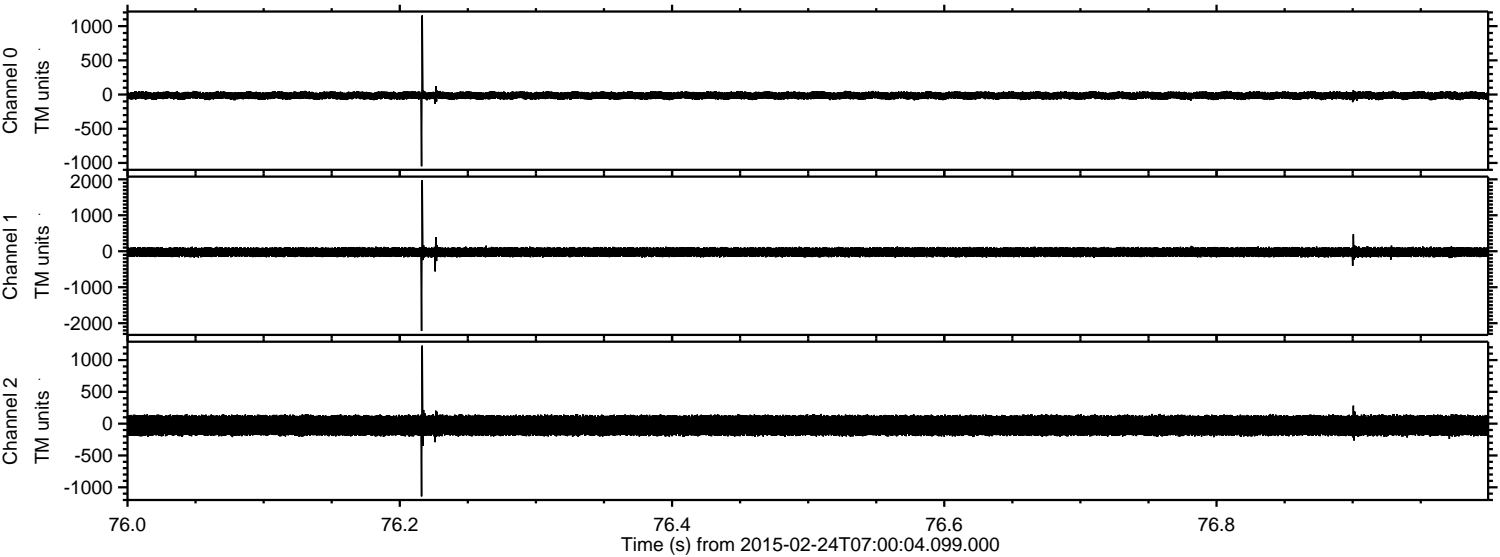


Processed Tue Mar 3 12:49:02 2015 by ELM ver.2012-10-06 from 001\_\_elm20150224\_070003\_\_dat00.bin





Processed Tue Mar 3 12:49:03 2015 by ELM ver.2012-10-06 from 001\_\_elm20150224\_070003\_\_dat00.bin



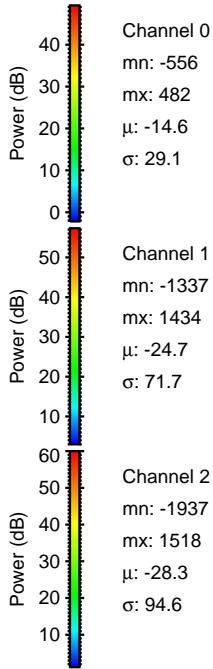
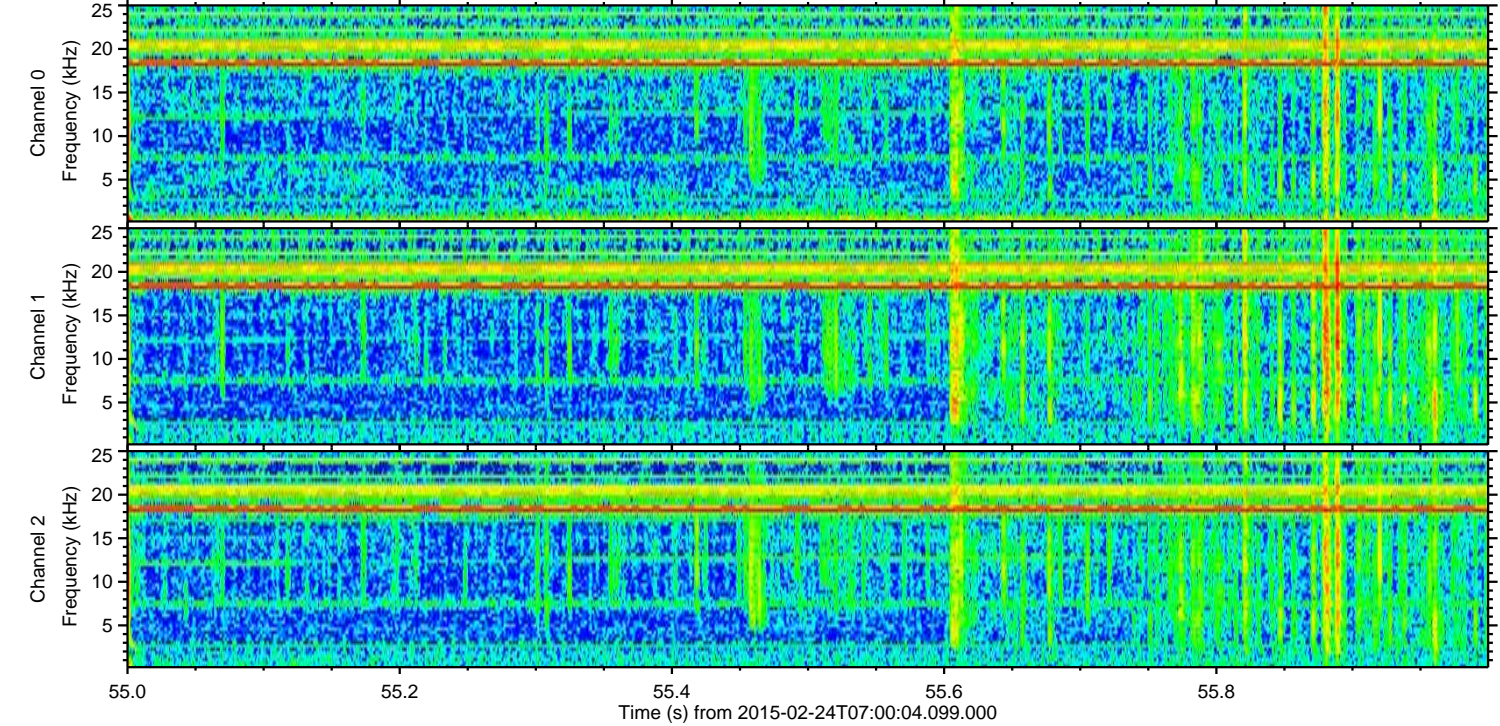
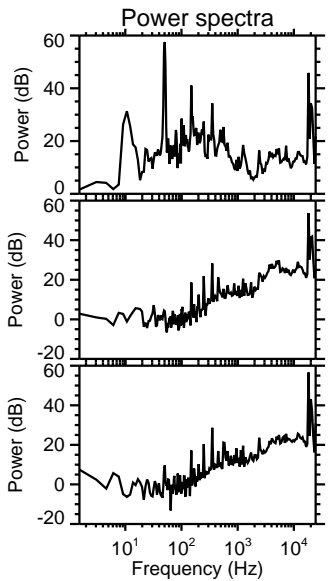
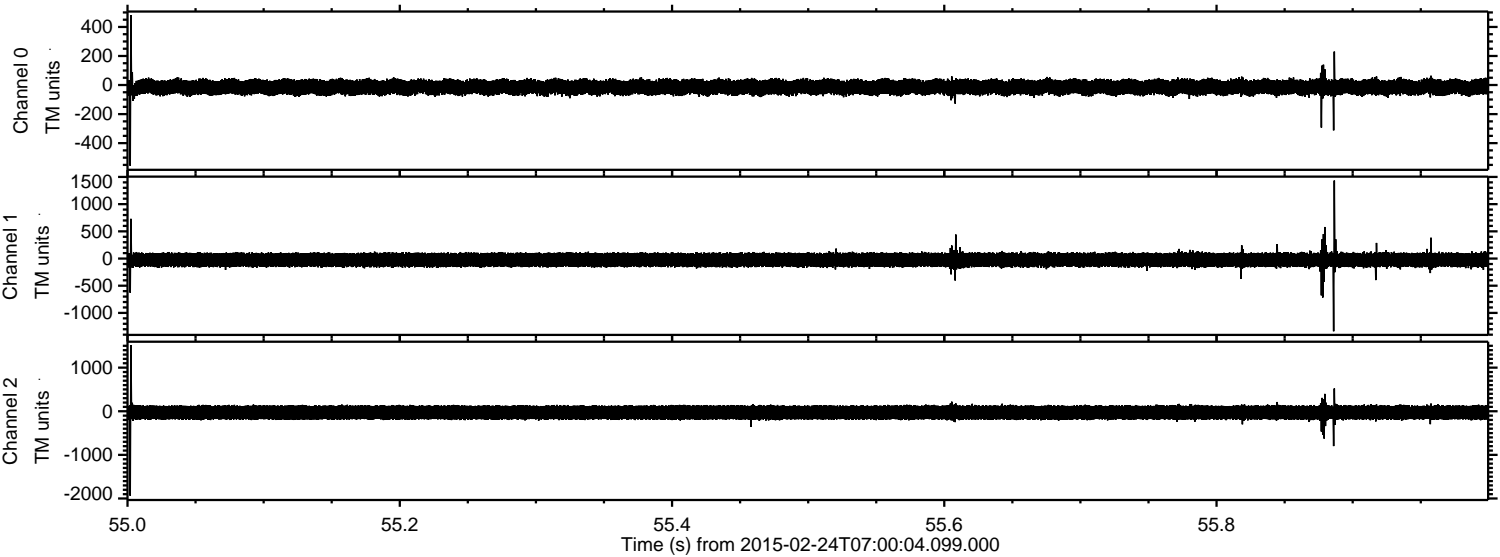
Channel 0  
mn: -1048  
mx: 1156  
 $\mu$ : -14.5  
 $\sigma$ : 30.2

Channel 1  
mn: -2216  
mx: 1976  
 $\mu$ : -24.6  
 $\sigma$ : 73.9

Channel 2  
mn: -1143  
mx: 1227  
 $\mu$ : -28.3  
 $\sigma$ : 94.2



Processed Tue Mar 3 12:49:04 2015 by ELM ver.2012-10-06 from 001\_\_elm20150224\_070003\_\_dat00.bin



Channel 0  
mn: -556  
mx: 482  
 $\mu$ : -14.6  
 $\sigma$ : 29.1

Channel 1  
mn: -1337  
mx: 1434  
 $\mu$ : -24.7  
 $\sigma$ : 71.7

Channel 2  
mn: -1937  
mx: 1518  
 $\mu$ : -28.3  
 $\sigma$ : 94.6



Processed Tue Mar 3 12:49:05 2015 by ELM ver.2012-10-06 from 001\_\_elm20150224\_070003\_\_dat00.bin

