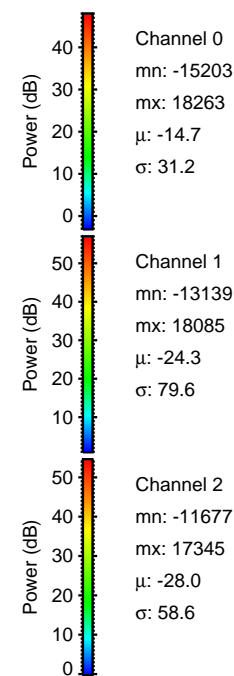
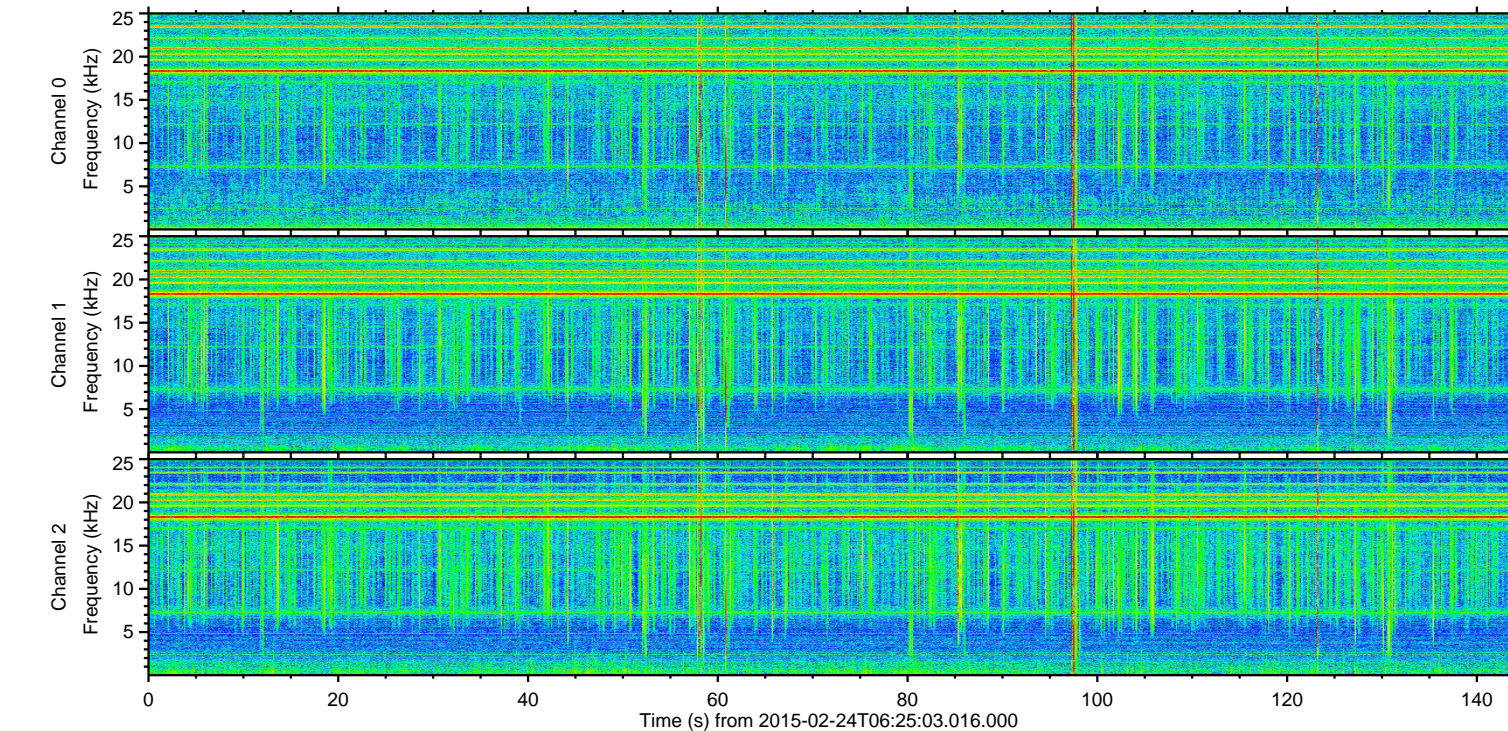
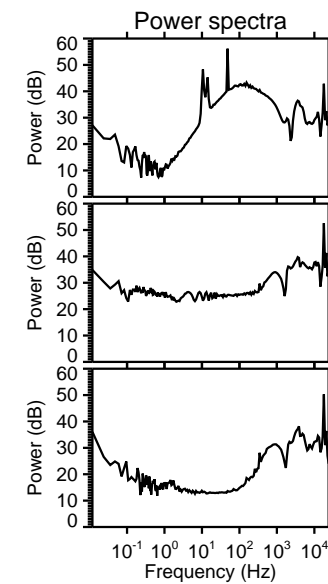
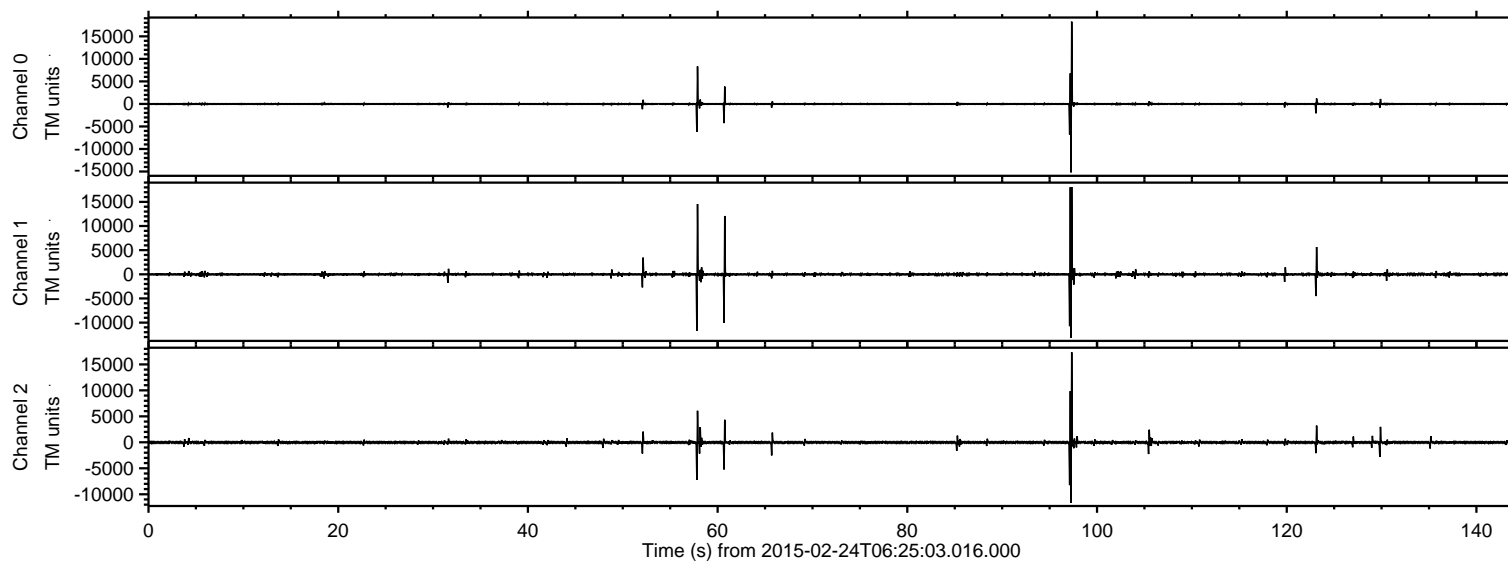


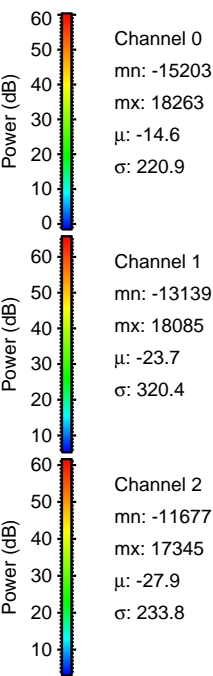
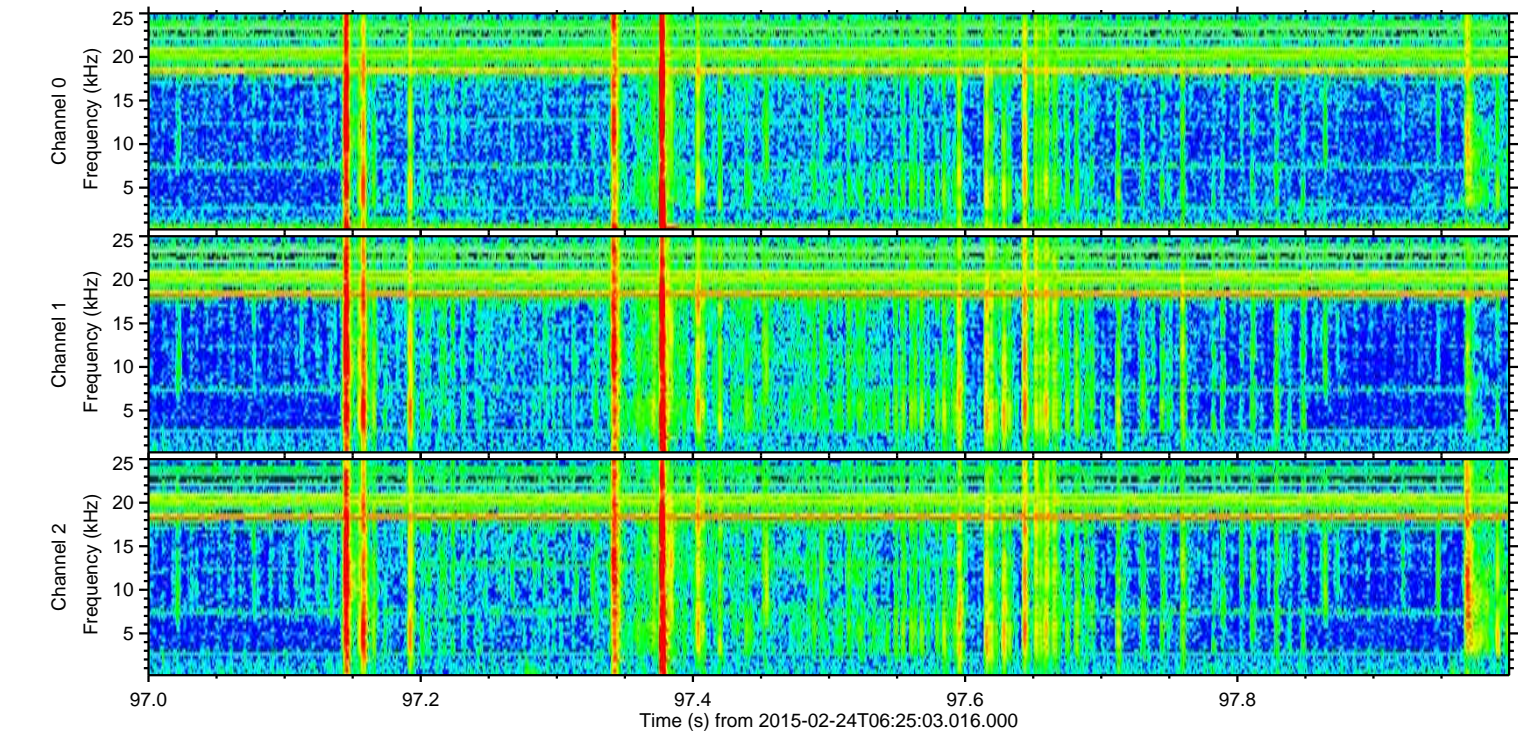
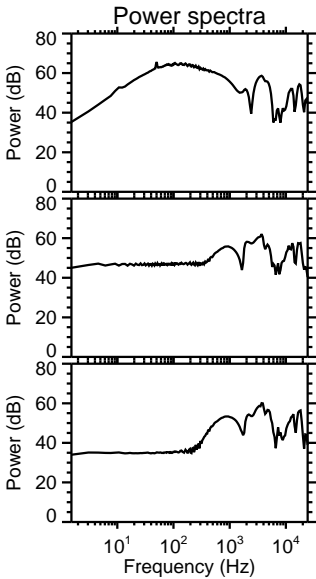
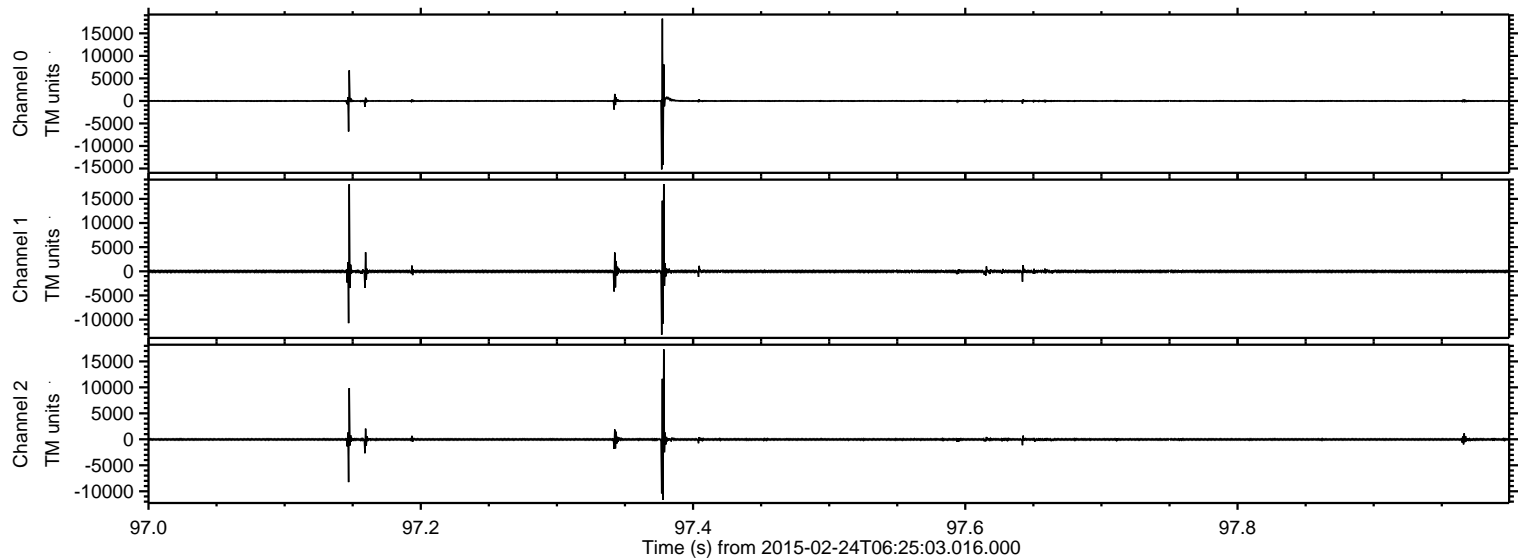
# ELMAVAN 3D WAVEFORMS (Measured data sampled at 50 kHz) 49809 packets of 144 samples from 2015-02-24T06:25:03.016.000.

Processed Tue Mar 3 12:35:53 2015 by ELM ver.2012-10-06 from 001\_\_elm20150224\_062502\_\_dat00.bin



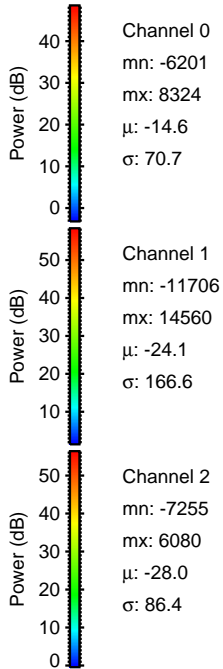
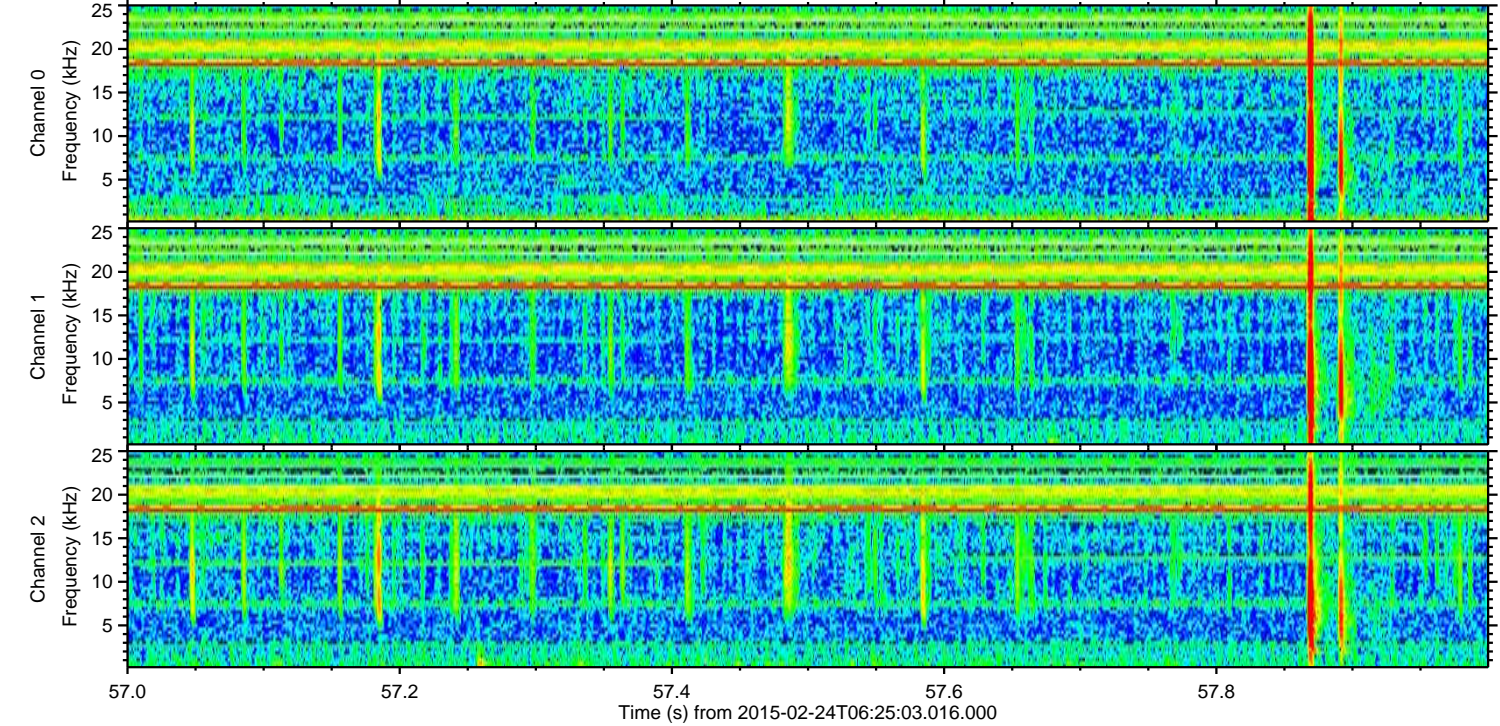
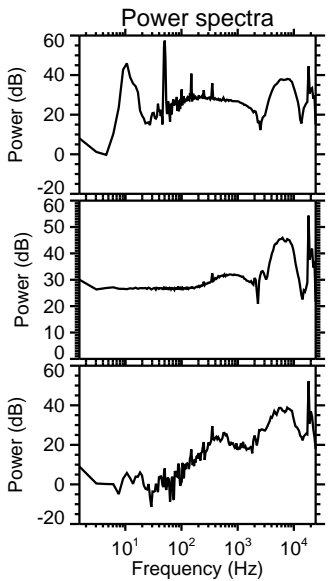
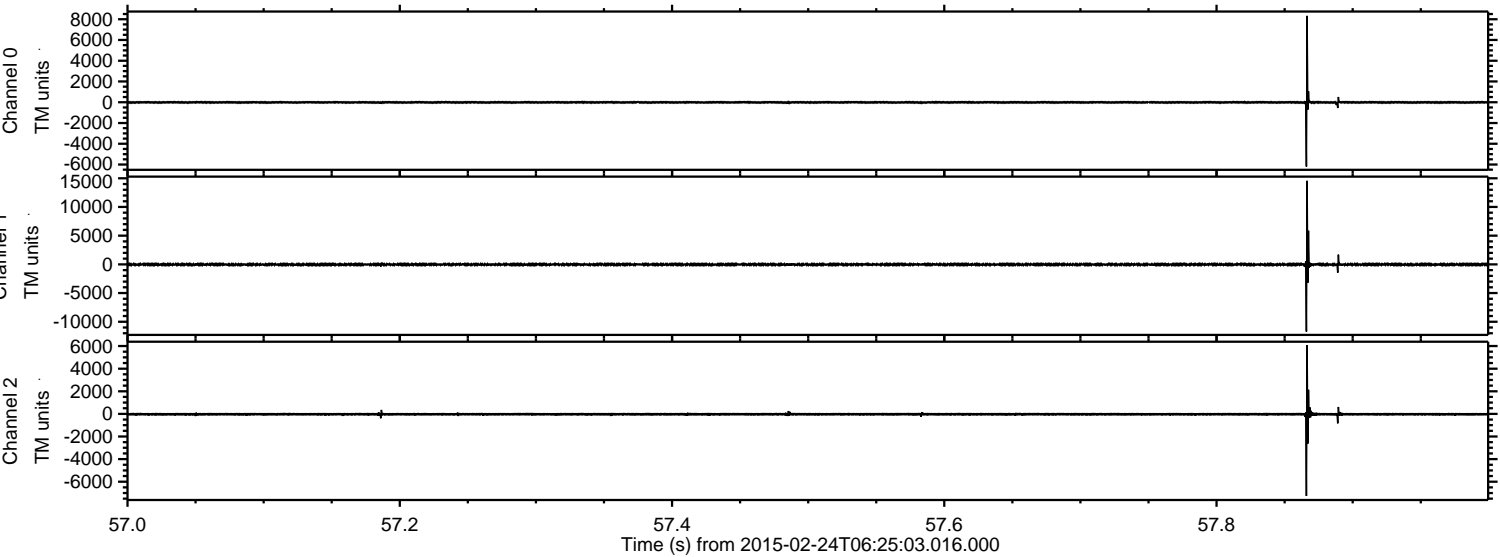


Processed Tue Mar 3 12:36:06 2015 by ELM ver.2012-10-06 from 001\_\_elm20150224\_062502\_\_dat00.bin



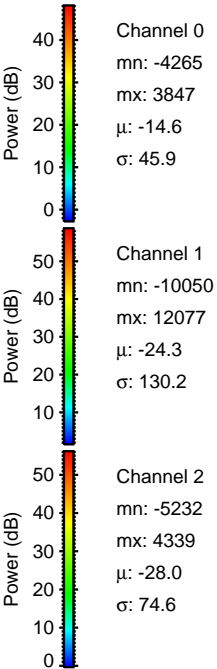
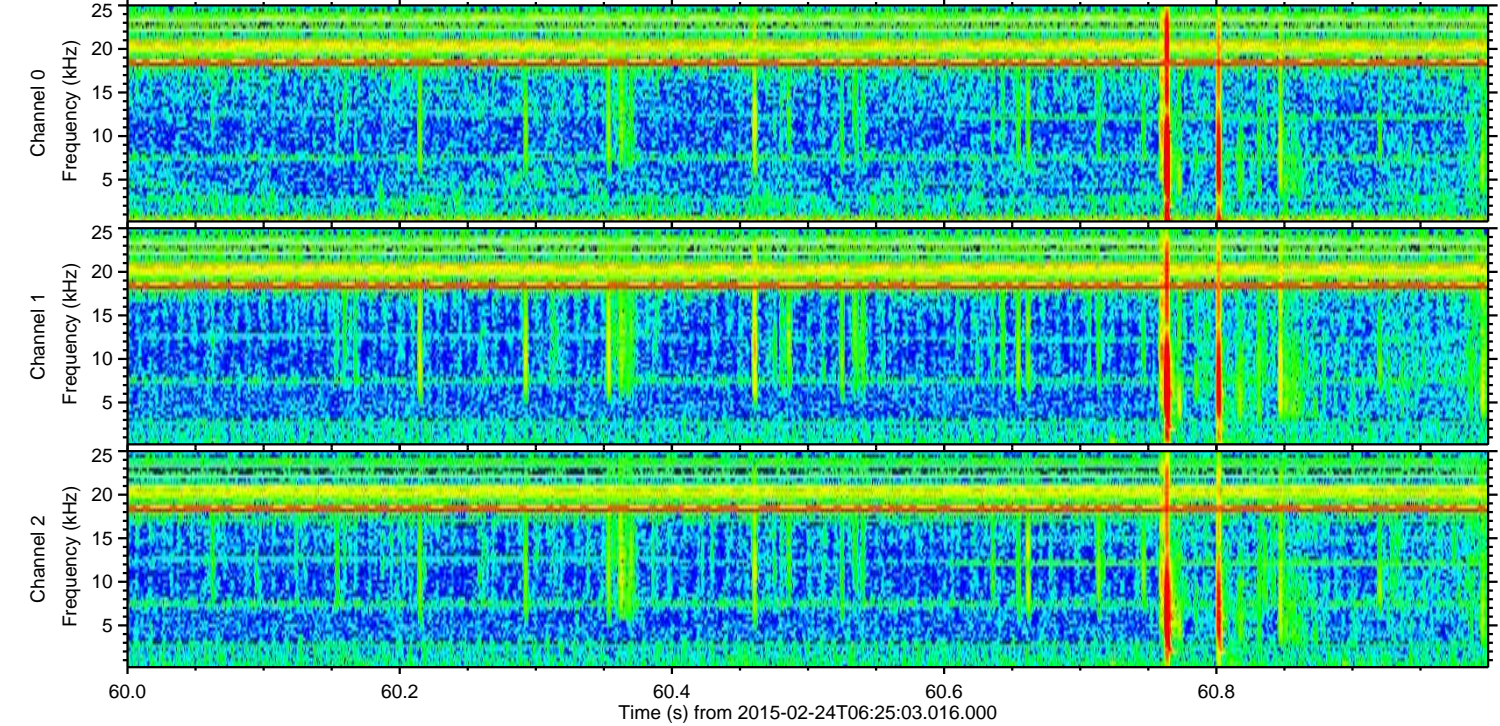
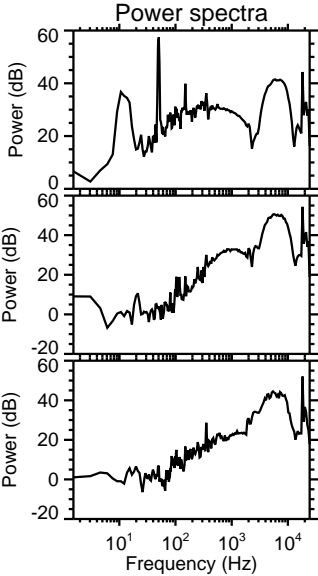
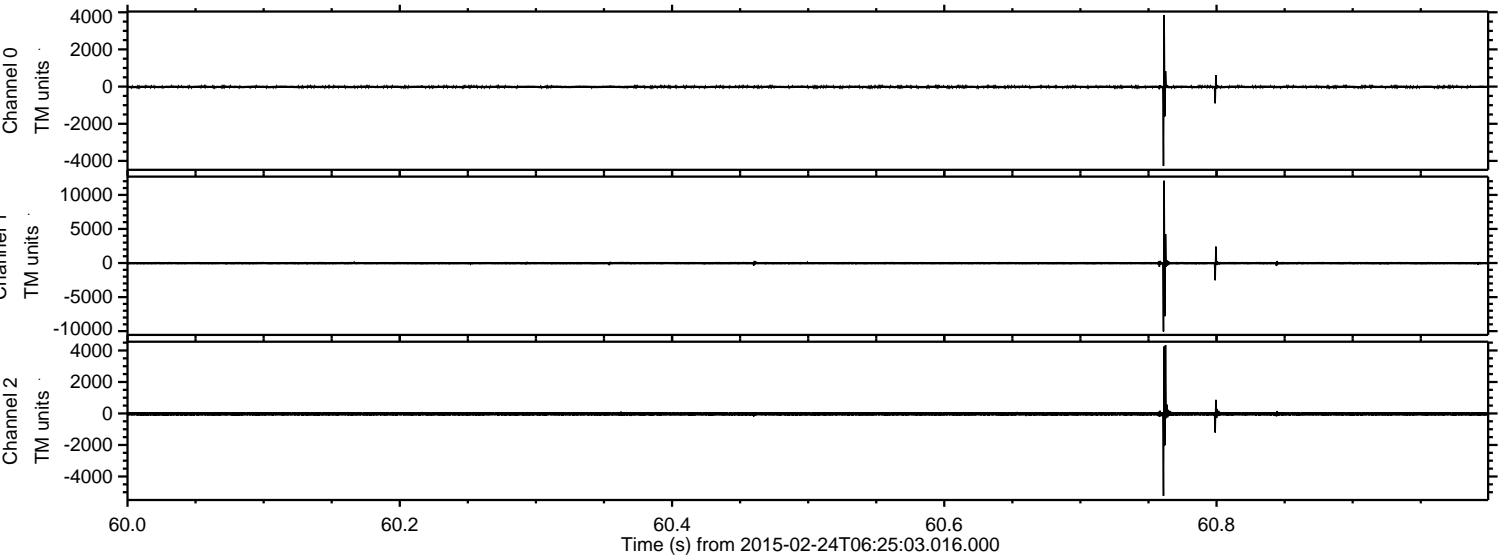


Processed Tue Mar 3 12:36:07 2015 by ELM ver.2012-10-06 from 001\_\_elm20150224\_062502\_\_dat00.bin





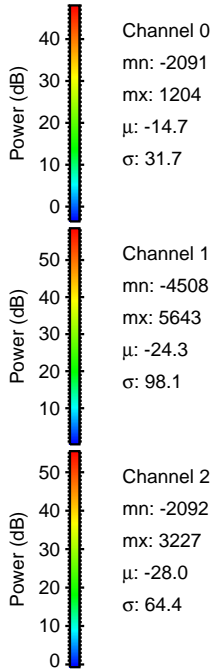
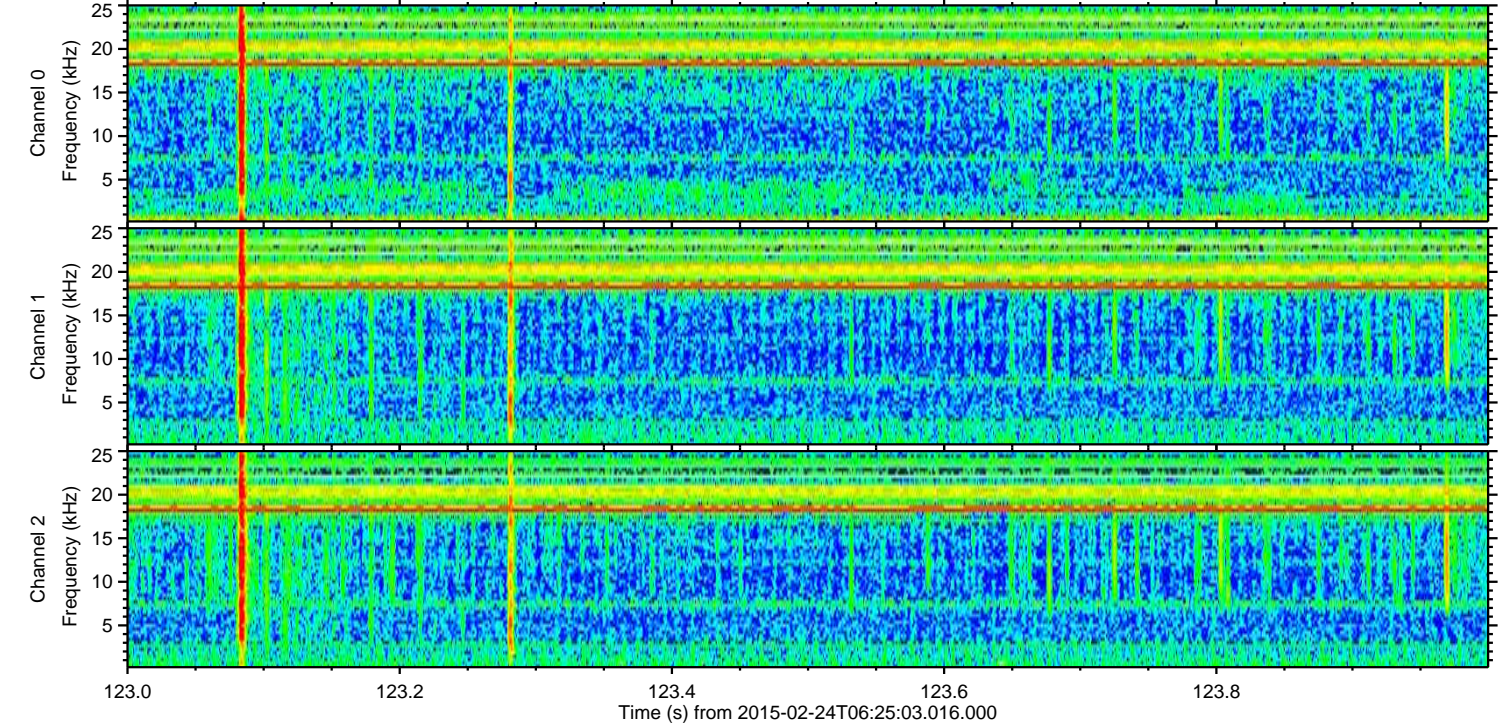
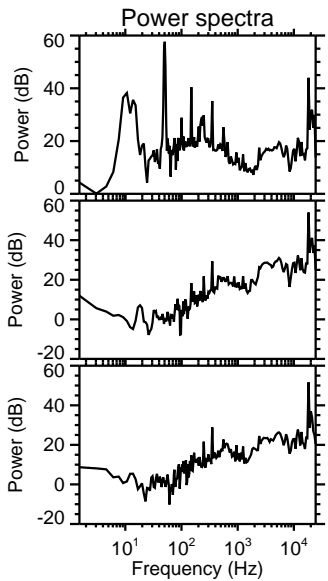
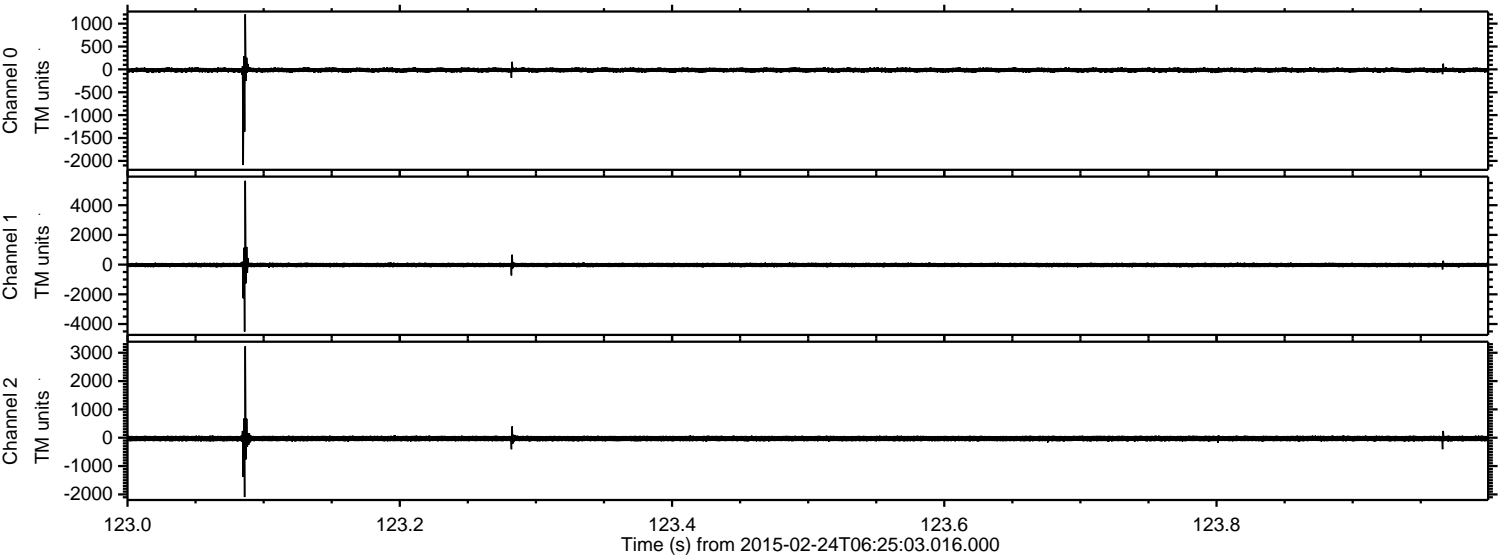
Processed Tue Mar 3 12:36:08 2015 by ELM ver.2012-10-06 from 001\_\_elm20150224\_062502\_\_dat00.bin





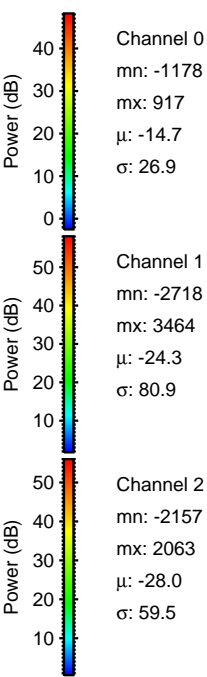
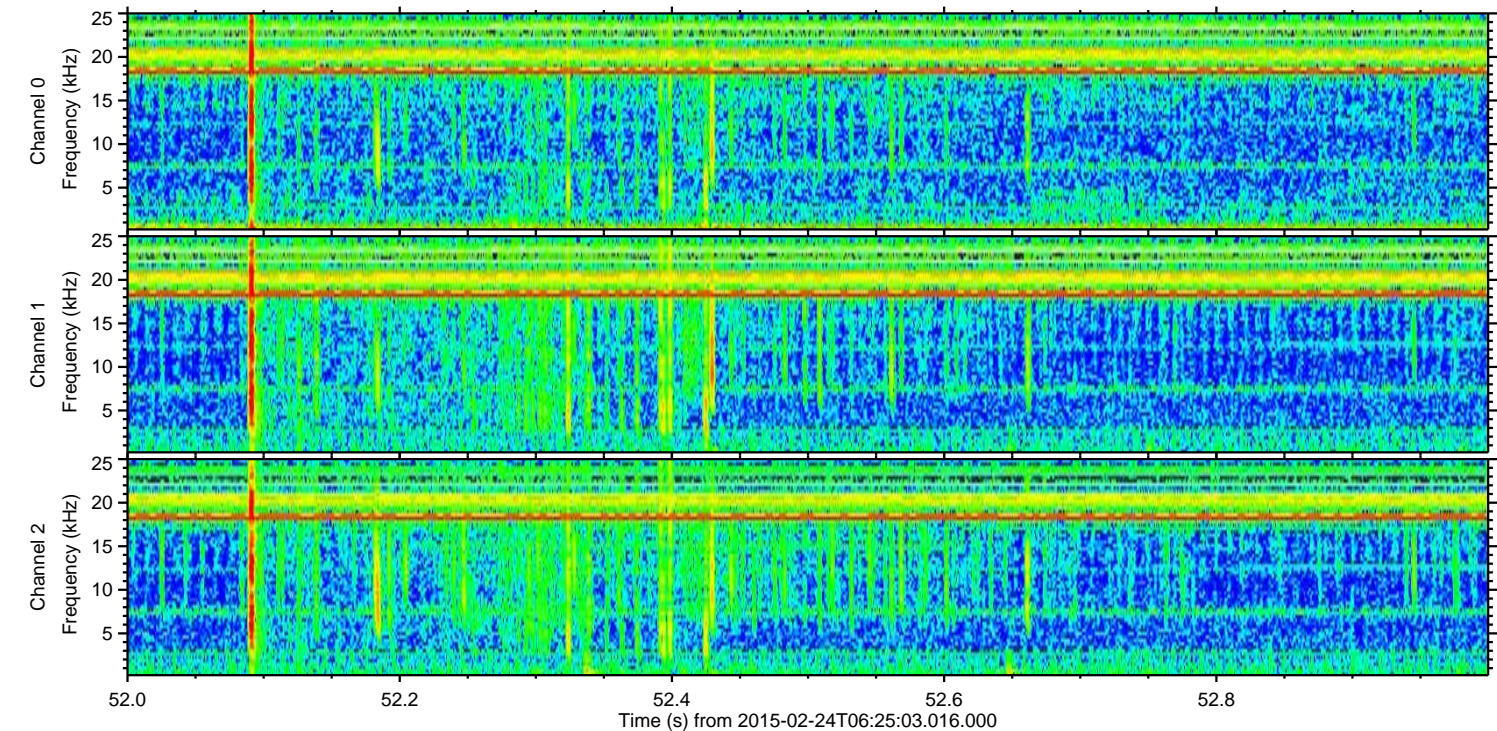
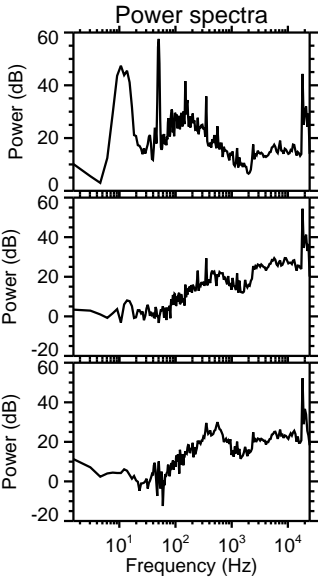
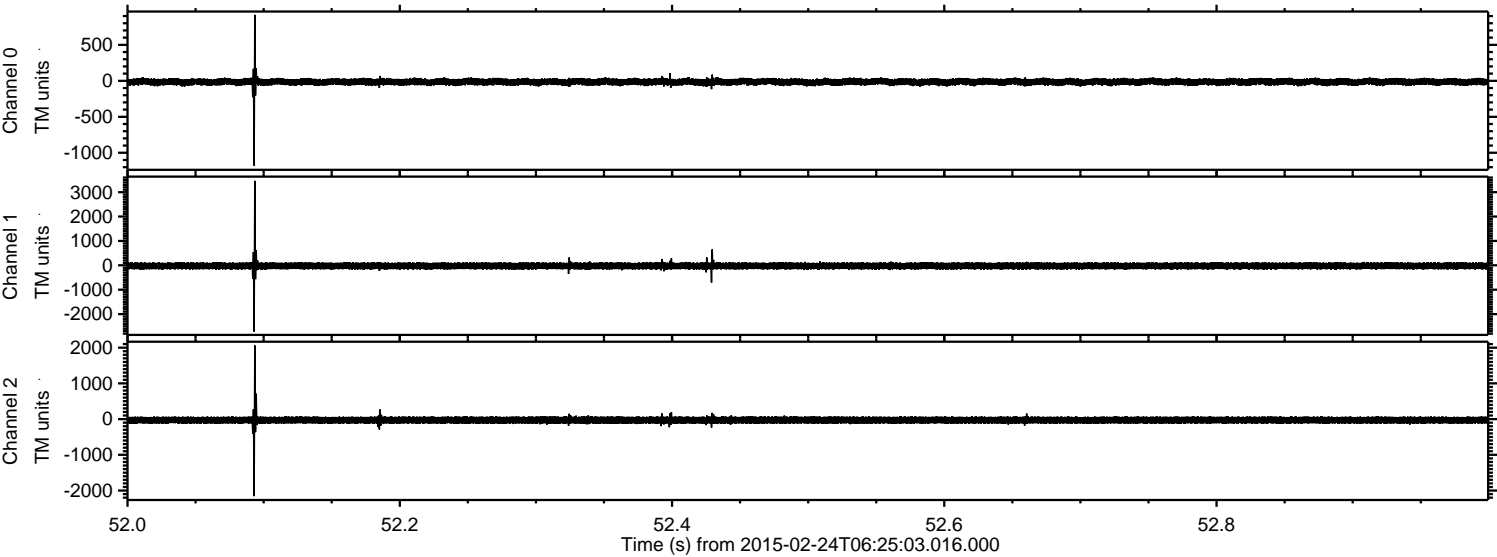
ELMAVAN 3D WAVEFORMS (Measured data sampled at 50 kHz) 49809 packets of 144 samples from 2015-02-24T06:25:03.016.000. Part 124/144

Processed Tue Mar 3 12:36:09 2015 by ELM ver.2012-10-06 from 001\_\_elm20150224\_062502\_\_dat00.bin





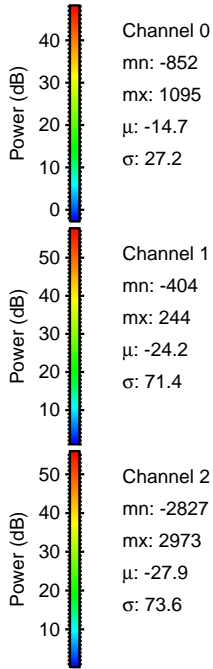
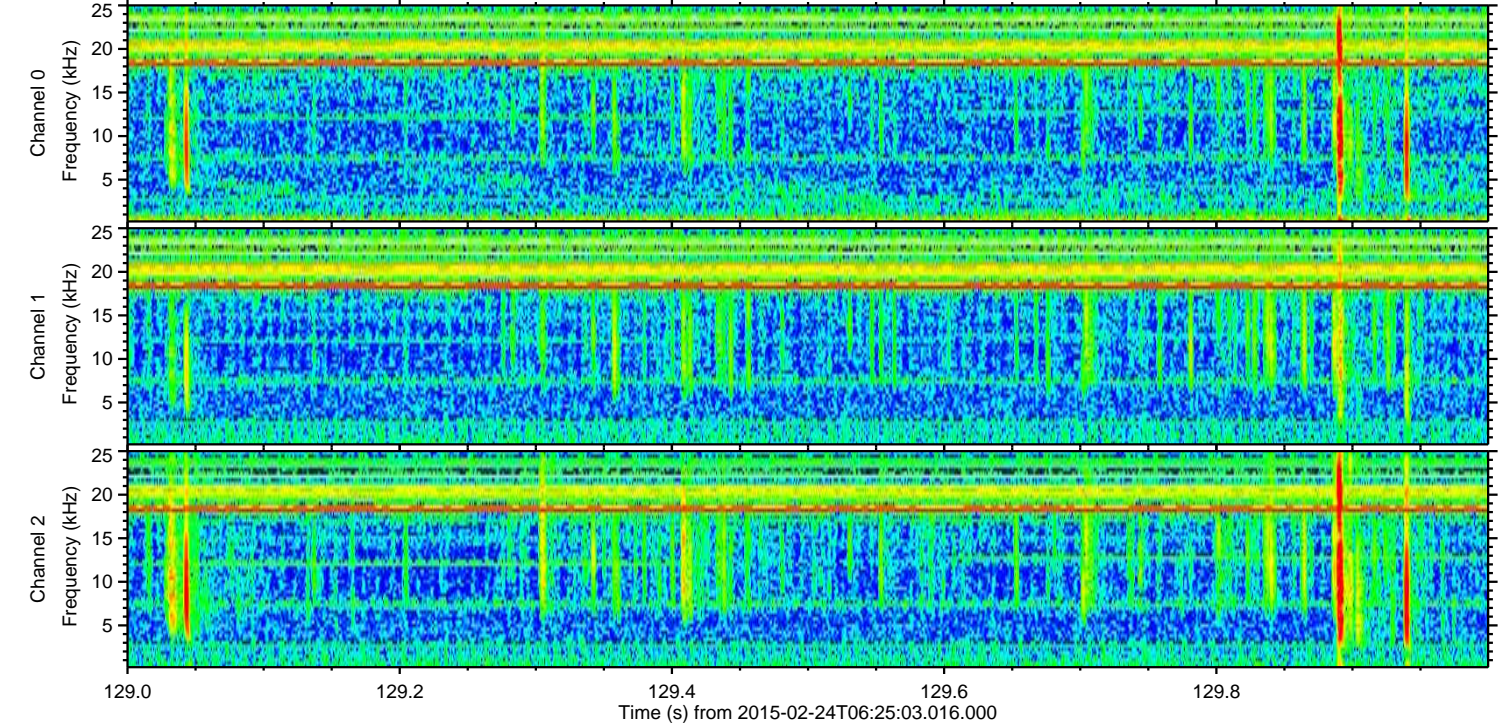
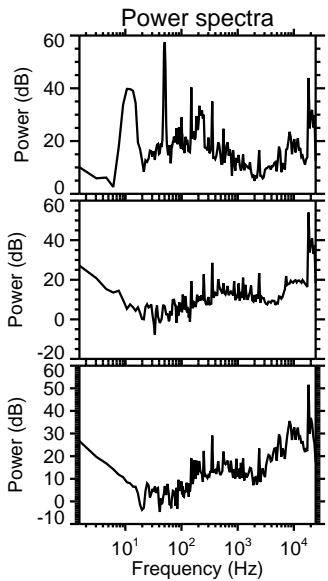
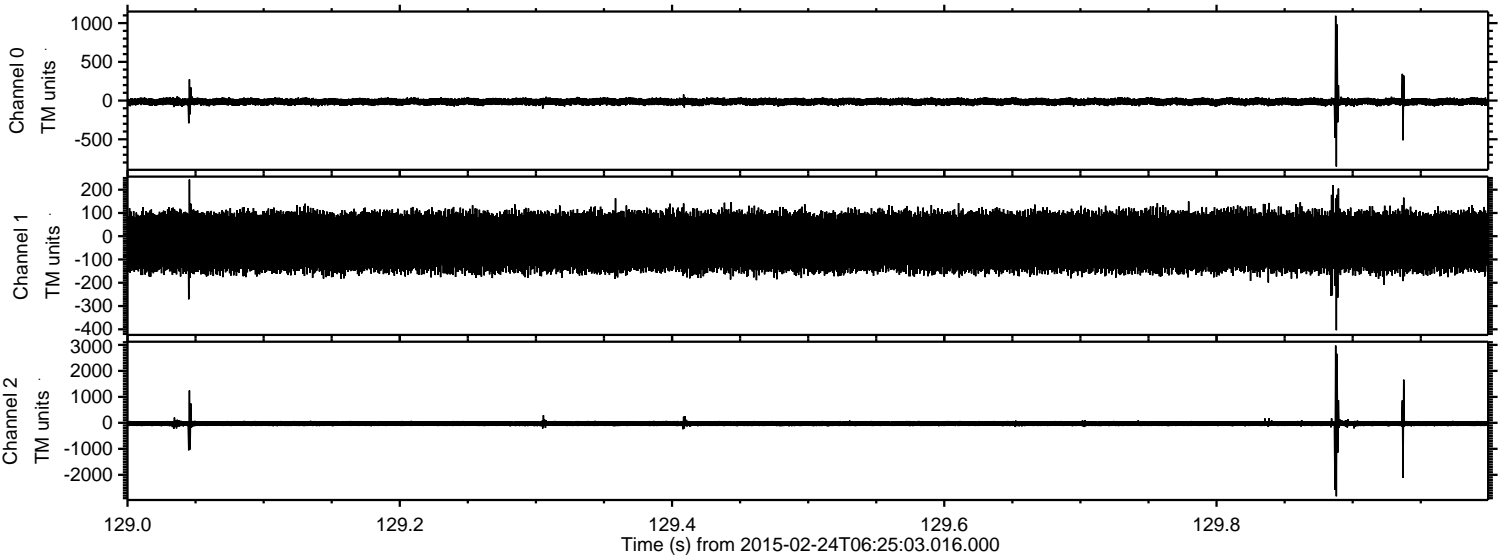
Processed Tue Mar 3 12:36:10 2015 by ELM ver.2012-10-06 from 001\_\_elm20150224\_062502\_\_dat00.bin





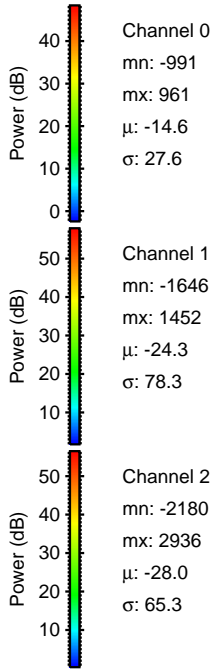
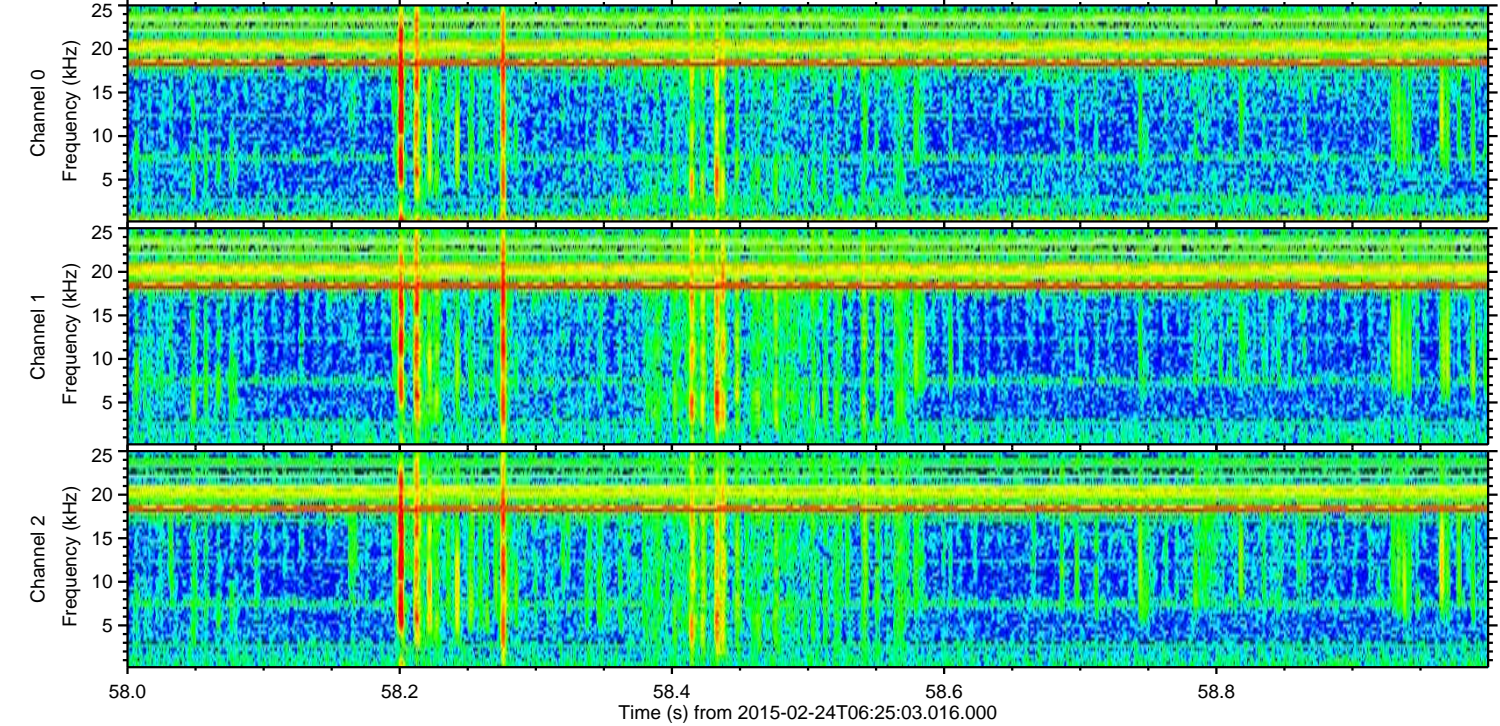
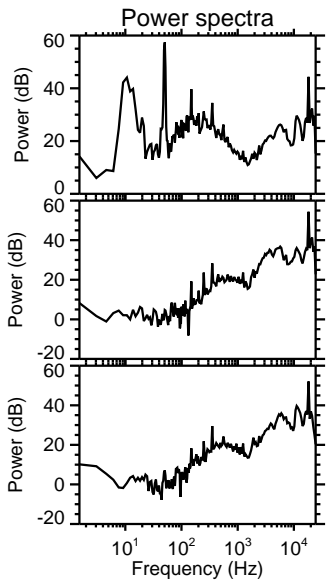
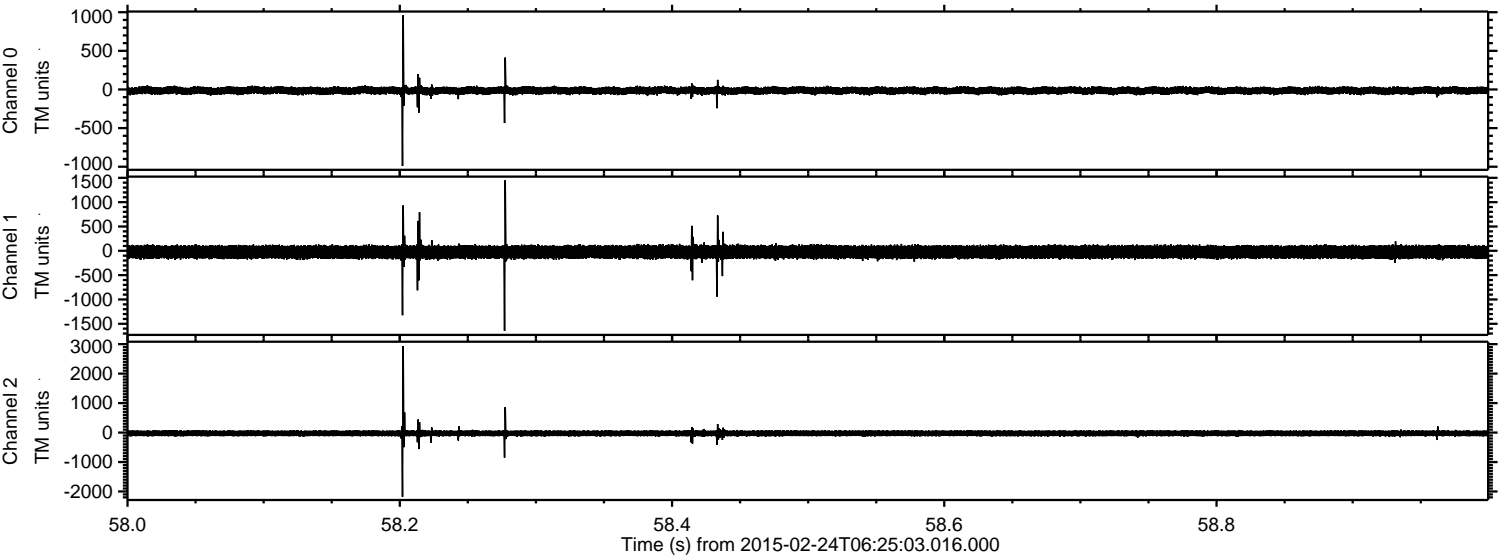
ELMAVAN 3D WAVEFORMS (Measured data sampled at 50 kHz) 49809 packets of 144 samples from 2015-02-24T06:25:03.016.000. Part 130/144

Processed Tue Mar 3 12:36:11 2015 by ELM ver.2012-10-06 from 001\_\_elm20150224\_062502\_\_dat00.bin



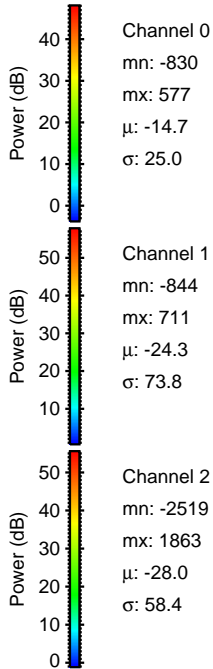
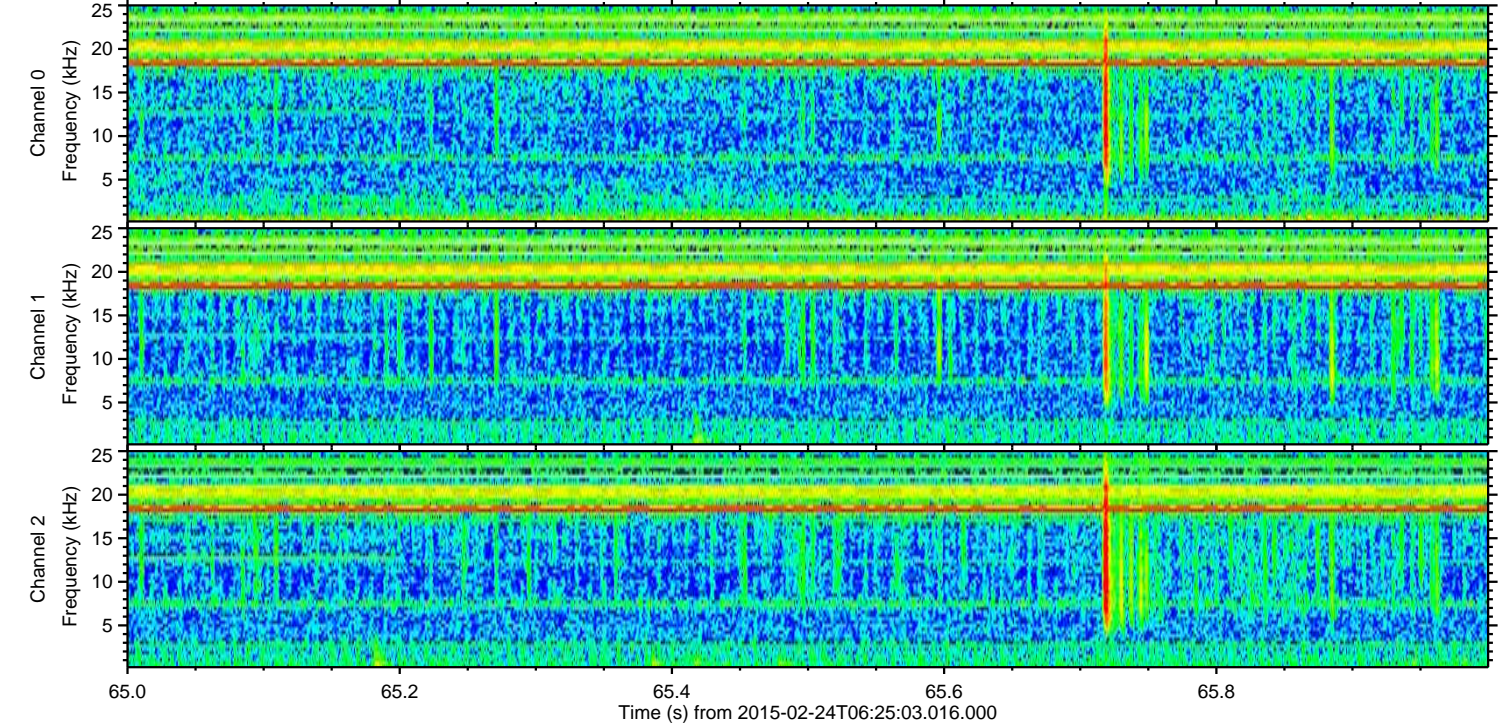
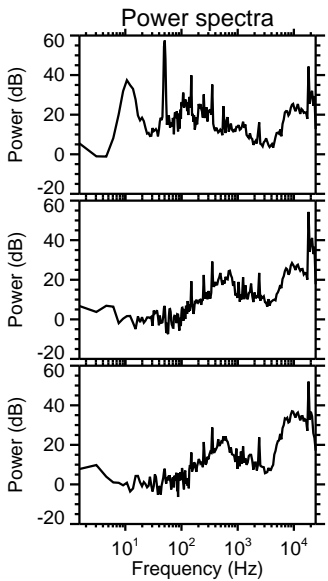
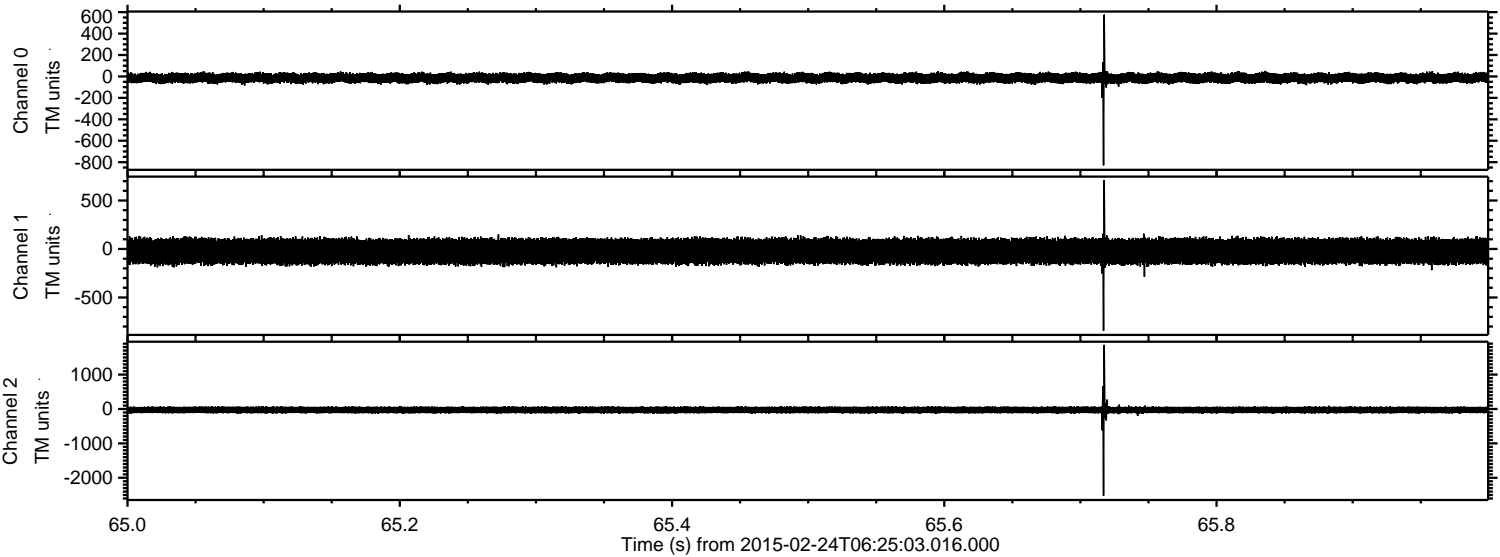


Processed Tue Mar 3 12:36:12 2015 by ELM ver.2012-10-06 from 001\_\_elm20150224\_062502\_\_dat00.bin





Processed Tue Mar 3 12:36:13 2015 by ELM ver.2012-10-06 from 001\_\_elm20150224\_062502\_\_dat00.bin



Channel 0  
mn: -830  
mx: 577  
 $\mu$ : -14.7  
 $\sigma$ : 25.0

Channel 1  
mn: -844  
mx: 711  
 $\mu$ : -24.3  
 $\sigma$ : 73.8

Channel 2  
mn: -2519  
mx: 1863  
 $\mu$ : -28.0  
 $\sigma$ : 58.4



Processed Tue Mar 3 12:36:14 2015 by ELM ver.2012-10-06 from 001\_\_elm20150224\_062502\_\_dat00.bin

