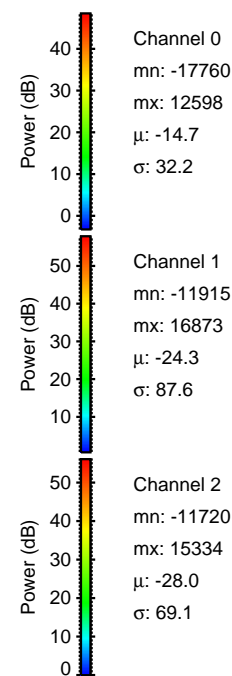
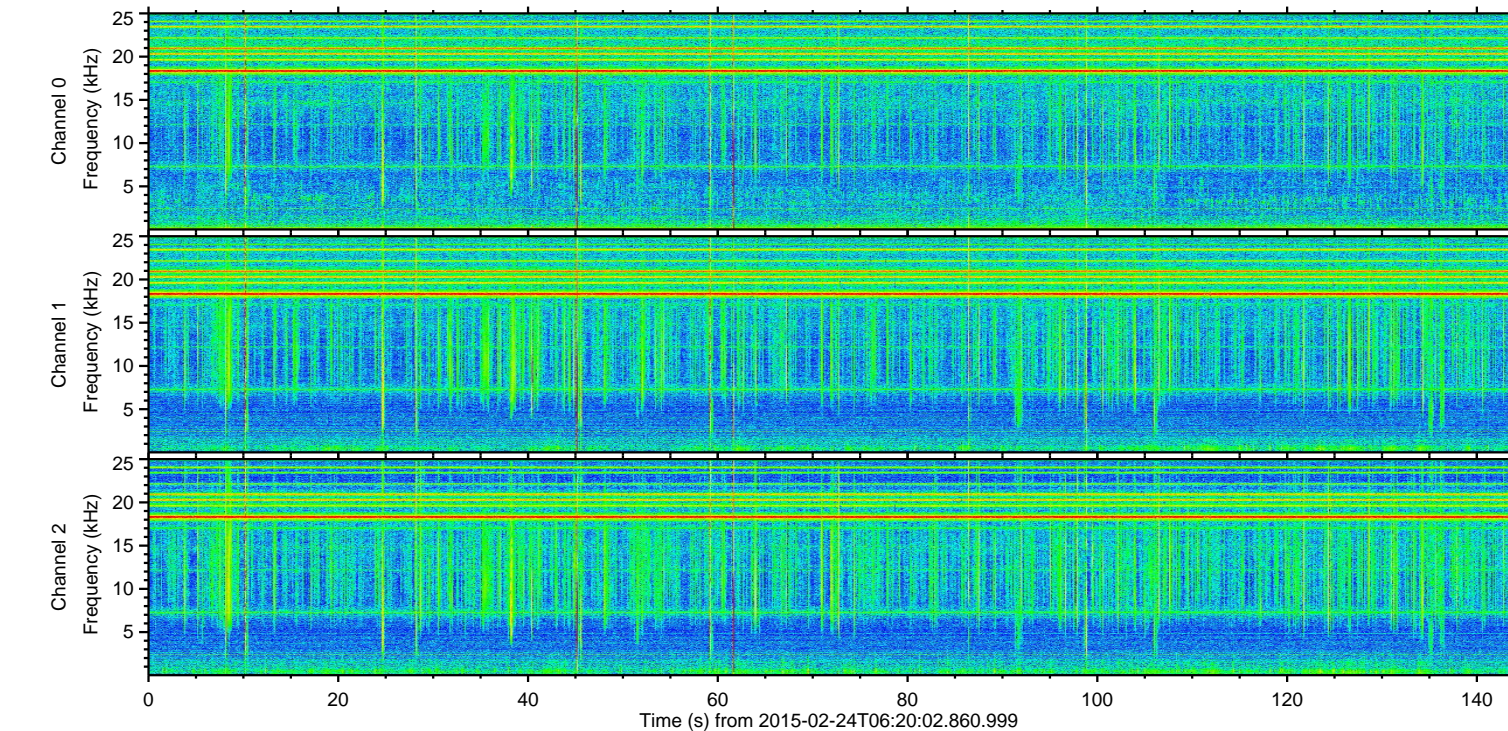
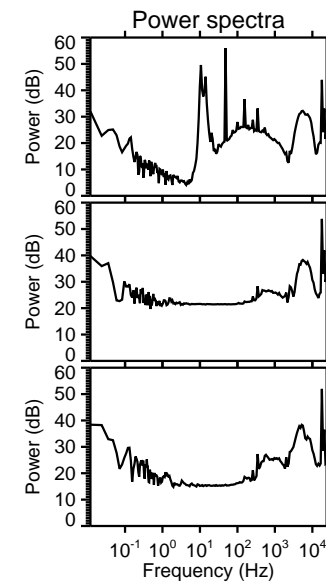
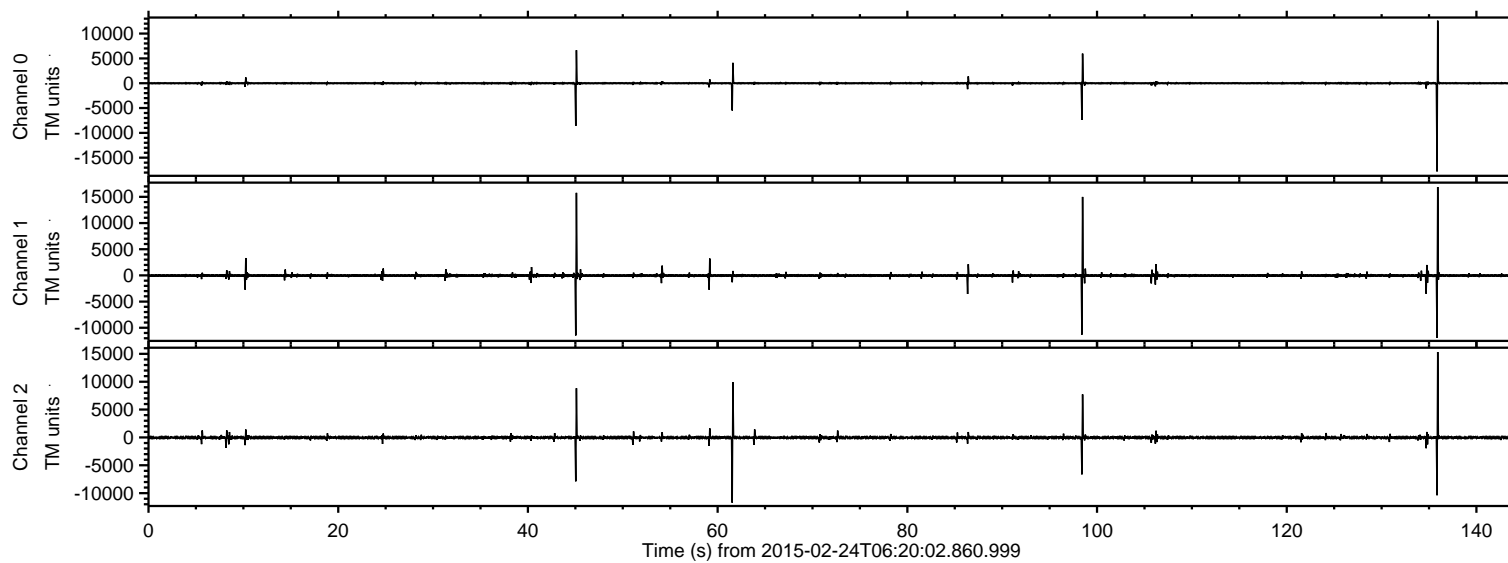


# ELMAVAN 3D WAVEFORMS (Measured data sampled at 50 kHz) 49808 packets of 144 samples from 2015-02-24T06:20:02.860.999.

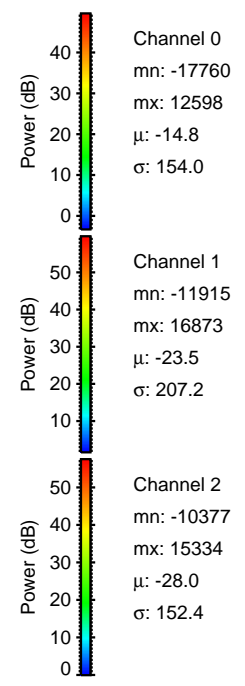
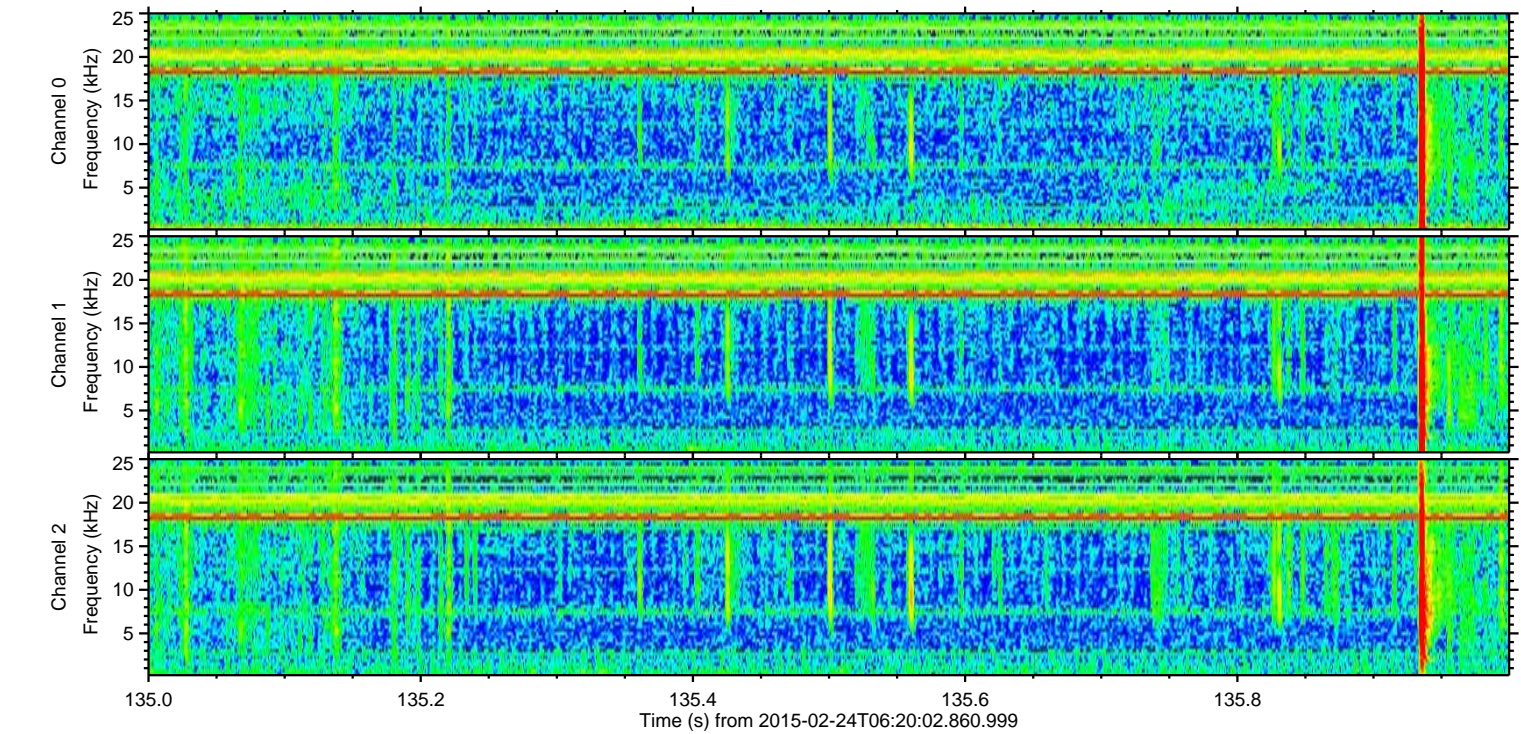
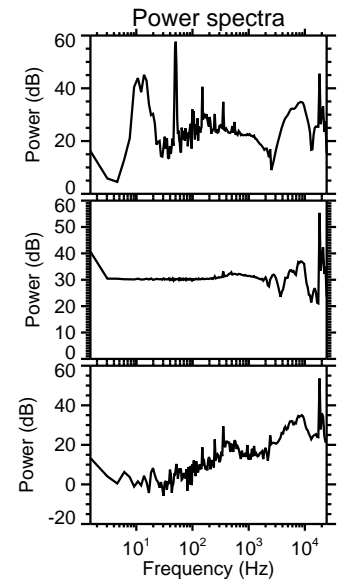
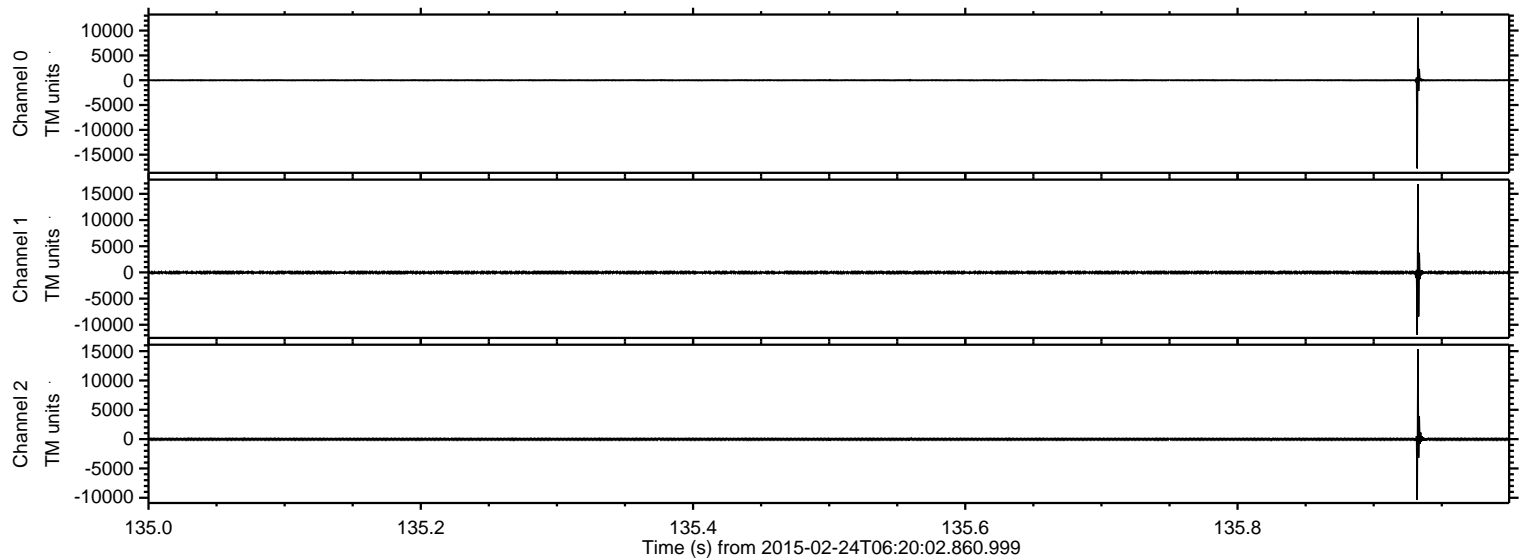
Processed Tue Mar 3 12:34:44 2015 by ELM ver.2012-10-06 from 001\_\_elm20150224\_062001\_\_dat00.bin





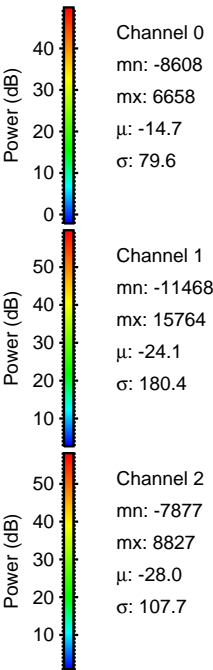
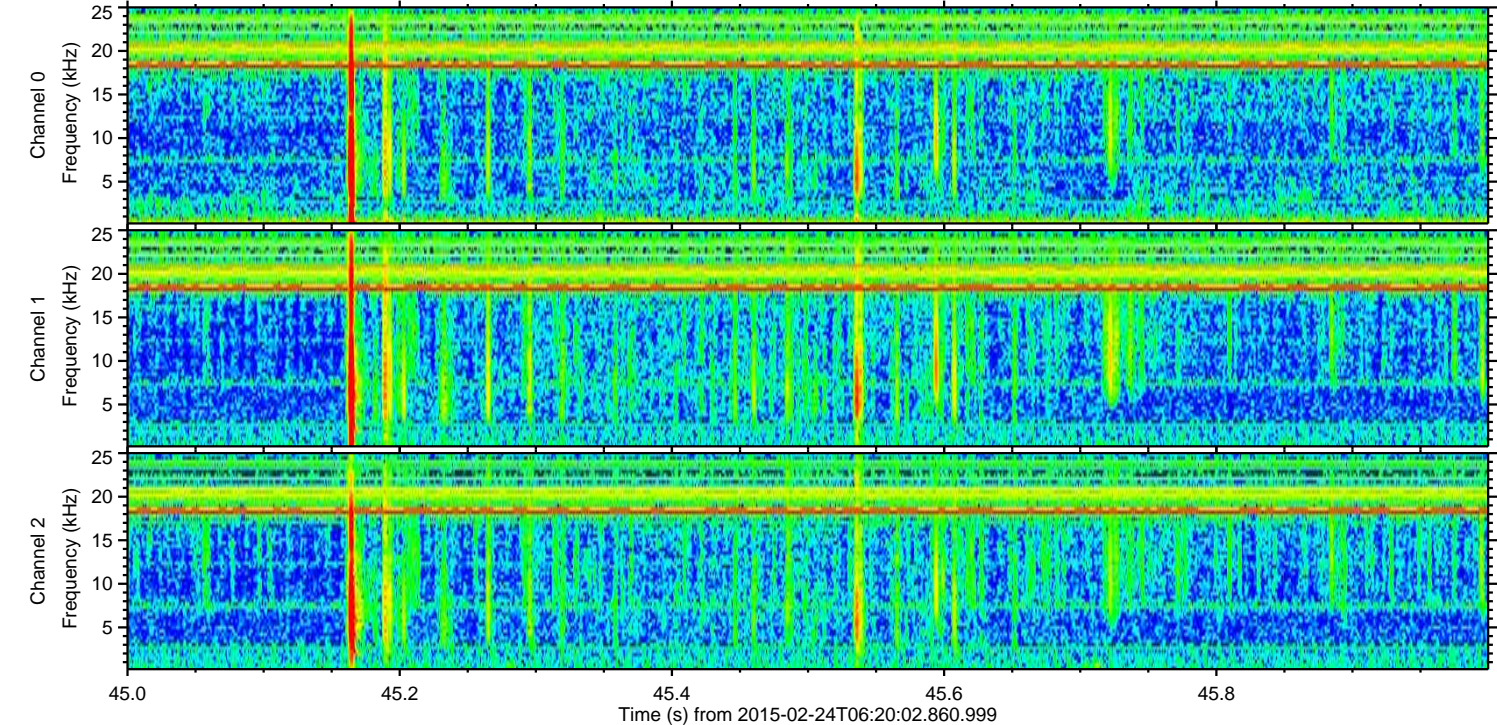
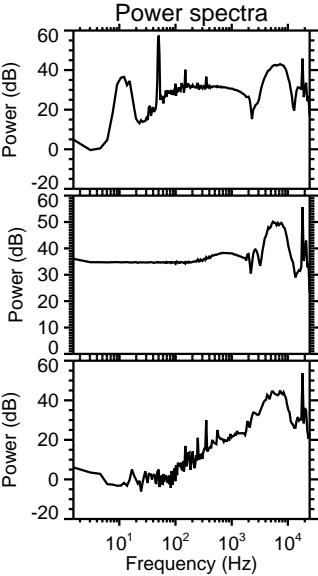
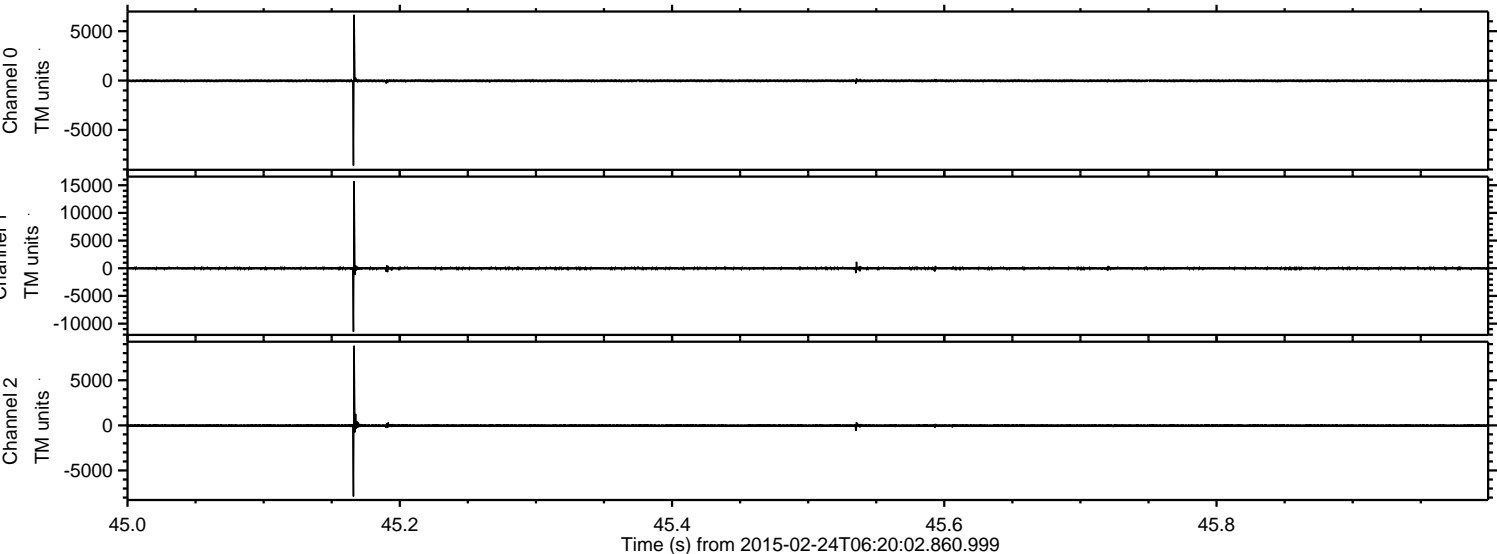
ELMAVAN 3D WAVEFORMS (Measured data sampled at 50 kHz) 49808 packets of 144 samples from 2015-02-24T06:20:02.860.999. Part 136/144

Processed Tue Mar 3 12:34:57 2015 by ELM ver.2012-10-06 from 001\_\_elm20150224\_062001\_\_dat00.bin



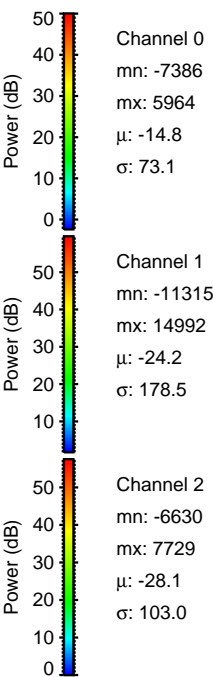
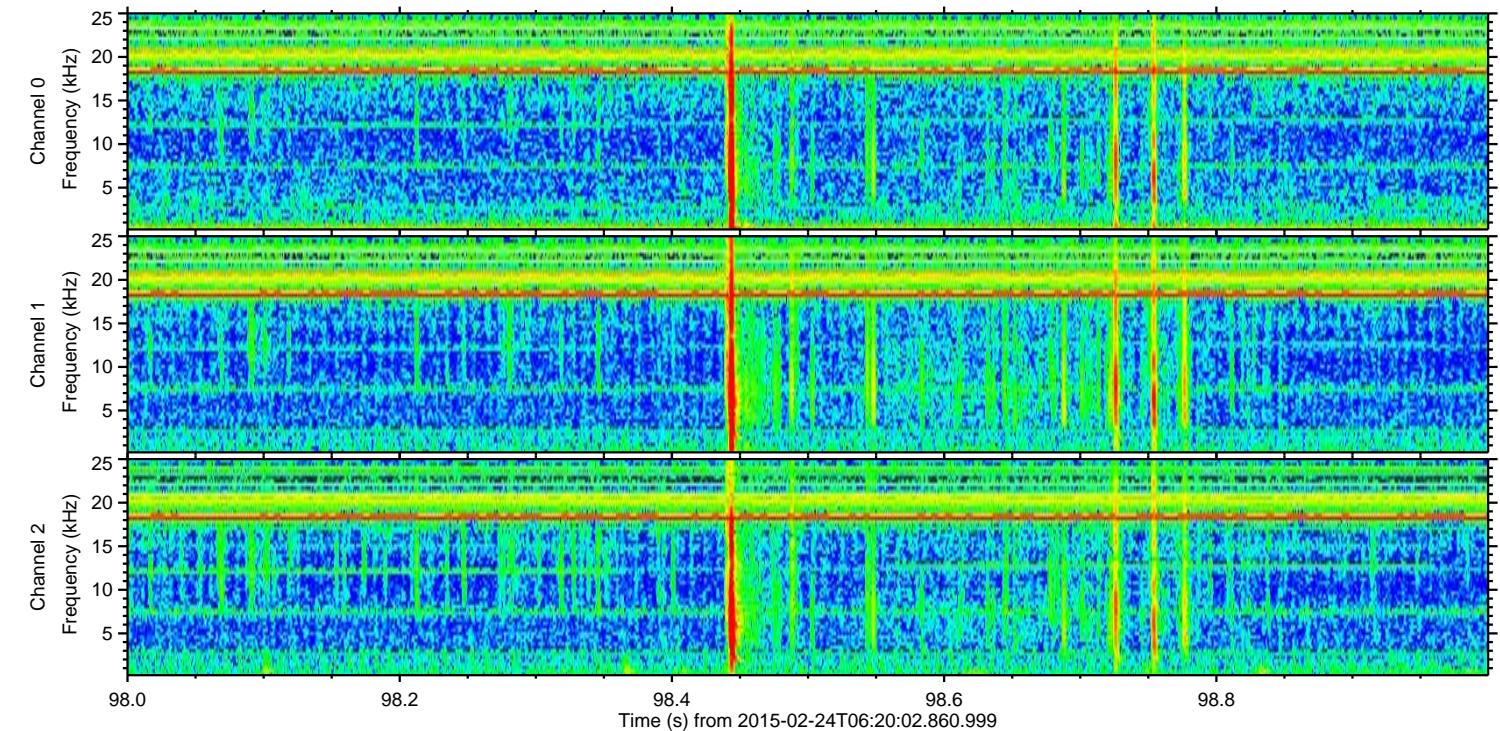
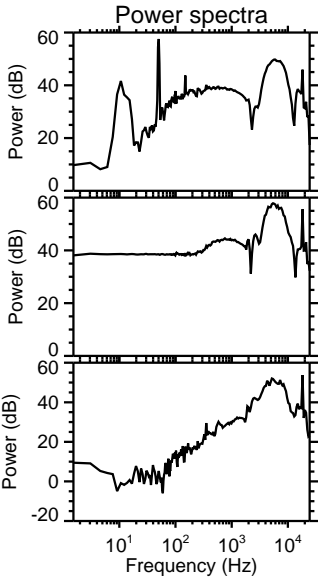
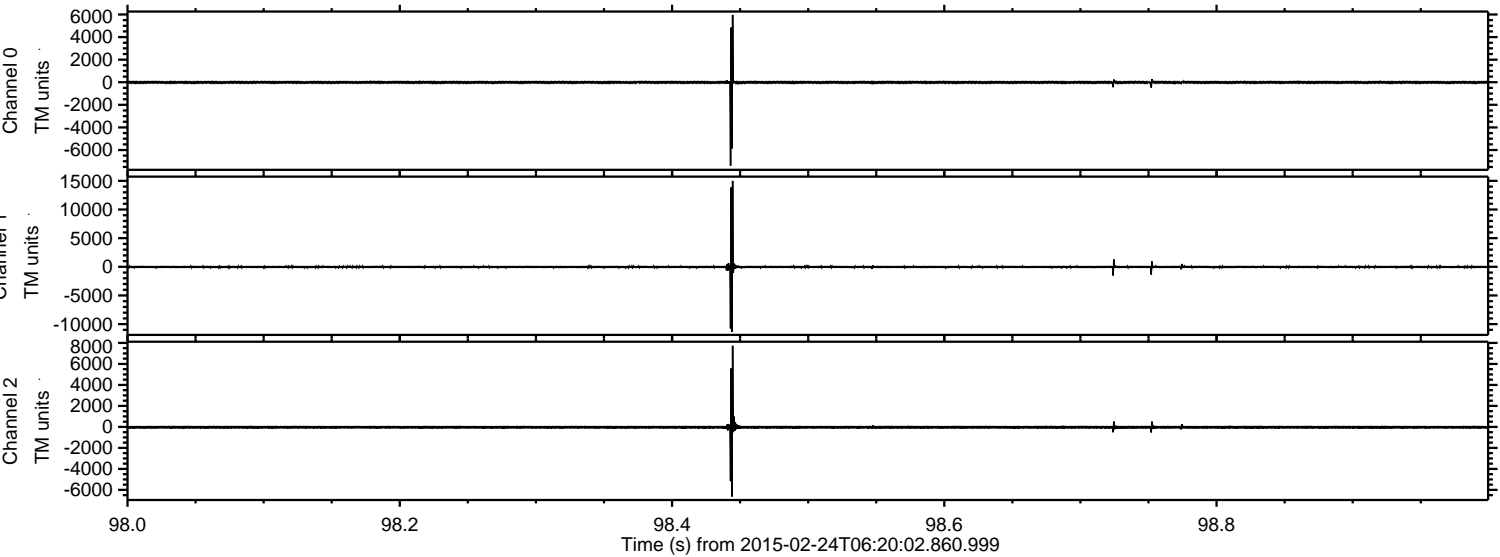


Processed Tue Mar 3 12:34:58 2015 by ELM ver.2012-10-06 from 001\_\_elm20150224\_062001\_\_dat00.bin



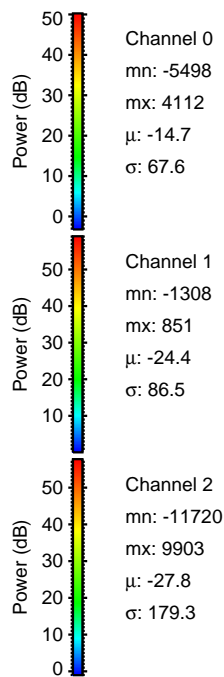
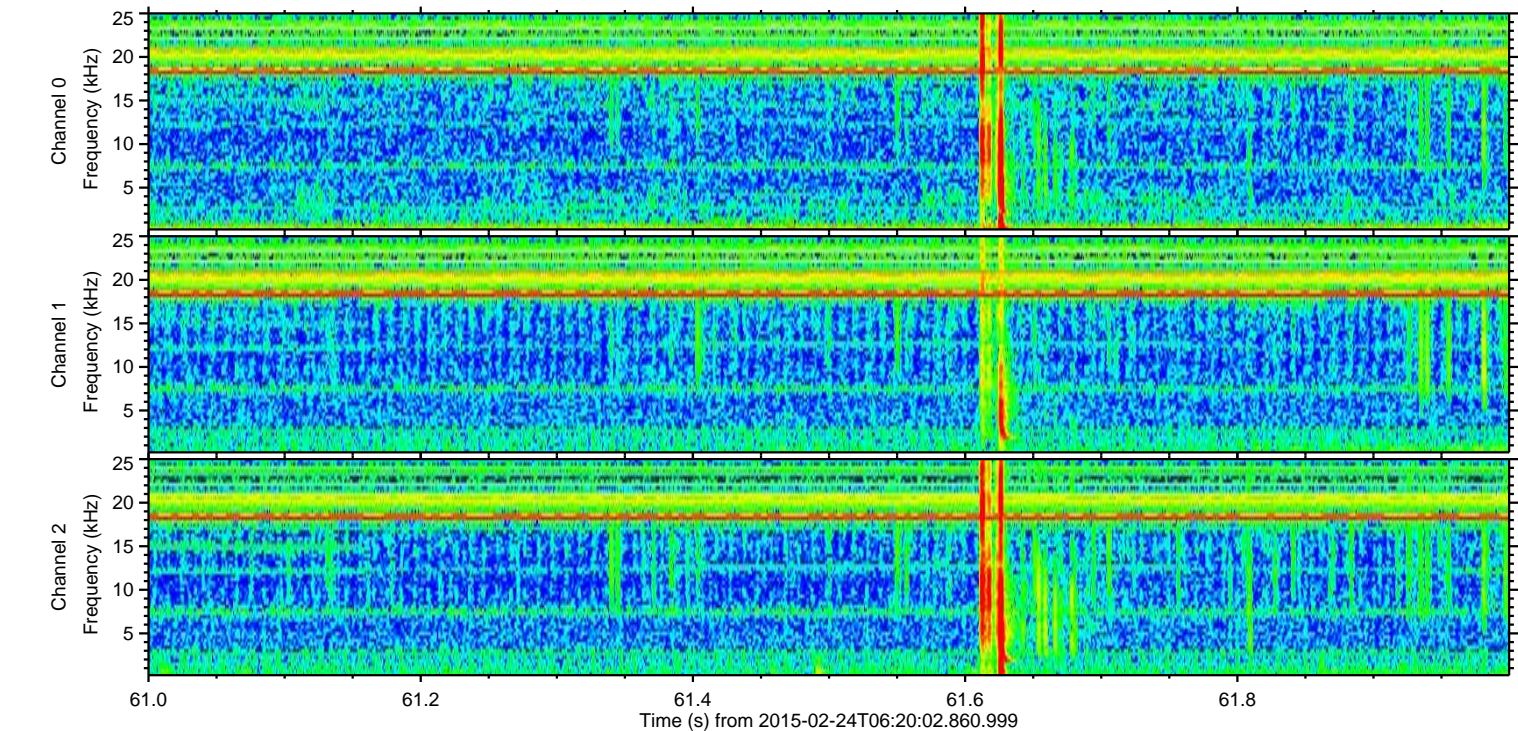
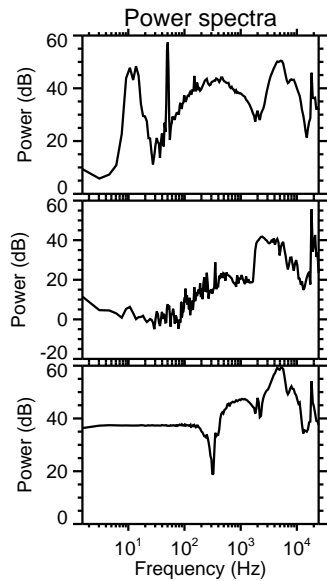
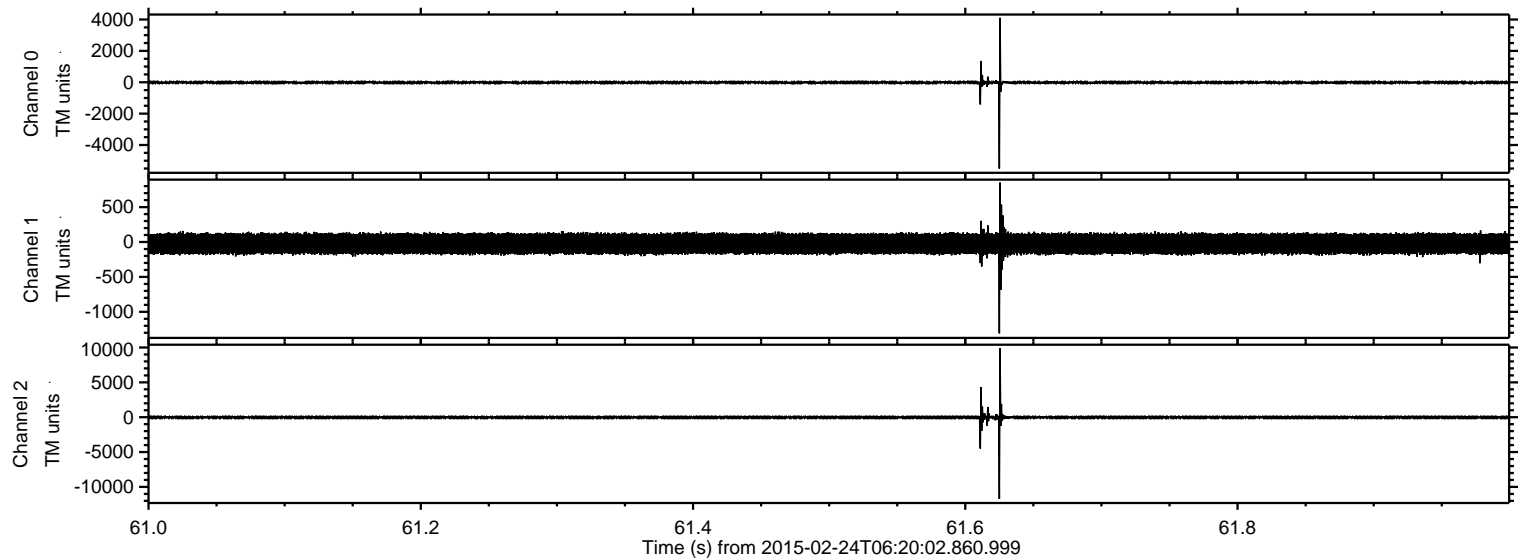


Processed Tue Mar 3 12:34:59 2015 by ELM ver.2012-10-06 from 001\_\_elm20150224\_062001\_\_dat00.bin



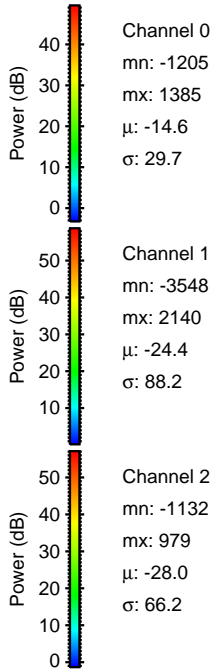
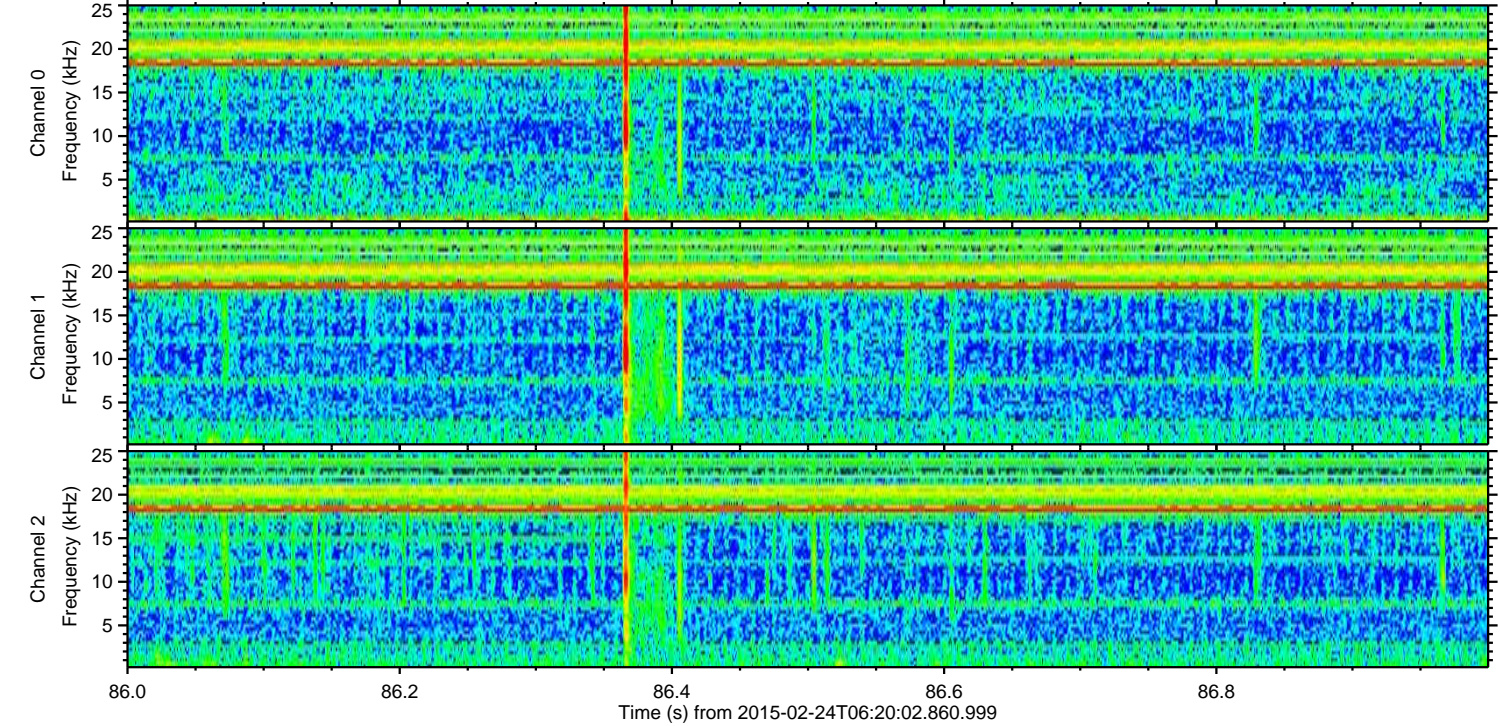
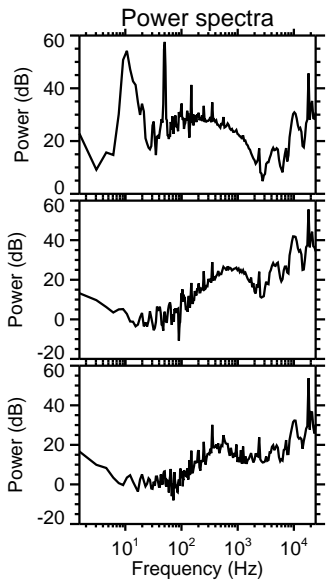
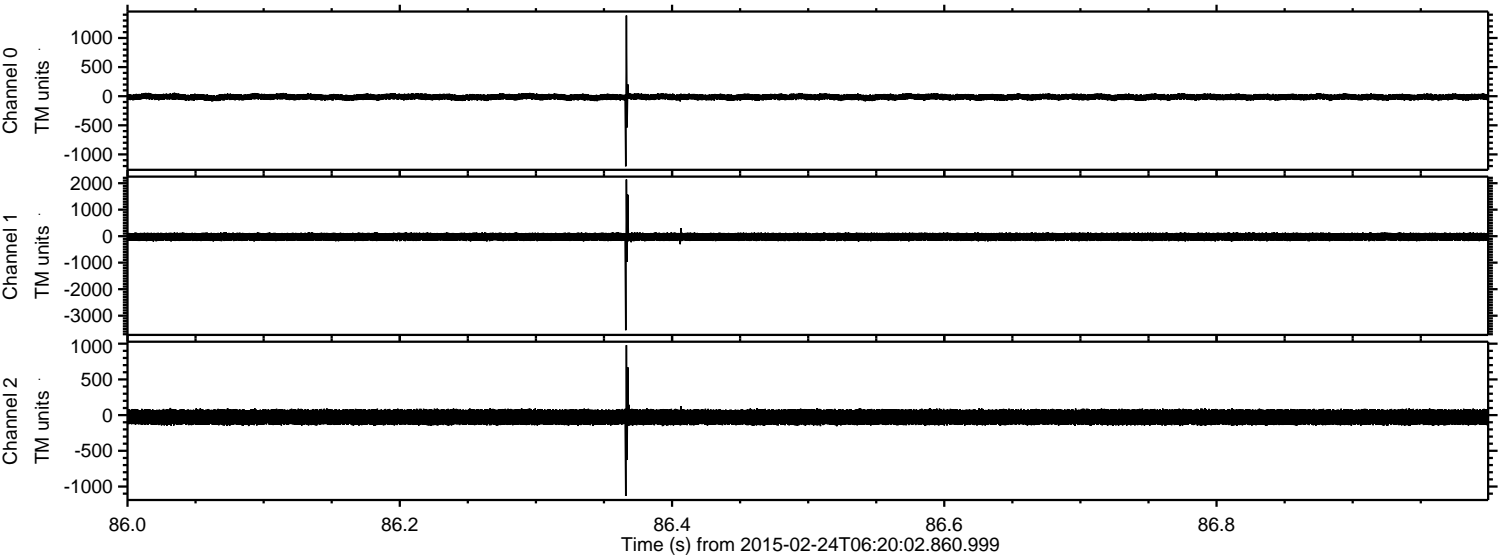


Processed Tue Mar 3 12:35:00 2015 by ELM ver.2012-10-06 from 001\_\_elm20150224\_062001\_\_dat00.bin





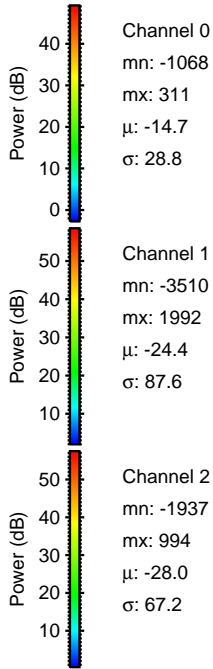
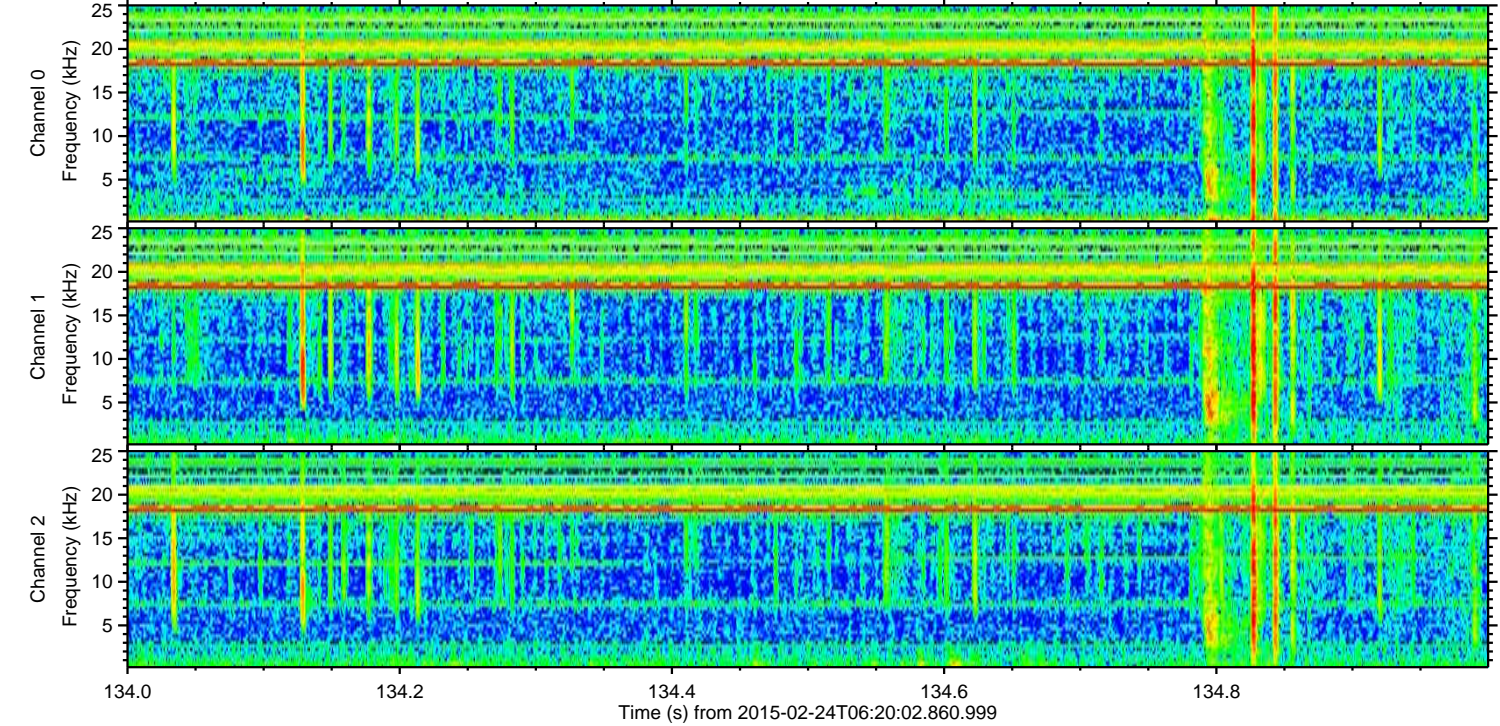
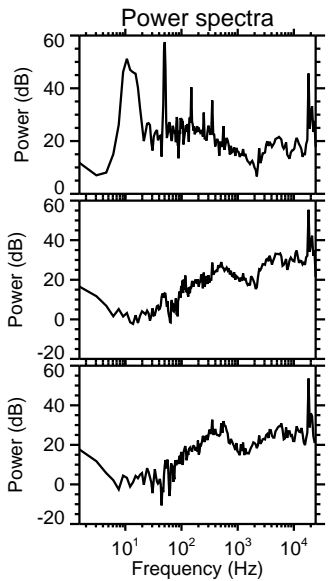
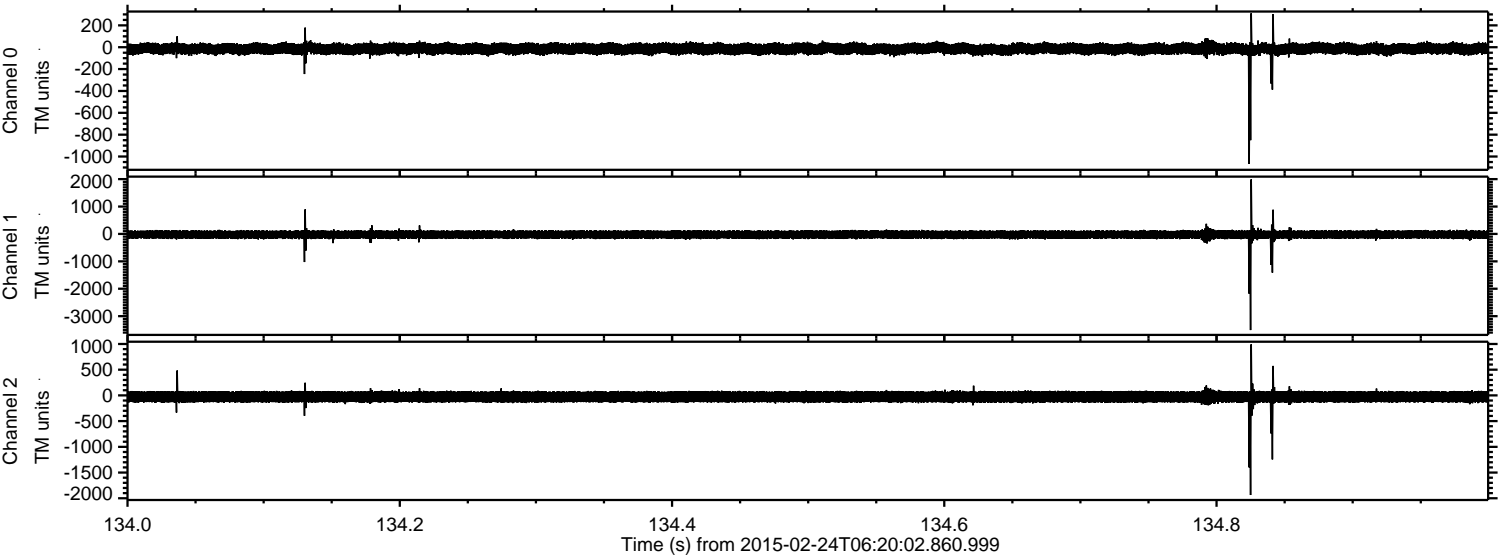
Processed Tue Mar 3 12:35:01 2015 by ELM ver.2012-10-06 from 001\_\_elm20150224\_062001\_\_dat00.bin





ELMAVAN 3D WAVEFORMS (Measured data sampled at 50 kHz) 49808 packets of 144 samples from 2015-02-24T06:20:02.860.999. Part 135/144

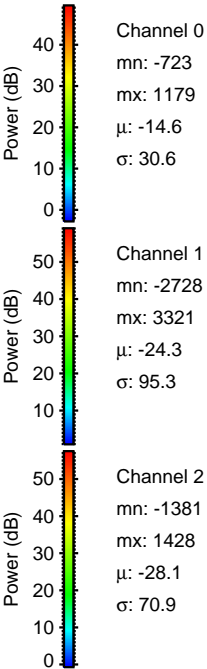
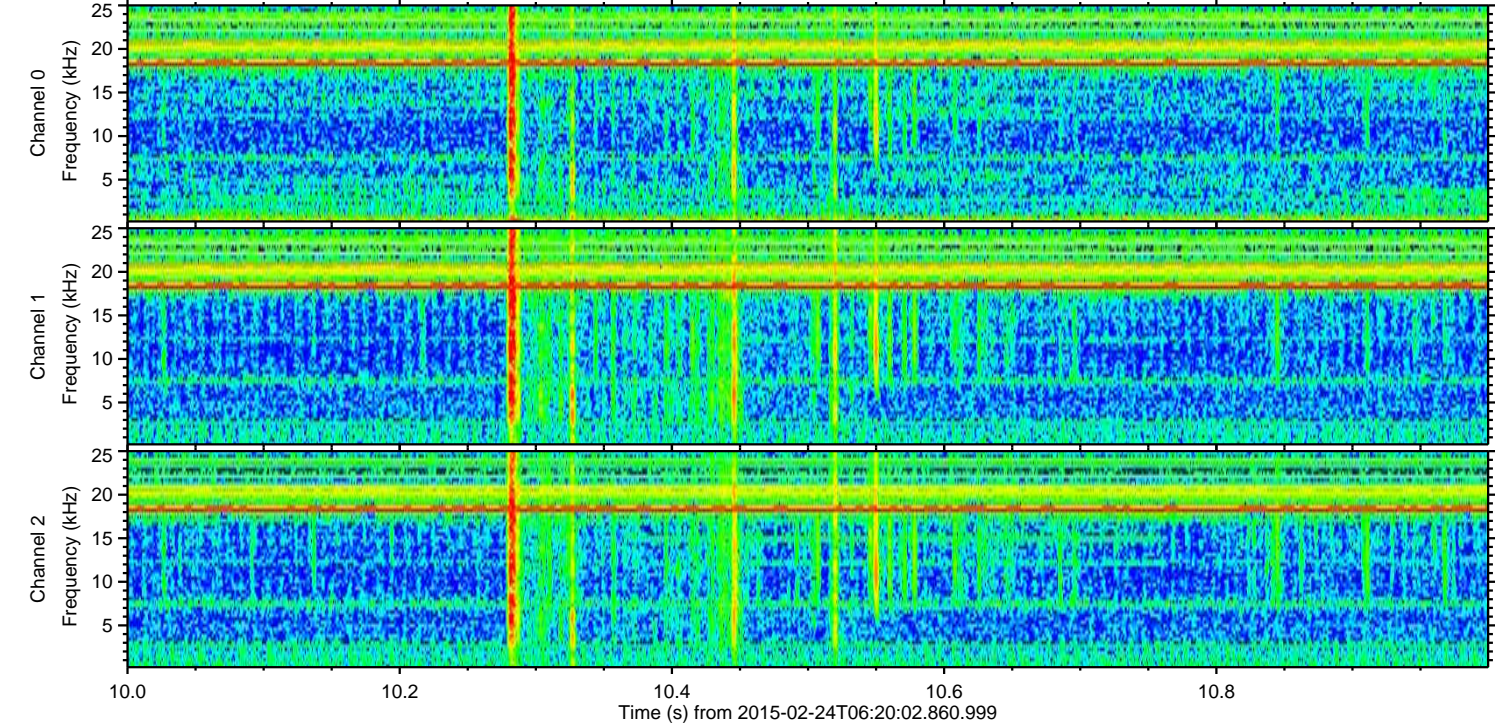
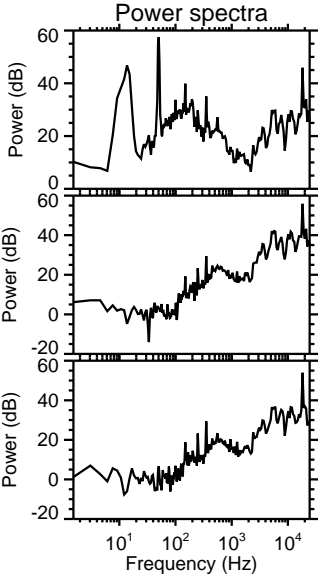
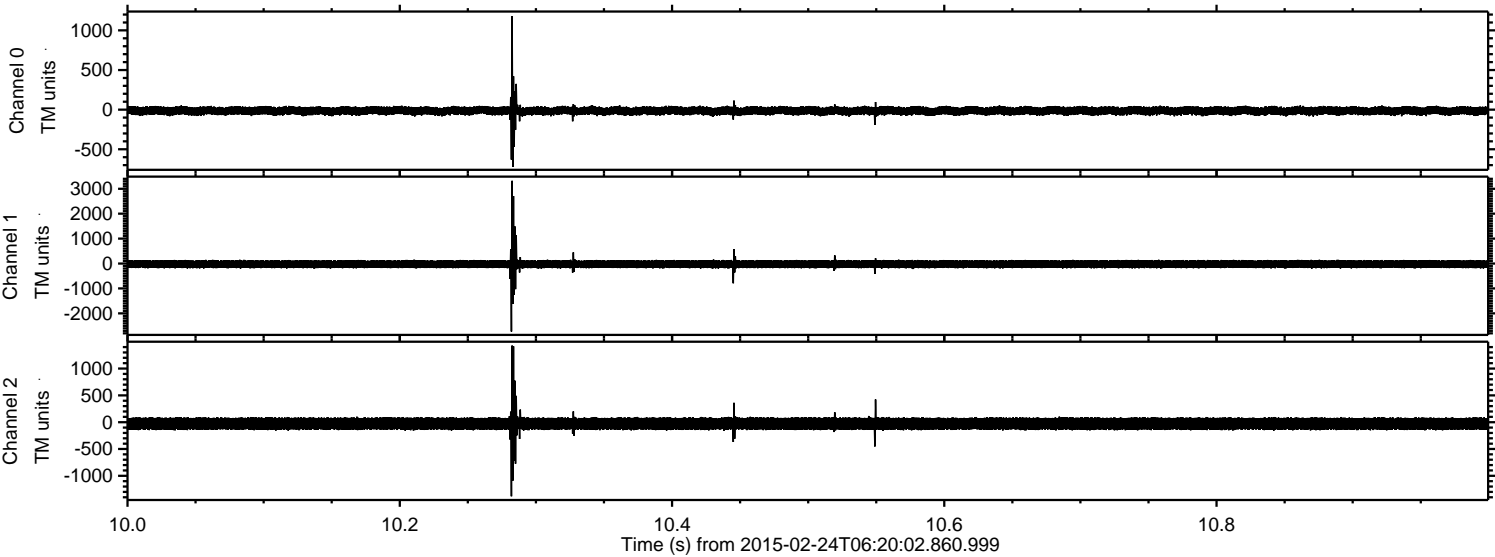
Processed Tue Mar 3 12:35:02 2015 by ELM ver.2012-10-06 from 001\_\_elm20150224\_062001\_\_dat00.bin





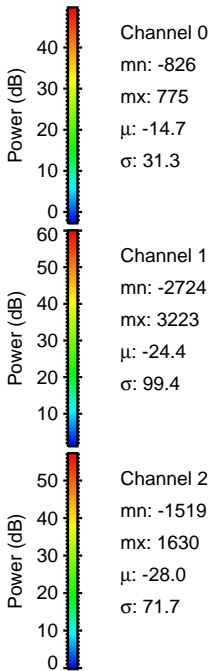
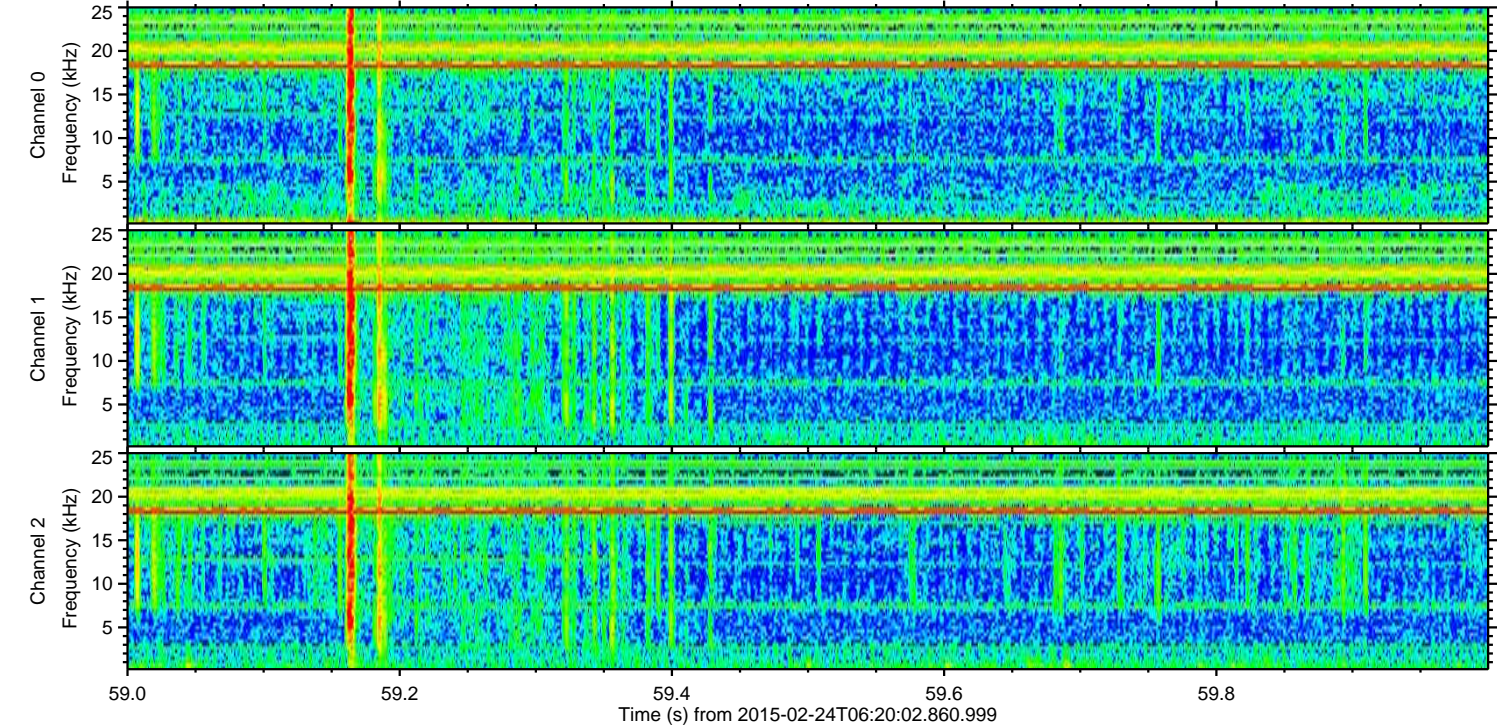
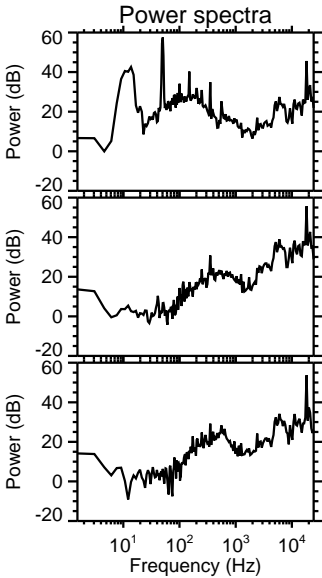
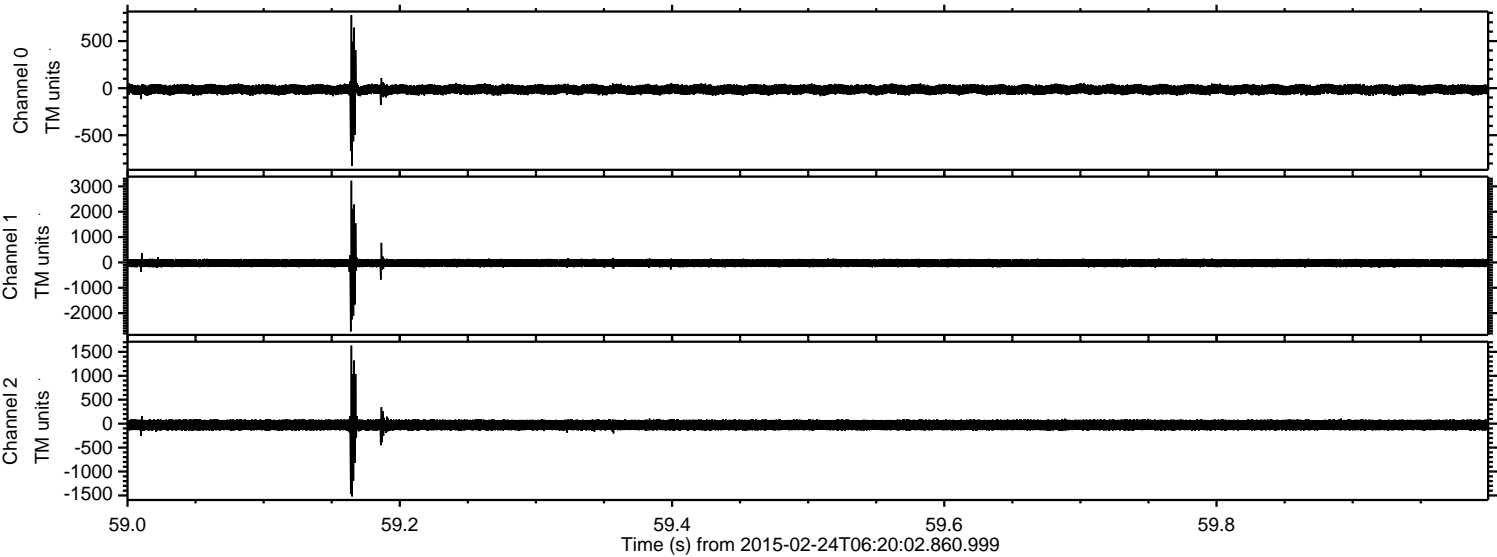
ELMAVAN 3D WAVEFORMS (Measured data sampled at 50 kHz) 49808 packets of 144 samples from 2015-02-24T06:20:02.860.999. Part 11/144

Processed Tue Mar 3 12:35:03 2015 by ELM ver.2012-10-06 from 001\_\_elm20150224\_062001\_\_dat00.bin



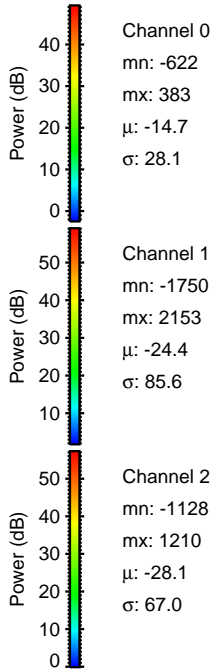
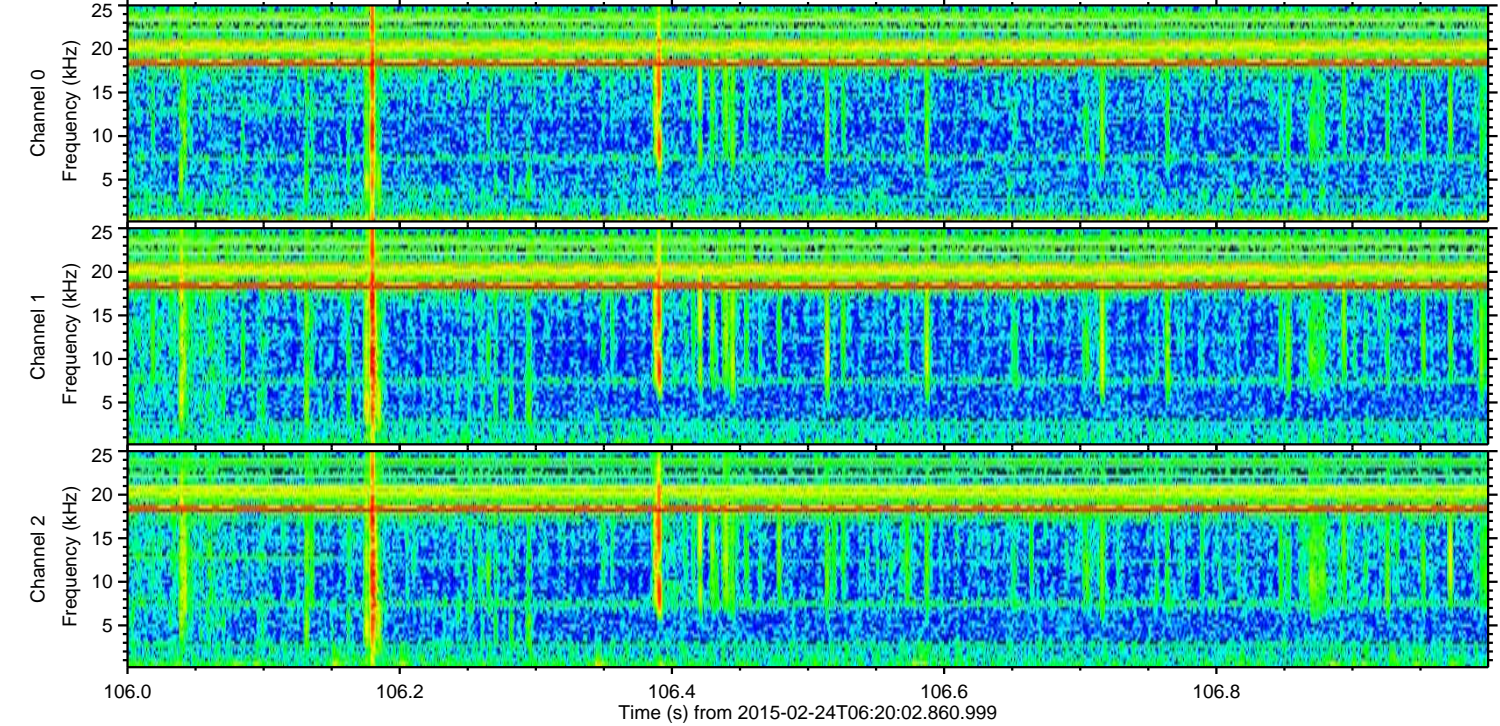
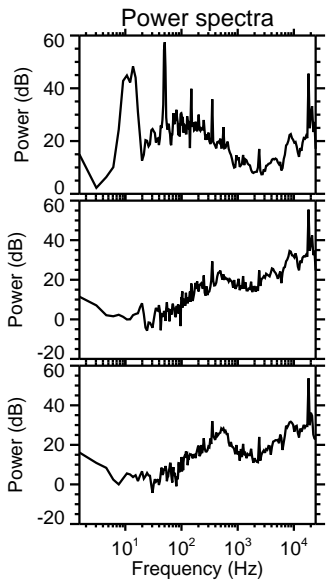
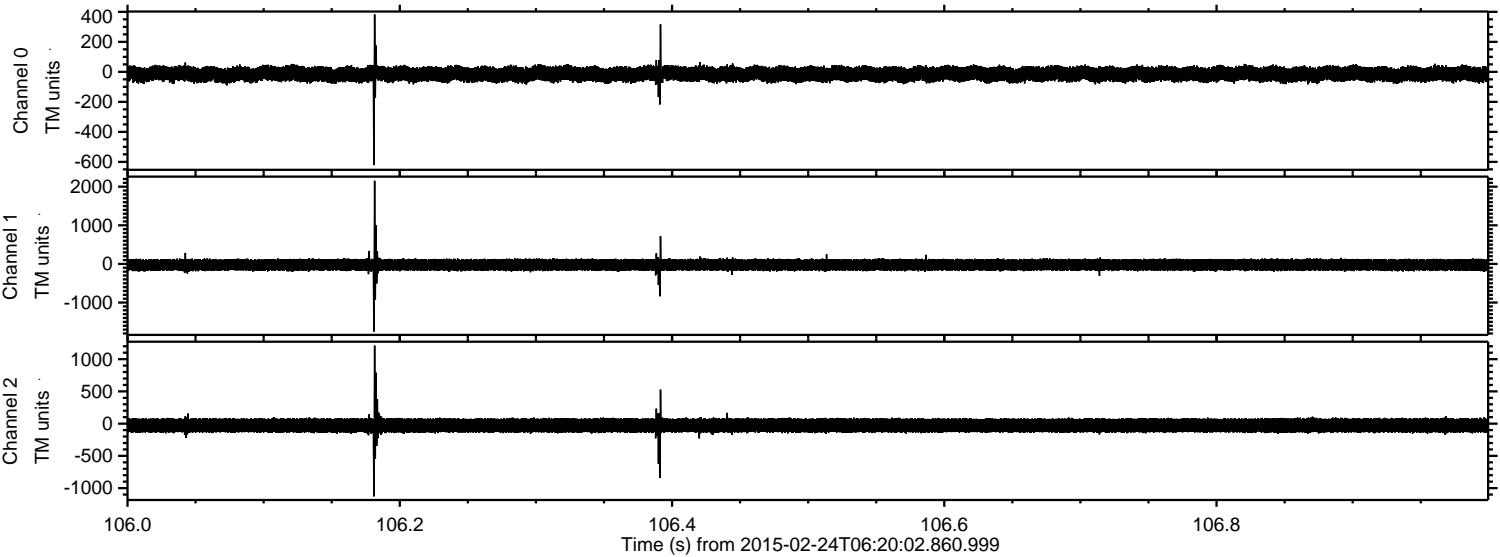


Processed Tue Mar 3 12:35:04 2015 by ELM ver.2012-10-06 from 001\_\_elm20150224\_062001\_\_dat00.bin





Processed Tue Mar 3 12:35:05 2015 by ELM ver.2012-10-06 from 001\_\_elm20150224\_062001\_\_dat00.bin



Channel 0  
mn: -622  
mx: 383  
 $\mu$ : -14.7  
 $\sigma$ : 28.1

Channel 1  
mn: -1750  
mx: 2153  
 $\mu$ : -24.4  
 $\sigma$ : 85.6

Channel 2  
mn: -1128  
mx: 1210  
 $\mu$ : -28.1  
 $\sigma$ : 67.0



Processed Tue Mar 3 12:35:06 2015 by ELM ver.2012-10-06 from 001\_\_elm20150224\_062001\_\_dat00.bin

