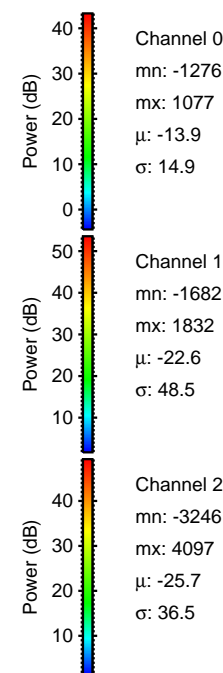
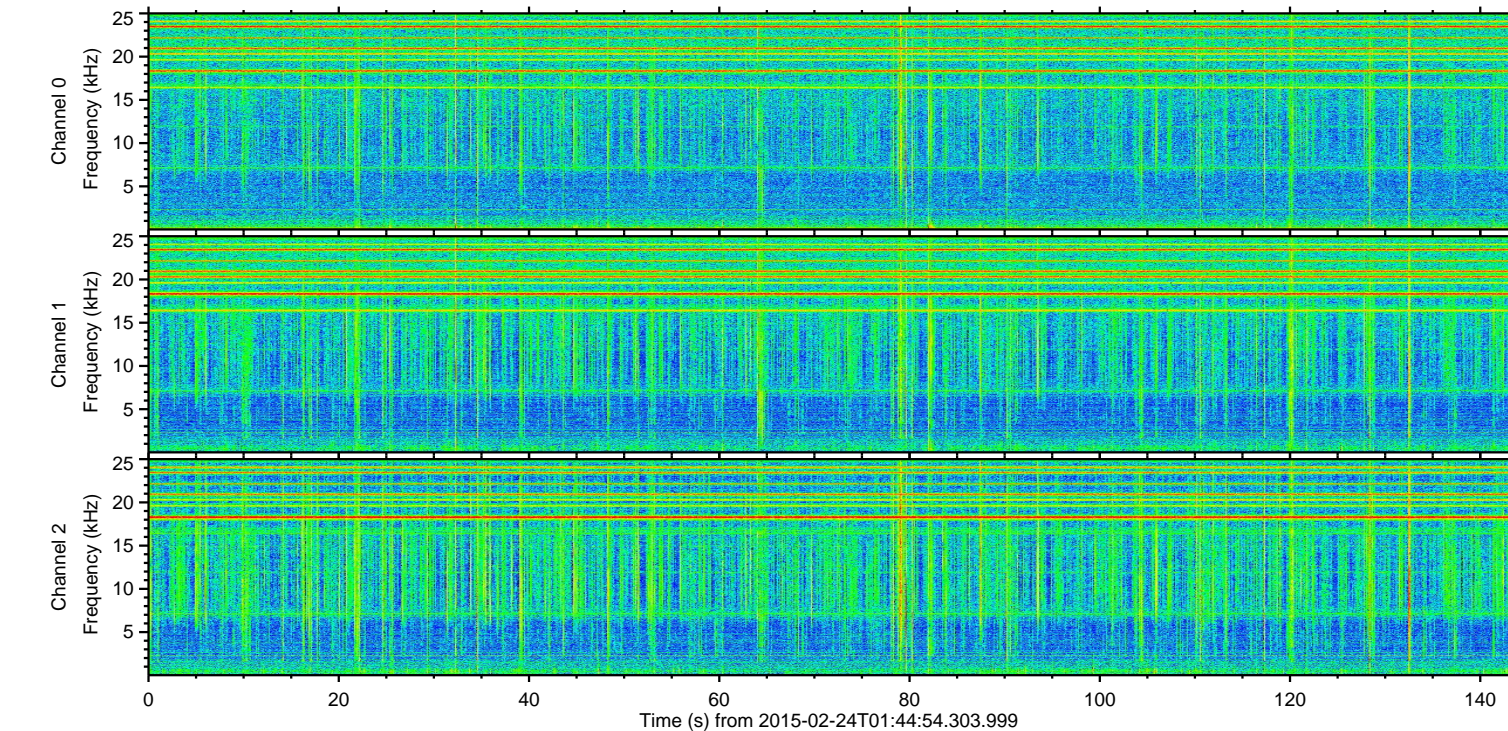
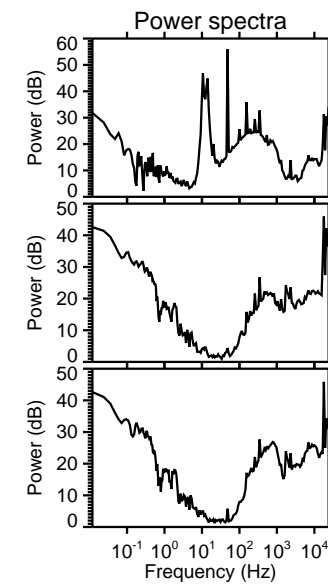
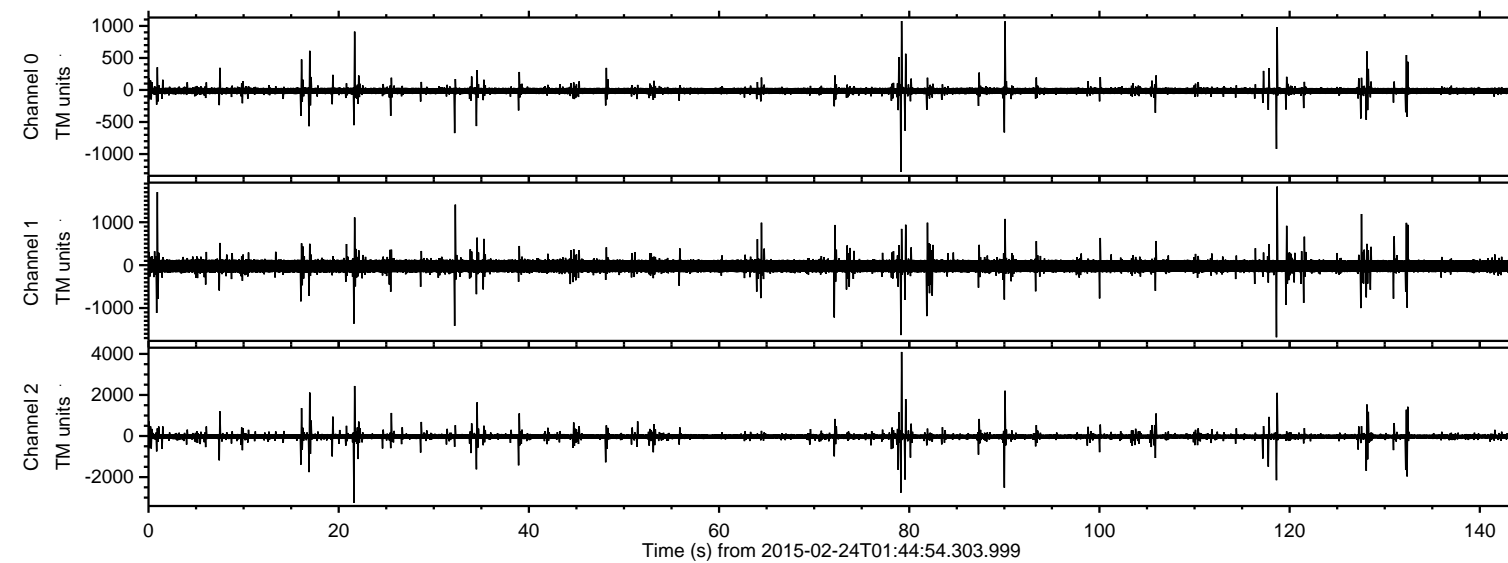


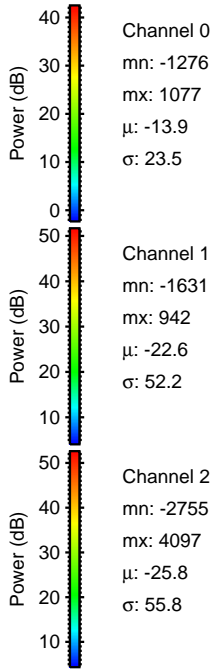
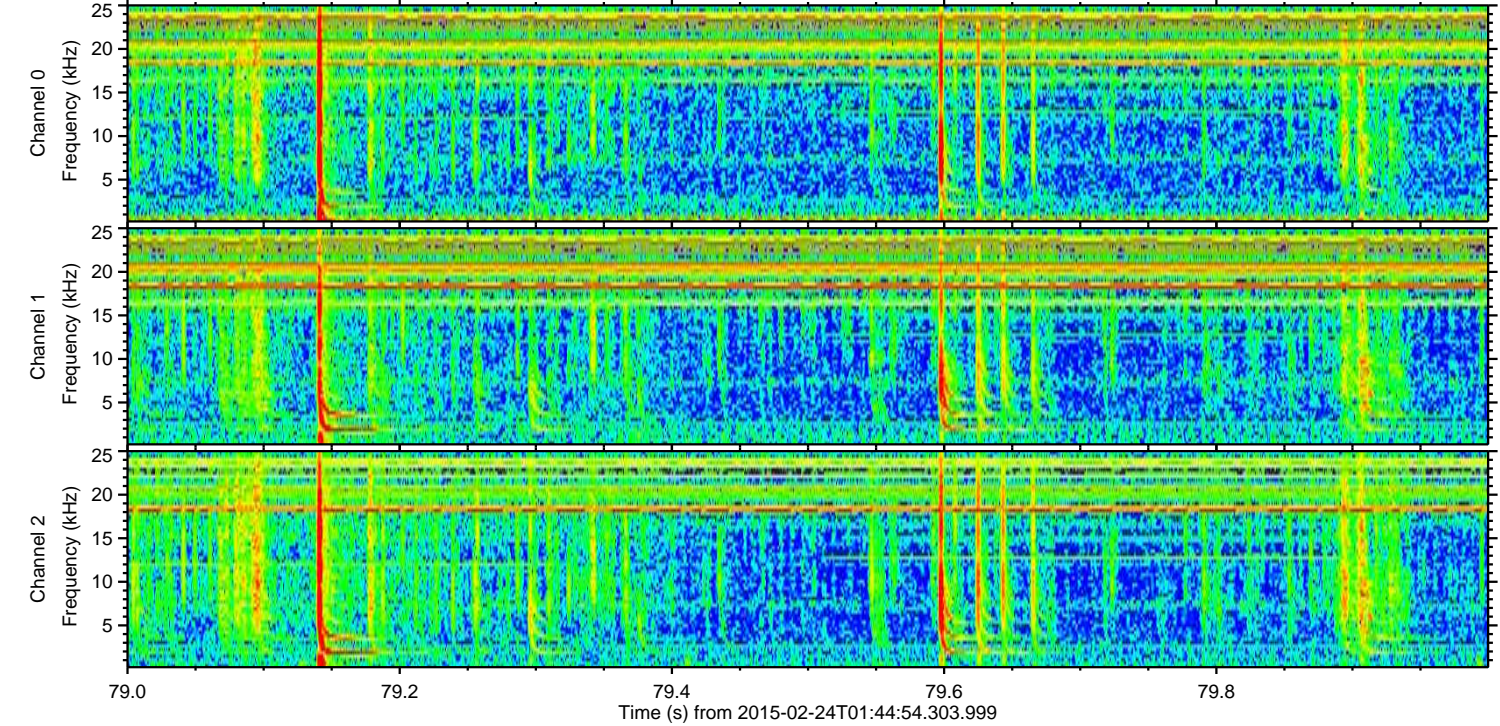
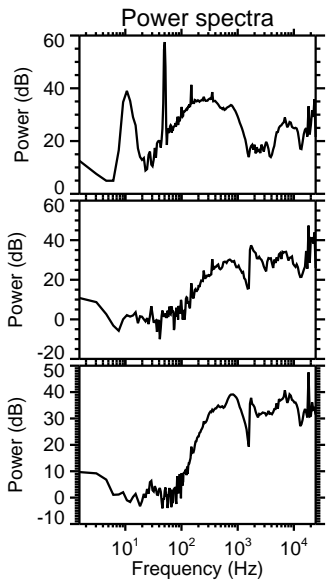
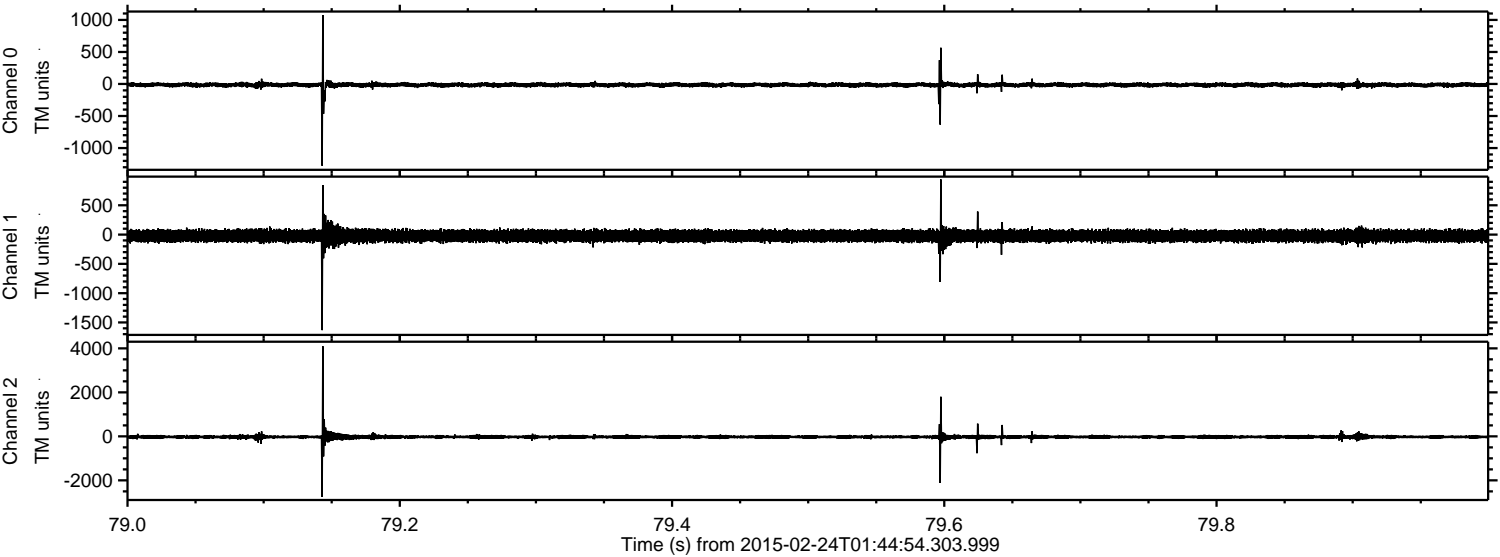
ELMAVAN 3D WAVEFORMS (Measured data sampled at 50 kHz) 49682 packets of 144 samples from 2015-02-24T01:44:54.303.999.

Processed Tue Mar 3 10:30:12 2015 by ELM ver.2012-10-06 from 001__elm20150224_014453__dat00.bin



ELMAVAN 3D WAVEFORMS (Measured data sampled at 50 kHz) 49682 packets of 144 samples from 2015-02-24T01:44:54.303.999. Part 80/144

Processed Tue Mar 3 10:30:24 2015 by ELM ver.2012-10-06 from 001__elm20150224_014453__dat00.bin



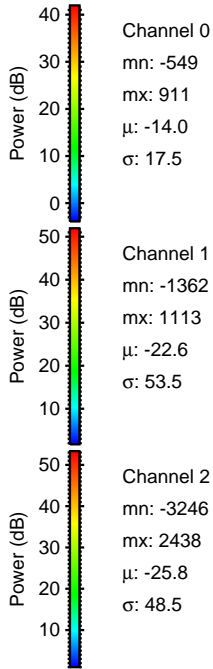
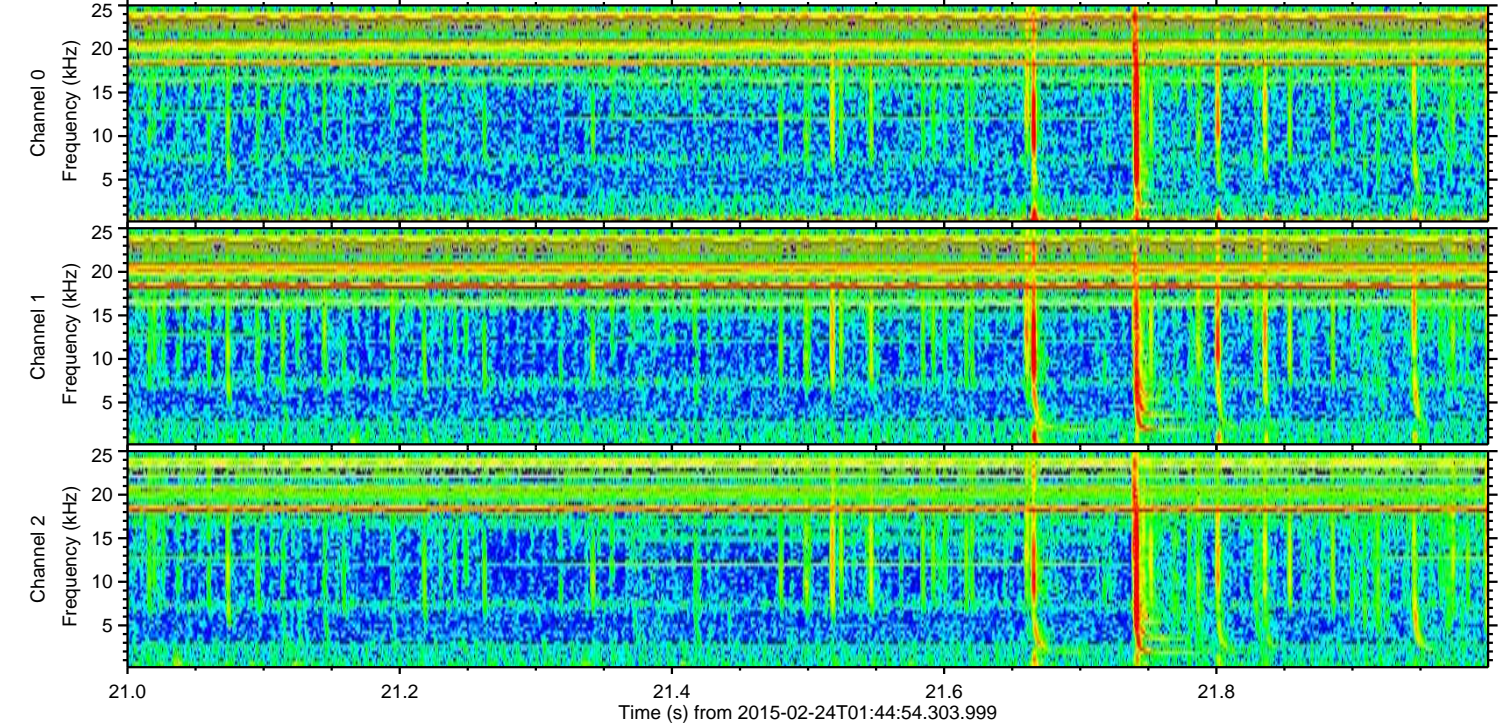
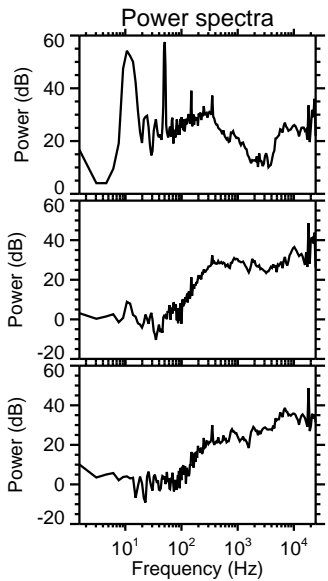
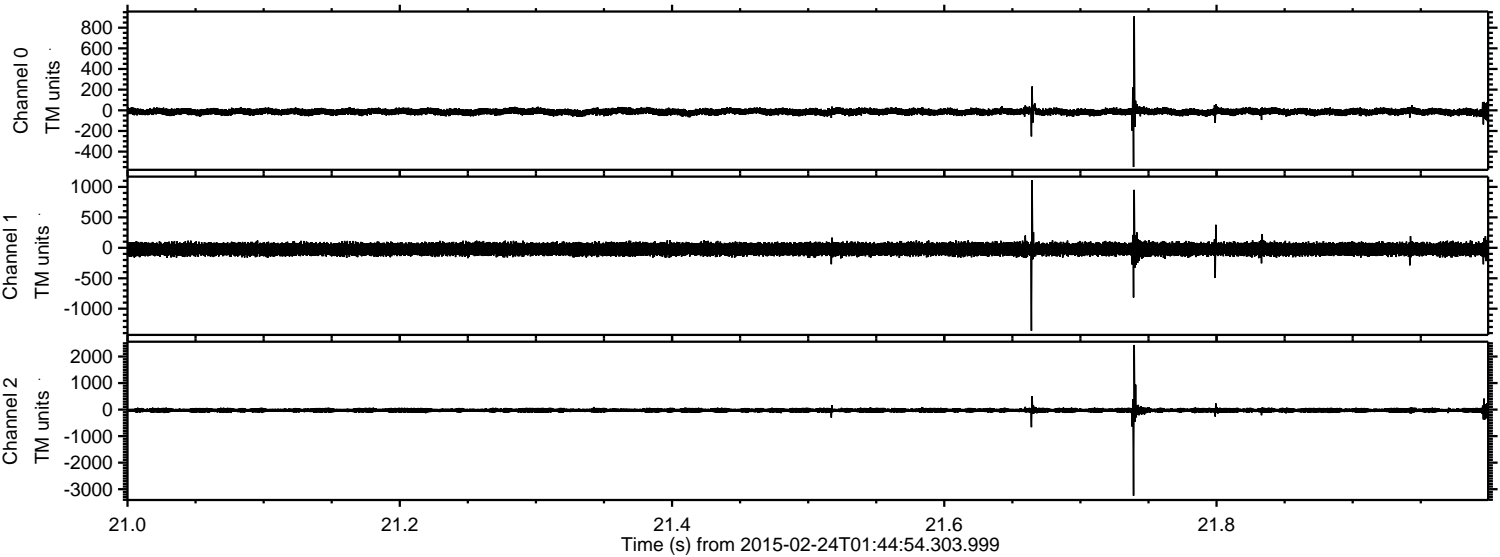
Channel 0
mn: -1276
mx: 1077
 μ : -13.9
 σ : 23.5

Channel 1
mn: -1631
mx: 942
 μ : -22.6
 σ : 52.2

Channel 2
mn: -2755
mx: 4097
 μ : -25.8
 σ : 55.8

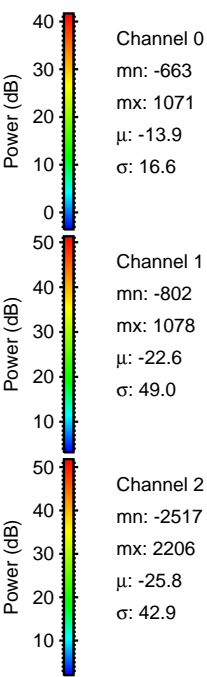
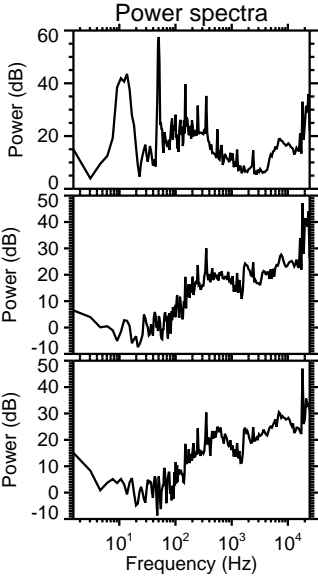
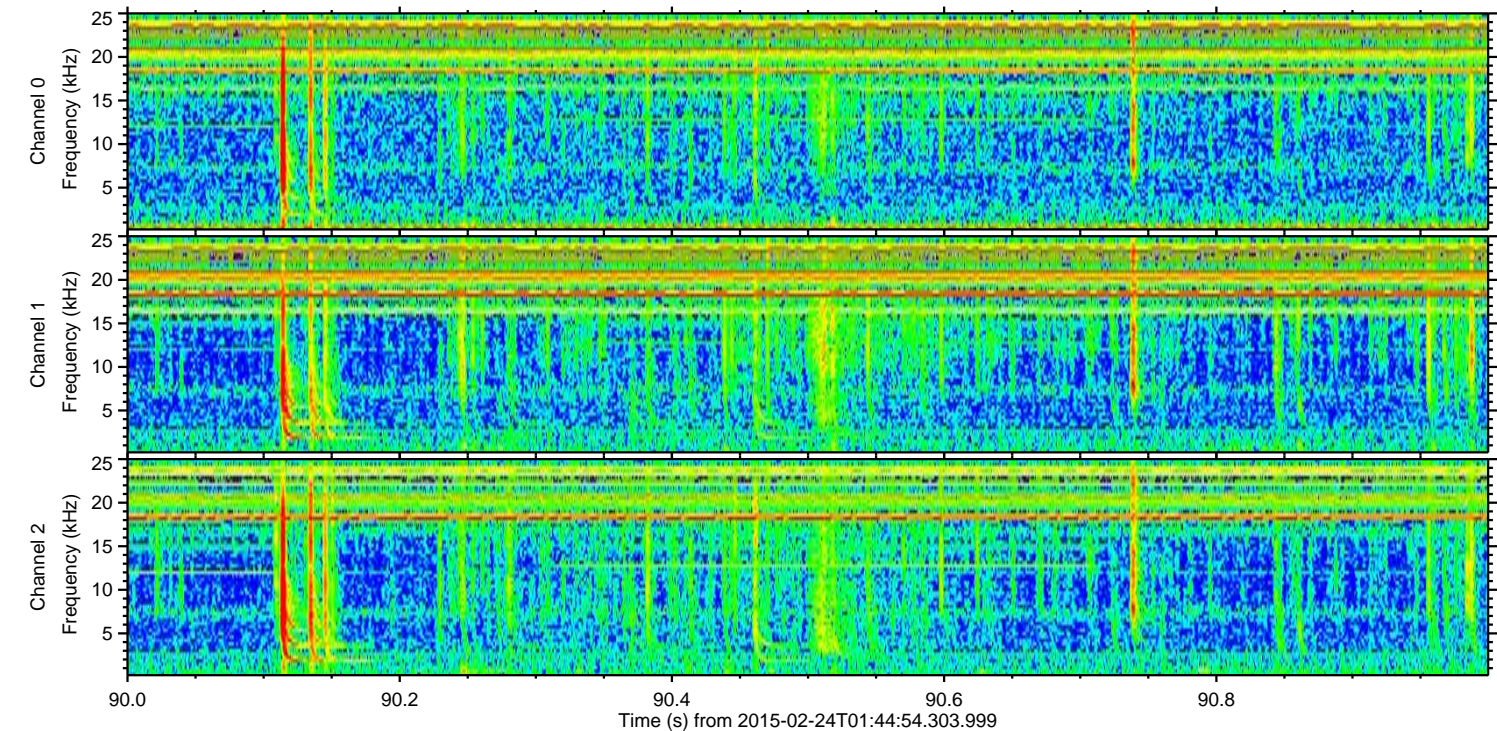
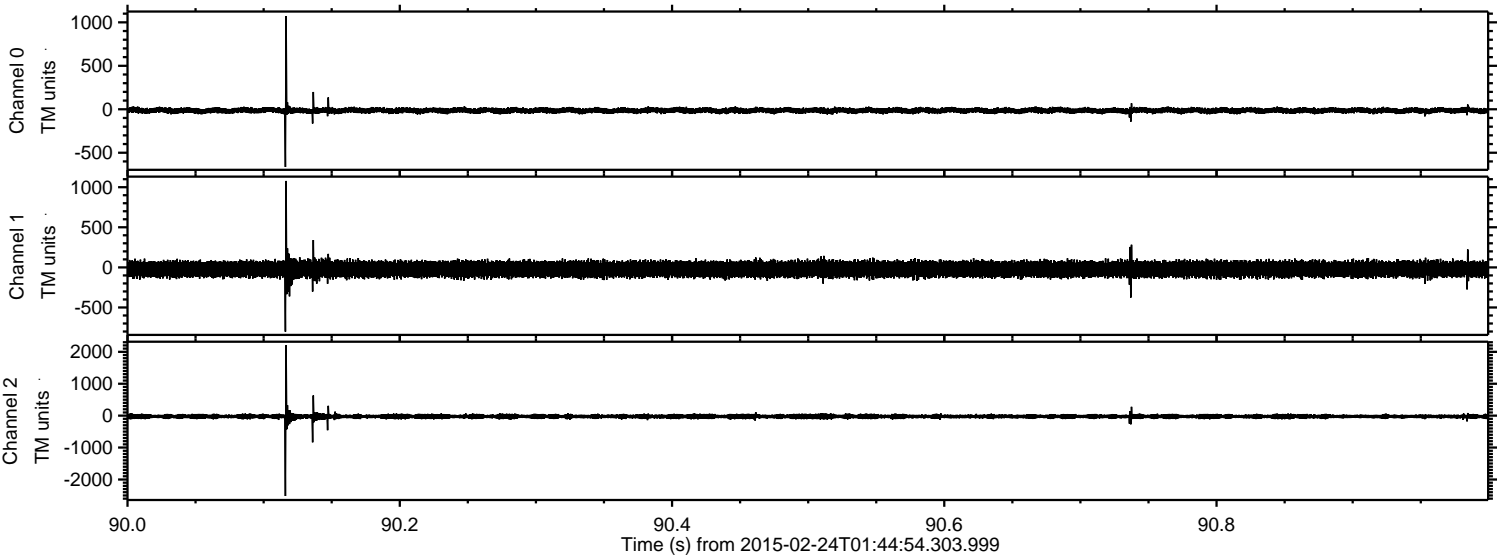
ELMAVAN 3D WAVEFORMS (Measured data sampled at 50 kHz) 49682 packets of 144 samples from 2015-02-24T01:44:54.303.999. Part 22/144

Processed Tue Mar 3 10:30:25 2015 by ELM ver.2012-10-06 from 001__elm20150224_014453__dat00.bin



ELMAVAN 3D WAVEFORMS (Measured data sampled at 50 kHz) 49682 packets of 144 samples from 2015-02-24T01:44:54.303.999. Part 91/144

Processed Tue Mar 3 10:30:25 2015 by ELM ver.2012-10-06 from 001__elm20150224_014453__dat00.bin



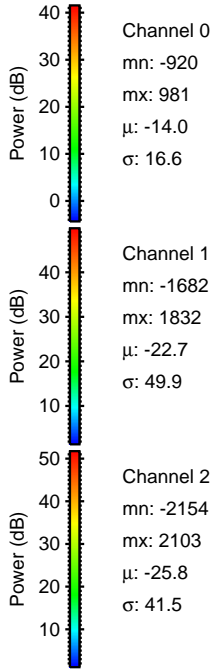
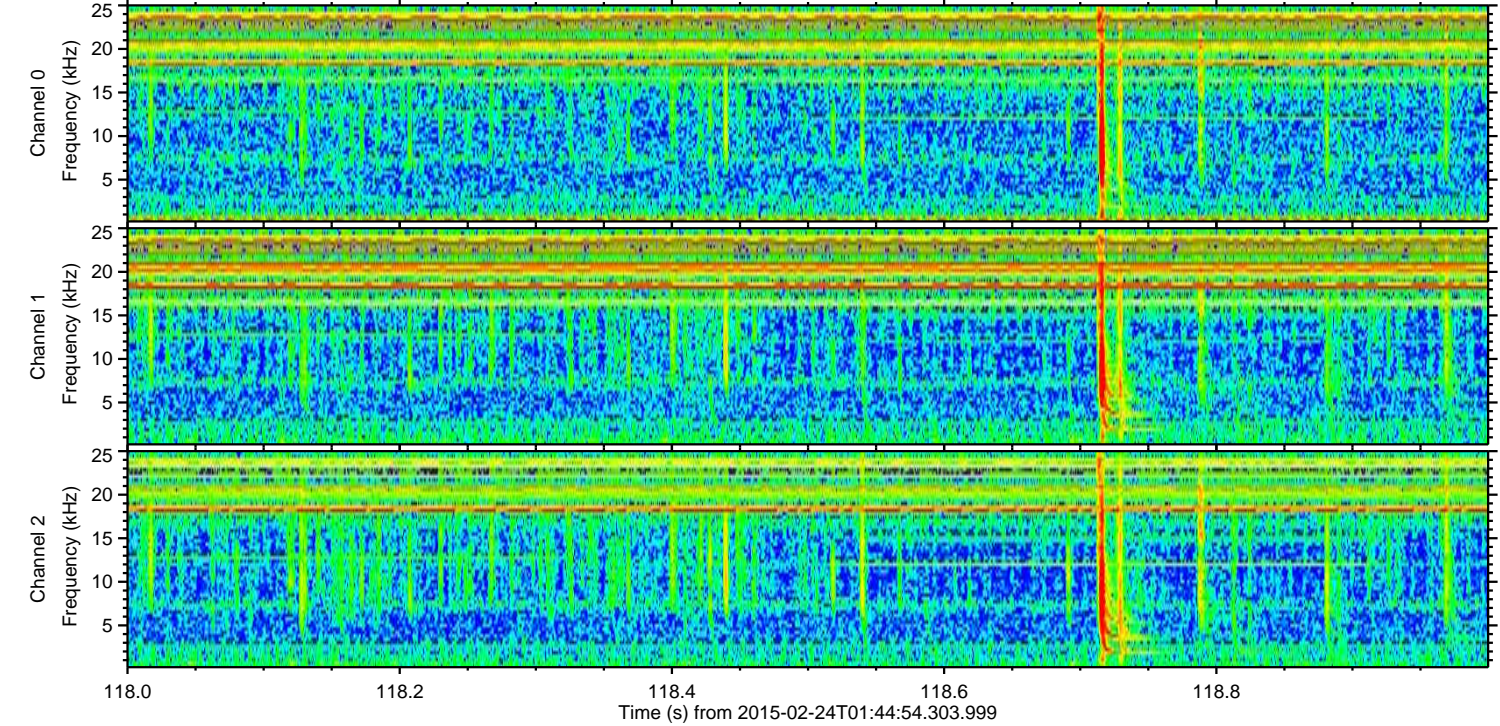
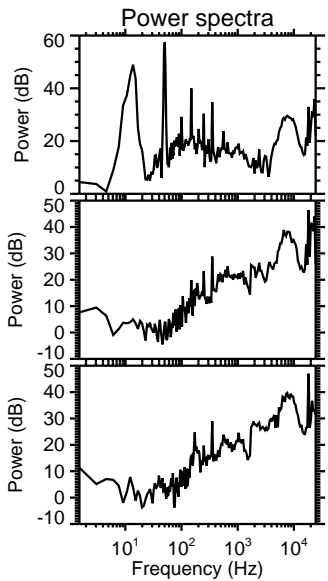
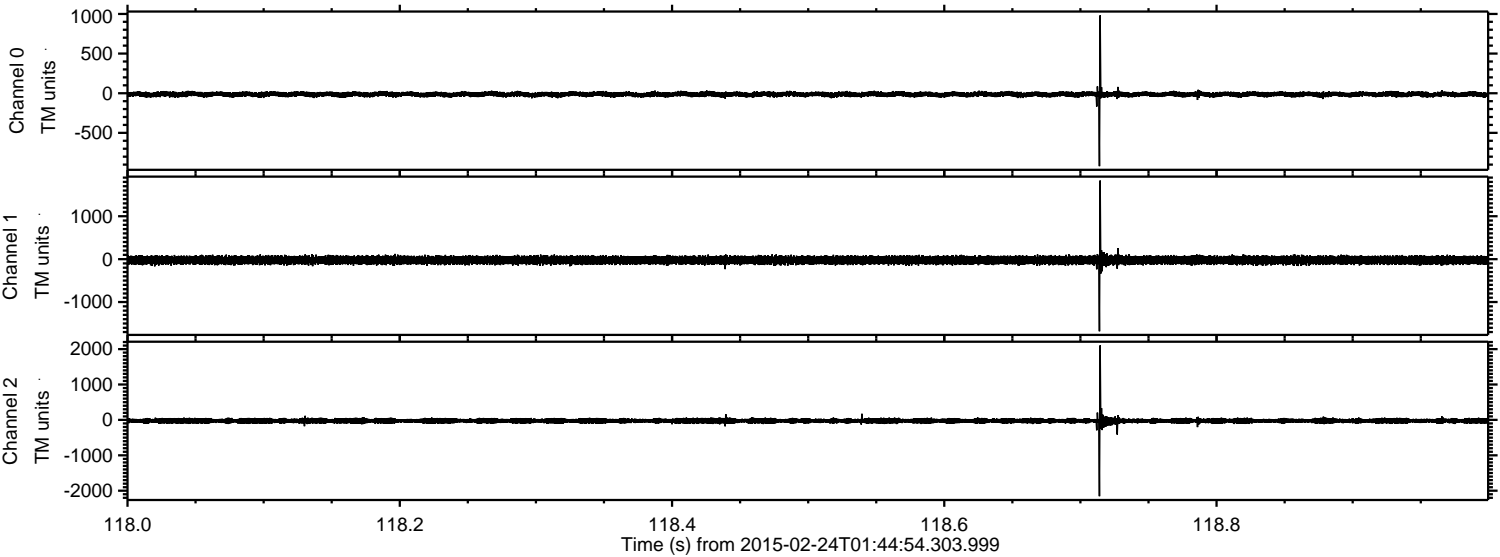
Channel 0
mn: -663
mx: 1071
 μ : -13.9
 σ : 16.6

Channel 1
mn: -802
mx: 1078
 μ : -22.6
 σ : 49.0

Channel 2
mn: -2517
mx: 2206
 μ : -25.8
 σ : 42.9

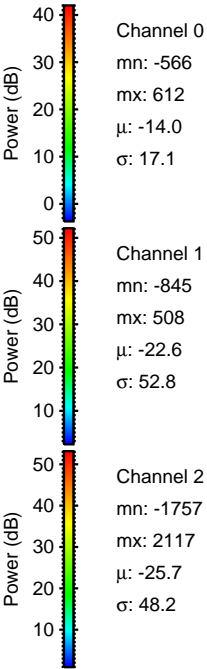
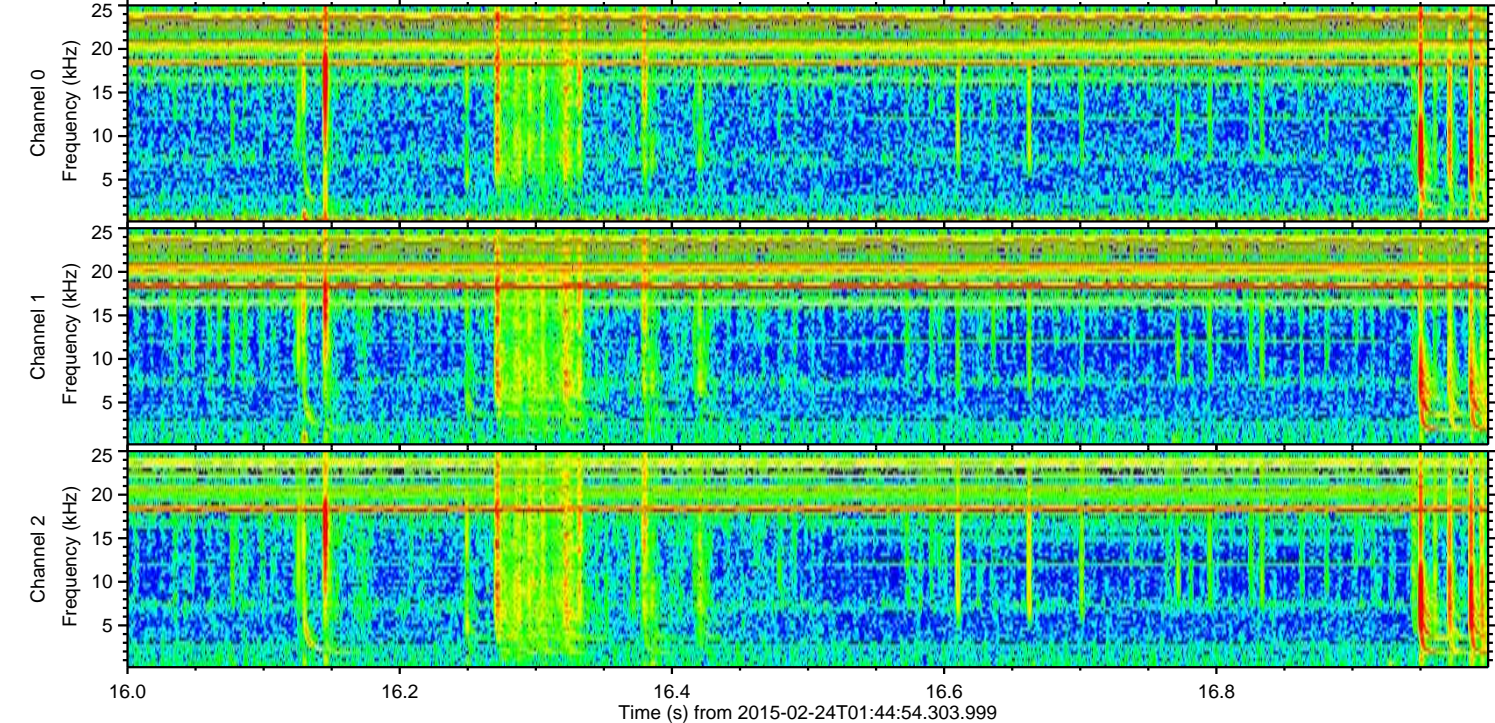
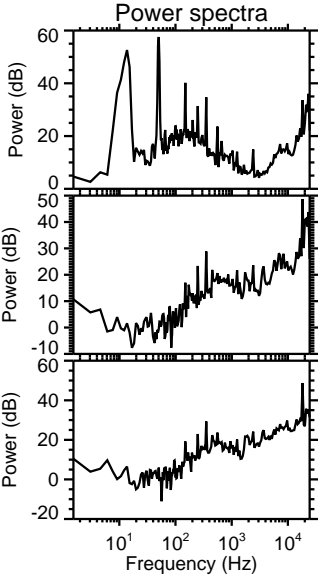
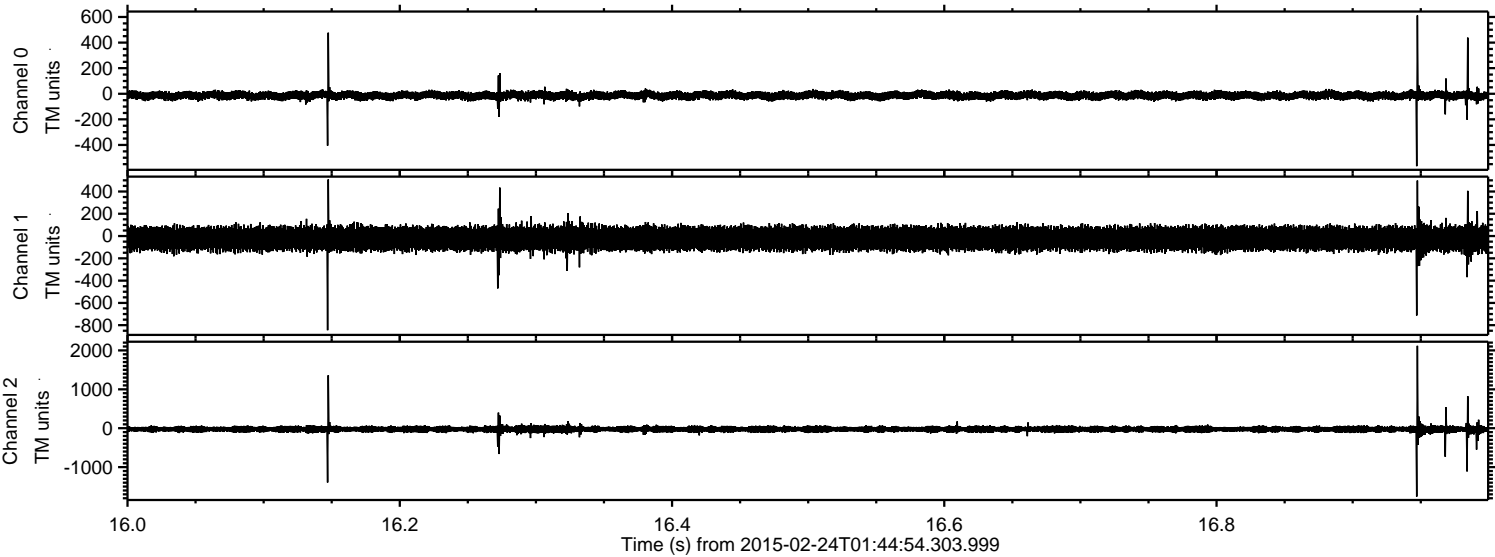
ELMAVAN 3D WAVEFORMS (Measured data sampled at 50 kHz) 49682 packets of 144 samples from 2015-02-24T01:44:54.303.999. Part 119/144

Processed Tue Mar 3 10:30:26 2015 by ELM ver.2012-10-06 from 001__elm20150224_014453__dat00.bin



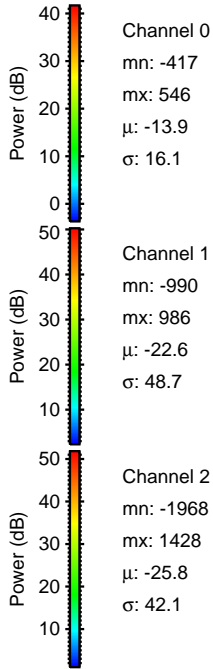
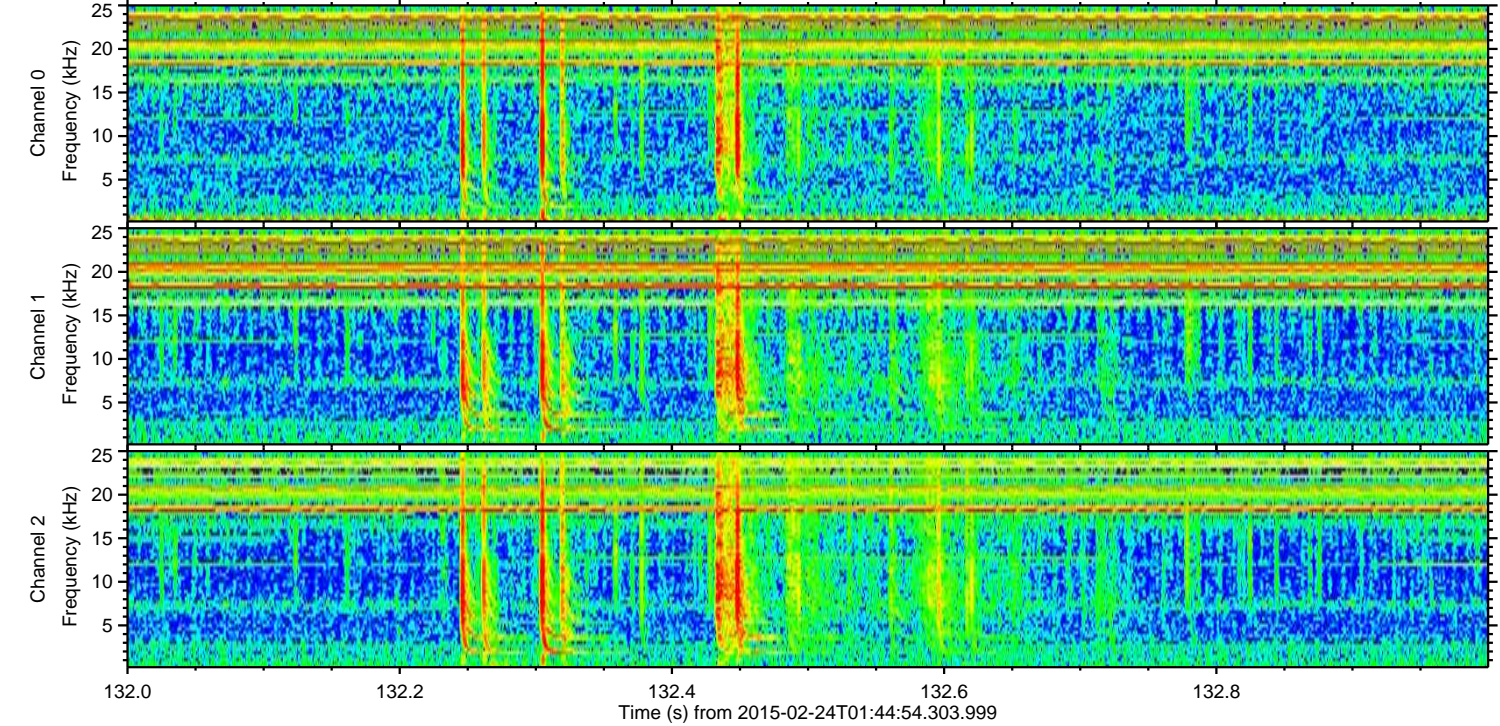
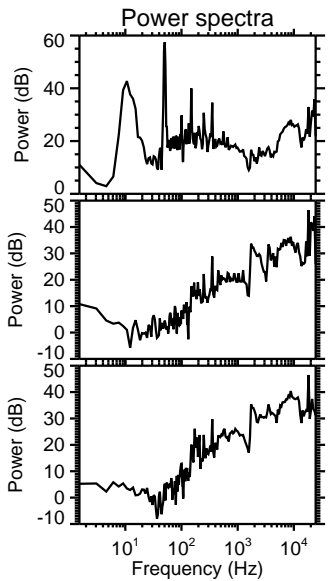
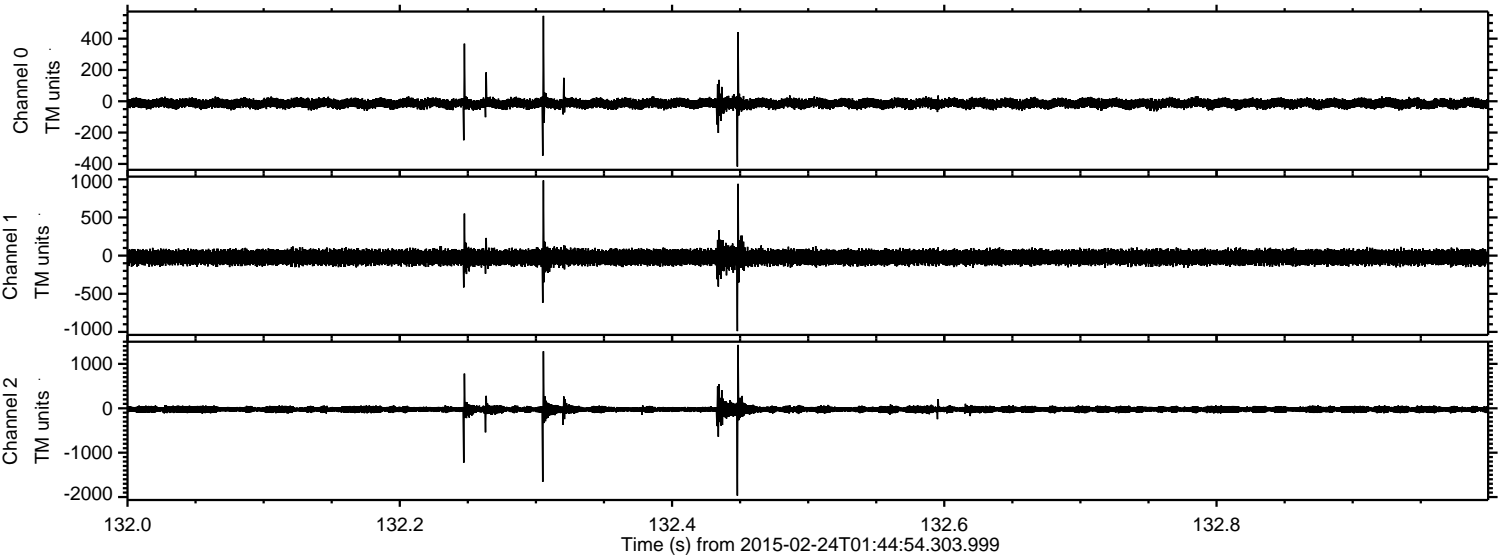
ELMAVAN 3D WAVEFORMS (Measured data sampled at 50 kHz) 49682 packets of 144 samples from 2015-02-24T01:44:54.303.999. Part 17/144

Processed Tue Mar 3 10:30:27 2015 by ELM ver.2012-10-06 from 001__elm20150224_014453__dat00.bin



ELMAVAN 3D WAVEFORMS (Measured data sampled at 50 kHz) 49682 packets of 144 samples from 2015-02-24T01:44:54.303.999. Part 133/144

Processed Tue Mar 3 10:30:28 2015 by ELM ver.2012-10-06 from 001__elm20150224_014453__dat00.bin



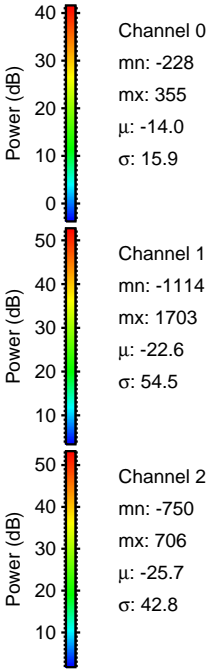
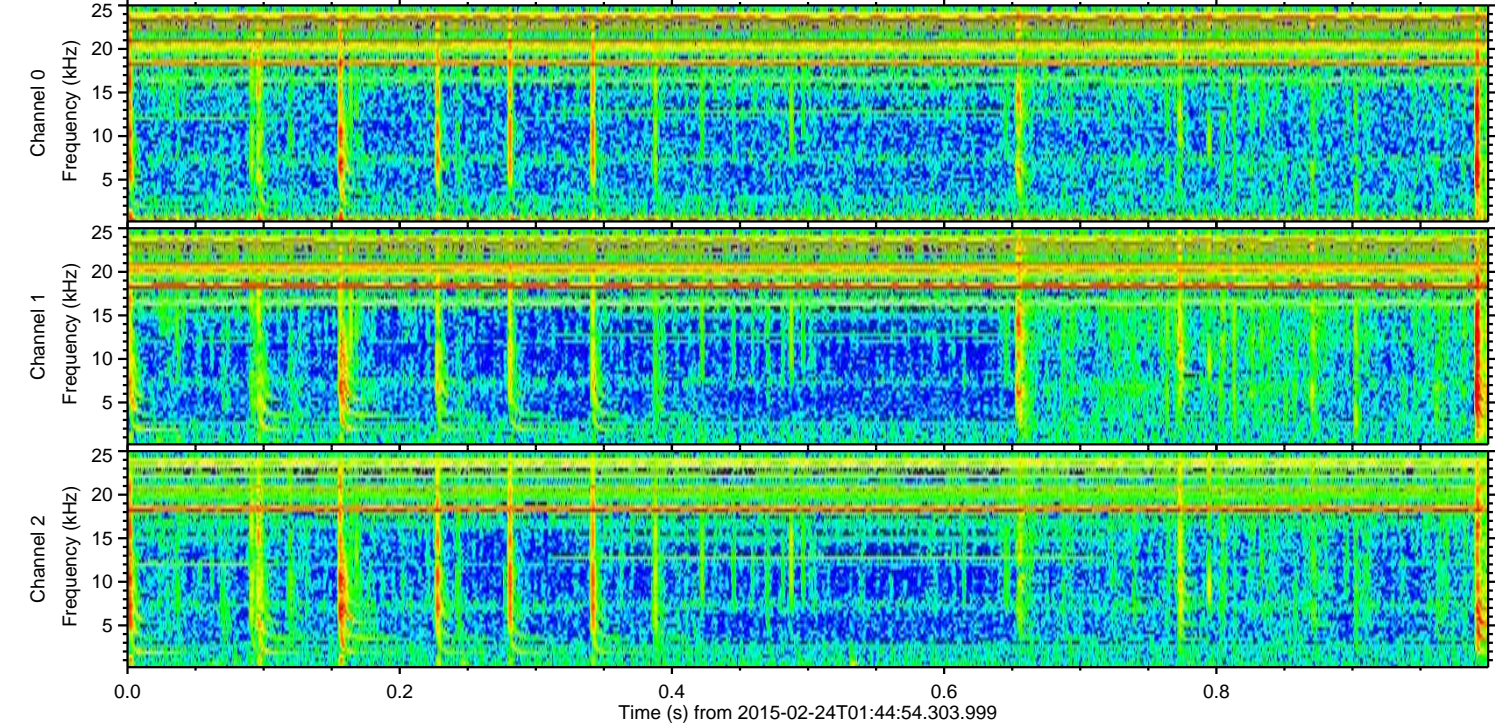
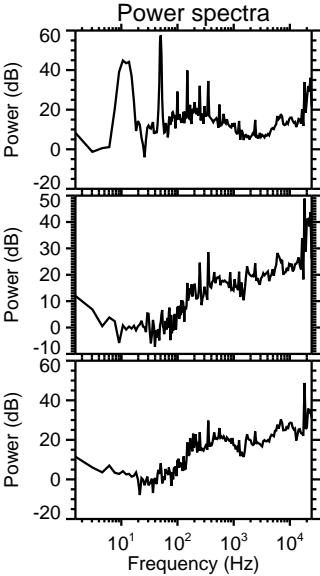
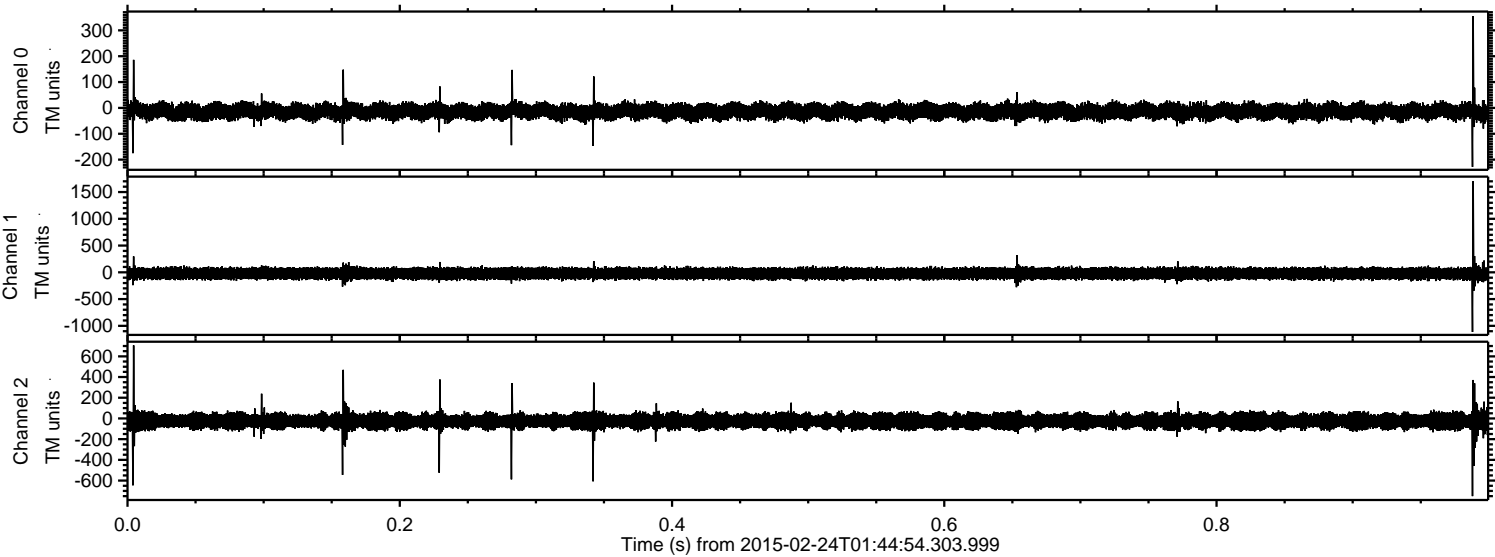
Channel 0
mn: -417
mx: 546
 μ : -13.9
 σ : 16.1

Channel 1
mn: -990
mx: 986
 μ : -22.6
 σ : 48.7

Channel 2
mn: -1968
mx: 1428
 μ : -25.8
 σ : 42.1

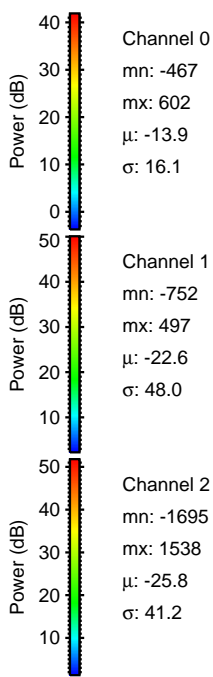
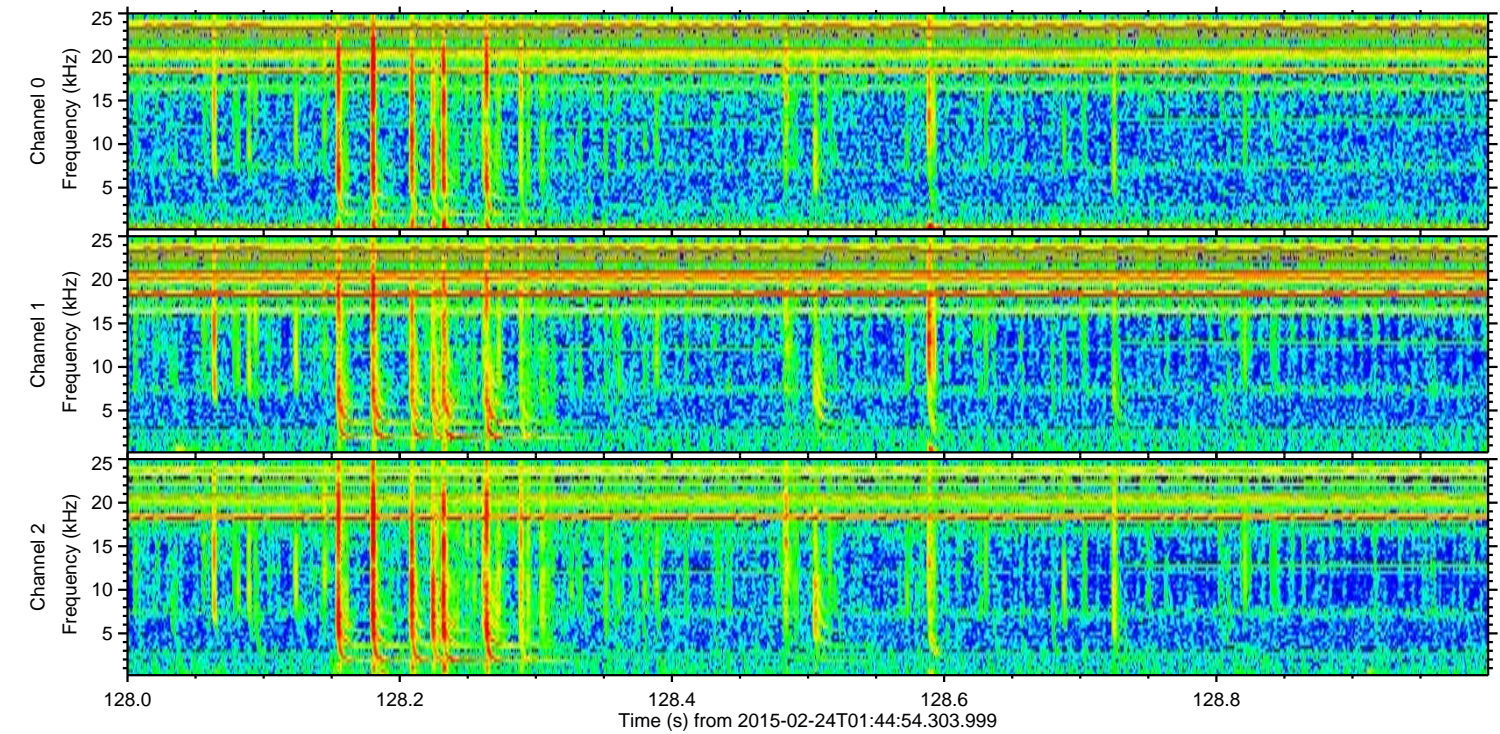
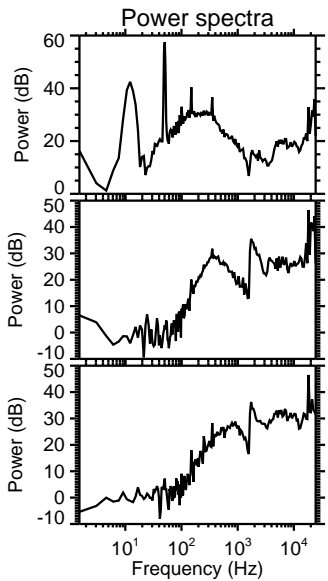
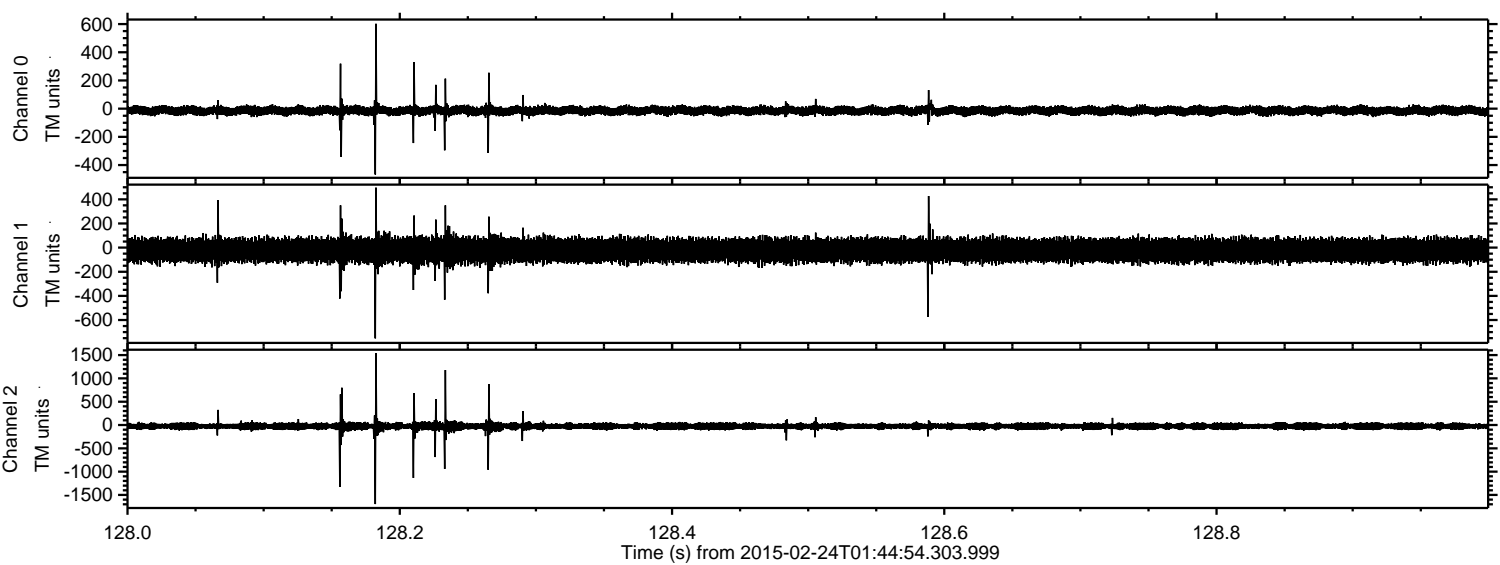
ELMAVAN 3D WAVEFORMS (Measured data sampled at 50 kHz) 49682 packets of 144 samples from 2015-02-24T01:44:54.303.999. Part 1/144

Processed Tue Mar 3 10:30:29 2015 by ELM ver.2012-10-06 from 001__elm20150224_014453__dat00.bin



ELMAVAN 3D WAVEFORMS (Measured data sampled at 50 kHz) 49682 packets of 144 samples from 2015-02-24T01:44:54.303.999. Part 129/144

Processed Tue Mar 3 10:30:30 2015 by ELM ver.2012-10-06 from 001__elm20150224_014453__dat00.bin



ELMAVAN 3D WAVEFORMS (Measured data sampled at 50 kHz) 49682 packets of 144 samples from 2015-02-24T01:44:54.303.999. Part 79/144

Processed Tue Mar 3 10:30:31 2015 by ELM ver.2012-10-06 from 001__elm20150224_014453__dat00.bin

