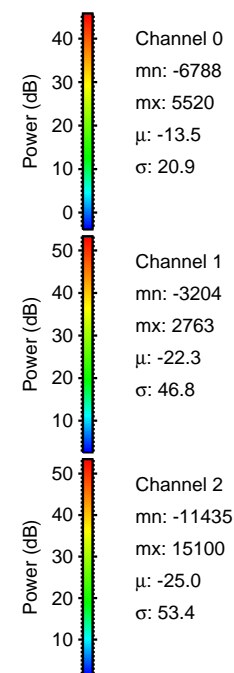
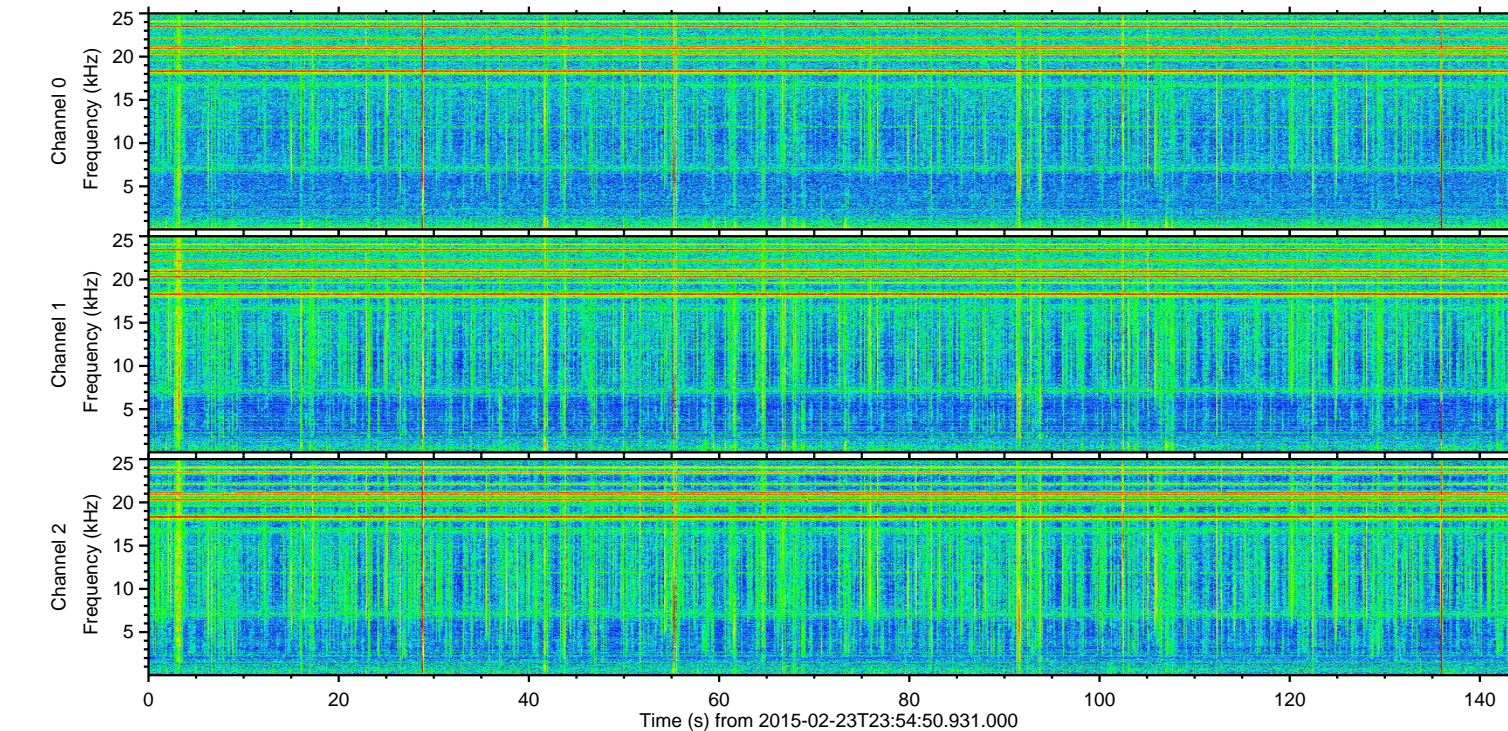
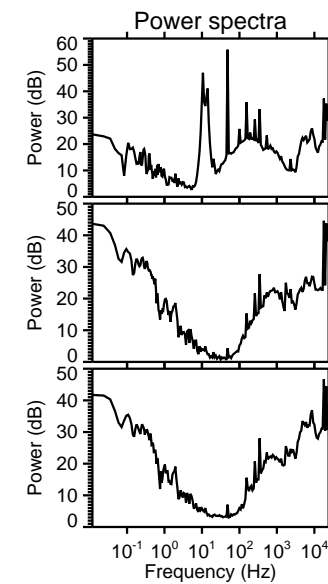
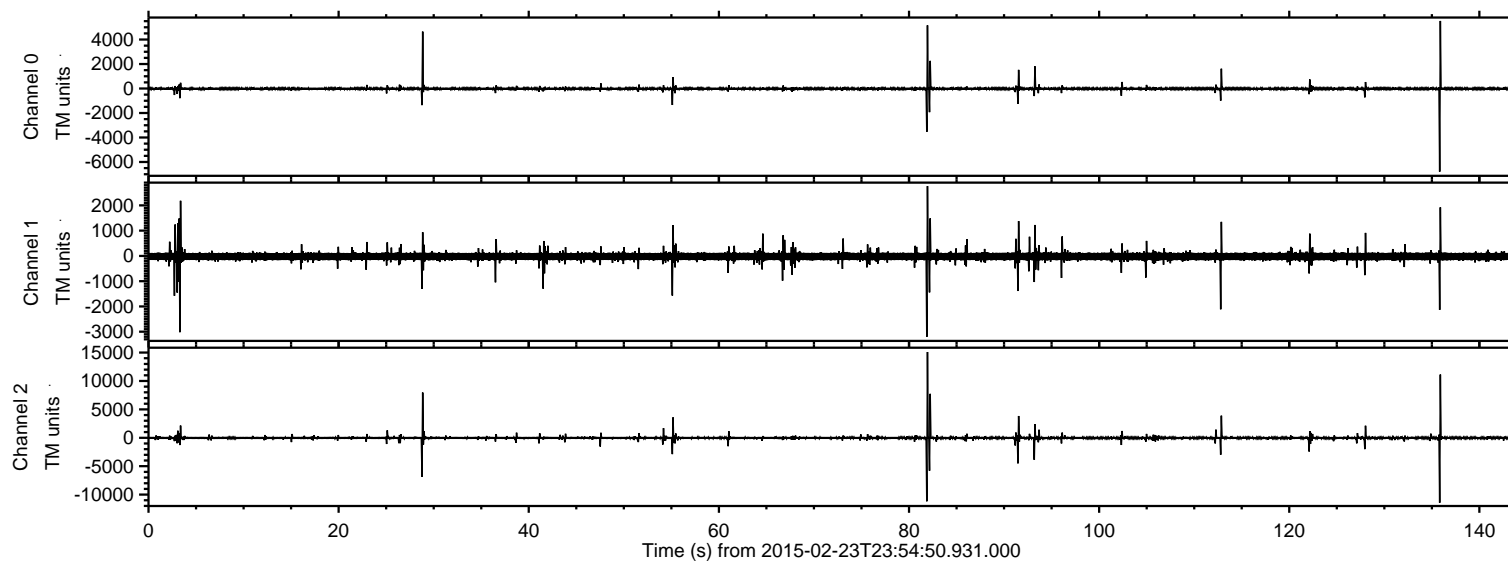
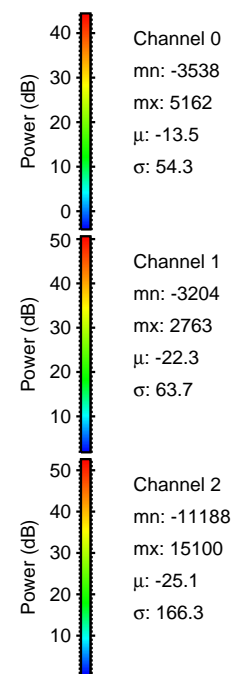
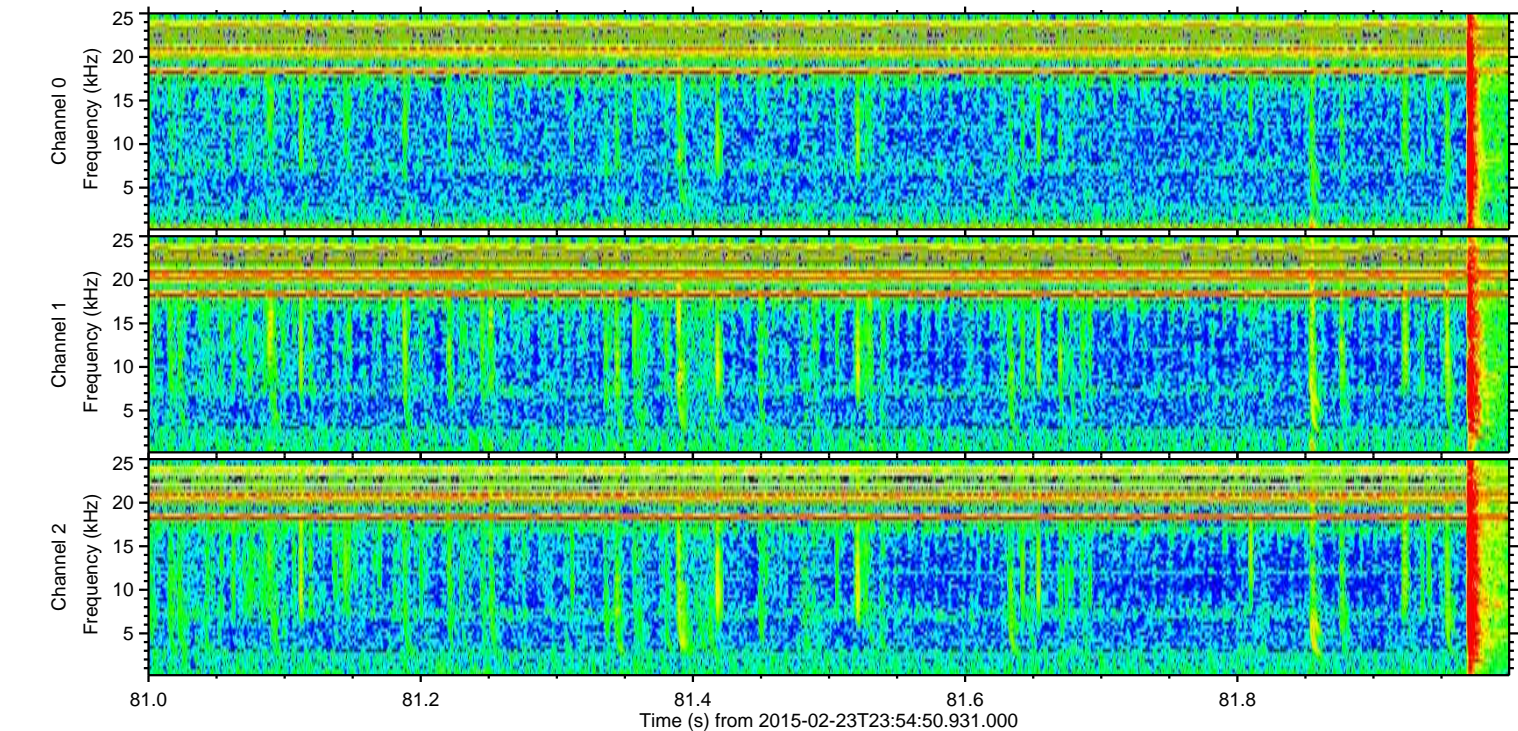
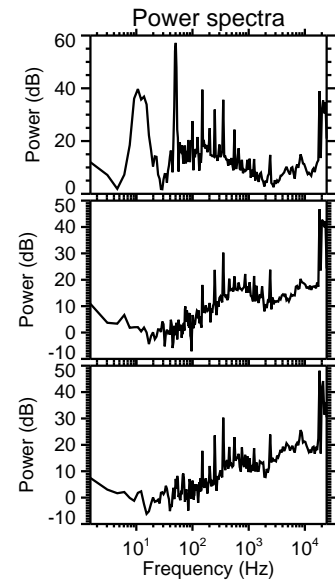
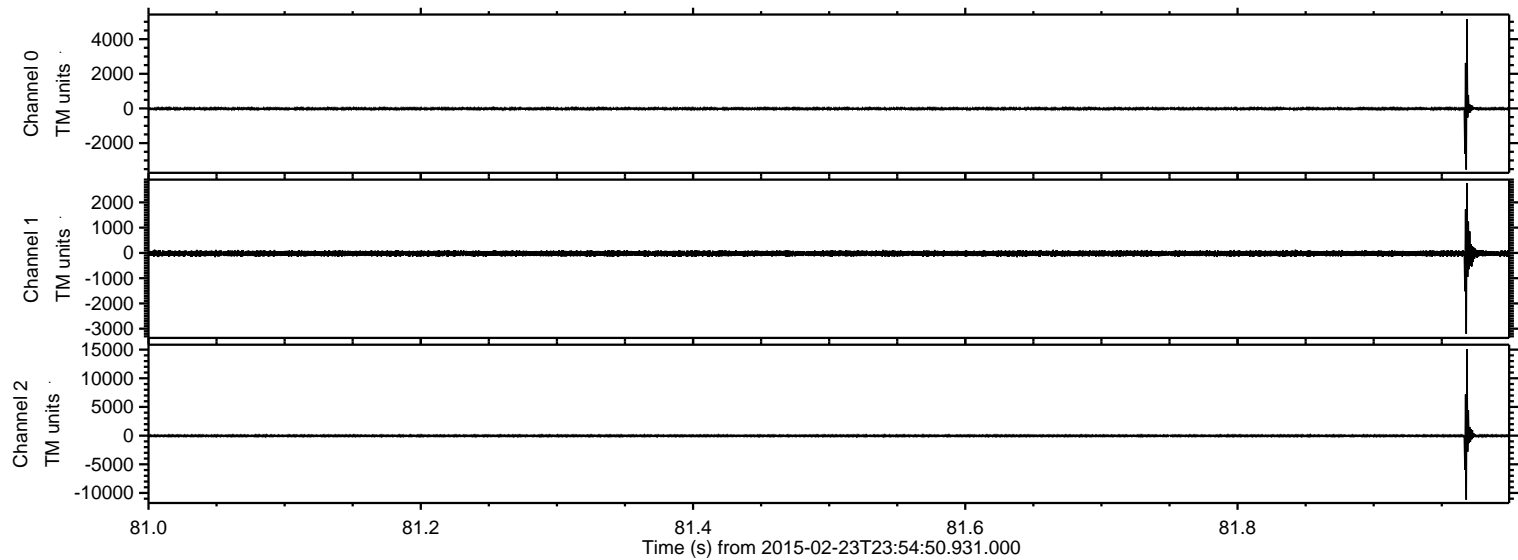


ELMAVAN 3D WAVEFORMS (Measured data sampled at 50 kHz) 49698 packets of 144 samples from 2015-02-23T23:54:50.931.000.

Processed Tue Mar 3 09:06:23 2015 by ELM ver.2012-10-06 from 001__elm20150223_235449__dat00.bin

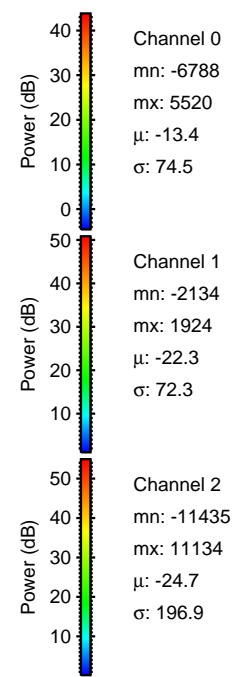
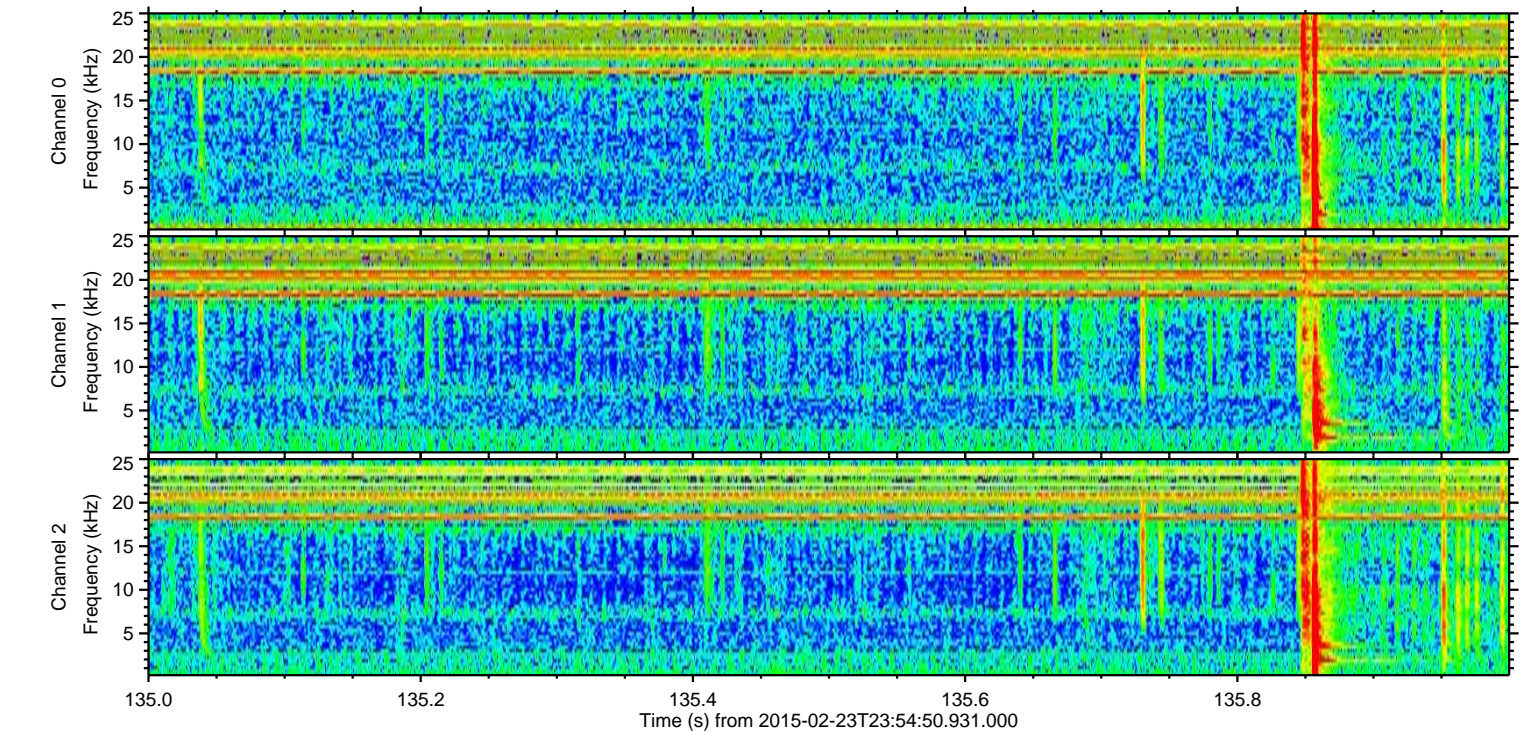
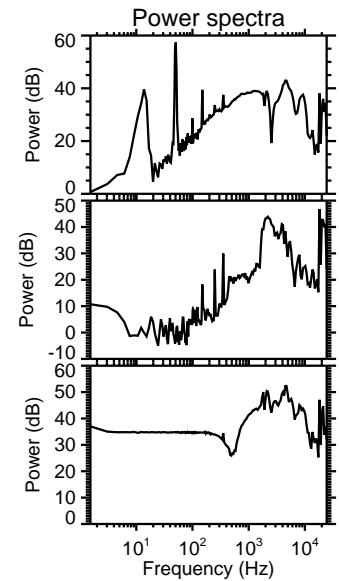
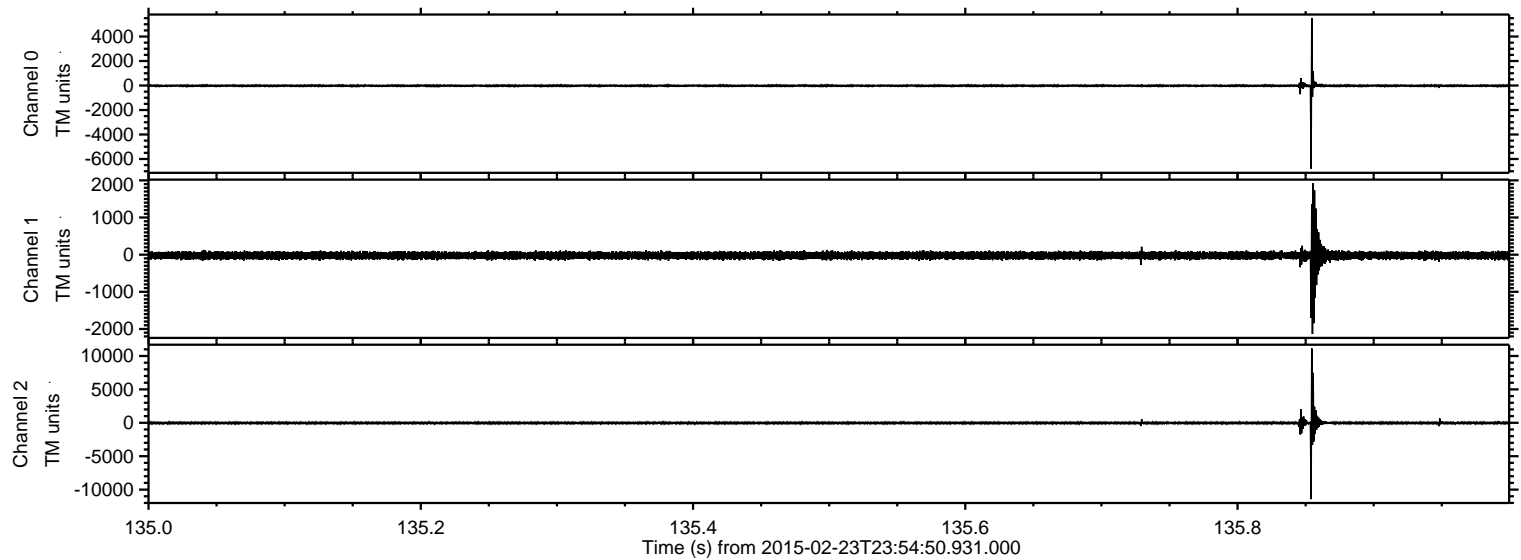


Processed Tue Mar 3 09:06:35 2015 by ELM ver.2012-10-06 from 001__elm20150223_235449__dat00.bin

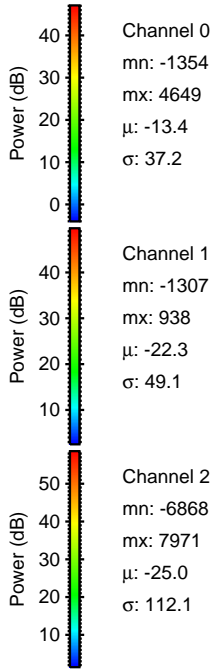
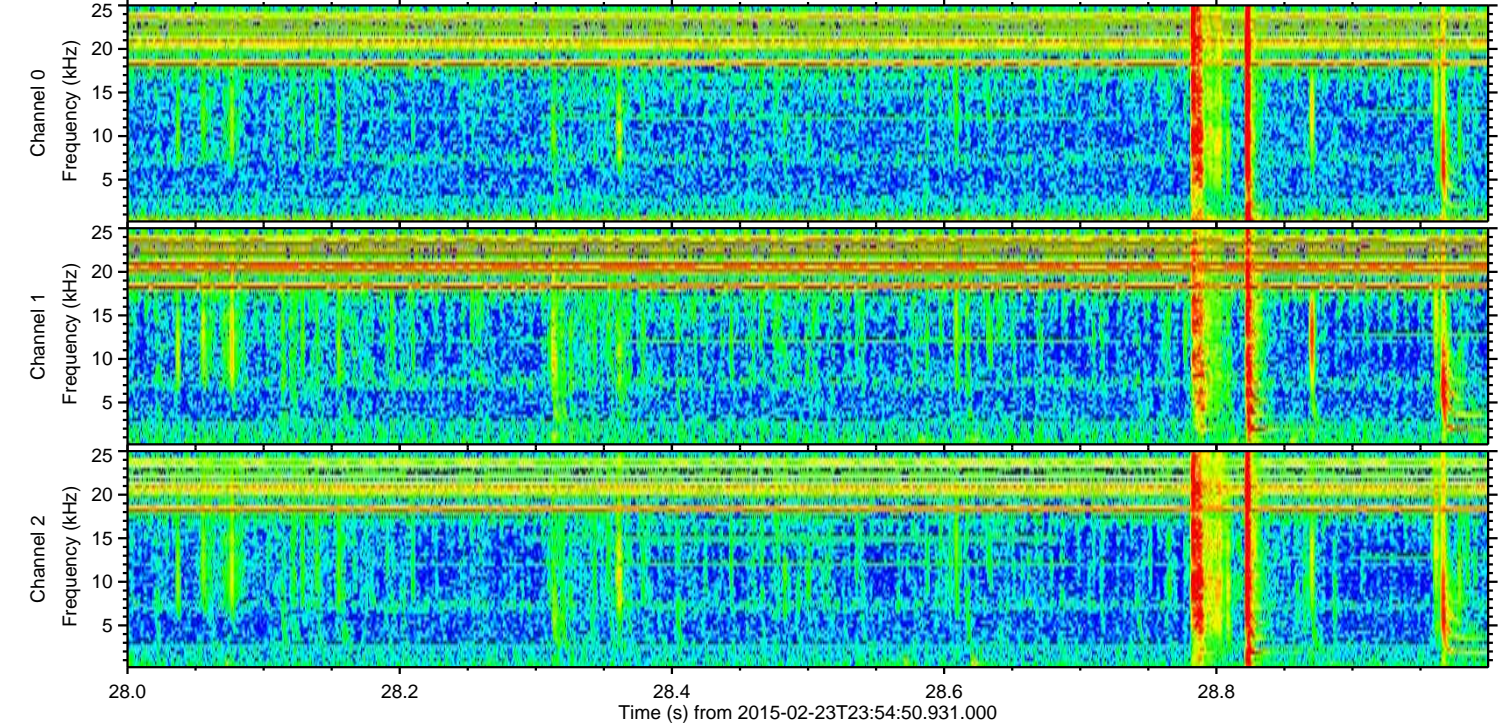
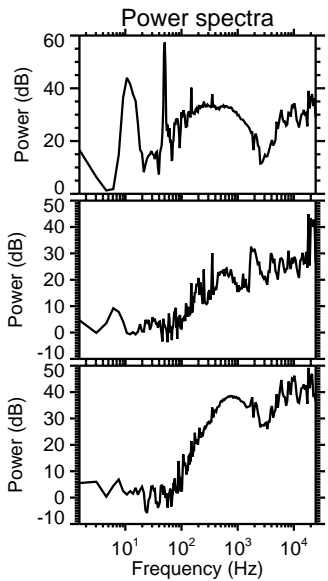
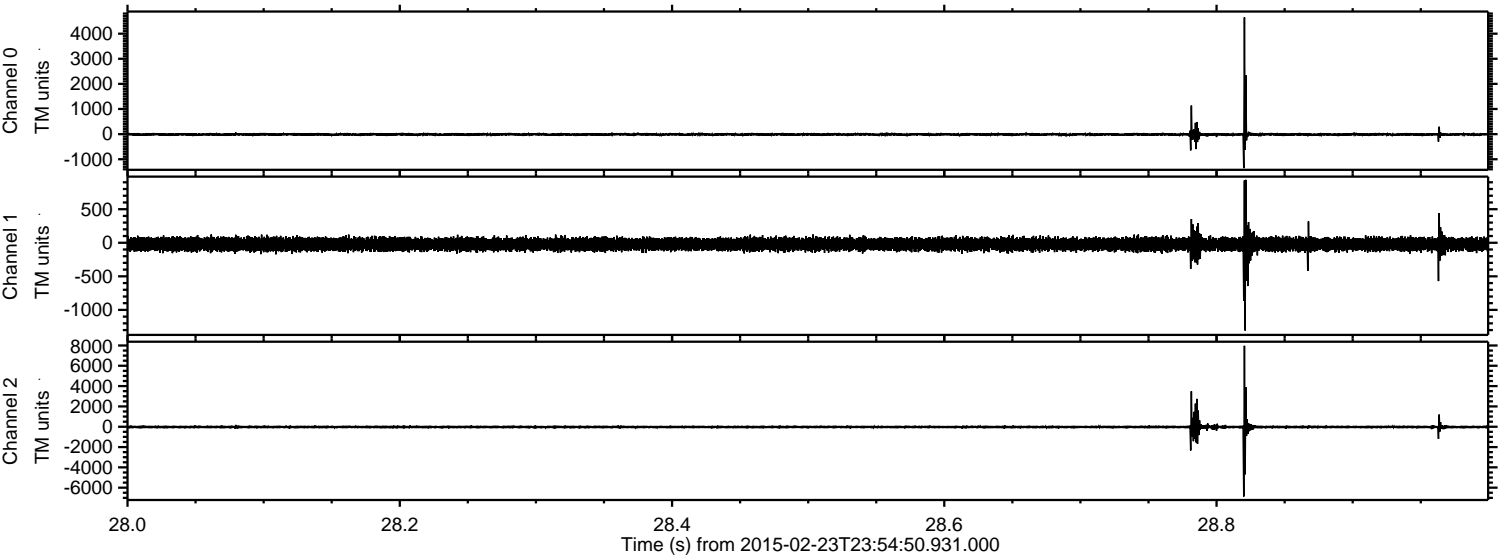


ELMAVAN 3D WAVEFORMS (Measured data sampled at 50 kHz) 49698 packets of 144 samples from 2015-02-23T23:54:50.931.000. Part 136/144

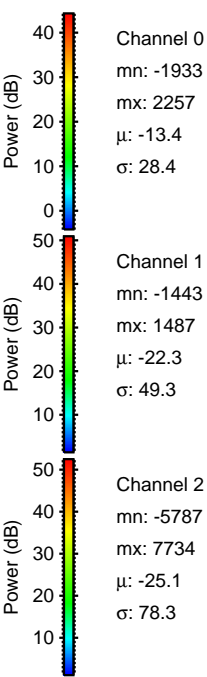
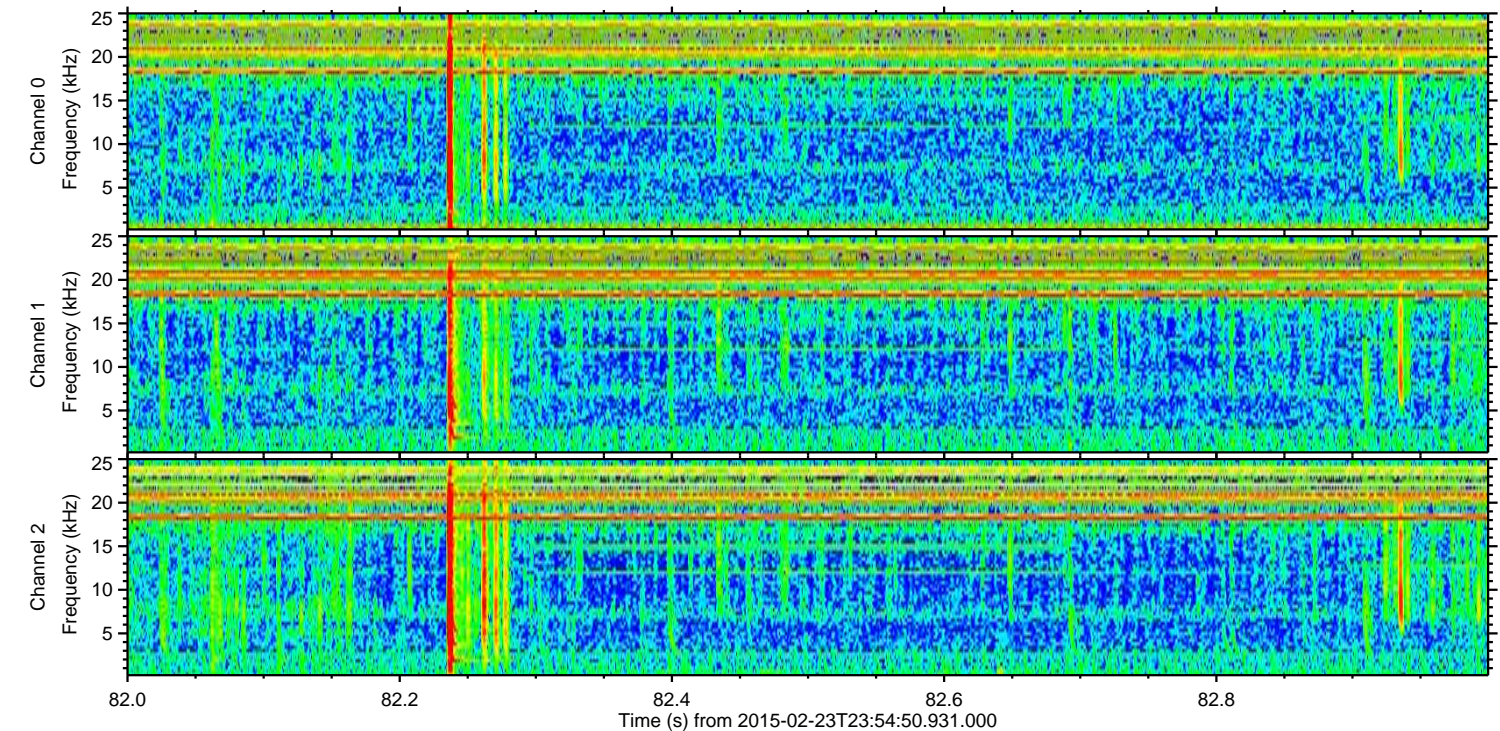
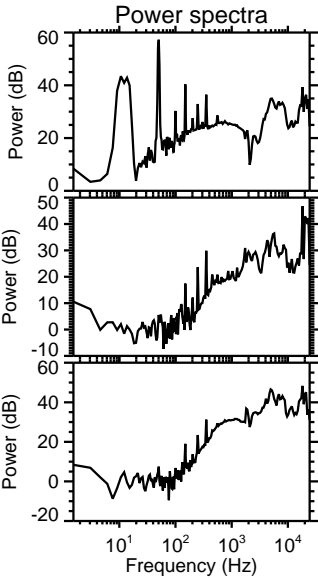
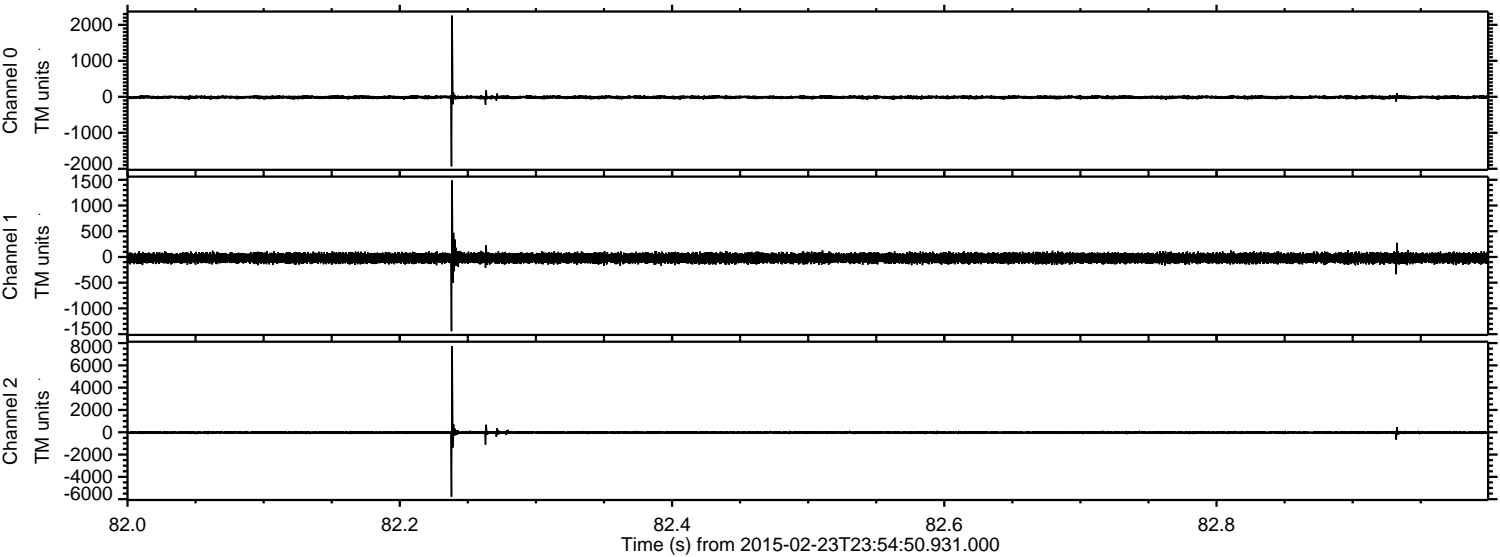
Processed Tue Mar 3 09:06:35 2015 by ELM ver.2012-10-06 from 001__elm20150223_235449__dat00.bin



Processed Tue Mar 3 09:06:36 2015 by ELM ver.2012-10-06 from 001__elm20150223_235449__dat00.bin



Processed Tue Mar 3 09:06:37 2015 by ELM ver.2012-10-06 from 001__elm20150223_235449__dat00.bin



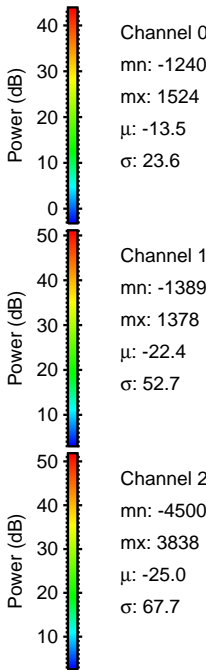
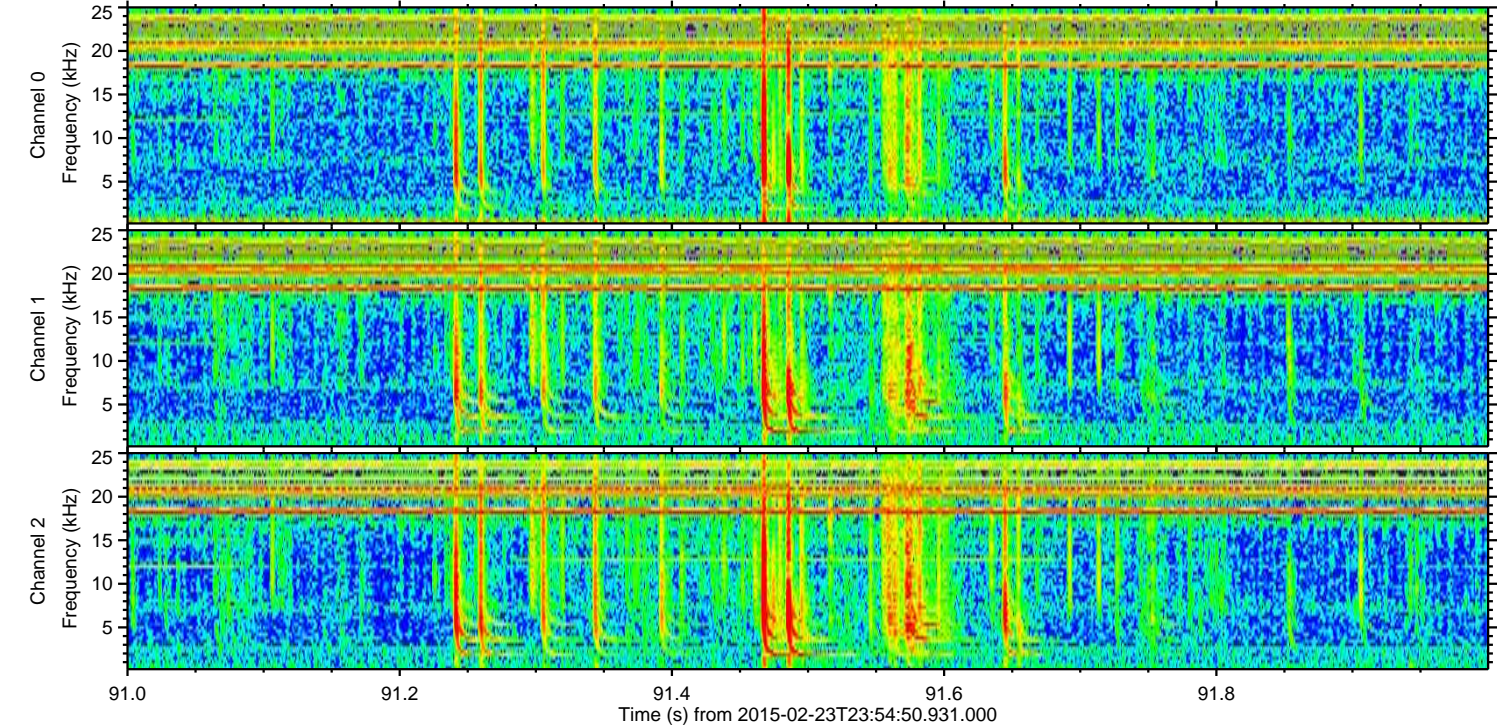
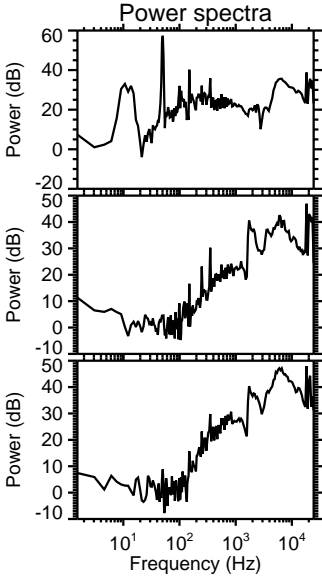
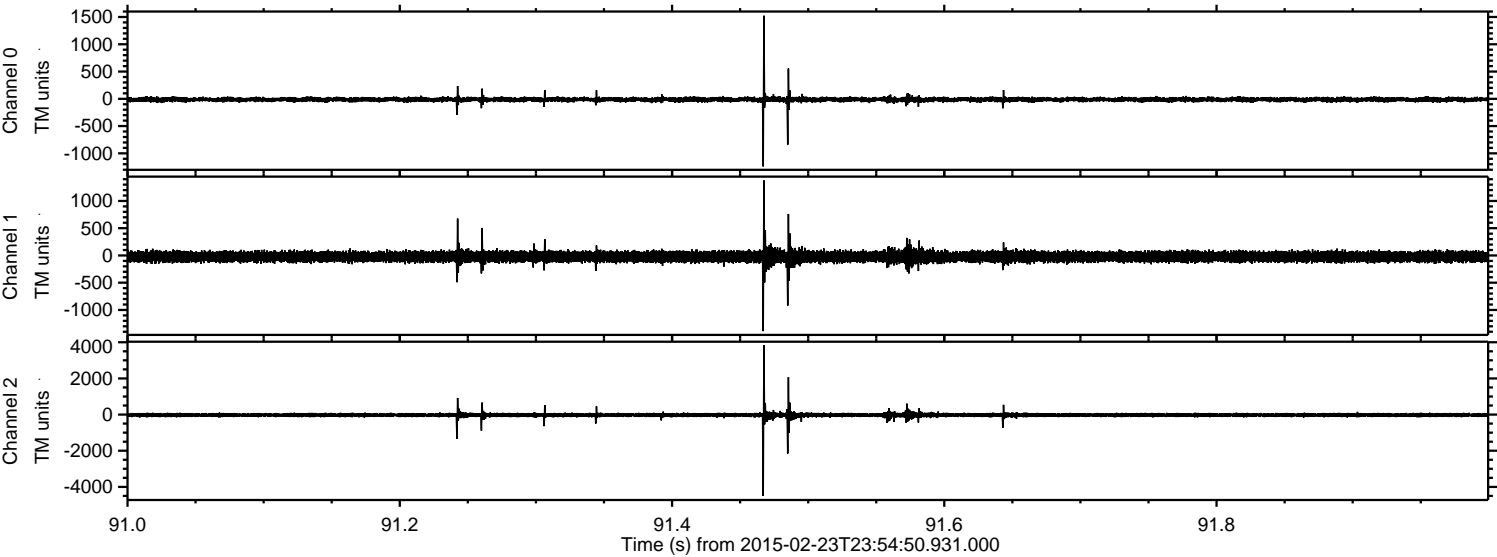
Channel 0
mn: -1933
mx: 2257
 μ : -13.4
 σ : 28.4

Channel 1
mn: -1443
mx: 1487
 μ : -22.3
 σ : 49.3

Channel 2
mn: -5787
mx: 7734
 μ : -25.1
 σ : 78.3

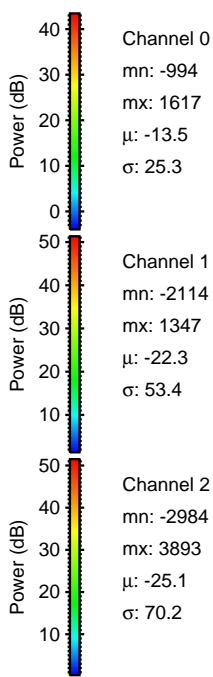
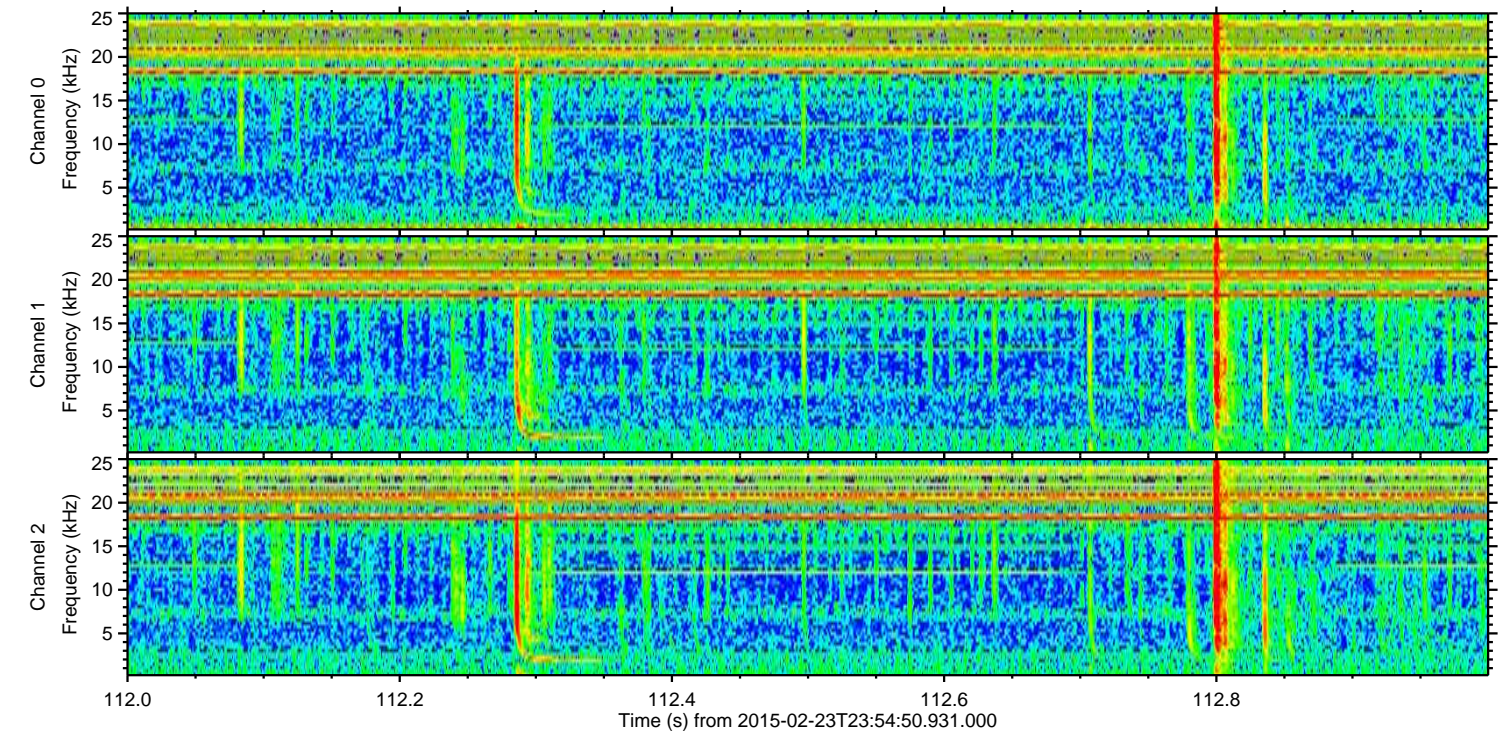
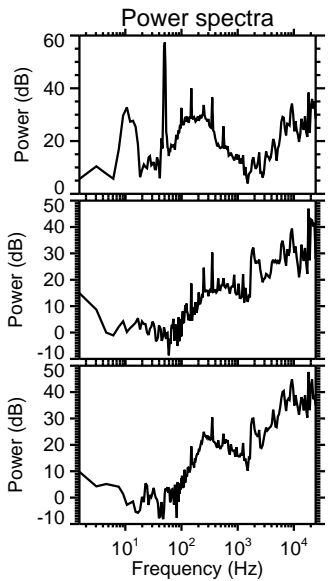
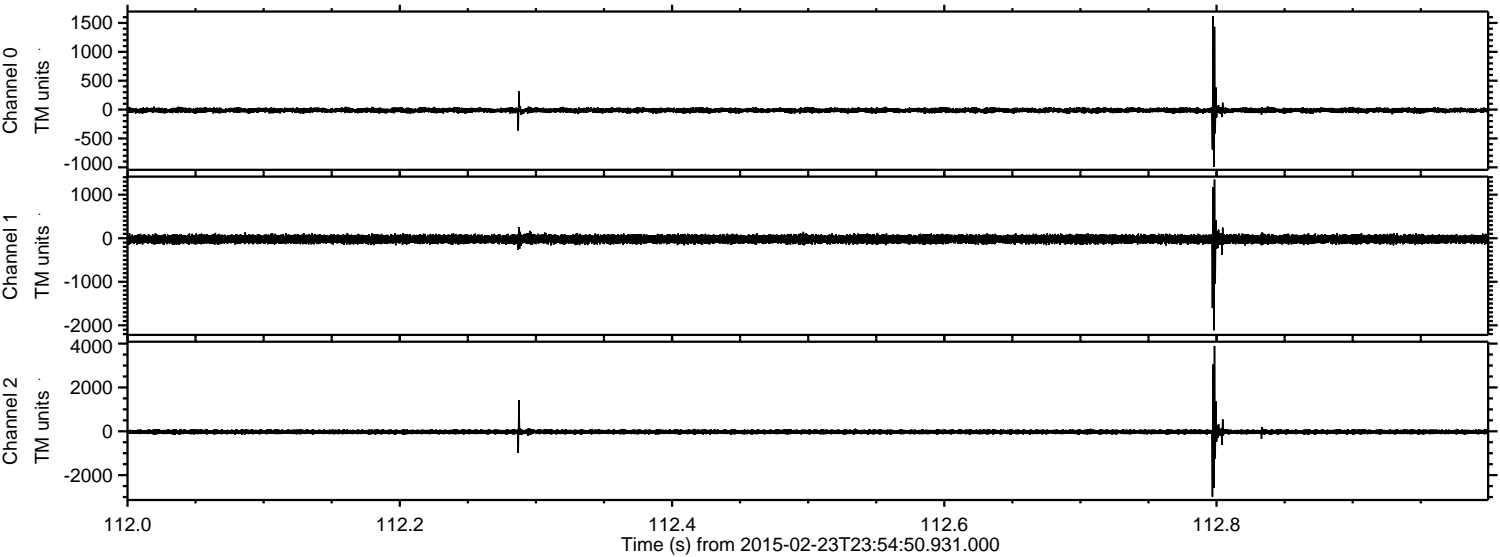
ELMAVAN 3D WAVEFORMS (Measured data sampled at 50 kHz) 49698 packets of 144 samples from 2015-02-23T23:54:50.931.000. Part 92/144

Processed Tue Mar 3 09:06:38 2015 by ELM ver.2012-10-06 from 001__elm20150223_235449__dat00.bin



ELMAVAN 3D WAVEFORMS (Measured data sampled at 50 kHz) 49698 packets of 144 samples from 2015-02-23T23:54:50.931.000. Part 113/144

Processed Tue Mar 3 09:06:39 2015 by ELM ver.2012-10-06 from 001__elm20150223_235449__dat00.bin

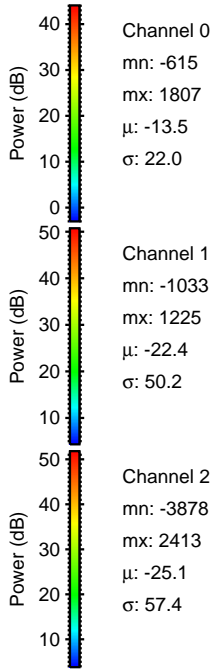
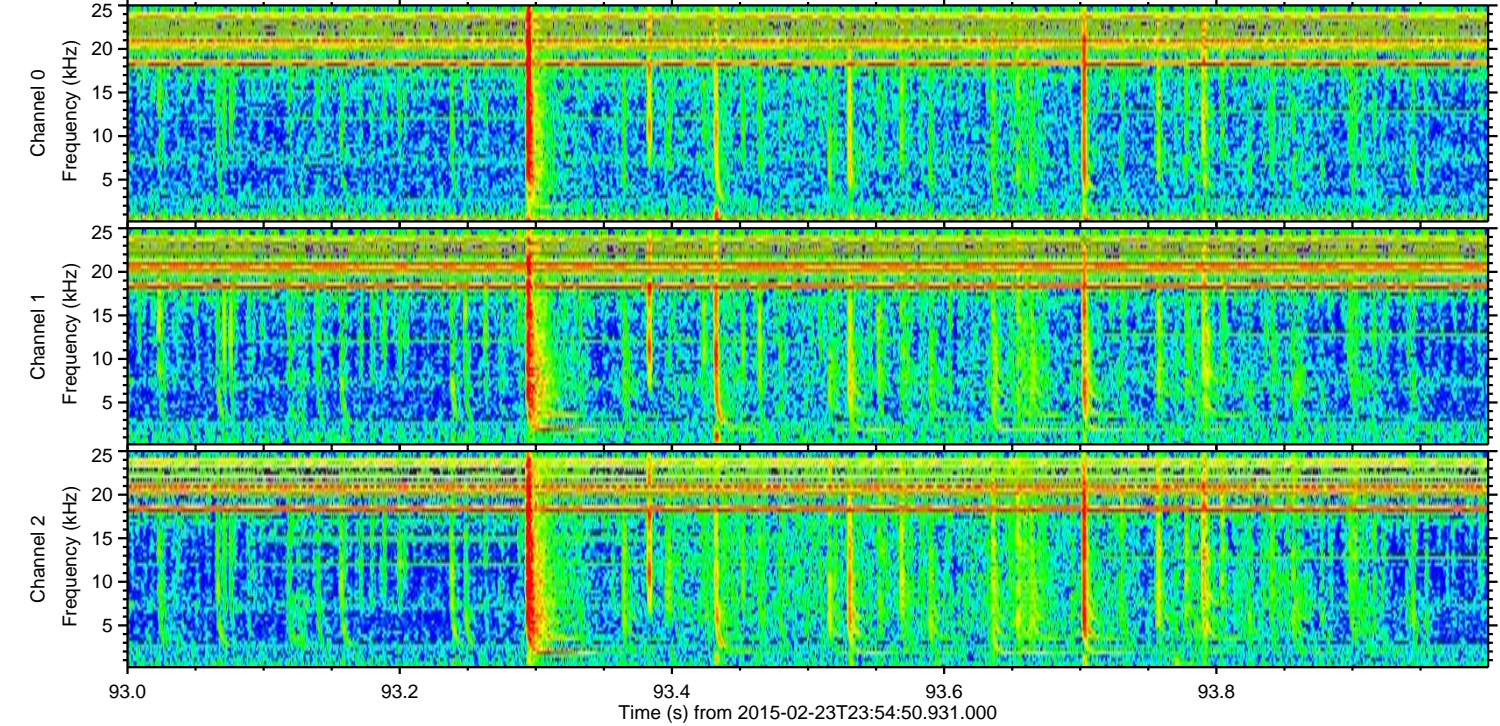
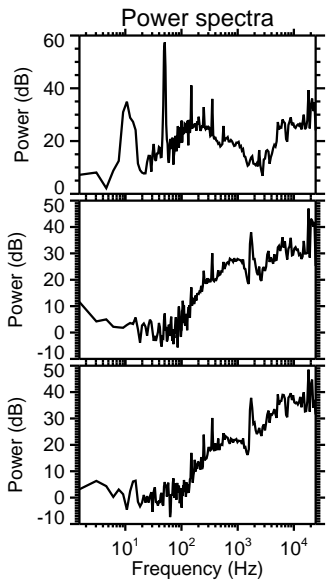
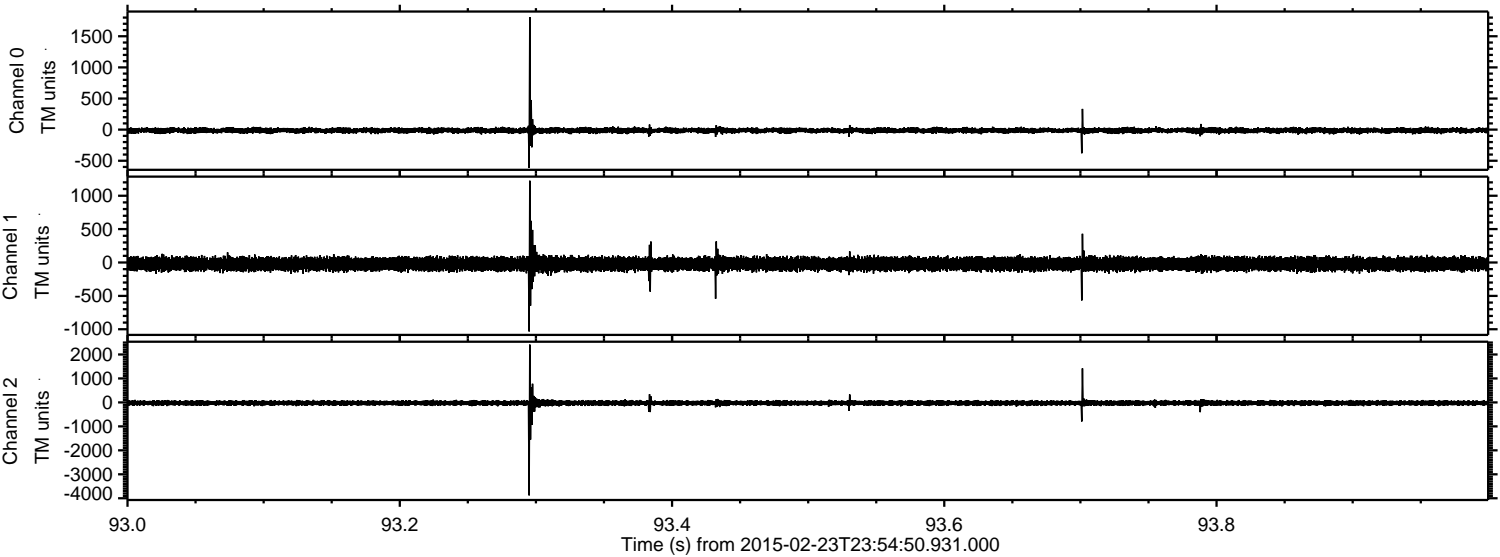


Channel 0
mn: -994
mx: 1617
 μ : -13.5
 σ : 25.3

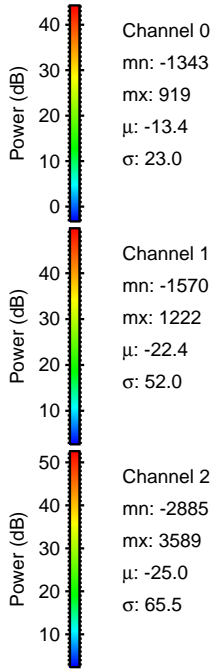
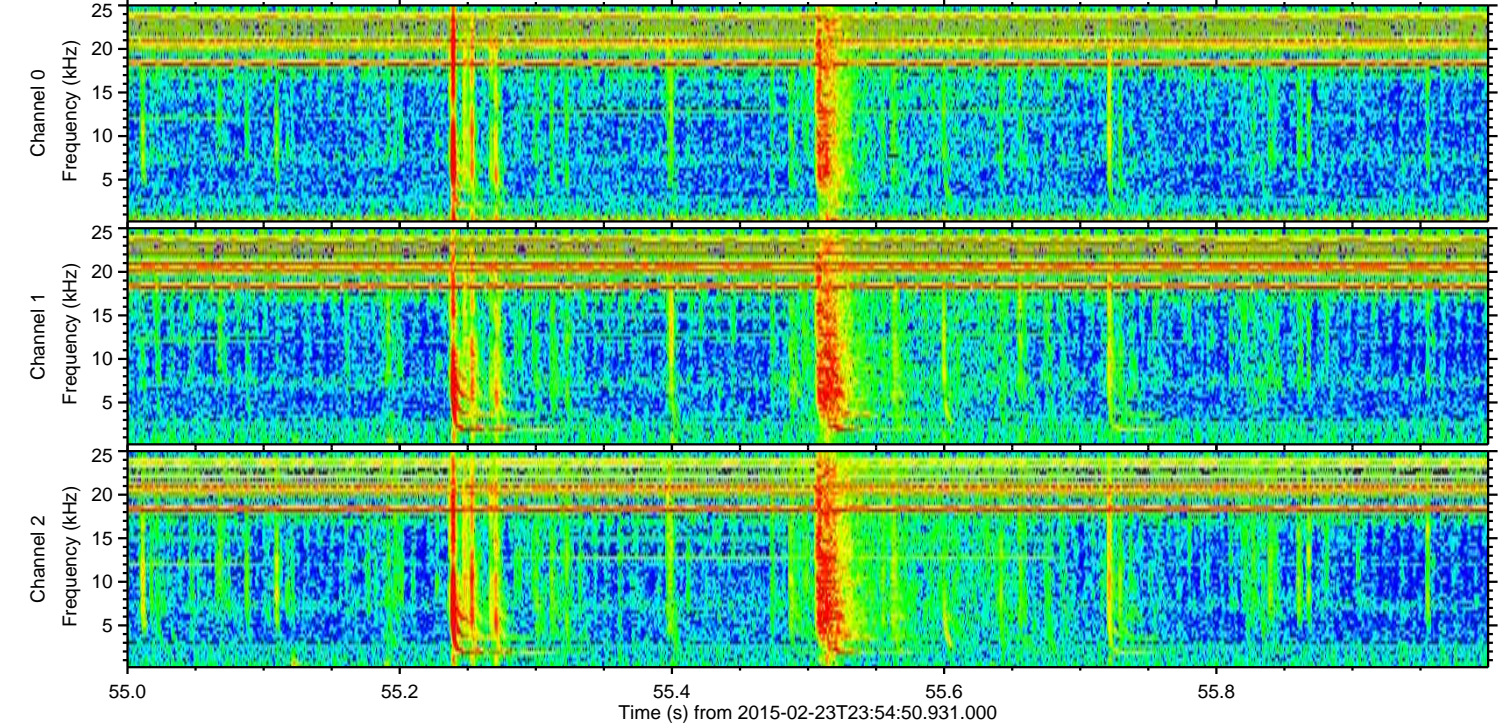
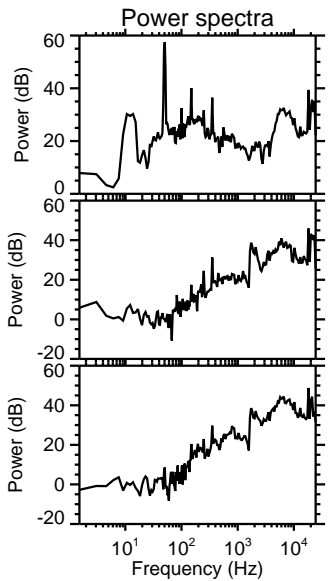
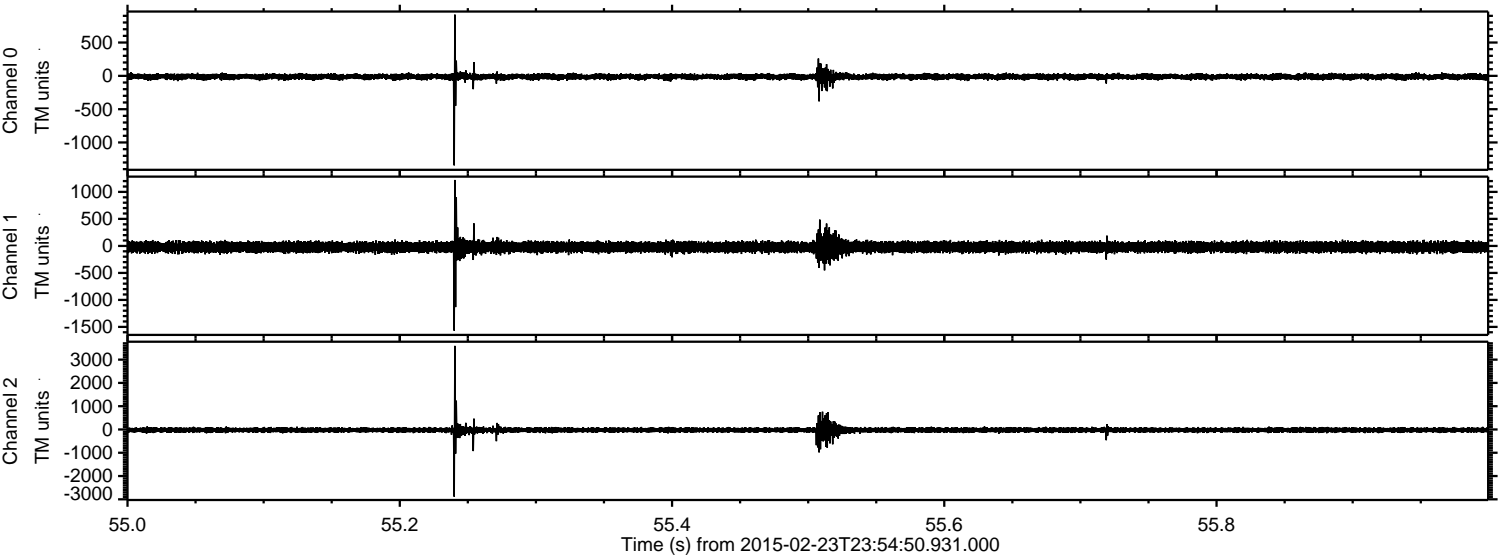
Channel 1
mn: -2114
mx: 1347
 μ : -22.3
 σ : 53.4

Channel 2
mn: -2984
mx: 3893
 μ : -25.1
 σ : 70.2

Processed Tue Mar 3 09:06:40 2015 by ELM ver.2012-10-06 from 001__elm20150223_235449__dat00.bin



Processed Tue Mar 3 09:06:41 2015 by ELM ver.2012-10-06 from 001__elm20150223_235449__dat00.bin

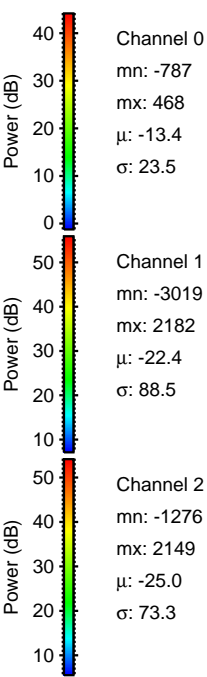
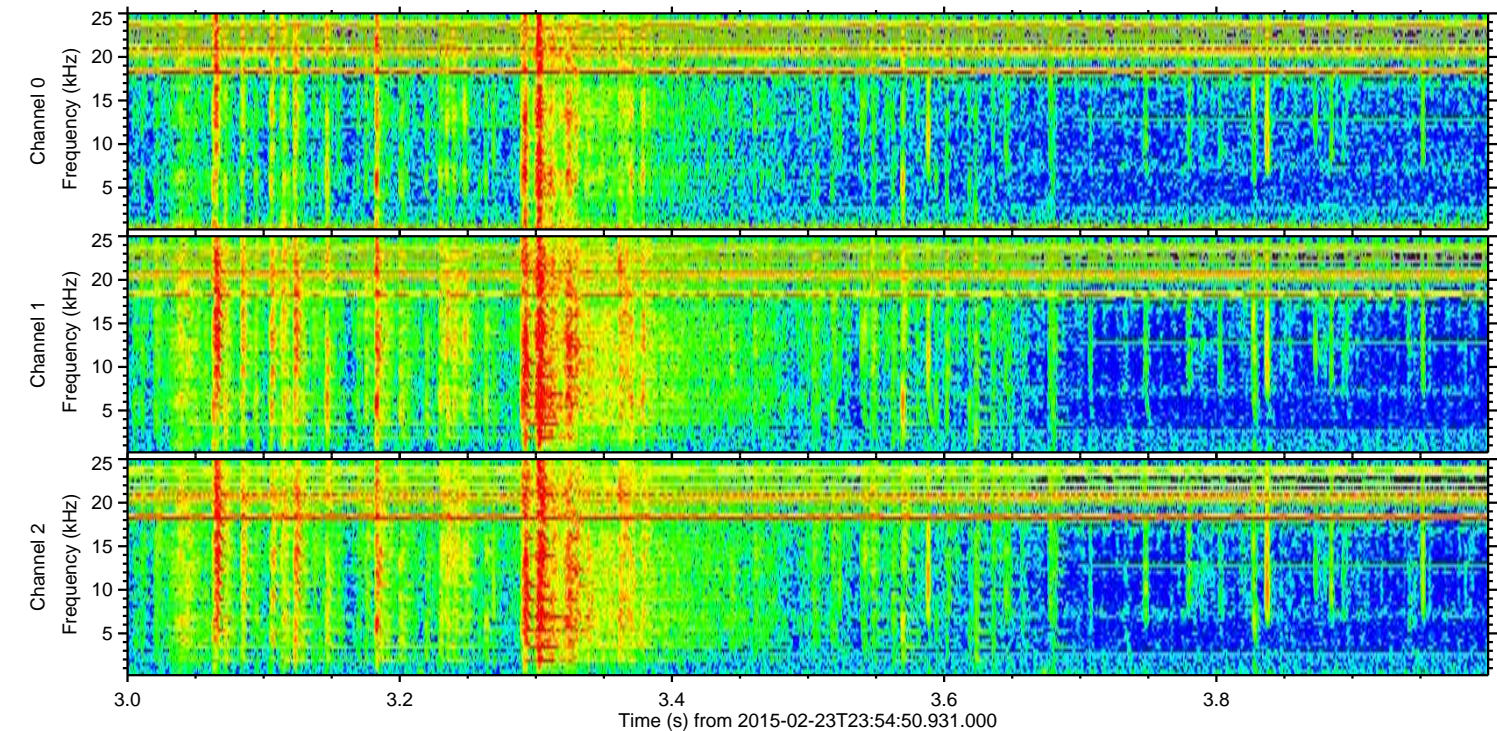
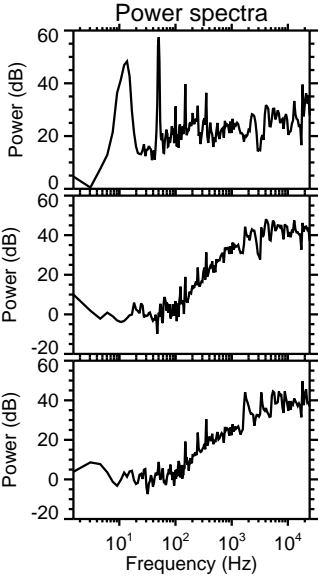
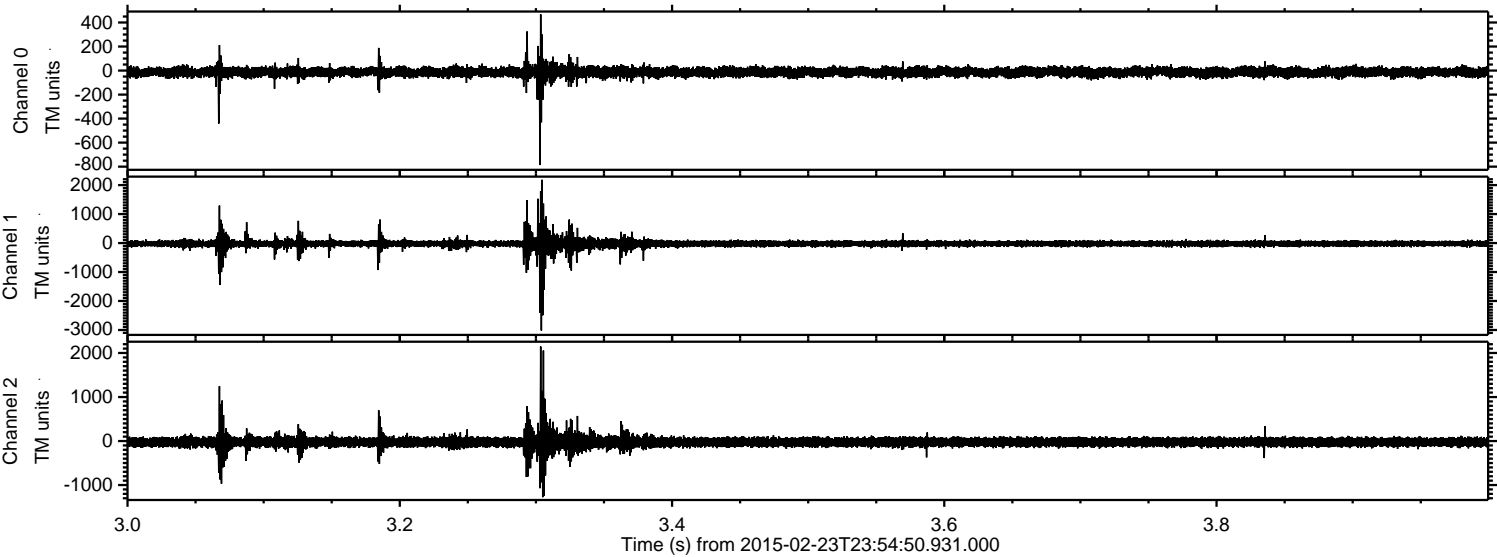


Channel 0
mn: -1343
mx: 919
 μ : -13.4
 σ : 23.0

Channel 1
mn: -1570
mx: 1222
 μ : -22.4
 σ : 52.0

Channel 2
mn: -2885
mx: 3589
 μ : -25.0
 σ : 65.5

Processed Tue Mar 3 09:06:42 2015 by ELM ver.2012-10-06 from 001__elm20150223_235449__dat00.bin



Processed Tue Mar 3 09:06:43 2015 by ELM ver.2012-10-06 from 001__elm20150223_235449__dat00.bin

