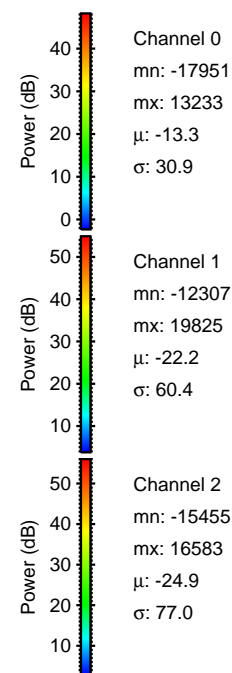
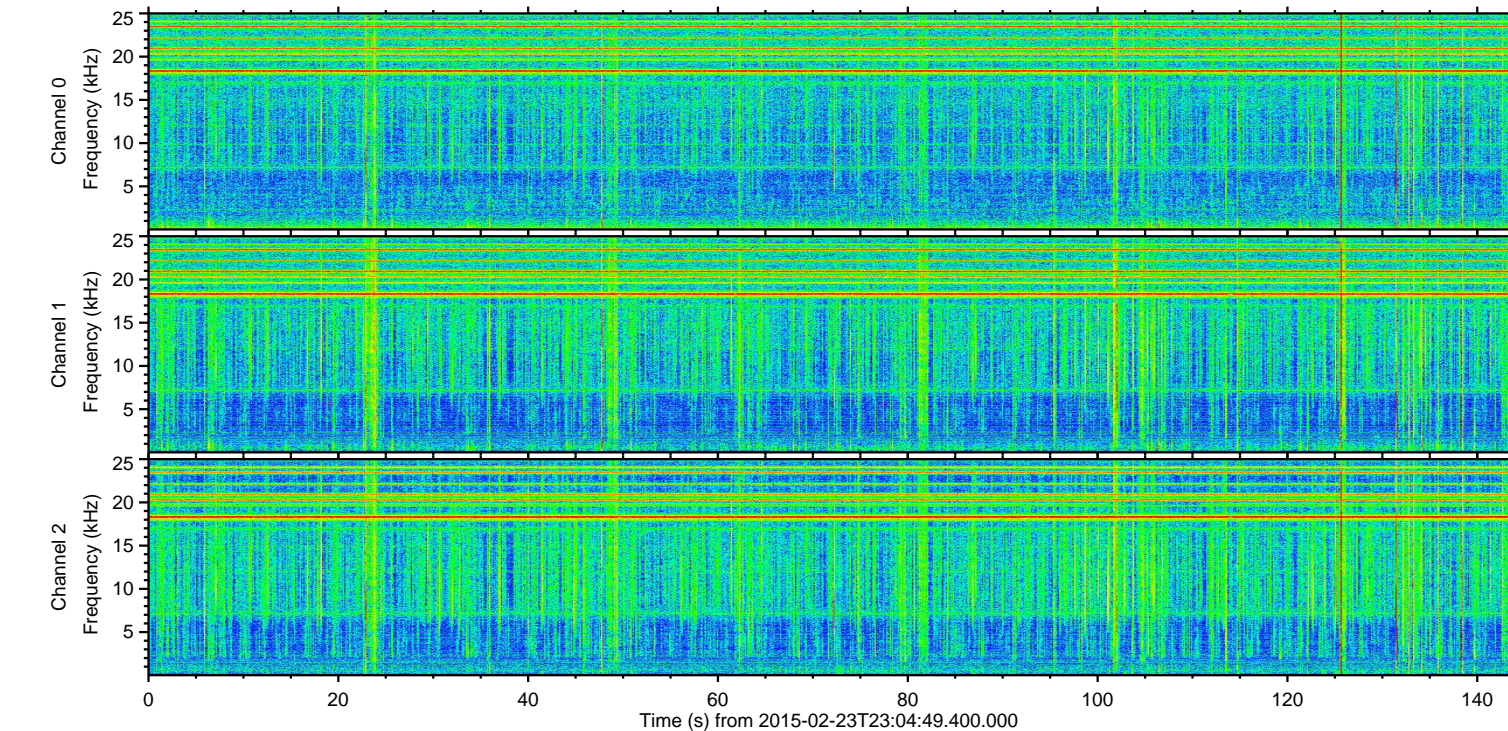
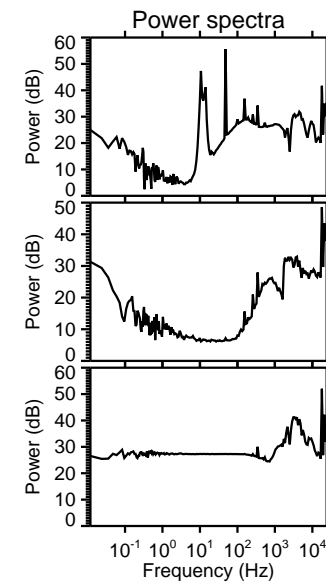
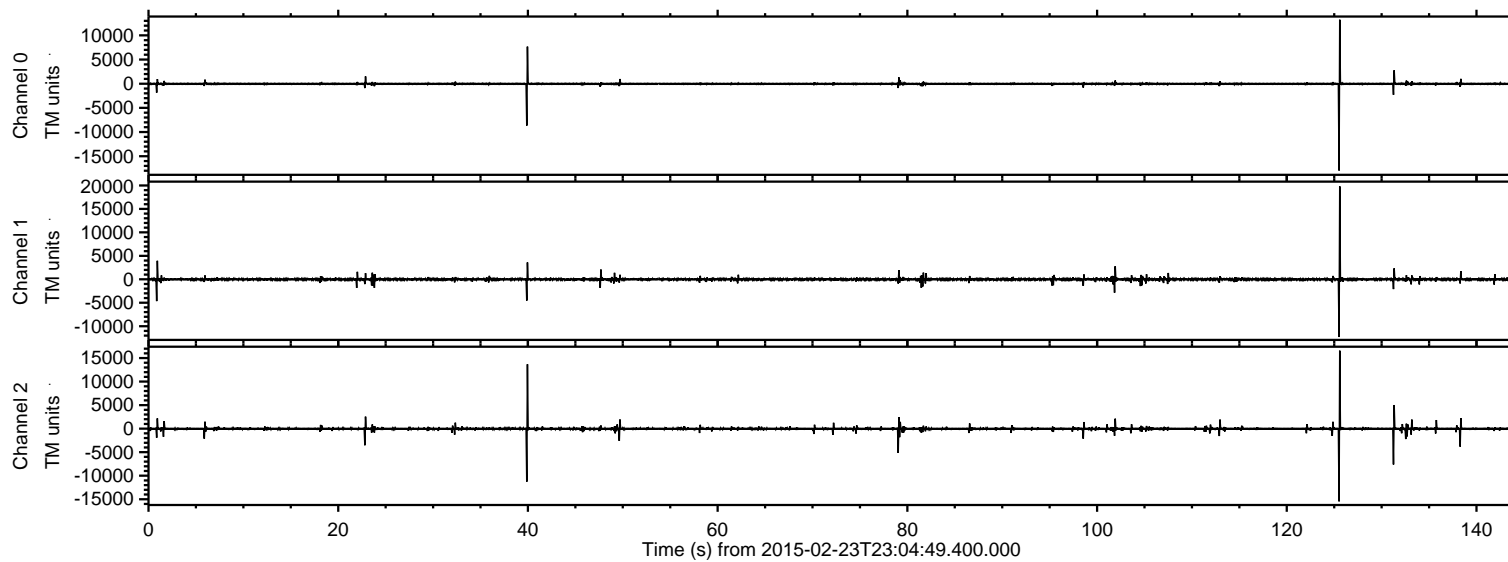


# ELMAVAN 3D WAVEFORMS (Measured data sampled at 50 kHz) 49806 packets of 144 samples from 2015-02-23T23:04:49.400.000.

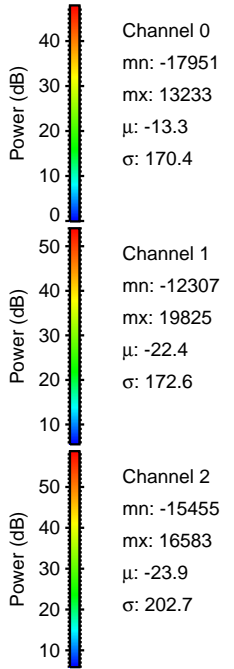
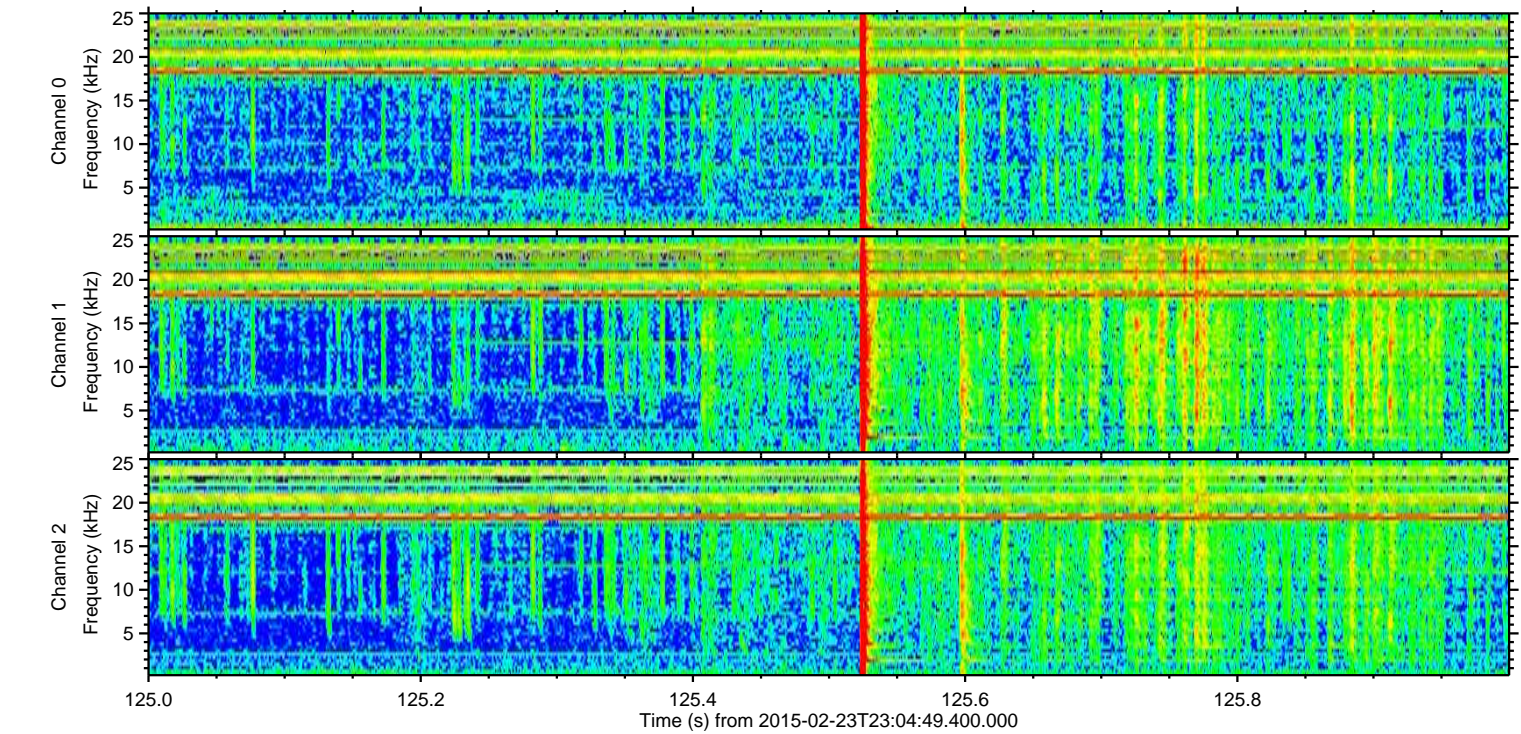
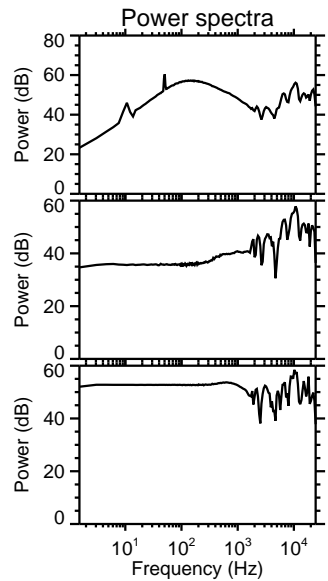
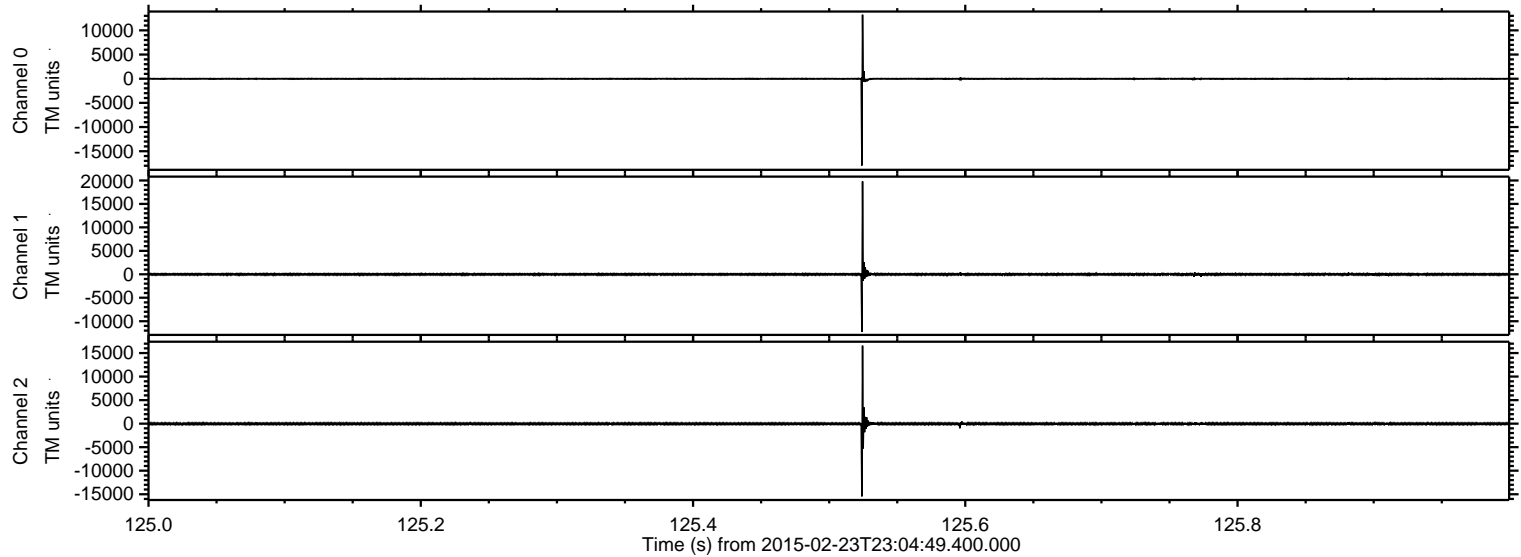
Processed Tue Mar 3 08:25:56 2015 by ELM ver.2012-10-06 from 001\_\_elm20150223\_230448\_\_dat00.bin





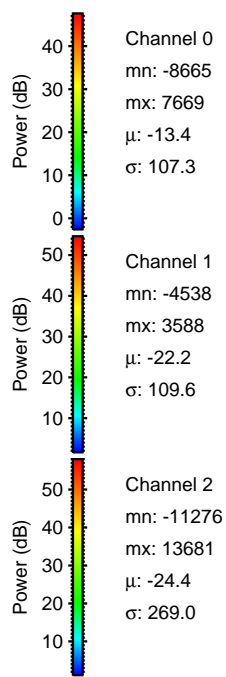
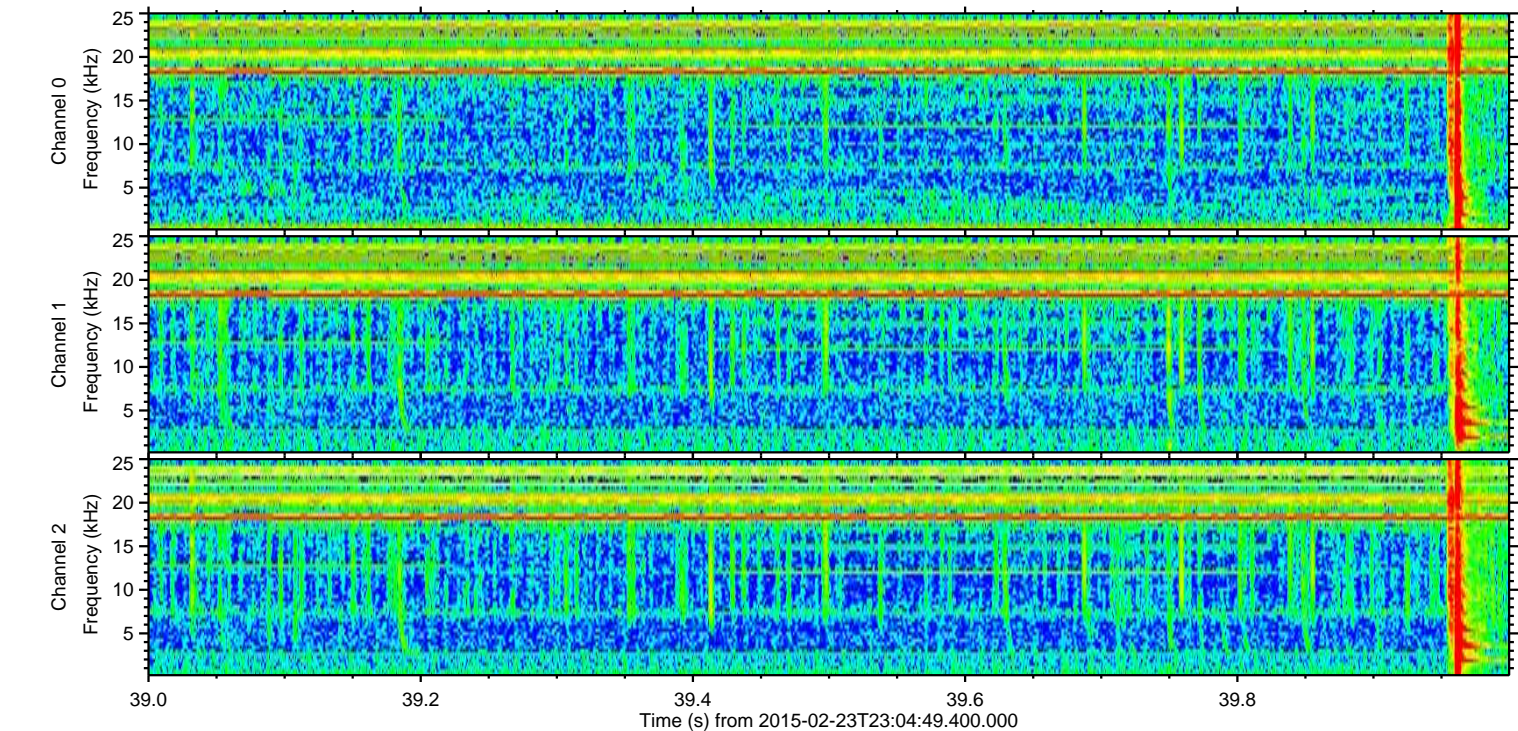
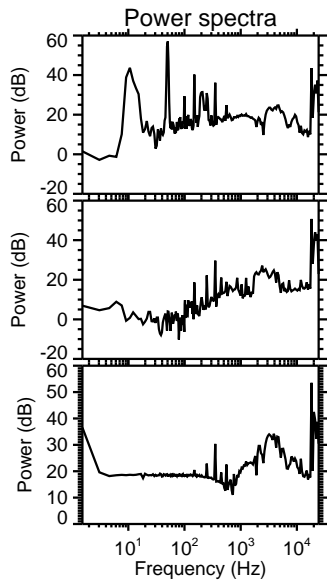
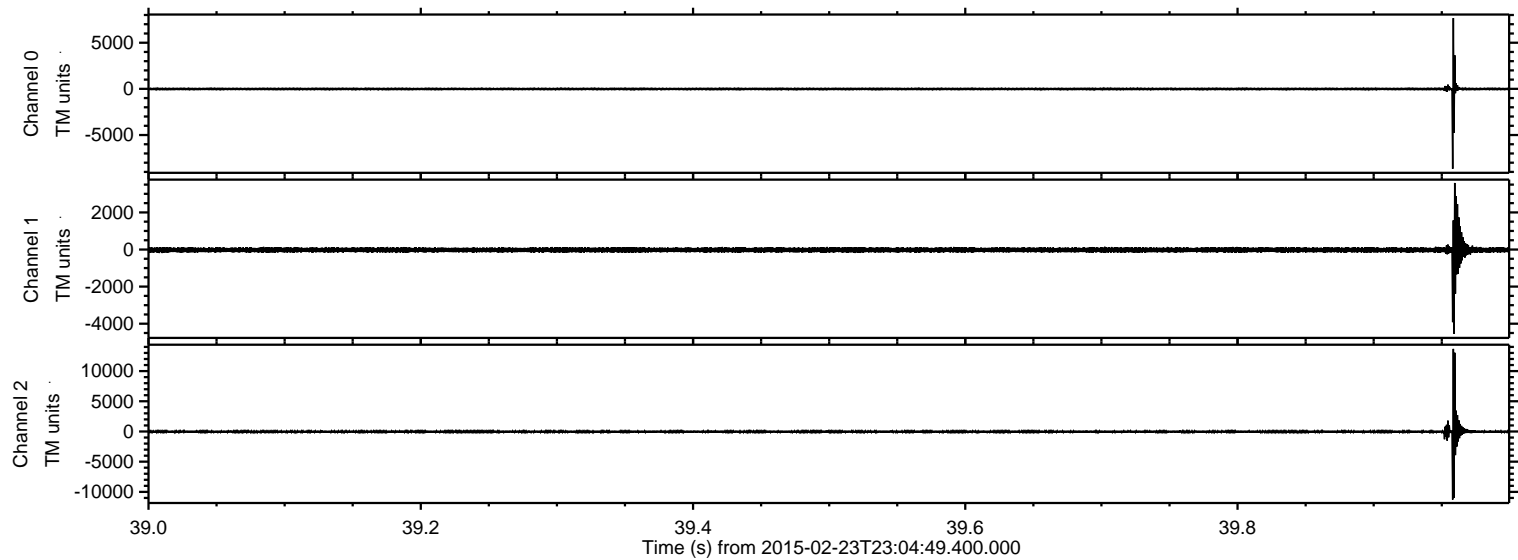
ELMAVAN 3D WAVEFORMS (Measured data sampled at 50 kHz) 49806 packets of 144 samples from 2015-02-23T23:04:49.400.000. Part 126/144

Processed Tue Mar 3 08:26:08 2015 by ELM ver.2012-10-06 from 001\_\_elm20150223\_230448\_\_dat00.bin





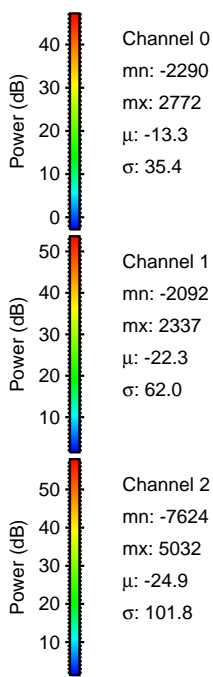
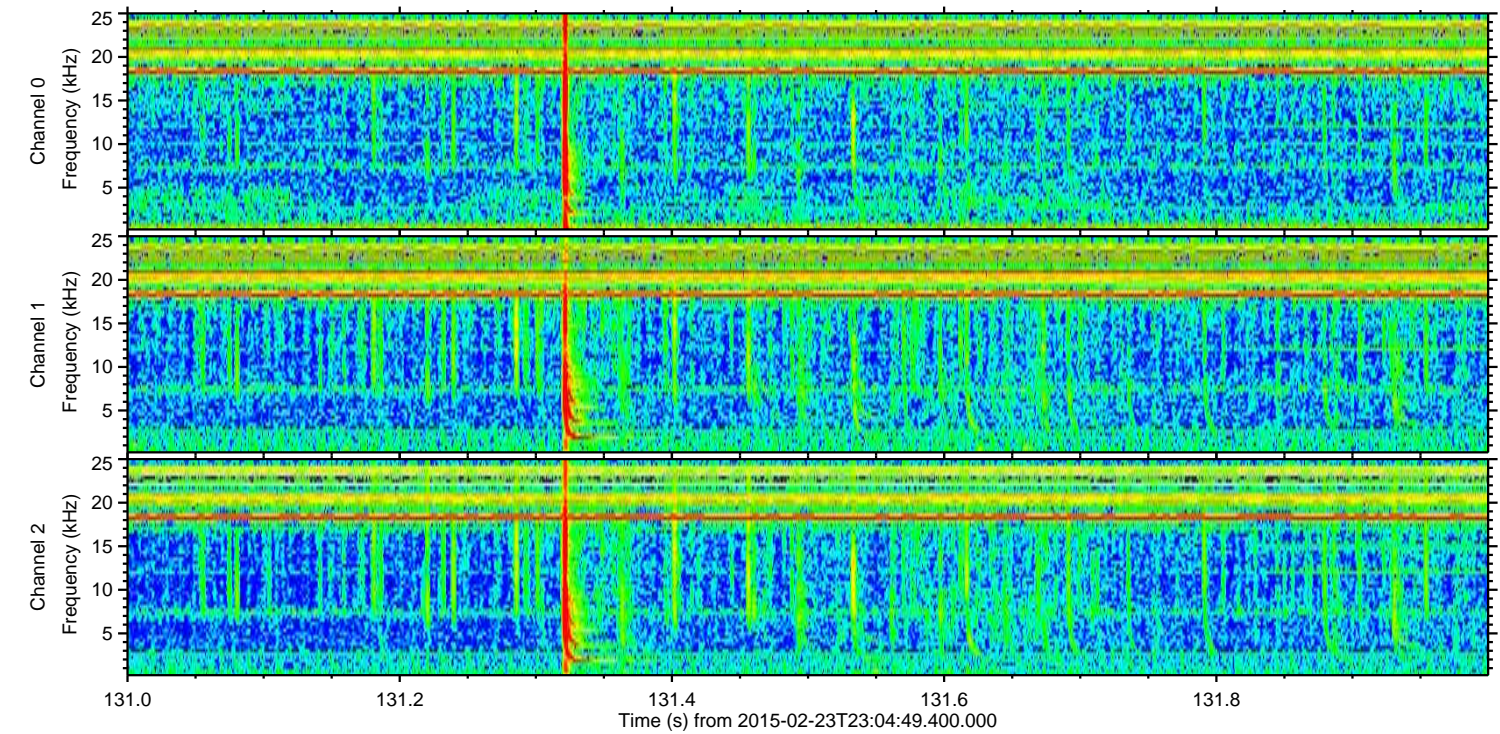
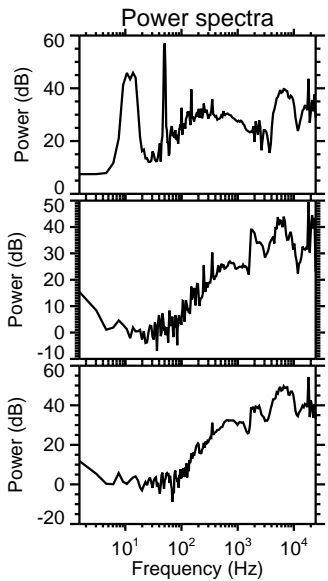
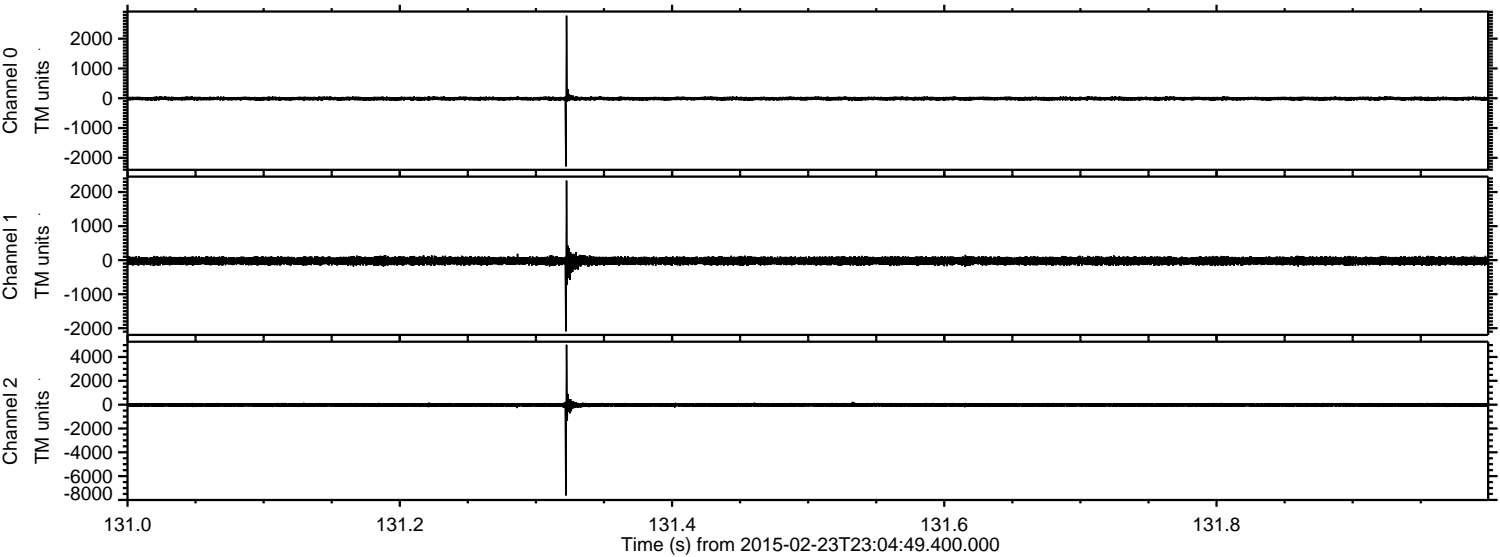
Processed Tue Mar 3 08:26:09 2015 by ELM ver.2012-10-06 from 001\_\_elm20150223\_230448\_\_dat00.bin





ELMAVAN 3D WAVEFORMS (Measured data sampled at 50 kHz) 49806 packets of 144 samples from 2015-02-23T23:04:49.400.000. Part 132/144

Processed Tue Mar 3 08:26:10 2015 by ELM ver.2012-10-06 from 001\_\_elm20150223\_230448\_\_dat00.bin



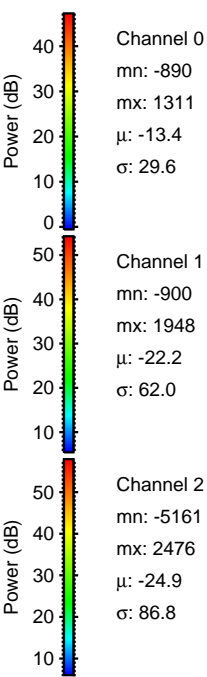
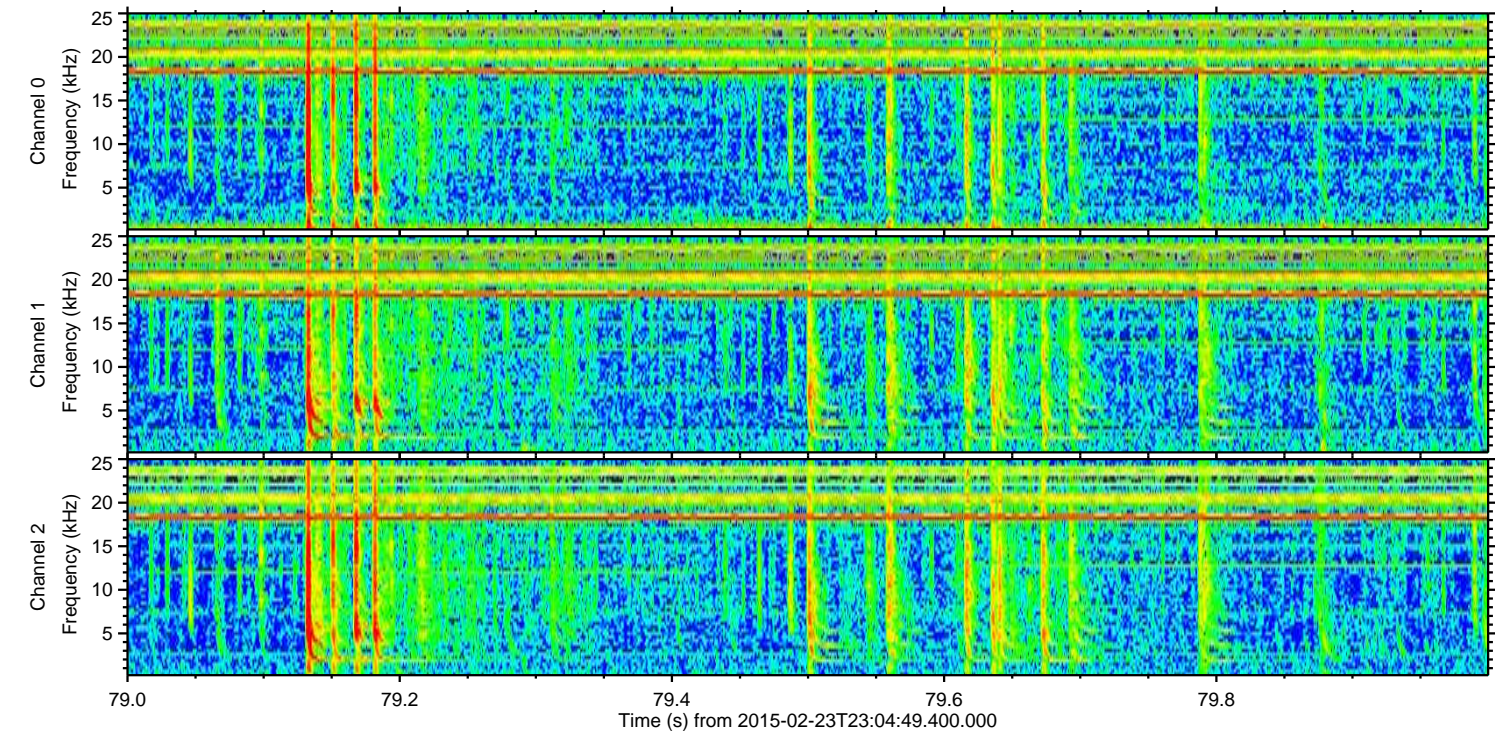
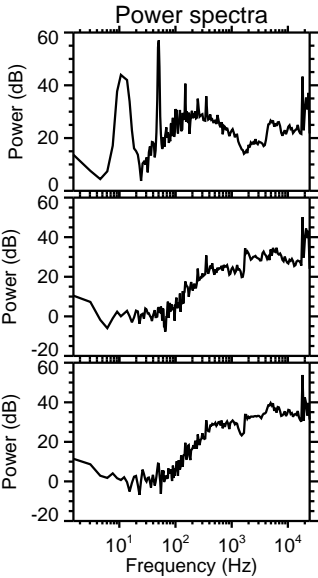
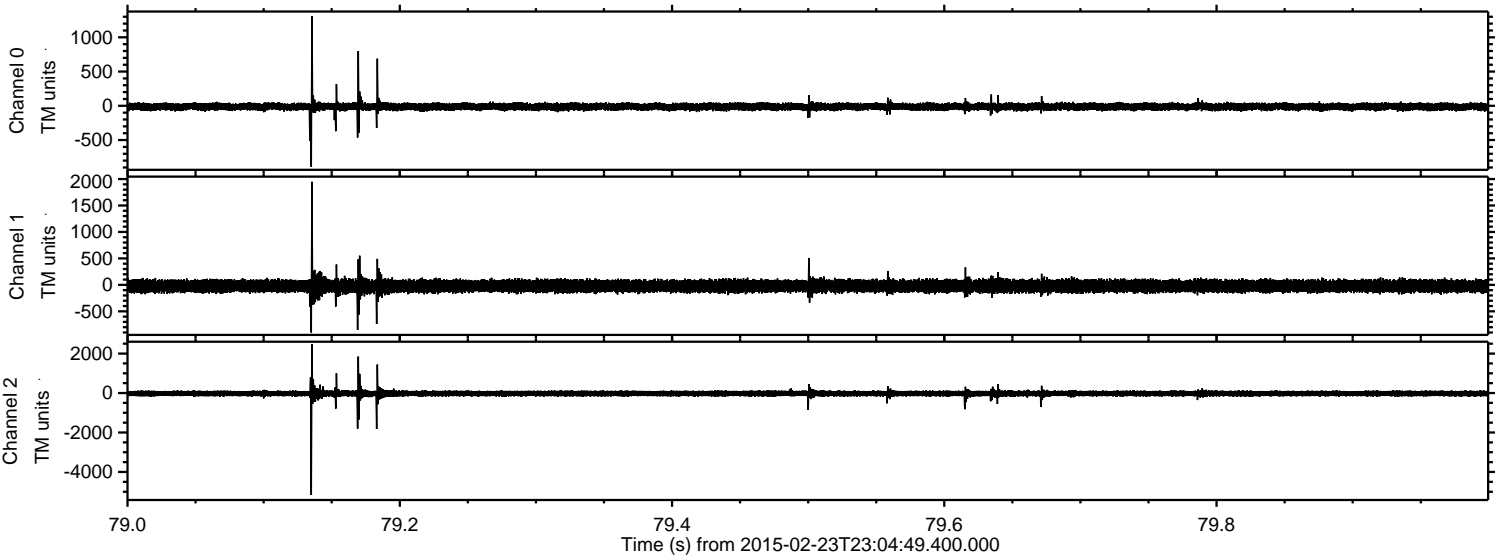
Channel 0  
mn: -2290  
mx: 2772  
 $\mu$ : -13.3  
 $\sigma$ : 35.4

Channel 1  
mn: -2092  
mx: 2337  
 $\mu$ : -22.3  
 $\sigma$ : 62.0

Channel 2  
mn: -7624  
mx: 5032  
 $\mu$ : -24.9  
 $\sigma$ : 101.8

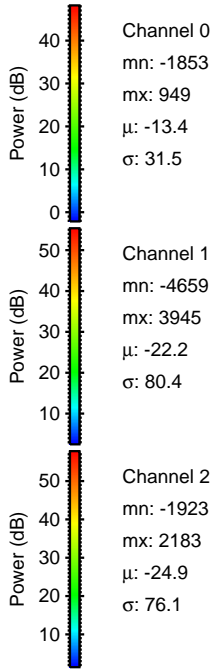
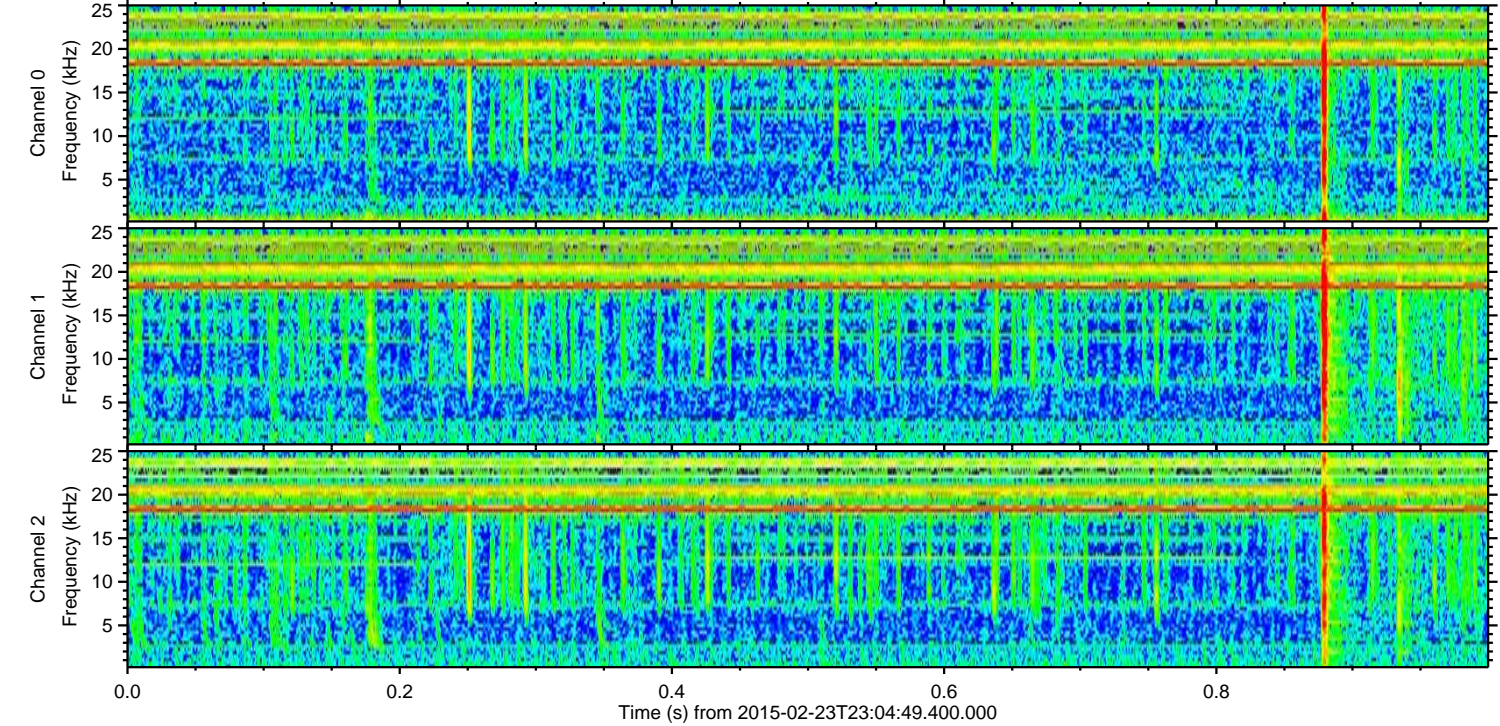
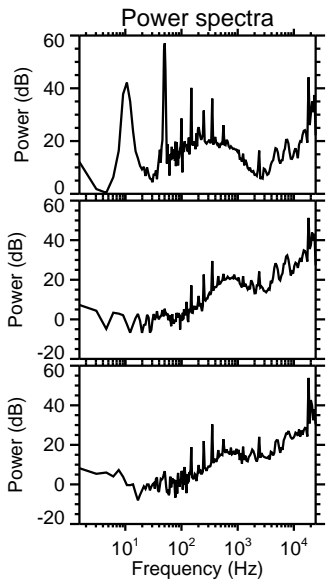
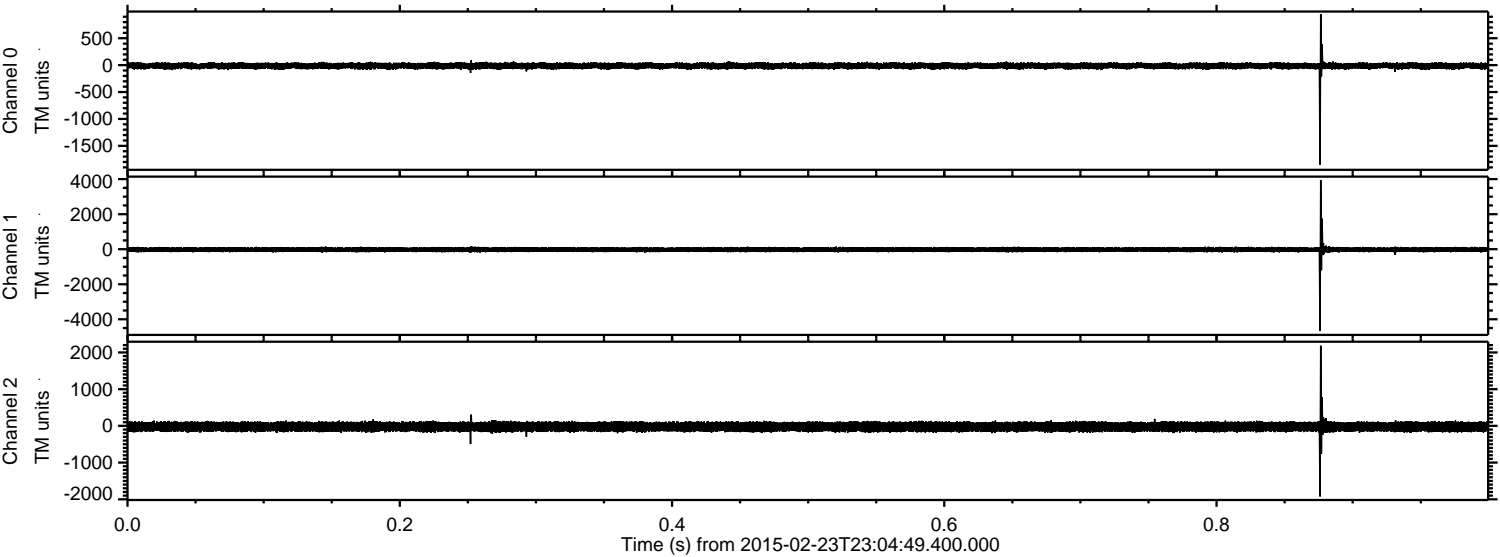


Processed Tue Mar 3 08:26:11 2015 by ELM ver.2012-10-06 from 001\_\_elm20150223\_230448\_\_dat00.bin





Processed Tue Mar 3 08:26:12 2015 by ELM ver.2012-10-06 from 001\_\_elm20150223\_230448\_\_dat00.bin



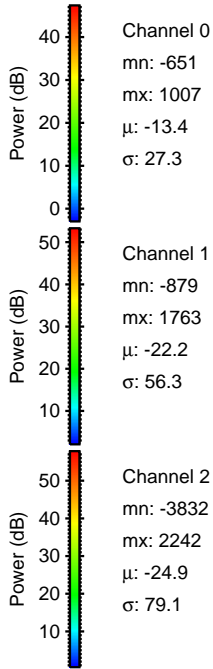
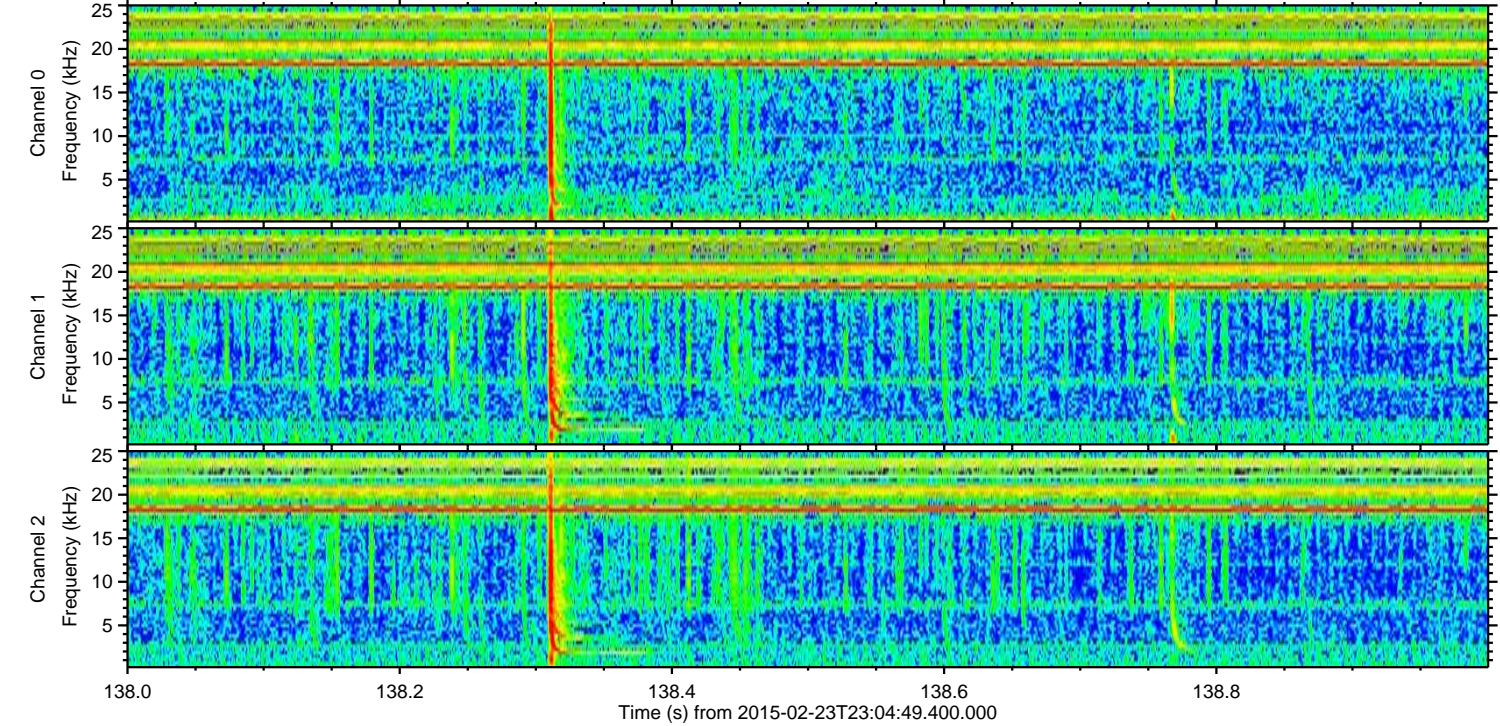
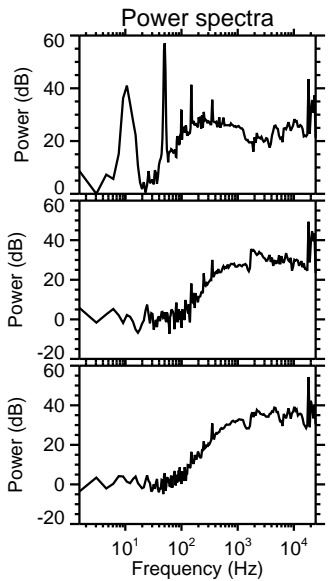
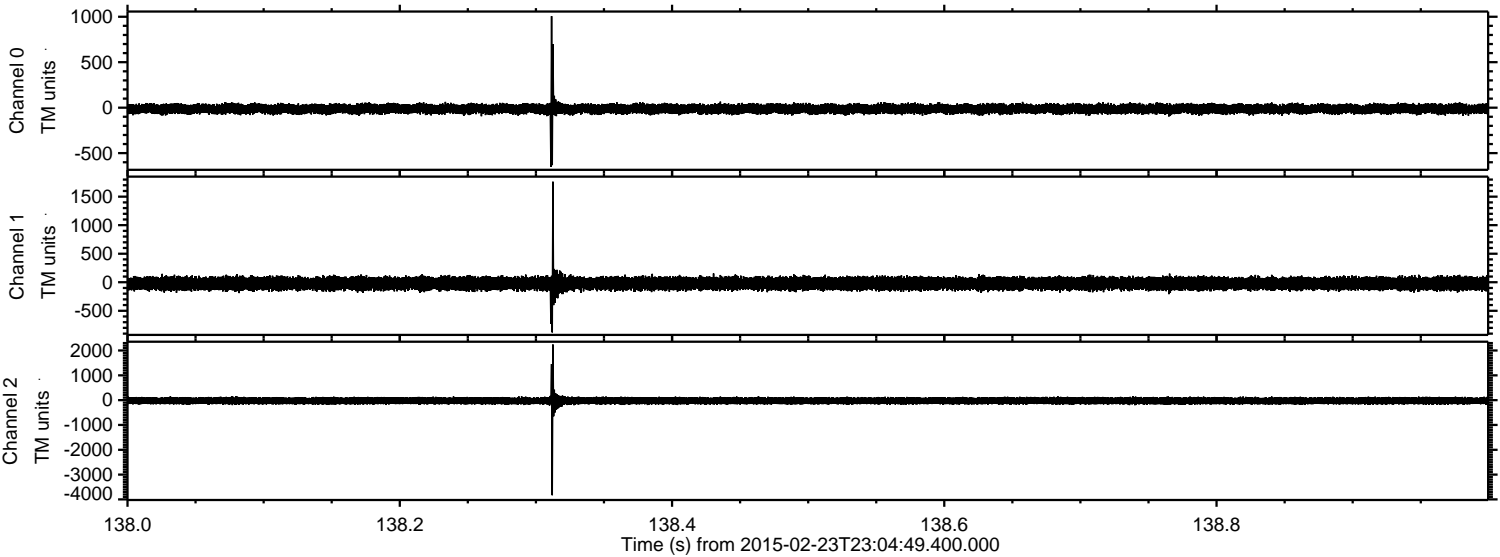
Channel 0  
mn: -1853  
mx: 949  
 $\mu$ : -13.4  
 $\sigma$ : 31.5

Channel 1  
mn: -4659  
mx: 3945  
 $\mu$ : -22.2  
 $\sigma$ : 80.4

Channel 2  
mn: -1923  
mx: 2183  
 $\mu$ : -24.9  
 $\sigma$ : 76.1



Processed Tue Mar 3 08:26:13 2015 by ELM ver.2012-10-06 from 001\_\_elm20150223\_230448\_\_dat00.bin



Channel 0  
mn: -651  
mx: 1007  
 $\mu$ : -13.4  
 $\sigma$ : 27.3

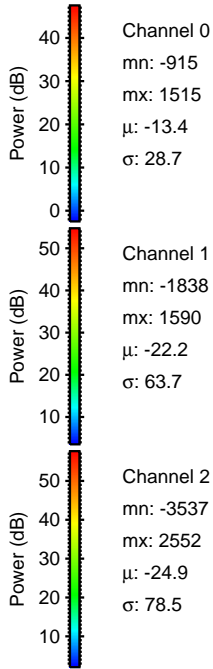
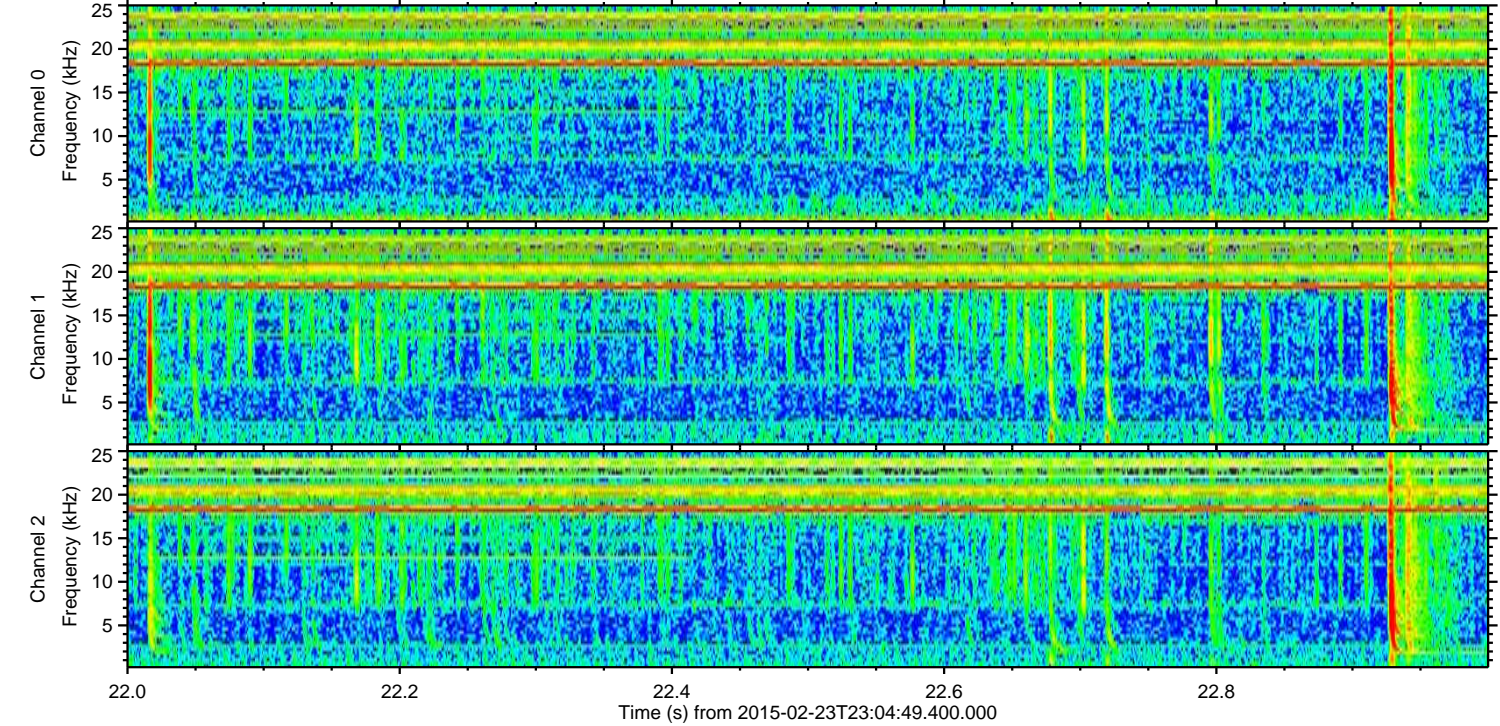
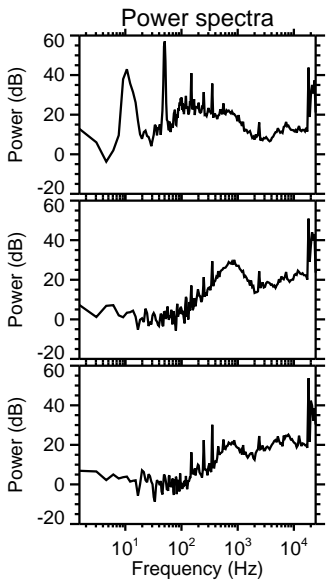
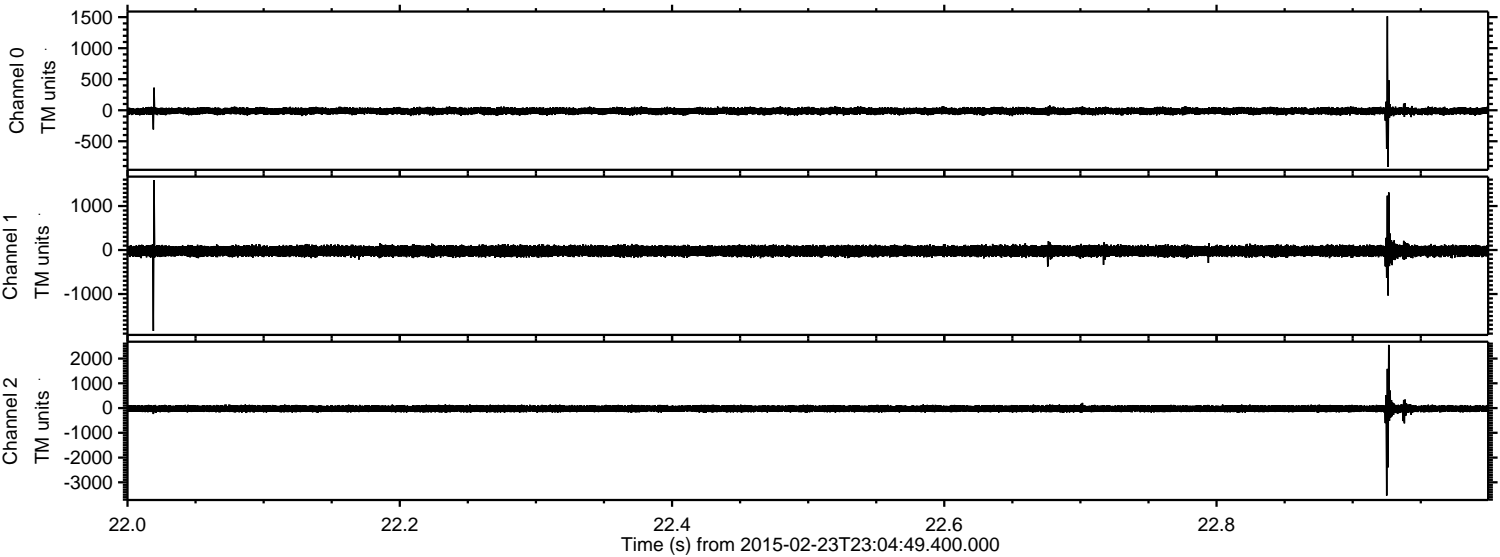
Channel 1  
mn: -879  
mx: 1763  
 $\mu$ : -22.2  
 $\sigma$ : 56.3

Channel 2  
mn: -3832  
mx: 2242  
 $\mu$ : -24.9  
 $\sigma$ : 79.1



ELMAVAN 3D WAVEFORMS (Measured data sampled at 50 kHz) 49806 packets of 144 samples from 2015-02-23T23:04:49.400.000. Part 23/144

Processed Tue Mar 3 08:26:13 2015 by ELM ver.2012-10-06 from 001\_\_elm20150223\_230448\_\_dat00.bin



Channel 0  
mn: -915  
mx: 1515  
 $\mu$ : -13.4  
 $\sigma$ : 28.7

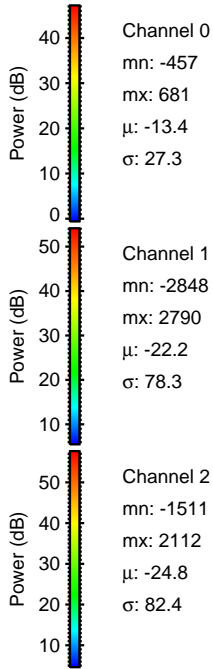
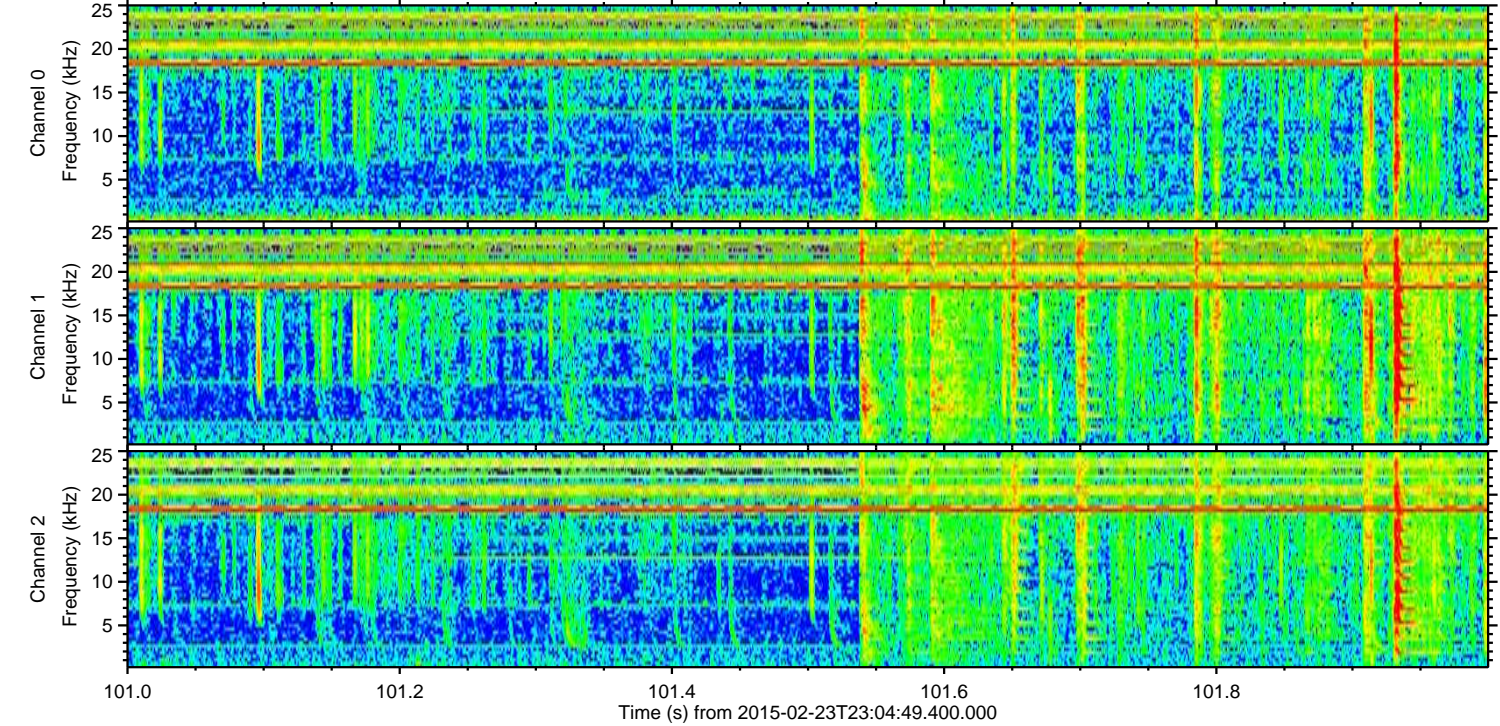
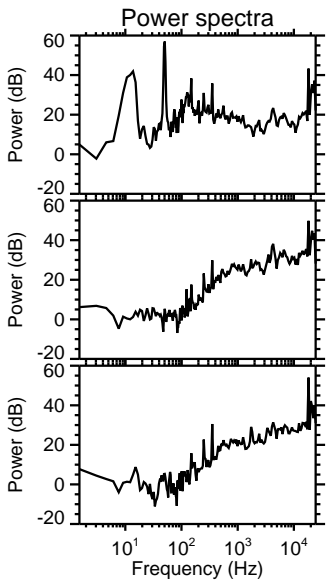
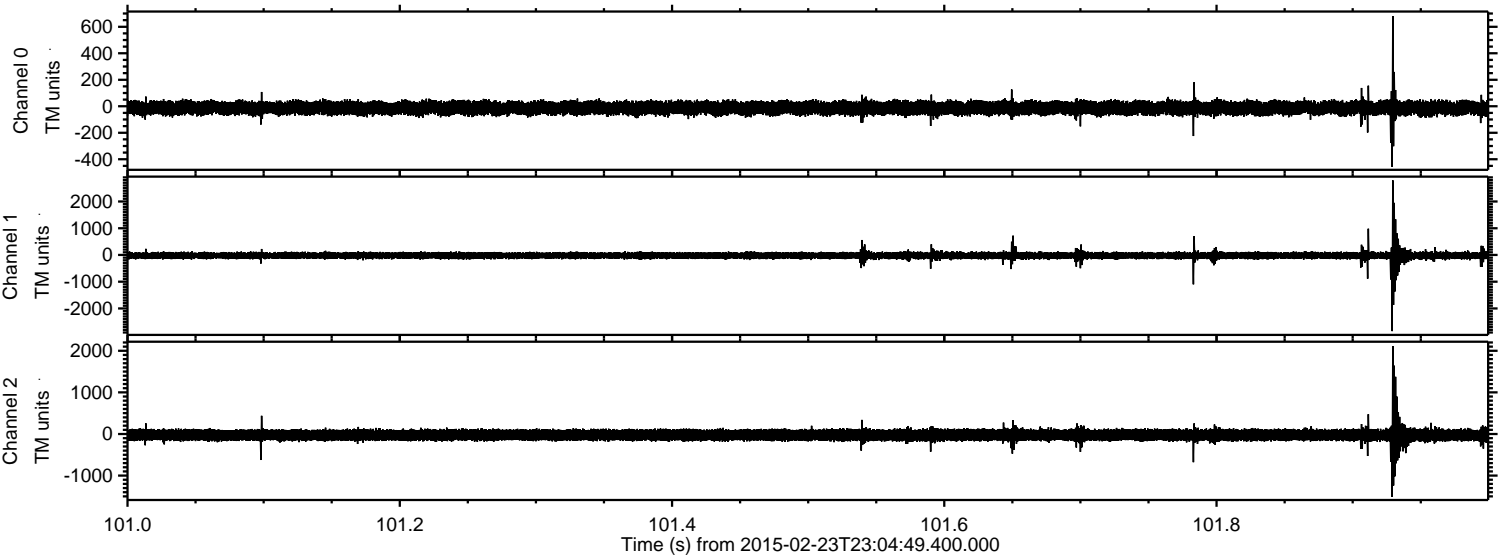
Channel 1  
mn: -1838  
mx: 1590  
 $\mu$ : -22.2  
 $\sigma$ : 63.7

Channel 2  
mn: -3537  
mx: 2552  
 $\mu$ : -24.9  
 $\sigma$ : 78.5



ELMAVAN 3D WAVEFORMS (Measured data sampled at 50 kHz) 49806 packets of 144 samples from 2015-02-23T23:04:49.400.000. Part 102/144

Processed Tue Mar 3 08:26:14 2015 by ELM ver.2012-10-06 from 001\_\_elm20150223\_230448\_\_dat00.bin



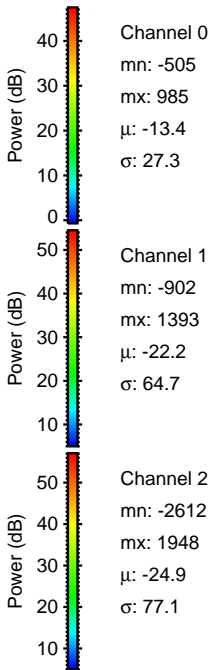
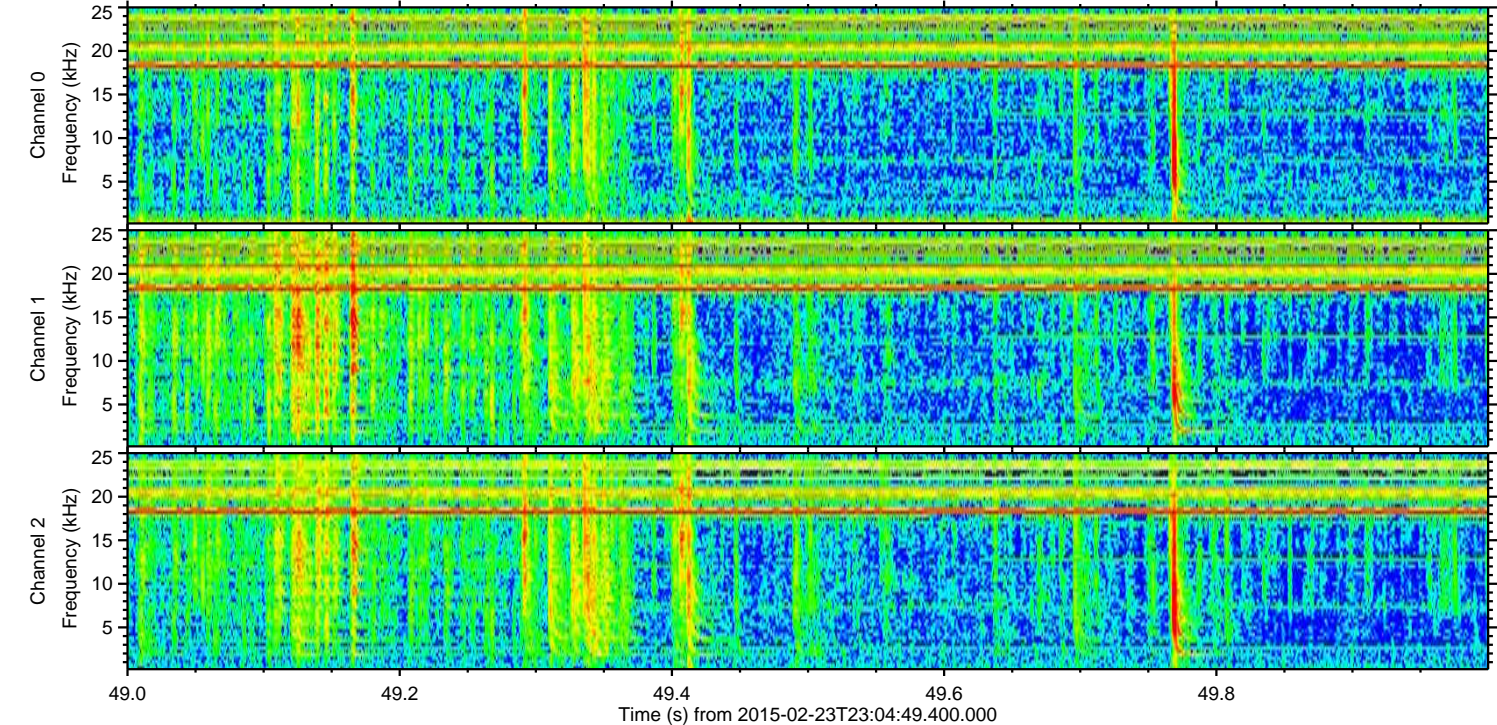
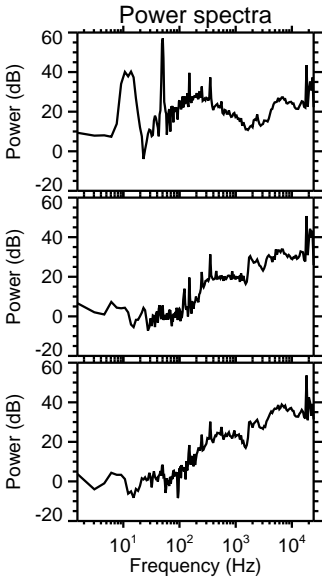
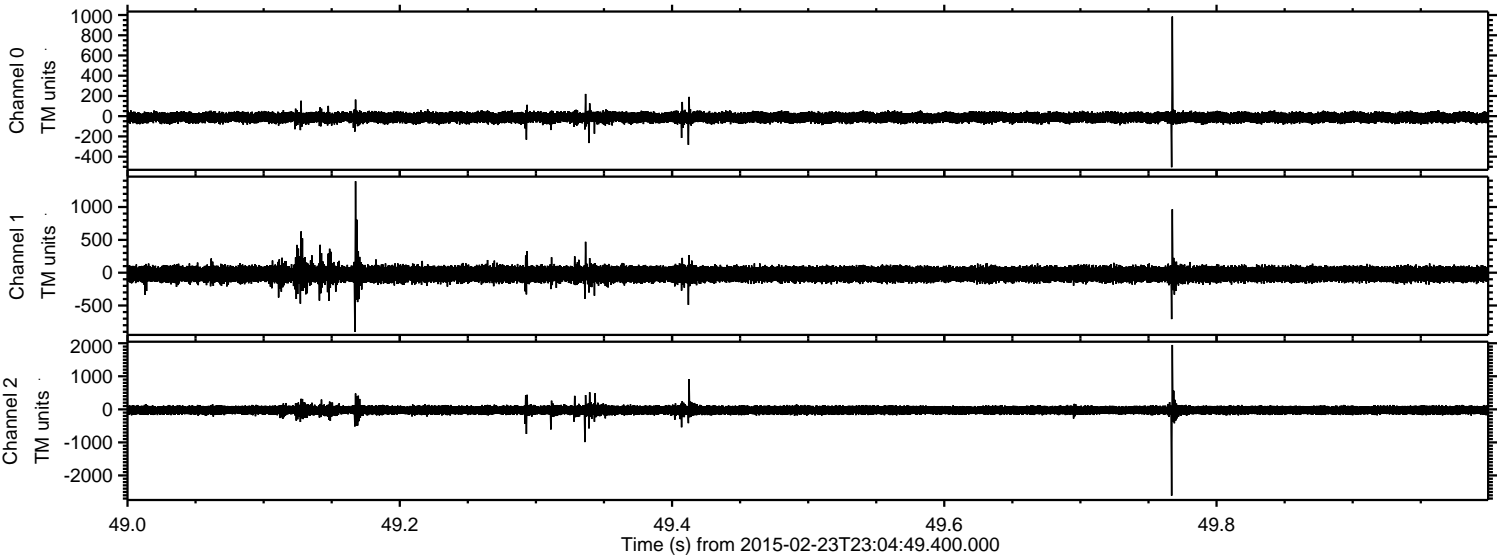
Channel 0  
mn: -457  
mx: 681  
 $\mu$ : -13.4  
 $\sigma$ : 27.3

Channel 1  
mn: -2848  
mx: 2790  
 $\mu$ : -22.2  
 $\sigma$ : 78.3

Channel 2  
mn: -1511  
mx: 2112  
 $\mu$ : -24.8  
 $\sigma$ : 82.4



Processed Tue Mar 3 08:26:15 2015 by ELM ver.2012-10-06 from 001\_\_elm20150223\_230448\_\_dat00.bin





Processed Tue Mar 3 08:26:16 2015 by ELM ver.2012-10-06 from 001\_\_elm20150223\_230448\_\_dat00.bin

