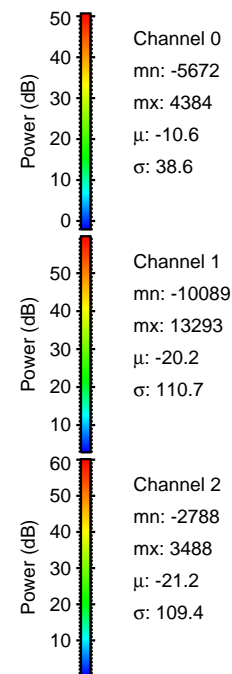
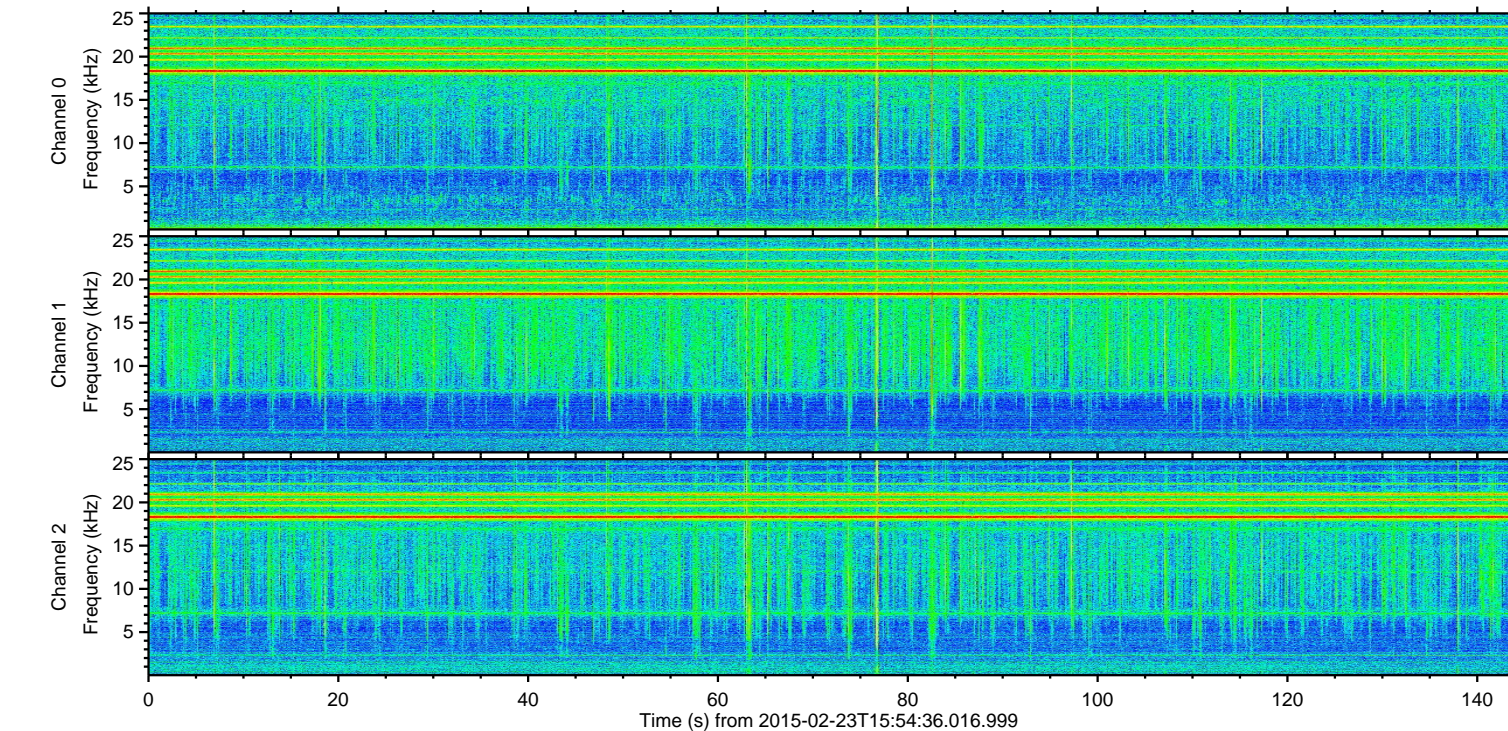
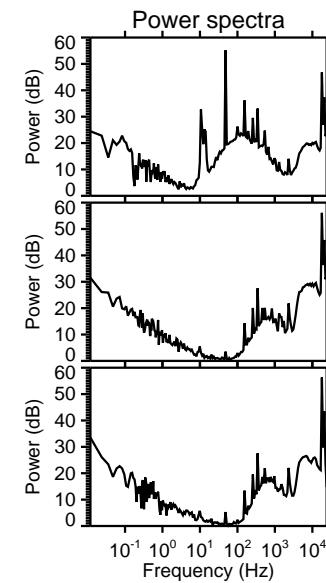
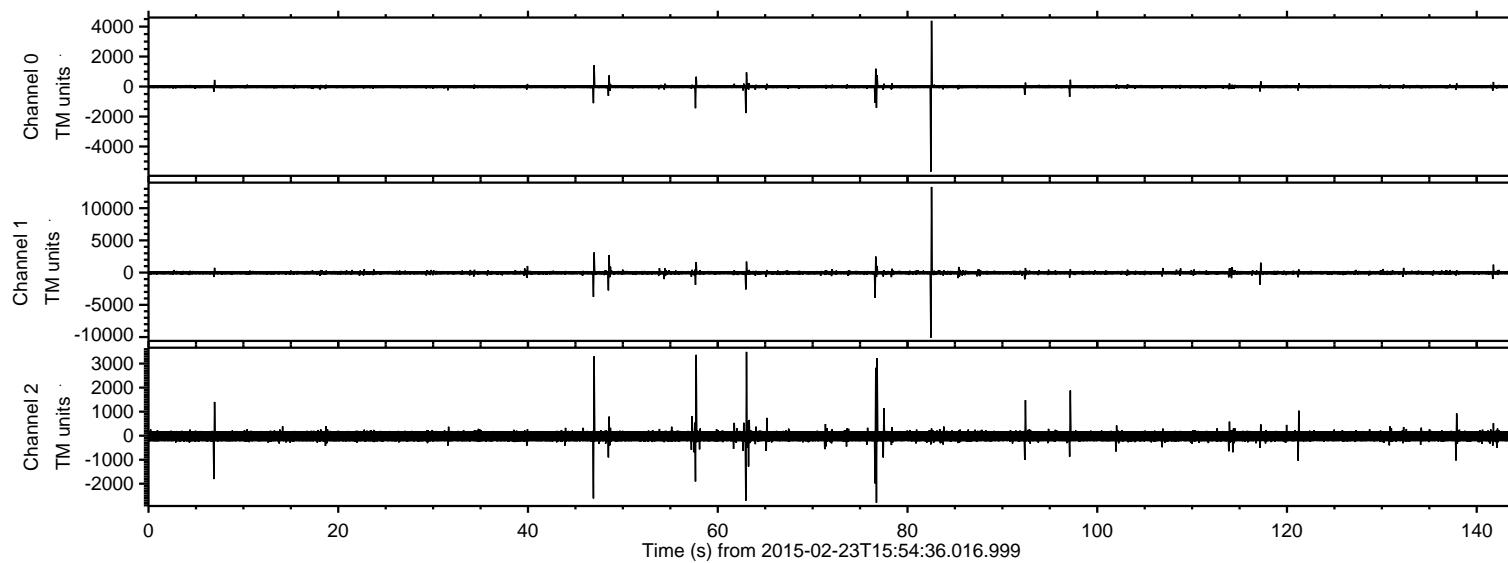


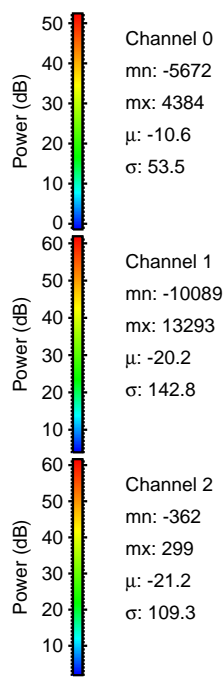
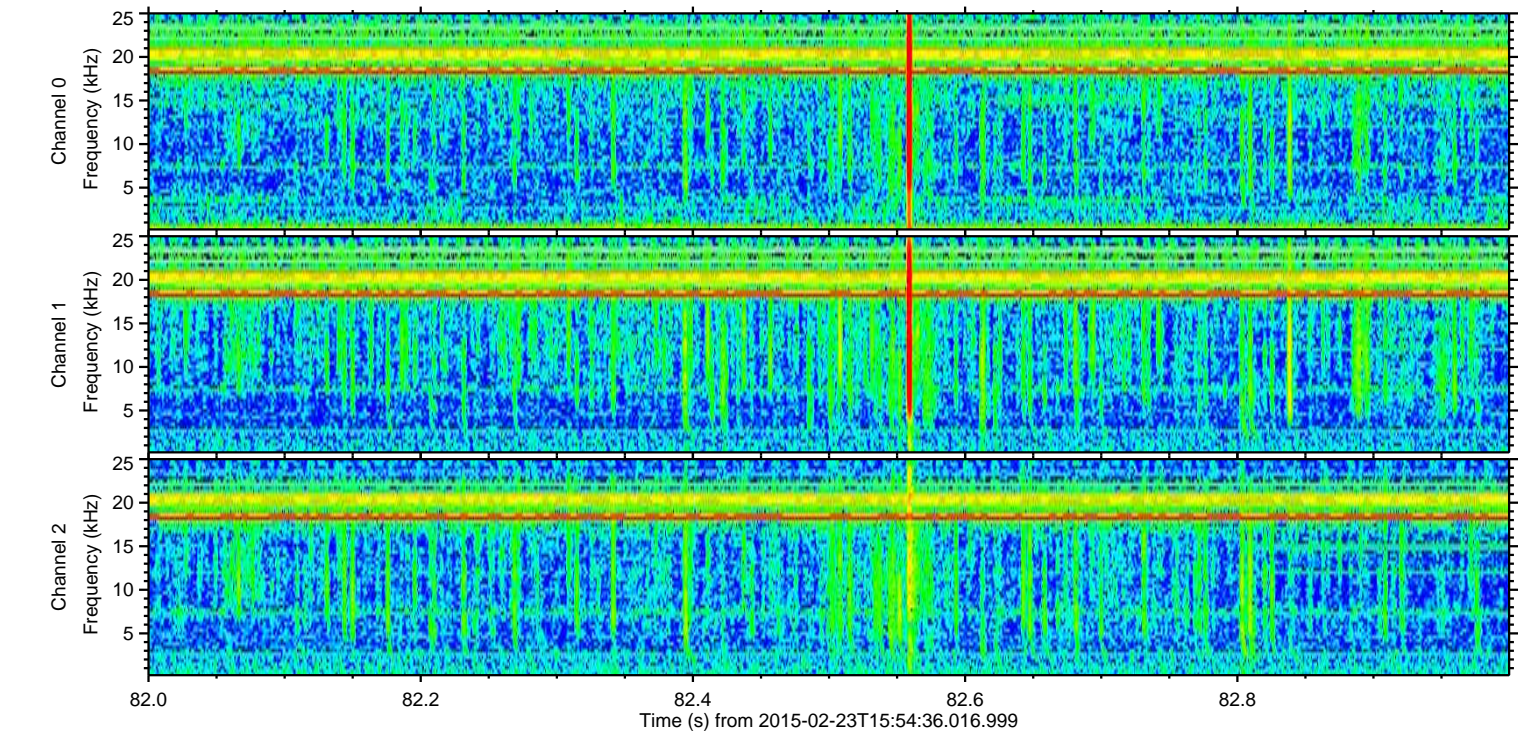
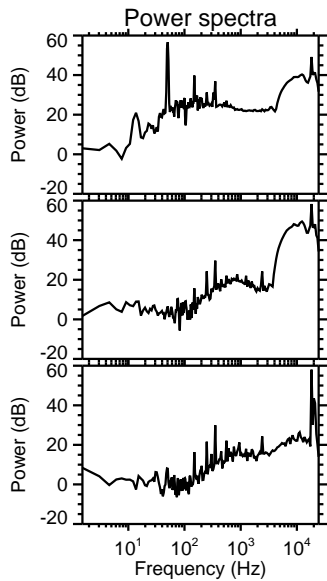
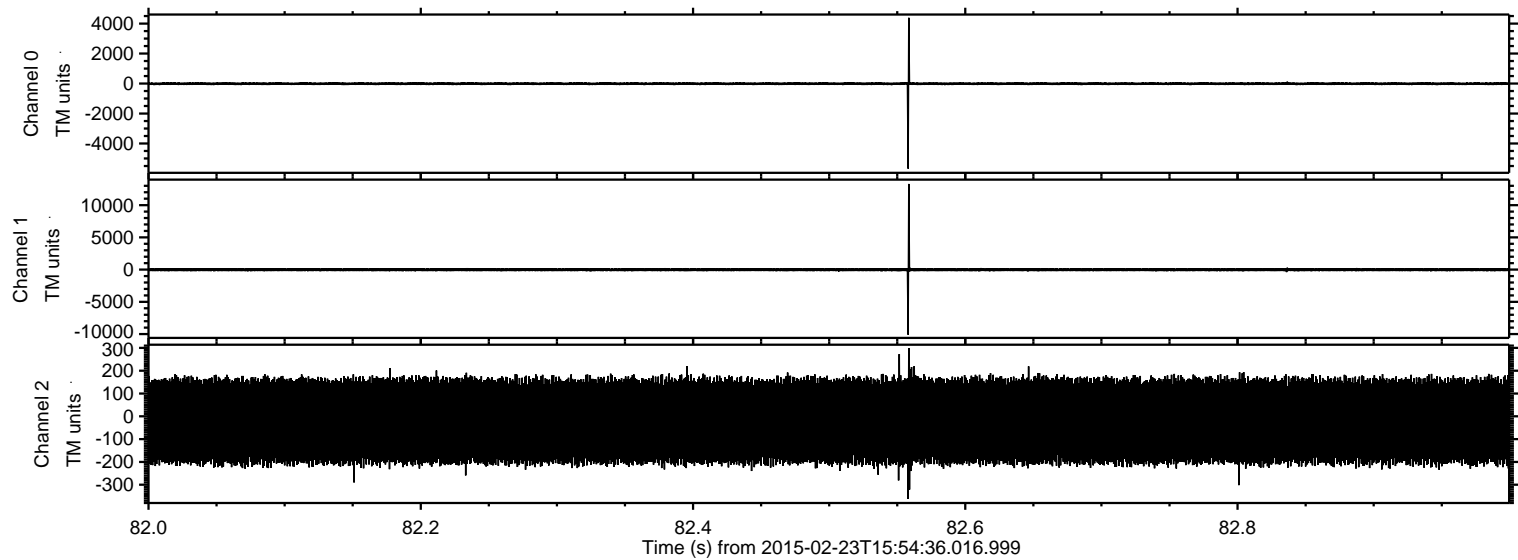
# ELMAVAN 3D WAVEFORMS (Measured data sampled at 50 kHz) 49797 packets of 144 samples from 2015-02-23T15:54:36.016.999.

Processed Tue Mar 3 01:12:07 2015 by ELM ver.2012-10-06 from 001\_\_elm20150223\_155435\_\_dat00.bin





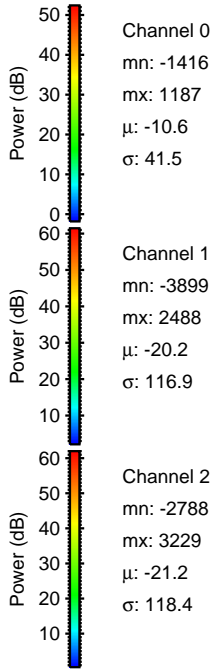
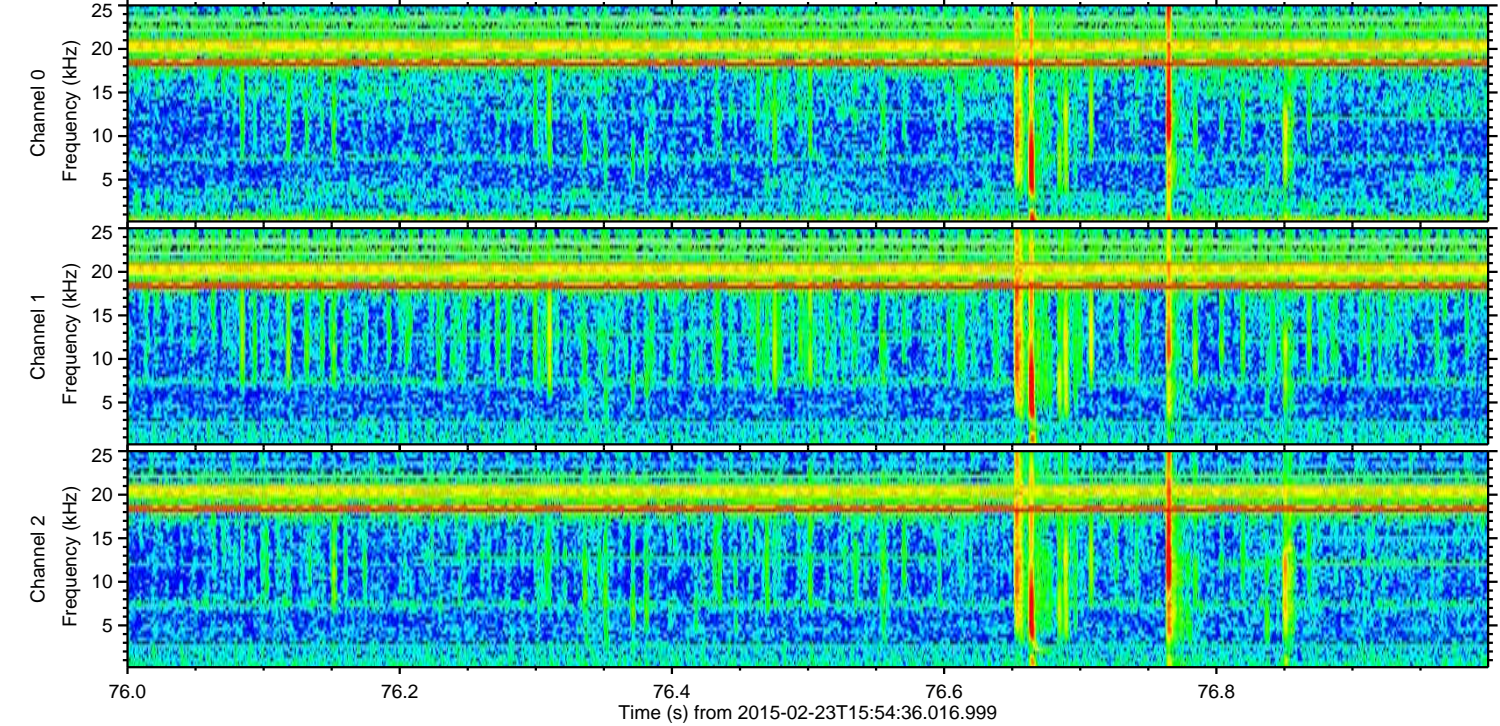
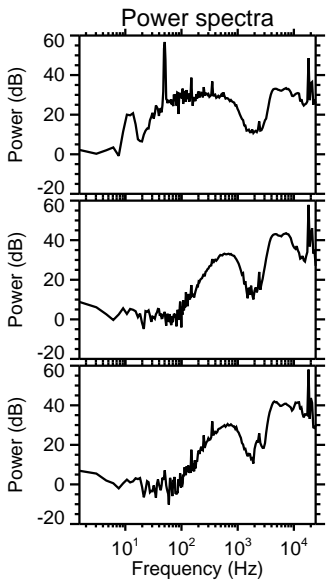
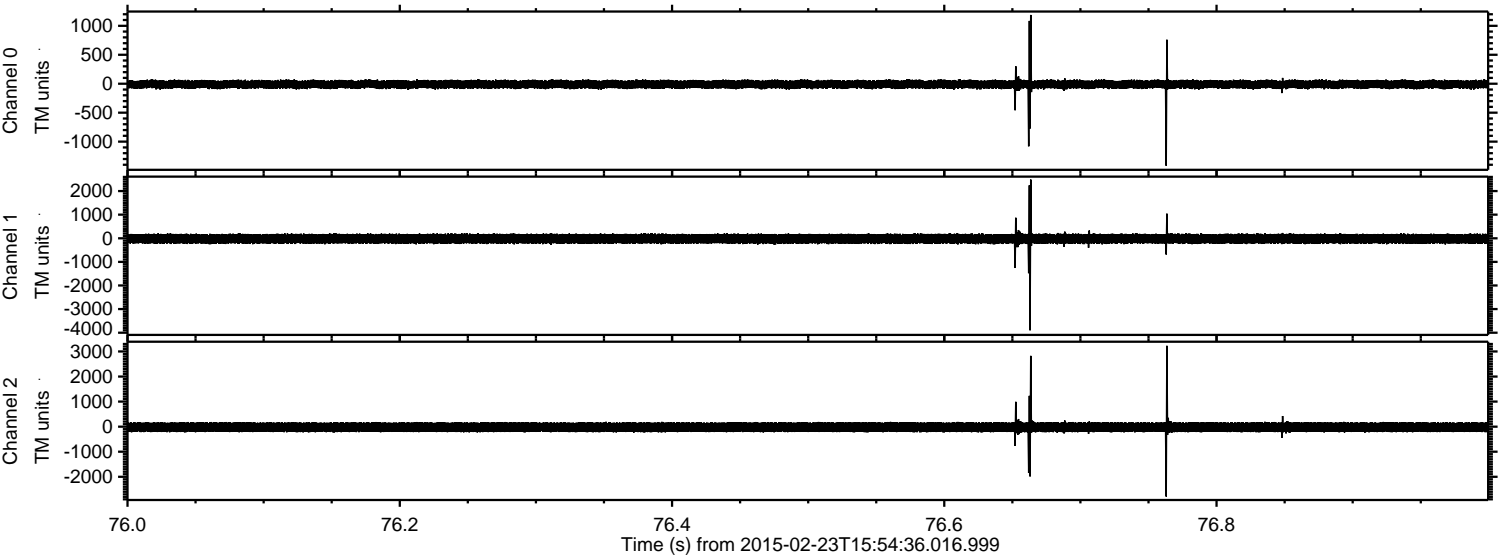
Processed Tue Mar 3 01:12:19 2015 by ELM ver.2012-10-06 from 001\_\_elm20150223\_155435\_\_dat00.bin





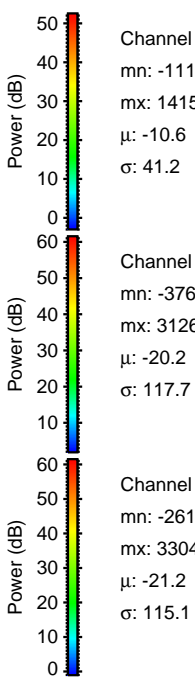
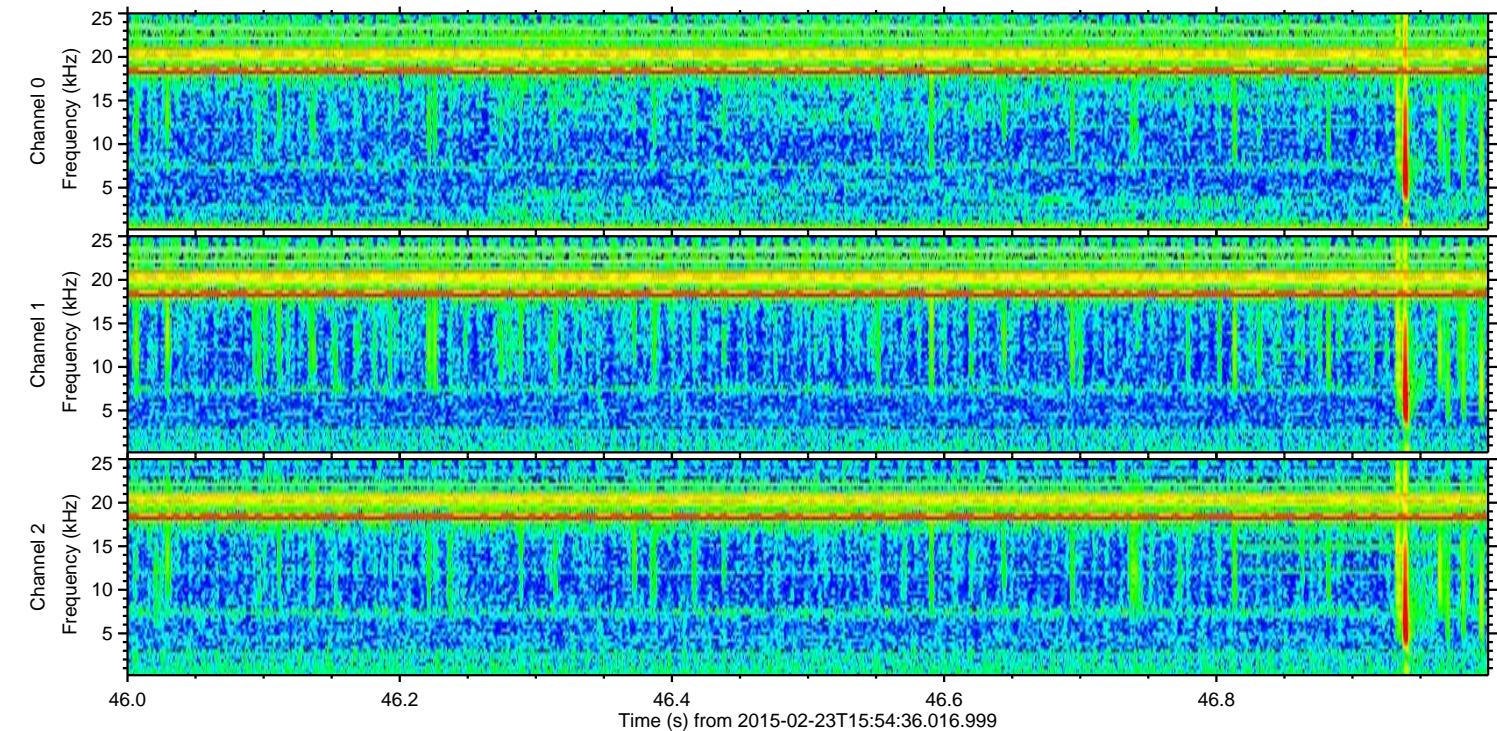
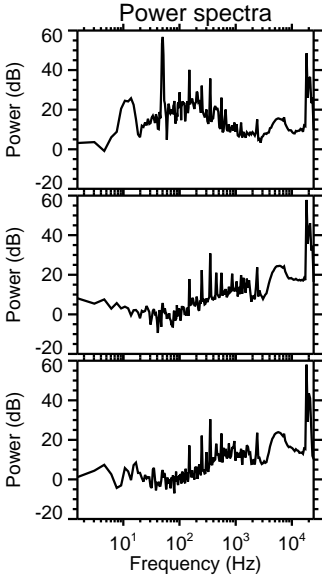
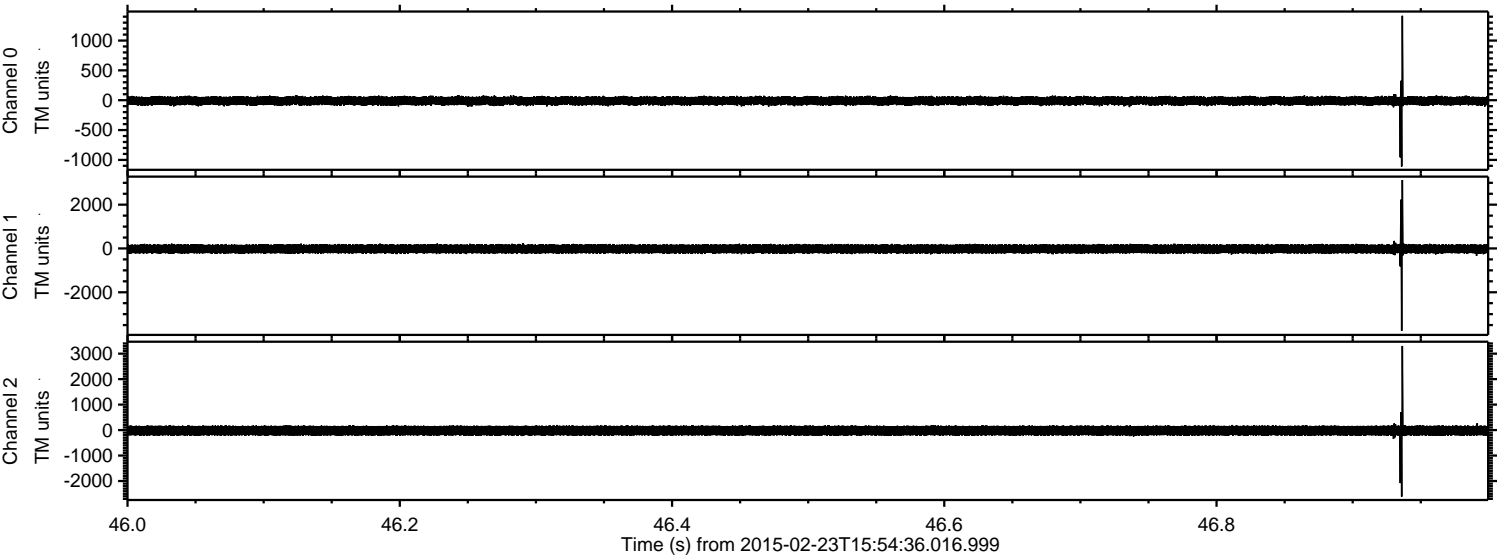
ELMAVAN 3D WAVEFORMS (Measured data sampled at 50 kHz) 49797 packets of 144 samples from 2015-02-23T15:54:36.016.999. Part 77/144

Processed Tue Mar 3 01:12:19 2015 by ELM ver.2012-10-06 from 001\_\_elm20150223\_155435\_\_dat00.bin



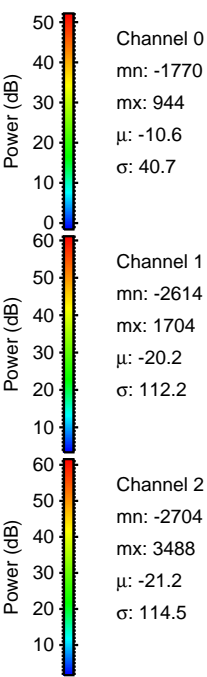
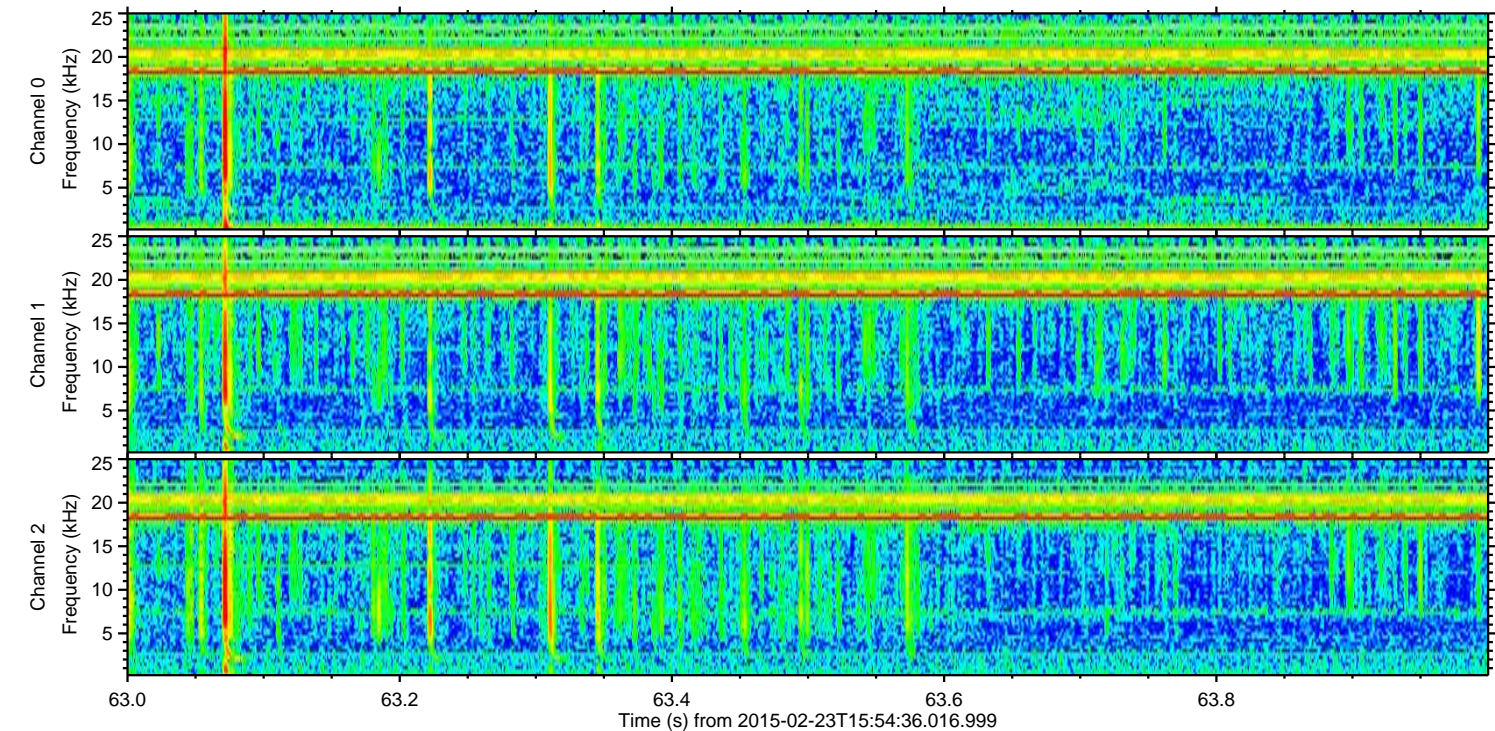
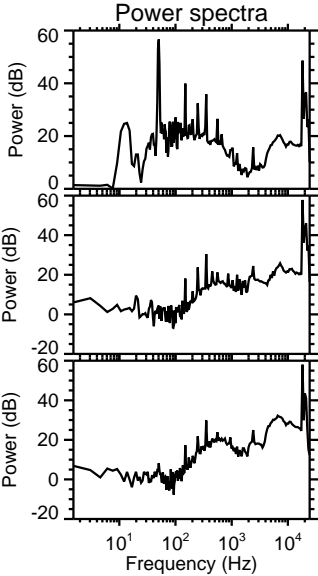
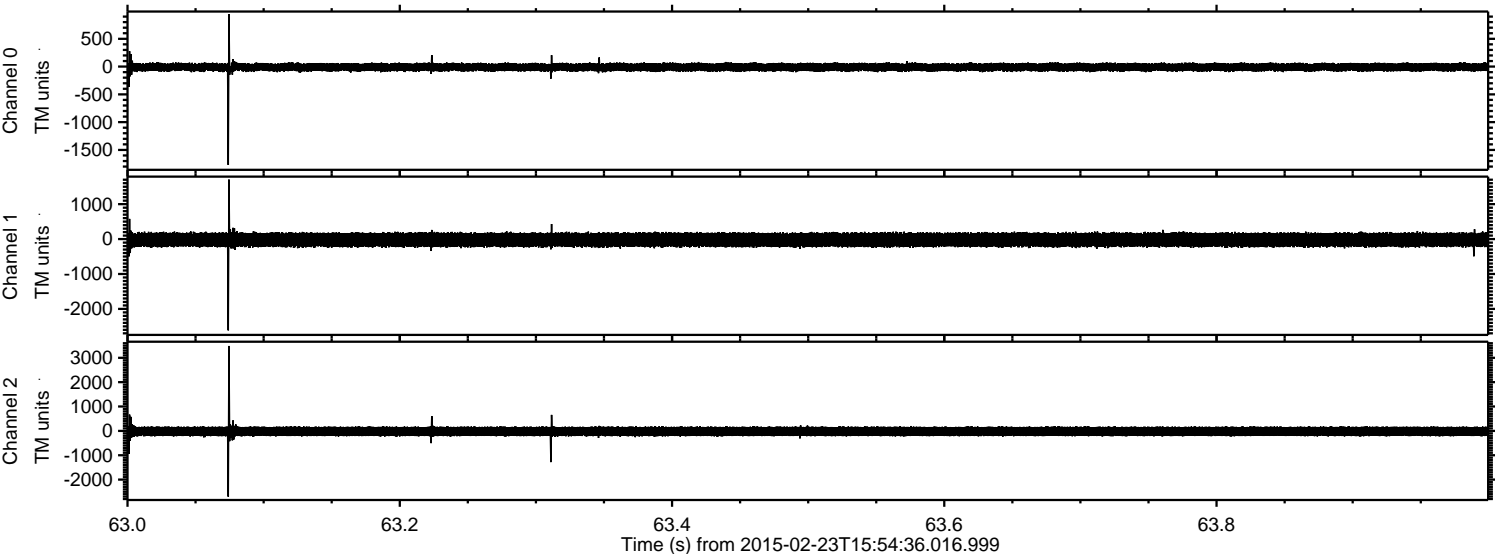


Processed Tue Mar 3 01:12:20 2015 by ELM ver.2012-10-06 from 001\_\_elm20150223\_155435\_\_dat00.bin



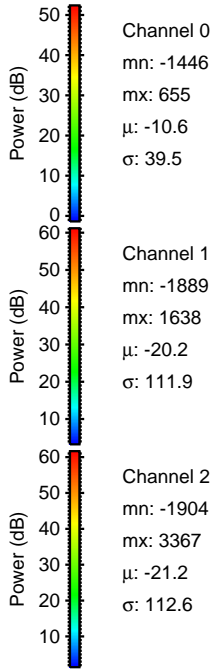
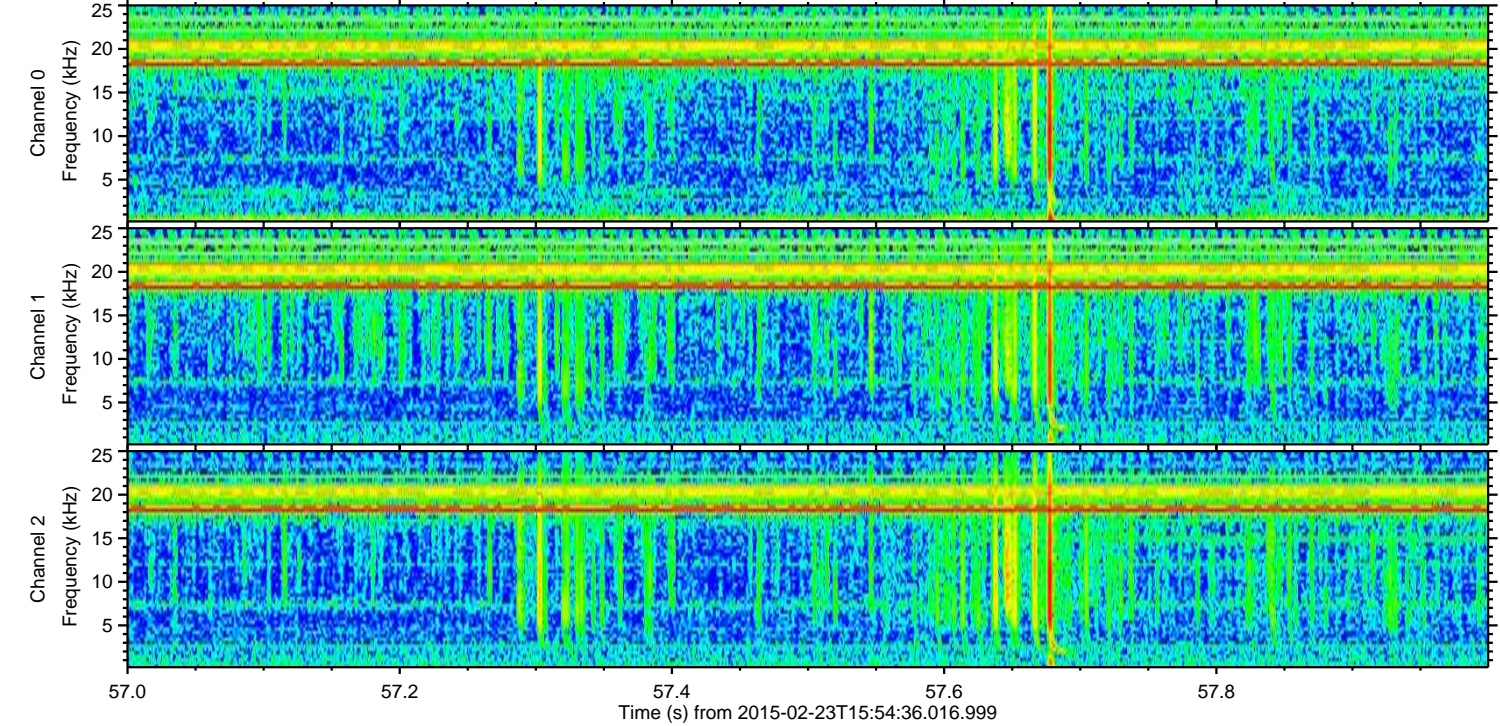
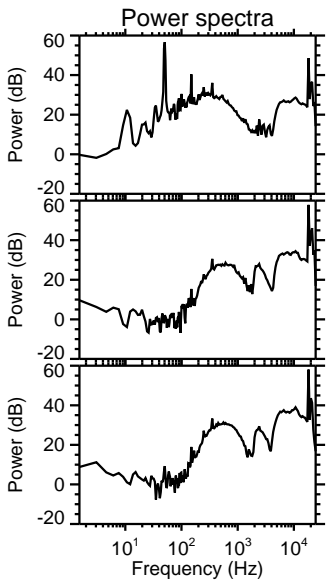
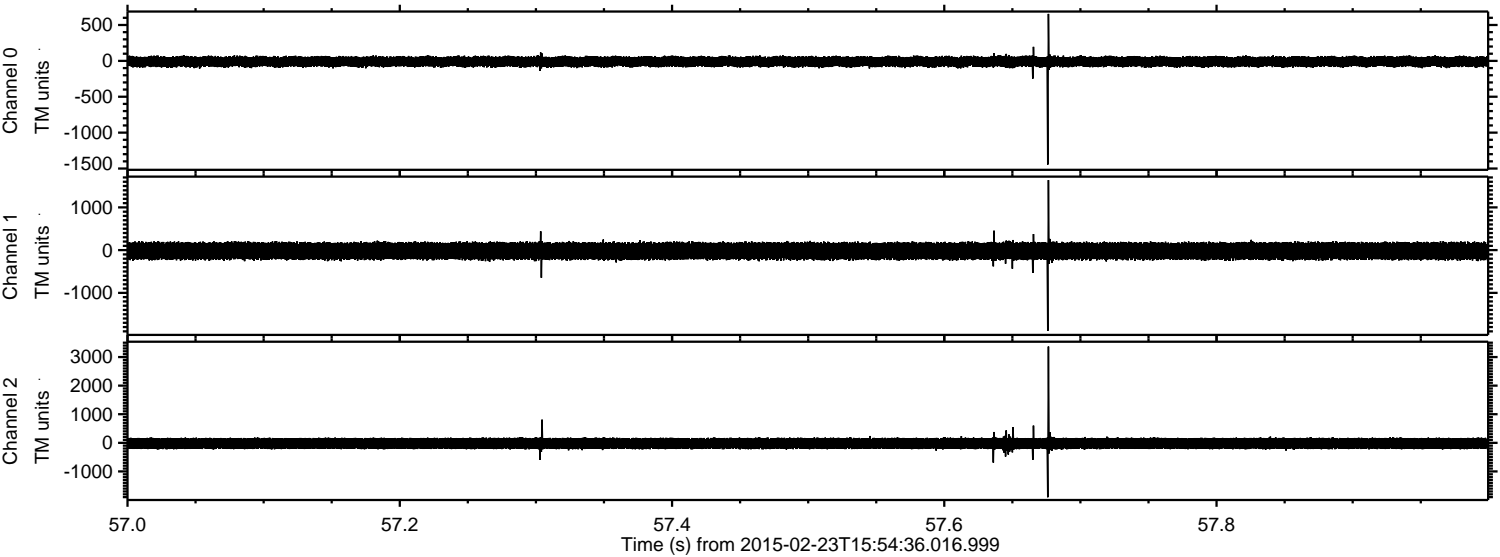


Processed Tue Mar 3 01:12:21 2015 by ELM ver.2012-10-06 from 001\_\_elm20150223\_155435\_\_dat00.bin



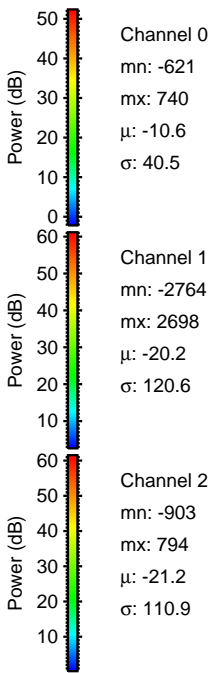
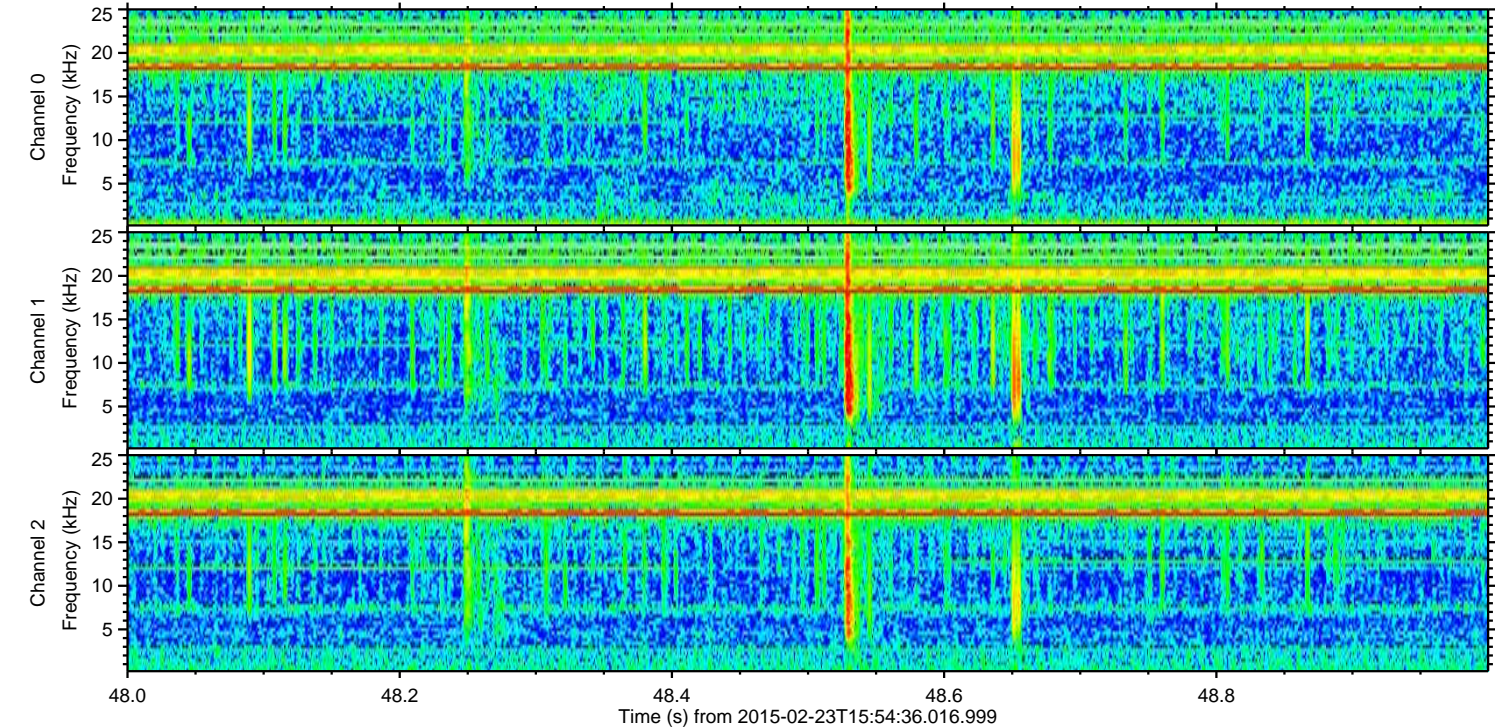
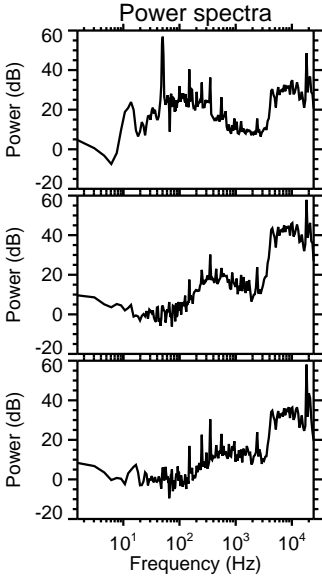
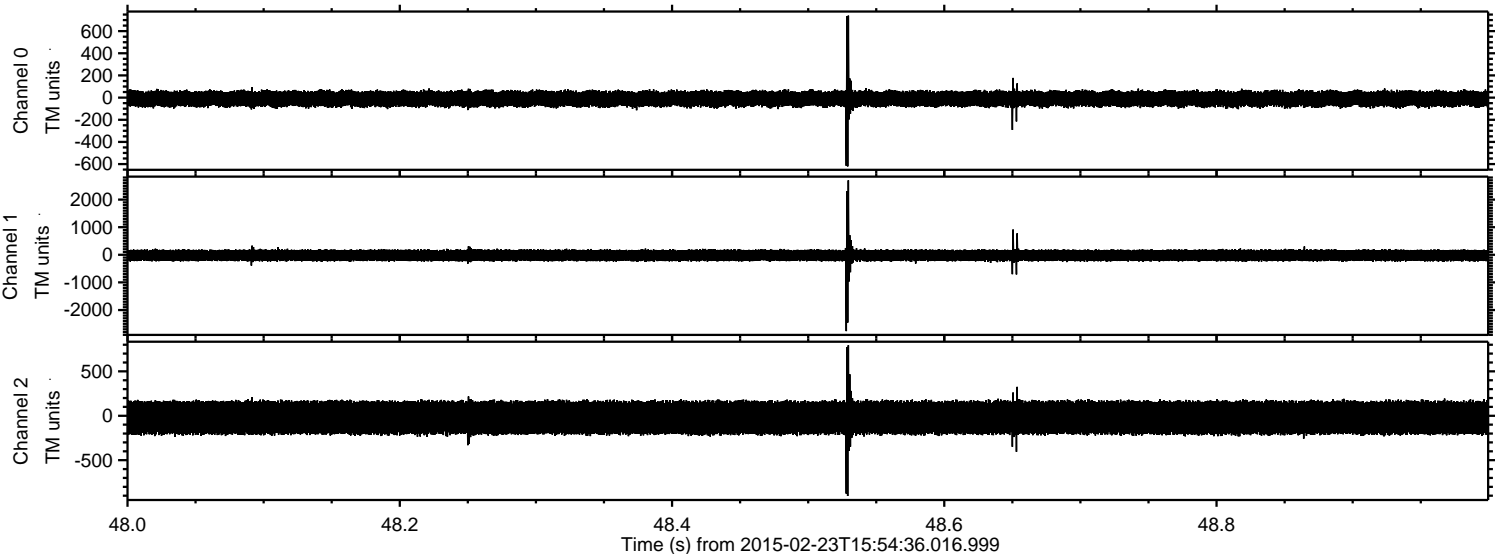


Processed Tue Mar 3 01:12:22 2015 by ELM ver.2012-10-06 from 001\_\_elm20150223\_155435\_\_dat00.bin



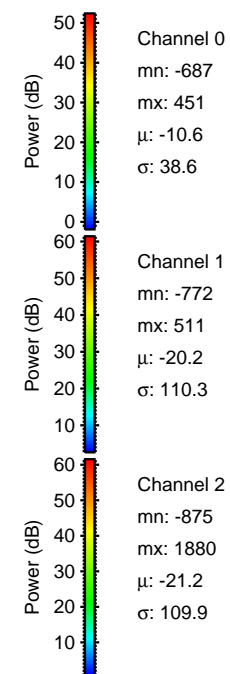
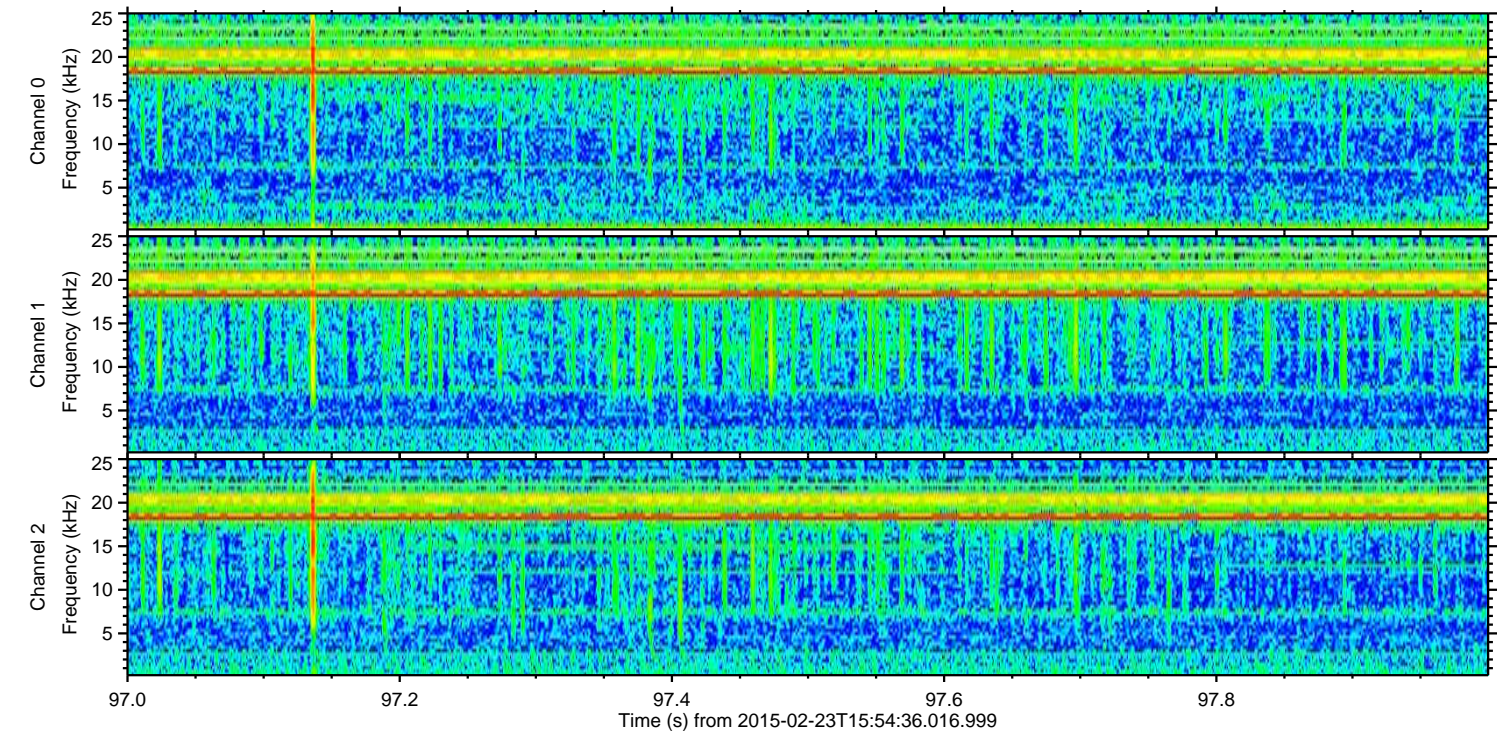
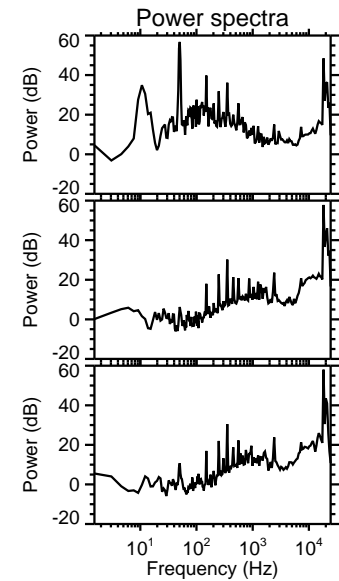
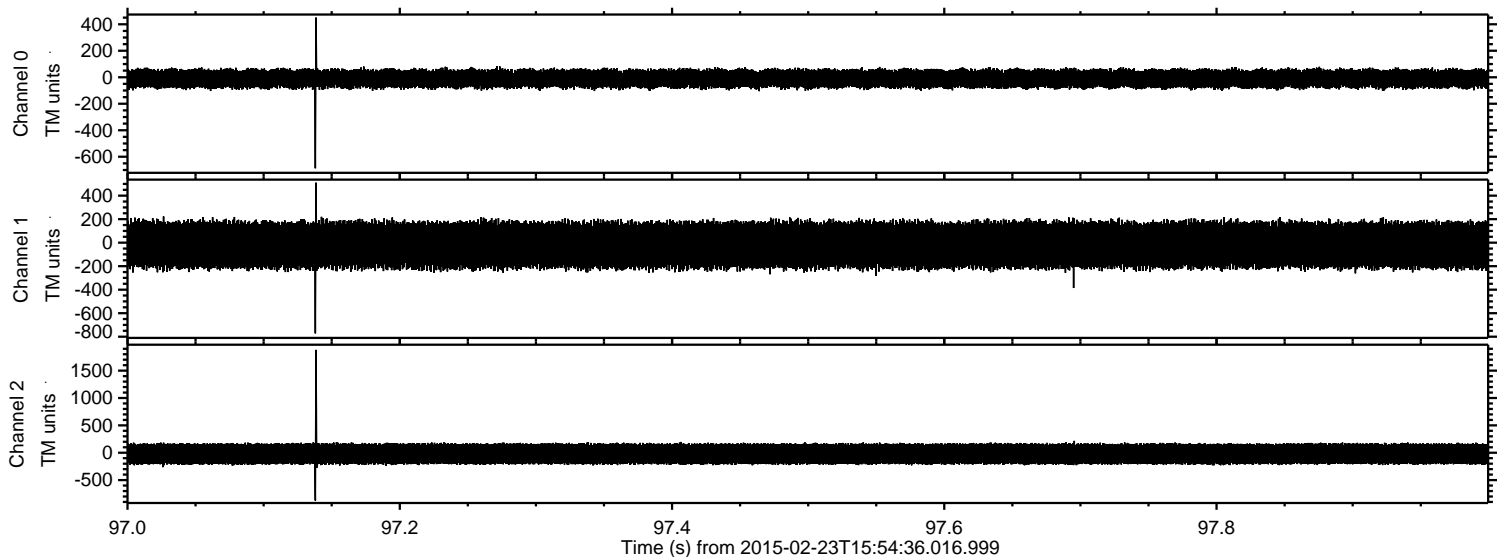


Processed Tue Mar 3 01:12:23 2015 by ELM ver.2012-10-06 from 001\_\_elm20150223\_155435\_\_dat00.bin





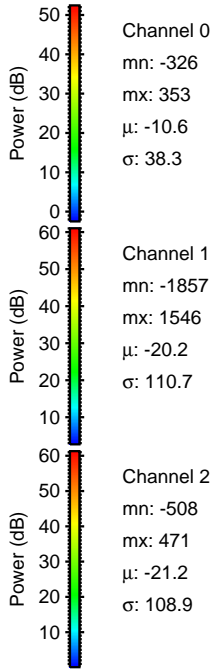
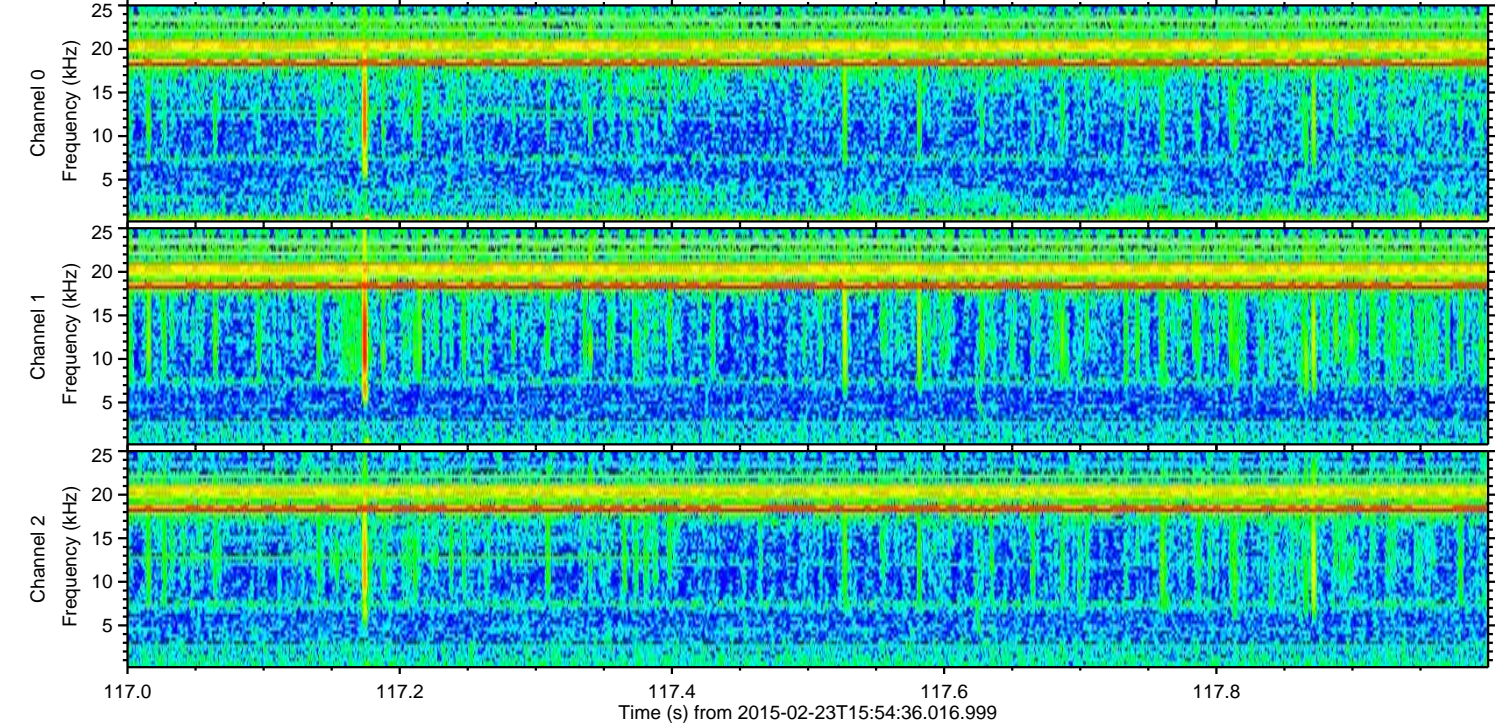
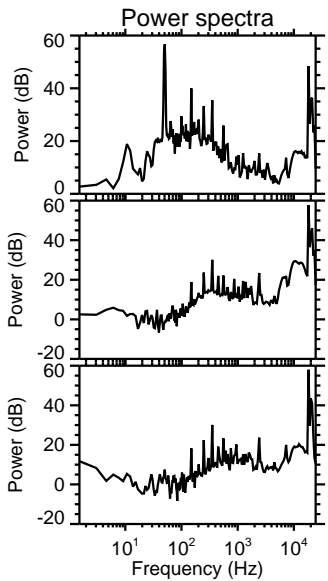
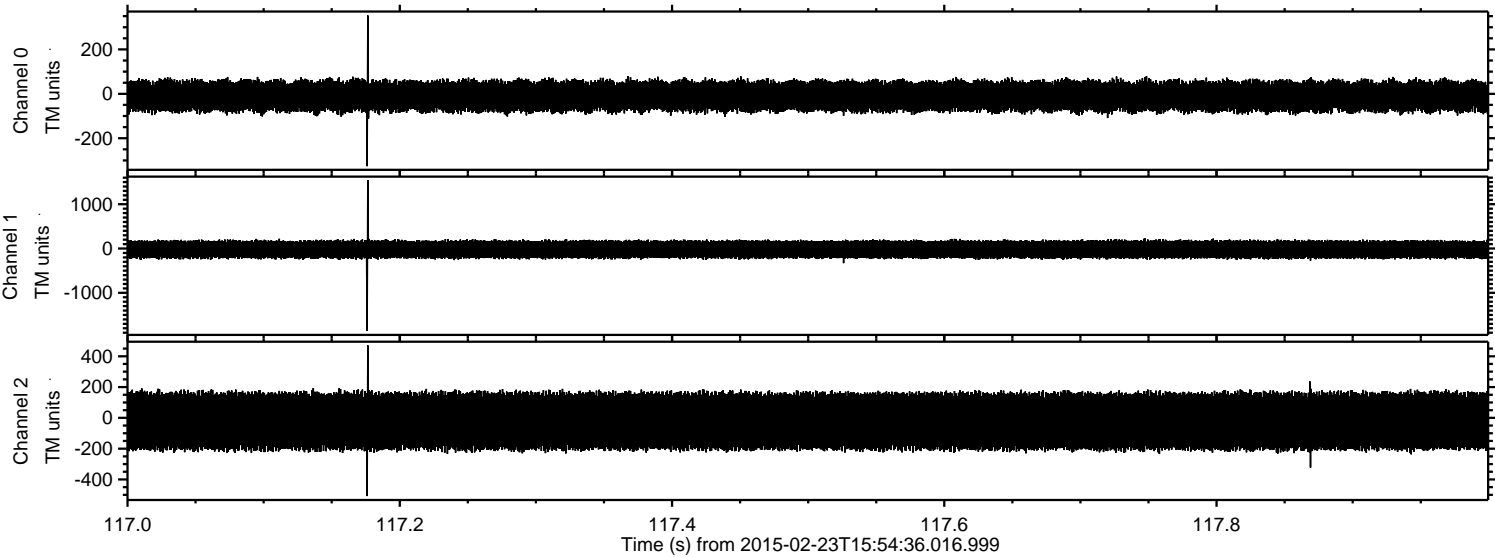
Processed Tue Mar 3 01:12:24 2015 by ELM ver.2012-10-06 from 001\_\_elm20150223\_155435\_\_dat00.bin





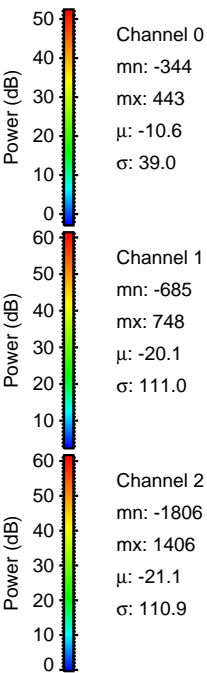
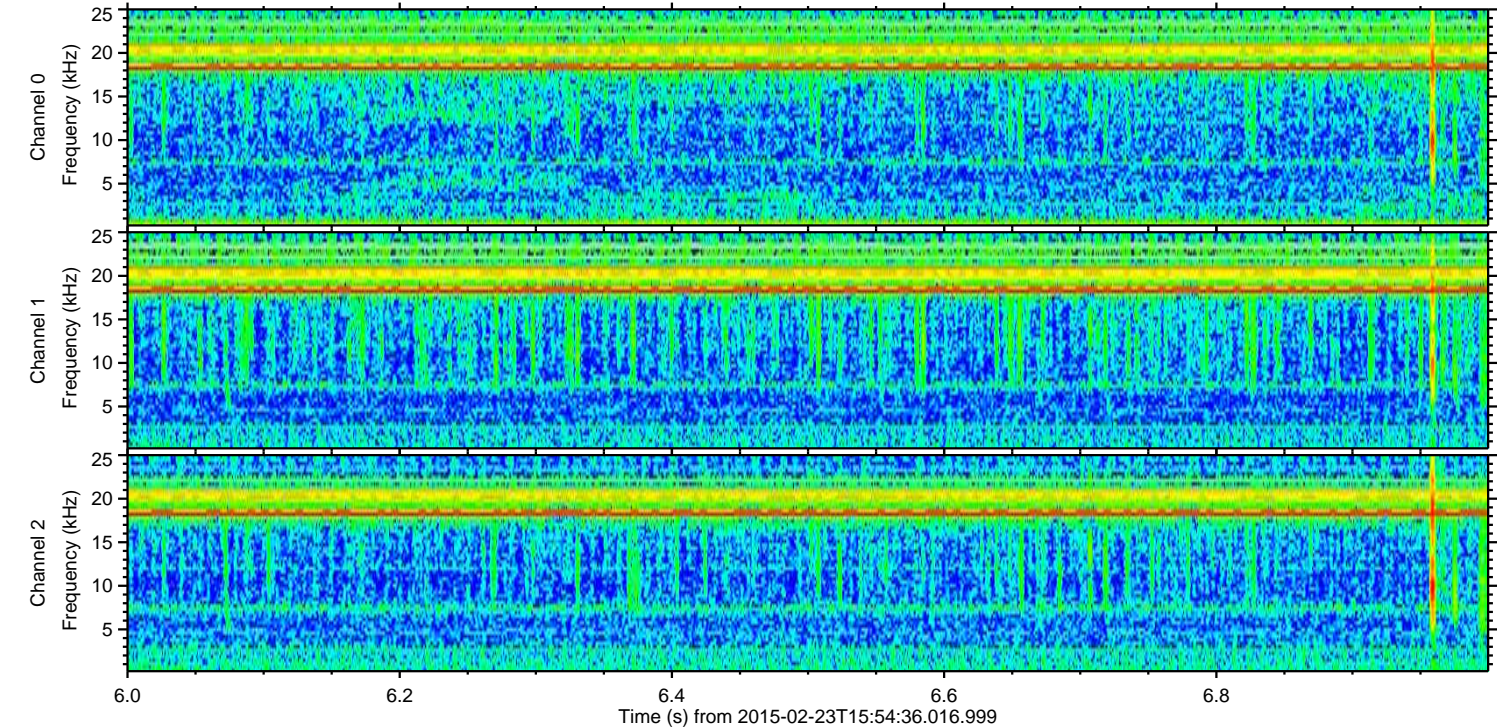
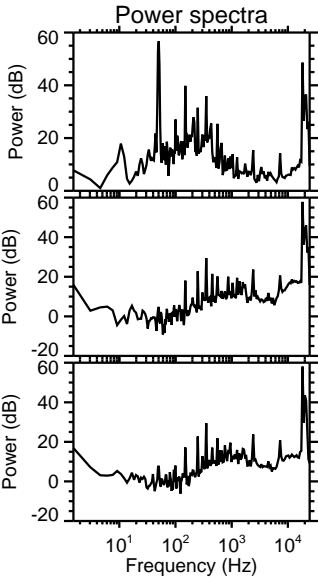
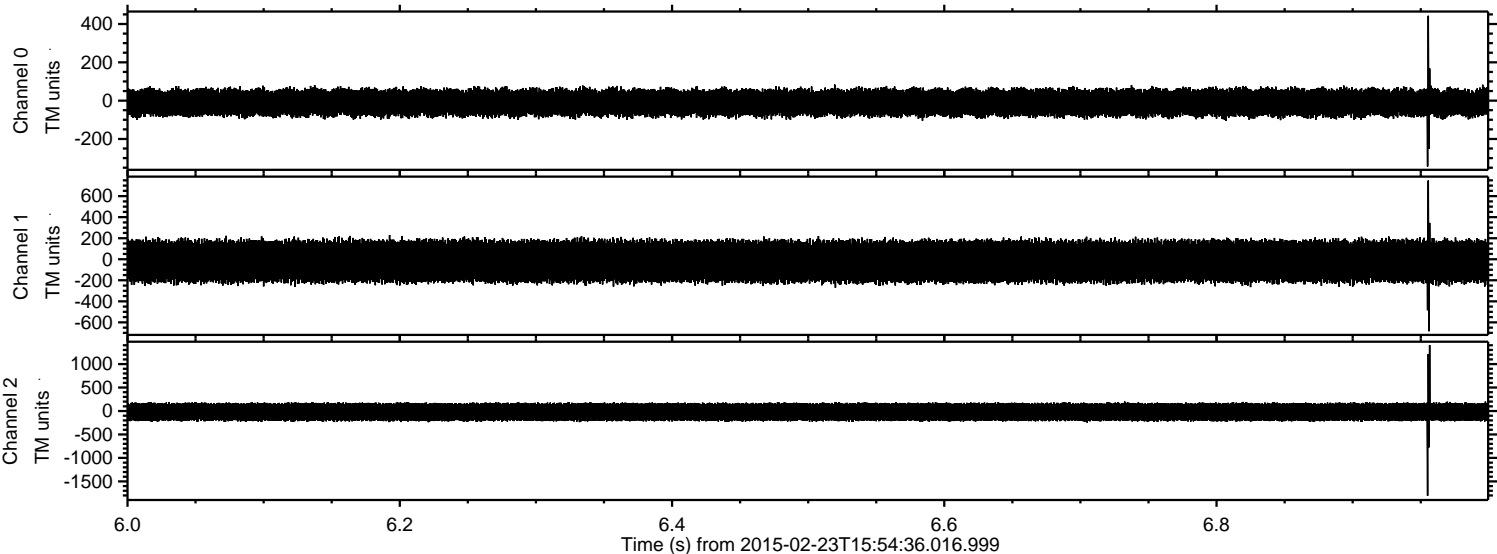
ELMAVAN 3D WAVEFORMS (Measured data sampled at 50 kHz) 49797 packets of 144 samples from 2015-02-23T15:54:36.016.999. Part 118/144

Processed Tue Mar 3 01:12:25 2015 by ELM ver.2012-10-06 from 001\_\_elm20150223\_155435\_\_dat00.bin



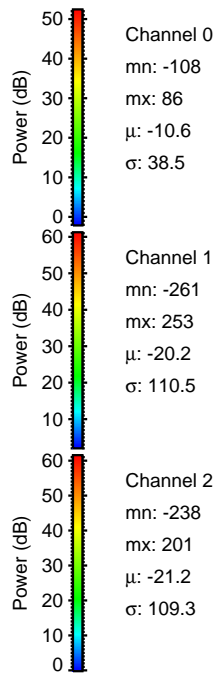
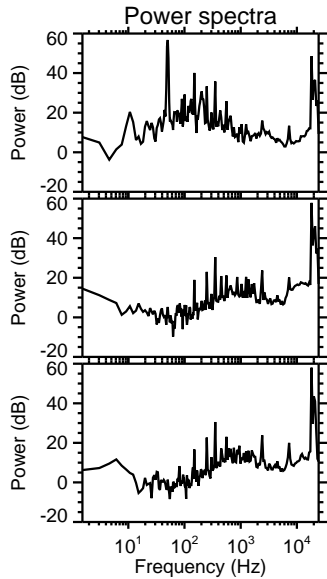
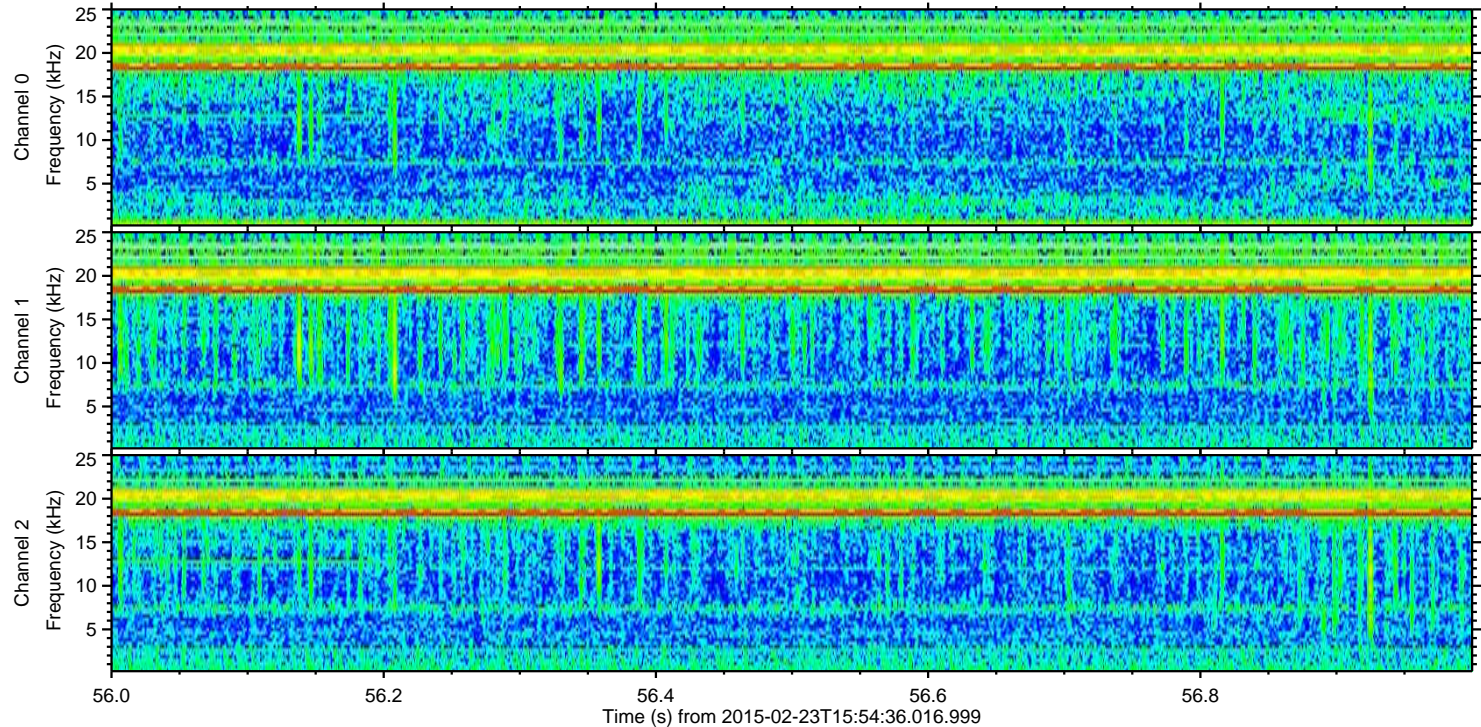
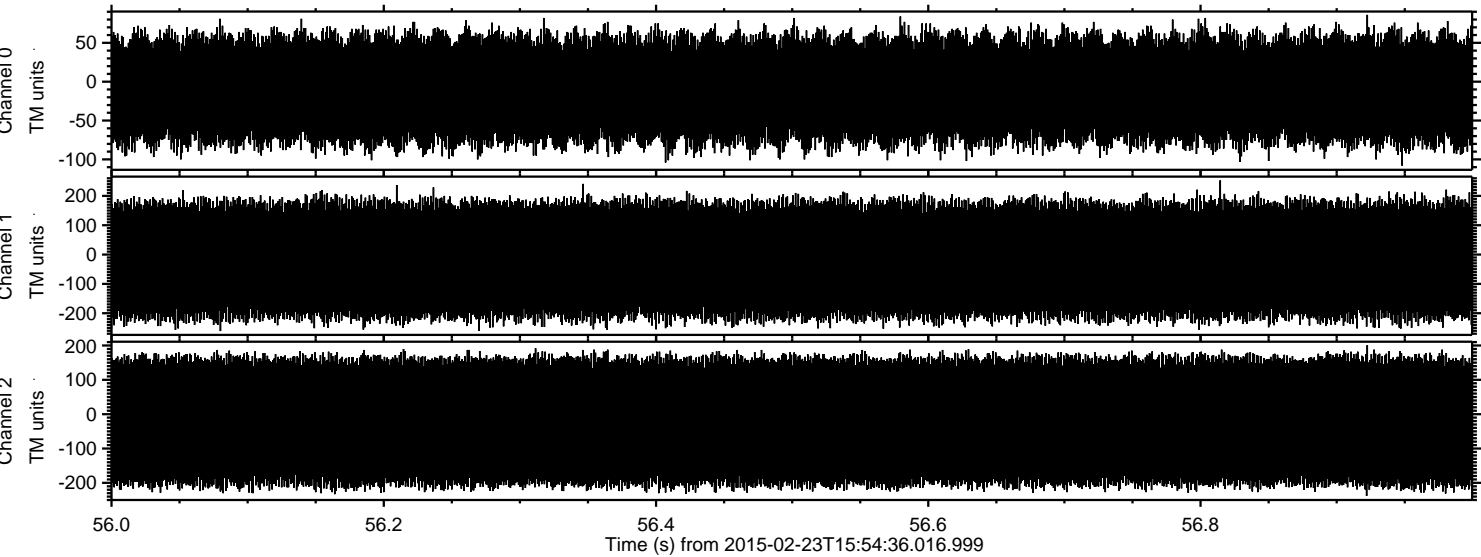


Processed Tue Mar 3 01:12:26 2015 by ELM ver.2012-10-06 from 001\_\_elm20150223\_155435\_\_dat00.bin





Processed Tue Mar 3 01:12:27 2015 by ELM ver.2012-10-06 from 001\_\_elm20150223\_155435\_\_dat00.bin



Channel 0  
mn: -108  
mx: 86  
 $\mu$ : -10.6  
 $\sigma$ : 38.5

Channel 1  
mn: -261  
mx: 253  
 $\mu$ : -20.2  
 $\sigma$ : 110.5

Channel 2  
mn: -238  
mx: 201  
 $\mu$ : -21.2  
 $\sigma$ : 109.3