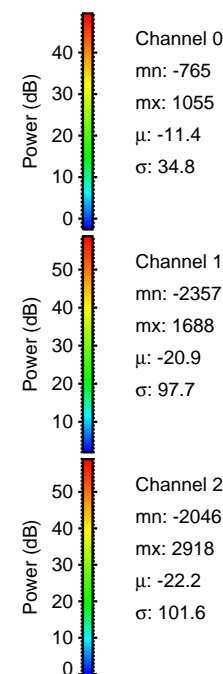
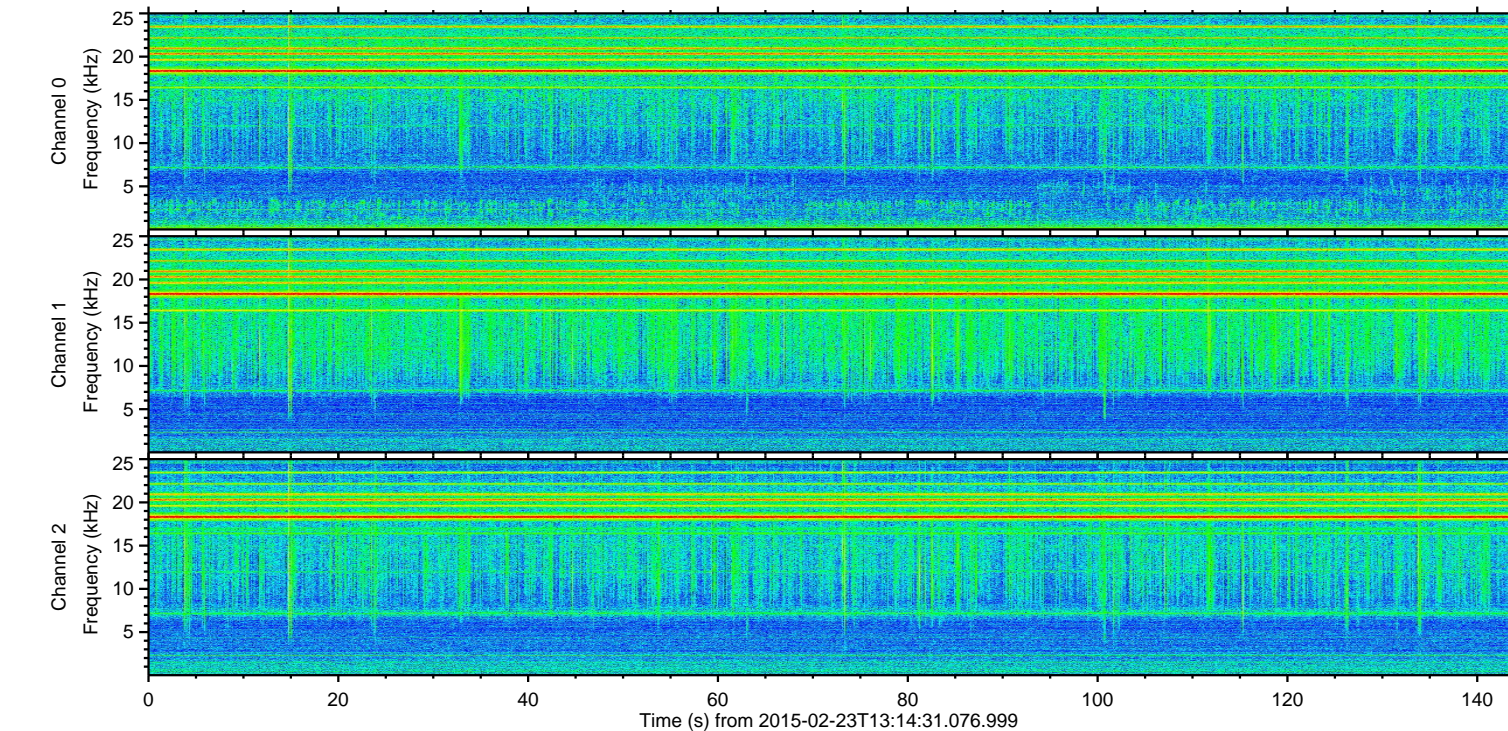
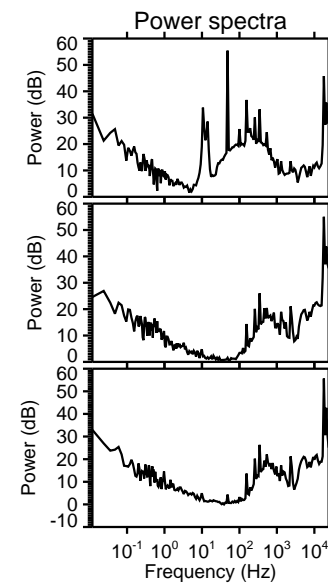
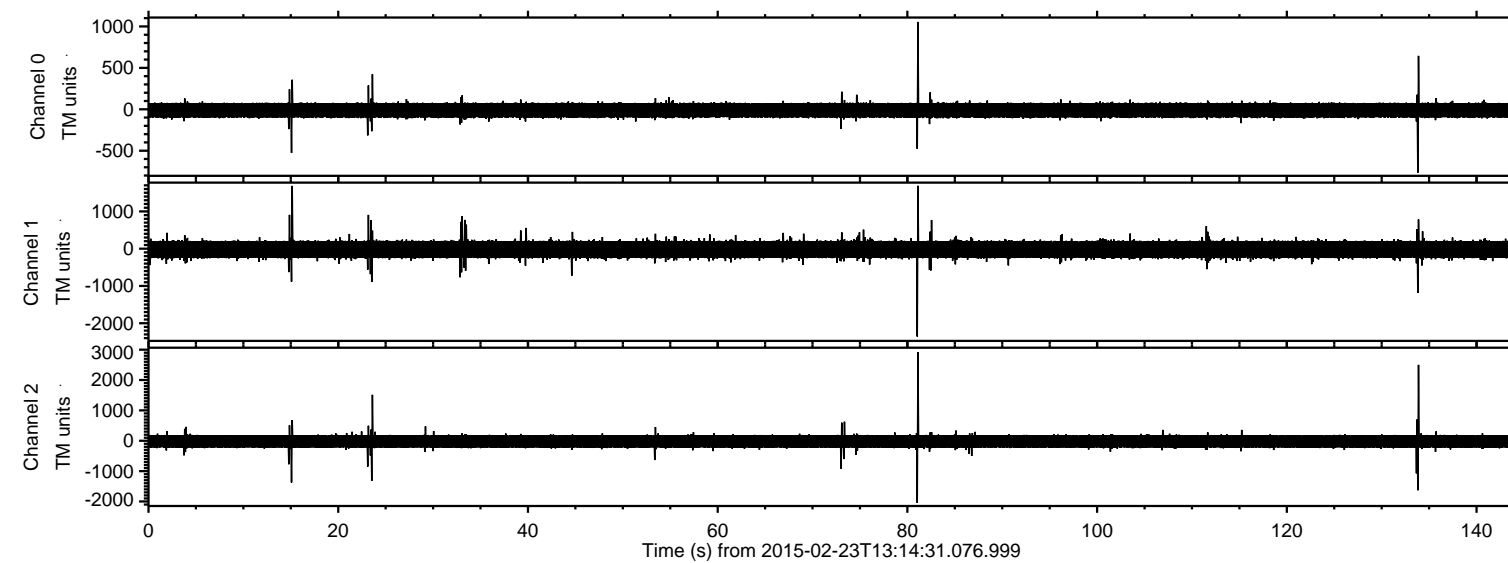


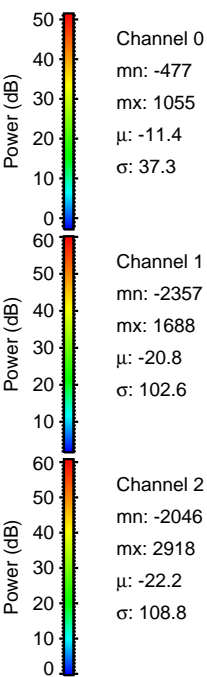
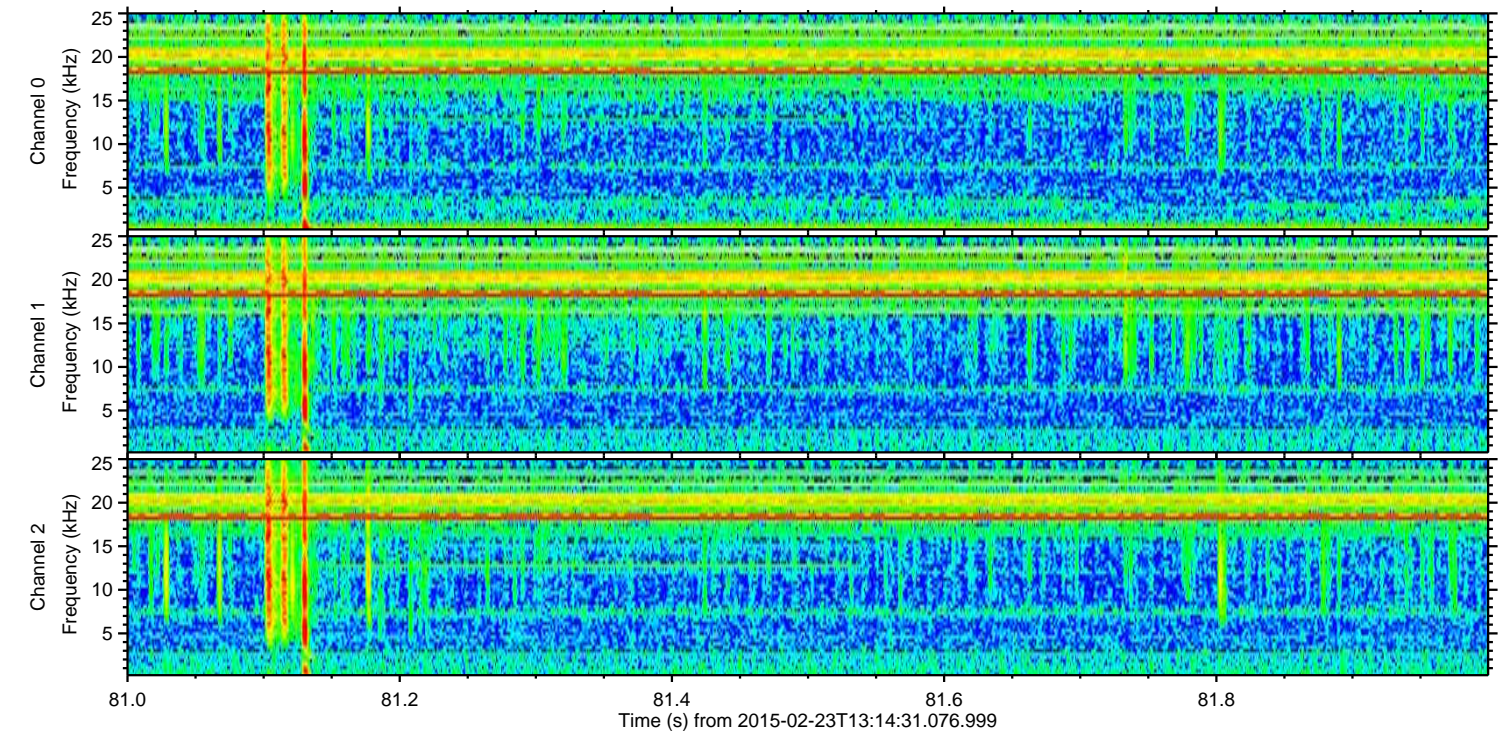
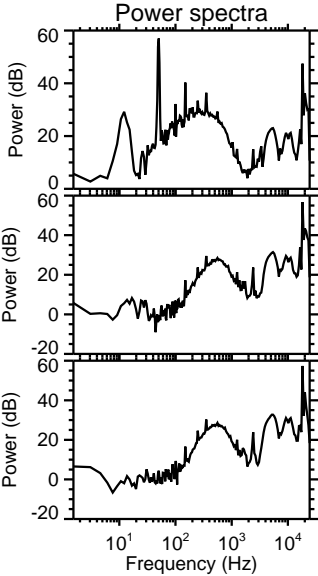
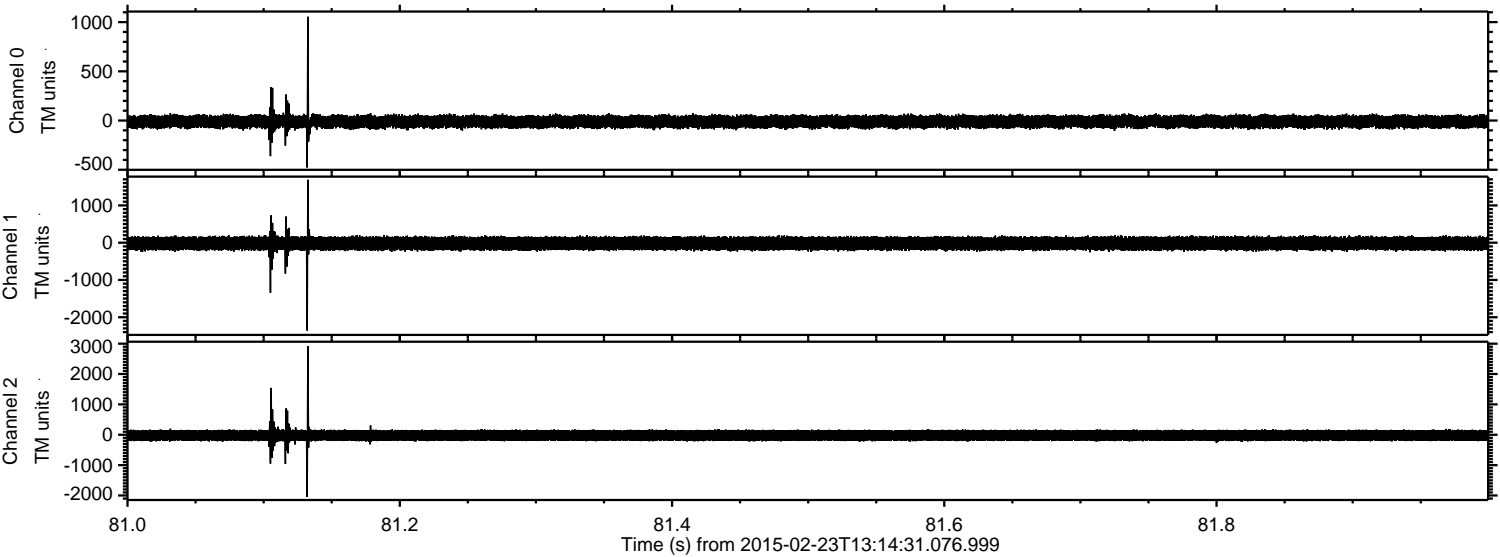
# ELMAVAN 3D WAVEFORMS (Measured data sampled at 50 kHz) 49804 packets of 144 samples from 2015-02-23T13:14:31.076.999.

Processed Mon Mar 2 23:49:45 2015 by ELM ver.2012-10-06 from 001\_\_elm20150223\_131430\_\_dat00.bin





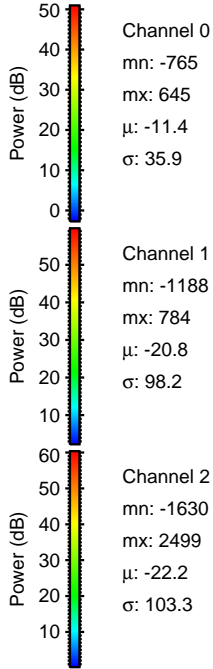
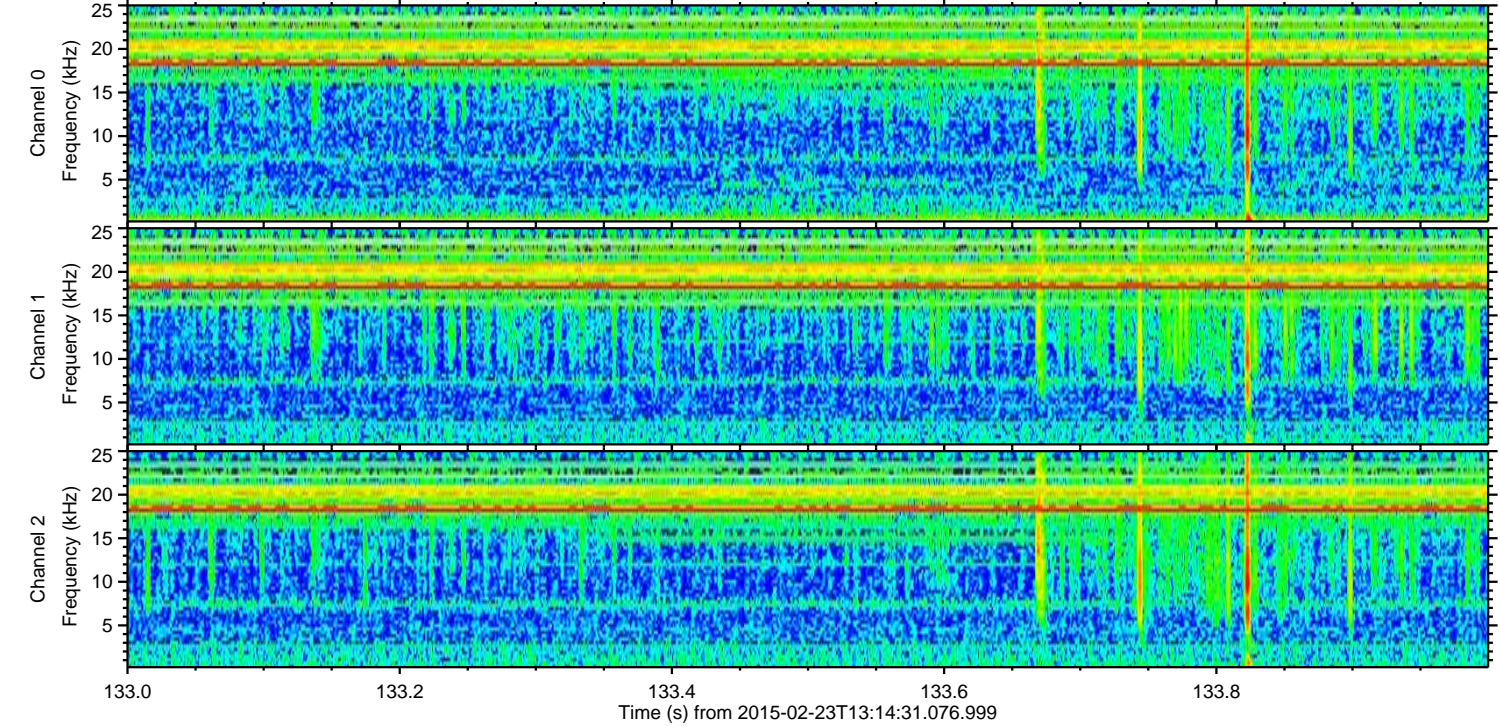
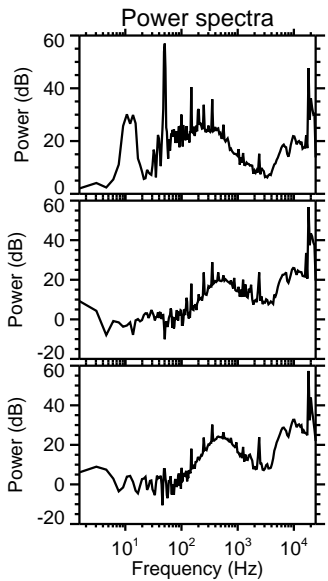
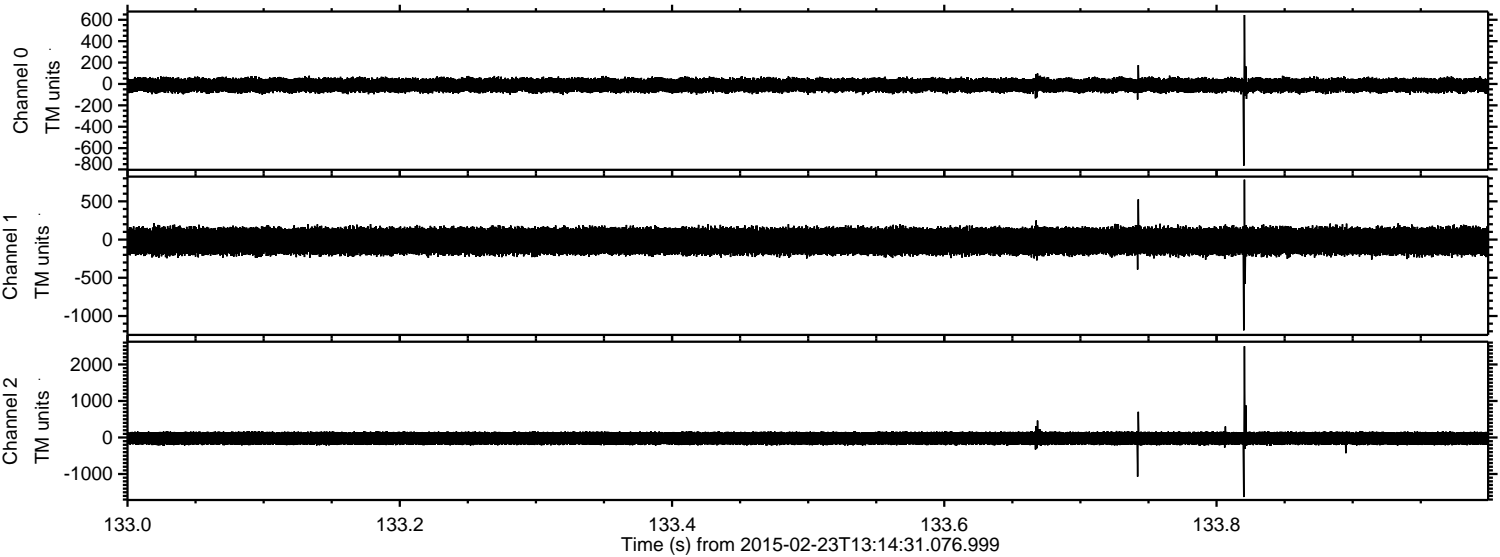
Processed Mon Mar 2 23:49:57 2015 by ELM ver.2012-10-06 from 001\_\_elm20150223\_131430\_\_dat00.bin





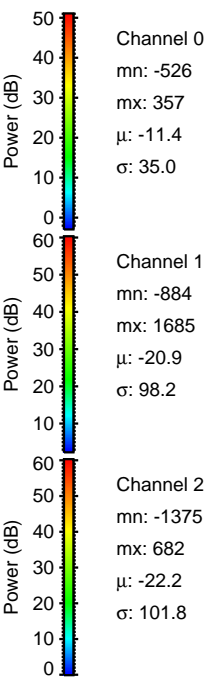
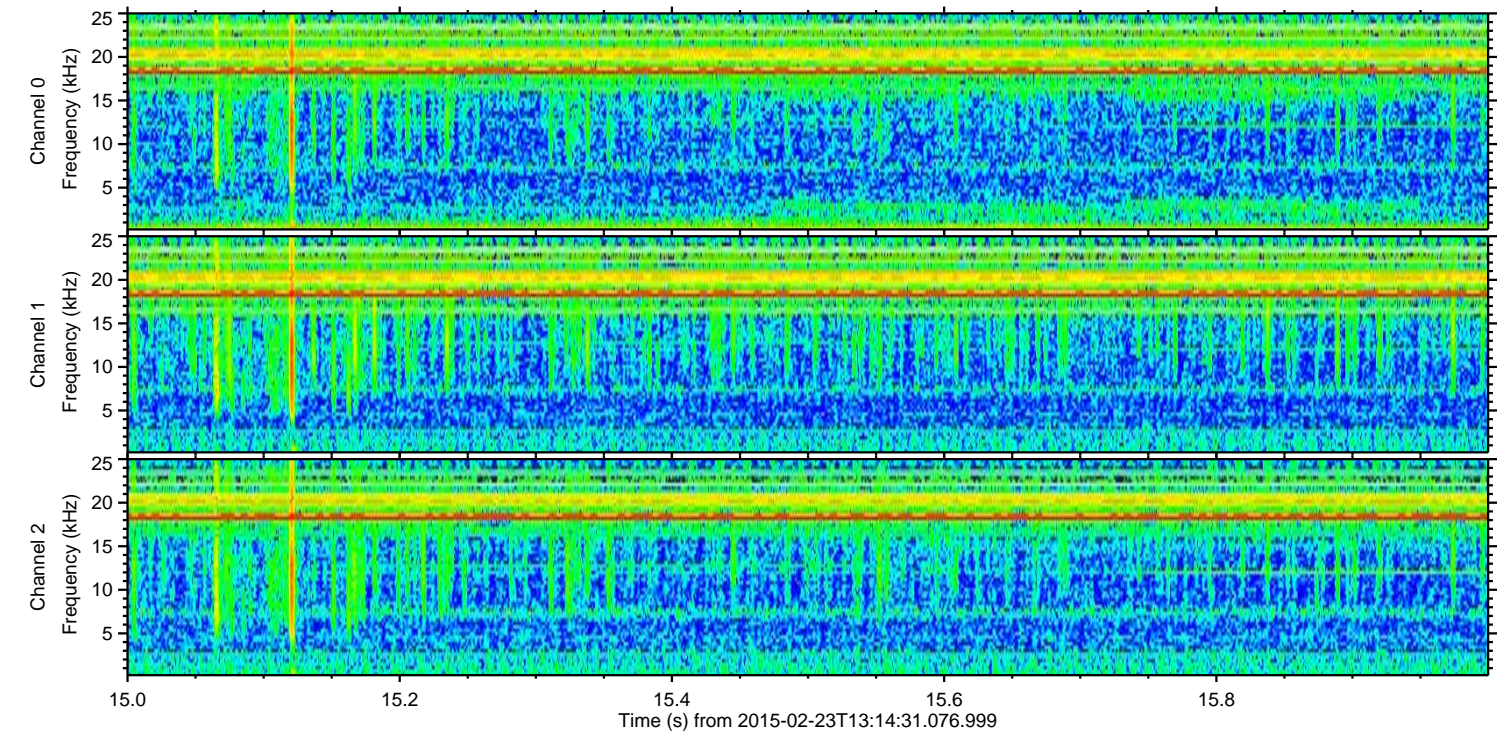
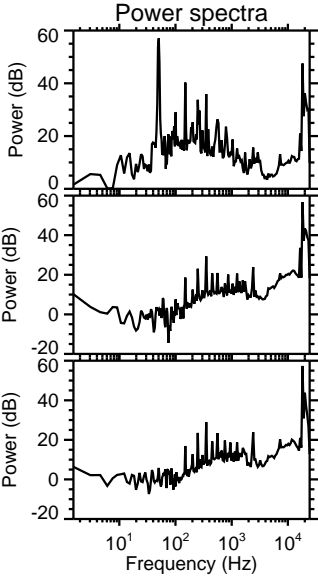
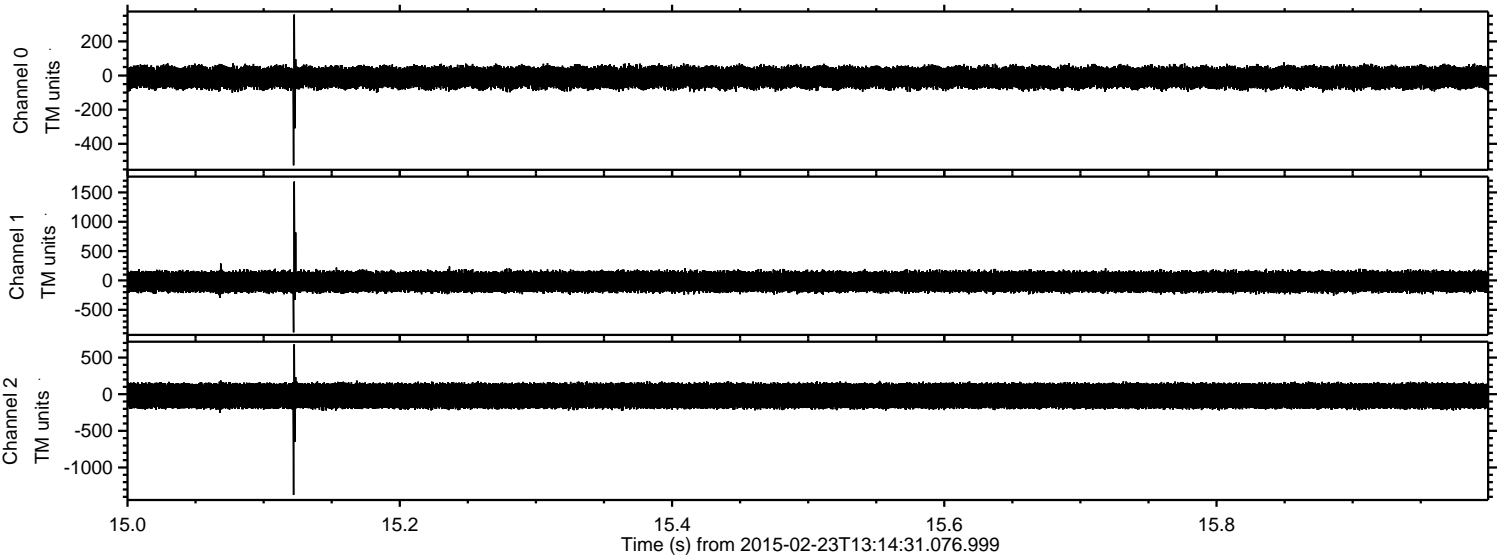
ELMAVAN 3D WAVEFORMS (Measured data sampled at 50 kHz) 49804 packets of 144 samples from 2015-02-23T13:14:31.076.999. Part 134/144

Processed Mon Mar 2 23:49:58 2015 by ELM ver.2012-10-06 from 001\_\_elm20150223\_131430\_\_dat00.bin





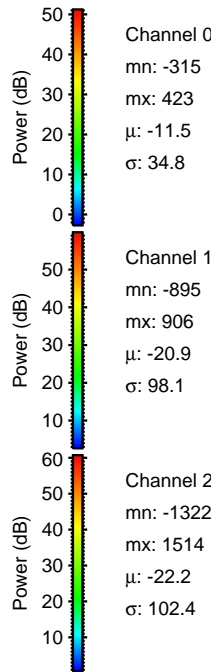
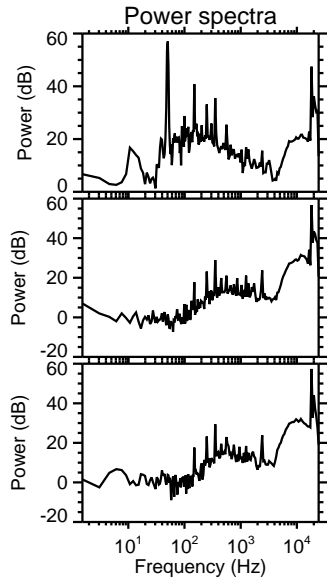
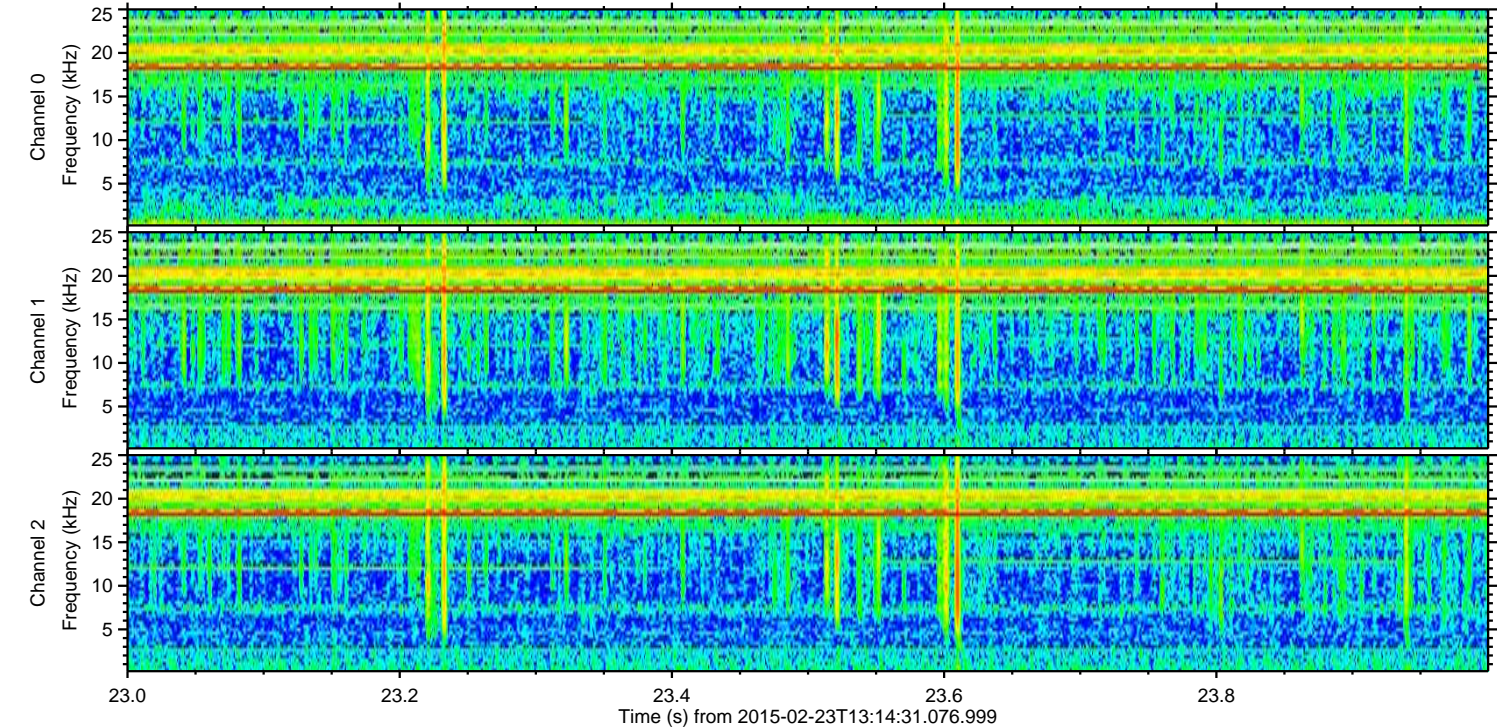
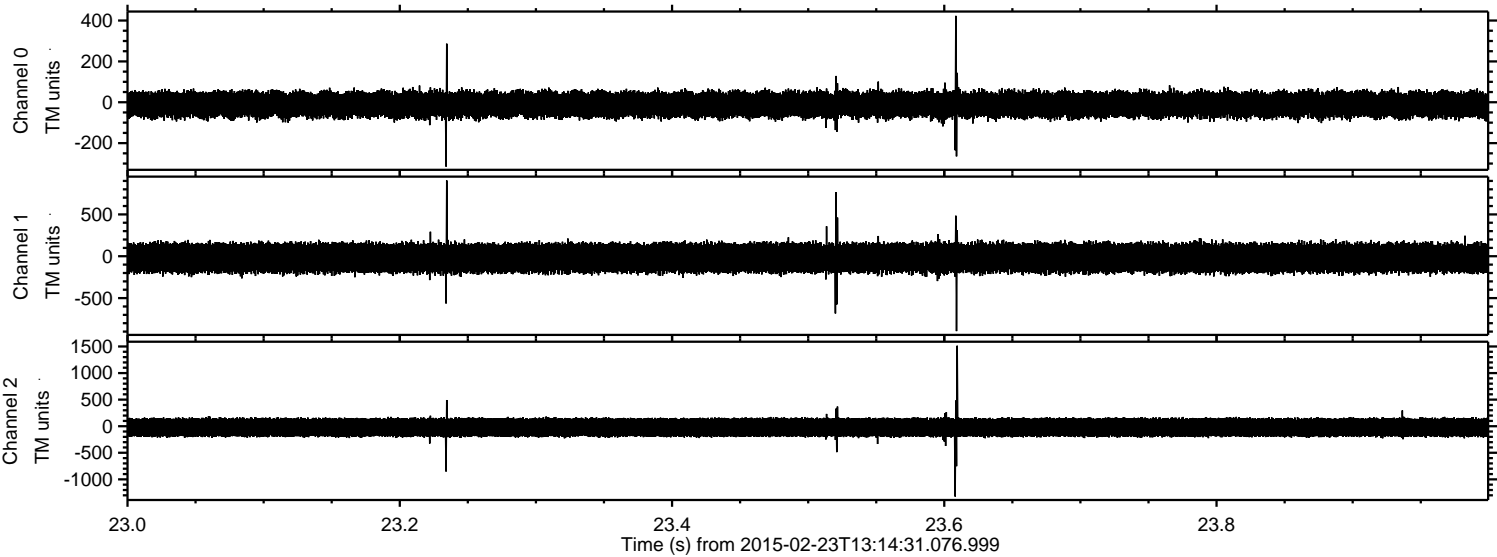
Processed Mon Mar 2 23:49:59 2015 by ELM ver.2012-10-06 from 001\_\_elm20150223\_131430\_\_dat00.bin





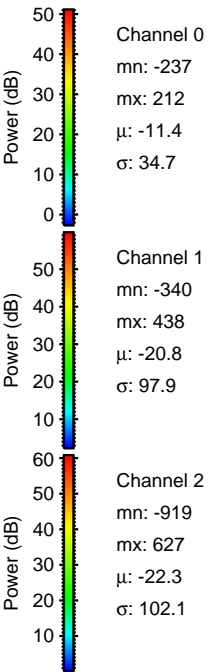
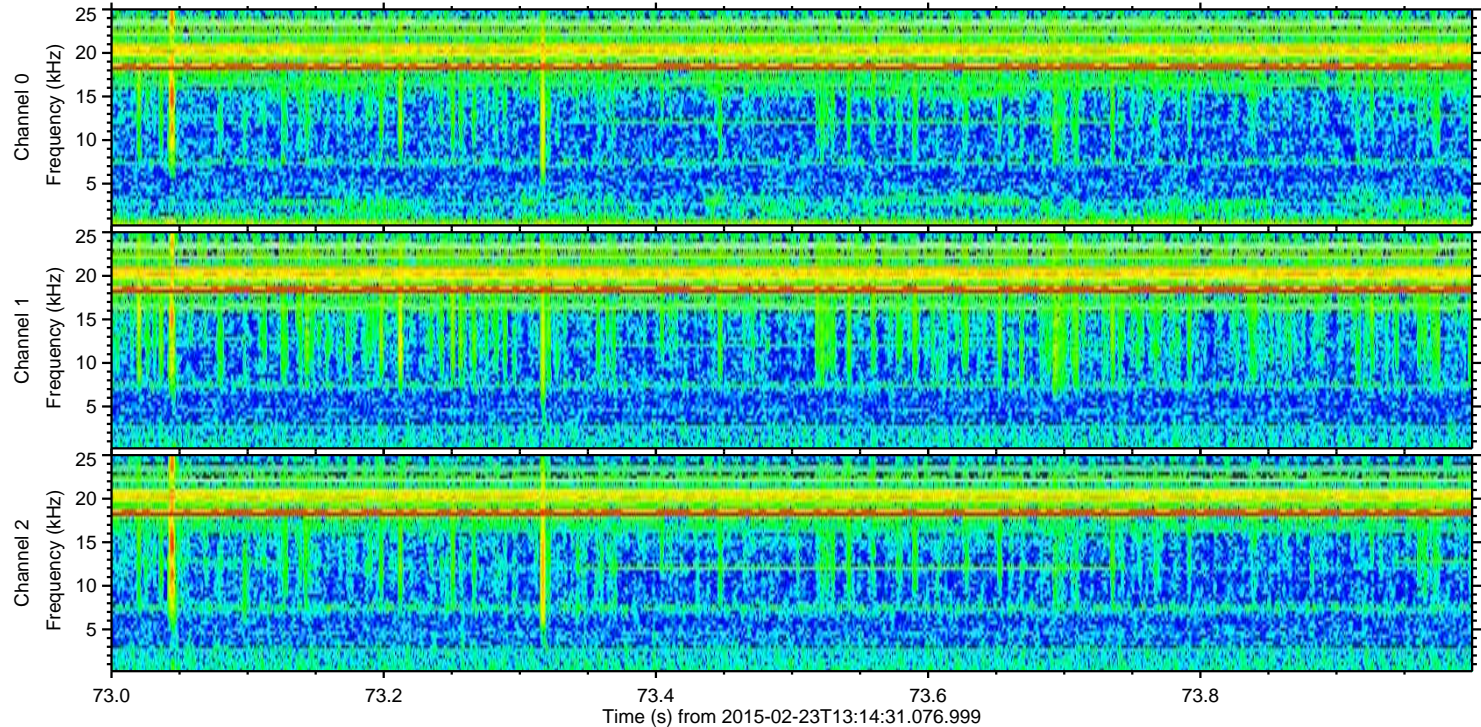
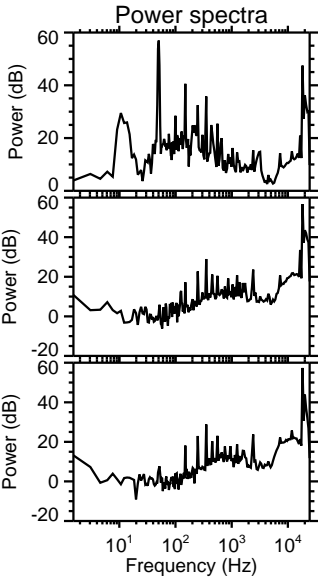
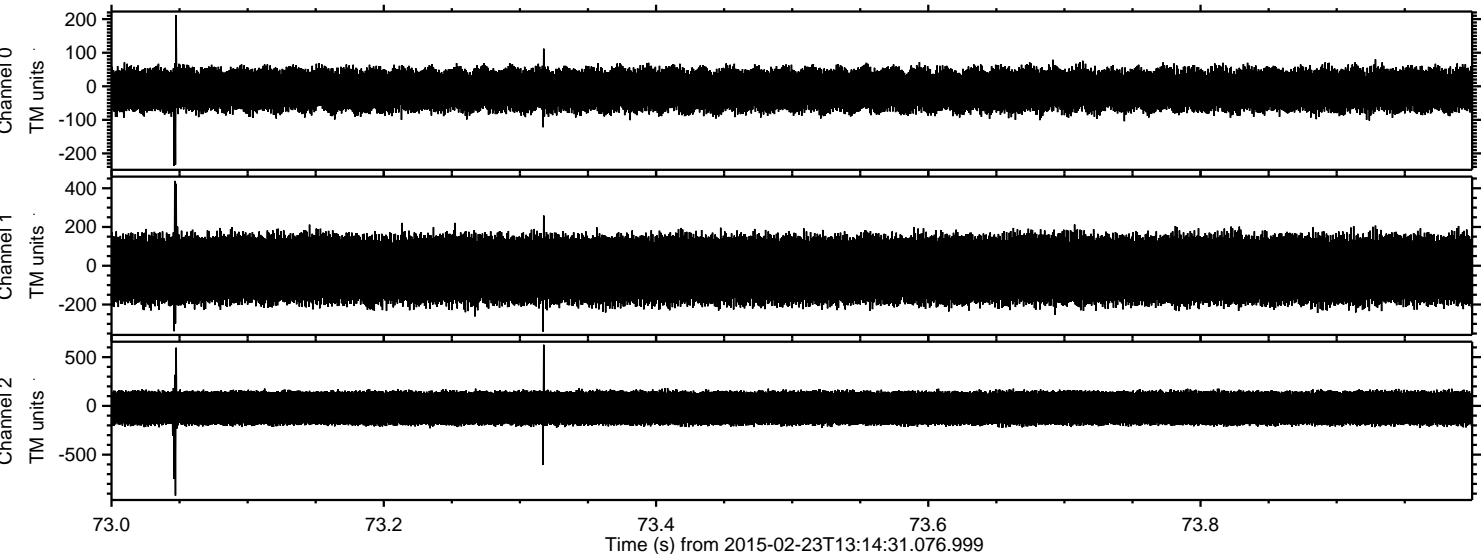
ELMAVAN 3D WAVEFORMS (Measured data sampled at 50 kHz) 49804 packets of 144 samples from 2015-02-23T13:14:31.076.999. Part 24/144

Processed Mon Mar 2 23:49:59 2015 by ELM ver.2012-10-06 from 001\_\_elm20150223\_131430\_\_dat00.bin



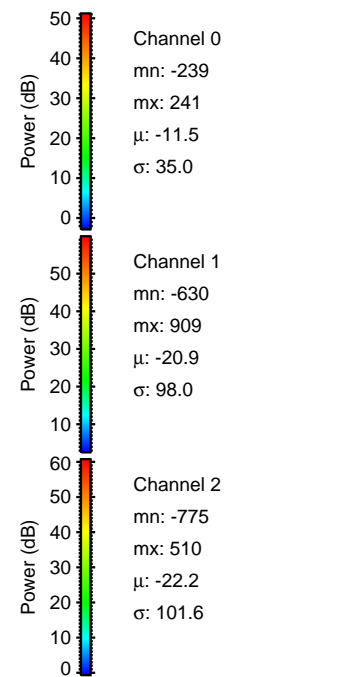
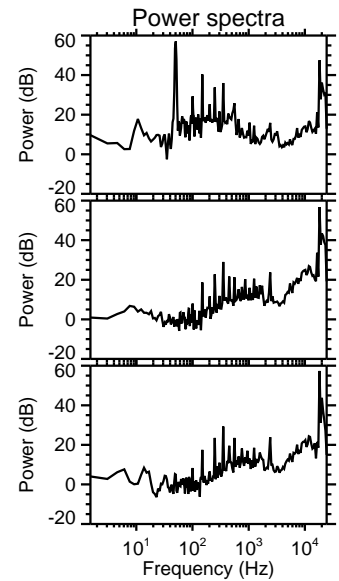
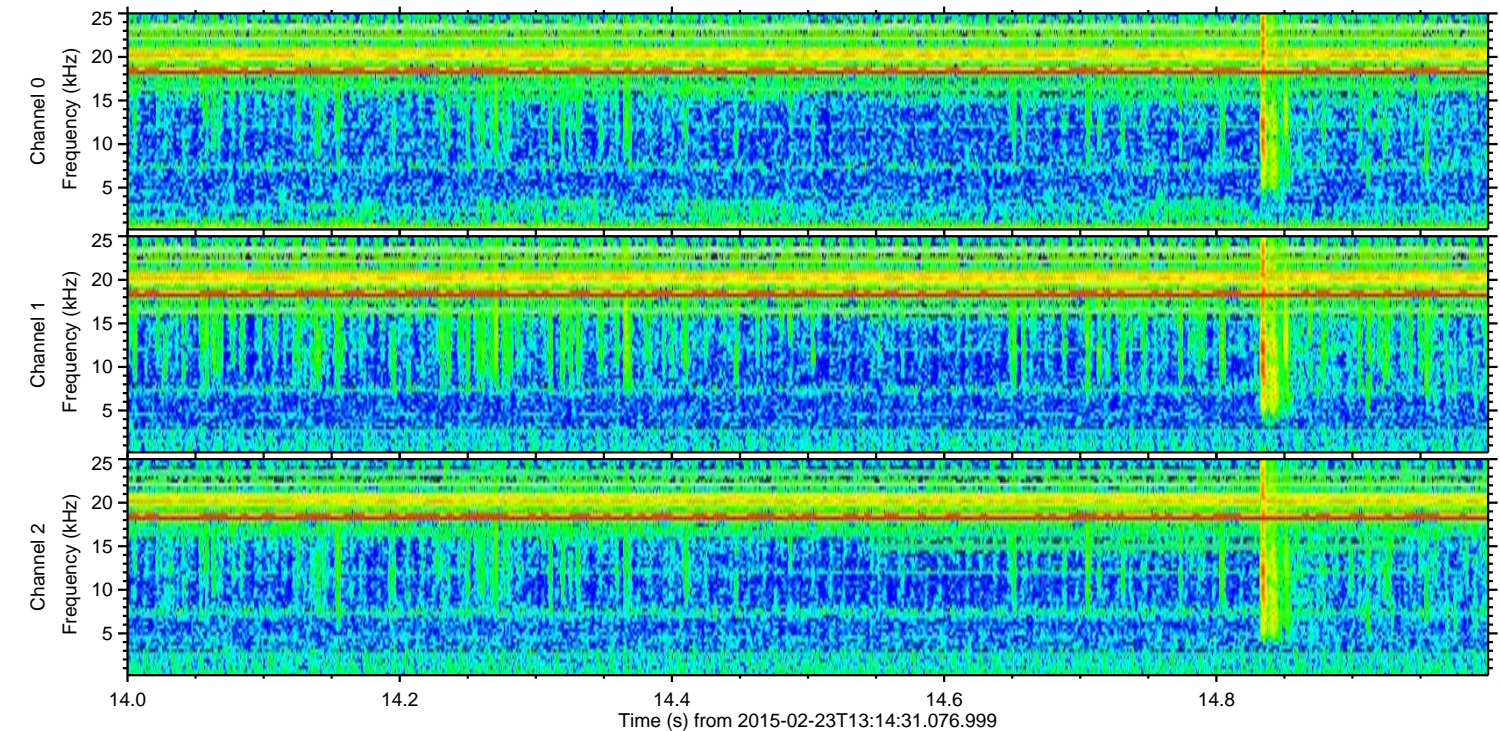
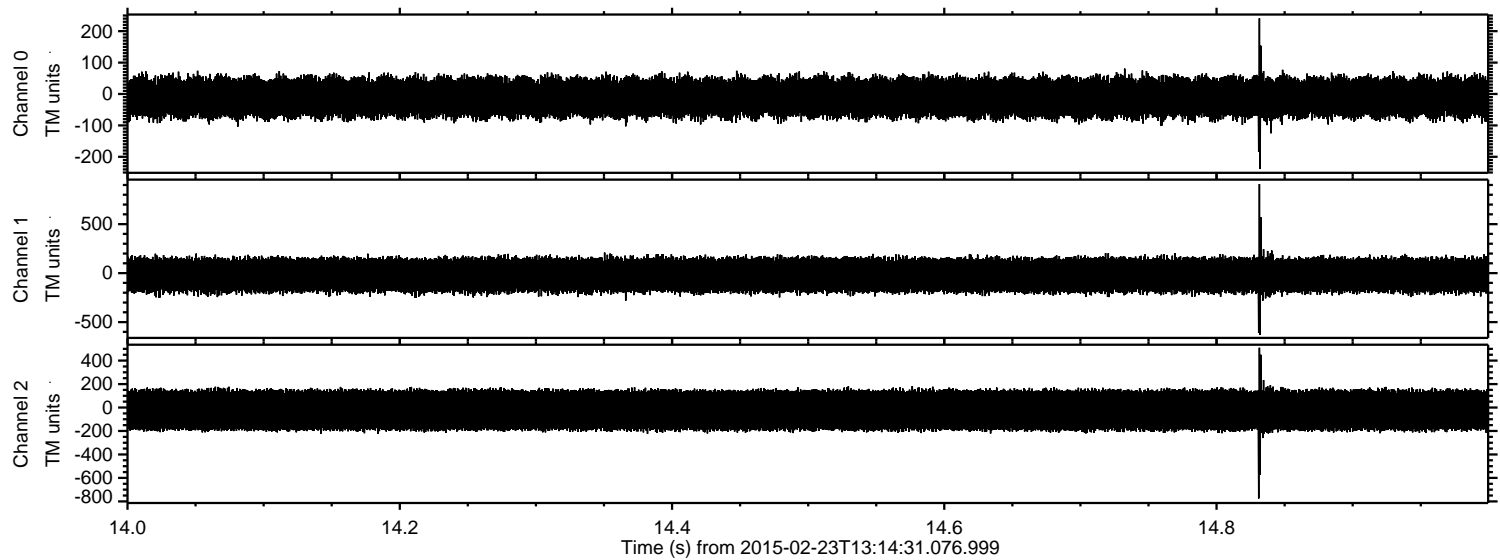


Processed Mon Mar 2 23:50:00 2015 by ELM ver.2012-10-06 from 001\_\_elm20150223\_131430\_\_dat00.bin





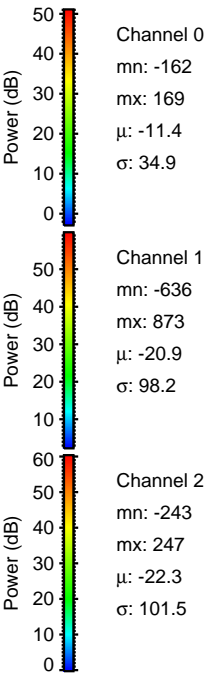
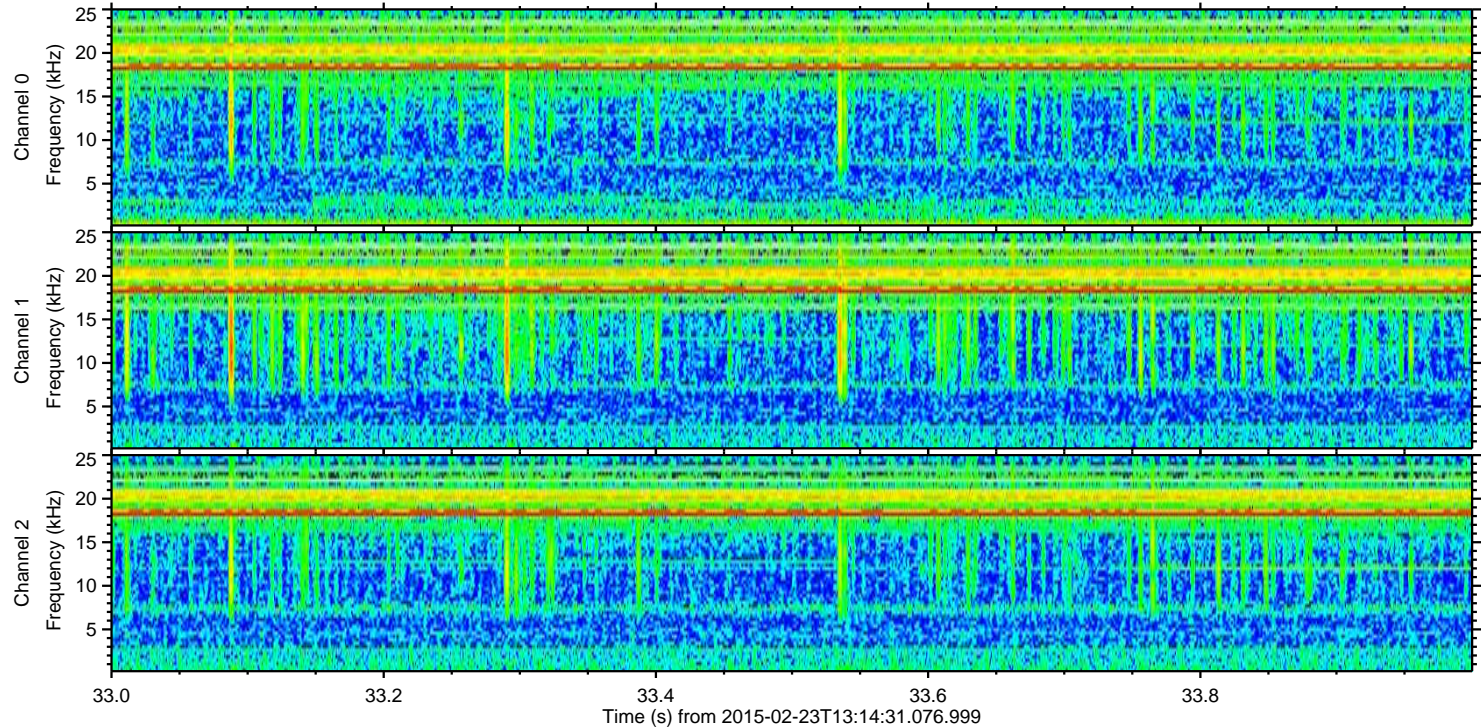
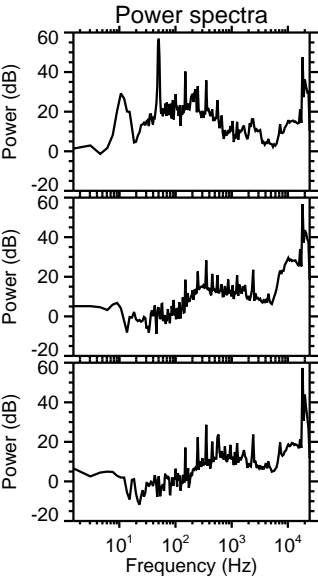
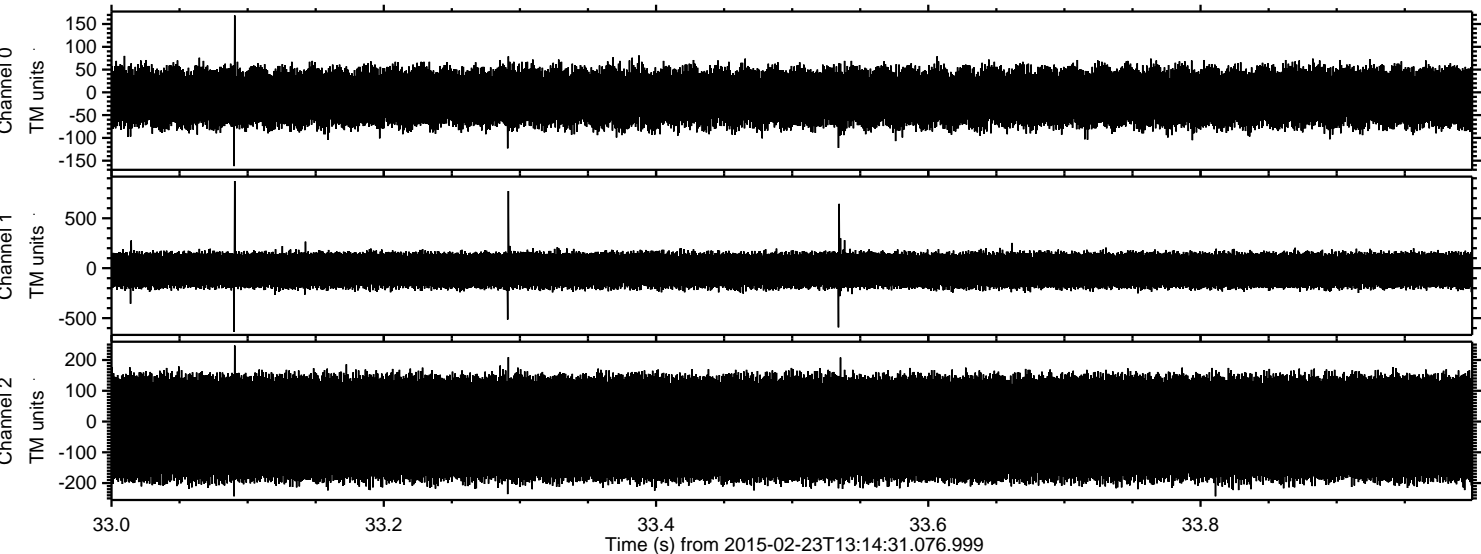
Processed Mon Mar 2 23:50:01 2015 by ELM ver.2012-10-06 from 001\_\_elm20150223\_131430\_\_dat00.bin





ELMAVAN 3D WAVEFORMS (Measured data sampled at 50 kHz) 49804 packets of 144 samples from 2015-02-23T13:14:31.076.999. Part 34/144

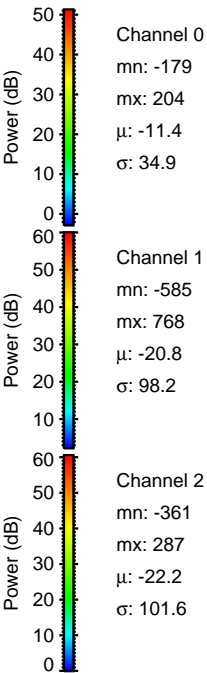
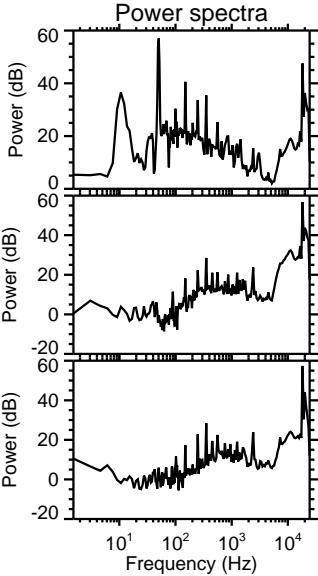
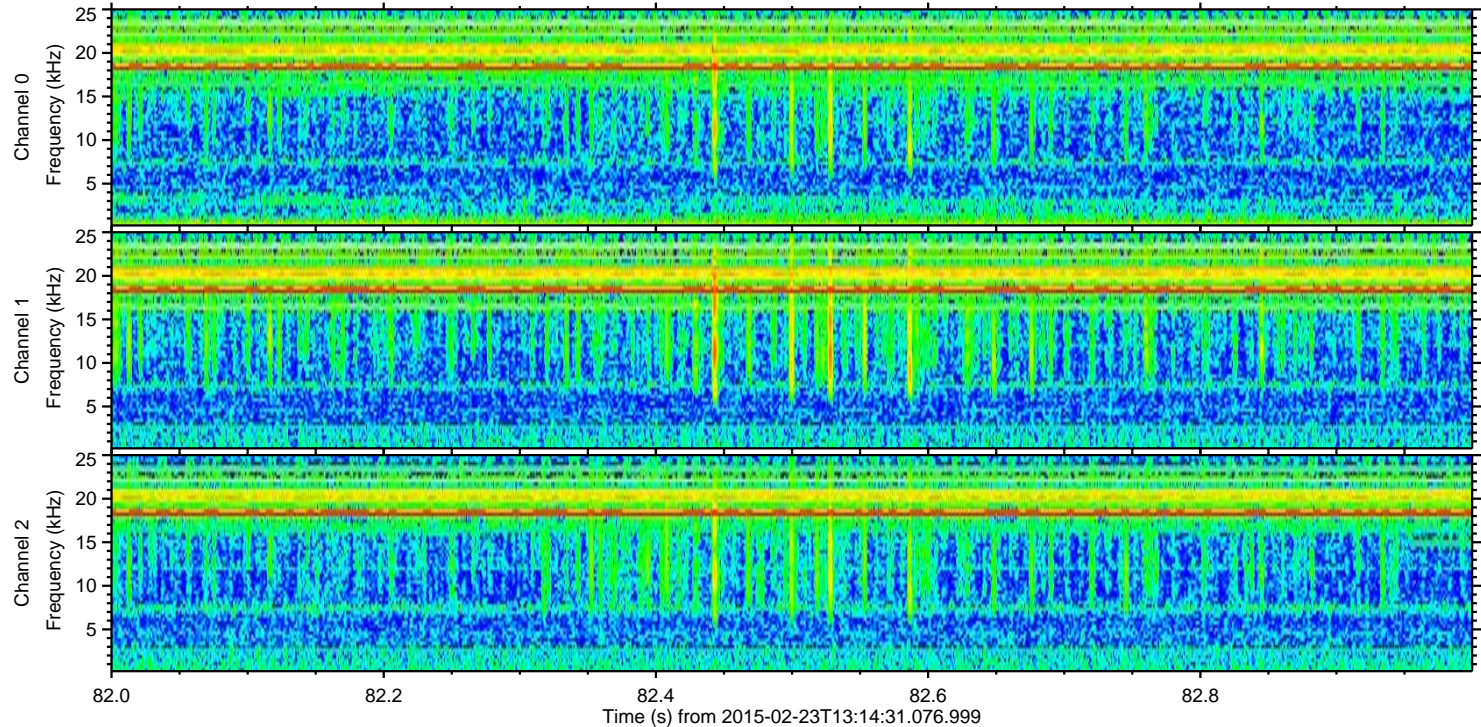
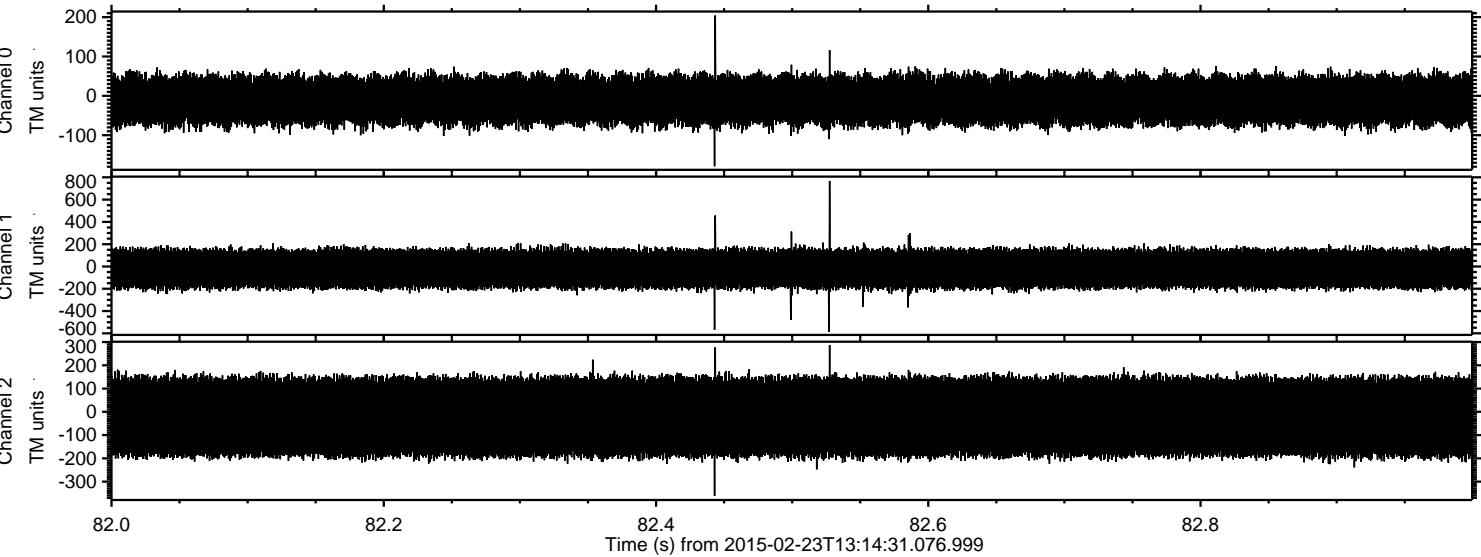
Processed Mon Mar 2 23:50:02 2015 by ELM ver.2012-10-06 from 001\_\_elm20150223\_131430\_\_dat00.bin





ELMAVAN 3D WAVEFORMS (Measured data sampled at 50 kHz) 49804 packets of 144 samples from 2015-02-23T13:14:31.076.999. Part 83/144

Processed Mon Mar 2 23:50:03 2015 by ELM ver.2012-10-06 from 001\_\_elm20150223\_131430\_\_dat00.bin



Channel 0  
mn: -179  
mx: 204  
 $\mu$ : -11.4  
 $\sigma$ : 34.9

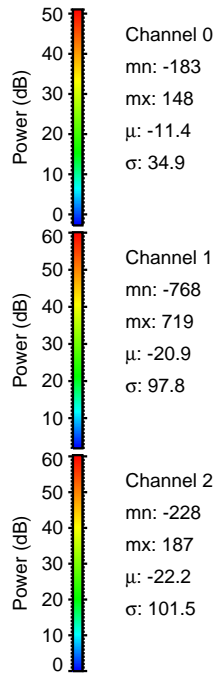
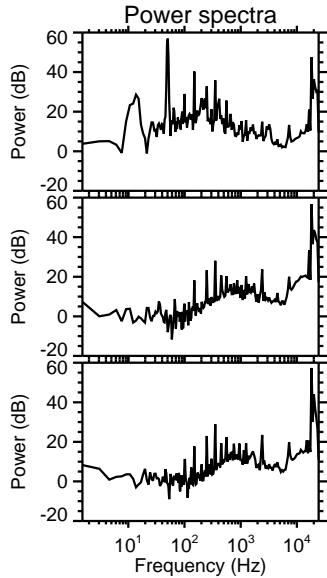
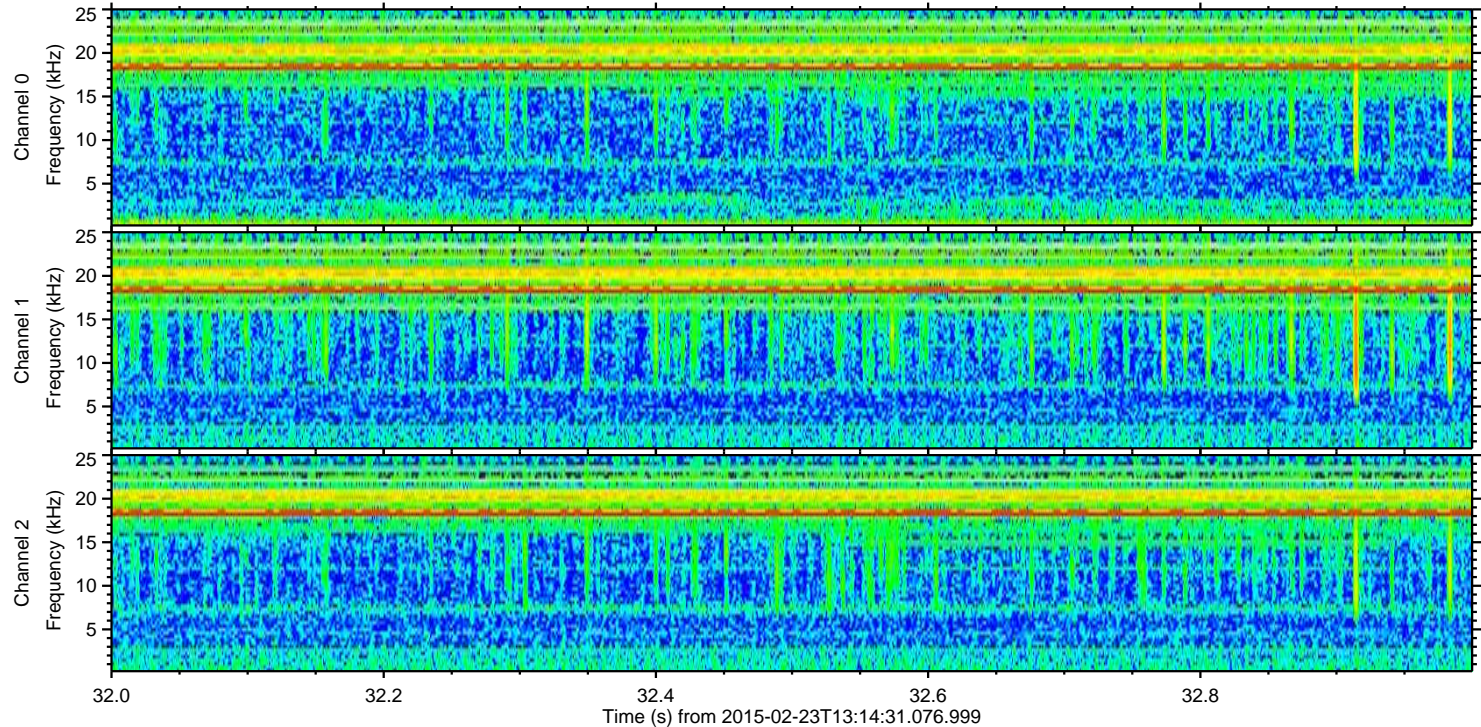
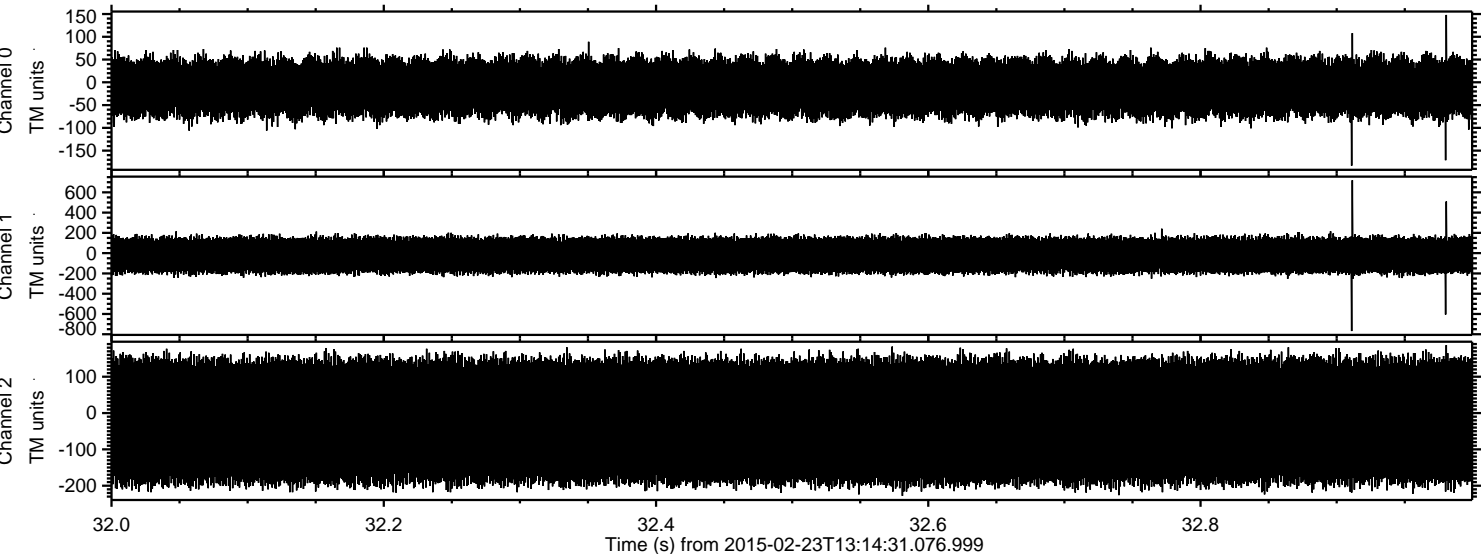
Channel 1  
mn: -585  
mx: 768  
 $\mu$ : -20.8  
 $\sigma$ : 98.2

Channel 2  
mn: -361  
mx: 287  
 $\mu$ : -22.2  
 $\sigma$ : 101.6



ELMAVAN 3D WAVEFORMS (Measured data sampled at 50 kHz) 49804 packets of 144 samples from 2015-02-23T13:14:31.076.999. Part 33/144

Processed Mon Mar 2 23:50:04 2015 by ELM ver.2012-10-06 from 001\_\_elm20150223\_131430\_\_dat00.bin





ELMAVAN 3D WAVEFORMS (Measured data sampled at 50 kHz) 49804 packets of 144 samples from 2015-02-23T13:14:31.076.999. Part 133/144

Processed Mon Mar 2 23:50:05 2015 by ELM ver.2012-10-06 from 001\_\_elm20150223\_131430\_\_dat00.bin

