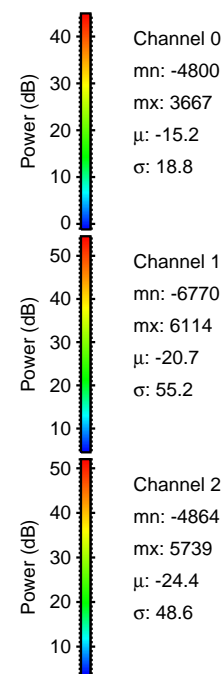
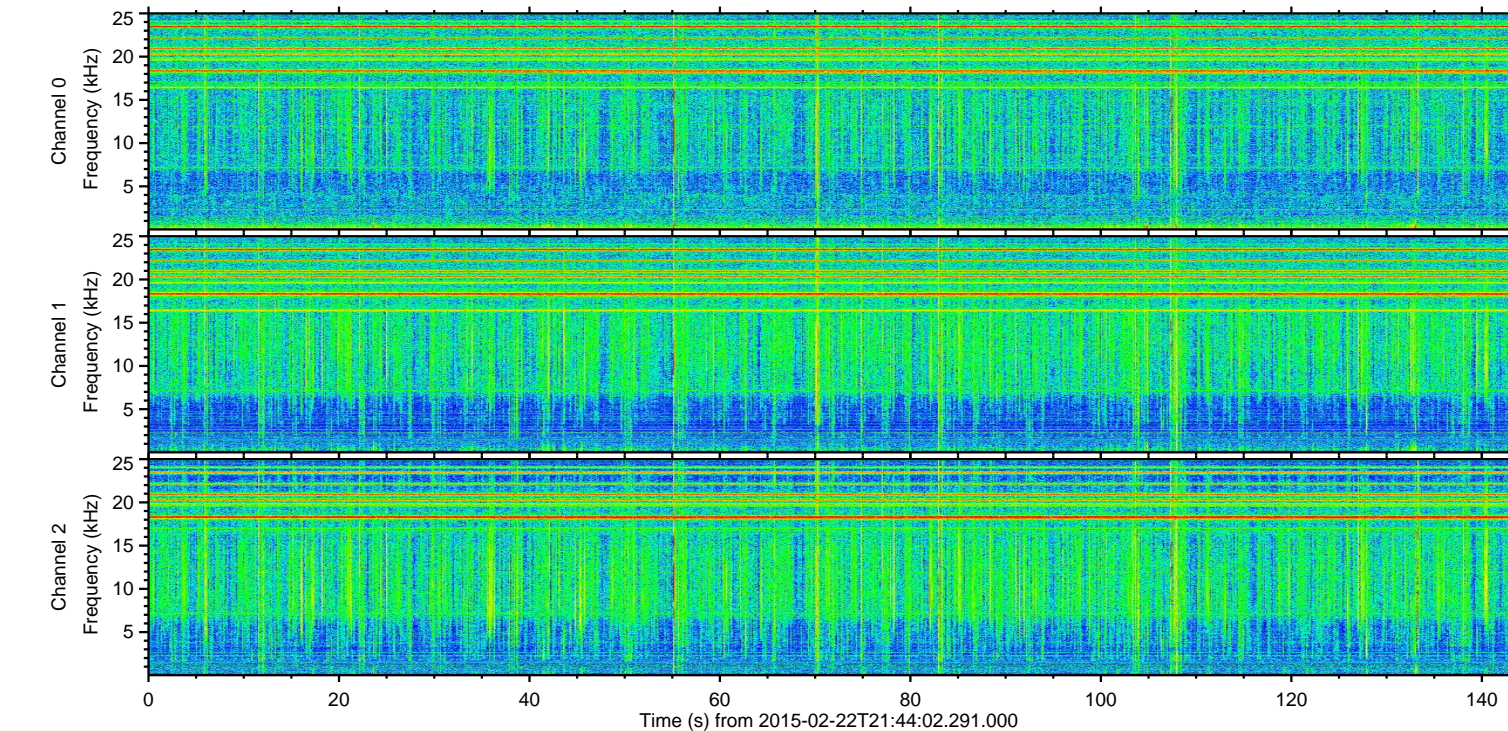
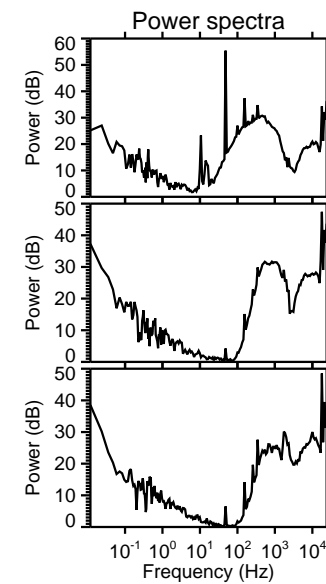
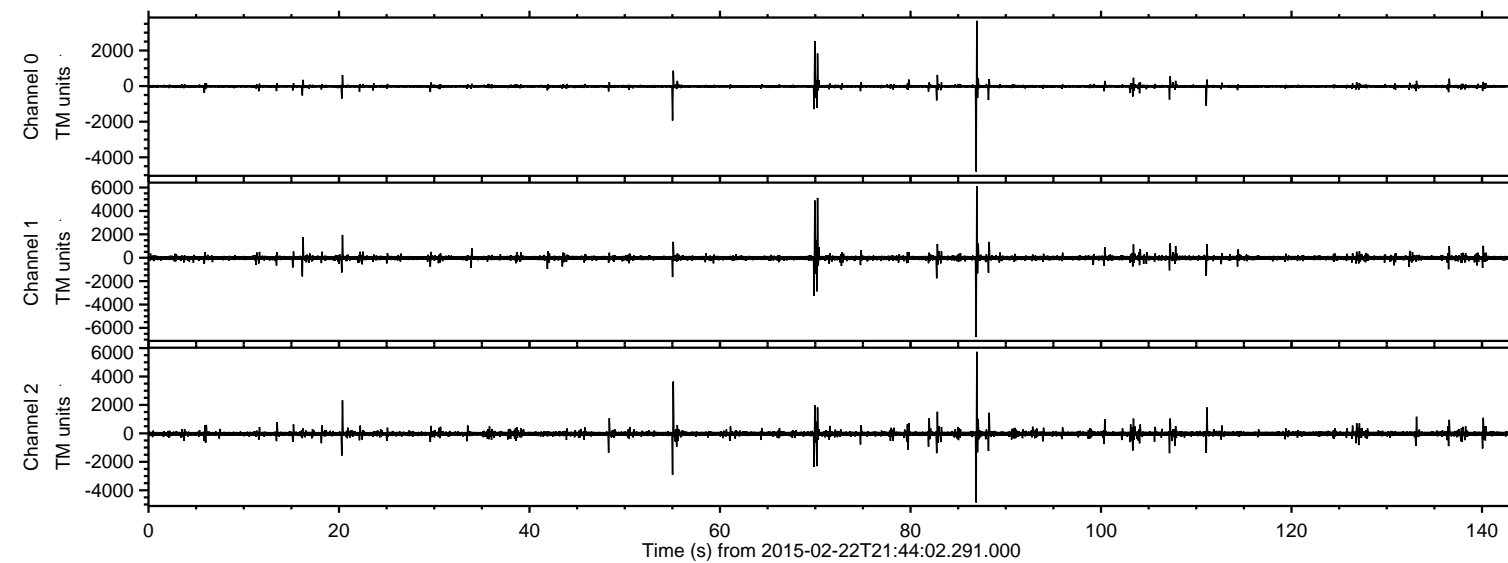
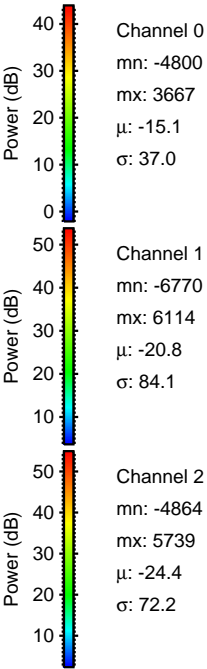
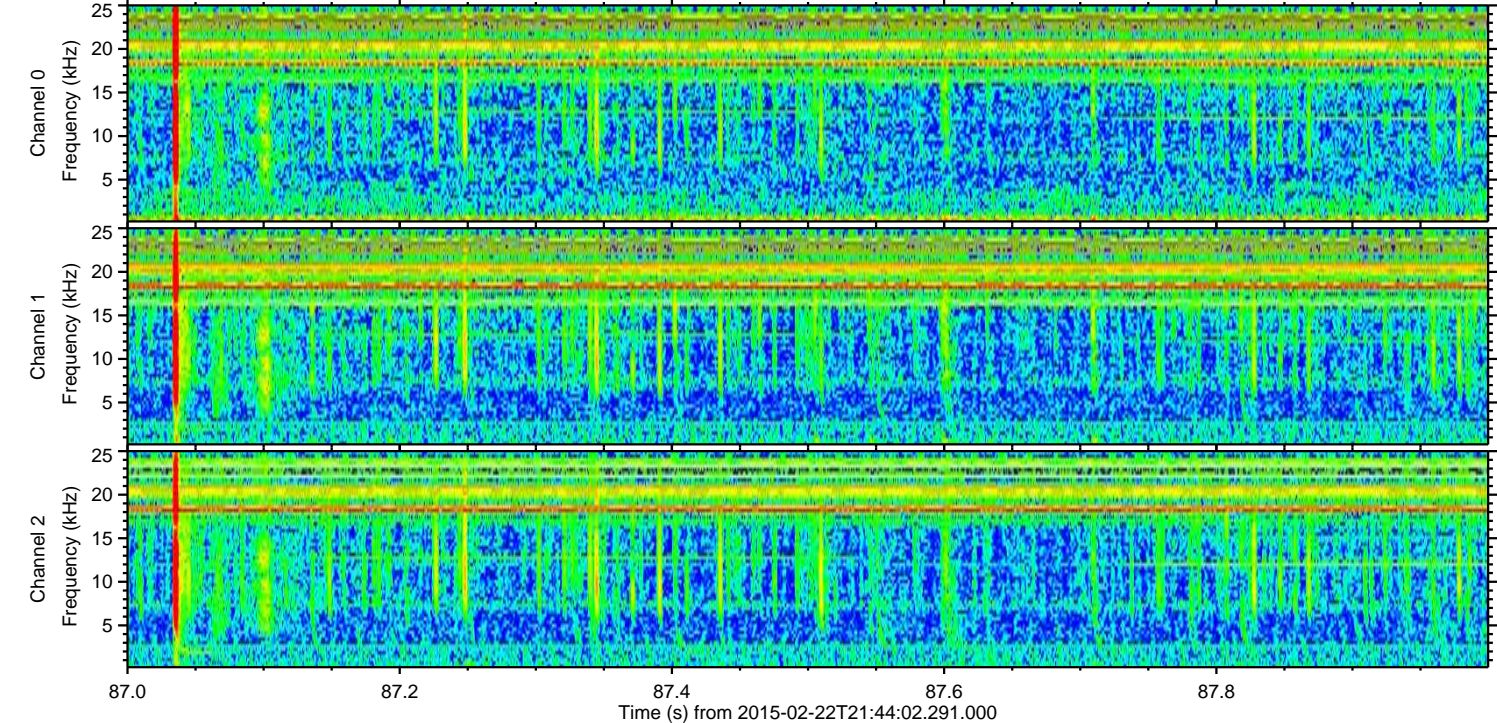
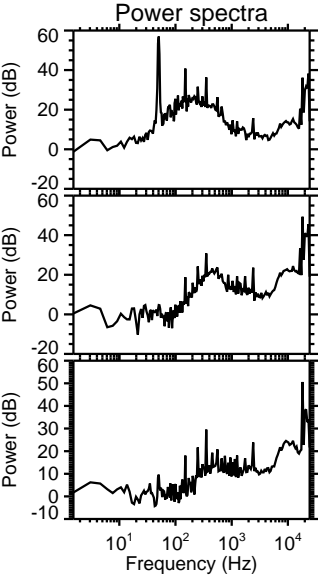
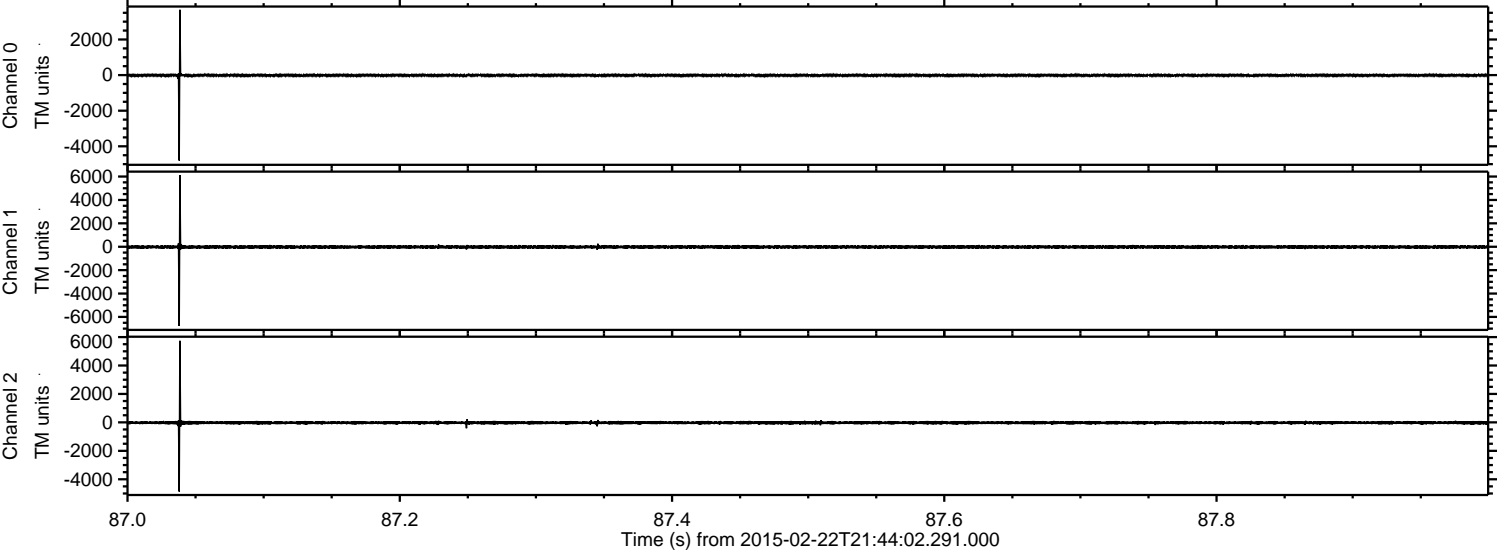


ELMAVAN 3D WAVEFORMS (Measured data sampled at 50 kHz) 49625 packets of 144 samples from 2015-02-22T21:44:02.291.000.

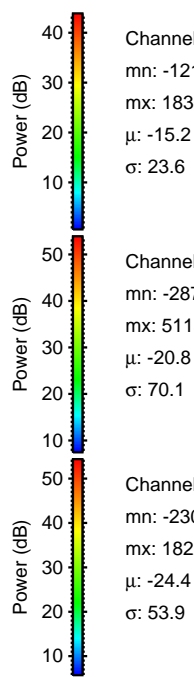
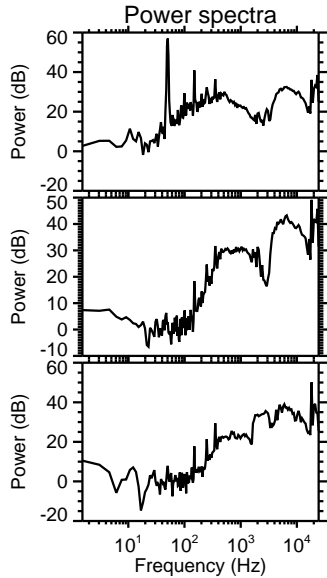
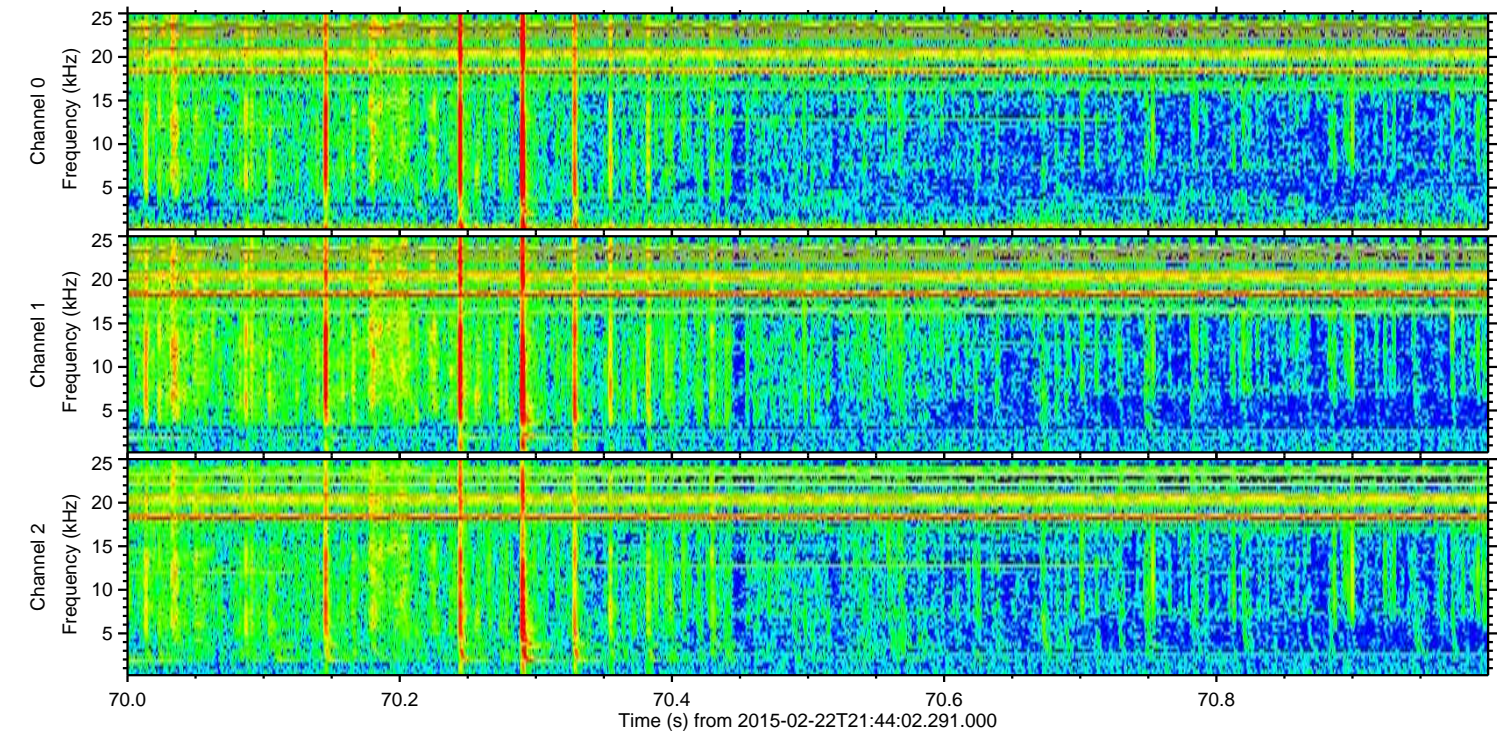
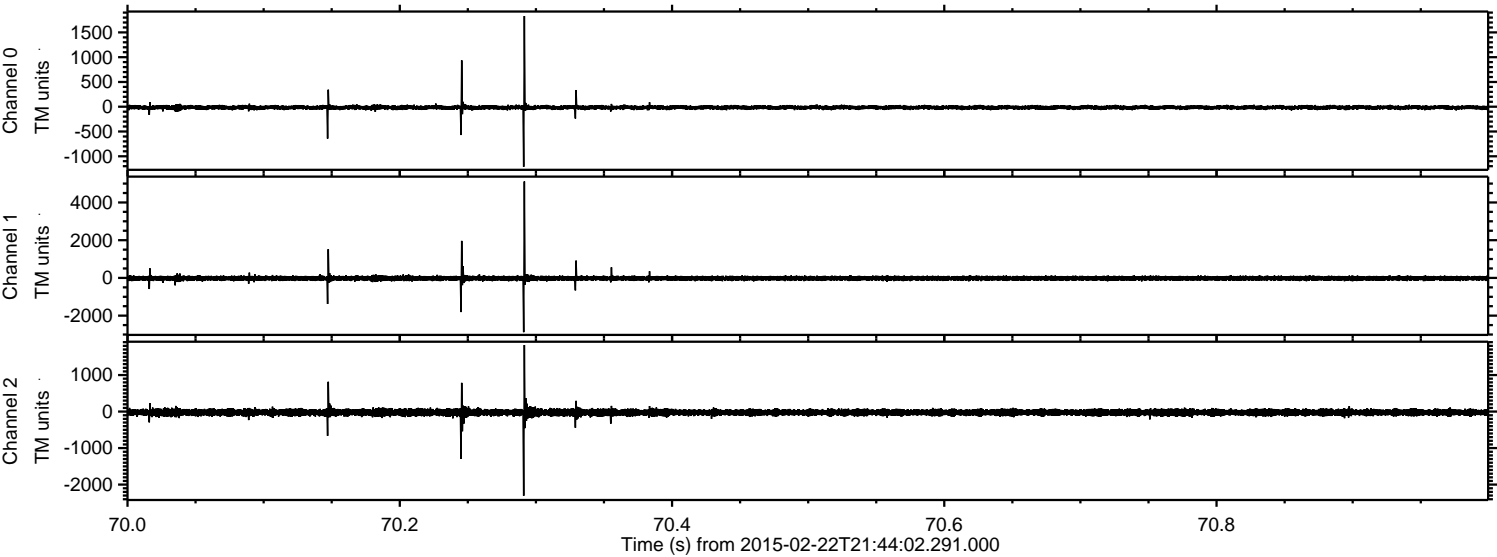
Processed Mon Mar 2 17:27:51 2015 by ELM ver.2012-10-06 from 001__elm20150222_214401__dat00.bin



Processed Mon Mar 2 17:28:06 2015 by ELM ver.2012-10-06 from 001__elm20150222_214401__dat00.bin

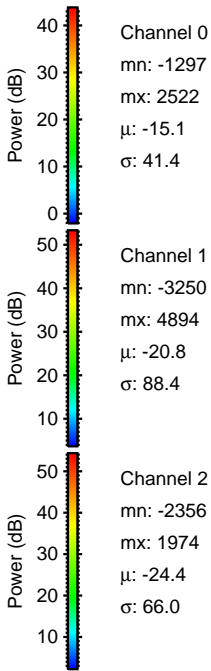
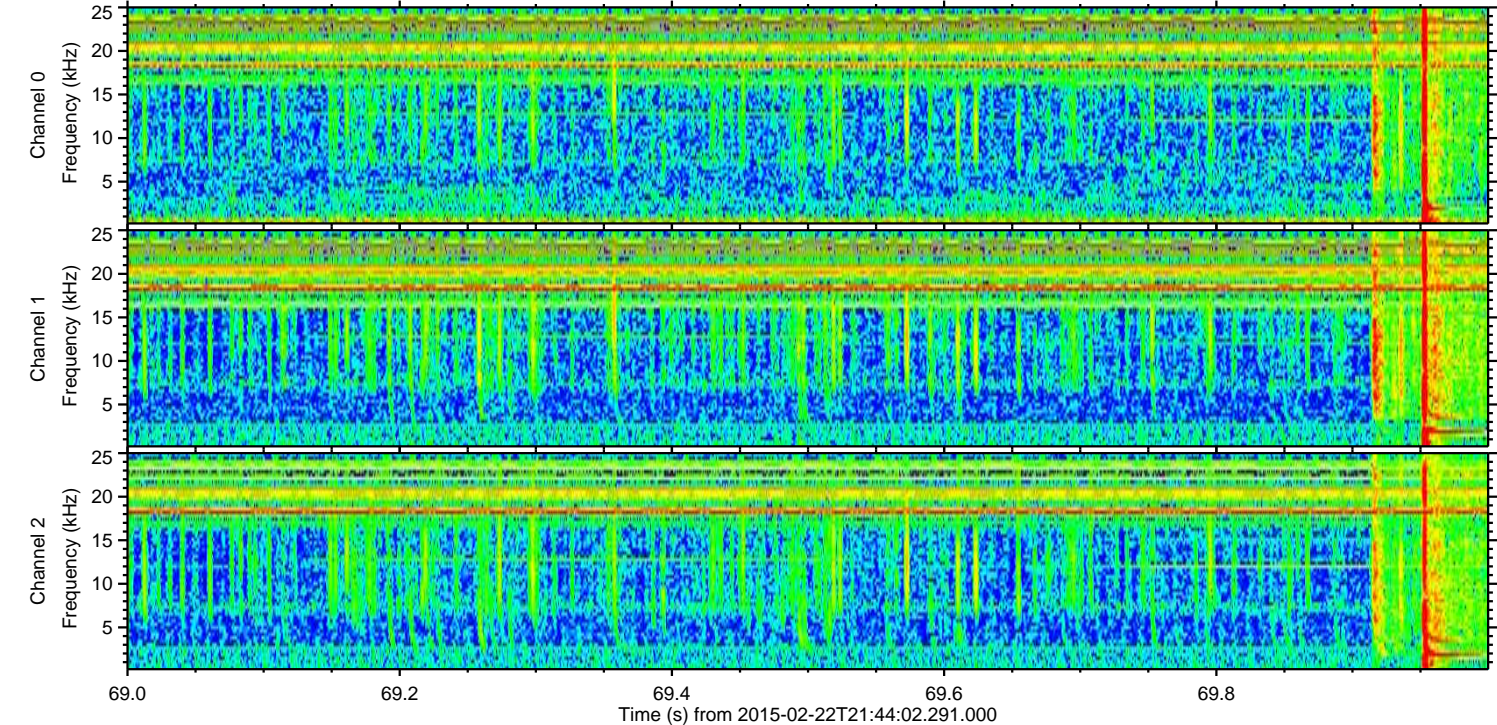
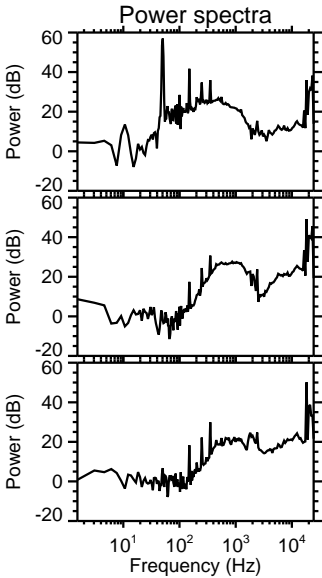
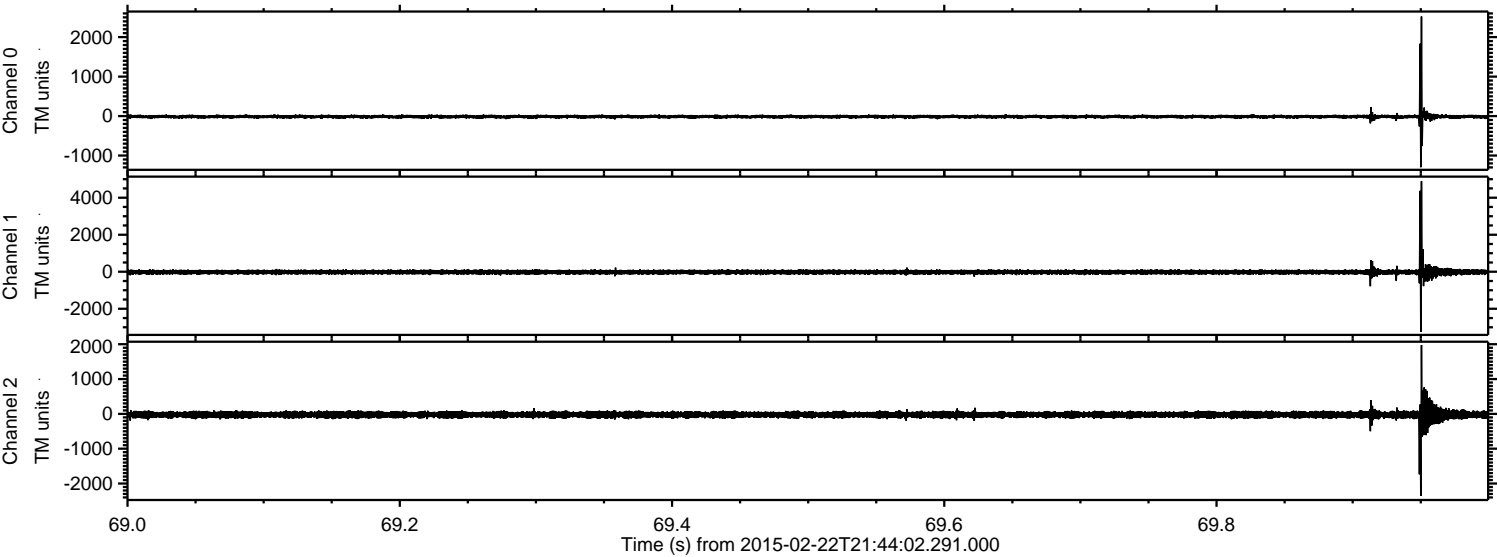


Processed Mon Mar 2 17:28:07 2015 by ELM ver.2012-10-06 from 001__elm20150222_214401__dat00.bin



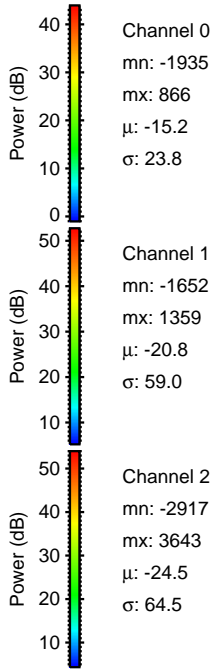
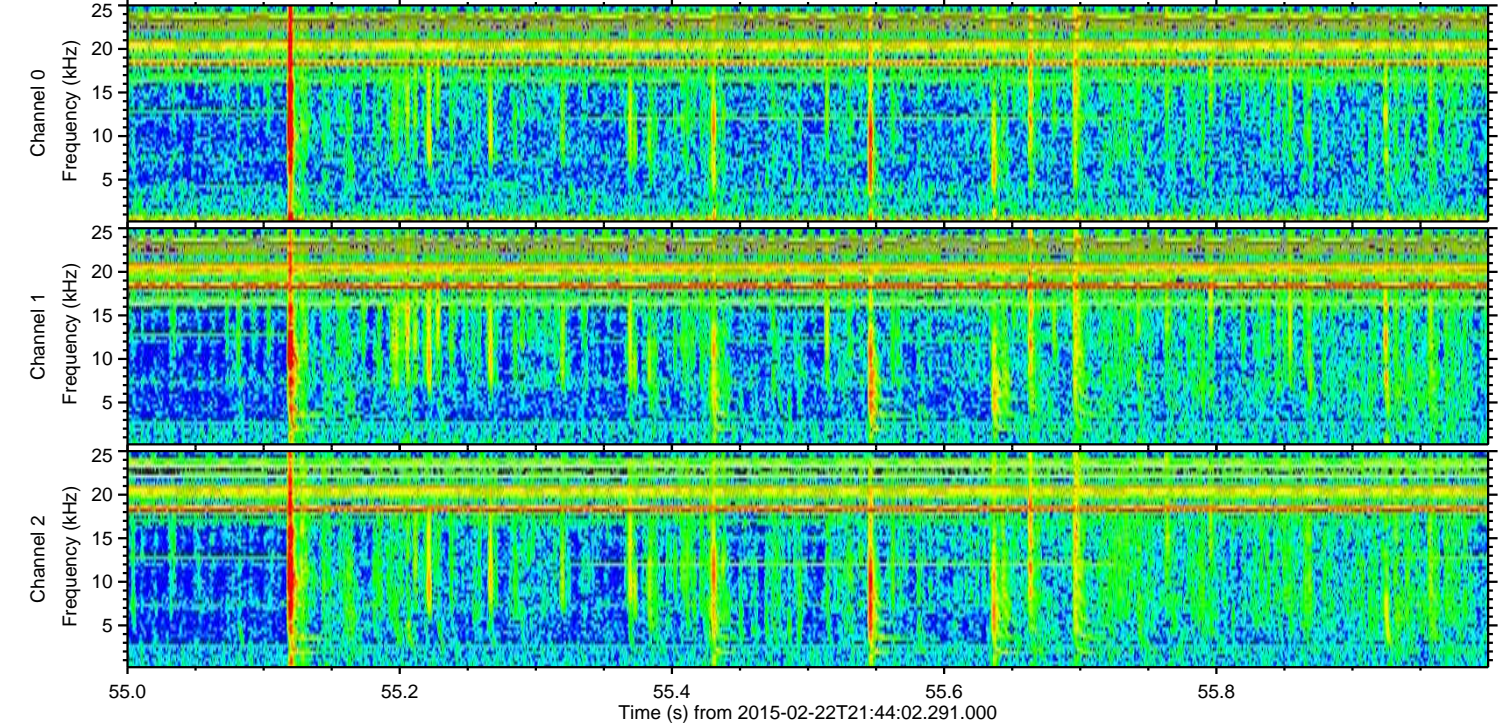
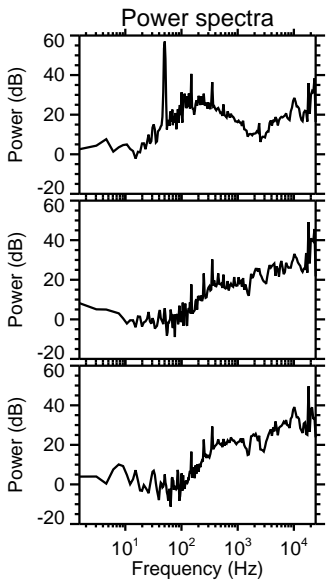
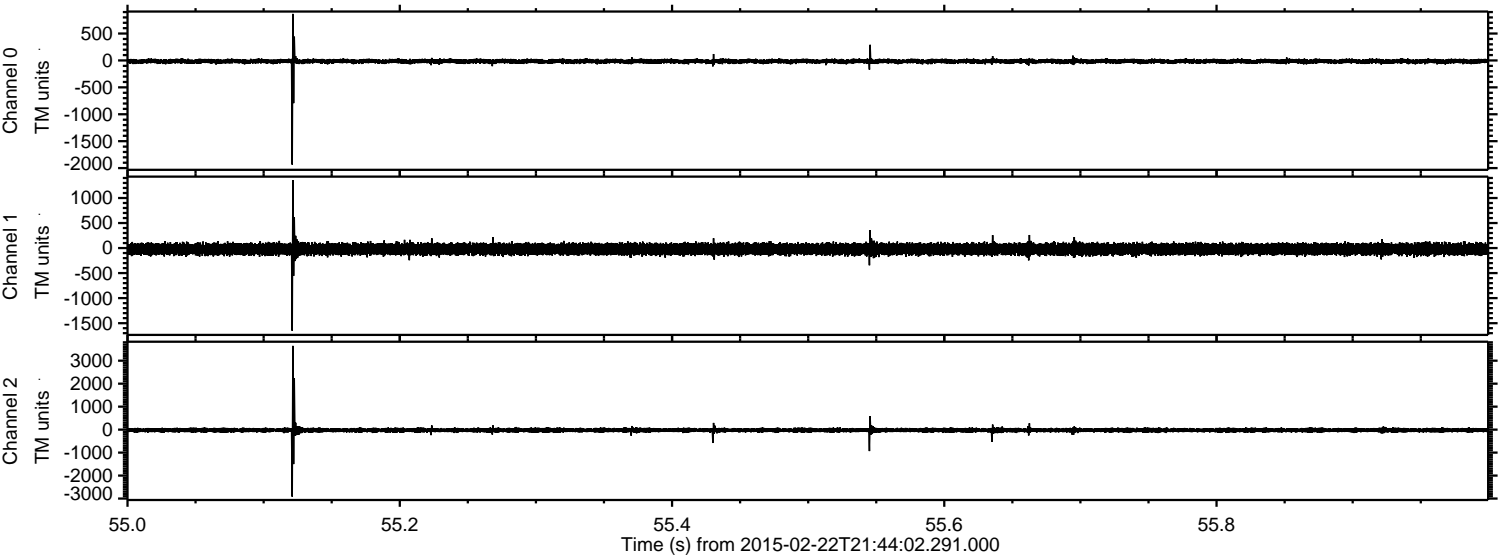
ELMAVAN 3D WAVEFORMS (Measured data sampled at 50 kHz) 49625 packets of 144 samples from 2015-02-22T21:44:02.291.000. Part 70/143

Processed Mon Mar 2 17:28:08 2015 by ELM ver.2012-10-06 from 001__elm20150222_214401__dat00.bin



ELMAVAN 3D WAVEFORMS (Measured data sampled at 50 kHz) 49625 packets of 144 samples from 2015-02-22T21:44:02.291.000. Part 56/143

Processed Mon Mar 2 17:28:09 2015 by ELM ver.2012-10-06 from 001__elm20150222_214401__dat00.bin

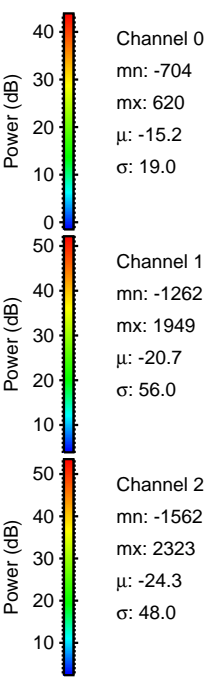
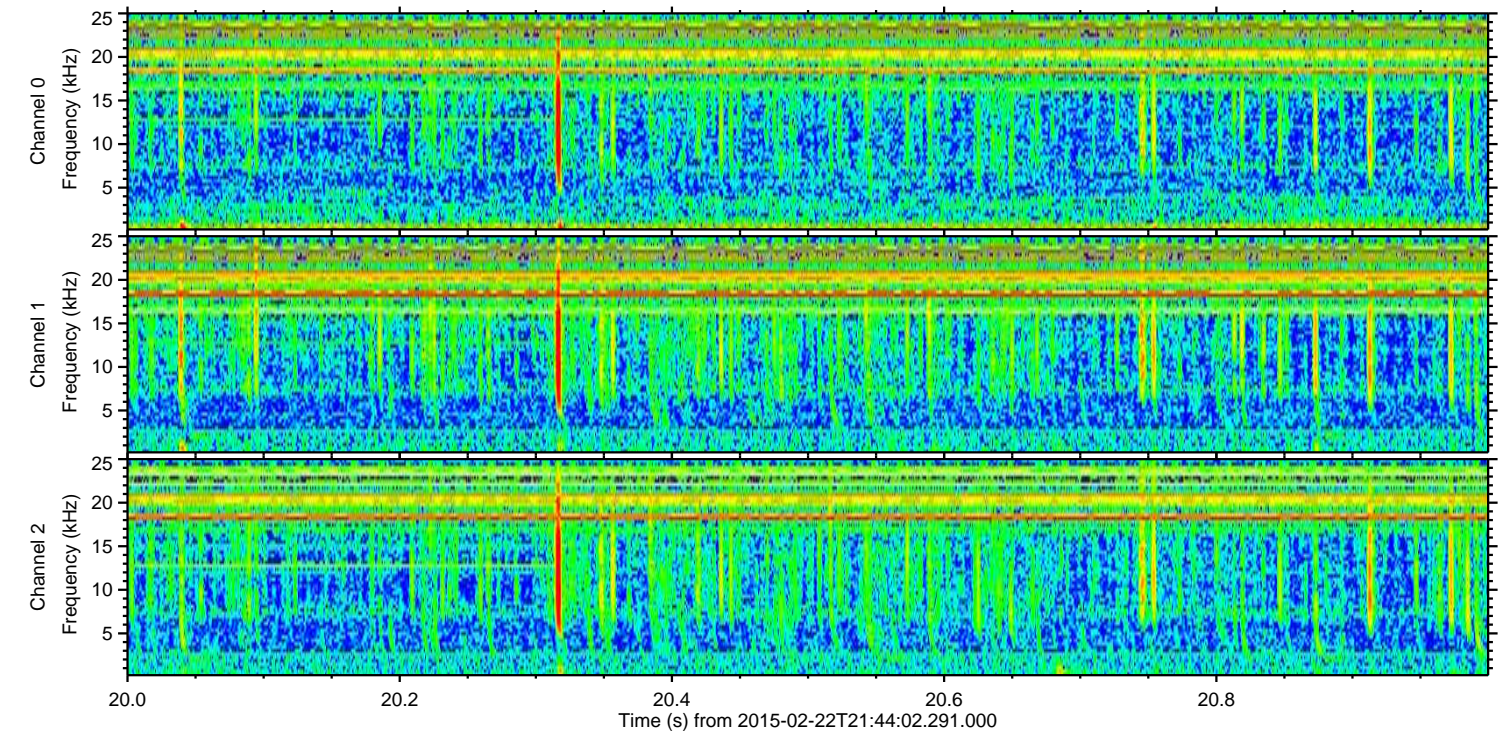
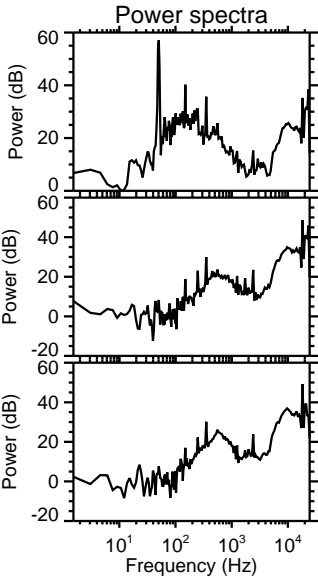
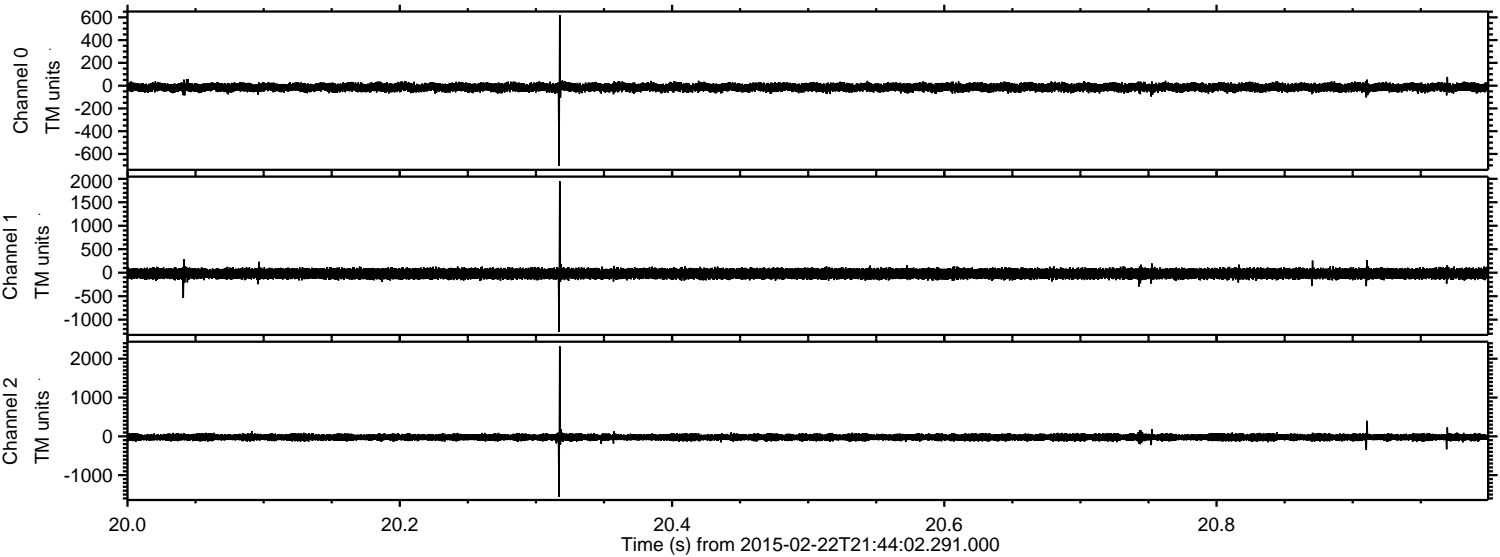


Channel 0
mn: -1935
mx: 866
 μ : -15.2
 σ : 23.8

Channel 1
mn: -1652
mx: 1359
 μ : -20.8
 σ : 59.0

Channel 2
mn: -2917
mx: 3643
 μ : -24.5
 σ : 64.5

Processed Mon Mar 2 17:28:10 2015 by ELM ver.2012-10-06 from 001__elm20150222_214401__dat00.bin



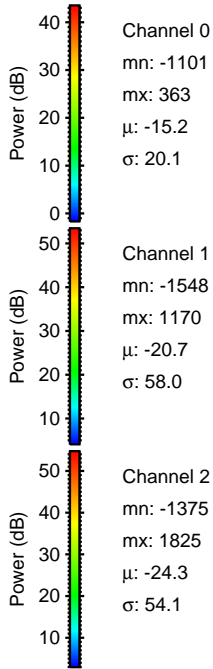
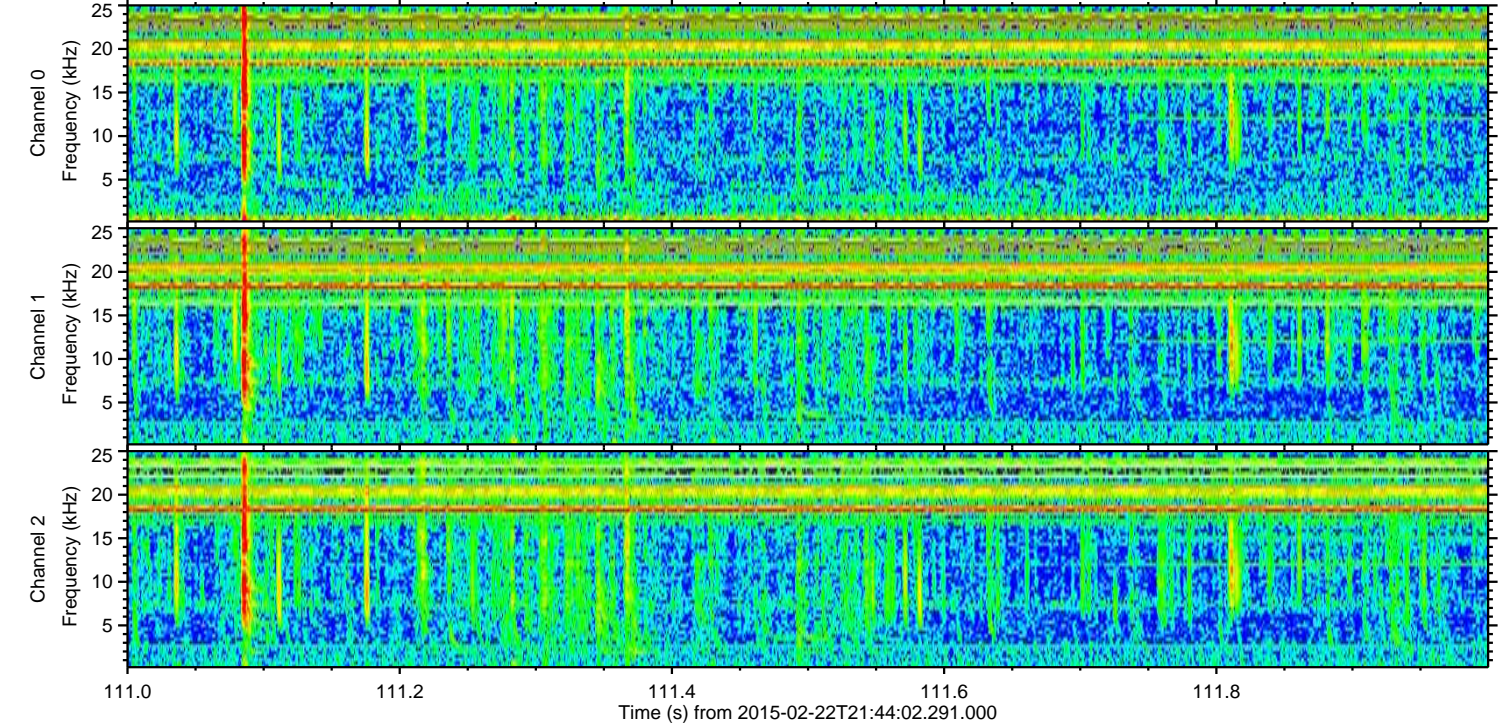
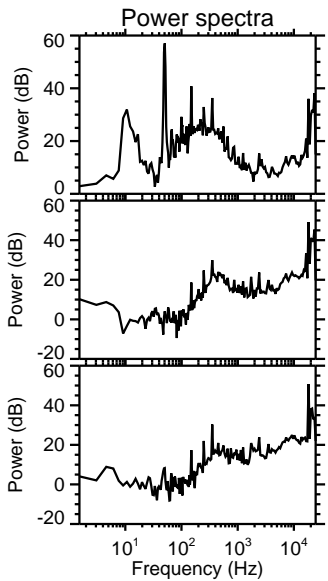
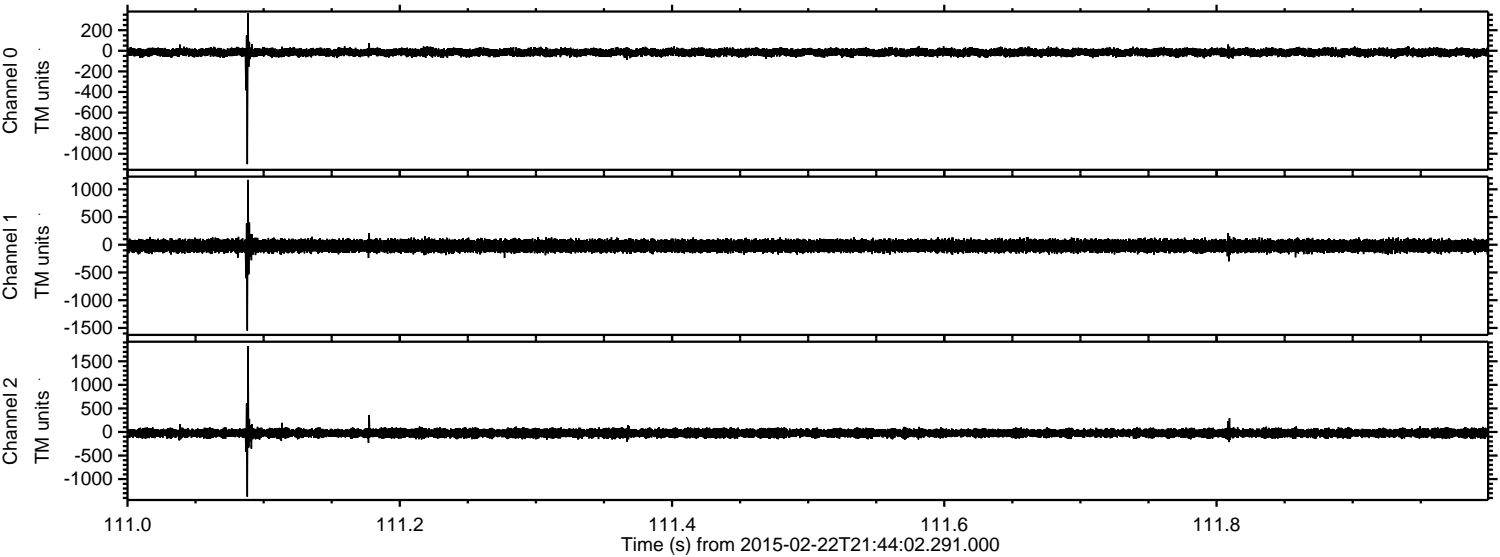
Channel 0
mn: -704
mx: 620
 μ : -15.2
 σ : 19.0

Channel 1
mn: -1262
mx: 1949
 μ : -20.7
 σ : 56.0

Channel 2
mn: -1562
mx: 2323
 μ : -24.3
 σ : 48.0

ELMAVAN 3D WAVEFORMS (Measured data sampled at 50 kHz) 49625 packets of 144 samples from 2015-02-22T21:44:02.291.000. Part 112/143

Processed Mon Mar 2 17:28:12 2015 by ELM ver.2012-10-06 from 001__elm20150222_214401__dat00.bin

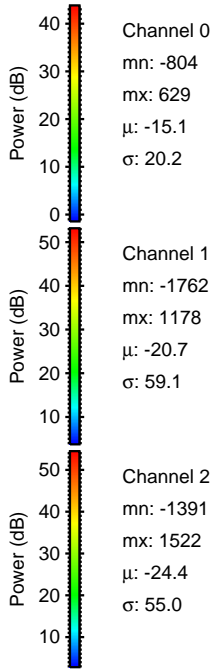
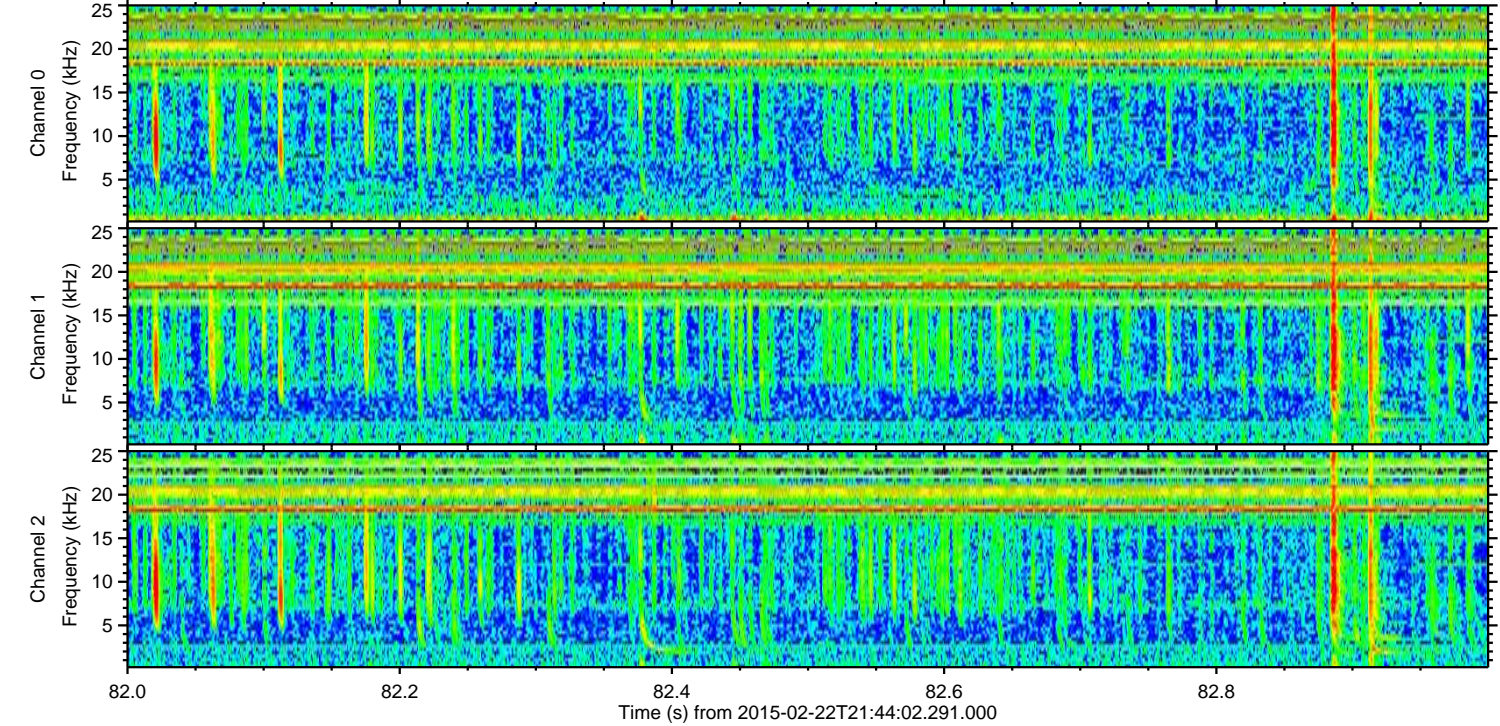
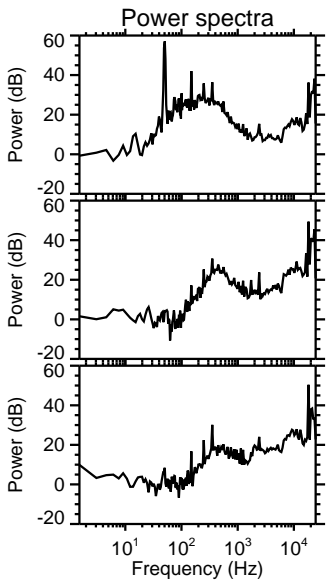
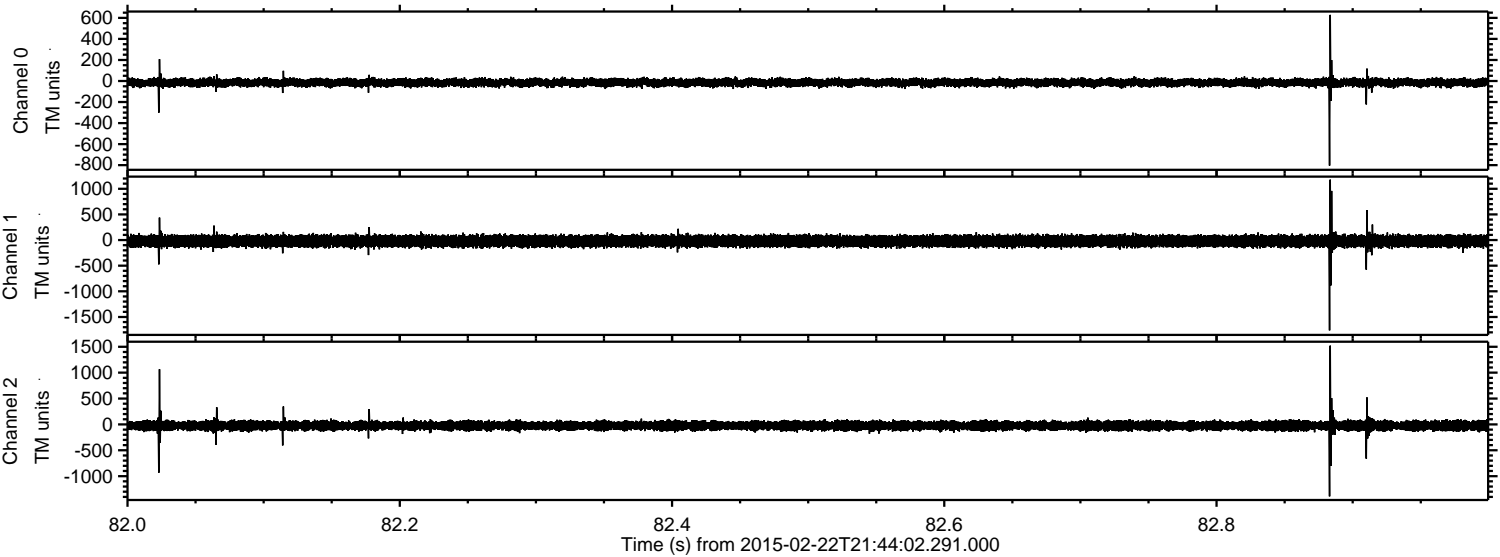


Channel 0
mn: -1101
mx: 363
 μ : -15.2
 σ : 20.1

Channel 1
mn: -1548
mx: 1170
 μ : -20.7
 σ : 58.0

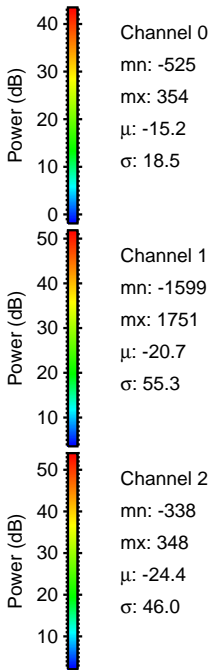
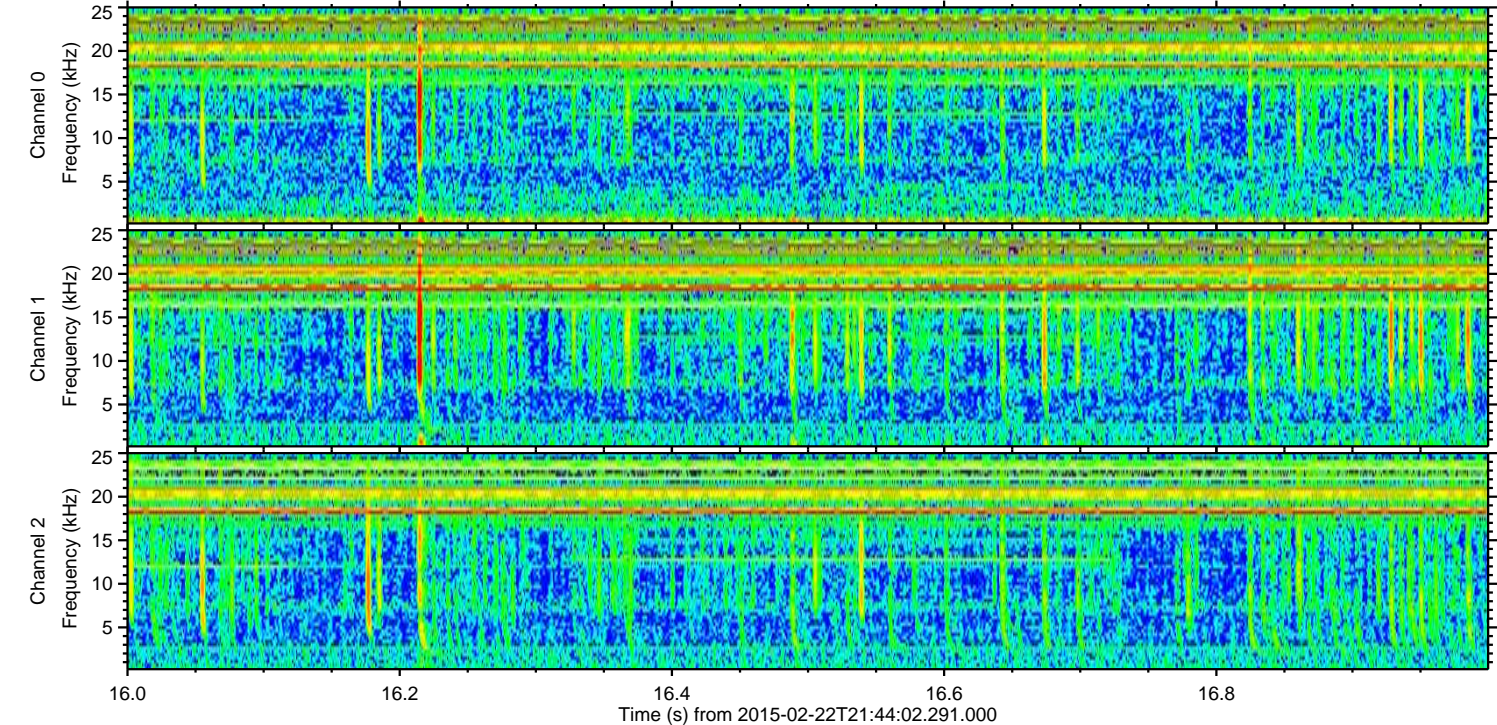
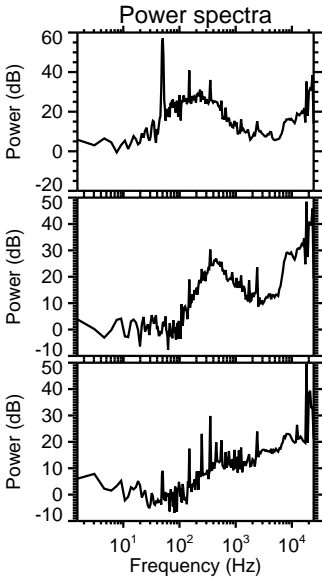
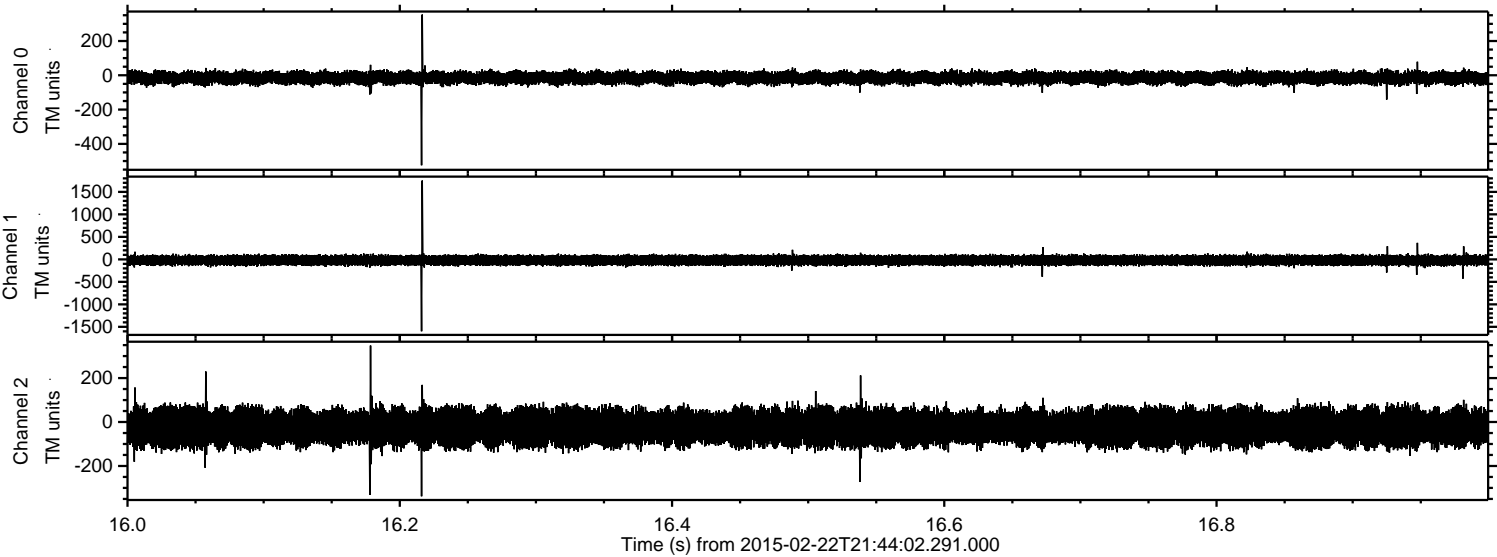
Channel 2
mn: -1375
mx: 1825
 μ : -24.3
 σ : 54.1

Processed Mon Mar 2 17:28:13 2015 by ELM ver.2012-10-06 from 001__elm20150222_214401__dat00.bin



ELMAVAN 3D WAVEFORMS (Measured data sampled at 50 kHz) 49625 packets of 144 samples from 2015-02-22T21:44:02.291.000. Part 17/143

Processed Mon Mar 2 17:28:14 2015 by ELM ver.2012-10-06 from 001__elm20150222_214401__dat00.bin

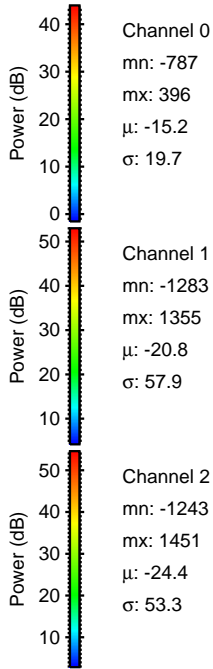
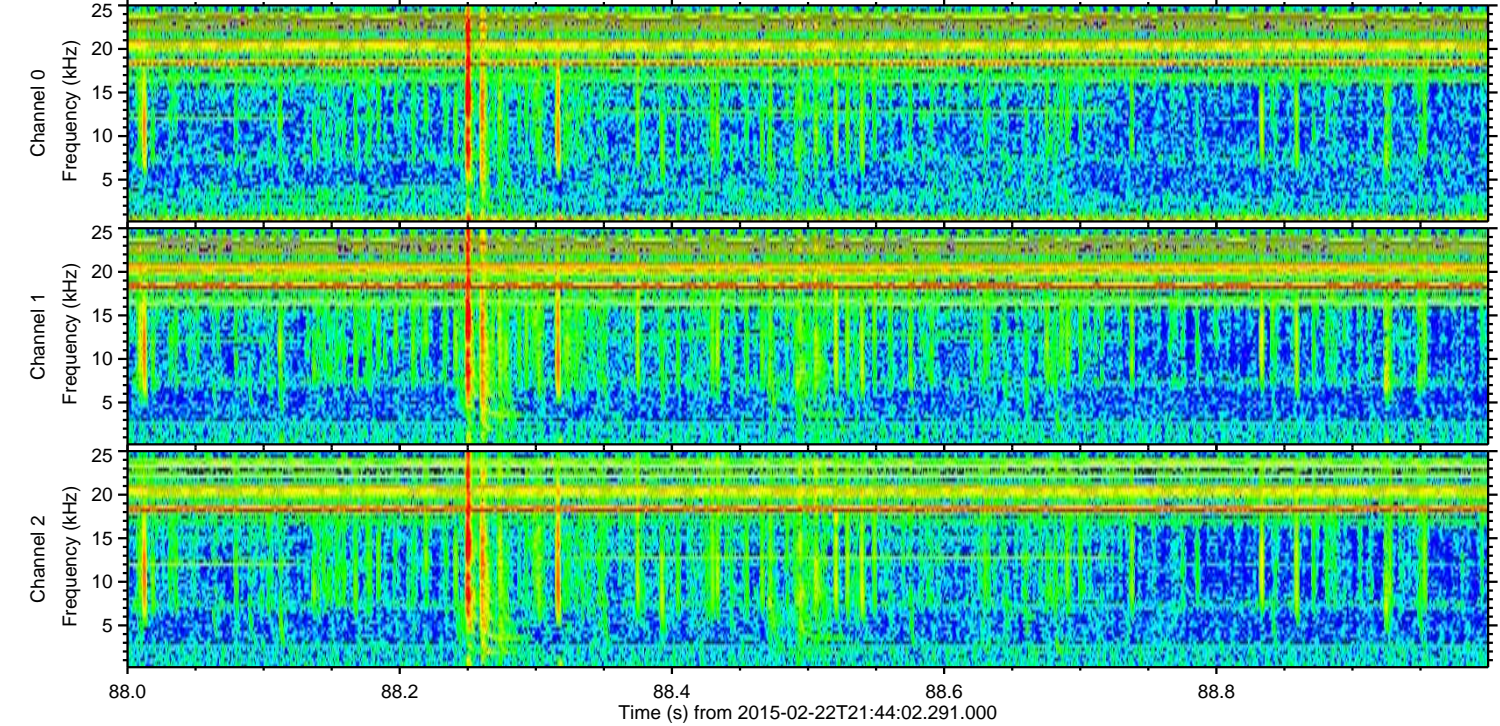
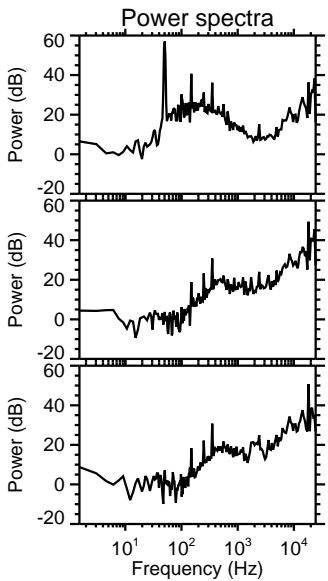
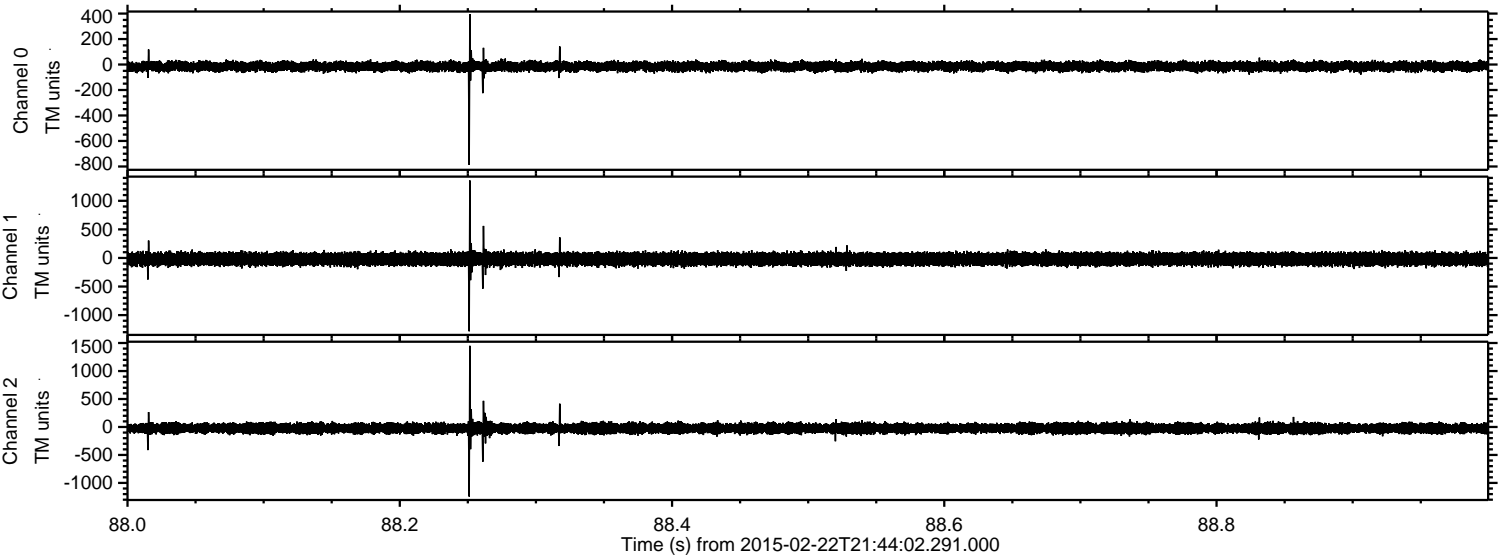


Channel 0
mn: -525
mx: 354
 μ : -15.2
 σ : 18.5

Channel 1
mn: -1599
mx: 1751
 μ : -20.7
 σ : 55.3

Channel 2
mn: -338
mx: 348
 μ : -24.4
 σ : 46.0

Processed Mon Mar 2 17:28:15 2015 by ELM ver.2012-10-06 from 001__elm20150222_214401__dat00.bin



Channel 0
mn: -787
mx: 396
 μ : -15.2
 σ : 19.7

Channel 1
mn: -1283
mx: 1355
 μ : -20.8
 σ : 57.9

Channel 2
mn: -1243
mx: 1451
 μ : -24.4
 σ : 53.3

ELMAVAN 3D WAVEFORMS (Measured data sampled at 50 kHz) 49625 packets of 144 samples from 2015-02-22T21:44:02.291.000. Part 118/143

