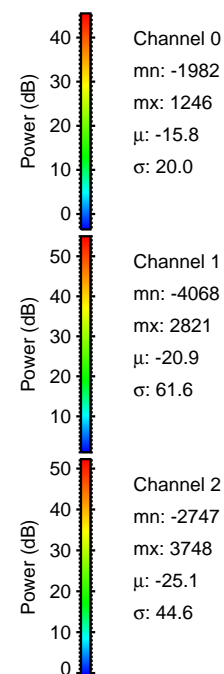
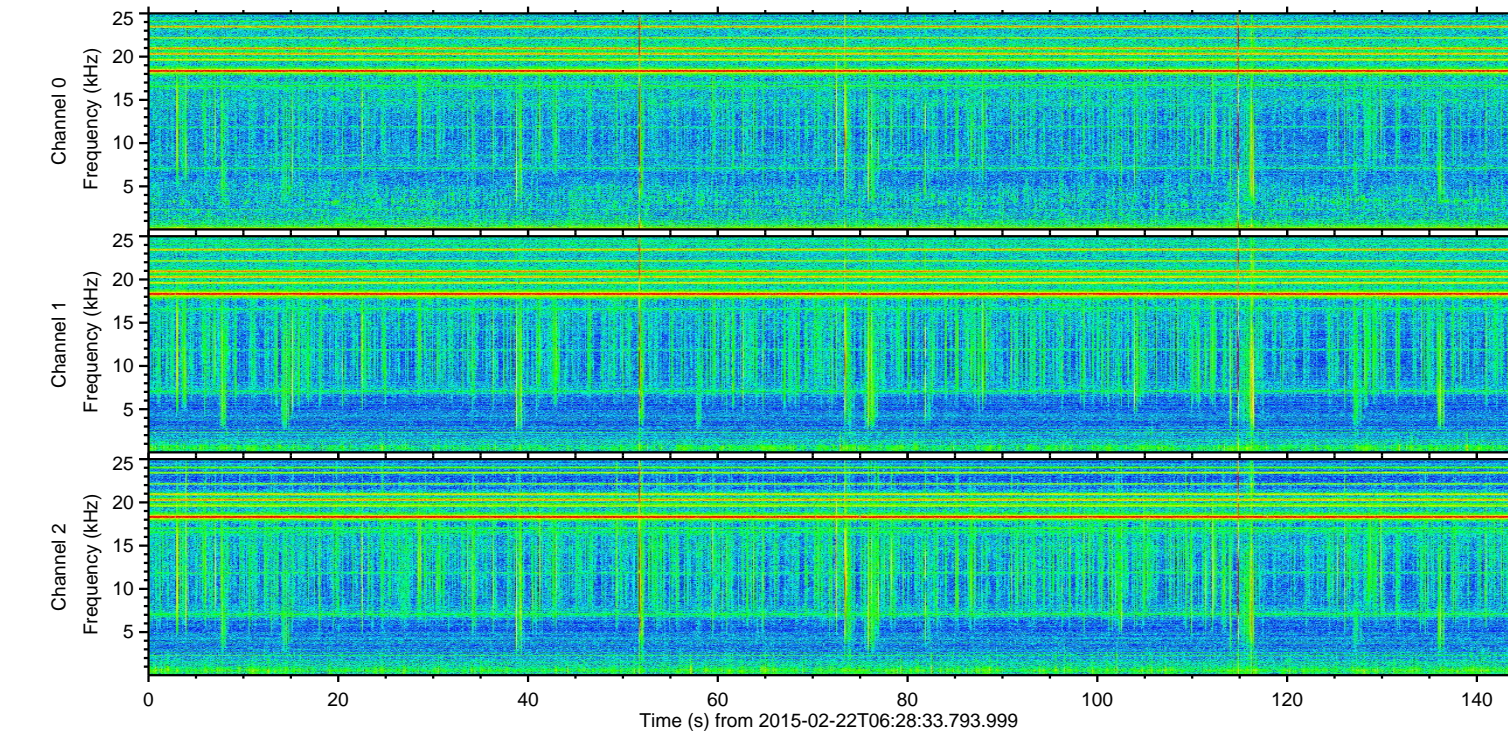
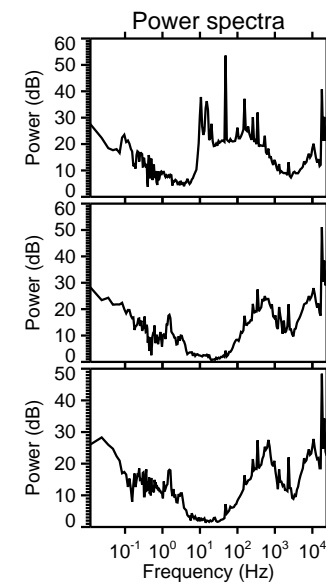
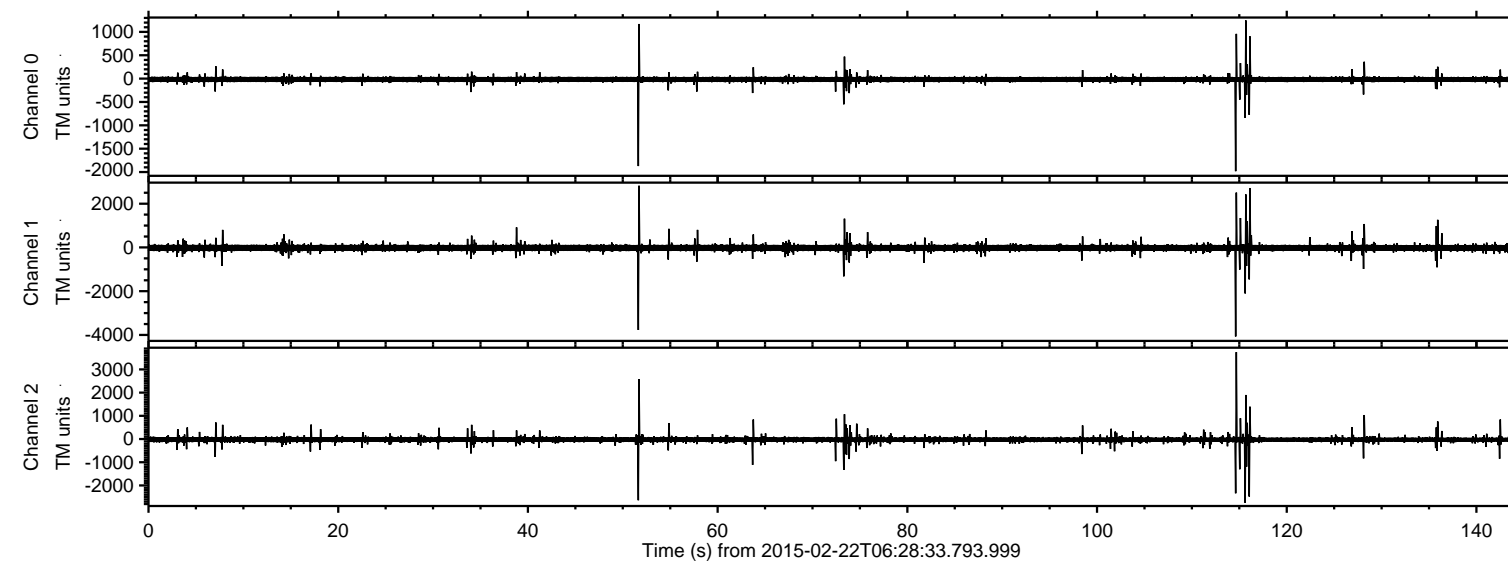


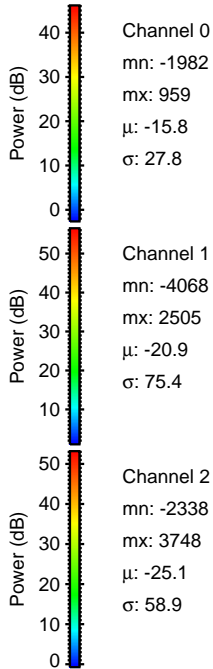
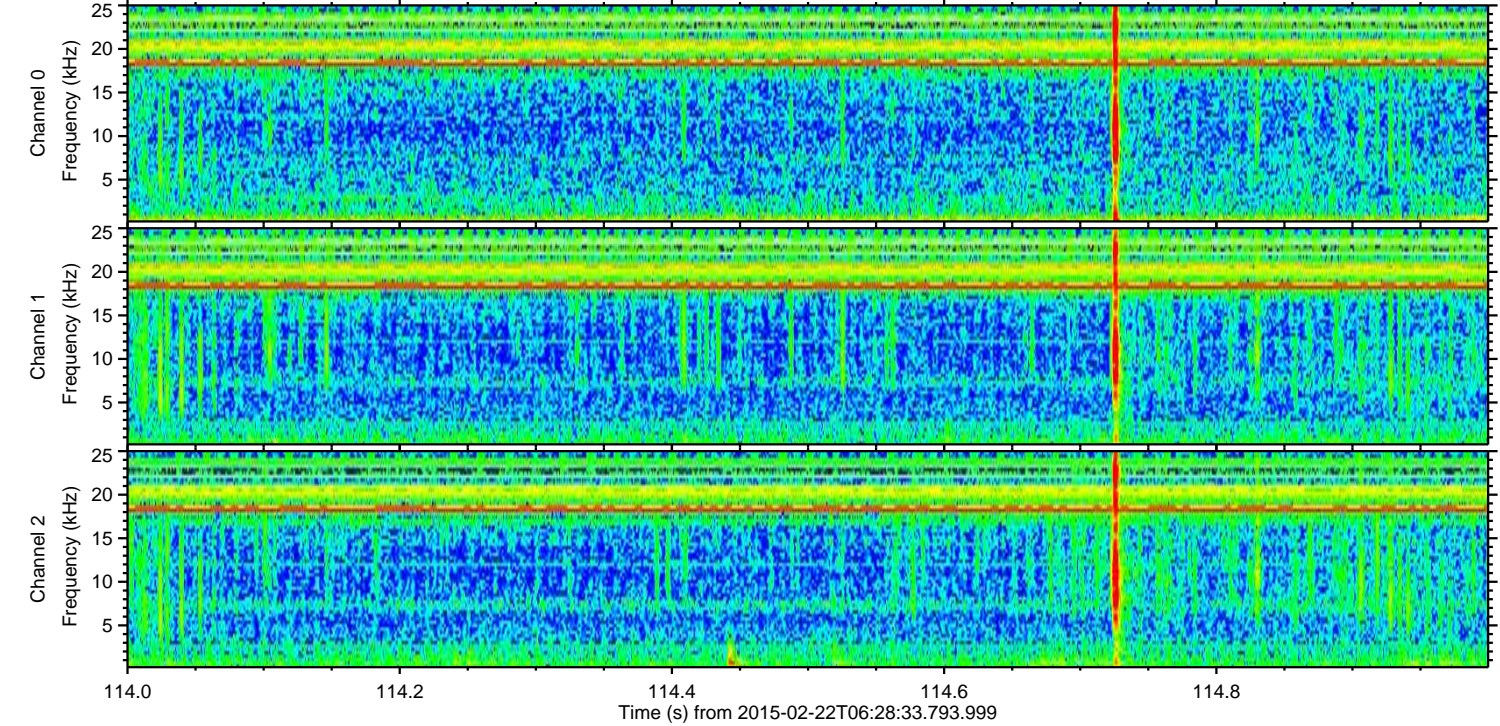
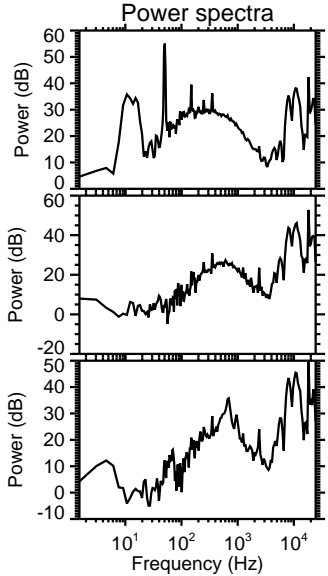
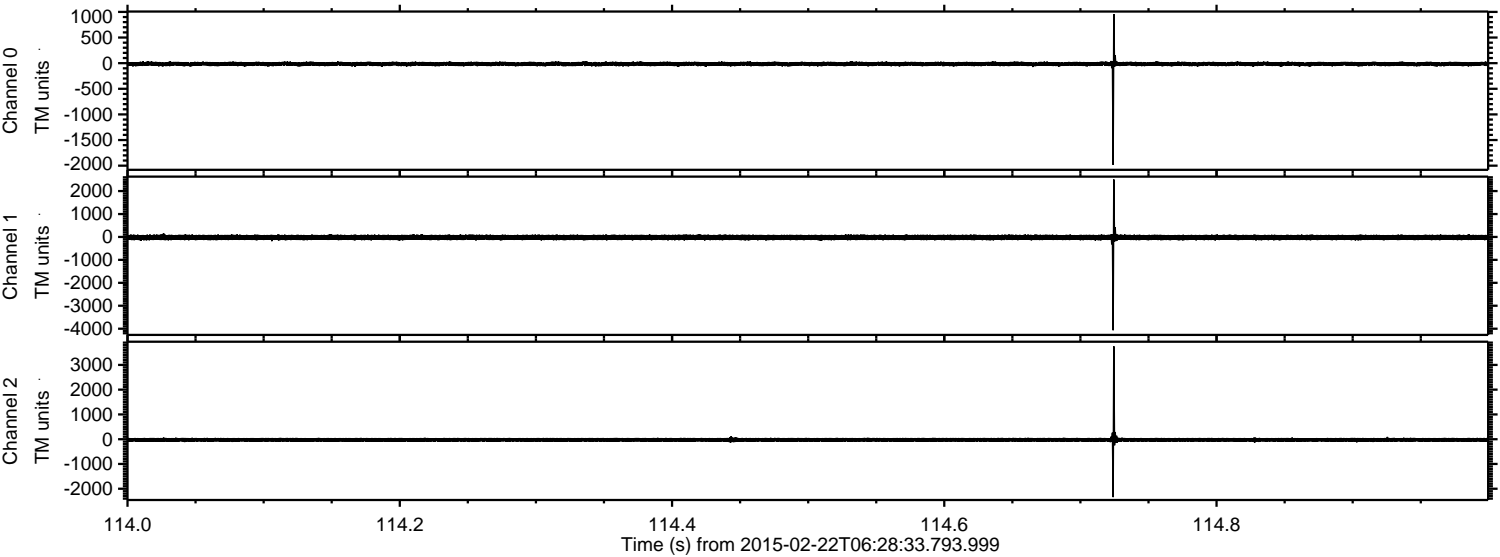
ELMAVAN 3D WAVEFORMS (Measured data sampled at 50 kHz) 49808 packets of 144 samples from 2015-02-22T06:28:33.793.999.

Processed Mon Mar 2 09:32:12 2015 by ELM ver.2012-10-06 from 001__elm20150222_062832__dat00.bin

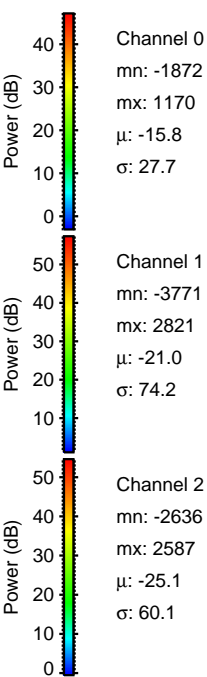
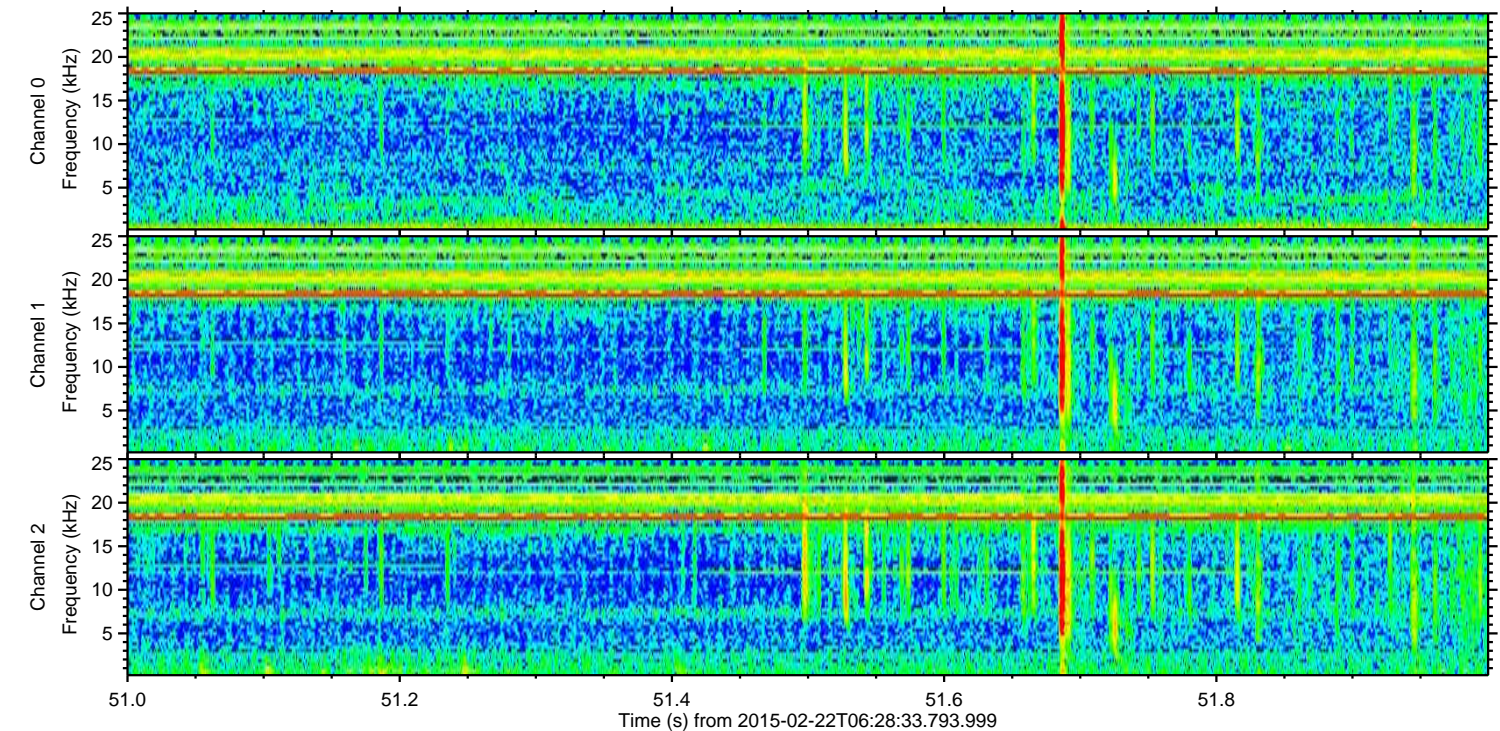
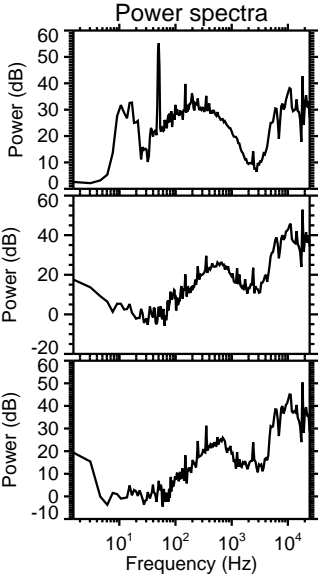
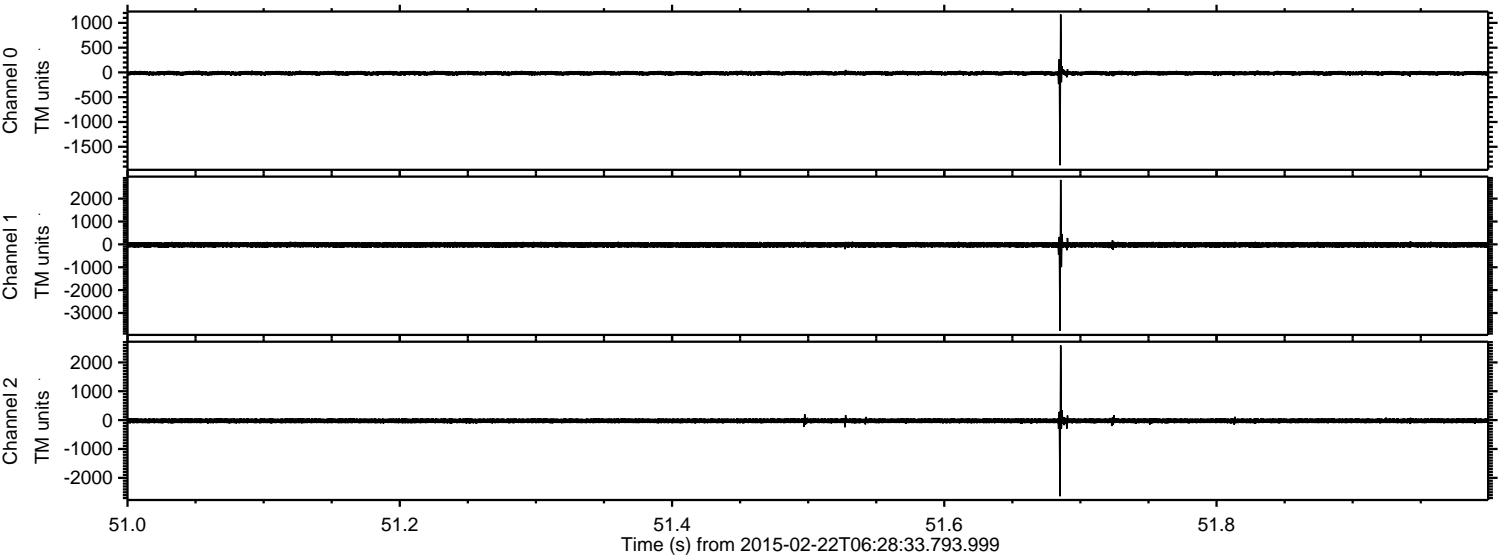


ELMAVAN 3D WAVEFORMS (Measured data sampled at 50 kHz) 49808 packets of 144 samples from 2015-02-22T06:28:33.793.999. Part 115/144

Processed Mon Mar 2 09:32:24 2015 by ELM ver.2012-10-06 from 001__elm20150222_062832__dat00.bin

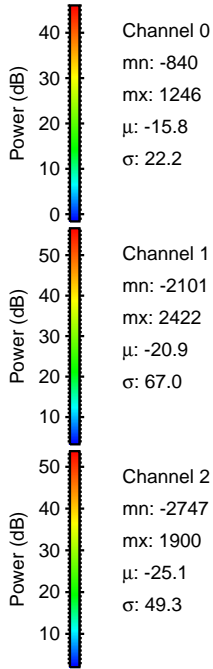
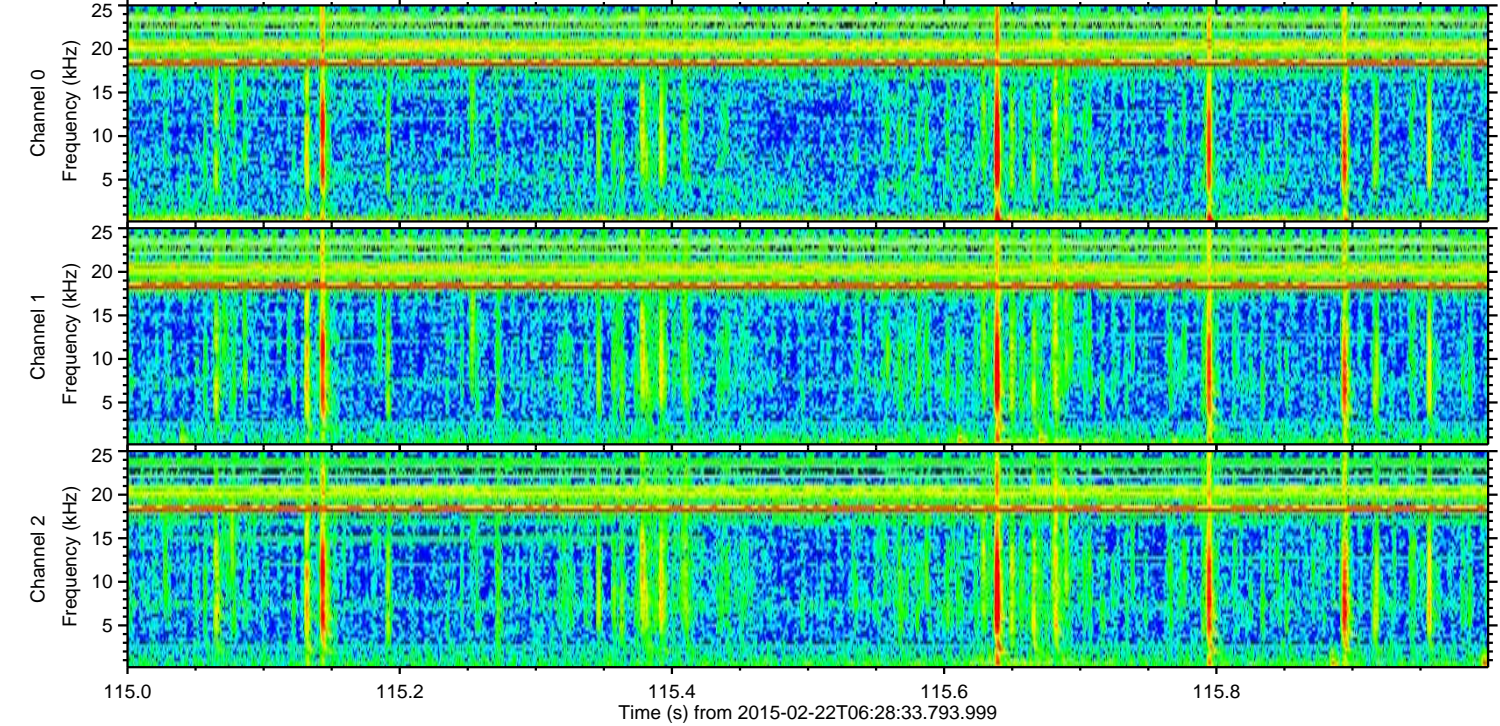
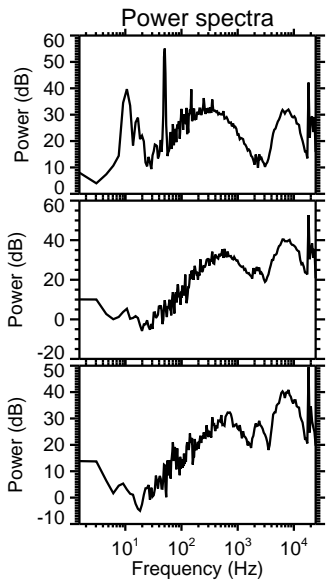
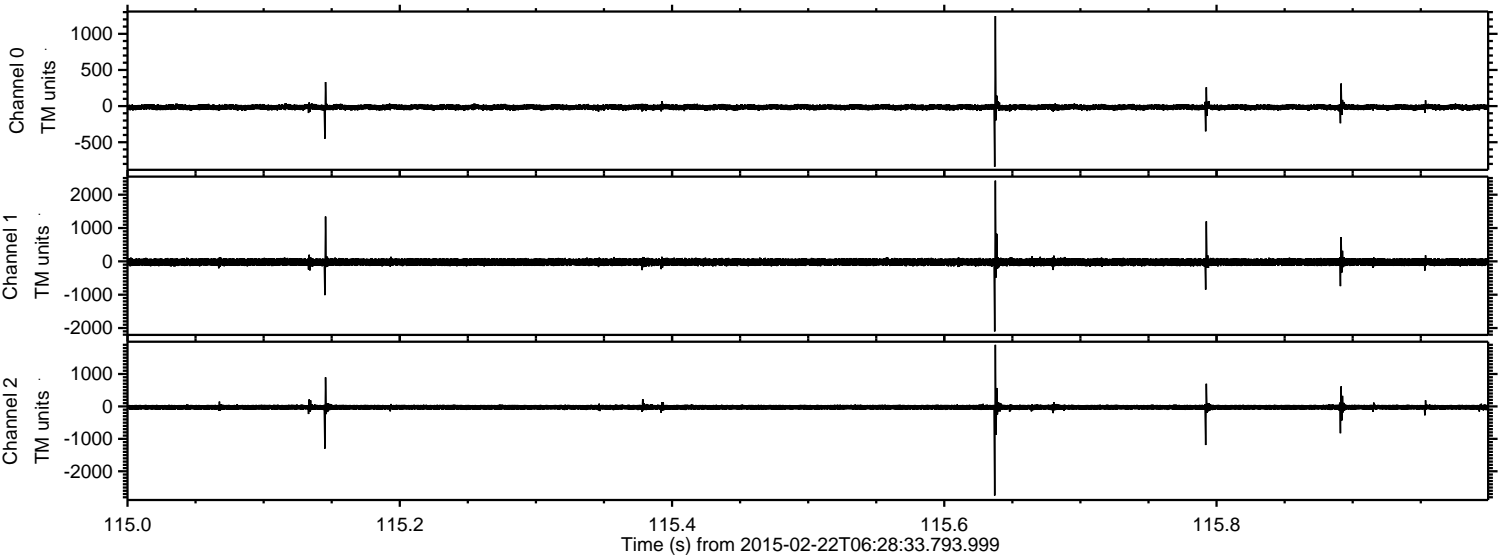


Processed Mon Mar 2 09:32:24 2015 by ELM ver.2012-10-06 from 001__elm20150222_062832__dat00.bin



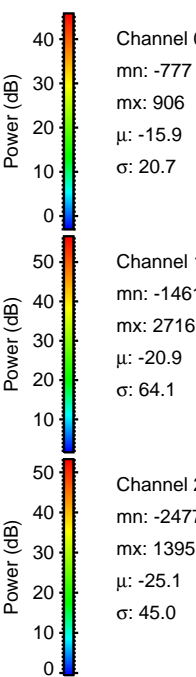
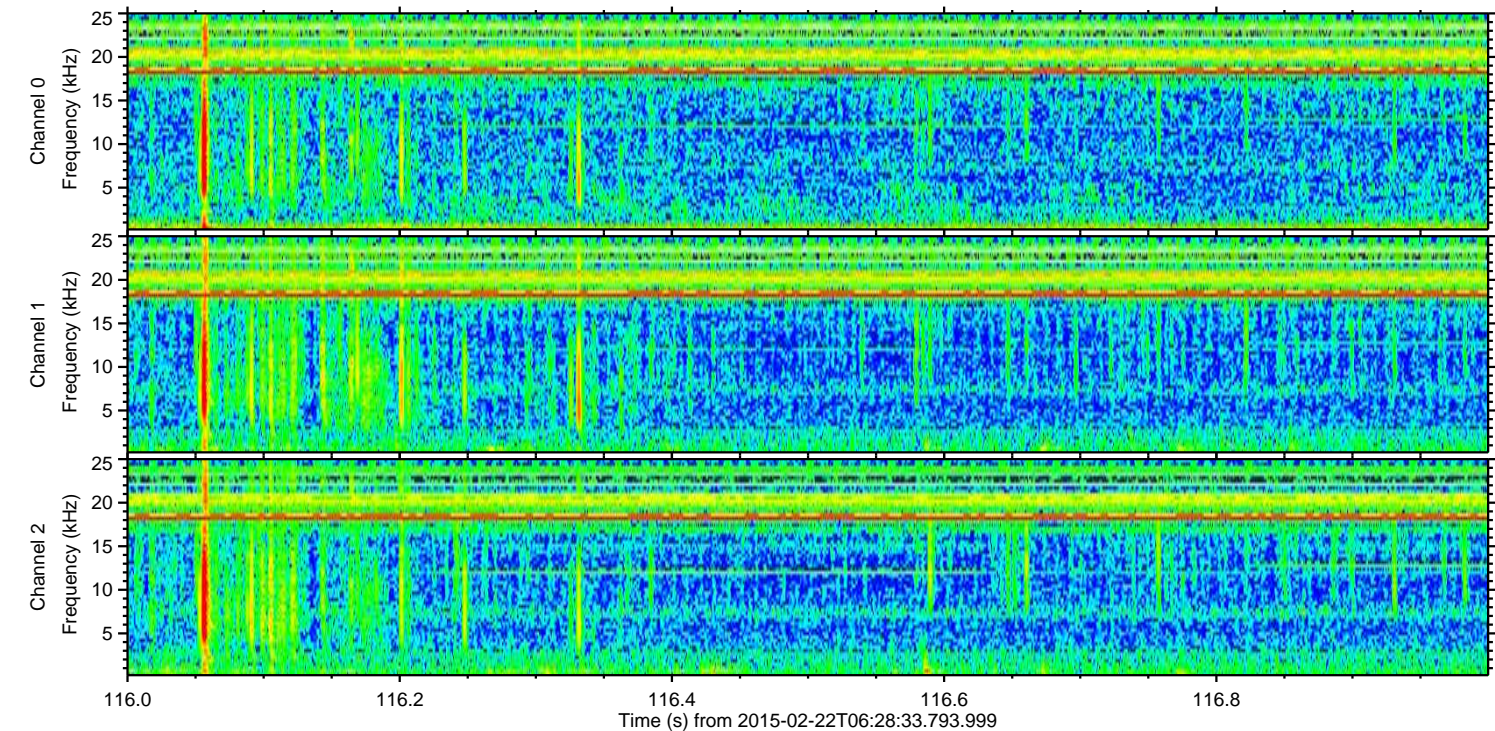
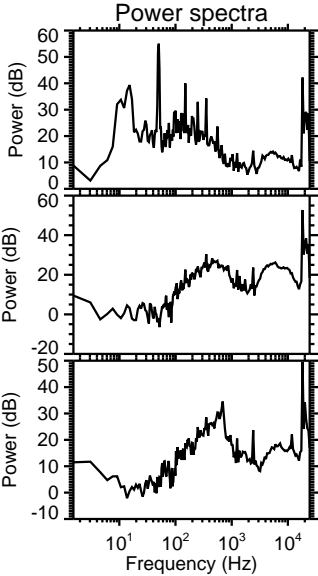
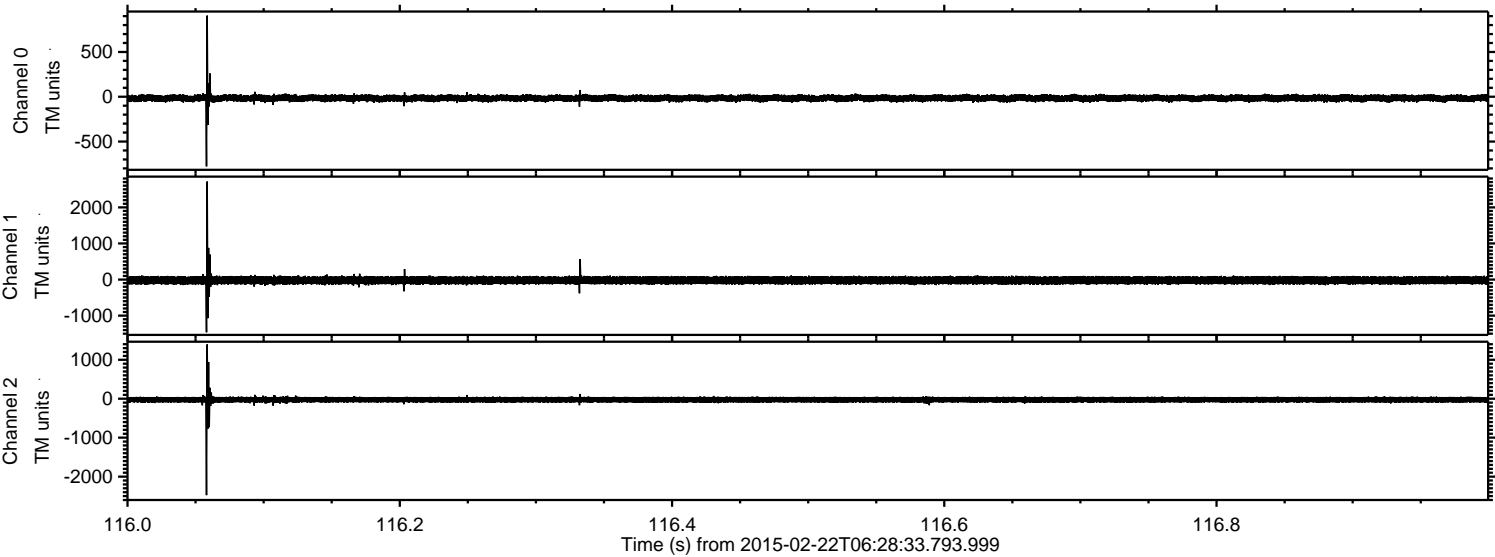
ELMAVAN 3D WAVEFORMS (Measured data sampled at 50 kHz) 49808 packets of 144 samples from 2015-02-22T06:28:33.793.999. Part 116/144

Processed Mon Mar 2 09:32:25 2015 by ELM ver.2012-10-06 from 001__elm20150222_062832__dat00.bin



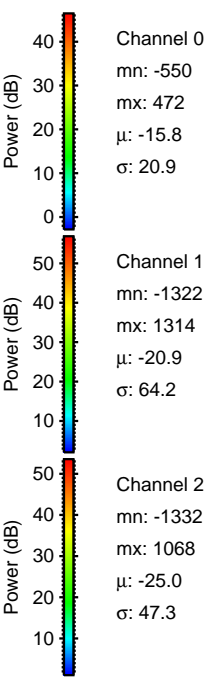
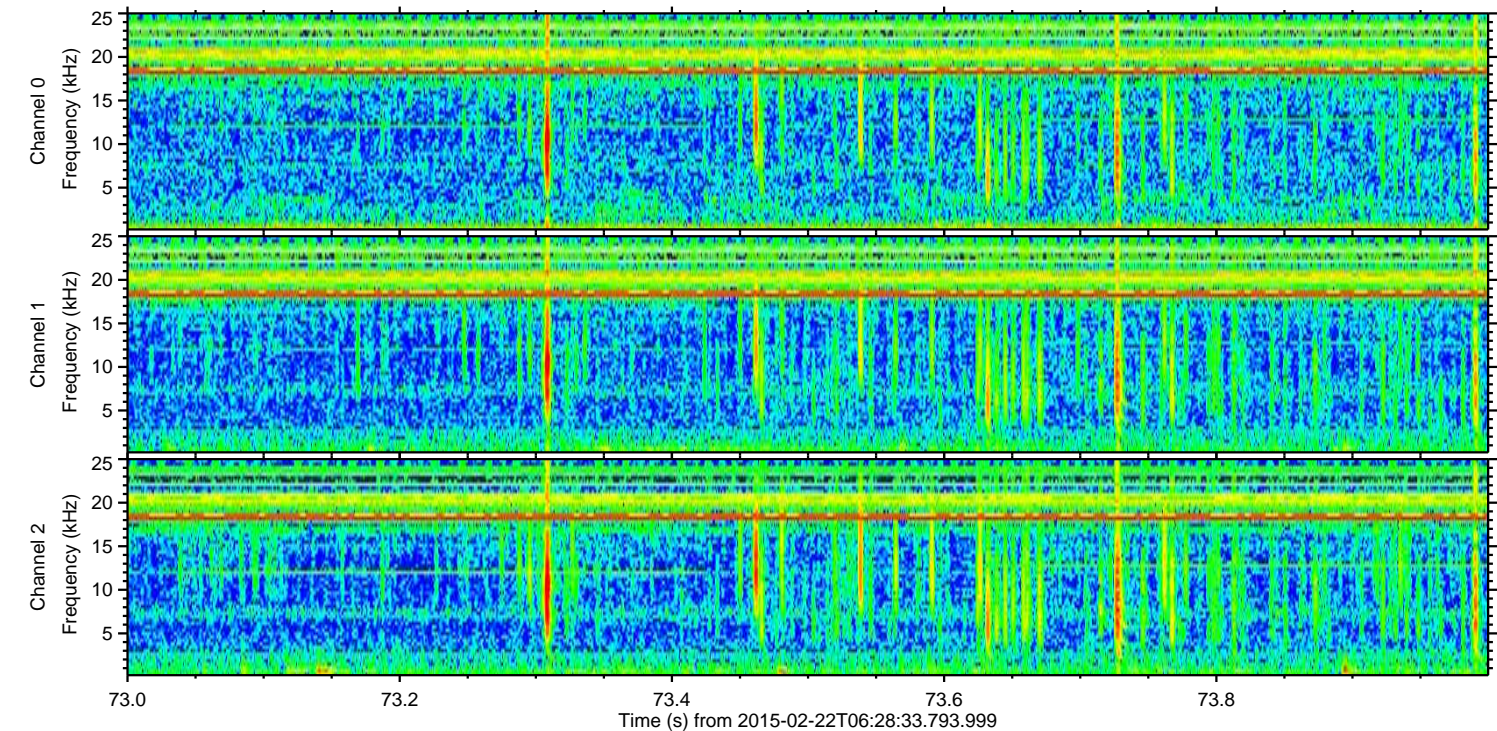
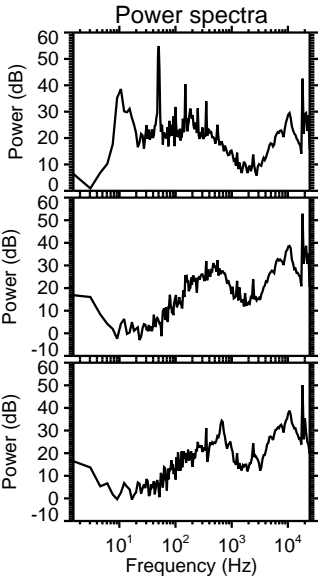
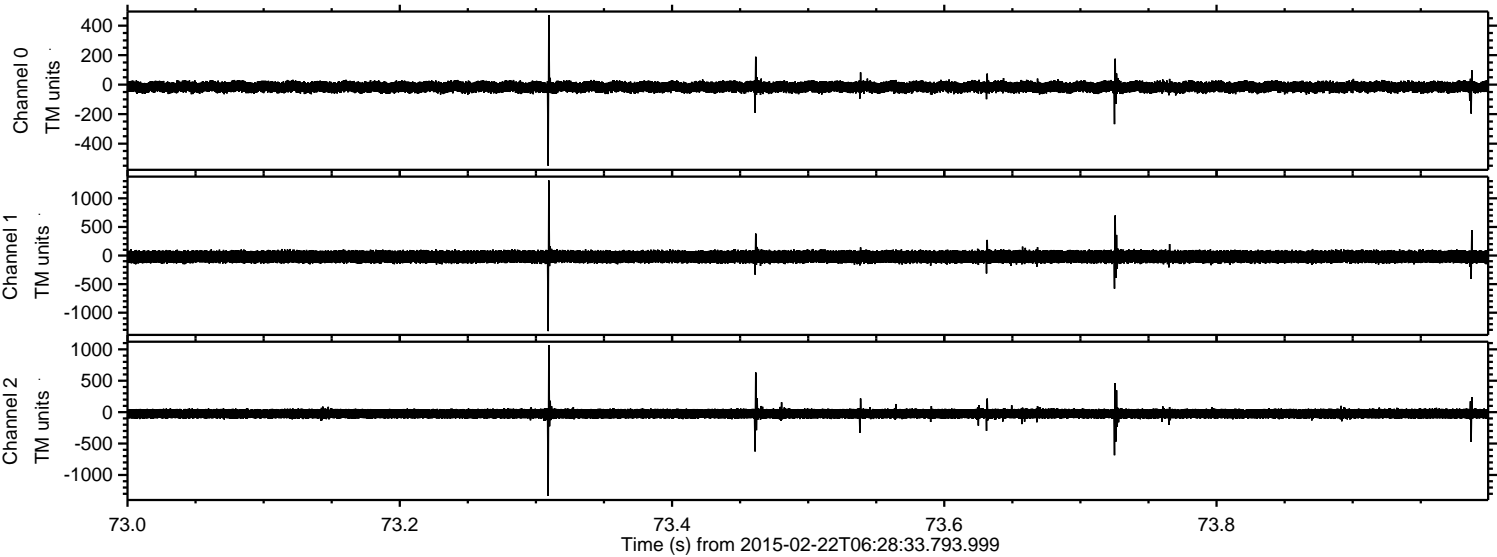
ELMAVAN 3D WAVEFORMS (Measured data sampled at 50 kHz) 49808 packets of 144 samples from 2015-02-22T06:28:33.793.999. Part 117/144

Processed Mon Mar 2 09:32:26 2015 by ELM ver.2012-10-06 from 001__elm20150222_062832__dat00.bin



ELMAVAN 3D WAVEFORMS (Measured data sampled at 50 kHz) 49808 packets of 144 samples from 2015-02-22T06:28:33.793.999. Part 74/144

Processed Mon Mar 2 09:32:27 2015 by ELM ver.2012-10-06 from 001__elm20150222_062832__dat00.bin



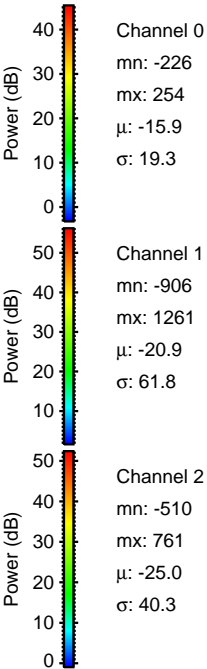
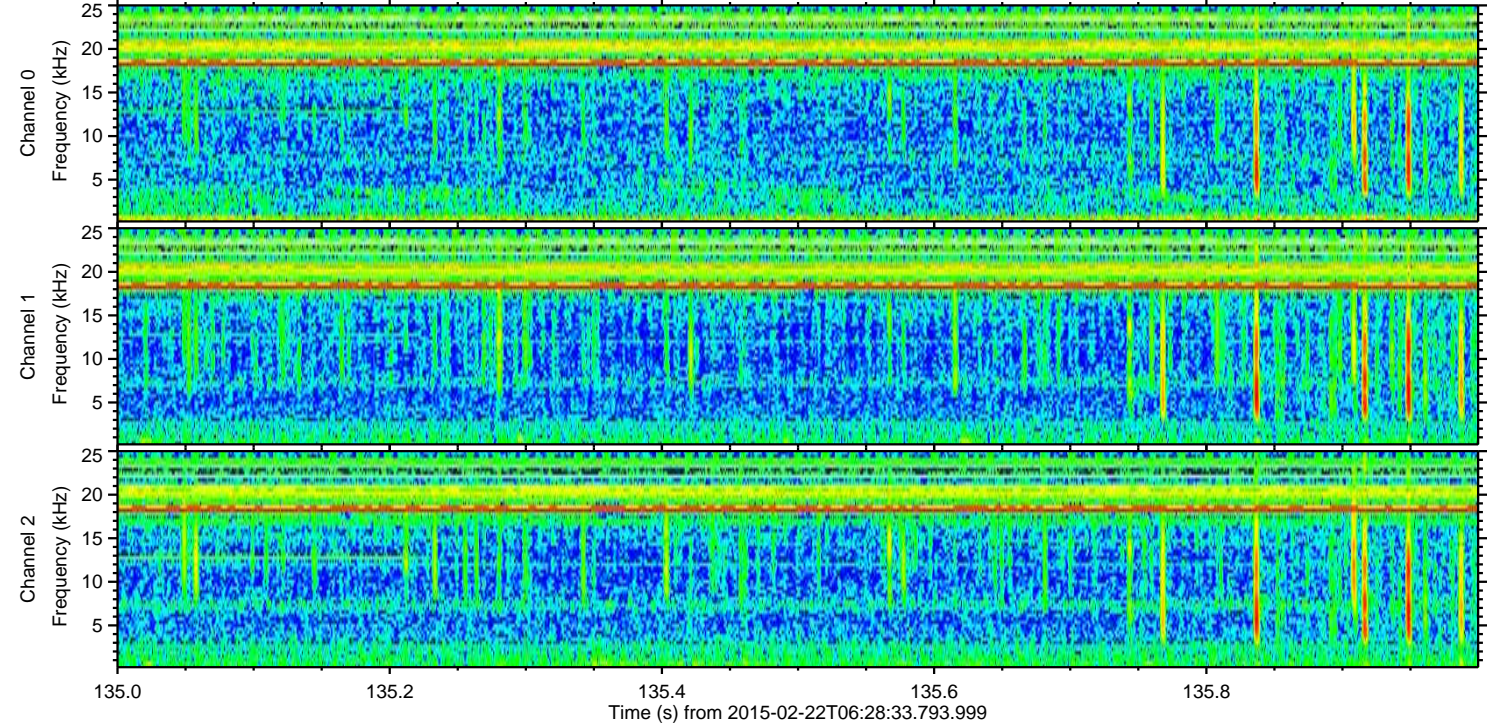
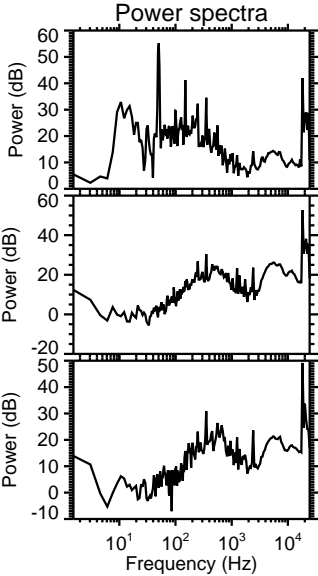
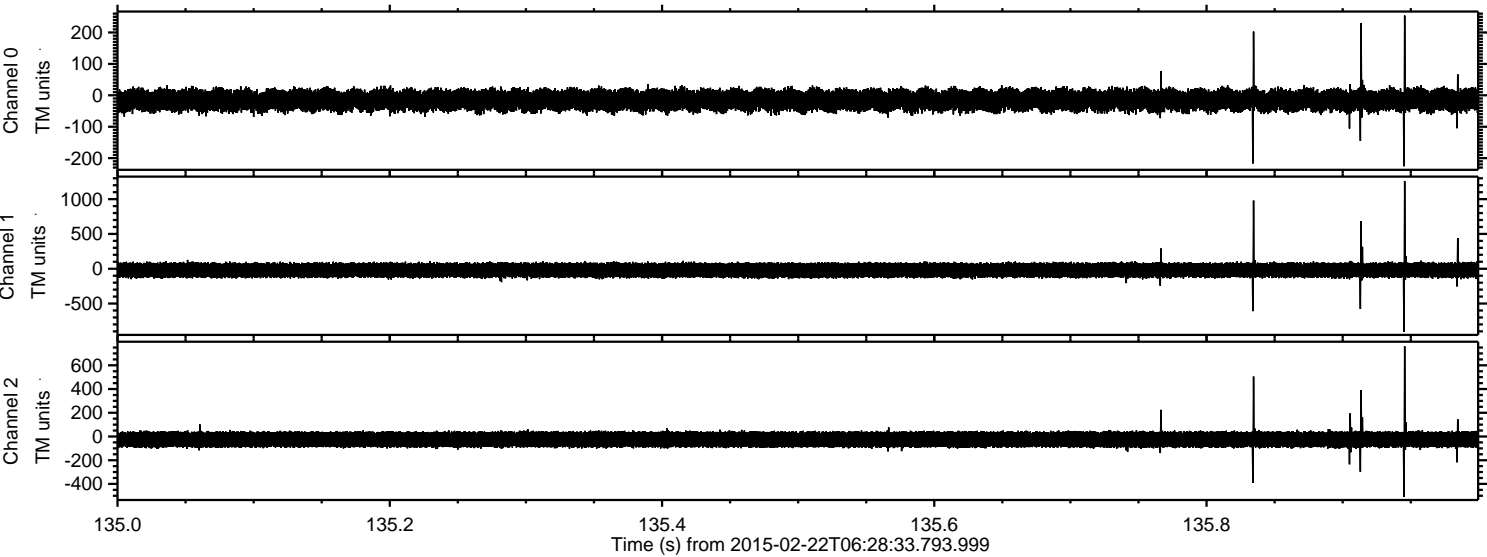
Channel 0
mn: -550
mx: 472
 μ : -15.8
 σ : 20.9

Channel 1
mn: -1322
mx: 1314
 μ : -20.9
 σ : 64.2

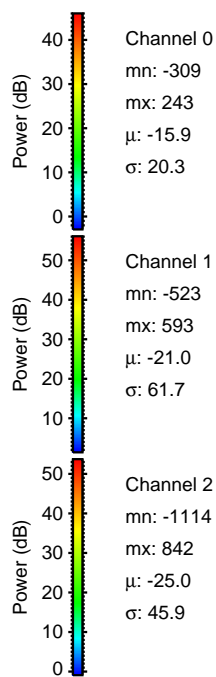
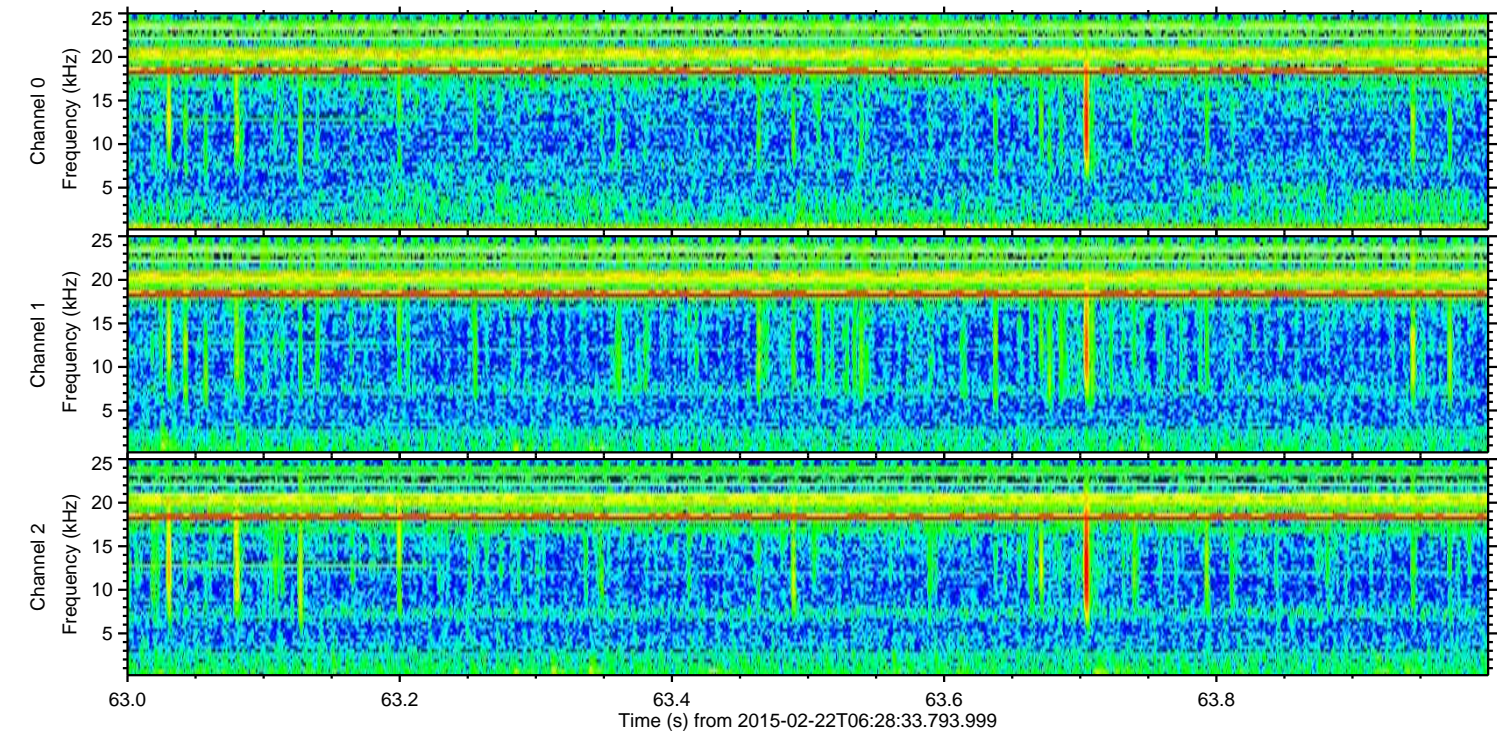
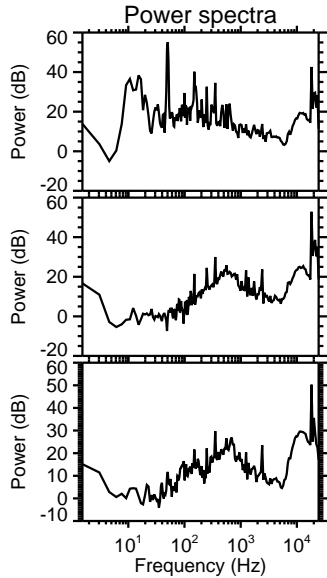
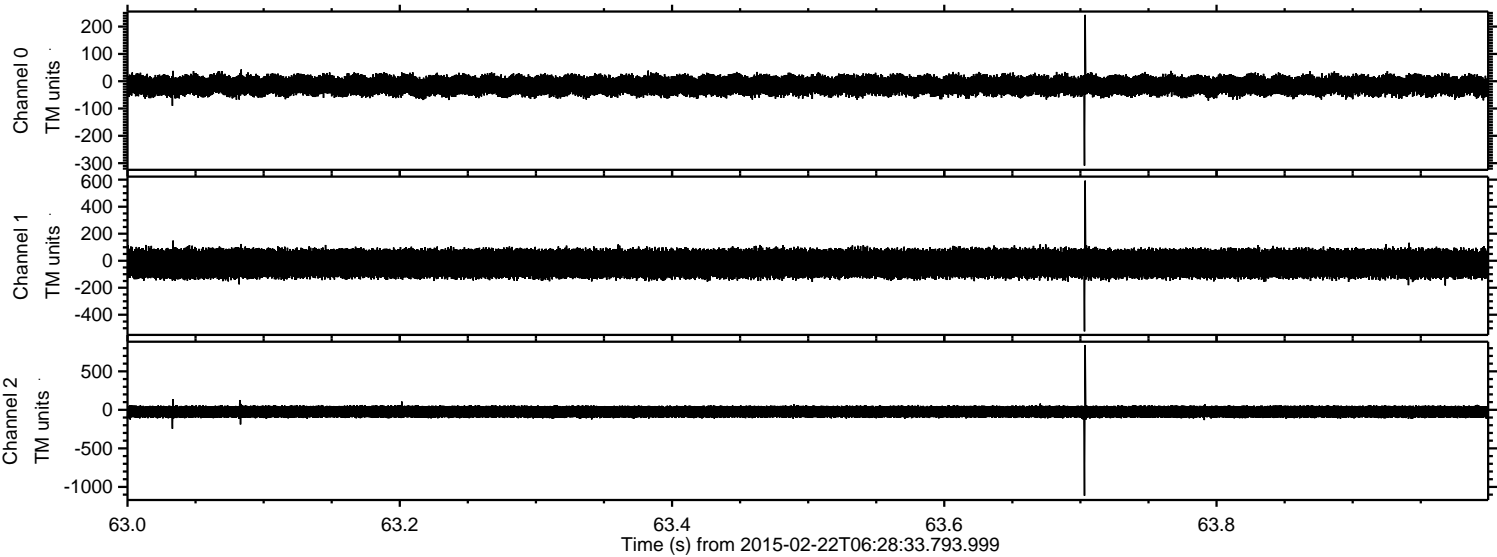
Channel 2
mn: -1332
mx: 1068
 μ : -25.0
 σ : 47.3

ELMAVAN 3D WAVEFORMS (Measured data sampled at 50 kHz) 49808 packets of 144 samples from 2015-02-22T06:28:33.793.999. Part 136/144

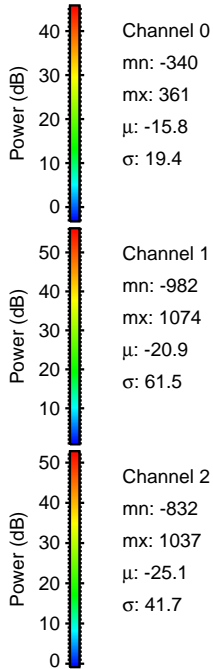
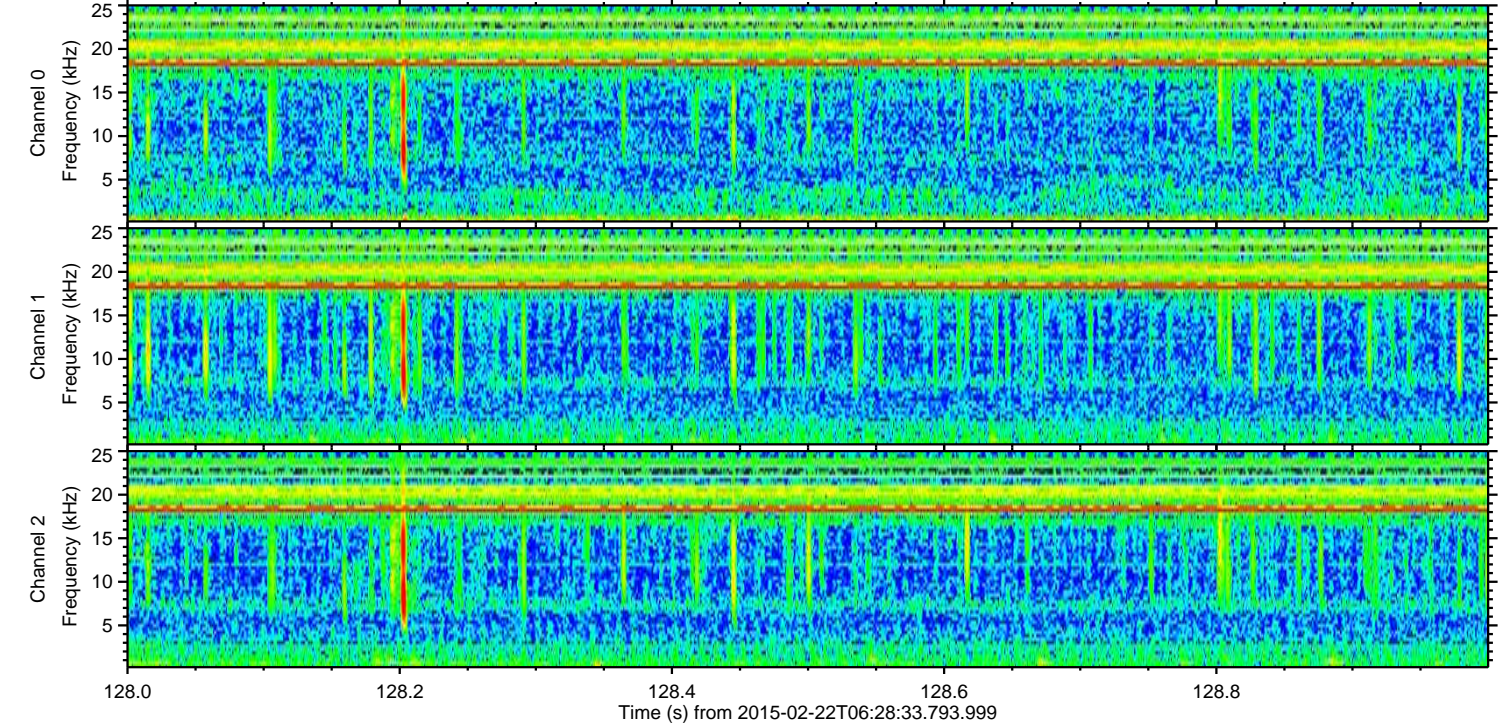
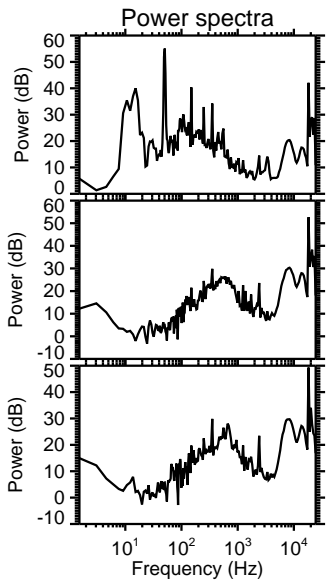
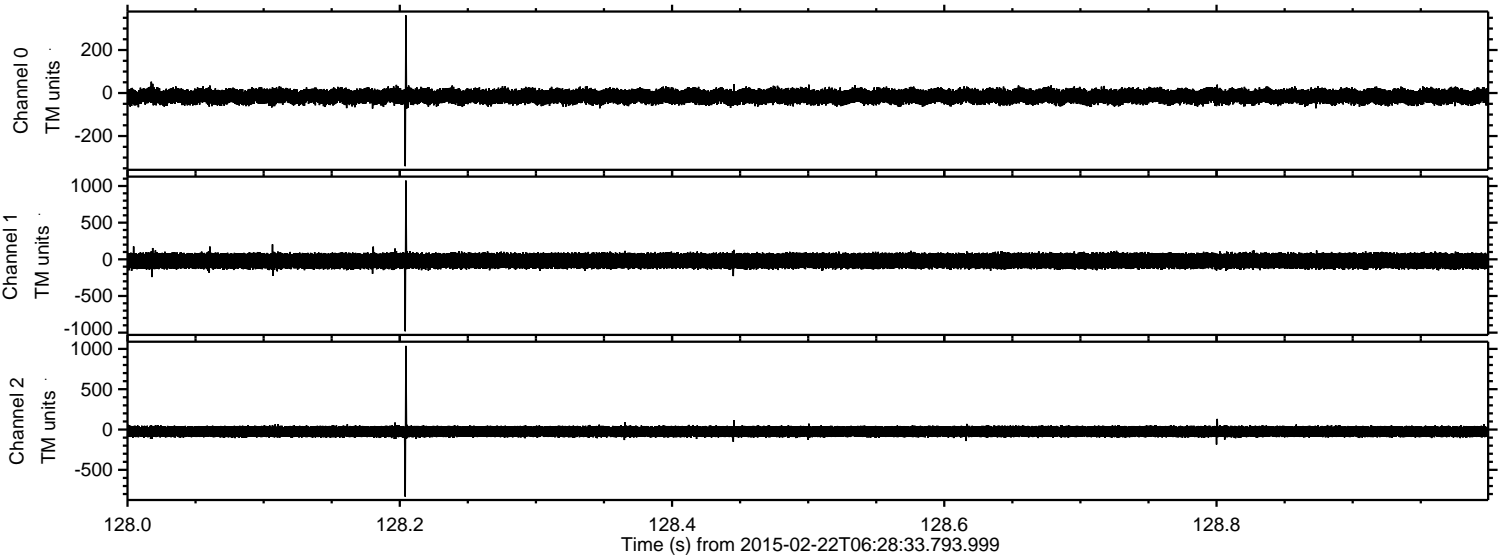
Processed Mon Mar 2 09:32:28 2015 by ELM ver.2012-10-06 from 001__elm20150222_062832__dat00.bin



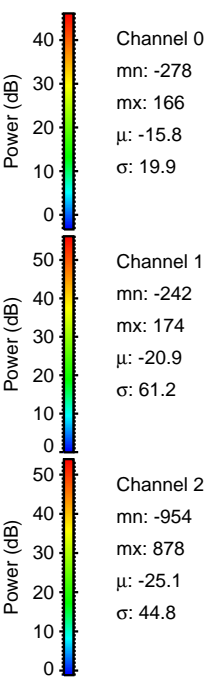
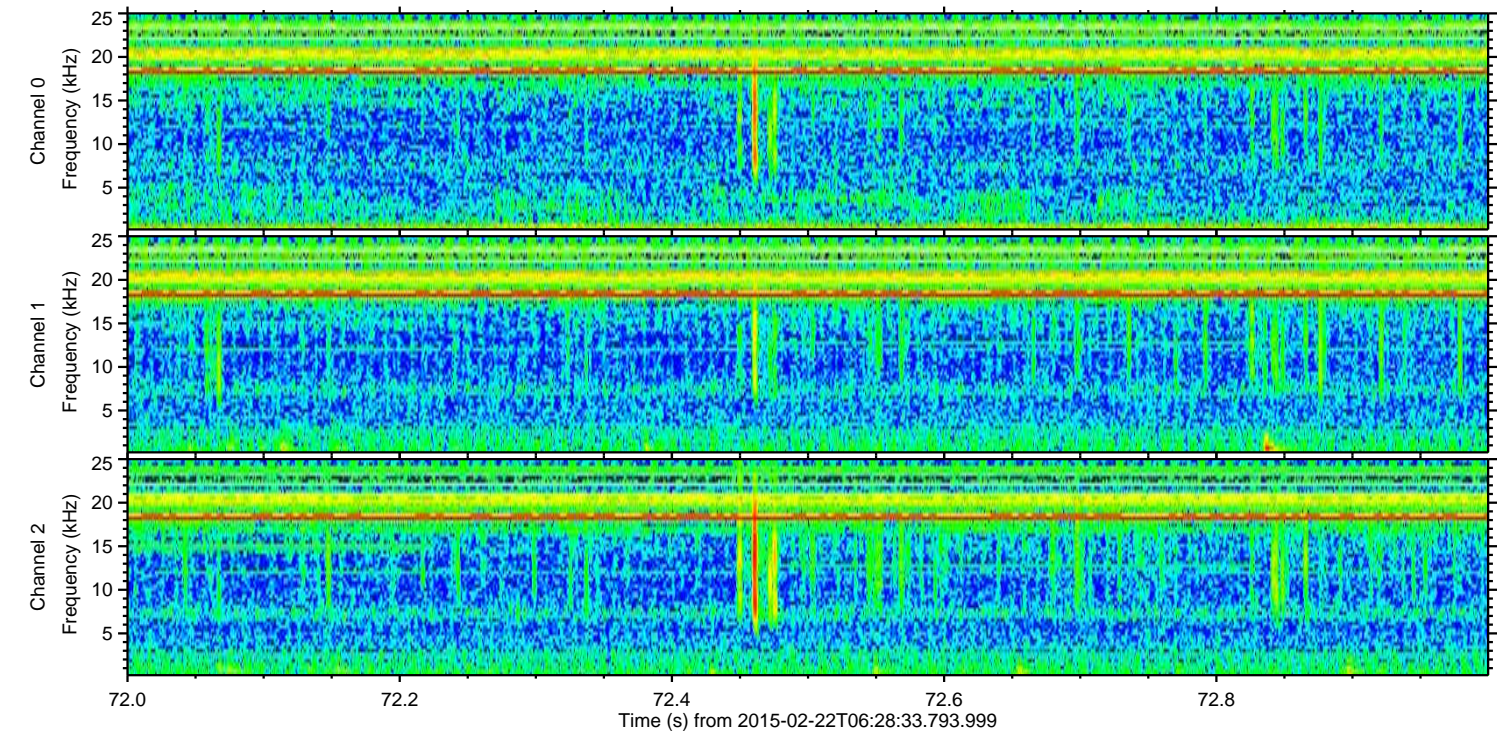
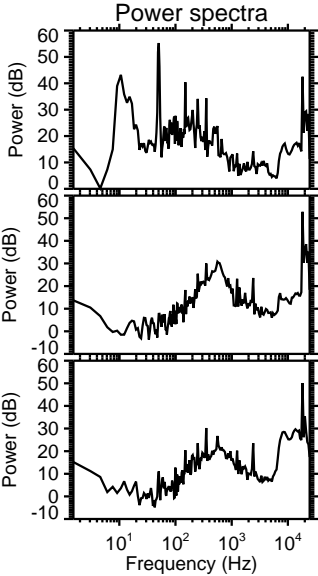
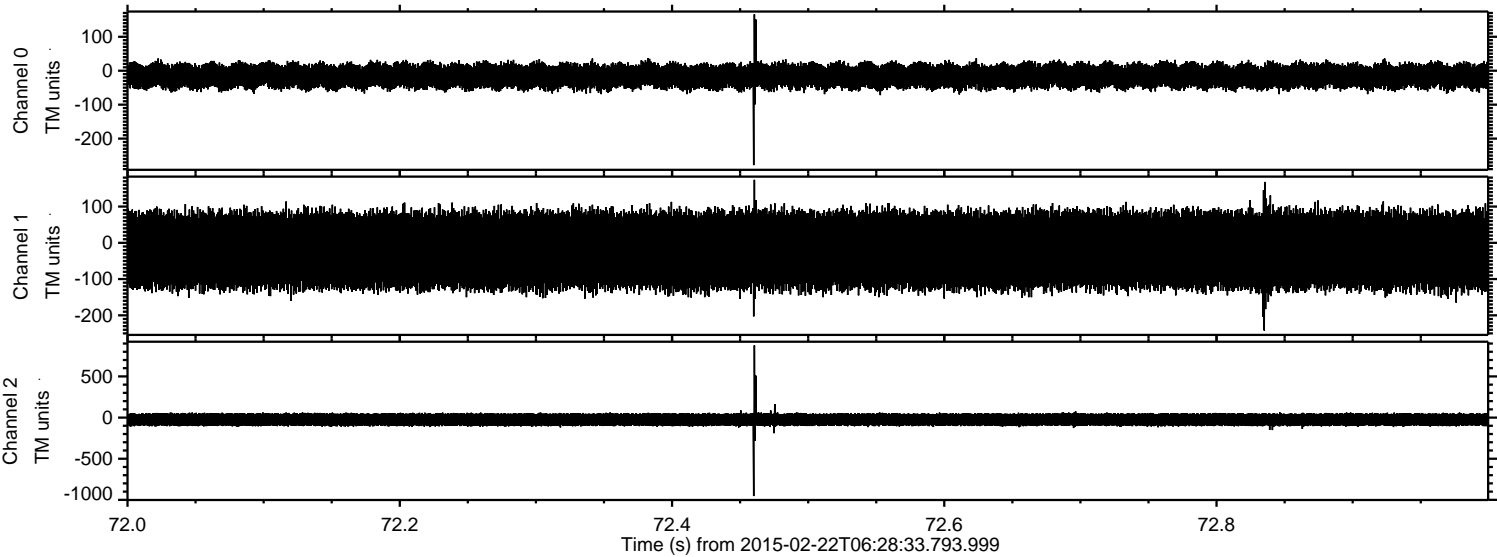
Processed Mon Mar 2 09:32:29 2015 by ELM ver.2012-10-06 from 001__elm20150222_062832__dat00.bin



Processed Mon Mar 2 09:32:30 2015 by ELM ver.2012-10-06 from 001__elm20150222_062832__dat00.bin



Processed Mon Mar 2 09:32:31 2015 by ELM ver.2012-10-06 from 001__elm20150222_062832__dat00.bin



Processed Mon Mar 2 09:32:32 2015 by ELM ver.2012-10-06 from 001__elm20150222_062832__dat00.bin

