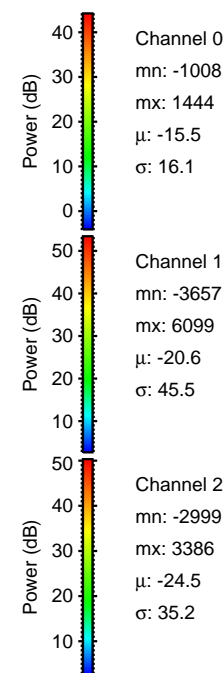
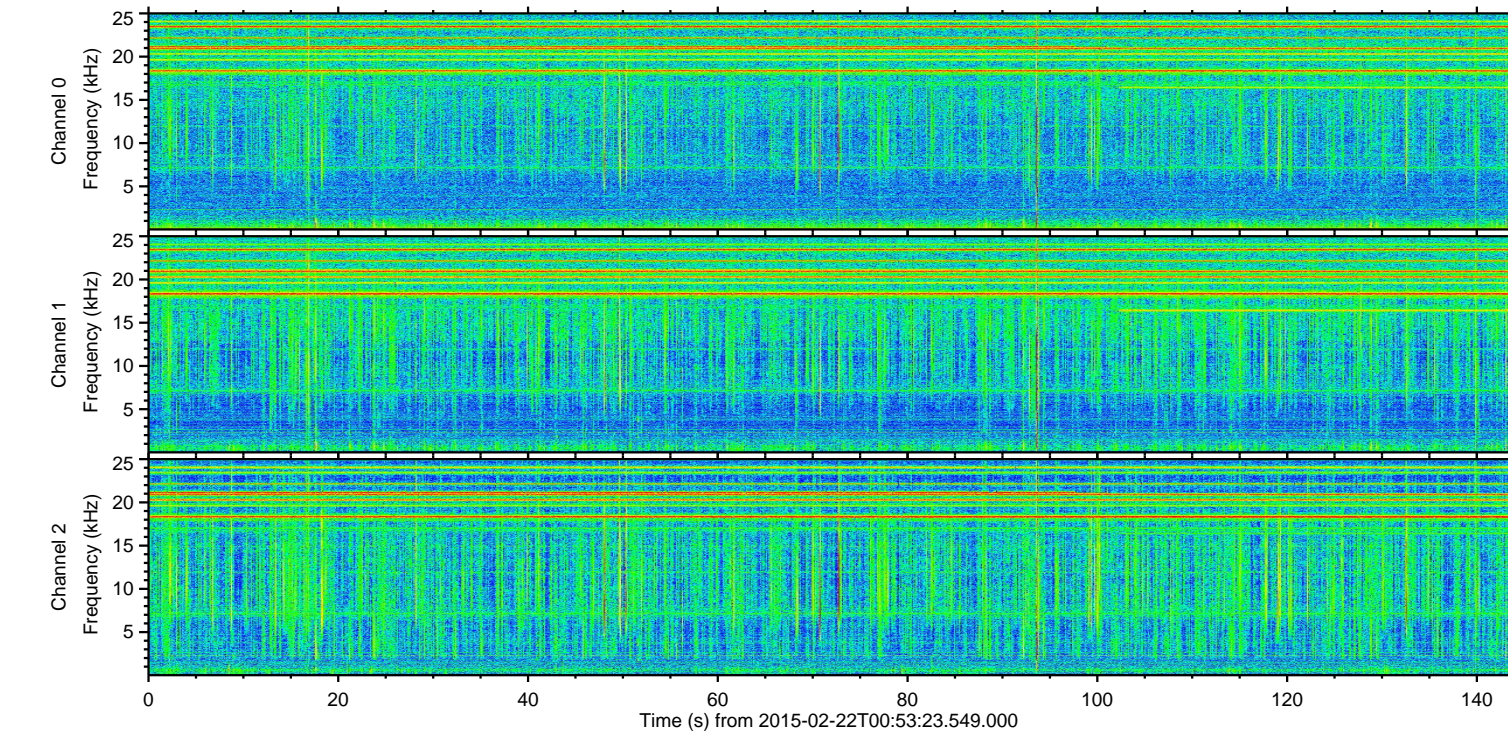
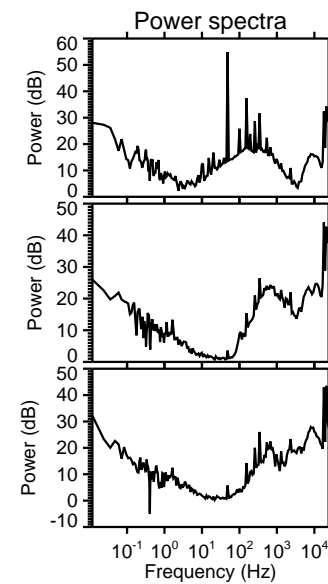
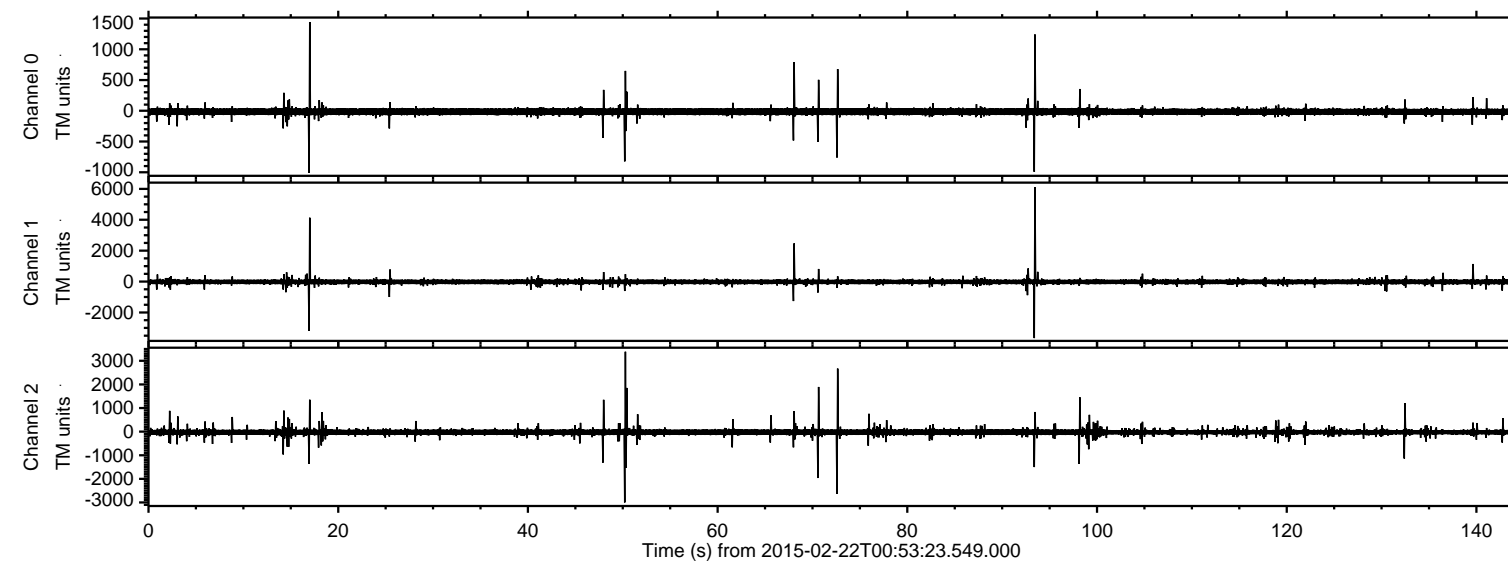
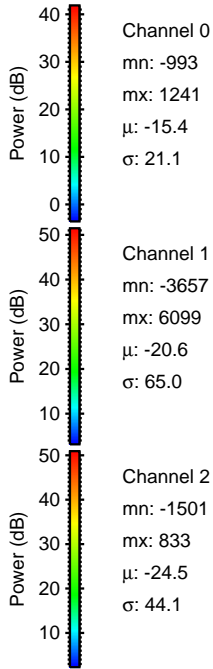
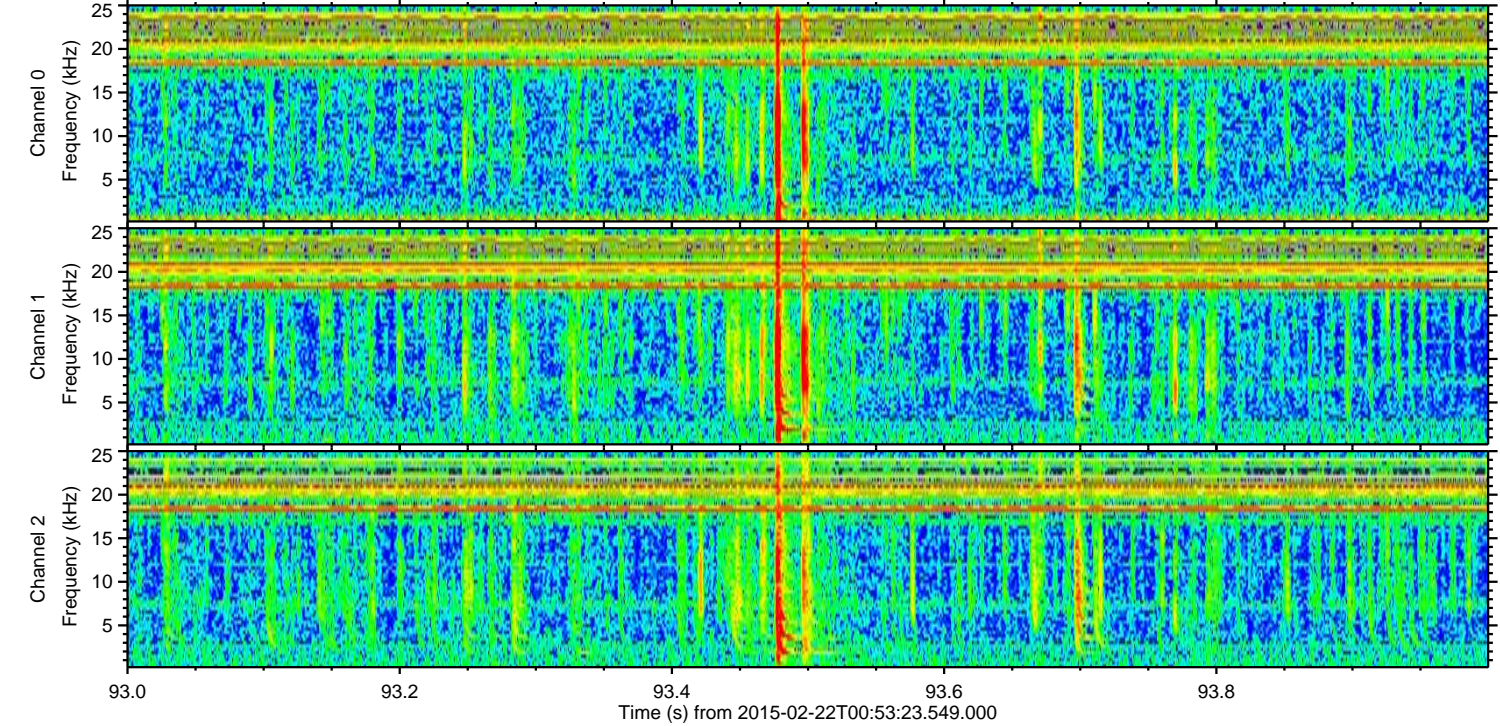
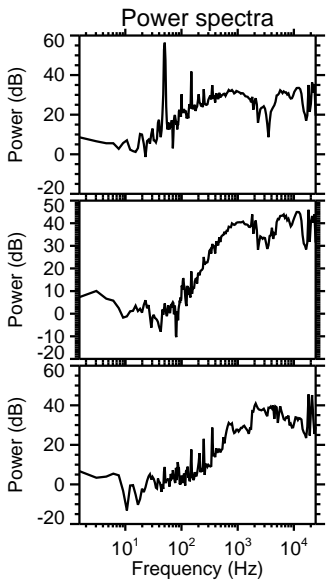
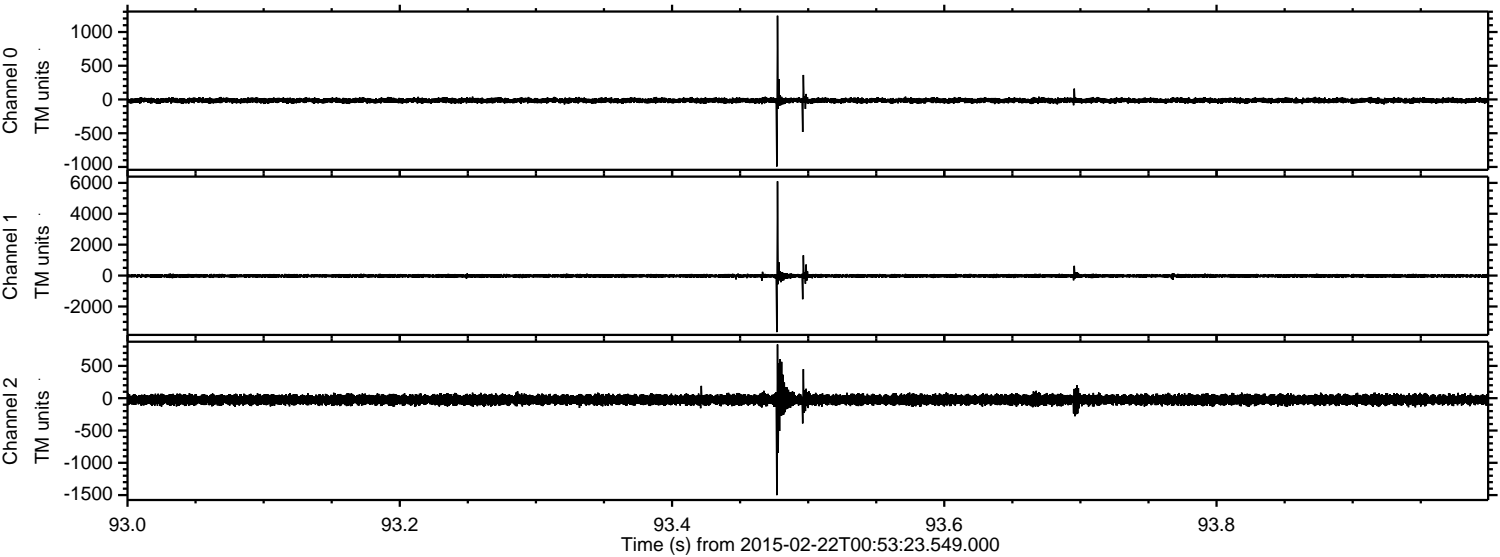


ELMAVAN 3D WAVEFORMS (Measured data sampled at 50 kHz) 49809 packets of 144 samples from 2015-02-22T00:53:23.549.000.

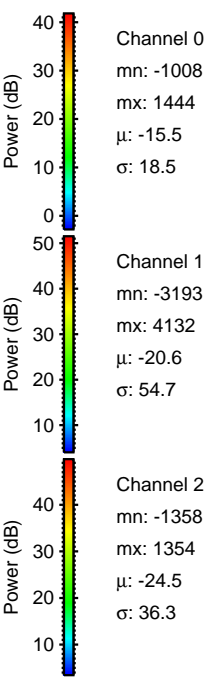
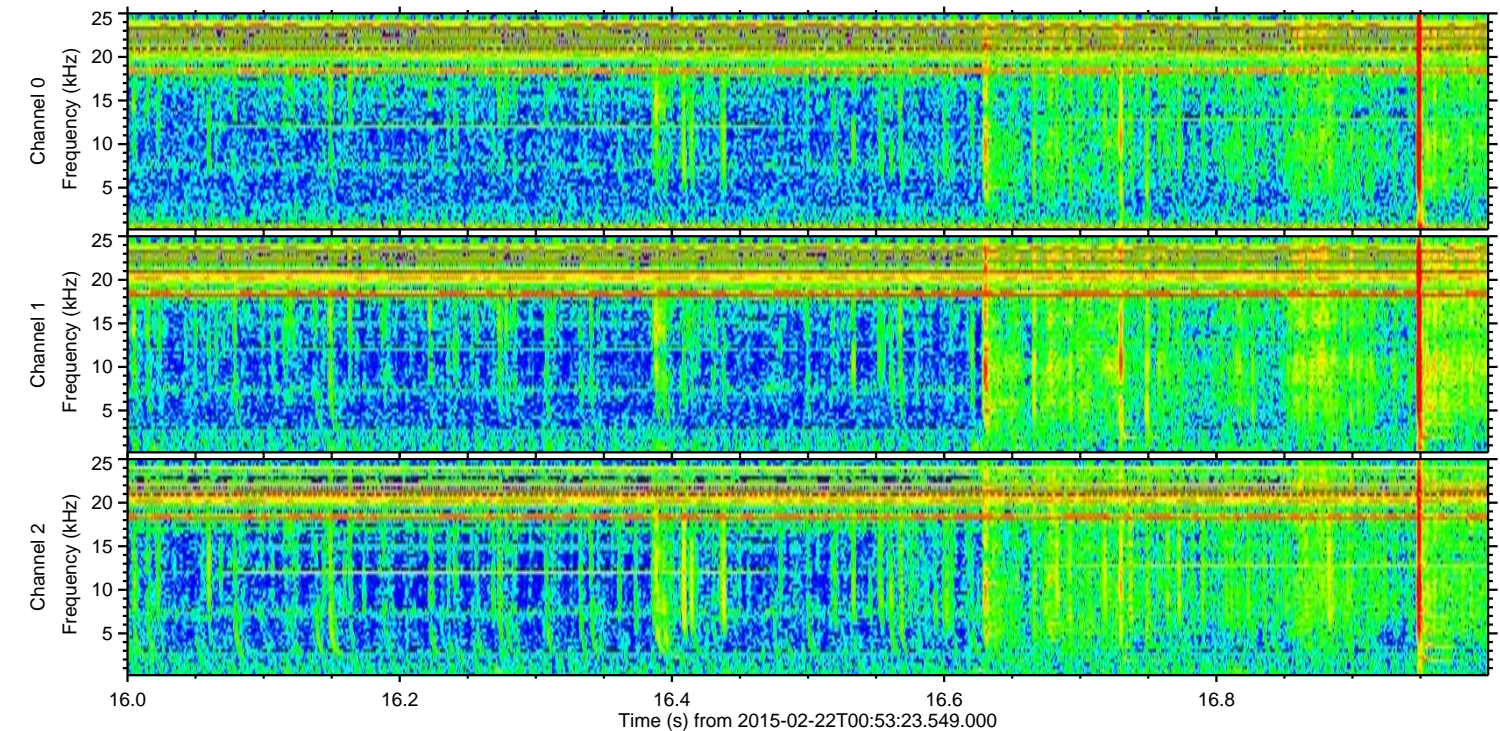
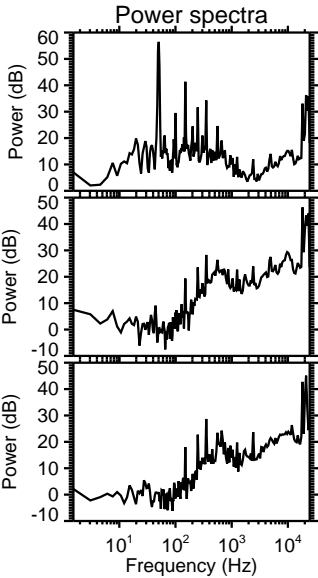
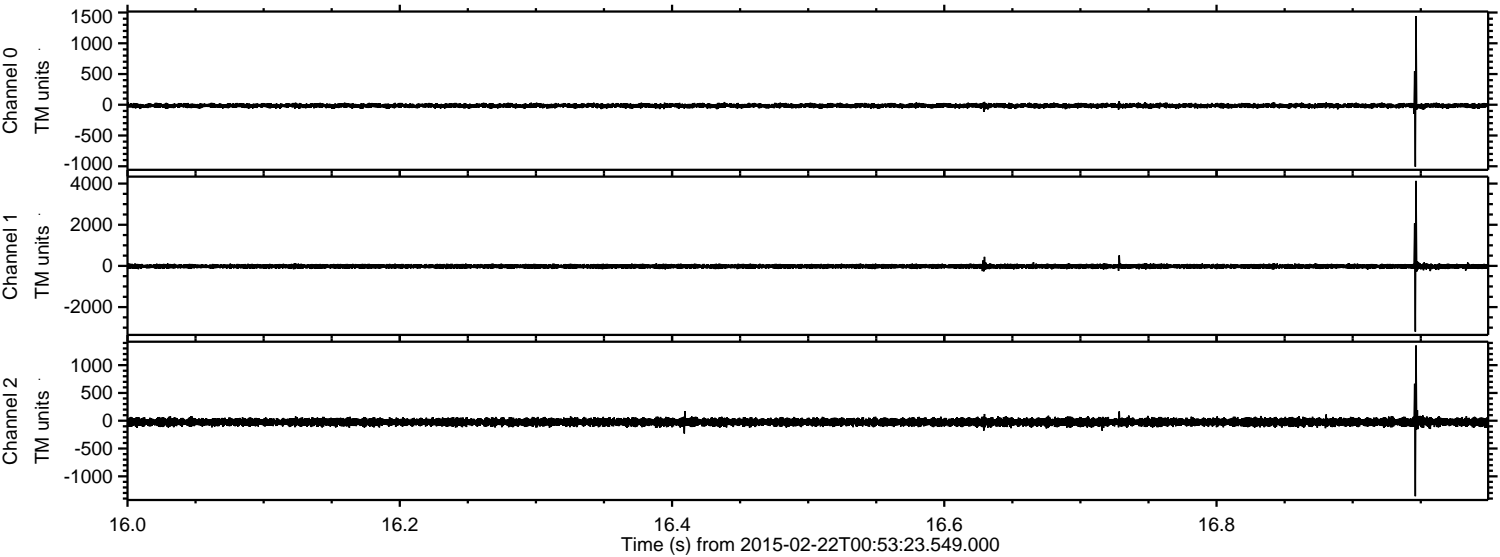
Processed Mon Mar 2 06:47:33 2015 by ELM ver.2012-10-06 from 001__elm20150222_005322__dat00.bin



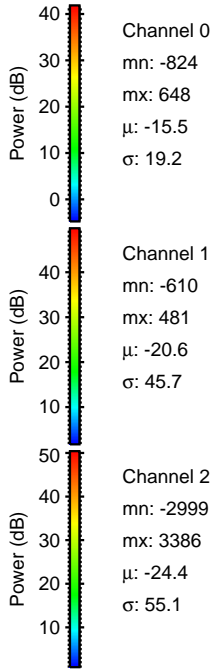
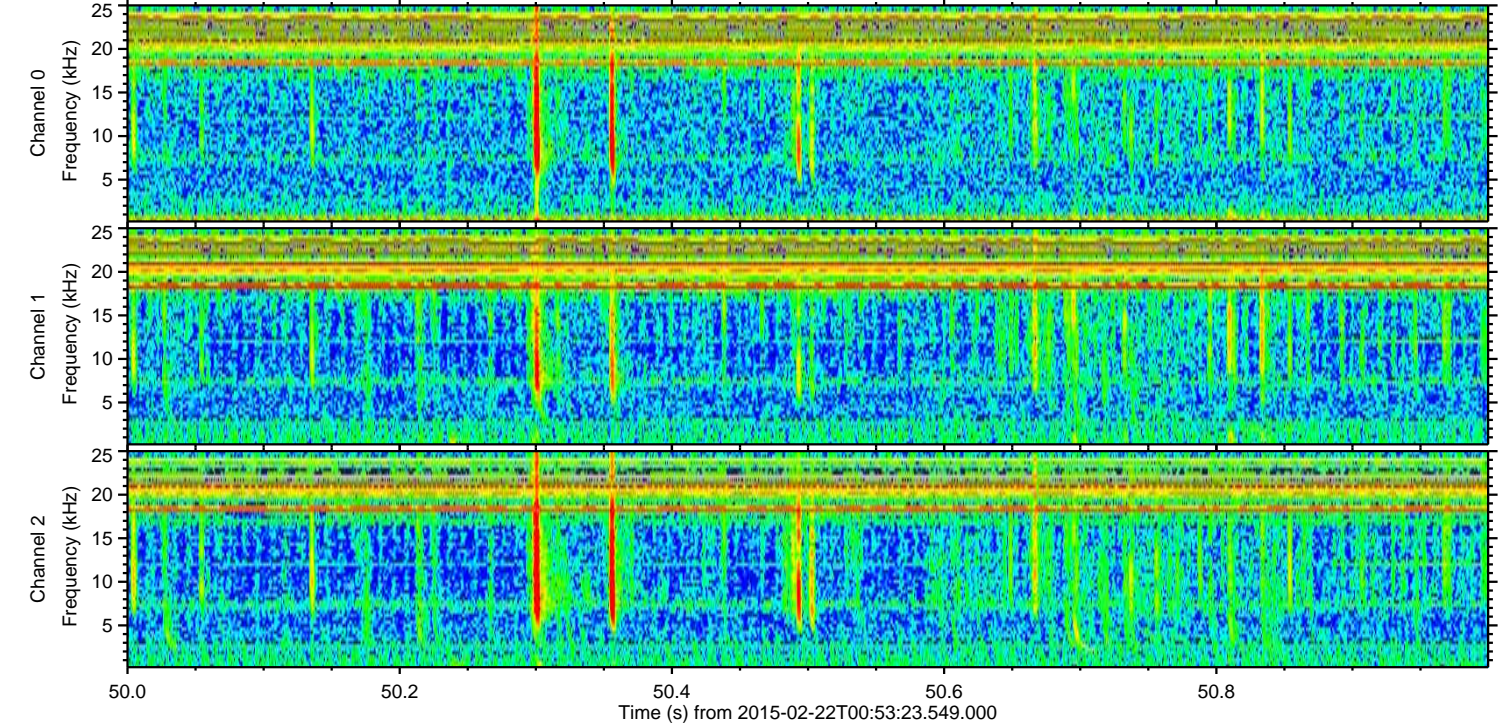
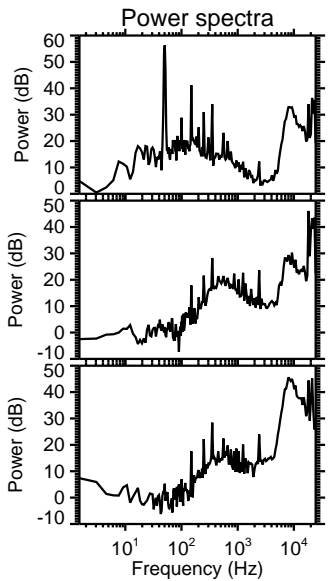
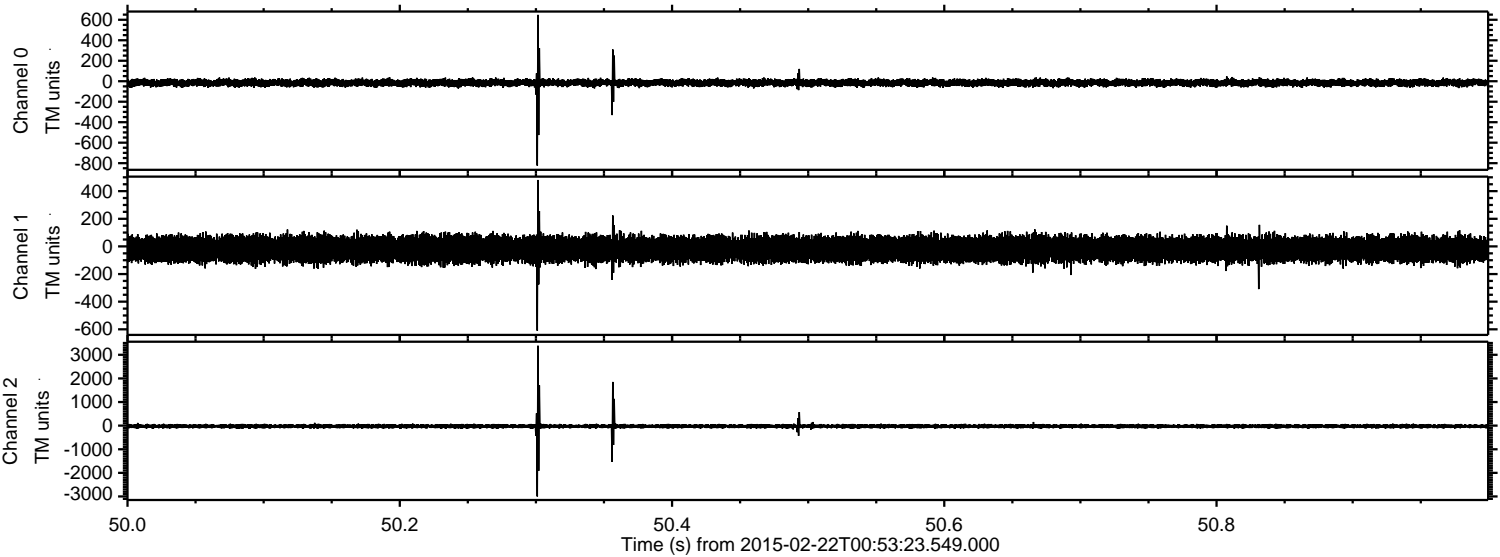
Processed Mon Mar 2 06:47:44 2015 by ELM ver.2012-10-06 from 001__elm20150222_005322__dat00.bin



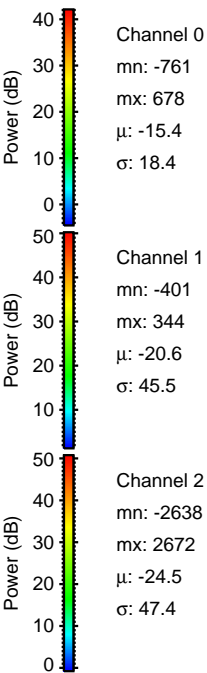
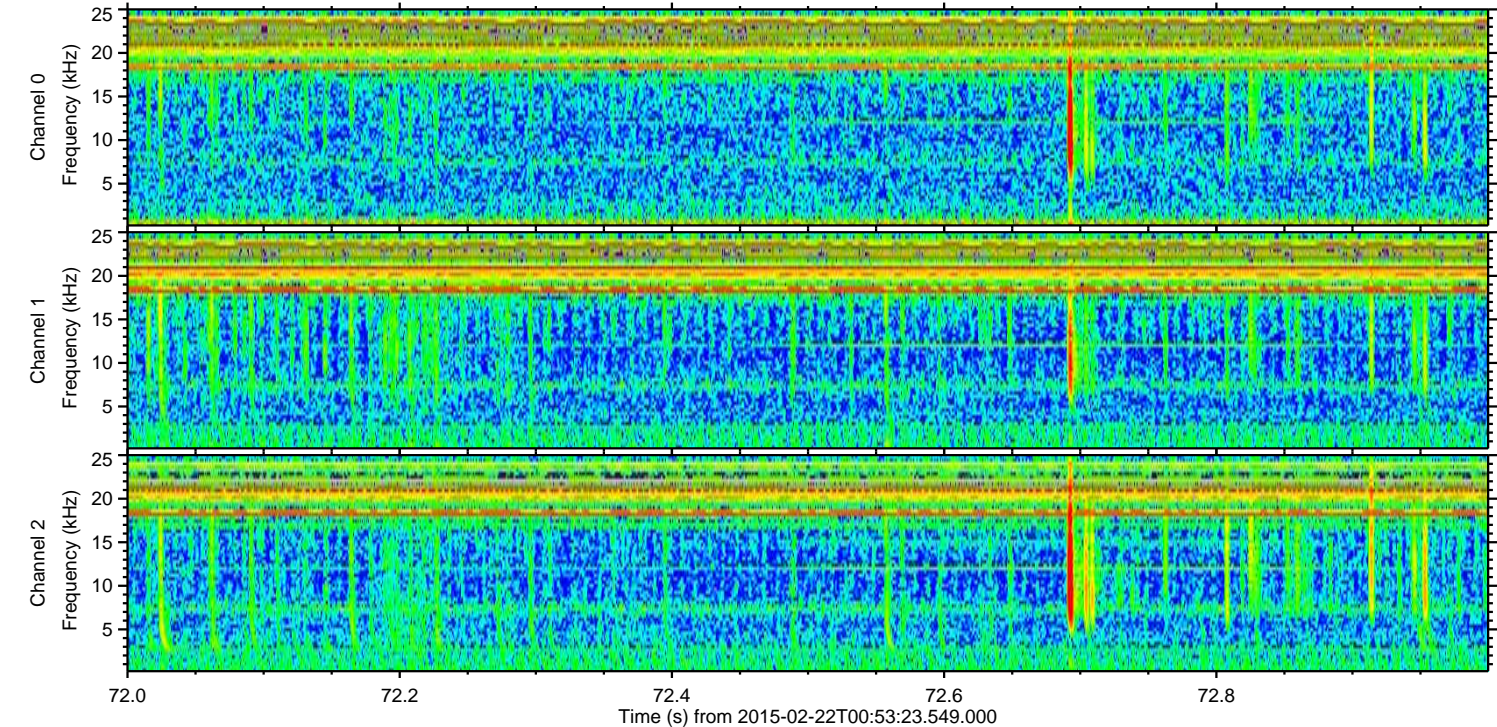
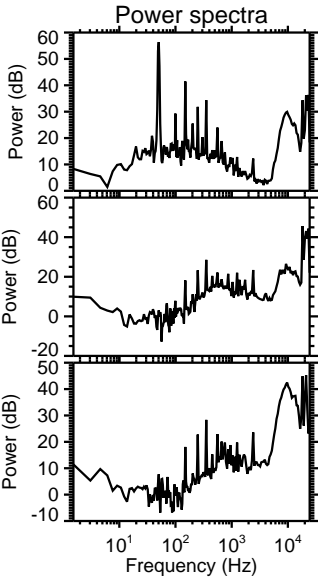
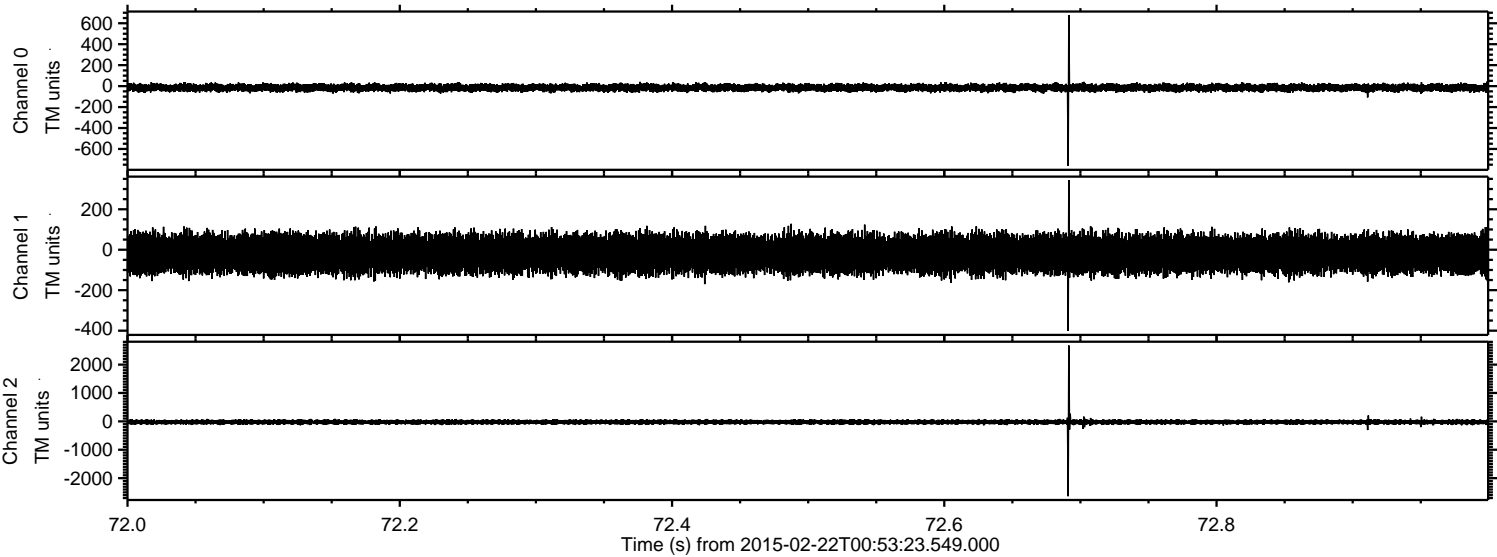
Processed Mon Mar 2 06:47:45 2015 by ELM ver.2012-10-06 from 001__elm20150222_005322__dat00.bin



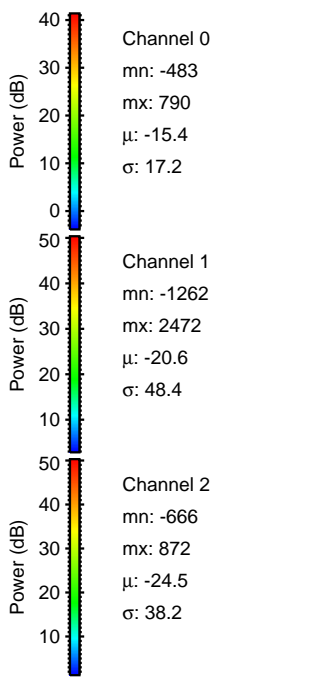
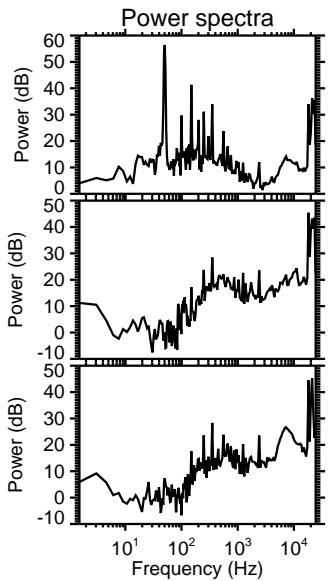
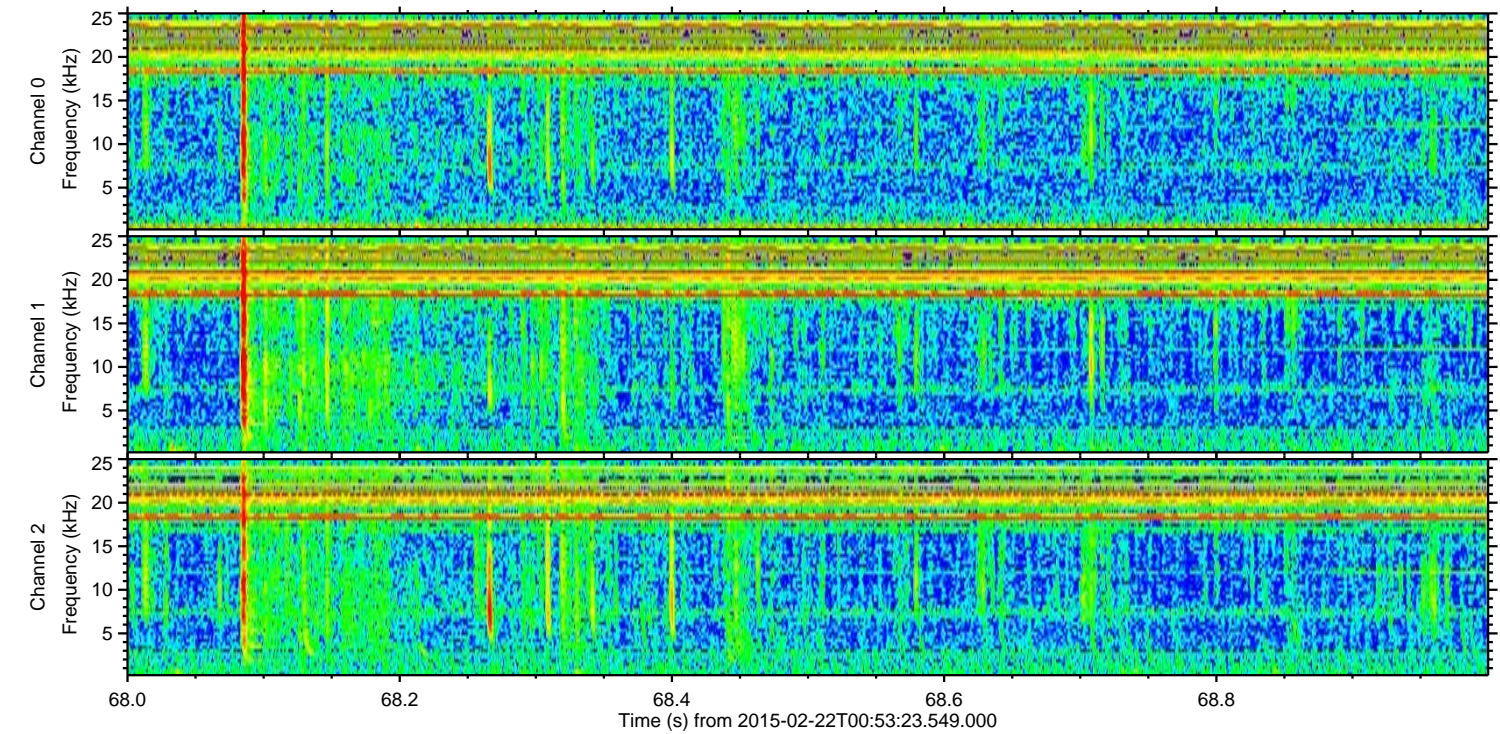
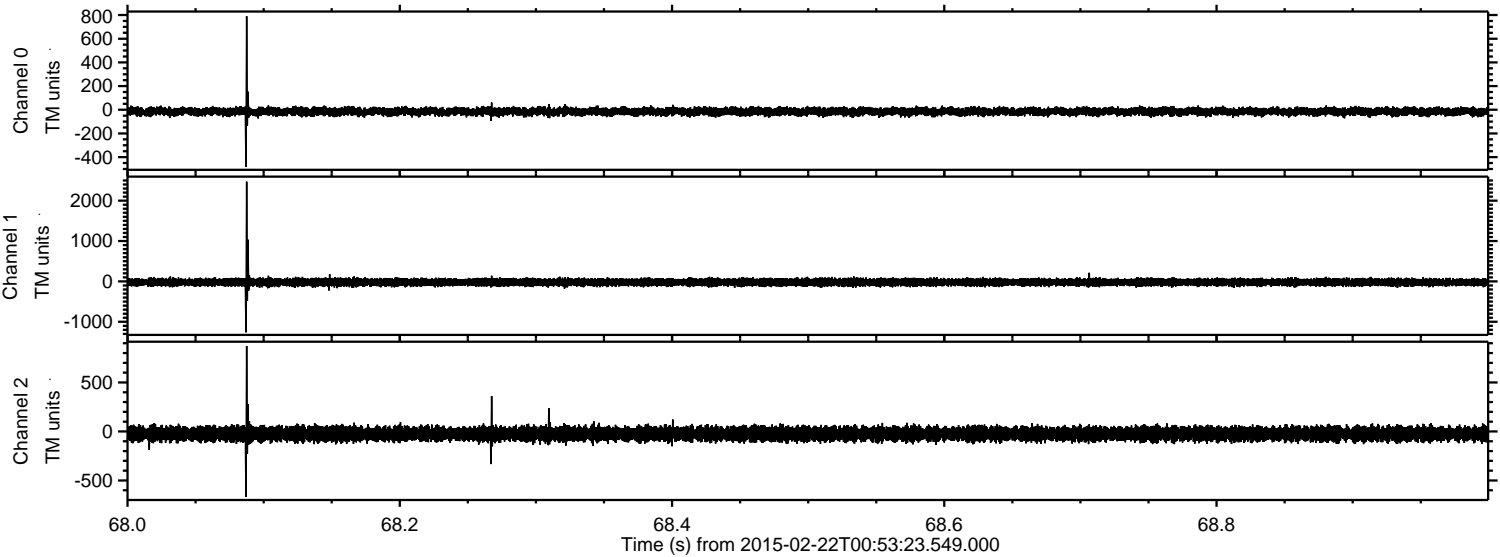
Processed Mon Mar 2 06:47:46 2015 by ELM ver.2012-10-06 from 001__elm20150222_005322__dat00.bin



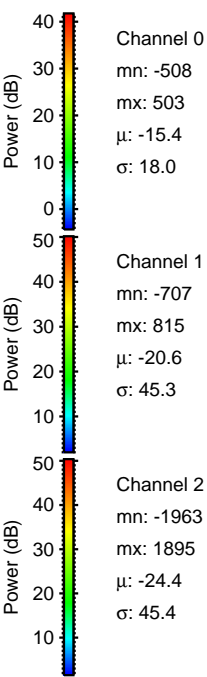
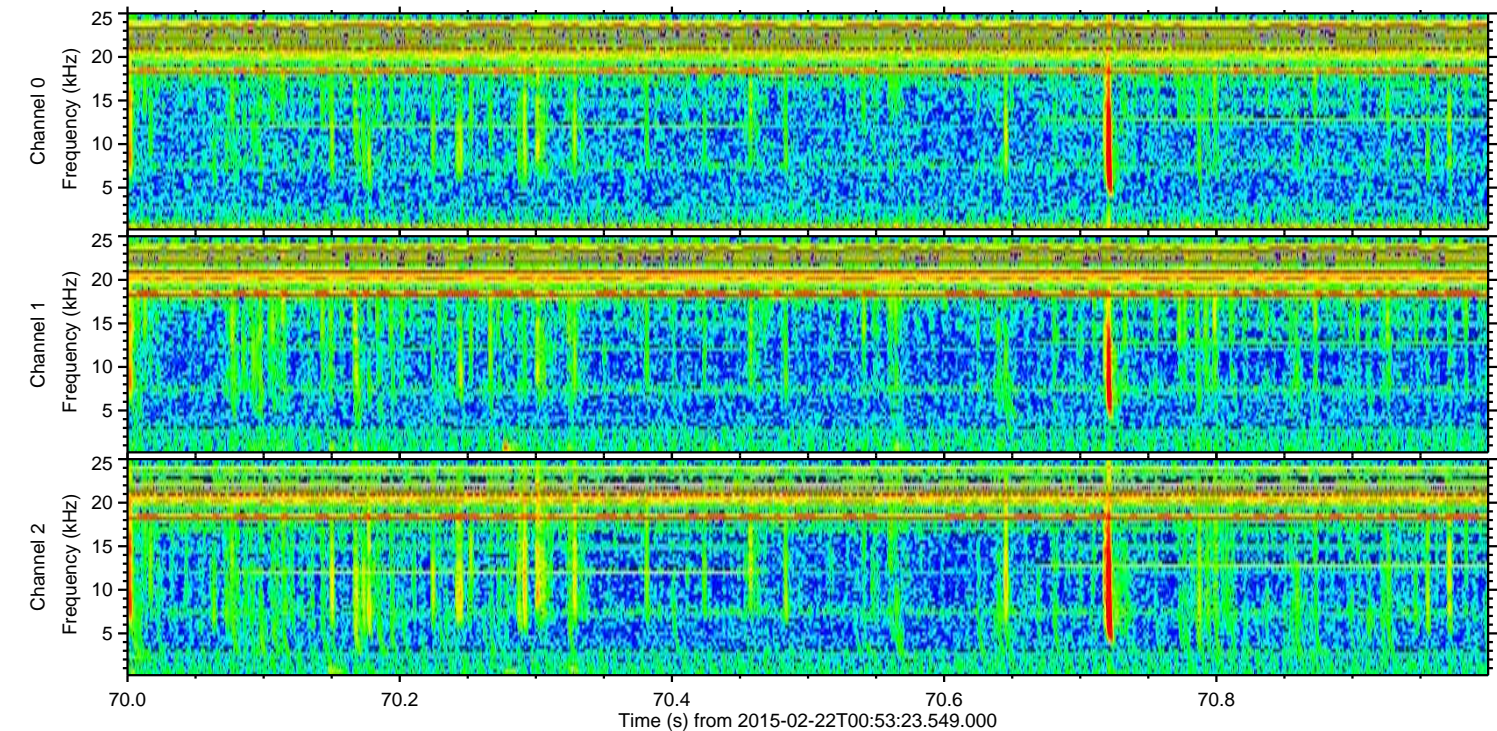
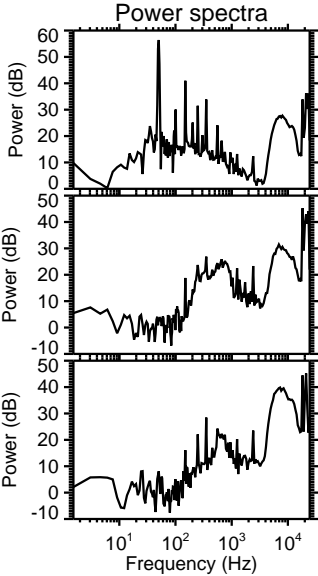
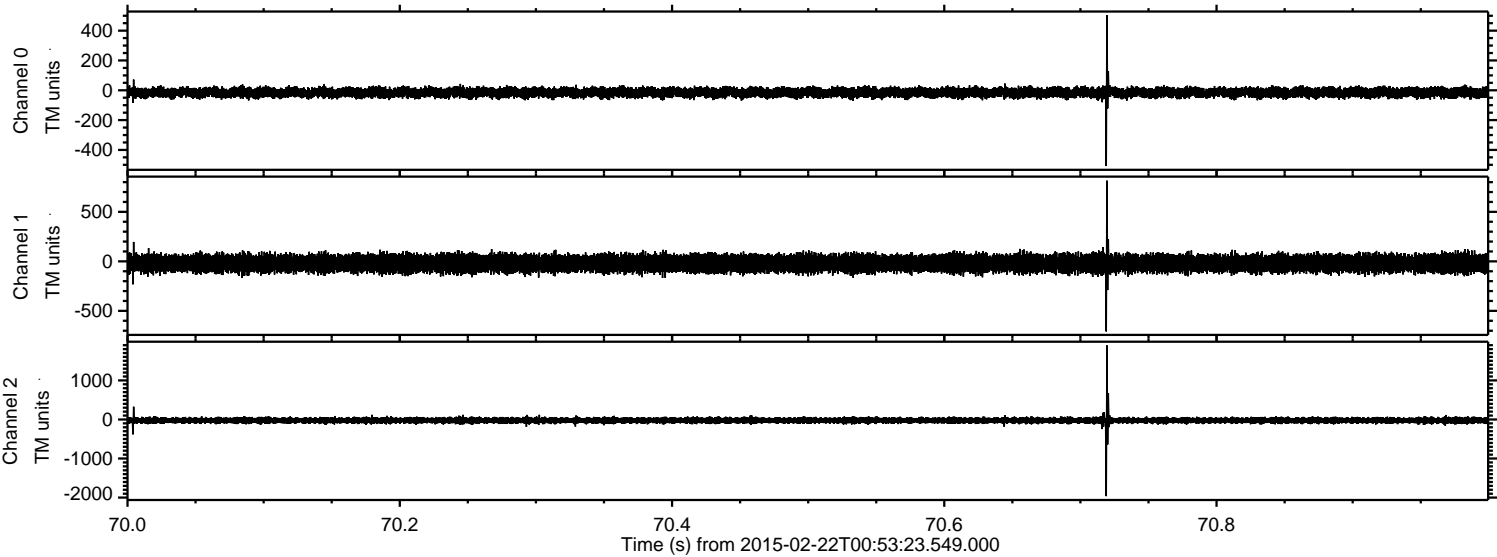
Processed Mon Mar 2 06:47:47 2015 by ELM ver.2012-10-06 from 001__elm20150222_005322__dat00.bin



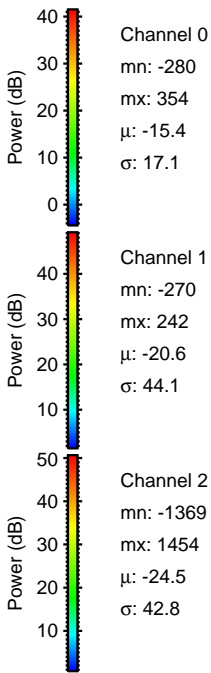
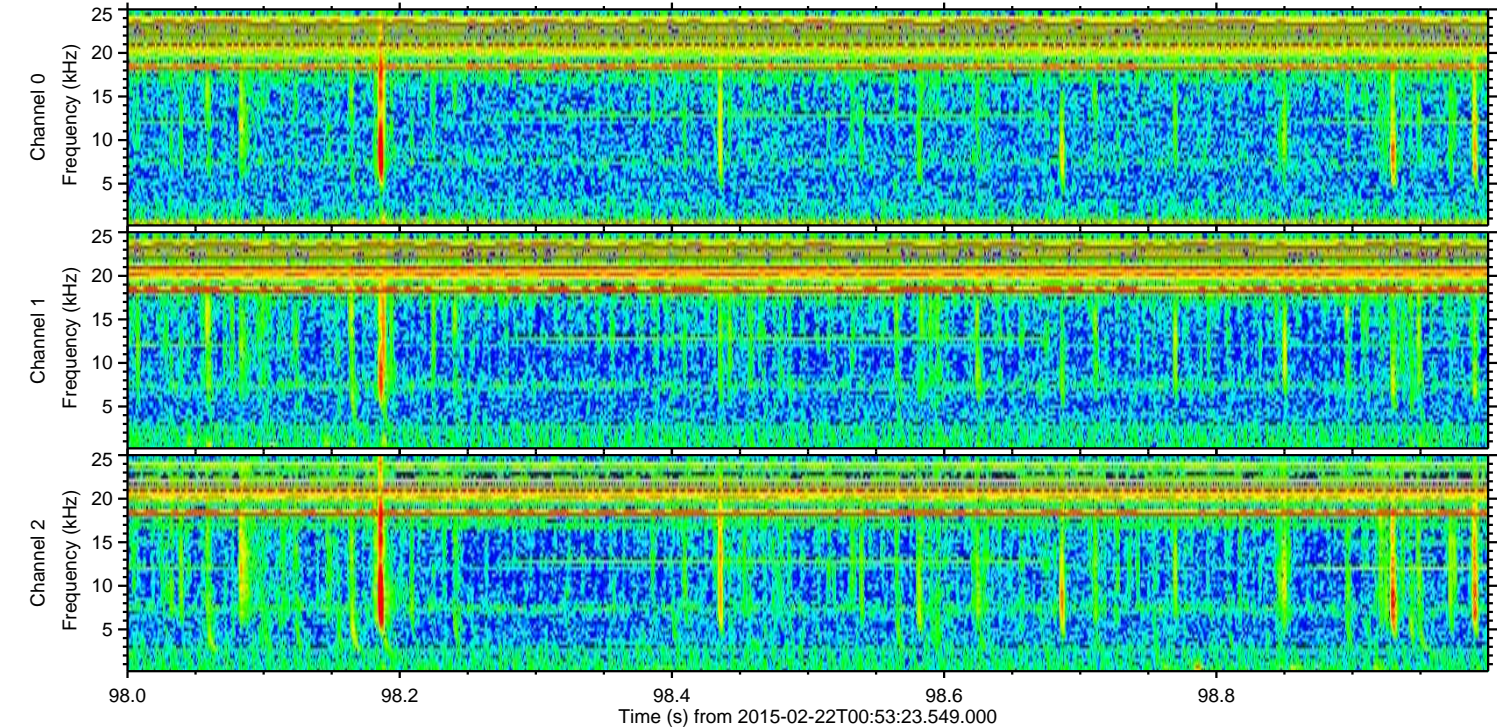
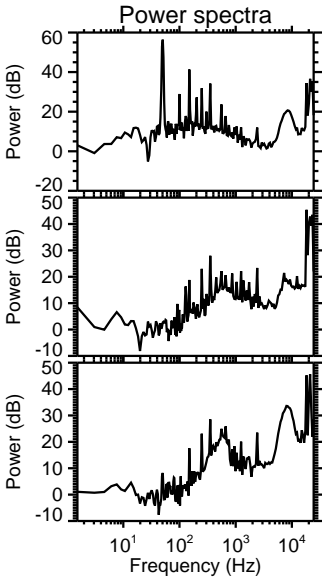
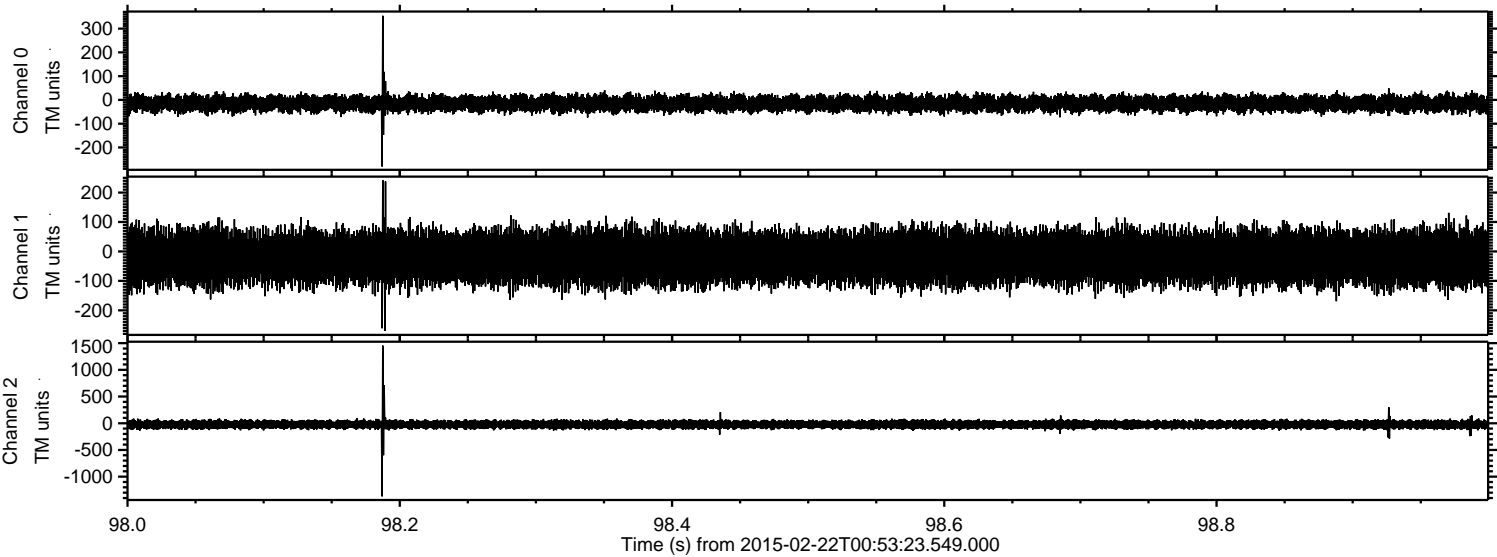
Processed Mon Mar 2 06:47:48 2015 by ELM ver.2012-10-06 from 001__elm20150222_005322__dat00.bin



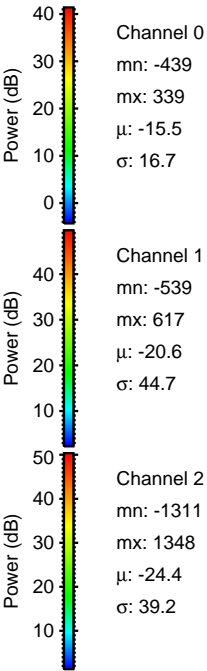
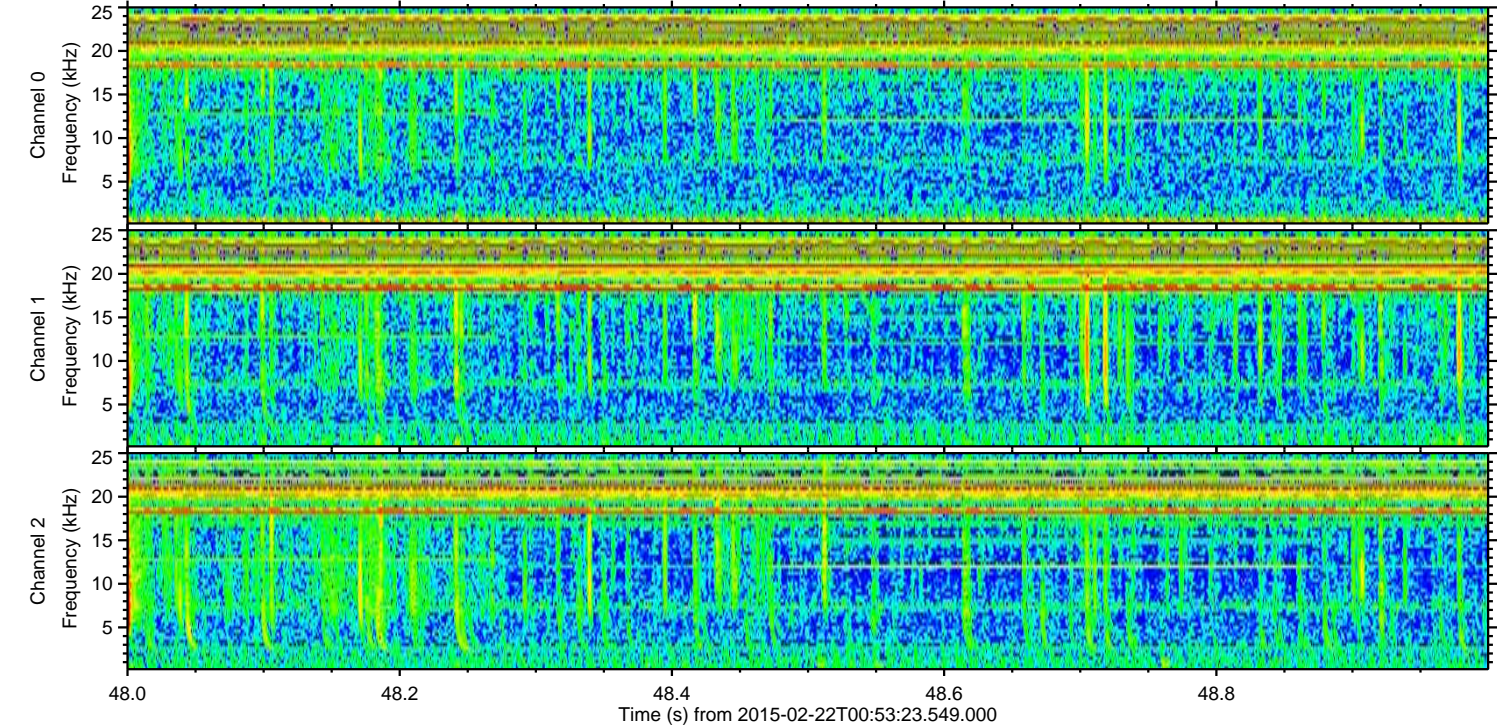
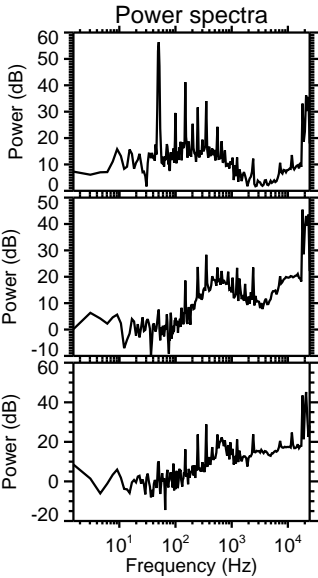
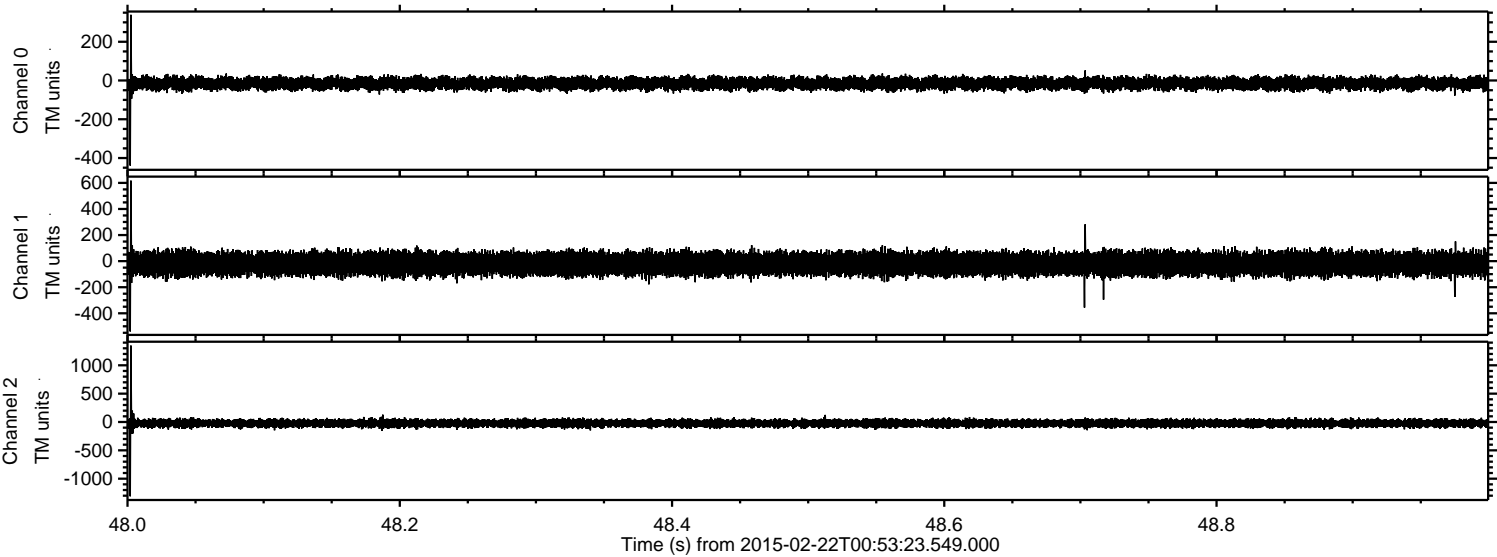
Processed Mon Mar 2 06:47:49 2015 by ELM ver.2012-10-06 from 001__elm20150222_005322__dat00.bin



Processed Mon Mar 2 06:47:50 2015 by ELM ver.2012-10-06 from 001__elm20150222_005322__dat00.bin

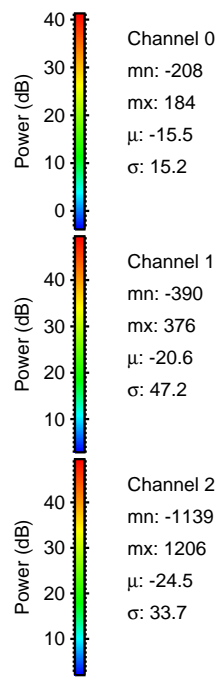
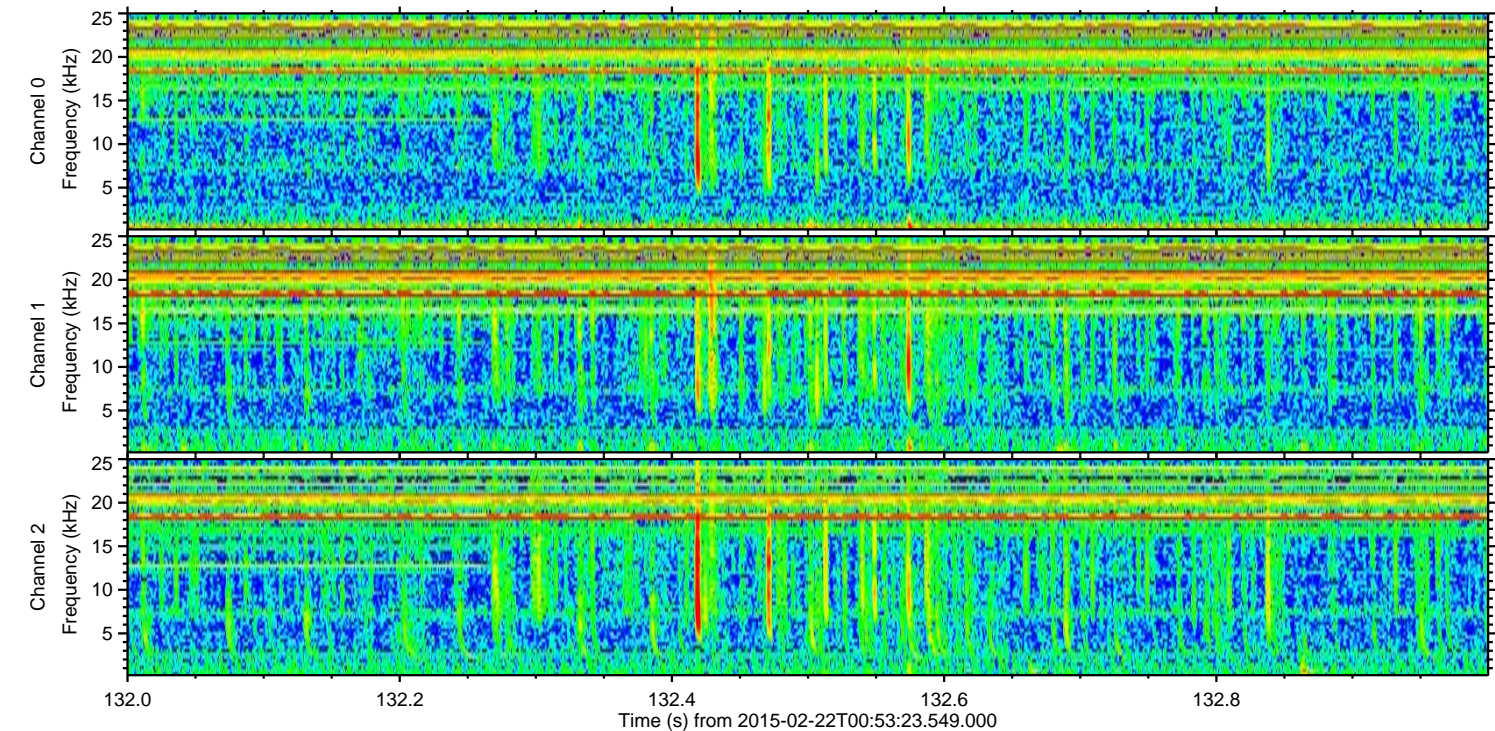
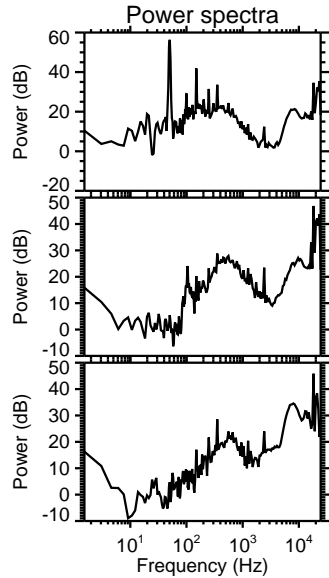
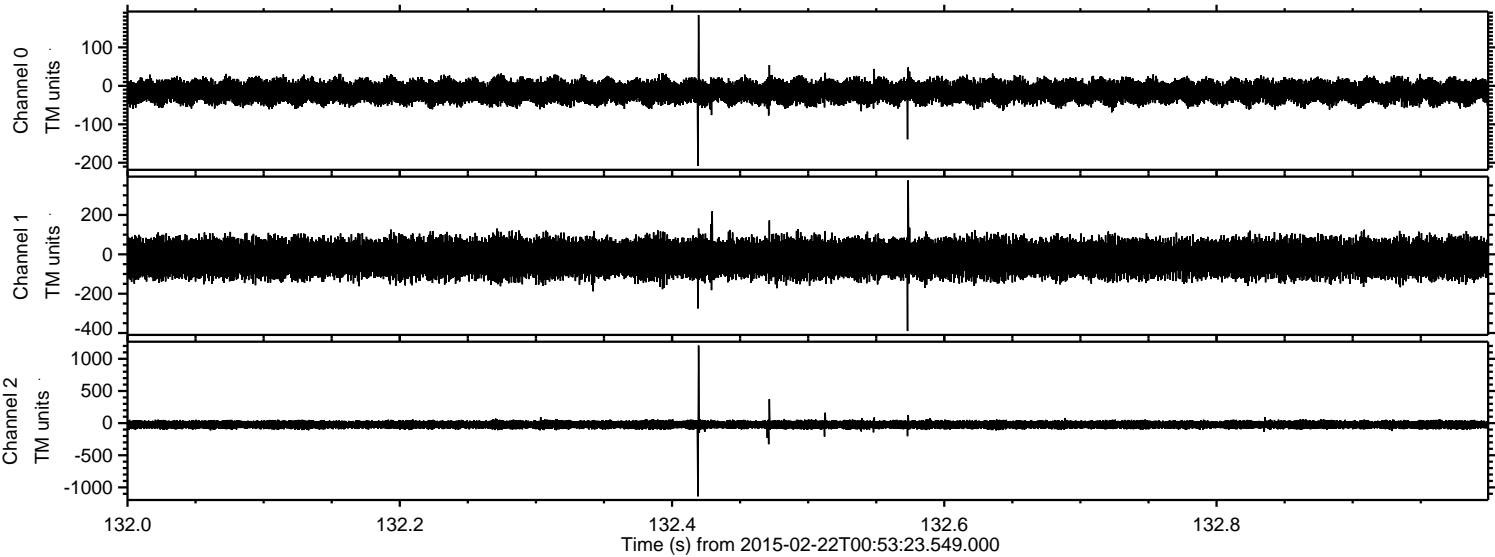


Processed Mon Mar 2 06:47:51 2015 by ELM ver.2012-10-06 from 001__elm20150222_005322__dat00.bin



ELMAVAN 3D WAVEFORMS (Measured data sampled at 50 kHz) 49809 packets of 144 samples from 2015-02-22T00:53:23.549.000. Part 133/144

Processed Mon Mar 2 06:47:52 2015 by ELM ver.2012-10-06 from 001__elm20150222_005322__dat00.bin



ELMAVAN 3D WAVEFORMS (Measured data sampled at 50 kHz) 49809 packets of 144 samples from 2015-02-22T00:53:23.549.000. Part 102/144

