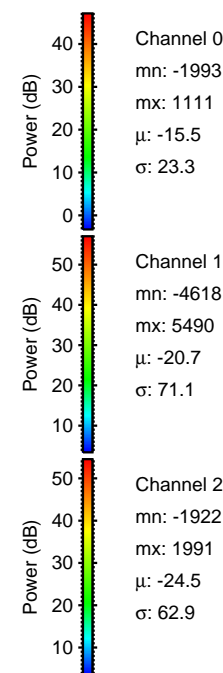
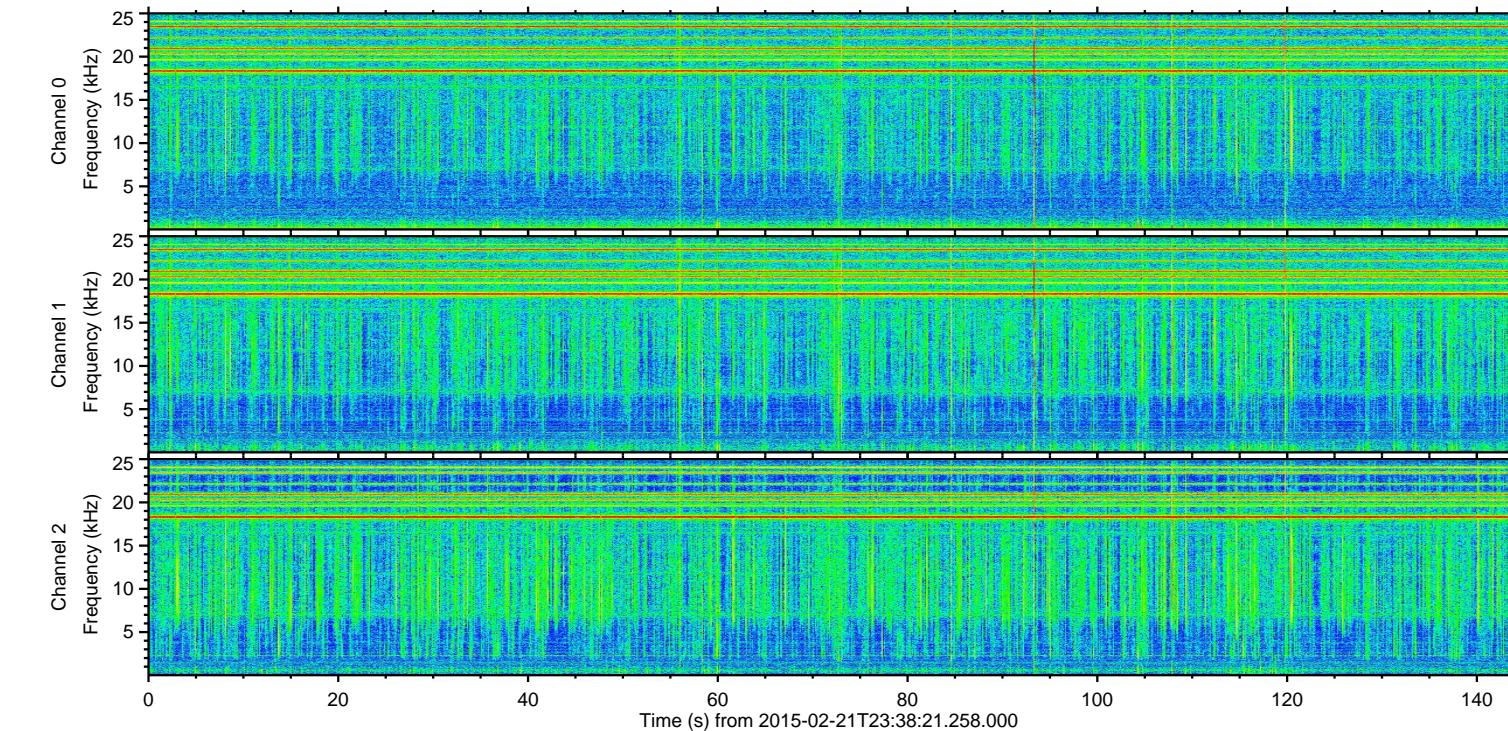
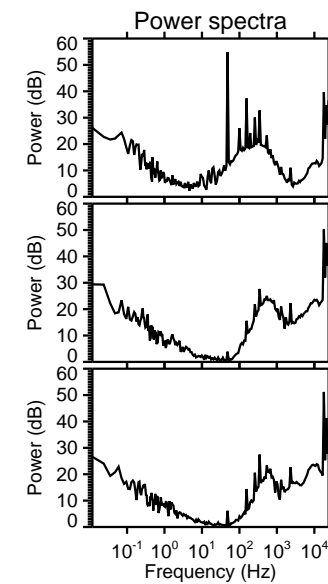
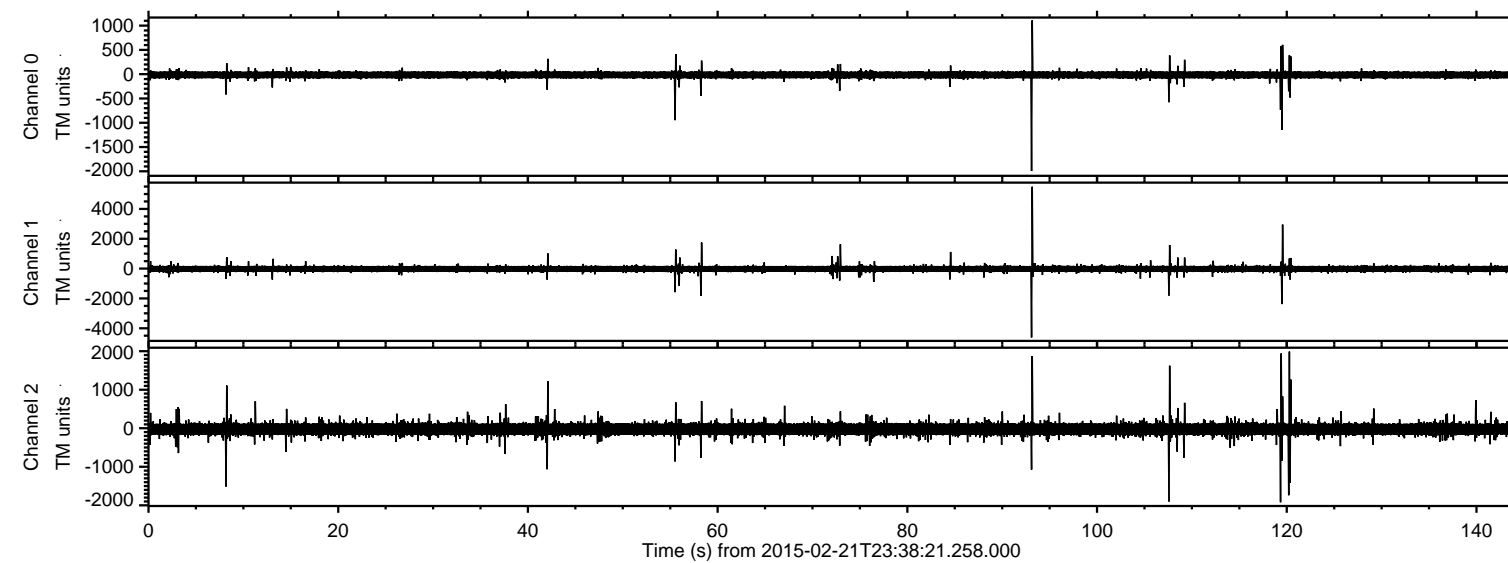
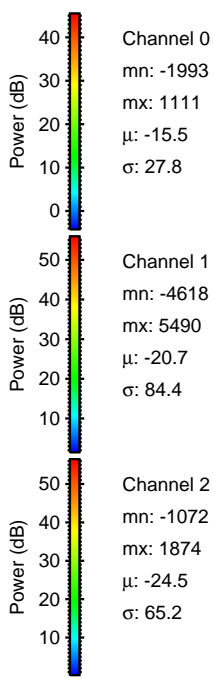
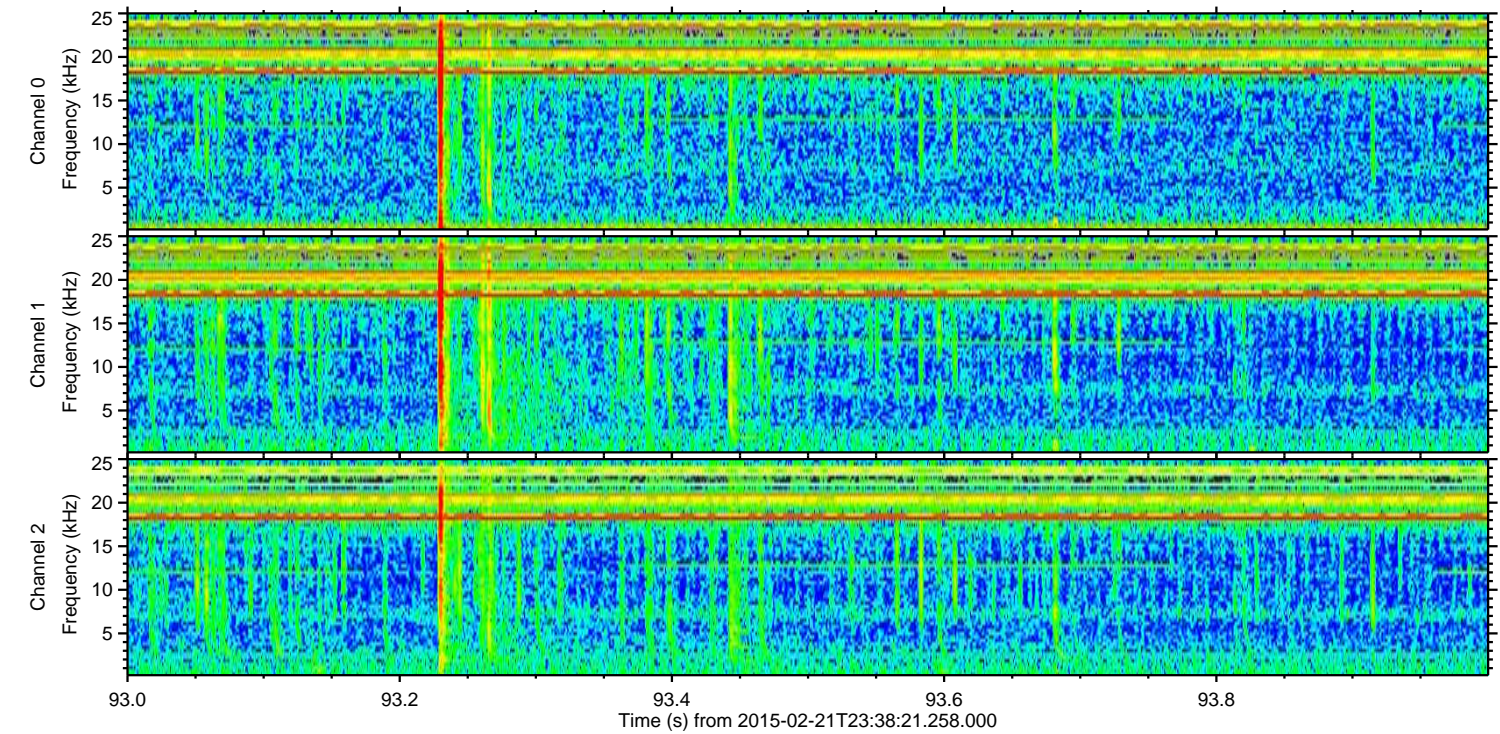
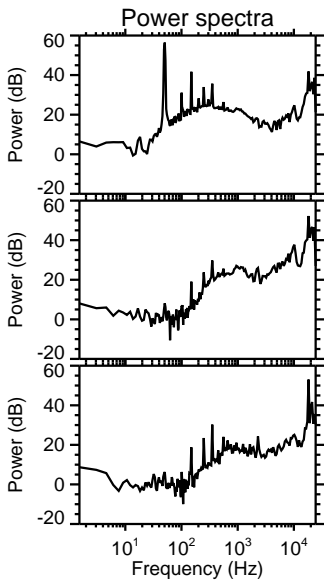
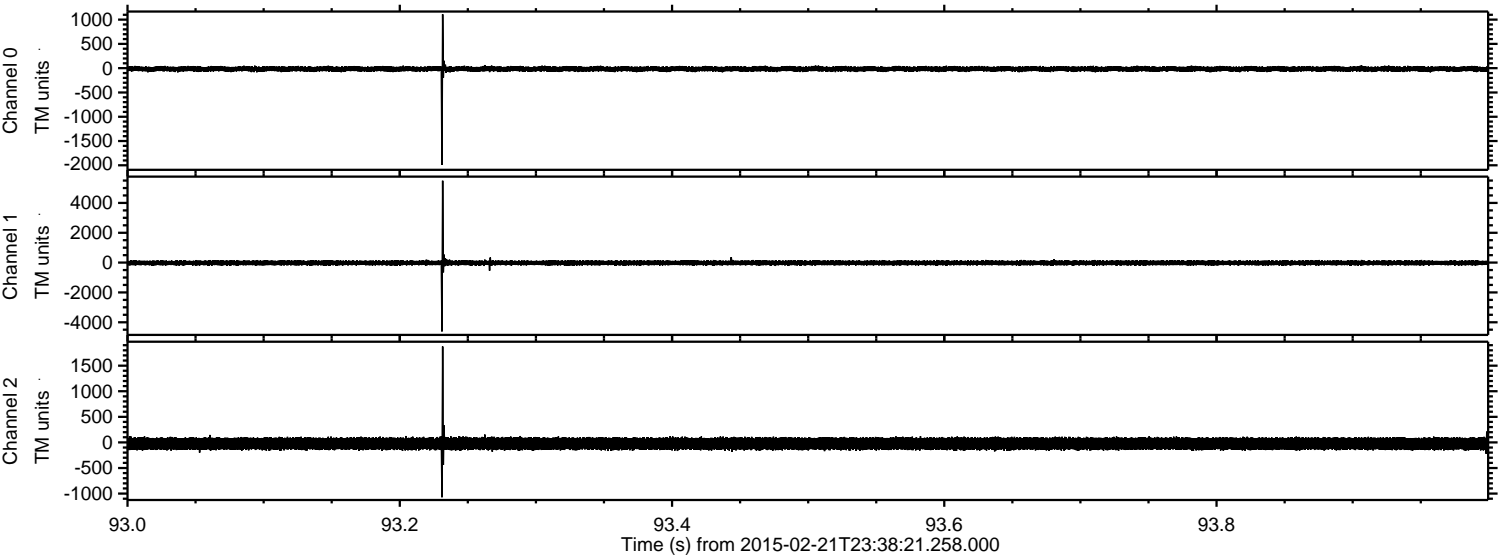


ELMAVAN 3D WAVEFORMS (Measured data sampled at 50 kHz) 49807 packets of 144 samples from 2015-02-21T23:38:21.258.000.

Processed Mon Mar 2 06:14:16 2015 by ELM ver.2012-10-06 from 001__elm20150221_233820__dat00.bin

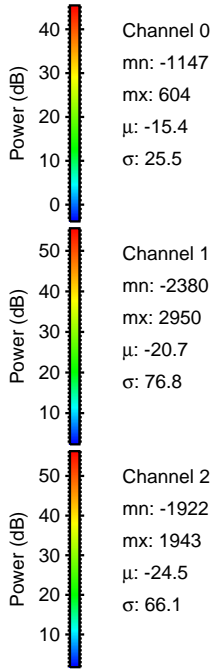
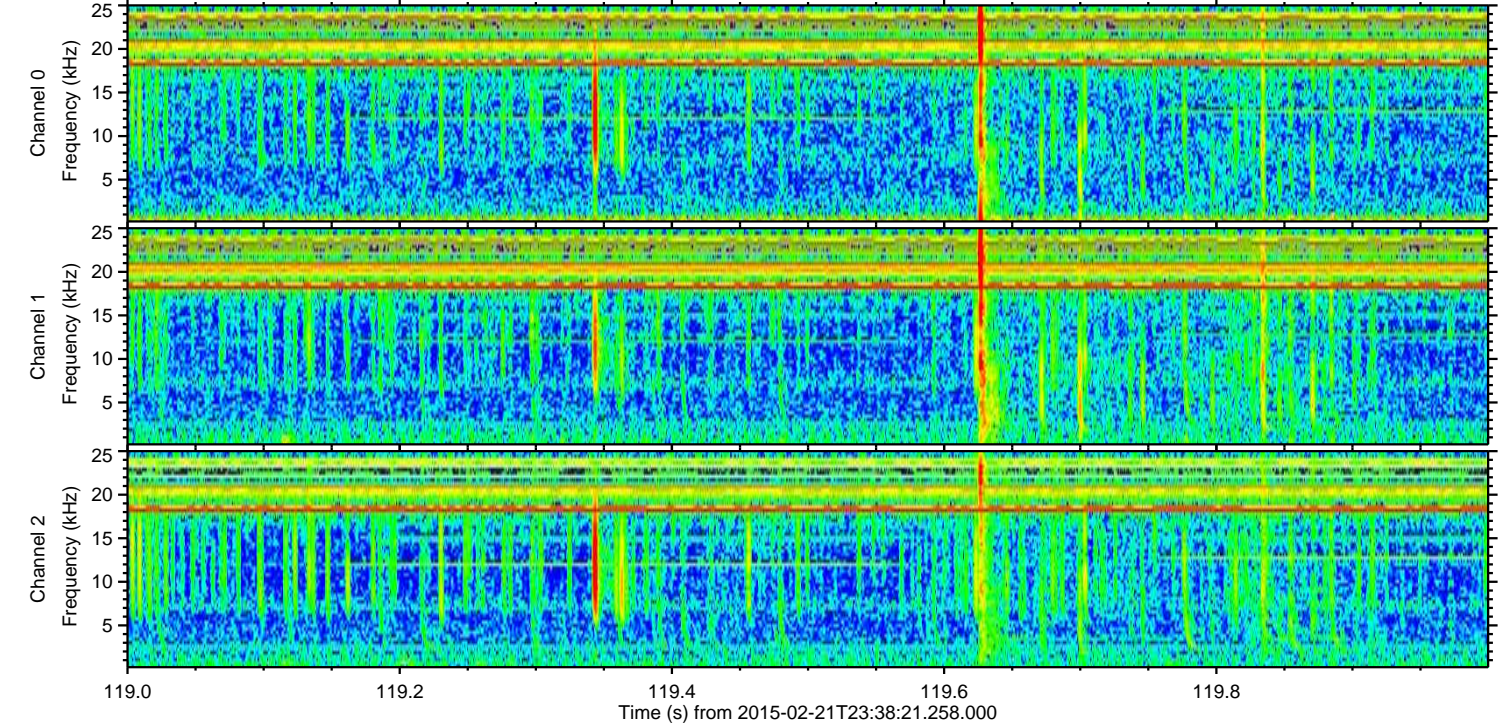
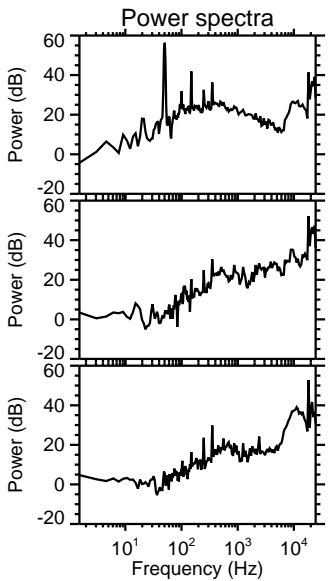
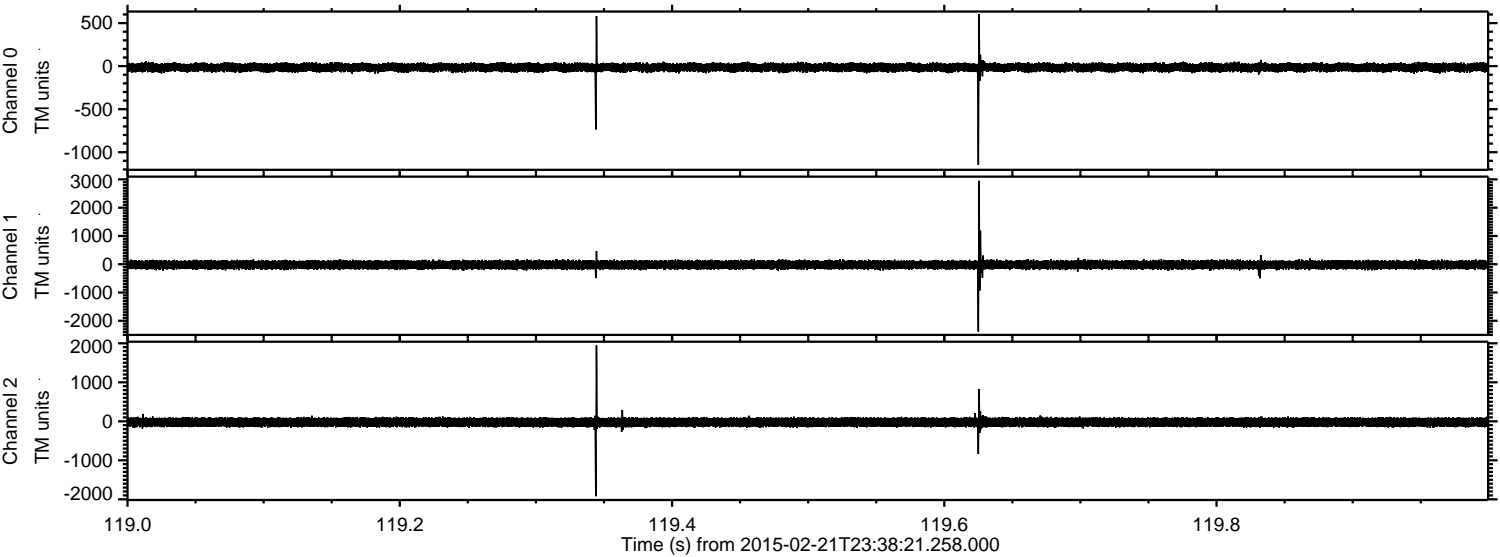


Processed Mon Mar 2 06:14:28 2015 by ELM ver.2012-10-06 from 001__elm20150221_233820__dat00.bin



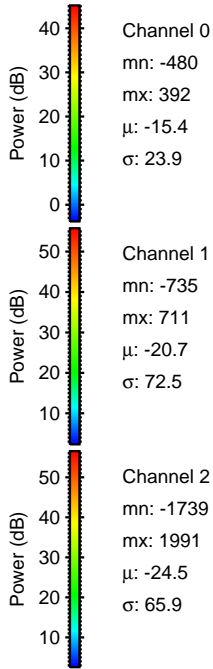
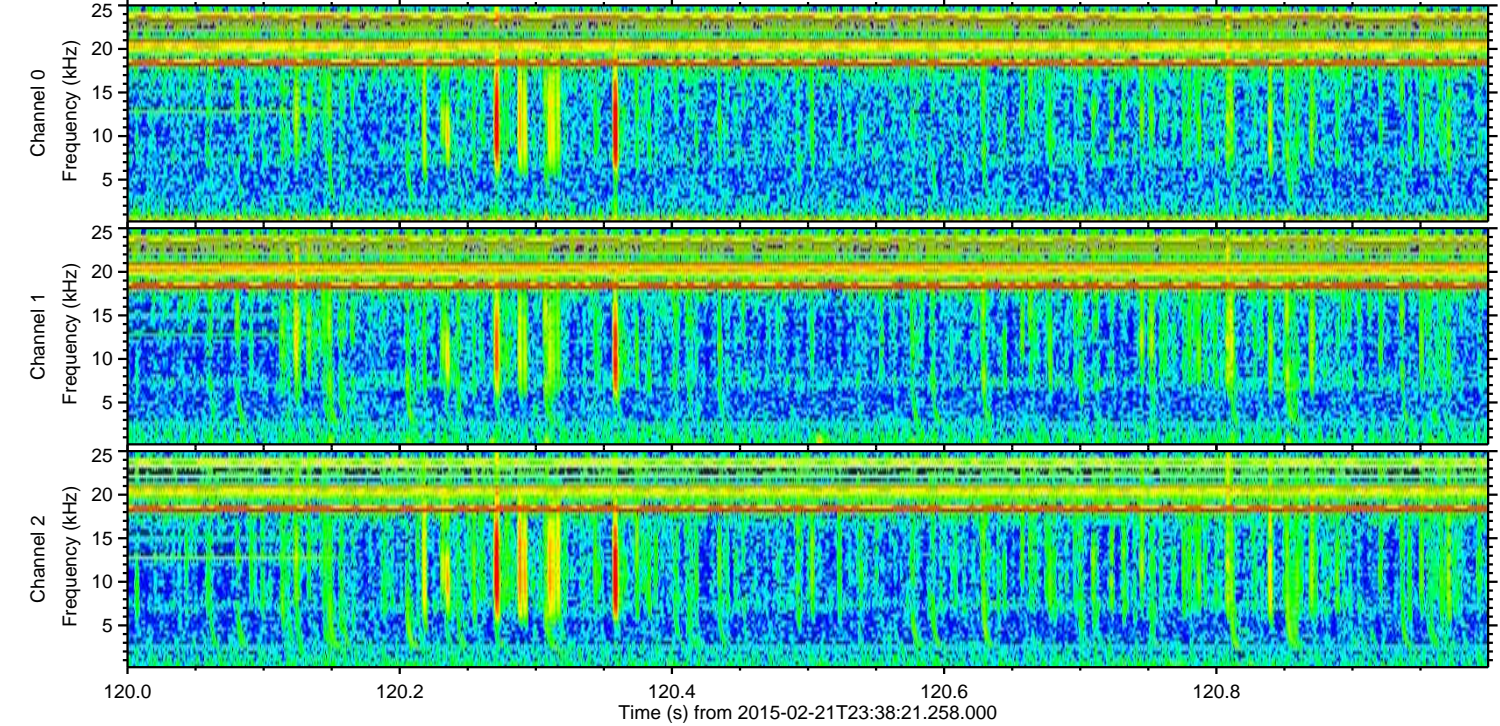
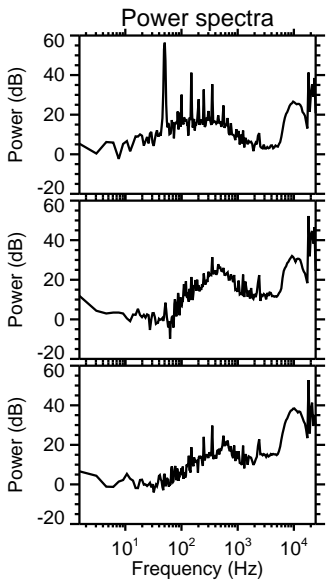
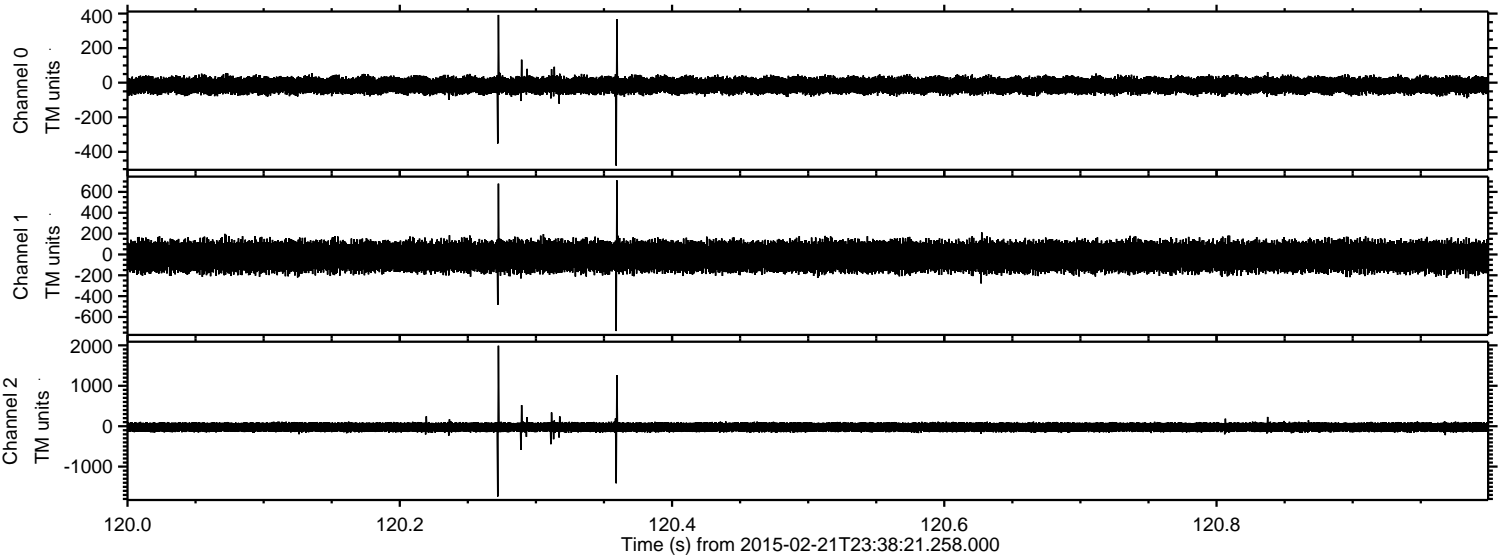
ELMAVAN 3D WAVEFORMS (Measured data sampled at 50 kHz) 49807 packets of 144 samples from 2015-02-21T23:38:21.258.000. Part 120/144

Processed Mon Mar 2 06:14:29 2015 by ELM ver.2012-10-06 from 001__elm20150221_233820__dat00.bin



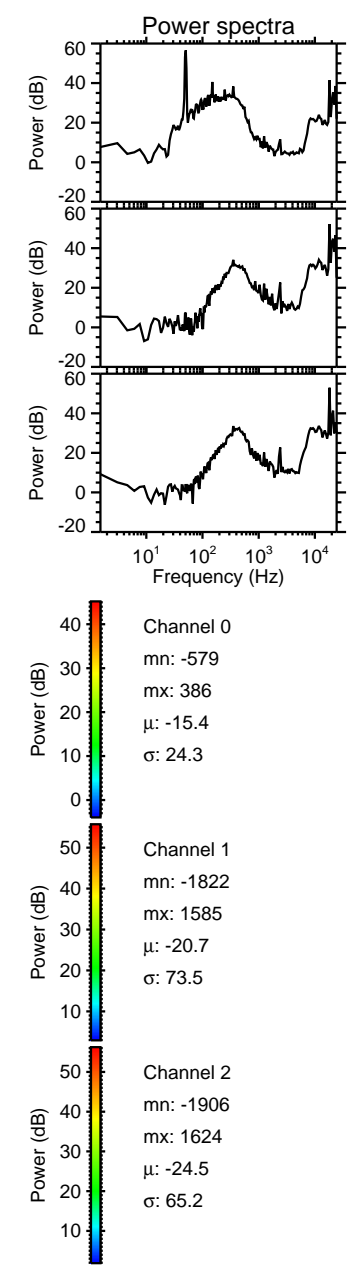
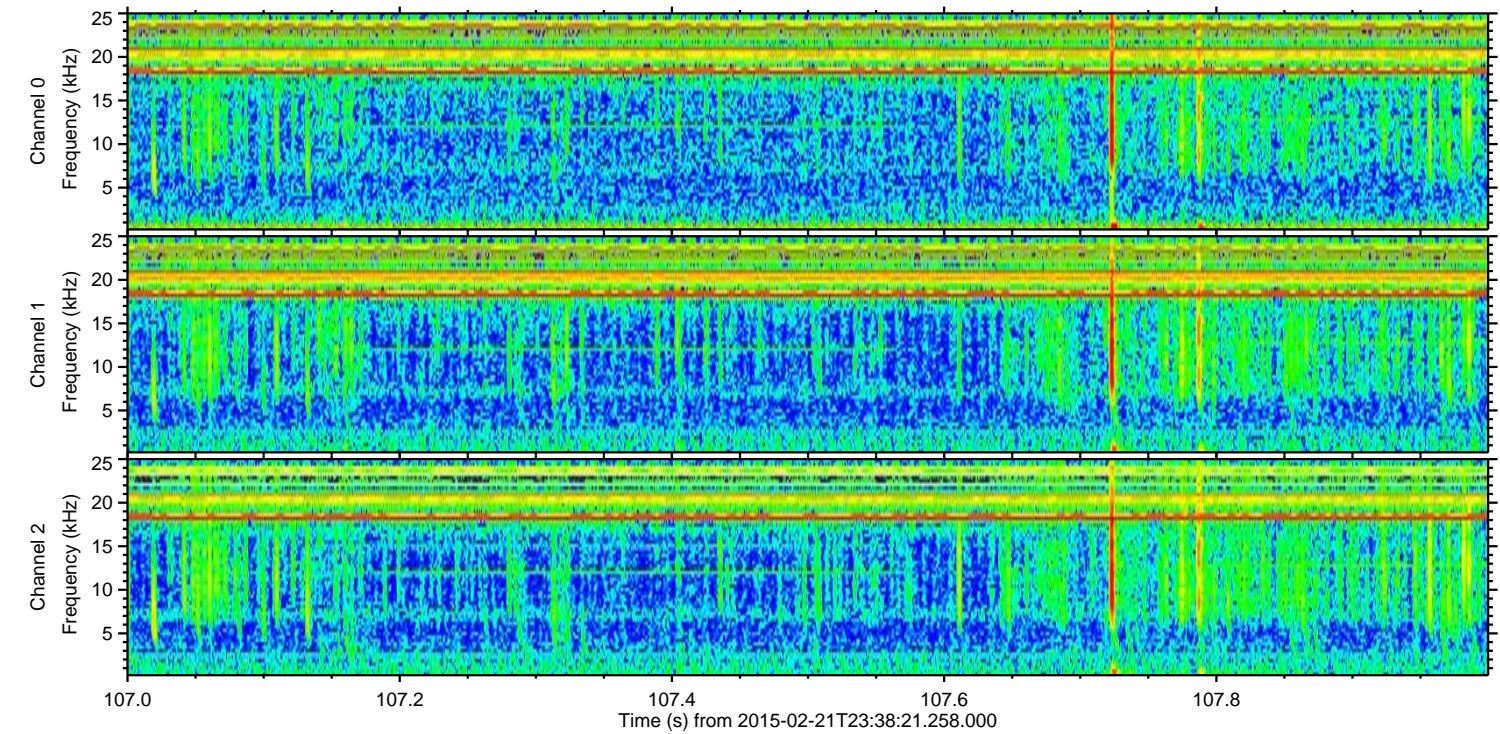
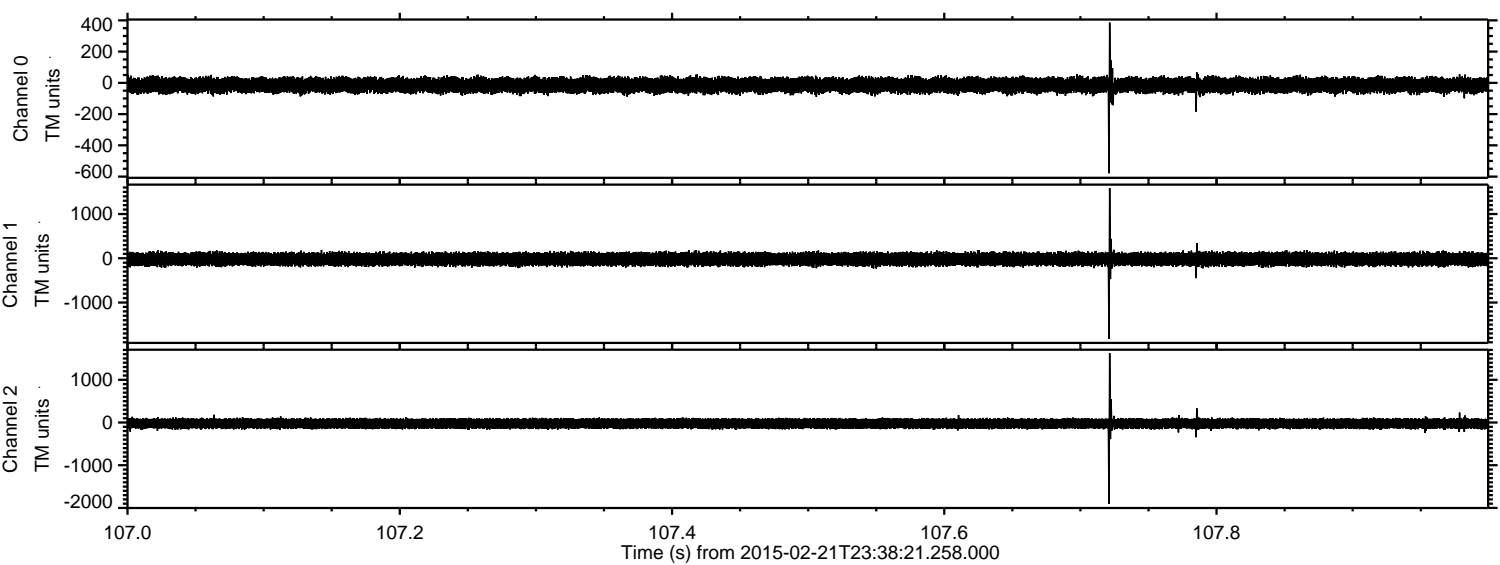
ELMAVAN 3D WAVEFORMS (Measured data sampled at 50 kHz) 49807 packets of 144 samples from 2015-02-21T23:38:21.258.000. Part 121/144

Processed Mon Mar 2 06:14:30 2015 by ELM ver.2012-10-06 from 001__elm20150221_233820__dat00.bin

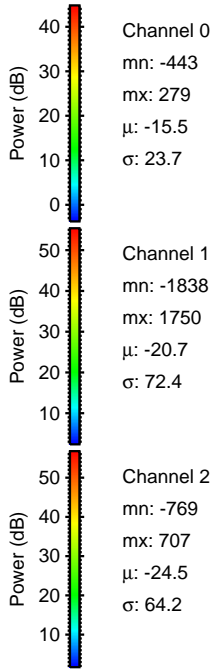
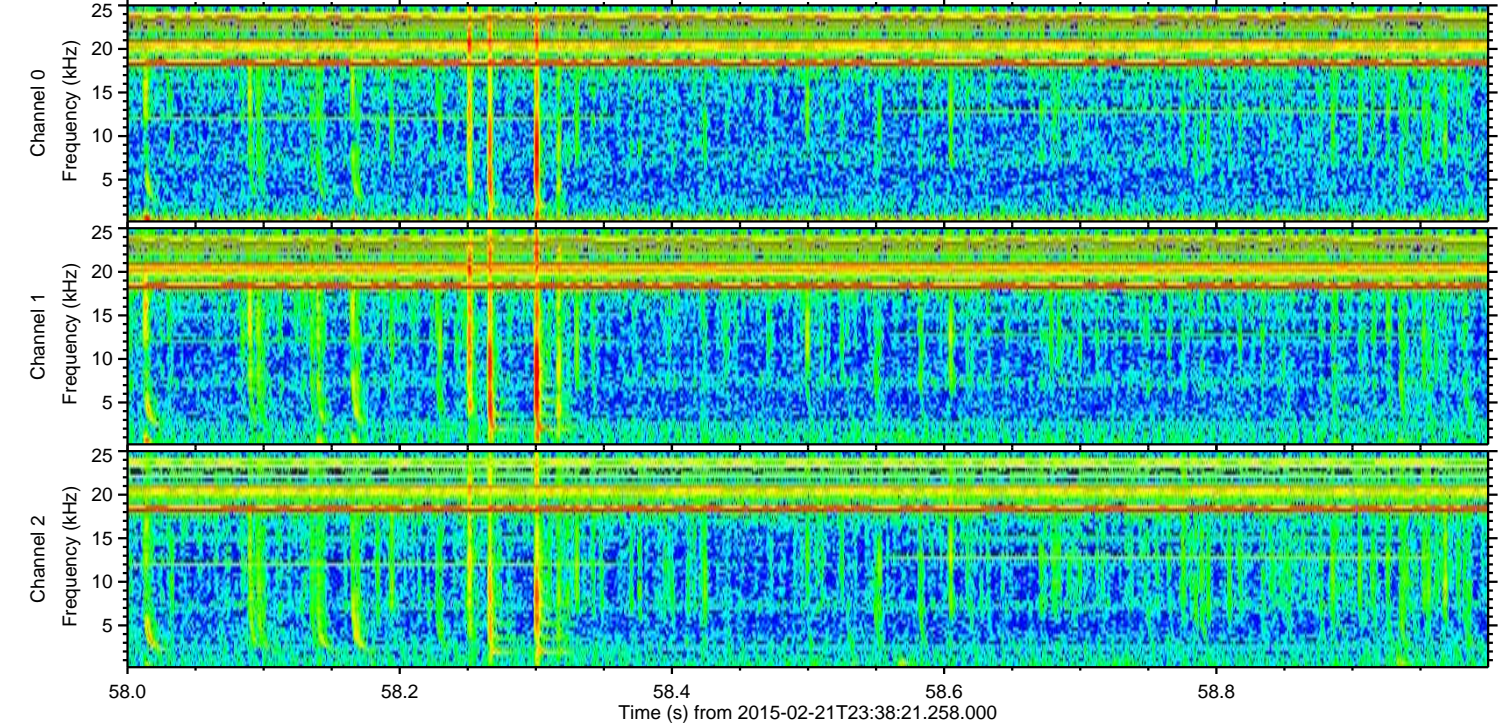
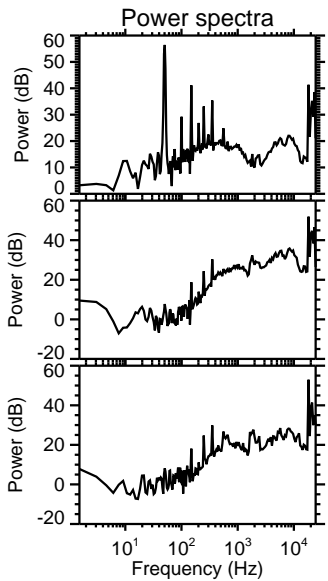
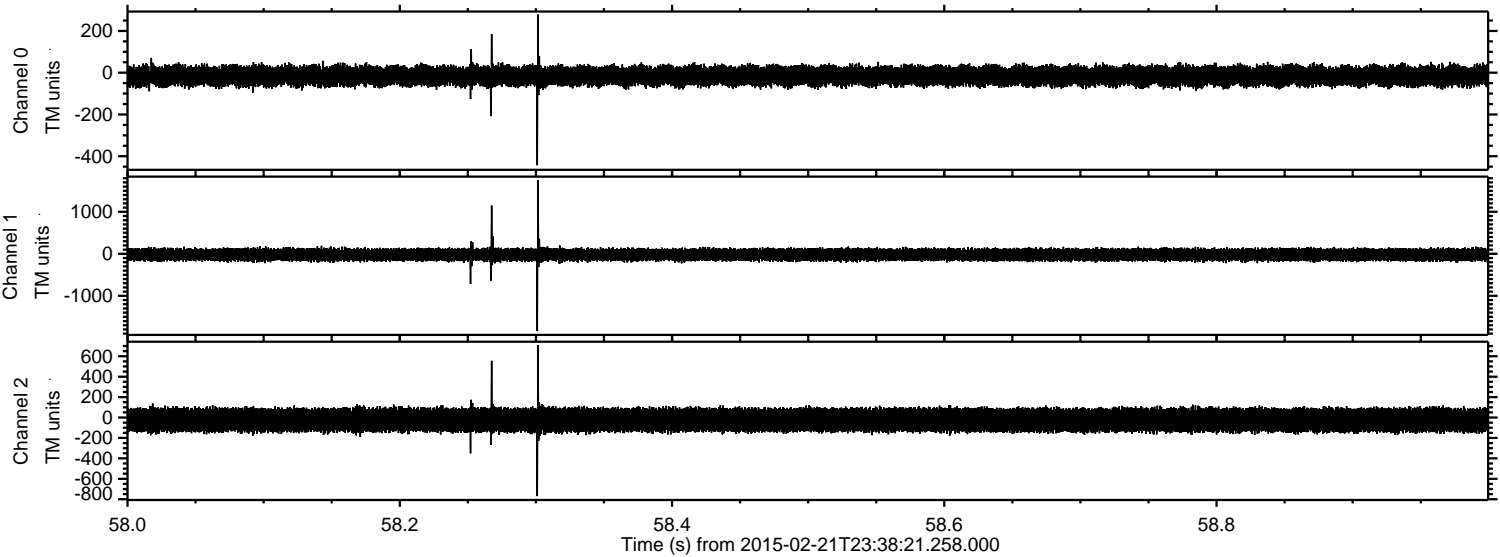


ELMAVAN 3D WAVEFORMS (Measured data sampled at 50 kHz) 49807 packets of 144 samples from 2015-02-21T23:38:21.258.000. Part 108/144

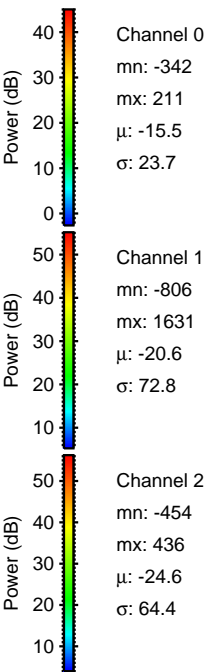
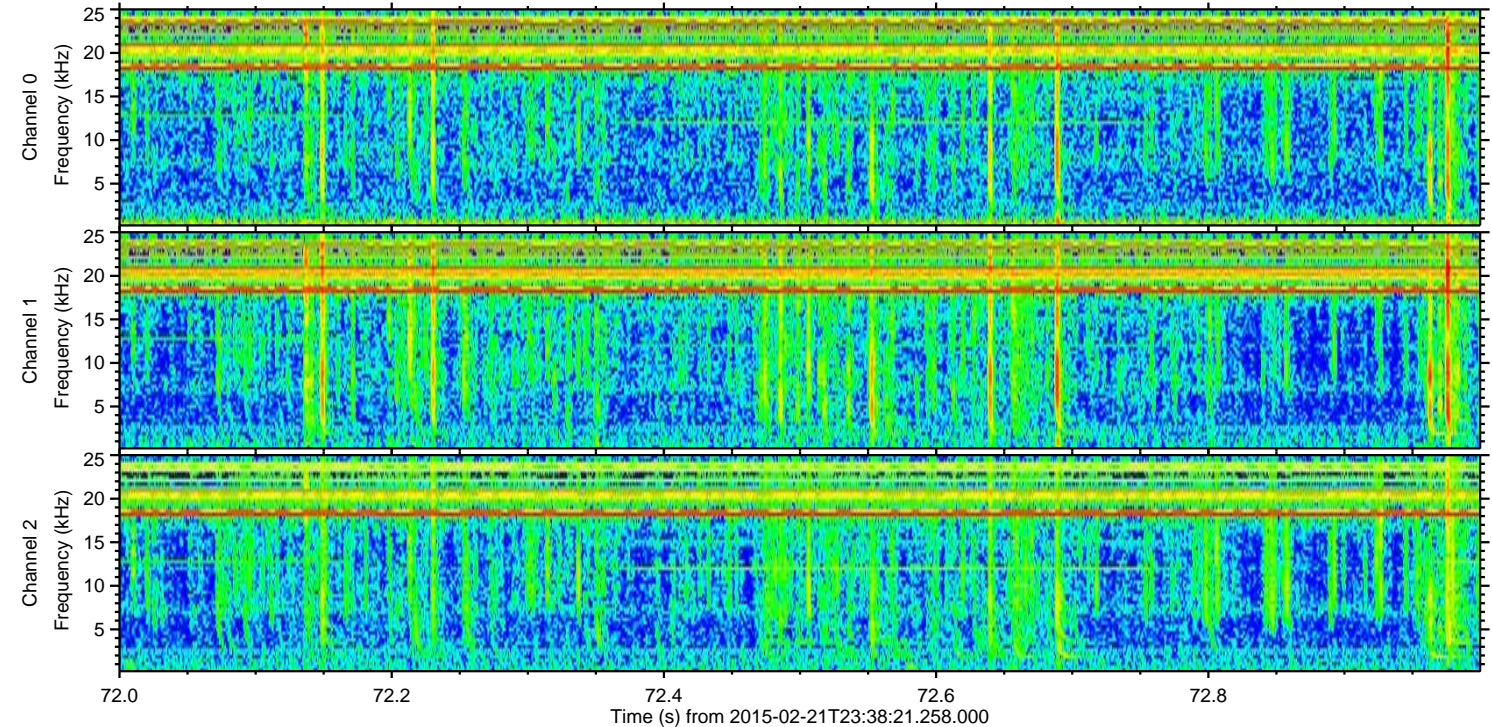
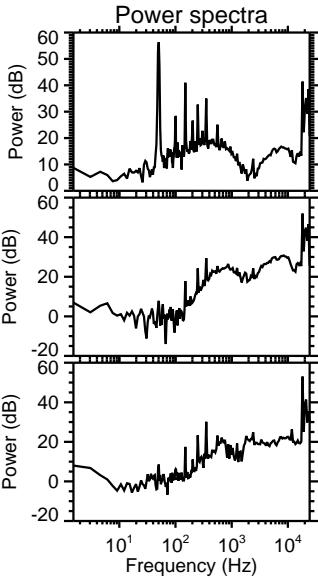
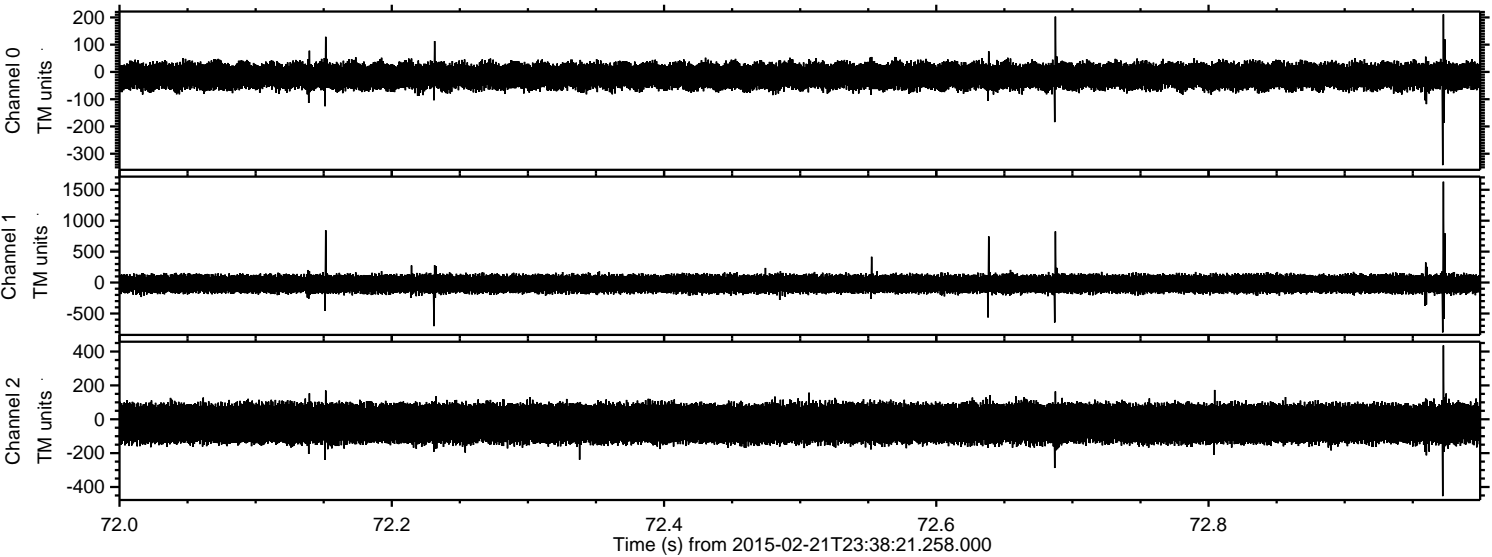
Processed Mon Mar 2 06:14:30 2015 by ELM ver.2012-10-06 from 001__elm20150221_233820__dat00.bin



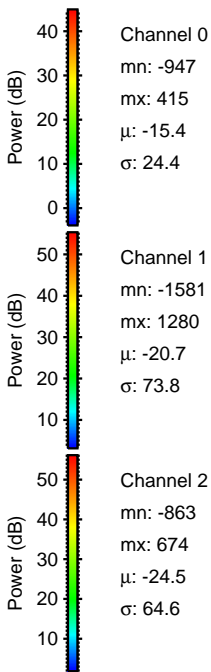
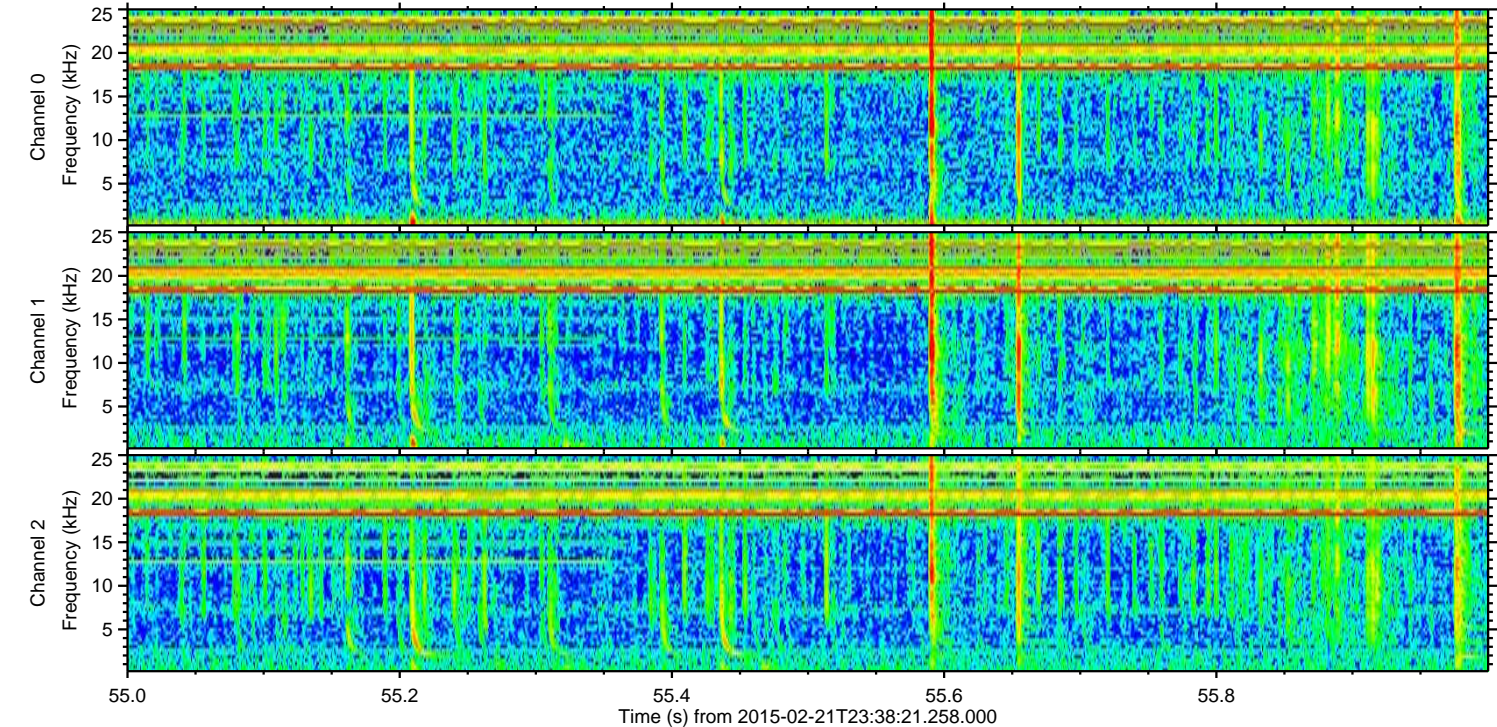
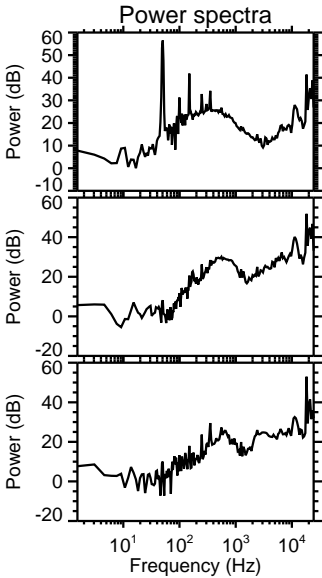
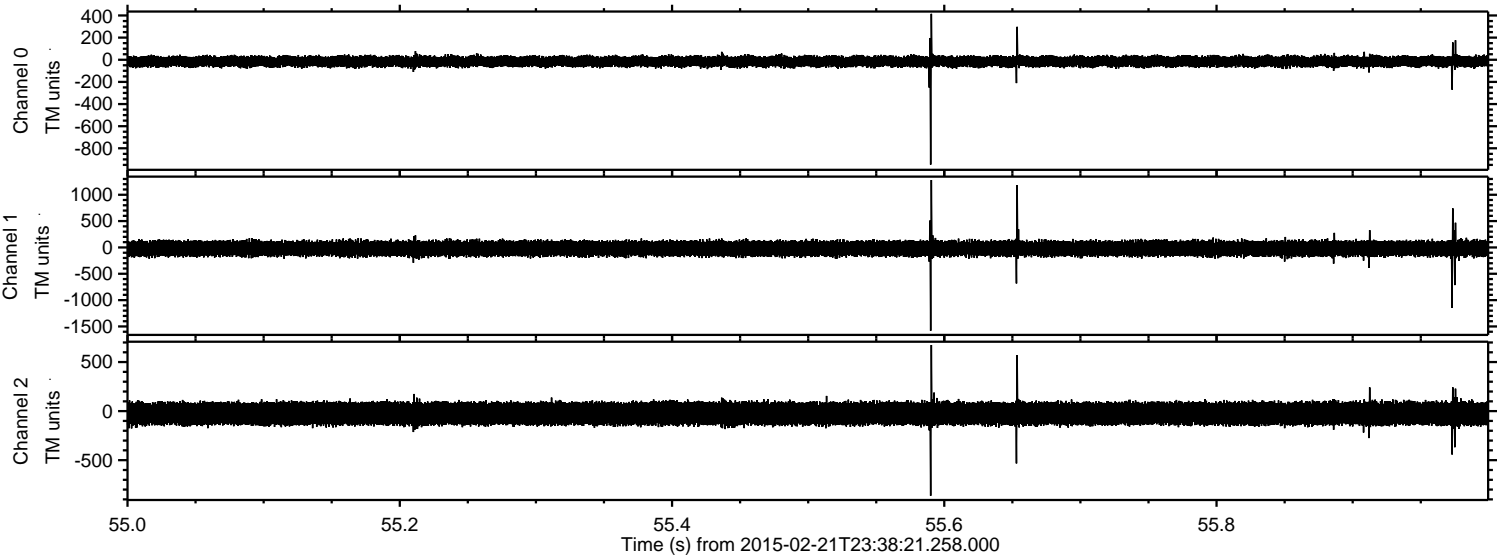
Processed Mon Mar 2 06:14:31 2015 by ELM ver.2012-10-06 from 001__elm20150221_233820__dat00.bin



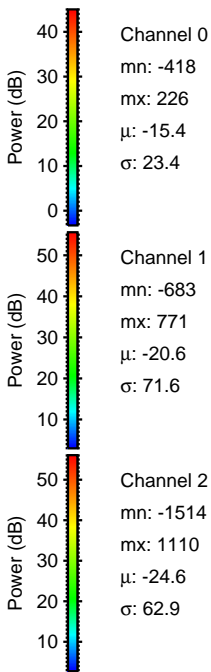
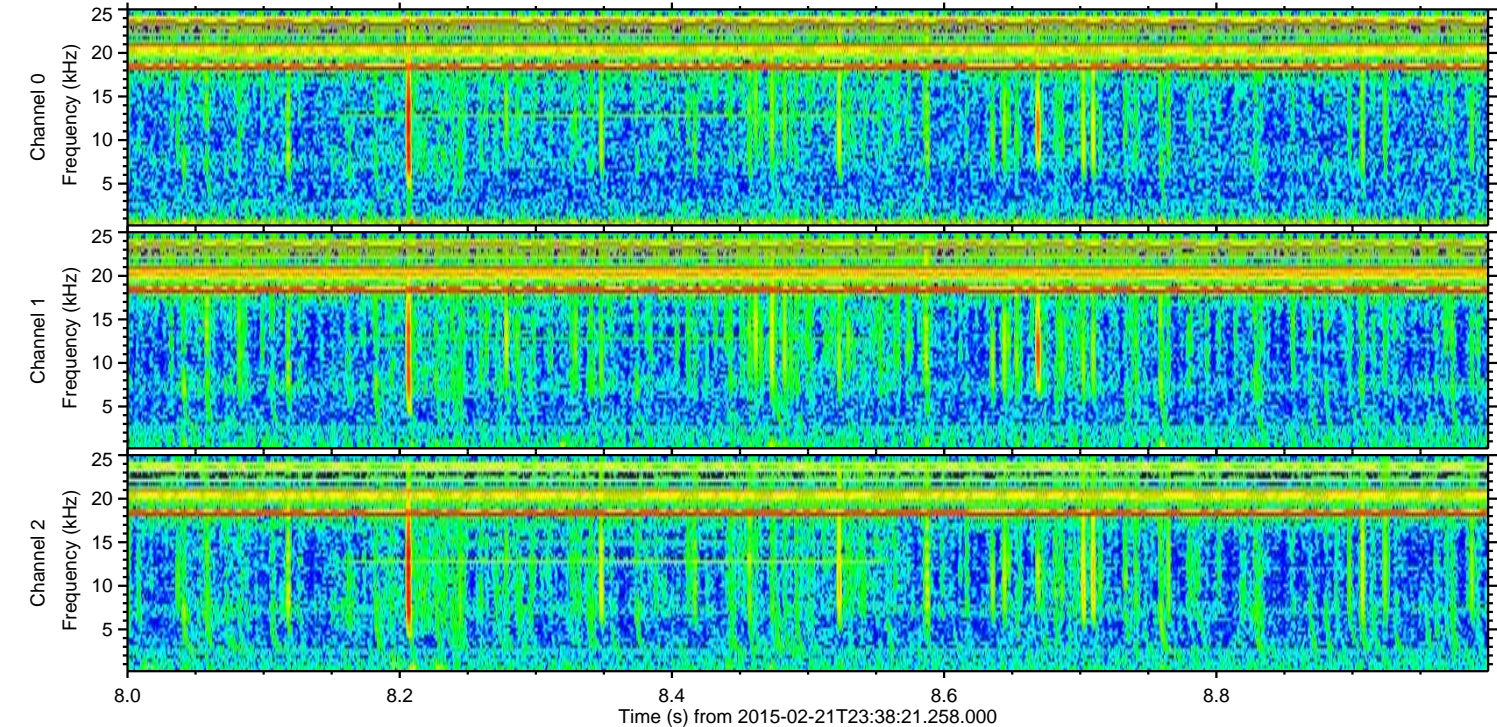
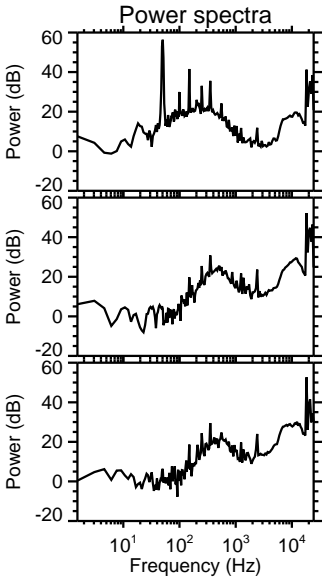
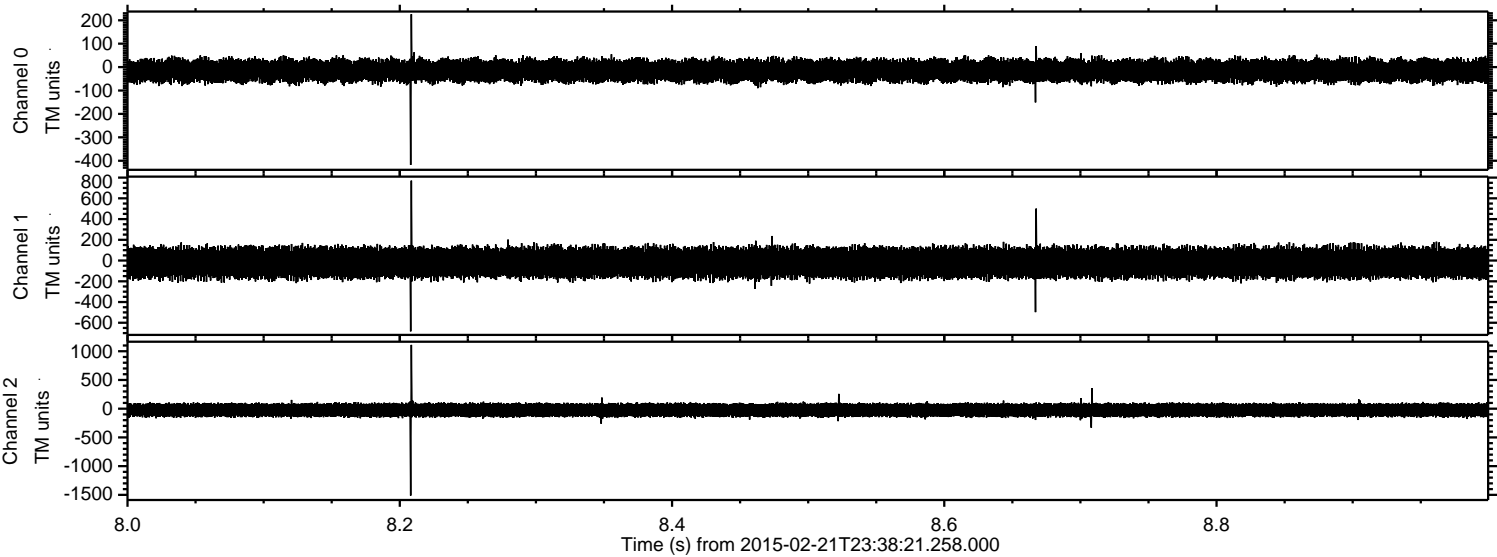
Processed Mon Mar 2 06:14:32 2015 by ELM ver.2012-10-06 from 001__elm20150221_233820__dat00.bin



Processed Mon Mar 2 06:14:33 2015 by ELM ver.2012-10-06 from 001__elm20150221_233820__dat00.bin



Processed Mon Mar 2 06:14:34 2015 by ELM ver.2012-10-06 from 001__elm20150221_233820__dat00.bin



Channel 0
mn: -418
mx: 226
 μ : -15.4
 σ : 23.4

Channel 1
mn: -683
mx: 771
 μ : -20.6
 σ : 71.6

Channel 2
mn: -1514
mx: 1110
 μ : -24.6
 σ : 62.9

Processed Mon Mar 2 06:14:35 2015 by ELM ver.2012-10-06 from 001__elm20150221_233820__dat00.bin

