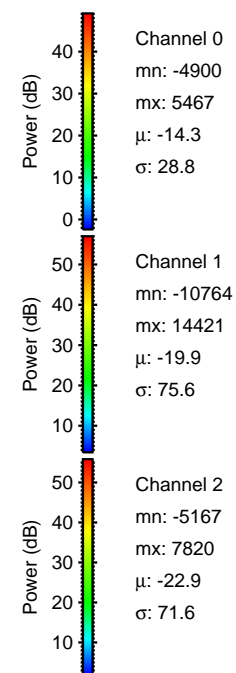
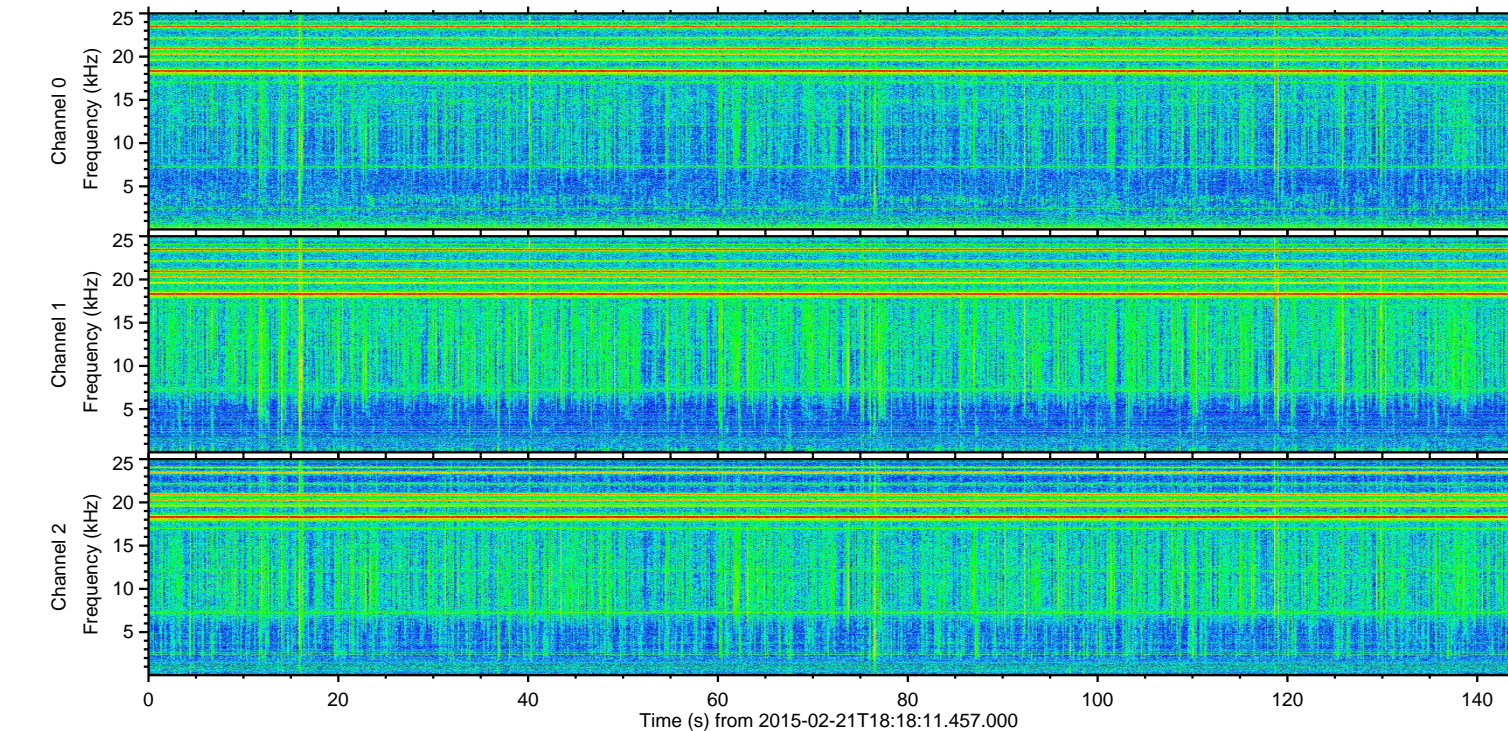
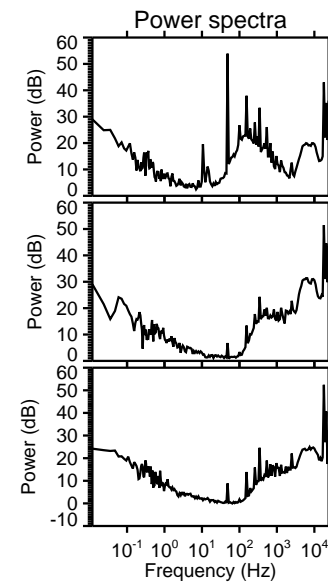
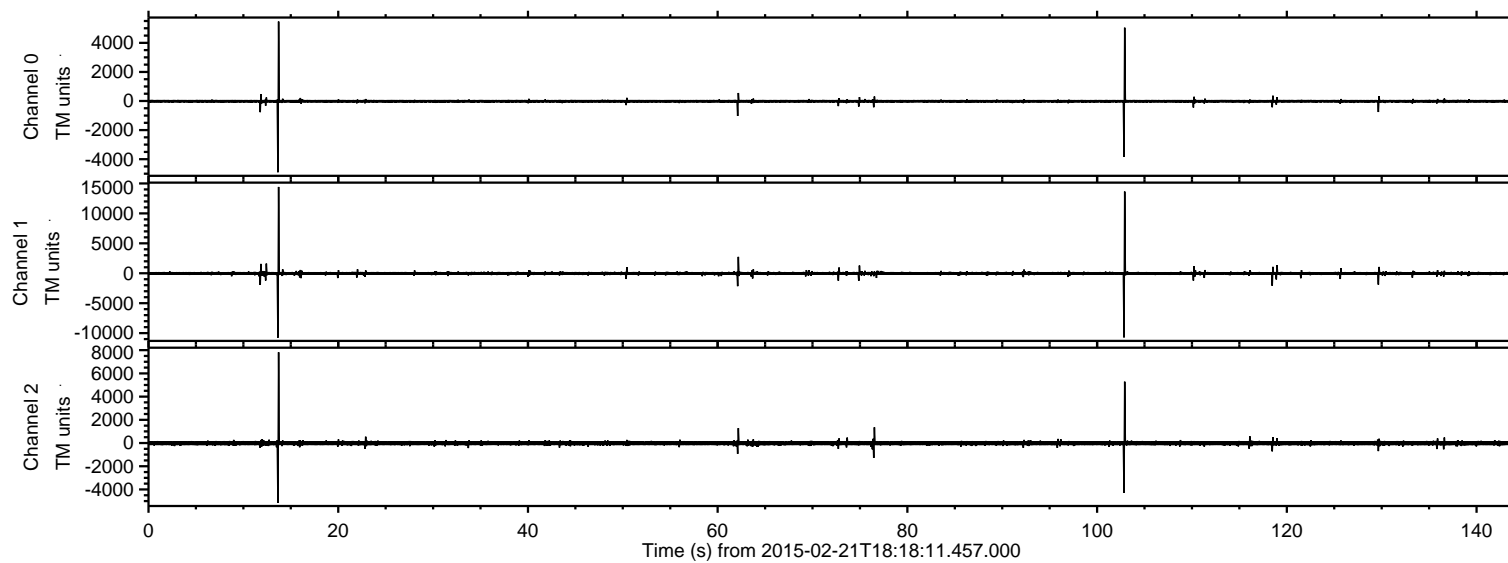
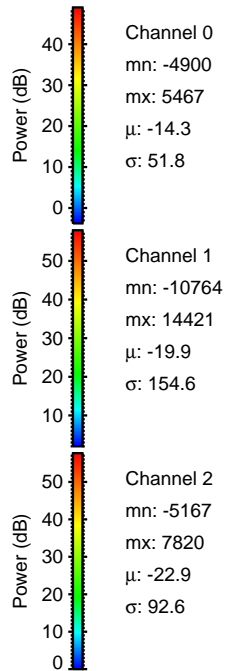
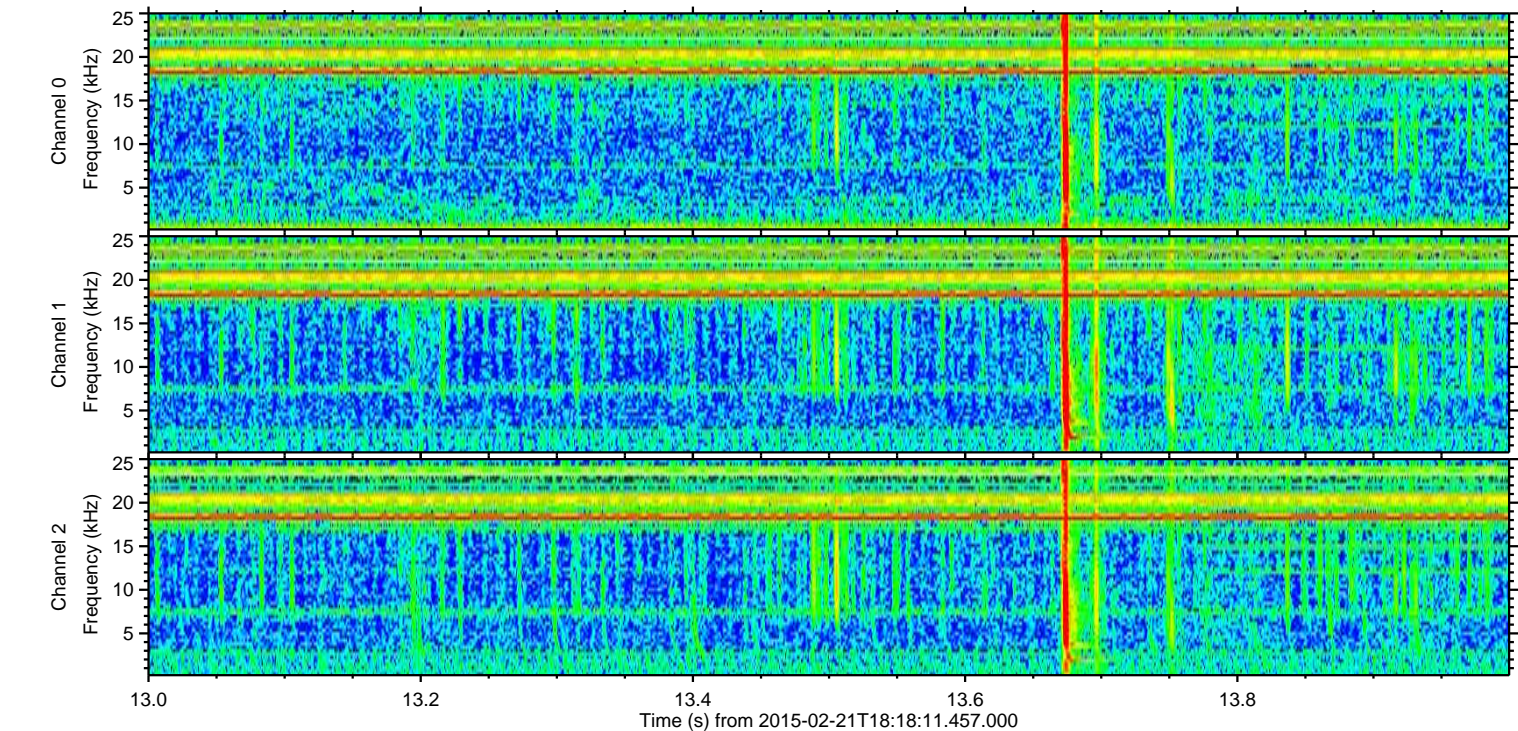
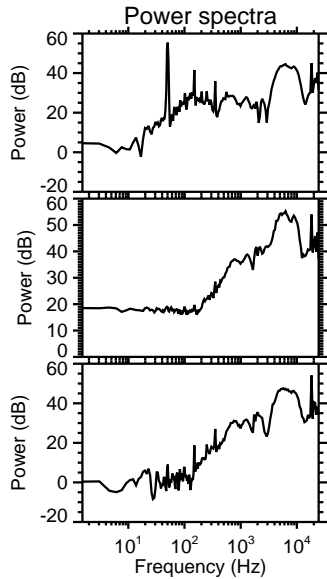
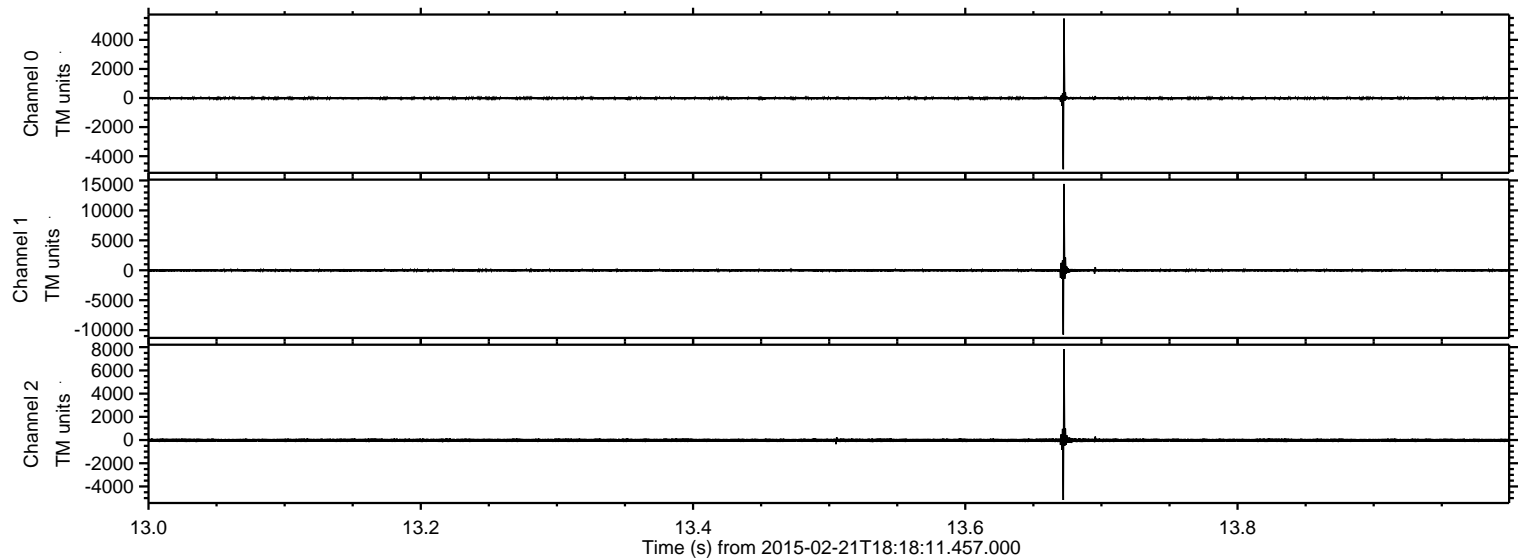


ELMAVAN 3D WAVEFORMS (Measured data sampled at 50 kHz) 49805 packets of 144 samples from 2015-02-21T18:18:11.457.000.

Processed Mon Mar 2 01:44:08 2015 by ELM ver.2012-10-06 from 001__elm20150221_181810__dat00.bin

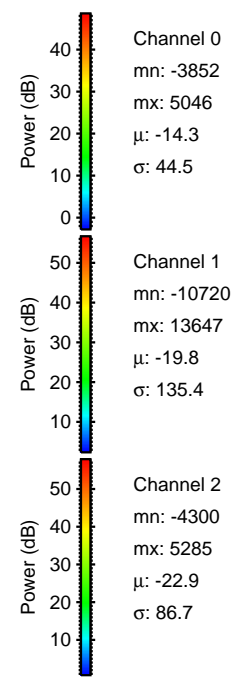
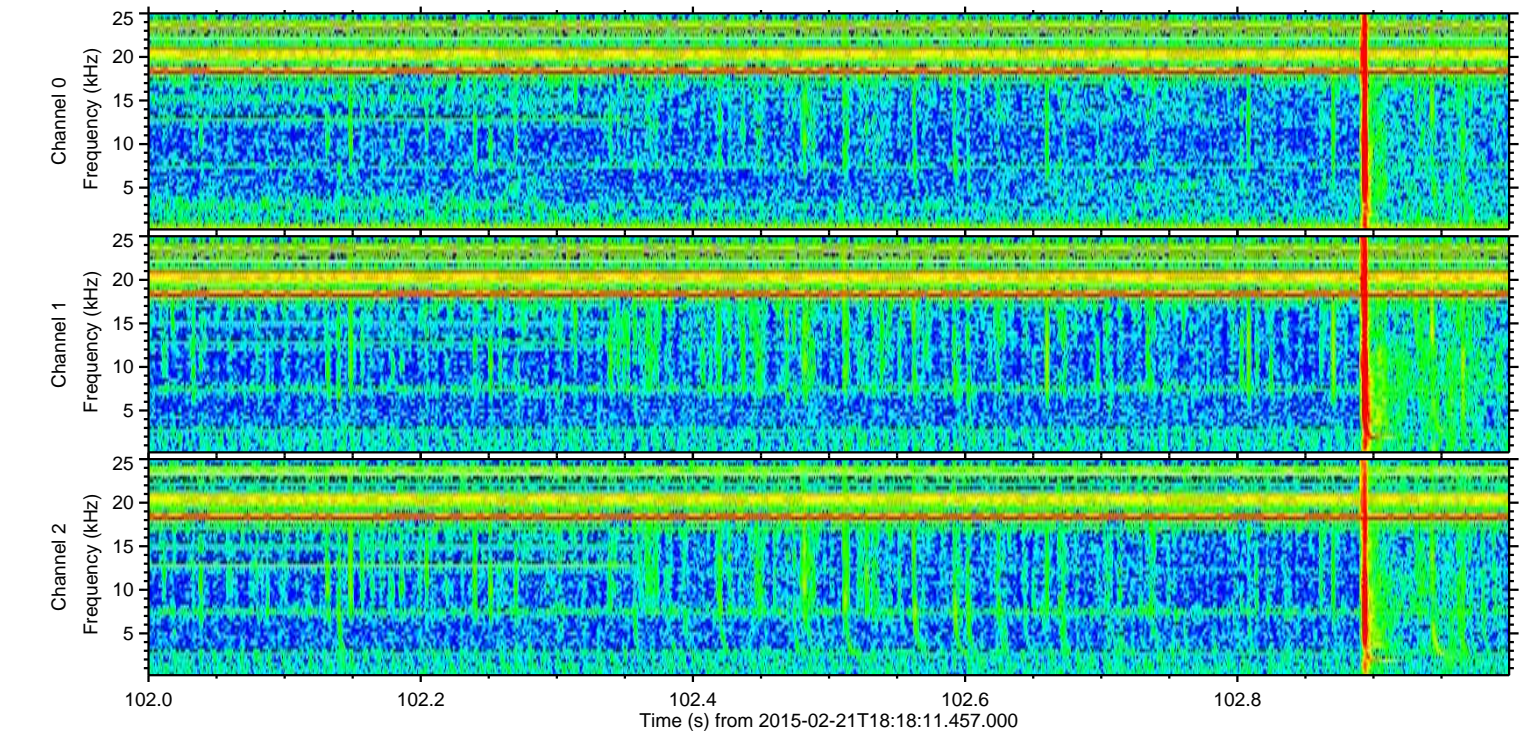
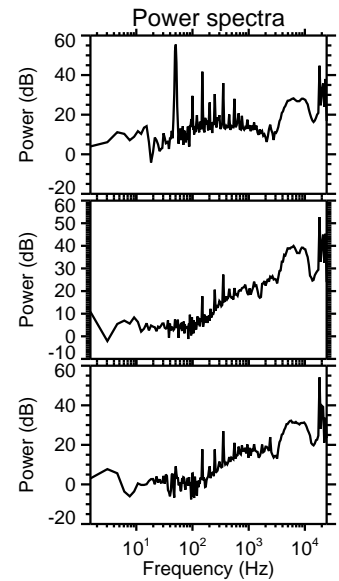
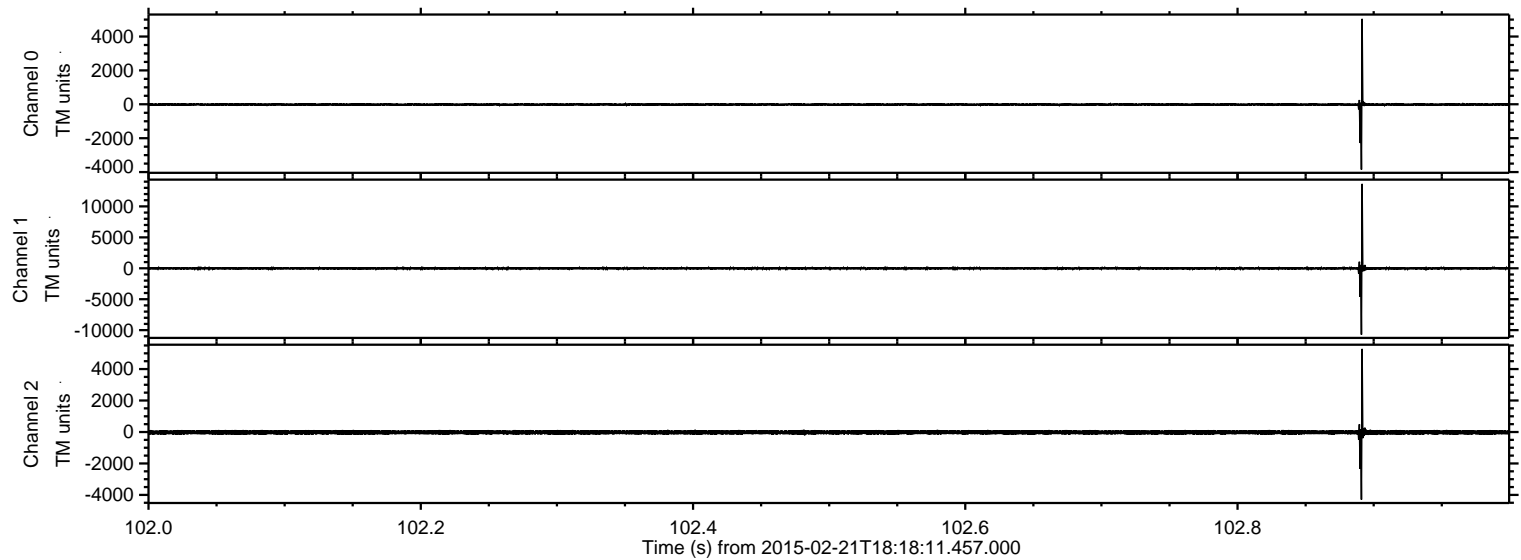


Processed Mon Mar 2 01:44:19 2015 by ELM ver.2012-10-06 from 001__elm20150221_181810__dat00.bin

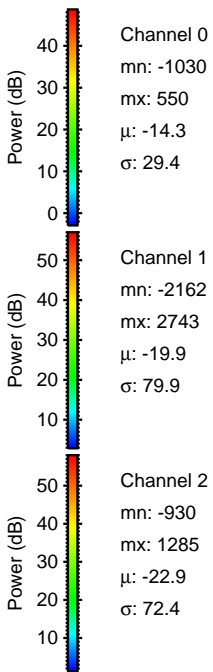
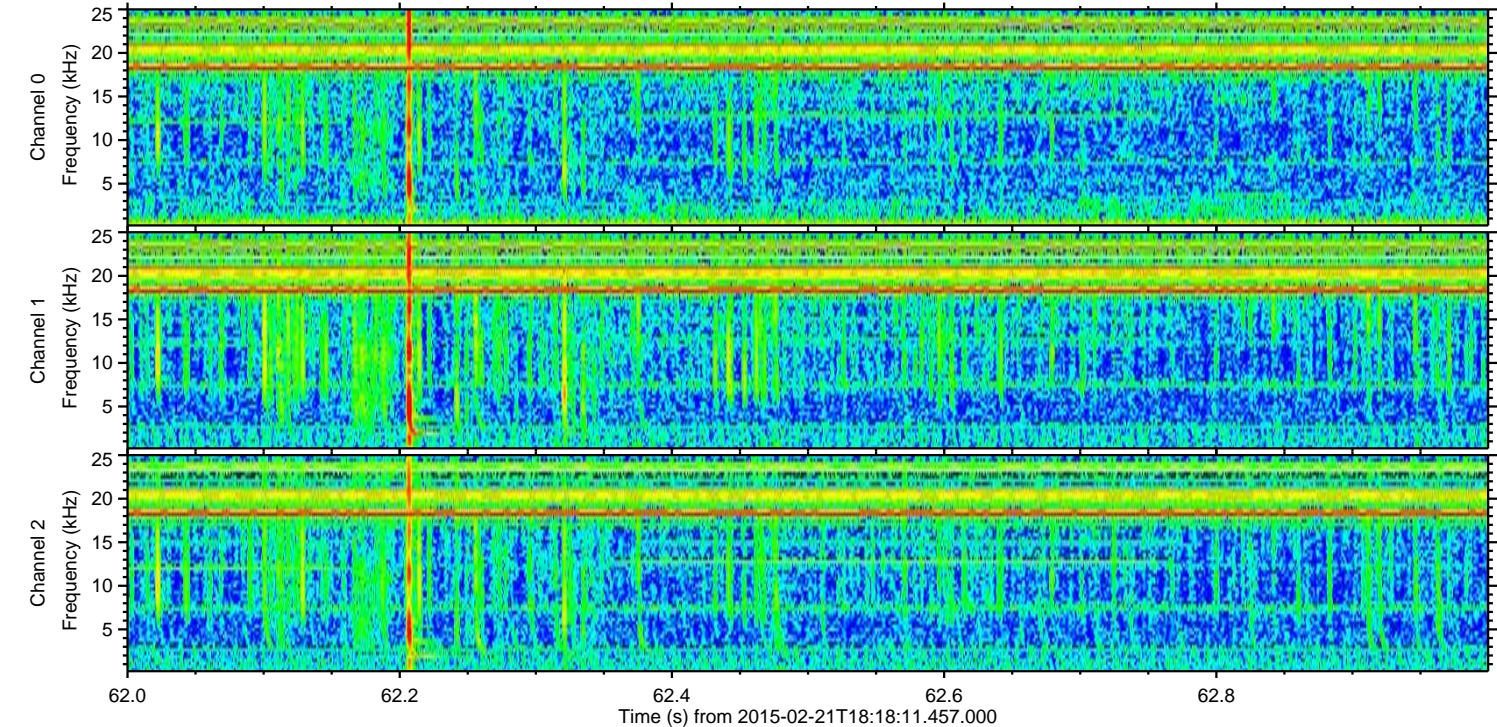
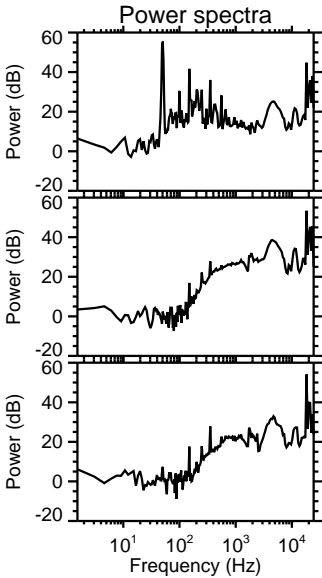
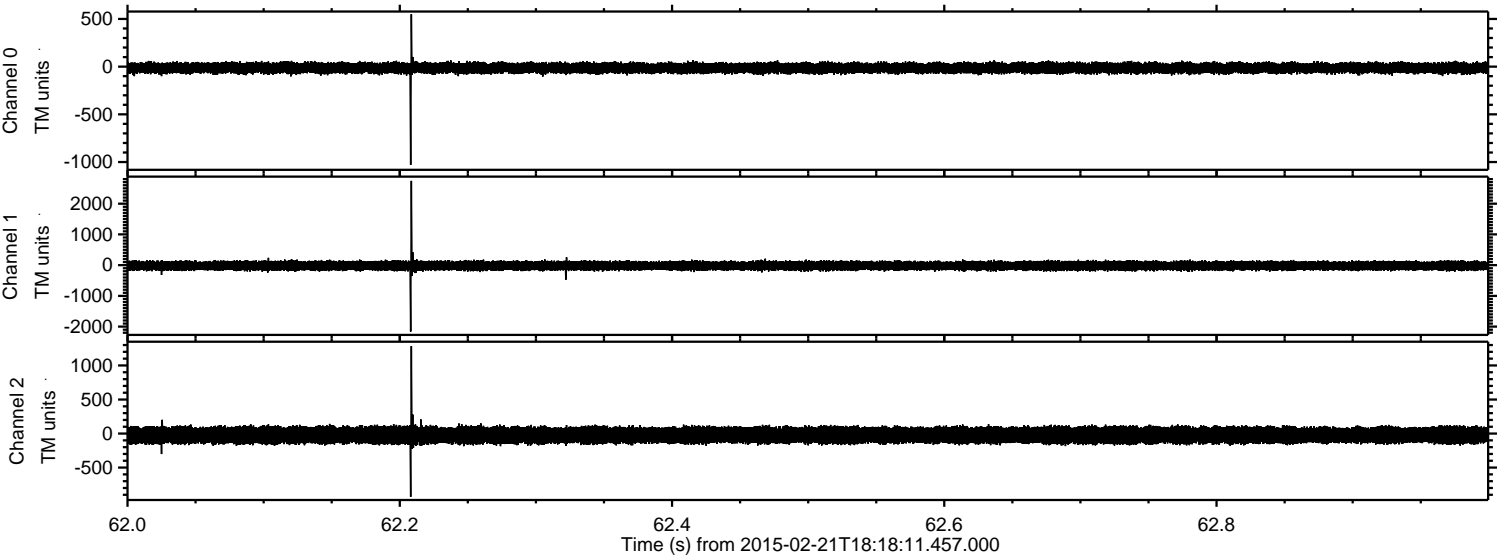


ELMAVAN 3D WAVEFORMS (Measured data sampled at 50 kHz) 49805 packets of 144 samples from 2015-02-21T18:18:11.457.000. Part 103/144

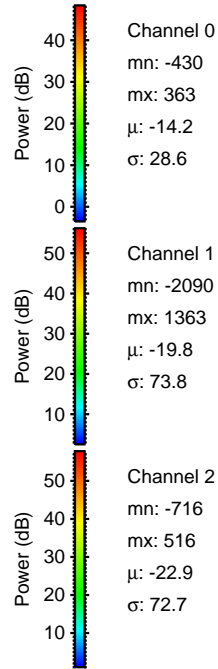
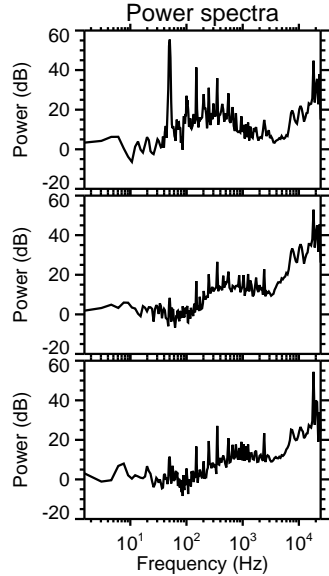
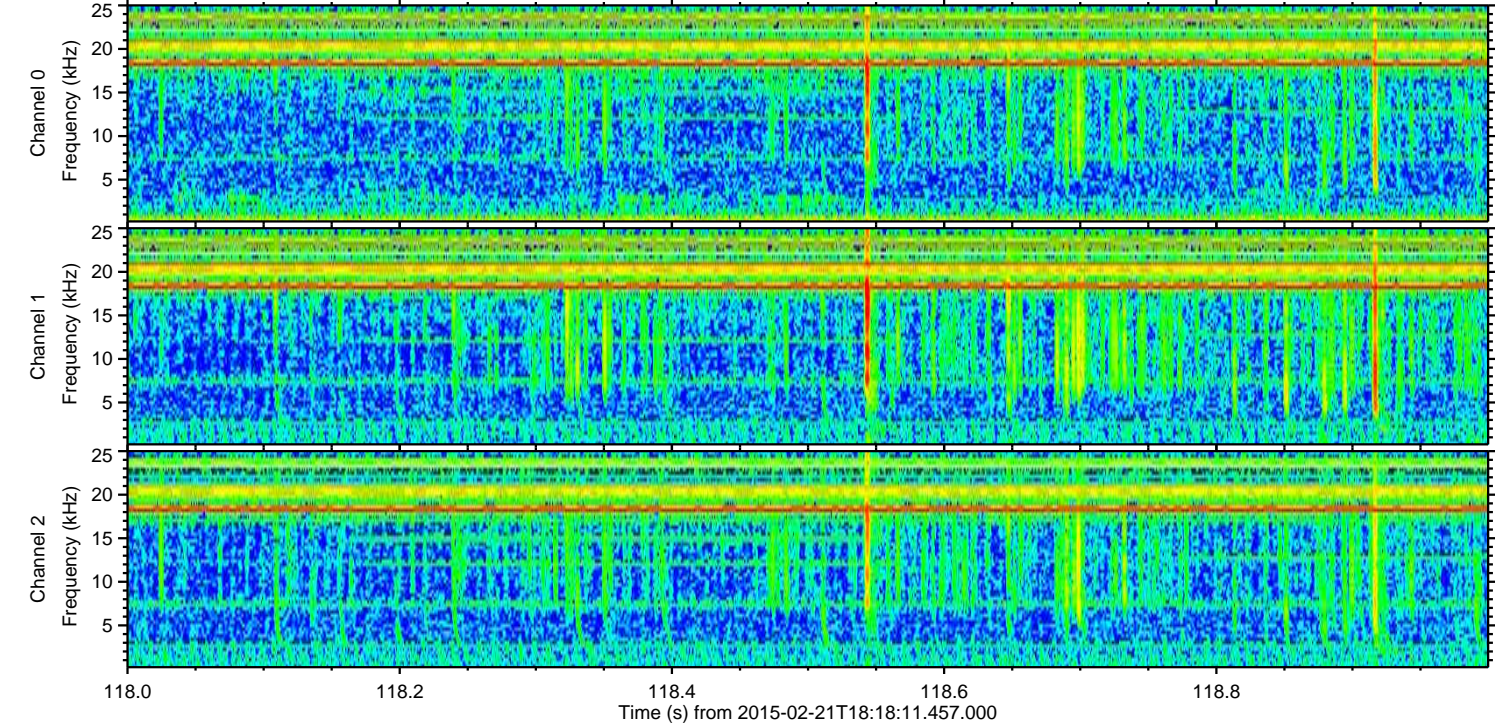
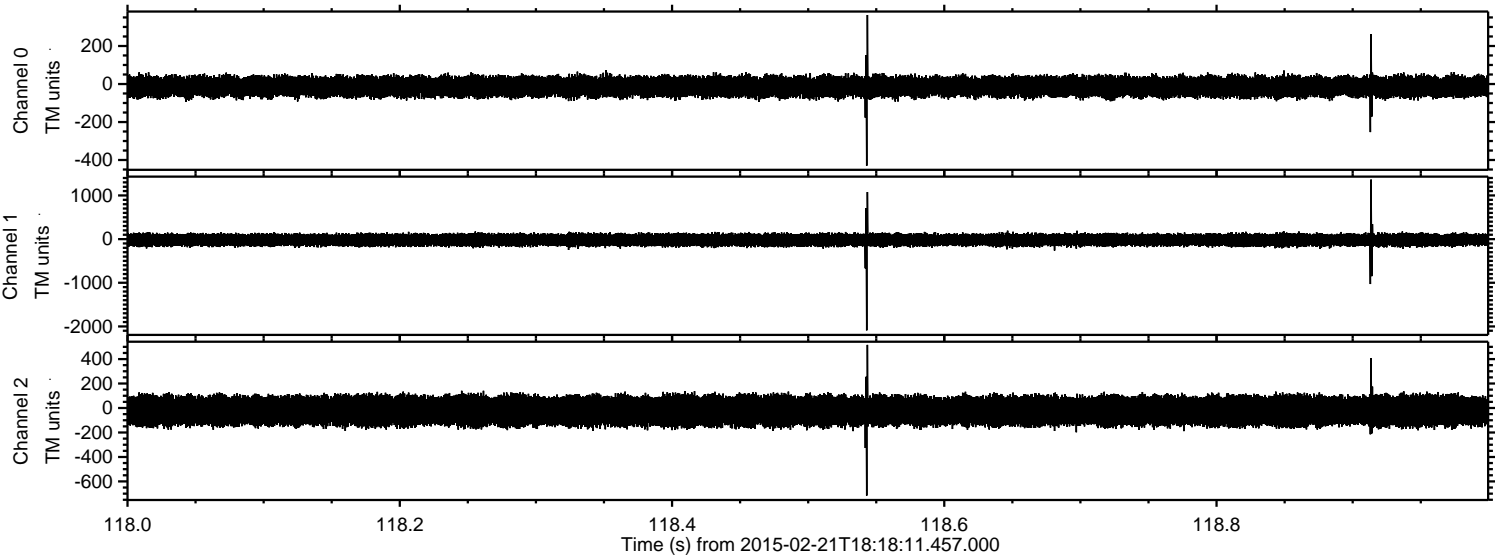
Processed Mon Mar 2 01:44:20 2015 by ELM ver.2012-10-06 from 001__elm20150221_181810__dat00.bin



Processed Mon Mar 2 01:44:21 2015 by ELM ver.2012-10-06 from 001__elm20150221_181810__dat00.bin

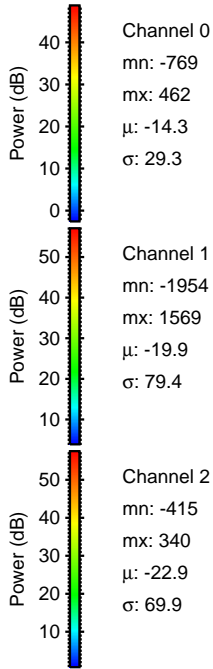
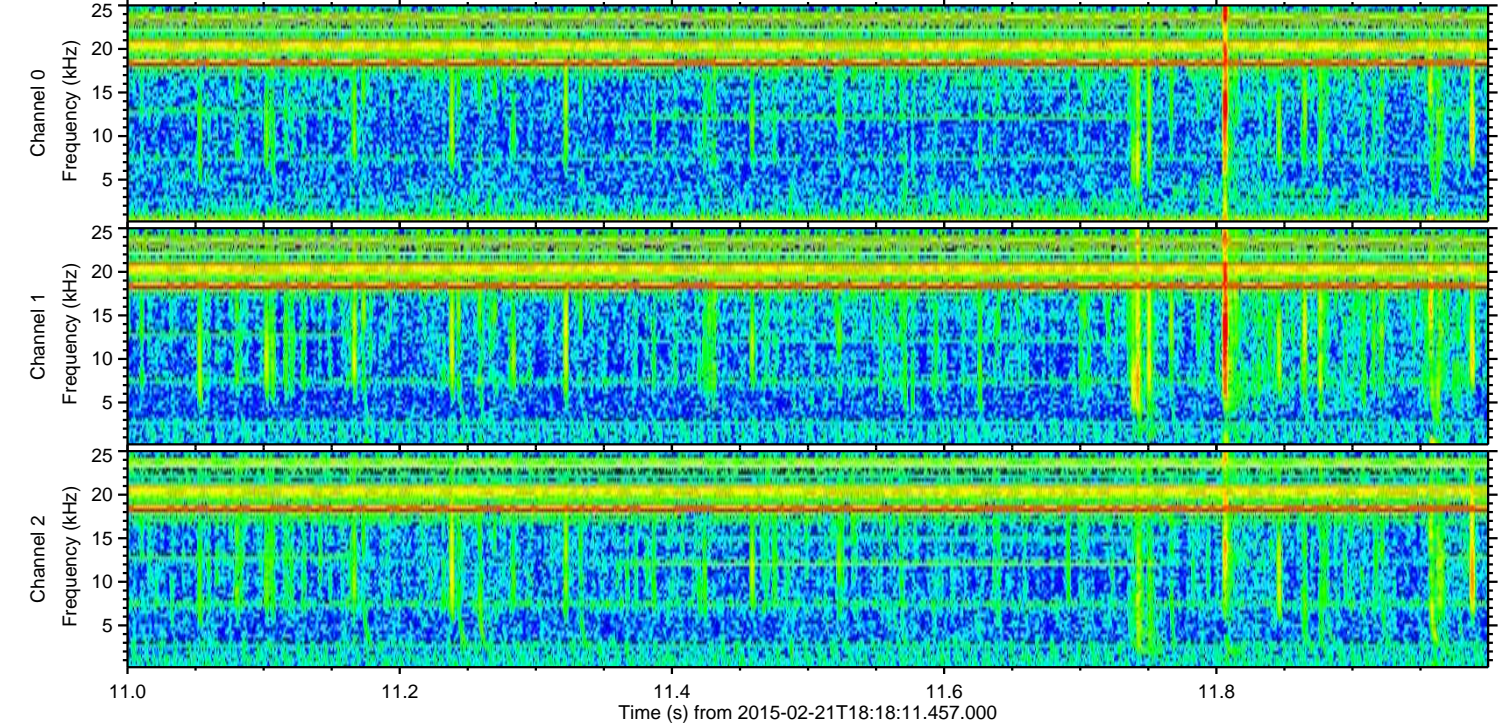
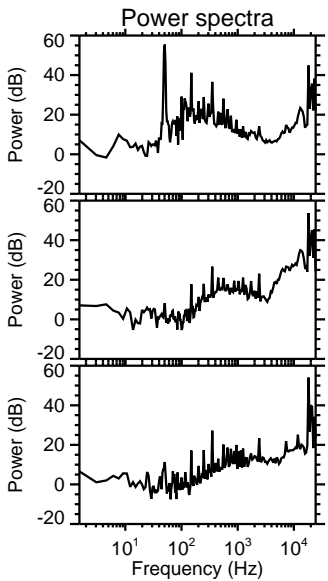
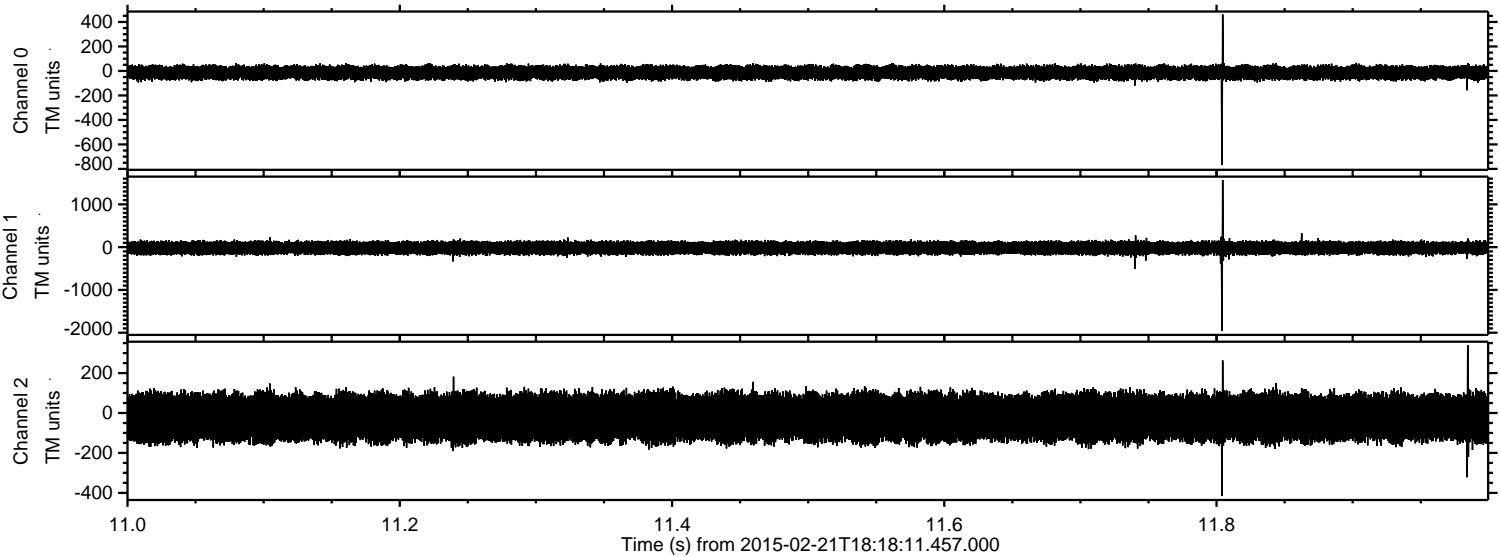


Processed Mon Mar 2 01:44:22 2015 by ELM ver.2012-10-06 from 001__elm20150221_181810__dat00.bin



ELMAVAN 3D WAVEFORMS (Measured data sampled at 50 kHz) 49805 packets of 144 samples from 2015-02-21T18:18:11.457.000. Part 12/144

Processed Mon Mar 2 01:44:23 2015 by ELM ver.2012-10-06 from 001__elm20150221_181810__dat00.bin



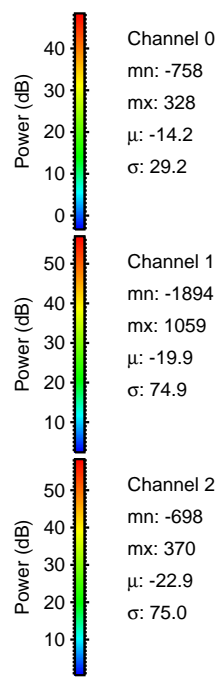
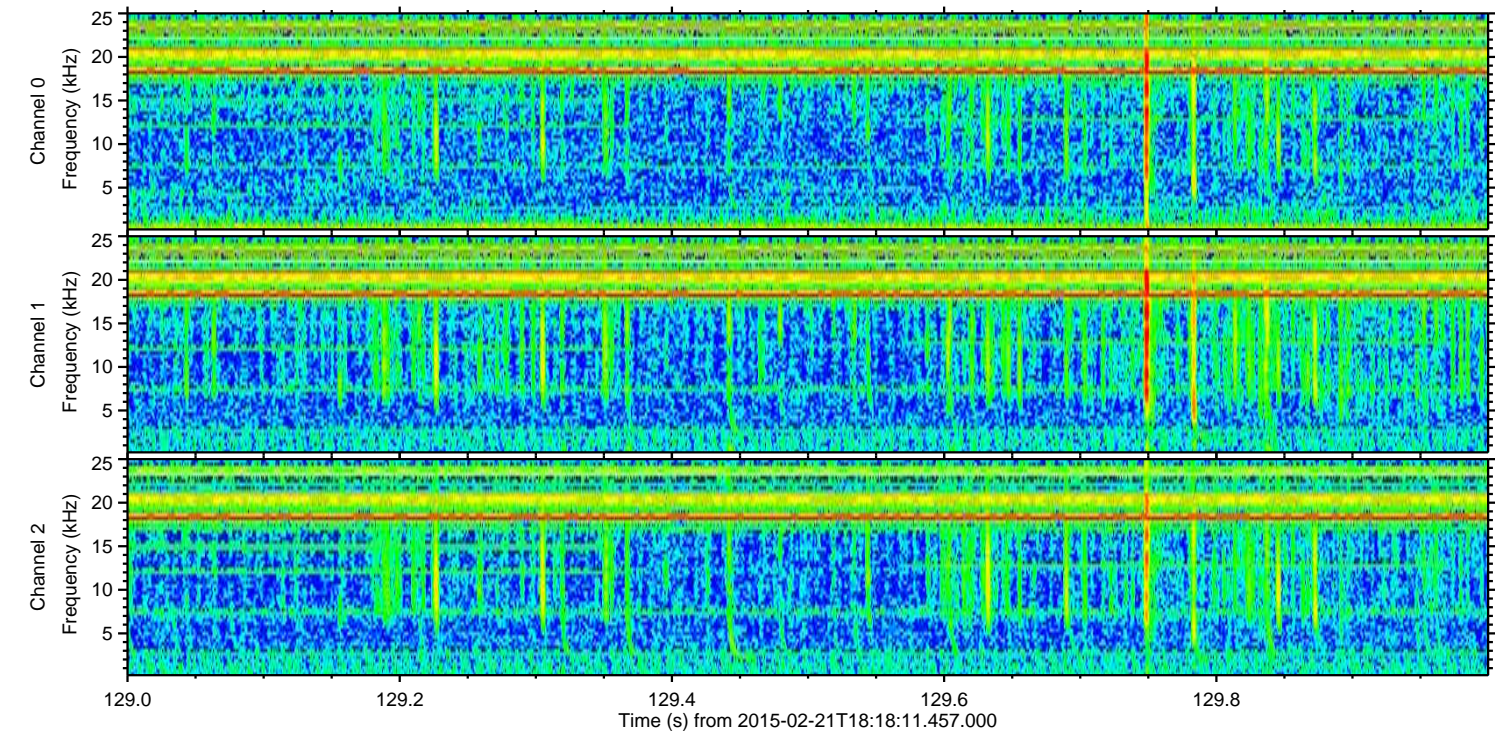
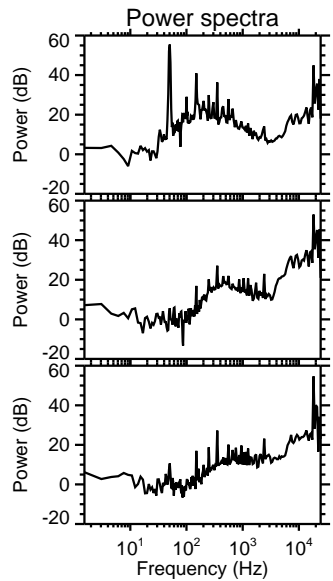
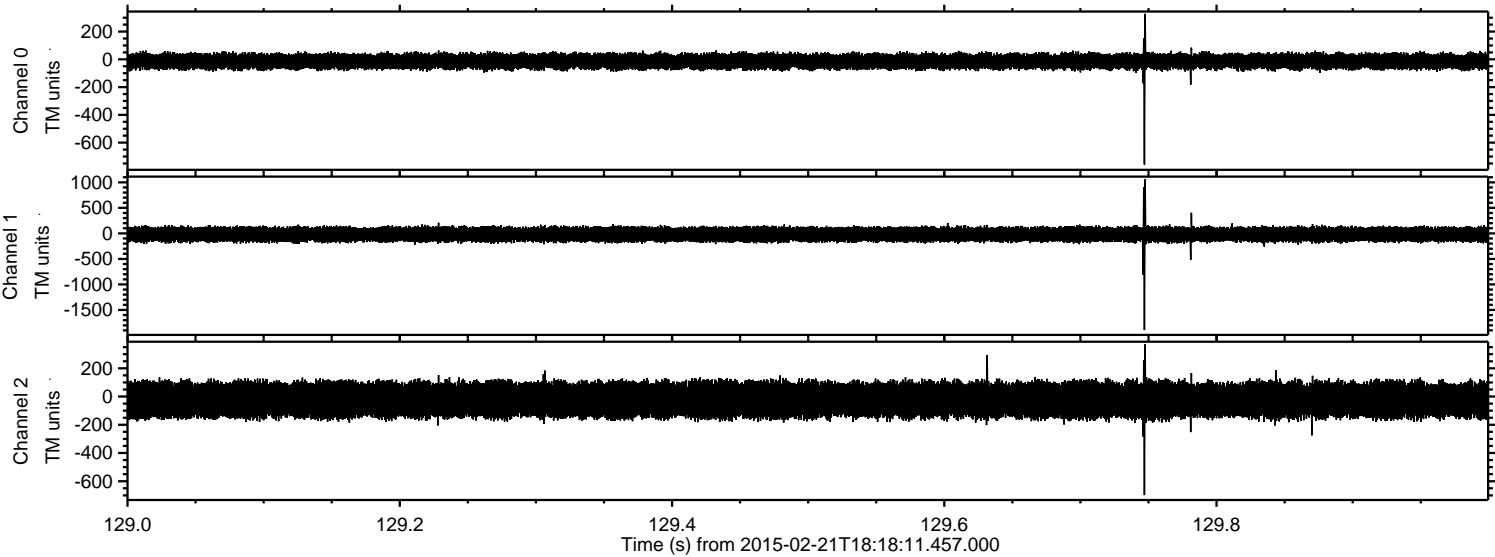
Channel 0
mn: -769
mx: 462
 μ : -14.3
 σ : 29.3

Channel 1
mn: -1954
mx: 1569
 μ : -19.9
 σ : 79.4

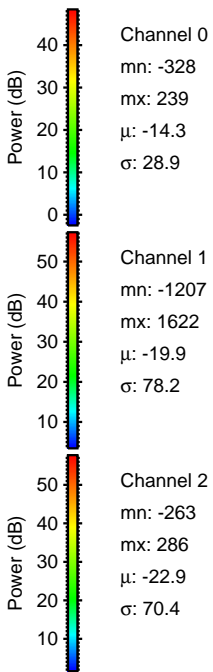
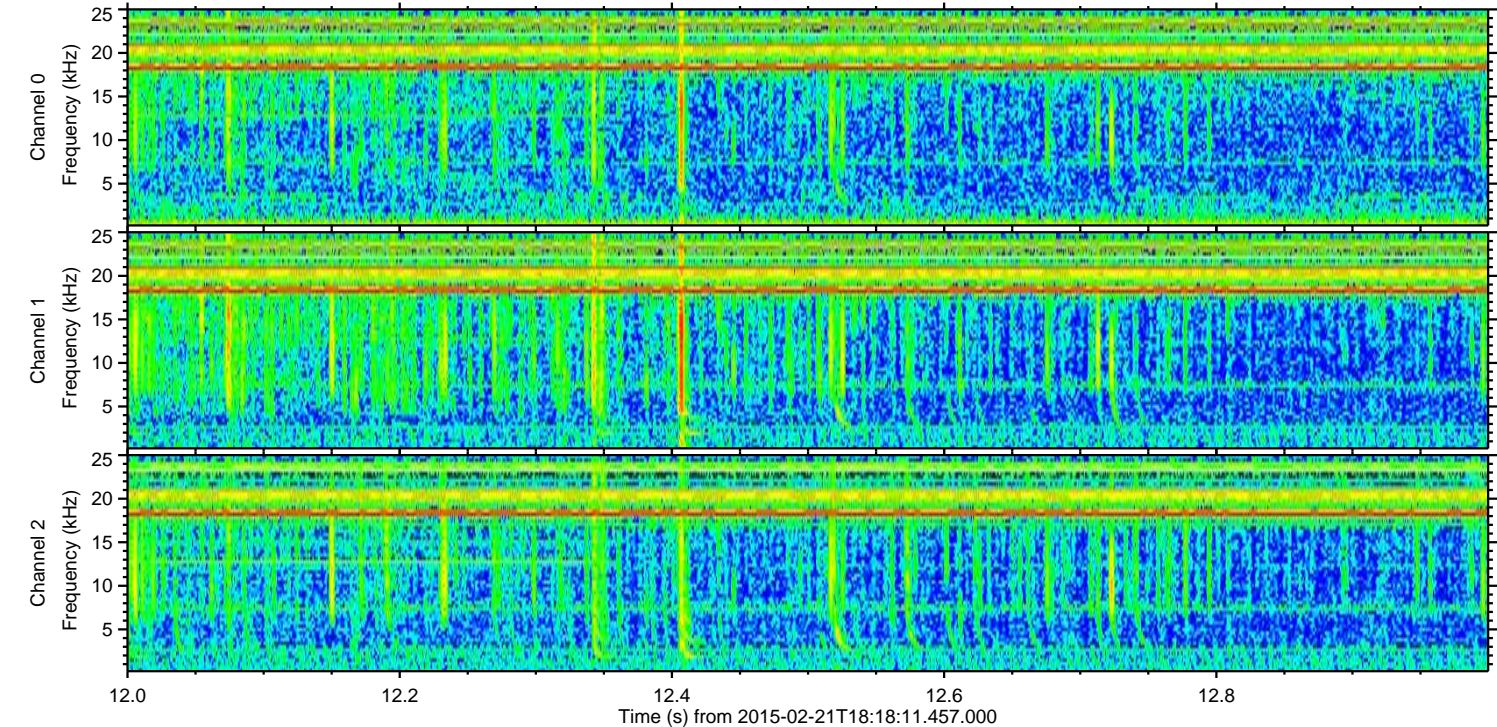
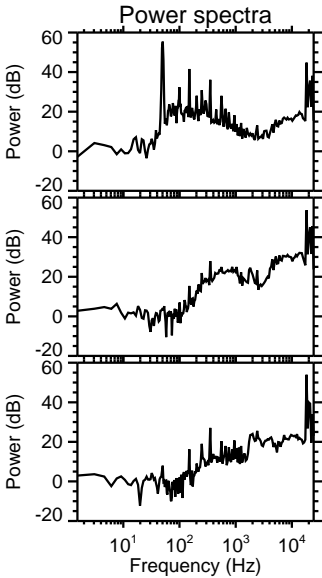
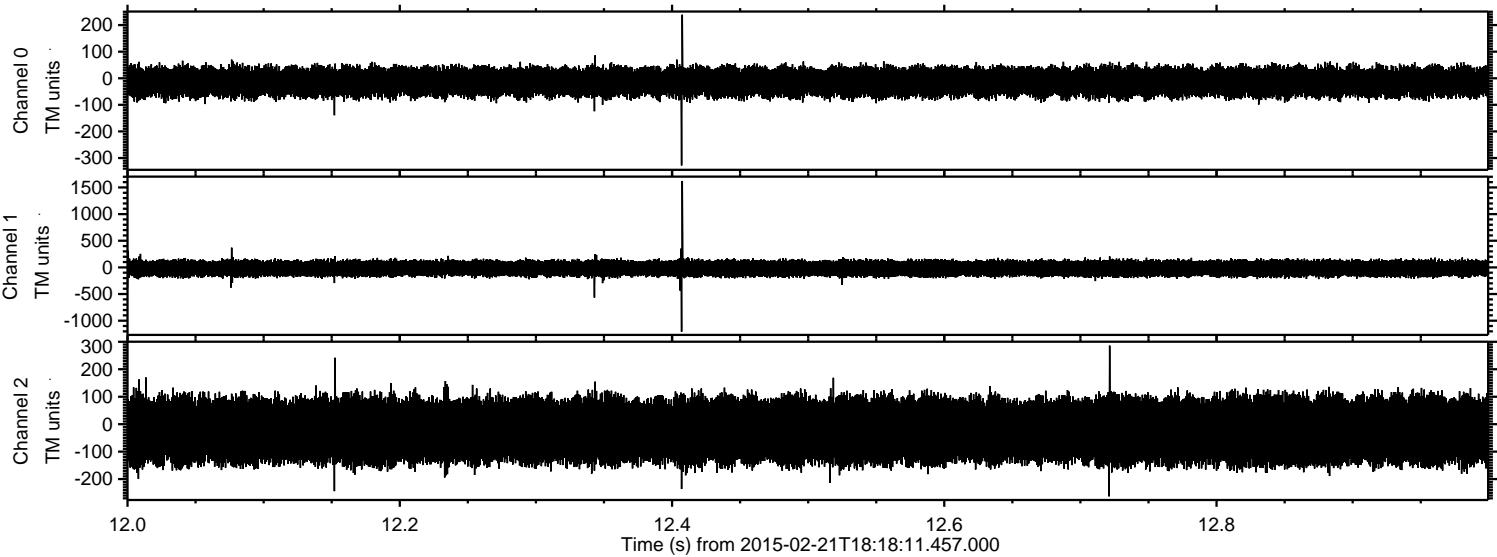
Channel 2
mn: -415
mx: 340
 μ : -22.9
 σ : 69.9

ELMAVAN 3D WAVEFORMS (Measured data sampled at 50 kHz) 49805 packets of 144 samples from 2015-02-21T18:18:11.457.000. Part 130/144

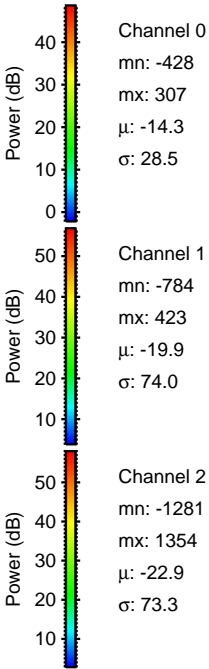
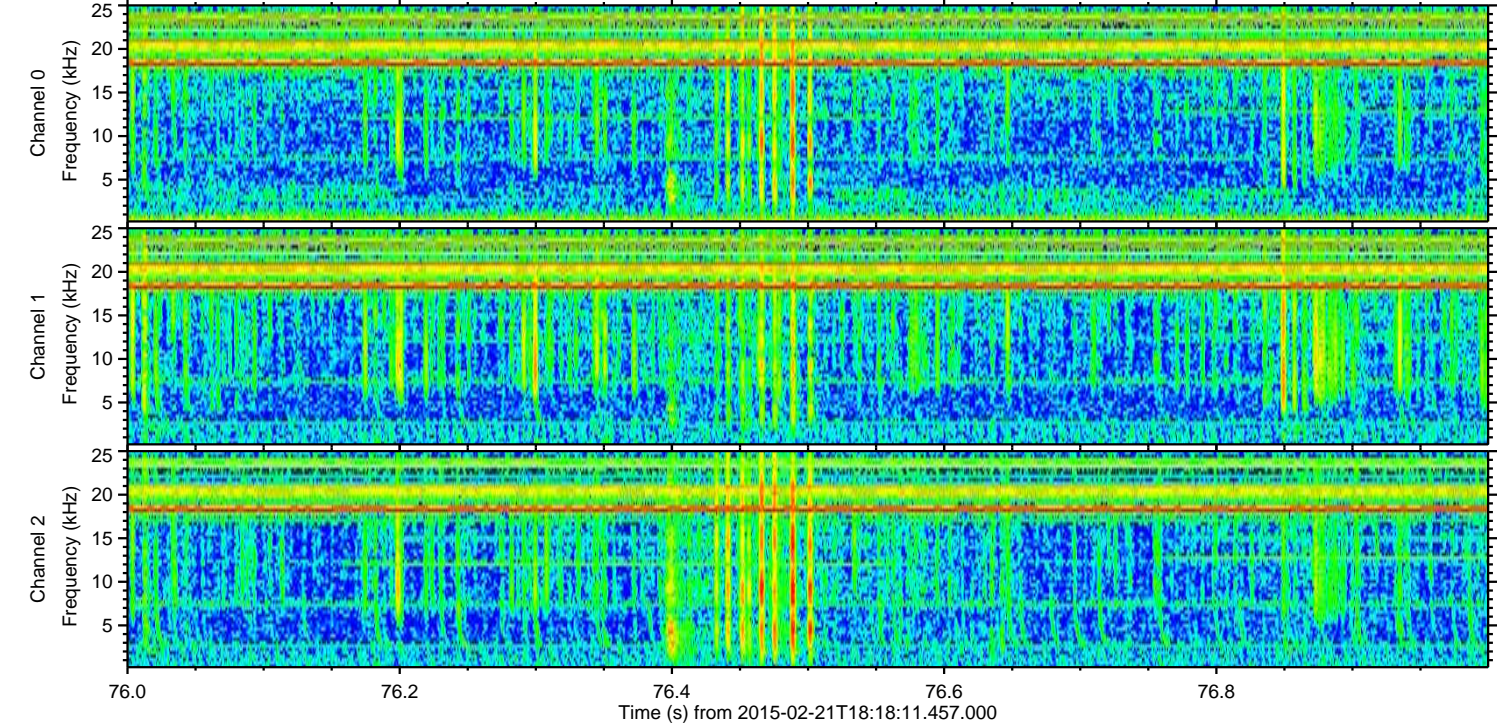
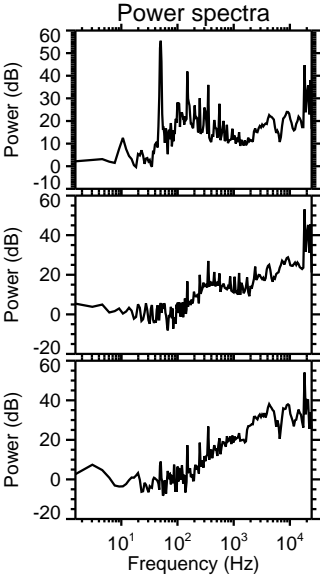
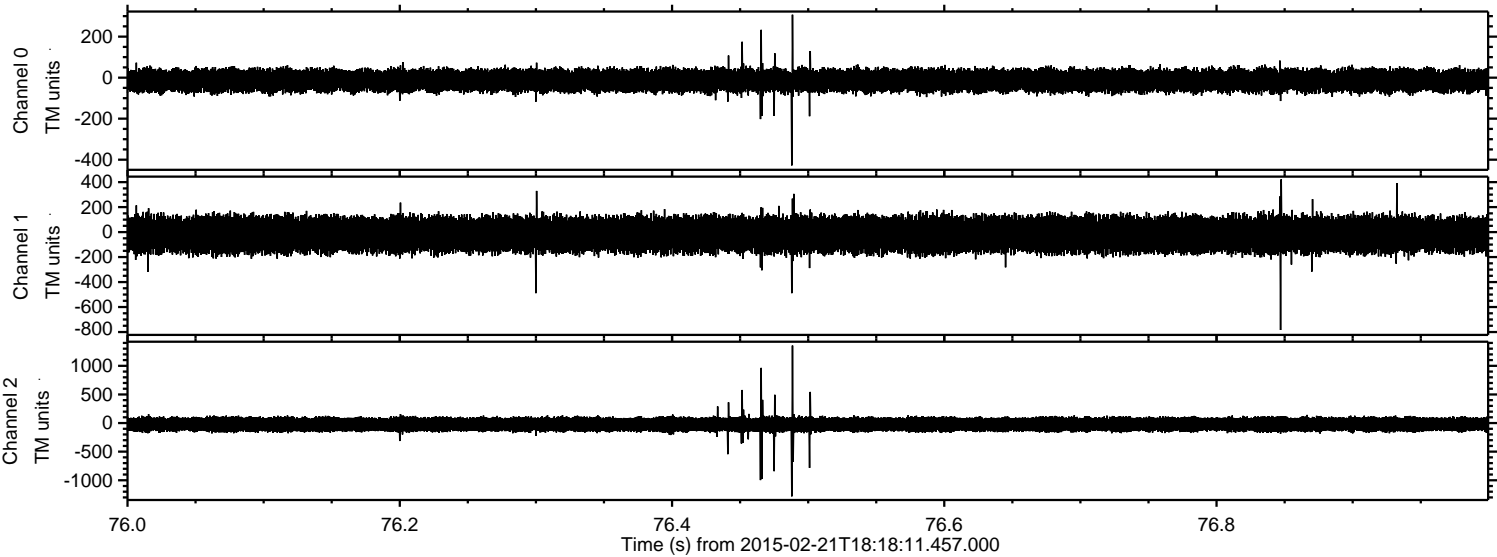
Processed Mon Mar 2 01:44:24 2015 by ELM ver.2012-10-06 from 001__elm20150221_181810__dat00.bin



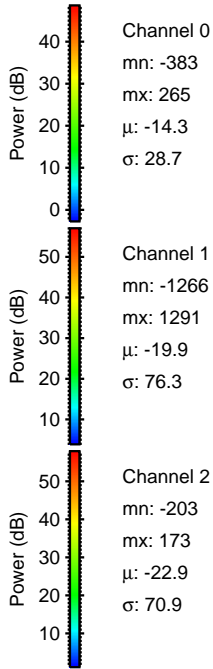
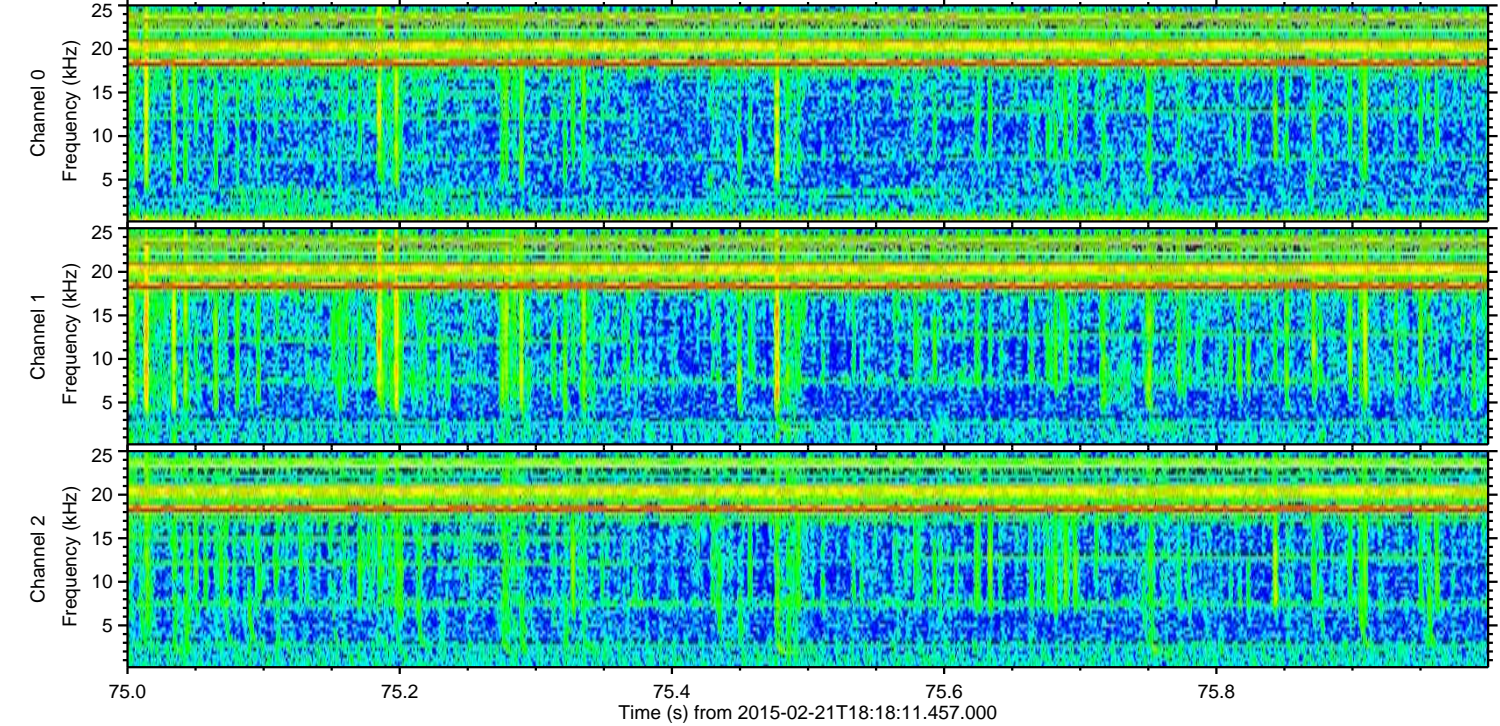
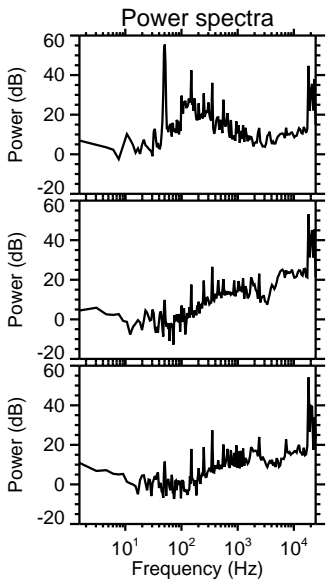
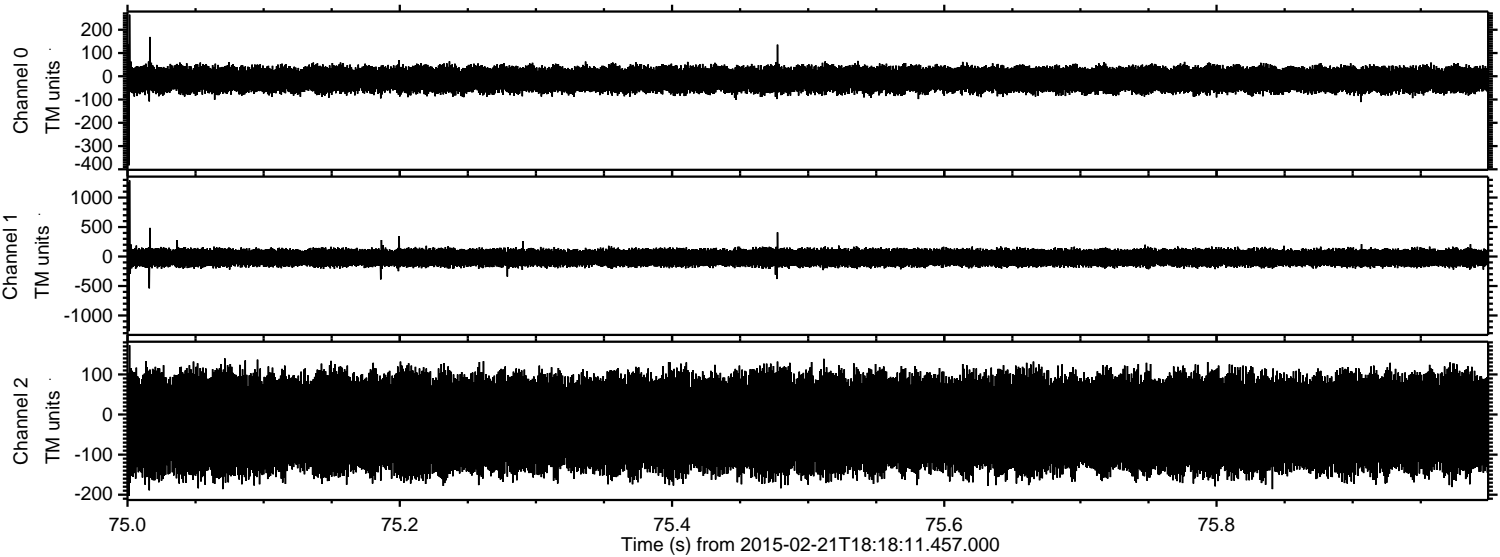
Processed Mon Mar 2 01:44:25 2015 by ELM ver.2012-10-06 from 001__elm20150221_181810__dat00.bin



Processed Mon Mar 2 01:44:26 2015 by ELM ver.2012-10-06 from 001__elm20150221_181810__dat00.bin



Processed Mon Mar 2 01:44:27 2015 by ELM ver.2012-10-06 from 001__elm20150221_181810__dat00.bin



Channel 0
mn: -383
mx: 265
 μ : -14.3
 σ : 28.7

Channel 1
mn: -1266
mx: 1291
 μ : -19.9
 σ : 76.3

Channel 2
mn: -203
mx: 173
 μ : -22.9
 σ : 70.9

Processed Mon Mar 2 01:44:28 2015 by ELM ver.2012-10-06 from 001__elm20150221_181810__dat00.bin

