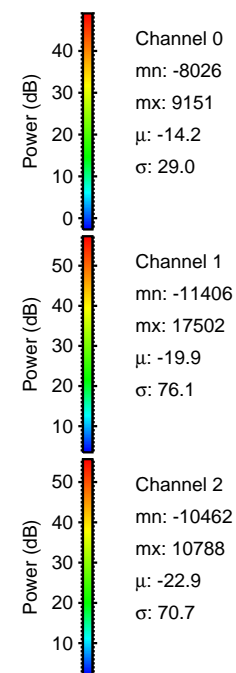
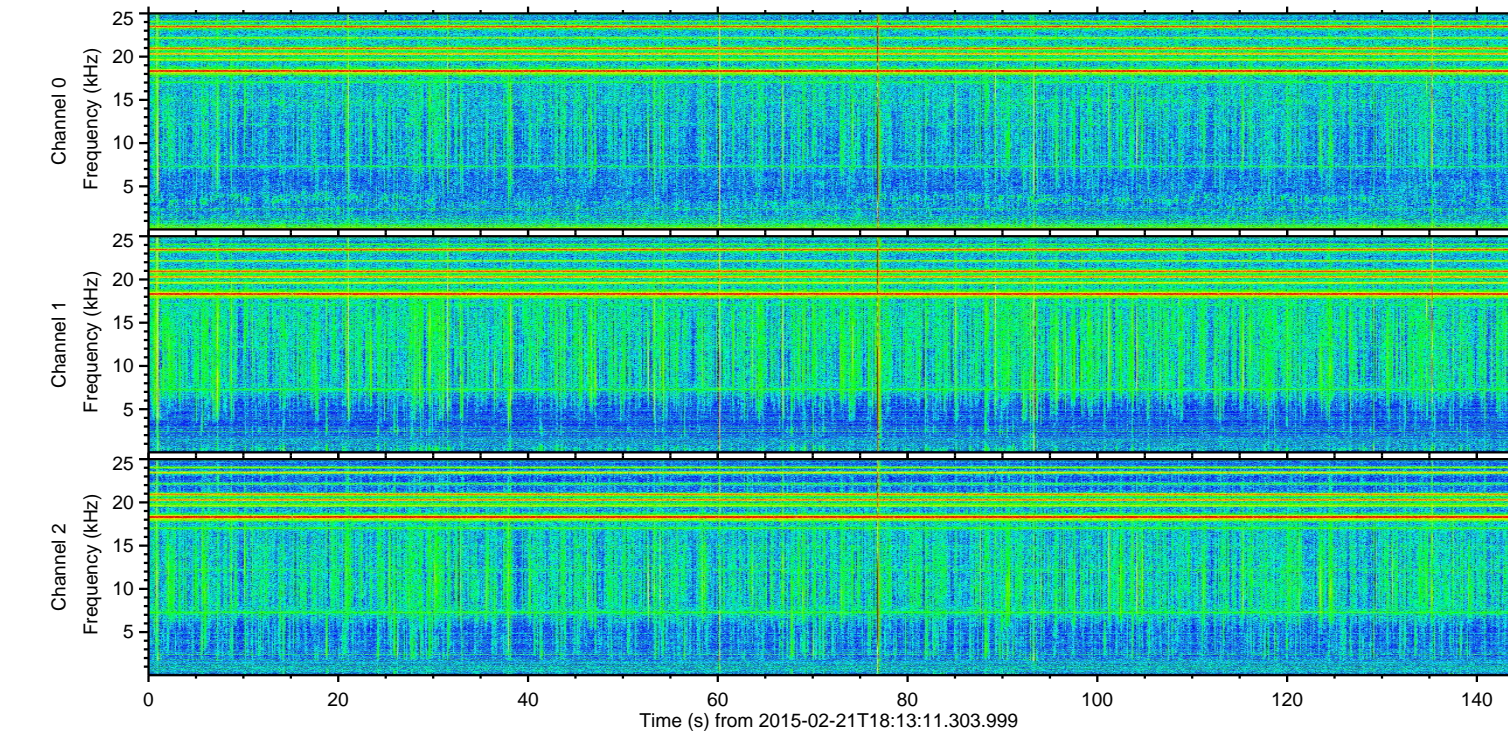
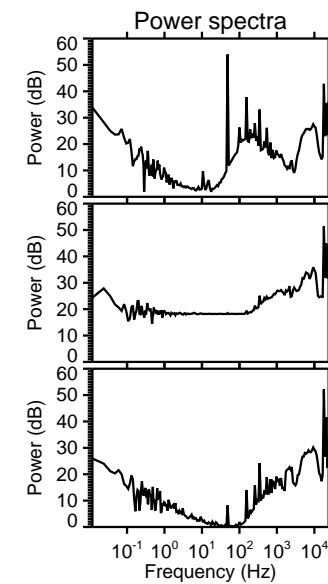
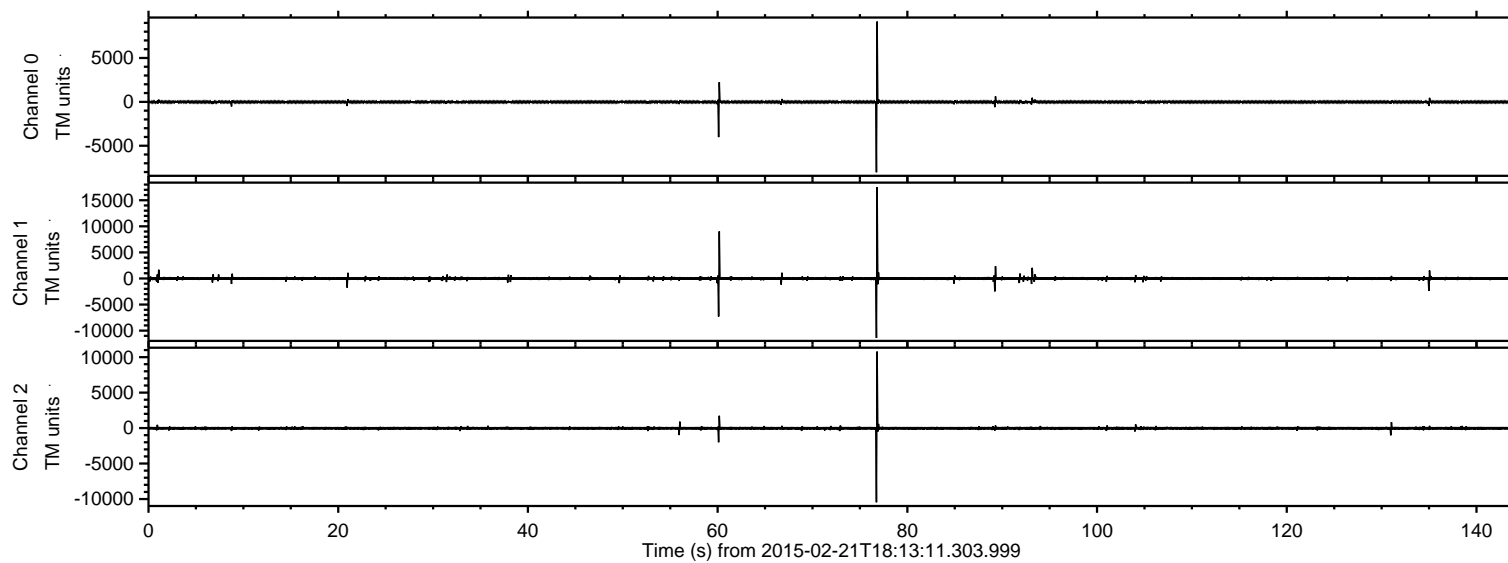


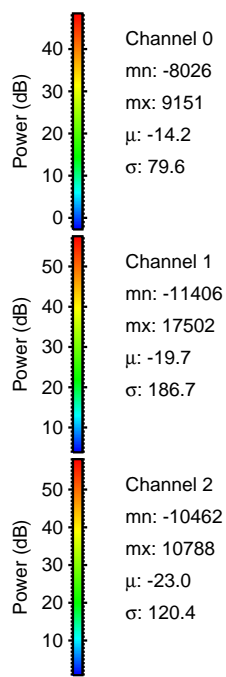
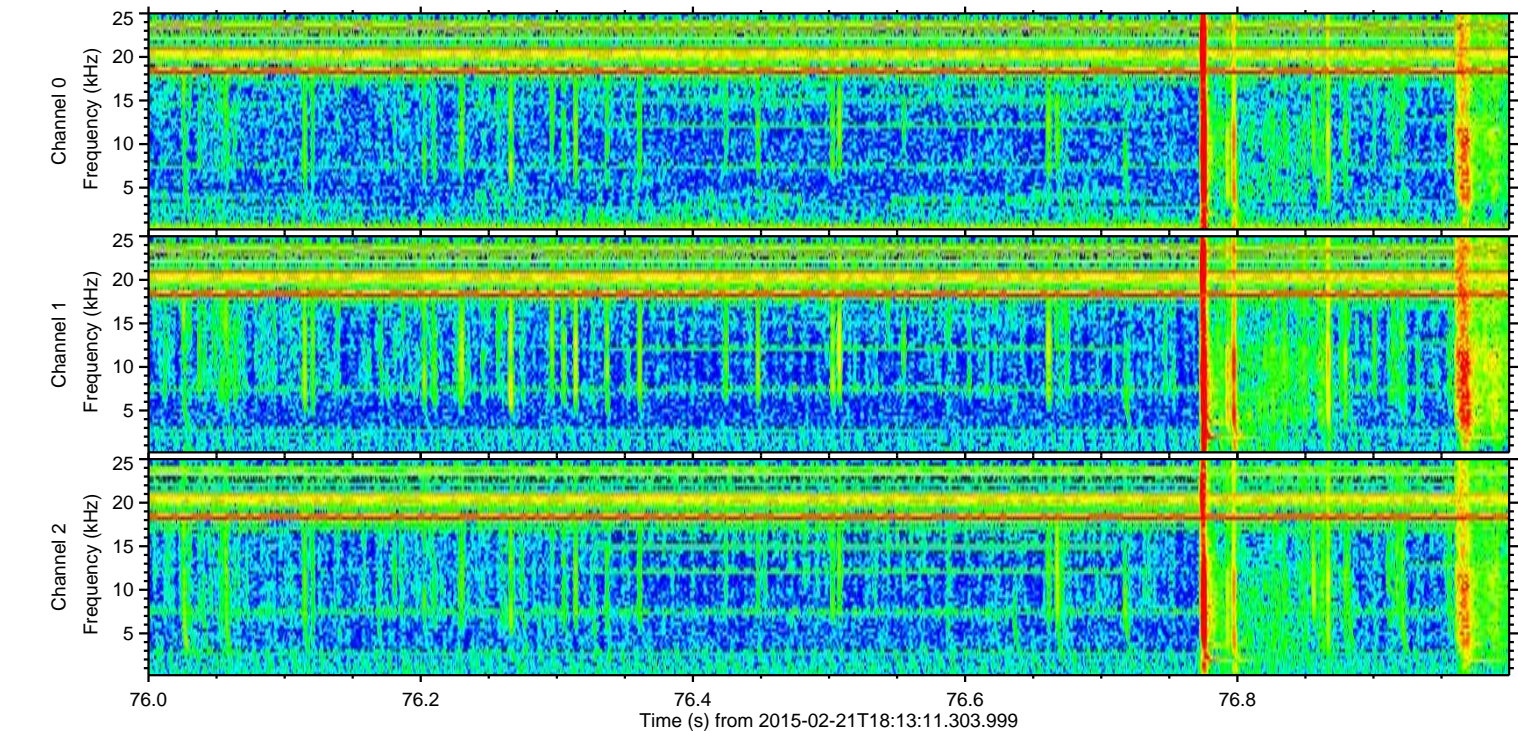
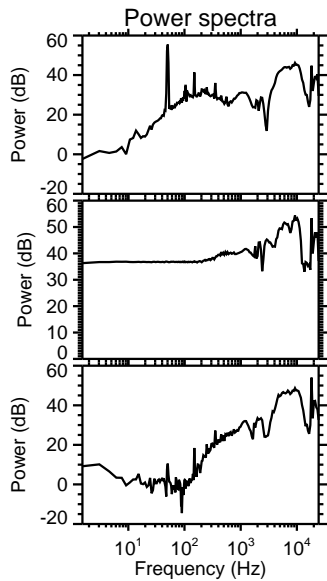
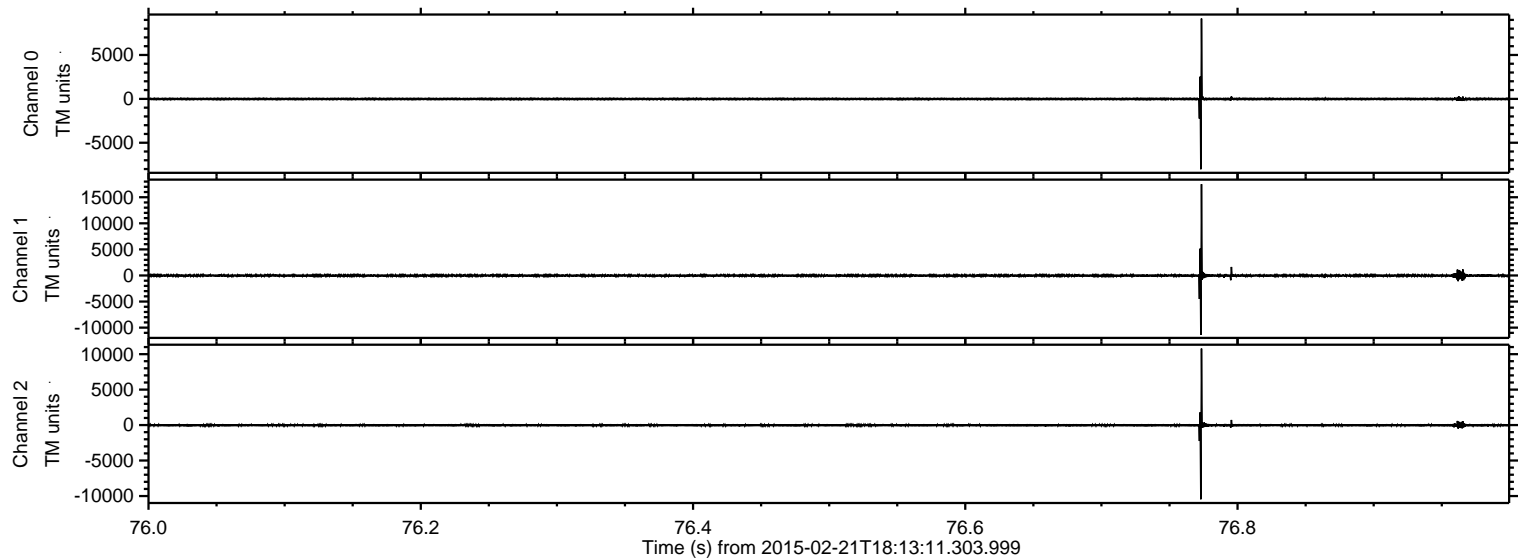
# ELMAVAN 3D WAVEFORMS (Measured data sampled at 50 kHz) 49807 packets of 144 samples from 2015-02-21T18:13:11.303.999.

Processed Mon Mar 2 01:42:30 2015 by ELM ver.2012-10-06 from 001\_\_elm20150221\_181310\_\_dat00.bin





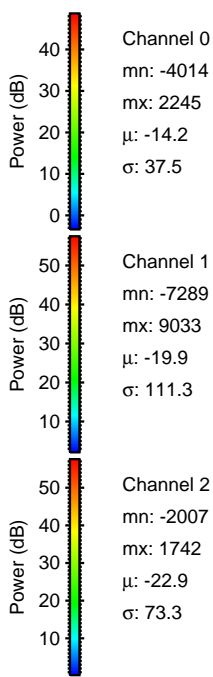
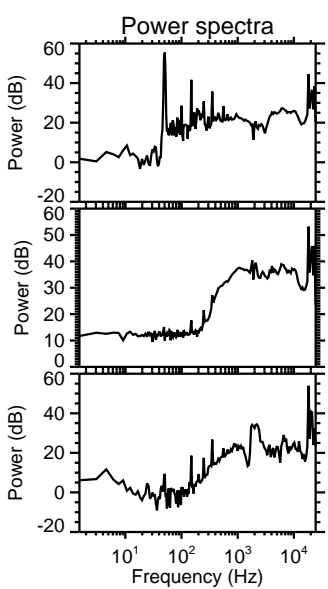
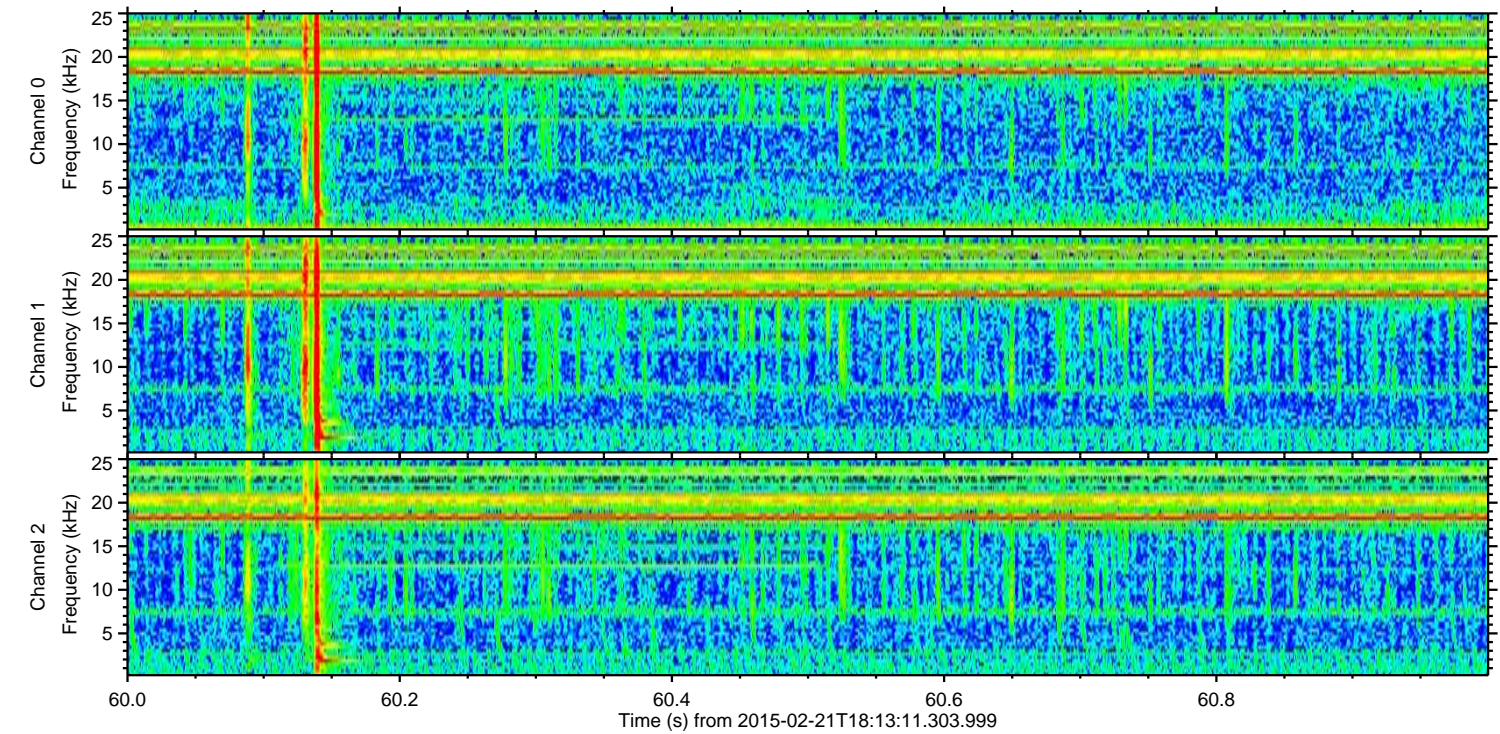
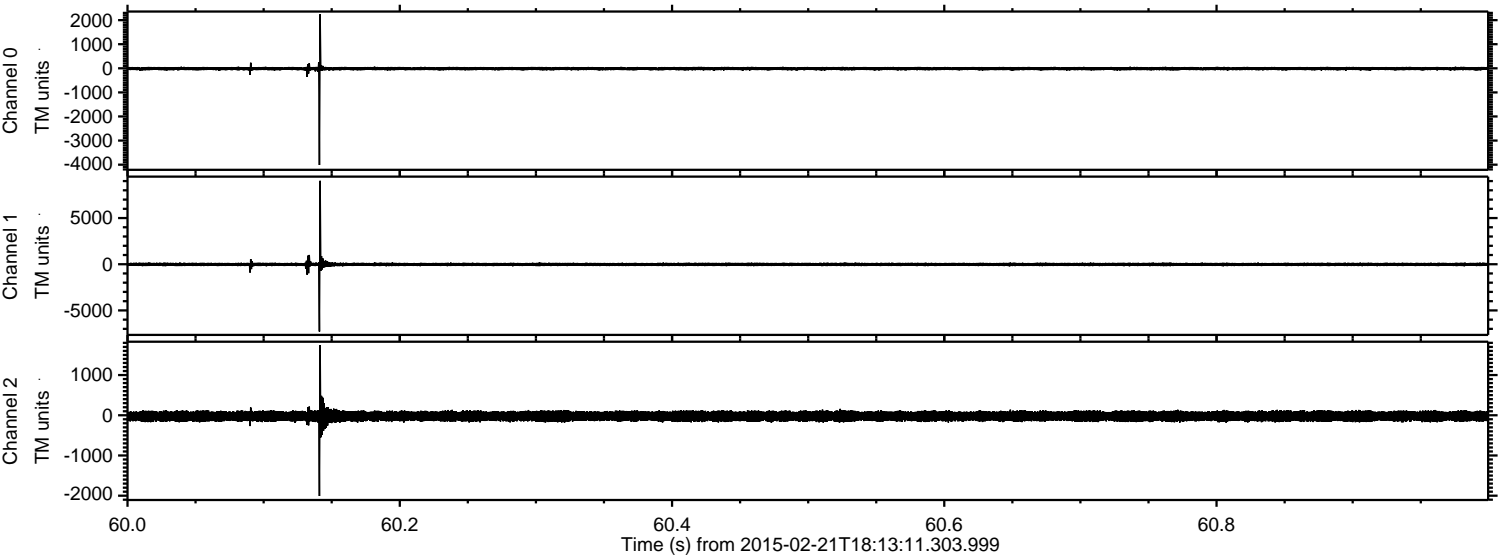
Processed Mon Mar 2 01:42:41 2015 by ELM ver.2012-10-06 from 001\_\_elm20150221\_181310\_\_dat00.bin





ELMAVAN 3D WAVEFORMS (Measured data sampled at 50 kHz) 49807 packets of 144 samples from 2015-02-21T18:13:11.303.999. Part 61/144

Processed Mon Mar 2 01:42:42 2015 by ELM ver.2012-10-06 from 001\_\_elm20150221\_181310\_\_dat00.bin



Channel 0  
mn: -4014  
mx: 2245  
 $\mu$ : -14.2  
 $\sigma$ : 37.5

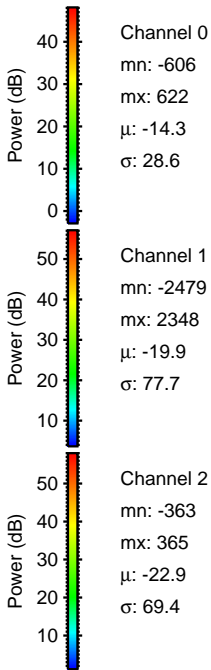
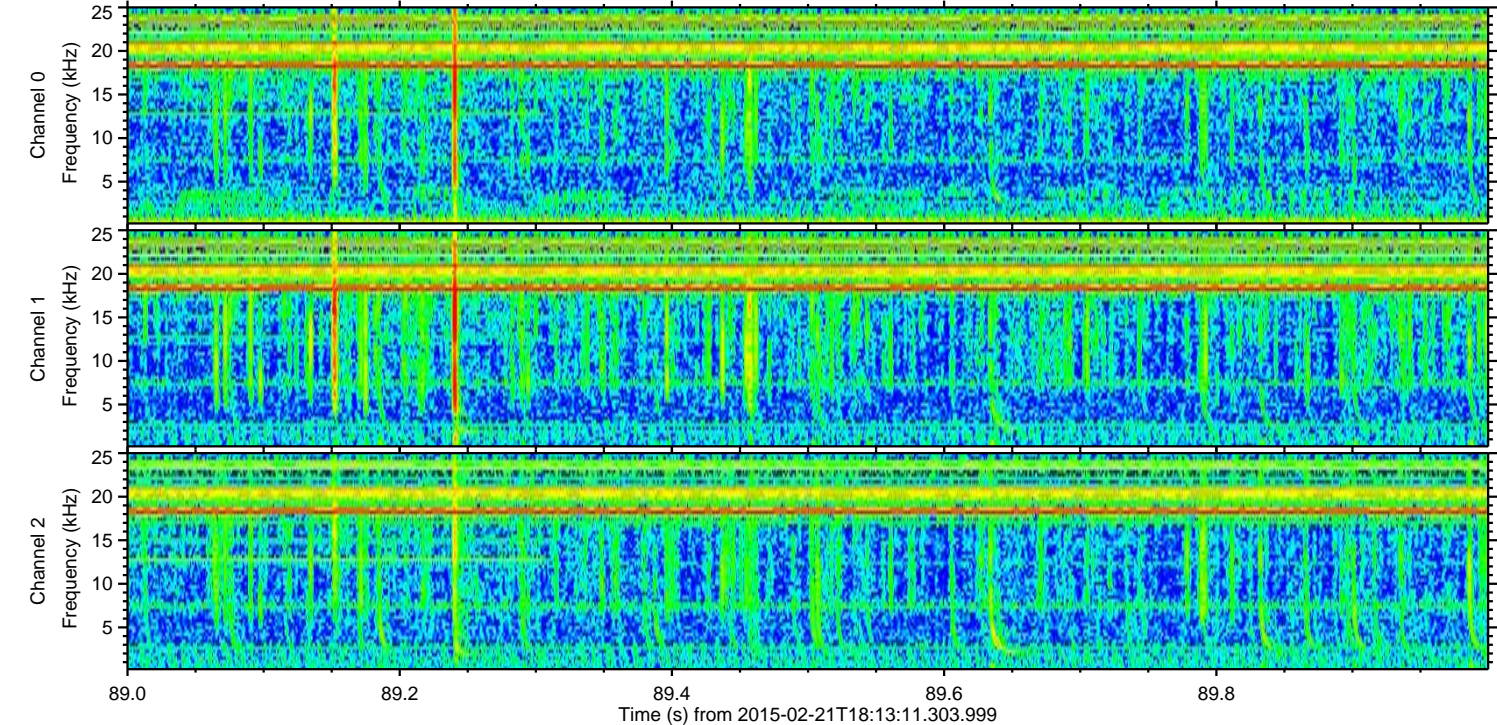
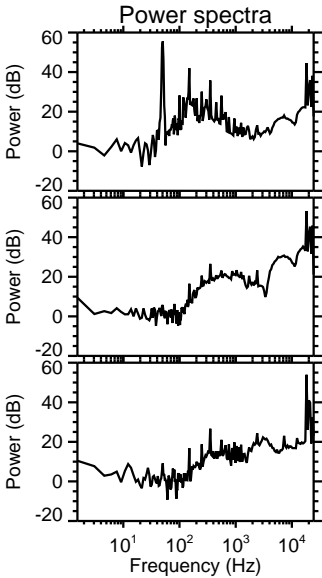
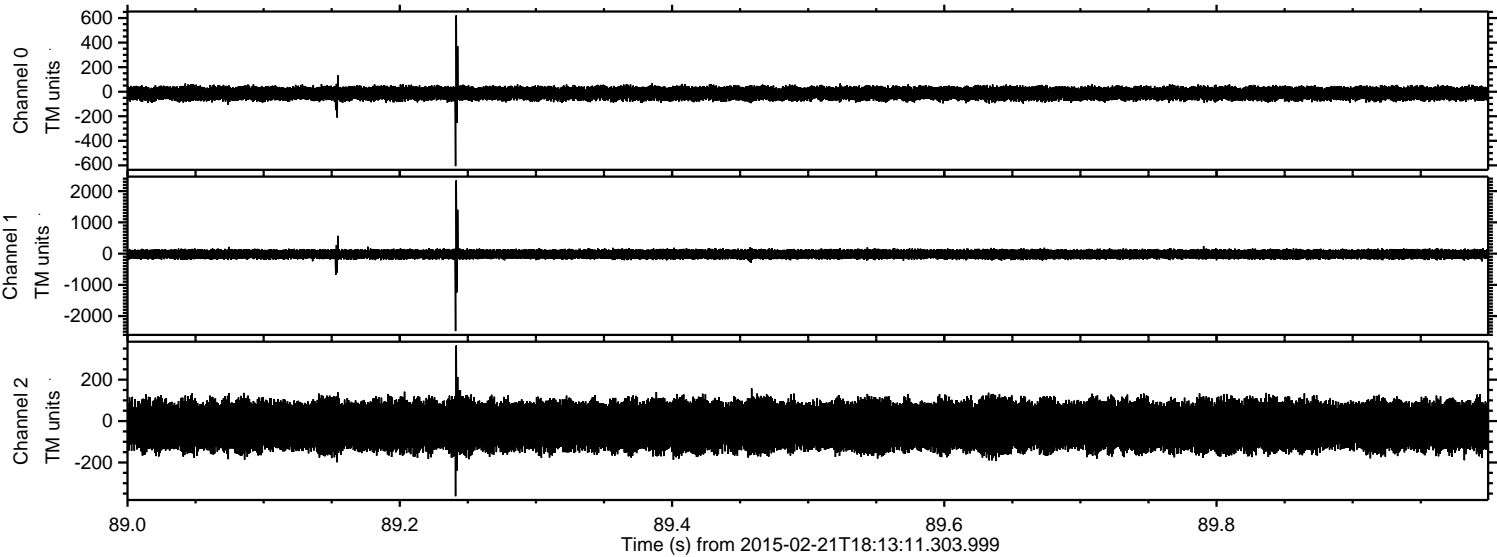
Channel 1  
mn: -7289  
mx: 9033  
 $\mu$ : -19.9  
 $\sigma$ : 111.3

Channel 2  
mn: -2007  
mx: 1742  
 $\mu$ : -22.9  
 $\sigma$ : 73.3



ELMAVAN 3D WAVEFORMS (Measured data sampled at 50 kHz) 49807 packets of 144 samples from 2015-02-21T18:13:11.303.999. Part 90/144

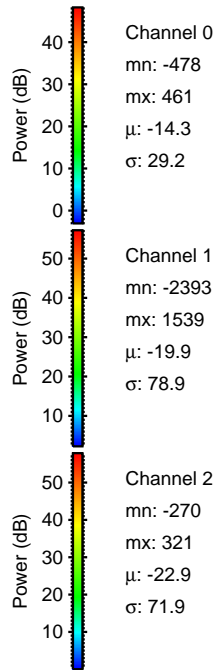
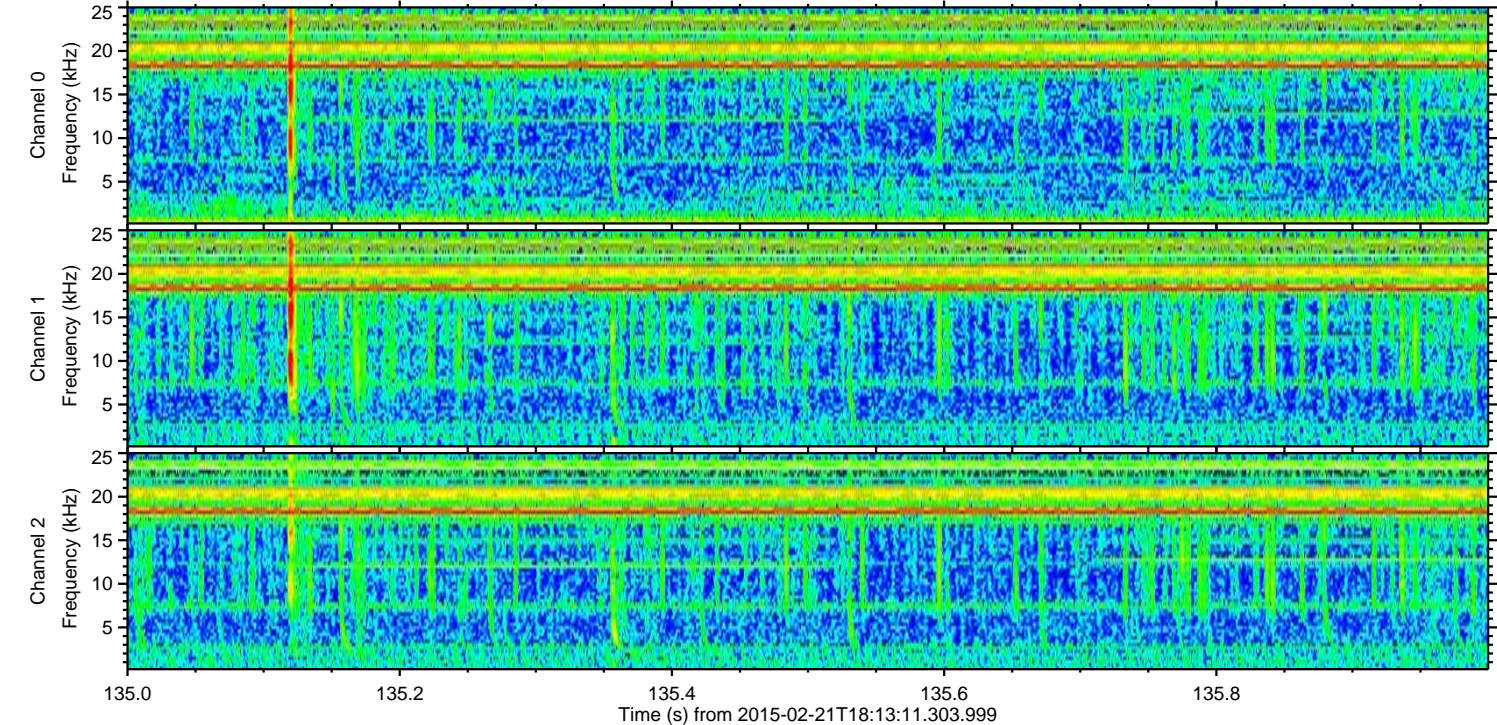
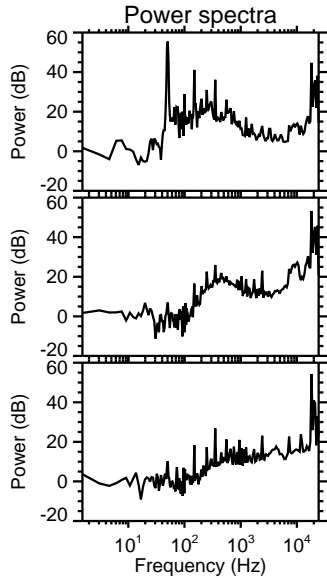
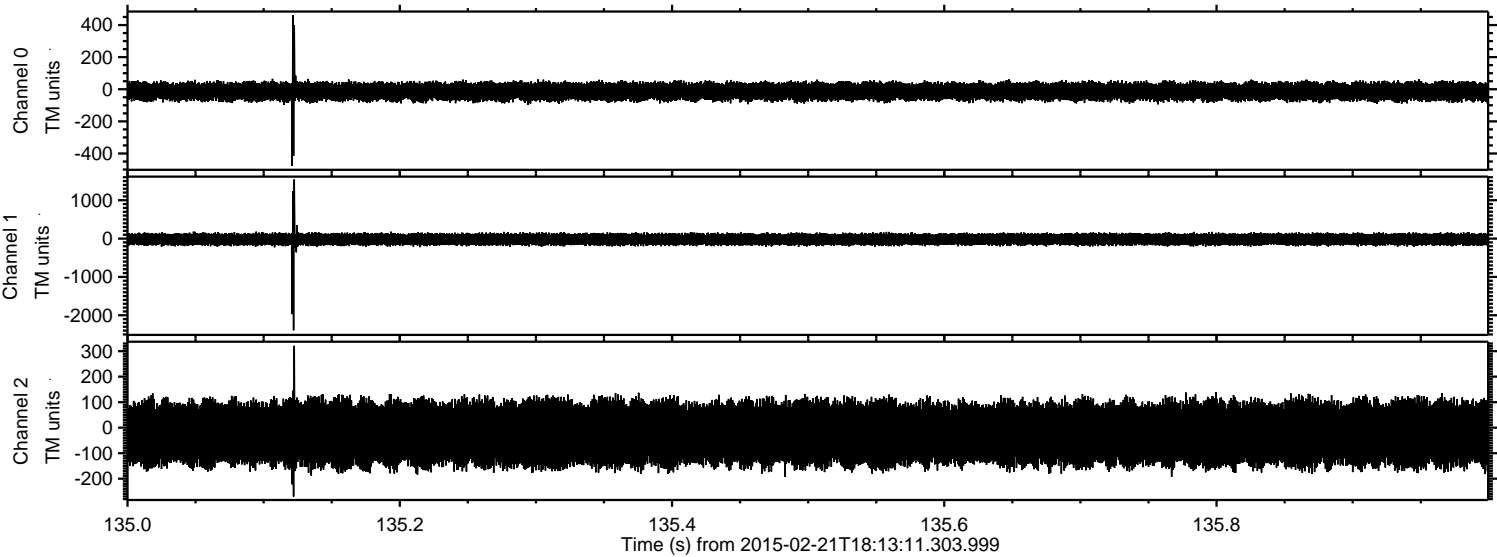
Processed Mon Mar 2 01:42:43 2015 by ELM ver.2012-10-06 from 001\_\_elm20150221\_181310\_\_dat00.bin





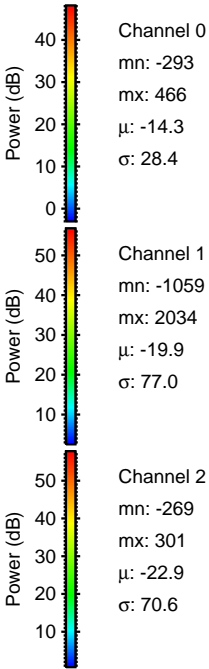
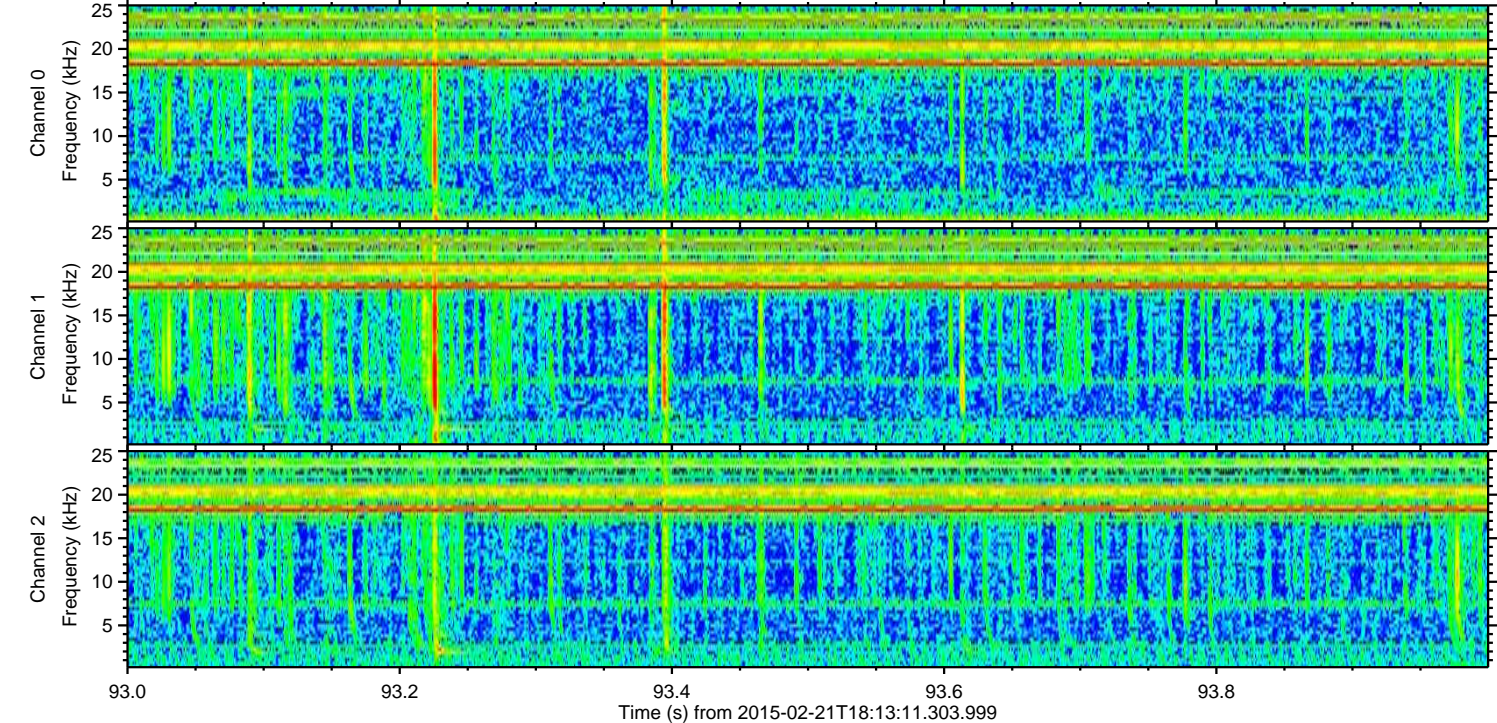
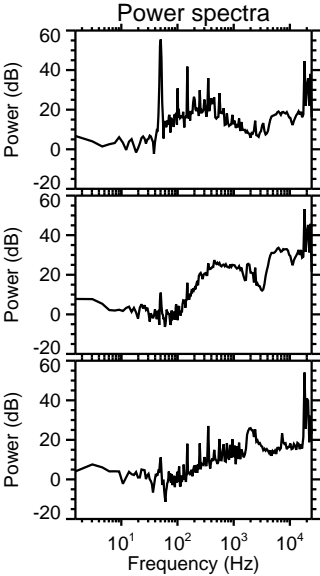
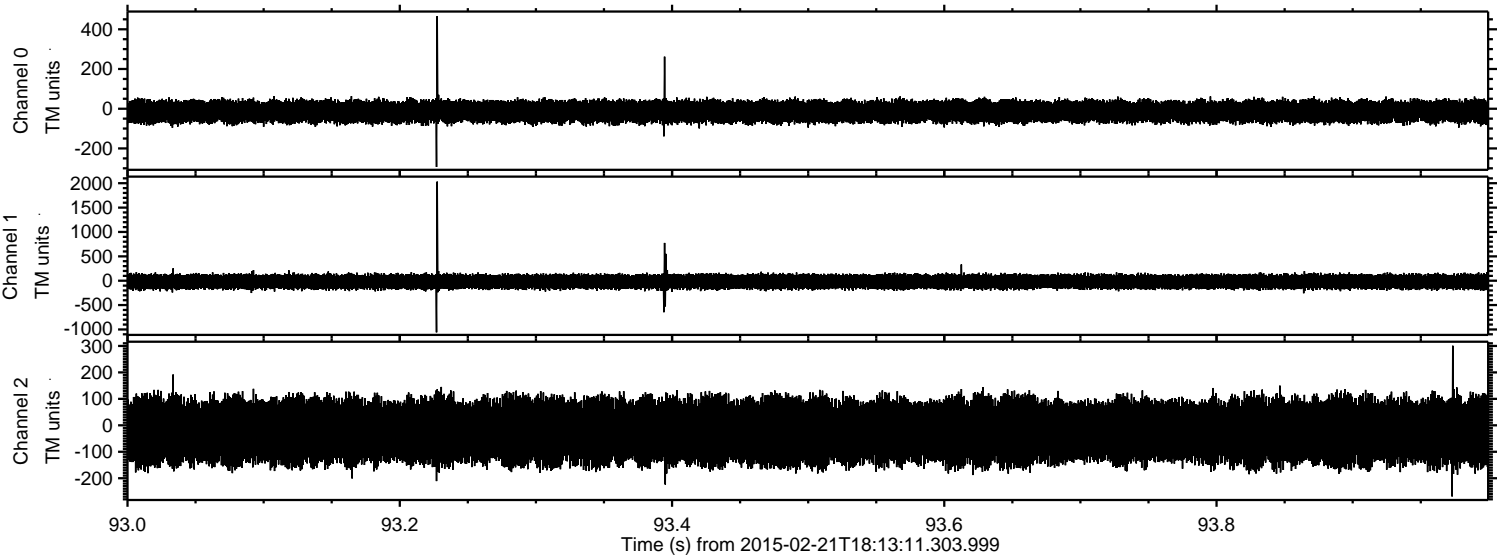
ELMAVAN 3D WAVEFORMS (Measured data sampled at 50 kHz) 49807 packets of 144 samples from 2015-02-21T18:13:11.303.999. Part 136/144

Processed Mon Mar 2 01:42:44 2015 by ELM ver.2012-10-06 from 001\_\_elm20150221\_181310\_\_dat00.bin





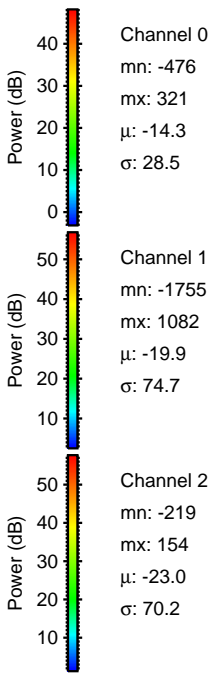
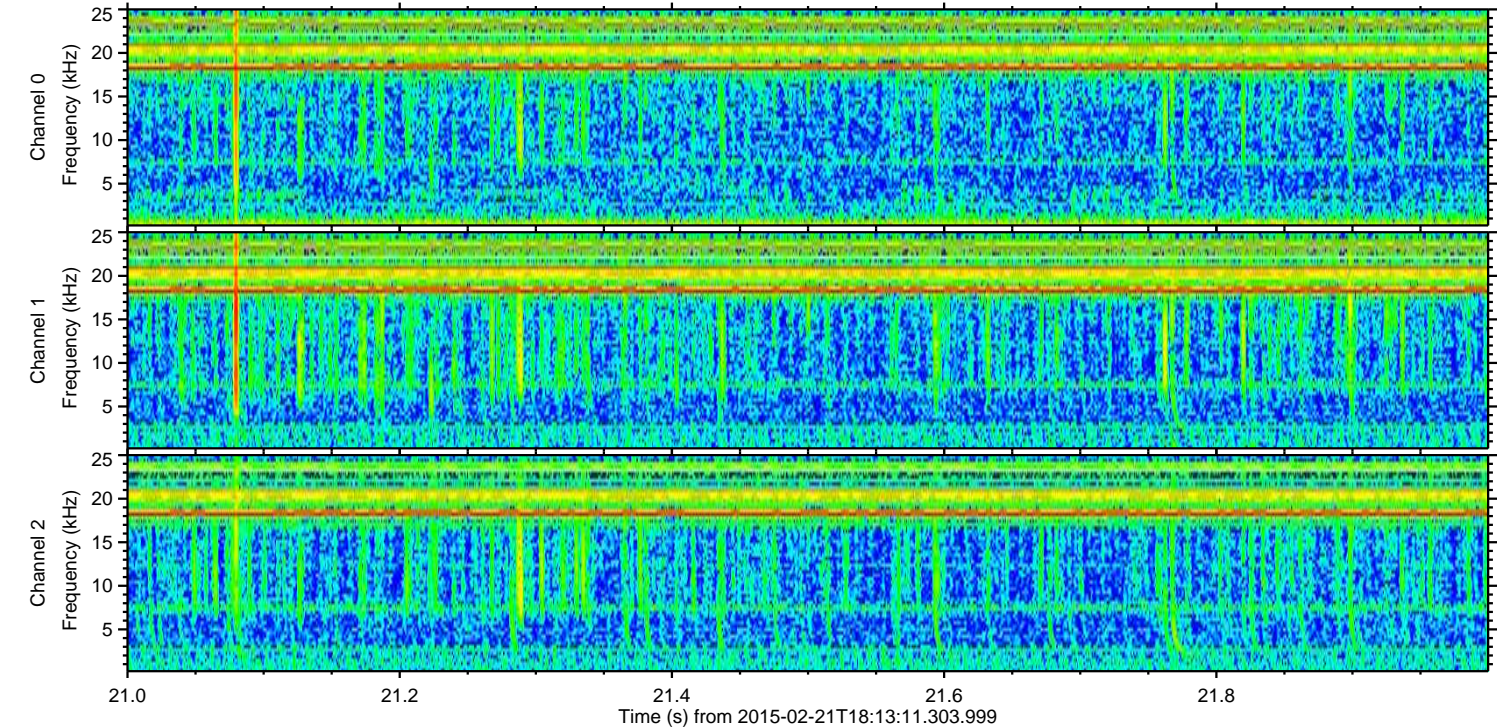
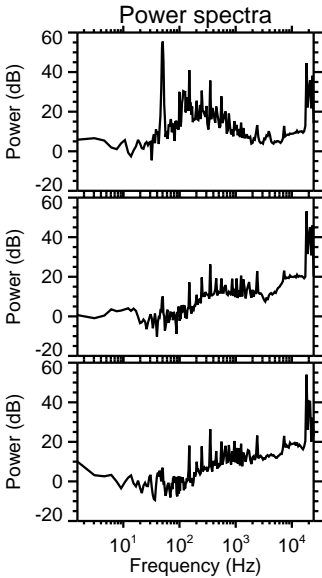
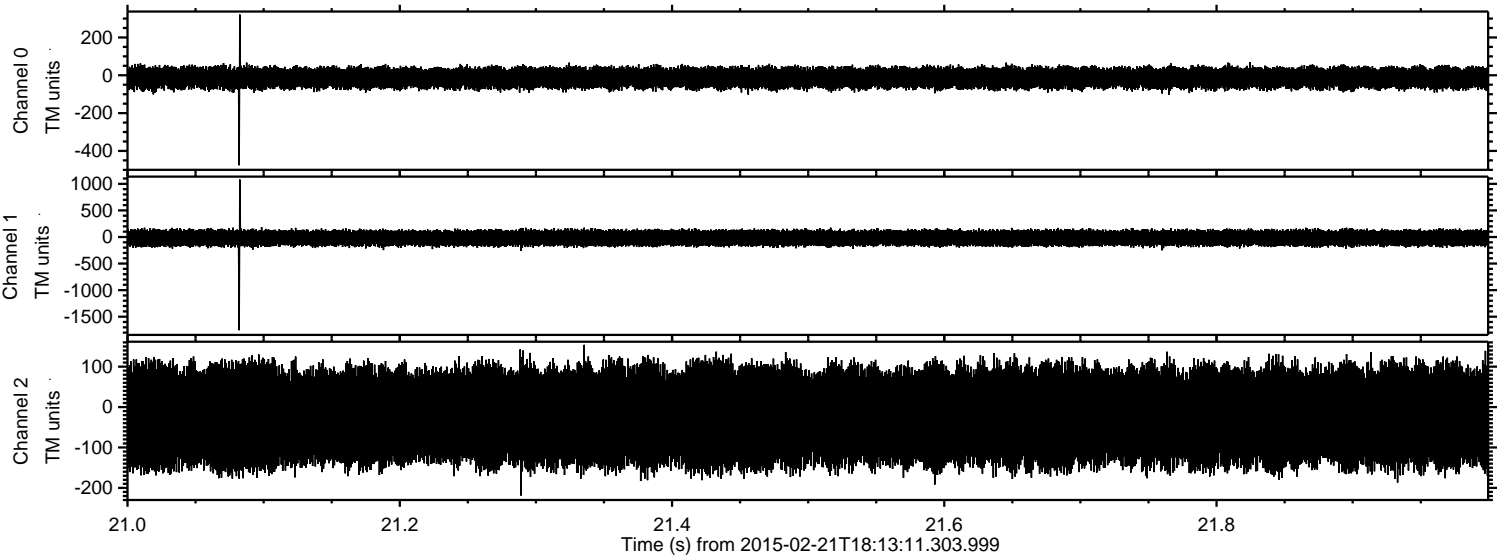
Processed Mon Mar 2 01:42:45 2015 by ELM ver.2012-10-06 from 001\_\_elm20150221\_181310\_\_dat00.bin





ELMAVAN 3D WAVEFORMS (Measured data sampled at 50 kHz) 49807 packets of 144 samples from 2015-02-21T18:13:11.303.999. Part 22/144

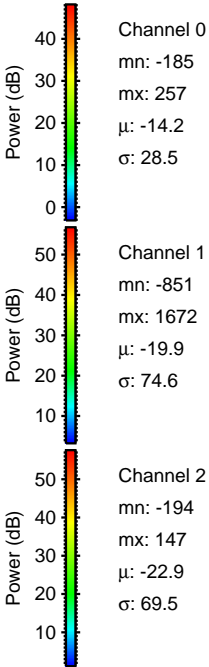
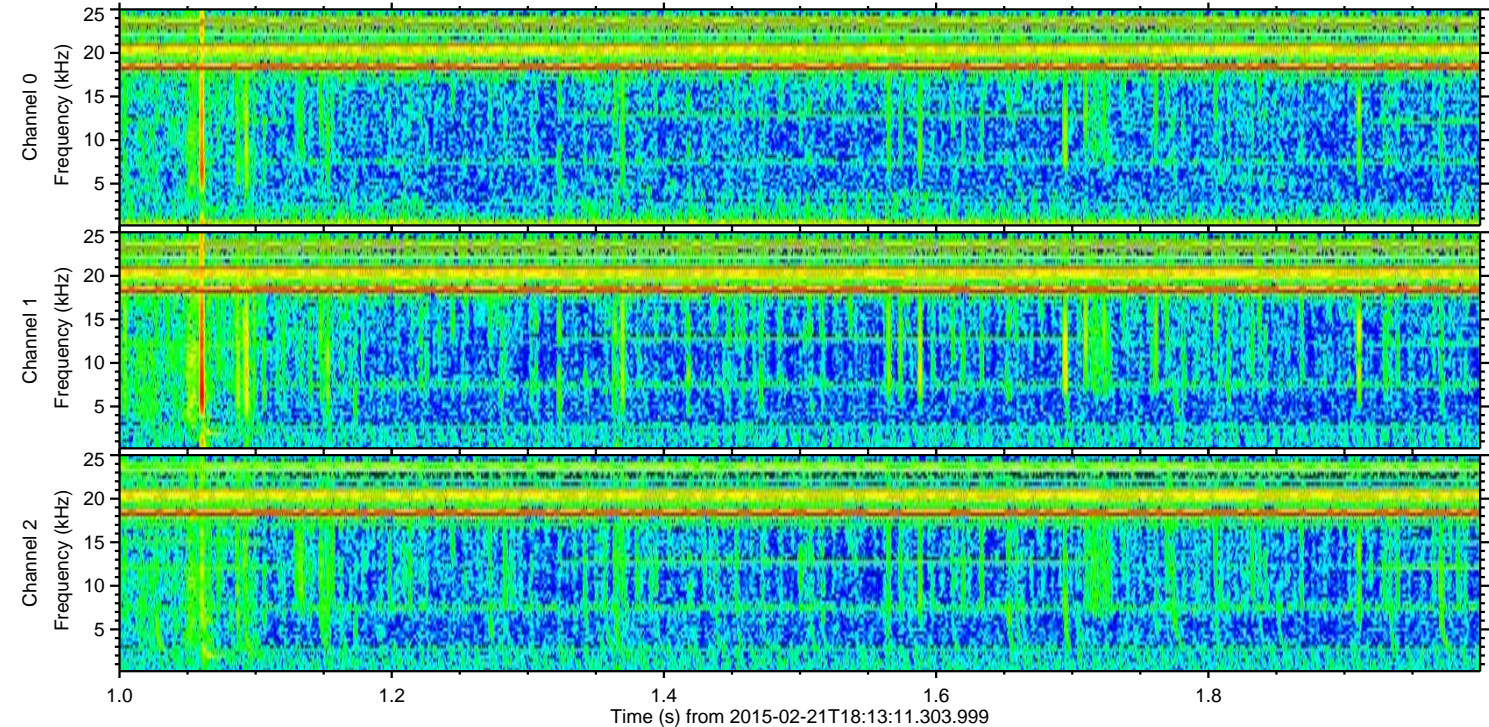
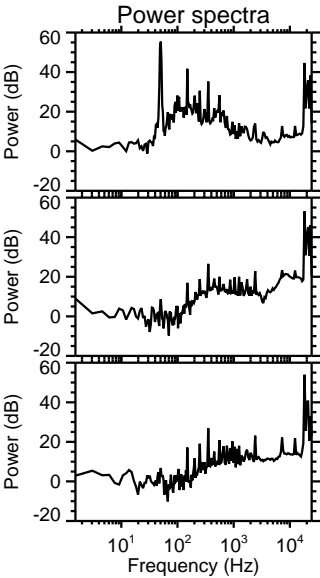
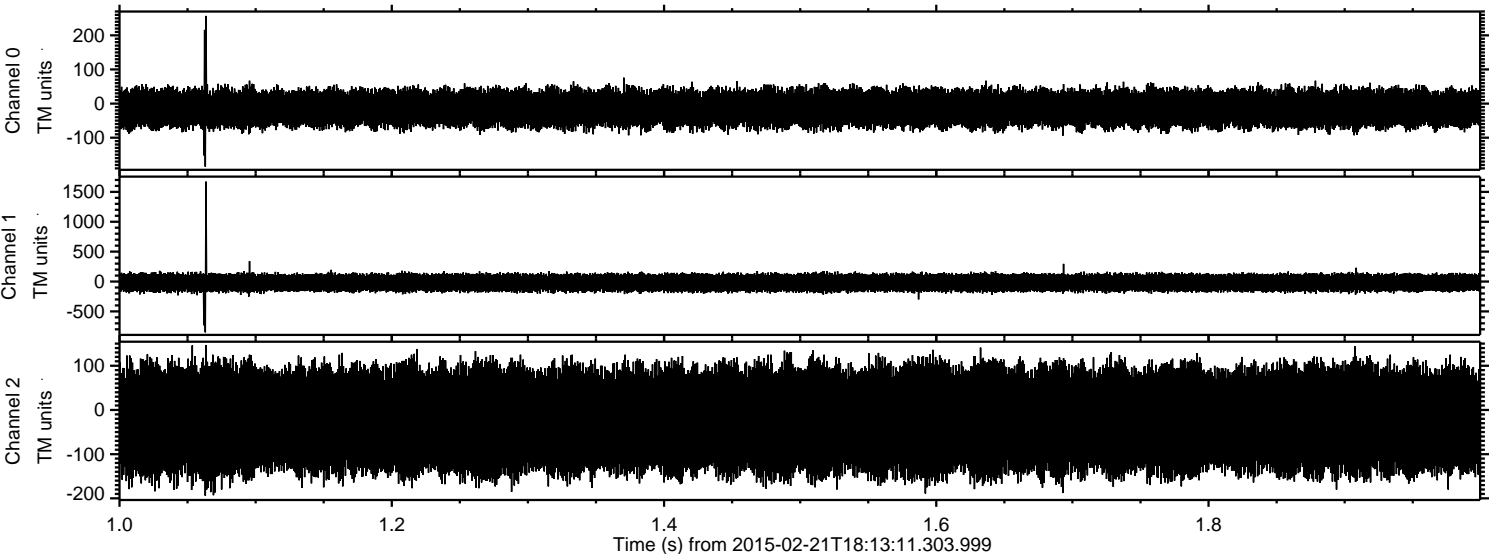
Processed Mon Mar 2 01:42:46 2015 by ELM ver.2012-10-06 from 001\_\_elm20150221\_181310\_\_dat00.bin





ELMAVAN 3D WAVEFORMS (Measured data sampled at 50 kHz) 49807 packets of 144 samples from 2015-02-21T18:13:11.303.999. Part 2/144

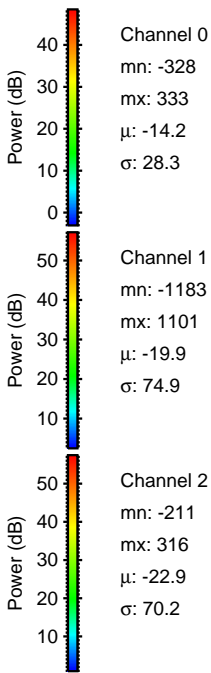
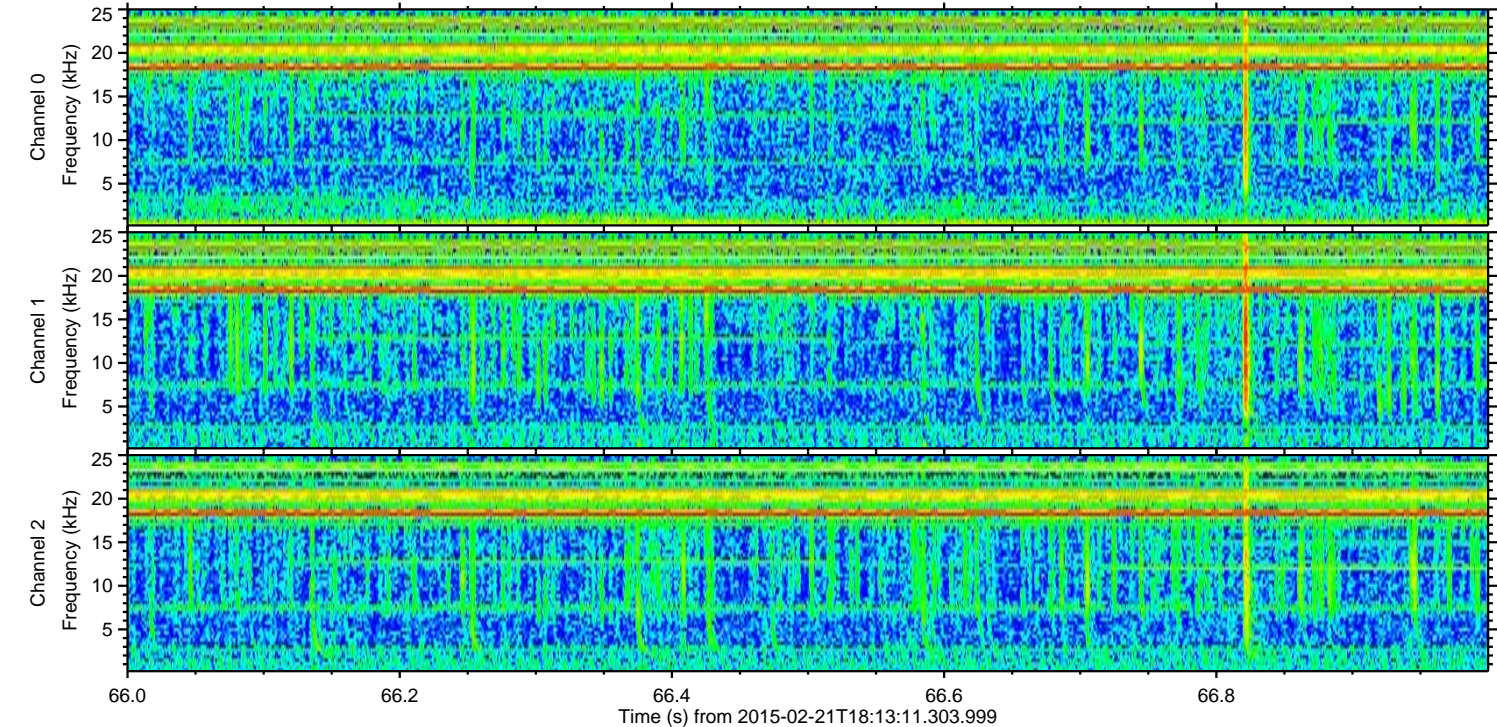
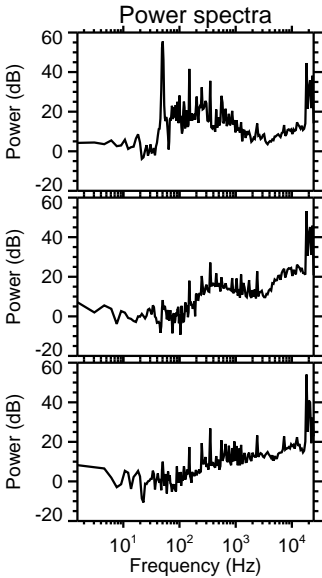
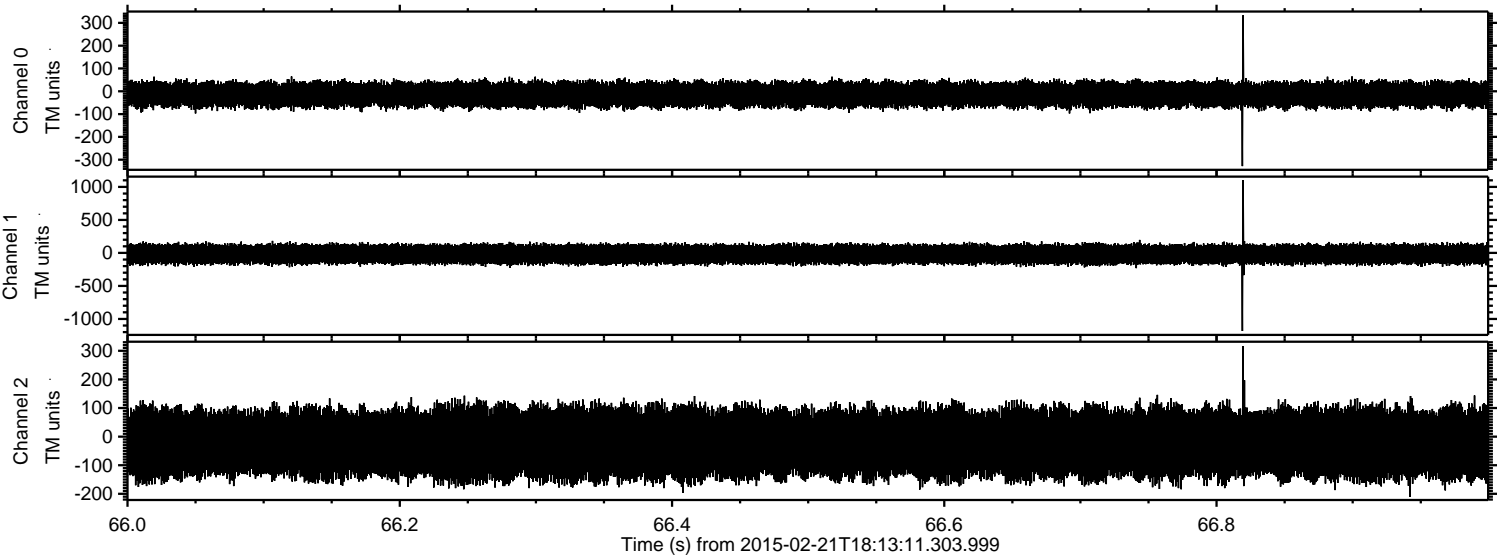
Processed Mon Mar 2 01:42:47 2015 by ELM ver.2012-10-06 from 001\_\_elm20150221\_181310\_\_dat00.bin





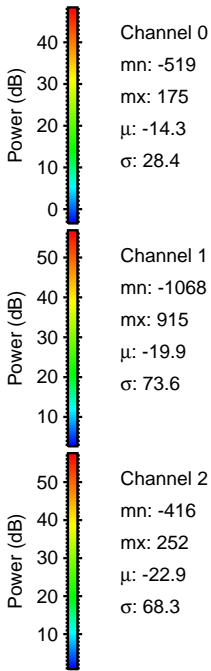
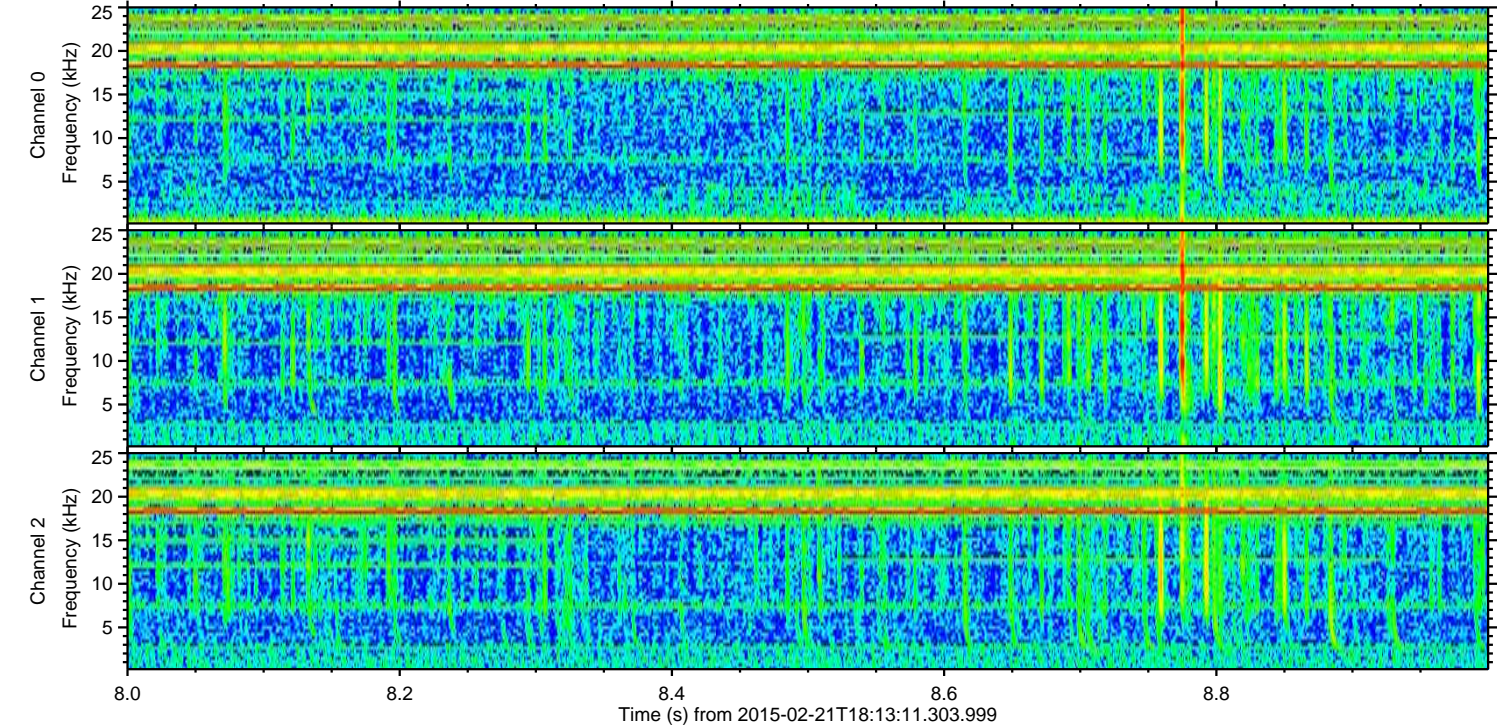
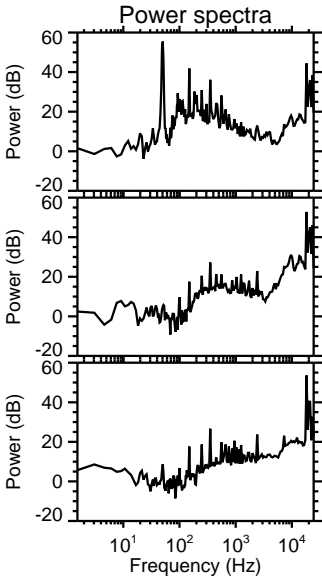
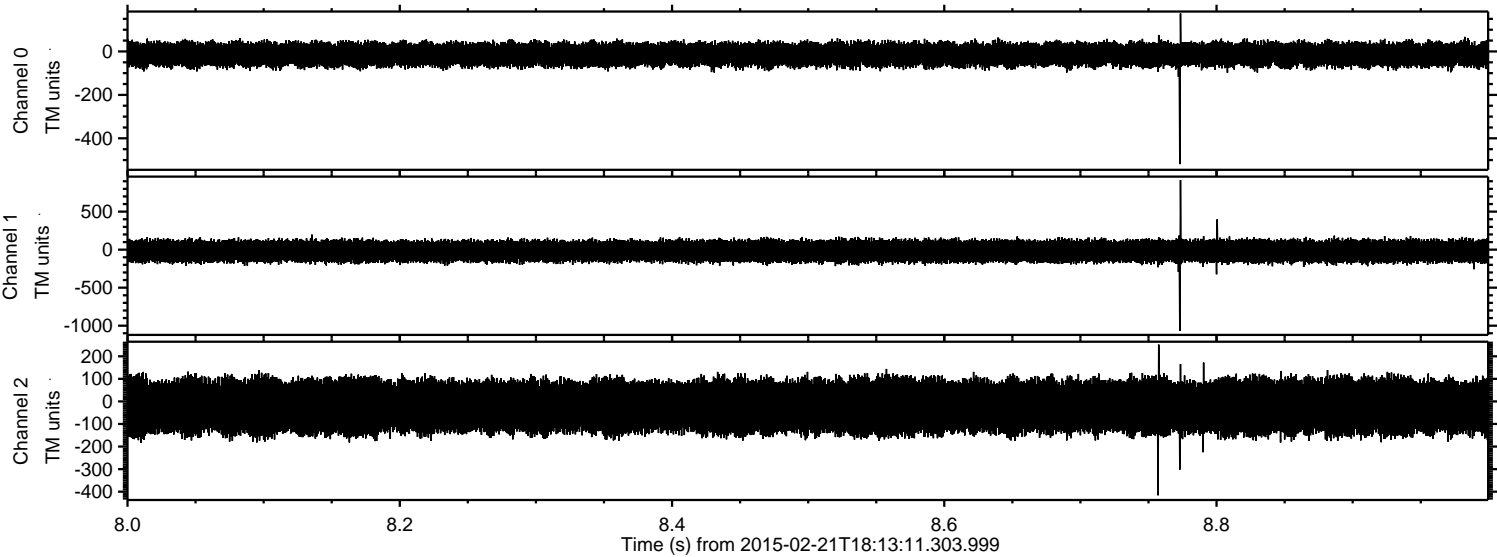
ELMAVAN 3D WAVEFORMS (Measured data sampled at 50 kHz) 49807 packets of 144 samples from 2015-02-21T18:13:11.303.999. Part 67/144

Processed Mon Mar 2 01:42:48 2015 by ELM ver.2012-10-06 from 001\_\_elm20150221\_181310\_\_dat00.bin





Processed Mon Mar 2 01:42:49 2015 by ELM ver.2012-10-06 from 001\_\_elm20150221\_181310\_\_dat00.bin





ELMAVAN 3D WAVEFORMS (Measured data sampled at 50 kHz) 49807 packets of 144 samples from 2015-02-21T18:13:11.303.999. Part 21/144

Processed Mon Mar 2 01:42:50 2015 by ELM ver.2012-10-06 from 001\_\_elm20150221\_181310\_\_dat00.bin

