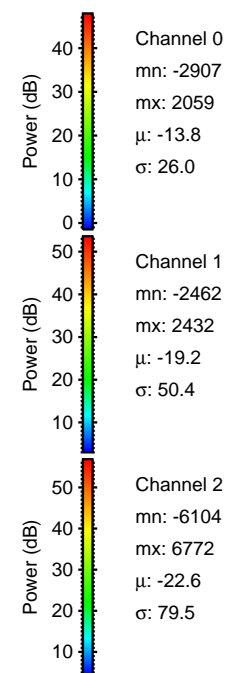
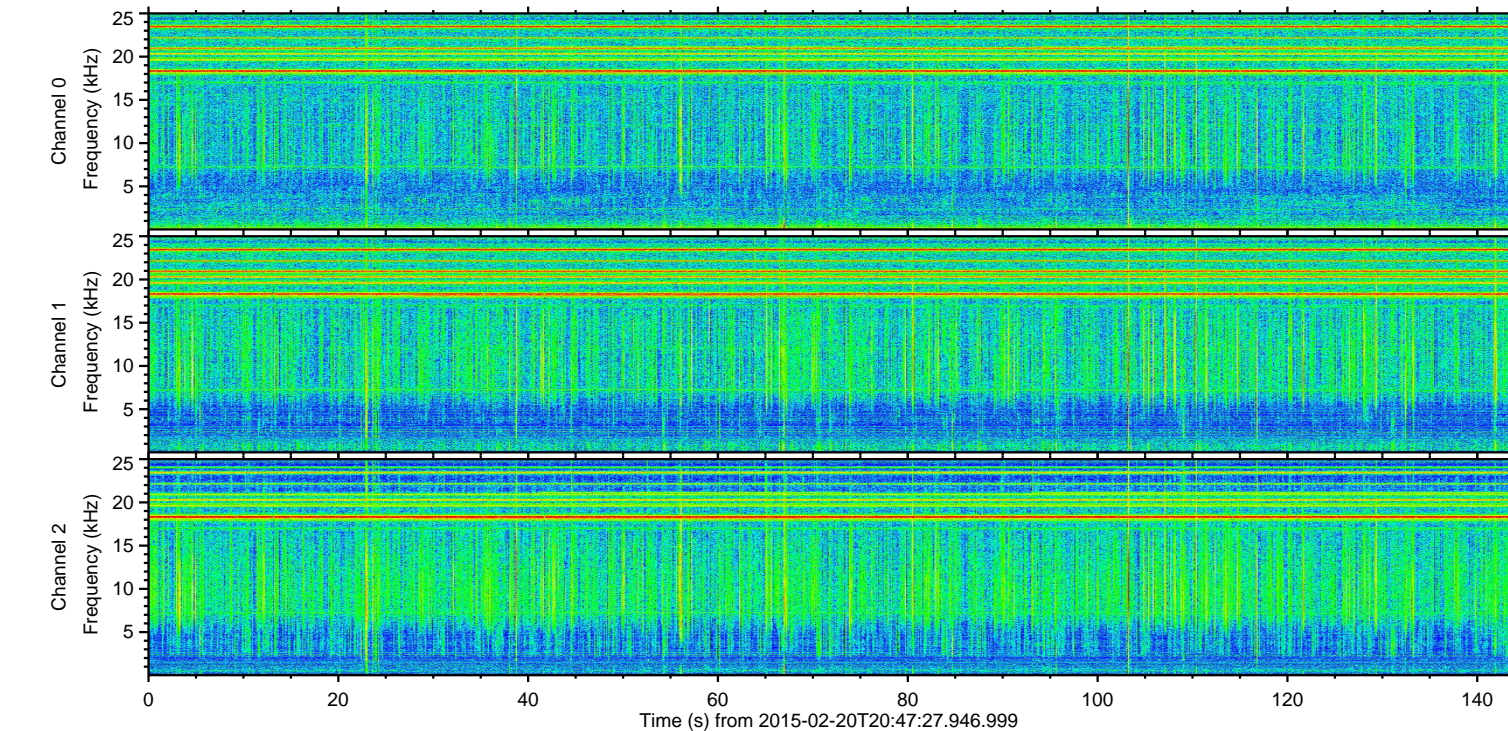
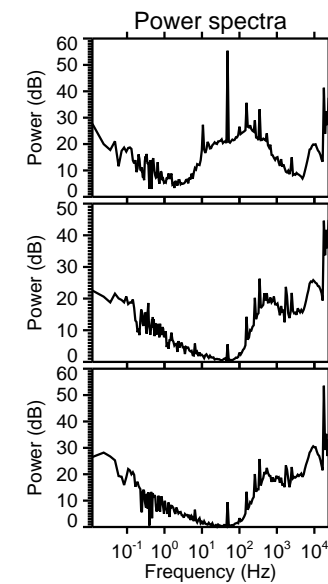
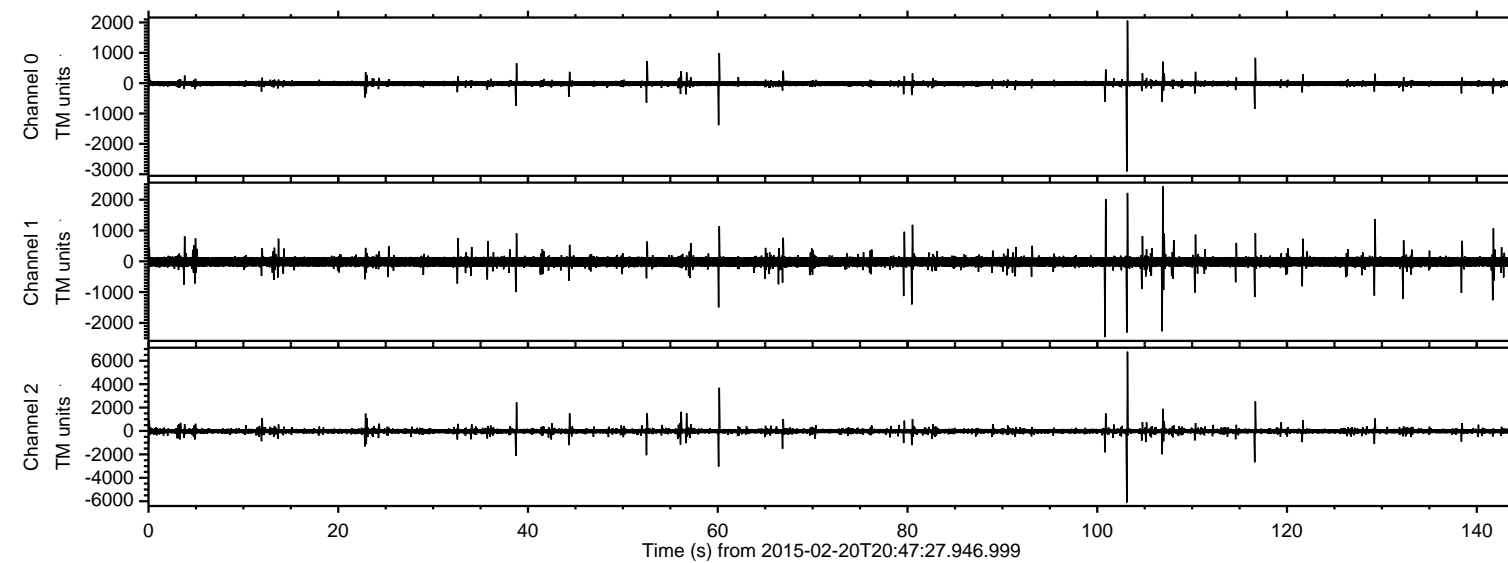


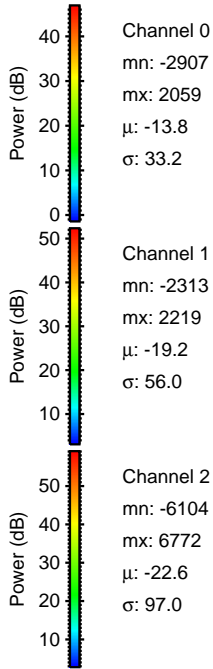
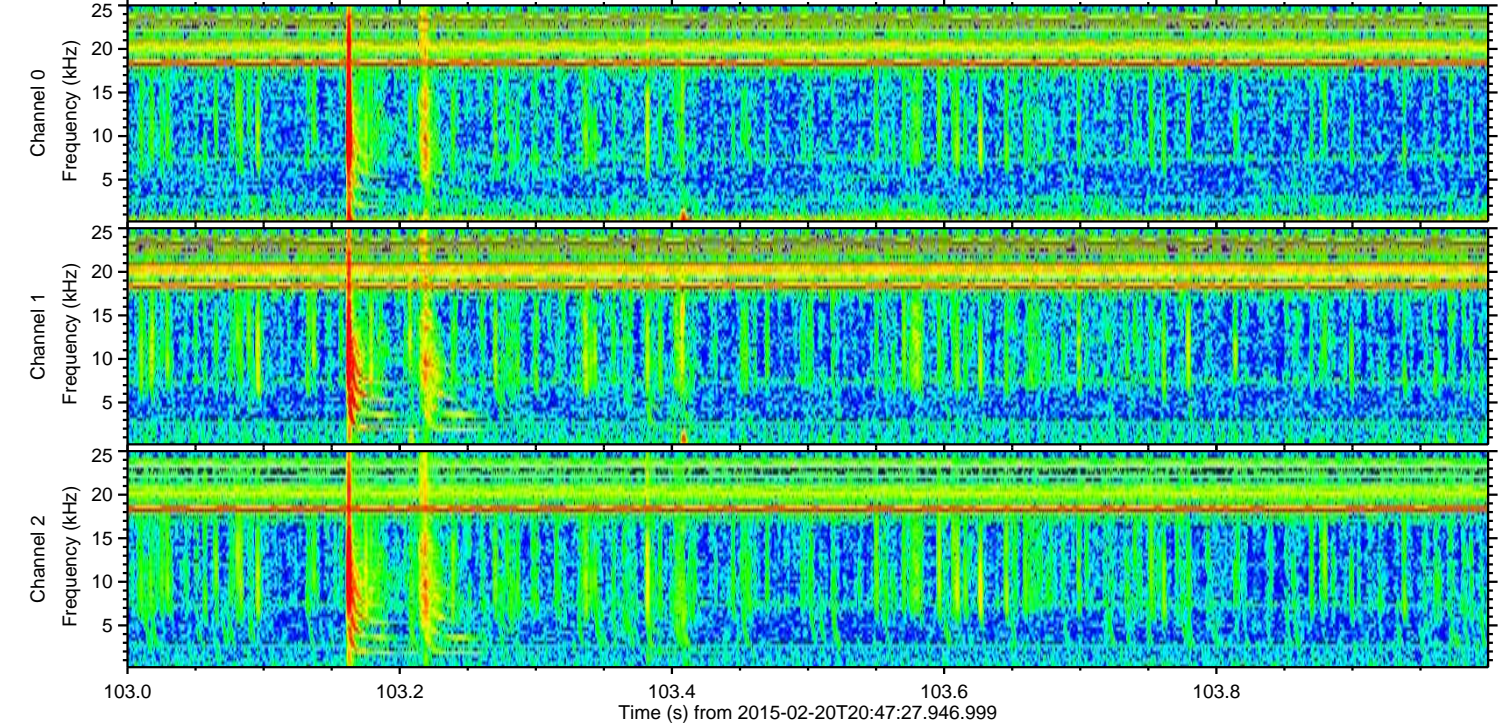
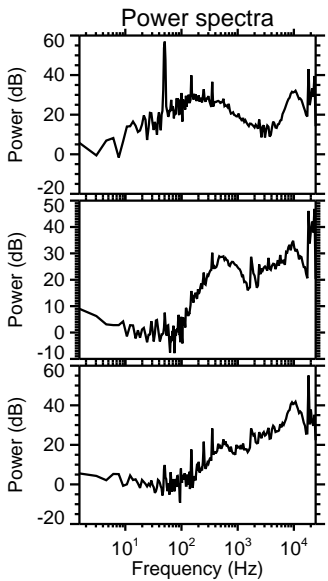
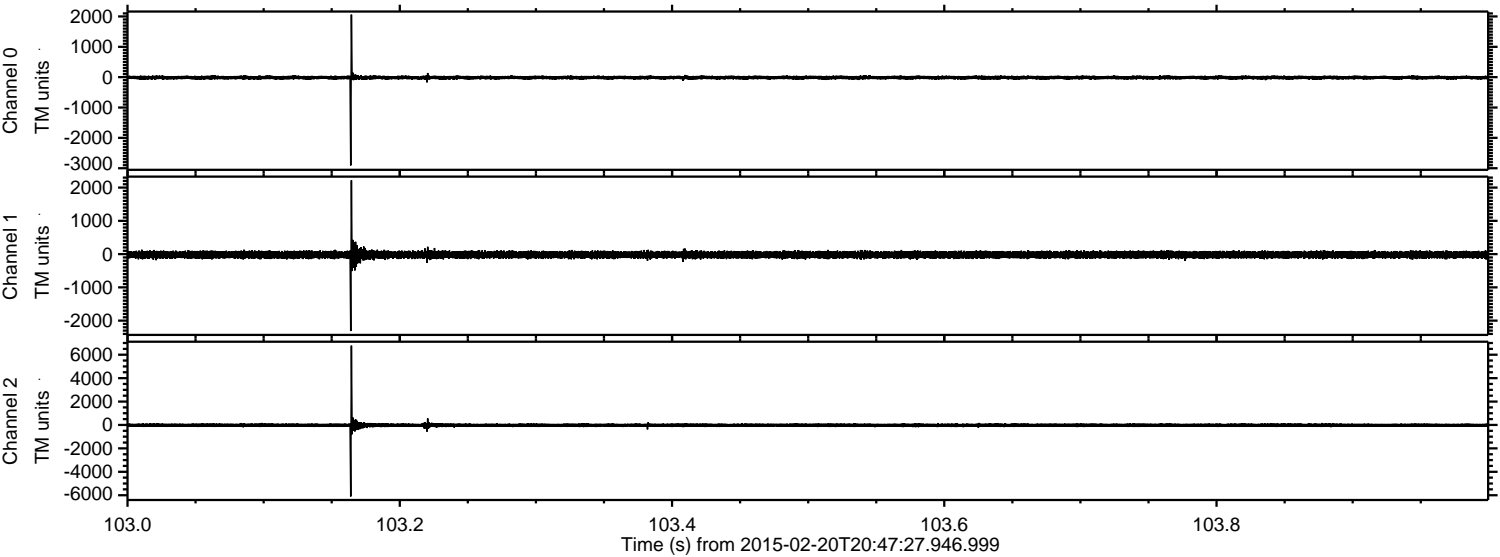
ELMAVAN 3D WAVEFORMS (Measured data sampled at 50 kHz) 49796 packets of 144 samples from 2015-02-20T20:47:27.946.999.

Processed Sat Feb 28 19:42:20 2015 by ELM ver.2012-10-06 from 001__elm20150220_204726__dat00.bin

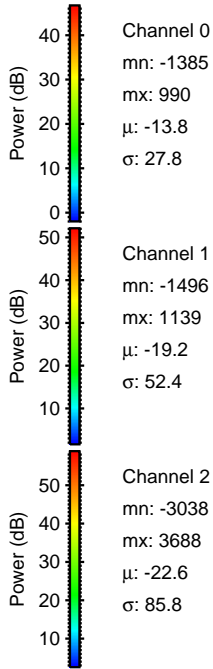
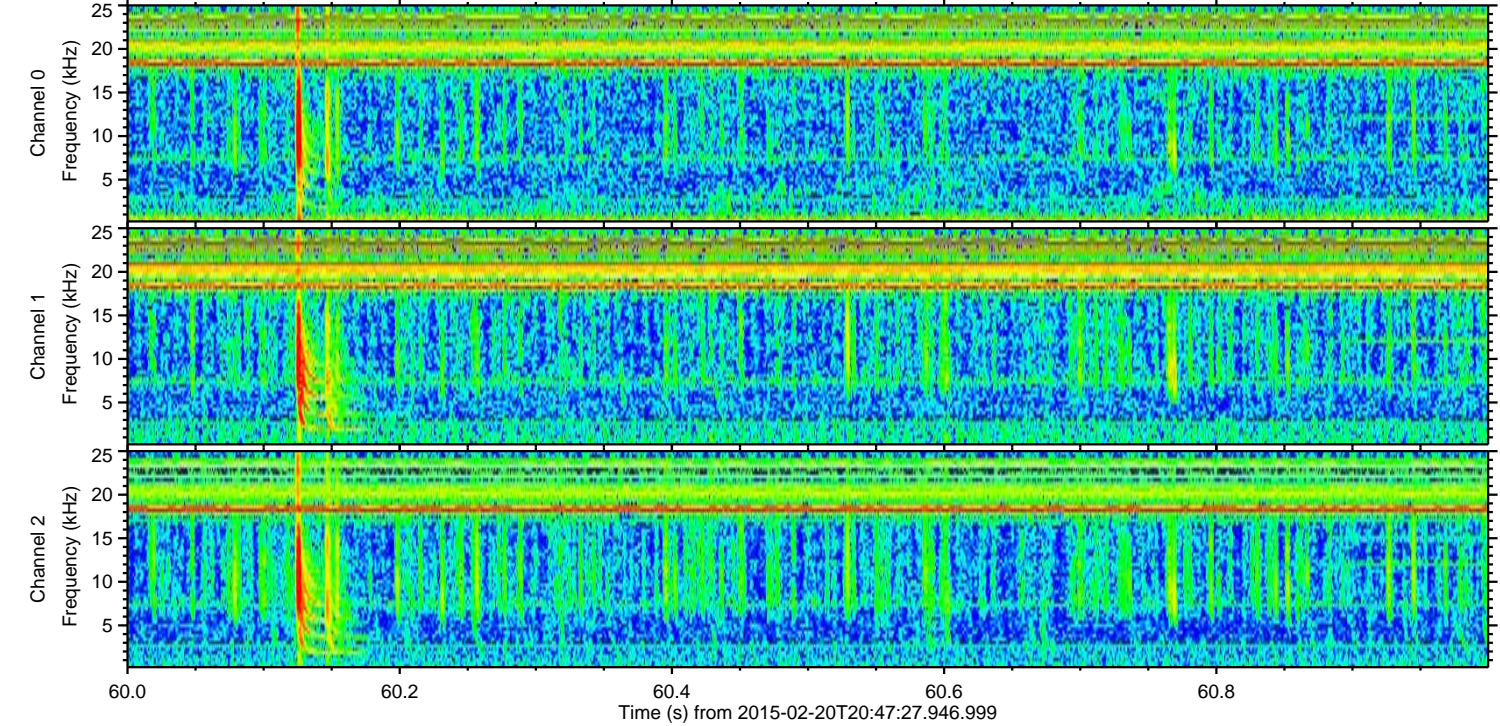
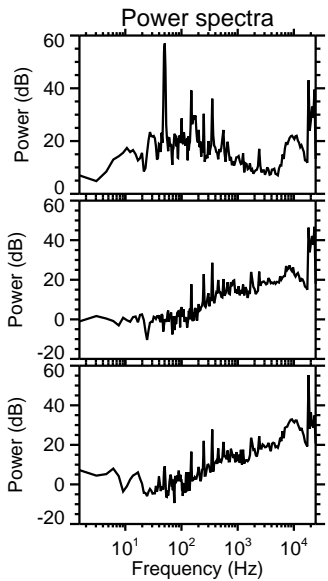
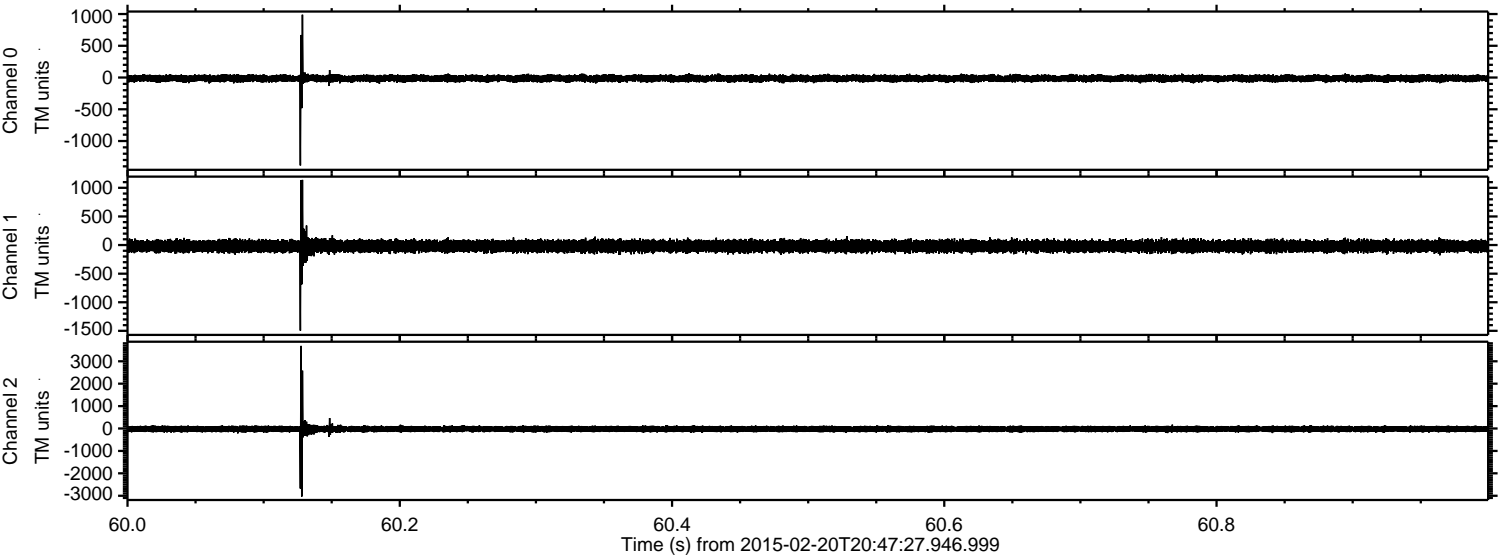


ELMAVAN 3D WAVEFORMS (Measured data sampled at 50 kHz) 49796 packets of 144 samples from 2015-02-20T20:47:27.946.999. Part 104/144

Processed Sat Feb 28 19:42:32 2015 by ELM ver.2012-10-06 from 001__elm20150220_204726__dat00.bin

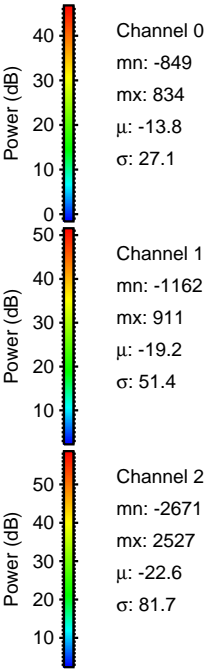
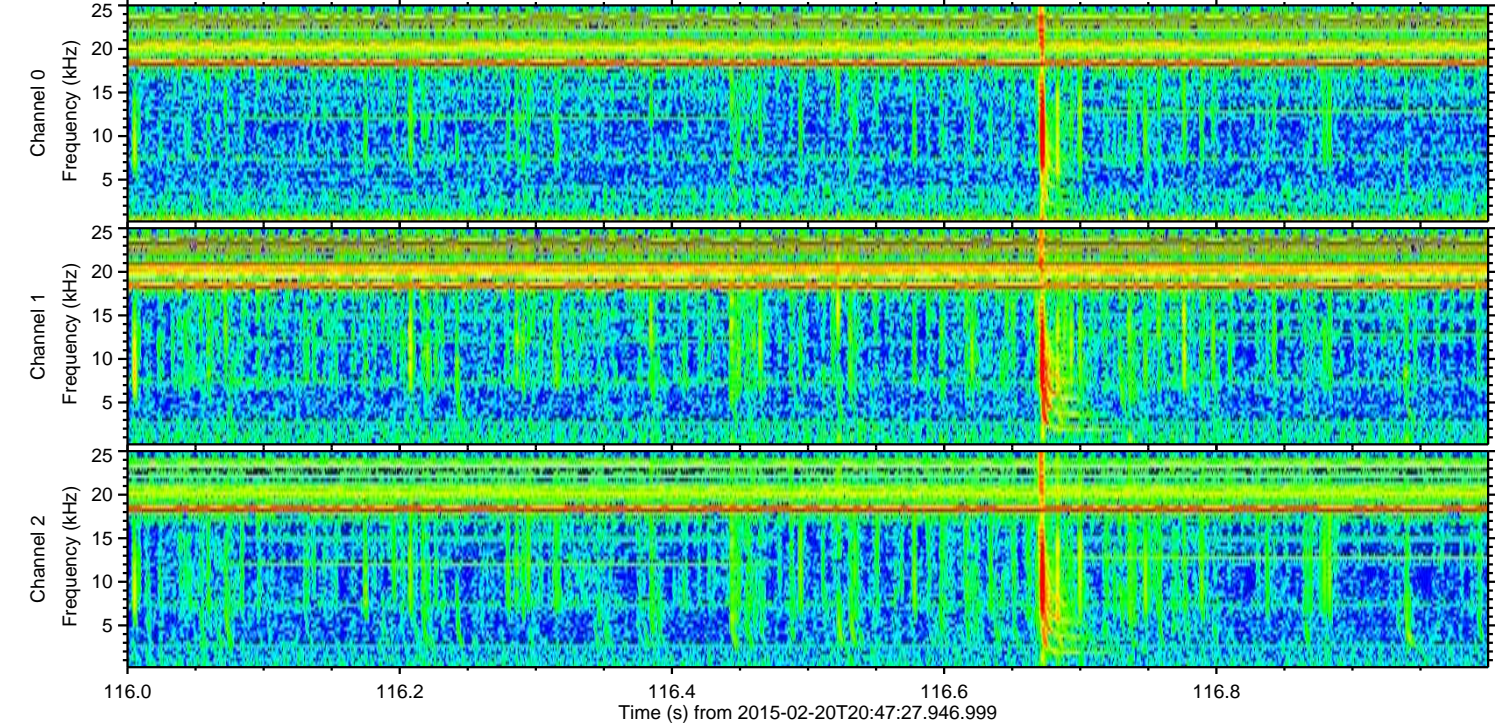
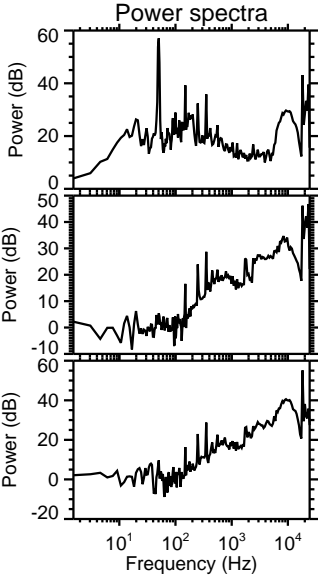
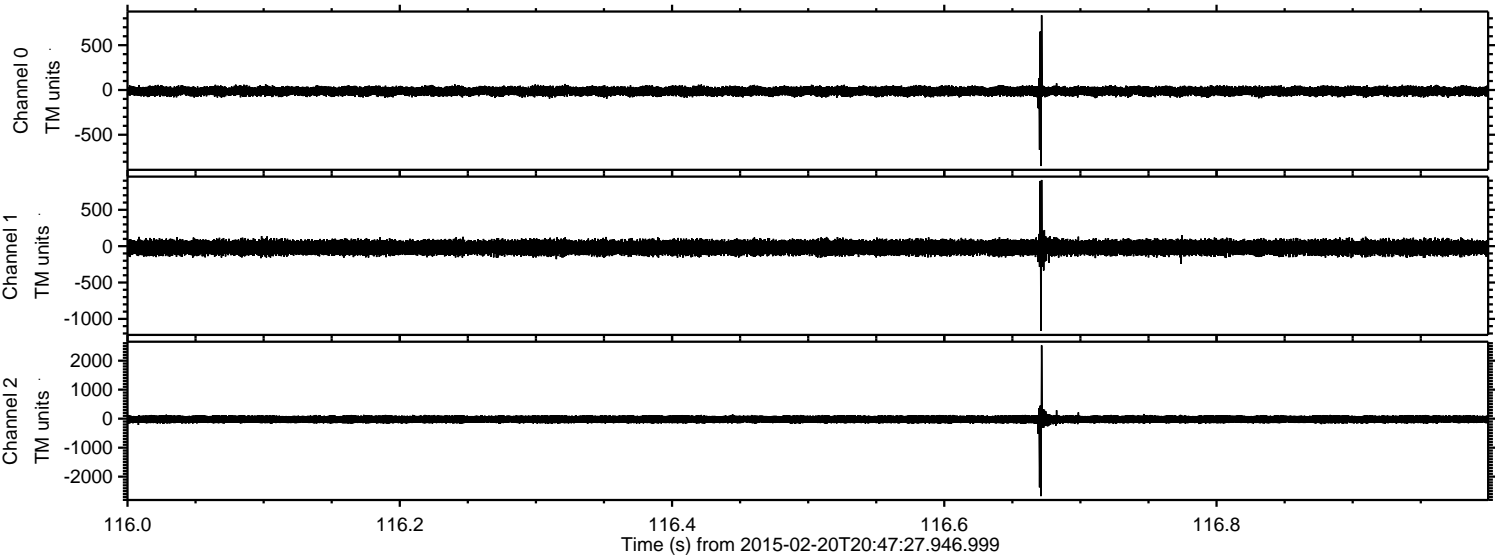


Processed Sat Feb 28 19:42:33 2015 by ELM ver.2012-10-06 from 001__elm20150220_204726__dat00.bin



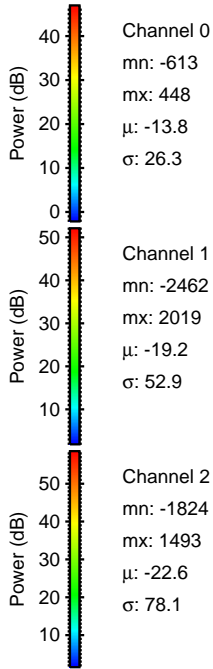
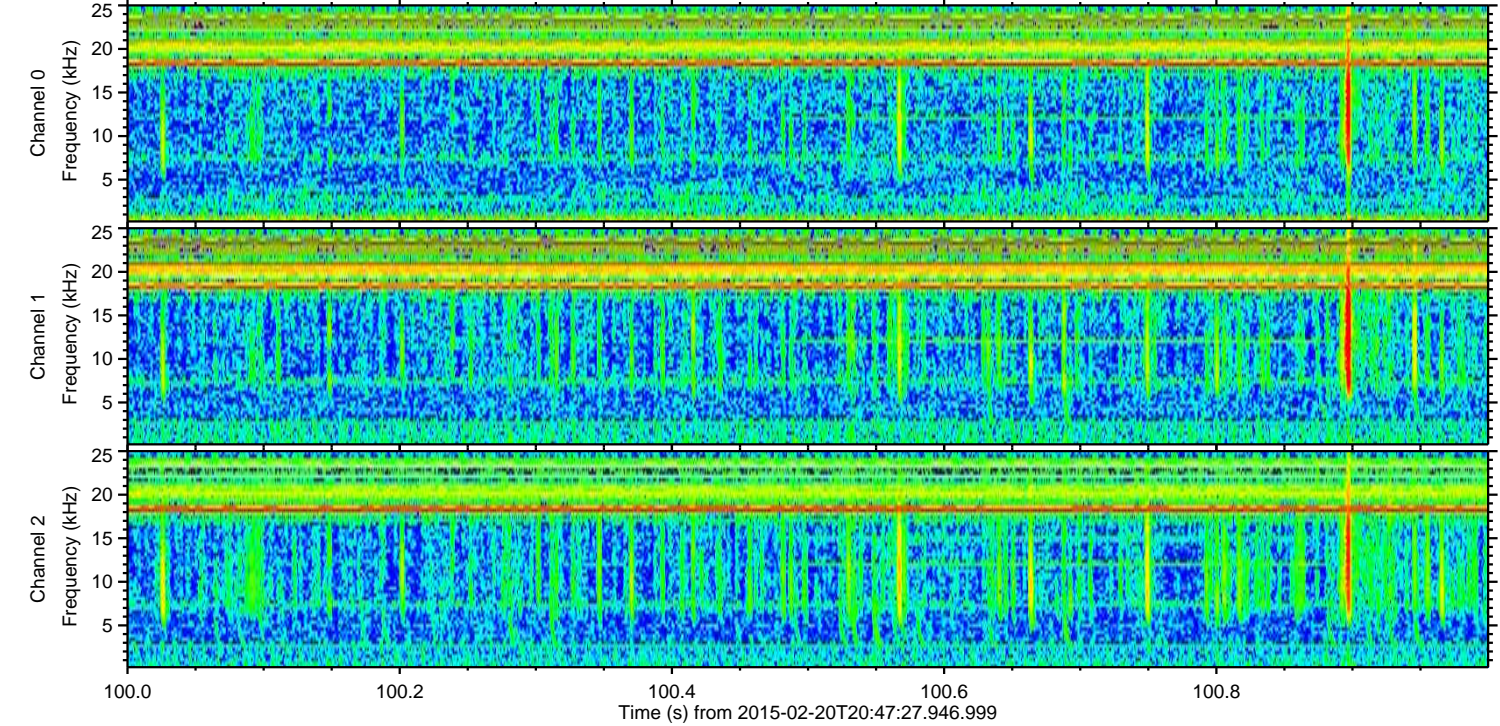
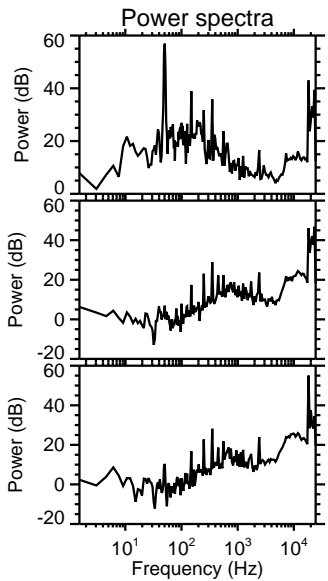
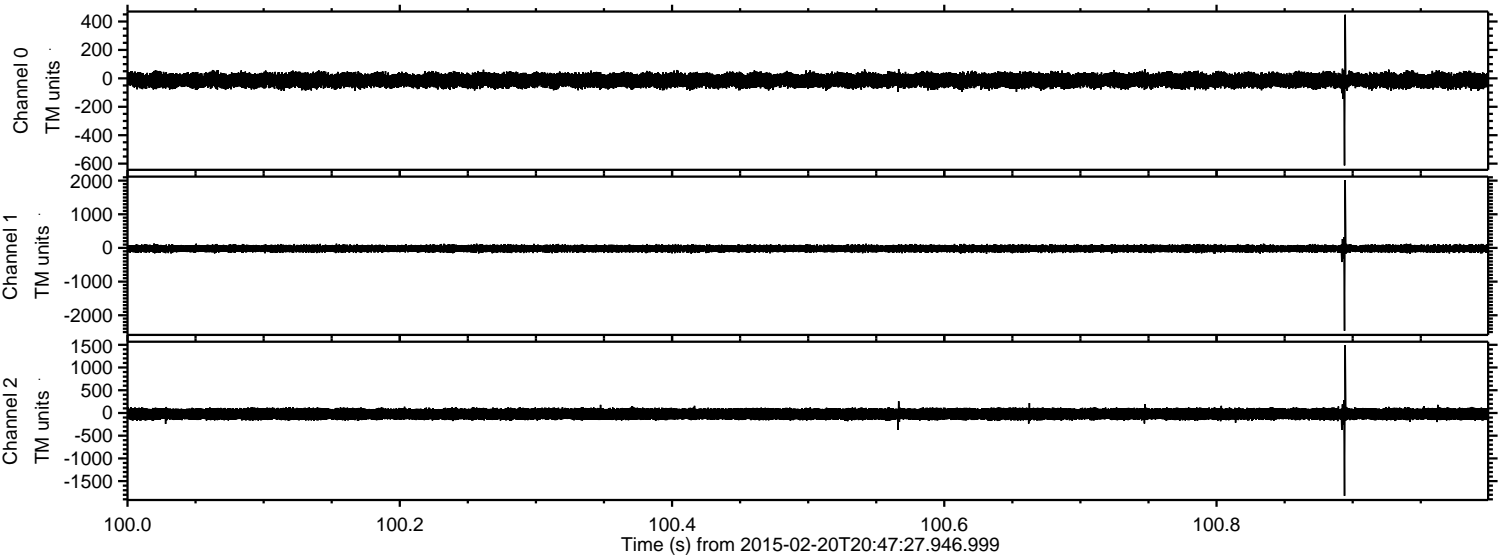
ELMAVAN 3D WAVEFORMS (Measured data sampled at 50 kHz) 49796 packets of 144 samples from 2015-02-20T20:47:27.946.999. Part 117/144

Processed Sat Feb 28 19:42:34 2015 by ELM ver.2012-10-06 from 001__elm20150220_204726__dat00.bin

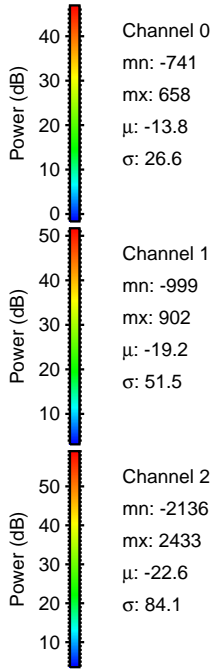
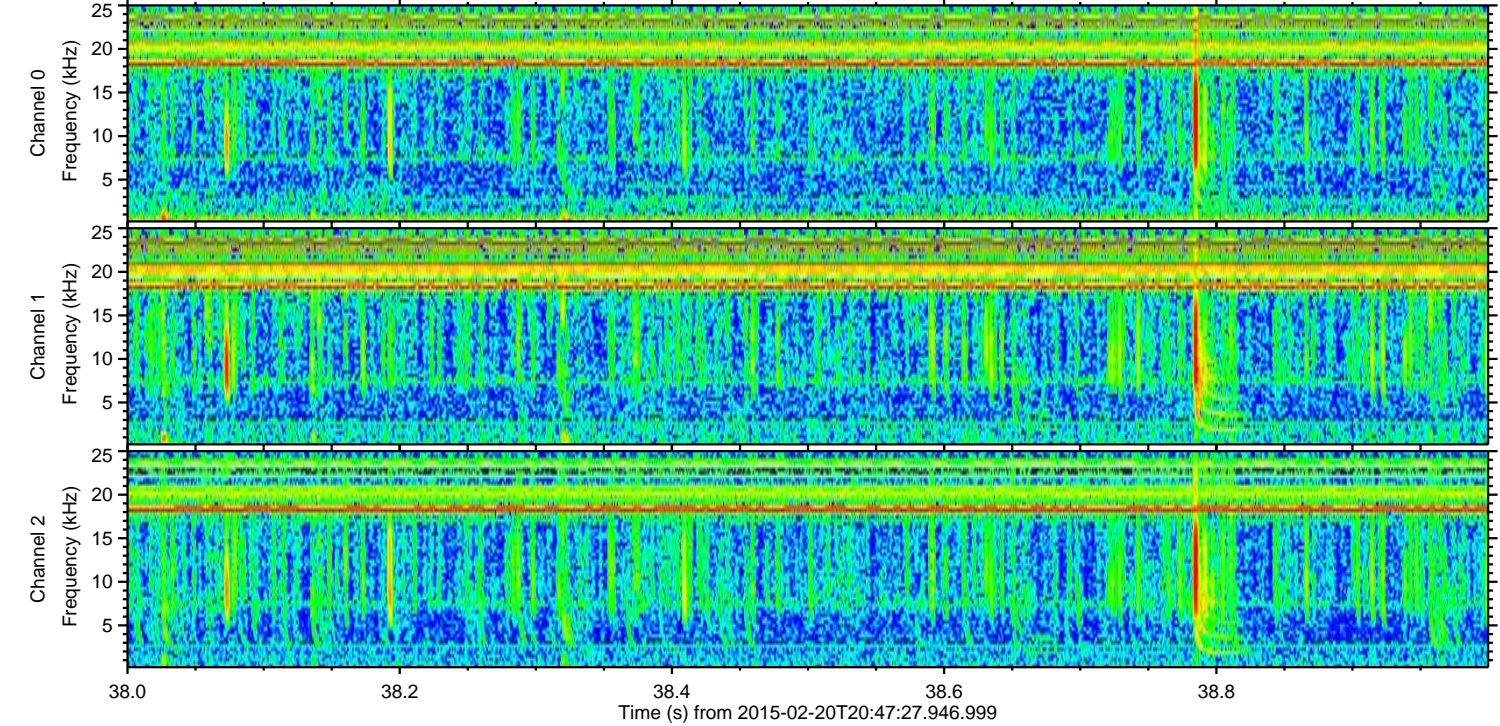
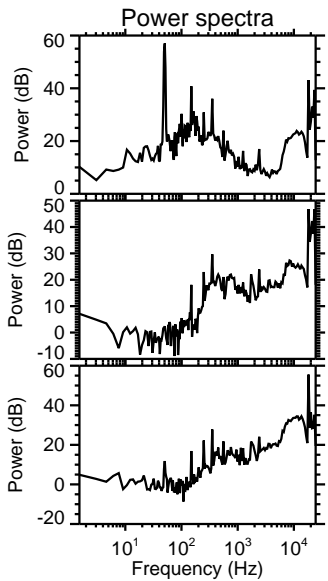
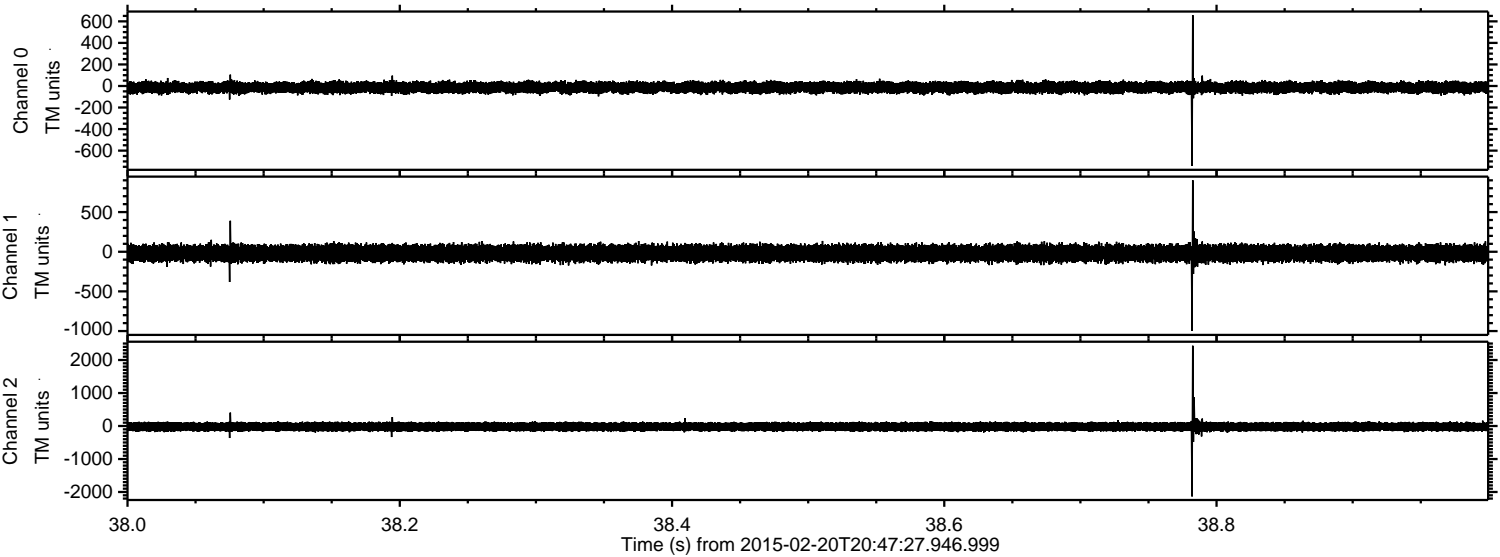


ELMAVAN 3D WAVEFORMS (Measured data sampled at 50 kHz) 49796 packets of 144 samples from 2015-02-20T20:47:27.946.999. Part 101/144

Processed Sat Feb 28 19:42:34 2015 by ELM ver.2012-10-06 from 001__elm20150220_204726__dat00.bin

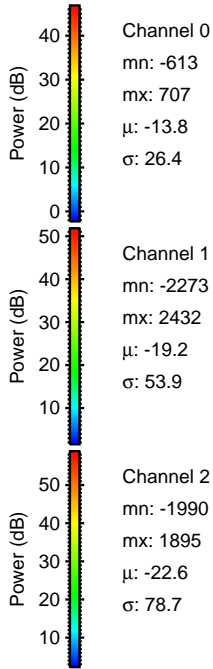
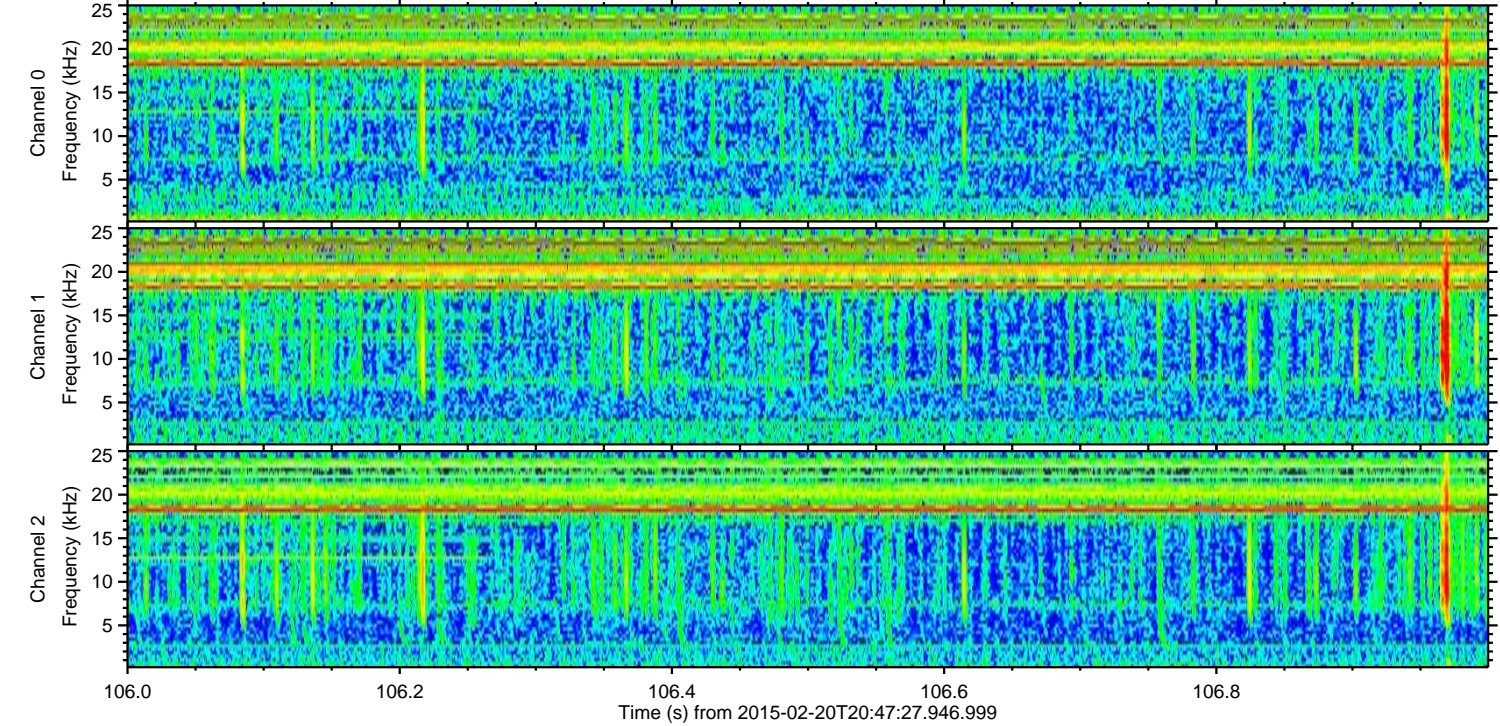
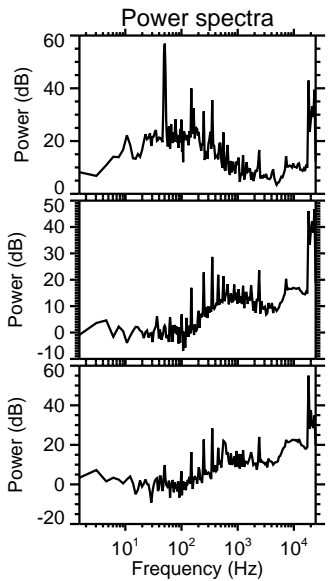
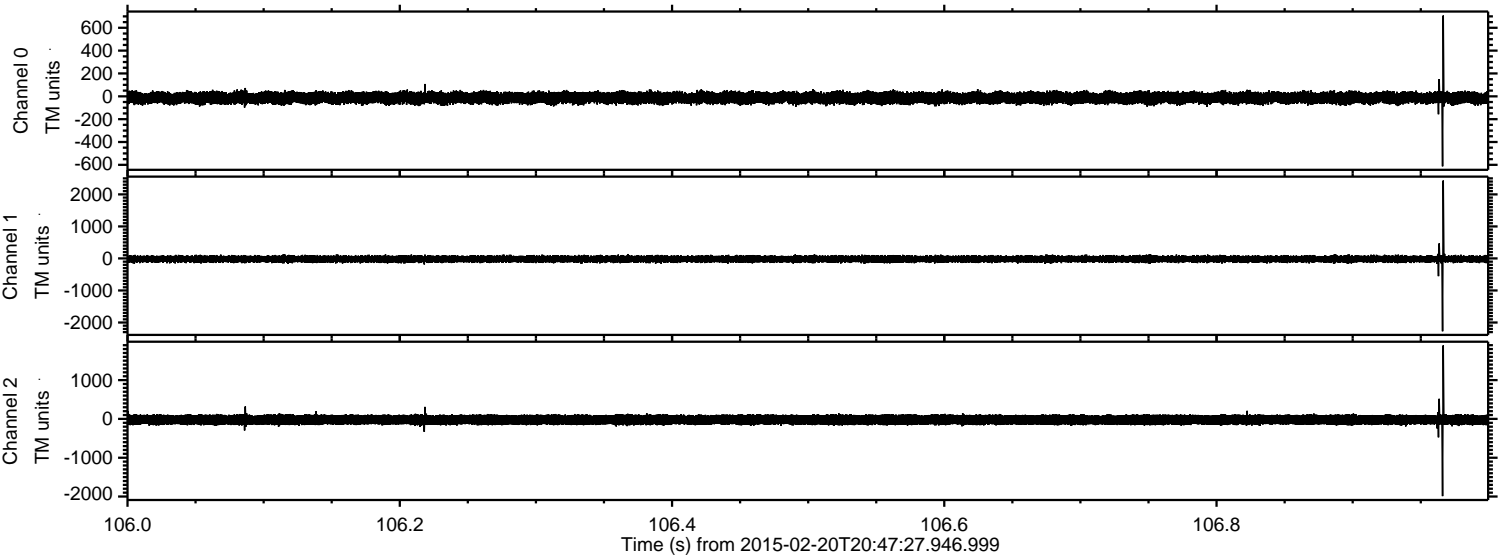


Processed Sat Feb 28 19:42:35 2015 by ELM ver.2012-10-06 from 001__elm20150220_204726__dat00.bin



ELMAVAN 3D WAVEFORMS (Measured data sampled at 50 kHz) 49796 packets of 144 samples from 2015-02-20T20:47:27.946.999. Part 107/144

Processed Sat Feb 28 19:42:36 2015 by ELM ver.2012-10-06 from 001__elm20150220_204726__dat00.bin

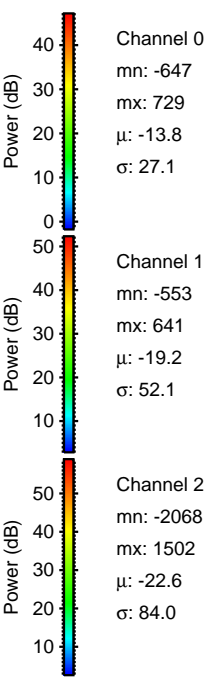
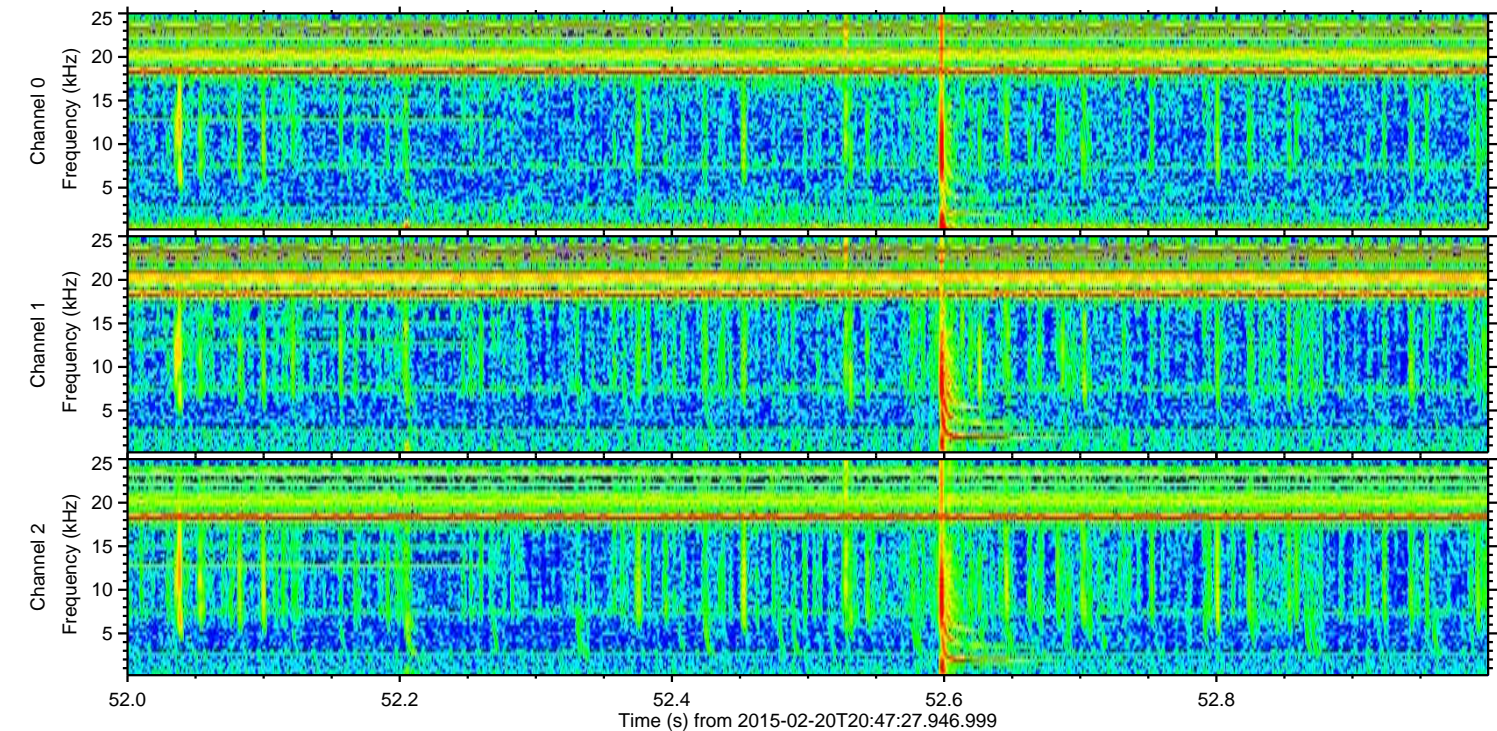
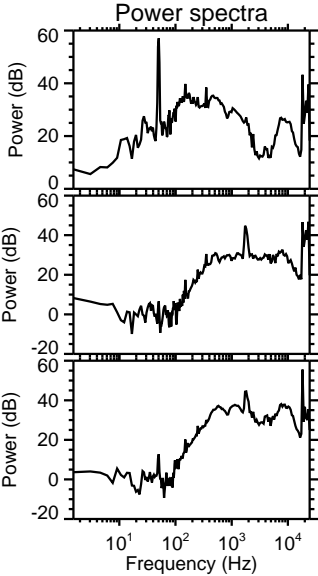
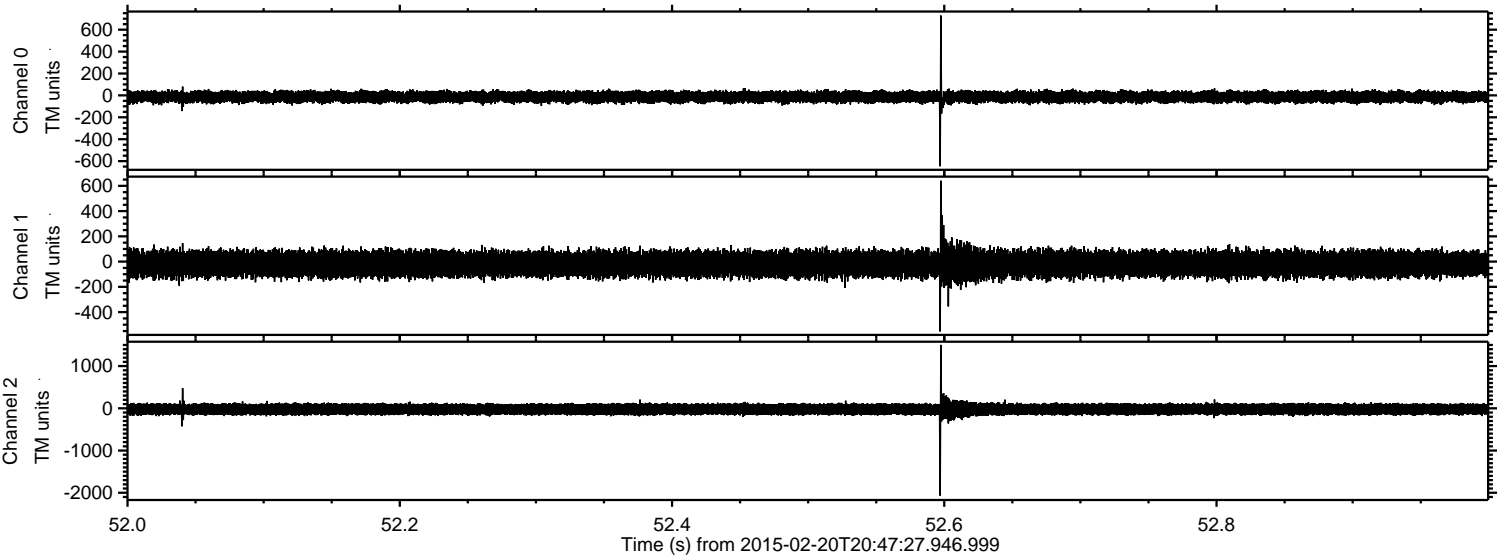


Channel 0
mn: -613
mx: 707
 μ : -13.8
 σ : 26.4

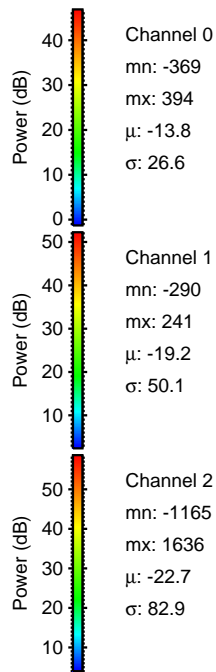
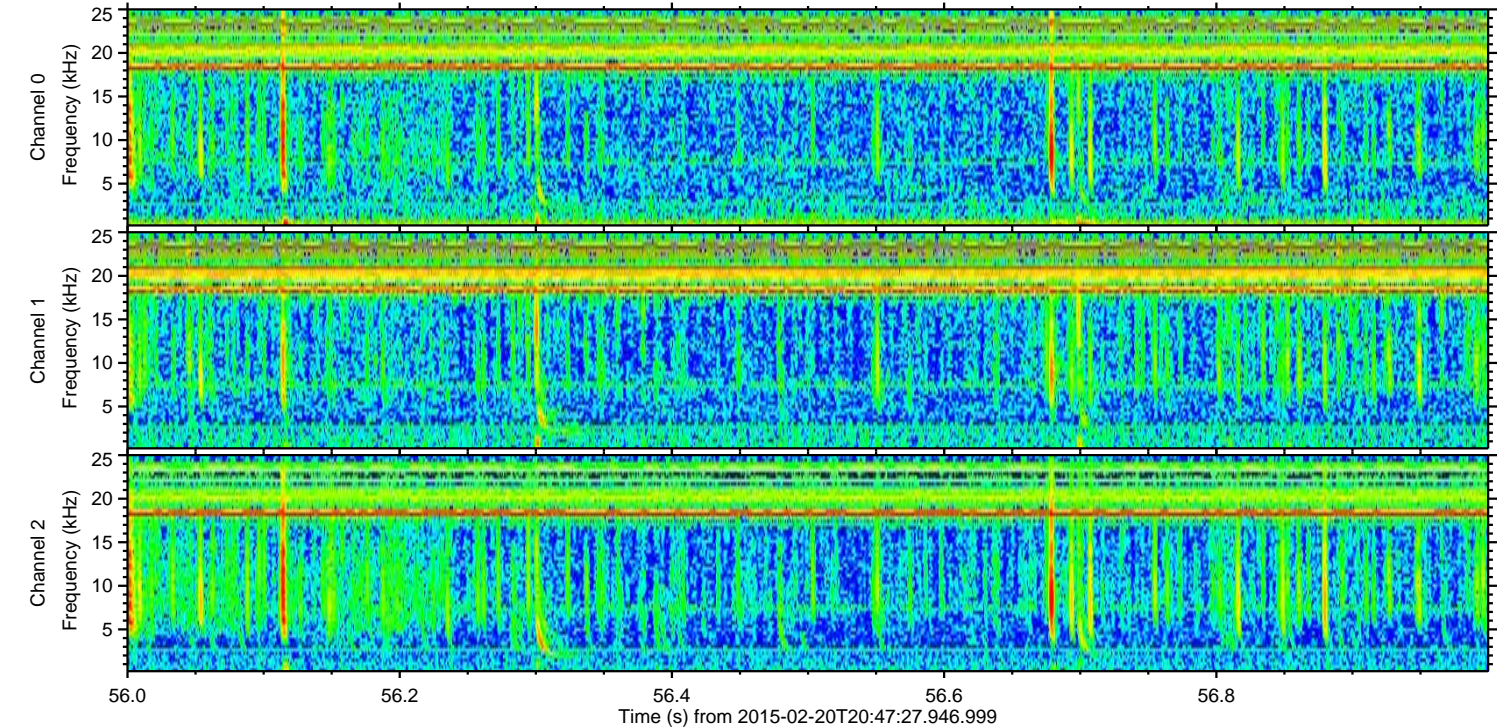
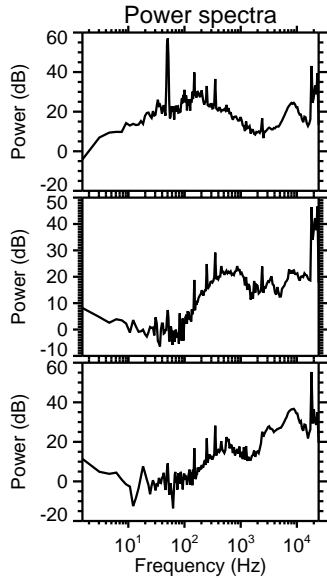
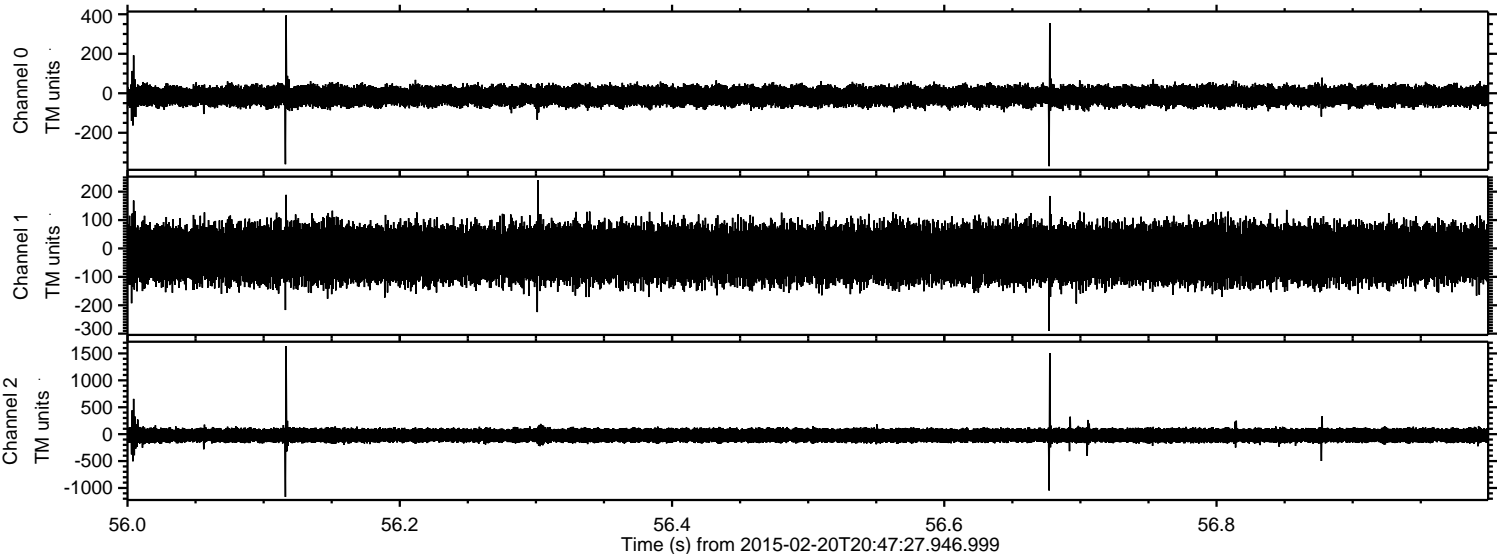
Channel 1
mn: -2273
mx: 2432
 μ : -19.2
 σ : 53.9

Channel 2
mn: -1990
mx: 1895
 μ : -22.6
 σ : 78.7

Processed Sat Feb 28 19:42:37 2015 by ELM ver.2012-10-06 from 001__elm20150220_204726__dat00.bin

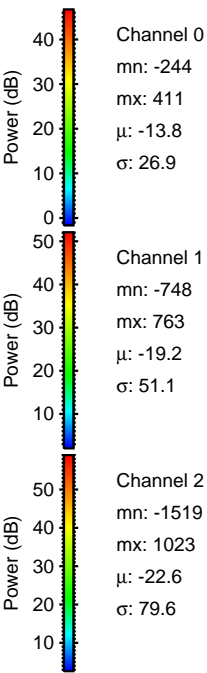
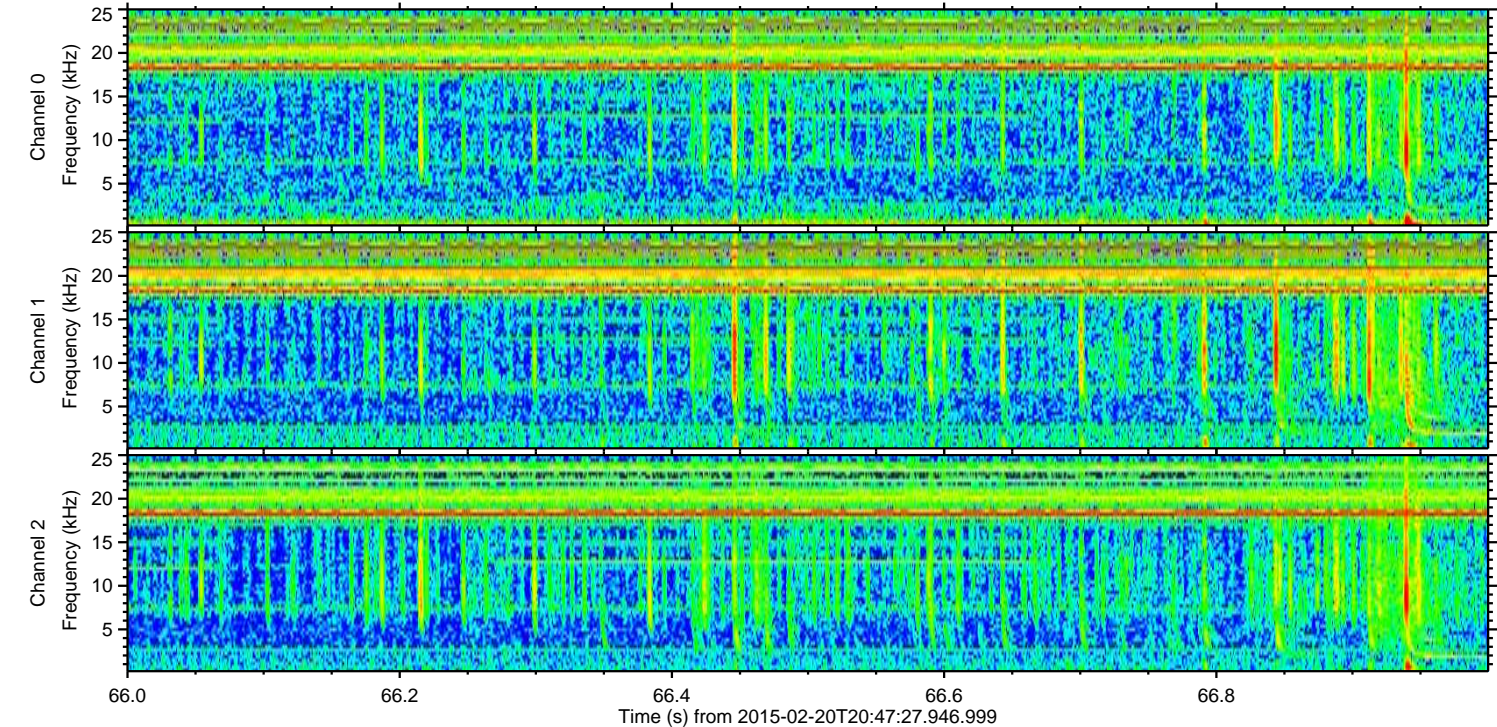
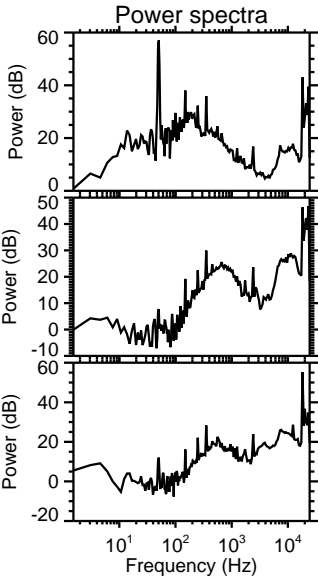
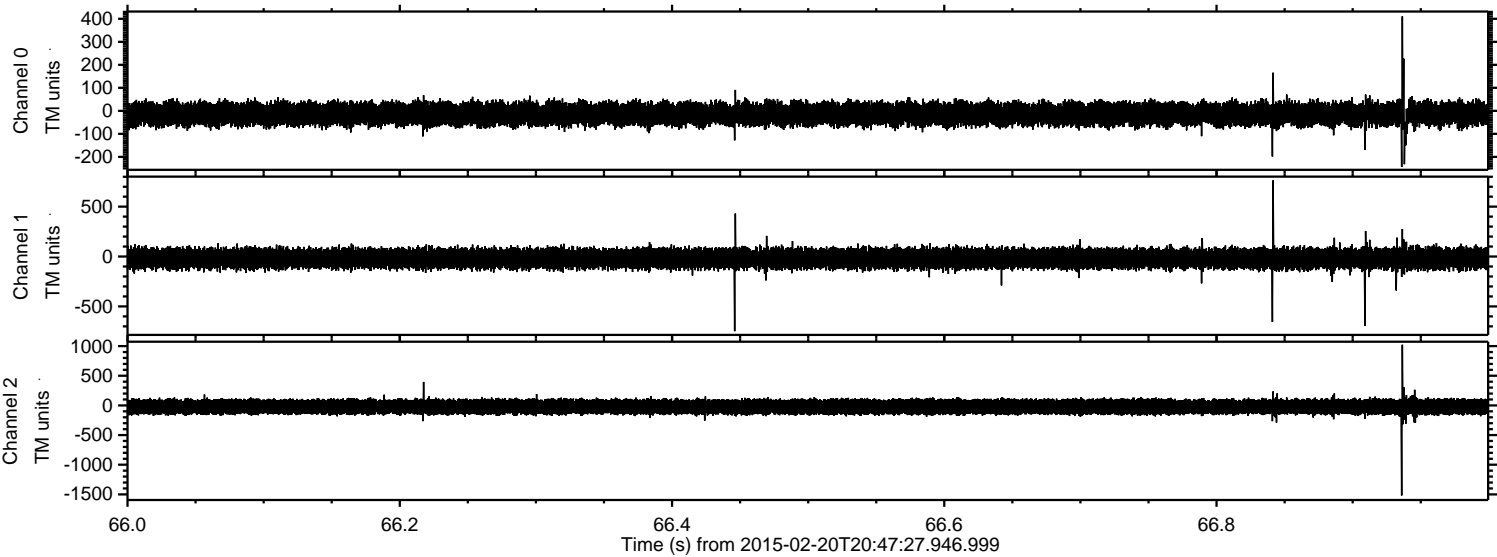


Processed Sat Feb 28 19:42:38 2015 by ELM ver.2012-10-06 from 001__elm20150220_204726__dat00.bin



ELMAVAN 3D WAVEFORMS (Measured data sampled at 50 kHz) 49796 packets of 144 samples from 2015-02-20T20:47:27.946.999. Part 67/144

Processed Sat Feb 28 19:42:39 2015 by ELM ver.2012-10-06 from 001__elm20150220_204726__dat00.bin



Channel 0
mn: -244
mx: 411
 μ : -13.8
 σ : 26.9

Channel 1
mn: -748
mx: 763
 μ : -19.2
 σ : 51.1

Channel 2
mn: -1519
mx: 1023
 μ : -22.6
 σ : 79.6

Processed Sat Feb 28 19:42:40 2015 by ELM ver.2012-10-06 from 001__elm20150220_204726__dat00.bin

