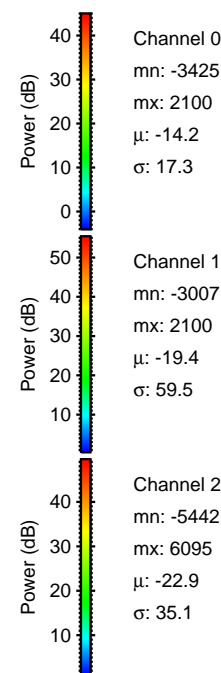
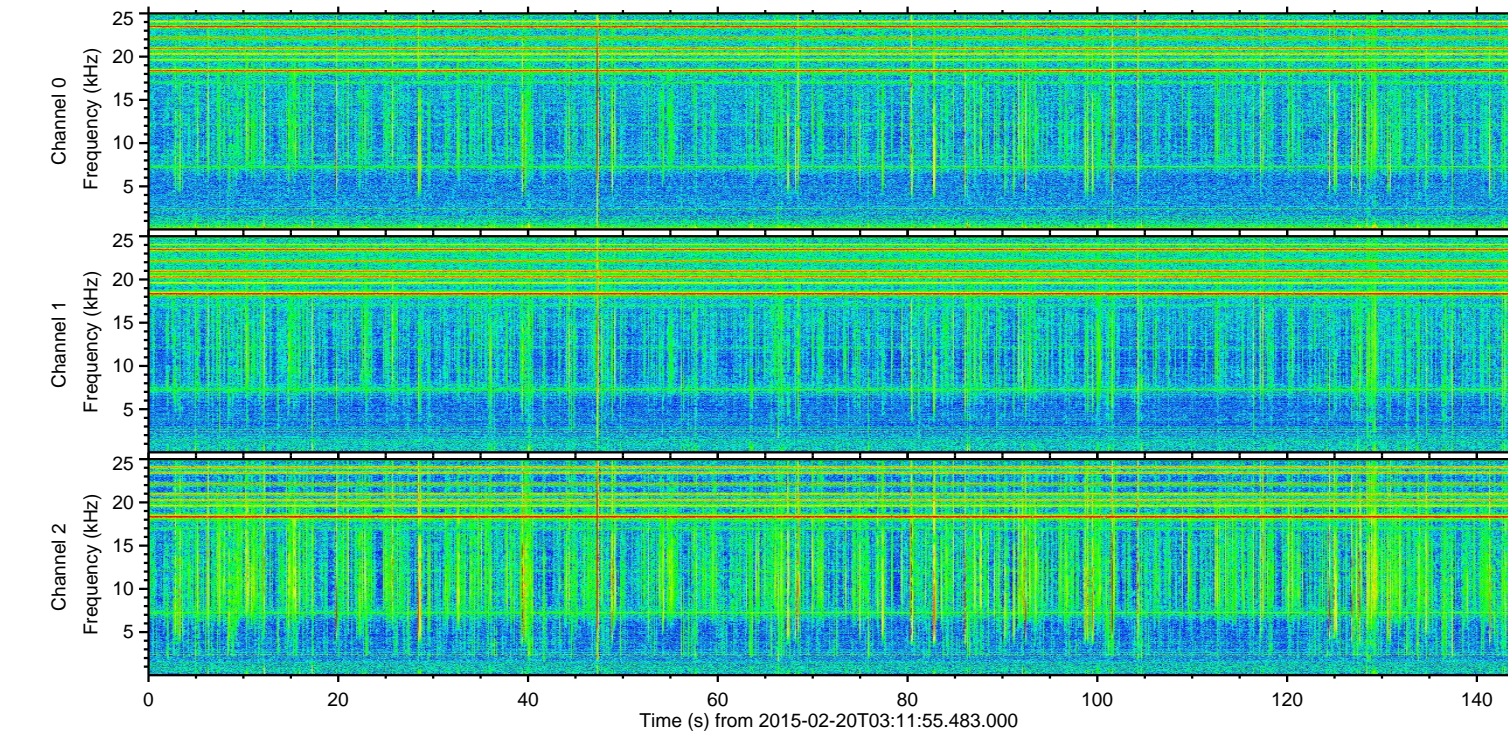
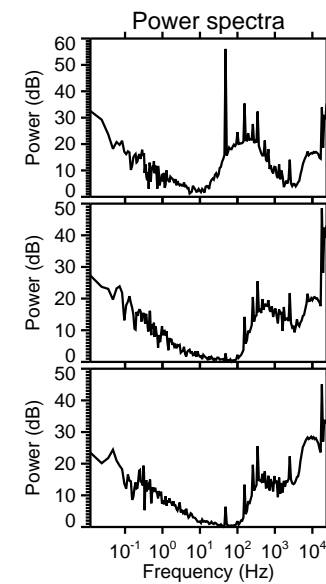
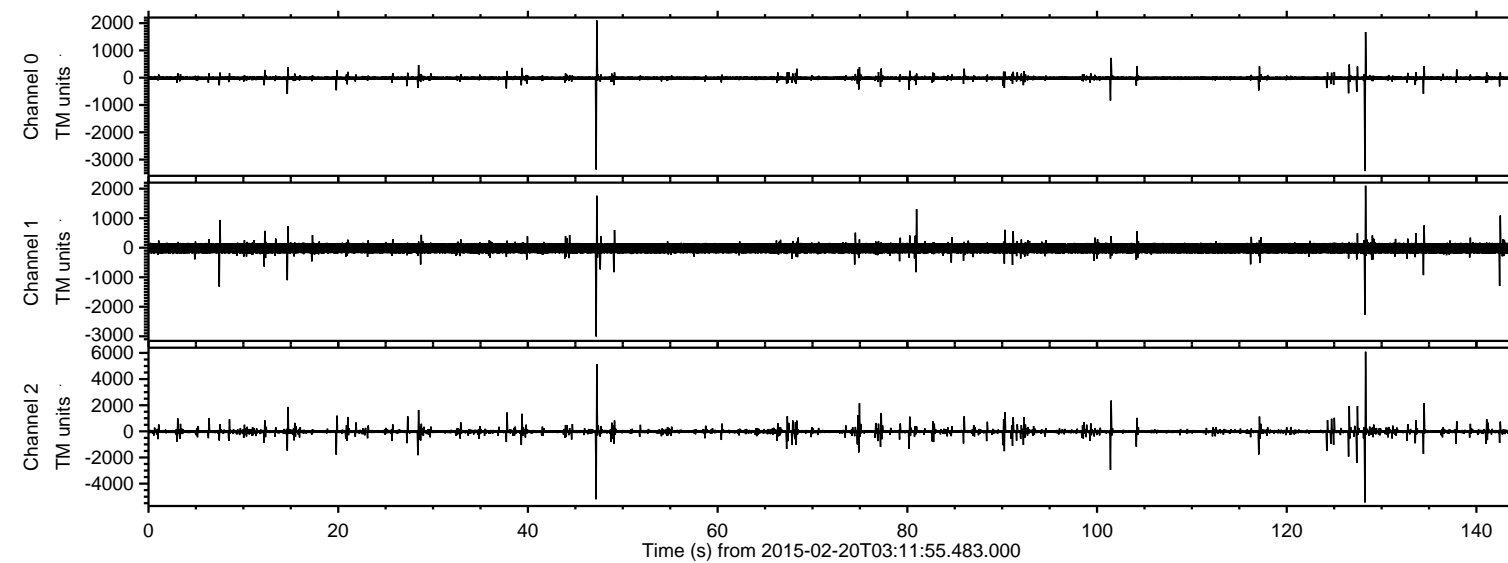


# ELMAVAN 3D WAVEFORMS (Measured data sampled at 50 kHz) 49808 packets of 144 samples from 2015-02-20T03:11:55.483.000.

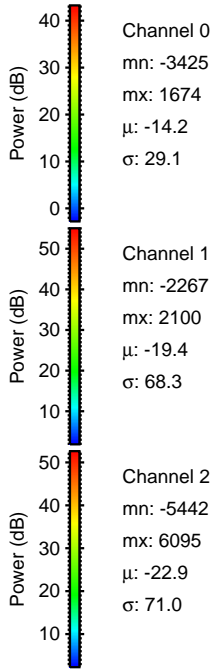
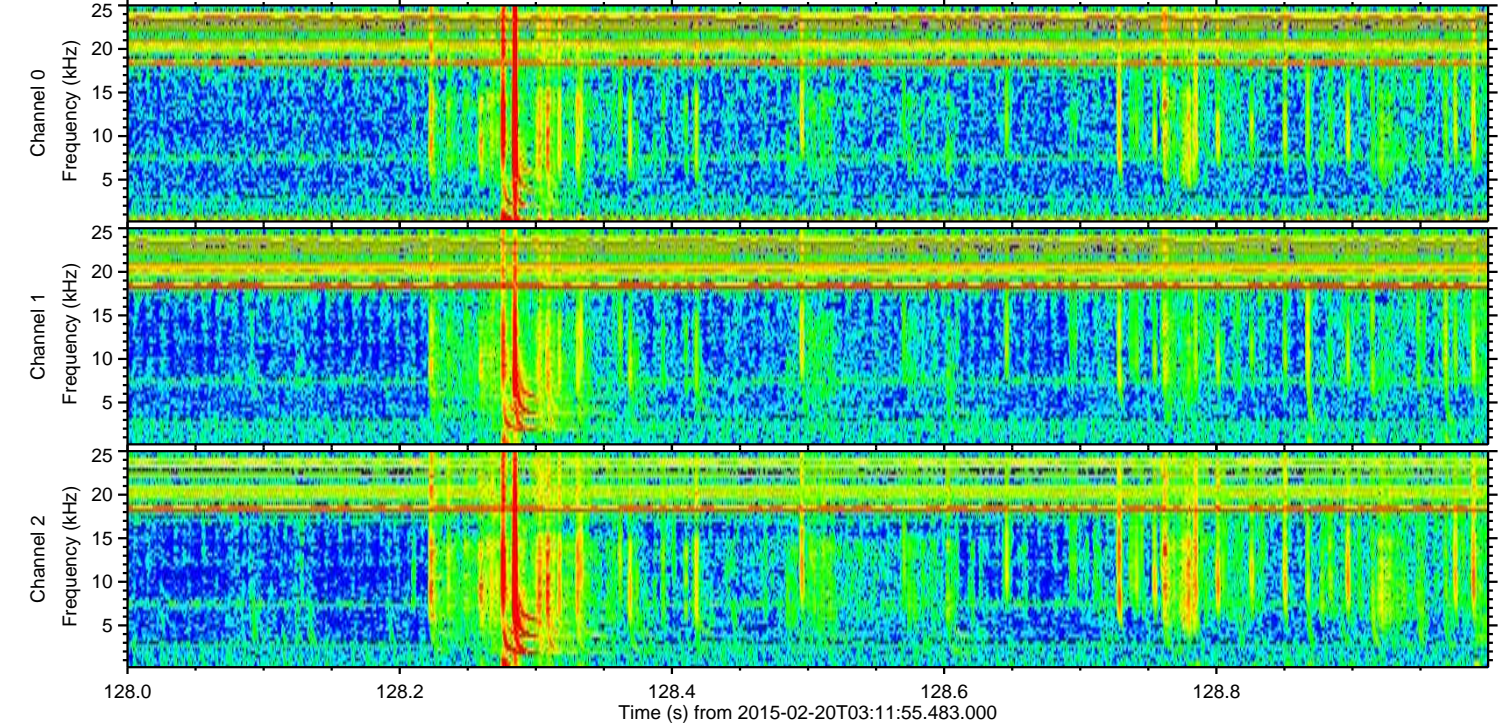
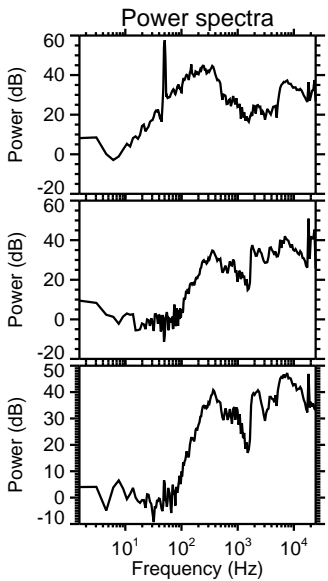
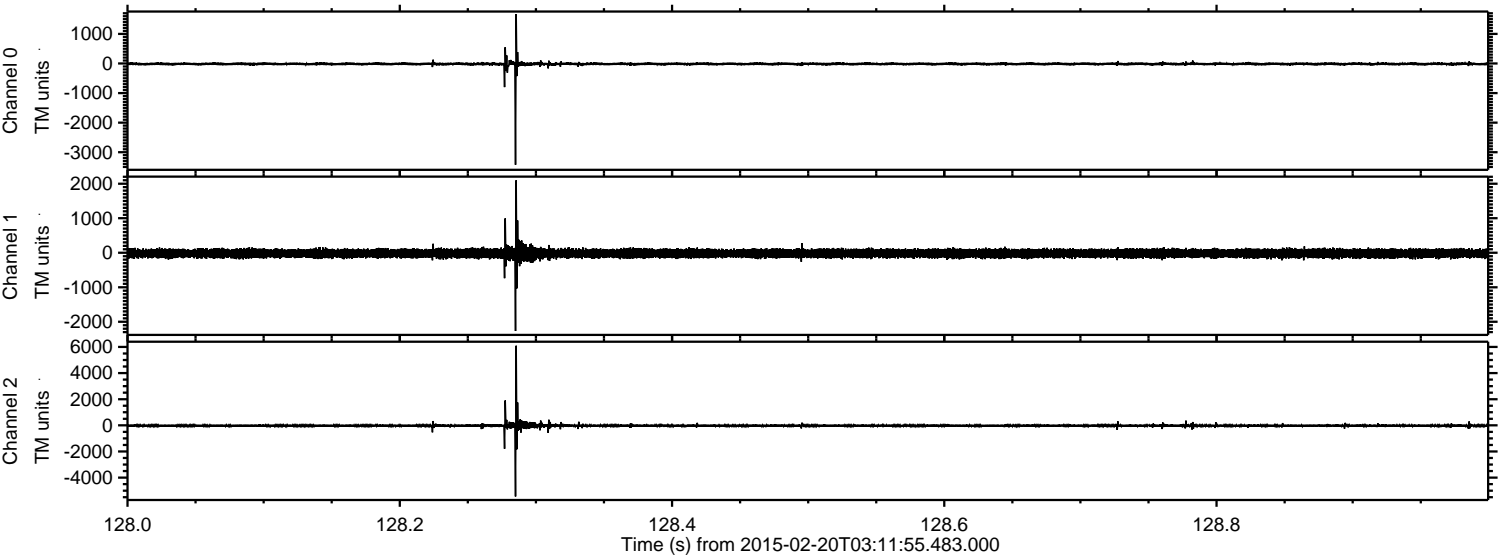
Processed Sat Feb 28 11:45:40 2015 by ELM ver.2012-10-06 from 001\_\_elm20150220\_031154\_\_dat00.bin





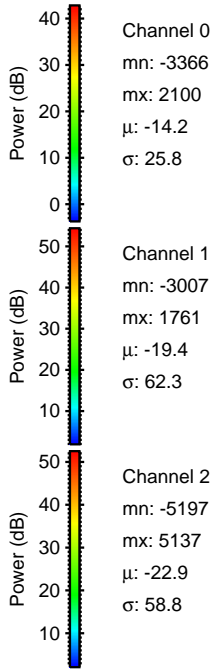
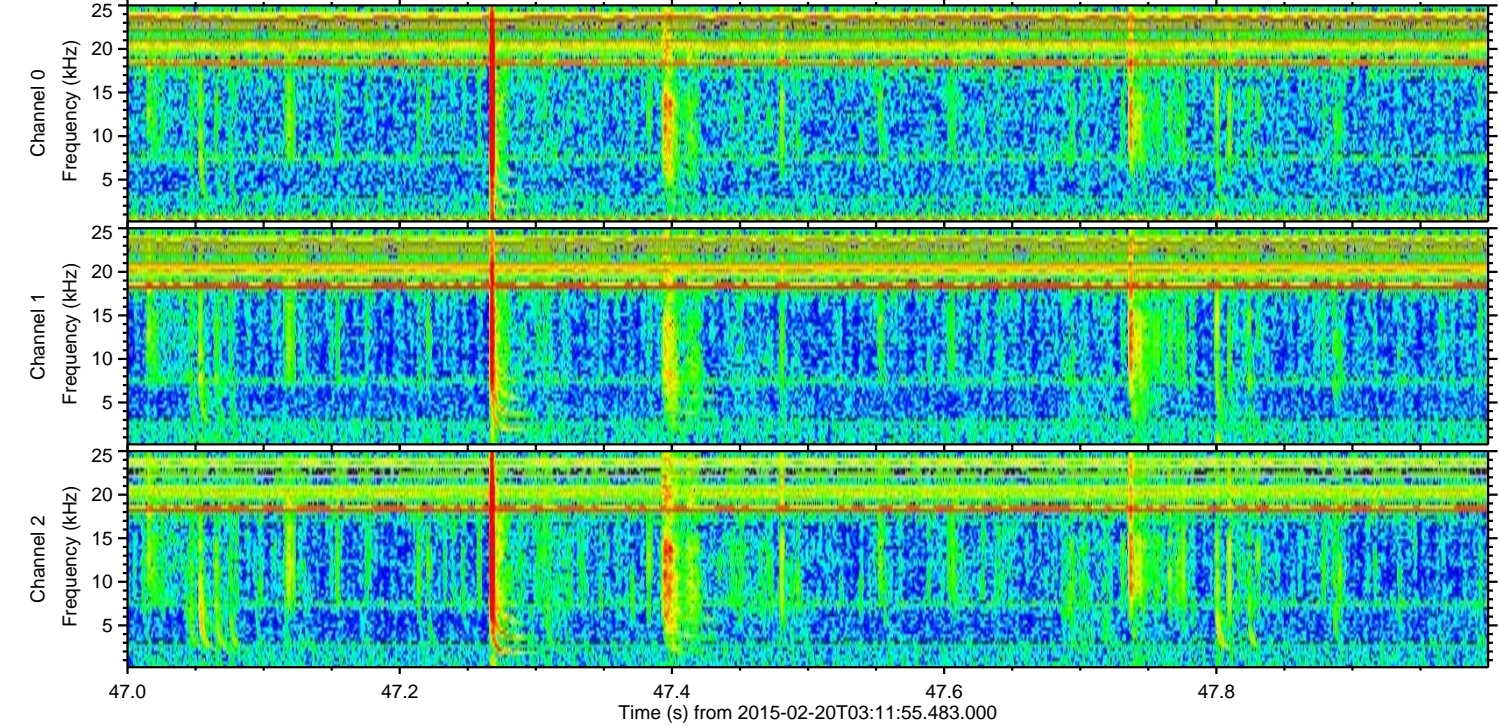
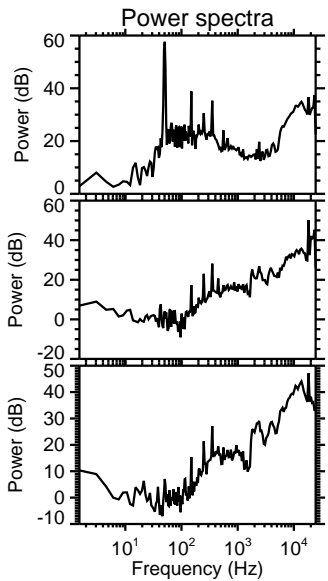
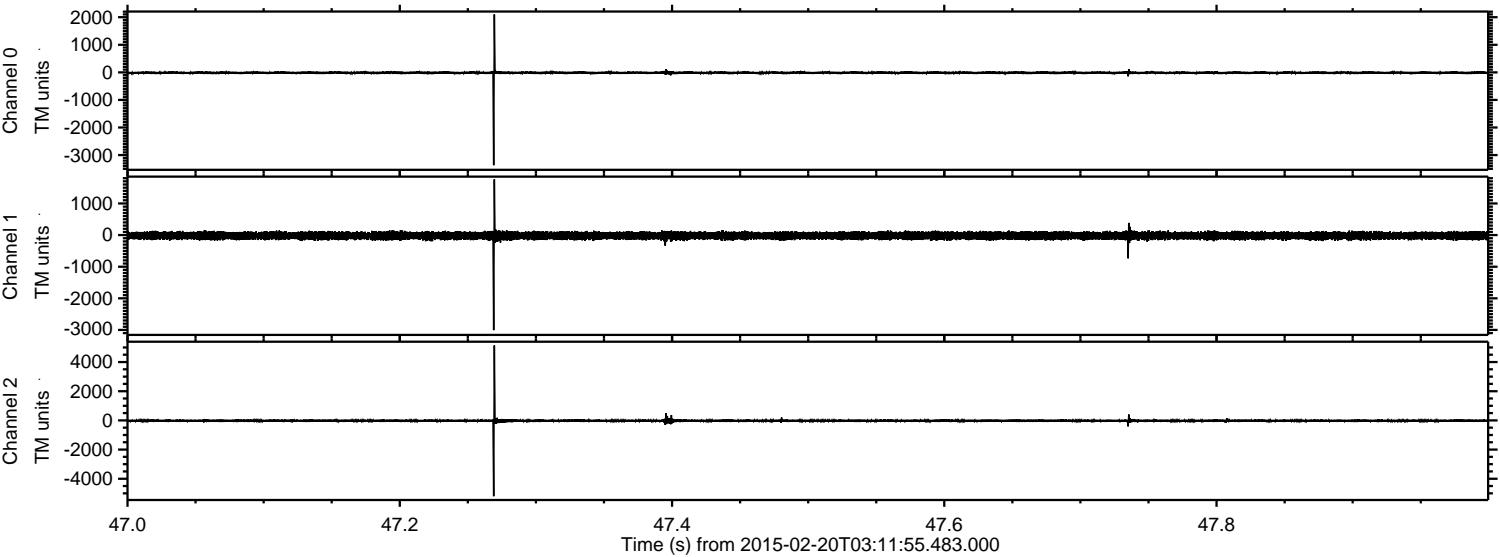
ELMAVAN 3D WAVEFORMS (Measured data sampled at 50 kHz) 49808 packets of 144 samples from 2015-02-20T03:11:55.483.000. Part 129/144

Processed Sat Feb 28 11:45:51 2015 by ELM ver.2012-10-06 from 001\_\_elm20150220\_031154\_\_dat00.bin





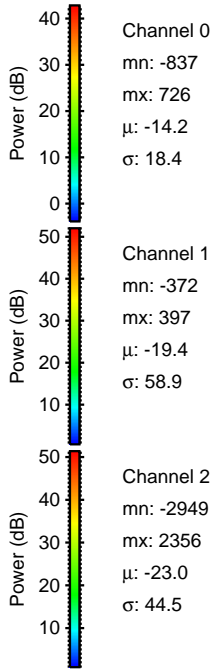
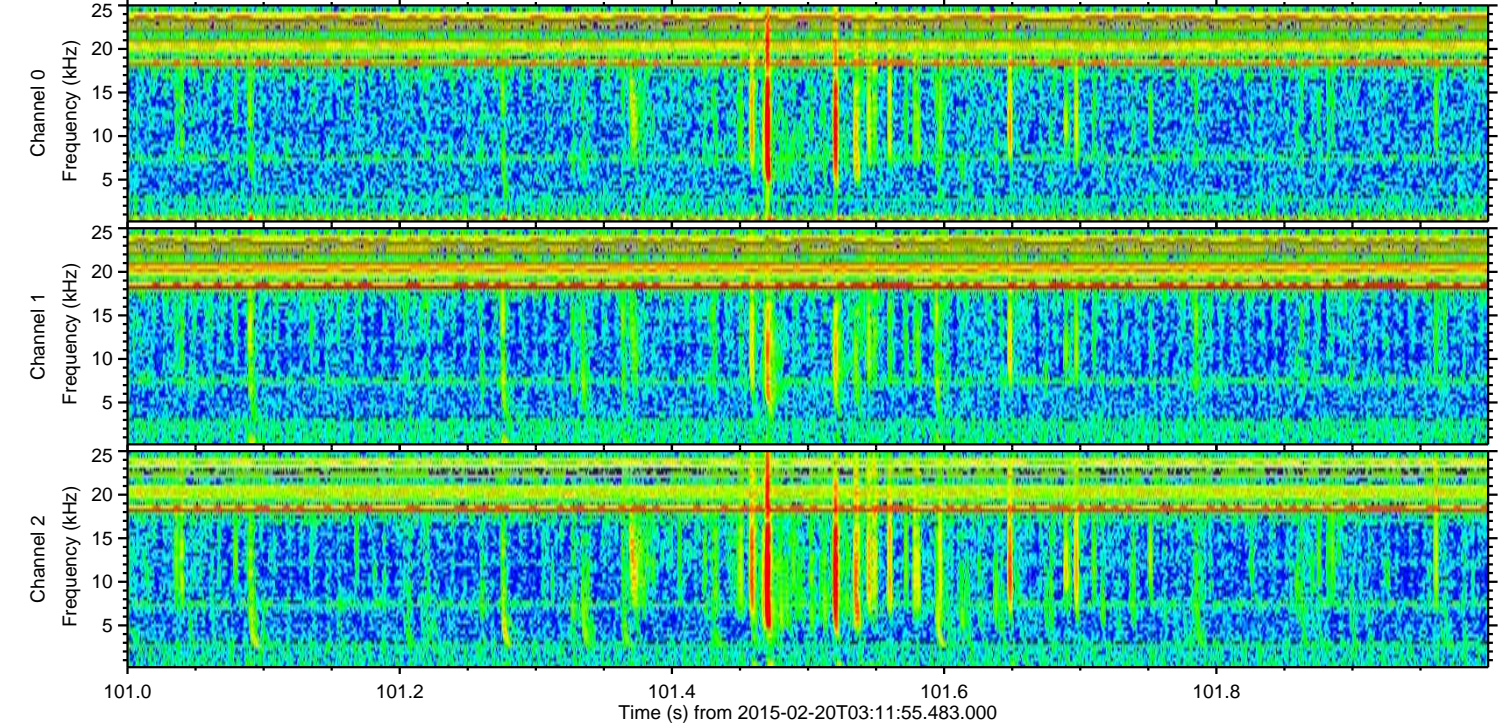
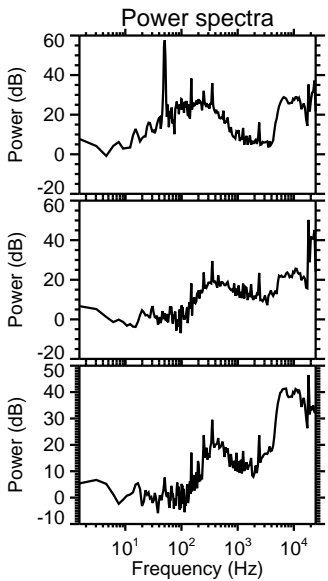
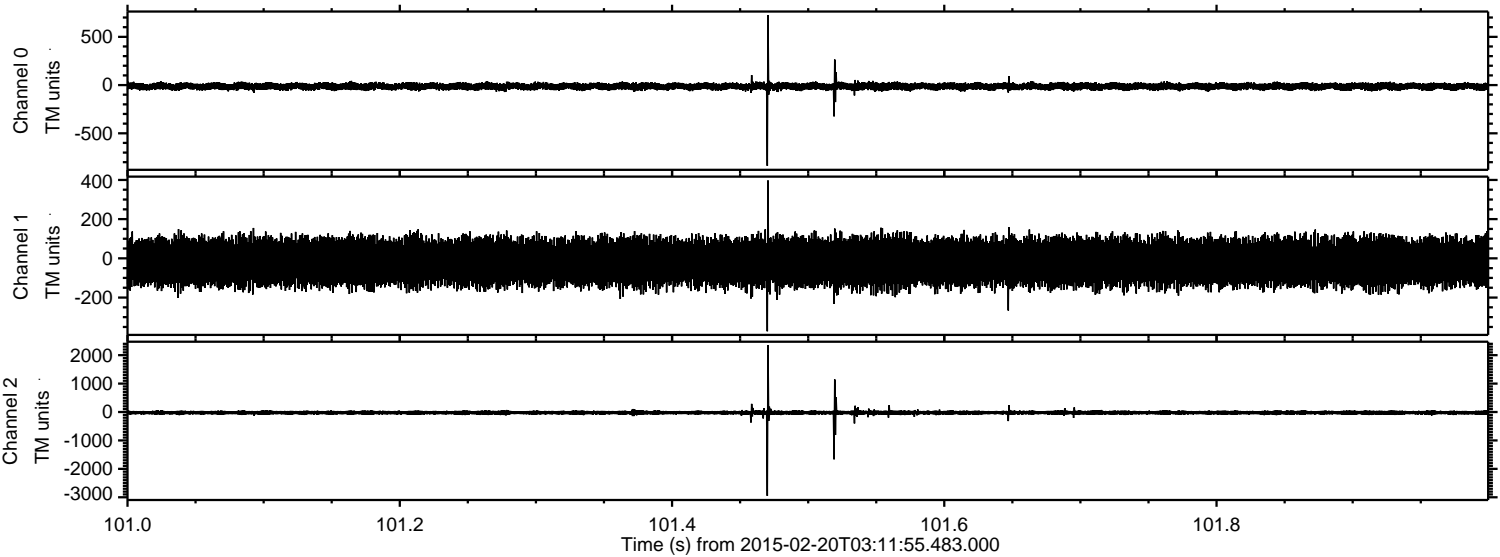
Processed Sat Feb 28 11:45:52 2015 by ELM ver.2012-10-06 from 001\_\_elm20150220\_031154\_\_dat00.bin





ELMAVAN 3D WAVEFORMS (Measured data sampled at 50 kHz) 49808 packets of 144 samples from 2015-02-20T03:11:55.483.000. Part 102/144

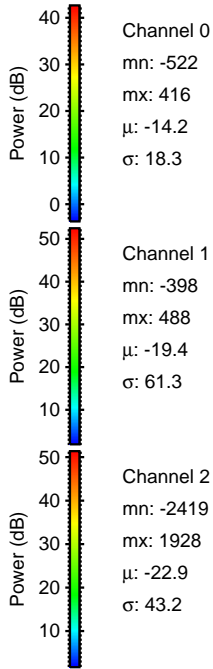
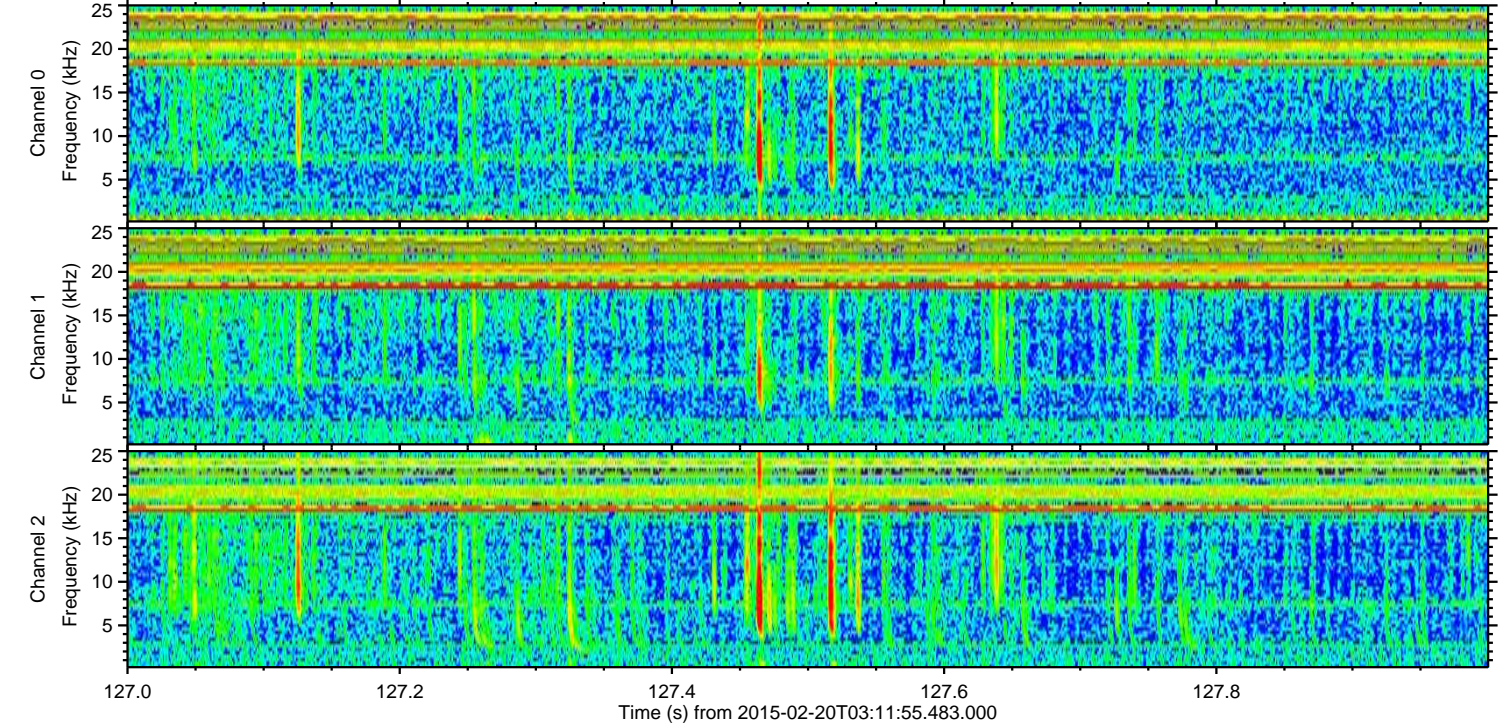
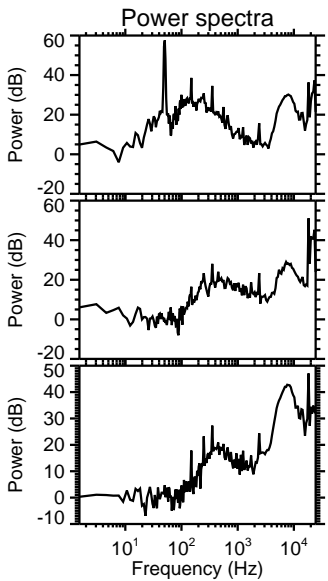
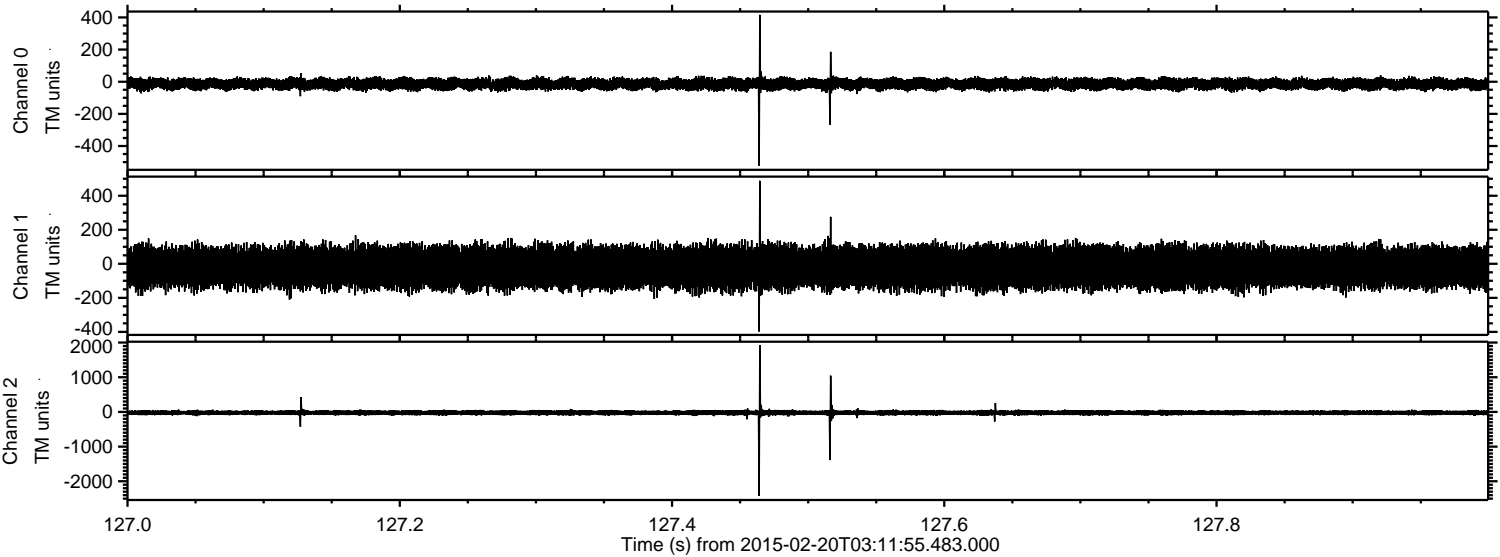
Processed Sat Feb 28 11:45:53 2015 by ELM ver.2012-10-06 from 001\_\_elm20150220\_031154\_\_dat00.bin





ELMAVAN 3D WAVEFORMS (Measured data sampled at 50 kHz) 49808 packets of 144 samples from 2015-02-20T03:11:55.483.000. Part 128/144

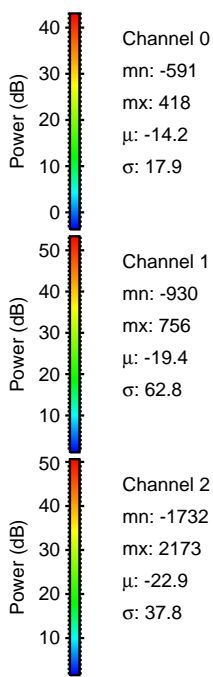
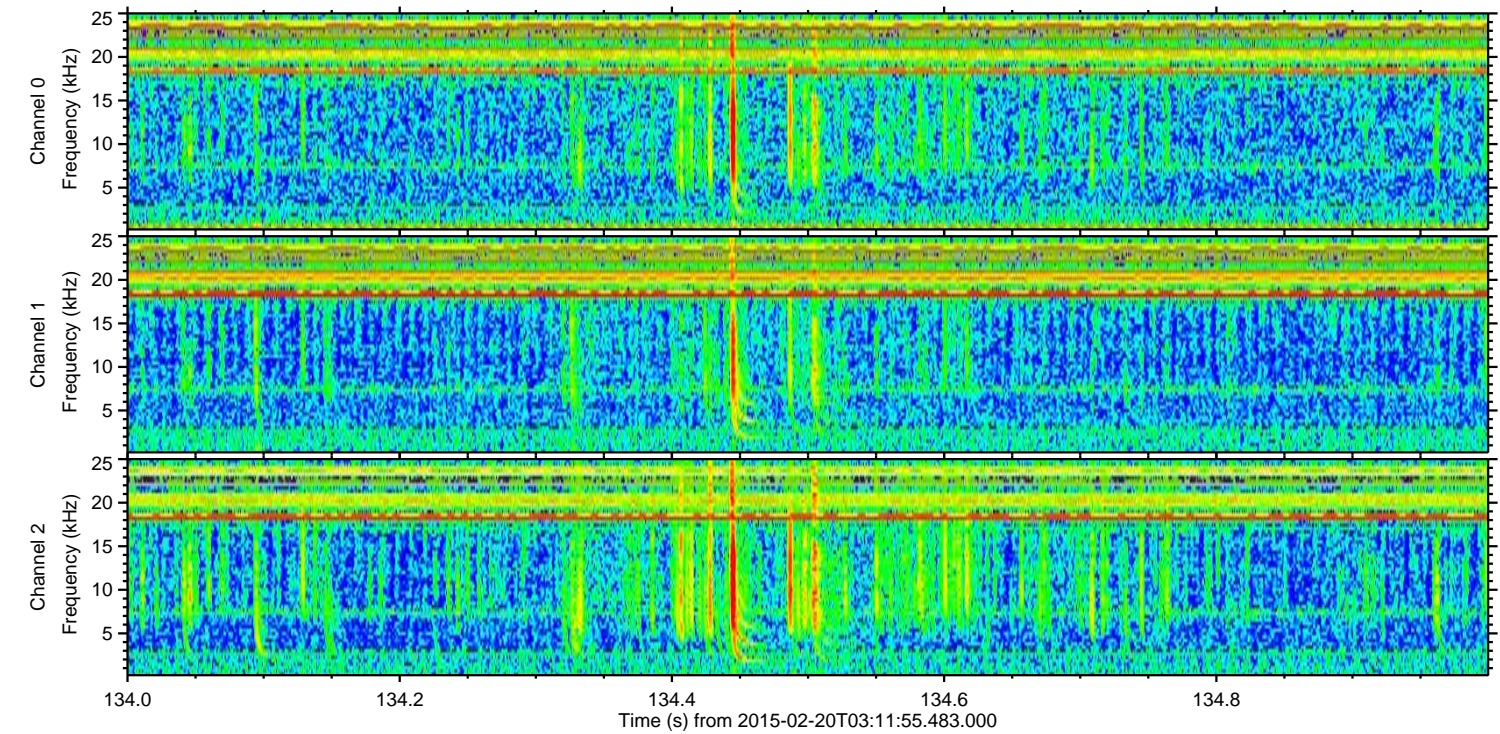
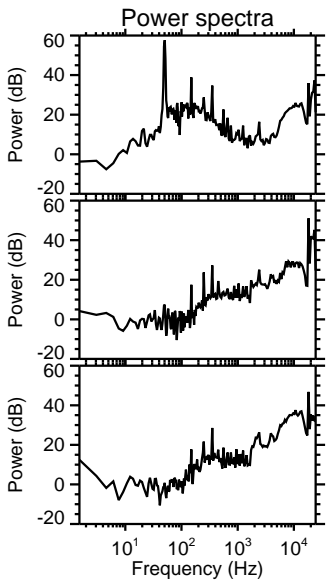
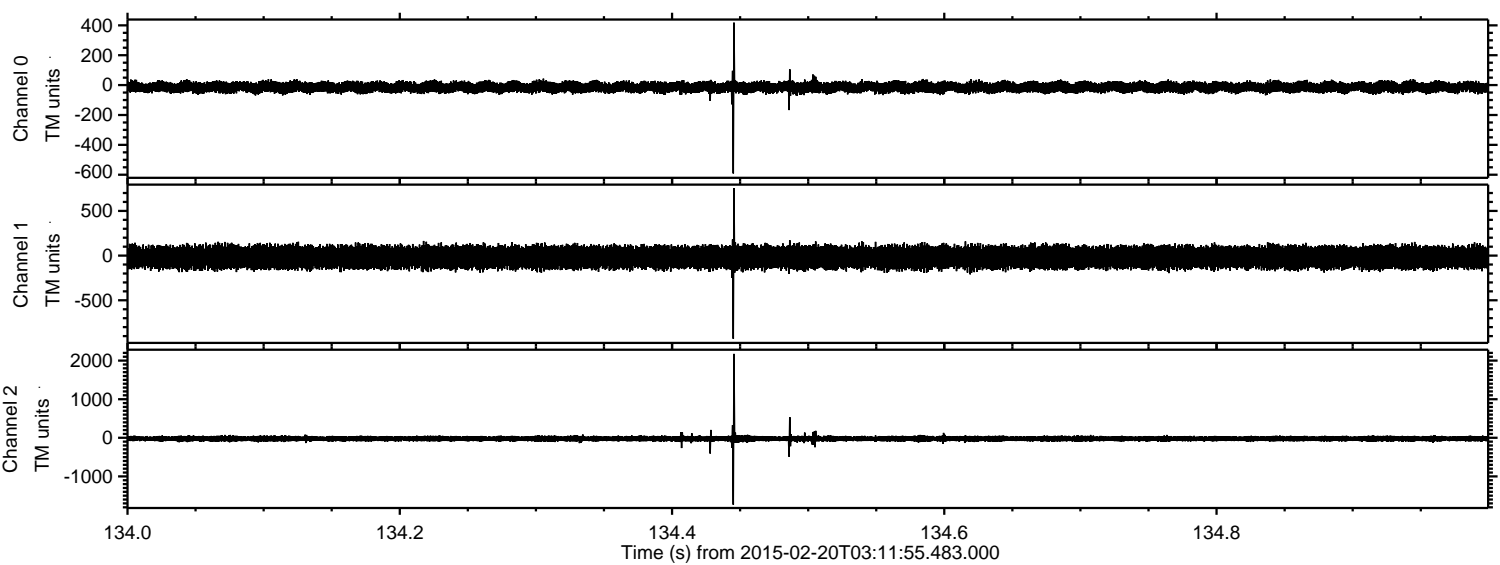
Processed Sat Feb 28 11:45:54 2015 by ELM ver.2012-10-06 from 001\_\_elm20150220\_031154\_\_dat00.bin





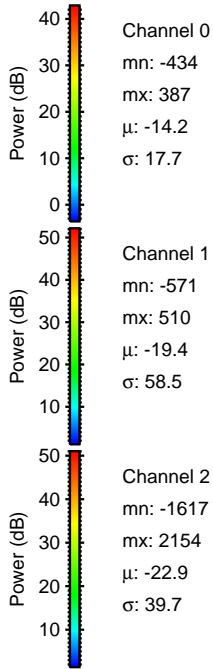
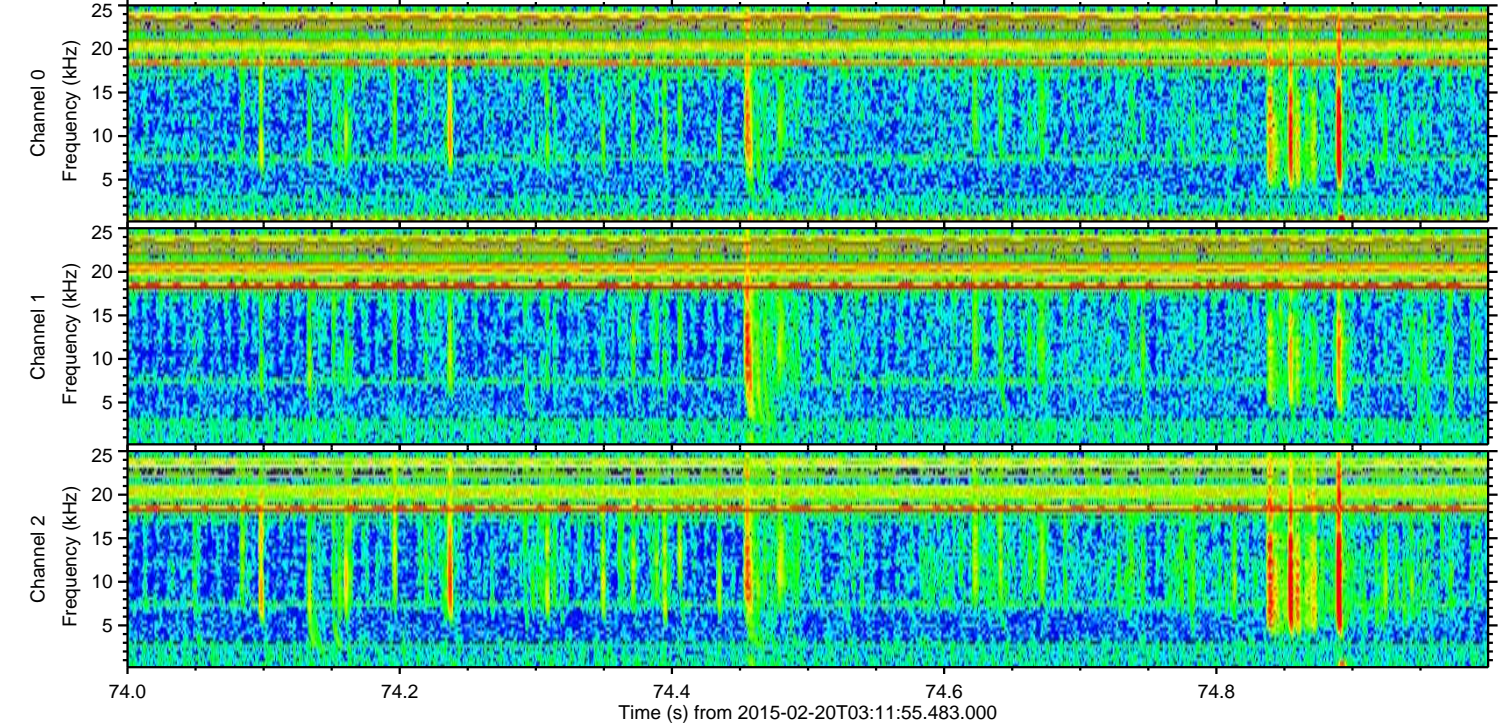
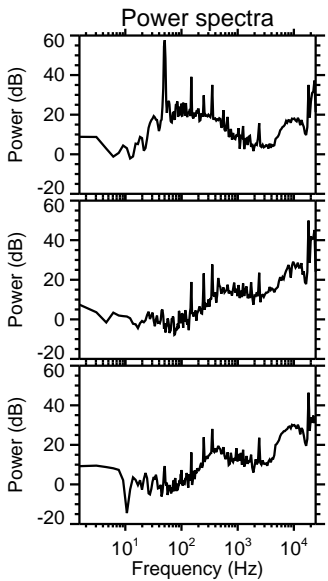
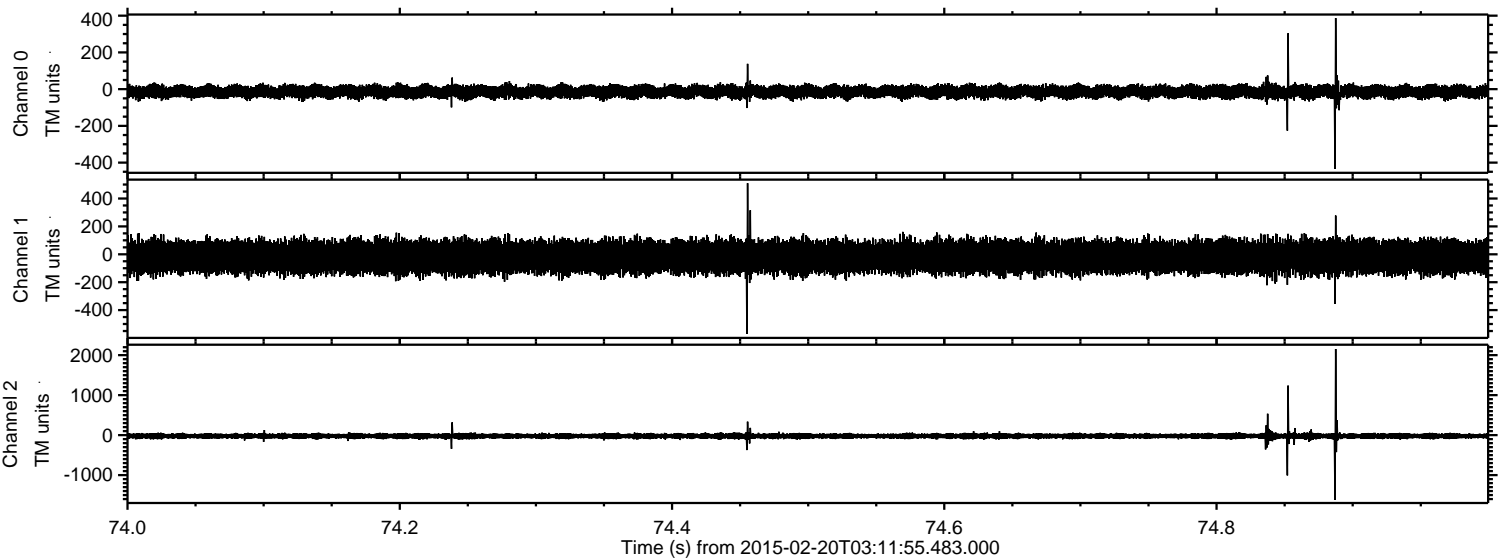
ELMAVAN 3D WAVEFORMS (Measured data sampled at 50 kHz) 49808 packets of 144 samples from 2015-02-20T03:11:55.483.000. Part 135/144

Processed Sat Feb 28 11:45:55 2015 by ELM ver.2012-10-06 from 001\_\_elm20150220\_031154\_\_dat00.bin





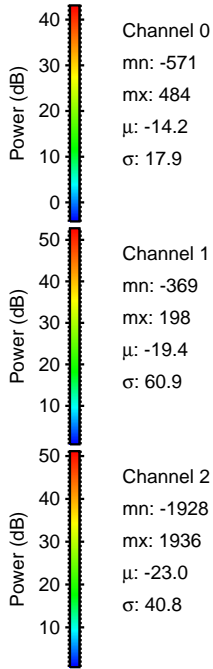
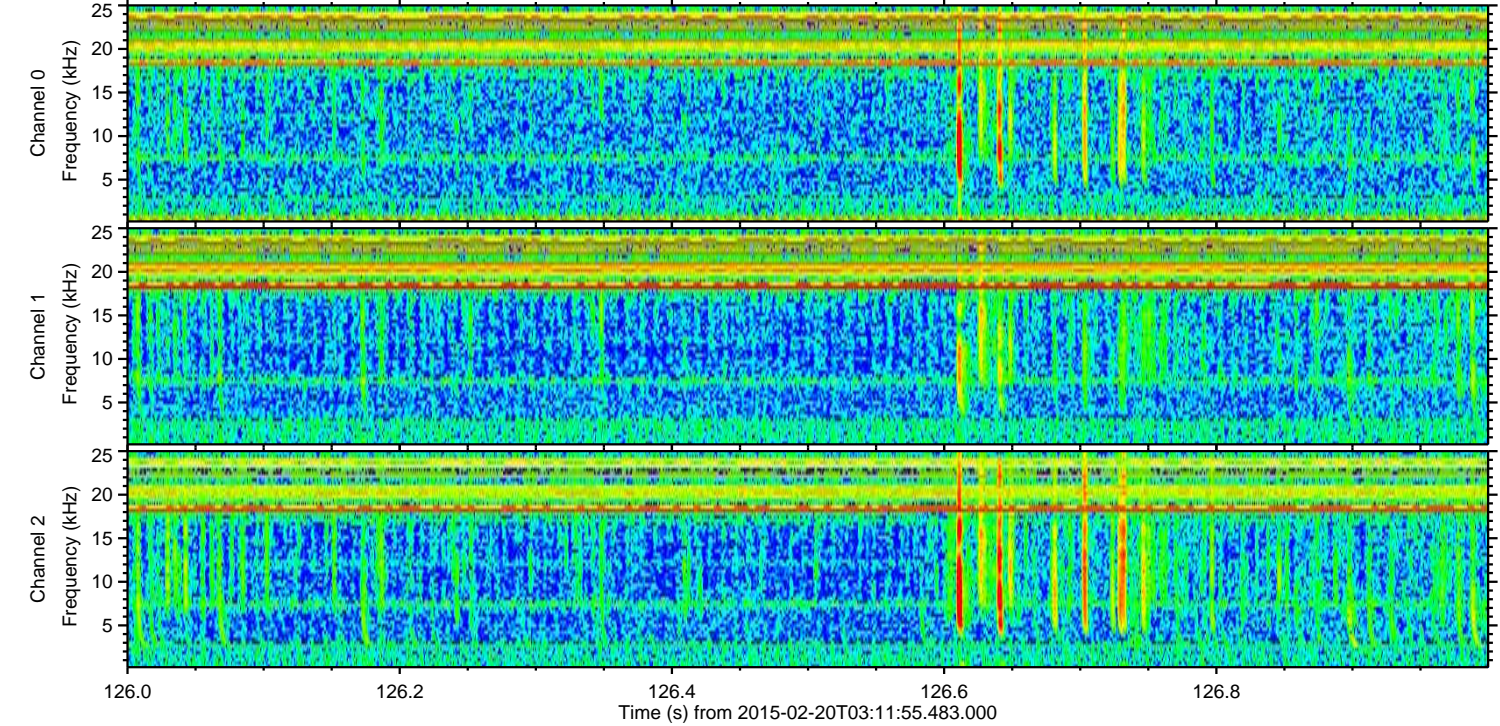
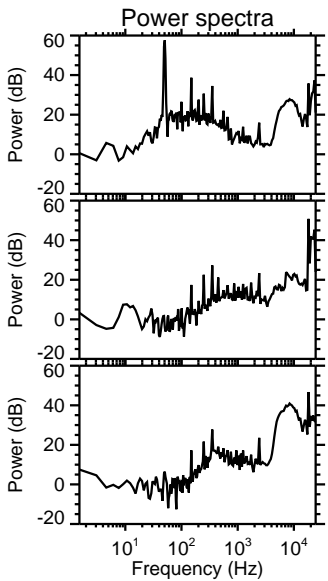
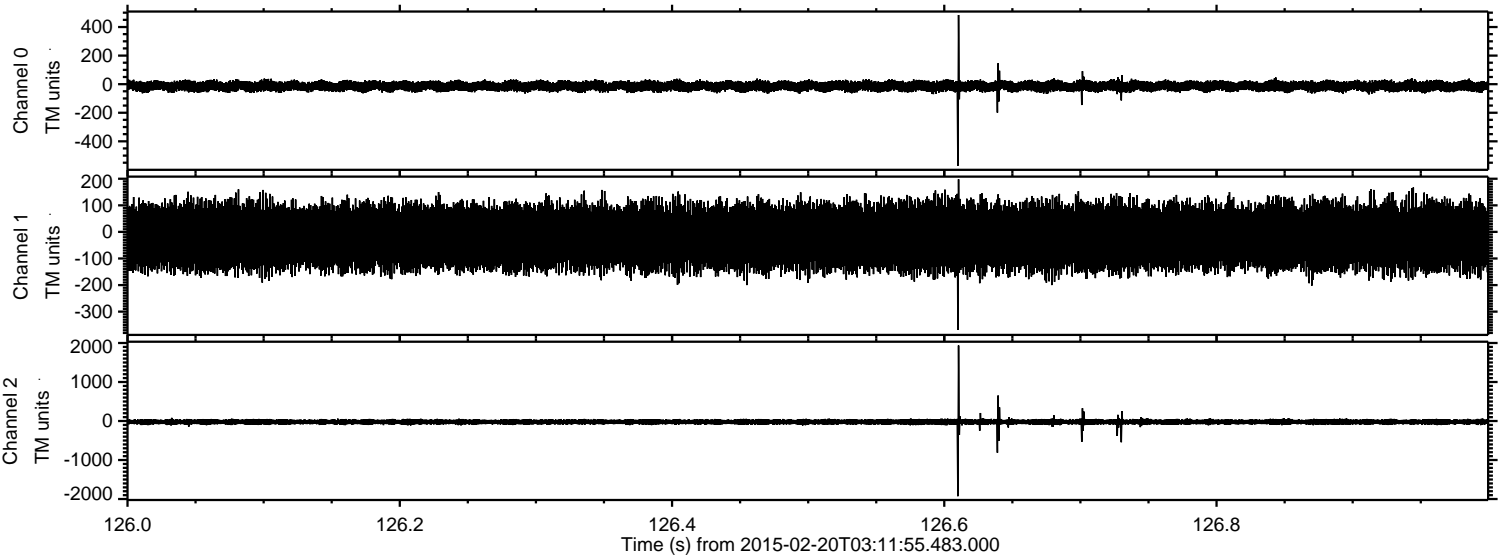
Processed Sat Feb 28 11:45:56 2015 by ELM ver.2012-10-06 from 001\_\_elm20150220\_031154\_\_dat00.bin





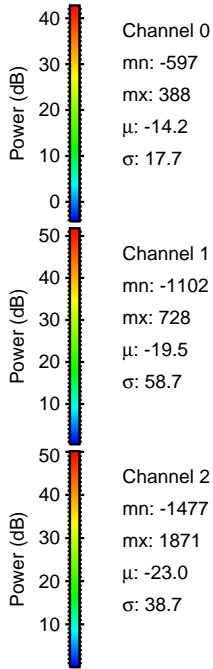
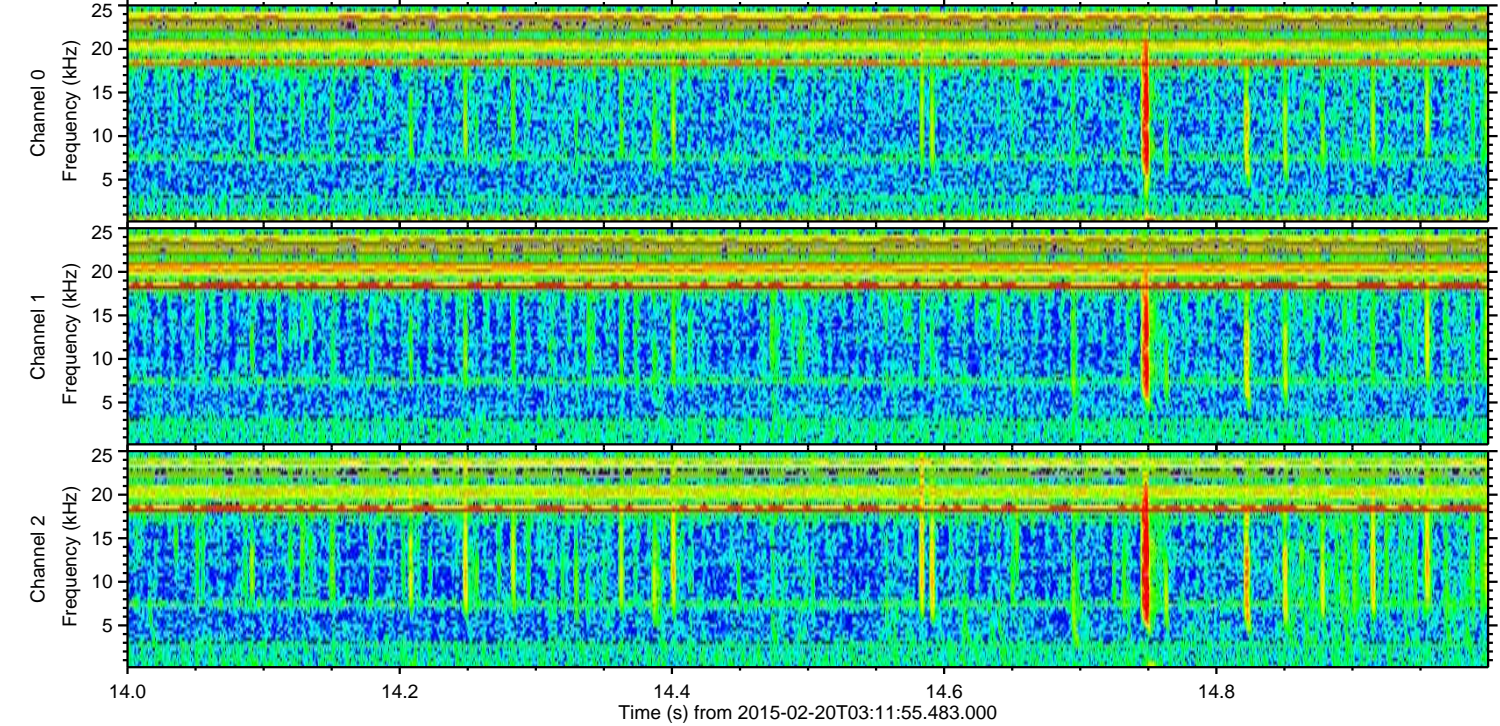
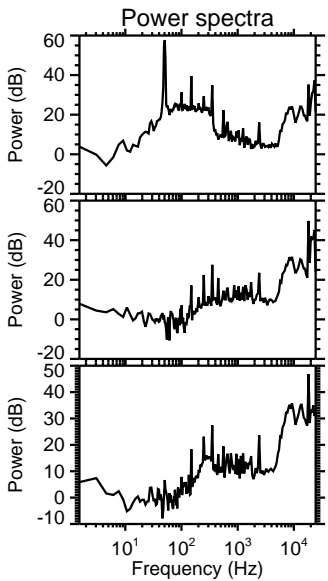
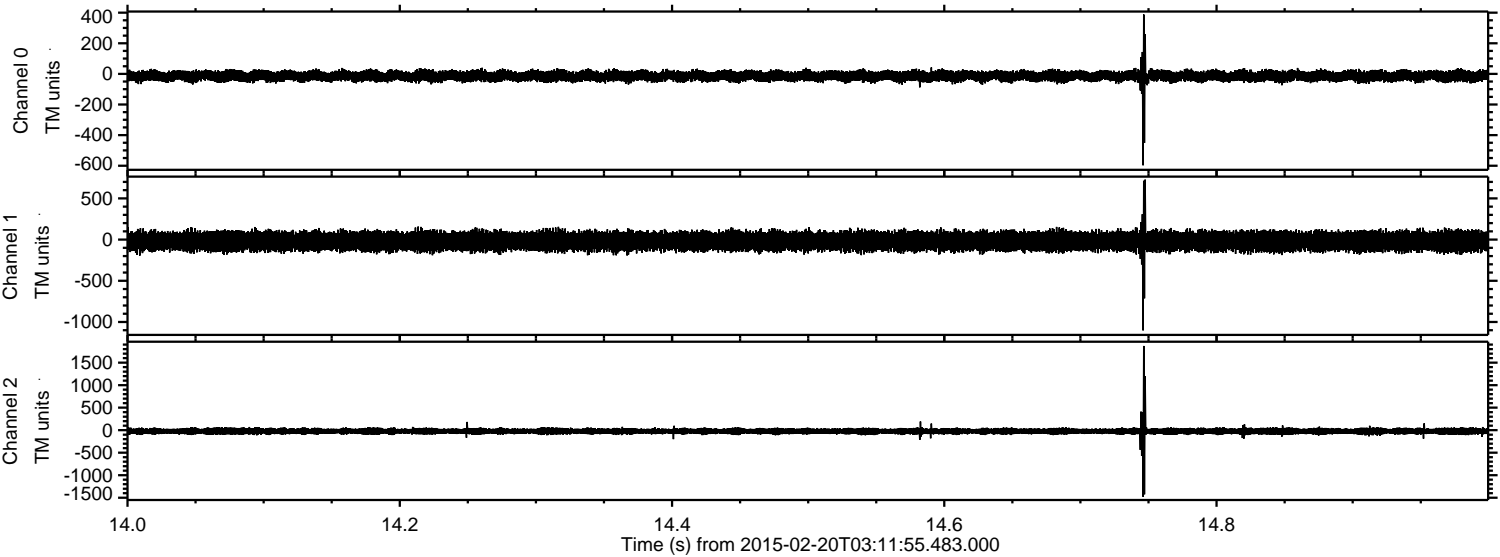
ELMAVAN 3D WAVEFORMS (Measured data sampled at 50 kHz) 49808 packets of 144 samples from 2015-02-20T03:11:55.483.000. Part 127/144

Processed Sat Feb 28 11:45:57 2015 by ELM ver.2012-10-06 from 001\_\_elm20150220\_031154\_\_dat00.bin



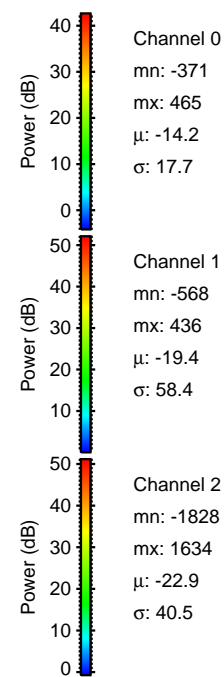
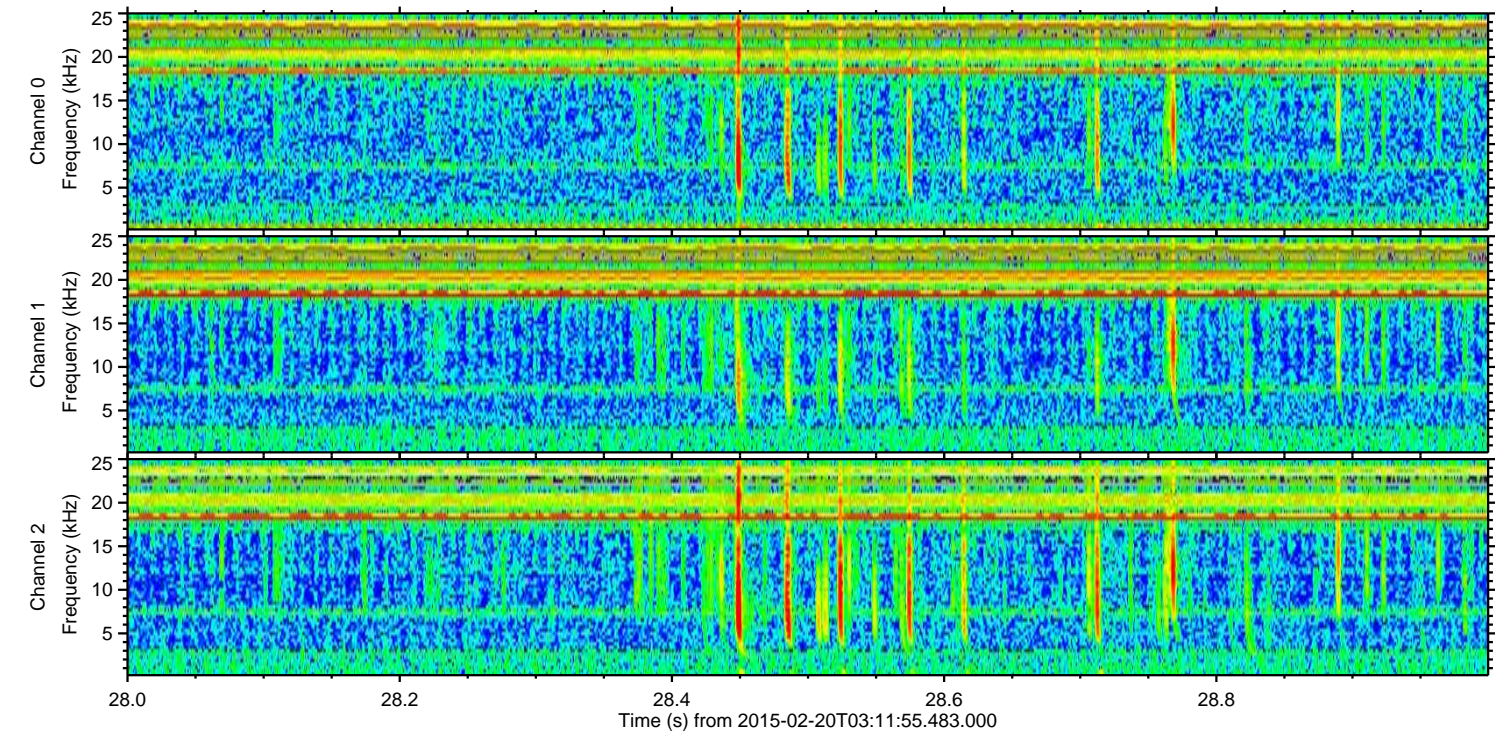
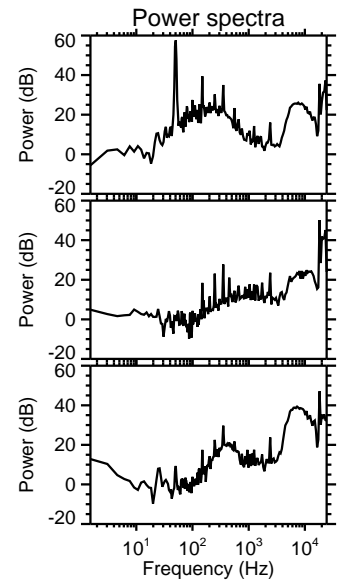
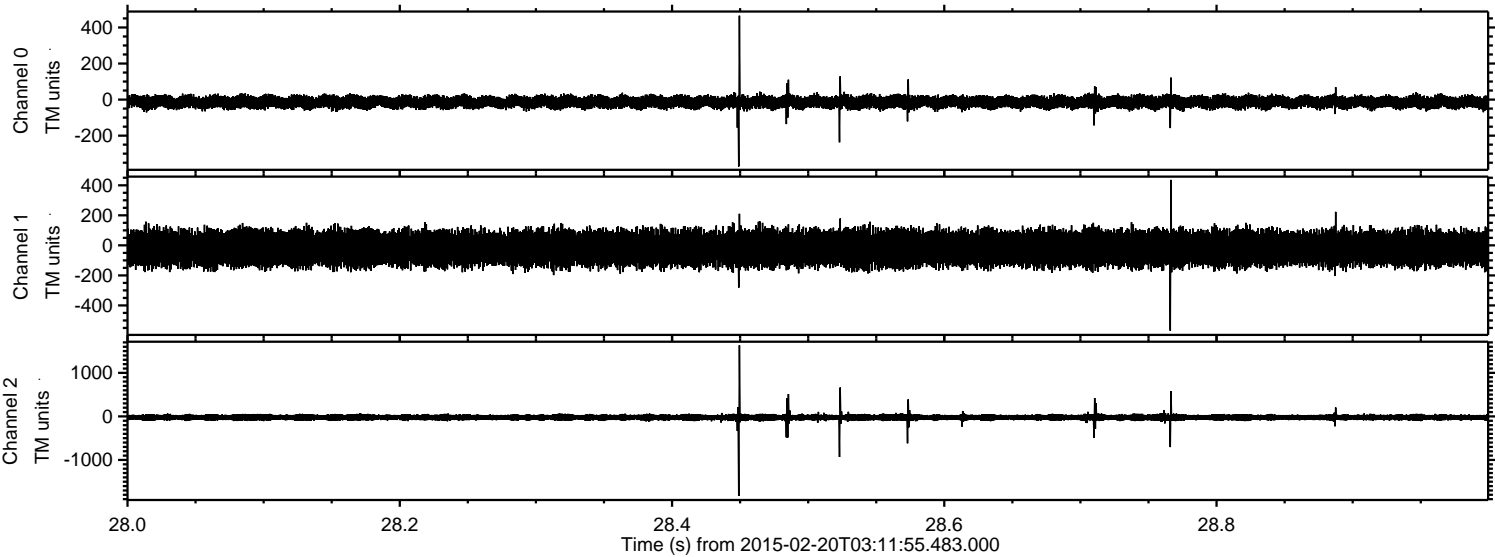


Processed Sat Feb 28 11:45:58 2015 by ELM ver.2012-10-06 from 001\_\_elm20150220\_031154\_\_dat00.bin



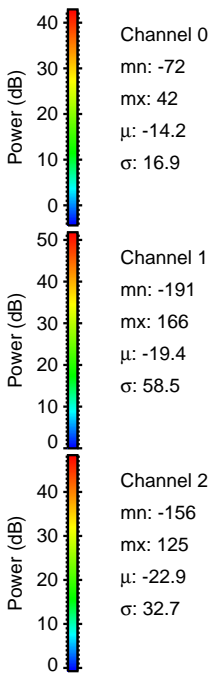
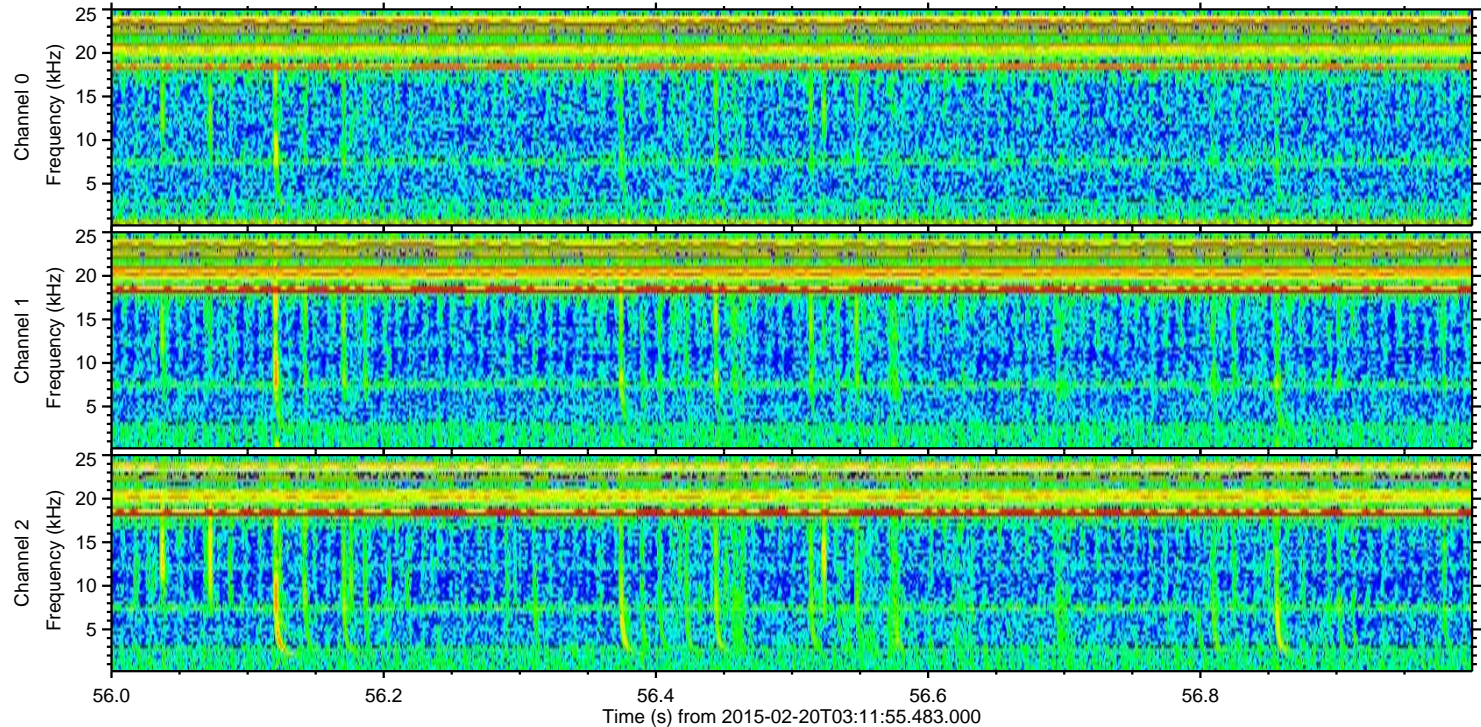
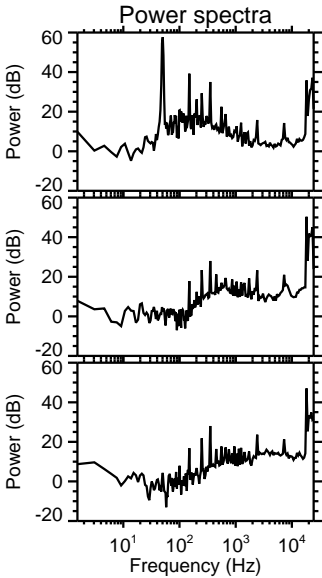
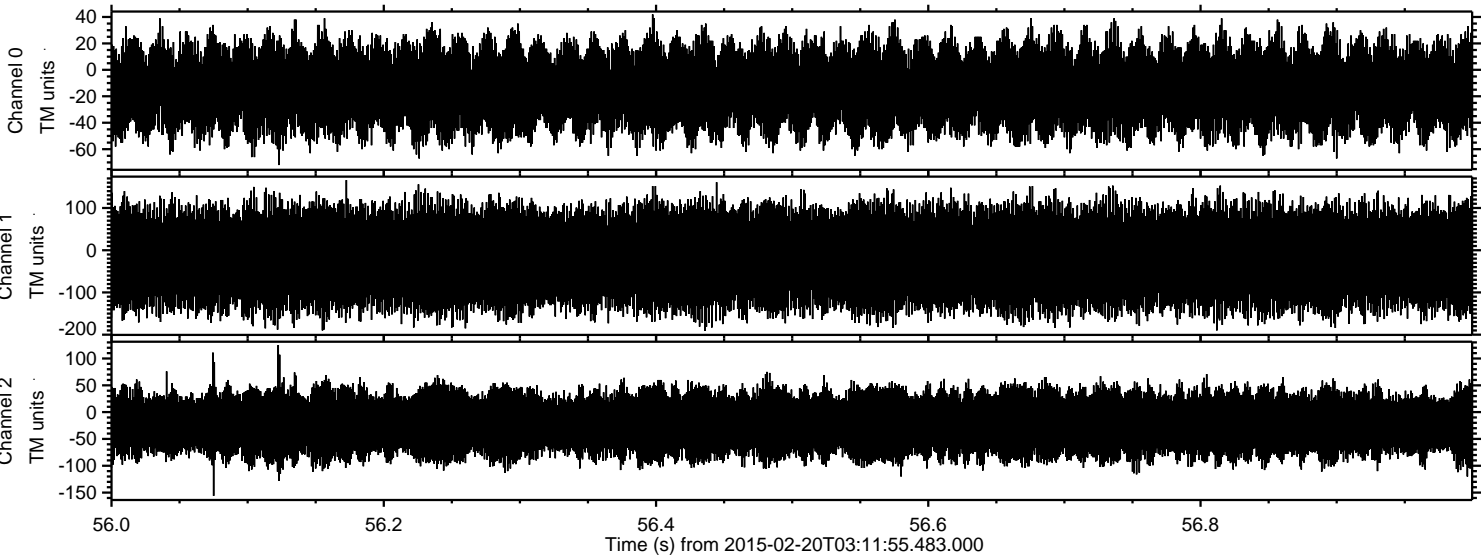


Processed Sat Feb 28 11:45:59 2015 by ELM ver.2012-10-06 from 001\_\_elm20150220\_031154\_\_dat00.bin





Processed Sat Feb 28 11:46:00 2015 by ELM ver.2012-10-06 from 001\_\_elm20150220\_031154\_\_dat00.bin



Channel 0  
mn: -72  
mx: 42  
 $\mu$ : -14.2  
 $\sigma$ : 16.9

Channel 1  
mn: -191  
mx: 166  
 $\mu$ : -19.4  
 $\sigma$ : 58.5

Channel 2  
mn: -156  
mx: 125  
 $\mu$ : -22.9  
 $\sigma$ : 32.7