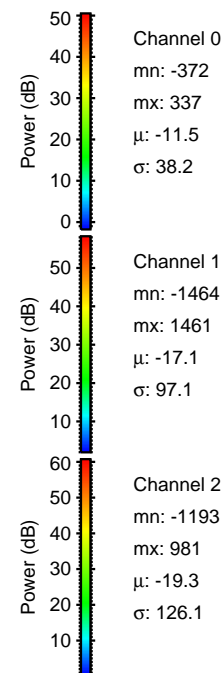
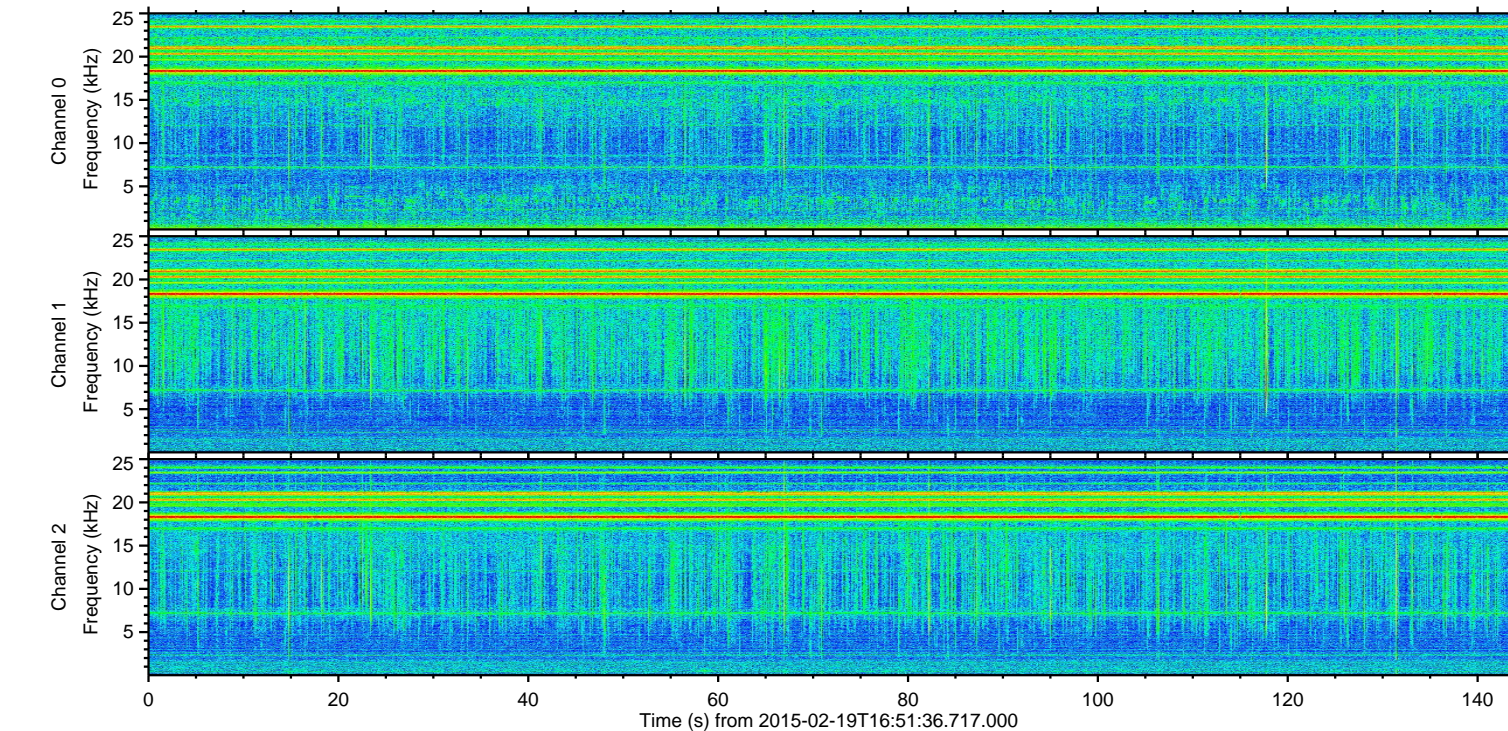
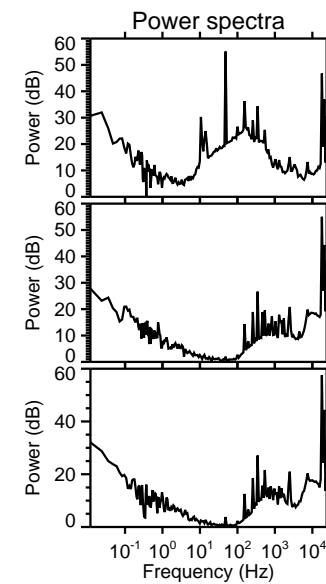
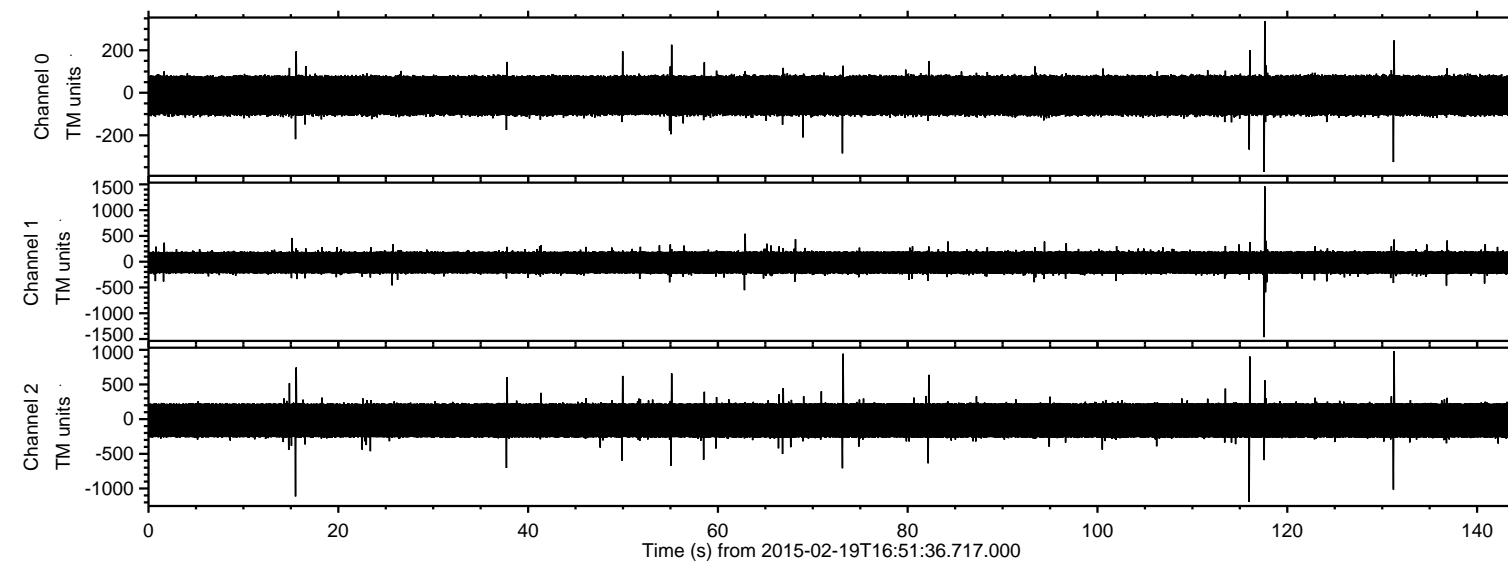


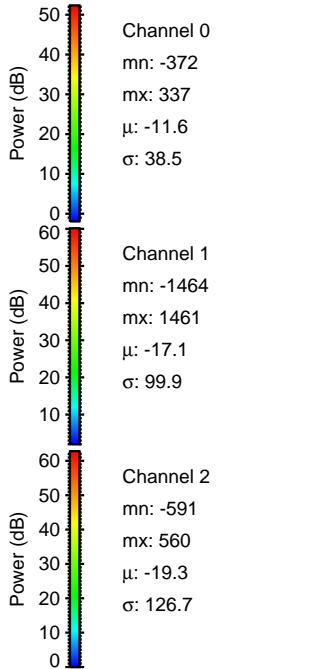
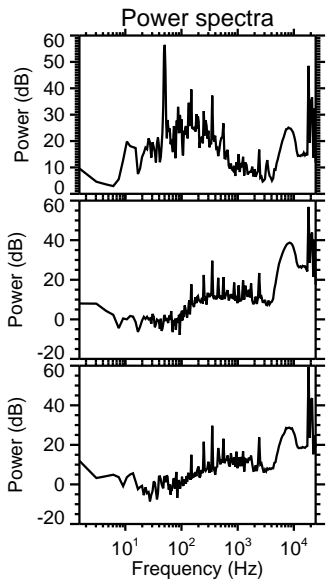
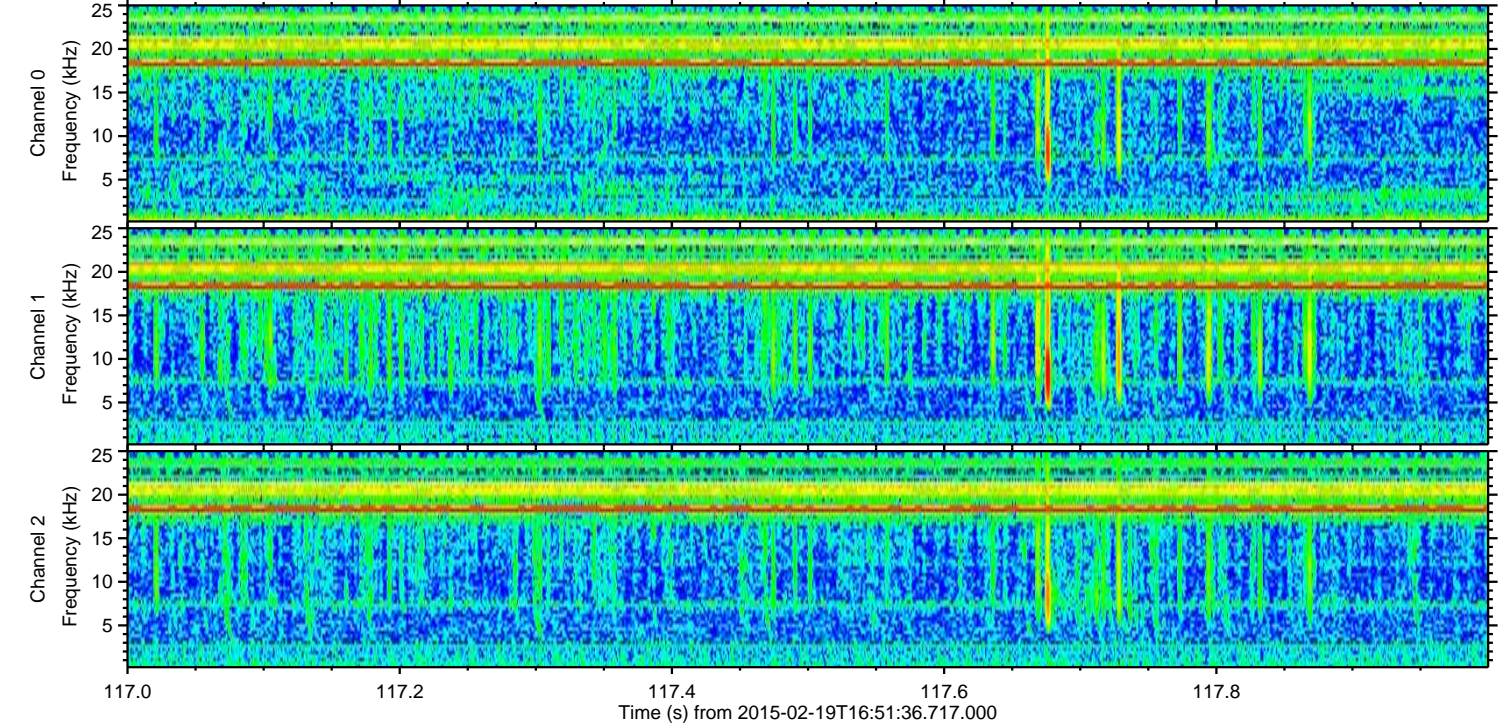
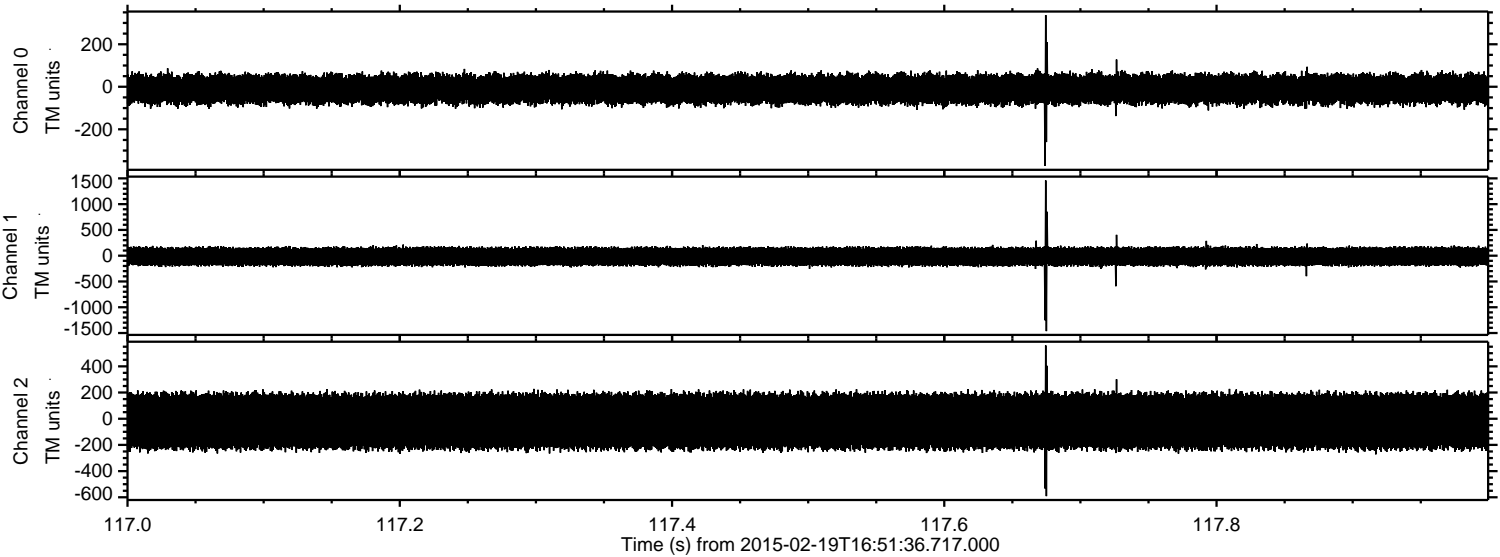
# ELMAVAN 3D WAVEFORMS (Measured data sampled at 50 kHz) 49784 packets of 144 samples from 2015-02-19T16:51:36.717.000.

Processed Fri Feb 27 18:51:50 2015 by ELM ver.2012-10-06 from 001\_\_elm20150219\_165135\_\_dat00.bin





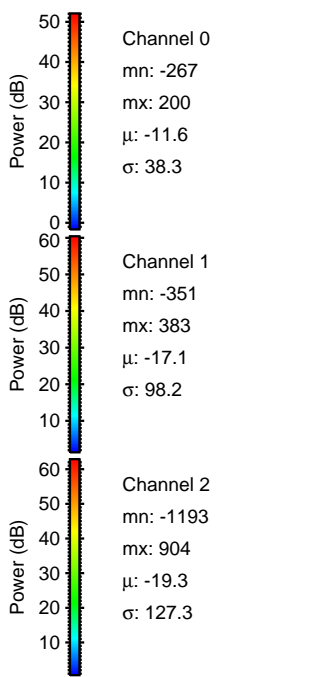
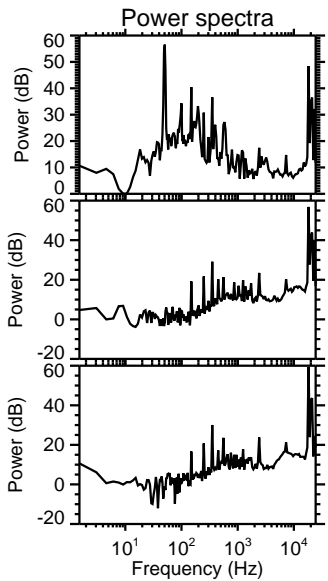
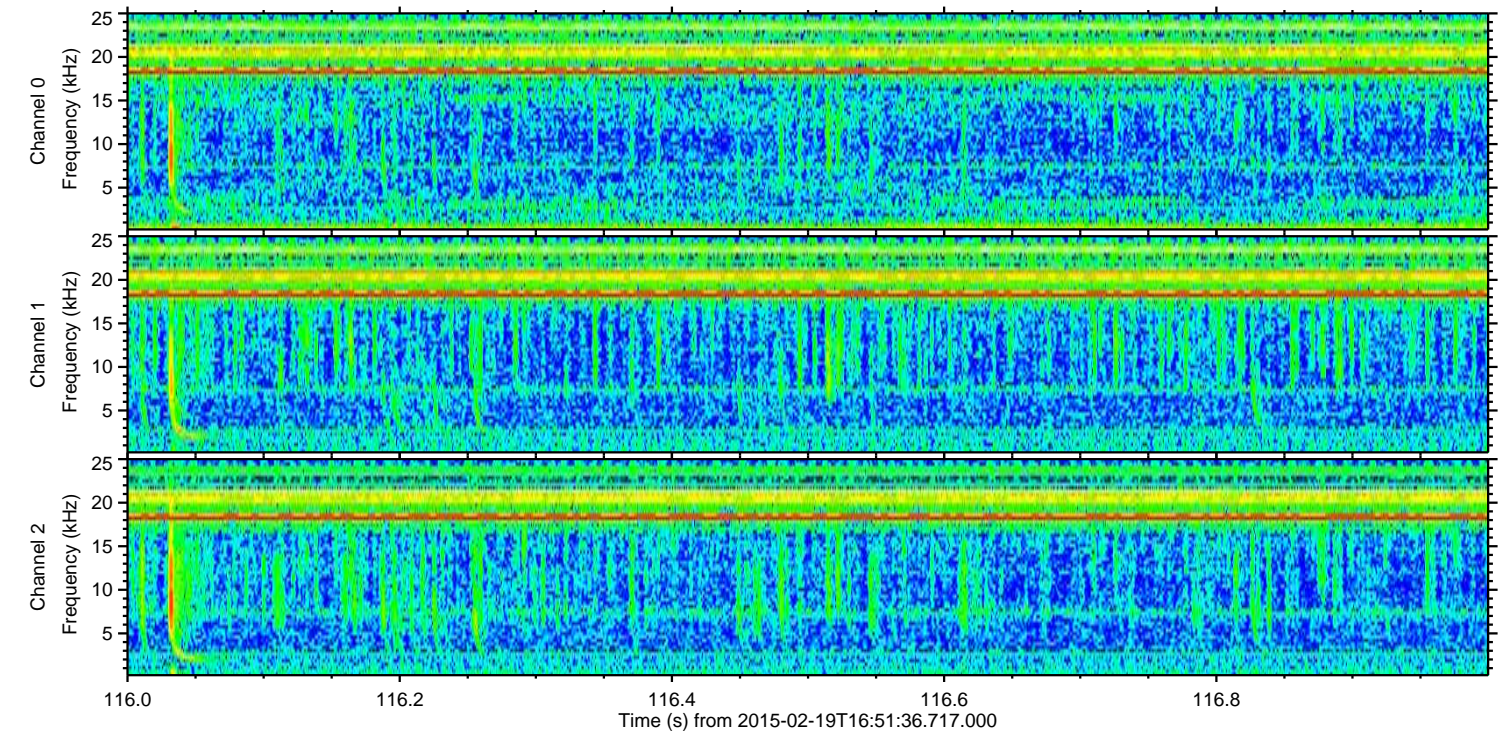
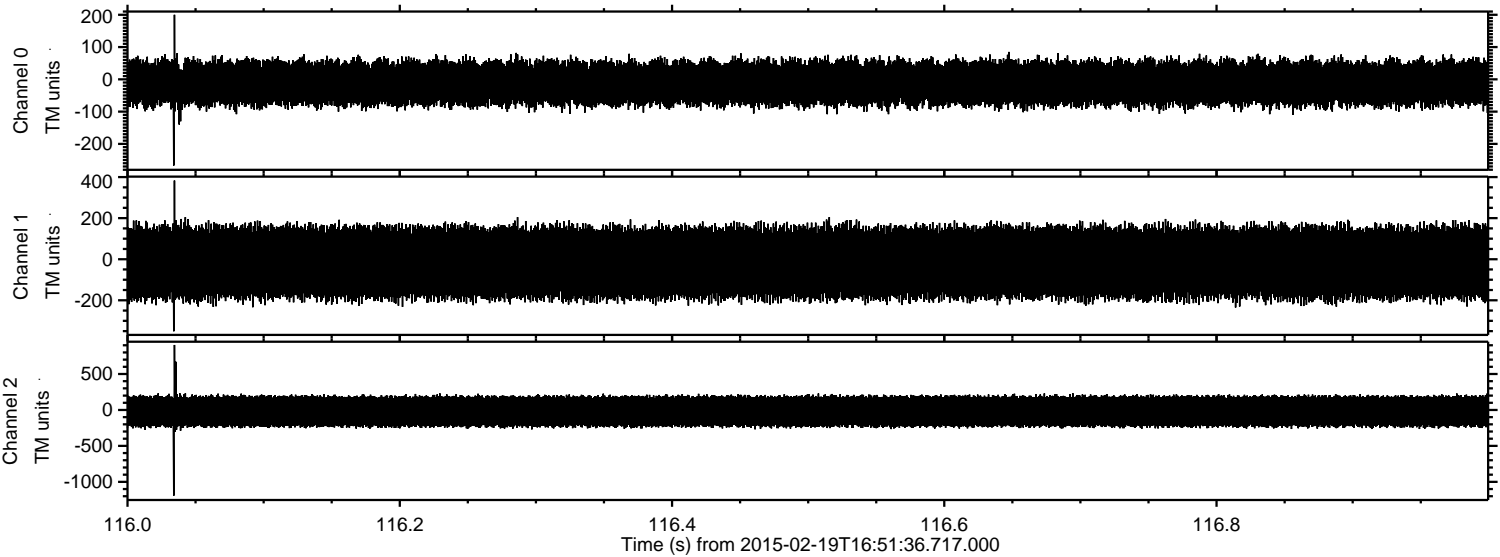
Processed Fri Feb 27 18:52:02 2015 by ELM ver.2012-10-06 from 001\_\_elm20150219\_165135\_\_dat00.bin





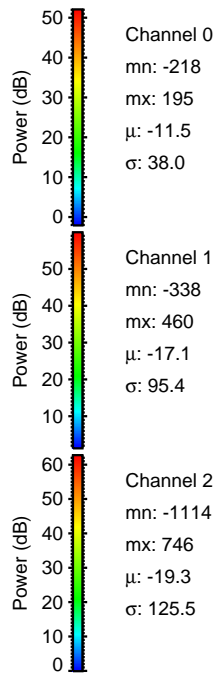
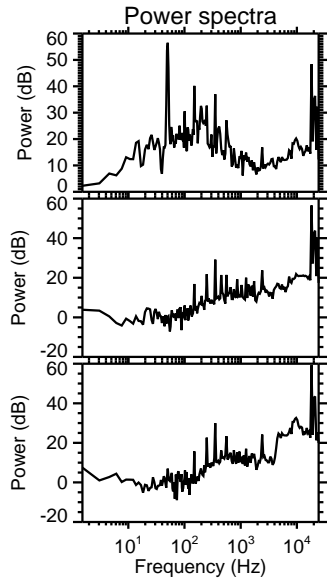
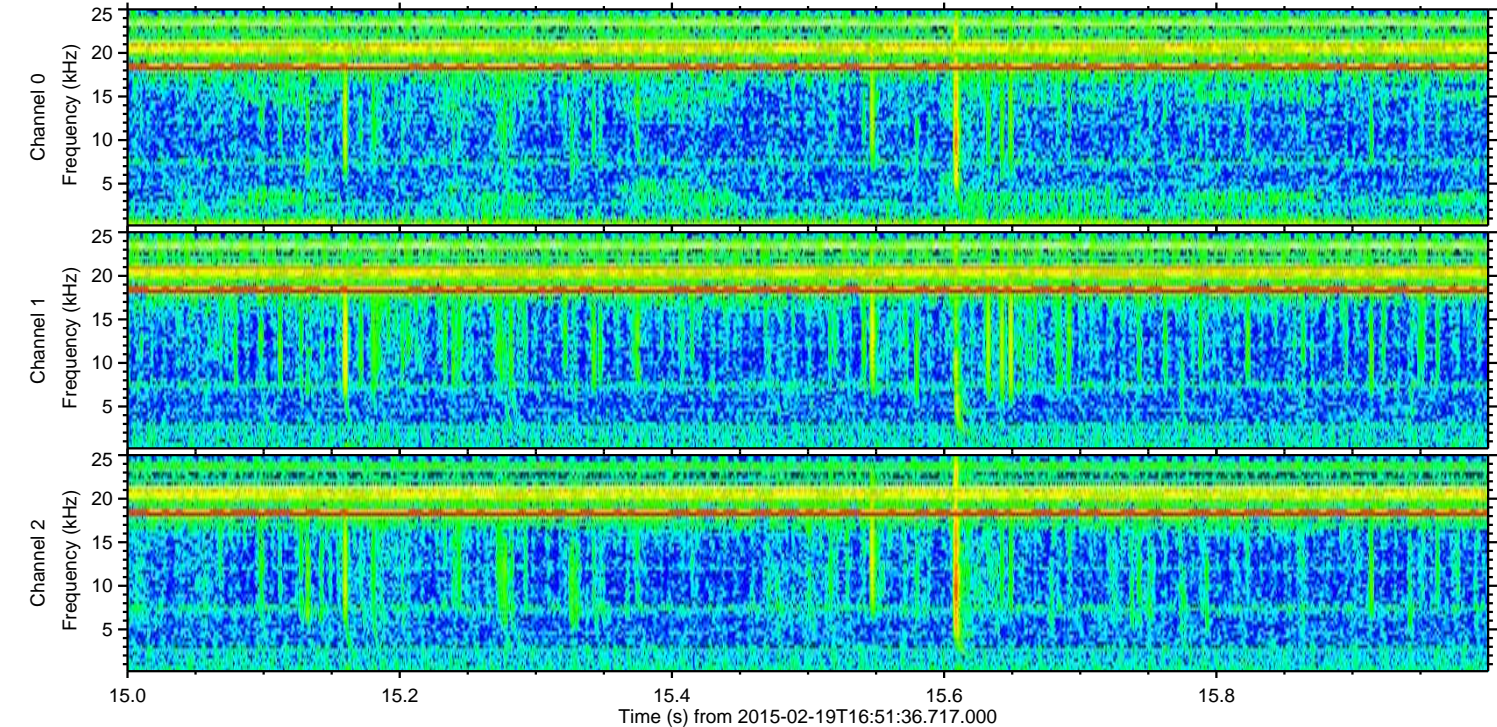
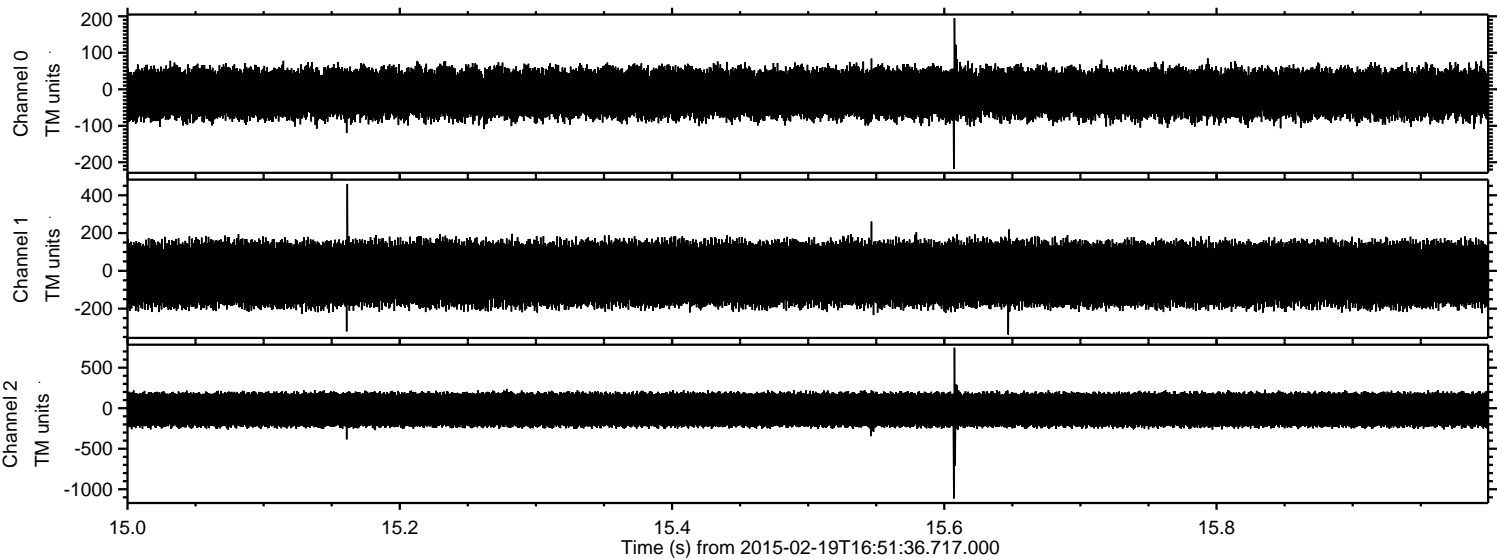
ELMAVAN 3D WAVEFORMS (Measured data sampled at 50 kHz) 49784 packets of 144 samples from 2015-02-19T16:51:36.717.000. Part 117/144

Processed Fri Feb 27 18:52:03 2015 by ELM ver.2012-10-06 from 001\_\_elm20150219\_165135\_\_dat00.bin





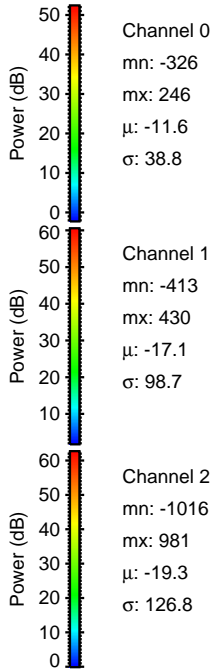
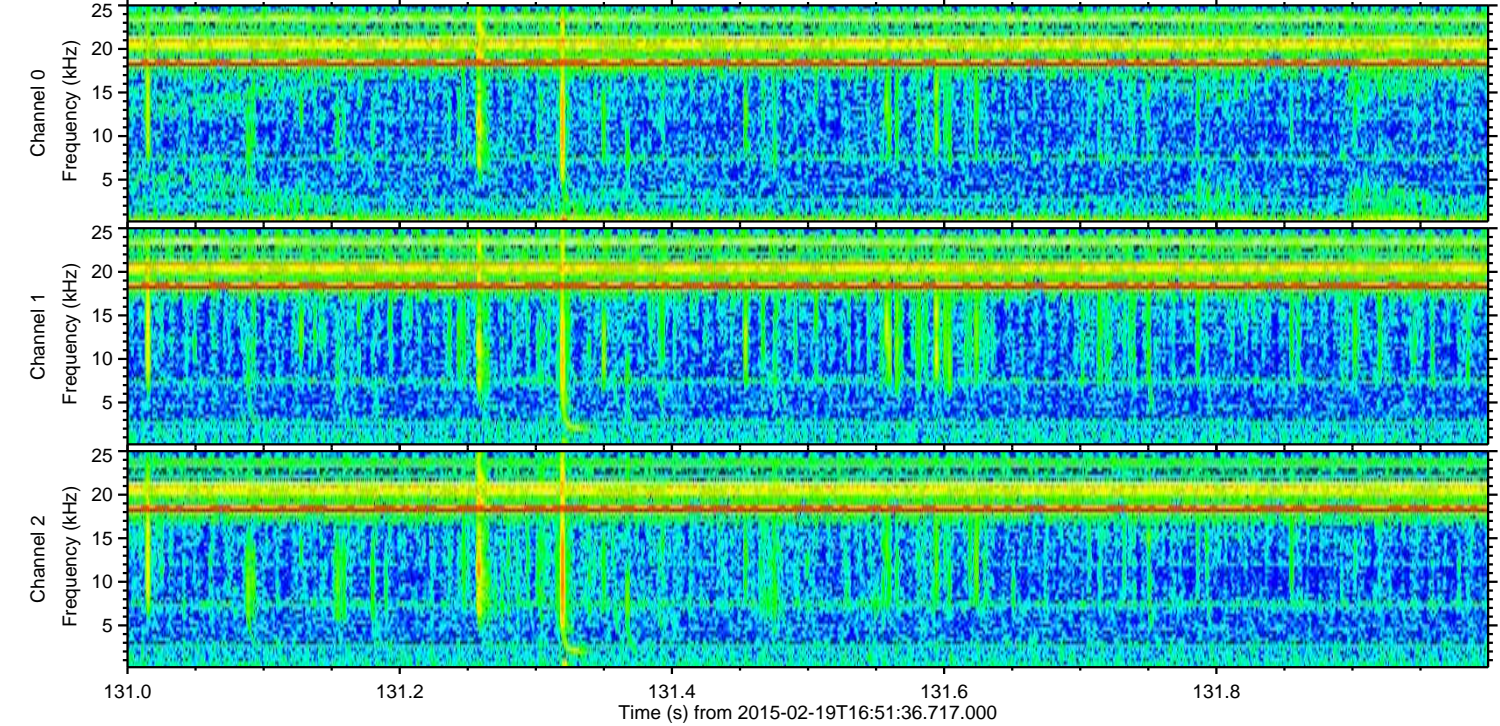
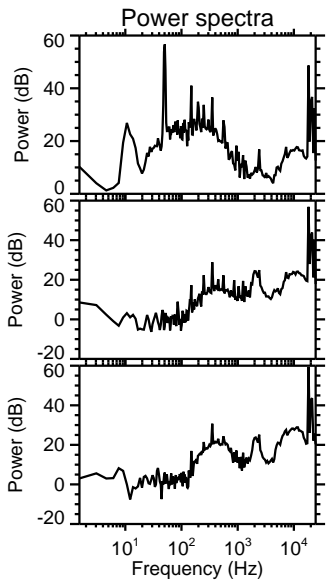
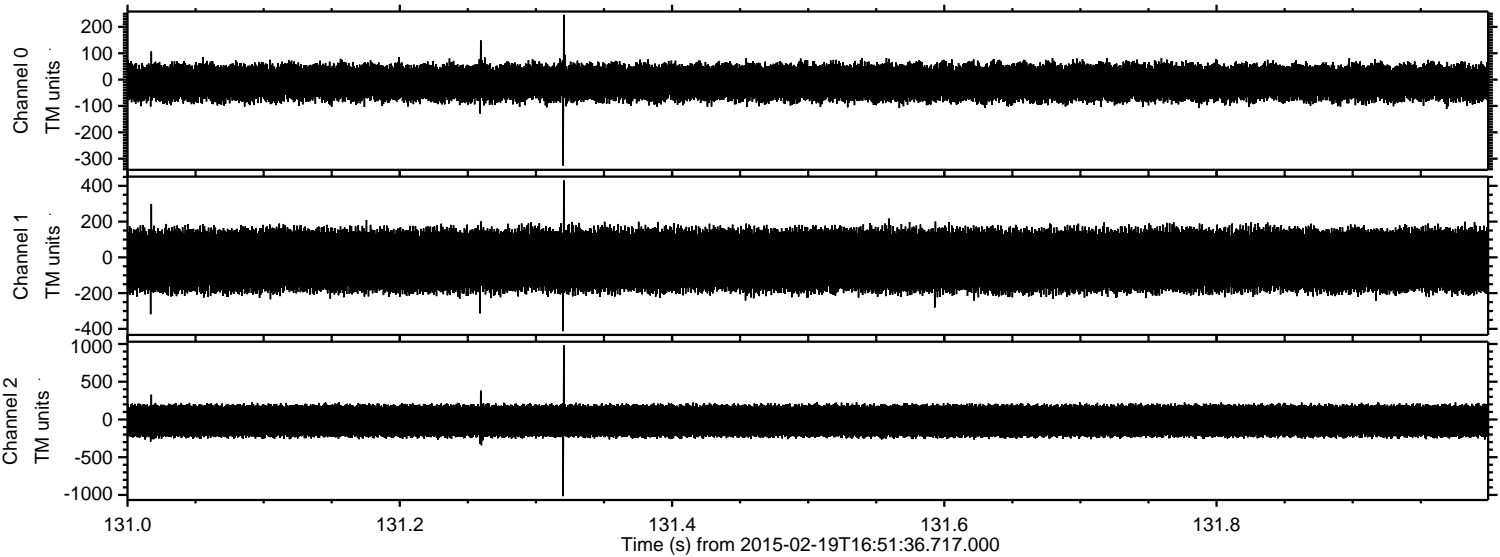
Processed Fri Feb 27 18:52:04 2015 by ELM ver.2012-10-06 from 001\_\_elm20150219\_165135\_\_dat00.bin





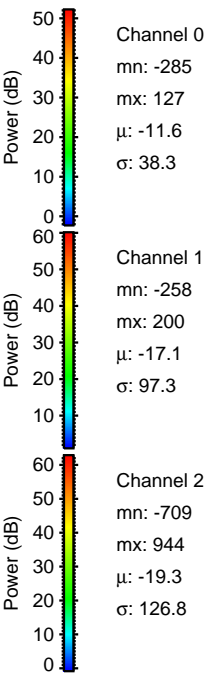
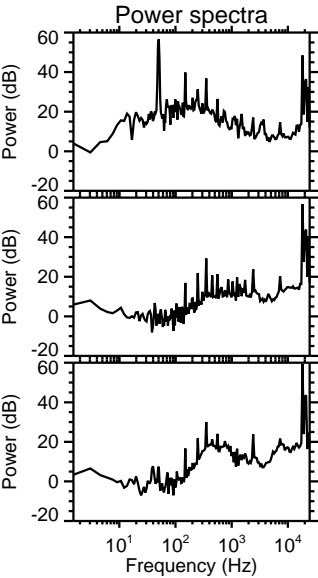
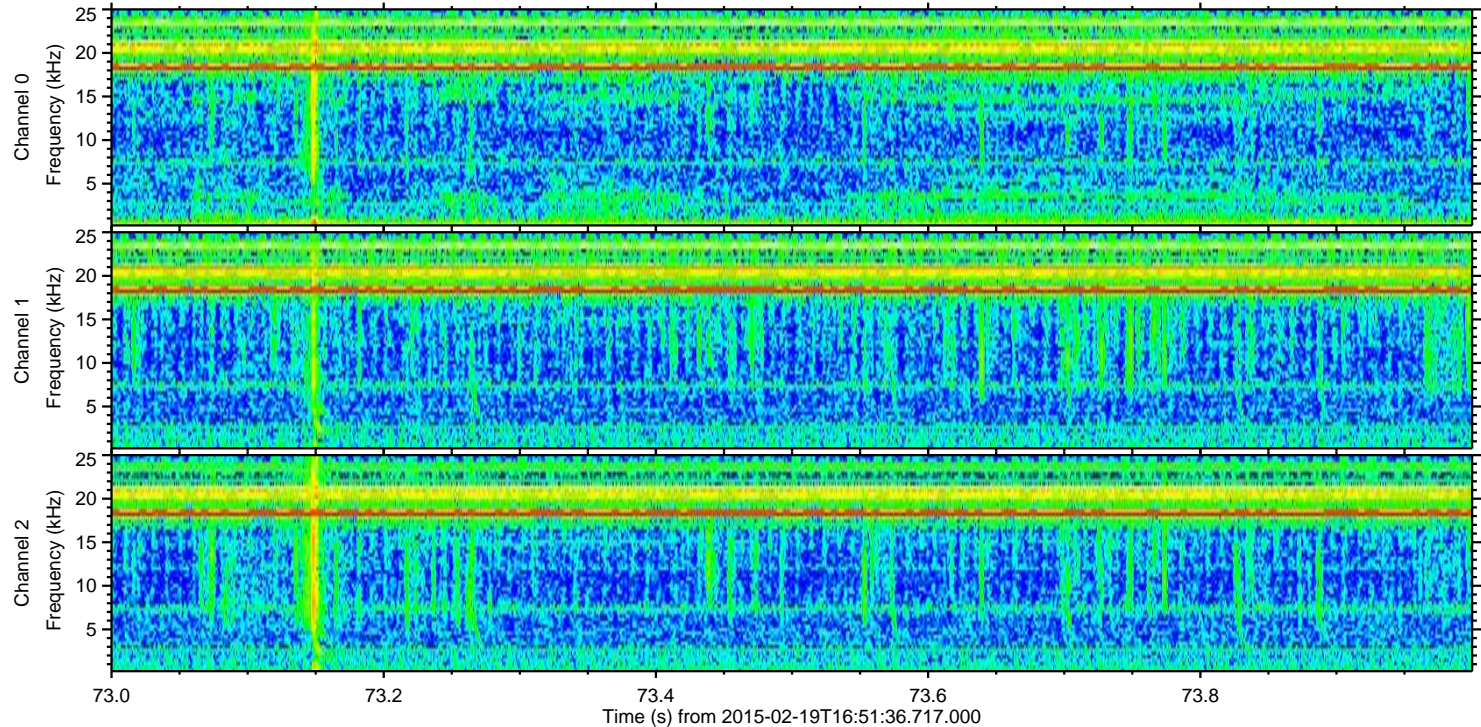
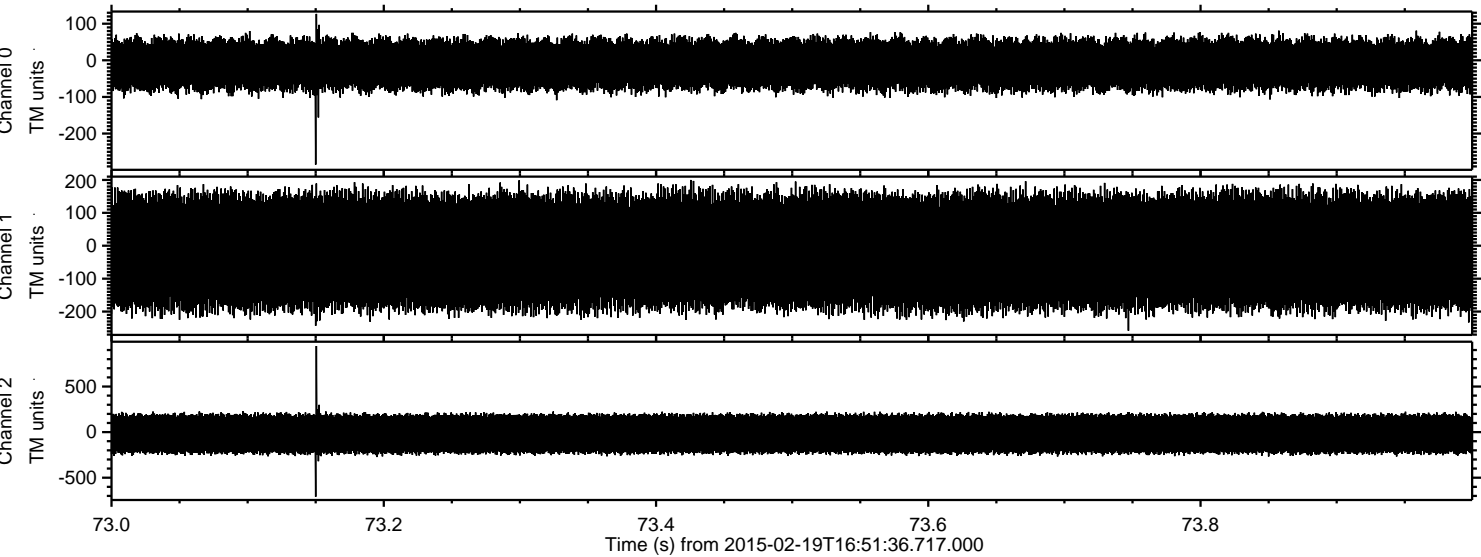
ELMAVAN 3D WAVEFORMS (Measured data sampled at 50 kHz) 49784 packets of 144 samples from 2015-02-19T16:51:36.717.000. Part 132/144

Processed Fri Feb 27 18:52:05 2015 by ELM ver.2012-10-06 from 001\_\_elm20150219\_165135\_\_dat00.bin



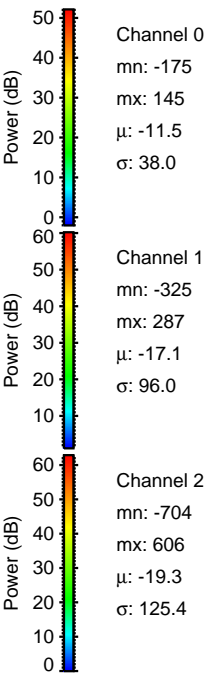
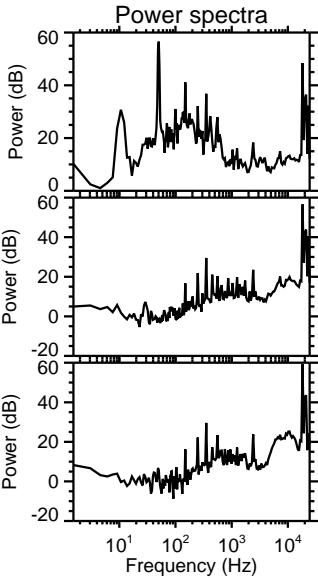
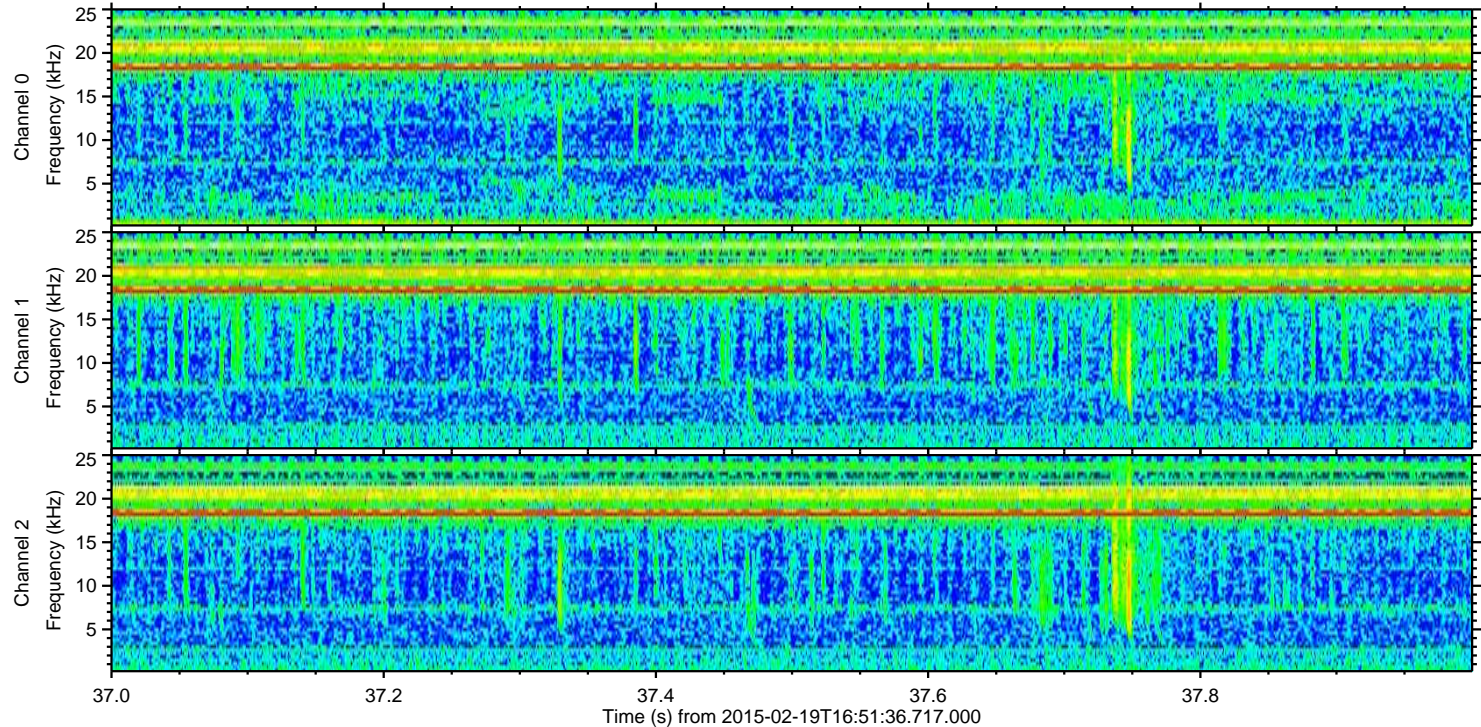
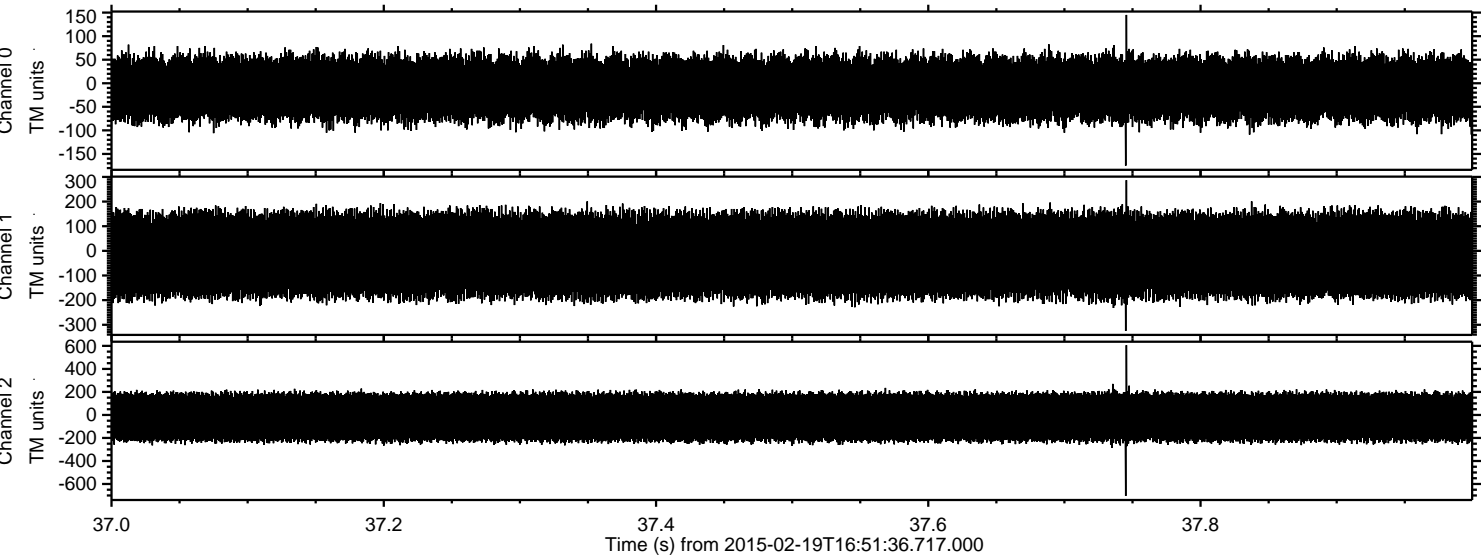


Processed Fri Feb 27 18:52:05 2015 by ELM ver.2012-10-06 from 001\_\_elm20150219\_165135\_\_dat00.bin



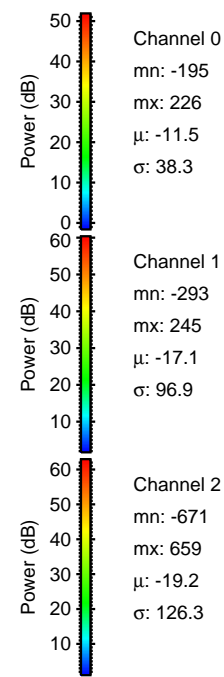
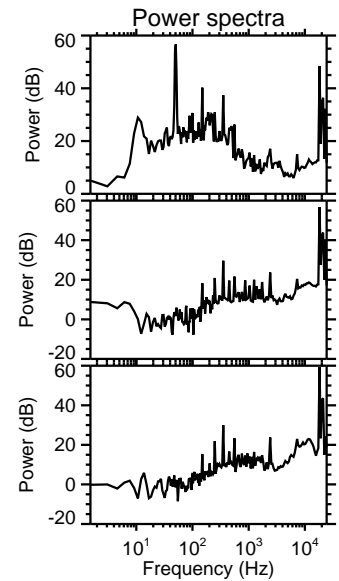
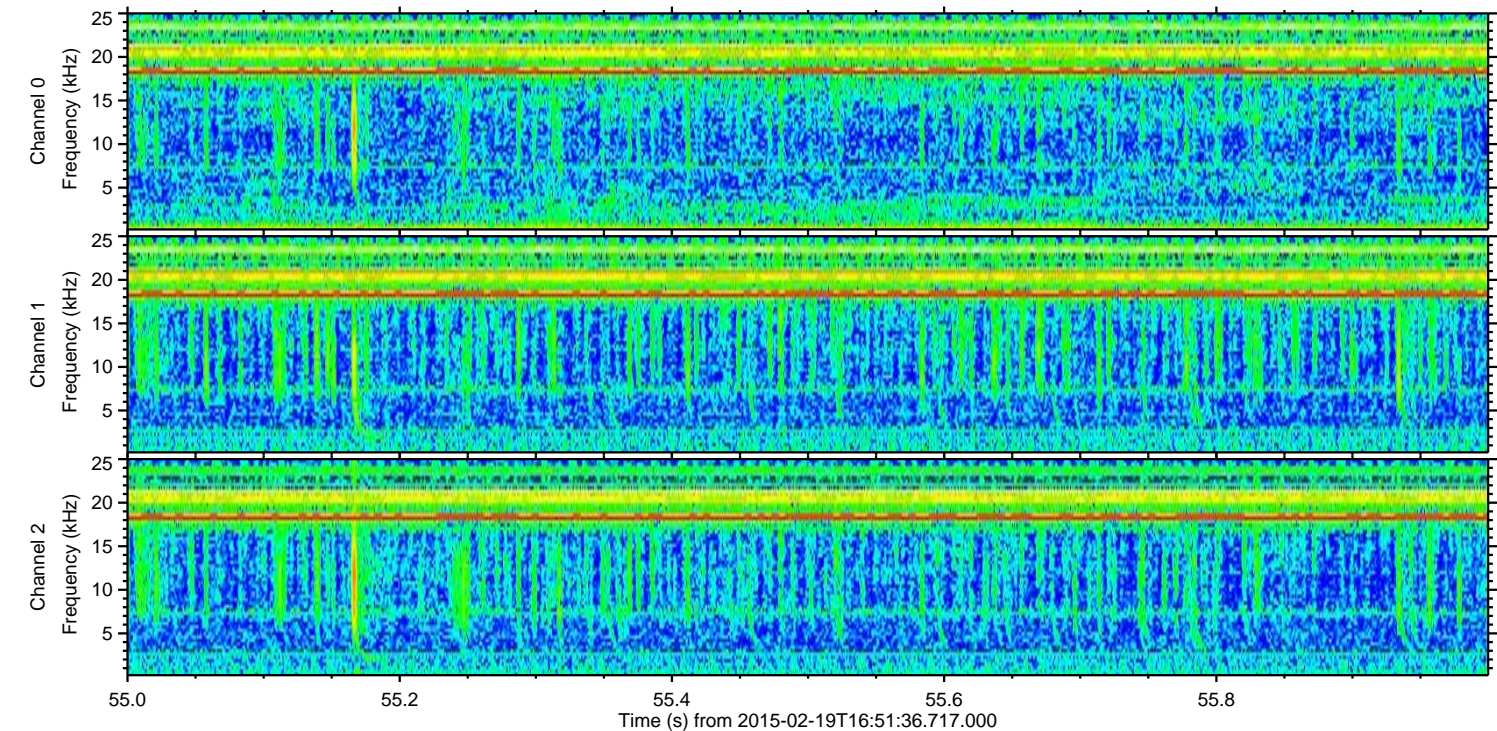
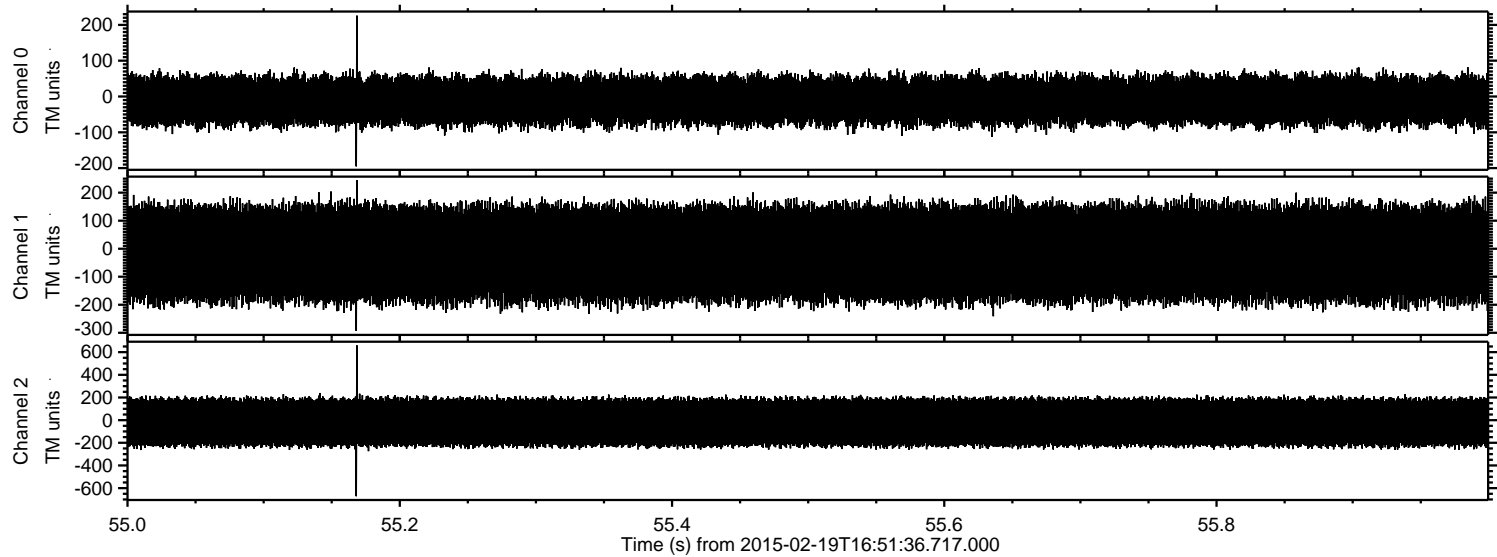


Processed Fri Feb 27 18:52:06 2015 by ELM ver.2012-10-06 from 001\_\_elm20150219\_165135\_\_dat00.bin



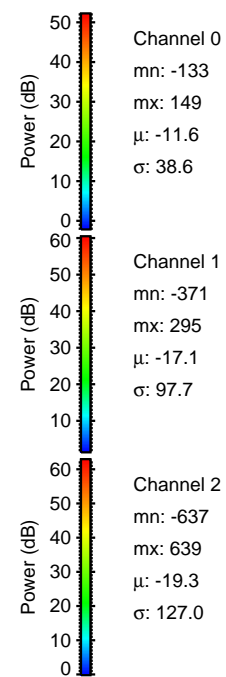
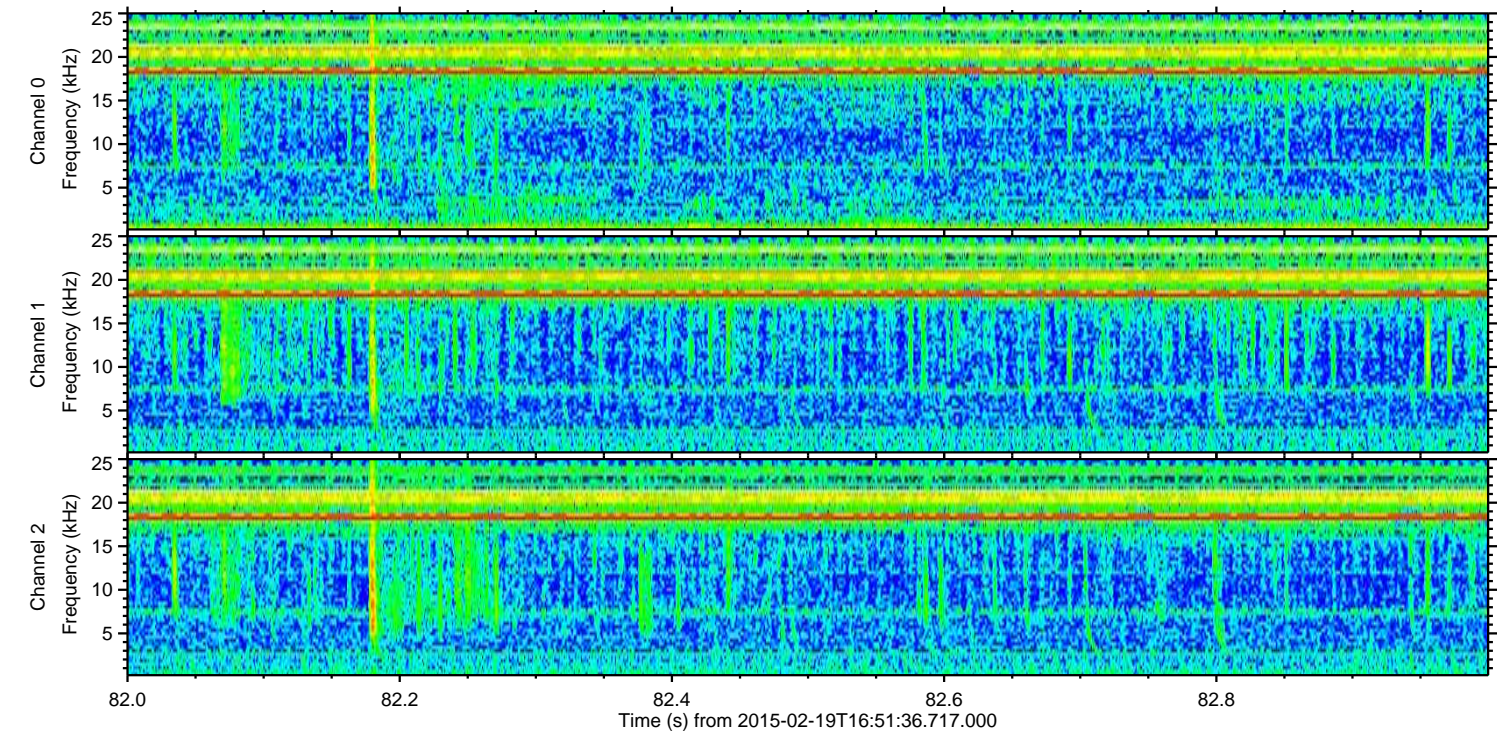
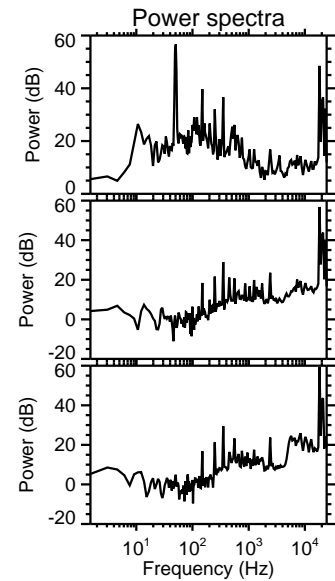
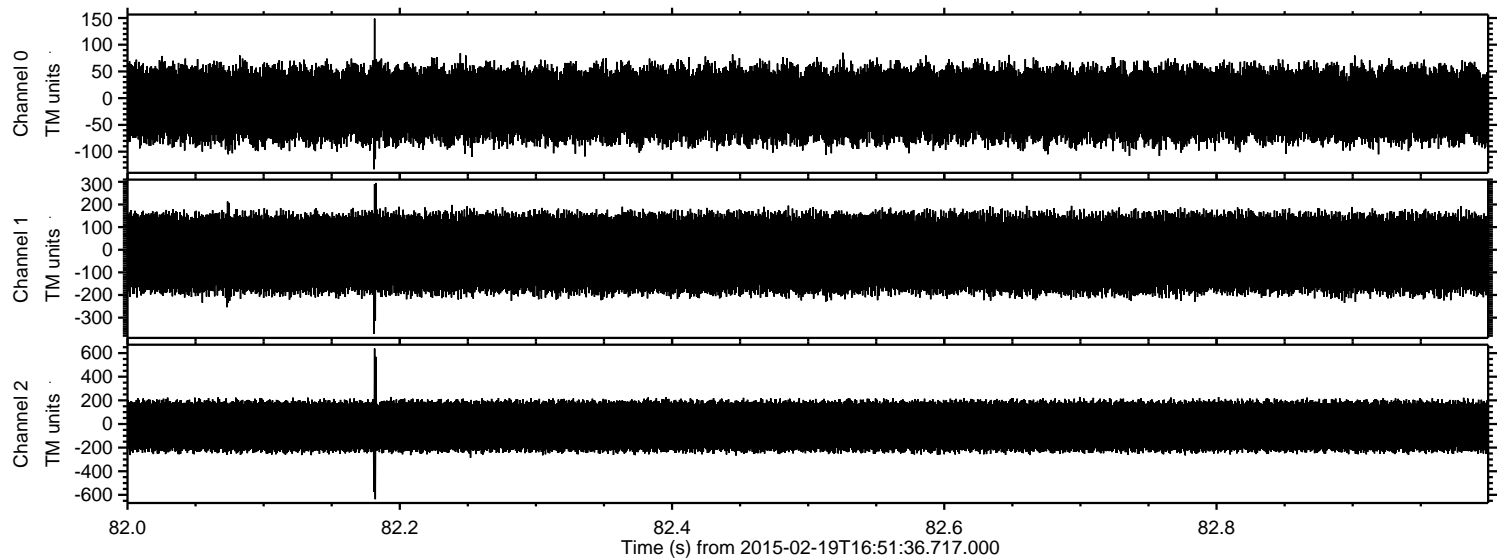


Processed Fri Feb 27 18:52:07 2015 by ELM ver.2012-10-06 from 001\_\_elm20150219\_165135\_\_dat00.bin





Processed Fri Feb 27 18:52:08 2015 by ELM ver.2012-10-06 from 001\_\_elm20150219\_165135\_\_dat00.bin



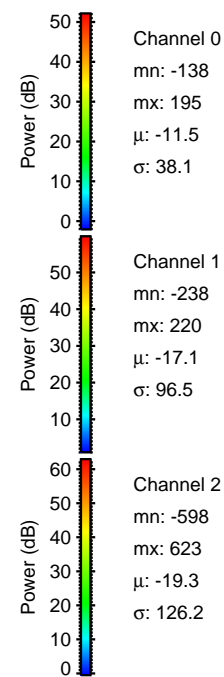
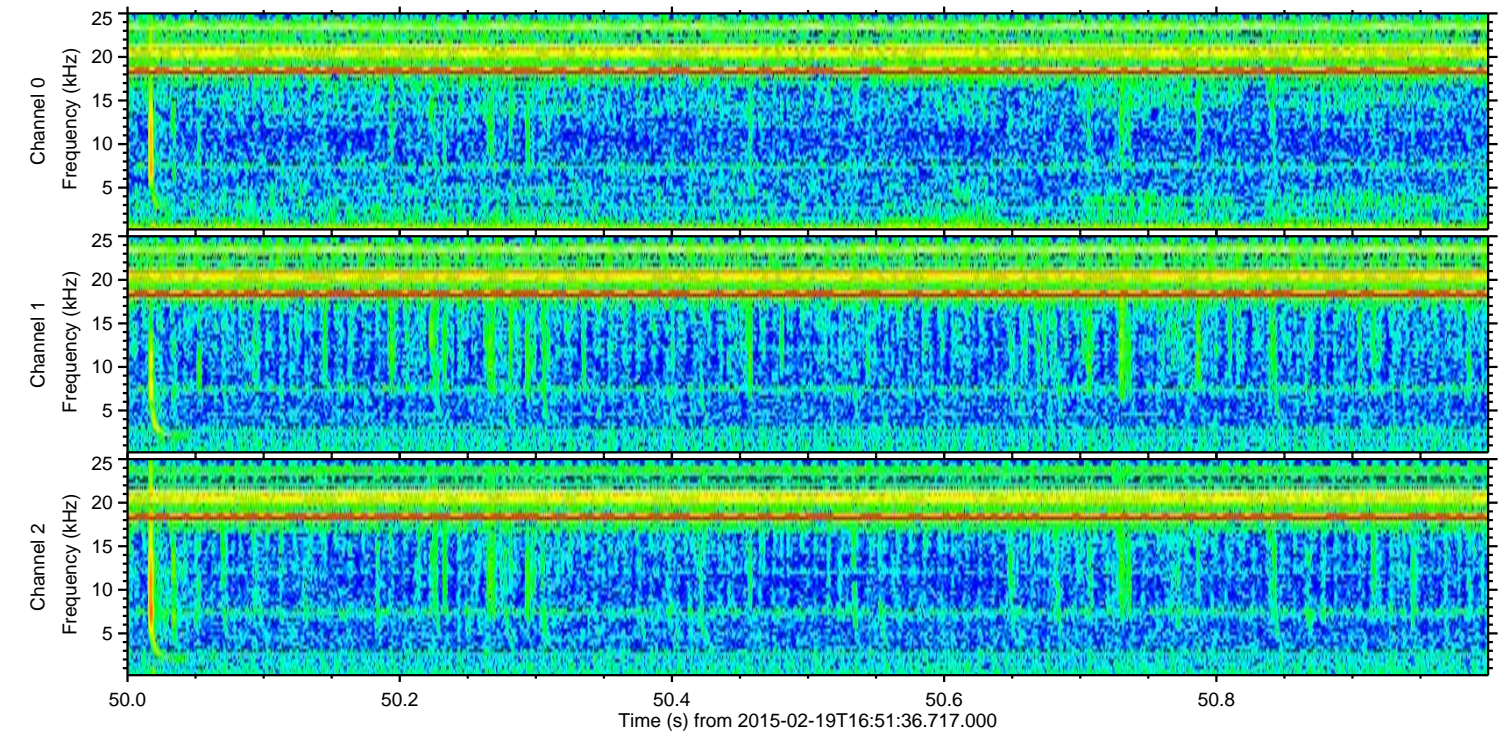
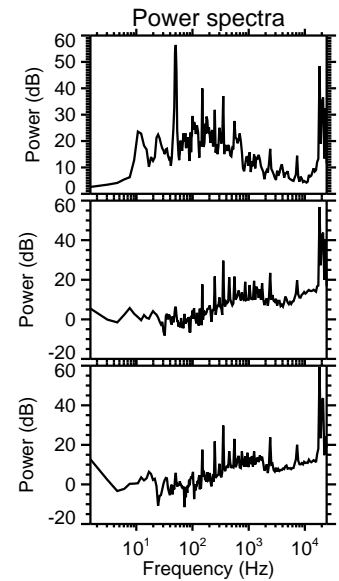
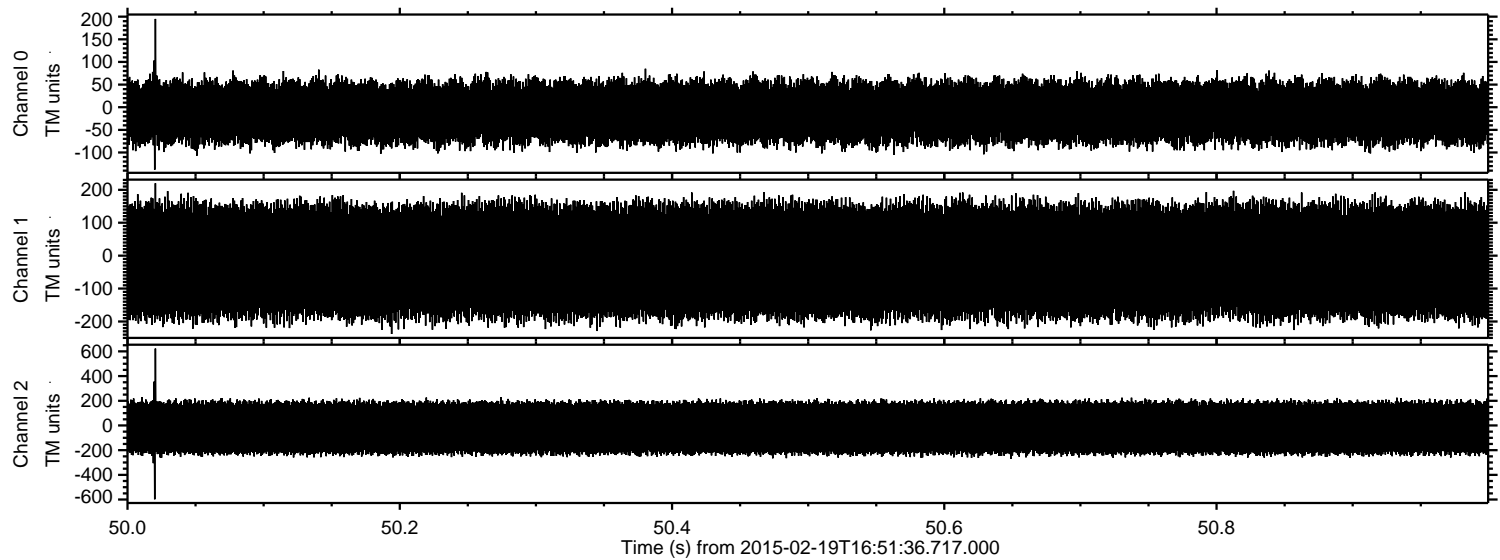
Channel 0  
mn: -133  
mx: 149  
 $\mu$ : -11.6  
 $\sigma$ : 38.6

Channel 1  
mn: -371  
mx: 295  
 $\mu$ : -17.1  
 $\sigma$ : 97.7

Channel 2  
mn: -637  
mx: 639  
 $\mu$ : -19.3  
 $\sigma$ : 127.0



Processed Fri Feb 27 18:52:09 2015 by ELM ver.2012-10-06 from 001\_\_elm20150219\_165135\_\_dat00.bin





Processed Fri Feb 27 18:52:10 2015 by ELM ver.2012-10-06 from 001\_\_elm20150219\_165135\_\_dat00.bin

