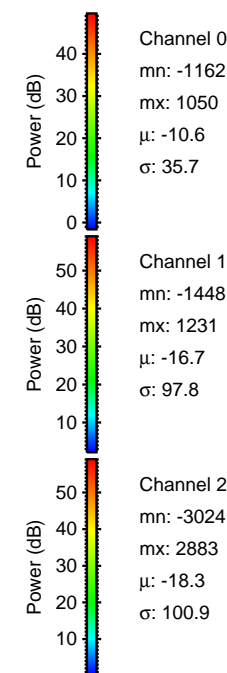
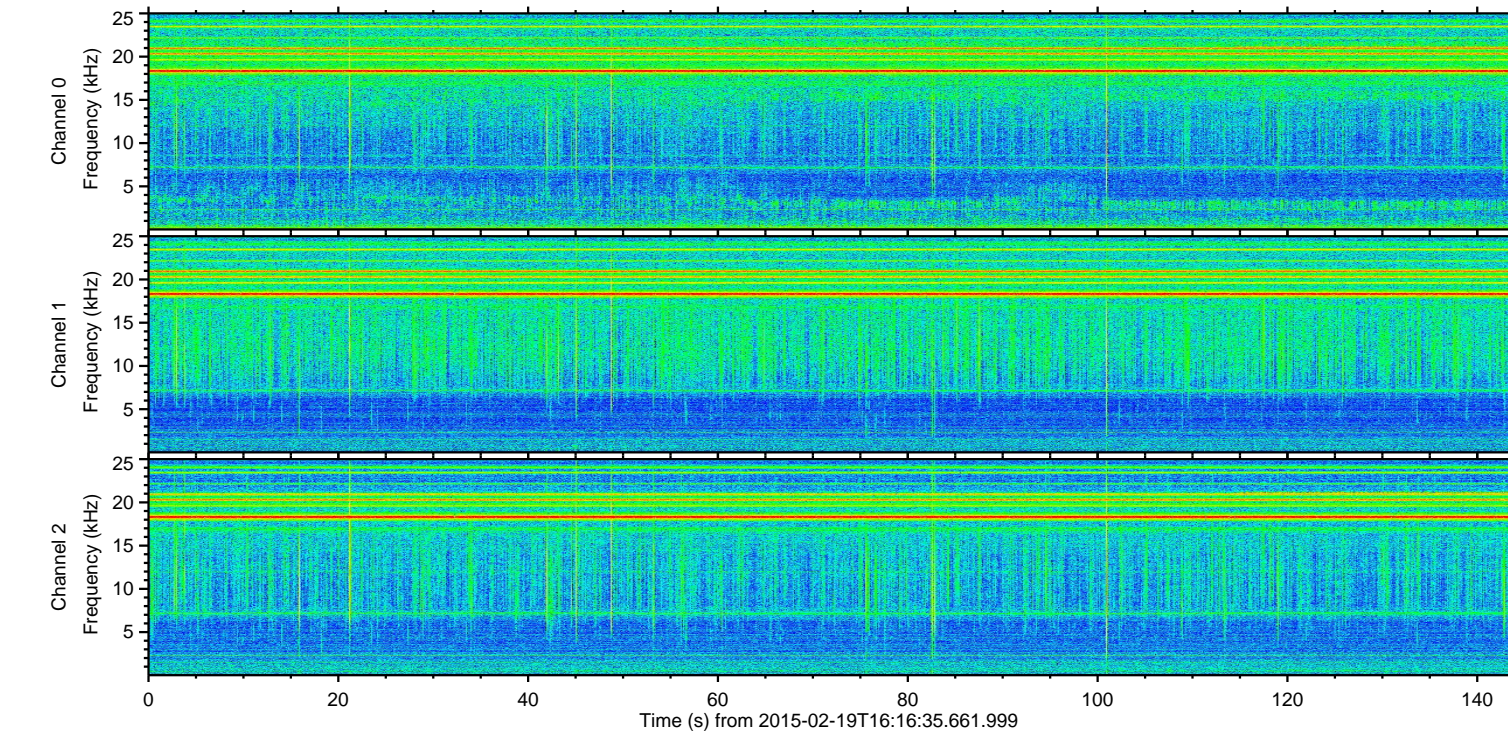
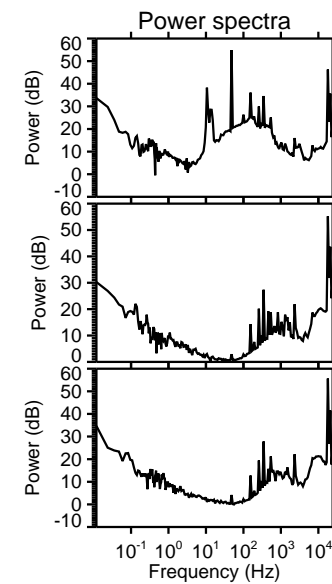
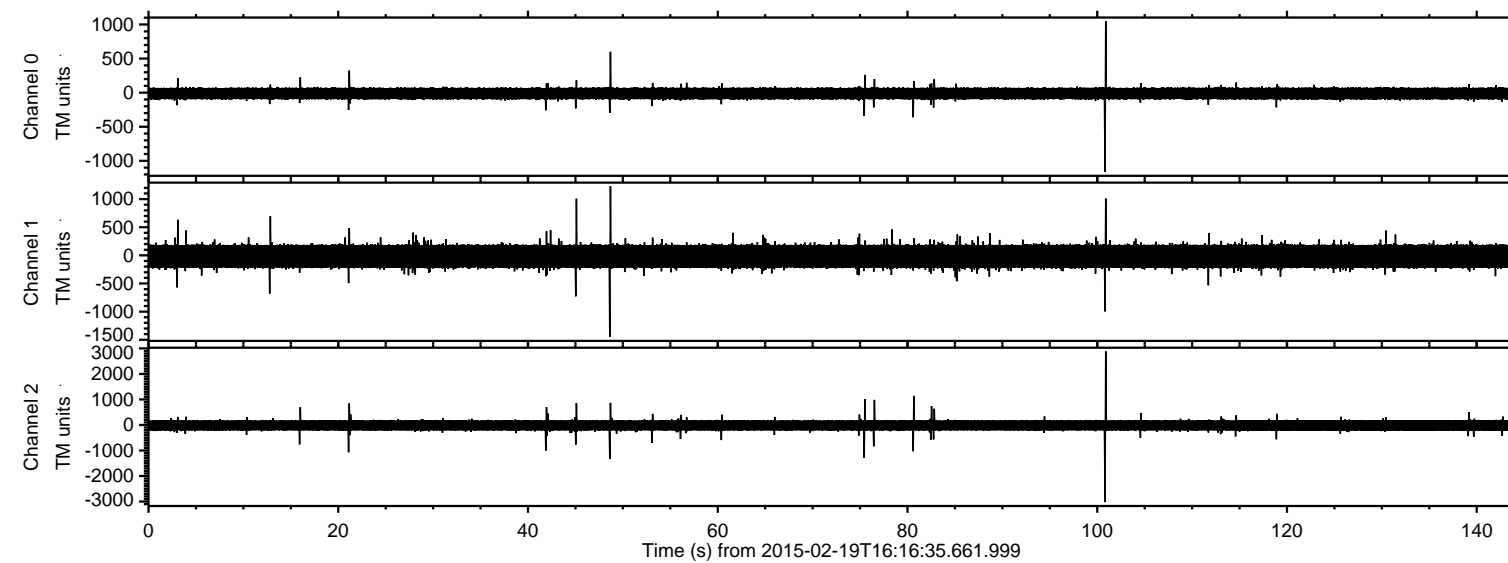
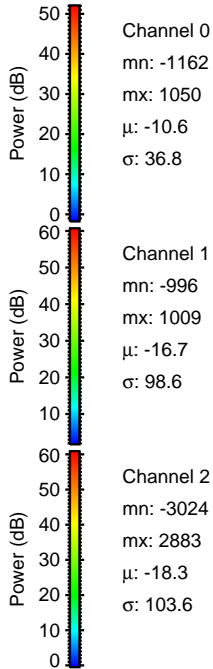
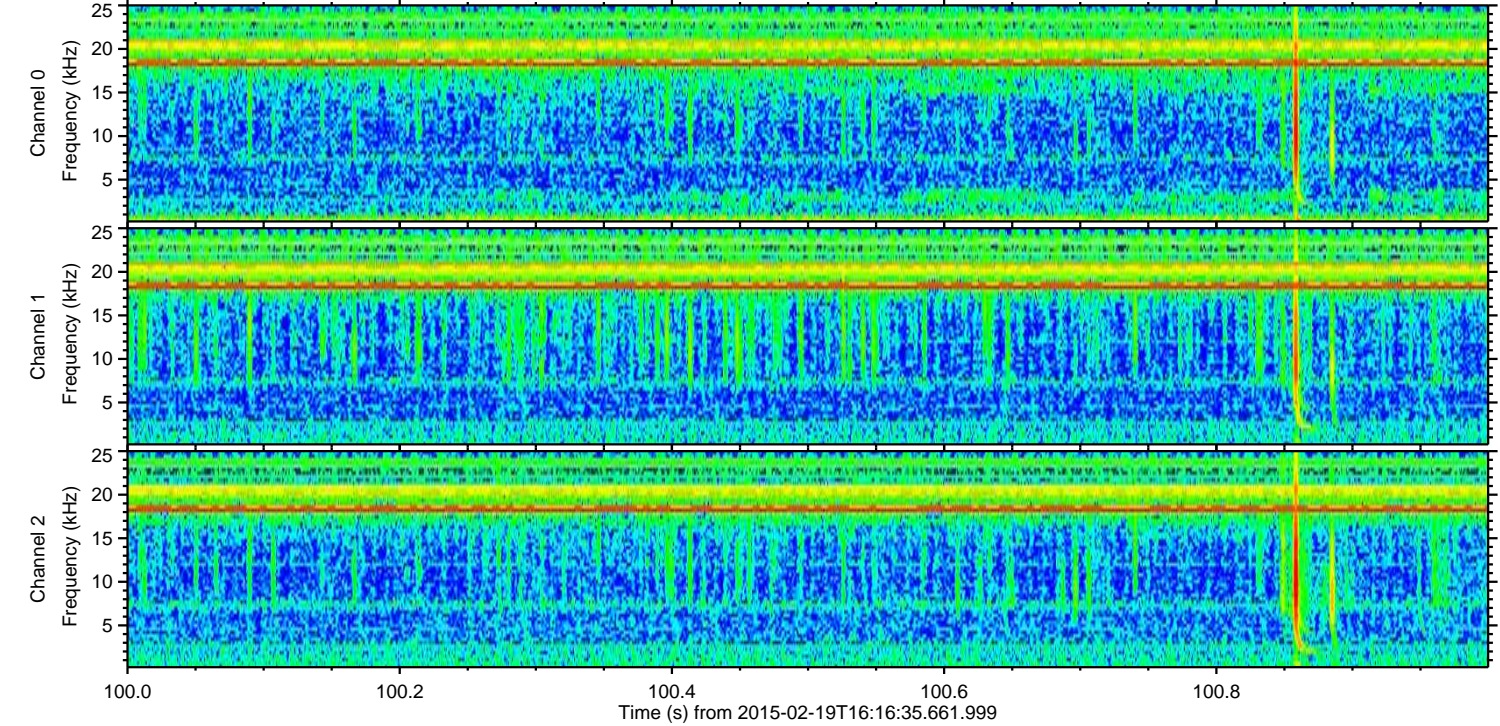
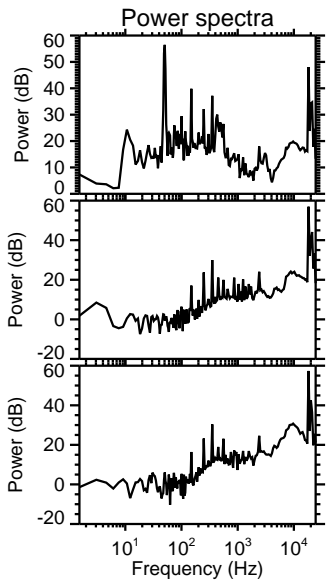
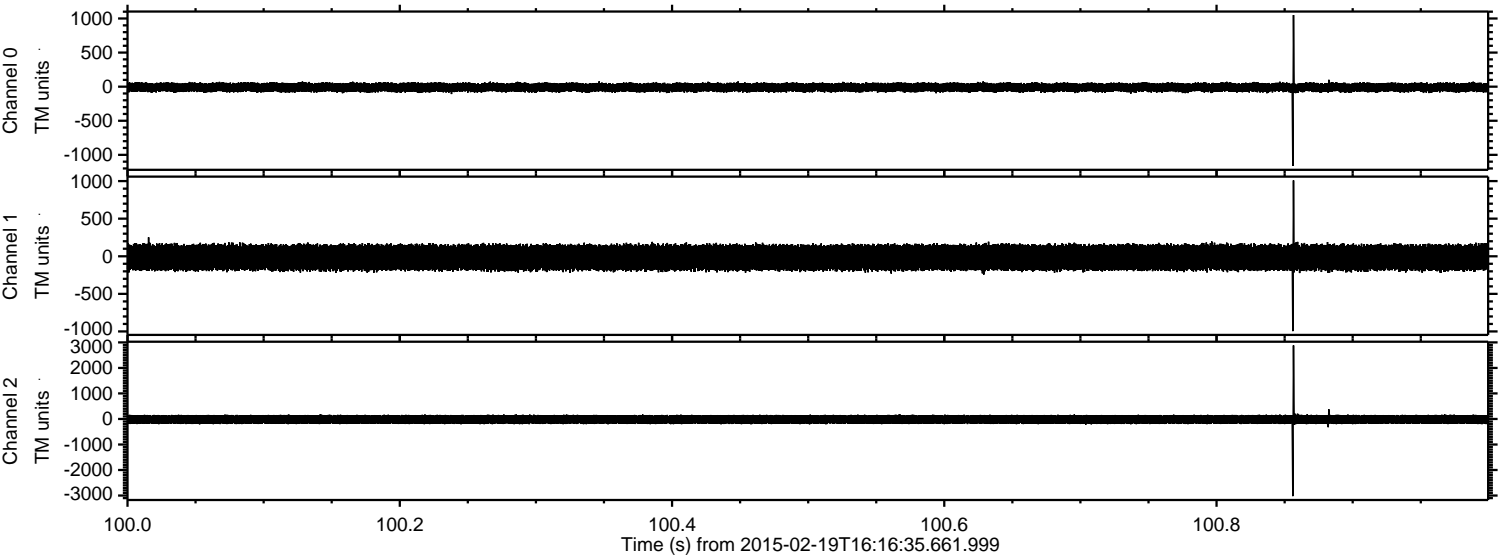


ELMAVAN 3D WAVEFORMS (Measured data sampled at 50 kHz) 49797 packets of 144 samples from 2015-02-19T16:16:35.661.999.

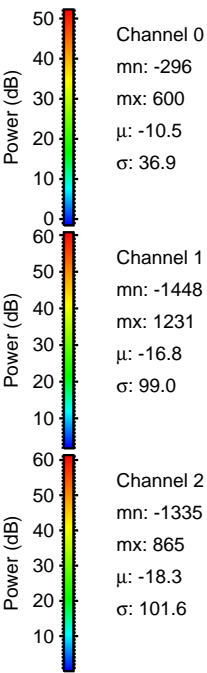
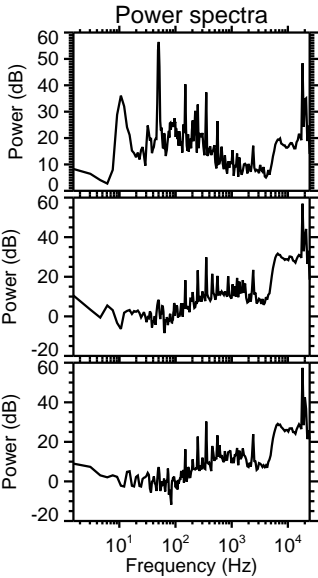
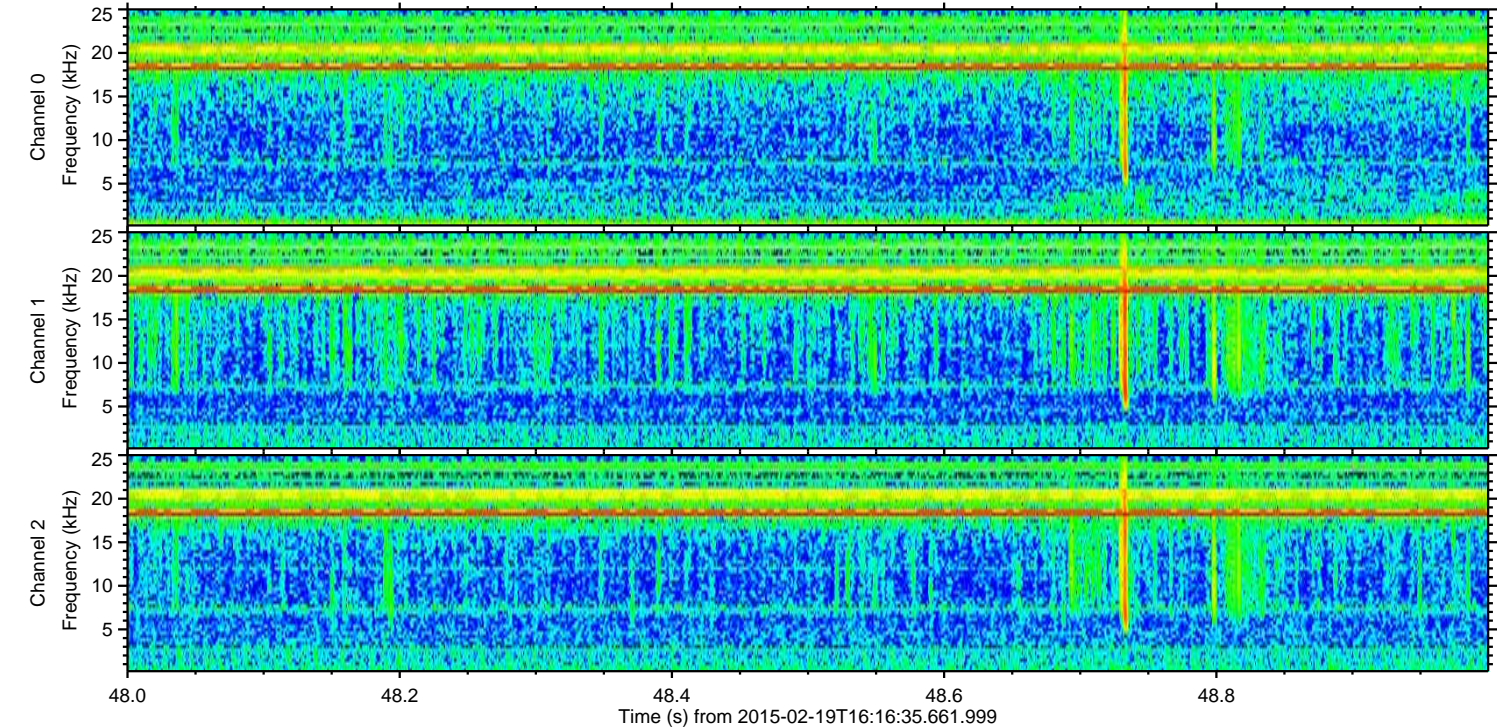
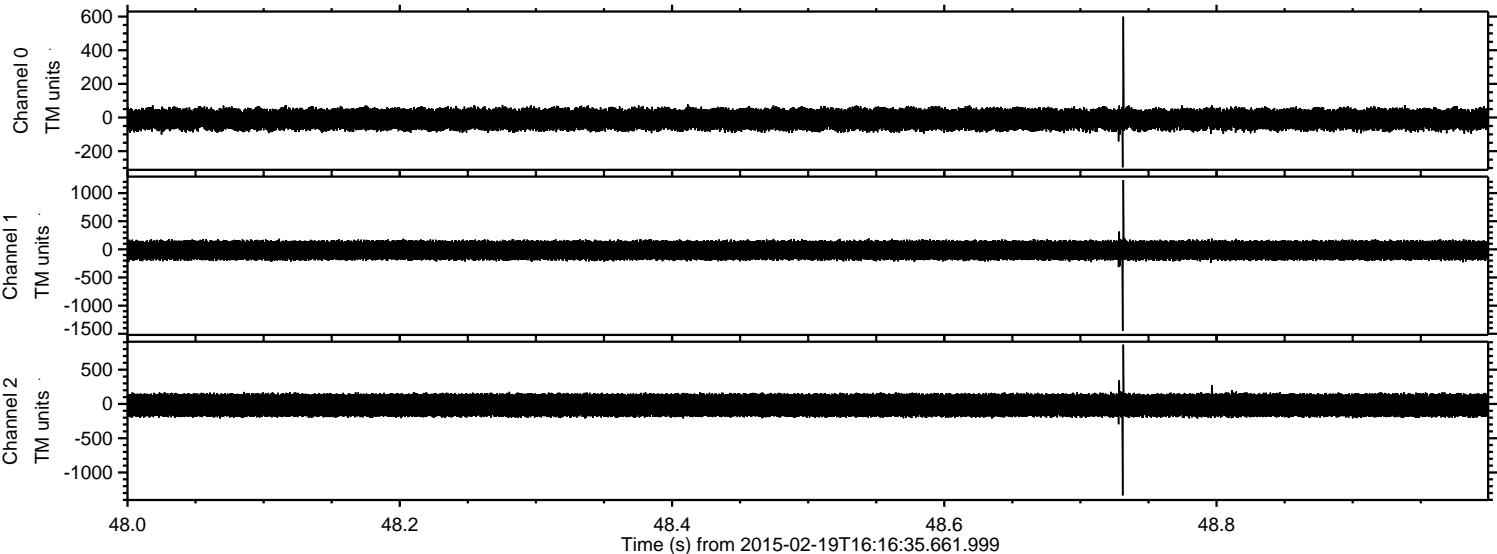
Processed Fri Feb 27 18:29:49 2015 by ELM ver.2012-10-06 from 001__elm20150219_161634__dat00.bin



Processed Fri Feb 27 18:30:00 2015 by ELM ver.2012-10-06 from 001__elm20150219_161634__dat00.bin

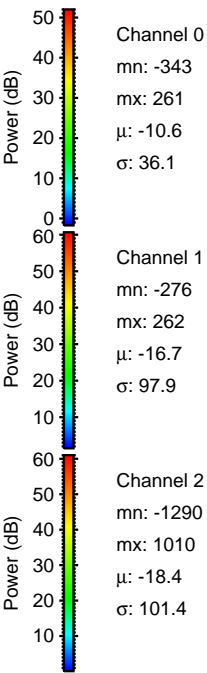
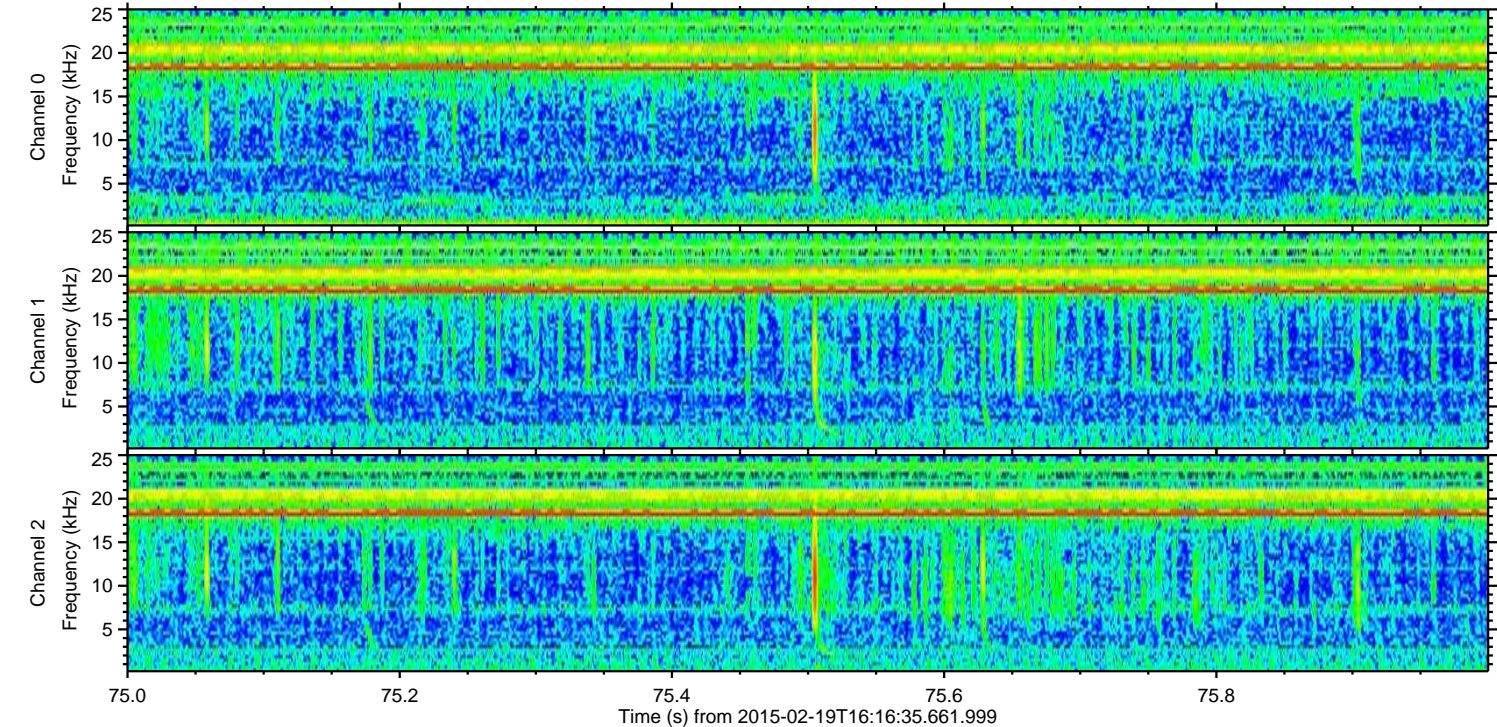
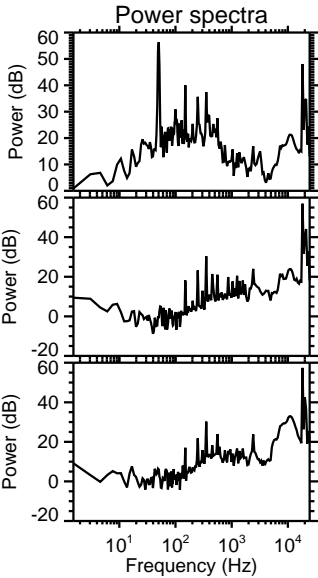
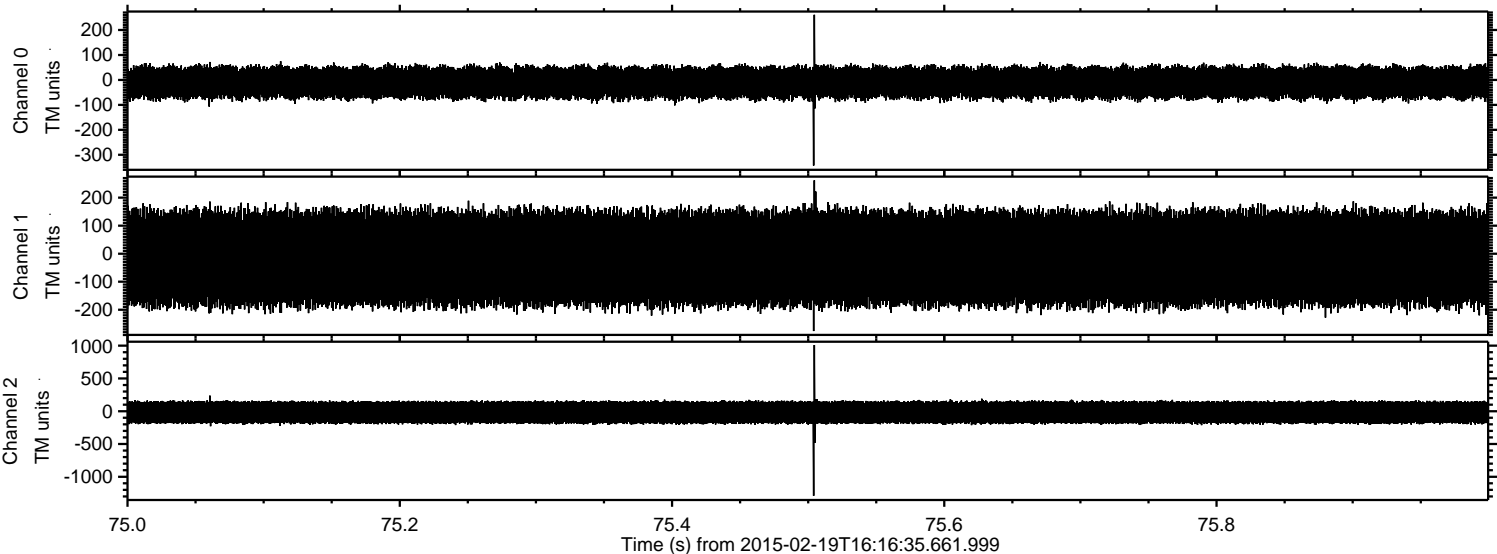


Processed Fri Feb 27 18:30:01 2015 by ELM ver.2012-10-06 from 001__elm20150219_161634__dat00.bin

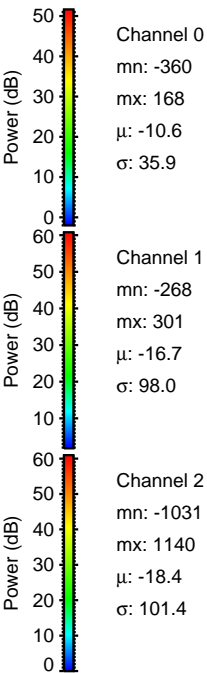
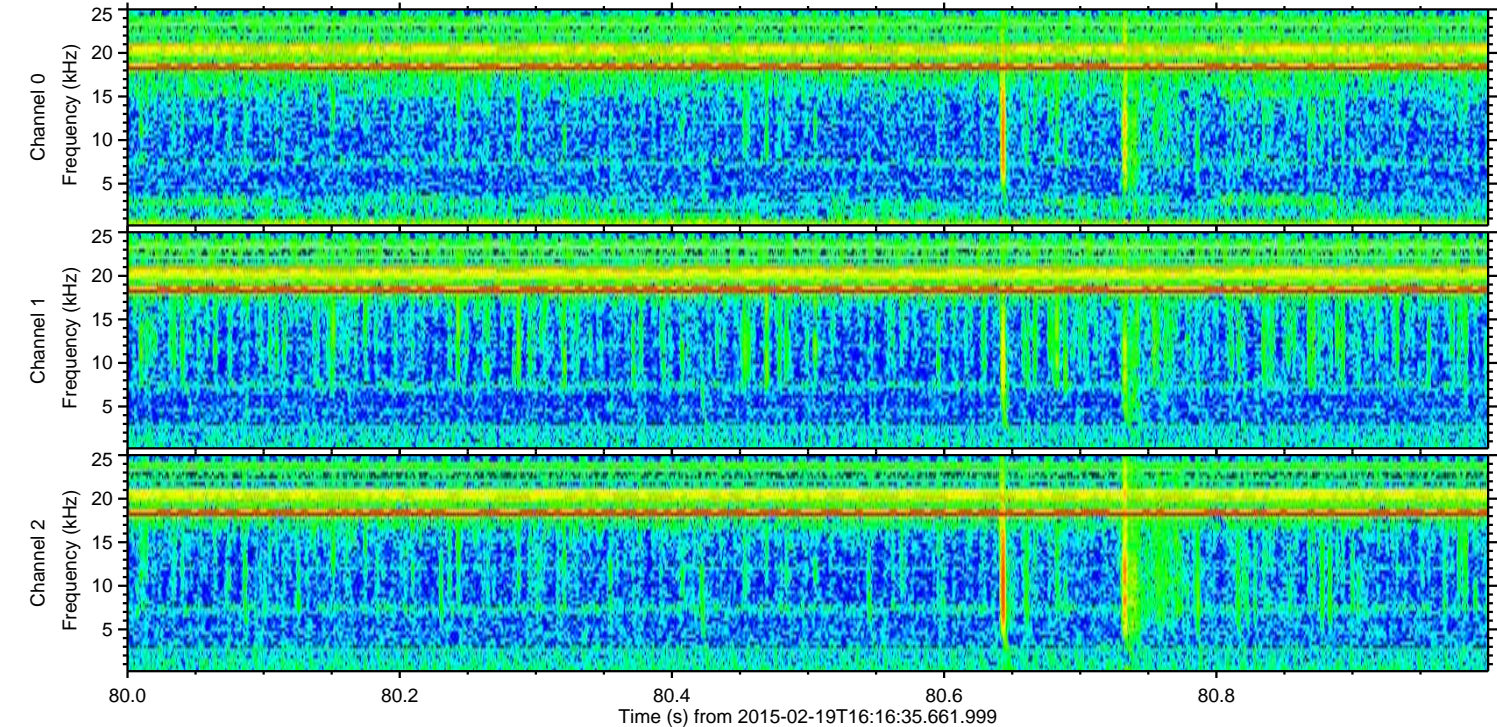
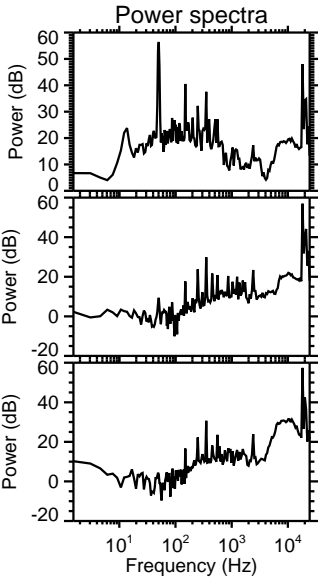
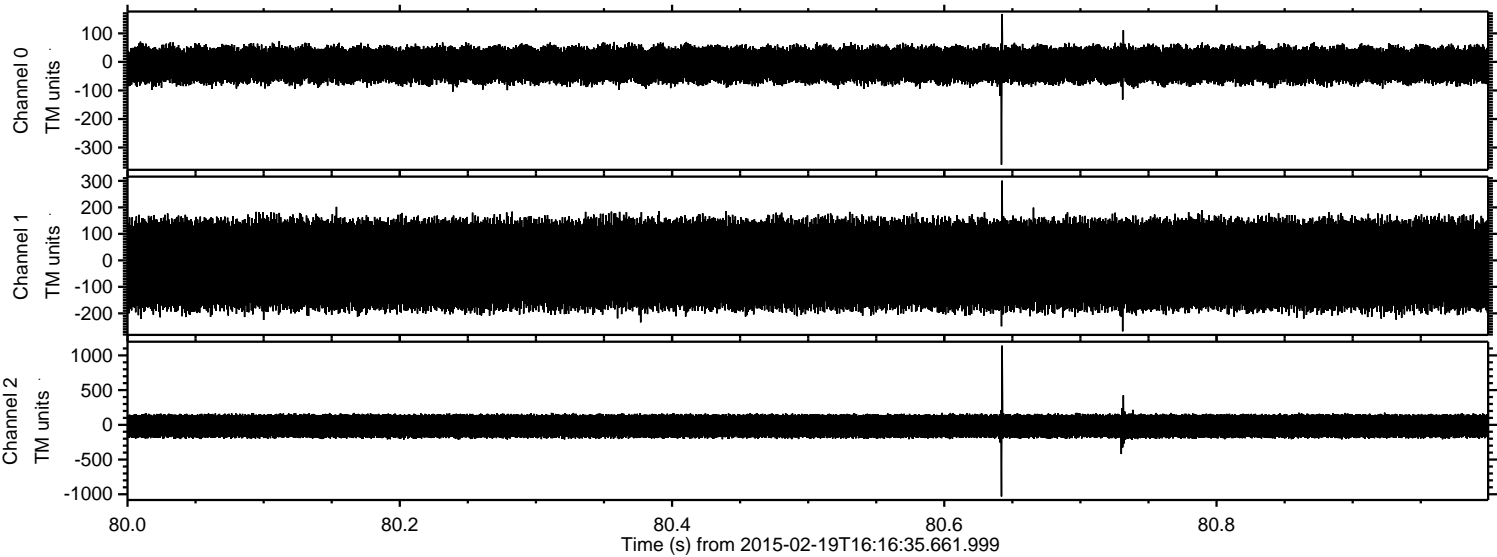


ELMAVAN 3D WAVEFORMS (Measured data sampled at 50 kHz) 49797 packets of 144 samples from 2015-02-19T16:16:35.661.999. Part 76/144

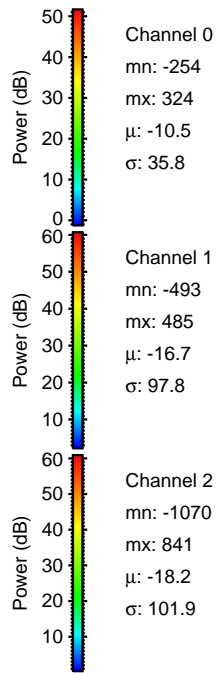
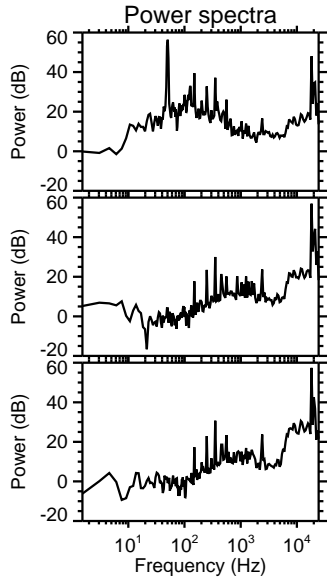
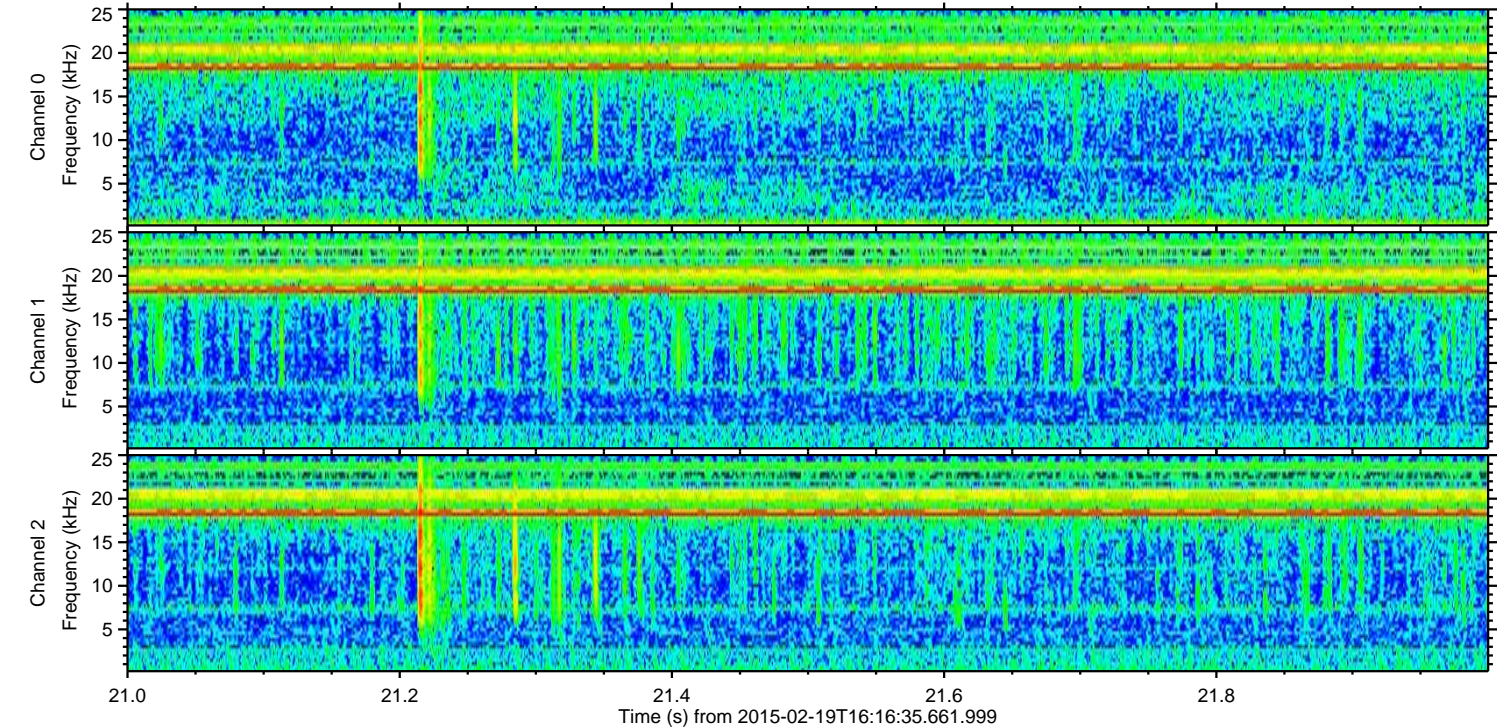
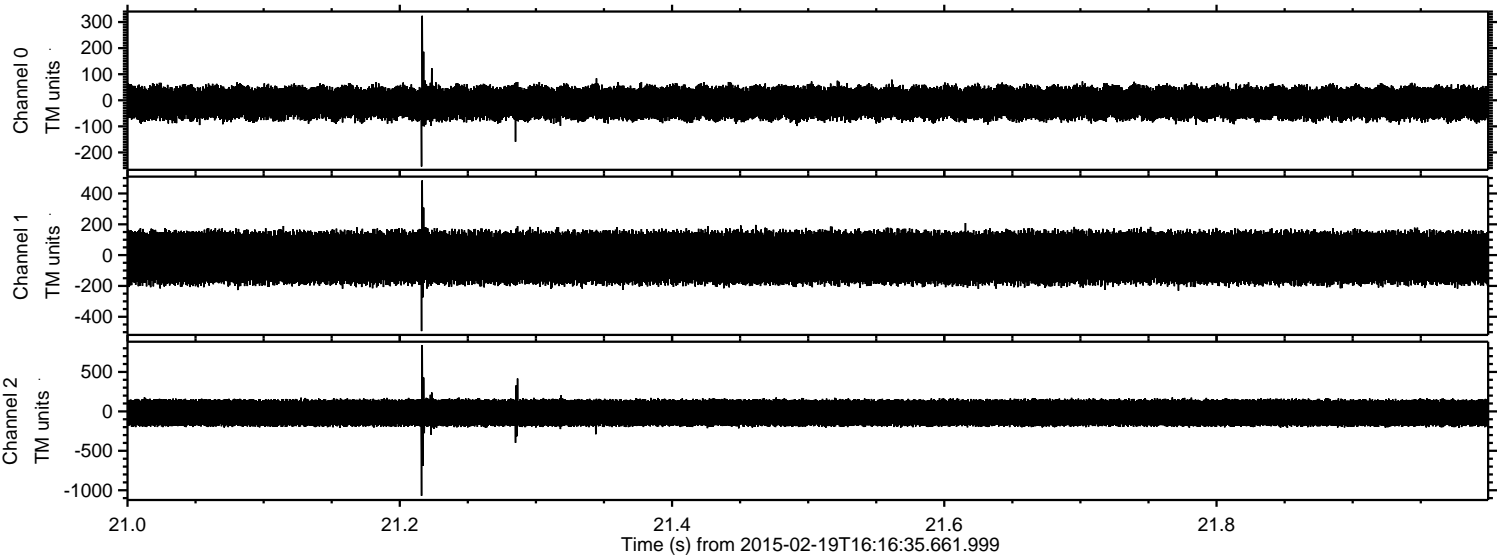
Processed Fri Feb 27 18:30:02 2015 by ELM ver.2012-10-06 from 001__elm20150219_161634__dat00.bin



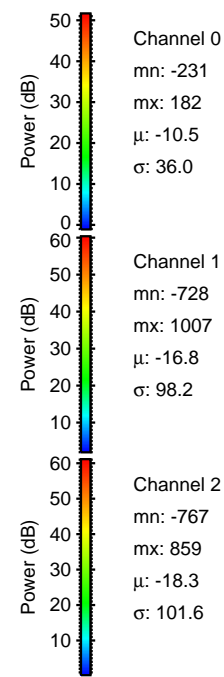
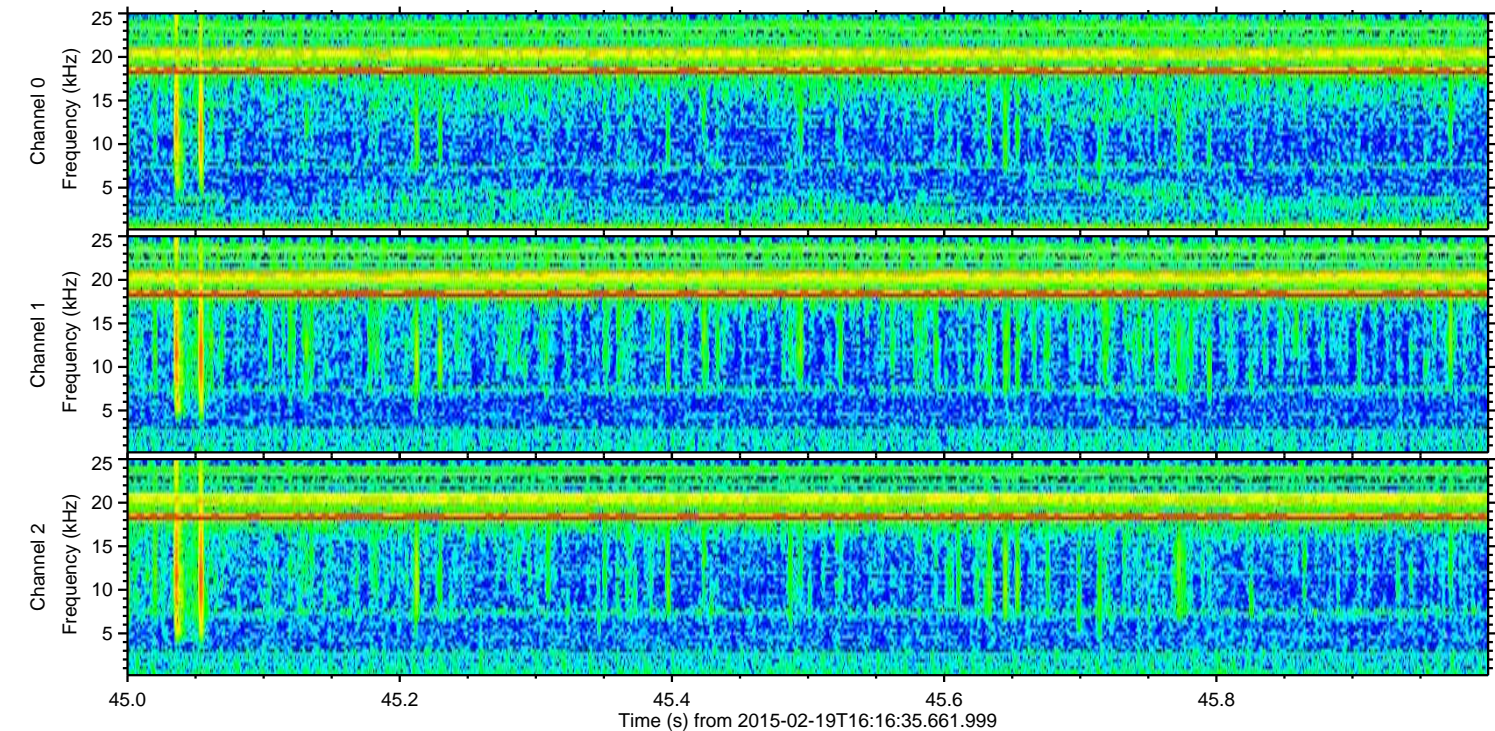
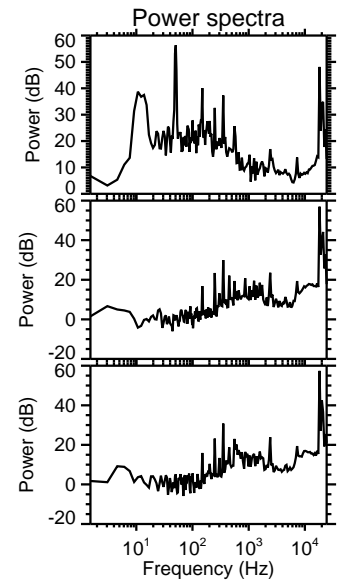
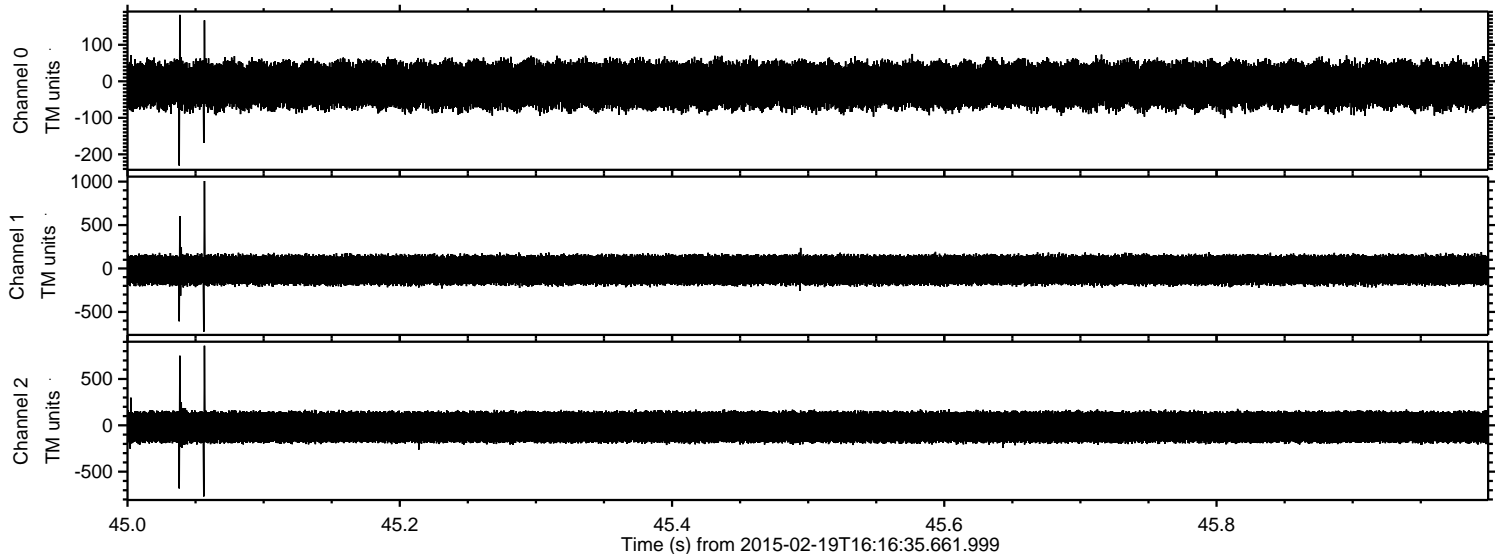
Processed Fri Feb 27 18:30:03 2015 by ELM ver.2012-10-06 from 001__elm20150219_161634__dat00.bin



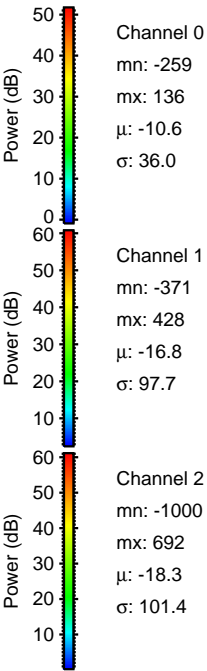
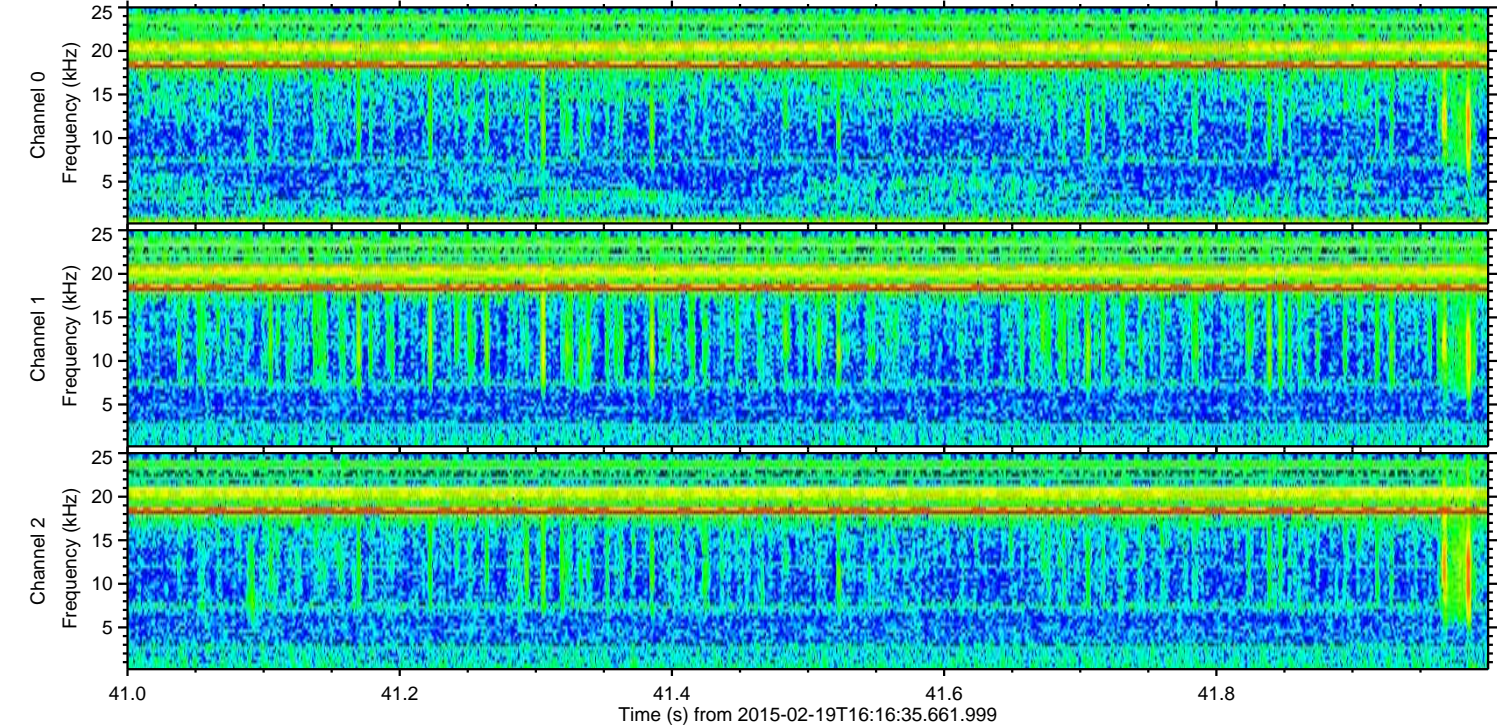
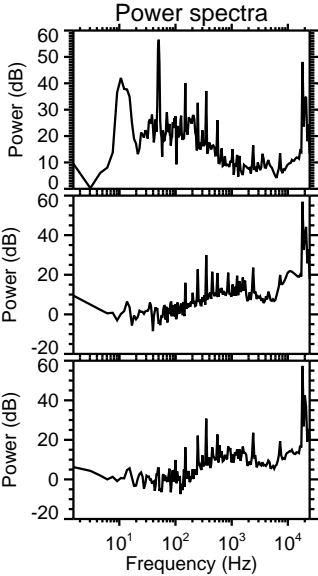
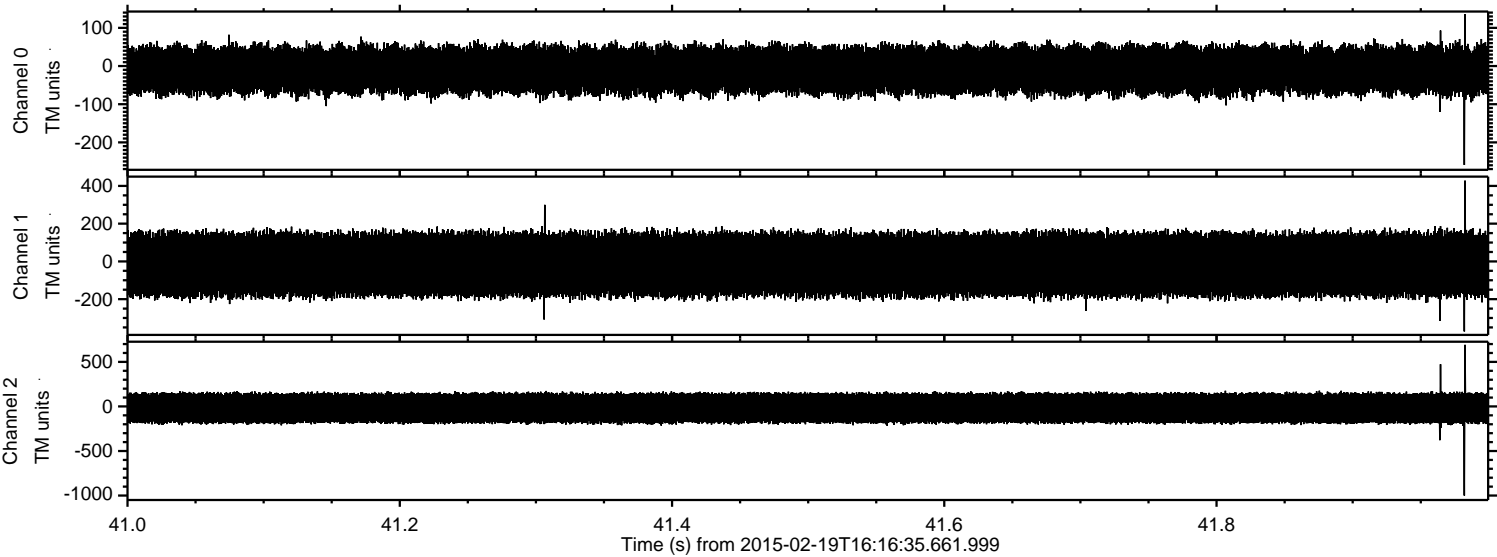
Processed Fri Feb 27 18:30:04 2015 by ELM ver.2012-10-06 from 001__elm20150219_161634__dat00.bin



Processed Fri Feb 27 18:30:05 2015 by ELM ver.2012-10-06 from 001__elm20150219_161634__dat00.bin

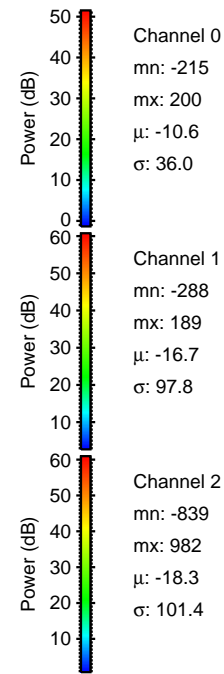
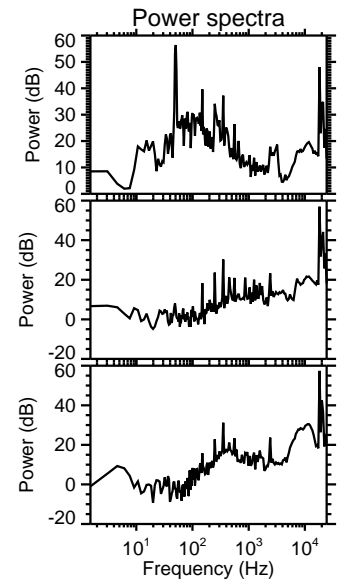
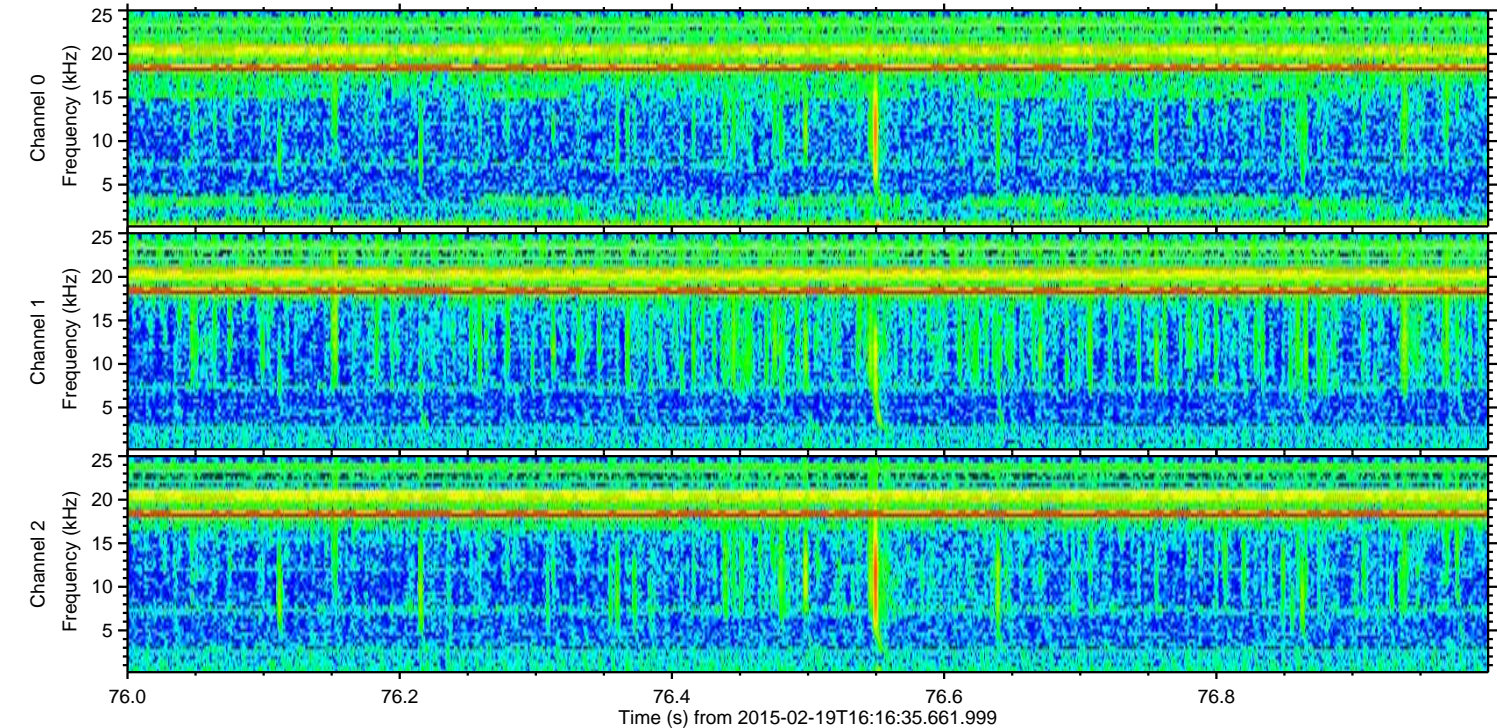
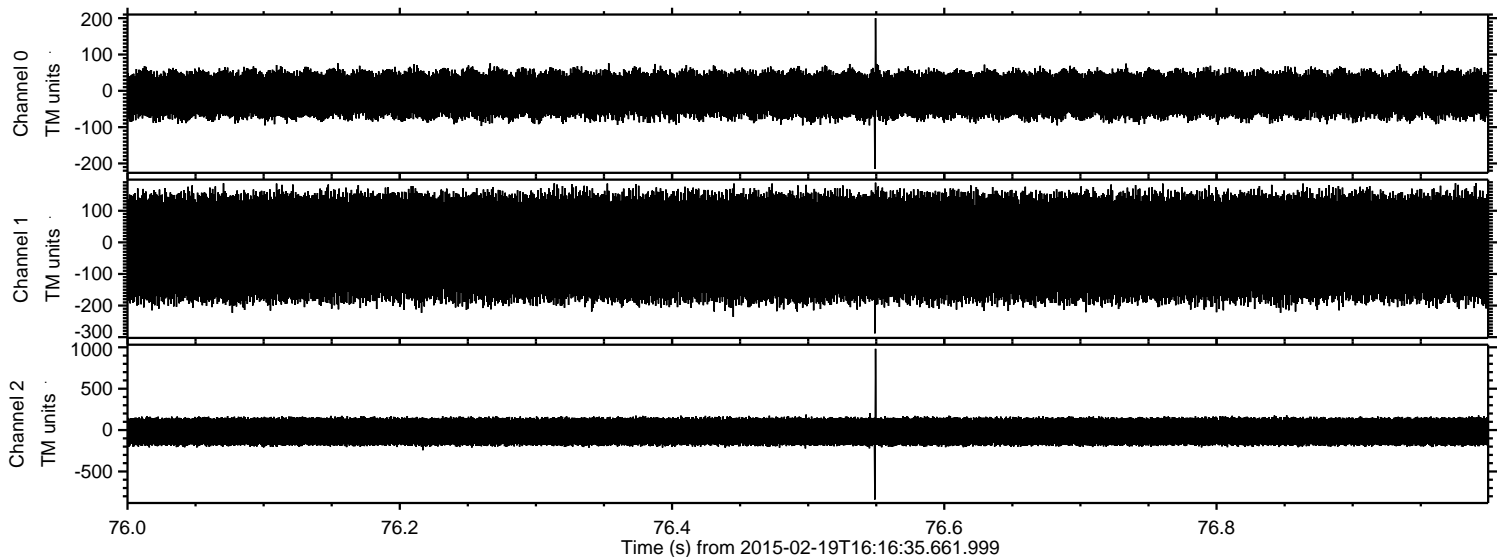


Processed Fri Feb 27 18:30:06 2015 by ELM ver.2012-10-06 from 001__elm20150219_161634__dat00.bin



ELMAVAN 3D WAVEFORMS (Measured data sampled at 50 kHz) 49797 packets of 144 samples from 2015-02-19T16:16:35.661.999. Part 77/144

Processed Fri Feb 27 18:30:07 2015 by ELM ver.2012-10-06 from 001__elm20150219_161634__dat00.bin

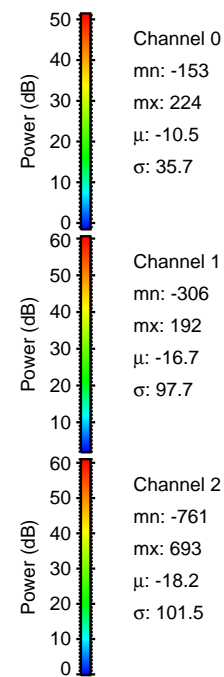
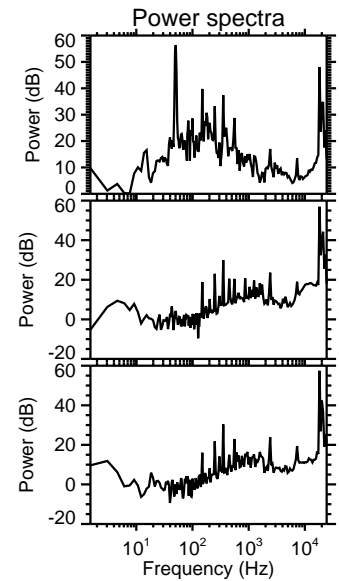
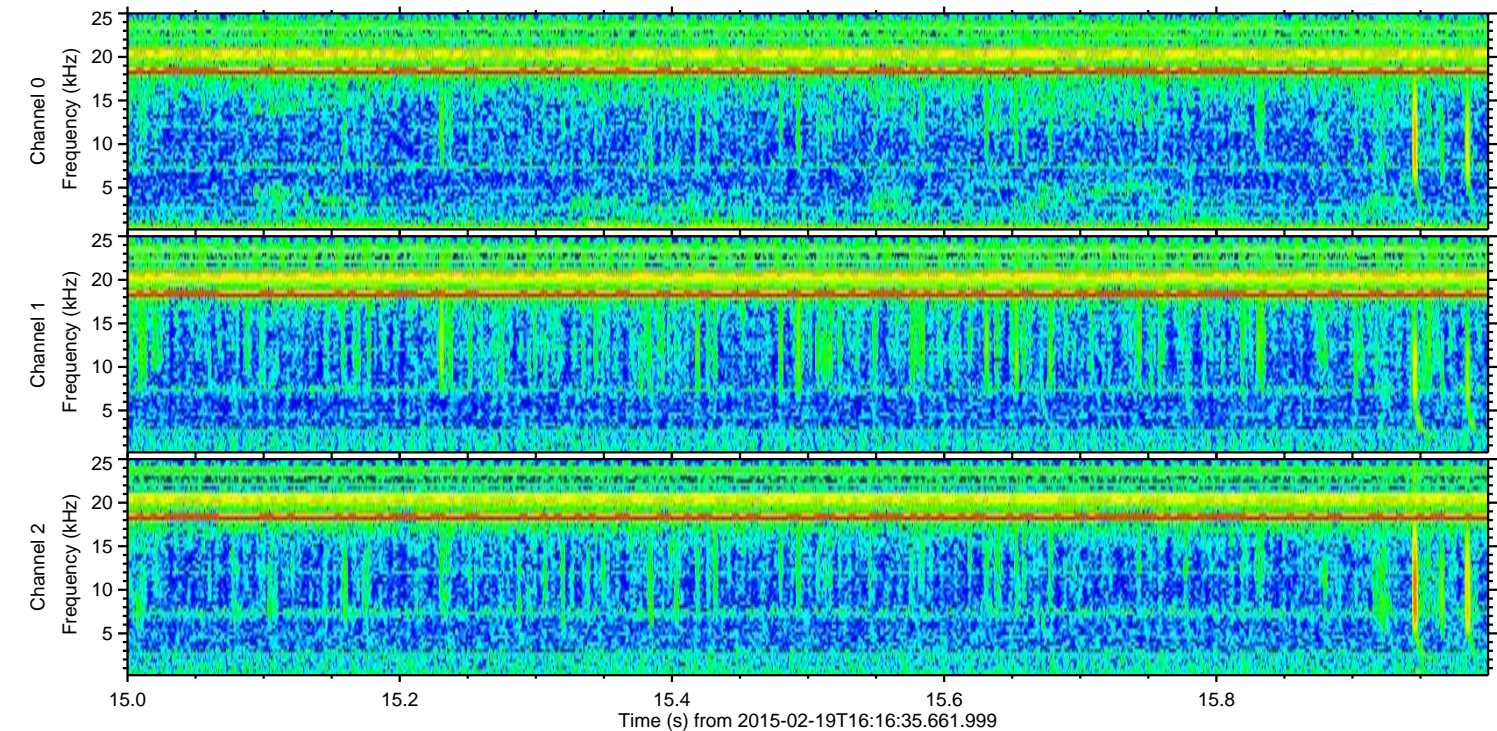
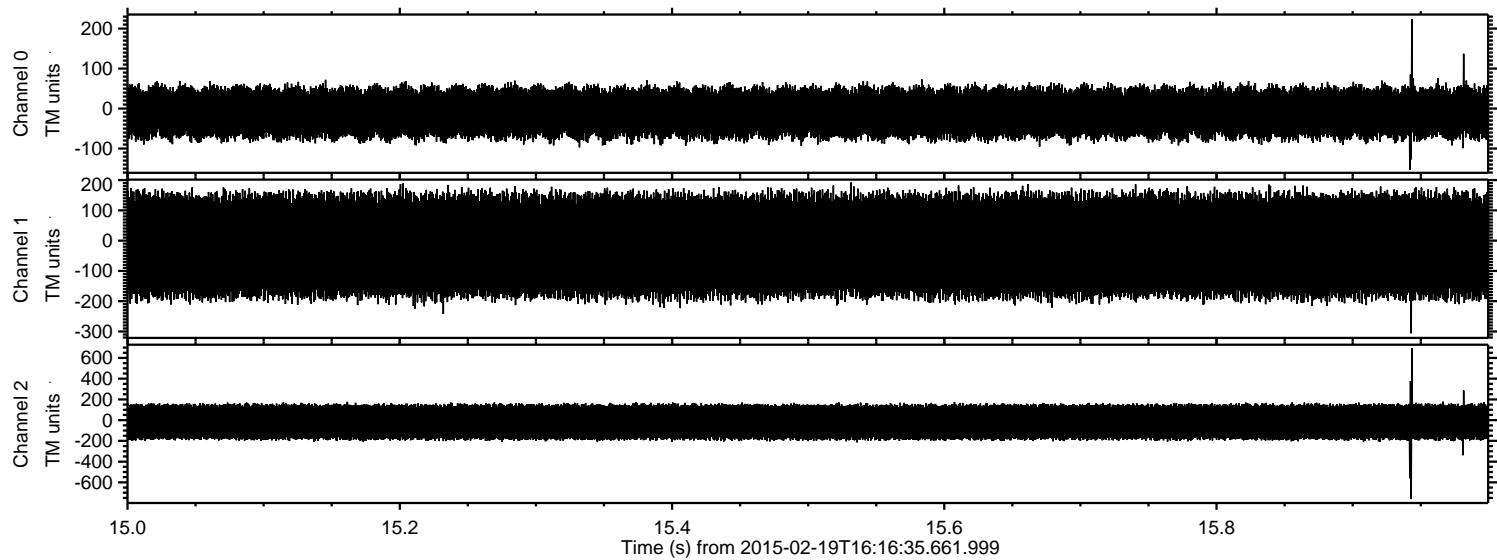


Channel 0
mn: -215
mx: 200
 μ : -10.6
 σ : 36.0

Channel 1
mn: -288
mx: 189
 μ : -16.7
 σ : 97.8

Channel 2
mn: -839
mx: 982
 μ : -18.3
 σ : 101.4

Processed Fri Feb 27 18:30:08 2015 by ELM ver.2012-10-06 from 001__elm20150219_161634__dat00.bin



Channel 0
mn: -153
mx: 224
 μ : -10.5
 σ : 35.7

Channel 1
mn: -306
mx: 192
 μ : -16.7
 σ : 97.7

Channel 2
mn: -761
mx: 693
 μ : -18.2
 σ : 101.5

Processed Fri Feb 27 18:30:09 2015 by ELM ver.2012-10-06 from 001__elm20150219_161634__dat00.bin

