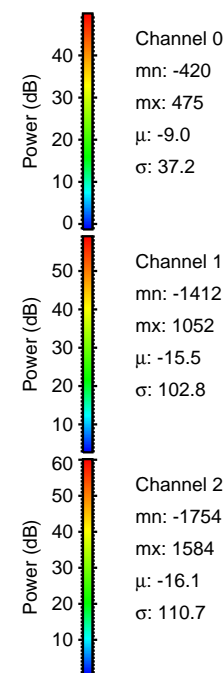
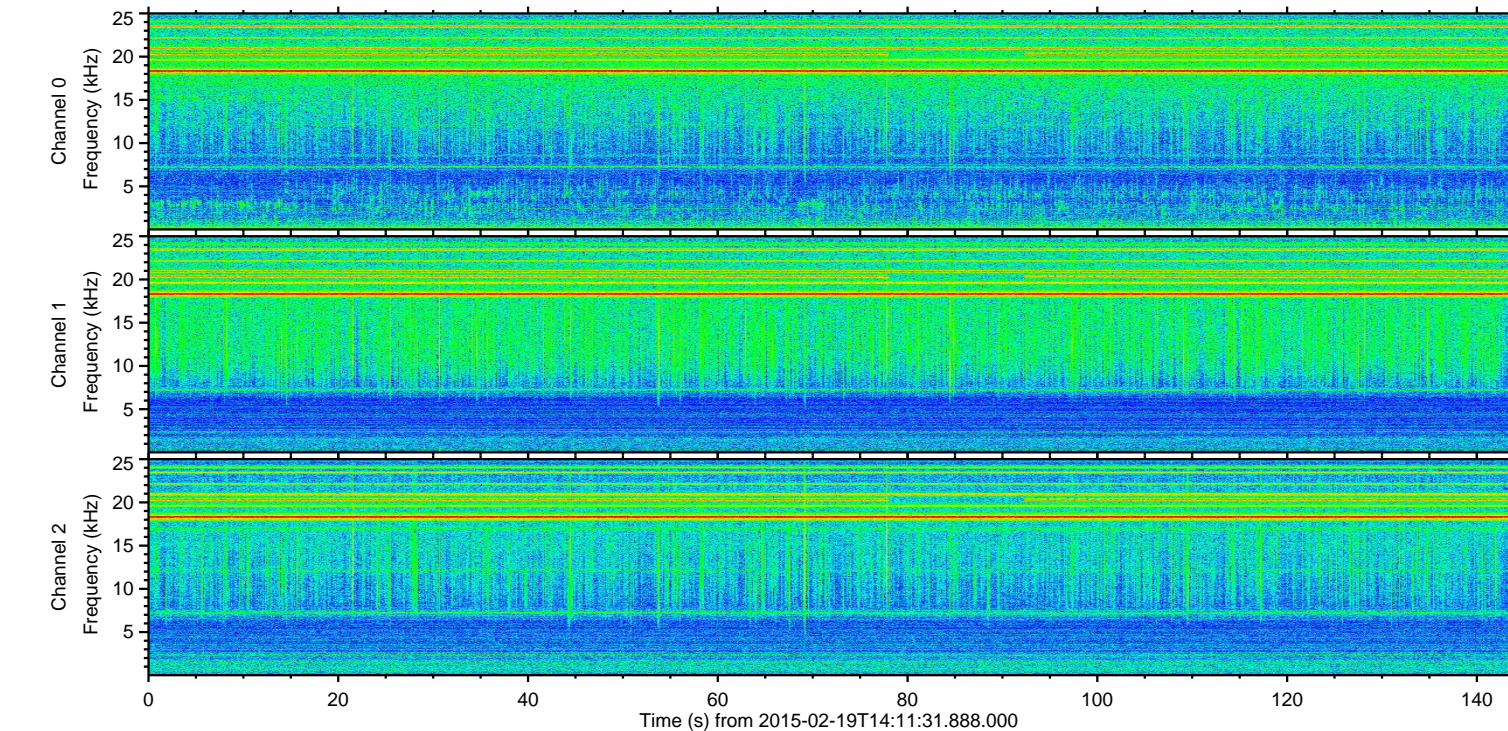
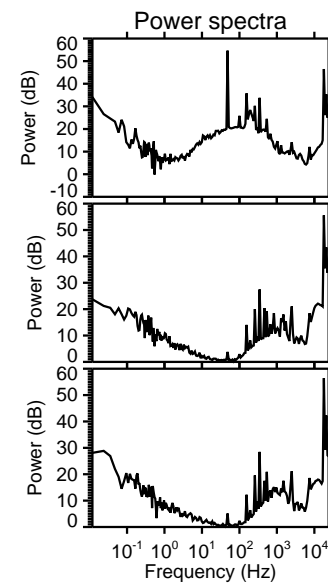
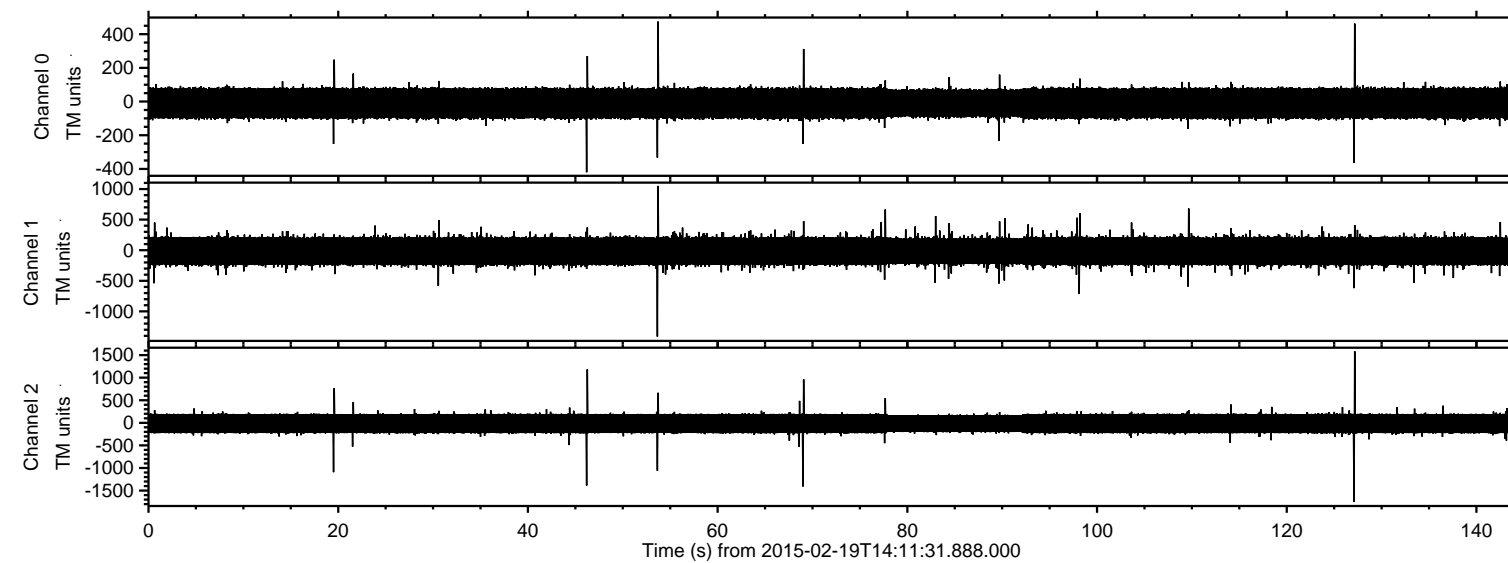


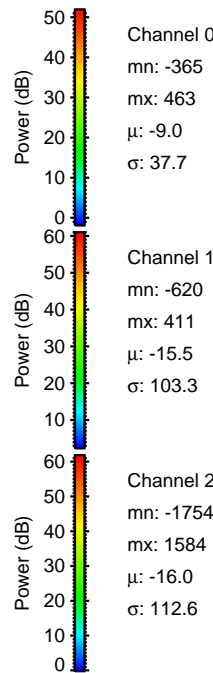
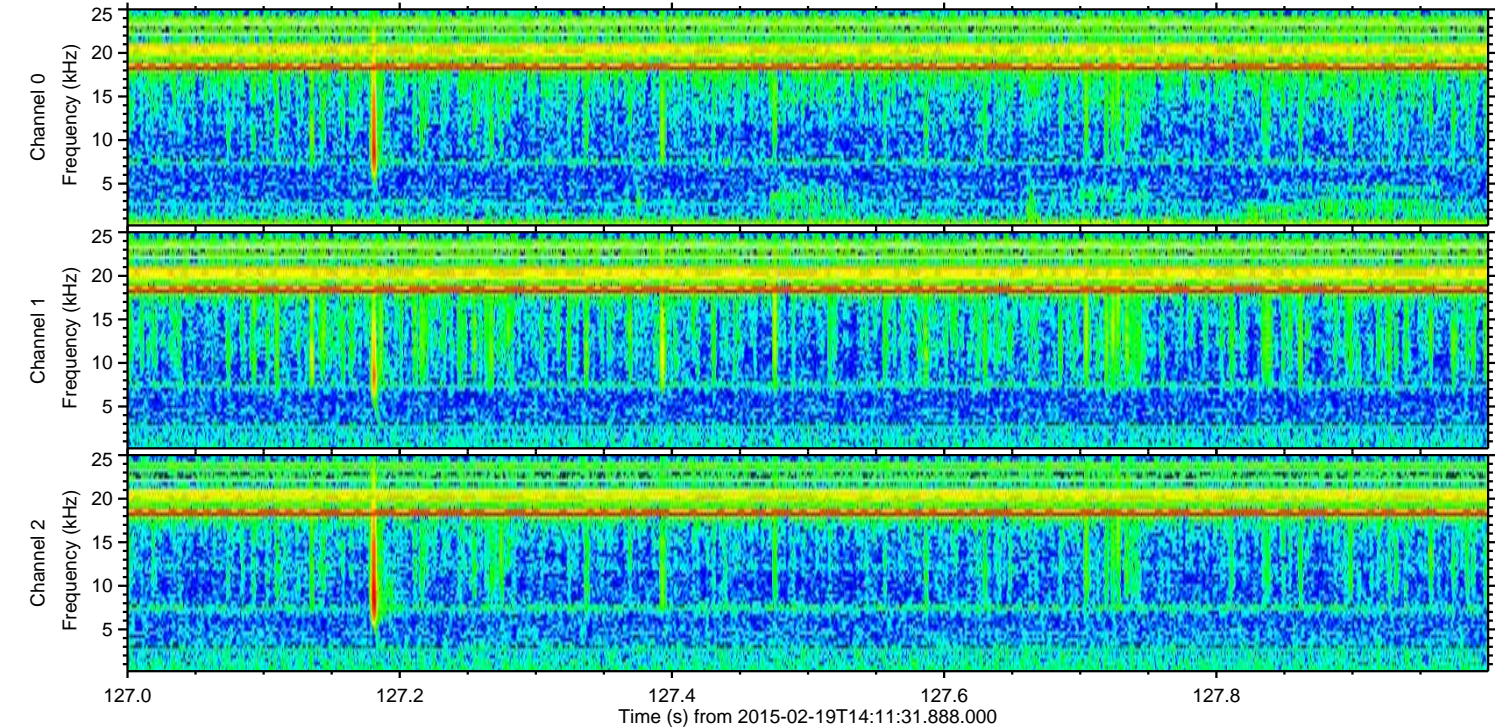
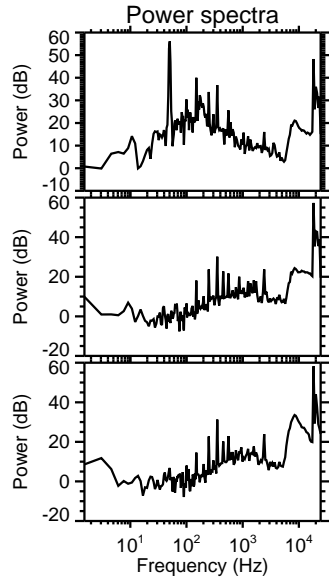
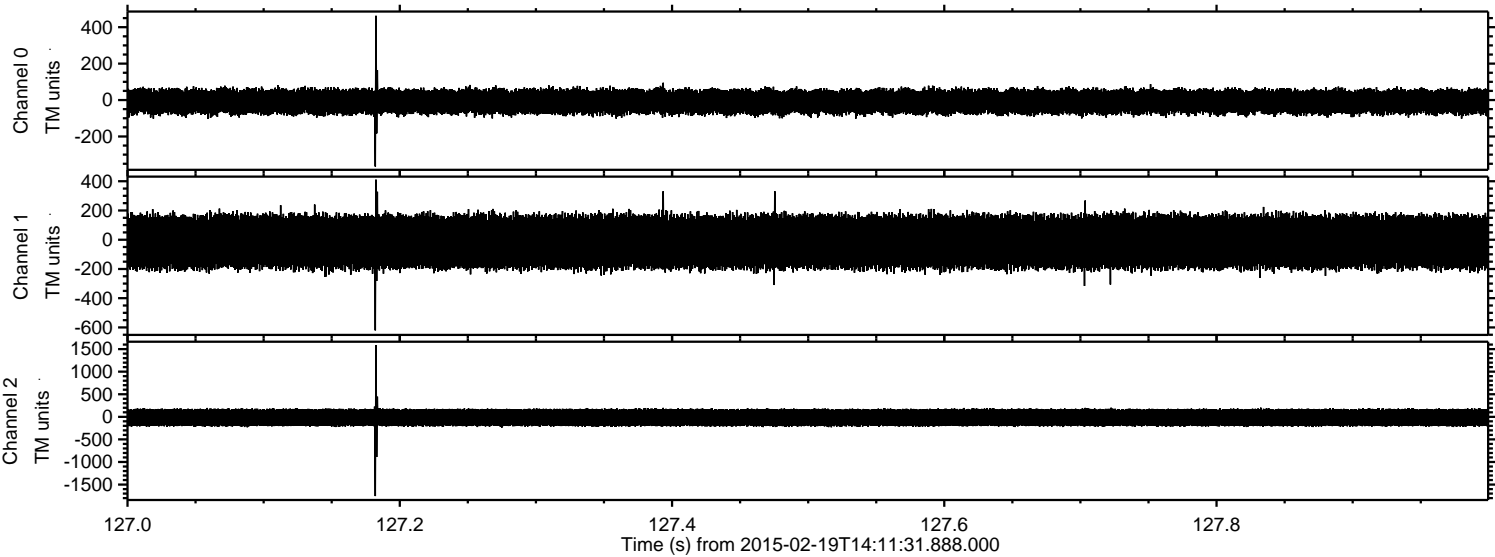
# ELMAVAN 3D WAVEFORMS (Measured data sampled at 50 kHz) 49808 packets of 144 samples from 2015-02-19T14:11:31.888.000.

Processed Fri Feb 27 16:40:21 2015 by ELM ver.2012-10-06 from 001\_\_elm20150219\_141130\_\_dat00.bin

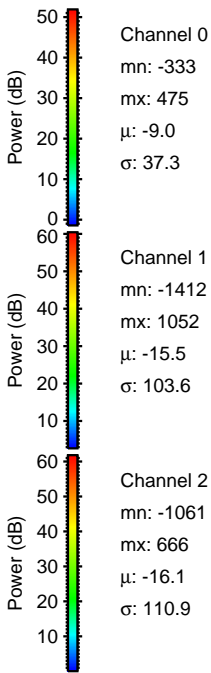
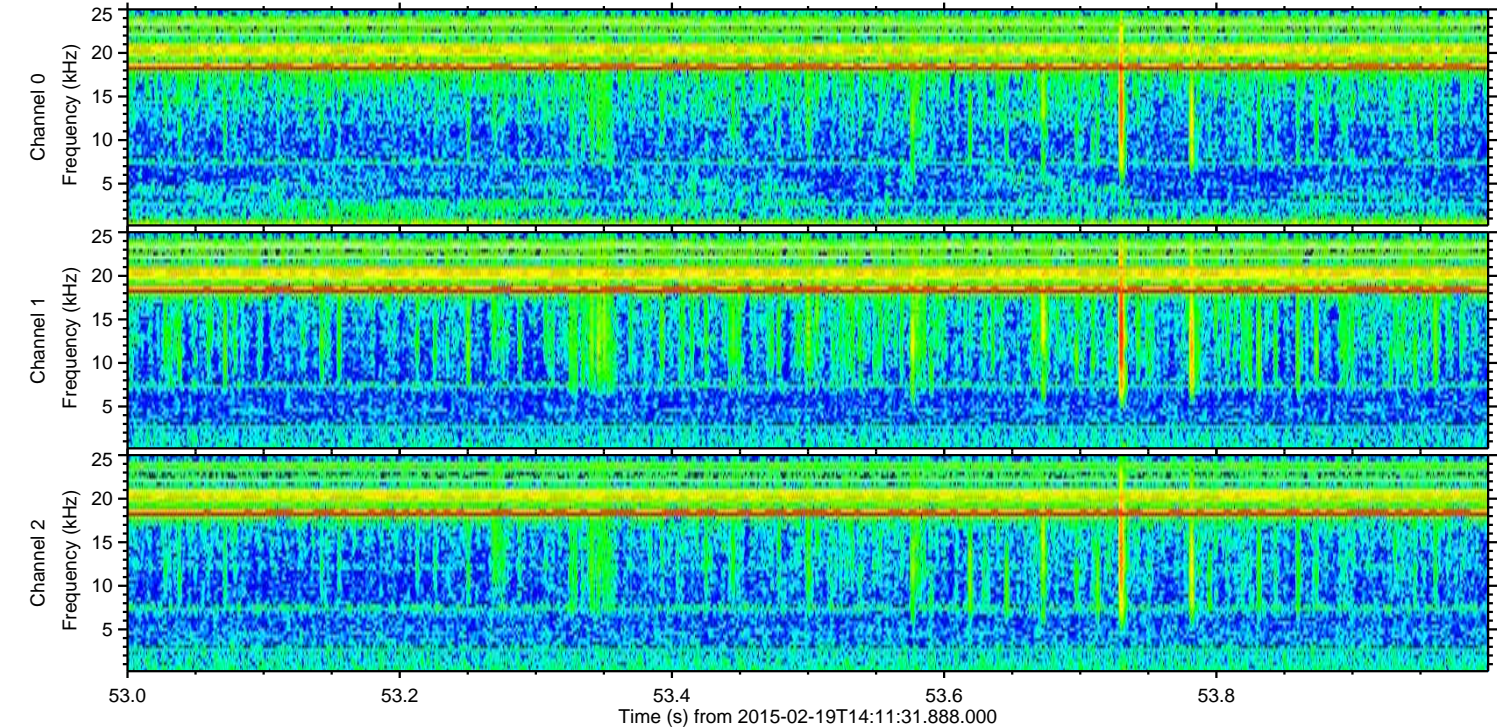
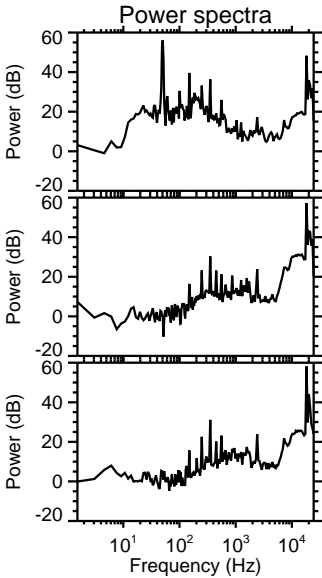
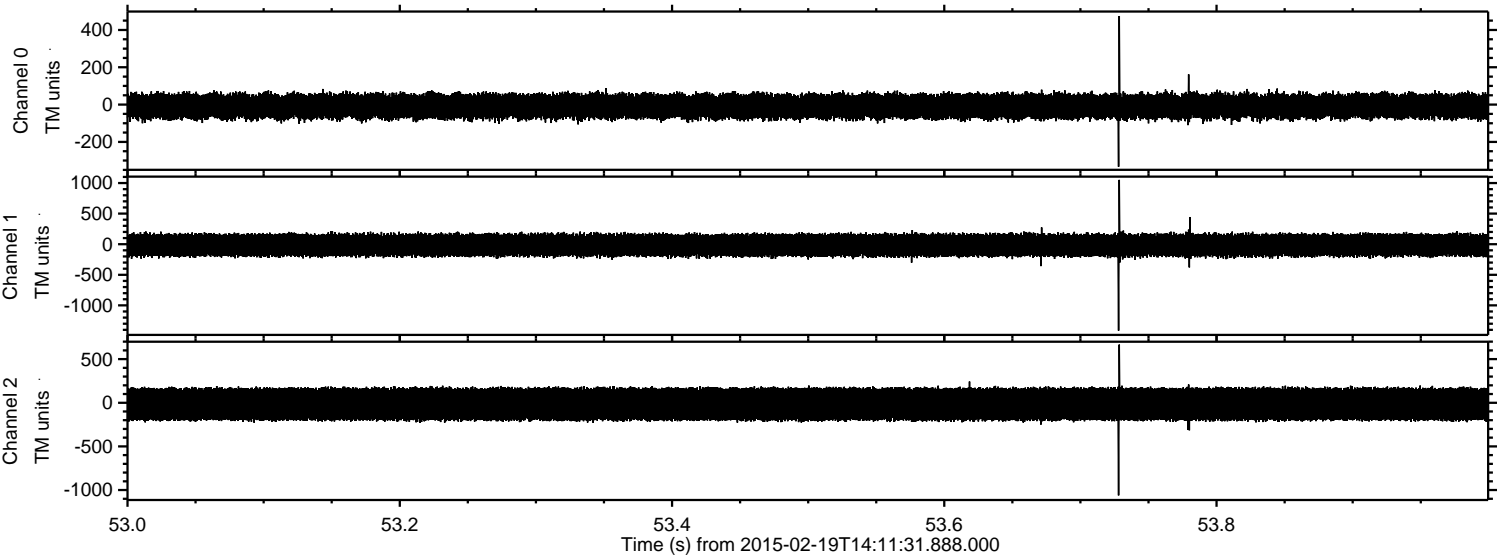


ELMAVAN 3D WAVEFORMS (Measured data sampled at 50 kHz) 49808 packets of 144 samples from 2015-02-19T14:11:31.888.000. Part 128/144

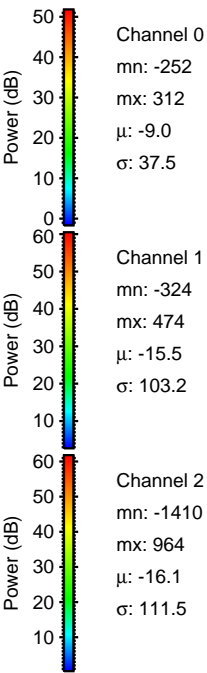
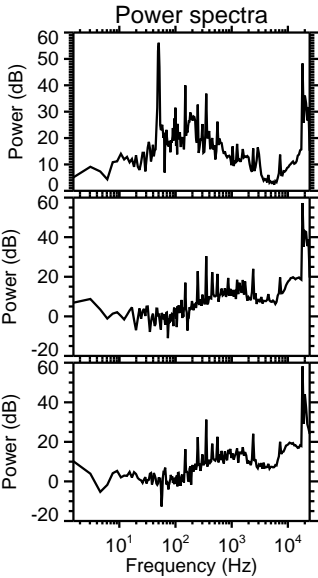
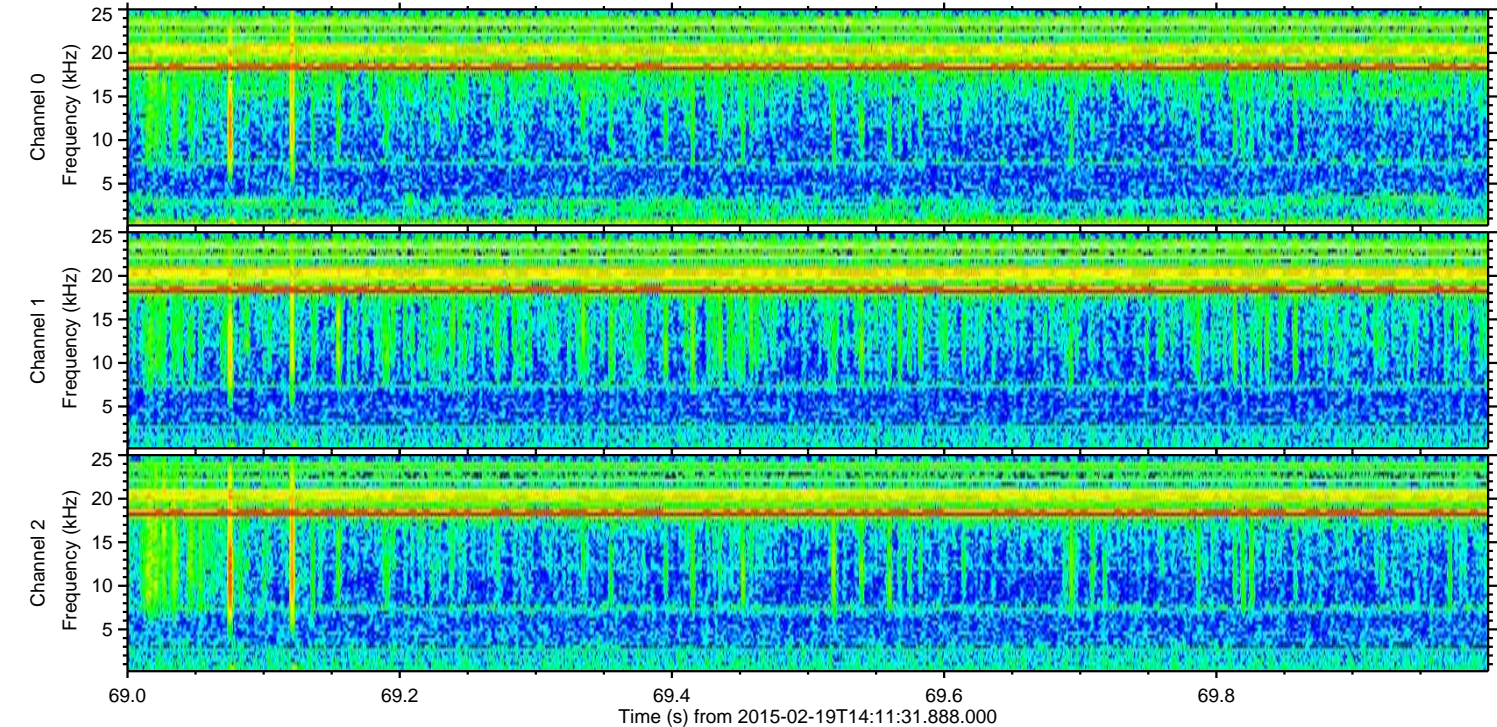
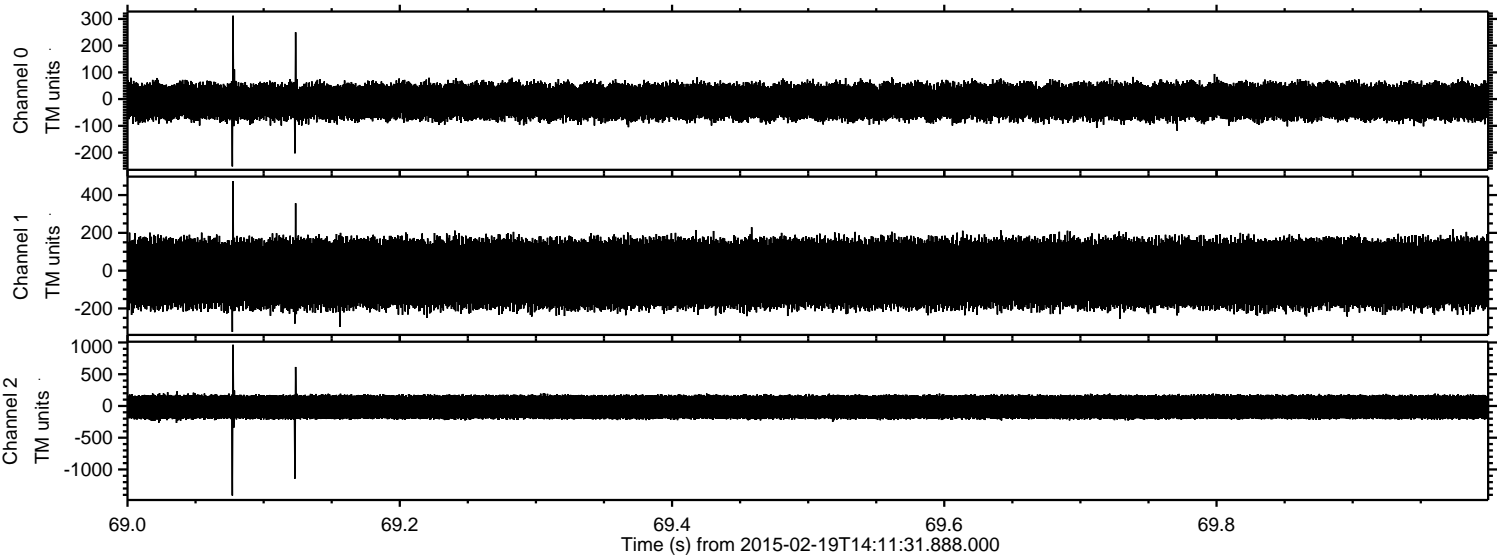
Processed Fri Feb 27 16:40:33 2015 by ELM ver.2012-10-06 from 001\_\_elm20150219\_141130\_\_dat00.bin



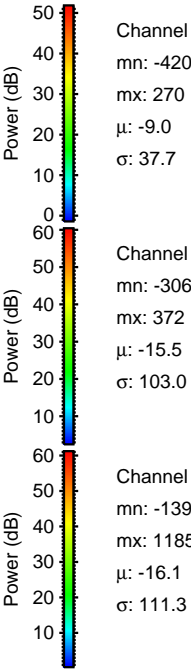
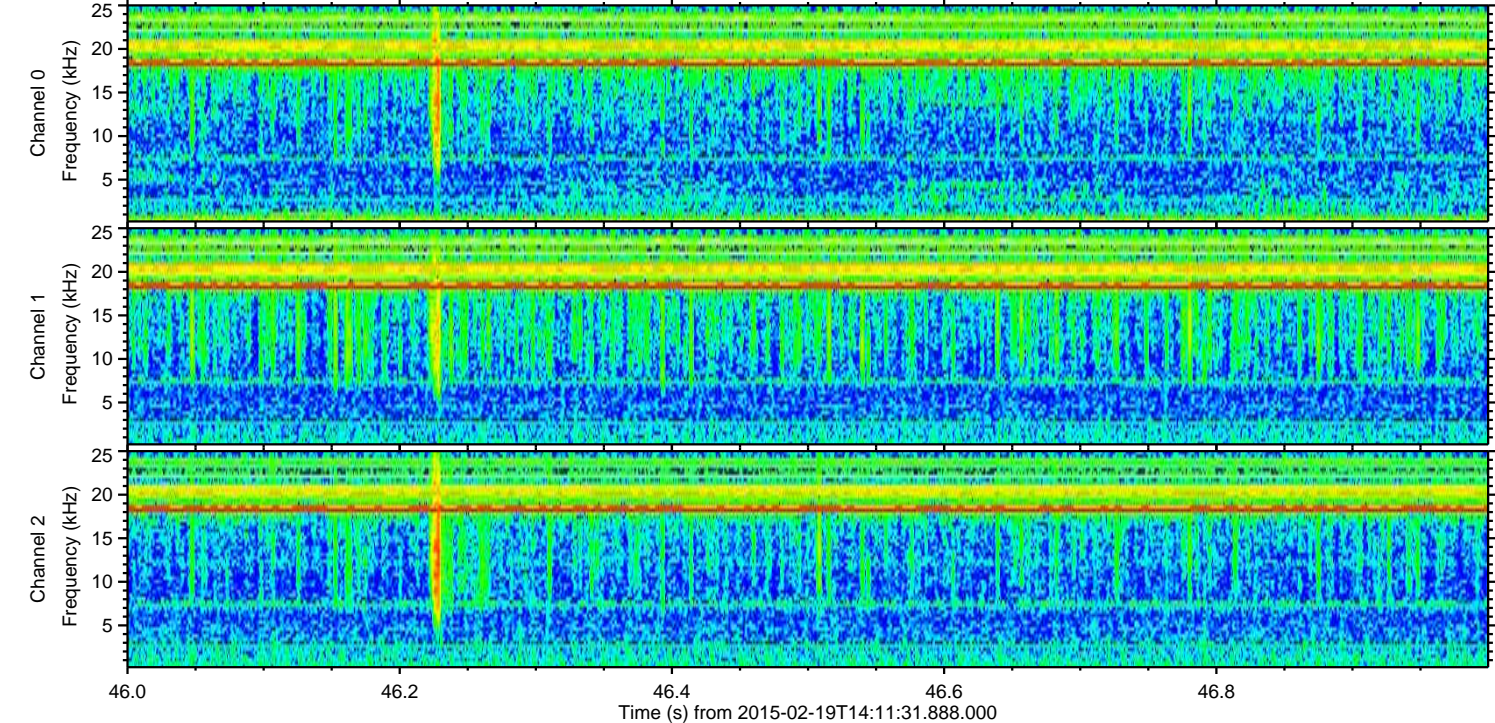
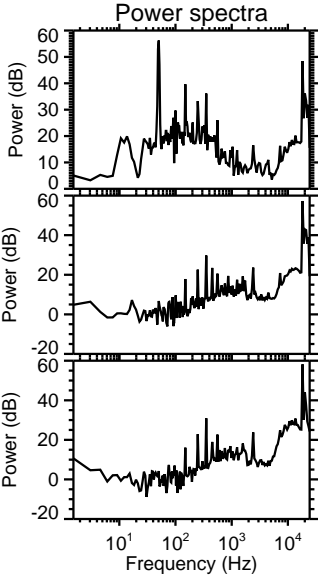
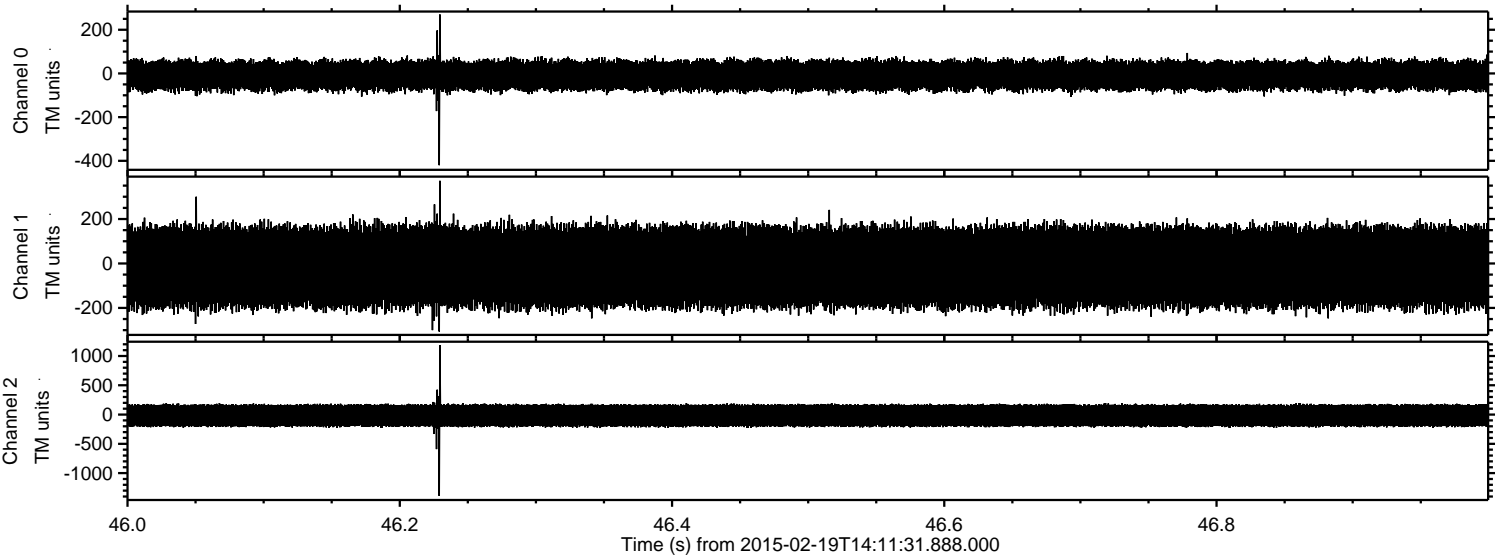
Processed Fri Feb 27 16:40:34 2015 by ELM ver.2012-10-06 from 001\_\_elm20150219\_141130\_\_dat00.bin



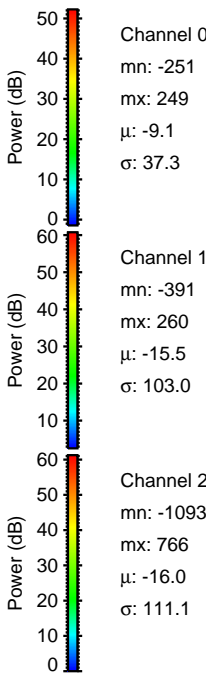
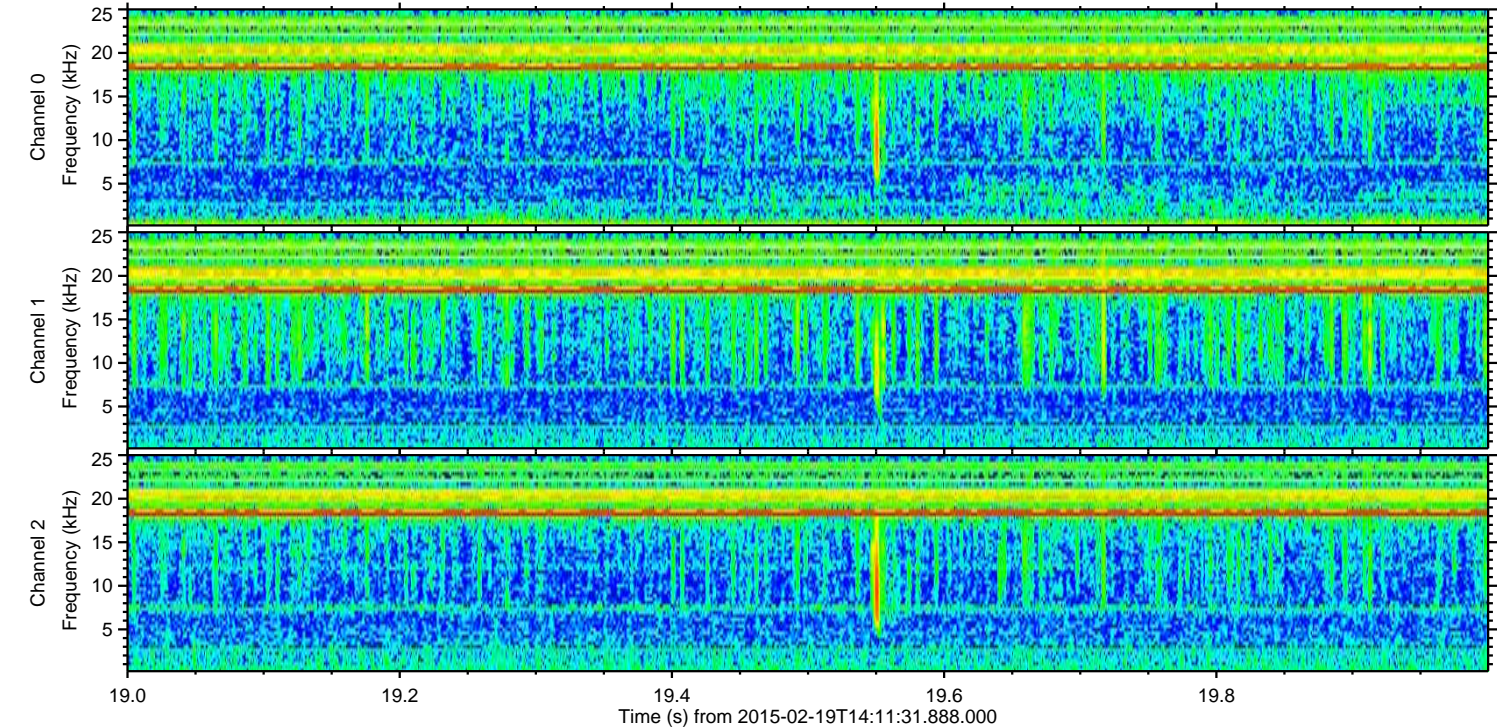
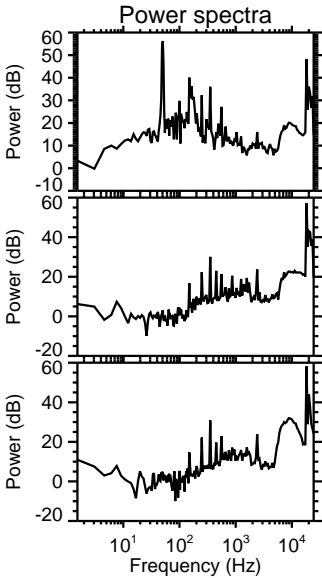
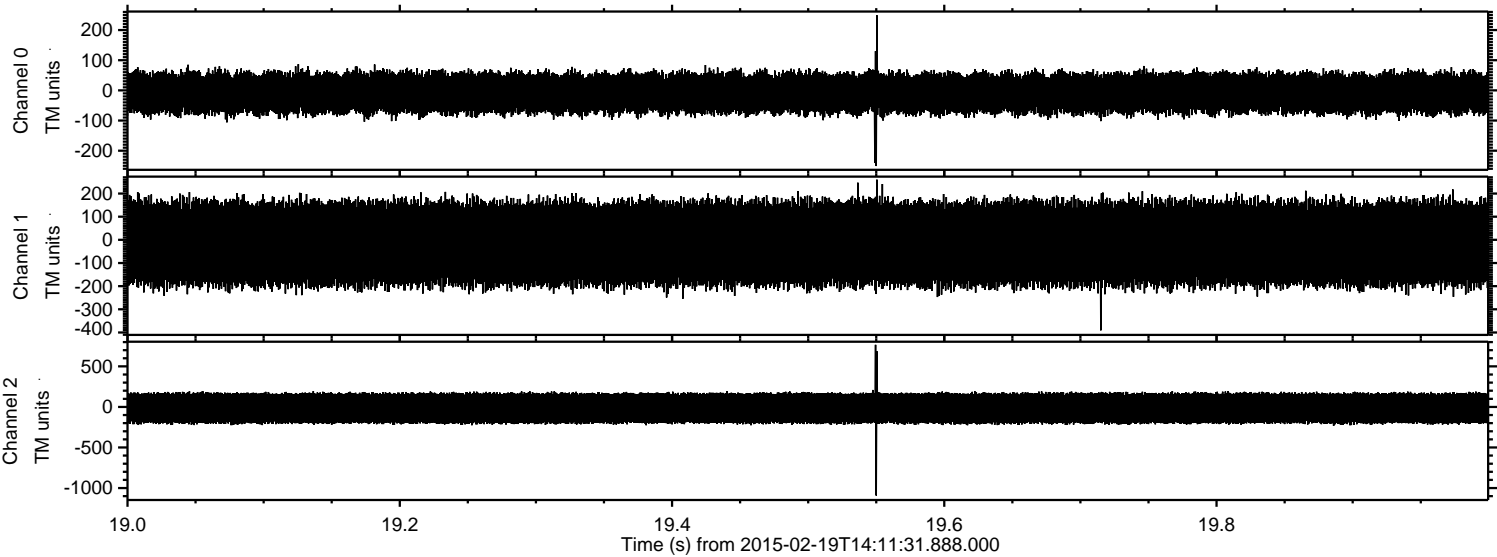
Processed Fri Feb 27 16:40:34 2015 by ELM ver.2012-10-06 from 001\_\_elm20150219\_141130\_\_dat00.bin



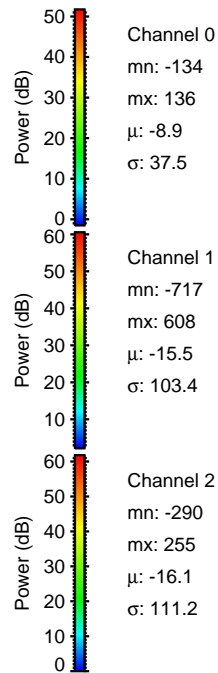
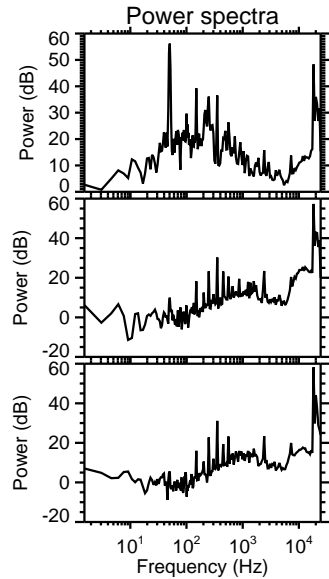
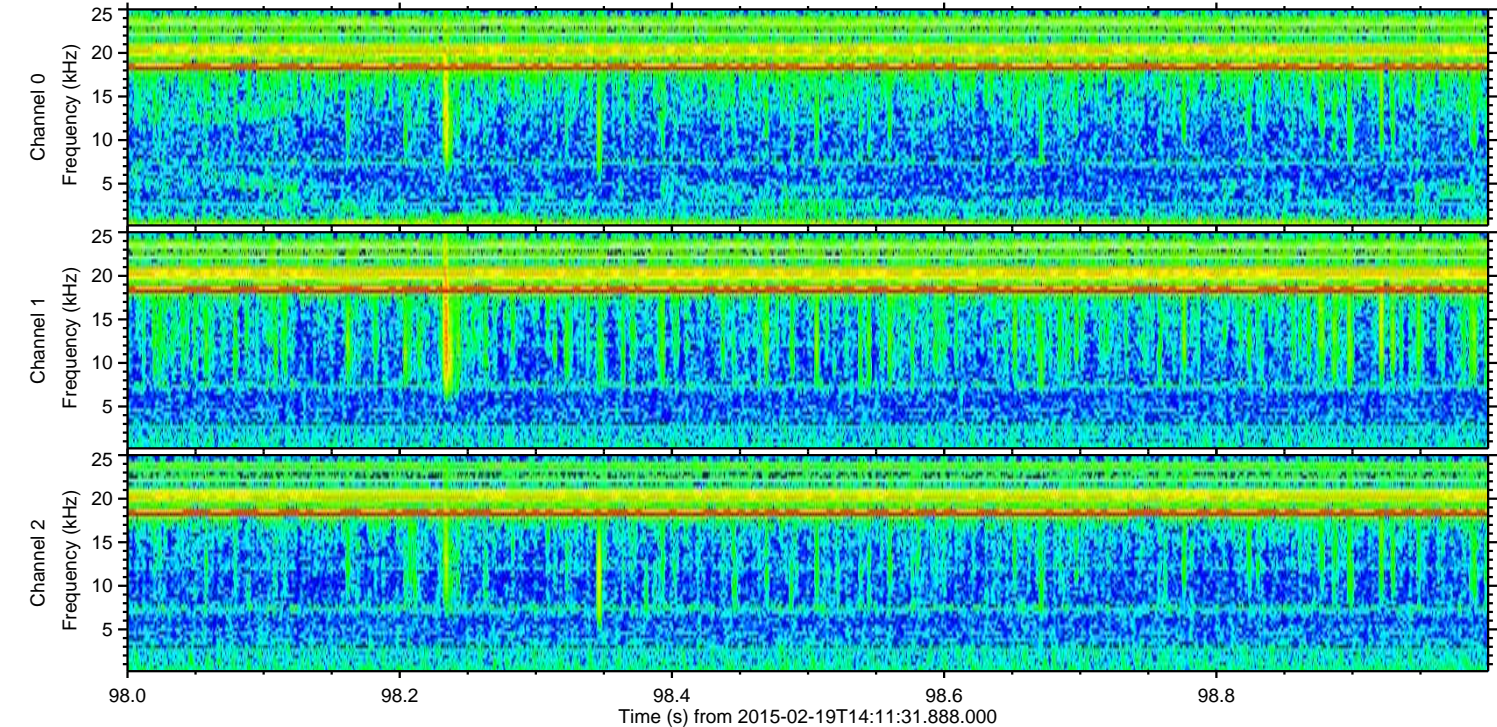
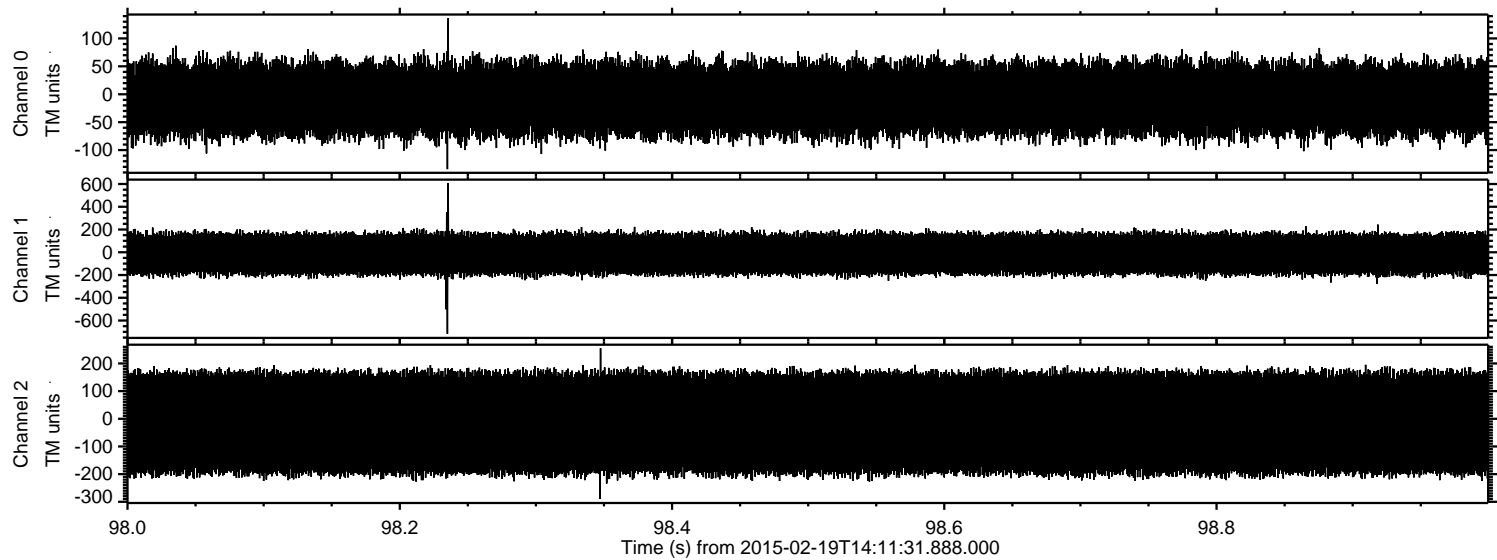
Processed Fri Feb 27 16:40:35 2015 by ELM ver.2012-10-06 from 001\_\_elm20150219\_141130\_\_dat00.bin



Processed Fri Feb 27 16:40:36 2015 by ELM ver.2012-10-06 from 001\_\_elm20150219\_141130\_\_dat00.bin

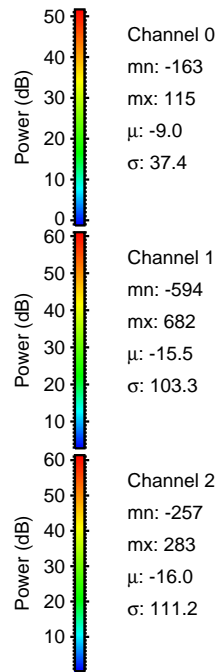
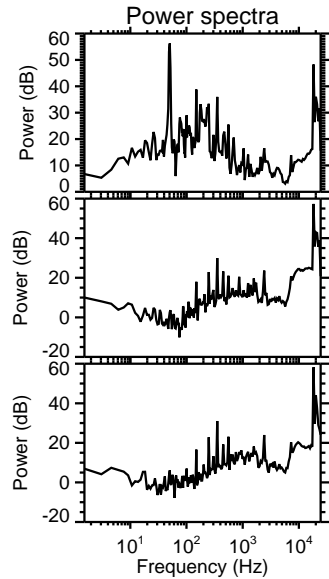
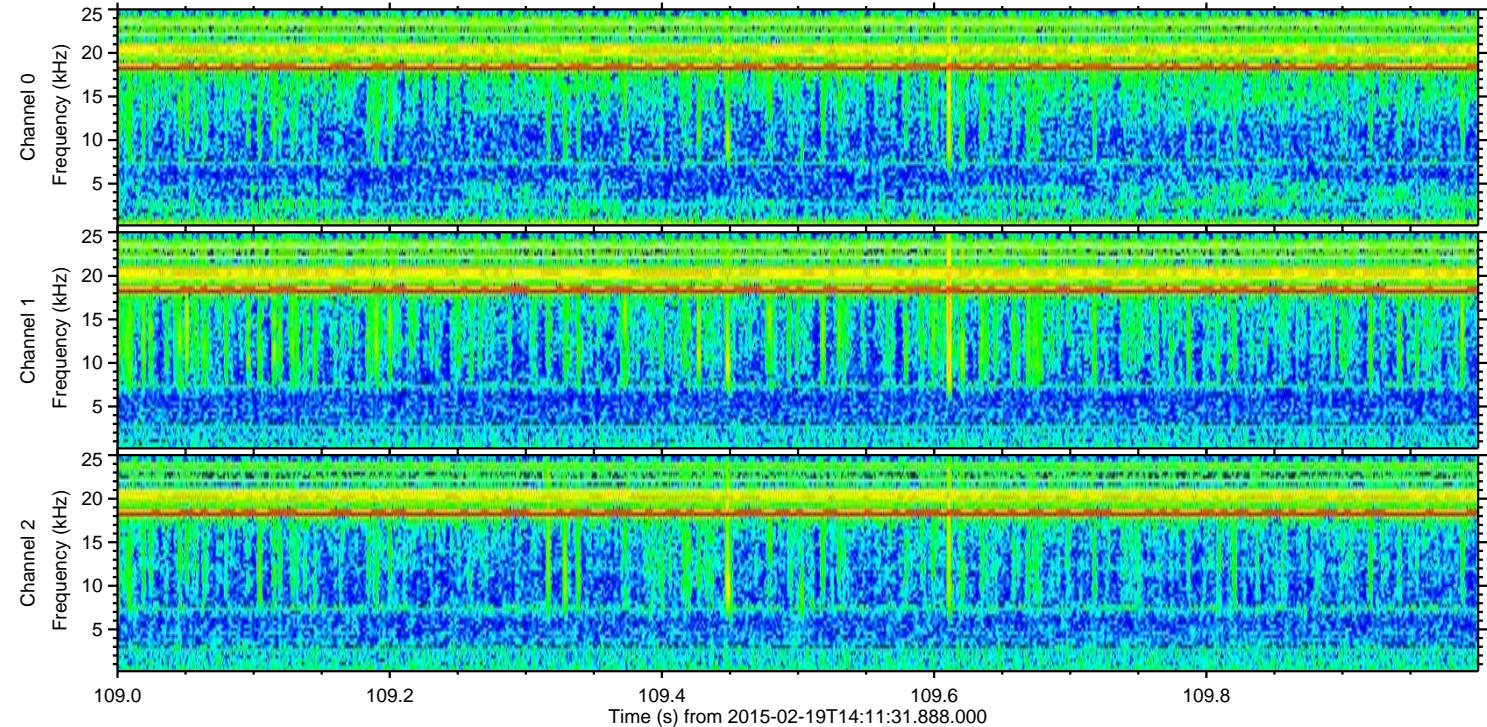
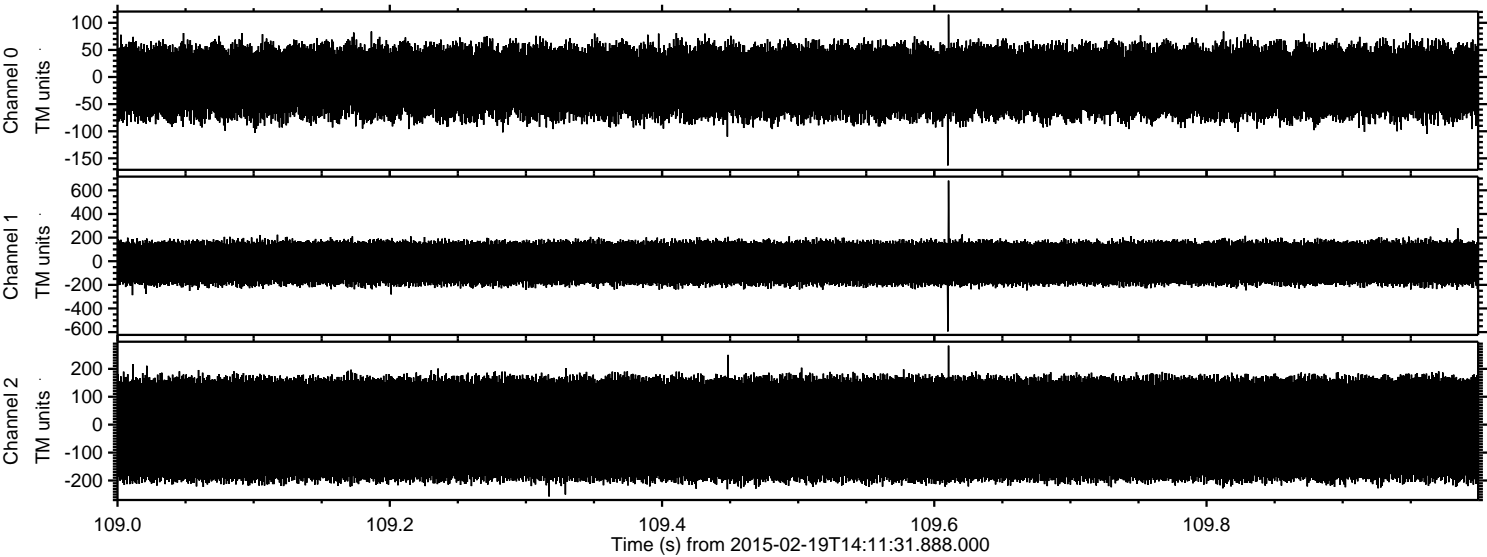


Processed Fri Feb 27 16:40:37 2015 by ELM ver.2012-10-06 from 001\_\_elm20150219\_141130\_\_dat00.bin

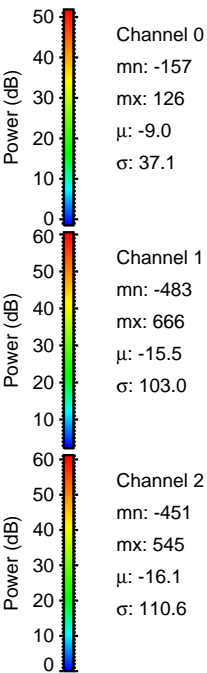
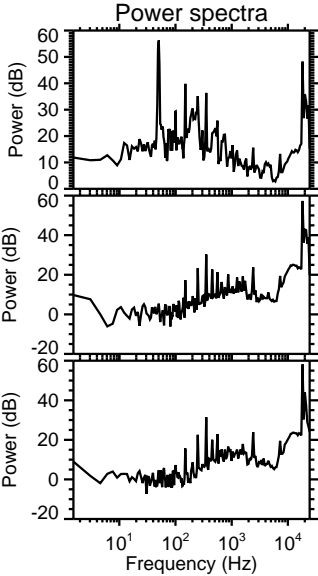
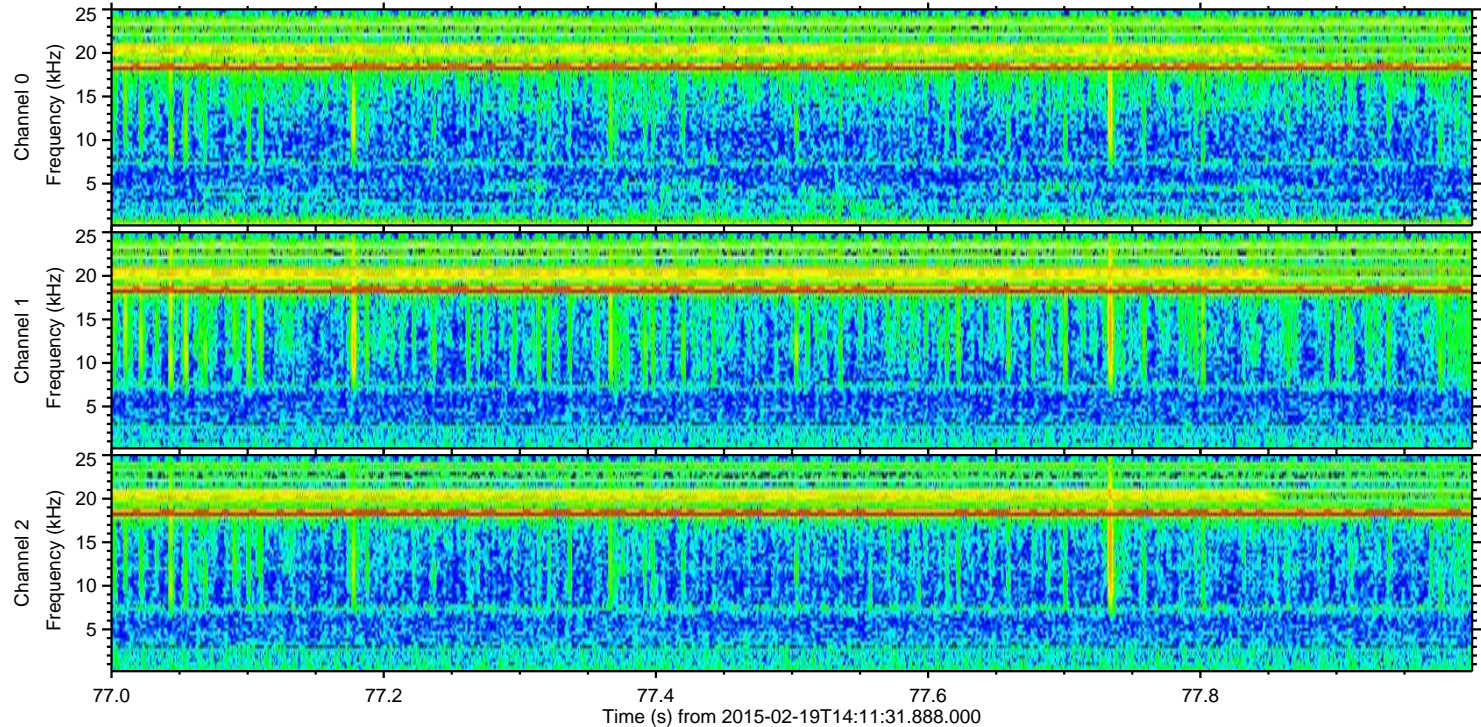
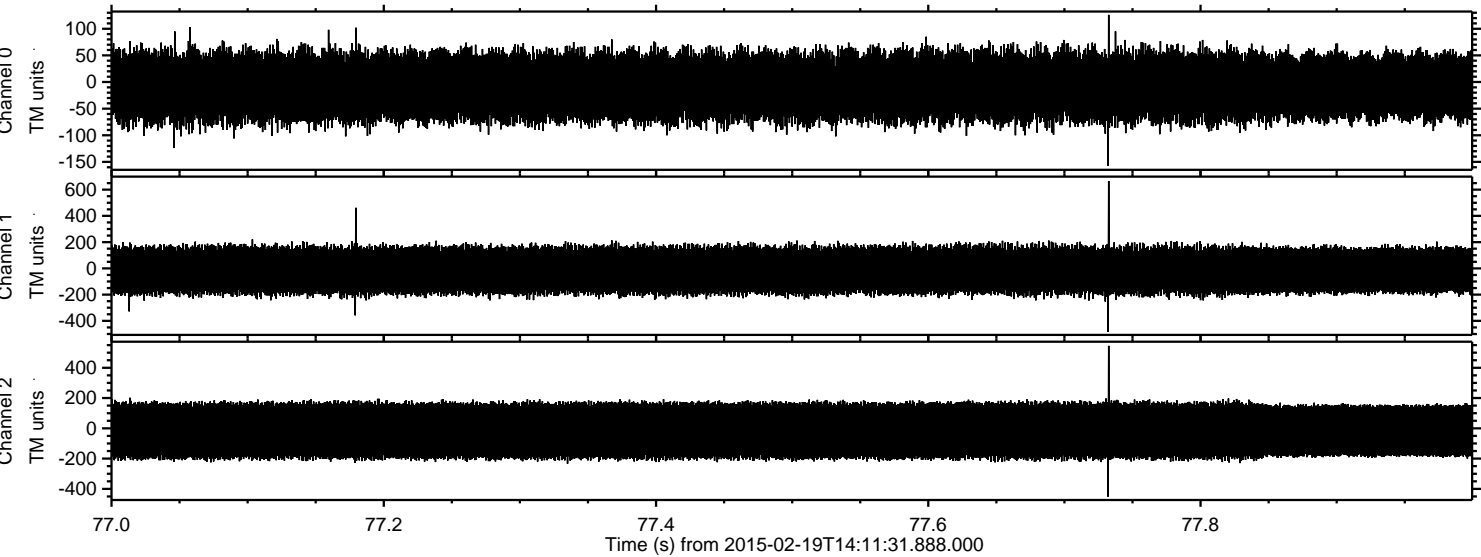


ELMAVAN 3D WAVEFORMS (Measured data sampled at 50 kHz) 49808 packets of 144 samples from 2015-02-19T14:11:31.888.000. Part 110/144

Processed Fri Feb 27 16:40:38 2015 by ELM ver.2012-10-06 from 001\_\_elm20150219\_141130\_\_dat00.bin



Processed Fri Feb 27 16:40:39 2015 by ELM ver.2012-10-06 from 001\_\_elm20150219\_141130\_\_dat00.bin



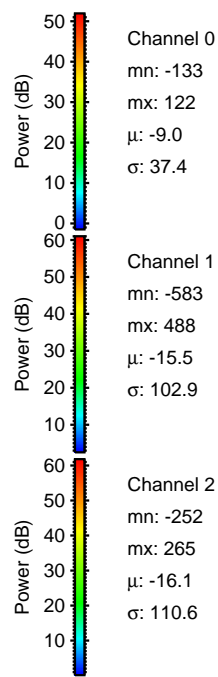
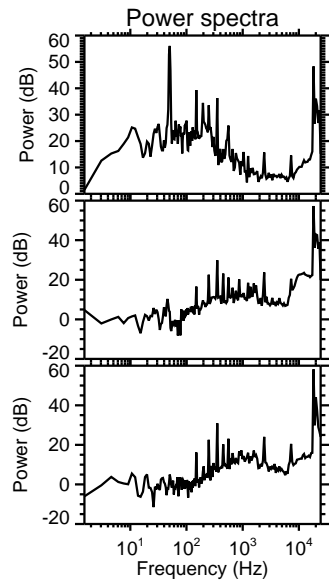
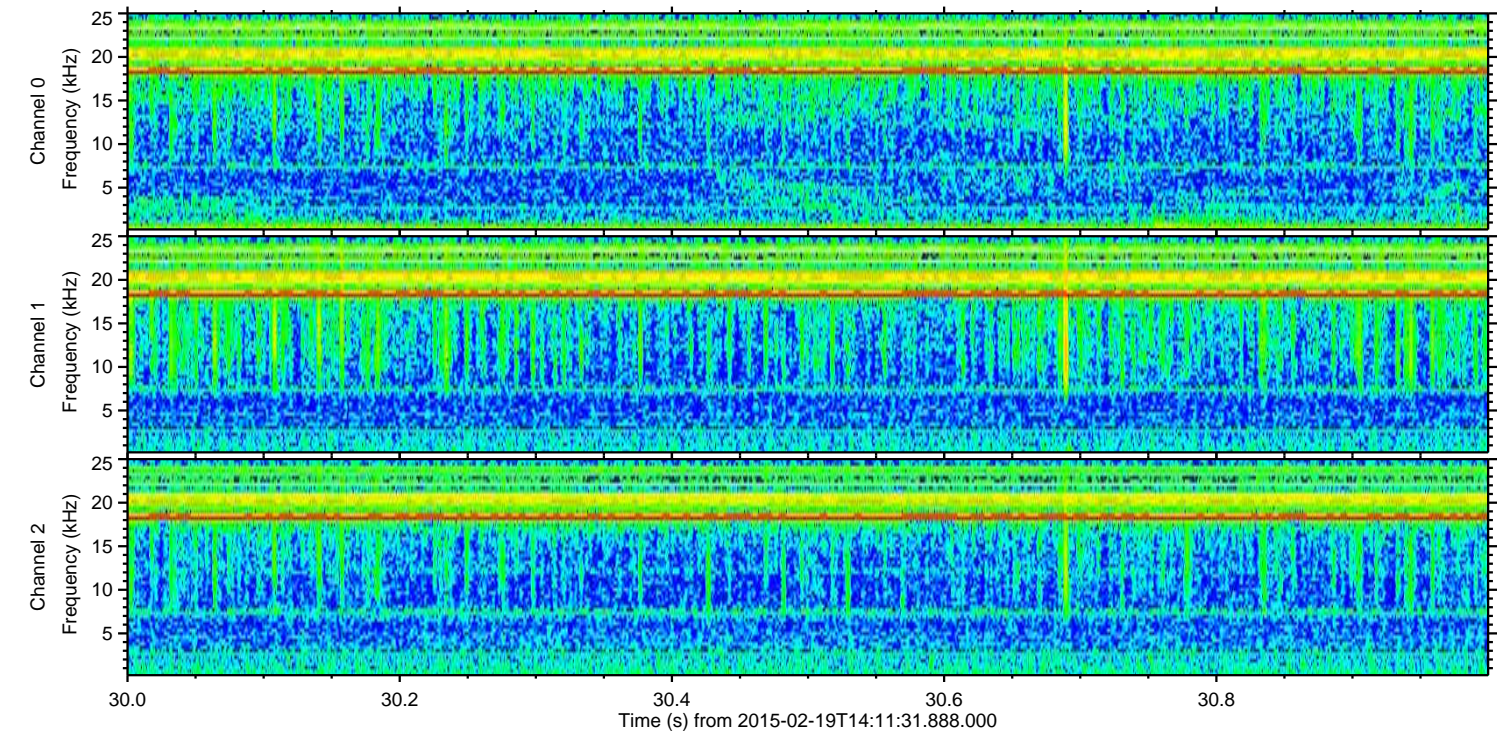
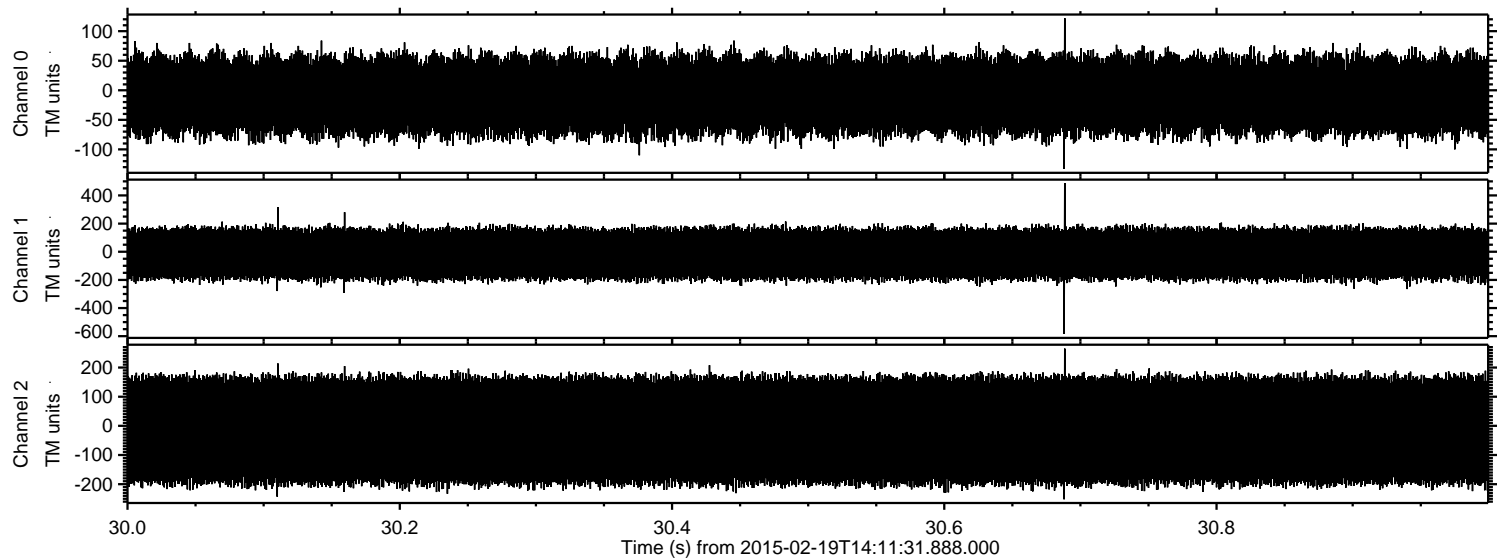
Power spectra

Channel 0  
mn: -157  
mx: 126  
 $\mu$ : -9.0  
 $\sigma$ : 37.1

Channel 1  
mn: -483  
mx: 666  
 $\mu$ : -15.5  
 $\sigma$ : 103.0

Channel 2  
mn: -451  
mx: 545  
 $\mu$ : -16.1  
 $\sigma$ : 110.6

Processed Fri Feb 27 16:40:40 2015 by ELM ver.2012-10-06 from 001\_\_elm20150219\_141130\_\_dat00.bin



Processed Fri Feb 27 16:40:41 2015 by ELM ver.2012-10-06 from 001\_\_elm20150219\_141130\_\_dat00.bin

