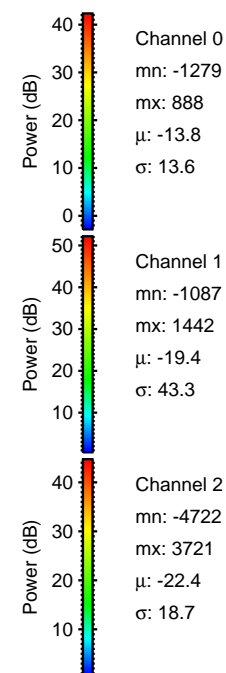
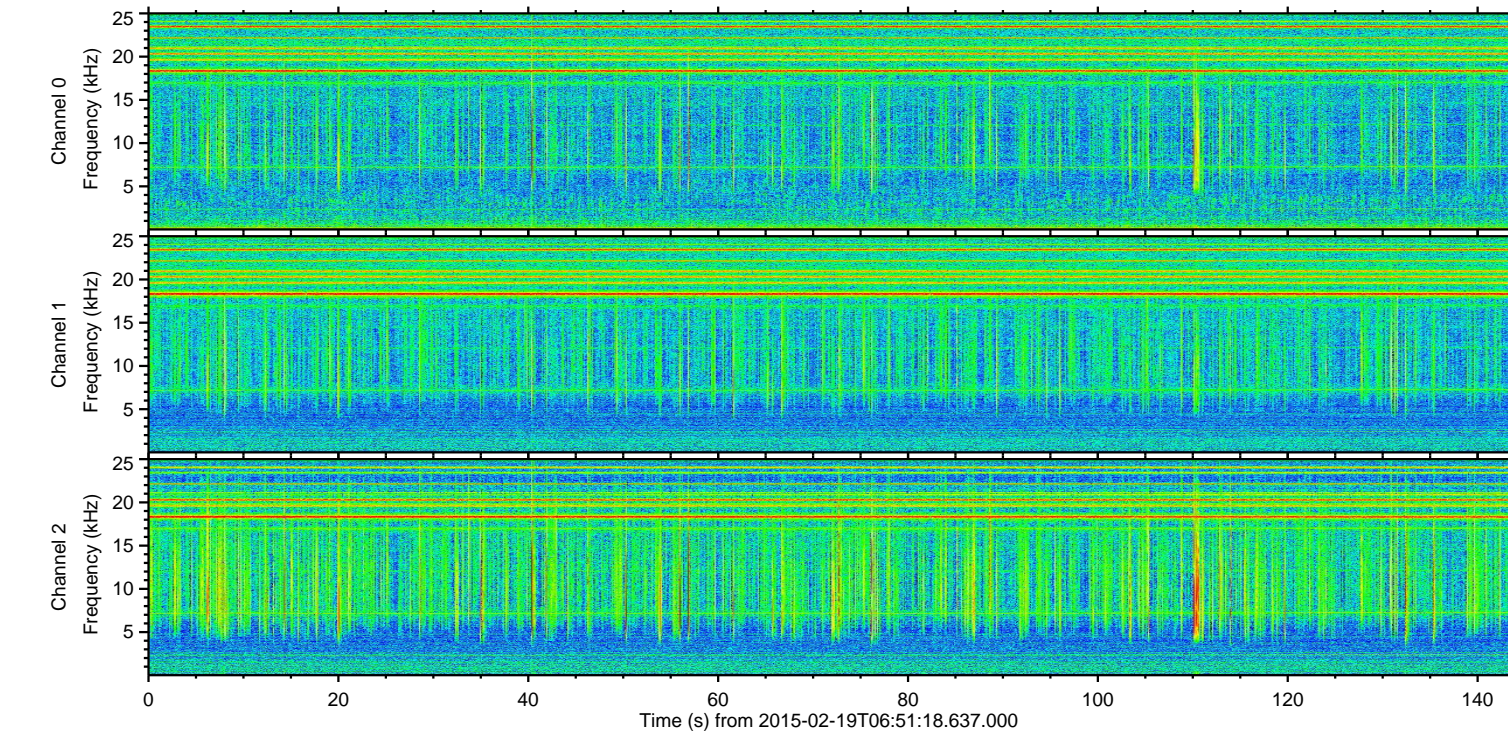
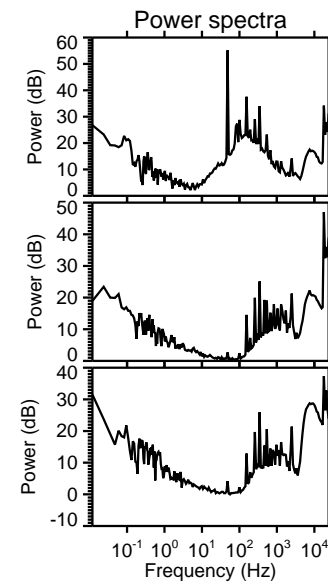
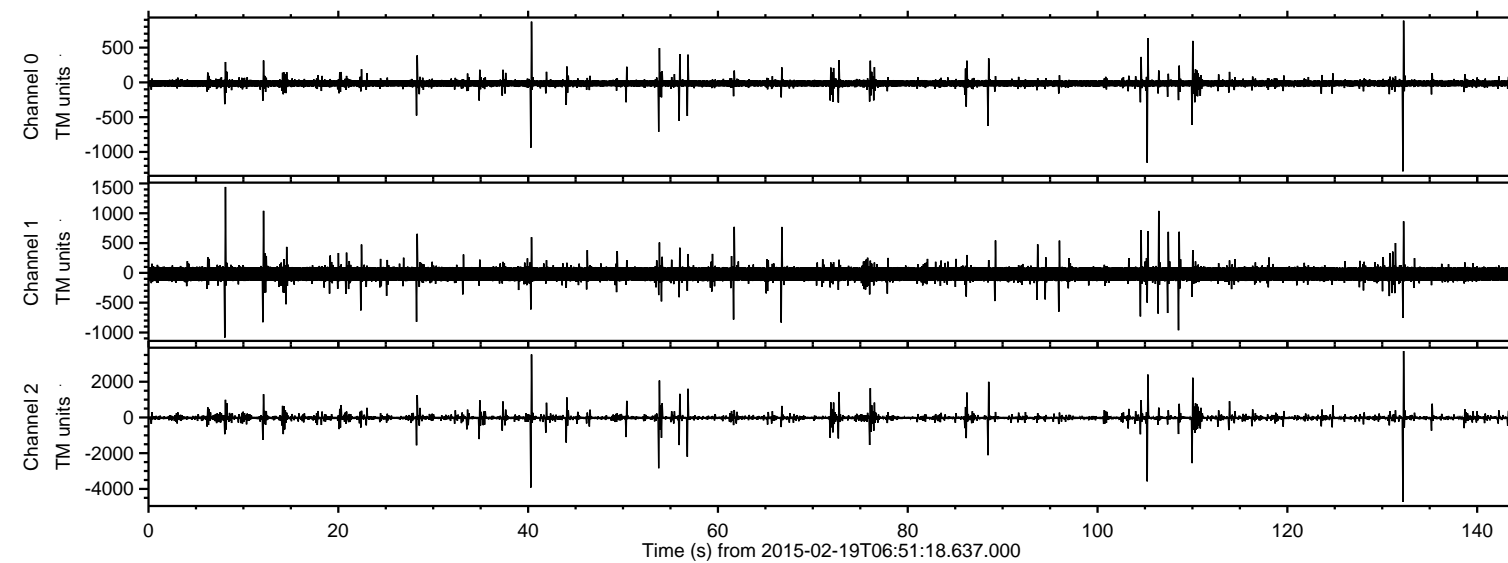


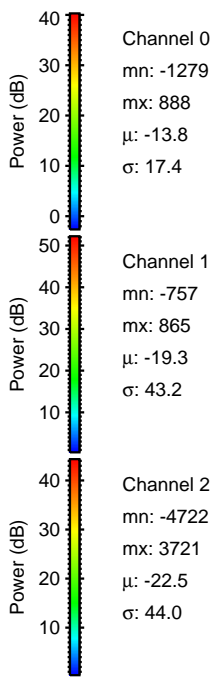
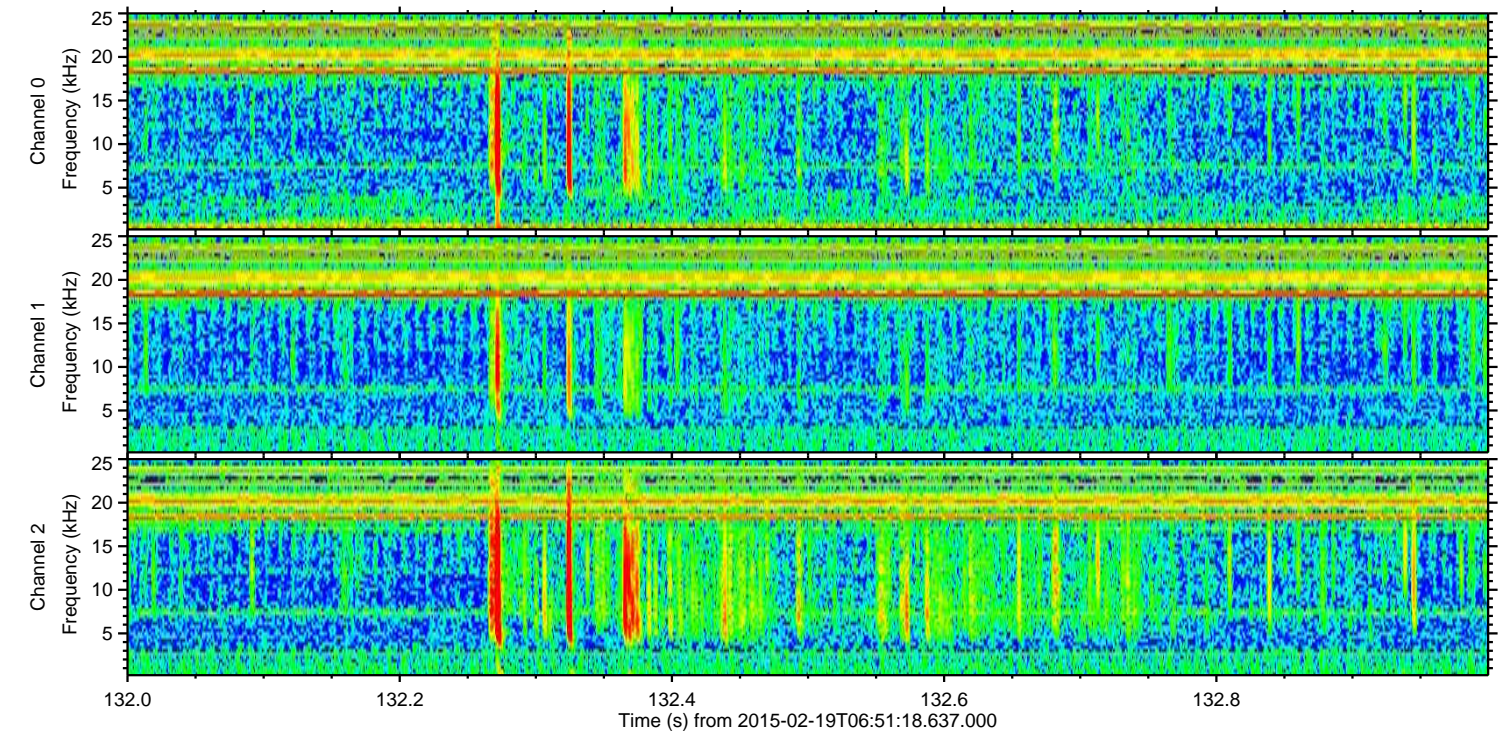
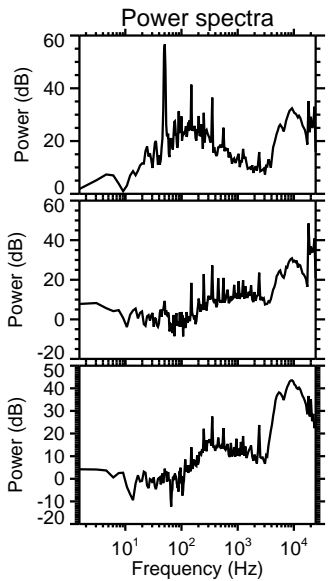
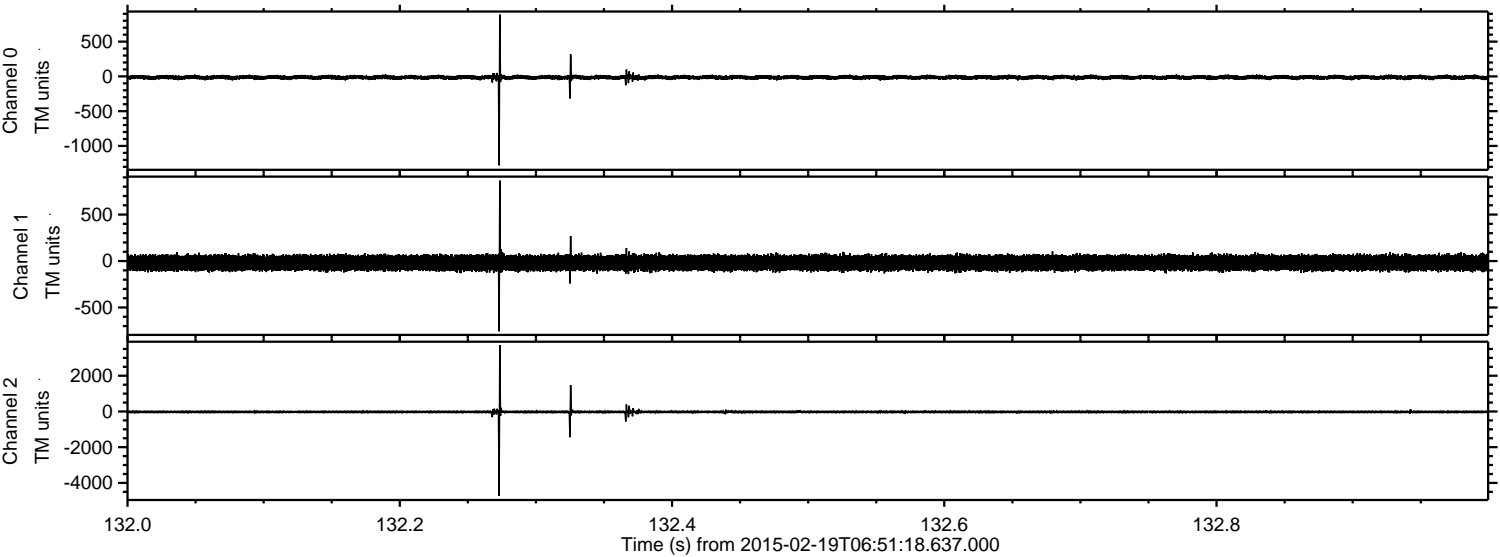
ELMAVAN 3D WAVEFORMS (Measured data sampled at 50 kHz) 49782 packets of 144 samples from 2015-02-19T06:51:18.637.000.

Processed Fri Feb 27 11:03:13 2015 by ELM ver.2012-10-06 from 001\_\_elm20150219\_065117\_\_dat00.bin



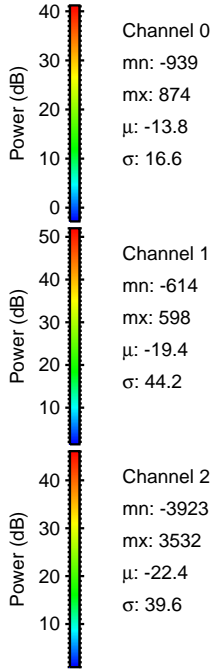
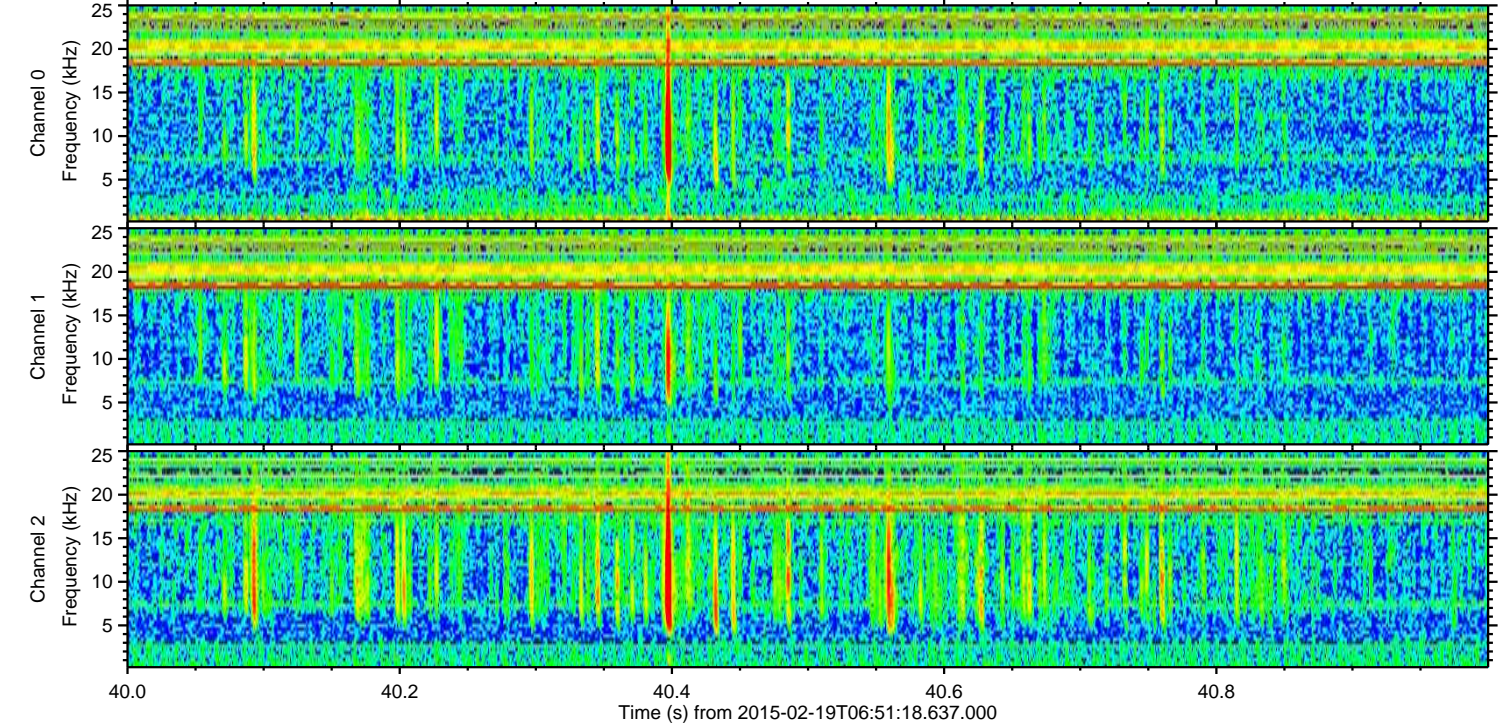
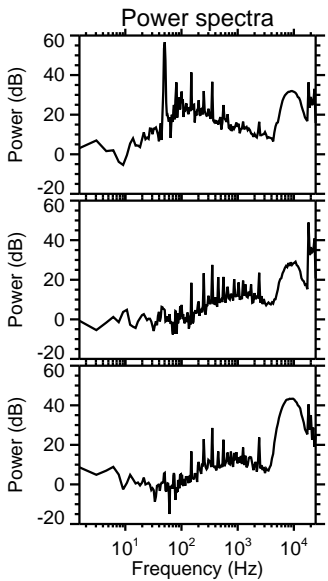
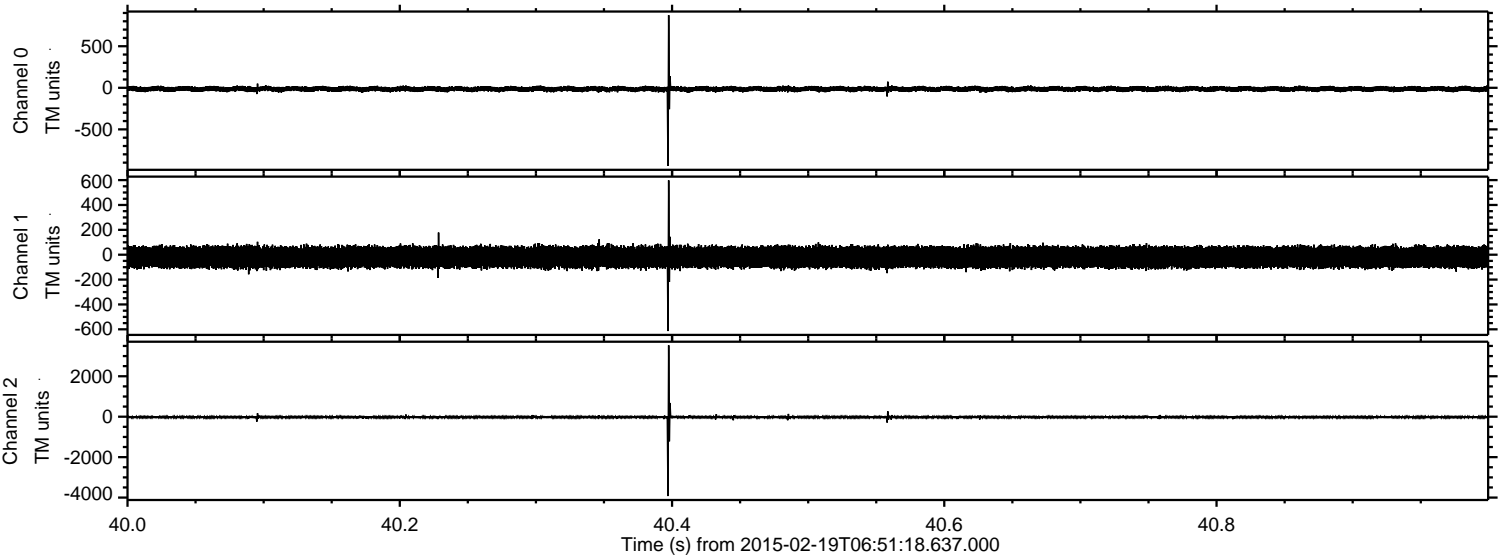


Processed Fri Feb 27 11:03:25 2015 by ELM ver.2012-10-06 from 001\_\_elm20150219\_065117\_\_dat00.bin





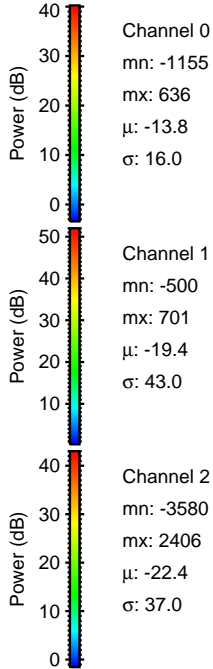
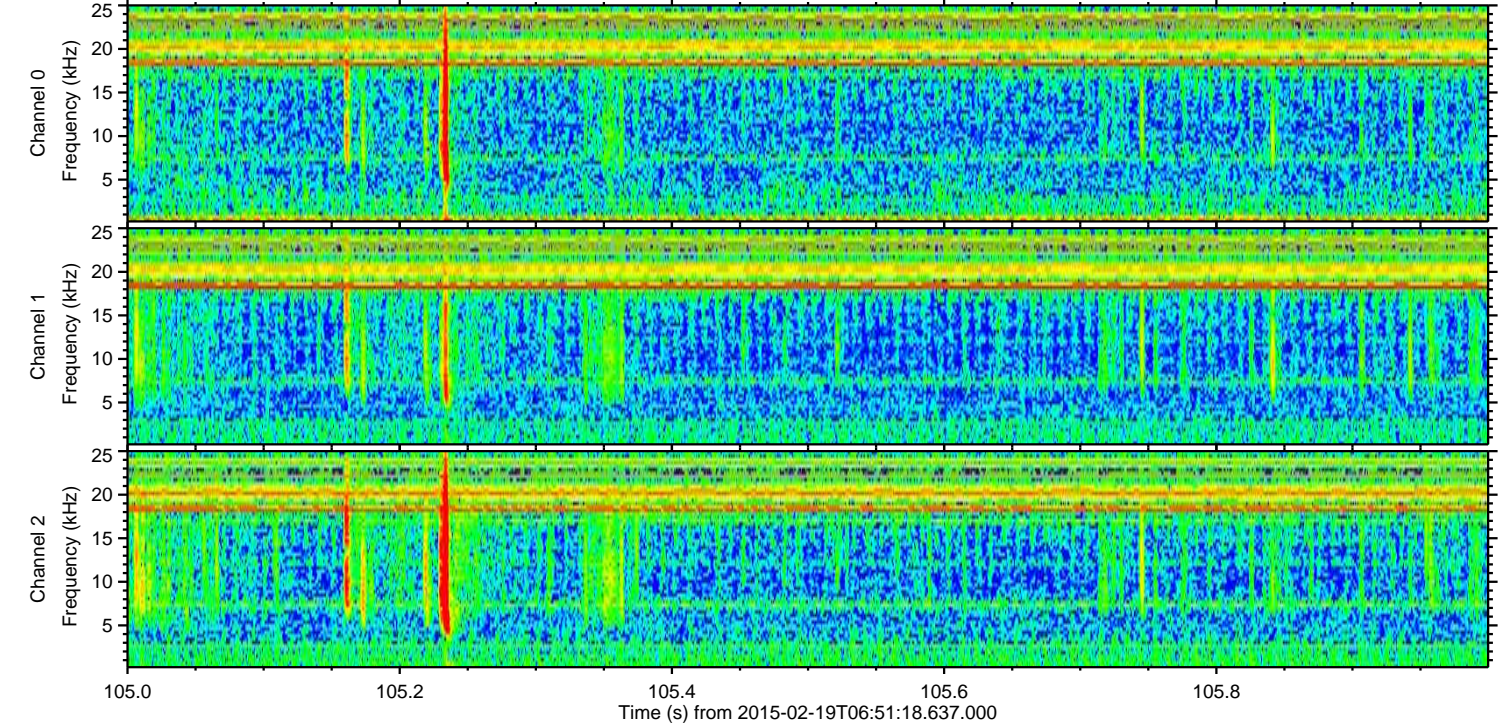
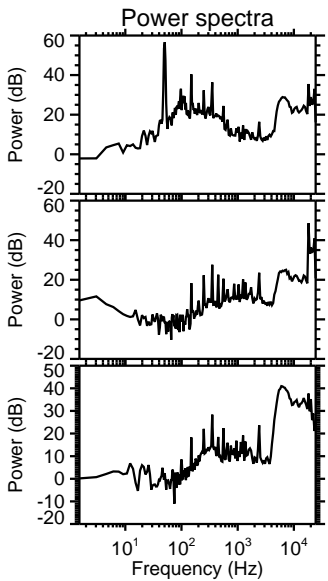
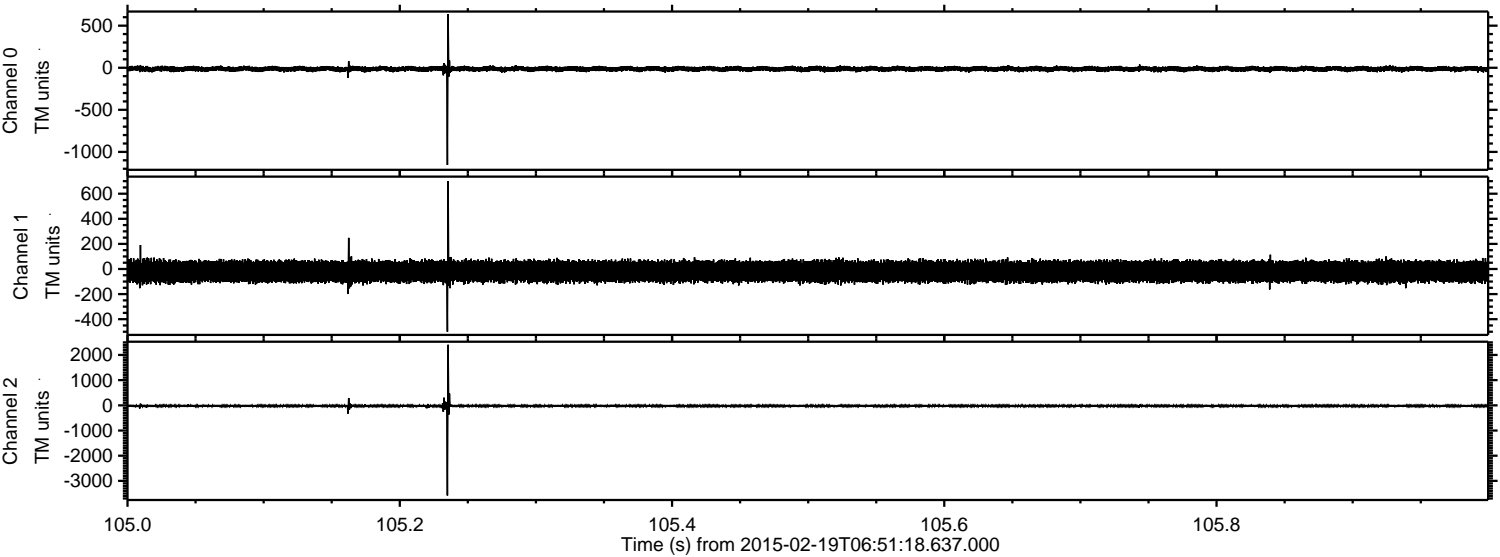
Processed Fri Feb 27 11:03:26 2015 by ELM ver.2012-10-06 from 001\_\_elm20150219\_065117\_\_dat00.bin





ELMAVAN 3D WAVEFORMS (Measured data sampled at 50 kHz) 49782 packets of 144 samples from 2015-02-19T06:51:18.637.000. Part 106/144

Processed Fri Feb 27 11:03:27 2015 by ELM ver.2012-10-06 from 001\_\_elm20150219\_065117\_\_dat00.bin



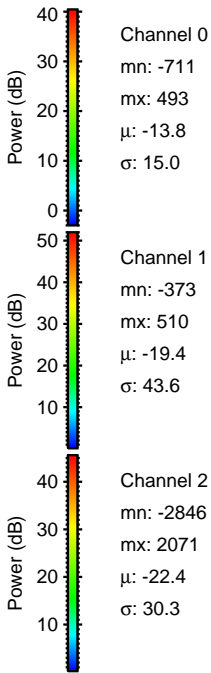
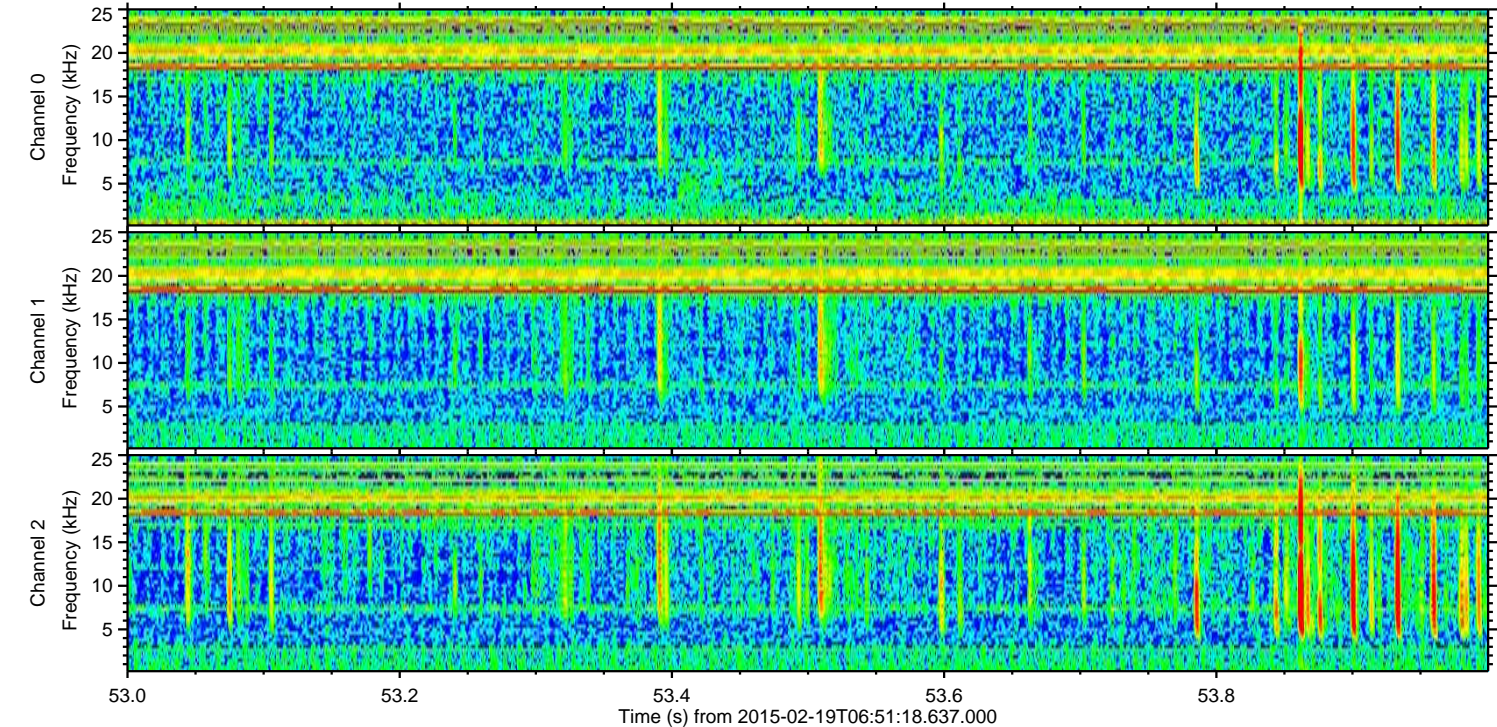
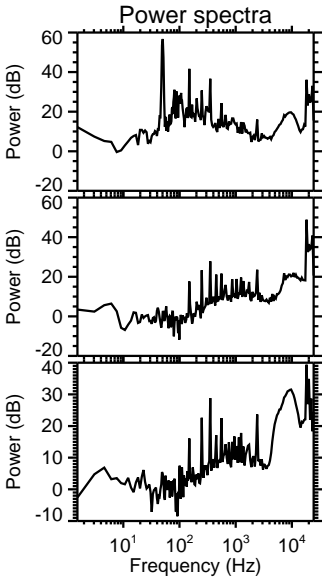
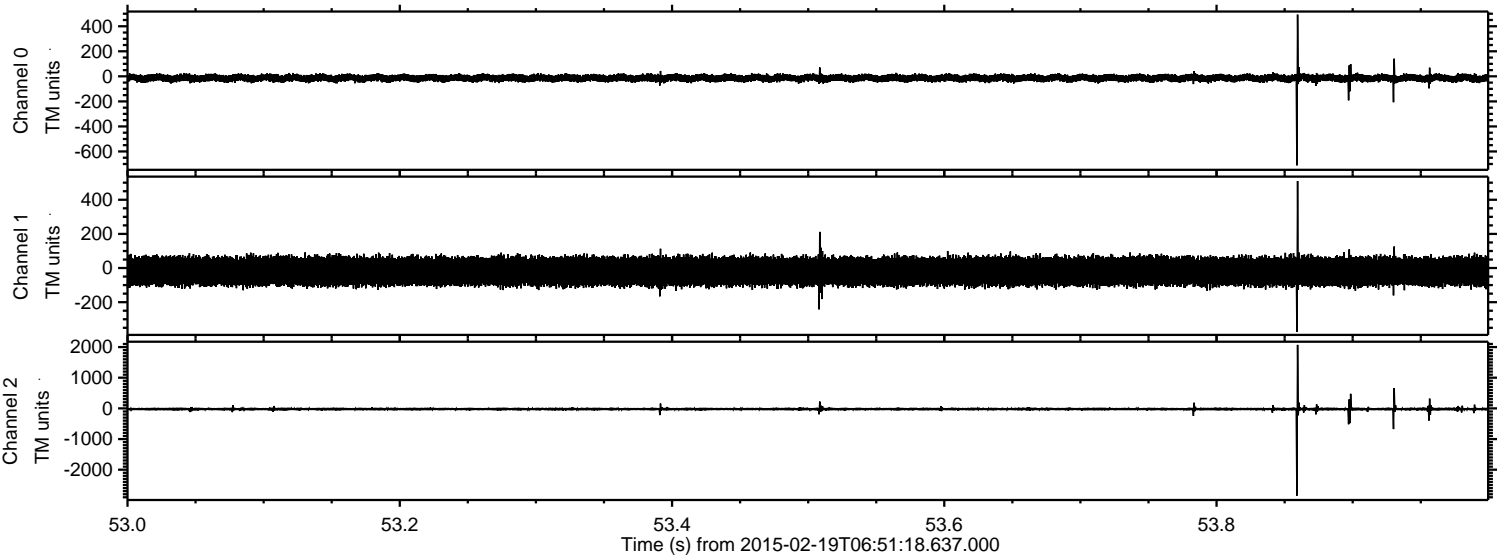
Channel 0  
mn: -1155  
mx: 636  
 $\mu$ : -13.8  
 $\sigma$ : 16.0

Channel 1  
mn: -500  
mx: 701  
 $\mu$ : -19.4  
 $\sigma$ : 43.0

Channel 2  
mn: -3580  
mx: 2406  
 $\mu$ : -22.4  
 $\sigma$ : 37.0



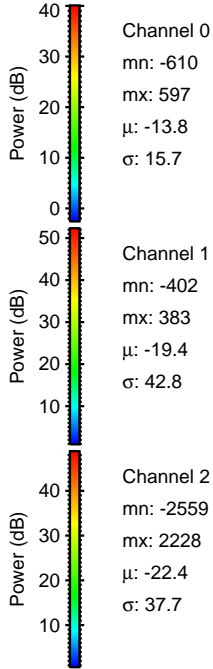
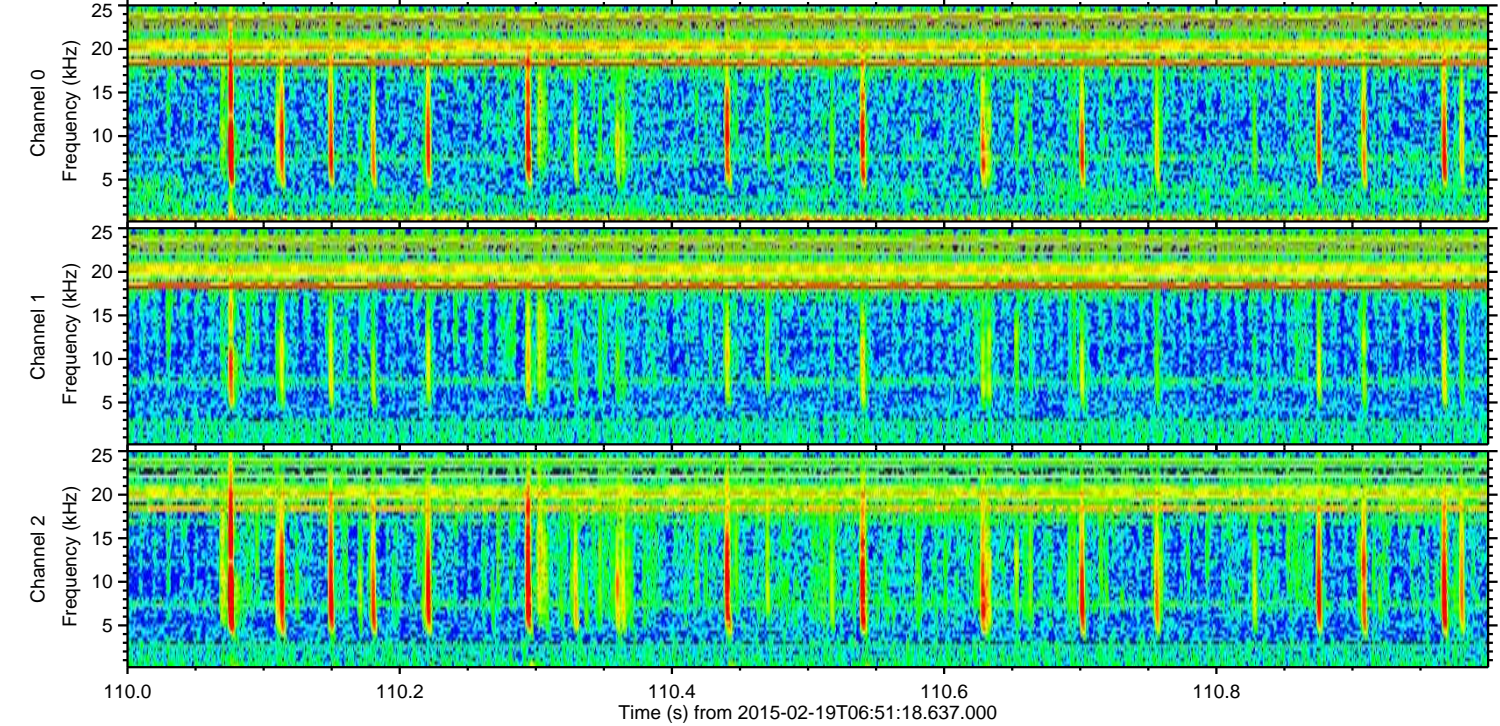
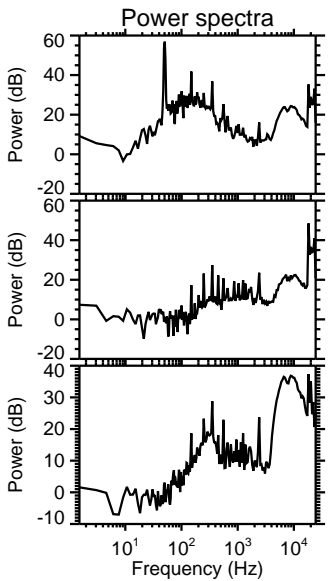
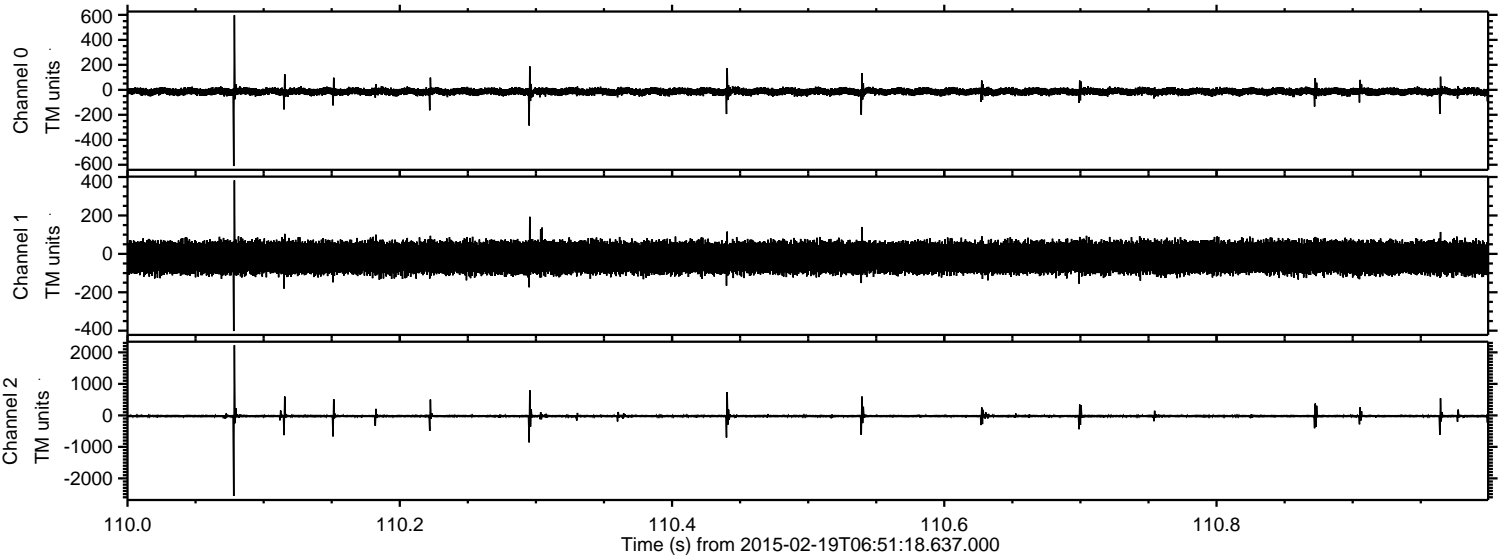
Processed Fri Feb 27 11:03:28 2015 by ELM ver.2012-10-06 from 001\_\_elm20150219\_065117\_\_dat00.bin





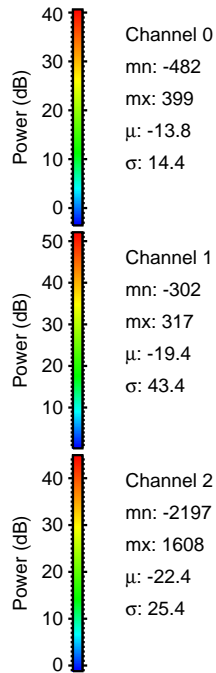
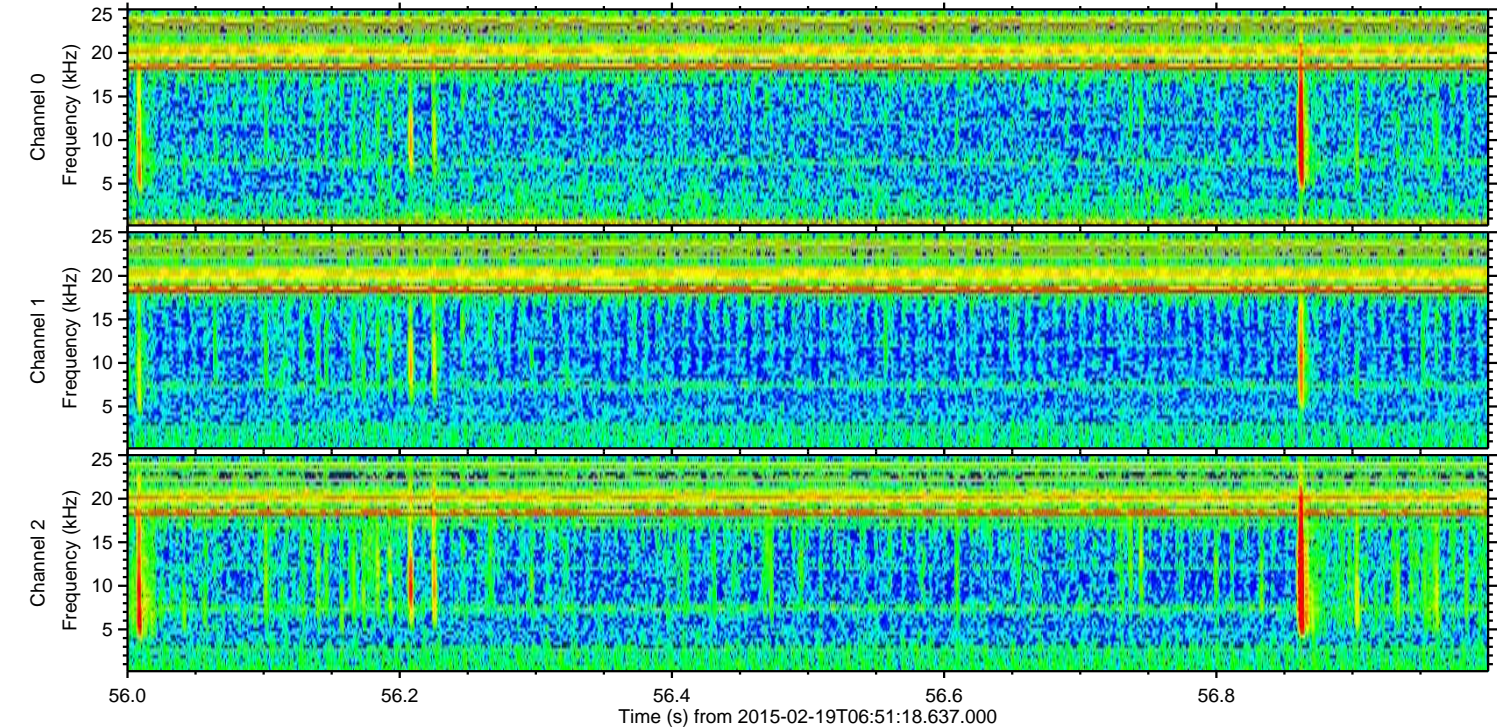
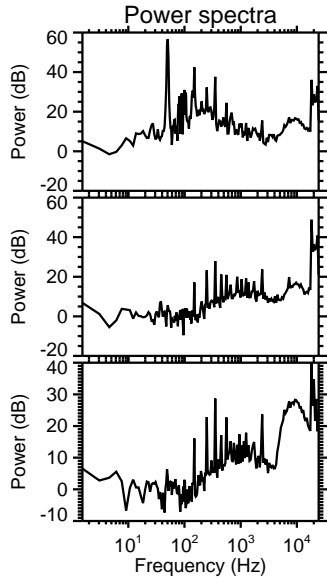
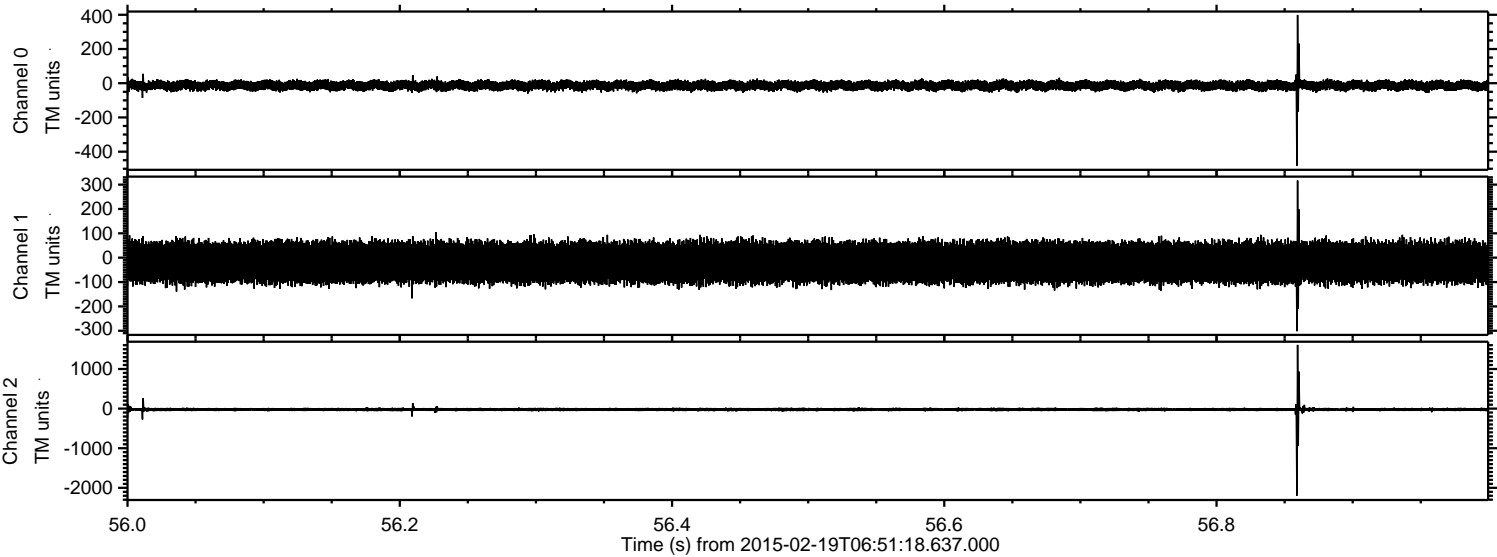
ELMAVAN 3D WAVEFORMS (Measured data sampled at 50 kHz) 49782 packets of 144 samples from 2015-02-19T06:51:18.637.000. Part 111/144

Processed Fri Feb 27 11:03:28 2015 by ELM ver.2012-10-06 from 001\_\_elm20150219\_065117\_\_dat00.bin



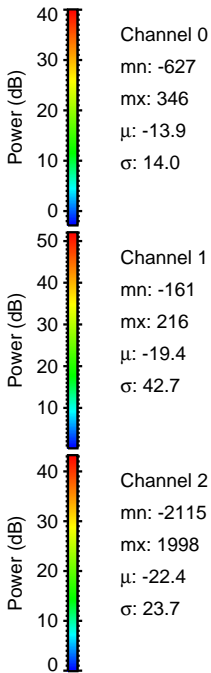
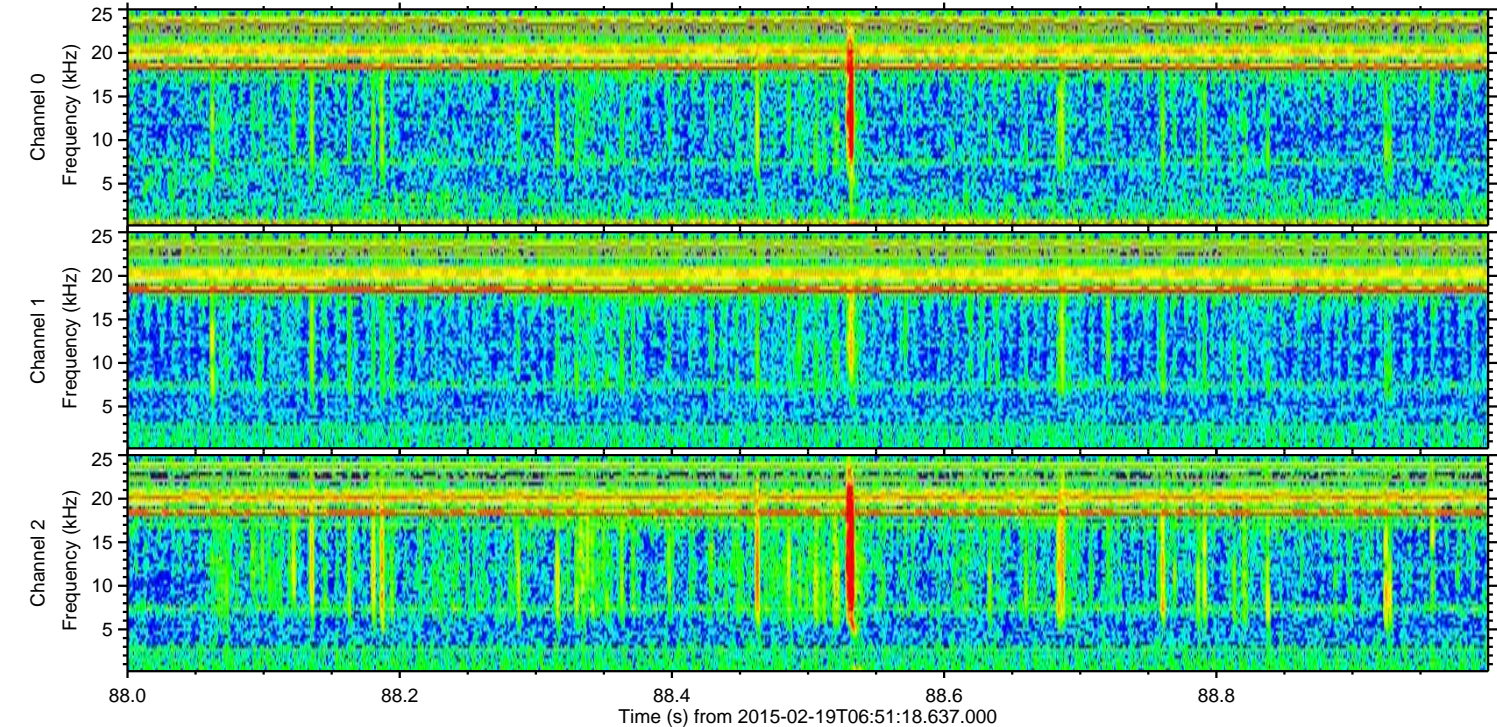
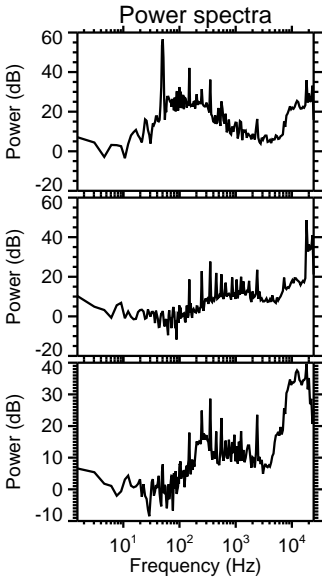
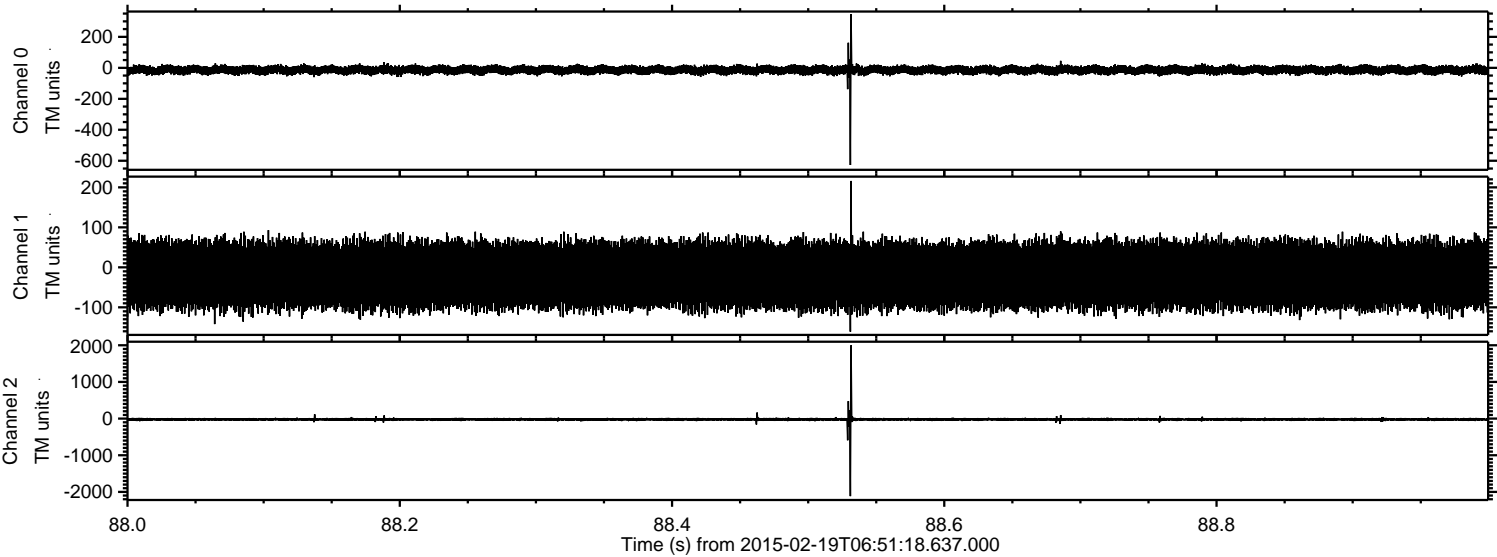


Processed Fri Feb 27 11:03:29 2015 by ELM ver.2012-10-06 from 001\_\_elm20150219\_065117\_\_dat00.bin



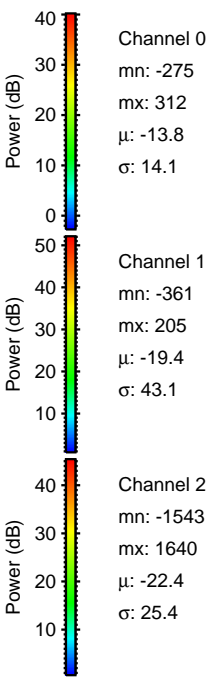
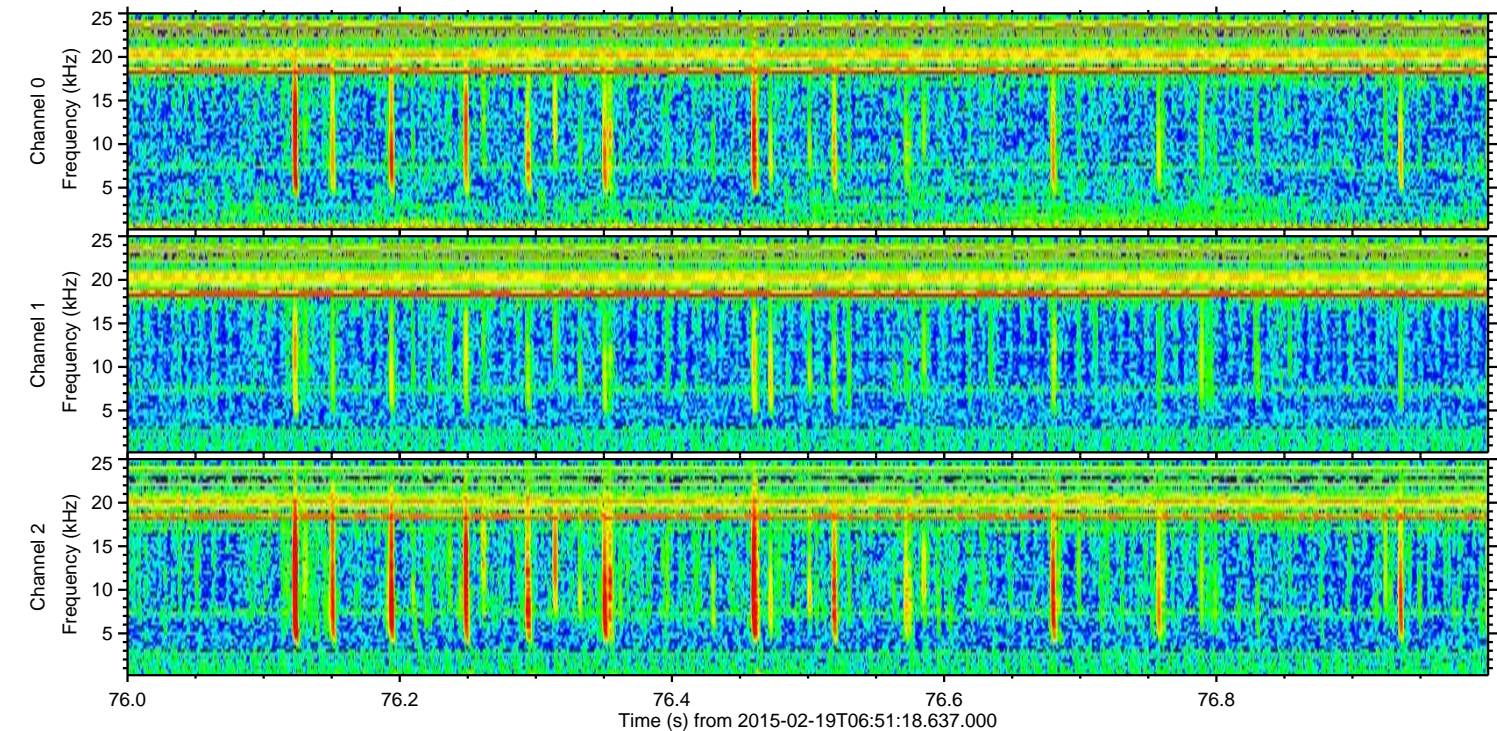
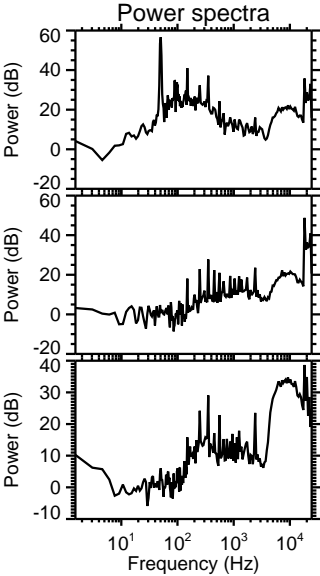
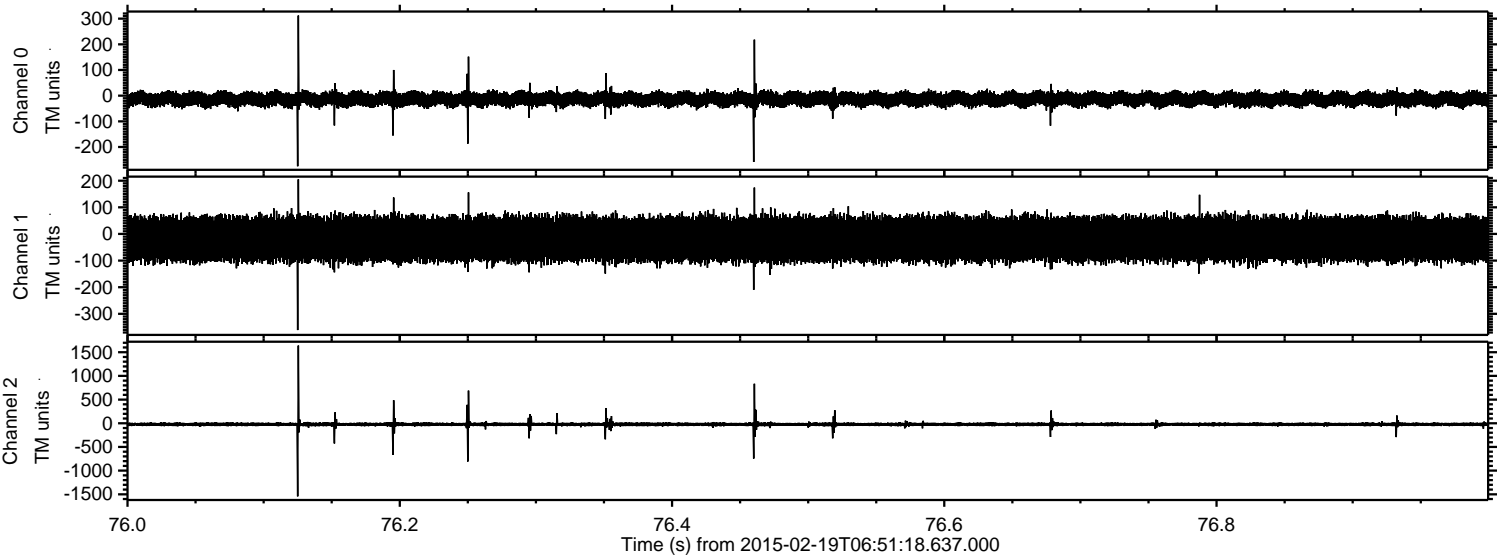


Processed Fri Feb 27 11:03:30 2015 by ELM ver.2012-10-06 from 001\_\_elm20150219\_065117\_\_dat00.bin



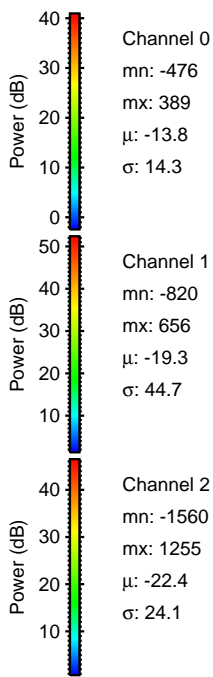
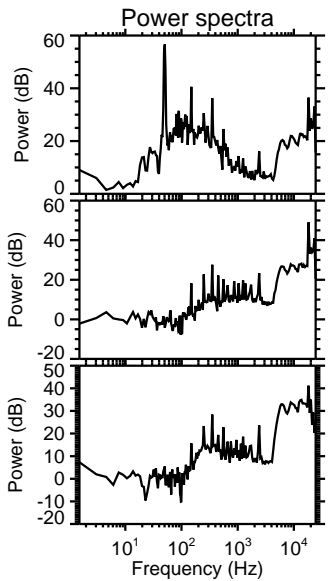
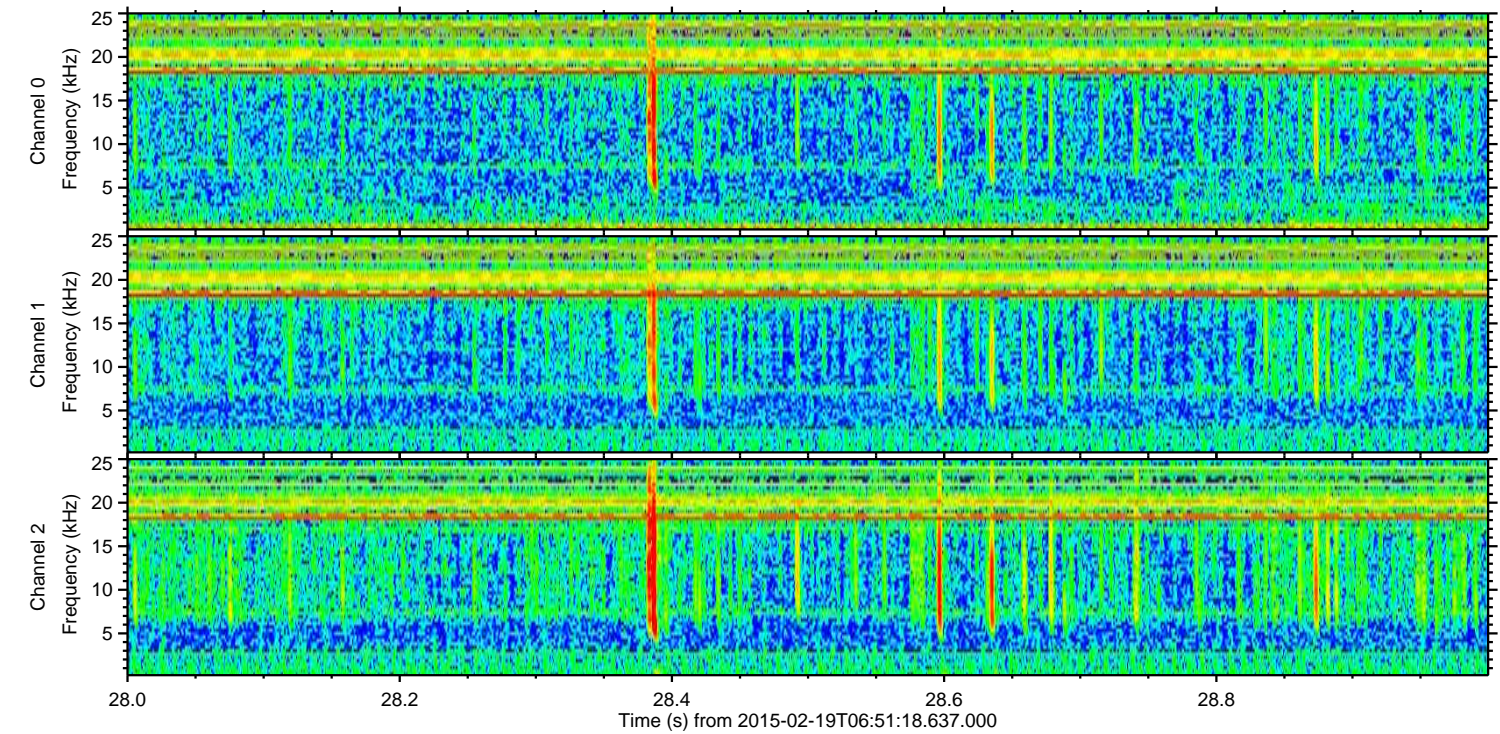
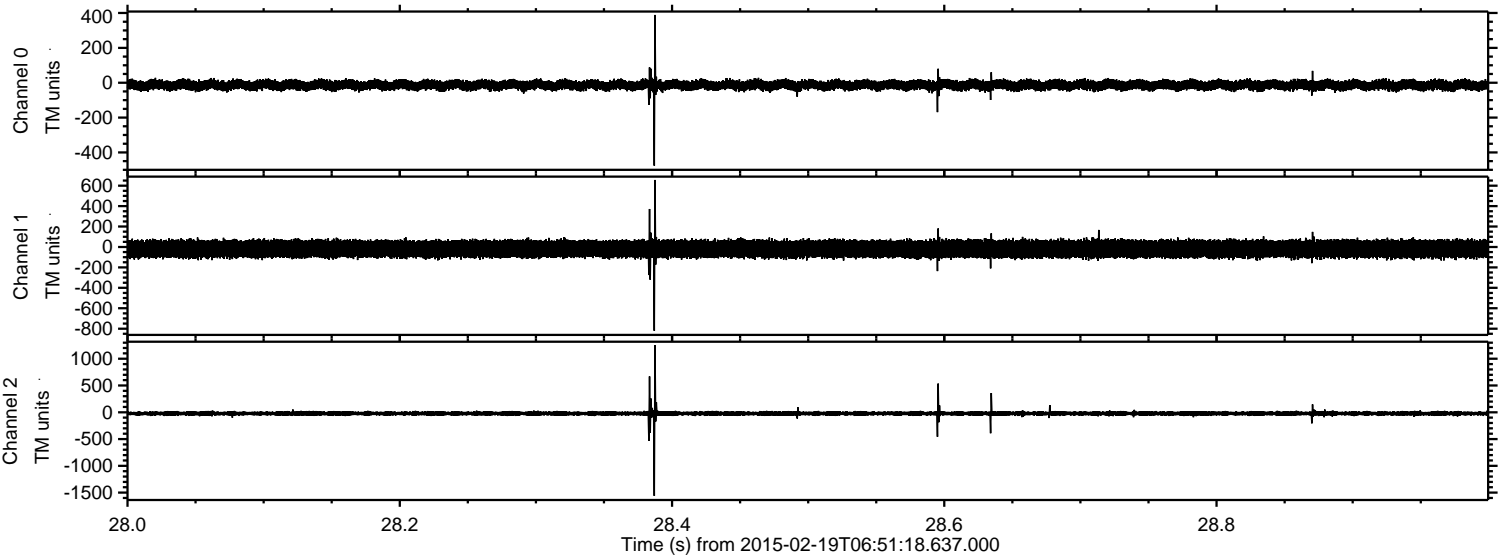


Processed Fri Feb 27 11:03:31 2015 by ELM ver.2012-10-06 from 001\_\_elm20150219\_065117\_\_dat00.bin





Processed Fri Feb 27 11:03:32 2015 by ELM ver.2012-10-06 from 001\_\_elm20150219\_065117\_\_dat00.bin





Processed Fri Feb 27 11:03:33 2015 by ELM ver.2012-10-06 from 001\_\_elm20150219\_065117\_\_dat00.bin

