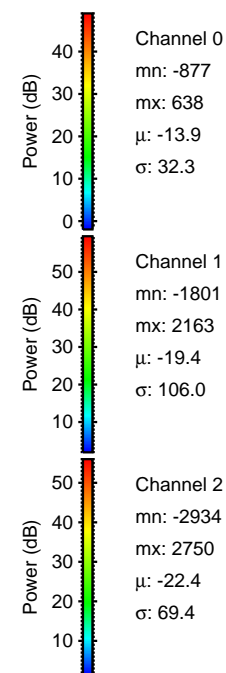
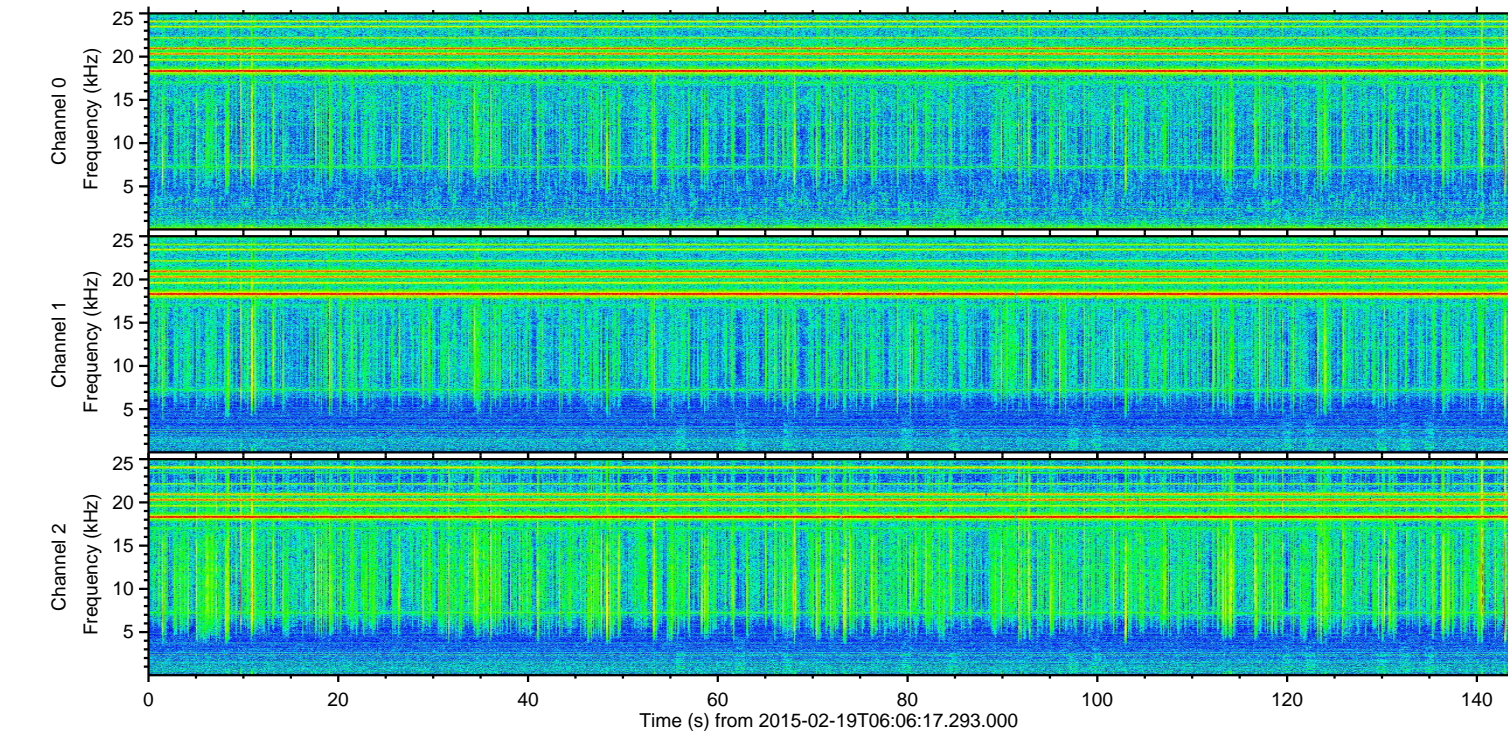
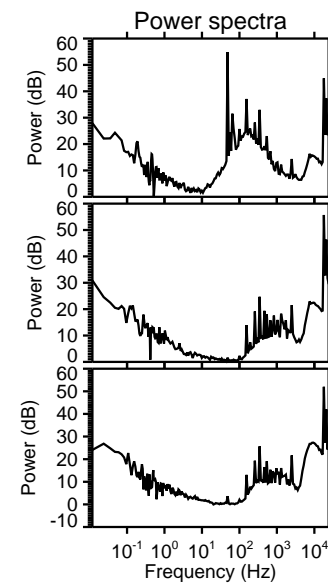
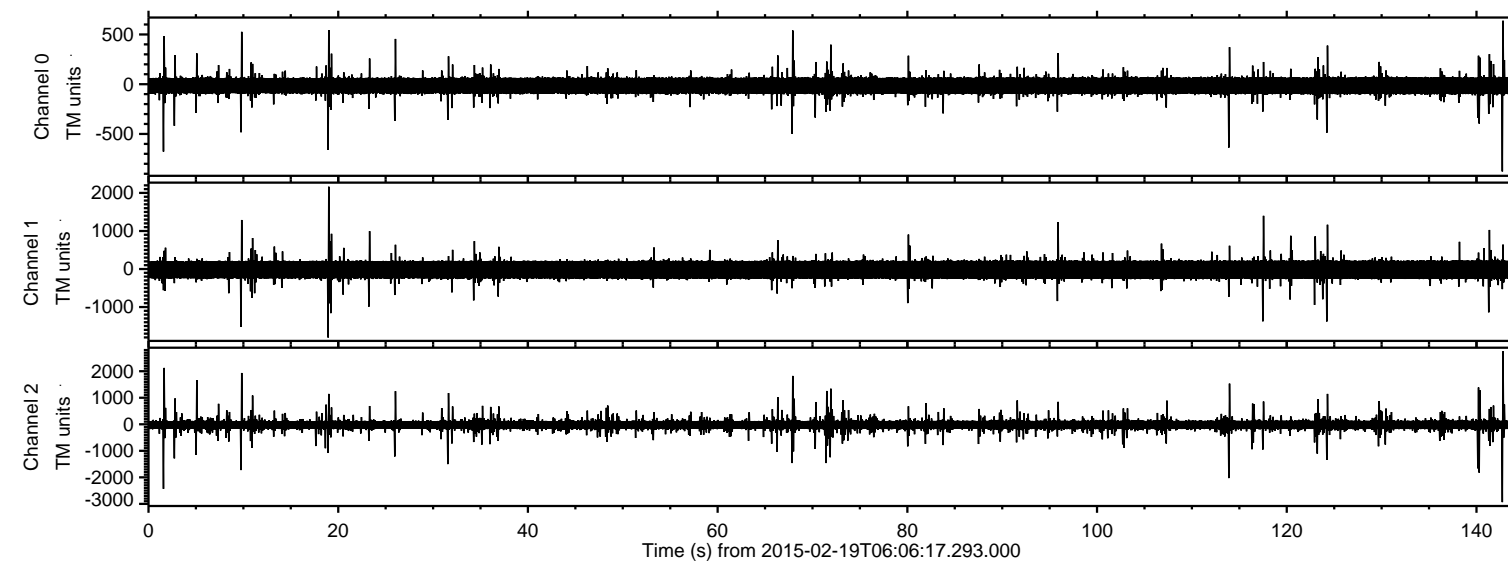


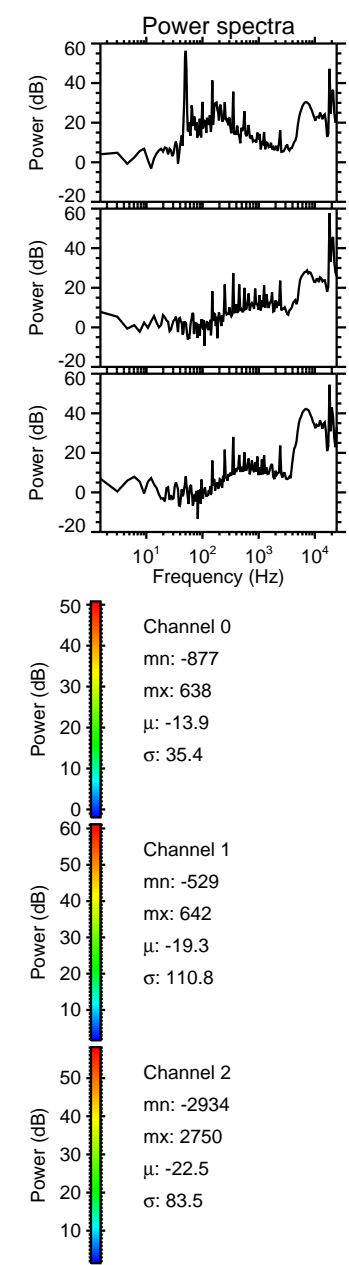
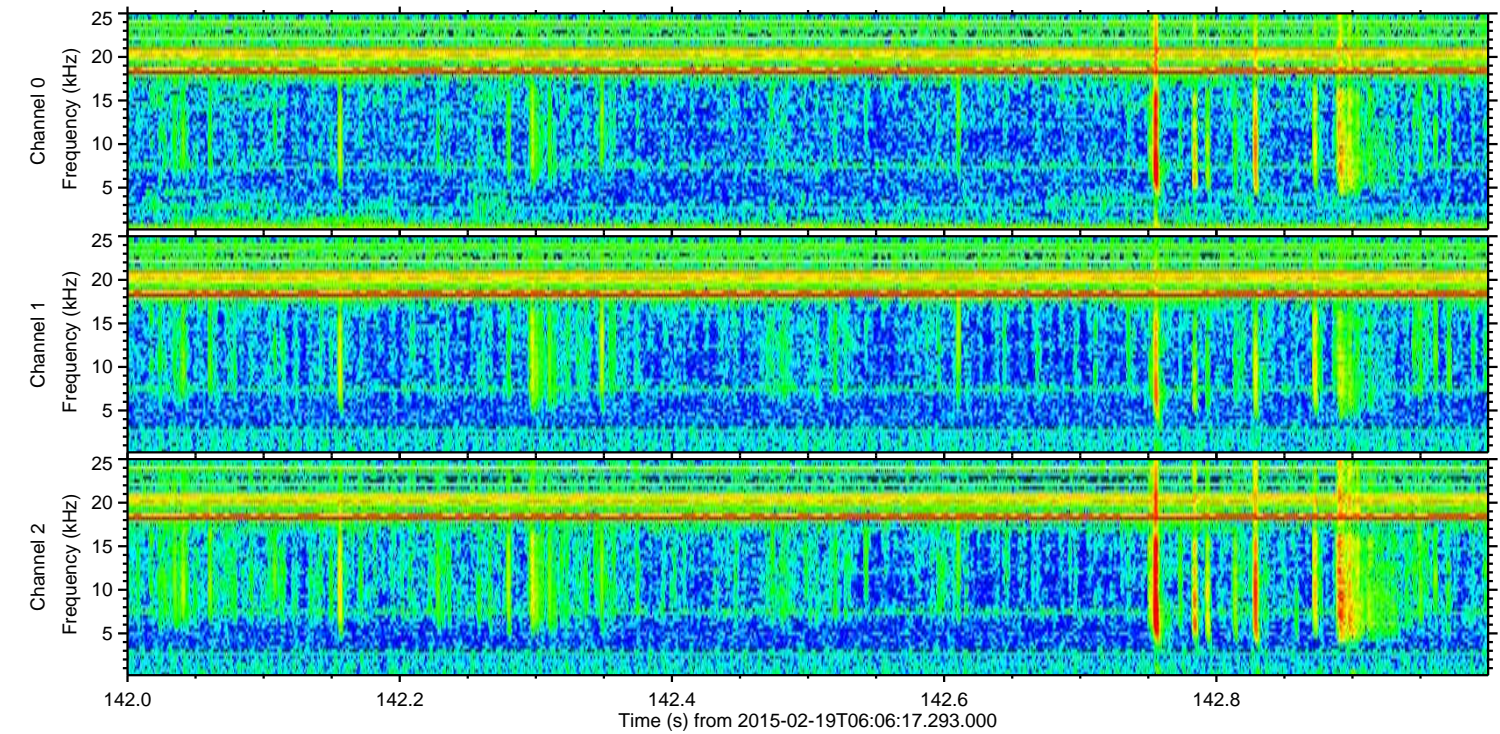
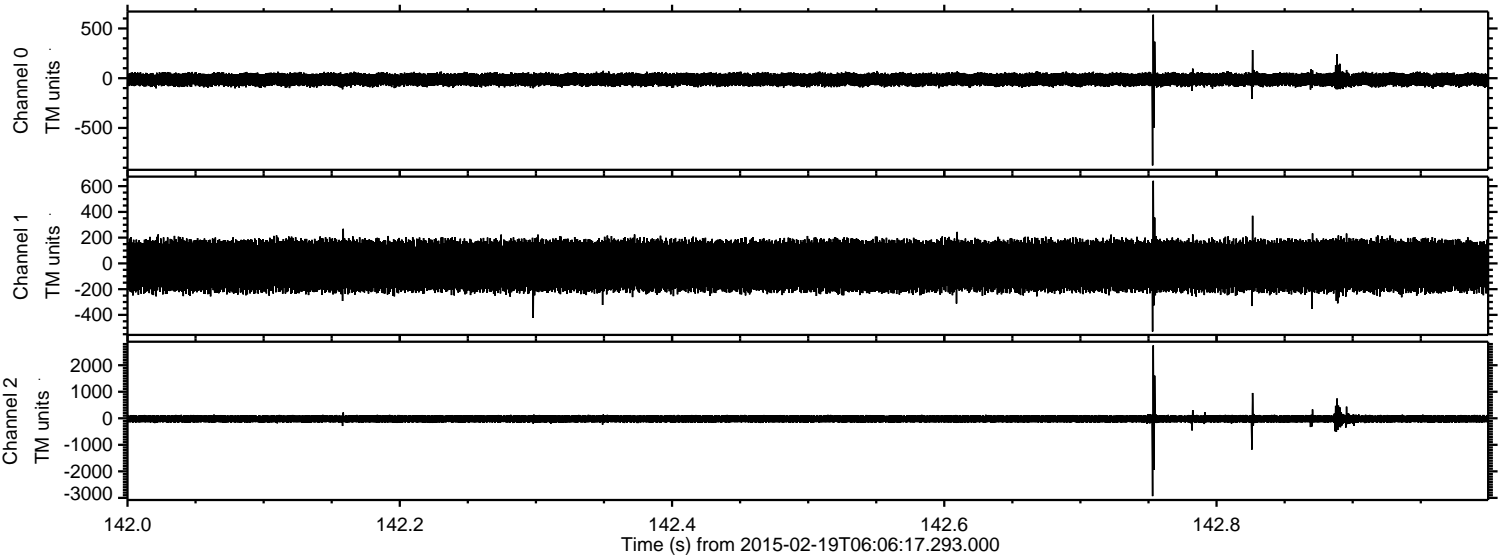
ELMAVAN 3D WAVEFORMS (Measured data sampled at 50 kHz) 49807 packets of 144 samples from 2015-02-19T06:06:17.293.000.

Processed Fri Feb 27 10:33:44 2015 by ELM ver.2012-10-06 from 001__elm20150219_060616__dat00.bin



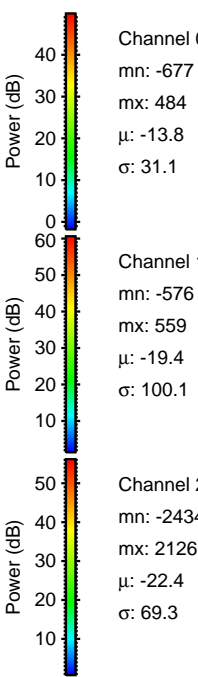
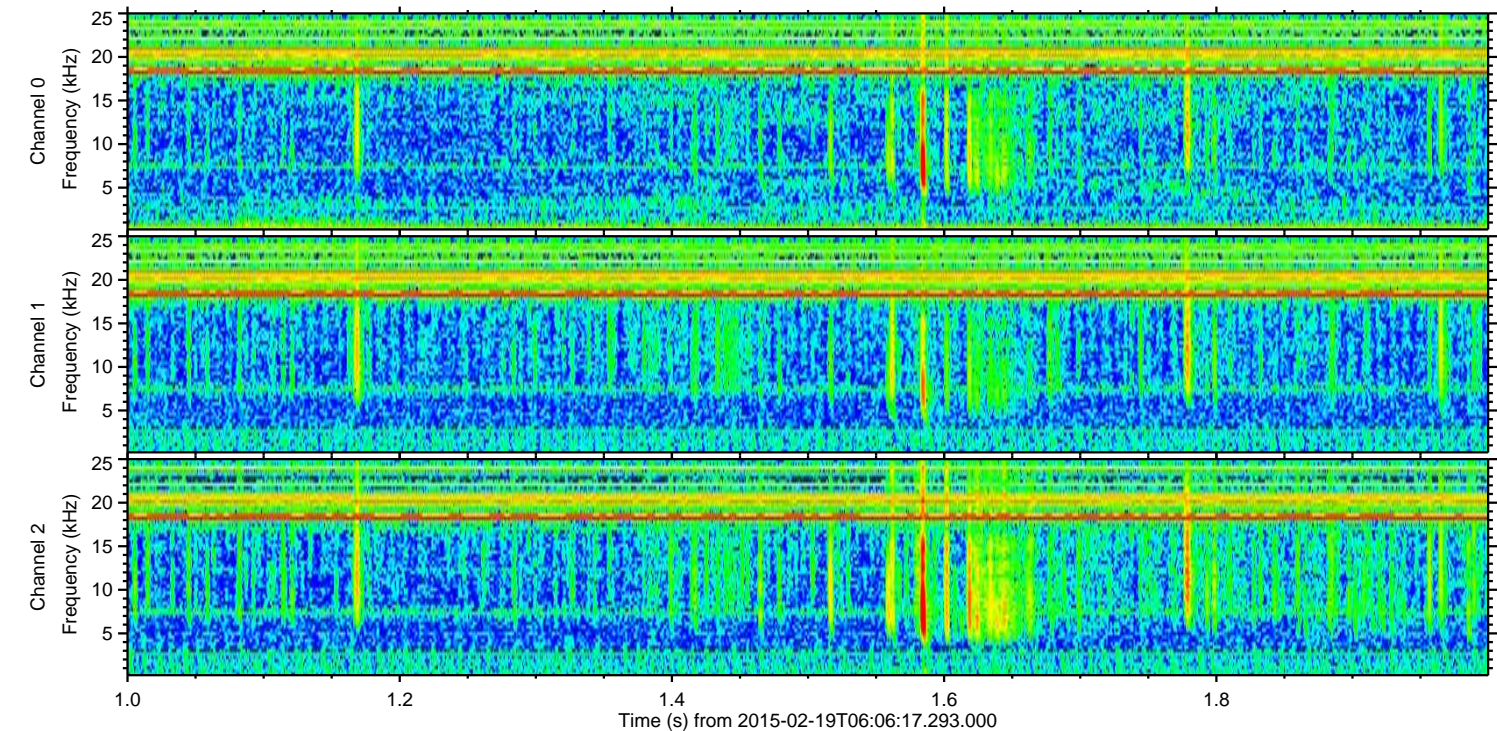
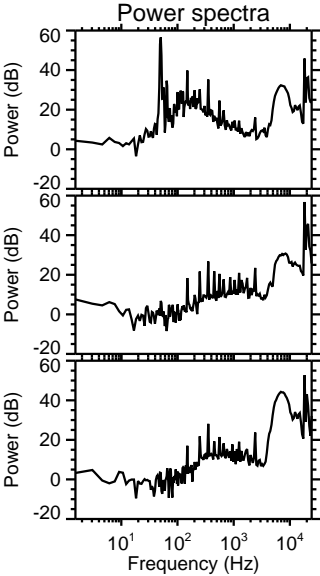
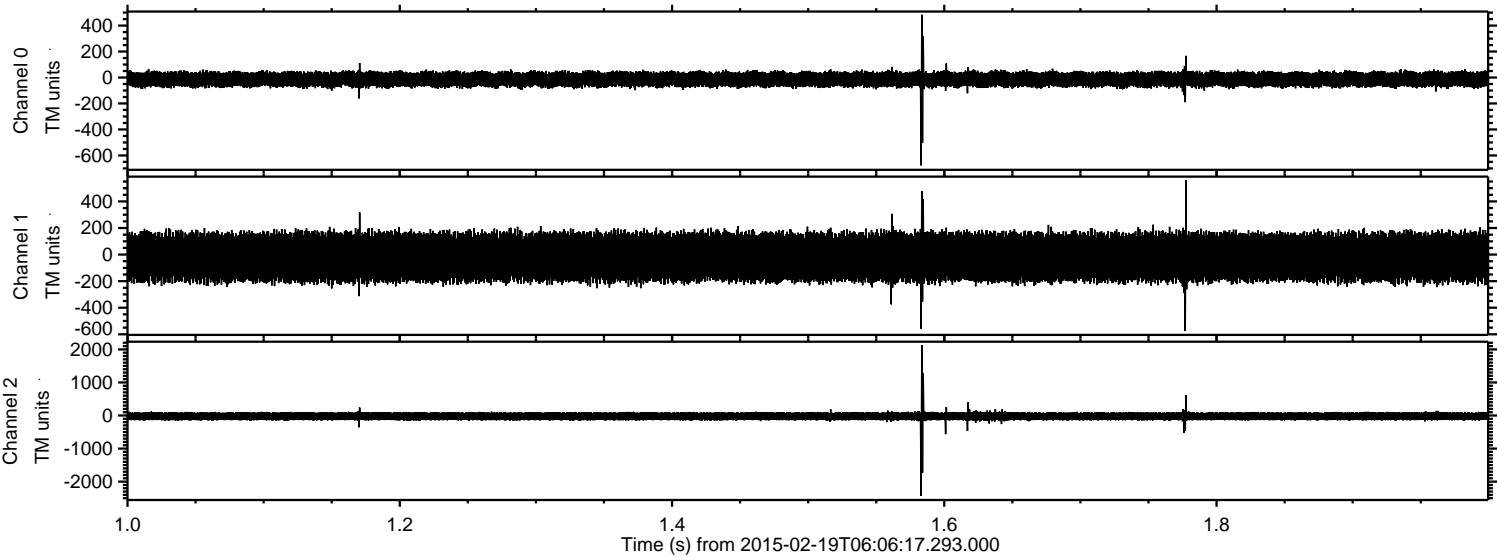
ELMAVAN 3D WAVEFORMS (Measured data sampled at 50 kHz) 49807 packets of 144 samples from 2015-02-19T06:06:17.293.000. Part 143/144

Processed Fri Feb 27 10:33:56 2015 by ELM ver.2012-10-06 from 001__elm20150219_060616__dat00.bin



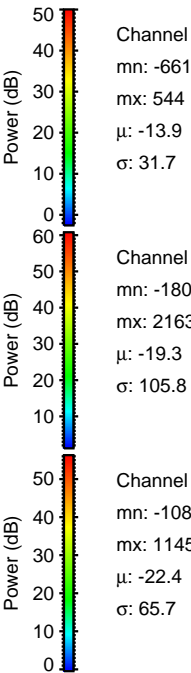
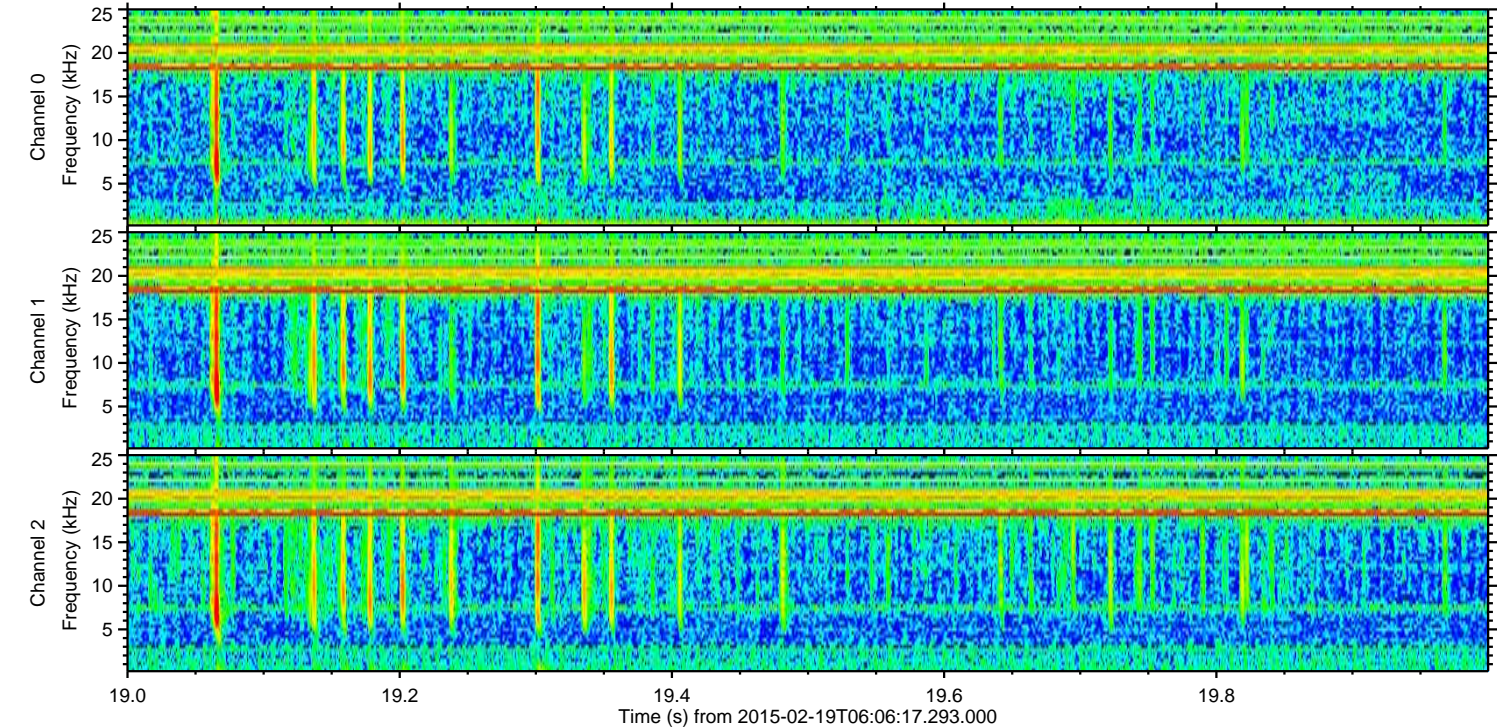
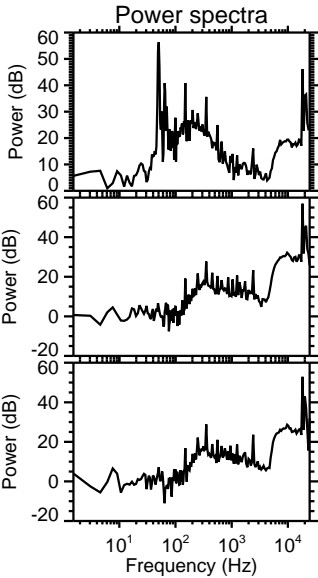
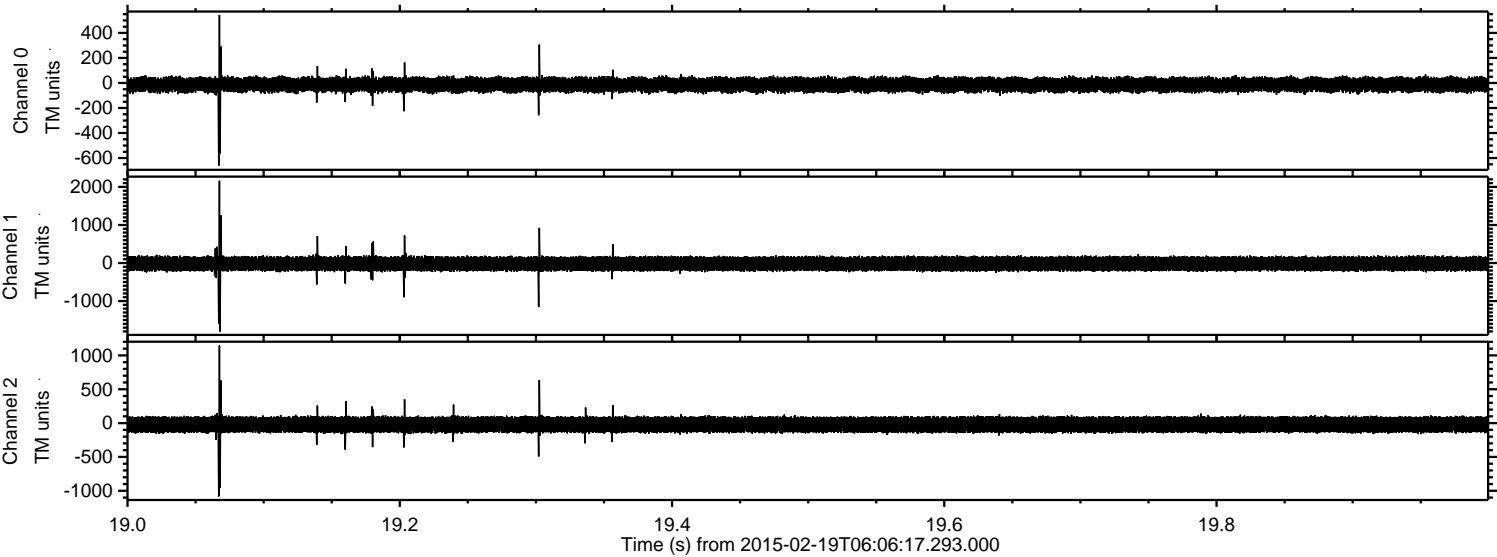
ELMAVAN 3D WAVEFORMS (Measured data sampled at 50 kHz) 49807 packets of 144 samples from 2015-02-19T06:06:17.293.000. Part 2/144

Processed Fri Feb 27 10:33:57 2015 by ELM ver.2012-10-06 from 001__elm20150219_060616__dat00.bin



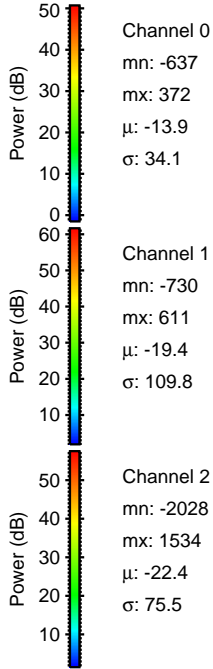
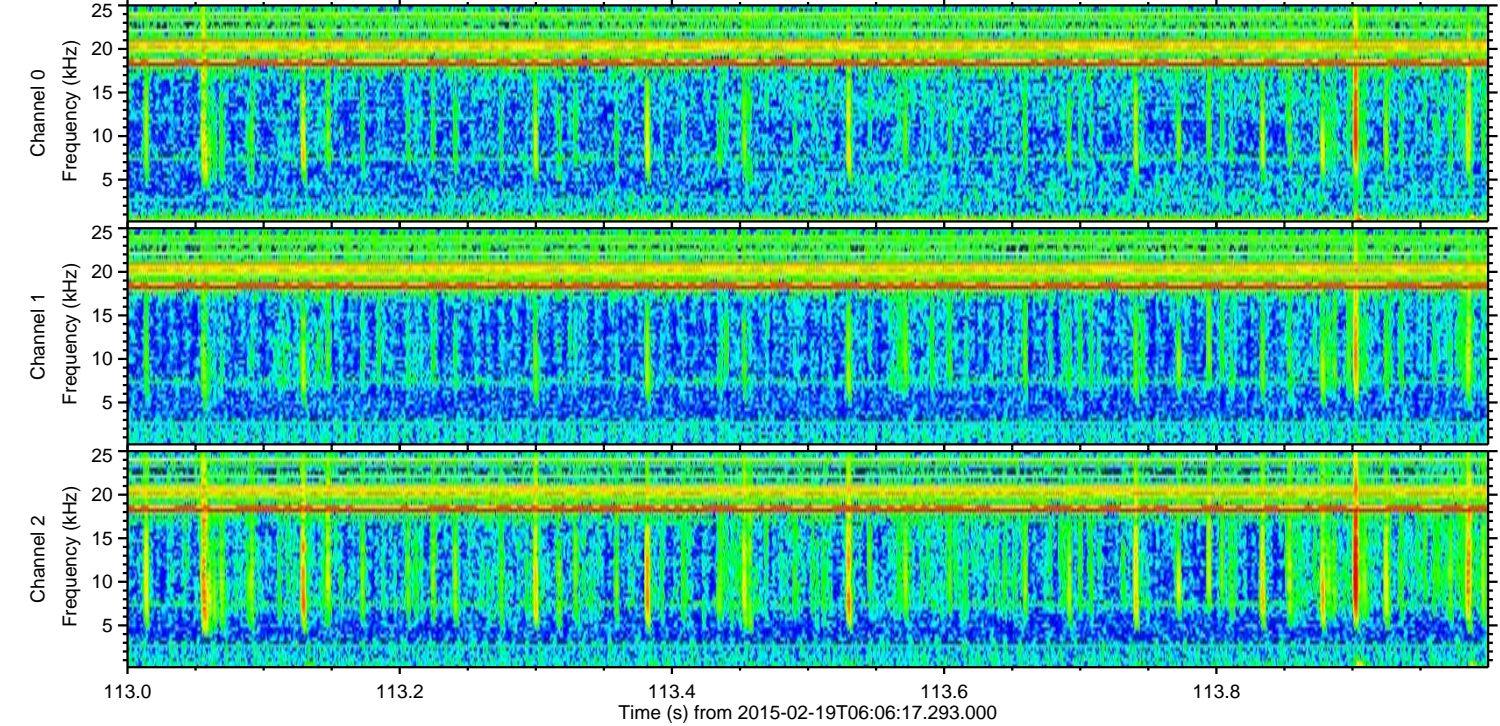
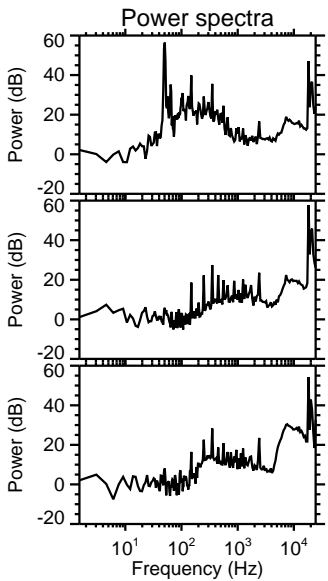
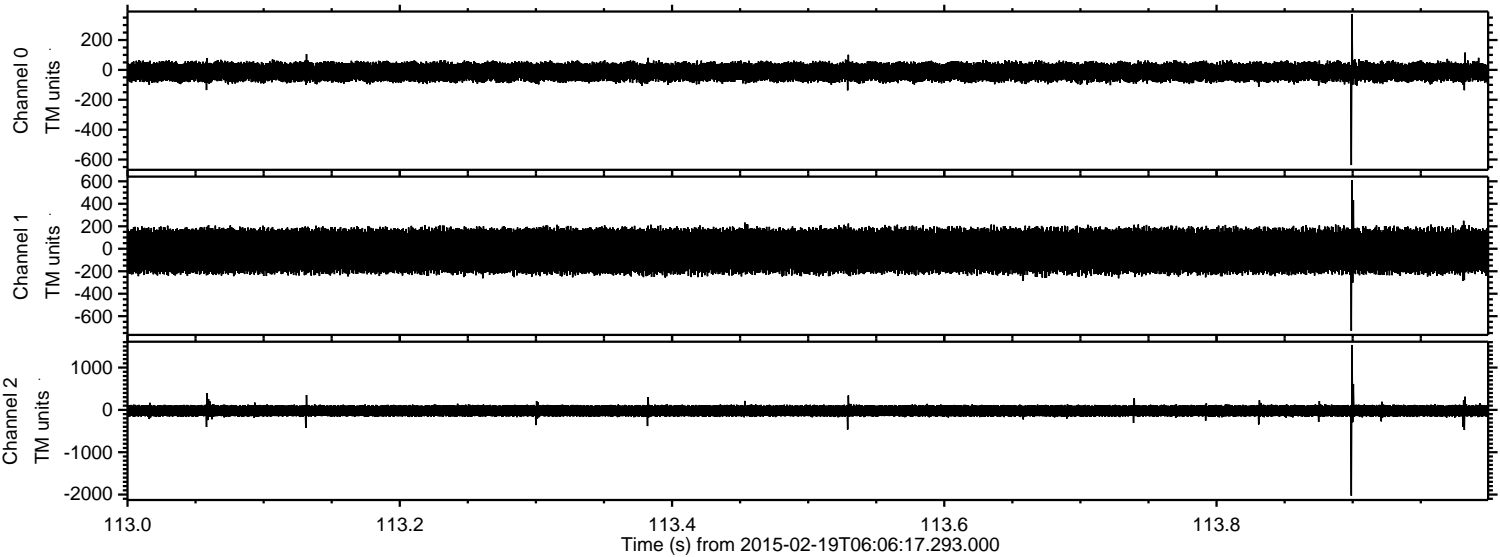
ELMAVAN 3D WAVEFORMS (Measured data sampled at 50 kHz) 49807 packets of 144 samples from 2015-02-19T06:06:17.293.000. Part 20/144

Processed Fri Feb 27 10:33:58 2015 by ELM ver.2012-10-06 from 001__elm20150219_060616__dat00.bin

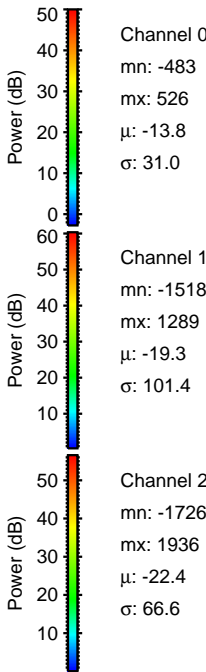
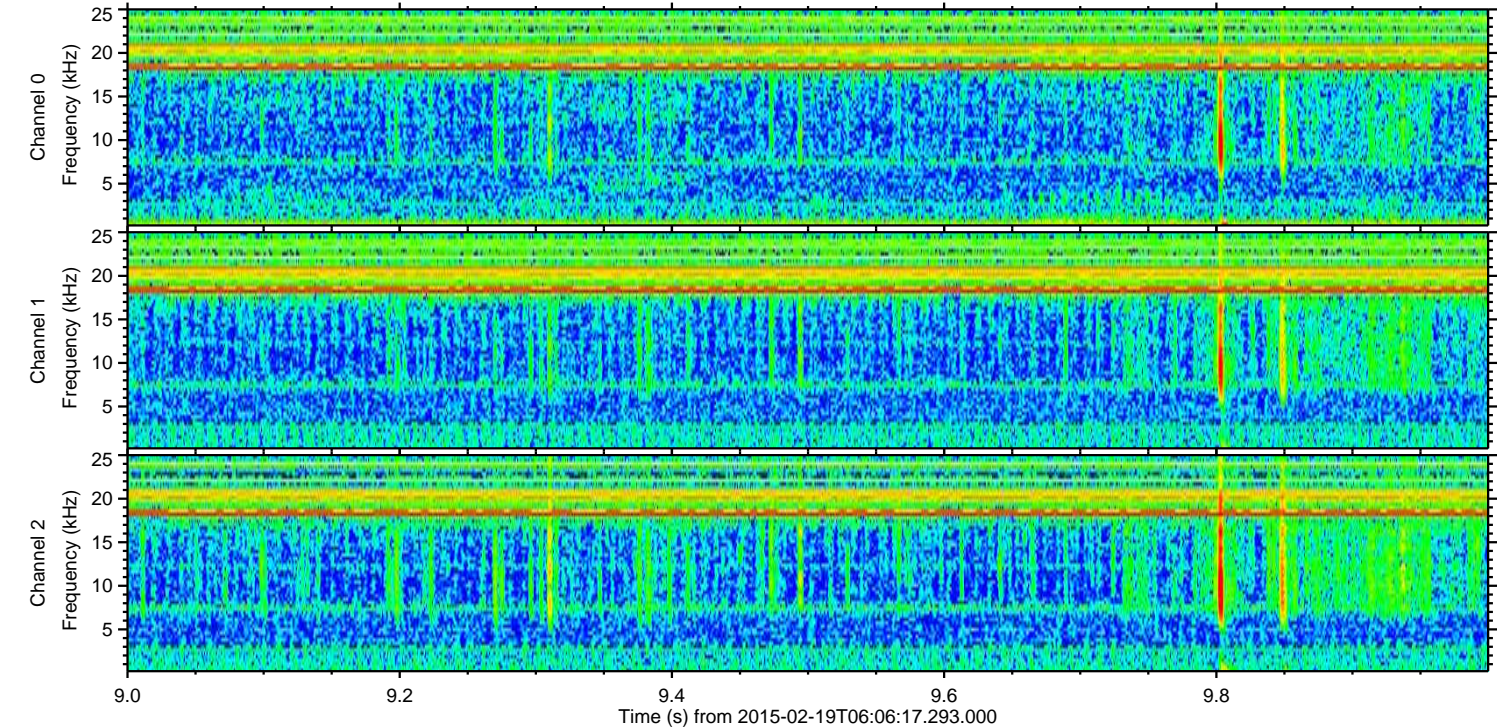
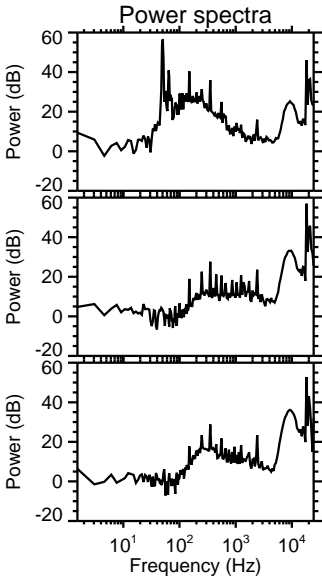
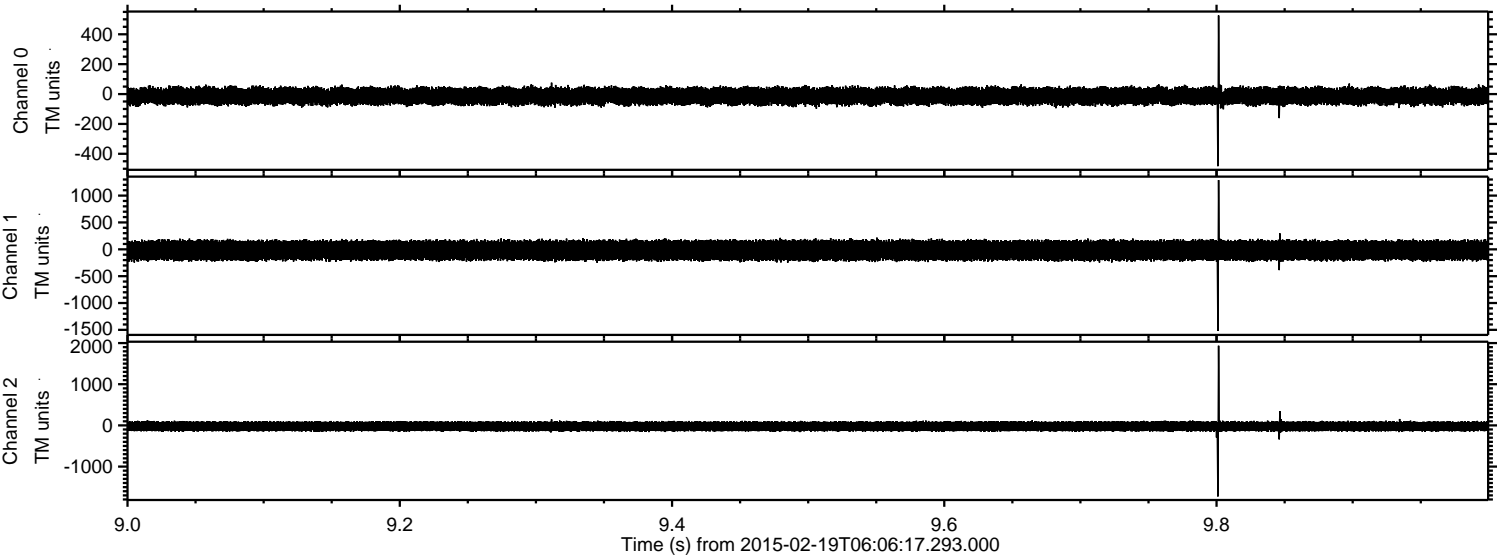


ELMAVAN 3D WAVEFORMS (Measured data sampled at 50 kHz) 49807 packets of 144 samples from 2015-02-19T06:06:17.293.000. Part 114/144

Processed Fri Feb 27 10:33:59 2015 by ELM ver.2012-10-06 from 001__elm20150219_060616__dat00.bin

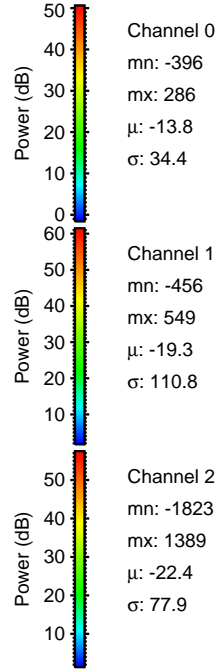
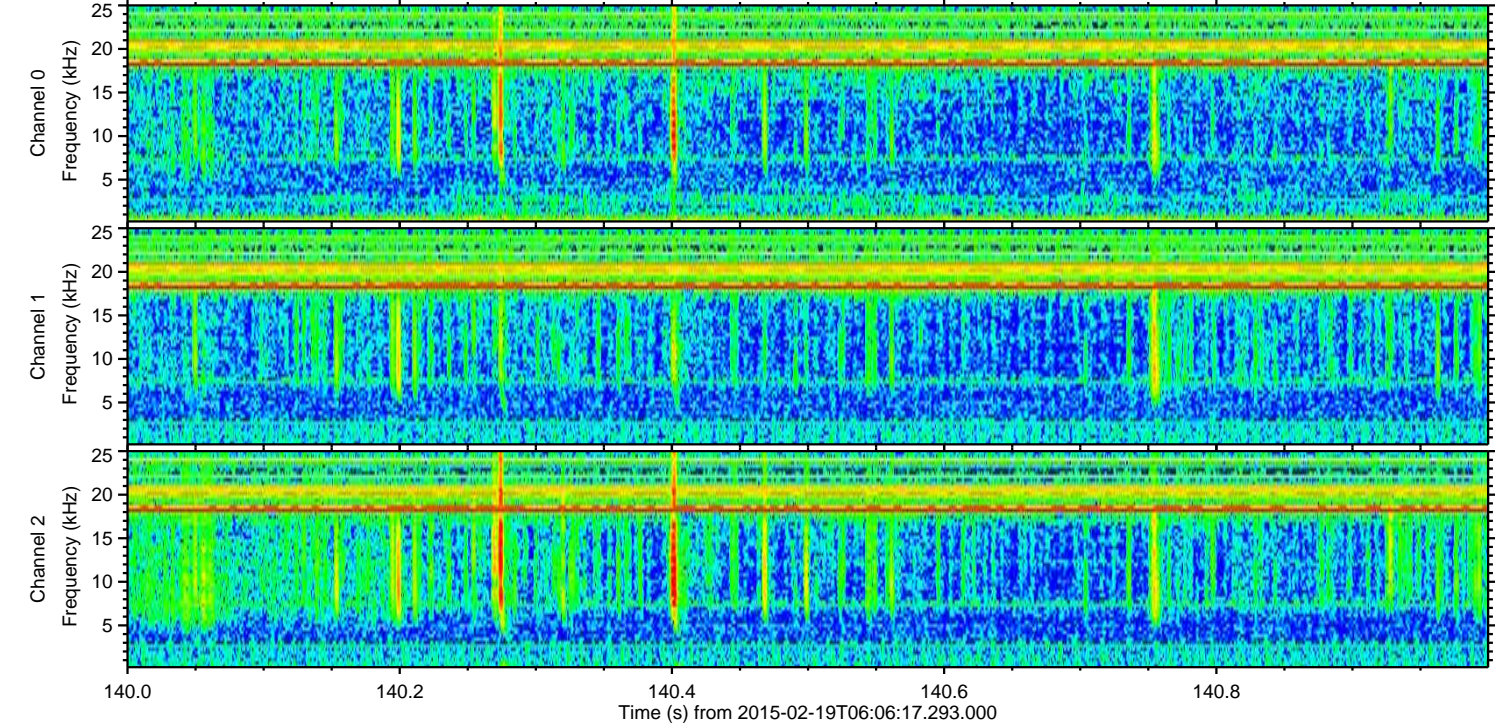
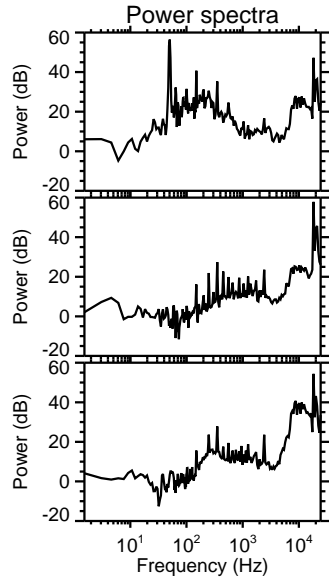
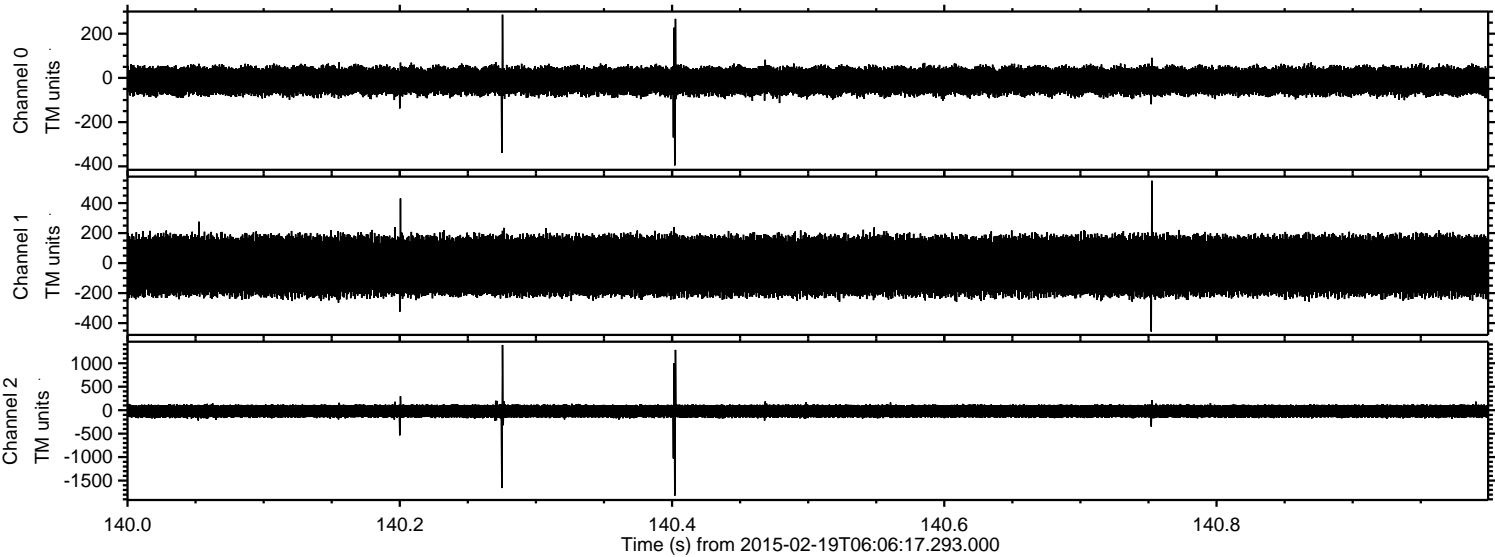


Processed Fri Feb 27 10:34:00 2015 by ELM ver.2012-10-06 from 001__elm20150219_060616__dat00.bin

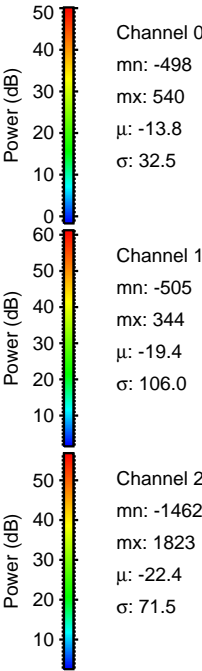
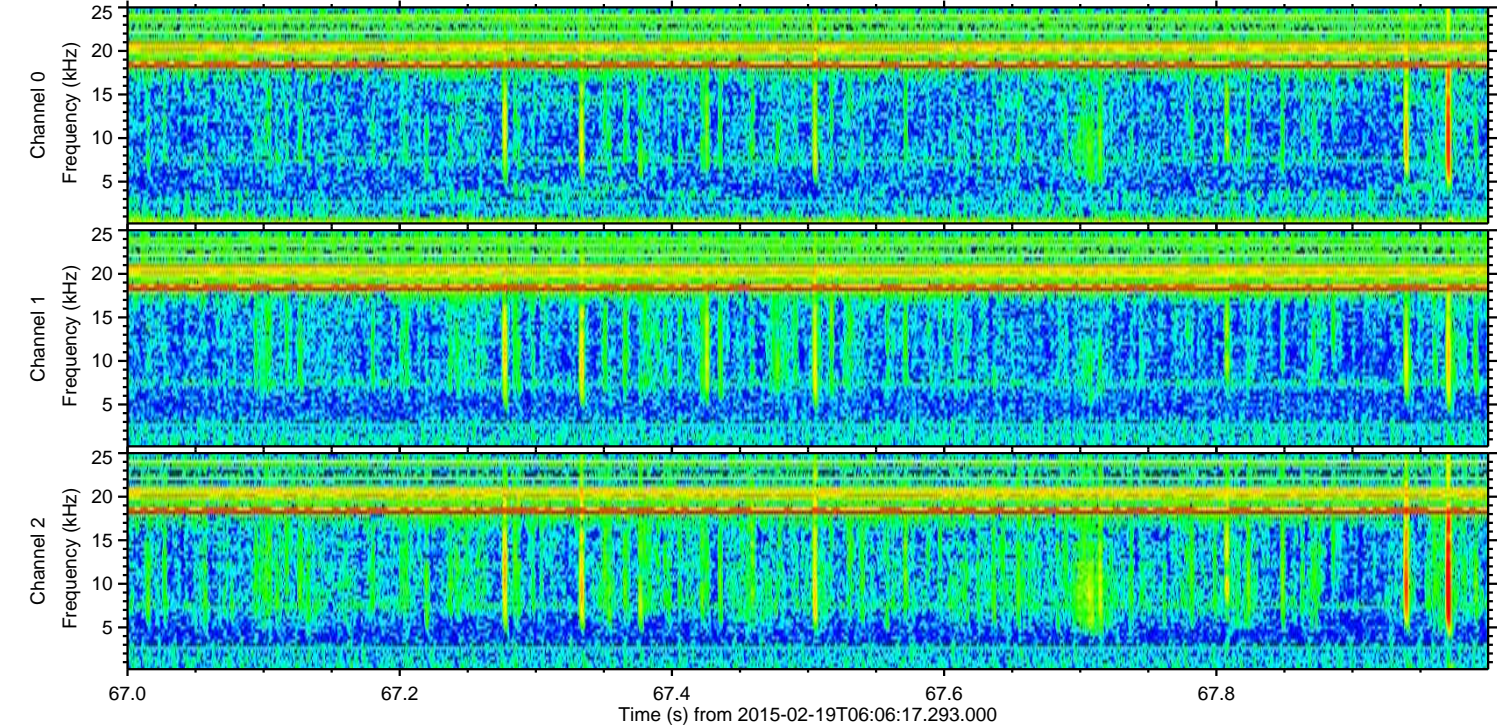
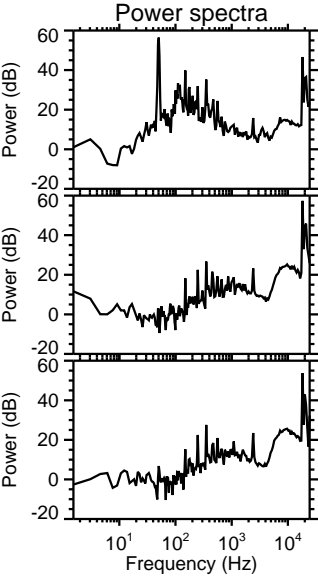
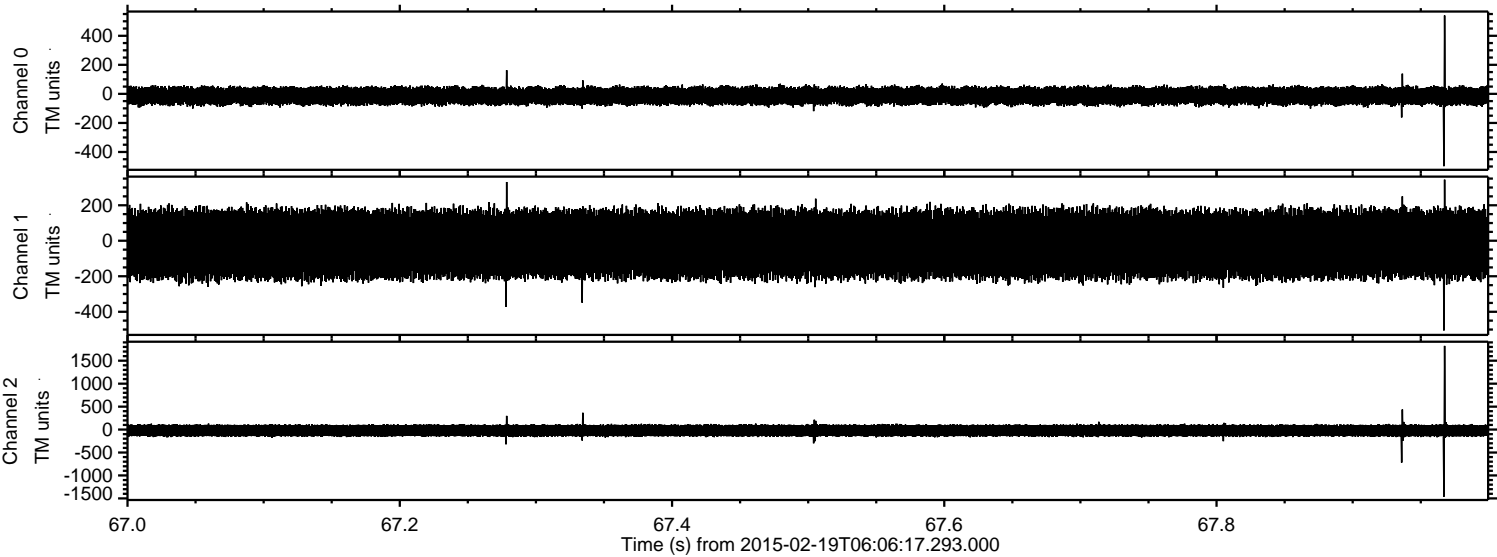


ELMAVAN 3D WAVEFORMS (Measured data sampled at 50 kHz) 49807 packets of 144 samples from 2015-02-19T06:06:17.293.000. Part 141/144

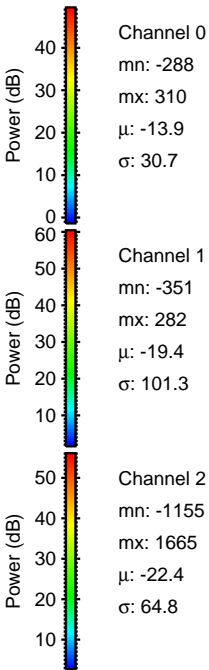
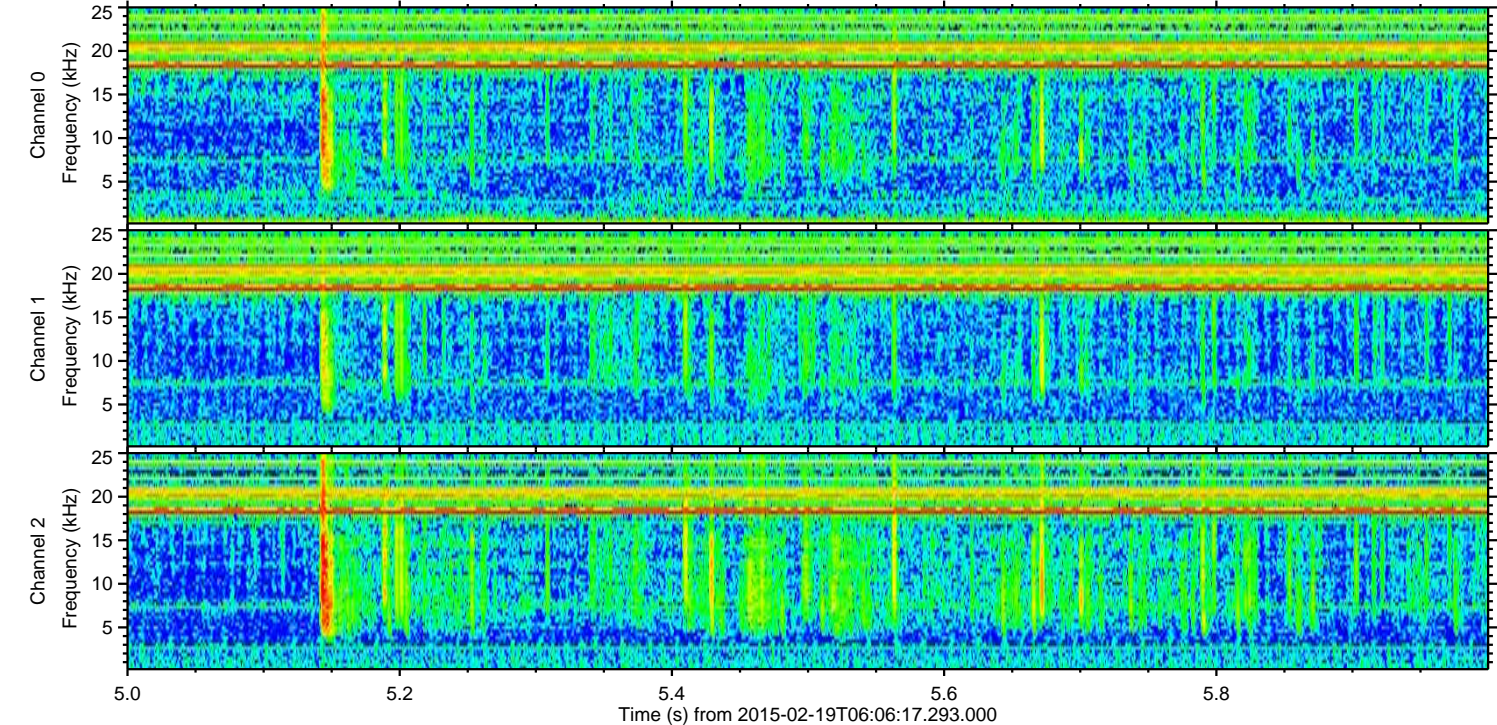
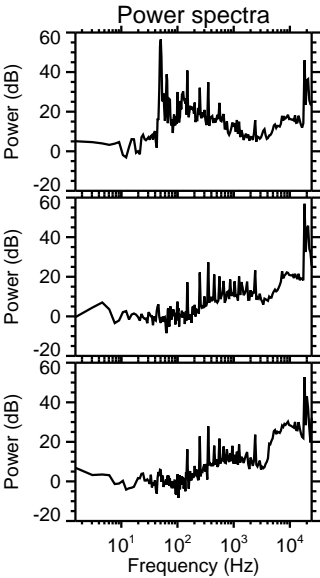
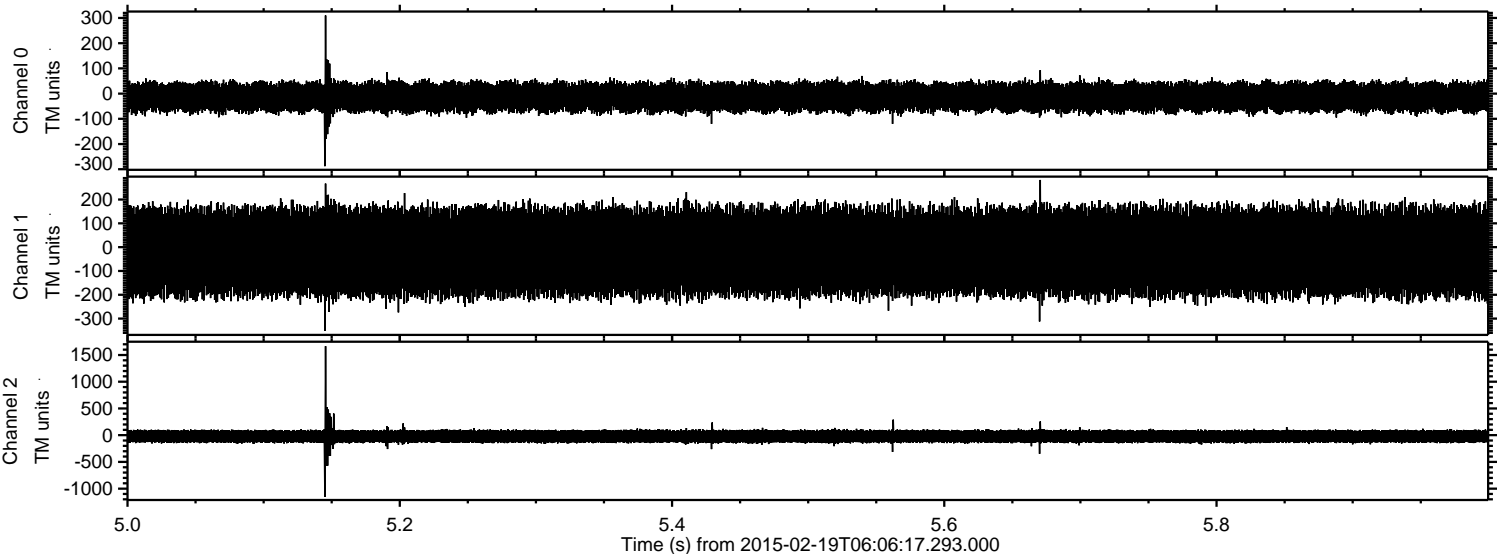
Processed Fri Feb 27 10:34:01 2015 by ELM ver.2012-10-06 from 001__elm20150219_060616__dat00.bin



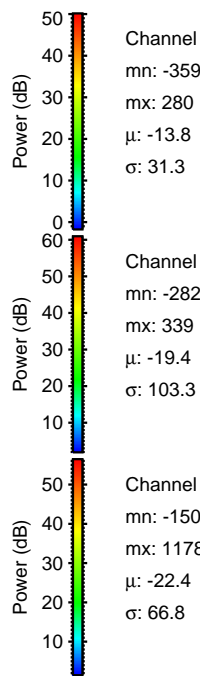
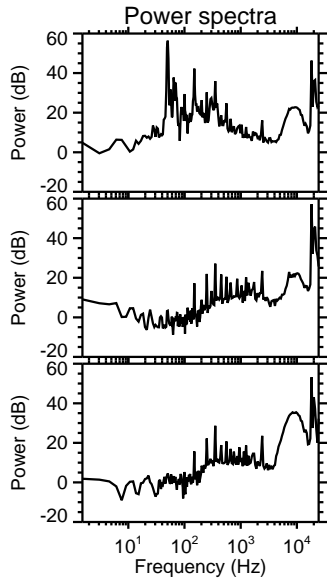
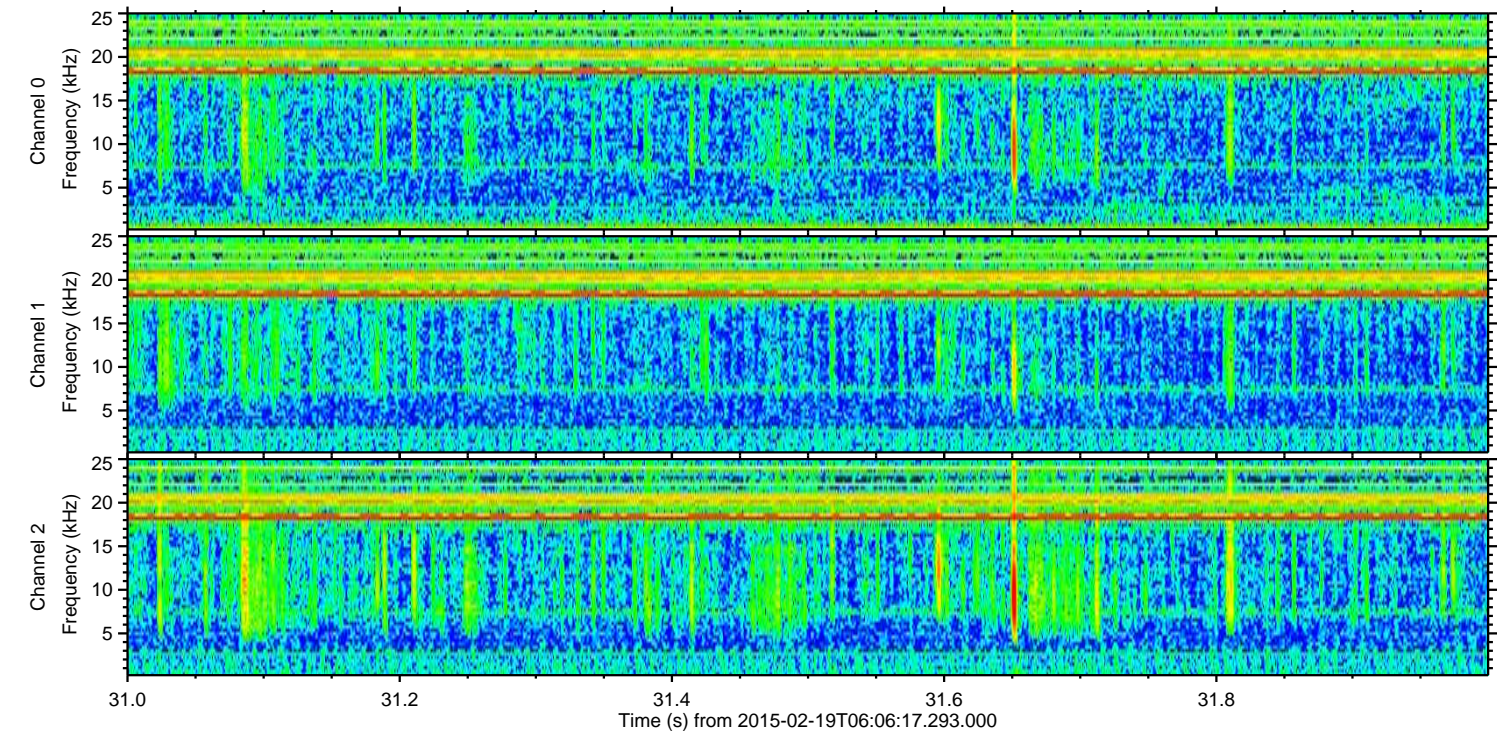
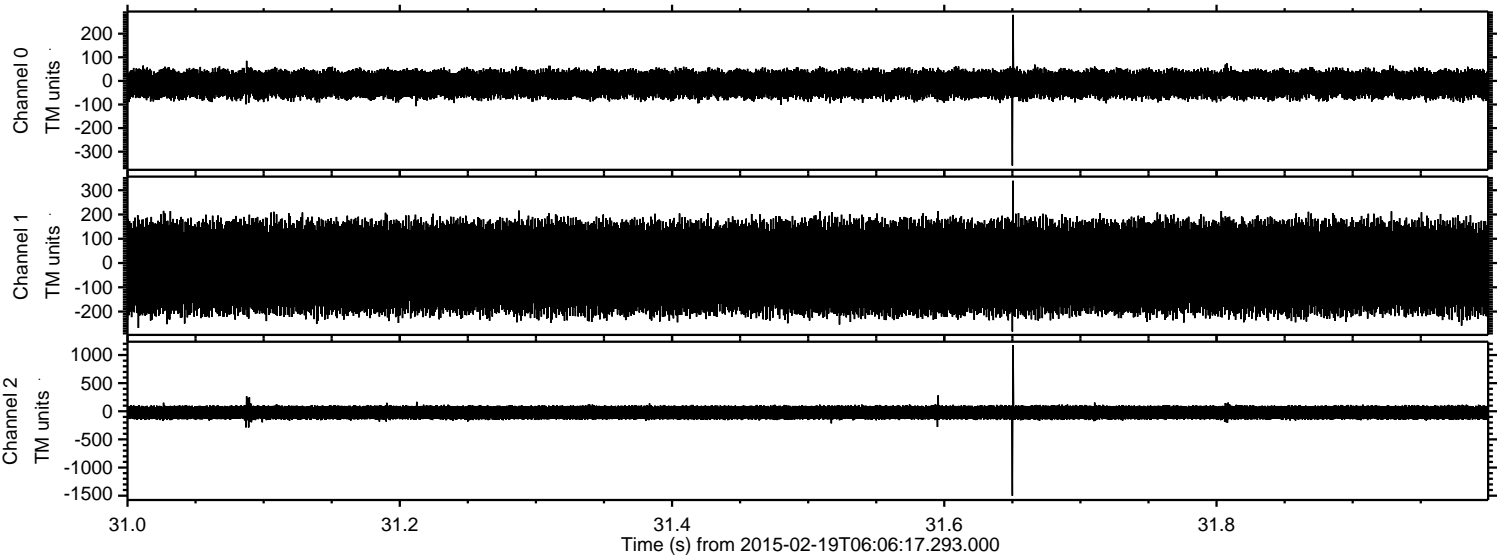
Processed Fri Feb 27 10:34:02 2015 by ELM ver.2012-10-06 from 001__elm20150219_060616__dat00.bin



Processed Fri Feb 27 10:34:03 2015 by ELM ver.2012-10-06 from 001__elm20150219_060616__dat00.bin



Processed Fri Feb 27 10:34:03 2015 by ELM ver.2012-10-06 from 001__elm20150219_060616__dat00.bin



Channel 0
mn: -359
mx: 280
 μ : -13.8
 σ : 31.3

Channel 1
mn: -282
mx: 339
 μ : -19.4
 σ : 103.3

Channel 2
mn: -1502
mx: 1178
 μ : -22.4
 σ : 66.8

Processed Fri Feb 27 10:34:04 2015 by ELM ver.2012-10-06 from 001__elm20150219_060616__dat00.bin

