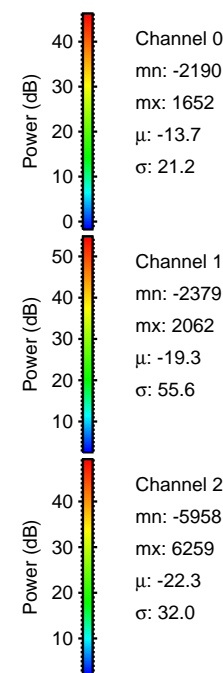
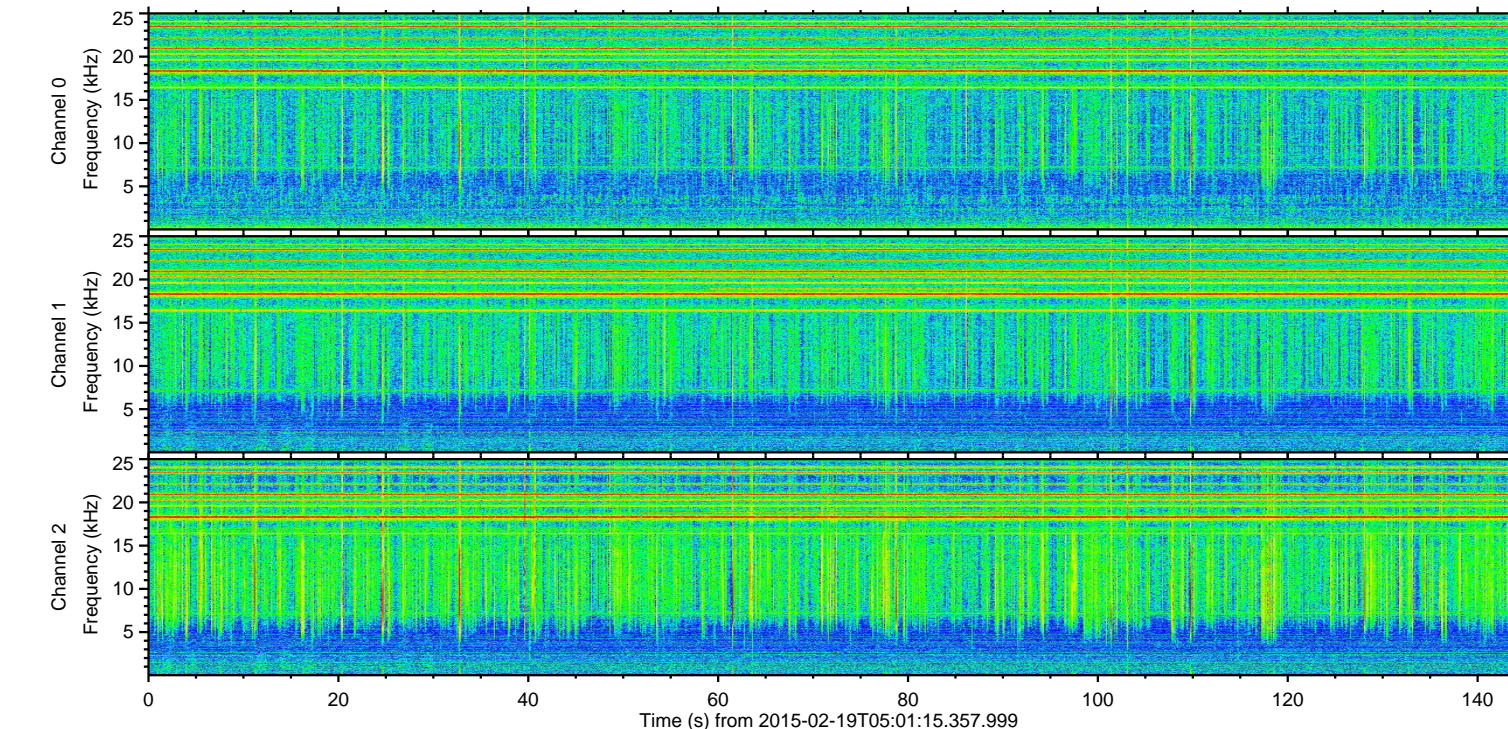
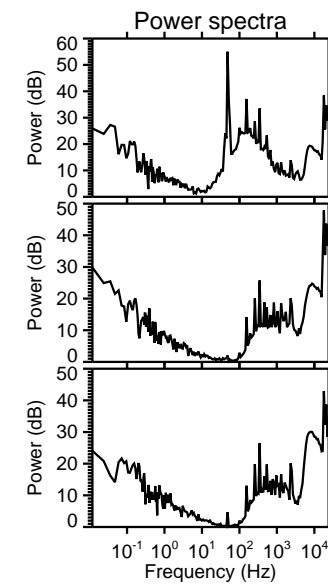
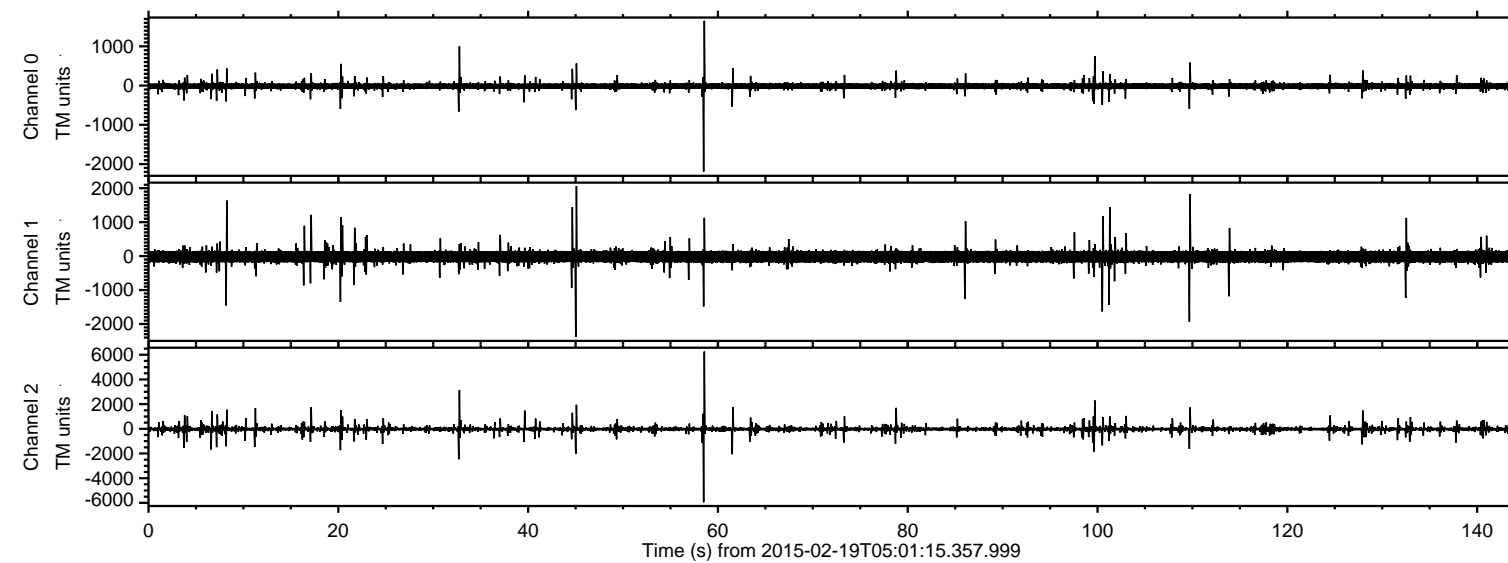
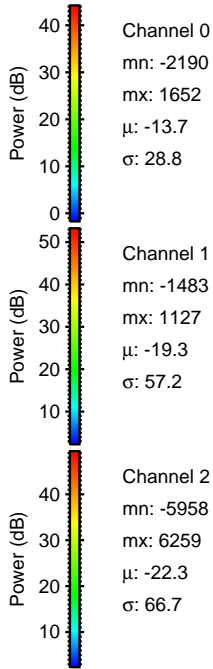
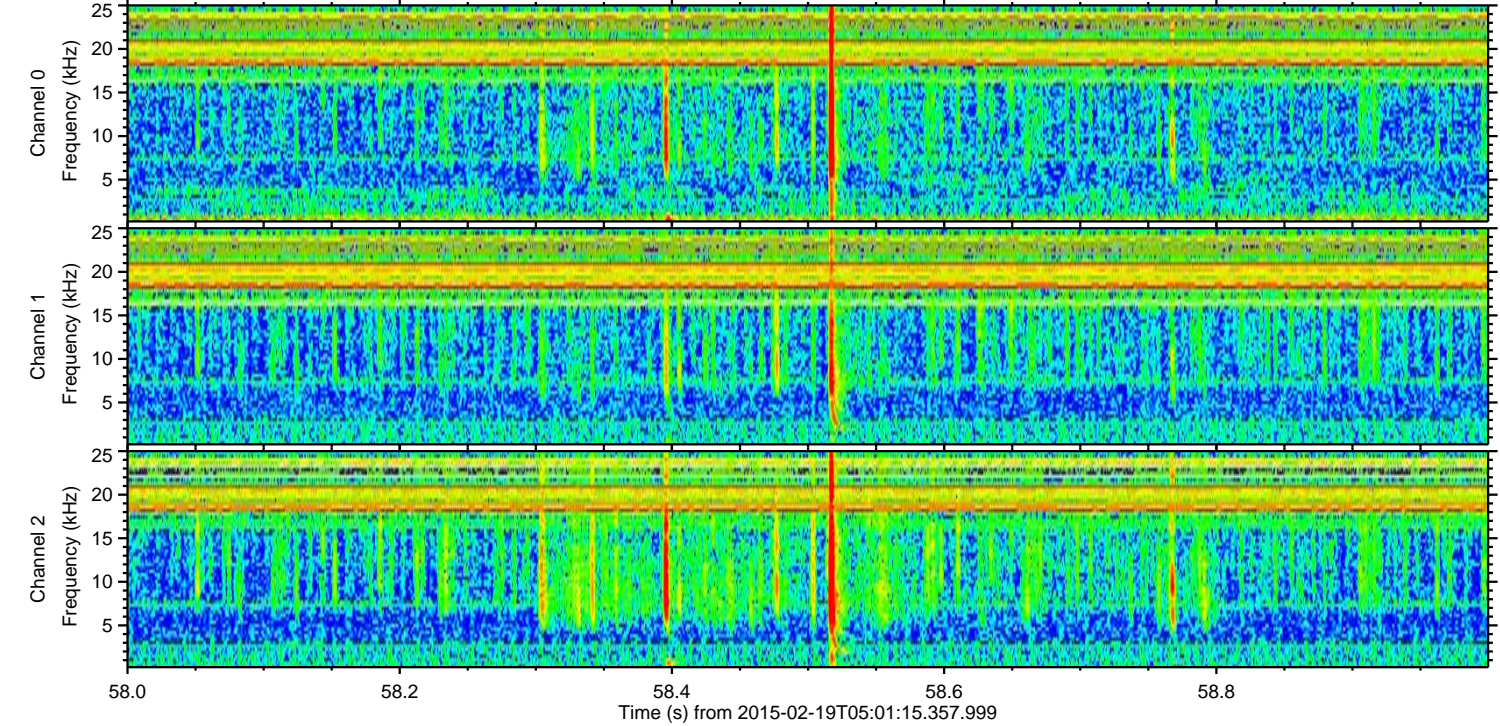
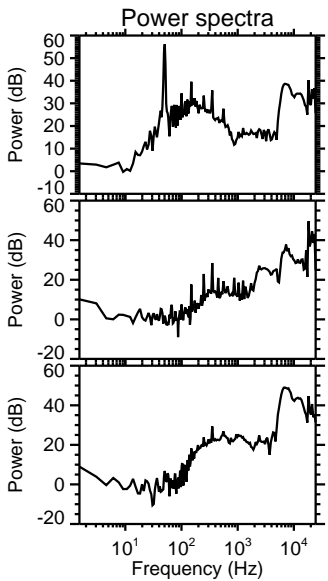
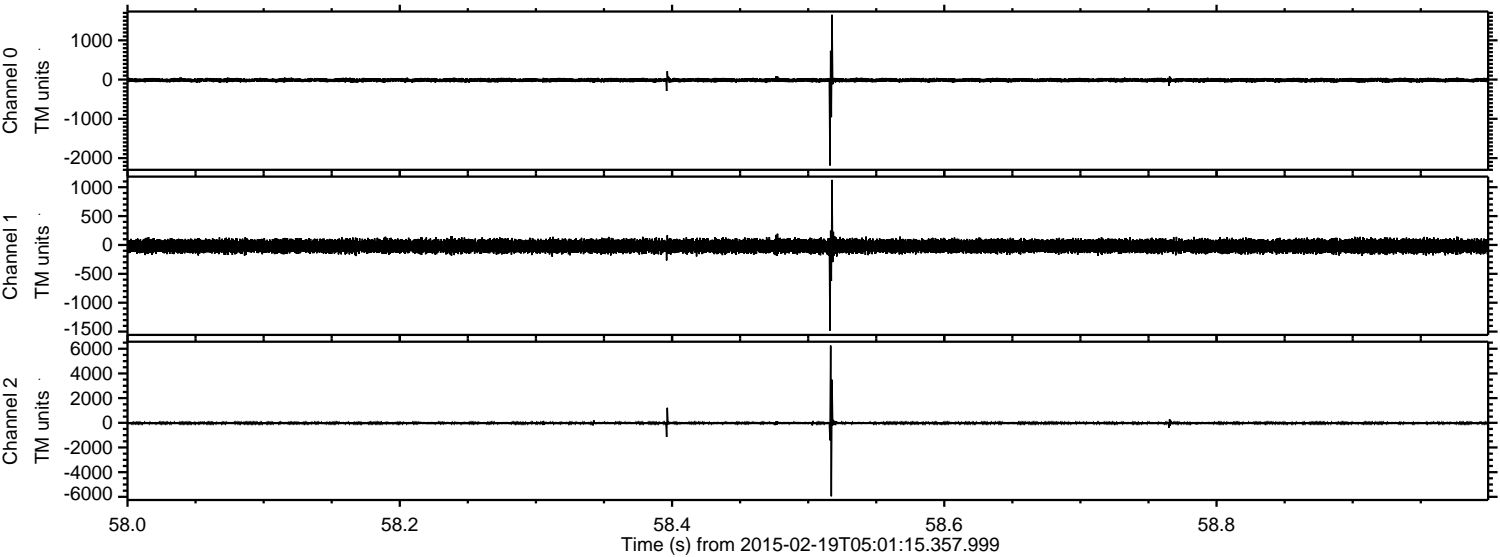


ELMAVAN 3D WAVEFORMS (Measured data sampled at 50 kHz) 49782 packets of 144 samples from 2015-02-19T05:01:15.357.999.

Processed Fri Feb 27 09:45:08 2015 by ELM ver.2012-10-06 from 001__elm20150219_050114__dat00.bin

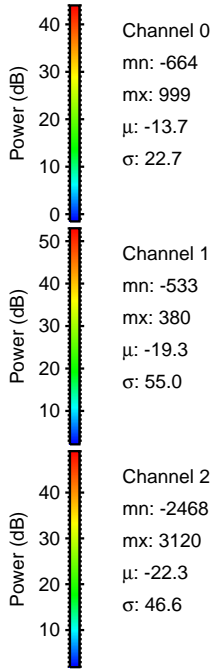
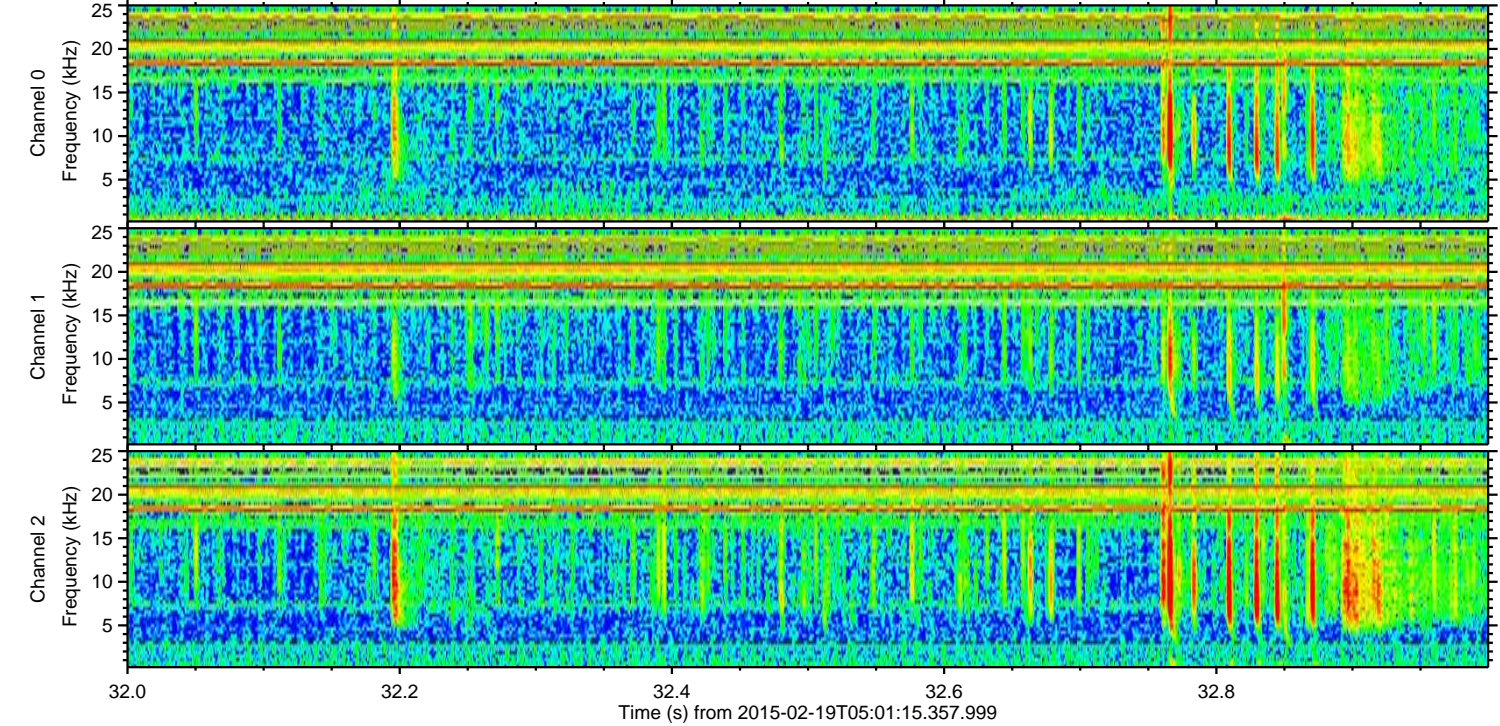
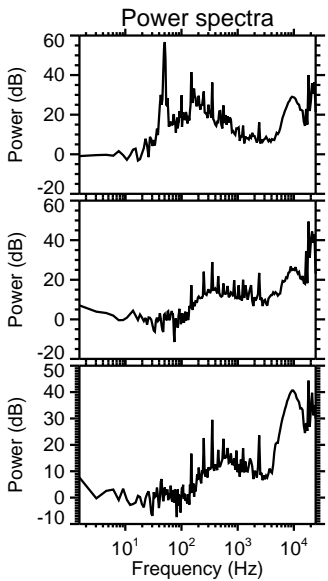
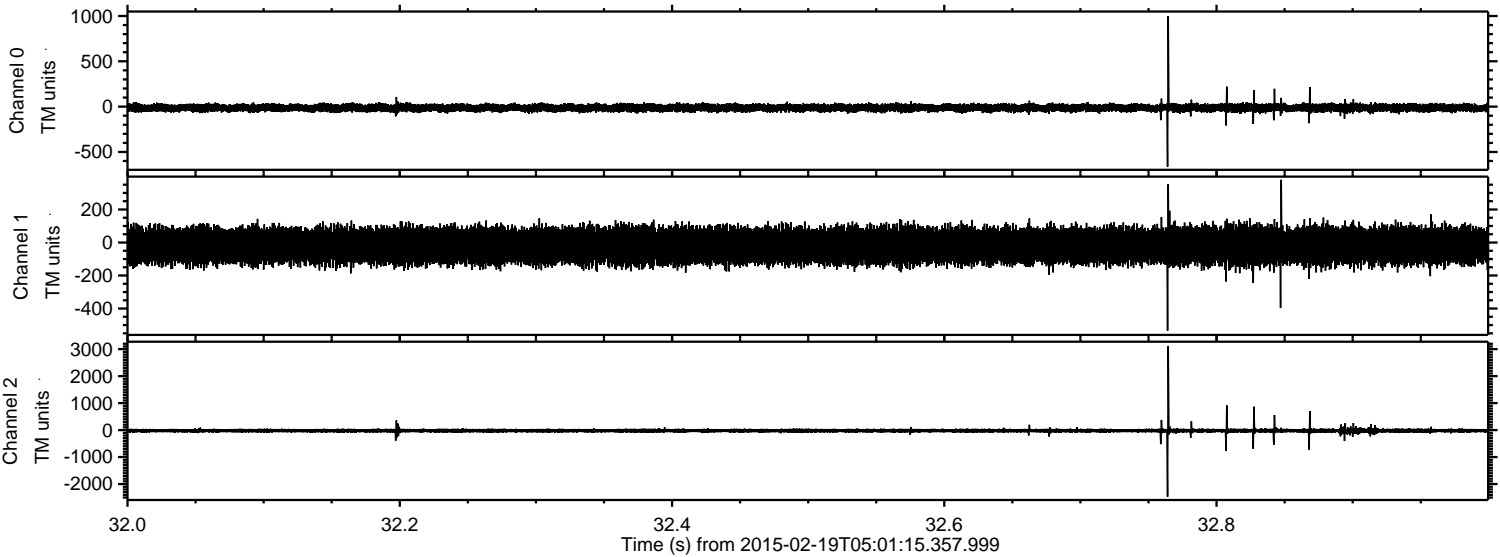


Processed Fri Feb 27 09:45:19 2015 by ELM ver.2012-10-06 from 001__elm20150219_050114__dat00.bin

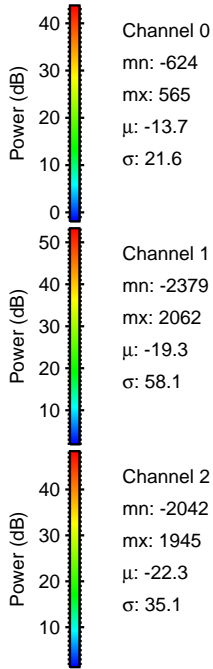
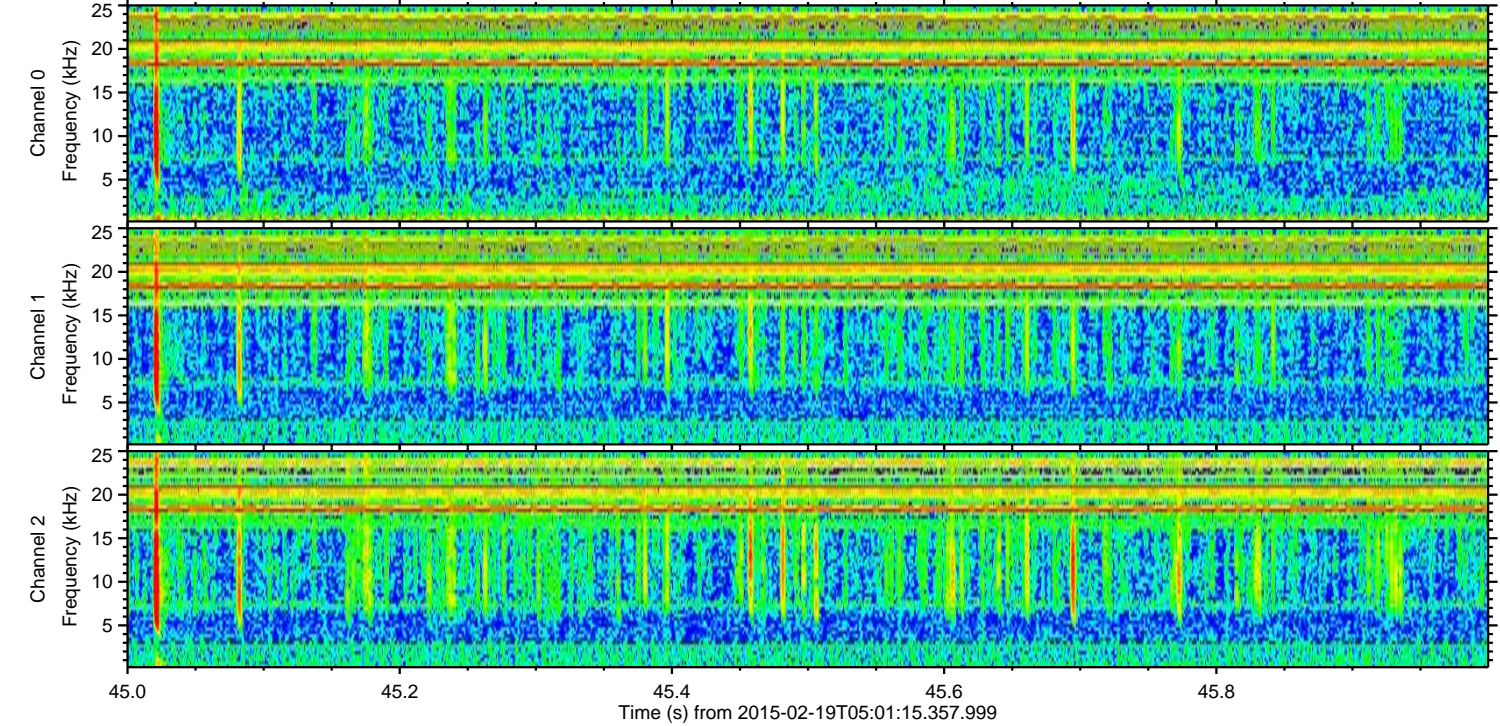
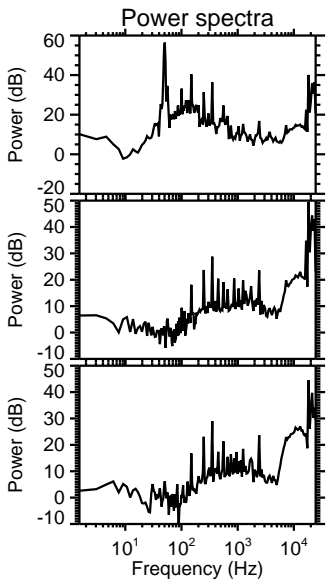
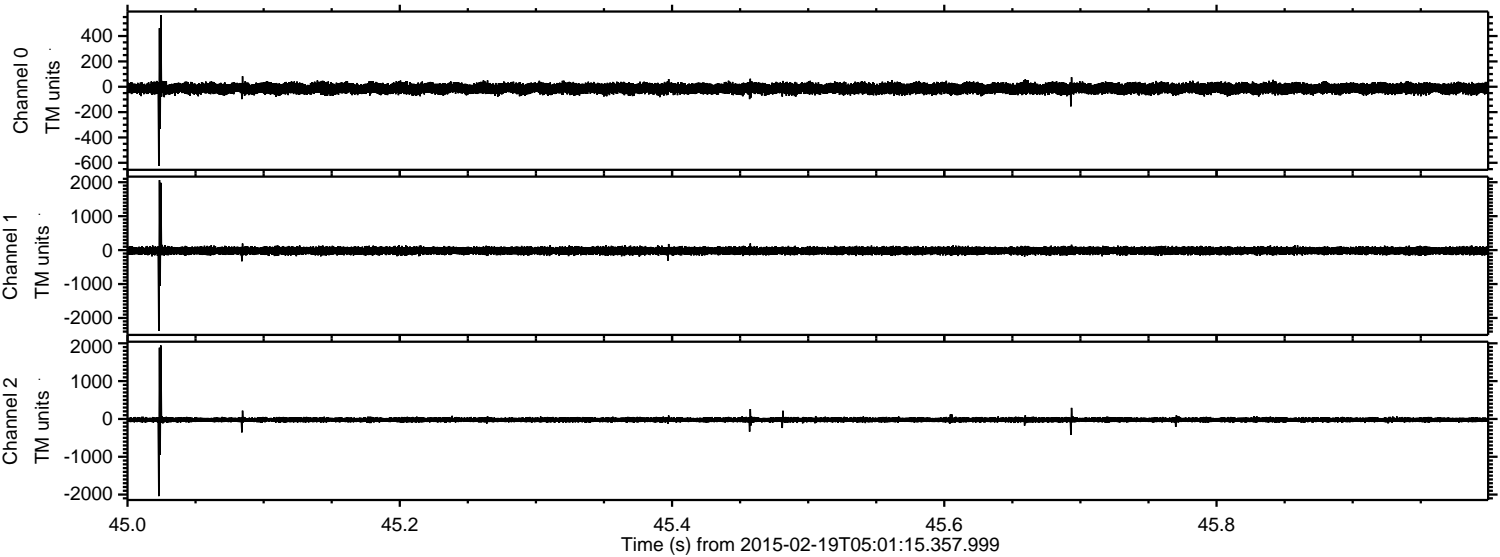


ELMAVAN 3D WAVEFORMS (Measured data sampled at 50 kHz) 49782 packets of 144 samples from 2015-02-19T05:01:15.357.999. Part 33/144

Processed Fri Feb 27 09:45:20 2015 by ELM ver.2012-10-06 from 001__elm20150219_050114__dat00.bin

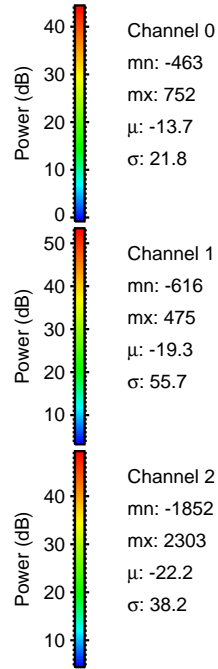
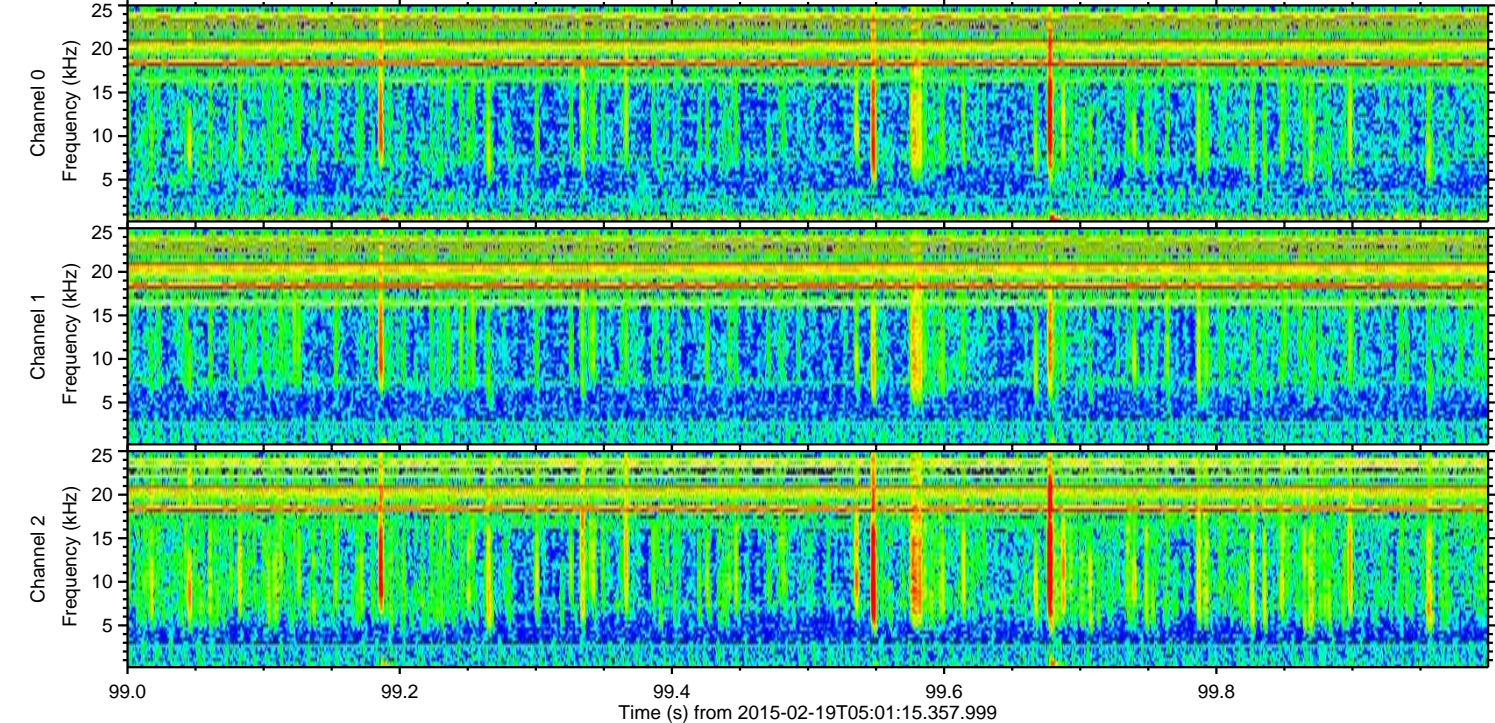
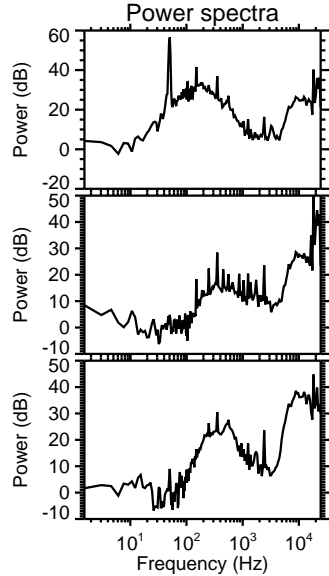
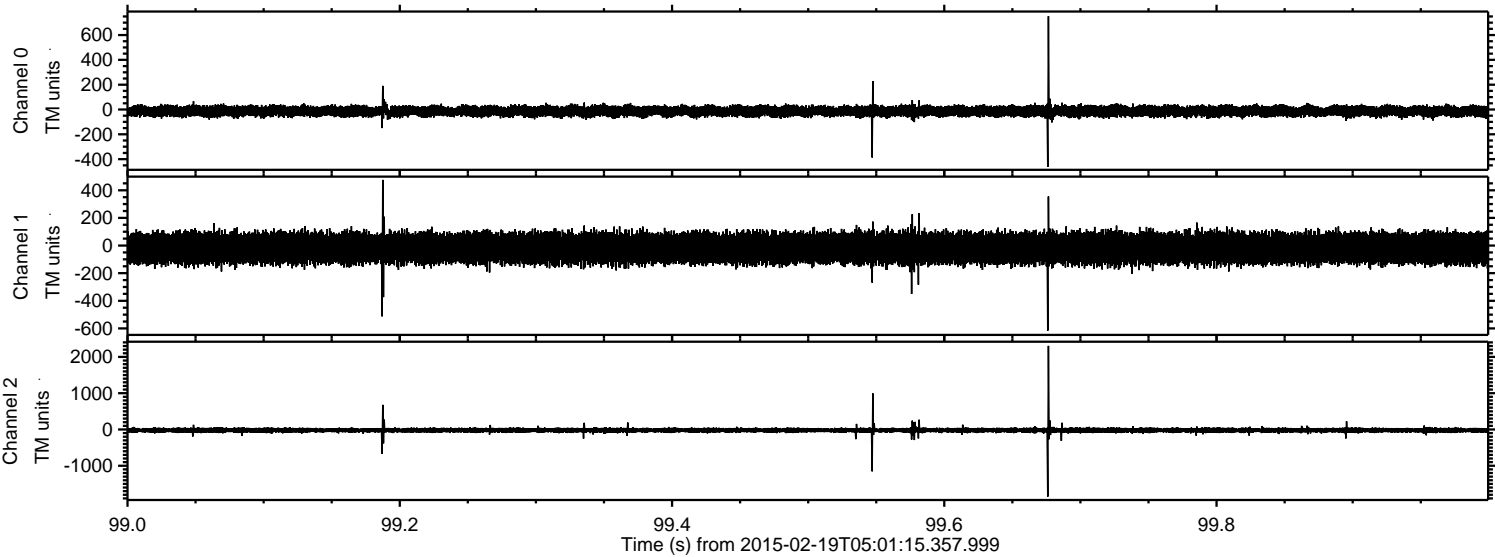


Processed Fri Feb 27 09:45:21 2015 by ELM ver.2012-10-06 from 001__elm20150219_050114__dat00.bin

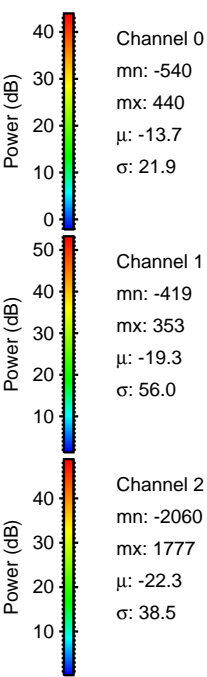
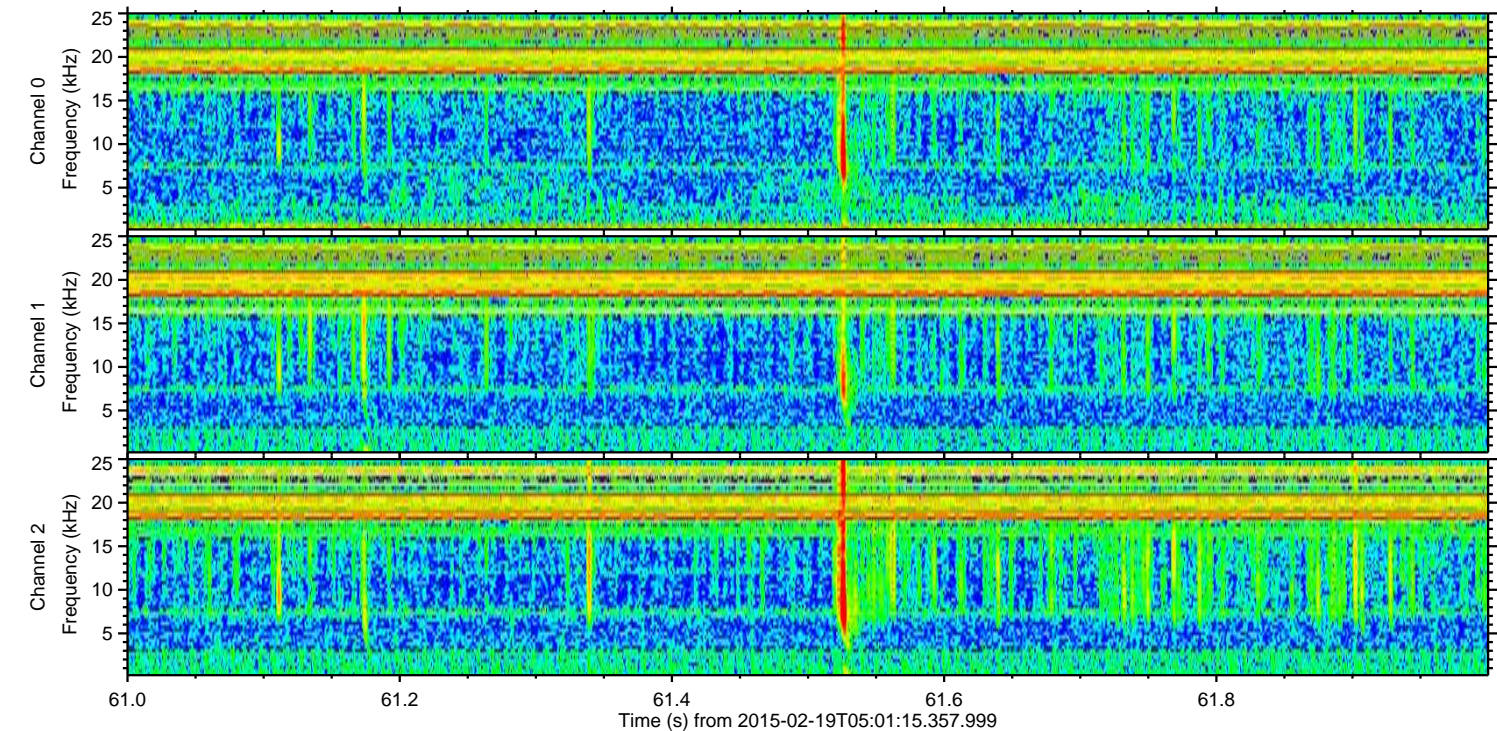
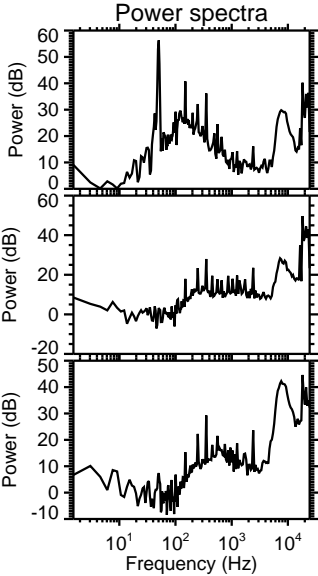
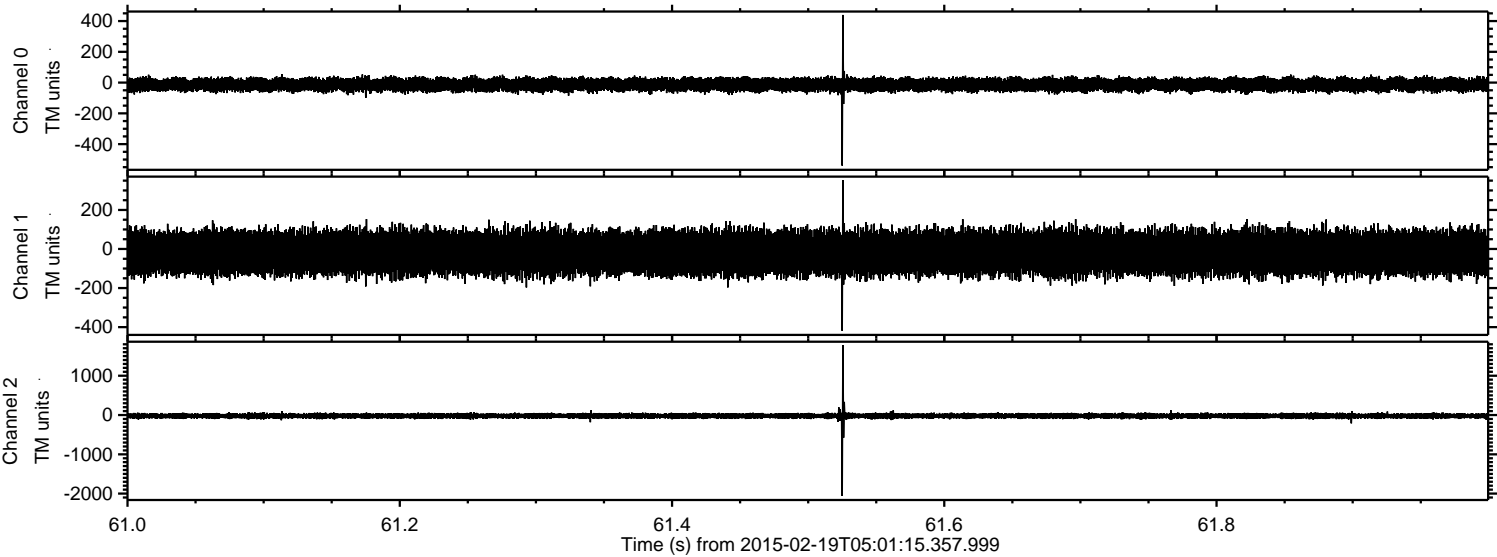


ELMAVAN 3D WAVEFORMS (Measured data sampled at 50 kHz) 49782 packets of 144 samples from 2015-02-19T05:01:15.357.999. Part 100/144

Processed Fri Feb 27 09:45:22 2015 by ELM ver.2012-10-06 from 001__elm20150219_050114__dat00.bin

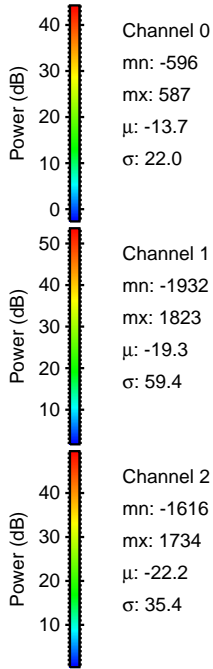
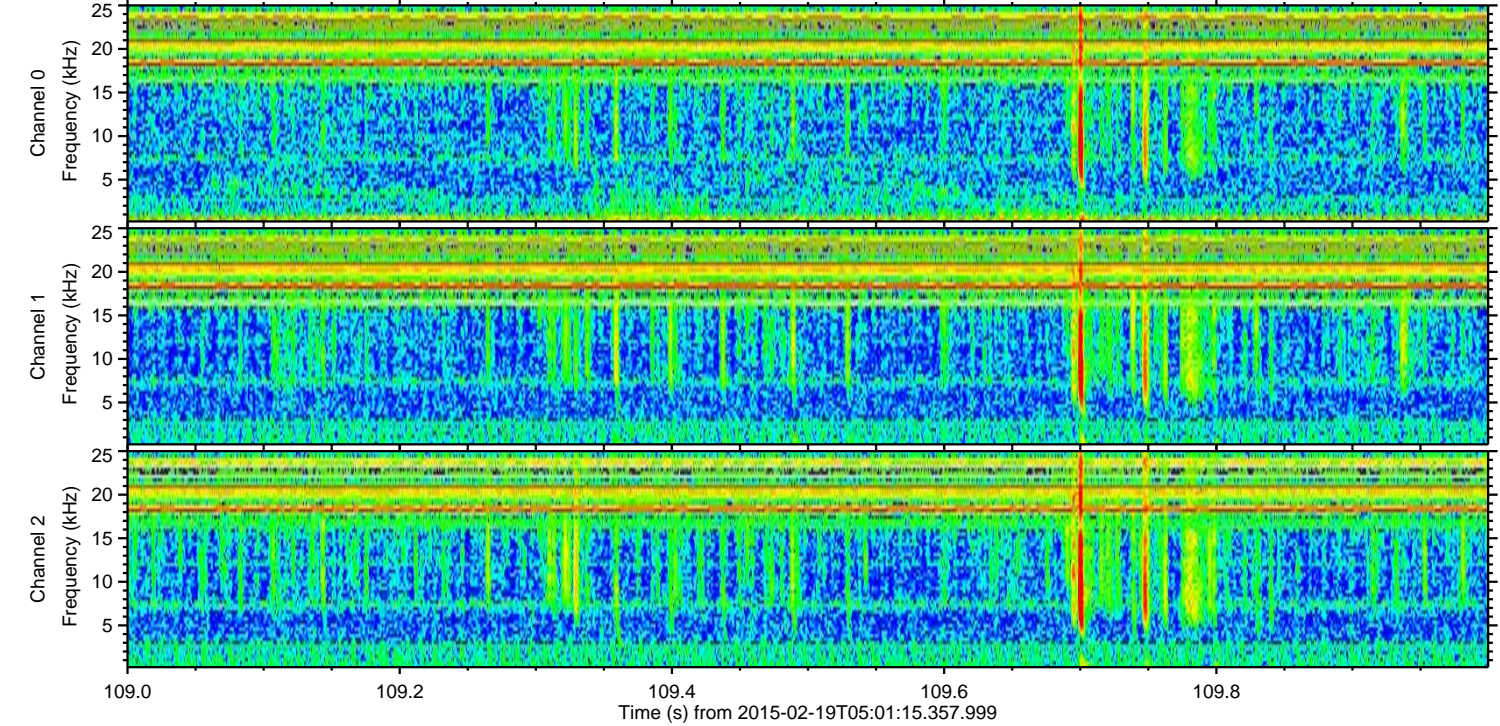
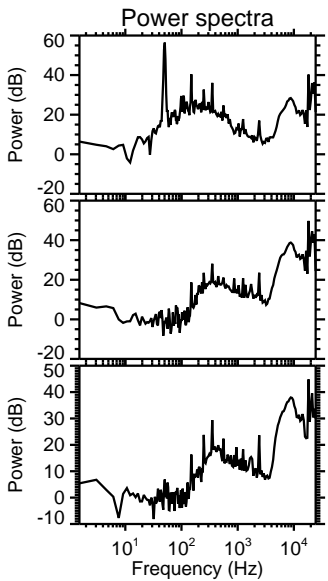
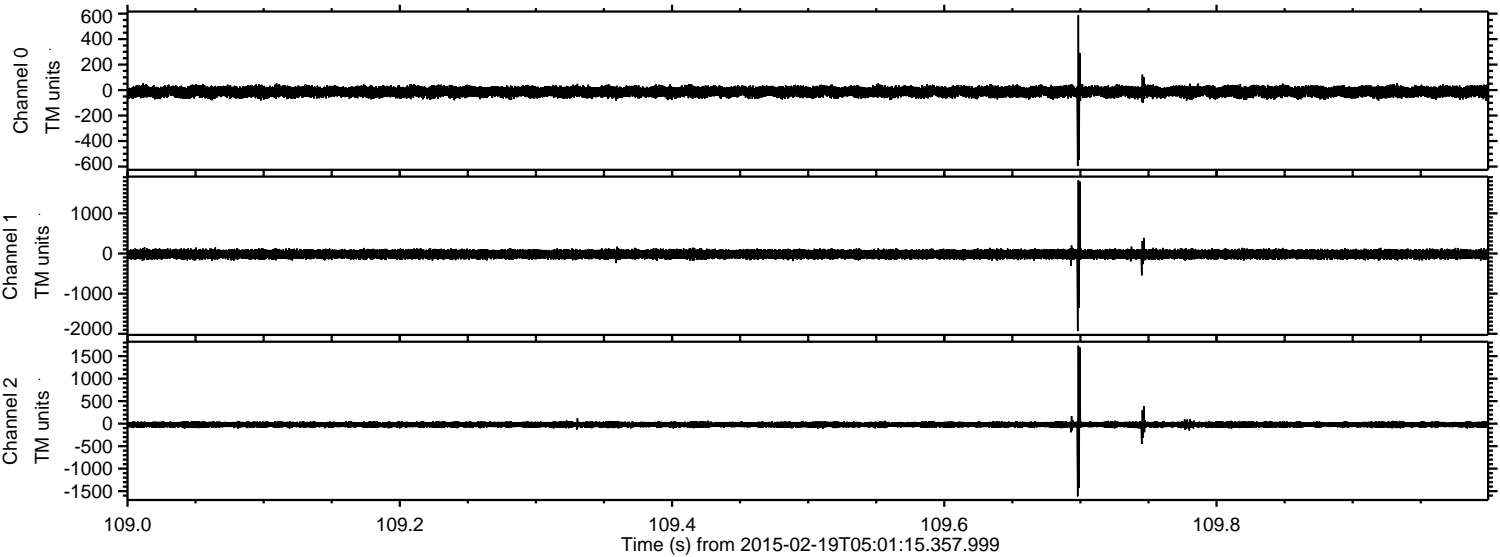


Processed Fri Feb 27 09:45:23 2015 by ELM ver.2012-10-06 from 001__elm20150219_050114__dat00.bin

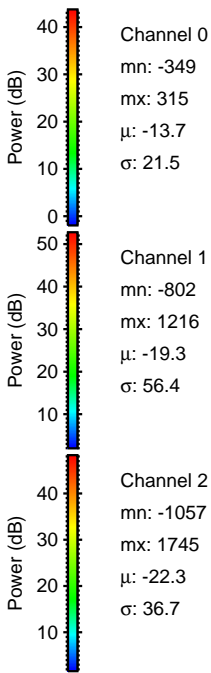
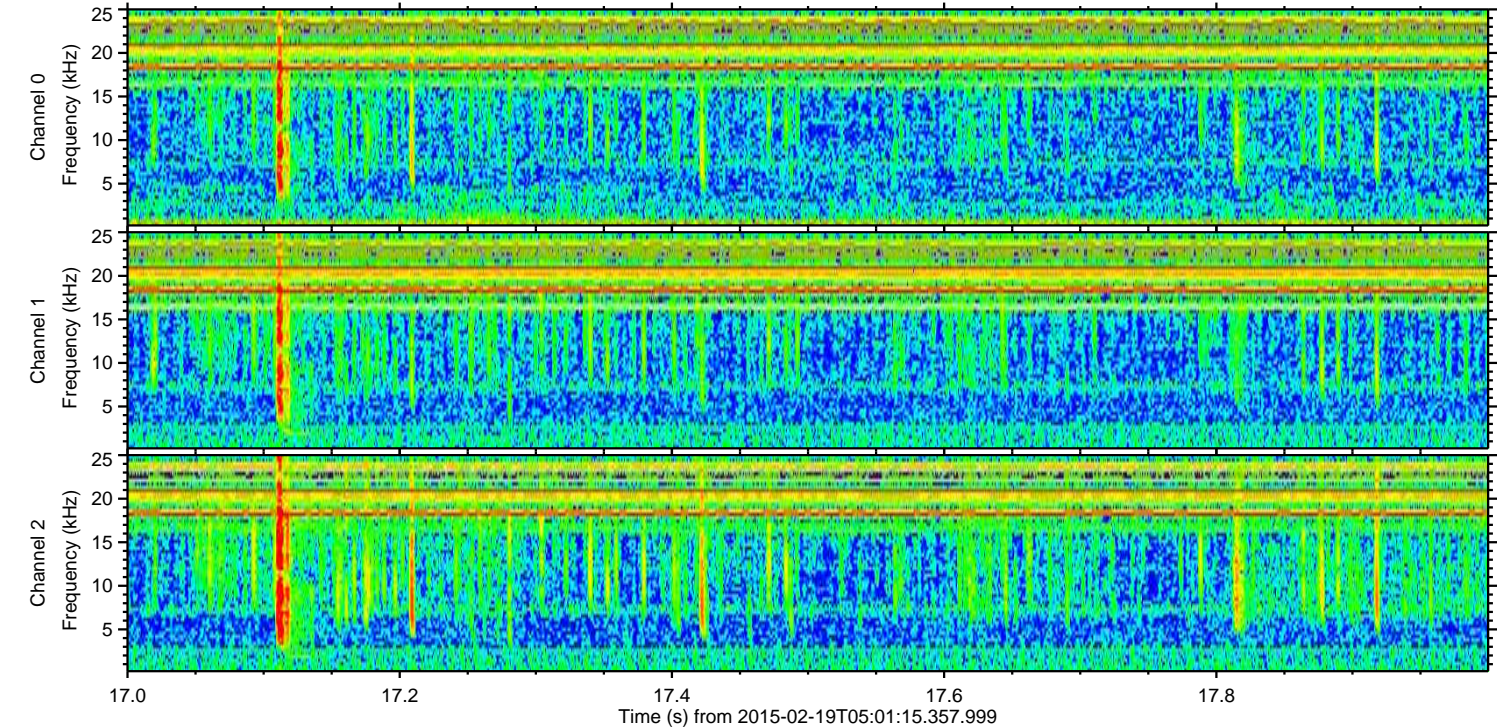
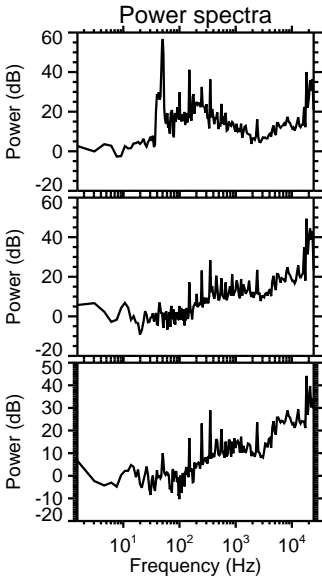
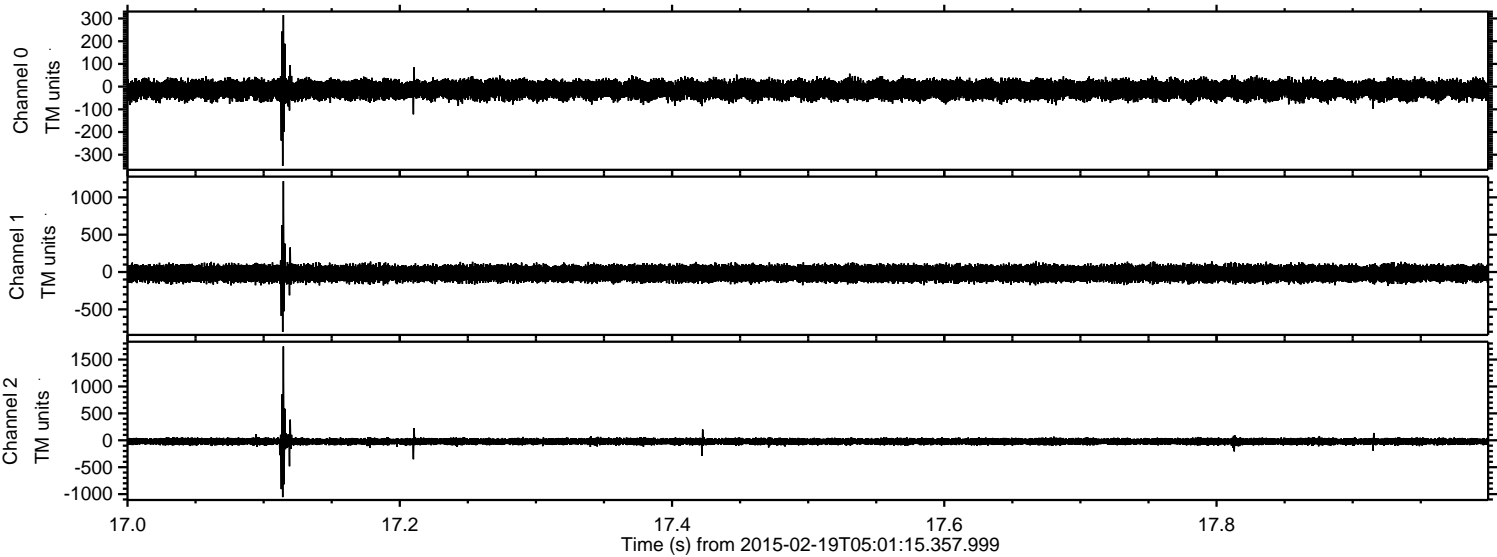


ELMAVAN 3D WAVEFORMS (Measured data sampled at 50 kHz) 49782 packets of 144 samples from 2015-02-19T05:01:15.357.999. Part 110/144

Processed Fri Feb 27 09:45:24 2015 by ELM ver.2012-10-06 from 001__elm20150219_050114__dat00.bin

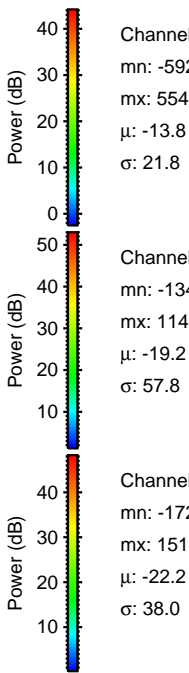
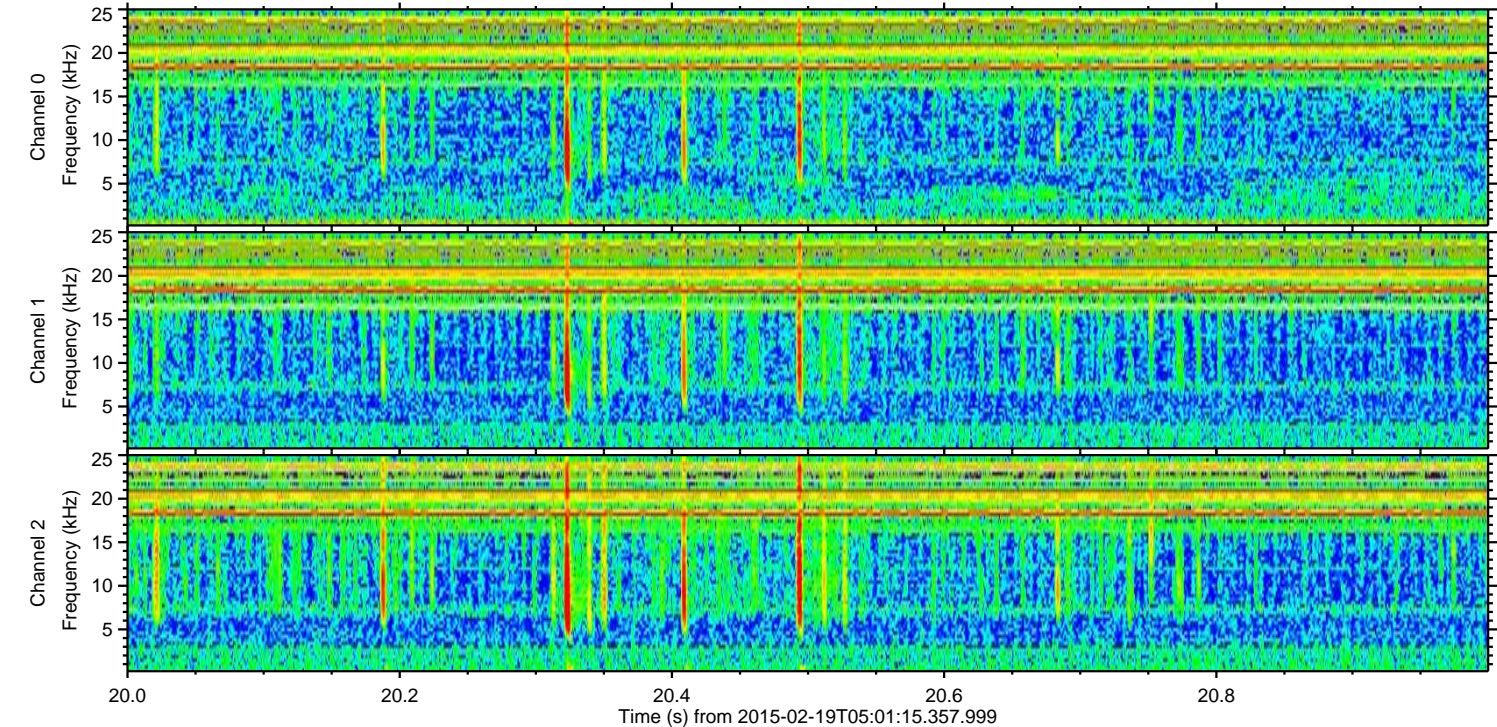
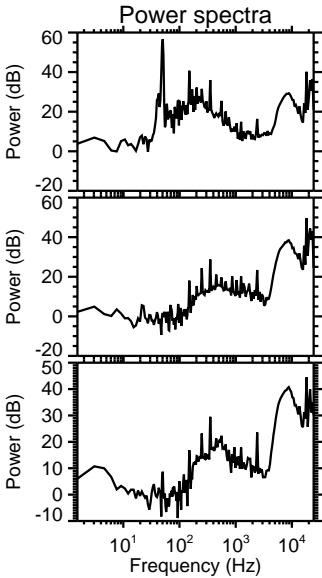
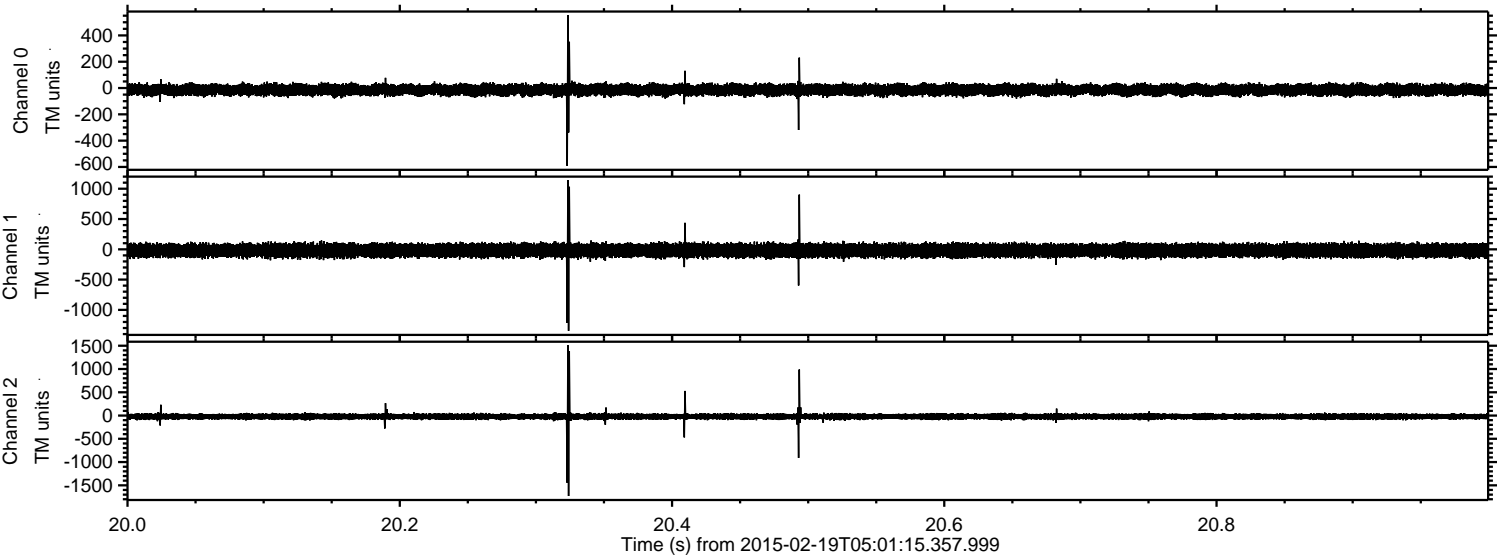


Processed Fri Feb 27 09:45:25 2015 by ELM ver.2012-10-06 from 001__elm20150219_050114__dat00.bin

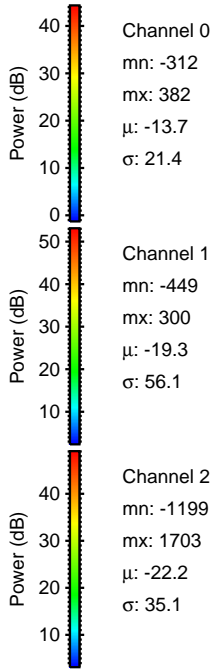
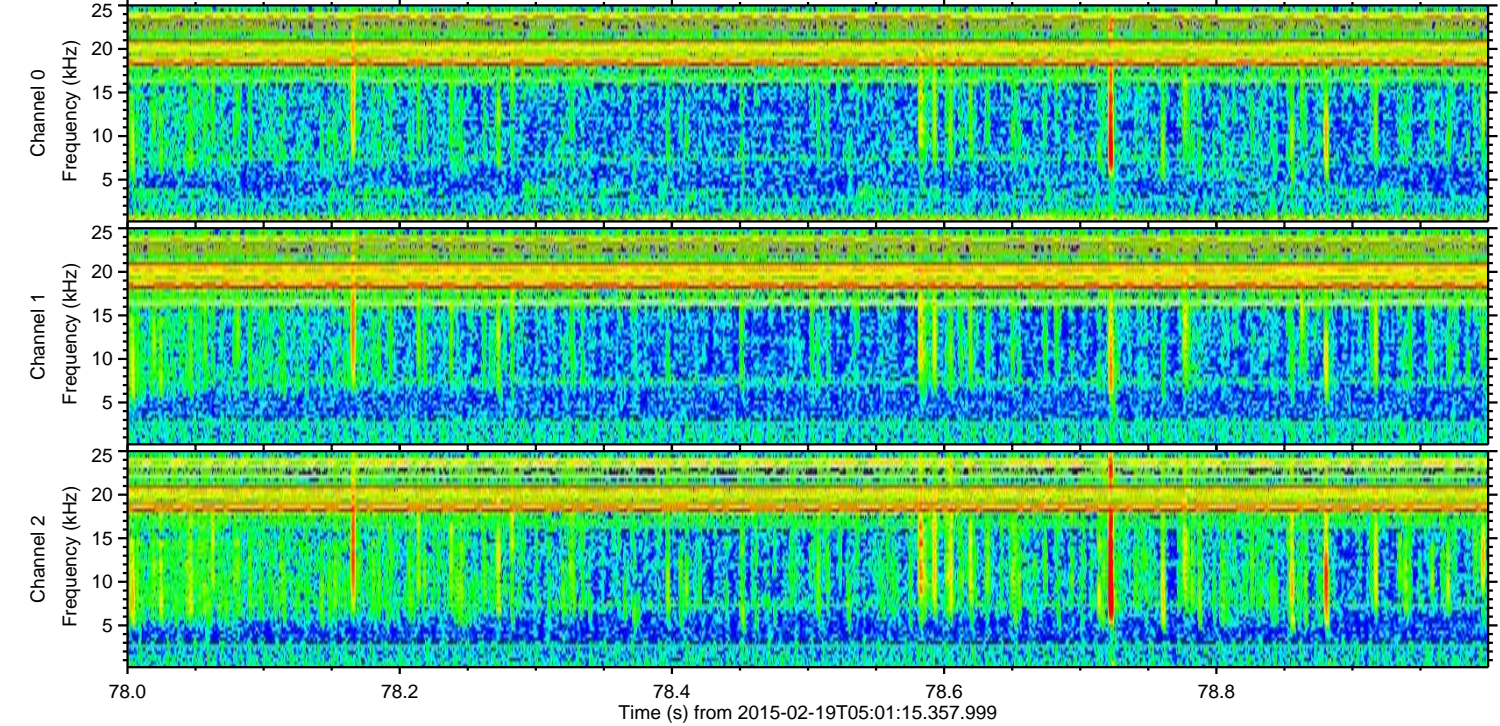
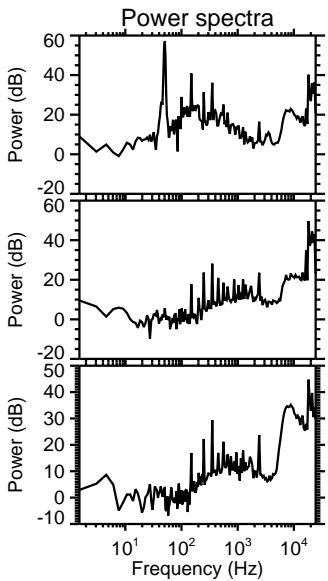
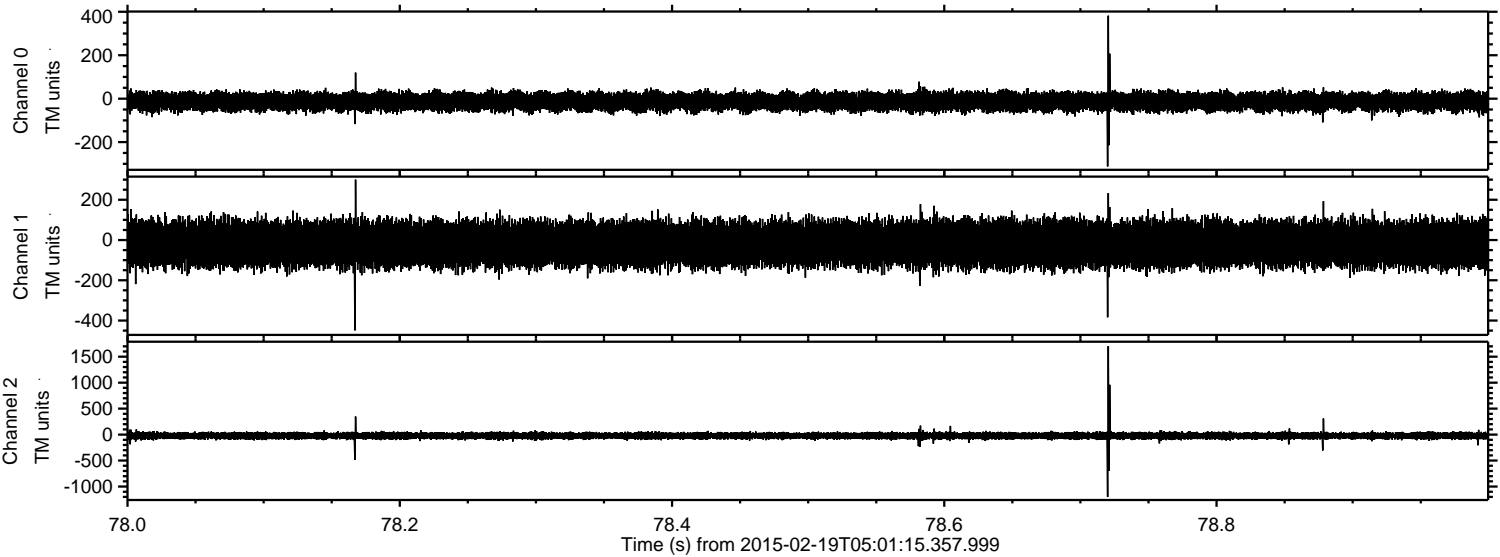


ELMAVAN 3D WAVEFORMS (Measured data sampled at 50 kHz) 49782 packets of 144 samples from 2015-02-19T05:01:15.357.999. Part 21/144

Processed Fri Feb 27 09:45:26 2015 by ELM ver.2012-10-06 from 001__elm20150219_050114__dat00.bin



Processed Fri Feb 27 09:45:27 2015 by ELM ver.2012-10-06 from 001__elm20150219_050114__dat00.bin



Channel 0
mn: -312
mx: 382
 μ : -13.7
 σ : 21.4

Channel 1
mn: -449
mx: 300
 μ : -19.3
 σ : 56.1

Channel 2
mn: -1199
mx: 1703
 μ : -22.2
 σ : 35.1

Processed Fri Feb 27 09:45:28 2015 by ELM ver.2012-10-06 from 001__elm20150219_050114__dat00.bin

