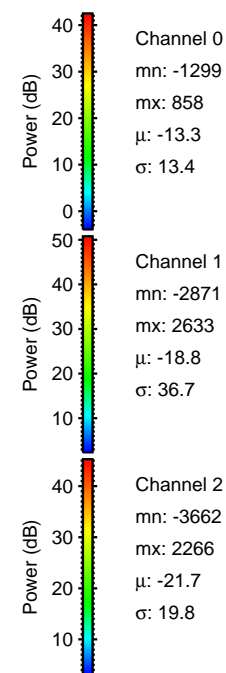
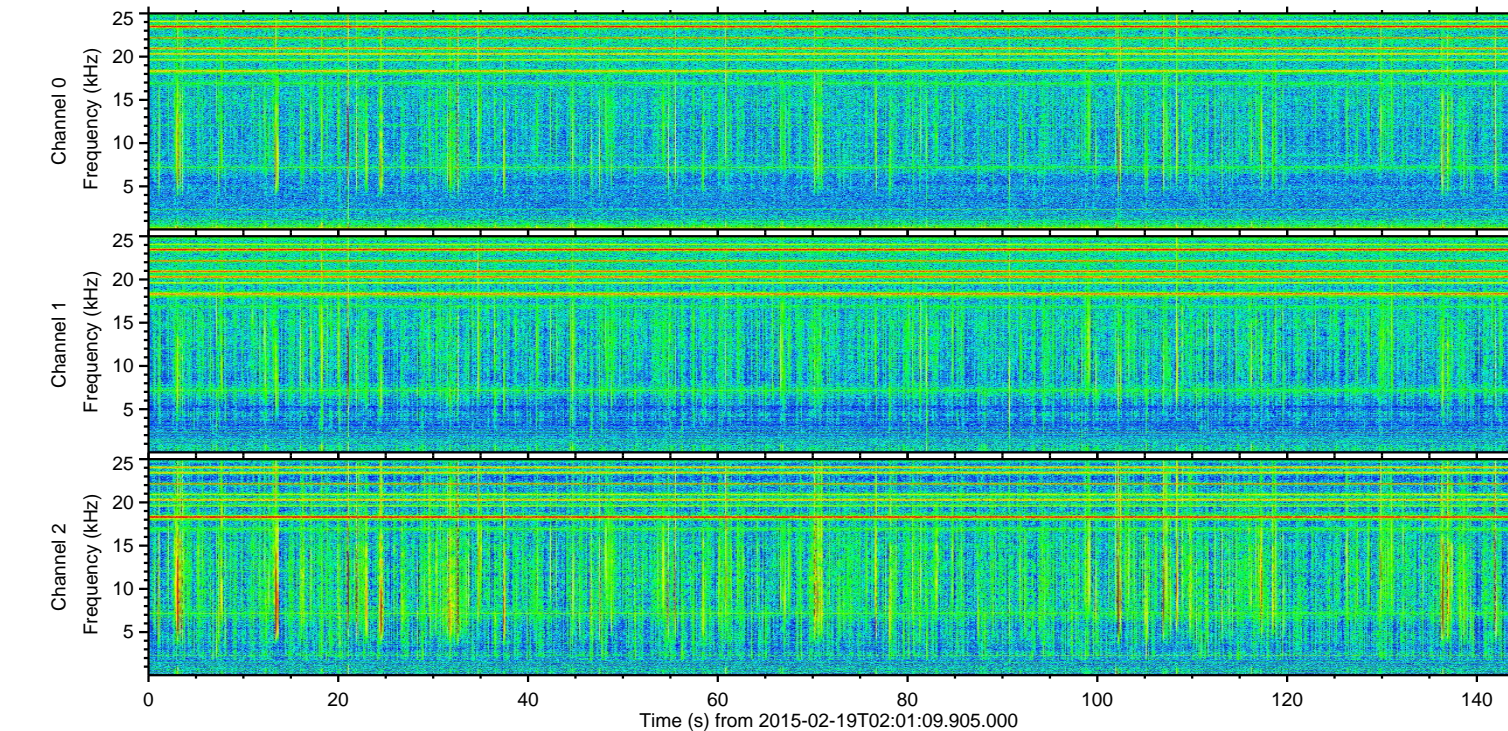
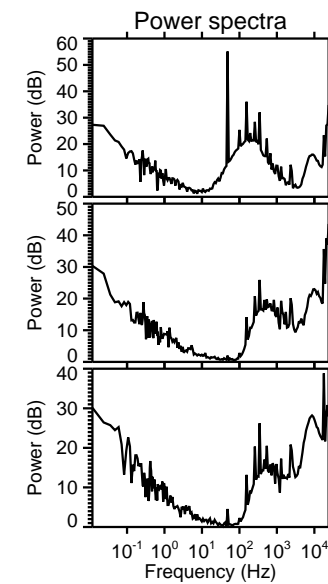
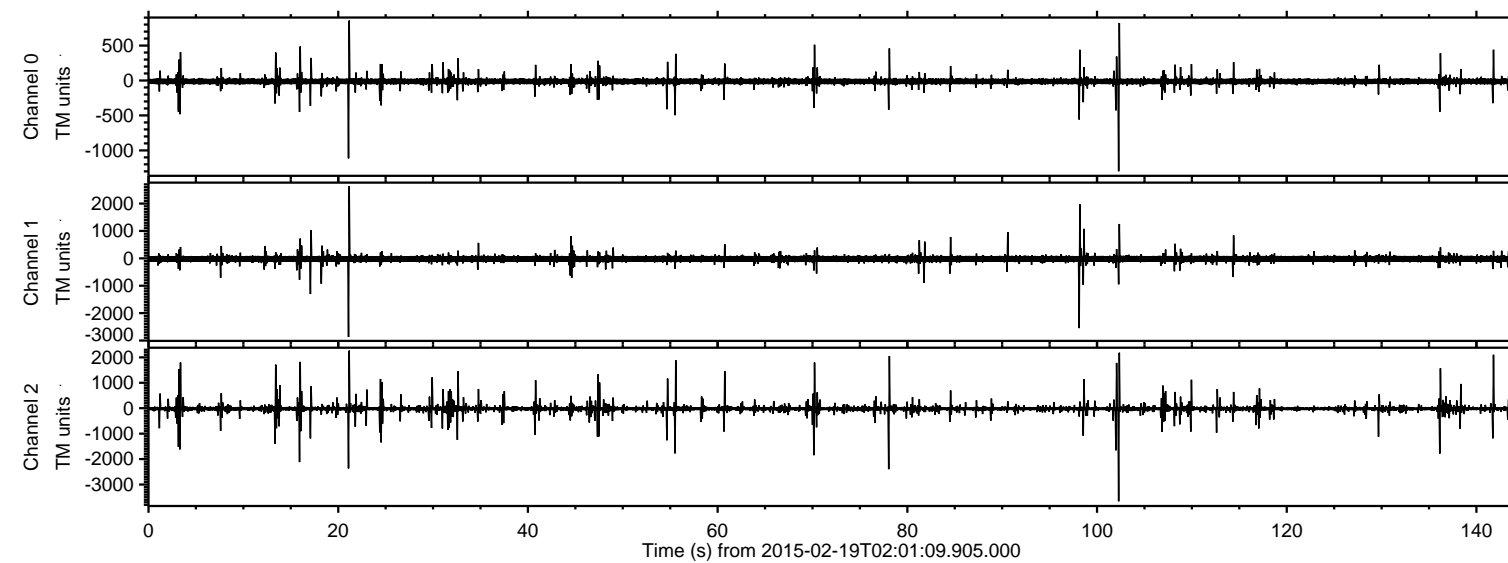


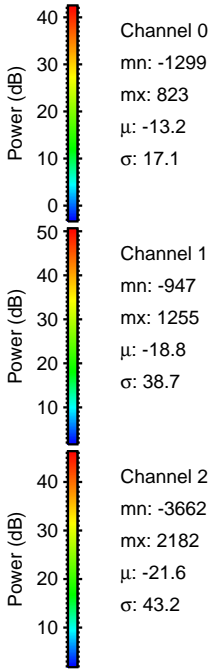
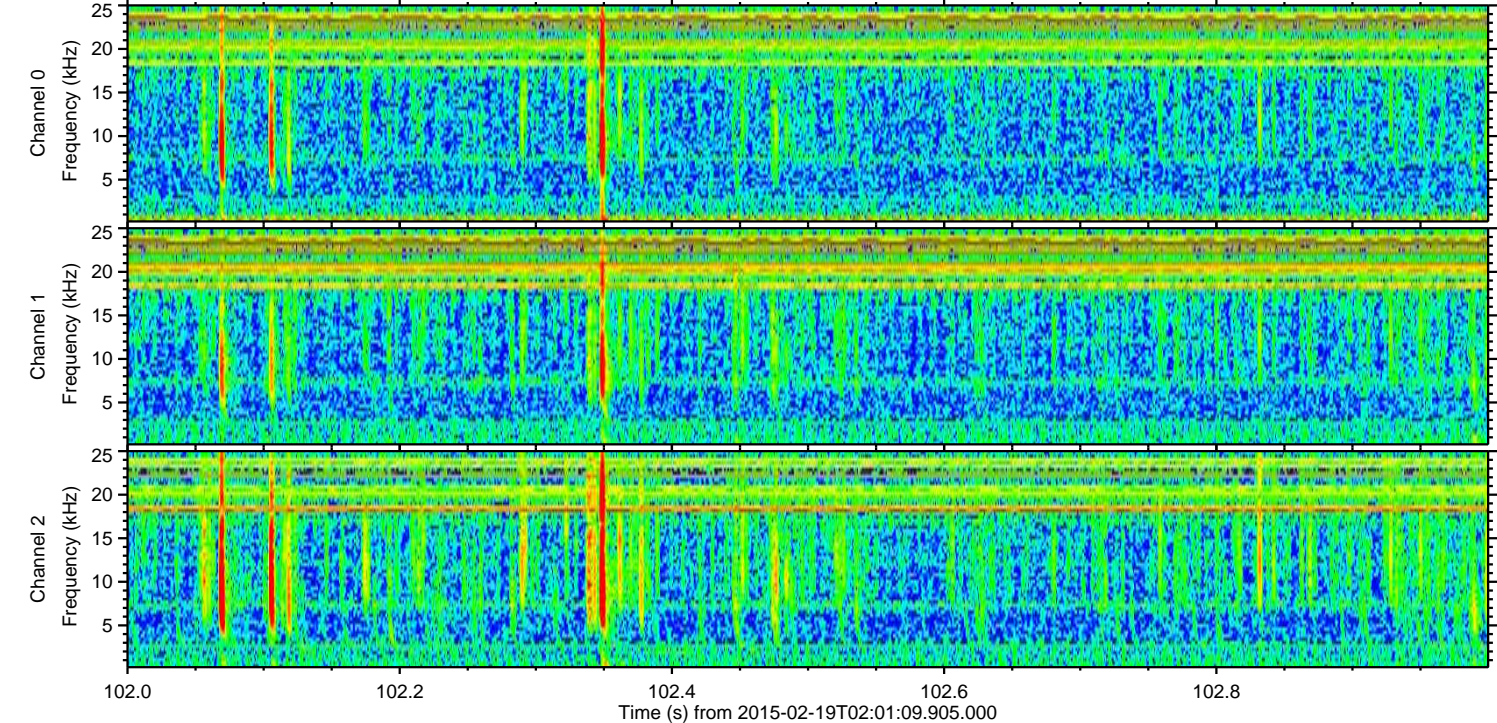
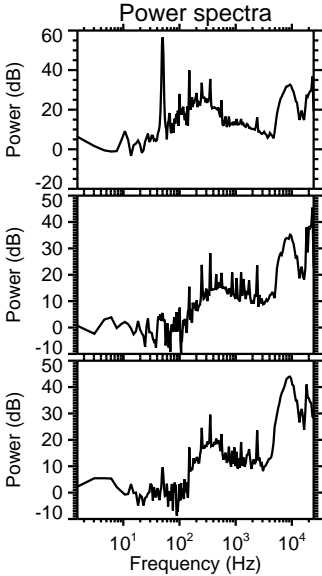
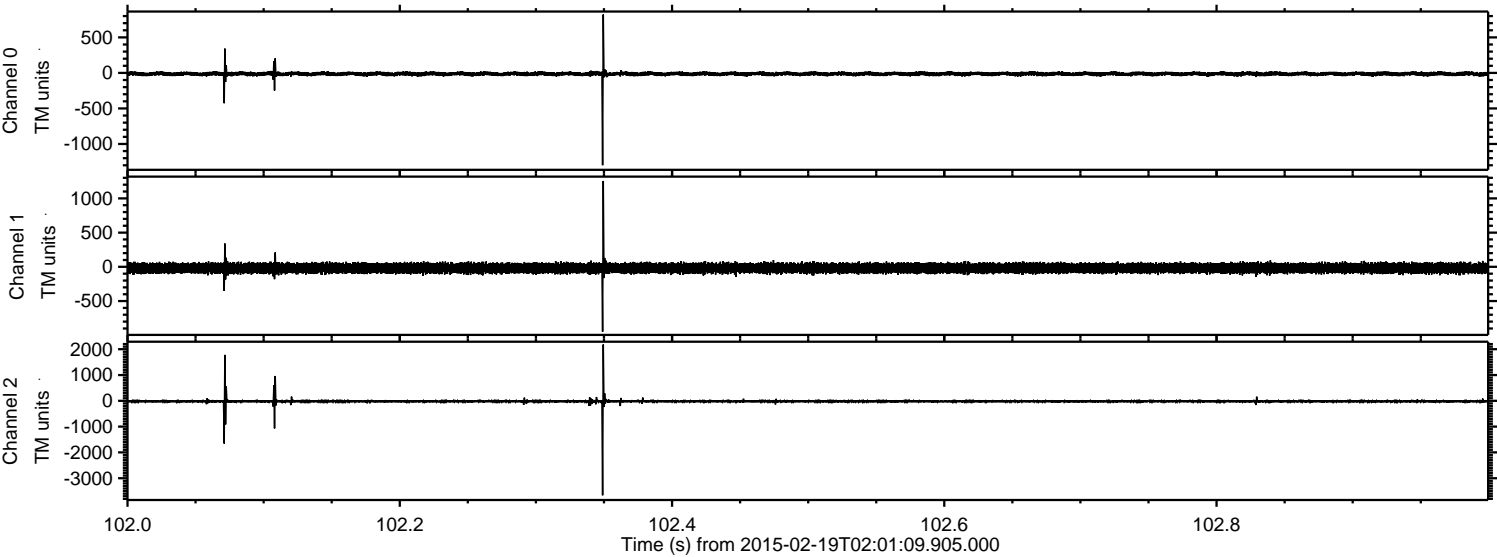
ELMAVAN 3D WAVEFORMS (Measured data sampled at 50 kHz) 49808 packets of 144 samples from 2015-02-19T02:01:09.905.000.

Processed Fri Feb 27 07:58:36 2015 by ELM ver.2012-10-06 from 001__elm20150219_020108__dat00.bin

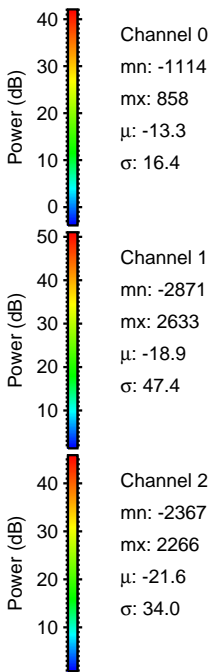
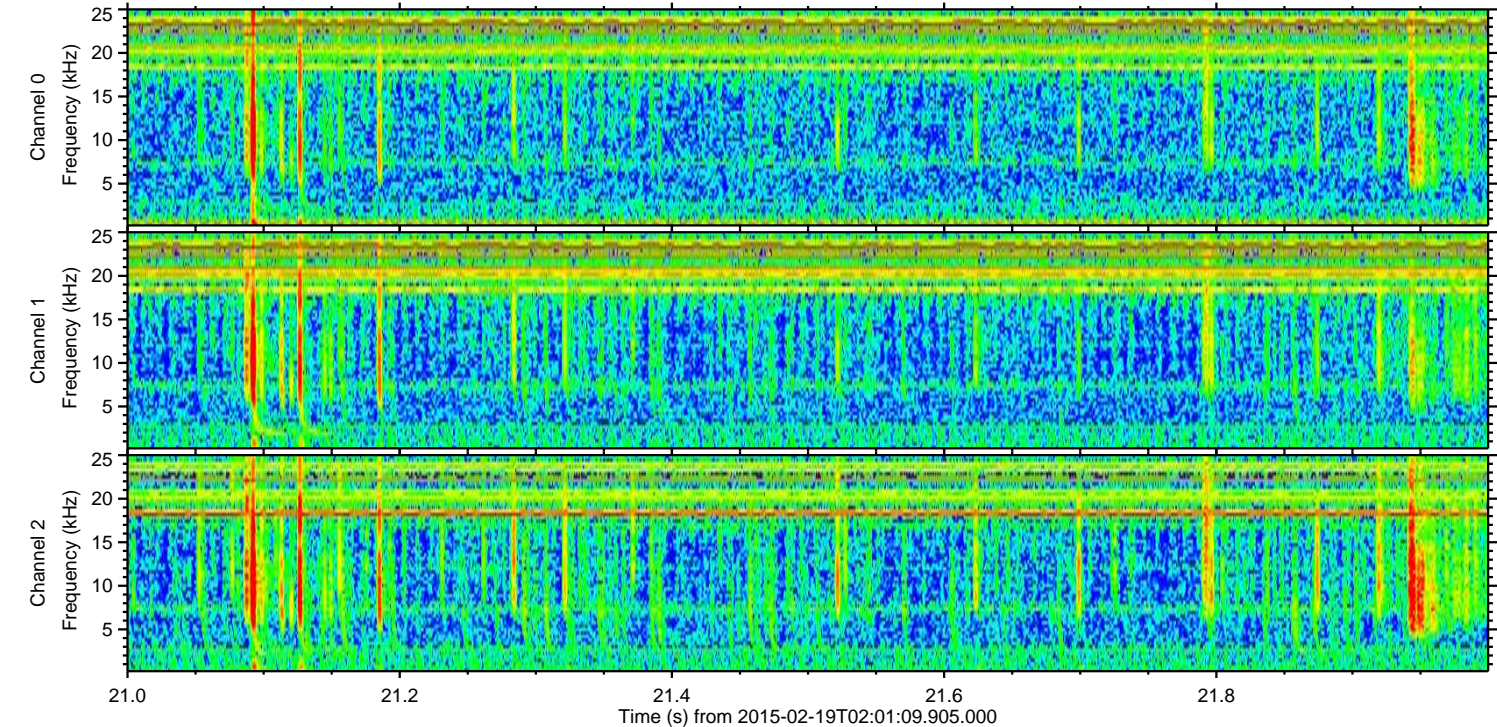
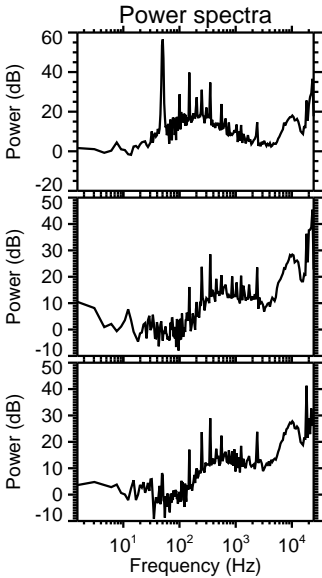
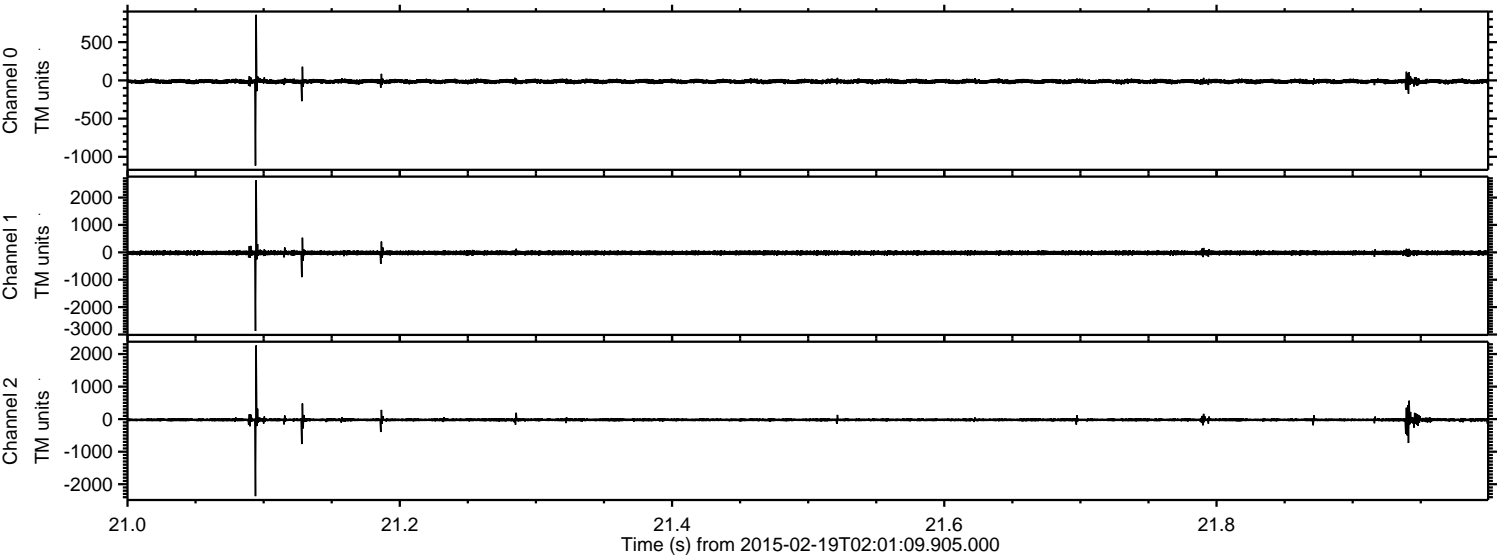


ELMAVAN 3D WAVEFORMS (Measured data sampled at 50 kHz) 49808 packets of 144 samples from 2015-02-19T02:01:09.905.000. Part 103/144

Processed Fri Feb 27 07:58:48 2015 by ELM ver.2012-10-06 from 001__elm20150219_020108__dat00.bin



Processed Fri Feb 27 07:58:49 2015 by ELM ver.2012-10-06 from 001__elm20150219_020108__dat00.bin

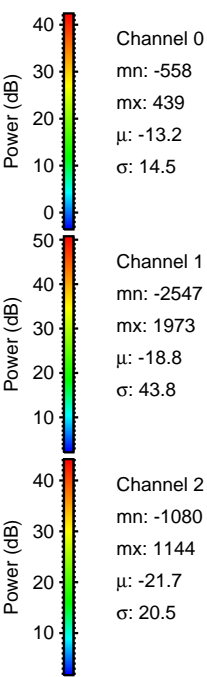
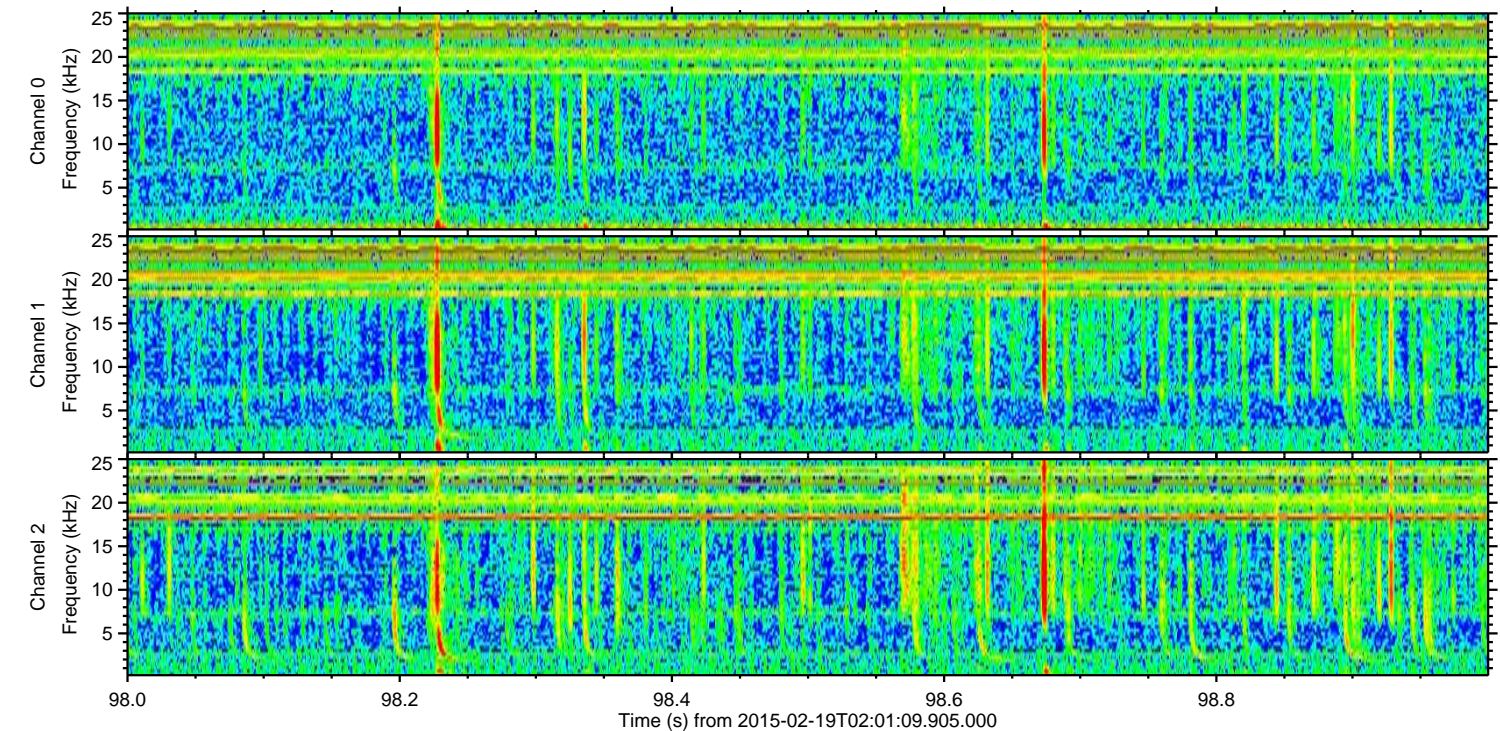
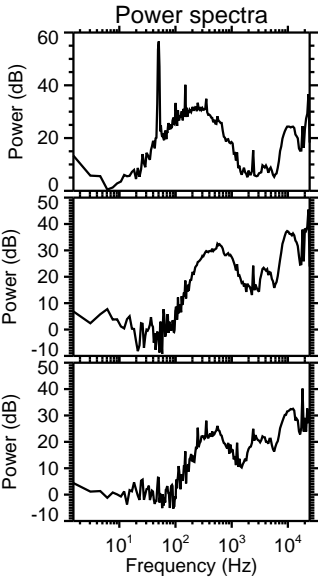
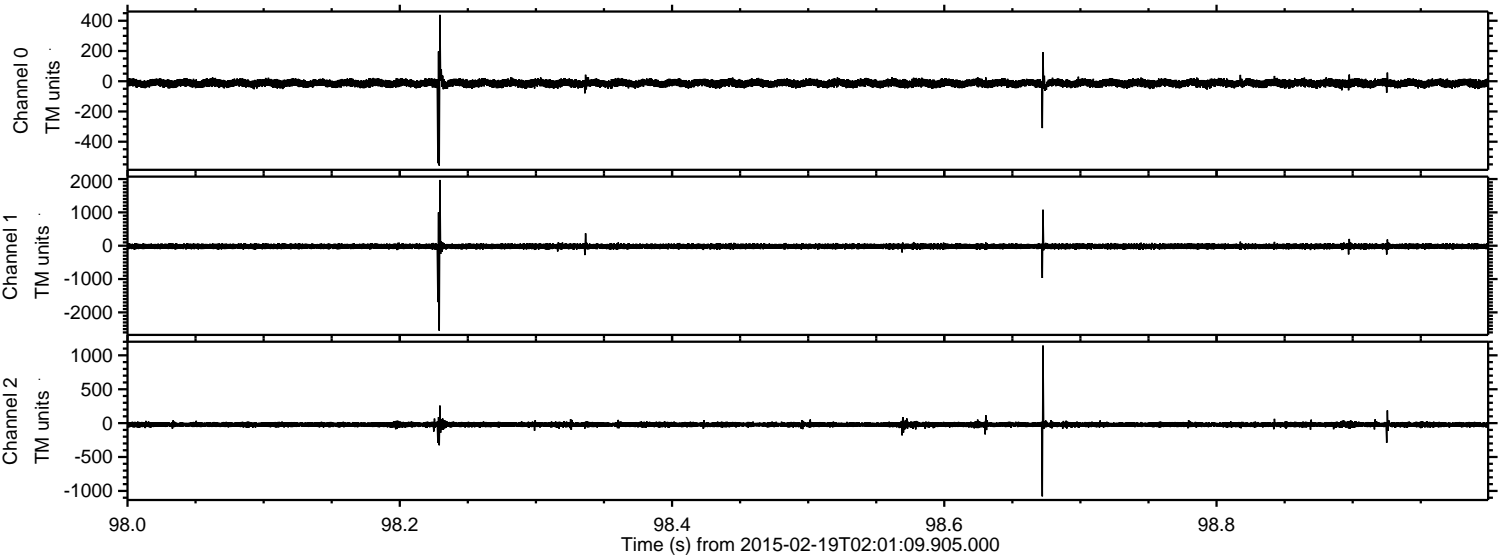


Channel 0
mn: -1114
mx: 858
 μ : -13.3
 σ : 16.4

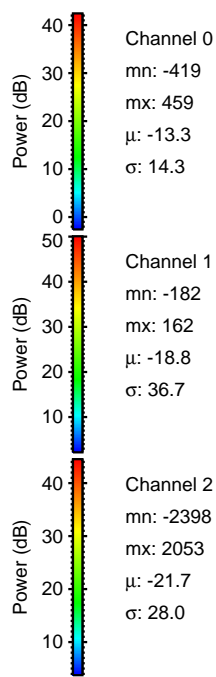
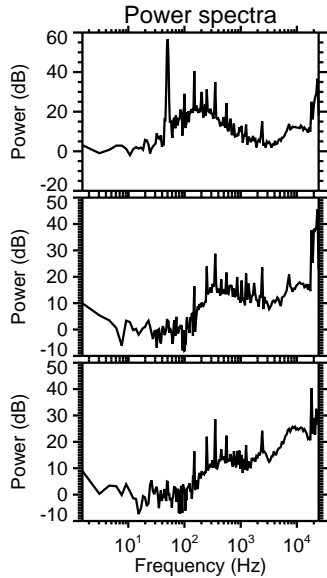
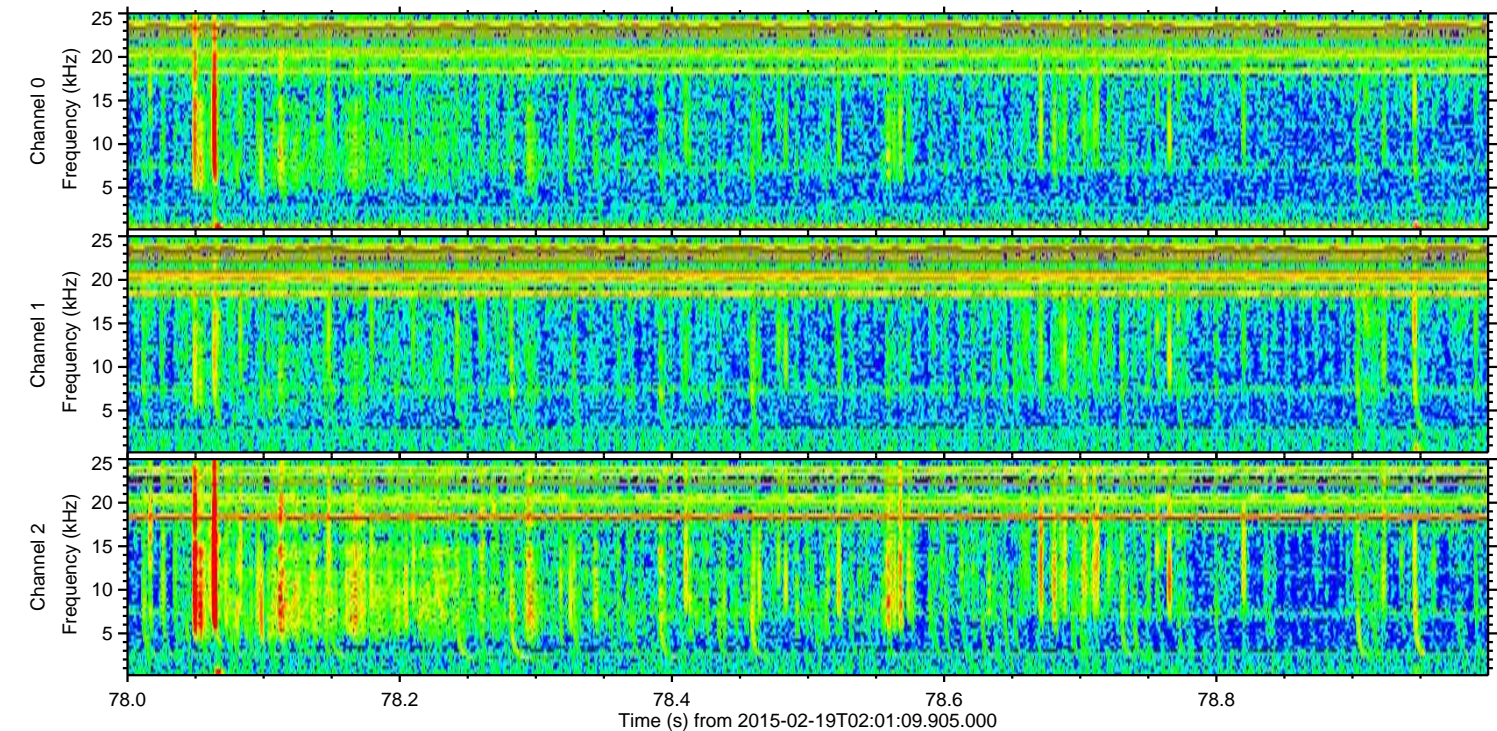
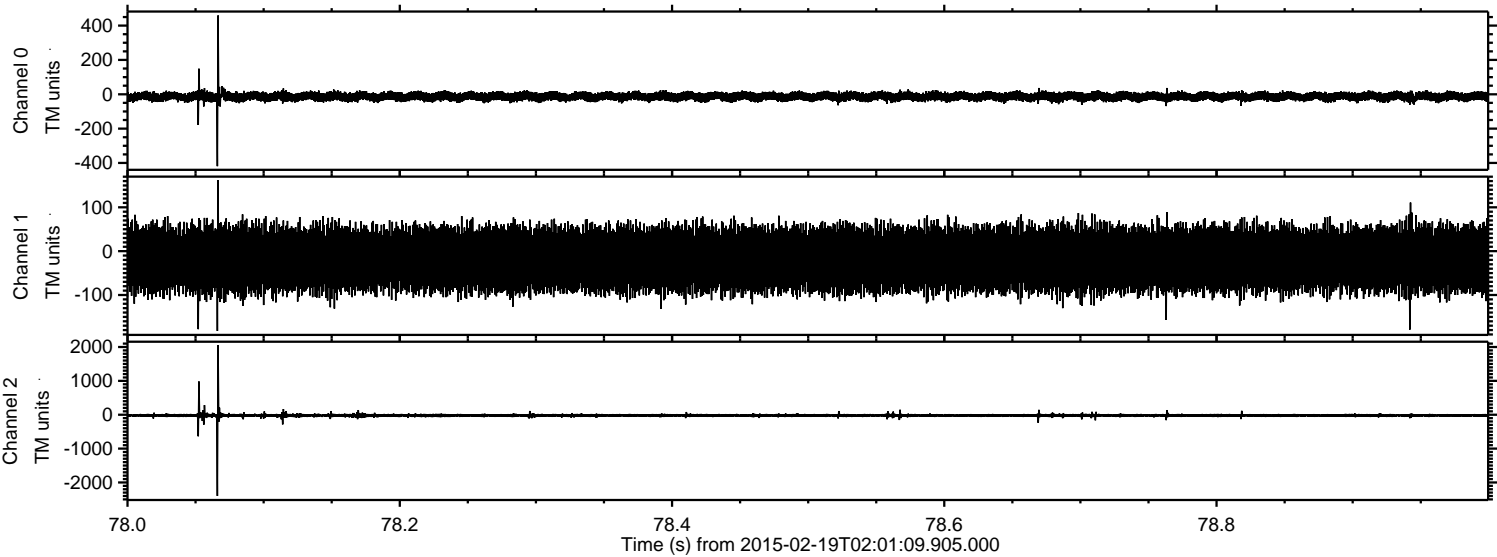
Channel 1
mn: -2871
mx: 2633
 μ : -18.9
 σ : 47.4

Channel 2
mn: -2367
mx: 2266
 μ : -21.6
 σ : 34.0

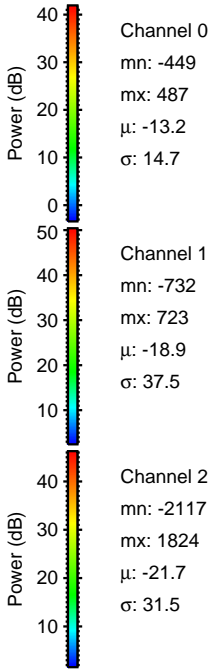
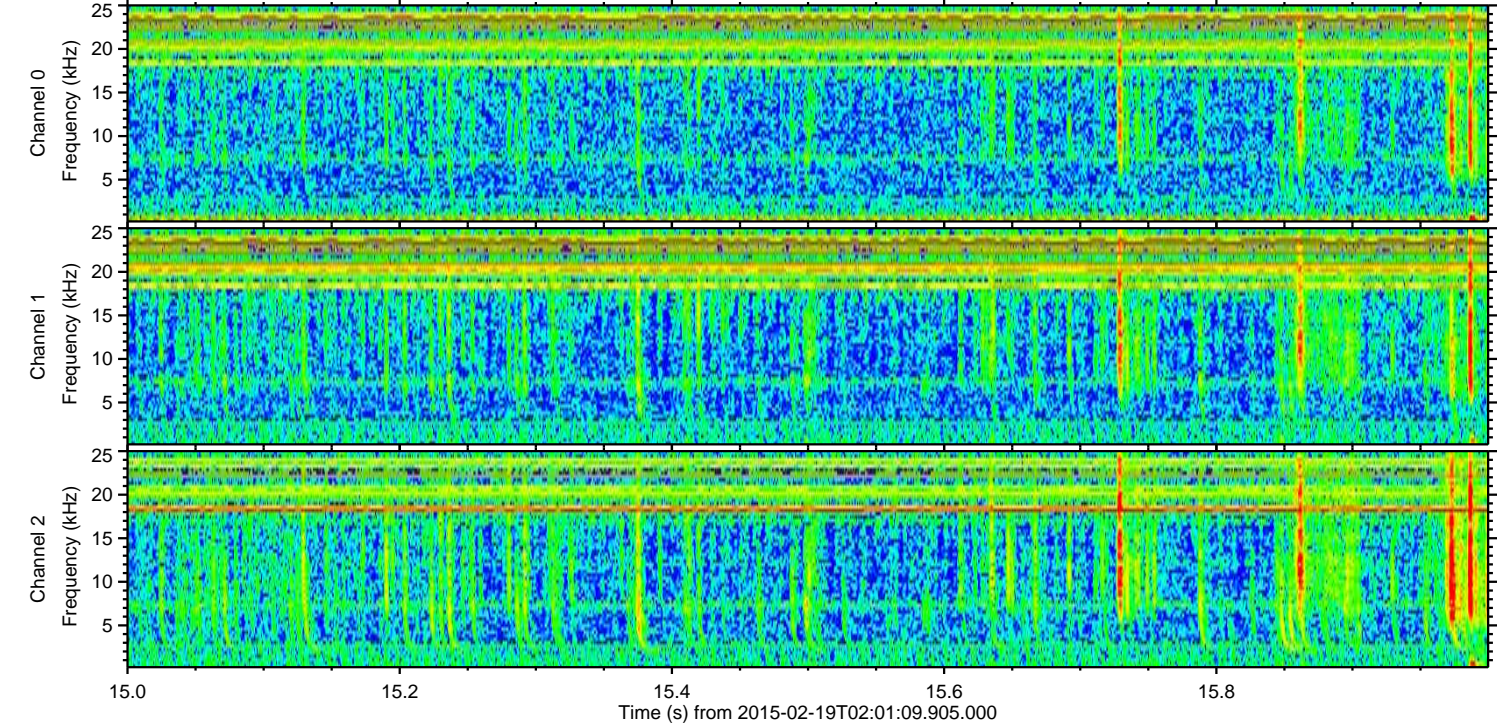
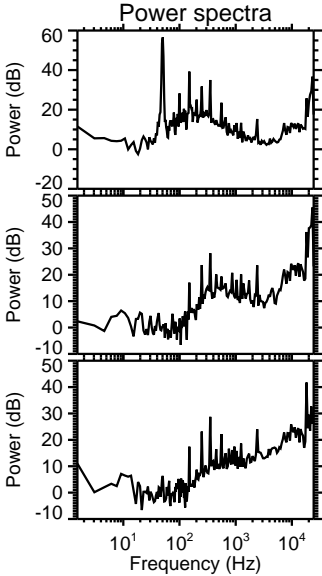
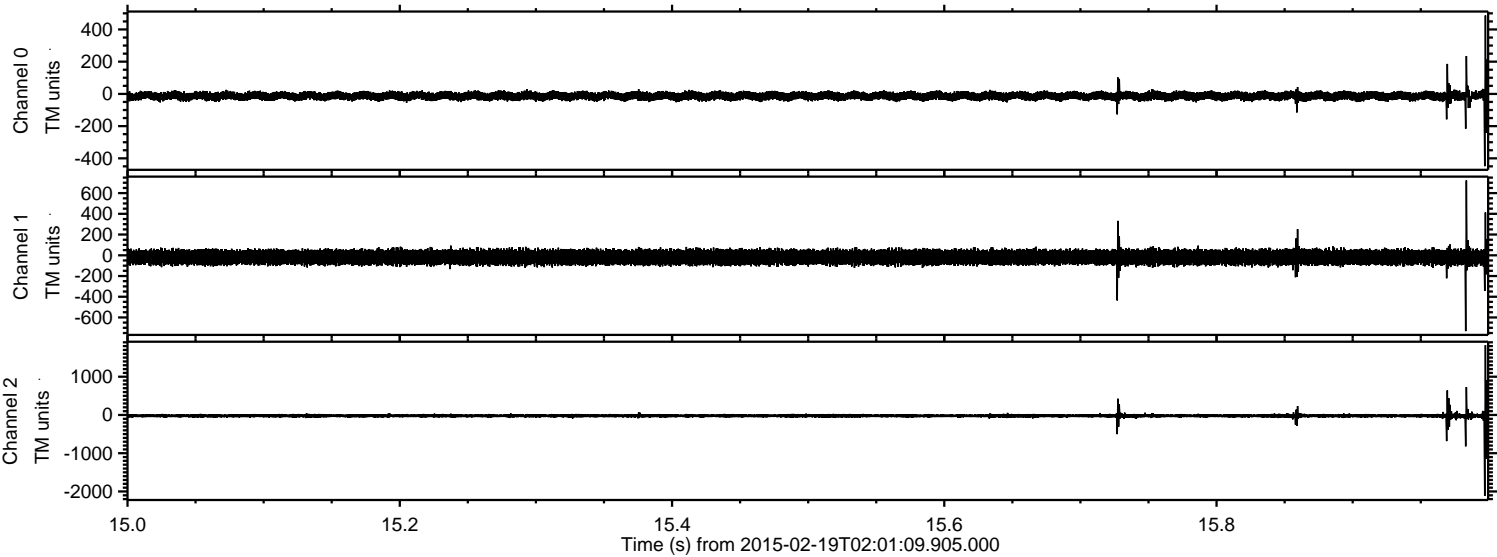
Processed Fri Feb 27 07:58:50 2015 by ELM ver.2012-10-06 from 001__elm20150219_020108__dat00.bin



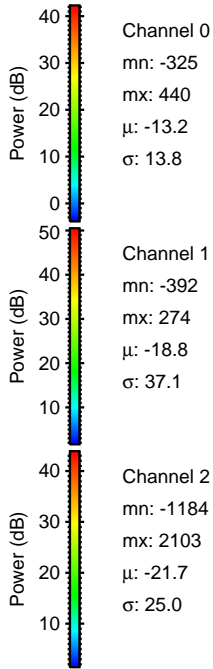
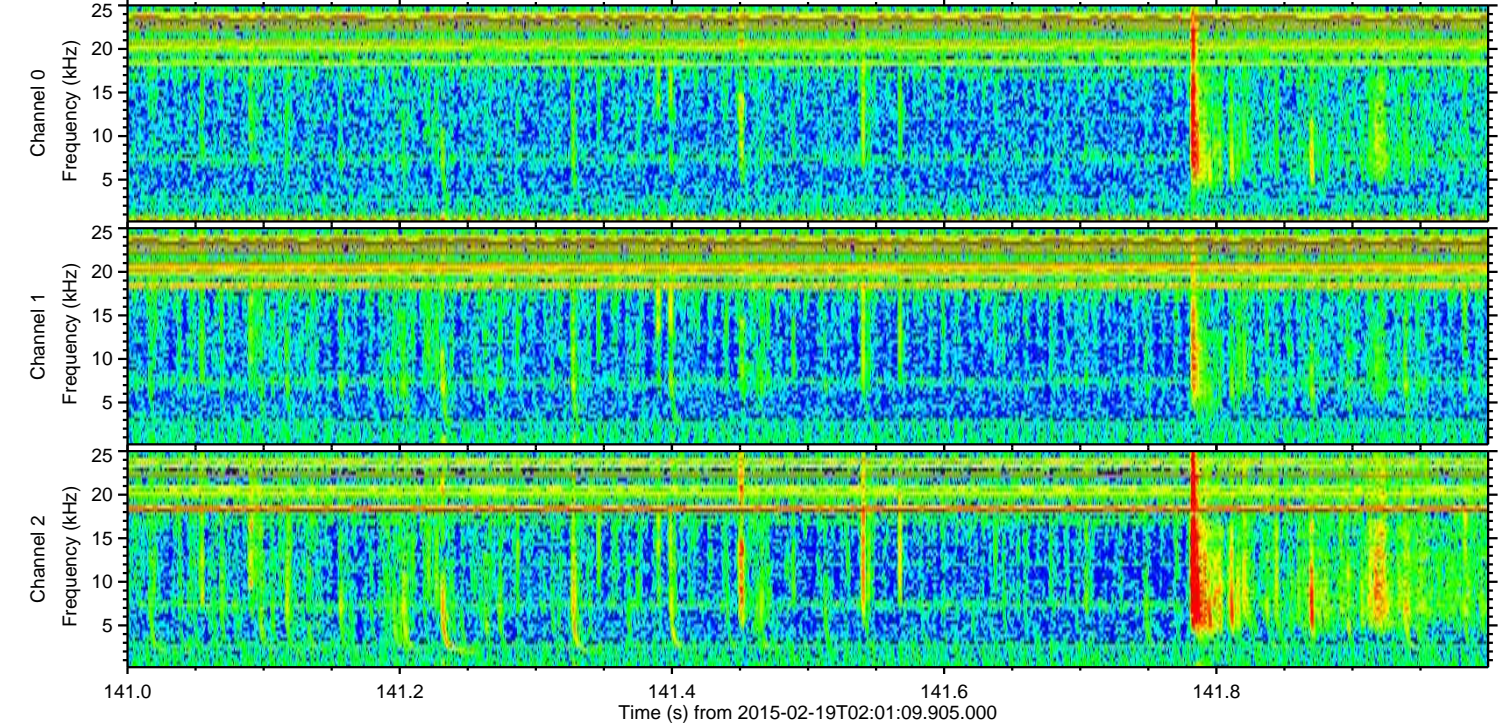
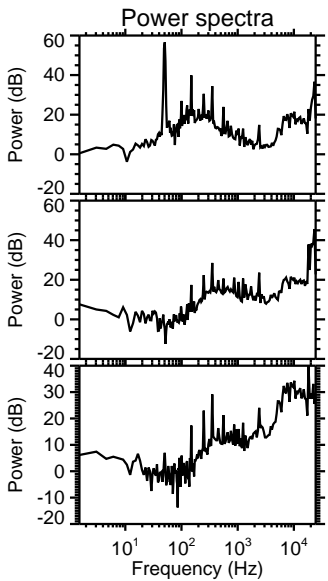
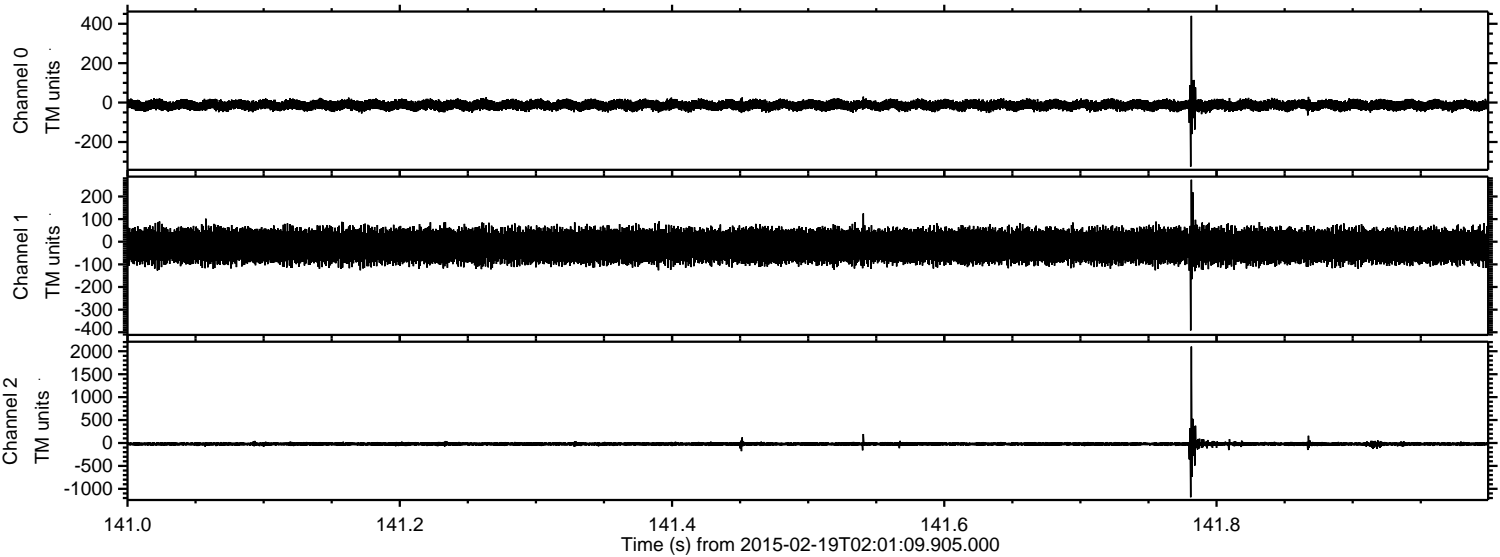
Processed Fri Feb 27 07:58:51 2015 by ELM ver.2012-10-06 from 001__elm20150219_020108__dat00.bin



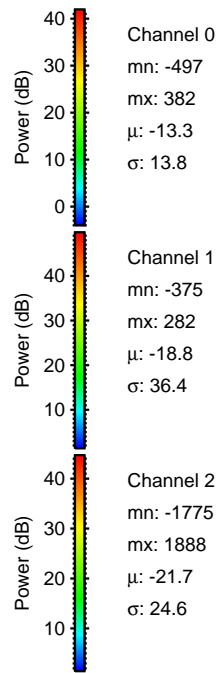
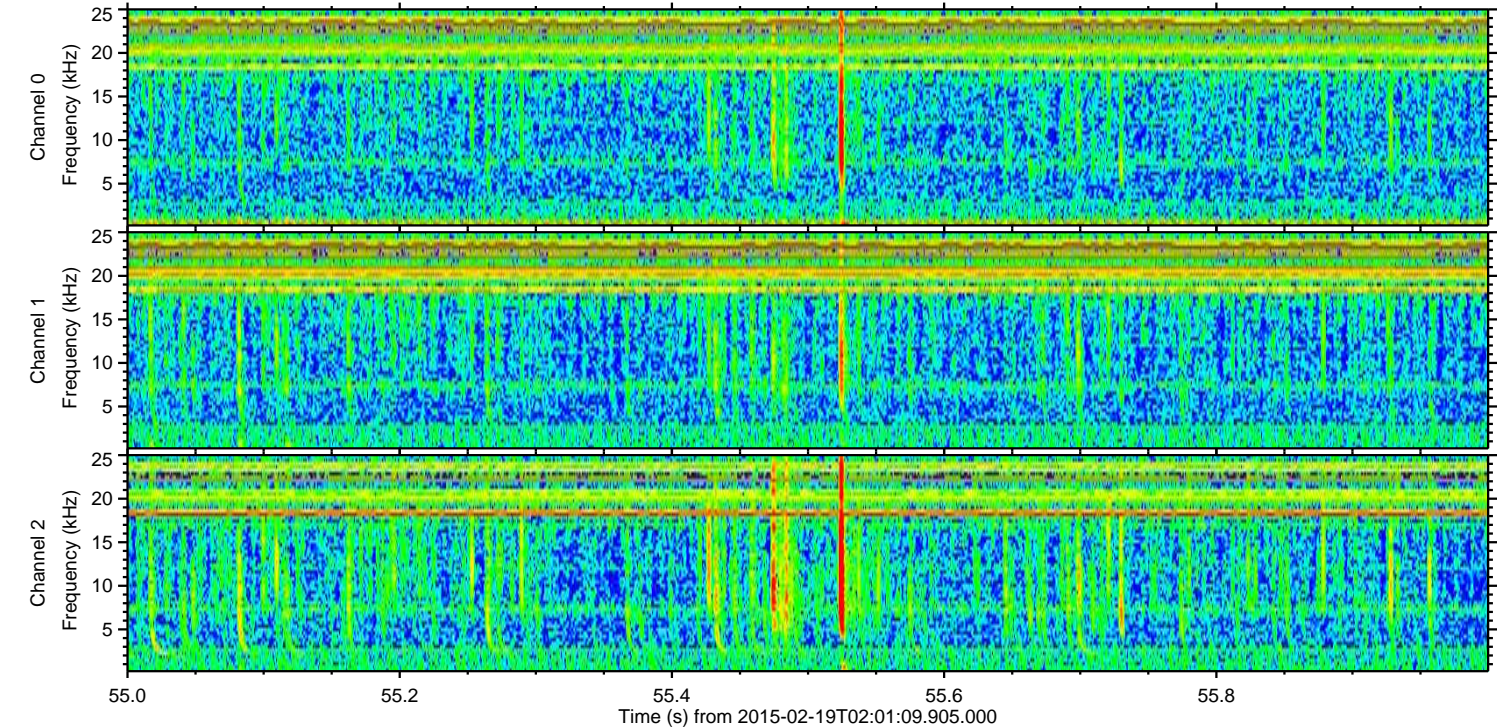
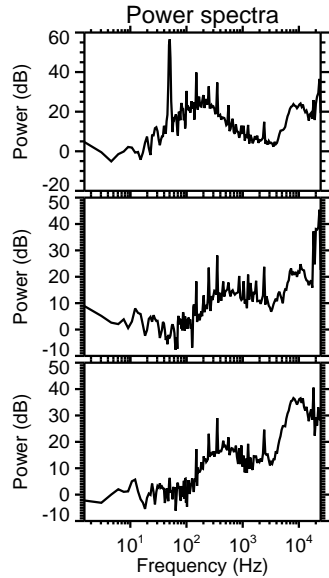
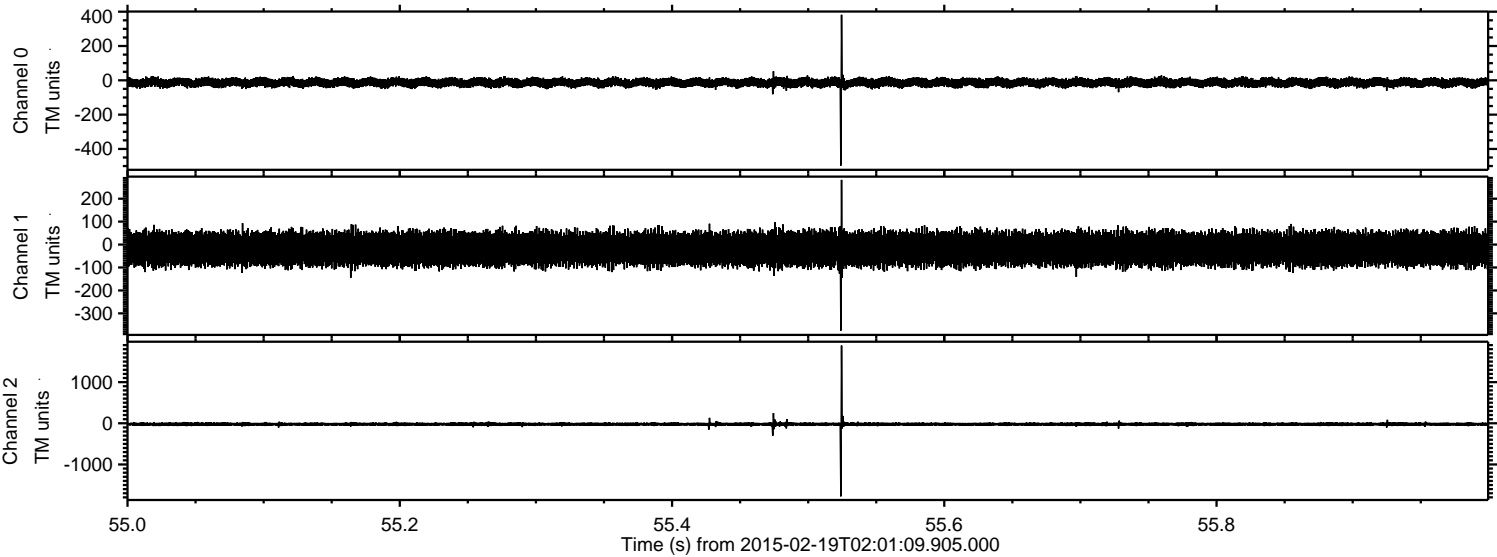
Processed Fri Feb 27 07:58:52 2015 by ELM ver.2012-10-06 from 001__elm20150219_020108__dat00.bin



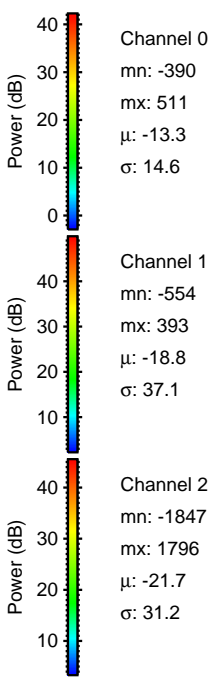
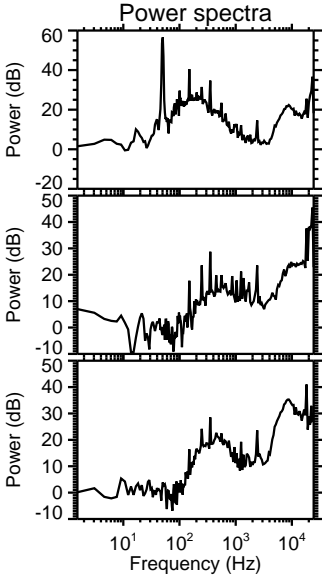
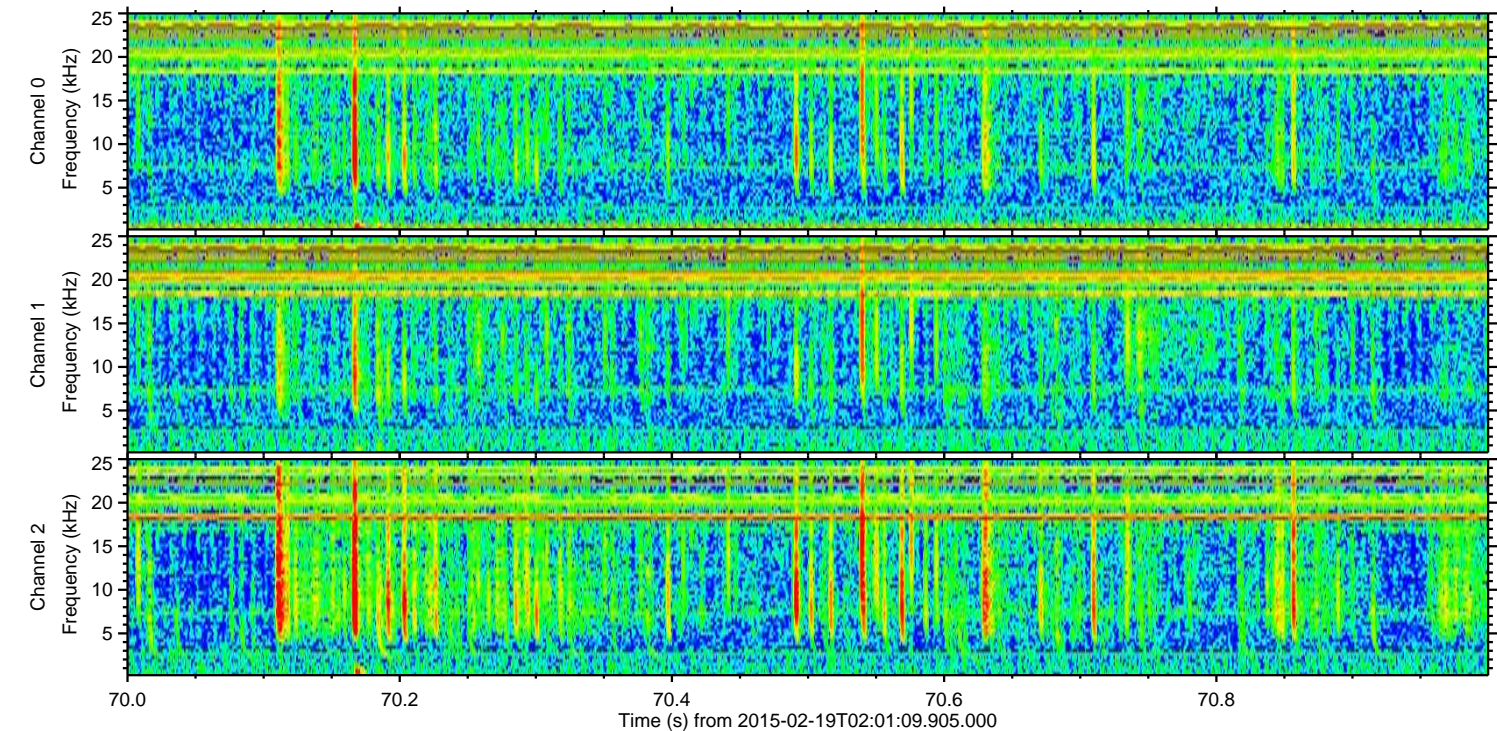
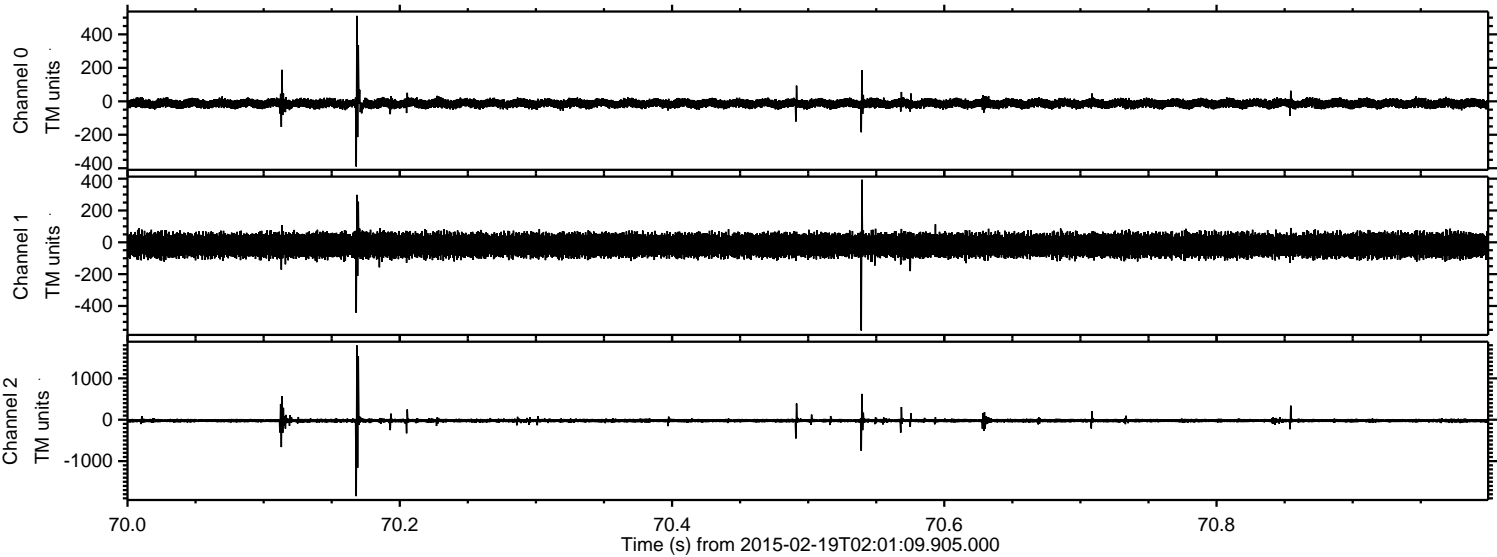
Processed Fri Feb 27 07:58:52 2015 by ELM ver.2012-10-06 from 001__elm20150219_020108__dat00.bin



Processed Fri Feb 27 07:58:53 2015 by ELM ver.2012-10-06 from 001__elm20150219_020108__dat00.bin

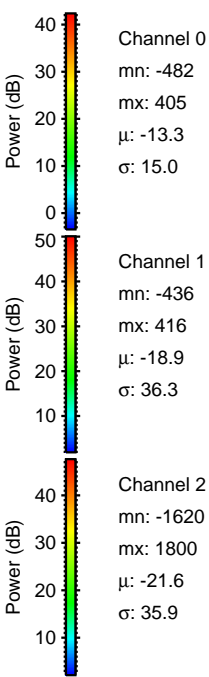
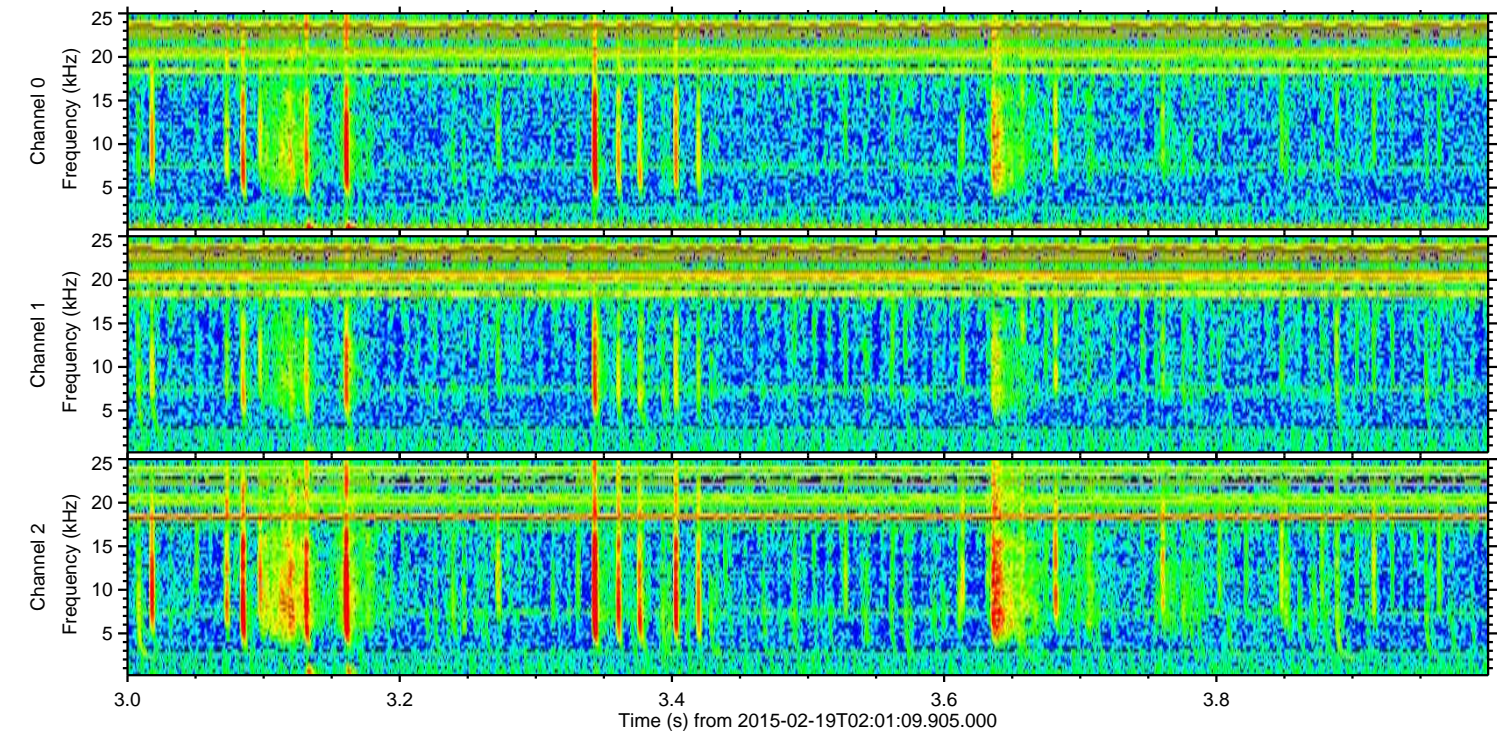
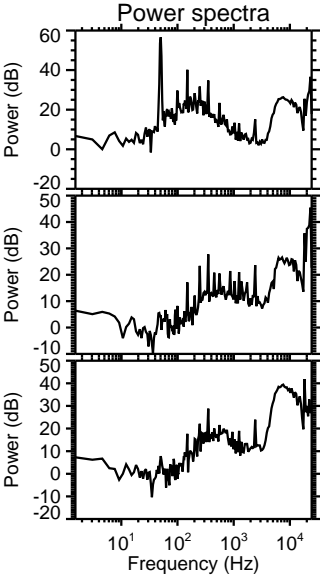
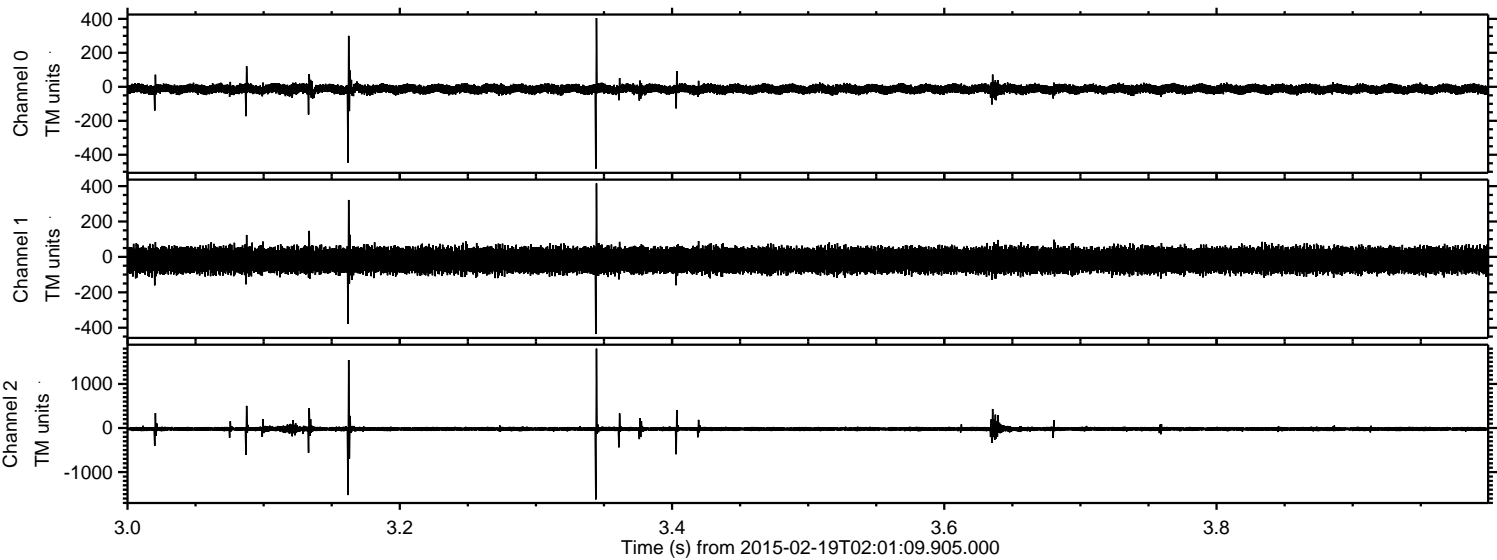


Processed Fri Feb 27 07:58:54 2015 by ELM ver.2012-10-06 from 001__elm20150219_020108__dat00.bin



ELMAVAN 3D WAVEFORMS (Measured data sampled at 50 kHz) 49808 packets of 144 samples from 2015-02-19T02:01:09.905.000. Part 4/144

Processed Fri Feb 27 07:58:55 2015 by ELM ver.2012-10-06 from 001__elm20150219_020108__dat00.bin



Channel 0
mn: -482
mx: 405
 μ : -13.3
 σ : 15.0

Channel 1
mn: -436
mx: 416
 μ : -18.9
 σ : 36.3

Channel 2
mn: -1620
mx: 1800
 μ : -21.6
 σ : 35.9

Processed Fri Feb 27 07:58:56 2015 by ELM ver.2012-10-06 from 001__elm20150219_020108__dat00.bin

