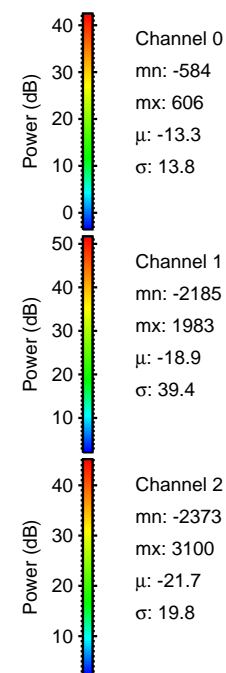
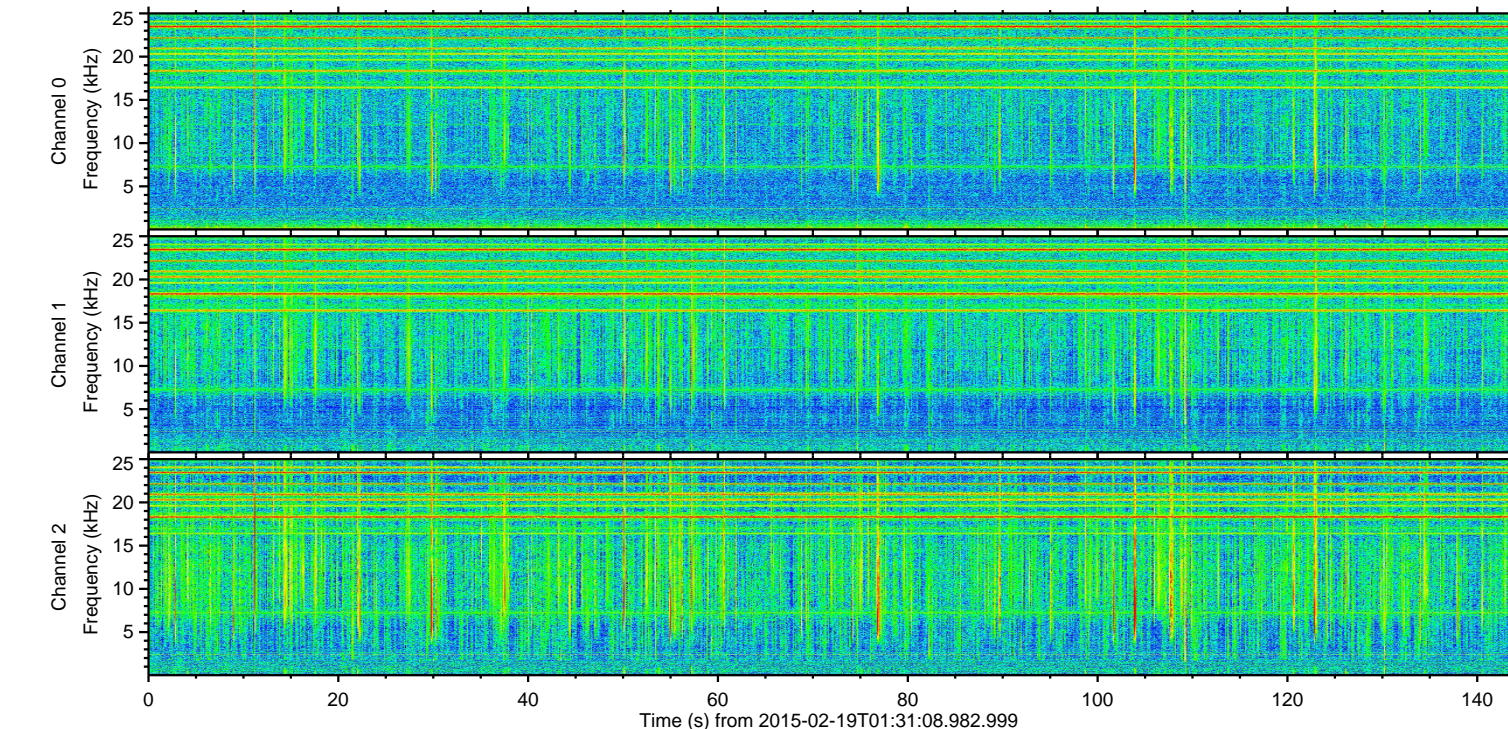
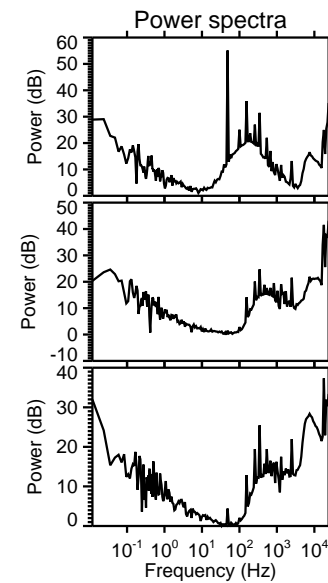
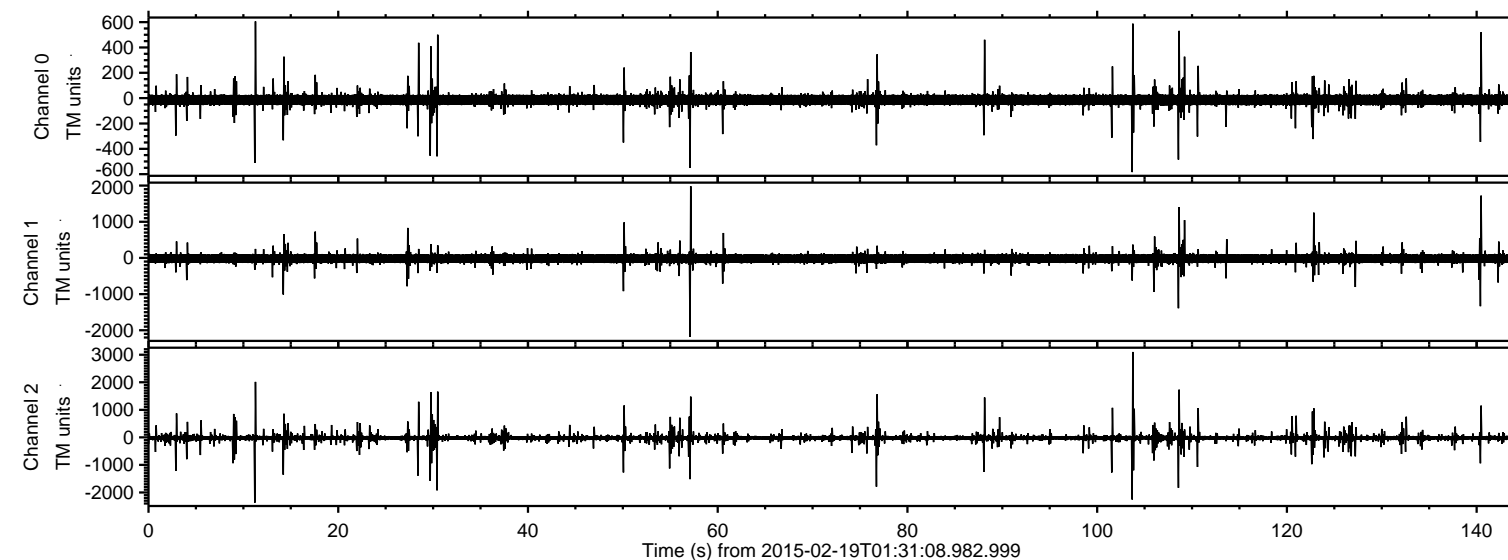


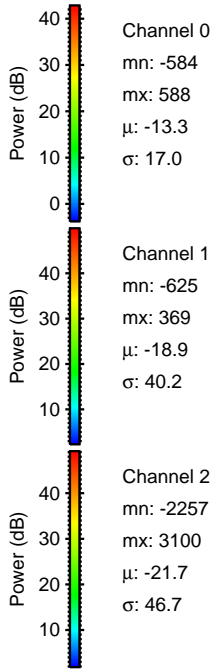
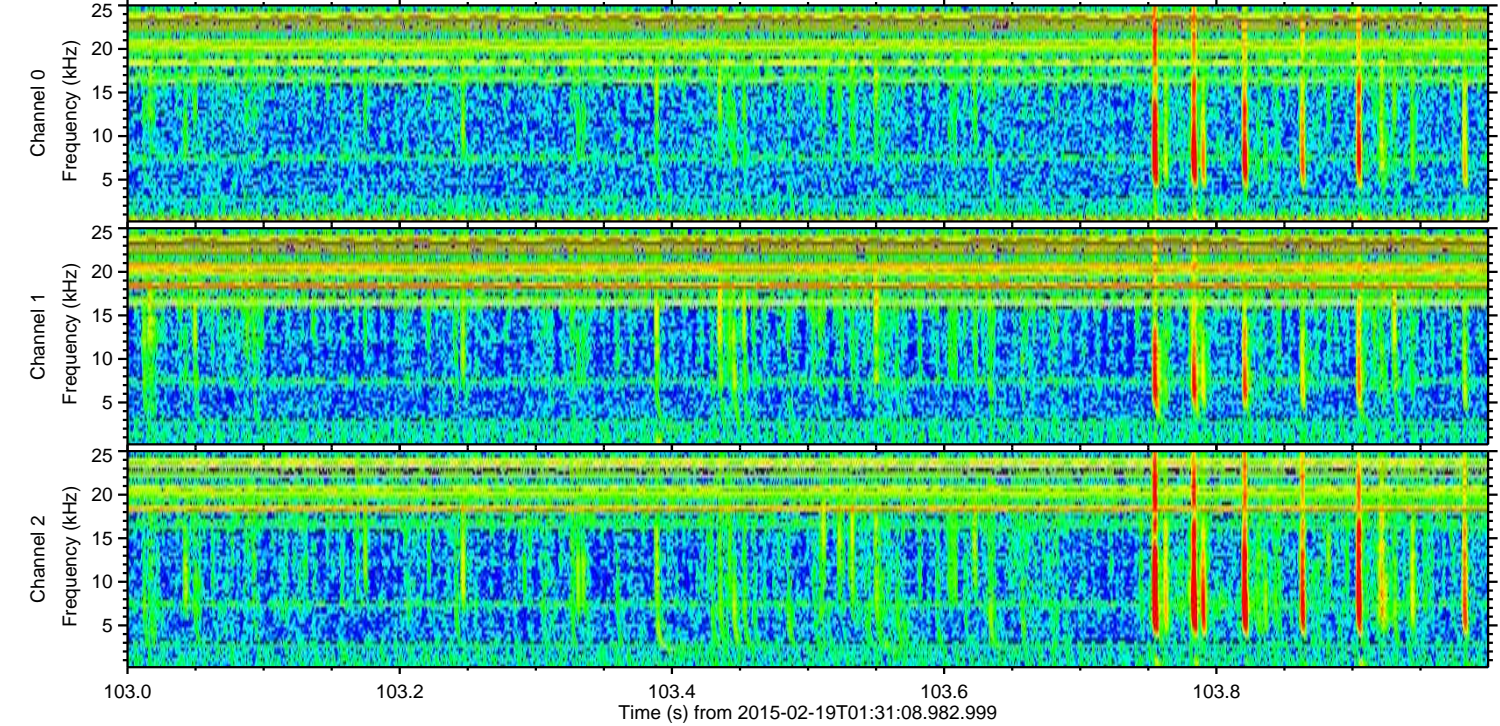
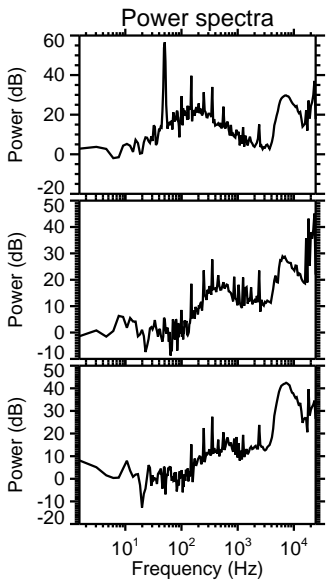
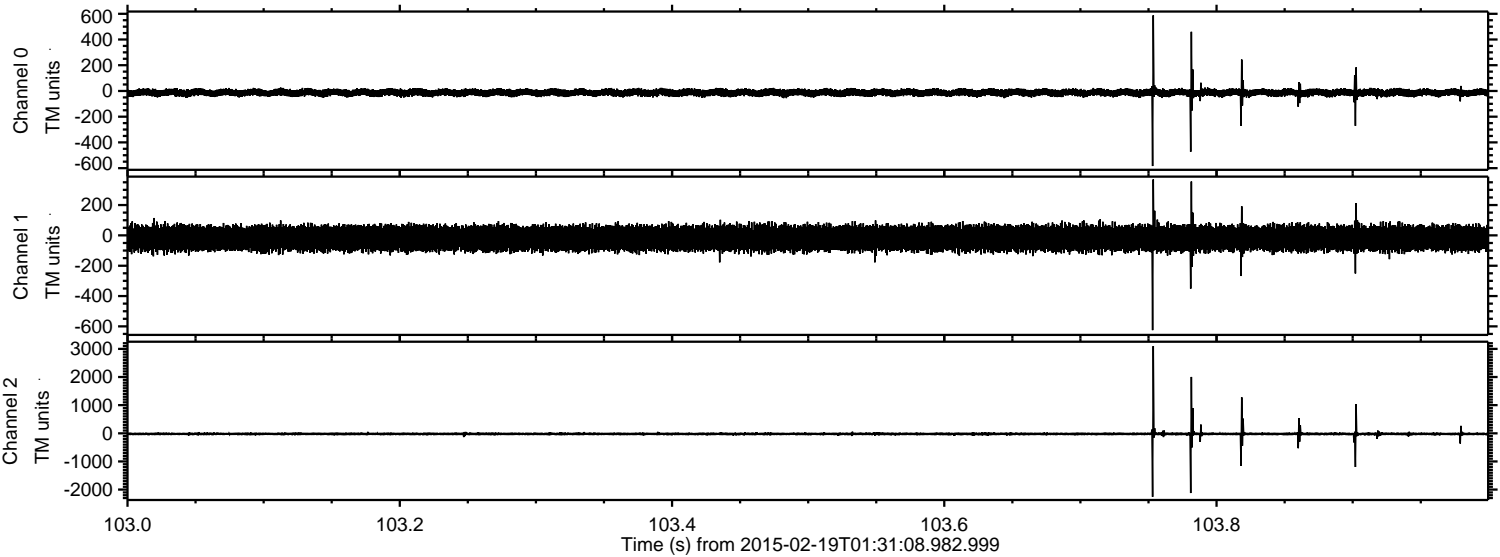
ELMAVAN 3D WAVEFORMS (Measured data sampled at 50 kHz) 49802 packets of 144 samples from 2015-02-19T01:31:08.982.999.

Processed Fri Feb 27 07:40:13 2015 by ELM ver.2012-10-06 from 001__elm20150219_013107__dat00.bin

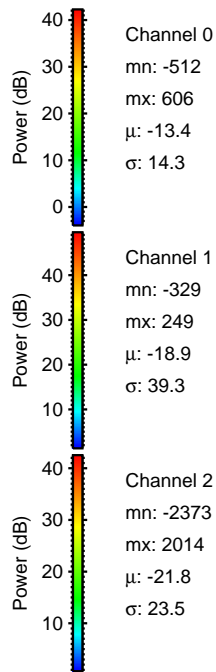
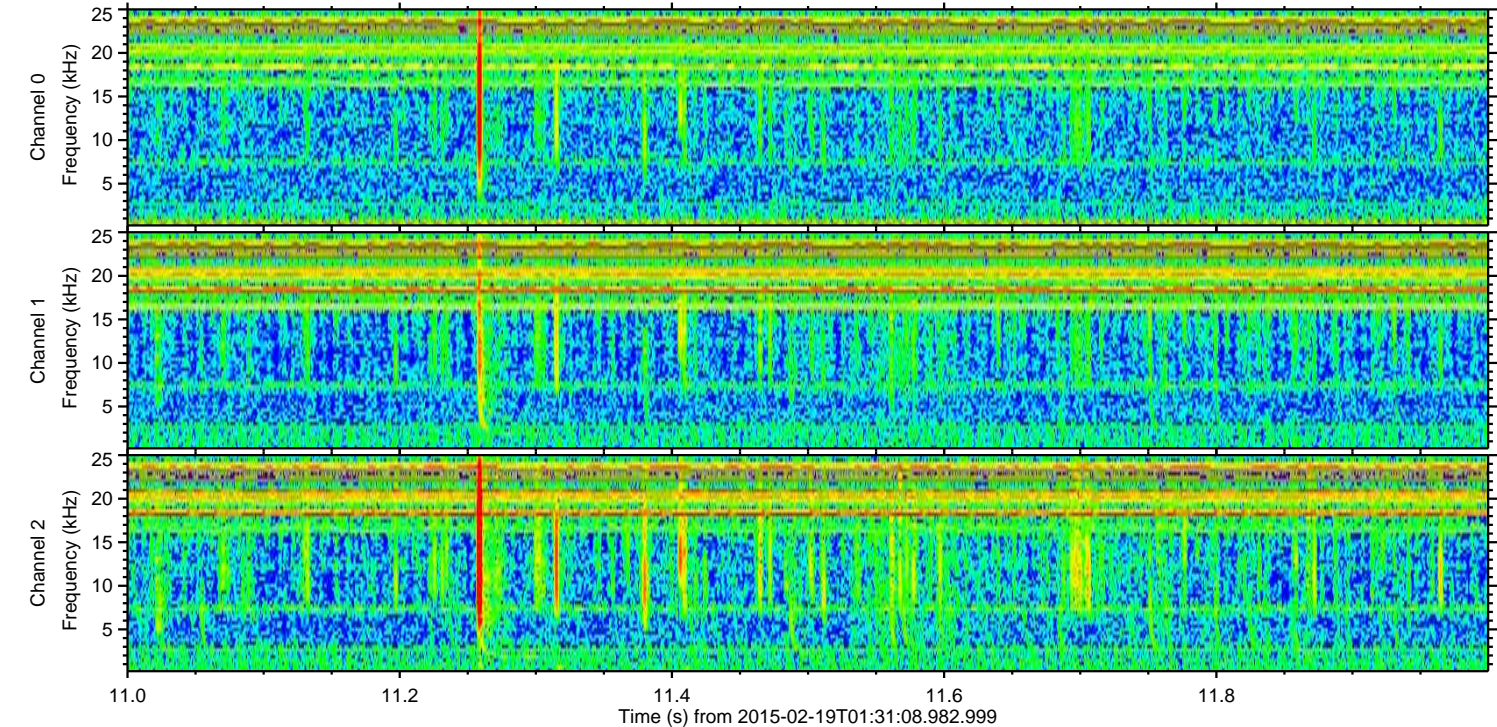
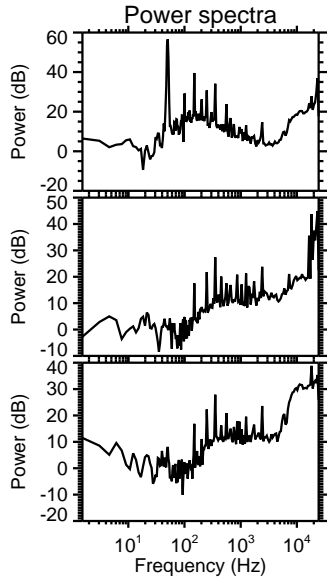
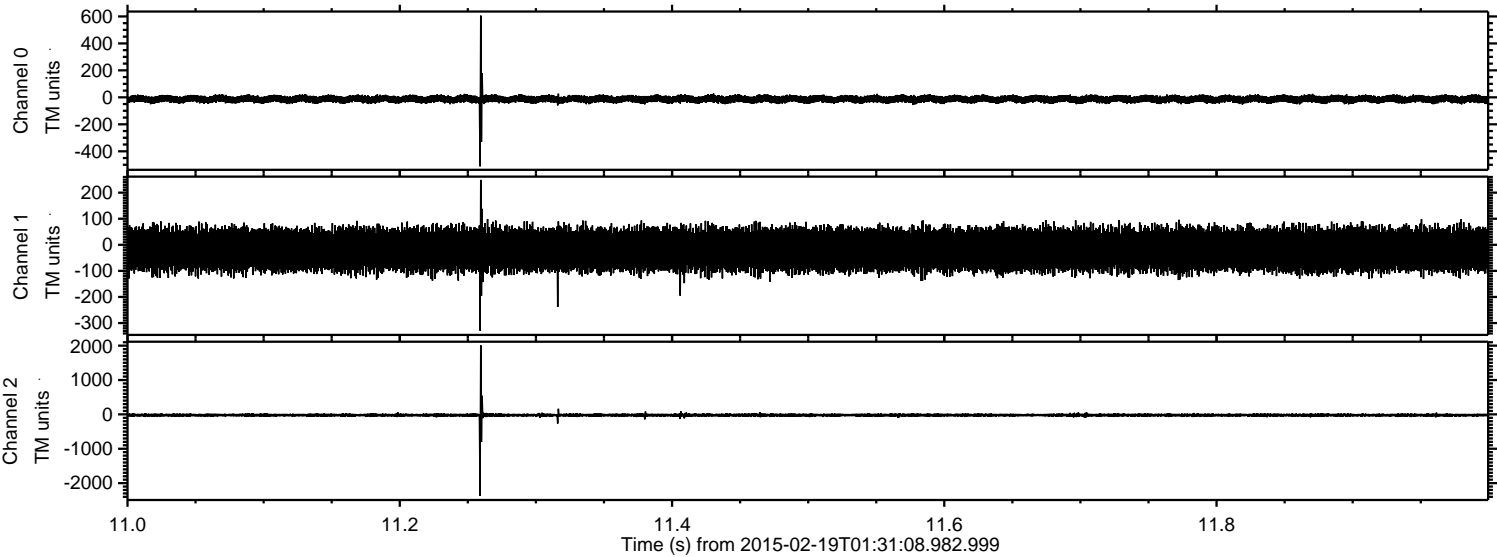


ELMAVAN 3D WAVEFORMS (Measured data sampled at 50 kHz) 49802 packets of 144 samples from 2015-02-19T01:31:08.982.999. Part 104/144

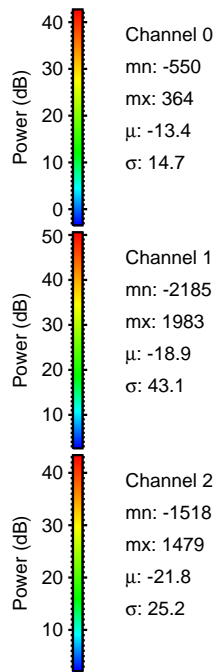
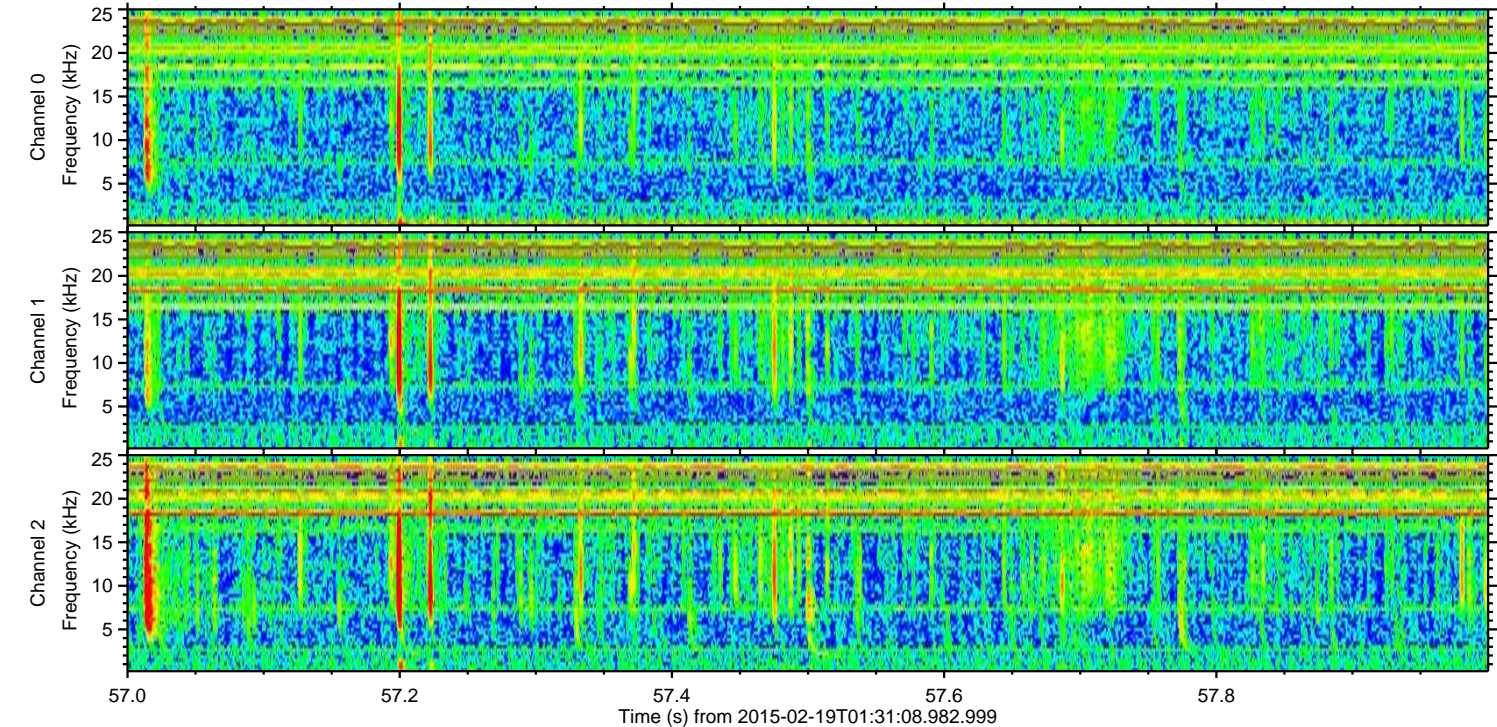
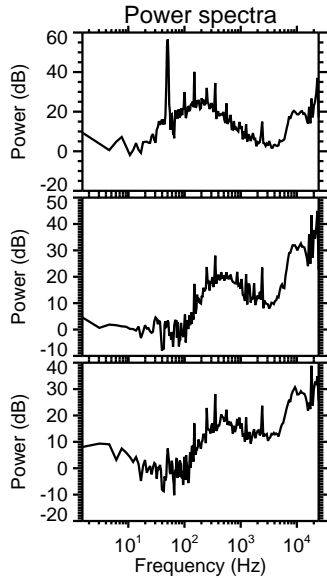
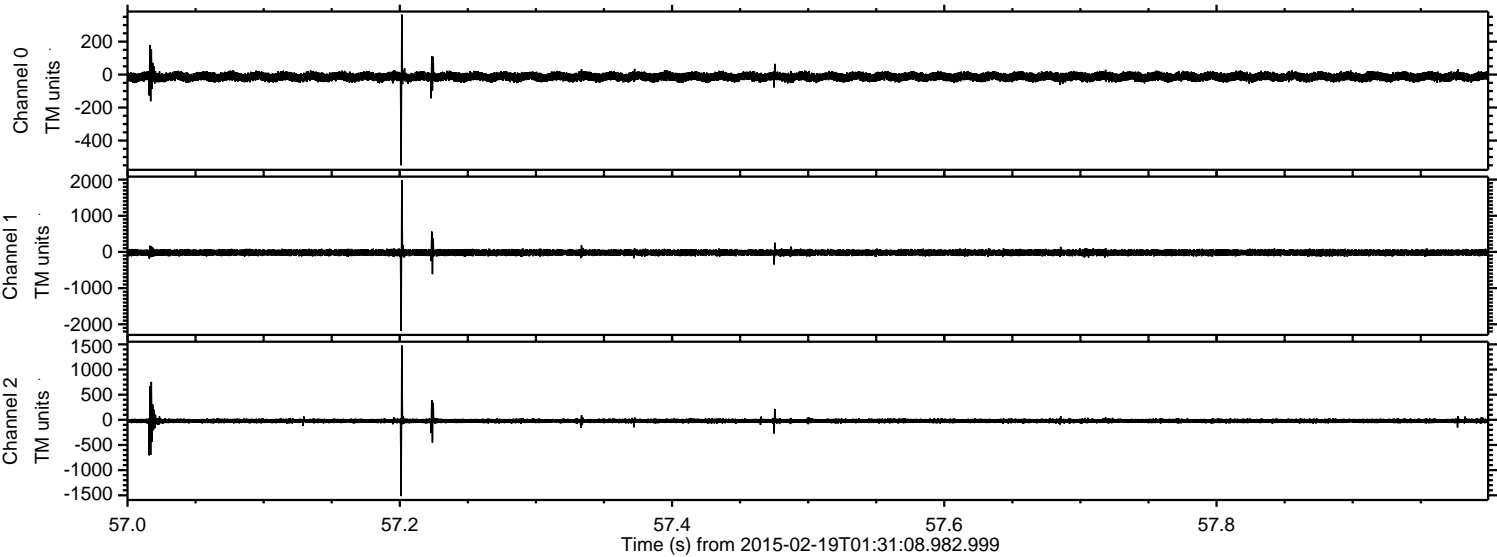
Processed Fri Feb 27 07:40:24 2015 by ELM ver.2012-10-06 from 001__elm20150219_013107__dat00.bin



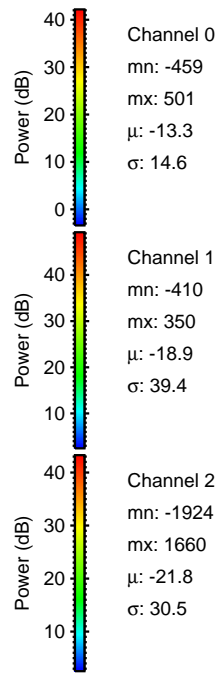
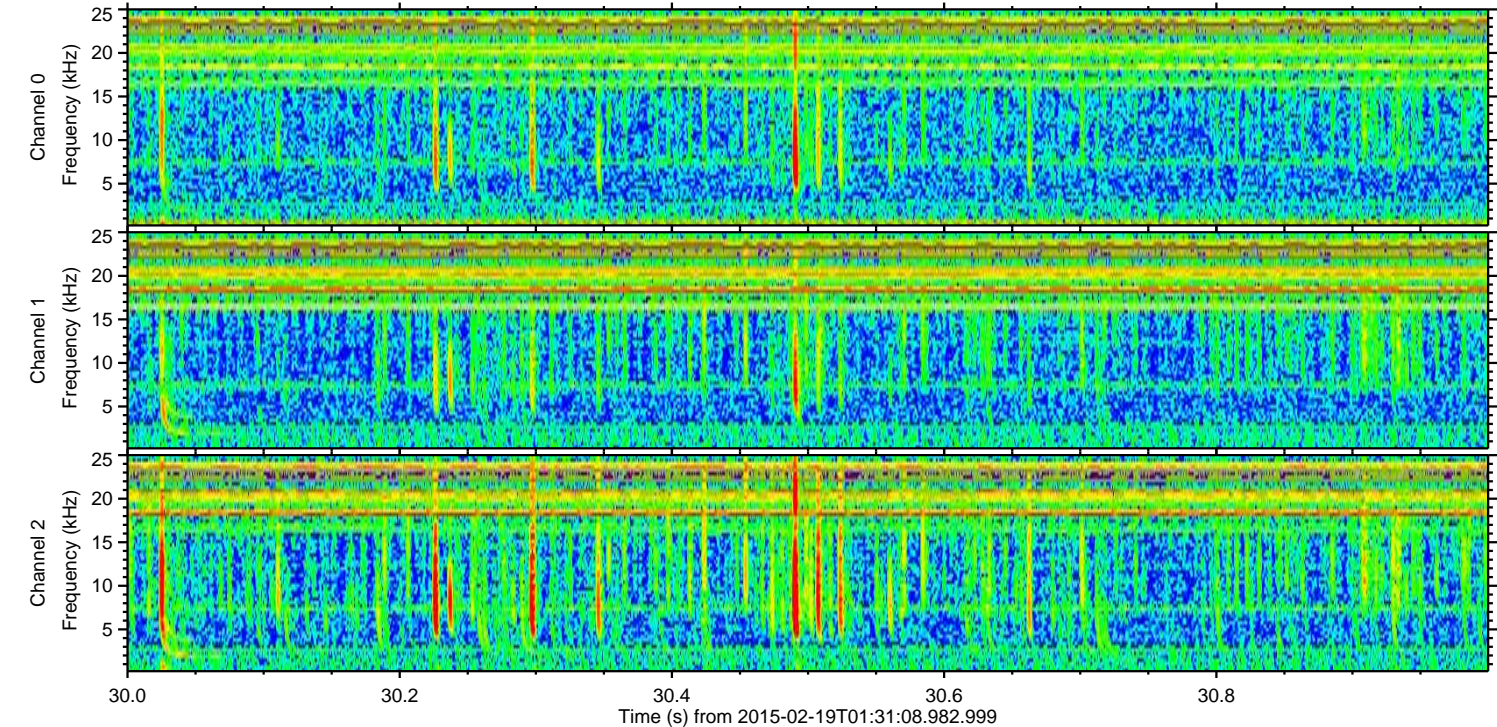
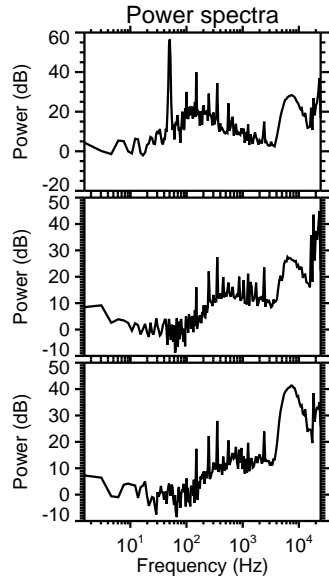
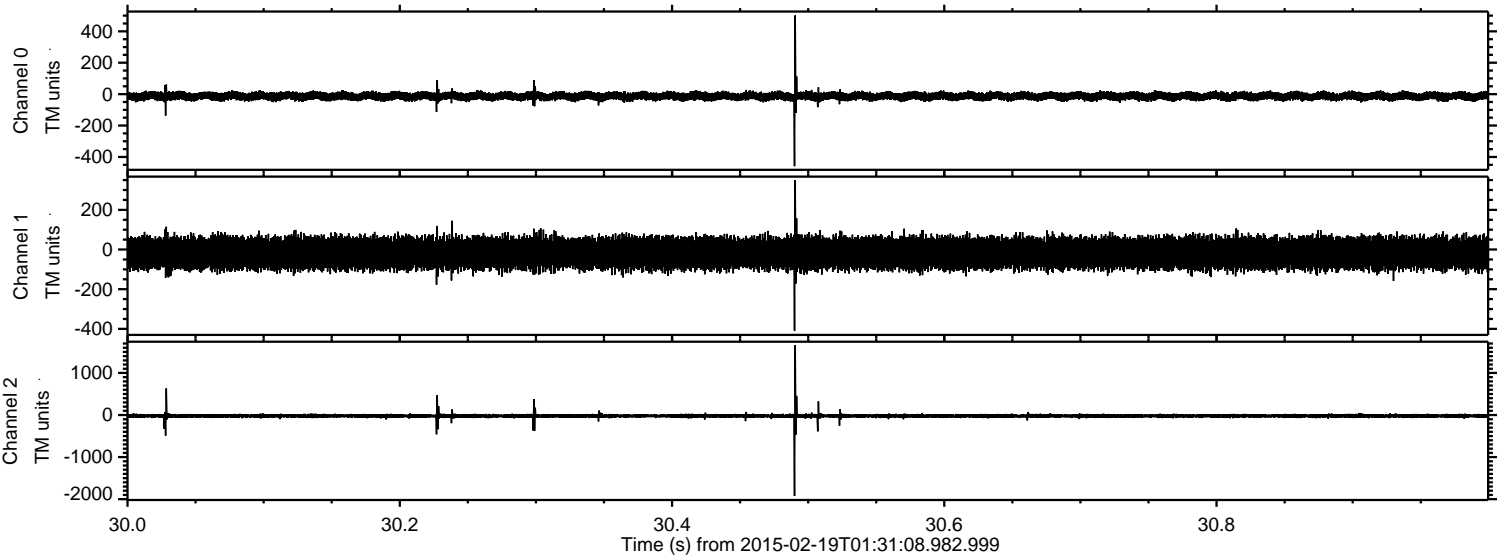
Processed Fri Feb 27 07:40:25 2015 by ELM ver.2012-10-06 from 001__elm20150219_013107__dat00.bin



Processed Fri Feb 27 07:40:26 2015 by ELM ver.2012-10-06 from 001__elm20150219_013107__dat00.bin

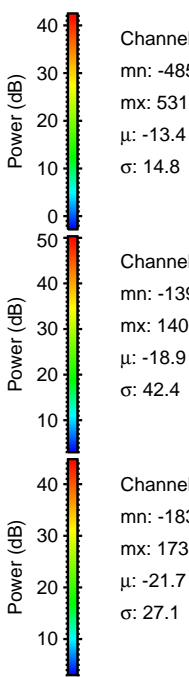
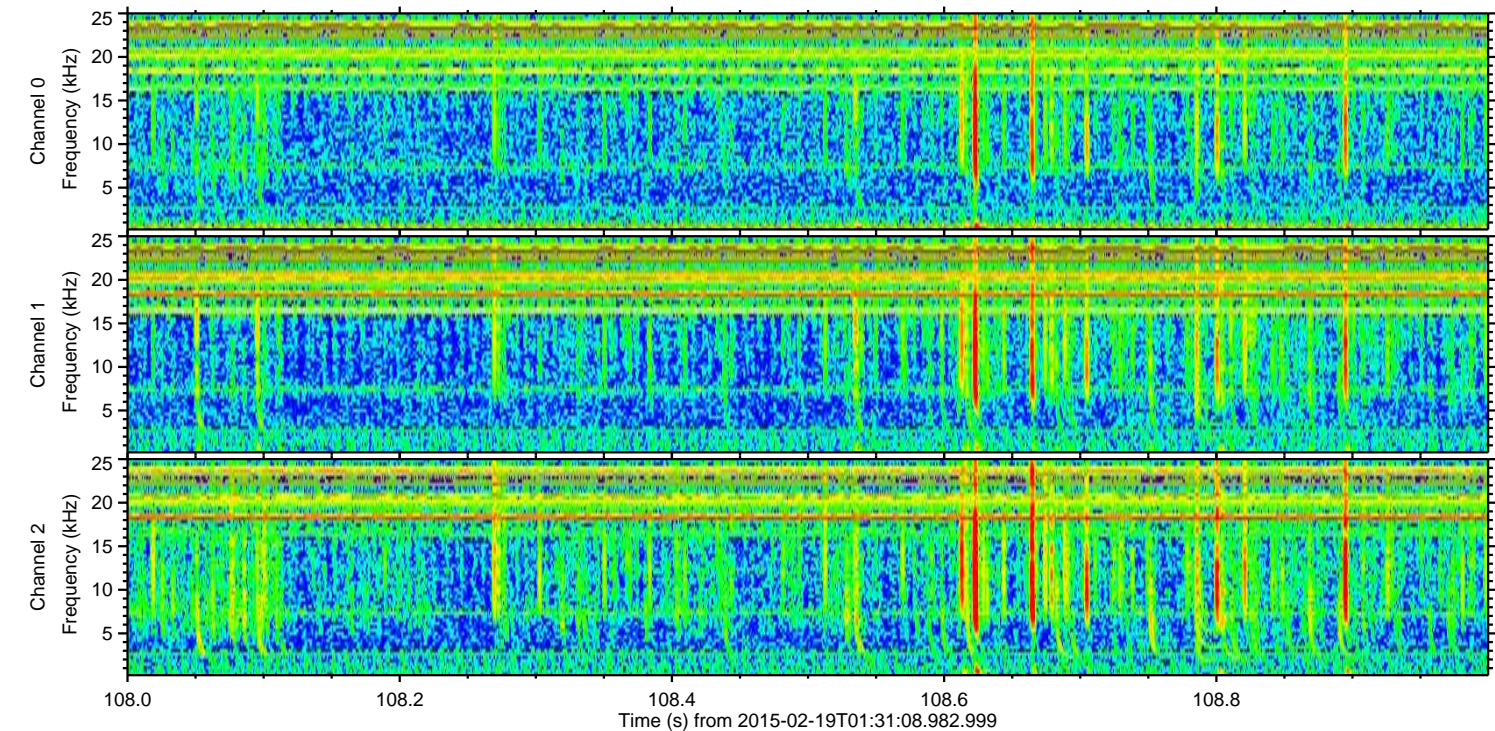
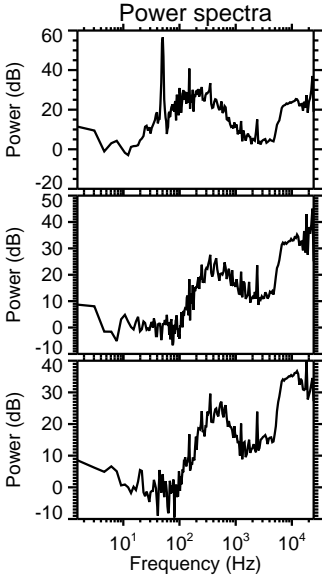
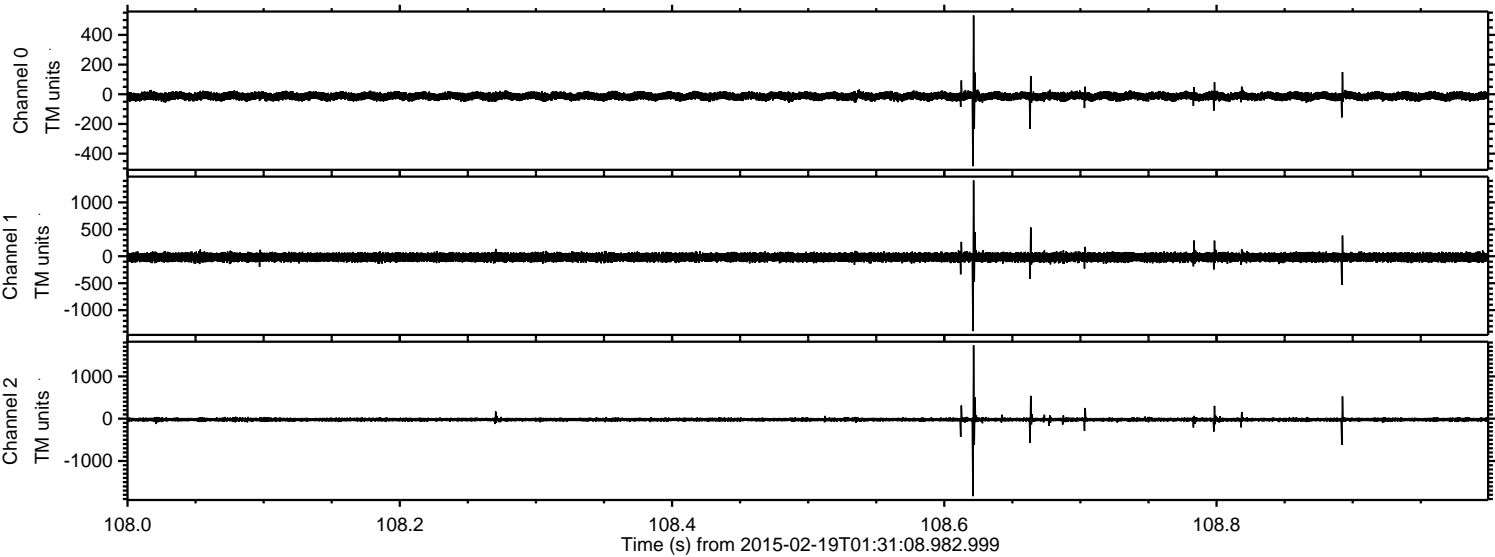


Processed Fri Feb 27 07:40:27 2015 by ELM ver.2012-10-06 from 001__elm20150219_013107__dat00.bin

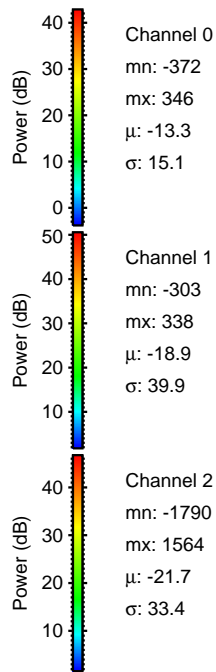
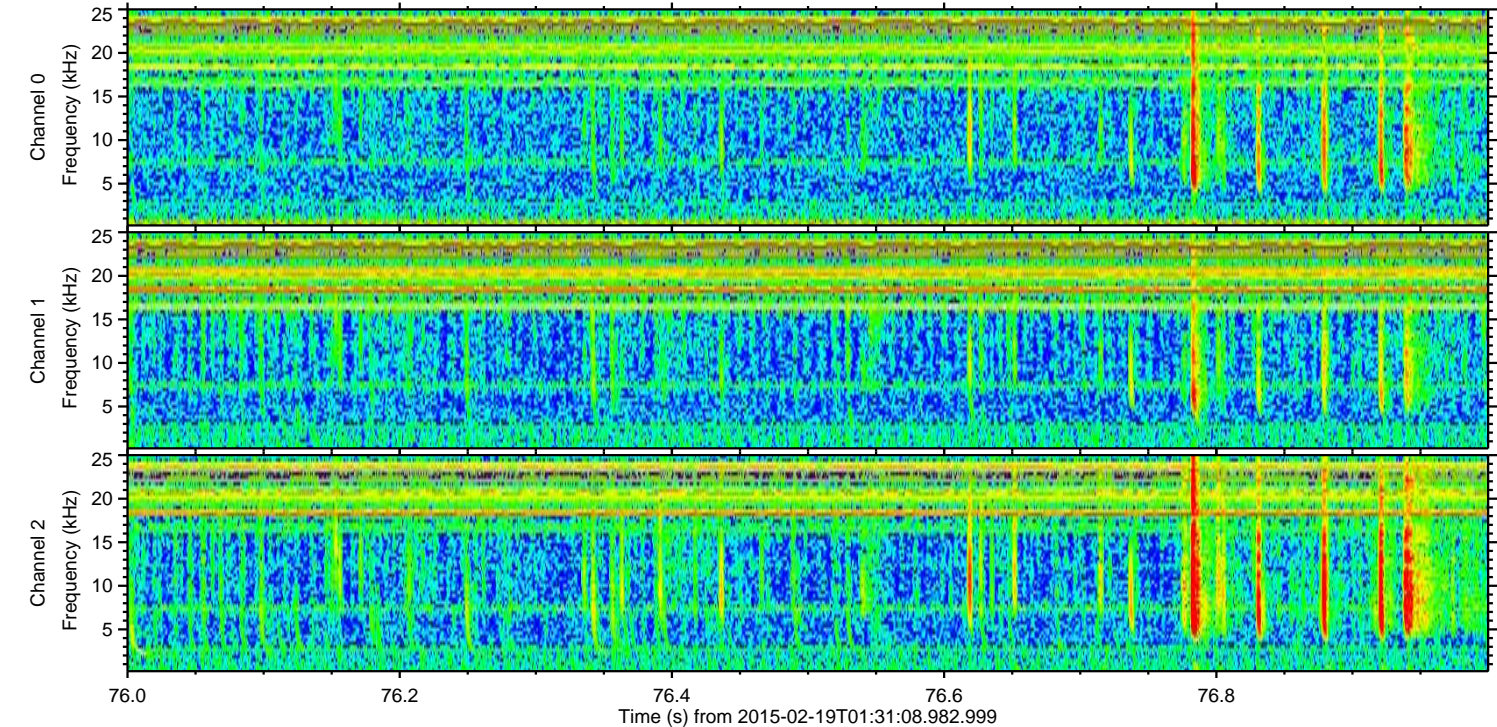
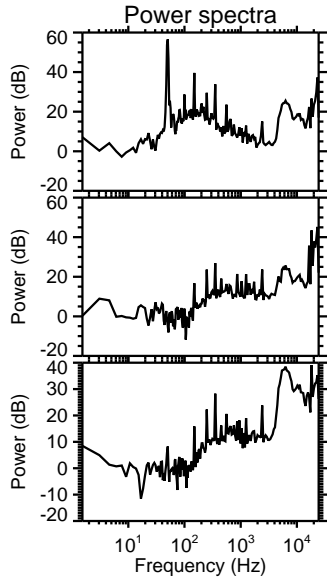
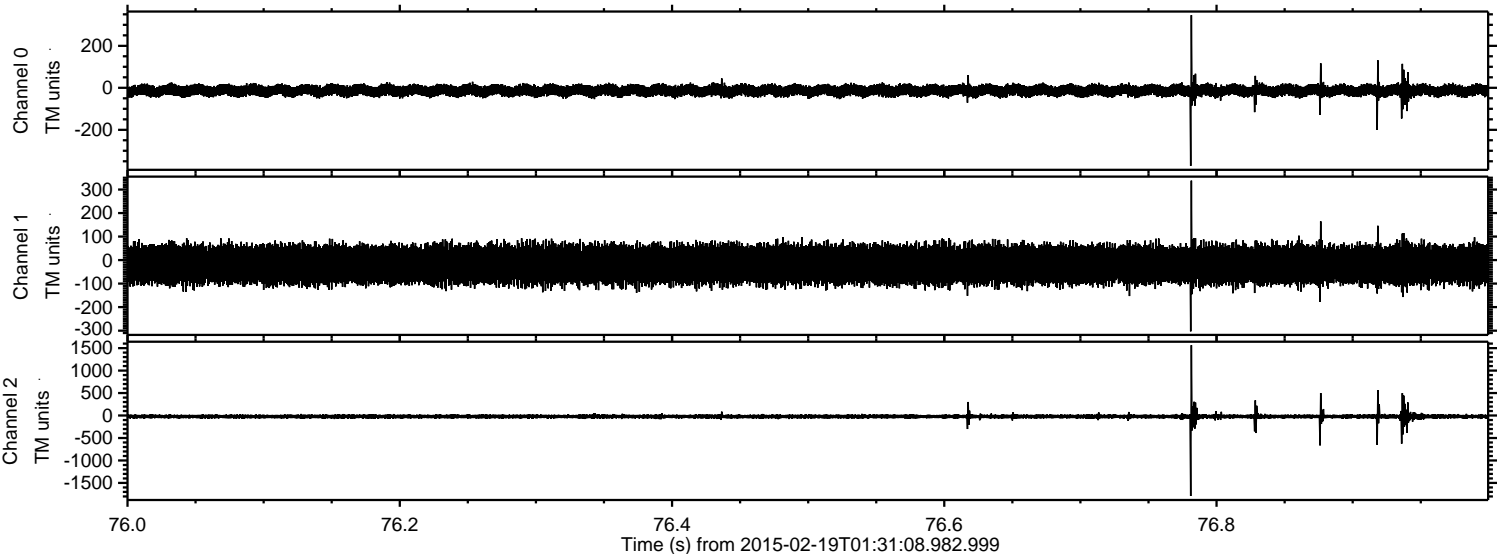


ELMAVAN 3D WAVEFORMS (Measured data sampled at 50 kHz) 49802 packets of 144 samples from 2015-02-19T01:31:08.982.999. Part 109/144

Processed Fri Feb 27 07:40:28 2015 by ELM ver.2012-10-06 from 001__elm20150219_013107__dat00.bin

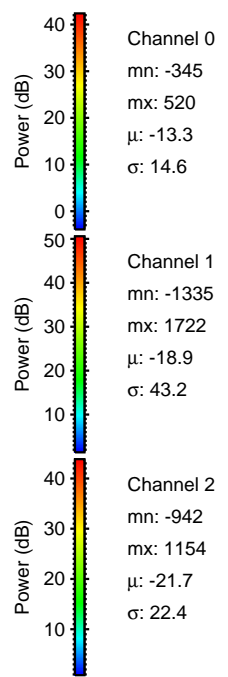
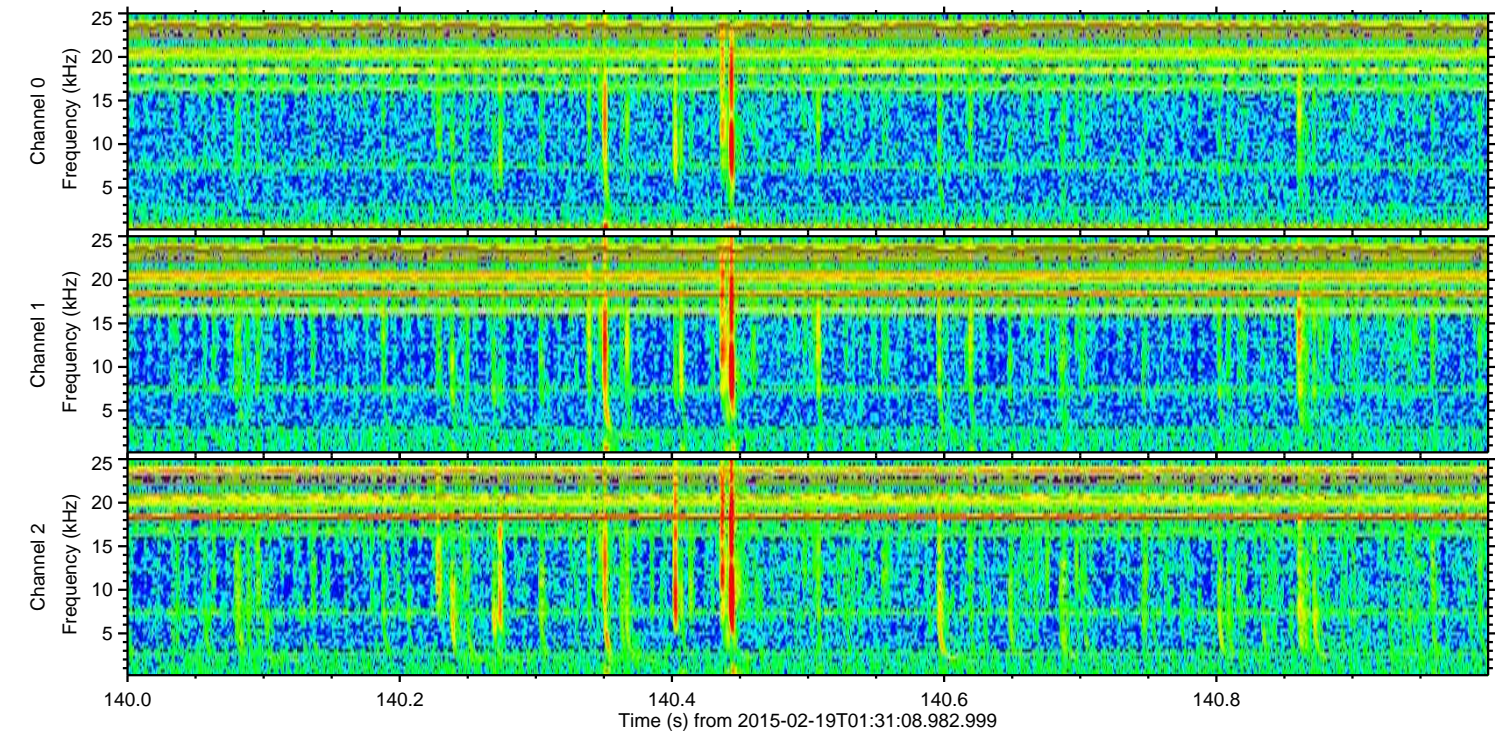
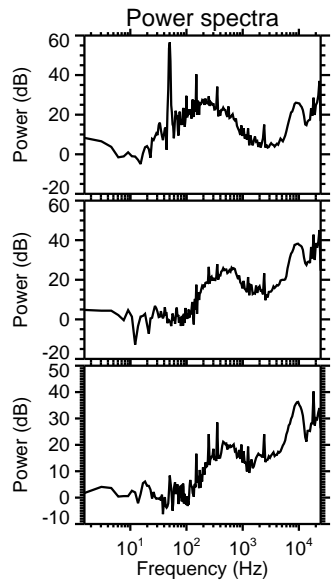
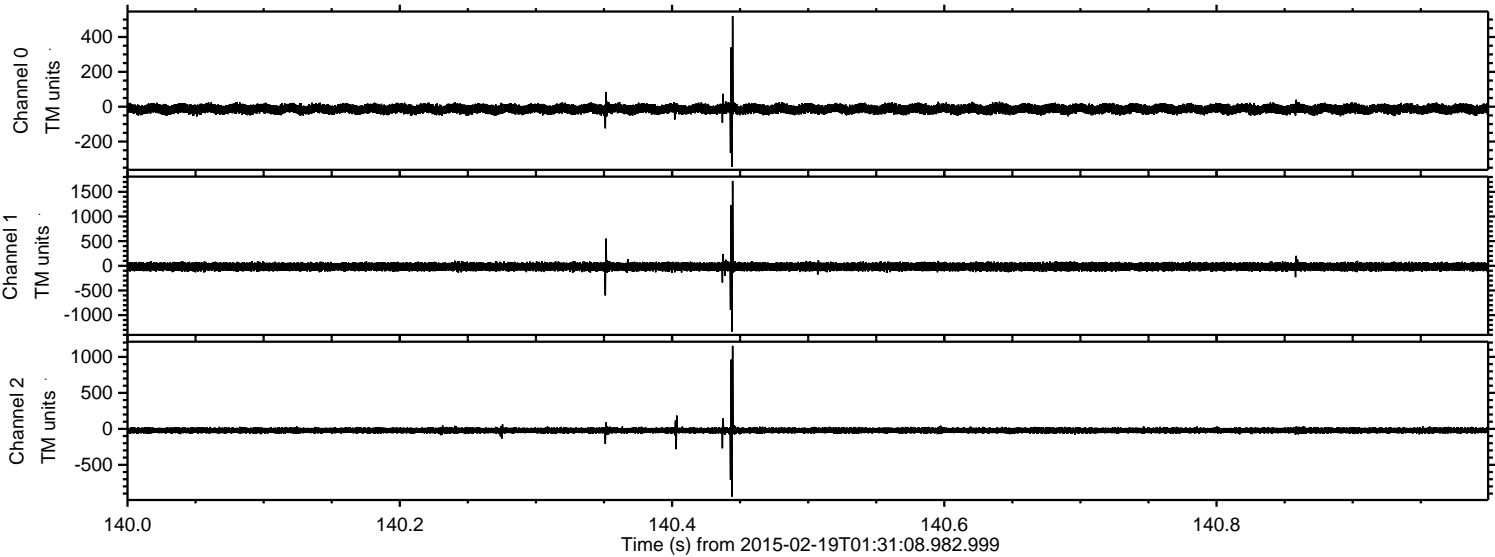


Processed Fri Feb 27 07:40:29 2015 by ELM ver.2012-10-06 from 001__elm20150219_013107__dat00.bin



ELMAVAN 3D WAVEFORMS (Measured data sampled at 50 kHz) 49802 packets of 144 samples from 2015-02-19T01:31:08.982.999. Part 141/144

Processed Fri Feb 27 07:40:30 2015 by ELM ver.2012-10-06 from 001__elm20150219_013107__dat00.bin

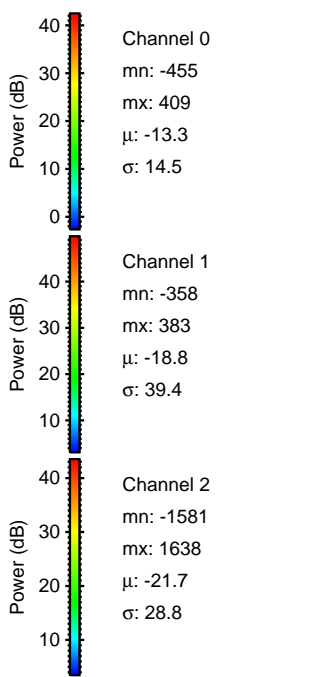
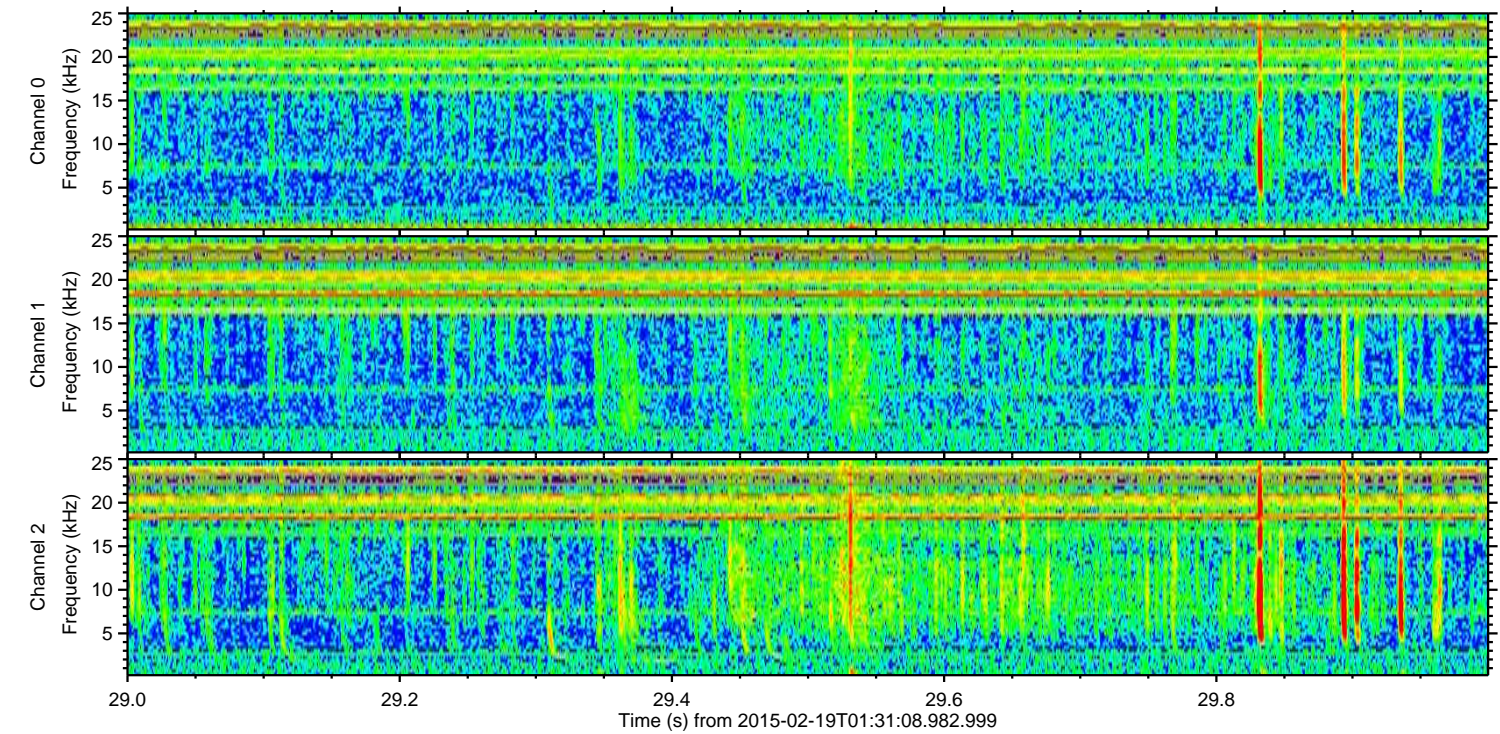
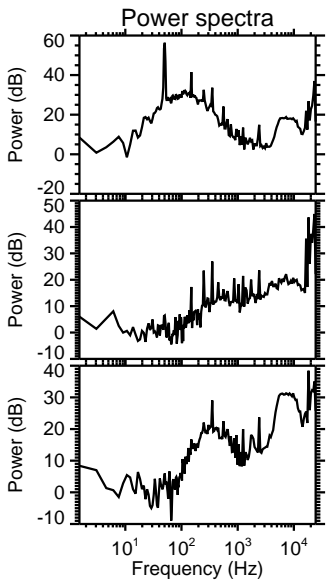
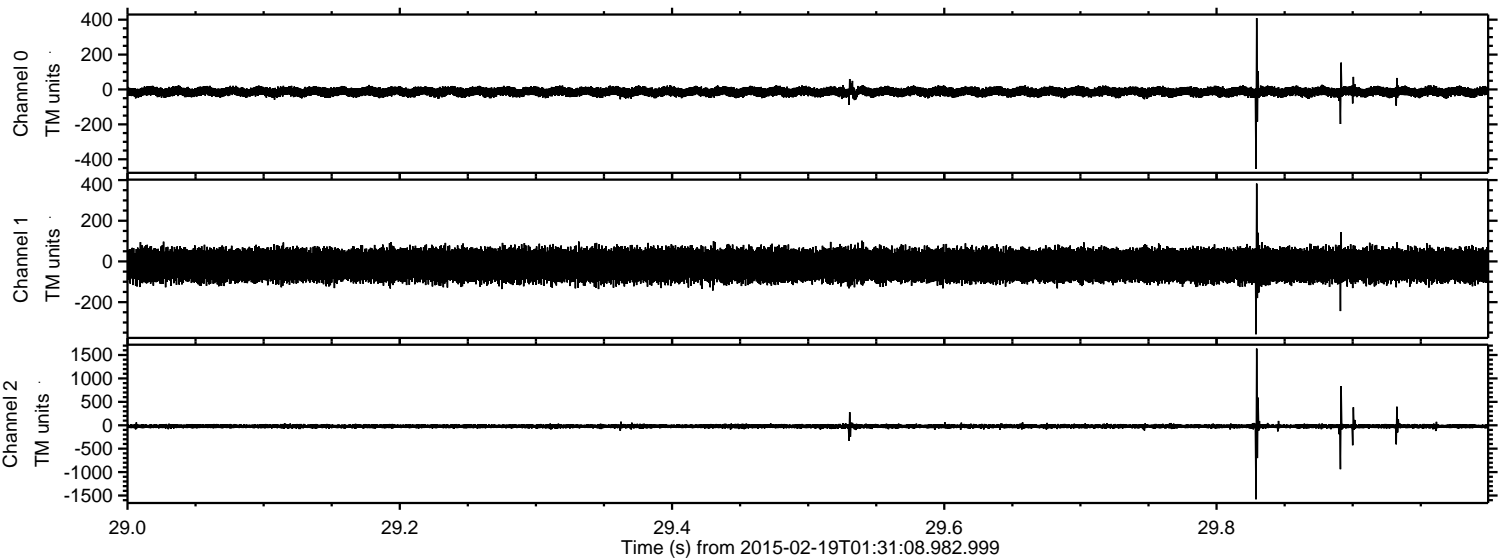


Channel 0
mn: -345
mx: 520
 μ : -13.3
 σ : 14.6

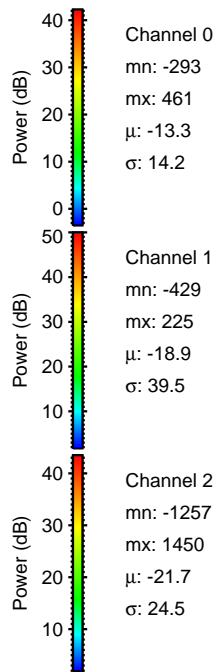
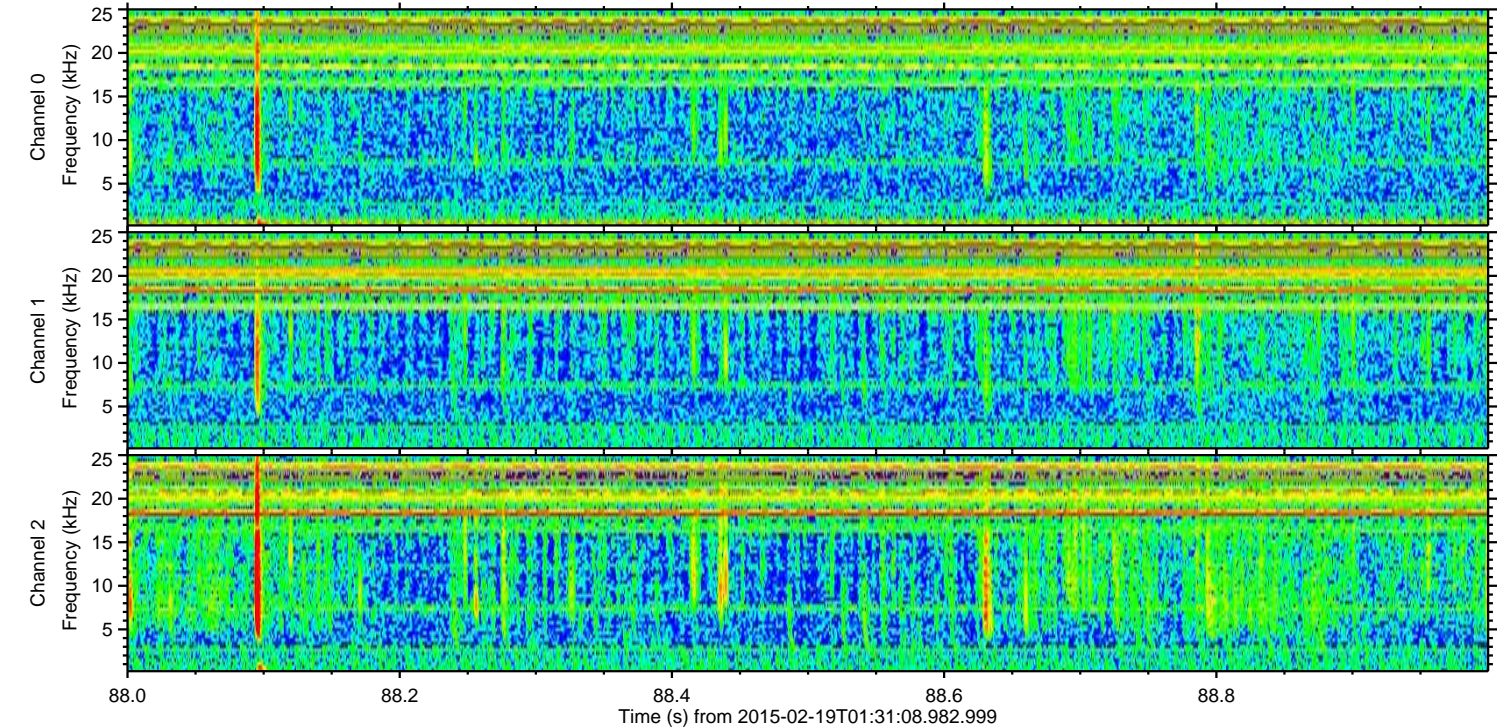
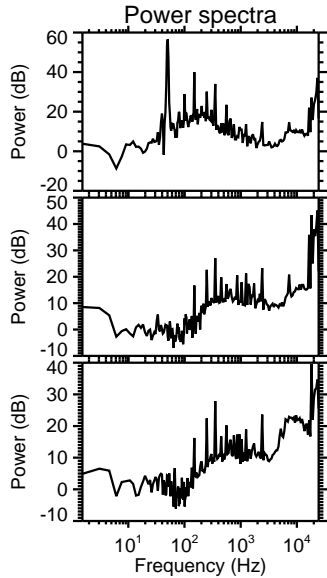
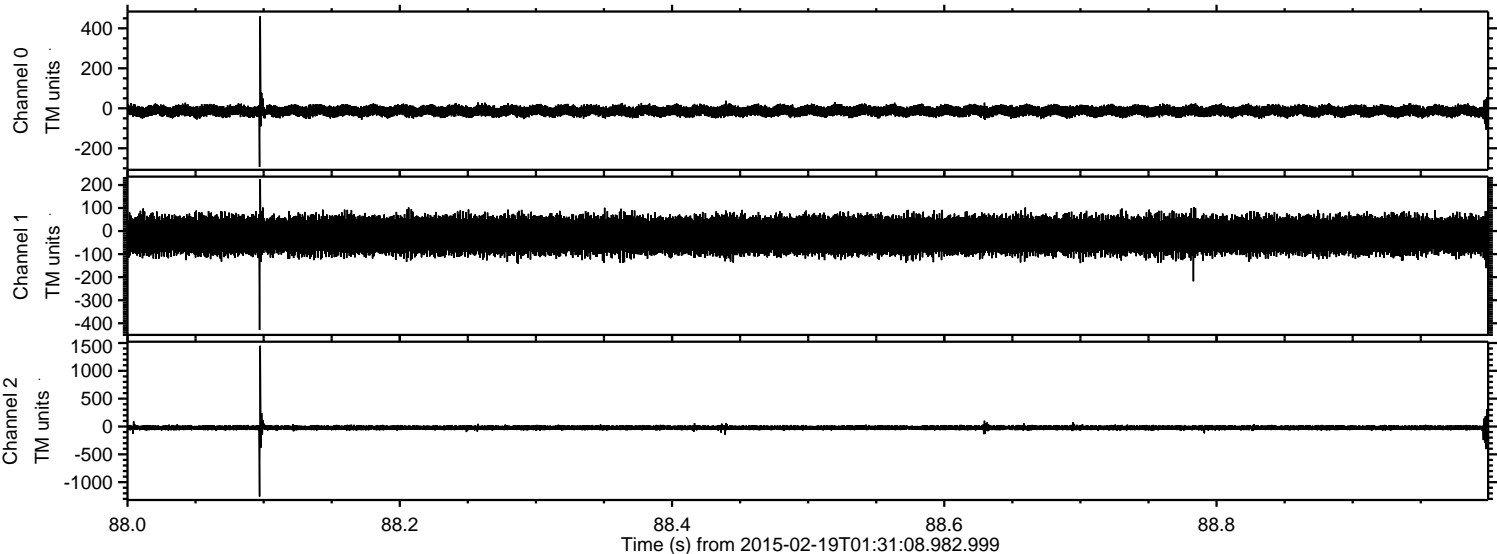
Channel 1
mn: -1335
mx: 1722
 μ : -18.9
 σ : 43.2

Channel 2
mn: -942
mx: 1154
 μ : -21.7
 σ : 22.4

Processed Fri Feb 27 07:40:31 2015 by ELM ver.2012-10-06 from 001__elm20150219_013107__dat00.bin



Processed Fri Feb 27 07:40:32 2015 by ELM ver.2012-10-06 from 001__elm20150219_013107__dat00.bin



Processed Fri Feb 27 07:40:32 2015 by ELM ver.2012-10-06 from 001__elm20150219_013107__dat00.bin

