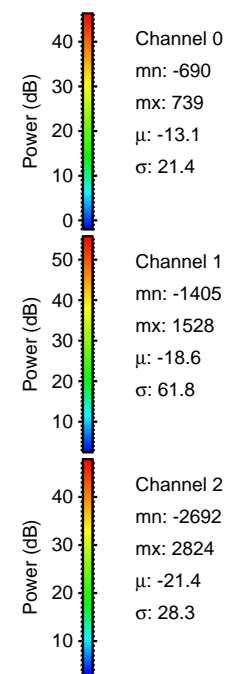
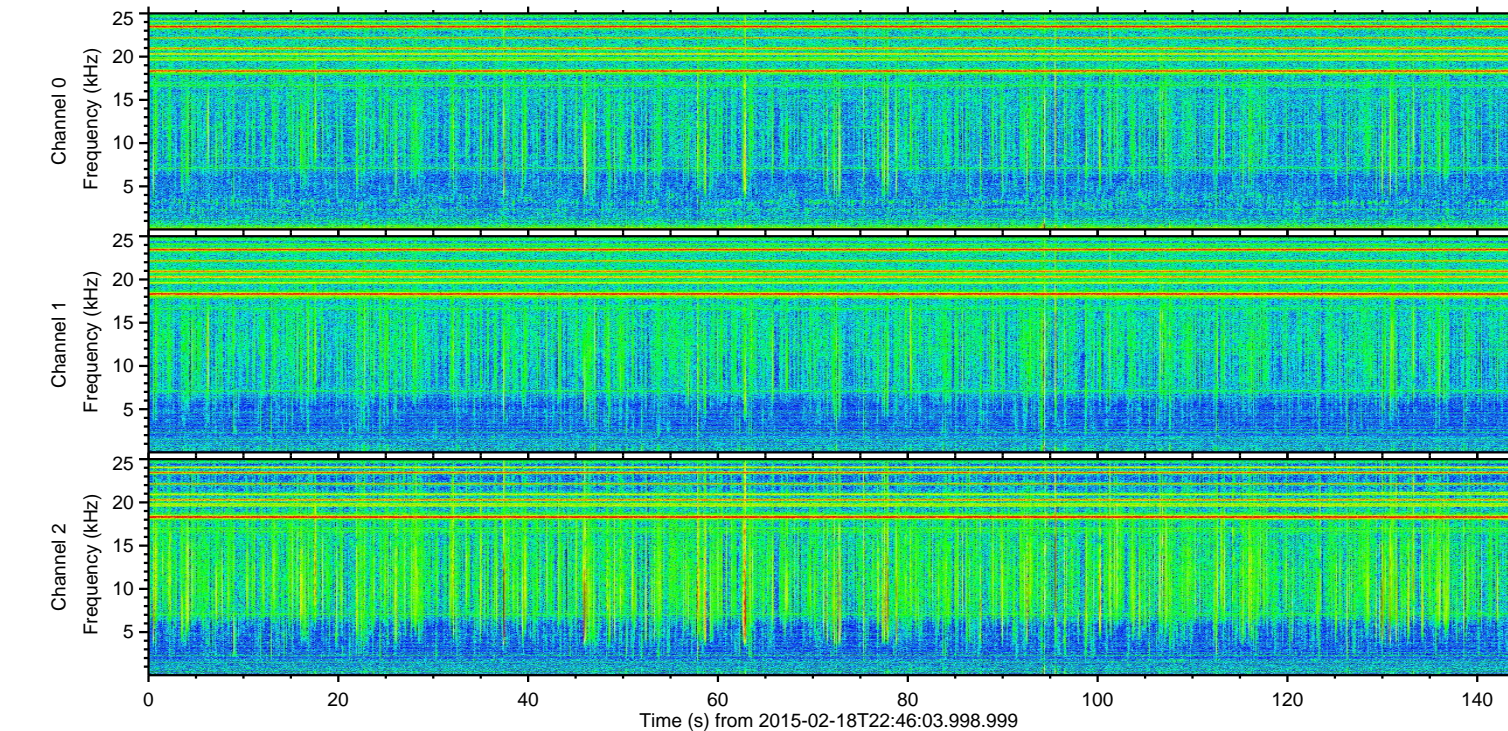
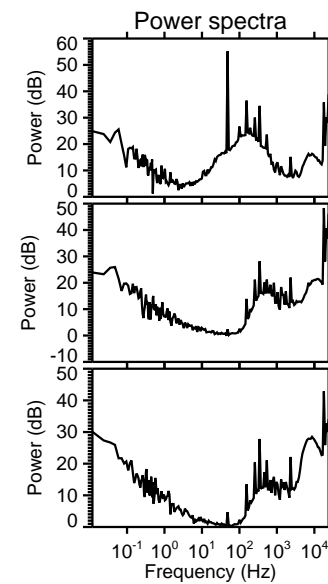
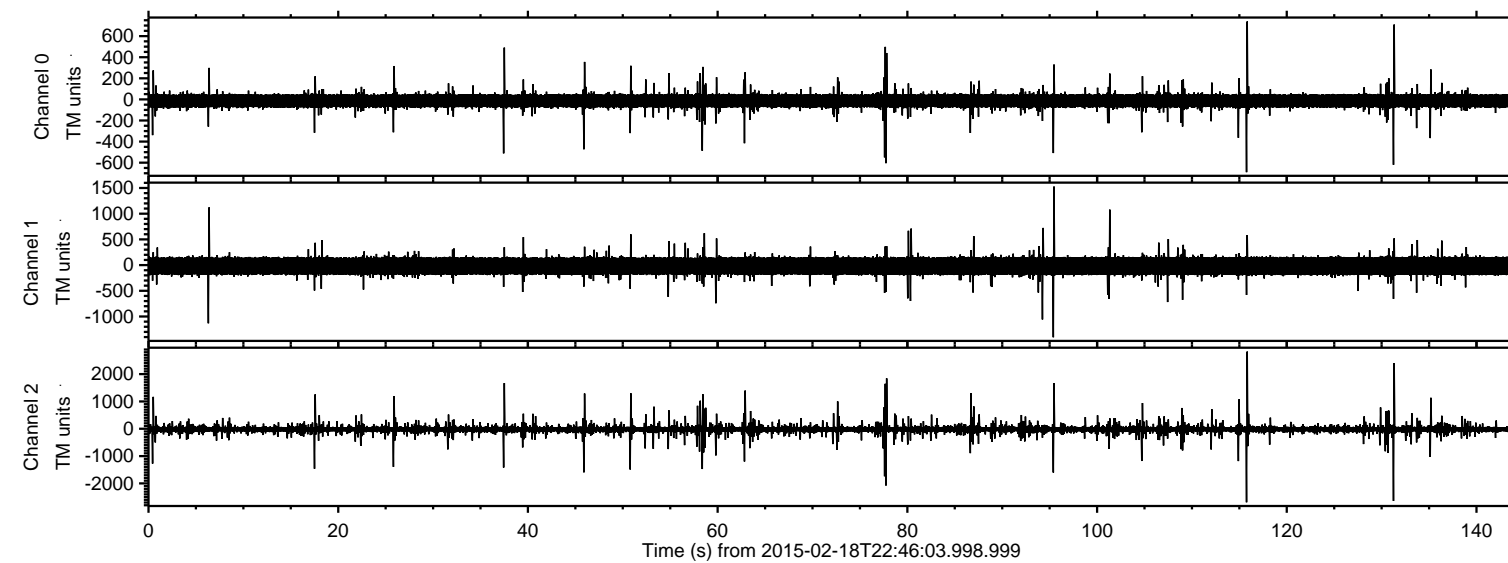


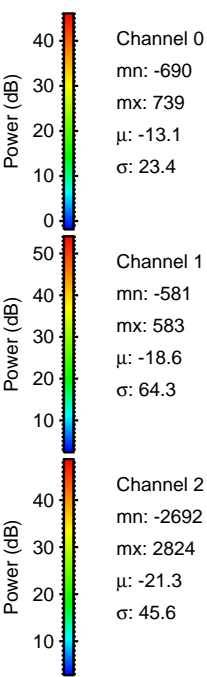
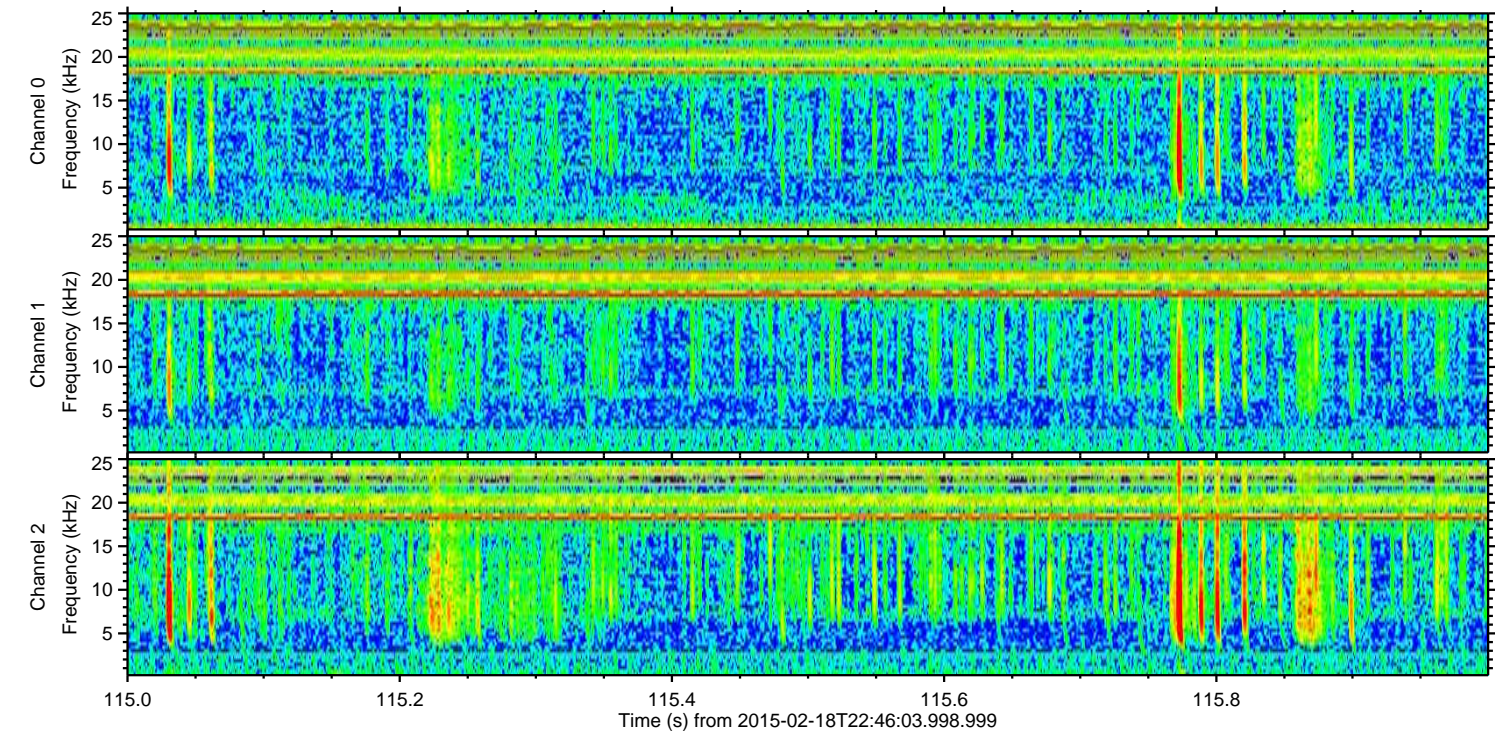
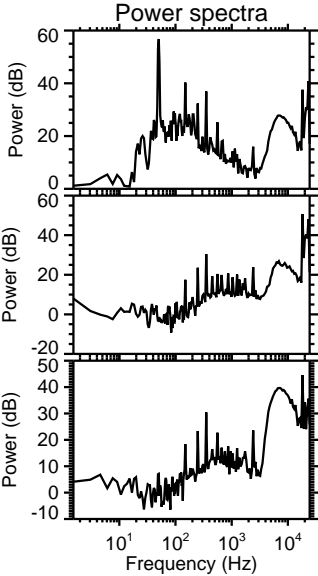
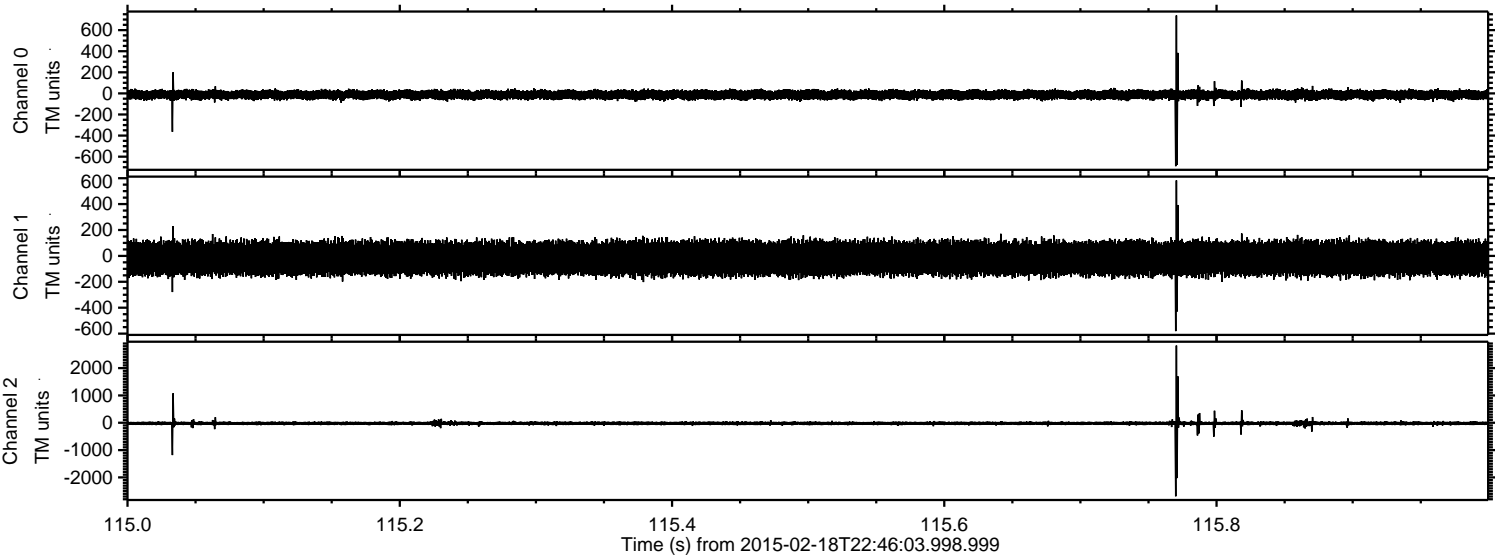
ELMAVAN 3D WAVEFORMS (Measured data sampled at 50 kHz) 49806 packets of 144 samples from 2015-02-18T22:46:03.998.999.

Processed Fri Feb 27 06:15:33 2015 by ELM ver.2012-10-06 from 001__elm20150218_224602__dat00.bin



ELMAVAN 3D WAVEFORMS (Measured data sampled at 50 kHz) 49806 packets of 144 samples from 2015-02-18T22:46:03.998.999. Part 116/144

Processed Fri Feb 27 06:15:44 2015 by ELM ver.2012-10-06 from 001__elm20150218_224602__dat00.bin



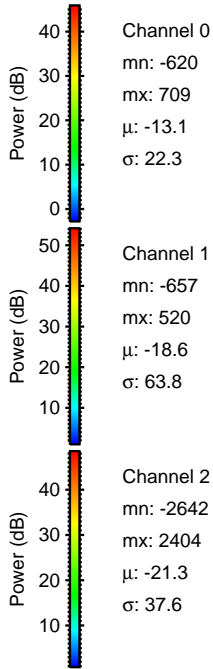
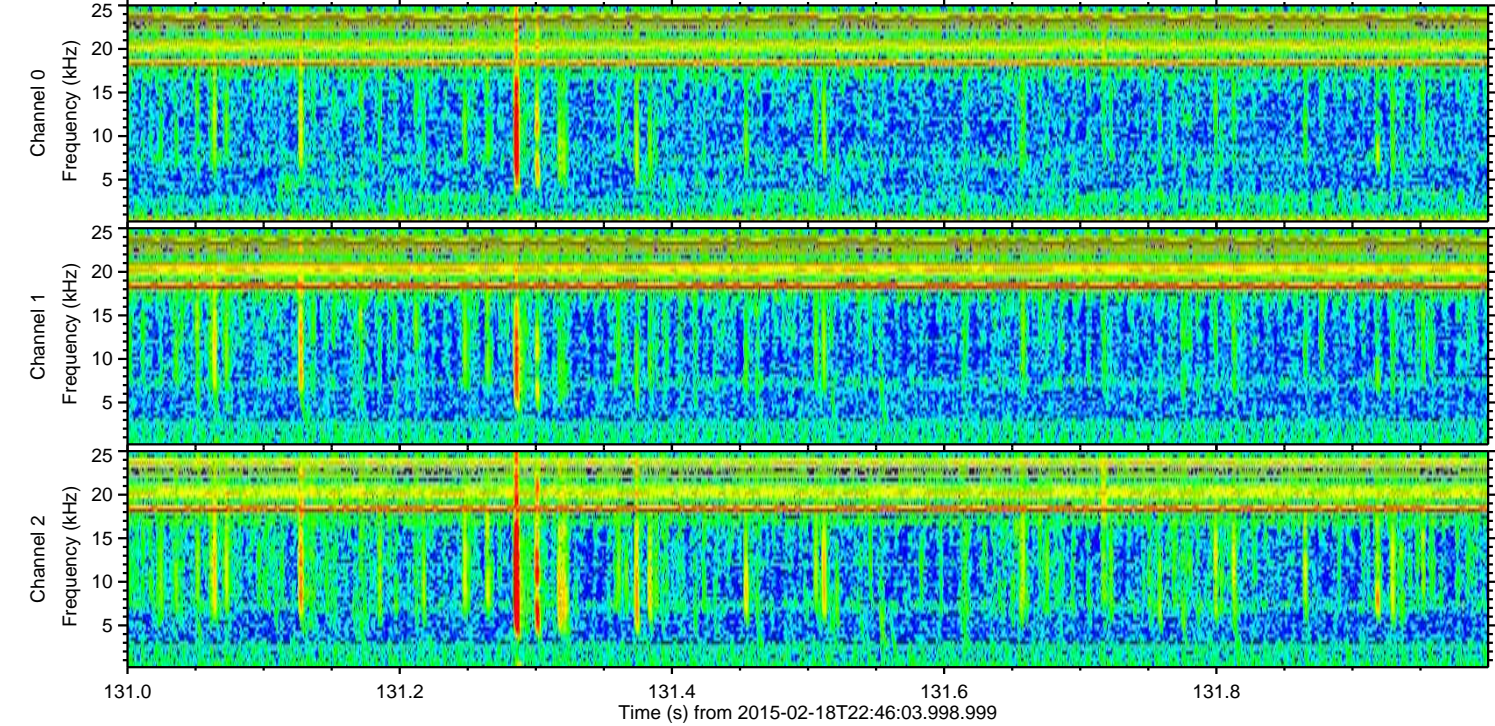
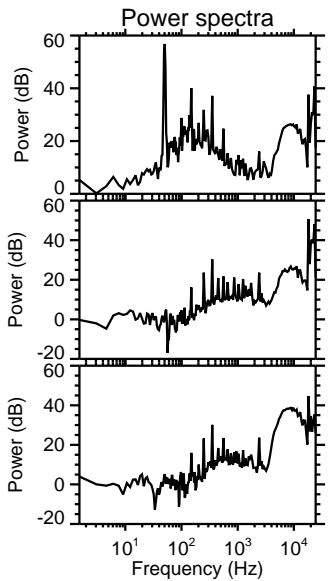
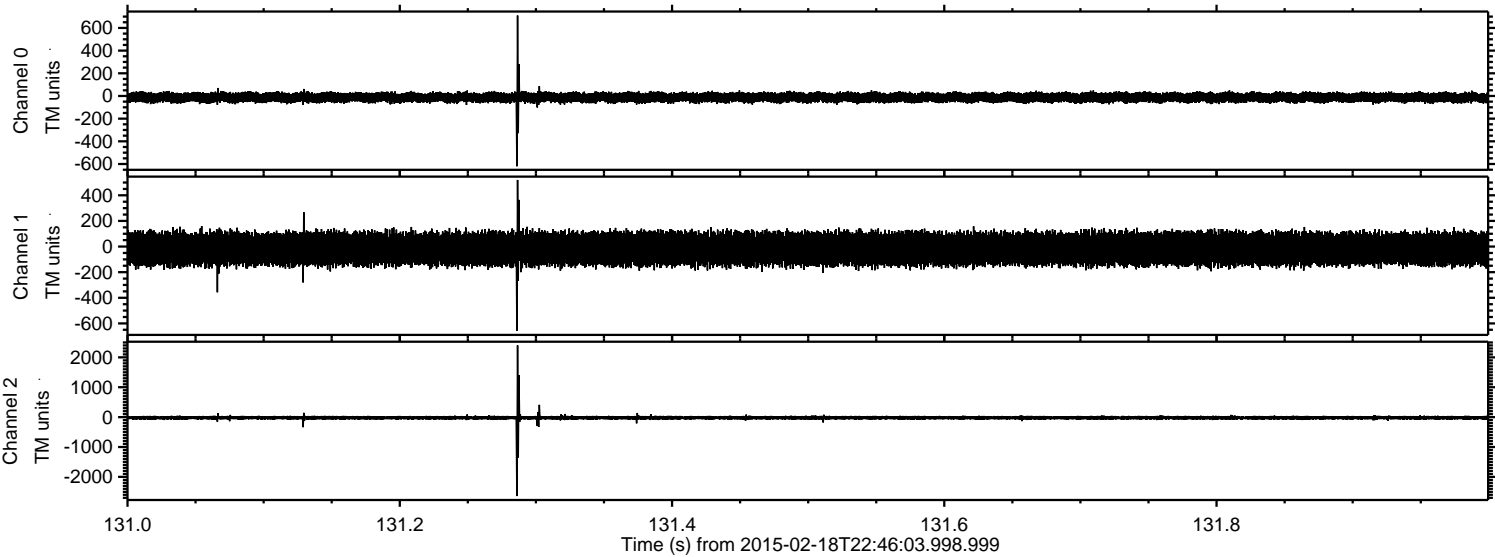
Channel 0
mn: -690
mx: 739
 μ : -13.1
 σ : 23.4

Channel 1
mn: -581
mx: 583
 μ : -18.6
 σ : 64.3

Channel 2
mn: -2692
mx: 2824
 μ : -21.3
 σ : 45.6

ELMAVAN 3D WAVEFORMS (Measured data sampled at 50 kHz) 49806 packets of 144 samples from 2015-02-18T22:46:03.998.999. Part 132/144

Processed Fri Feb 27 06:15:45 2015 by ELM ver.2012-10-06 from 001__elm20150218_224602__dat00.bin

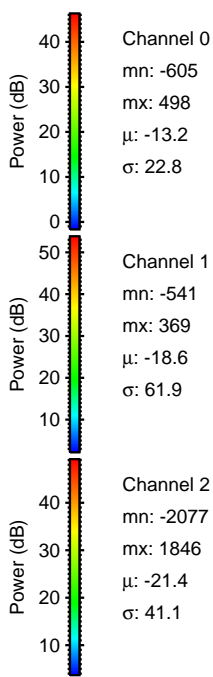
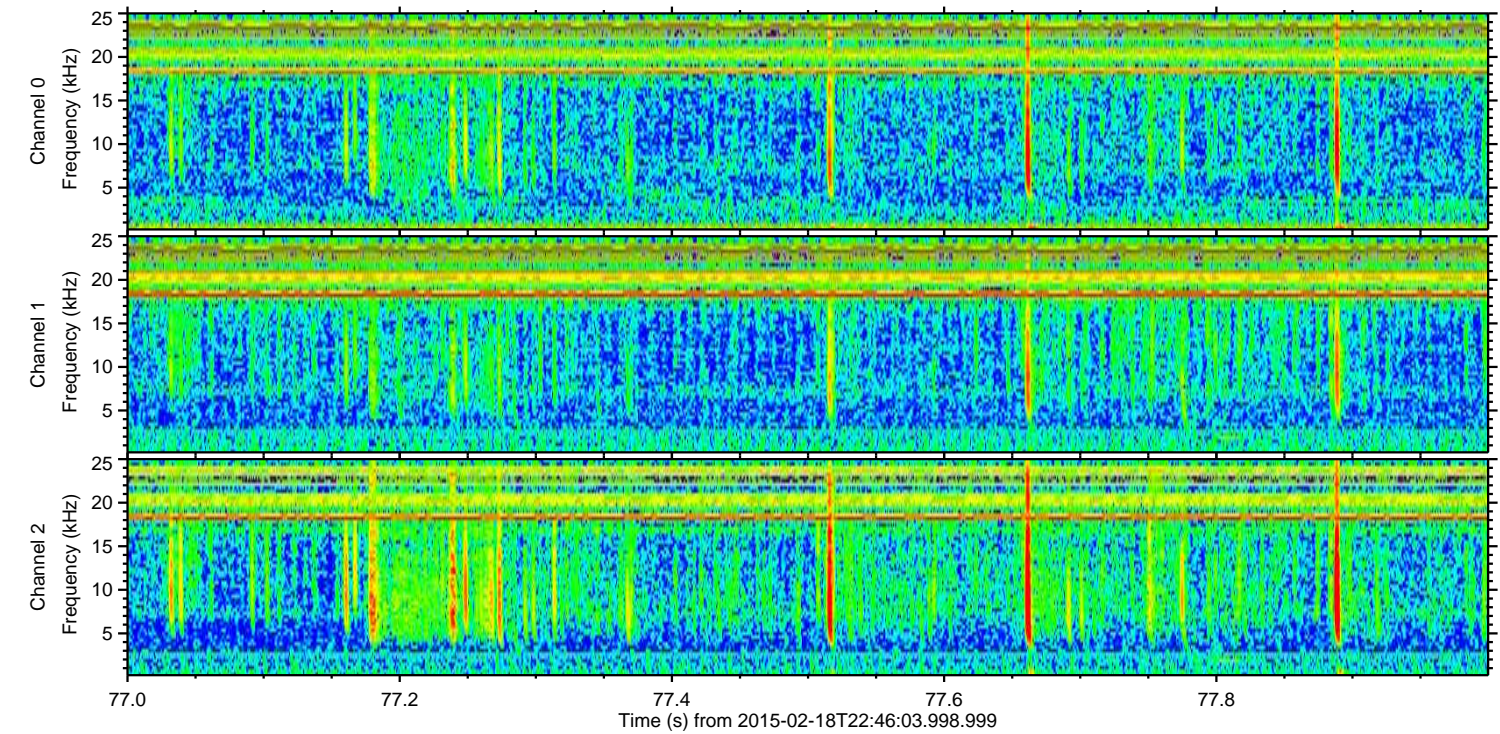
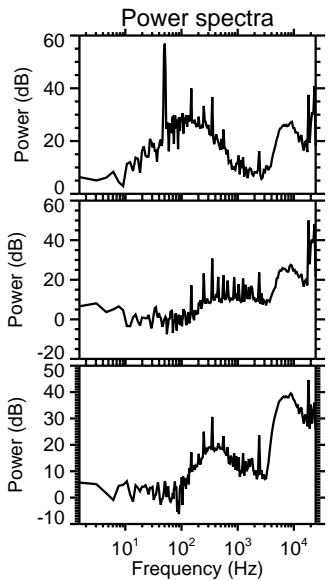
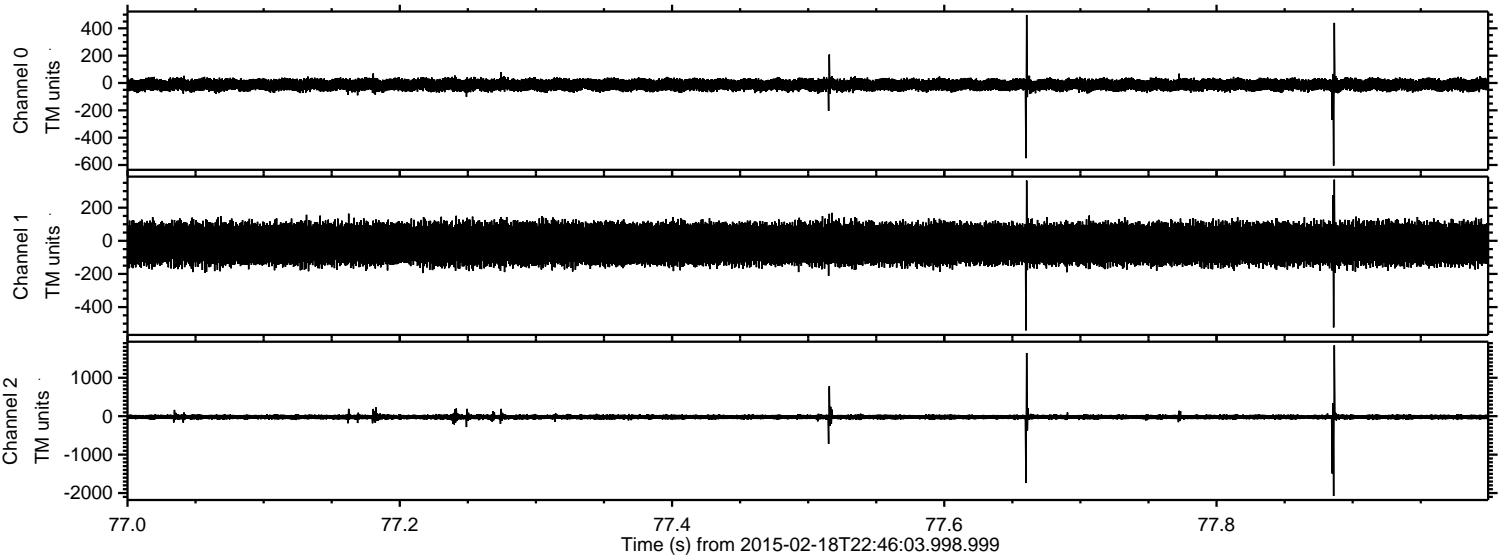


Channel 0
mn: -620
mx: 709
 μ : -13.1
 σ : 22.3

Channel 1
mn: -657
mx: 520
 μ : -18.6
 σ : 63.8

Channel 2
mn: -2642
mx: 2404
 μ : -21.3
 σ : 37.6

Processed Fri Feb 27 06:15:46 2015 by ELM ver.2012-10-06 from 001__elm20150218_224602__dat00.bin

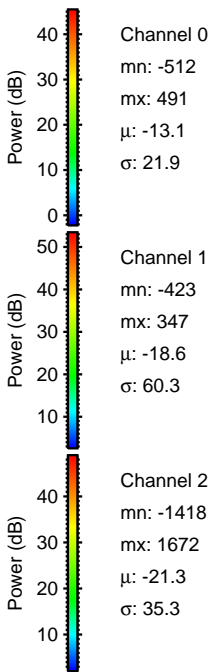
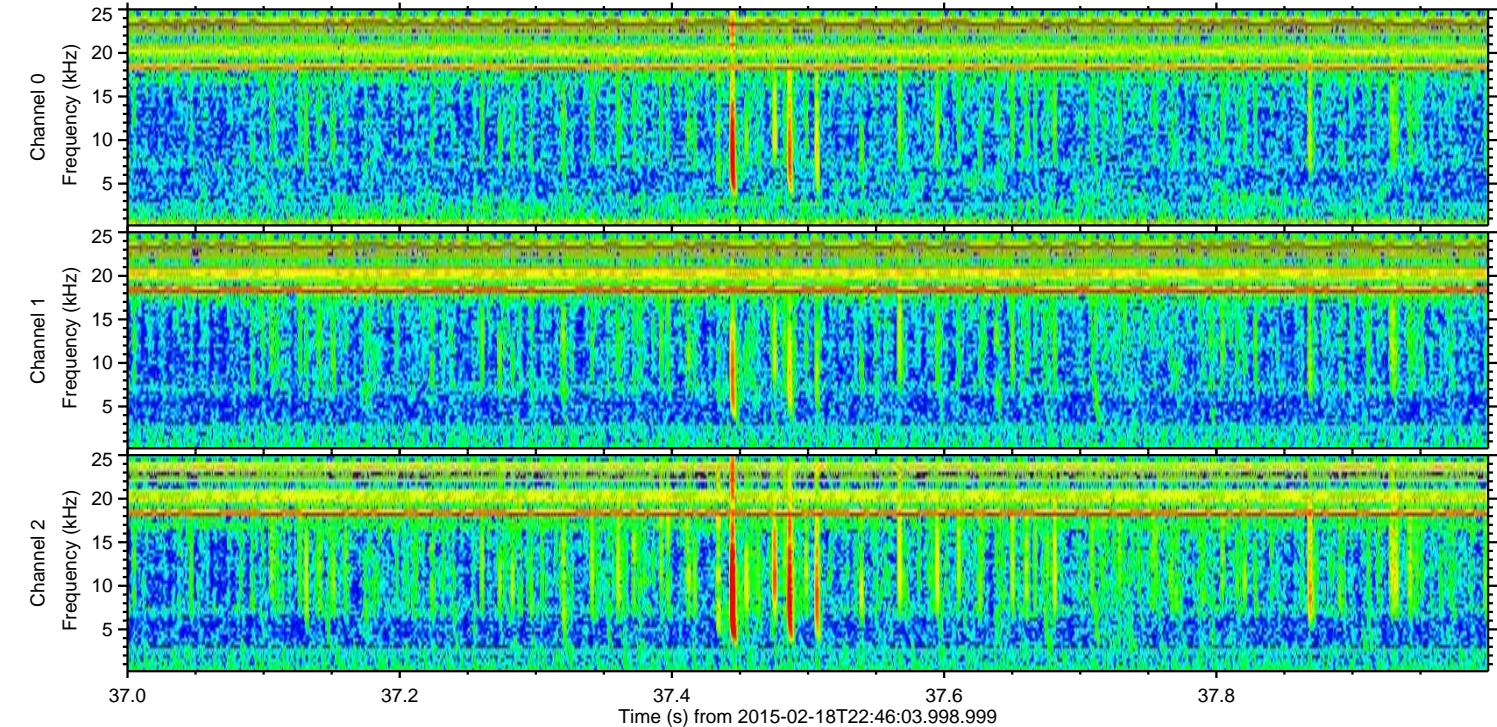
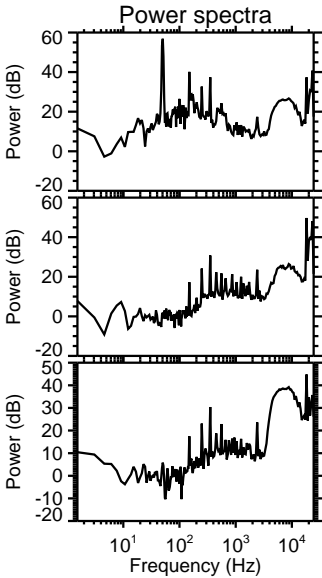
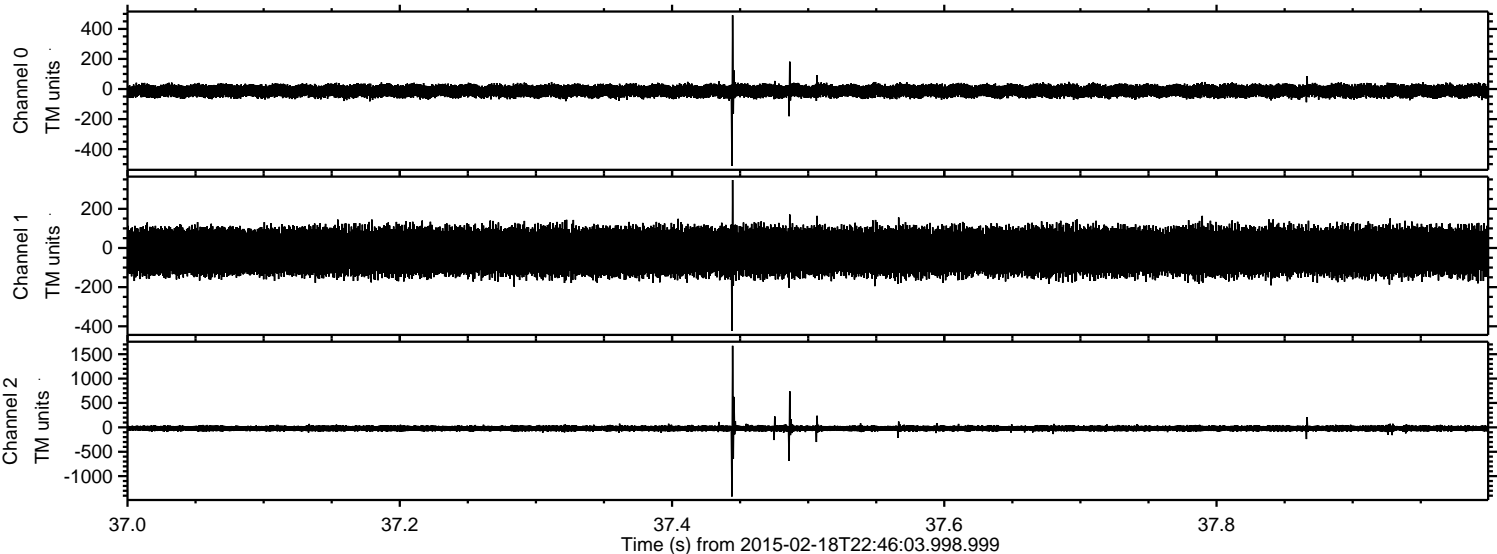


Channel 0
mn: -605
mx: 498
 μ : -13.2
 σ : 22.8

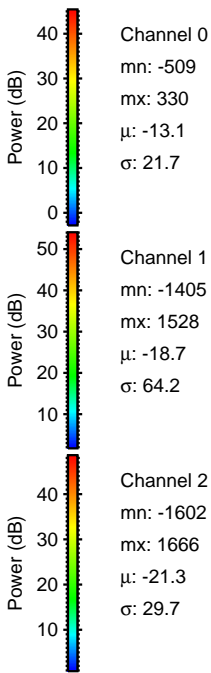
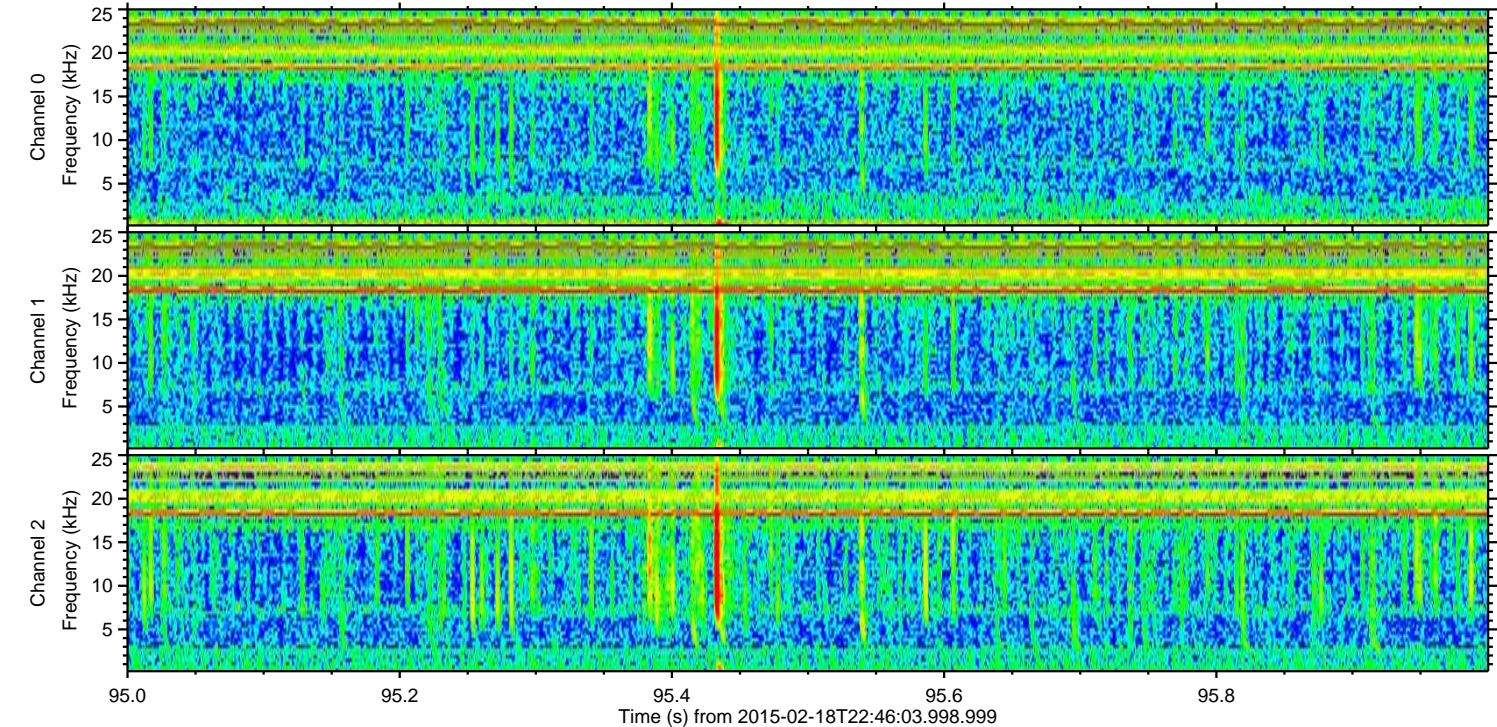
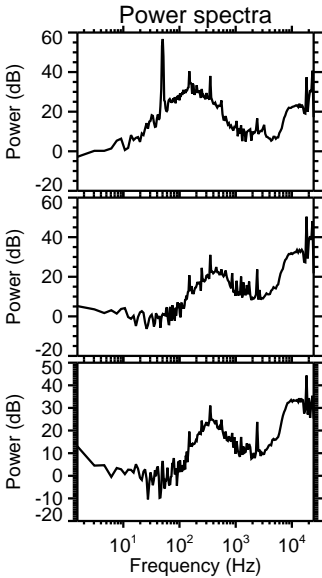
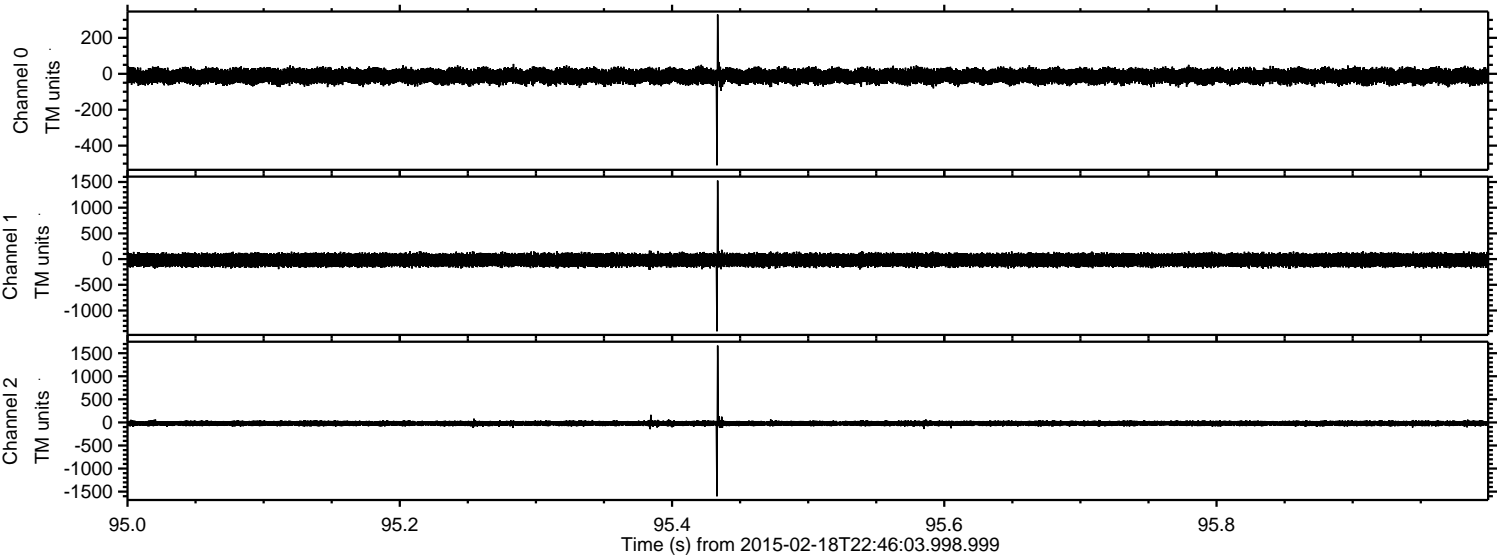
Channel 1
mn: -541
mx: 369
 μ : -18.6
 σ : 61.9

Channel 2
mn: -2077
mx: 1846
 μ : -21.4
 σ : 41.1

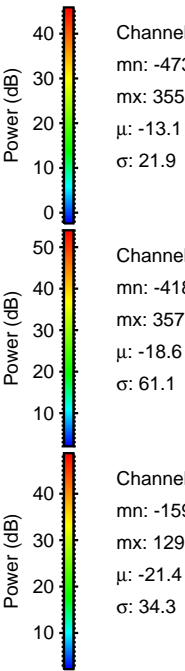
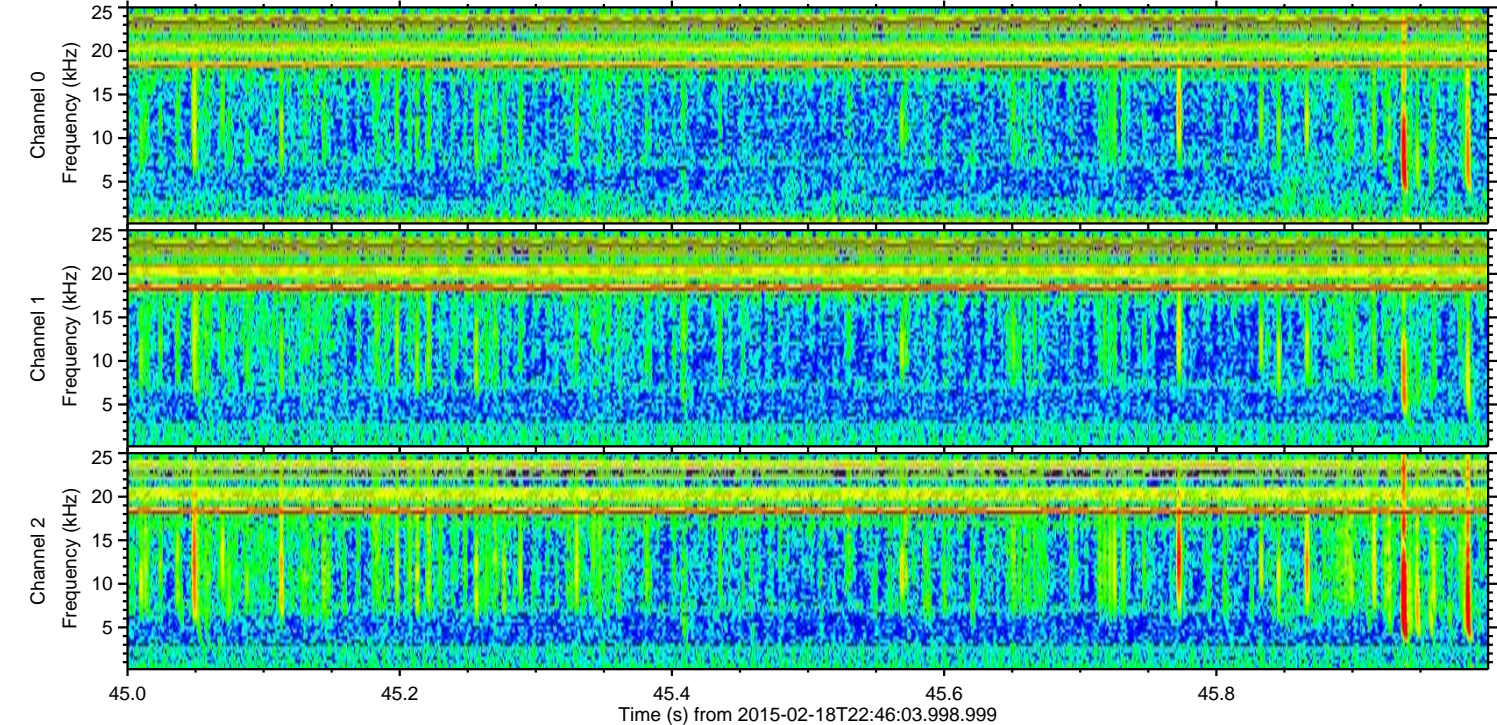
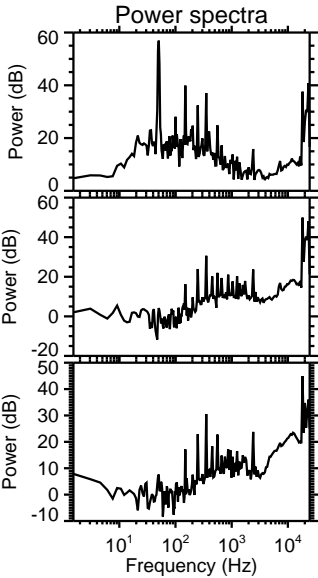
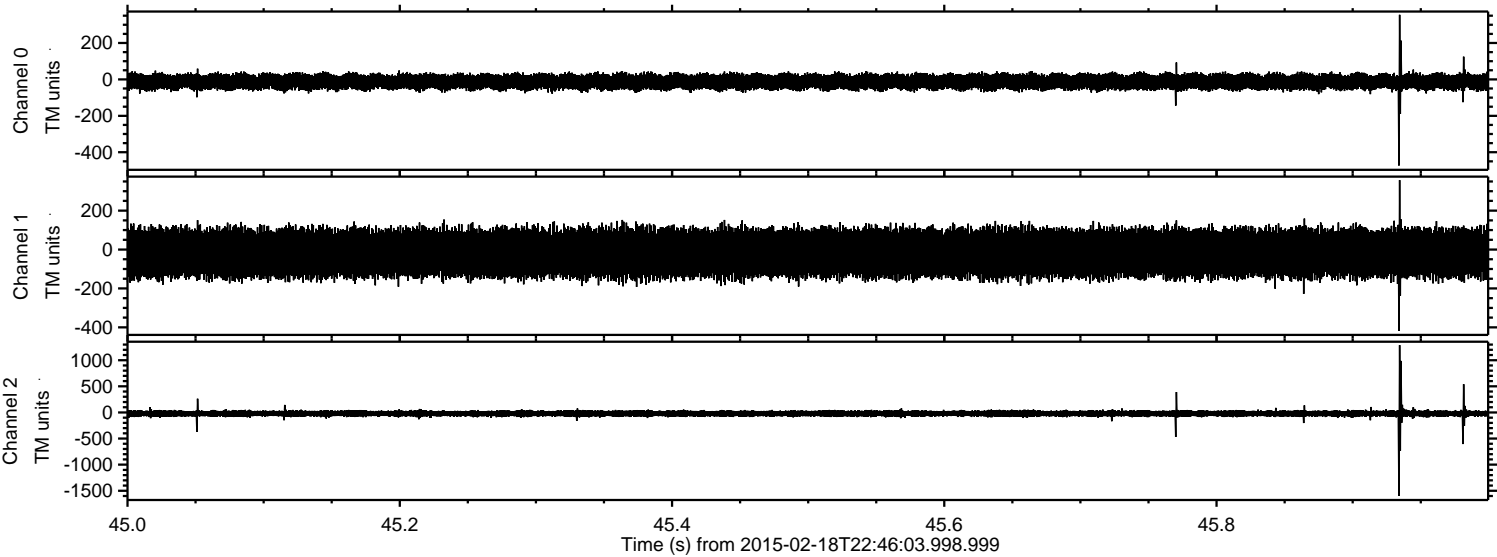
Processed Fri Feb 27 06:15:47 2015 by ELM ver.2012-10-06 from 001__elm20150218_224602__dat00.bin



Processed Fri Feb 27 06:15:48 2015 by ELM ver.2012-10-06 from 001__elm20150218_224602__dat00.bin



Processed Fri Feb 27 06:15:49 2015 by ELM ver.2012-10-06 from 001__elm20150218_224602__dat00.bin

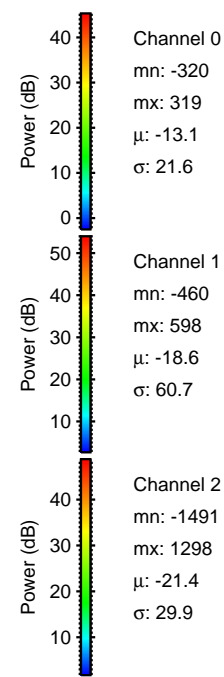
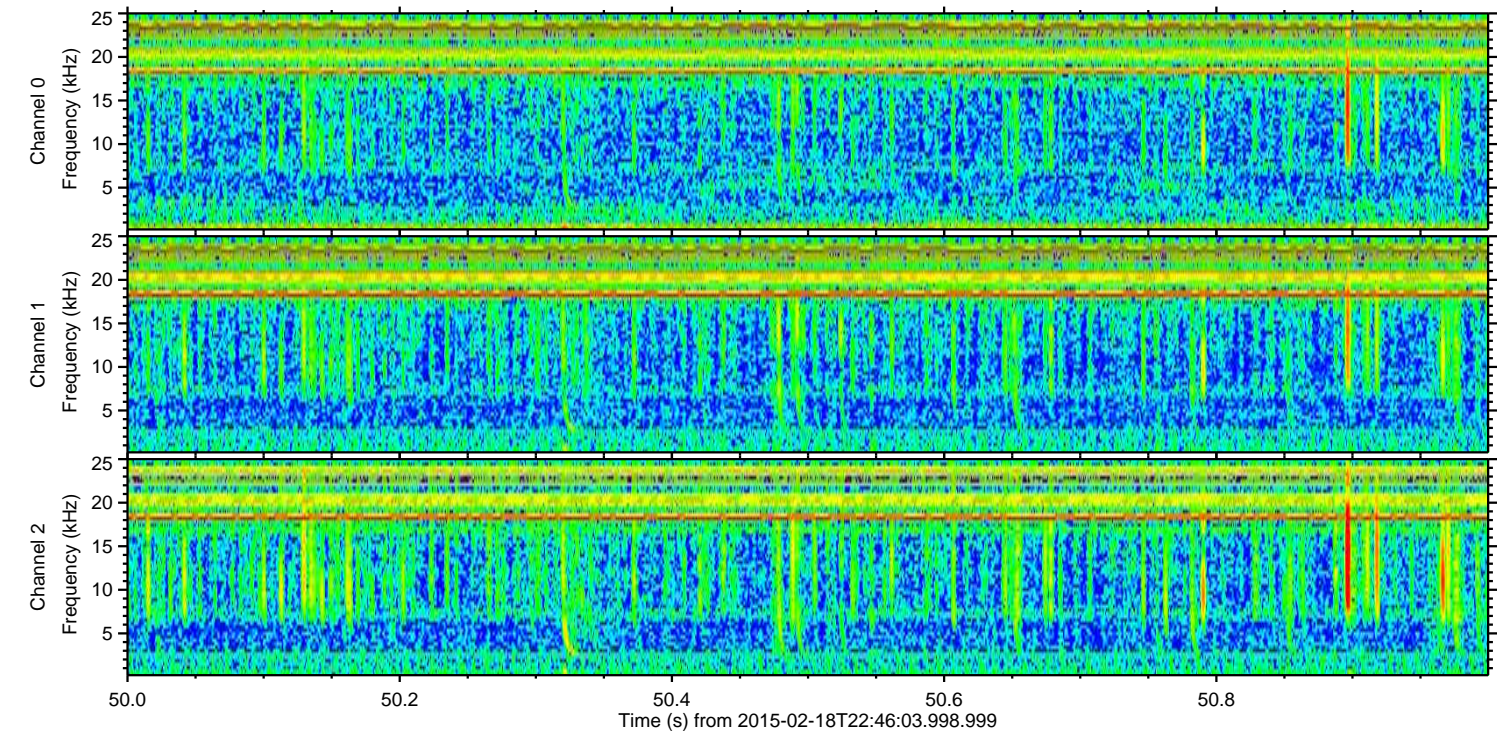
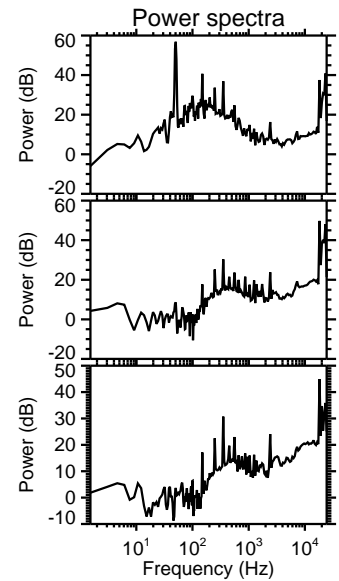
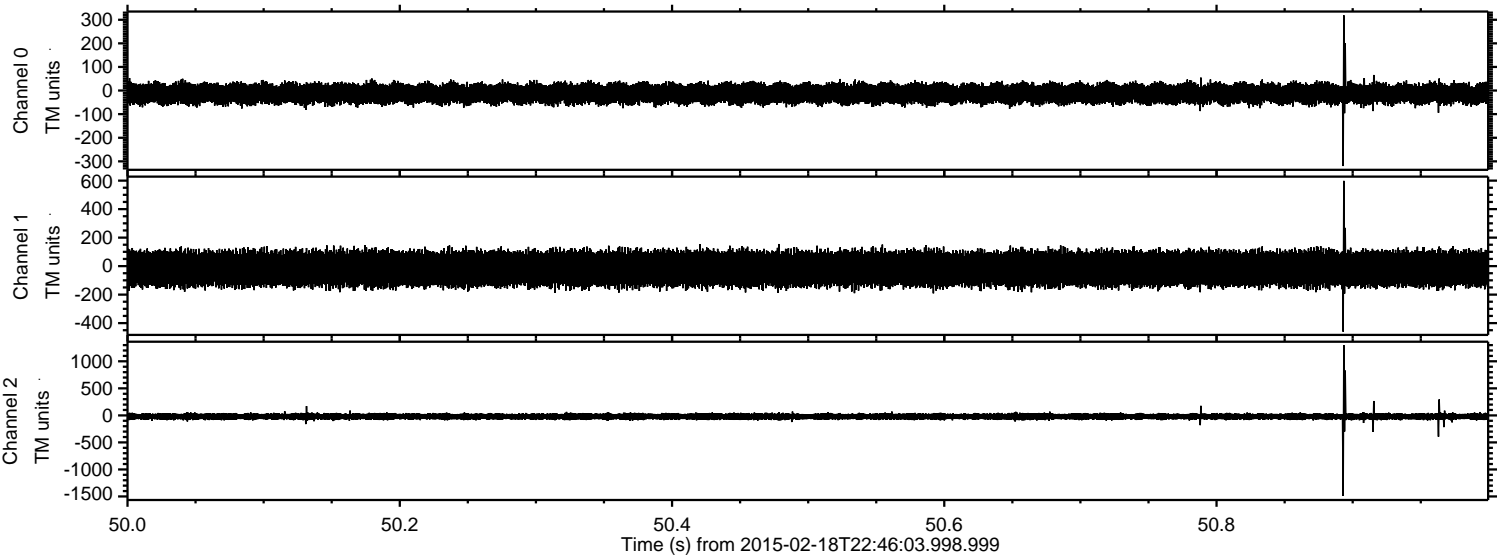


Channel 0
mn: -473
mx: 355
 μ : -13.1
 σ : 21.9

Channel 1
mn: -418
mx: 357
 μ : -18.6
 σ : 61.1

Channel 2
mn: -1597
mx: 1290
 μ : -21.4
 σ : 34.3

Processed Fri Feb 27 06:15:50 2015 by ELM ver.2012-10-06 from 001__elm20150218_224602__dat00.bin

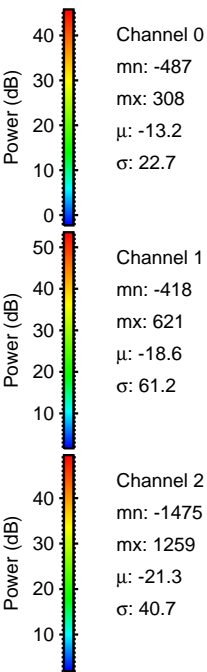
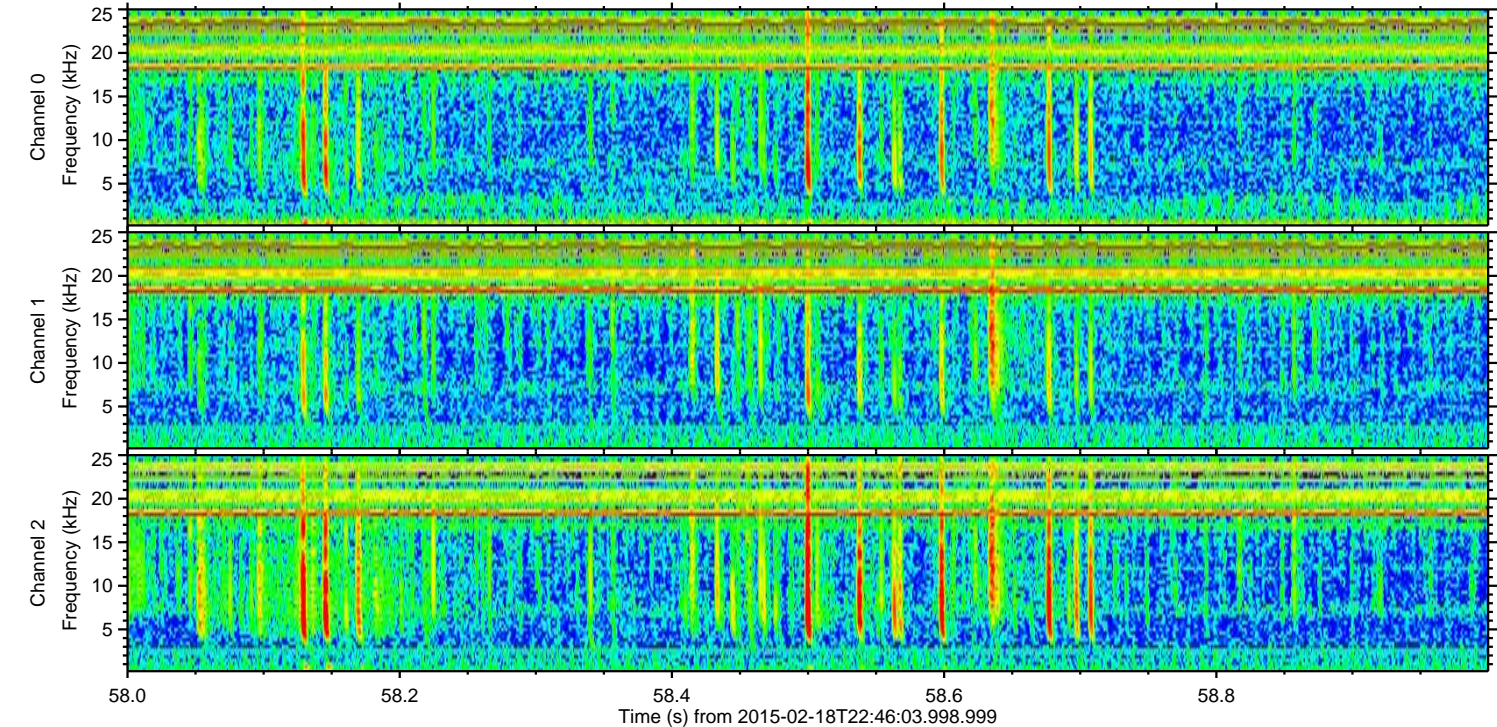
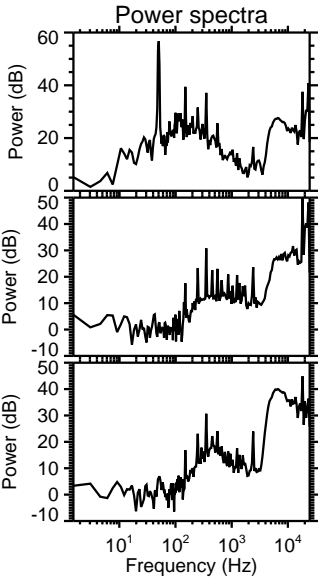
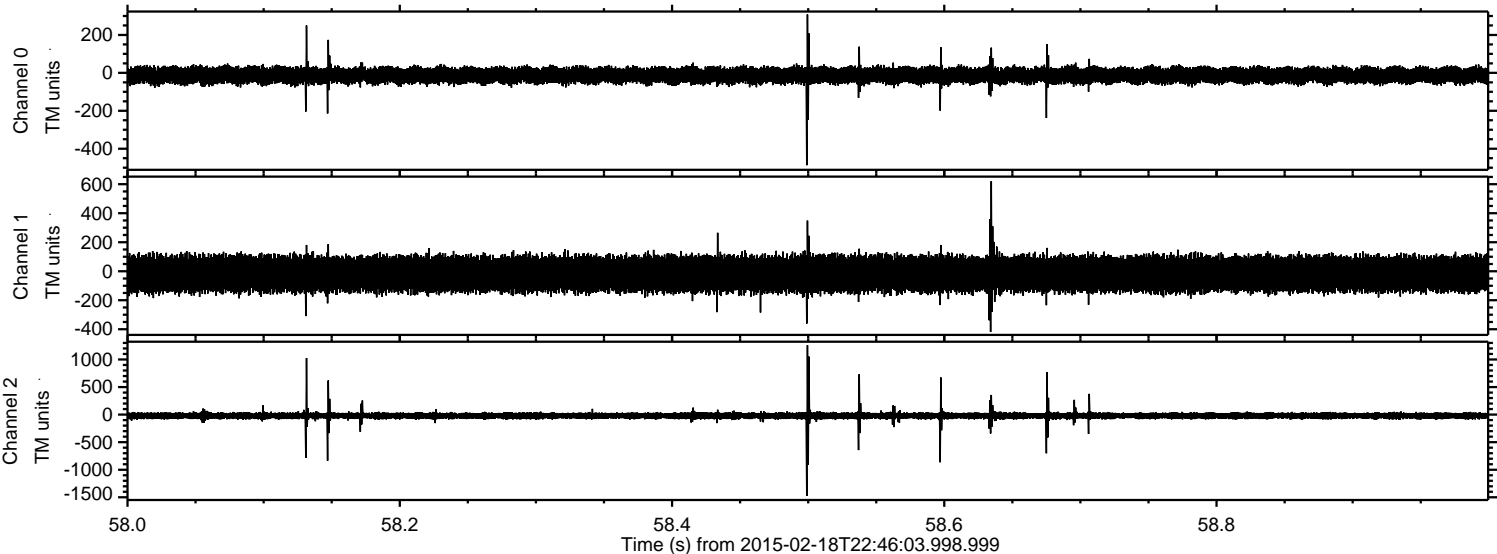


Channel 0
mn: -320
mx: 319
 μ : -13.1
 σ : 21.6

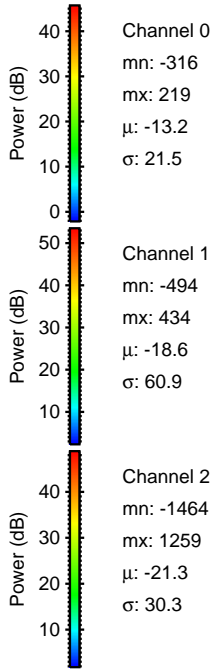
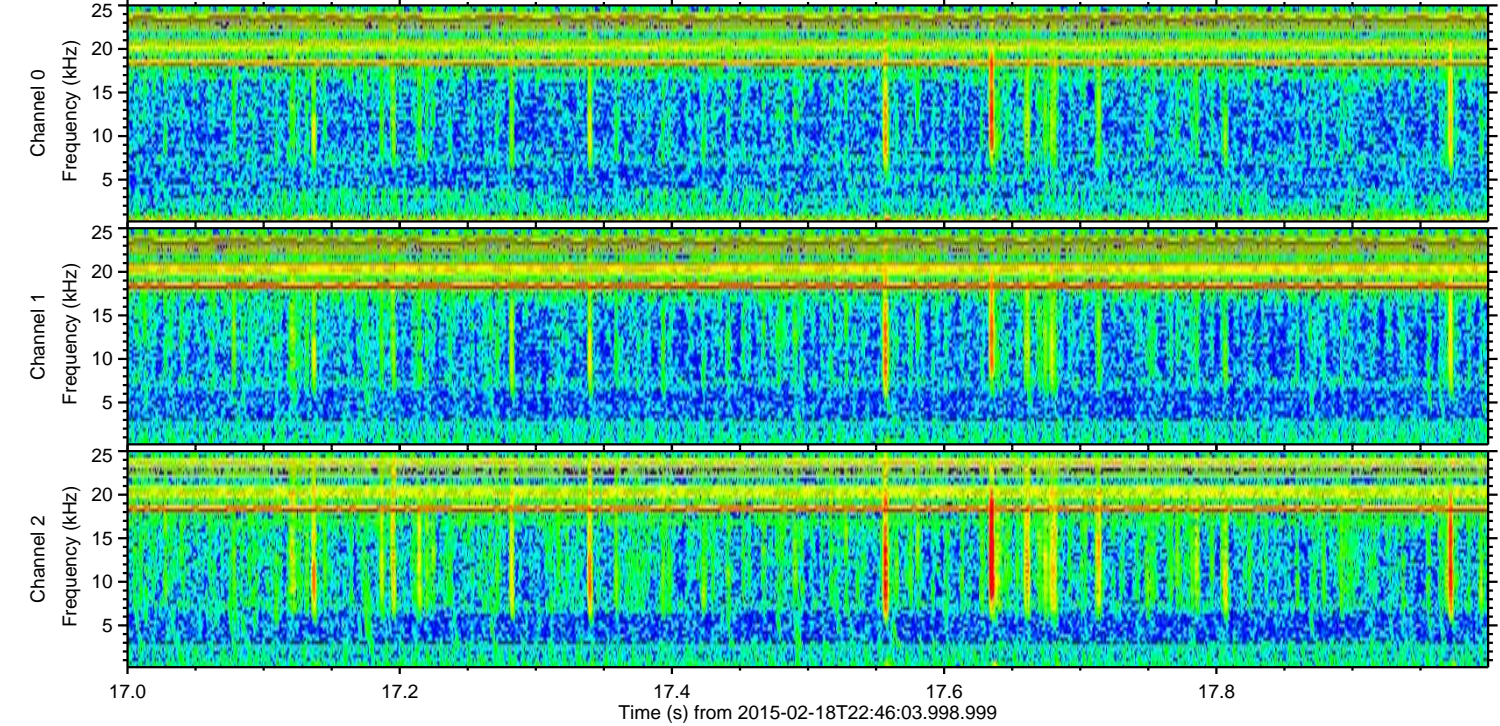
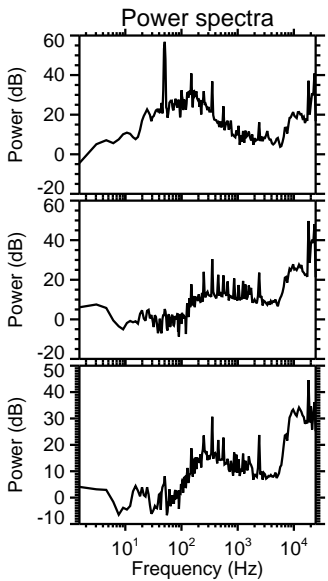
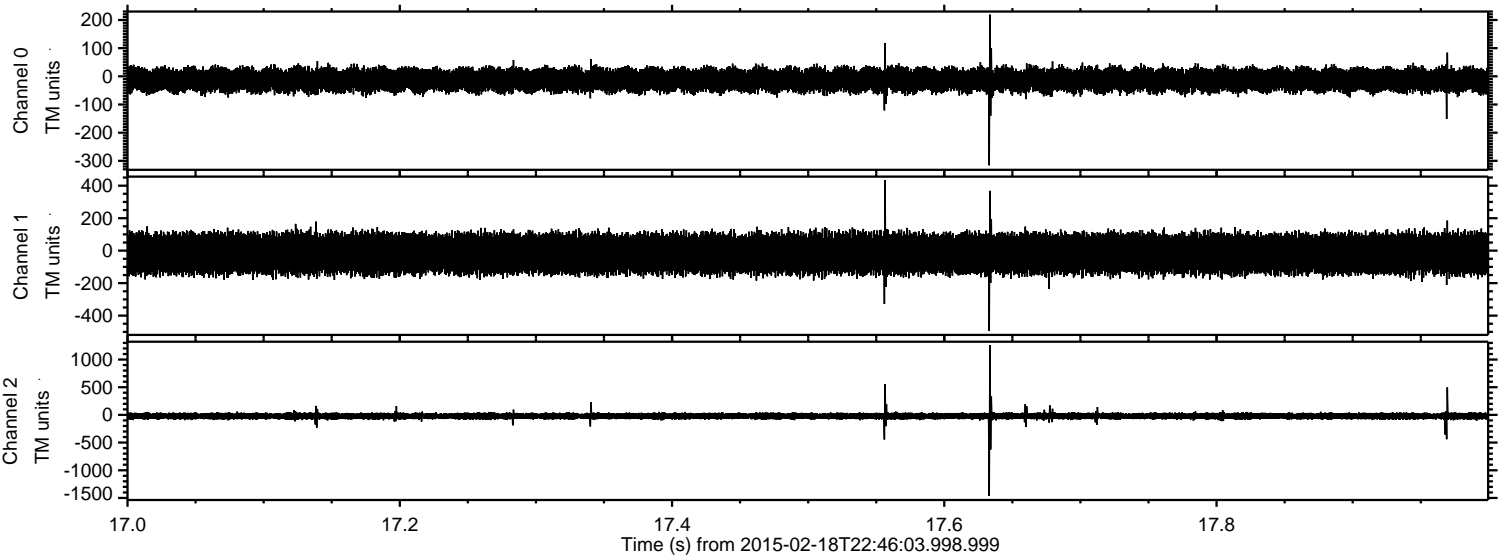
Channel 1
mn: -460
mx: 598
 μ : -18.6
 σ : 60.7

Channel 2
mn: -1491
mx: 1298
 μ : -21.4
 σ : 29.9

Processed Fri Feb 27 06:15:51 2015 by ELM ver.2012-10-06 from 001__elm20150218_224602__dat00.bin



Processed Fri Feb 27 06:15:52 2015 by ELM ver.2012-10-06 from 001__elm20150218_224602__dat00.bin



Channel 0
mn: -316
mx: 219
 μ : -13.2
 σ : 21.5

Channel 1
mn: -494
mx: 434
 μ : -18.6
 σ : 60.9

Channel 2
mn: -1464
mx: 1259
 μ : -21.3
 σ : 30.3

Processed Fri Feb 27 06:15:53 2015 by ELM ver.2012-10-06 from 001__elm20150218_224602__dat00.bin

