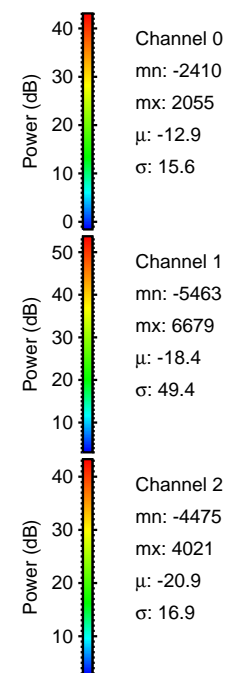
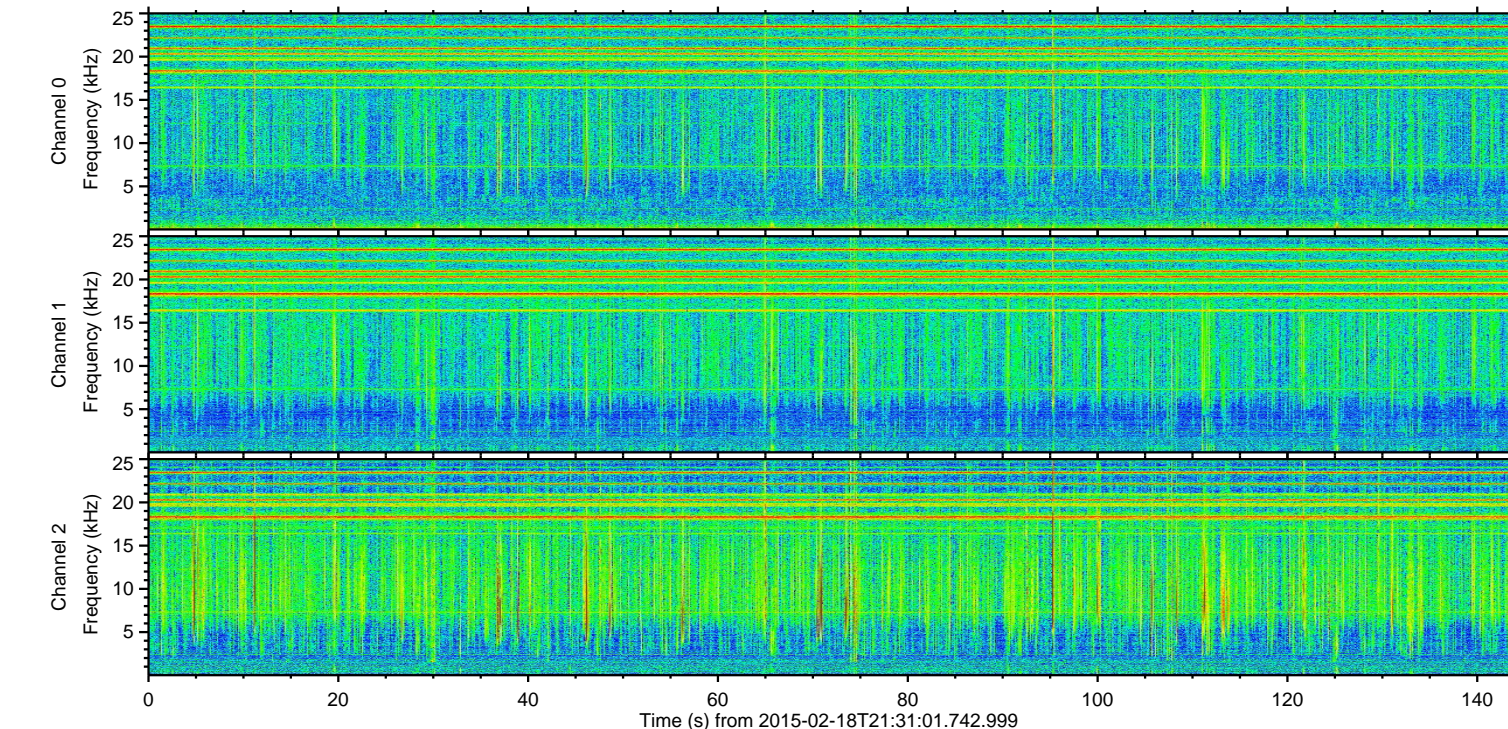
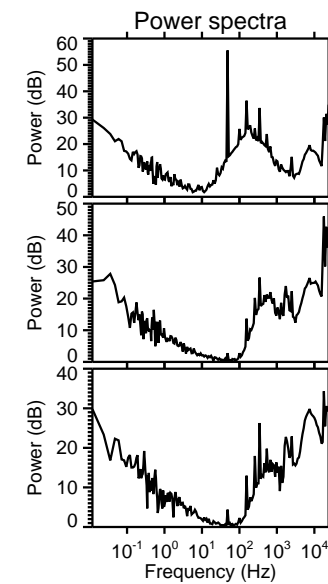
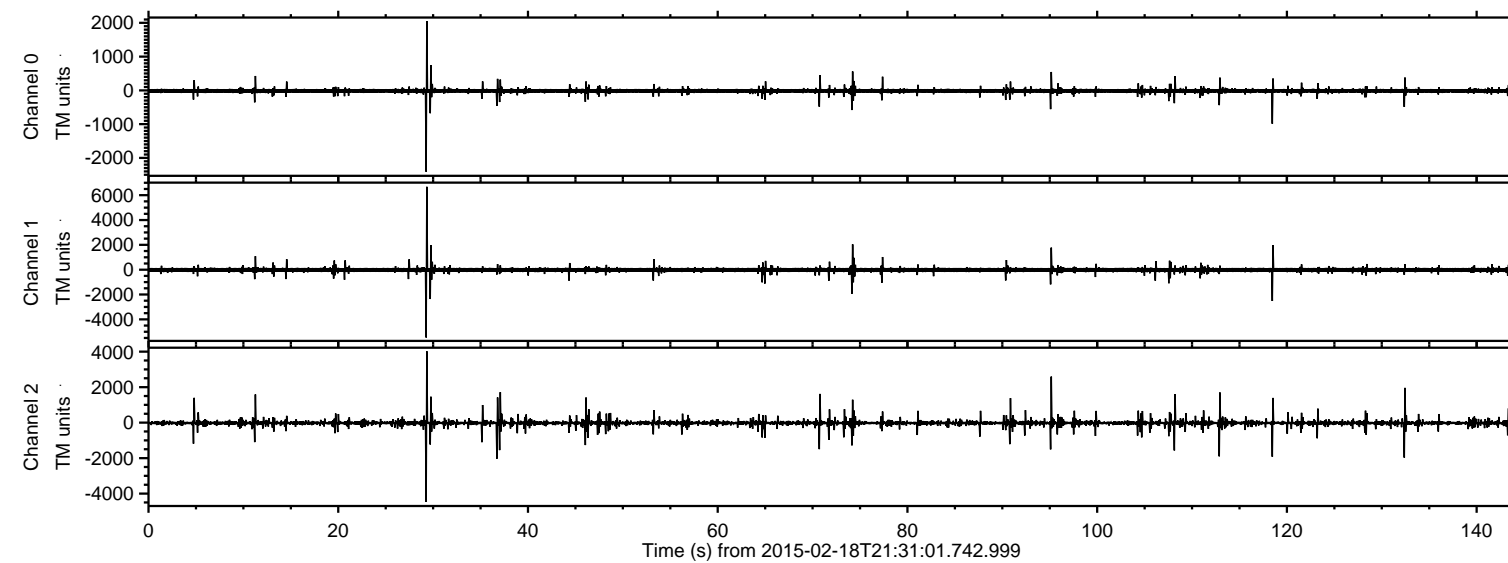


# ELMAVAN 3D WAVEFORMS (Measured data sampled at 50 kHz) 49800 packets of 144 samples from 2015-02-18T21:31:01.742.999.

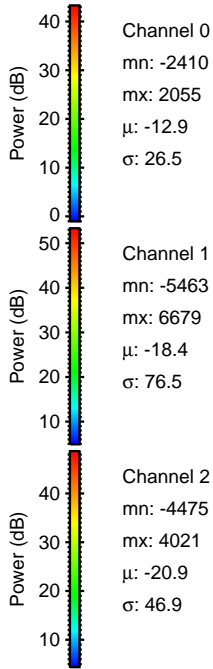
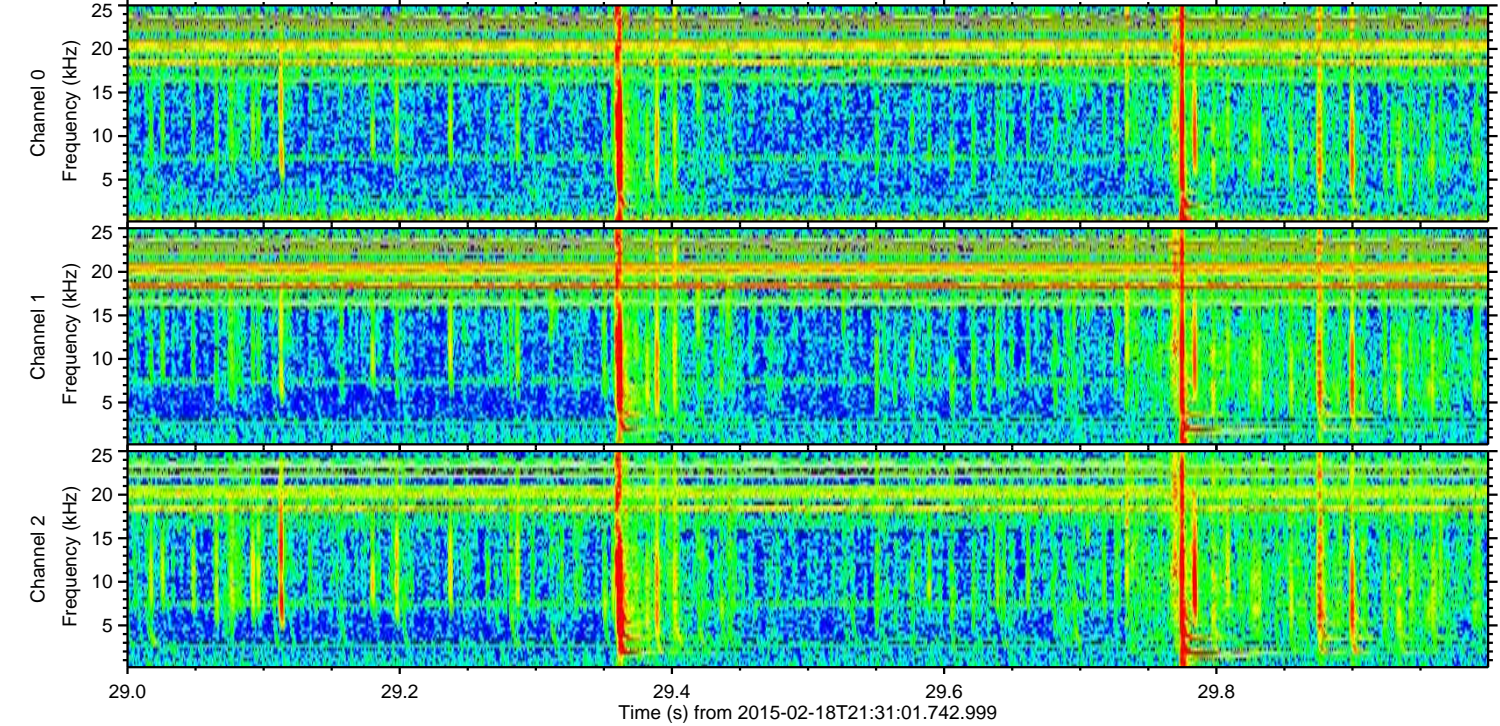
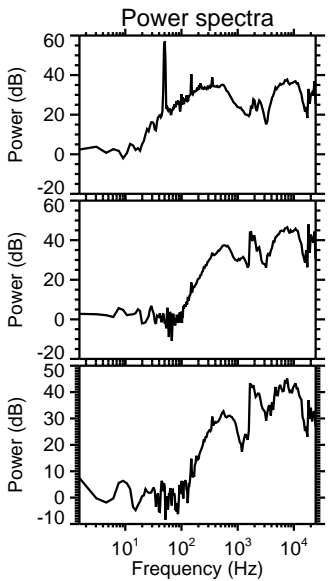
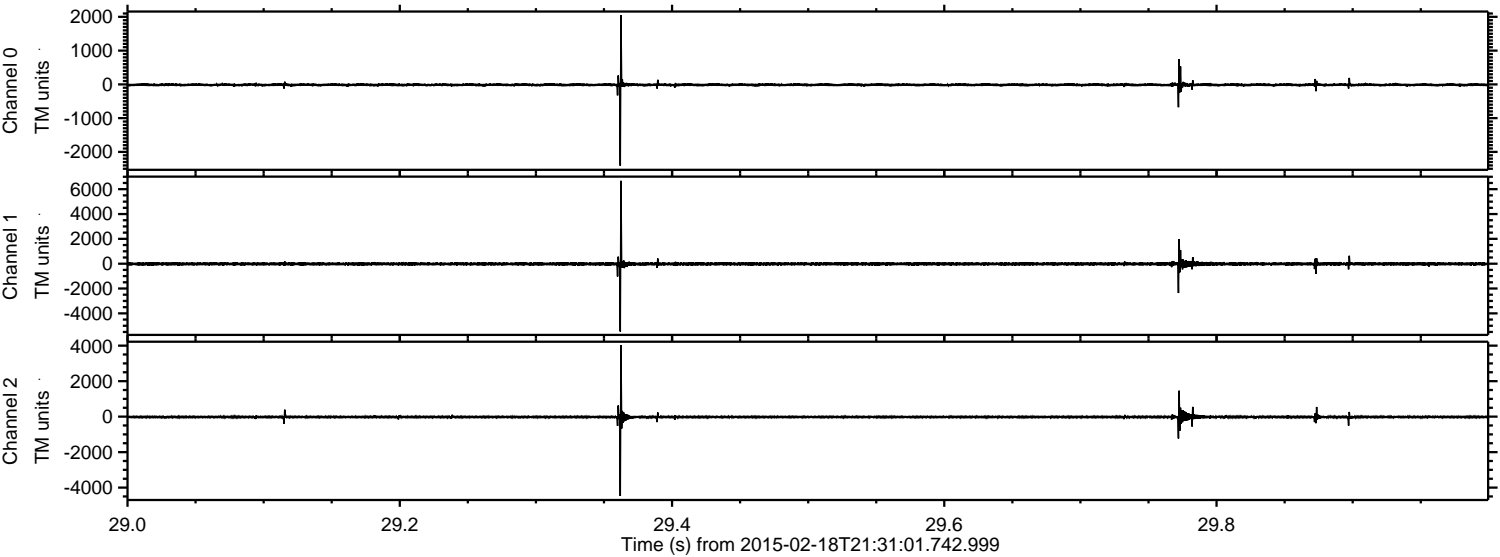
Processed Fri Feb 27 03:57:44 2015 by ELM ver.2012-10-06 from 001\_\_elm20150218\_213100\_\_dat00.bin





ELMAVAN 3D WAVEFORMS (Measured data sampled at 50 kHz) 49800 packets of 144 samples from 2015-02-18T21:31:01.742.999. Part 30/144

Processed Fri Feb 27 03:57:55 2015 by ELM ver.2012-10-06 from 001\_\_elm20150218\_213100\_\_dat00.bin



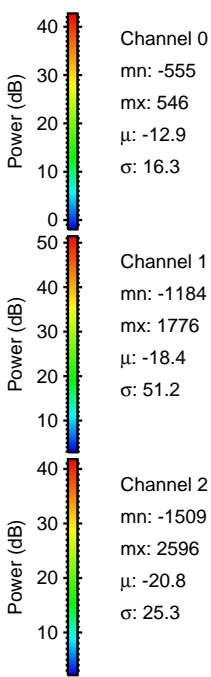
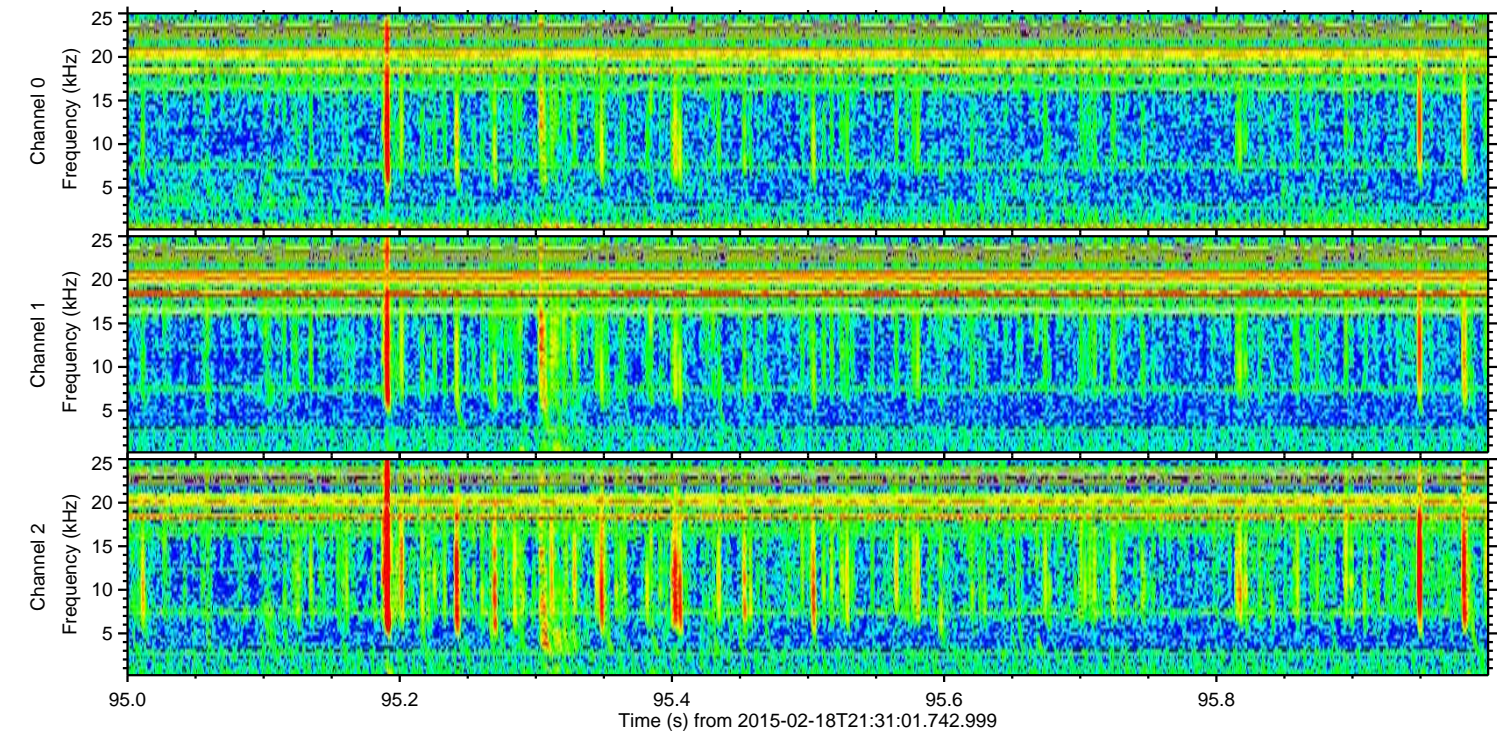
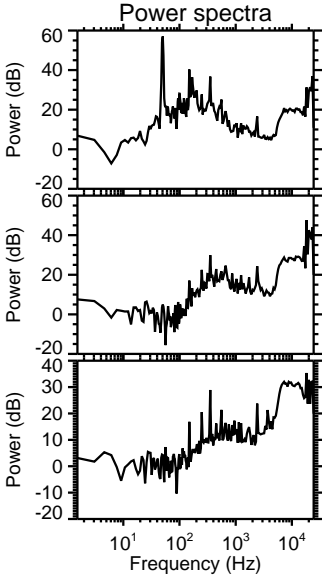
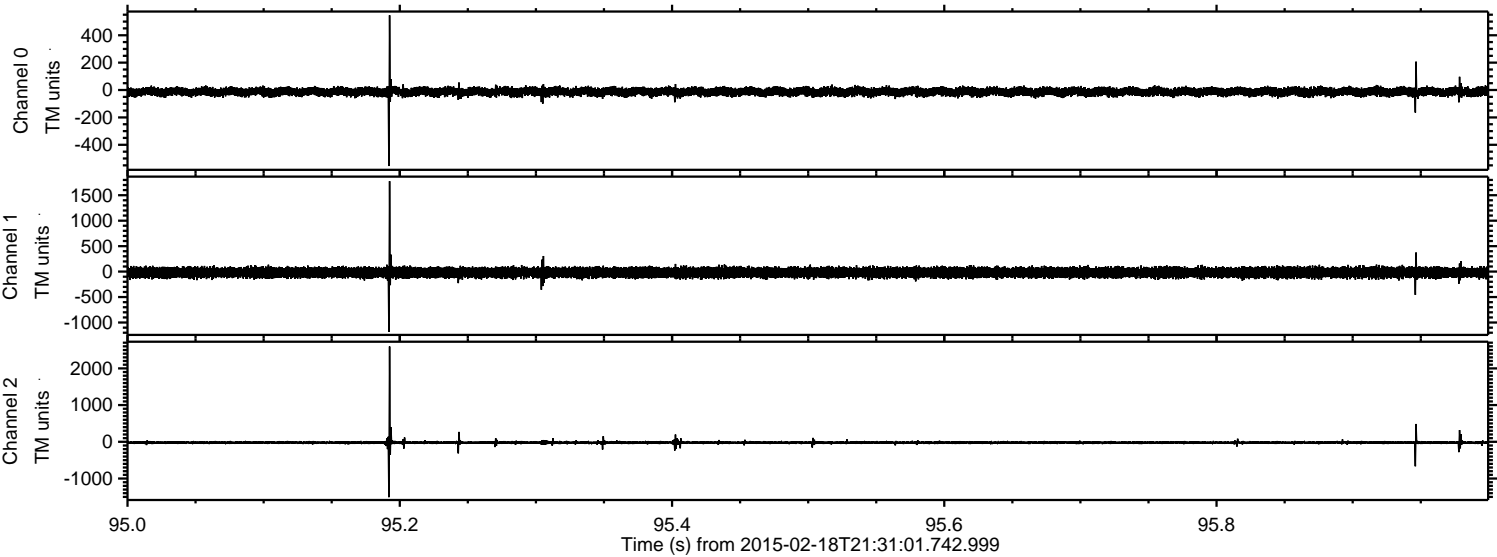
Channel 0  
mn: -2410  
mx: 2055  
 $\mu$ : -12.9  
 $\sigma$ : 26.5

Channel 1  
mn: -5463  
mx: 6679  
 $\mu$ : -18.4  
 $\sigma$ : 76.5

Channel 2  
mn: -4475  
mx: 4021  
 $\mu$ : -20.9  
 $\sigma$ : 46.9



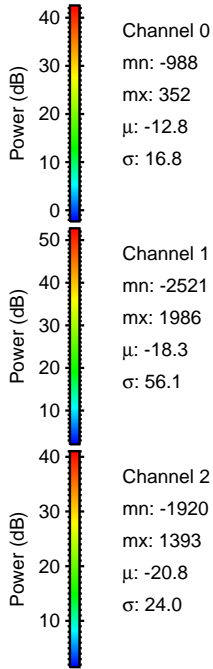
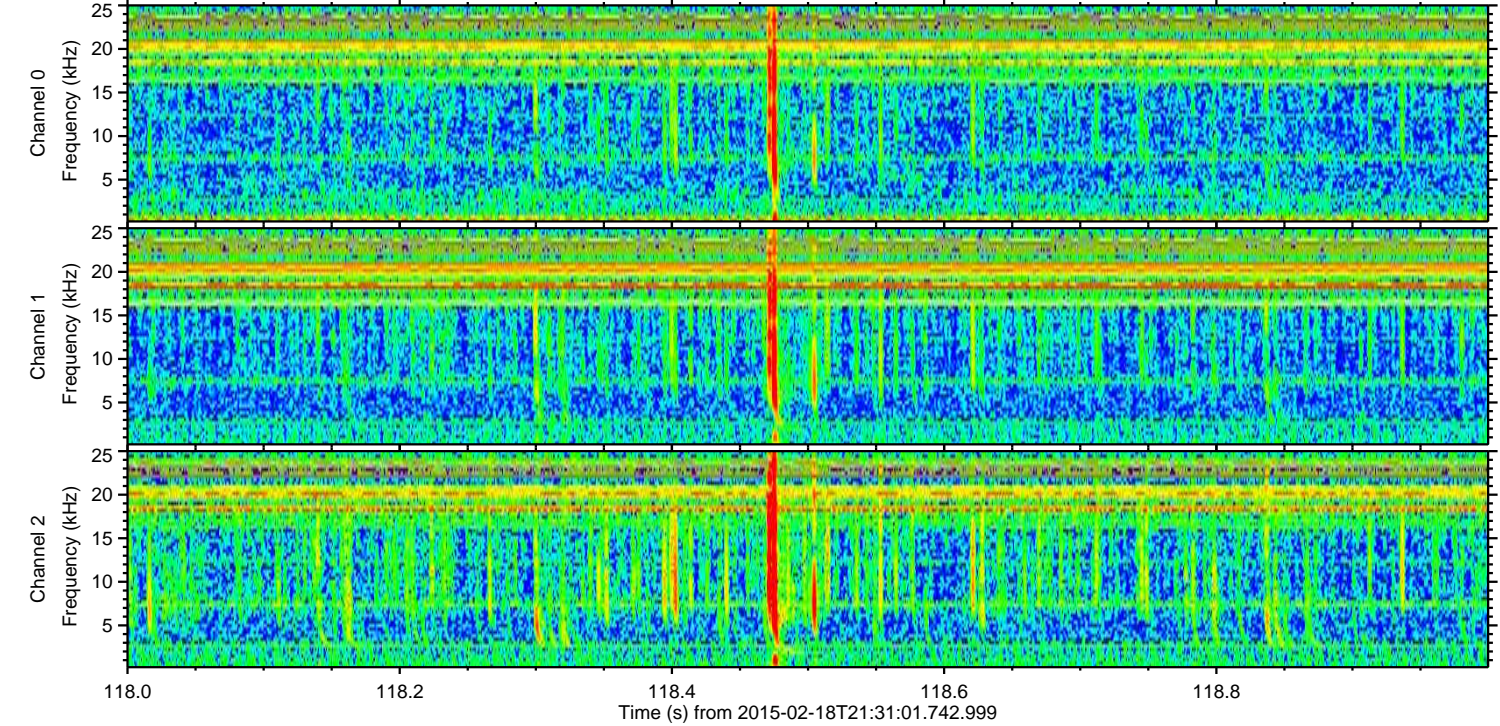
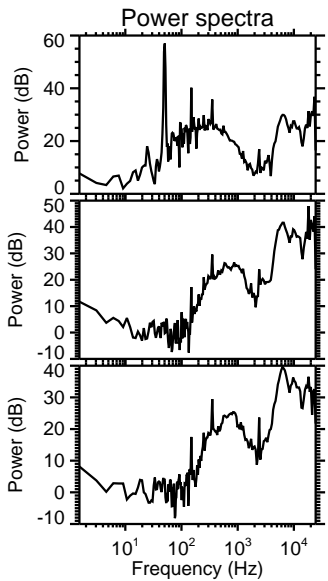
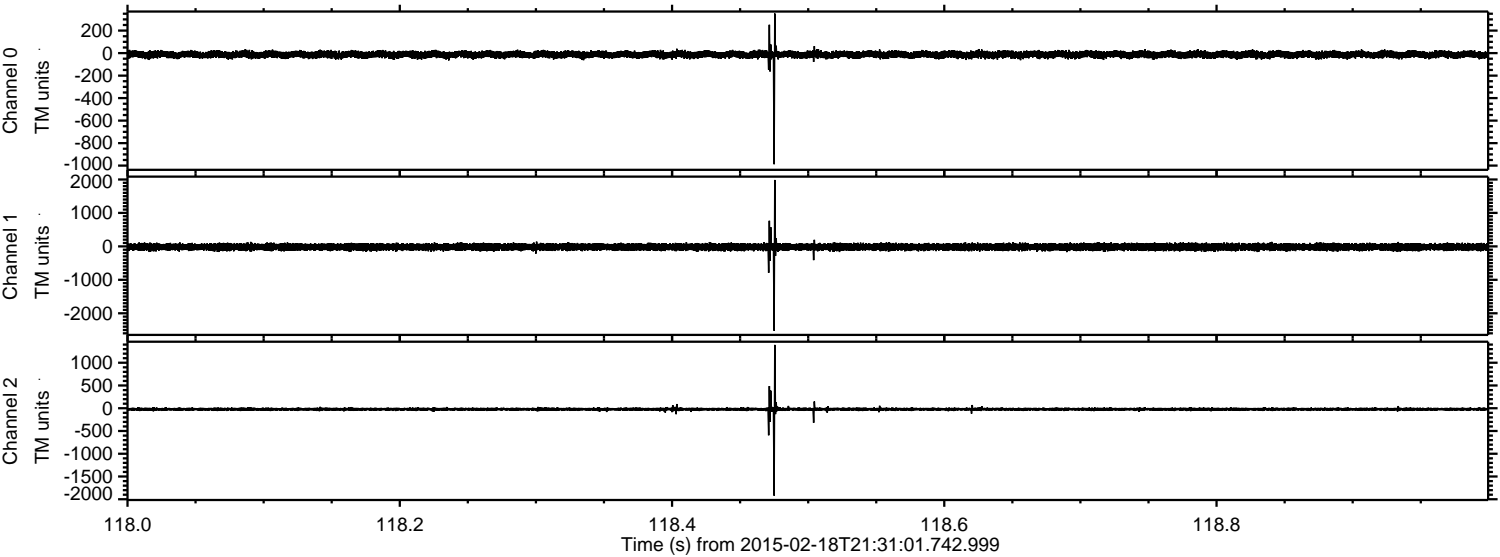
Processed Fri Feb 27 03:57:56 2015 by ELM ver.2012-10-06 from 001\_\_elm20150218\_213100\_\_dat00.bin





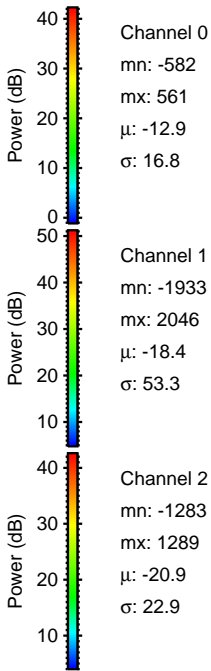
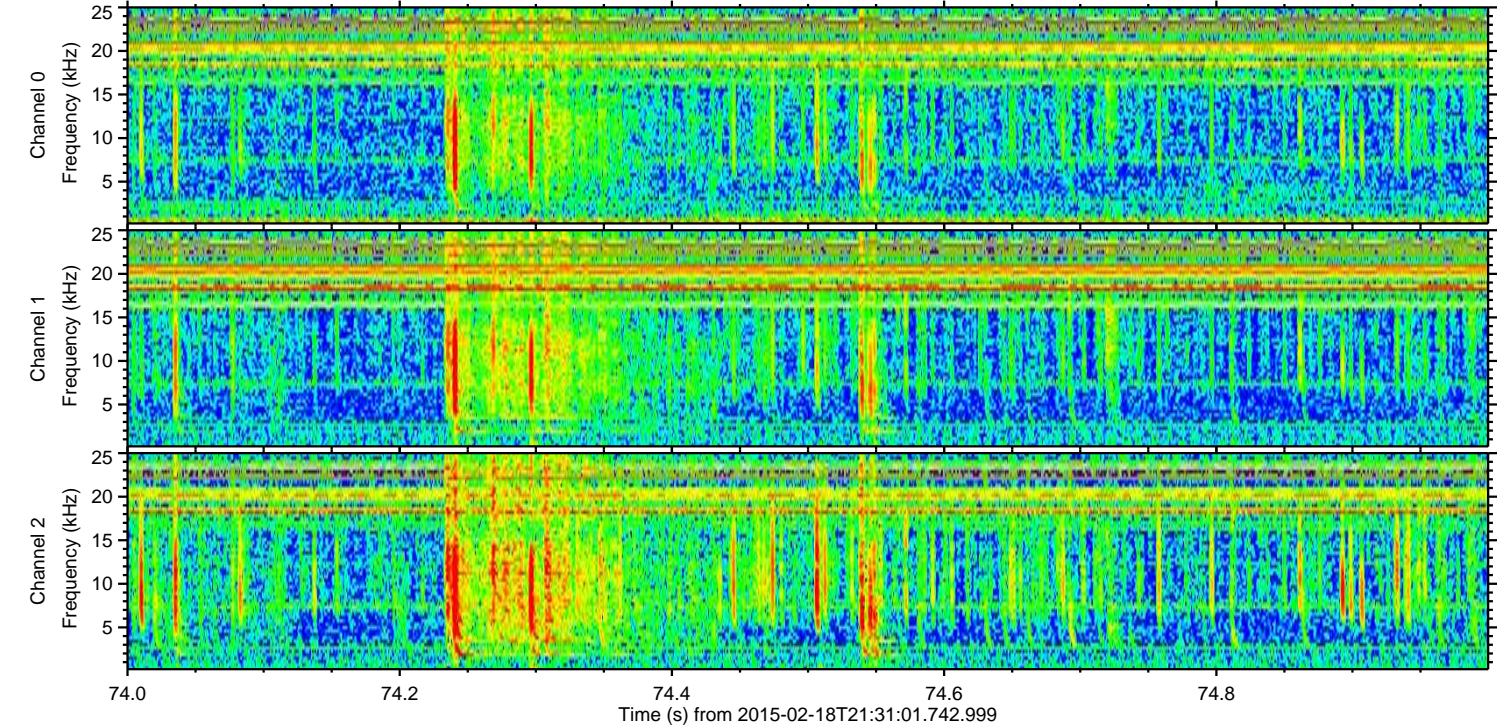
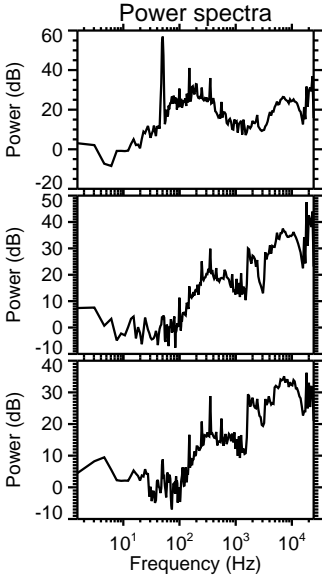
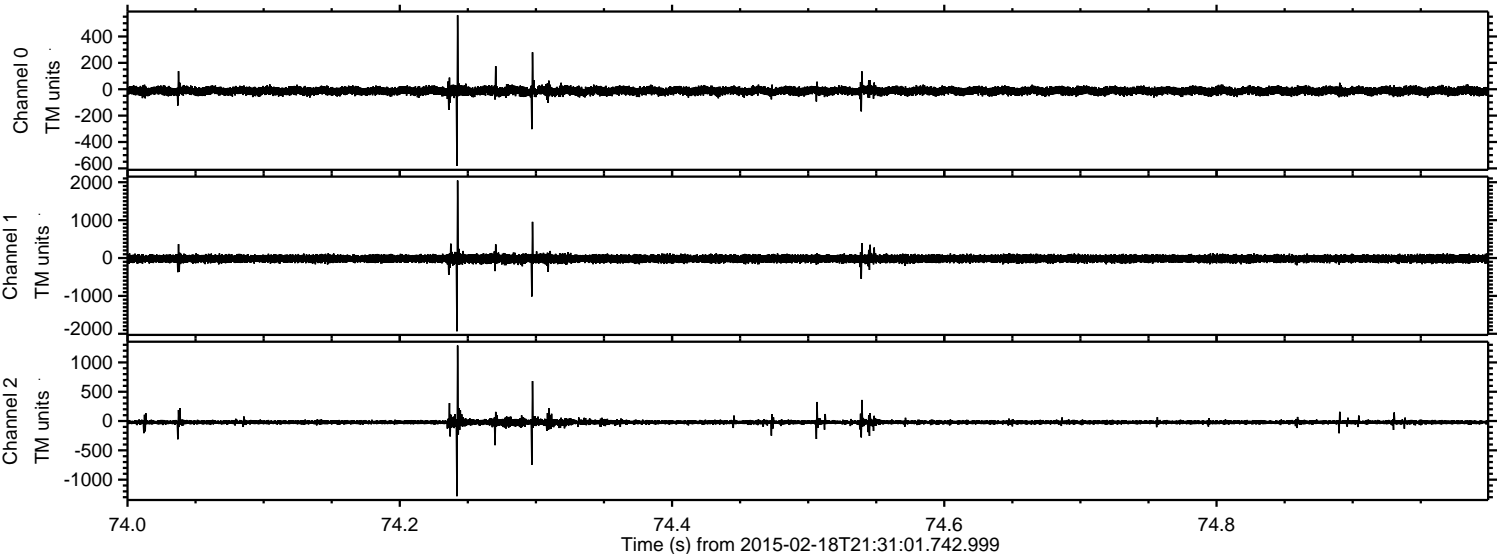
ELMAVAN 3D WAVEFORMS (Measured data sampled at 50 kHz) 49800 packets of 144 samples from 2015-02-18T21:31:01.742.999. Part 119/144

Processed Fri Feb 27 03:57:57 2015 by ELM ver.2012-10-06 from 001\_\_elm20150218\_213100\_\_dat00.bin



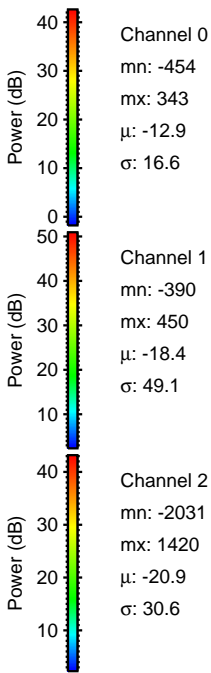
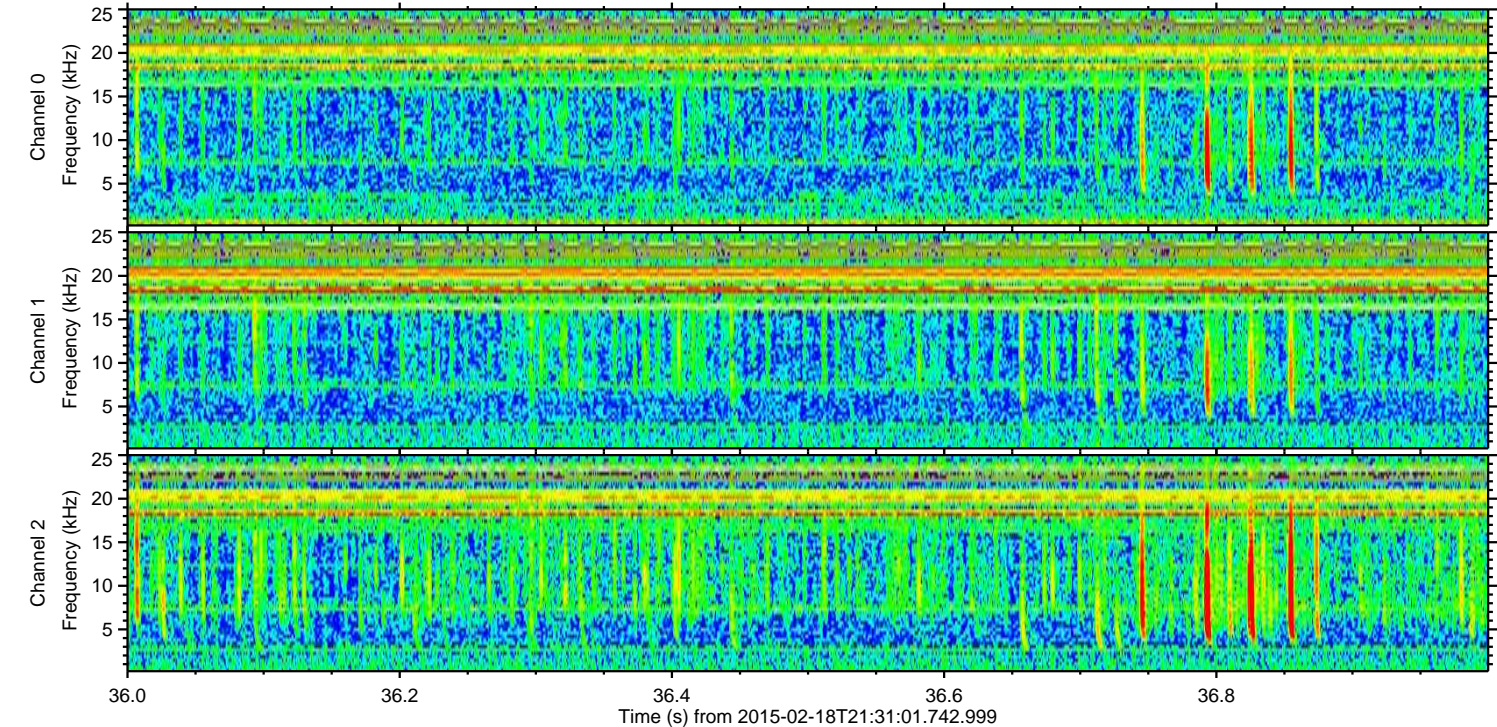
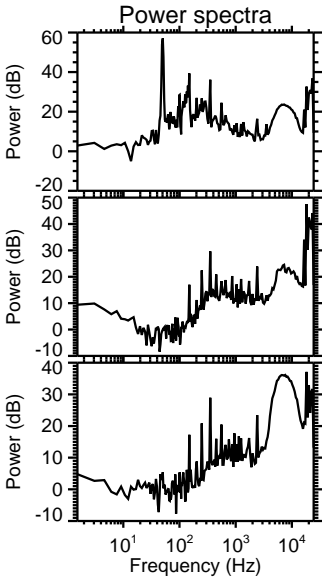
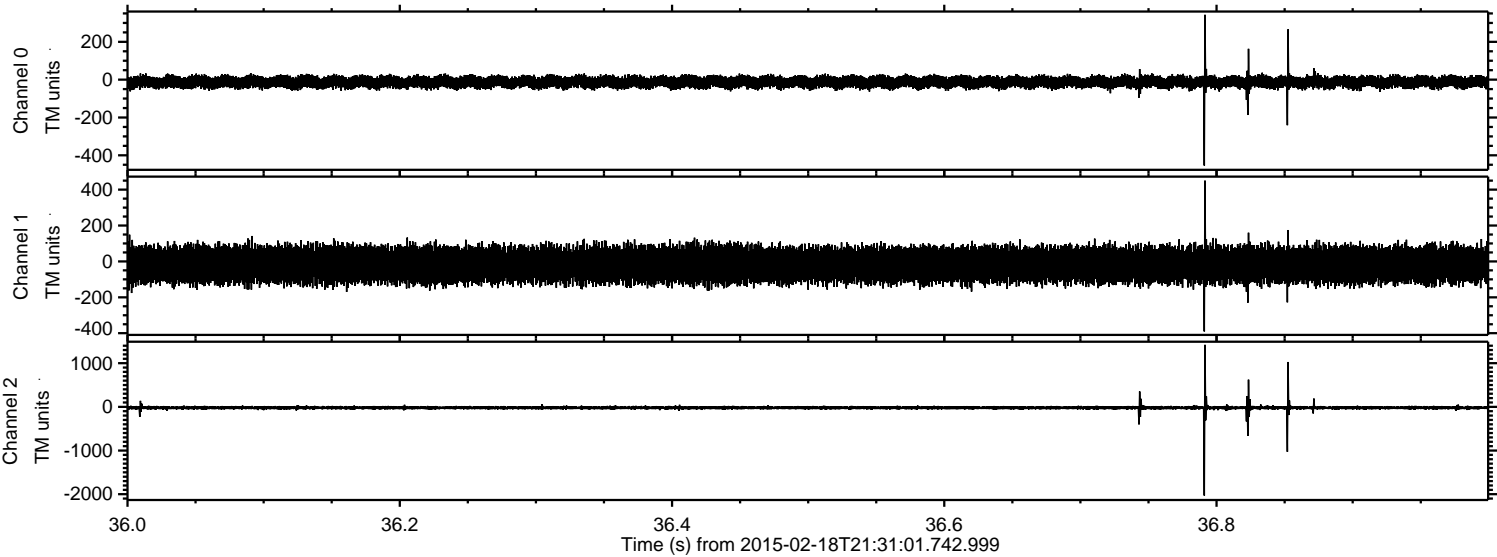


Processed Fri Feb 27 03:57:58 2015 by ELM ver.2012-10-06 from 001\_\_elm20150218\_213100\_\_dat00.bin





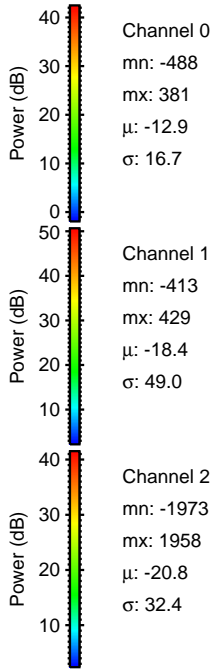
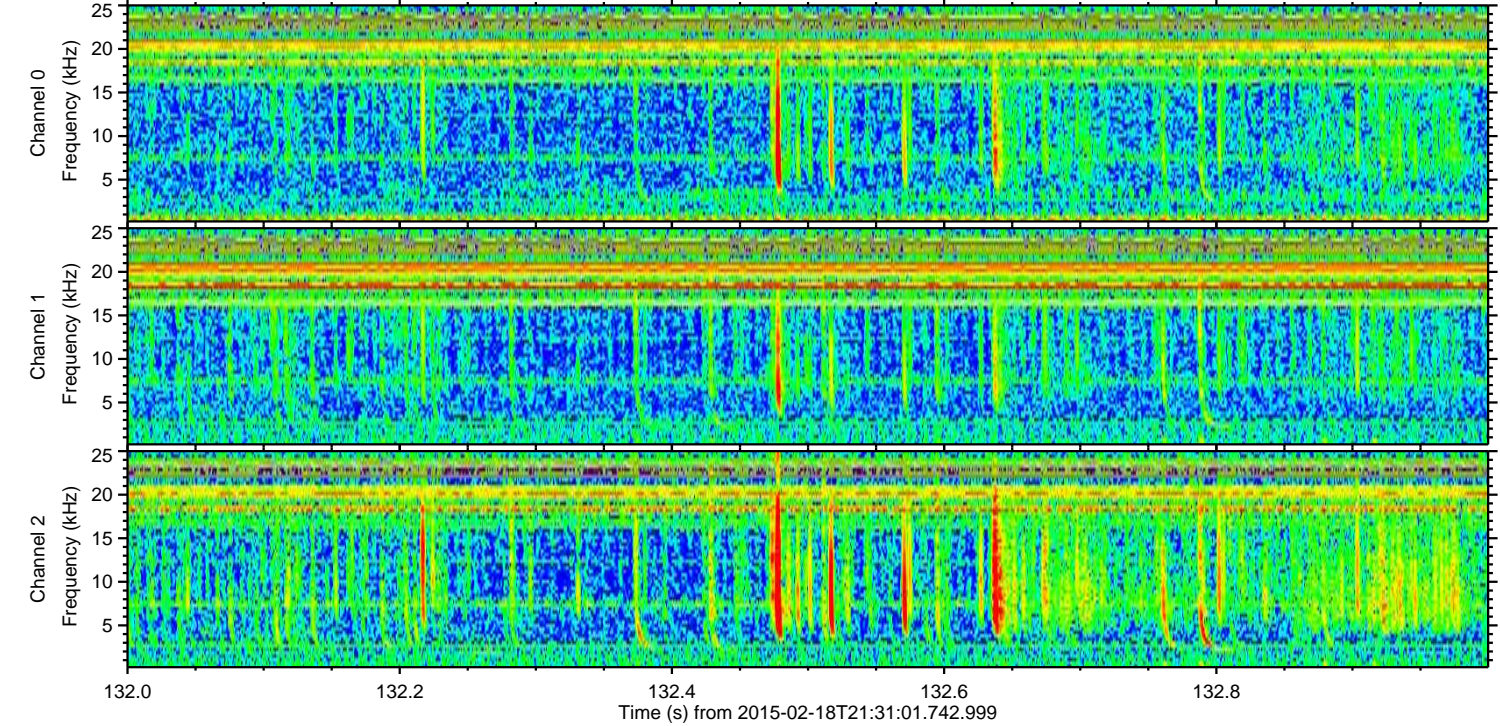
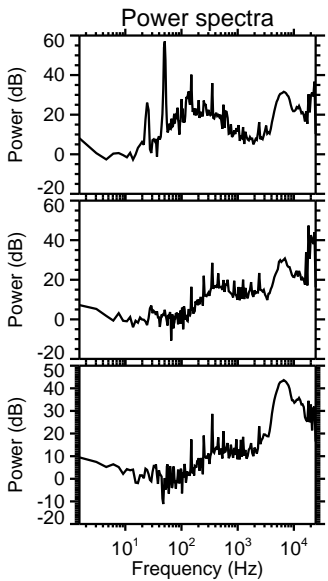
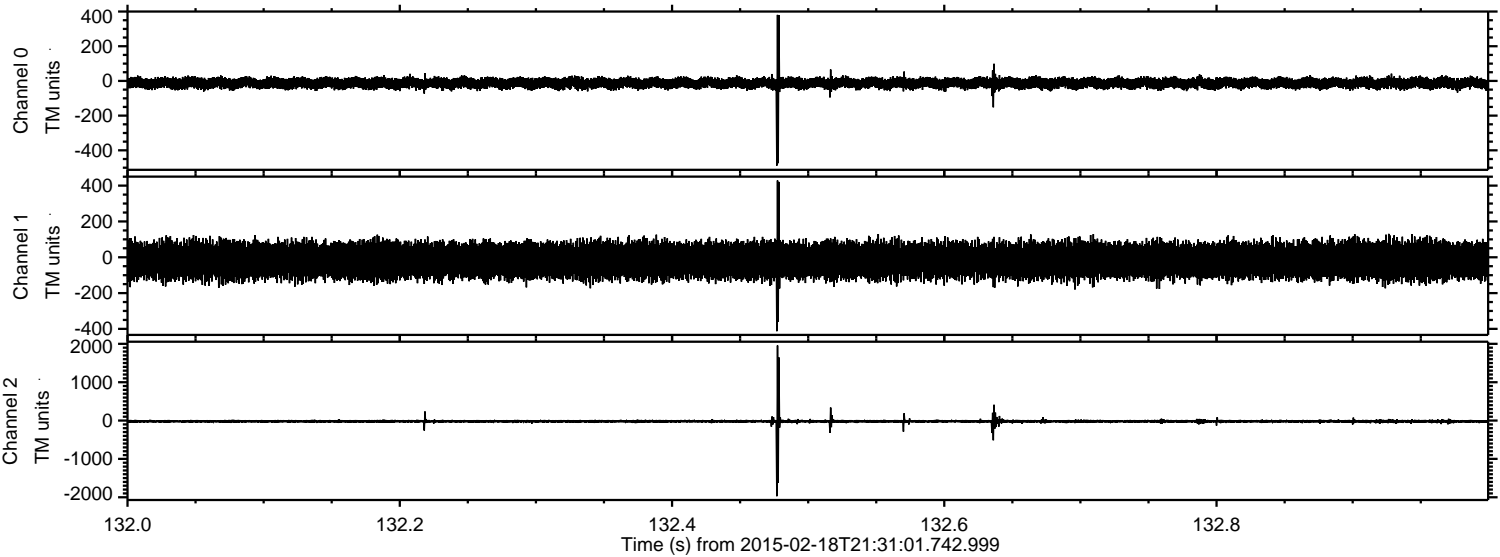
Processed Fri Feb 27 03:57:59 2015 by ELM ver.2012-10-06 from 001\_\_elm20150218\_213100\_\_dat00.bin





ELMAVAN 3D WAVEFORMS (Measured data sampled at 50 kHz) 49800 packets of 144 samples from 2015-02-18T21:31:01.742.999. Part 133/144

Processed Fri Feb 27 03:58:00 2015 by ELM ver.2012-10-06 from 001\_\_elm20150218\_213100\_\_dat00.bin



Channel 0  
mn: -488  
mx: 381  
 $\mu$ : -12.9  
 $\sigma$ : 16.7

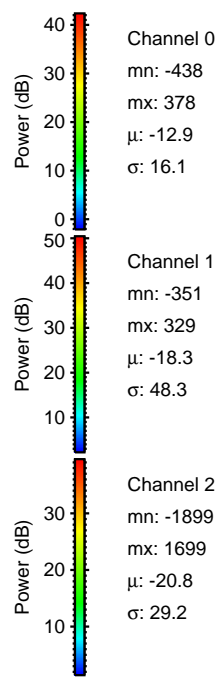
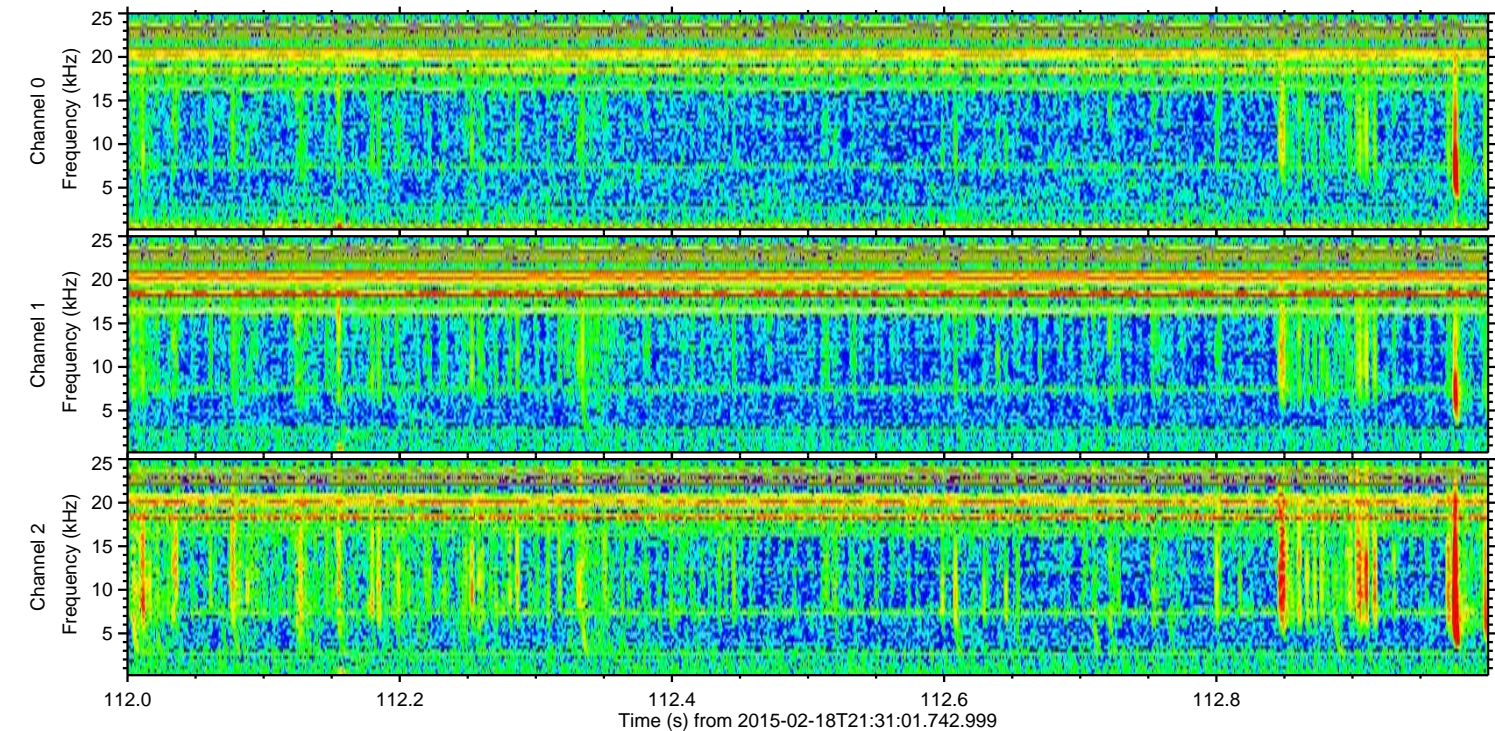
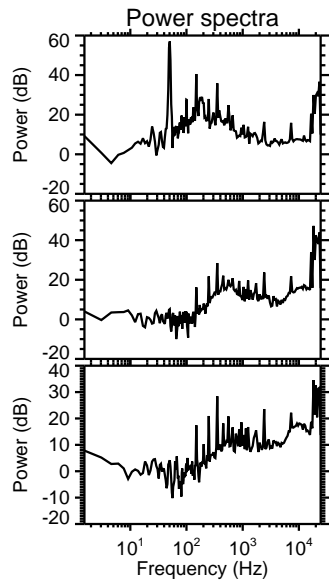
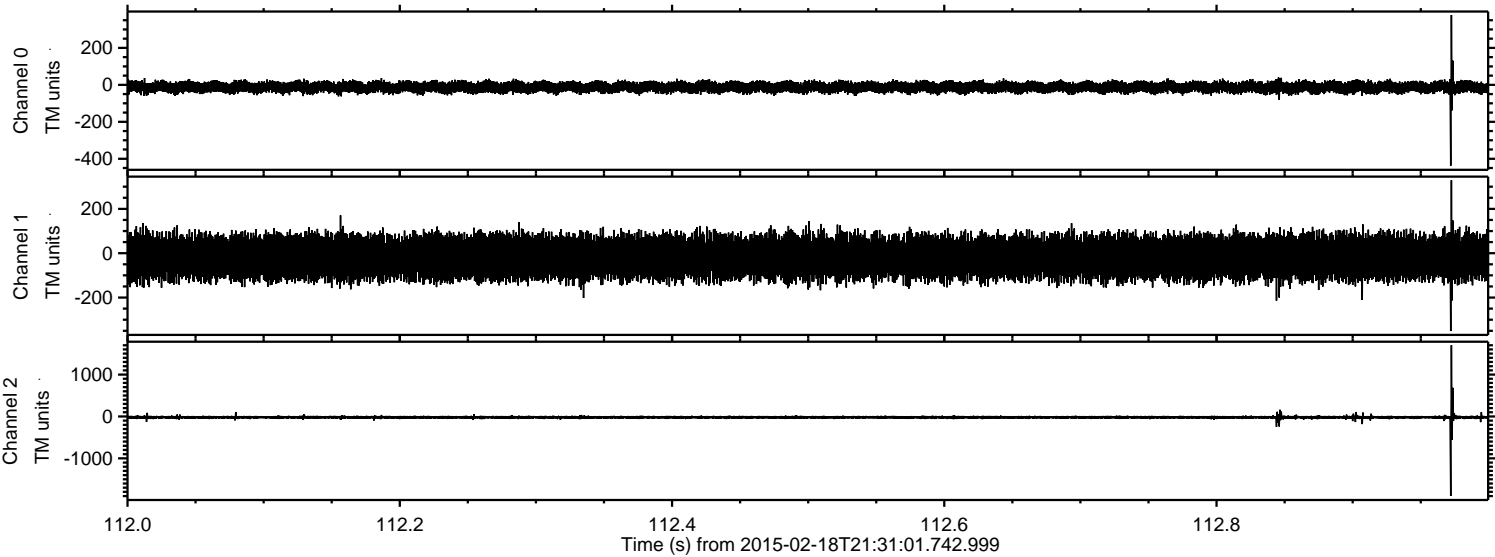
Channel 1  
mn: -413  
mx: 429  
 $\mu$ : -18.4  
 $\sigma$ : 49.0

Channel 2  
mn: -1973  
mx: 1958  
 $\mu$ : -20.8  
 $\sigma$ : 32.4



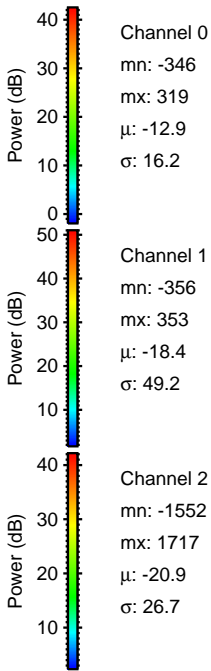
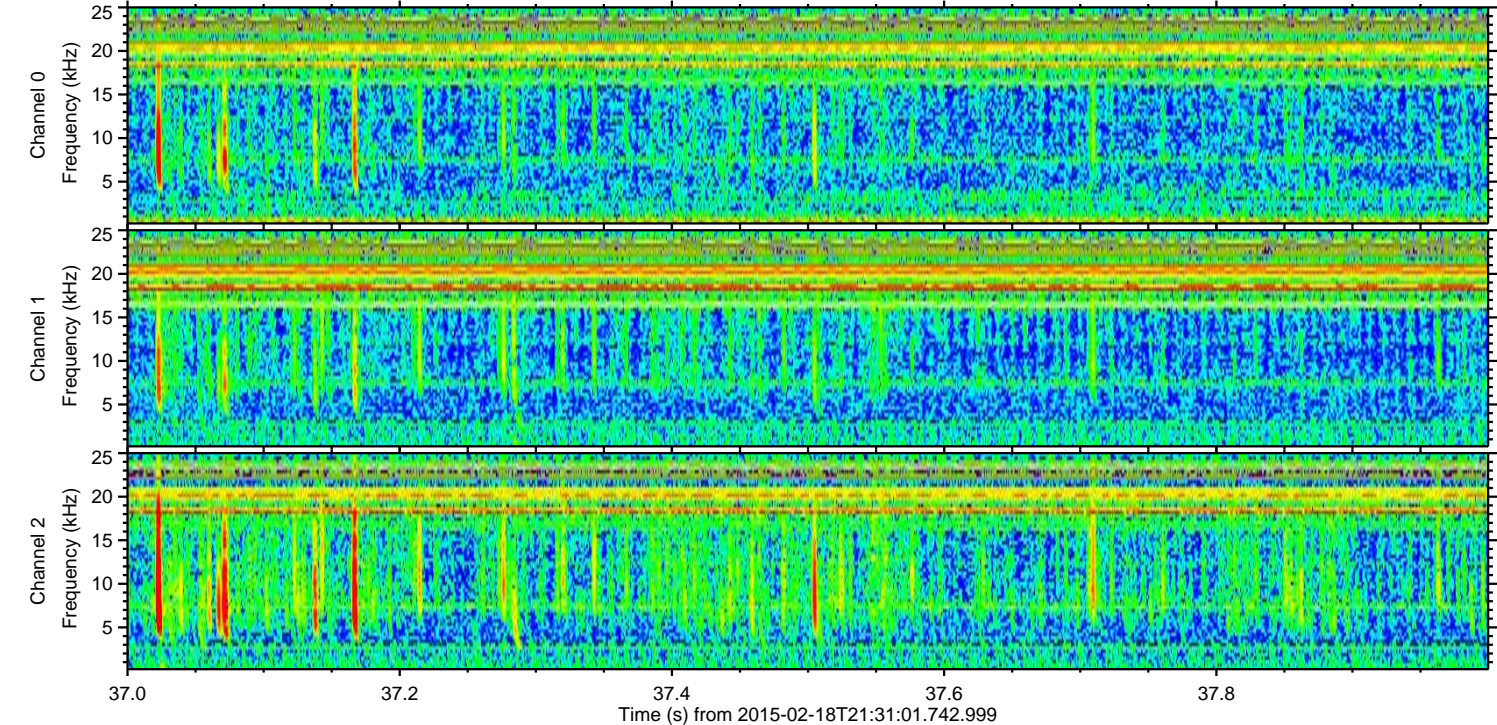
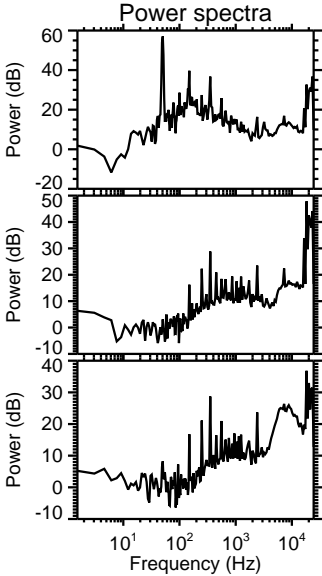
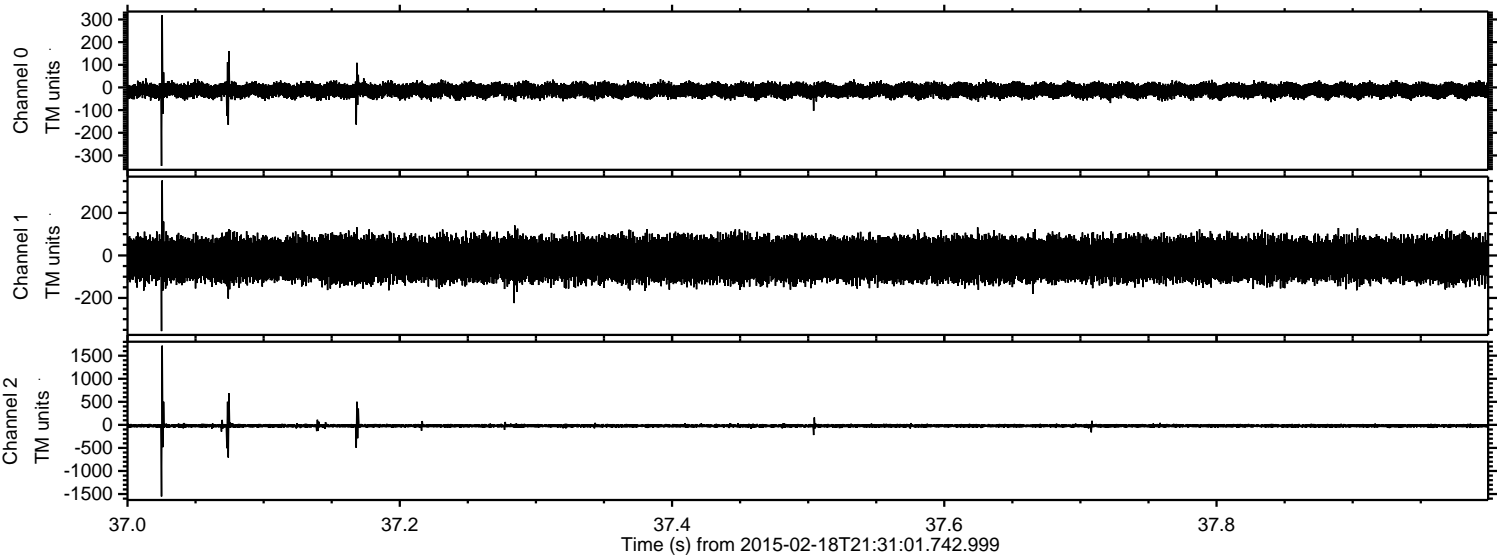
ELMAVAN 3D WAVEFORMS (Measured data sampled at 50 kHz) 49800 packets of 144 samples from 2015-02-18T21:31:01.742.999. Part 113/144

Processed Fri Feb 27 03:58:01 2015 by ELM ver.2012-10-06 from 001\_\_elm20150218\_213100\_\_dat00.bin



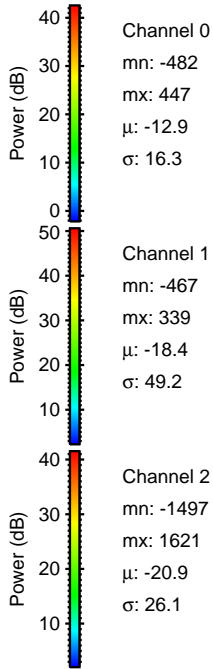
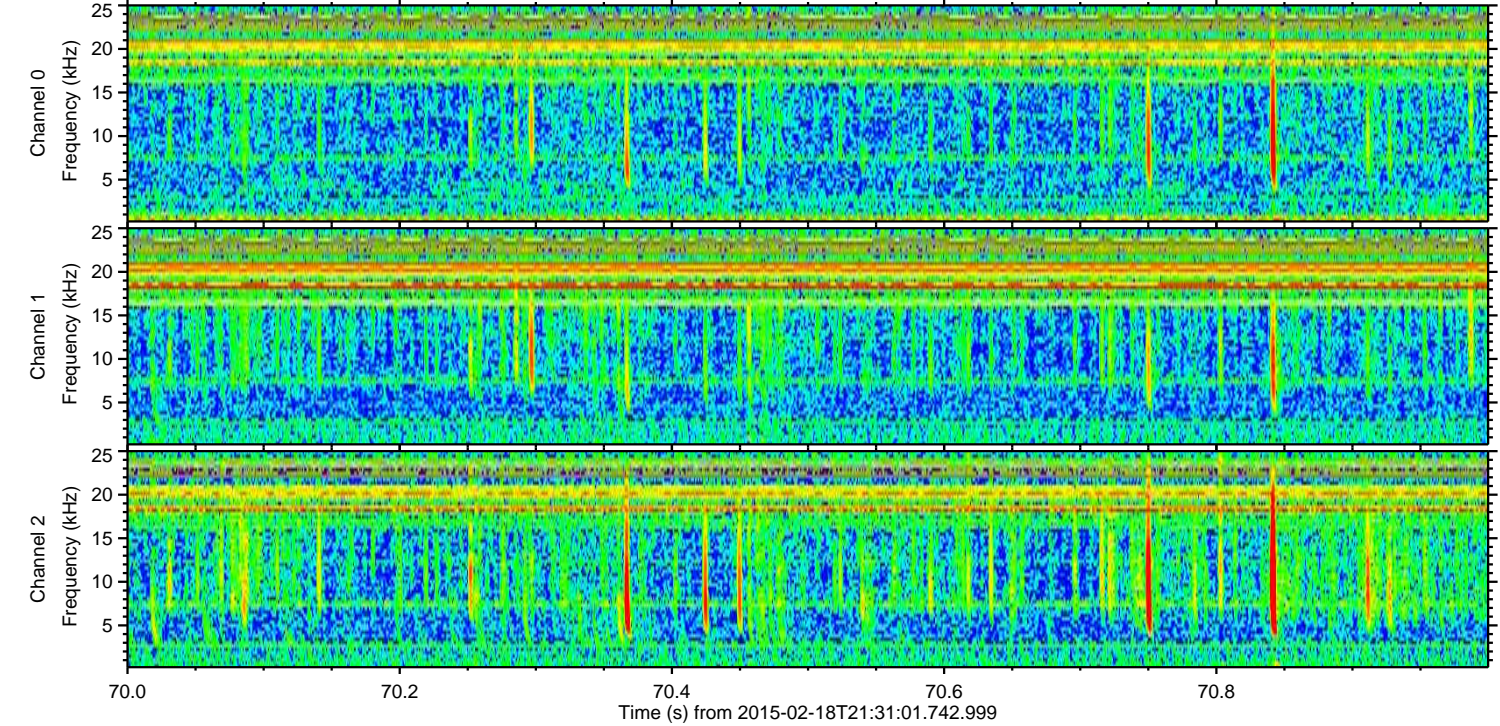
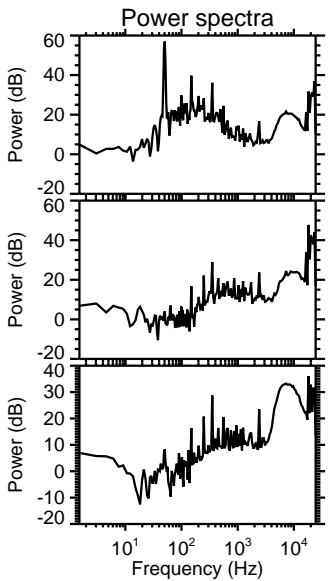
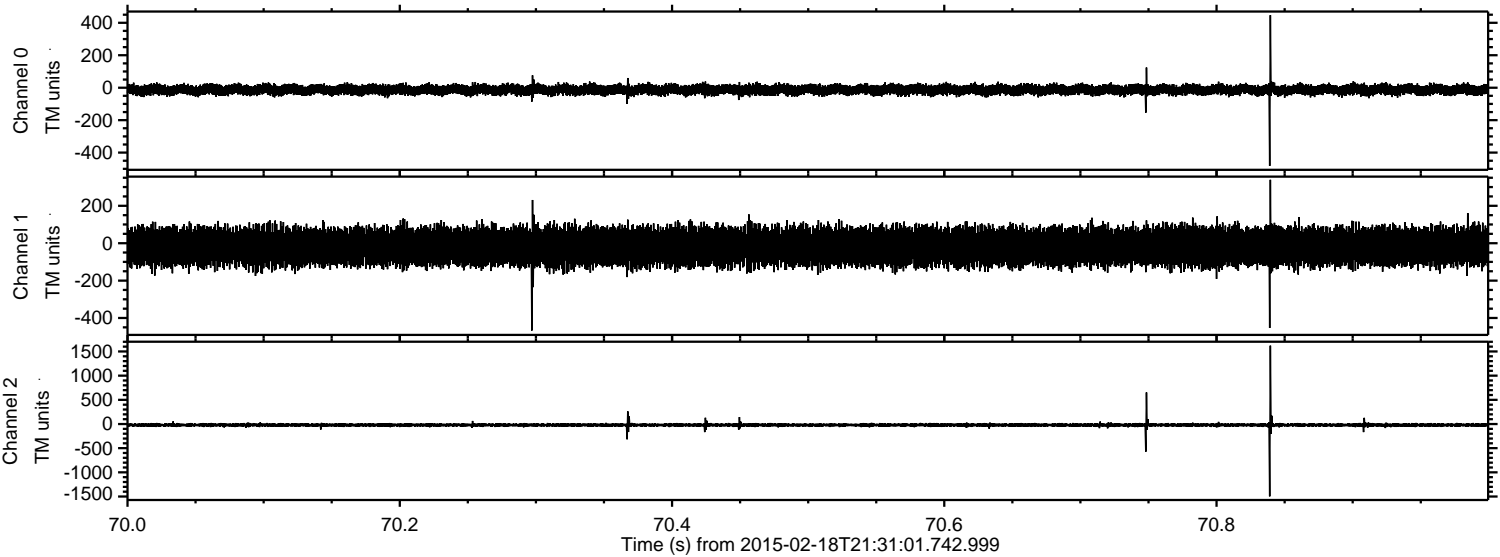


Processed Fri Feb 27 03:58:02 2015 by ELM ver.2012-10-06 from 001\_\_elm20150218\_213100\_\_dat00.bin





Processed Fri Feb 27 03:58:03 2015 by ELM ver.2012-10-06 from 001\_\_elm20150218\_213100\_\_dat00.bin



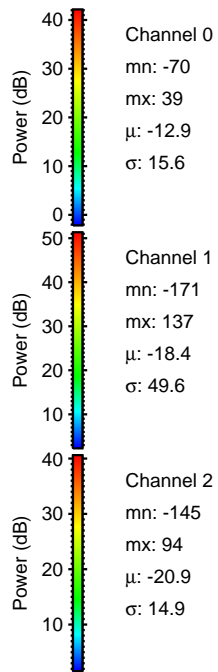
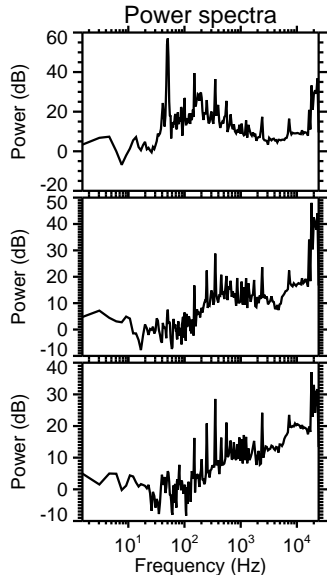
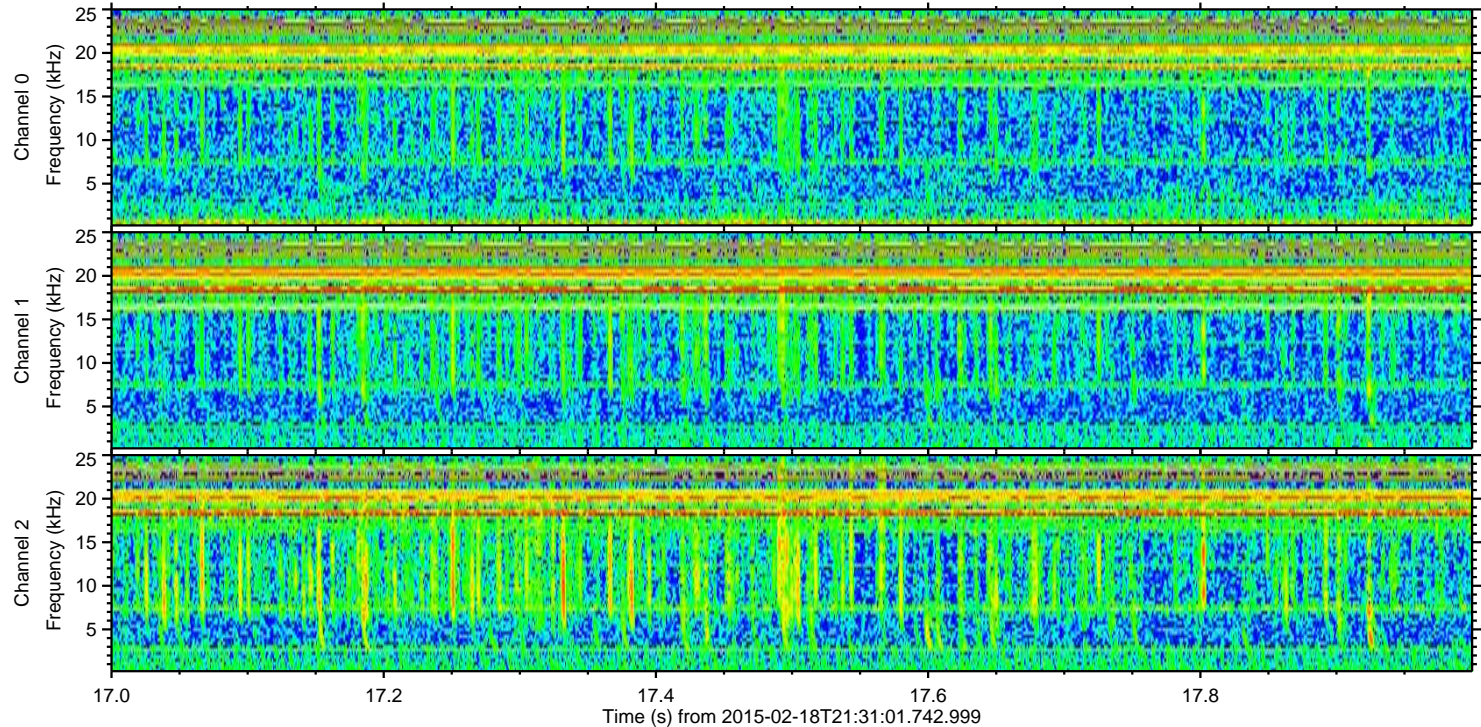
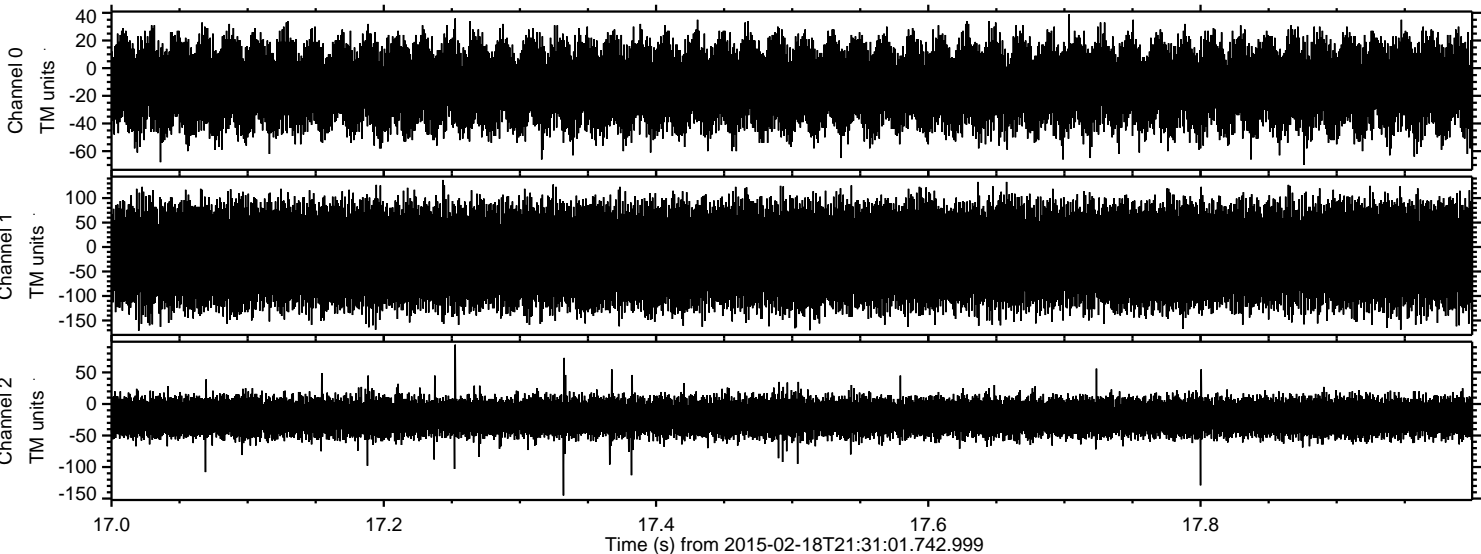
Channel 0  
mn: -482  
mx: 447  
 $\mu$ : -12.9  
 $\sigma$ : 16.3

Channel 1  
mn: -467  
mx: 339  
 $\mu$ : -18.4  
 $\sigma$ : 49.2

Channel 2  
mn: -1497  
mx: 1621  
 $\mu$ : -20.9  
 $\sigma$ : 26.1



Processed Fri Feb 27 03:58:03 2015 by ELM ver.2012-10-06 from 001\_\_elm20150218\_213100\_\_dat00.bin



Power spectra

Channel 0

mn: -70  
mx: 39  
 $\mu$ : -12.9  
 $\sigma$ : 15.6

Channel 1

mn: -171  
mx: 137  
 $\mu$ : -18.4  
 $\sigma$ : 49.6

Channel 2

mn: -145  
mx: 94  
 $\mu$ : -20.9  
 $\sigma$ : 14.9