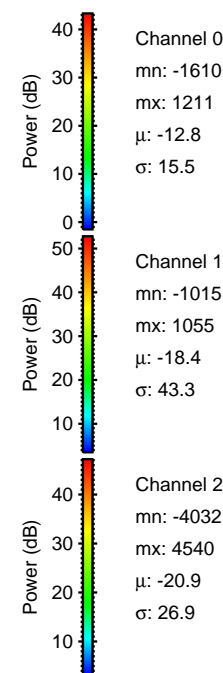
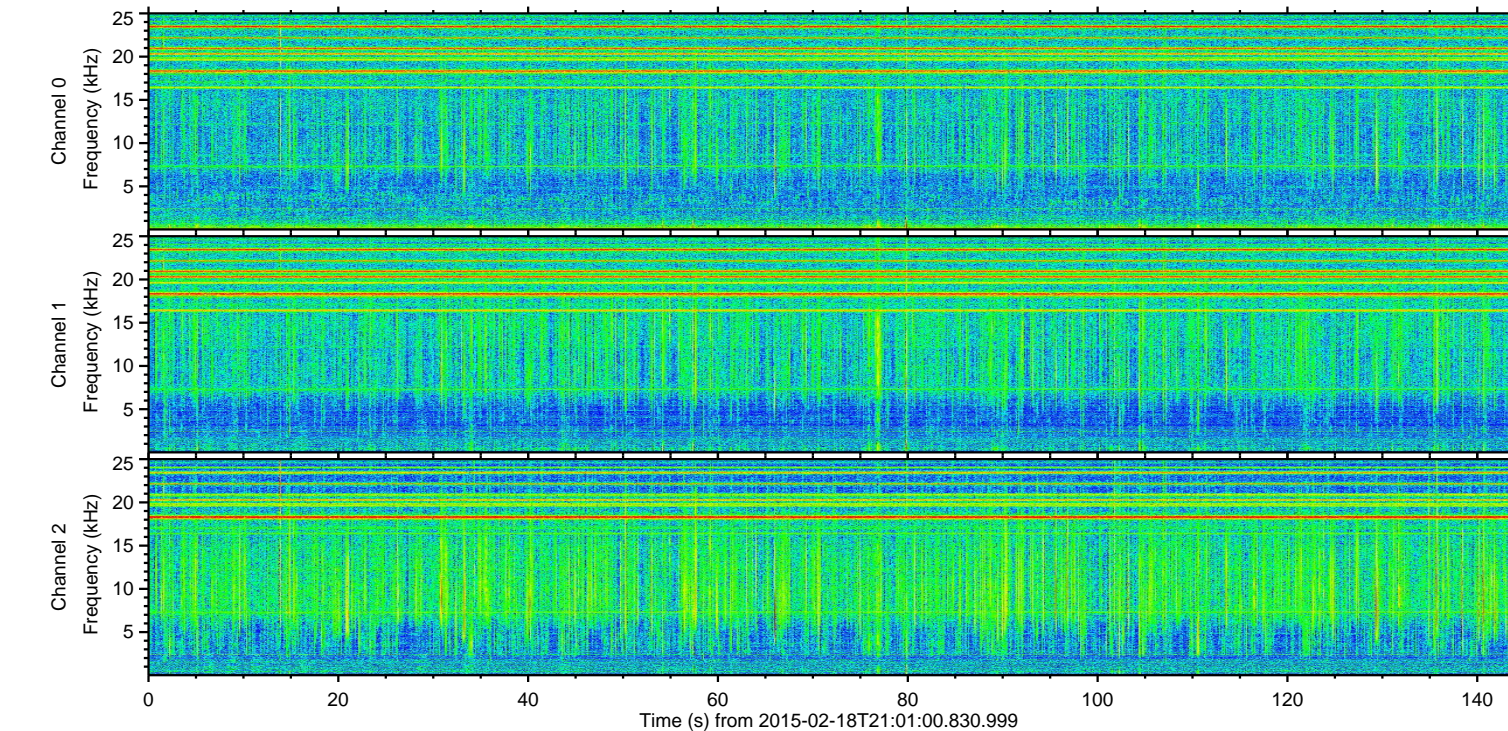
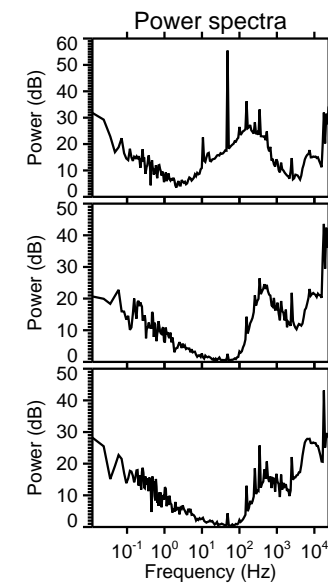
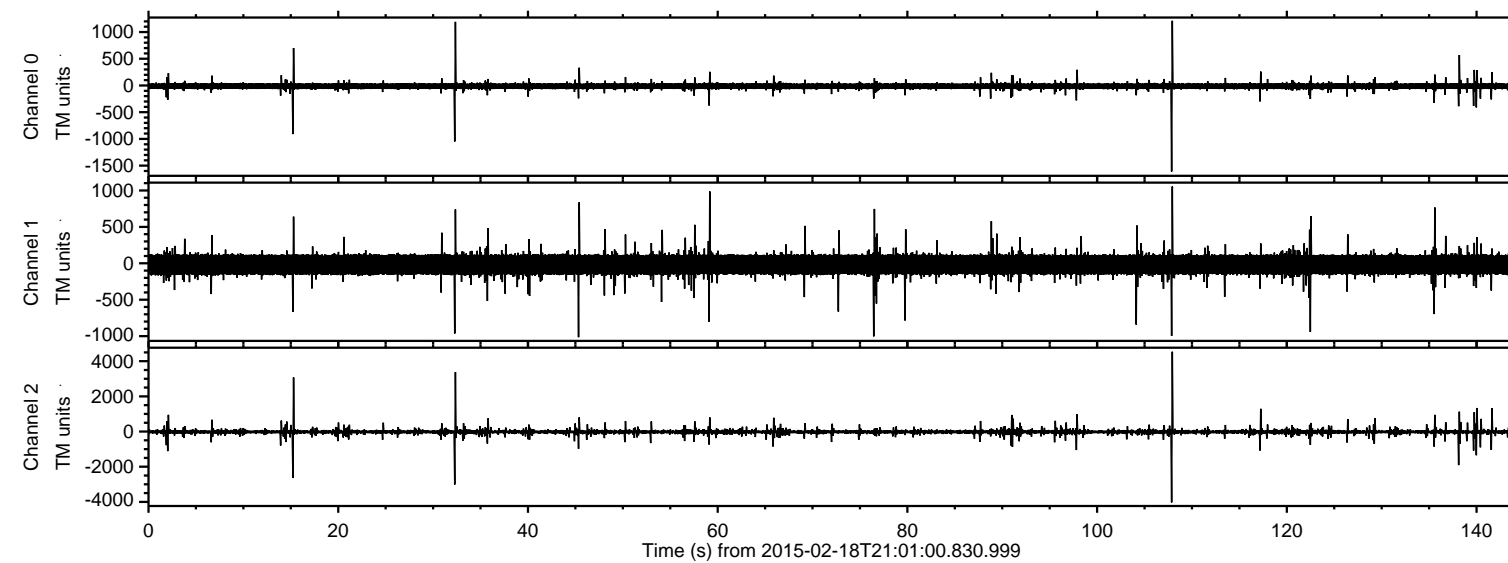


ELMAVAN 3D WAVEFORMS (Measured data sampled at 50 kHz) 49804 packets of 144 samples from 2015-02-18T21:01:00.830.999.

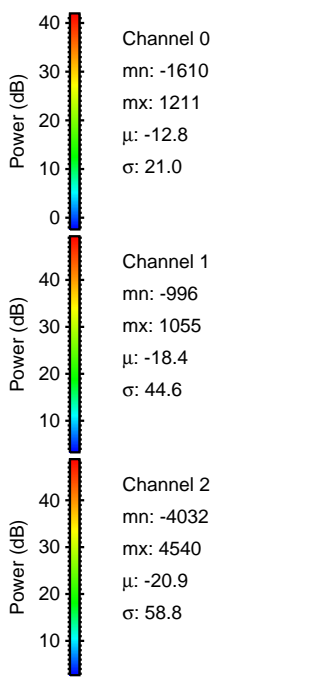
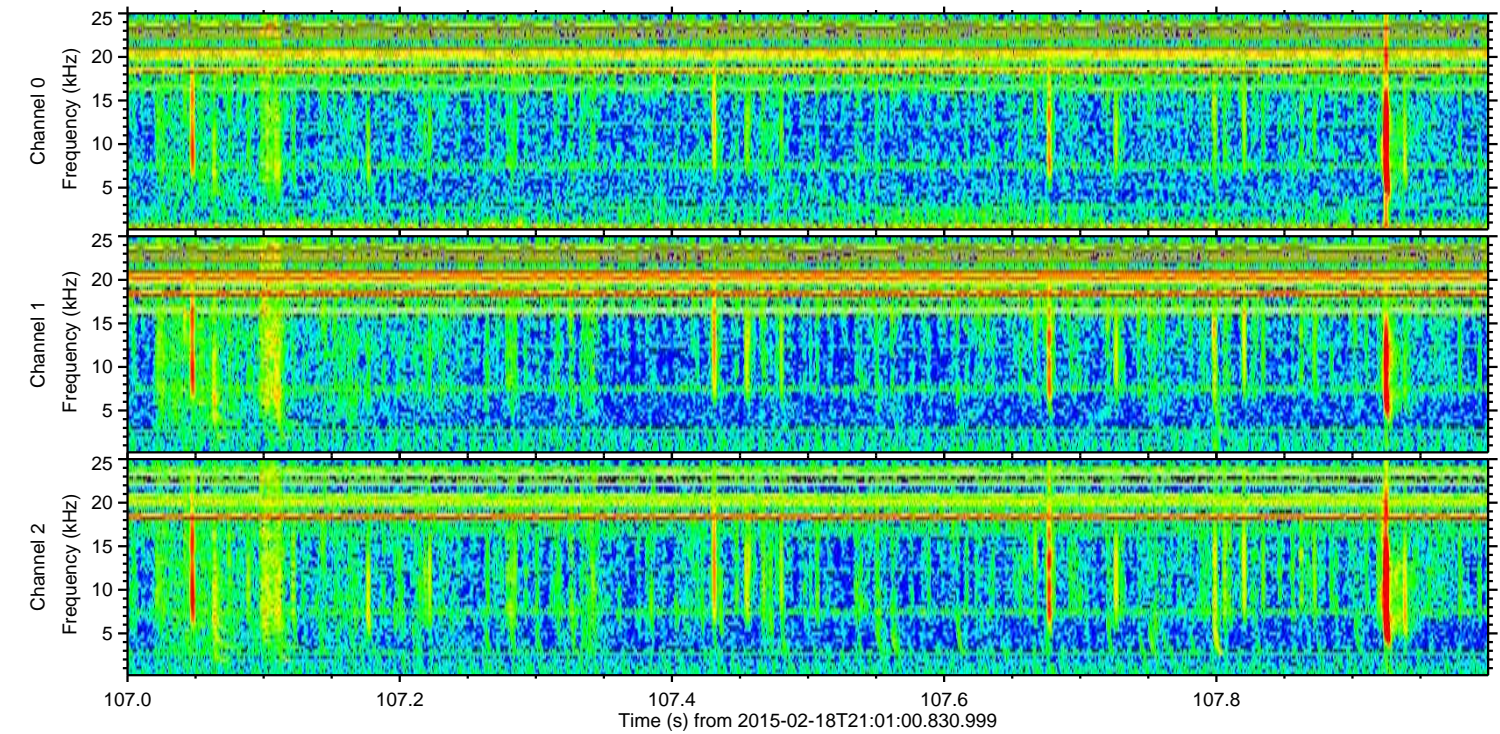
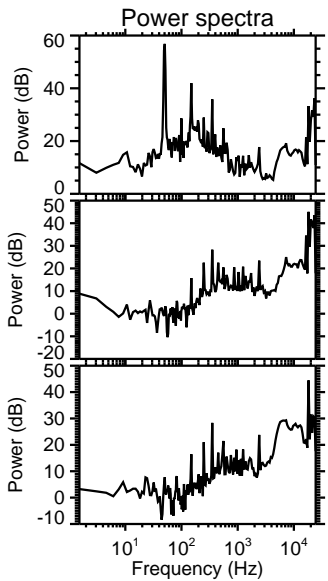
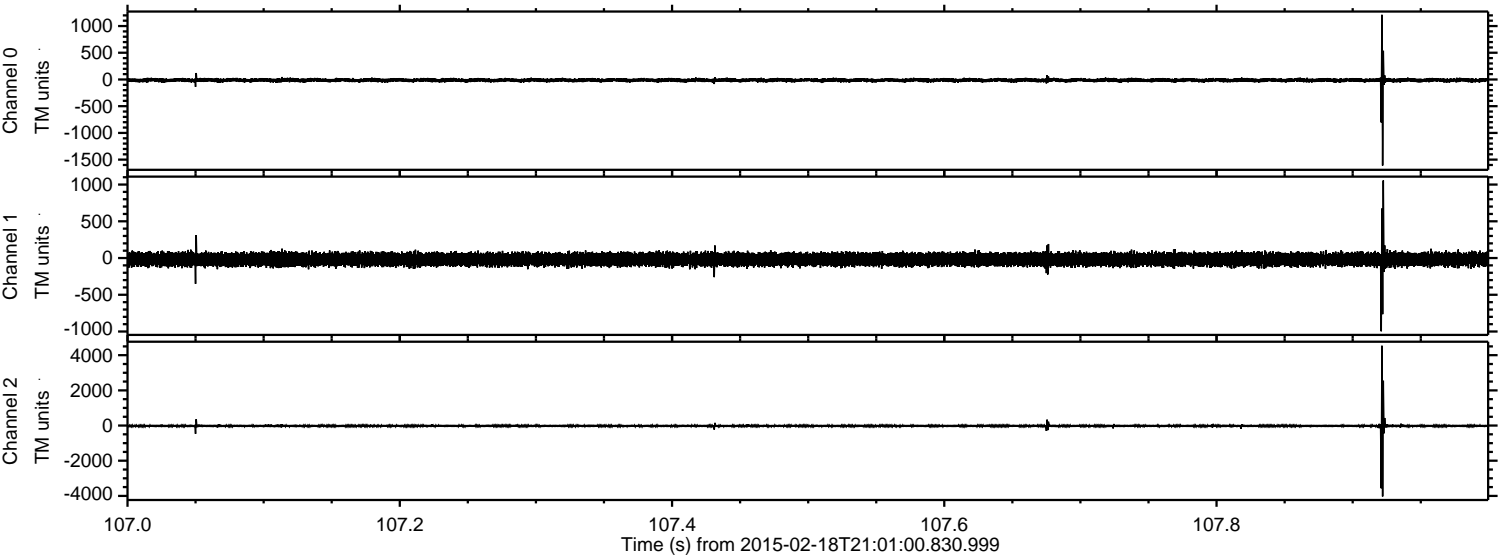
Processed Fri Feb 27 03:43:02 2015 by ELM ver.2012-10-06 from 001\_\_elm20150218\_210059\_\_dat00.bin





ELMAVAN 3D WAVEFORMS (Measured data sampled at 50 kHz) 49804 packets of 144 samples from 2015-02-18T21:01:00.830.999. Part 108/144

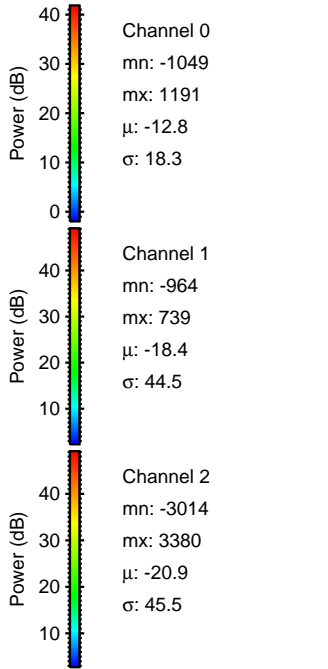
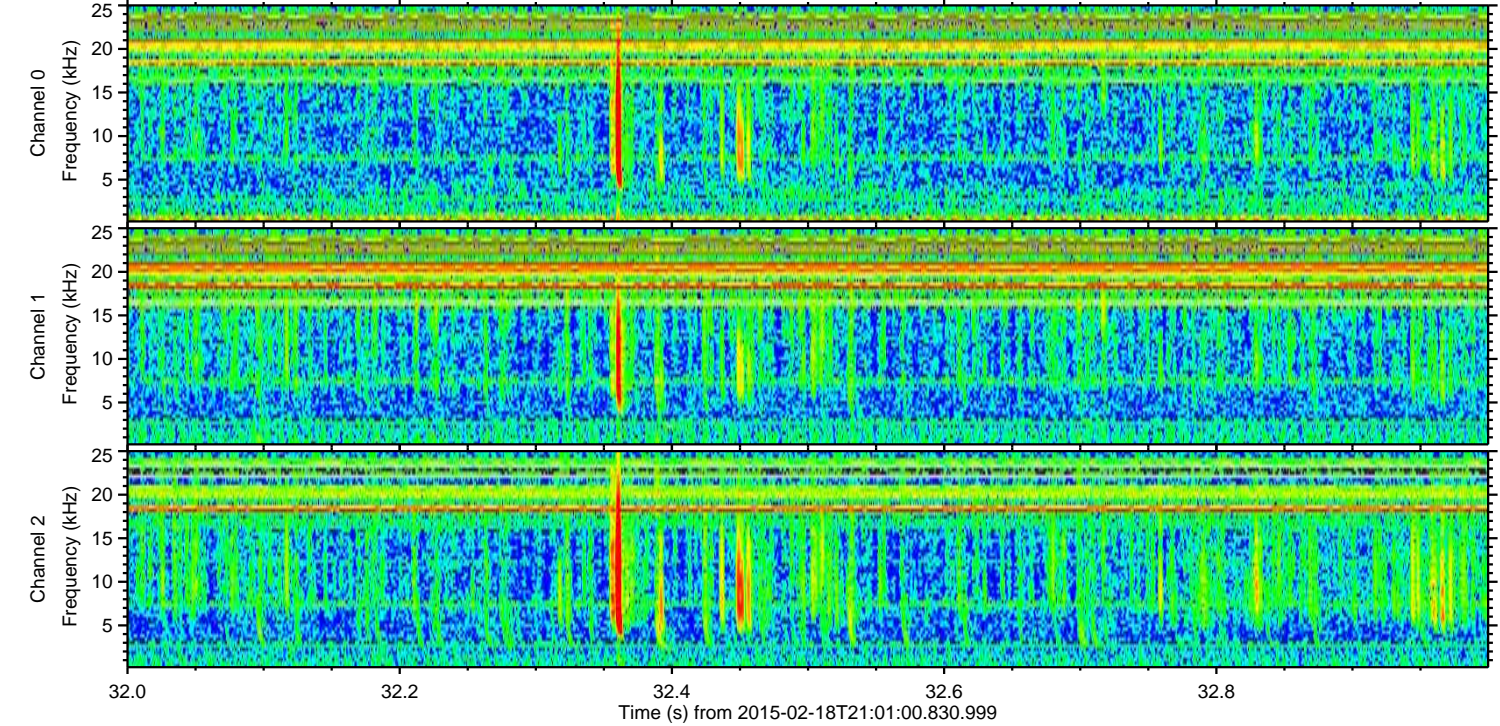
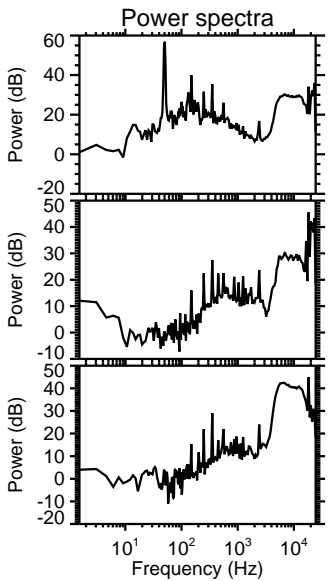
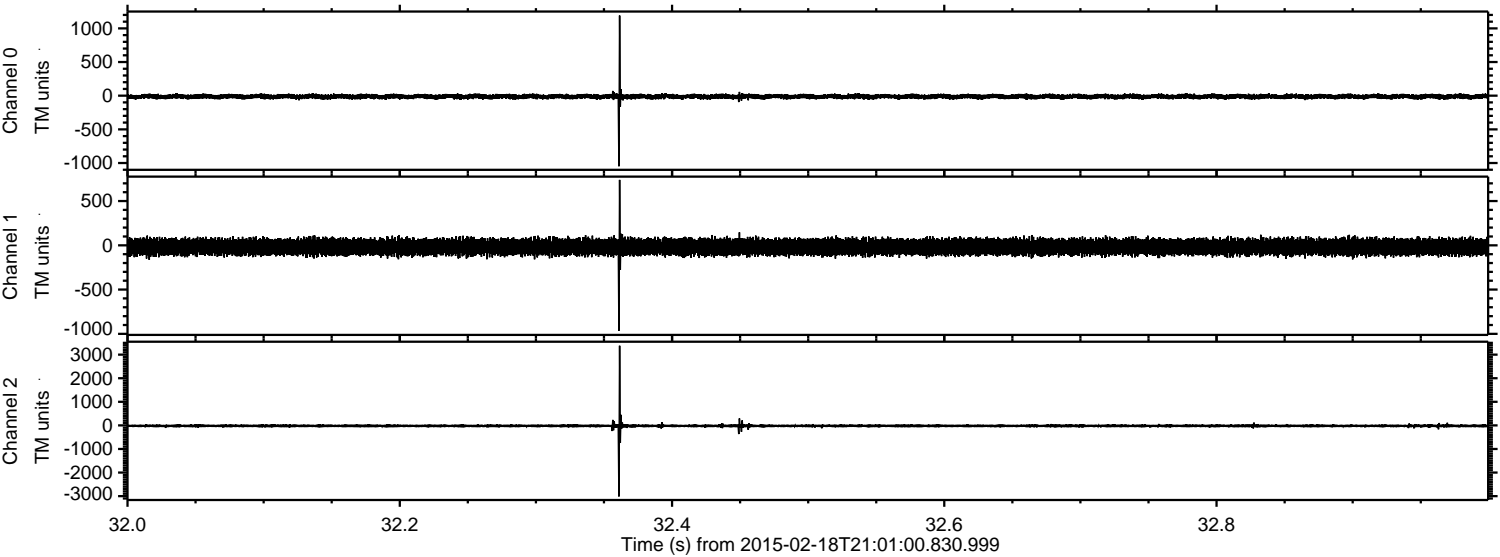
Processed Fri Feb 27 03:43:14 2015 by ELM ver.2012-10-06 from 001\_\_elm20150218\_210059\_\_dat00.bin





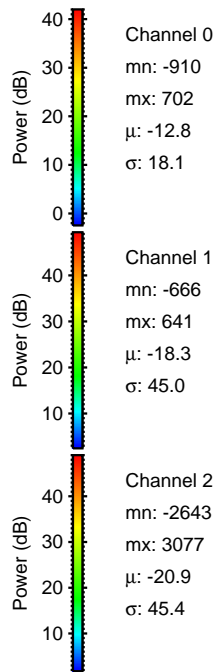
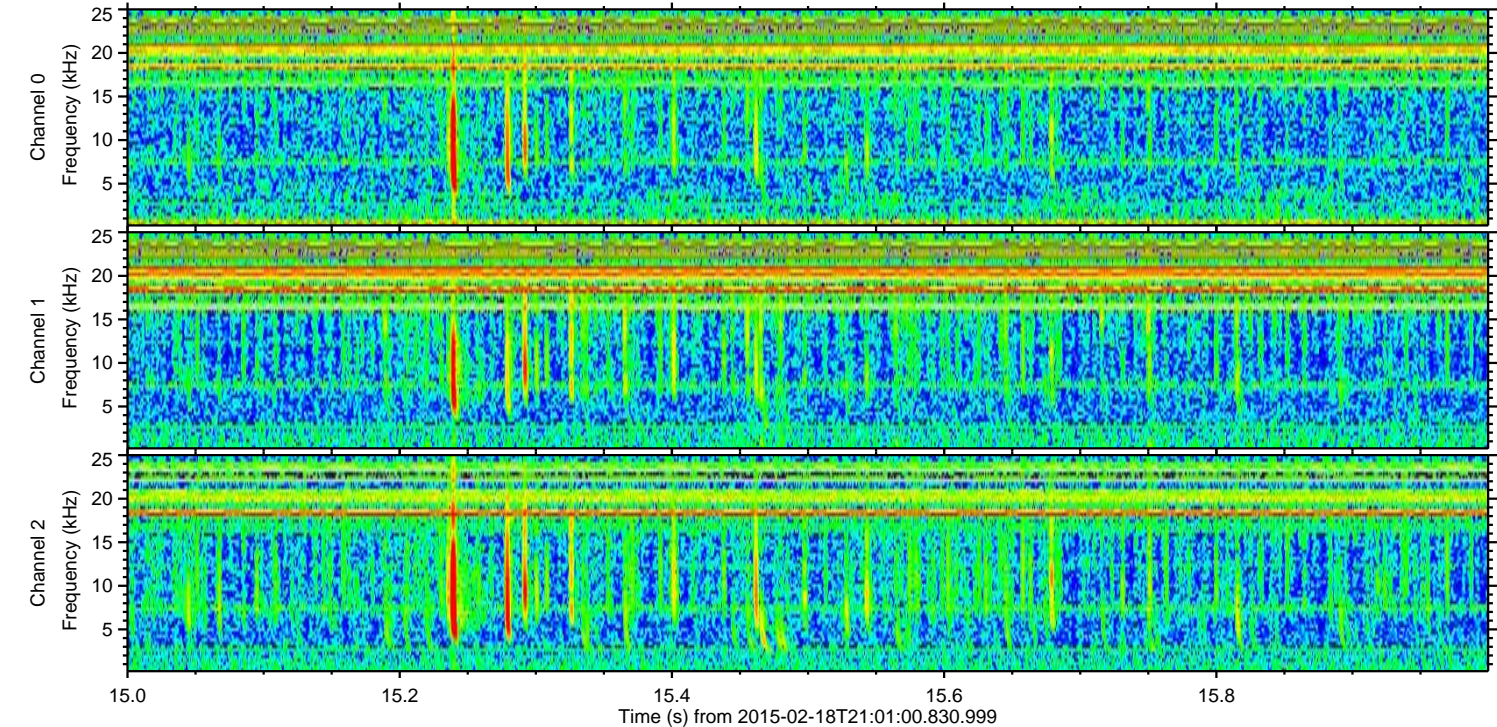
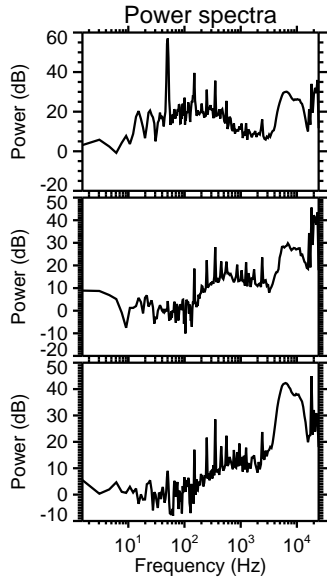
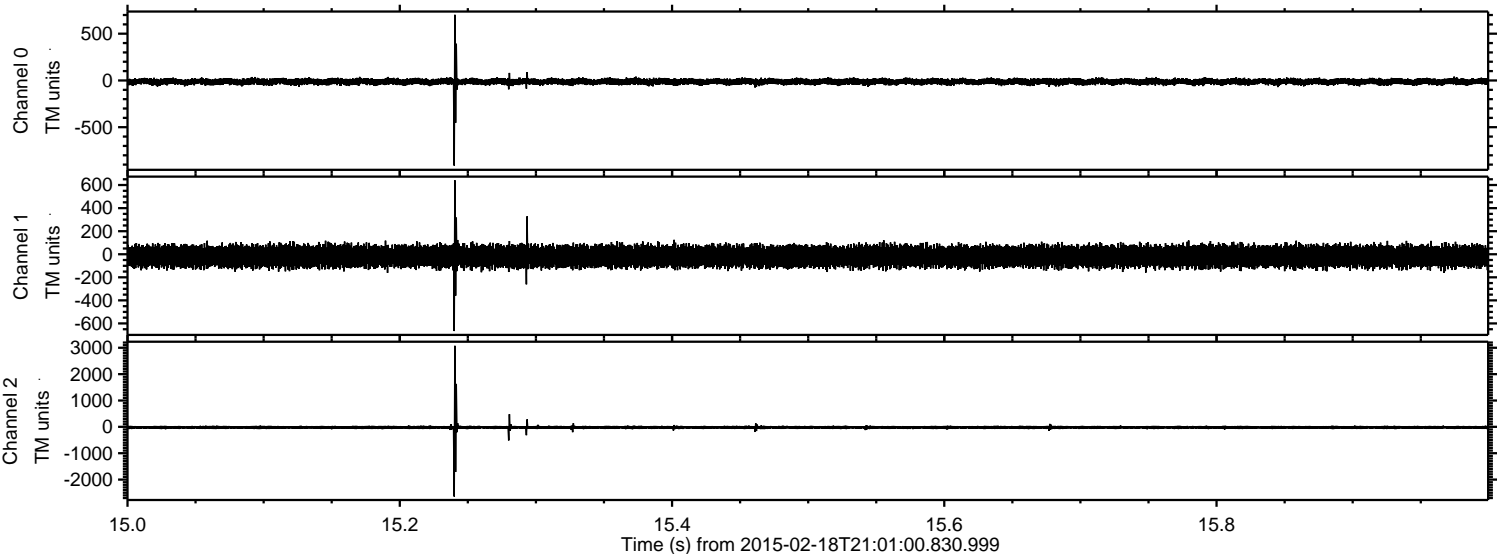
ELMAVAN 3D WAVEFORMS (Measured data sampled at 50 kHz) 49804 packets of 144 samples from 2015-02-18T21:01:00.830.999. Part 33/144

Processed Fri Feb 27 03:43:15 2015 by ELM ver.2012-10-06 from 001\_\_elm20150218\_210059\_\_dat00.bin





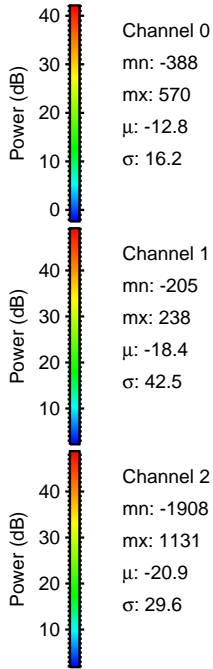
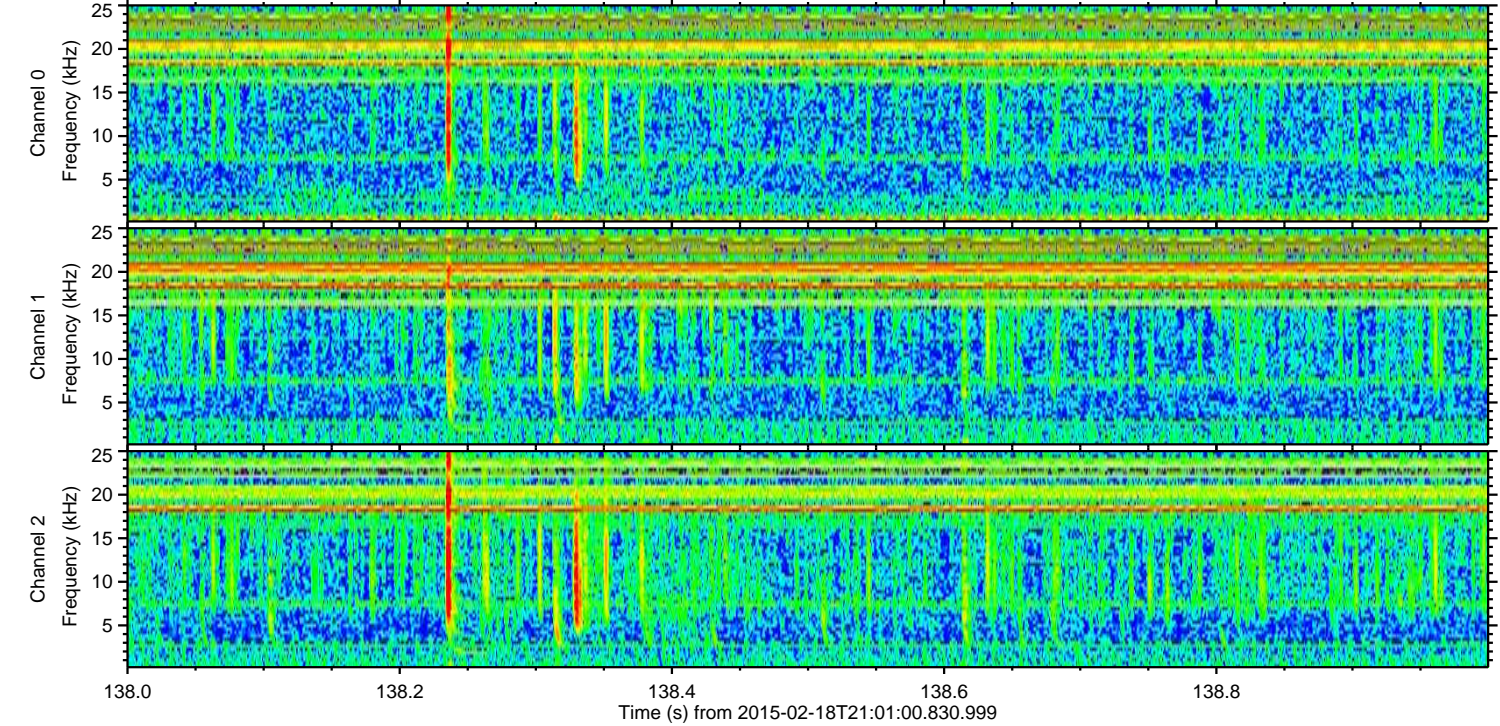
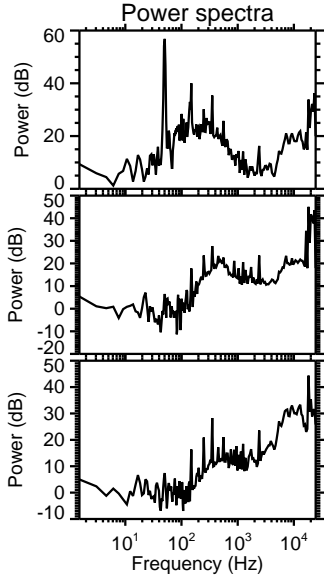
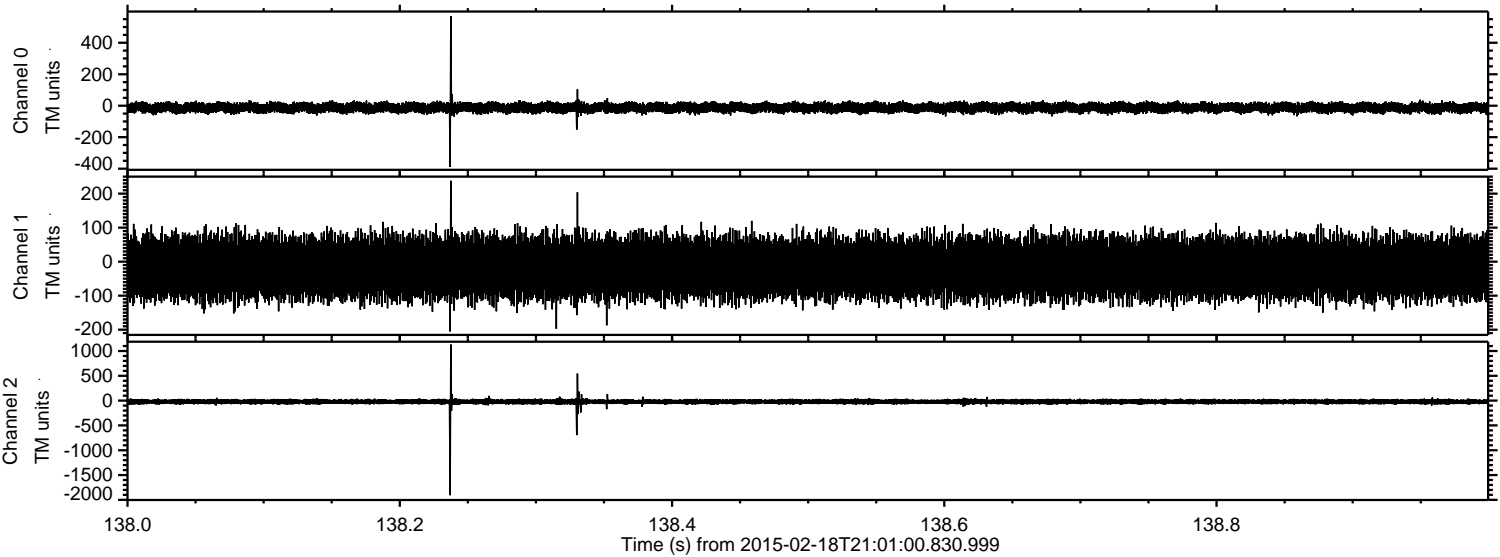
Processed Fri Feb 27 03:43:16 2015 by ELM ver.2012-10-06 from 001\_\_elm20150218\_210059\_\_dat00.bin





ELMAVAN 3D WAVEFORMS (Measured data sampled at 50 kHz) 49804 packets of 144 samples from 2015-02-18T21:01:00.830.999. Part 139/144

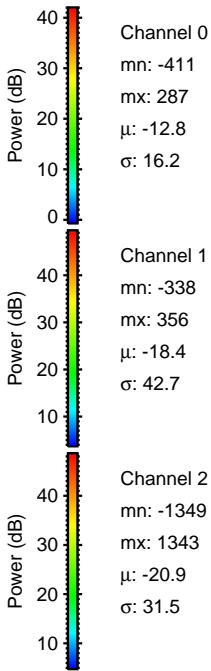
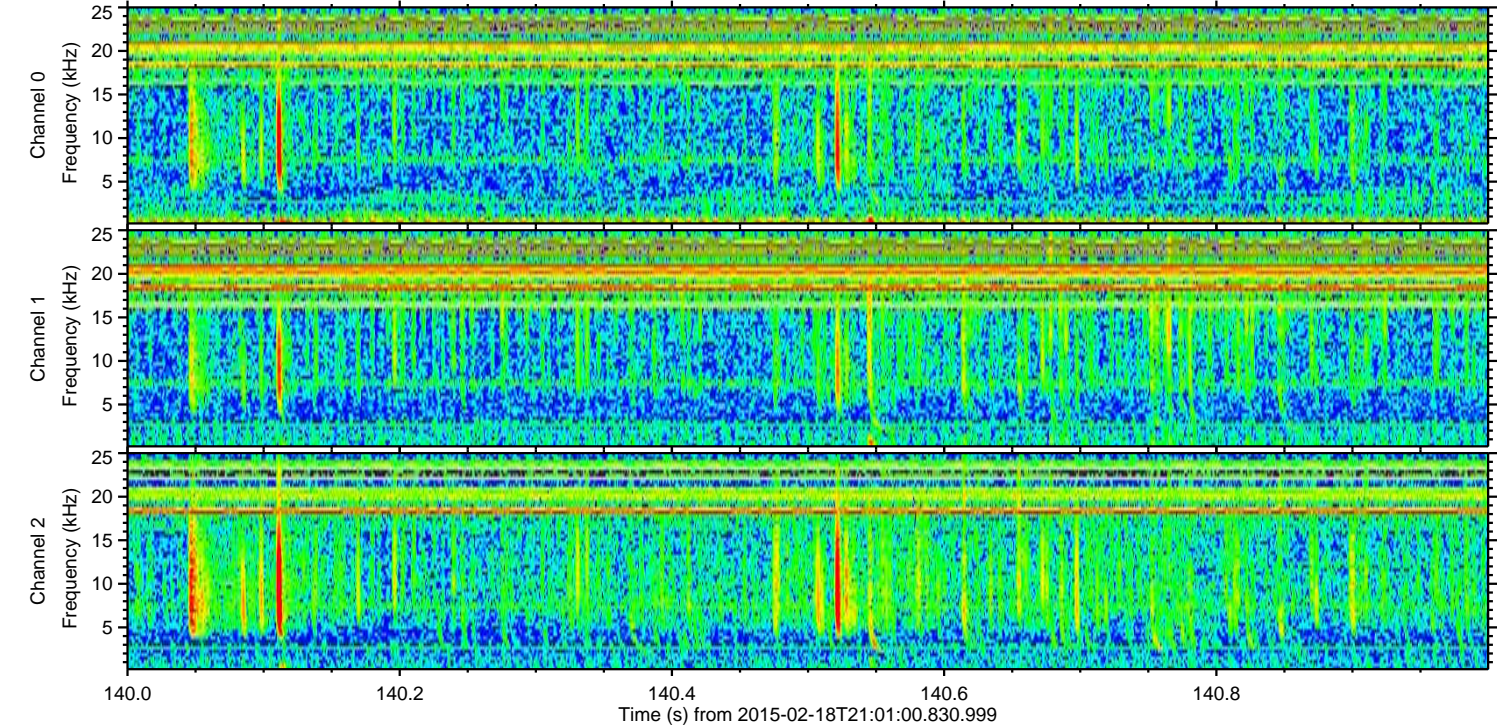
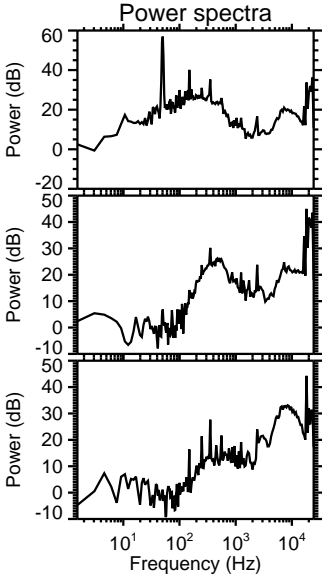
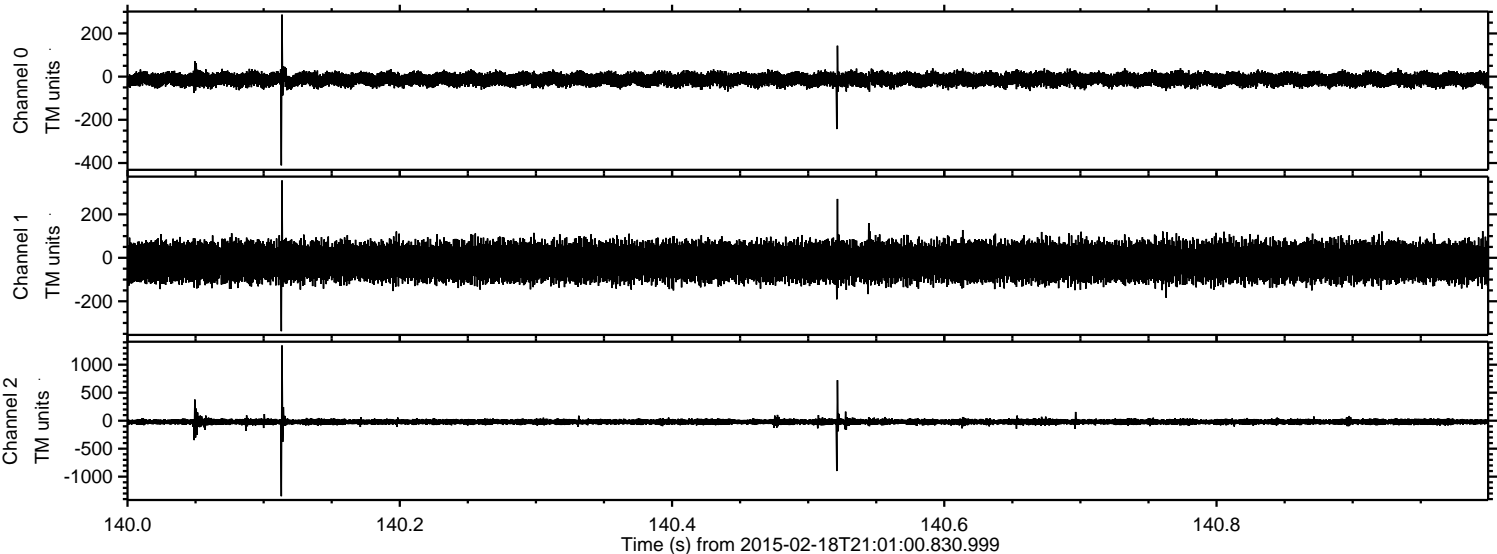
Processed Fri Feb 27 03:43:17 2015 by ELM ver.2012-10-06 from 001\_\_elm20150218\_210059\_\_dat00.bin





ELMAVAN 3D WAVEFORMS (Measured data sampled at 50 kHz) 49804 packets of 144 samples from 2015-02-18T21:01:00.830.999. Part 141/144

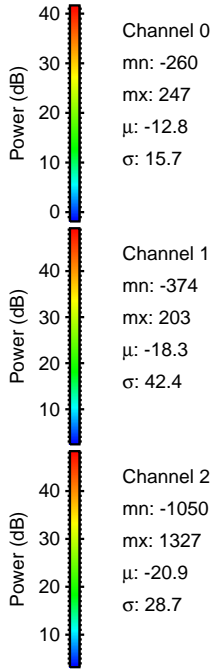
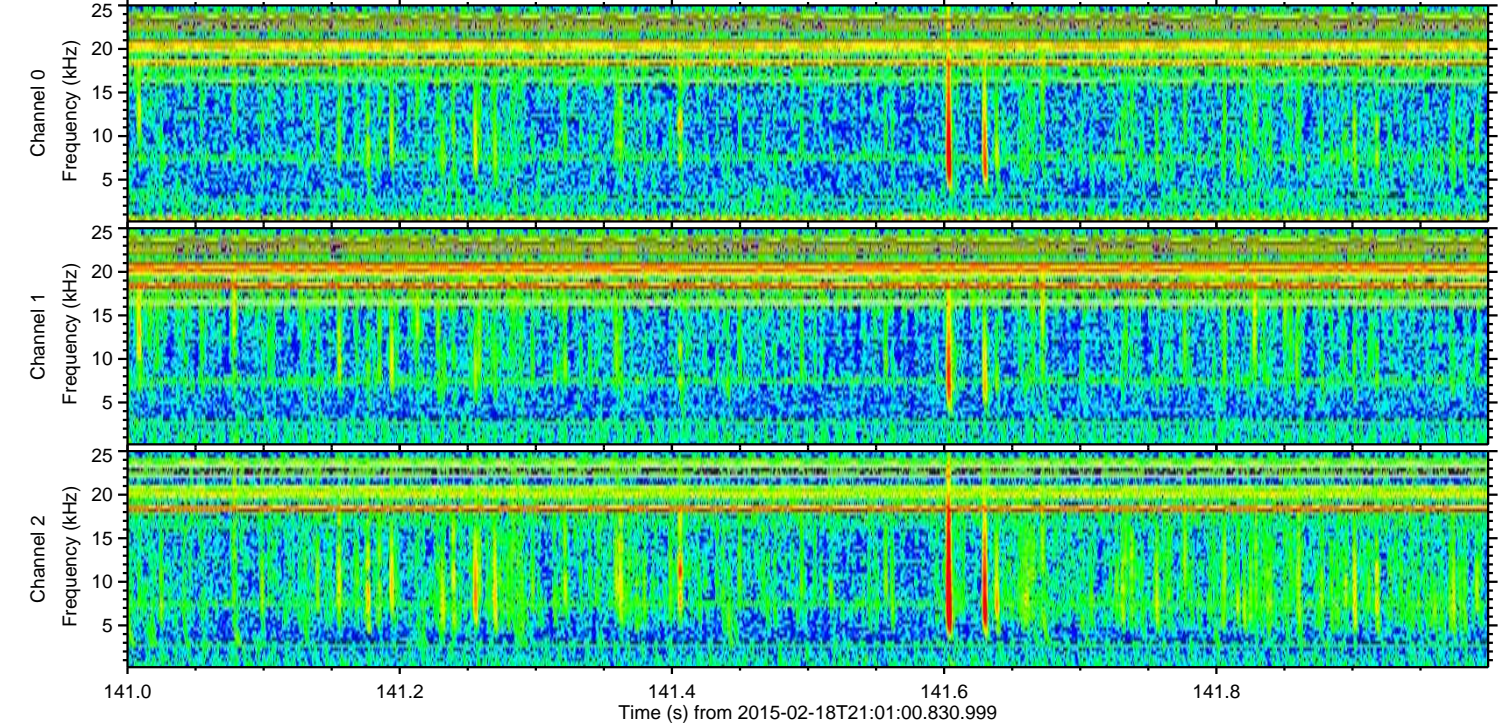
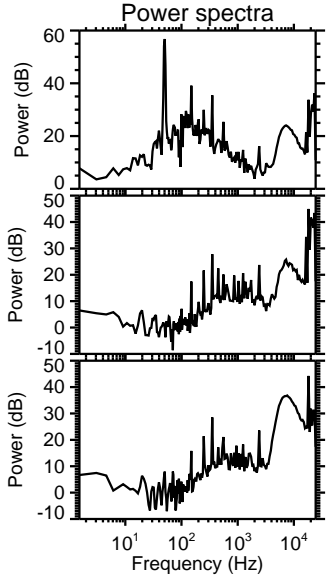
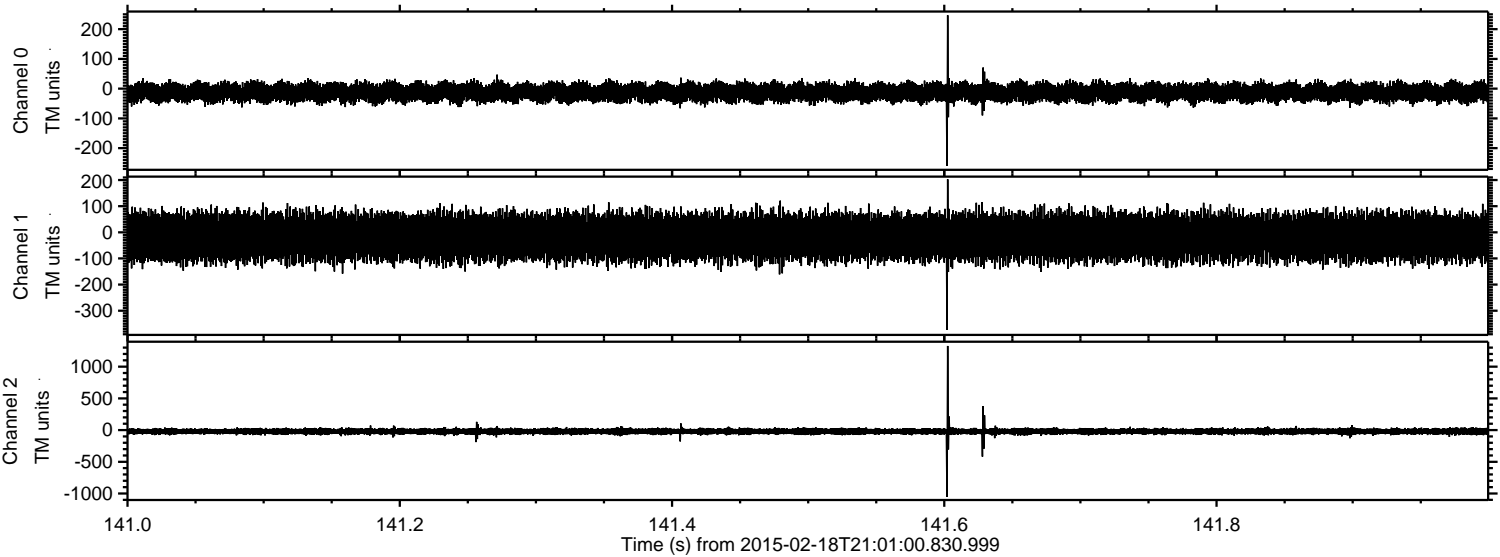
Processed Fri Feb 27 03:43:18 2015 by ELM ver.2012-10-06 from 001\_\_elm20150218\_210059\_\_dat00.bin





ELMAVAN 3D WAVEFORMS (Measured data sampled at 50 kHz) 49804 packets of 144 samples from 2015-02-18T21:01:00.830.999. Part 142/144

Processed Fri Feb 27 03:43:19 2015 by ELM ver.2012-10-06 from 001\_\_elm20150218\_210059\_\_dat00.bin



Channel 0  
mn: -260  
mx: 247  
 $\mu$ : -12.8  
 $\sigma$ : 15.7

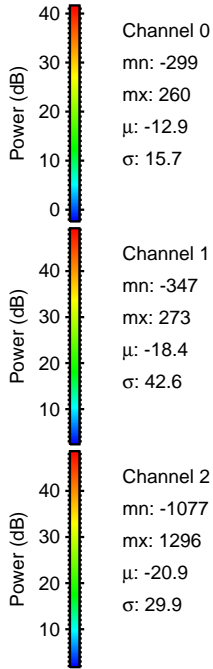
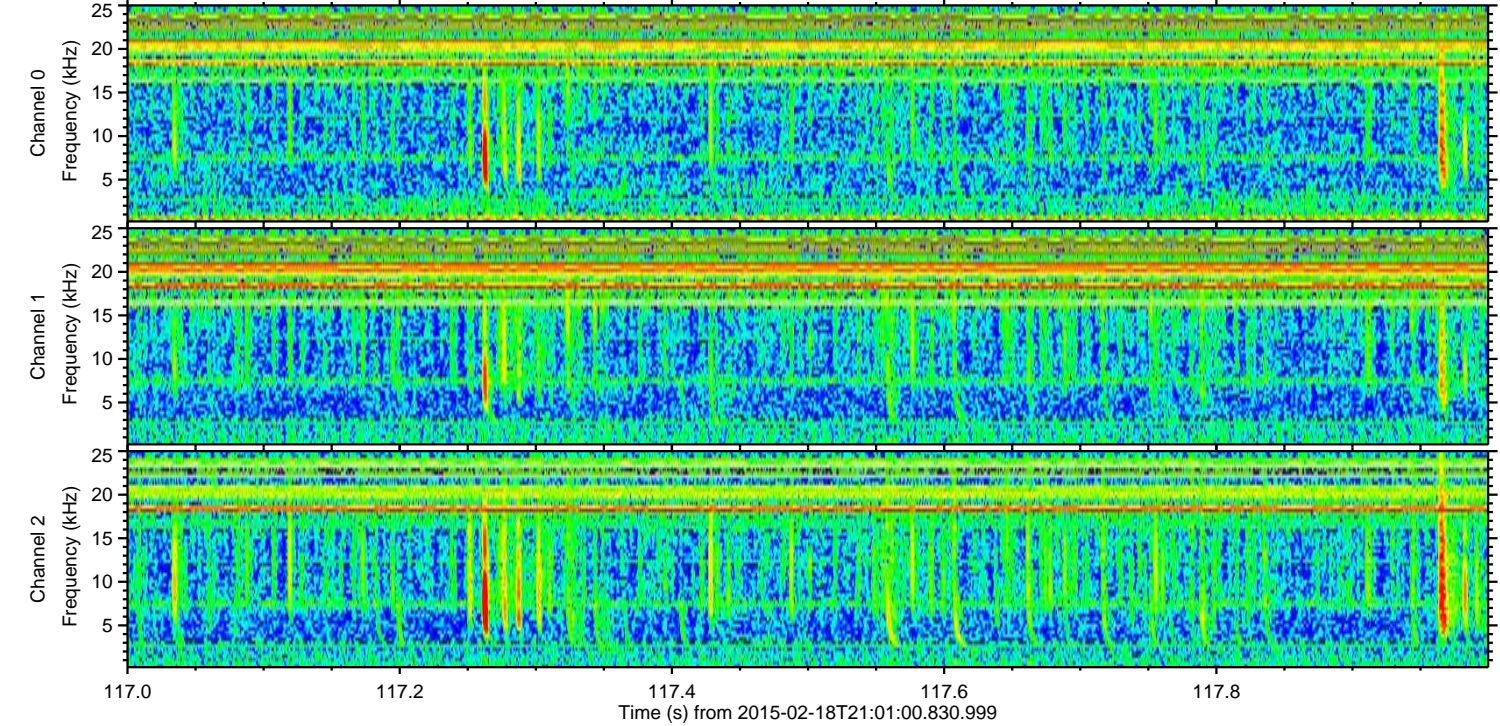
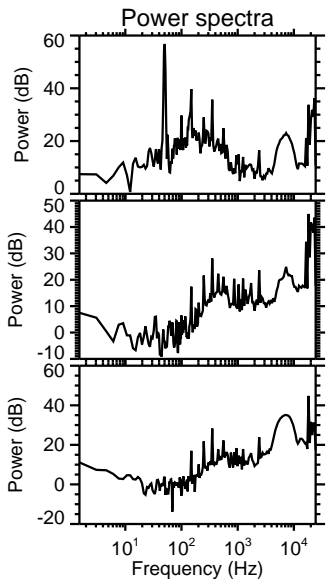
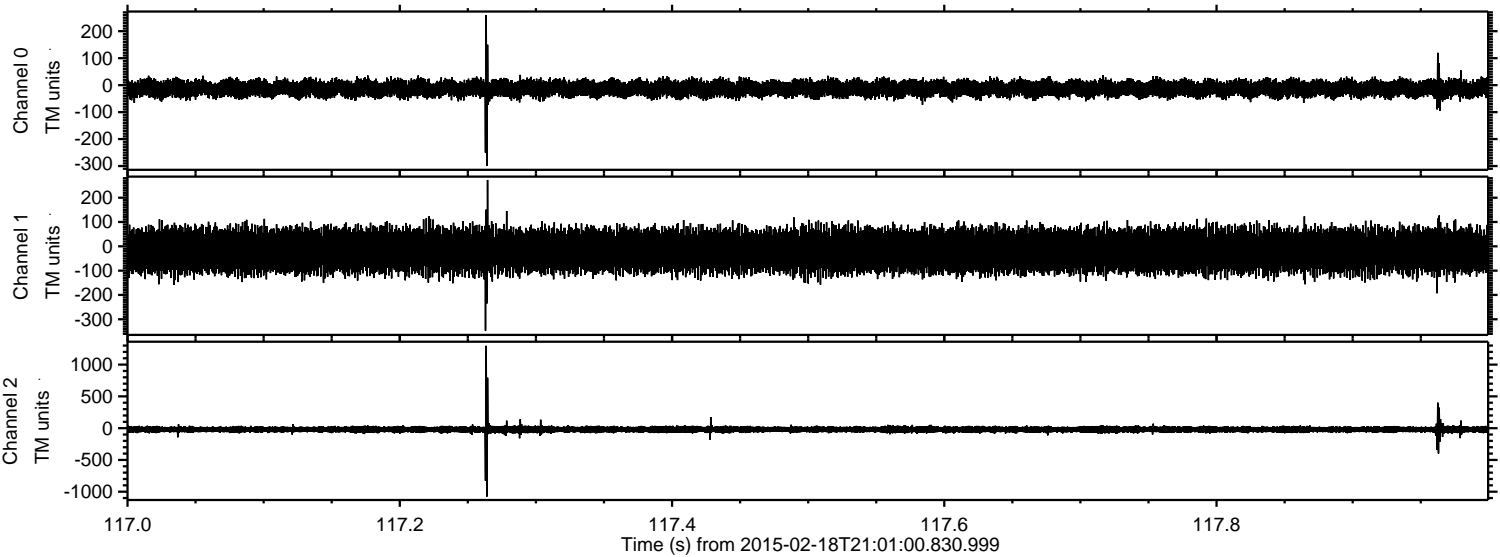
Channel 1  
mn: -374  
mx: 203  
 $\mu$ : -18.3  
 $\sigma$ : 42.4

Channel 2  
mn: -1050  
mx: 1327  
 $\mu$ : -20.9  
 $\sigma$ : 28.7



ELMAVAN 3D WAVEFORMS (Measured data sampled at 50 kHz) 49804 packets of 144 samples from 2015-02-18T21:01:00.830.999. Part 118/144

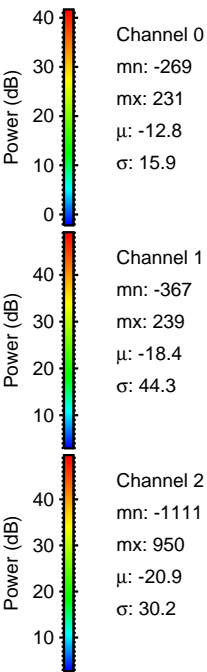
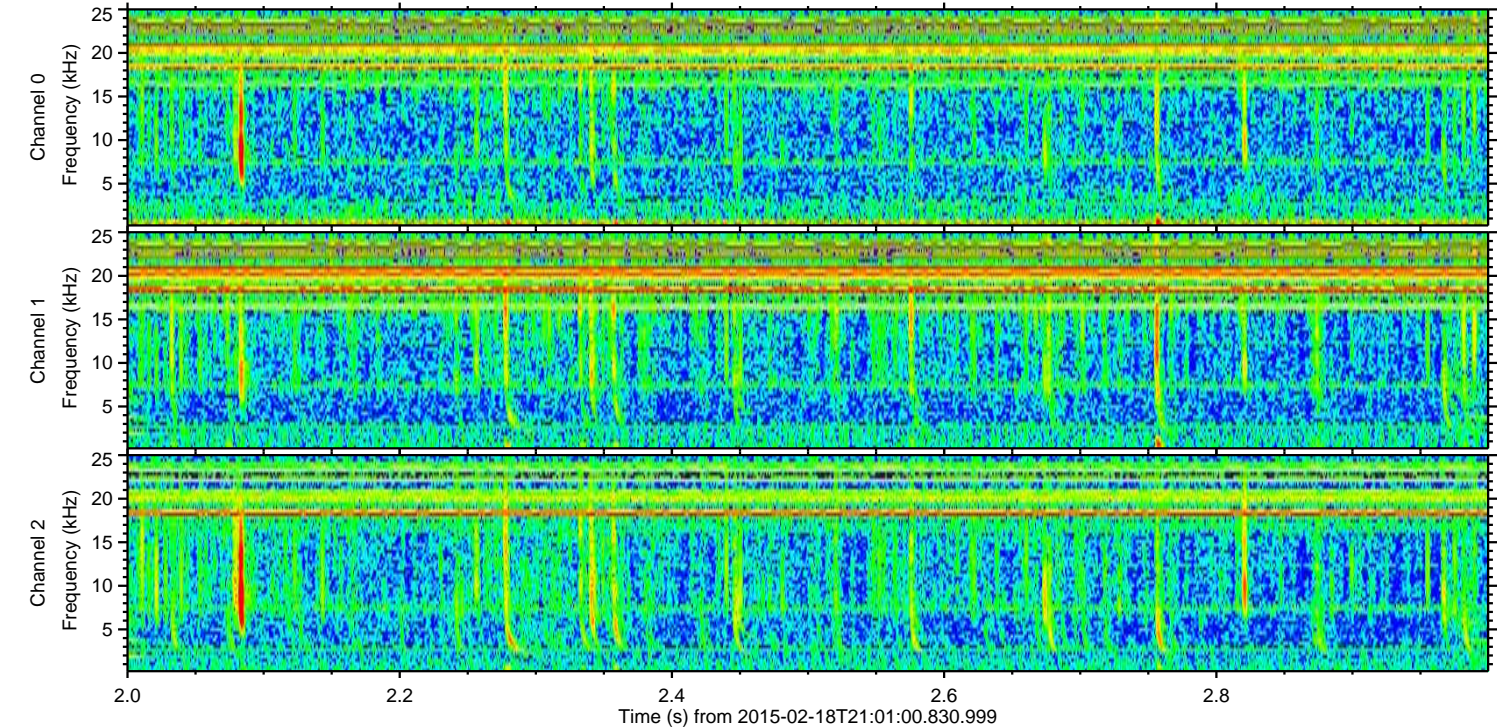
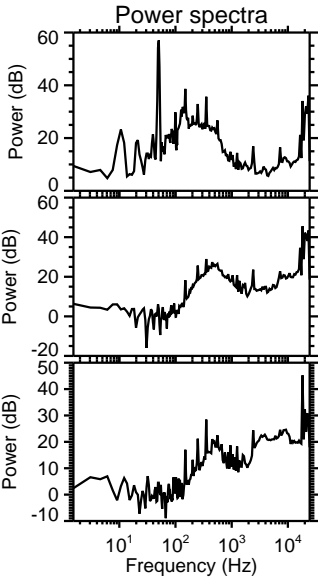
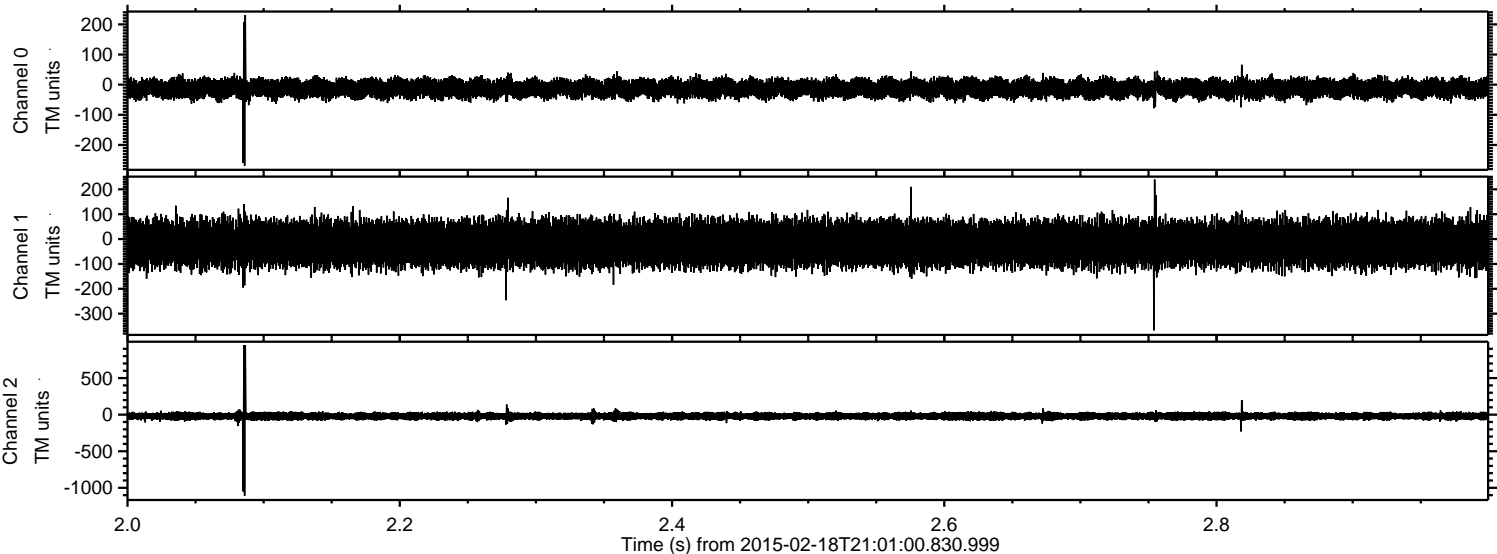
Processed Fri Feb 27 03:43:20 2015 by ELM ver.2012-10-06 from 001\_\_elm20150218\_210059\_\_dat00.bin





ELMAVAN 3D WAVEFORMS (Measured data sampled at 50 kHz) 49804 packets of 144 samples from 2015-02-18T21:01:00.830.999. Part 3/144

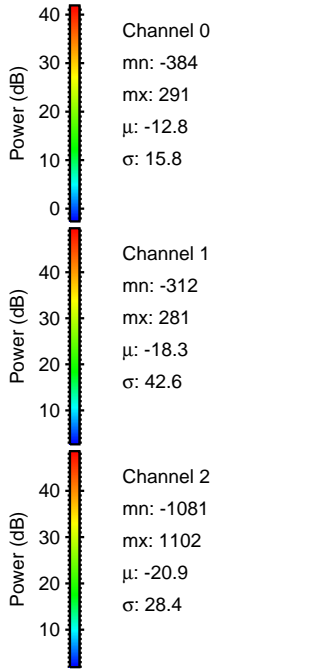
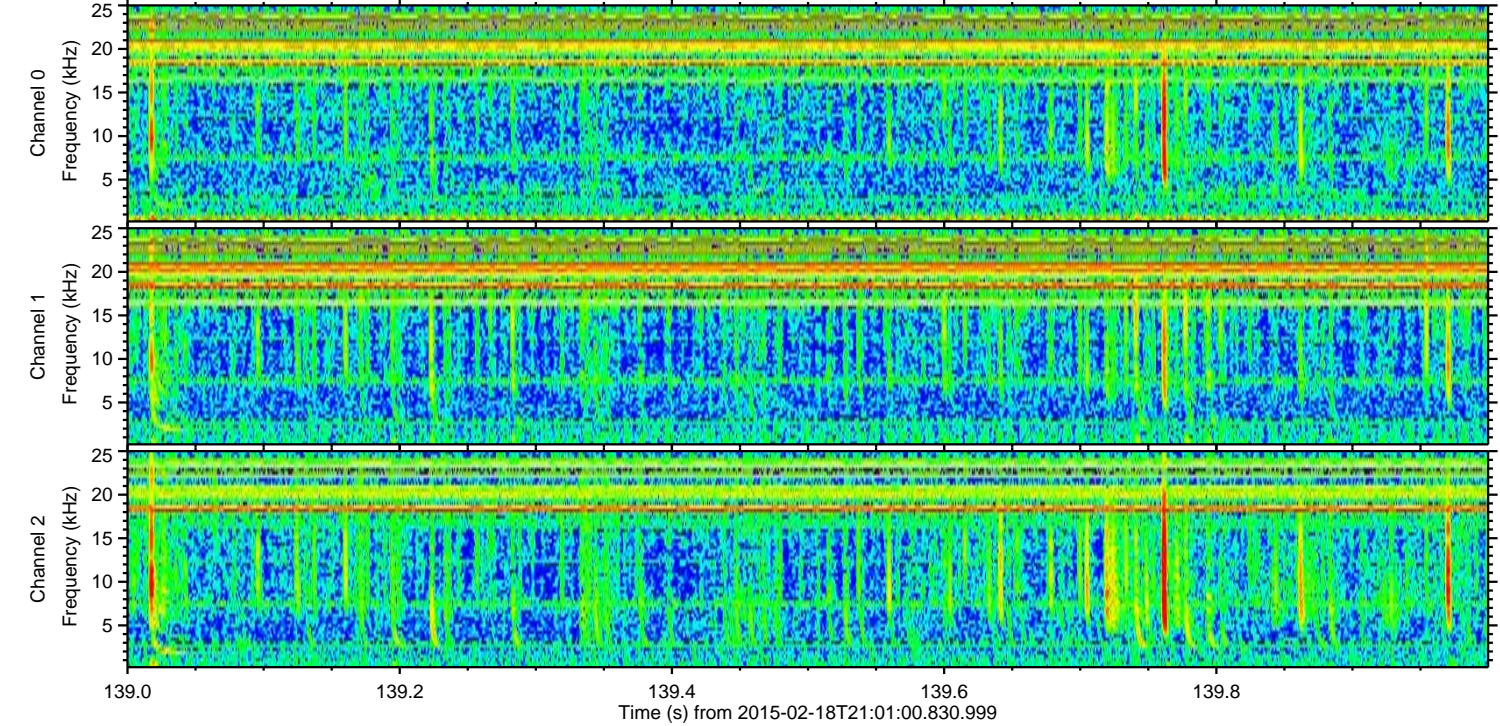
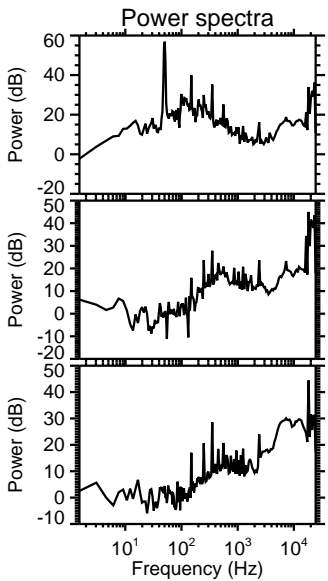
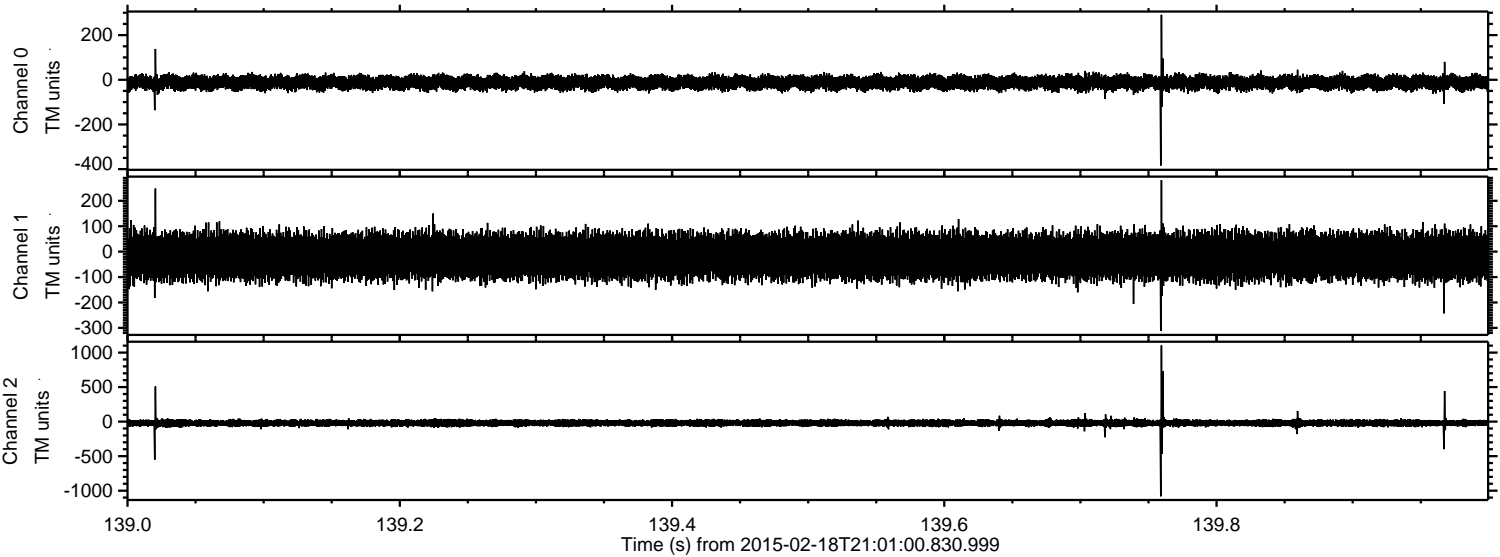
Processed Fri Feb 27 03:43:21 2015 by ELM ver.2012-10-06 from 001\_\_elm20150218\_210059\_\_dat00.bin





ELMAVAN 3D WAVEFORMS (Measured data sampled at 50 kHz) 49804 packets of 144 samples from 2015-02-18T21:01:00.830.999. Part 140/144

Processed Fri Feb 27 03:43:22 2015 by ELM ver.2012-10-06 from 001\_\_elm20150218\_210059\_\_dat00.bin





ELMAVAN 3D WAVEFORMS (Measured data sampled at 50 kHz) 49804 packets of 144 samples from 2015-02-18T21:01:00.830.999. Part 134/144

