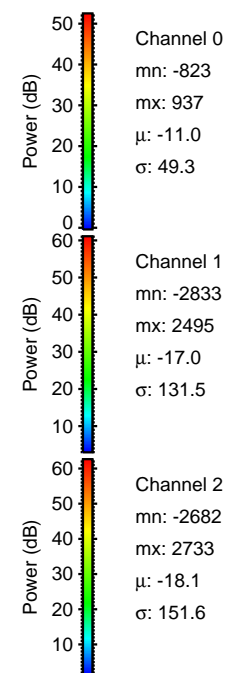
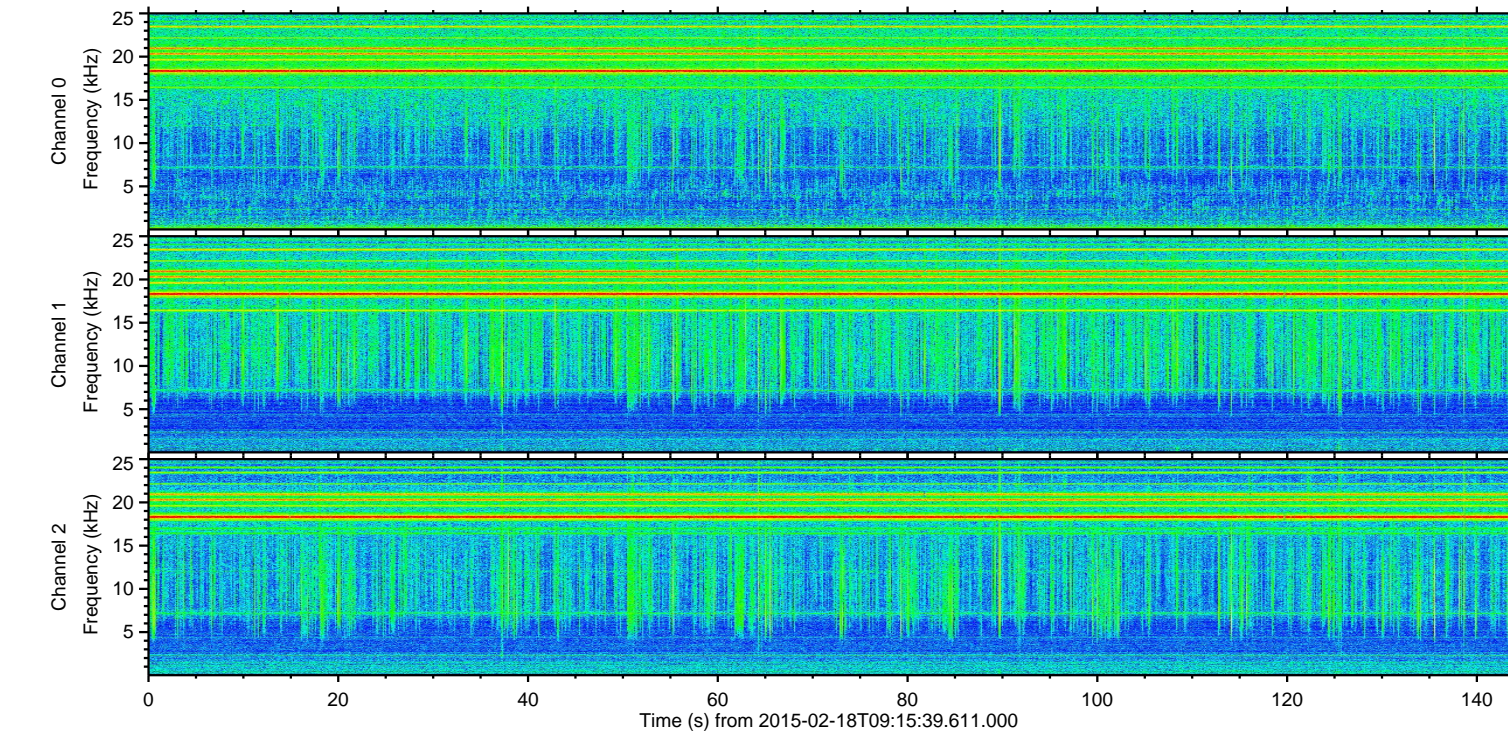
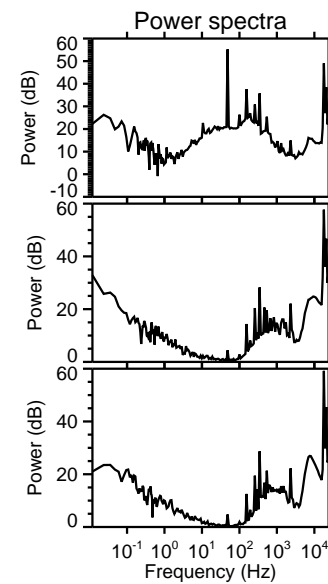
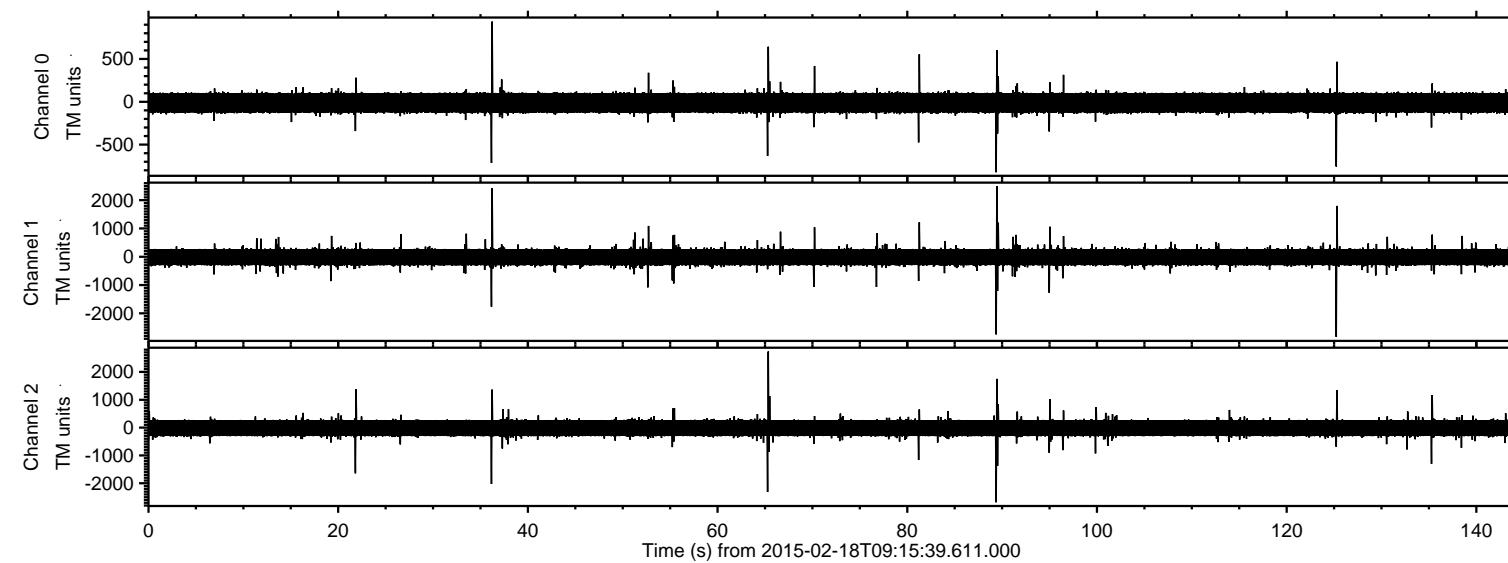


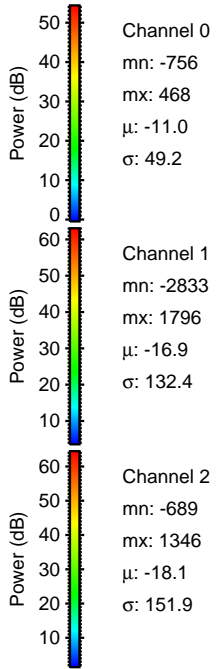
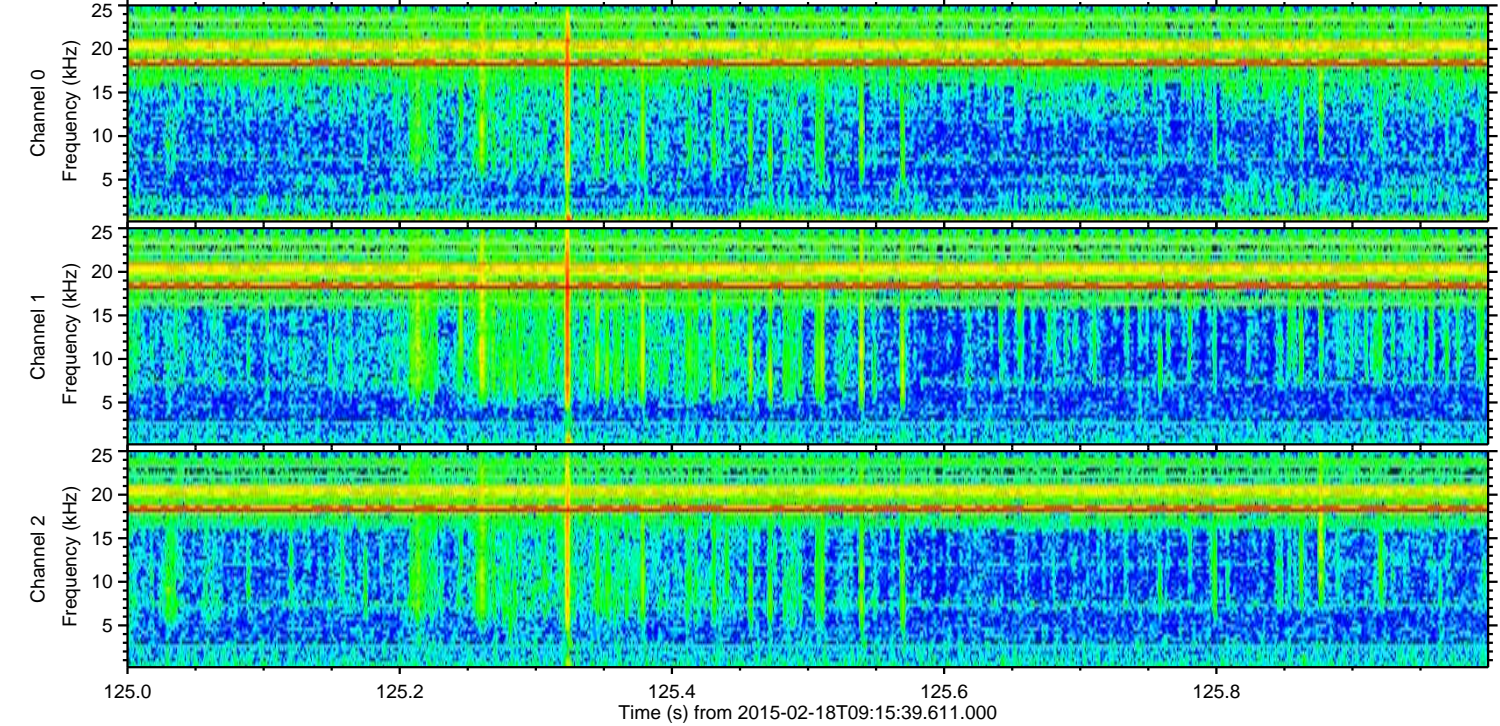
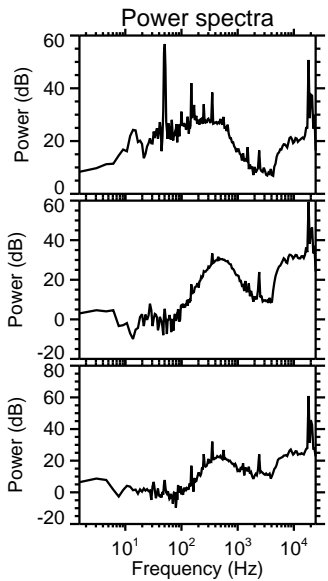
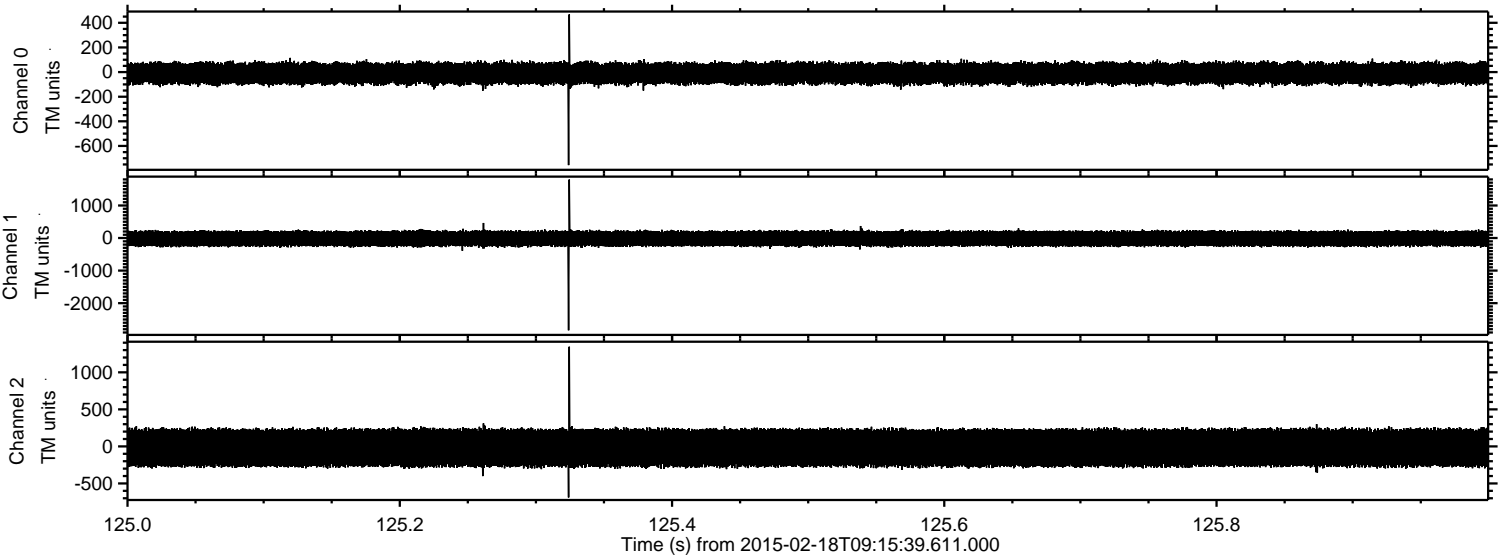
ELMAVAN 3D WAVEFORMS (Measured data sampled at 50 kHz) 49812 packets of 144 samples from 2015-02-18T09:15:39.611.000.

Processed Thu Feb 26 22:51:23 2015 by ELM ver.2012-10-06 from 001__elm20150218_091538__dat00.bin

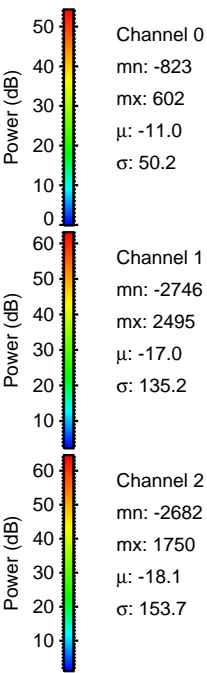
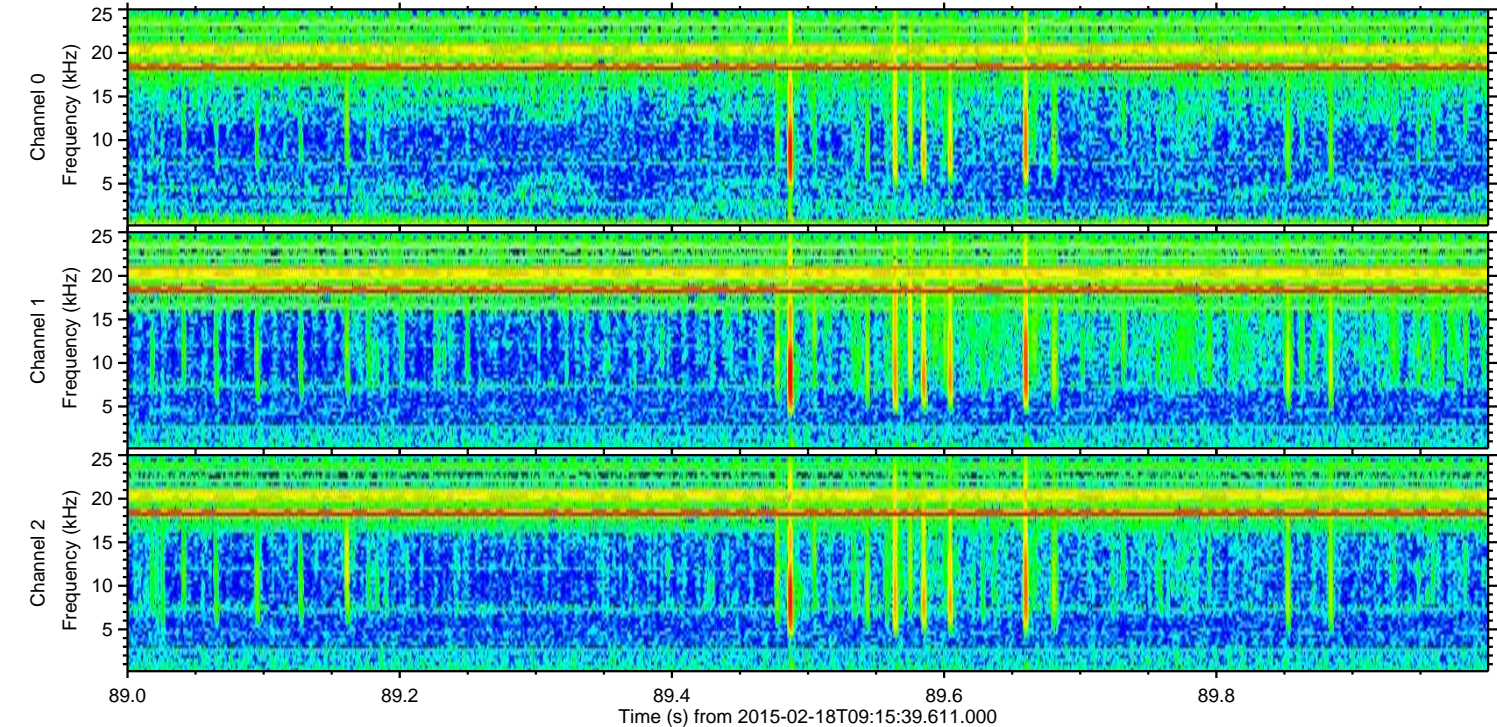
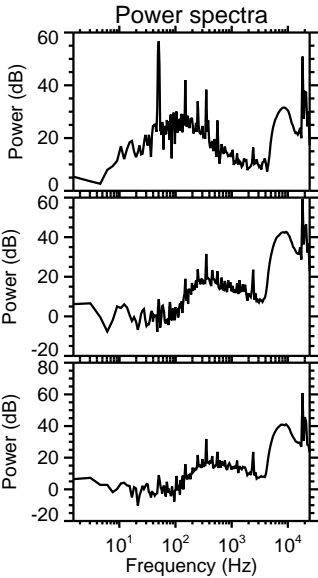
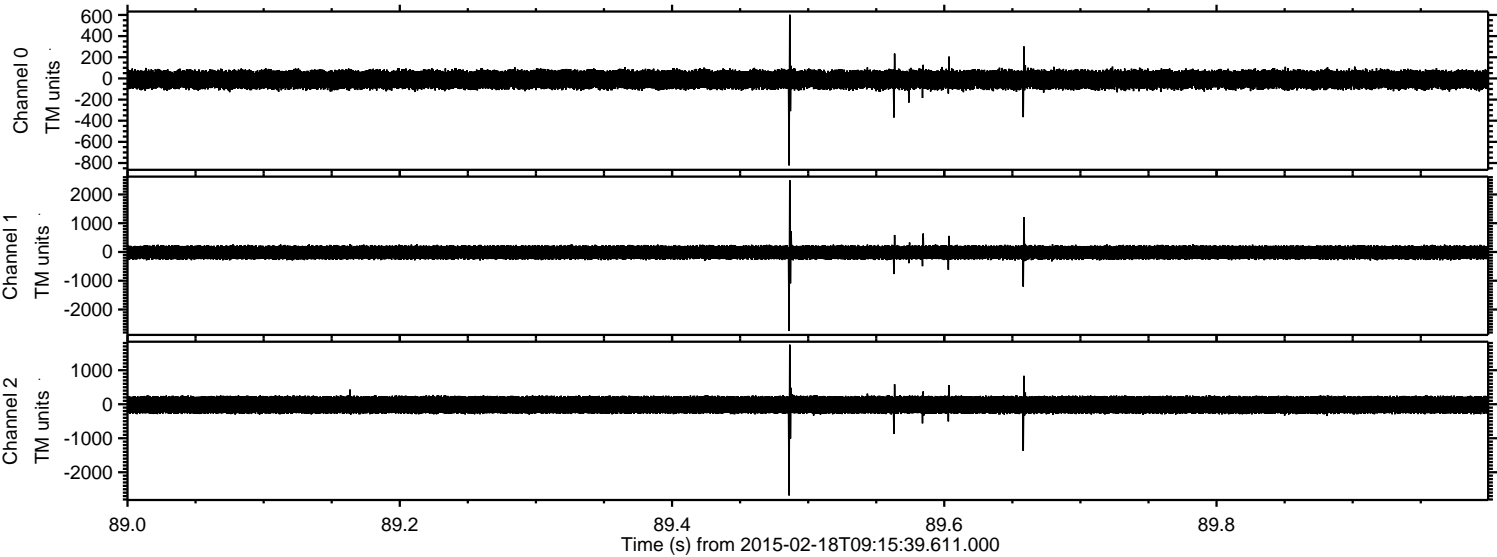


ELMAVAN 3D WAVEFORMS (Measured data sampled at 50 kHz) 49812 packets of 144 samples from 2015-02-18T09:15:39.611.000. Part 126/144

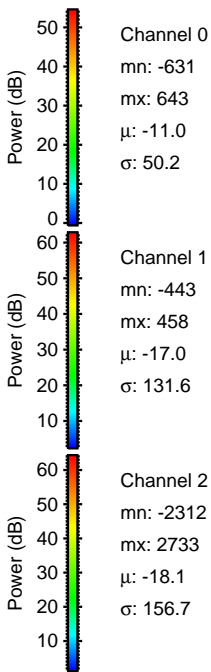
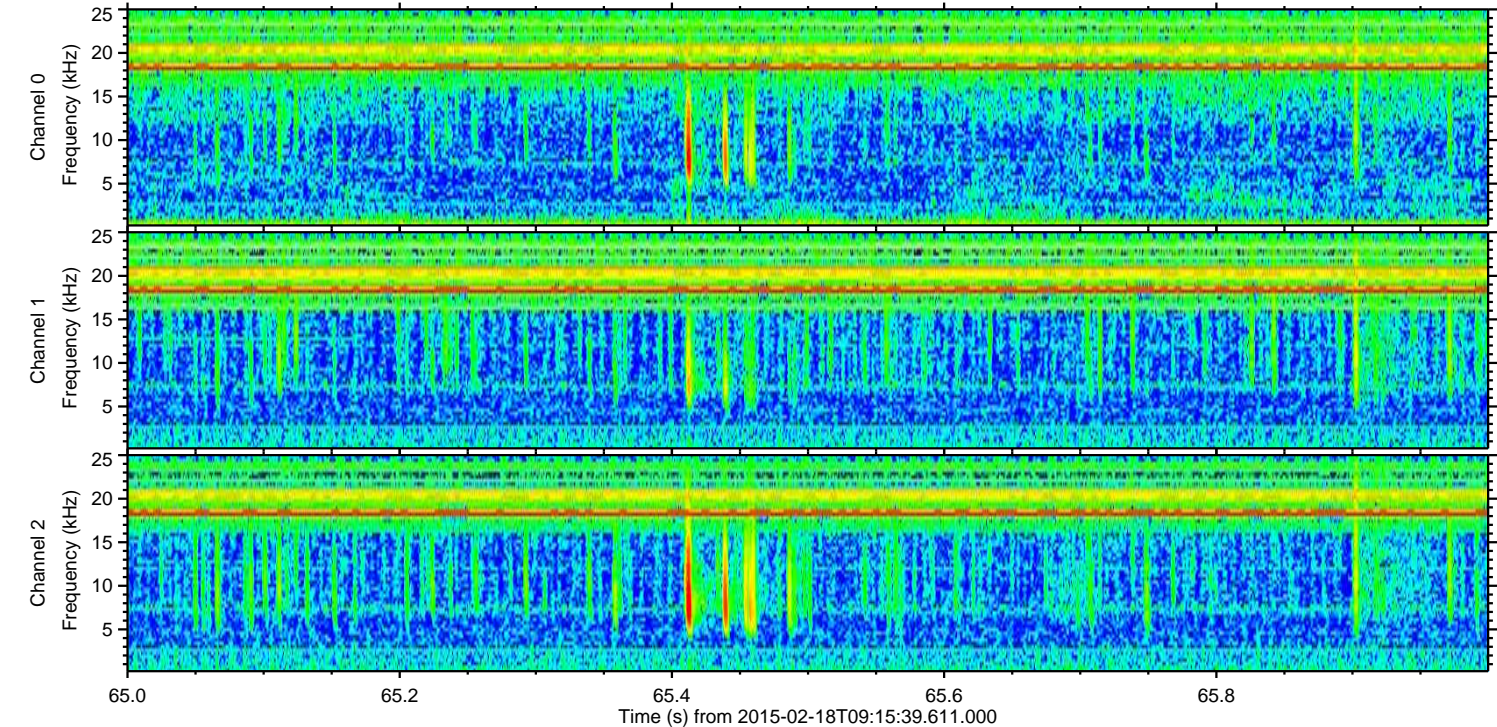
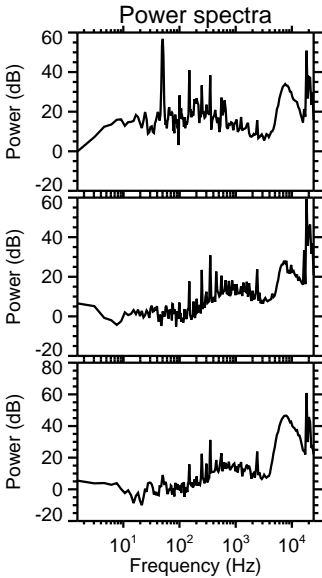
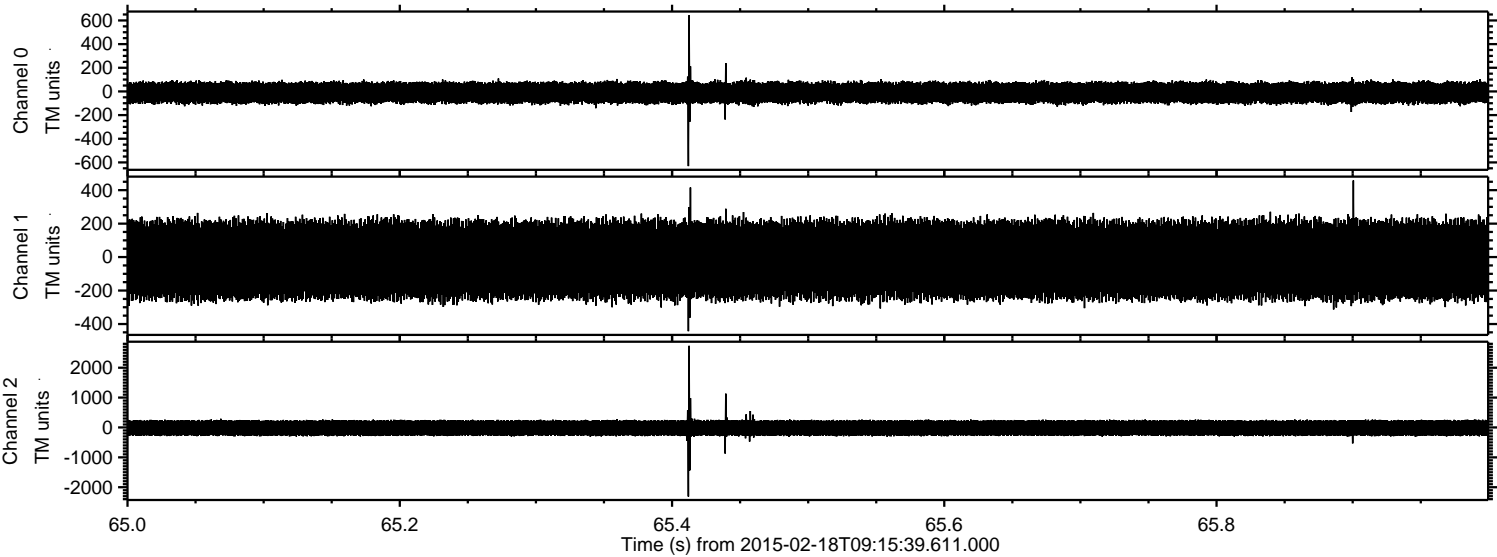
Processed Thu Feb 26 22:51:35 2015 by ELM ver.2012-10-06 from 001__elm20150218_091538__dat00.bin



Processed Thu Feb 26 22:51:36 2015 by ELM ver.2012-10-06 from 001__elm20150218_091538__dat00.bin

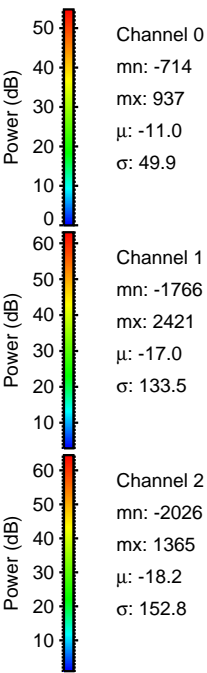
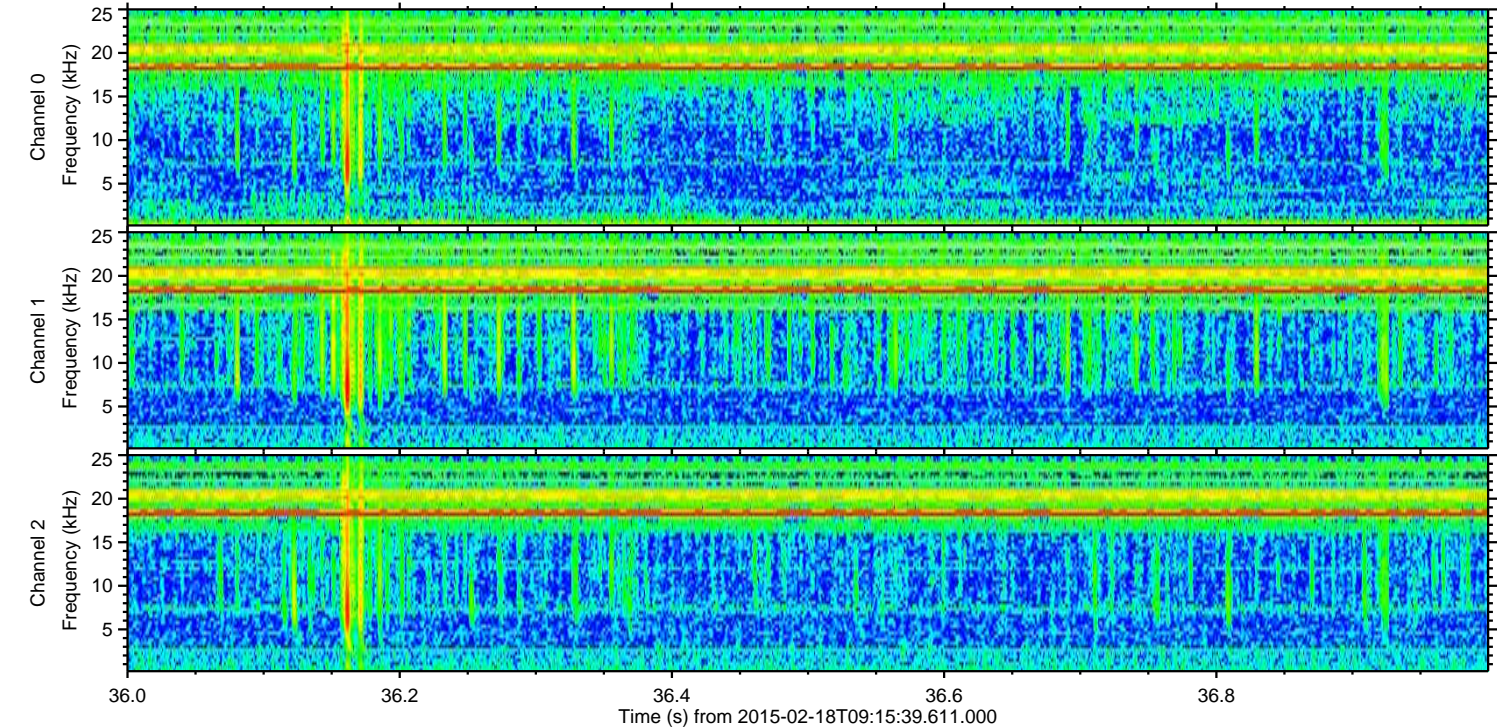
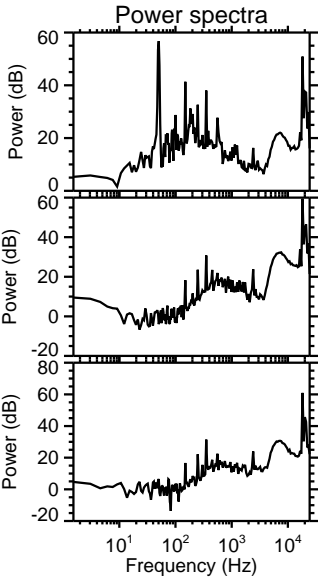
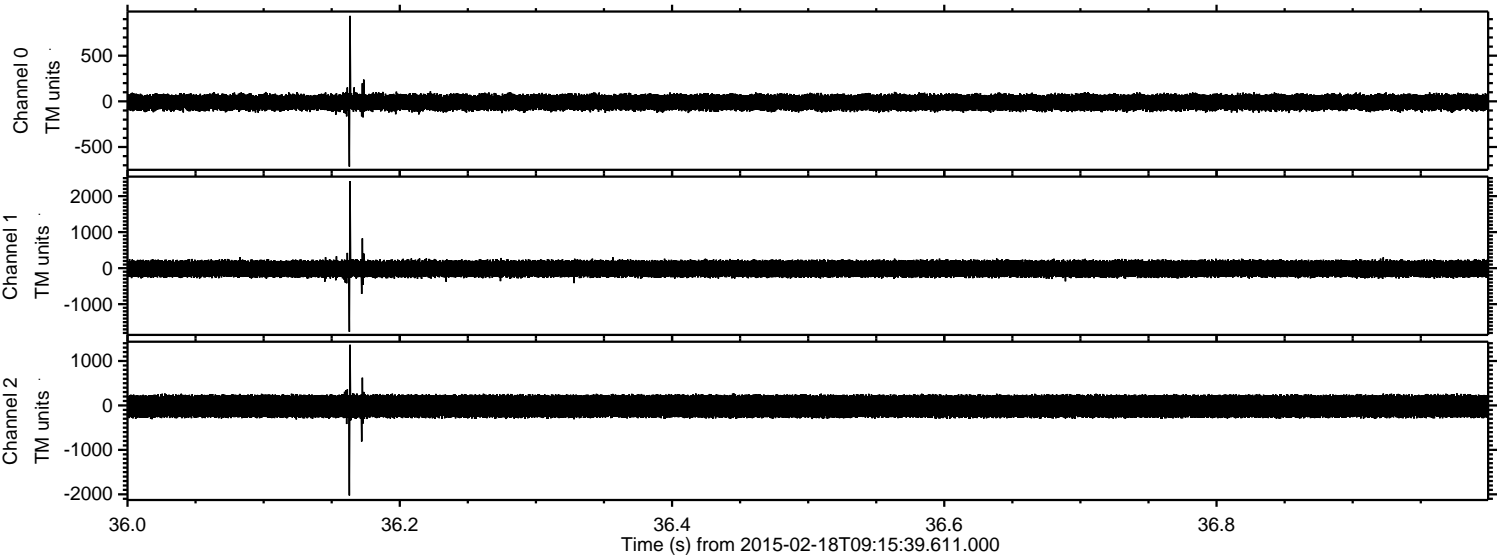


Processed Thu Feb 26 22:51:37 2015 by ELM ver.2012-10-06 from 001__elm20150218_091538__dat00.bin

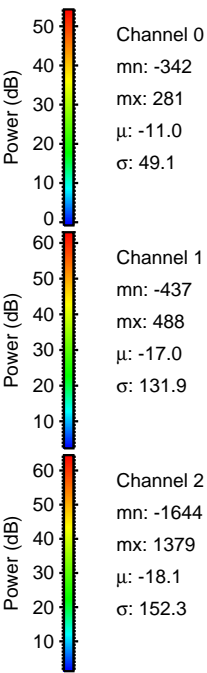
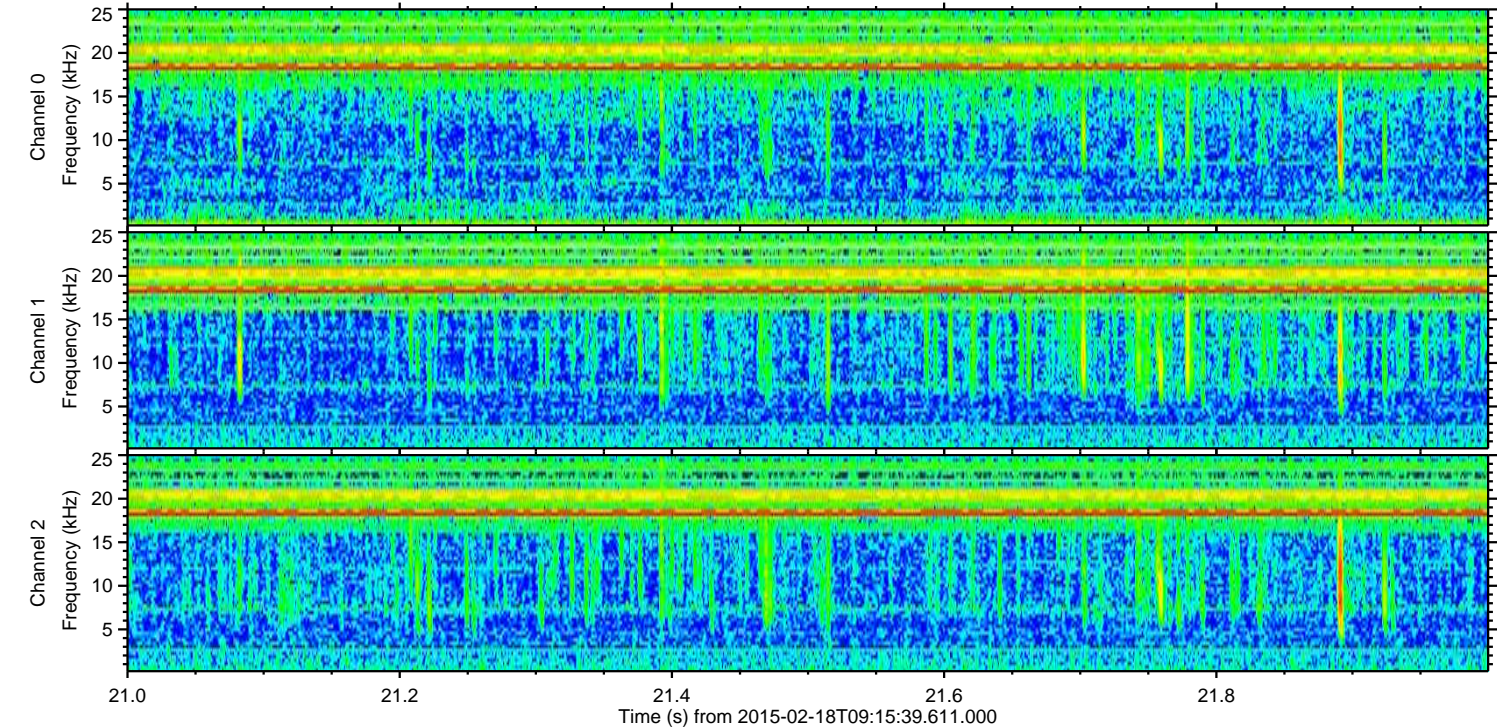
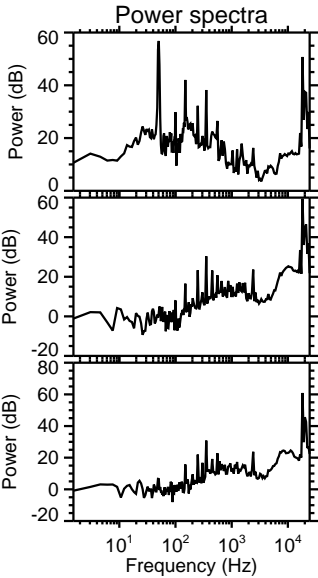
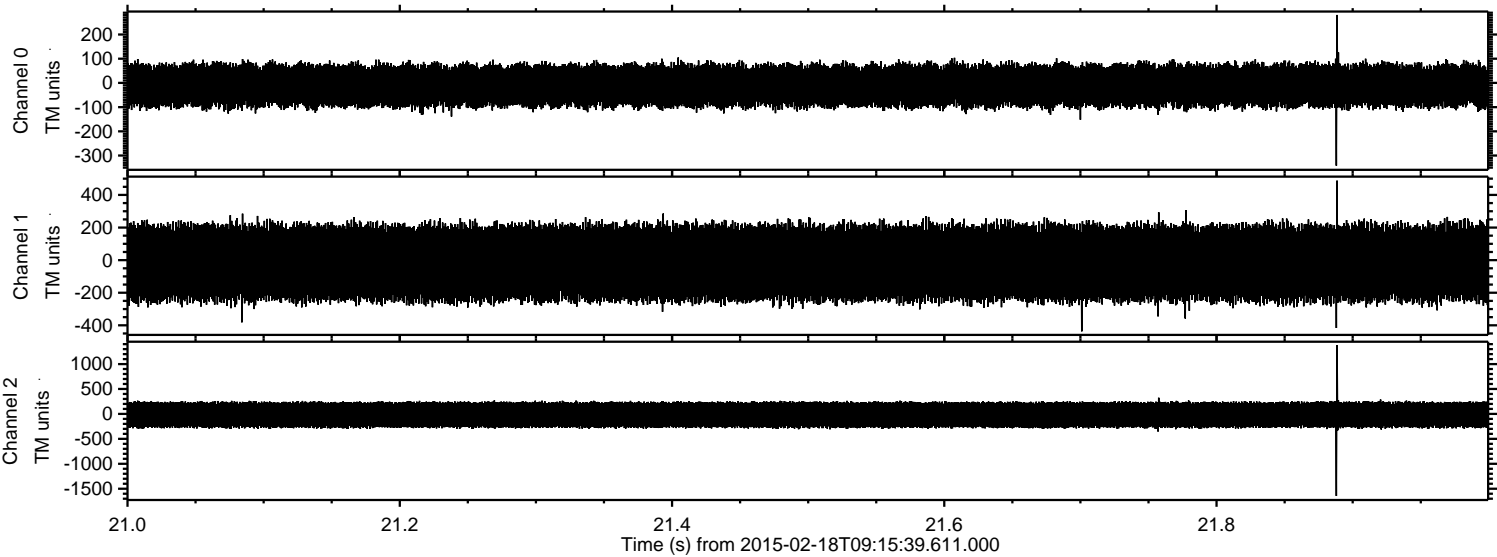


ELMAVAN 3D WAVEFORMS (Measured data sampled at 50 kHz) 49812 packets of 144 samples from 2015-02-18T09:15:39.611.000. Part 37/144

Processed Thu Feb 26 22:51:38 2015 by ELM ver.2012-10-06 from 001__elm20150218_091538__dat00.bin

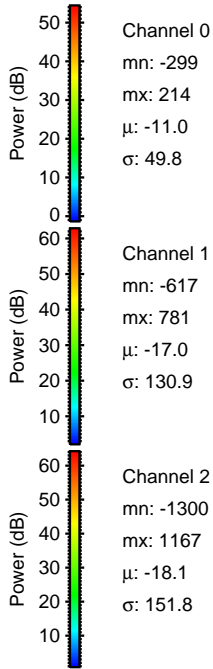
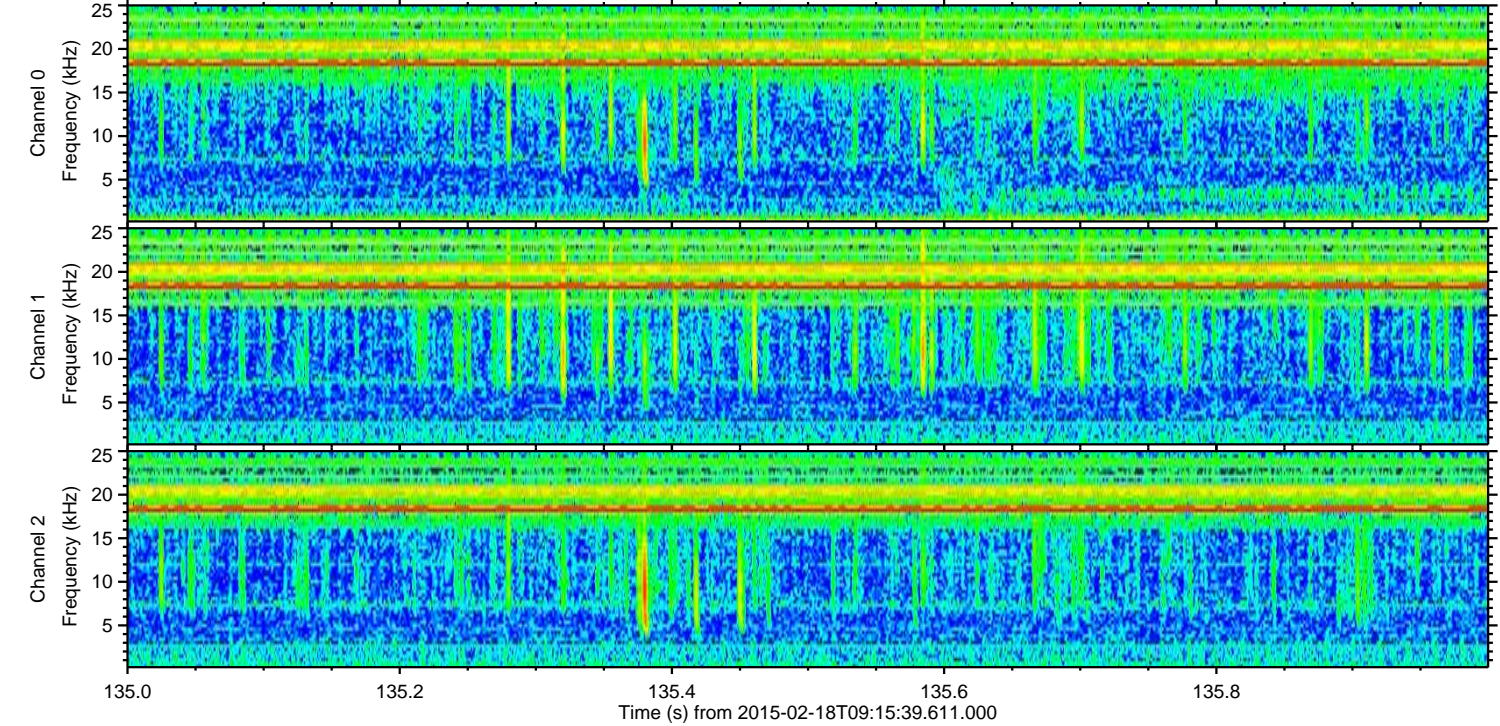
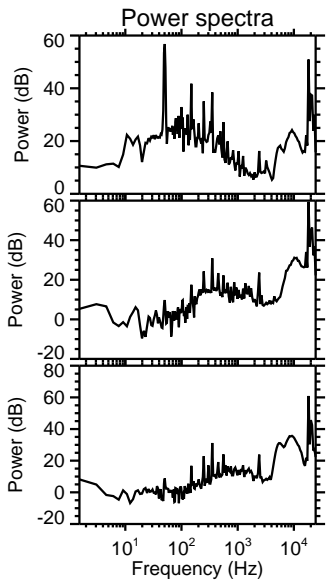
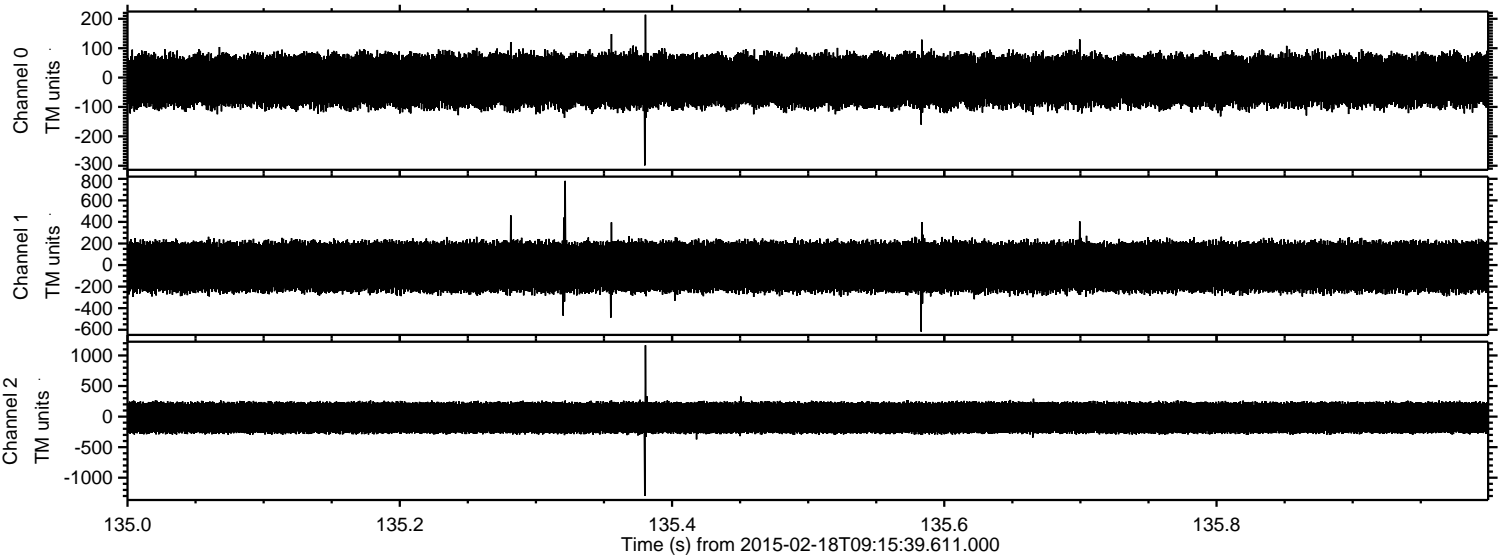


Processed Thu Feb 26 22:51:39 2015 by ELM ver.2012-10-06 from 001__elm20150218_091538__dat00.bin

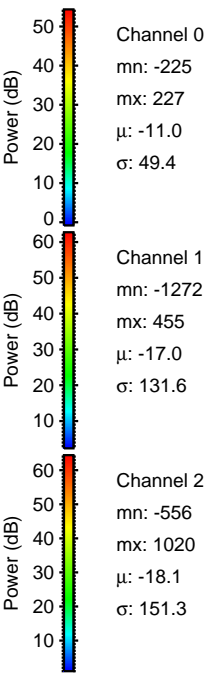
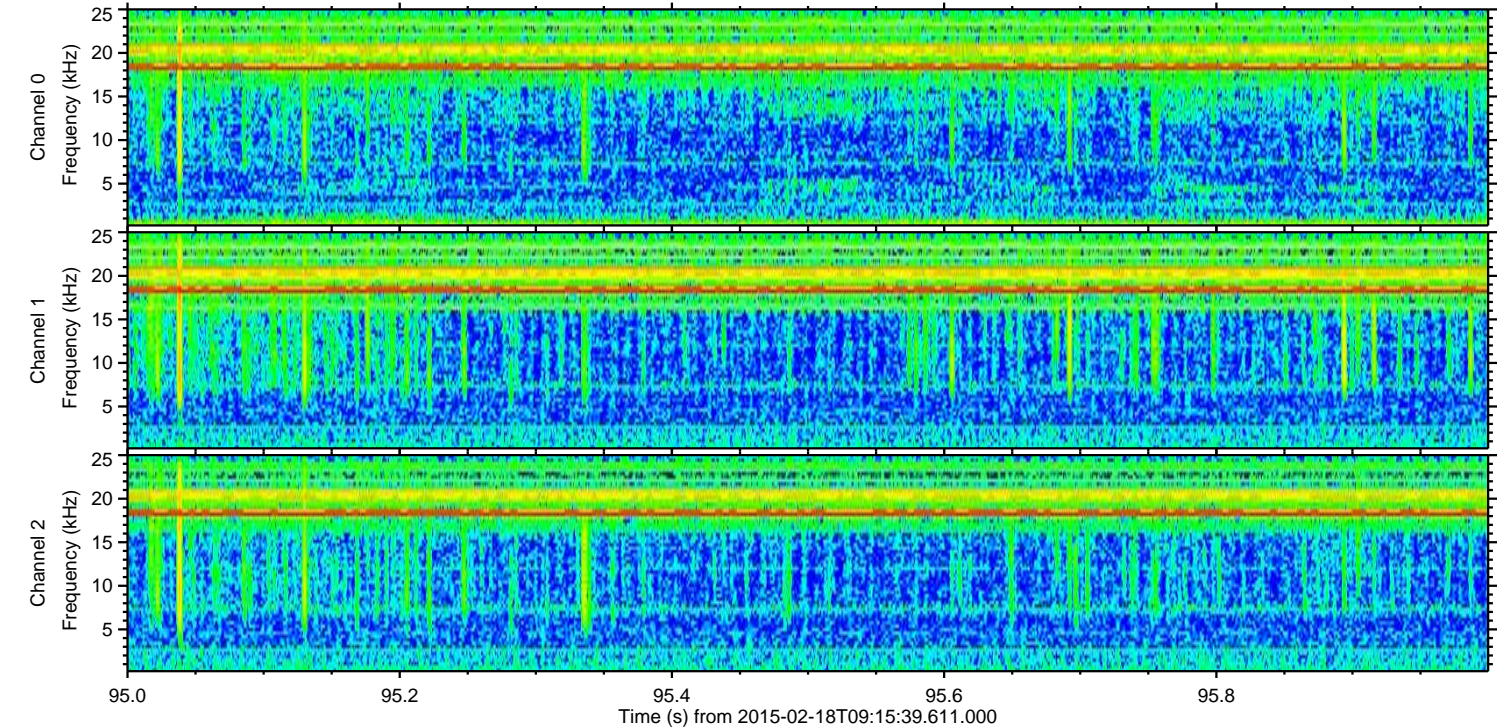
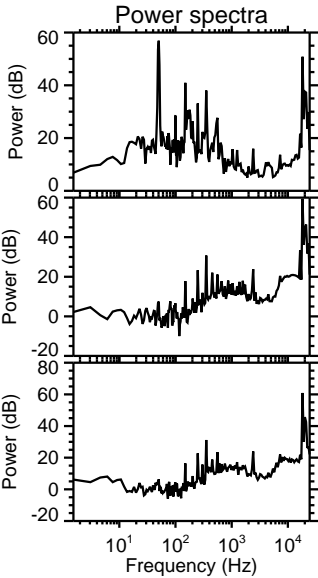
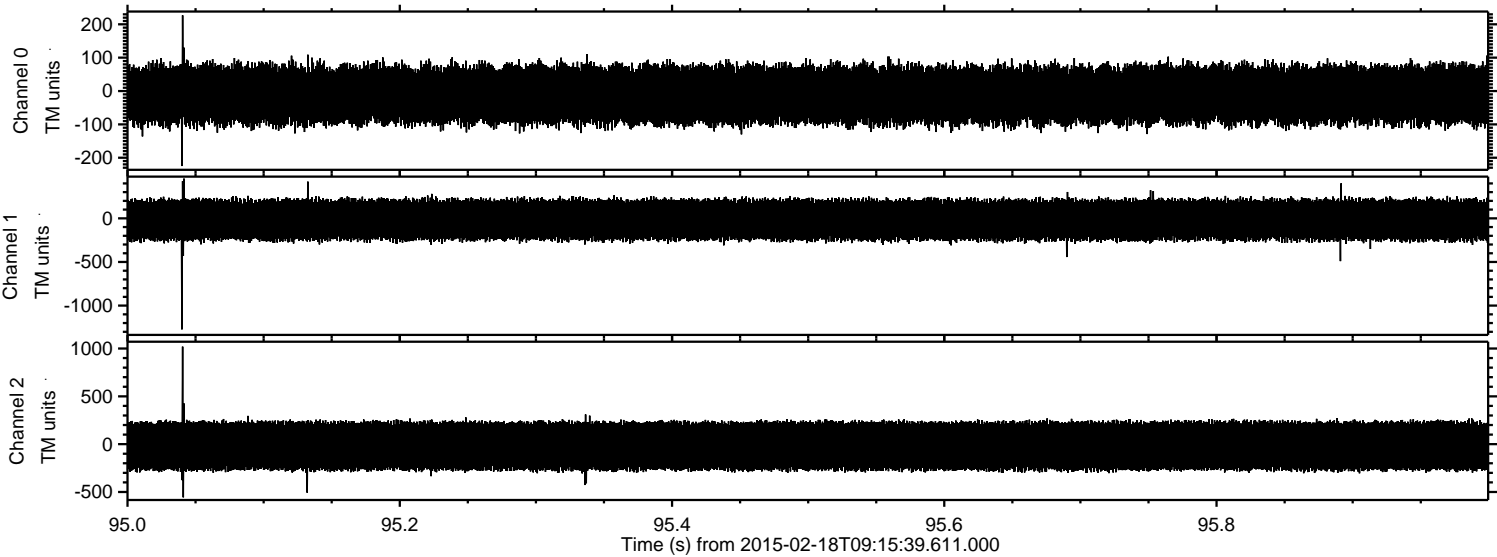


ELMAVAN 3D WAVEFORMS (Measured data sampled at 50 kHz) 49812 packets of 144 samples from 2015-02-18T09:15:39.611.000. Part 136/144

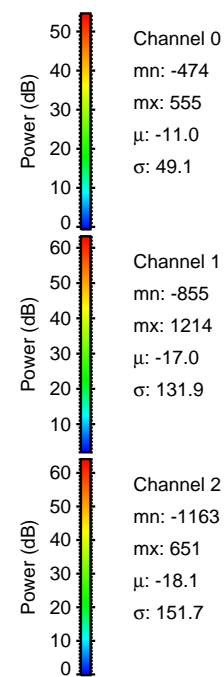
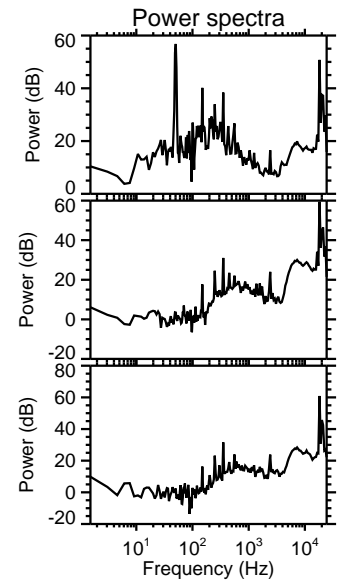
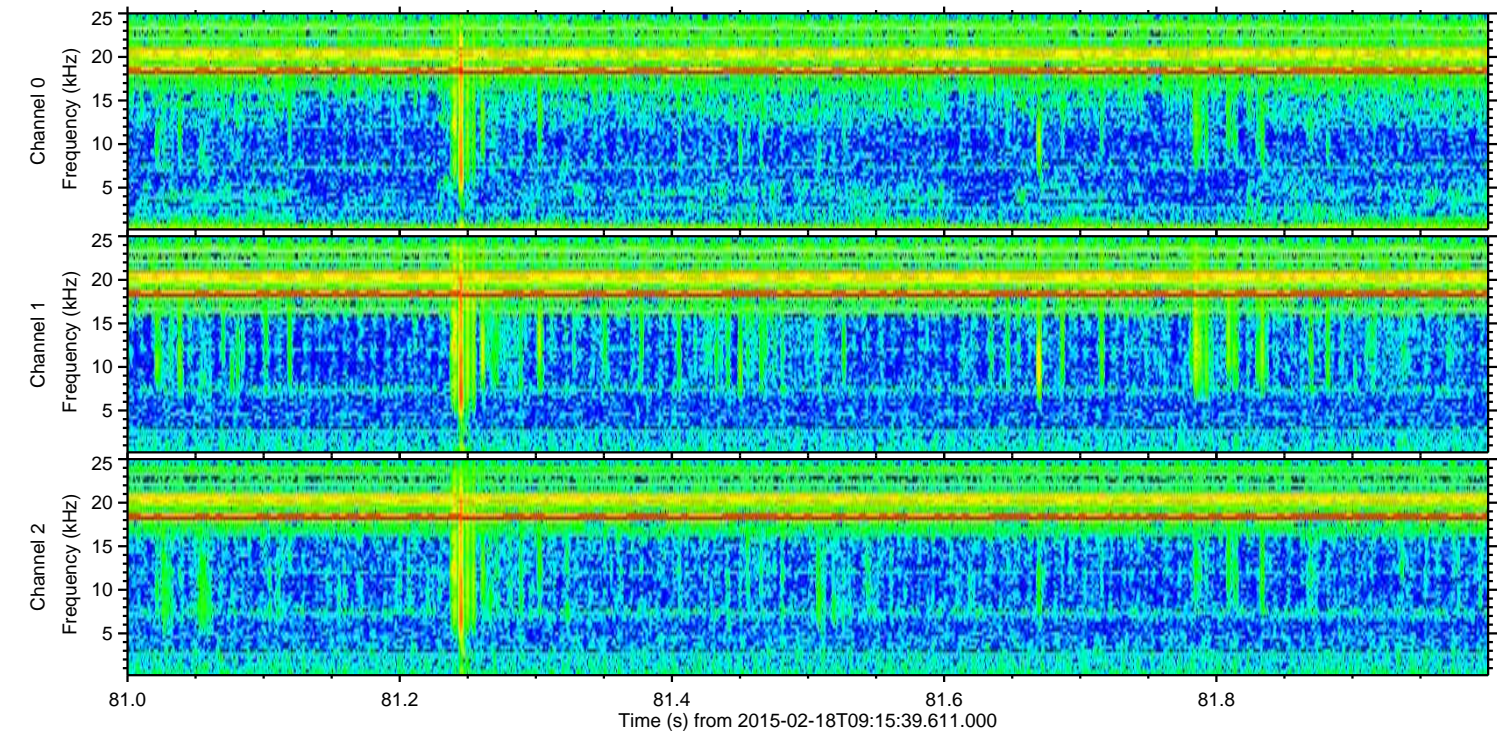
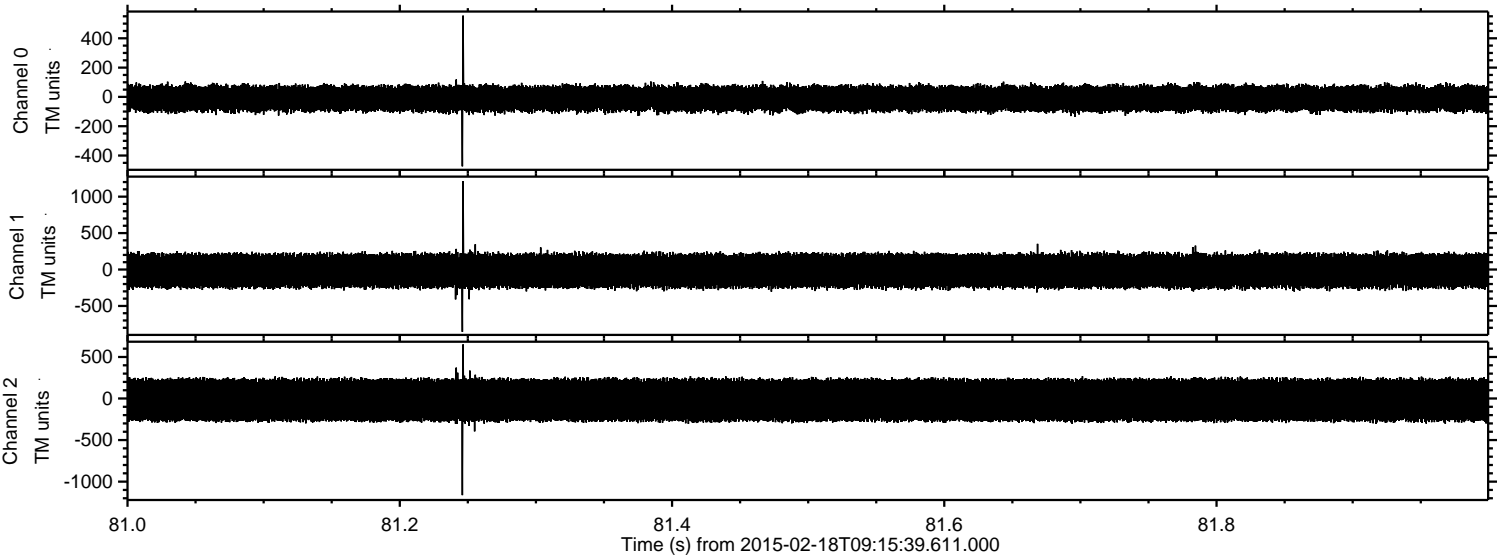
Processed Thu Feb 26 22:51:40 2015 by ELM ver.2012-10-06 from 001__elm20150218_091538__dat00.bin



Processed Thu Feb 26 22:51:41 2015 by ELM ver.2012-10-06 from 001__elm20150218_091538__dat00.bin



Processed Thu Feb 26 22:51:42 2015 by ELM ver.2012-10-06 from 001__elm20150218_091538__dat00.bin

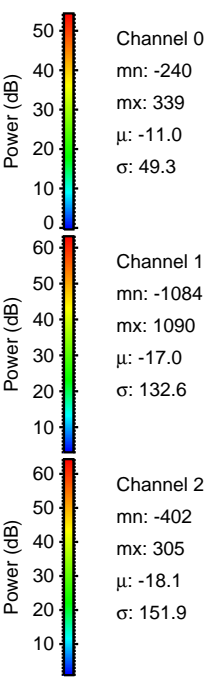
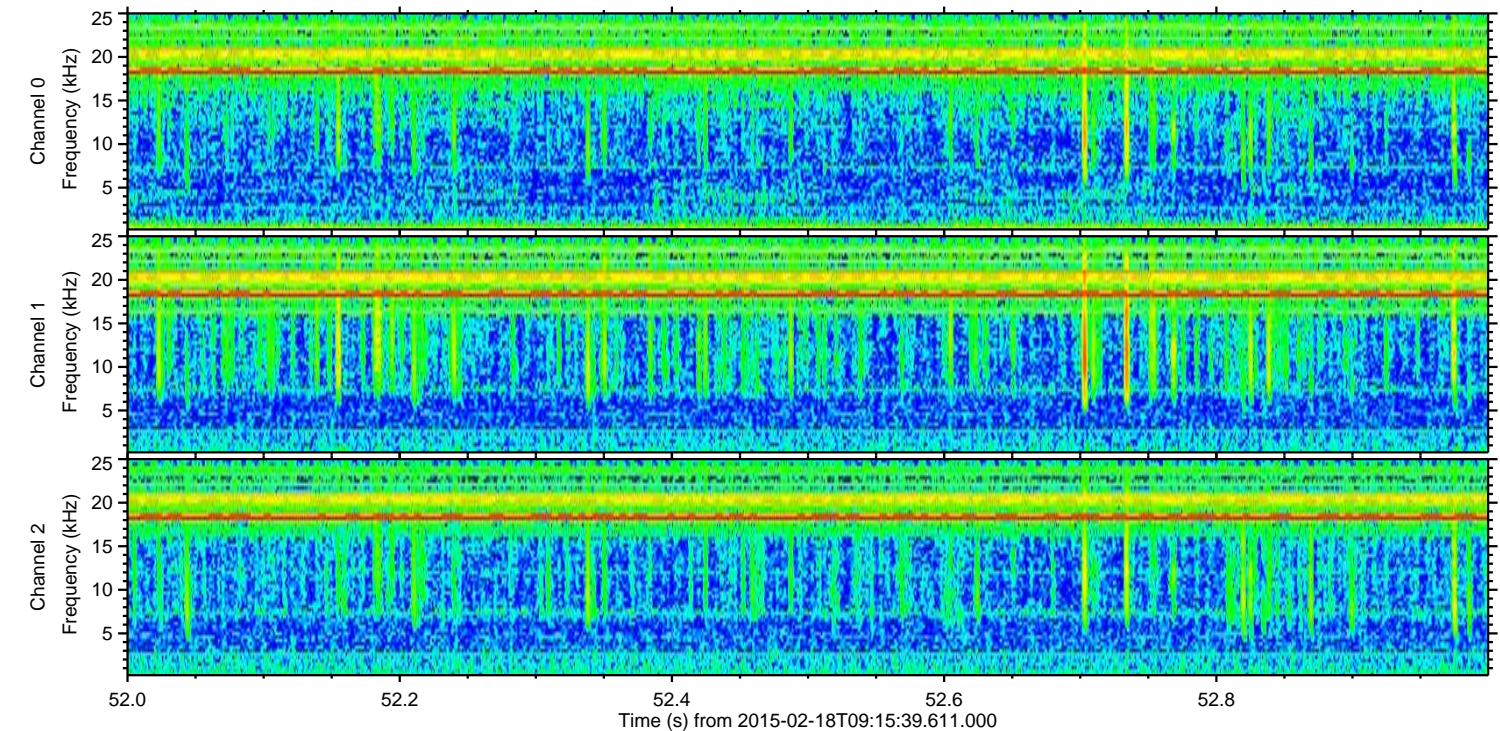
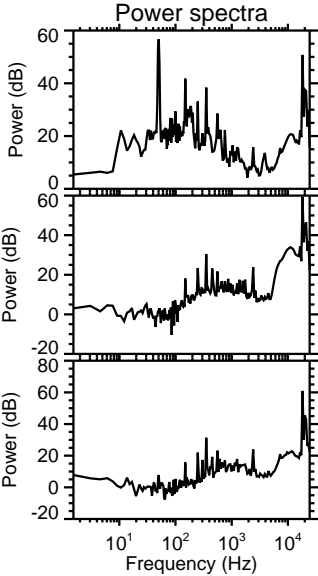
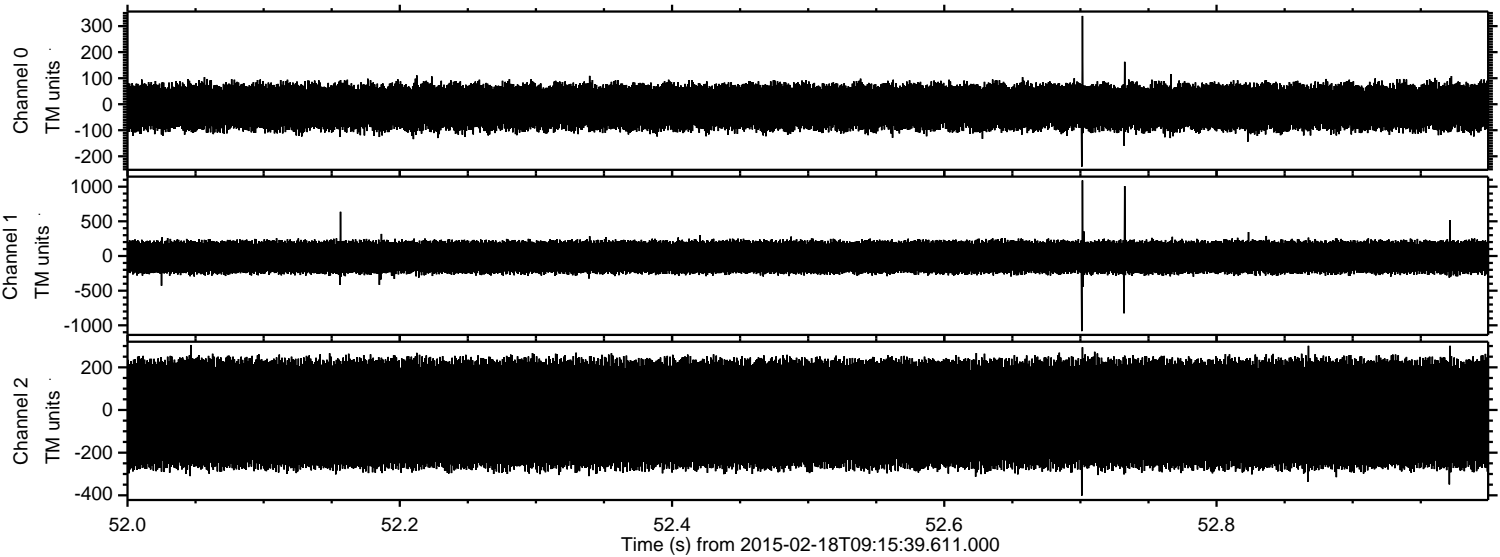


Channel 0
mn: -474
mx: 555
 μ : -11.0
 σ : 49.1

Channel 1
mn: -855
mx: 1214
 μ : -17.0
 σ : 131.9

Channel 2
mn: -1163
mx: 651
 μ : -18.1
 σ : 151.7

Processed Thu Feb 26 22:51:43 2015 by ELM ver.2012-10-06 from 001__elm20150218_091538__dat00.bin



Processed Thu Feb 26 22:51:43 2015 by ELM ver.2012-10-06 from 001__elm20150218_091538__dat00.bin

