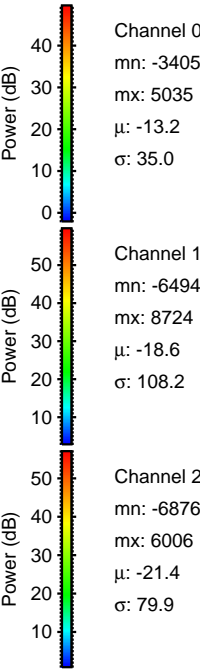
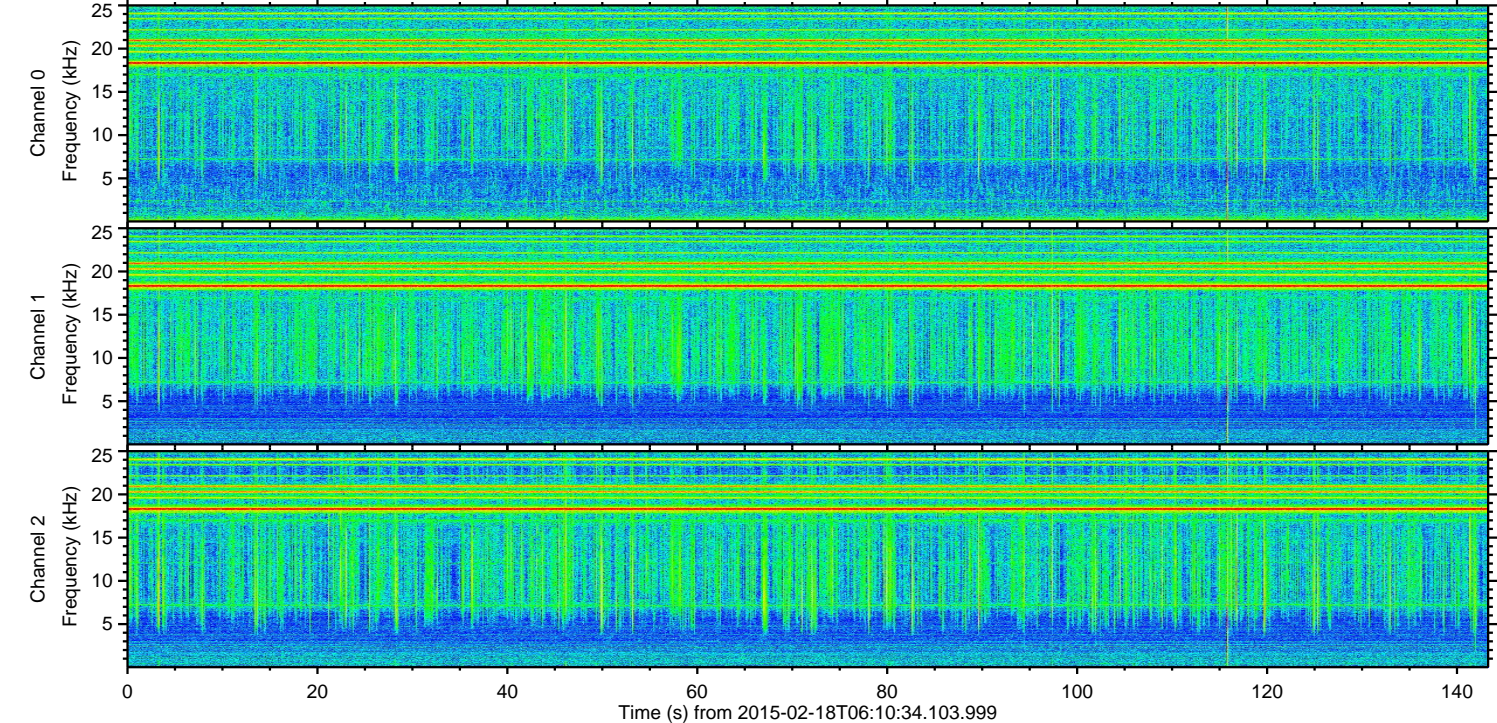
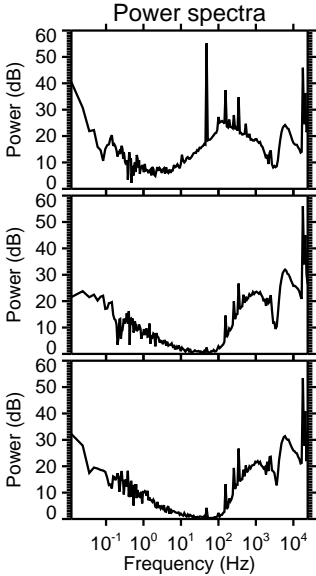
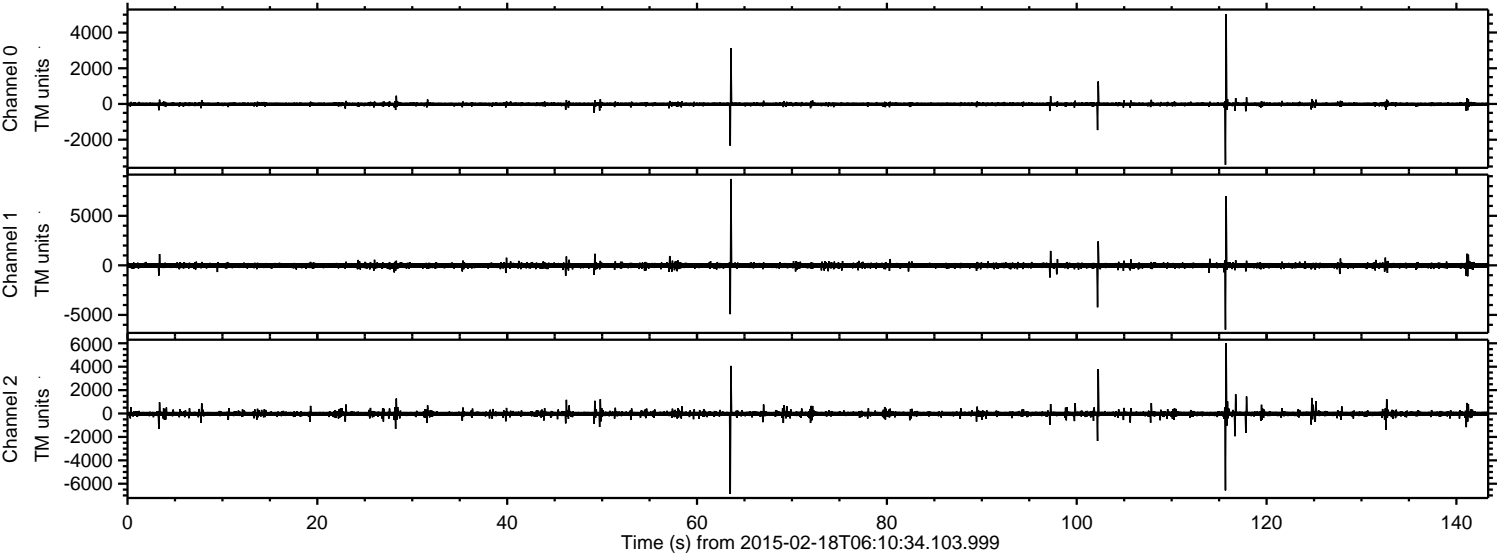


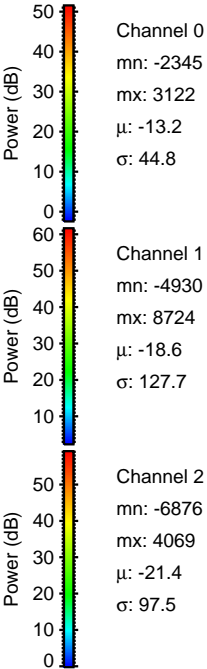
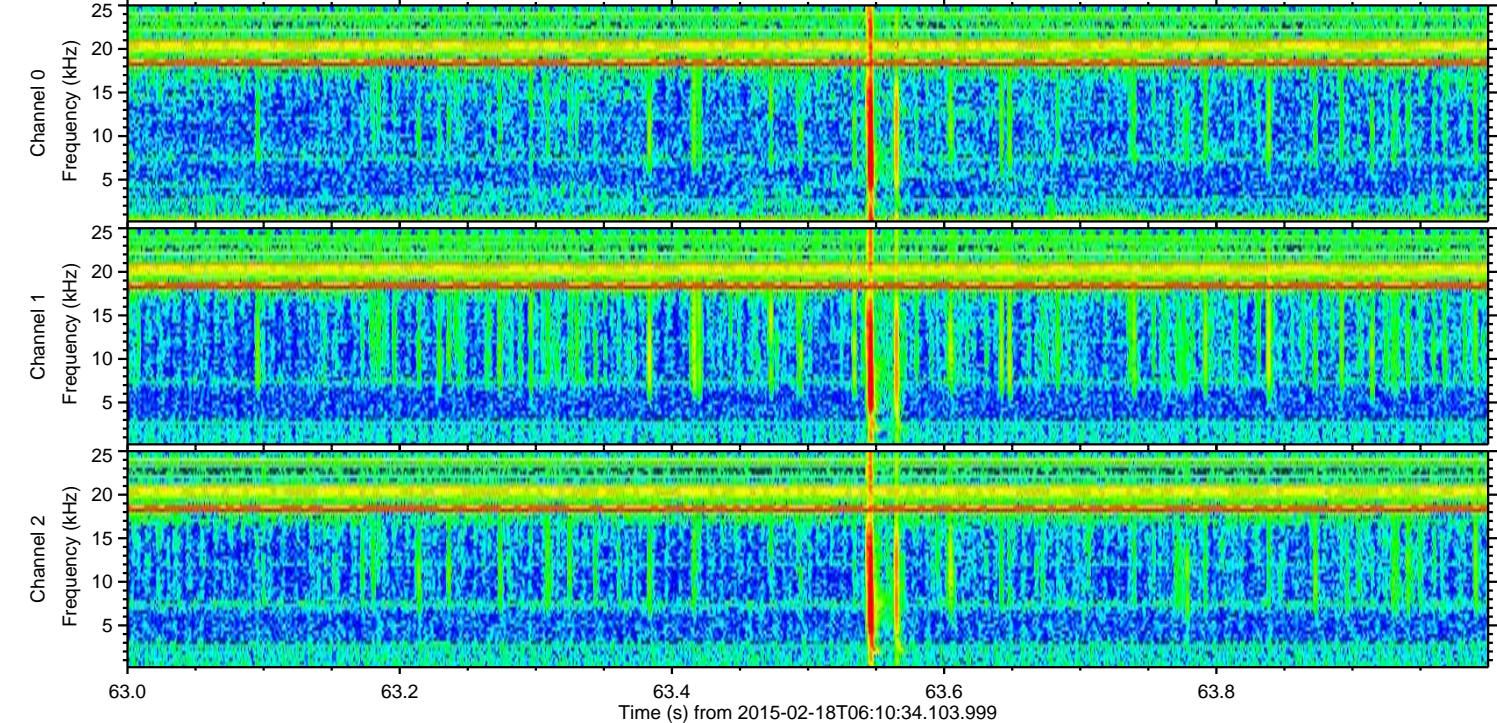
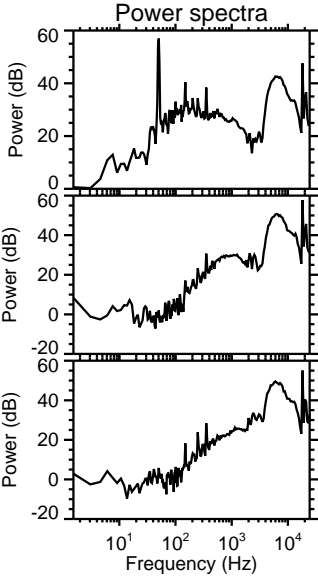
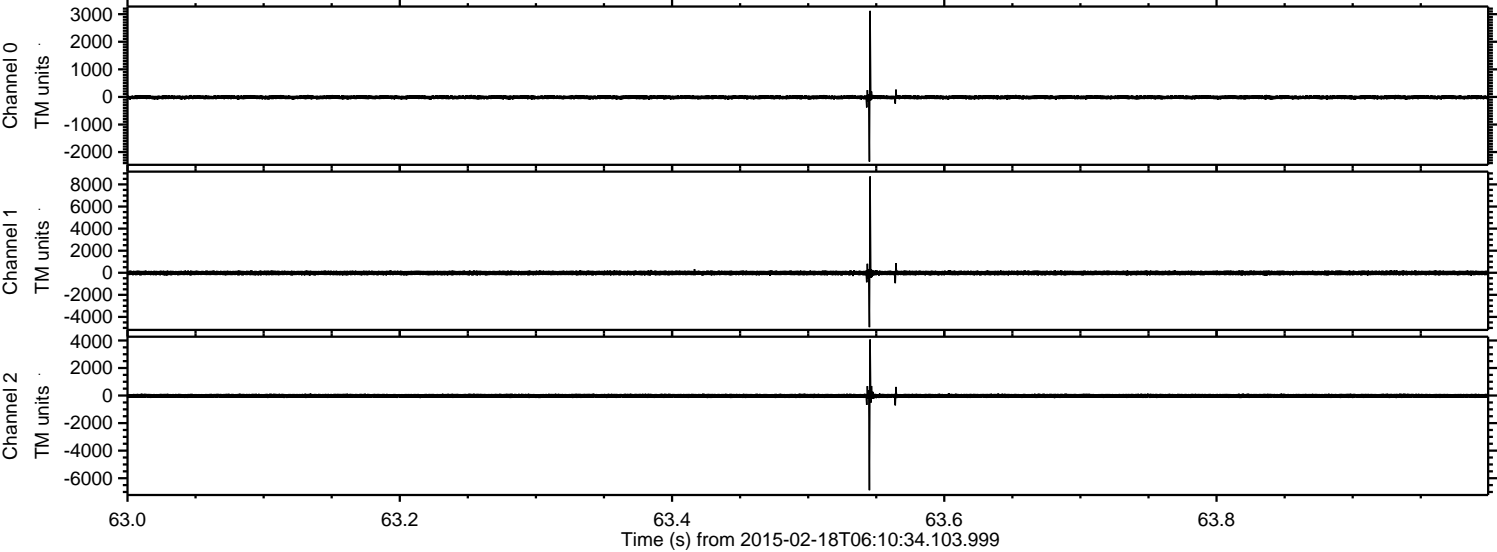
ELMAVAN 3D WAVEFORMS (Measured data sampled at 50 kHz) 49772 packets of 144 samples from 2015-02-18T06:10:34.103.999.

Processed Thu Feb 26 21:42:14 2015 by ELM ver.2012-10-06 from 001__elm20150218_061033__dat00.bin



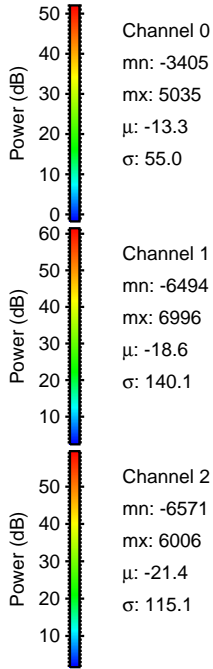
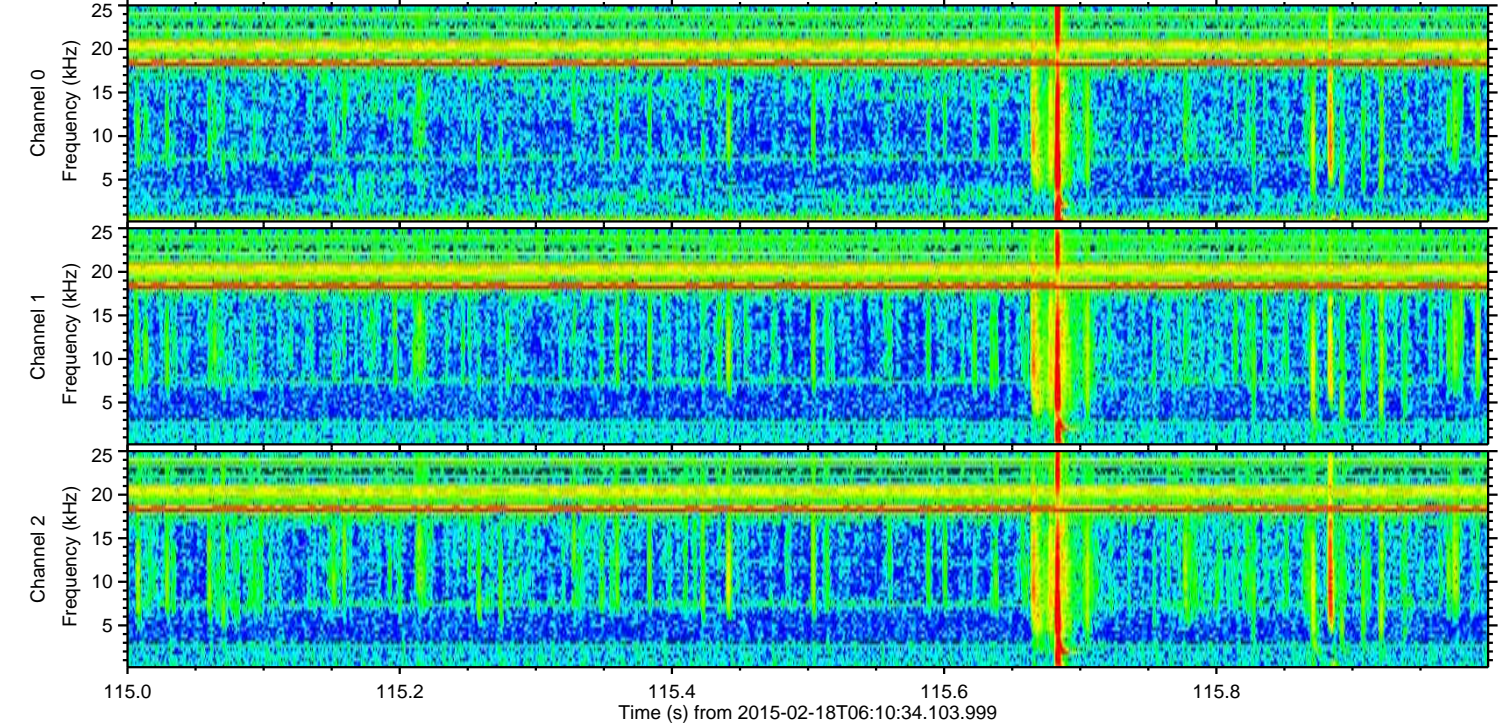
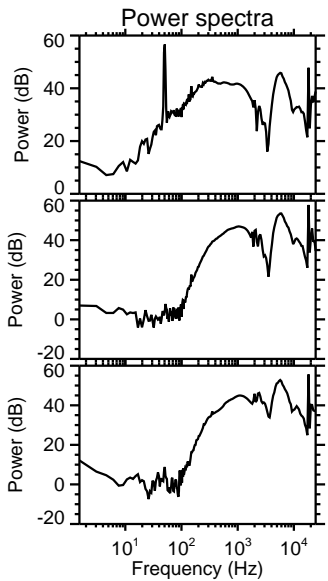
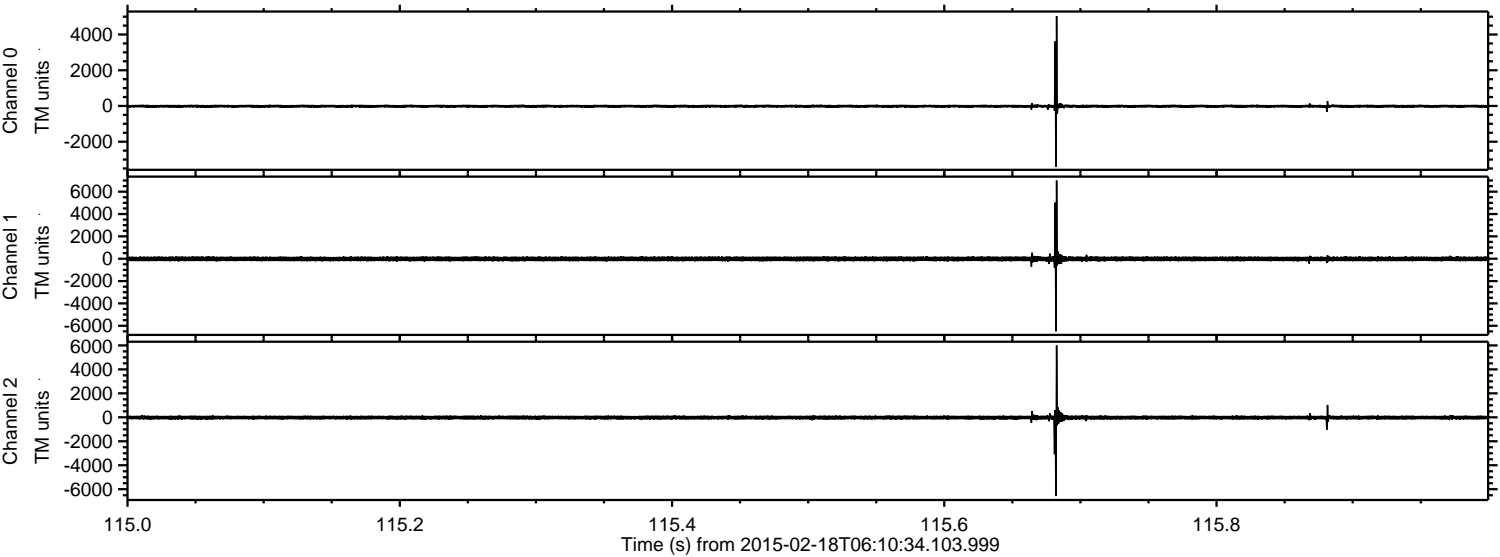
ELMAVAN 3D WAVEFORMS (Measured data sampled at 50 kHz) 49772 packets of 144 samples from 2015-02-18T06:10:34.103.999. Part 64/144

Processed Thu Feb 26 21:42:25 2015 by ELM ver.2012-10-06 from 001__elm20150218_061033__dat00.bin



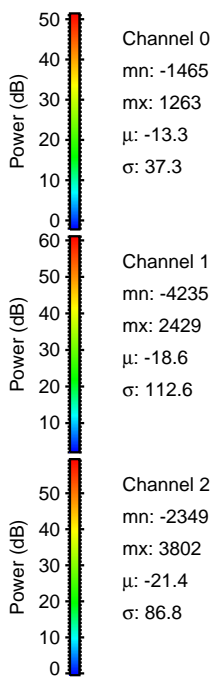
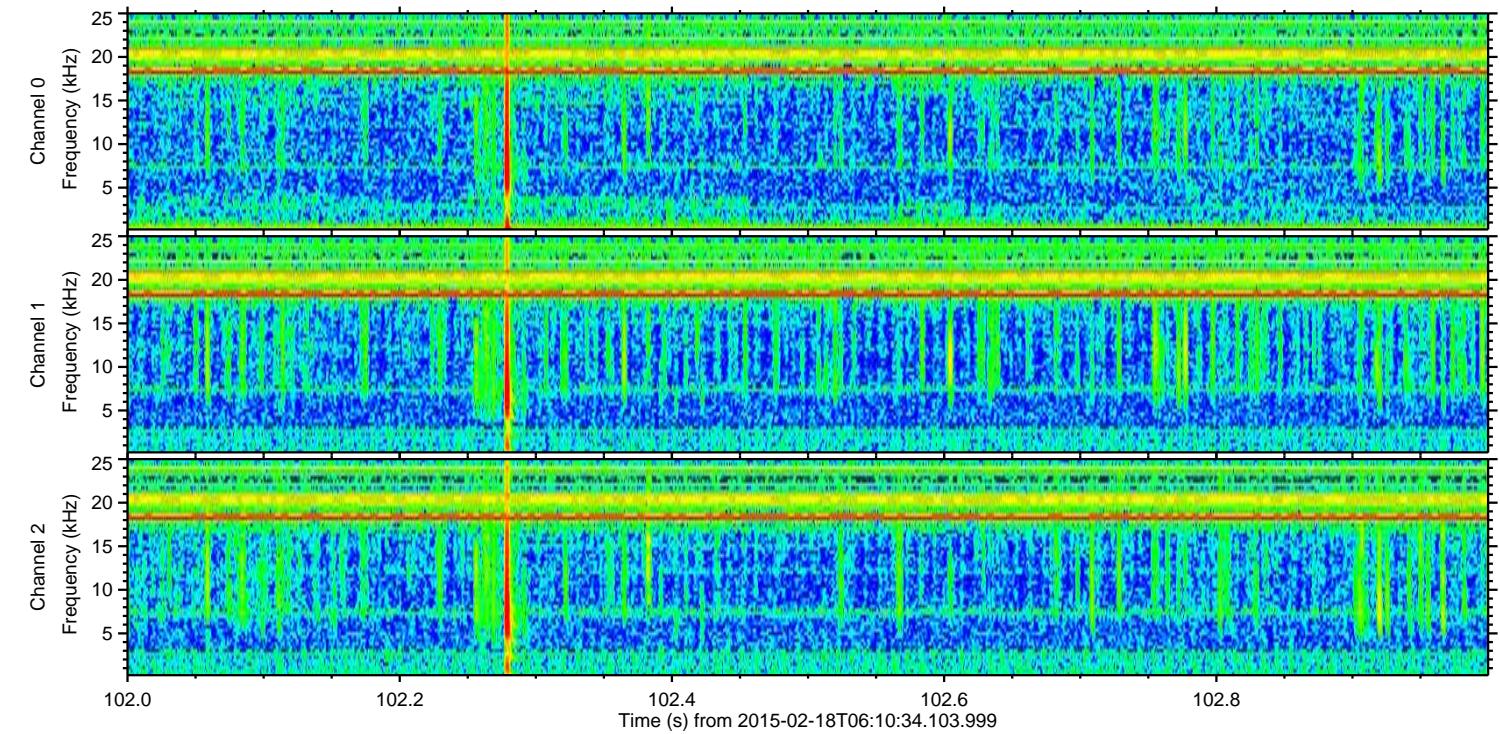
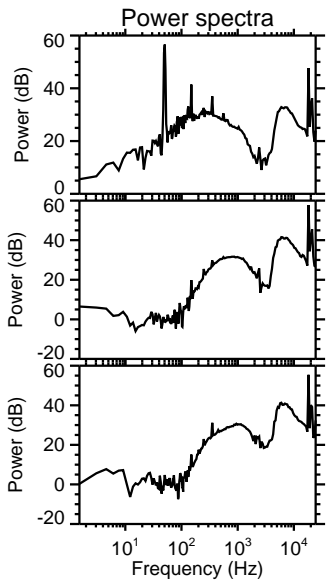
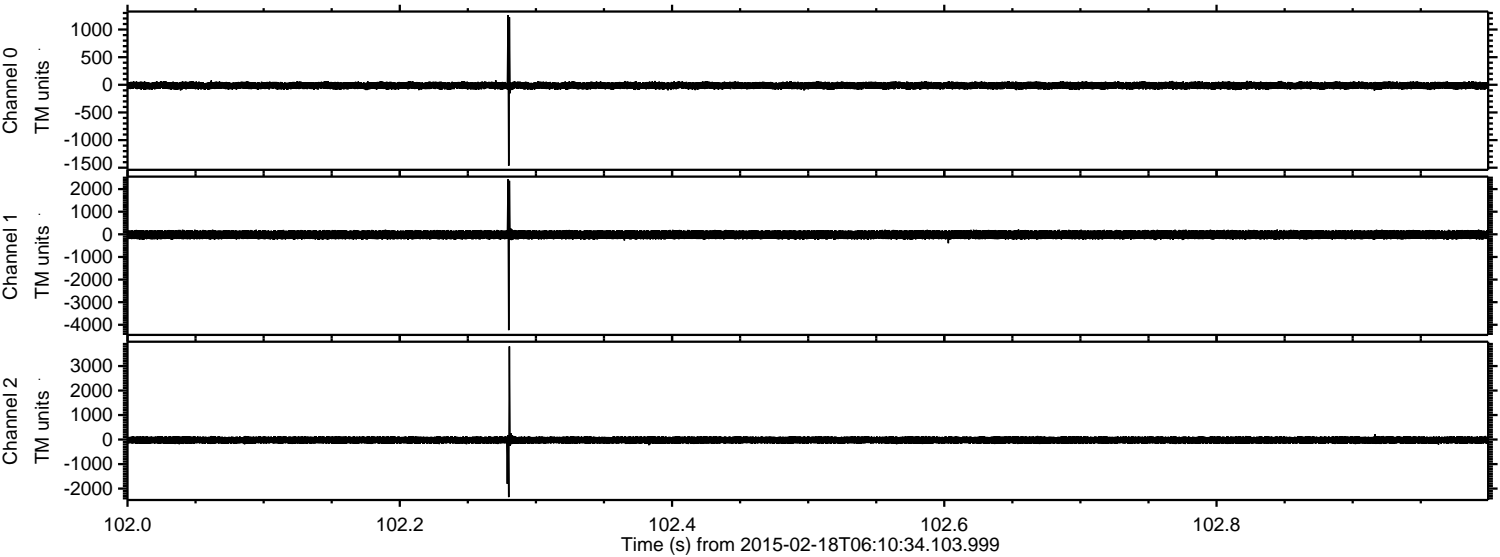
ELMAVAN 3D WAVEFORMS (Measured data sampled at 50 kHz) 49772 packets of 144 samples from 2015-02-18T06:10:34.103.999. Part 116/144

Processed Thu Feb 26 21:42:26 2015 by ELM ver.2012-10-06 from 001__elm20150218_061033__dat00.bin



ELMAVAN 3D WAVEFORMS (Measured data sampled at 50 kHz) 49772 packets of 144 samples from 2015-02-18T06:10:34.103.999. Part 103/144

Processed Thu Feb 26 21:42:27 2015 by ELM ver.2012-10-06 from 001__elm20150218_061033__dat00.bin



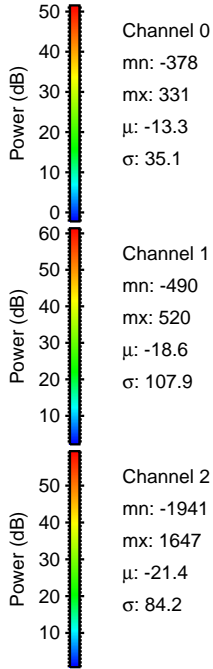
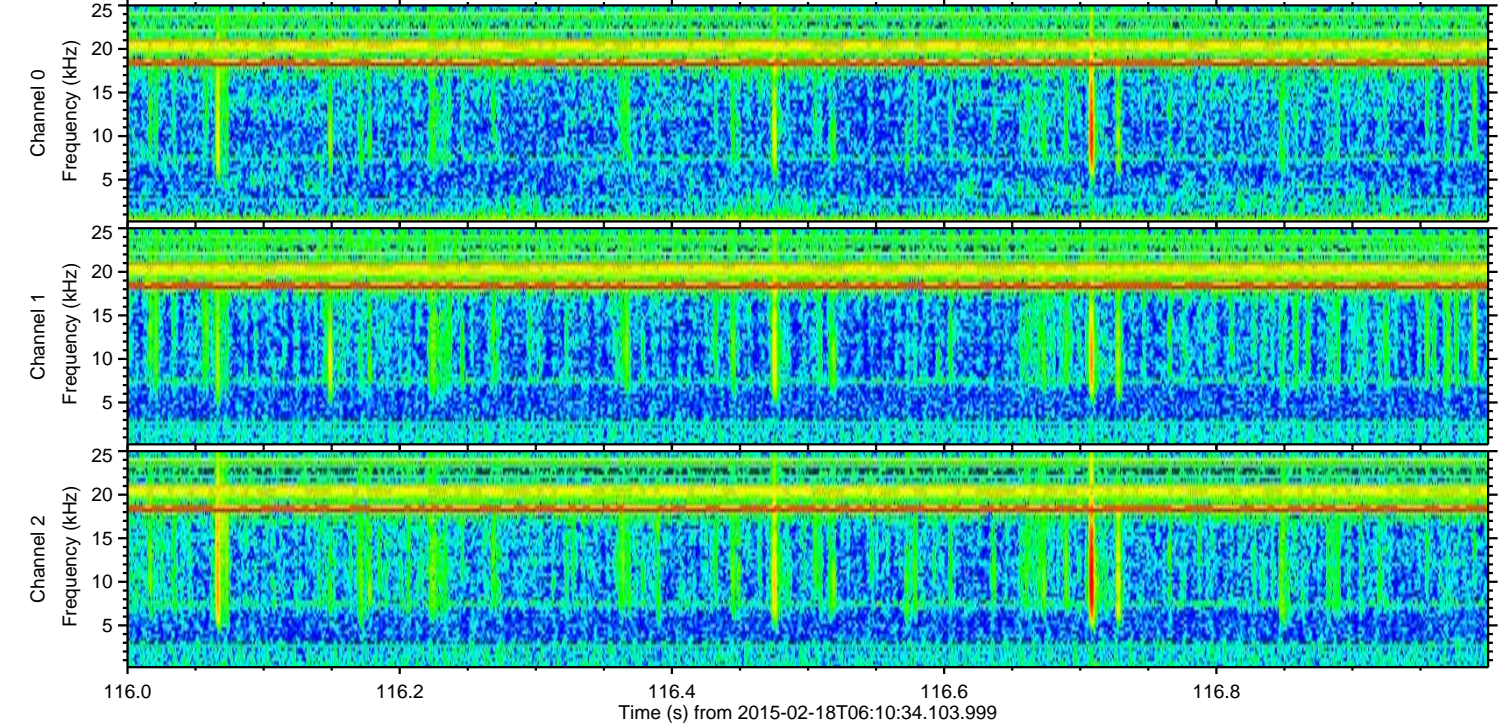
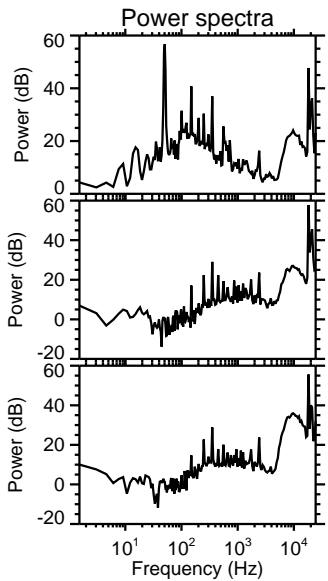
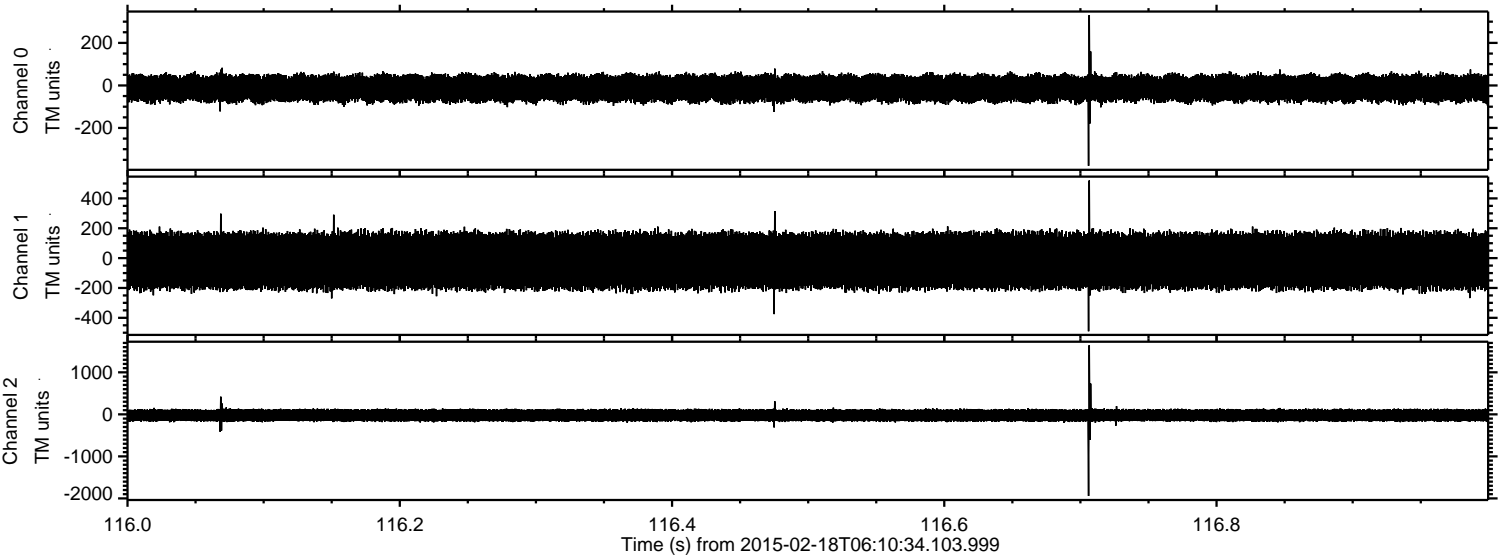
Channel 0
mn: -1465
mx: 1263
 μ : -13.3
 σ : 37.3

Channel 1
mn: -4235
mx: 2429
 μ : -18.6
 σ : 112.6

Channel 2
mn: -2349
mx: 3802
 μ : -21.4
 σ : 86.8

ELMAVAN 3D WAVEFORMS (Measured data sampled at 50 kHz) 49772 packets of 144 samples from 2015-02-18T06:10:34.103.999. Part 117/144

Processed Thu Feb 26 21:42:28 2015 by ELM ver.2012-10-06 from 001__elm20150218_061033__dat00.bin



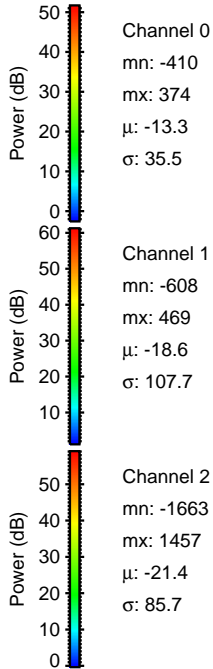
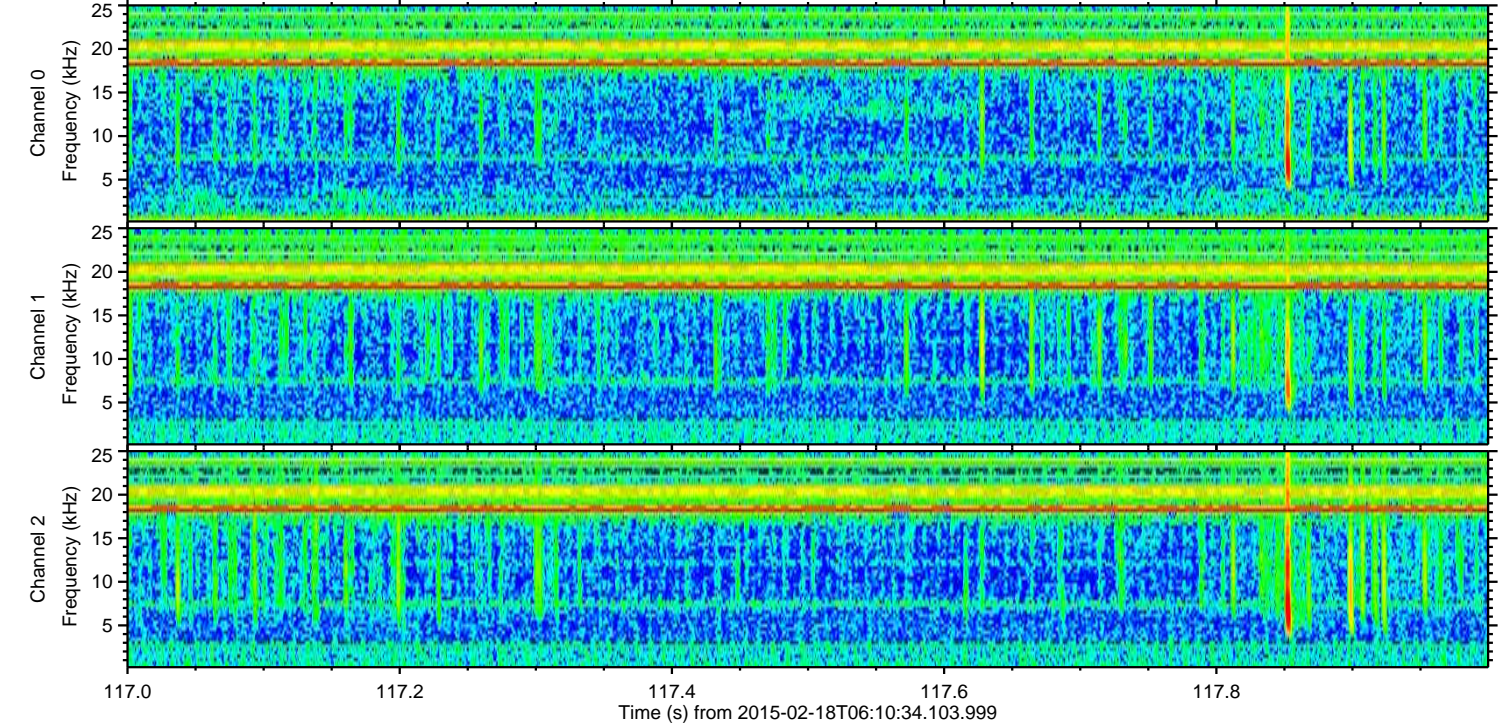
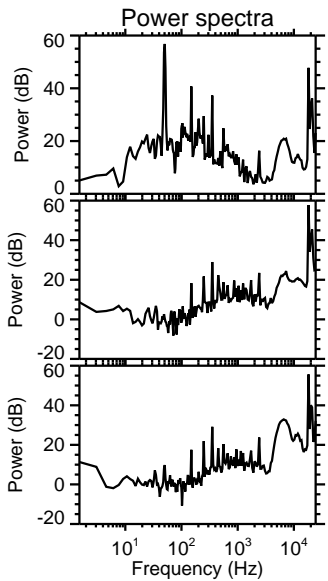
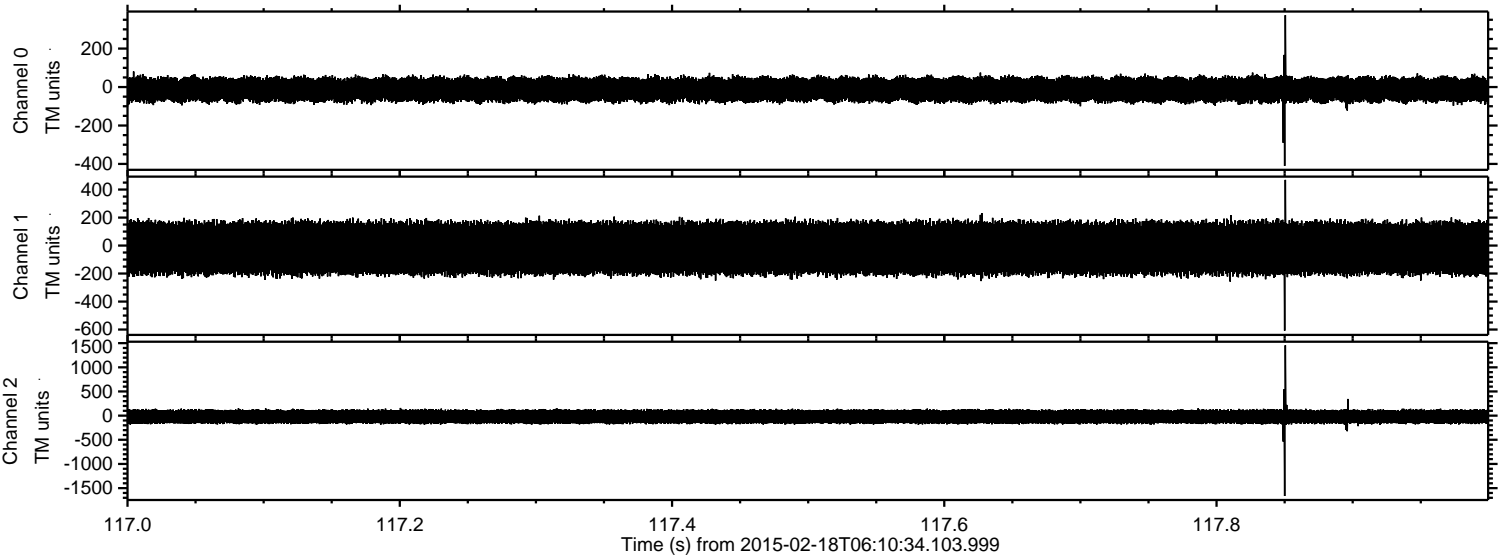
Channel 0
mn: -378
mx: 331
 μ : -13.3
 σ : 35.1

Channel 1
mn: -490
mx: 520
 μ : -18.6
 σ : 107.9

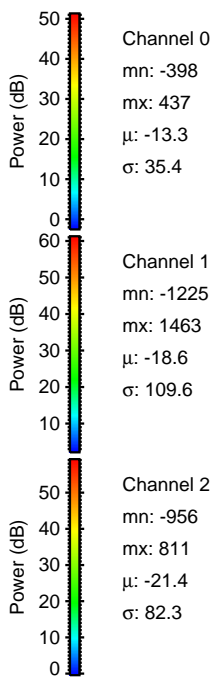
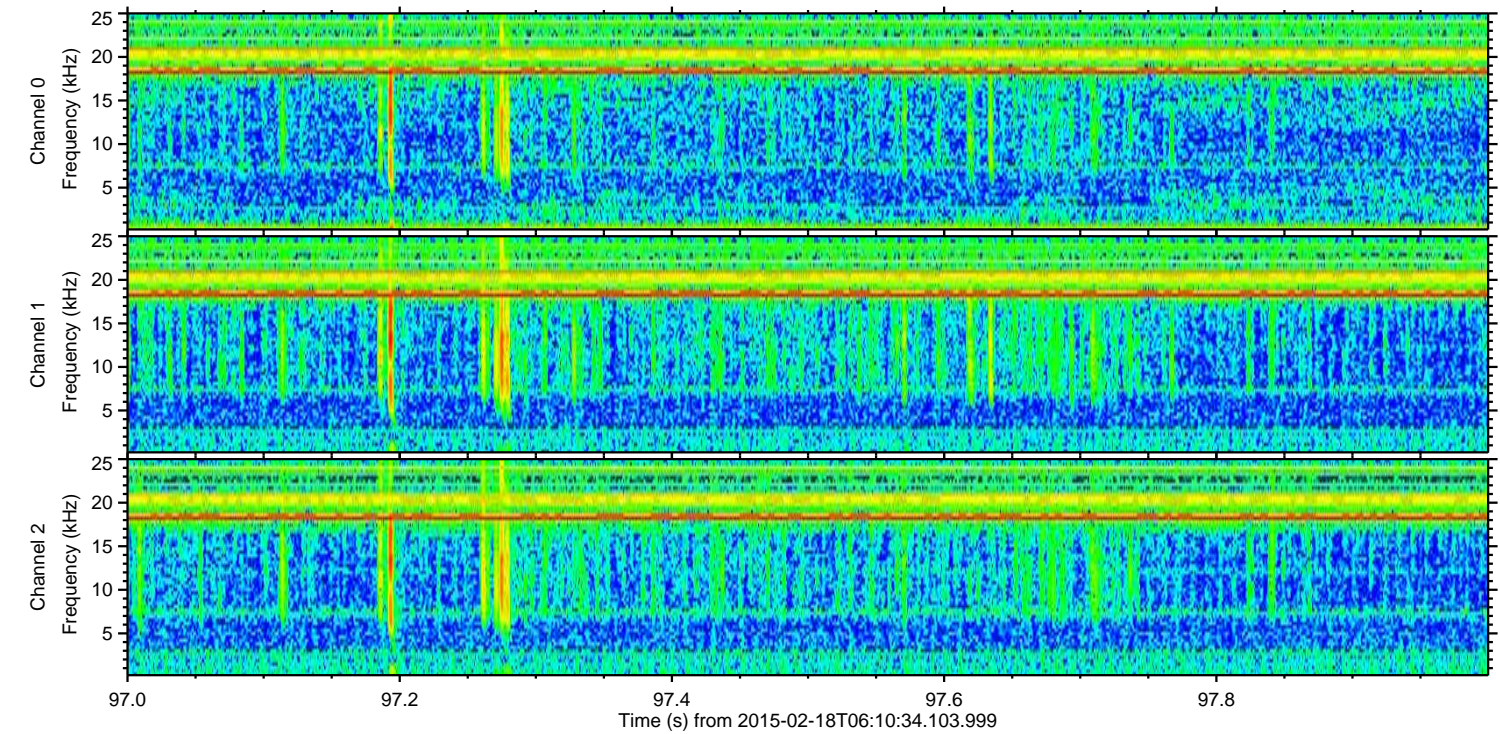
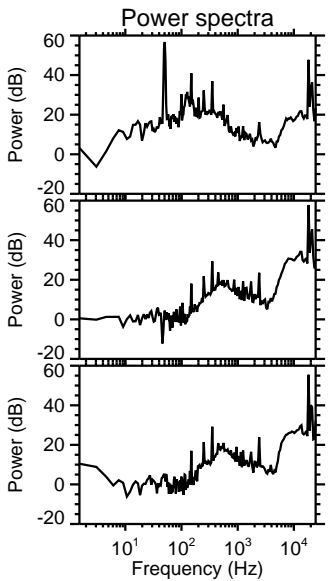
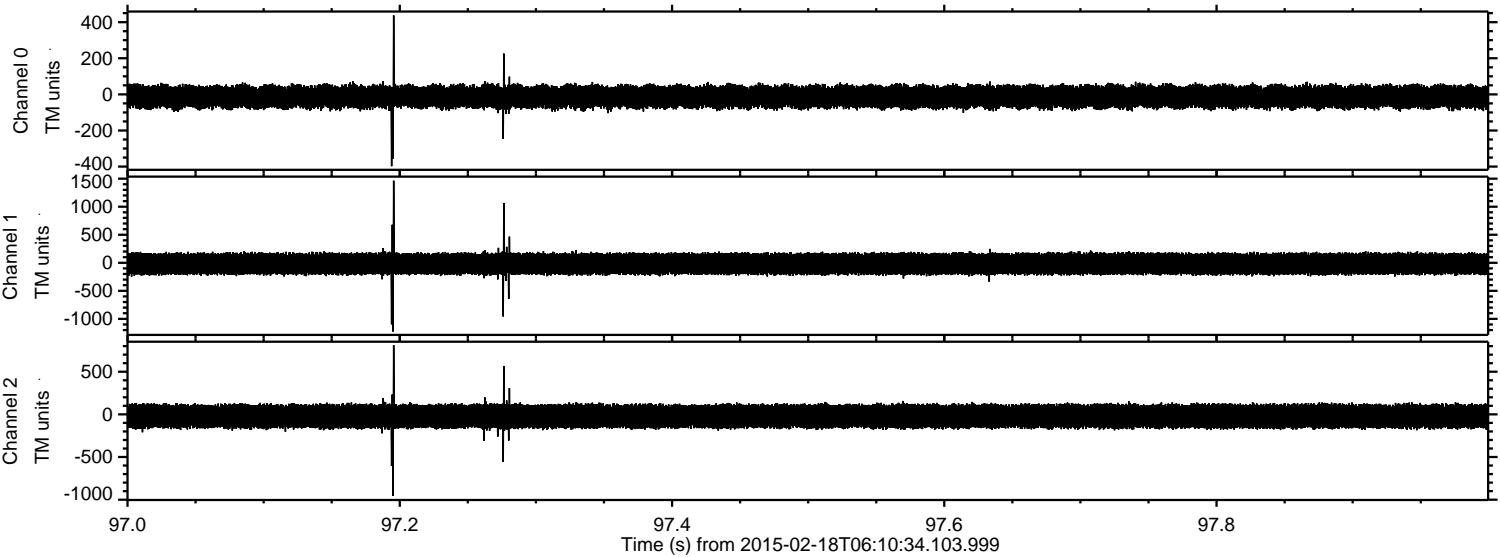
Channel 2
mn: -1941
mx: 1647
 μ : -21.4
 σ : 84.2

ELMAVAN 3D WAVEFORMS (Measured data sampled at 50 kHz) 49772 packets of 144 samples from 2015-02-18T06:10:34.103.999. Part 118/144

Processed Thu Feb 26 21:42:29 2015 by ELM ver.2012-10-06 from 001__elm20150218_061033__dat00.bin

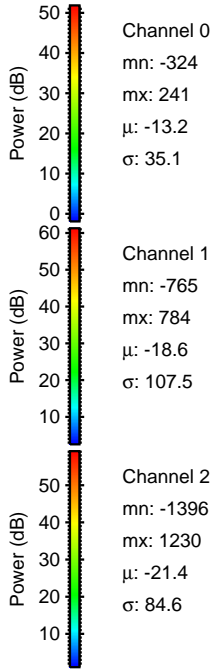
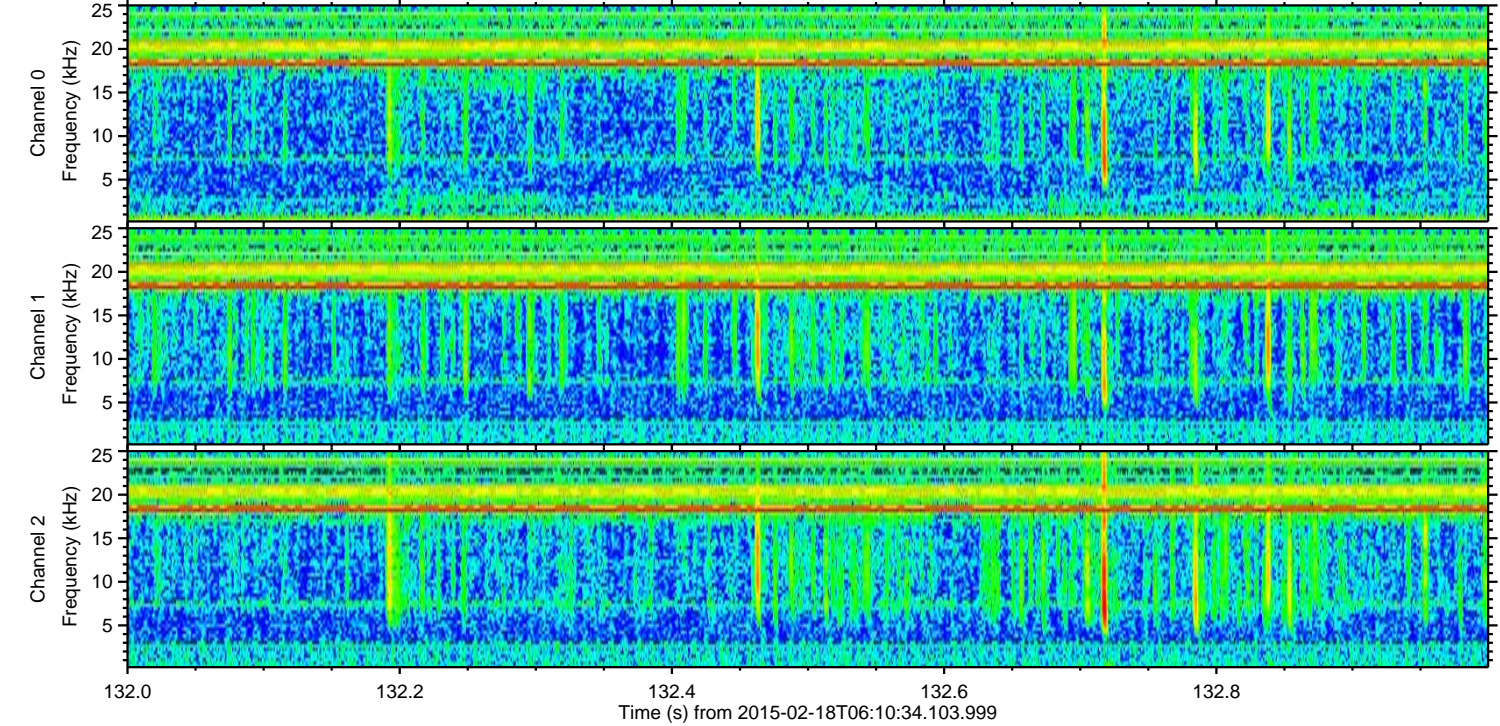
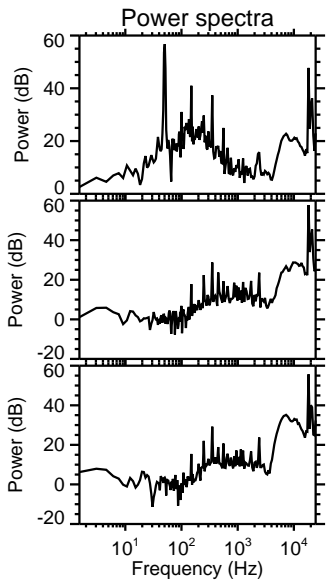
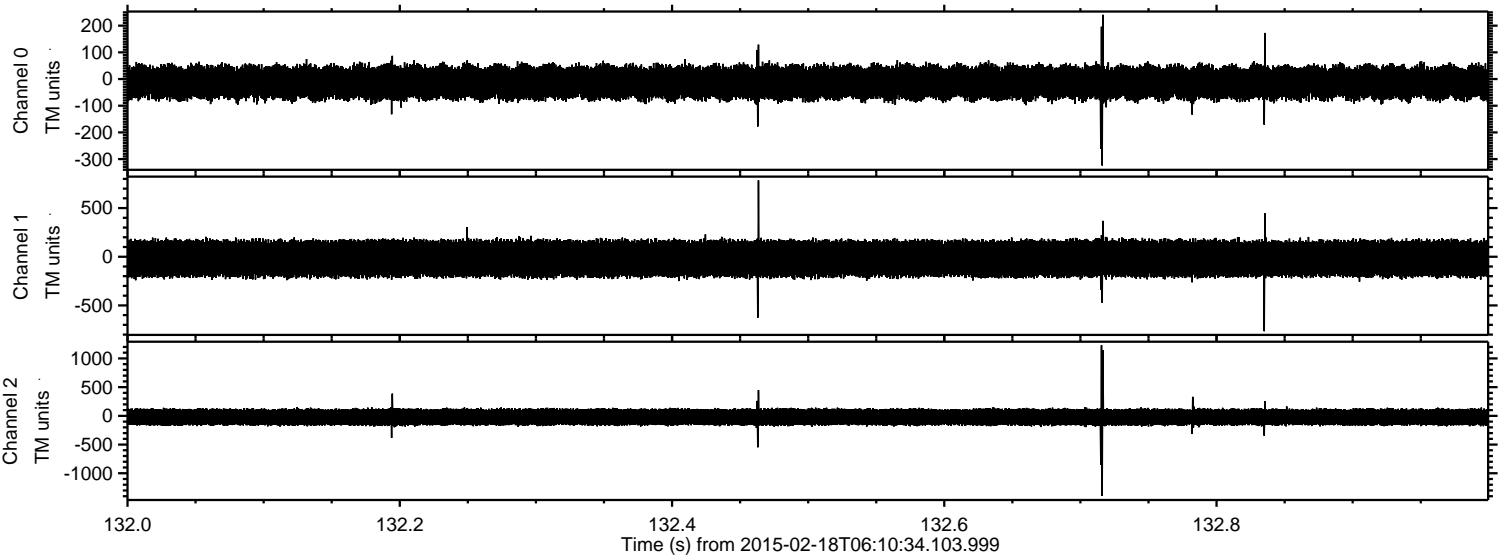


Processed Thu Feb 26 21:42:30 2015 by ELM ver.2012-10-06 from 001__elm20150218_061033__dat00.bin



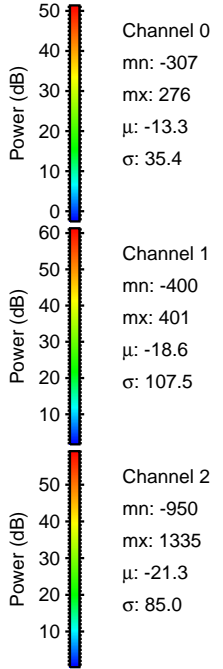
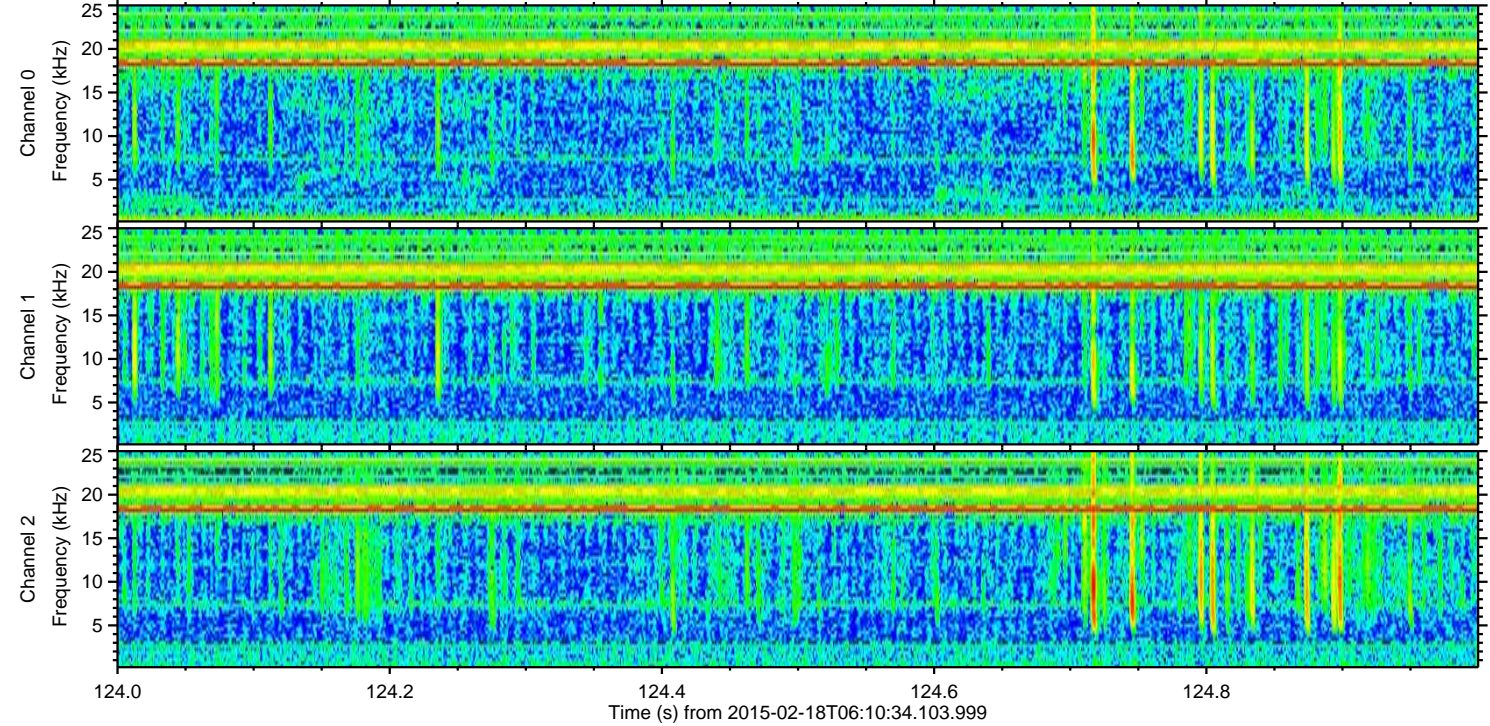
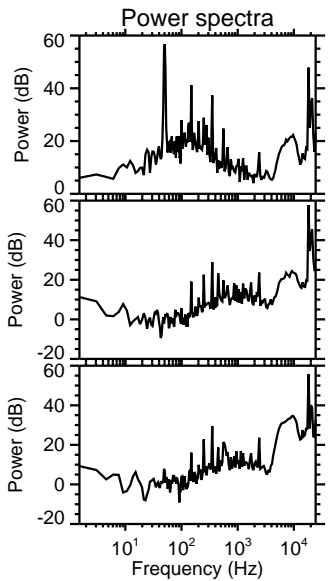
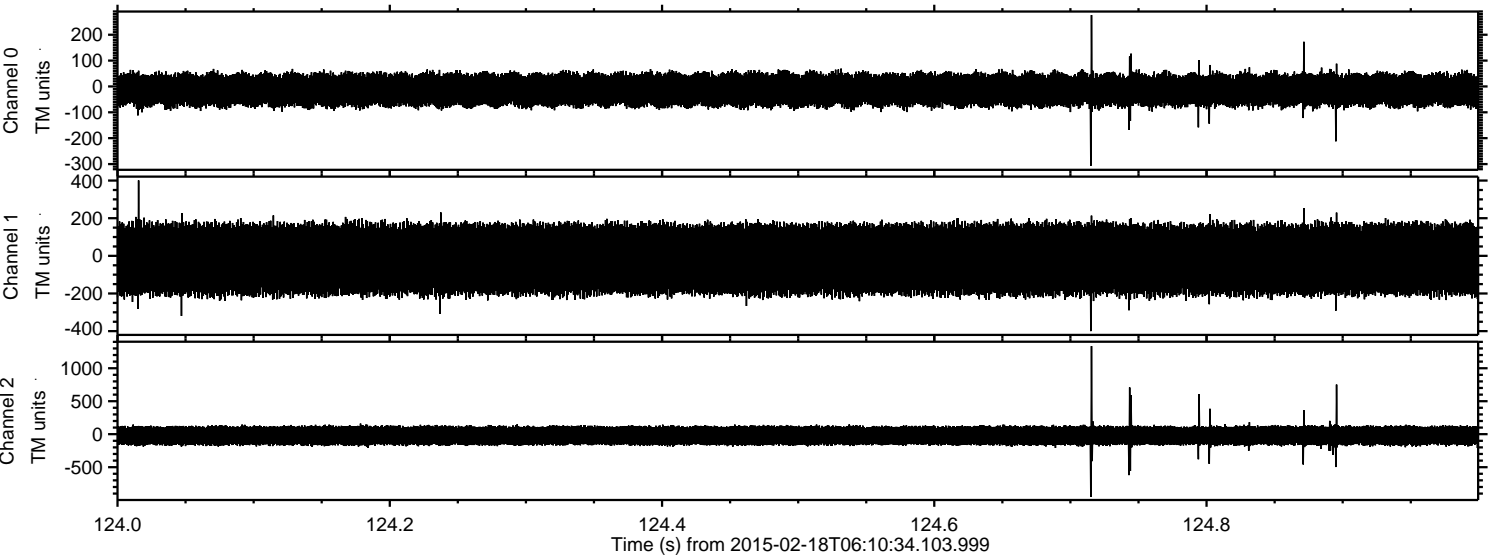
ELMAVAN 3D WAVEFORMS (Measured data sampled at 50 kHz) 49772 packets of 144 samples from 2015-02-18T06:10:34.103.999. Part 133/144

Processed Thu Feb 26 21:42:31 2015 by ELM ver.2012-10-06 from 001__elm20150218_061033__dat00.bin

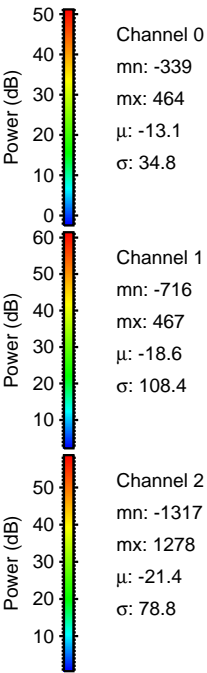
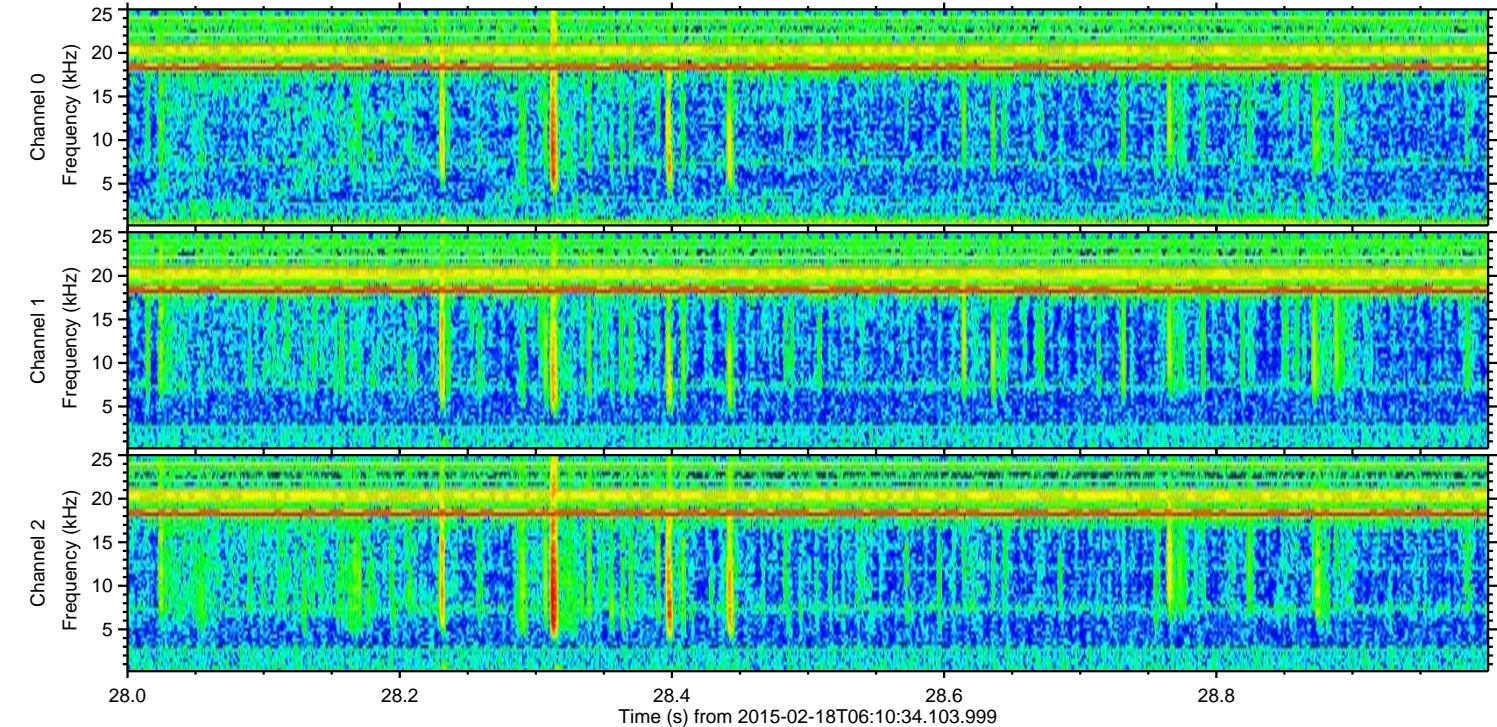
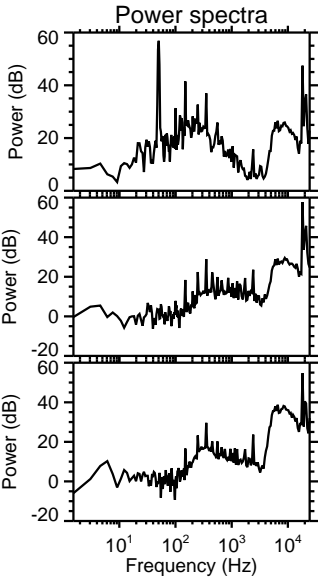
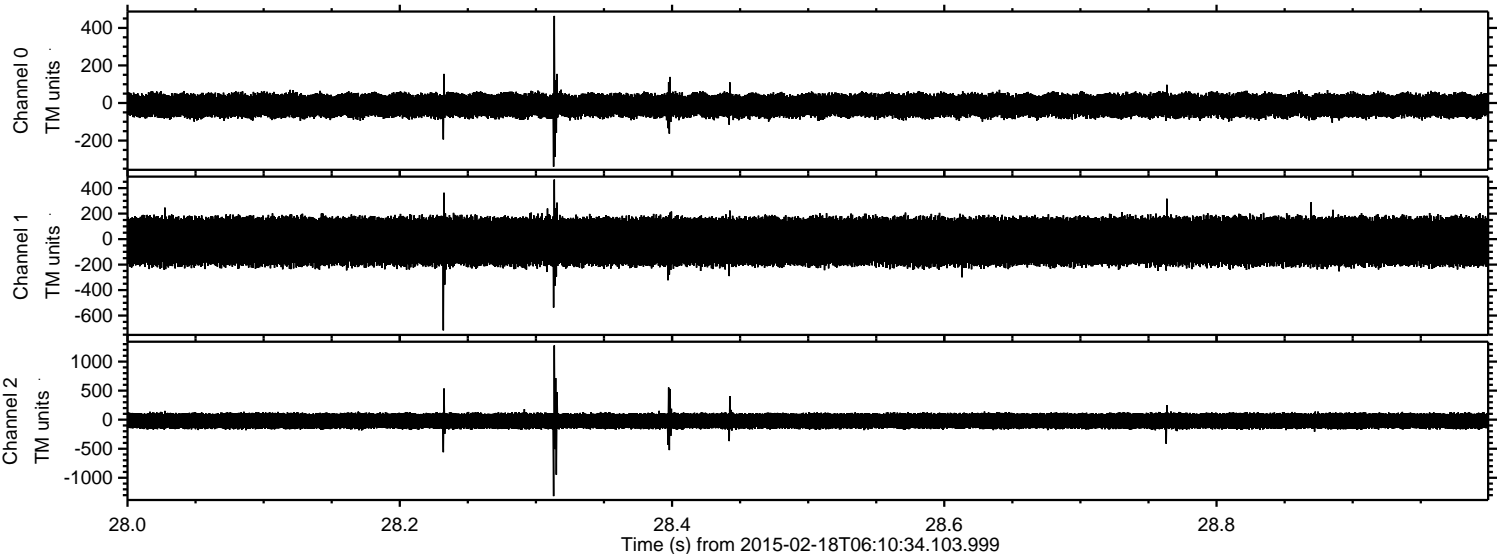


ELMAVAN 3D WAVEFORMS (Measured data sampled at 50 kHz) 49772 packets of 144 samples from 2015-02-18T06:10:34.103.999. Part 125/144

Processed Thu Feb 26 21:42:32 2015 by ELM ver.2012-10-06 from 001__elm20150218_061033__dat00.bin



Processed Thu Feb 26 21:42:33 2015 by ELM ver.2012-10-06 from 001__elm20150218_061033__dat00.bin



ELMAVAN 3D WAVEFORMS (Measured data sampled at 50 kHz) 49772 packets of 144 samples from 2015-02-18T06:10:34.103.999. Part 143/144

Processed Thu Feb 26 21:42:34 2015 by ELM ver.2012-10-06 from 001__elm20150218_061033__dat00.bin

