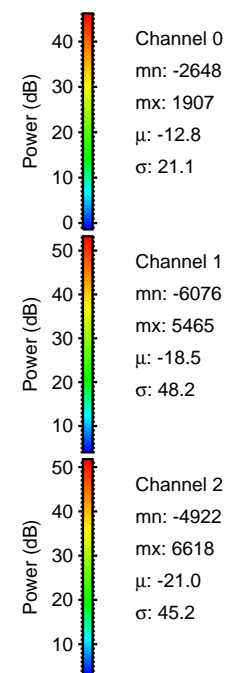
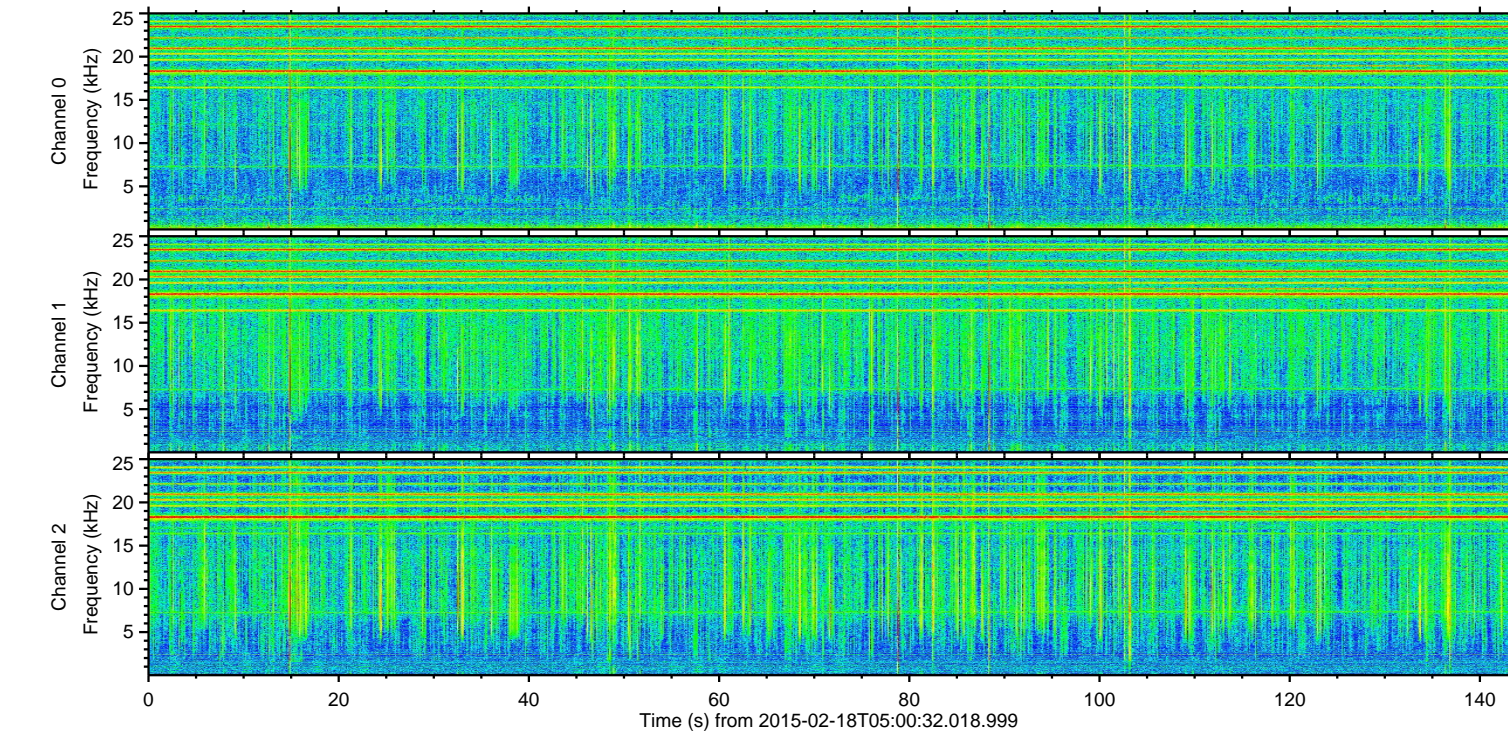
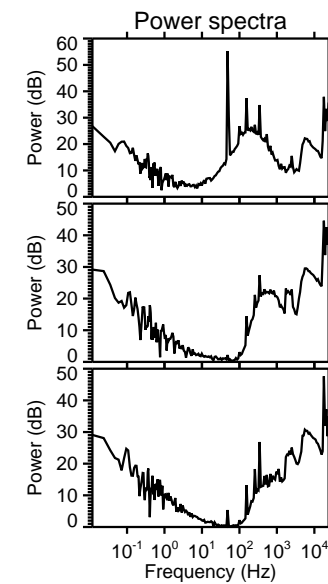
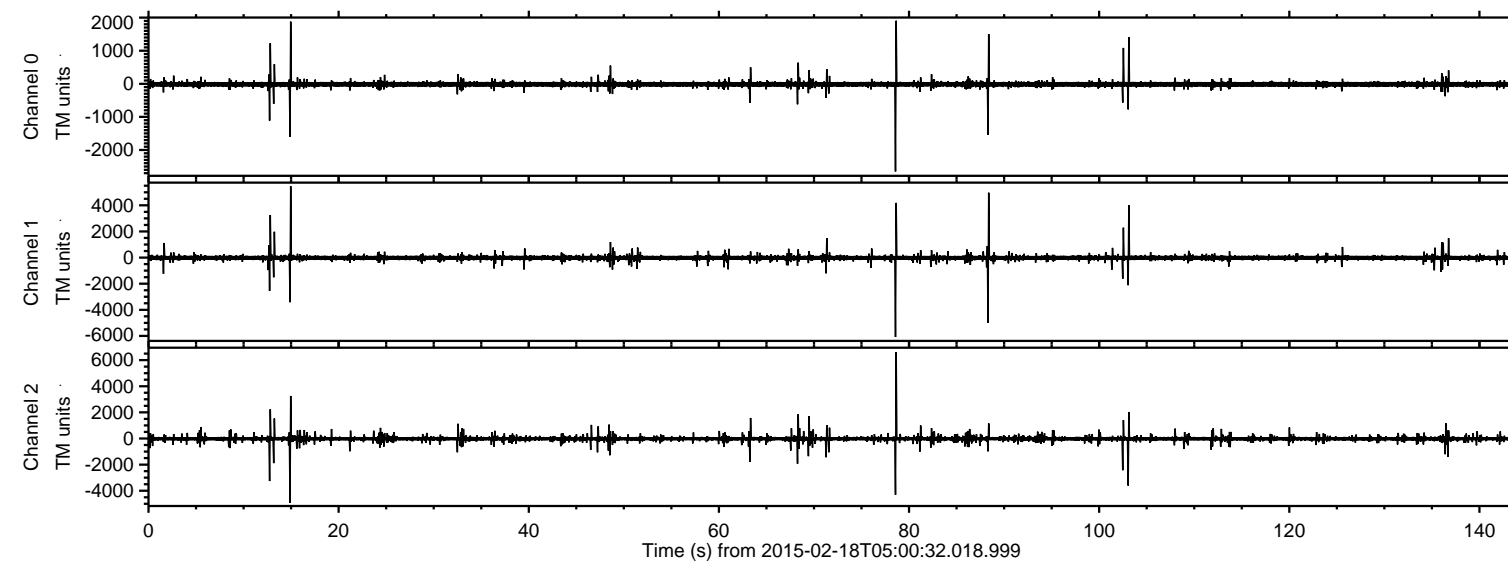


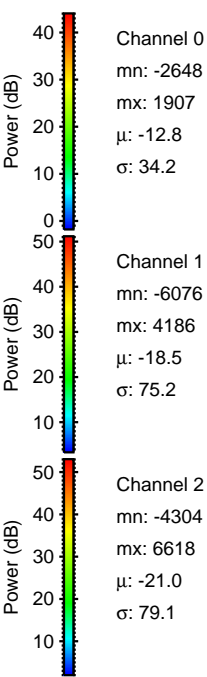
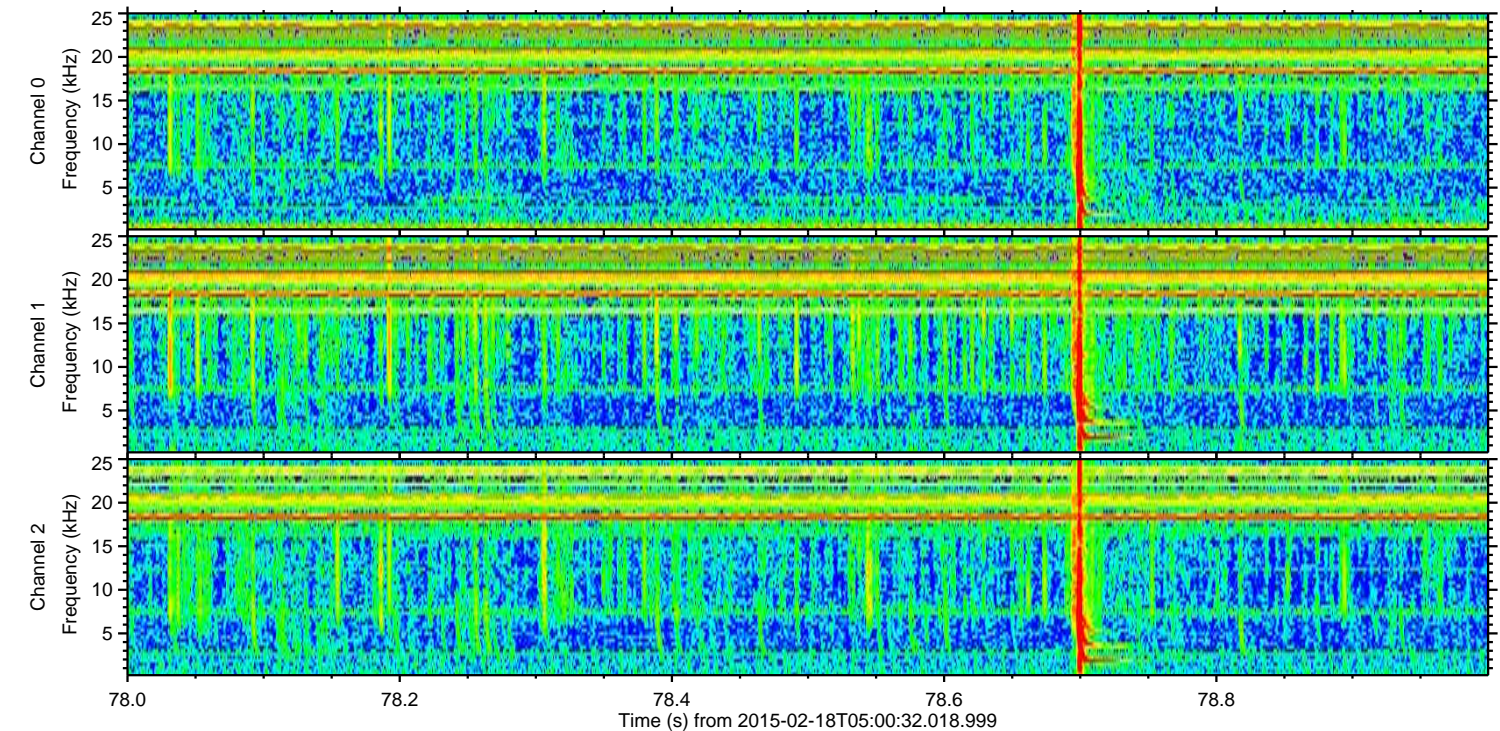
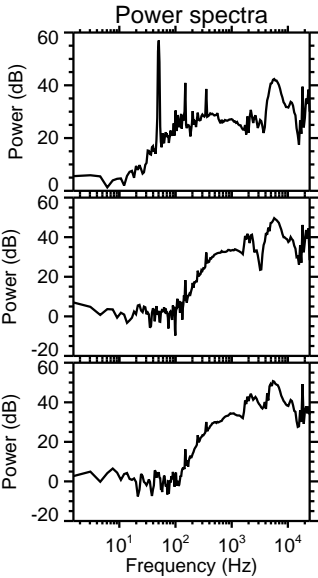
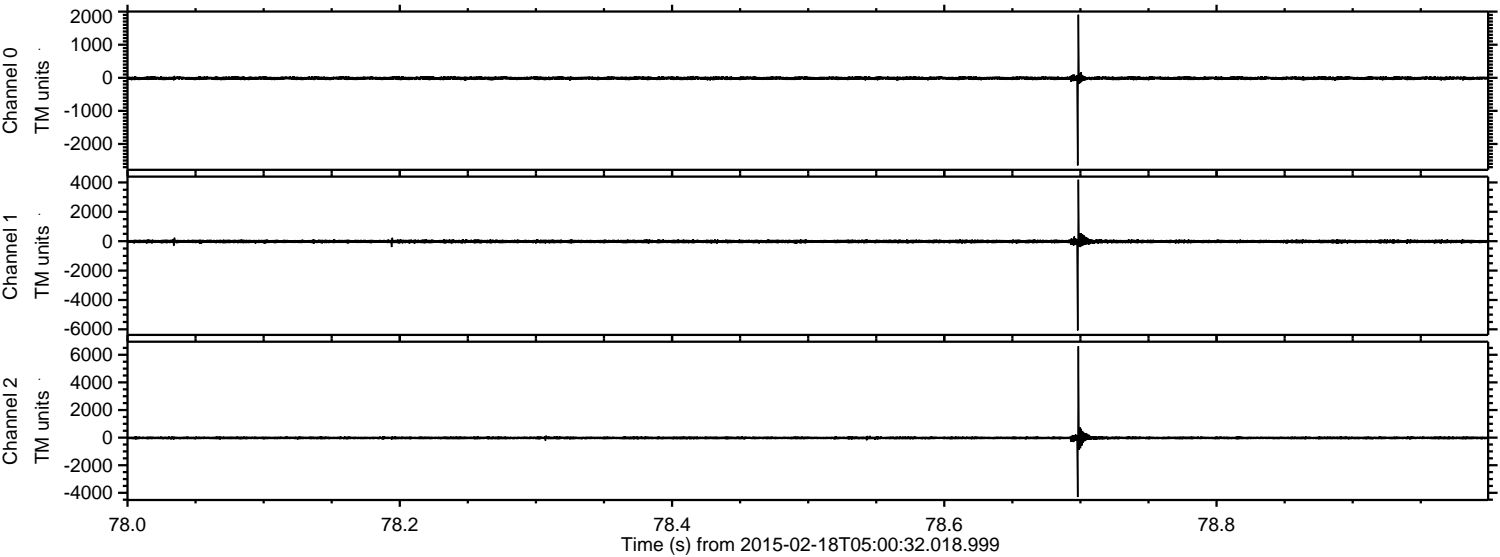
ELMAVAN 3D WAVEFORMS (Measured data sampled at 50 kHz) 49696 packets of 144 samples from 2015-02-18T05:00:32.018.999.

Processed Thu Feb 26 21:09:32 2015 by ELM ver.2012-10-06 from 001\_\_elm20150218\_050031\_\_dat00.bin





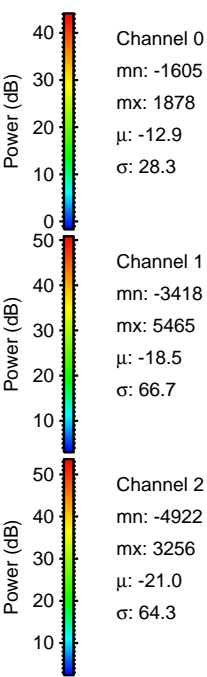
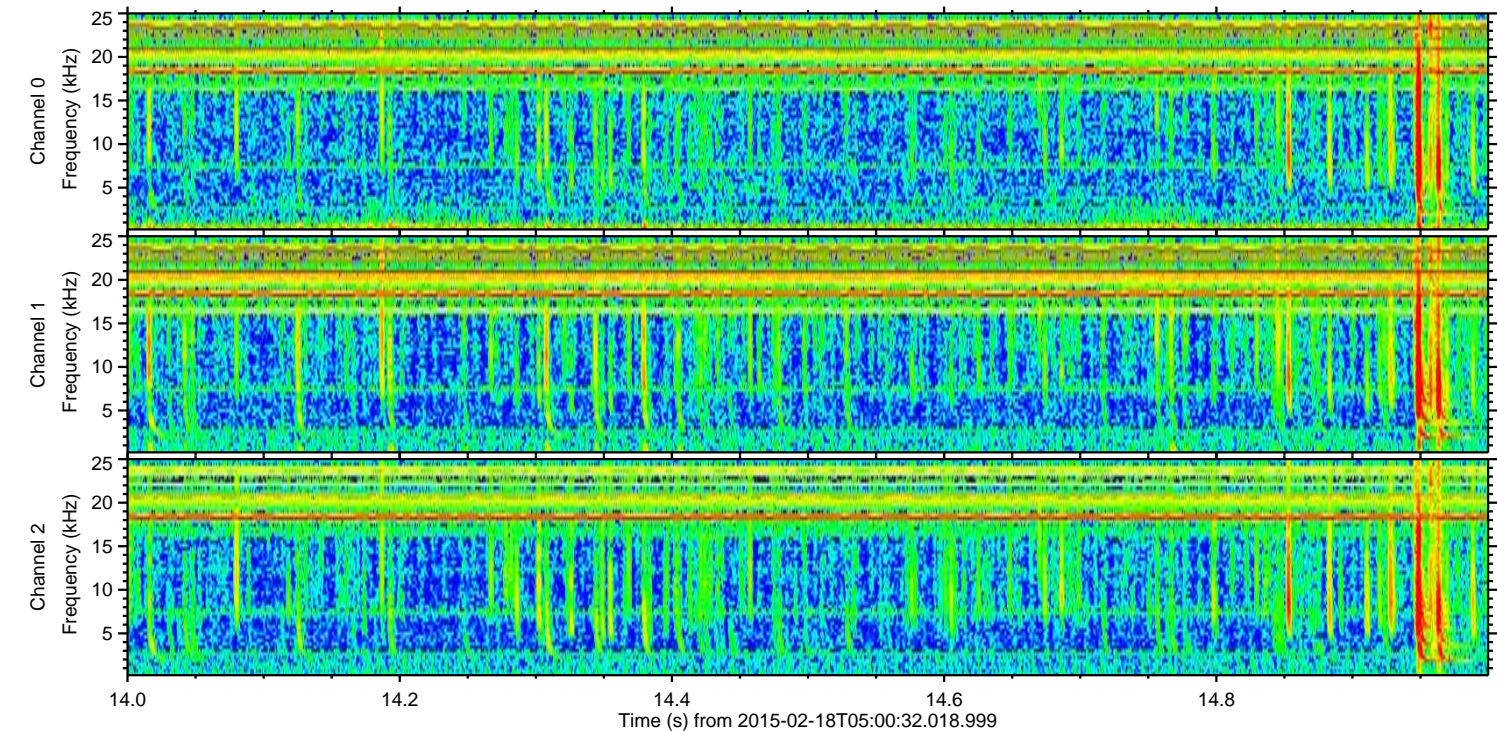
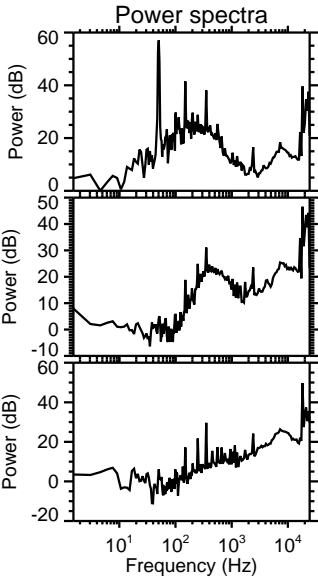
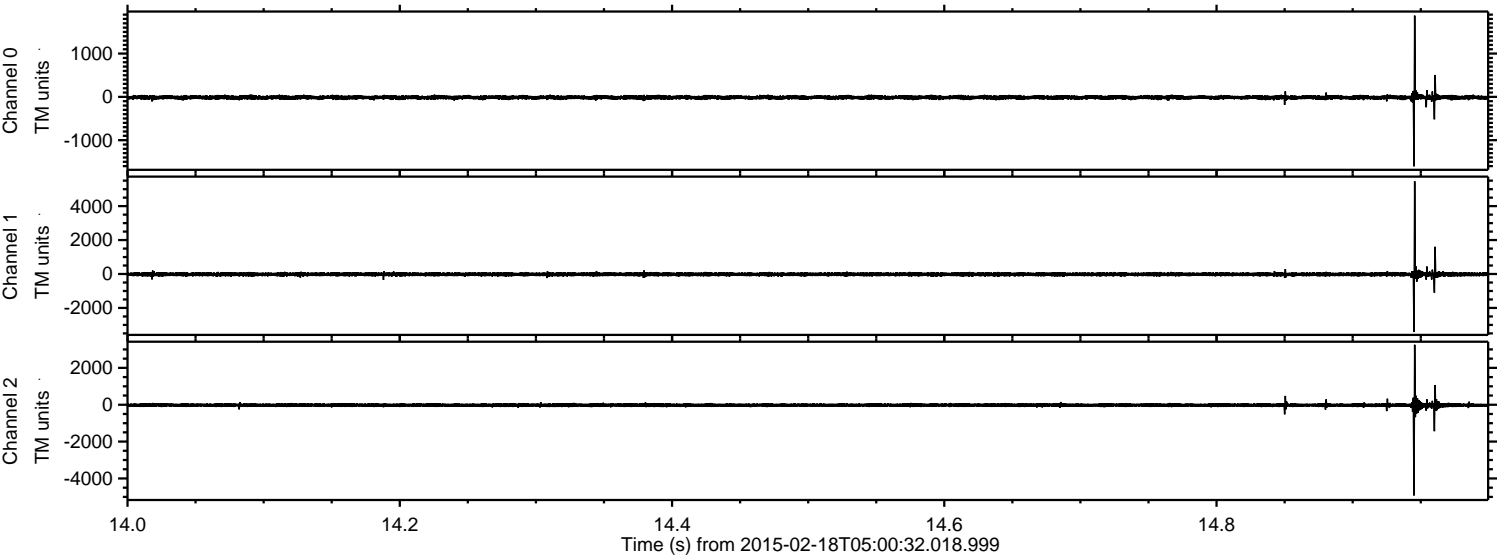
Processed Thu Feb 26 21:09:47 2015 by ELM ver.2012-10-06 from 001\_\_elm20150218\_050031\_\_dat00.bin





ELMAVAN 3D WAVEFORMS (Measured data sampled at 50 kHz) 49696 packets of 144 samples from 2015-02-18T05:00:32.018.999. Part 15/144

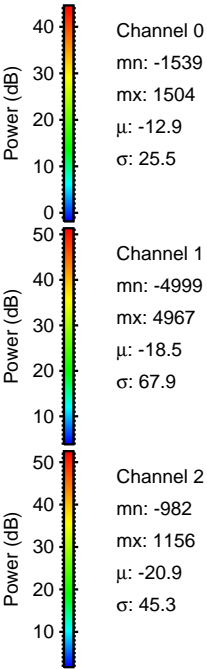
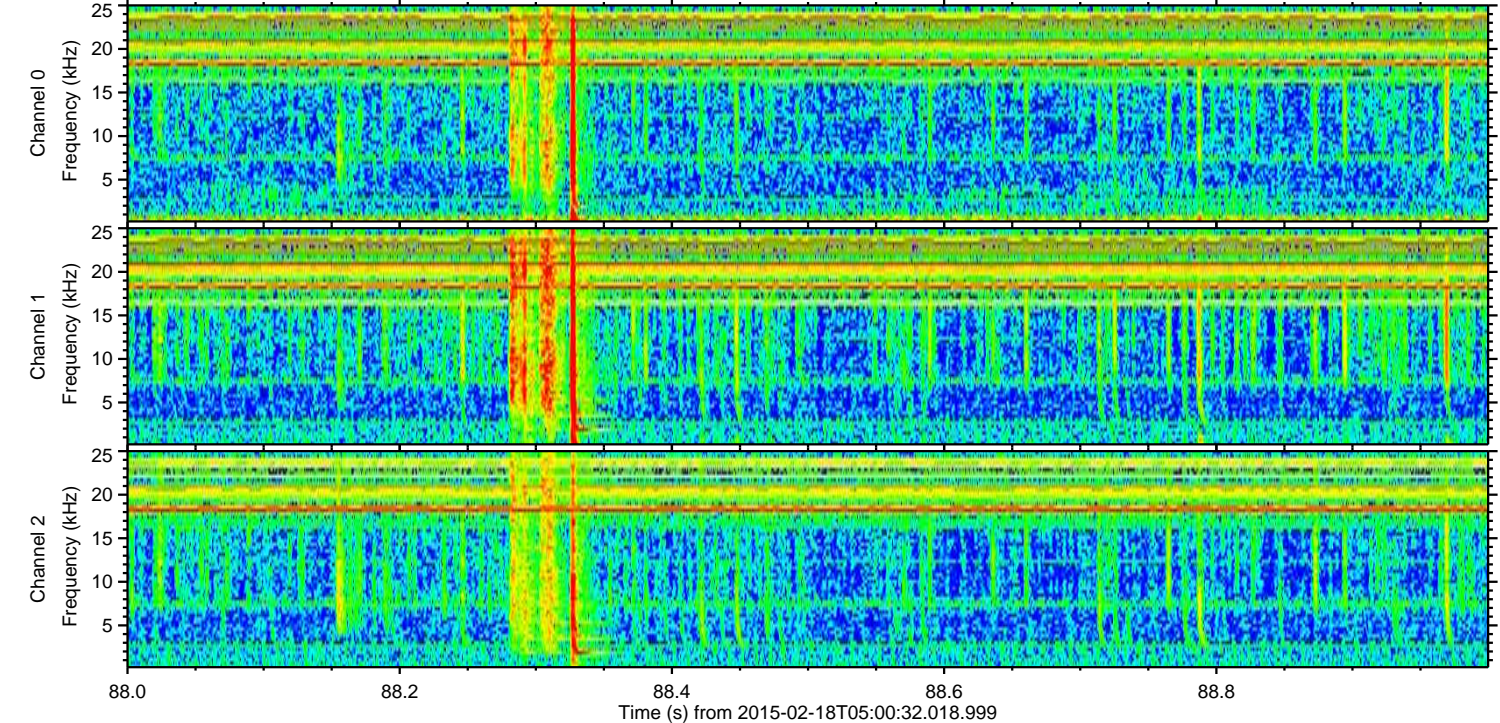
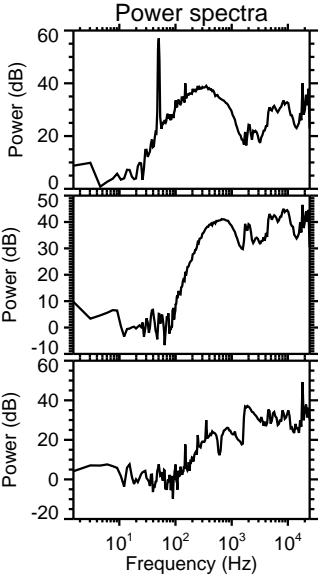
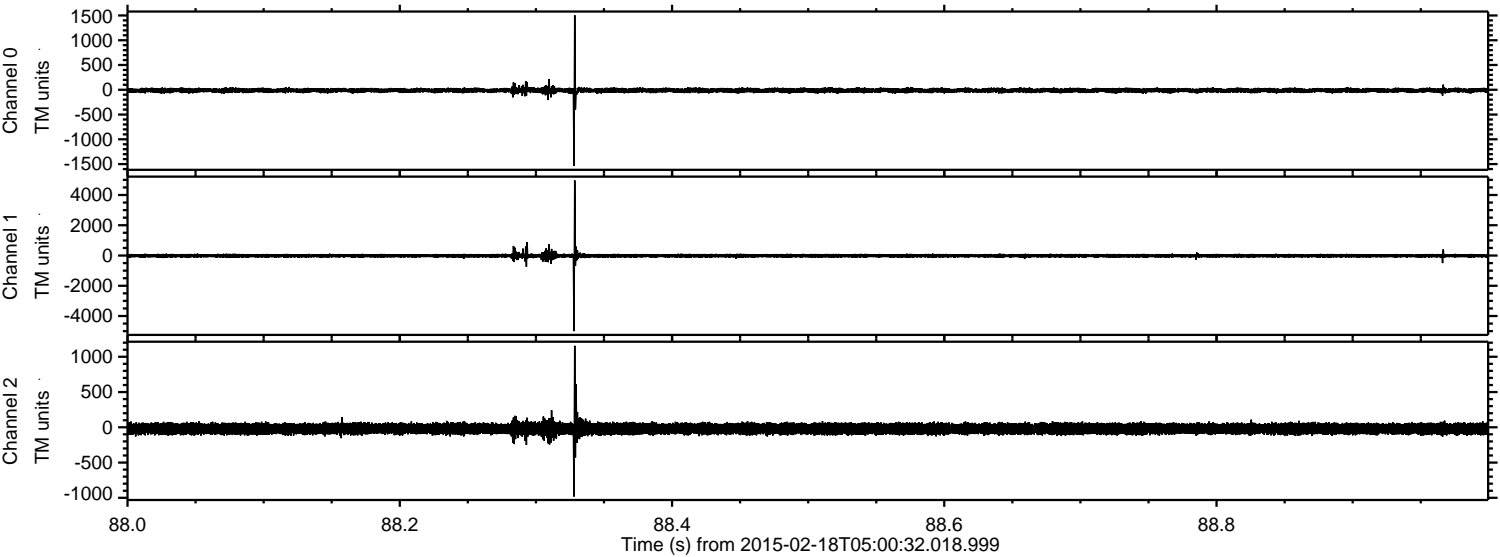
Processed Thu Feb 26 21:09:48 2015 by ELM ver.2012-10-06 from 001\_\_elm20150218\_050031\_\_dat00.bin





ELMAVAN 3D WAVEFORMS (Measured data sampled at 50 kHz) 49696 packets of 144 samples from 2015-02-18T05:00:32.018.999. Part 89/144

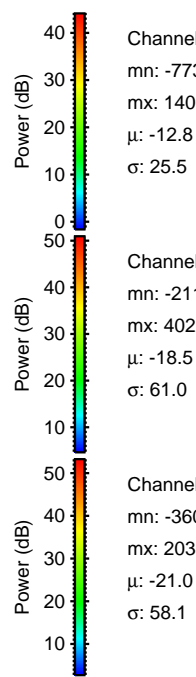
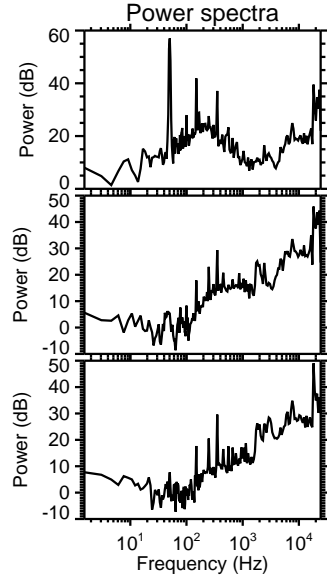
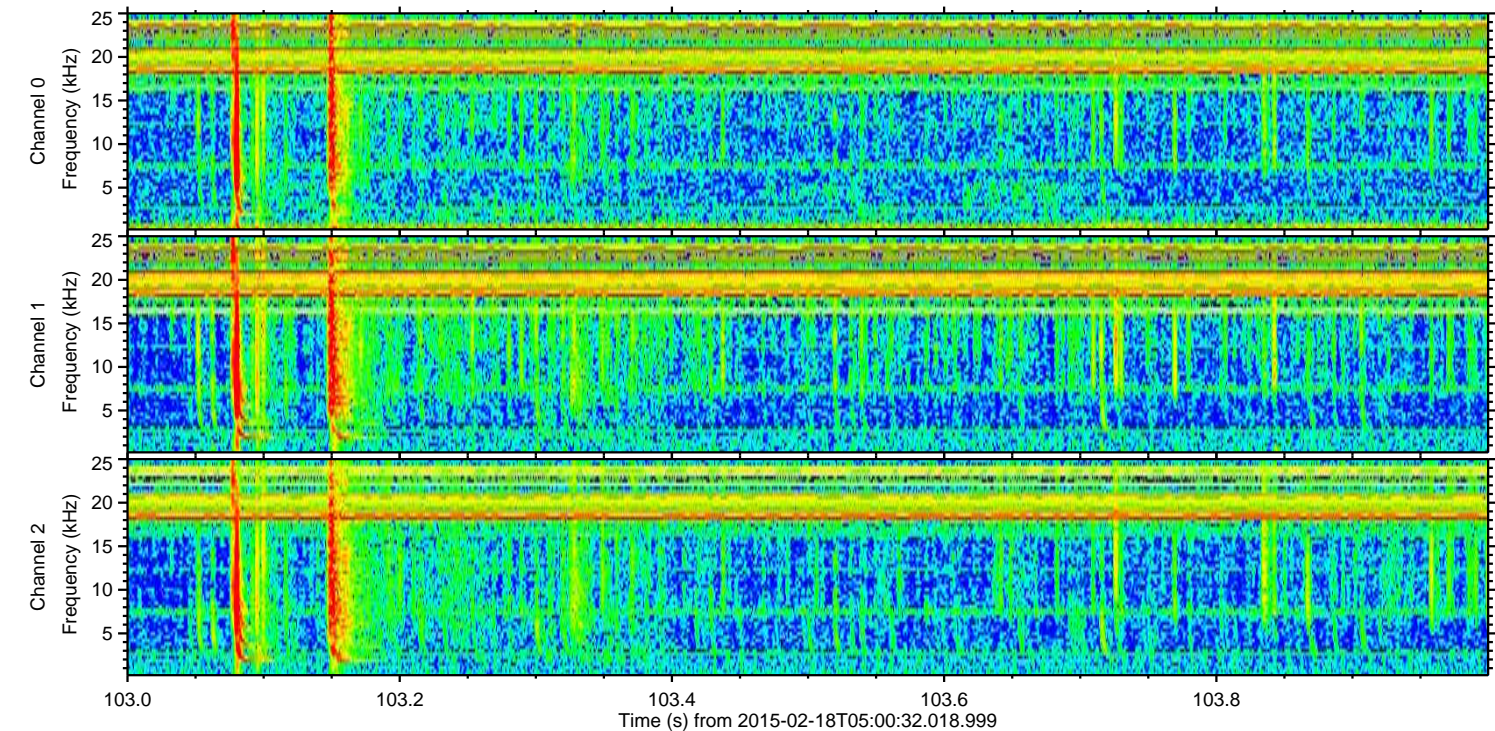
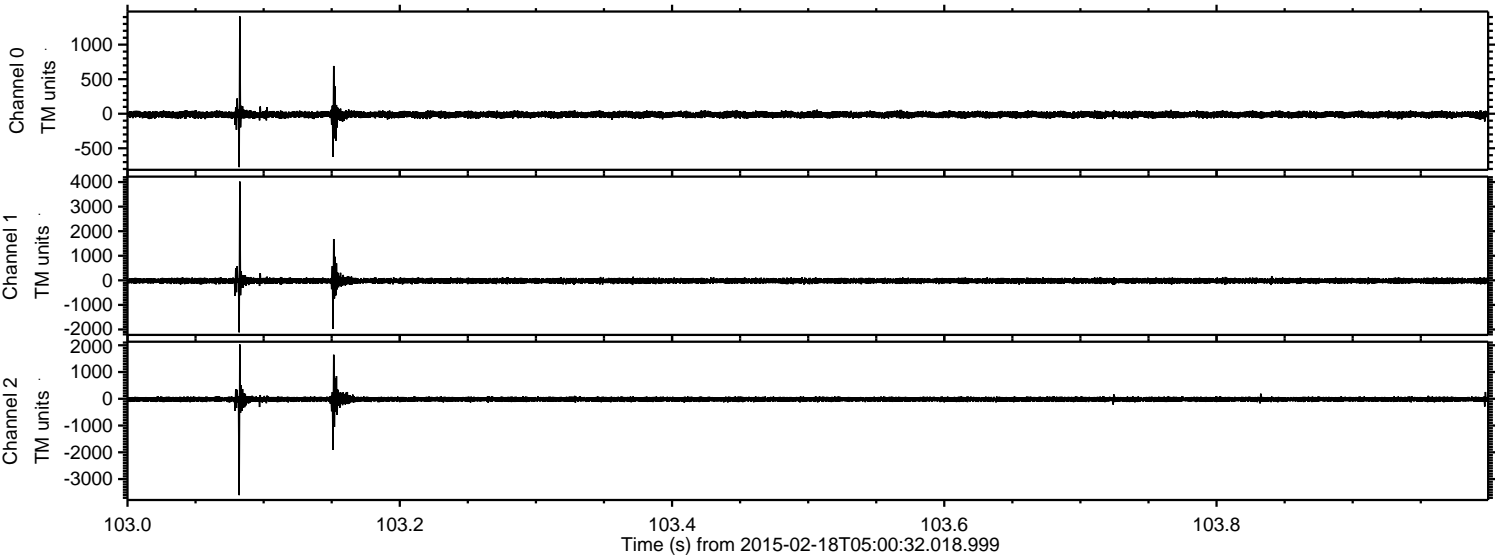
Processed Thu Feb 26 21:09:49 2015 by ELM ver.2012-10-06 from 001\_\_elm20150218\_050031\_\_dat00.bin





ELMAVAN 3D WAVEFORMS (Measured data sampled at 50 kHz) 49696 packets of 144 samples from 2015-02-18T05:00:32.018.999. Part 104/144

Processed Thu Feb 26 21:09:50 2015 by ELM ver.2012-10-06 from 001\_\_elm20150218\_050031\_\_dat00.bin



Channel 0  
mn: -773  
mx: 1409  
 $\mu$ : -12.8  
 $\sigma$ : 25.5

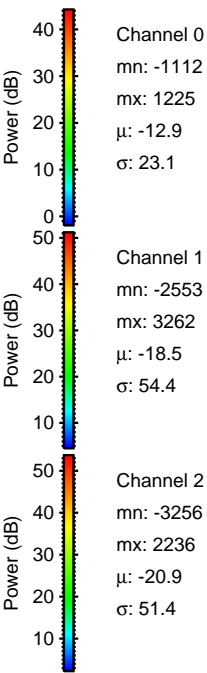
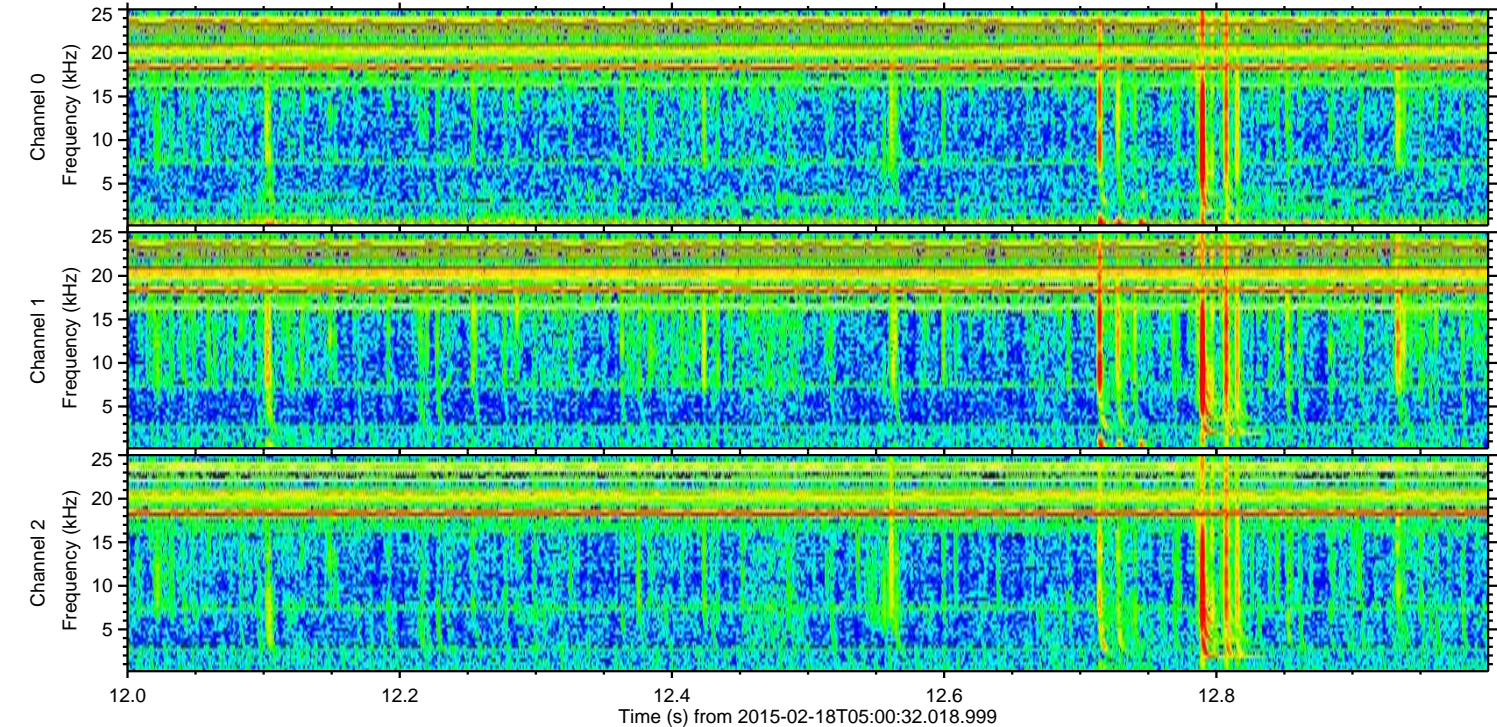
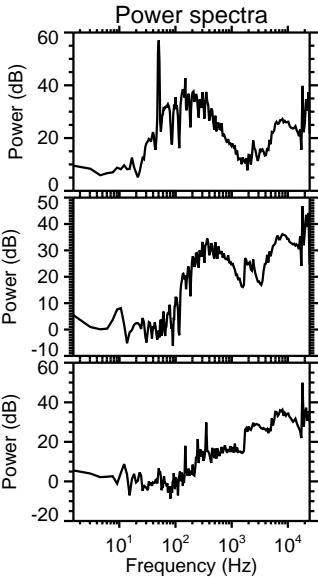
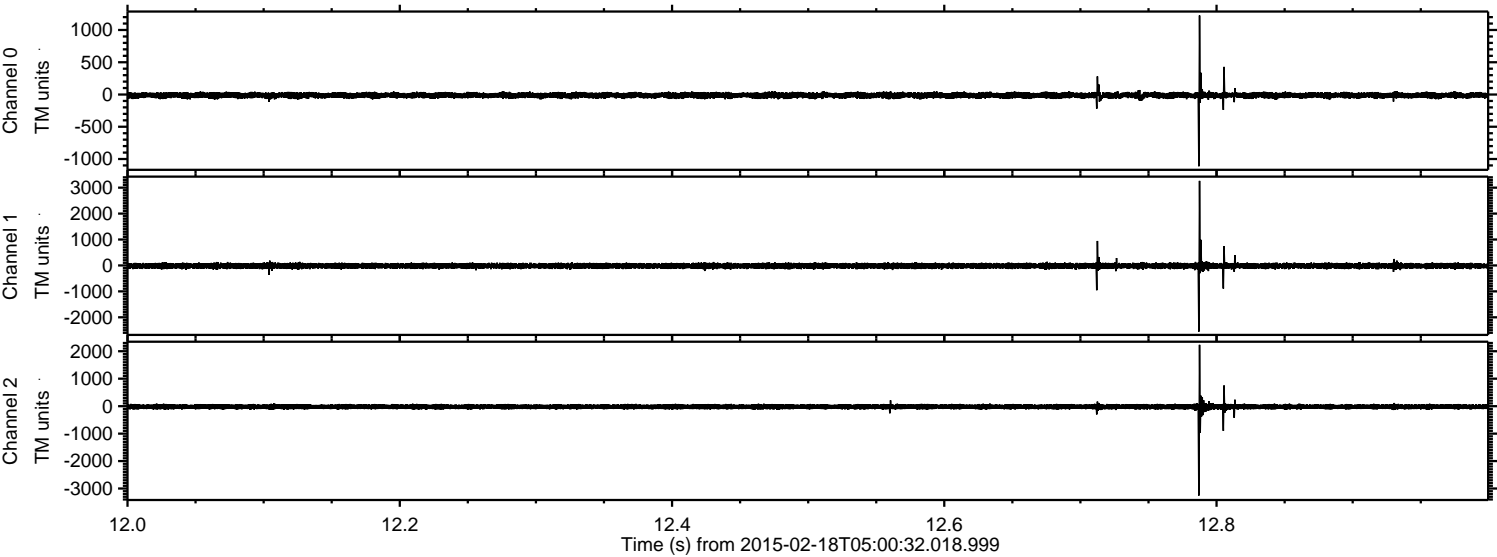
Channel 1  
mn: -2115  
mx: 4022  
 $\mu$ : -18.5  
 $\sigma$ : 61.0

Channel 2  
mn: -3603  
mx: 2030  
 $\mu$ : -21.0  
 $\sigma$ : 58.1



ELMAVAN 3D WAVEFORMS (Measured data sampled at 50 kHz) 49696 packets of 144 samples from 2015-02-18T05:00:32.018.999. Part 13/144

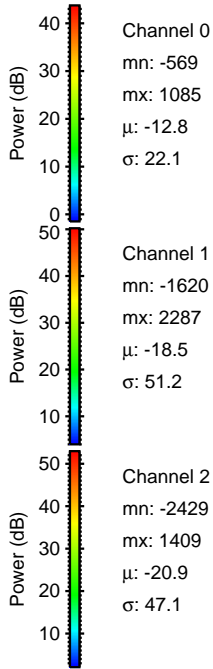
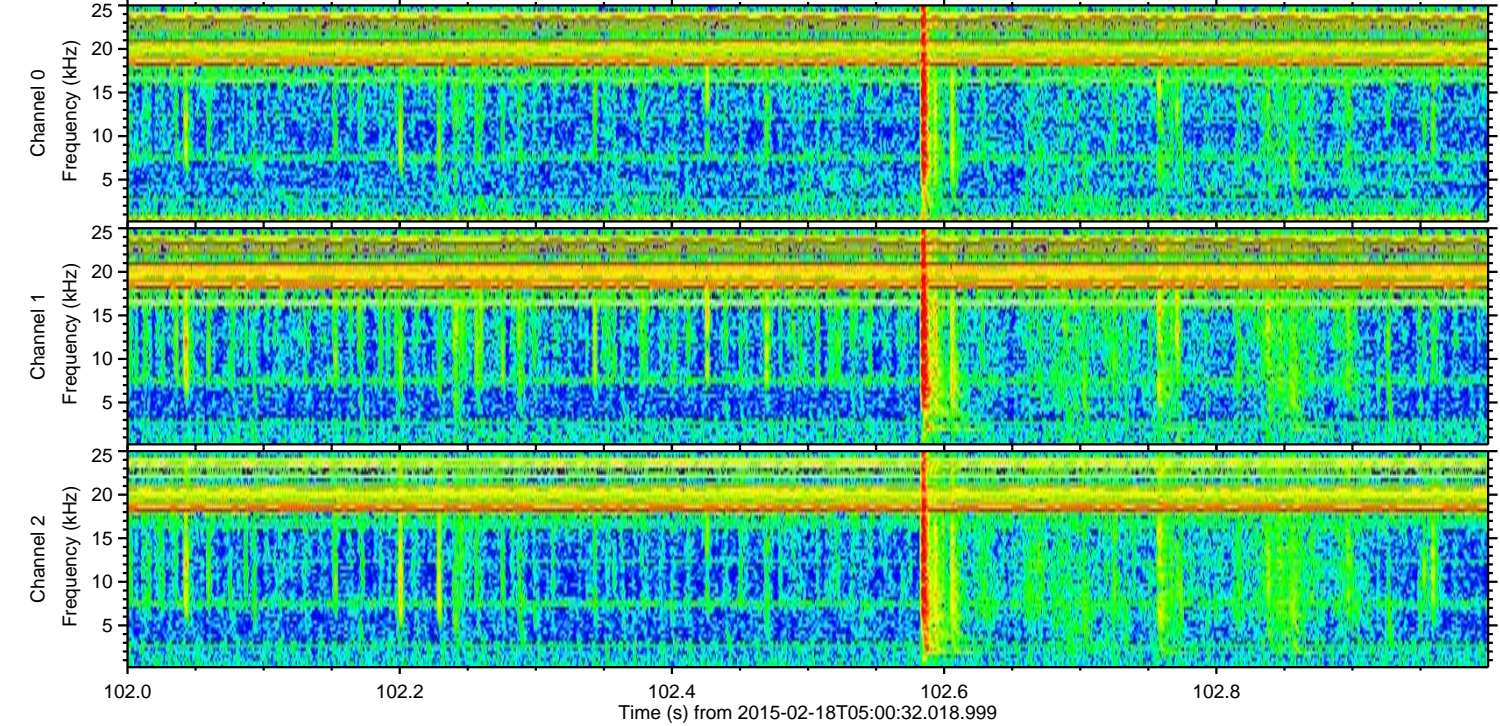
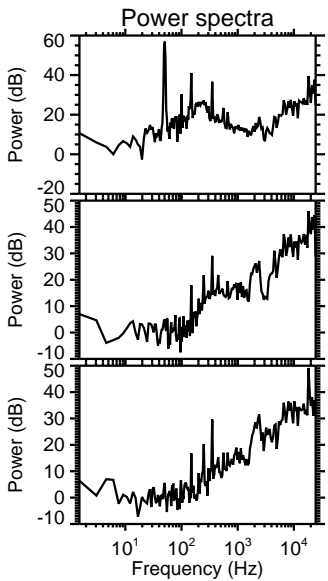
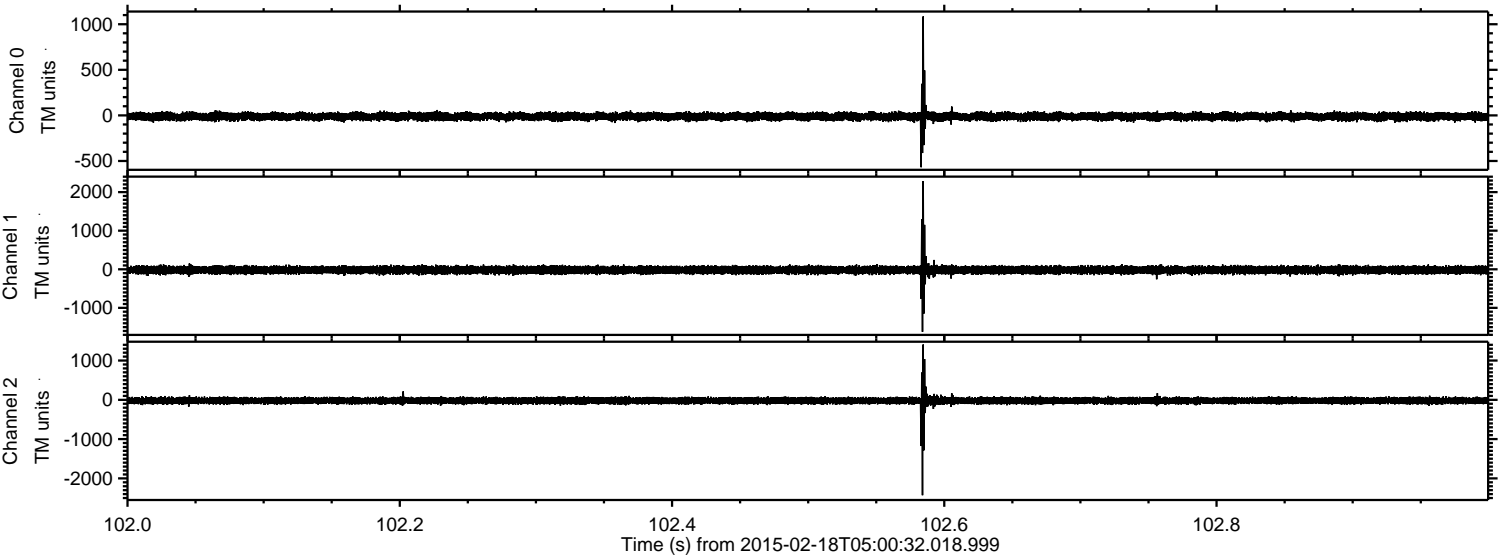
Processed Thu Feb 26 21:09:51 2015 by ELM ver.2012-10-06 from 001\_\_elm20150218\_050031\_\_dat00.bin





ELMAVAN 3D WAVEFORMS (Measured data sampled at 50 kHz) 49696 packets of 144 samples from 2015-02-18T05:00:32.018.999. Part 103/144

Processed Thu Feb 26 21:09:52 2015 by ELM ver.2012-10-06 from 001\_\_elm20150218\_050031\_\_dat00.bin



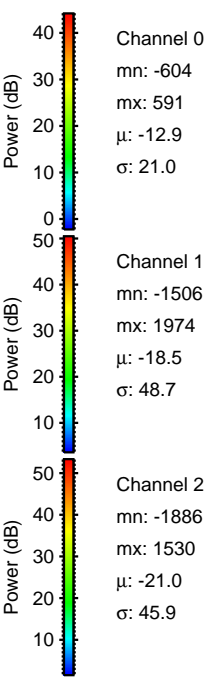
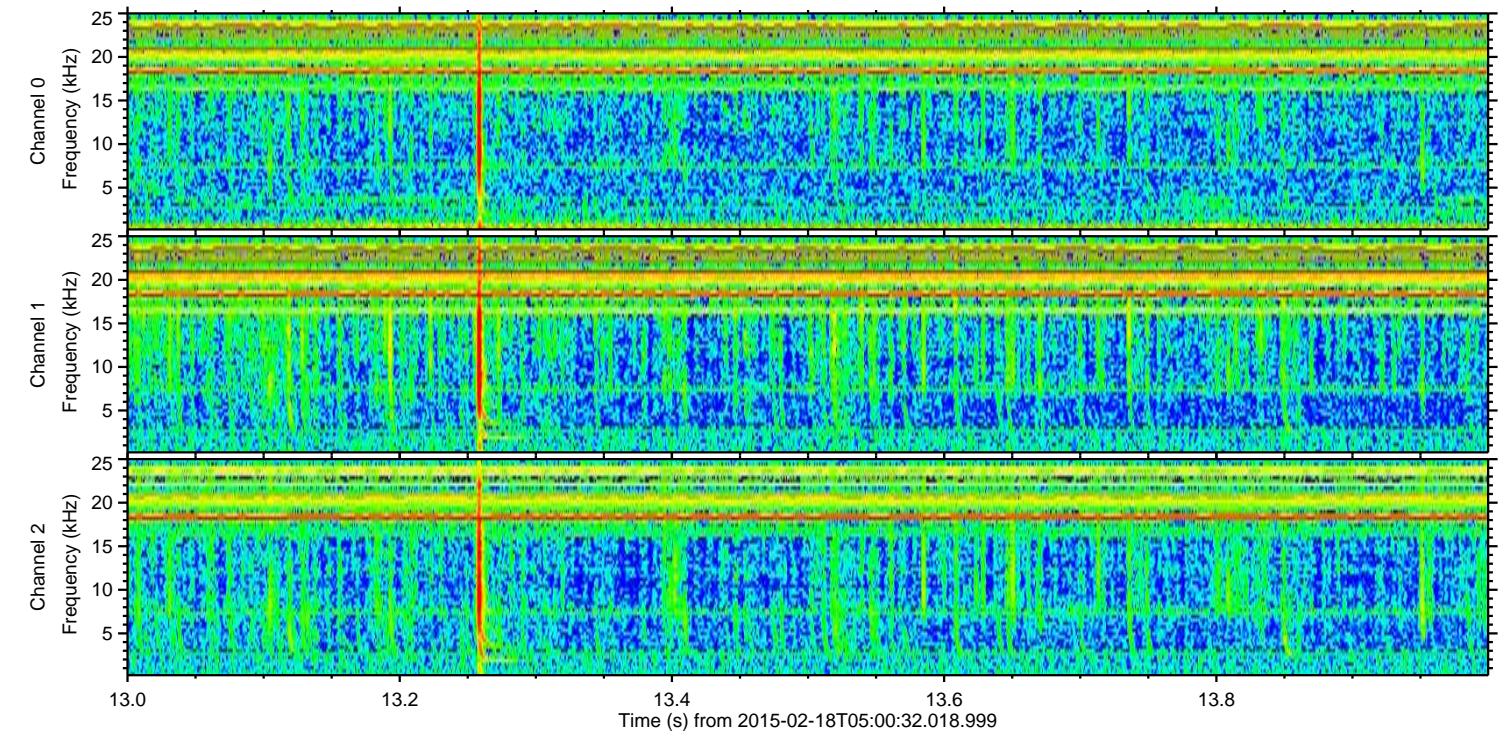
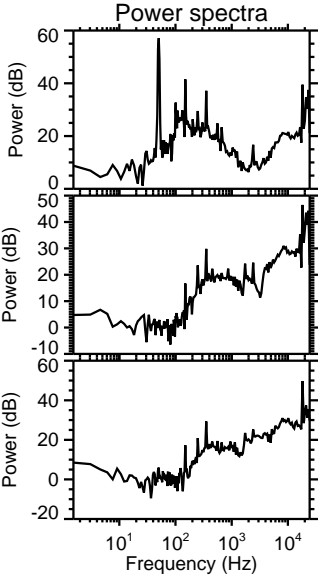
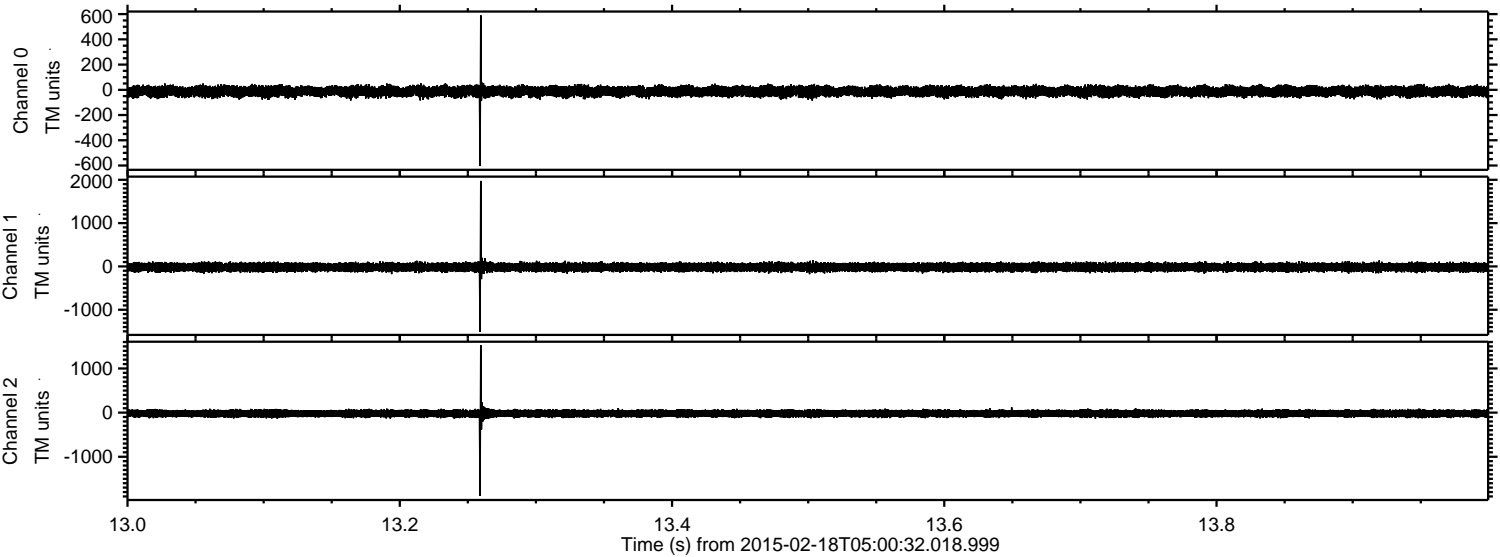
Channel 0  
mn: -569  
mx: 1085  
 $\mu$ : -12.8  
 $\sigma$ : 22.1

Channel 1  
mn: -1620  
mx: 2287  
 $\mu$ : -18.5  
 $\sigma$ : 51.2

Channel 2  
mn: -2429  
mx: 1409  
 $\mu$ : -20.9  
 $\sigma$ : 47.1

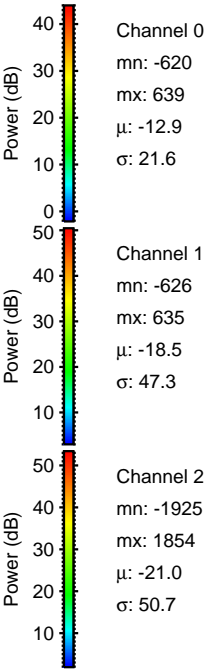
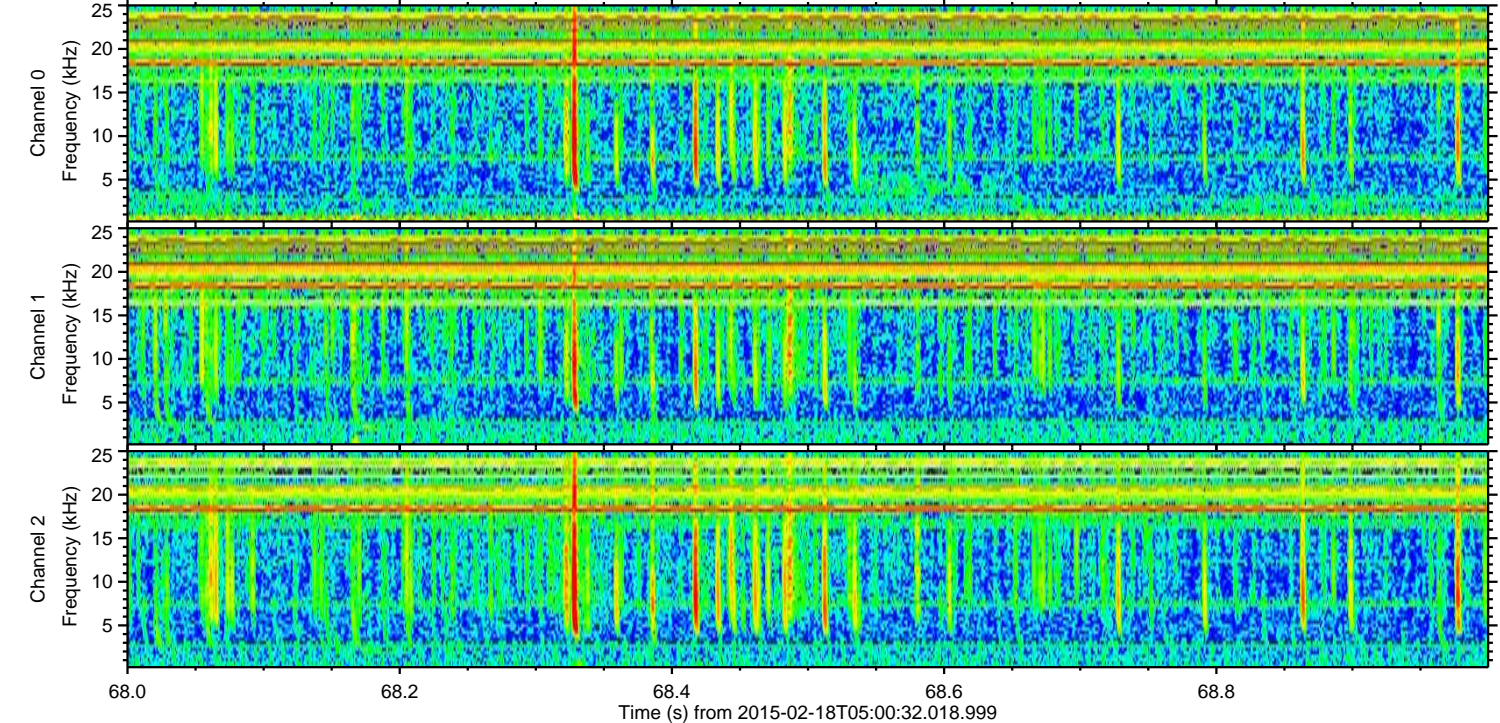
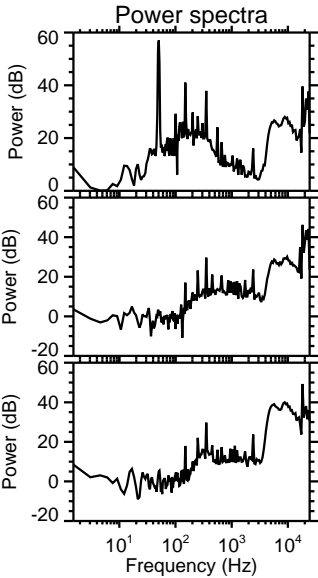
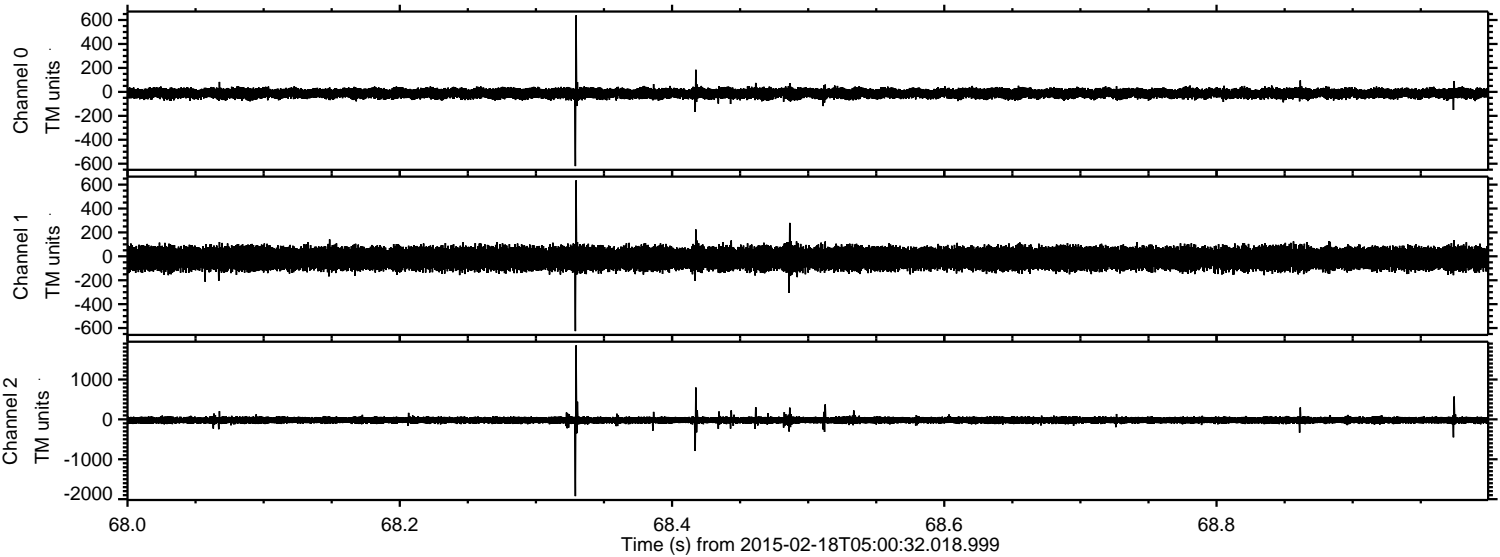


Processed Thu Feb 26 21:09:53 2015 by ELM ver.2012-10-06 from 001\_\_elm20150218\_050031\_\_dat00.bin



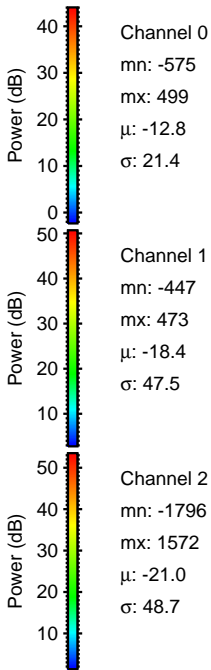
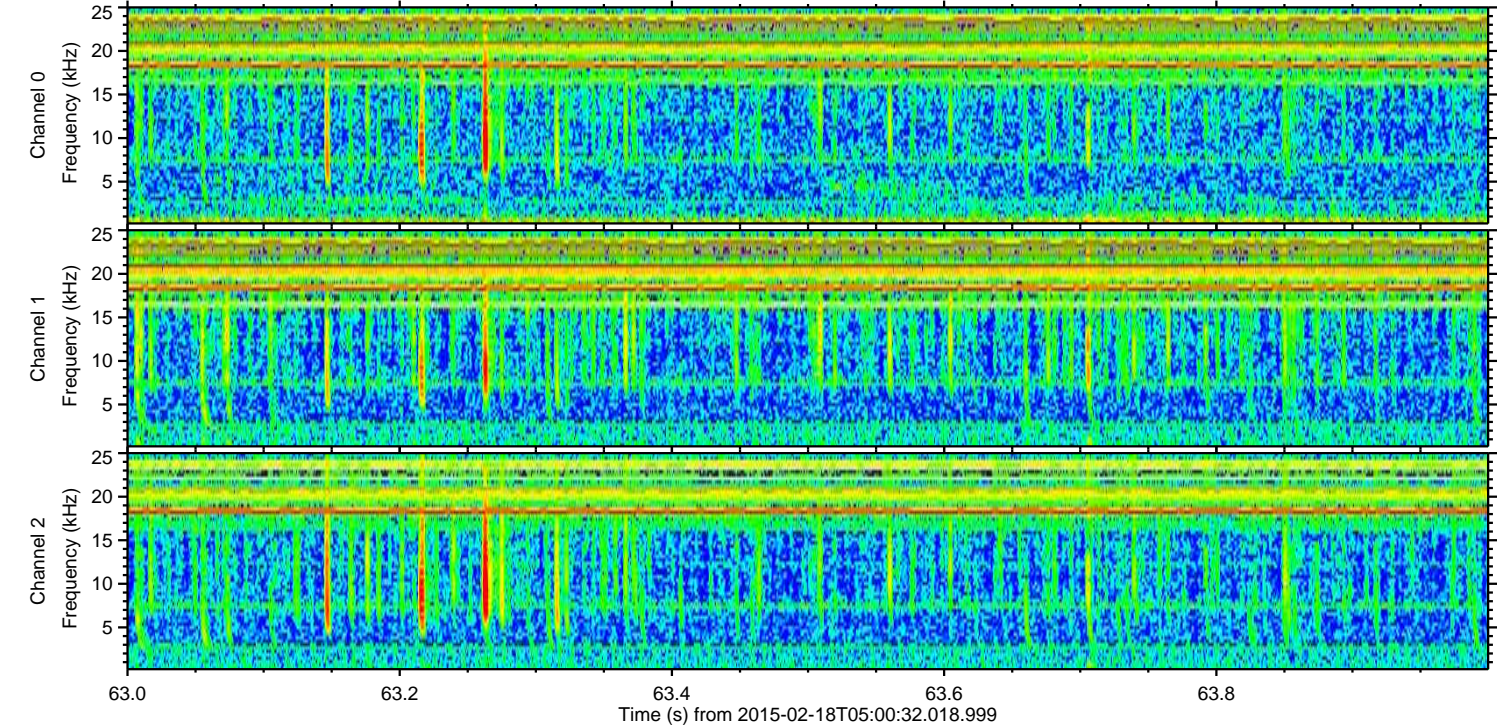
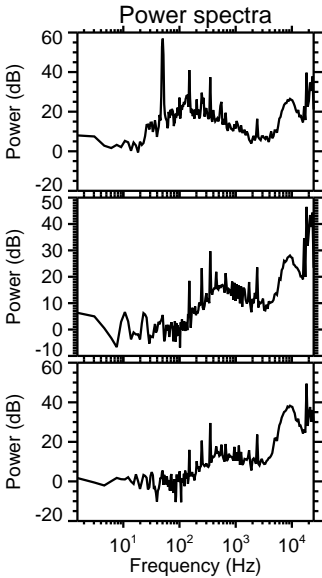
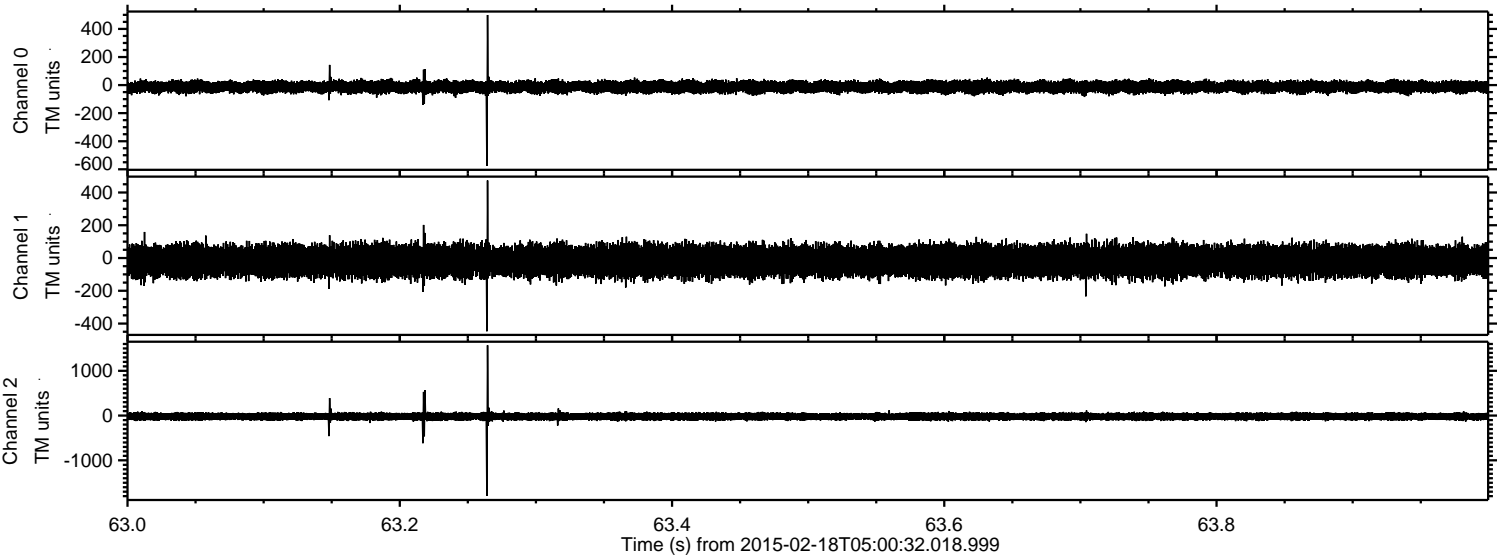


Processed Thu Feb 26 21:09:54 2015 by ELM ver.2012-10-06 from 001\_\_elm20150218\_050031\_\_dat00.bin





Processed Thu Feb 26 21:09:55 2015 by ELM ver.2012-10-06 from 001\_\_elm20150218\_050031\_\_dat00.bin





Processed Thu Feb 26 21:09:56 2015 by ELM ver.2012-10-06 from 001\_\_elm20150218\_050031\_\_dat00.bin

