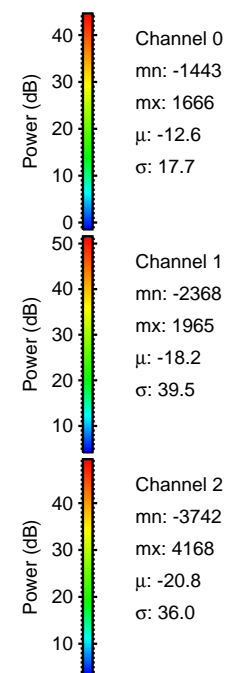
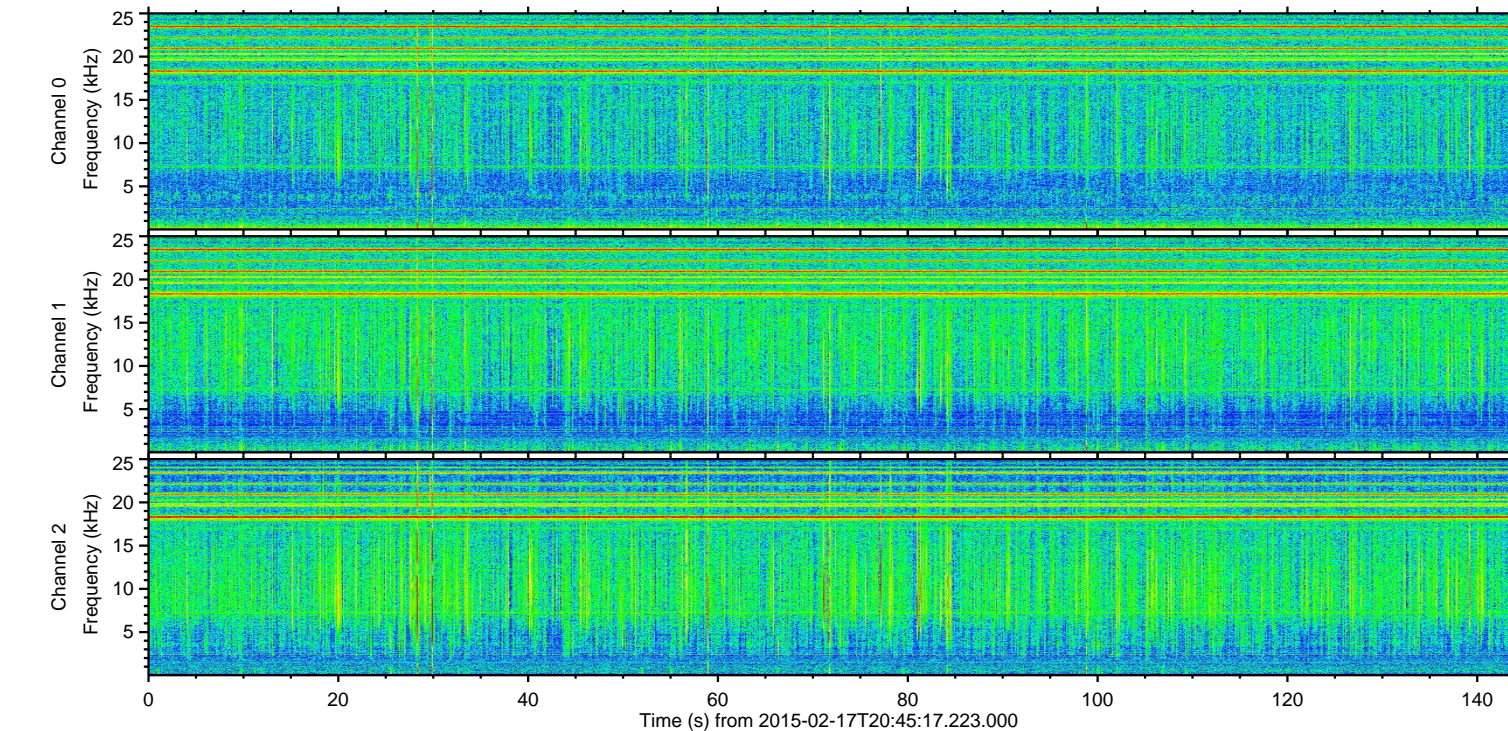
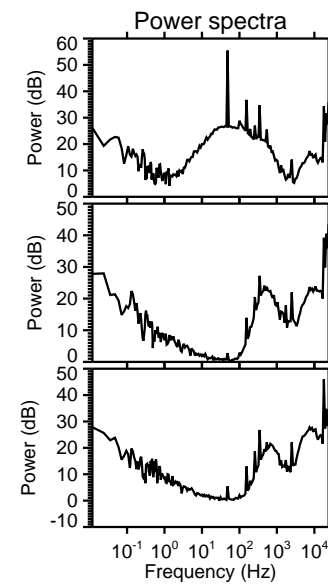
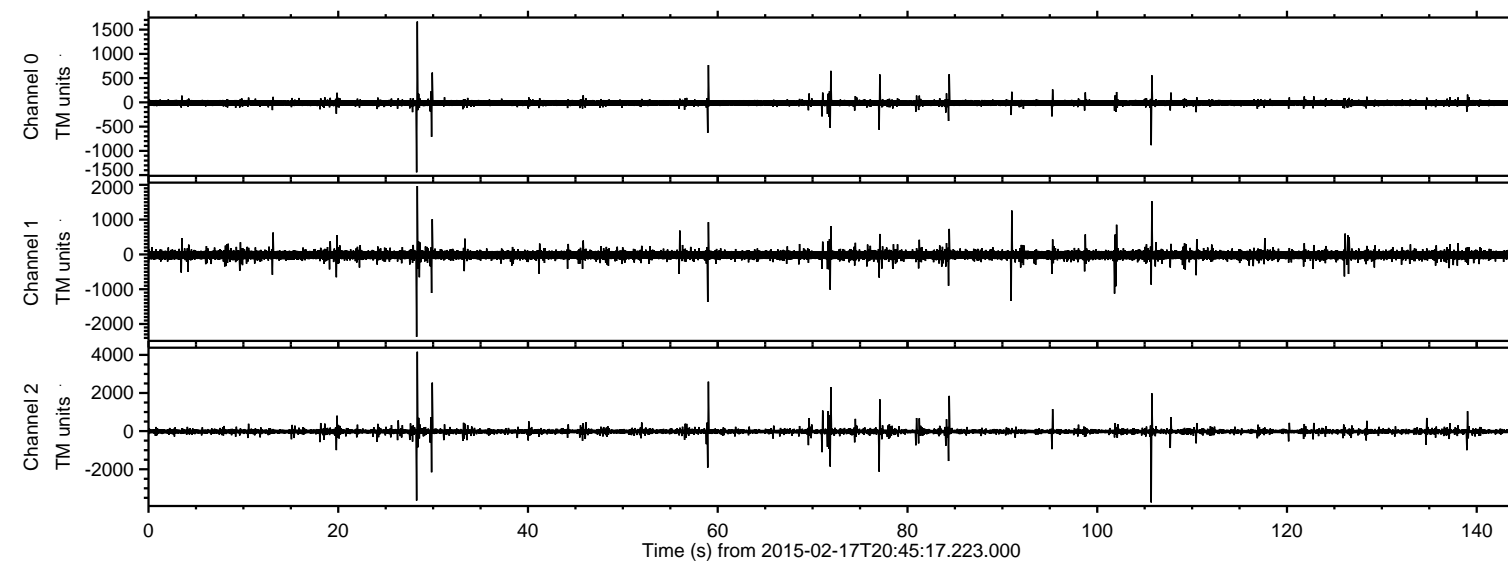
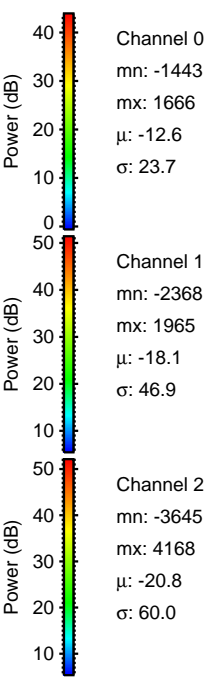
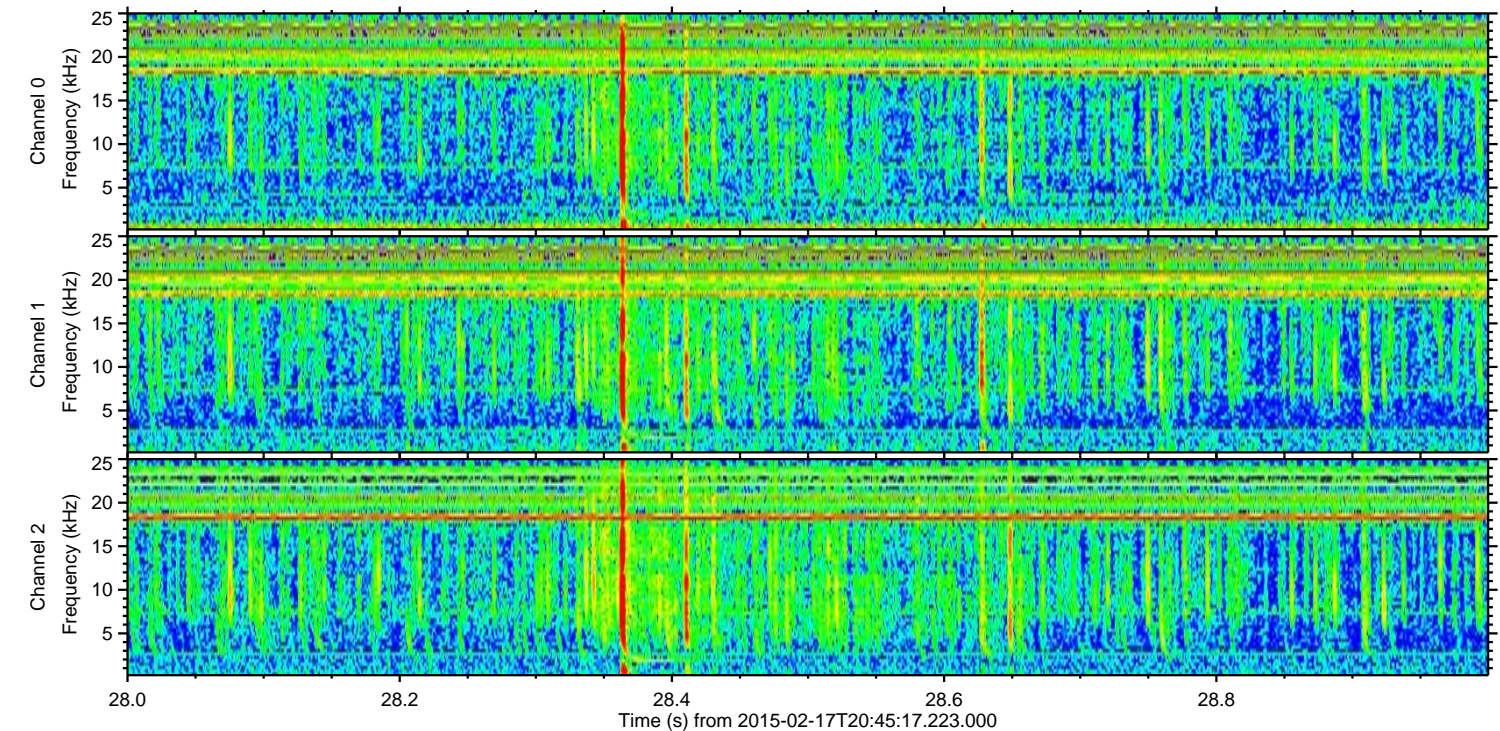
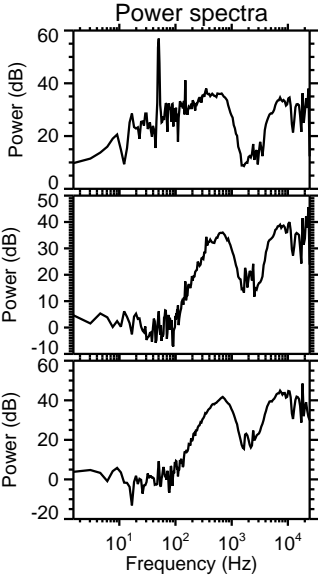
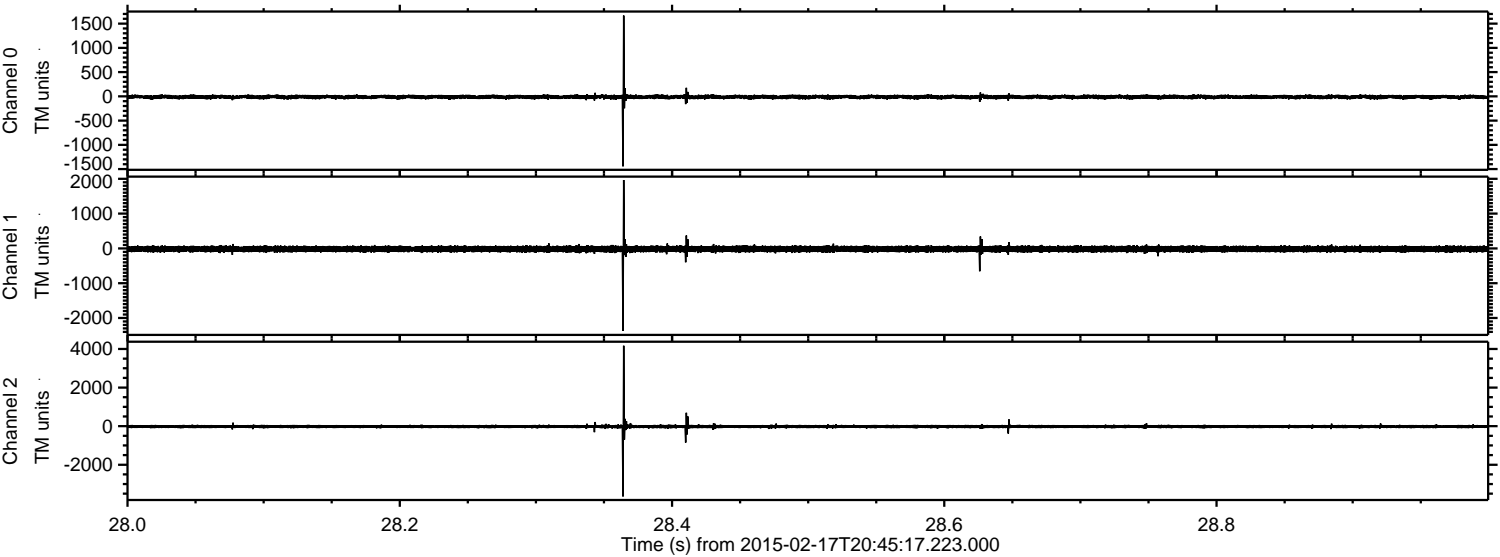


ELMAVAN 3D WAVEFORMS (Measured data sampled at 50 kHz) 49798 packets of 144 samples from 2015-02-17T20:45:17.223.000.

Processed Thu Feb 26 18:18:21 2015 by ELM ver.2012-10-06 from 001__elm20150217_204516__dat00.bin

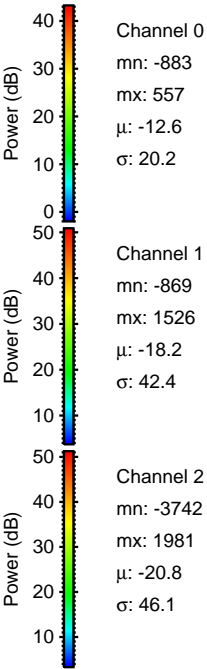
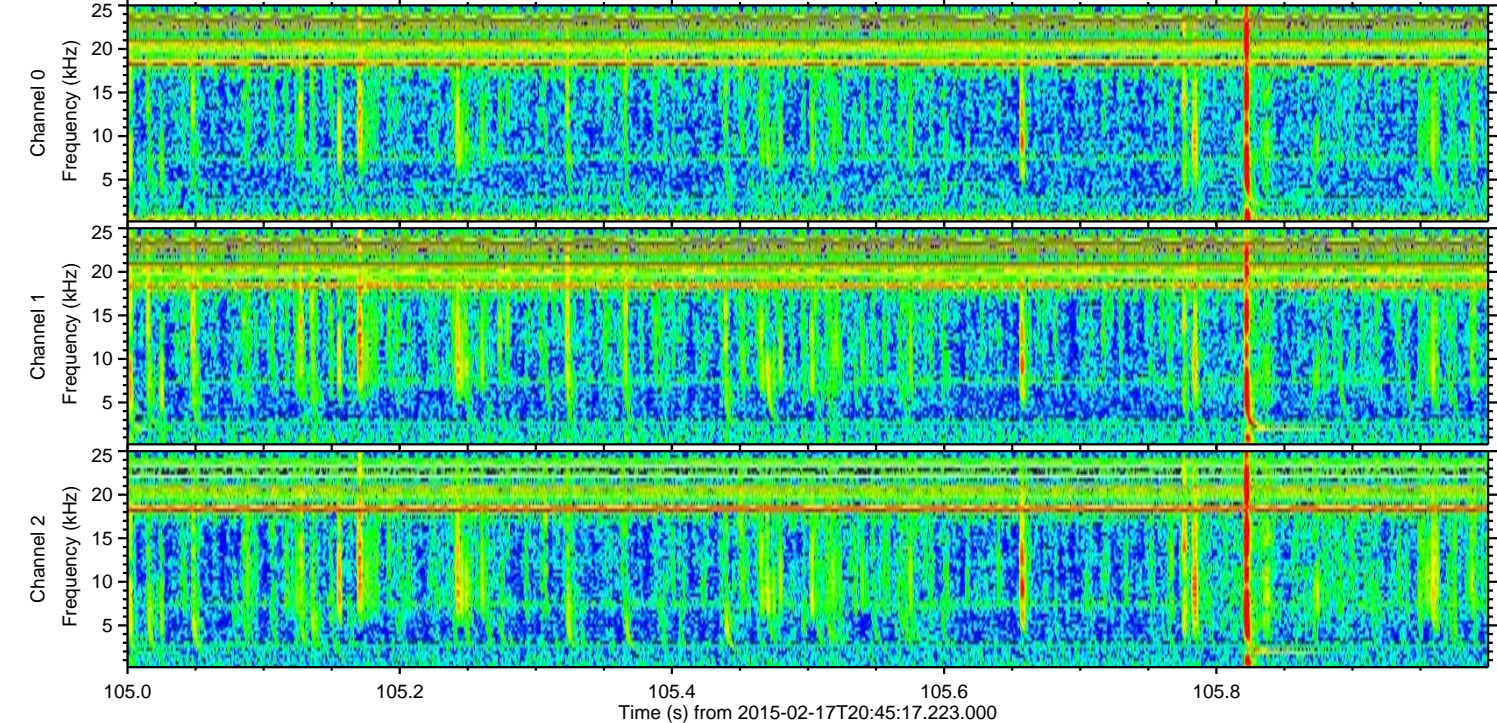
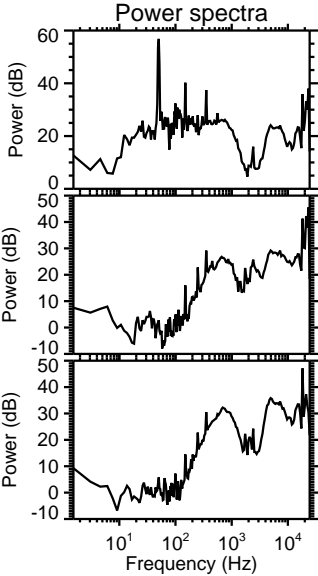
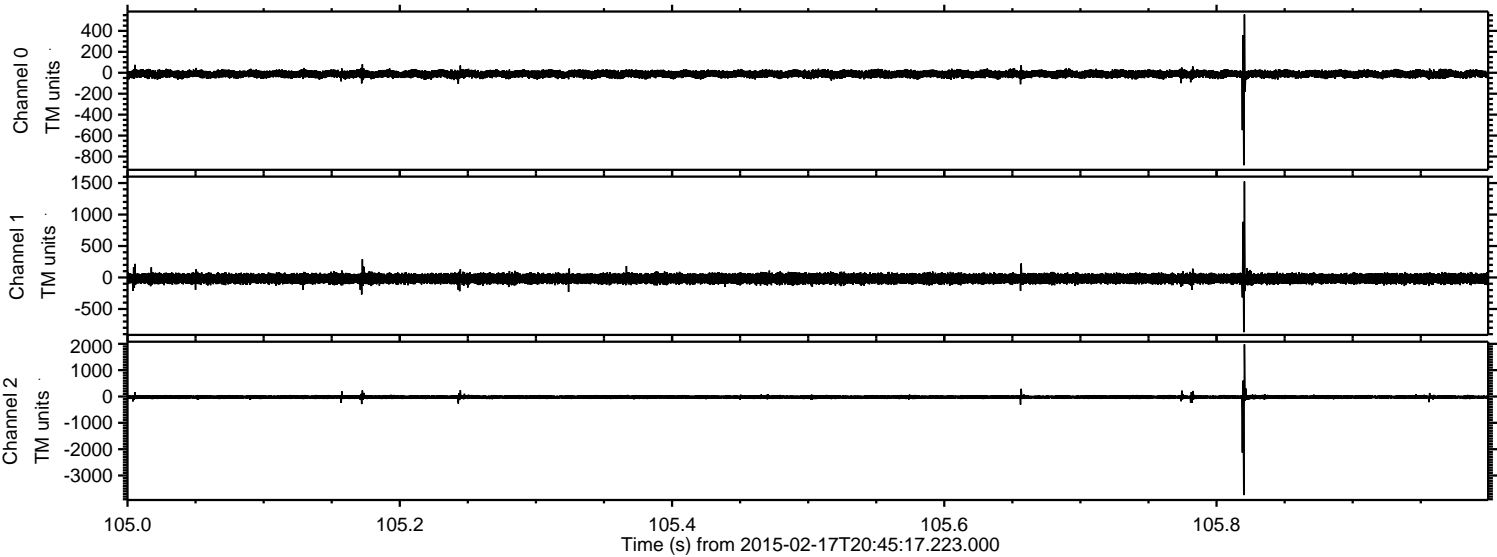


Processed Thu Feb 26 18:18:32 2015 by ELM ver.2012-10-06 from 001__elm20150217_204516__dat00.bin

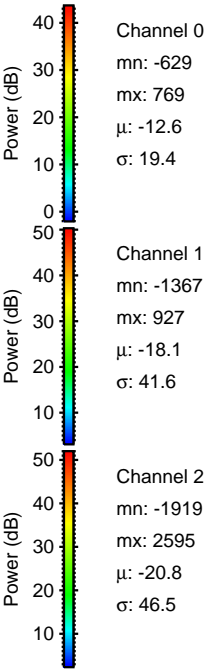
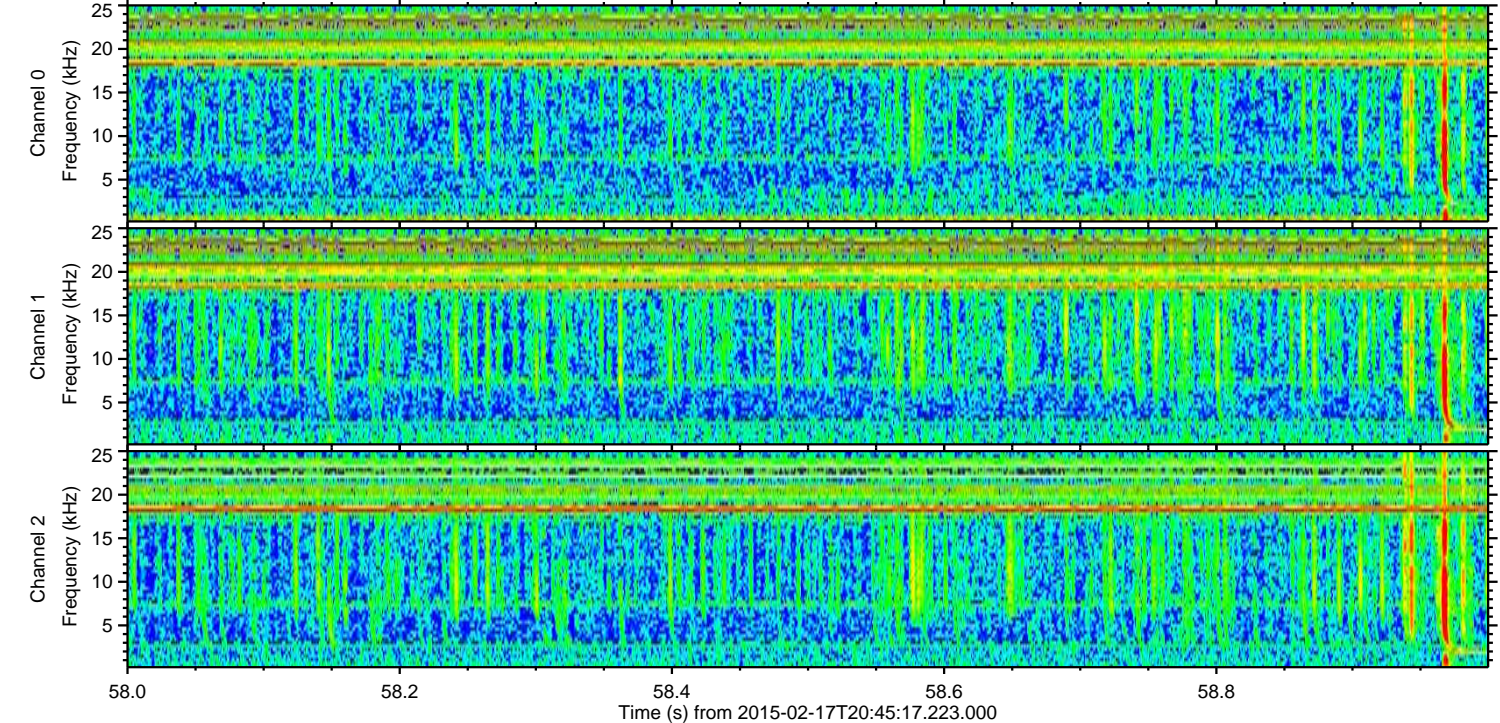
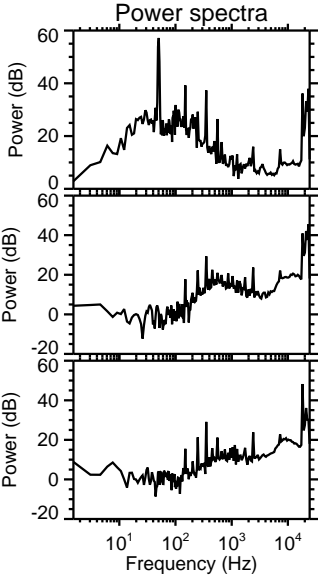
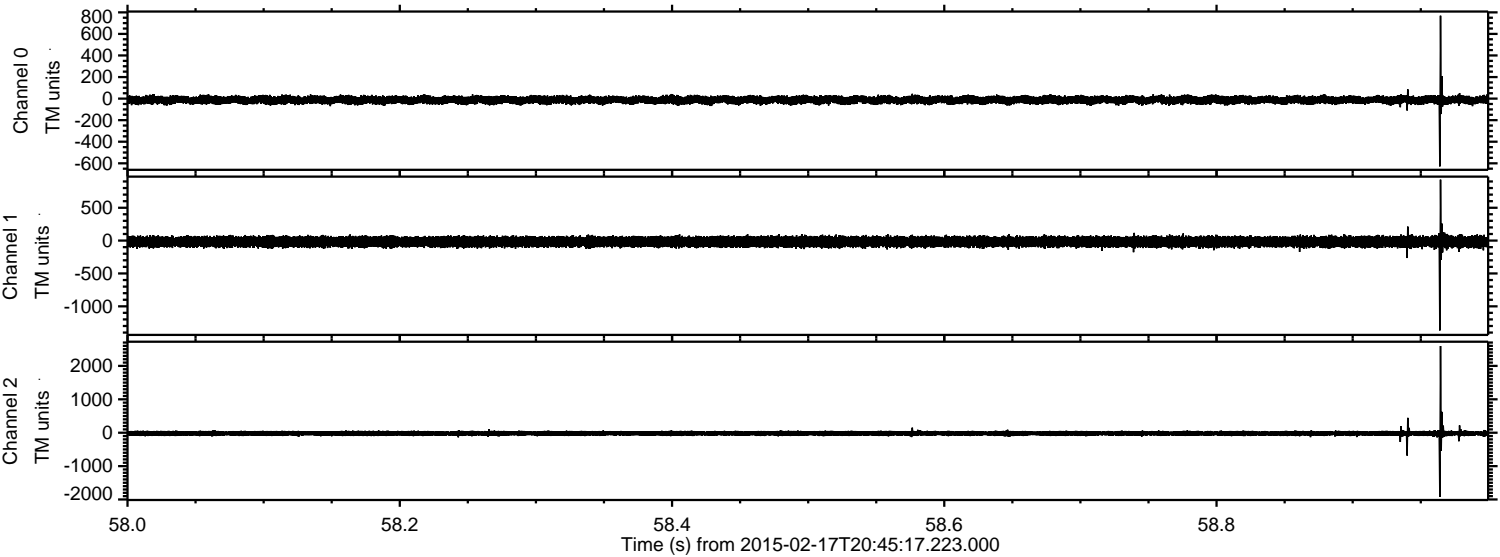


ELMAVAN 3D WAVEFORMS (Measured data sampled at 50 kHz) 49798 packets of 144 samples from 2015-02-17T20:45:17.223.000. Part 106/144

Processed Thu Feb 26 18:18:33 2015 by ELM ver.2012-10-06 from 001__elm20150217_204516__dat00.bin

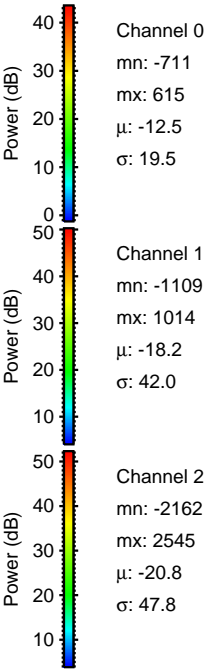
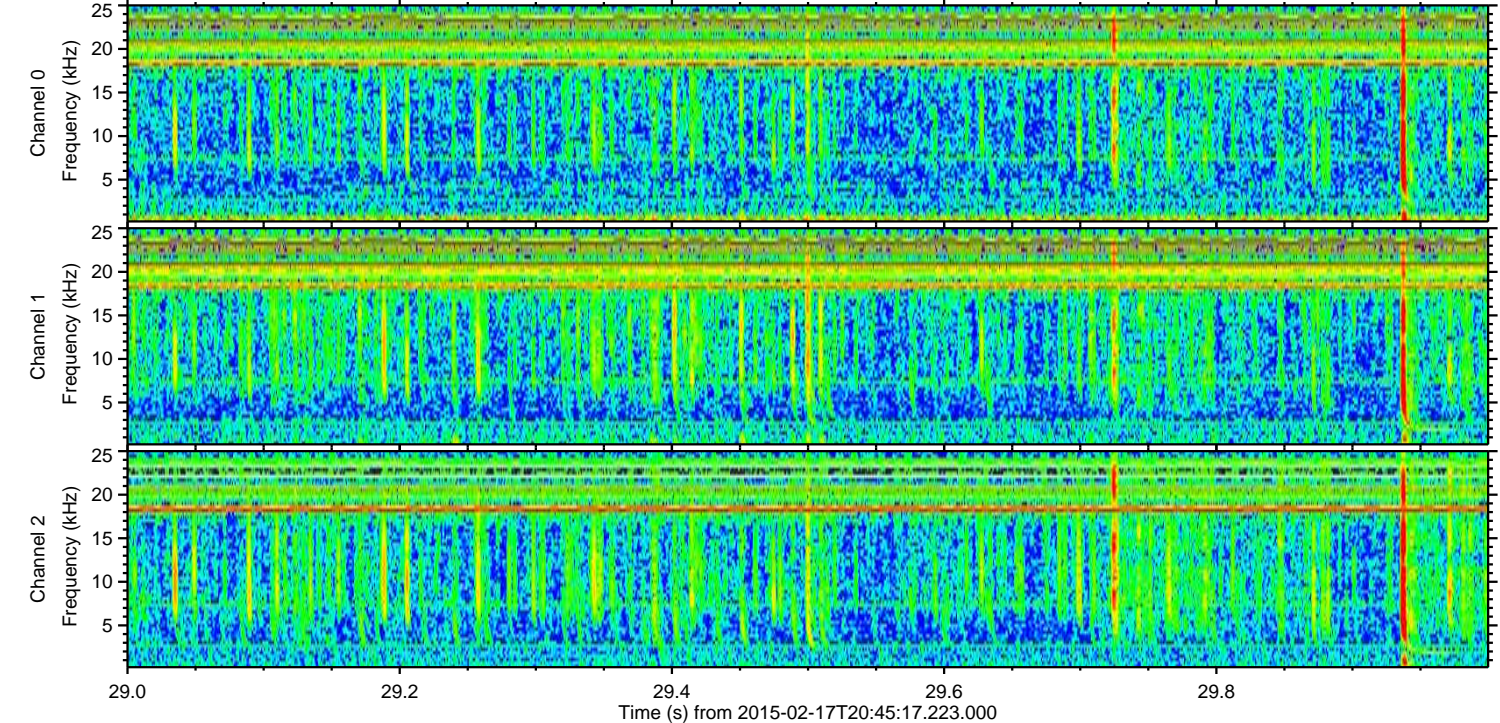
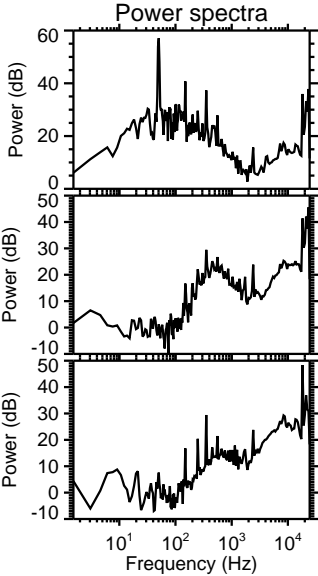
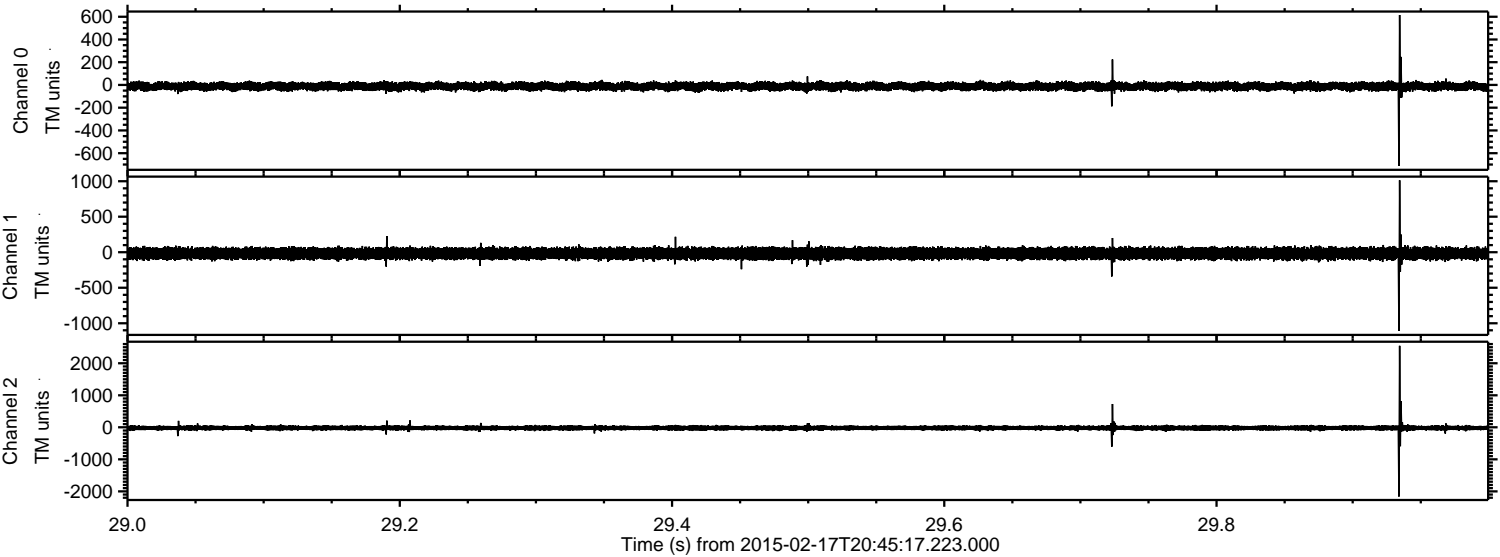


Processed Thu Feb 26 18:18:34 2015 by ELM ver.2012-10-06 from 001__elm20150217_204516__dat00.bin



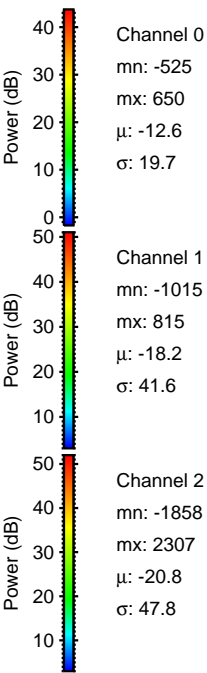
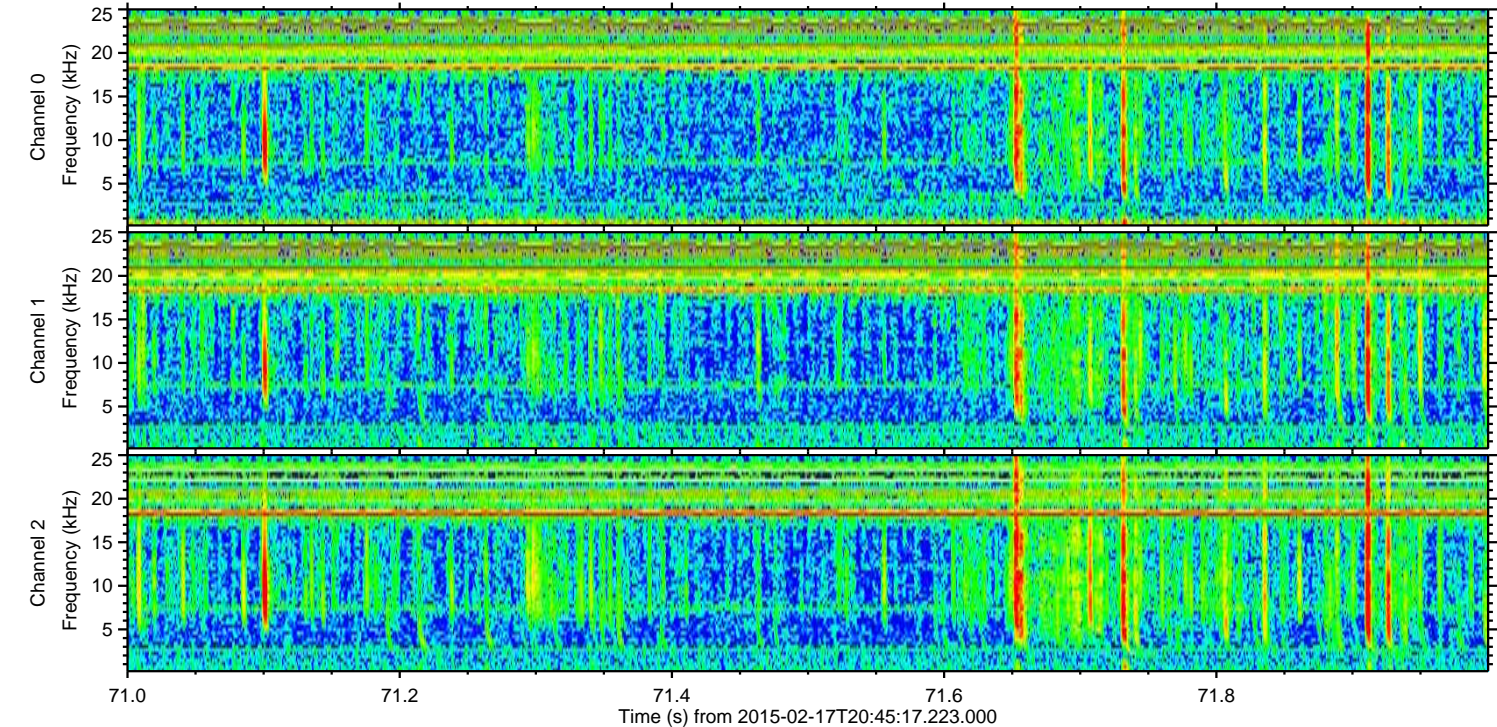
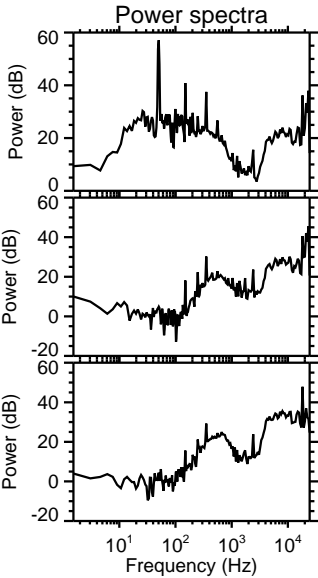
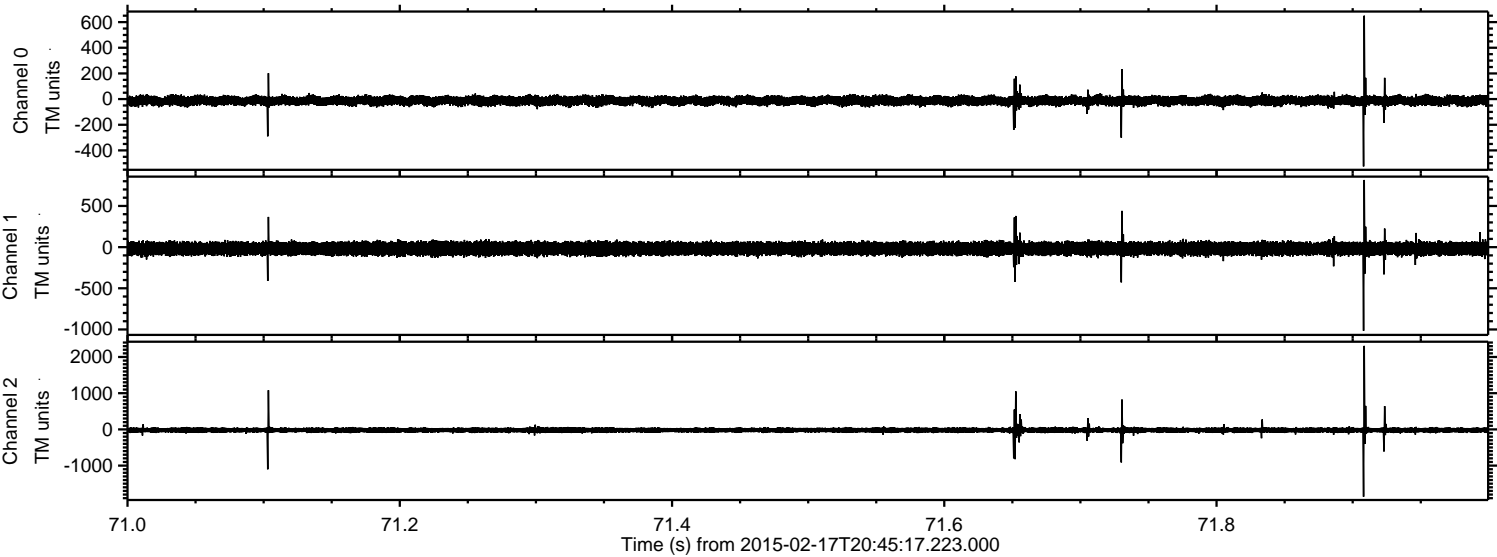
ELMAVAN 3D WAVEFORMS (Measured data sampled at 50 kHz) 49798 packets of 144 samples from 2015-02-17T20:45:17.223.000. Part 30/144

Processed Thu Feb 26 18:18:35 2015 by ELM ver.2012-10-06 from 001__elm20150217_204516__dat00.bin

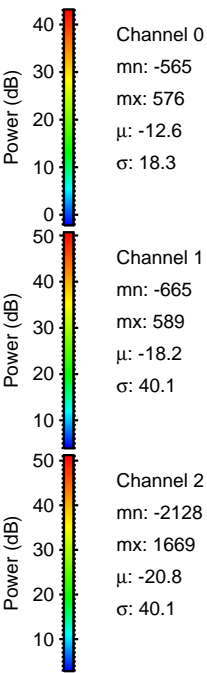
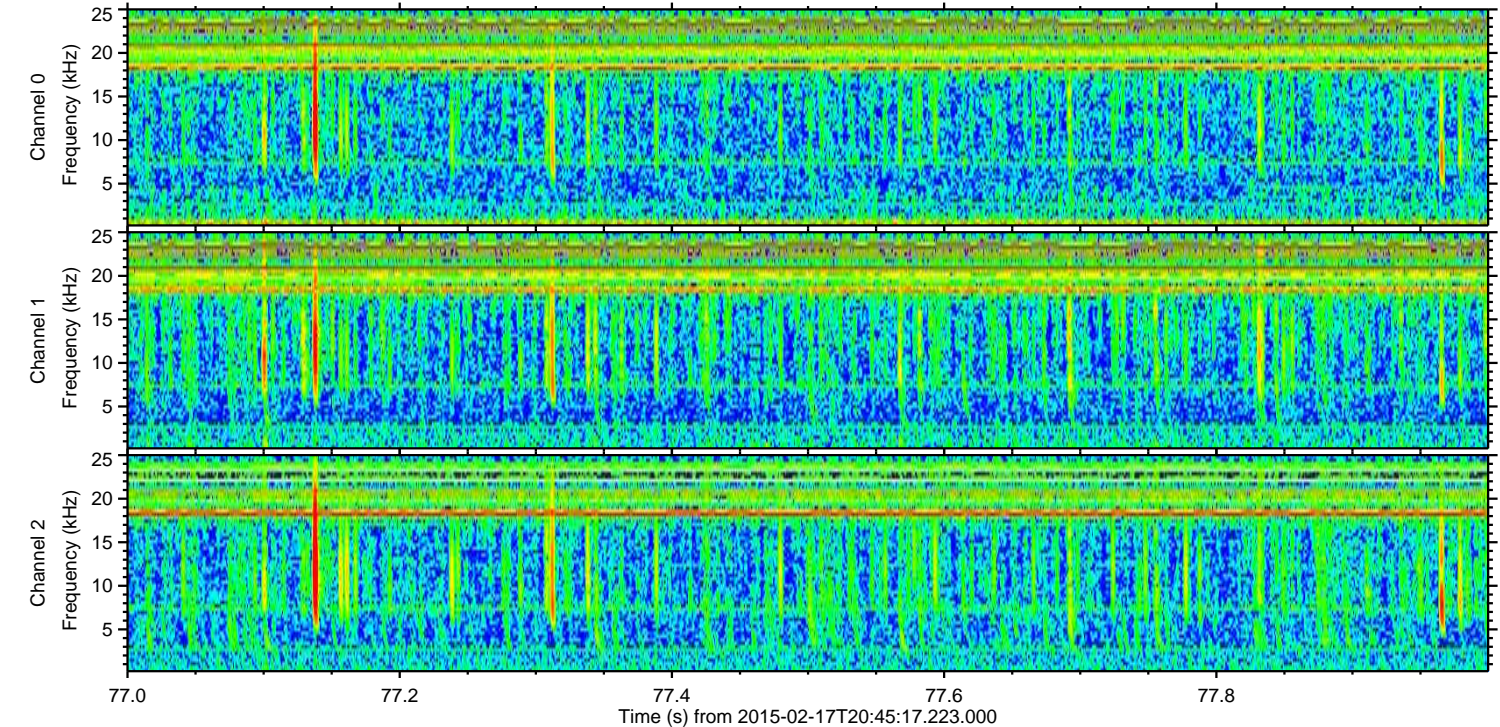
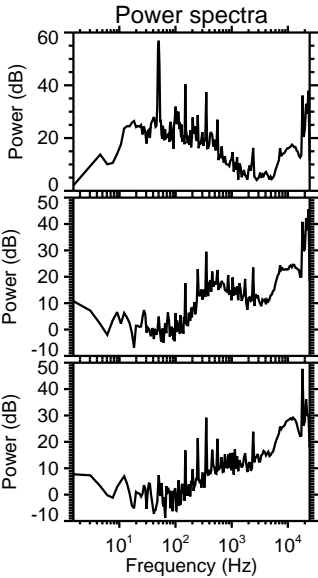
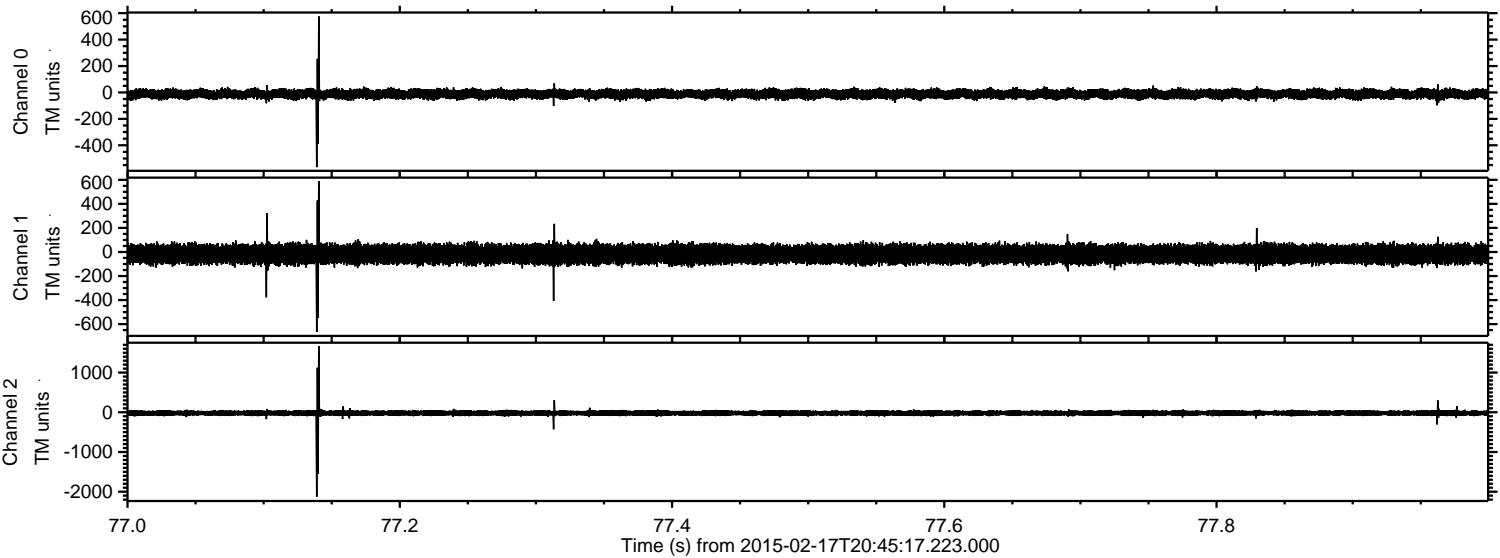


ELMAVAN 3D WAVEFORMS (Measured data sampled at 50 kHz) 49798 packets of 144 samples from 2015-02-17T20:45:17.223.000. Part 72/144

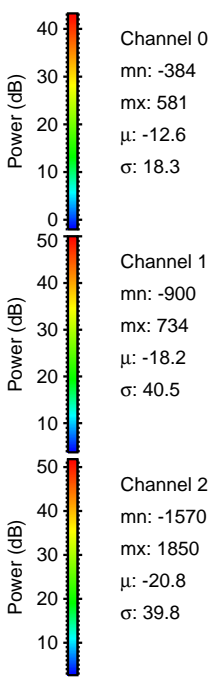
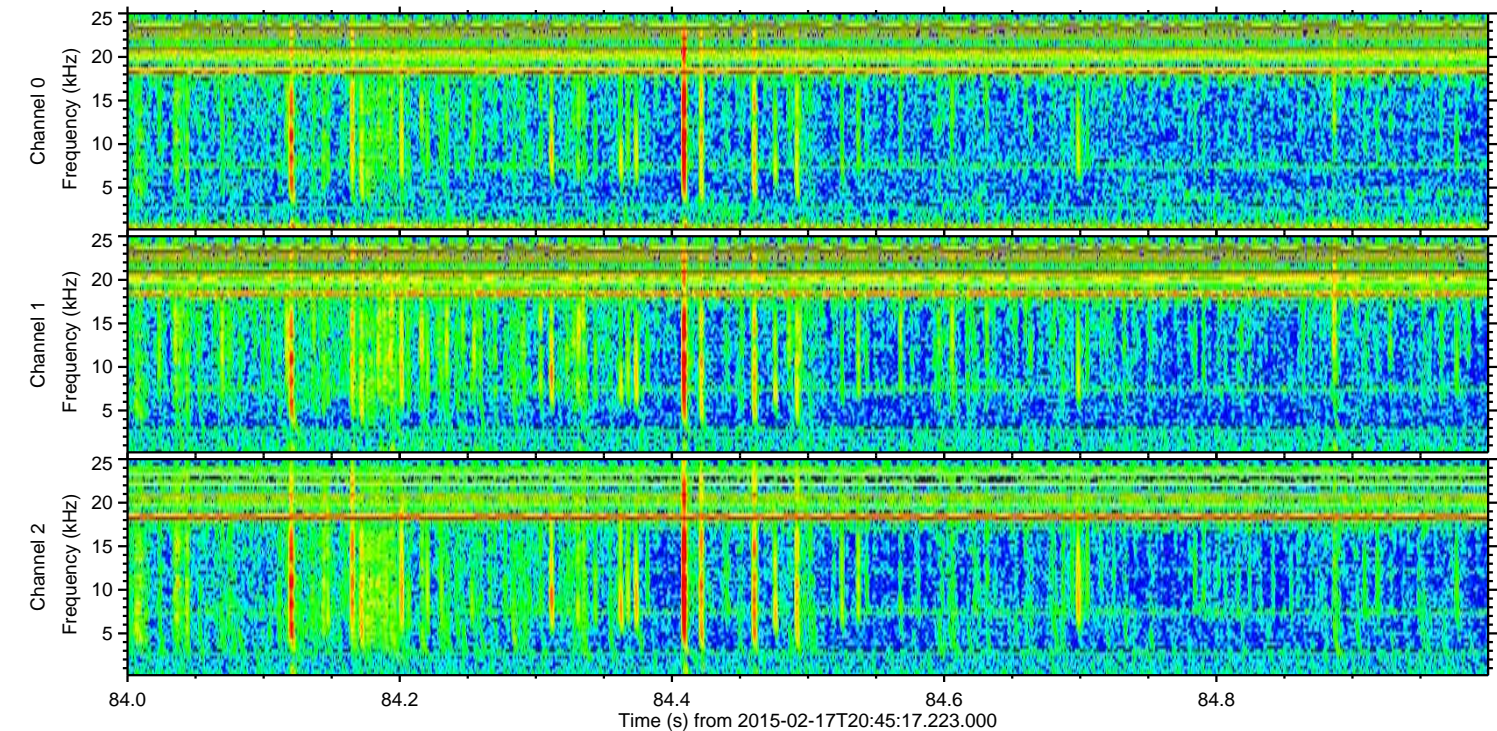
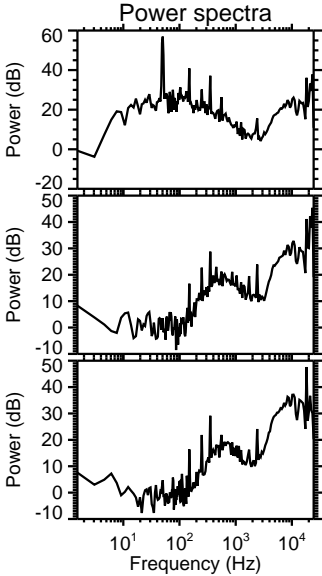
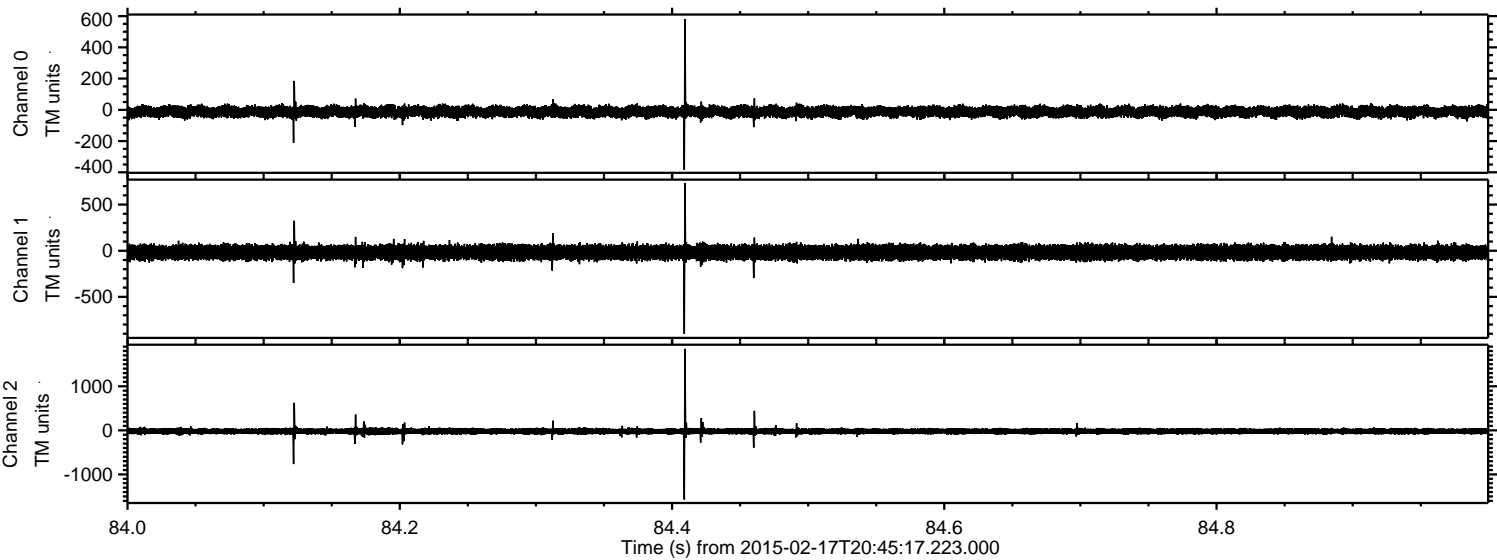
Processed Thu Feb 26 18:18:36 2015 by ELM ver.2012-10-06 from 001__elm20150217_204516__dat00.bin



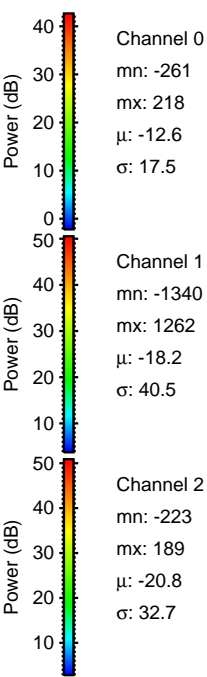
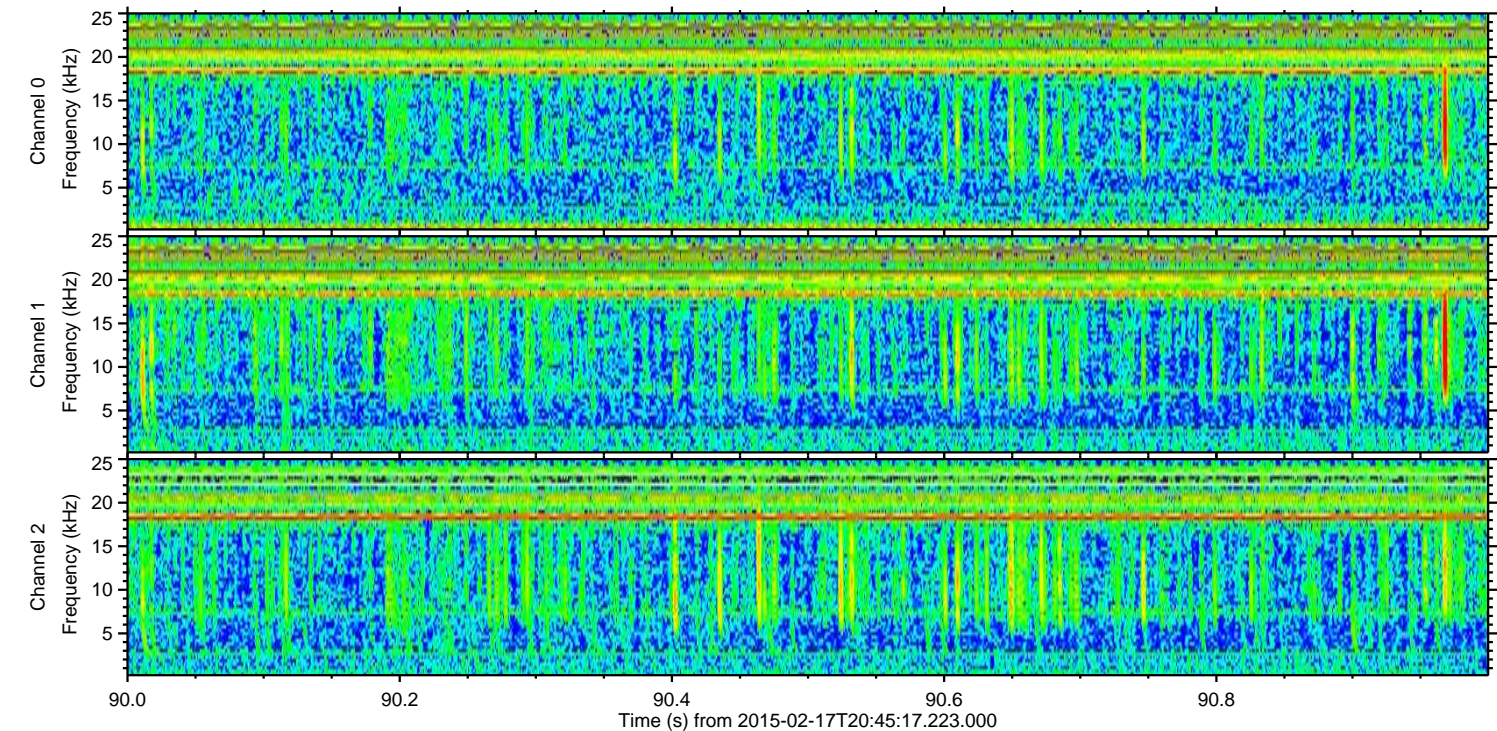
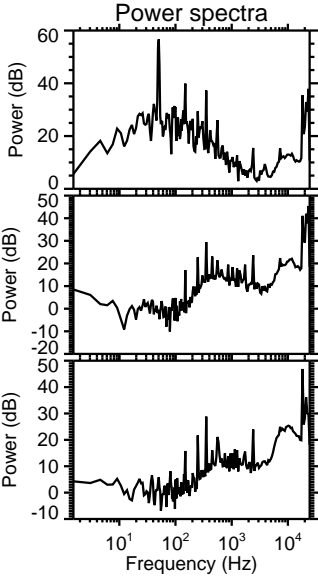
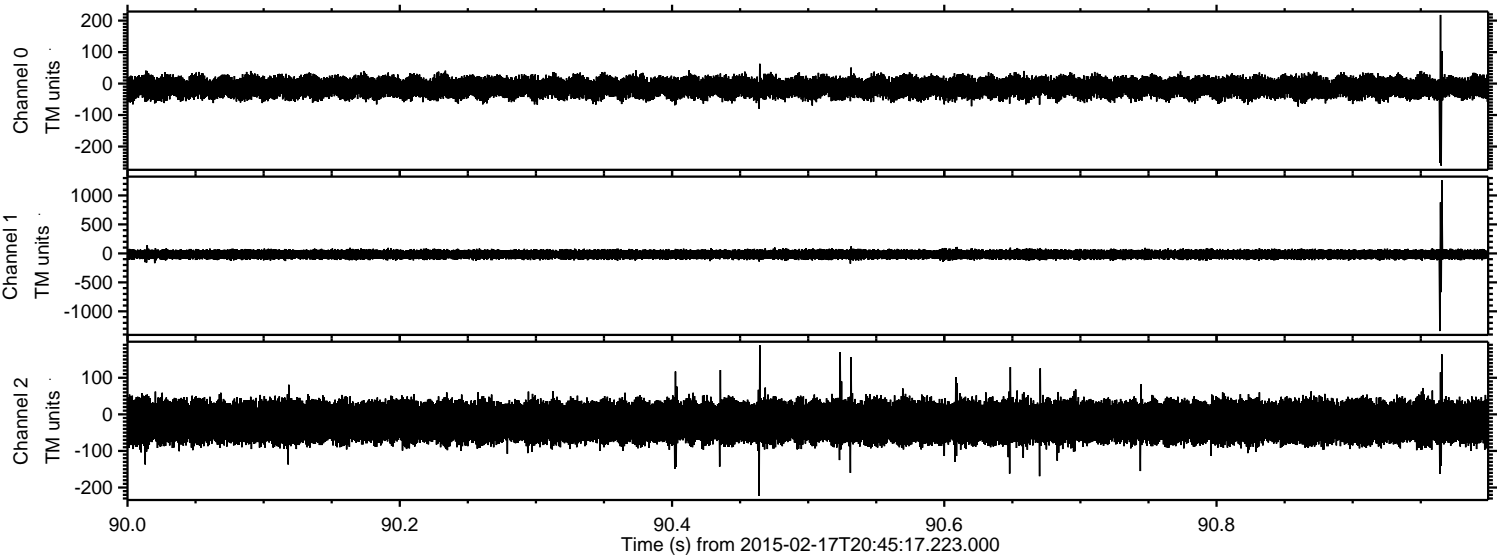
Processed Thu Feb 26 18:18:37 2015 by ELM ver.2012-10-06 from 001__elm20150217_204516__dat00.bin



Processed Thu Feb 26 18:18:38 2015 by ELM ver.2012-10-06 from 001__elm20150217_204516__dat00.bin



Processed Thu Feb 26 18:18:39 2015 by ELM ver.2012-10-06 from 001__elm20150217_204516__dat00.bin

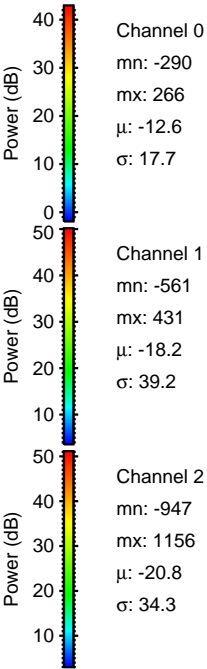
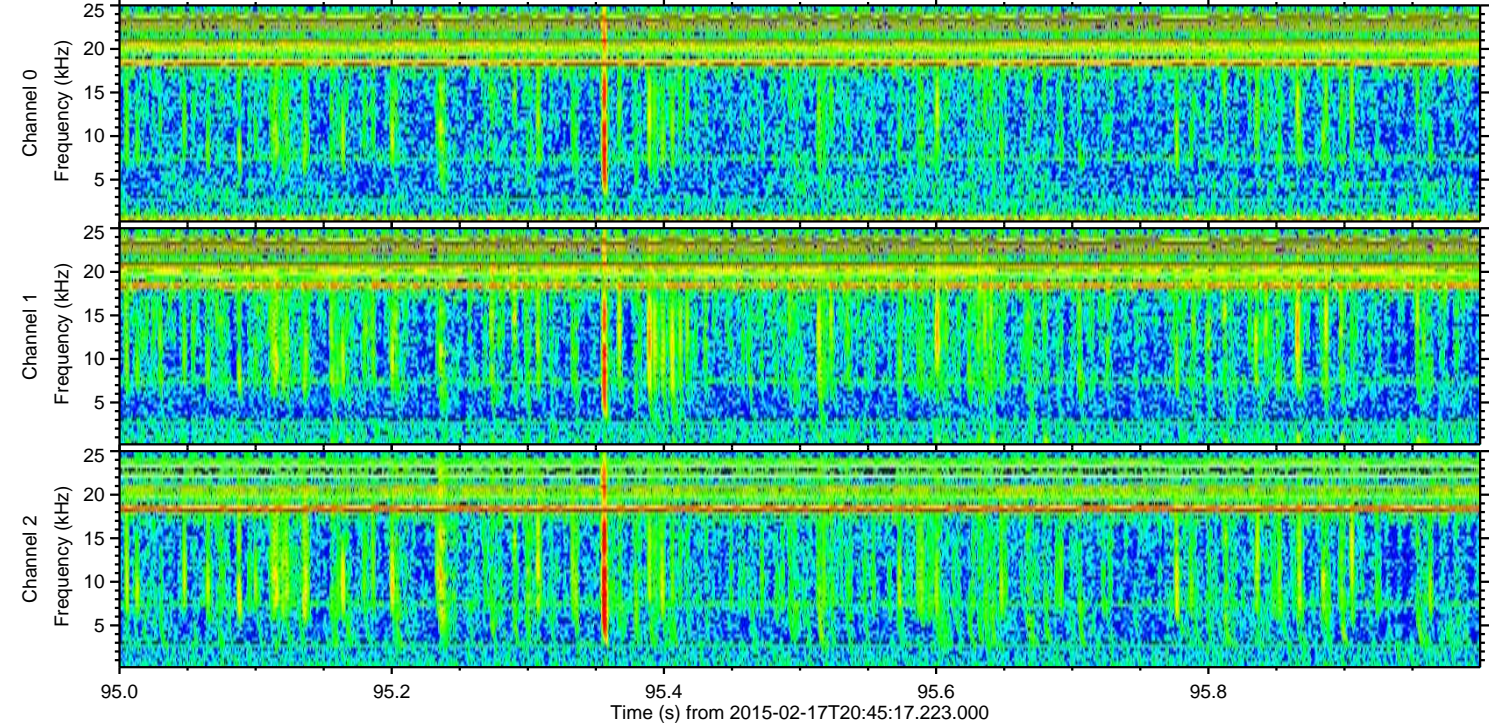
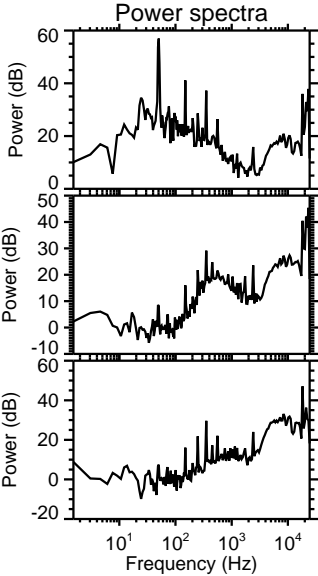
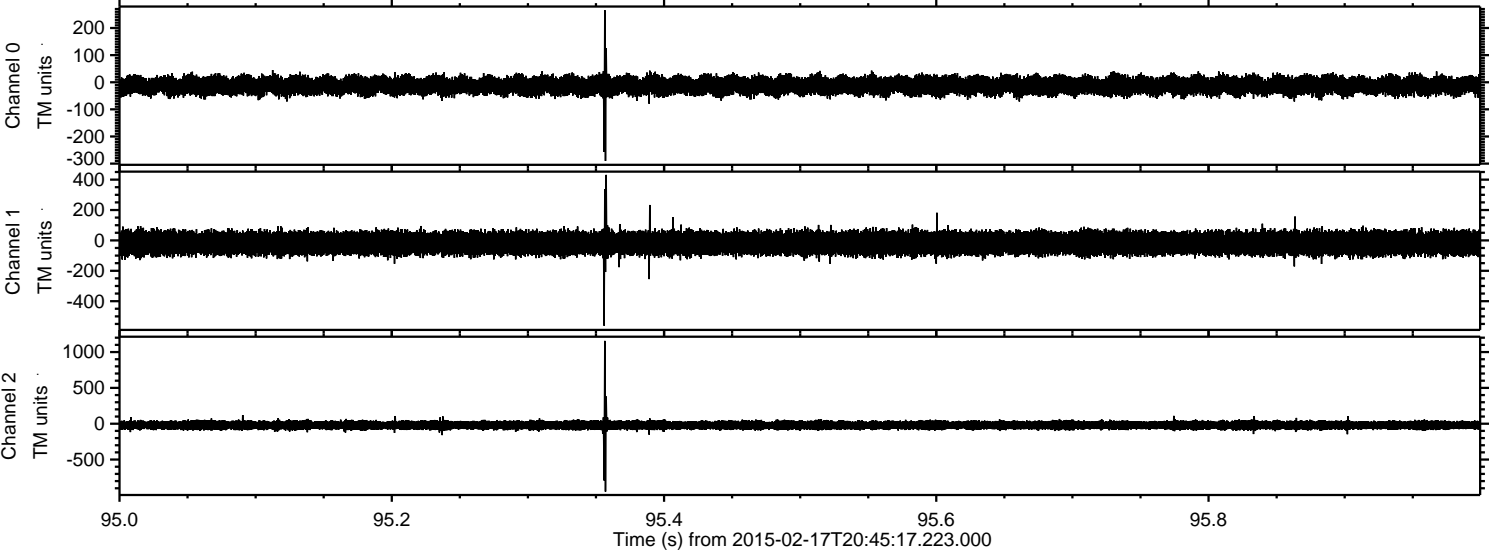


Channel 0
mn: -261
mx: 218
 μ : -12.6
 σ : 17.5

Channel 1
mn: -1340
mx: 1262
 μ : -18.2
 σ : 40.5

Channel 2
mn: -223
mx: 189
 μ : -20.8
 σ : 32.7

Processed Thu Feb 26 18:18:40 2015 by ELM ver.2012-10-06 from 001__elm20150217_204516__dat00.bin



Processed Thu Feb 26 18:18:41 2015 by ELM ver.2012-10-06 from 001__elm20150217_204516__dat00.bin

