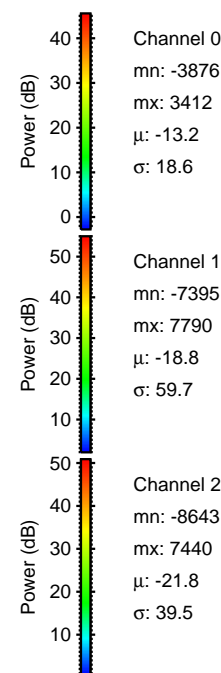
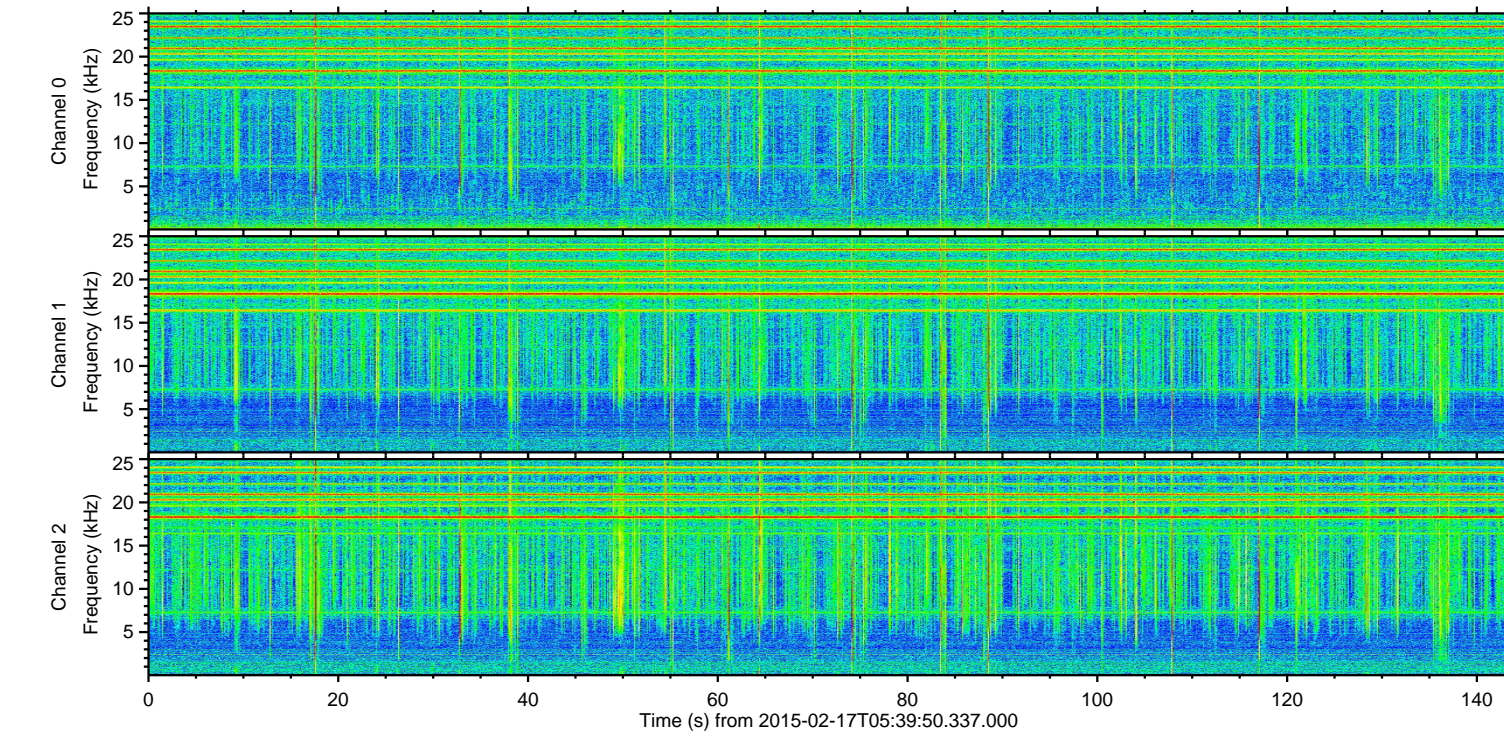
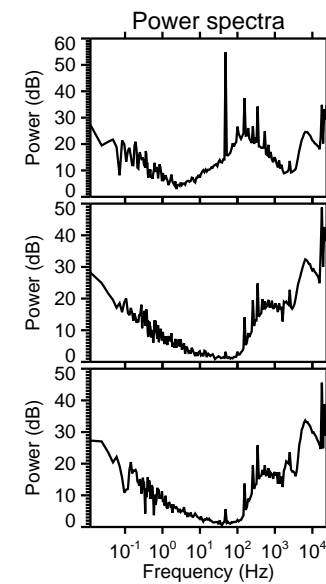
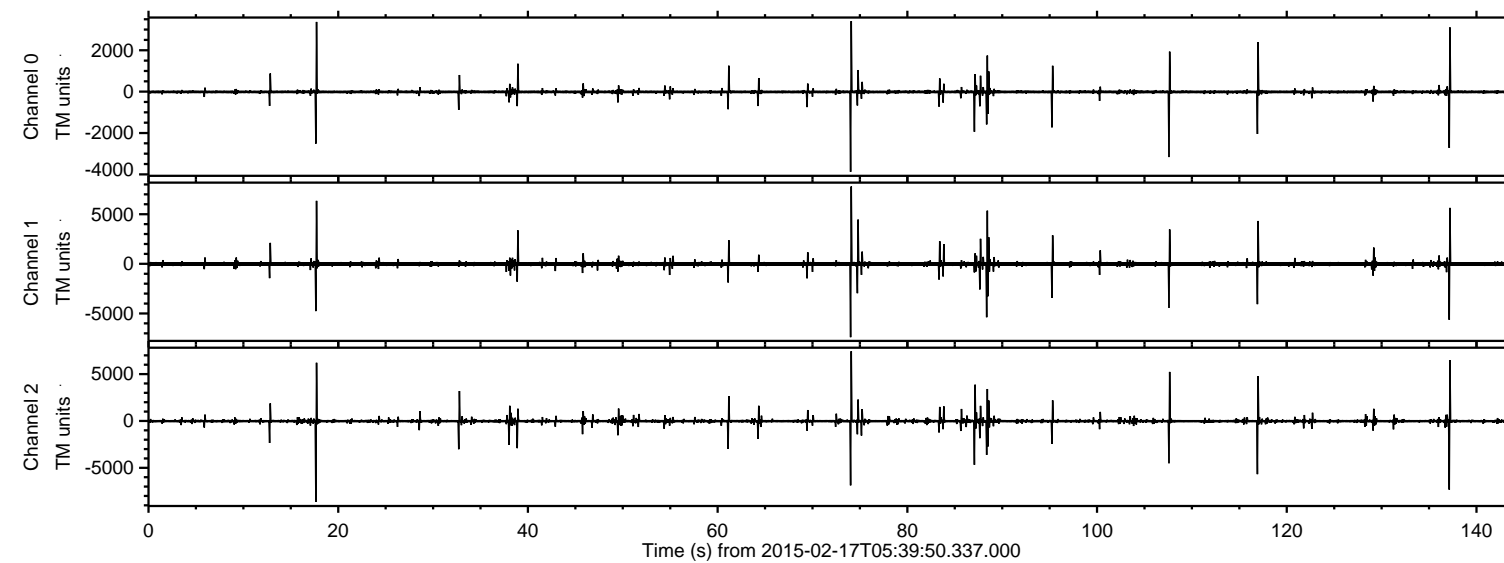


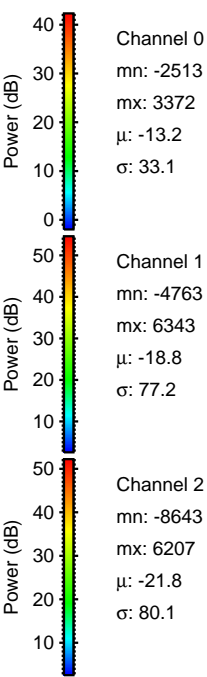
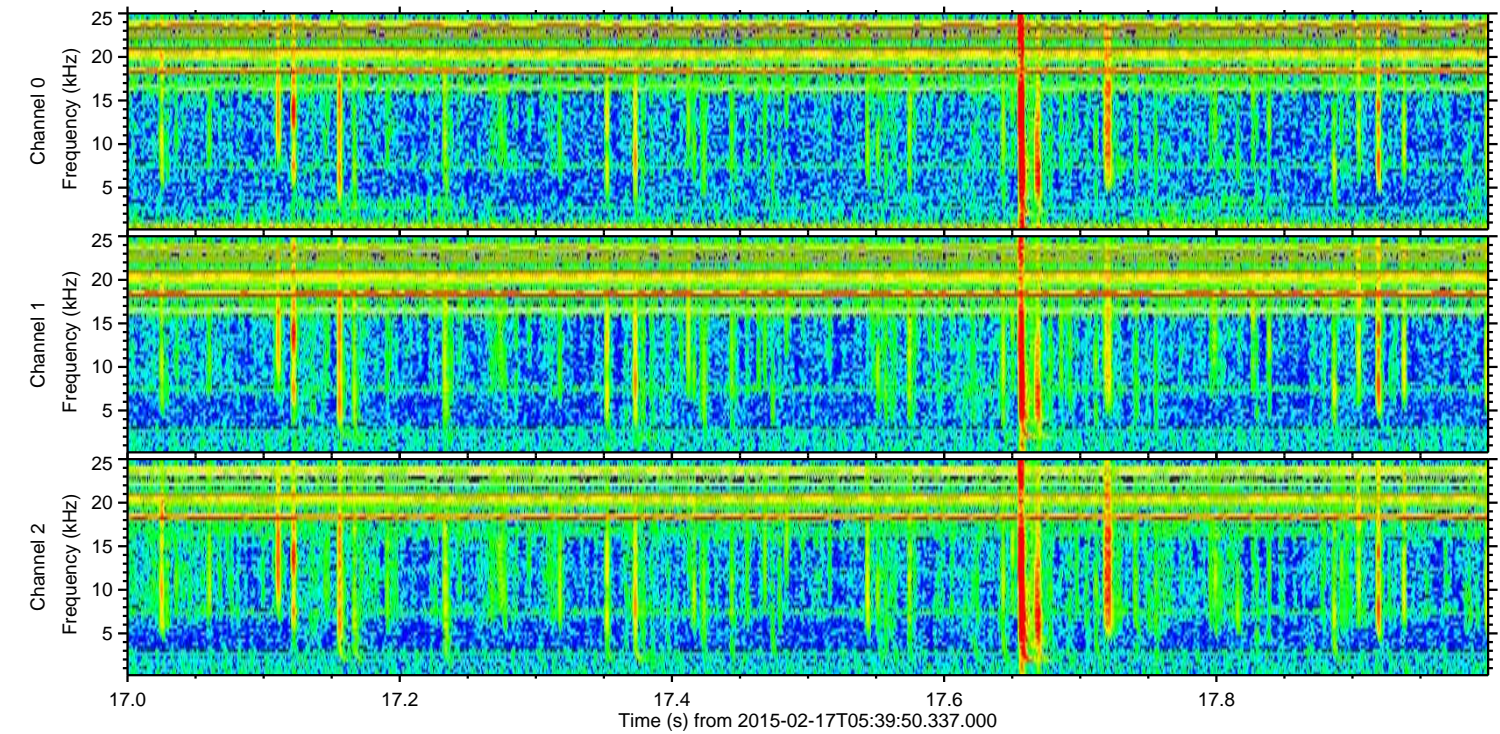
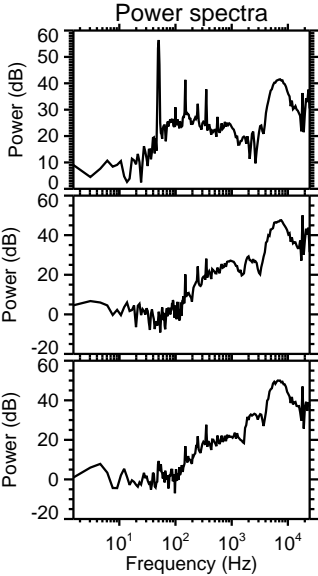
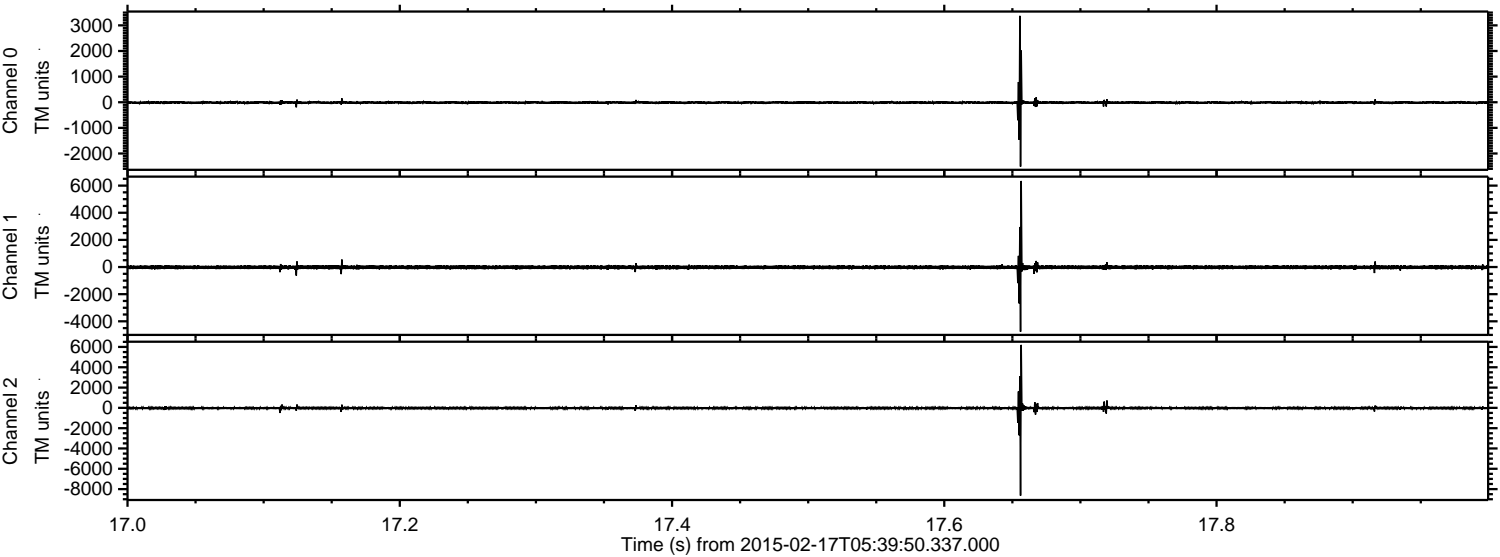
ELMAVAN 3D WAVEFORMS (Measured data sampled at 50 kHz) 49807 packets of 144 samples from 2015-02-17T05:39:50.337.000.

Processed Thu Feb 26 02:27:28 2015 by ELM ver.2012-10-06 from 001__elm20150217_053949__dat00.bin

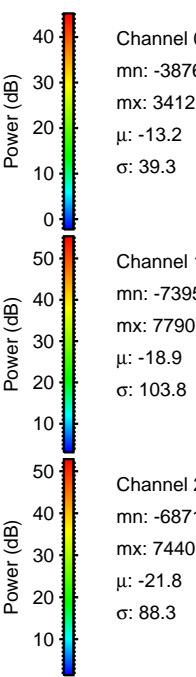
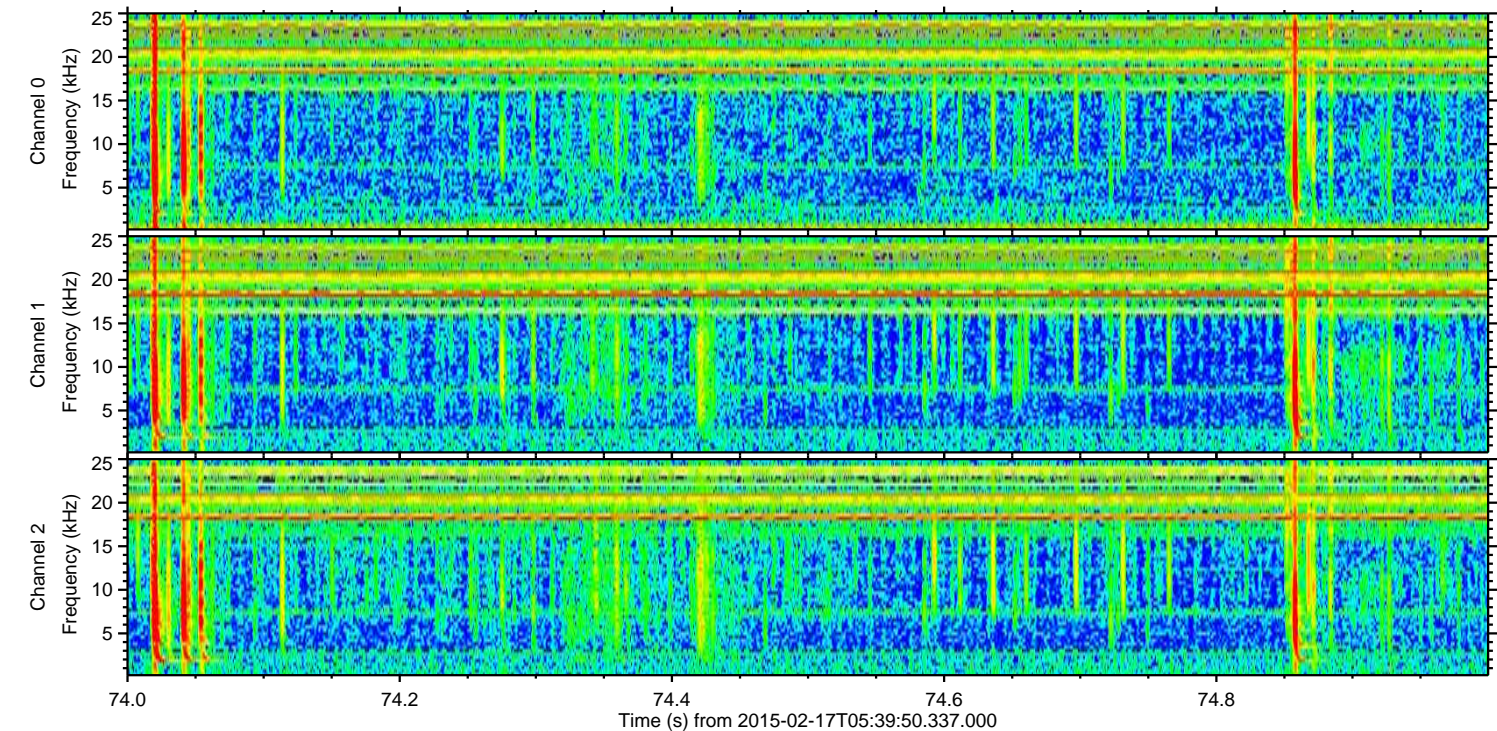
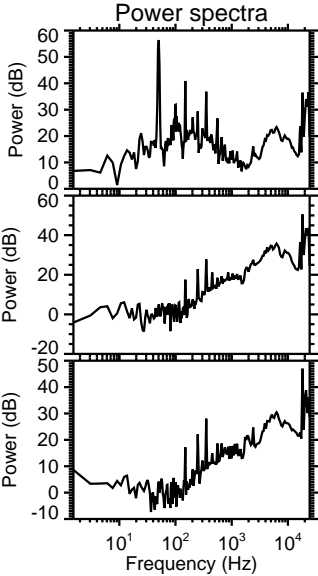
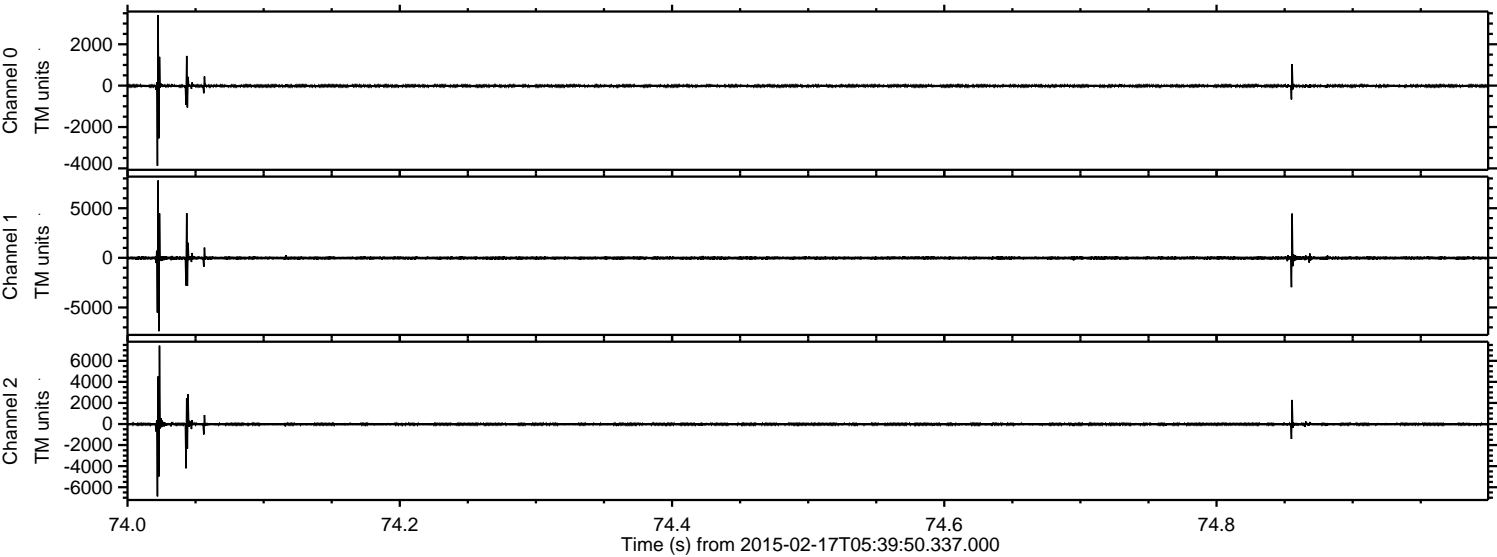


ELMAVAN 3D WAVEFORMS (Measured data sampled at 50 kHz) 49807 packets of 144 samples from 2015-02-17T05:39:50.337.000. Part 18/144

Processed Thu Feb 26 02:27:39 2015 by ELM ver.2012-10-06 from 001__elm20150217_053949__dat00.bin

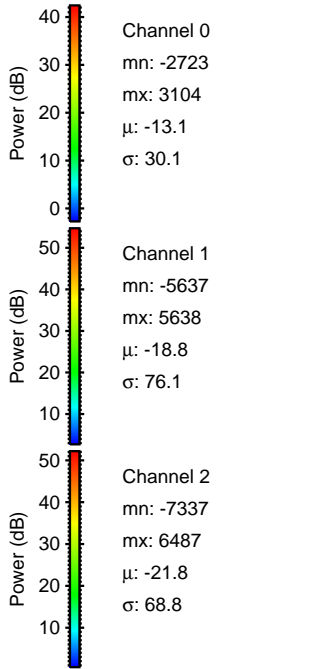
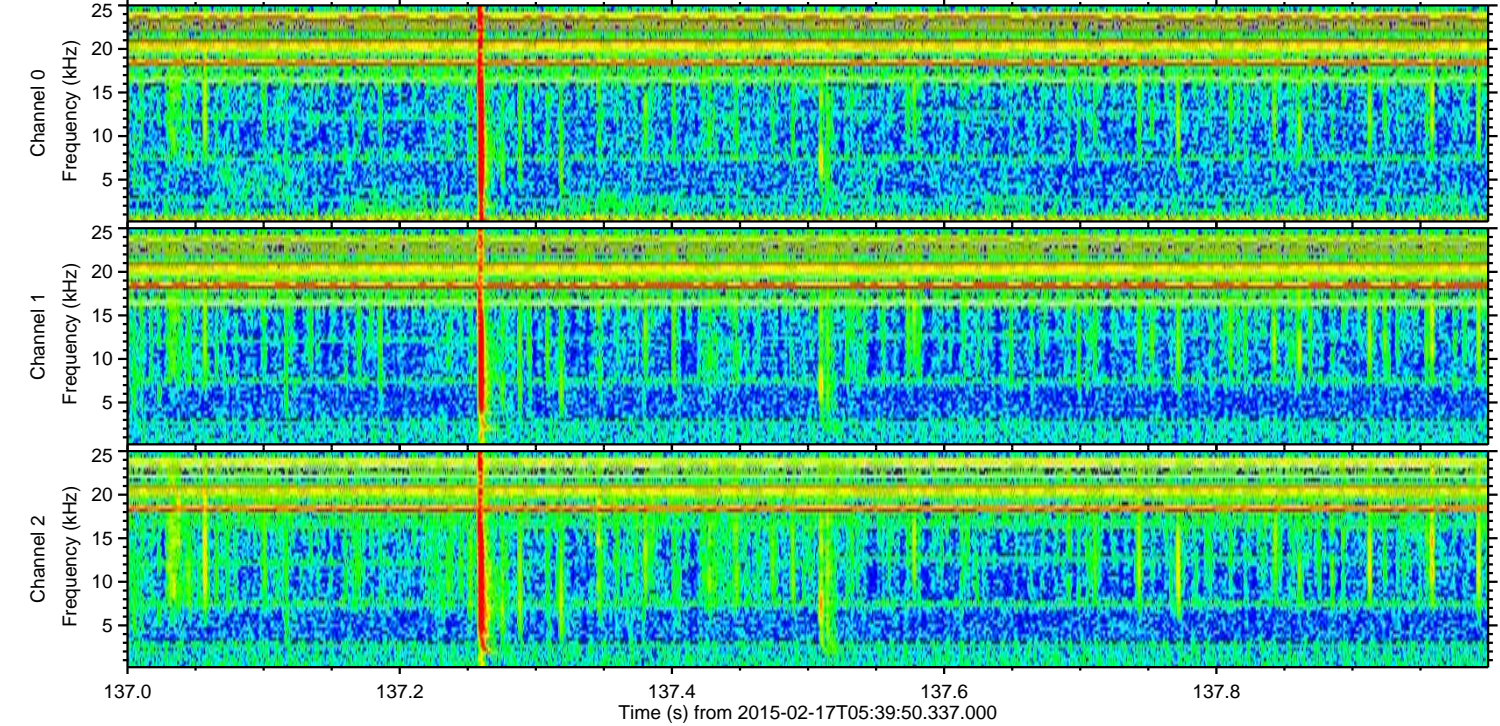
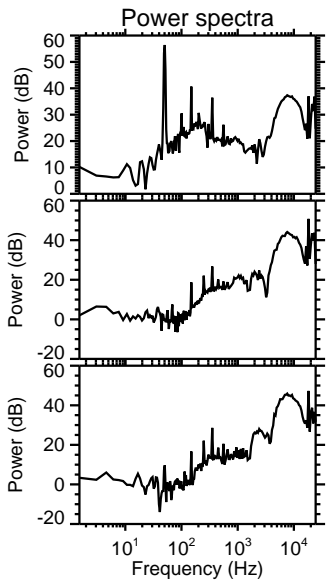
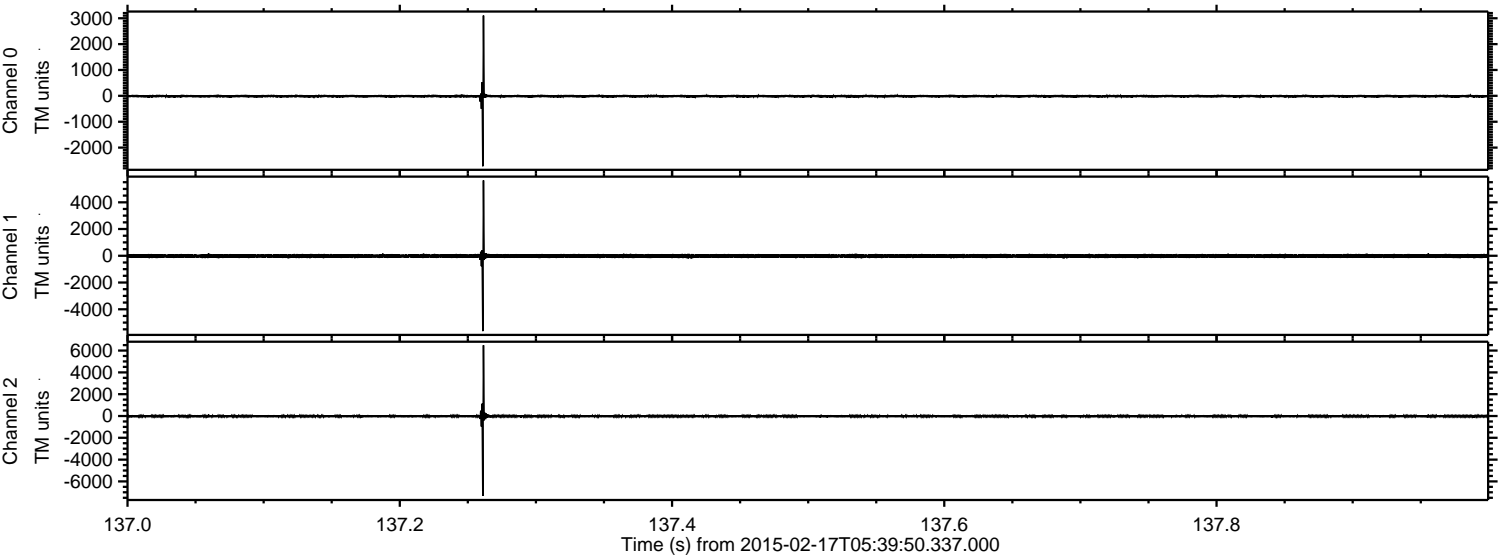


Processed Thu Feb 26 02:27:40 2015 by ELM ver.2012-10-06 from 001__elm20150217_053949__dat00.bin



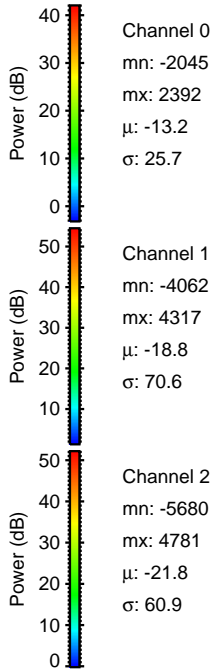
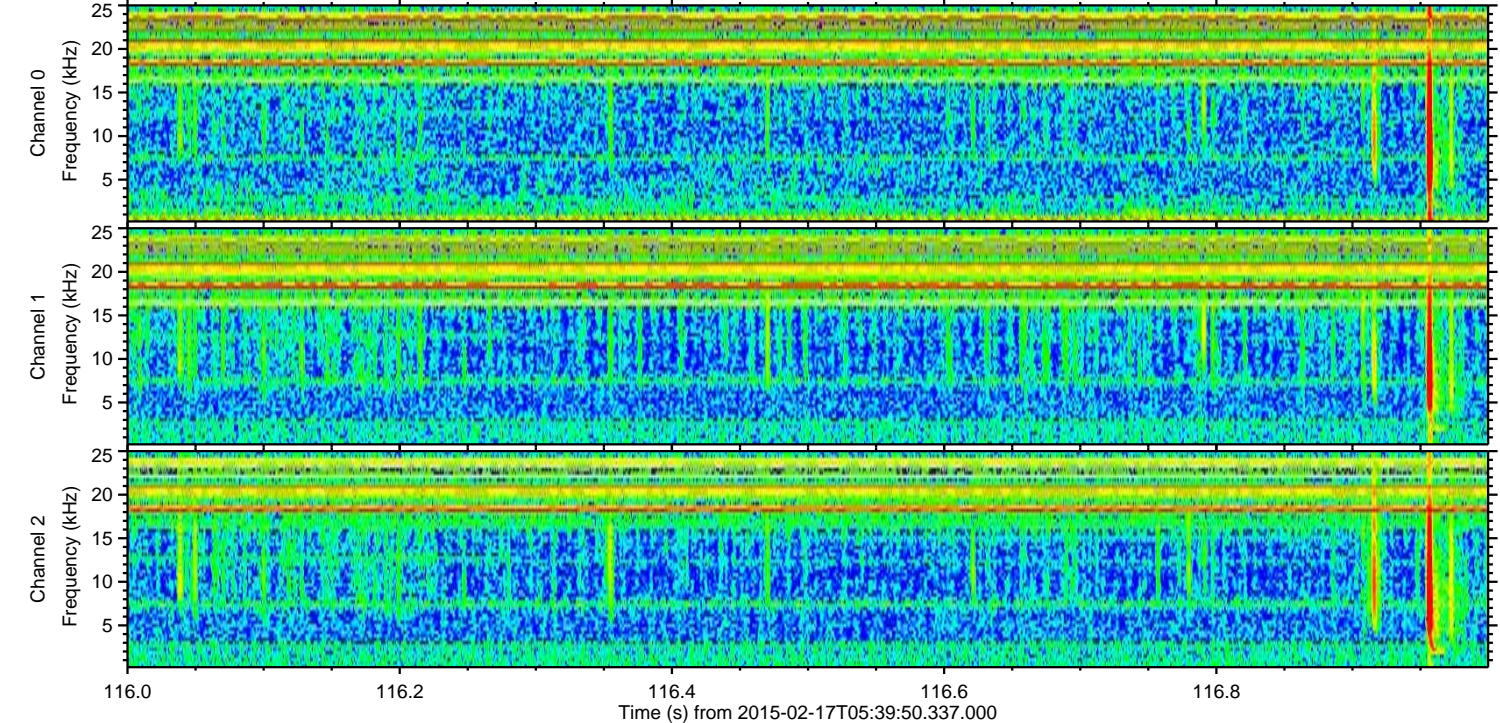
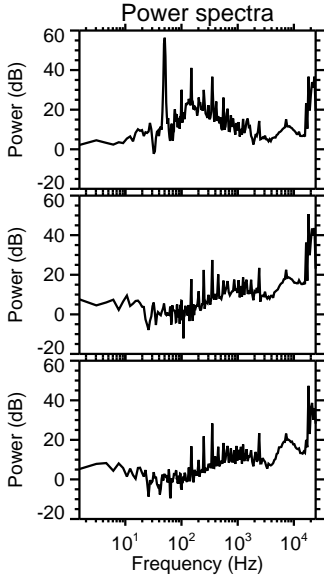
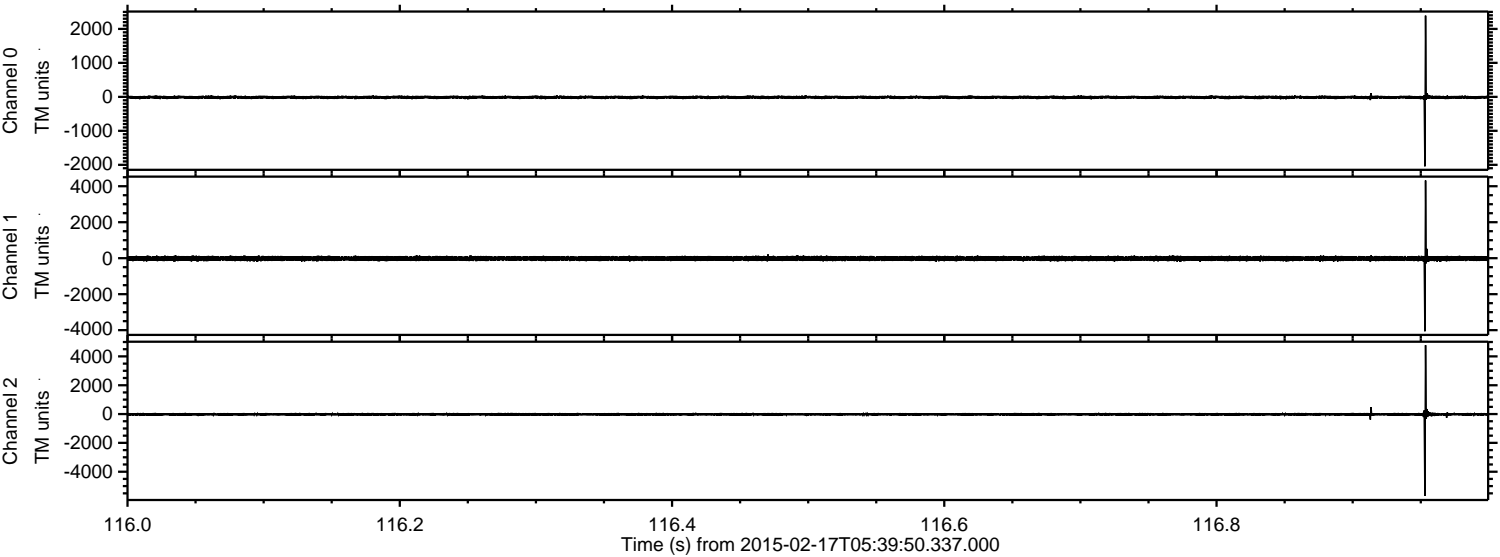
ELMAVAN 3D WAVEFORMS (Measured data sampled at 50 kHz) 49807 packets of 144 samples from 2015-02-17T05:39:50.337.000. Part 138/144

Processed Thu Feb 26 02:27:41 2015 by ELM ver.2012-10-06 from 001__elm20150217_053949__dat00.bin

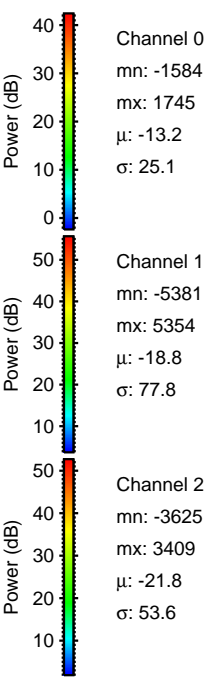
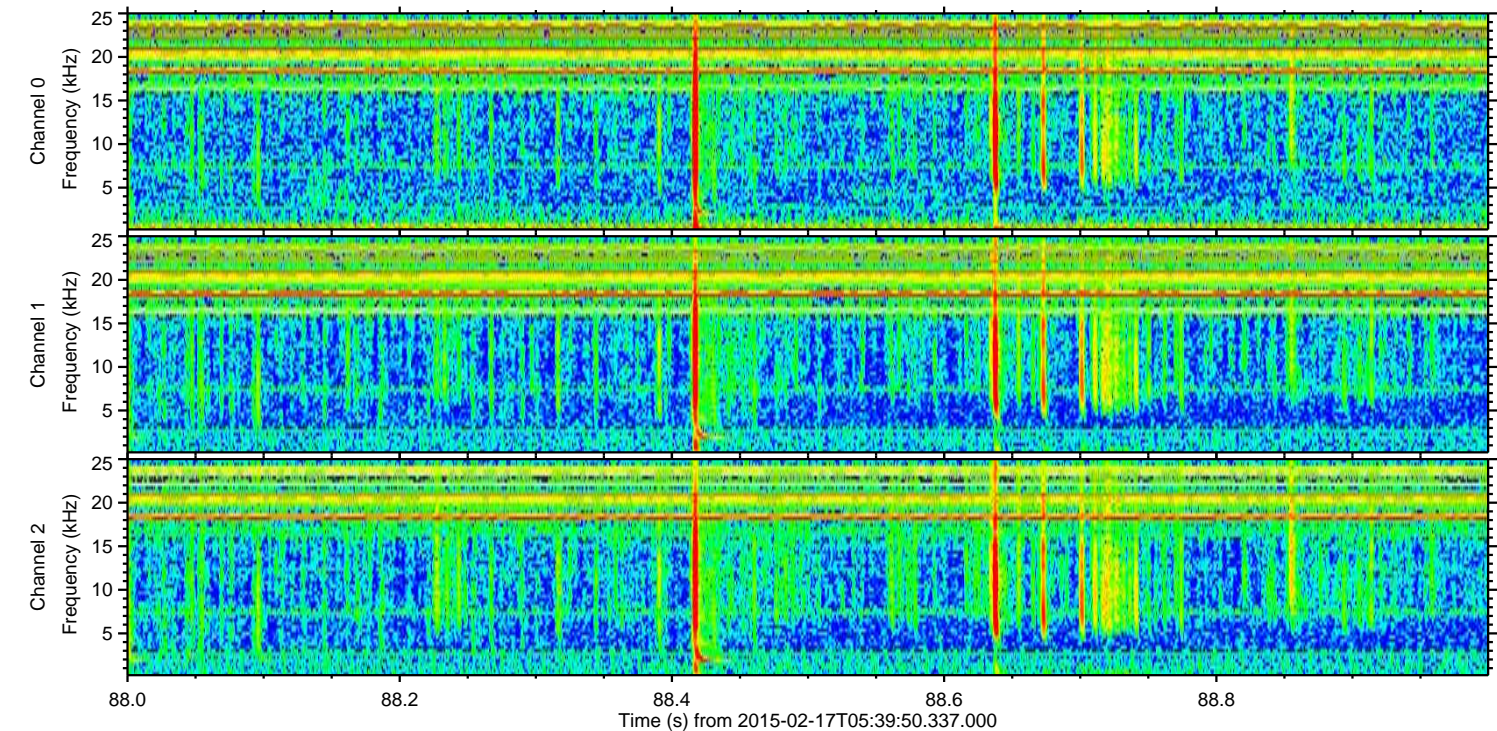
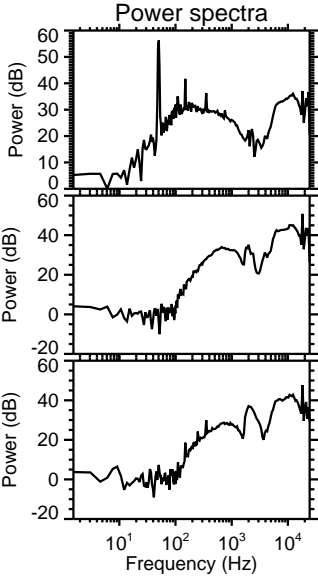
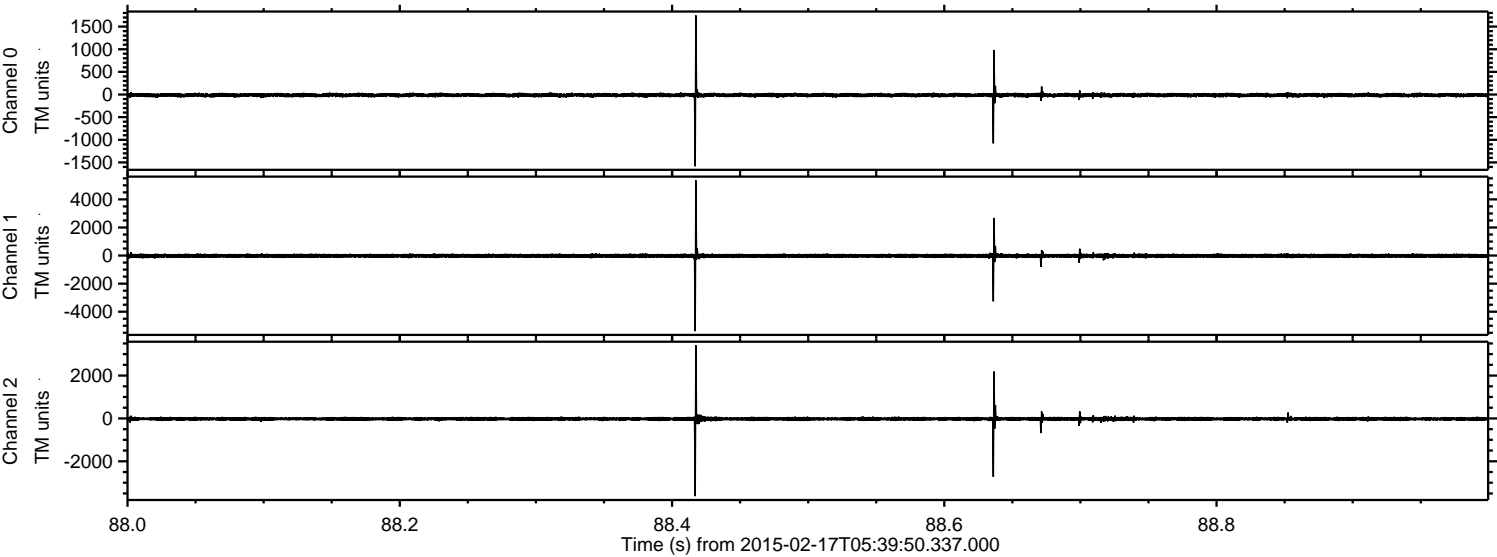


ELMAVAN 3D WAVEFORMS (Measured data sampled at 50 kHz) 49807 packets of 144 samples from 2015-02-17T05:39:50.337.000. Part 117/144

Processed Thu Feb 26 02:27:42 2015 by ELM ver.2012-10-06 from 001__elm20150217_053949__dat00.bin

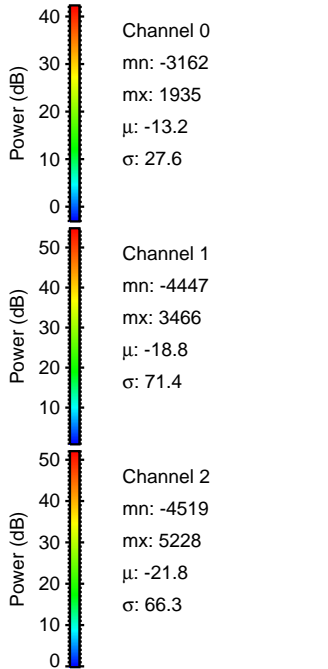
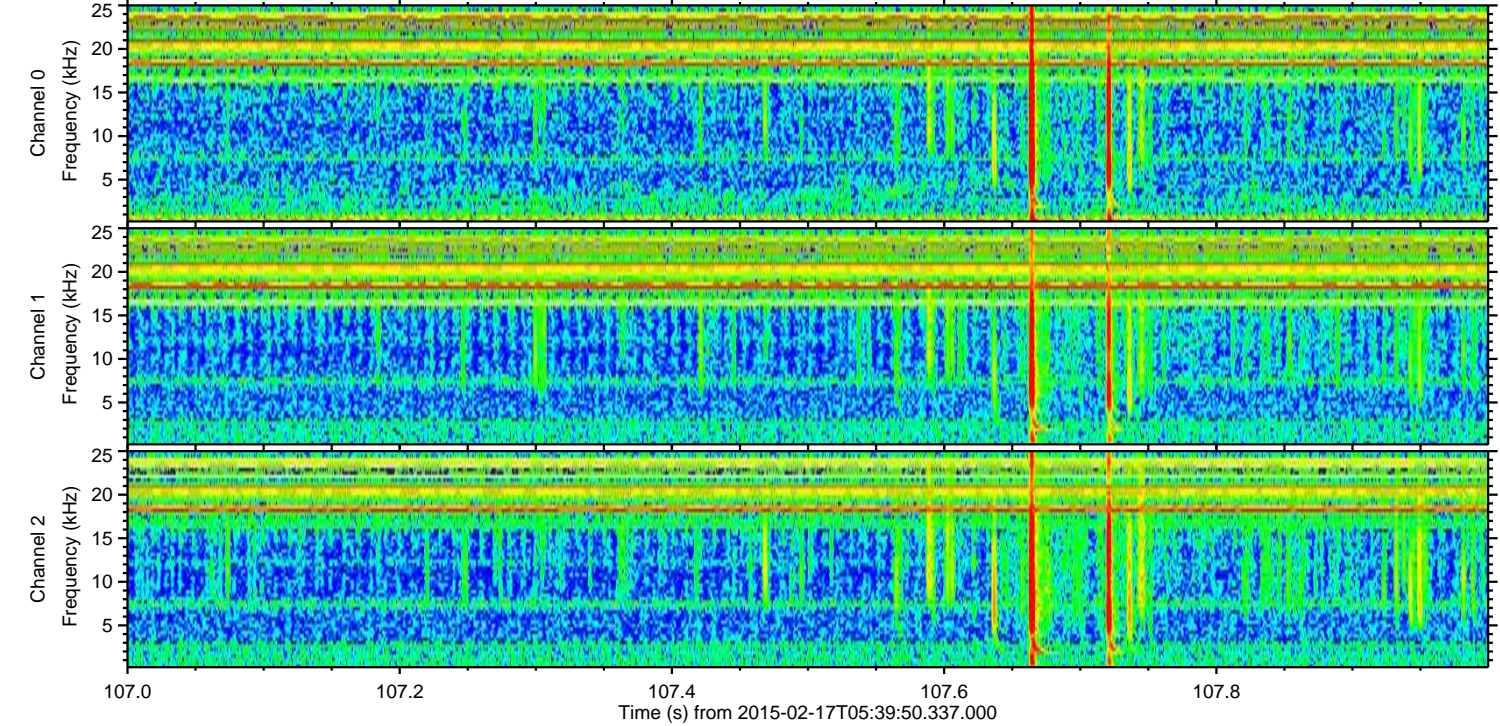
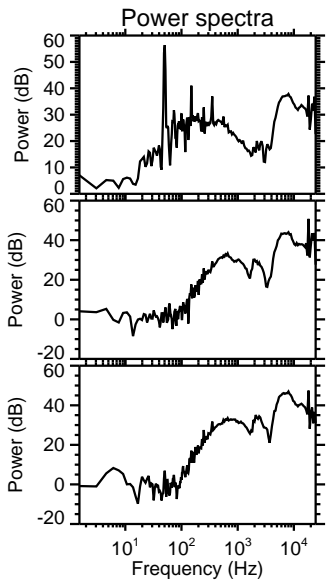
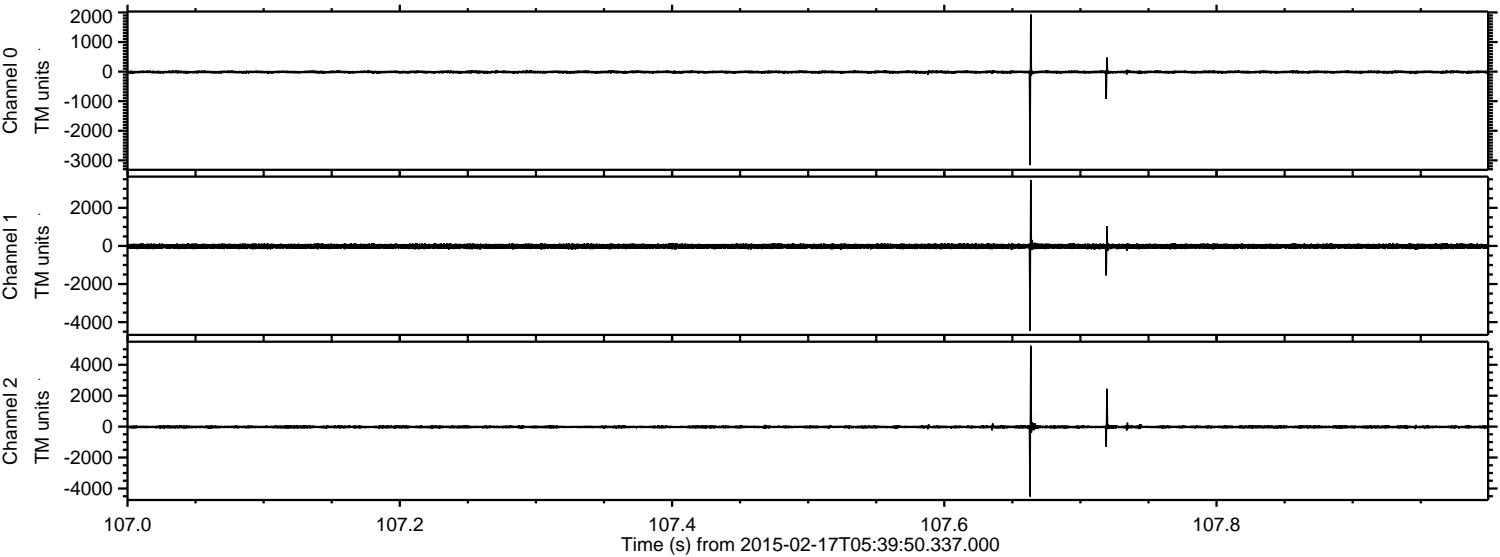


Processed Thu Feb 26 02:27:43 2015 by ELM ver.2012-10-06 from 001__elm20150217_053949__dat00.bin

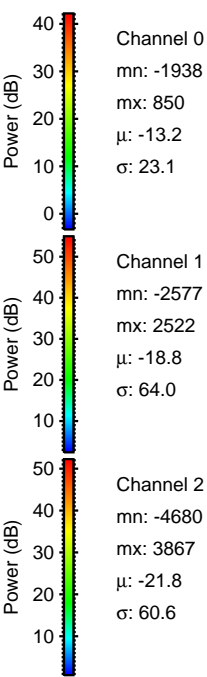
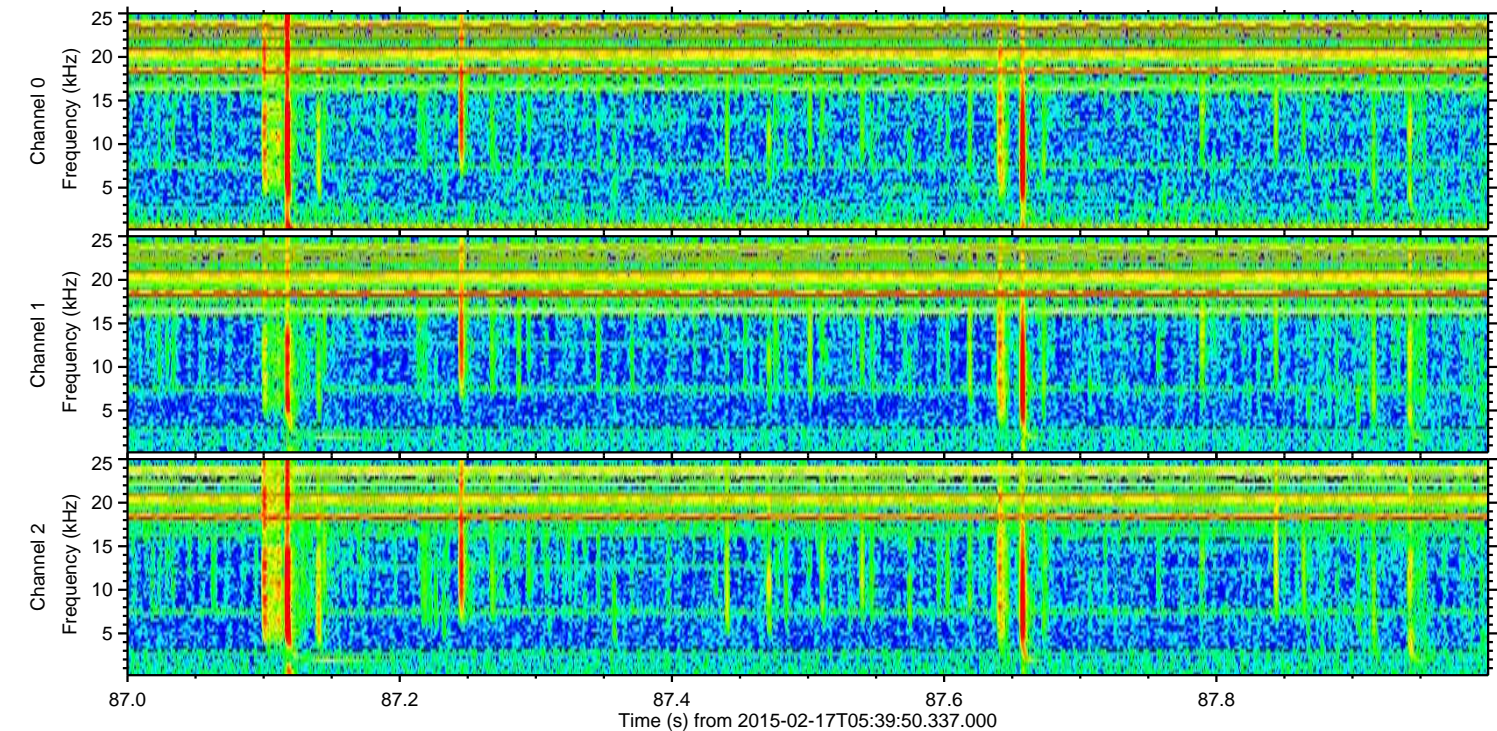
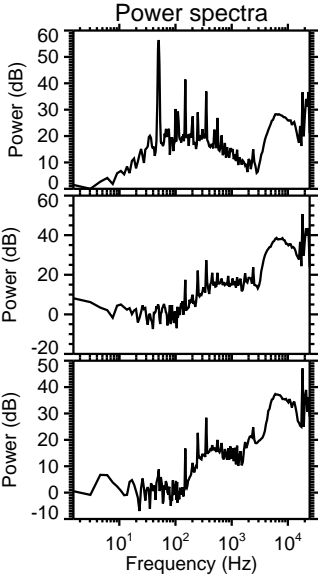
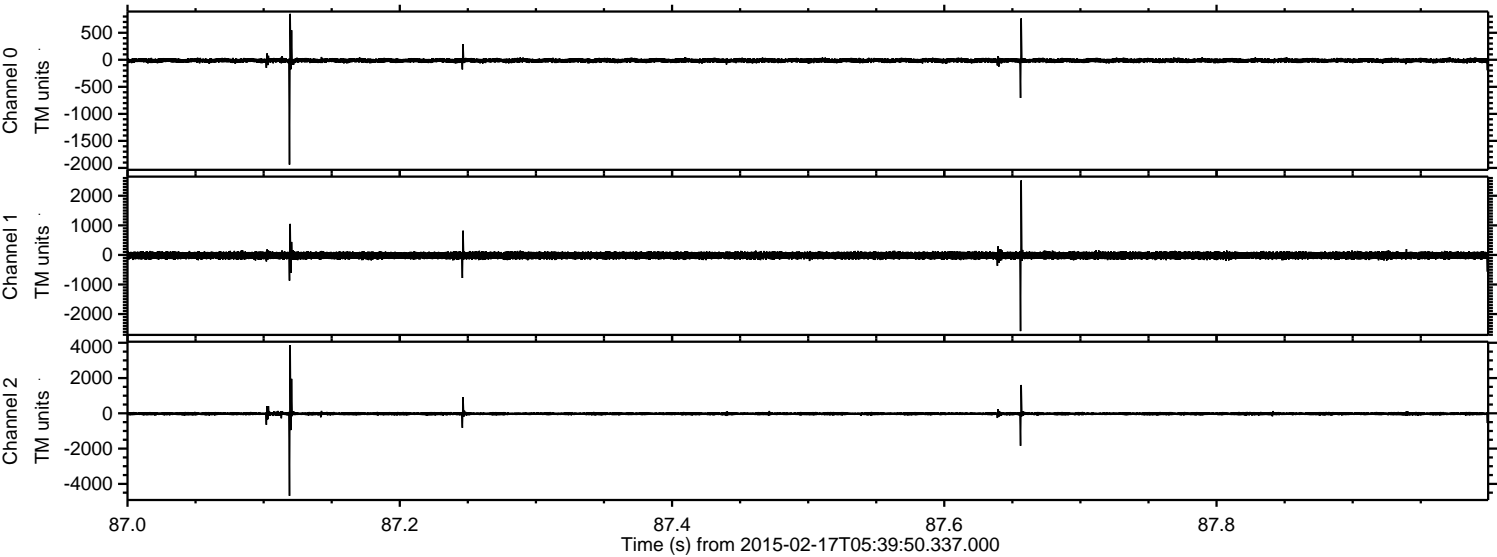


ELMAVAN 3D WAVEFORMS (Measured data sampled at 50 kHz) 49807 packets of 144 samples from 2015-02-17T05:39:50.337.000. Part 108/144

Processed Thu Feb 26 02:27:44 2015 by ELM ver.2012-10-06 from 001__elm20150217_053949__dat00.bin



Processed Thu Feb 26 02:27:45 2015 by ELM ver.2012-10-06 from 001__elm20150217_053949__dat00.bin

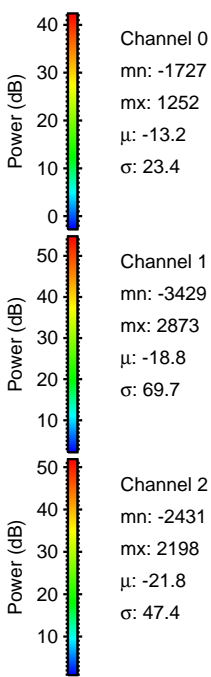
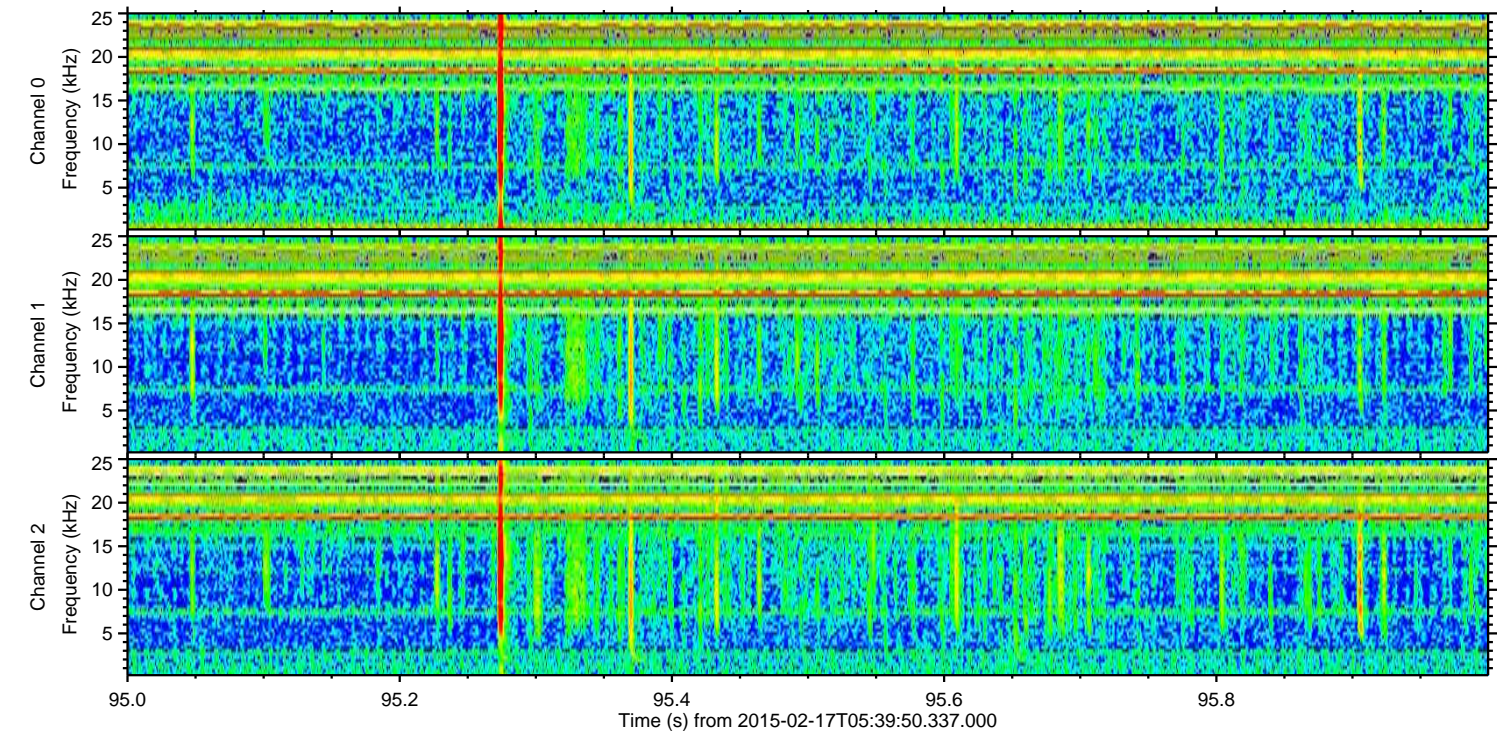
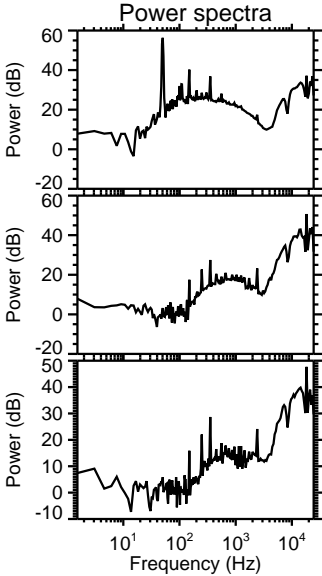
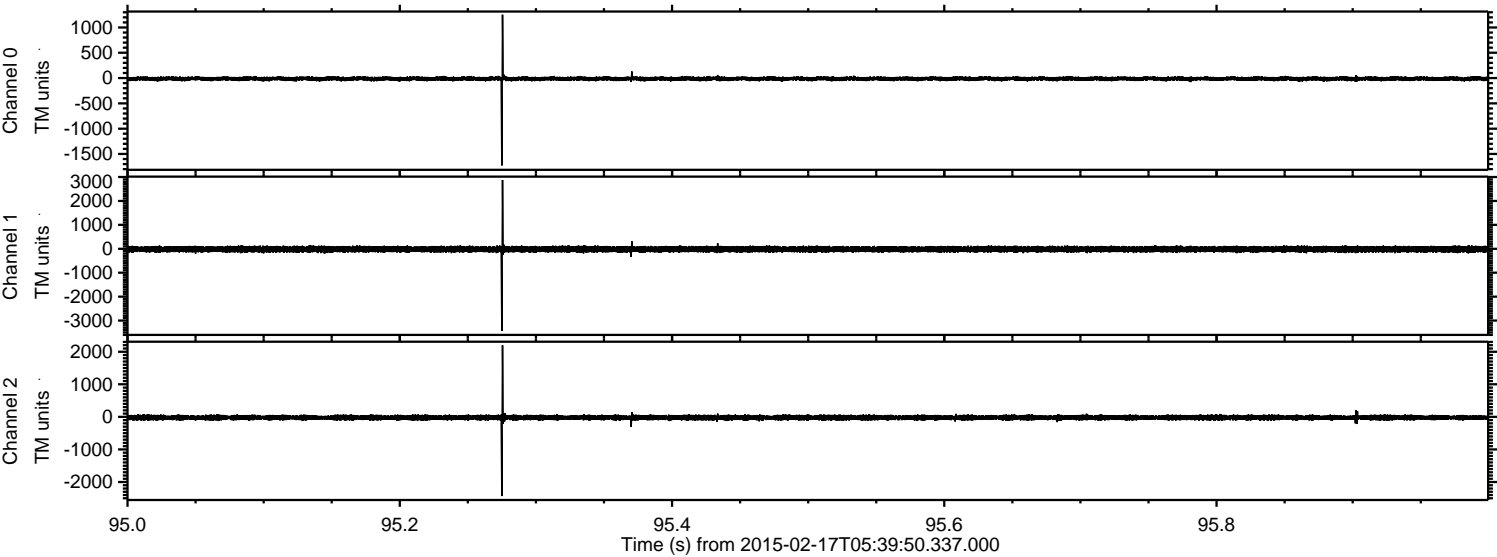


Channel 0
mn: -1938
mx: 850
 μ : -13.2
 σ : 23.1

Channel 1
mn: -2577
mx: 2522
 μ : -18.8
 σ : 64.0

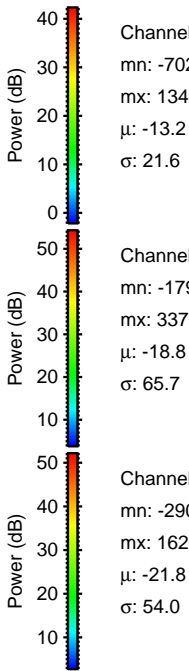
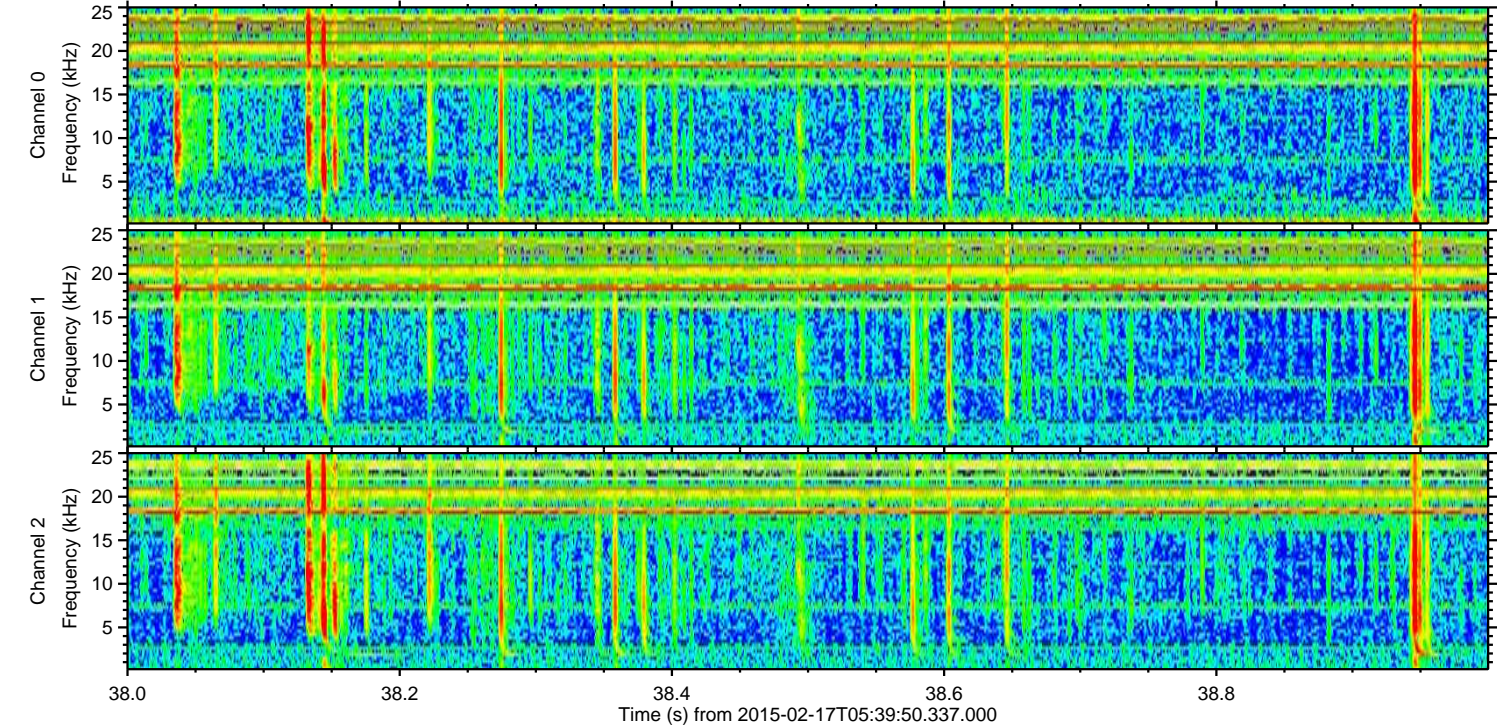
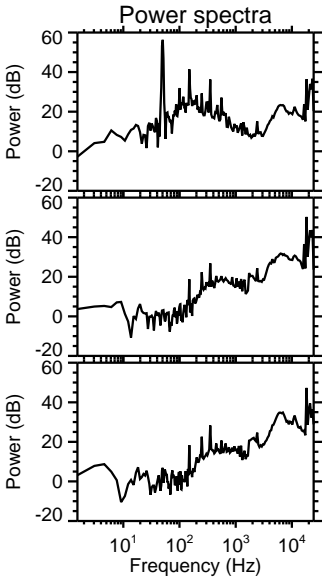
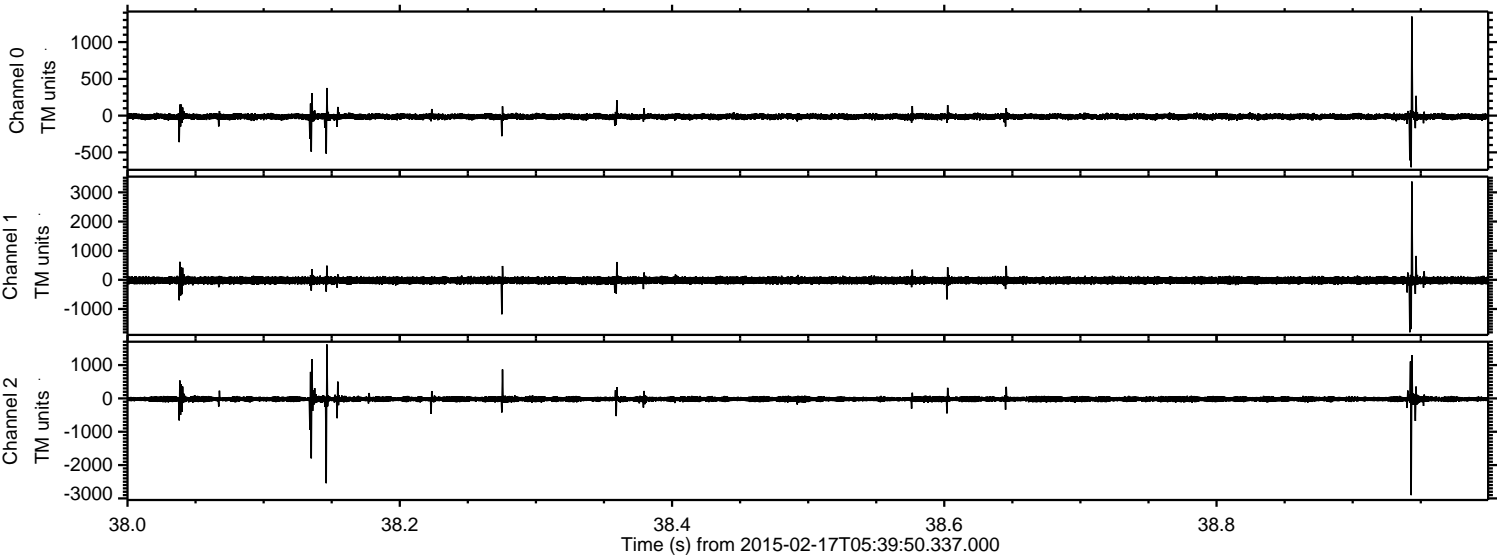
Channel 2
mn: -4680
mx: 3867
 μ : -21.8
 σ : 60.6

Processed Thu Feb 26 02:27:46 2015 by ELM ver.2012-10-06 from 001__elm20150217_053949__dat00.bin



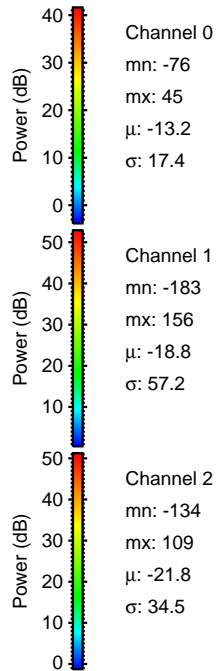
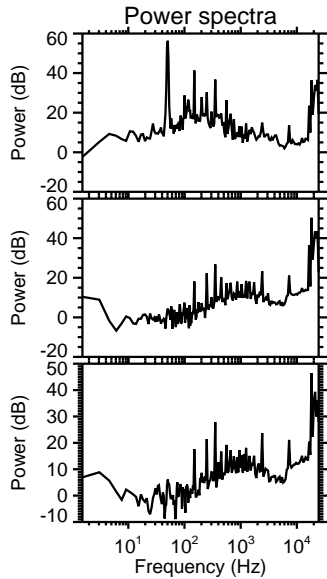
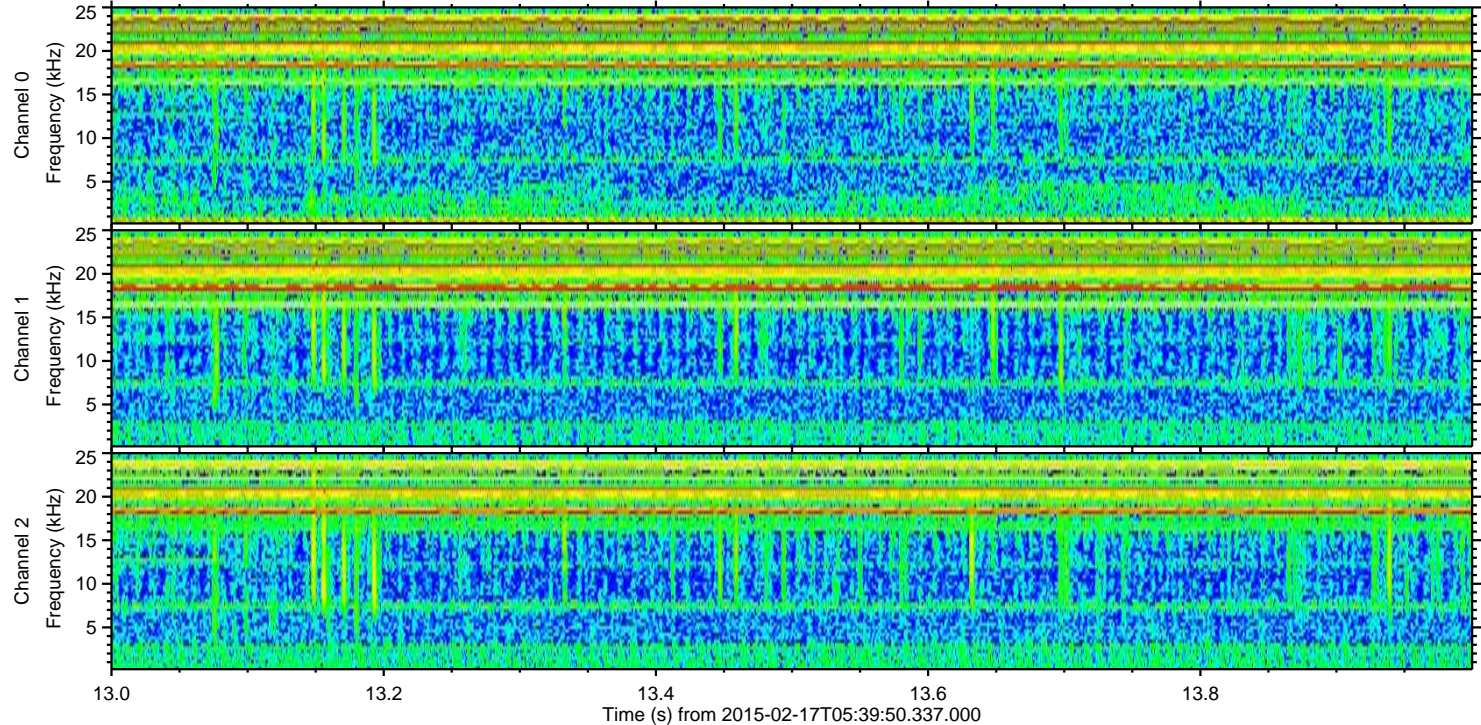
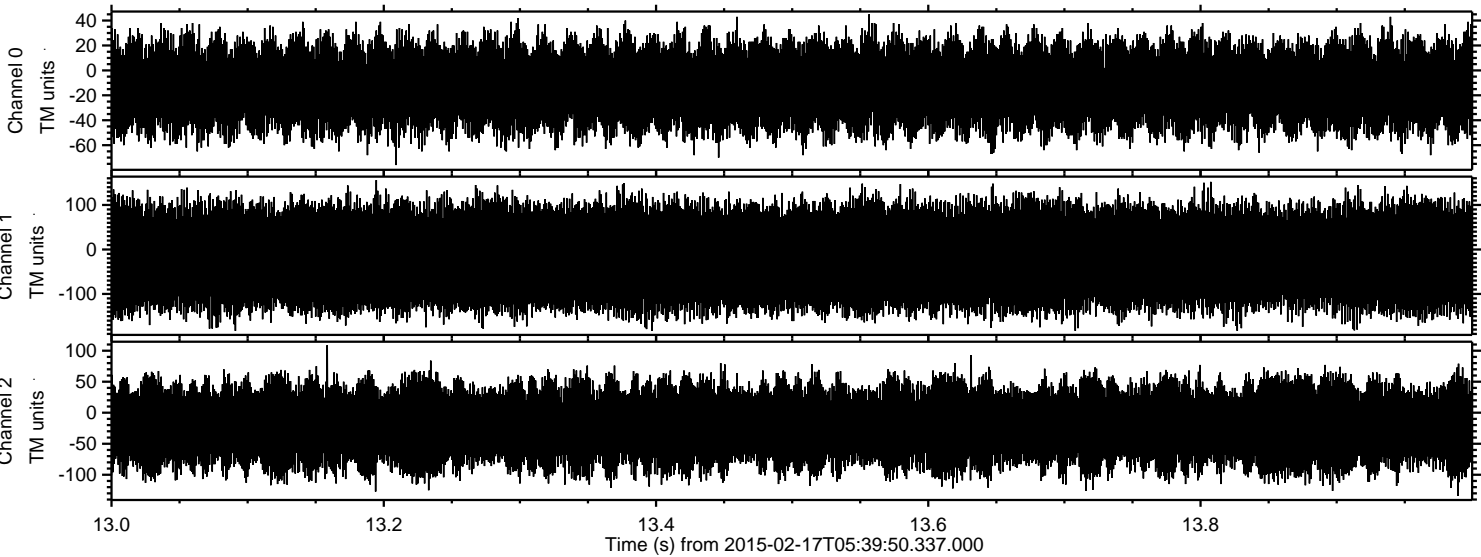
ELMAVAN 3D WAVEFORMS (Measured data sampled at 50 kHz) 49807 packets of 144 samples from 2015-02-17T05:39:50.337.000. Part 39/144

Processed Thu Feb 26 02:27:47 2015 by ELM ver.2012-10-06 from 001__elm20150217_053949__dat00.bin



ELMAVAN 3D WAVEFORMS (Measured data sampled at 50 kHz) 49807 packets of 144 samples from 2015-02-17T05:39:50.337.000. Part 14/144

Processed Thu Feb 26 02:27:48 2015 by ELM ver.2012-10-06 from 001__elm20150217_053949__dat00.bin



Power spectra

Channel 0

mn: -76
mx: 45
 μ : -13.2
 σ : 17.4

Channel 1

mn: -183
mx: 156
 μ : -18.8
 σ : 57.2

Channel 2

mn: -134
mx: 109
 μ : -21.8
 σ : 34.5