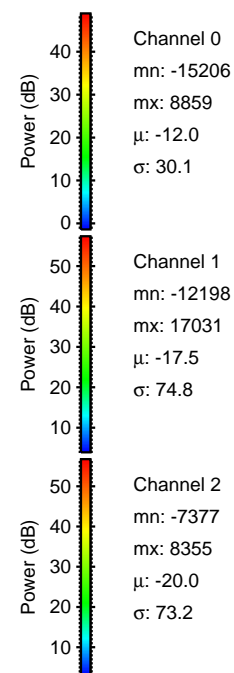
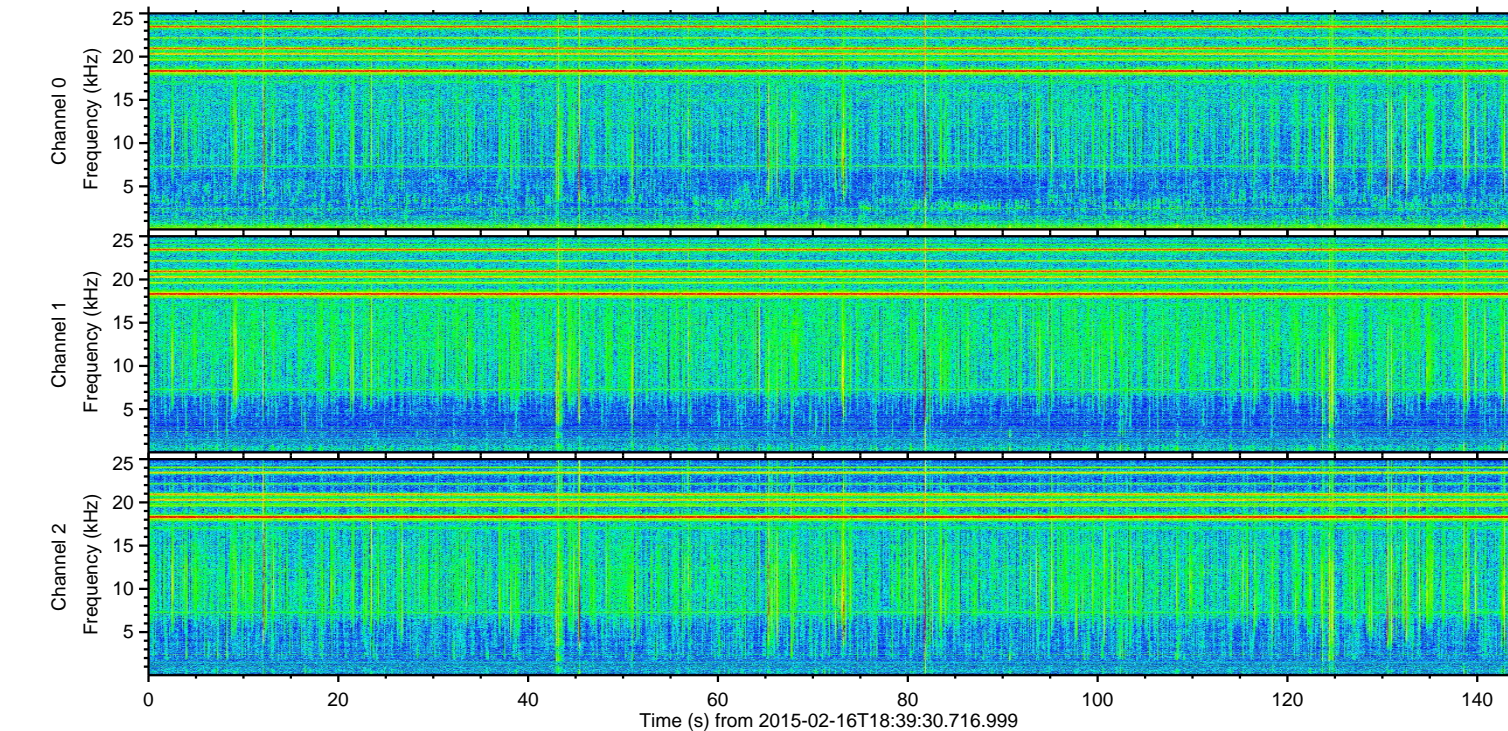
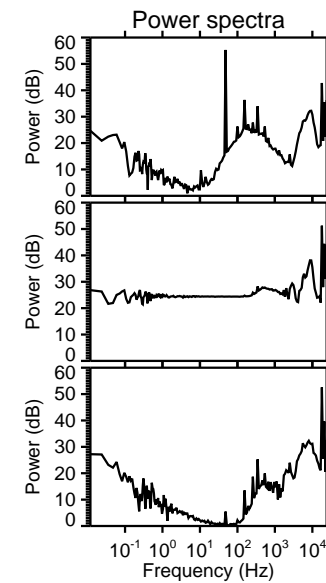
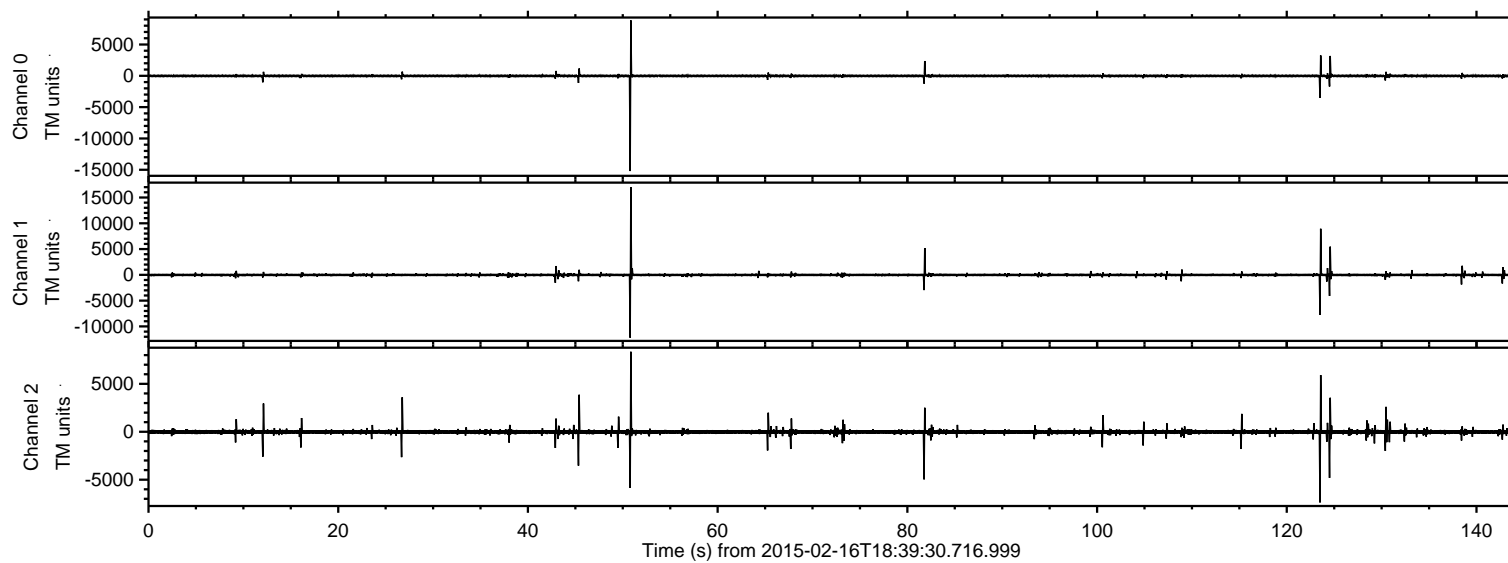
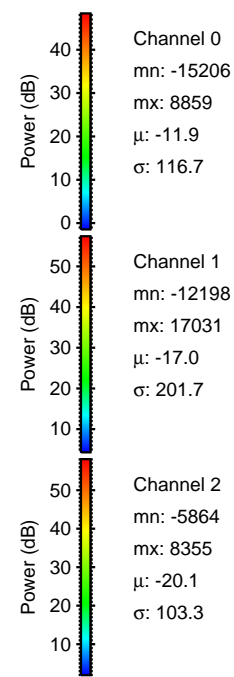
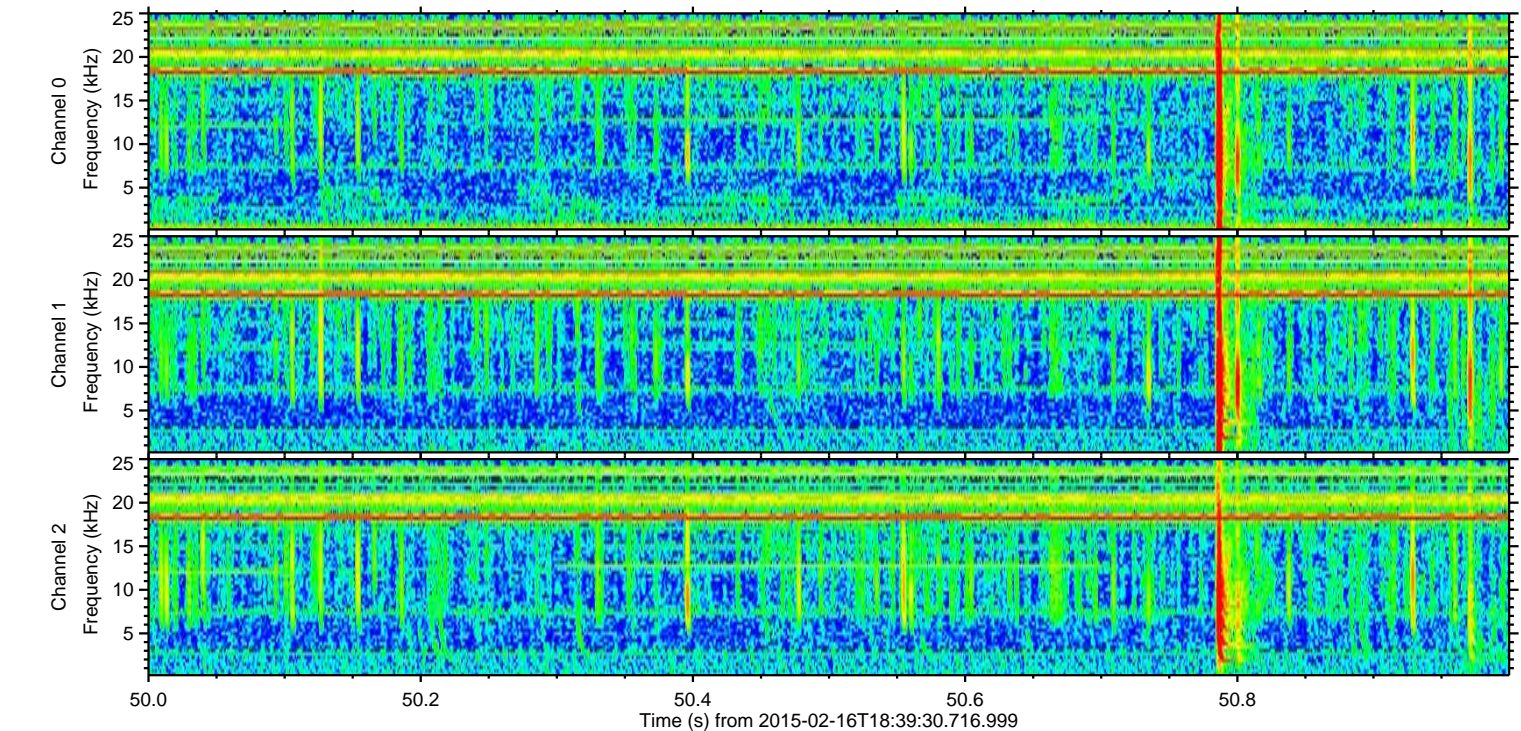
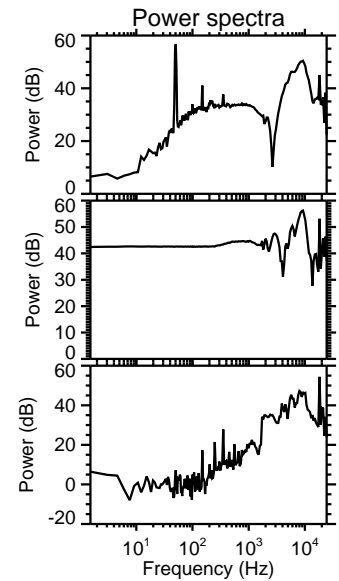
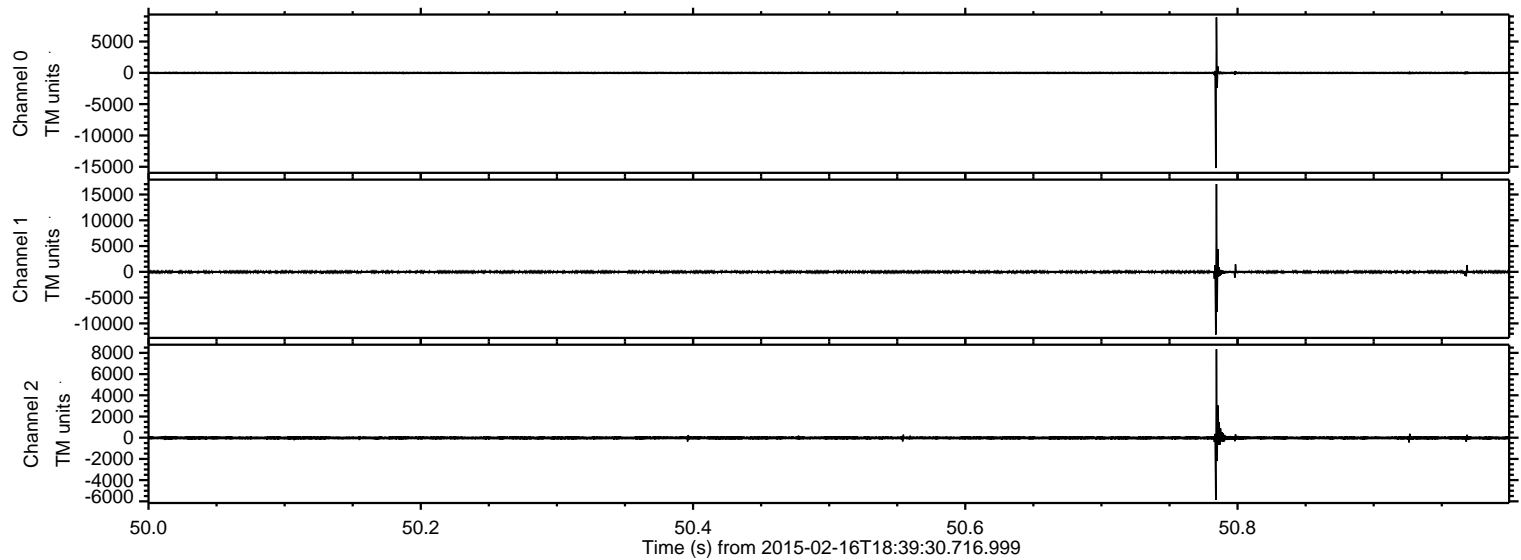


ELMAVAN 3D WAVEFORMS (Measured data sampled at 50 kHz) 49806 packets of 144 samples from 2015-02-16T18:39:30.716.999.

Processed Thu Feb 26 00:03:31 2015 by ELM ver.2012-10-06 from 001__elm20150216_183929__dat00.bin

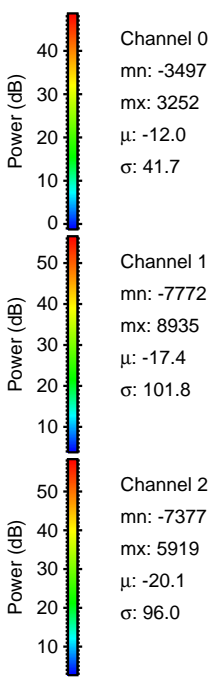
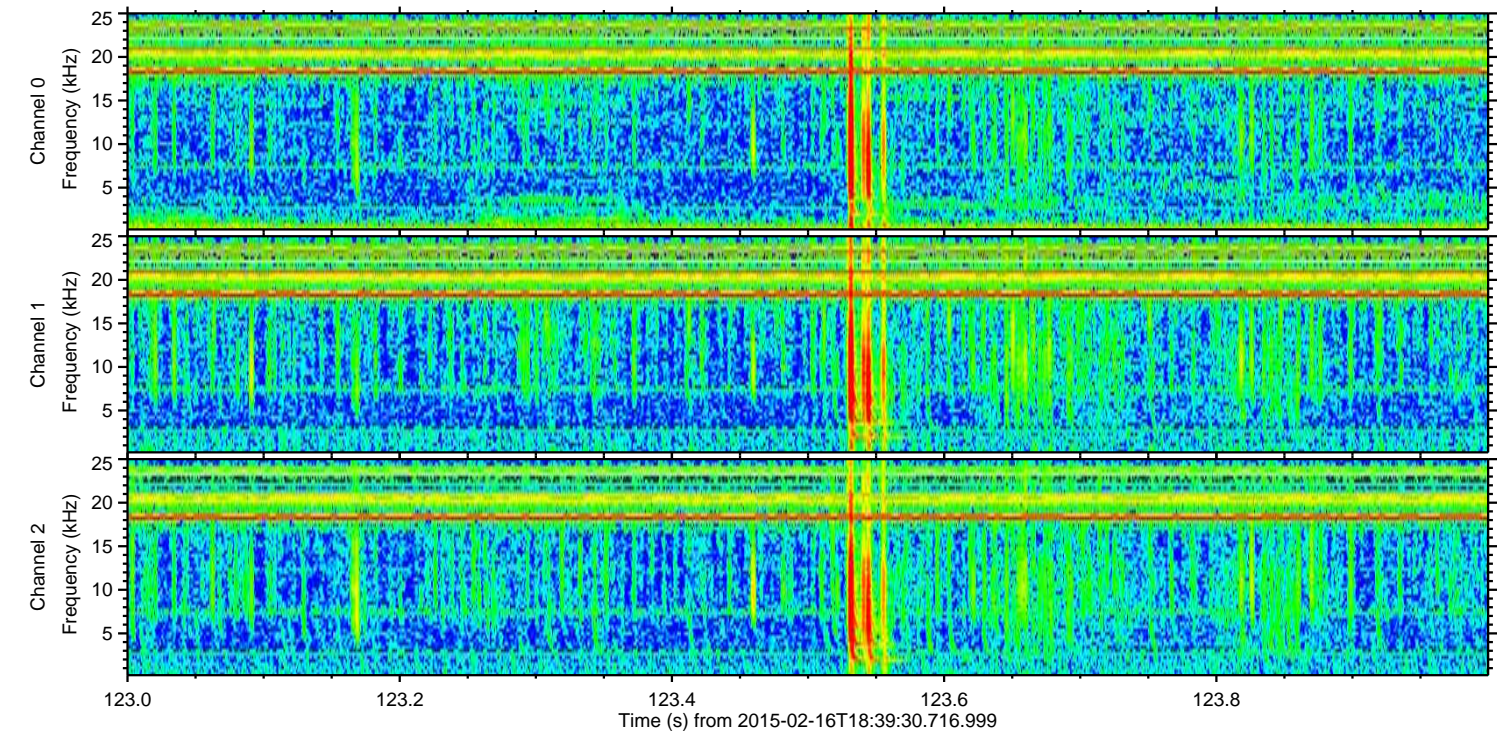
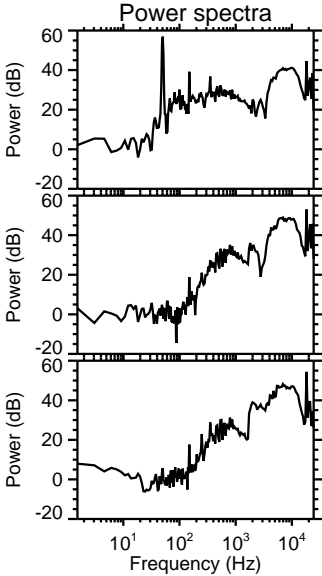
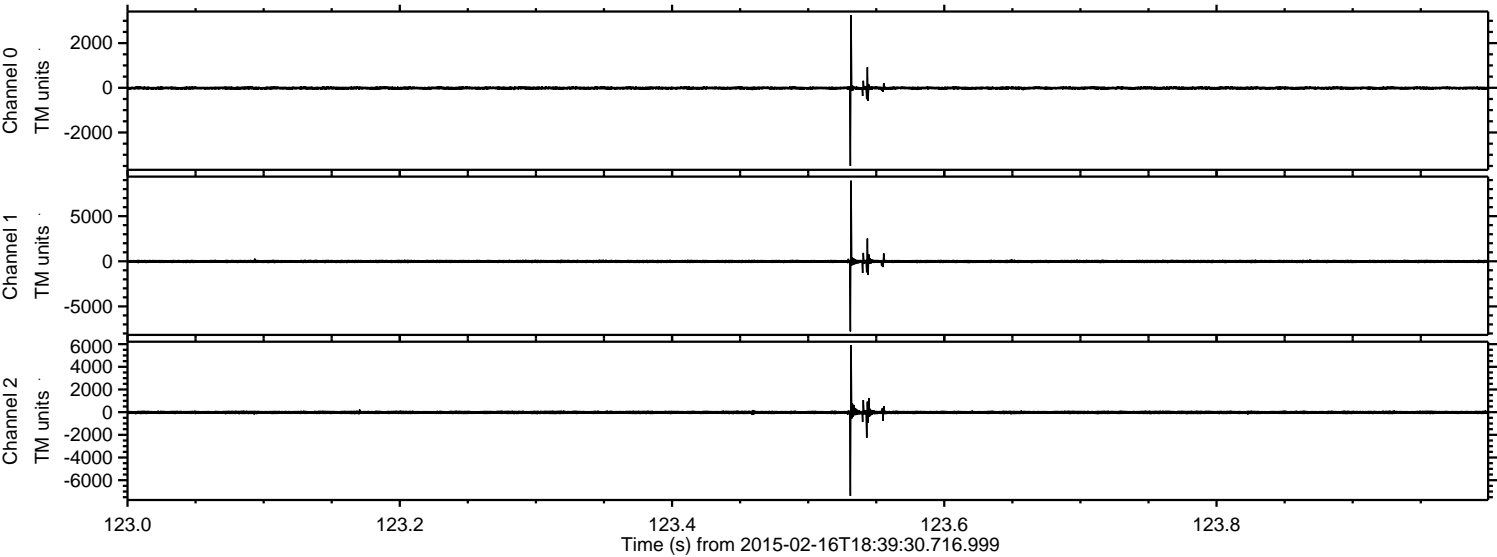


Processed Thu Feb 26 00:03:44 2015 by ELM ver.2012-10-06 from 001__elm20150216_183929__dat00.bin



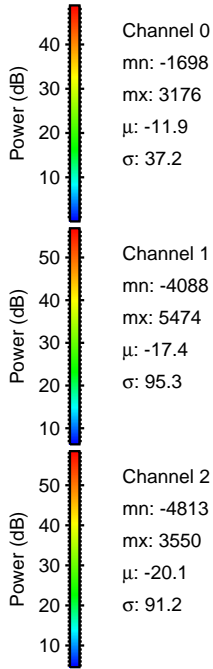
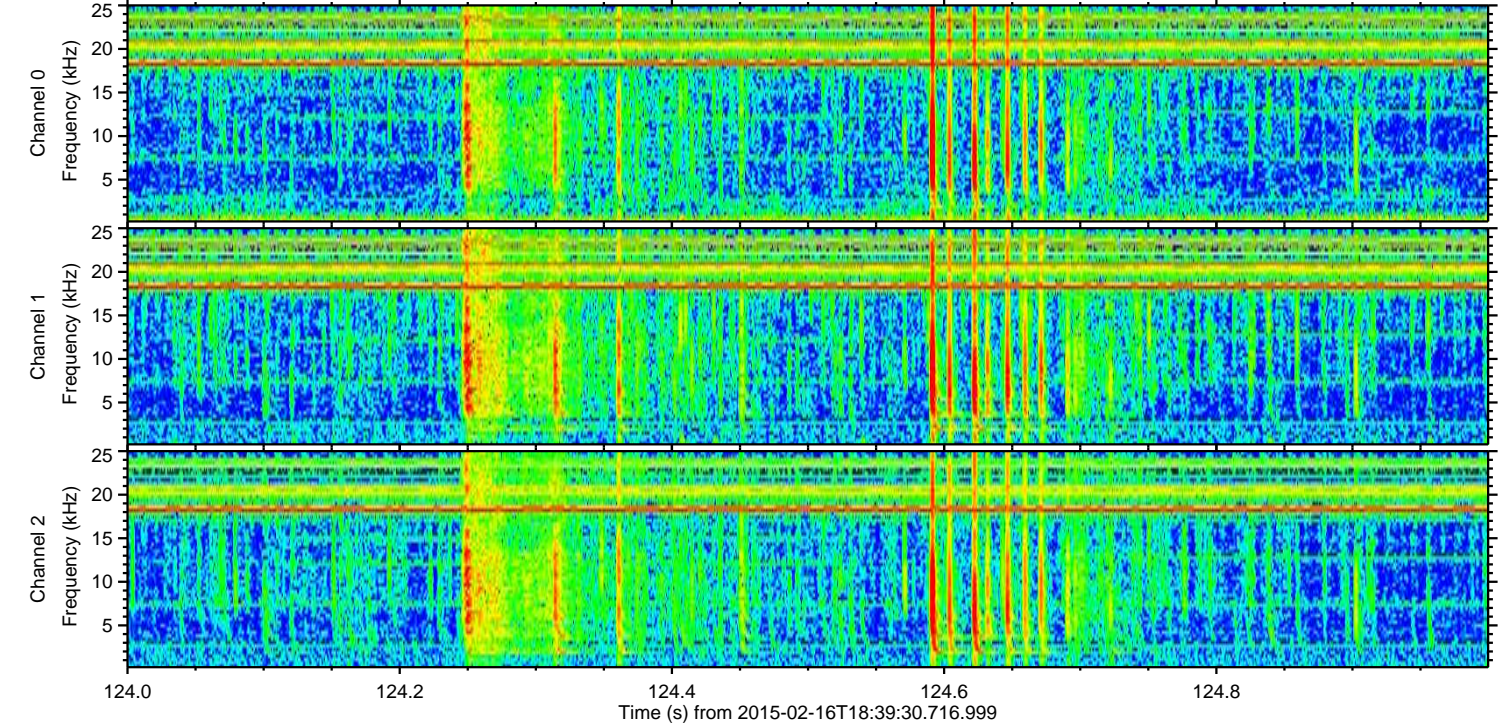
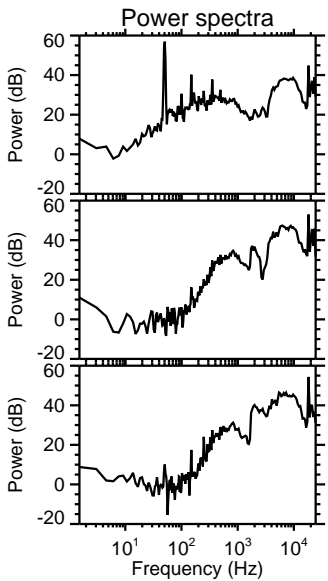
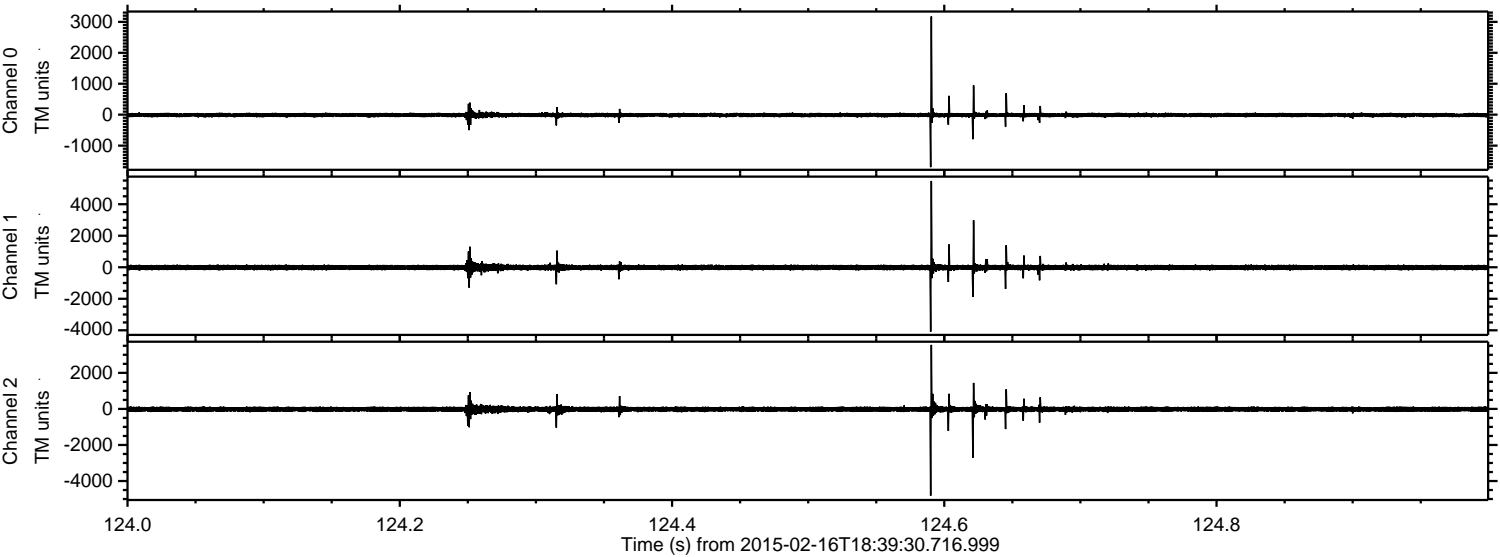
ELMAVAN 3D WAVEFORMS (Measured data sampled at 50 kHz) 49806 packets of 144 samples from 2015-02-16T18:39:30.716.999. Part 124/144

Processed Thu Feb 26 00:03:45 2015 by ELM ver.2012-10-06 from 001__elm20150216_183929__dat00.bin



ELMAVAN 3D WAVEFORMS (Measured data sampled at 50 kHz) 49806 packets of 144 samples from 2015-02-16T18:39:30.716.999. Part 125/144

Processed Thu Feb 26 00:03:46 2015 by ELM ver.2012-10-06 from 001__elm20150216_183929__dat00.bin



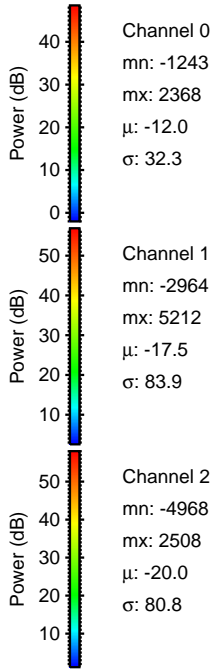
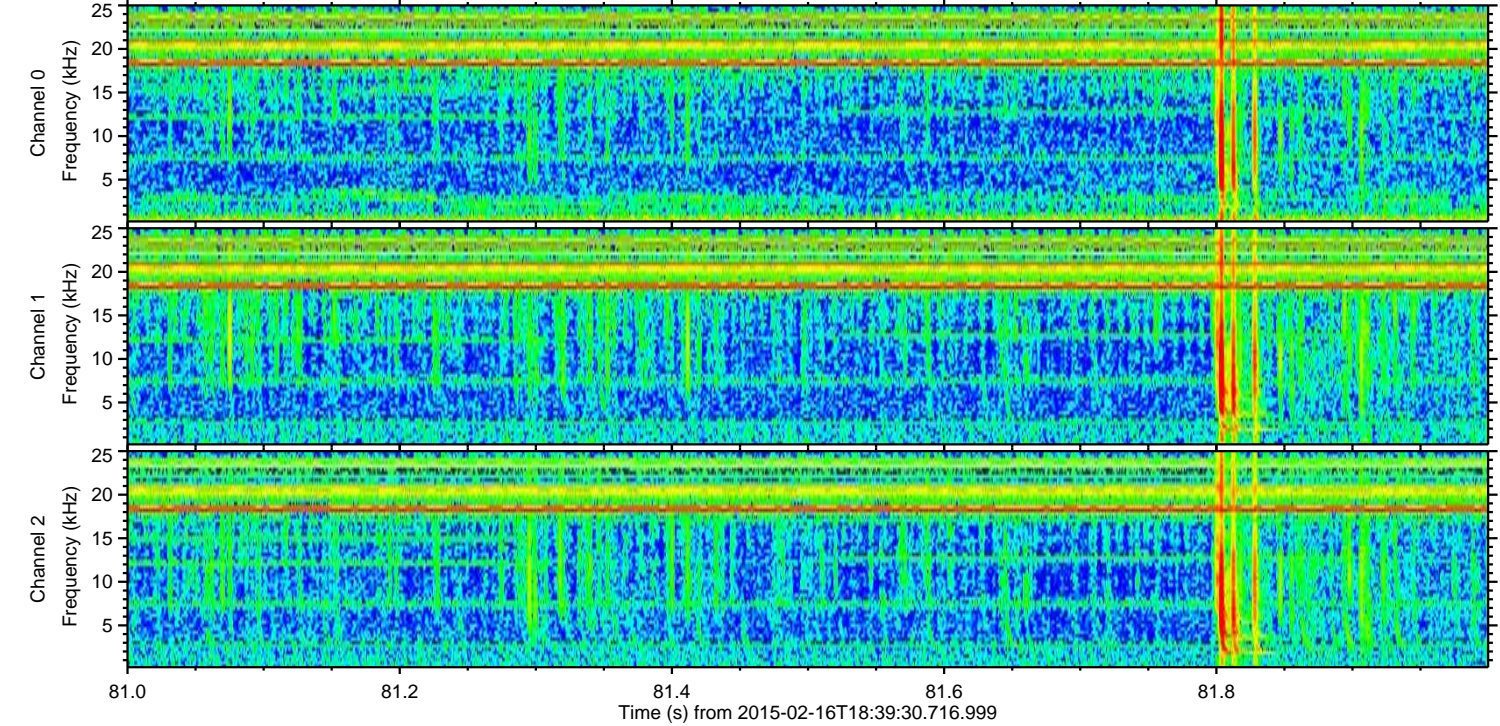
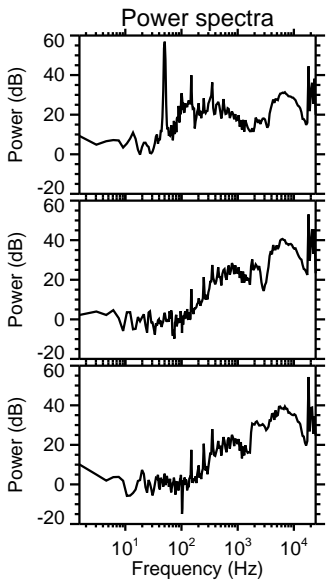
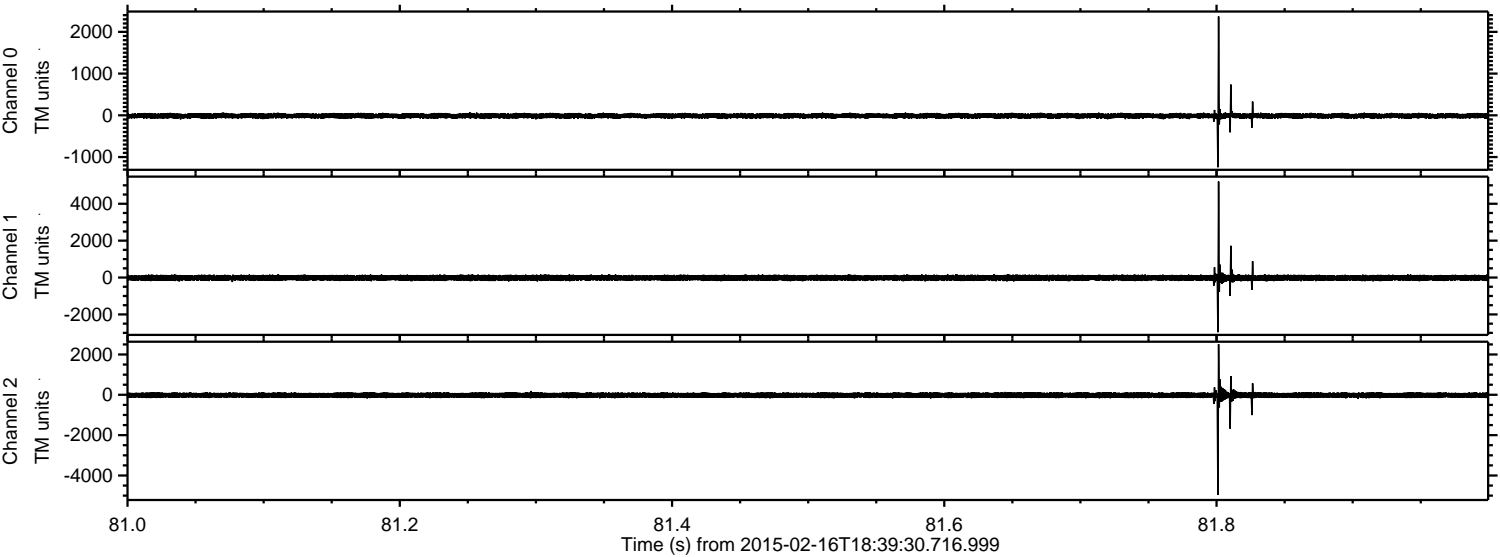
Channel 0
mn: -1698
mx: 3176
 μ : -11.9
 σ : 37.2

Channel 1
mn: -4088
mx: 5474
 μ : -17.4
 σ : 95.3

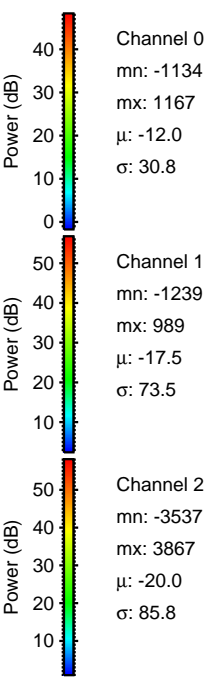
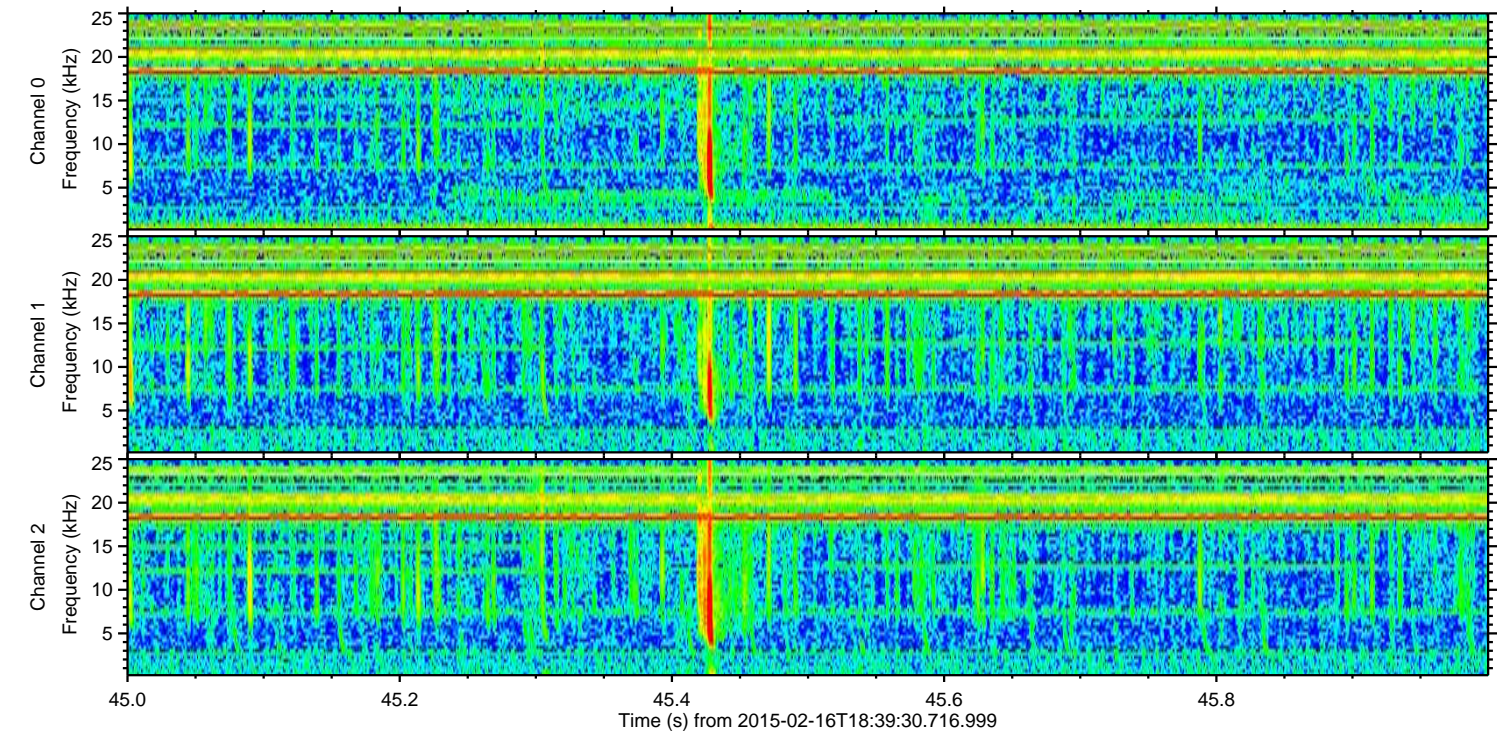
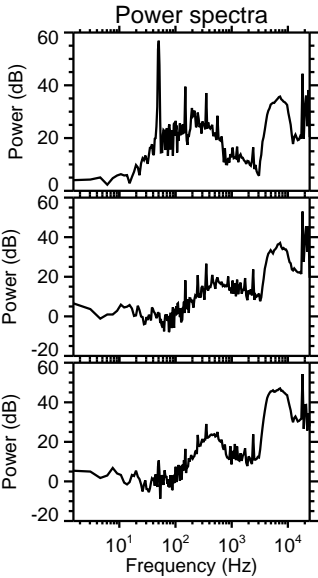
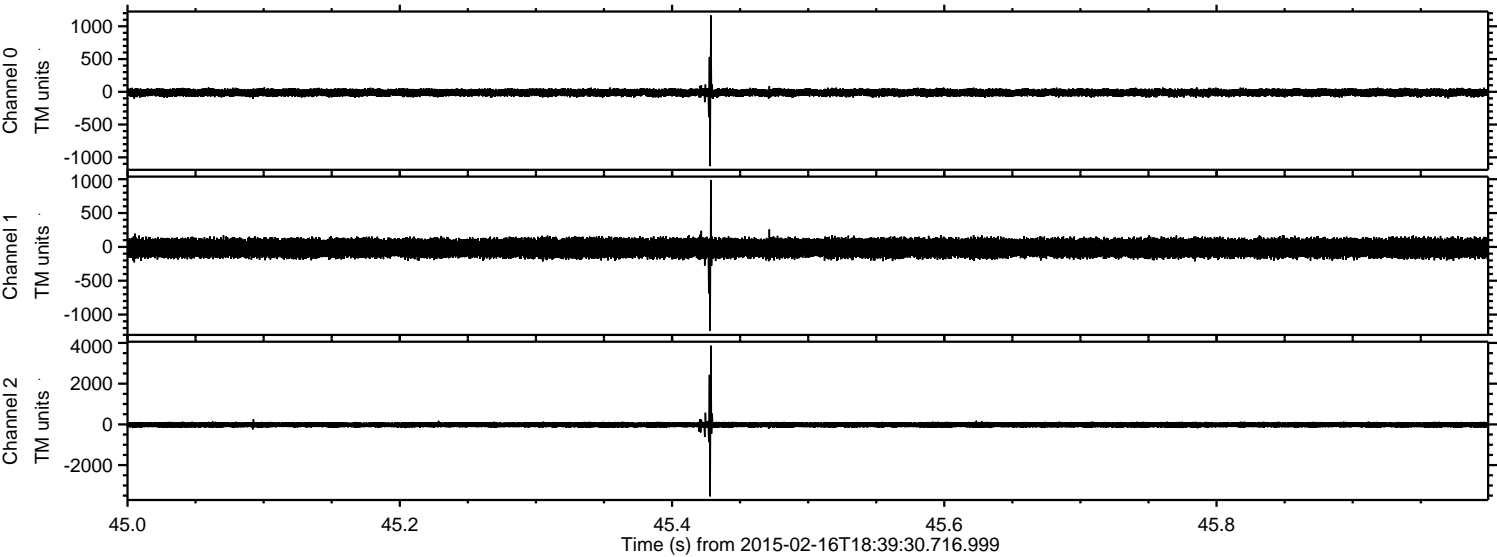
Channel 2
mn: -4813
mx: 3550
 μ : -20.1
 σ : 91.2

ELMAVAN 3D WAVEFORMS (Measured data sampled at 50 kHz) 49806 packets of 144 samples from 2015-02-16T18:39:30.716.999. Part 82/144

Processed Thu Feb 26 00:03:48 2015 by ELM ver.2012-10-06 from 001__elm20150216_183929__dat00.bin



Processed Thu Feb 26 00:03:49 2015 by ELM ver.2012-10-06 from 001__elm20150216_183929__dat00.bin



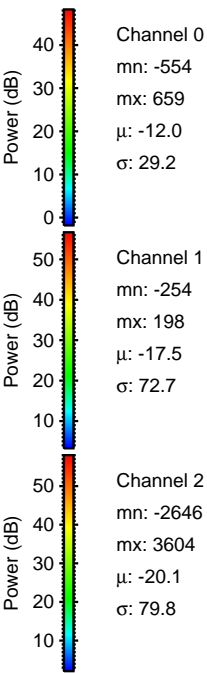
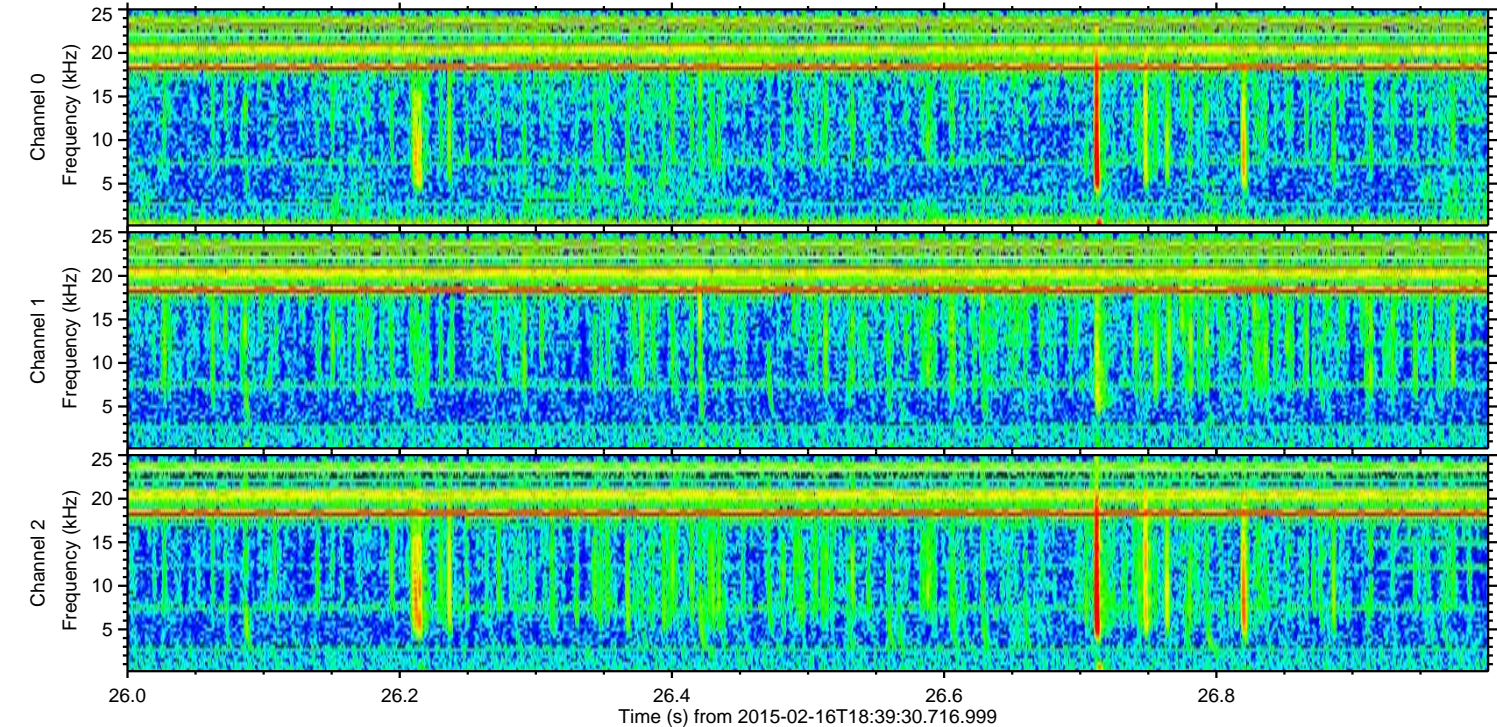
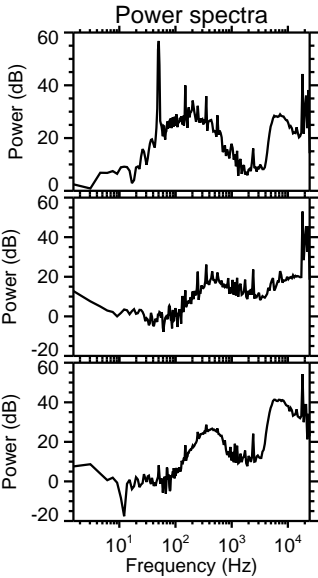
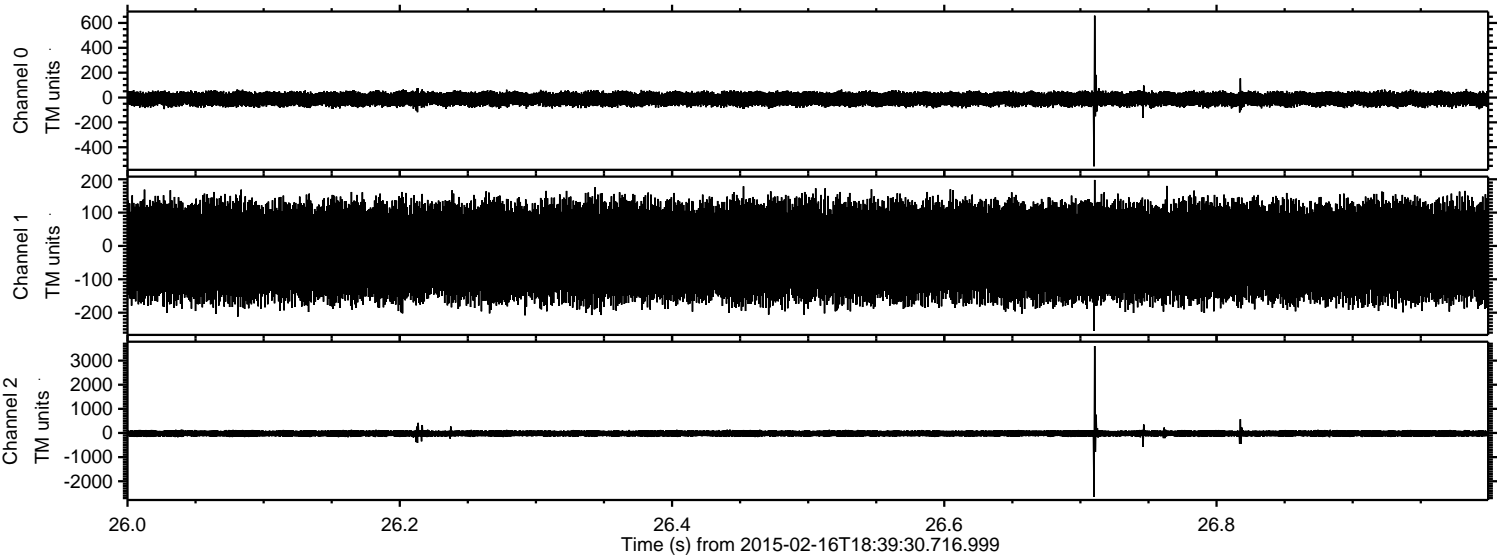
Channel 0
mn: -1134
mx: 1167
 μ : -12.0
 σ : 30.8

Channel 1
mn: -1239
mx: 989
 μ : -17.5
 σ : 73.5

Channel 2
mn: -3537
mx: 3867
 μ : -20.0
 σ : 85.8

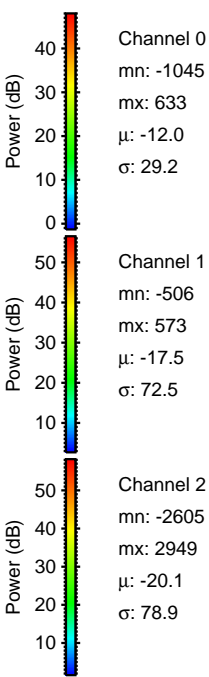
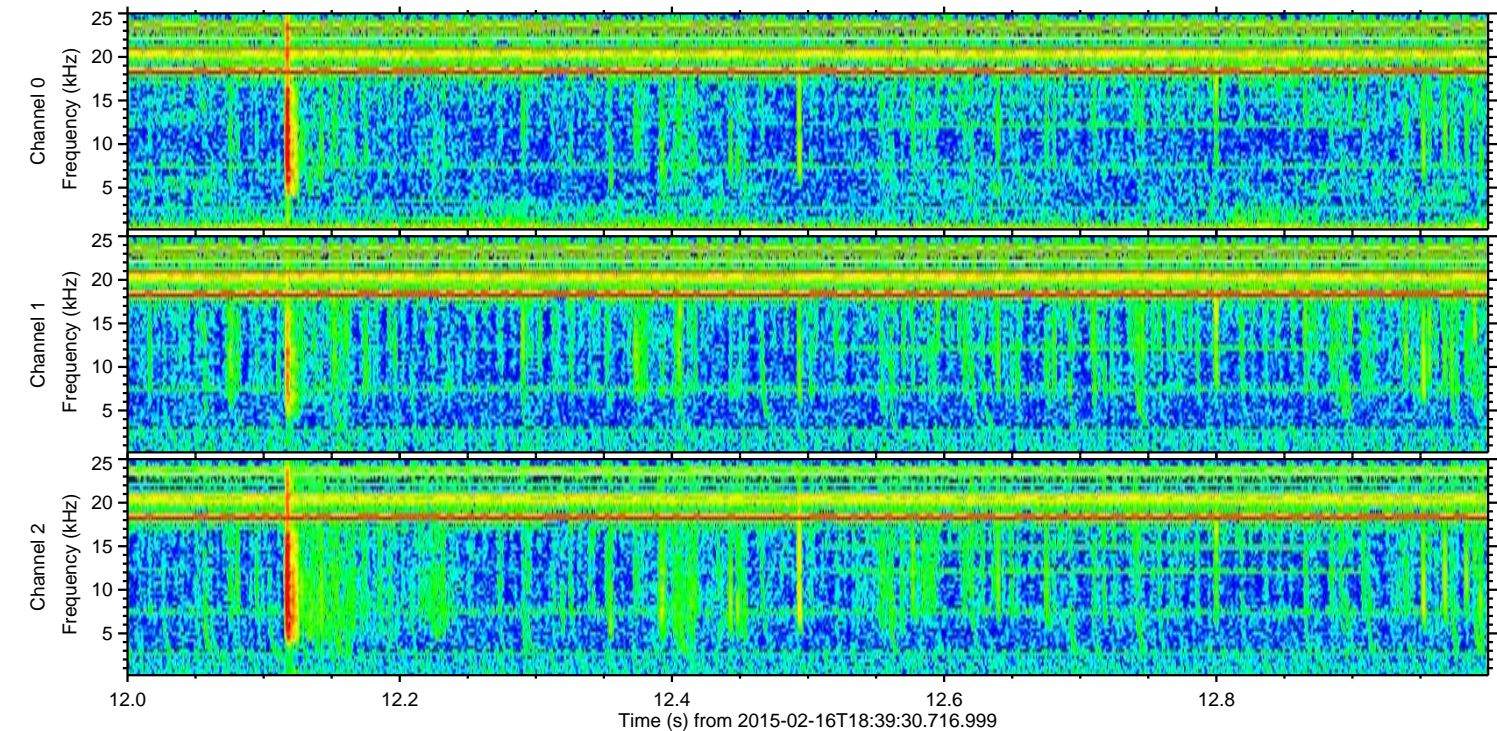
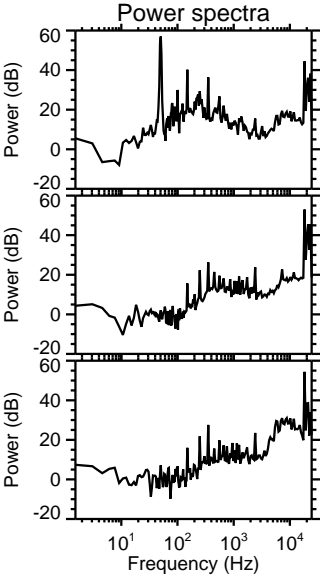
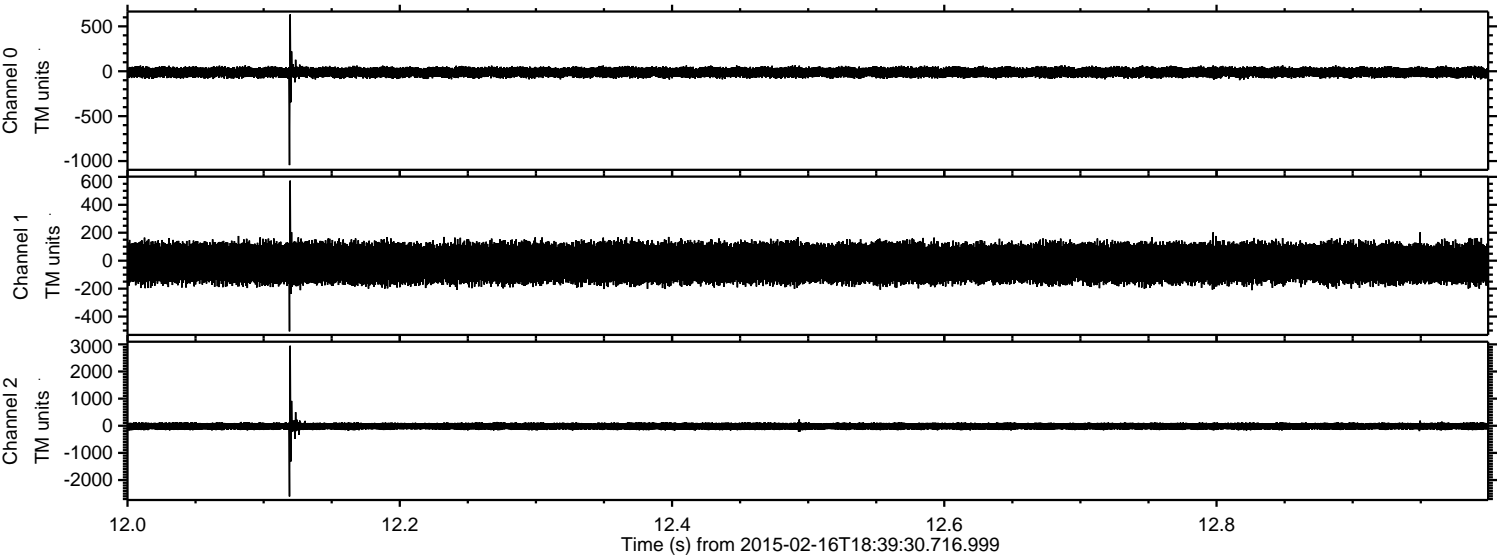
ELMAVAN 3D WAVEFORMS (Measured data sampled at 50 kHz) 49806 packets of 144 samples from 2015-02-16T18:39:30.716.999. Part 27/144

Processed Thu Feb 26 00:03:50 2015 by ELM ver.2012-10-06 from 001__elm20150216_183929__dat00.bin



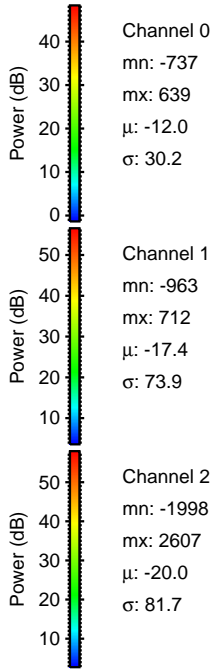
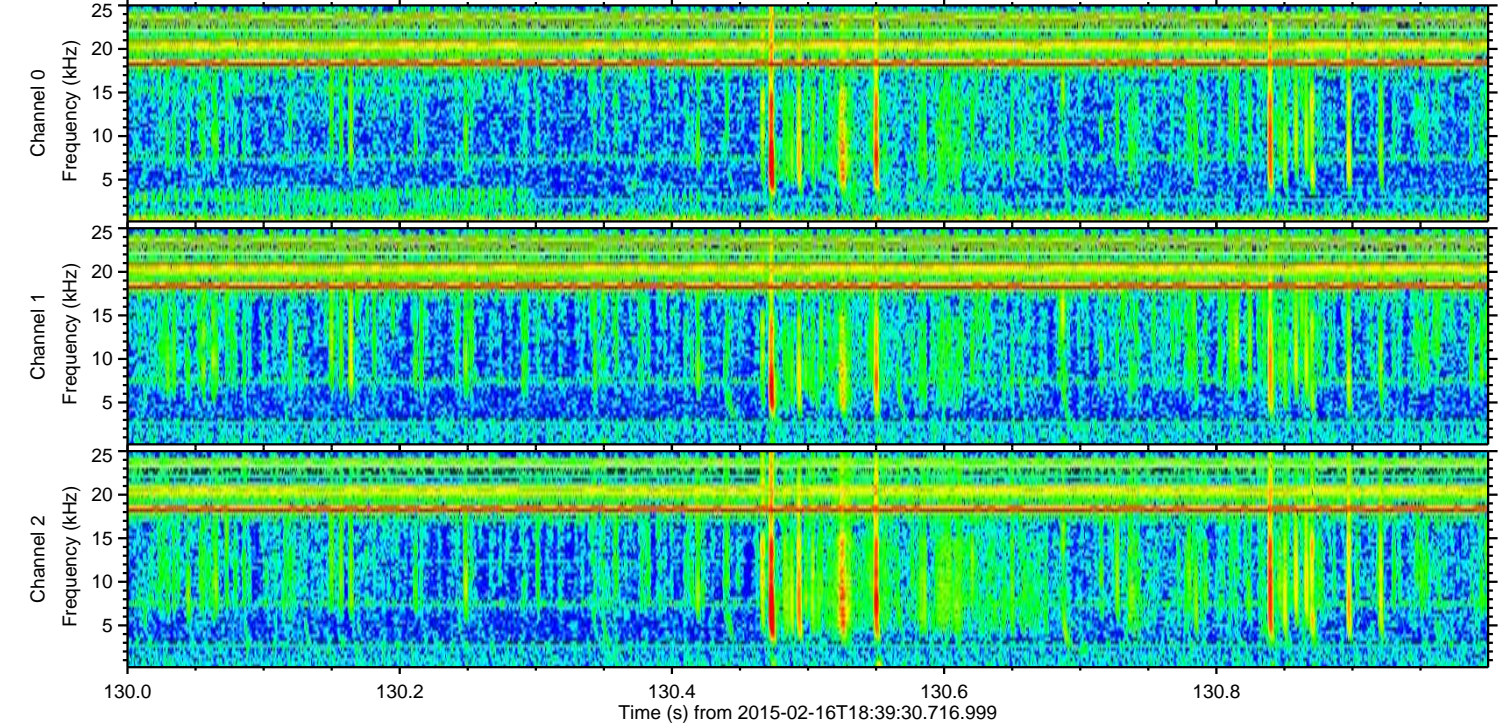
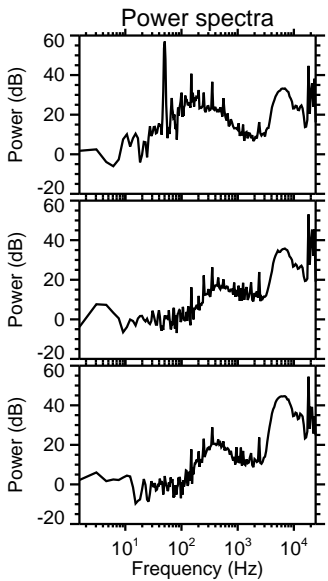
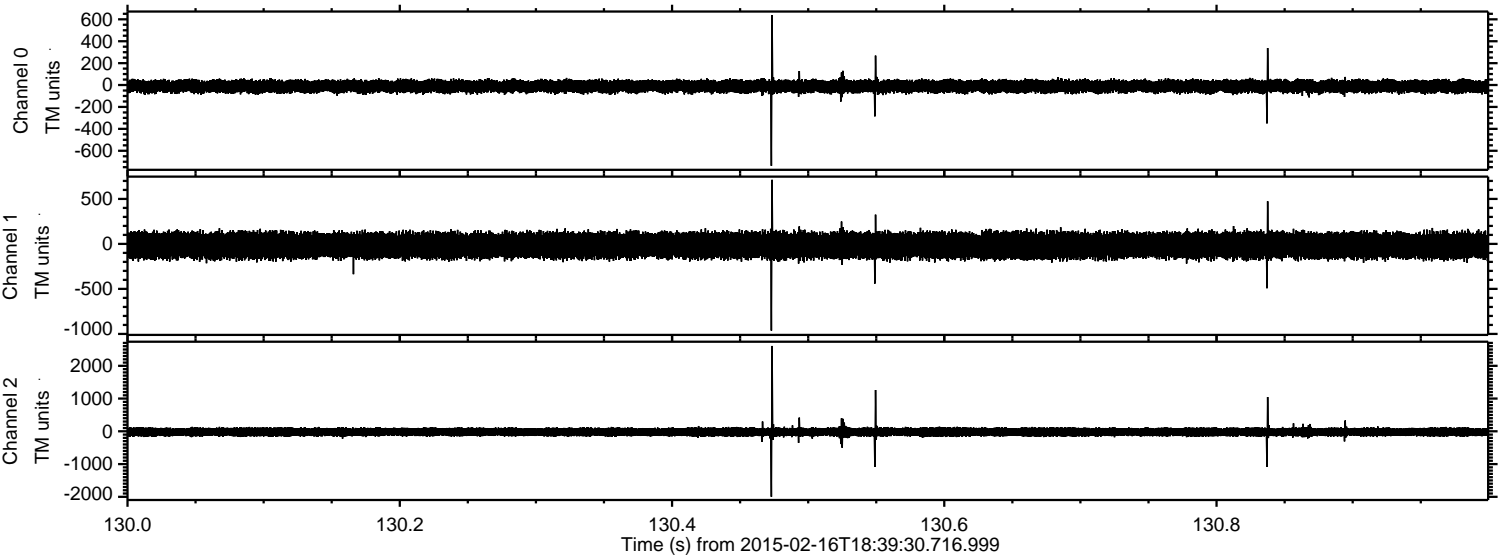
ELMAVAN 3D WAVEFORMS (Measured data sampled at 50 kHz) 49806 packets of 144 samples from 2015-02-16T18:39:30.716.999. Part 13/144

Processed Thu Feb 26 00:03:51 2015 by ELM ver.2012-10-06 from 001__elm20150216_183929__dat00.bin

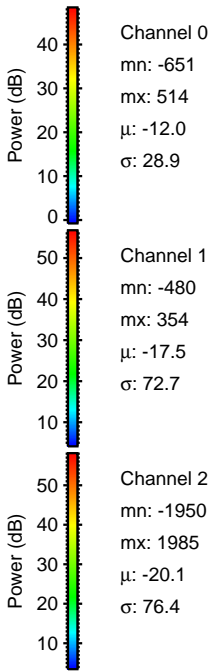
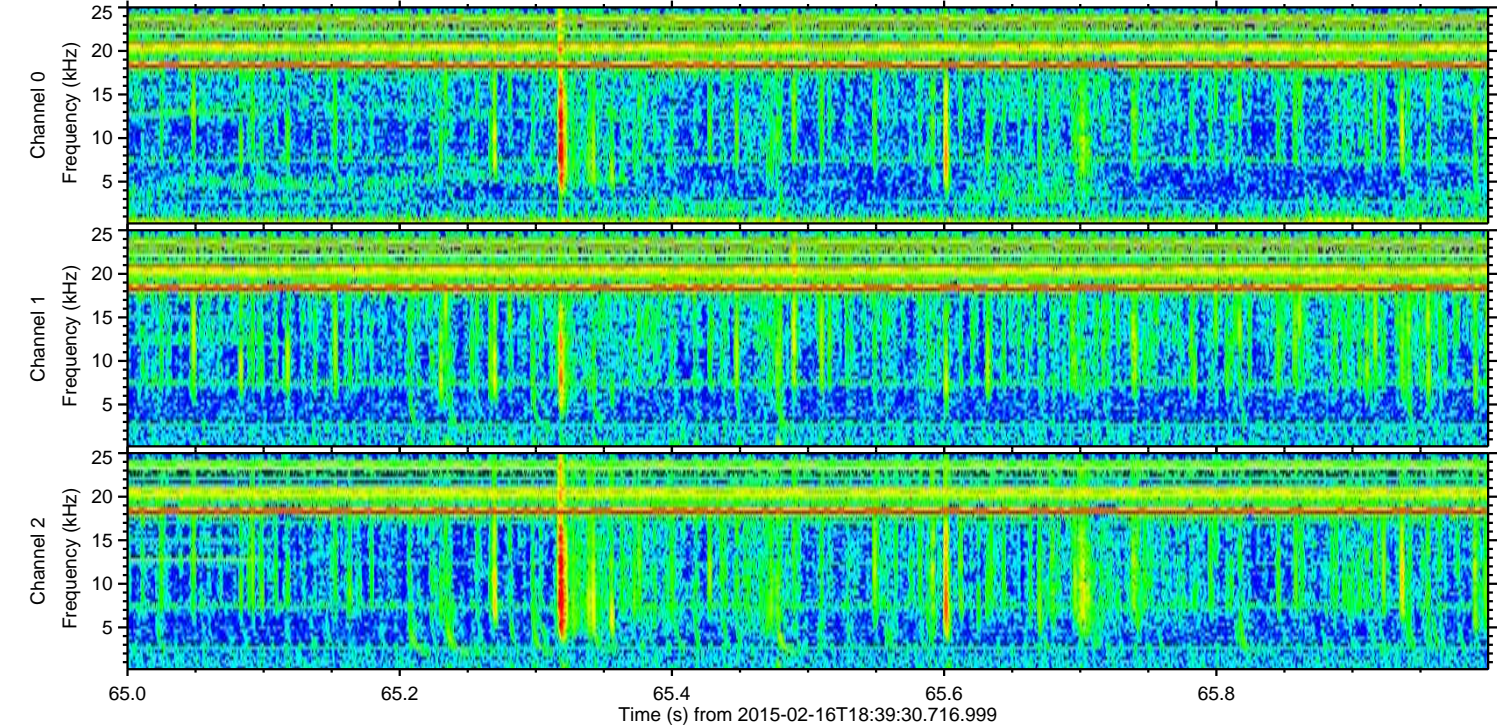
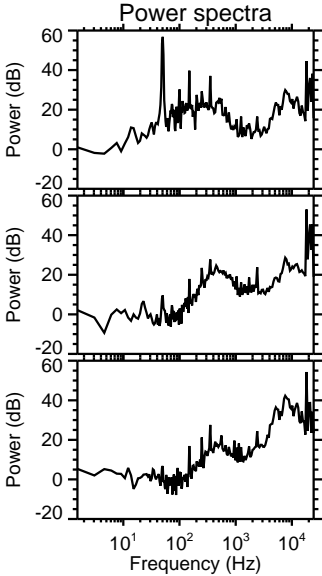
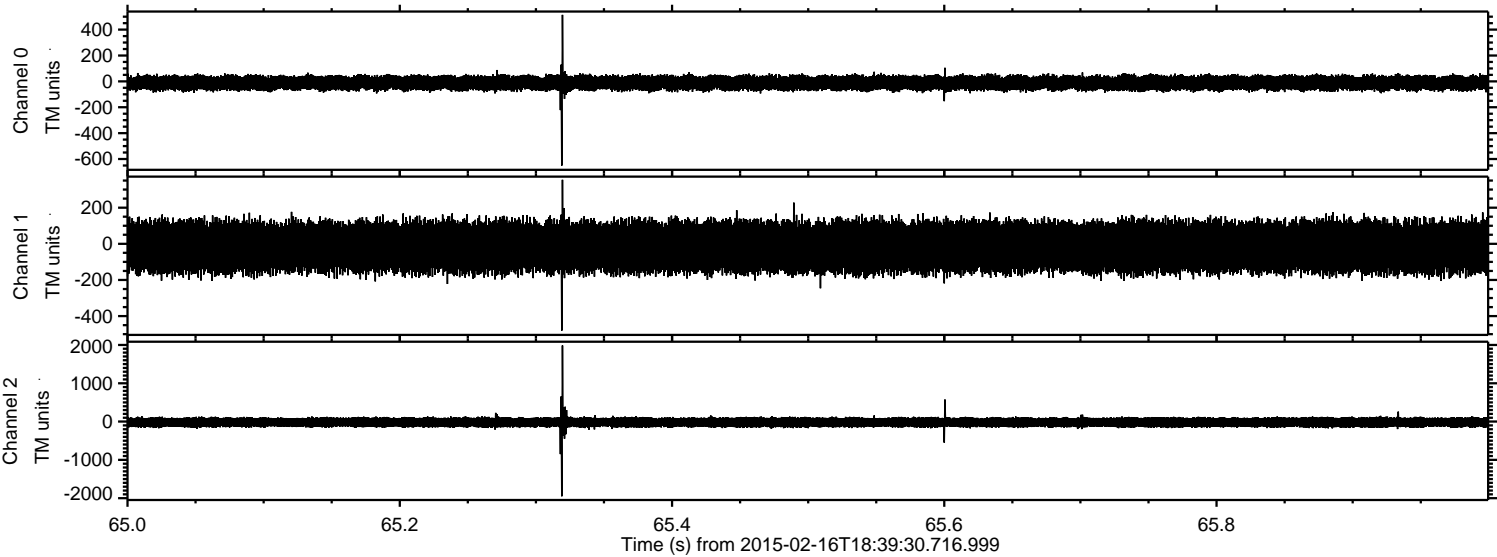


ELMAVAN 3D WAVEFORMS (Measured data sampled at 50 kHz) 49806 packets of 144 samples from 2015-02-16T18:39:30.716.999. Part 131/144

Processed Thu Feb 26 00:03:52 2015 by ELM ver.2012-10-06 from 001__elm20150216_183929__dat00.bin



Processed Thu Feb 26 00:03:53 2015 by ELM ver.2012-10-06 from 001__elm20150216_183929__dat00.bin



ELMAVAN 3D WAVEFORMS (Measured data sampled at 50 kHz) 49806 packets of 144 samples from 2015-02-16T18:39:30.716.999. Part 70/144

Processed Thu Feb 26 00:03:54 2015 by ELM ver.2012-10-06 from 001__elm20150216_183929__dat00.bin

