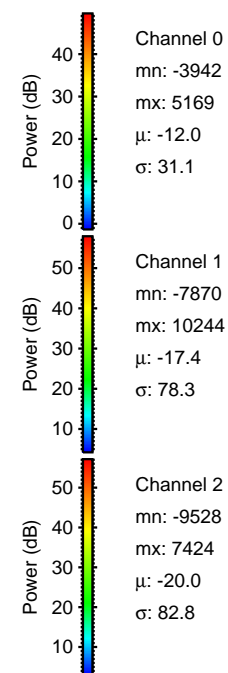
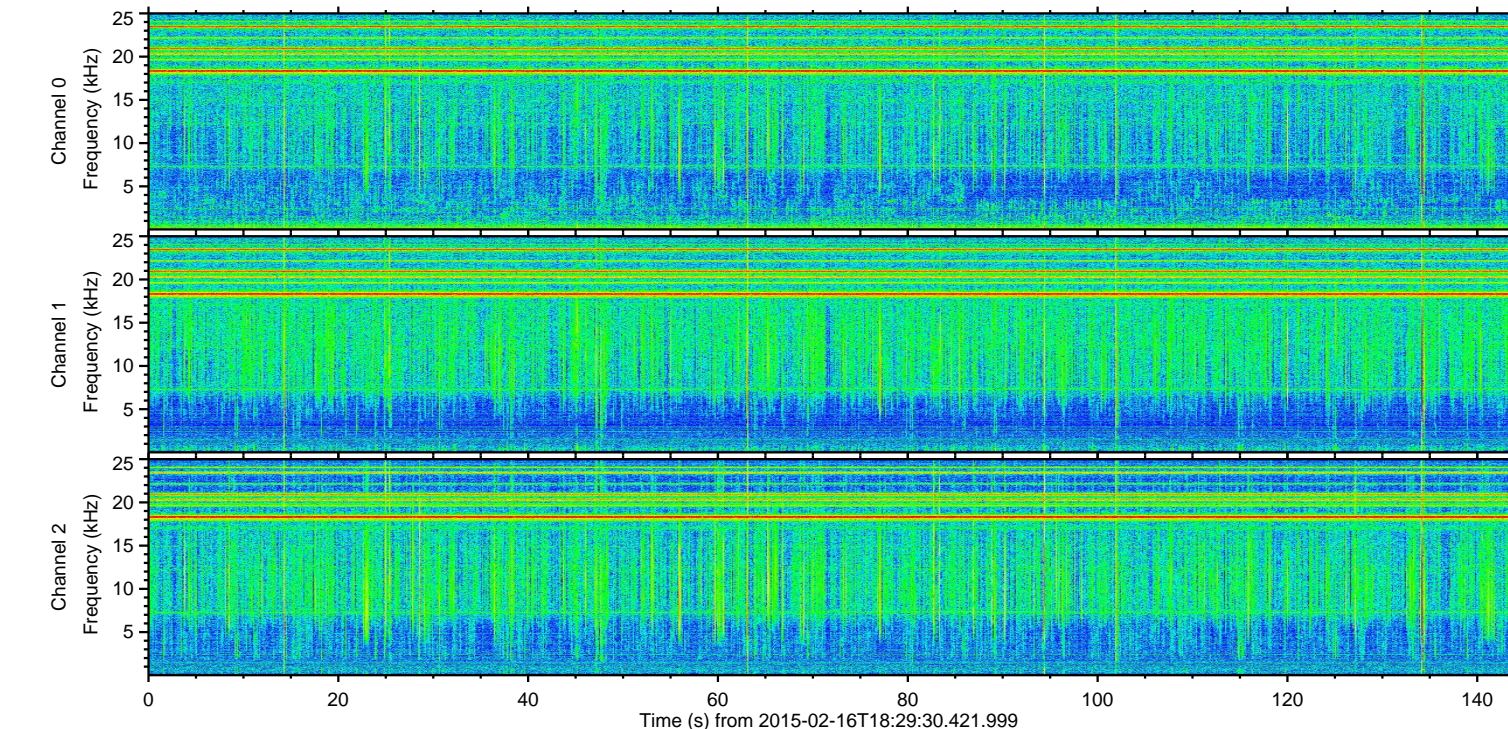
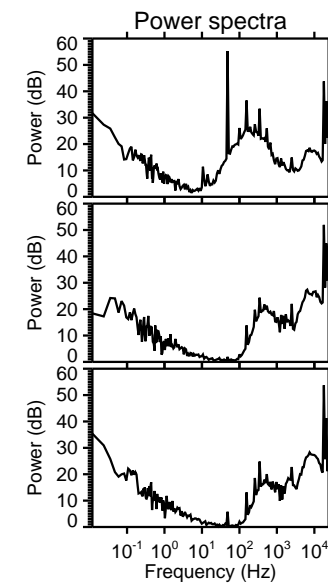
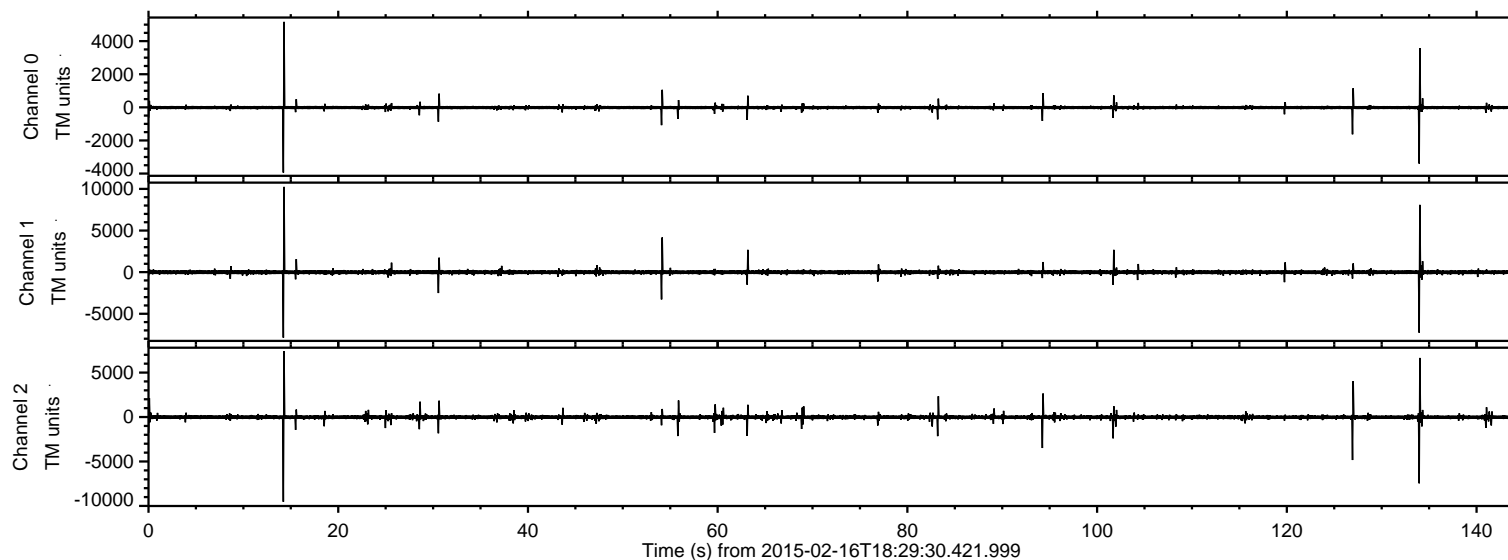
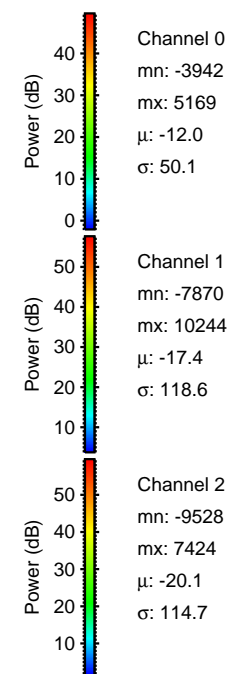
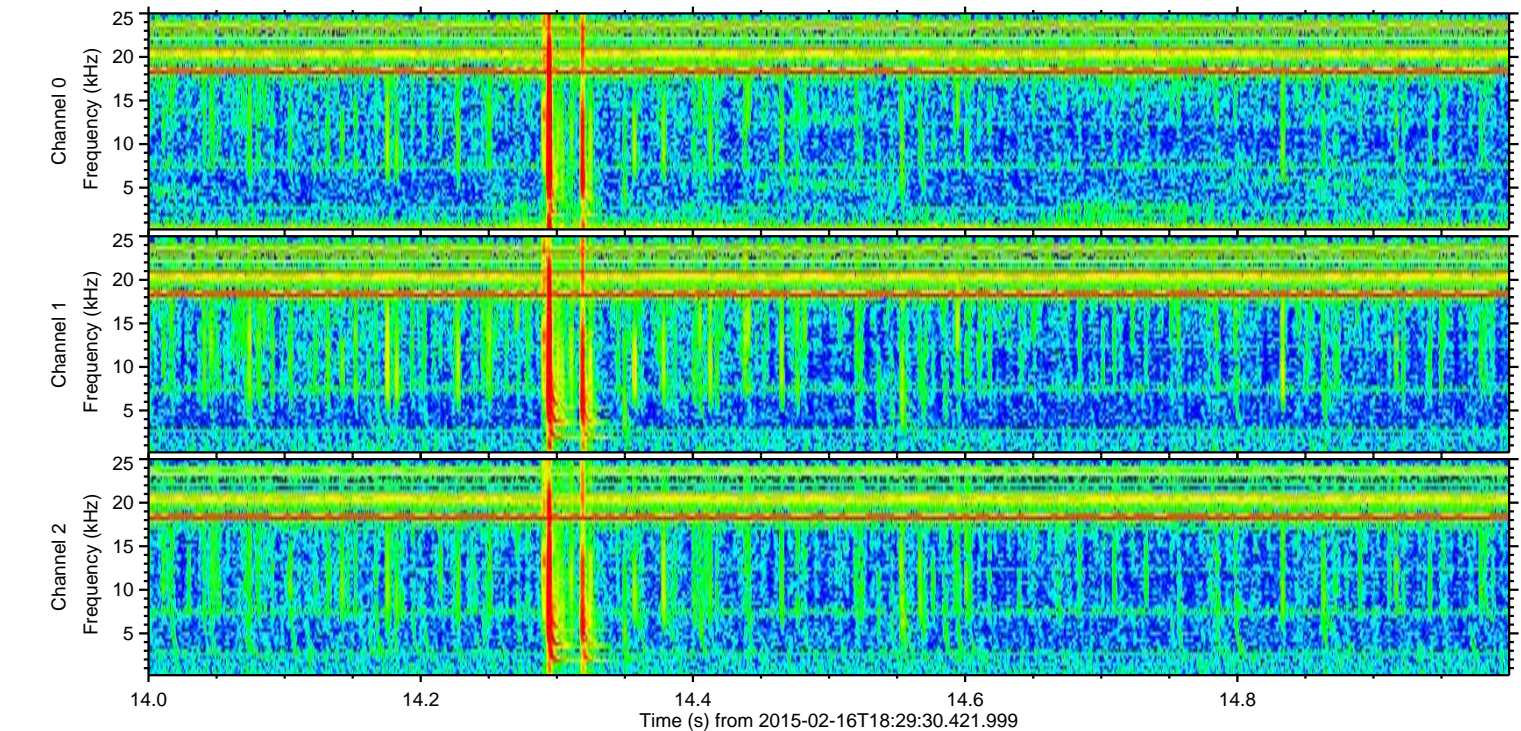
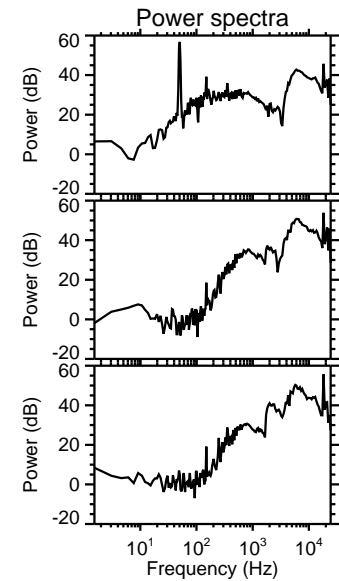
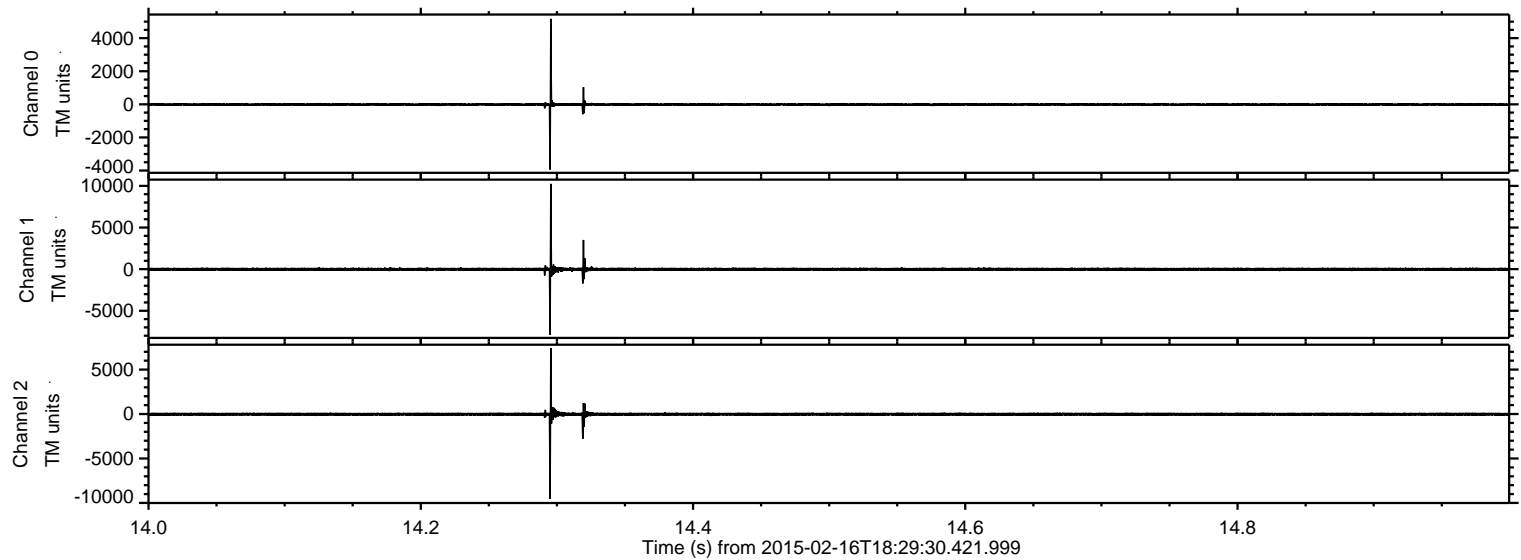


ELMAVAN 3D WAVEFORMS (Measured data sampled at 50 kHz) 49805 packets of 144 samples from 2015-02-16T18:29:30.421.999.

Processed Thu Feb 26 00:00:52 2015 by ELM ver.2012-10-06 from 001__elm20150216_182929__dat00.bin

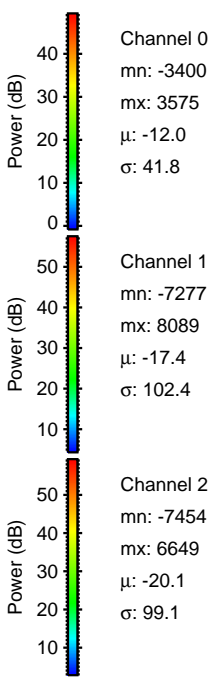
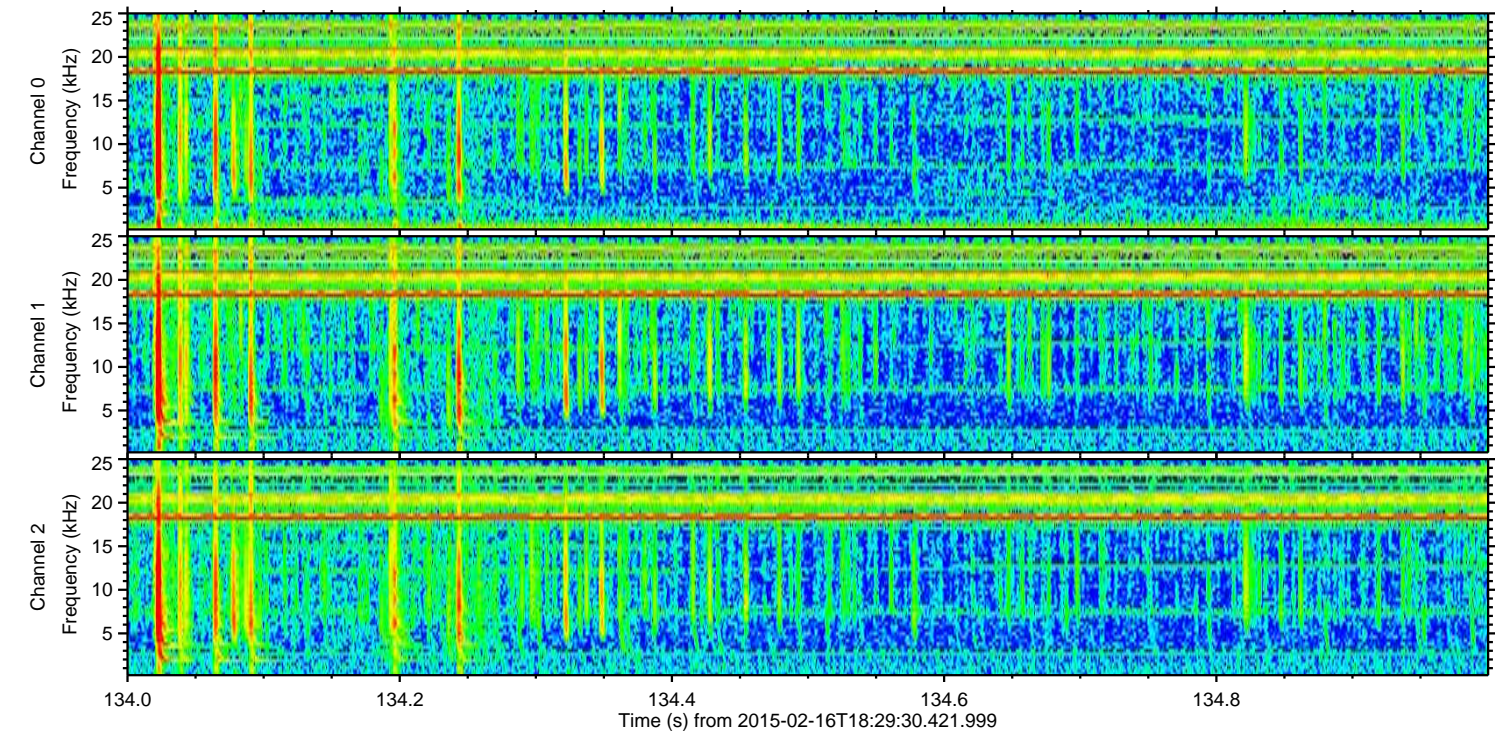
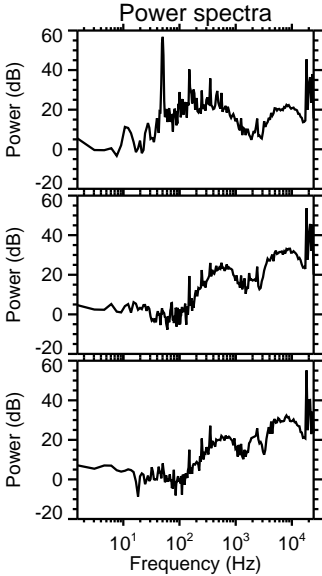
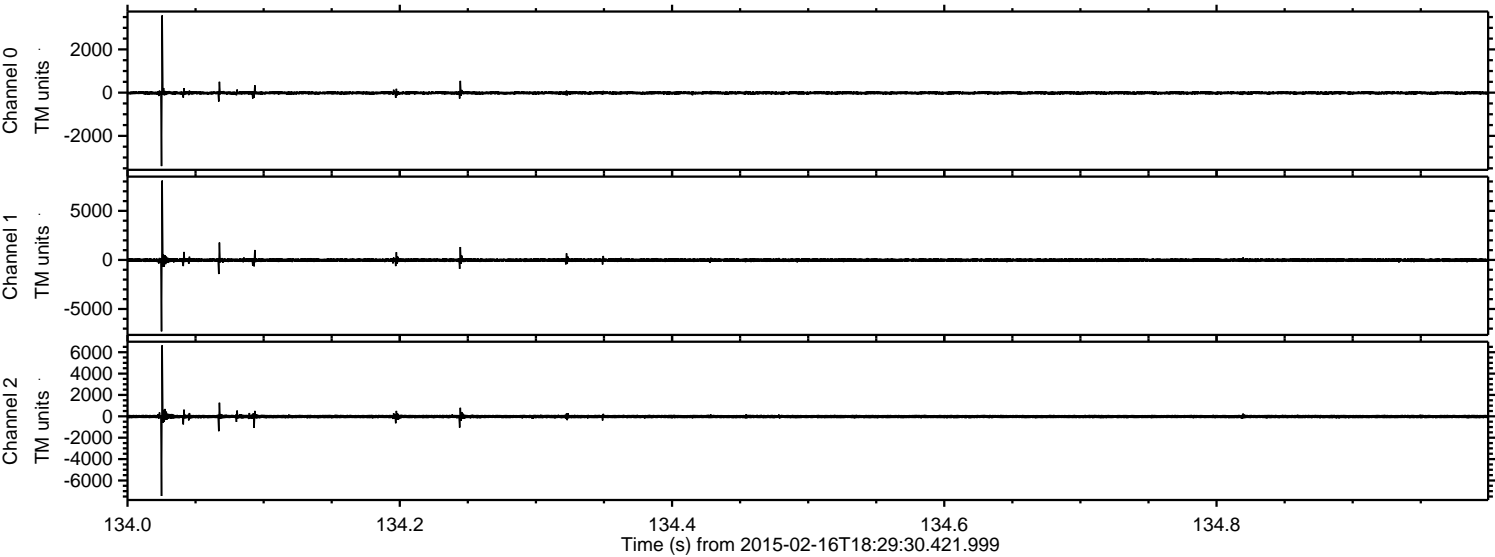


Processed Thu Feb 26 00:01:05 2015 by ELM ver.2012-10-06 from 001__elm20150216_182929__dat00.bin



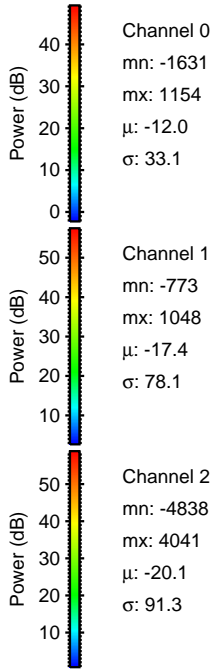
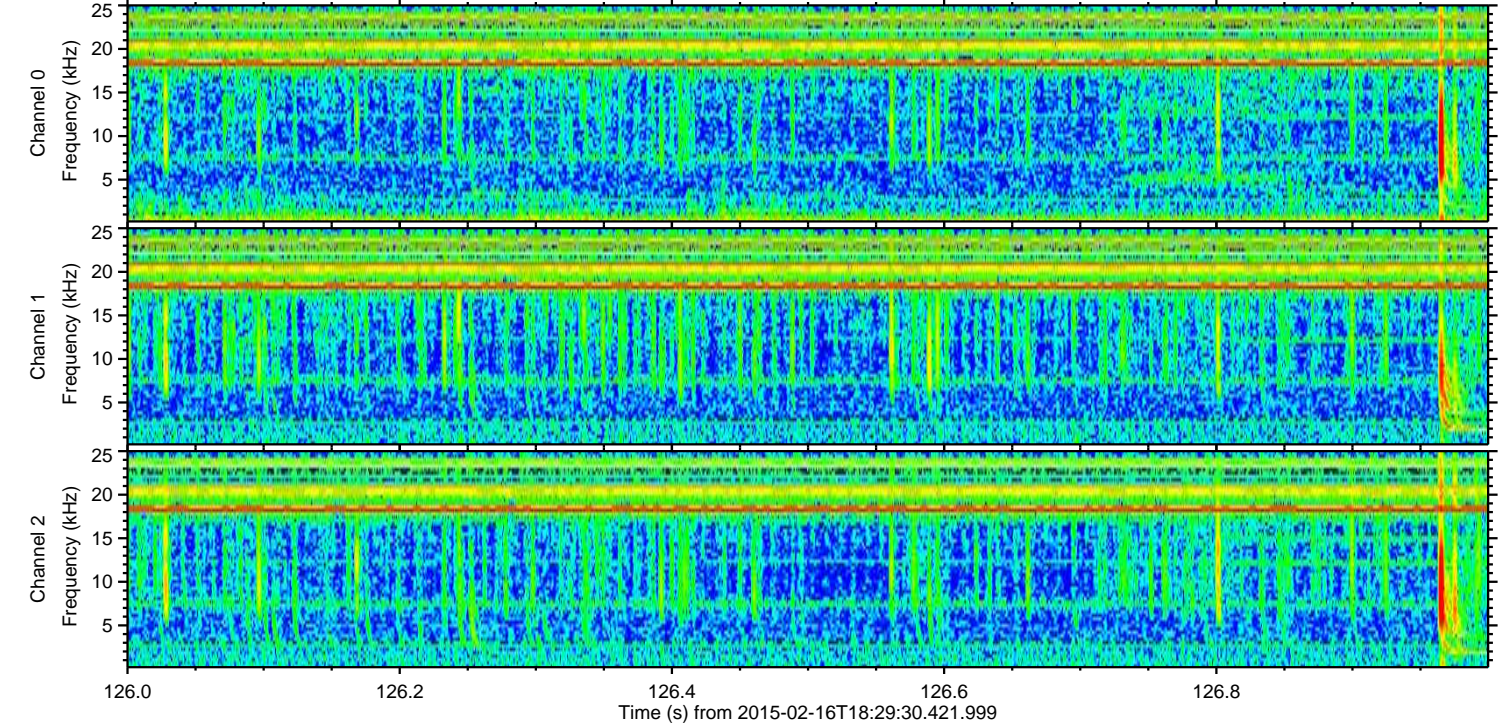
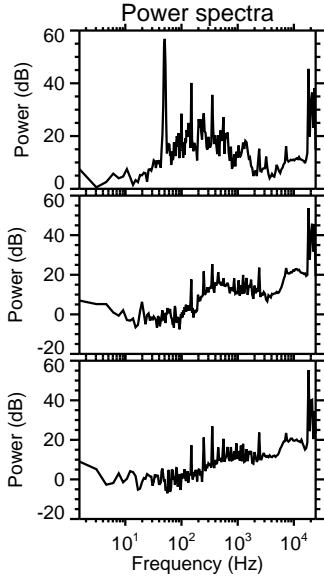
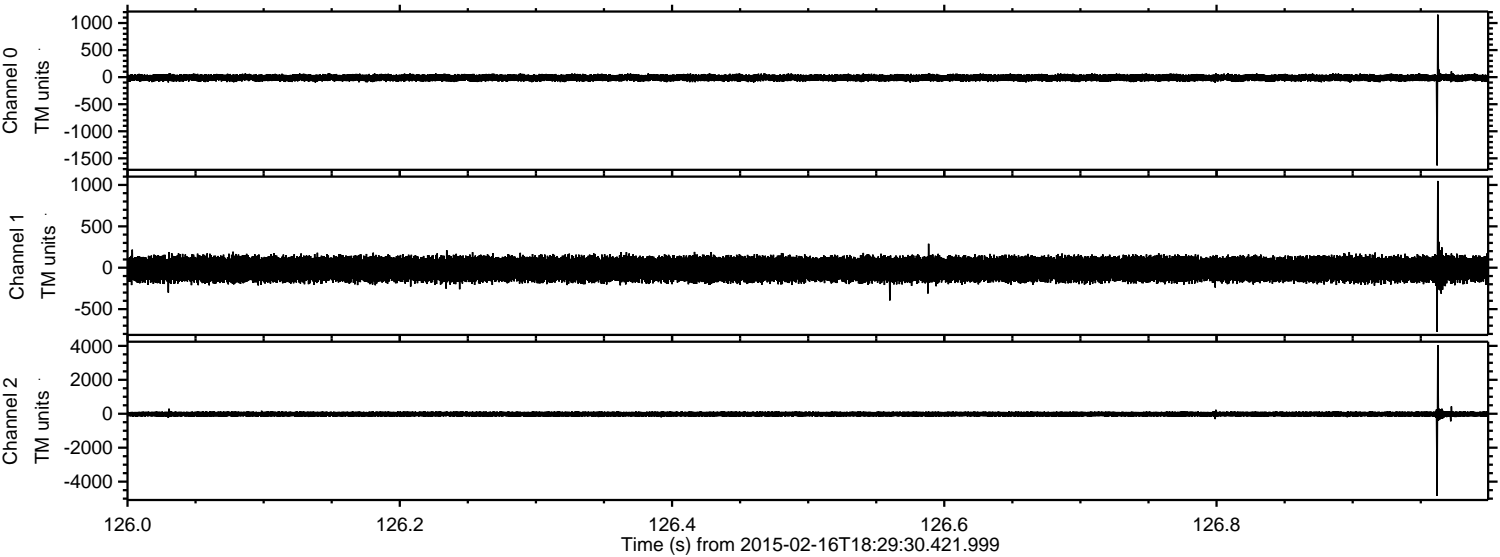
ELMAVAN 3D WAVEFORMS (Measured data sampled at 50 kHz) 49805 packets of 144 samples from 2015-02-16T18:29:30.421.999. Part 135/144

Processed Thu Feb 26 00:01:06 2015 by ELM ver.2012-10-06 from 001__elm20150216_182929__dat00.bin

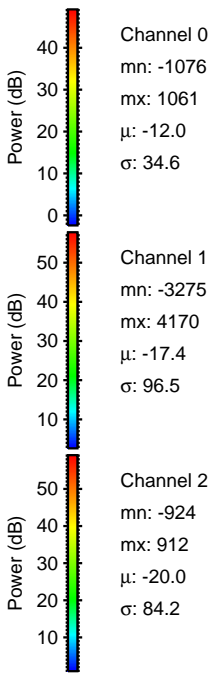
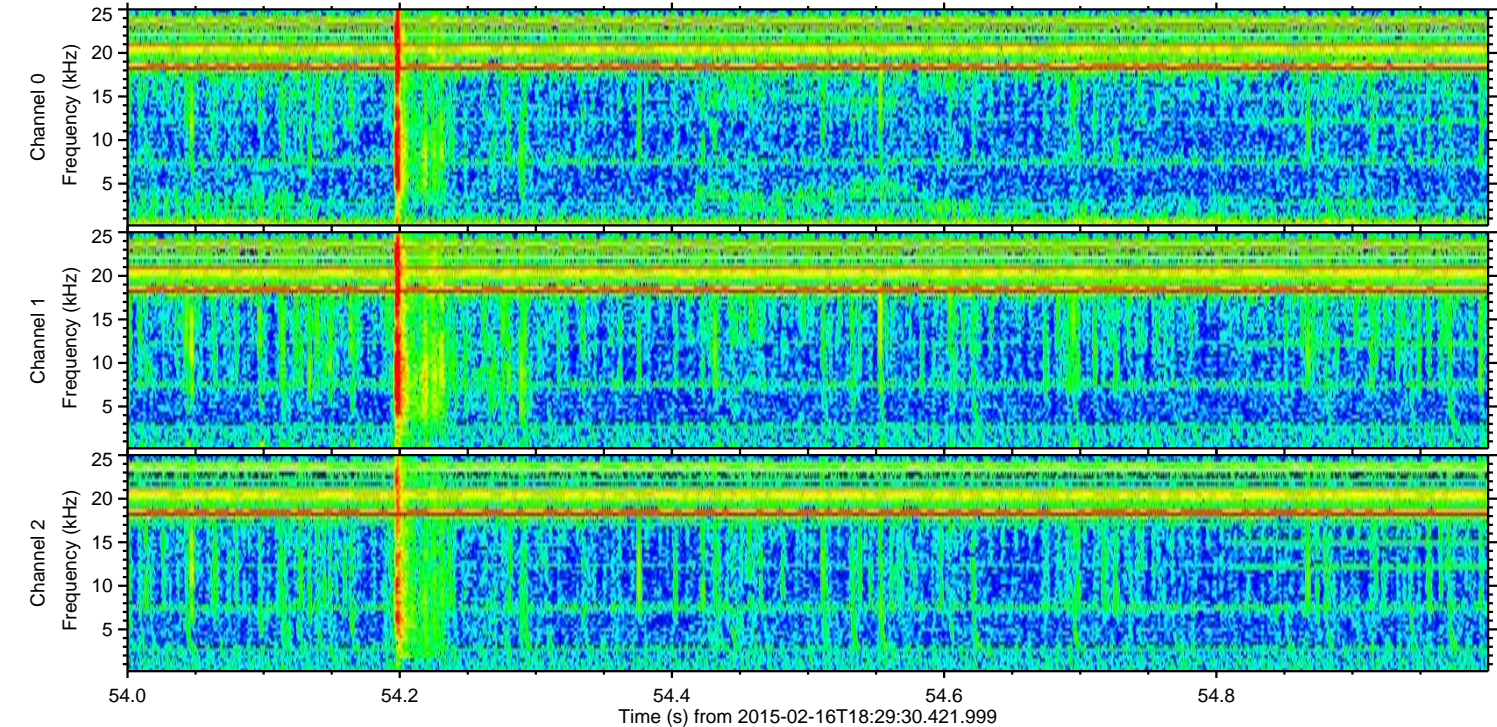
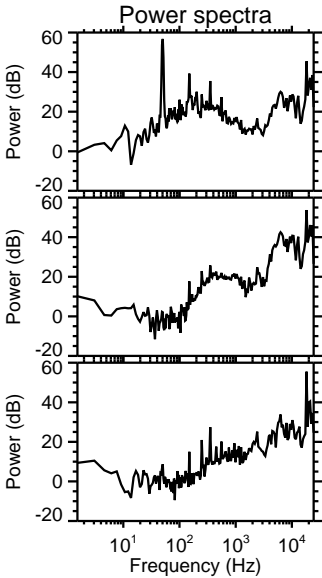
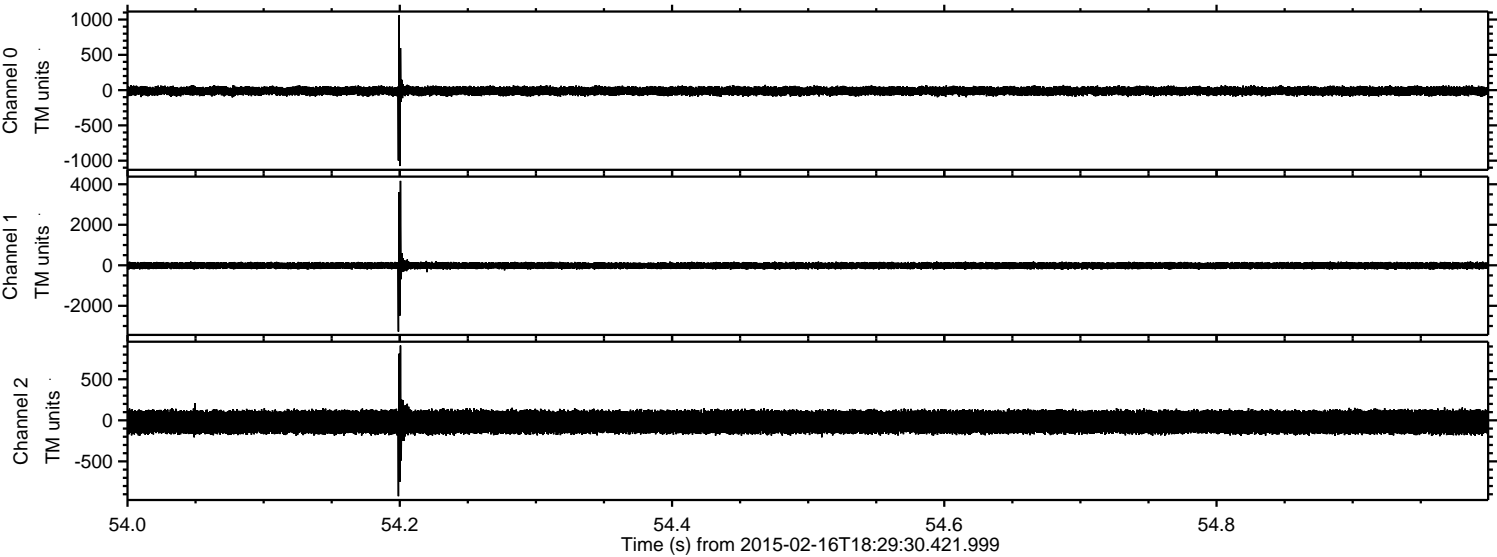


ELMAVAN 3D WAVEFORMS (Measured data sampled at 50 kHz) 49805 packets of 144 samples from 2015-02-16T18:29:30.421.999. Part 127/144

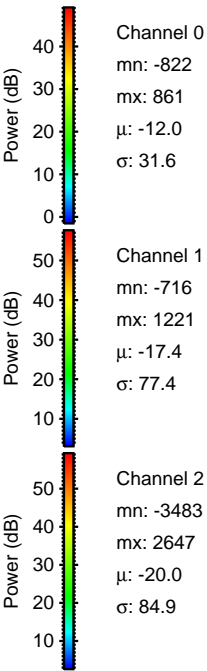
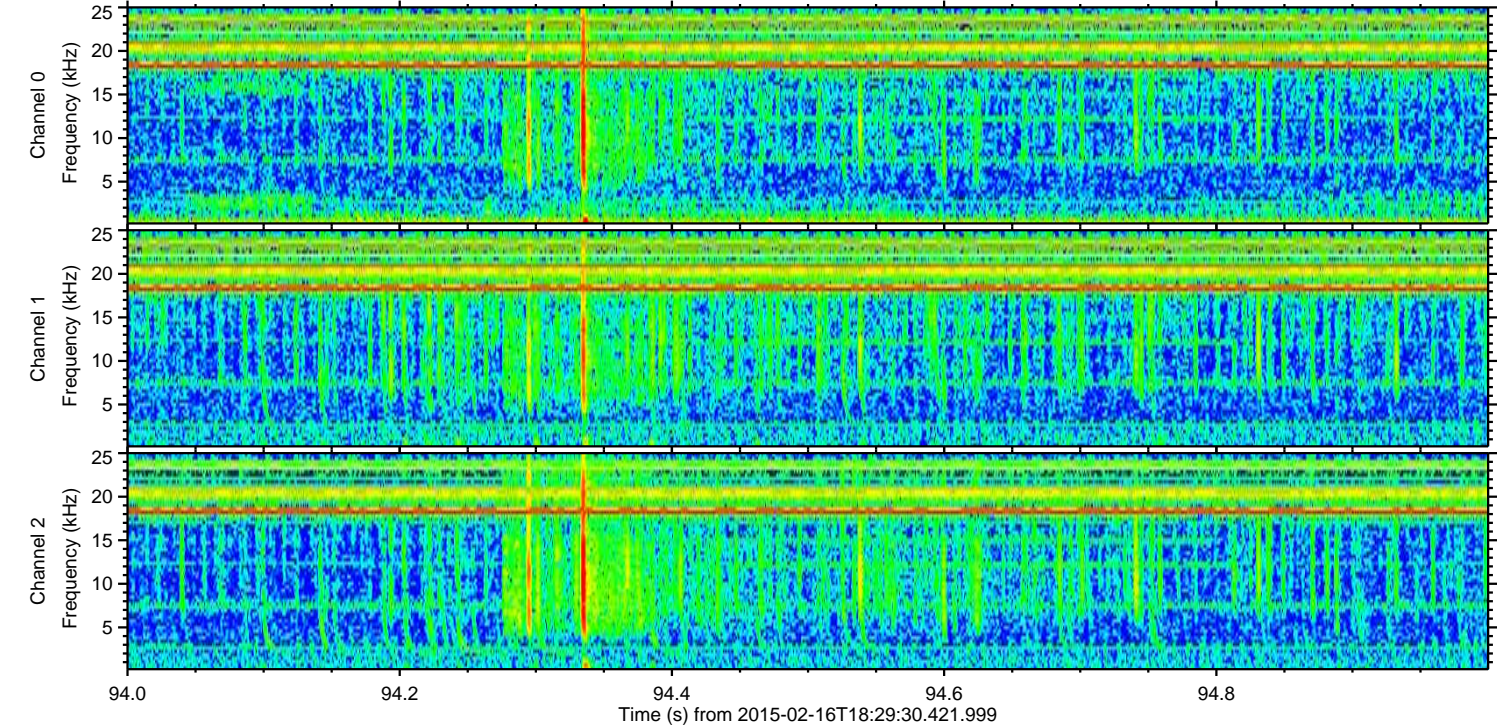
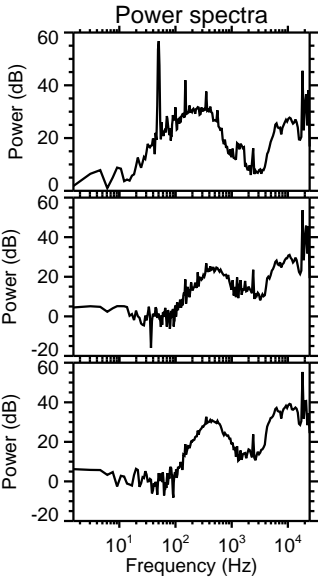
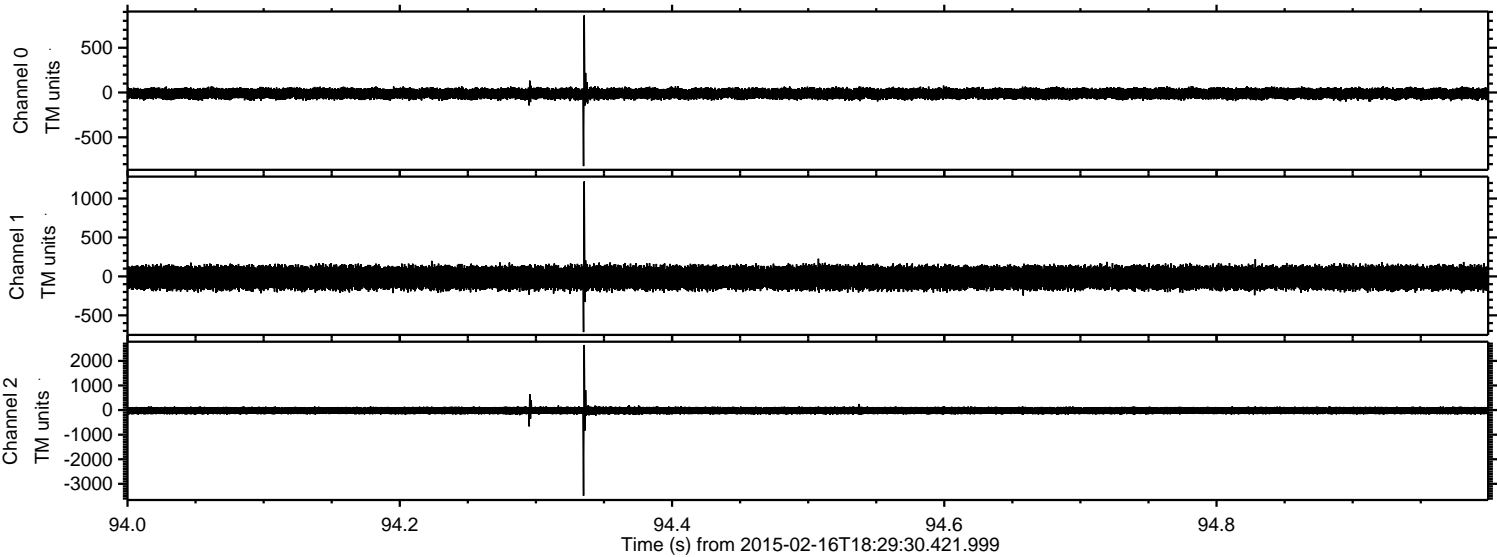
Processed Thu Feb 26 00:01:08 2015 by ELM ver.2012-10-06 from 001__elm20150216_182929__dat00.bin



Processed Thu Feb 26 00:01:09 2015 by ELM ver.2012-10-06 from 001__elm20150216_182929__dat00.bin

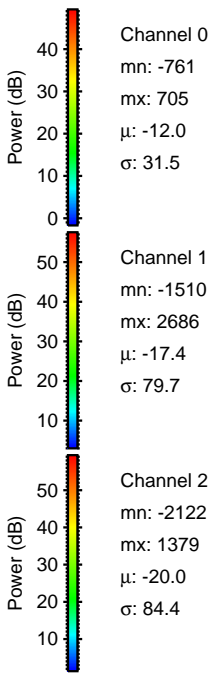
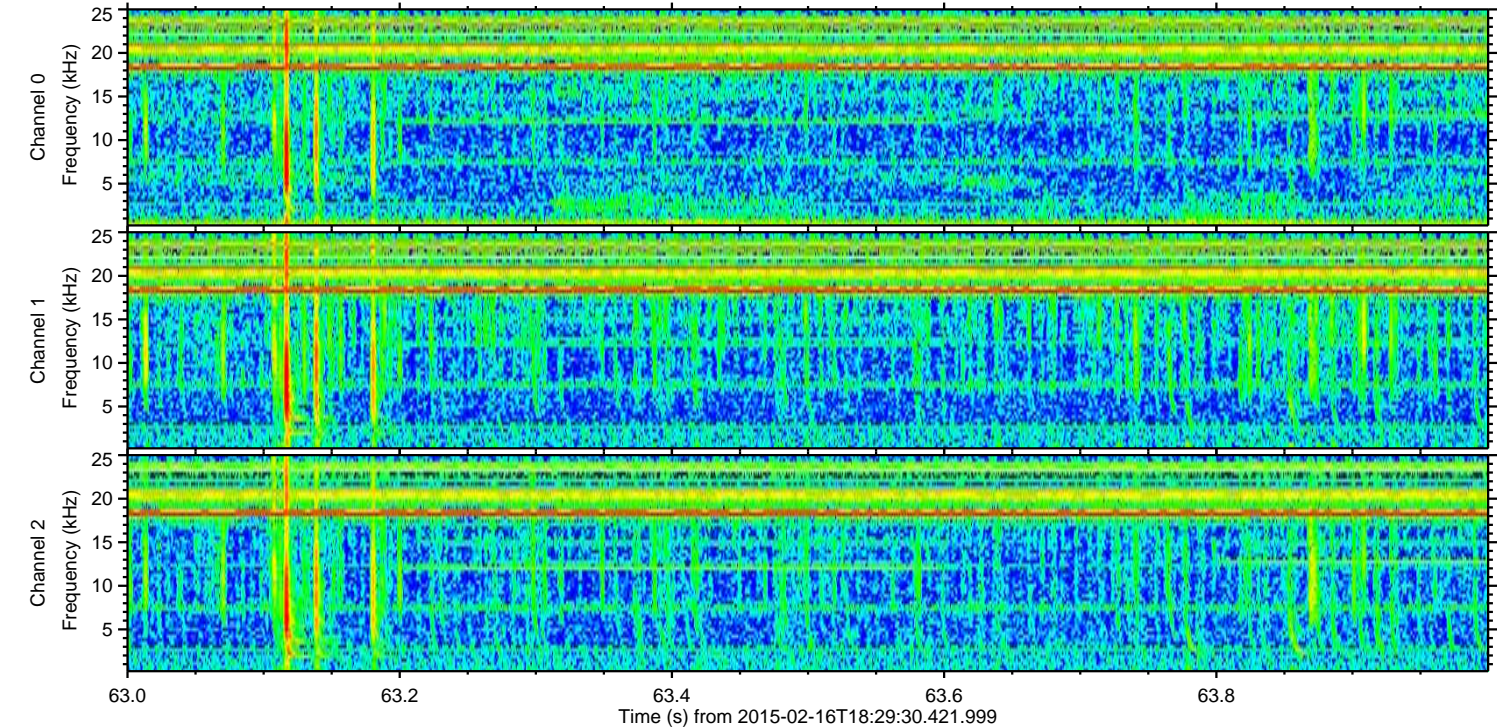
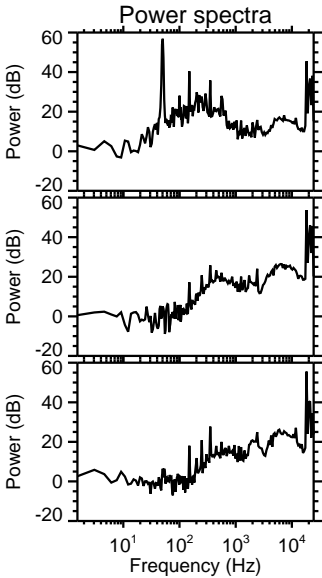
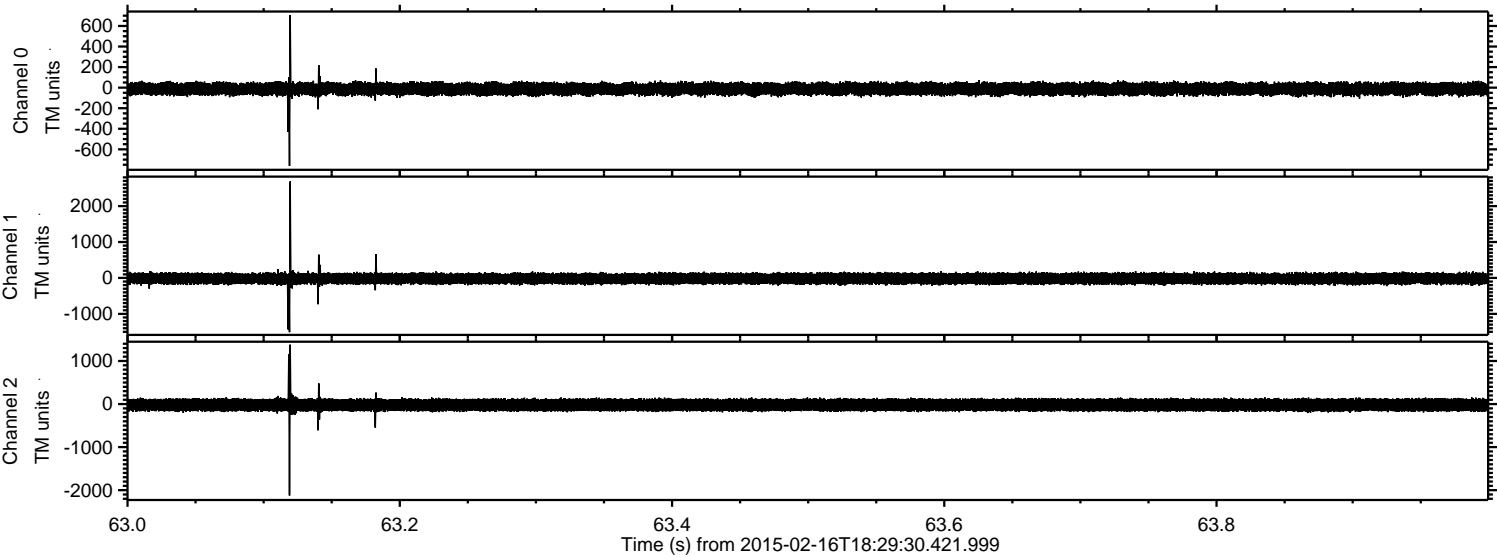


Processed Thu Feb 26 00:01:10 2015 by ELM ver.2012-10-06 from 001__elm20150216_182929__dat00.bin



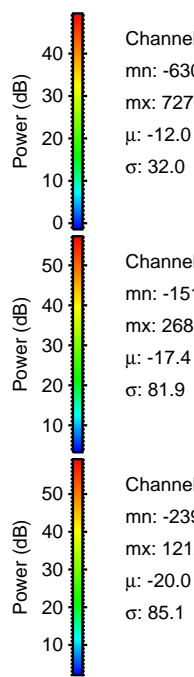
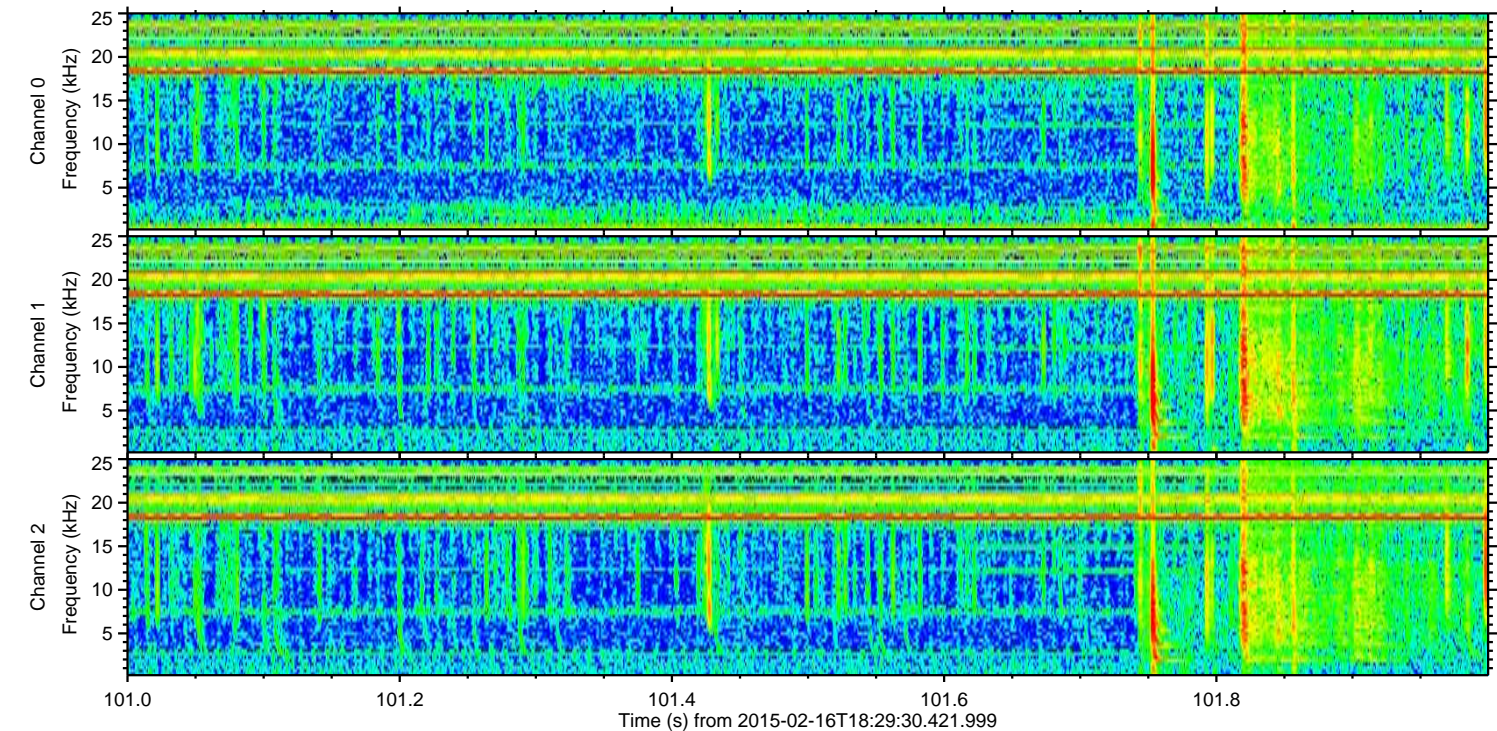
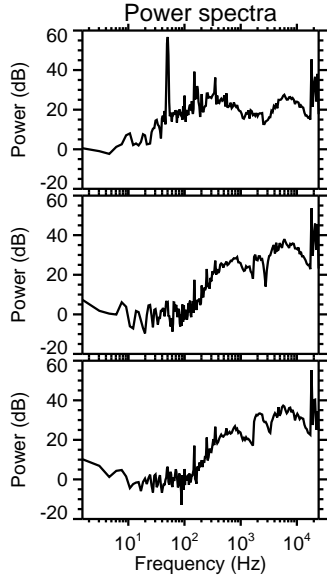
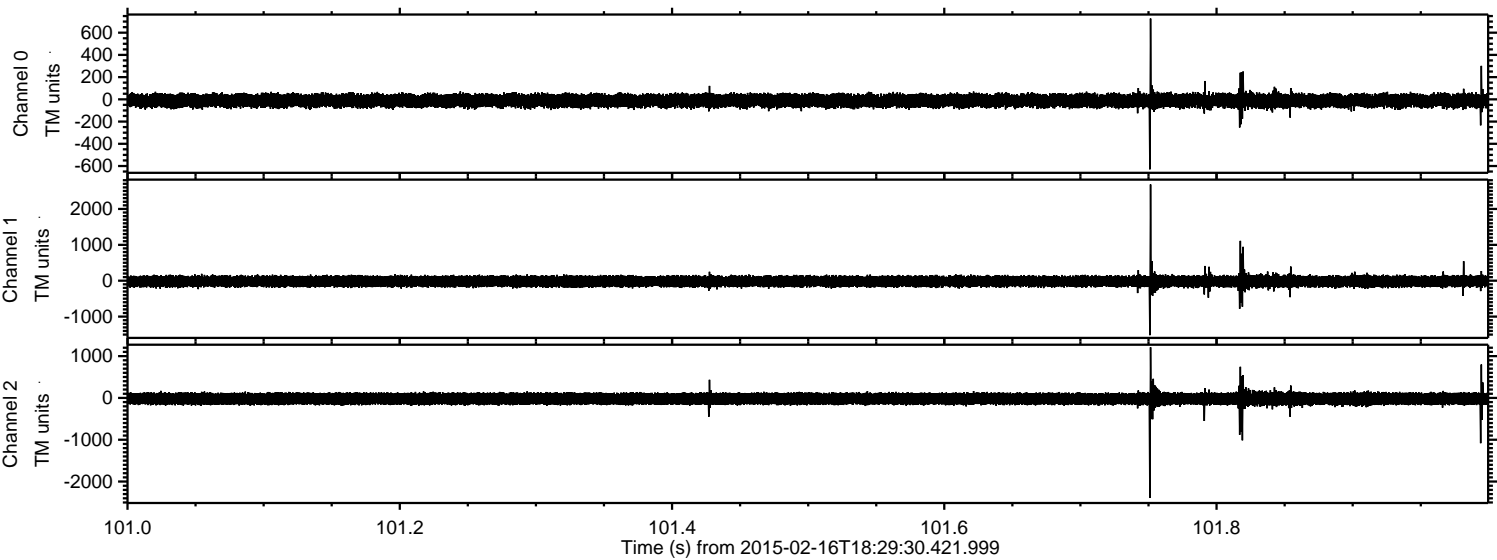
ELMAVAN 3D WAVEFORMS (Measured data sampled at 50 kHz) 49805 packets of 144 samples from 2015-02-16T18:29:30.421.999. Part 64/144

Processed Thu Feb 26 00:01:11 2015 by ELM ver.2012-10-06 from 001__elm20150216_182929__dat00.bin



ELMAVAN 3D WAVEFORMS (Measured data sampled at 50 kHz) 49805 packets of 144 samples from 2015-02-16T18:29:30.421.999. Part 102/144

Processed Thu Feb 26 00:01:12 2015 by ELM ver.2012-10-06 from 001__elm20150216_182929__dat00.bin

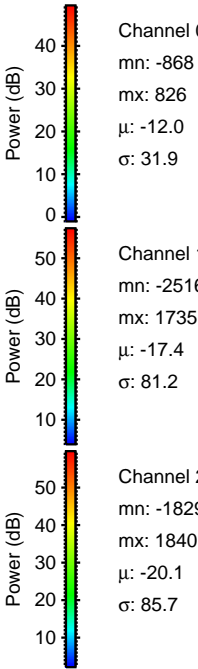
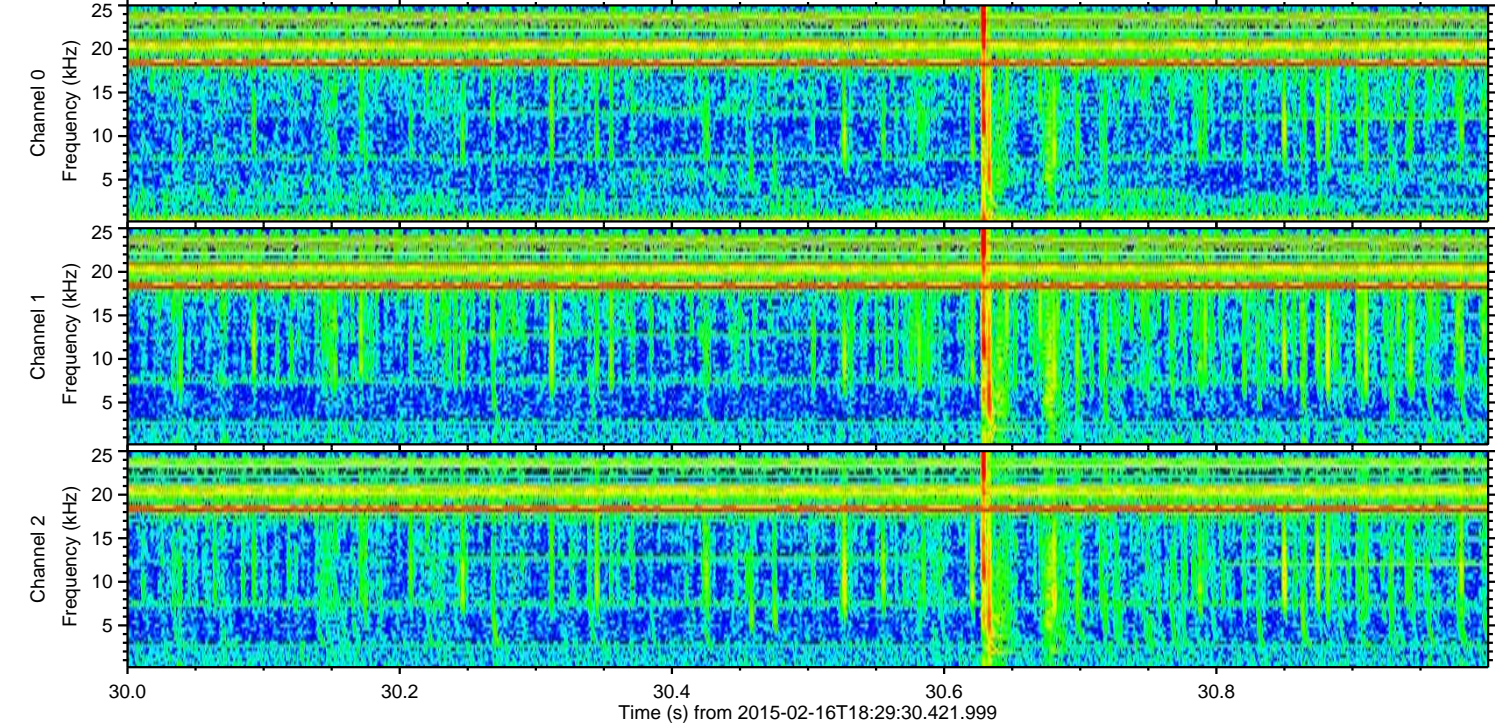
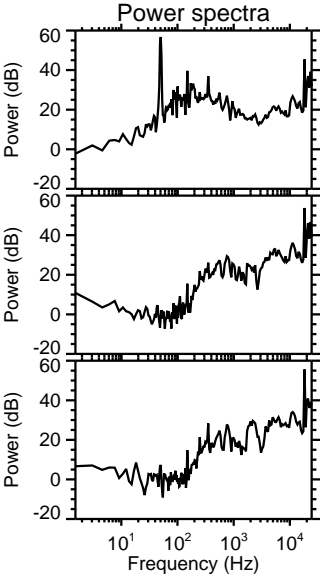
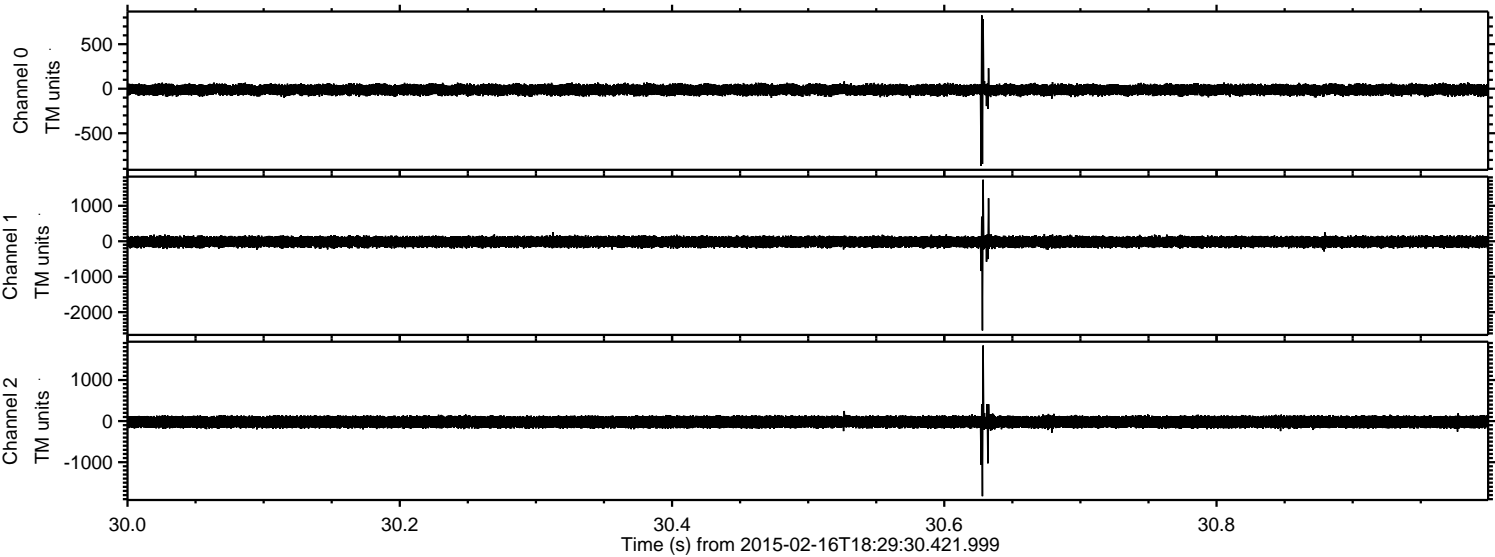


Channel 0
mn: -630
mx: 727
 μ : -12.0
 σ : 32.0

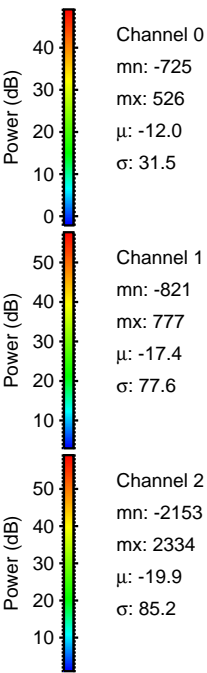
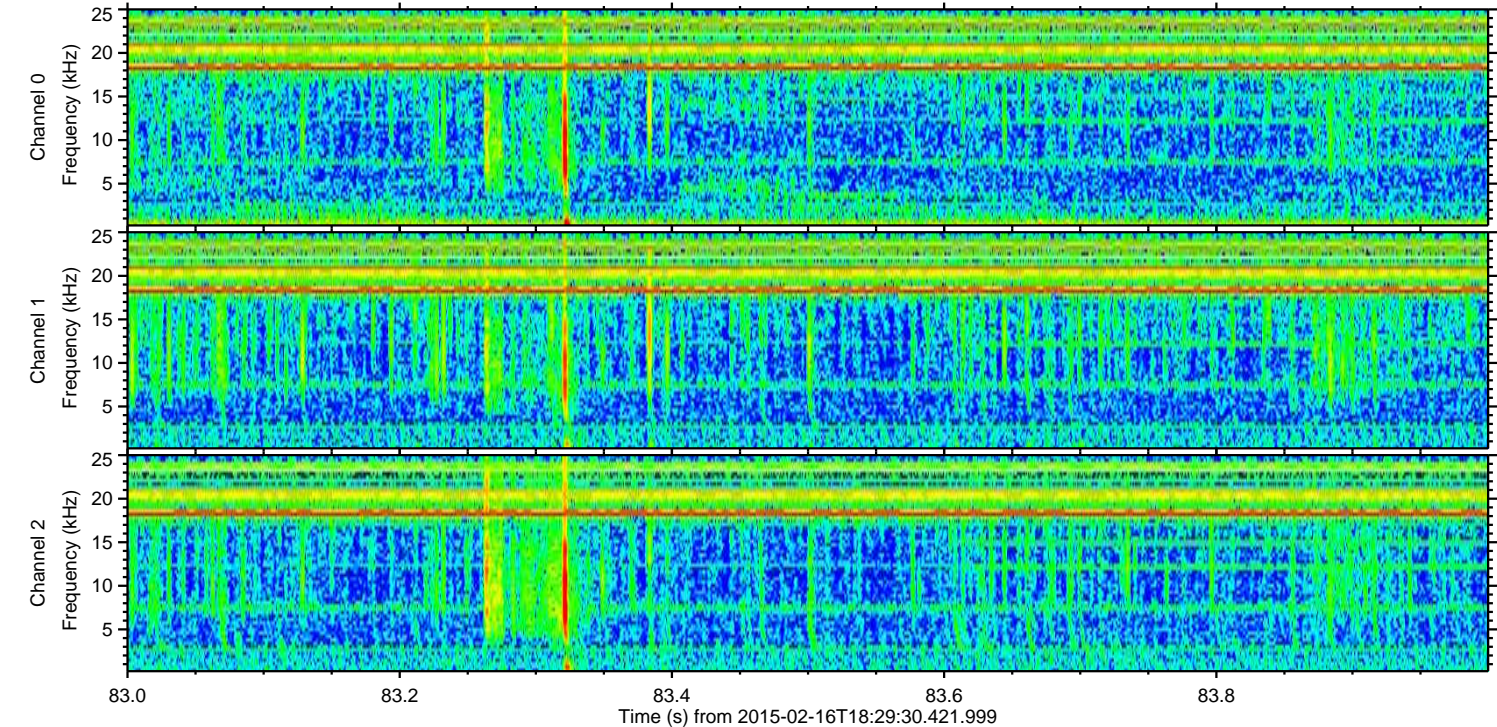
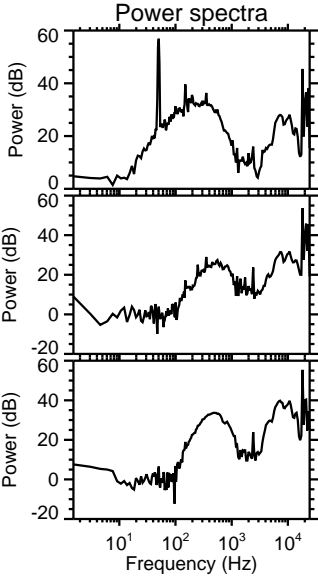
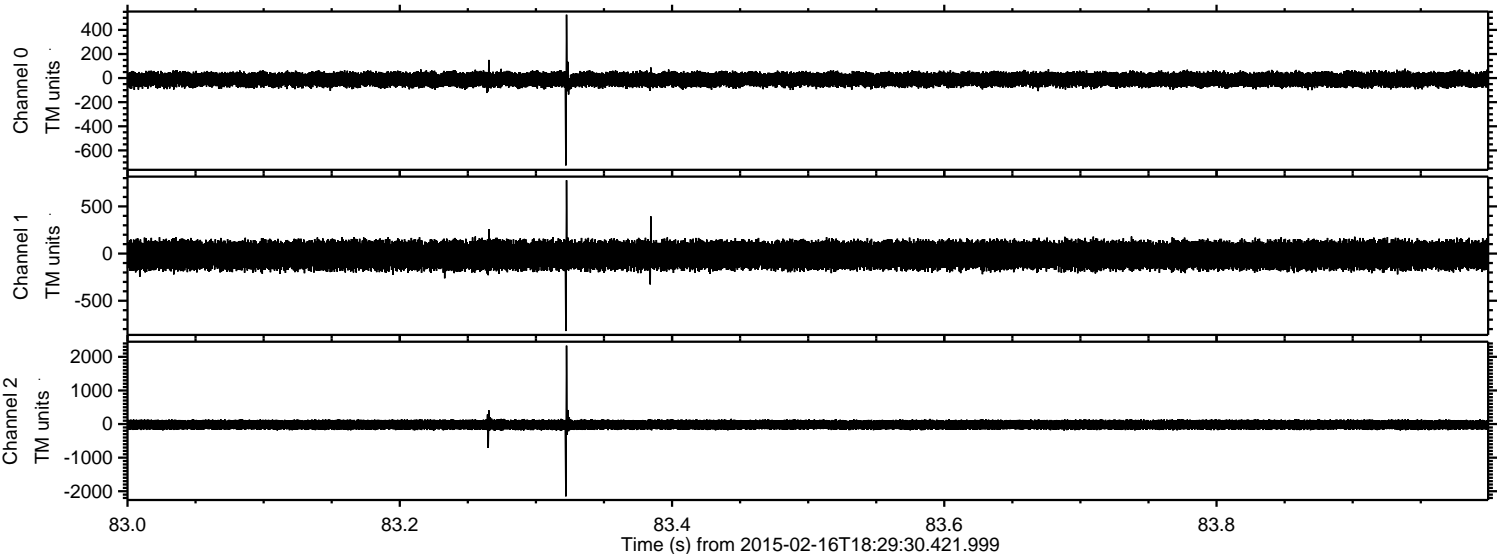
Channel 1
mn: -1517
mx: 2682
 μ : -17.4
 σ : 81.9

Channel 2
mn: -2393
mx: 1212
 μ : -20.0
 σ : 85.1

Processed Thu Feb 26 00:01:13 2015 by ELM ver.2012-10-06 from 001__elm20150216_182929__dat00.bin



Processed Thu Feb 26 00:01:14 2015 by ELM ver.2012-10-06 from 001__elm20150216_182929__dat00.bin



Processed Thu Feb 26 00:01:15 2015 by ELM ver.2012-10-06 from 001__elm20150216_182929__dat00.bin

