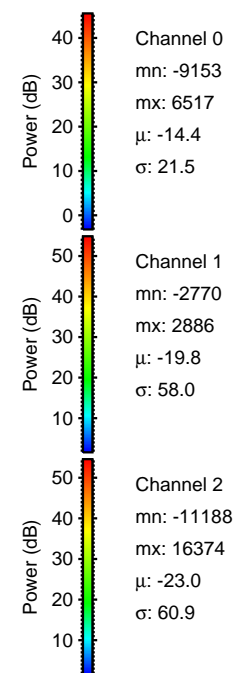
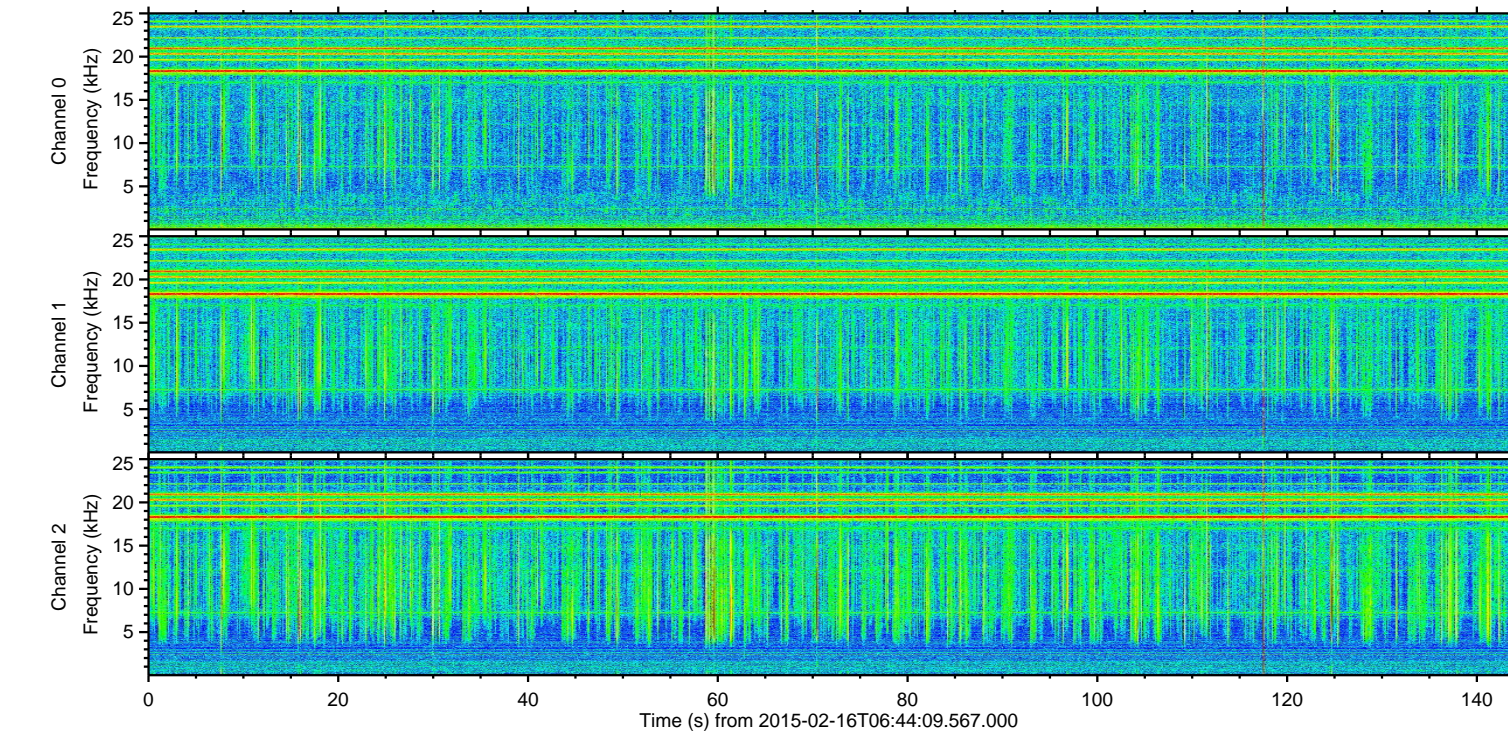
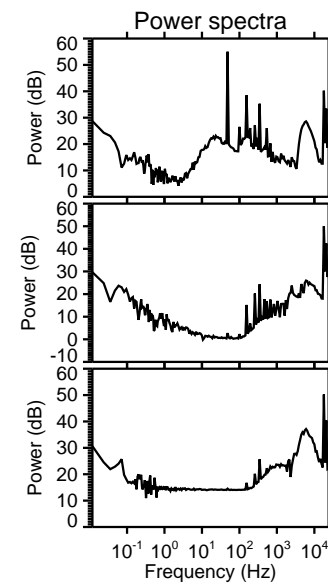
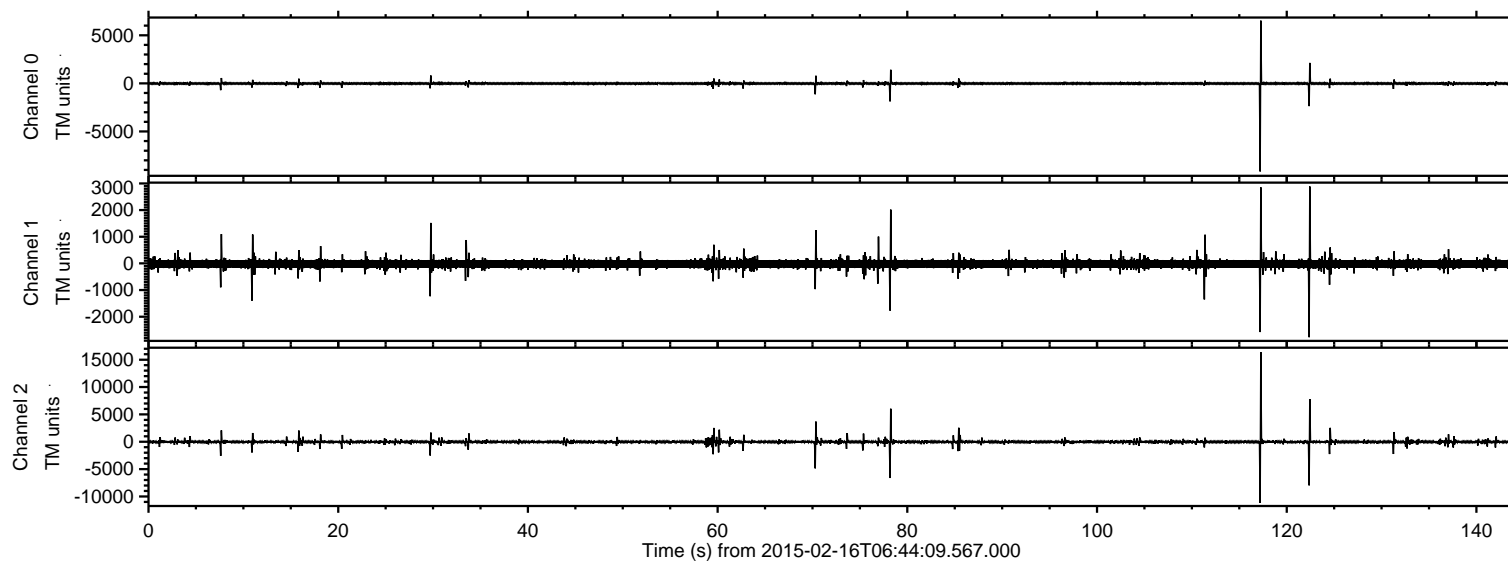


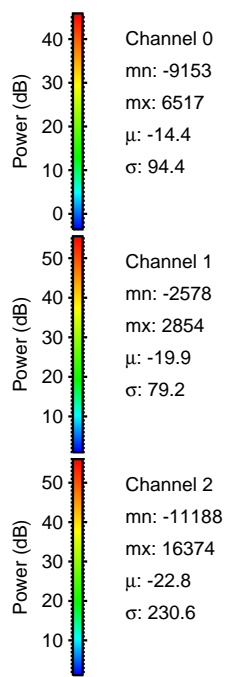
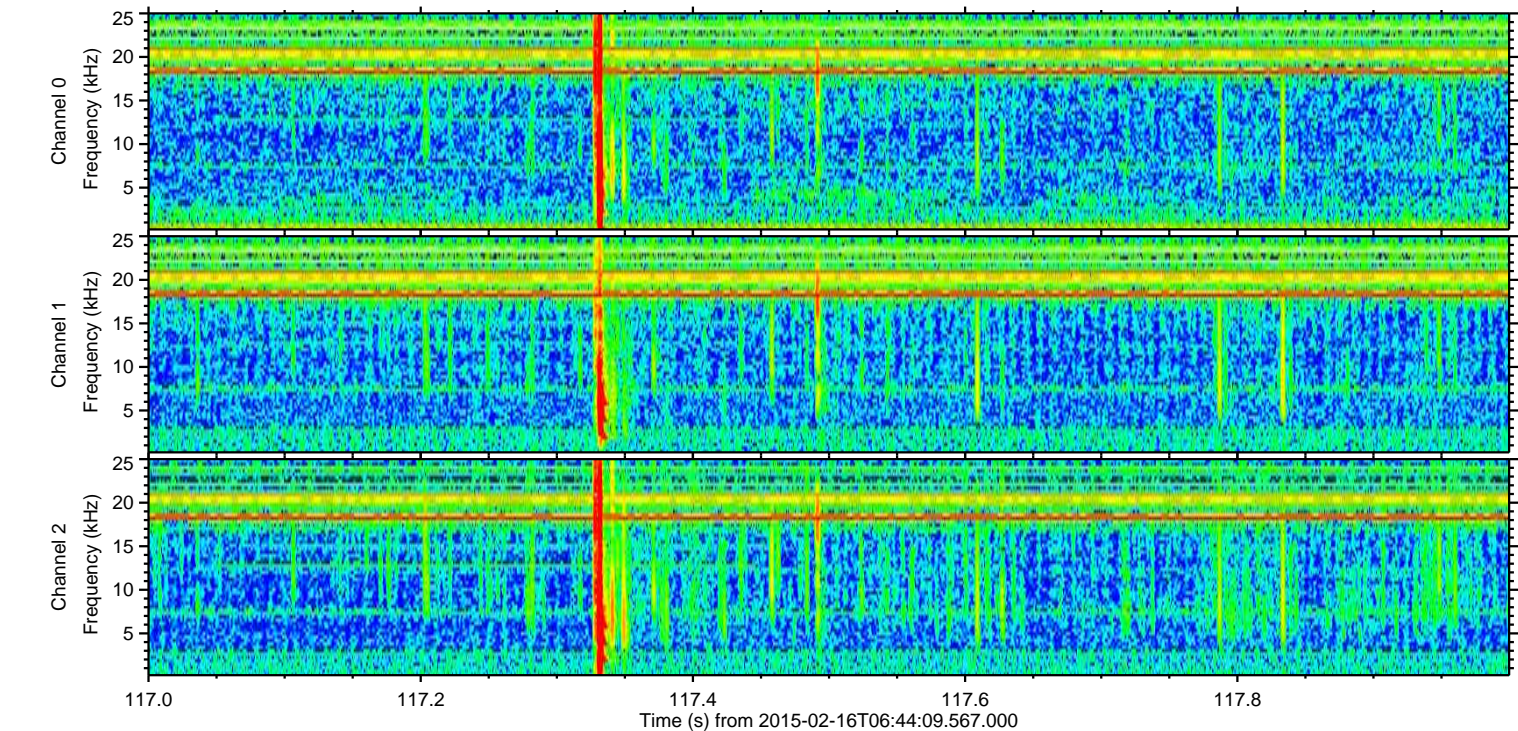
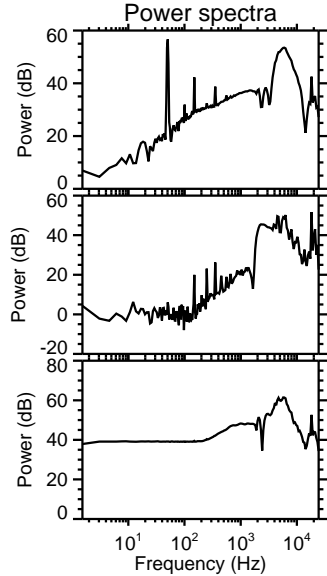
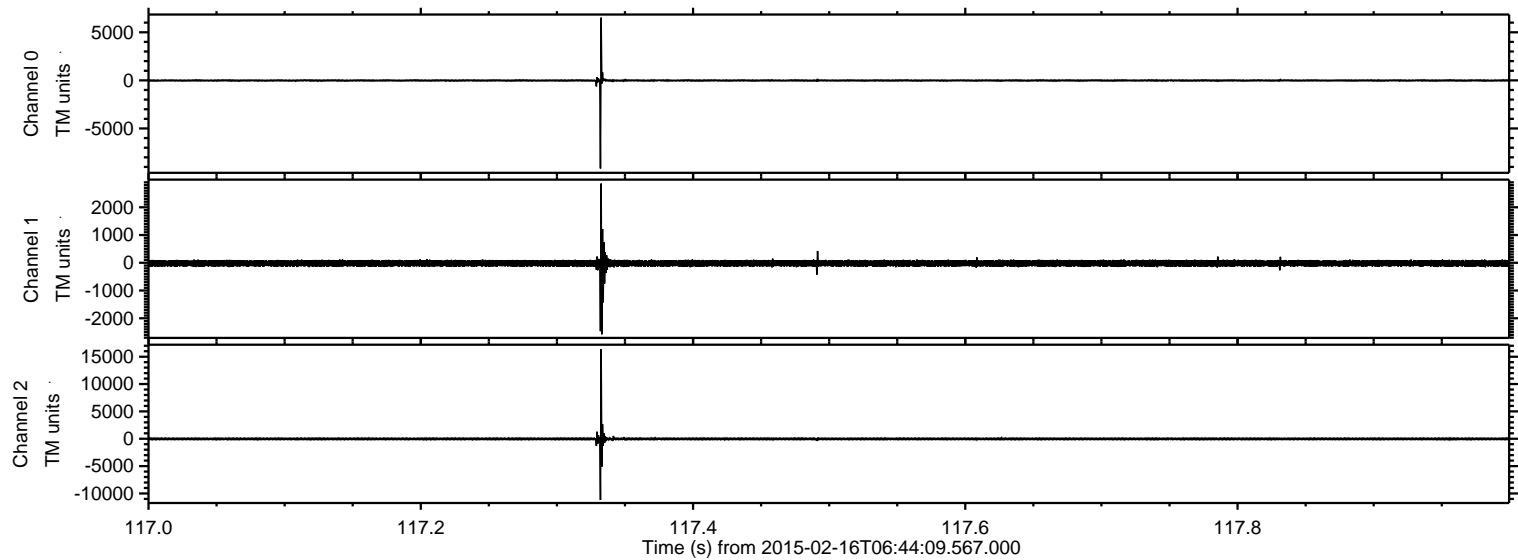
ELMAVAN 3D WAVEFORMS (Measured data sampled at 50 kHz) 49809 packets of 144 samples from 2015-02-16T06:44:09.567.000.

Processed Tue Feb 24 11:41:43 2015 by ELM ver.2012-10-06 from 001__elm20150216_064408__dat00.bin



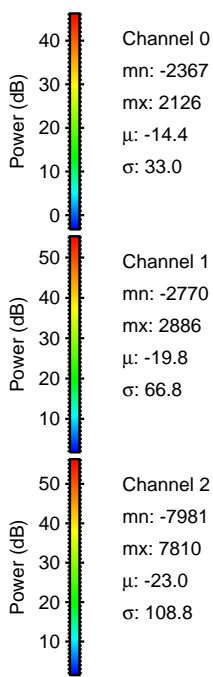
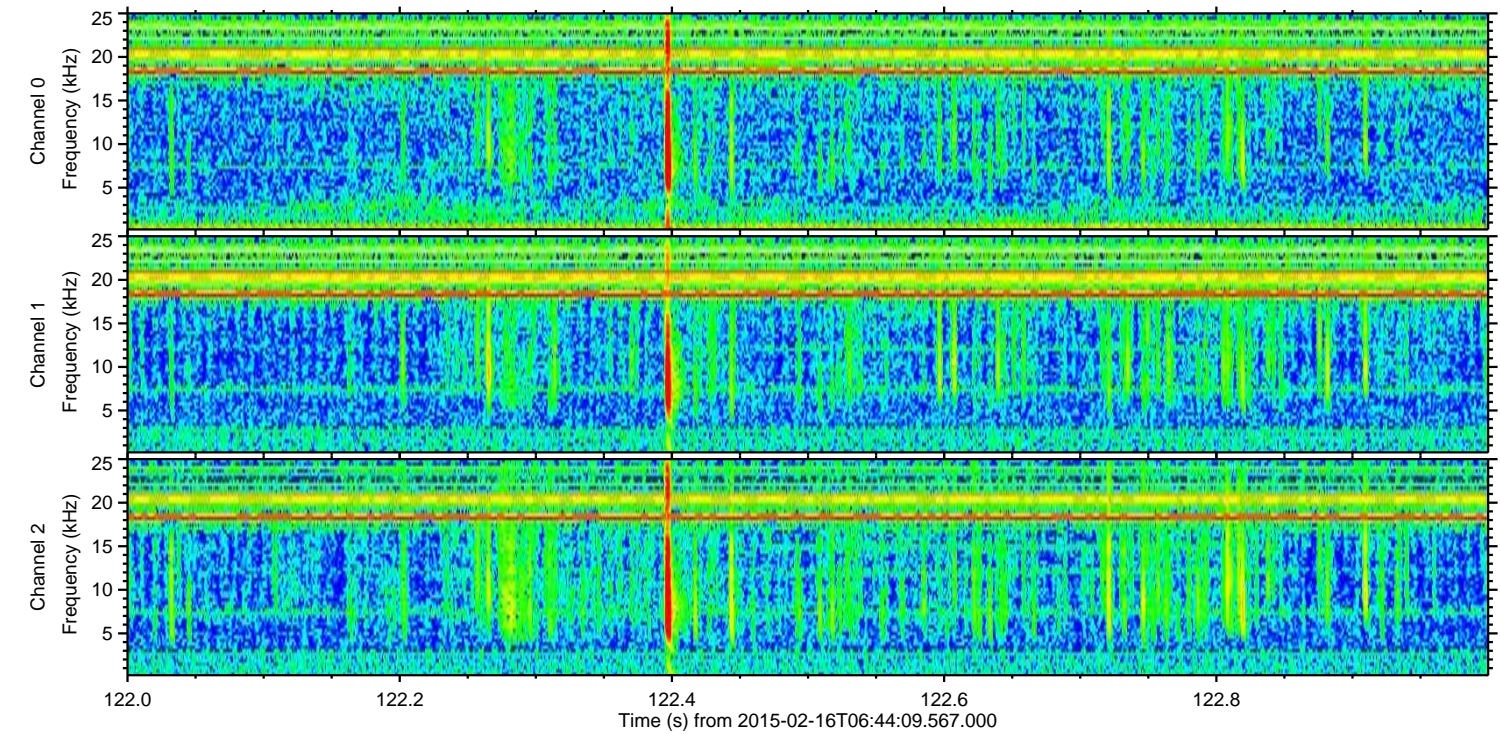
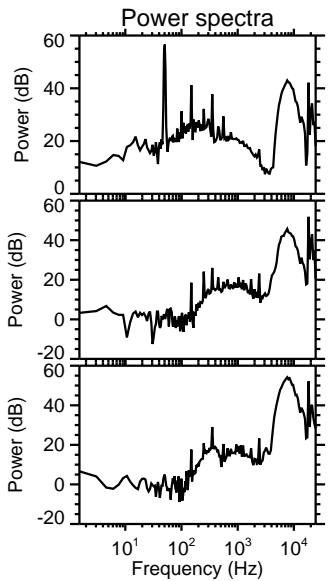
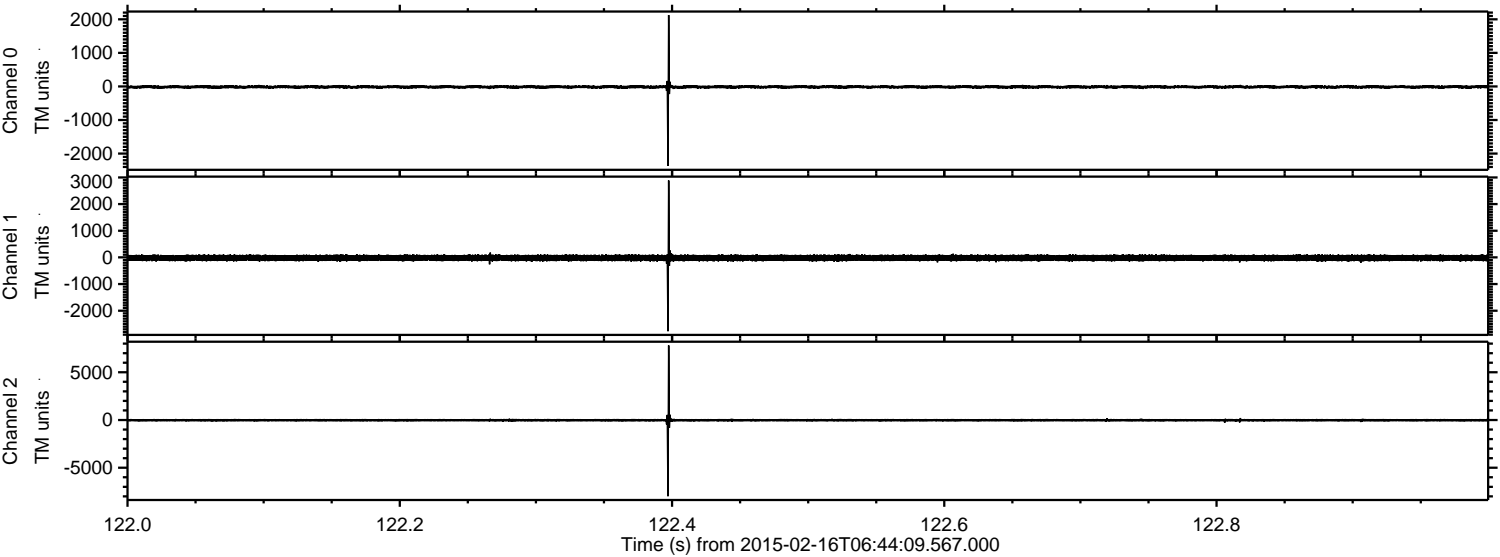
ELMAVAN 3D WAVEFORMS (Measured data sampled at 50 kHz) 49809 packets of 144 samples from 2015-02-16T06:44:09.567.000. Part 118/144

Processed Tue Feb 24 11:42:00 2015 by ELM ver.2012-10-06 from 001__elm20150216_064408__dat00.bin

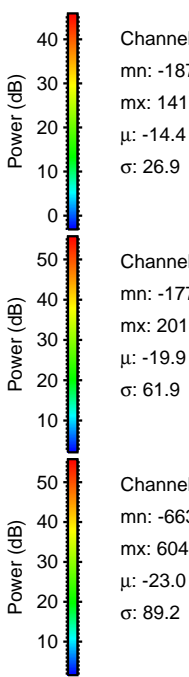
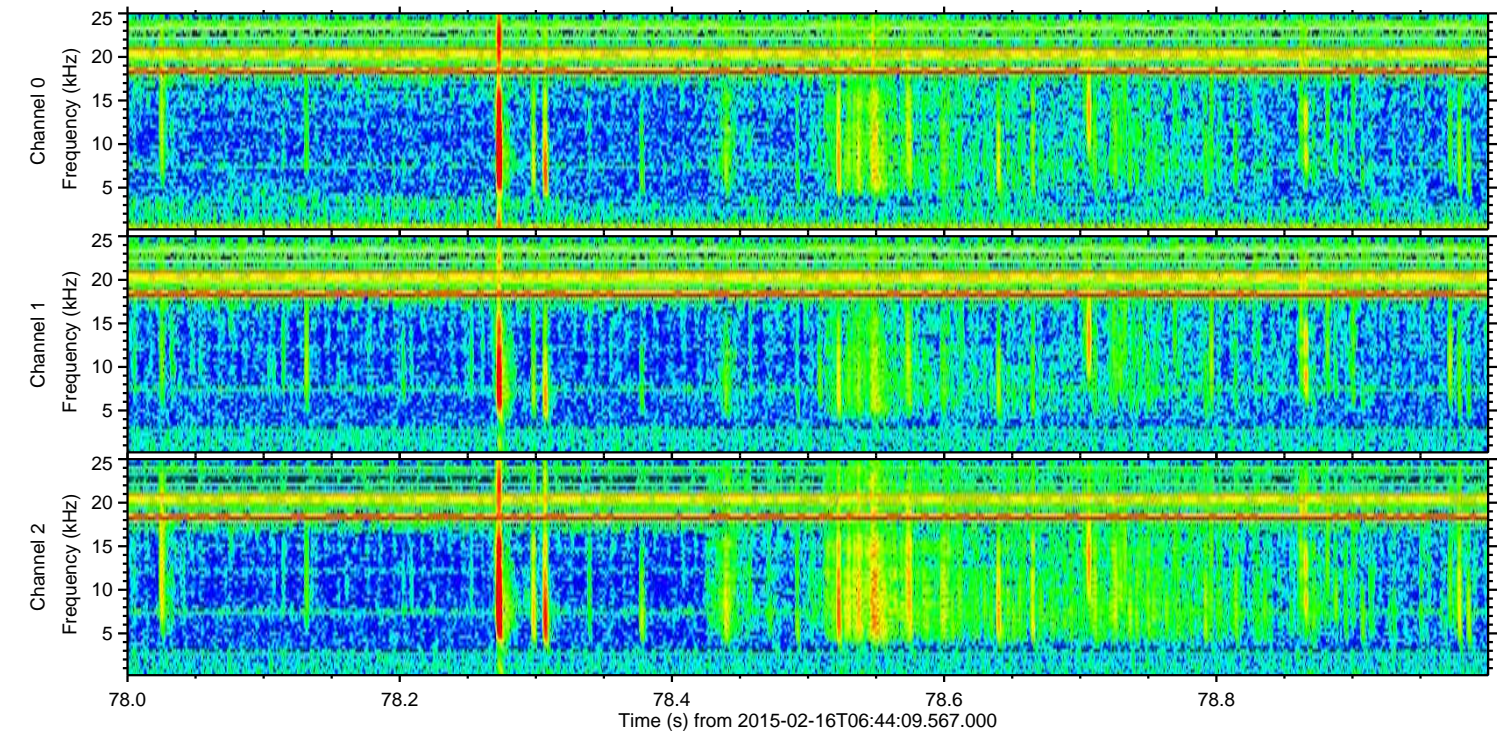
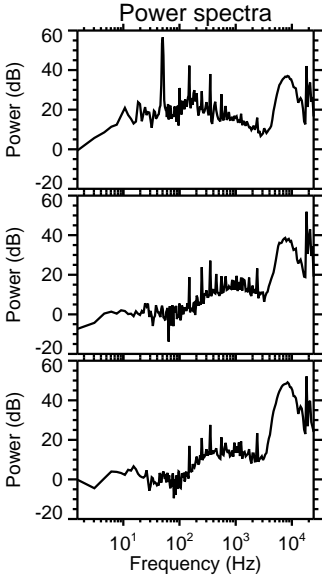
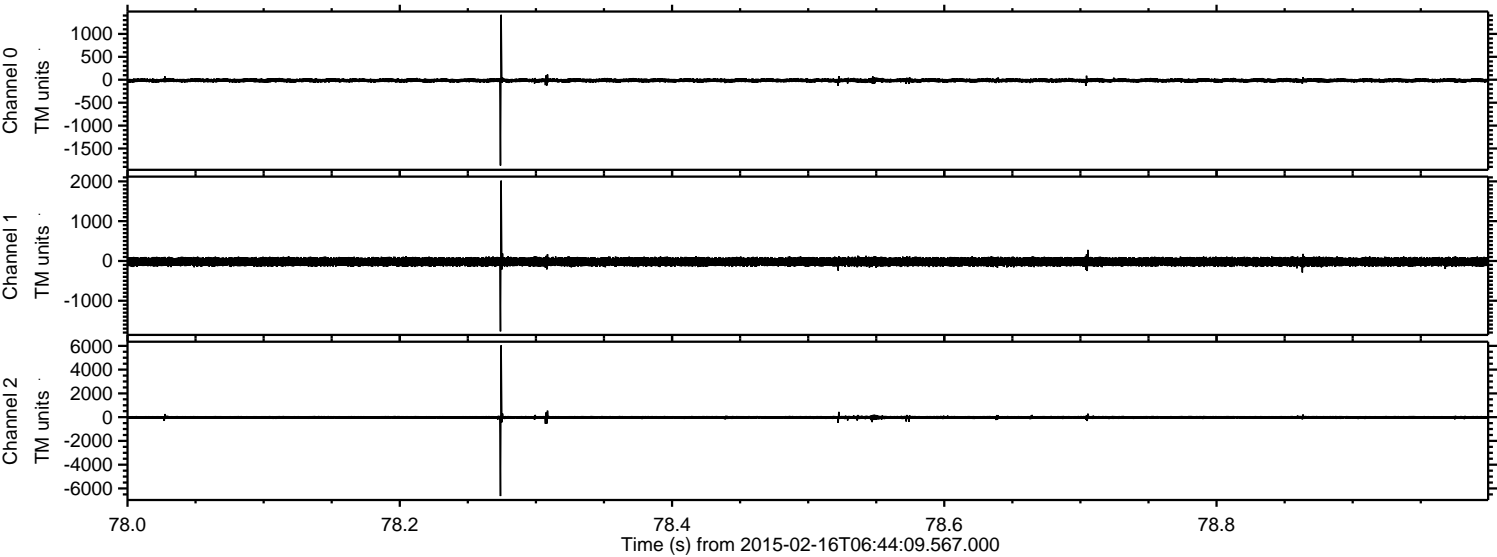


ELMAVAN 3D WAVEFORMS (Measured data sampled at 50 kHz) 49809 packets of 144 samples from 2015-02-16T06:44:09.567.000. Part 123/144

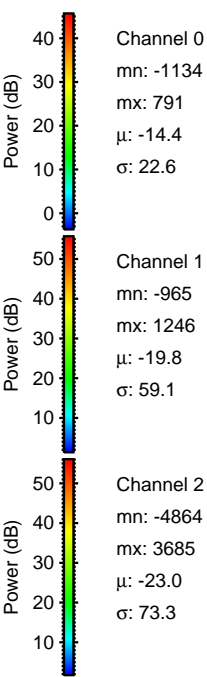
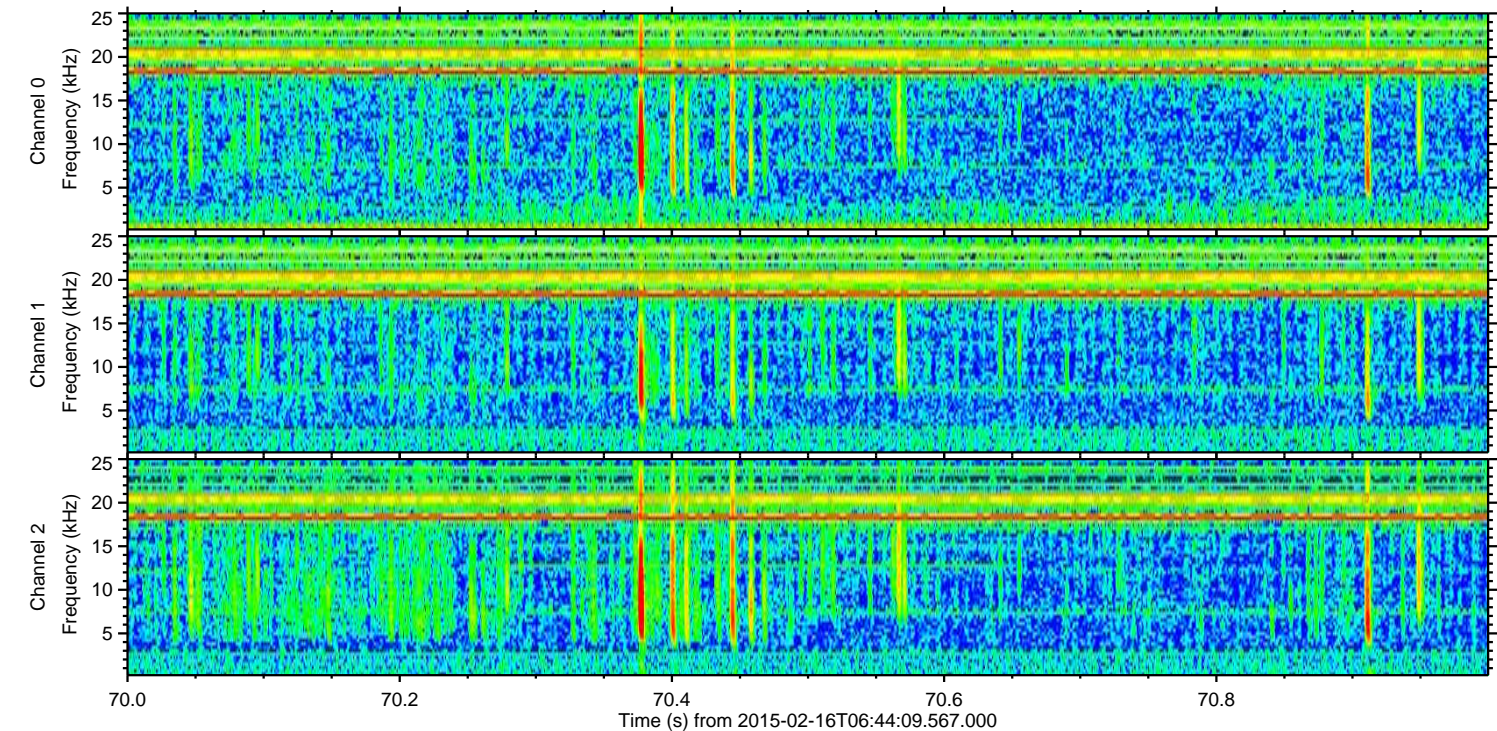
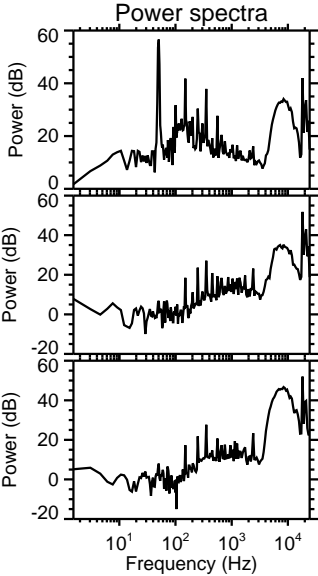
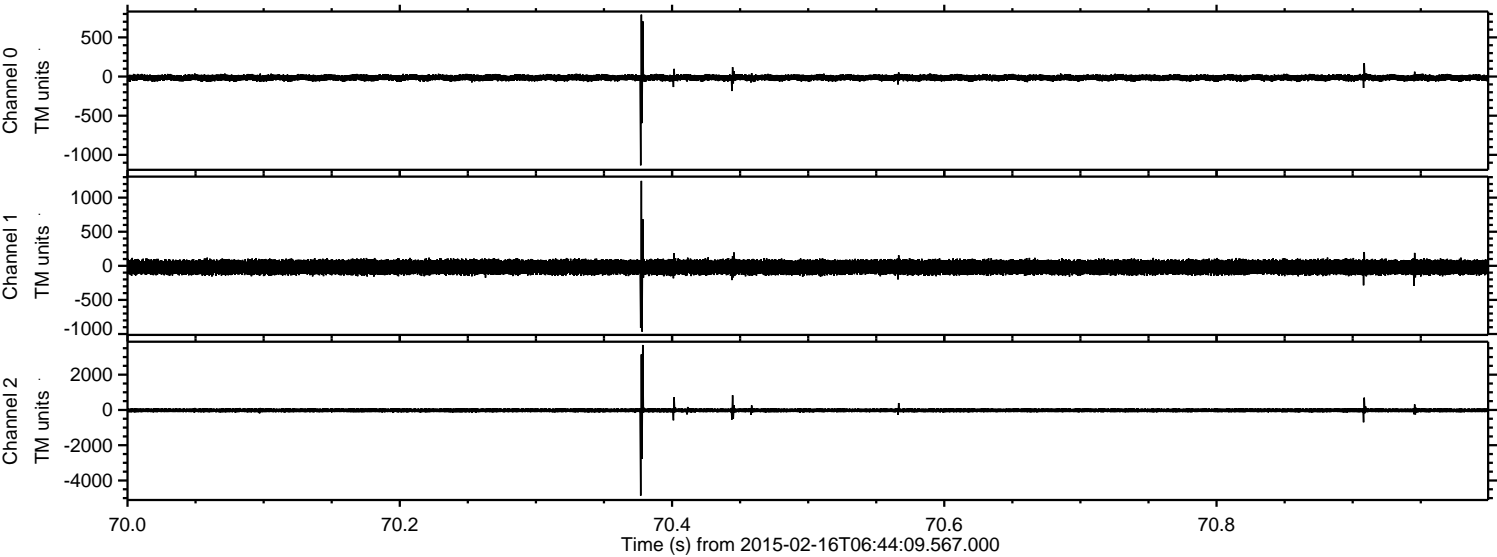
Processed Tue Feb 24 11:42:01 2015 by ELM ver.2012-10-06 from 001__elm20150216_064408__dat00.bin



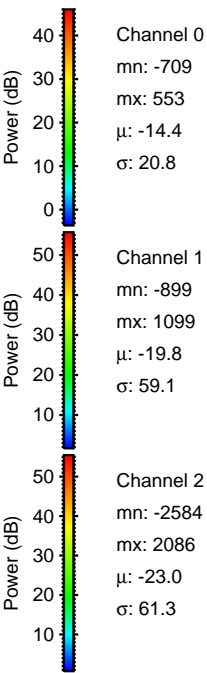
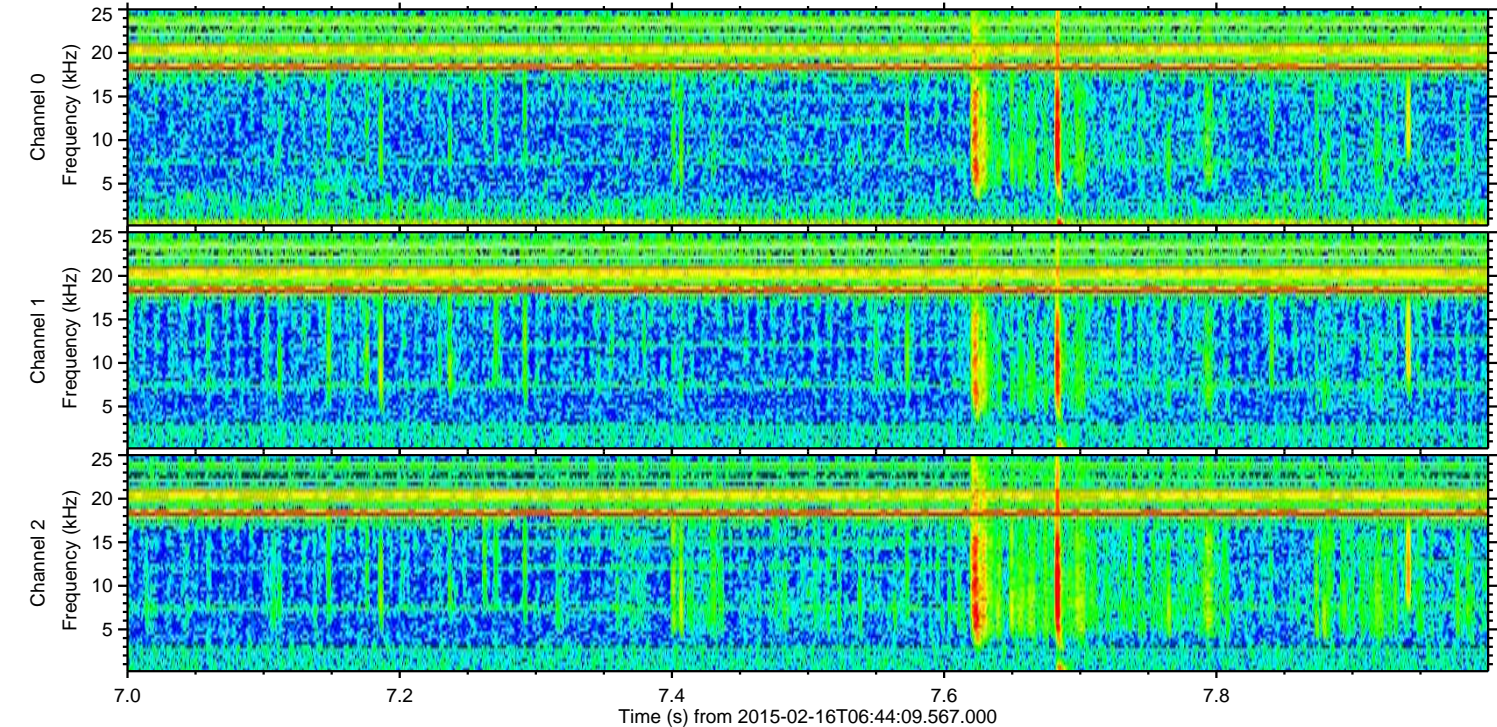
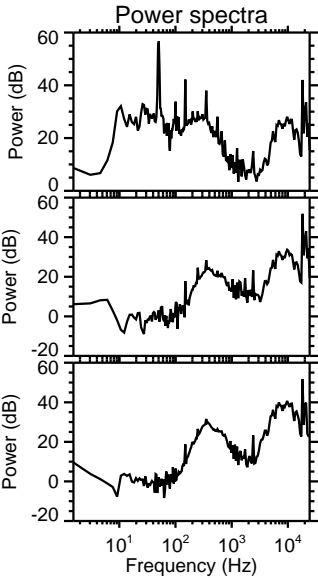
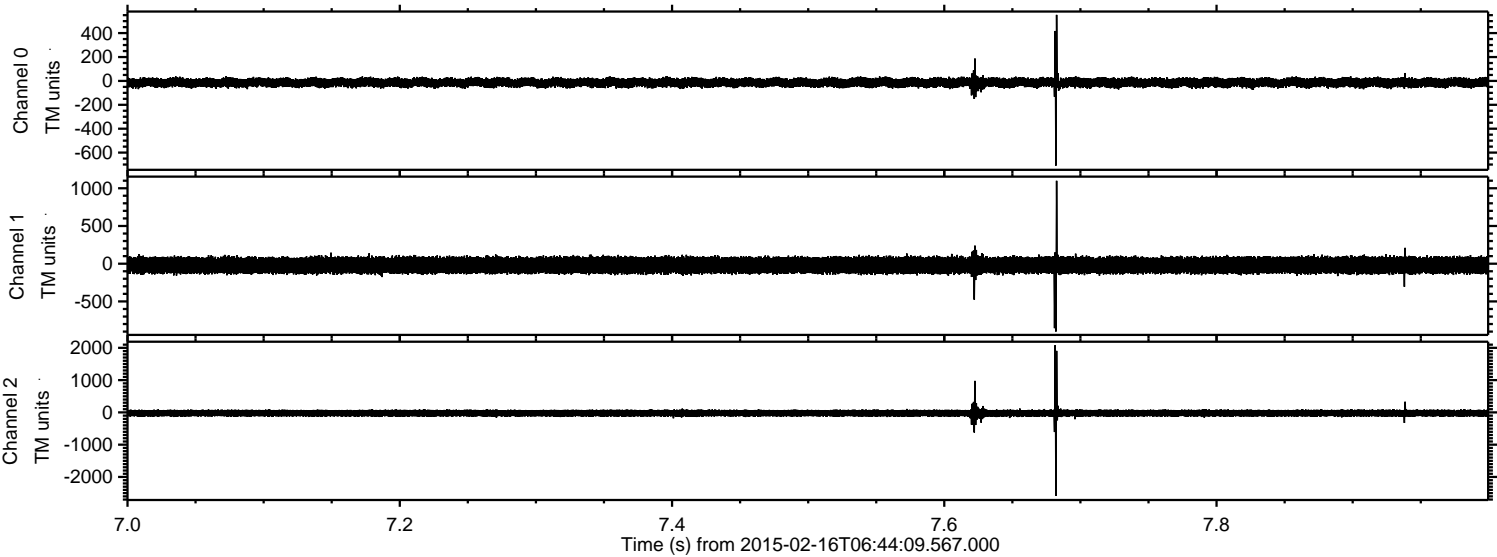
Processed Tue Feb 24 11:42:03 2015 by ELM ver.2012-10-06 from 001__elm20150216_064408__dat00.bin



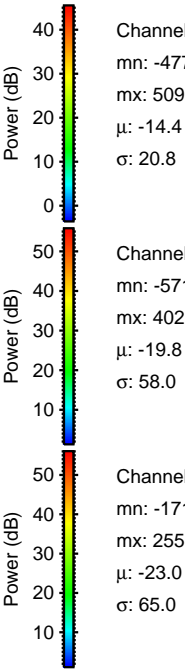
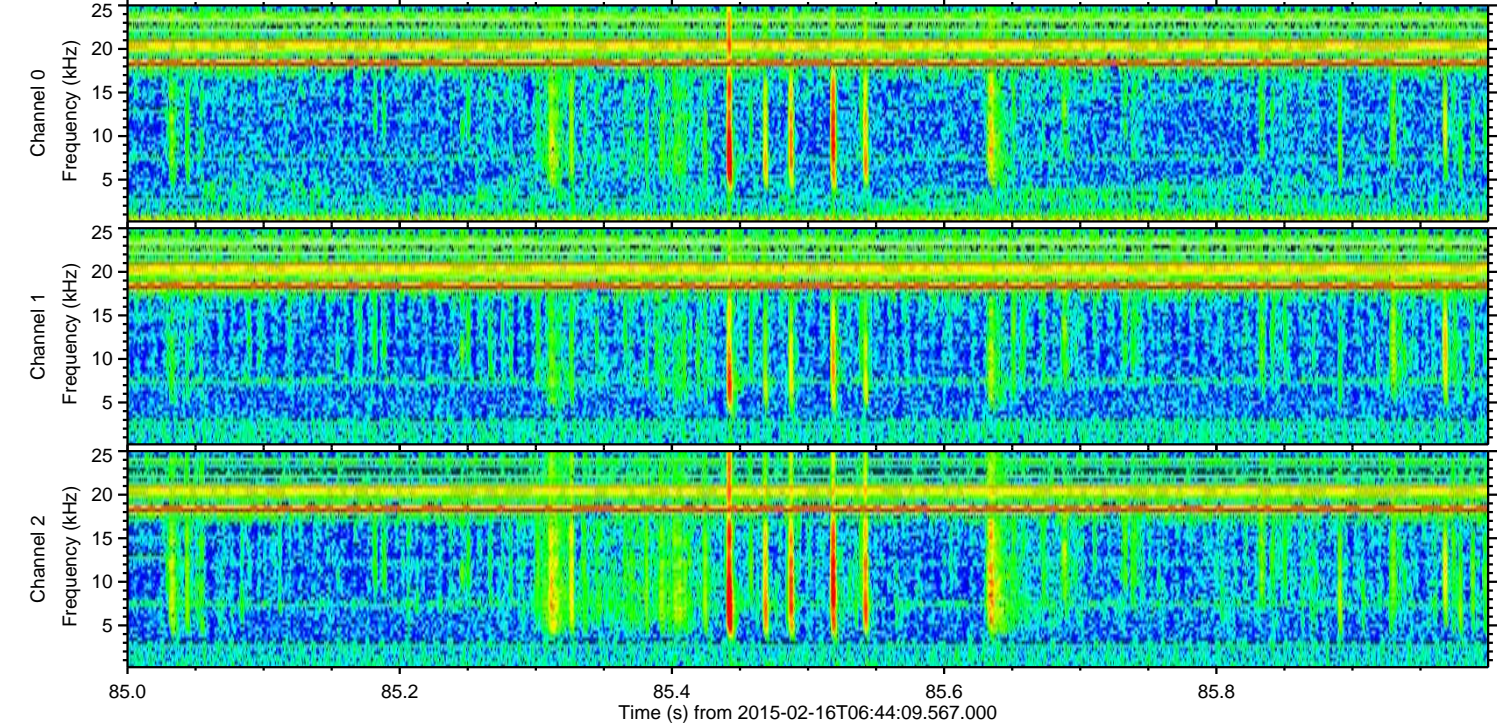
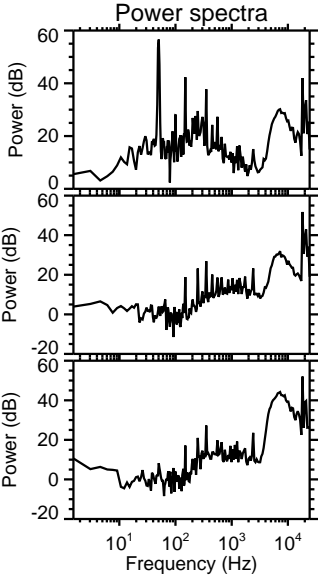
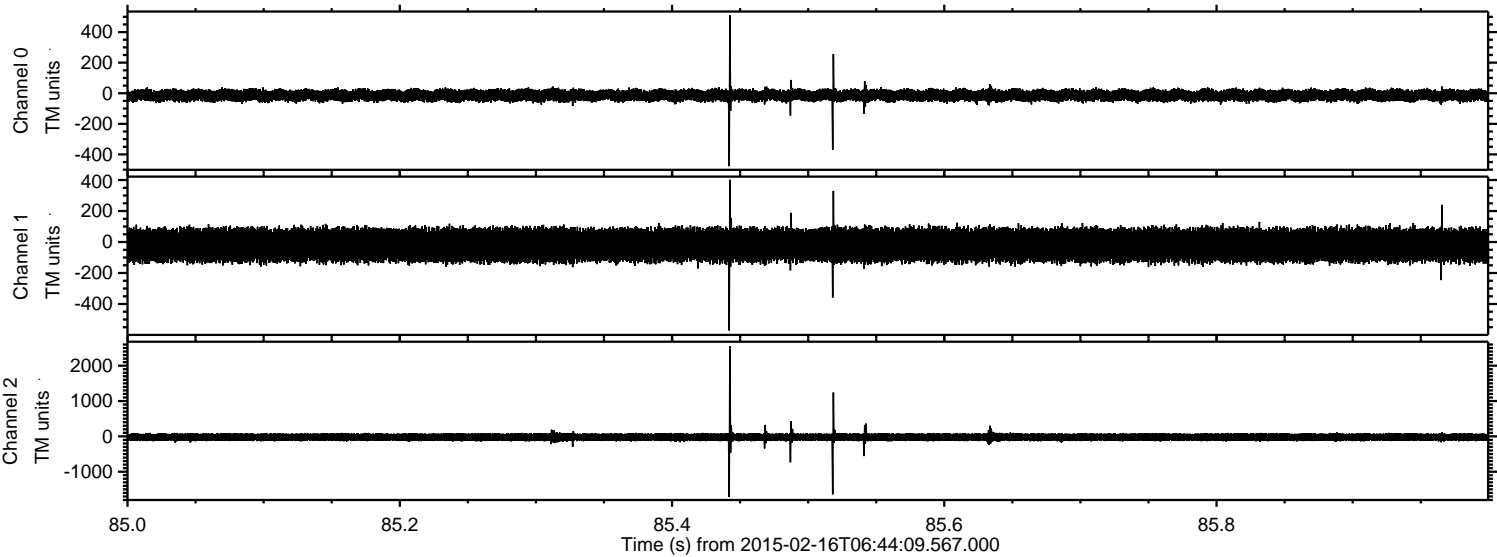
Processed Tue Feb 24 11:42:04 2015 by ELM ver.2012-10-06 from 001__elm20150216_064408__dat00.bin



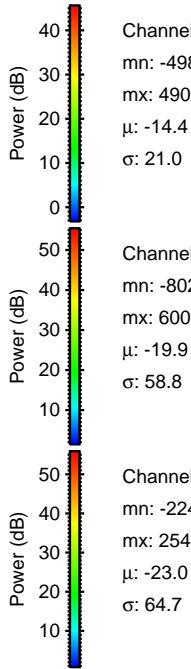
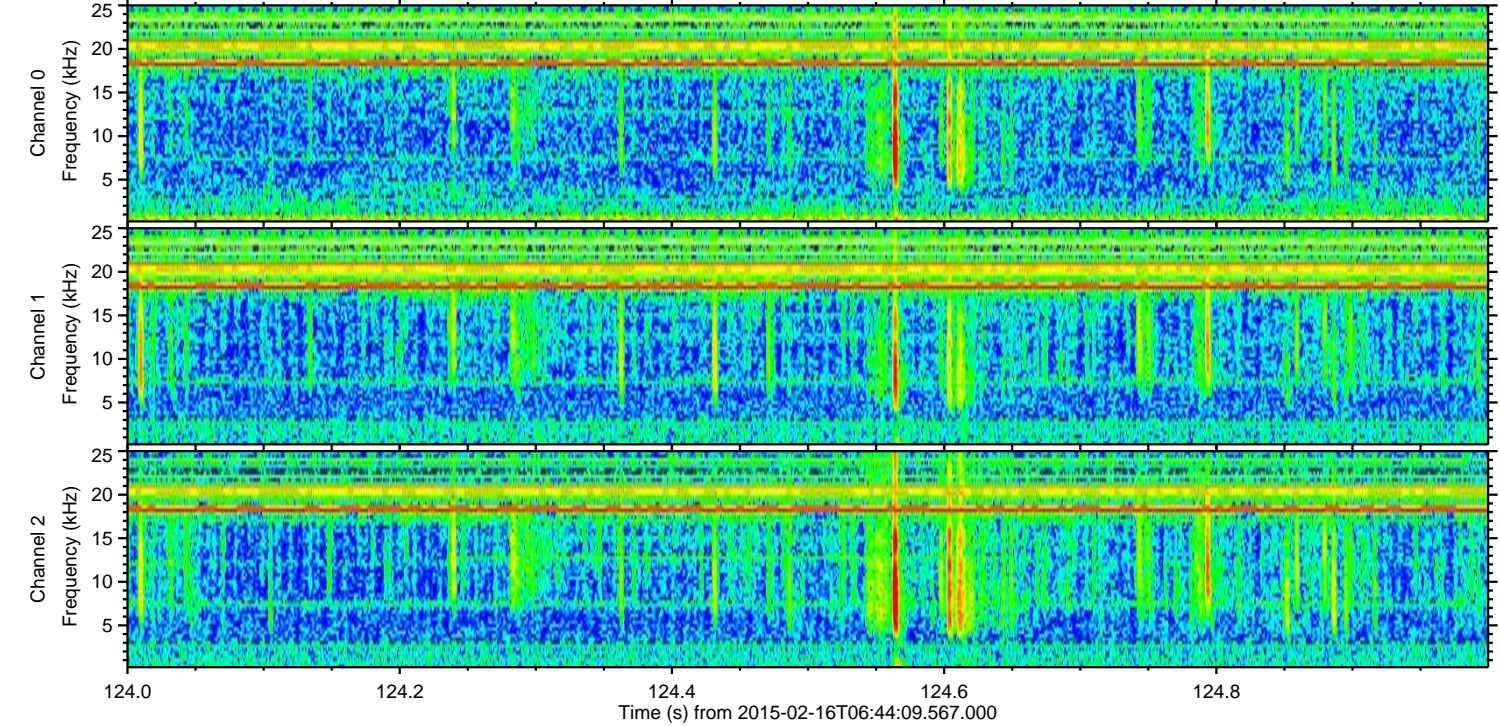
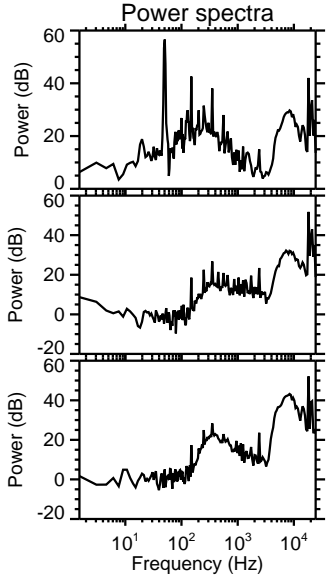
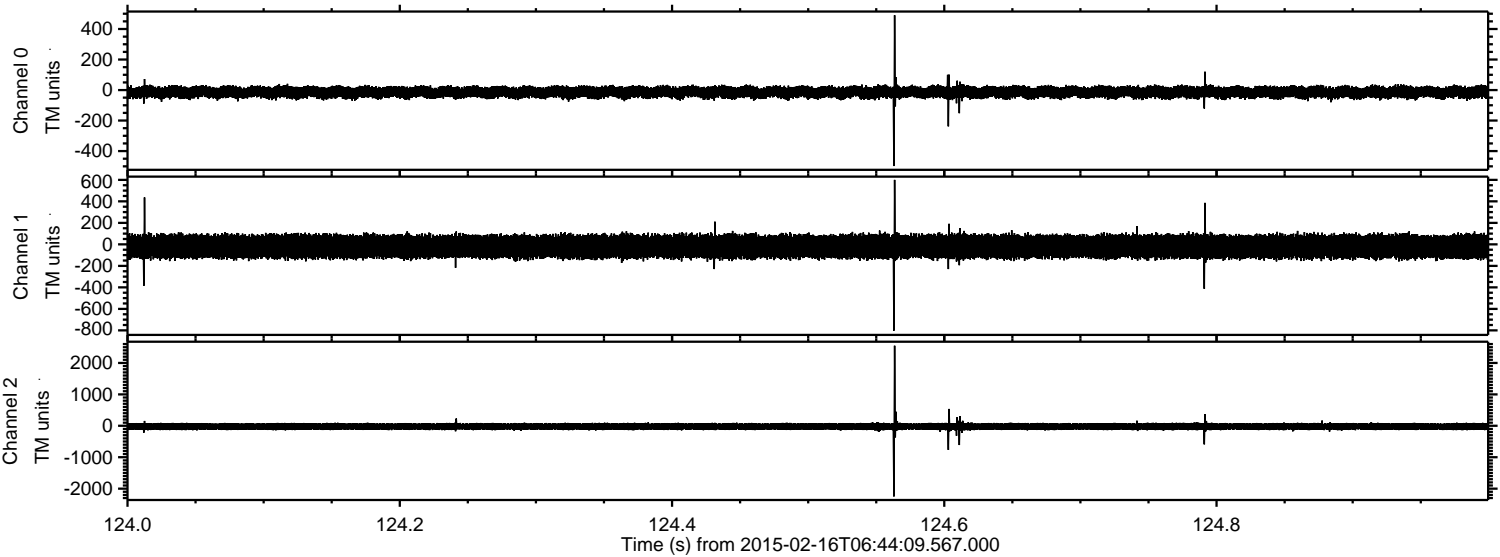
Processed Tue Feb 24 11:42:05 2015 by ELM ver.2012-10-06 from 001__elm20150216_064408__dat00.bin



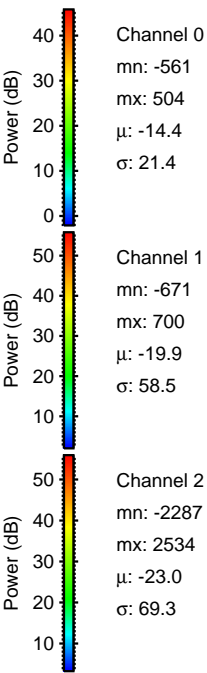
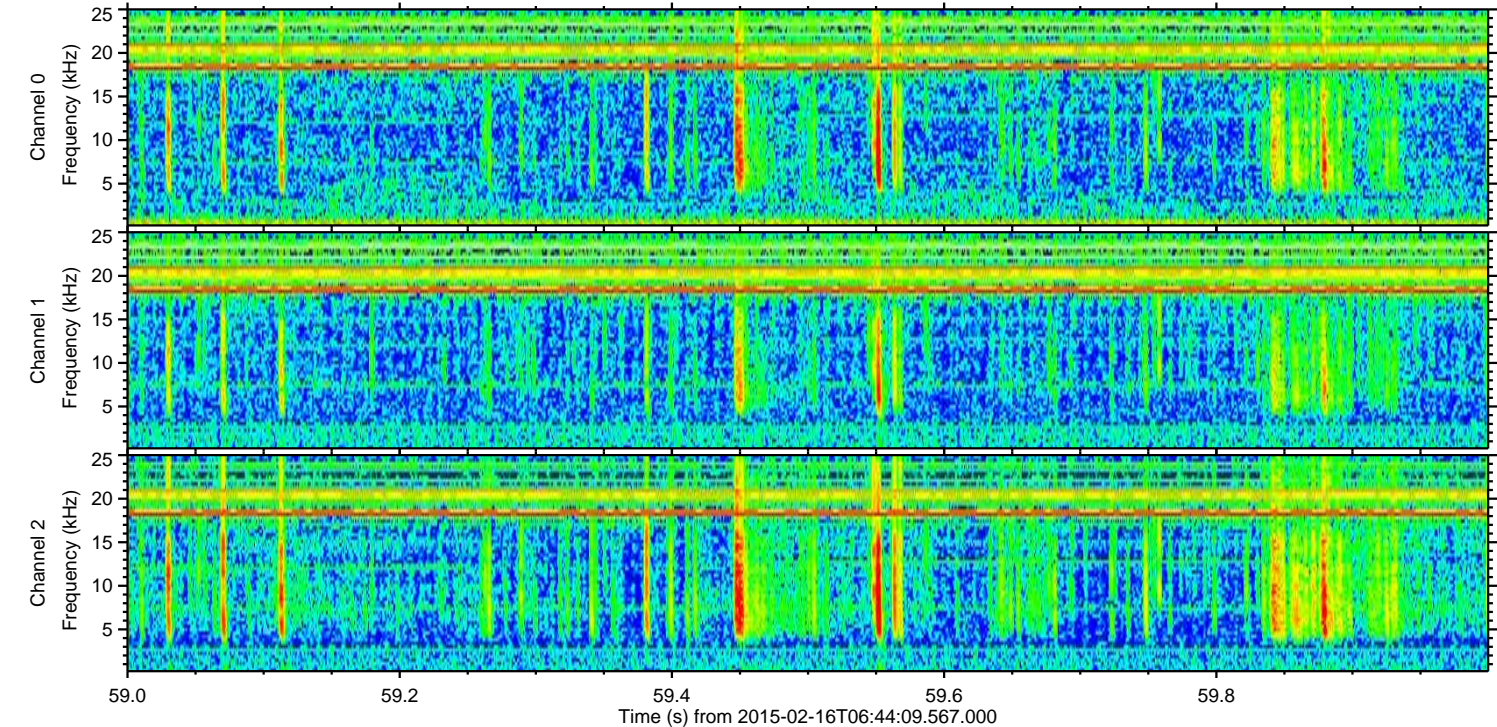
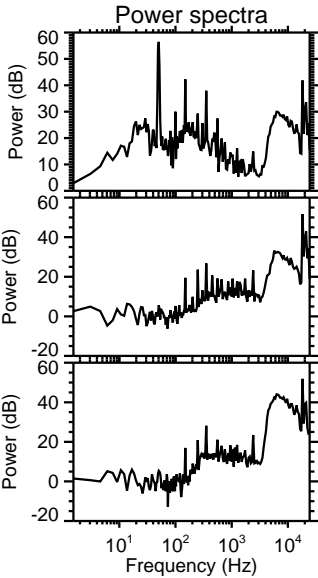
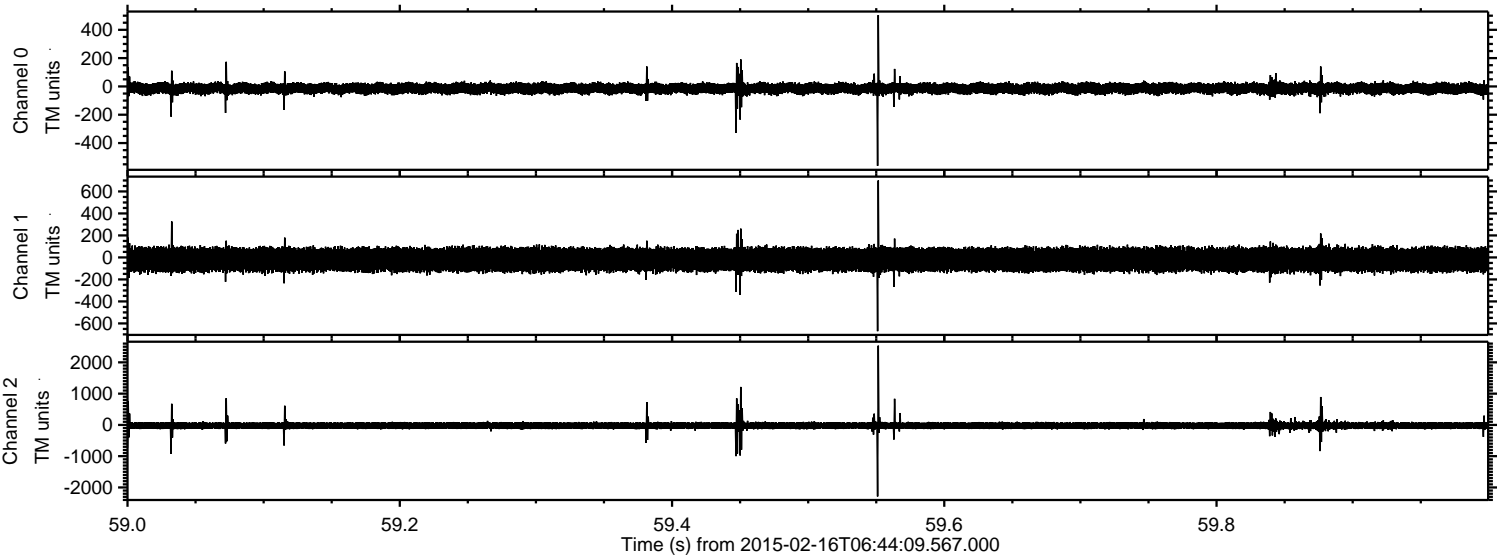
Processed Tue Feb 24 11:42:06 2015 by ELM ver.2012-10-06 from 001__elm20150216_064408__dat00.bin



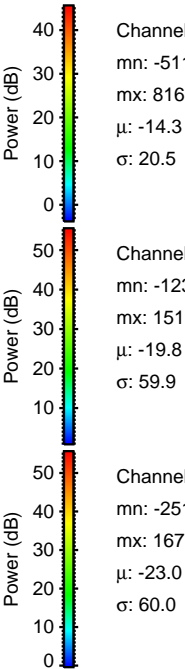
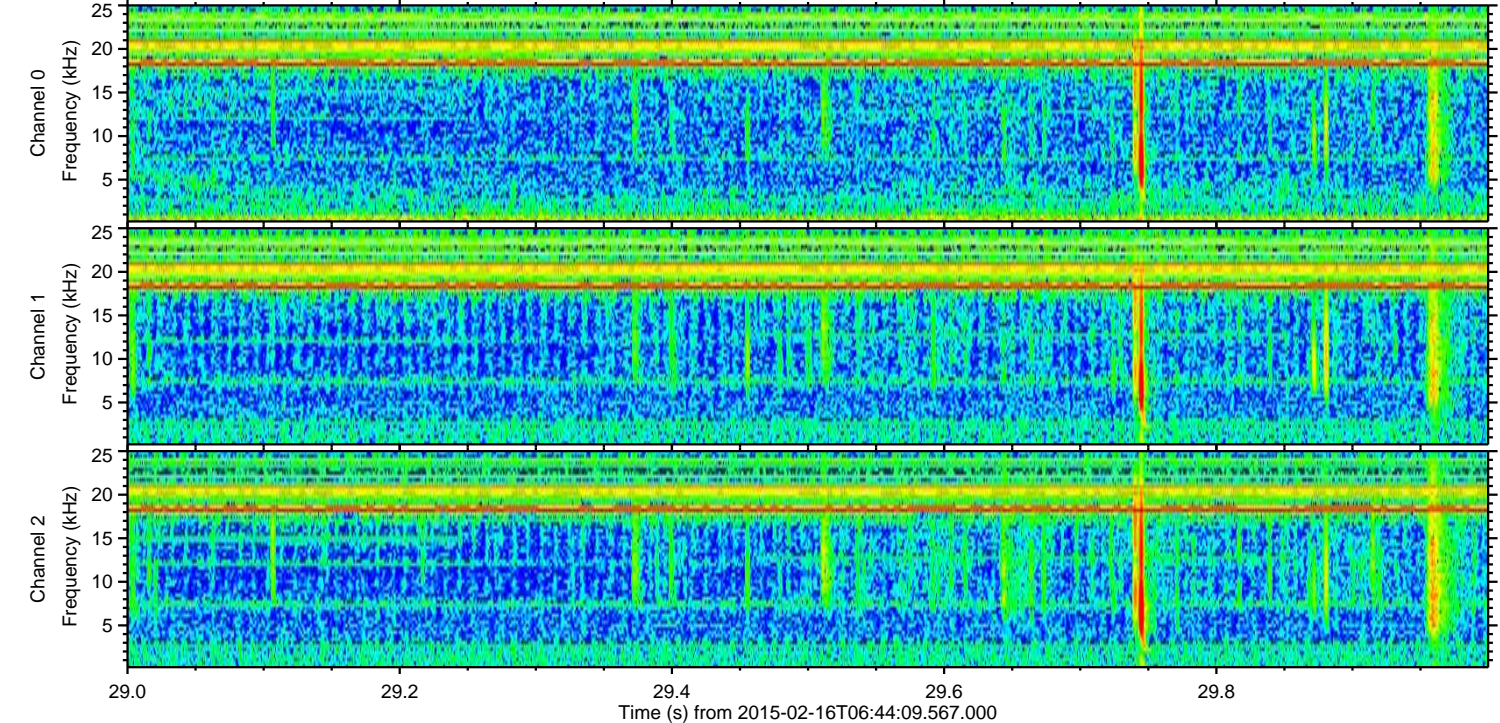
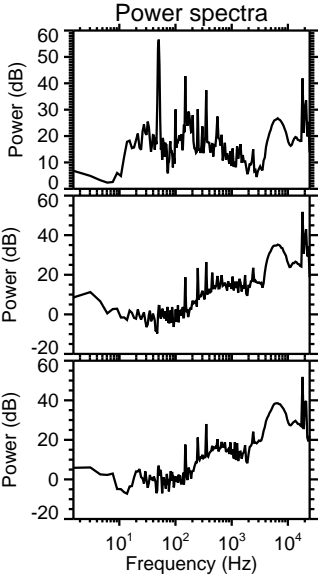
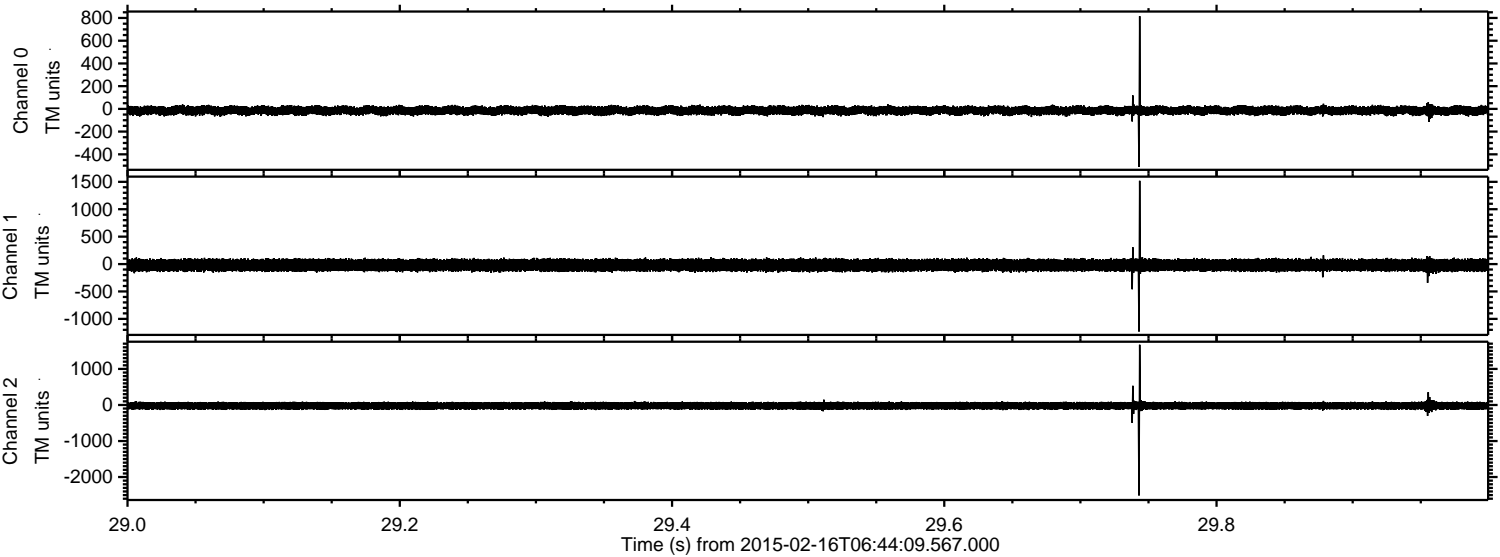
Processed Tue Feb 24 11:42:07 2015 by ELM ver.2012-10-06 from 001__elm20150216_064408__dat00.bin



Processed Tue Feb 24 11:42:09 2015 by ELM ver.2012-10-06 from 001__elm20150216_064408__dat00.bin



Processed Tue Feb 24 11:42:11 2015 by ELM ver.2012-10-06 from 001__elm20150216_064408__dat00.bin



Channel 0
mn: -511
mx: 816
 μ : -14.3
 σ : 20.5

Channel 1
mn: -1231
mx: 1519
 μ : -19.8
 σ : 59.9

Channel 2
mn: -2511
mx: 1671
 μ : -23.0
 σ : 60.0

Processed Tue Feb 24 11:42:13 2015 by ELM ver.2012-10-06 from 001__elm20150216_064408__dat00.bin

