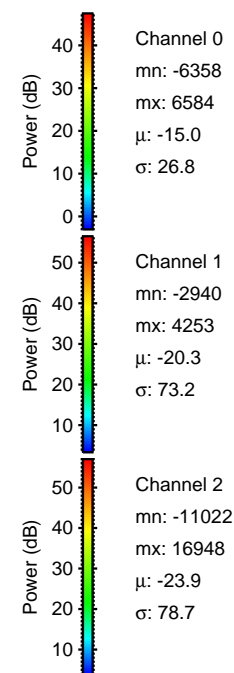
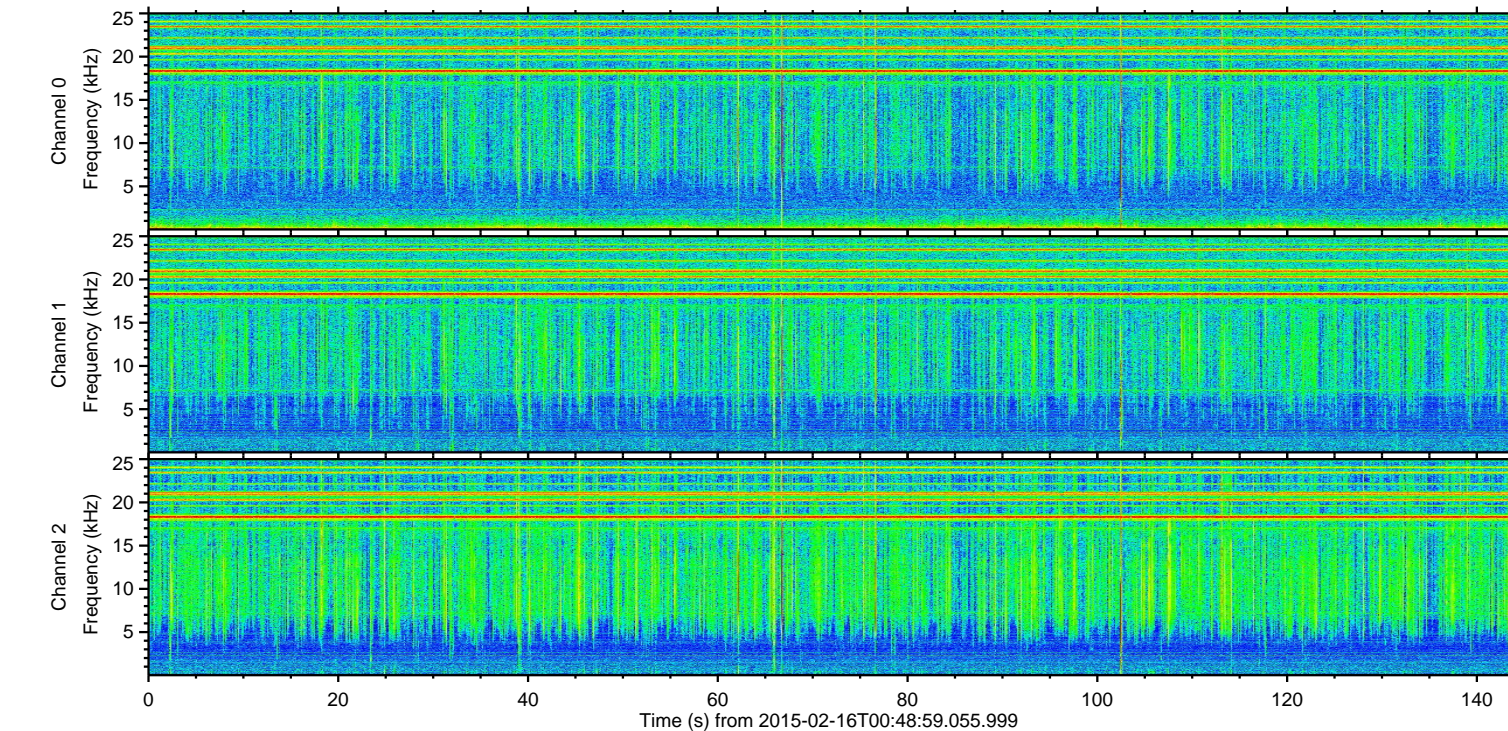
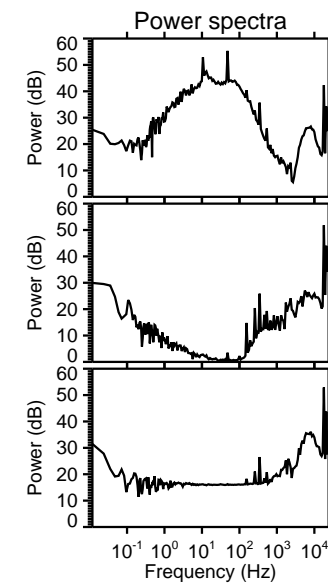
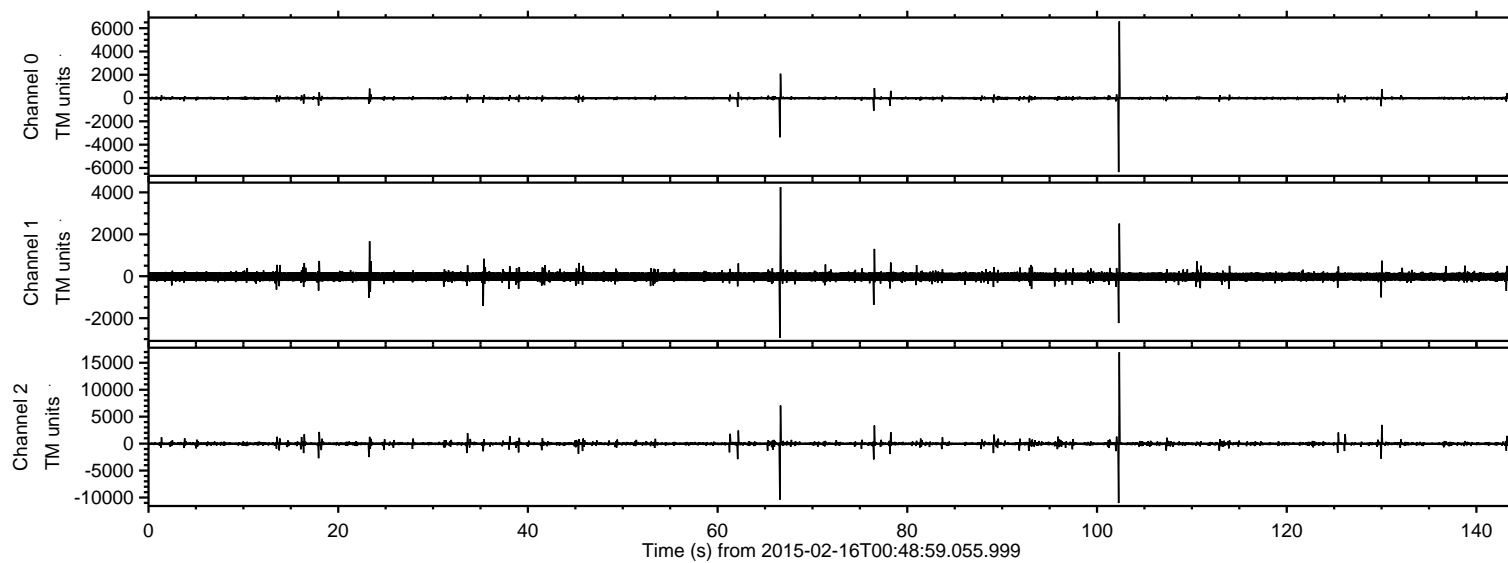


ELMAVAN 3D WAVEFORMS (Measured data sampled at 50 kHz) 49809 packets of 144 samples from 2015-02-16T00:48:59.055.999.

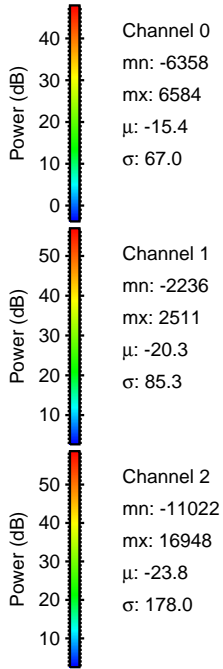
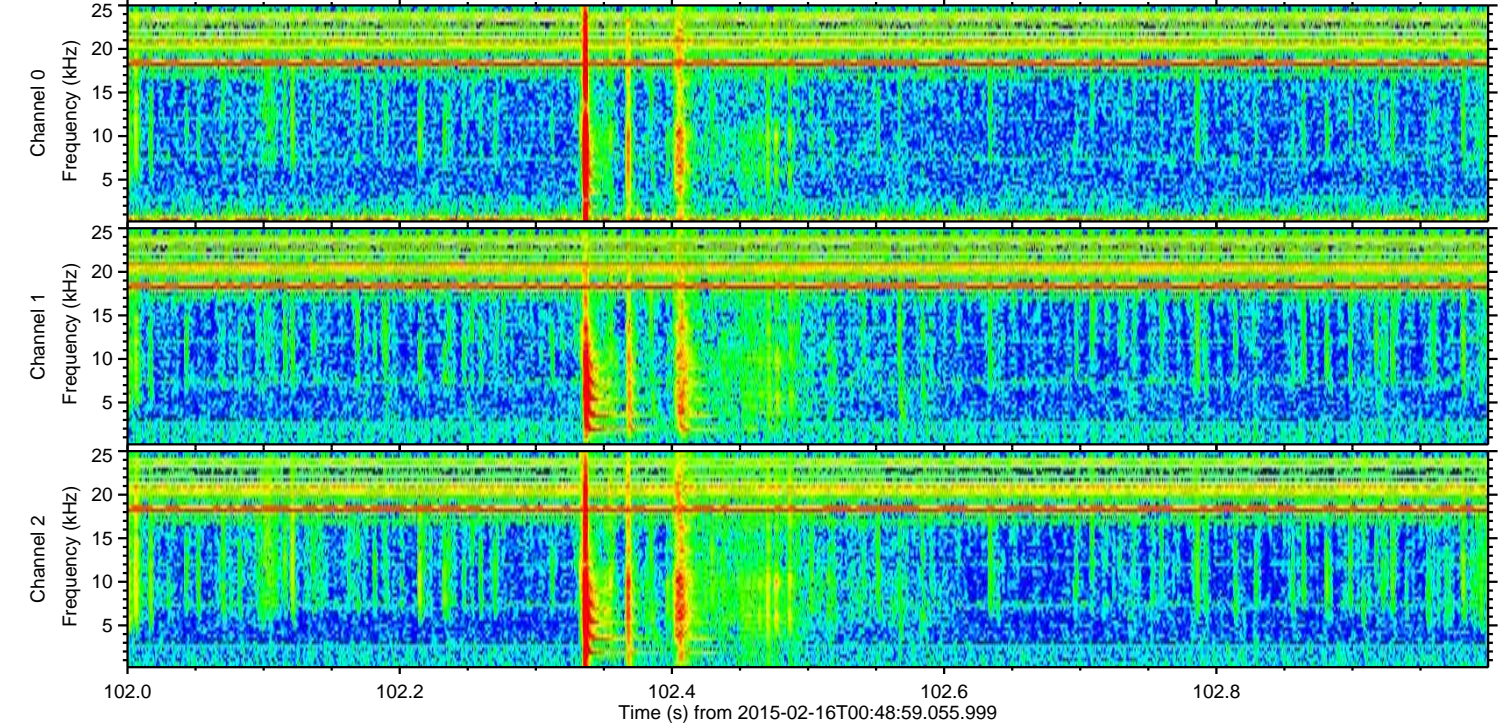
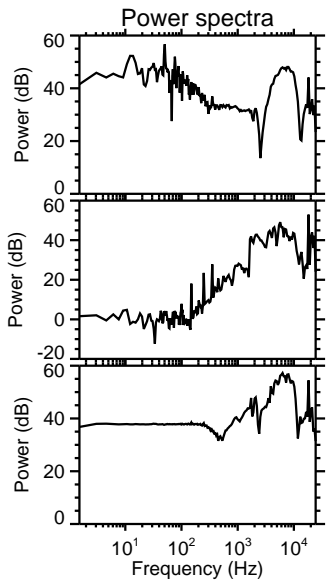
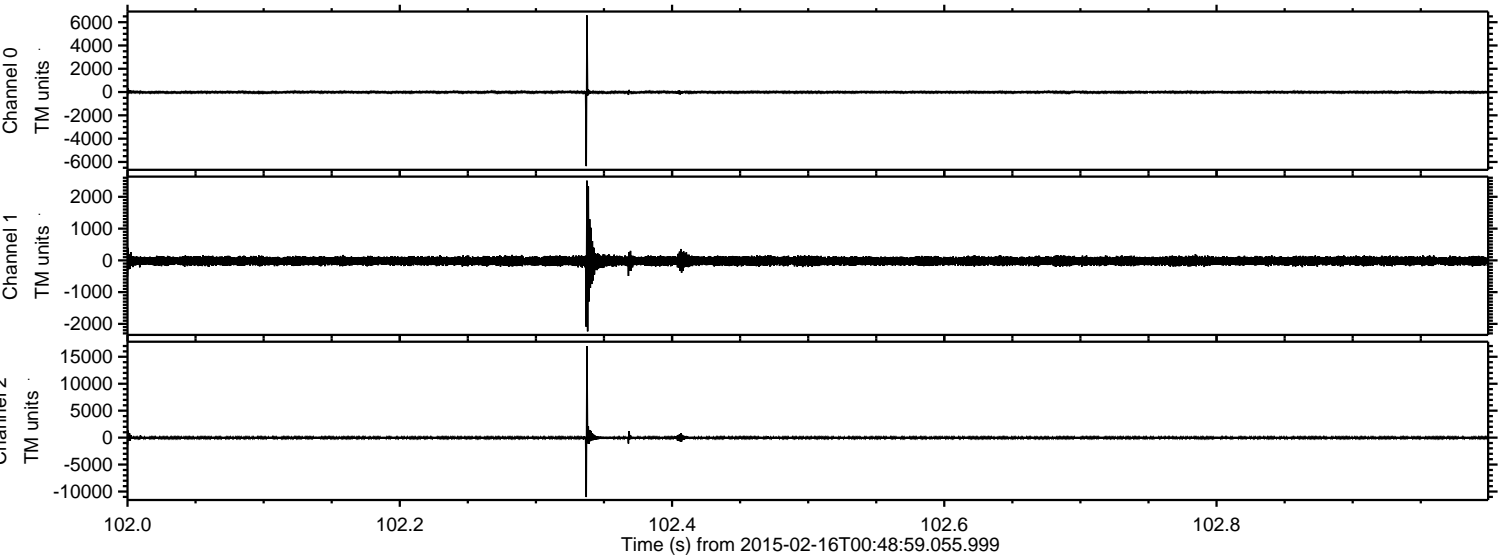
Processed Mon Feb 23 23:38:59 2015 by ELM ver.2012-10-06 from 001\_\_elm20150216\_004858\_\_dat00.bin





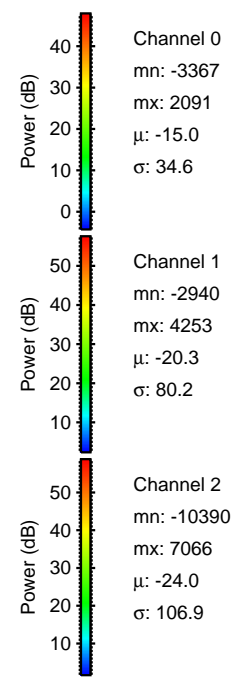
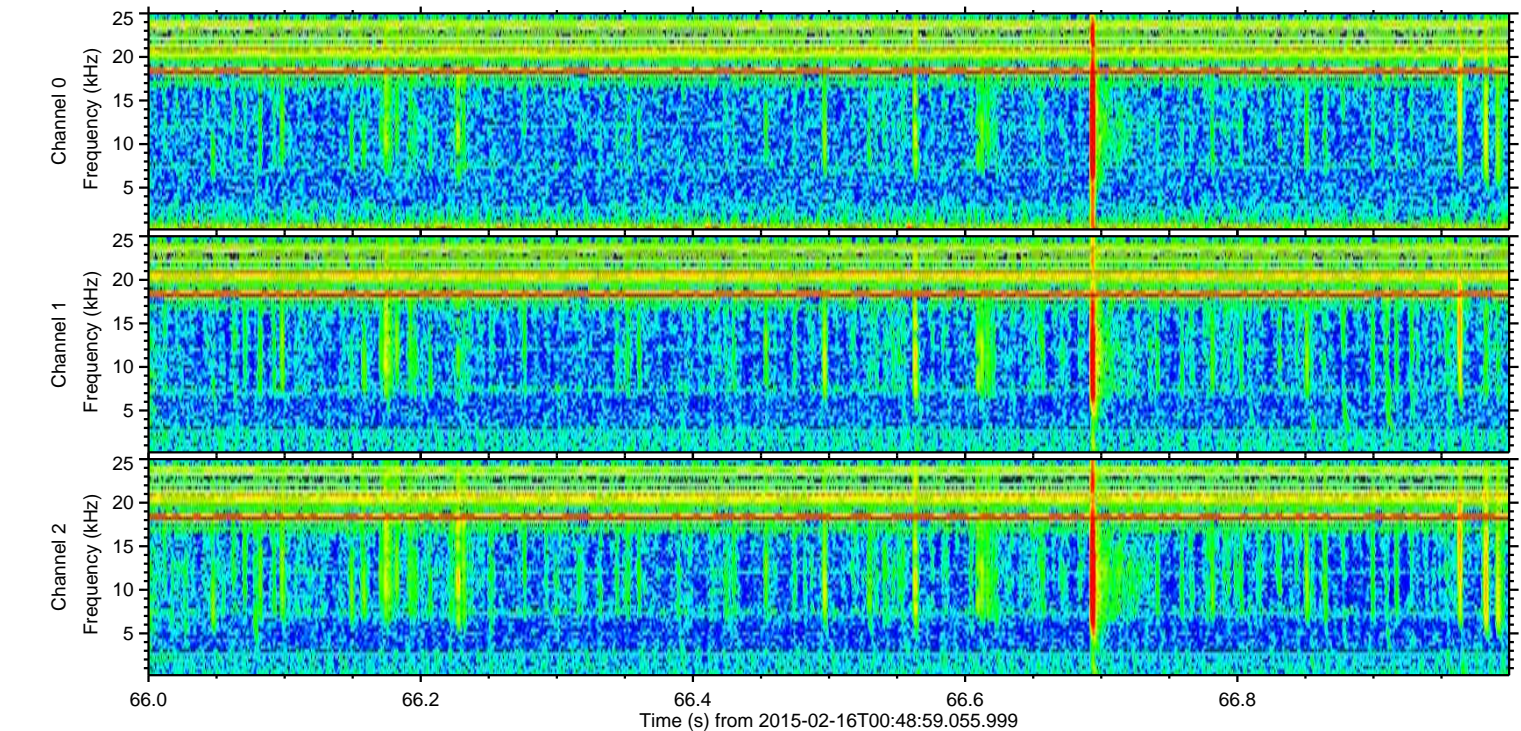
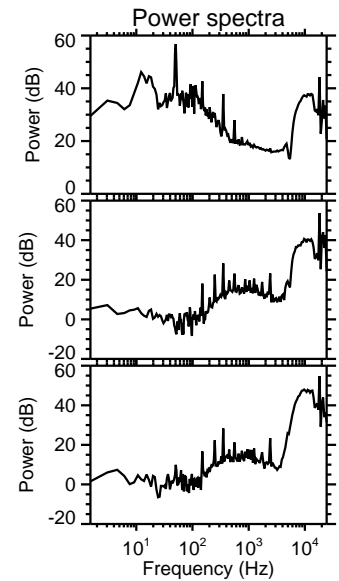
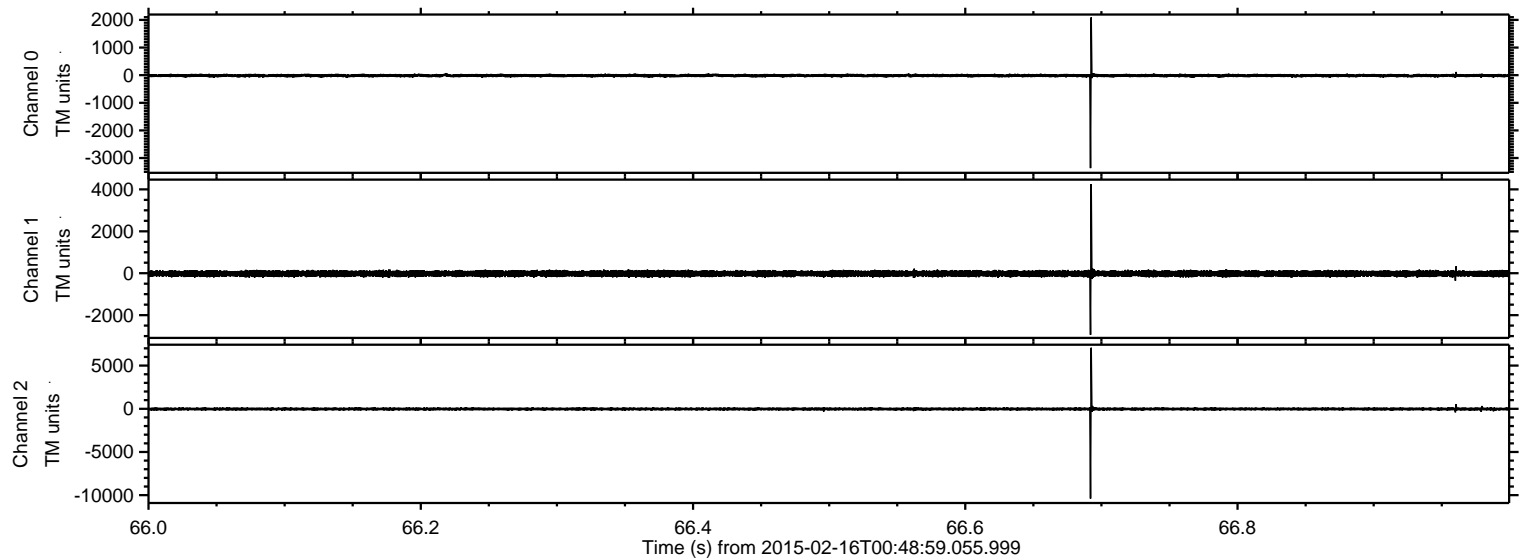
ELMAVAN 3D WAVEFORMS (Measured data sampled at 50 kHz) 49809 packets of 144 samples from 2015-02-16T00:48:59.055.999. Part 103/144

Processed Mon Feb 23 23:39:15 2015 by ELM ver.2012-10-06 from 001\_\_elm20150216\_004858\_\_dat00.bin





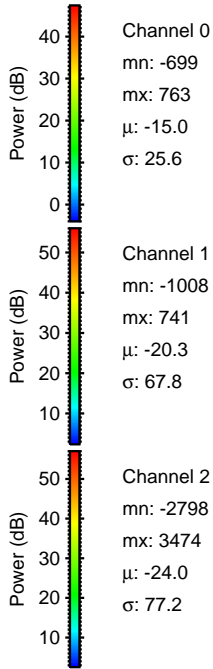
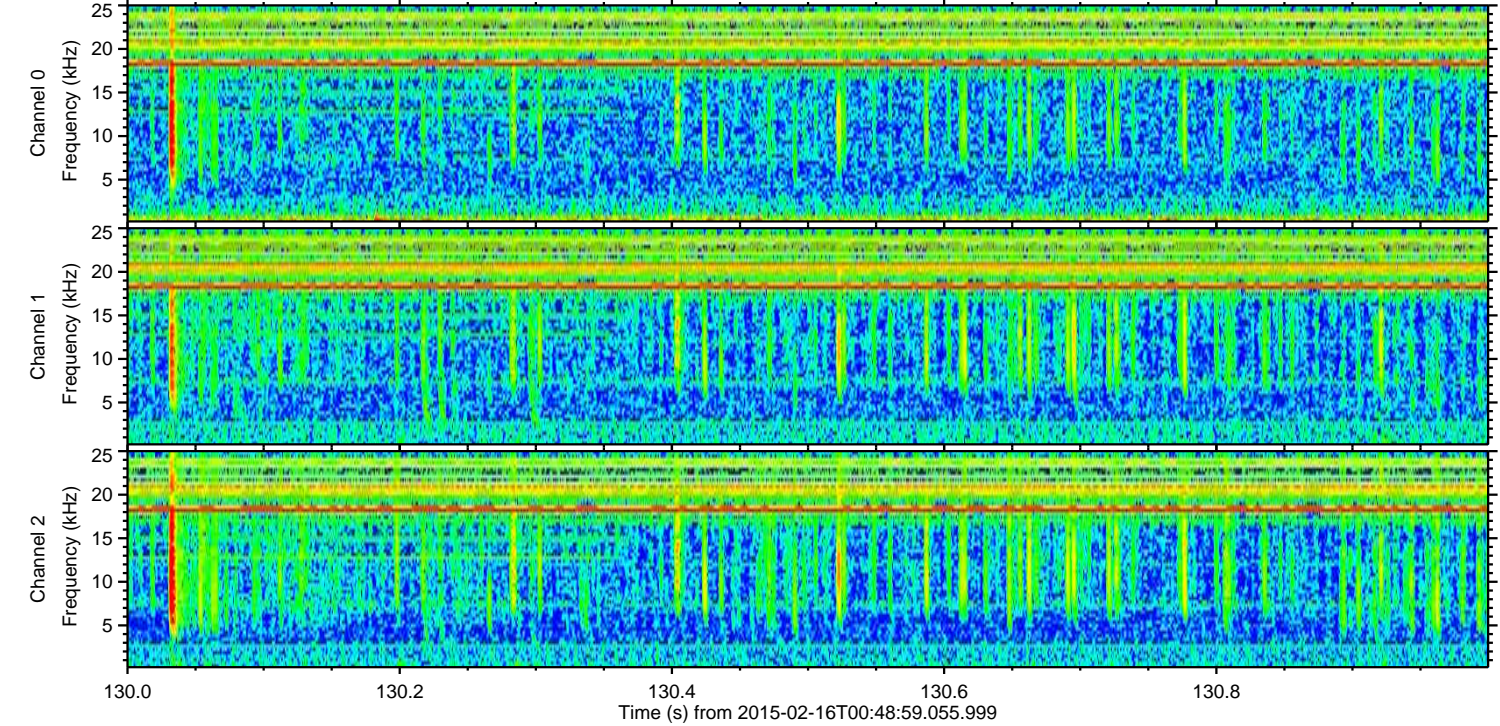
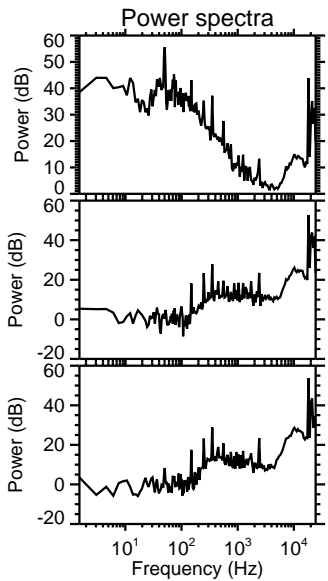
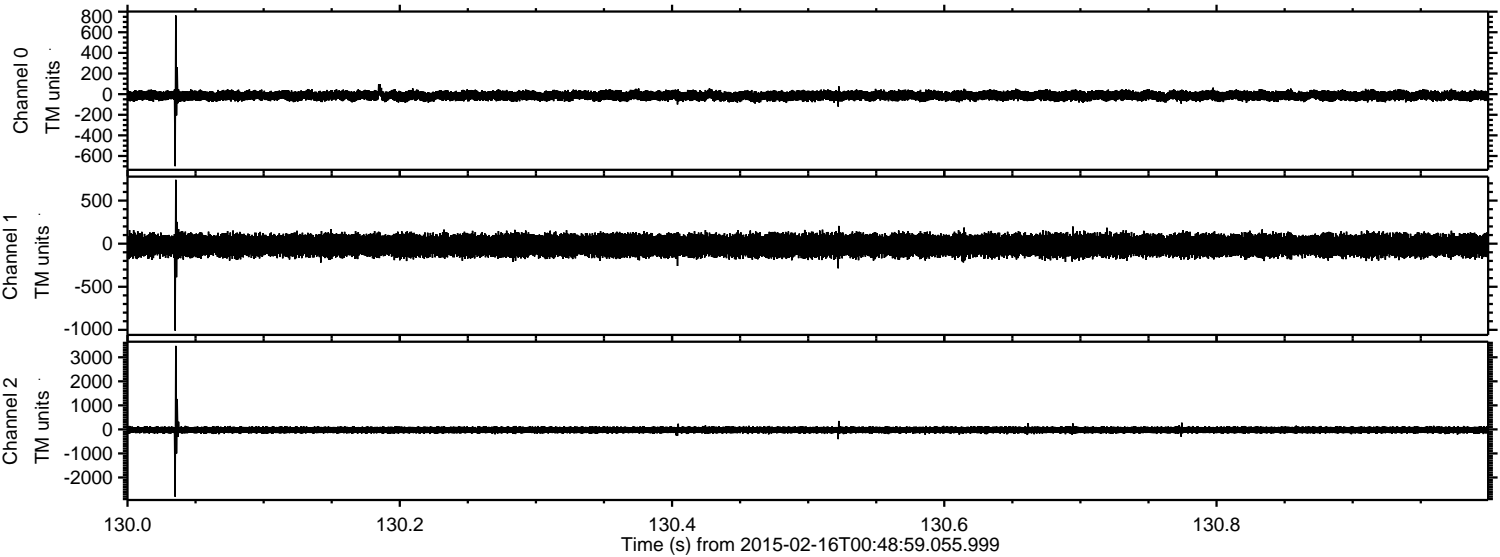
Processed Mon Feb 23 23:39:17 2015 by ELM ver.2012-10-06 from 001\_\_elm20150216\_004858\_\_dat00.bin





ELMAVAN 3D WAVEFORMS (Measured data sampled at 50 kHz) 49809 packets of 144 samples from 2015-02-16T00:48:59.055.999. Part 131/144

Processed Mon Feb 23 23:39:18 2015 by ELM ver.2012-10-06 from 001\_\_elm20150216\_004858\_\_dat00.bin



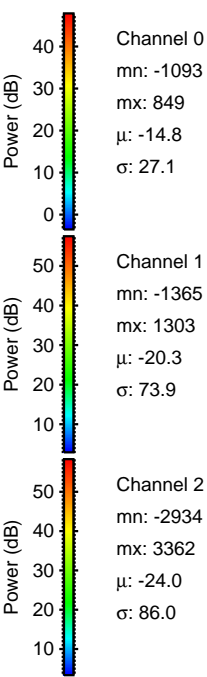
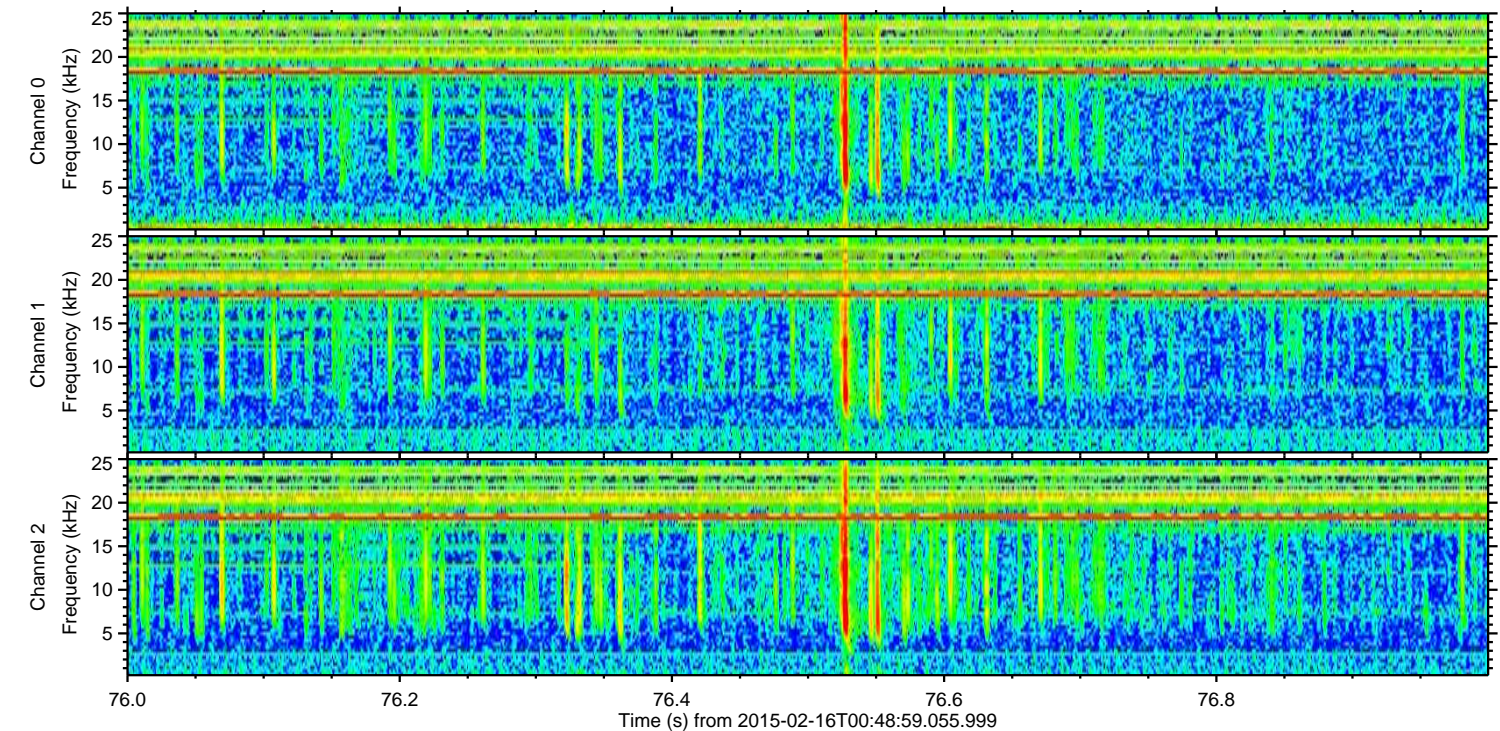
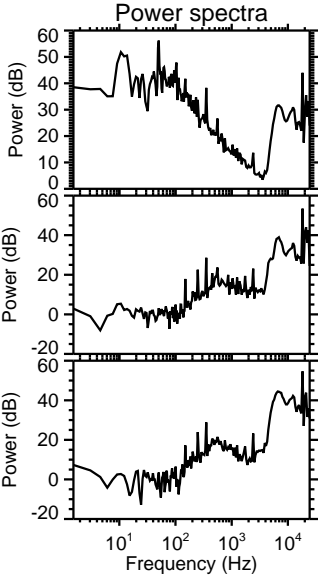
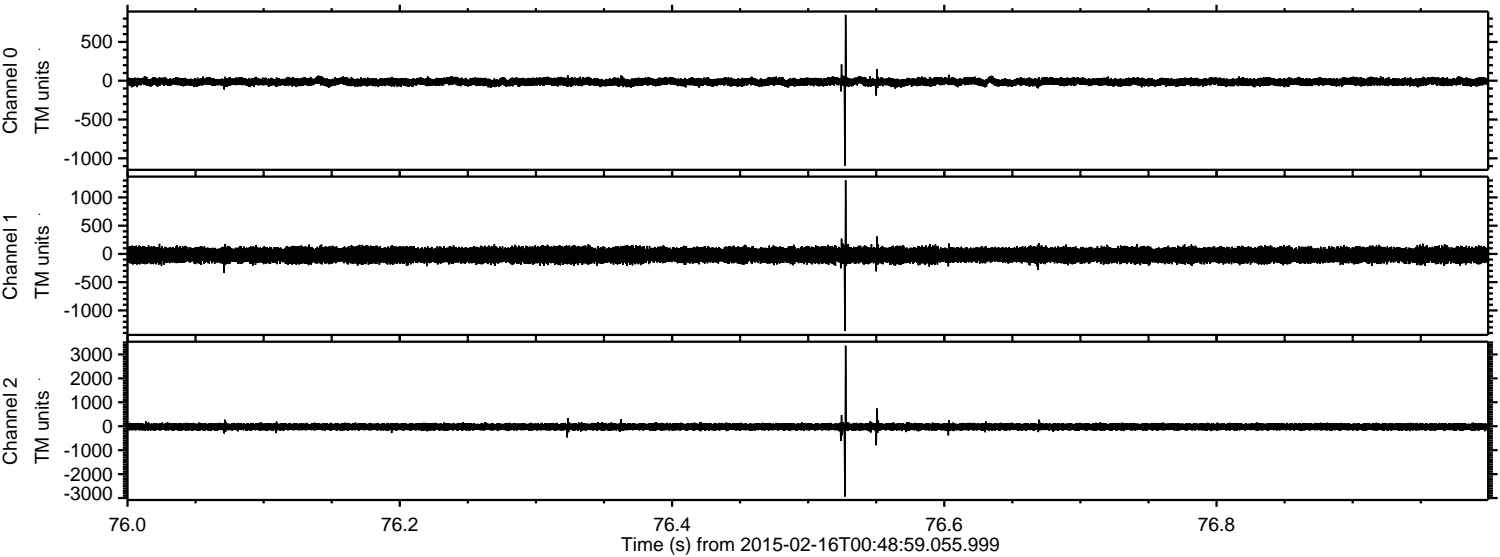
Channel 0  
mn: -699  
mx: 763  
 $\mu$ : -15.0  
 $\sigma$ : 25.6

Channel 1  
mn: -1008  
mx: 741  
 $\mu$ : -20.3  
 $\sigma$ : 67.8

Channel 2  
mn: -2798  
mx: 3474  
 $\mu$ : -24.0  
 $\sigma$ : 77.2



Processed Mon Feb 23 23:39:19 2015 by ELM ver.2012-10-06 from 001\_\_elm20150216\_004858\_\_dat00.bin



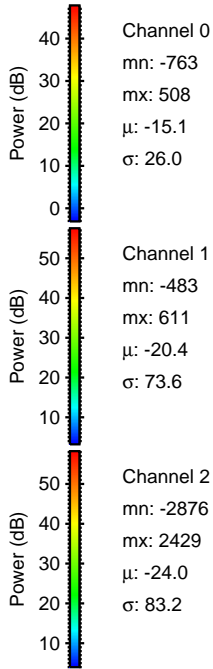
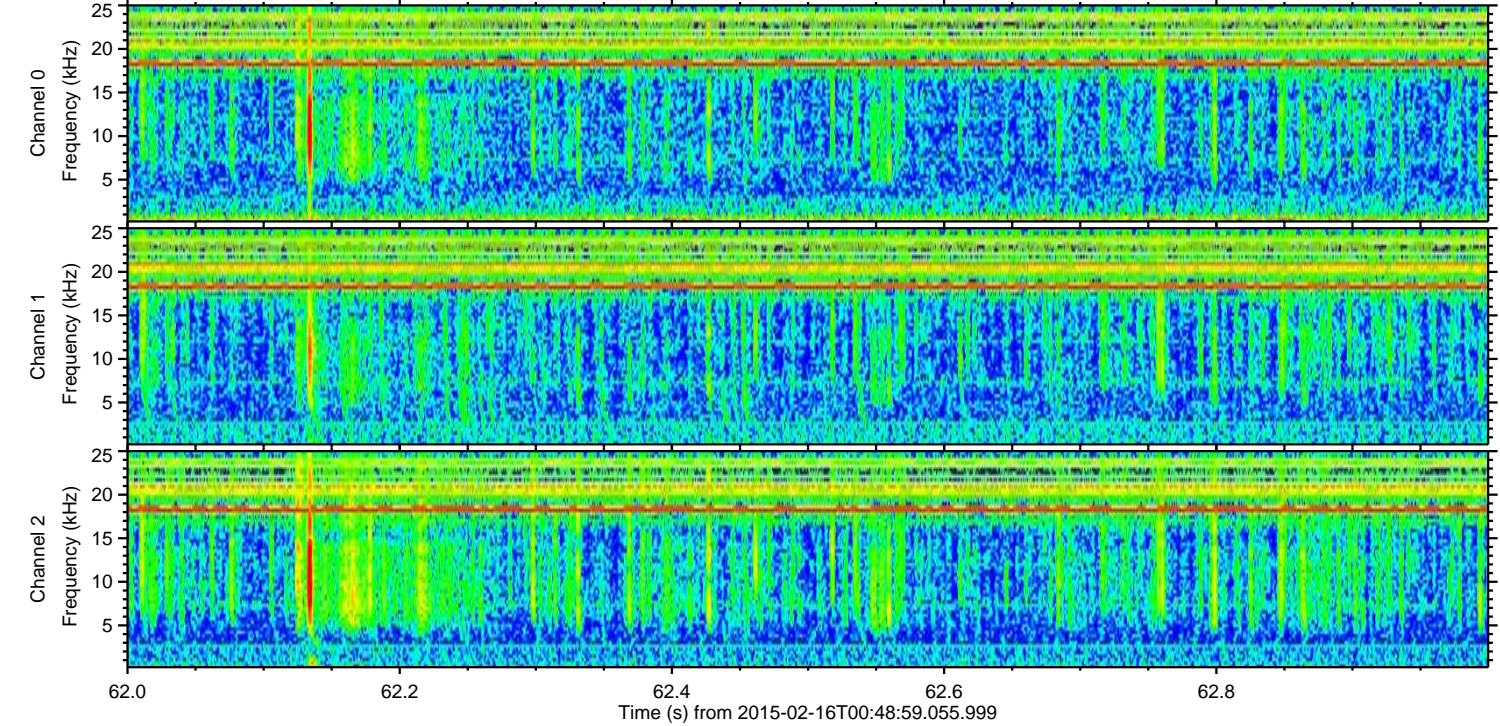
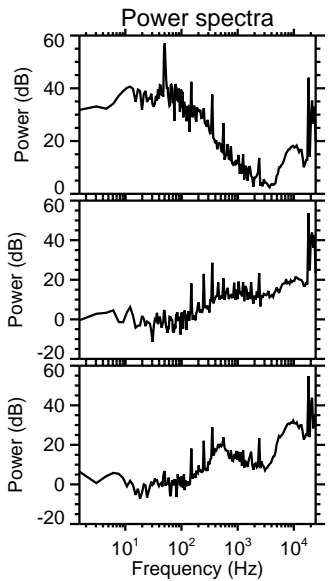
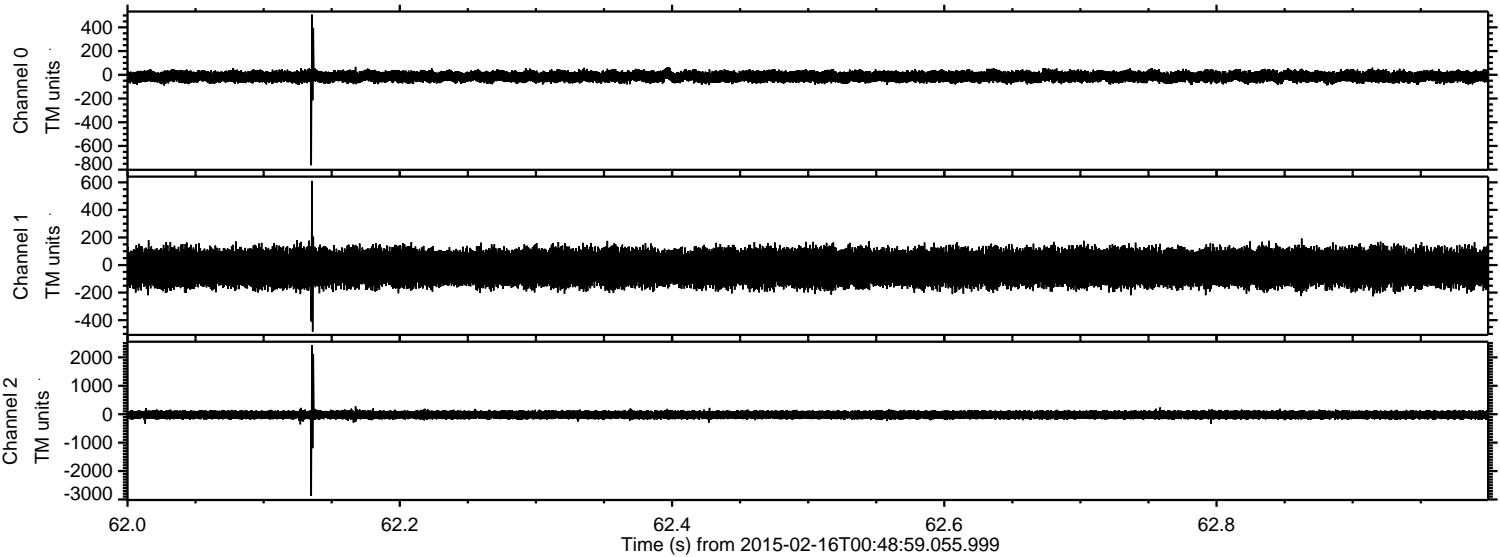
Channel 0  
mn: -1093  
mx: 849  
 $\mu$ : -14.8  
 $\sigma$ : 27.1

Channel 1  
mn: -1365  
mx: 1303  
 $\mu$ : -20.3  
 $\sigma$ : 73.9

Channel 2  
mn: -2934  
mx: 3362  
 $\mu$ : -24.0  
 $\sigma$ : 86.0



Processed Mon Feb 23 23:39:20 2015 by ELM ver.2012-10-06 from 001\_\_elm20150216\_004858\_\_dat00.bin



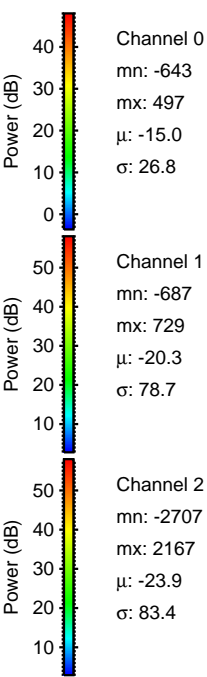
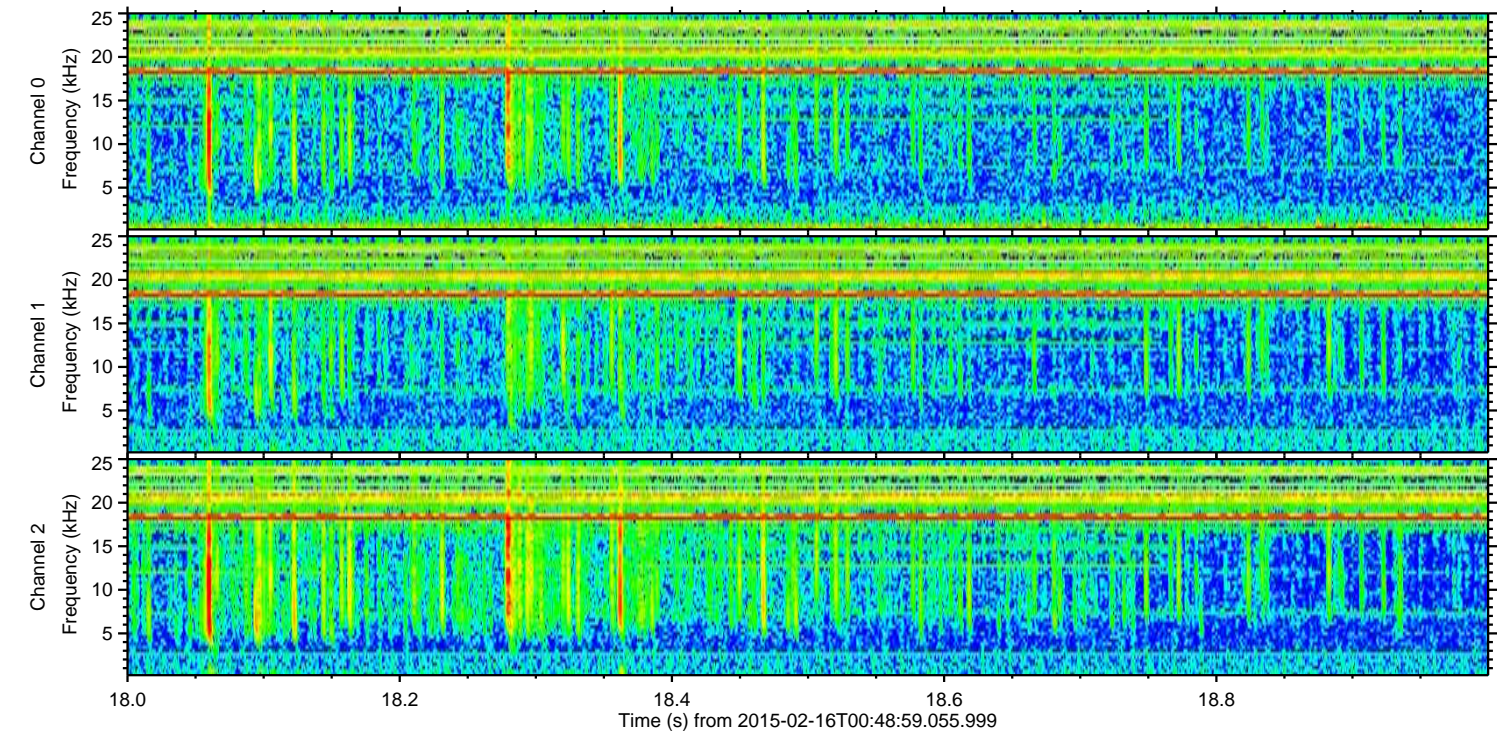
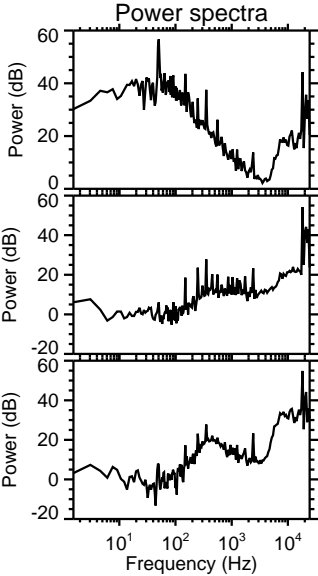
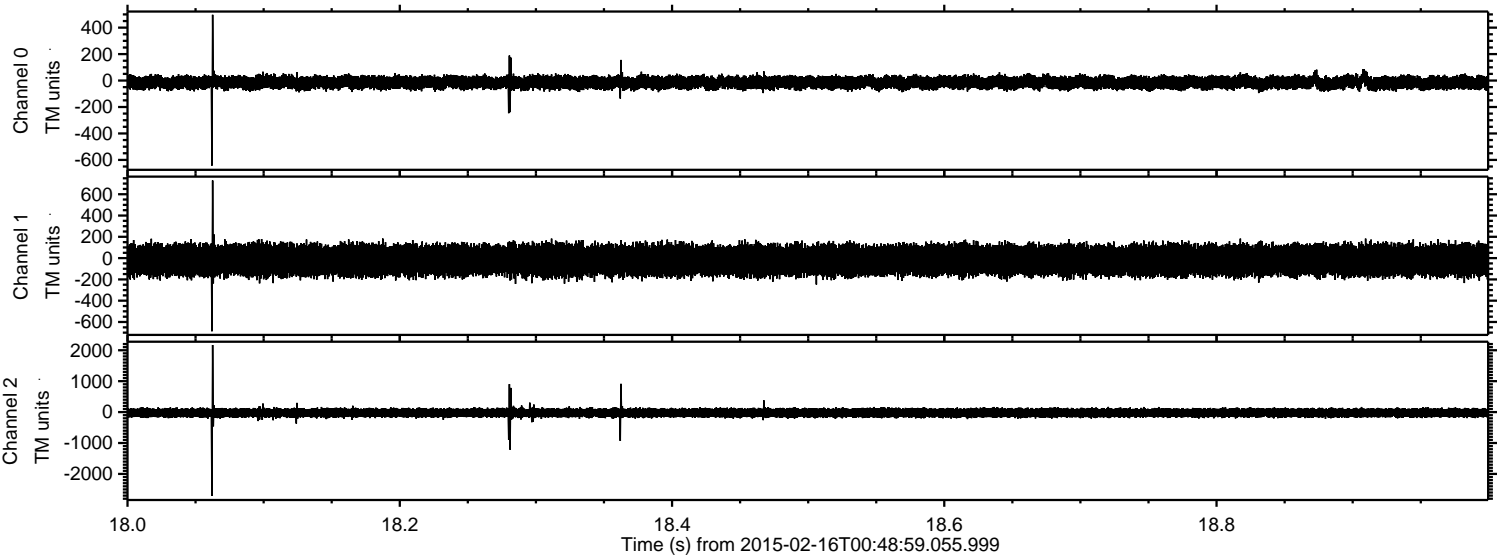
Channel 0  
mn: -763  
mx: 508  
 $\mu$ : -15.1  
 $\sigma$ : 26.0

Channel 1  
mn: -483  
mx: 611  
 $\mu$ : -20.4  
 $\sigma$ : 73.6

Channel 2  
mn: -2876  
mx: 2429  
 $\mu$ : -24.0  
 $\sigma$ : 83.2

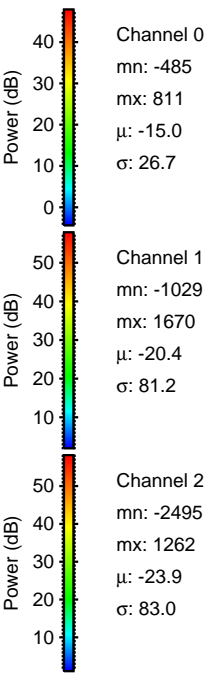
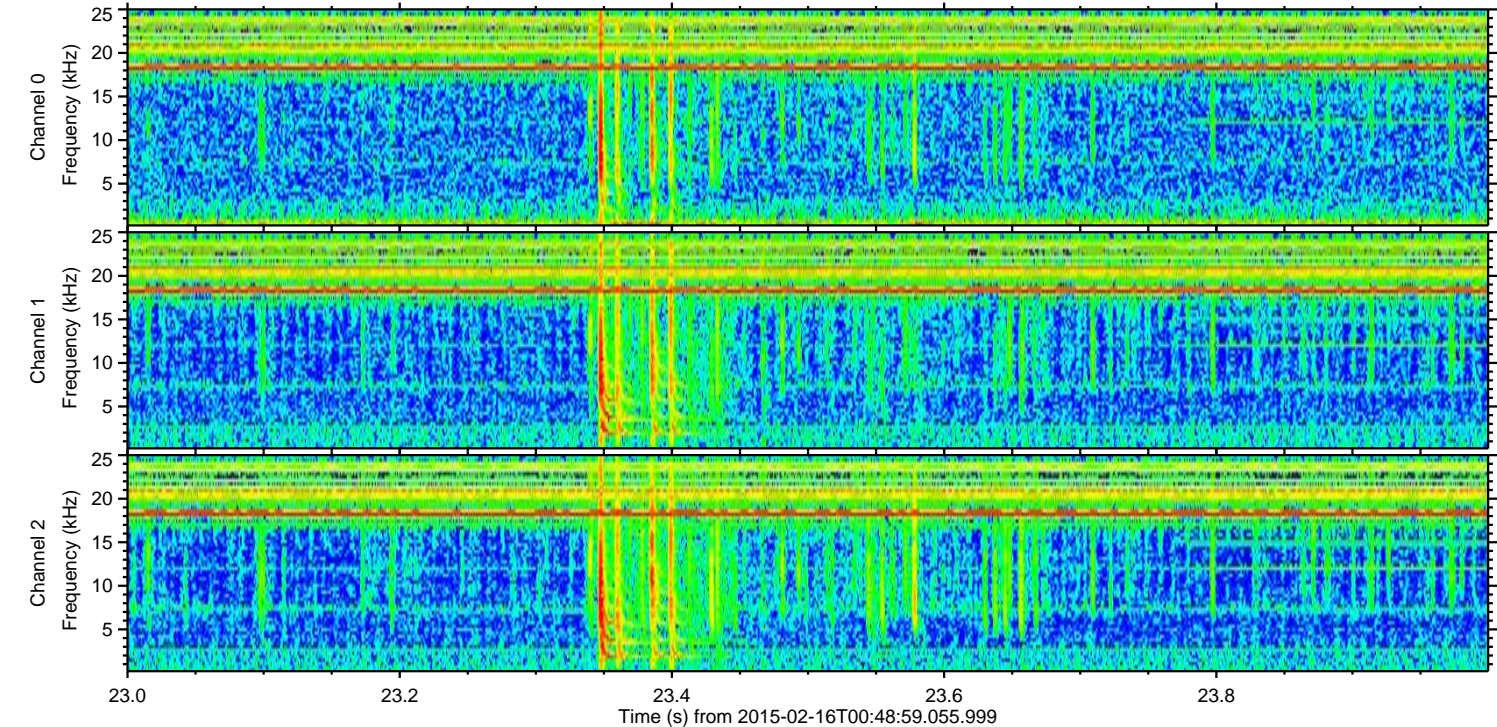
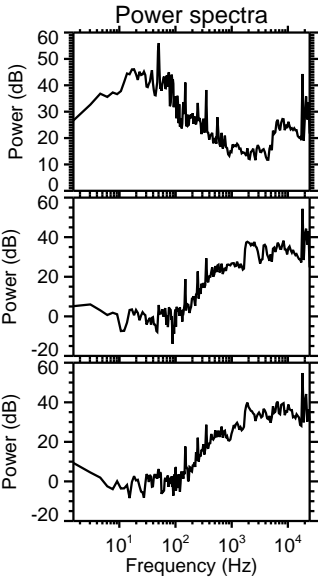
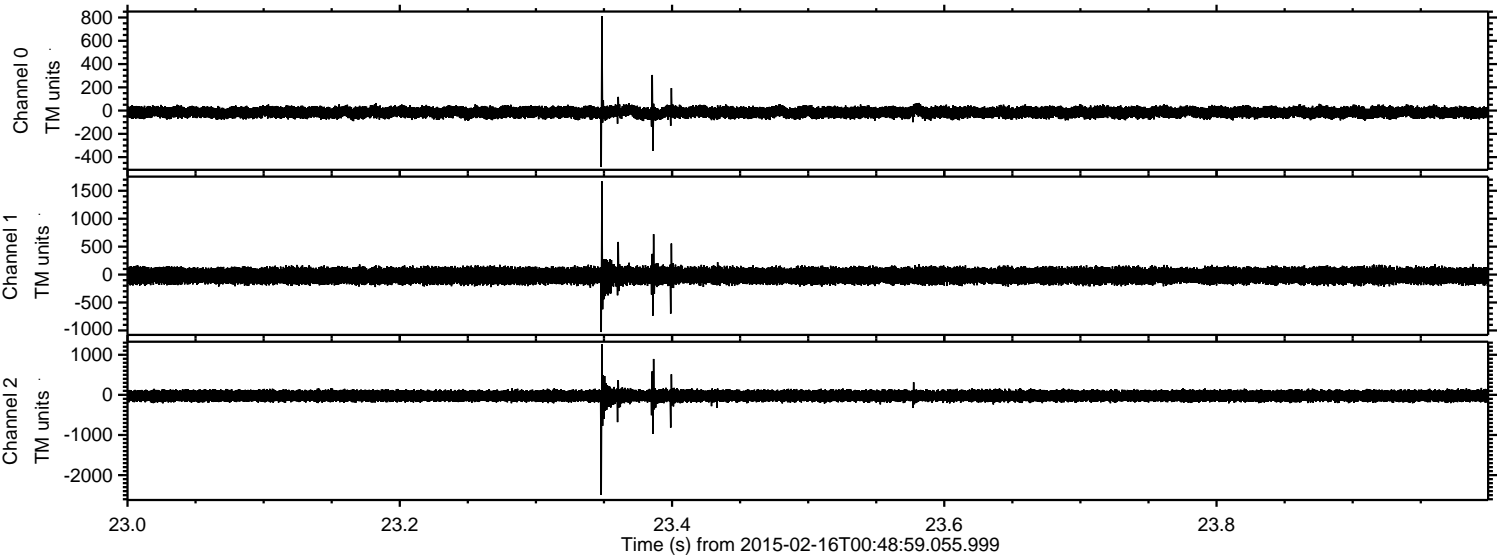


Processed Mon Feb 23 23:39:21 2015 by ELM ver.2012-10-06 from 001\_\_elm20150216\_004858\_\_dat00.bin





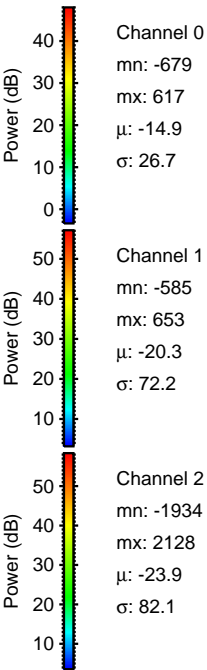
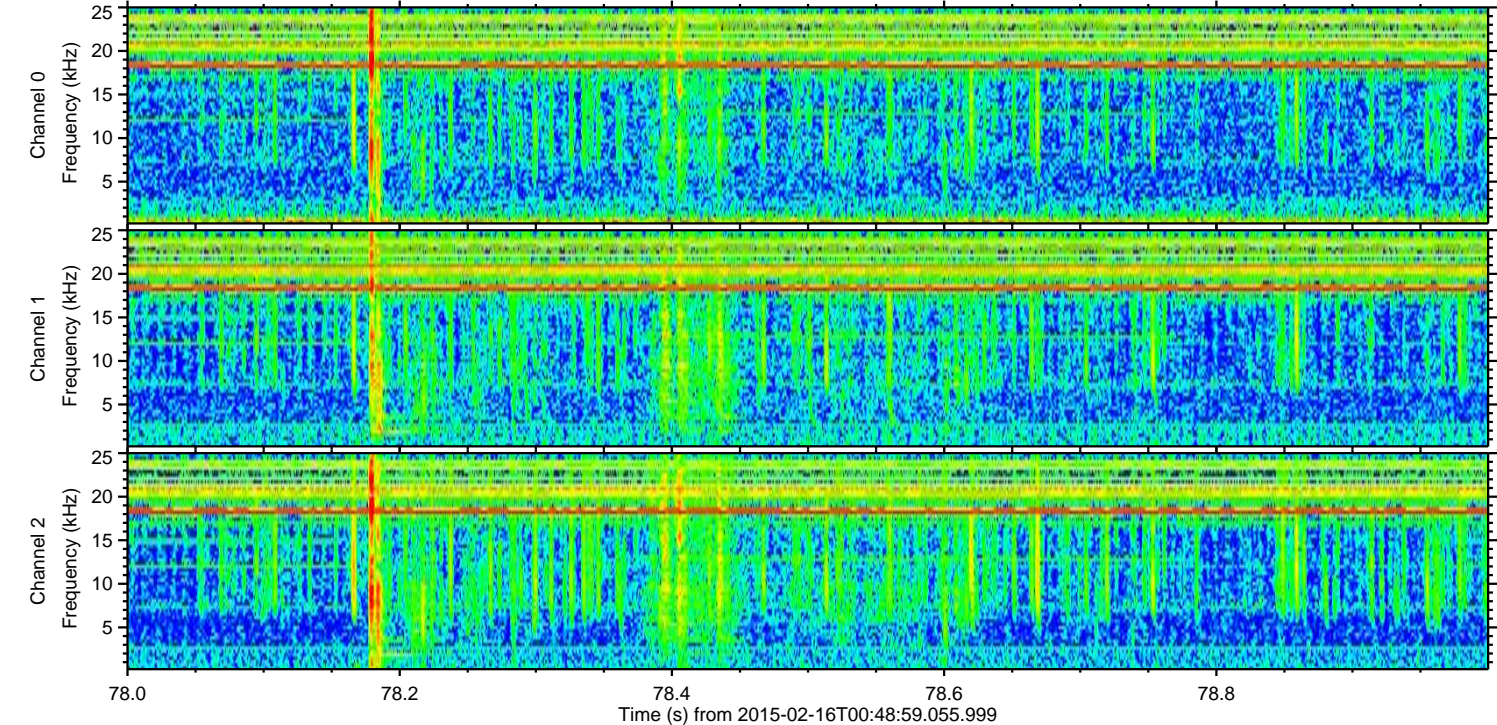
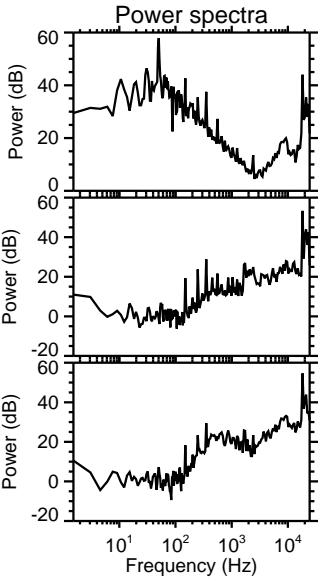
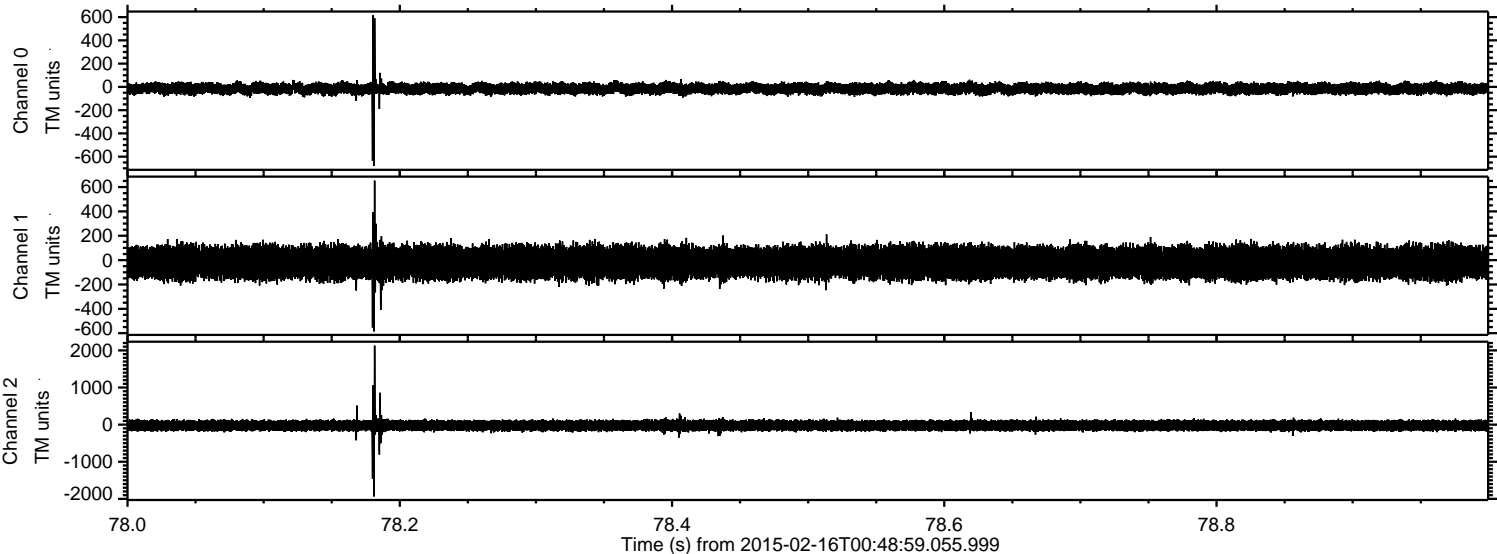
Processed Mon Feb 23 23:39:22 2015 by ELM ver.2012-10-06 from 001\_\_elm20150216\_004858\_\_dat00.bin





ELMAVAN 3D WAVEFORMS (Measured data sampled at 50 kHz) 49809 packets of 144 samples from 2015-02-16T00:48:59.055.999. Part 79/144

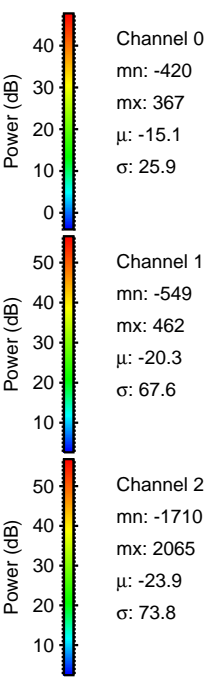
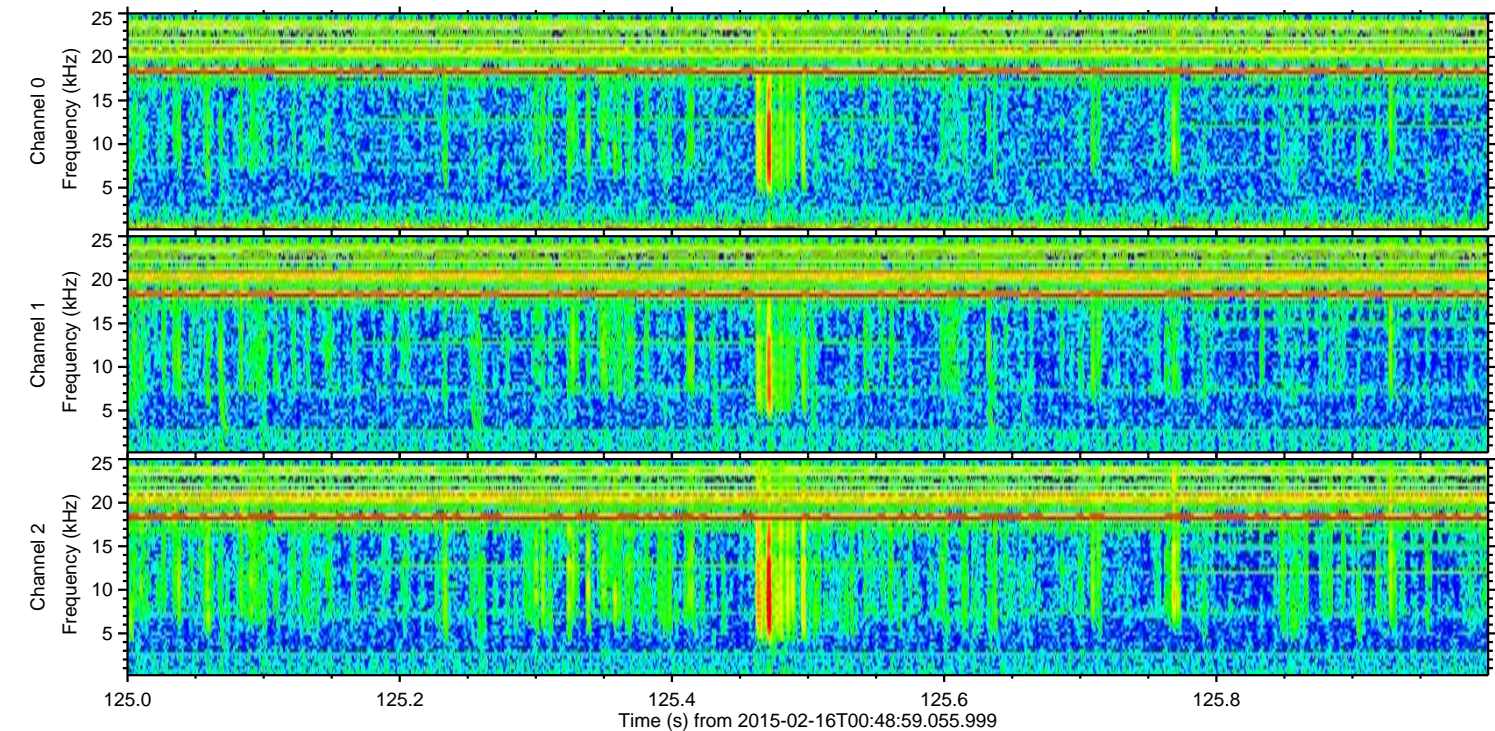
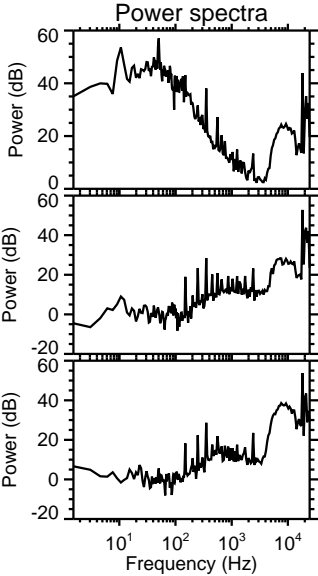
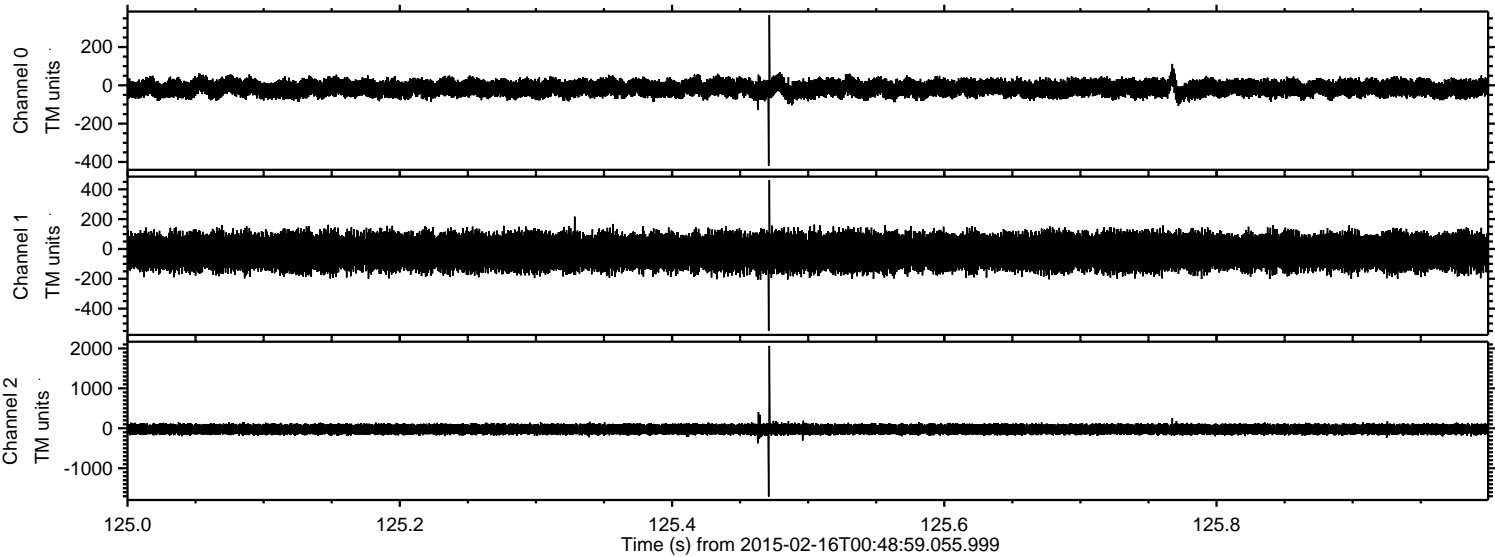
Processed Mon Feb 23 23:39:23 2015 by ELM ver.2012-10-06 from 001\_\_elm20150216\_004858\_\_dat00.bin





ELMAVAN 3D WAVEFORMS (Measured data sampled at 50 kHz) 49809 packets of 144 samples from 2015-02-16T00:48:59.055.999. Part 126/144

Processed Mon Feb 23 23:39:24 2015 by ELM ver.2012-10-06 from 001\_\_elm20150216\_004858\_\_dat00.bin





ELMAVAN 3D WAVEFORMS (Measured data sampled at 50 kHz) 49809 packets of 144 samples from 2015-02-16T00:48:59.055.999. Part 136/144

Processed Mon Feb 23 23:39:25 2015 by ELM ver.2012-10-06 from 001\_\_elm20150216\_004858\_\_dat00.bin

