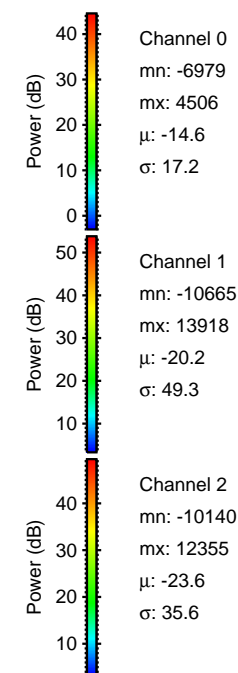
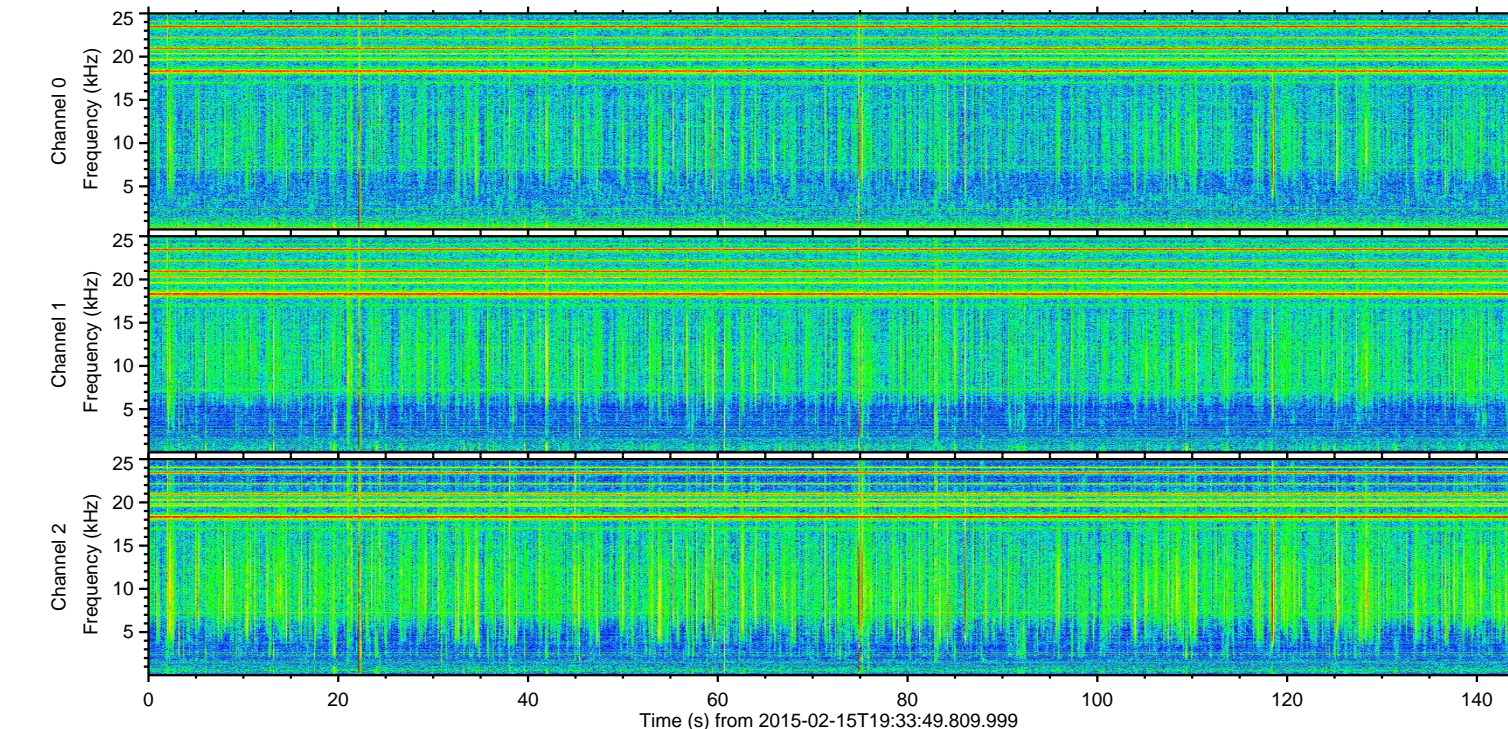
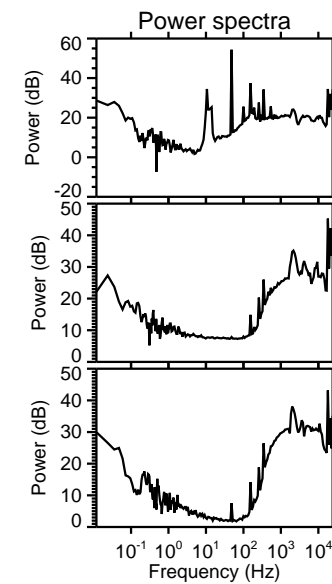
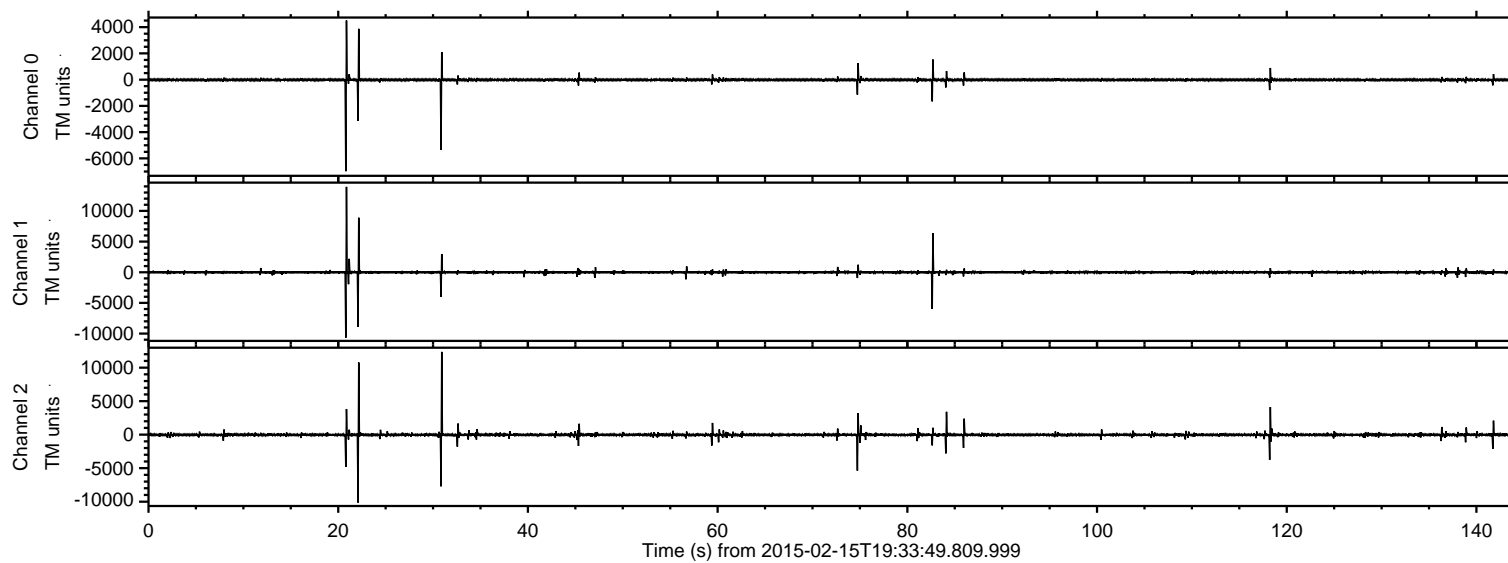
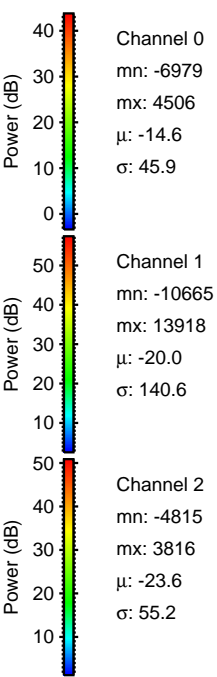
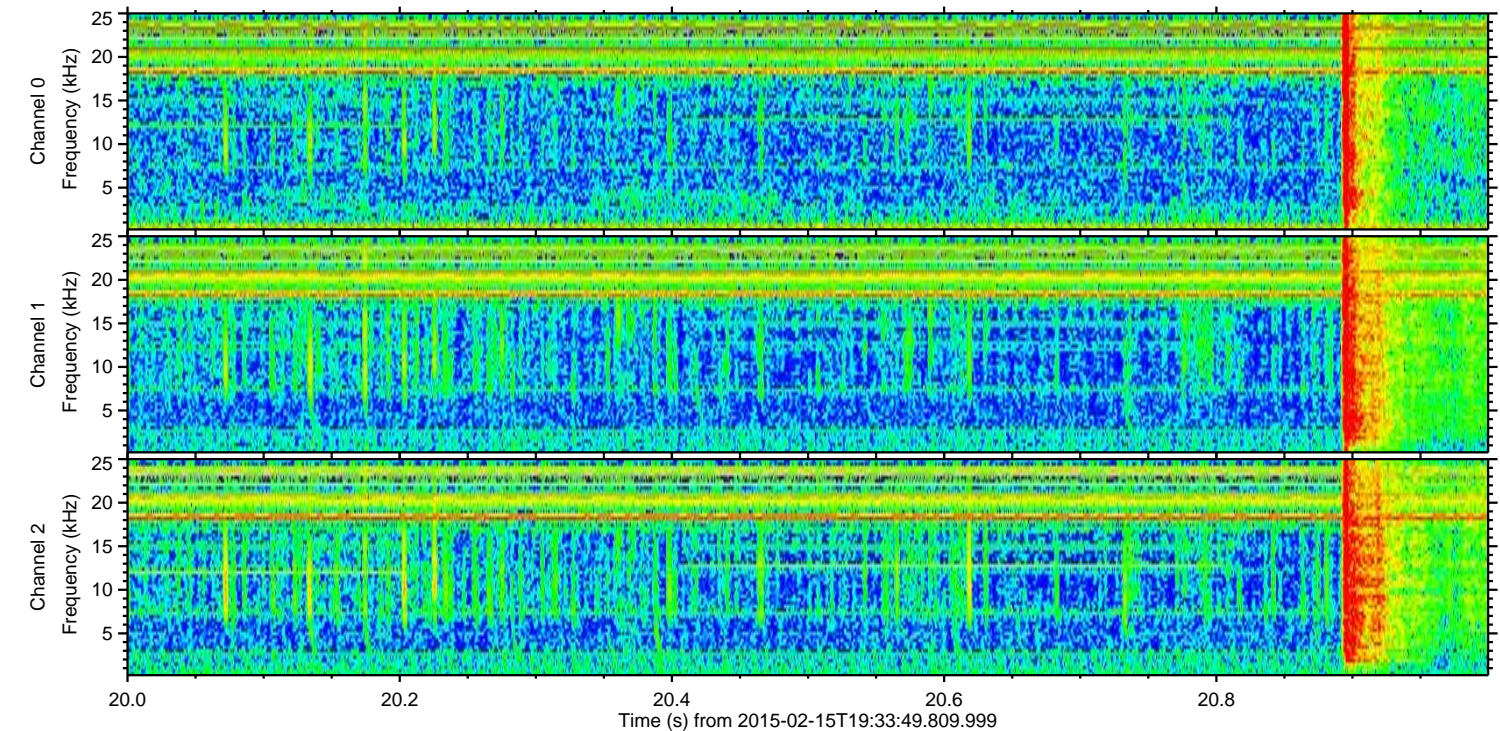
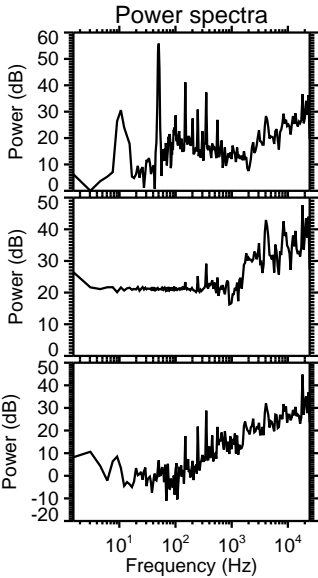
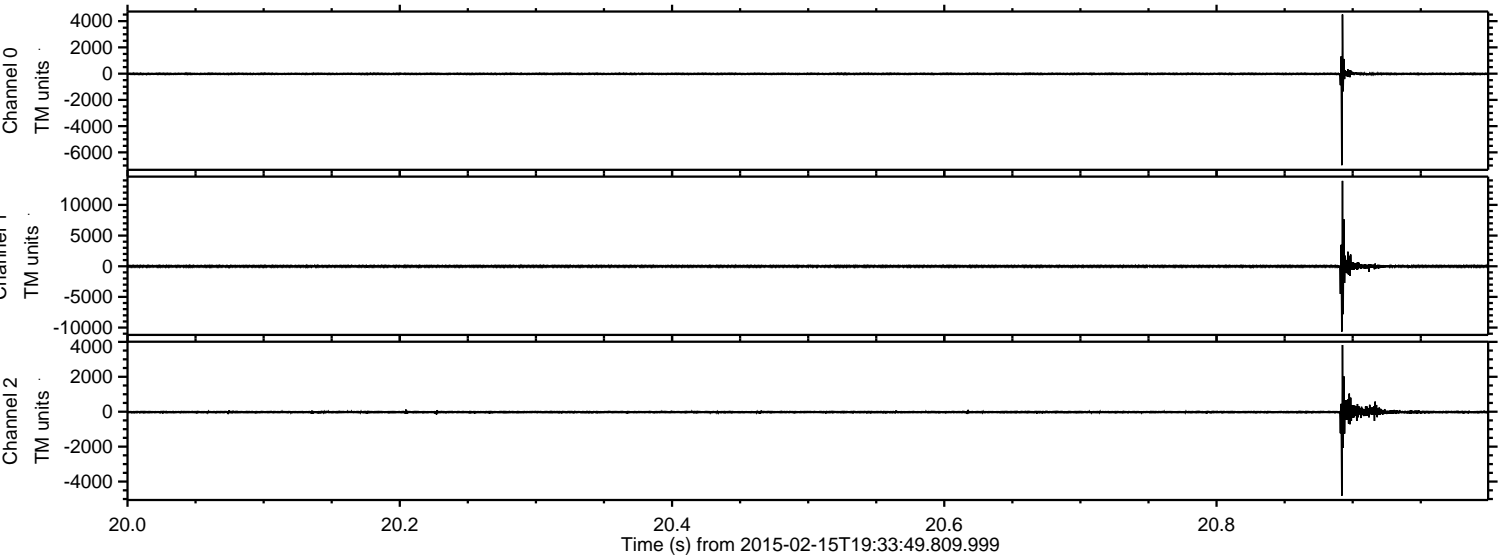


ELMAVAN 3D WAVEFORMS (Measured data sampled at 50 kHz) 49808 packets of 144 samples from 2015-02-15T19:33:49.809.999.

Processed Mon Feb 23 19:36:58 2015 by ELM ver.2012-10-06 from 001__elm20150215_193348__dat00.bin

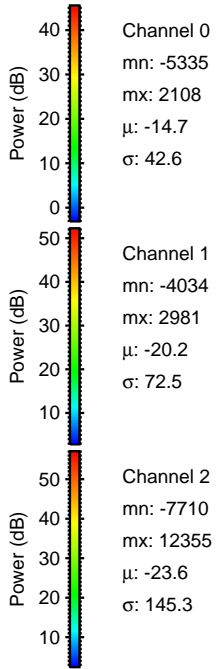
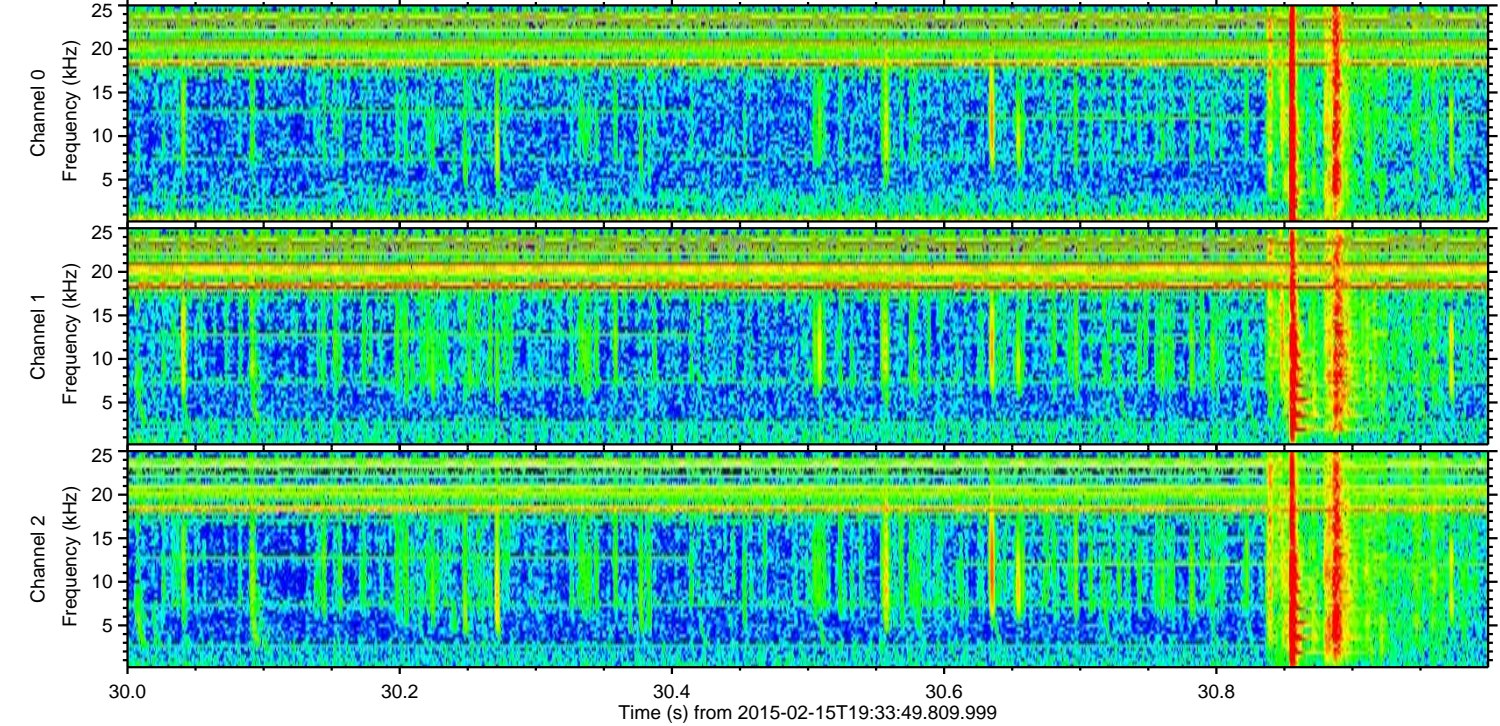
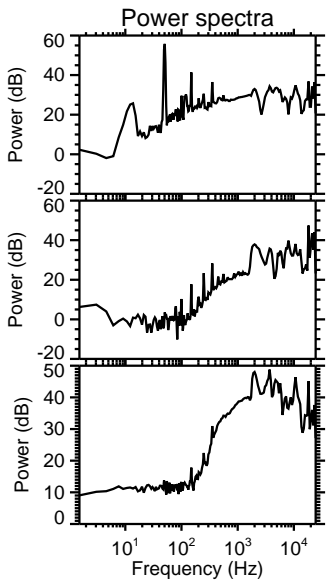
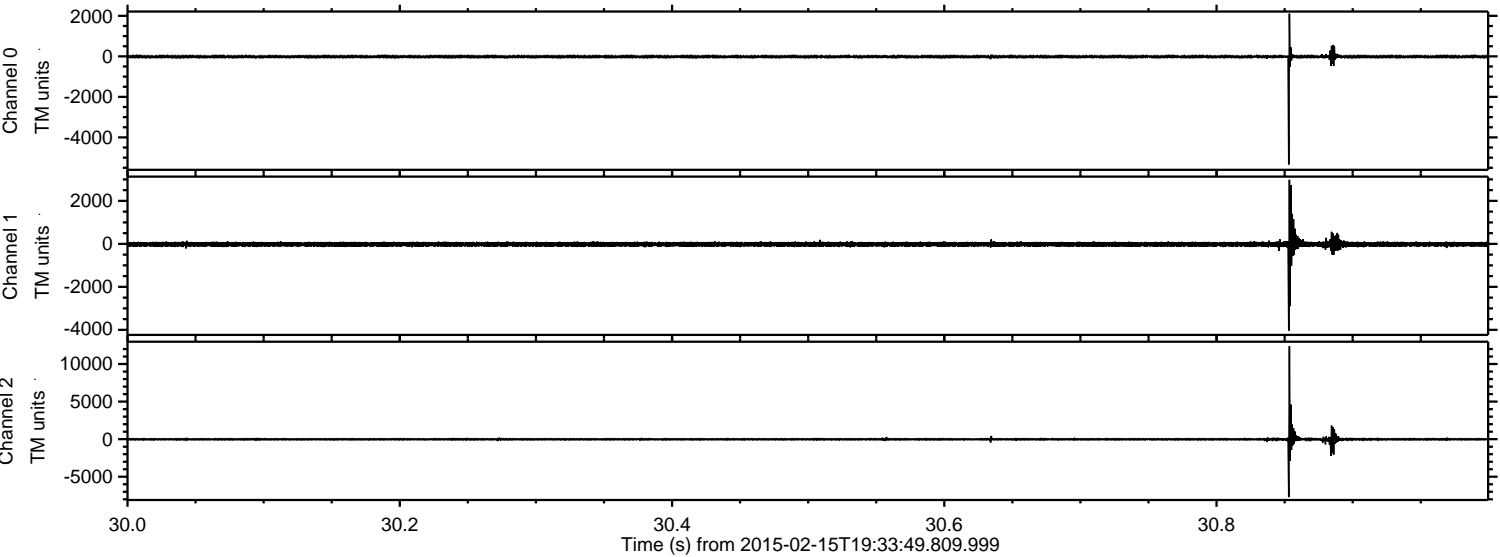


Processed Mon Feb 23 19:37:14 2015 by ELM ver.2012-10-06 from 001__elm20150215_193348__dat00.bin



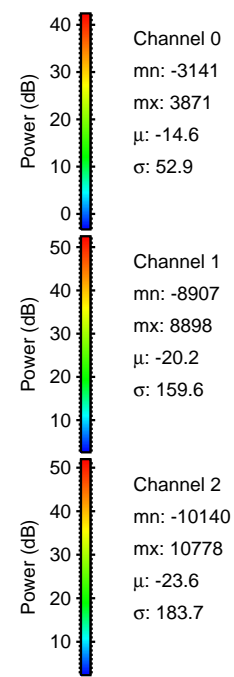
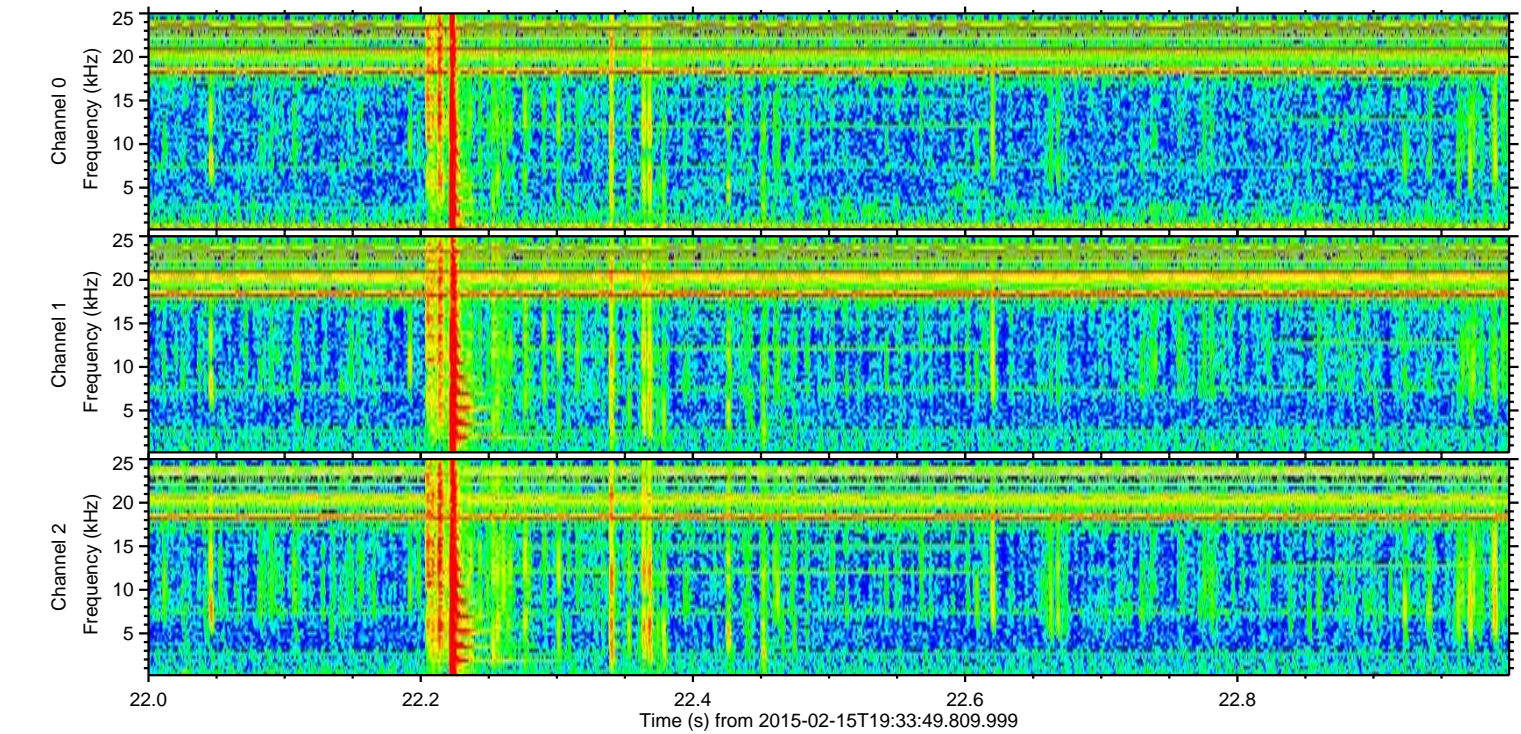
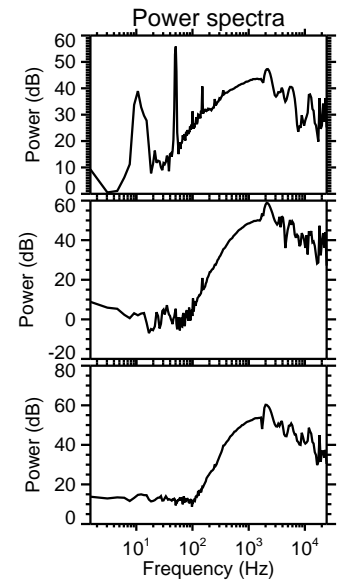
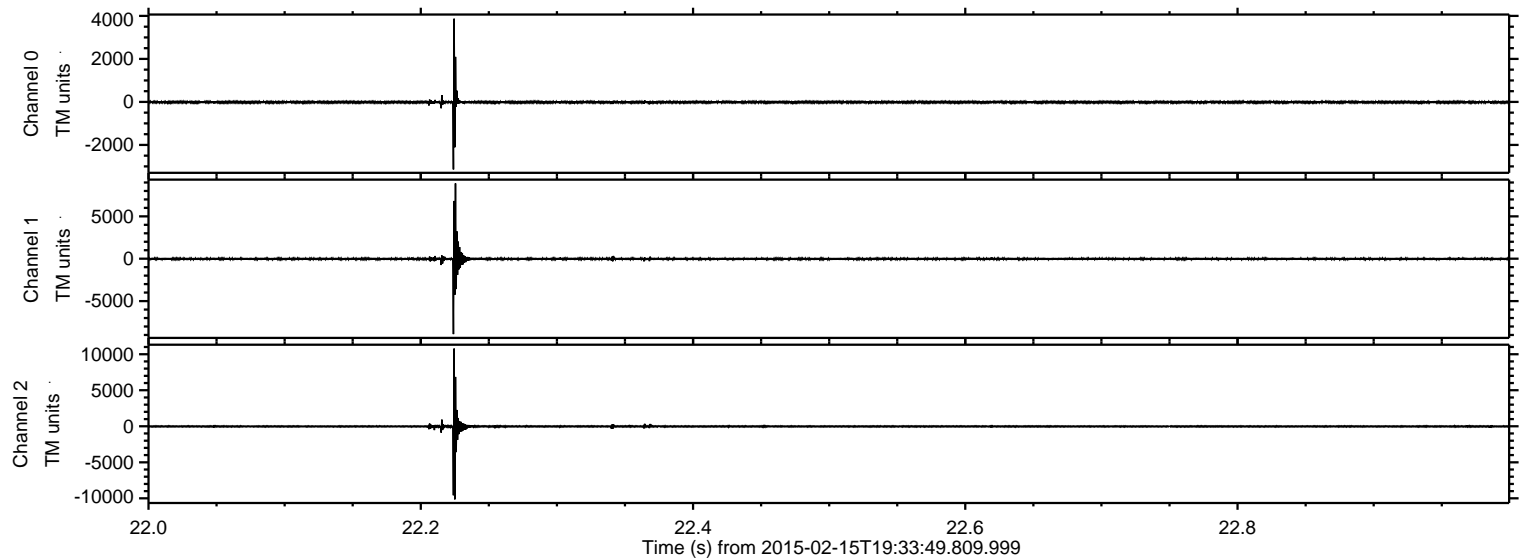
ELMAVAN 3D WAVEFORMS (Measured data sampled at 50 kHz) 49808 packets of 144 samples from 2015-02-15T19:33:49.809.999. Part 31/144

Processed Mon Feb 23 19:37:16 2015 by ELM ver.2012-10-06 from 001__elm20150215_193348__dat00.bin



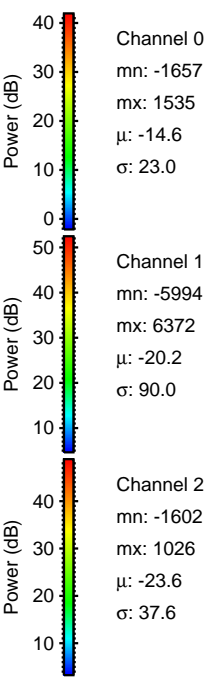
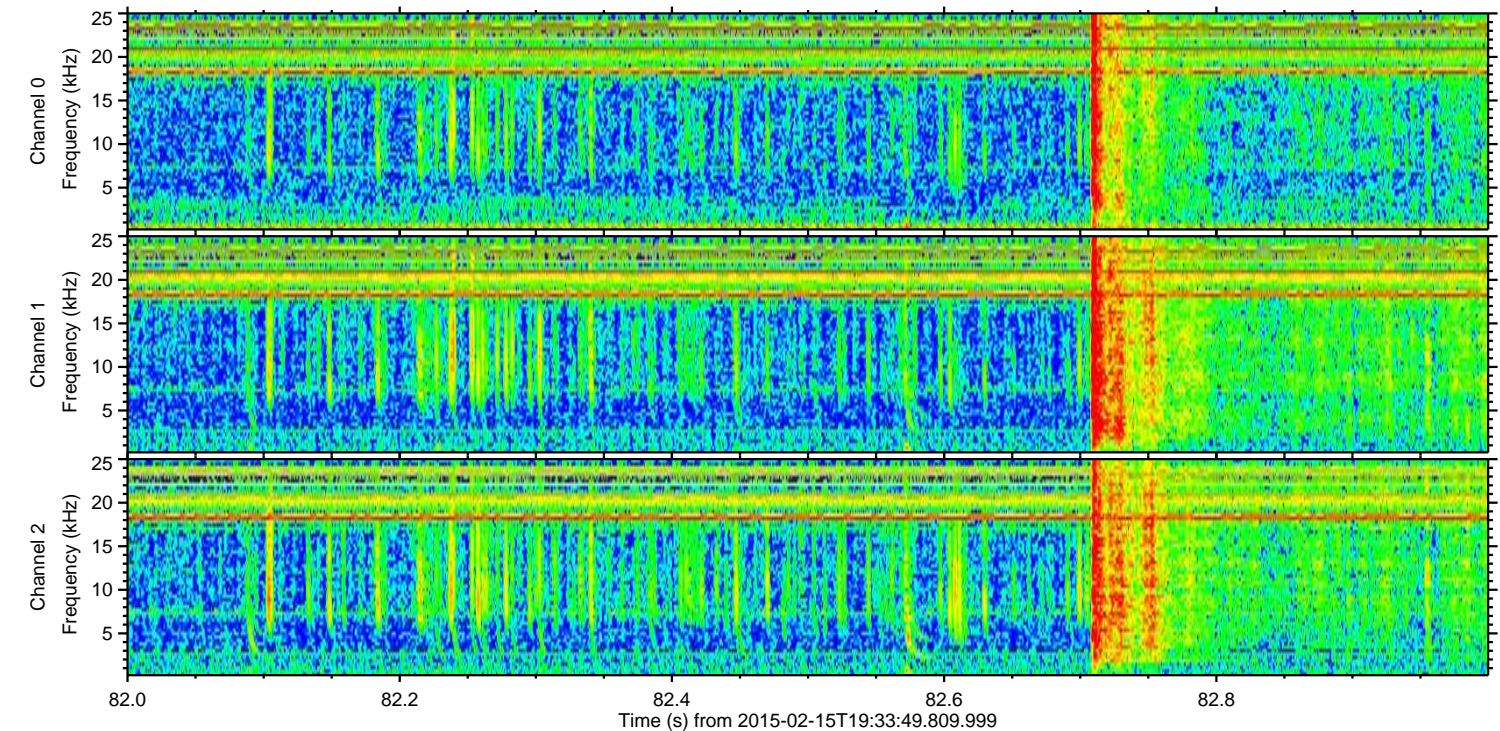
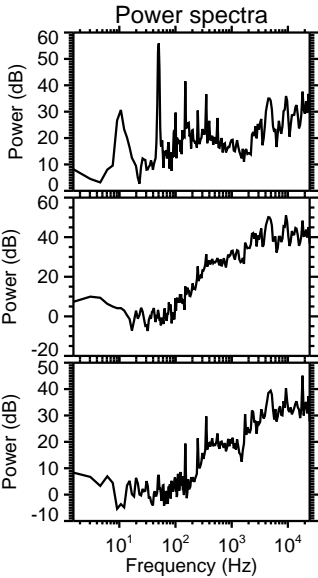
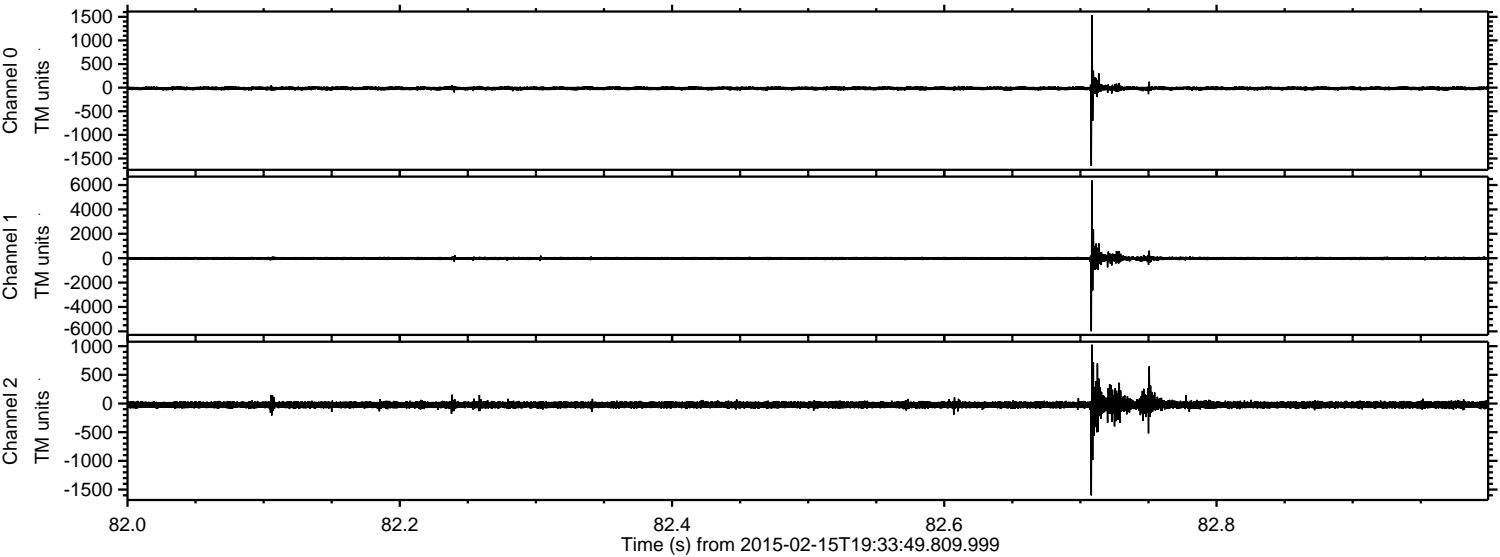
ELMAVAN 3D WAVEFORMS (Measured data sampled at 50 kHz) 49808 packets of 144 samples from 2015-02-15T19:33:49.809.999. Part 23/144

Processed Mon Feb 23 19:37:17 2015 by ELM ver.2012-10-06 from 001__elm20150215_193348__dat00.bin



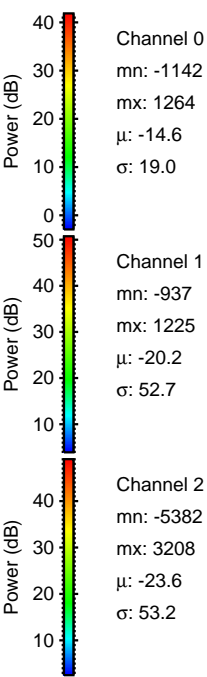
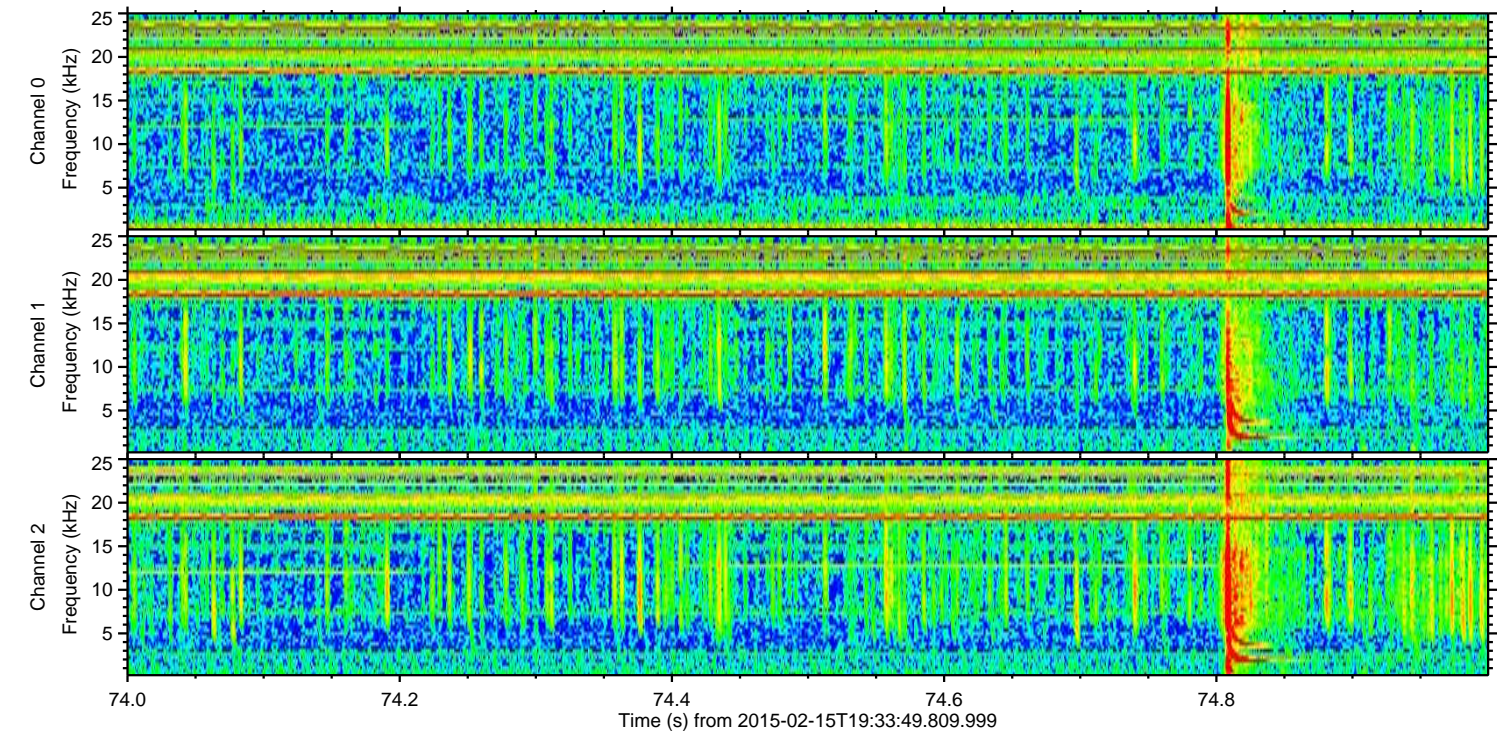
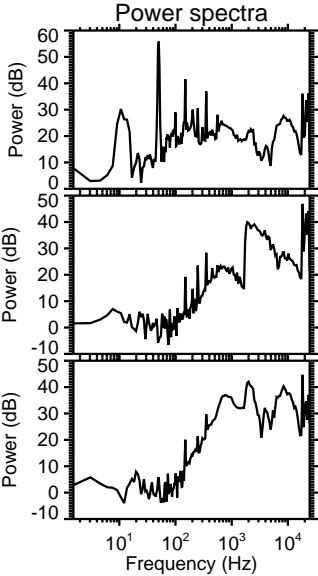
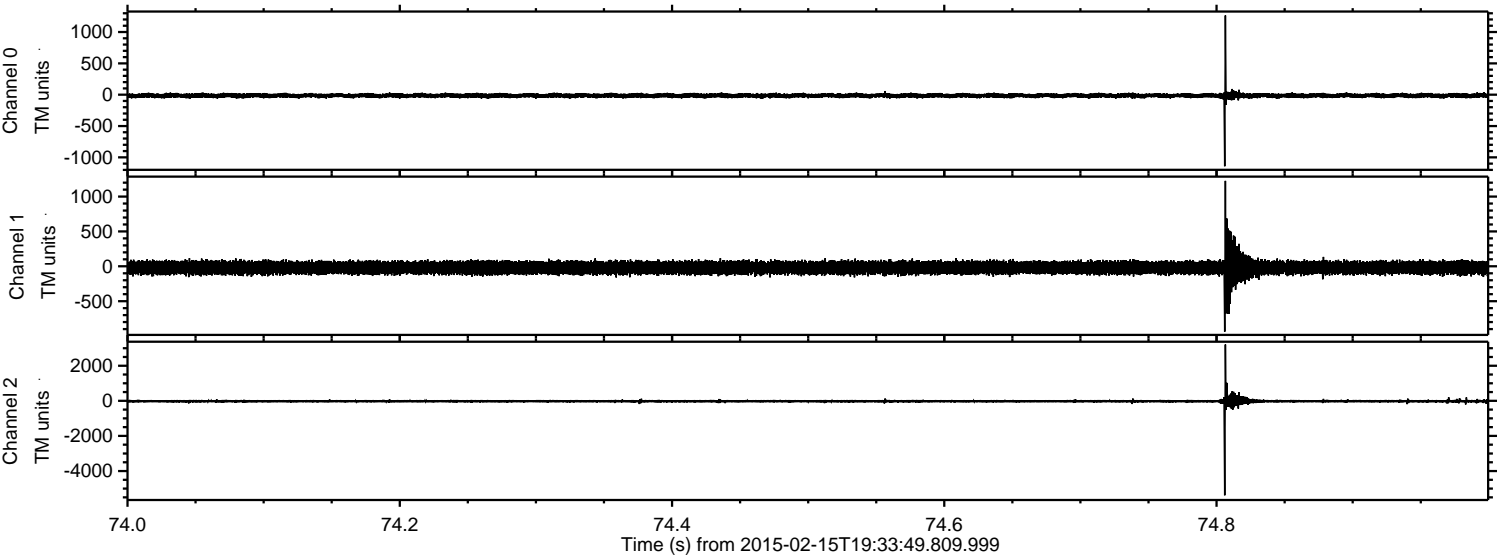
ELMAVAN 3D WAVEFORMS (Measured data sampled at 50 kHz) 49808 packets of 144 samples from 2015-02-15T19:33:49.809.999. Part 83/144

Processed Mon Feb 23 19:37:19 2015 by ELM ver.2012-10-06 from 001__elm20150215_193348__dat00.bin



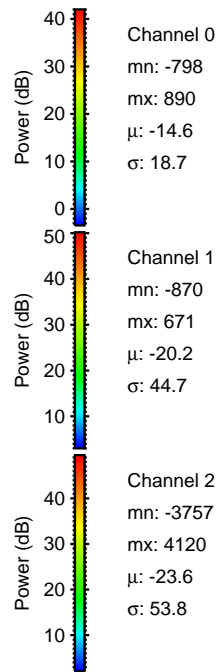
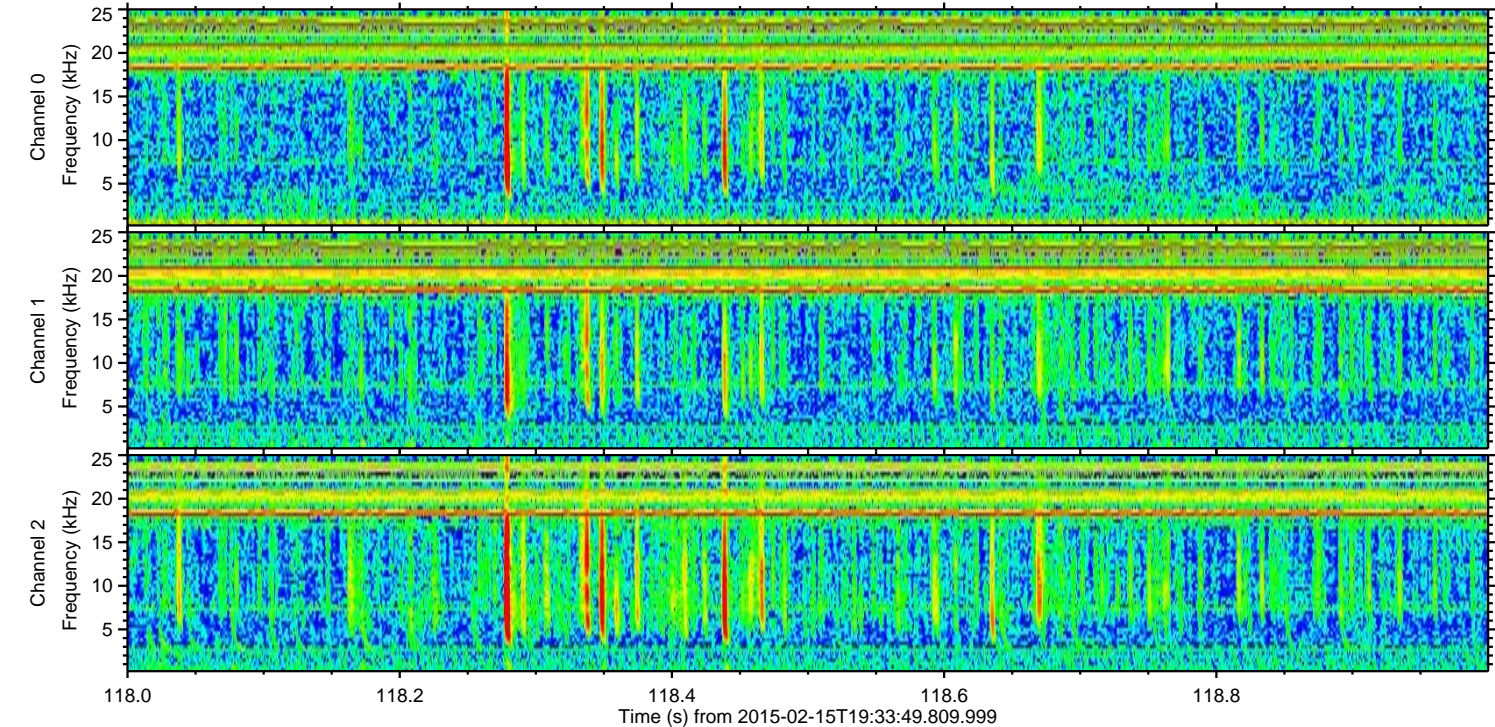
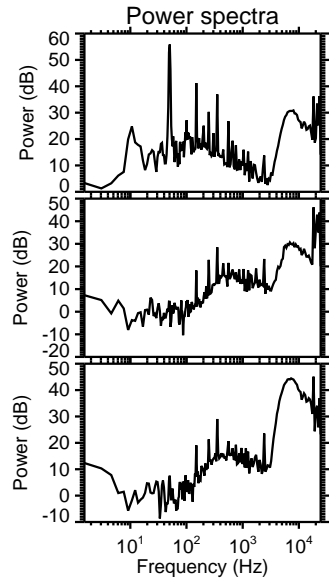
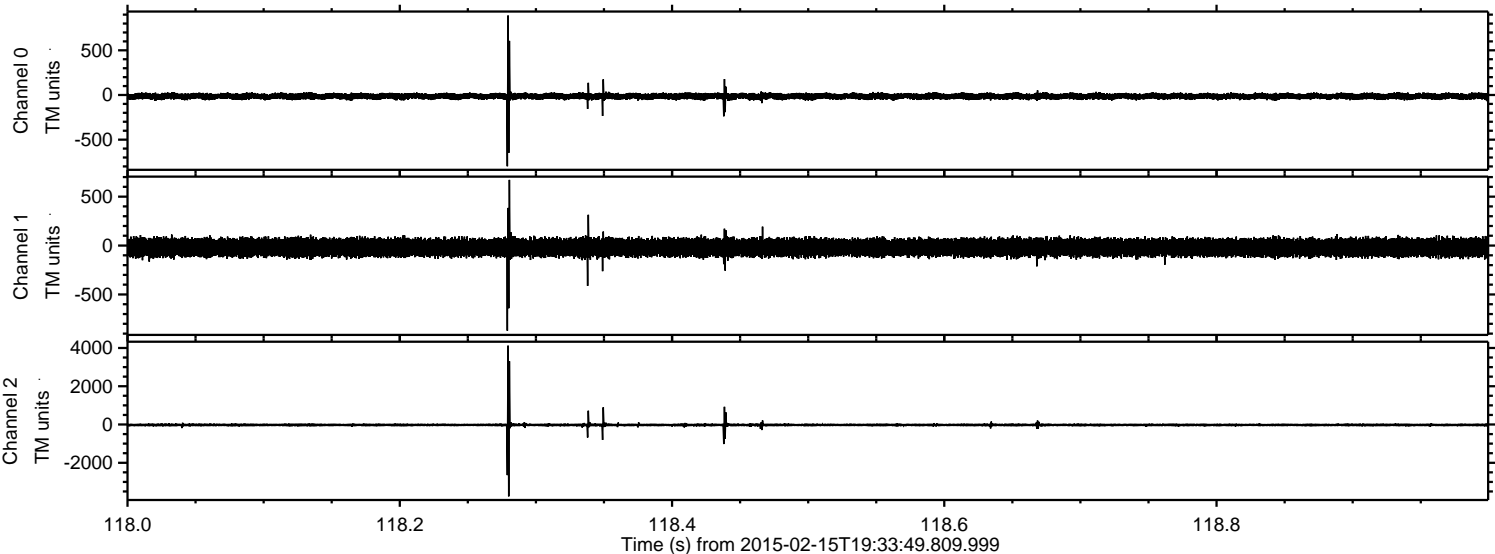
ELMAVAN 3D WAVEFORMS (Measured data sampled at 50 kHz) 49808 packets of 144 samples from 2015-02-15T19:33:49.809.999. Part 75/144

Processed Mon Feb 23 19:37:20 2015 by ELM ver.2012-10-06 from 001__elm20150215_193348__dat00.bin



ELMAVAN 3D WAVEFORMS (Measured data sampled at 50 kHz) 49808 packets of 144 samples from 2015-02-15T19:33:49.809.999. Part 119/144

Processed Mon Feb 23 19:37:21 2015 by ELM ver.2012-10-06 from 001__elm20150215_193348__dat00.bin

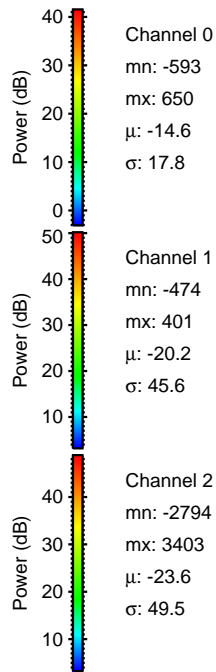
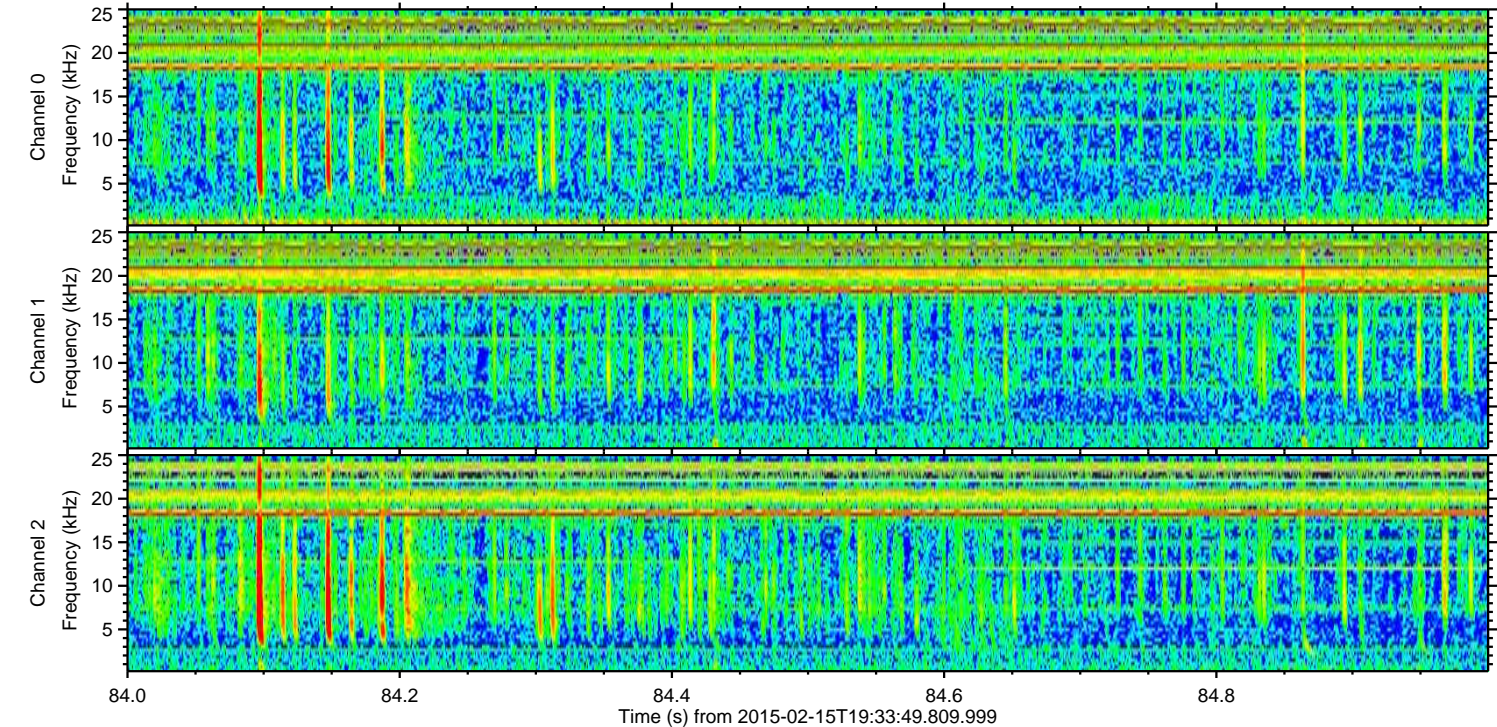
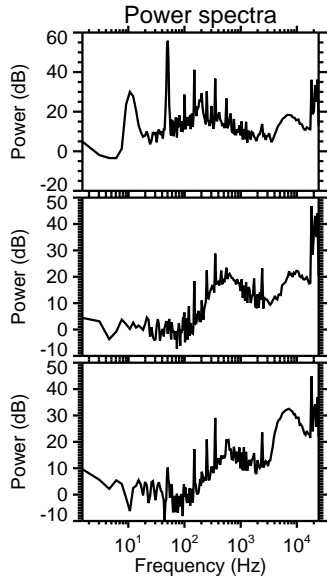
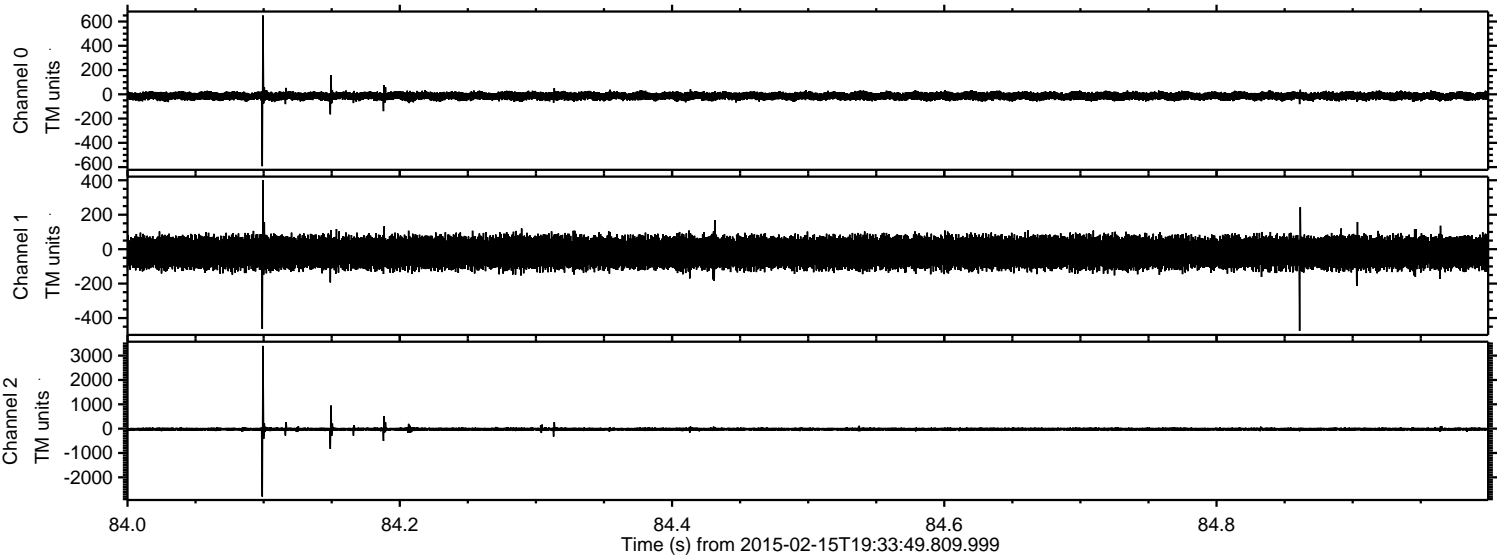


Channel 0
mn: -798
mx: 890
 μ : -14.6
 σ : 18.7

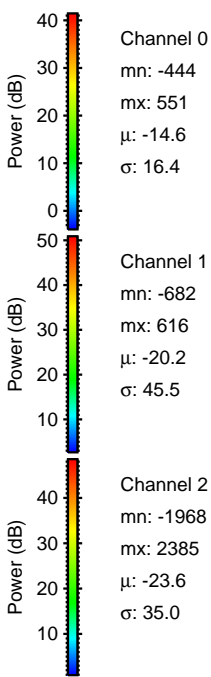
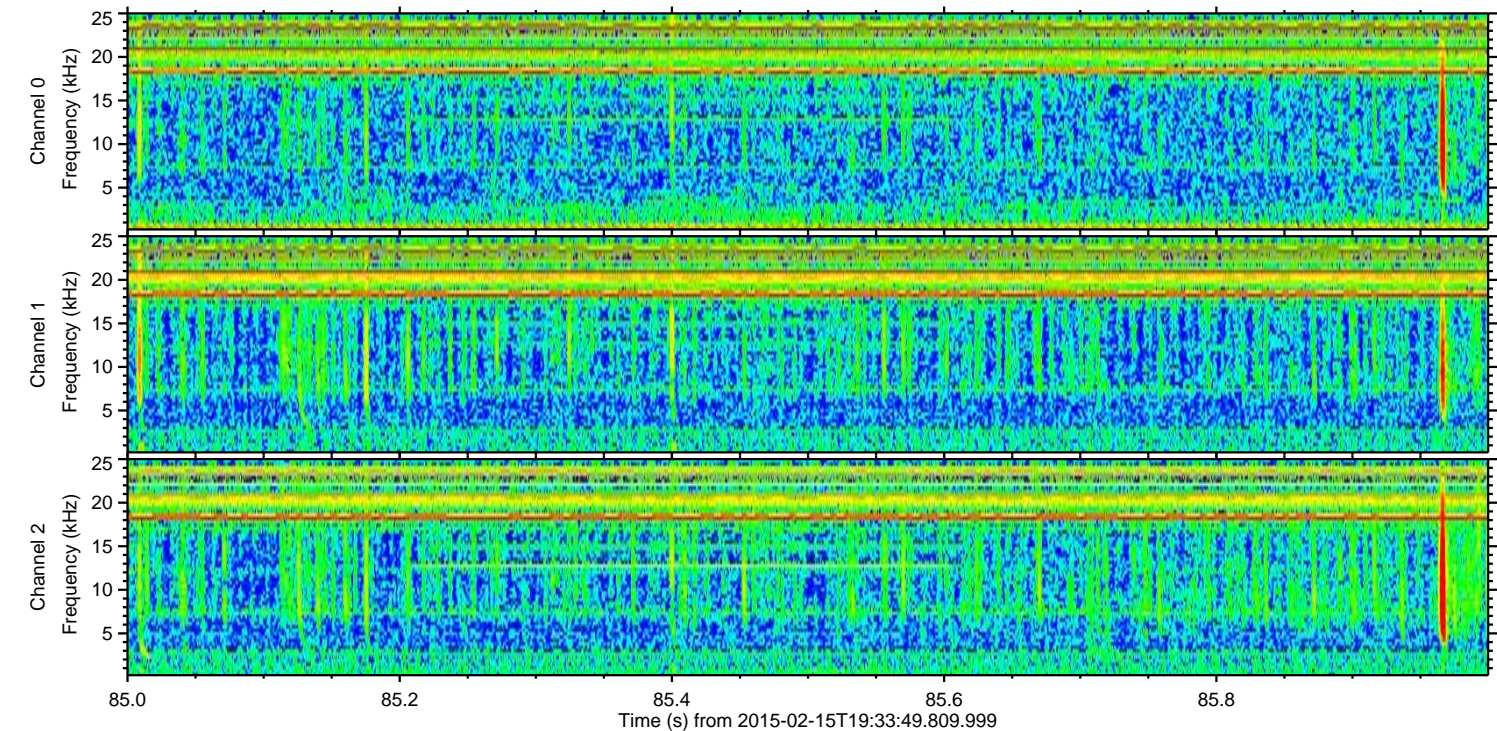
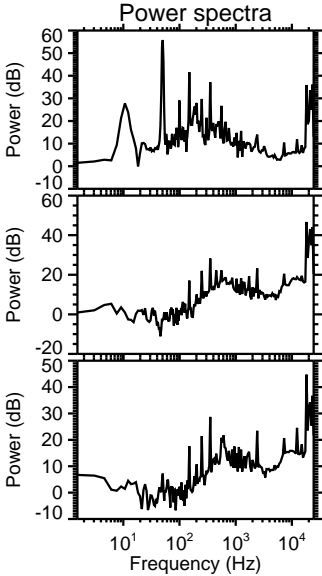
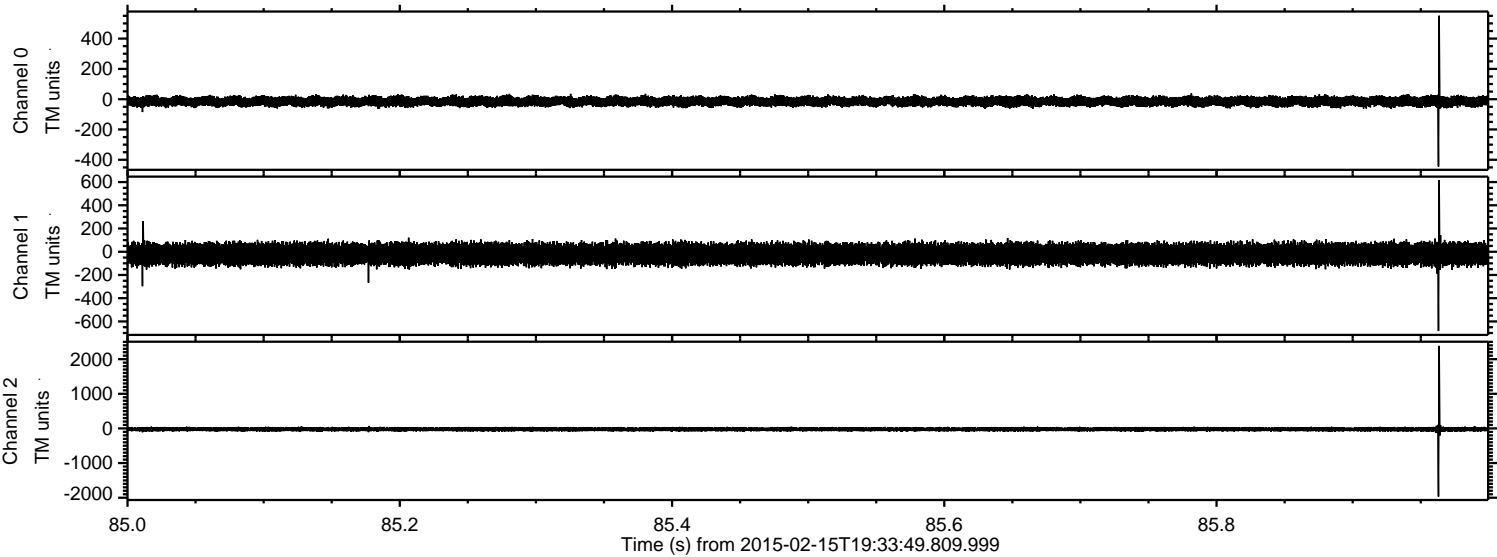
Channel 1
mn: -870
mx: 671
 μ : -20.2
 σ : 44.7

Channel 2
mn: -3757
mx: 4120
 μ : -23.6
 σ : 53.8

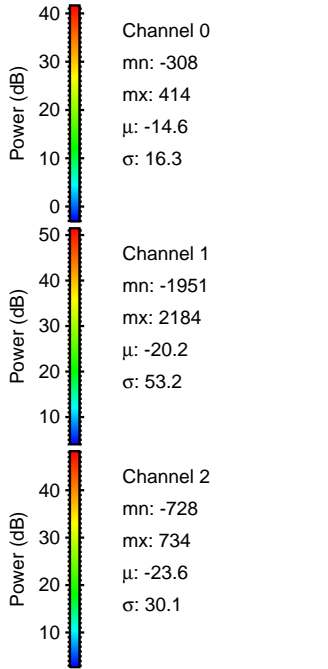
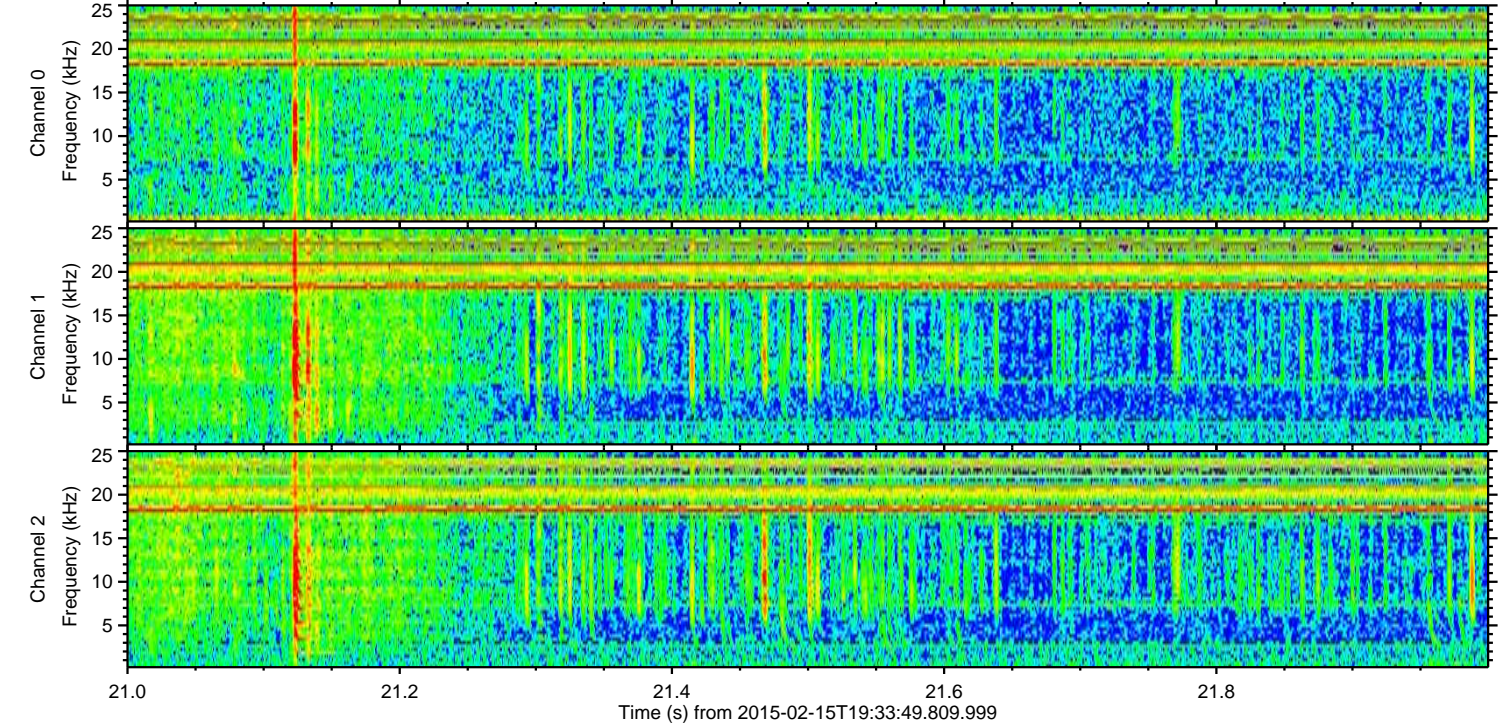
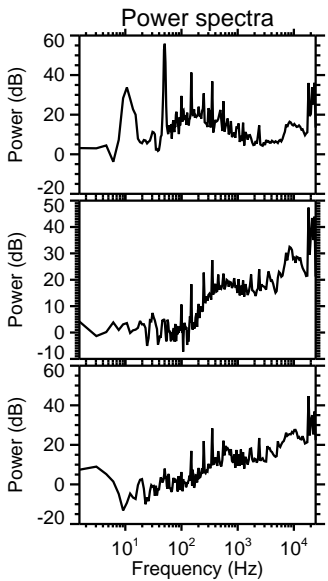
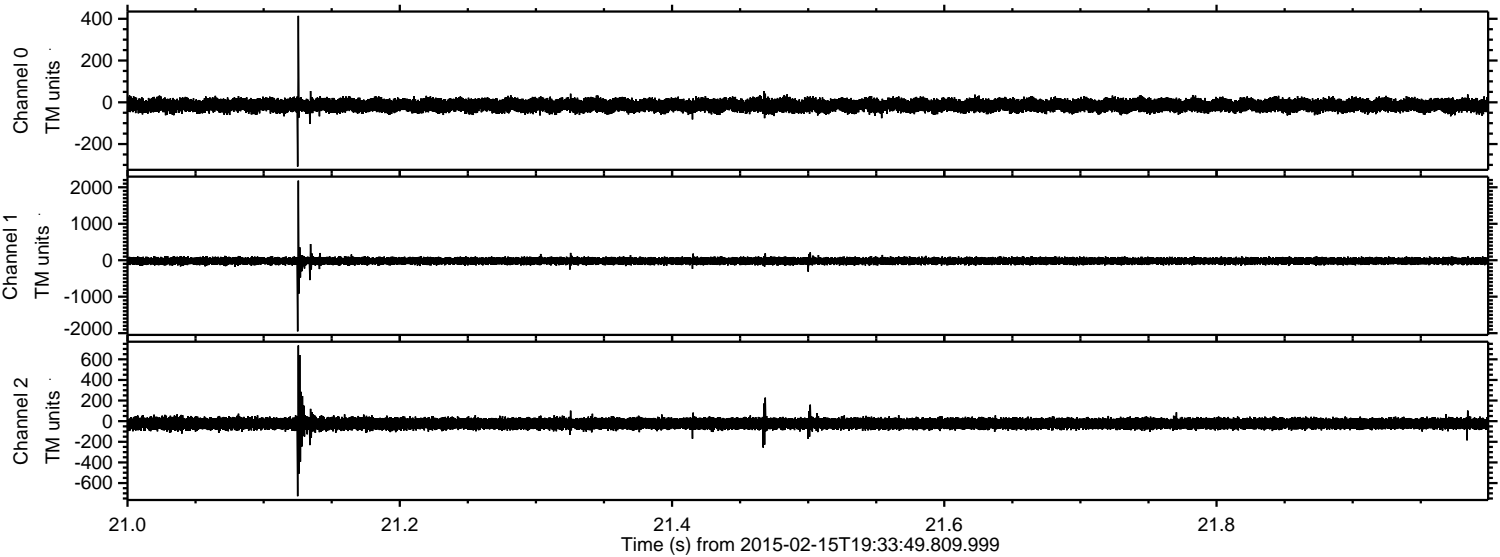
Processed Mon Feb 23 19:37:22 2015 by ELM ver.2012-10-06 from 001__elm20150215_193348__dat00.bin



Processed Mon Feb 23 19:37:23 2015 by ELM ver.2012-10-06 from 001__elm20150215_193348__dat00.bin



Processed Mon Feb 23 19:37:24 2015 by ELM ver.2012-10-06 from 001__elm20150215_193348__dat00.bin



Processed Mon Feb 23 19:37:25 2015 by ELM ver.2012-10-06 from 001__elm20150215_193348__dat00.bin

