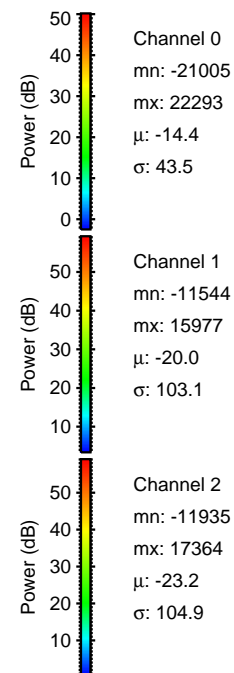
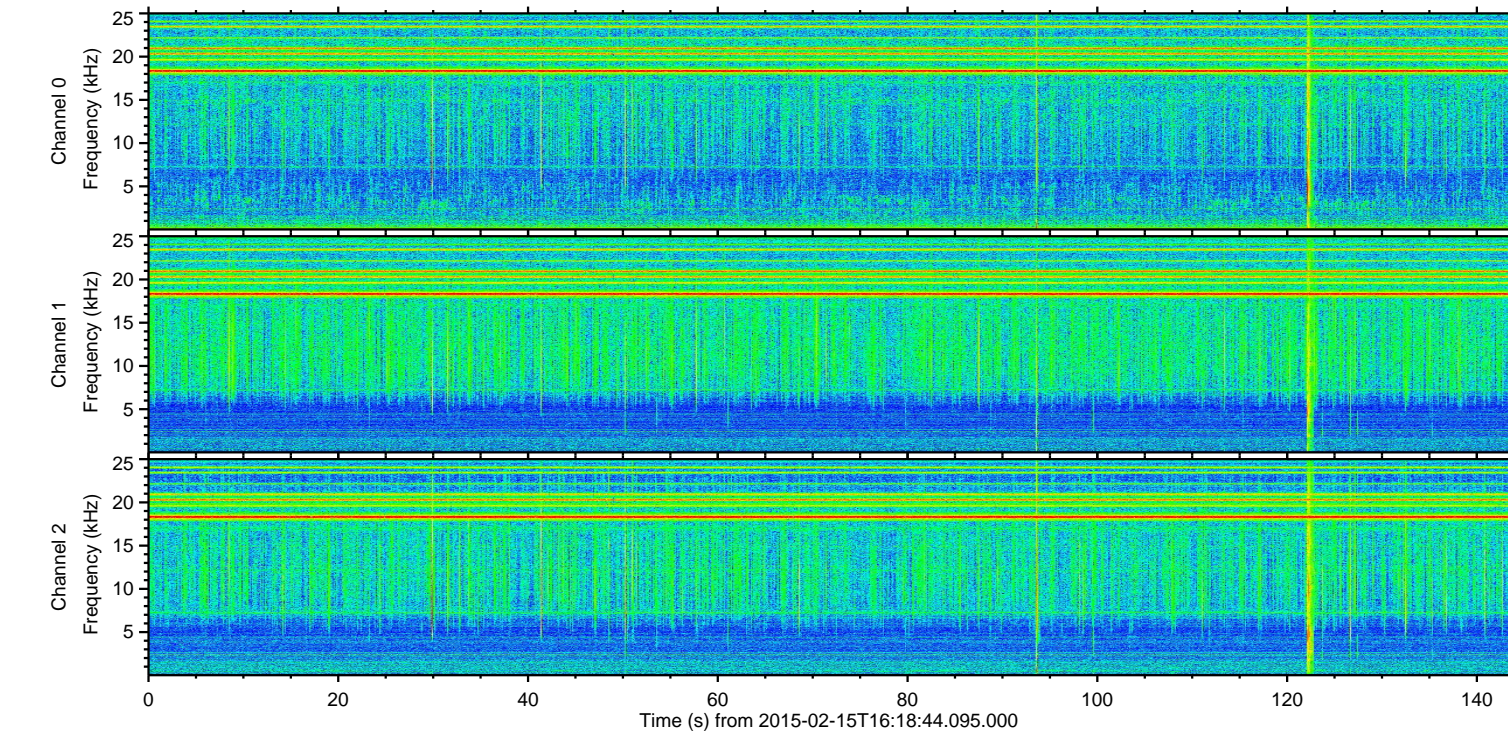
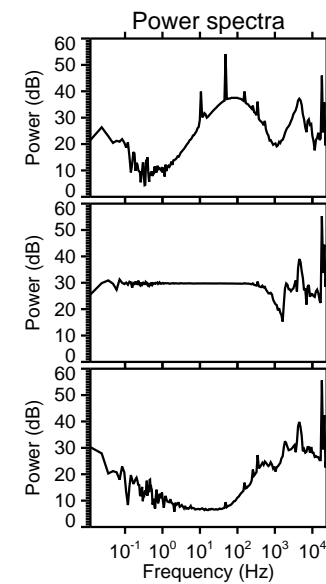
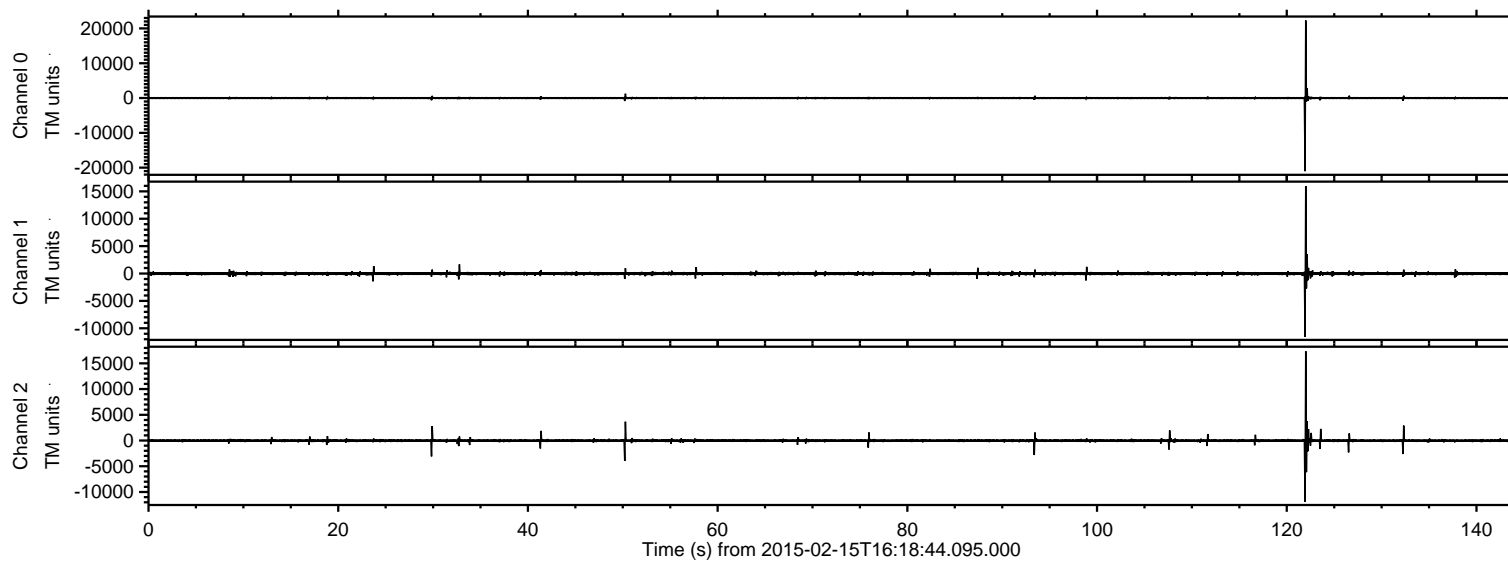


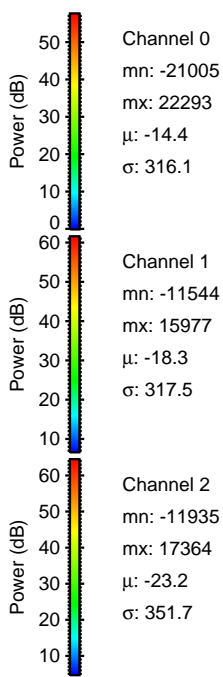
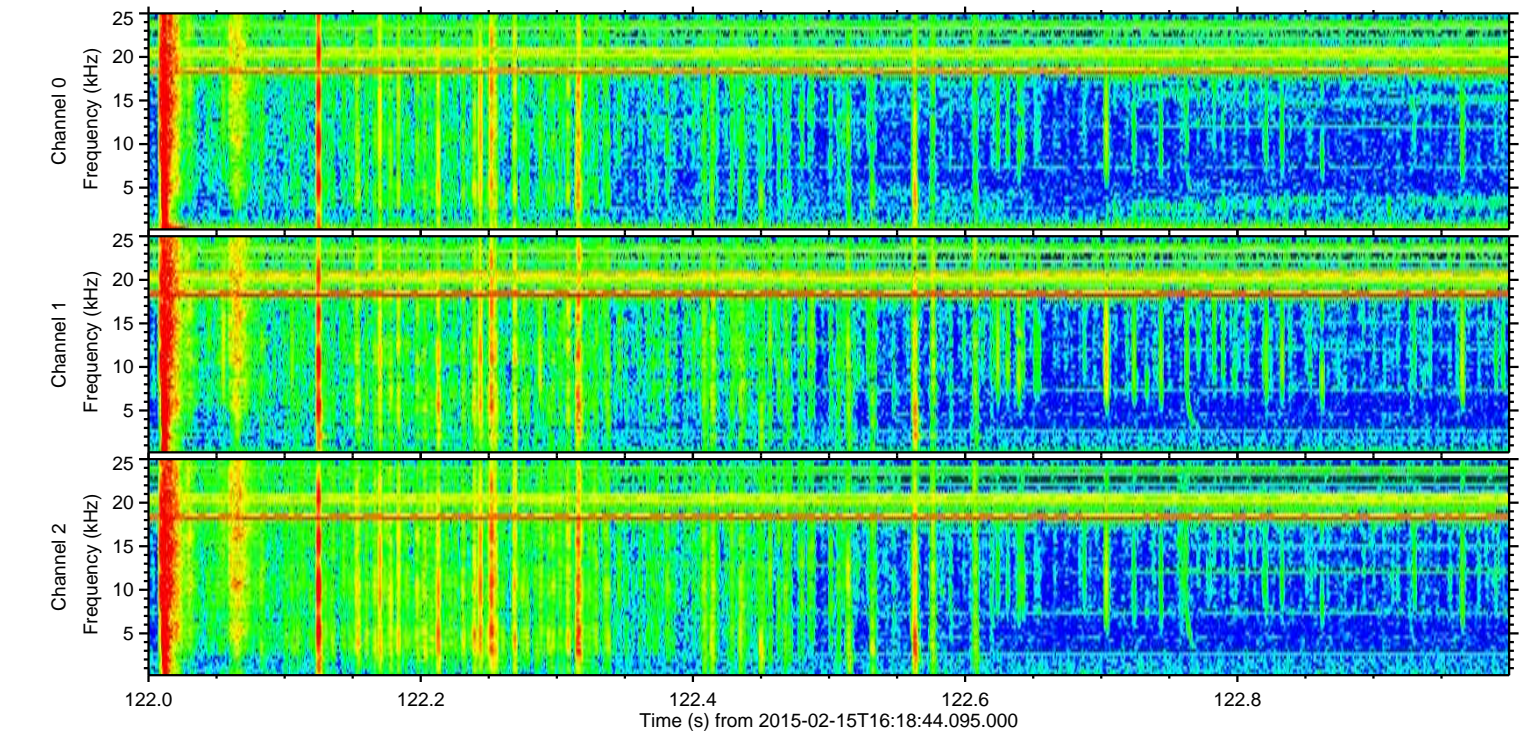
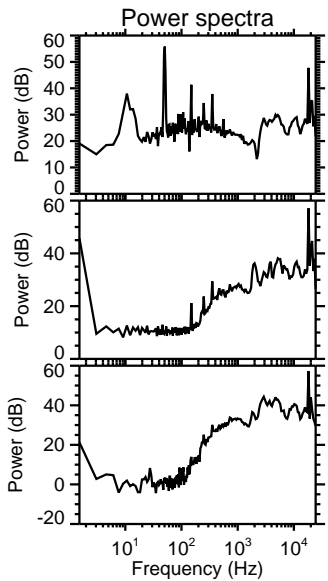
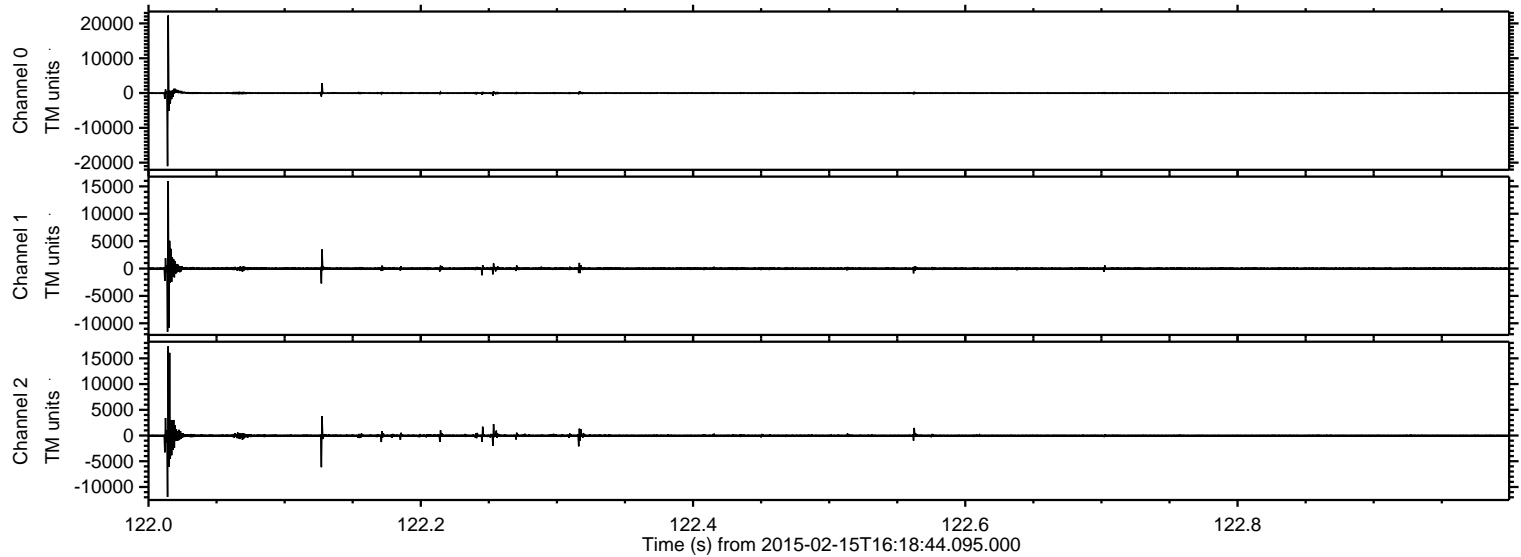
ELMAVAN 3D WAVEFORMS (Measured data sampled at 50 kHz) 49807 packets of 144 samples from 2015-02-15T16:18:44.095.000.

Processed Mon Feb 23 17:45:23 2015 by ELM ver.2012-10-06 from 001__elm20150215_161843__dat00.bin

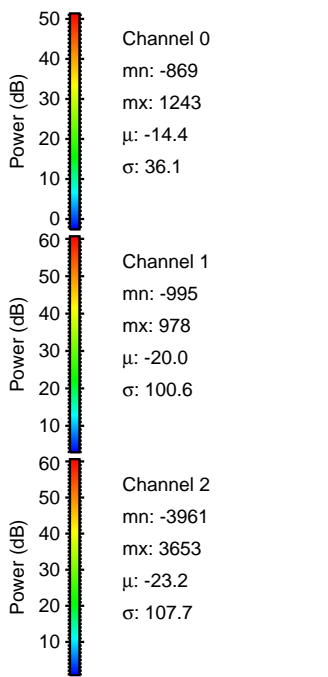
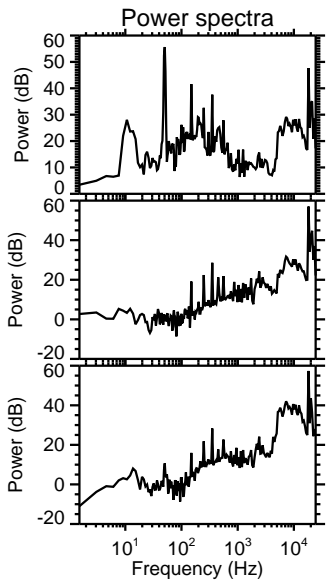
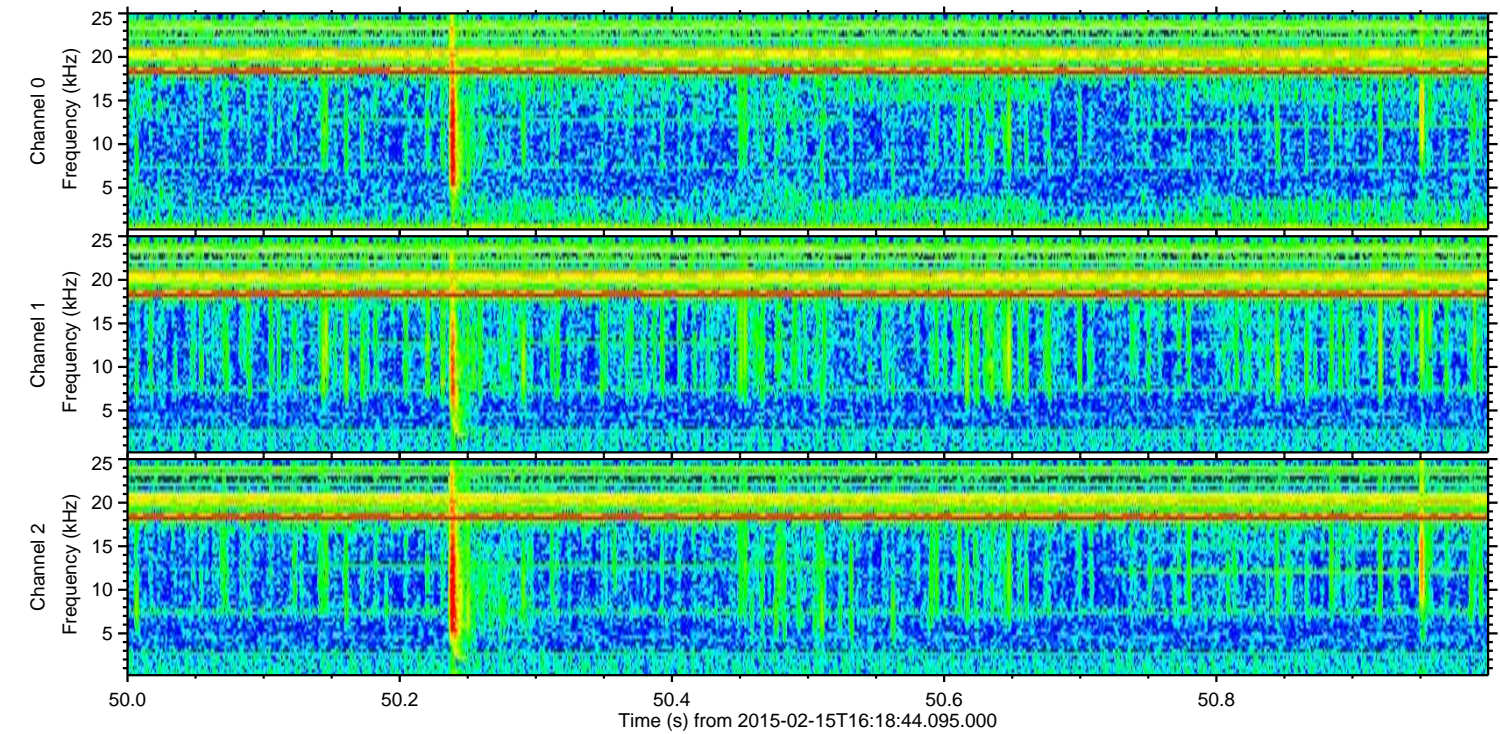
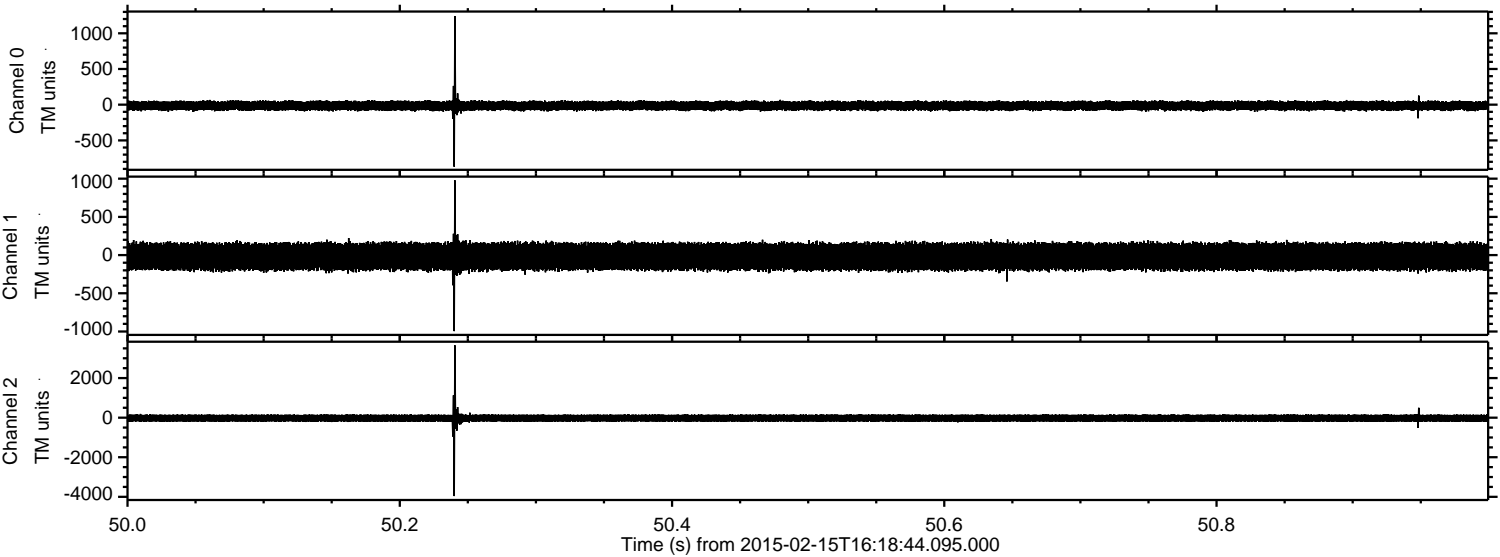


ELMAVAN 3D WAVEFORMS (Measured data sampled at 50 kHz) 49807 packets of 144 samples from 2015-02-15T16:18:44.095.000. Part 123/144

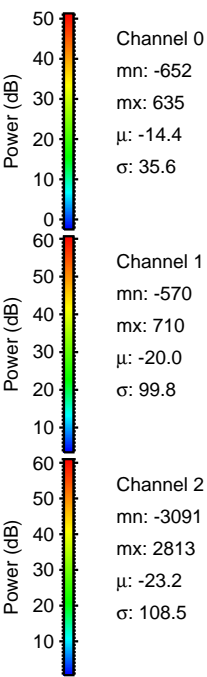
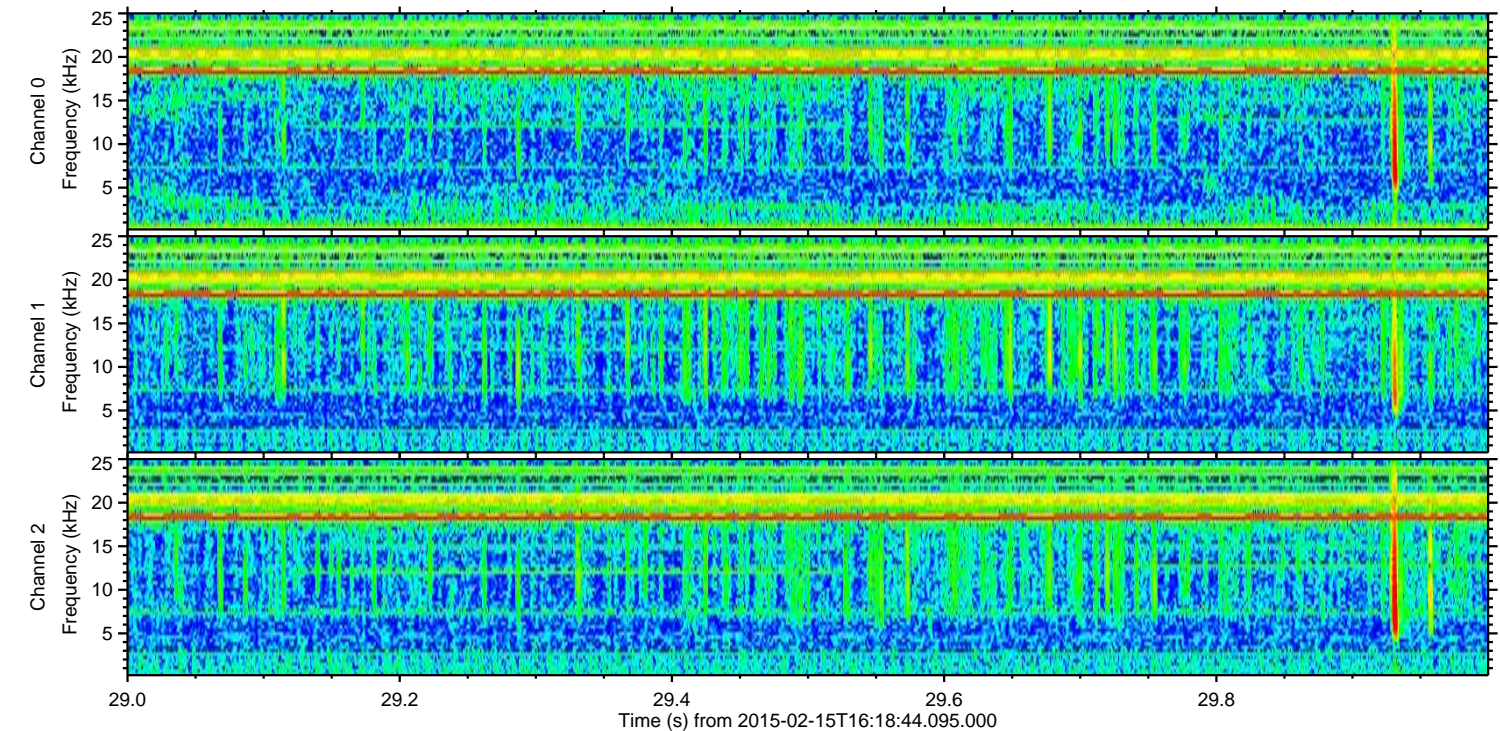
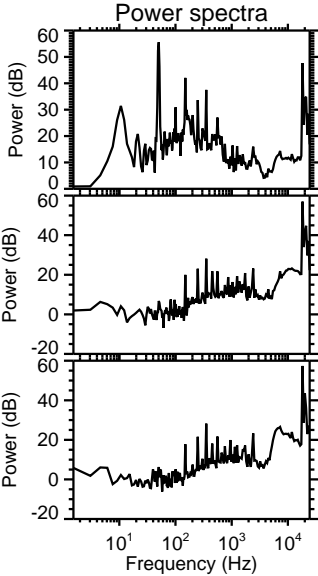
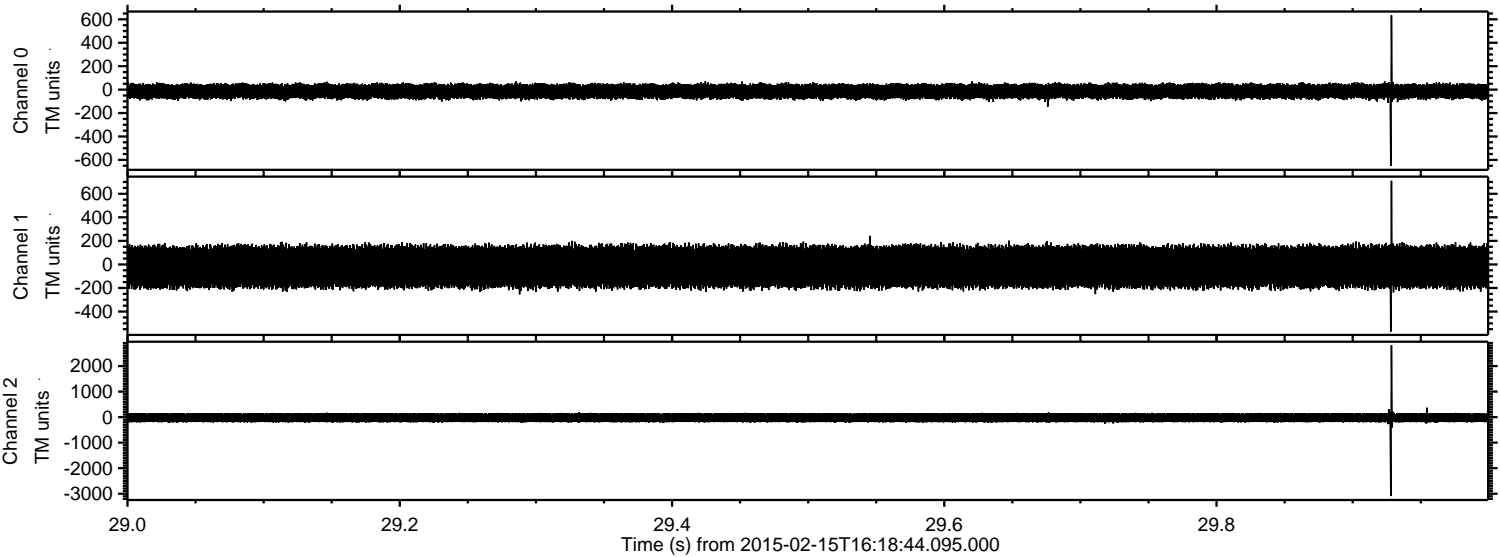
Processed Mon Feb 23 17:45:40 2015 by ELM ver.2012-10-06 from 001__elm20150215_161843__dat00.bin



Processed Mon Feb 23 17:45:41 2015 by ELM ver.2012-10-06 from 001__elm20150215_161843__dat00.bin

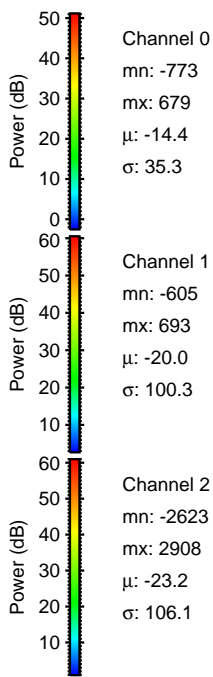
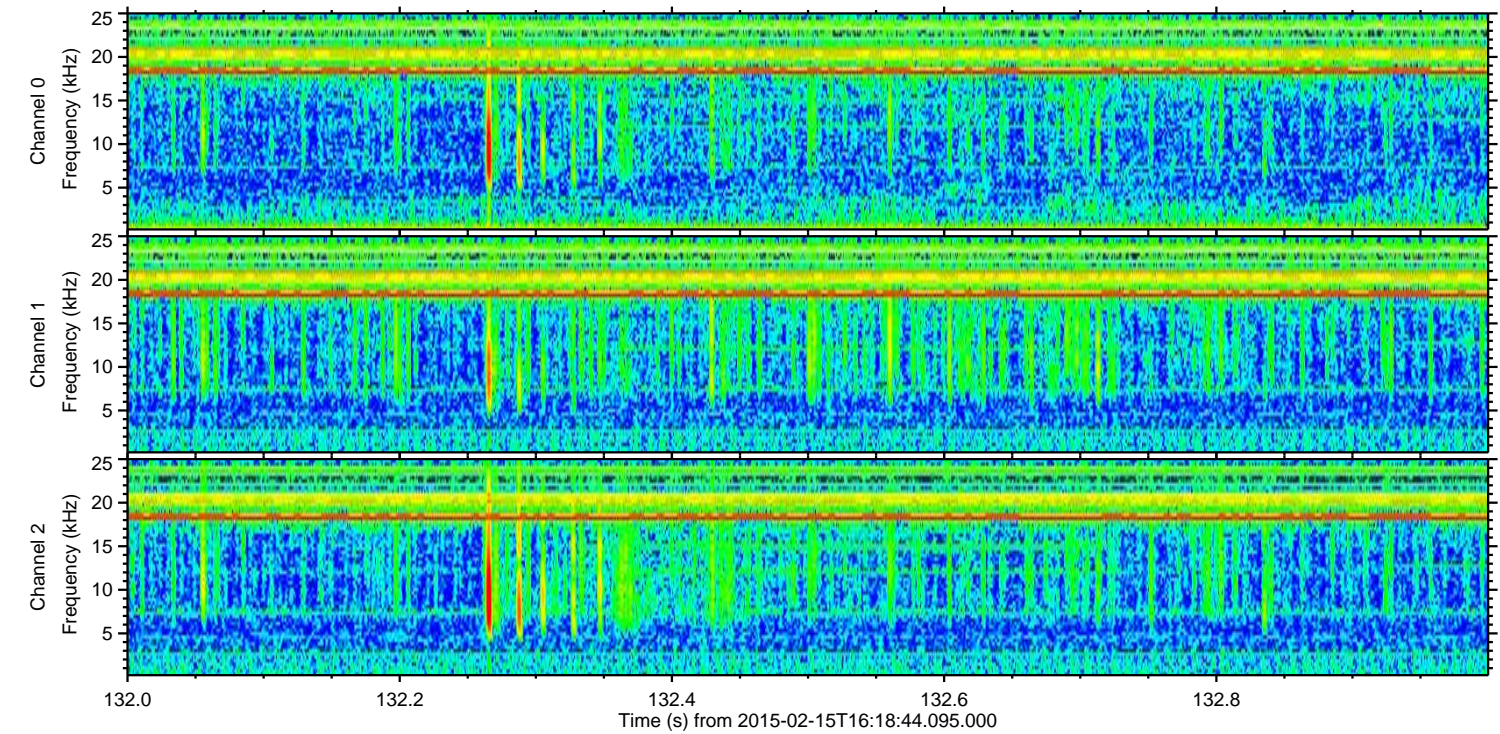
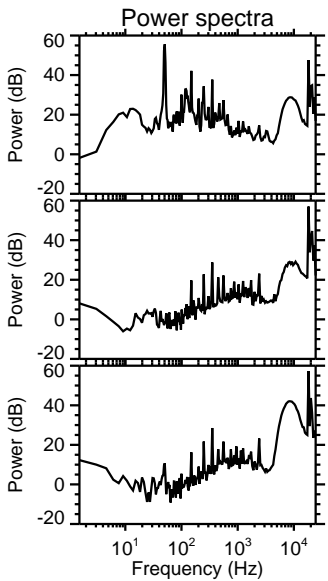
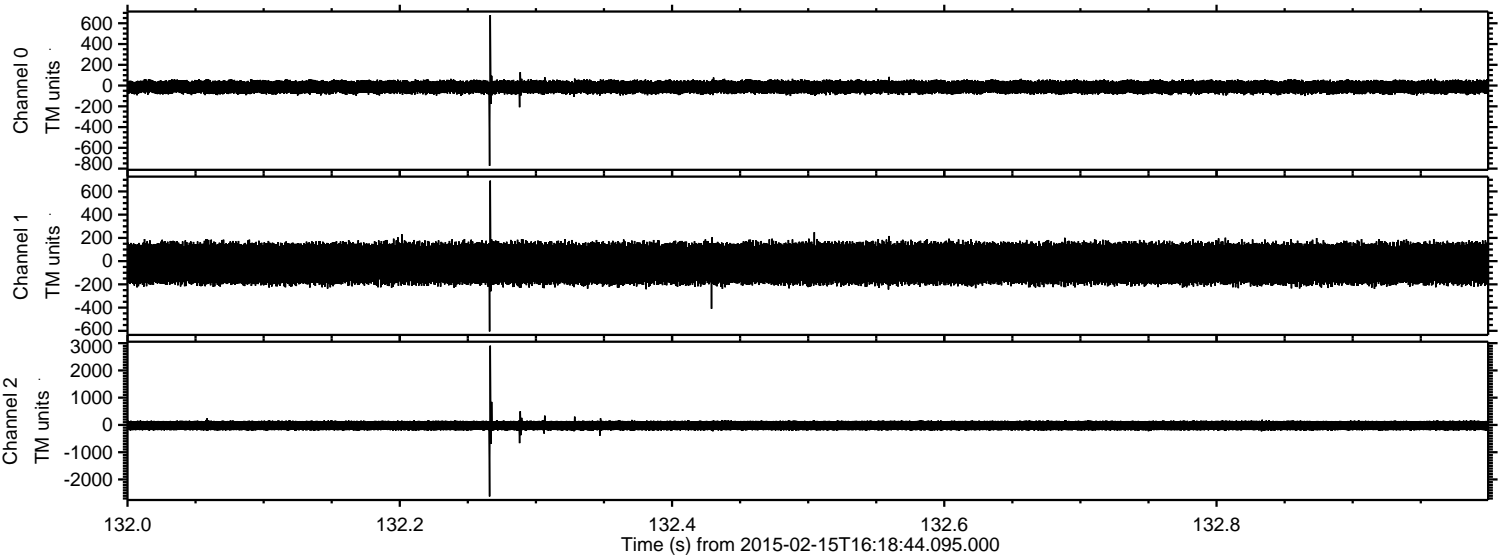


Processed Mon Feb 23 17:45:42 2015 by ELM ver.2012-10-06 from 001__elm20150215_161843__dat00.bin

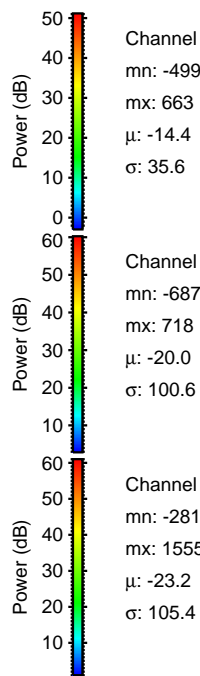
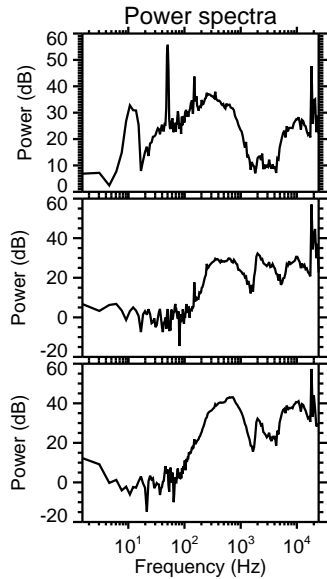
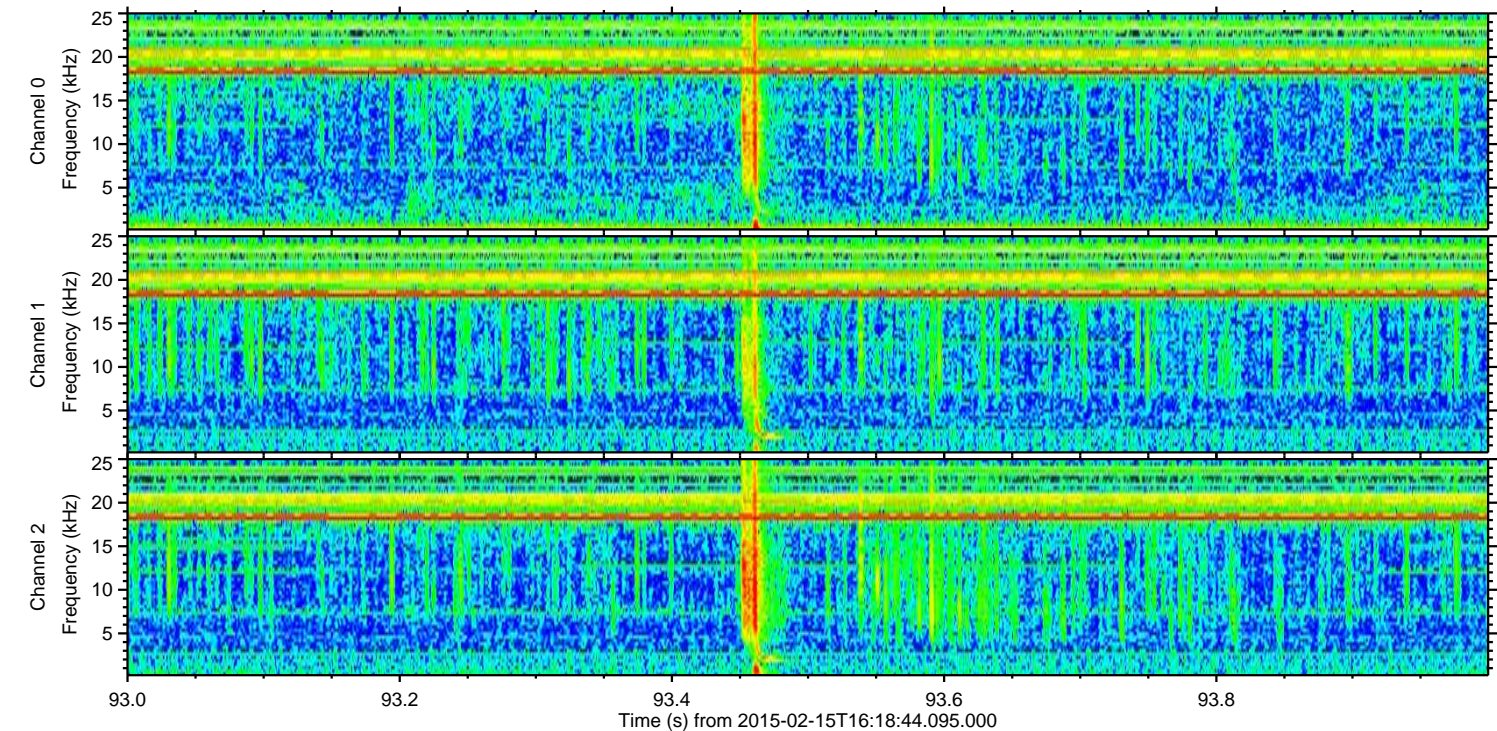
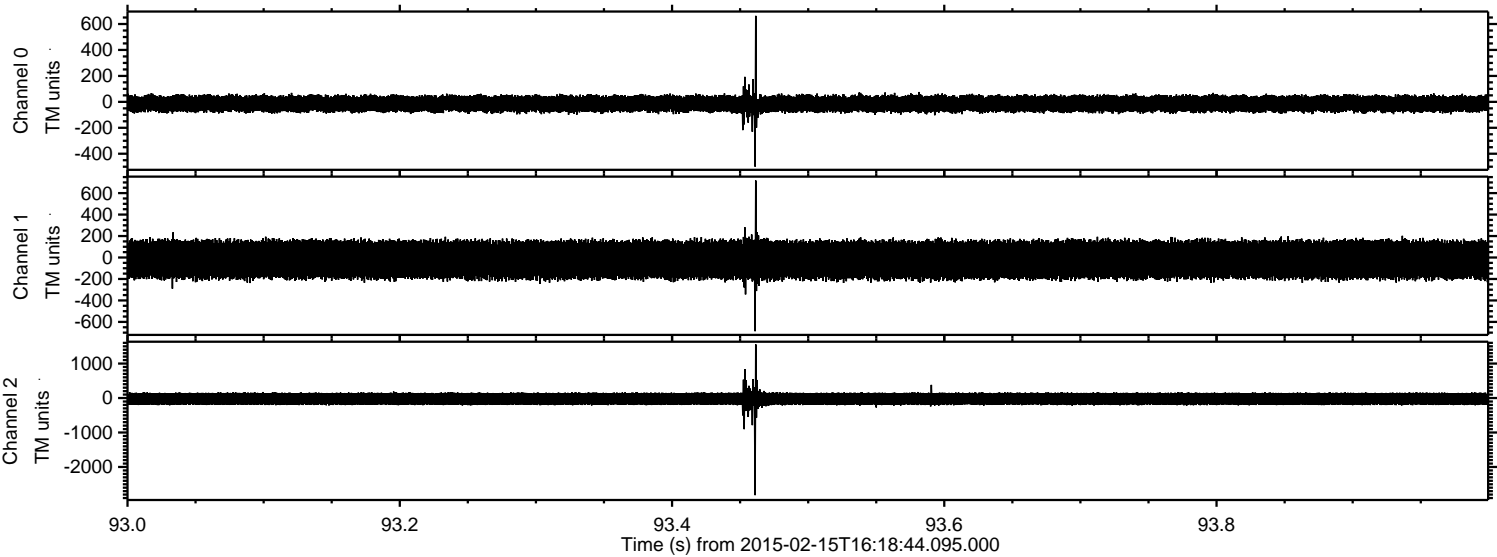


ELMAVAN 3D WAVEFORMS (Measured data sampled at 50 kHz) 49807 packets of 144 samples from 2015-02-15T16:18:44.095.000. Part 133/144

Processed Mon Feb 23 17:45:43 2015 by ELM ver.2012-10-06 from 001__elm20150215_161843__dat00.bin

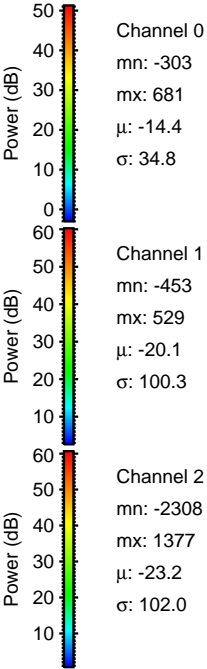
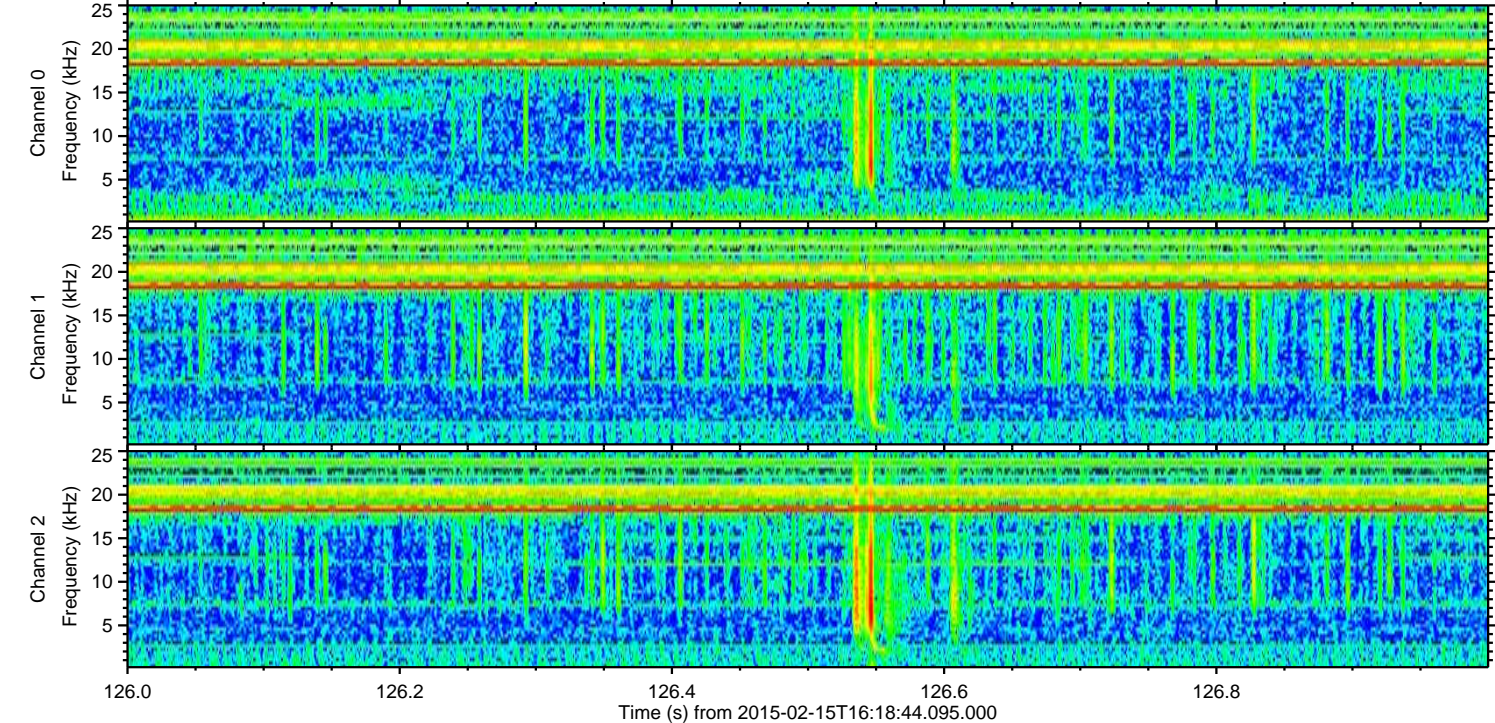
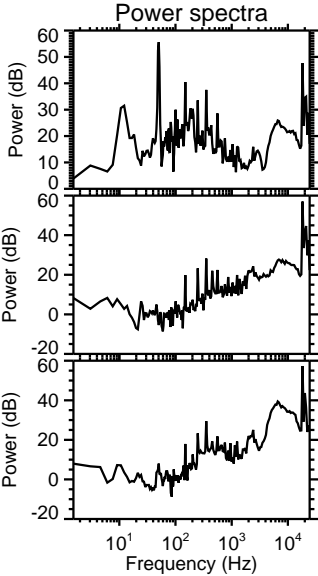
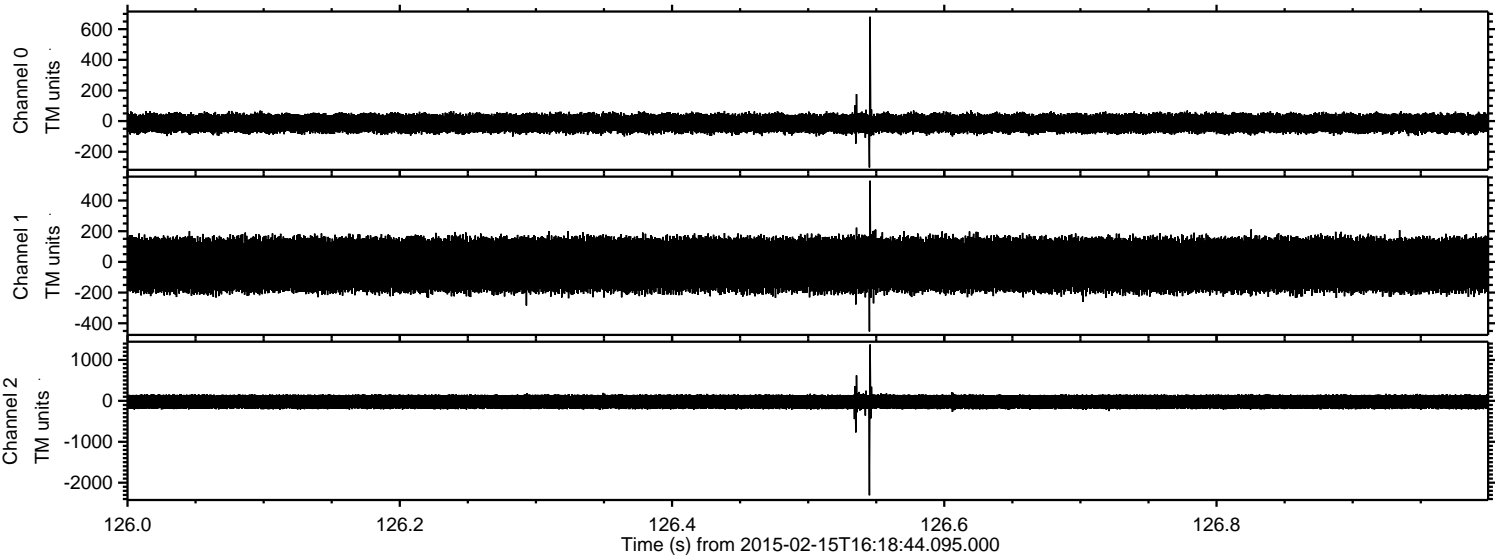


Processed Mon Feb 23 17:45:45 2015 by ELM ver.2012-10-06 from 001__elm20150215_161843__dat00.bin



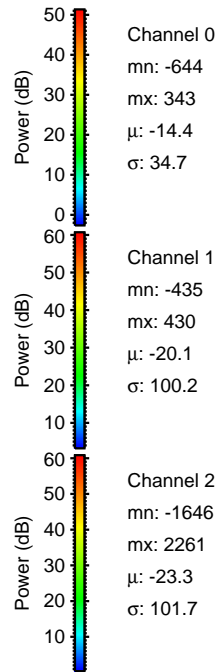
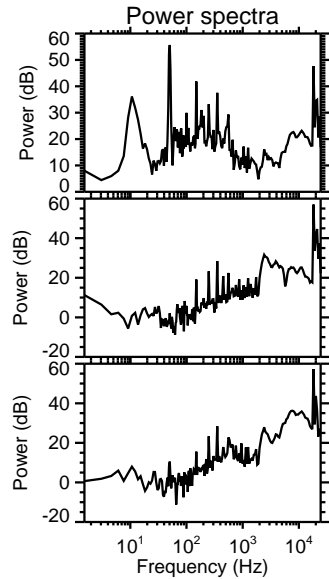
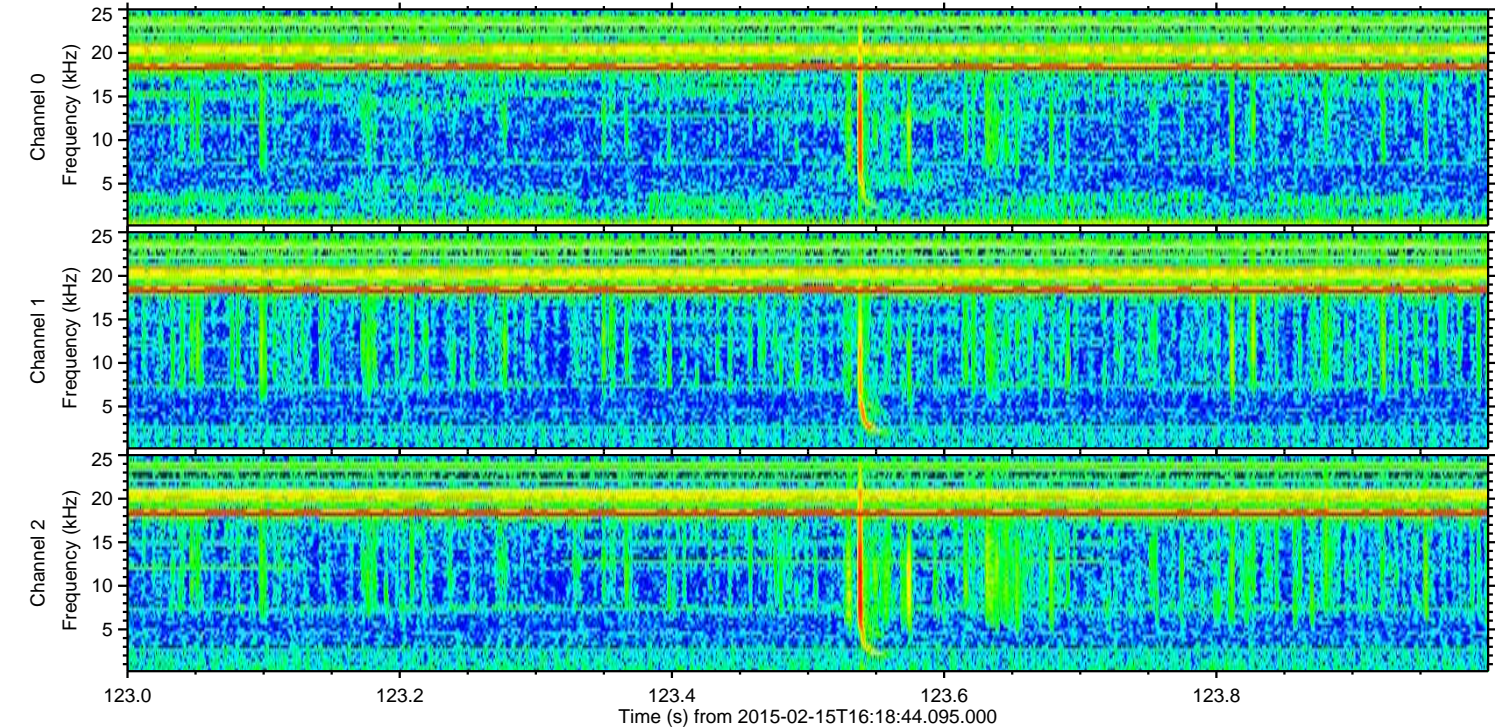
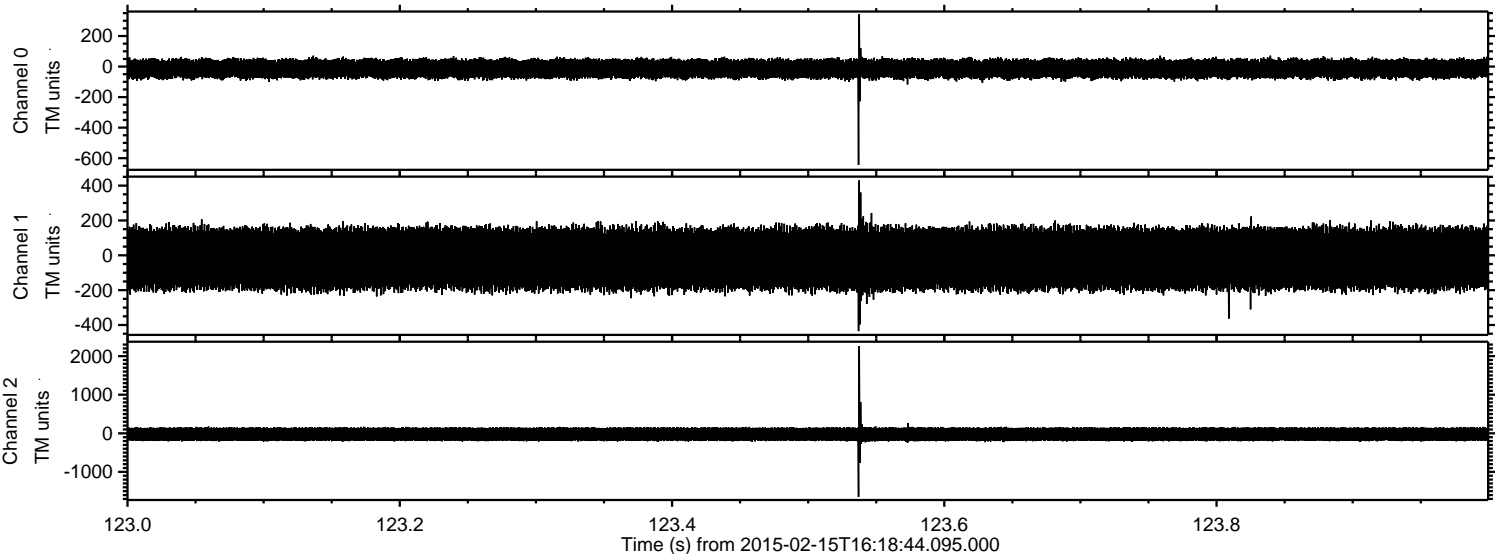
ELMAVAN 3D WAVEFORMS (Measured data sampled at 50 kHz) 49807 packets of 144 samples from 2015-02-15T16:18:44.095.000. Part 127/144

Processed Mon Feb 23 17:45:47 2015 by ELM ver.2012-10-06 from 001__elm20150215_161843__dat00.bin



ELMAVAN 3D WAVEFORMS (Measured data sampled at 50 kHz) 49807 packets of 144 samples from 2015-02-15T16:18:44.095.000. Part 124/144

Processed Mon Feb 23 17:45:49 2015 by ELM ver.2012-10-06 from 001__elm20150215_161843__dat00.bin

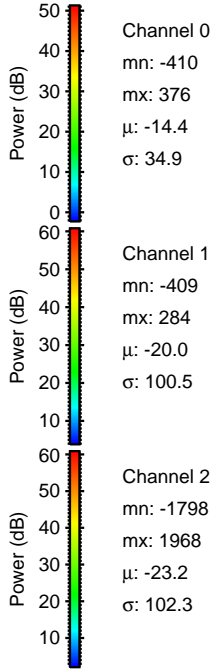
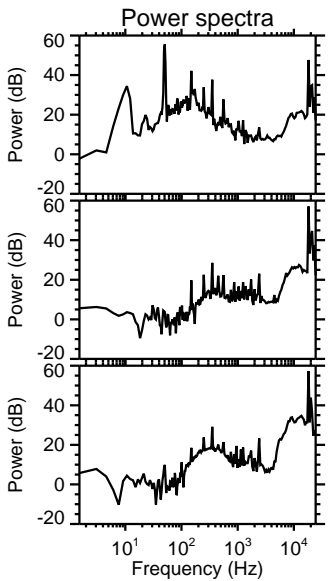
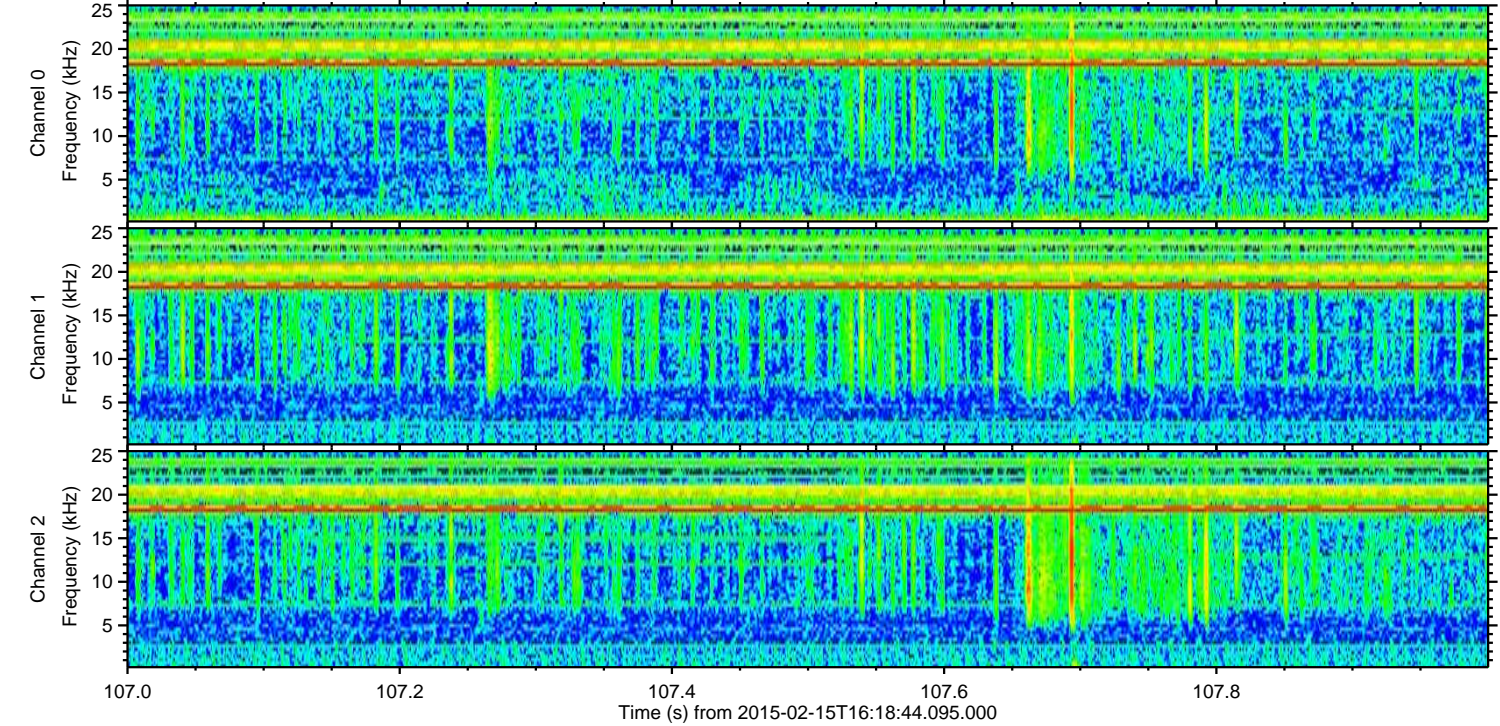
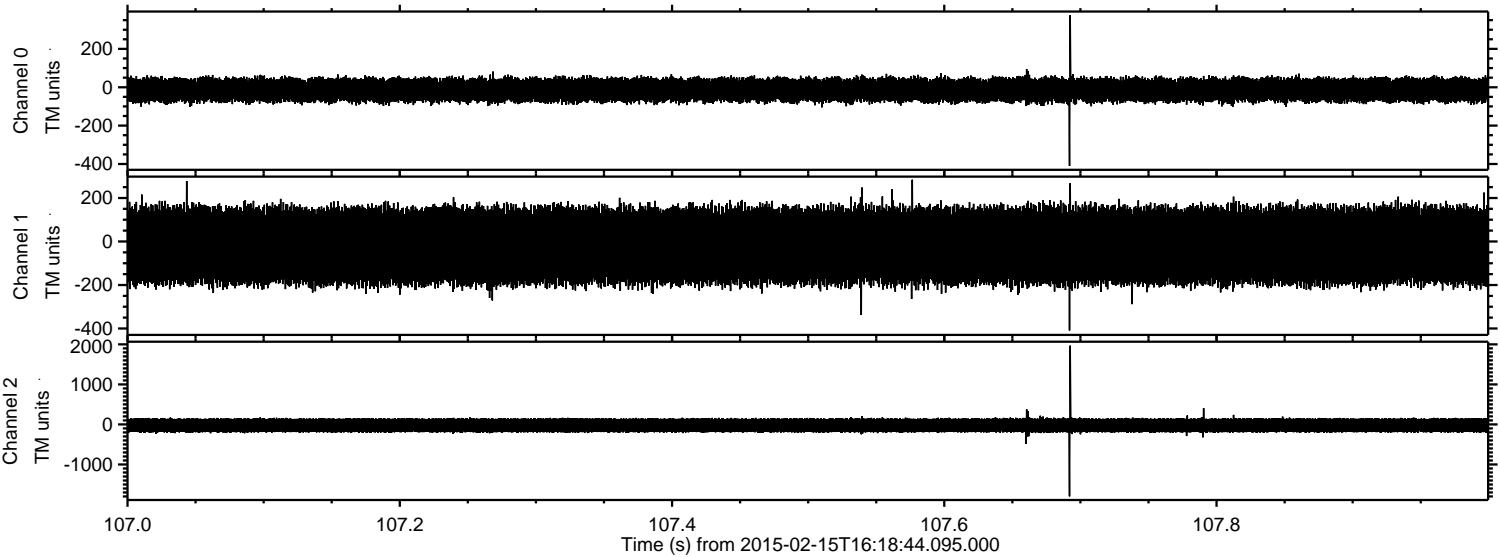


Channel 0
mn: -644
mx: 343
 μ : -14.4
 σ : 34.7

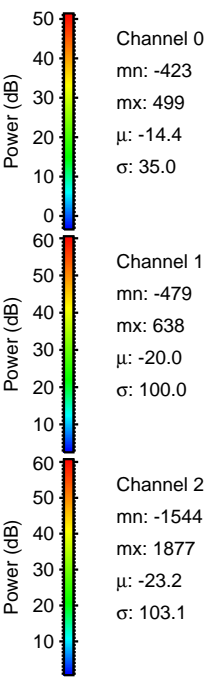
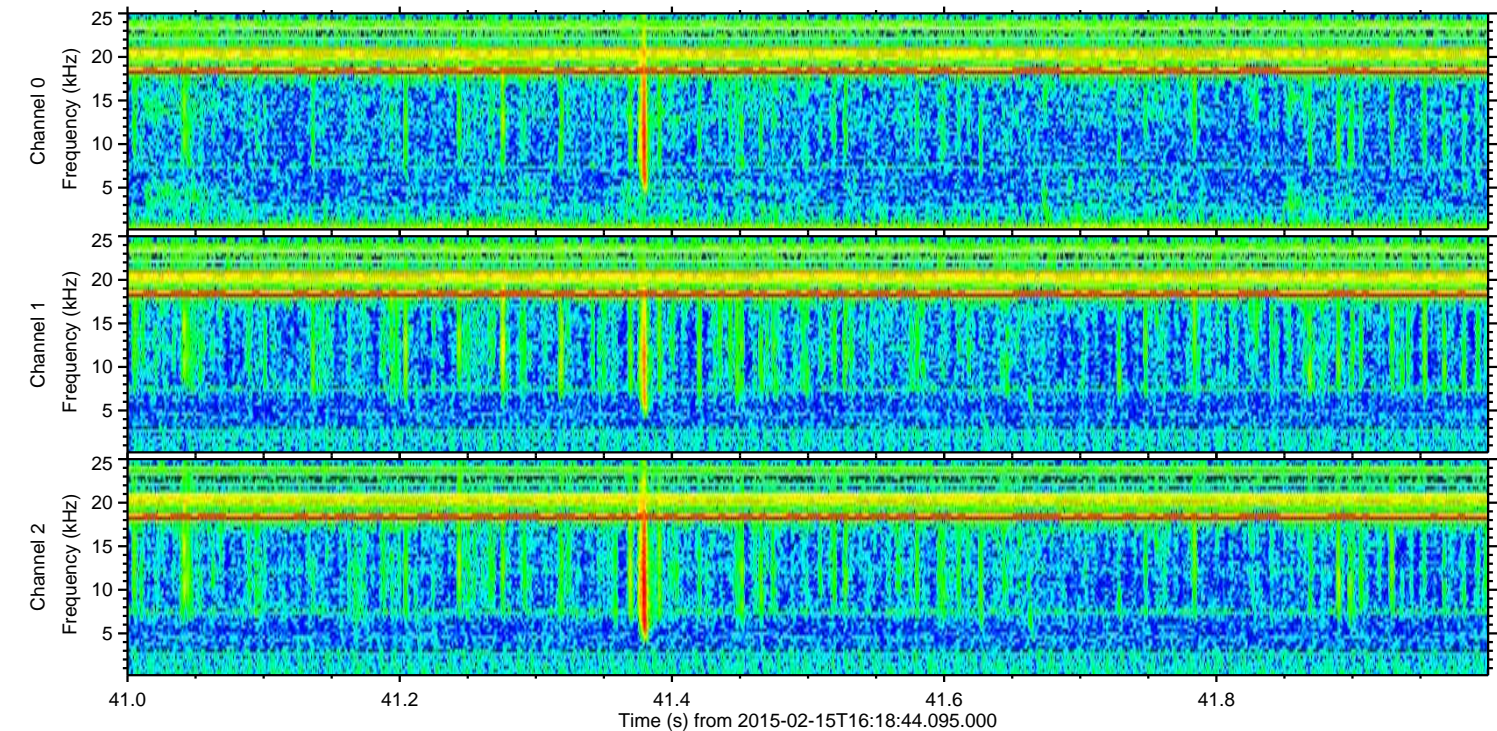
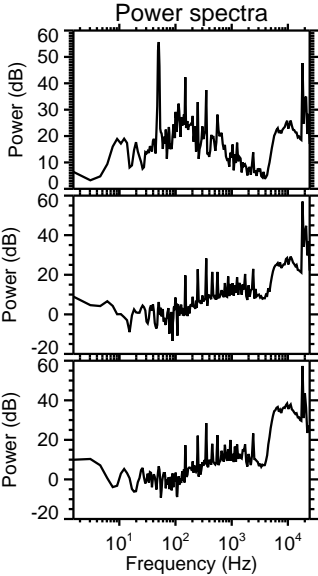
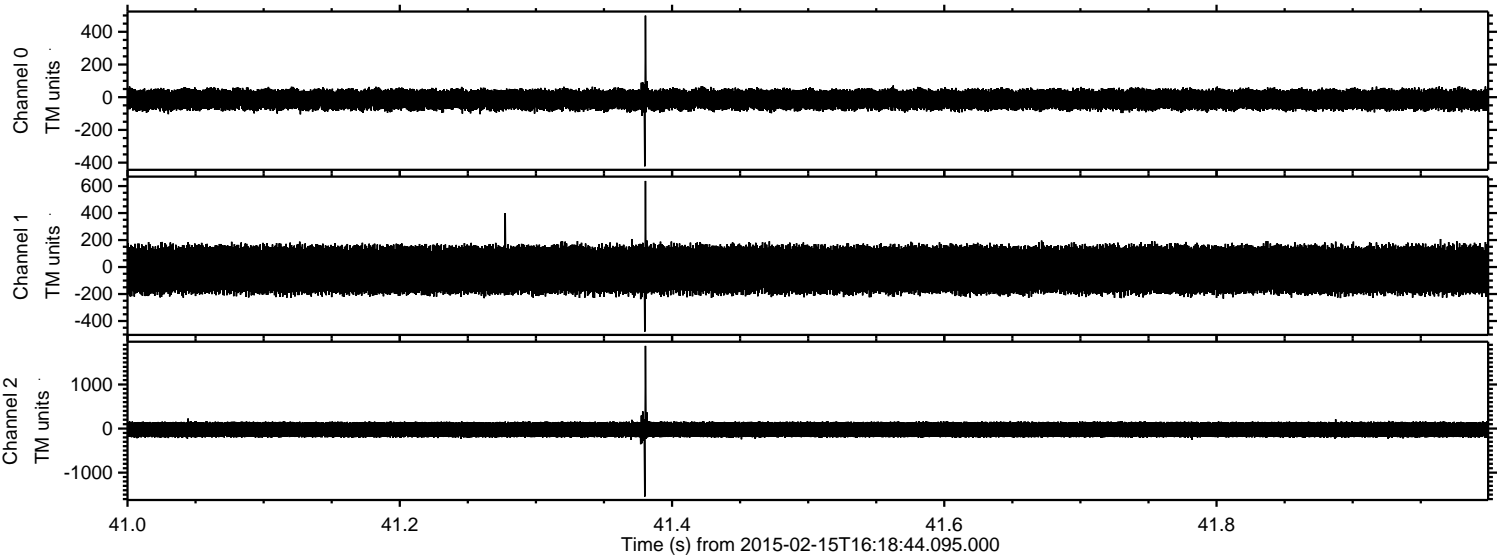
Channel 1
mn: -435
mx: 430
 μ : -20.1
 σ : 100.2

Channel 2
mn: -1646
mx: 2261
 μ : -23.3
 σ : 101.7

Processed Mon Feb 23 17:45:51 2015 by ELM ver.2012-10-06 from 001__elm20150215_161843__dat00.bin



Processed Mon Feb 23 17:45:52 2015 by ELM ver.2012-10-06 from 001__elm20150215_161843__dat00.bin



Processed Mon Feb 23 17:45:53 2015 by ELM ver.2012-10-06 from 001__elm20150215_161843__dat00.bin

