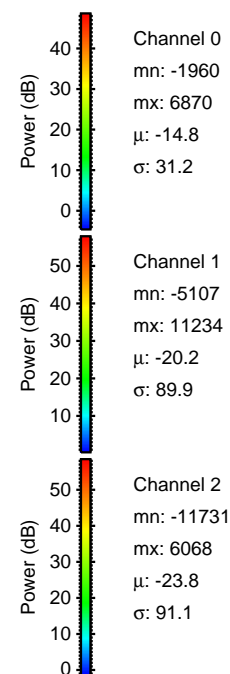
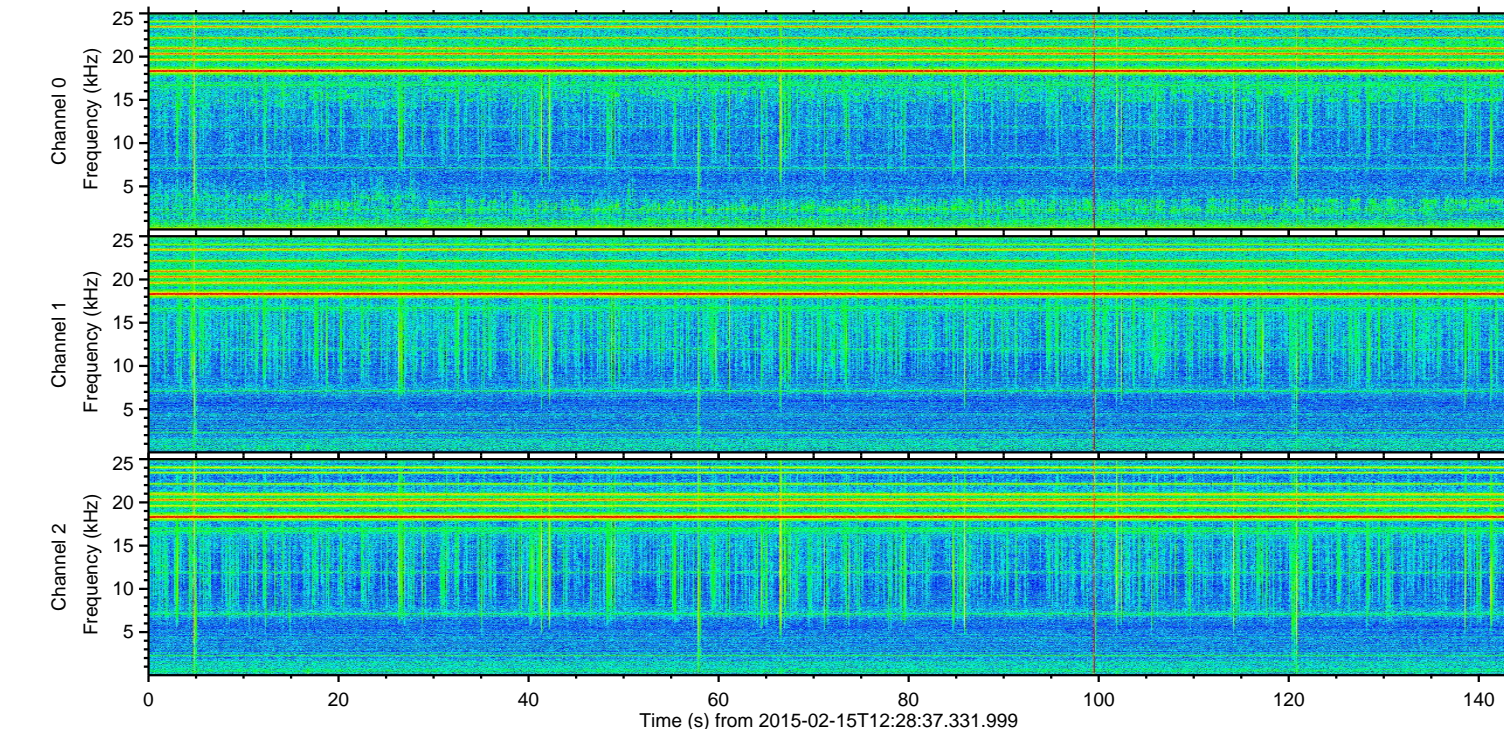
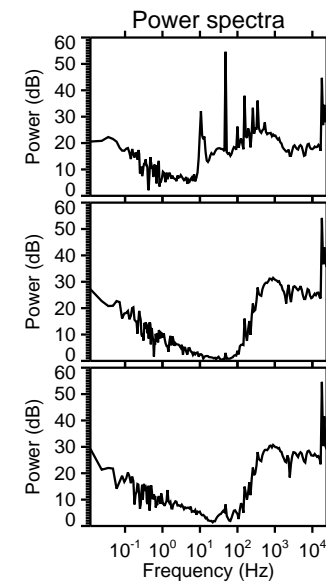
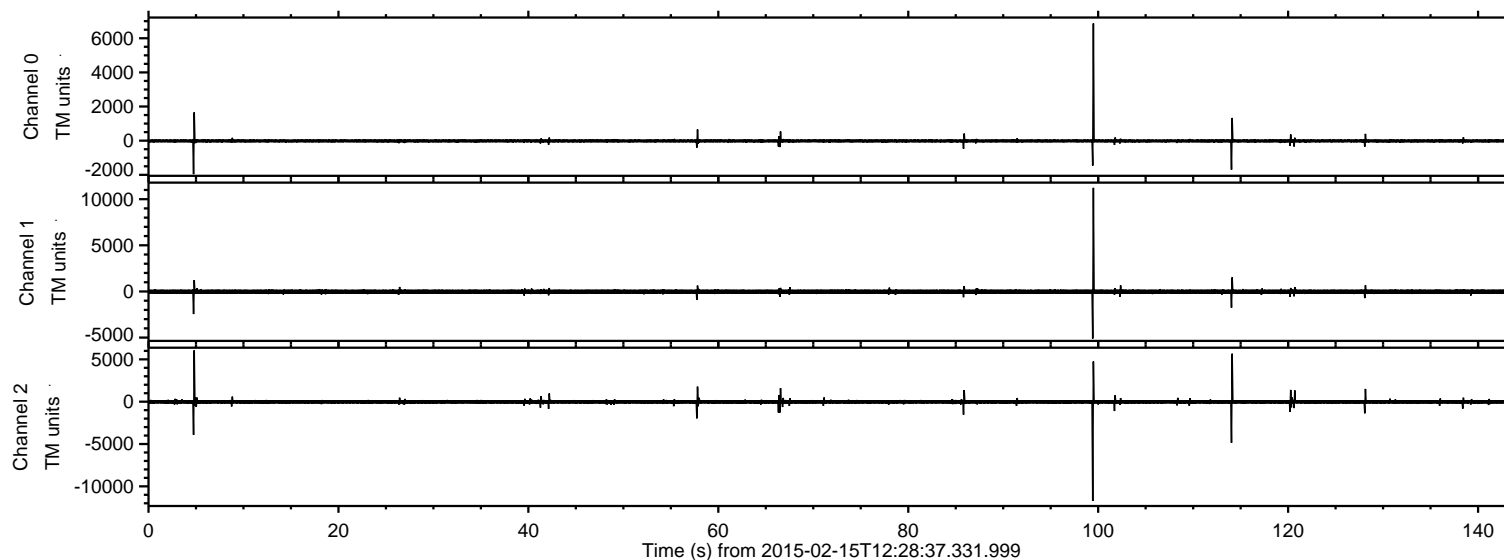


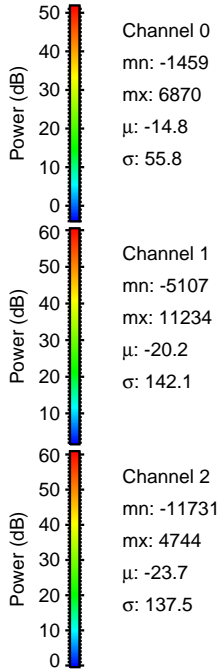
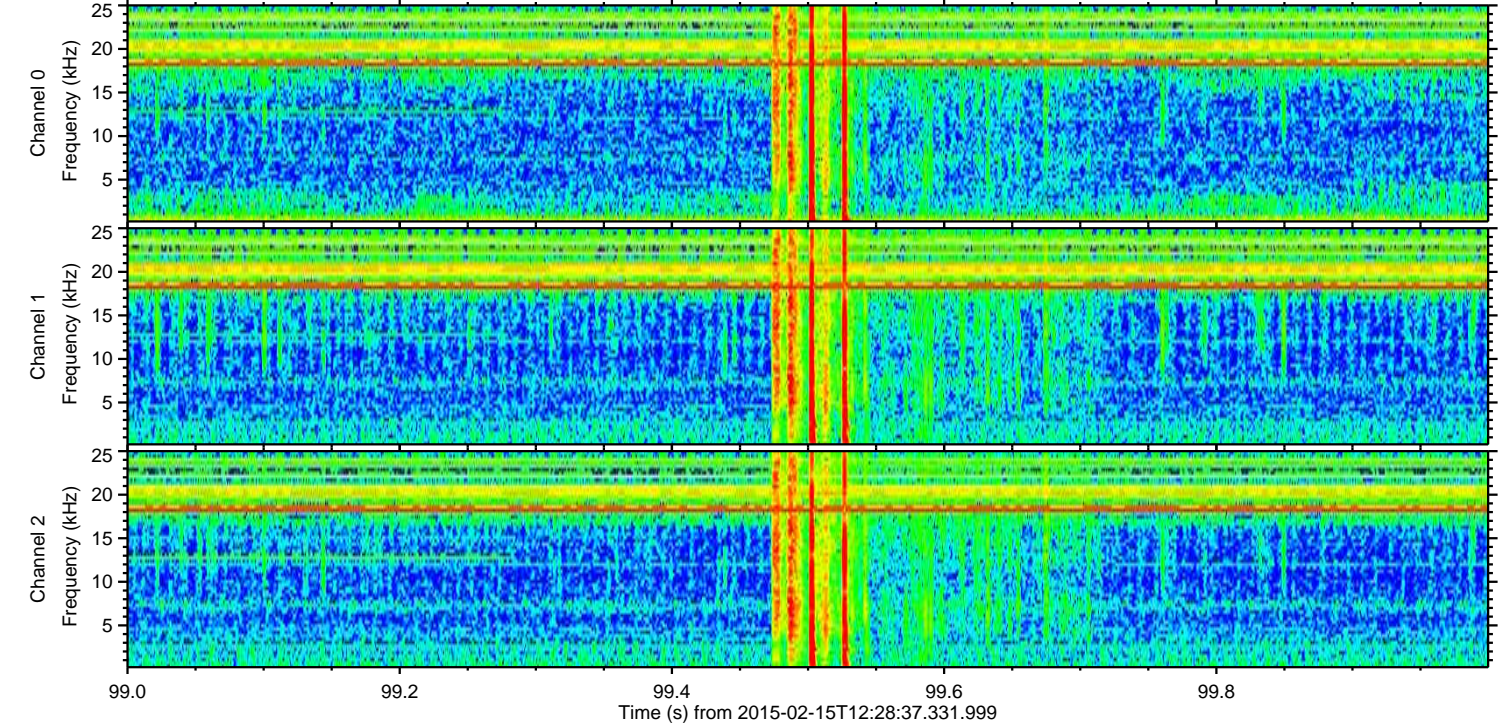
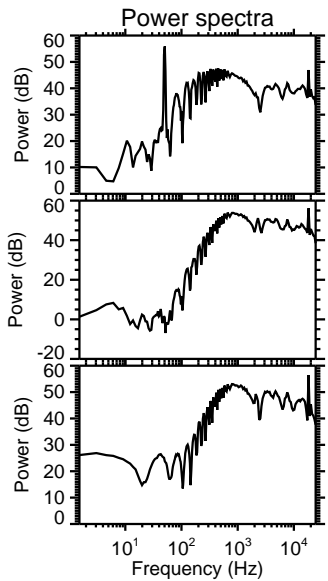
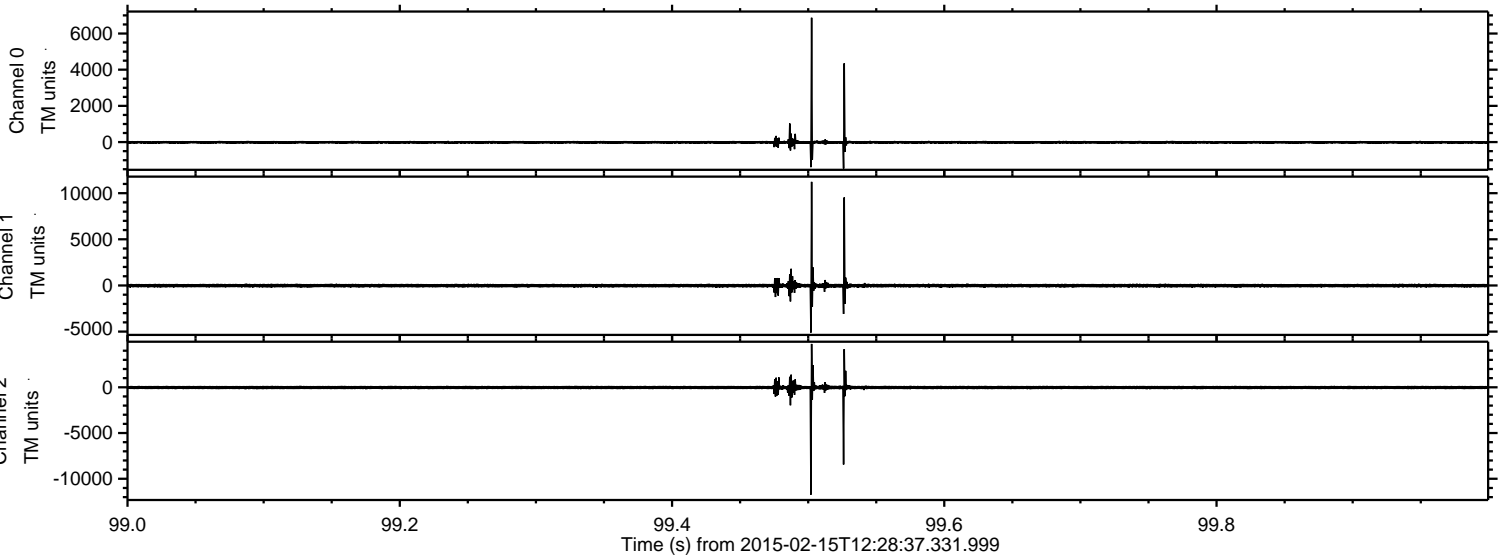
ELMAVAN 3D WAVEFORMS (Measured data sampled at 50 kHz) 49748 packets of 144 samples from 2015-02-15T12:28:37.331.999.

Processed Mon Feb 23 15:19:52 2015 by ELM ver.2012-10-06 from 001__elm20150215_122836__dat00.bin

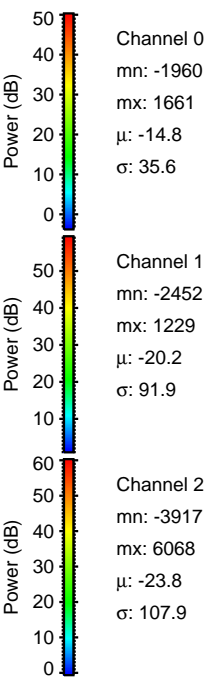
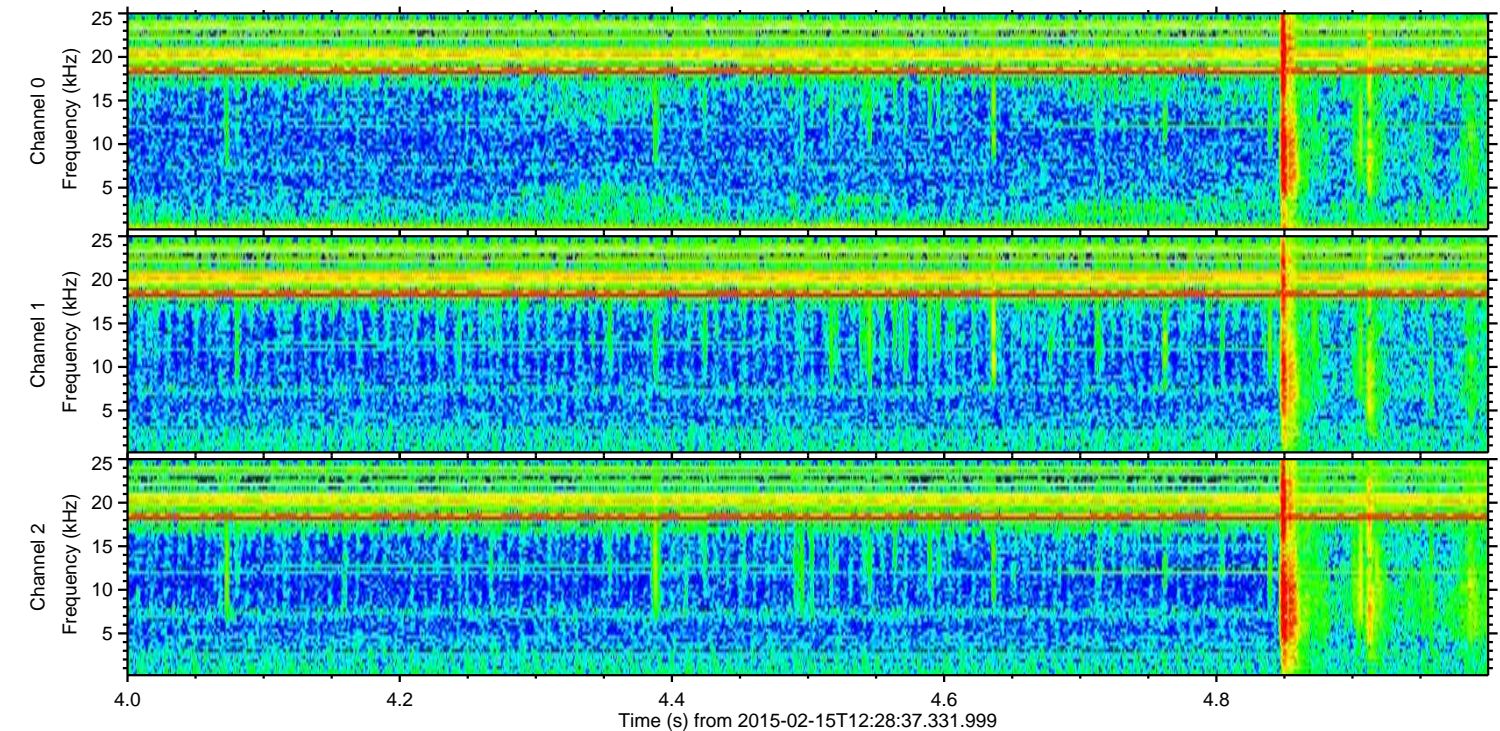
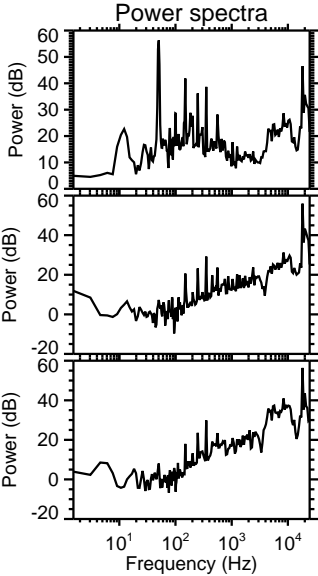
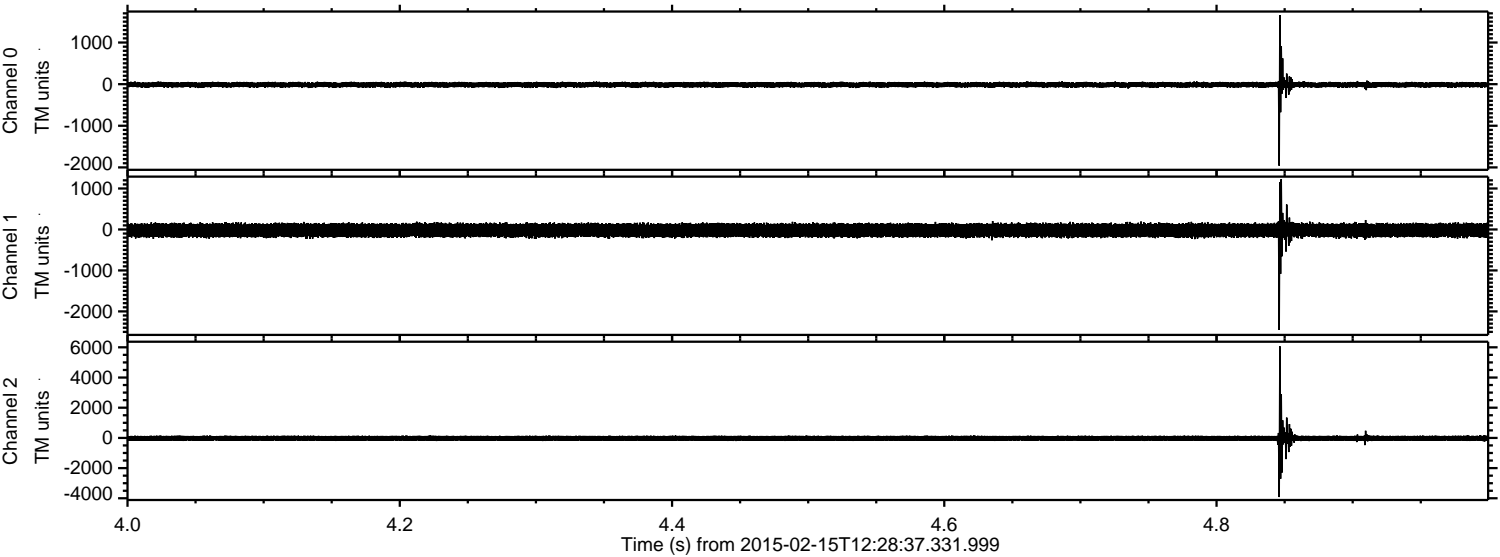


ELMAVAN 3D WAVEFORMS (Measured data sampled at 50 kHz) 49748 packets of 144 samples from 2015-02-15T12:28:37.331.999. Part 100/144

Processed Mon Feb 23 15:20:03 2015 by ELM ver.2012-10-06 from 001__elm20150215_122836__dat00.bin

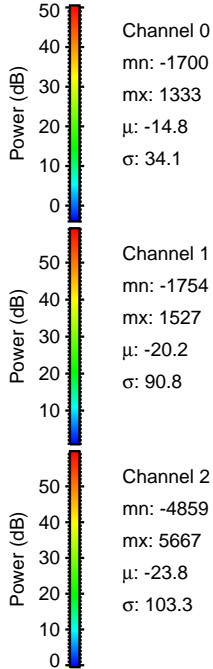
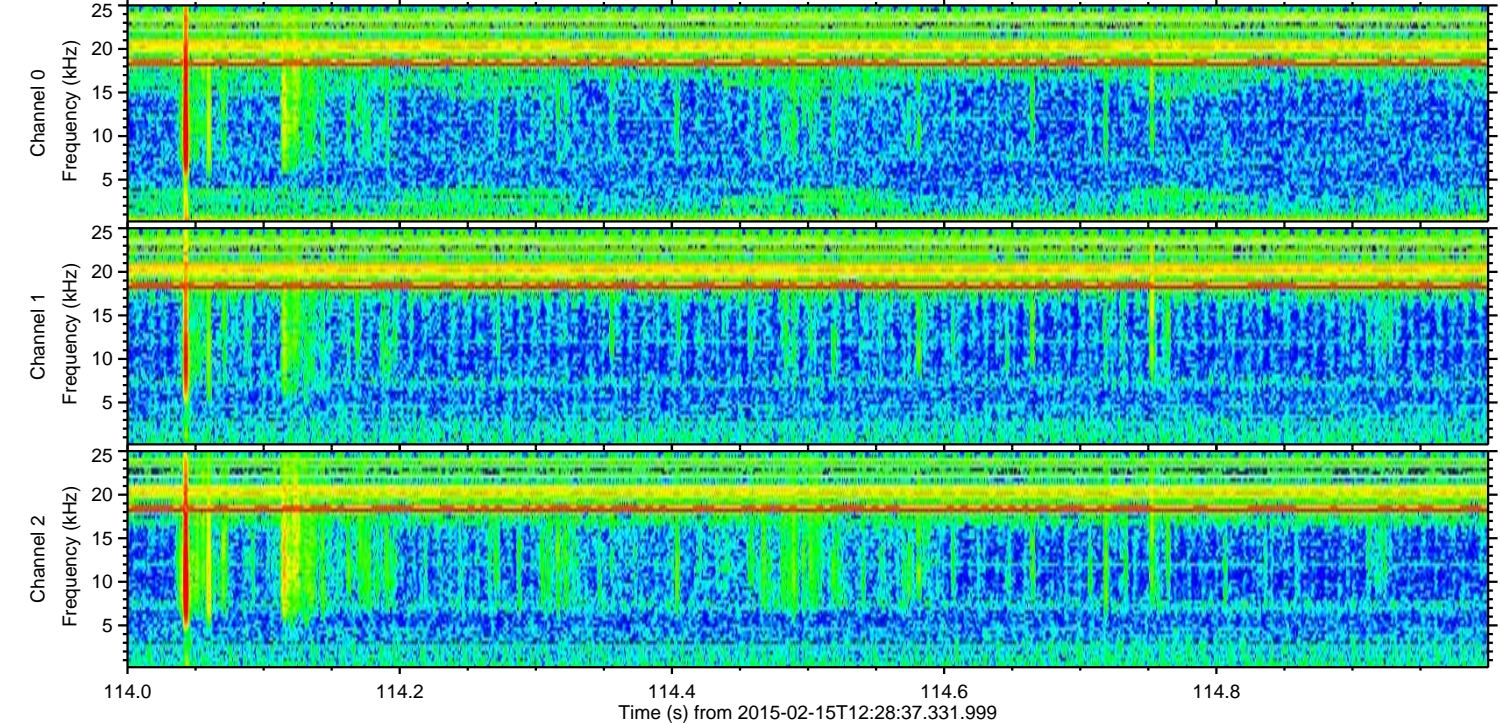
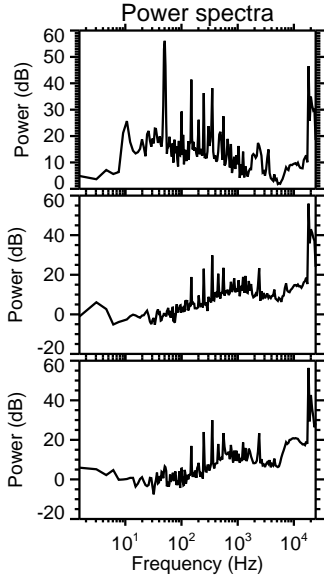
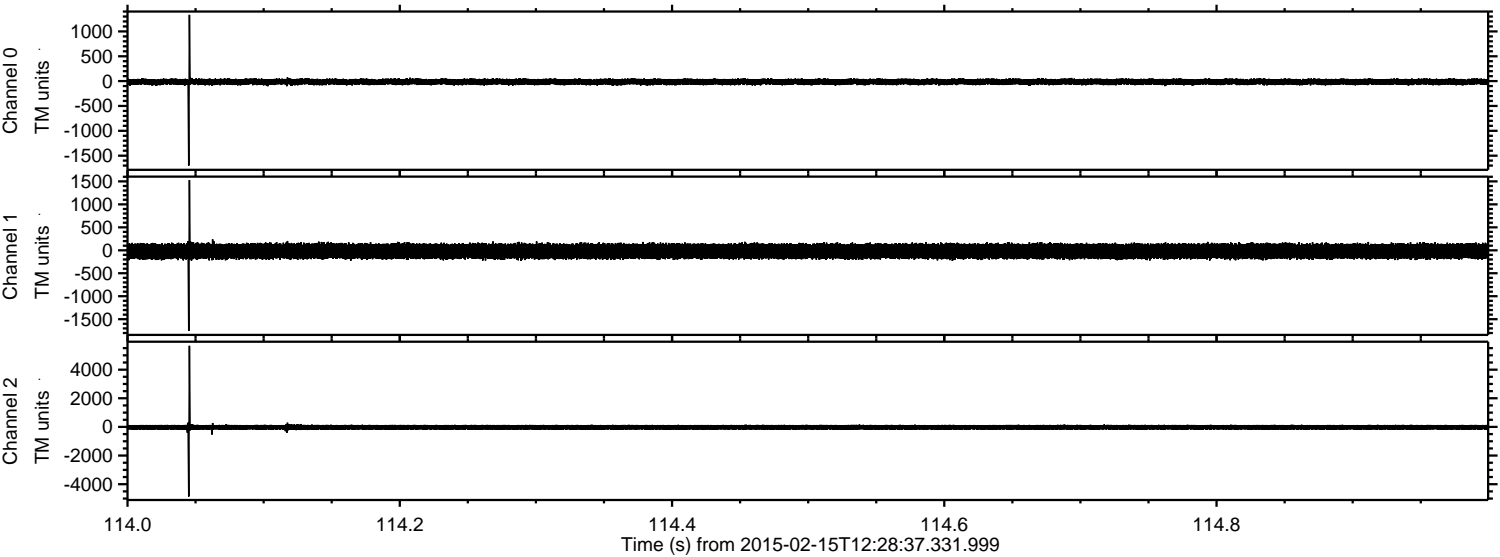


Processed Mon Feb 23 15:20:04 2015 by ELM ver.2012-10-06 from 001__elm20150215_122836__dat00.bin

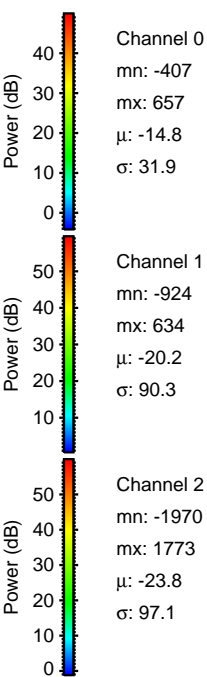
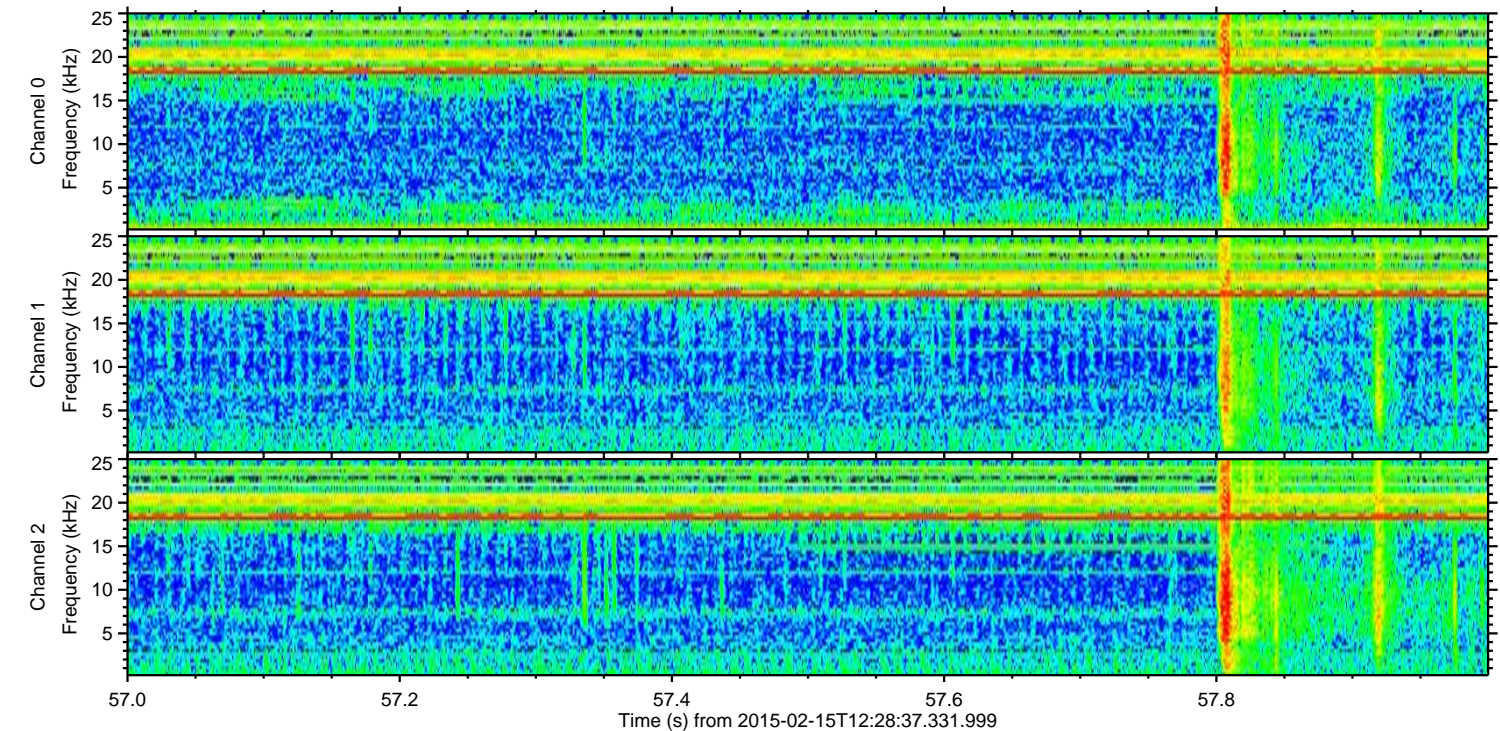
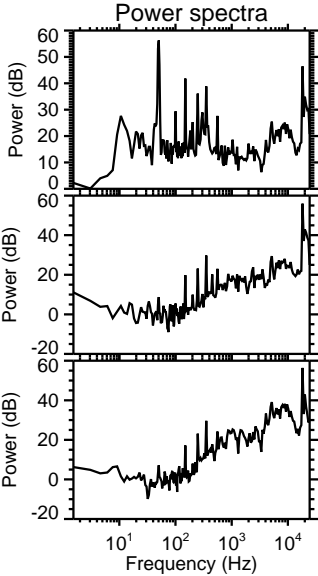
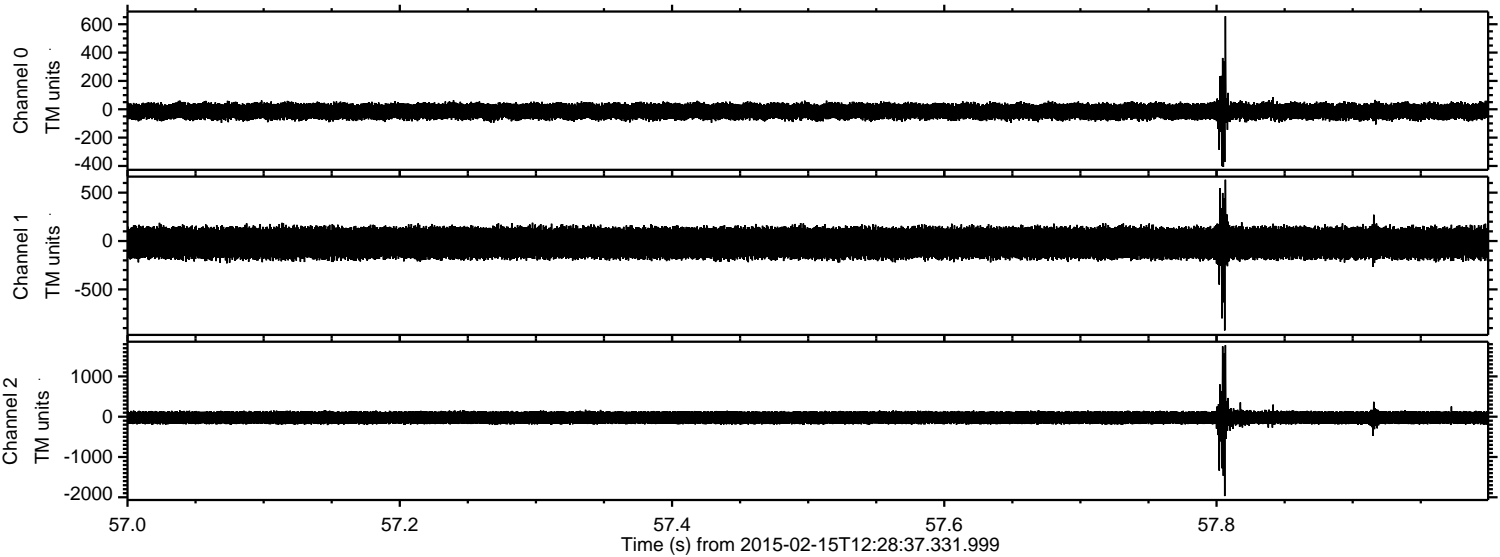


ELMAVAN 3D WAVEFORMS (Measured data sampled at 50 kHz) 49748 packets of 144 samples from 2015-02-15T12:28:37.331.999. Part 115/144

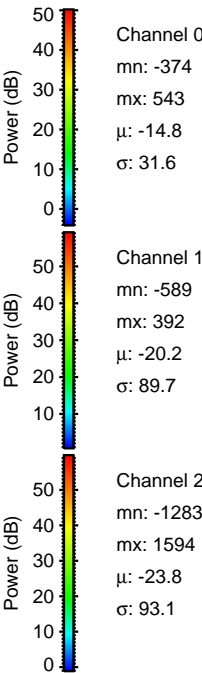
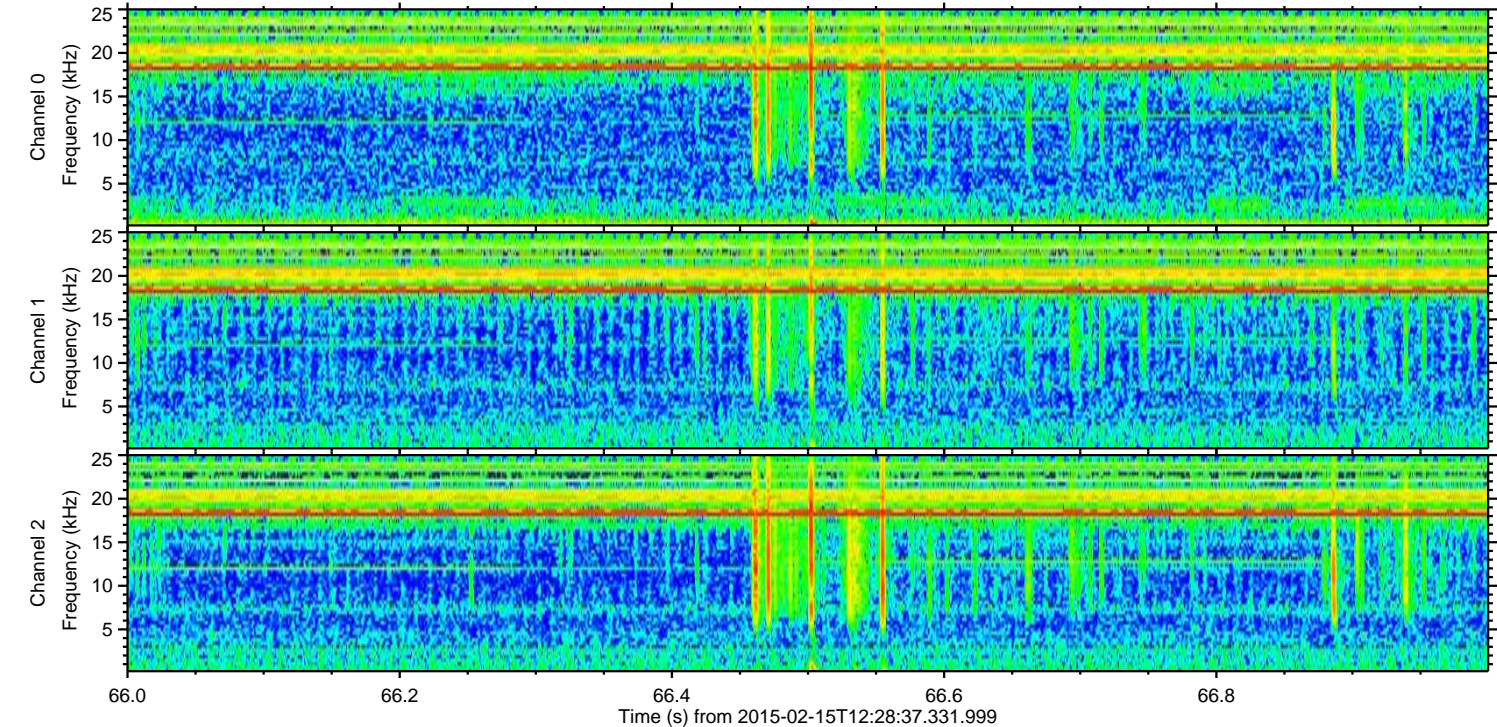
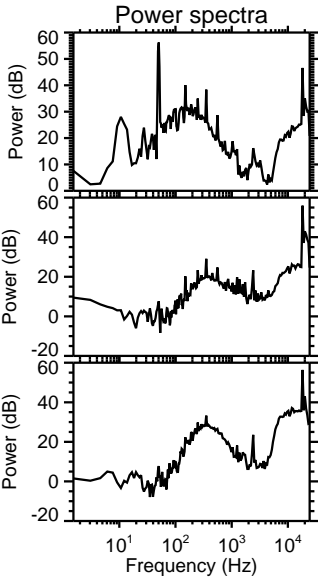
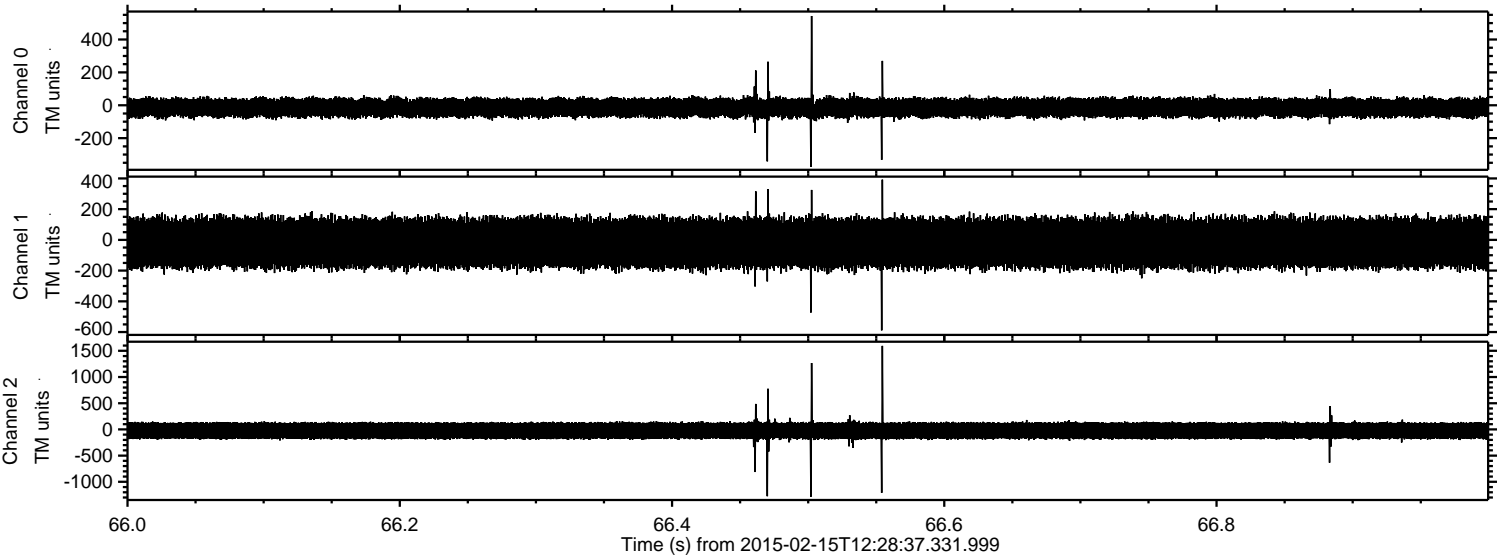
Processed Mon Feb 23 15:20:05 2015 by ELM ver.2012-10-06 from 001__elm20150215_122836__dat00.bin



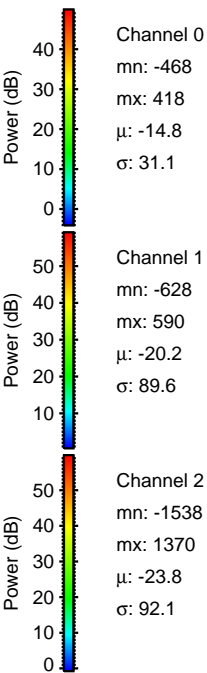
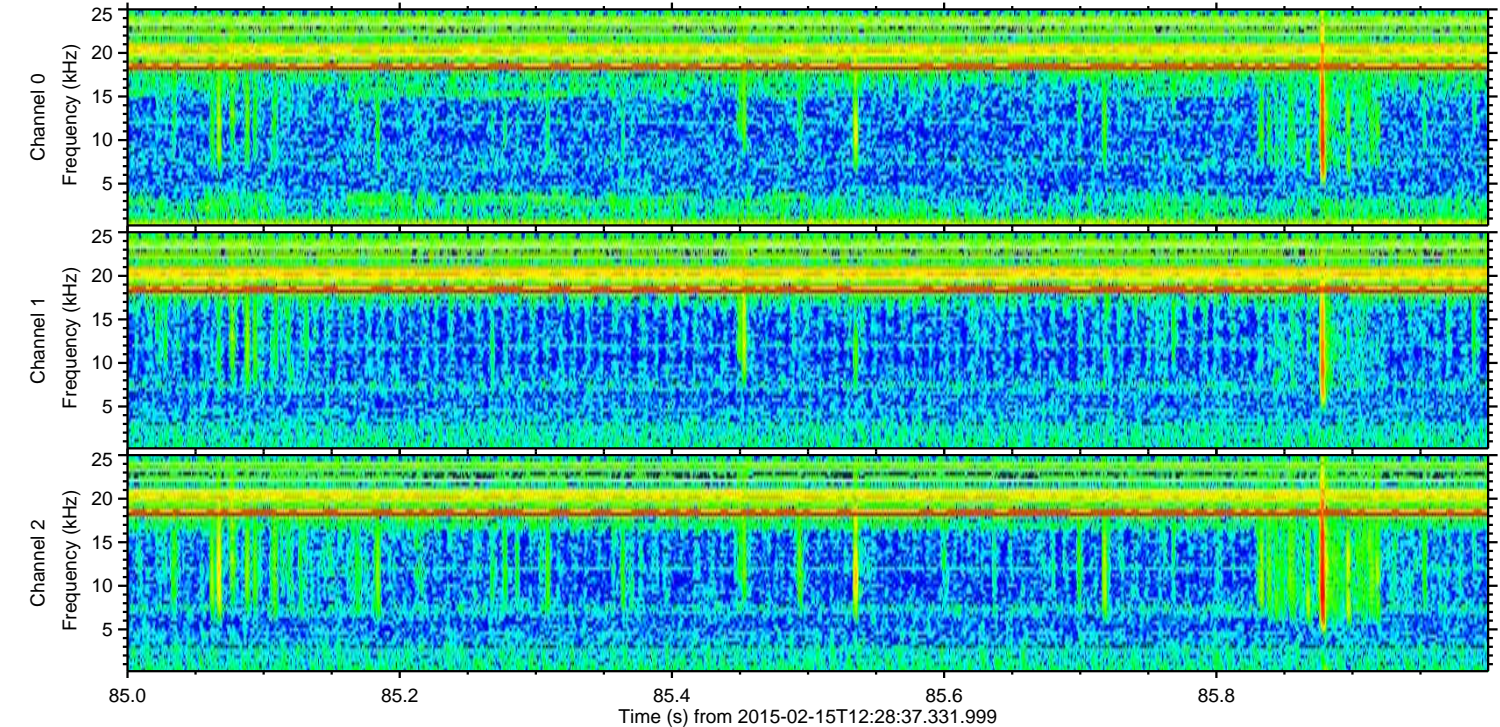
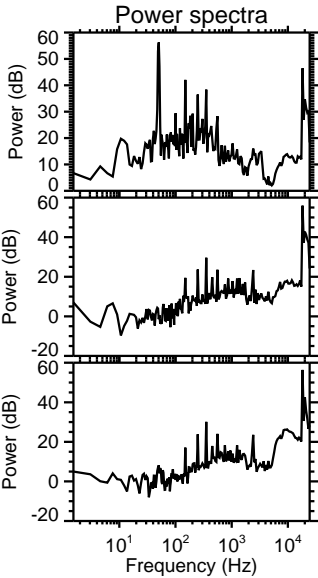
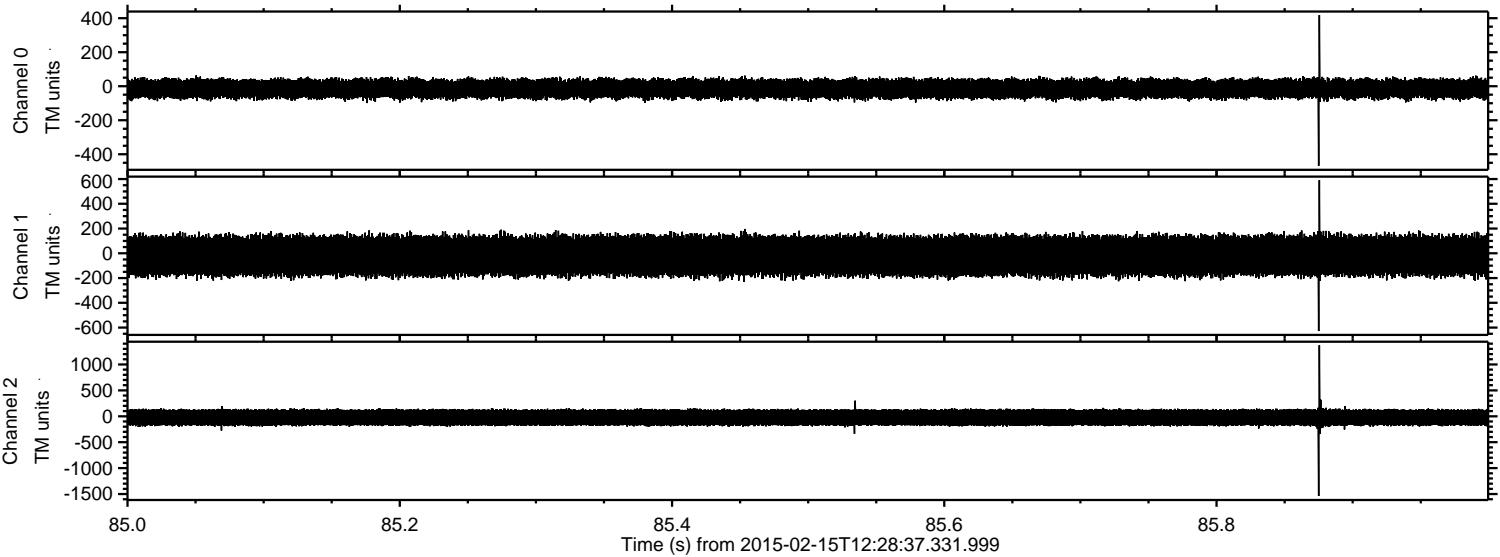
Processed Mon Feb 23 15:20:06 2015 by ELM ver.2012-10-06 from 001__elm20150215_122836__dat00.bin



Processed Mon Feb 23 15:20:07 2015 by ELM ver.2012-10-06 from 001__elm20150215_122836__dat00.bin

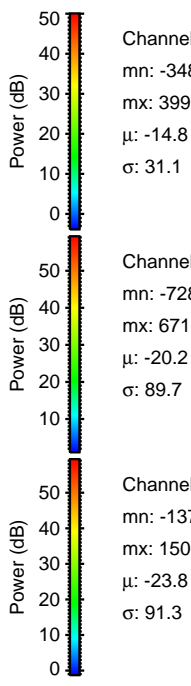
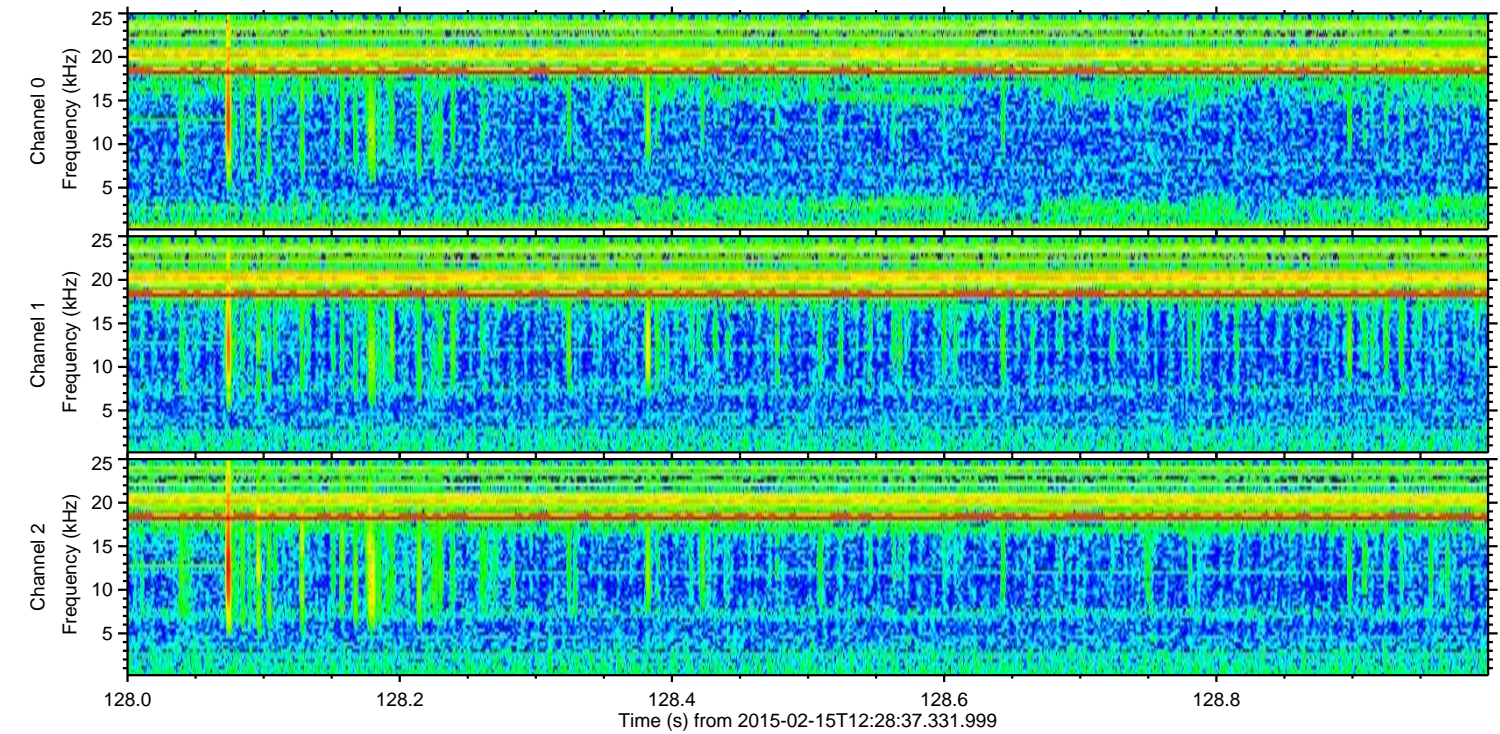
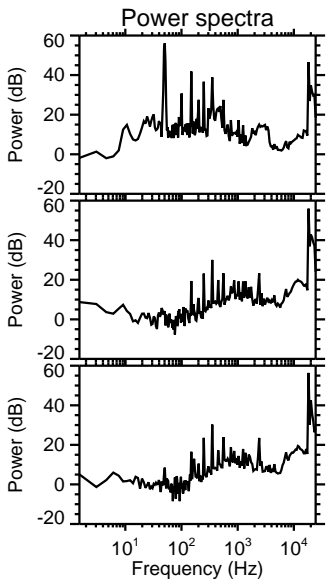
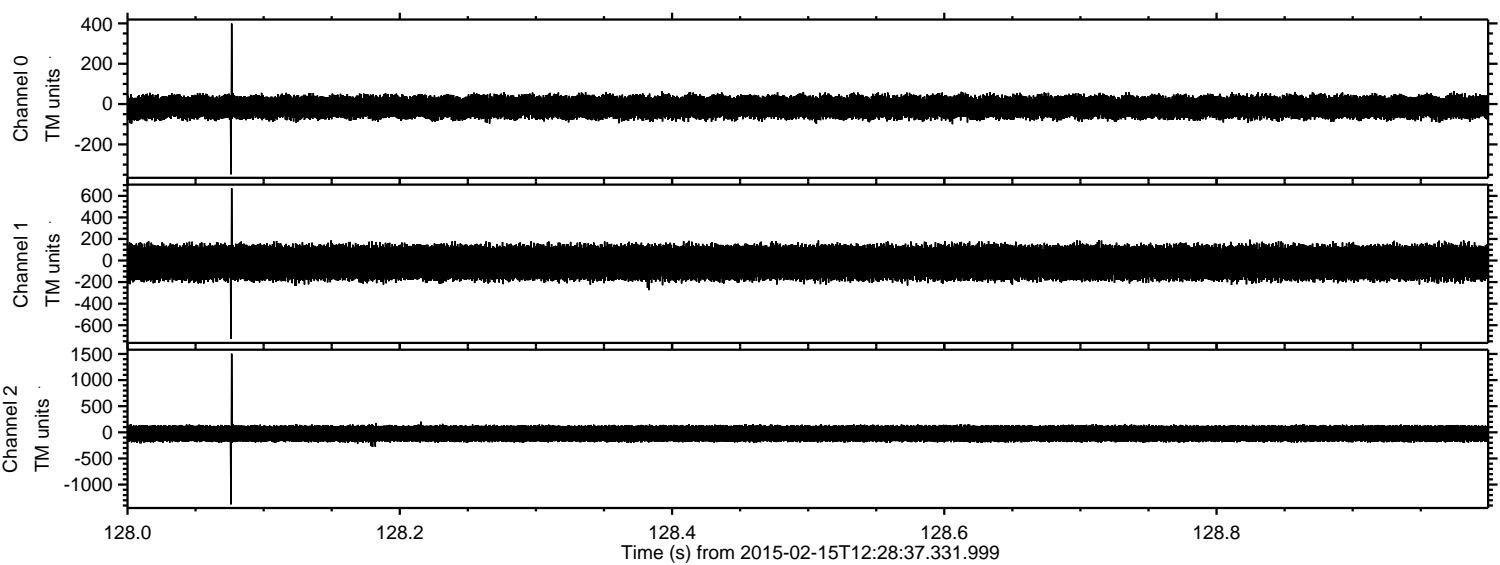


Processed Mon Feb 23 15:20:08 2015 by ELM ver.2012-10-06 from 001__elm20150215_122836__dat00.bin



ELMAVAN 3D WAVEFORMS (Measured data sampled at 50 kHz) 49748 packets of 144 samples from 2015-02-15T12:28:37.331.999. Part 129/144

Processed Mon Feb 23 15:20:09 2015 by ELM ver.2012-10-06 from 001__elm20150215_122836__dat00.bin

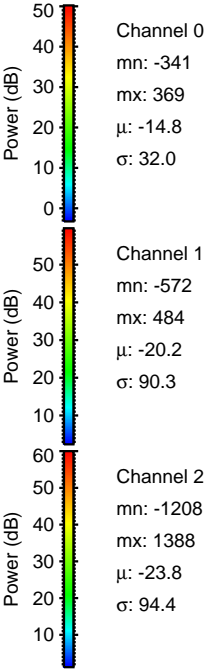
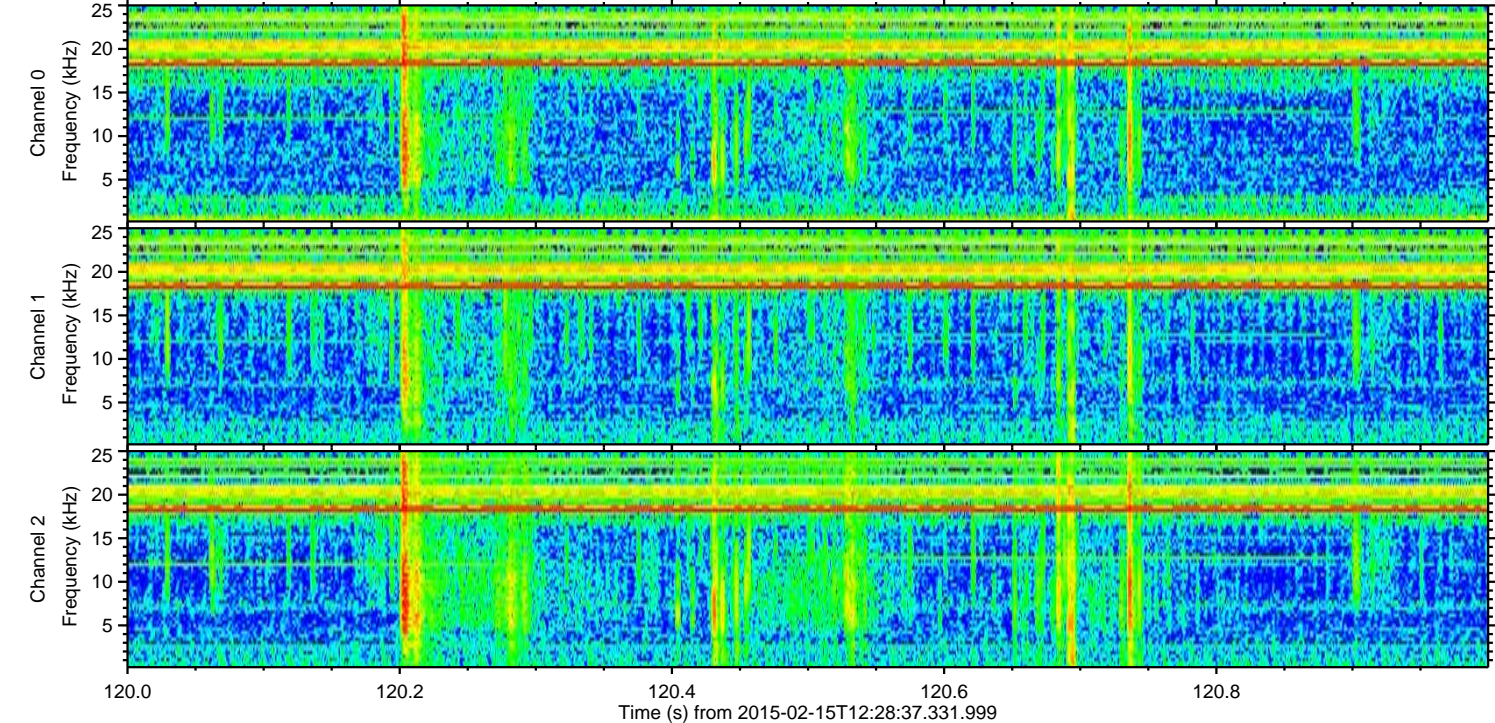
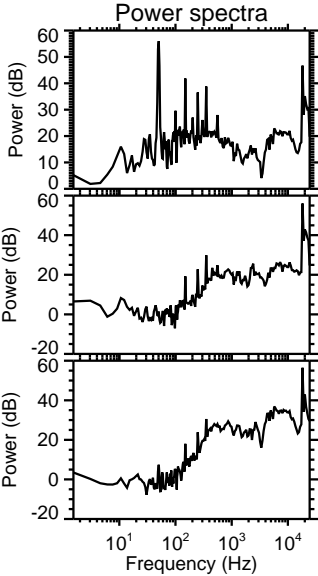
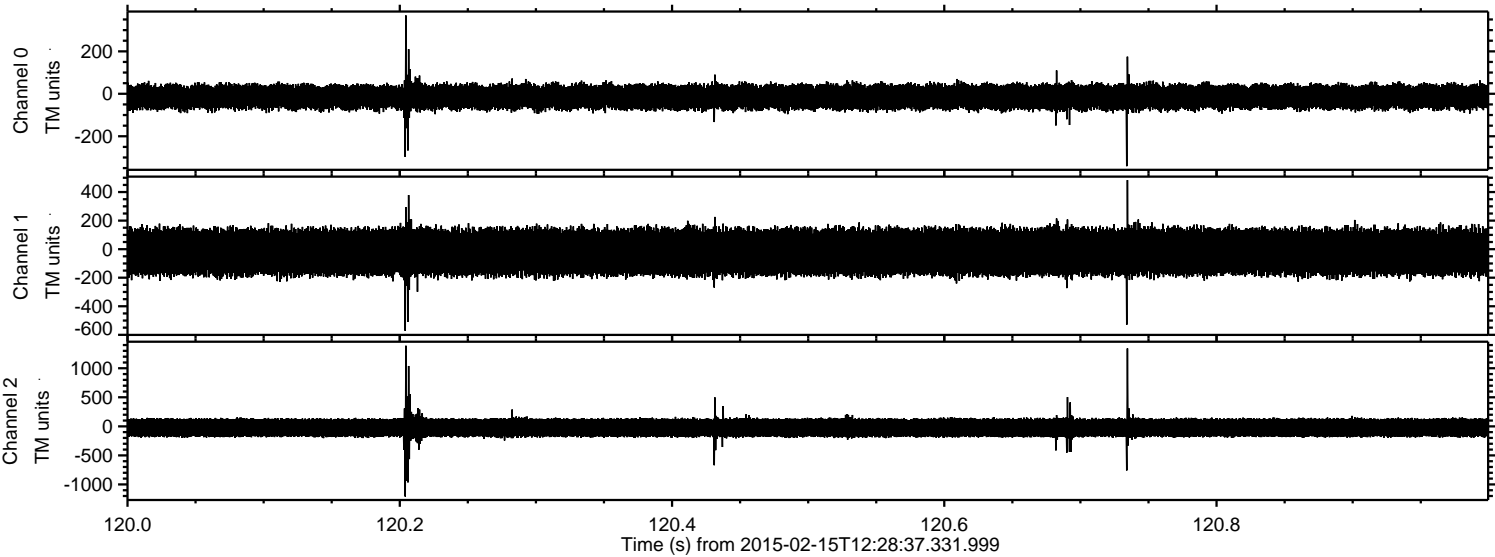


Channel 0
mn: -348
mx: 399
 μ : -14.8
 σ : 31.1

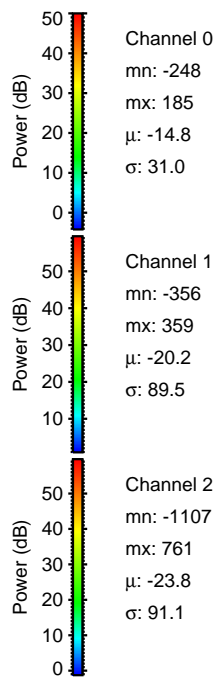
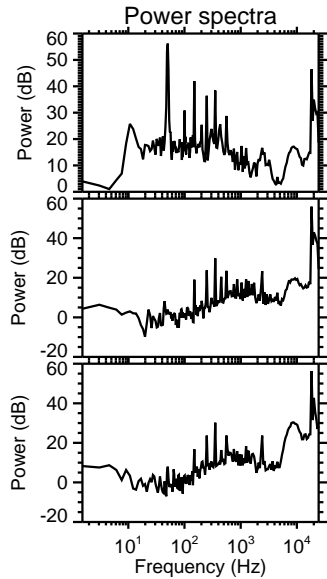
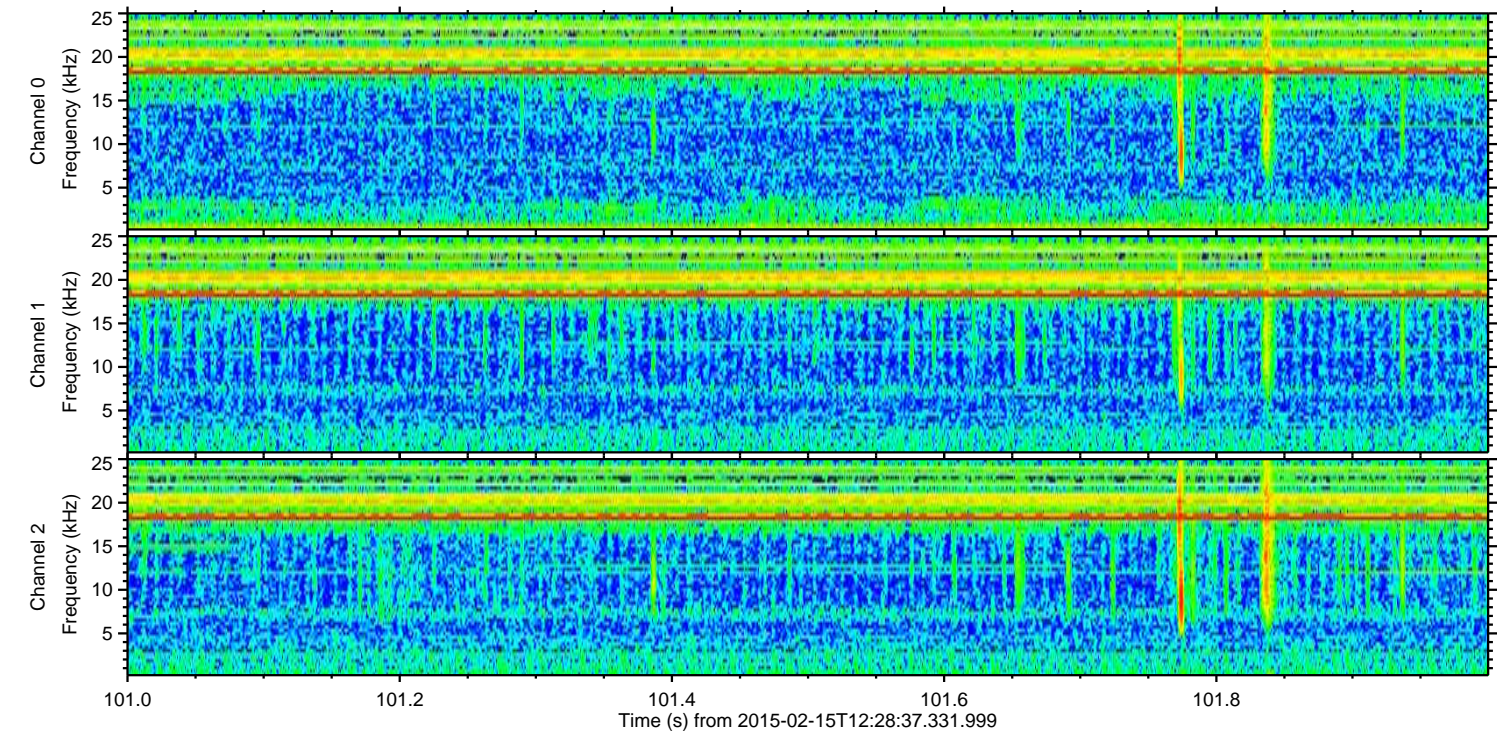
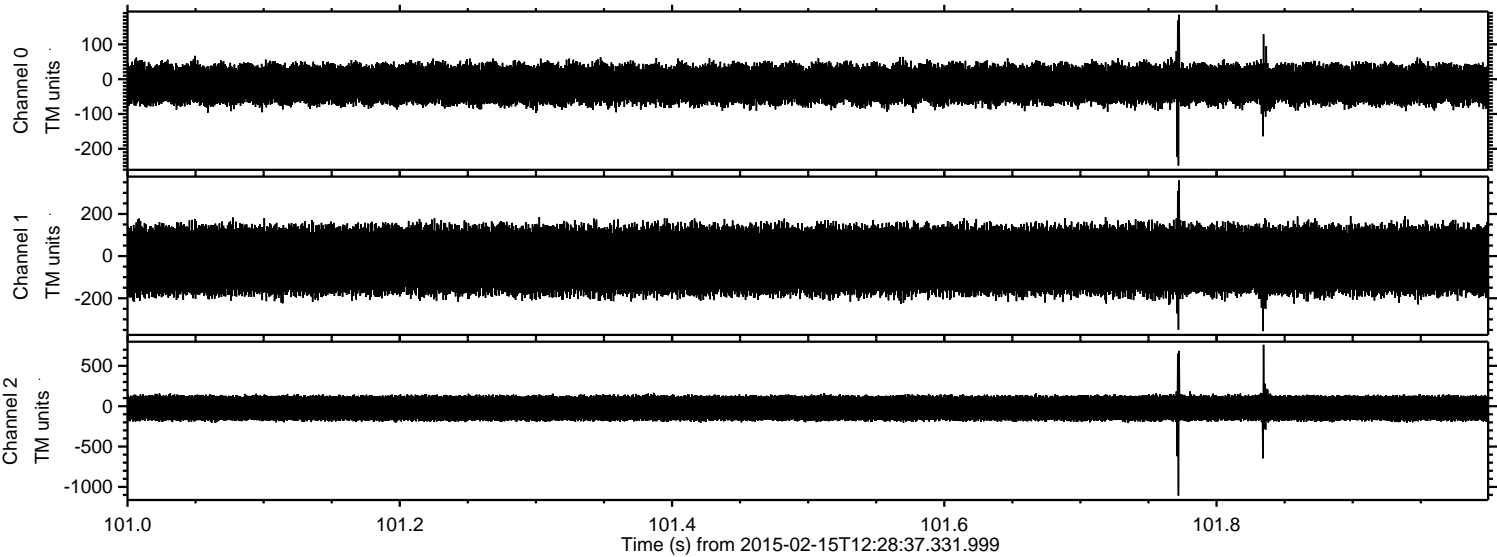
Channel 1
mn: -728
mx: 671
 μ : -20.2
 σ : 89.7

Channel 2
mn: -1379
mx: 1506
 μ : -23.8
 σ : 91.3

Processed Mon Feb 23 15:20:10 2015 by ELM ver.2012-10-06 from 001__elm20150215_122836__dat00.bin



Processed Mon Feb 23 15:20:11 2015 by ELM ver.2012-10-06 from 001__elm20150215_122836__dat00.bin



Processed Mon Feb 23 15:20:12 2015 by ELM ver.2012-10-06 from 001__elm20150215_122836__dat00.bin

