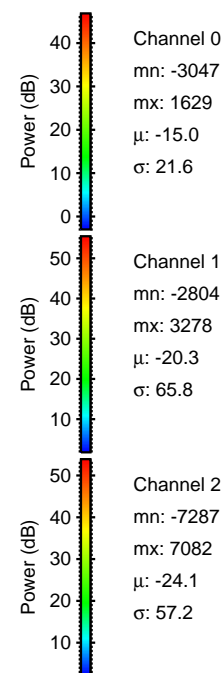
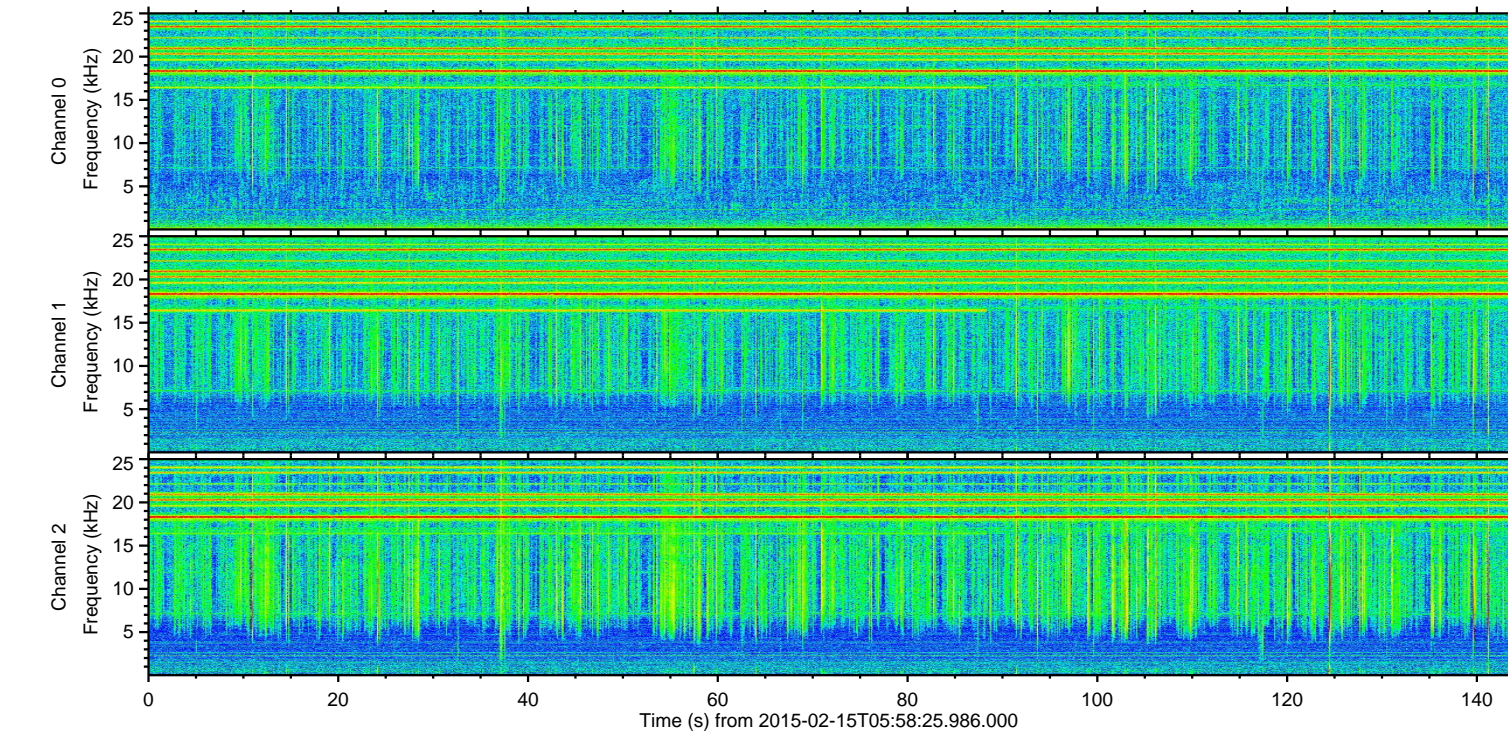
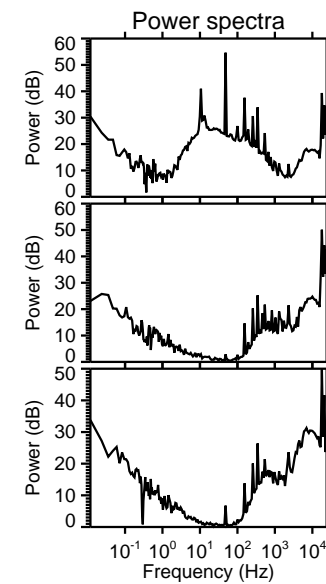
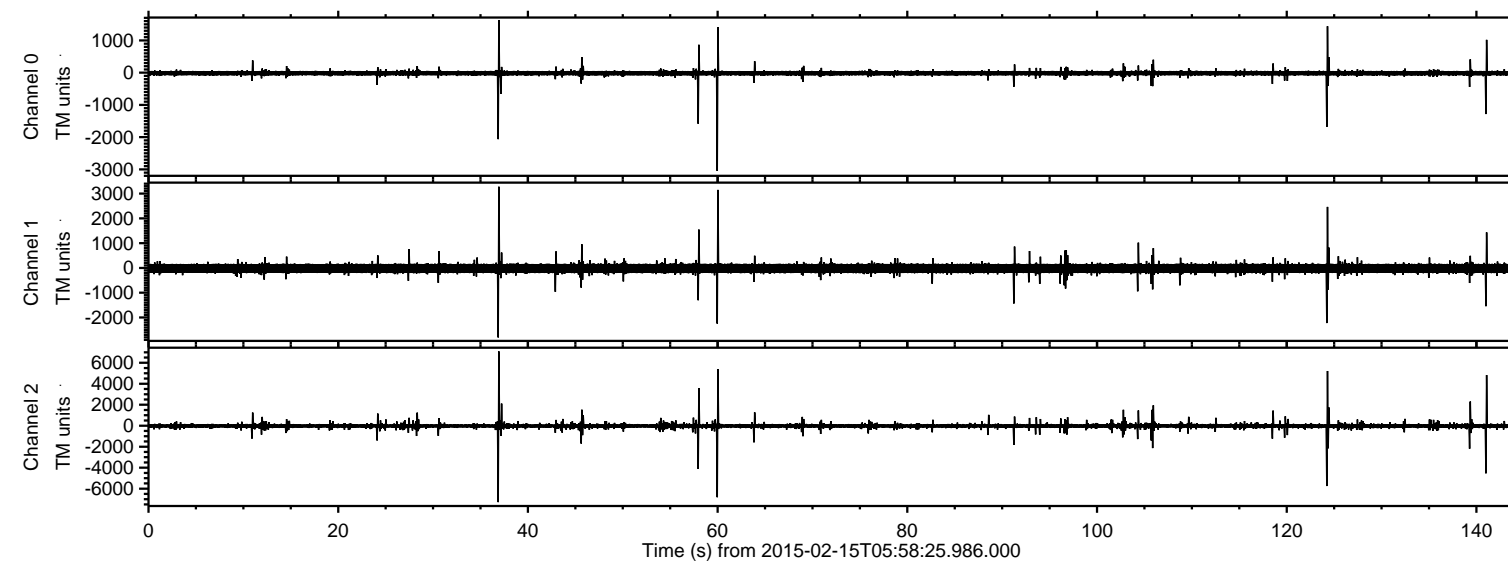
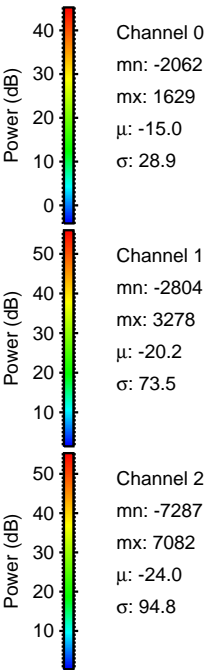
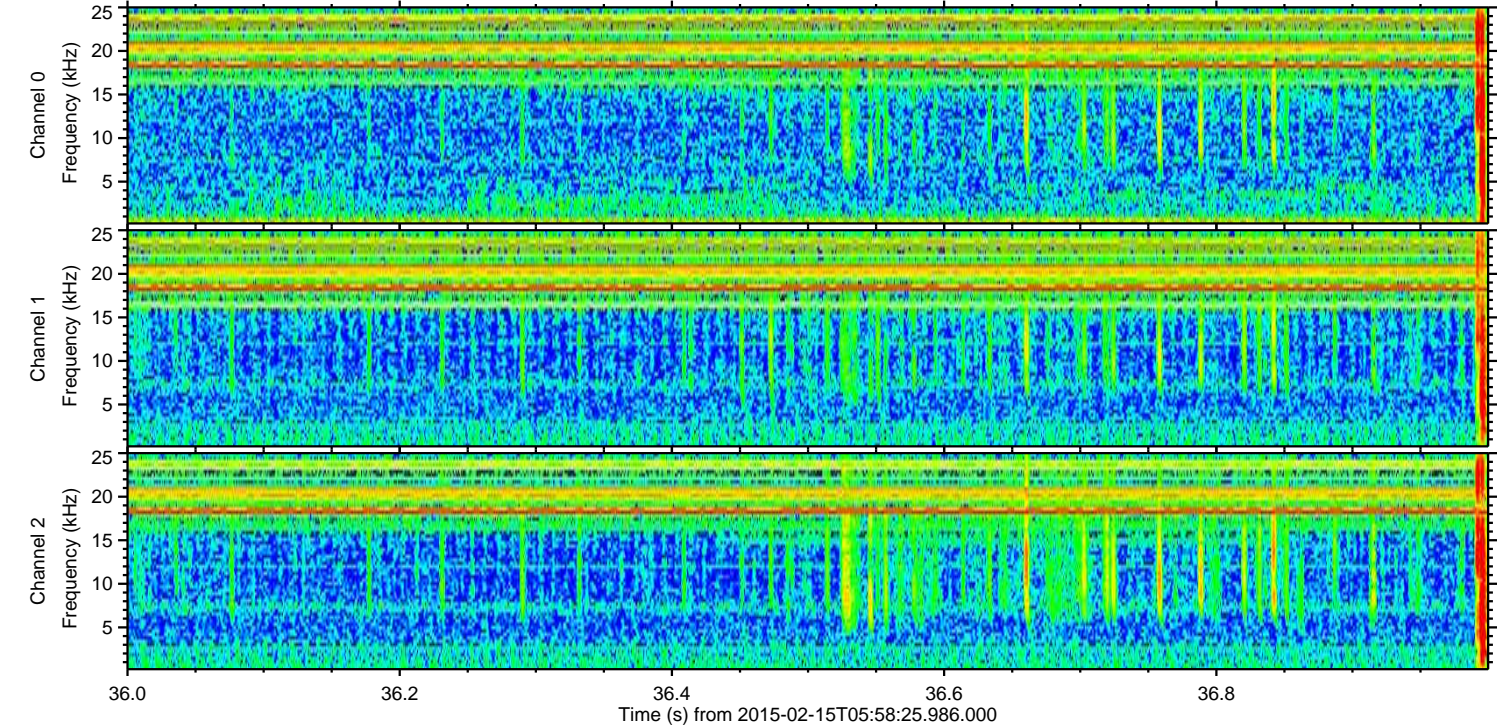
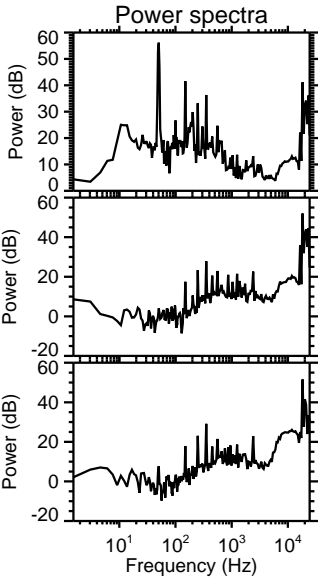
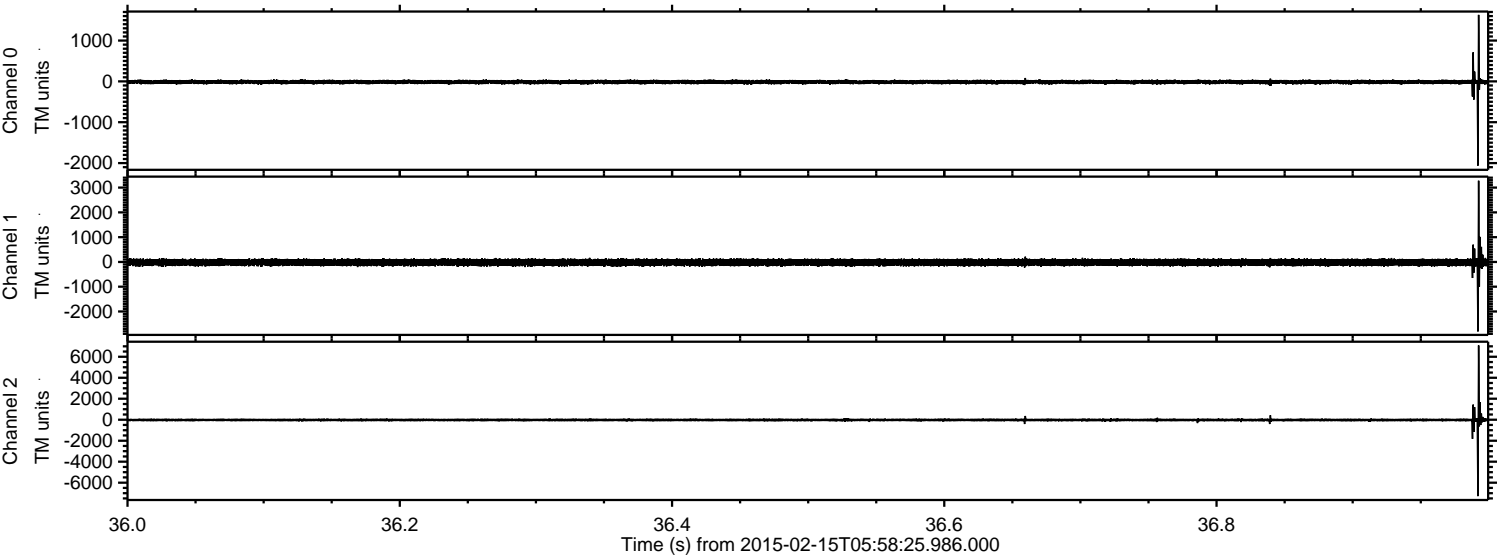


ELMAVAN 3D WAVEFORMS (Measured data sampled at 50 kHz) 49809 packets of 144 samples from 2015-02-15T05:58:25.986.000.

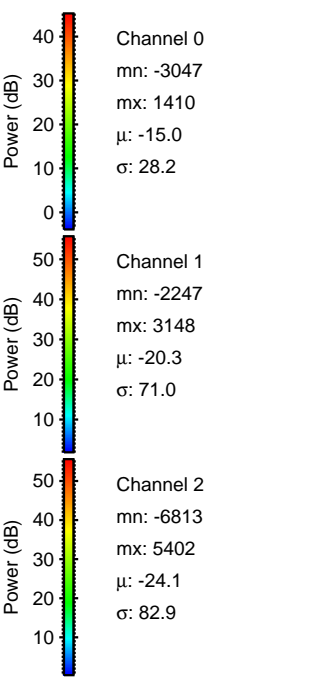
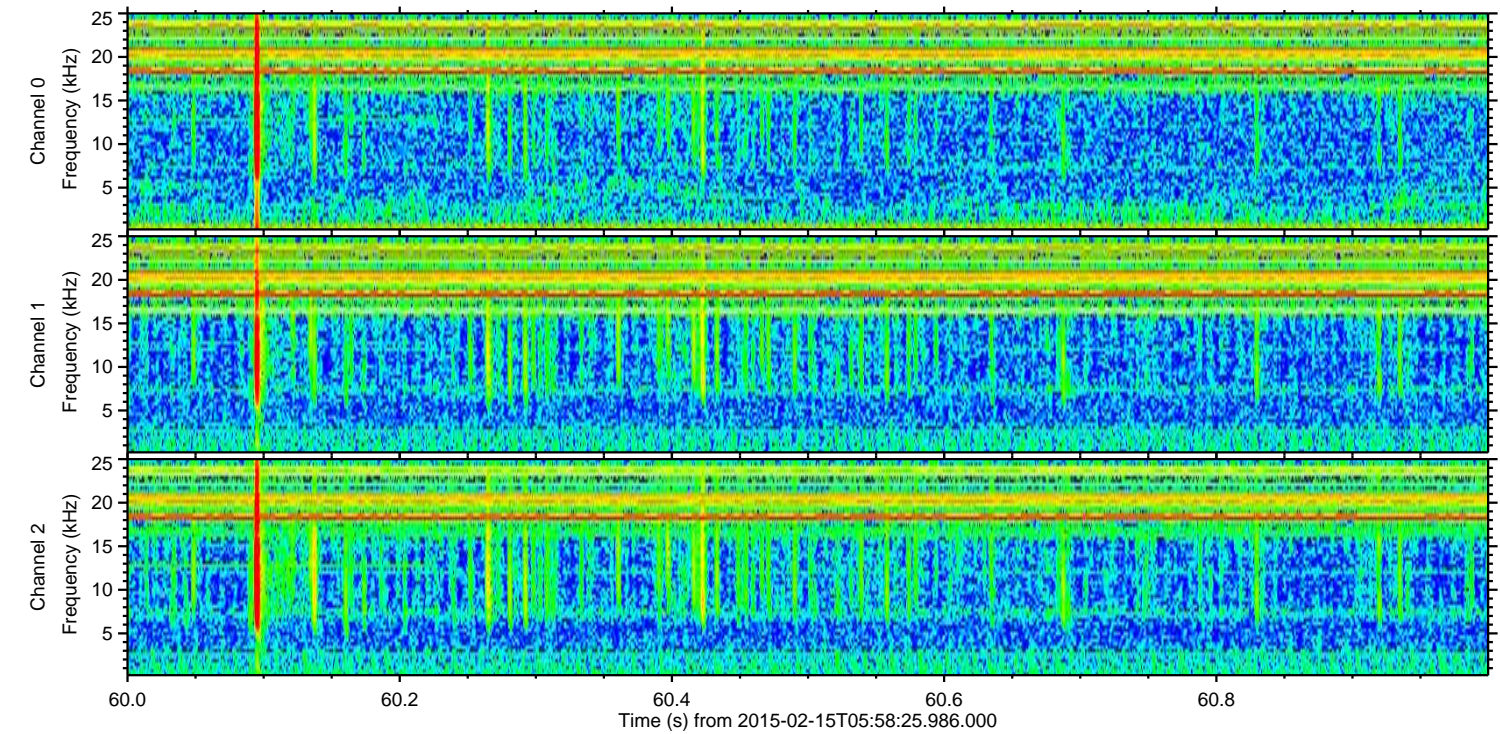
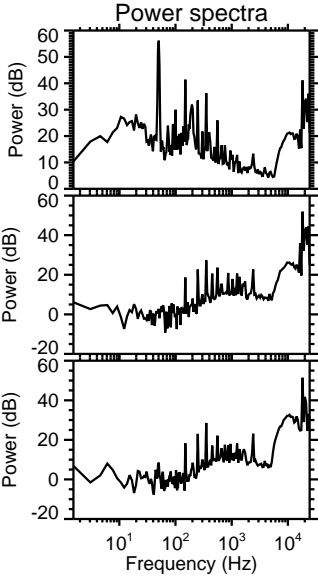
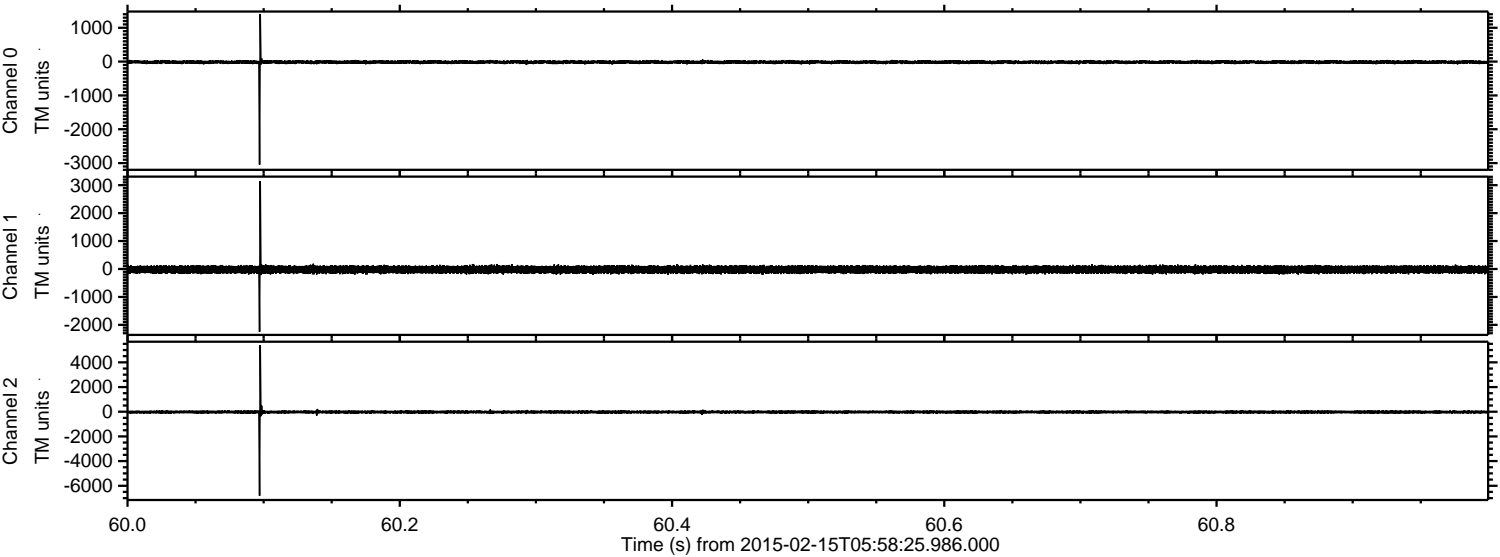
Processed Mon Feb 23 13:48:09 2015 by ELM ver.2012-10-06 from 001__elm20150215_055824__dat00.bin



Processed Mon Feb 23 13:48:21 2015 by ELM ver.2012-10-06 from 001__elm20150215_055824__dat00.bin

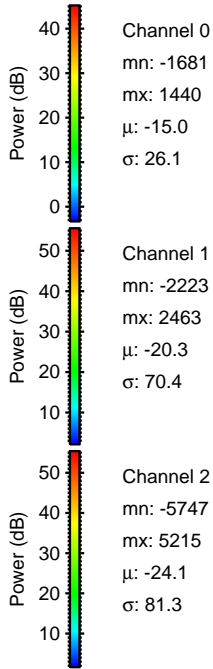
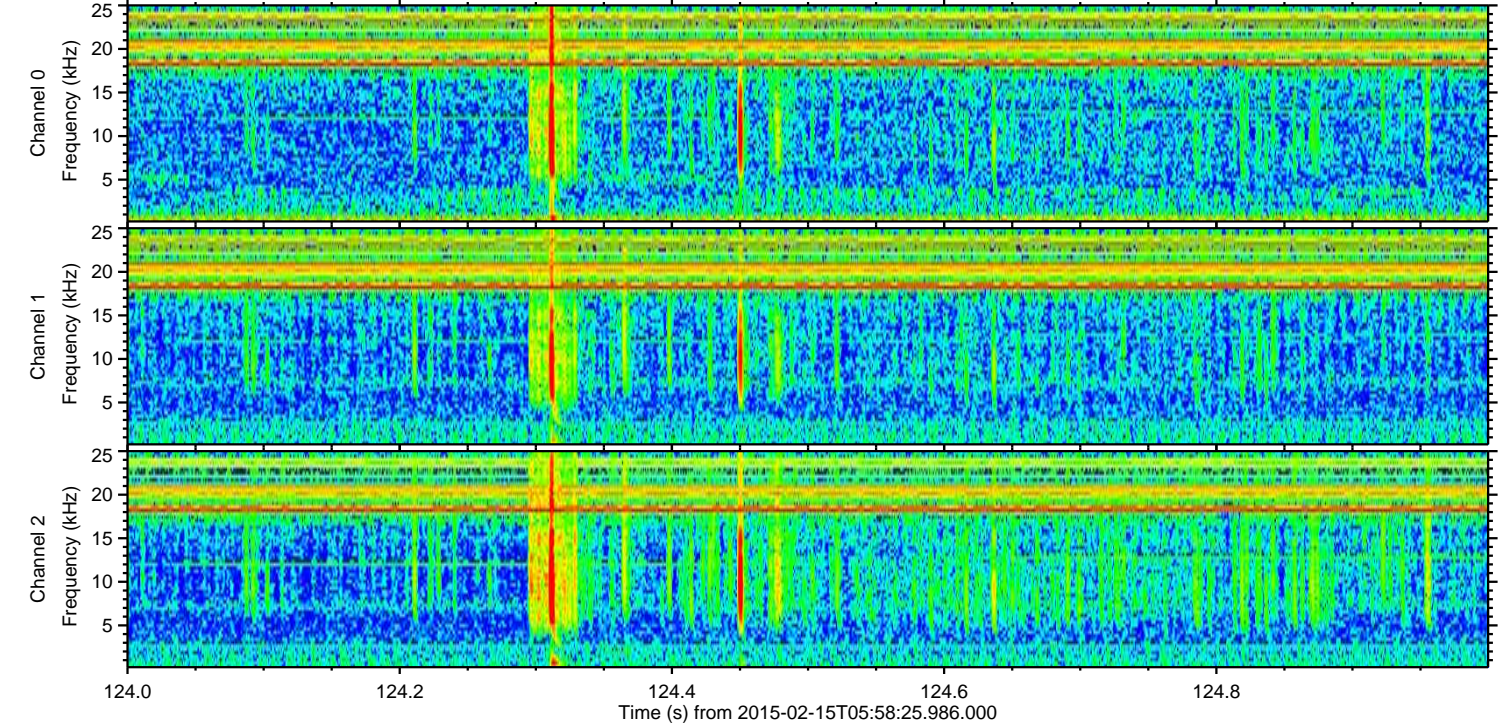
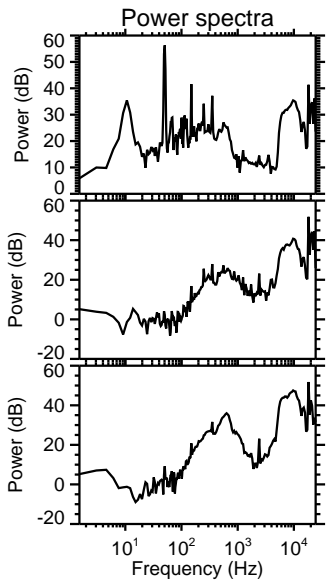
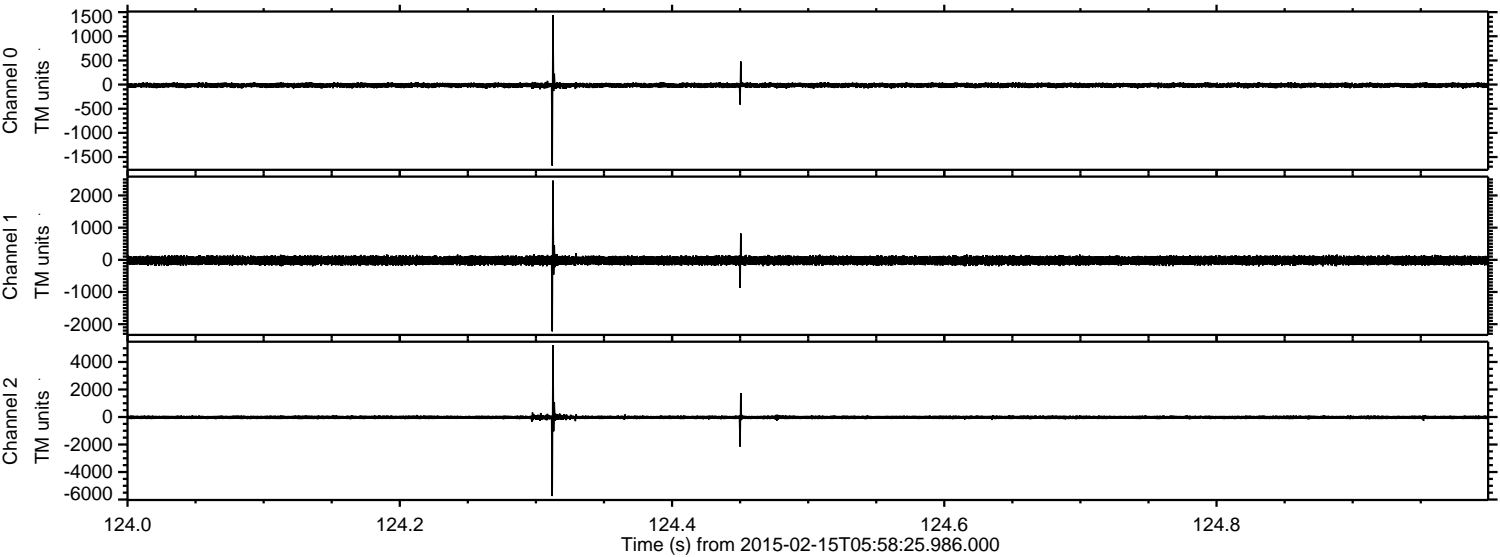


Processed Mon Feb 23 13:48:22 2015 by ELM ver.2012-10-06 from 001__elm20150215_055824__dat00.bin



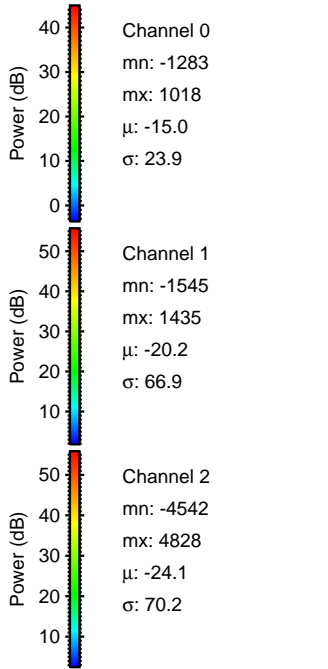
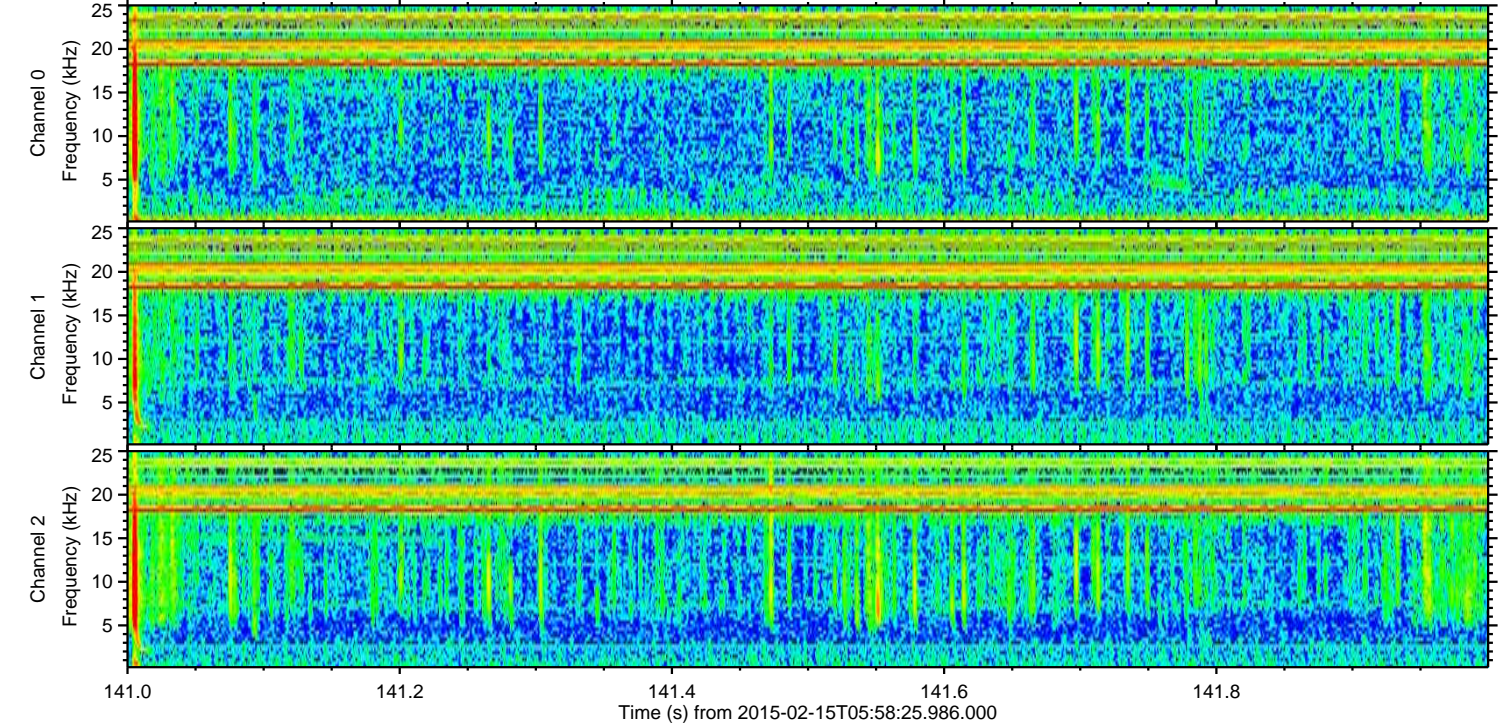
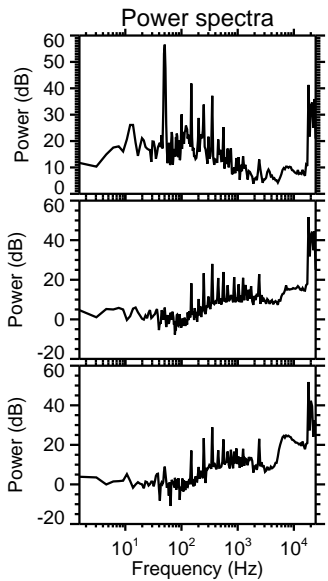
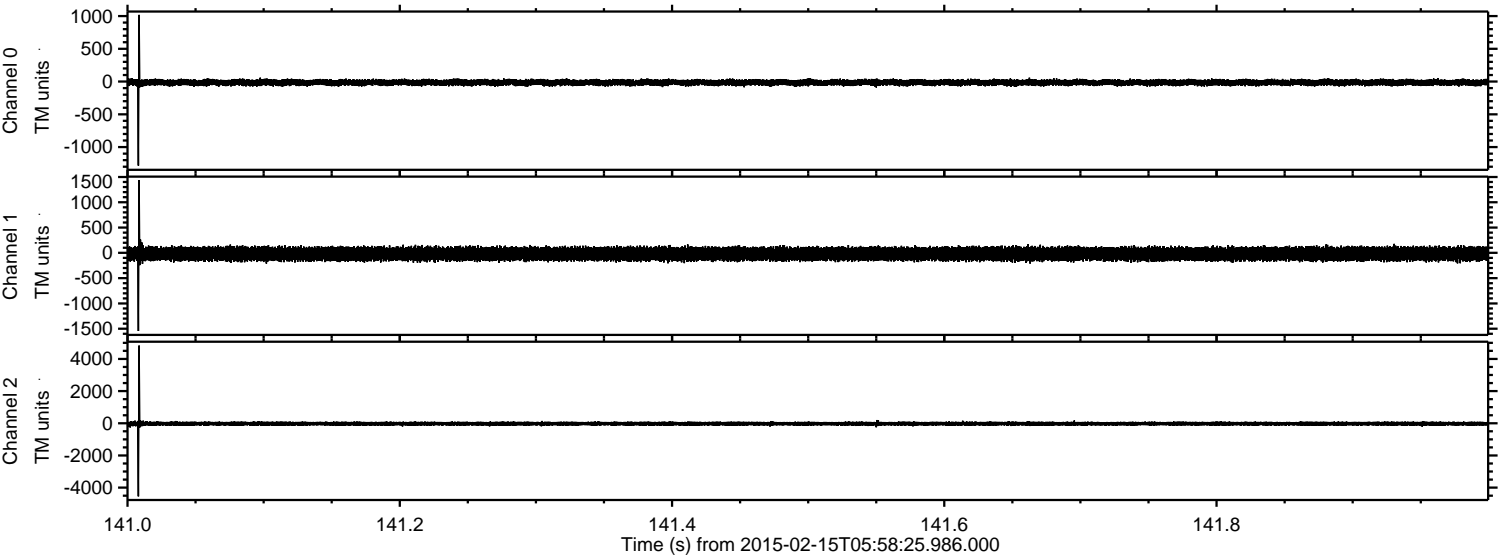
ELMAVAN 3D WAVEFORMS (Measured data sampled at 50 kHz) 49809 packets of 144 samples from 2015-02-15T05:58:25.986.000. Part 125/144

Processed Mon Feb 23 13:48:23 2015 by ELM ver.2012-10-06 from 001__elm20150215_055824__dat00.bin

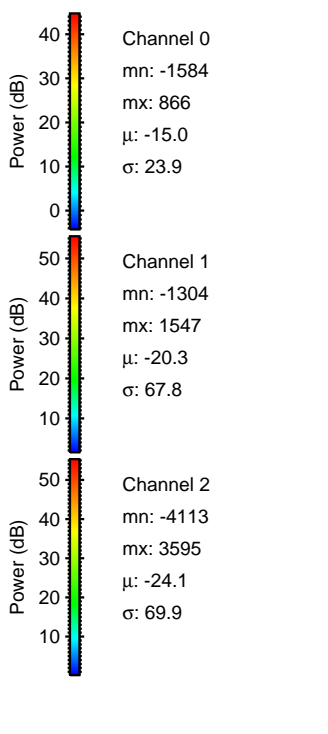
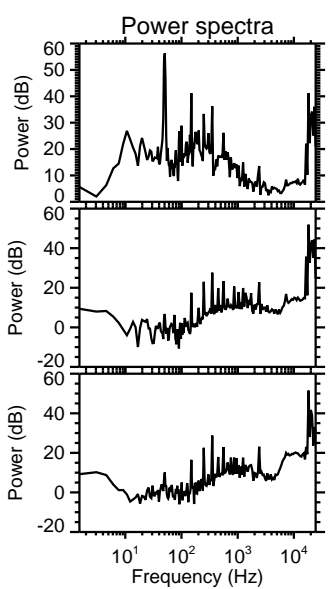
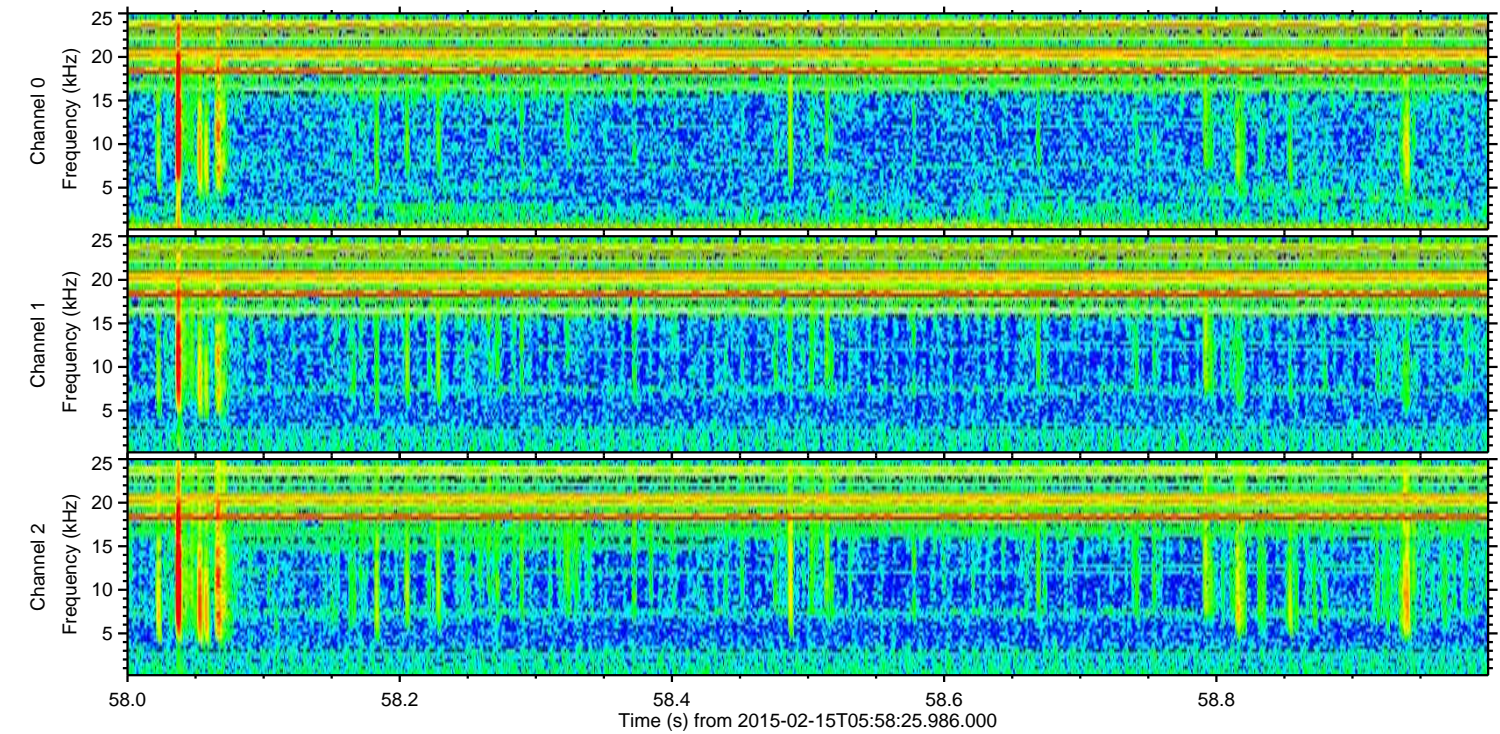
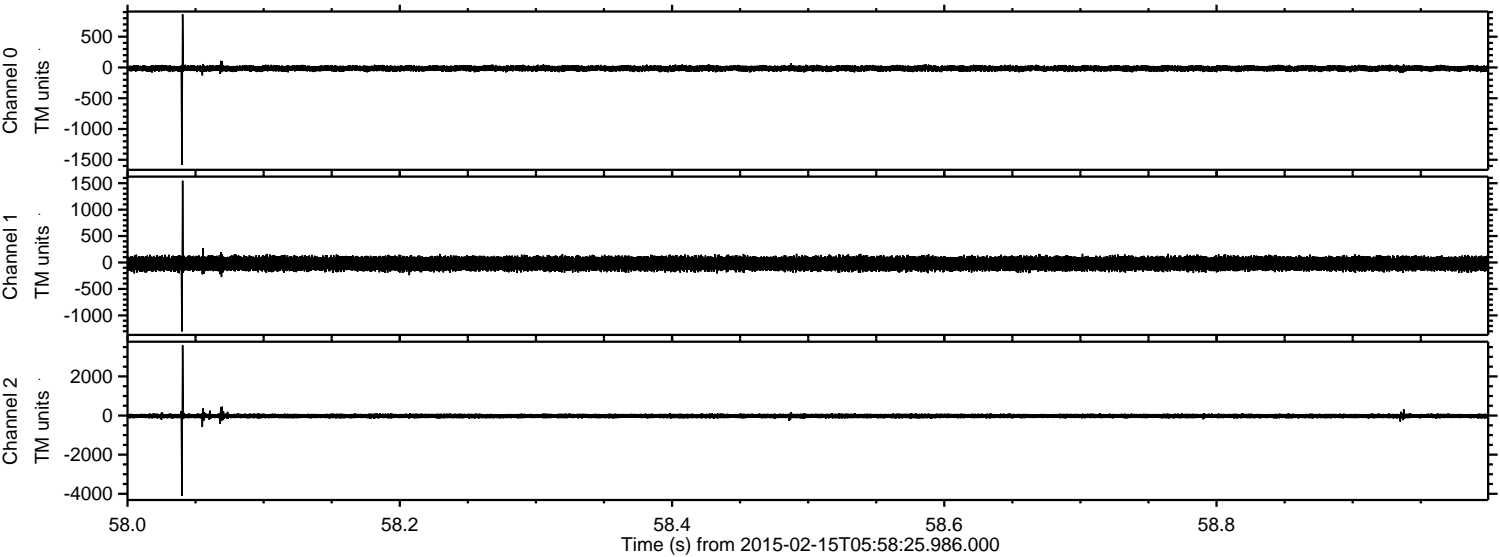


ELMAVAN 3D WAVEFORMS (Measured data sampled at 50 kHz) 49809 packets of 144 samples from 2015-02-15T05:58:25.986.000. Part 142/144

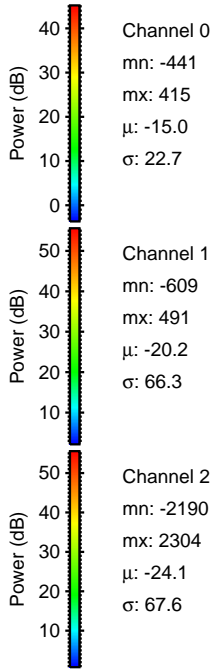
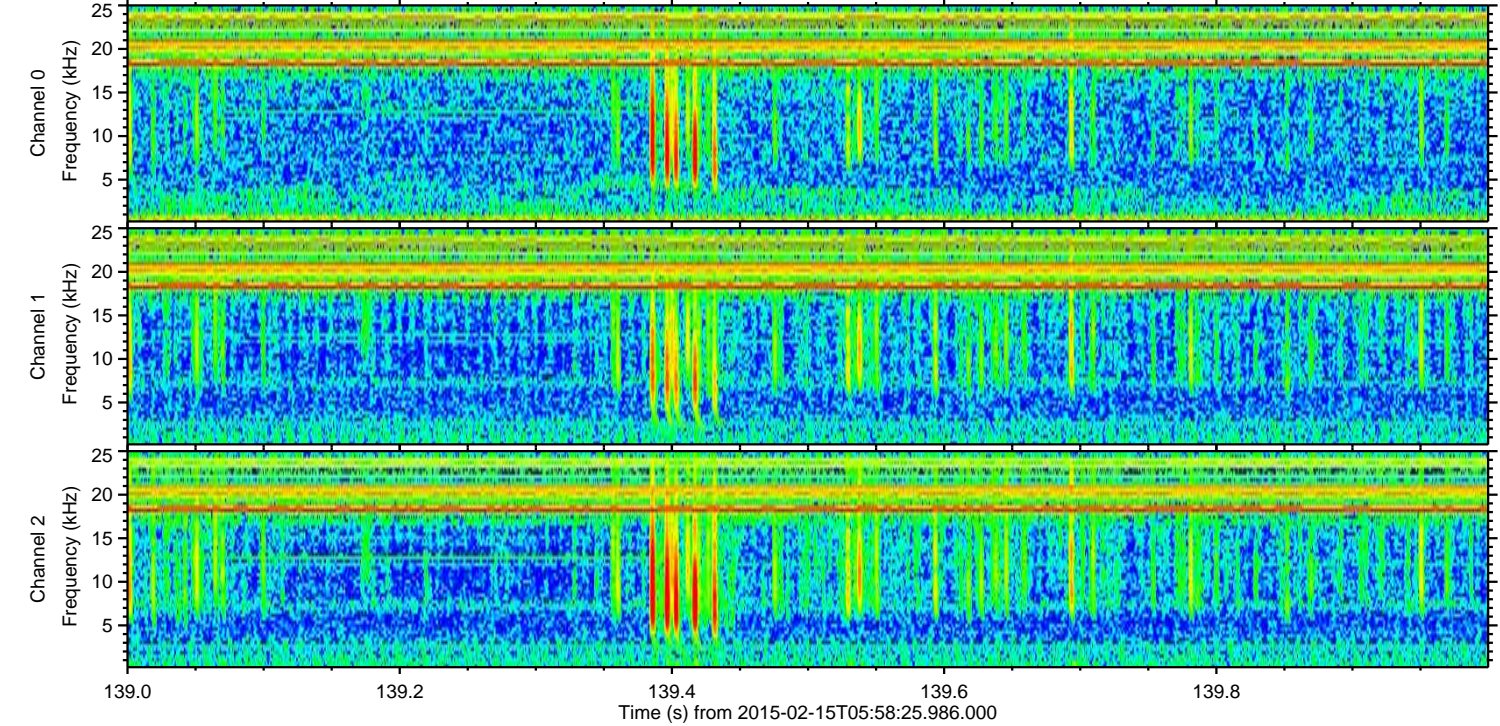
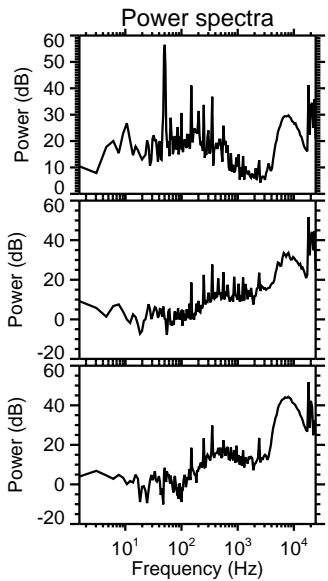
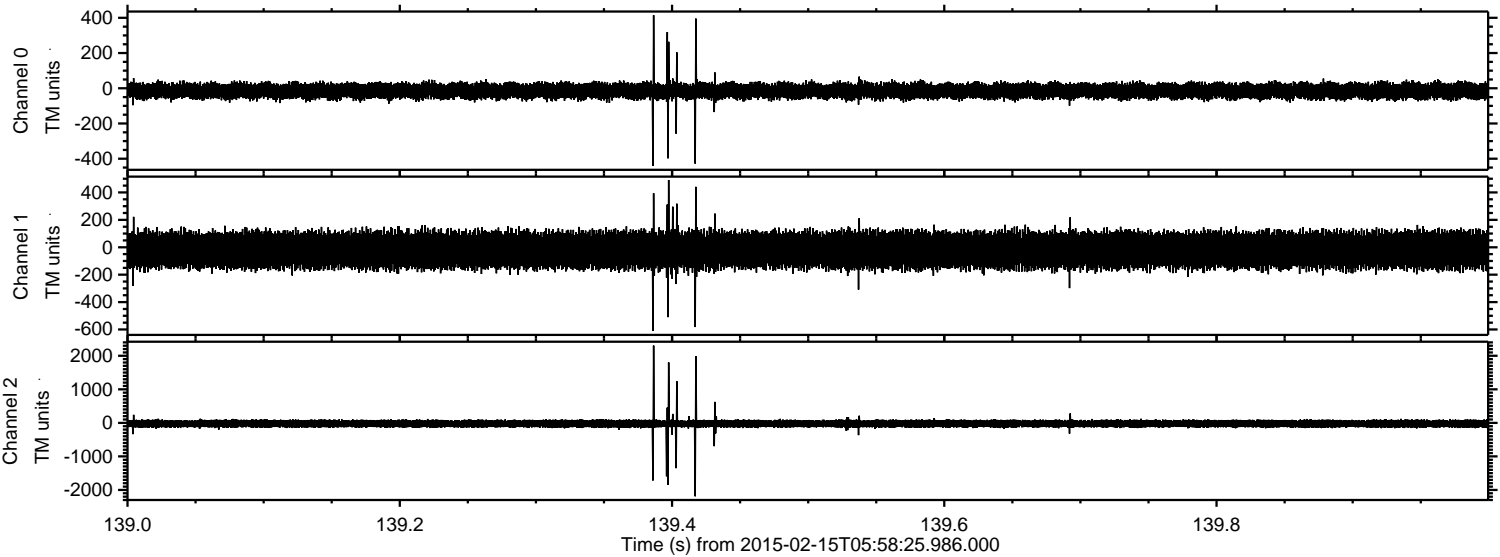
Processed Mon Feb 23 13:48:24 2015 by ELM ver.2012-10-06 from 001__elm20150215_055824__dat00.bin



Processed Mon Feb 23 13:48:25 2015 by ELM ver.2012-10-06 from 001__elm20150215_055824__dat00.bin

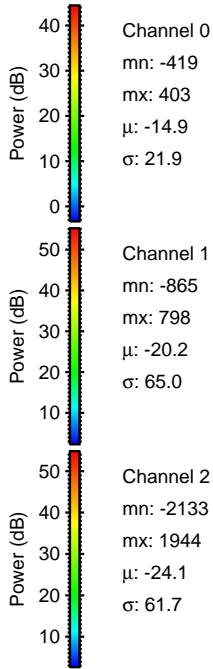
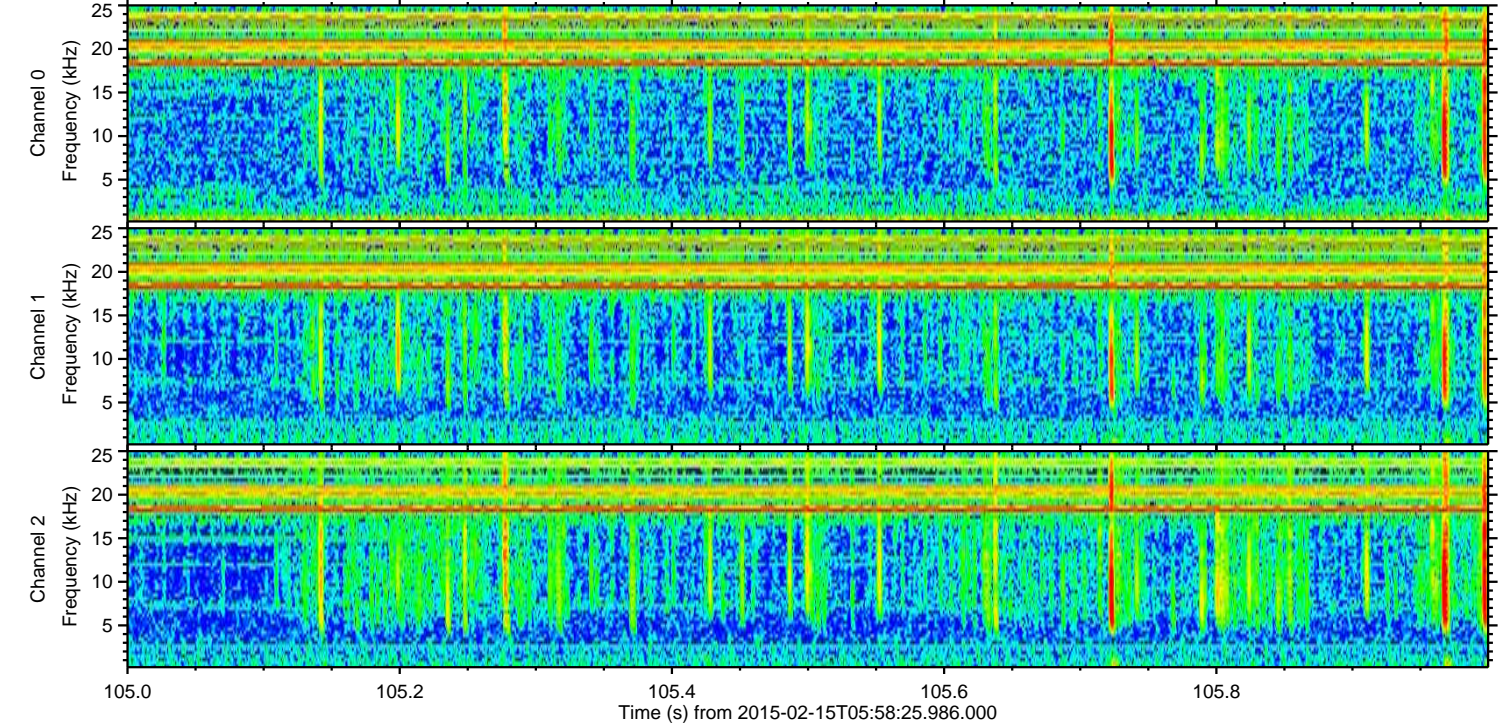
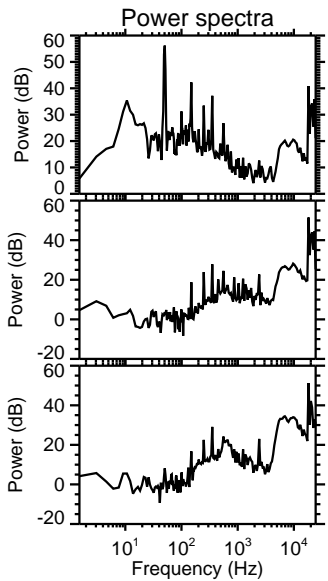
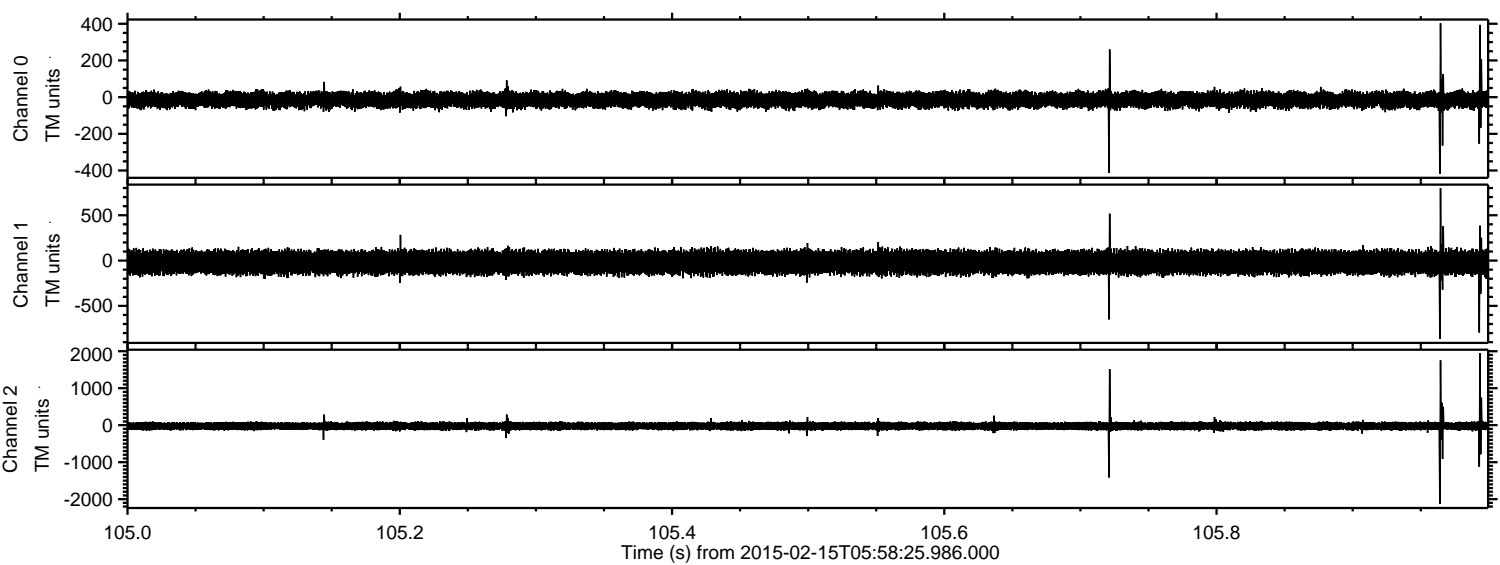


Processed Mon Feb 23 13:48:25 2015 by ELM ver.2012-10-06 from 001__elm20150215_055824__dat00.bin

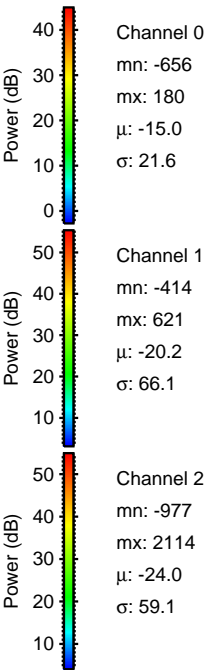
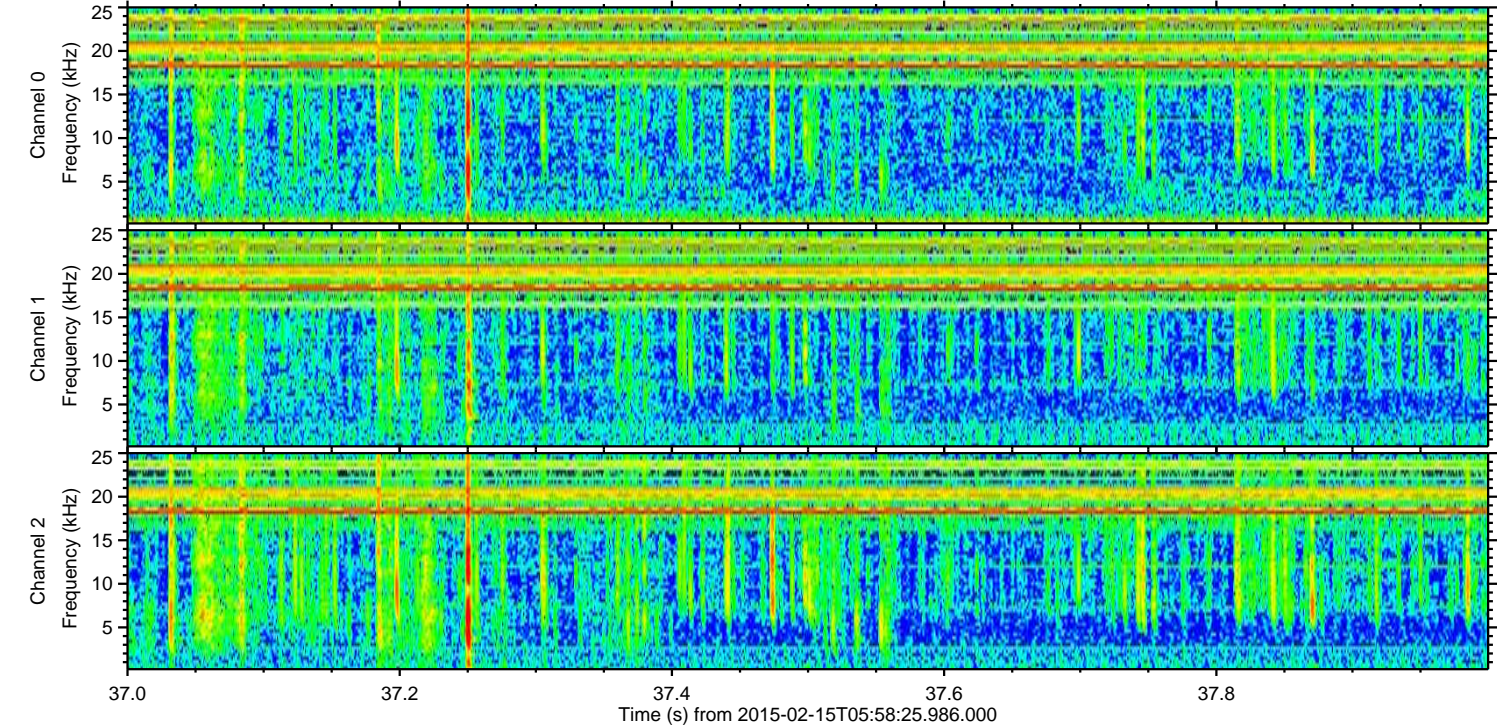
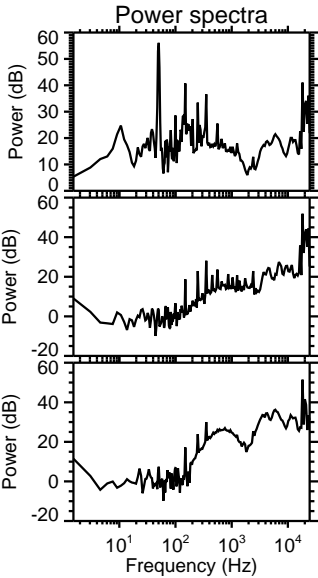
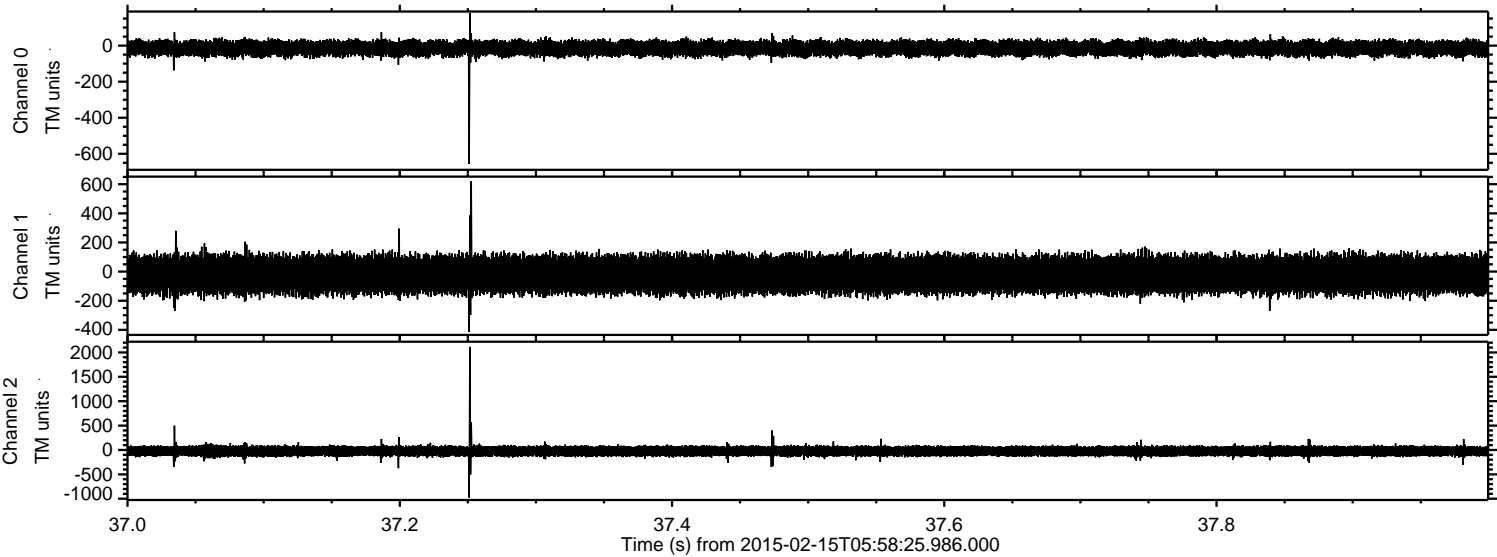


ELMAVAN 3D WAVEFORMS (Measured data sampled at 50 kHz) 49809 packets of 144 samples from 2015-02-15T05:58:25.986.000. Part 106/144

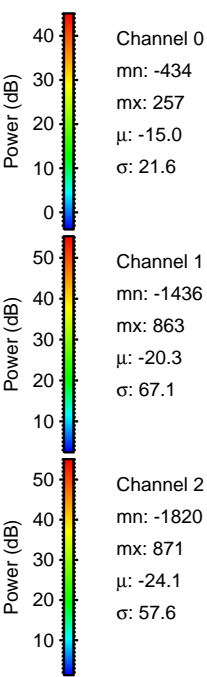
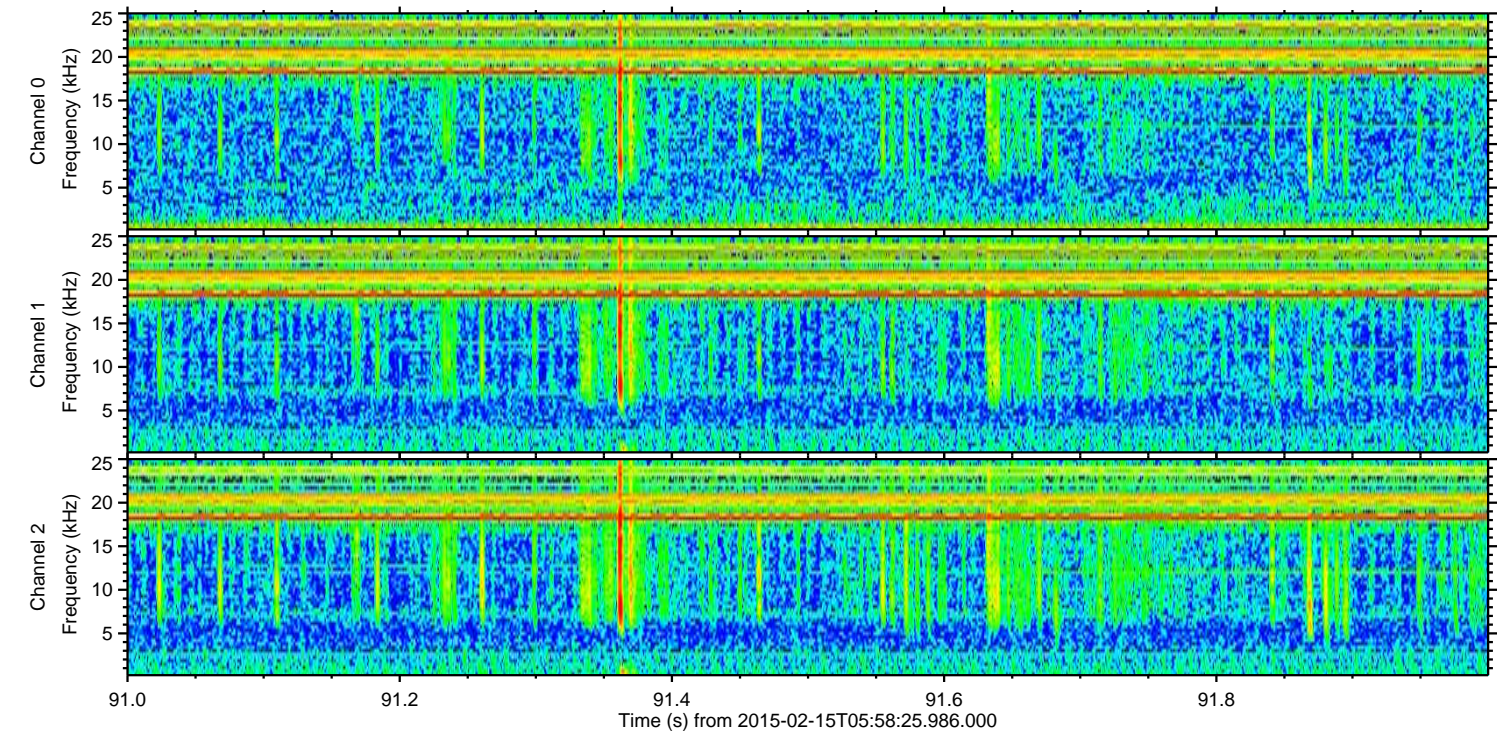
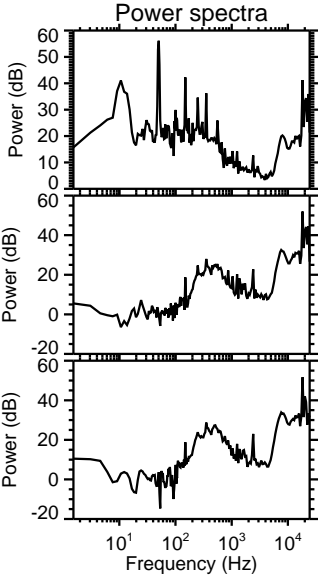
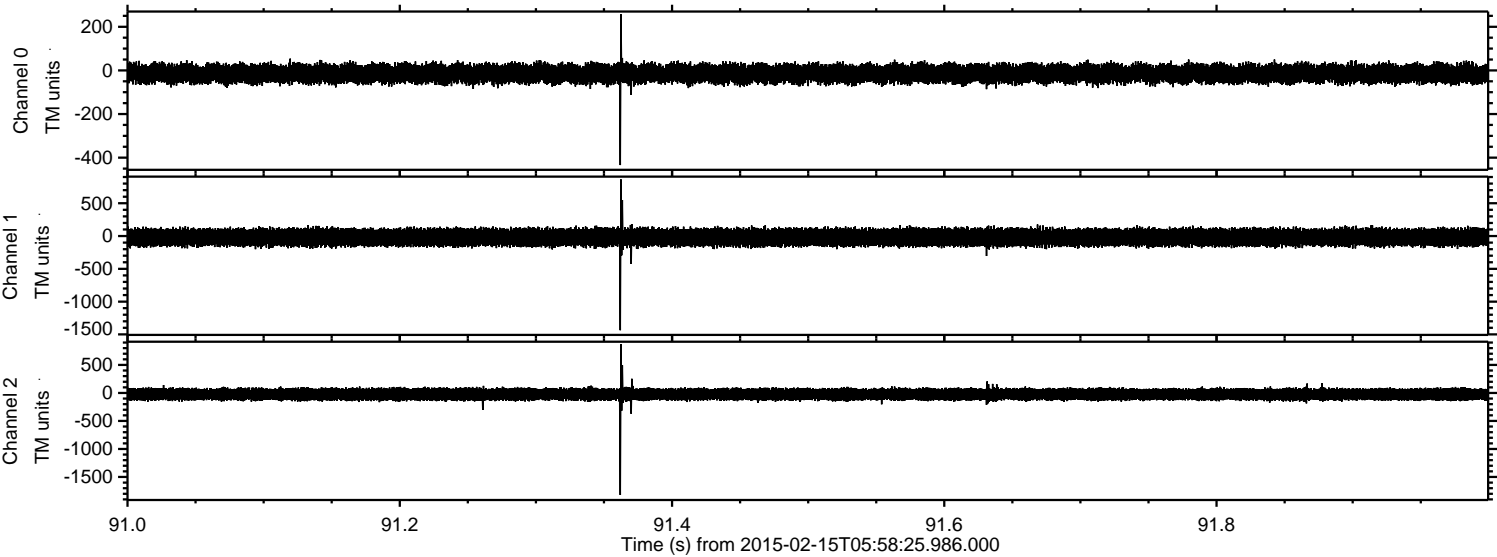
Processed Mon Feb 23 13:48:26 2015 by ELM ver.2012-10-06 from 001__elm20150215_055824__dat00.bin



Processed Mon Feb 23 13:48:27 2015 by ELM ver.2012-10-06 from 001__elm20150215_055824__dat00.bin



Processed Mon Feb 23 13:48:28 2015 by ELM ver.2012-10-06 from 001__elm20150215_055824__dat00.bin



Channel 0
mn: -434
mx: 257
 μ : -15.0
 σ : 21.6

Channel 1
mn: -1436
mx: 863
 μ : -20.3
 σ : 67.1

Channel 2
mn: -1820
mx: 871
 μ : -24.1
 σ : 57.6

Processed Mon Feb 23 13:48:29 2015 by ELM ver.2012-10-06 from 001__elm20150215_055824__dat00.bin

