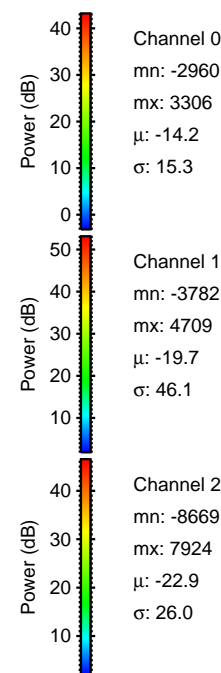
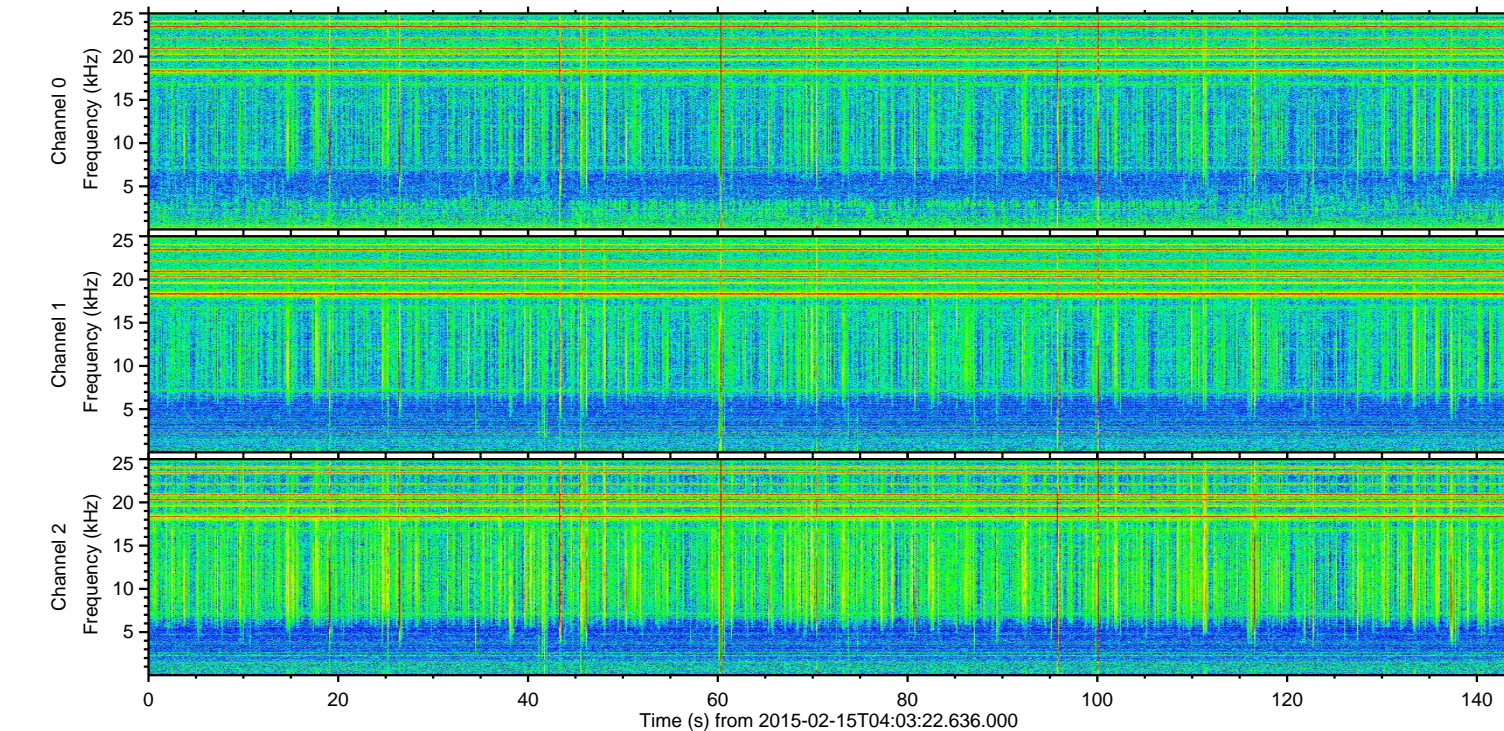
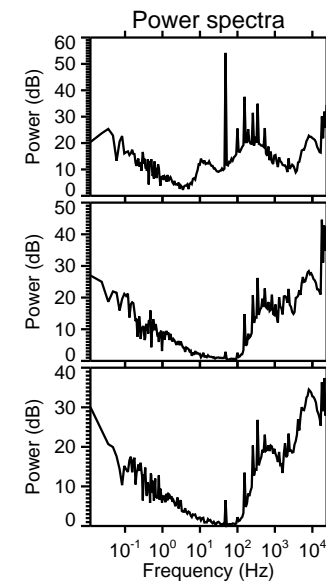
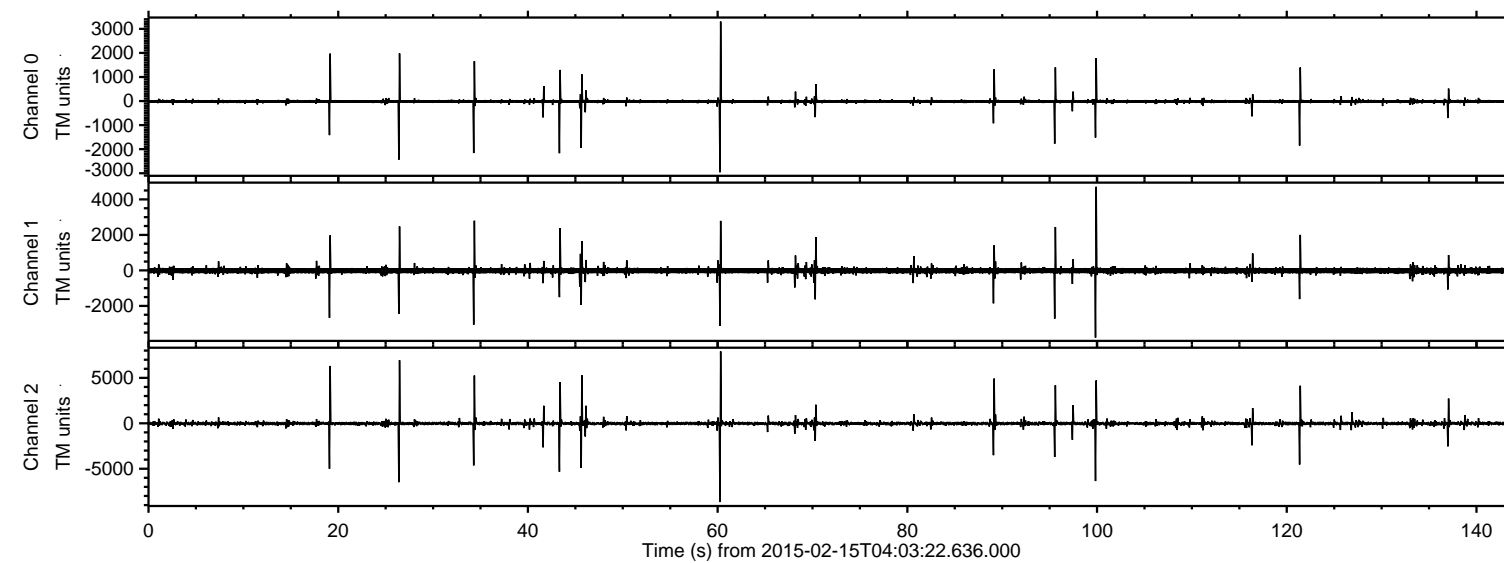
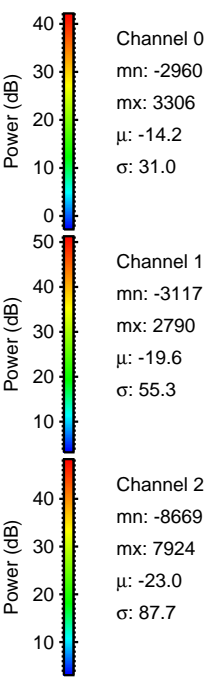
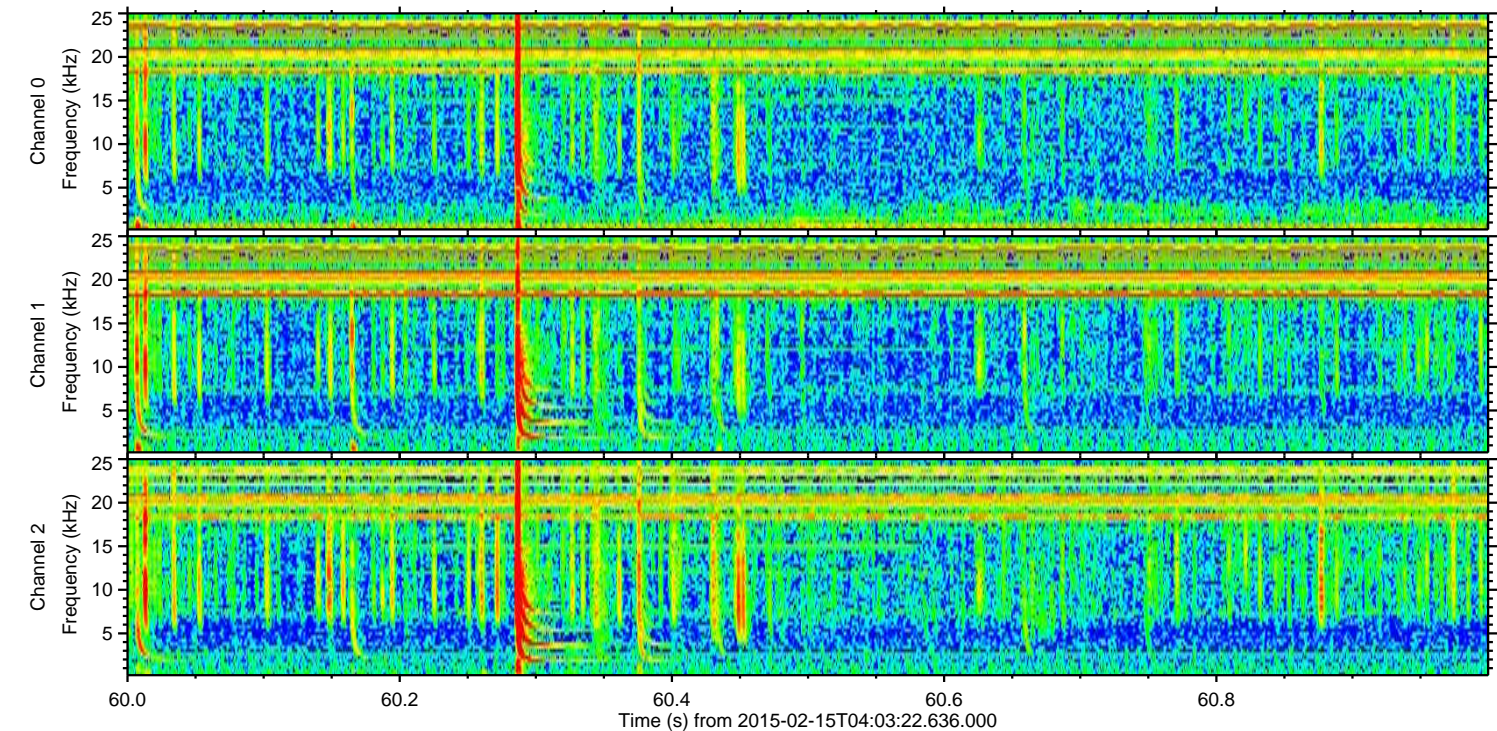
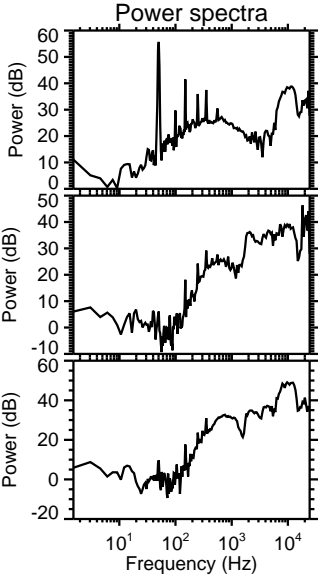
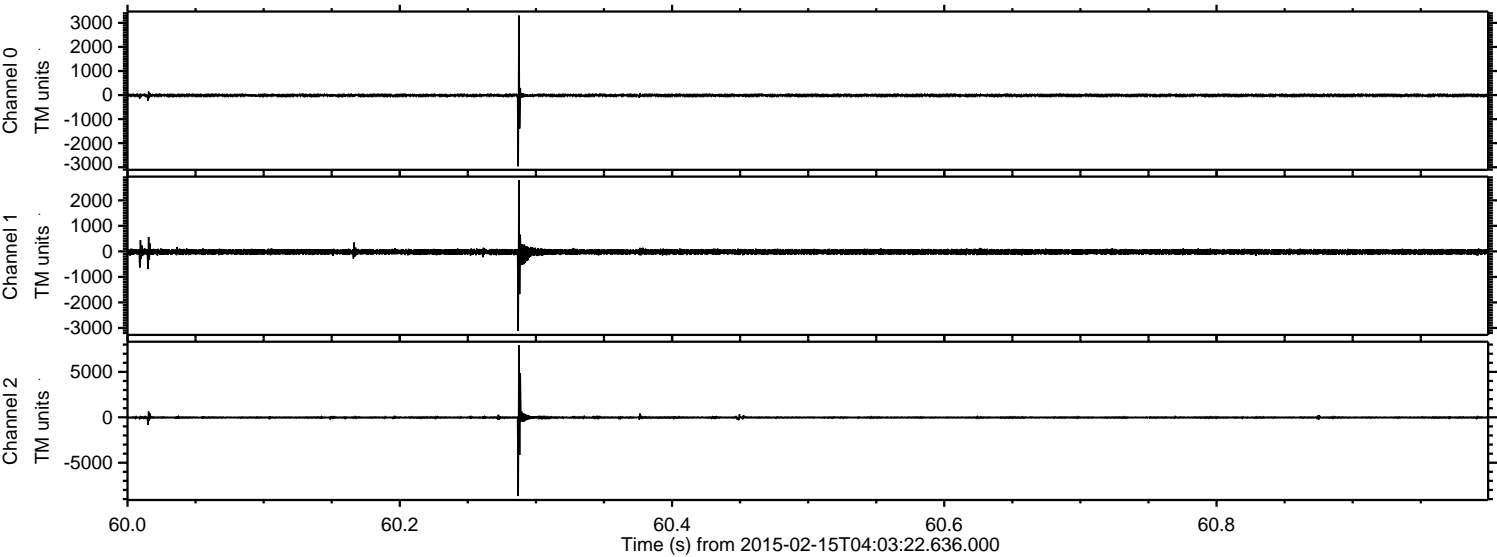


ELMAVAN 3D WAVEFORMS (Measured data sampled at 50 kHz) 49807 packets of 144 samples from 2015-02-15T04:03:22.636.000.

Processed Mon Feb 23 13:25:07 2015 by ELM ver.2012-10-06 from 001__elm20150215_040321__dat00.bin

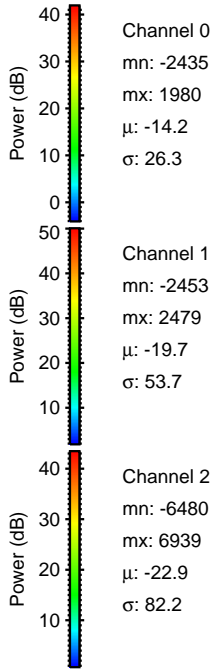
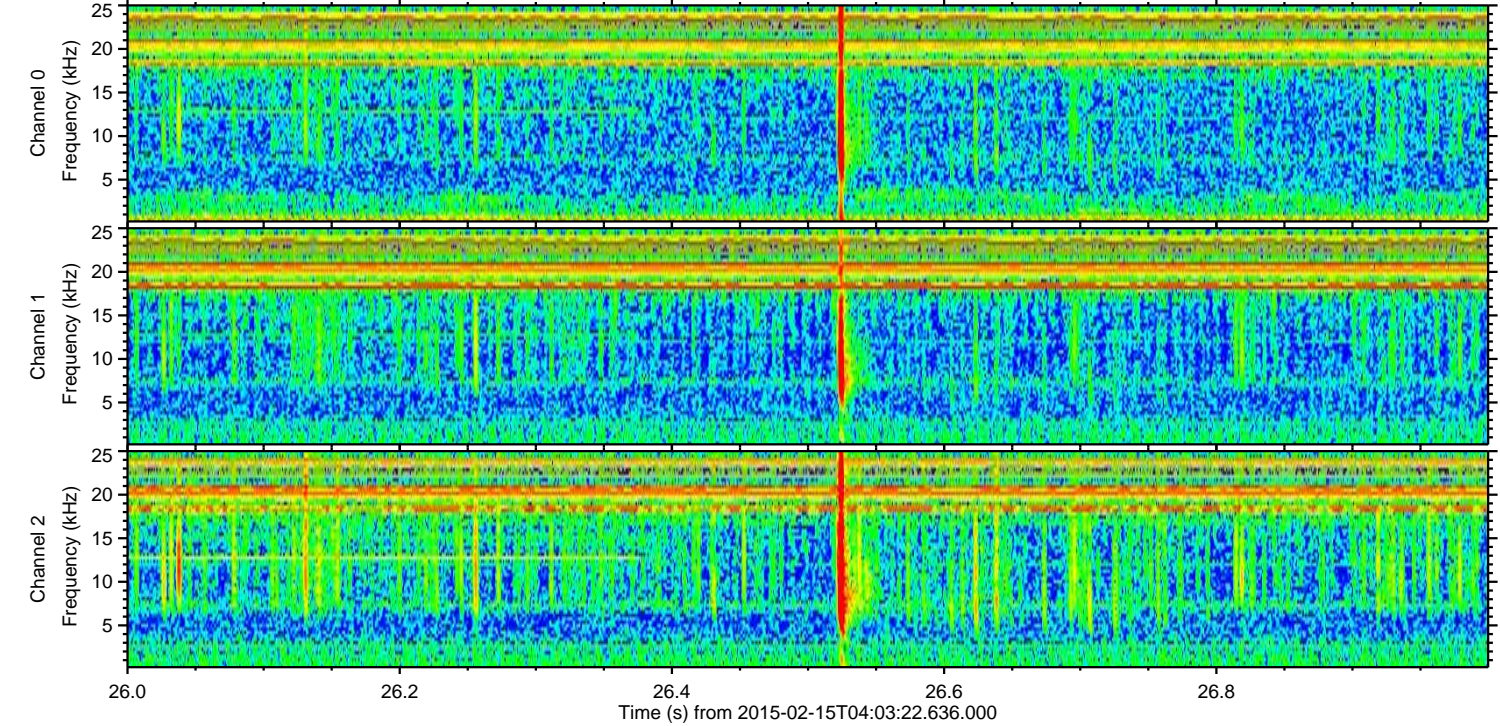
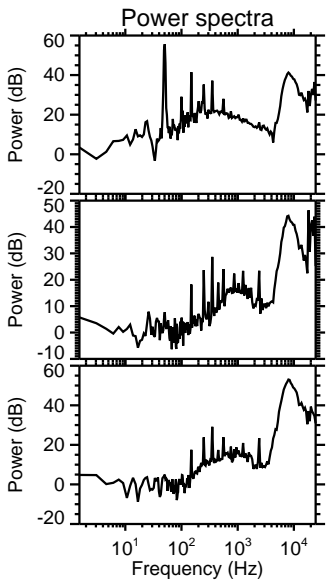
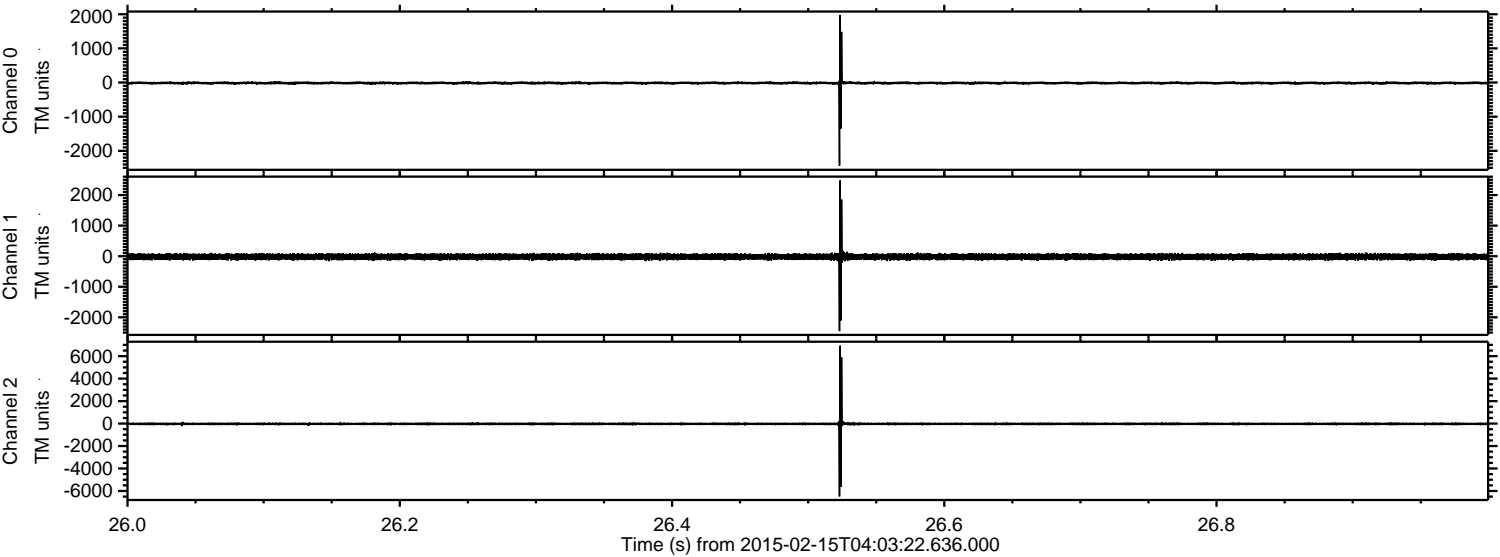


Processed Mon Feb 23 13:25:18 2015 by ELM ver.2012-10-06 from 001__elm20150215_040321__dat00.bin



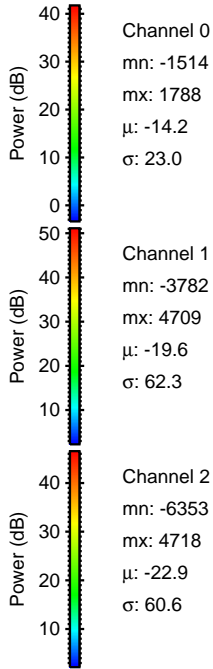
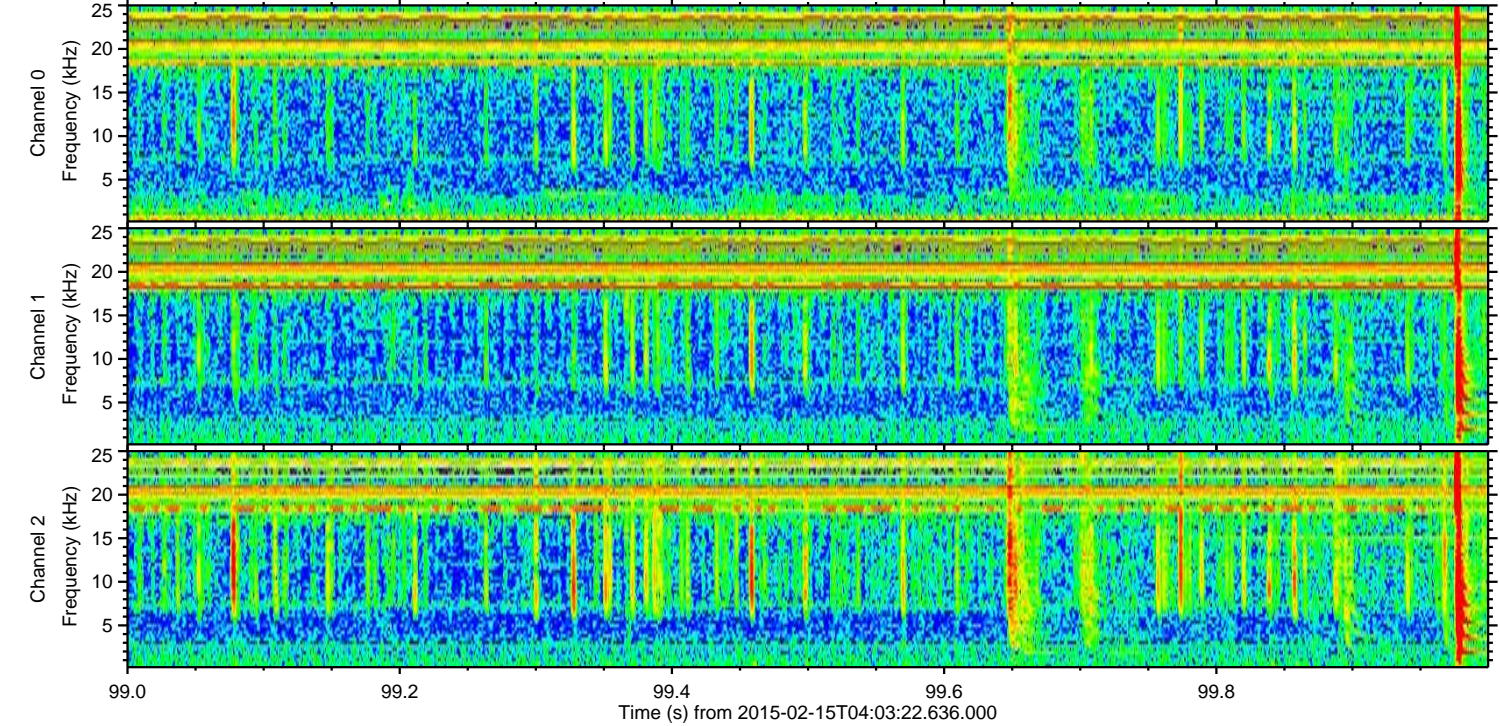
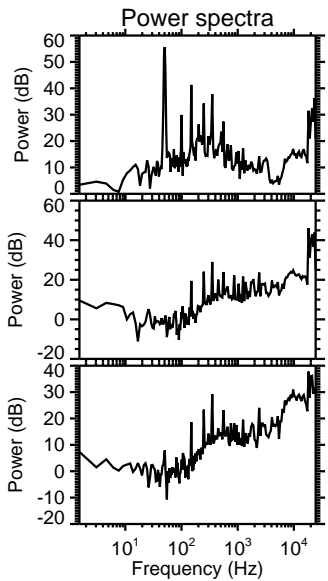
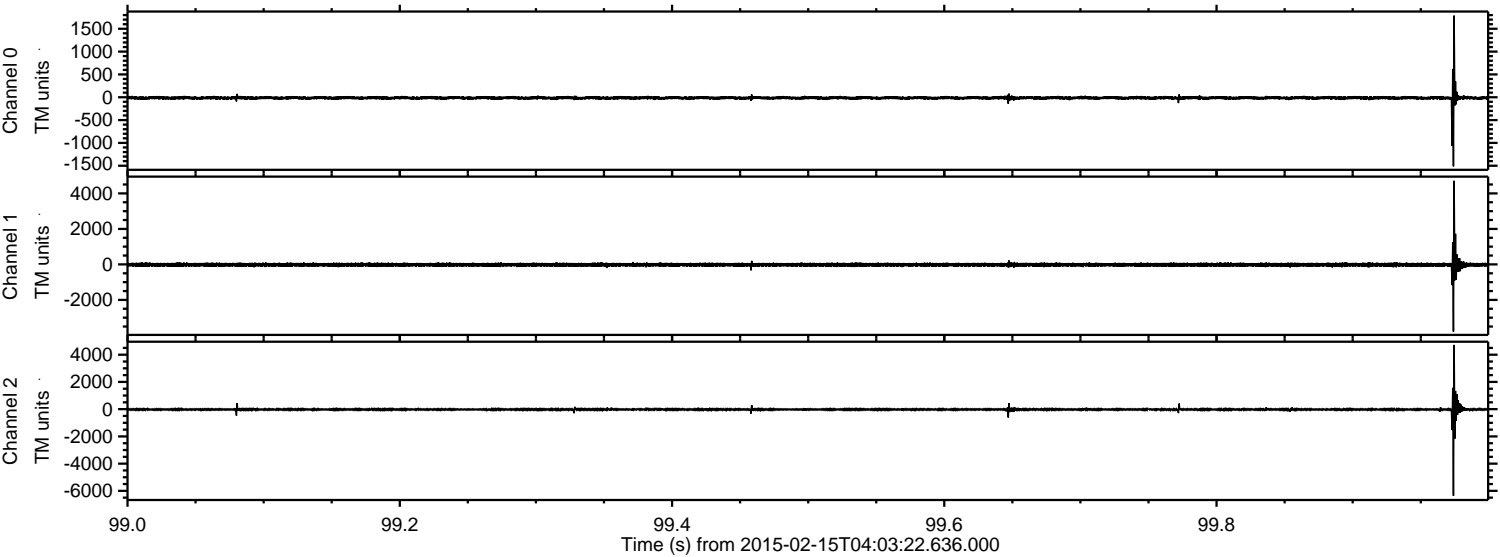
ELMAVAN 3D WAVEFORMS (Measured data sampled at 50 kHz) 49807 packets of 144 samples from 2015-02-15T04:03:22.636.000. Part 27/144

Processed Mon Feb 23 13:25:19 2015 by ELM ver.2012-10-06 from 001__elm20150215_040321__dat00.bin

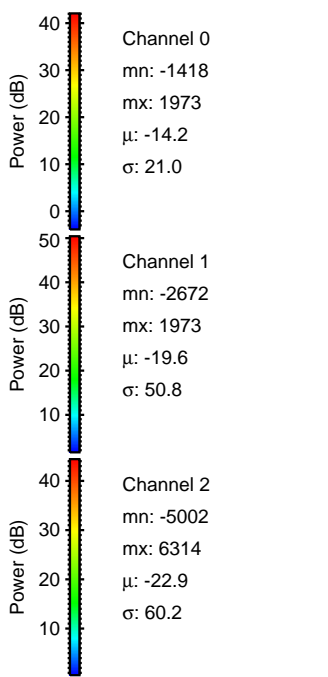
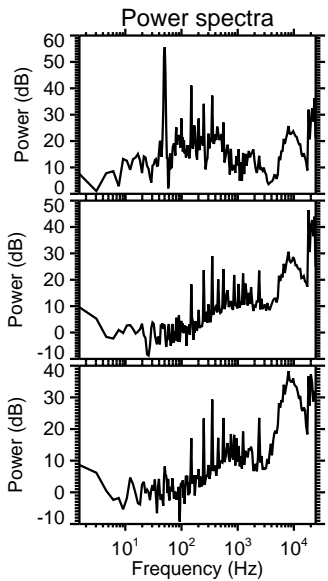
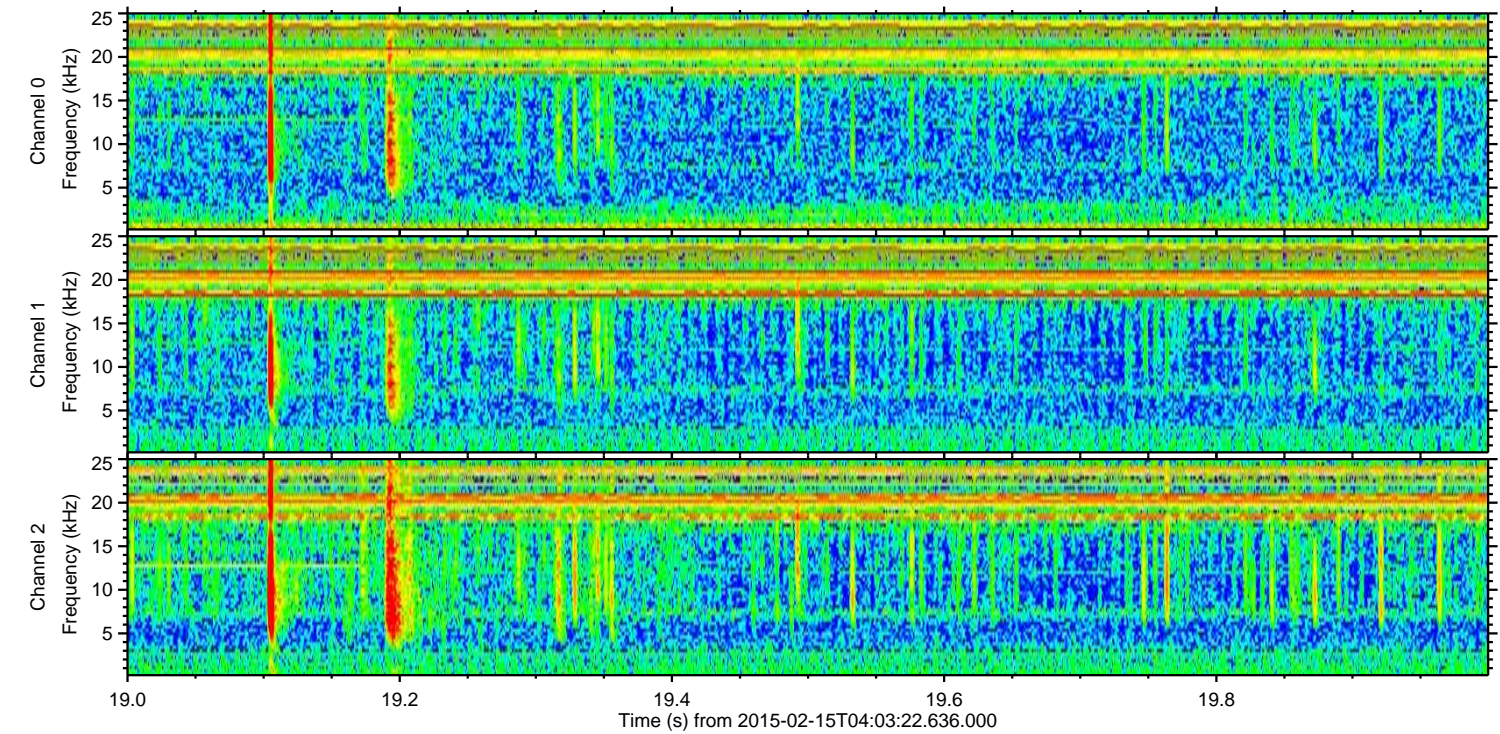
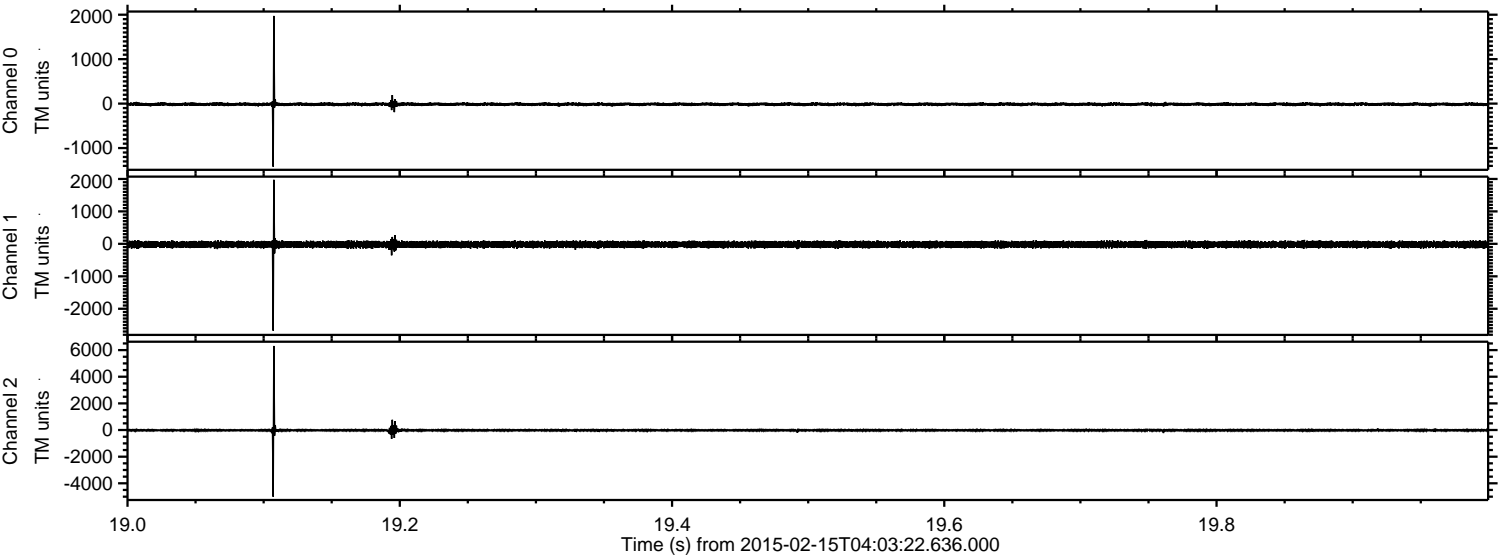


ELMAVAN 3D WAVEFORMS (Measured data sampled at 50 kHz) 49807 packets of 144 samples from 2015-02-15T04:03:22.636.000. Part 100/144

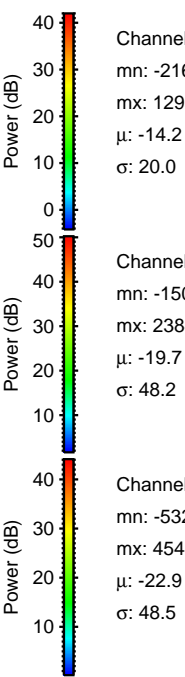
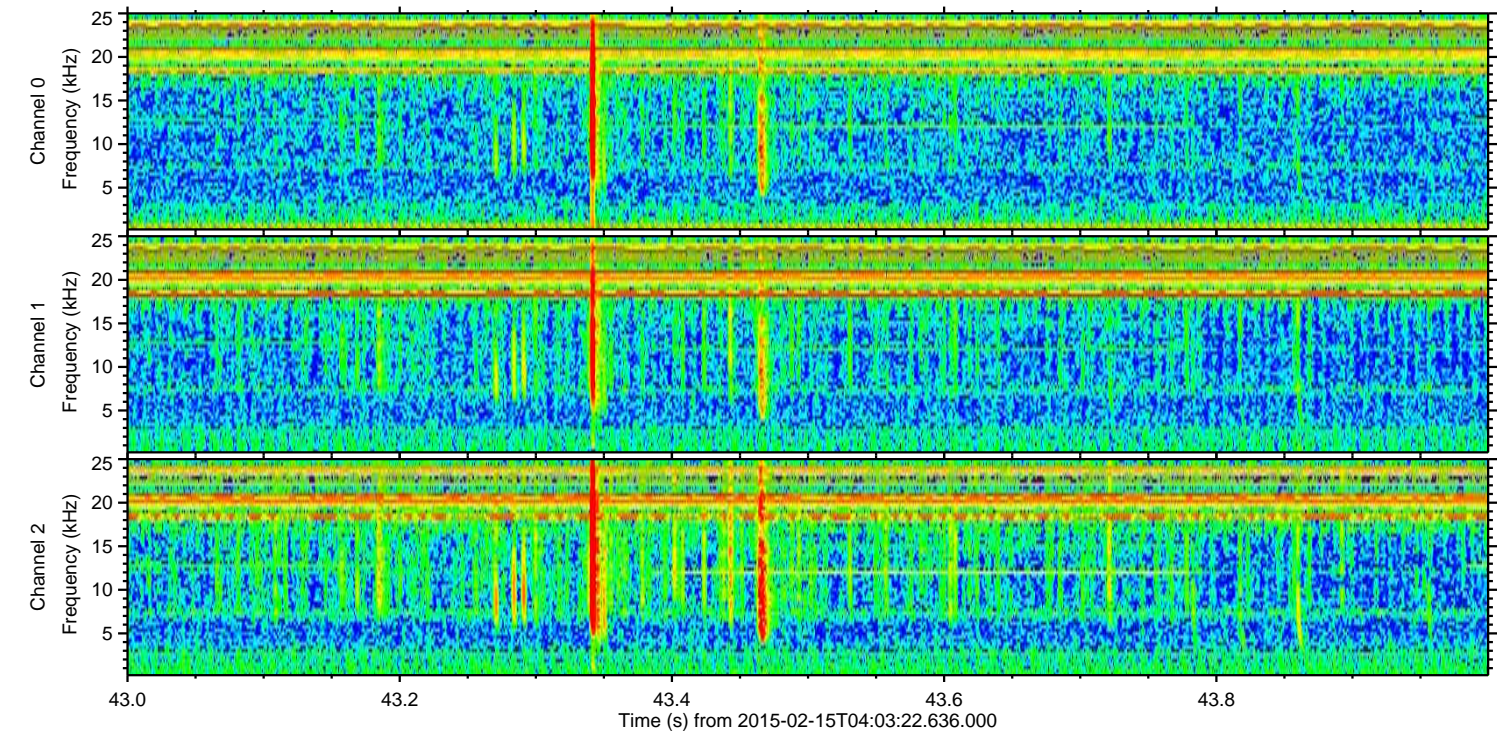
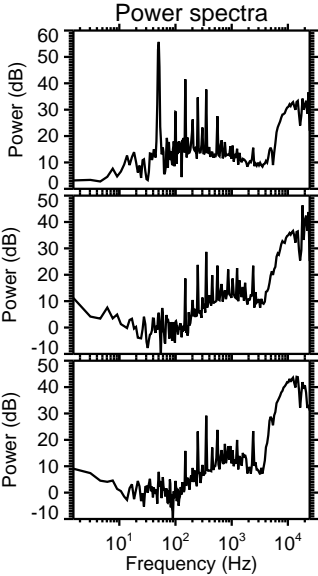
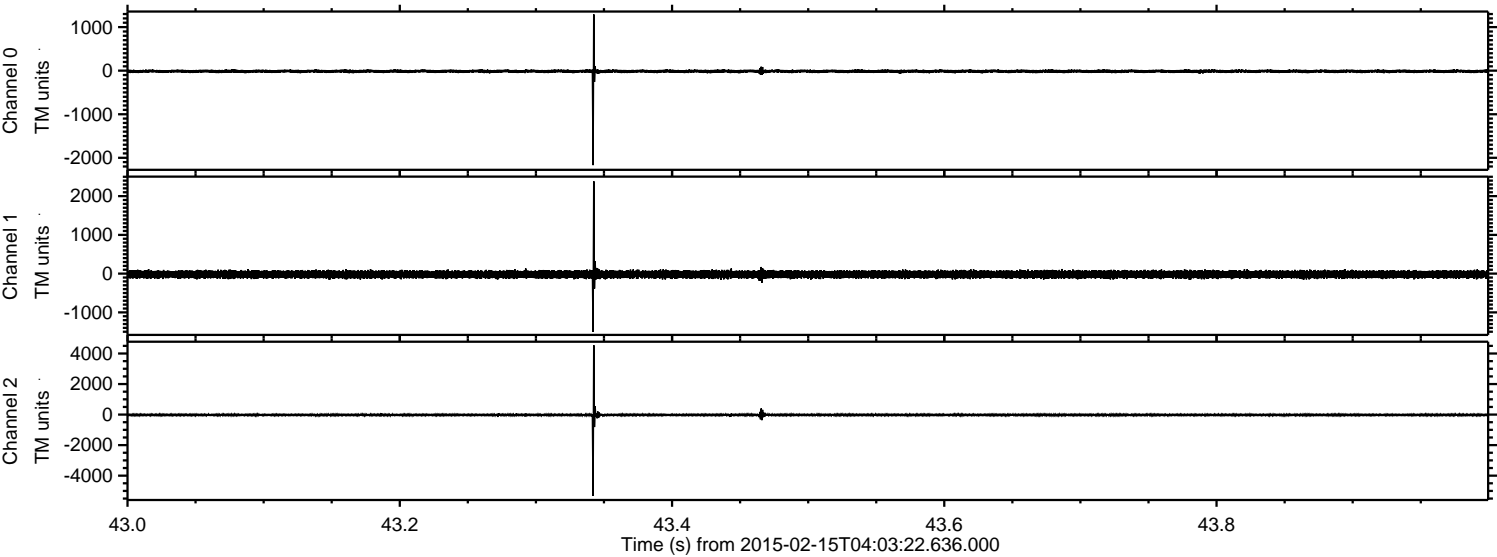
Processed Mon Feb 23 13:25:20 2015 by ELM ver.2012-10-06 from 001__elm20150215_040321__dat00.bin



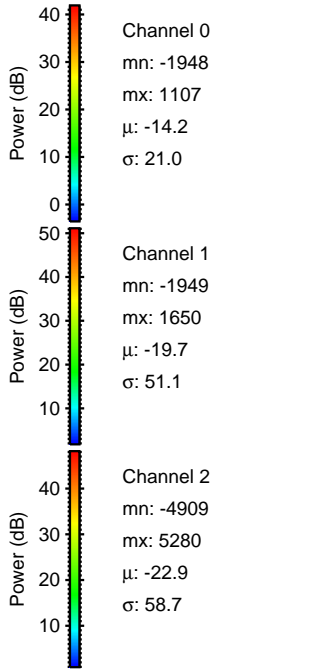
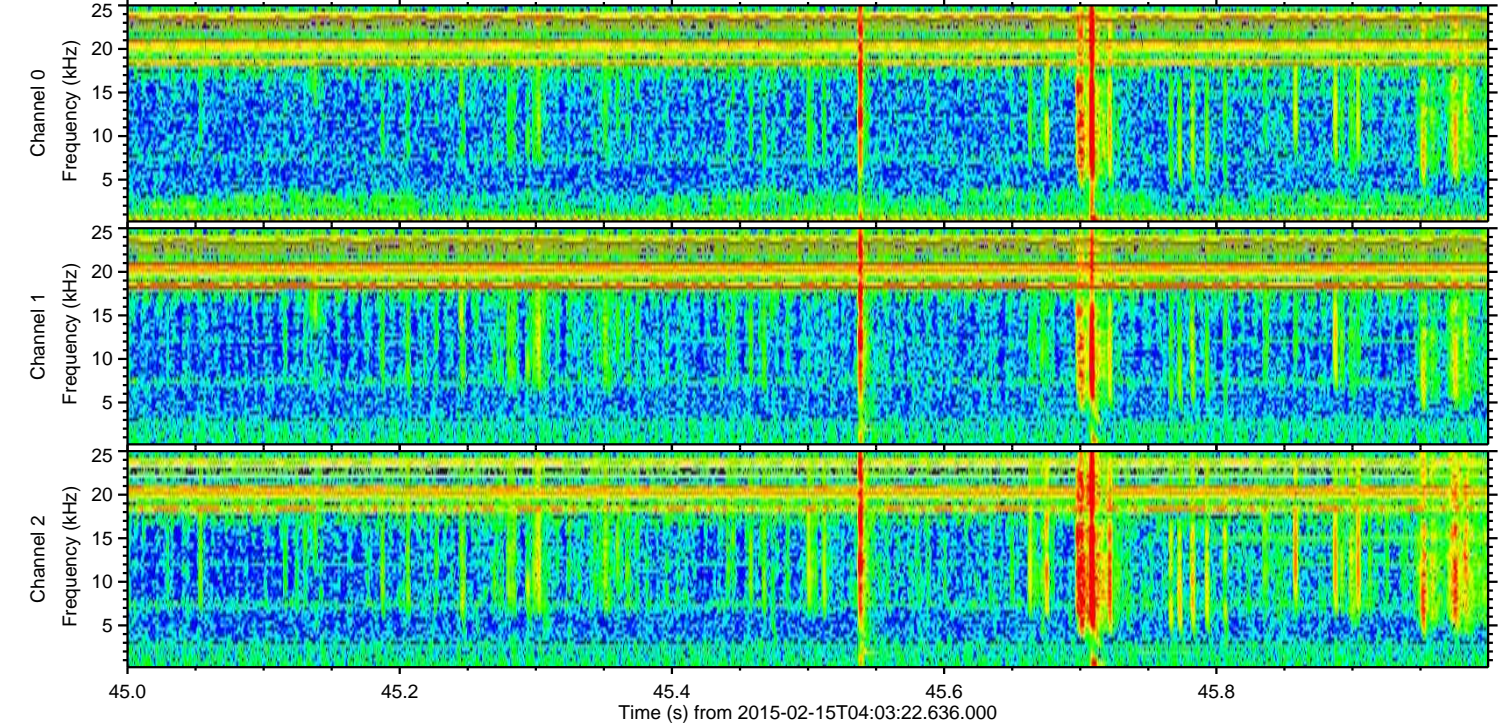
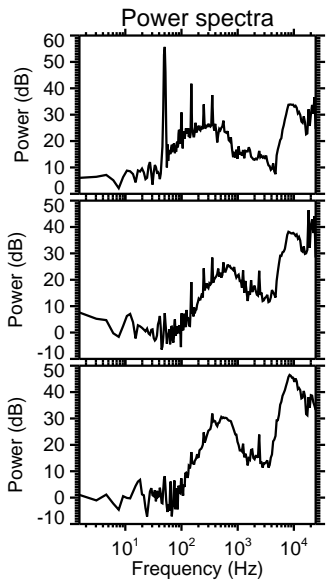
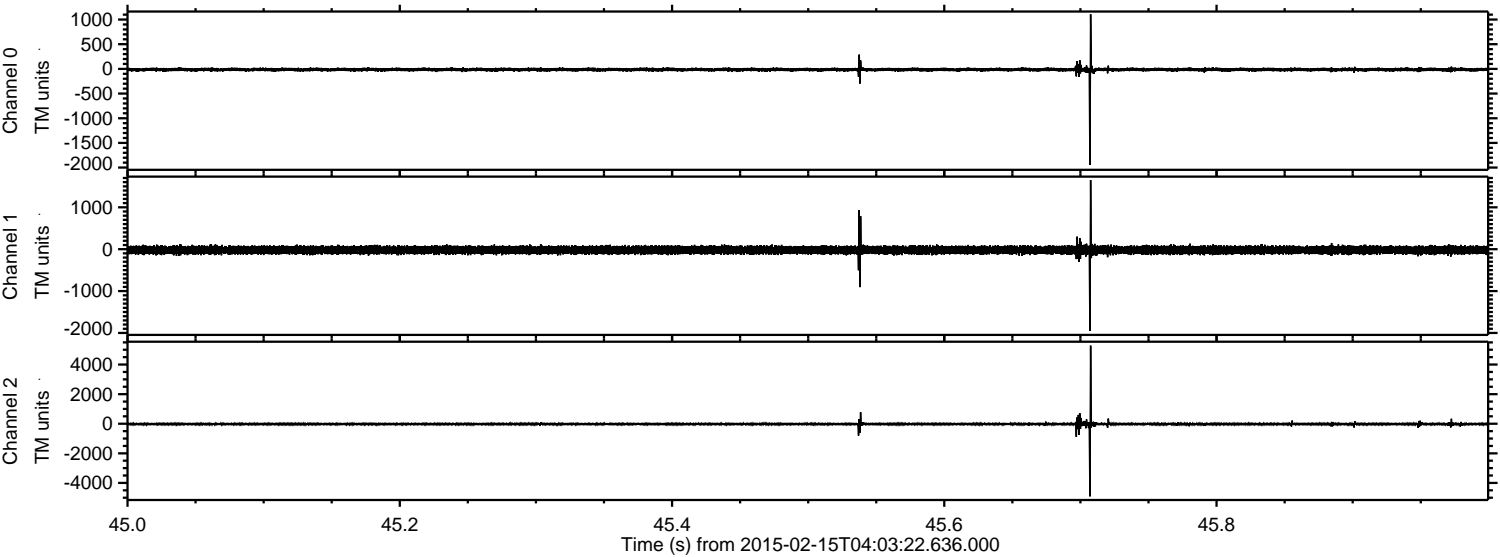
Processed Mon Feb 23 13:25:21 2015 by ELM ver.2012-10-06 from 001__elm20150215_040321__dat00.bin



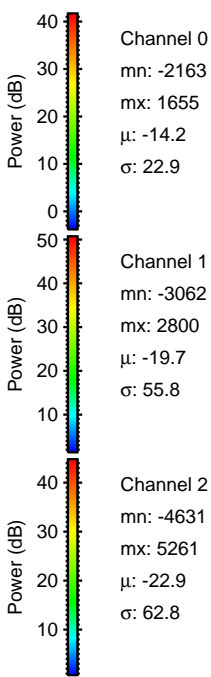
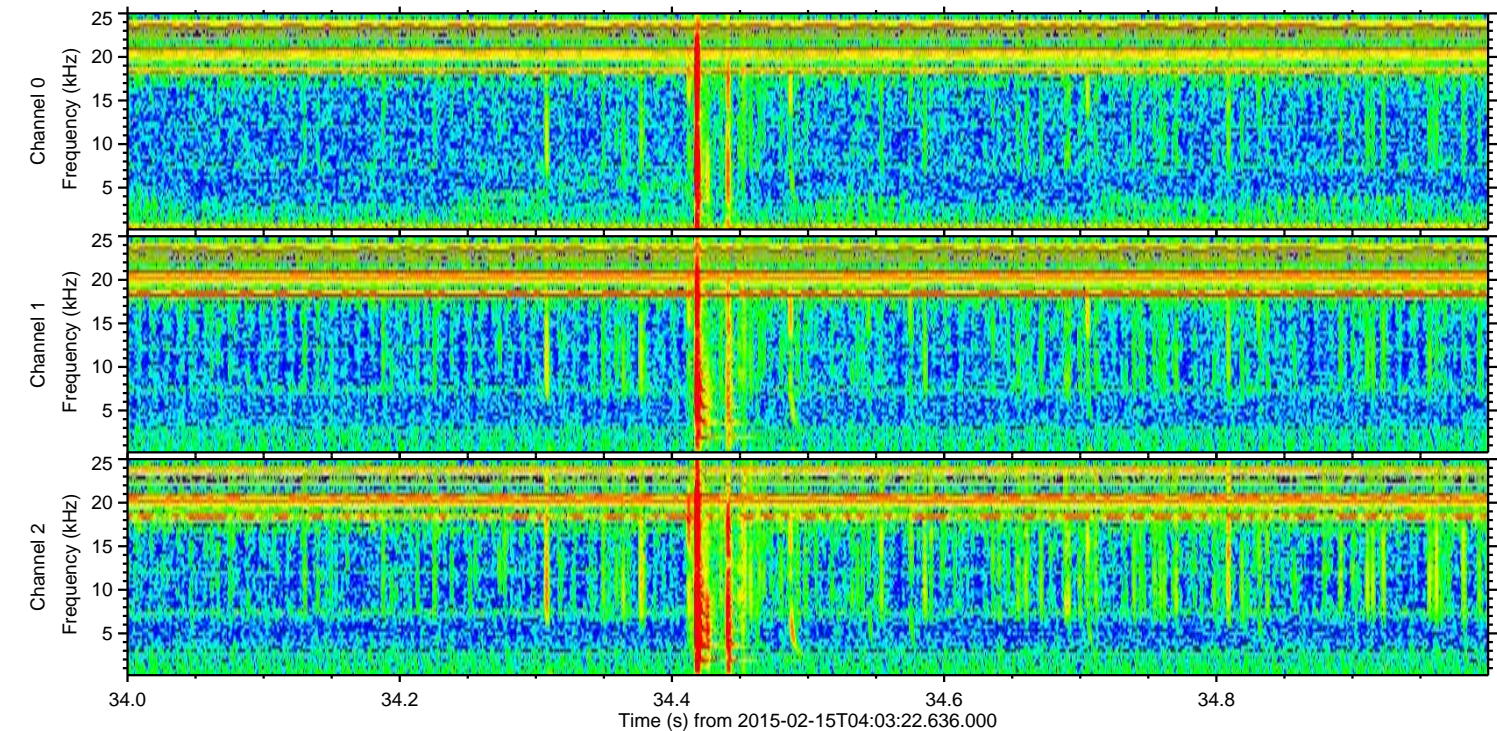
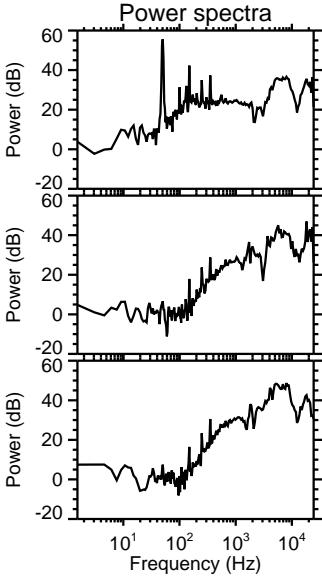
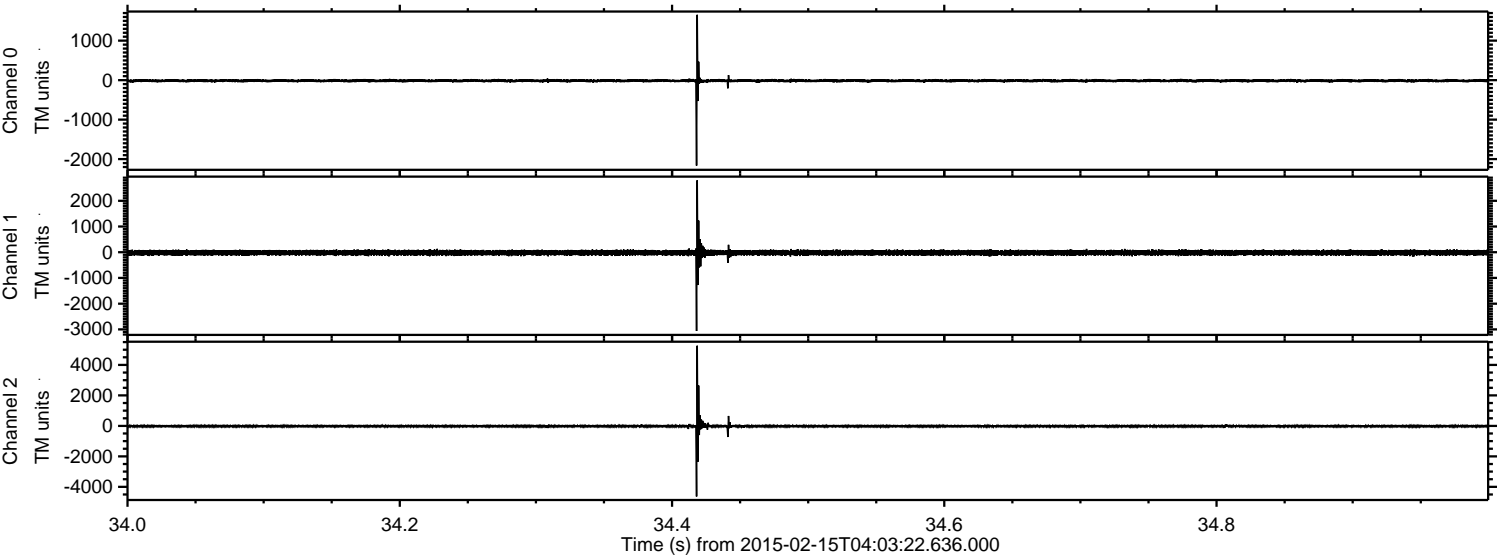
Processed Mon Feb 23 13:25:22 2015 by ELM ver.2012-10-06 from 001__elm20150215_040321__dat00.bin



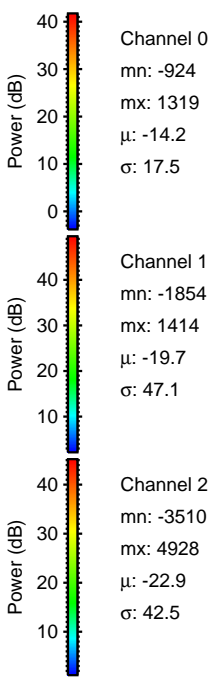
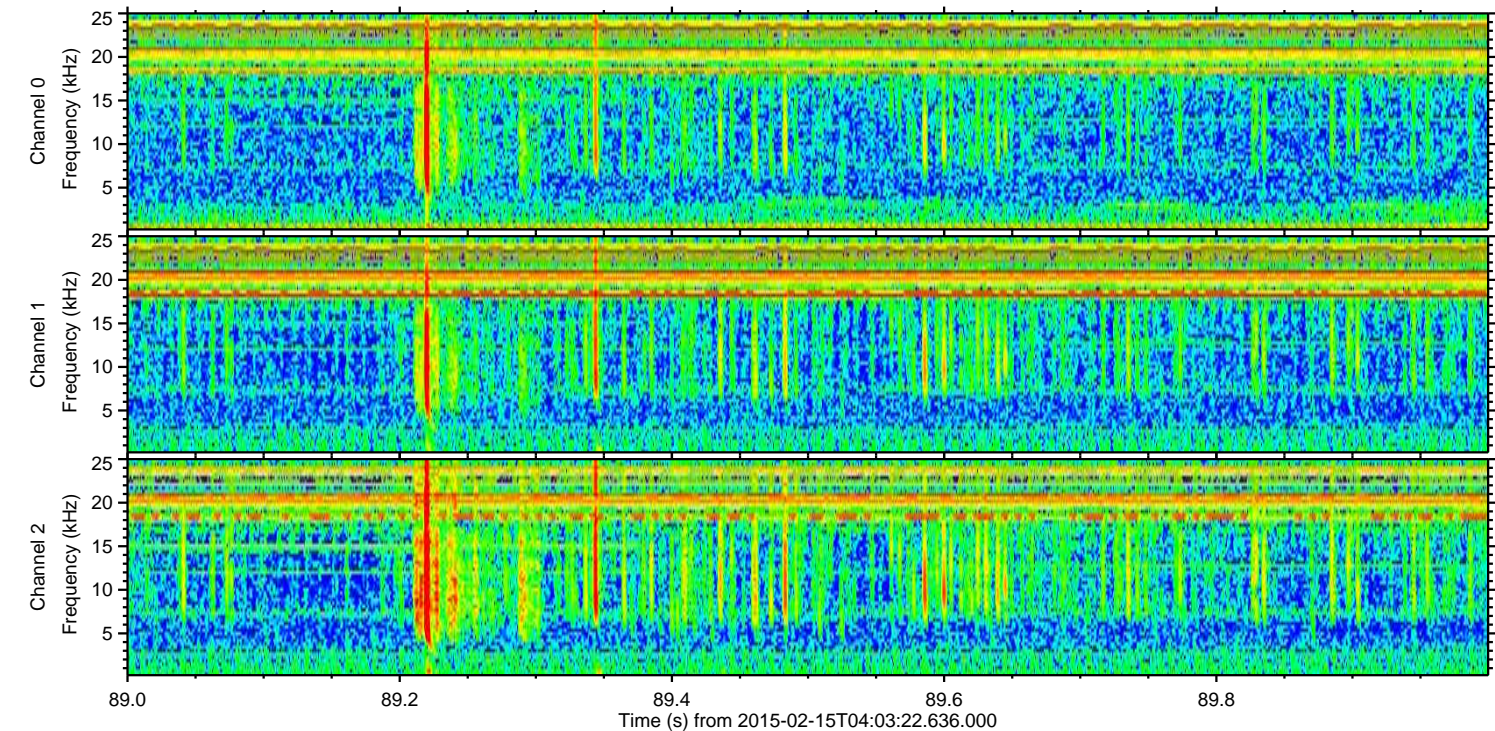
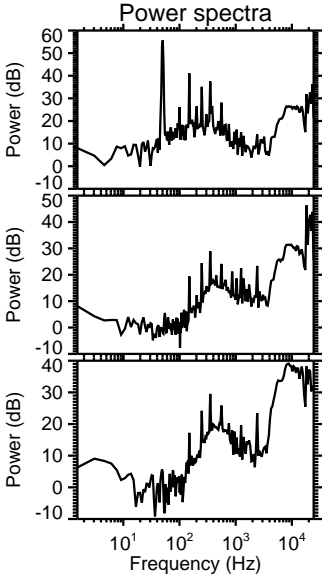
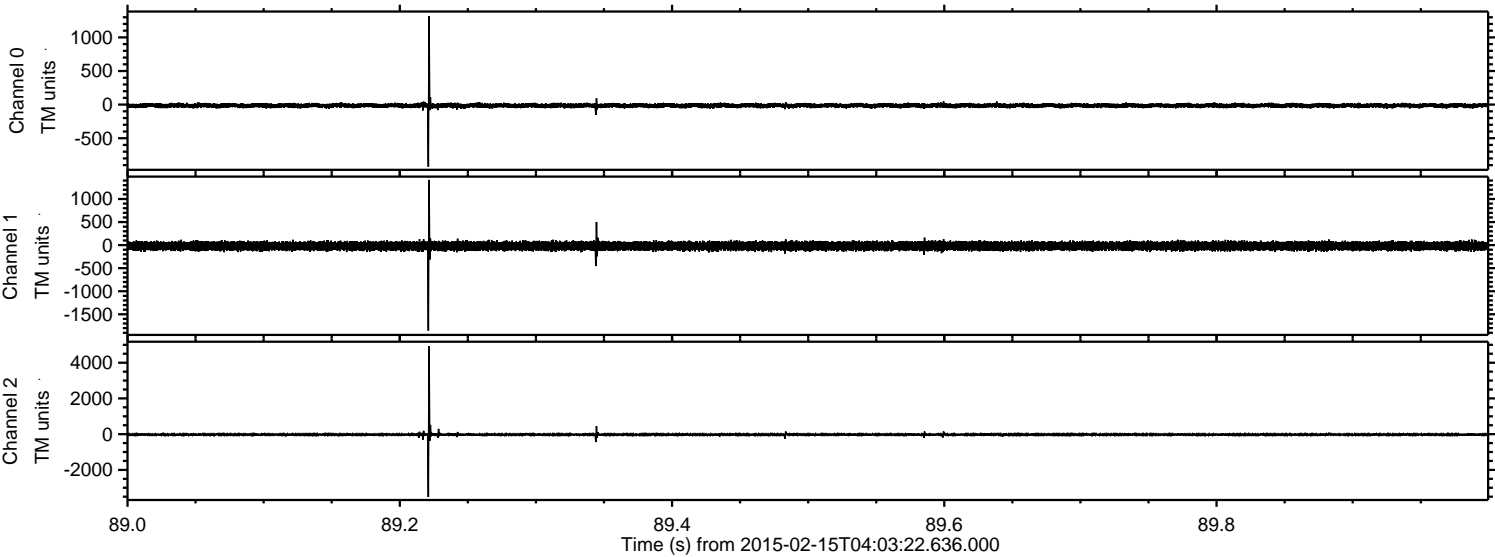
Processed Mon Feb 23 13:25:23 2015 by ELM ver.2012-10-06 from 001__elm20150215_040321__dat00.bin



Processed Mon Feb 23 13:25:24 2015 by ELM ver.2012-10-06 from 001__elm20150215_040321__dat00.bin

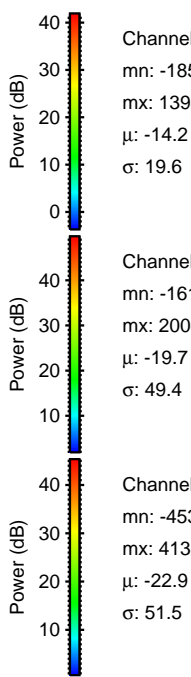
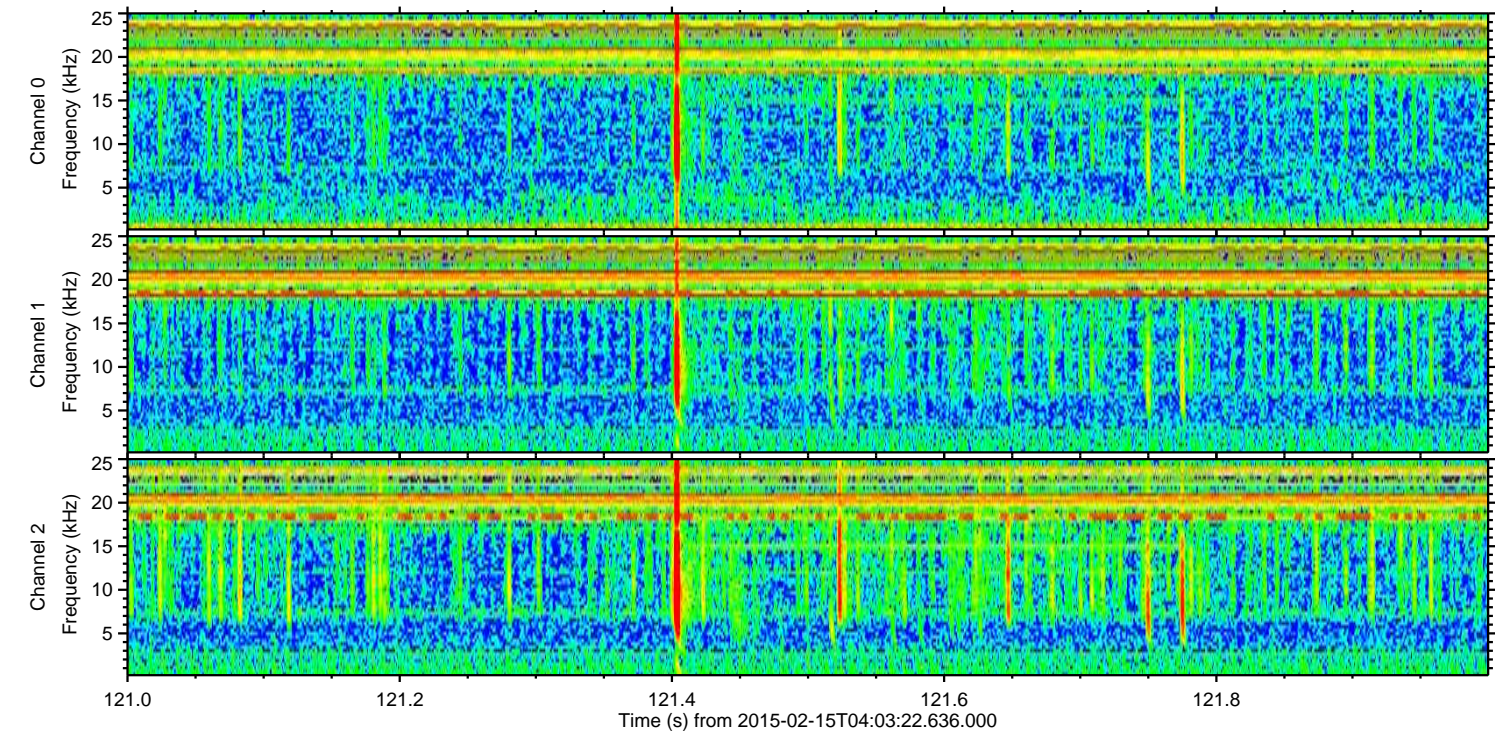
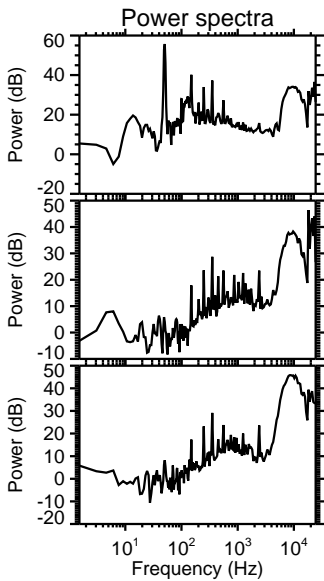
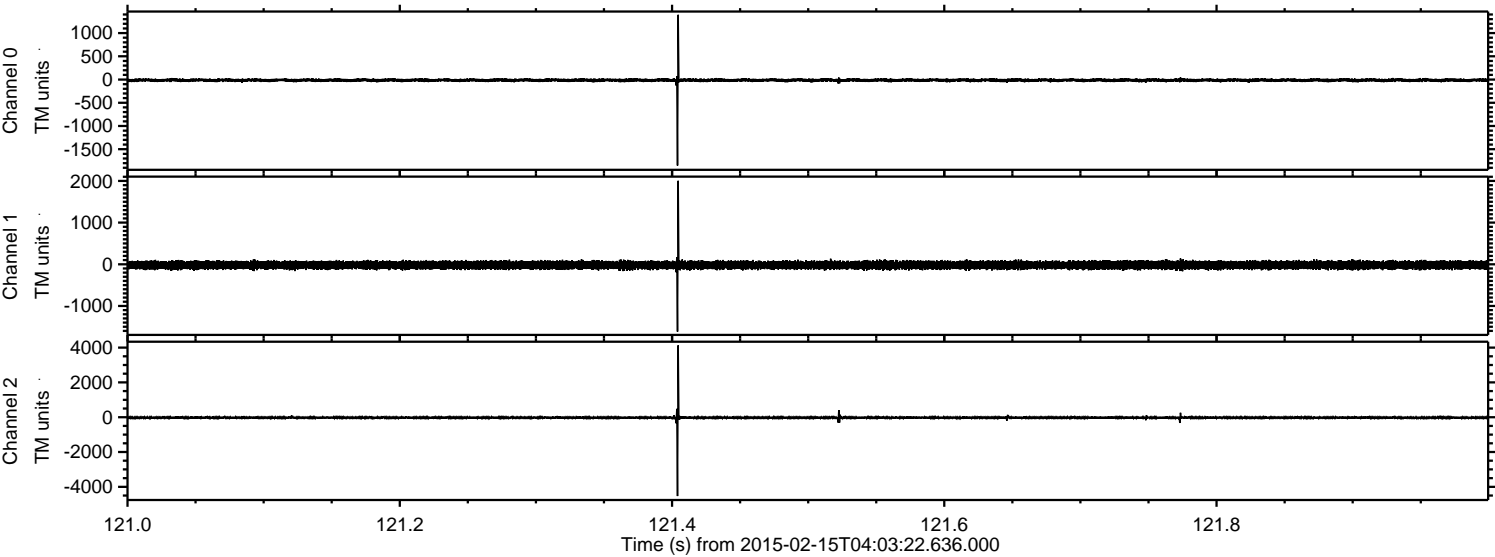


Processed Mon Feb 23 13:25:25 2015 by ELM ver.2012-10-06 from 001__elm20150215_040321__dat00.bin



ELMAVAN 3D WAVEFORMS (Measured data sampled at 50 kHz) 49807 packets of 144 samples from 2015-02-15T04:03:22.636.000. Part 122/144

Processed Mon Feb 23 13:25:26 2015 by ELM ver.2012-10-06 from 001__elm20150215_040321__dat00.bin



Channel 0
mn: -1851
mx: 1394
 μ : -14.2
 σ : 19.6

Channel 1
mn: -1615
mx: 2004
 μ : -19.7
 σ : 49.4

Channel 2
mn: -4531
mx: 4132
 μ : -22.9
 σ : 51.5

Processed Mon Feb 23 13:25:27 2015 by ELM ver.2012-10-06 from 001__elm20150215_040321__dat00.bin

