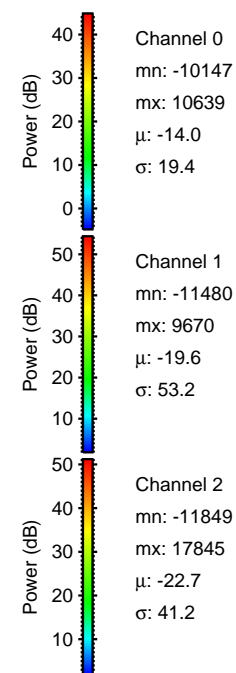
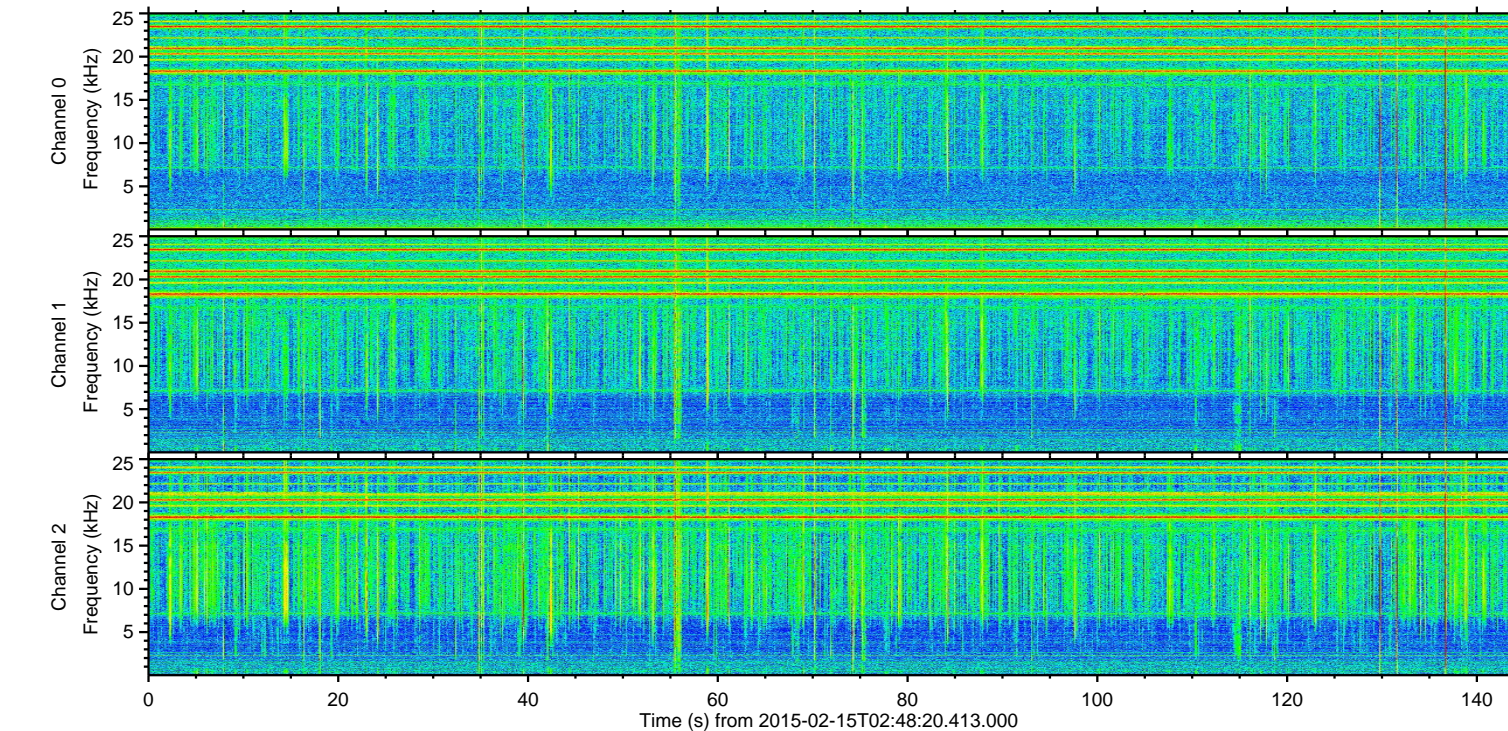
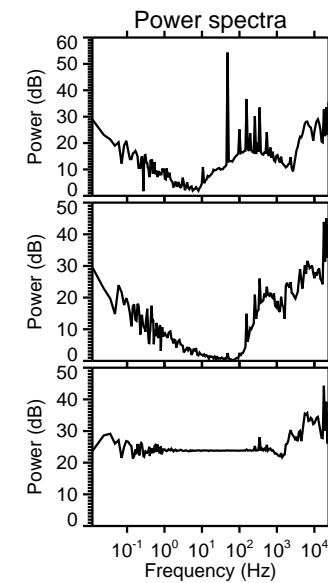
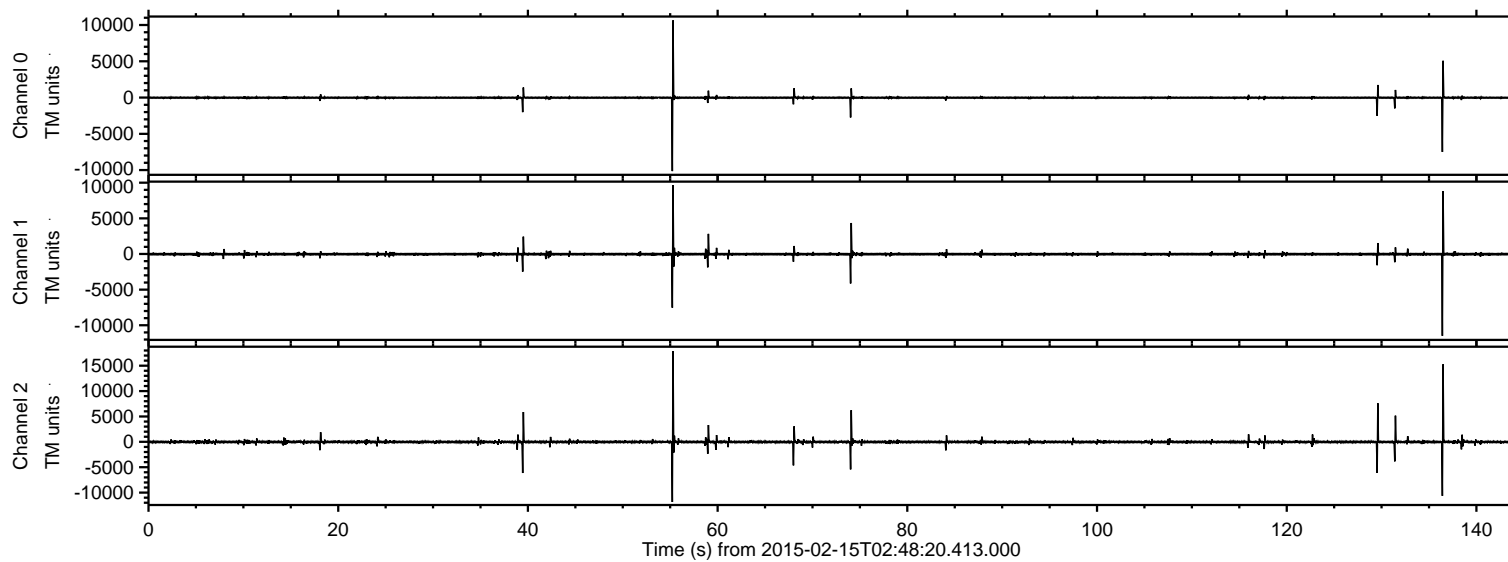
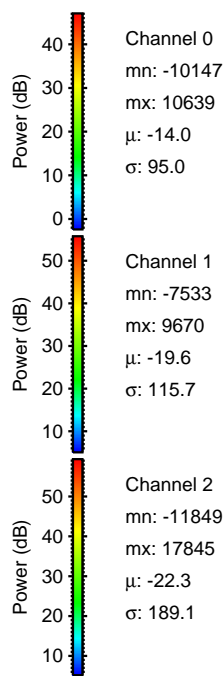
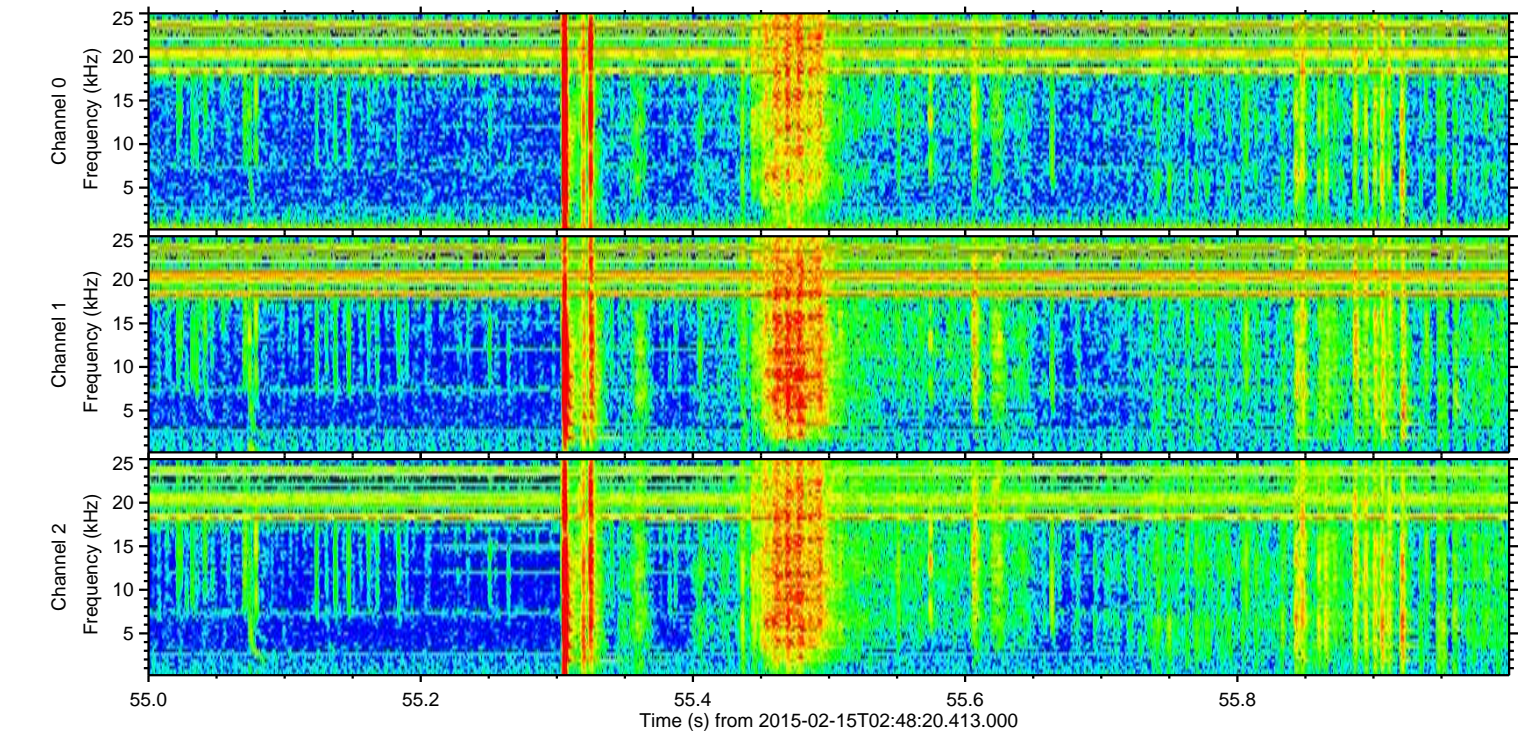
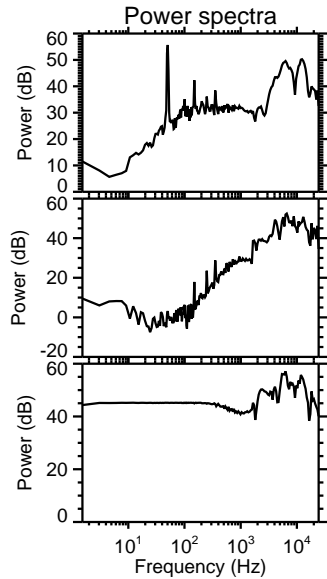
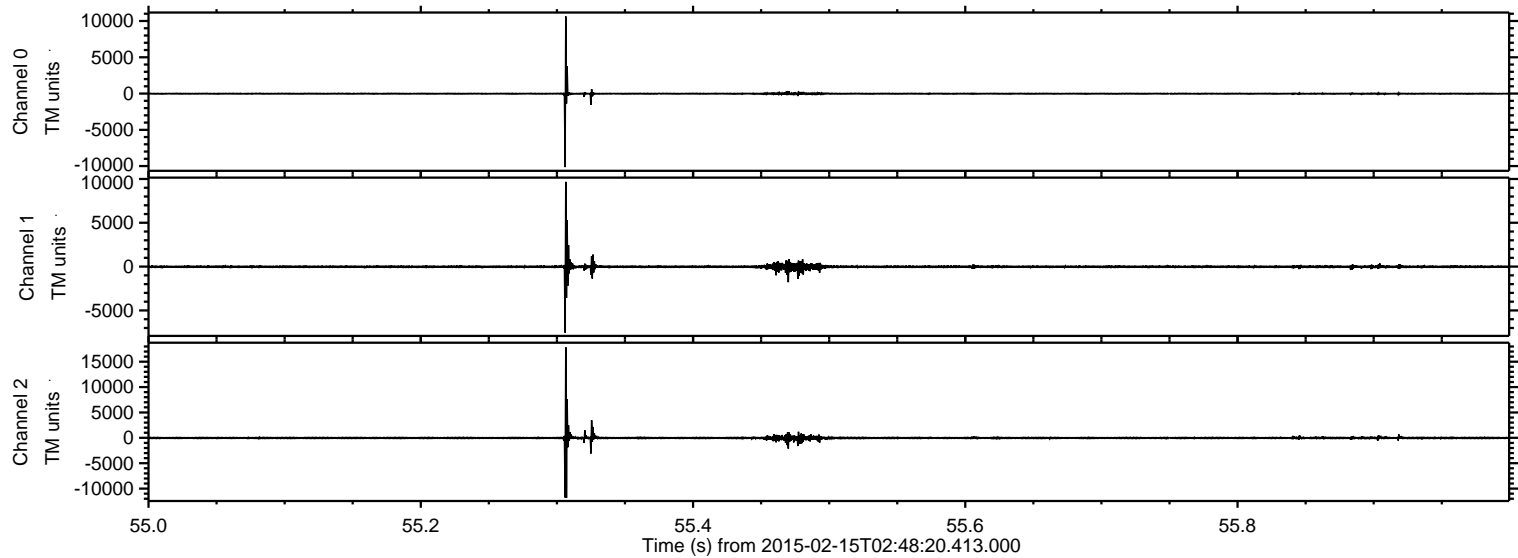


ELMAVAN 3D WAVEFORMS (Measured data sampled at 50 kHz) 49809 packets of 144 samples from 2015-02-15T02:48:20.413.000.

Processed Mon Feb 23 13:10:05 2015 by ELM ver.2012-10-06 from 001__elm20150215_024819__dat00.bin

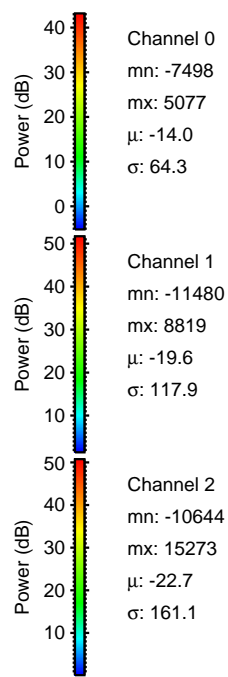
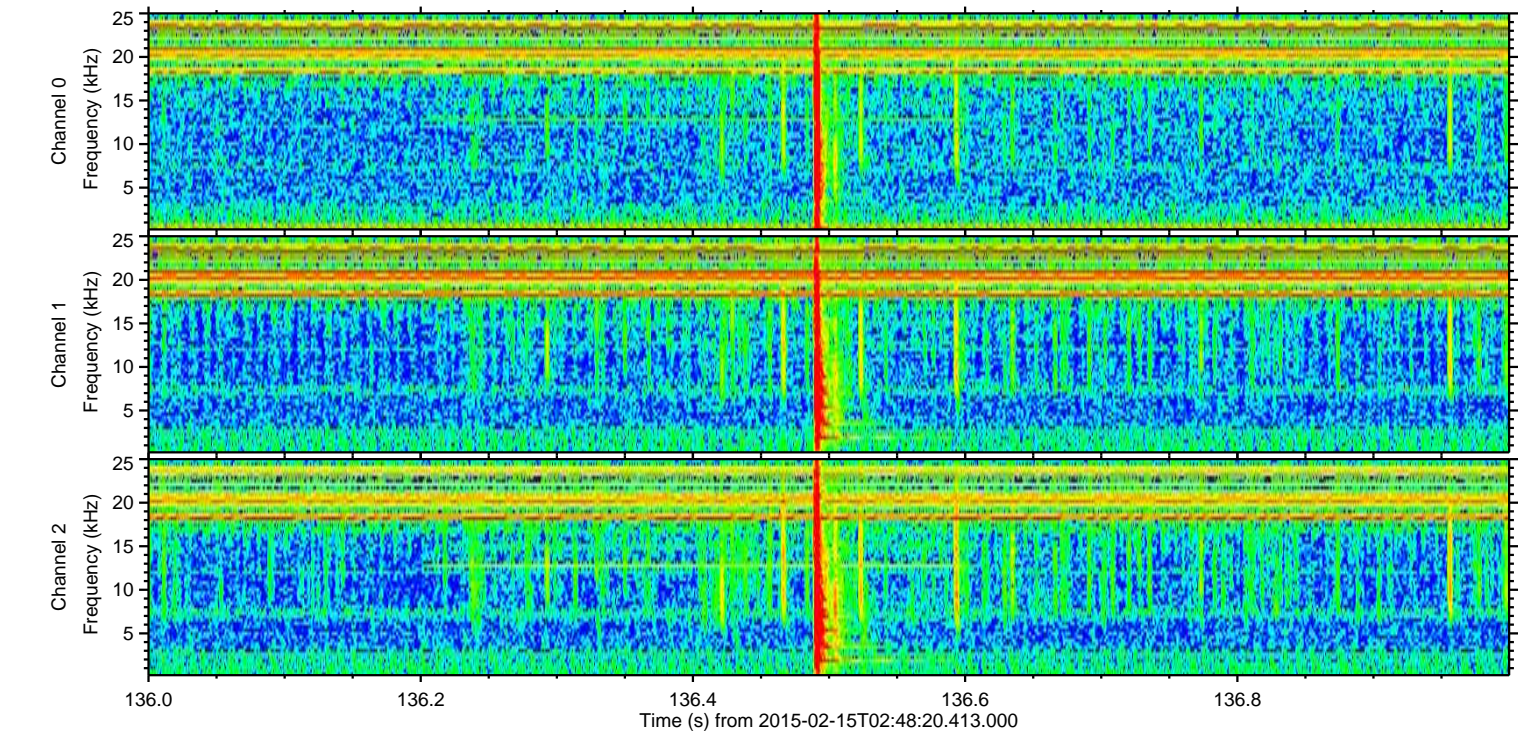
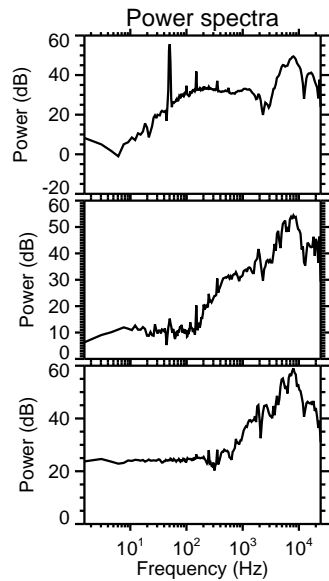
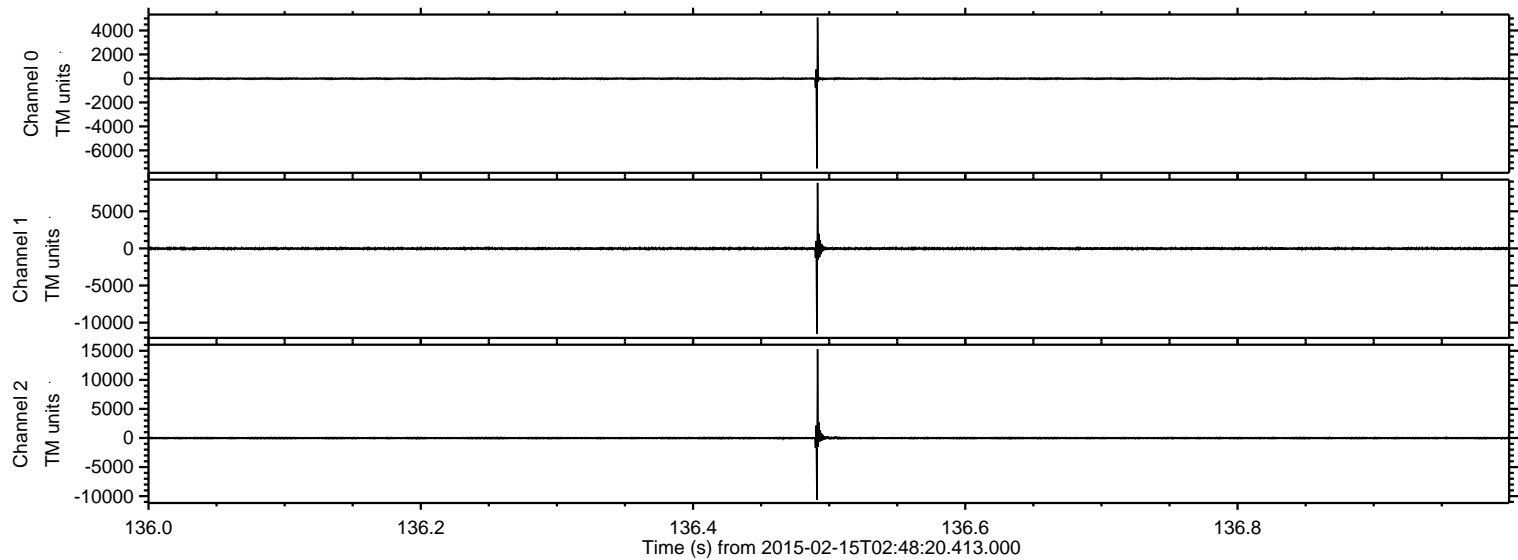


Processed Mon Feb 23 13:10:17 2015 by ELM ver.2012-10-06 from 001__elm20150215_024819__dat00.bin



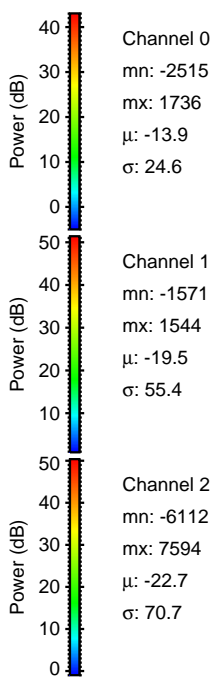
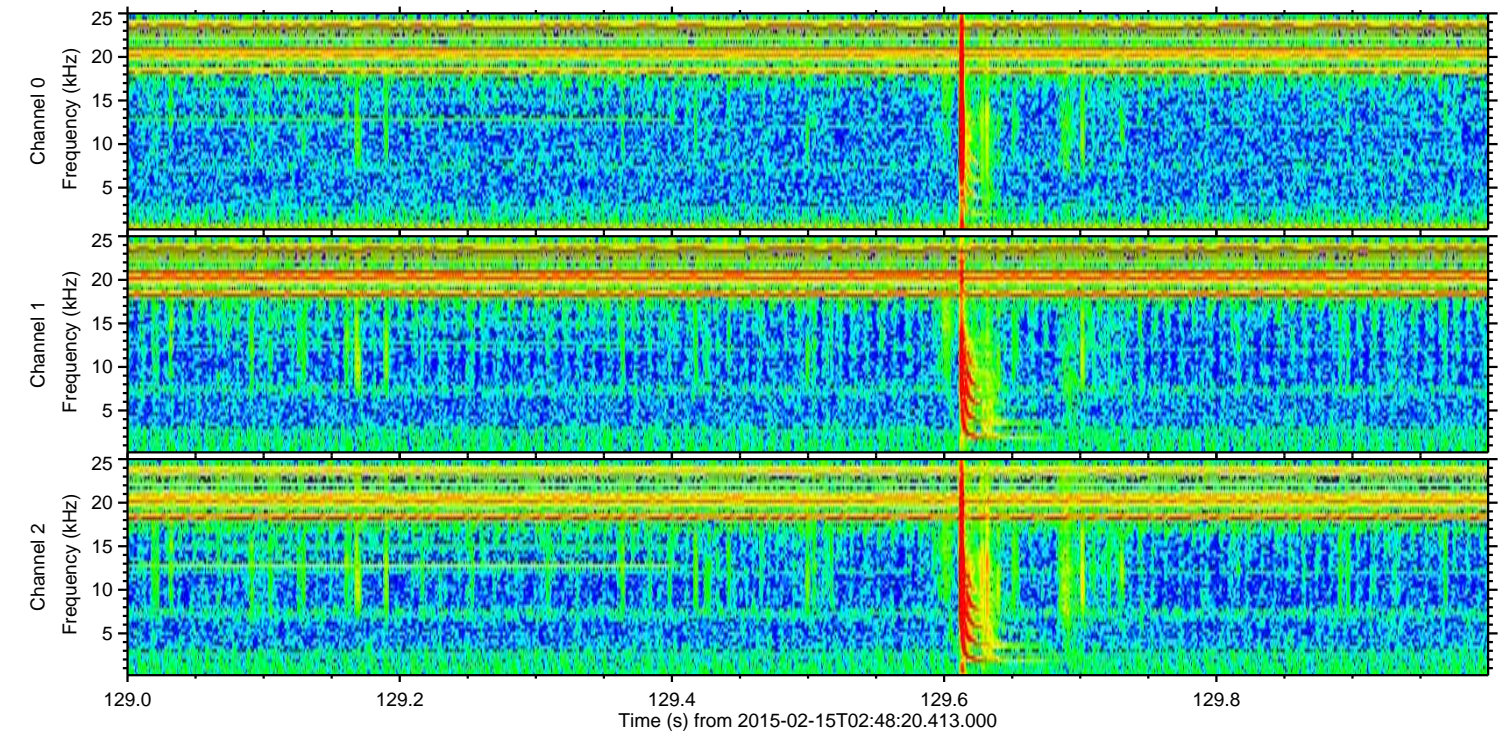
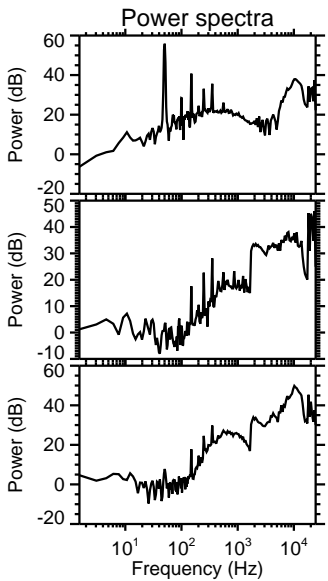
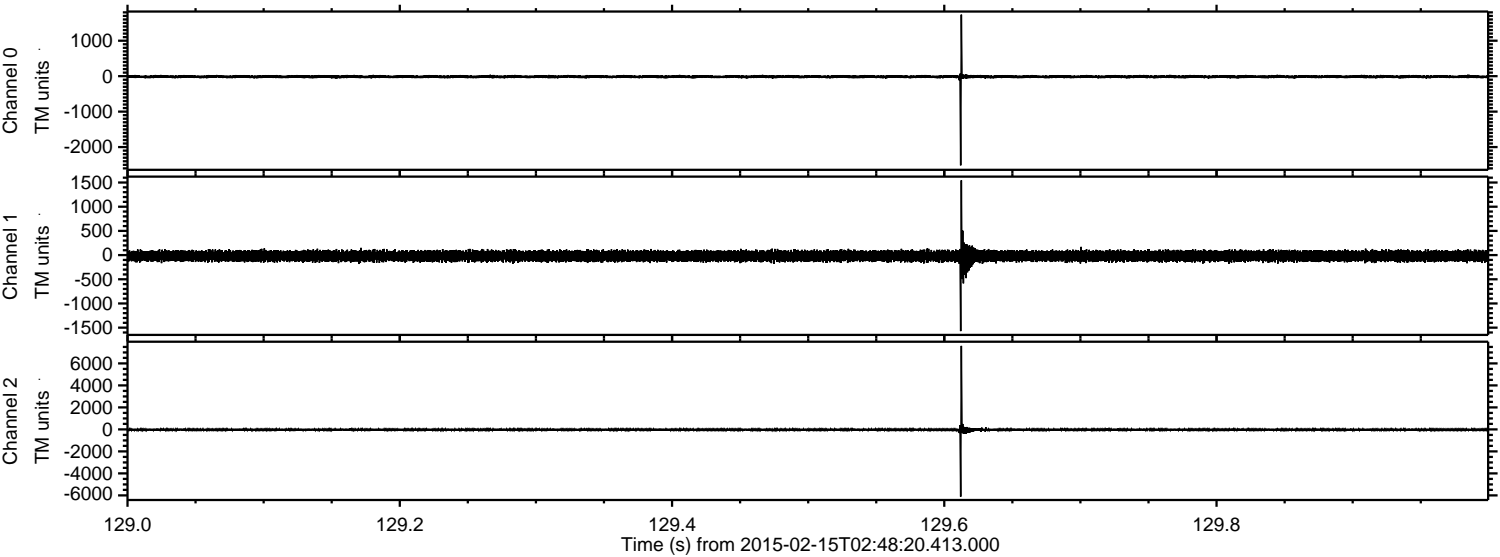
ELMAVAN 3D WAVEFORMS (Measured data sampled at 50 kHz) 49809 packets of 144 samples from 2015-02-15T02:48:20.413.000. Part 137/144

Processed Mon Feb 23 13:10:18 2015 by ELM ver.2012-10-06 from 001__elm20150215_024819__dat00.bin



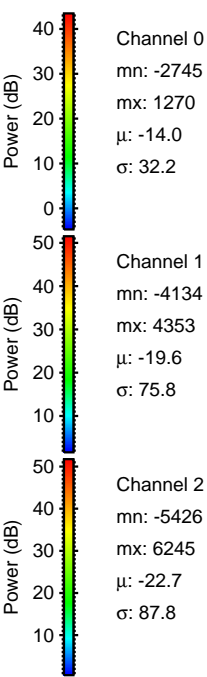
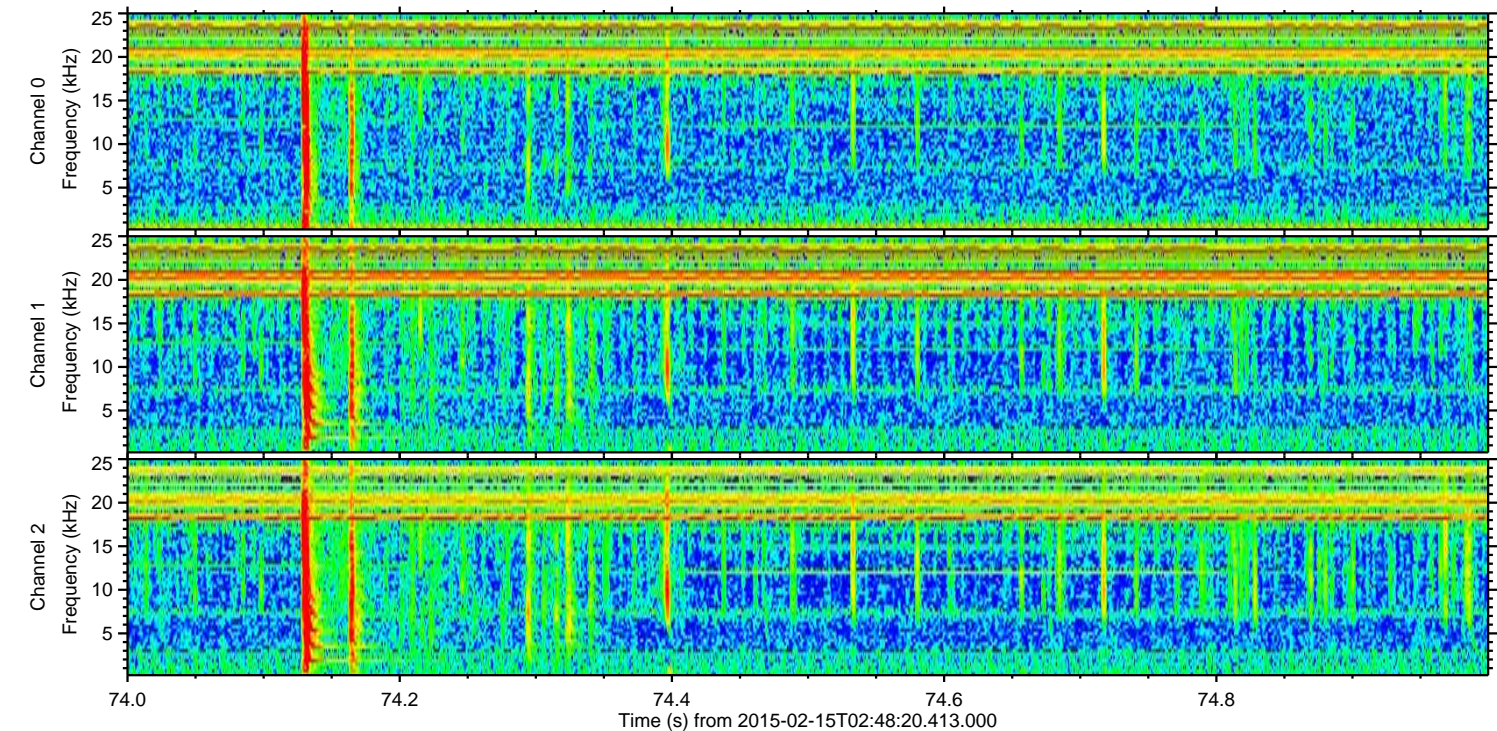
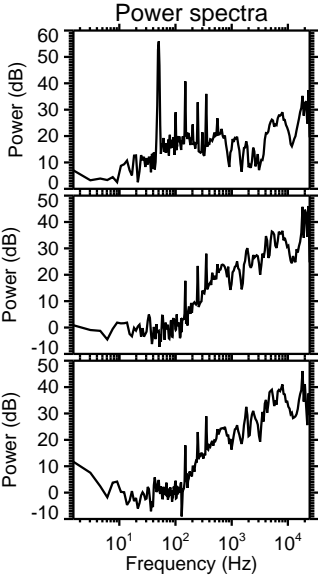
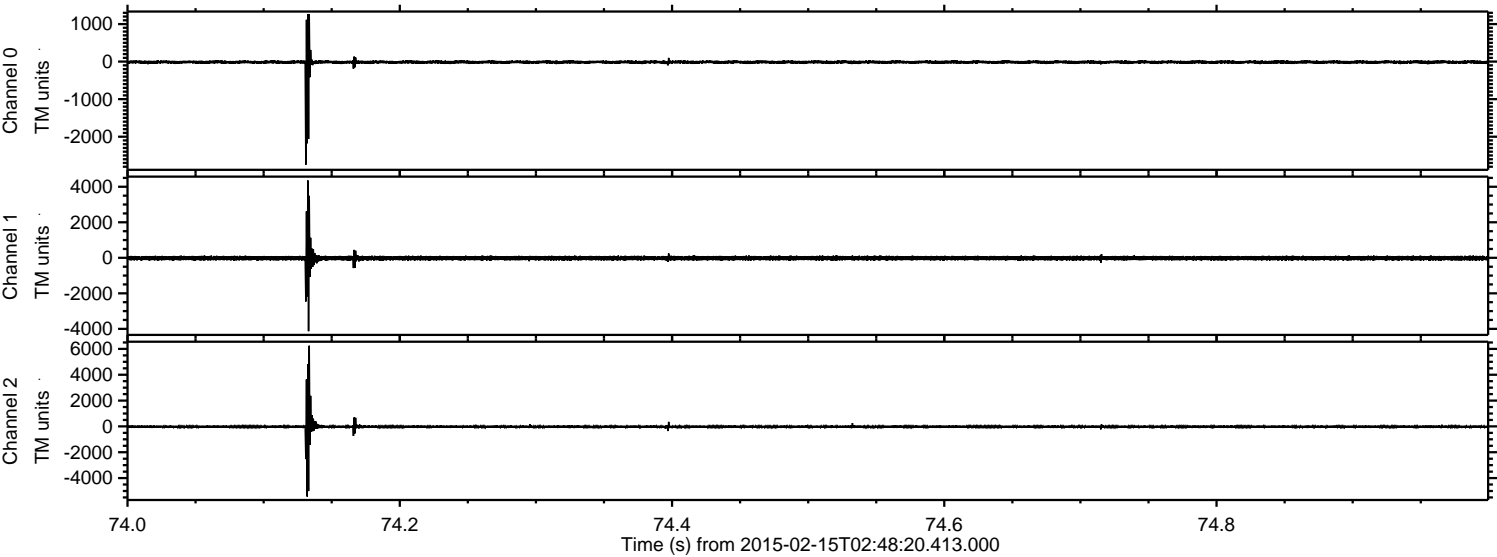
ELMAVAN 3D WAVEFORMS (Measured data sampled at 50 kHz) 49809 packets of 144 samples from 2015-02-15T02:48:20.413.000. Part 130/144

Processed Mon Feb 23 13:10:19 2015 by ELM ver.2012-10-06 from 001__elm20150215_024819__dat00.bin

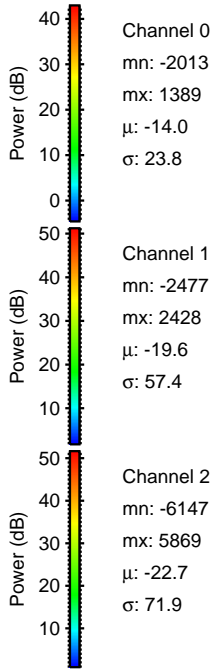
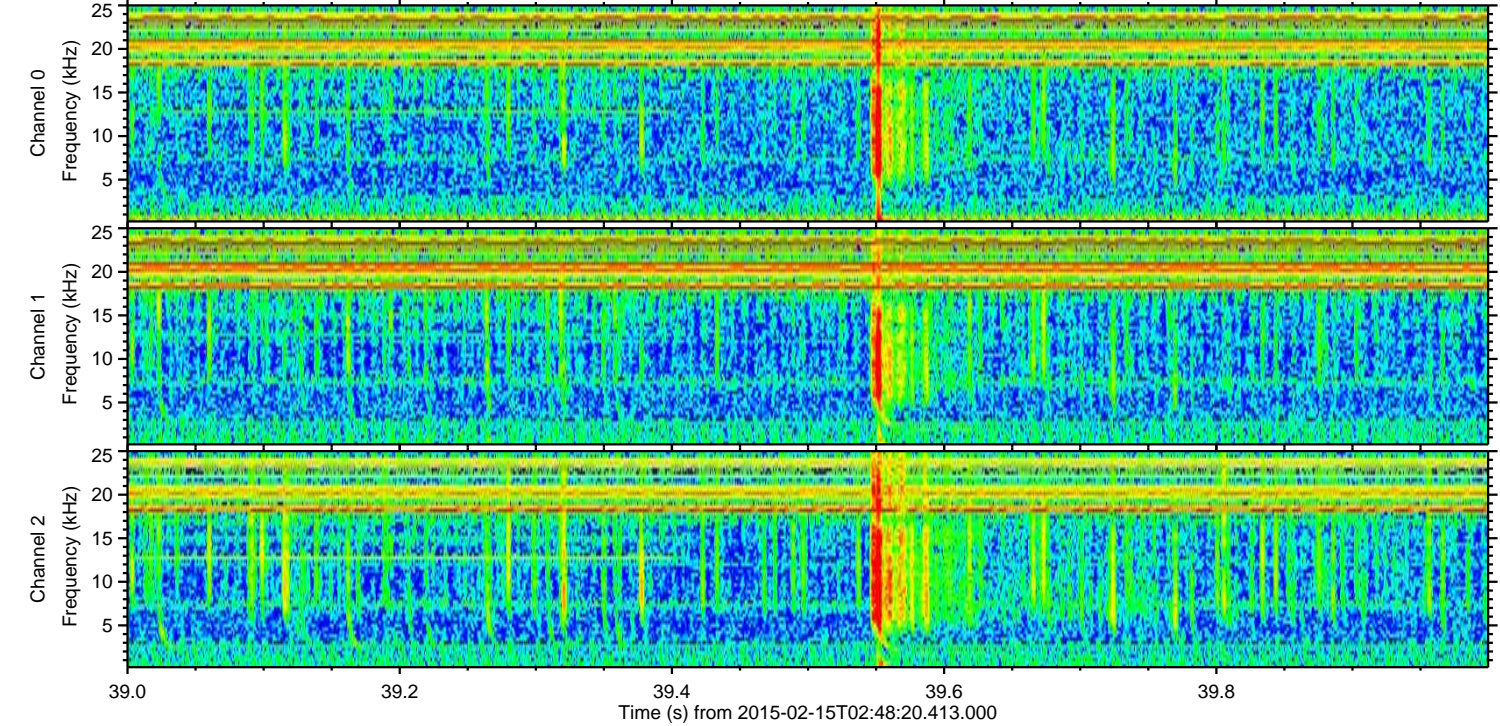
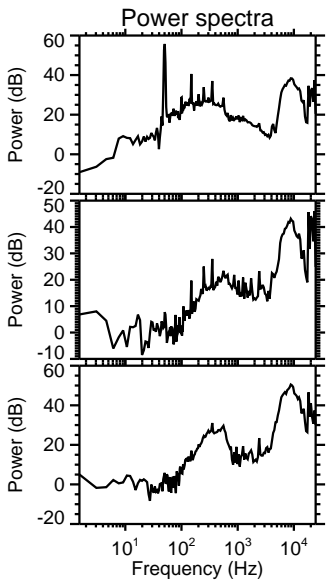
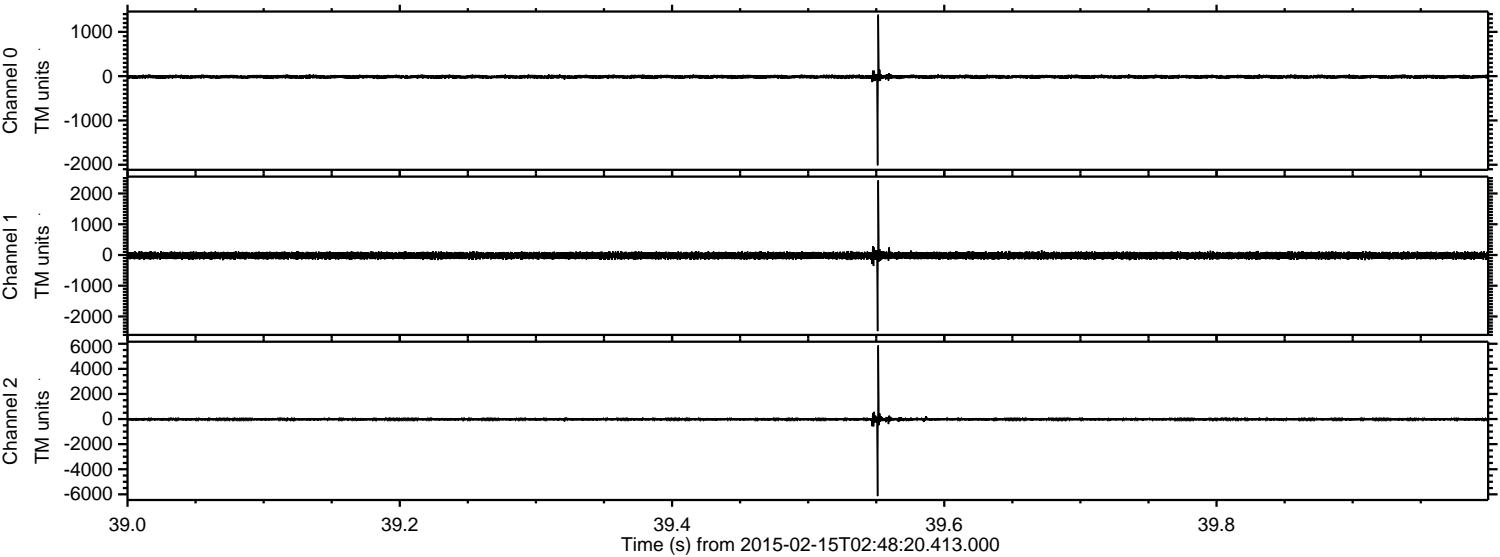


ELMAVAN 3D WAVEFORMS (Measured data sampled at 50 kHz) 49809 packets of 144 samples from 2015-02-15T02:48:20.413.000. Part 75/144

Processed Mon Feb 23 13:10:20 2015 by ELM ver.2012-10-06 from 001__elm20150215_024819__dat00.bin

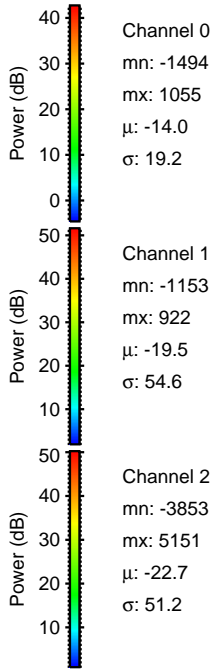
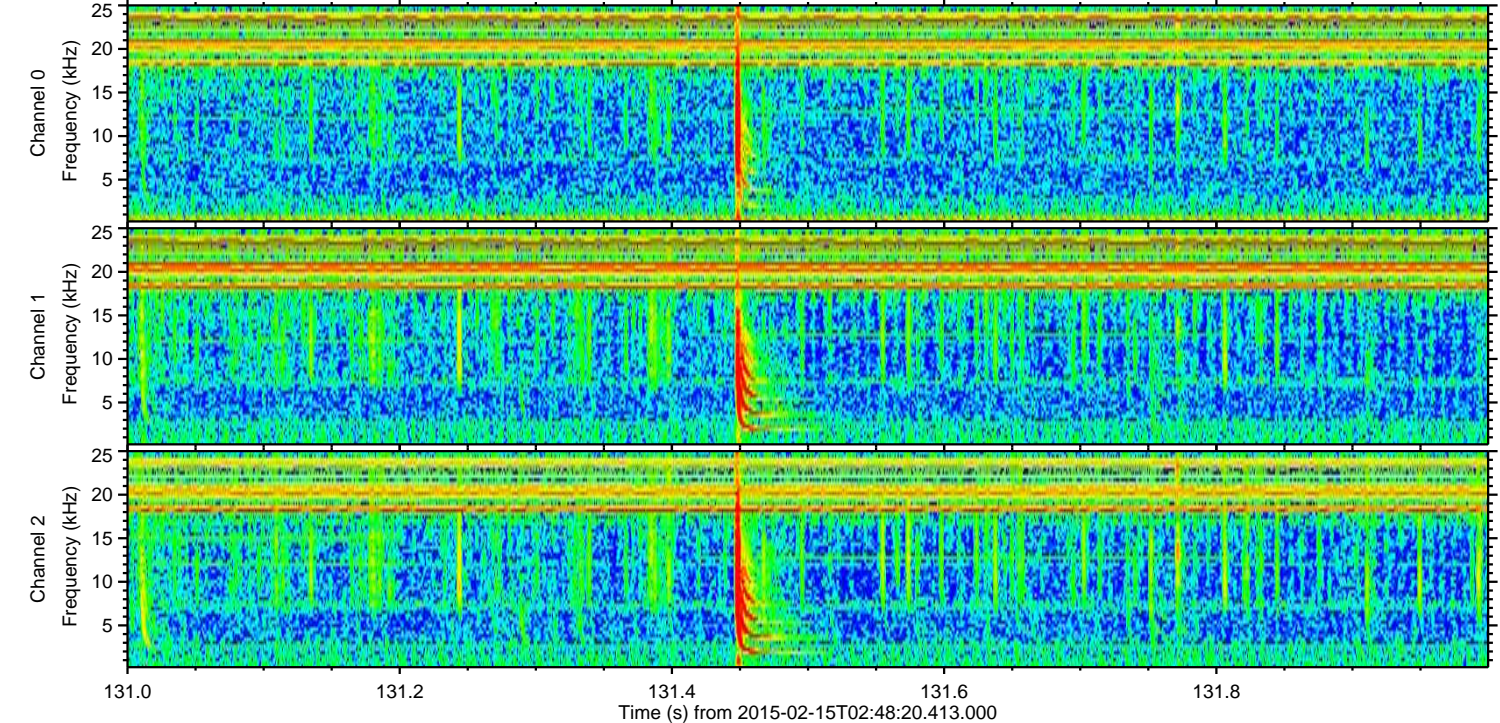
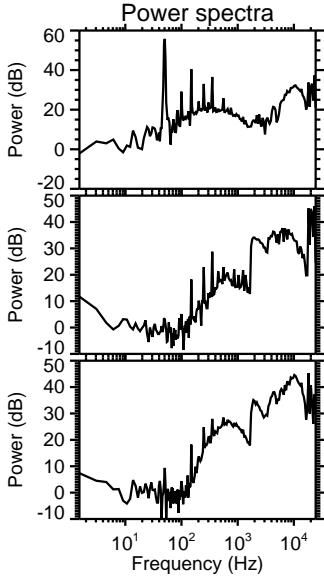
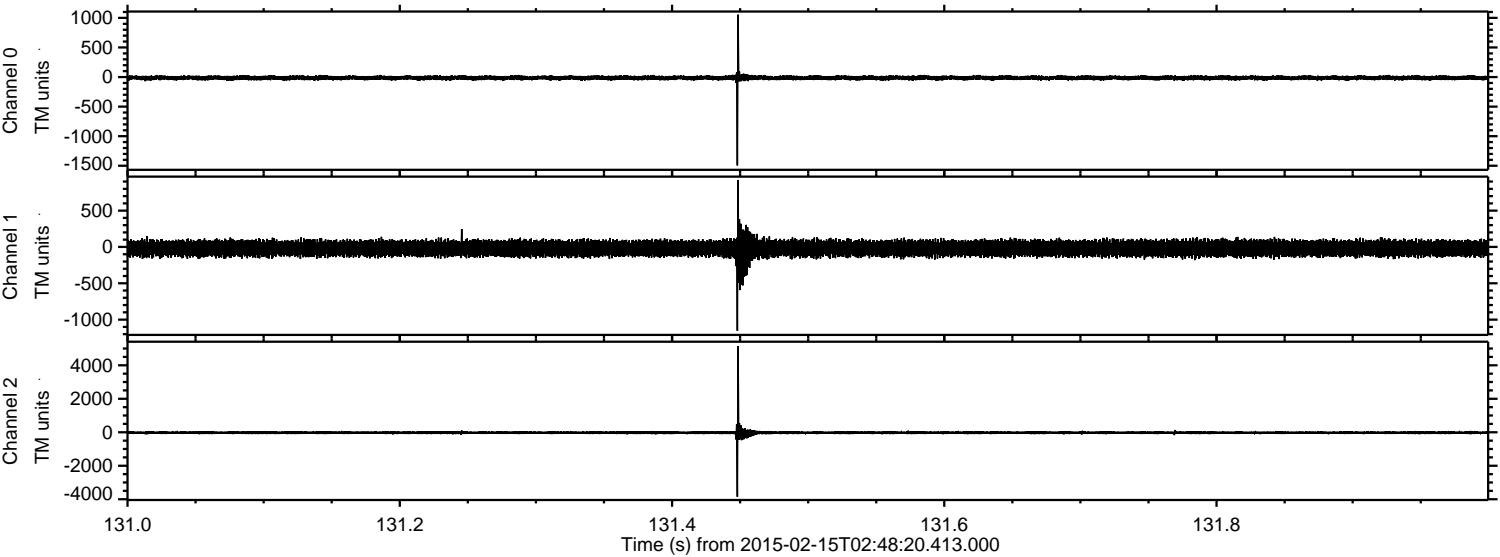


Processed Mon Feb 23 13:10:21 2015 by ELM ver.2012-10-06 from 001__elm20150215_024819__dat00.bin

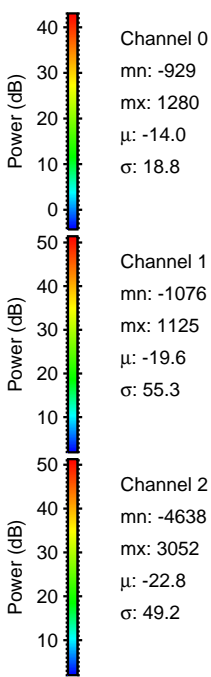
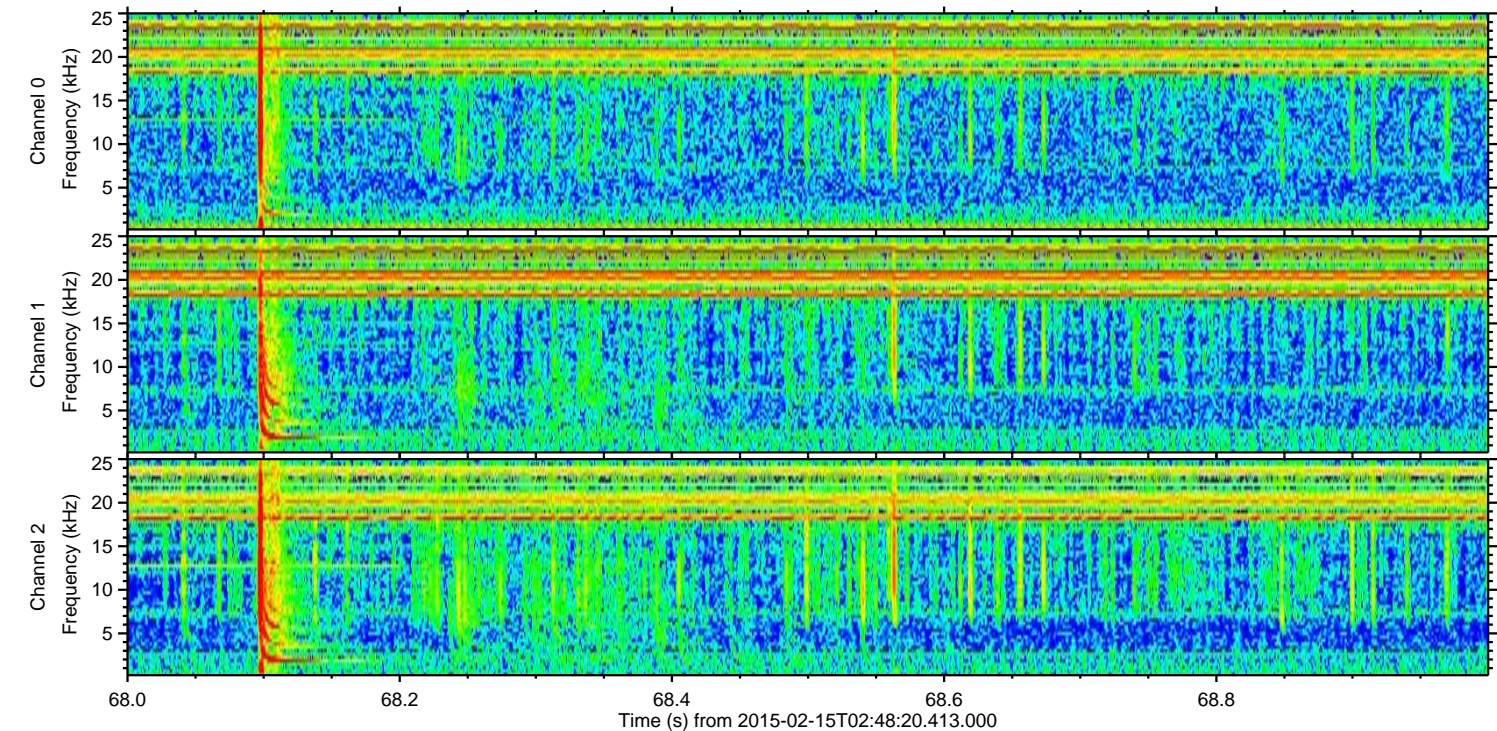
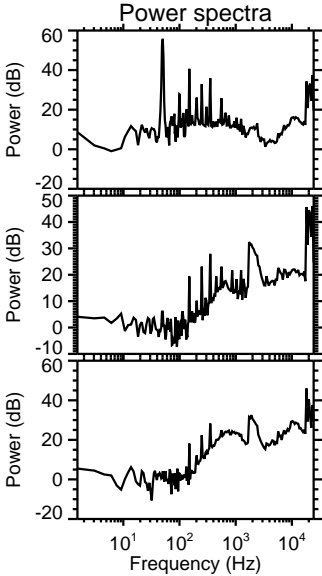
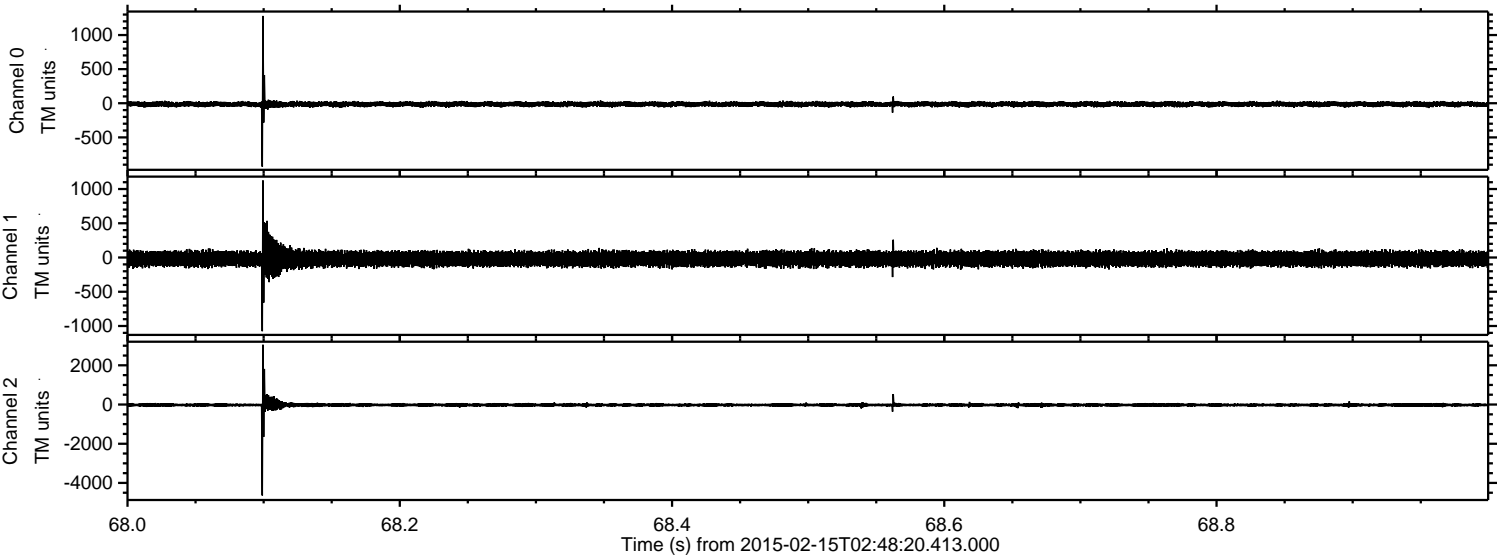


ELMAVAN 3D WAVEFORMS (Measured data sampled at 50 kHz) 49809 packets of 144 samples from 2015-02-15T02:48:20.413.000. Part 132/144

Processed Mon Feb 23 13:10:22 2015 by ELM ver.2012-10-06 from 001__elm20150215_024819__dat00.bin



Processed Mon Feb 23 13:10:23 2015 by ELM ver.2012-10-06 from 001__elm20150215_024819__dat00.bin

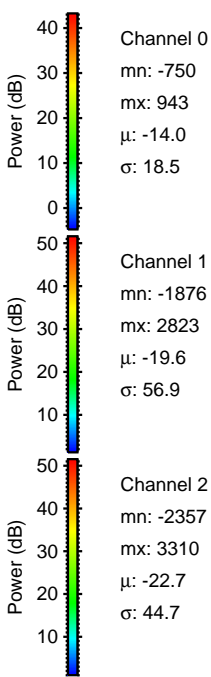
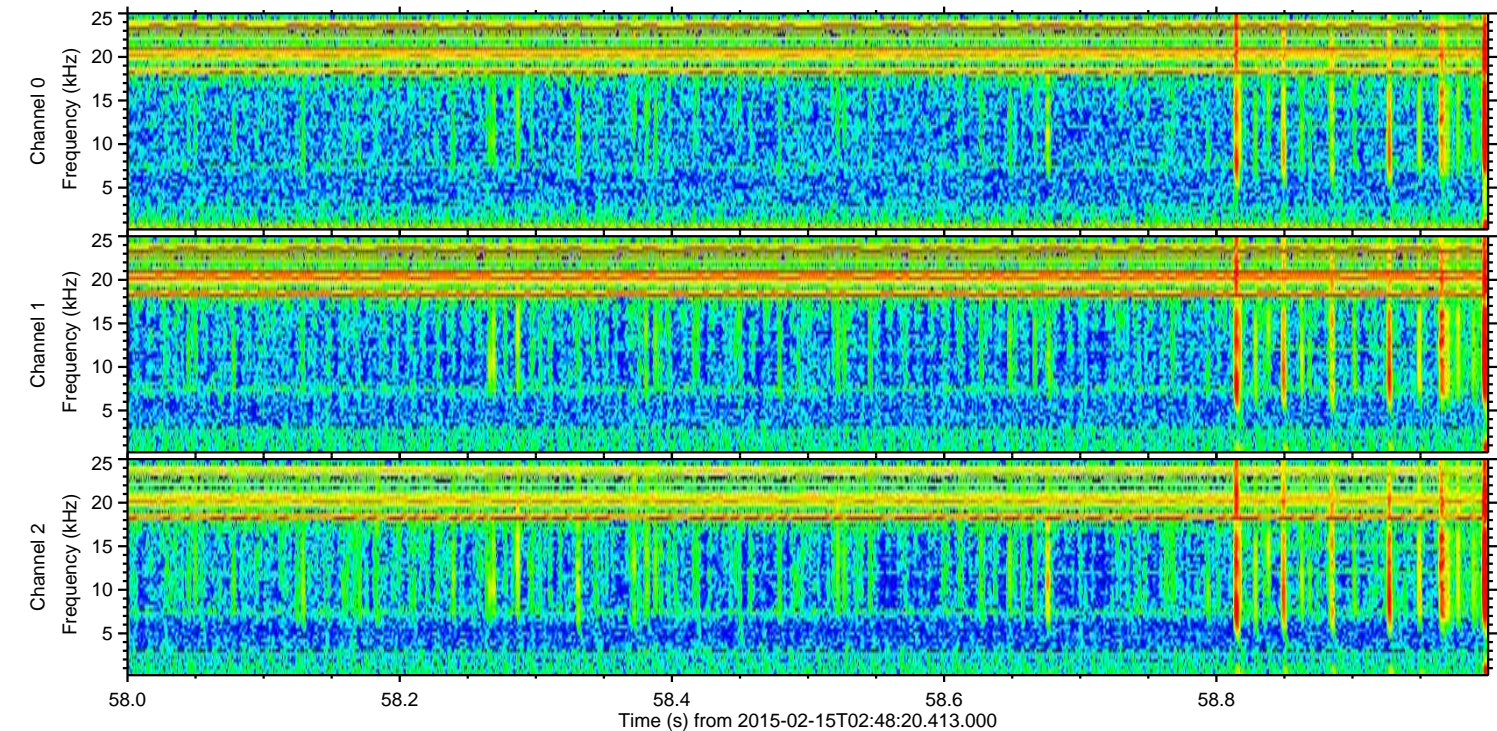
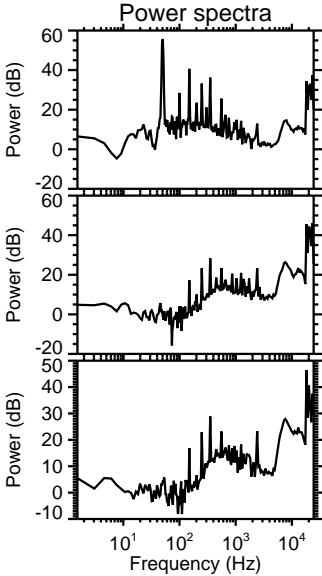
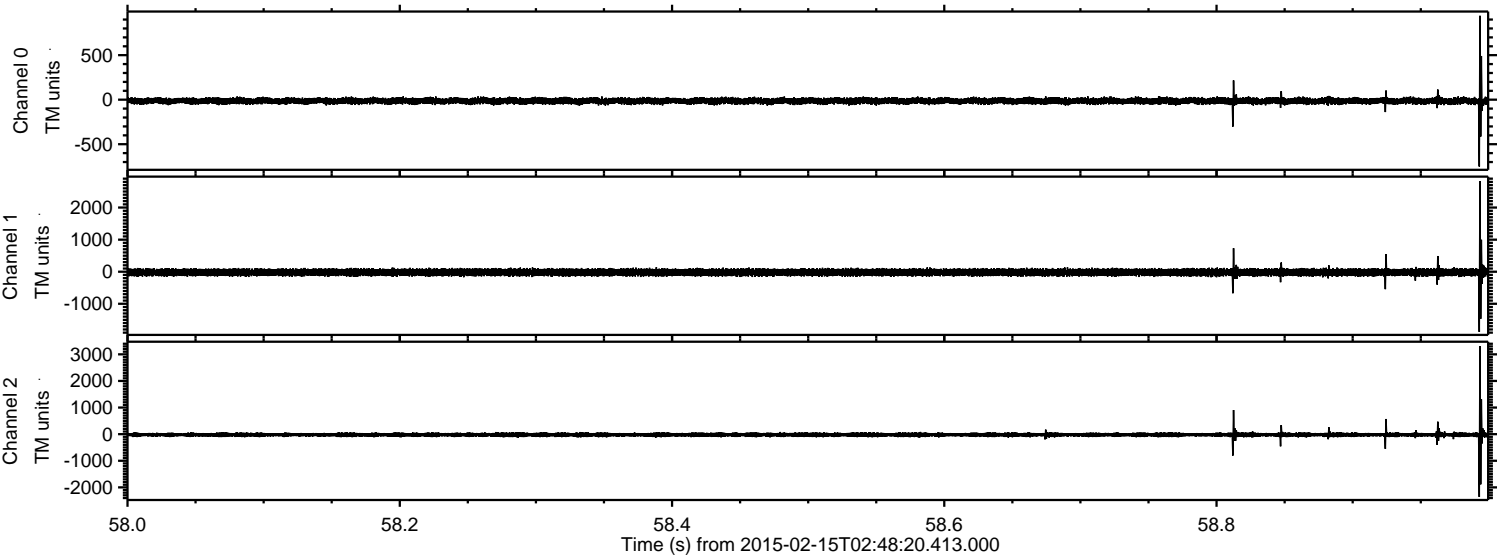


Channel 0
mn: -929
mx: 1280
 μ : -14.0
 σ : 18.8

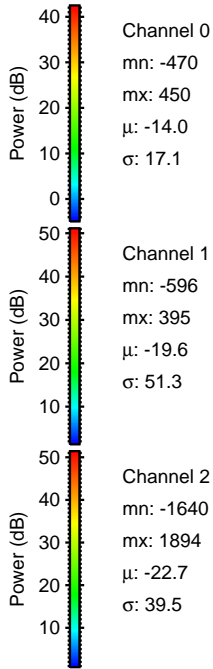
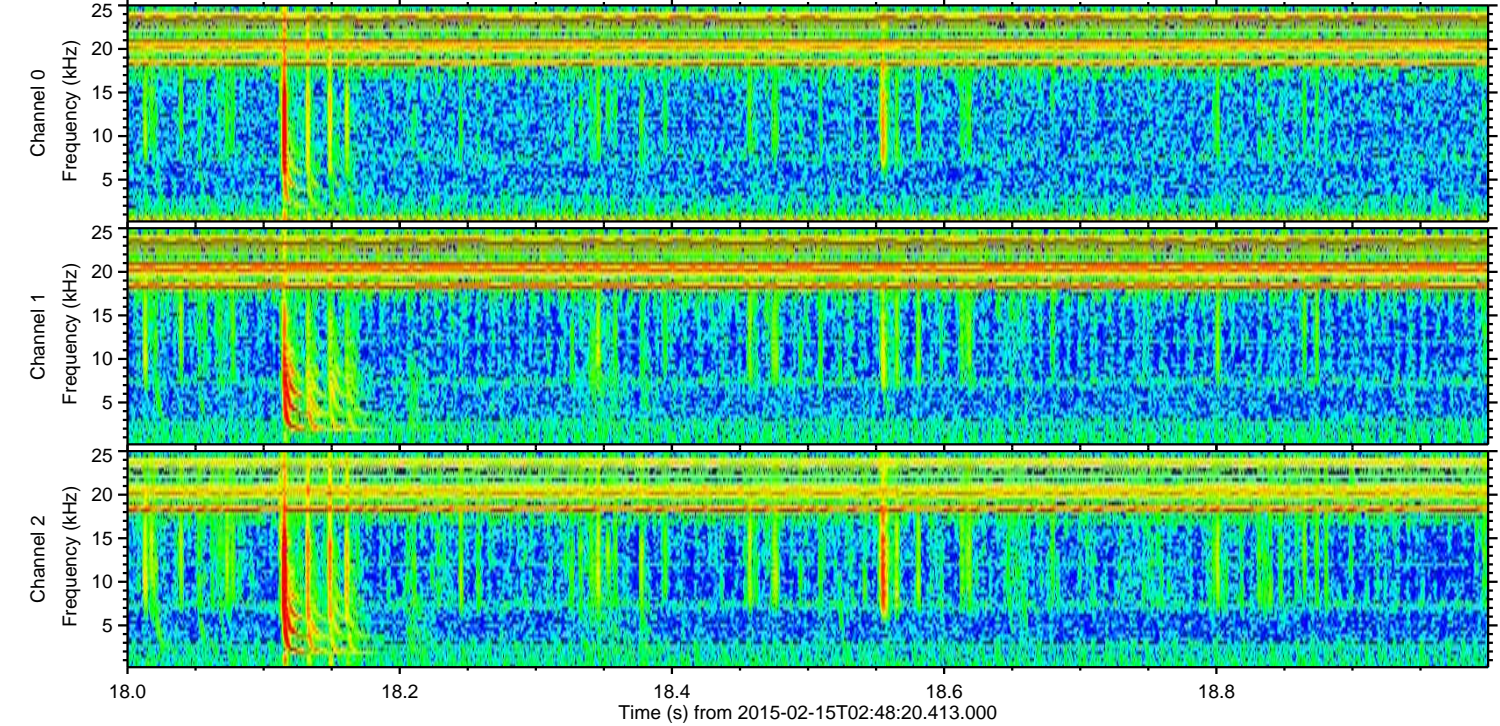
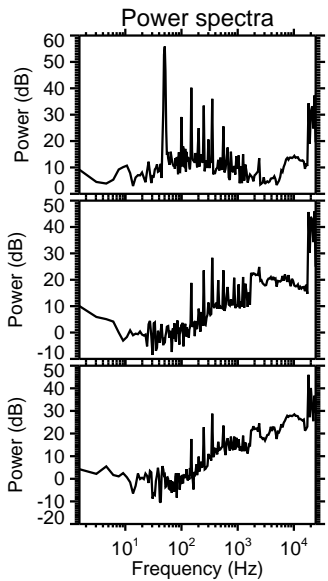
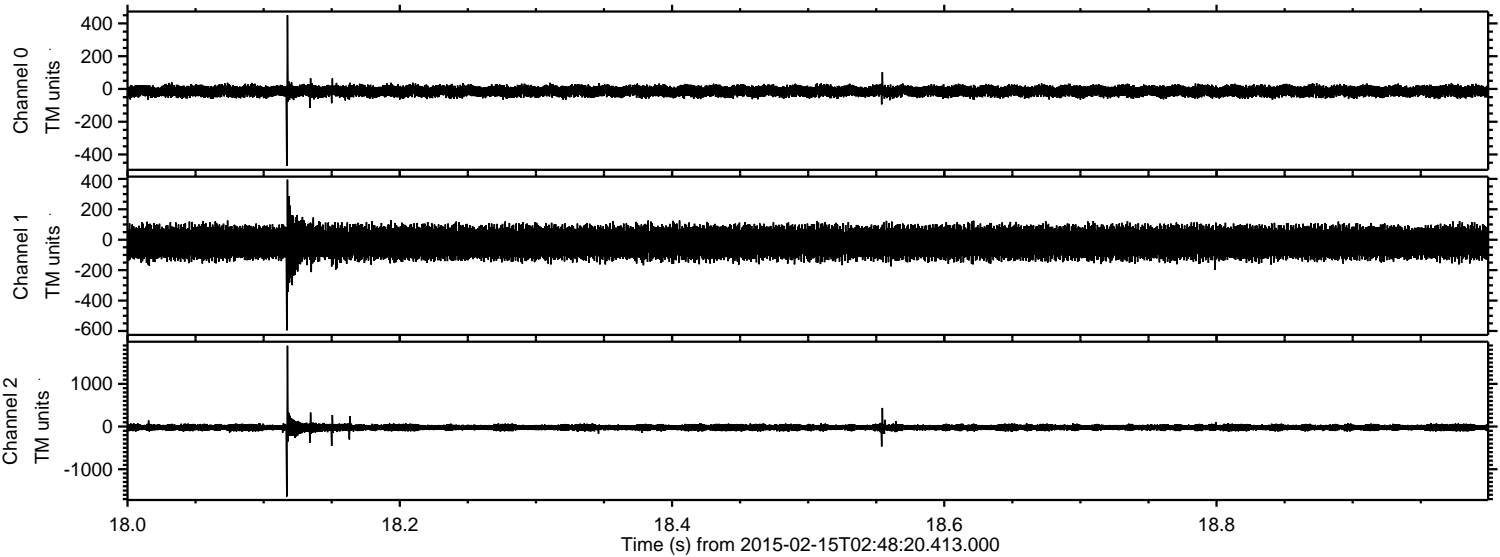
Channel 1
mn: -1076
mx: 1125
 μ : -19.6
 σ : 55.3

Channel 2
mn: -4638
mx: 3052
 μ : -22.8
 σ : 49.2

Processed Mon Feb 23 13:10:24 2015 by ELM ver.2012-10-06 from 001__elm20150215_024819__dat00.bin



Processed Mon Feb 23 13:10:25 2015 by ELM ver.2012-10-06 from 001__elm20150215_024819__dat00.bin



Processed Mon Feb 23 13:10:25 2015 by ELM ver.2012-10-06 from 001__elm20150215_024819__dat00.bin

