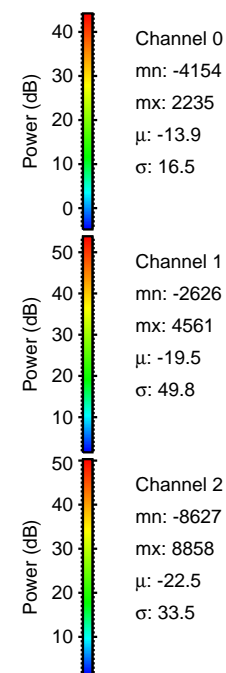
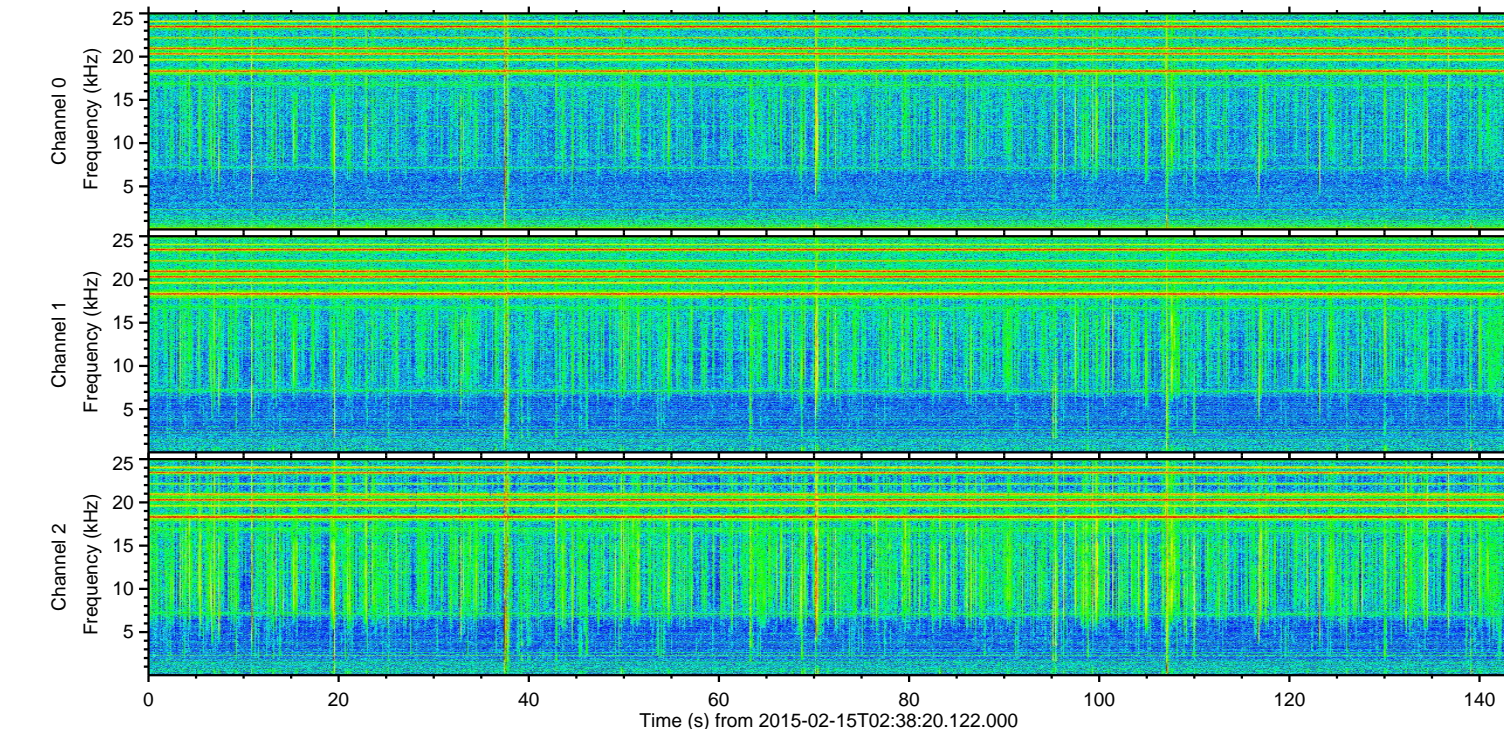
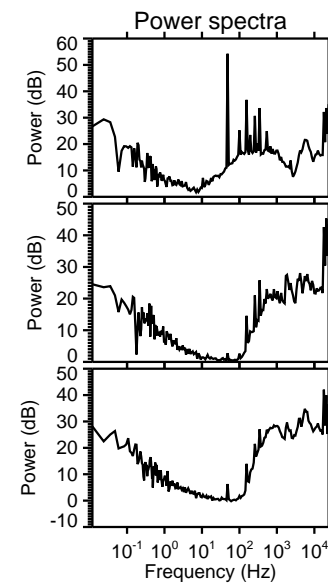
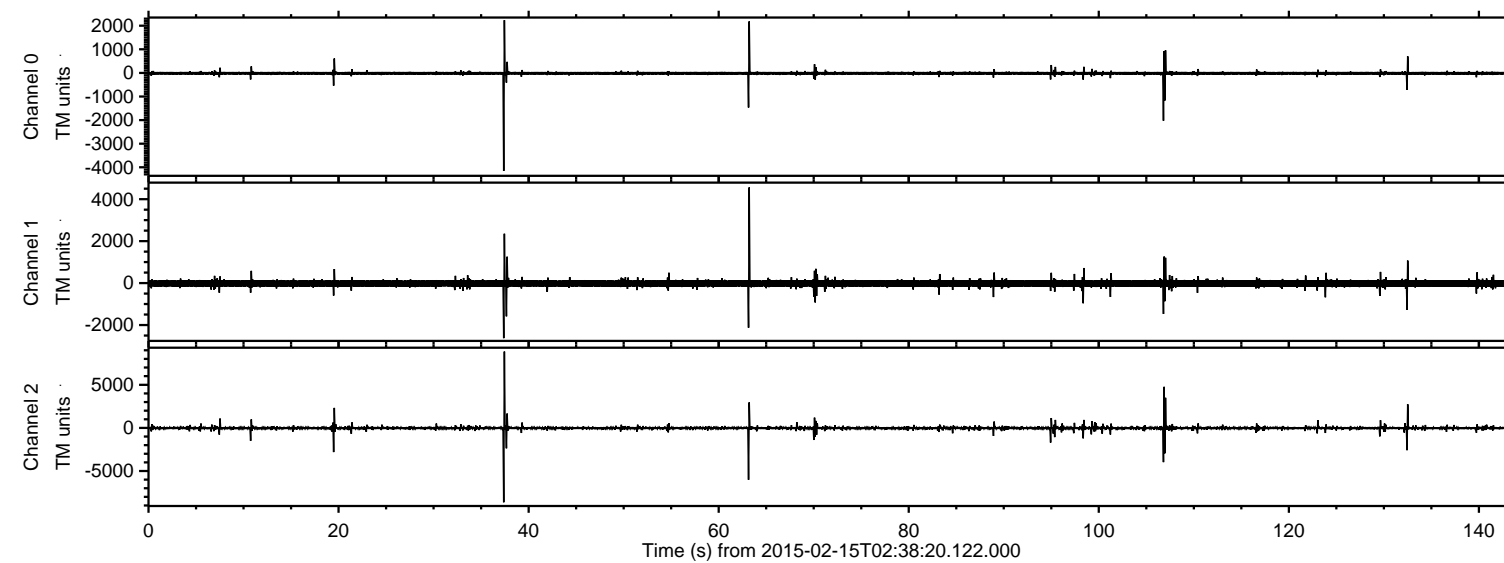
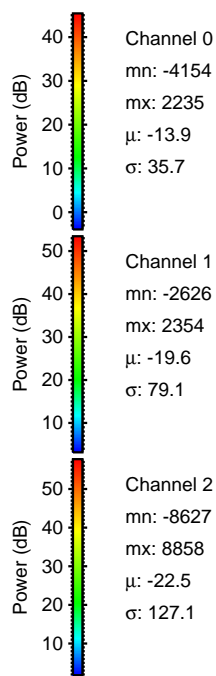
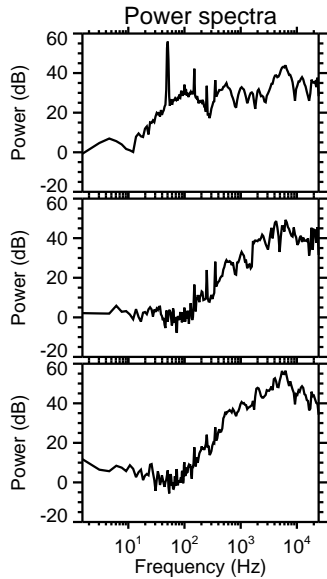
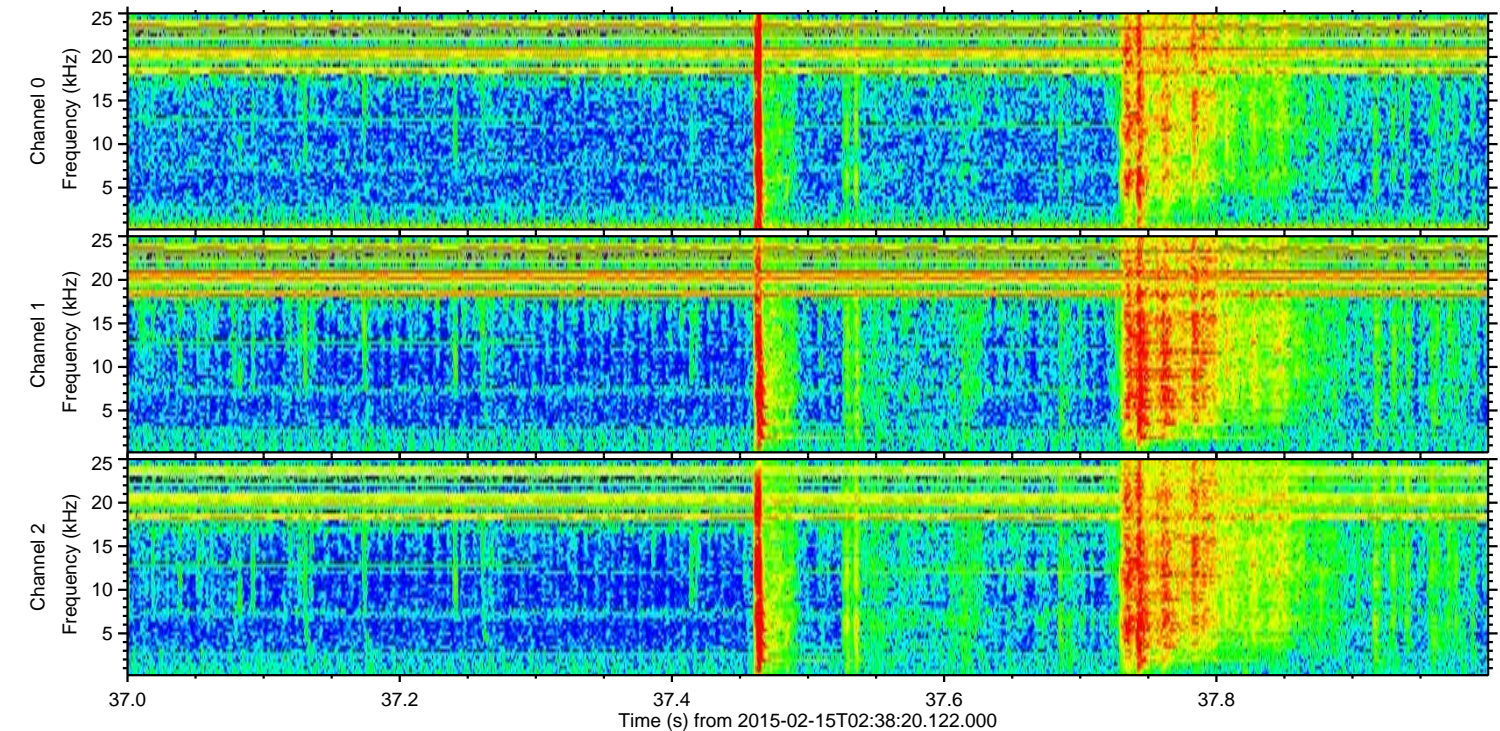
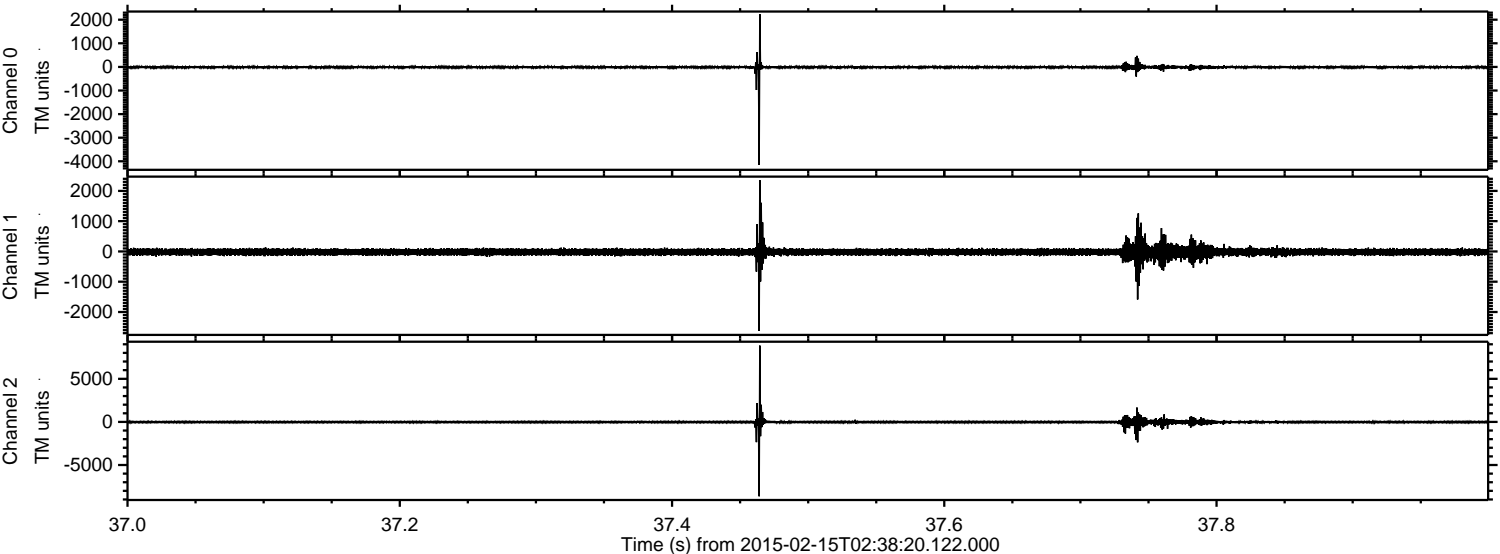


ELMAVAN 3D WAVEFORMS (Measured data sampled at 50 kHz) 49716 packets of 144 samples from 2015-02-15T02:38:20.122.000.

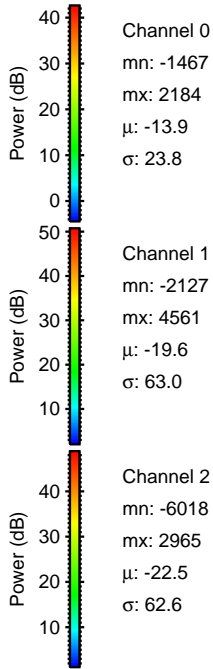
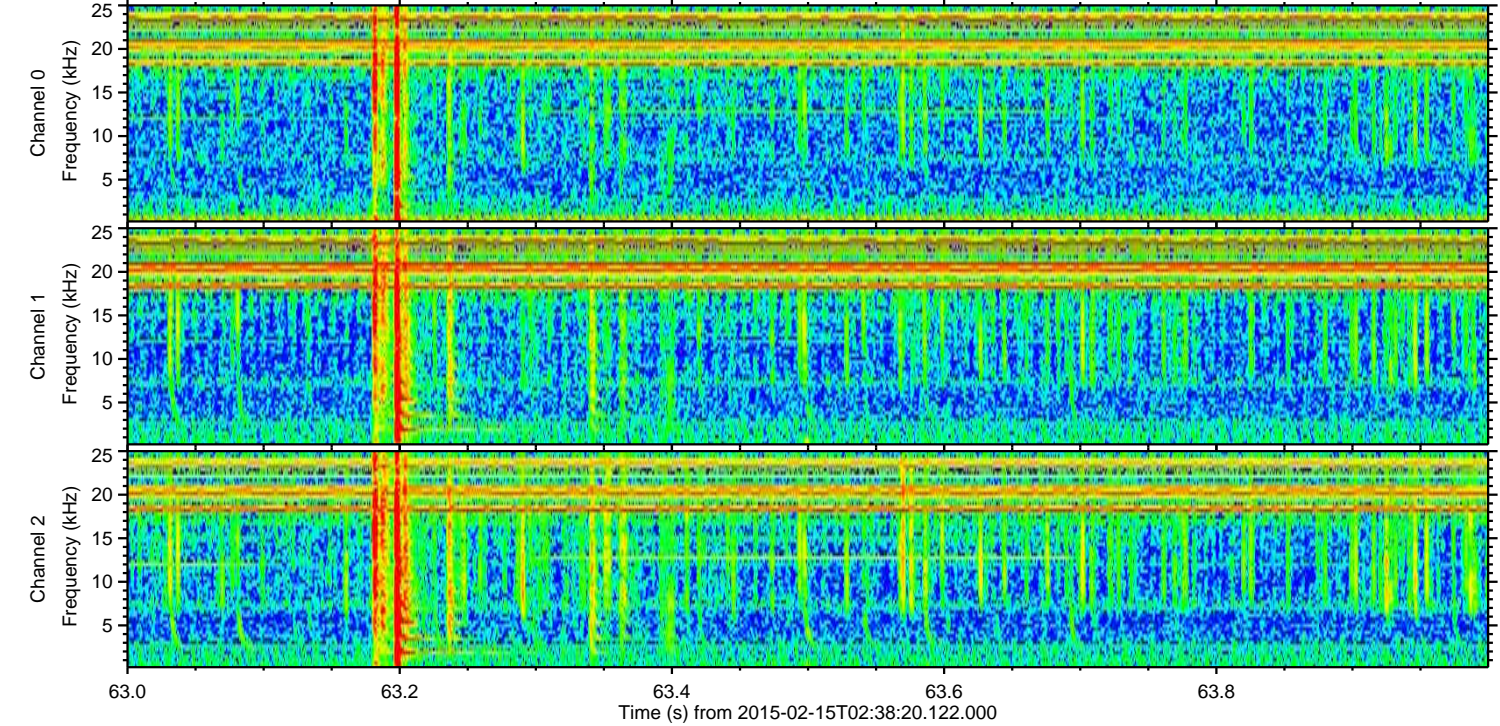
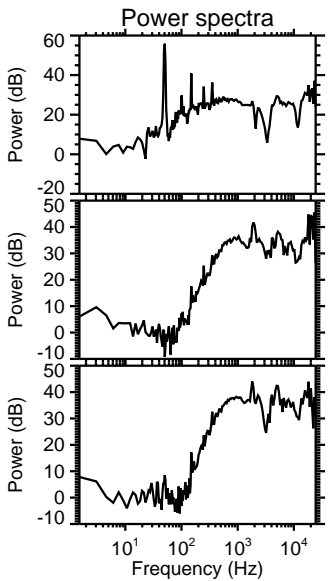
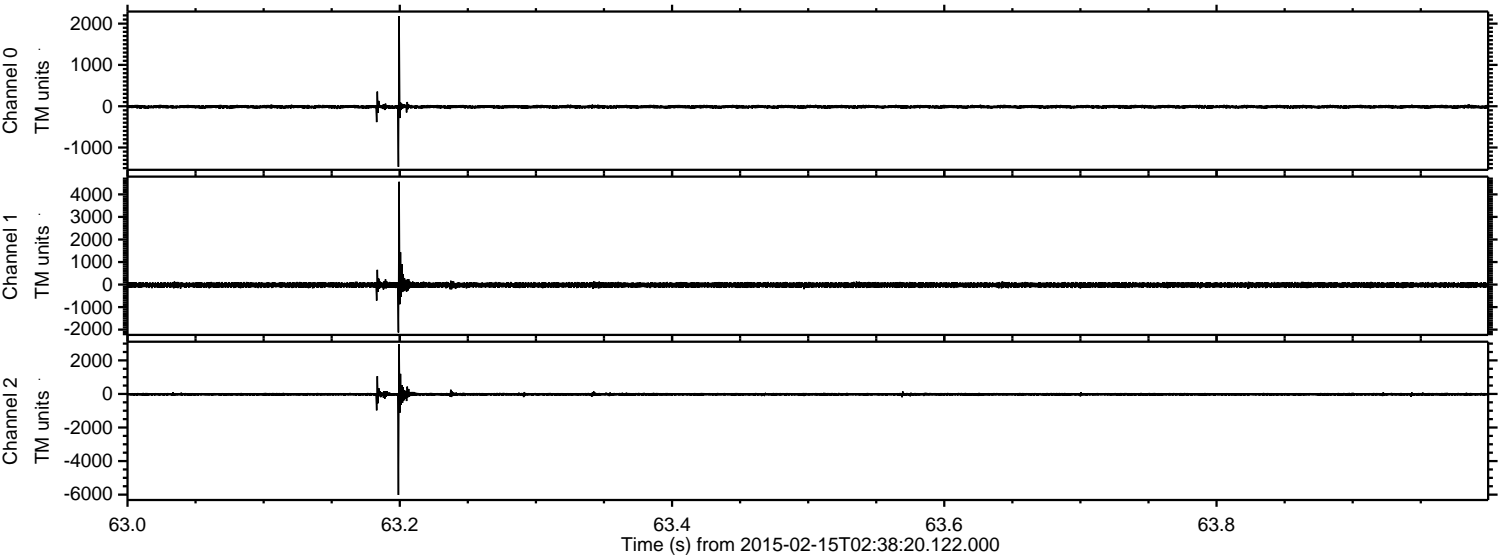
Processed Mon Feb 23 13:08:04 2015 by ELM ver.2012-10-06 from 001__elm20150215_023819__dat00.bin



Processed Mon Feb 23 13:08:16 2015 by ELM ver.2012-10-06 from 001__elm20150215_023819__dat00.bin

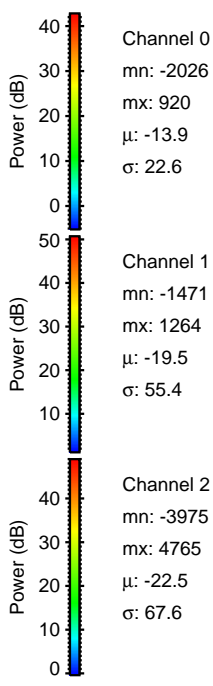
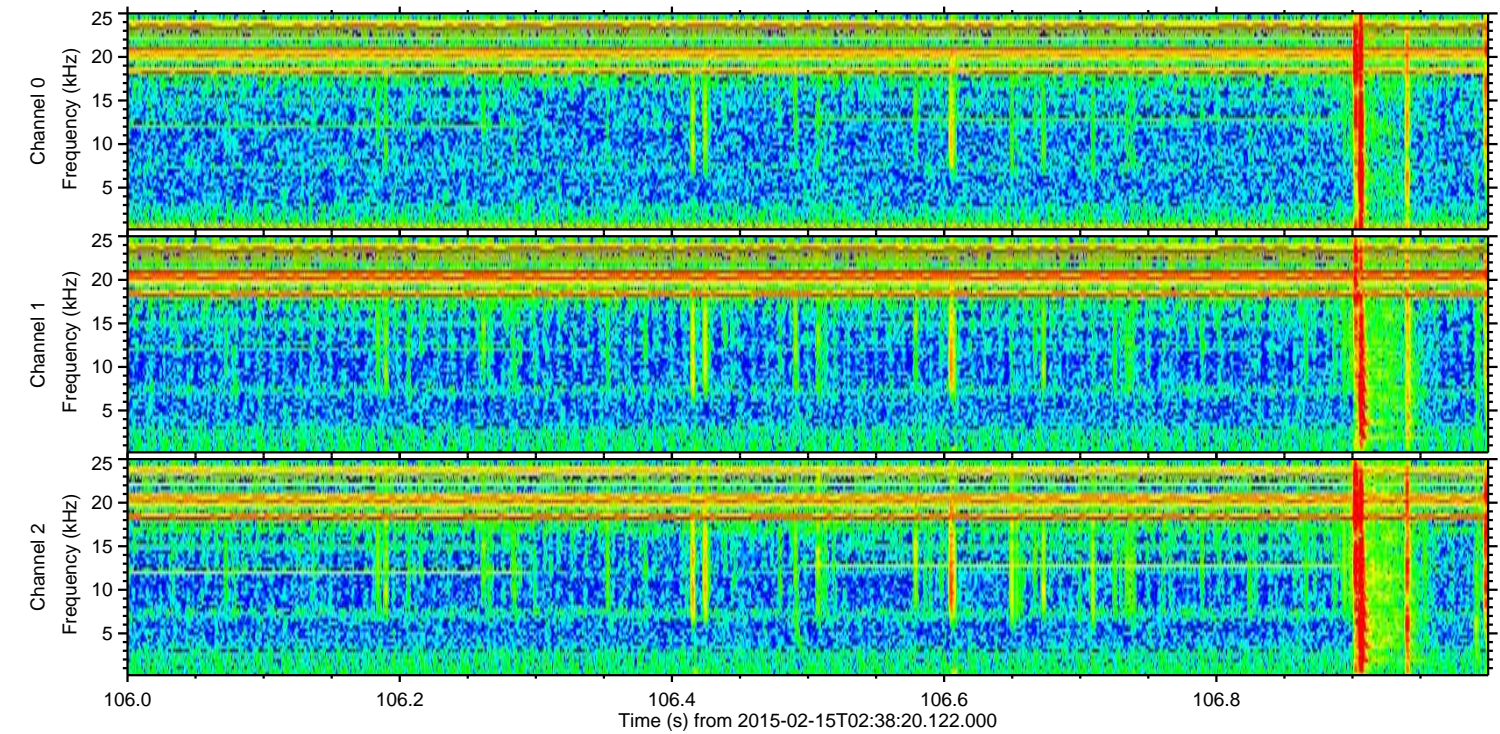
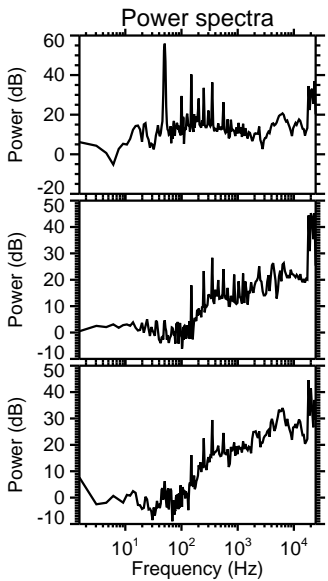
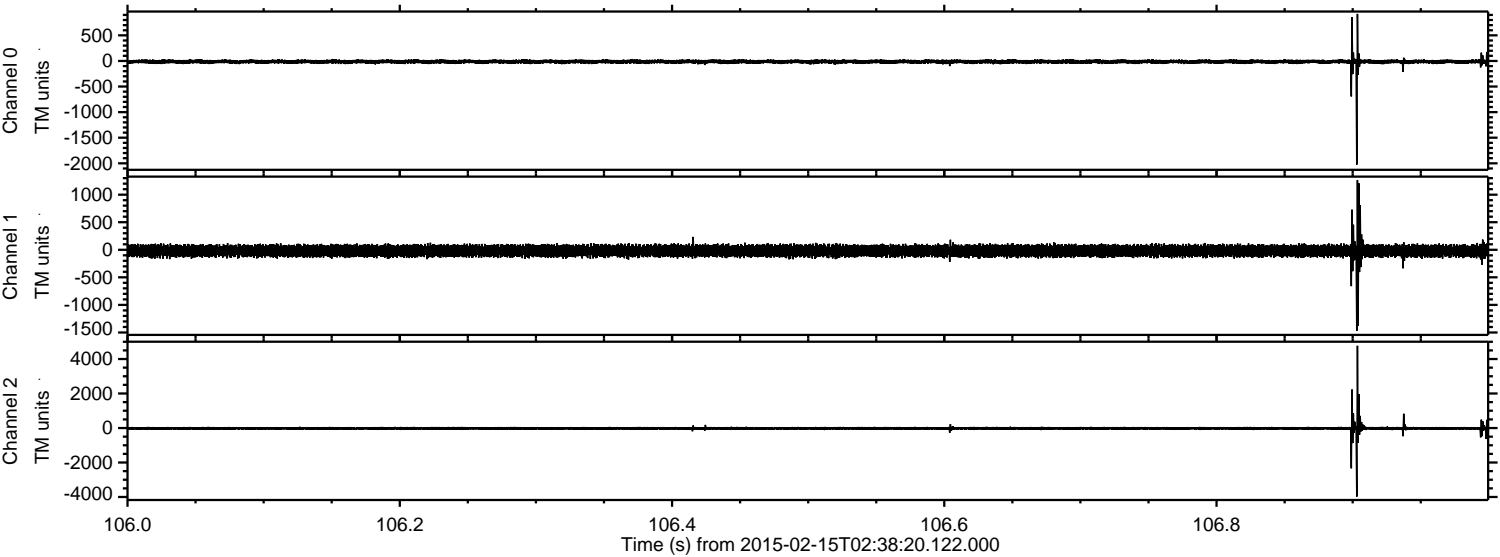


Processed Mon Feb 23 13:08:17 2015 by ELM ver.2012-10-06 from 001__elm20150215_023819__dat00.bin

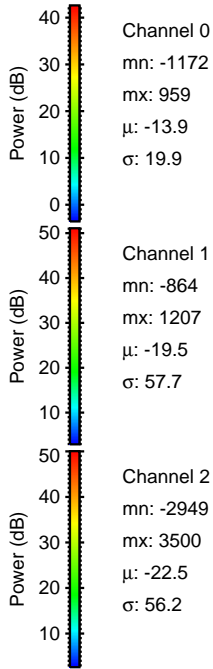
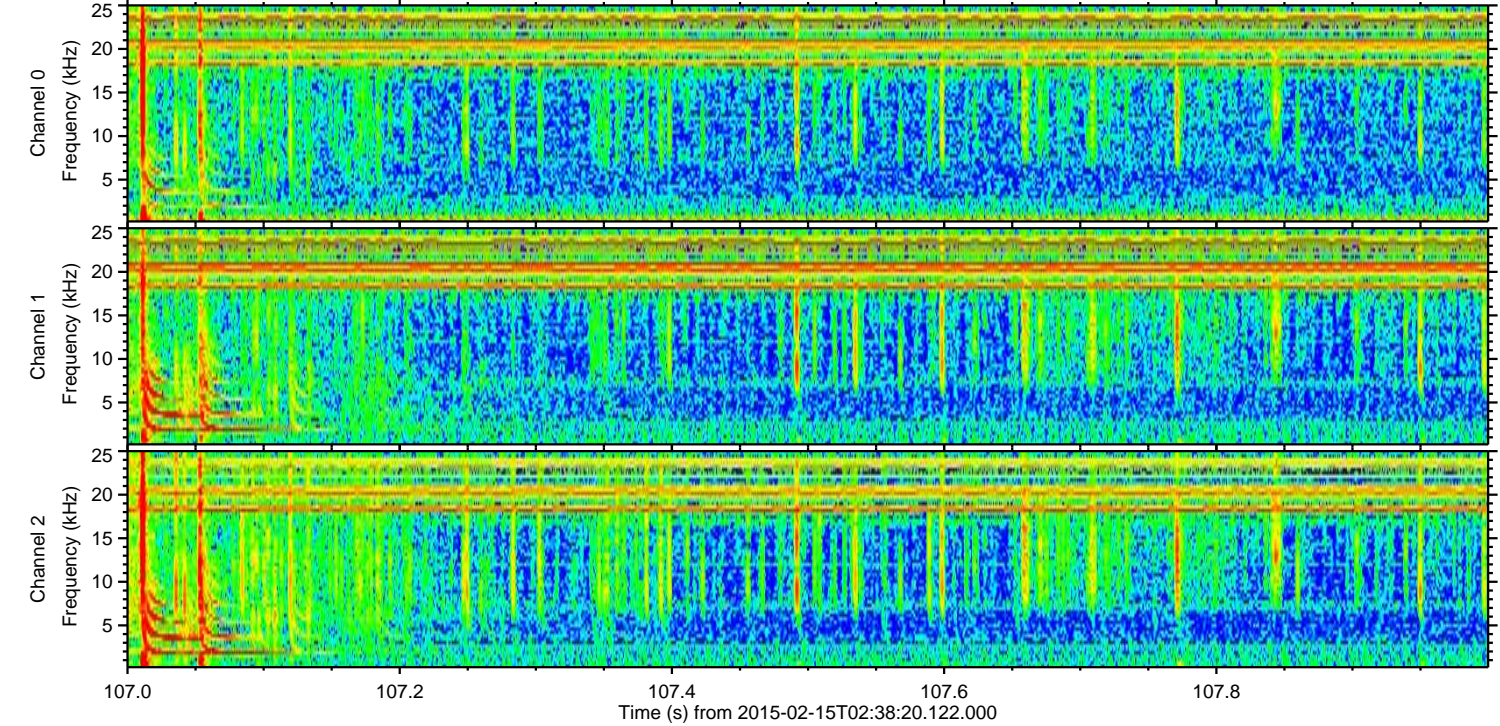
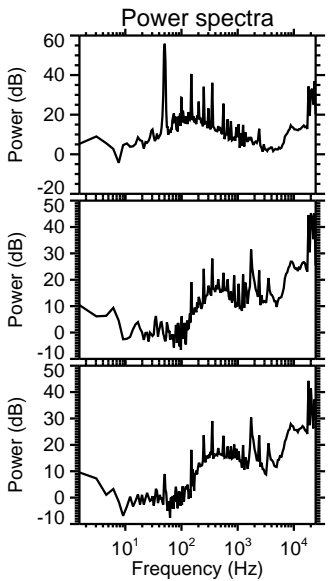
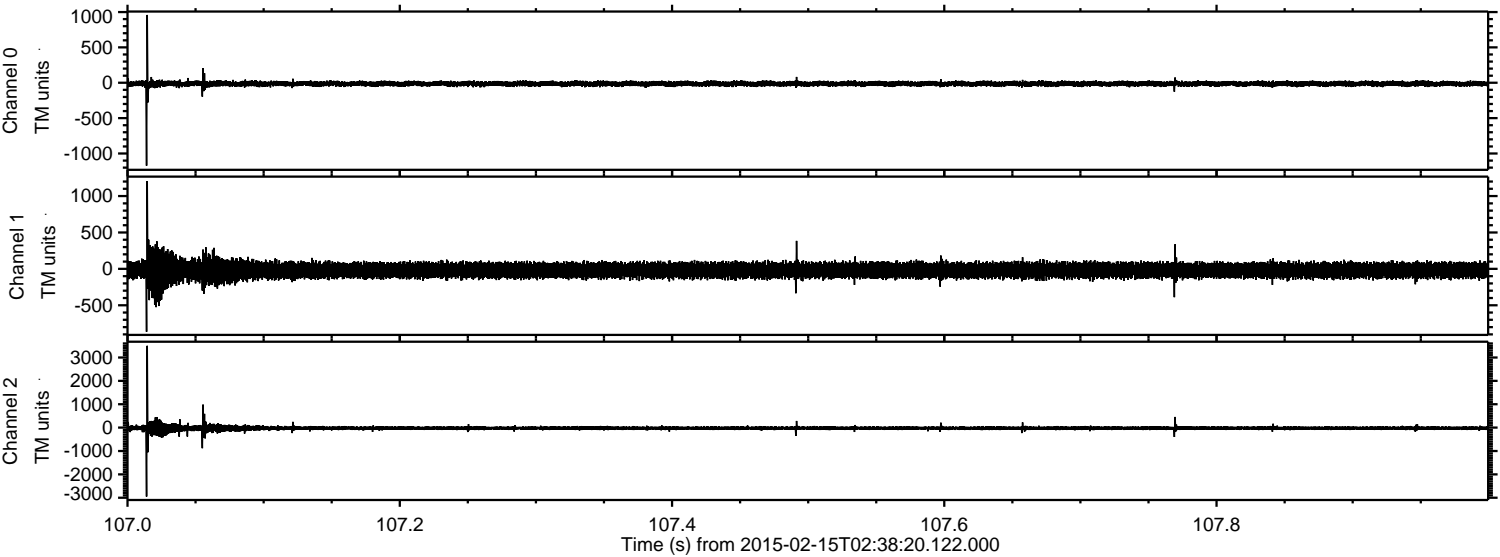


ELMAVAN 3D WAVEFORMS (Measured data sampled at 50 kHz) 49716 packets of 144 samples from 2015-02-15T02:38:20.122.000. Part 107/144

Processed Mon Feb 23 13:08:18 2015 by ELM ver.2012-10-06 from 001__elm20150215_023819__dat00.bin



Processed Mon Feb 23 13:08:19 2015 by ELM ver.2012-10-06 from 001__elm20150215_023819__dat00.bin



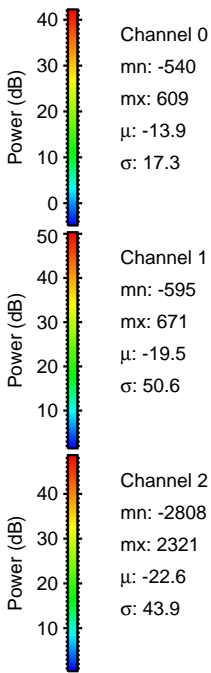
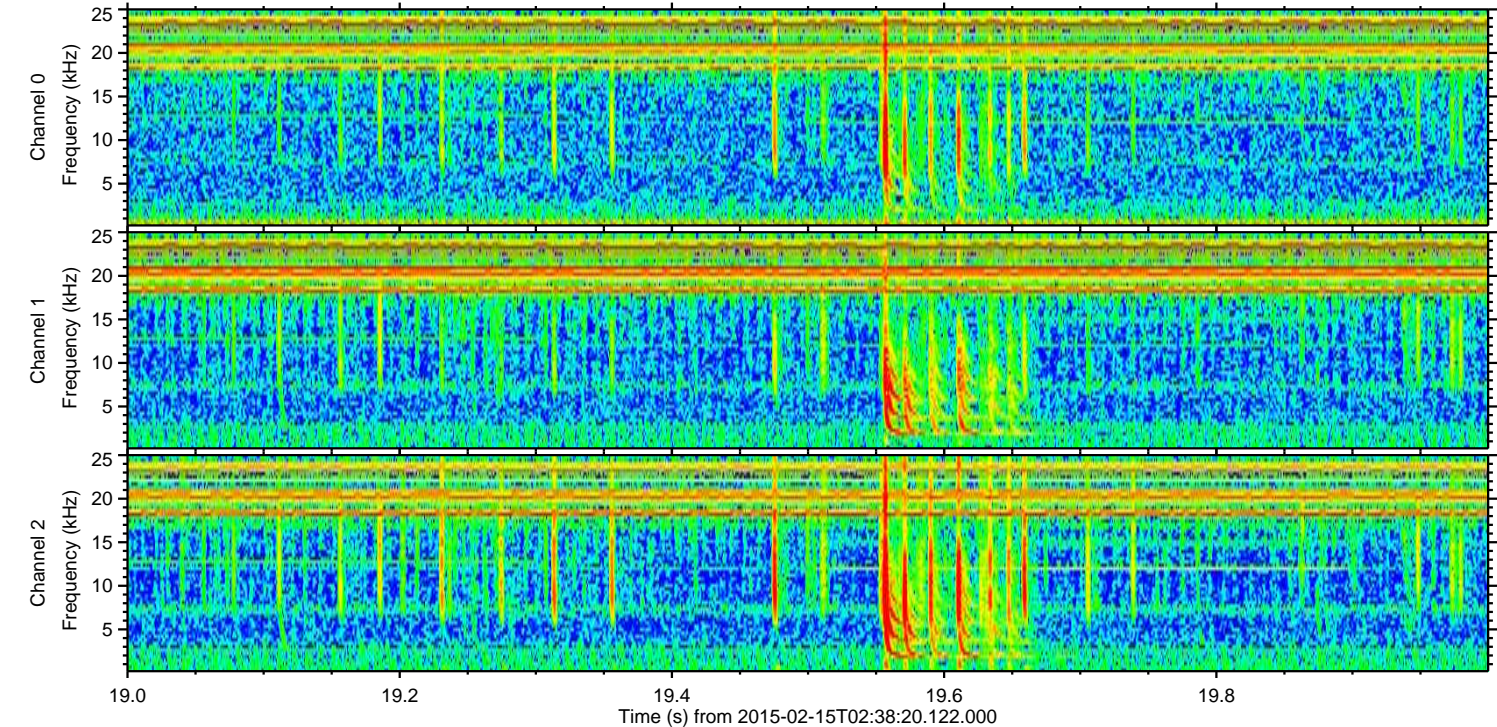
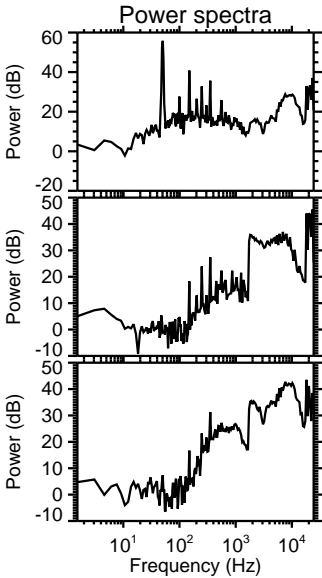
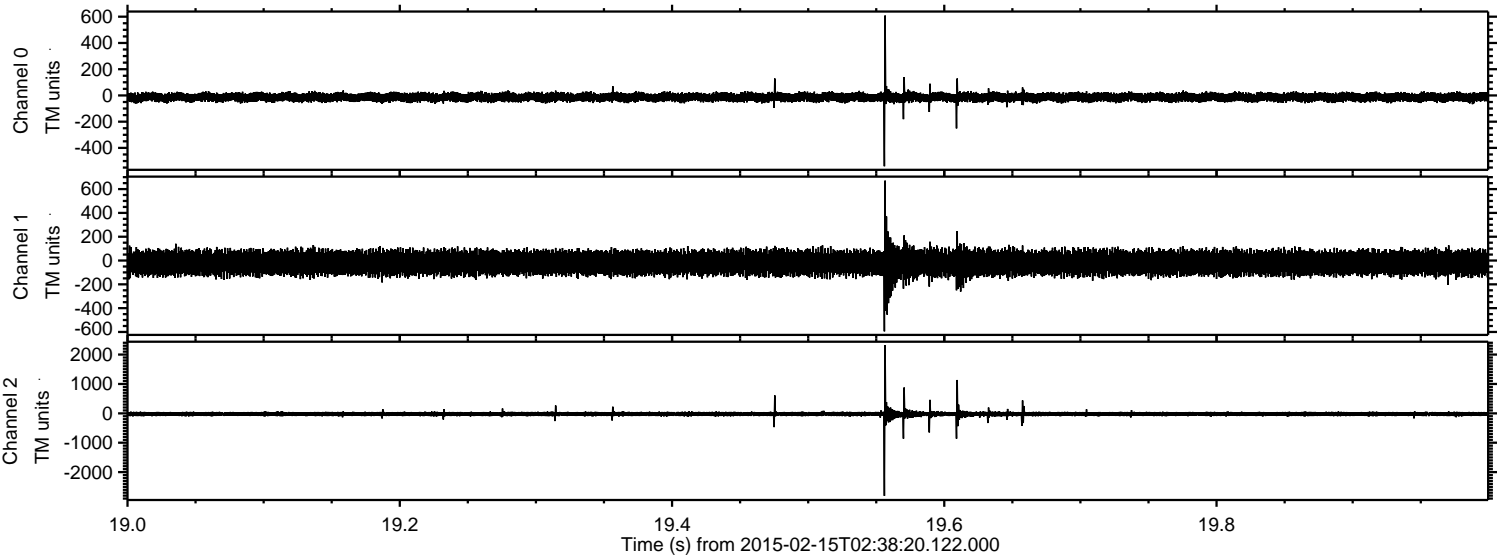
Channel 0
mn: -1172
mx: 959
 μ : -13.9
 σ : 19.9

Channel 1
mn: -864
mx: 1207
 μ : -19.5
 σ : 57.7

Channel 2
mn: -2949
mx: 3500
 μ : -22.5
 σ : 56.2

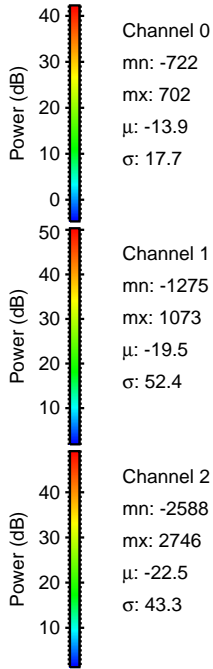
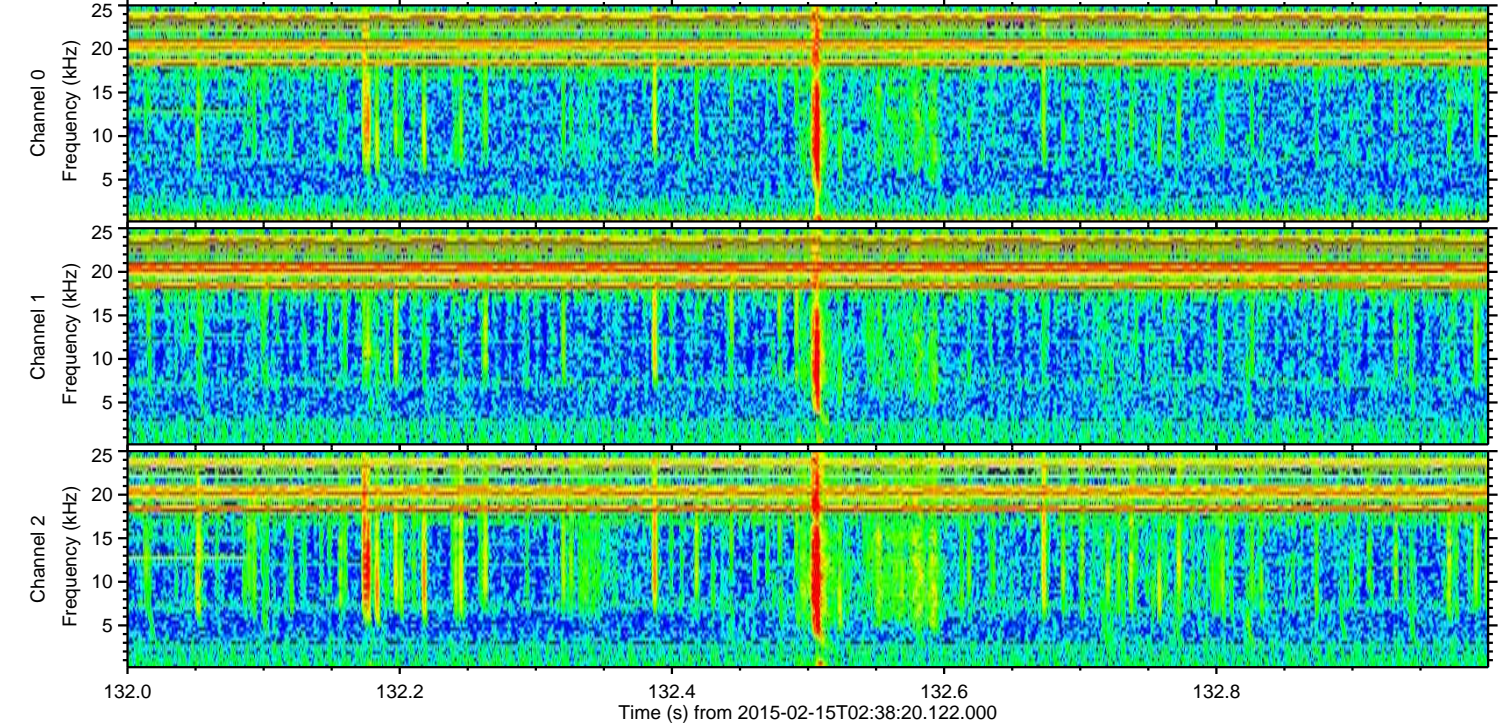
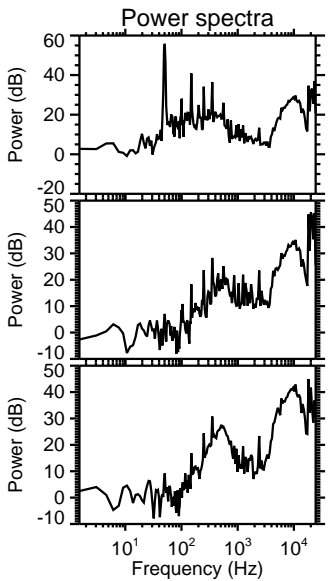
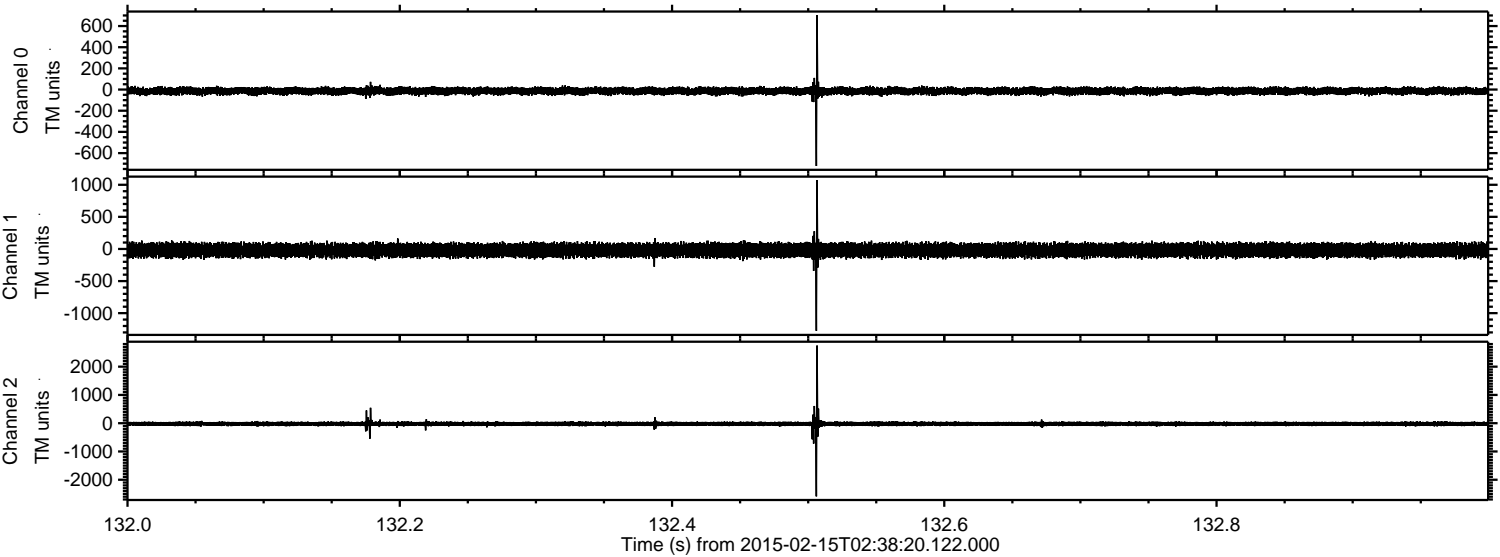
ELMAVAN 3D WAVEFORMS (Measured data sampled at 50 kHz) 49716 packets of 144 samples from 2015-02-15T02:38:20.122.000. Part 20/144

Processed Mon Feb 23 13:08:20 2015 by ELM ver.2012-10-06 from 001__elm20150215_023819__dat00.bin



ELMAVAN 3D WAVEFORMS (Measured data sampled at 50 kHz) 49716 packets of 144 samples from 2015-02-15T02:38:20.122.000. Part 133/144

Processed Mon Feb 23 13:08:21 2015 by ELM ver.2012-10-06 from 001__elm20150215_023819__dat00.bin

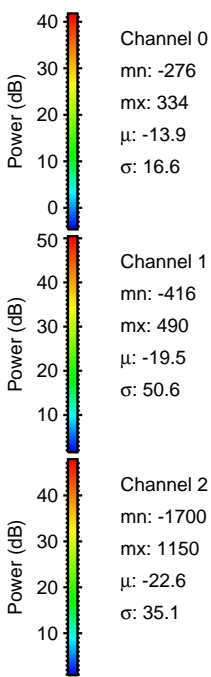
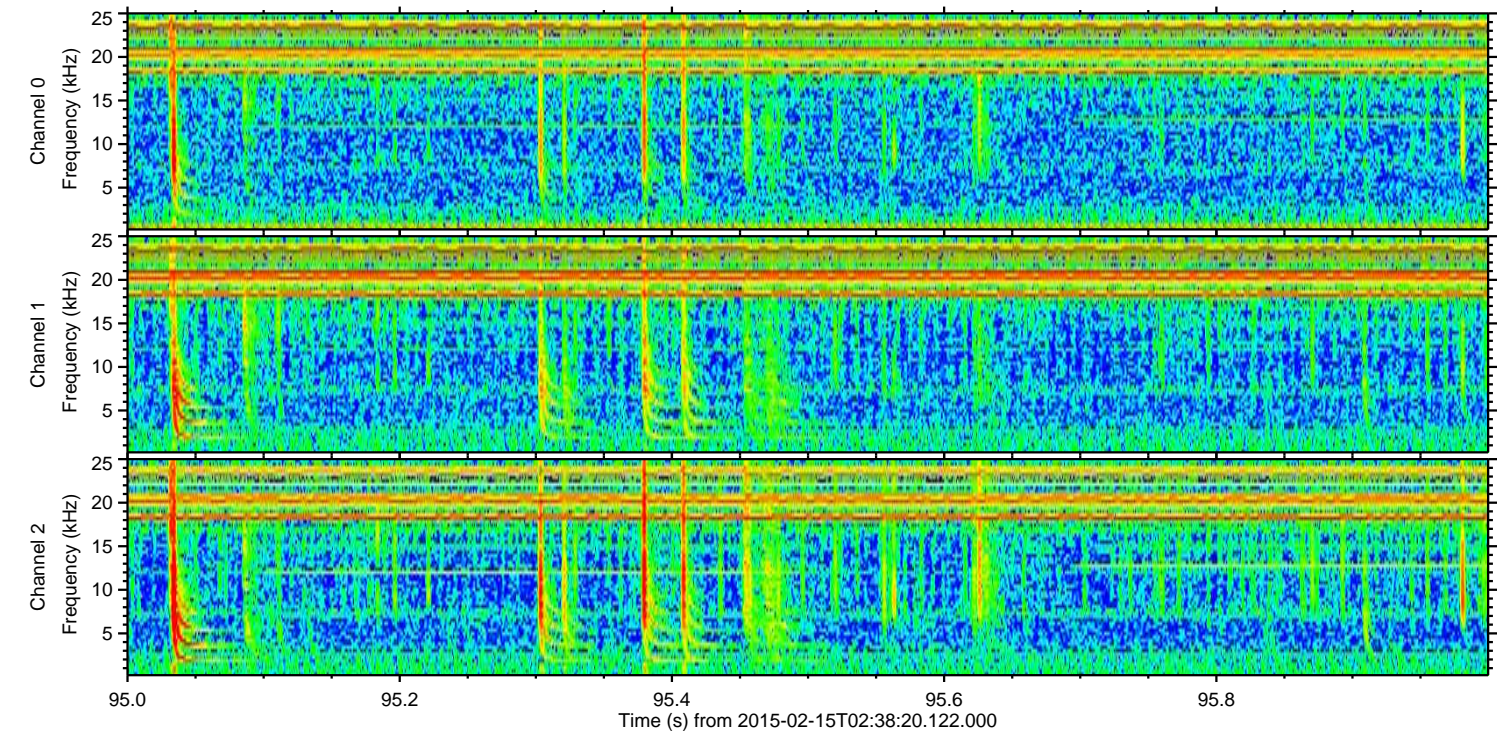
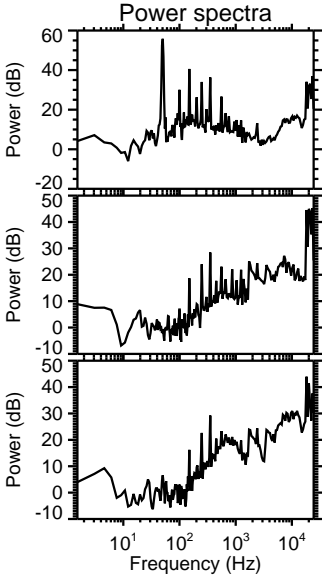
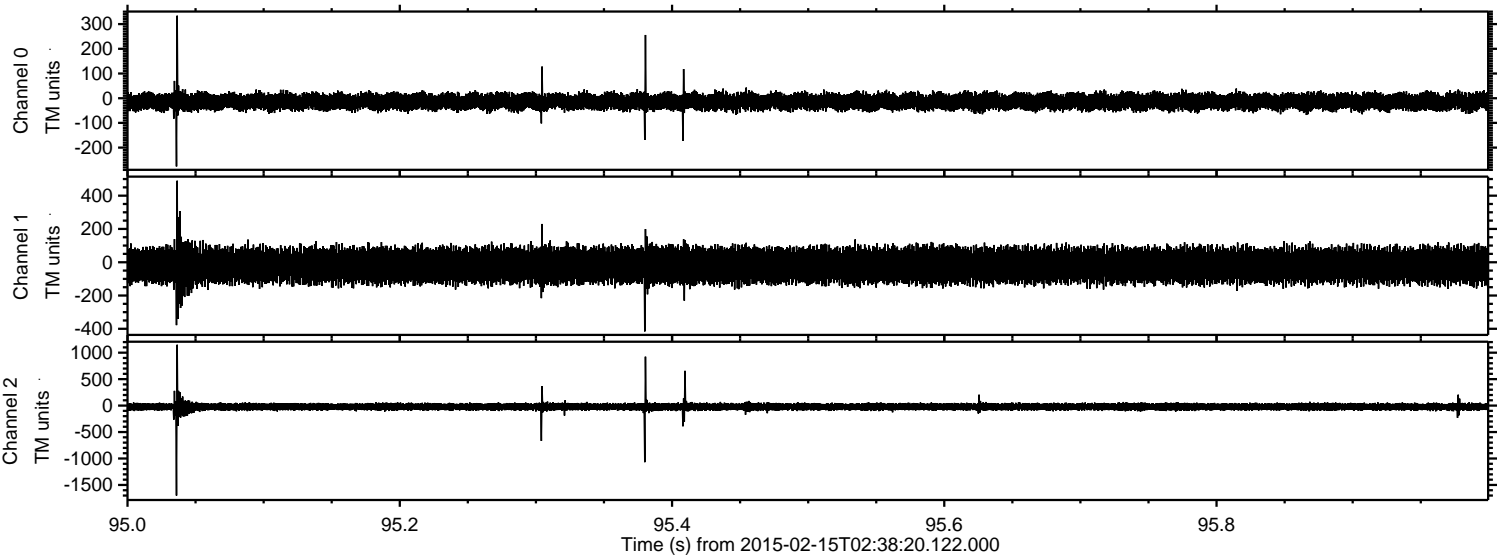


Channel 0
mn: -722
mx: 702
 μ : -13.9
 σ : 17.7

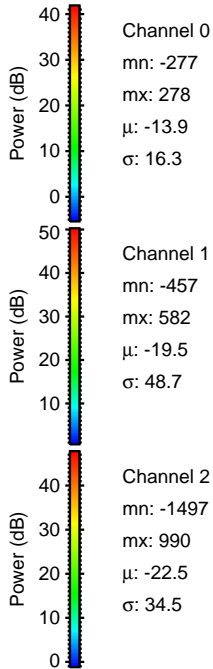
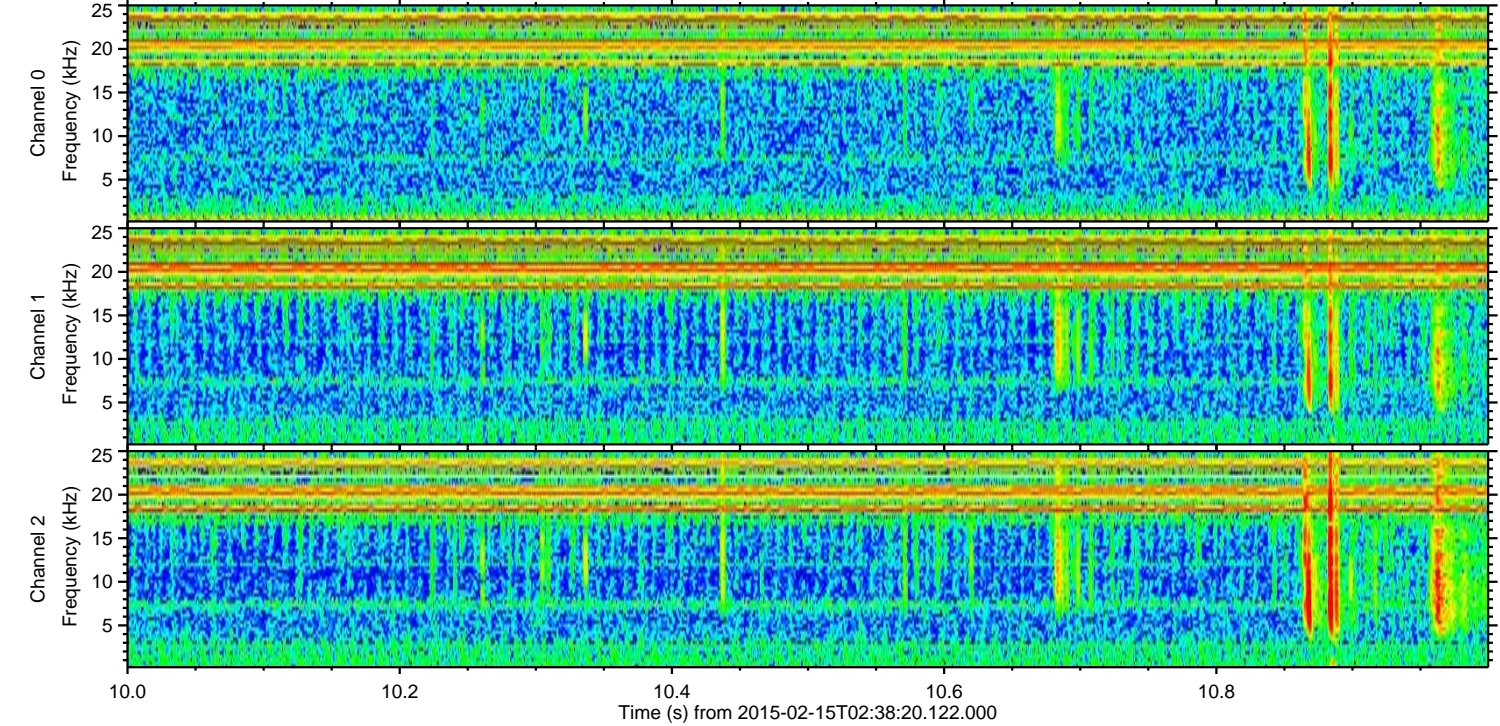
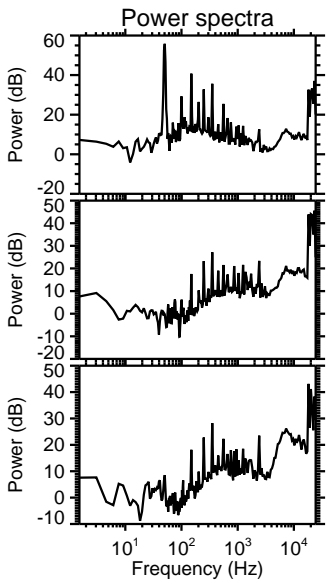
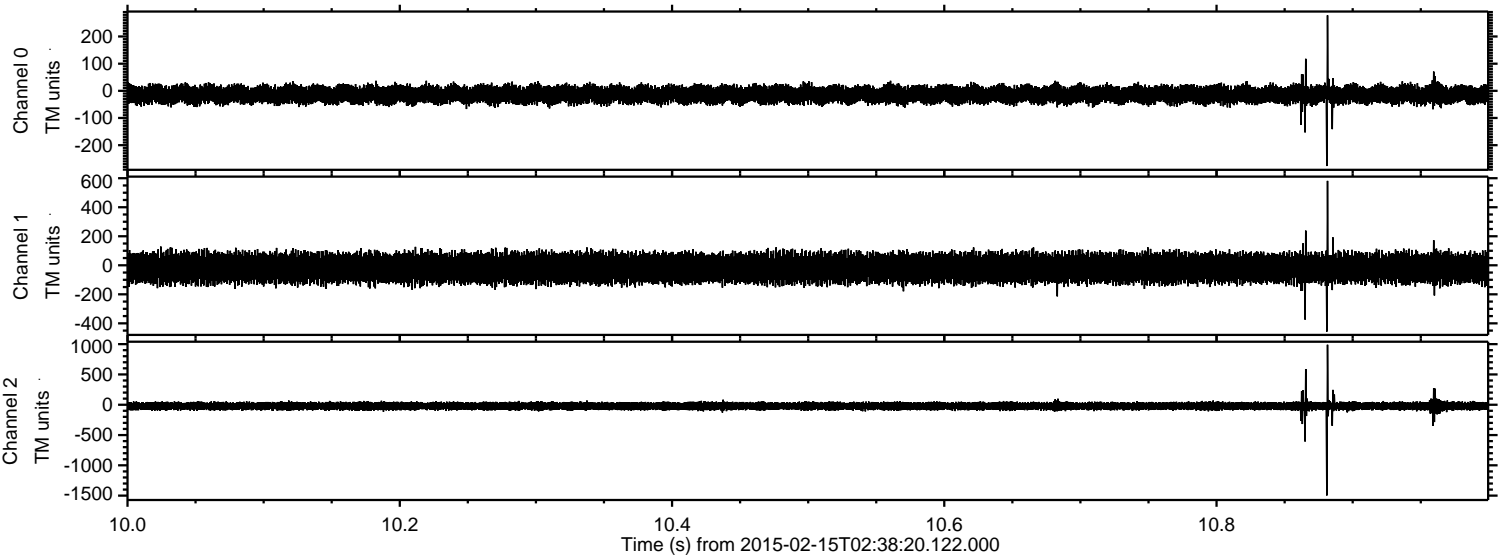
Channel 1
mn: -1275
mx: 1073
 μ : -19.5
 σ : 52.4

Channel 2
mn: -2588
mx: 2746
 μ : -22.5
 σ : 43.3

Processed Mon Feb 23 13:08:21 2015 by ELM ver.2012-10-06 from 001__elm20150215_023819__dat00.bin



Processed Mon Feb 23 13:08:22 2015 by ELM ver.2012-10-06 from 001__elm20150215_023819__dat00.bin

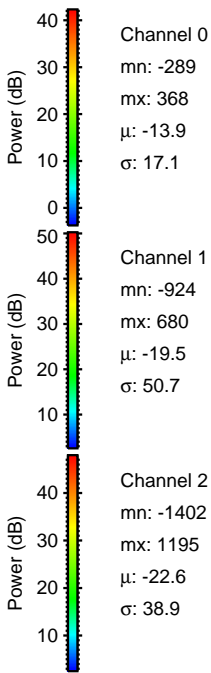
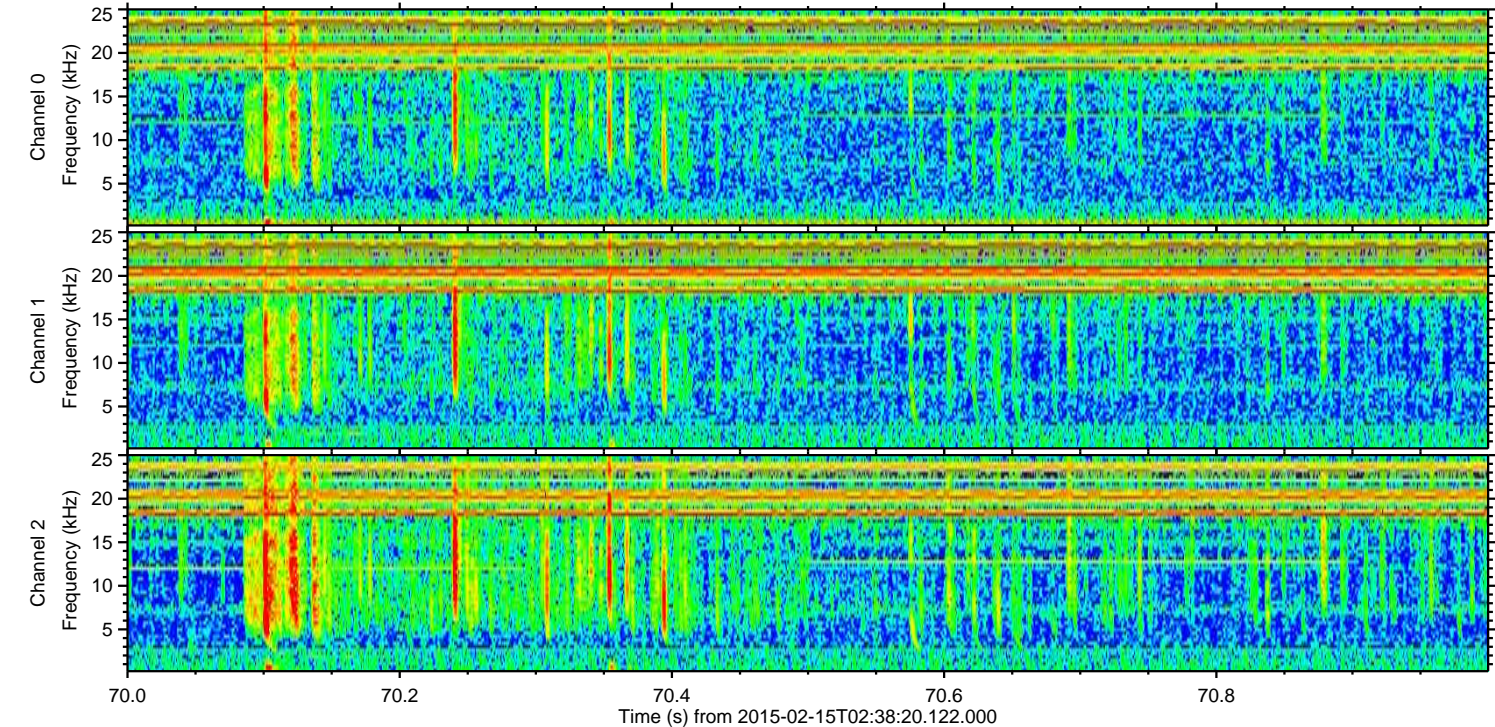
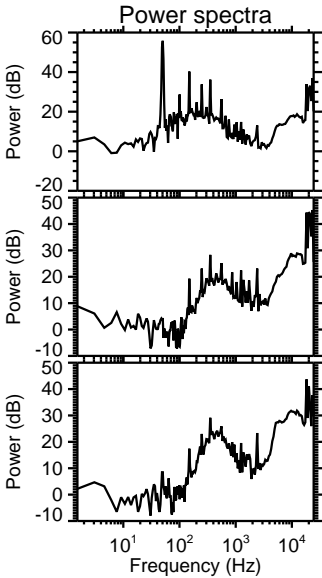
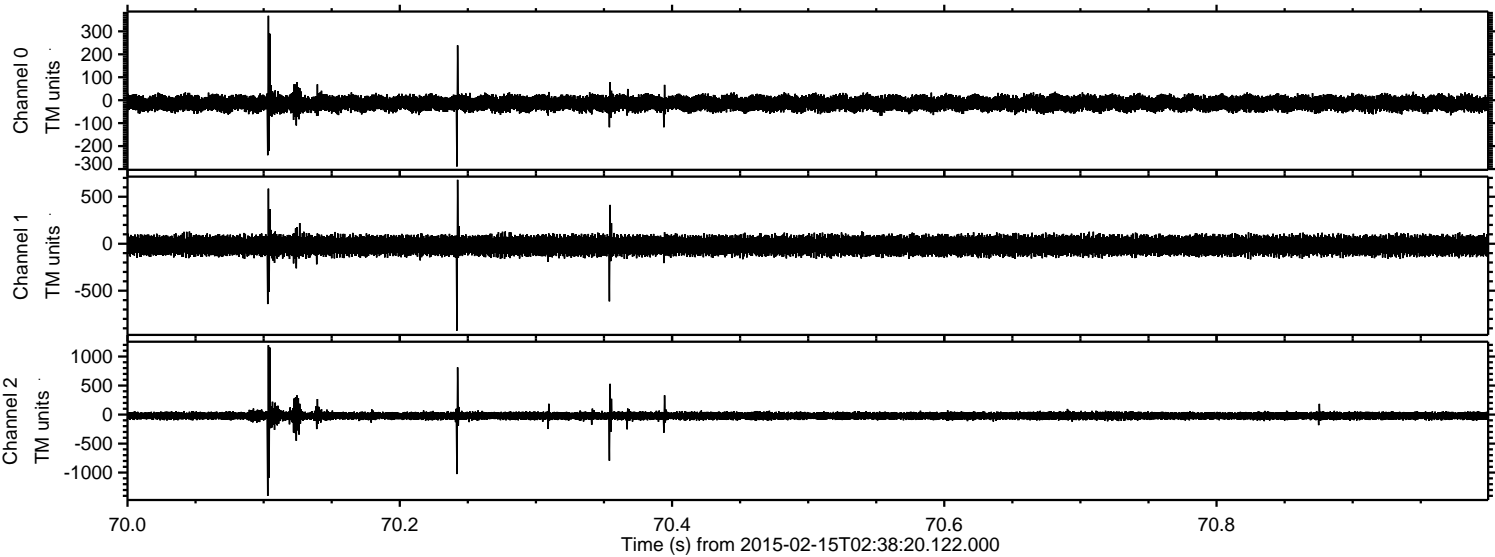


Channel 0
mn: -277
mx: 278
 μ : -13.9
 σ : 16.3

Channel 1
mn: -457
mx: 582
 μ : -19.5
 σ : 48.7

Channel 2
mn: -1497
mx: 990
 μ : -22.5
 σ : 34.5

Processed Mon Feb 23 13:08:23 2015 by ELM ver.2012-10-06 from 001__elm20150215_023819__dat00.bin



Processed Mon Feb 23 13:08:24 2015 by ELM ver.2012-10-06 from 001__elm20150215_023819__dat00.bin

