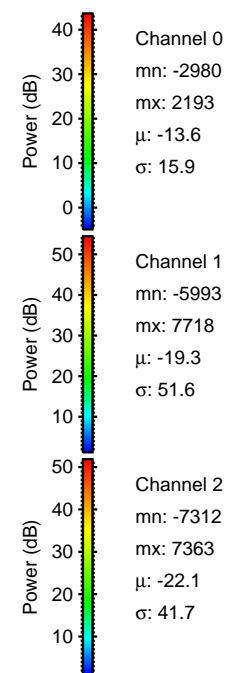
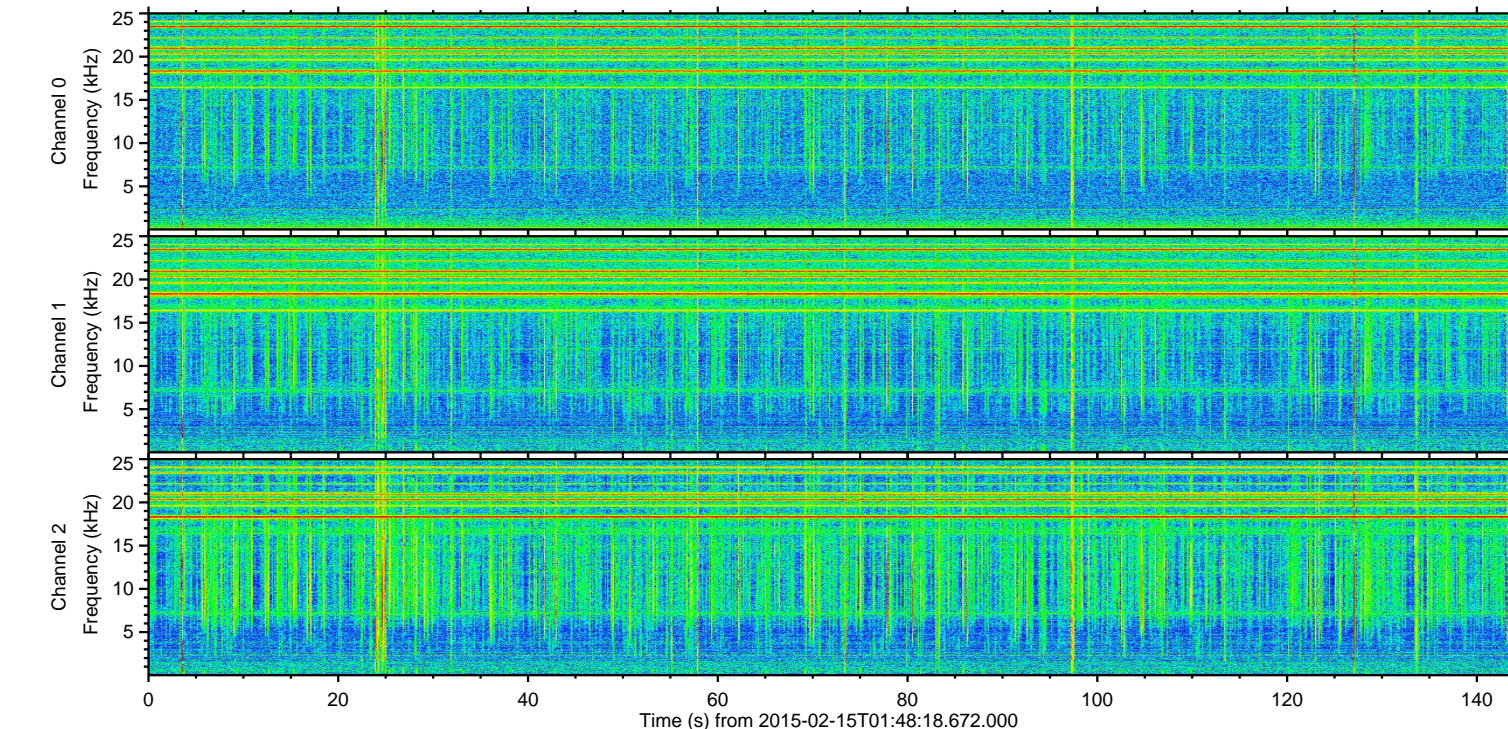
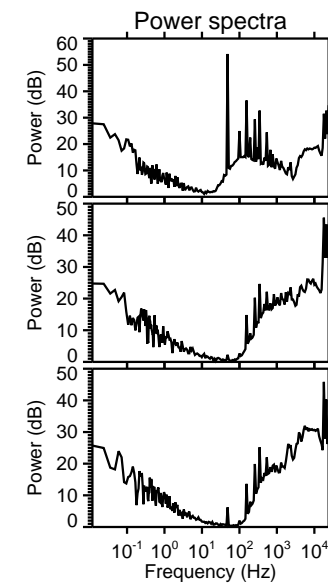
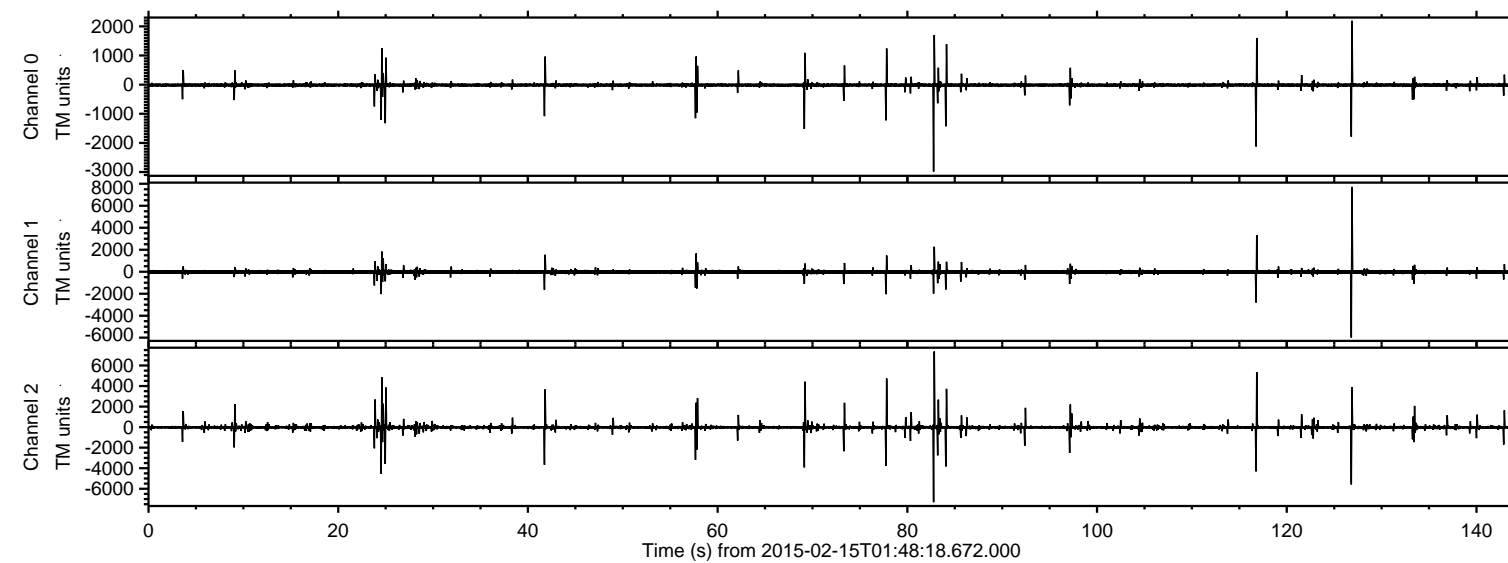


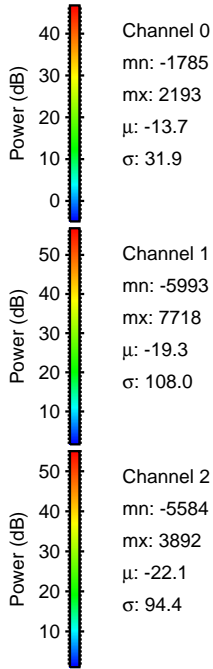
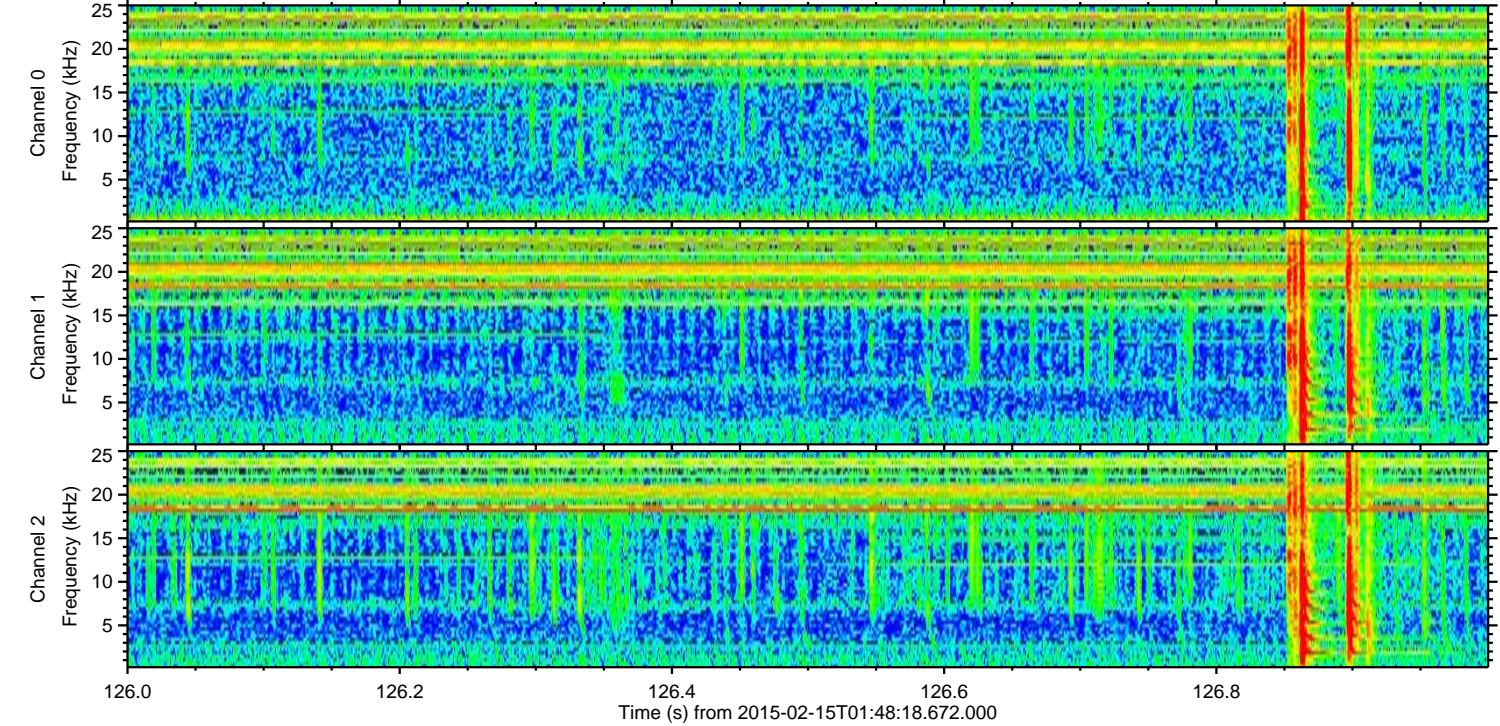
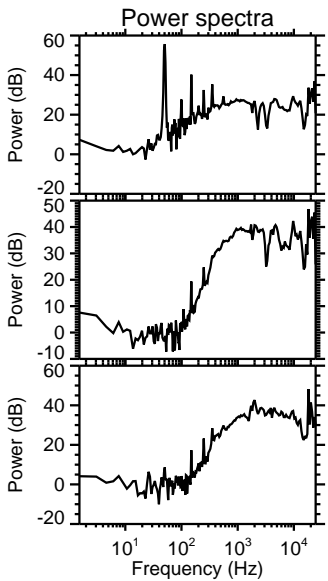
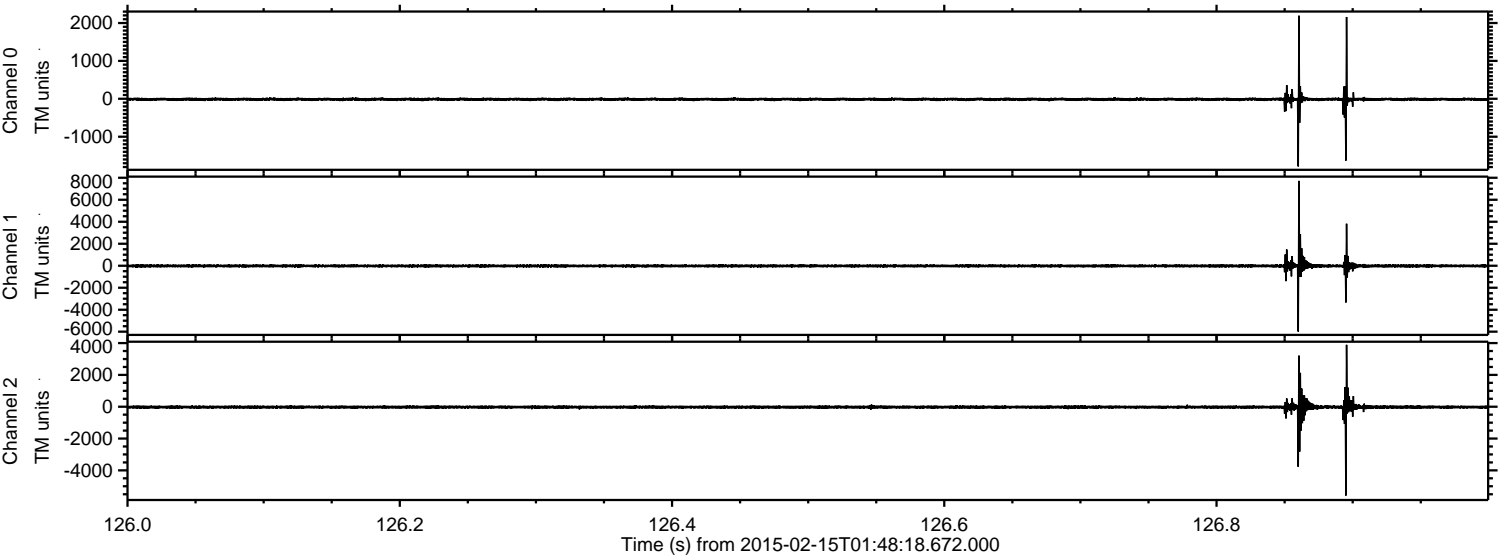
ELMAVAN 3D WAVEFORMS (Measured data sampled at 50 kHz) 49807 packets of 144 samples from 2015-02-15T01:48:18.672.000.

Processed Mon Feb 23 12:58:03 2015 by ELM ver.2012-10-06 from 001__elm20150215_014817__dat00.bin

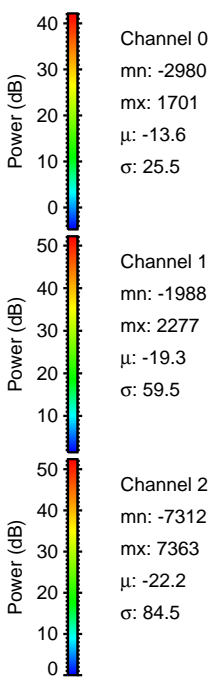
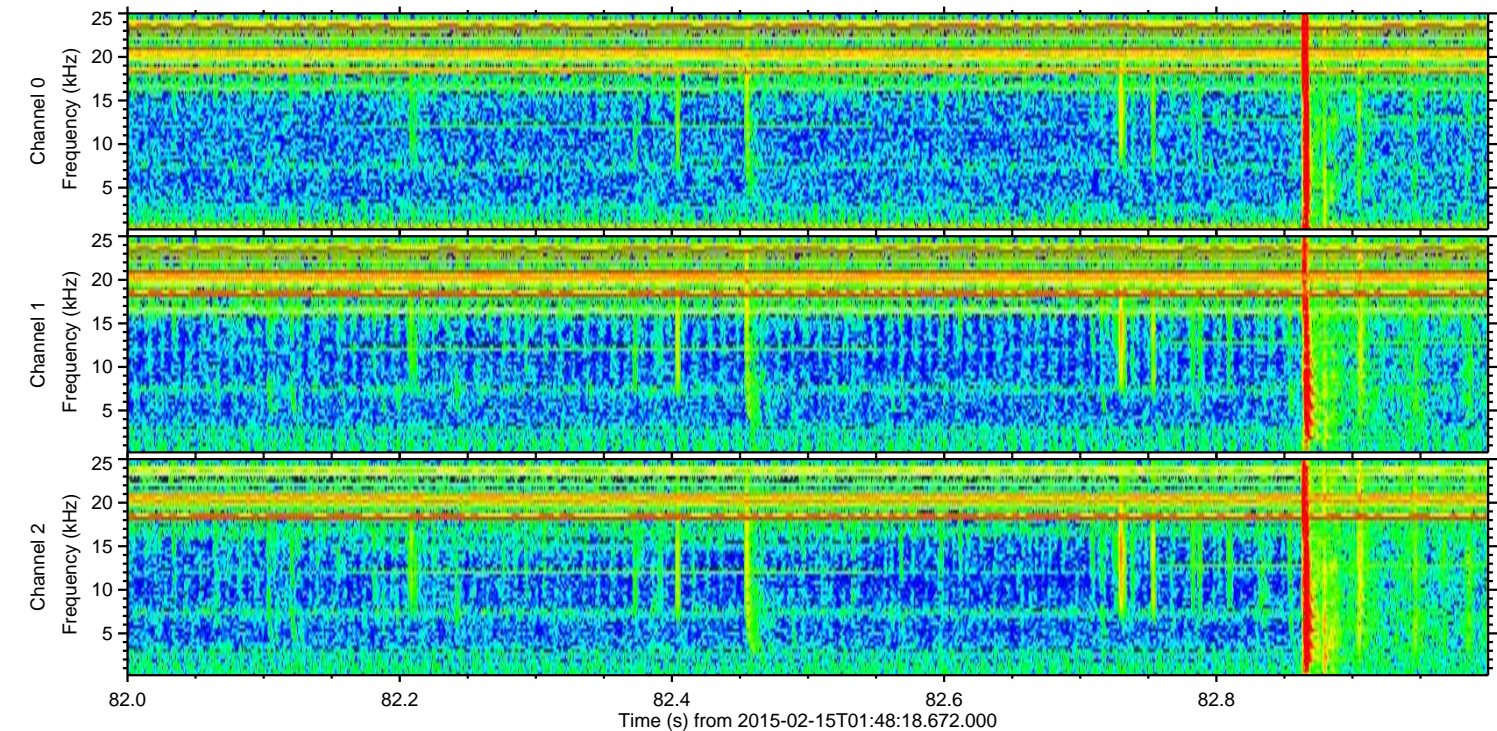
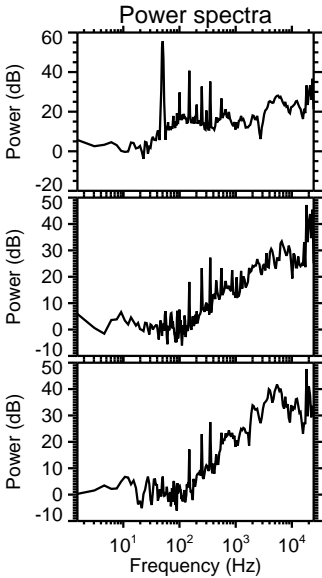
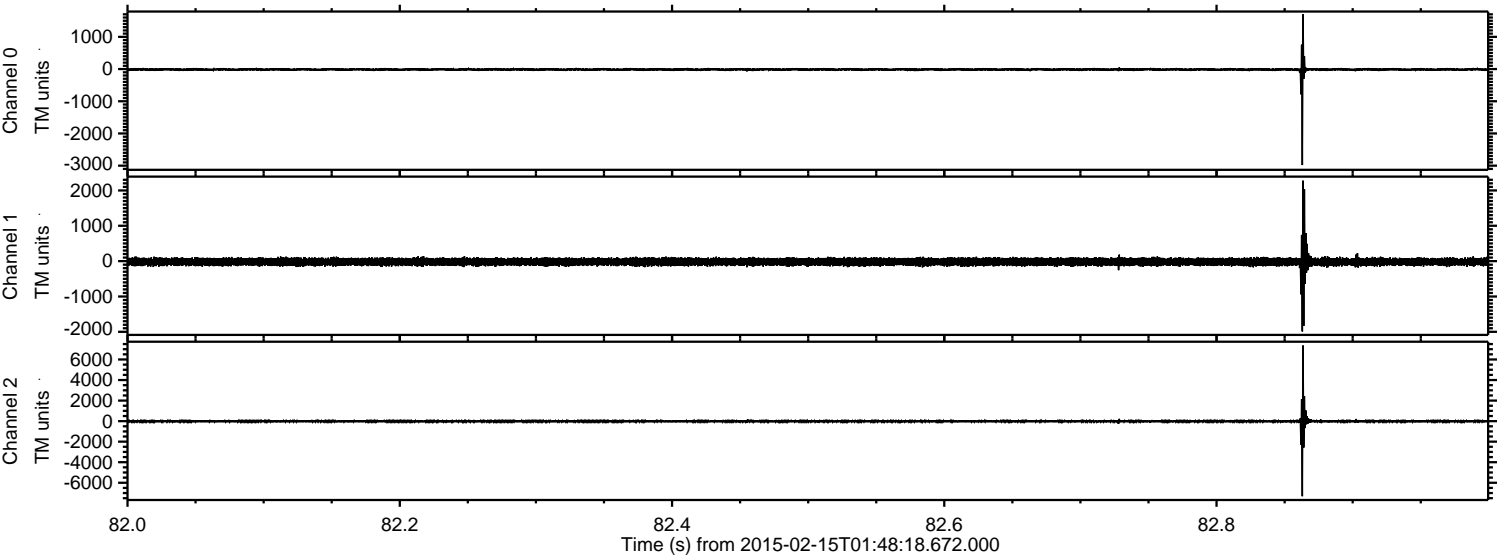


ELMAVAN 3D WAVEFORMS (Measured data sampled at 50 kHz) 49807 packets of 144 samples from 2015-02-15T01:48:18.672.000. Part 127/144

Processed Mon Feb 23 12:58:14 2015 by ELM ver.2012-10-06 from 001__elm20150215_014817__dat00.bin

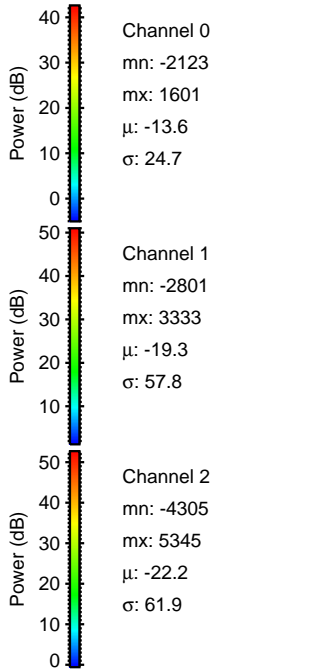
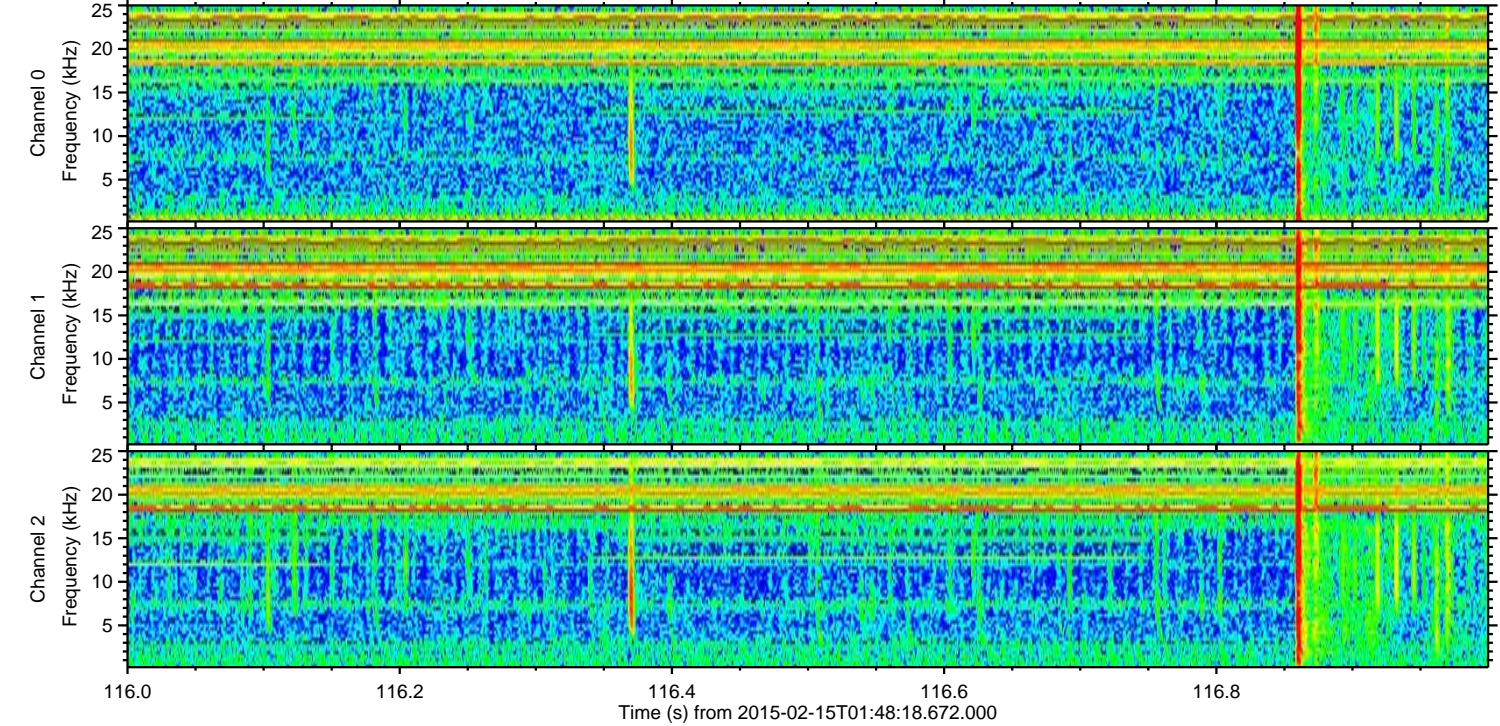
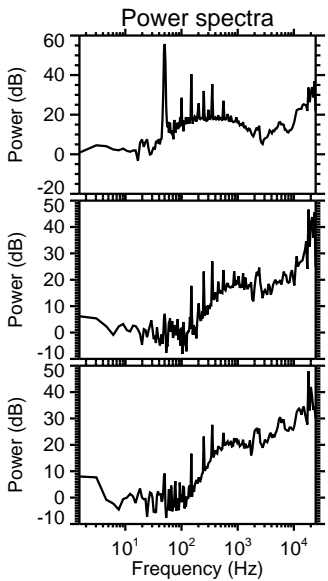
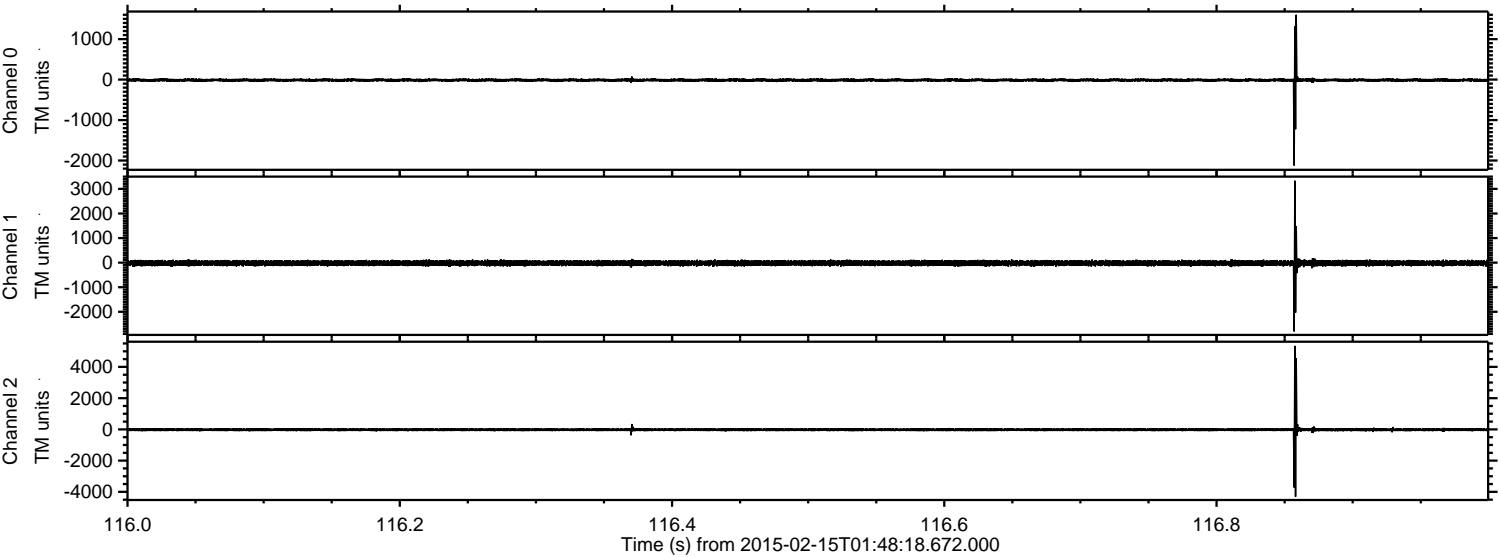


Processed Mon Feb 23 12:58:15 2015 by ELM ver.2012-10-06 from 001__elm20150215_014817__dat00.bin



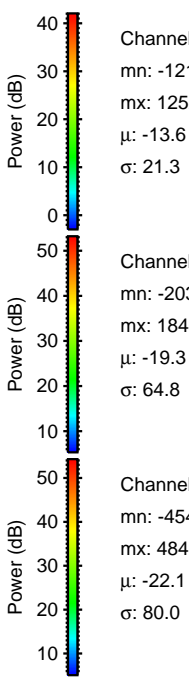
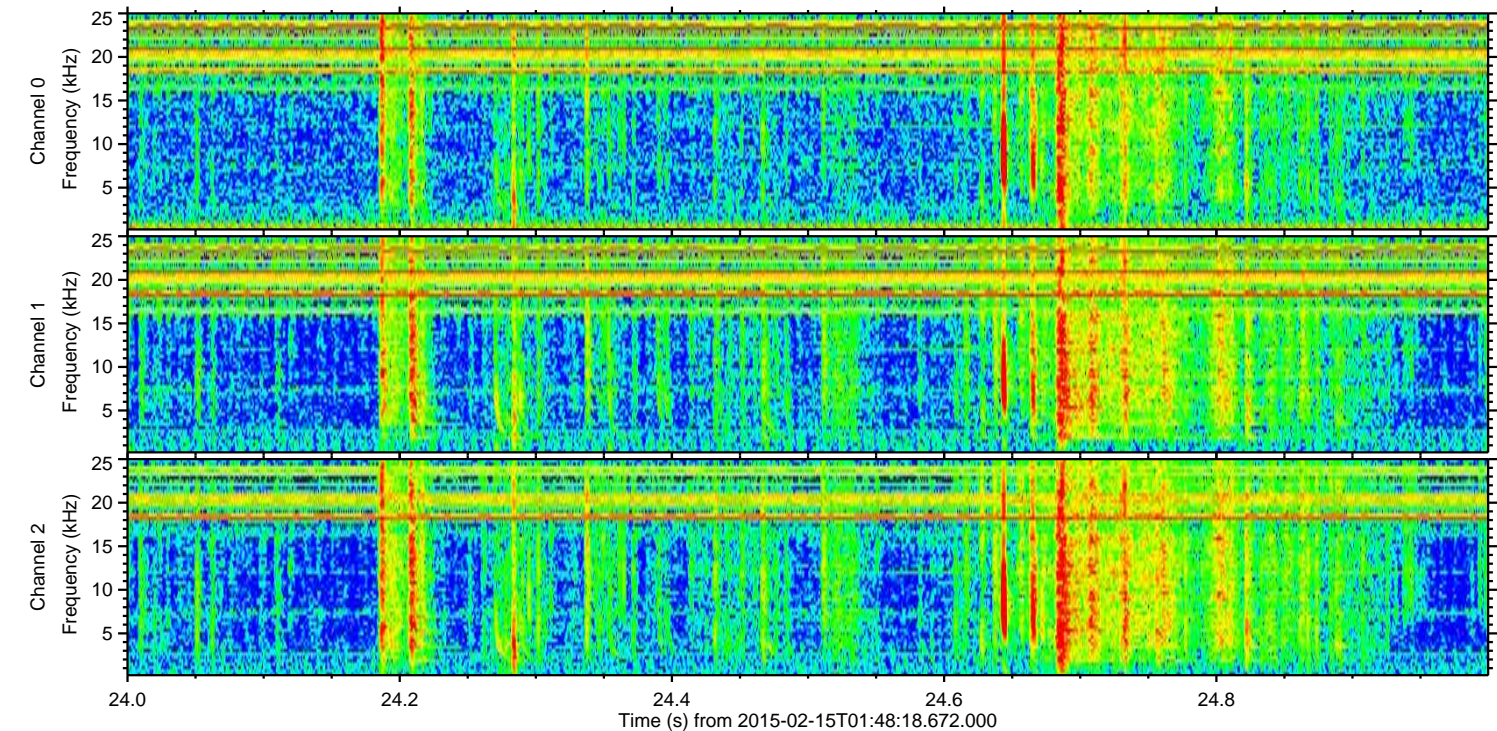
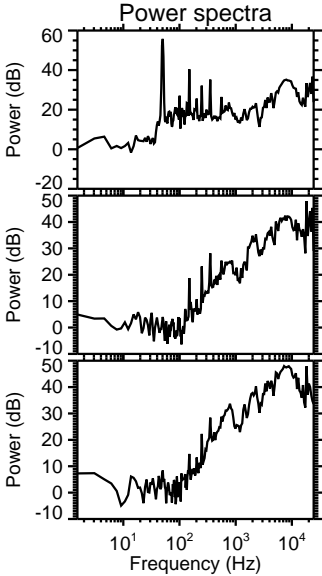
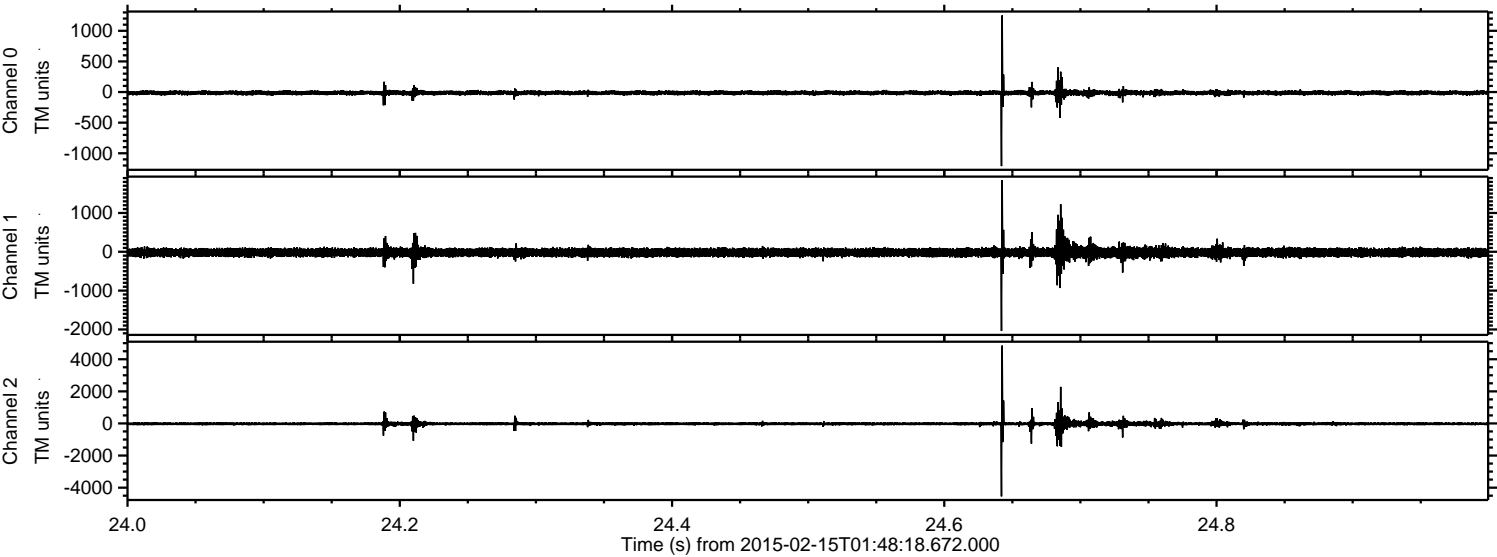
ELMAVAN 3D WAVEFORMS (Measured data sampled at 50 kHz) 49807 packets of 144 samples from 2015-02-15T01:48:18.672.000. Part 117/144

Processed Mon Feb 23 12:58:16 2015 by ELM ver.2012-10-06 from 001__elm20150215_014817__dat00.bin



ELMAVAN 3D WAVEFORMS (Measured data sampled at 50 kHz) 49807 packets of 144 samples from 2015-02-15T01:48:18.672.000. Part 25/144

Processed Mon Feb 23 12:58:17 2015 by ELM ver.2012-10-06 from 001__elm20150215_014817__dat00.bin

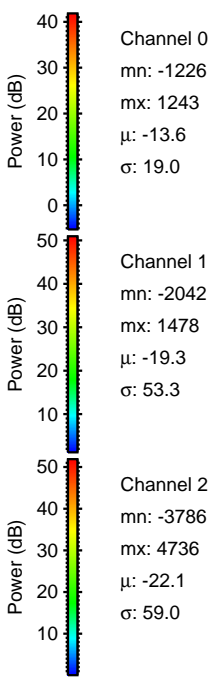
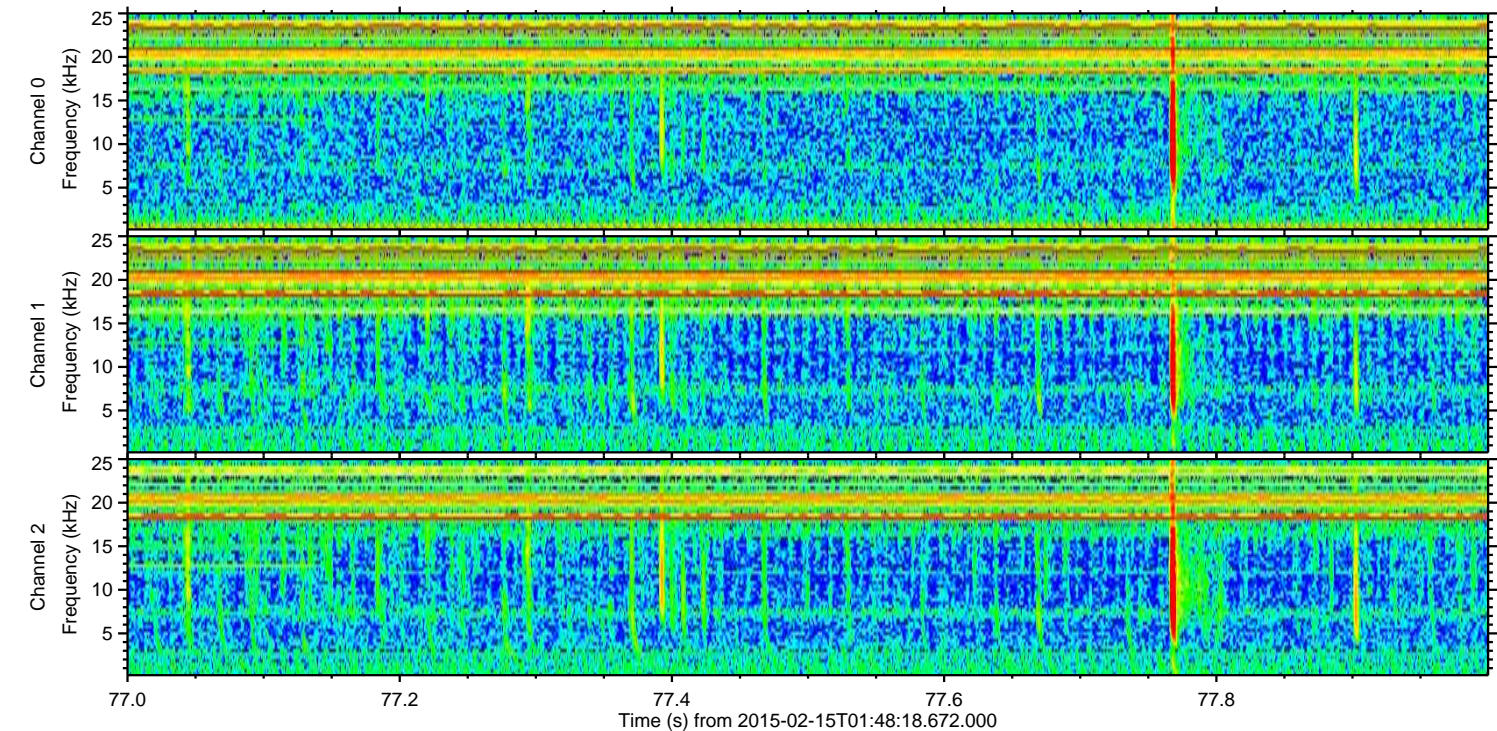
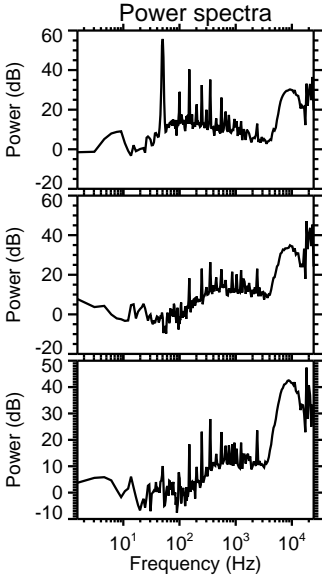
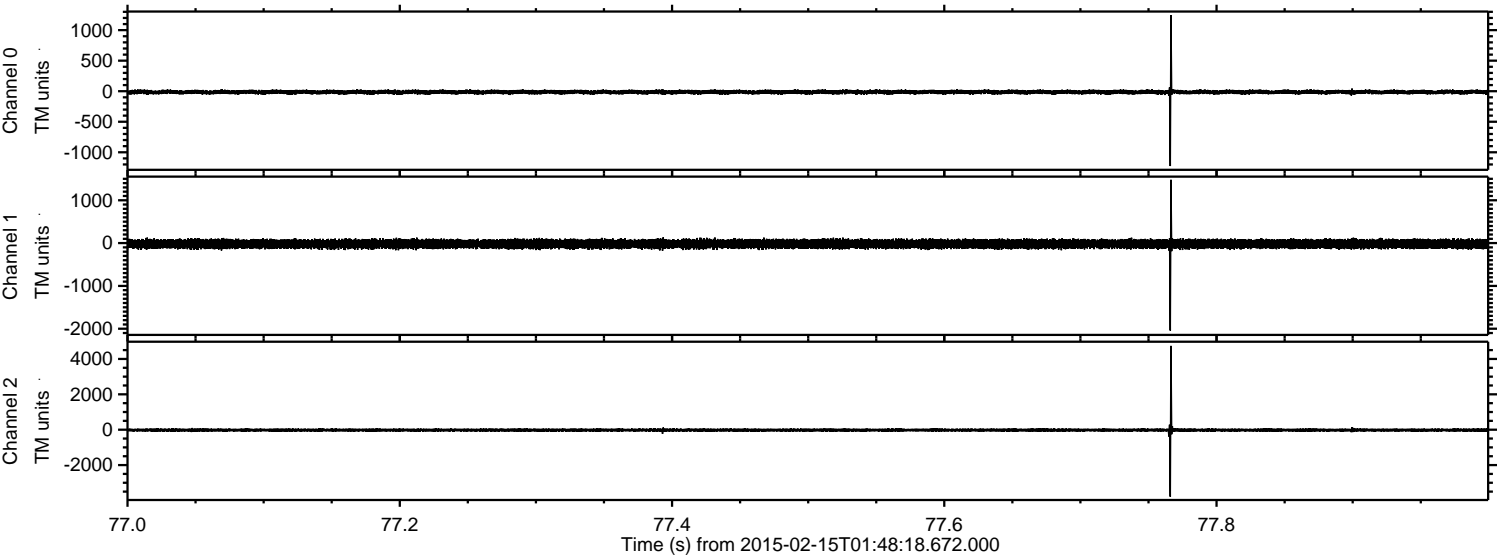


Channel 0
mn: -1210
mx: 1252
 μ : -13.6
 σ : 21.3

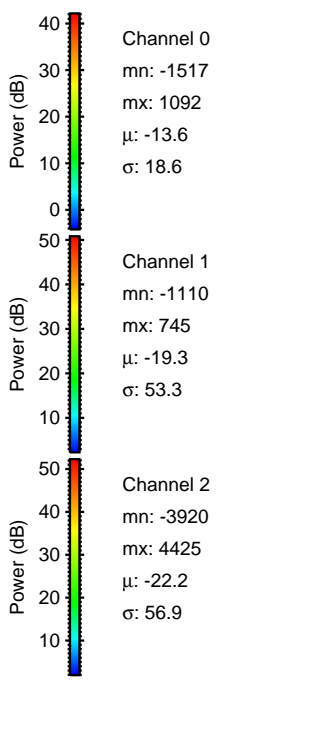
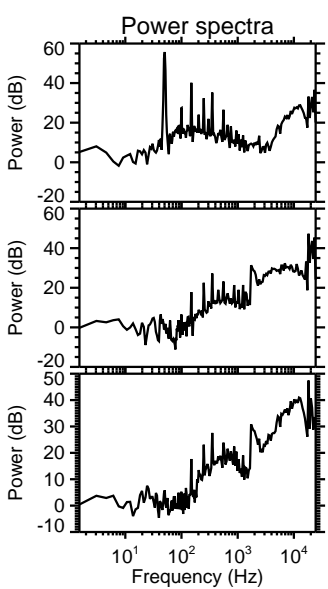
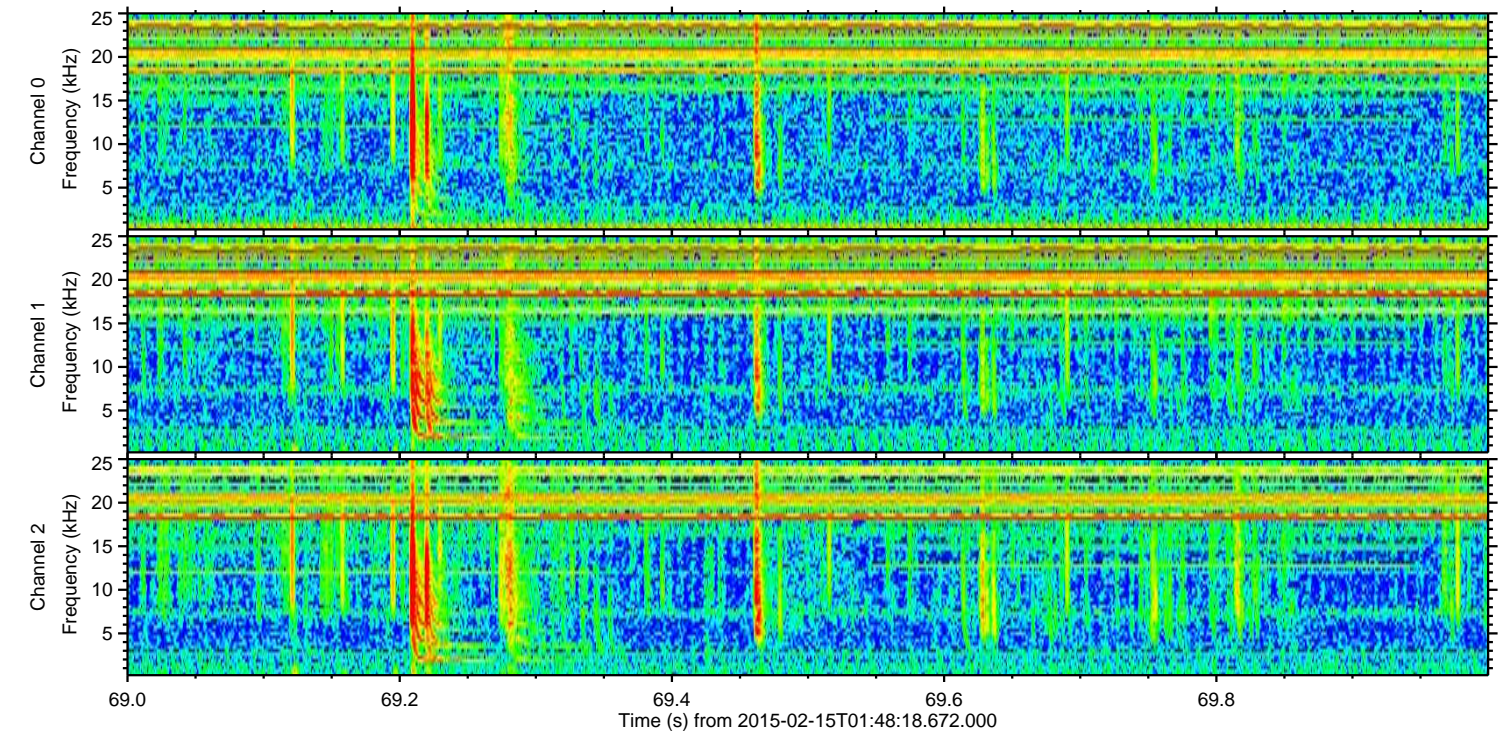
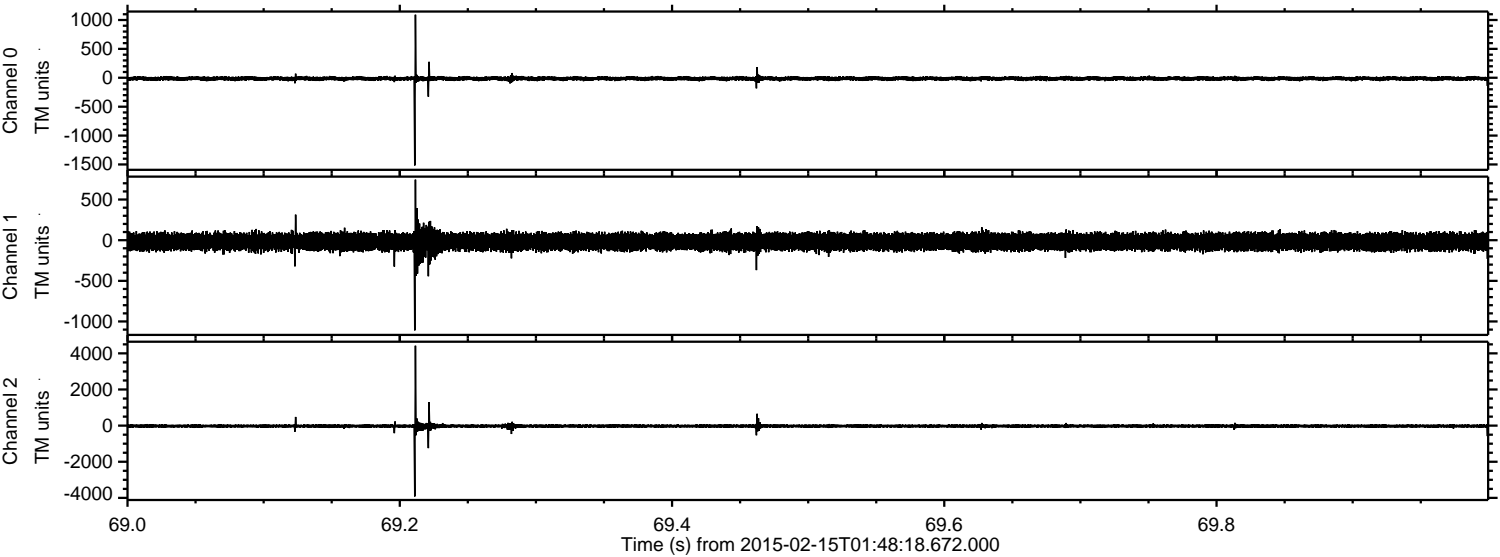
Channel 1
mn: -2039
mx: 1844
 μ : -19.3
 σ : 64.8

Channel 2
mn: -4542
mx: 4849
 μ : -22.1
 σ : 80.0

Processed Mon Feb 23 12:58:18 2015 by ELM ver.2012-10-06 from 001__elm20150215_014817__dat00.bin



Processed Mon Feb 23 12:58:19 2015 by ELM ver.2012-10-06 from 001__elm20150215_014817__dat00.bin

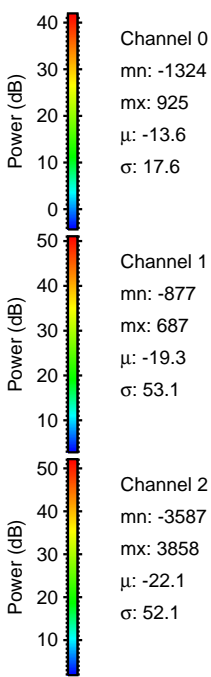
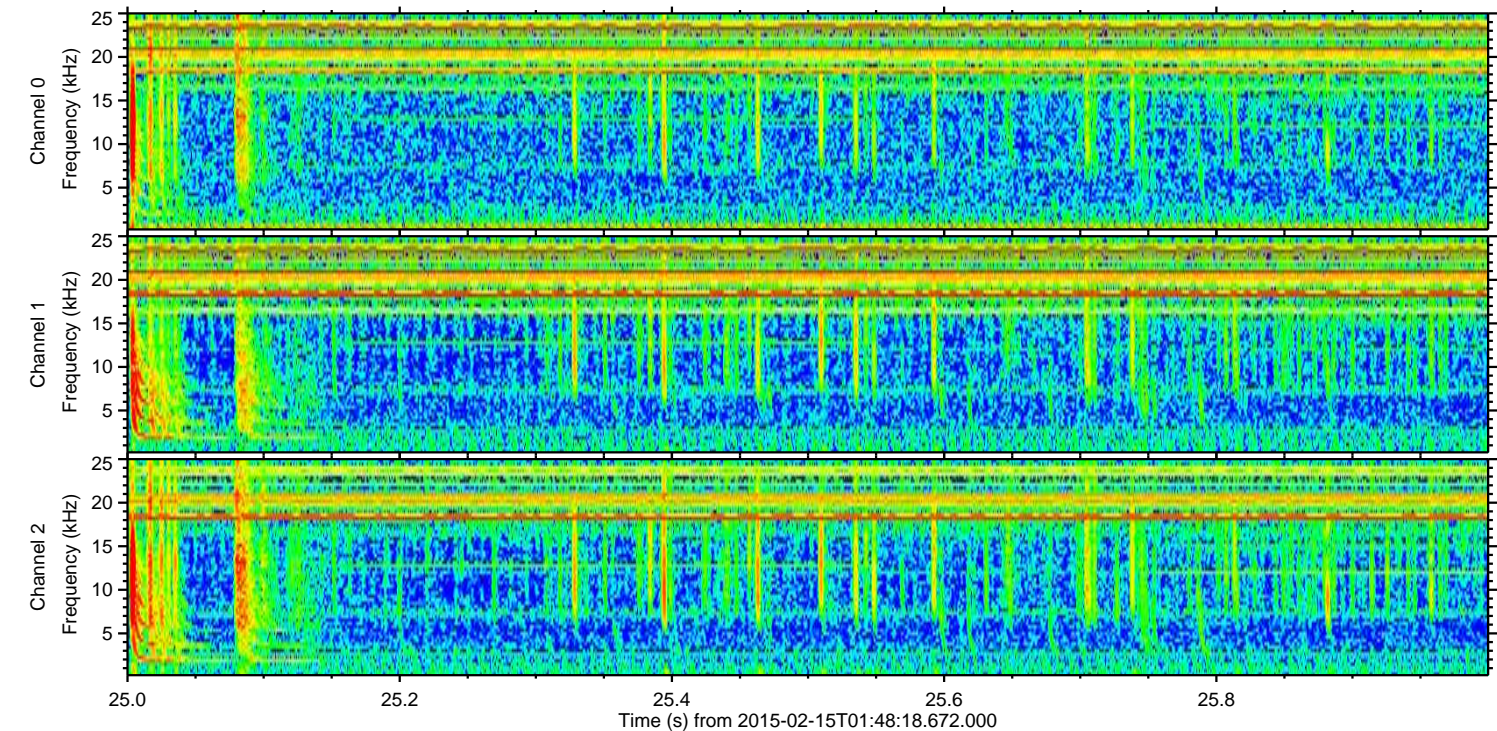
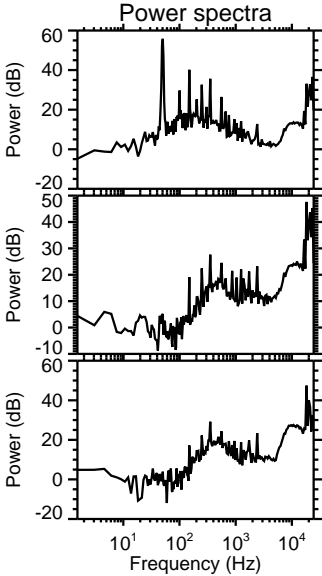
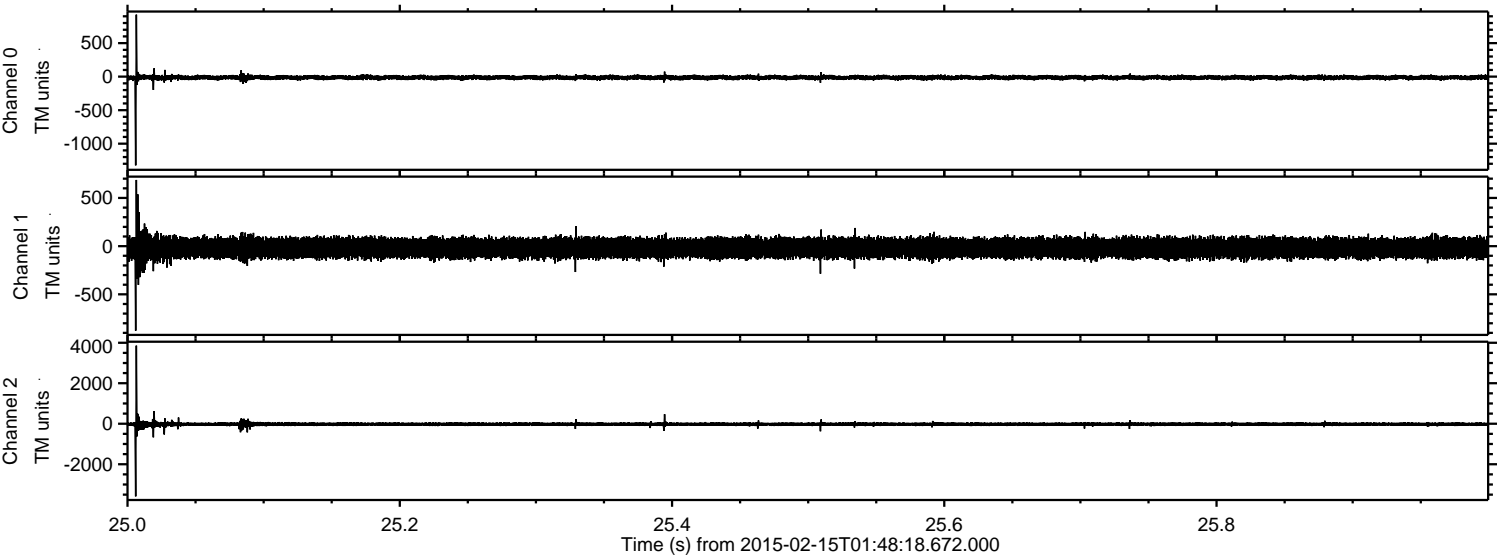


Channel 0
mn: -1517
mx: 1092
 μ : -13.6
 σ : 18.6

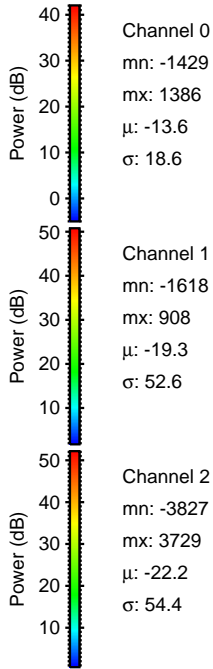
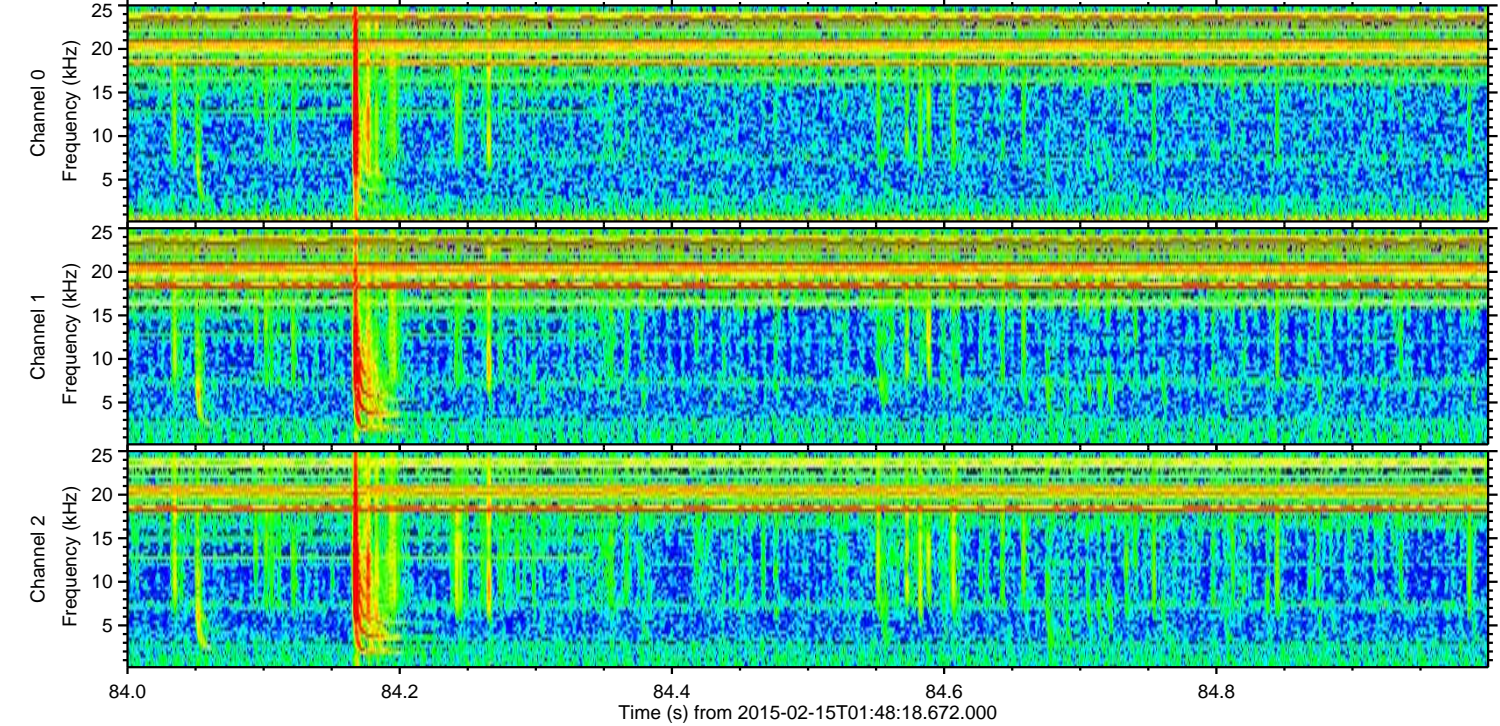
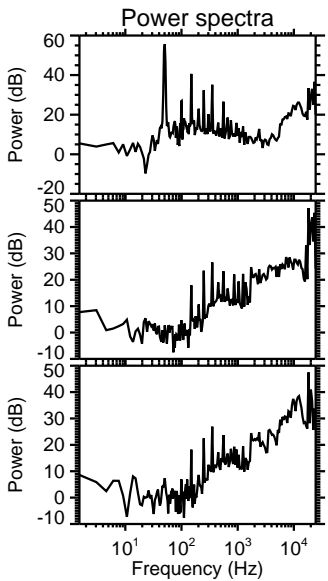
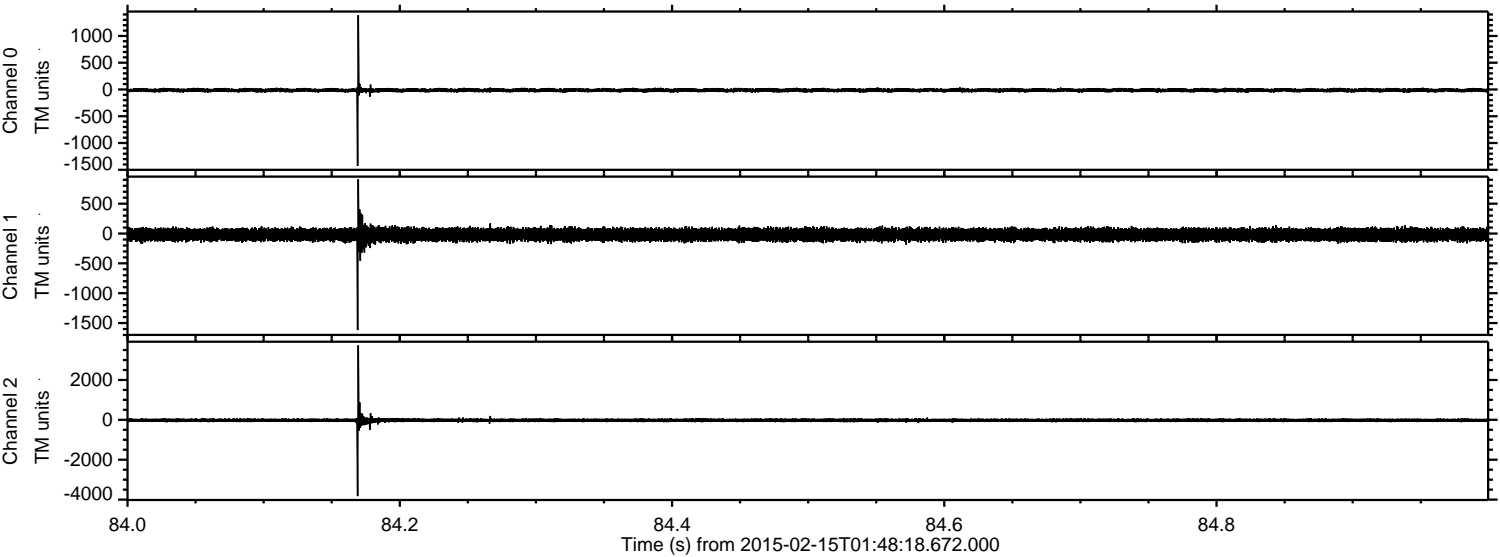
Channel 1
mn: -1110
mx: 745
 μ : -19.3
 σ : 53.3

Channel 2
mn: -3920
mx: 4425
 μ : -22.2
 σ : 56.9

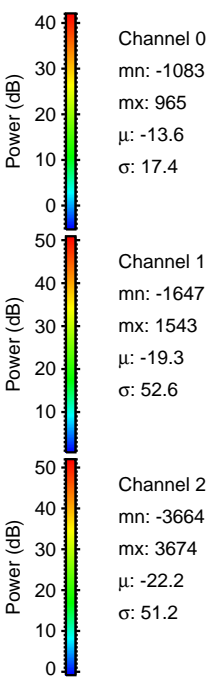
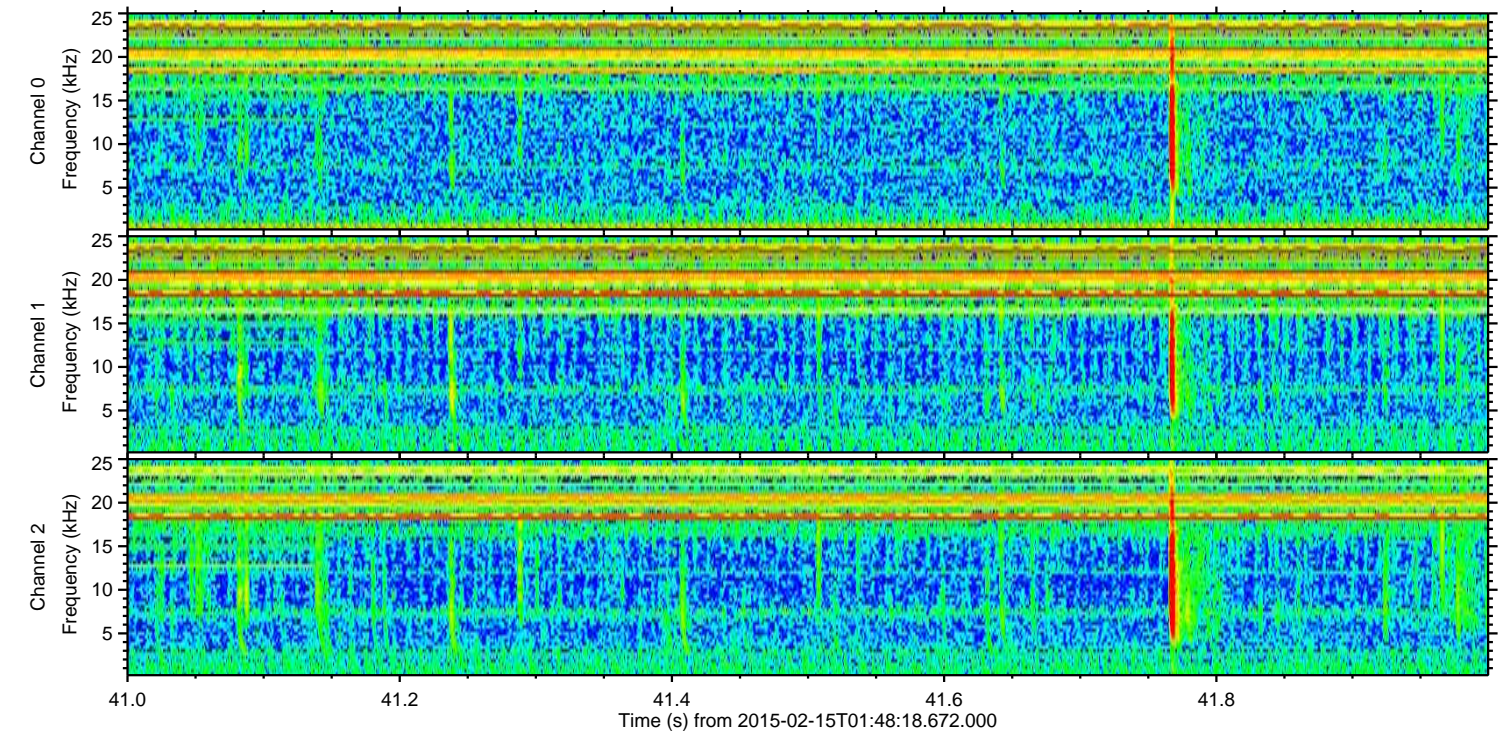
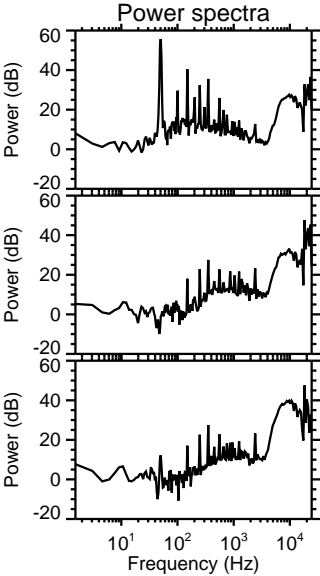
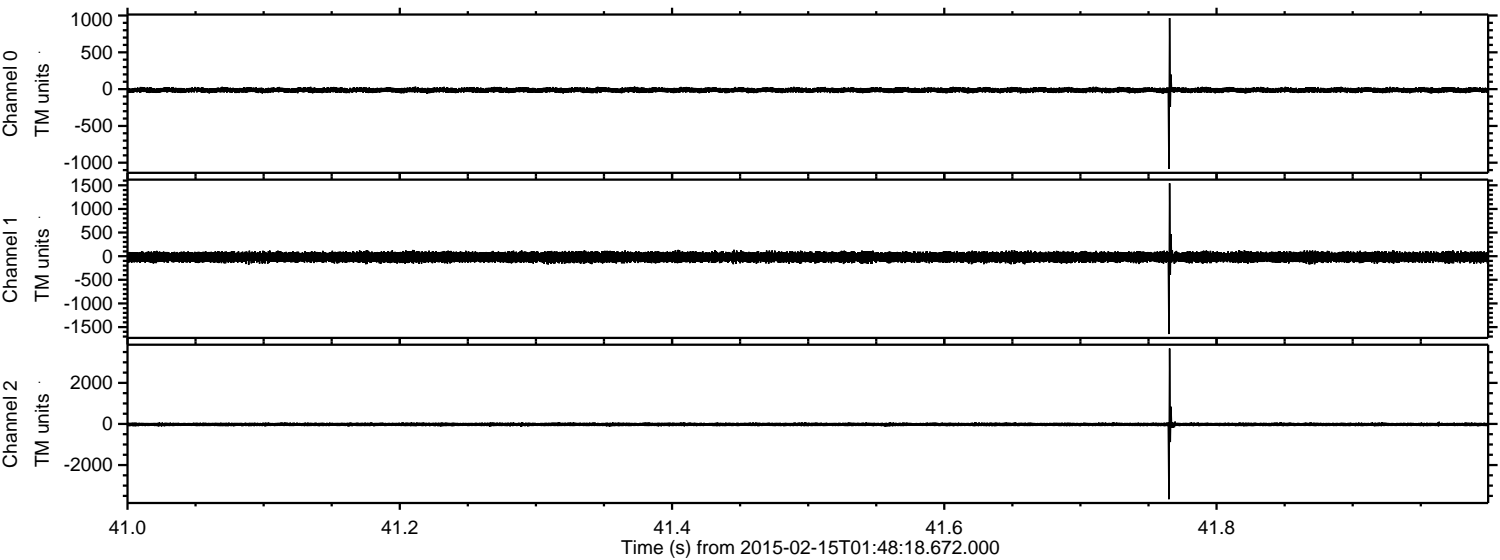
Processed Mon Feb 23 12:58:20 2015 by ELM ver.2012-10-06 from 001__elm20150215_014817__dat00.bin



Processed Mon Feb 23 12:58:21 2015 by ELM ver.2012-10-06 from 001__elm20150215_014817__dat00.bin



Processed Mon Feb 23 12:58:22 2015 by ELM ver.2012-10-06 from 001__elm20150215_014817__dat00.bin



Processed Mon Feb 23 12:58:23 2015 by ELM ver.2012-10-06 from 001__elm20150215_014817__dat00.bin

