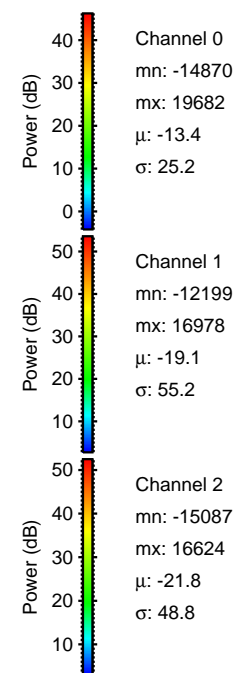
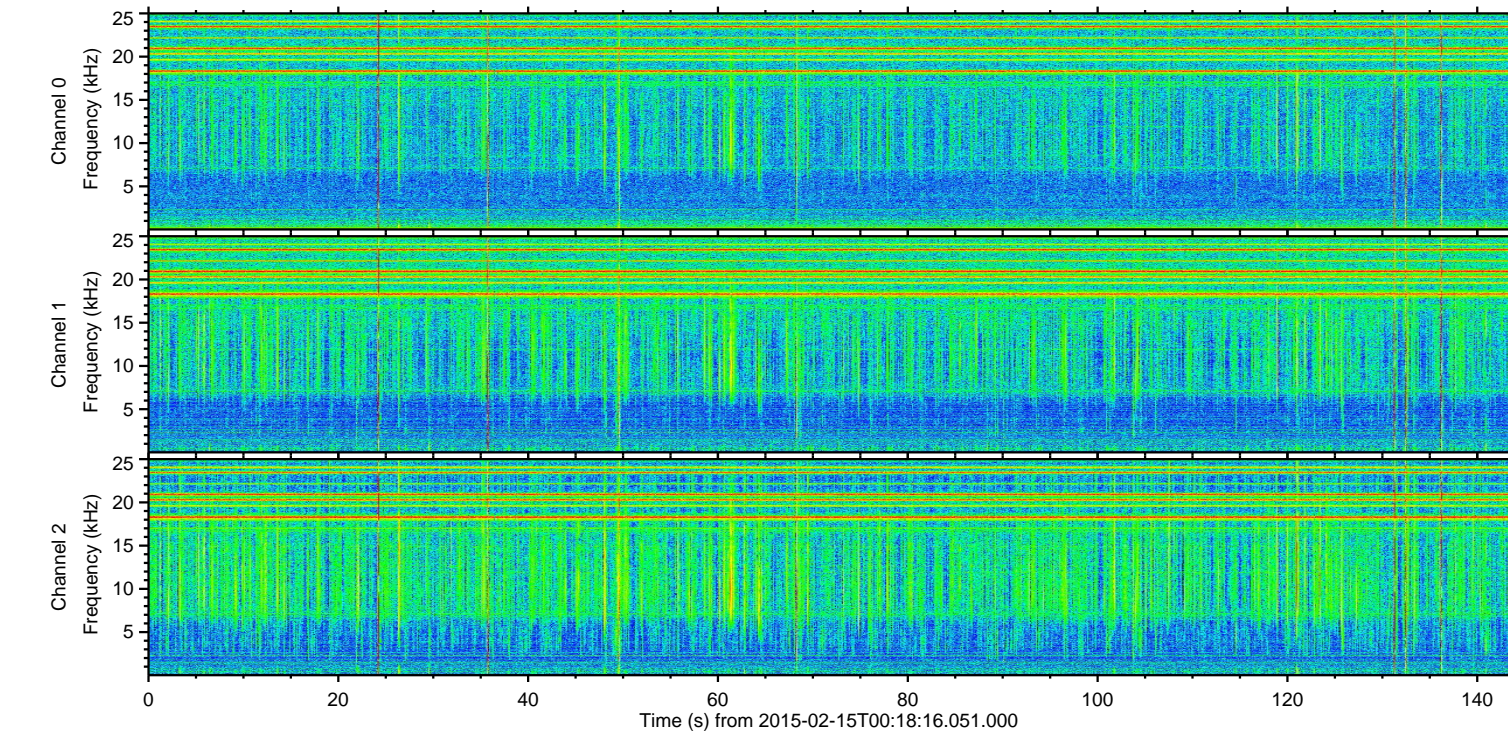
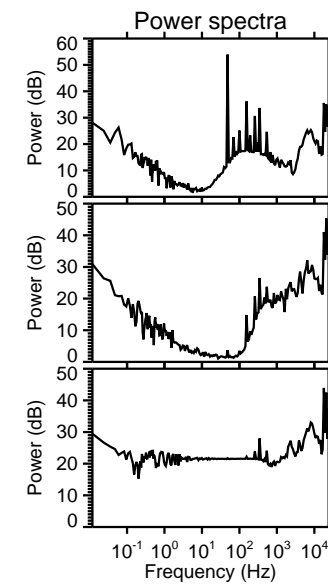
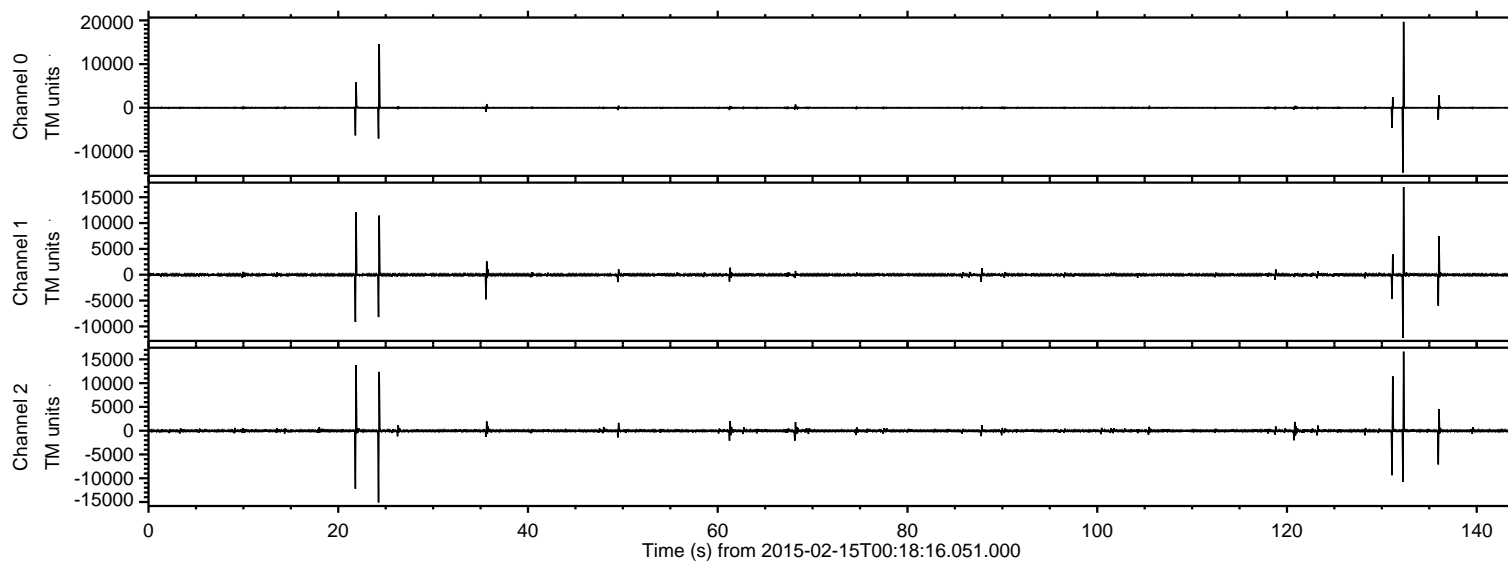


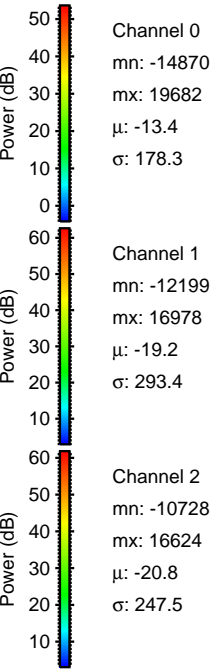
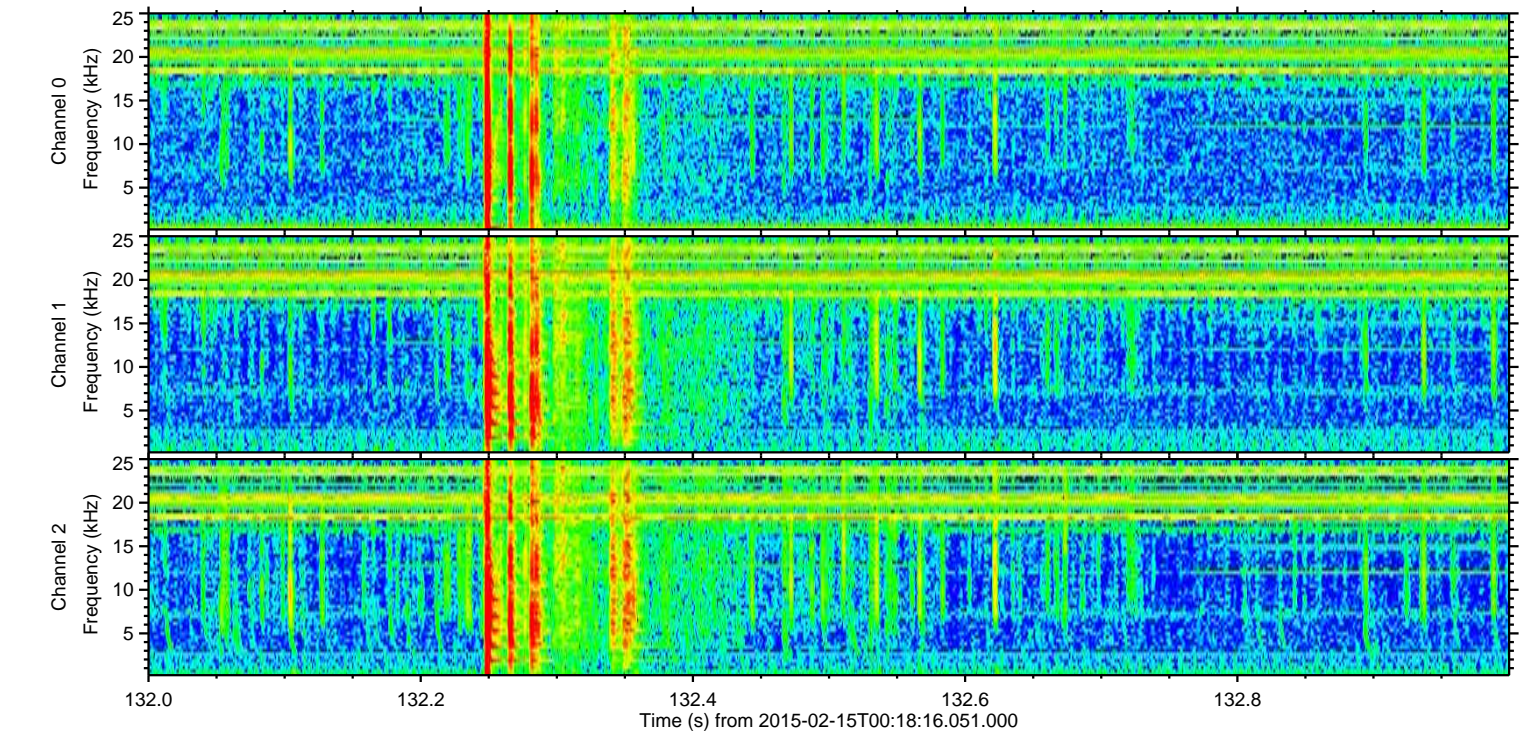
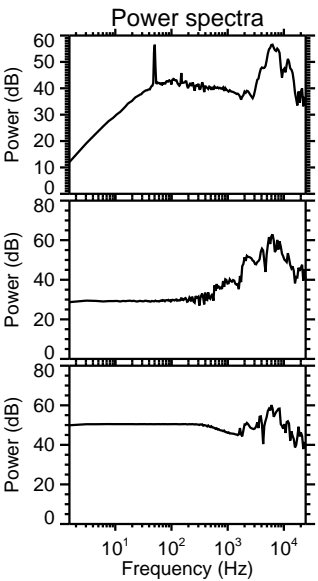
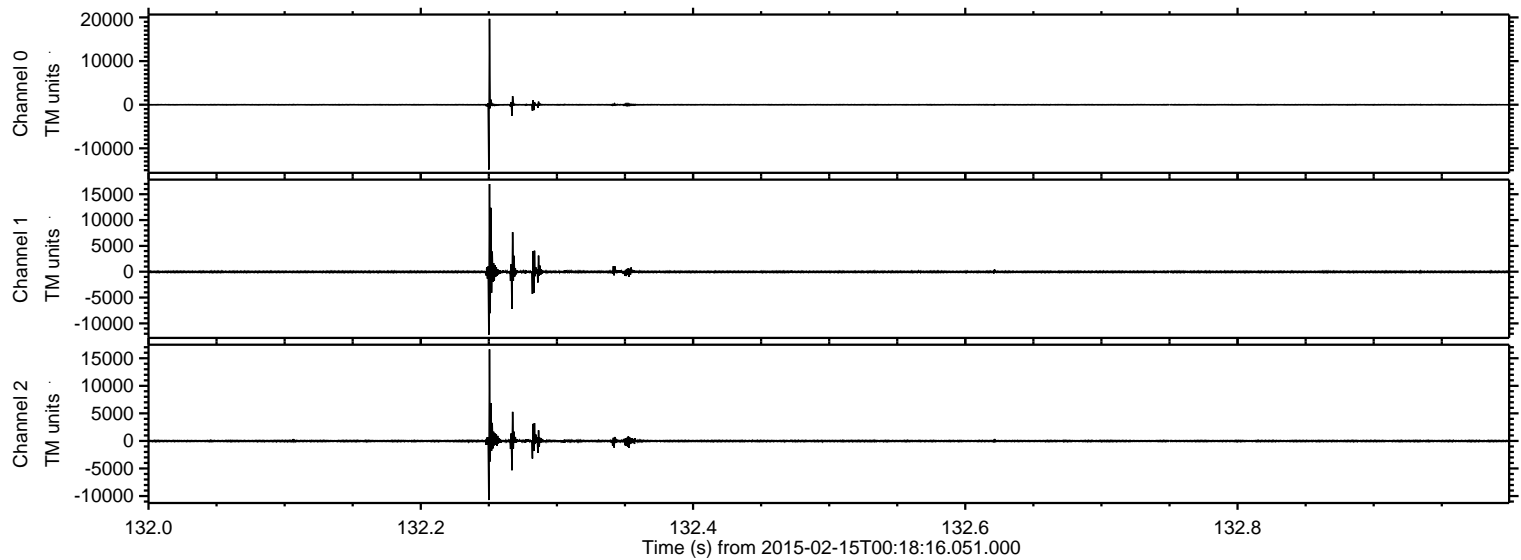
ELMAVAN 3D WAVEFORMS (Measured data sampled at 50 kHz) 49798 packets of 144 samples from 2015-02-15T00:18:16.051.000.

Processed Mon Feb 23 12:39:21 2015 by ELM ver.2012-10-06 from 001__elm20150215_001815__dat00.bin

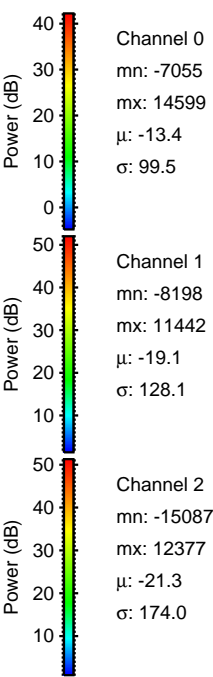
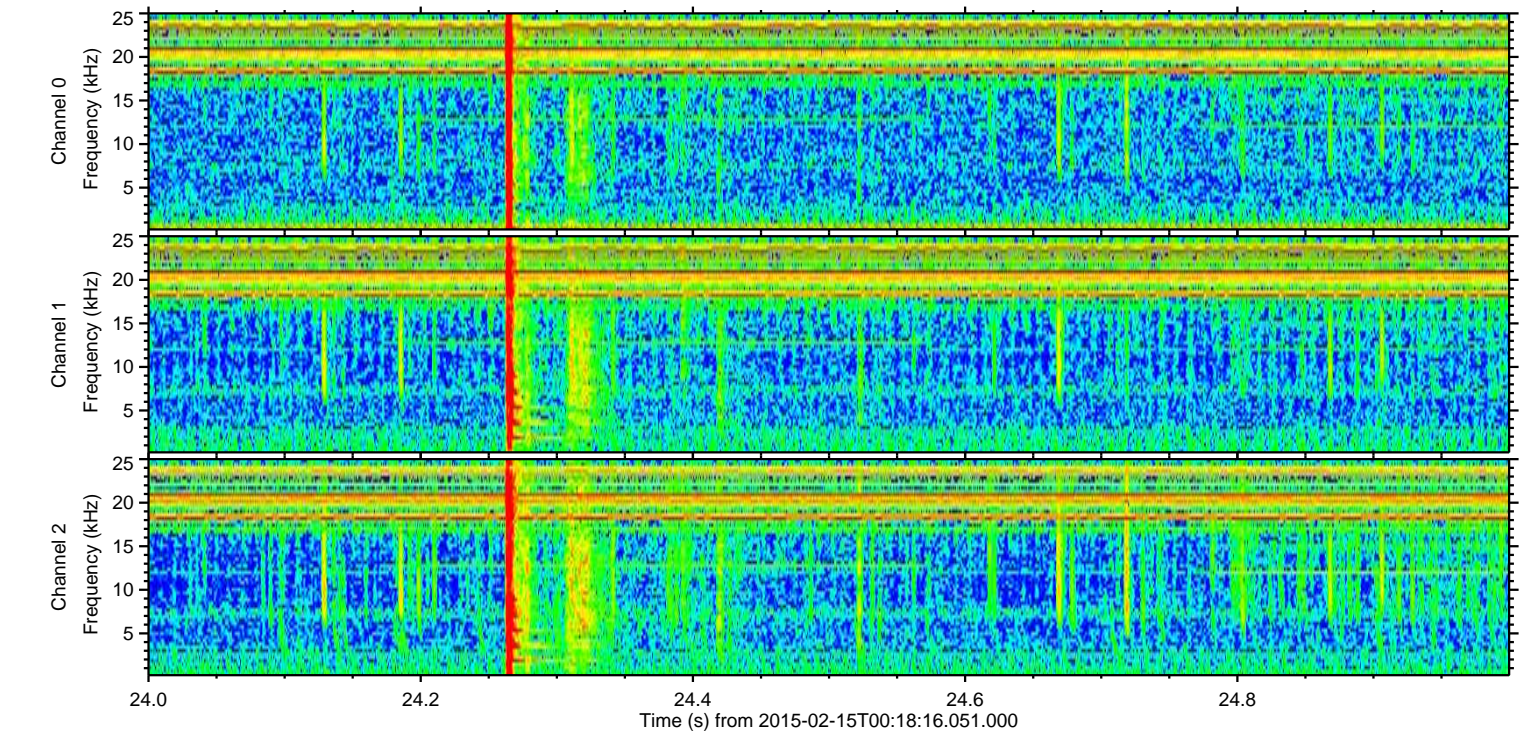
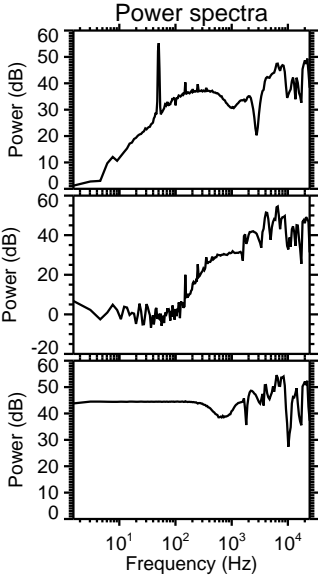
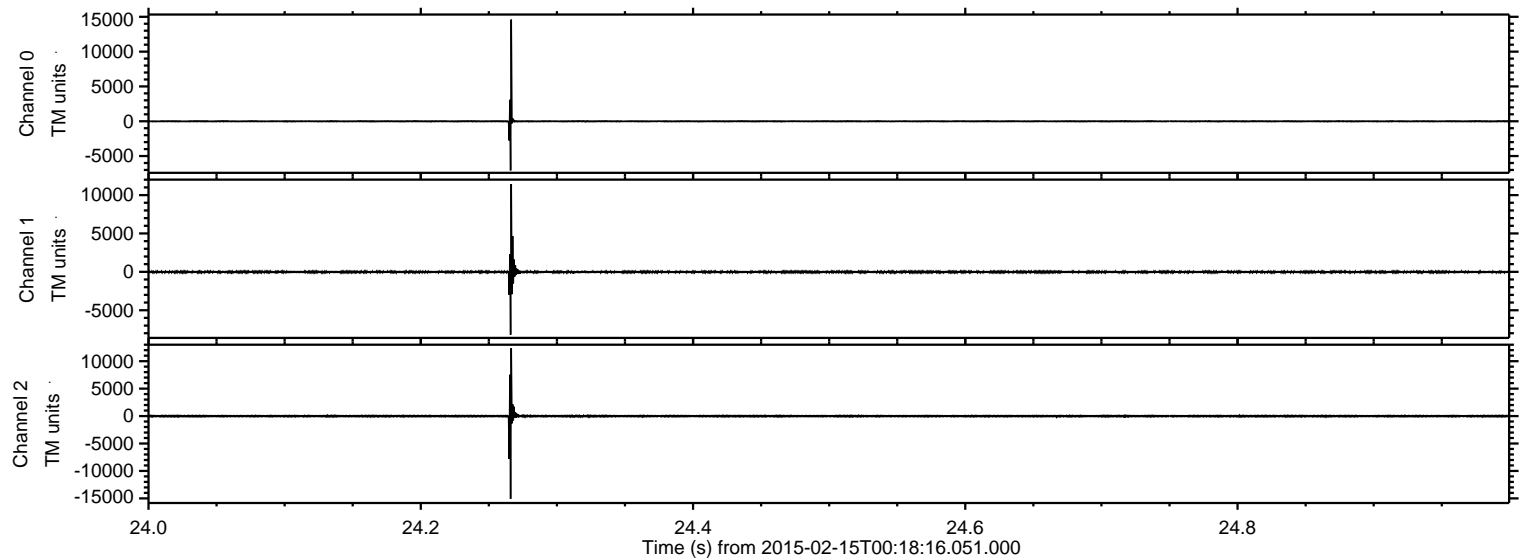


ELMAVAN 3D WAVEFORMS (Measured data sampled at 50 kHz) 49798 packets of 144 samples from 2015-02-15T00:18:16.051.000. Part 133/144

Processed Mon Feb 23 12:39:33 2015 by ELM ver.2012-10-06 from 001__elm20150215_001815__dat00.bin

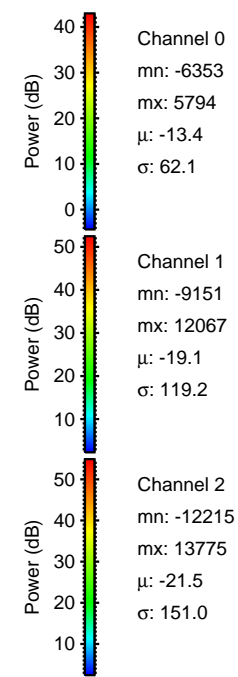
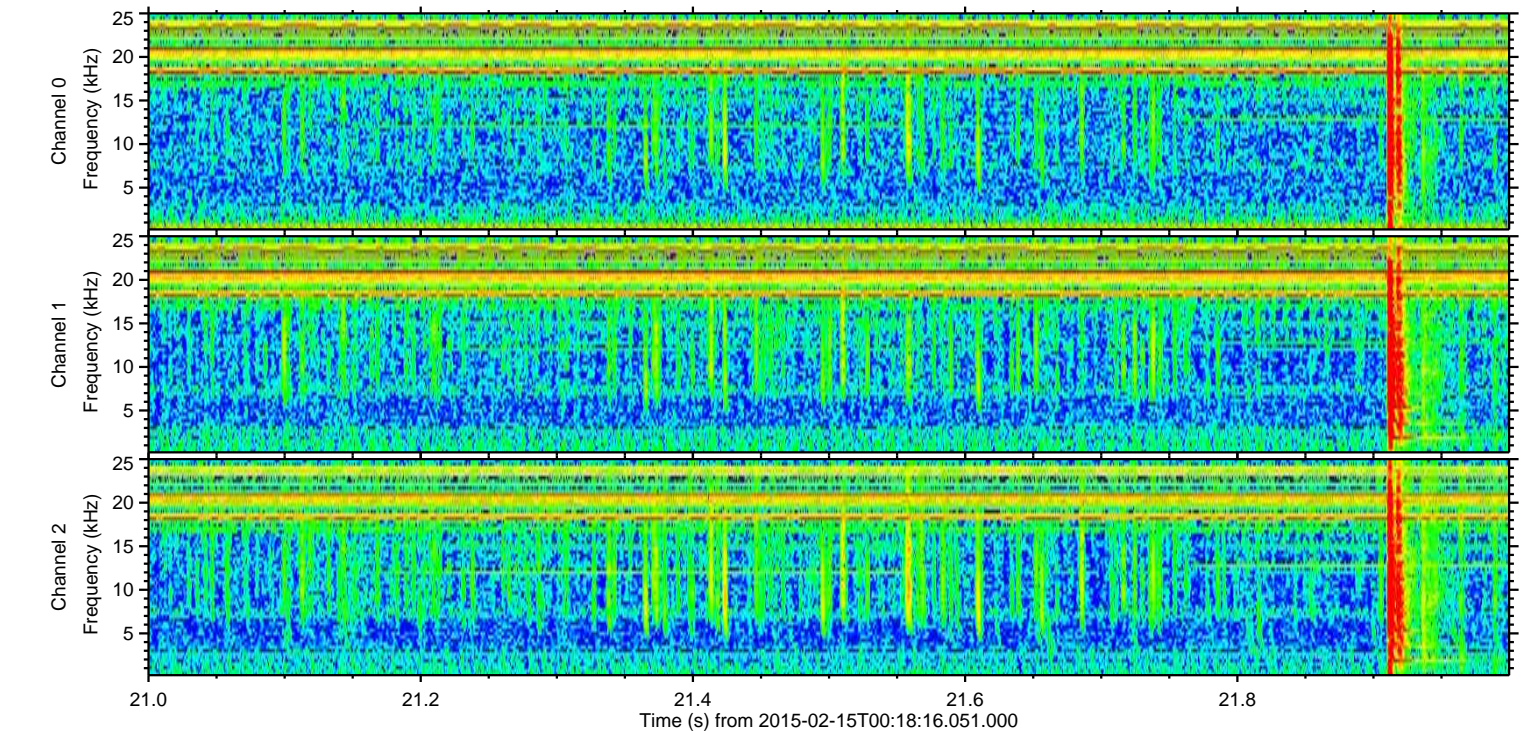
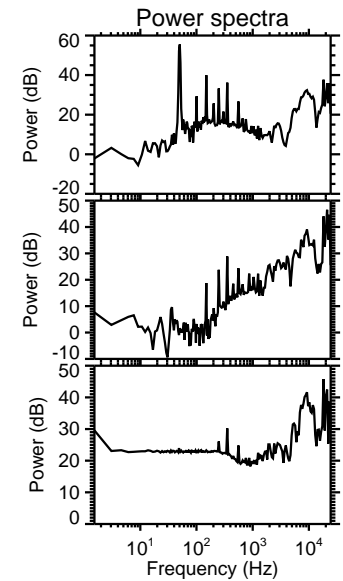
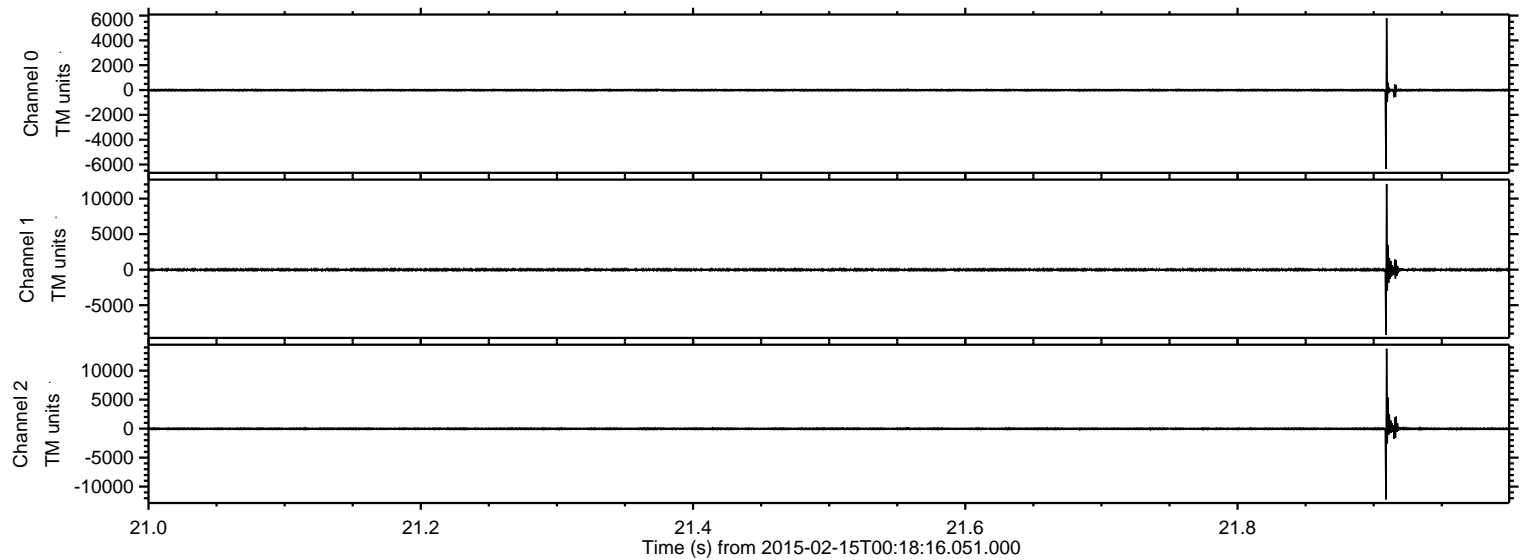


Processed Mon Feb 23 12:39:34 2015 by ELM ver.2012-10-06 from 001__elm20150215_001815__dat00.bin



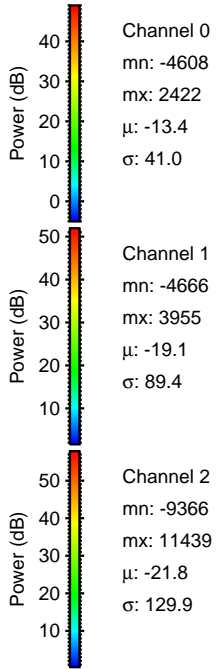
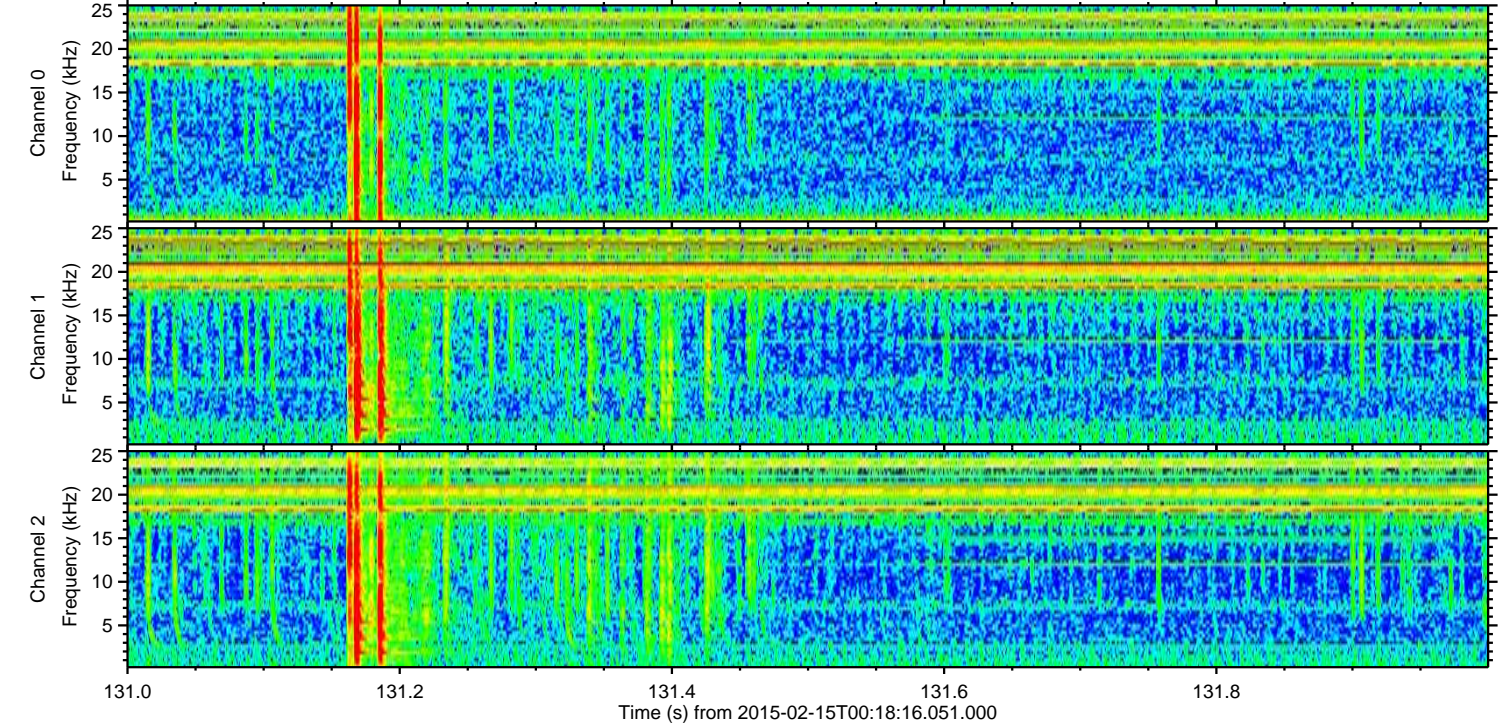
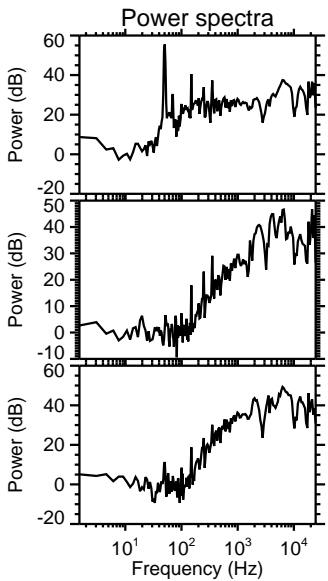
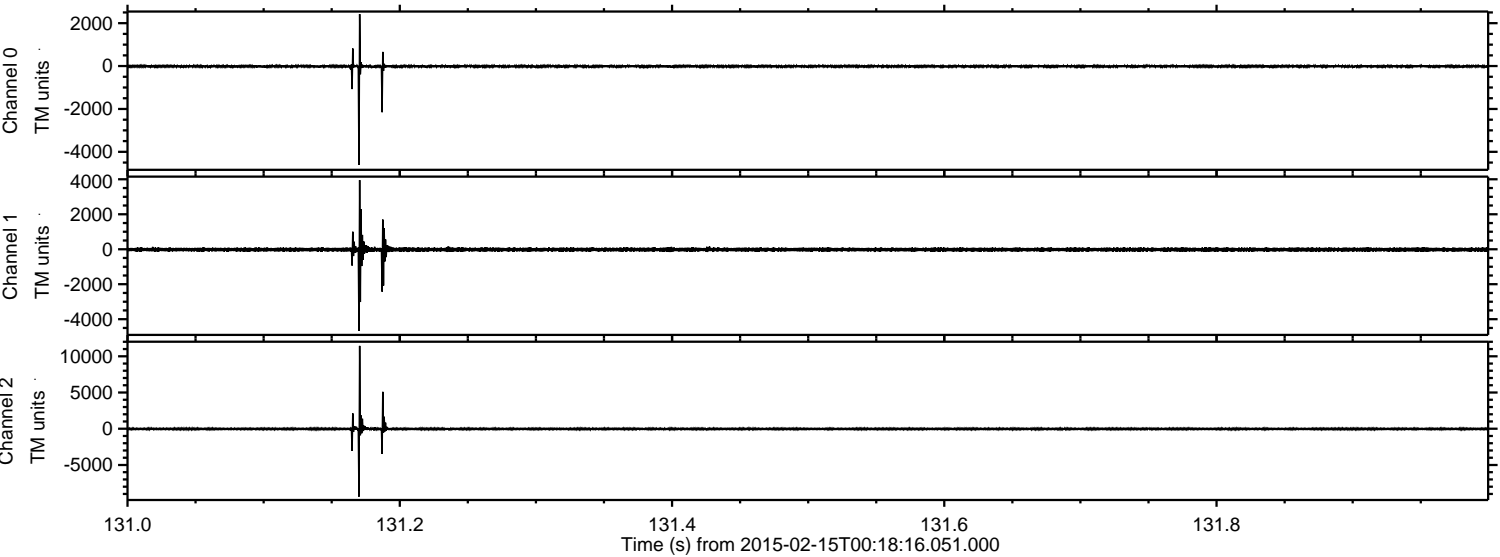
ELMAVAN 3D WAVEFORMS (Measured data sampled at 50 kHz) 49798 packets of 144 samples from 2015-02-15T00:18:16.051.000. Part 22/144

Processed Mon Feb 23 12:39:35 2015 by ELM ver.2012-10-06 from 001__elm20150215_001815__dat00.bin



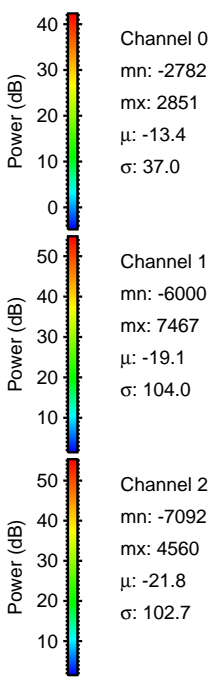
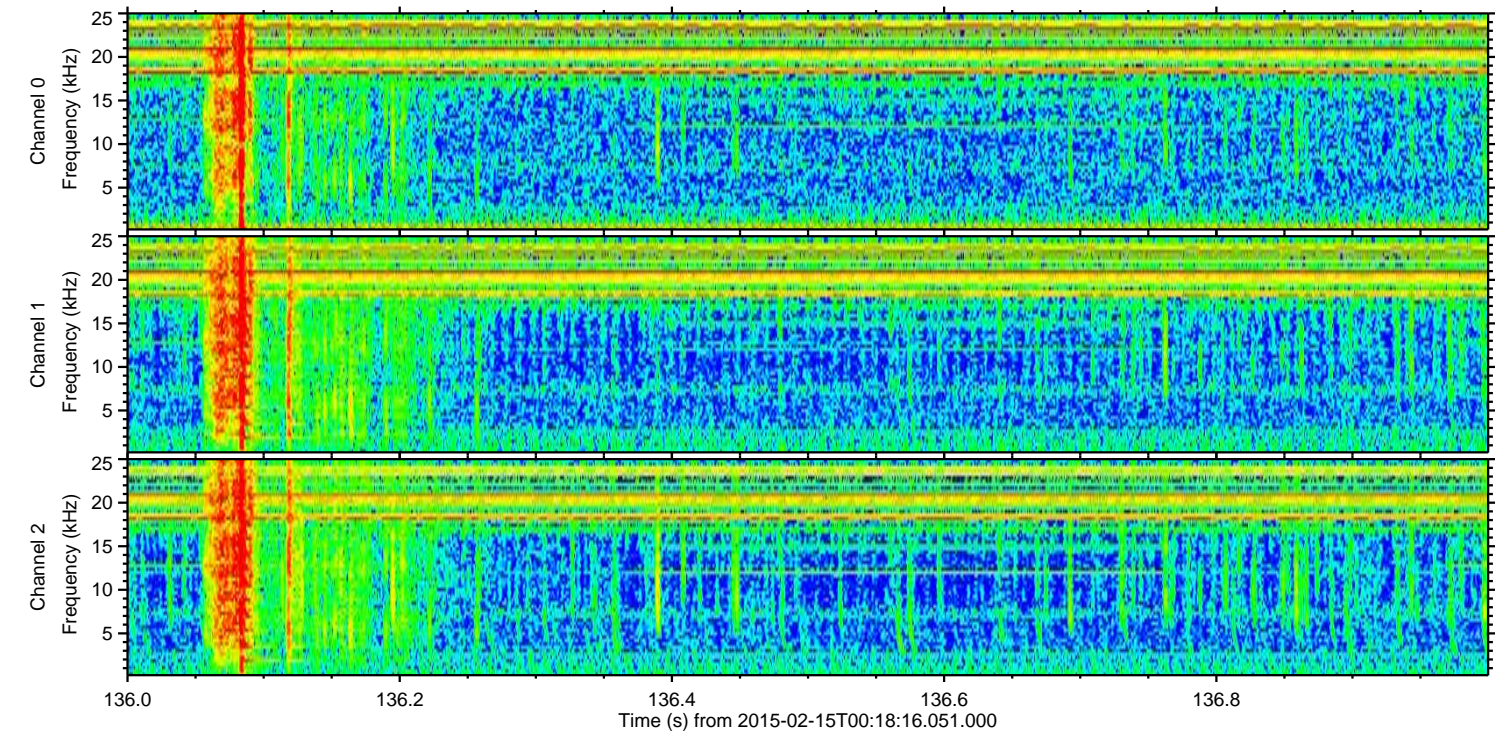
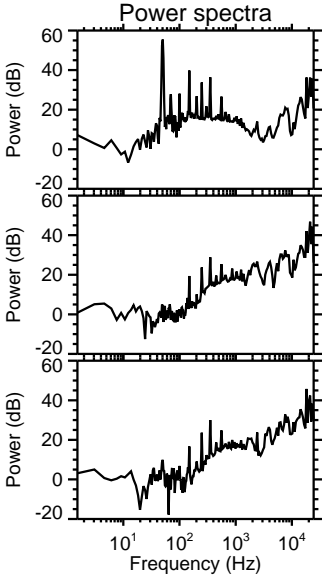
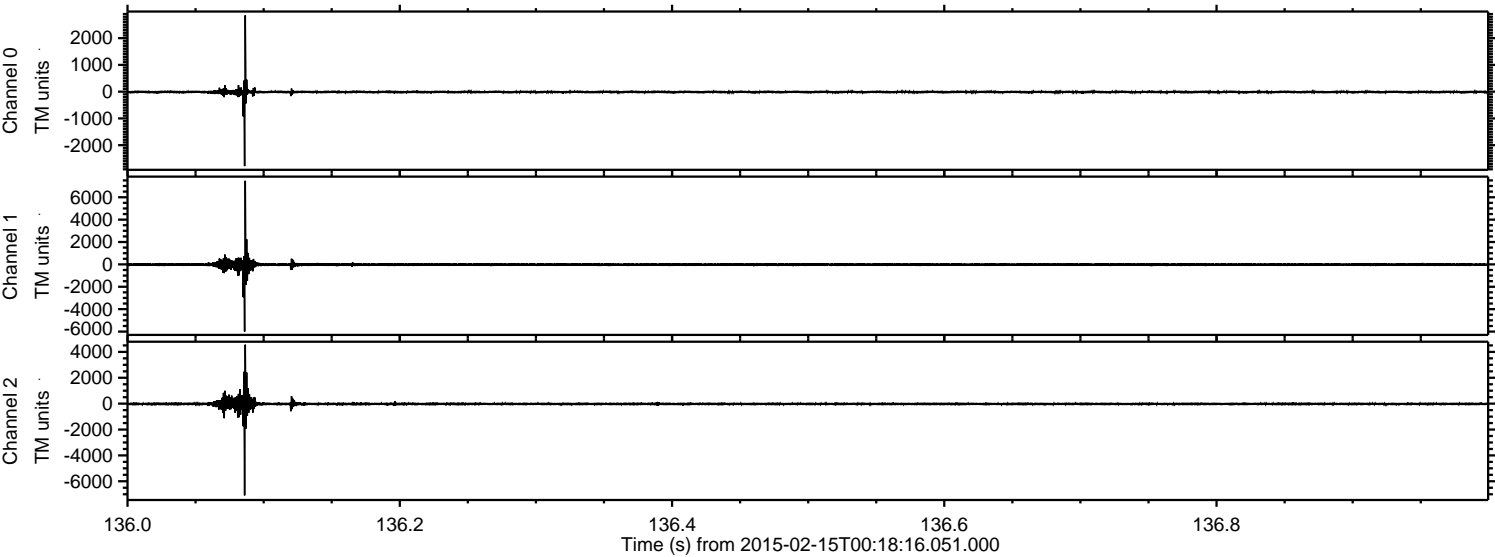
ELMAVAN 3D WAVEFORMS (Measured data sampled at 50 kHz) 49798 packets of 144 samples from 2015-02-15T00:18:16.051.000. Part 132/144

Processed Mon Feb 23 12:39:36 2015 by ELM ver.2012-10-06 from 001__elm20150215_001815__dat00.bin

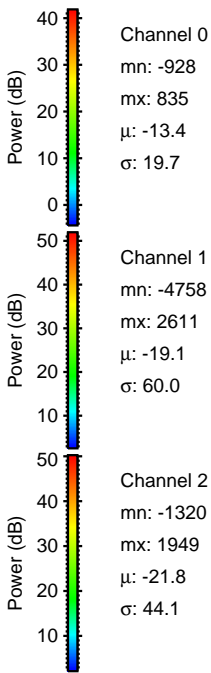
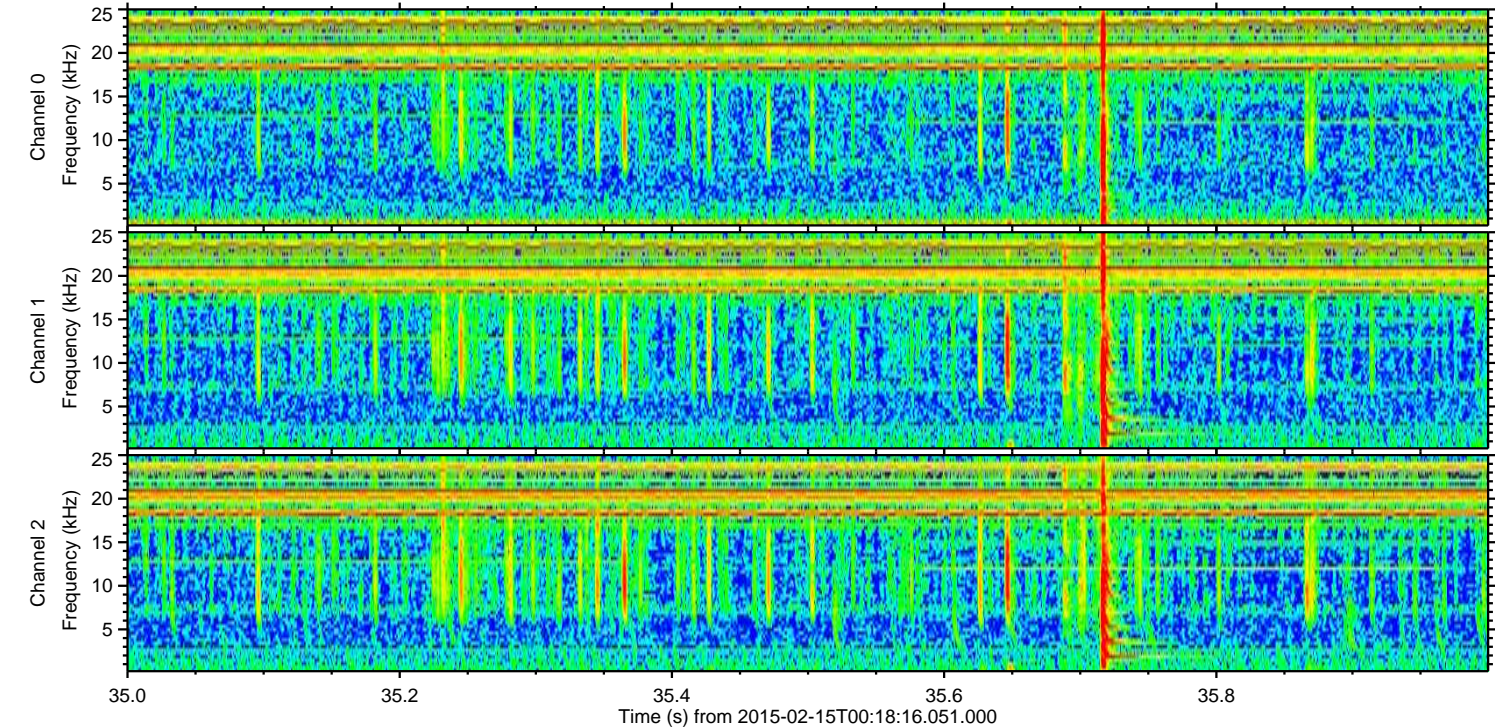
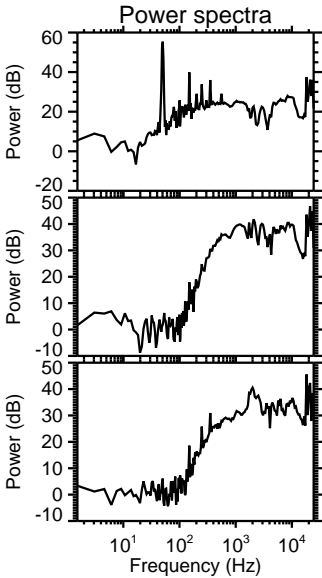
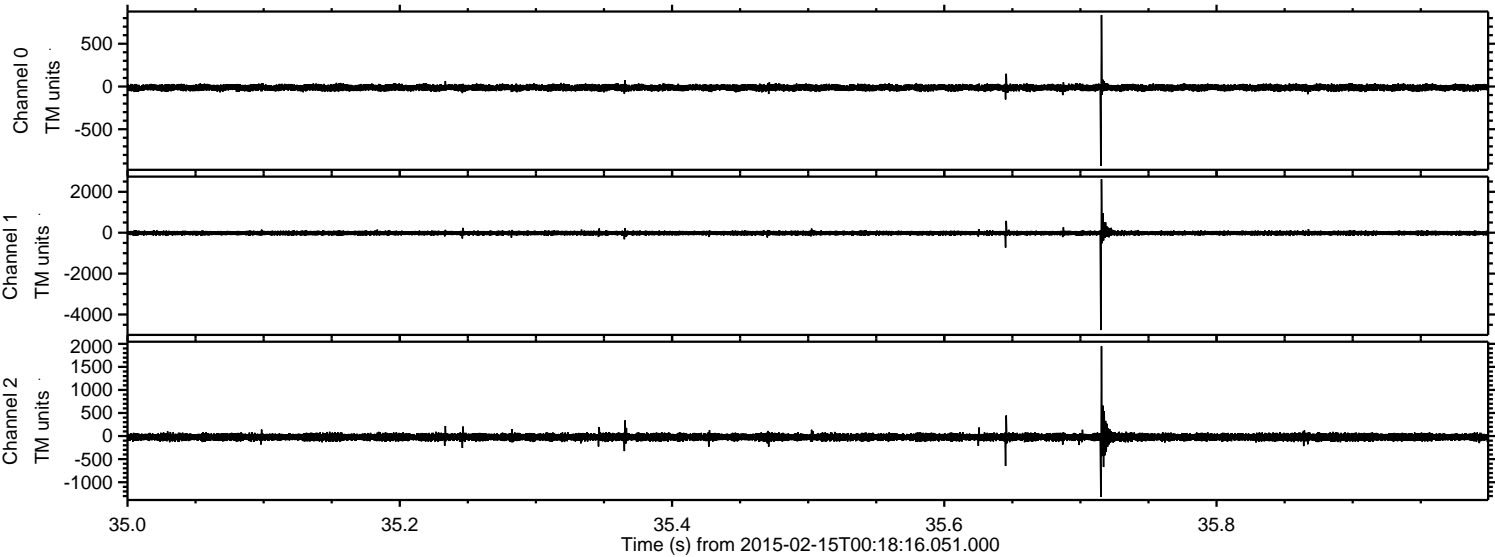


ELMAVAN 3D WAVEFORMS (Measured data sampled at 50 kHz) 49798 packets of 144 samples from 2015-02-15T00:18:16.051.000. Part 137/144

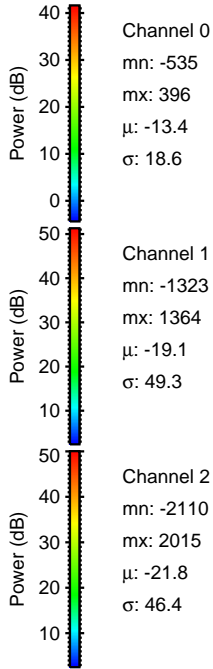
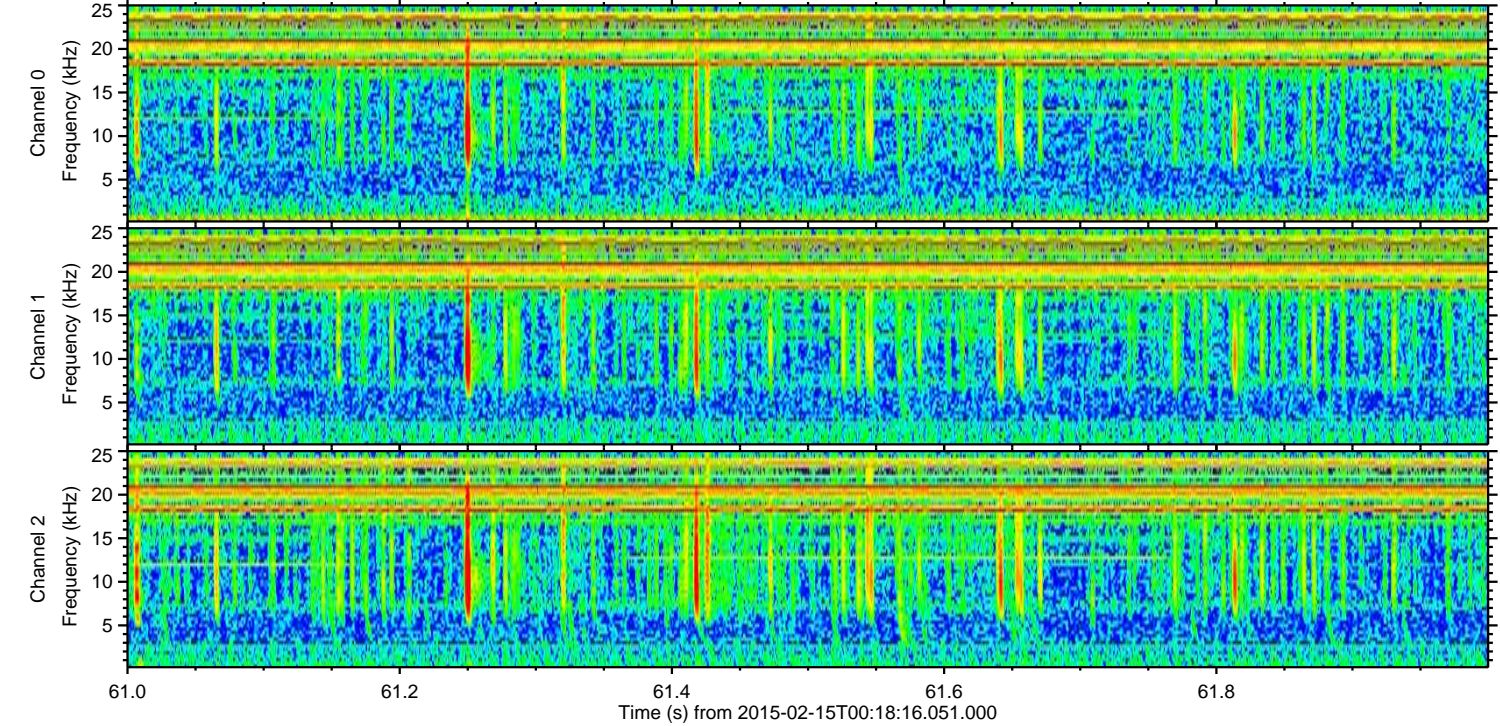
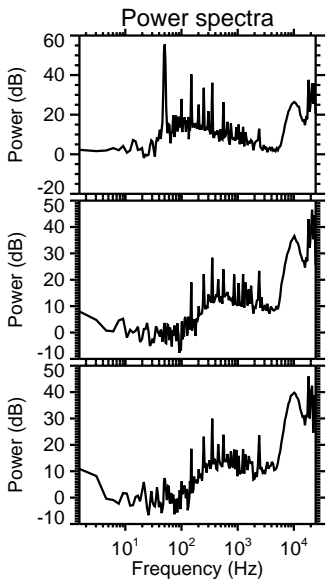
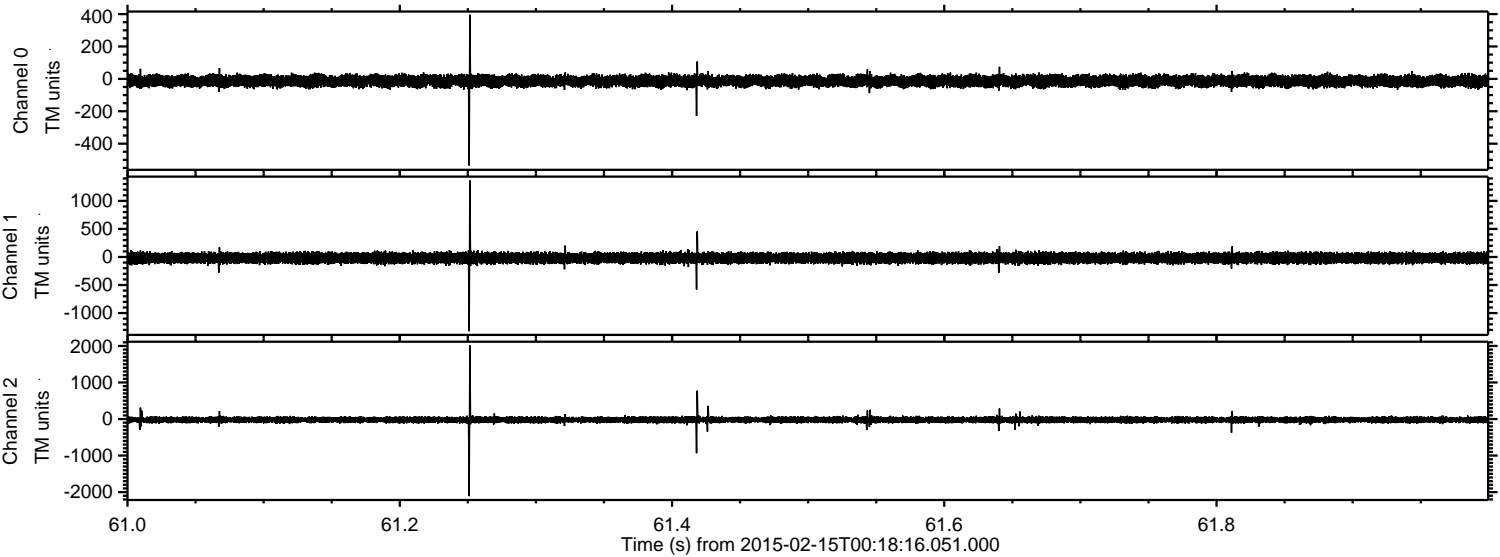
Processed Mon Feb 23 12:39:37 2015 by ELM ver.2012-10-06 from 001__elm20150215_001815__dat00.bin



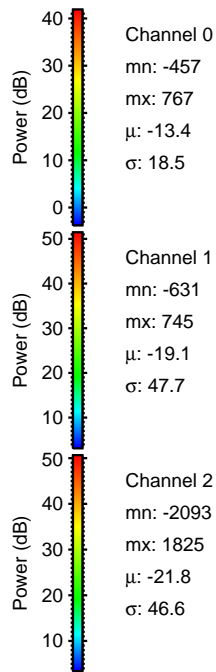
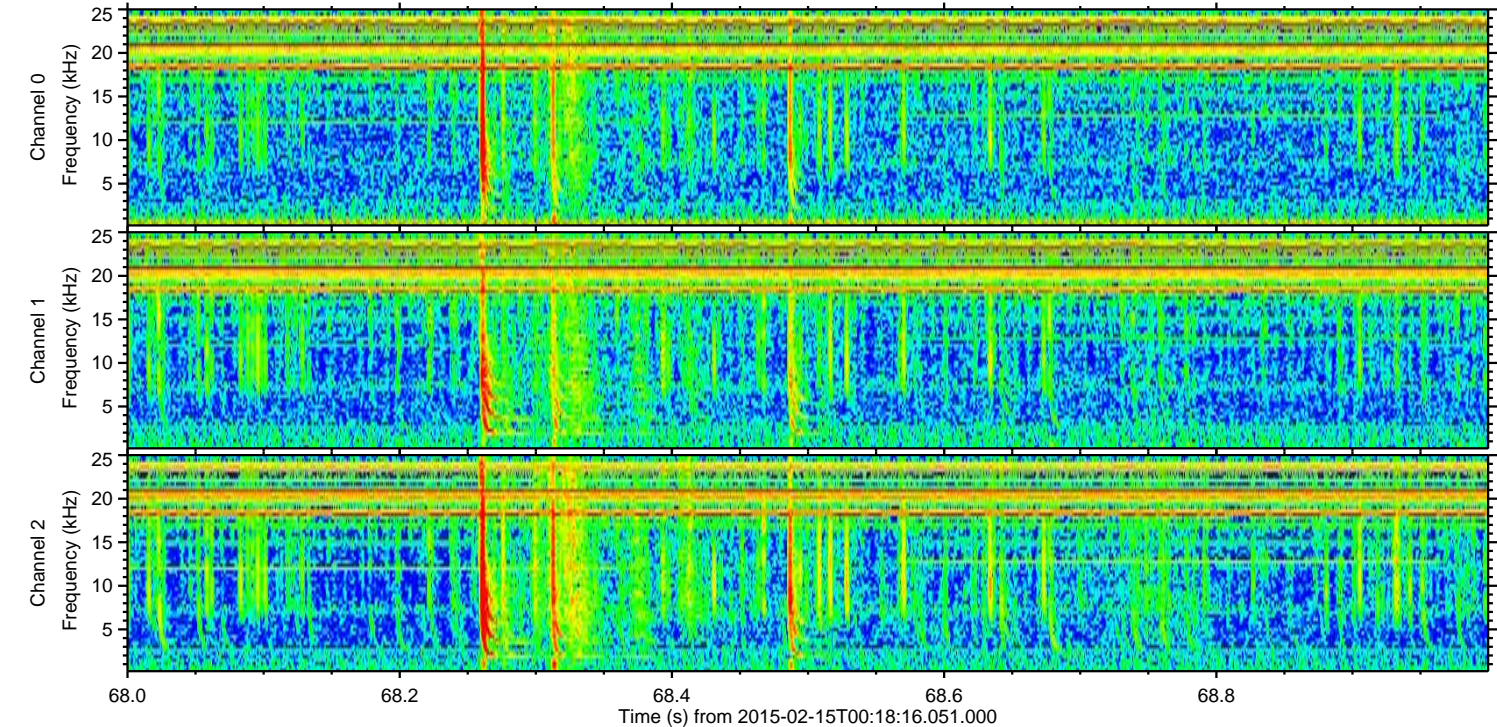
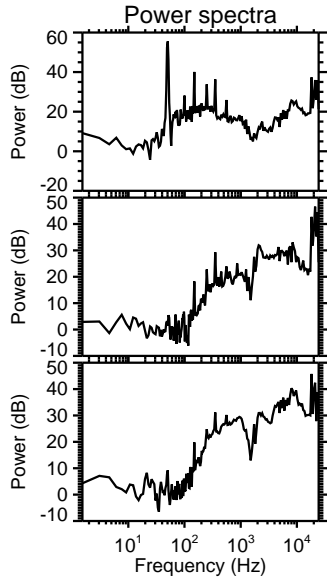
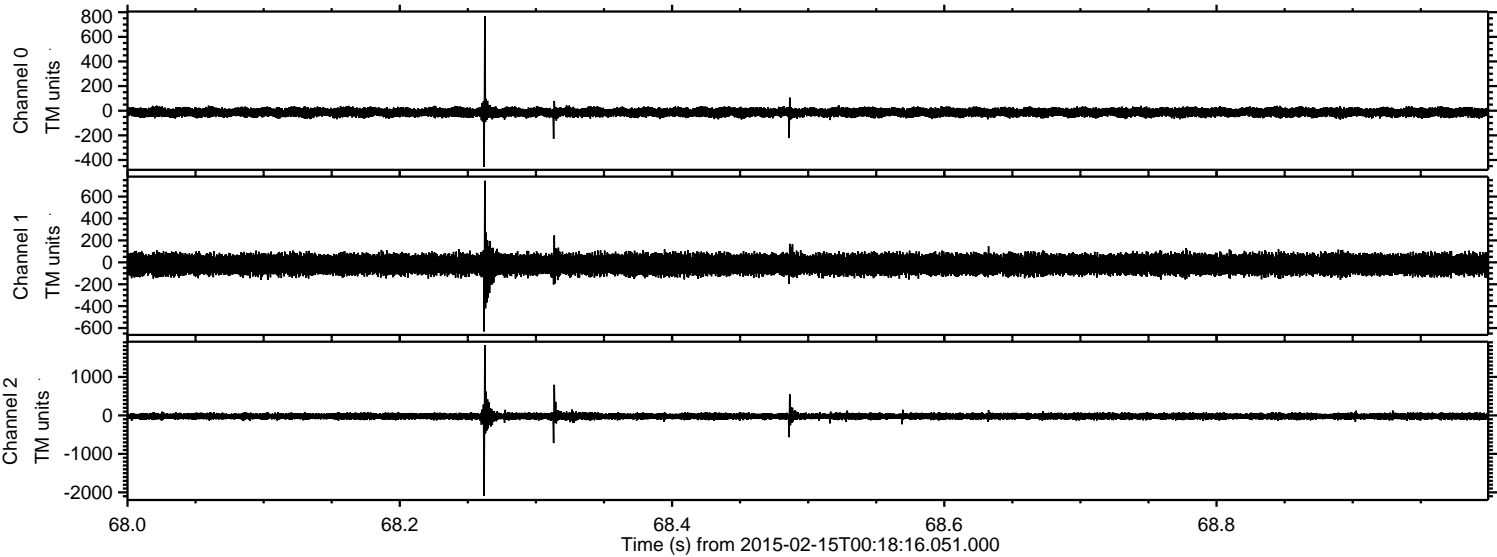
Processed Mon Feb 23 12:39:38 2015 by ELM ver.2012-10-06 from 001__elm20150215_001815__dat00.bin



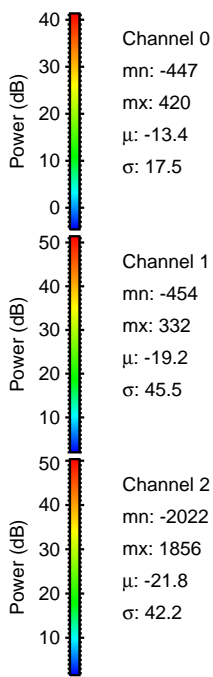
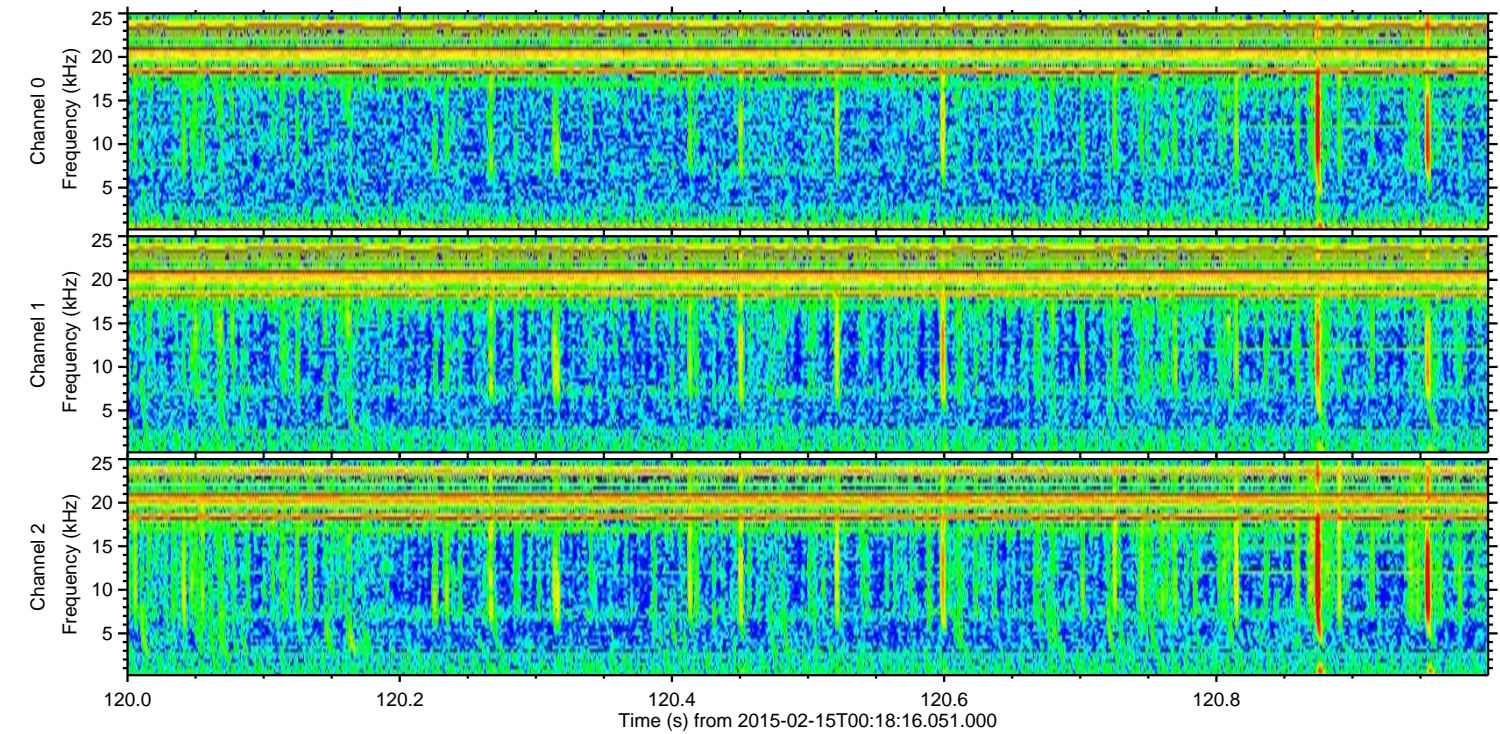
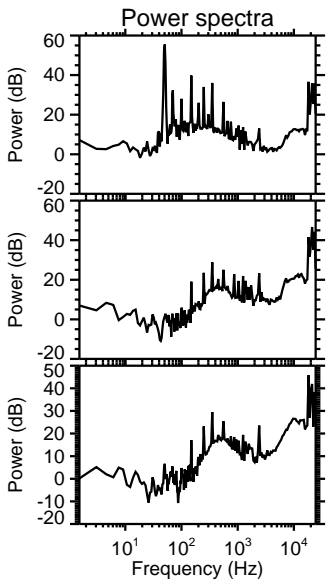
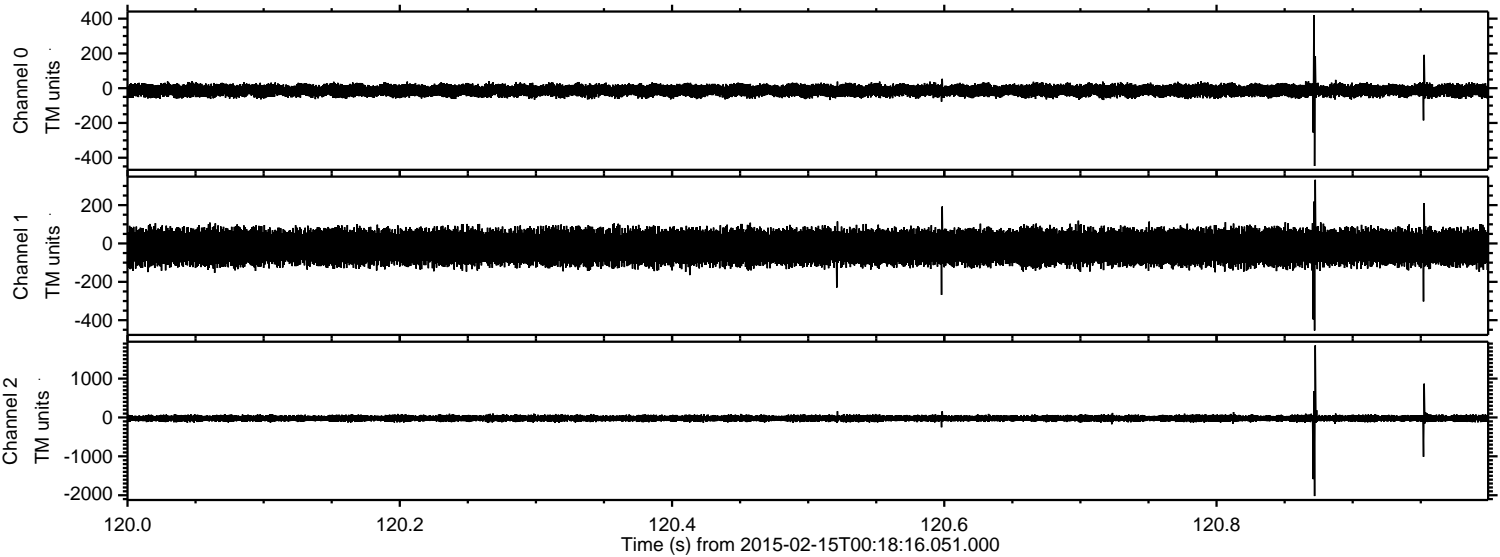
Processed Mon Feb 23 12:39:38 2015 by ELM ver.2012-10-06 from 001__elm20150215_001815__dat00.bin



Processed Mon Feb 23 12:39:39 2015 by ELM ver.2012-10-06 from 001__elm20150215_001815__dat00.bin



Processed Mon Feb 23 12:39:40 2015 by ELM ver.2012-10-06 from 001__elm20150215_001815__dat00.bin



Channel 0
mn: -447
mx: 420
 μ : -13.4
 σ : 17.5

Channel 1
mn: -454
mx: 332
 μ : -19.2
 σ : 45.5

Channel 2
mn: -2022
mx: 1856
 μ : -21.8
 σ : 42.2

Processed Mon Feb 23 12:39:41 2015 by ELM ver.2012-10-06 from 001__elm20150215_001815__dat00.bin

