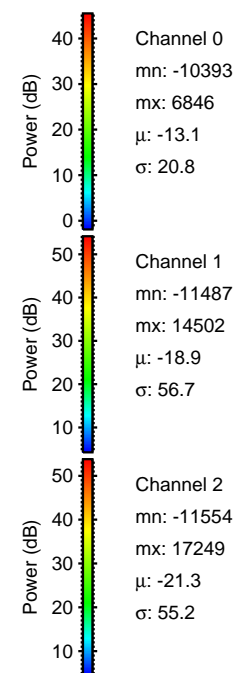
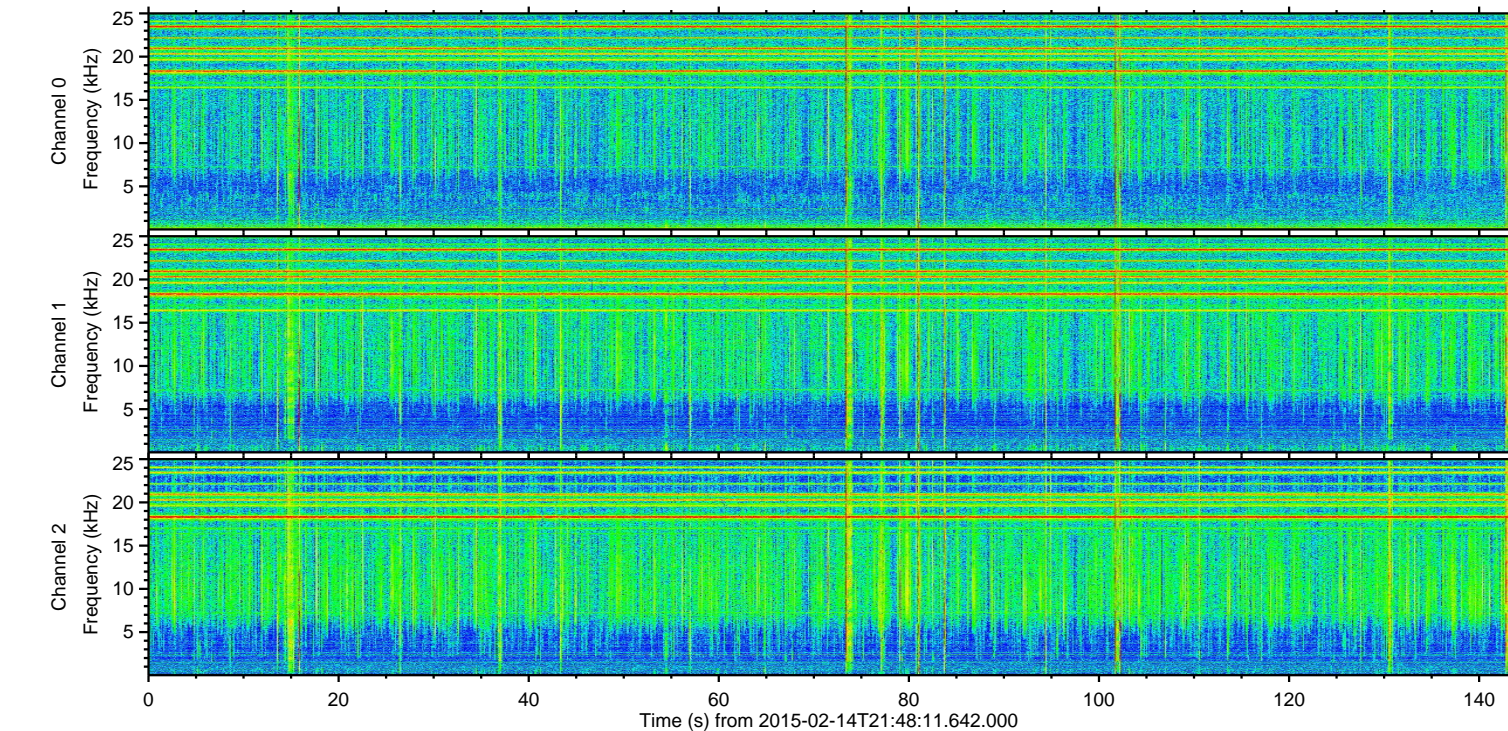
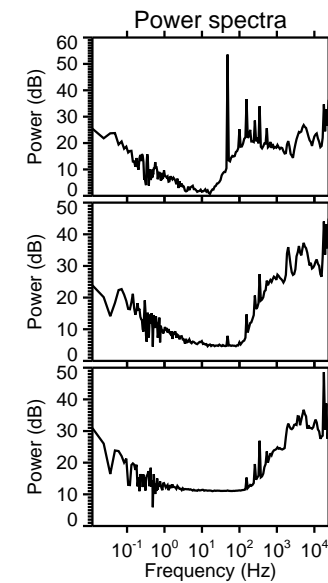
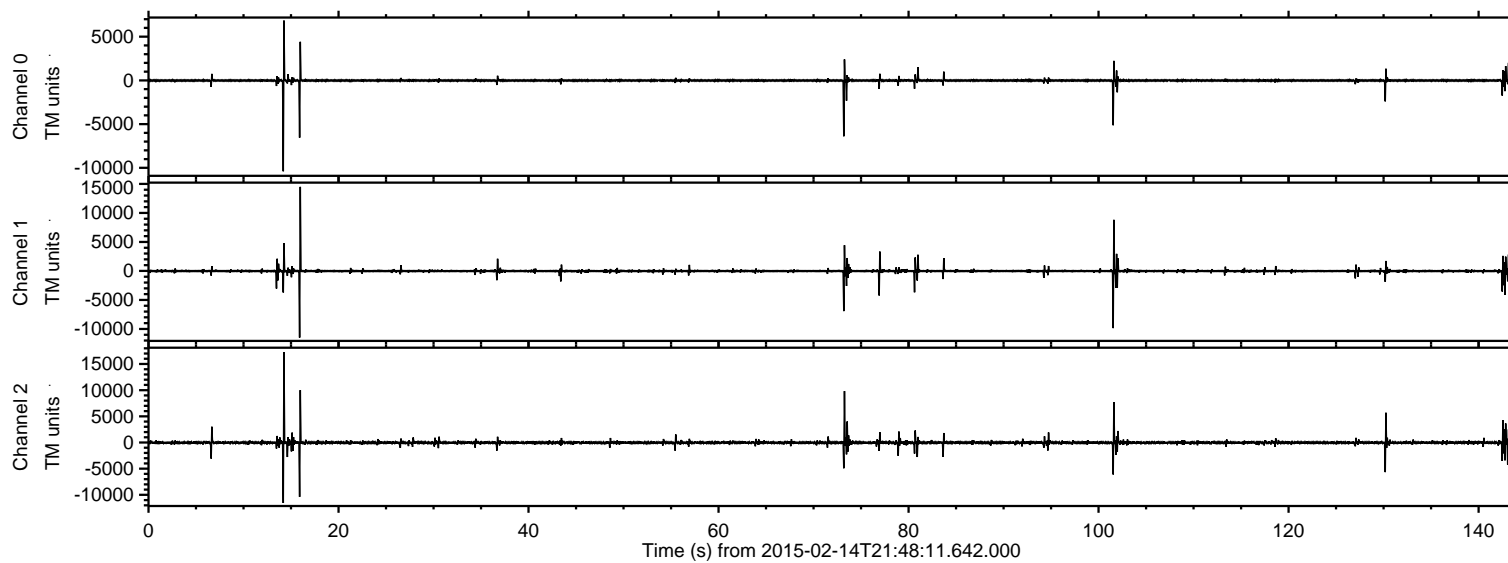
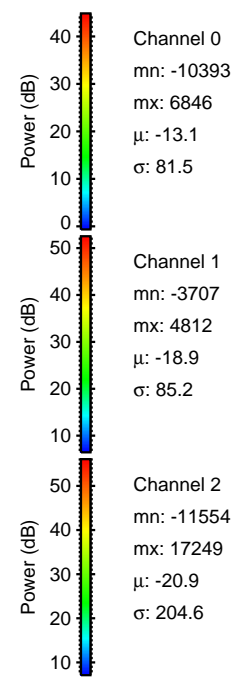
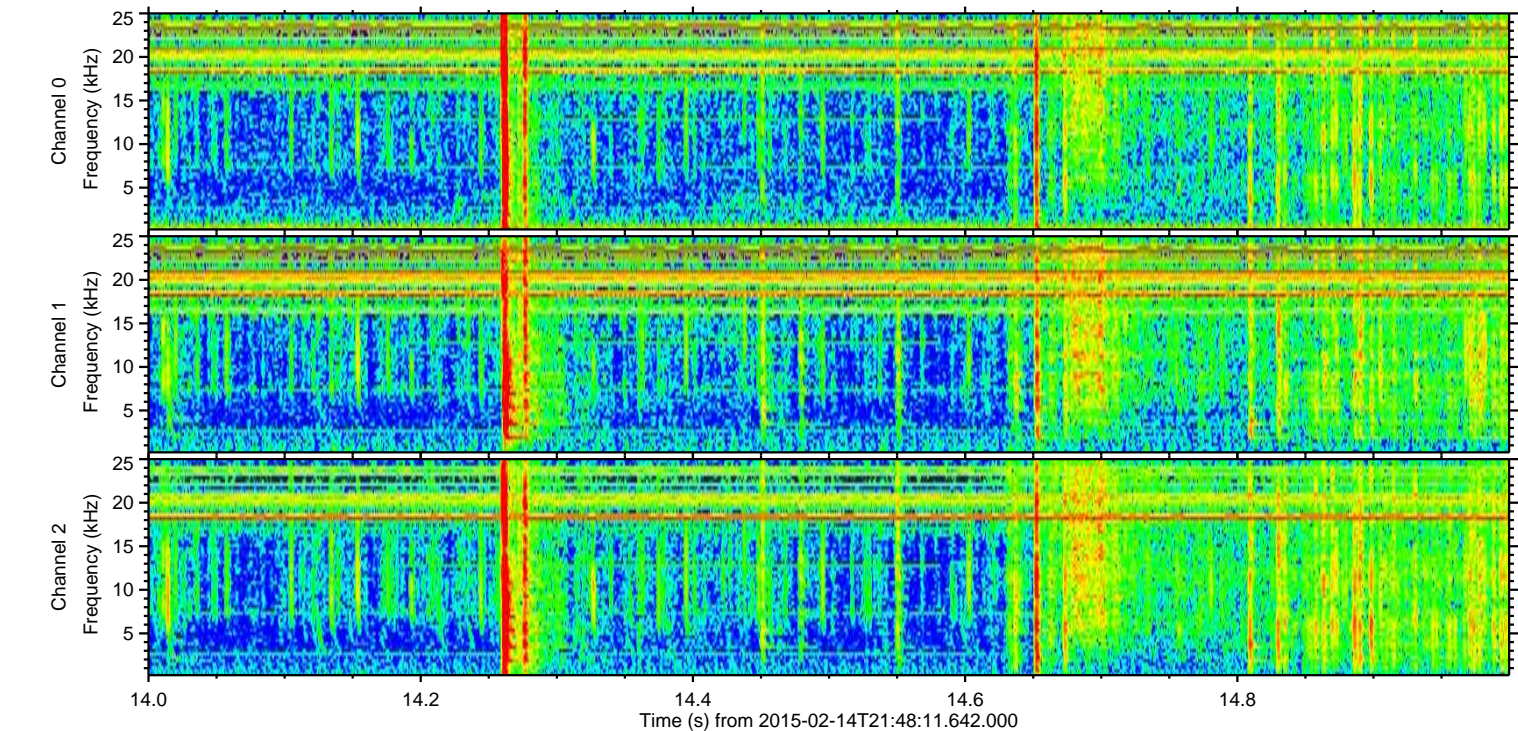
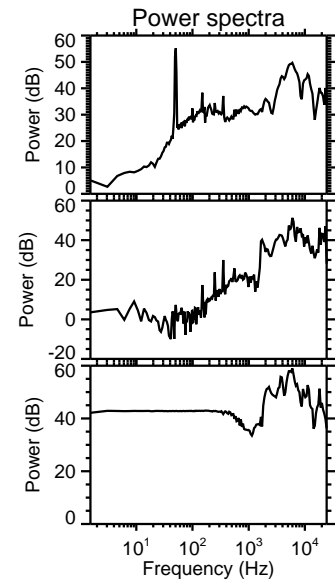
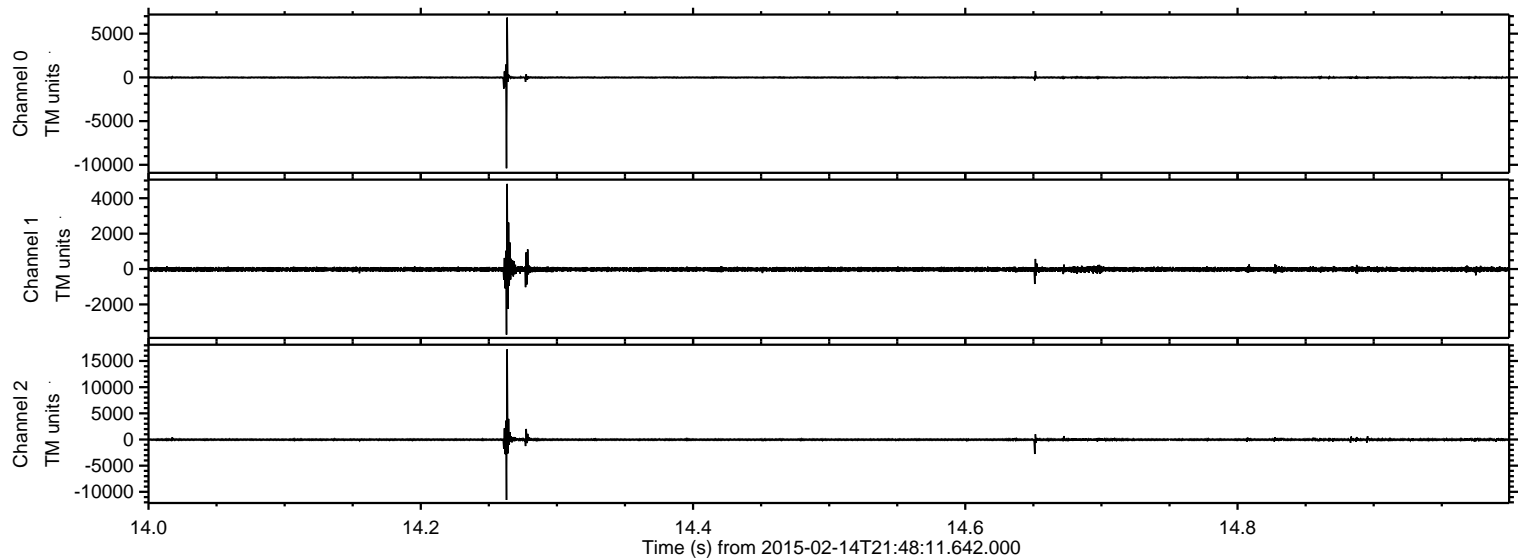


ELMAVAN 3D WAVEFORMS (Measured data sampled at 50 kHz) 49728 packets of 144 samples from 2015-02-14T21:48:11.642.000.

Processed Mon Feb 23 12:09:20 2015 by ELM ver.2012-10-06 from 001__elm20150214_214810__dat00.bin

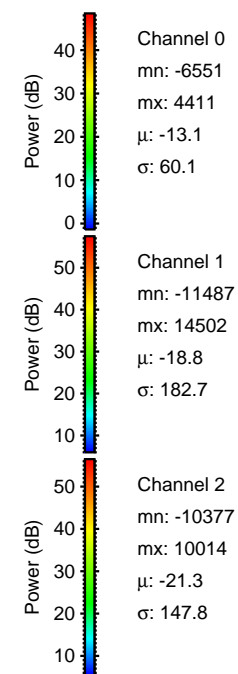
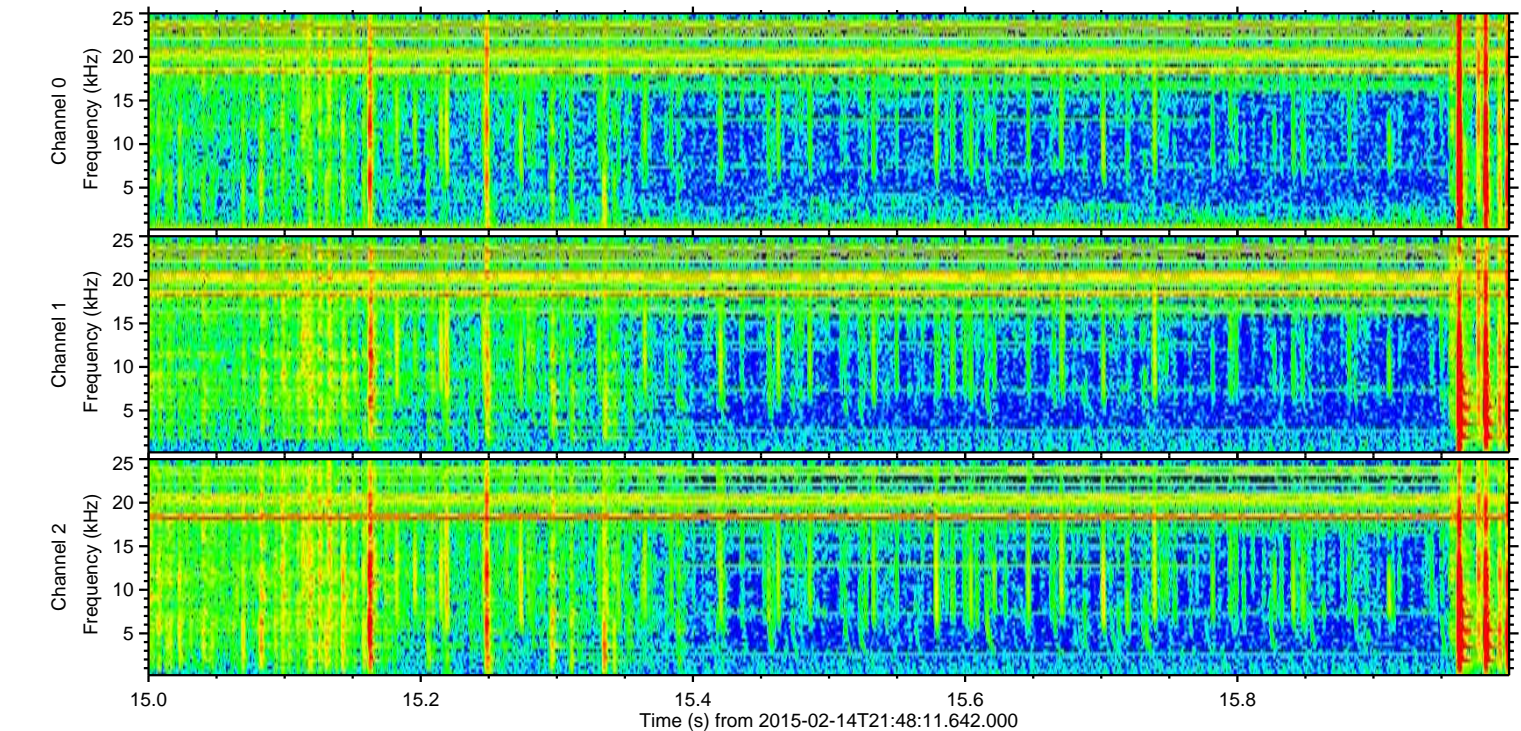
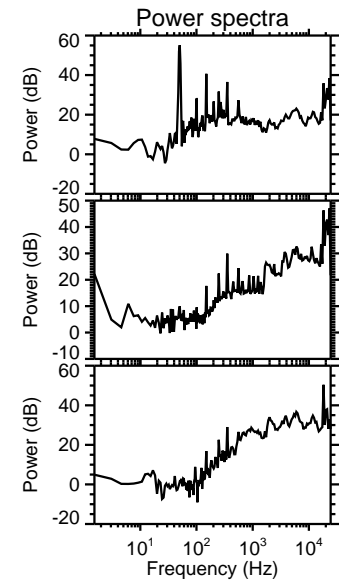
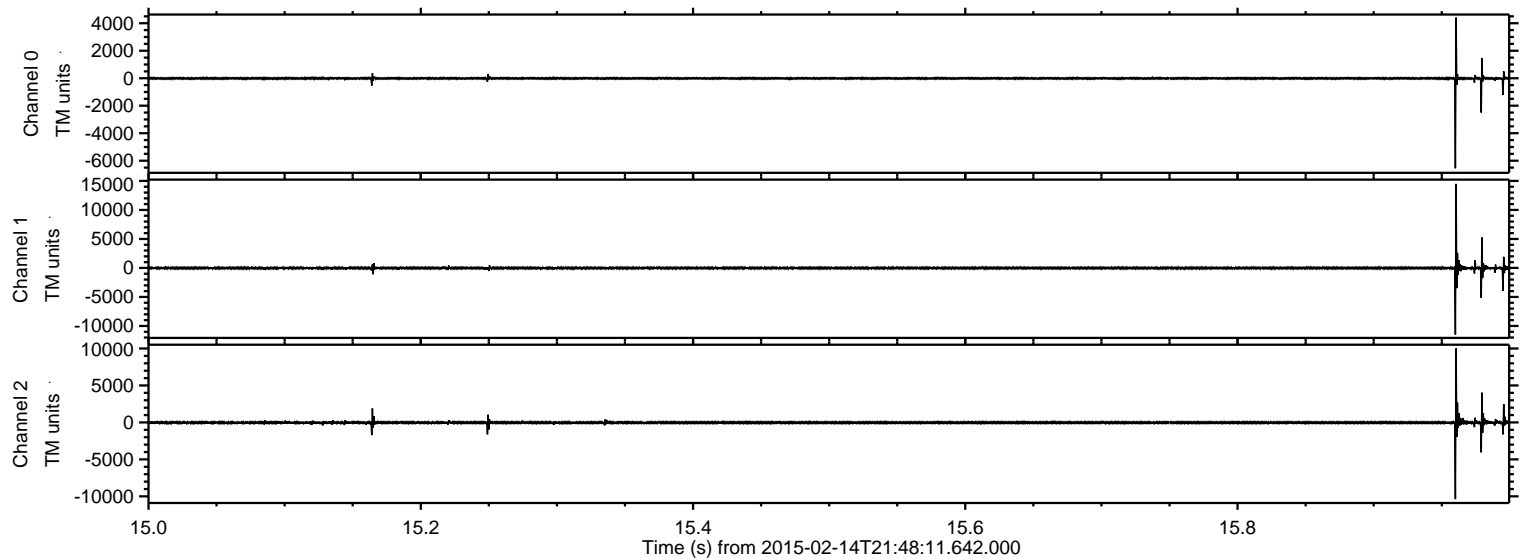


Processed Mon Feb 23 12:09:32 2015 by ELM ver.2012-10-06 from 001__elm20150214_214810__dat00.bin



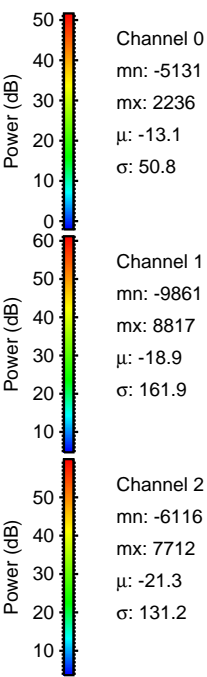
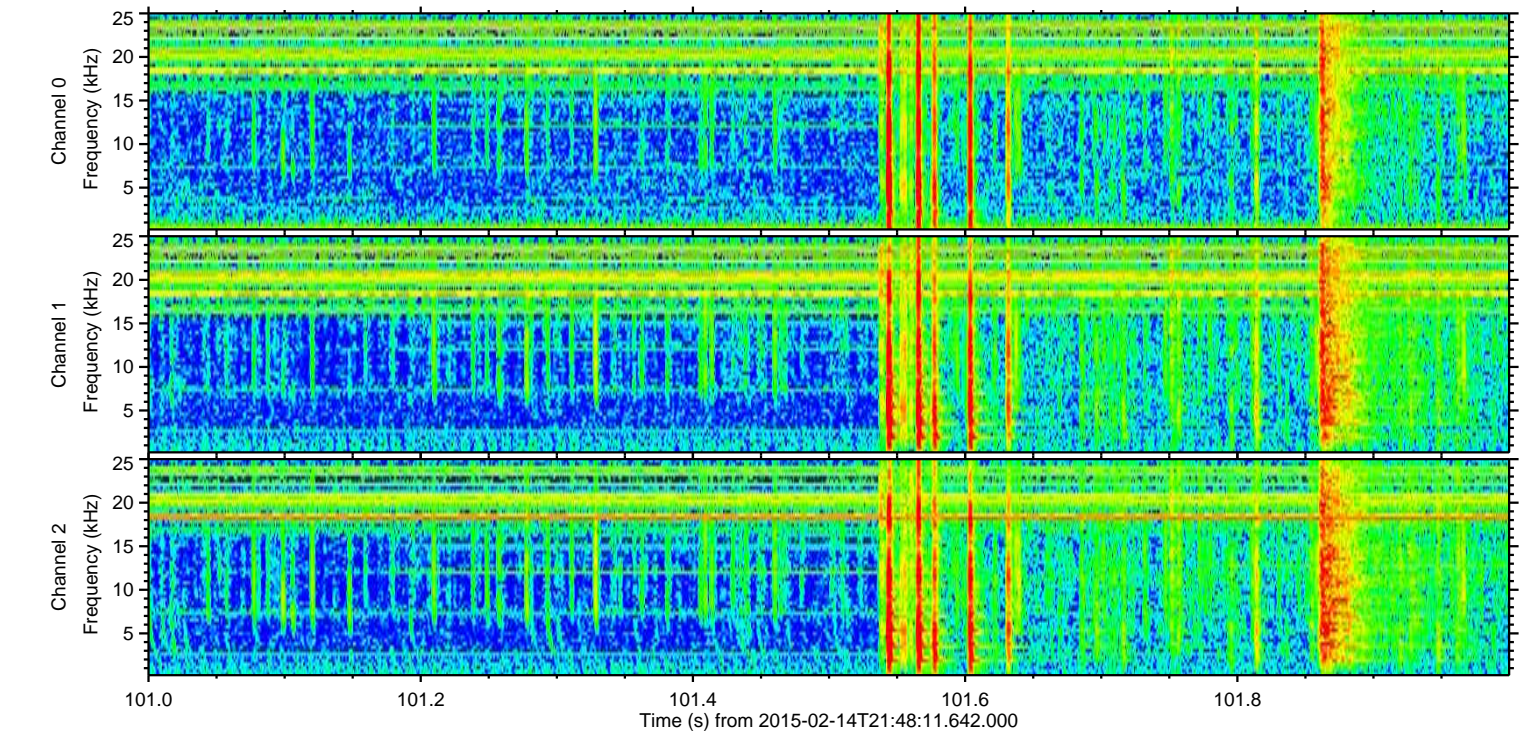
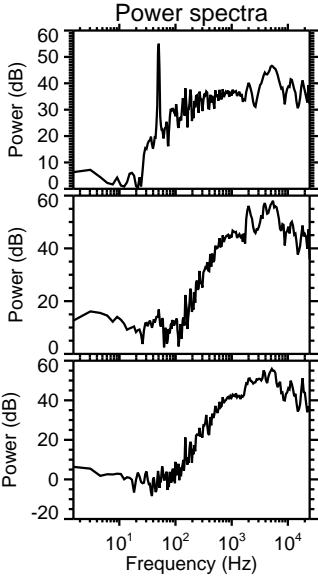
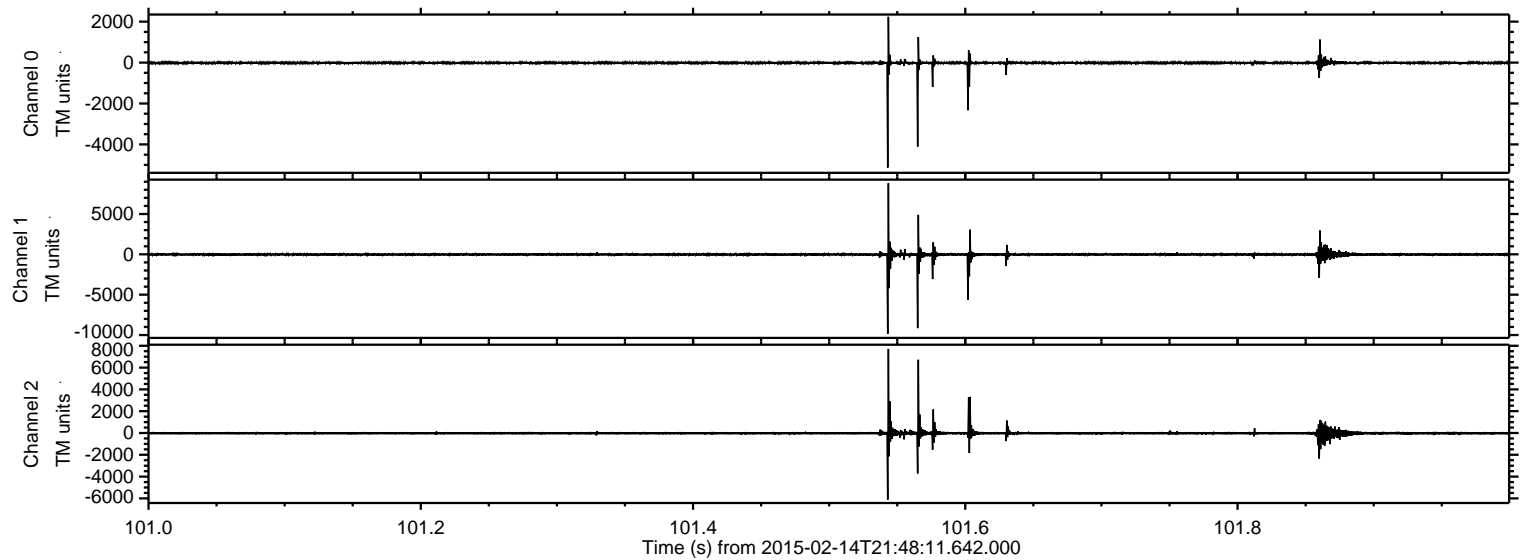
ELMAVAN 3D WAVEFORMS (Measured data sampled at 50 kHz) 49728 packets of 144 samples from 2015-02-14T21:48:11.642.000. Part 16/144

Processed Mon Feb 23 12:09:33 2015 by ELM ver.2012-10-06 from 001__elm20150214_214810__dat00.bin

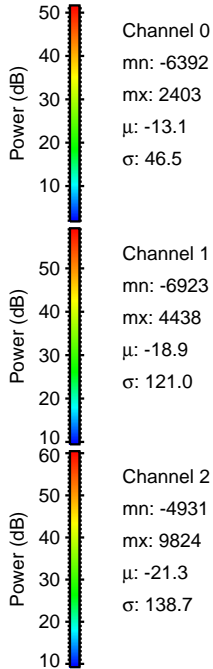
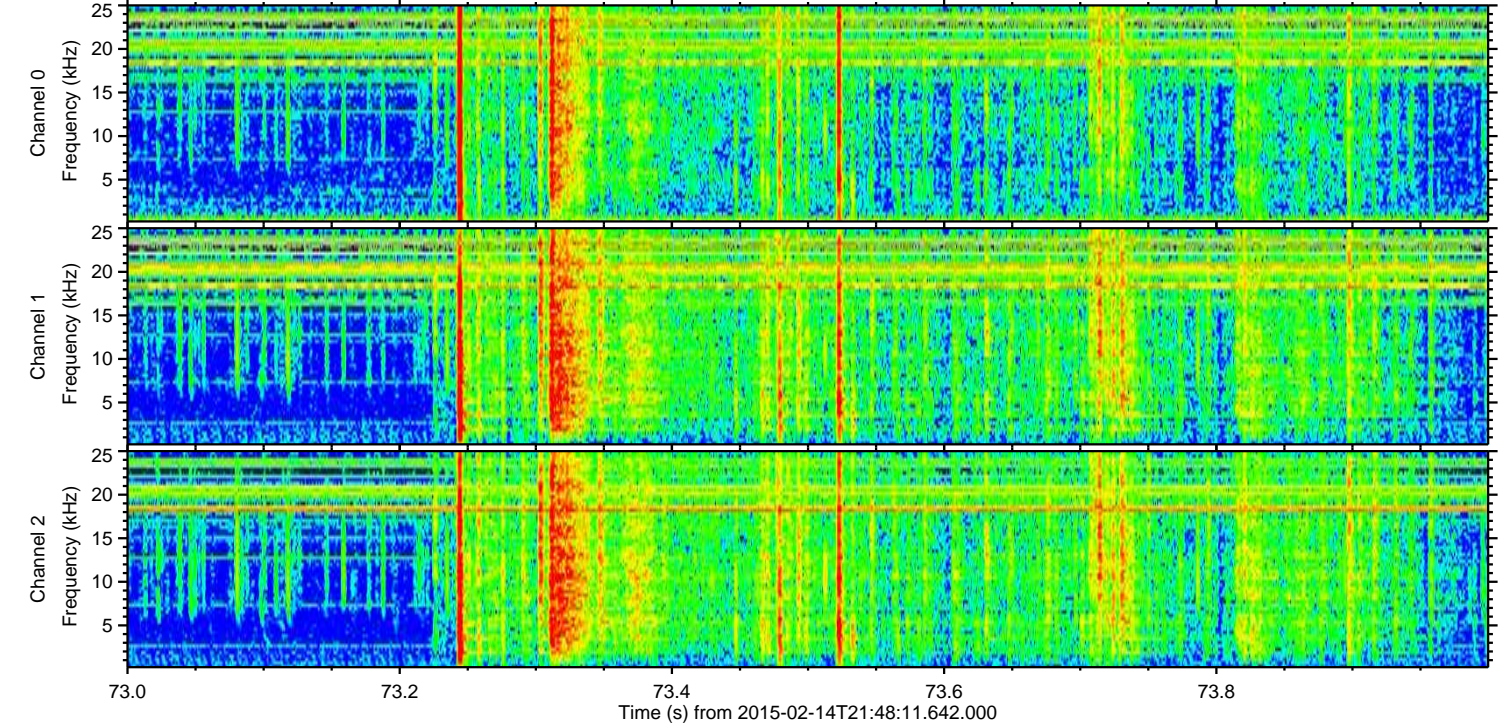
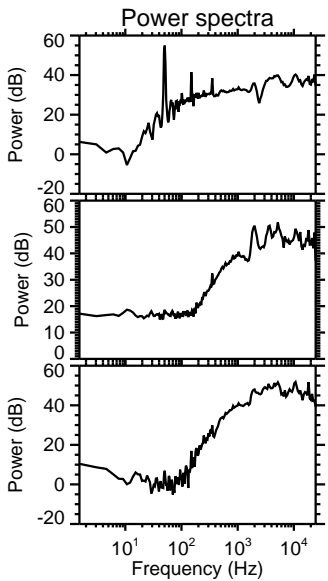
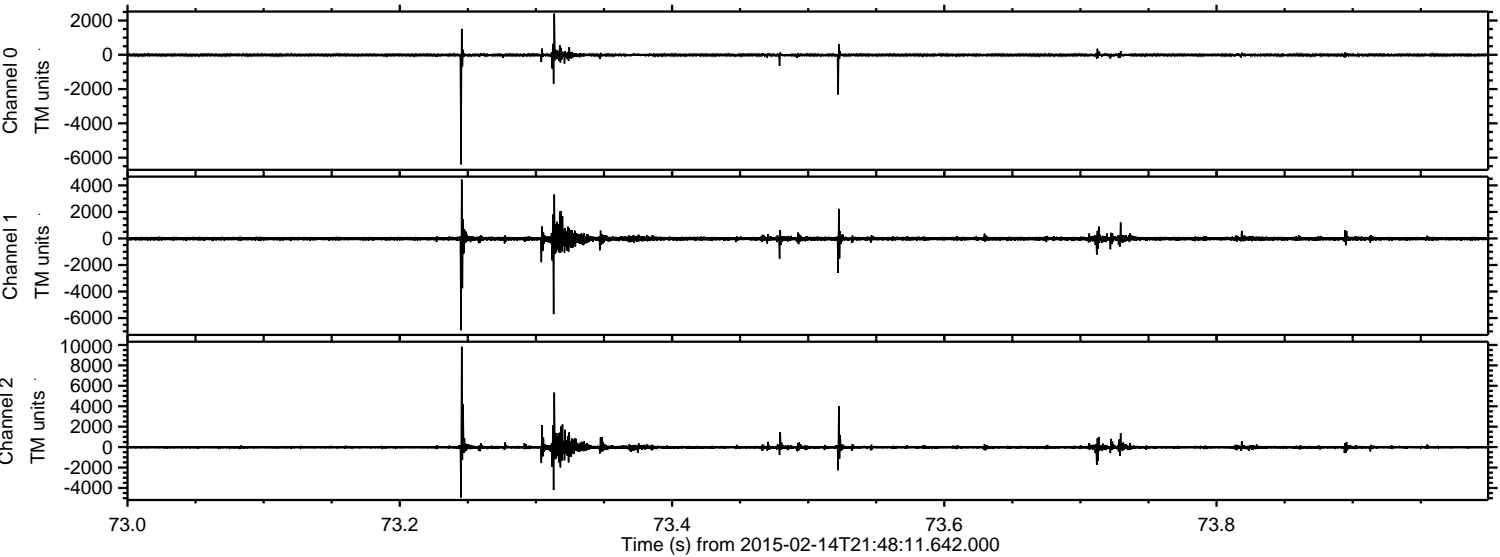


ELMAVAN 3D WAVEFORMS (Measured data sampled at 50 kHz) 49728 packets of 144 samples from 2015-02-14T21:48:11.642.000. Part 102/144

Processed Mon Feb 23 12:09:33 2015 by ELM ver.2012-10-06 from 001__elm20150214_214810__dat00.bin

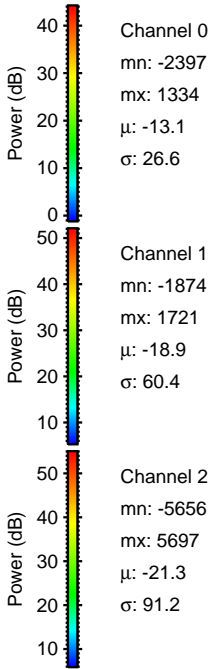
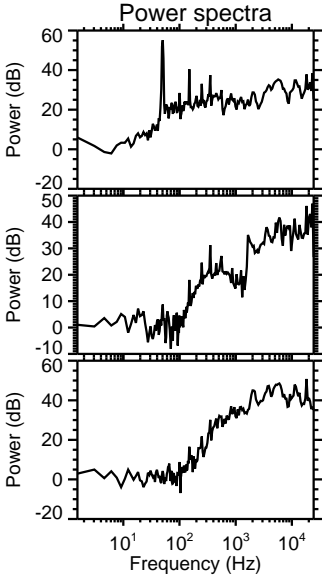
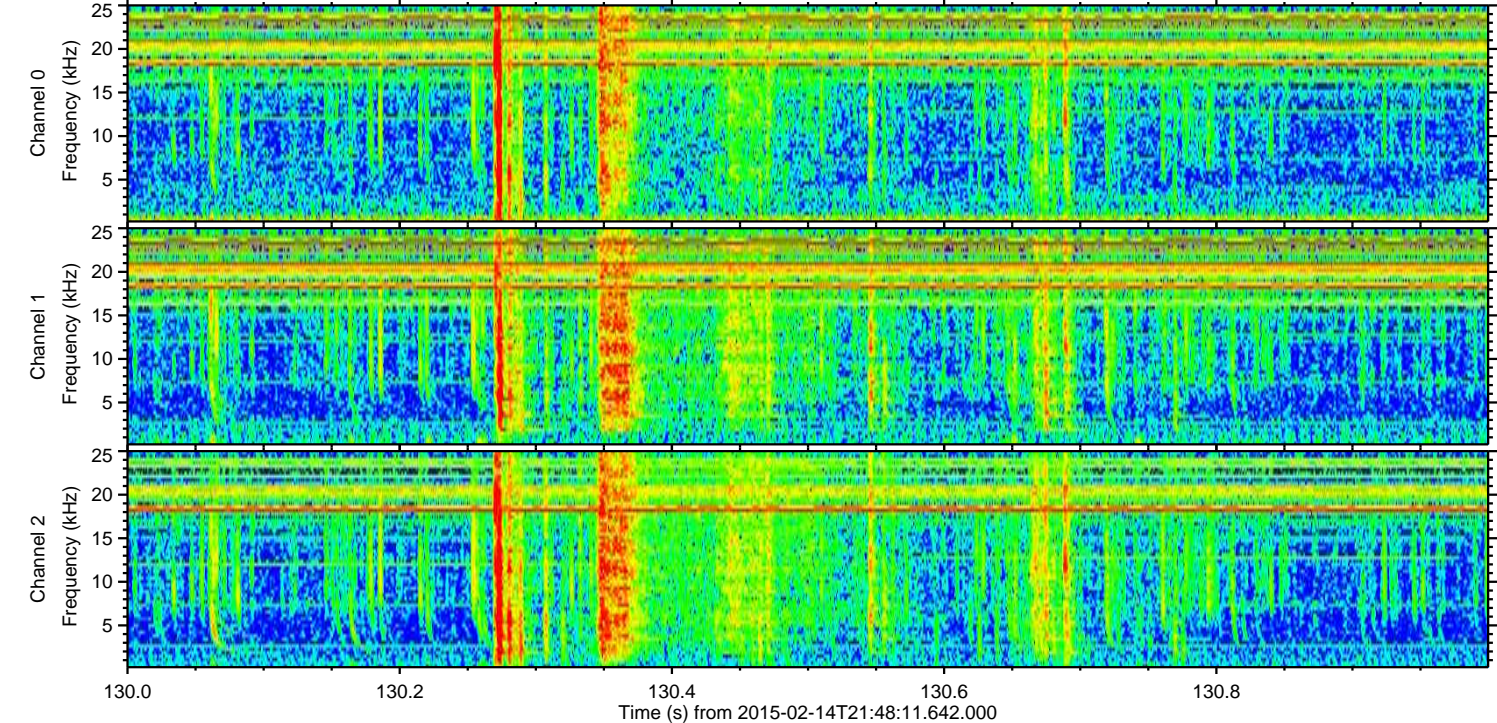
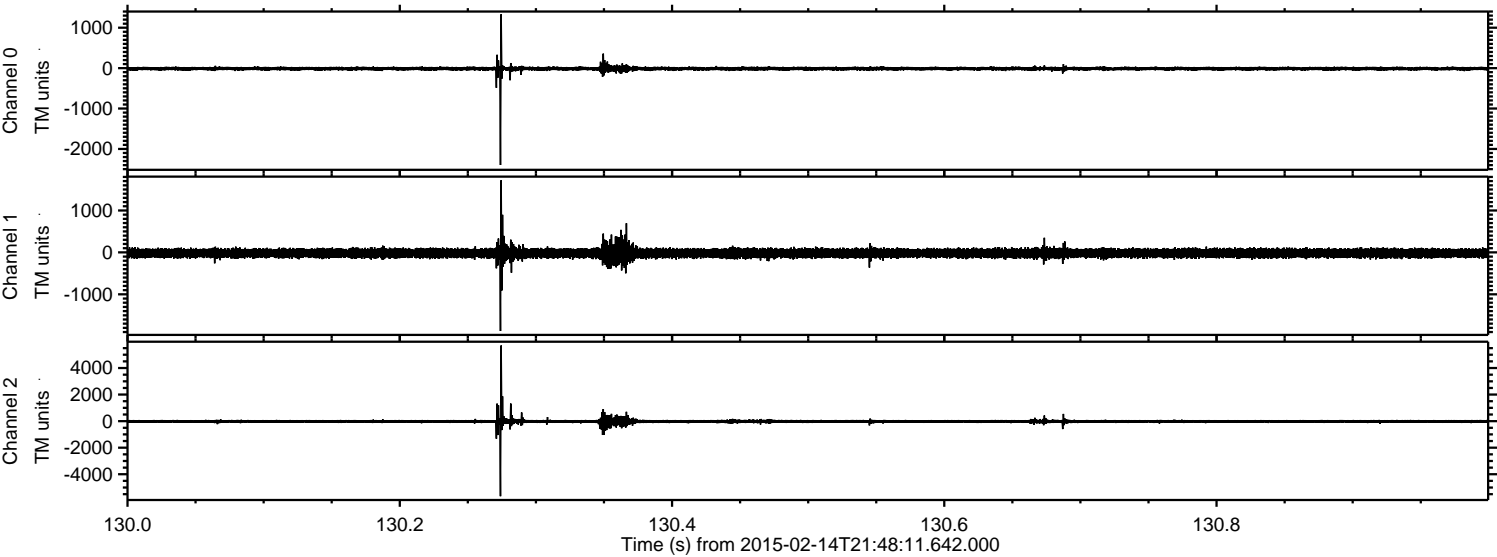


Processed Mon Feb 23 12:09:34 2015 by ELM ver.2012-10-06 from 001__elm20150214_214810__dat00.bin



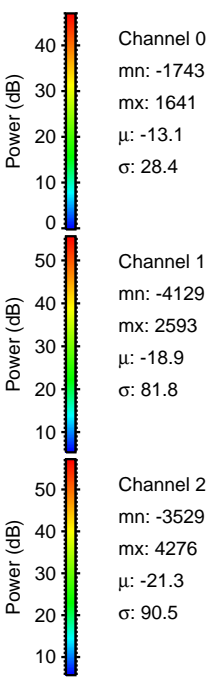
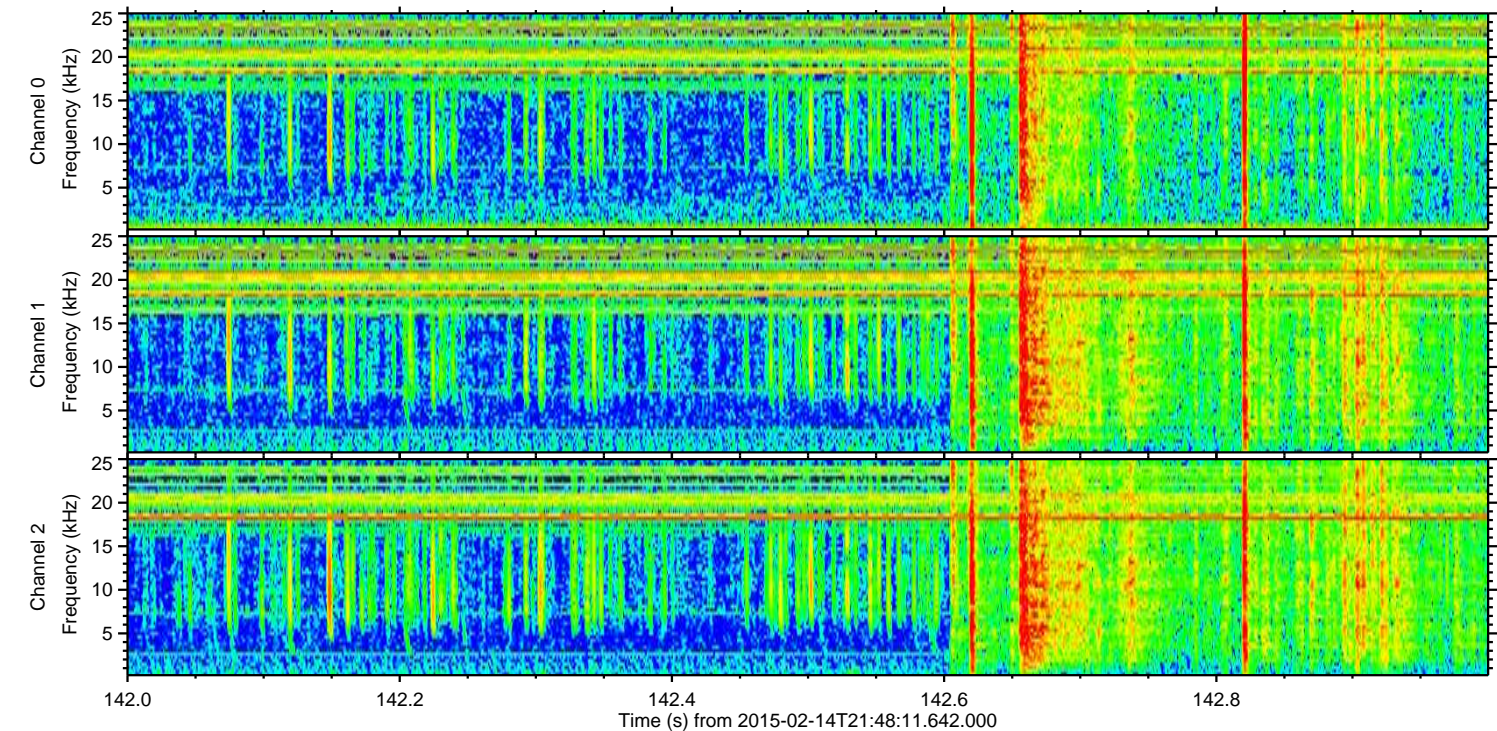
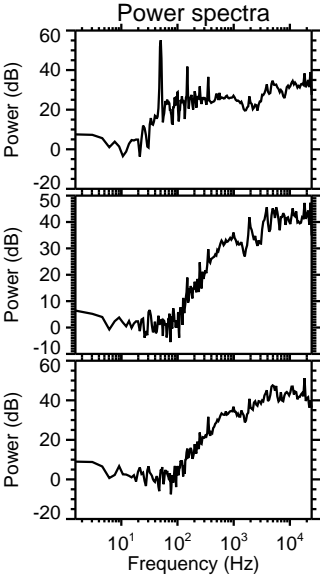
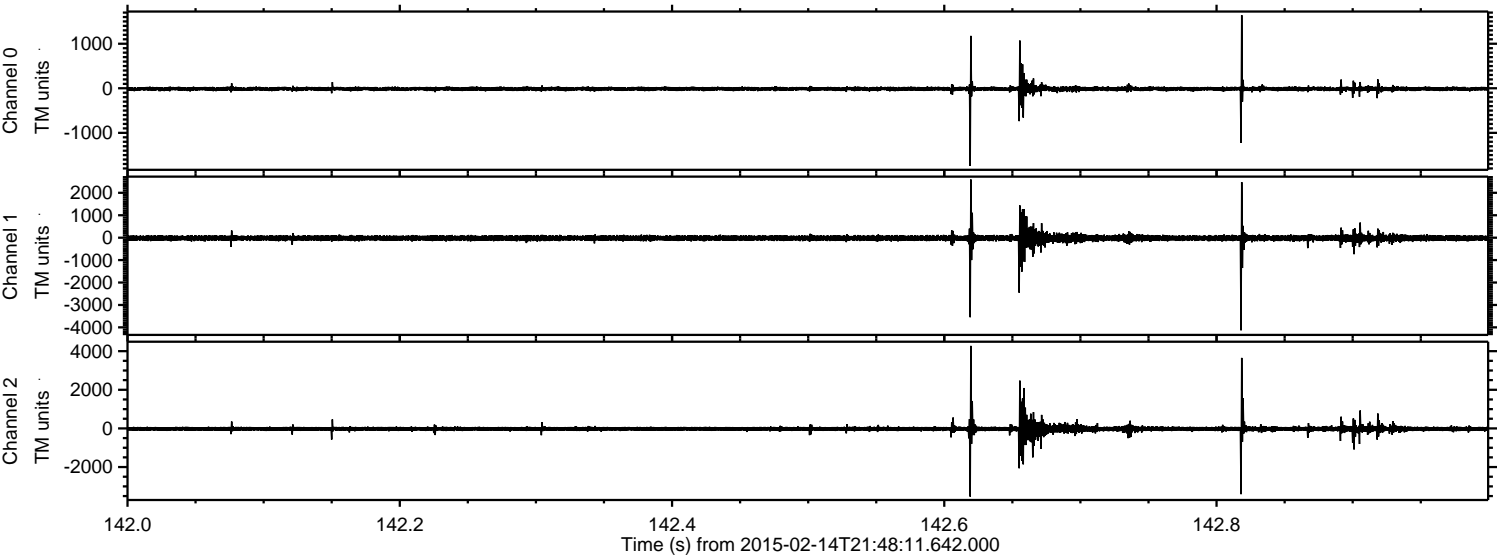
ELMAVAN 3D WAVEFORMS (Measured data sampled at 50 kHz) 49728 packets of 144 samples from 2015-02-14T21:48:11.642.000. Part 131/144

Processed Mon Feb 23 12:09:35 2015 by ELM ver.2012-10-06 from 001__elm20150214_214810__dat00.bin

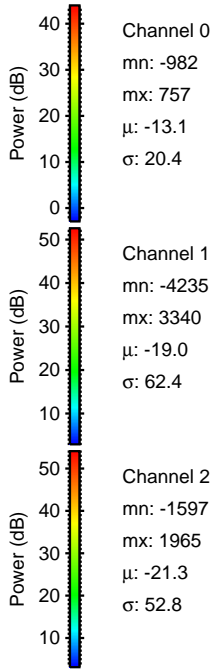
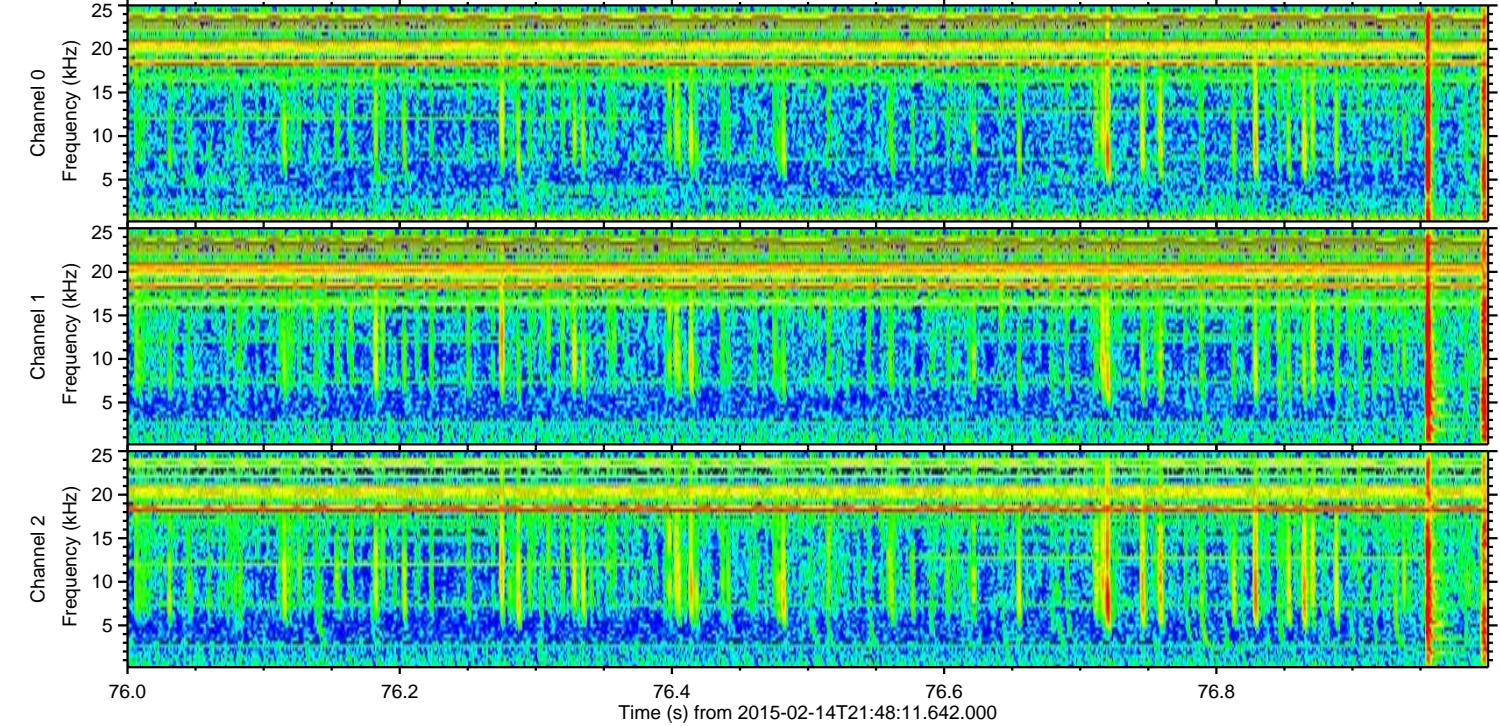
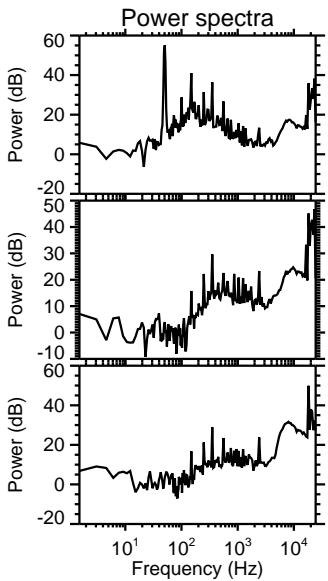
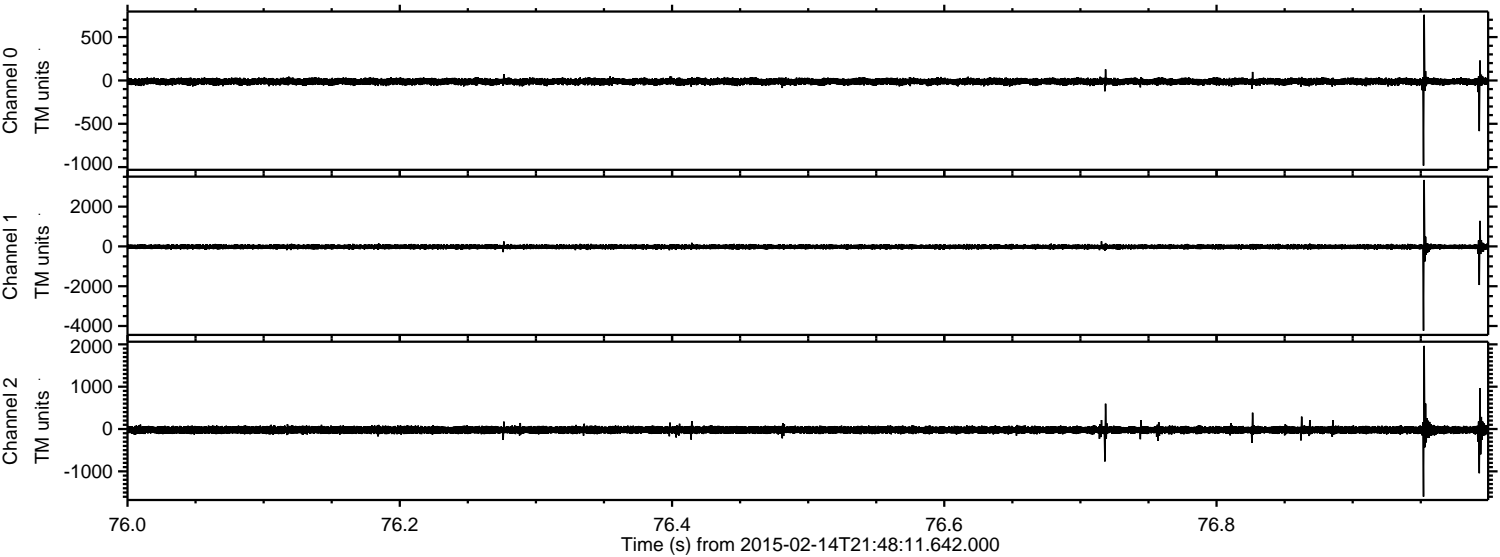


ELMAVAN 3D WAVEFORMS (Measured data sampled at 50 kHz) 49728 packets of 144 samples from 2015-02-14T21:48:11.642.000. Part 143/144

Processed Mon Feb 23 12:09:36 2015 by ELM ver.2012-10-06 from 001__elm20150214_214810__dat00.bin



Processed Mon Feb 23 12:09:37 2015 by ELM ver.2012-10-06 from 001__elm20150214_214810__dat00.bin

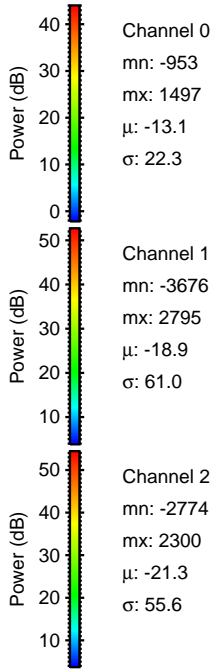
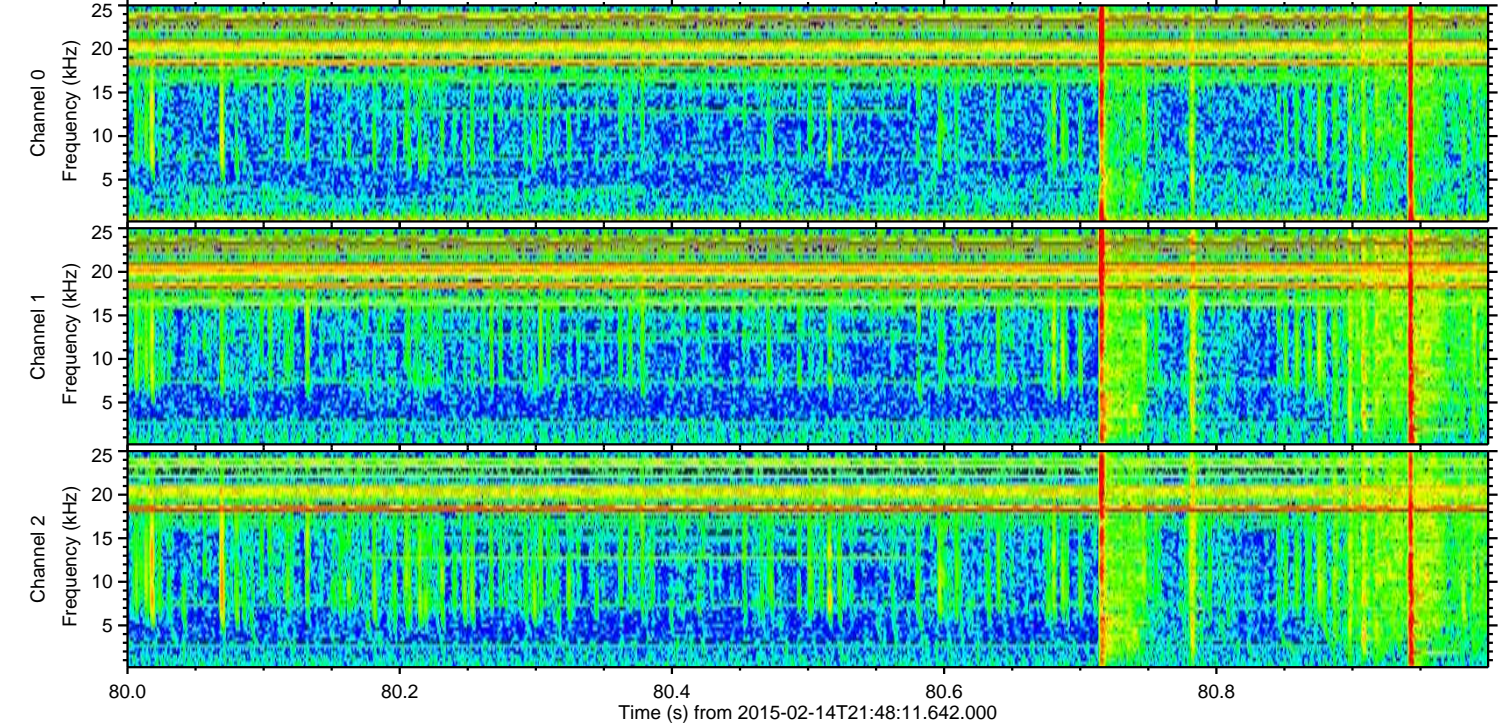
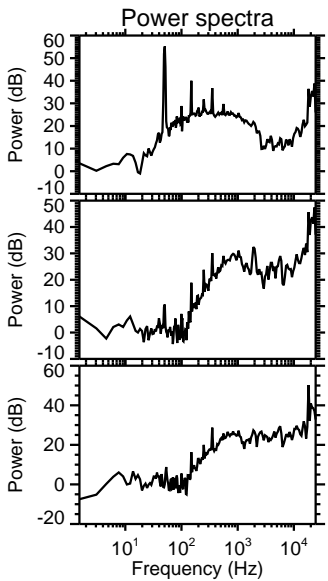
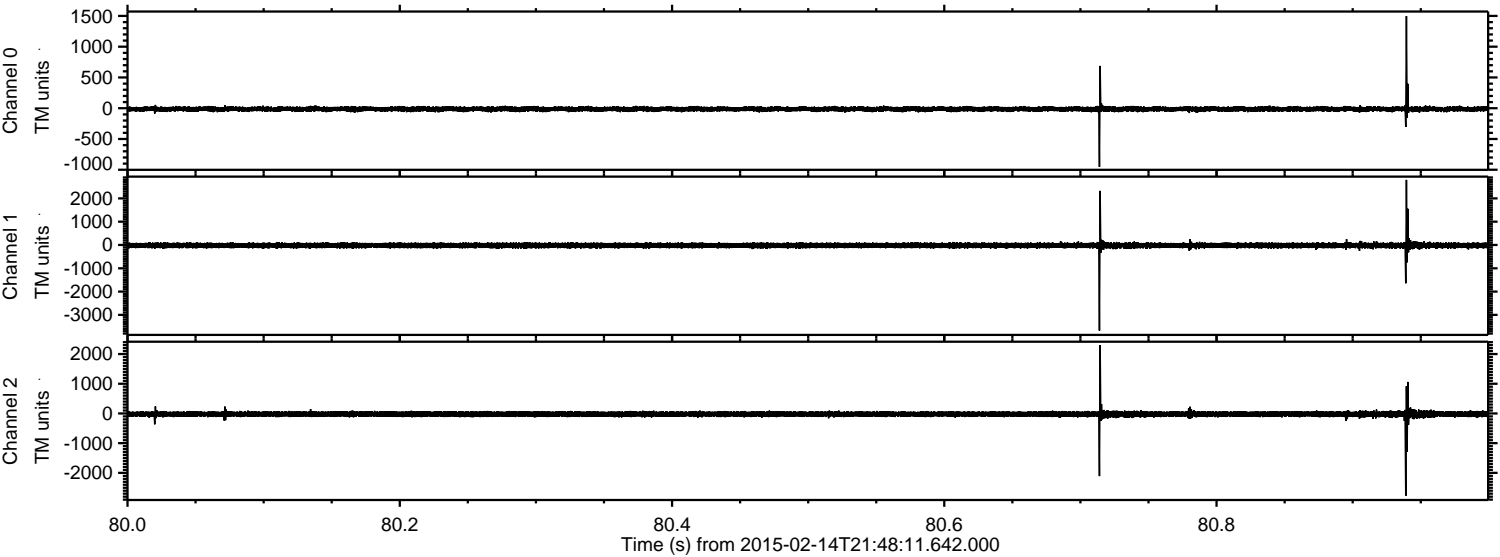


Channel 0
mn: -982
mx: 757
 μ : -13.1
 σ : 20.4

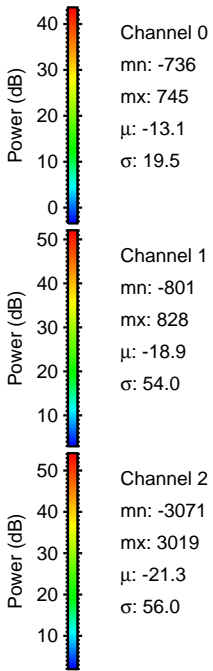
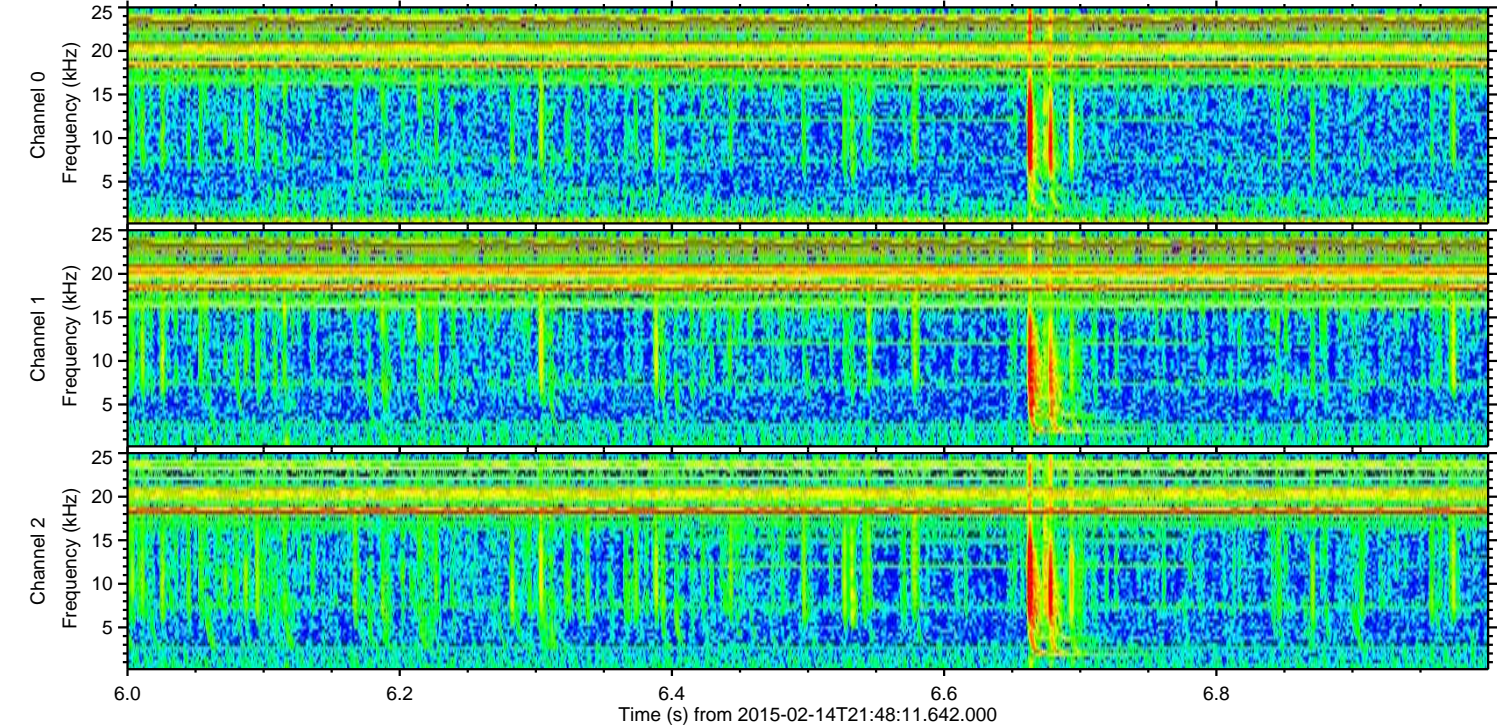
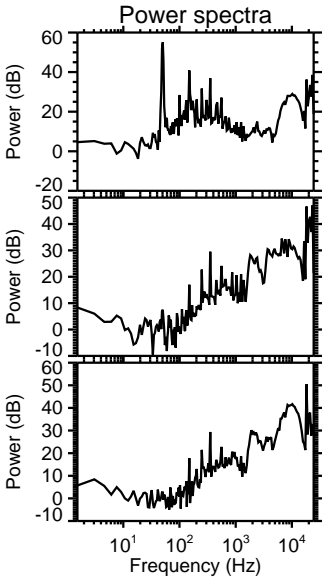
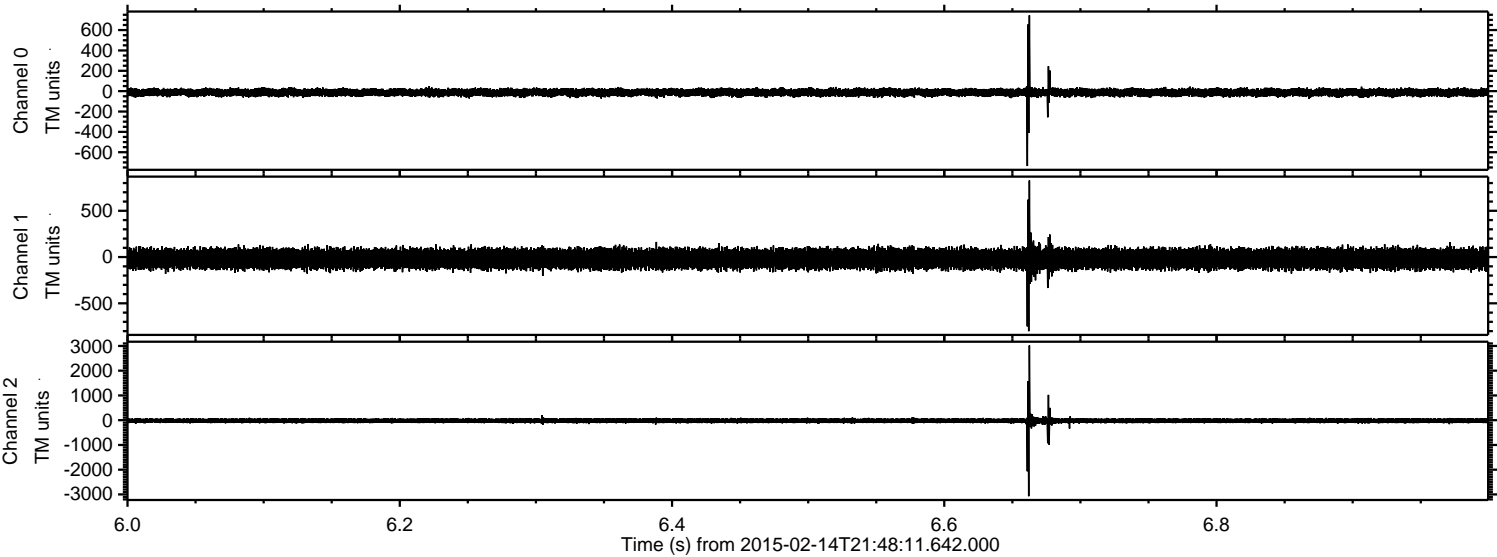
Channel 1
mn: -4235
mx: 3340
 μ : -19.0
 σ : 62.4

Channel 2
mn: -1597
mx: 1965
 μ : -21.3
 σ : 52.8

Processed Mon Feb 23 12:09:38 2015 by ELM ver.2012-10-06 from 001__elm20150214_214810__dat00.bin



Processed Mon Feb 23 12:09:39 2015 by ELM ver.2012-10-06 from 001__elm20150214_214810__dat00.bin



Processed Mon Feb 23 12:09:40 2015 by ELM ver.2012-10-06 from 001__elm20150214_214810__dat00.bin

