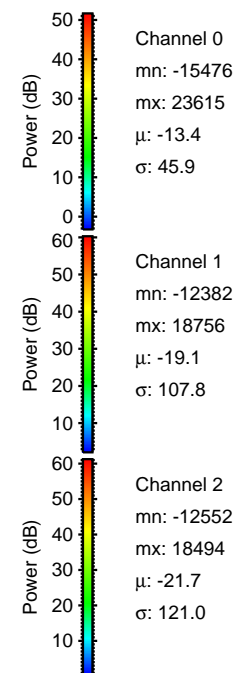
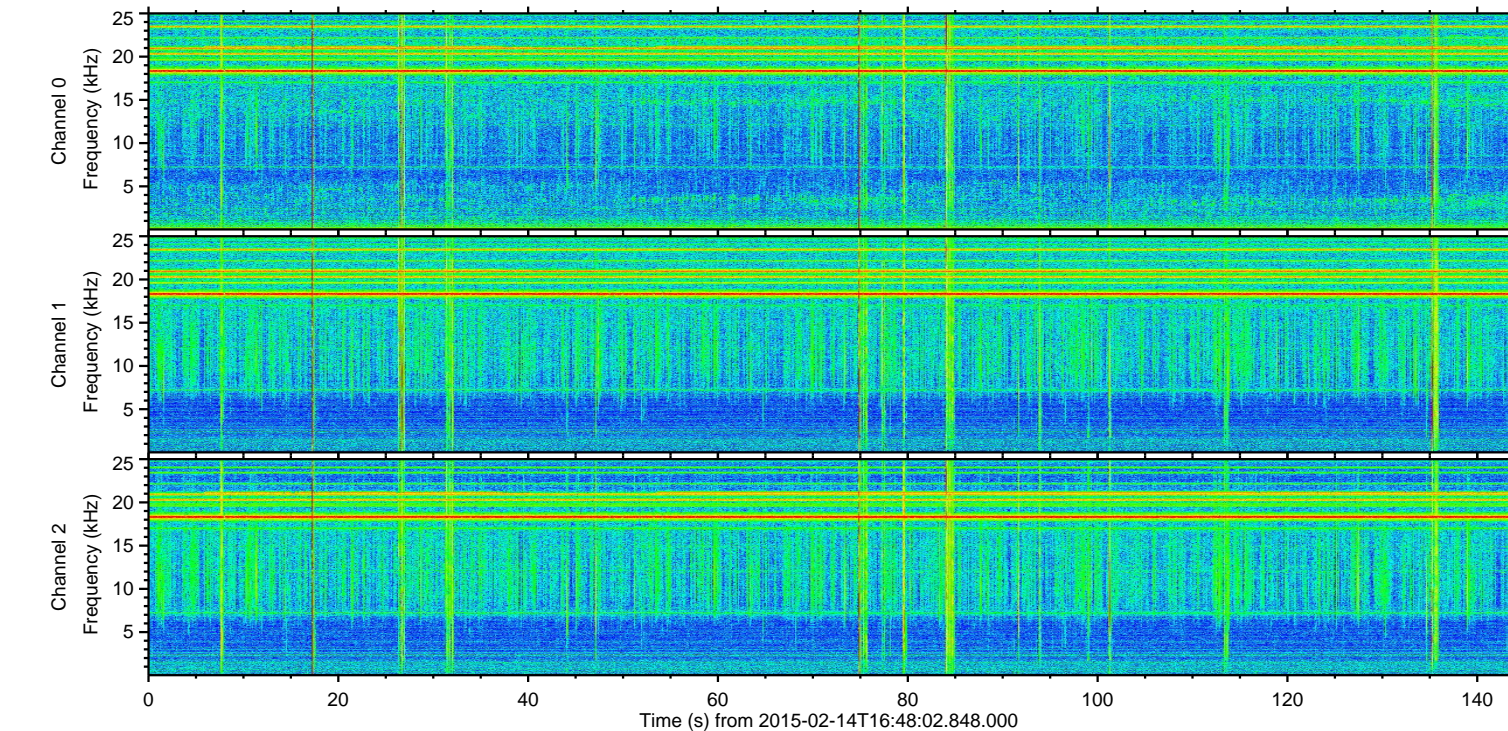
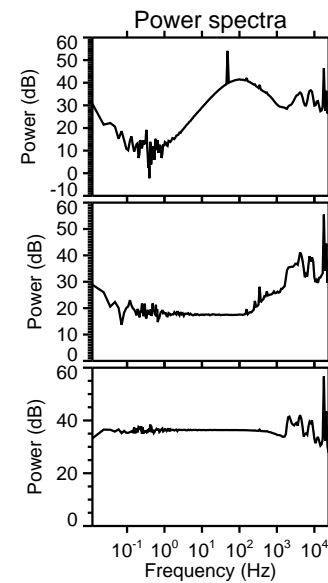
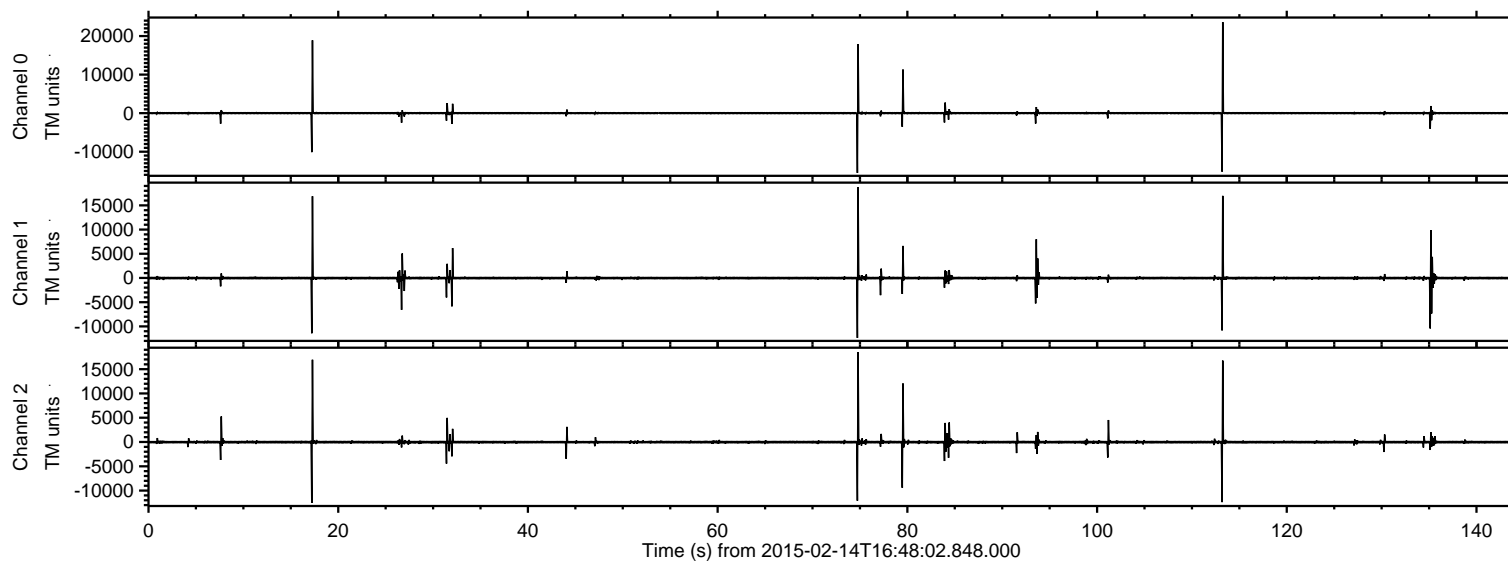


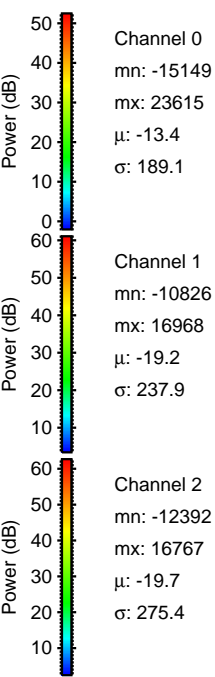
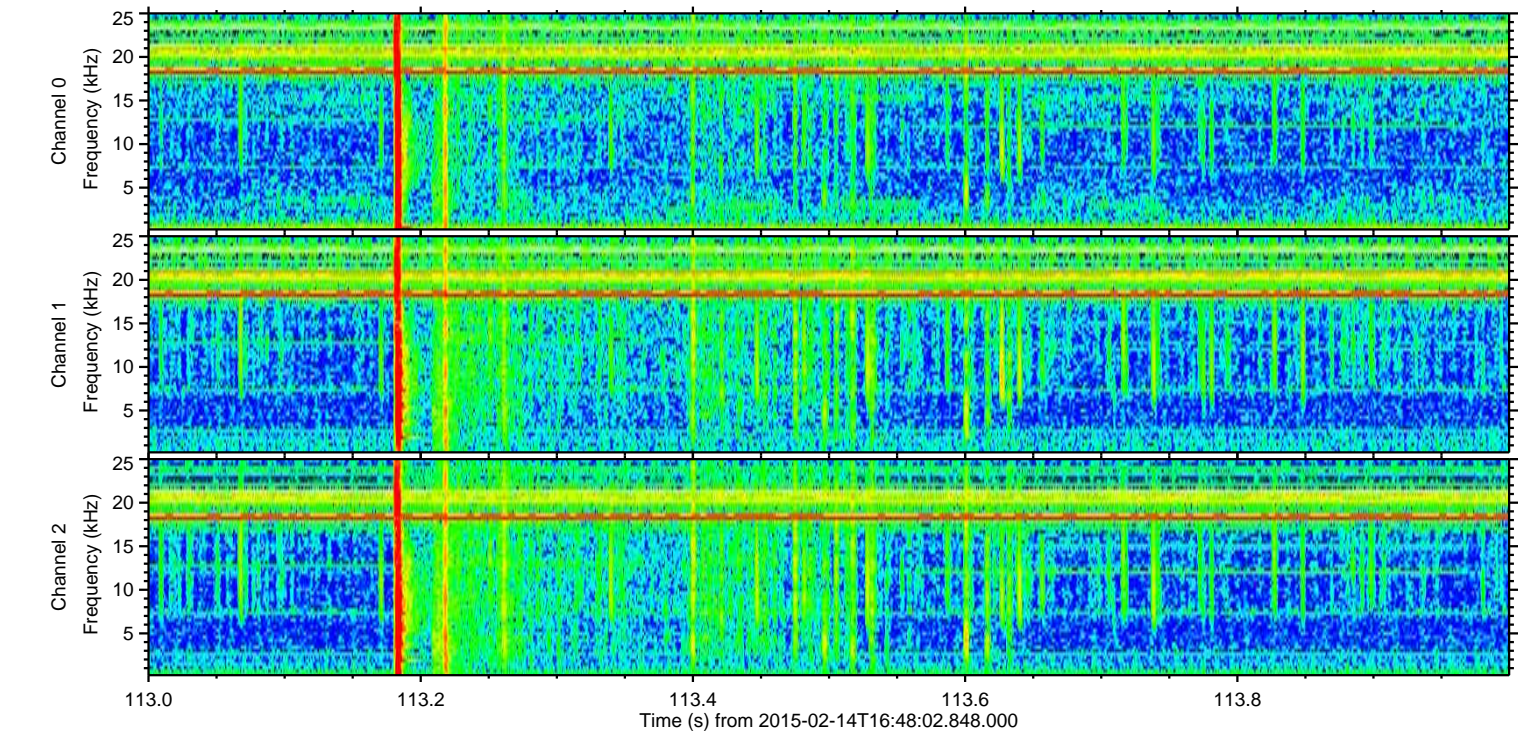
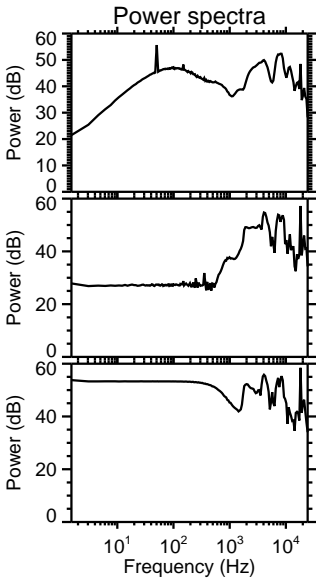
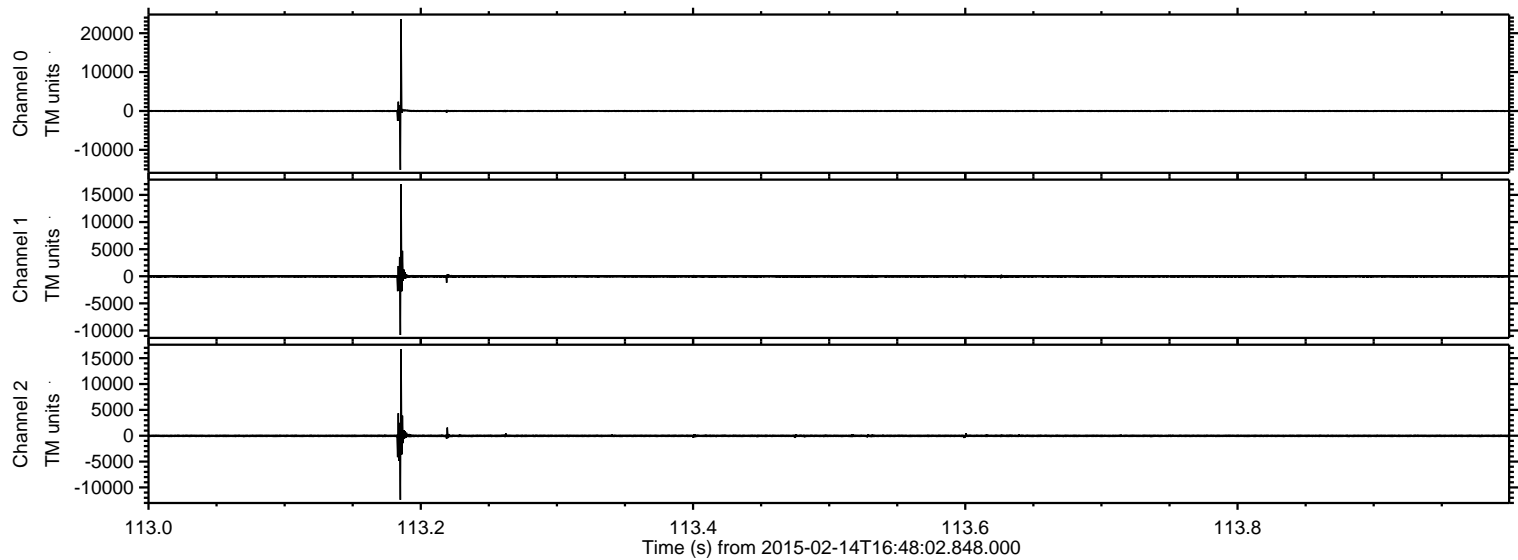
ELMAVAN 3D WAVEFORMS (Measured data sampled at 50 kHz) 49806 packets of 144 samples from 2015-02-14T16:48:02.848.000.

Processed Mon Feb 23 10:49:13 2015 by ELM ver.2012-10-06 from 001__elm20150214_164801__dat00.bin



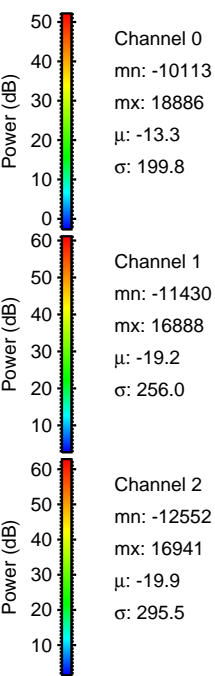
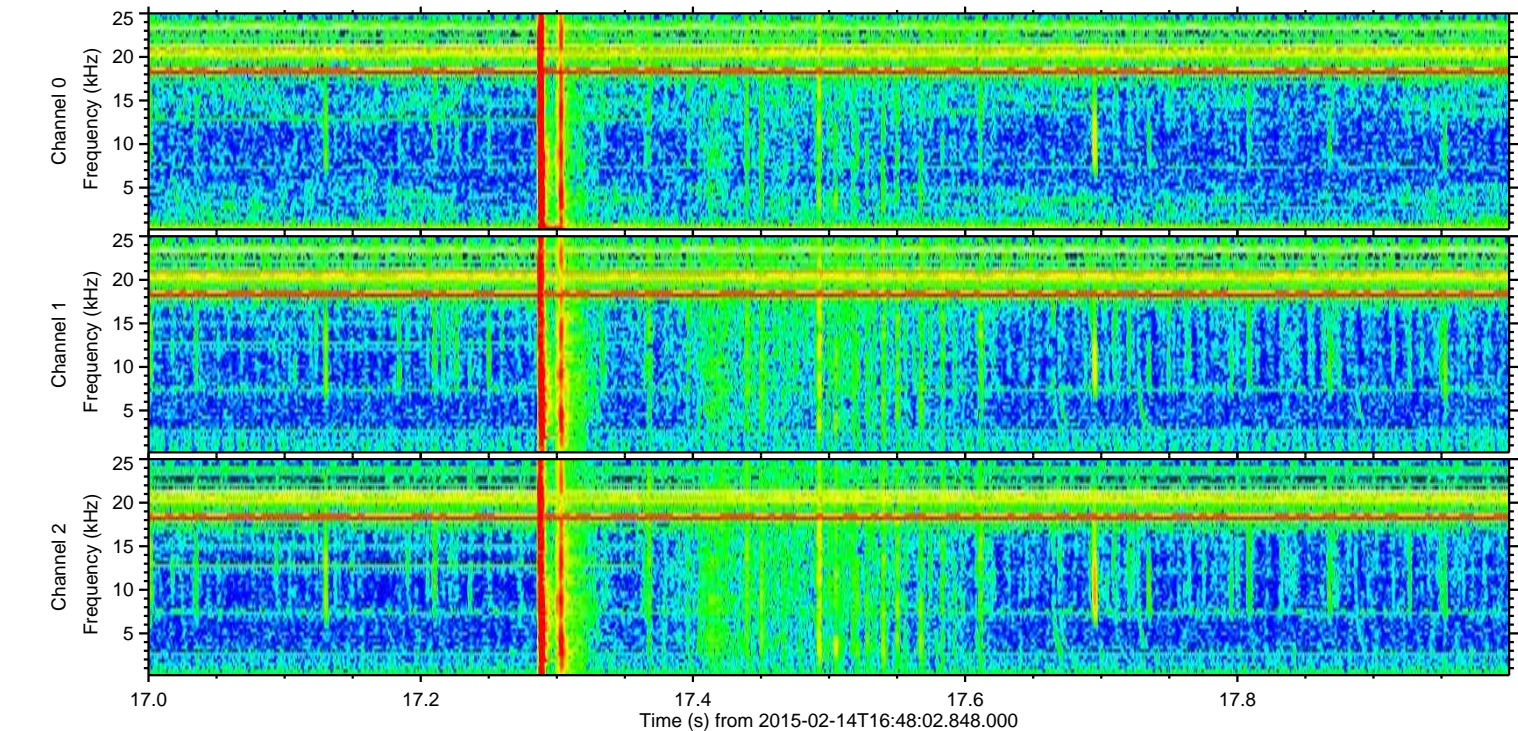
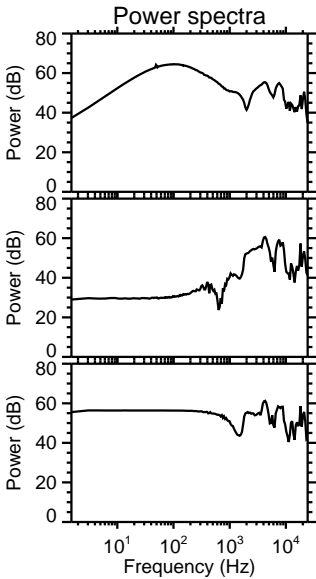
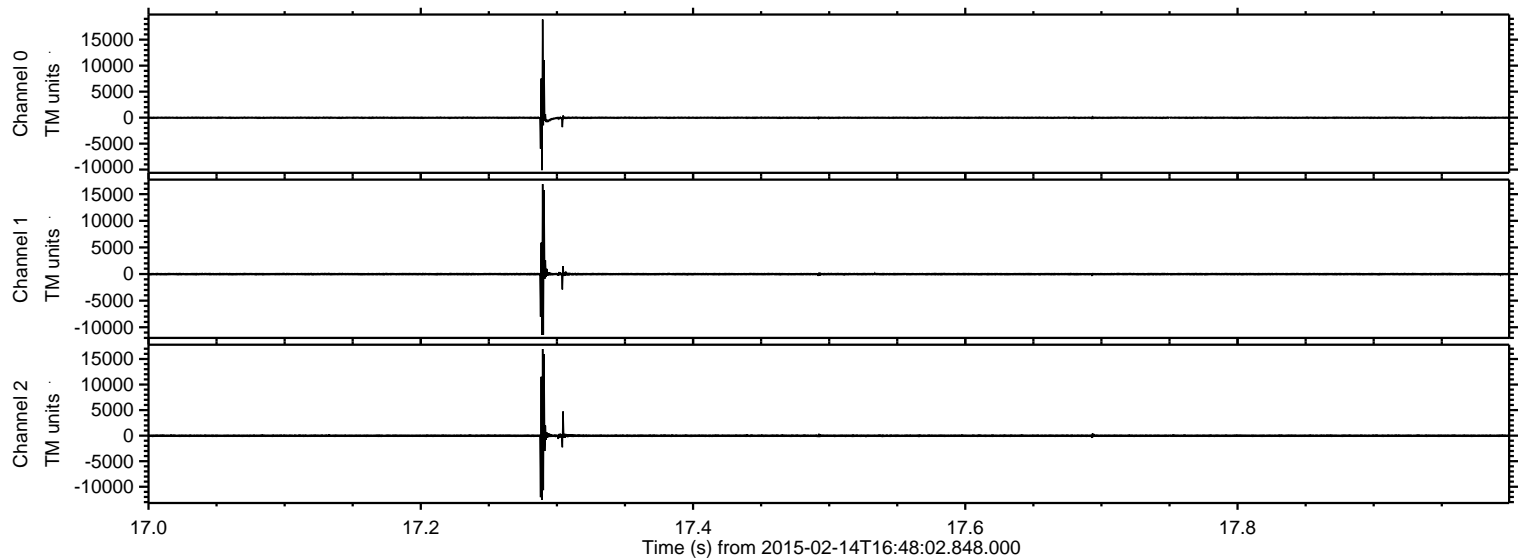
ELMAVAN 3D WAVEFORMS (Measured data sampled at 50 kHz) 49806 packets of 144 samples from 2015-02-14T16:48:02.848.000. Part 114/144

Processed Mon Feb 23 10:49:31 2015 by ELM ver.2012-10-06 from 001__elm20150214_164801__dat00.bin

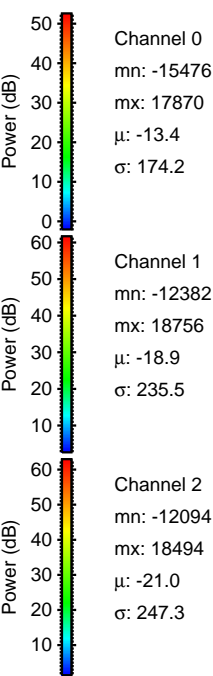
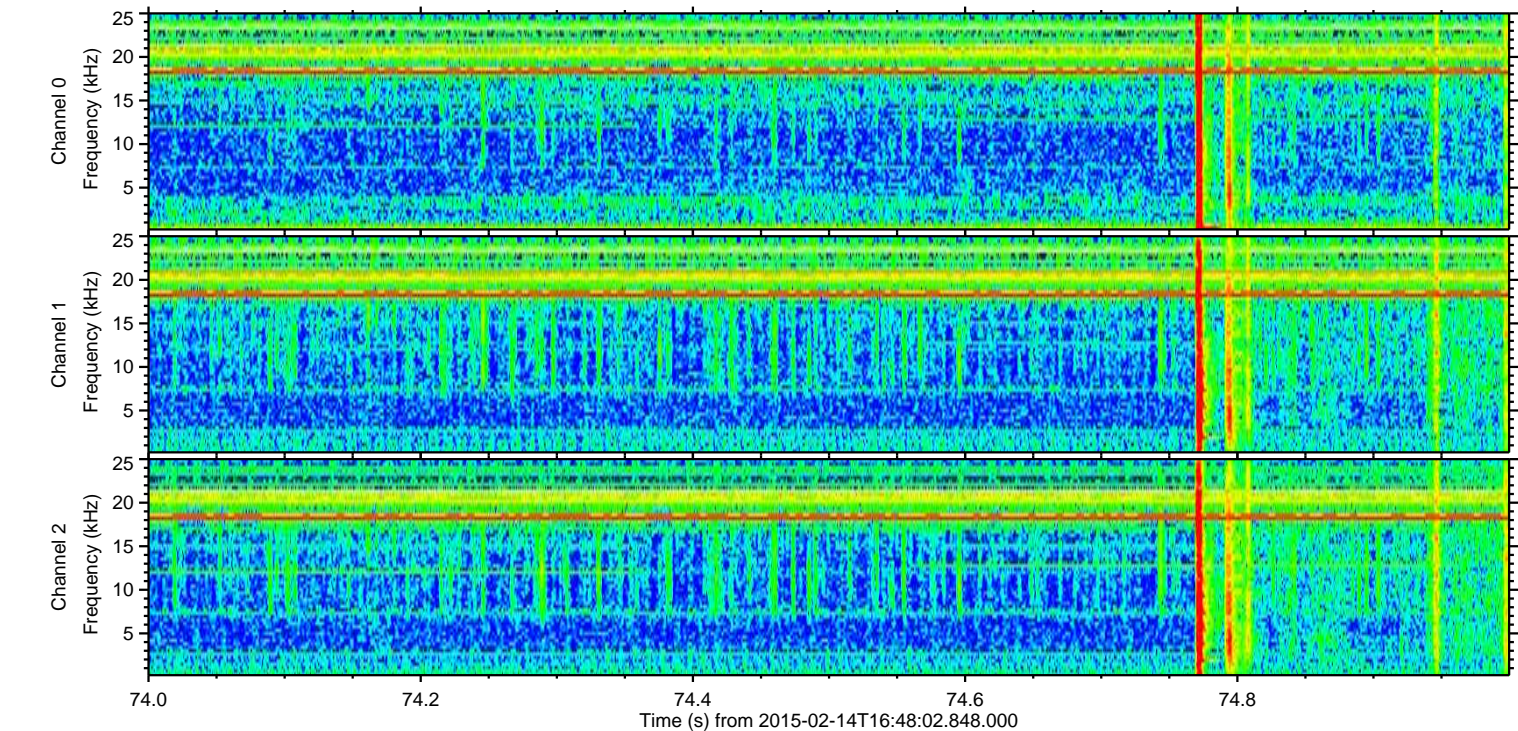
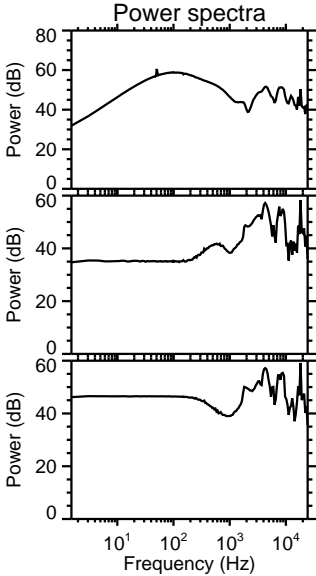
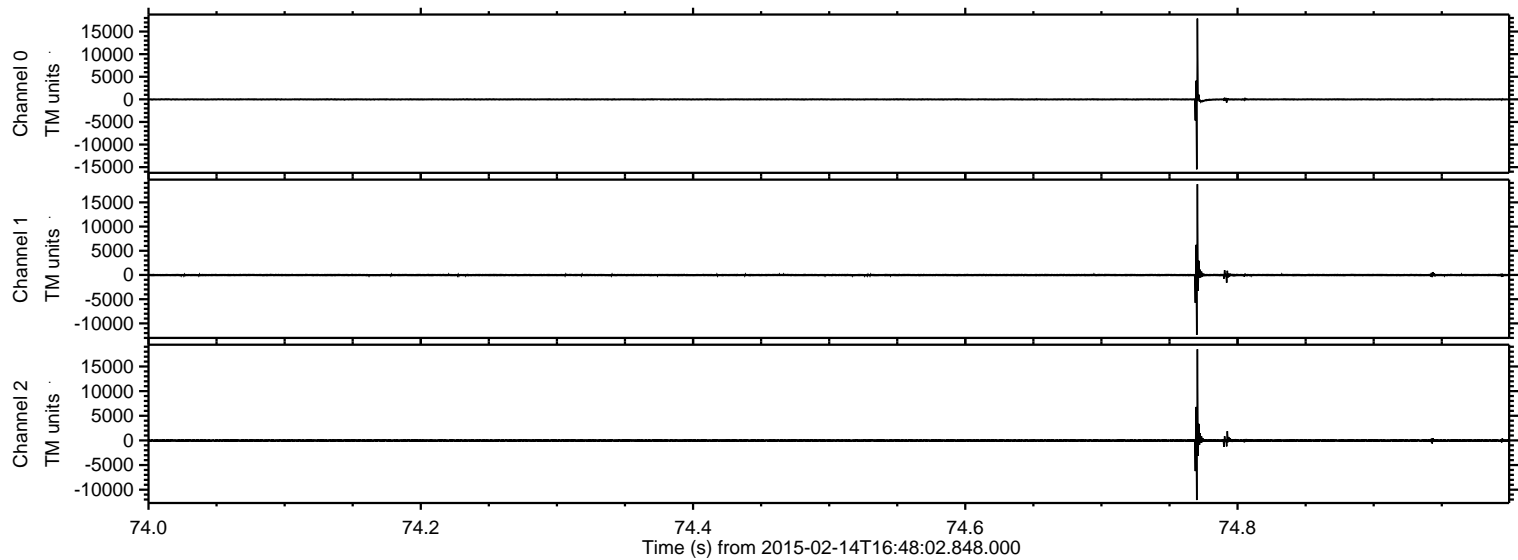


ELMAVAN 3D WAVEFORMS (Measured data sampled at 50 kHz) 49806 packets of 144 samples from 2015-02-14T16:48:02.848.000. Part 18/144

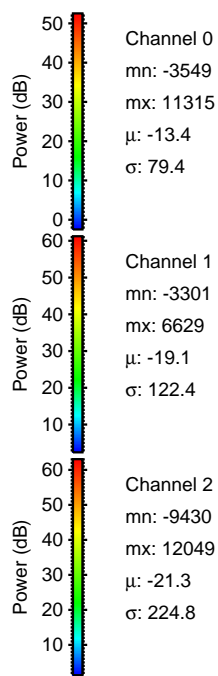
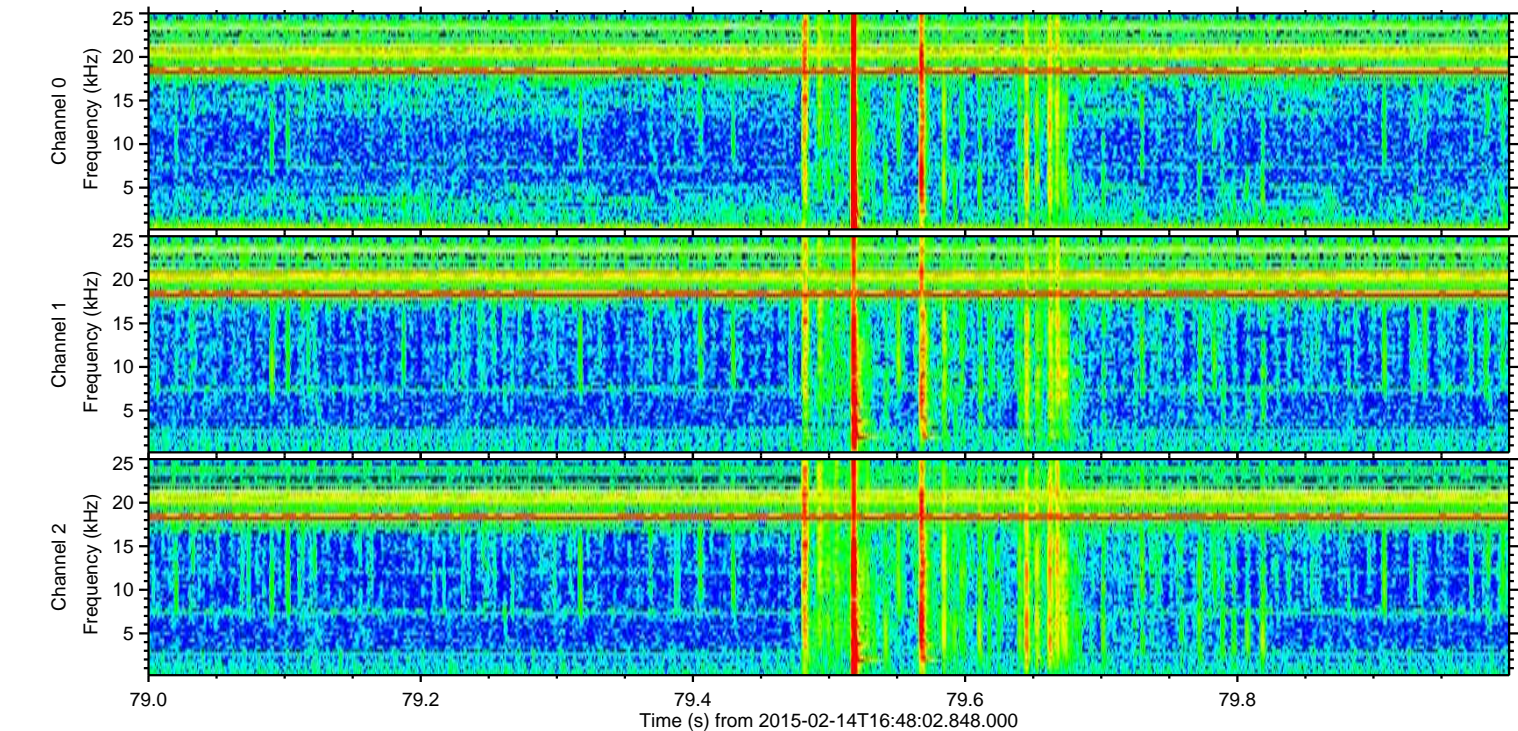
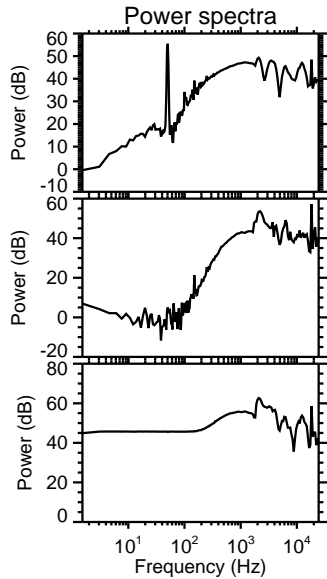
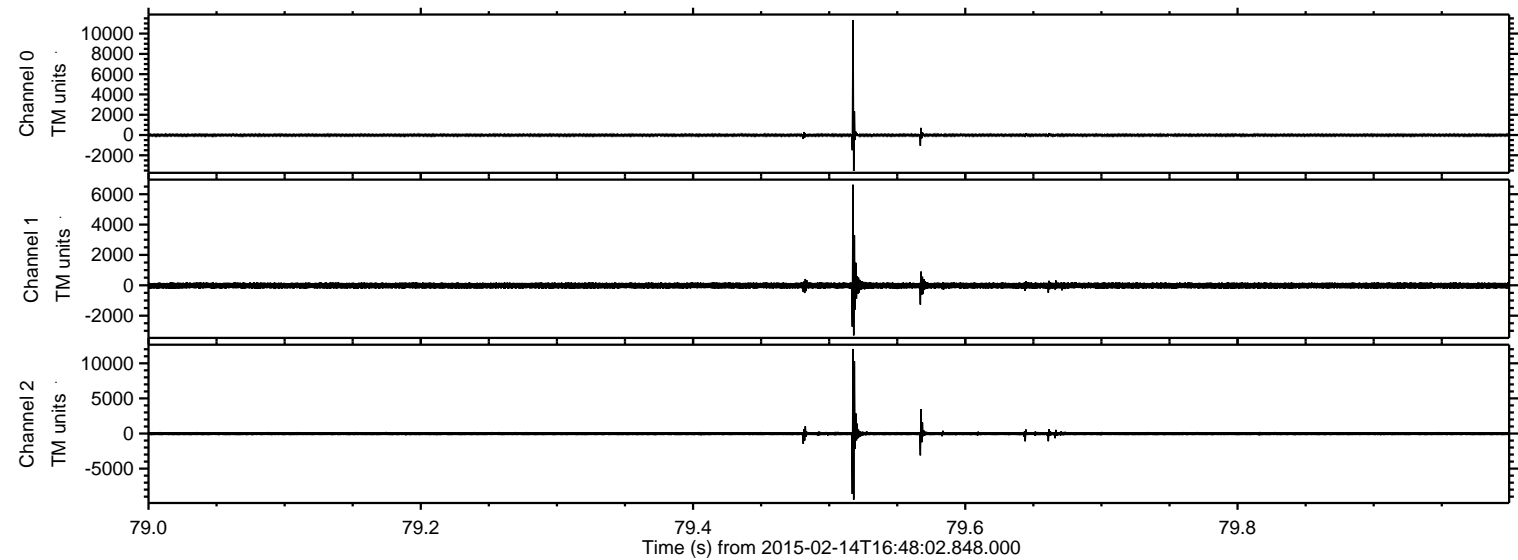
Processed Mon Feb 23 10:49:33 2015 by ELM ver.2012-10-06 from 001__elm20150214_164801__dat00.bin



Processed Mon Feb 23 10:49:35 2015 by ELM ver.2012-10-06 from 001__elm20150214_164801__dat00.bin

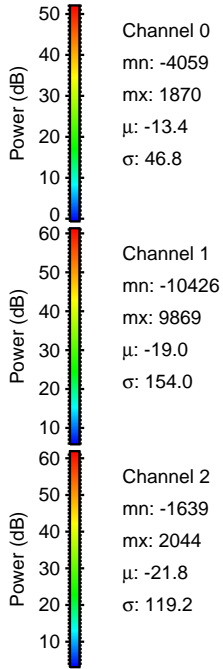
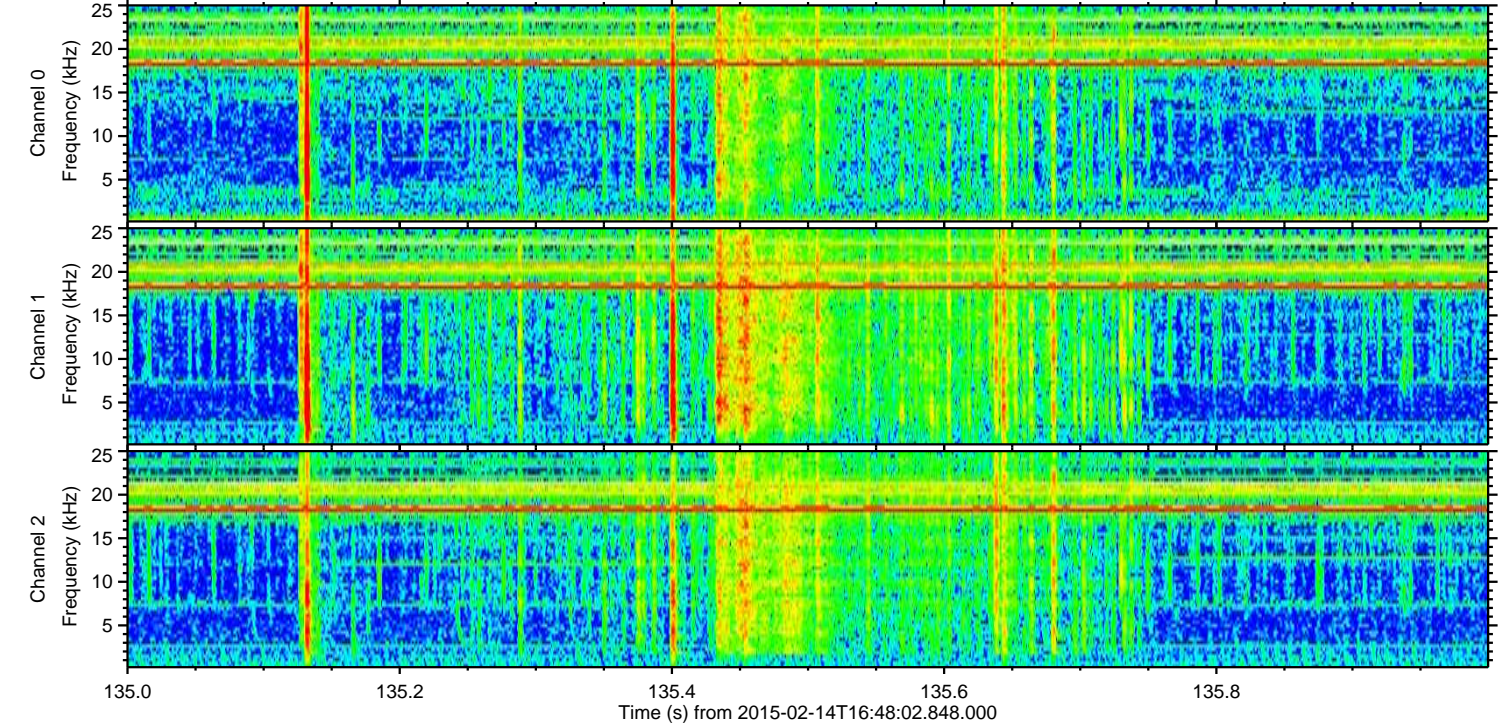
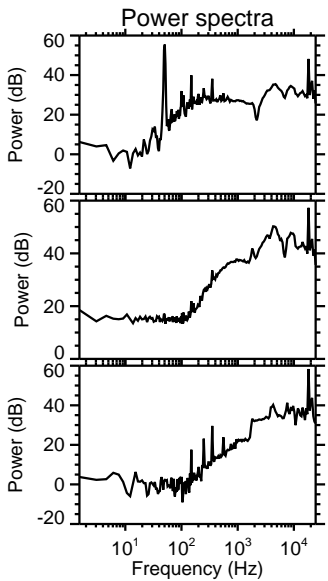
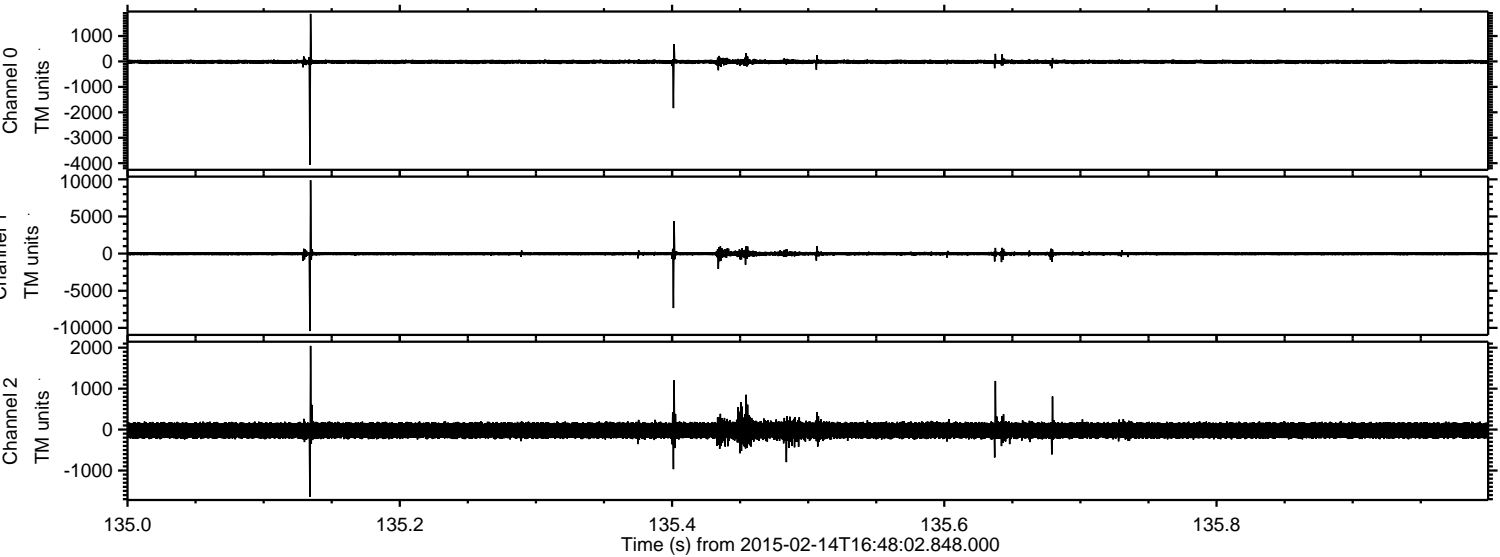


Processed Mon Feb 23 10:49:36 2015 by ELM ver.2012-10-06 from 001__elm20150214_164801__dat00.bin

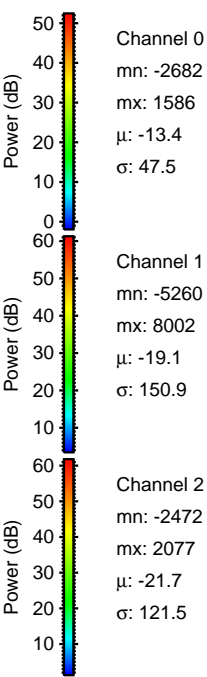
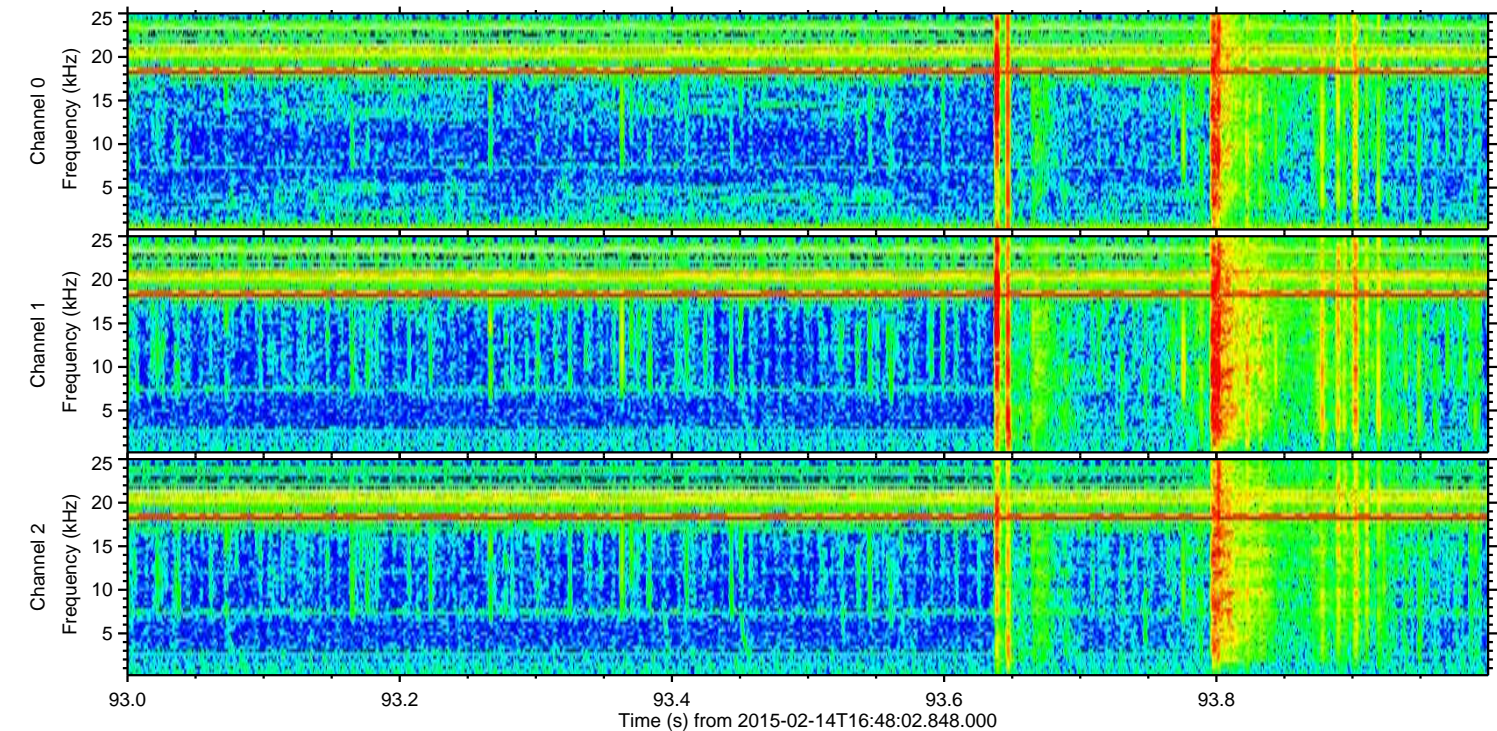
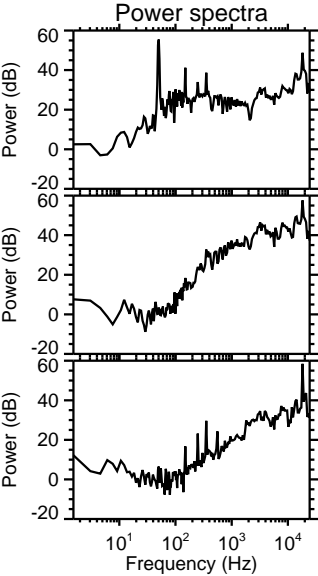
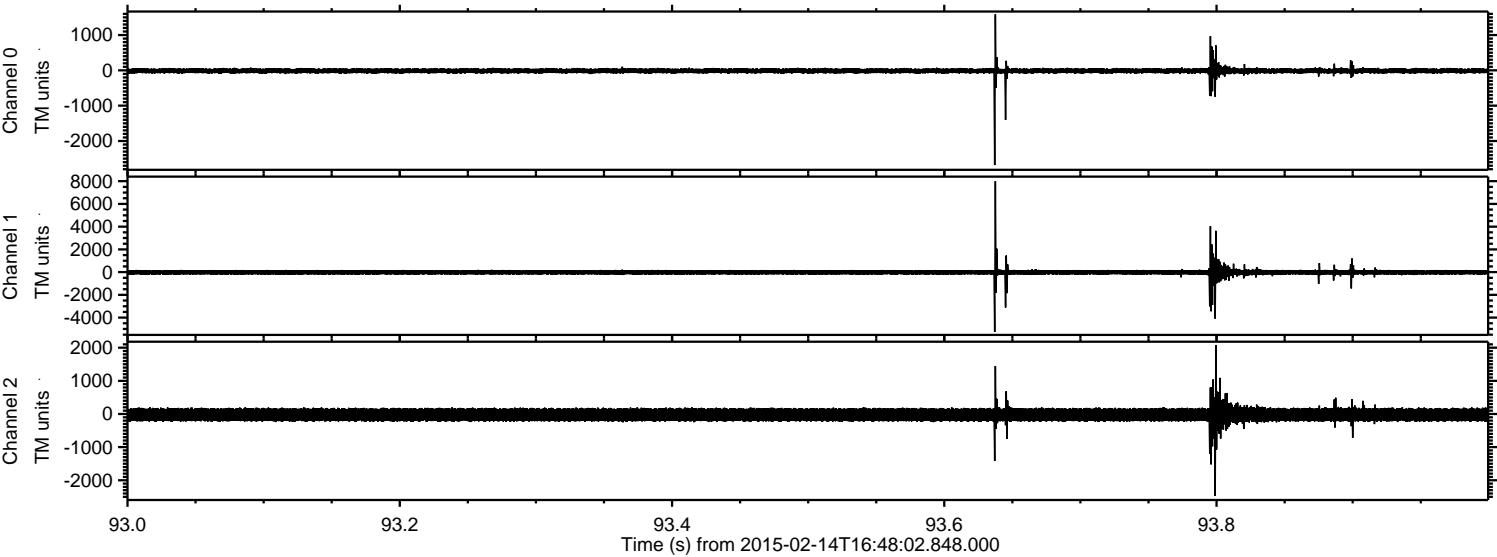


ELMAVAN 3D WAVEFORMS (Measured data sampled at 50 kHz) 49806 packets of 144 samples from 2015-02-14T16:48:02.848.000. Part 136/144

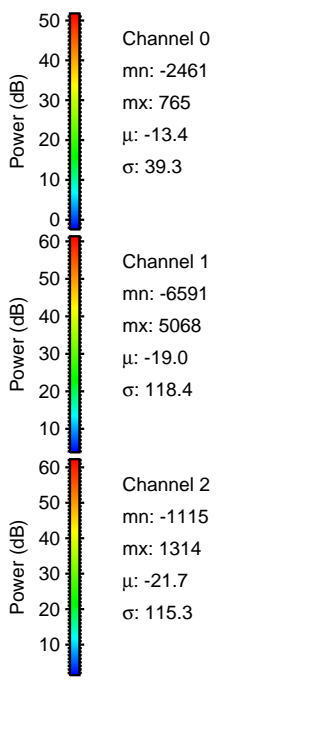
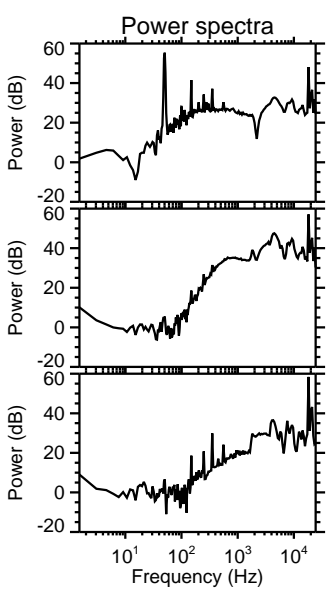
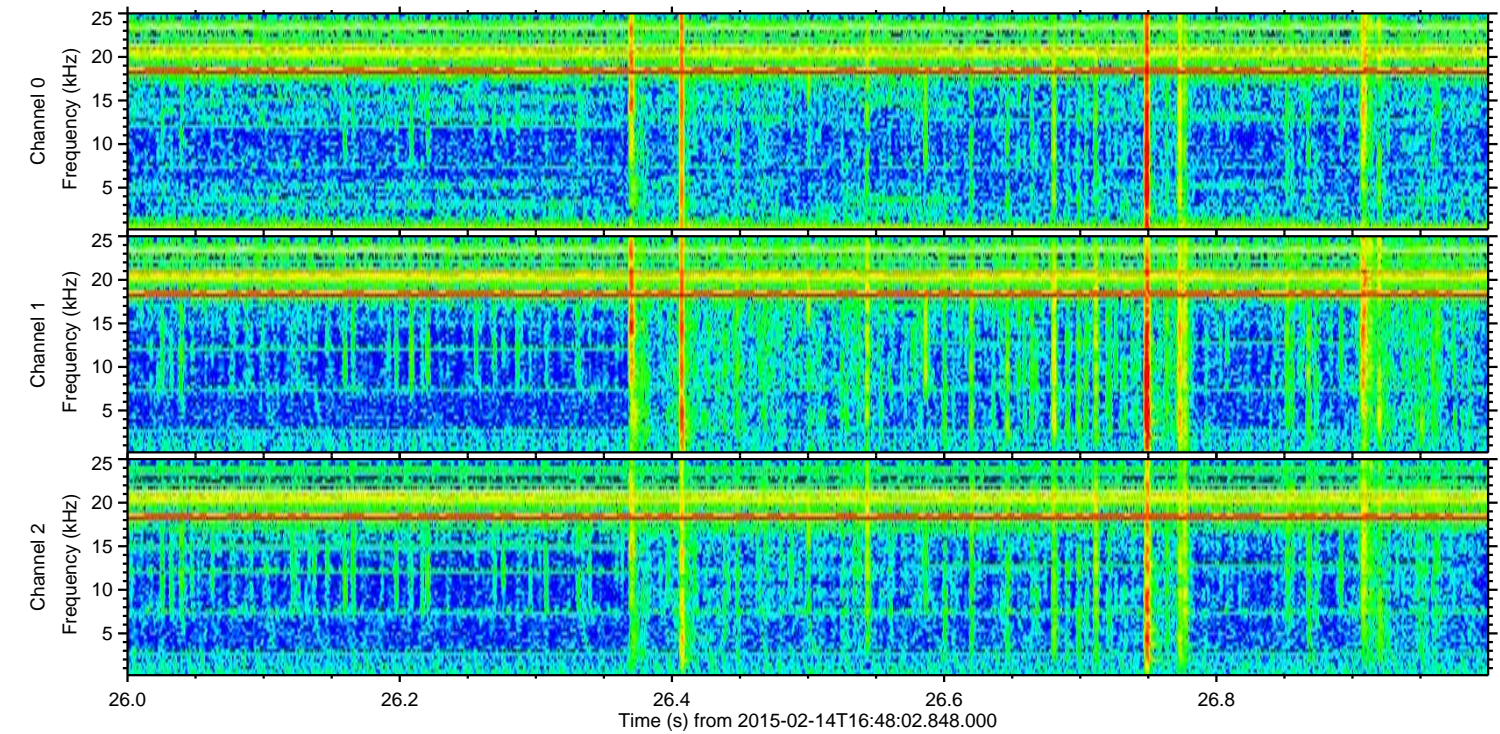
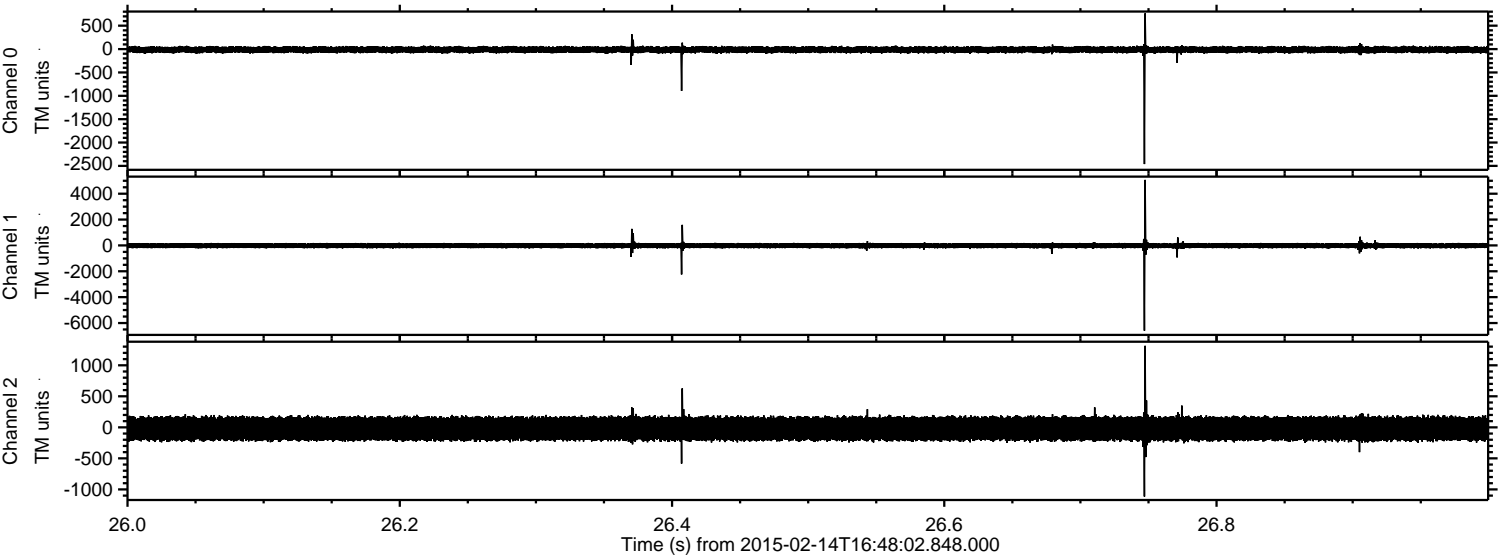
Processed Mon Feb 23 10:49:37 2015 by ELM ver.2012-10-06 from 001__elm20150214_164801__dat00.bin



Processed Mon Feb 23 10:49:39 2015 by ELM ver.2012-10-06 from 001__elm20150214_164801__dat00.bin



Processed Mon Feb 23 10:49:40 2015 by ELM ver.2012-10-06 from 001__elm20150214_164801__dat00.bin

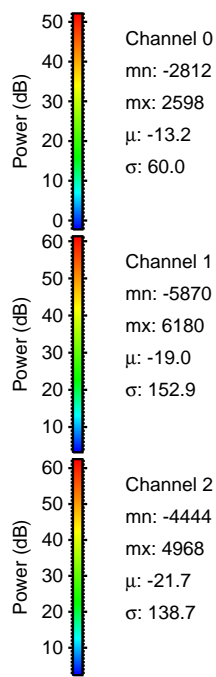
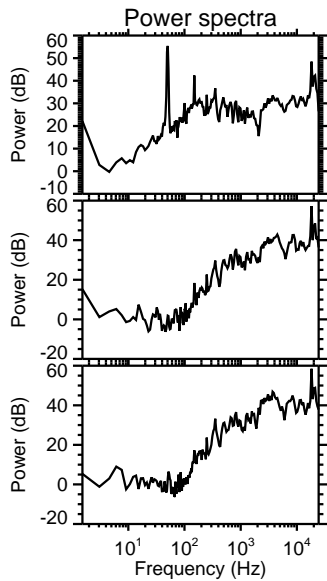
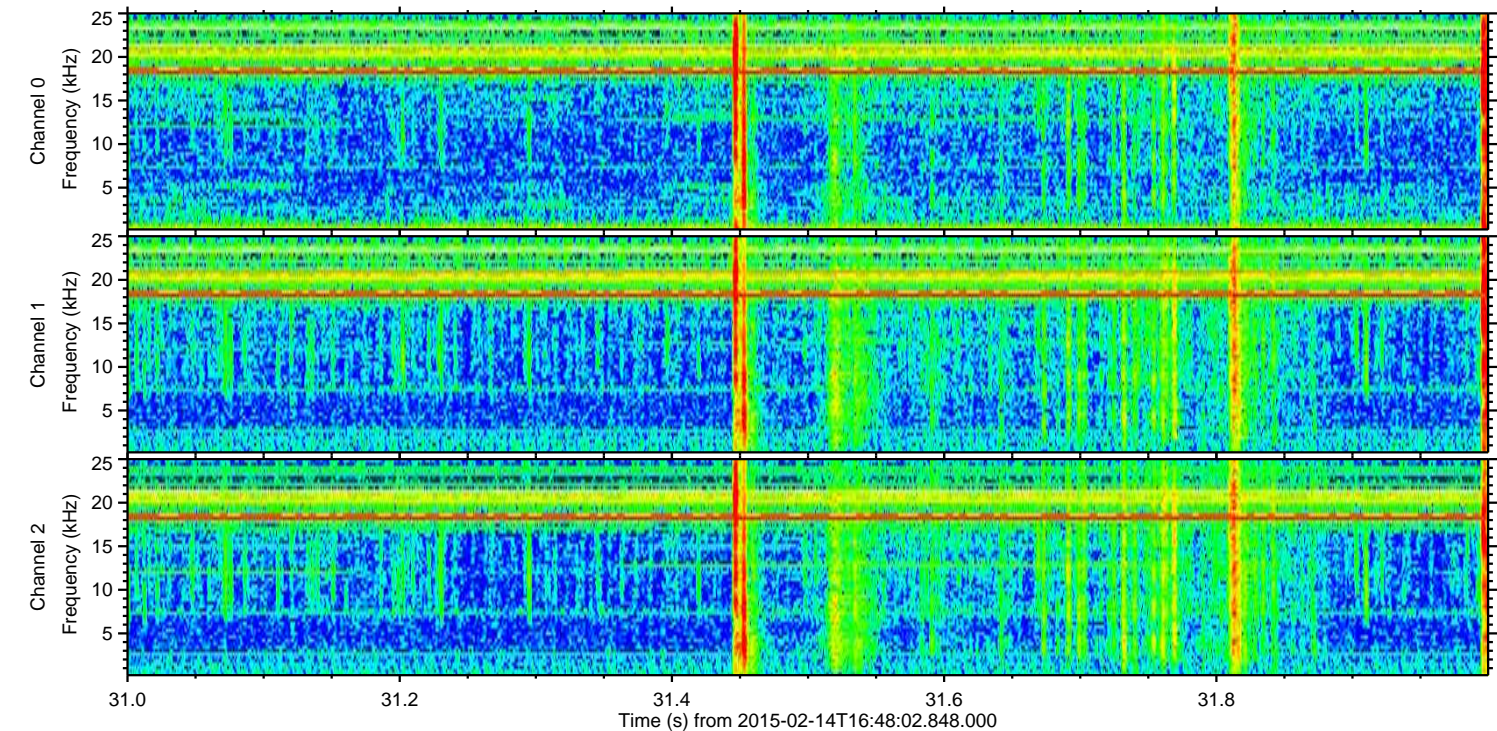
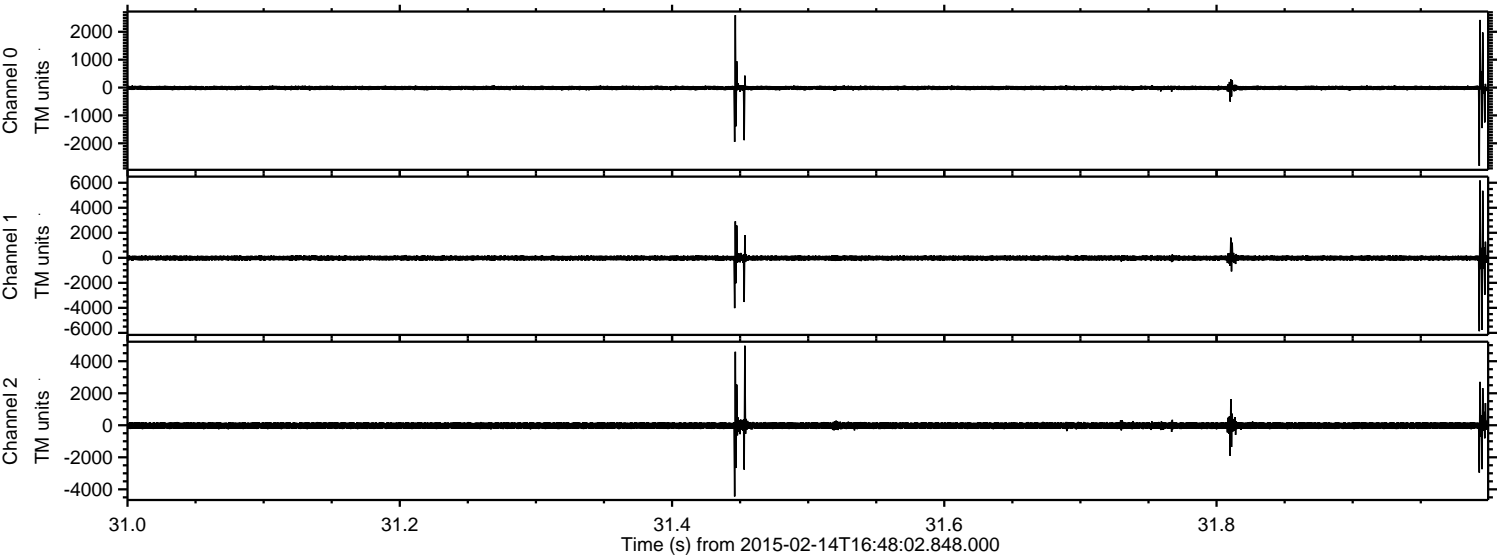


Channel 0
mn: -2461
mx: 765
 μ : -13.4
 σ : 39.3

Channel 1
mn: -6591
mx: 5068
 μ : -19.0
 σ : 118.4

Channel 2
mn: -1115
mx: 1314
 μ : -21.7
 σ : 115.3

Processed Mon Feb 23 10:49:41 2015 by ELM ver.2012-10-06 from 001__elm20150214_164801__dat00.bin

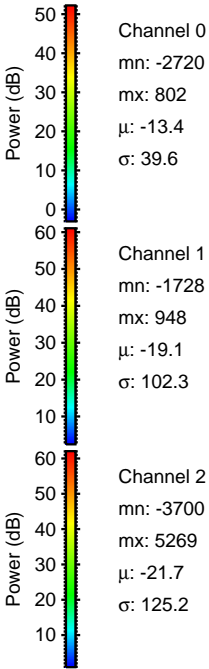
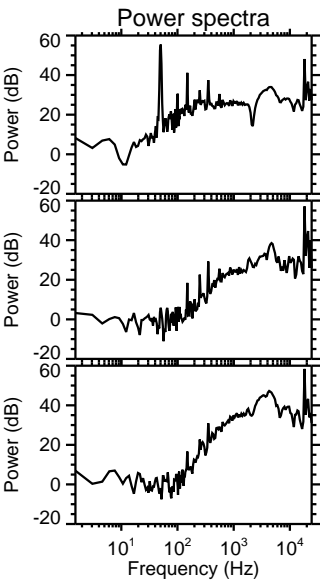
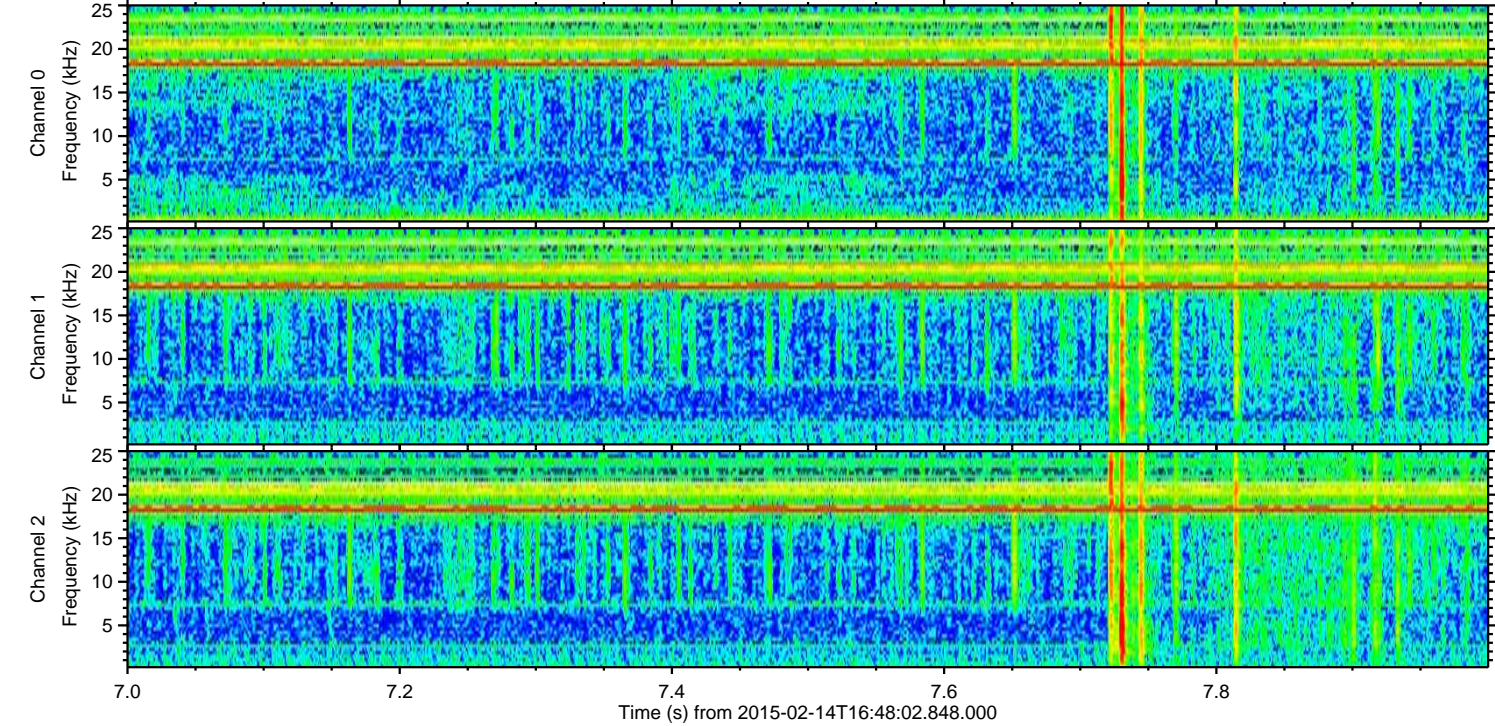
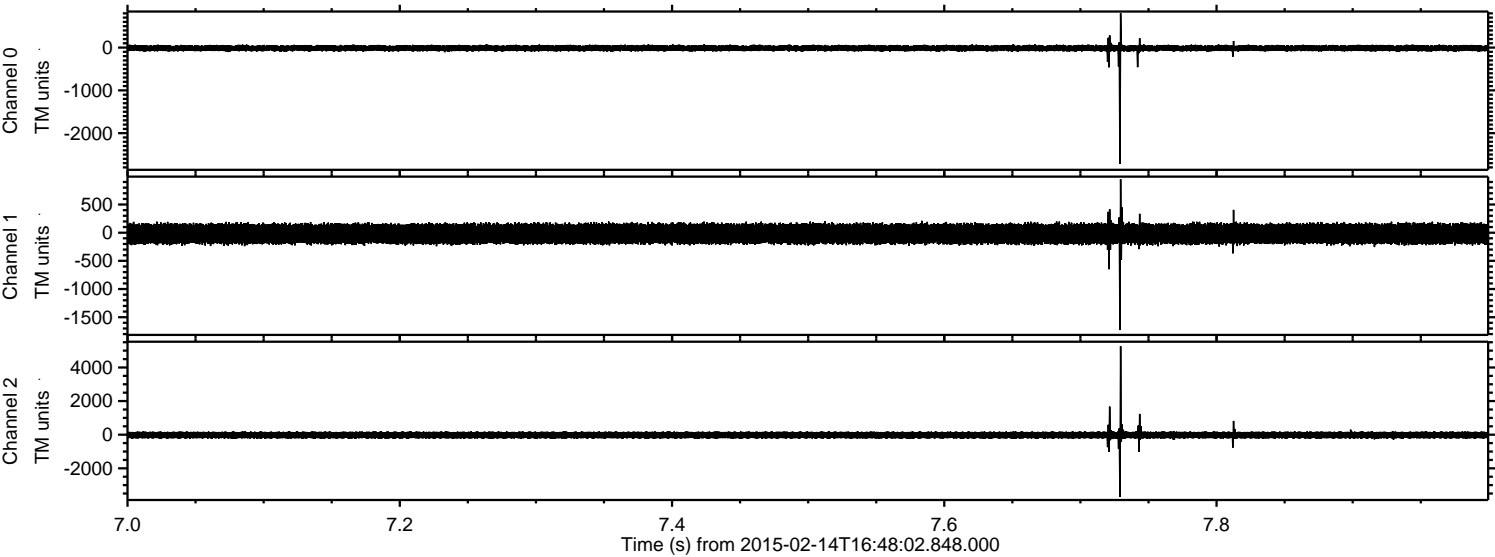


Channel 0
mn: -2812
mx: 2598
 μ : -13.2
 σ : 60.0

Channel 1
mn: -5870
mx: 6180
 μ : -19.0
 σ : 152.9

Channel 2
mn: -4444
mx: 4968
 μ : -21.7
 σ : 138.7

Processed Mon Feb 23 10:49:42 2015 by ELM ver.2012-10-06 from 001__elm20150214_164801__dat00.bin



Channel 0
mn: -2720
mx: 802
 μ : -13.4
 σ : 39.6

Channel 1
mn: -1728
mx: 948
 μ : -19.1
 σ : 102.3

Channel 2
mn: -3700
mx: 5269
 μ : -21.7
 σ : 125.2

Processed Mon Feb 23 10:49:43 2015 by ELM ver.2012-10-06 from 001__elm20150214_164801__dat00.bin

