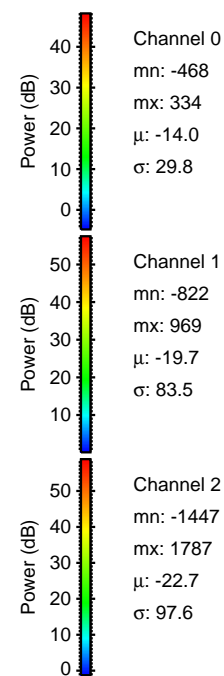
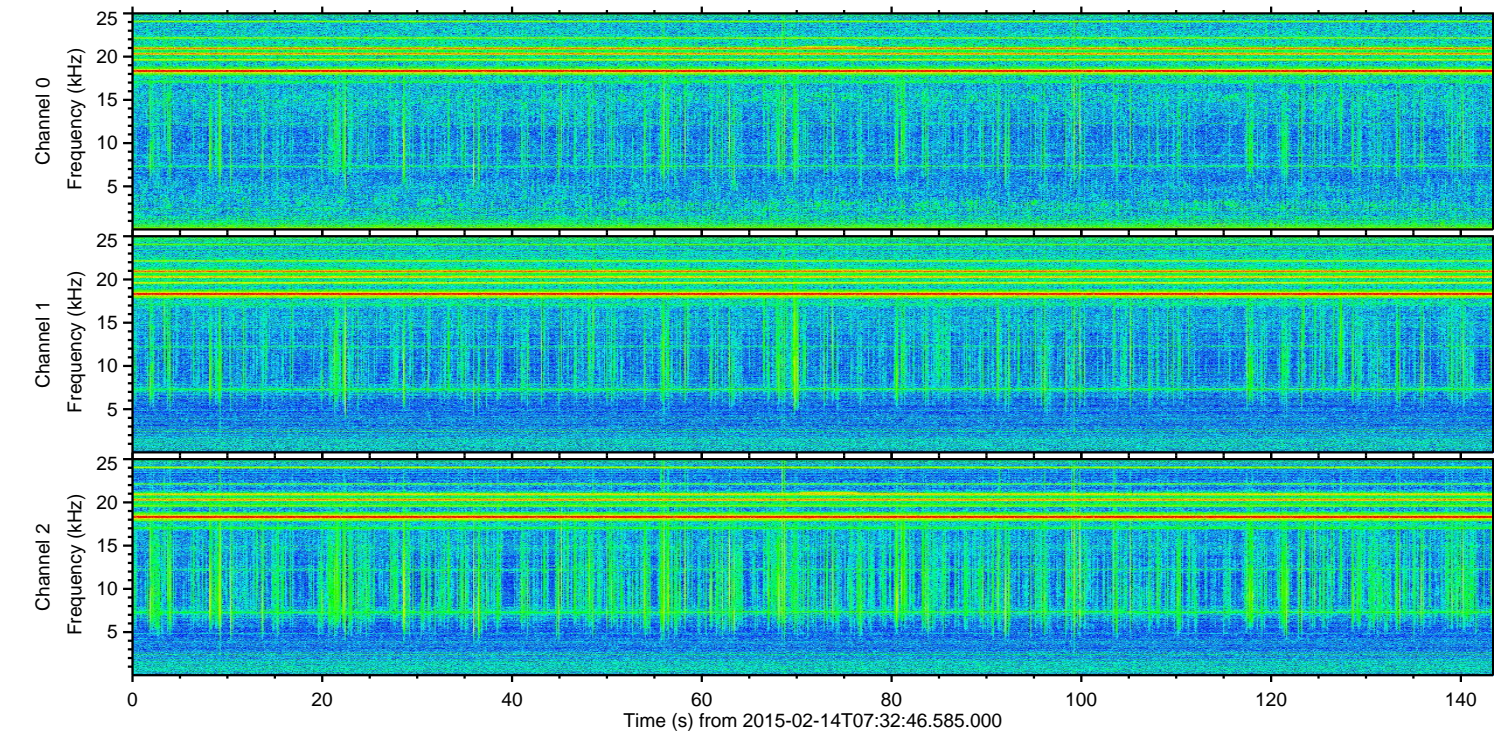
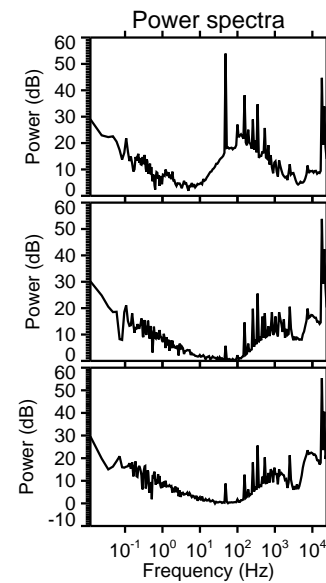
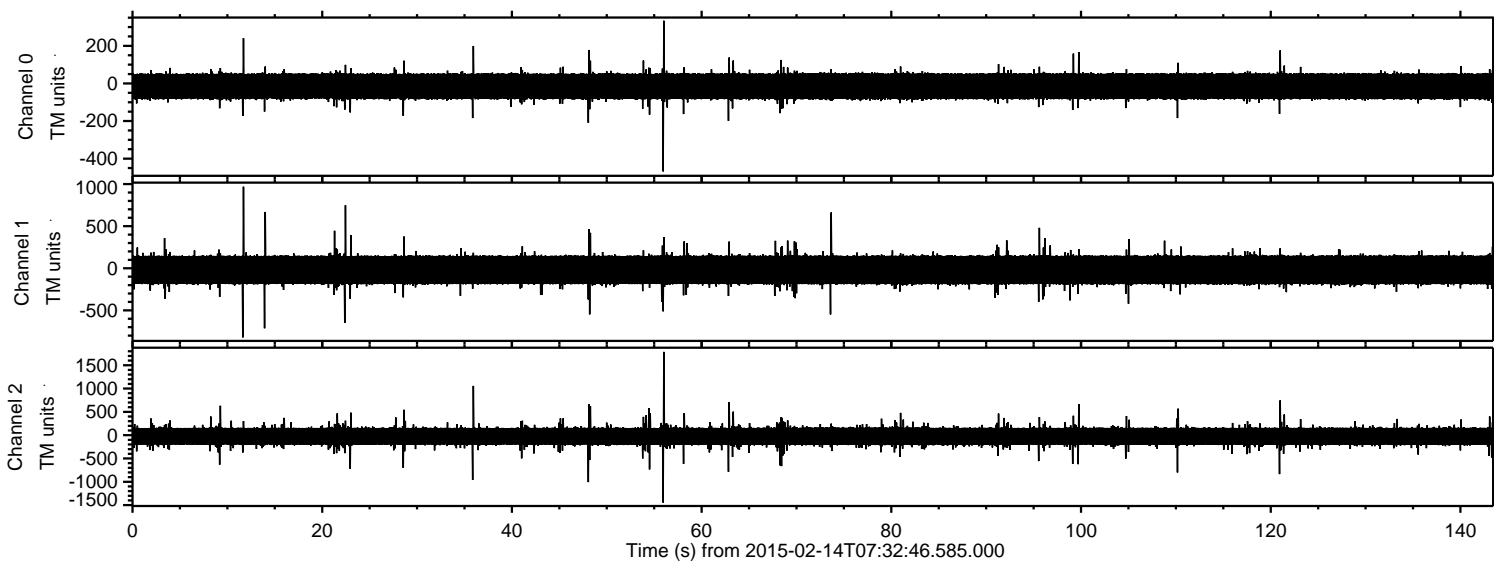


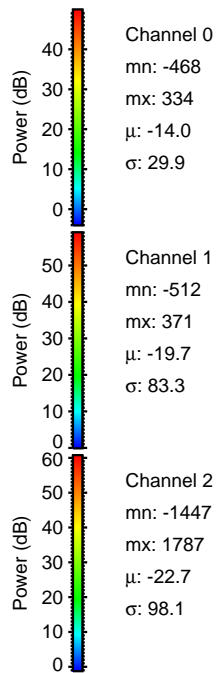
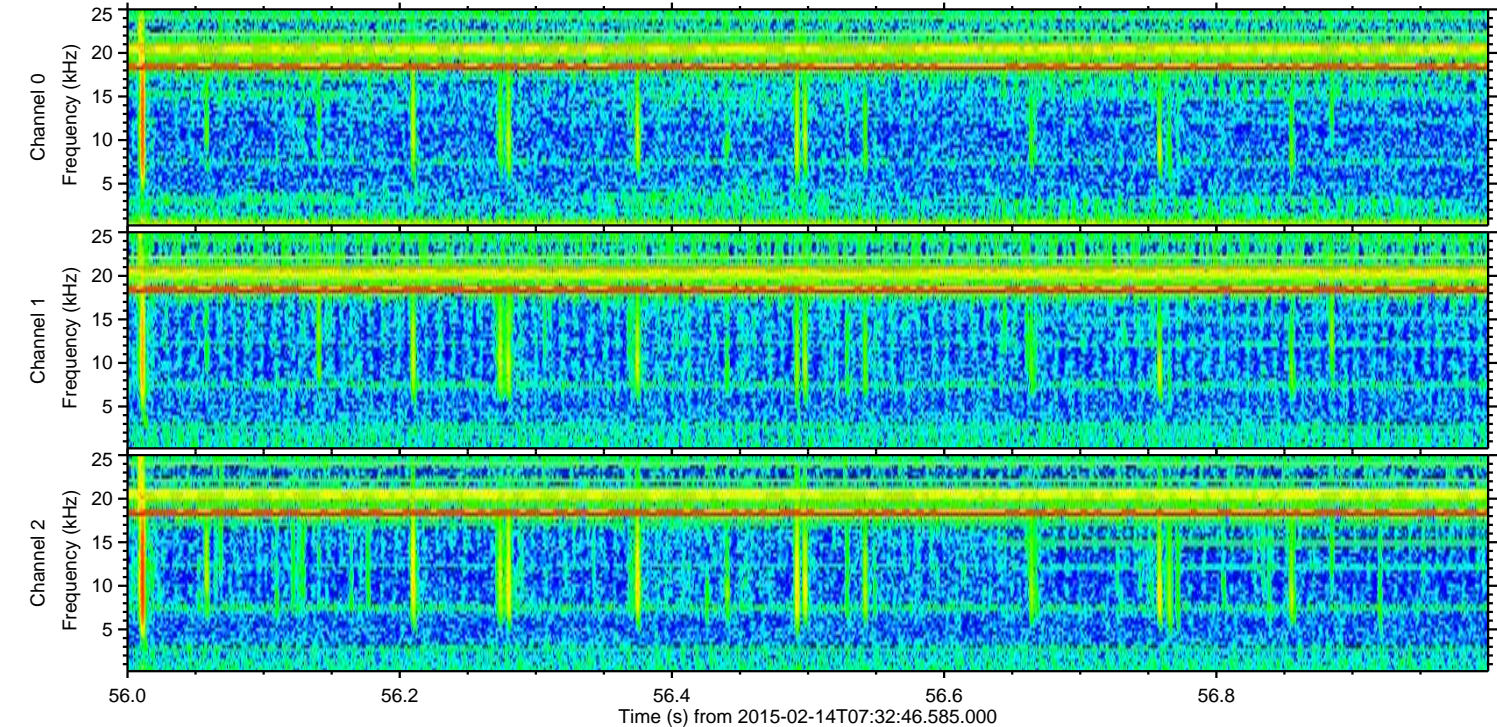
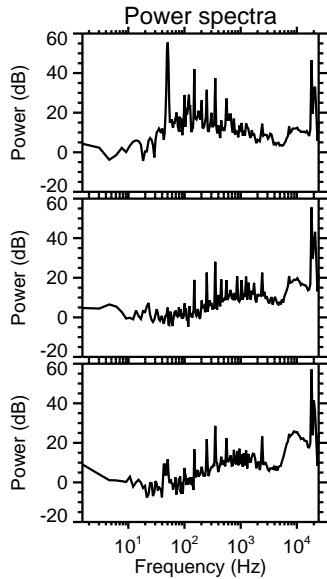
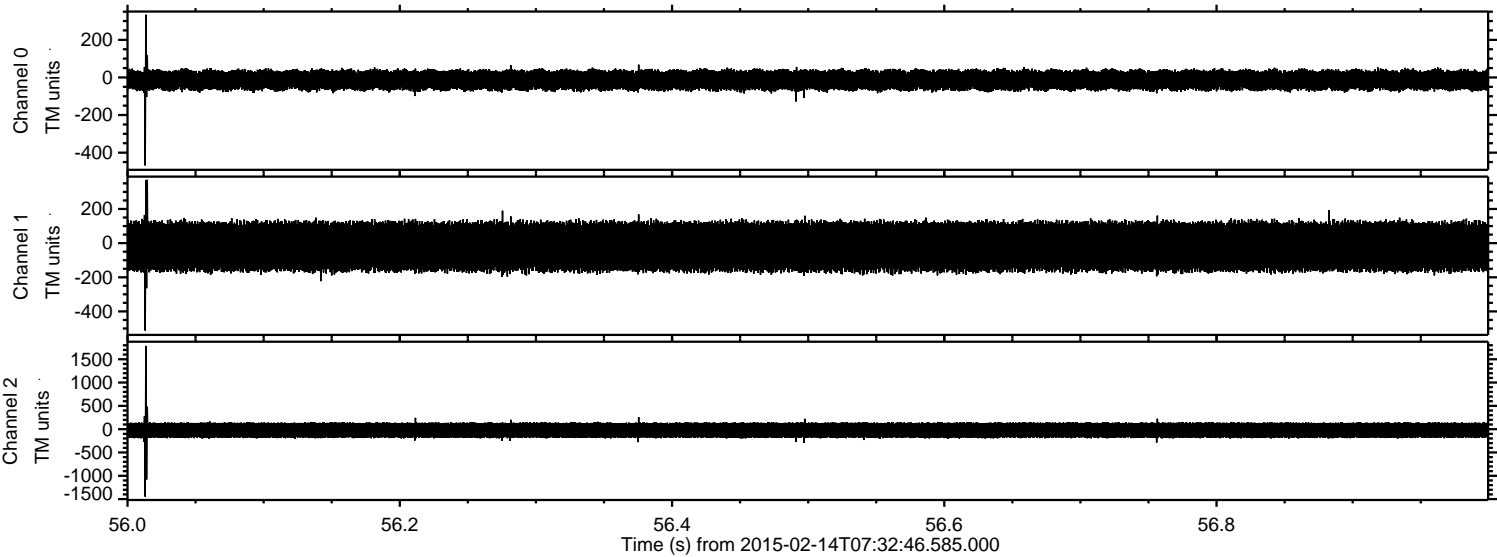
# ELMAVAN 3D WAVEFORMS (Measured data sampled at 50 kHz) 49809 packets of 144 samples from 2015-02-14T07:32:46.585.000.

Processed Mon Feb 23 08:47:18 2015 by ELM ver.2012-10-06 from 001\_\_elm20150214\_073245\_\_dat00.bin



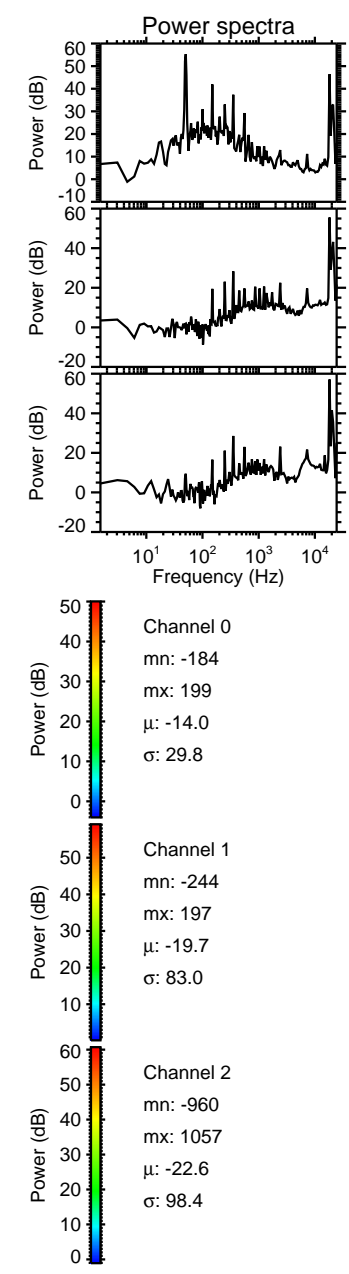
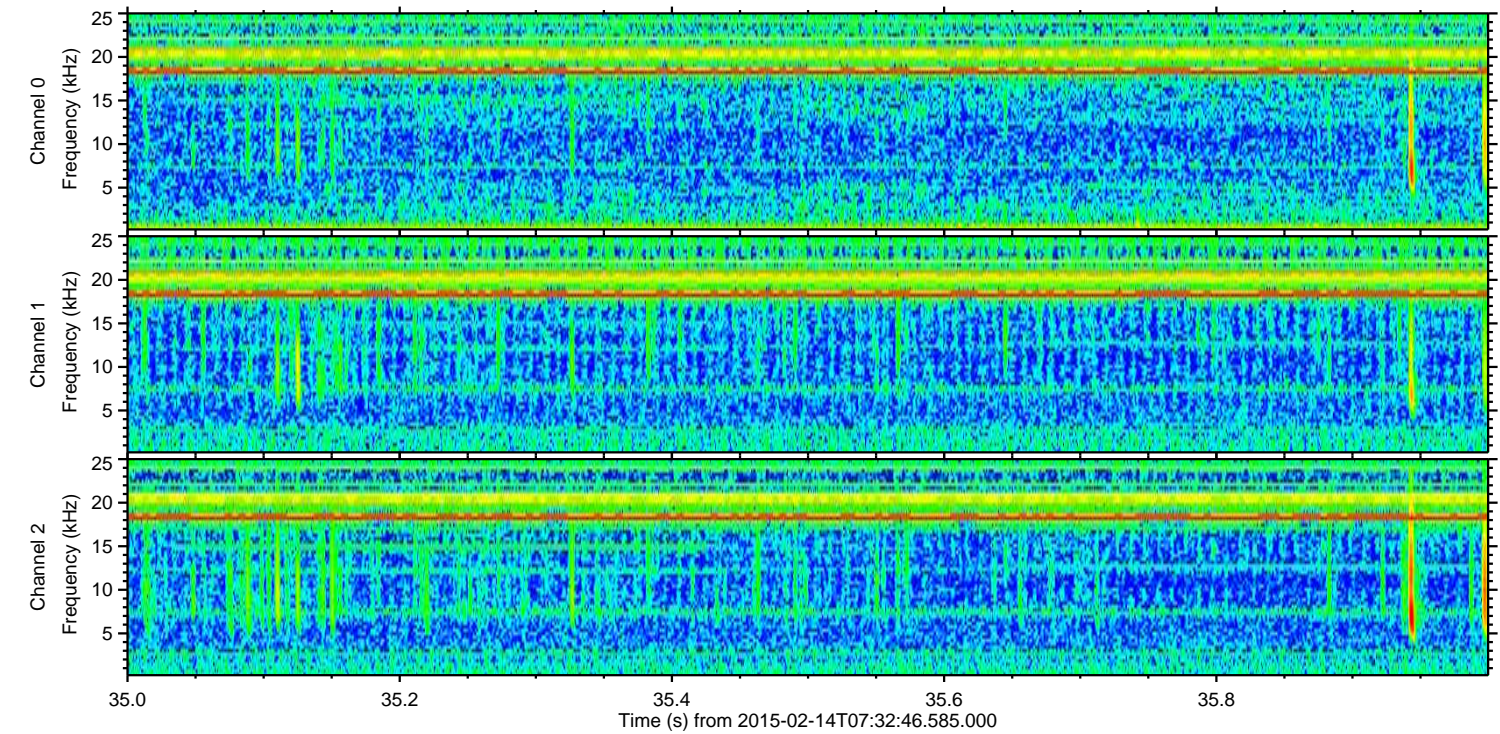
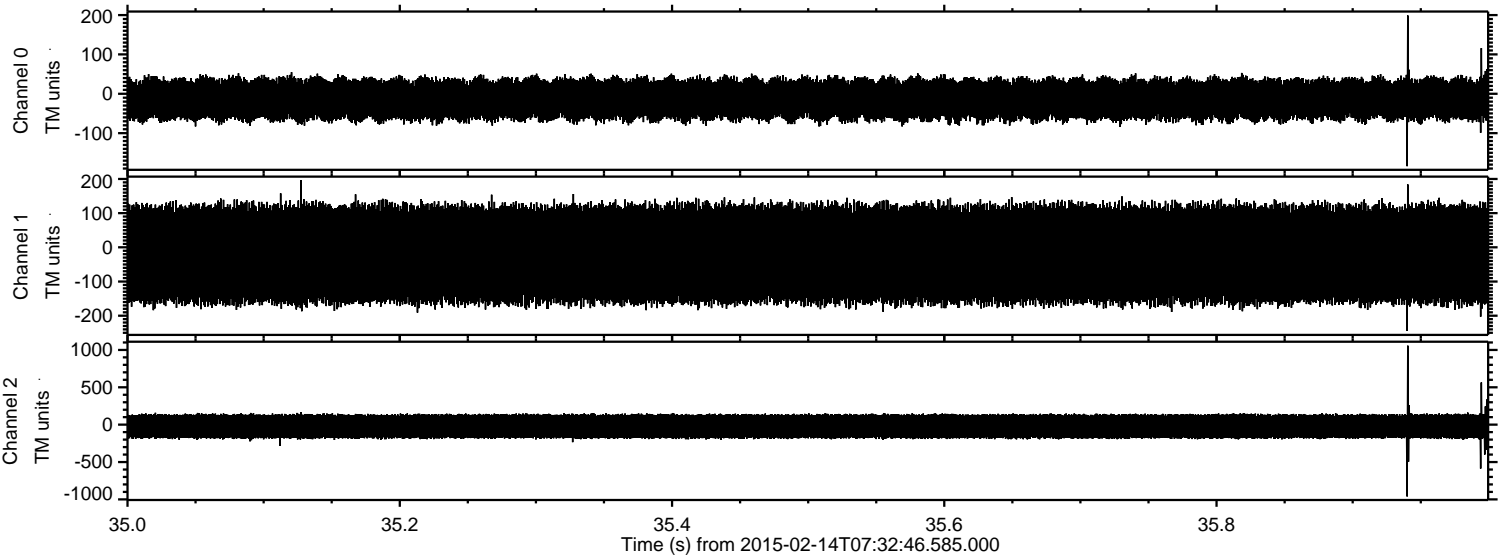


Processed Mon Feb 23 08:47:35 2015 by ELM ver.2012-10-06 from 001\_\_elm20150214\_073245\_\_dat00.bin



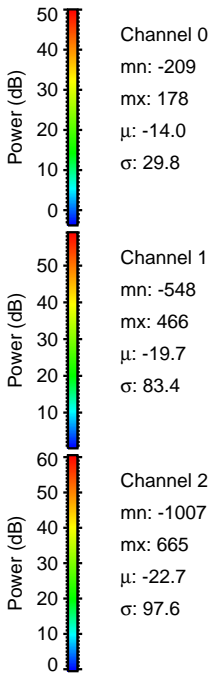
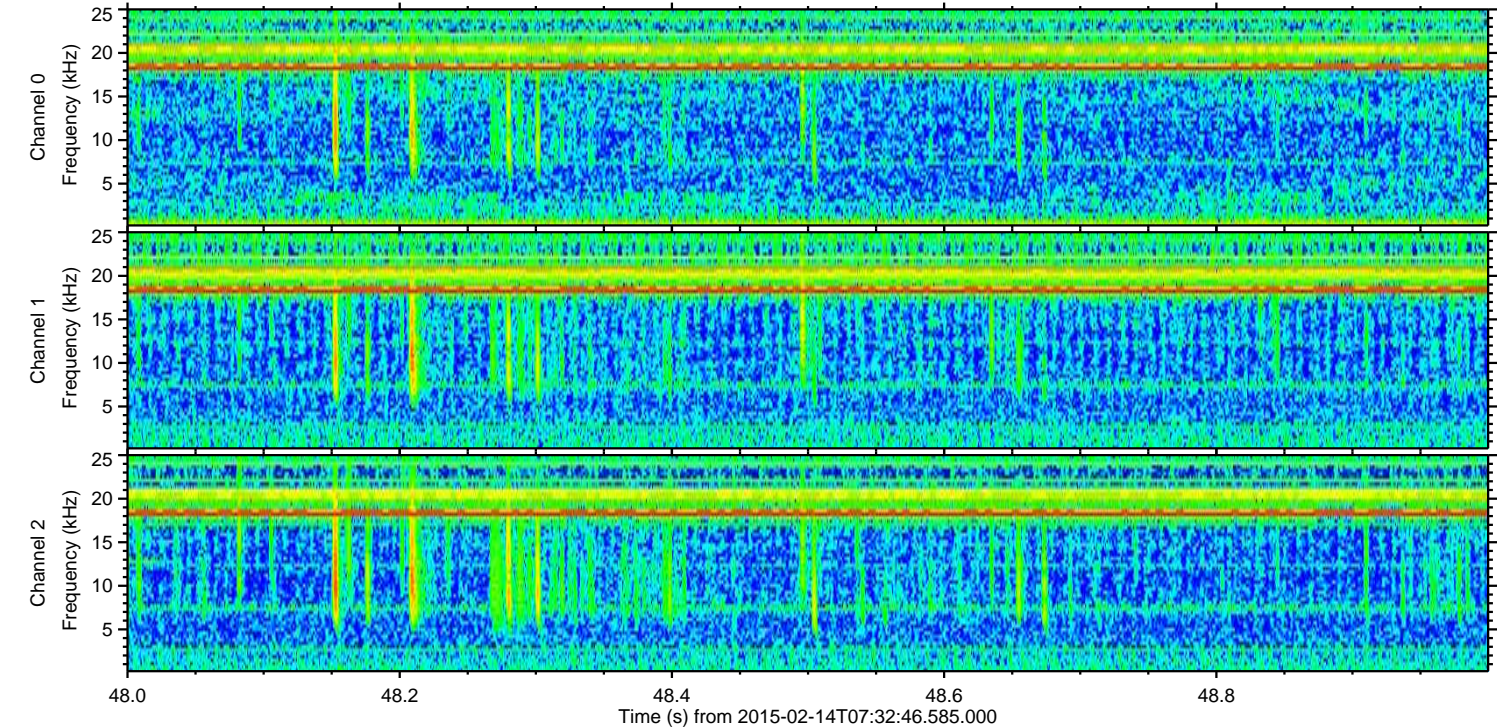
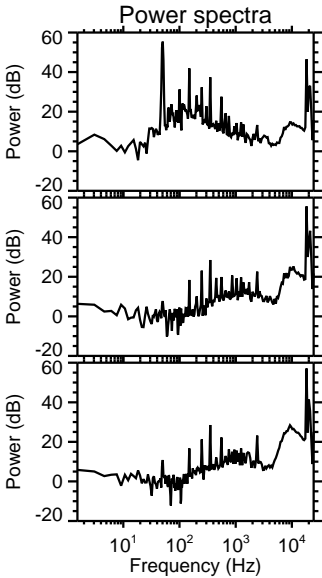
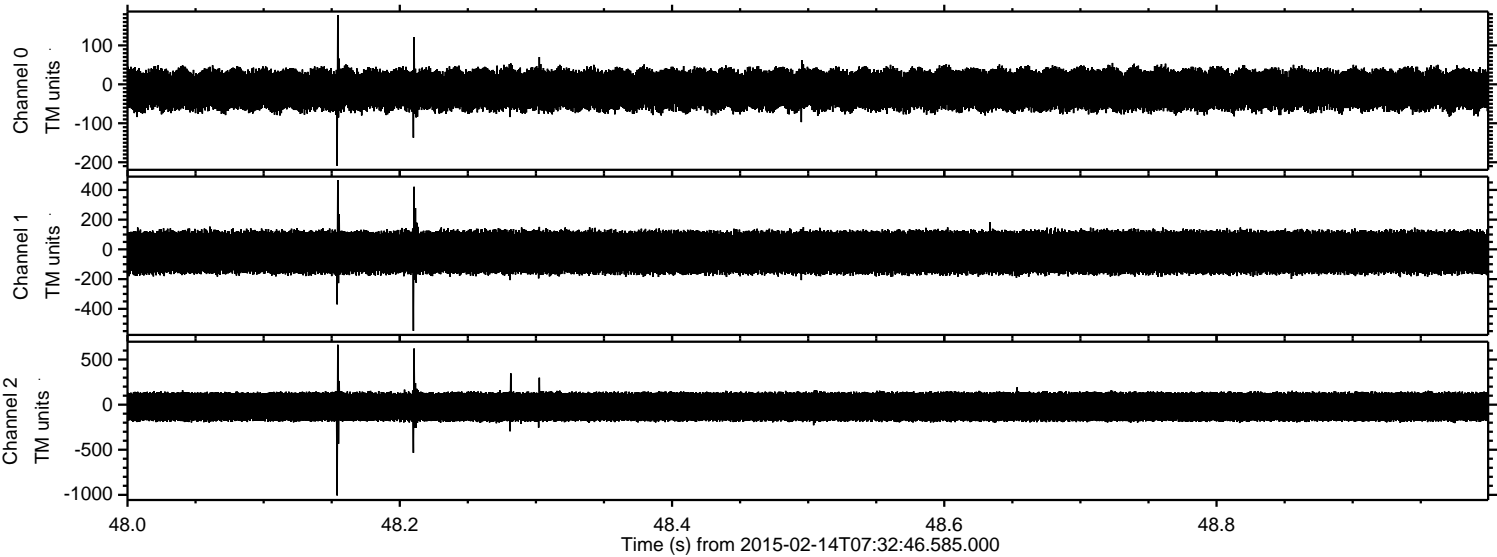


Processed Mon Feb 23 08:47:36 2015 by ELM ver.2012-10-06 from 001\_\_elm20150214\_073245\_\_dat00.bin



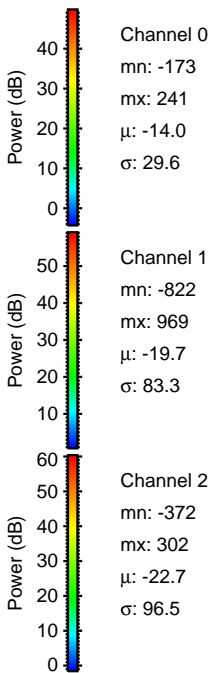
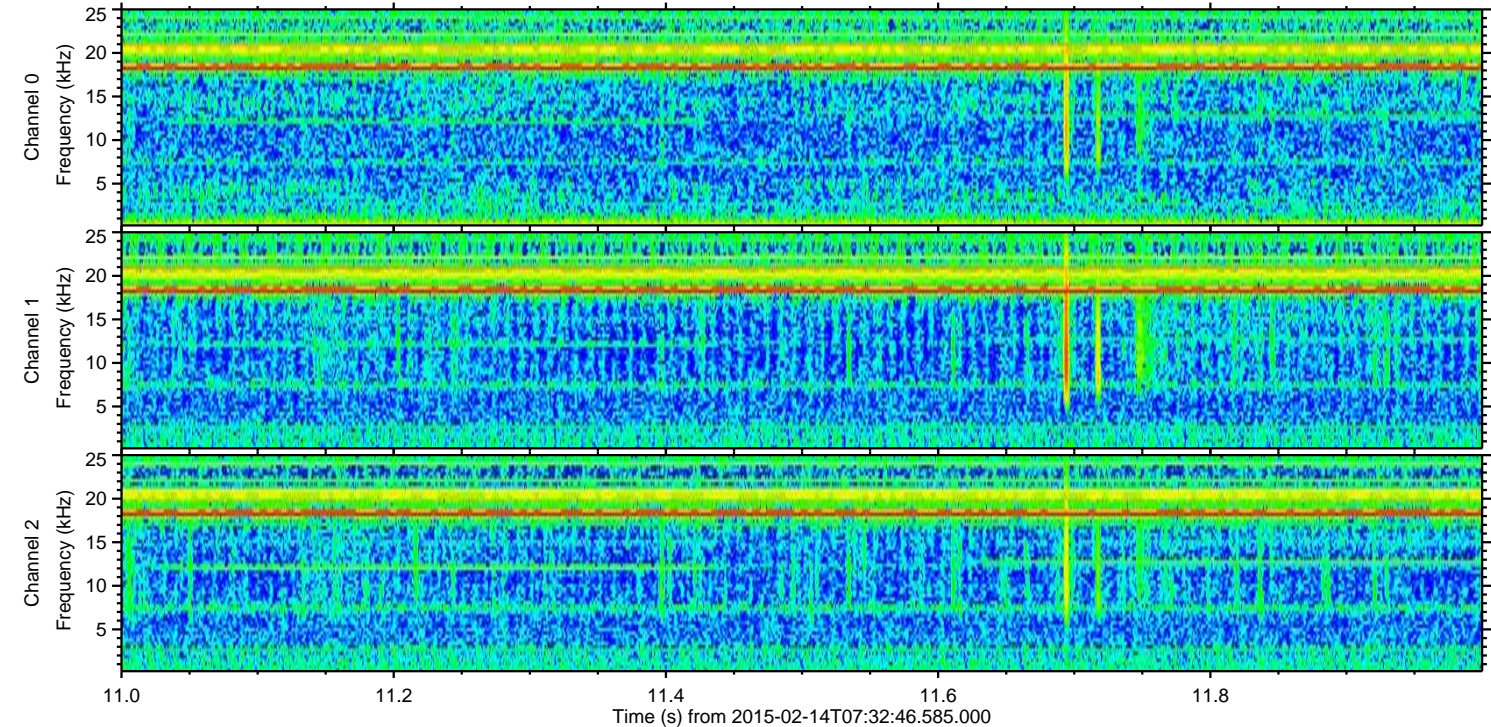
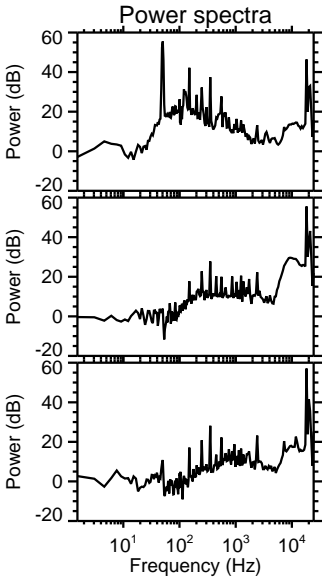
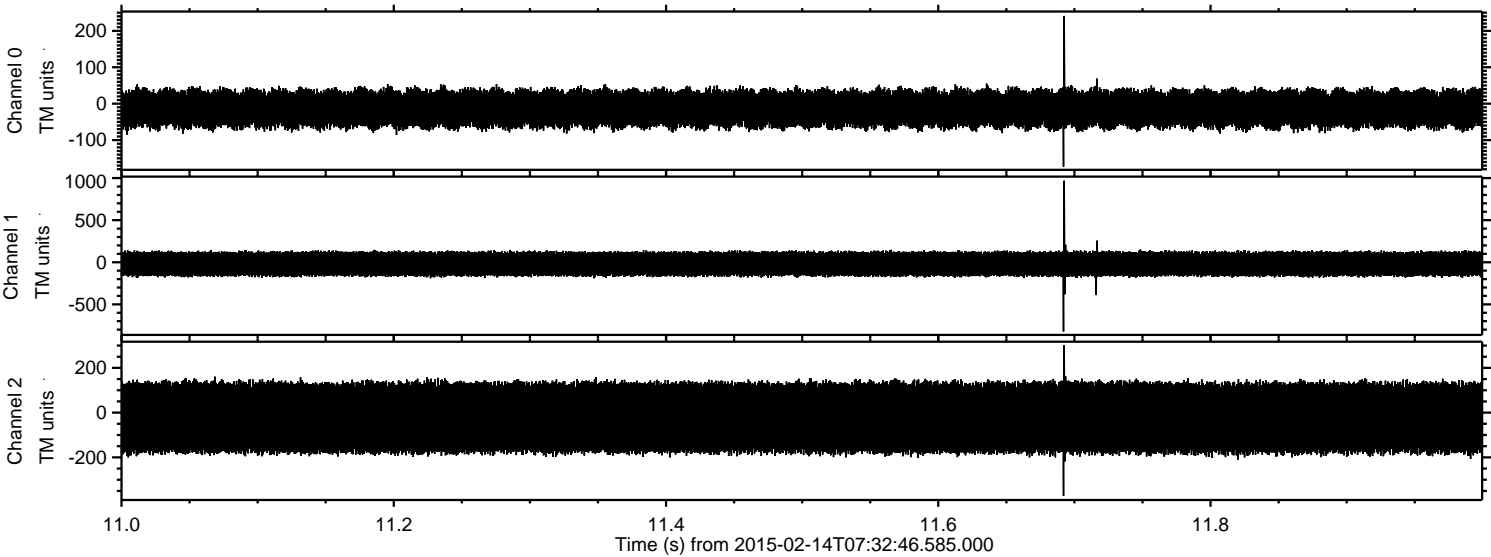


Processed Mon Feb 23 08:47:37 2015 by ELM ver.2012-10-06 from 001\_\_elm20150214\_073245\_\_dat00.bin





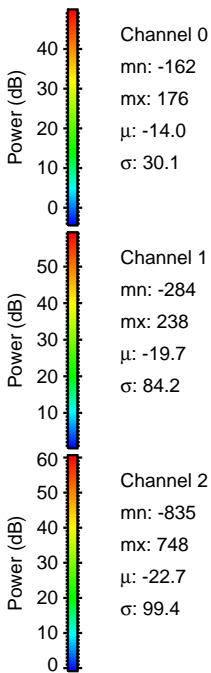
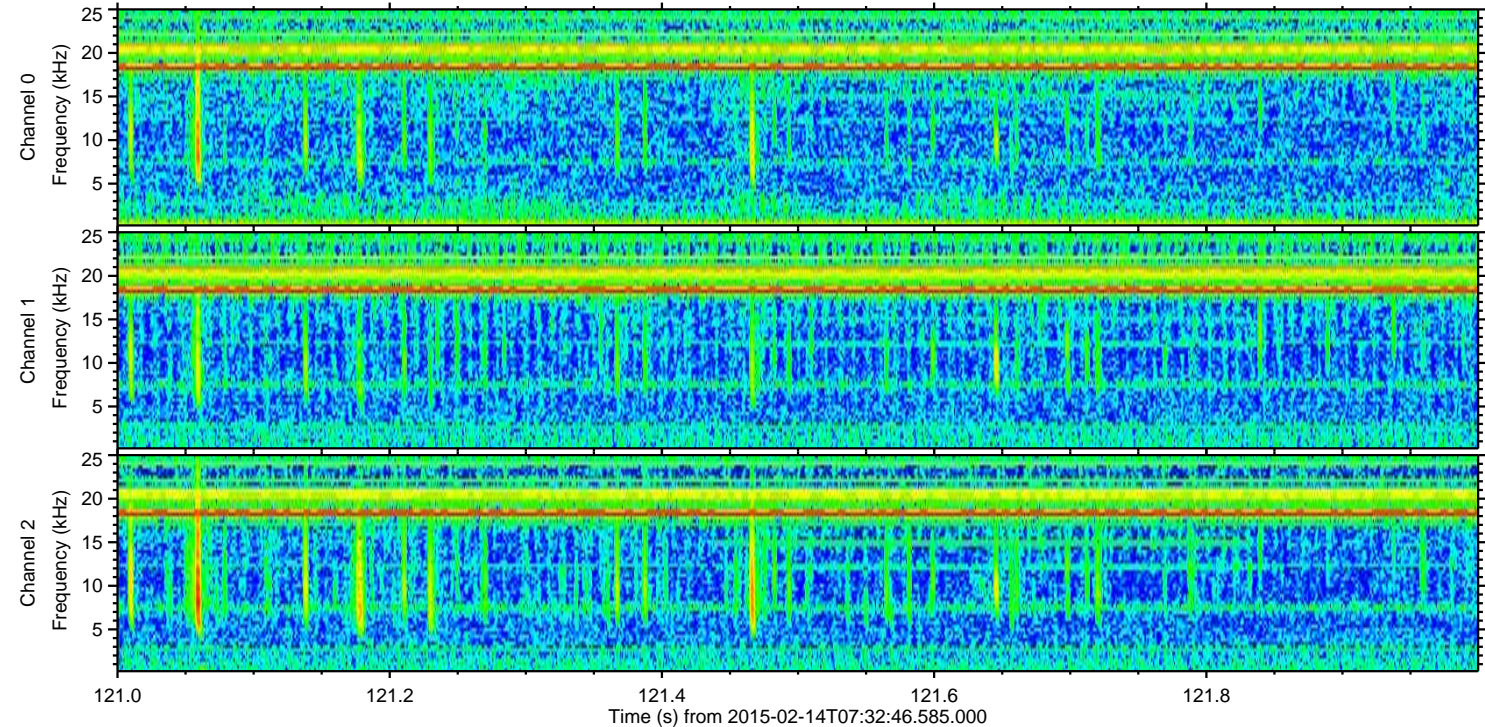
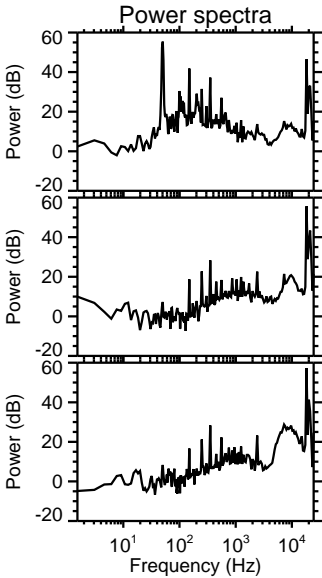
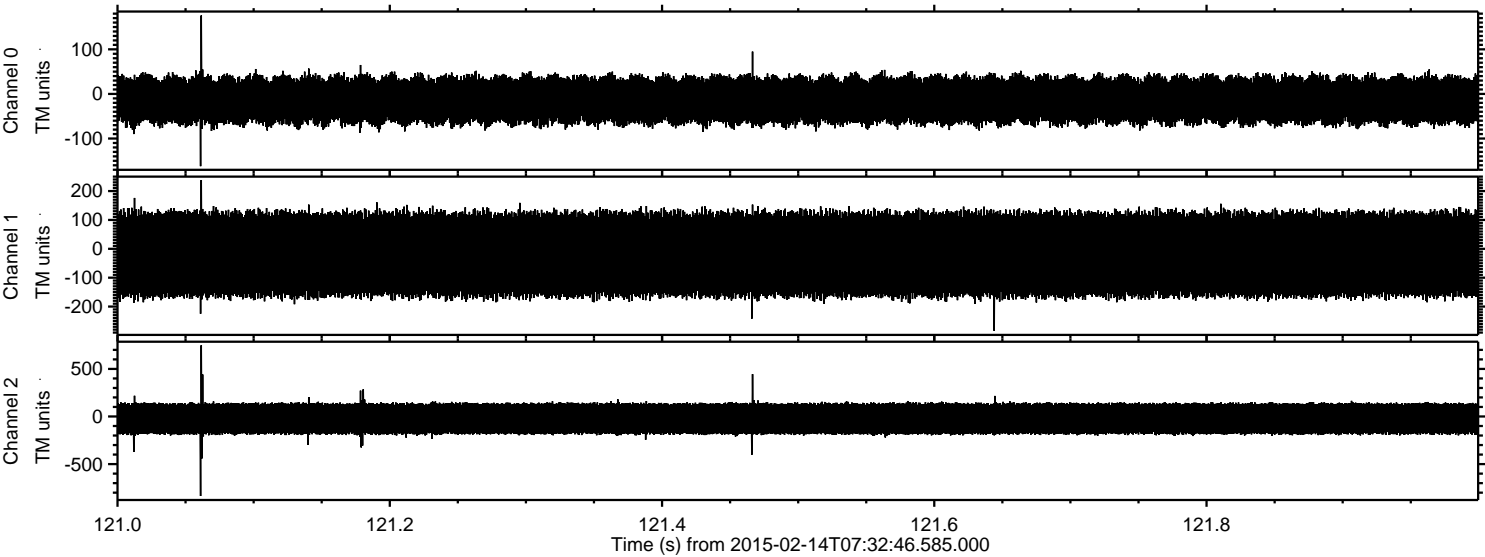
Processed Mon Feb 23 08:47:38 2015 by ELM ver.2012-10-06 from 001\_\_elm20150214\_073245\_\_dat00.bin





ELMAVAN 3D WAVEFORMS (Measured data sampled at 50 kHz) 49809 packets of 144 samples from 2015-02-14T07:32:46.585.000. Part 122/144

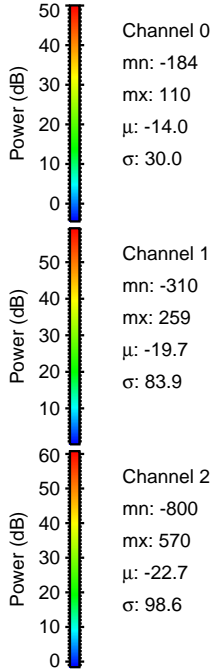
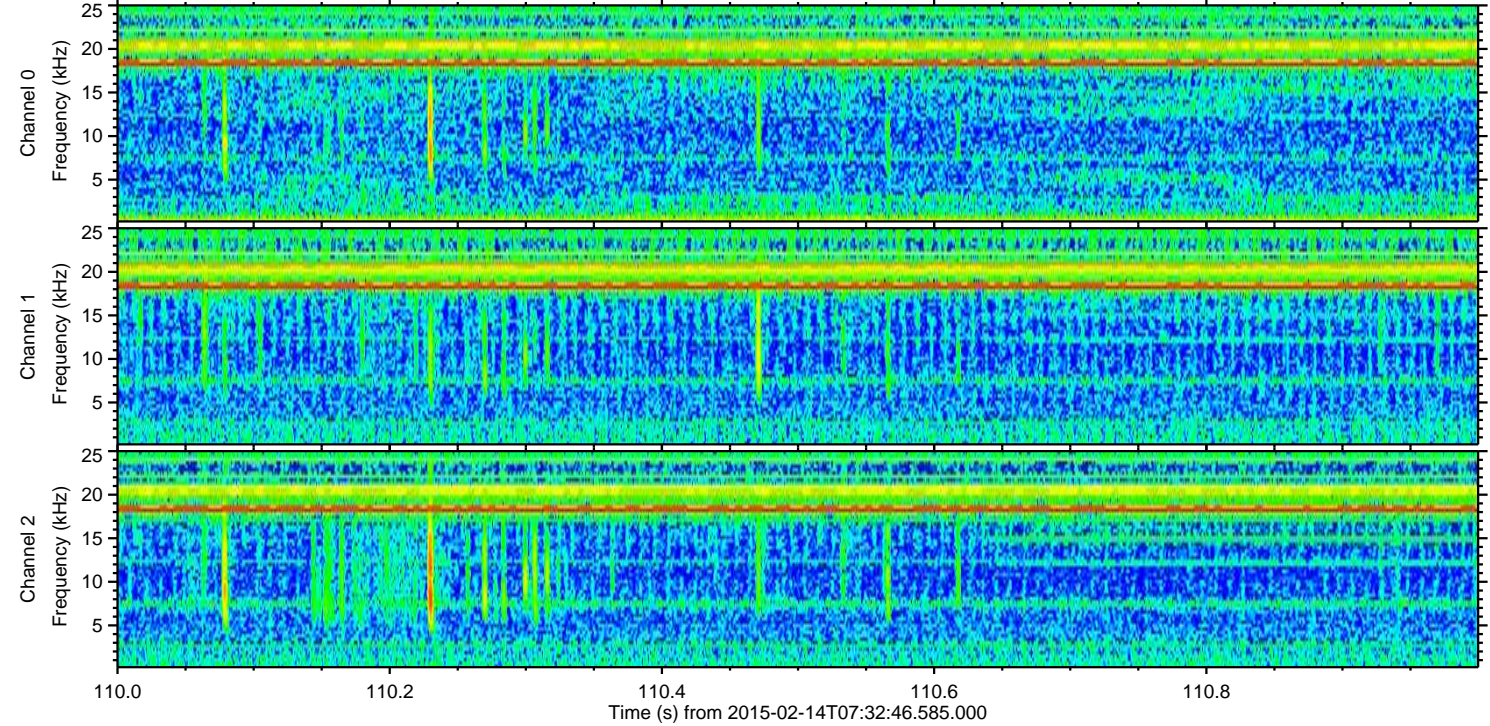
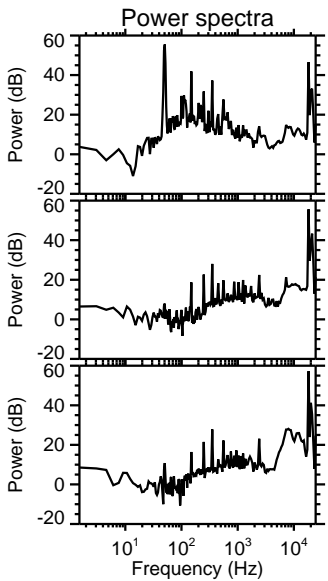
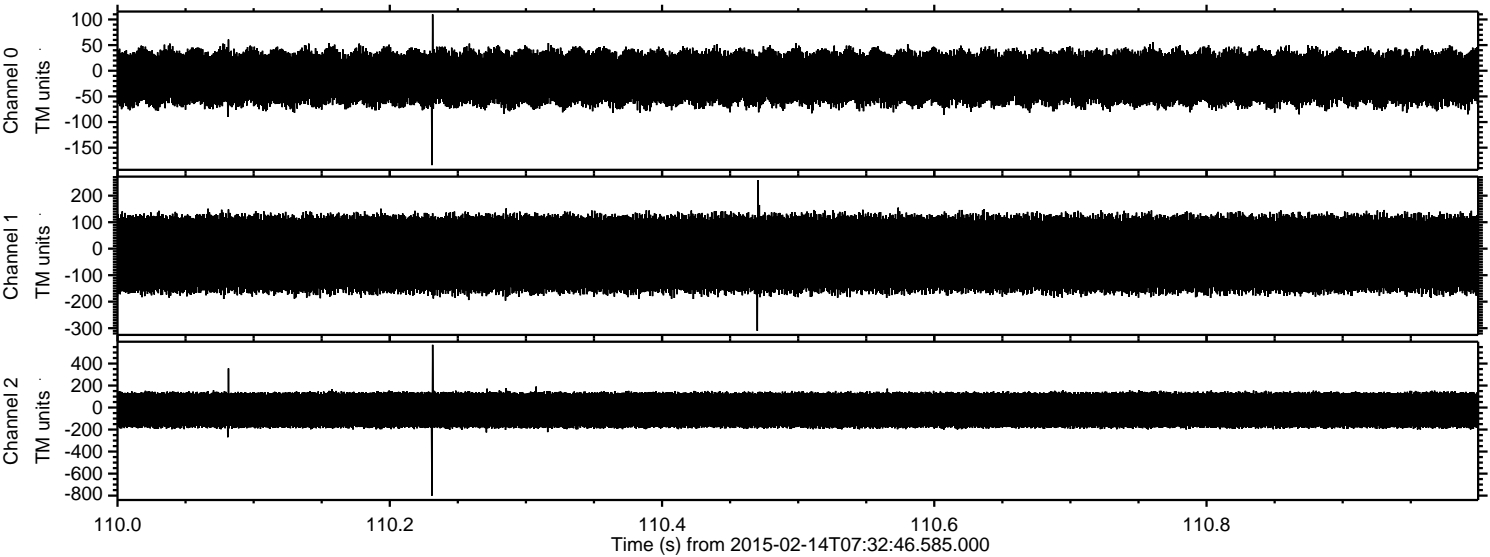
Processed Mon Feb 23 08:47:39 2015 by ELM ver.2012-10-06 from 001\_\_elm20150214\_073245\_\_dat00.bin





ELMAVAN 3D WAVEFORMS (Measured data sampled at 50 kHz) 49809 packets of 144 samples from 2015-02-14T07:32:46.585.000. Part 111/144

Processed Mon Feb 23 08:47:40 2015 by ELM ver.2012-10-06 from 001\_\_elm20150214\_073245\_\_dat00.bin



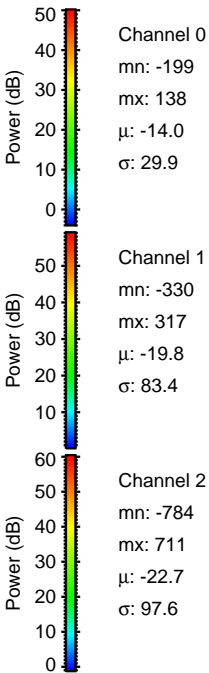
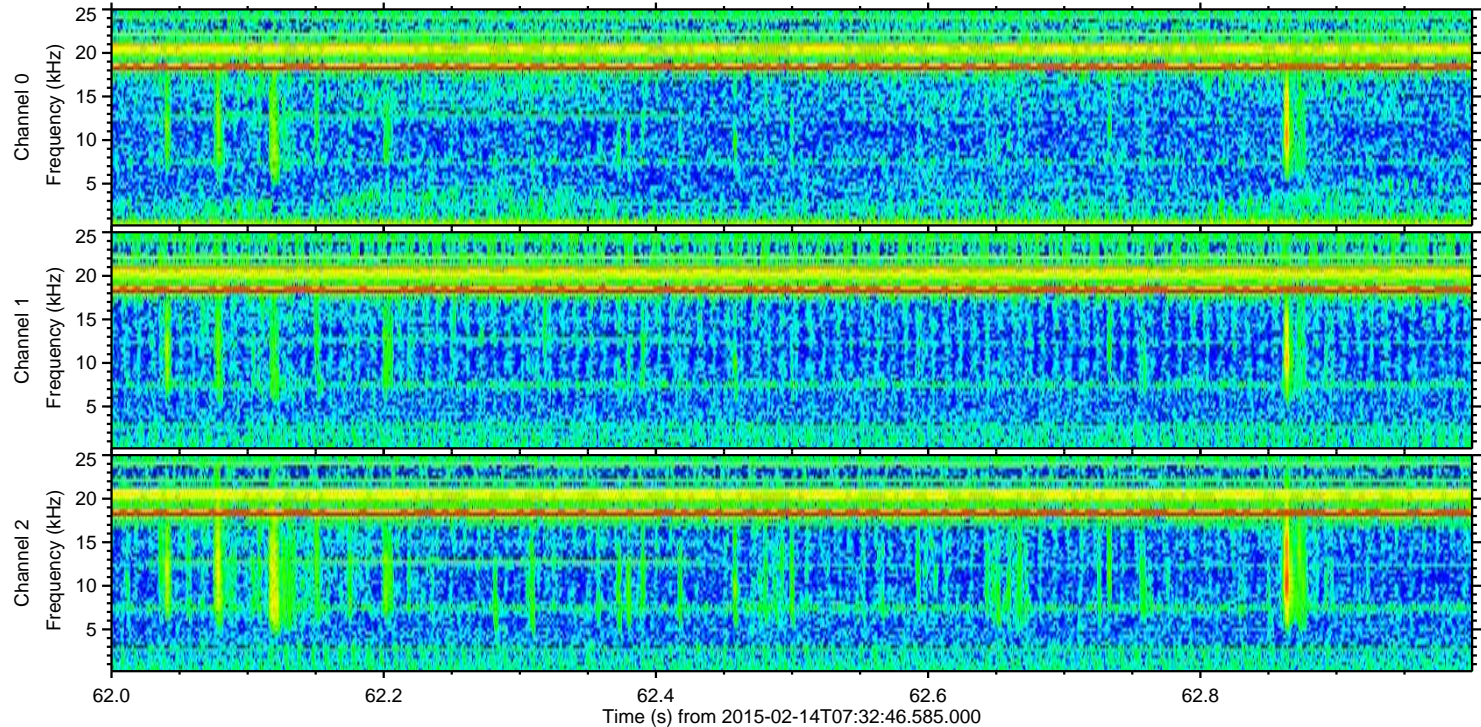
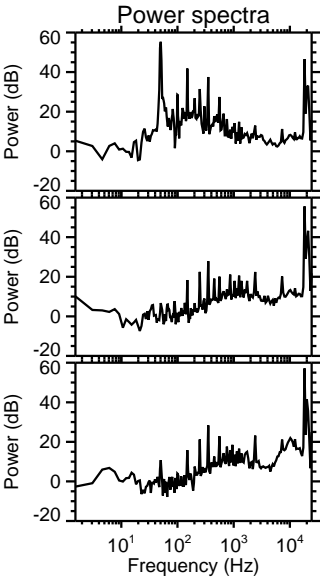
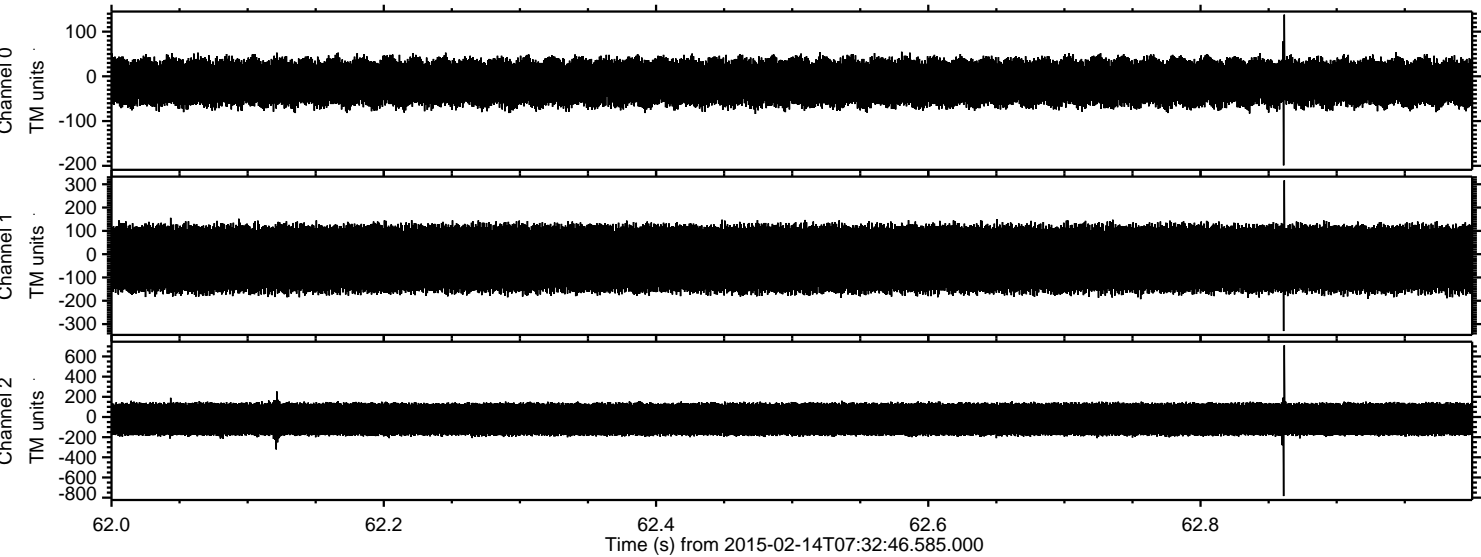
Channel 0  
mn: -184  
mx: 110  
 $\mu$ : -14.0  
 $\sigma$ : 30.0

Channel 1  
mn: -310  
mx: 259  
 $\mu$ : -19.7  
 $\sigma$ : 83.9

Channel 2  
mn: -800  
mx: 570  
 $\mu$ : -22.7  
 $\sigma$ : 98.6

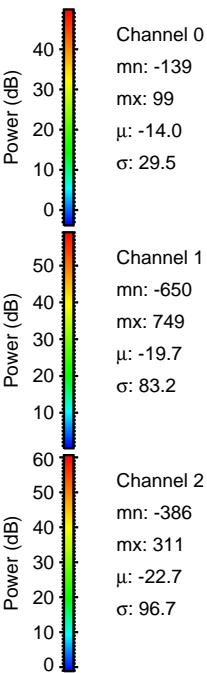
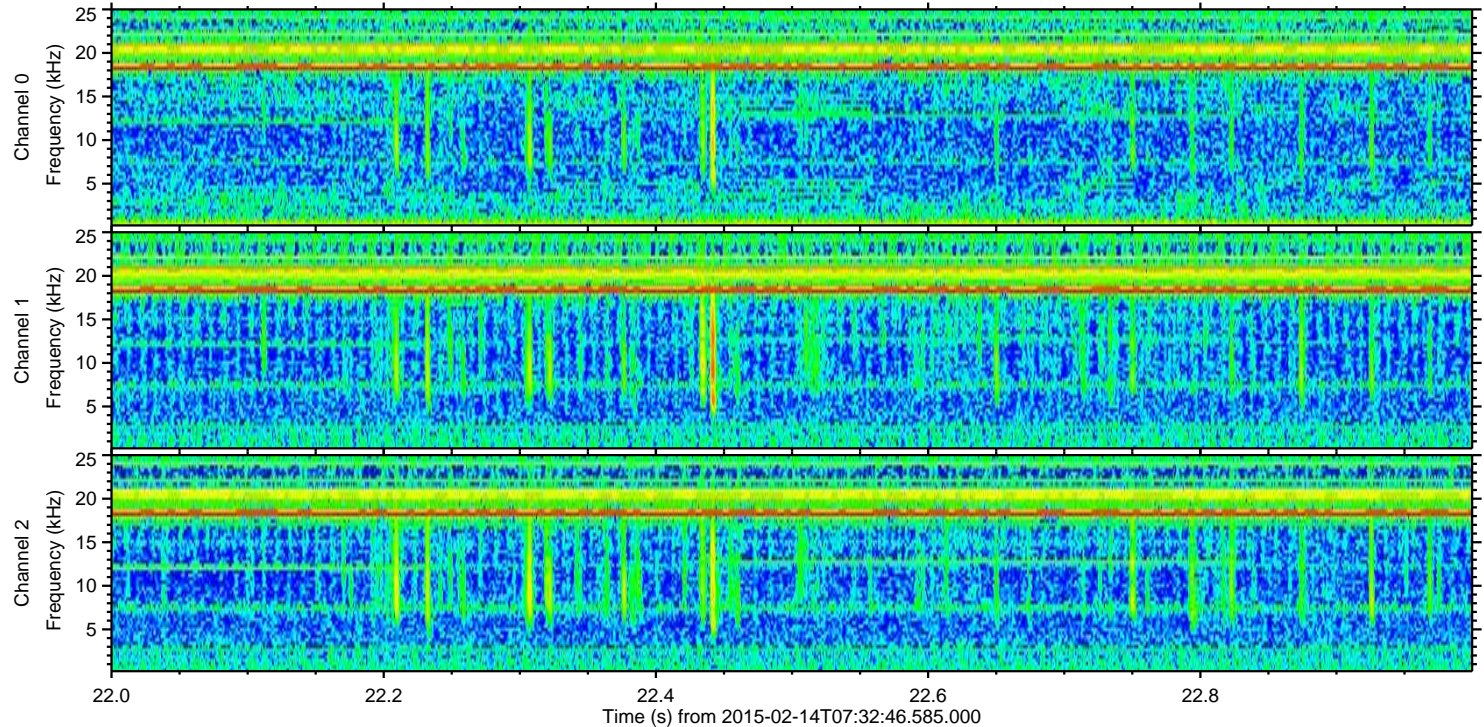
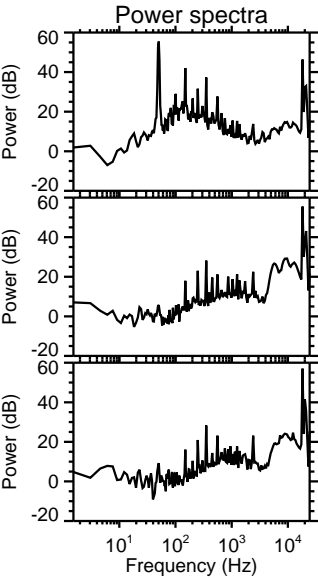
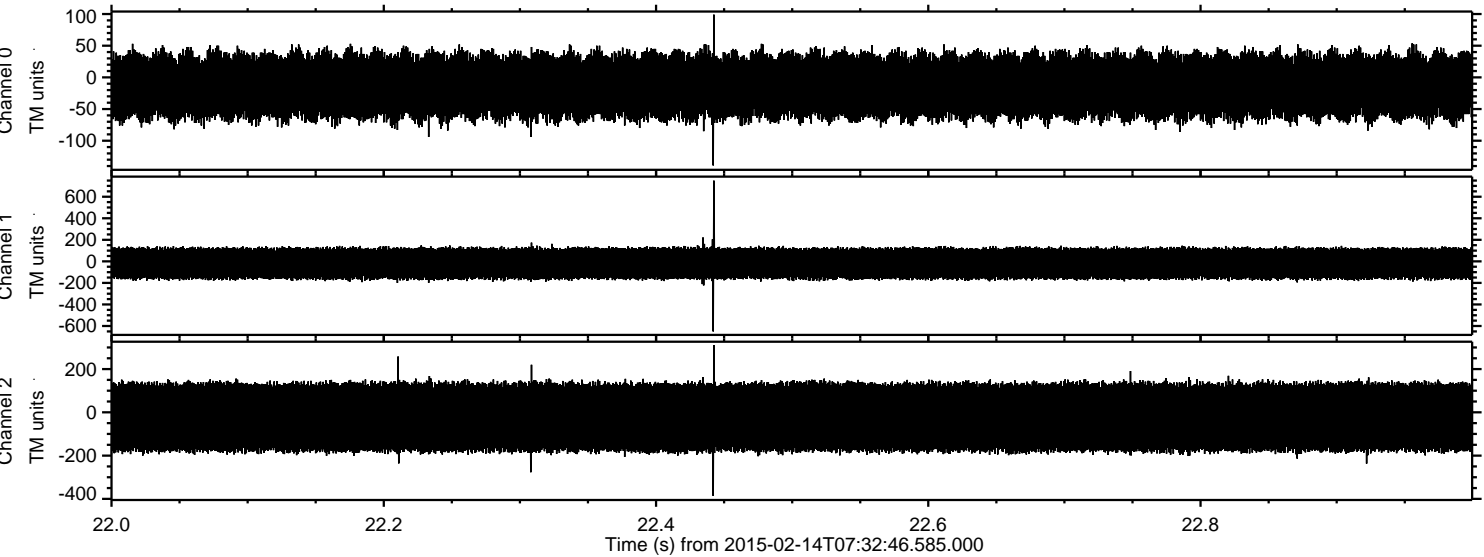


Processed Mon Feb 23 08:47:42 2015 by ELM ver.2012-10-06 from 001\_\_elm20150214\_073245\_\_dat00.bin



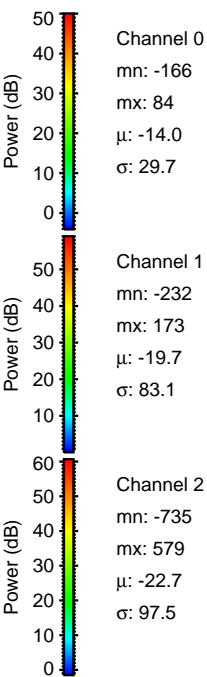
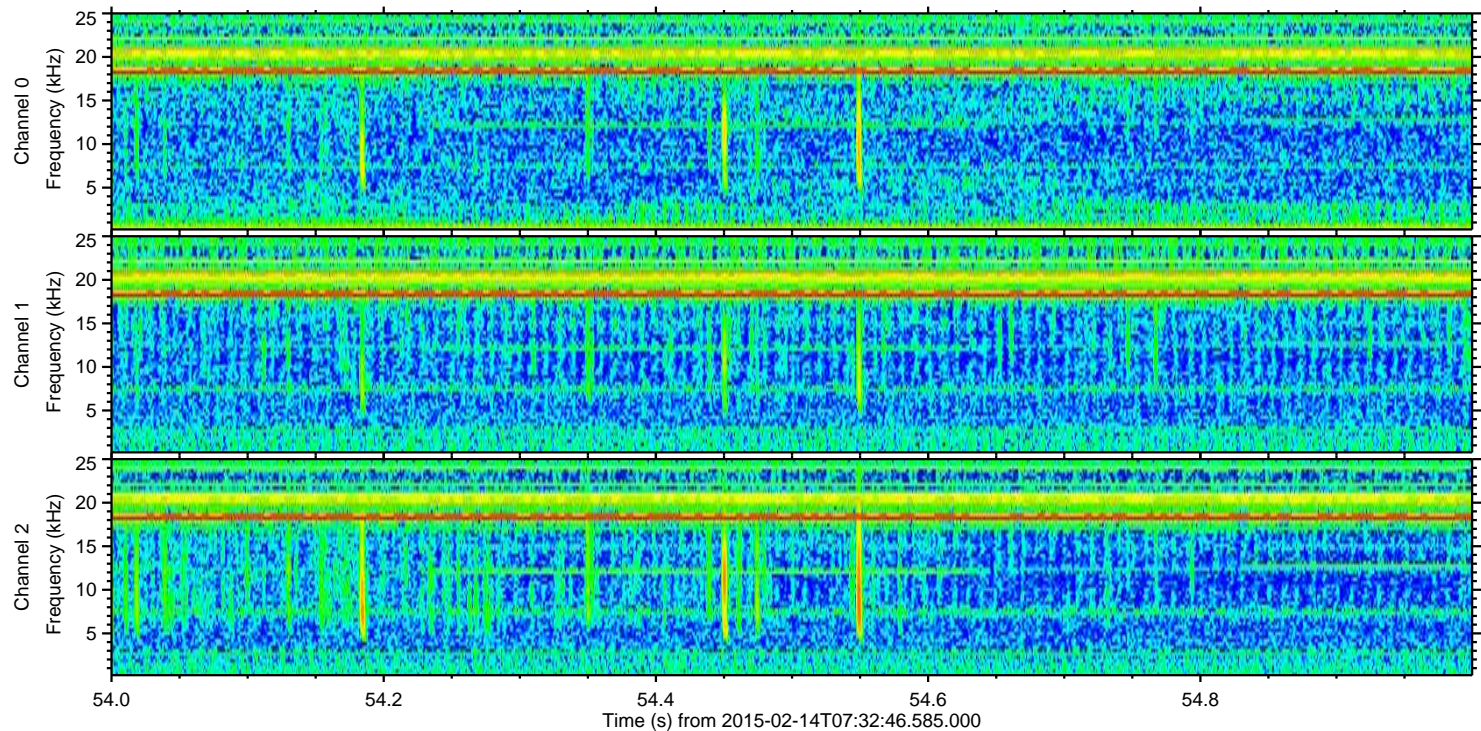
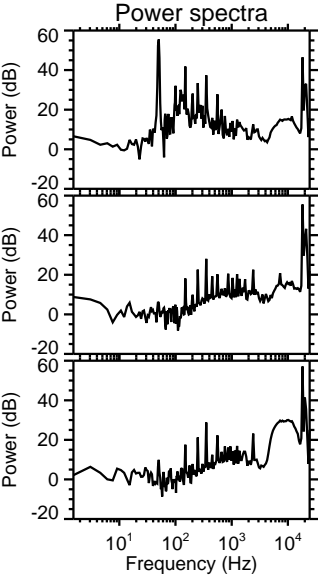
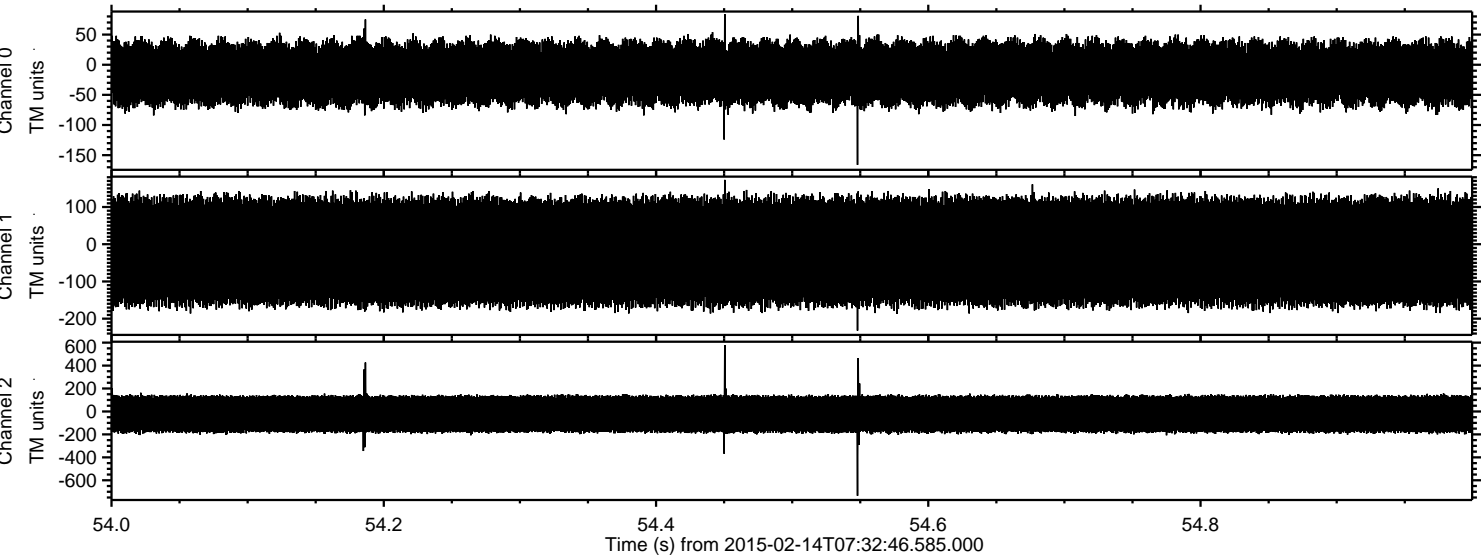


Processed Mon Feb 23 08:47:44 2015 by ELM ver.2012-10-06 from 001\_\_elm20150214\_073245\_\_dat00.bin





Processed Mon Feb 23 08:47:46 2015 by ELM ver.2012-10-06 from 001\_\_elm20150214\_073245\_\_dat00.bin





Processed Mon Feb 23 08:47:47 2015 by ELM ver.2012-10-06 from 001\_\_elm20150214\_073245\_\_dat00.bin

