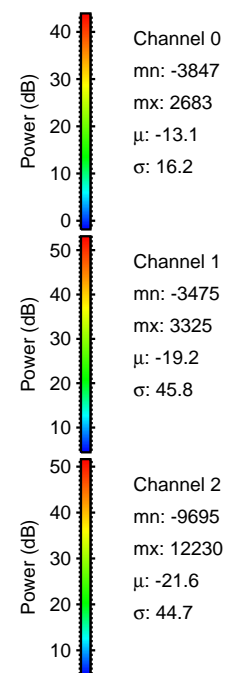
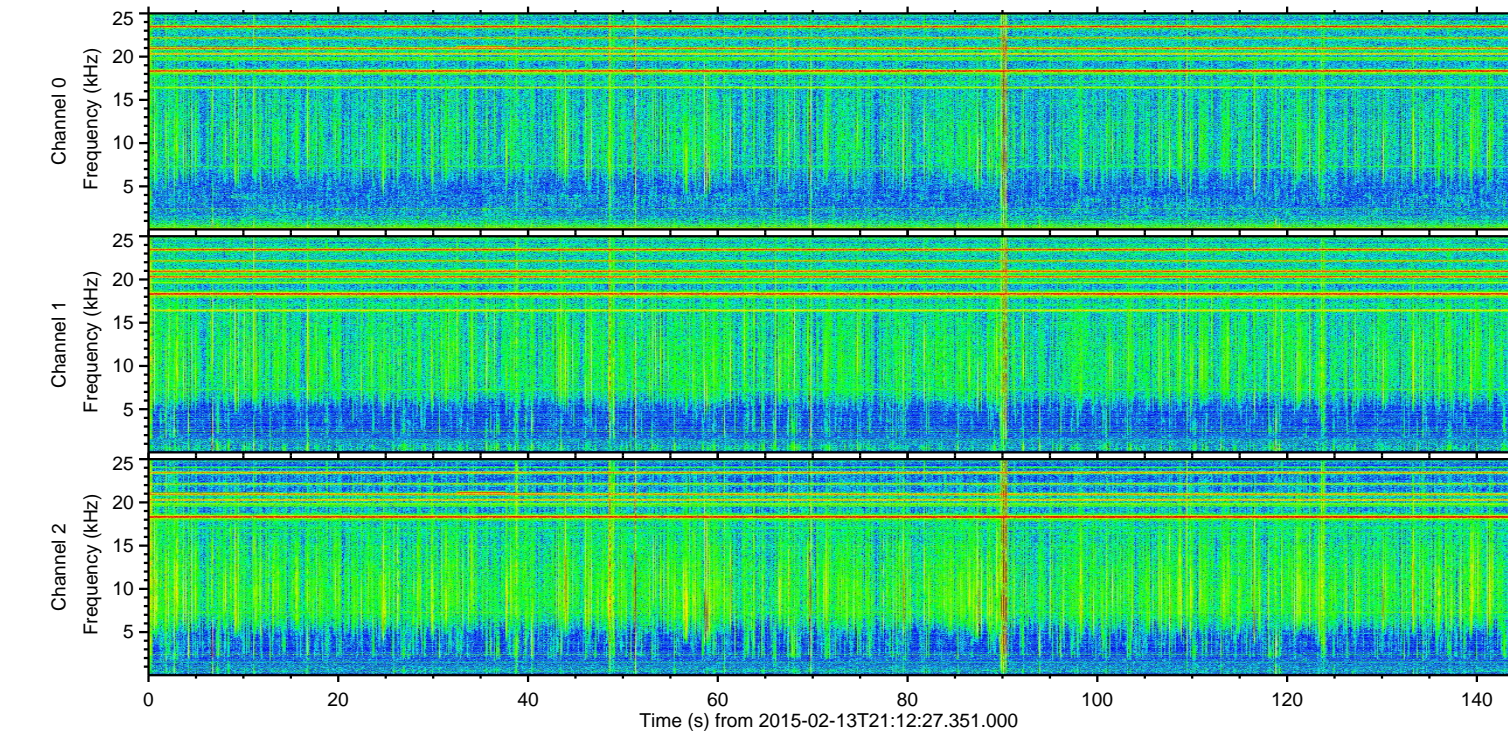
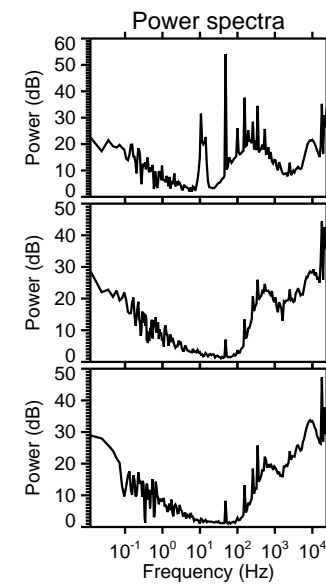
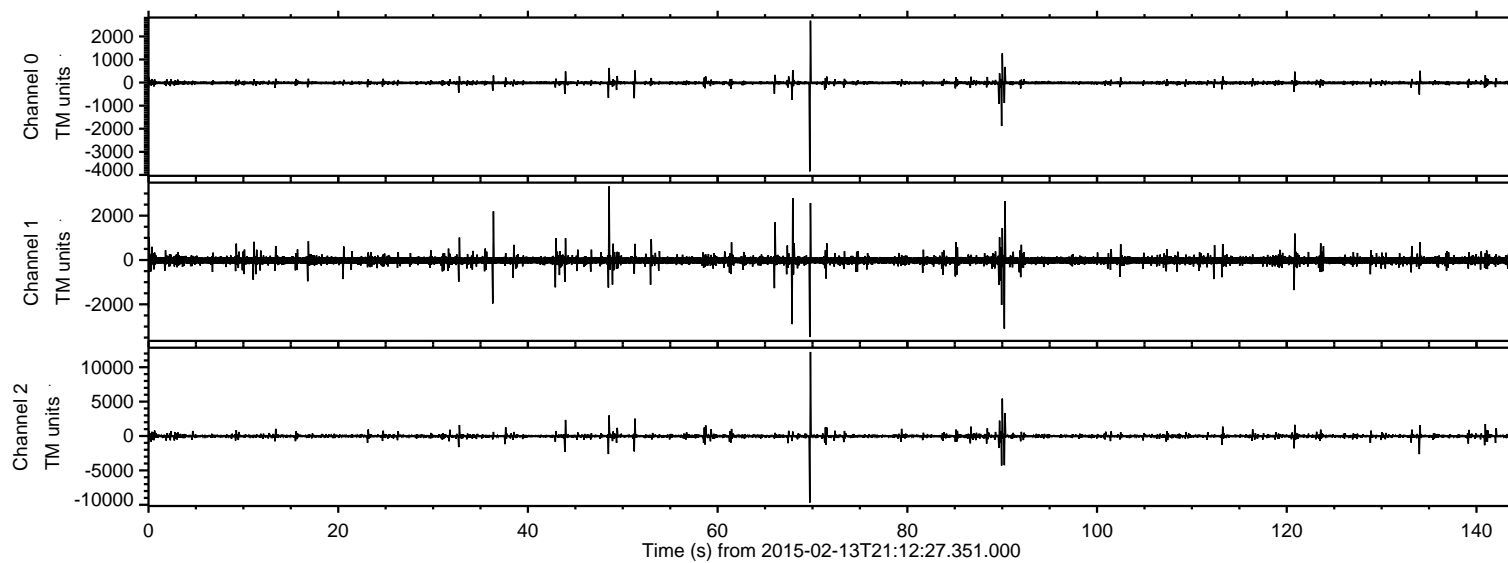
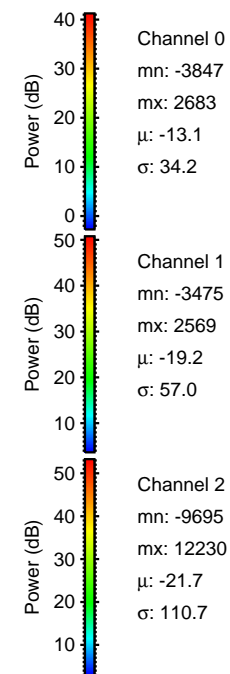
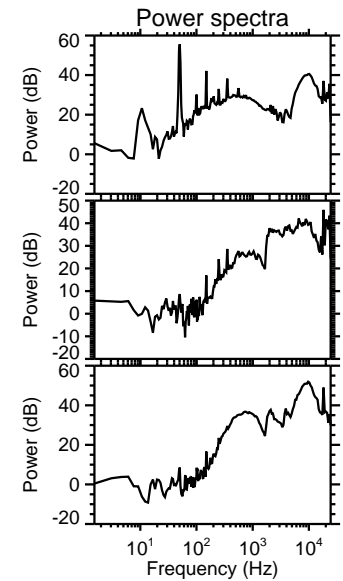
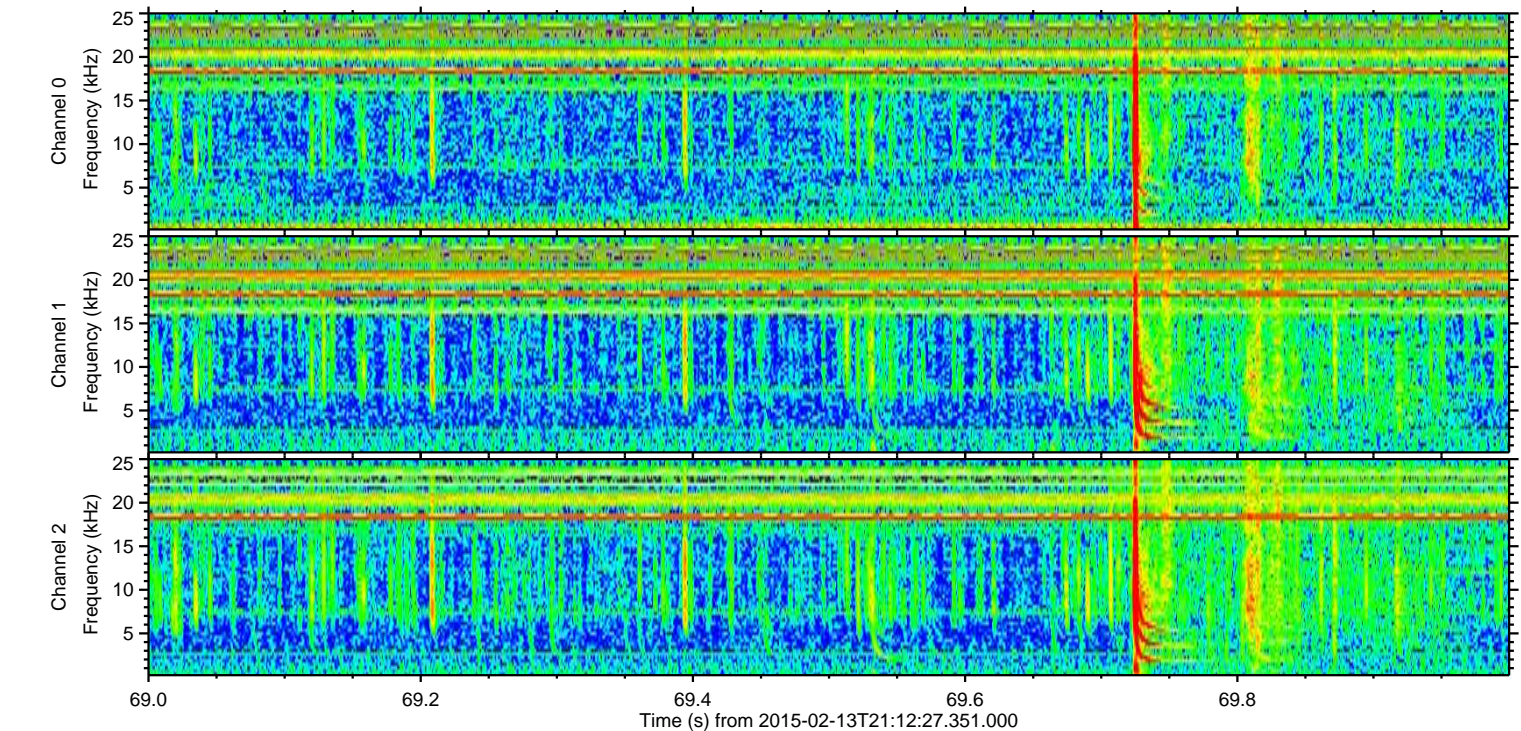
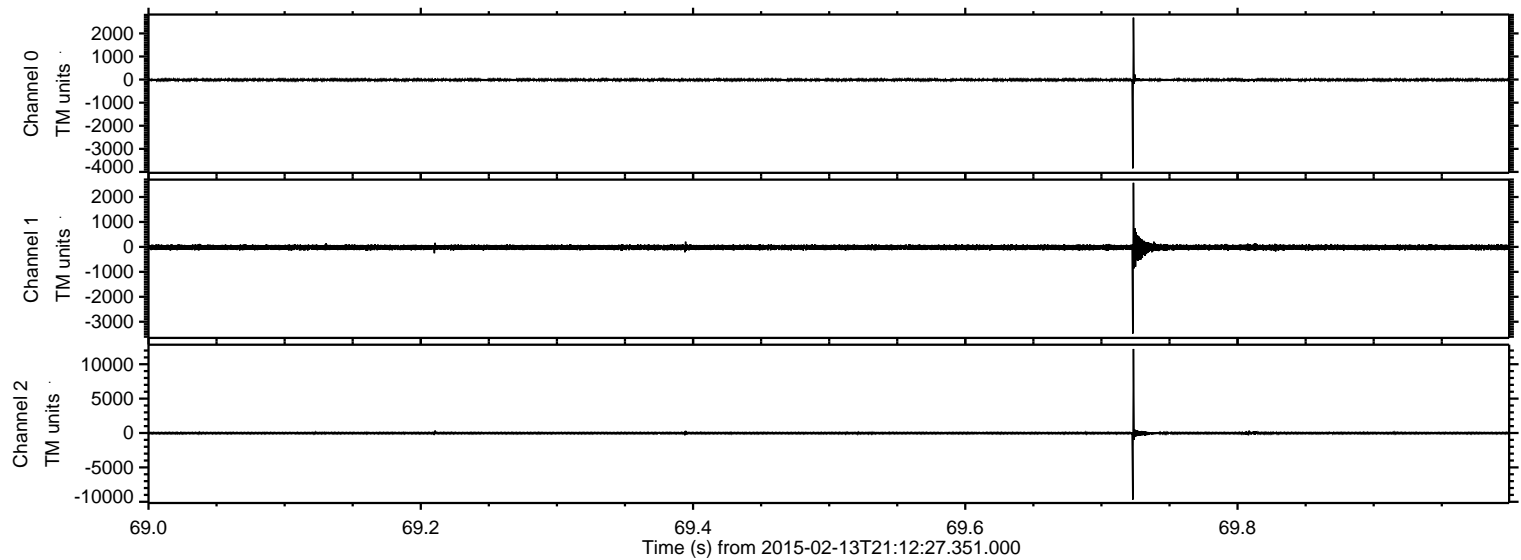


ELMAVAN 3D WAVEFORMS (Measured data sampled at 50 kHz) 49807 packets of 144 samples from 2015-02-13T21:12:27.351.000.

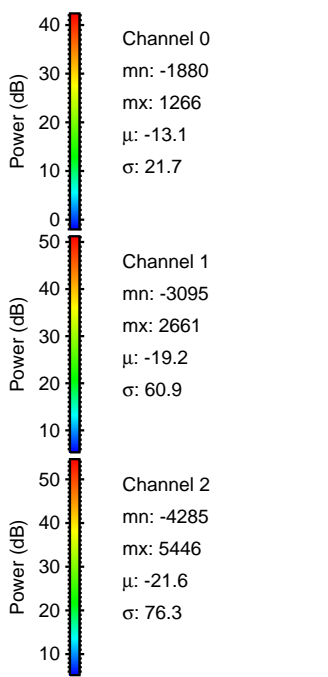
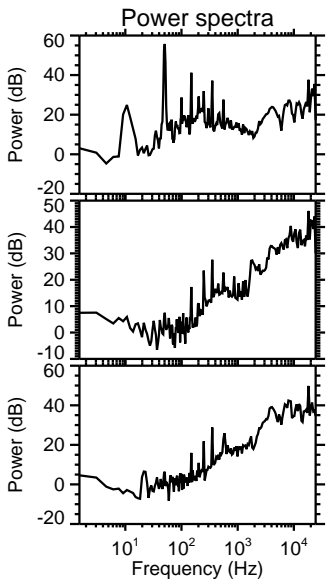
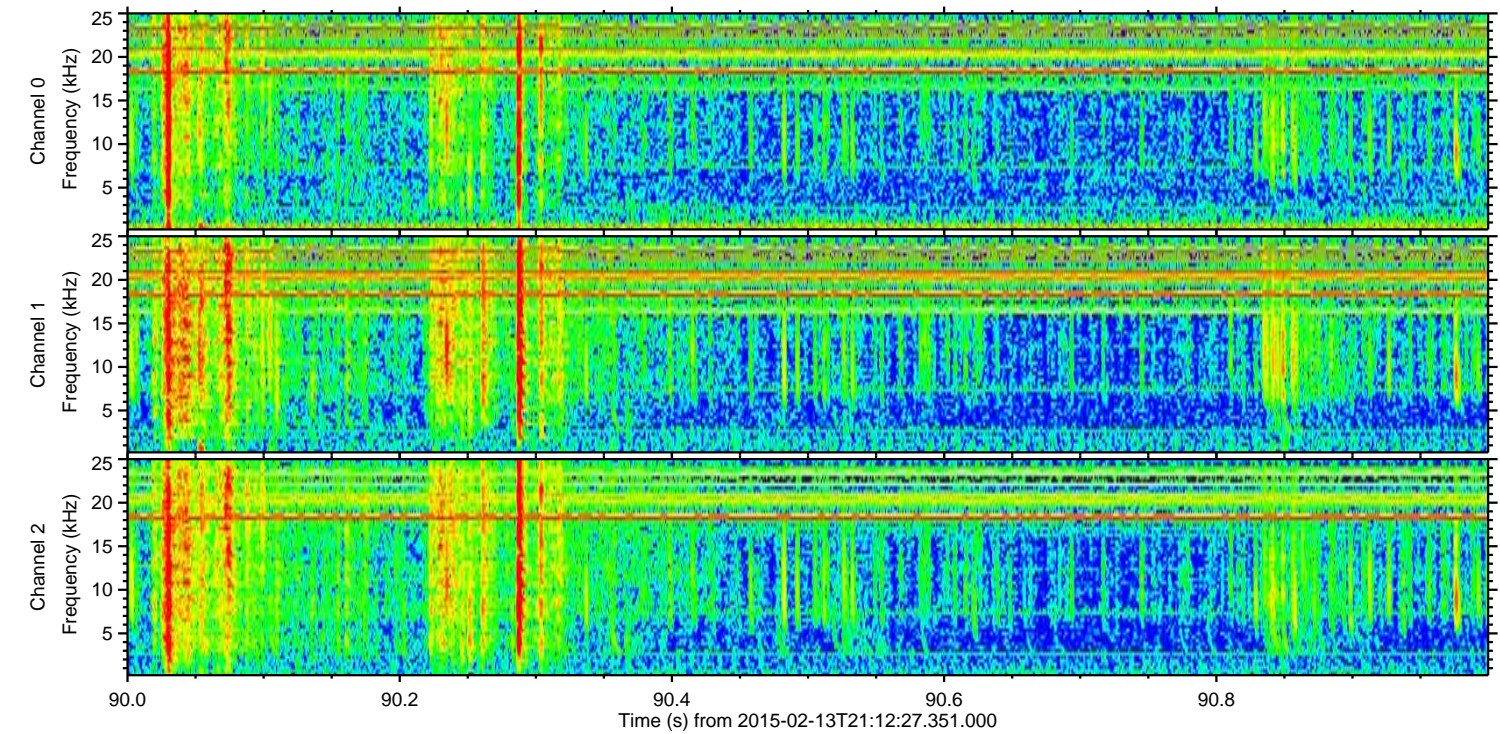
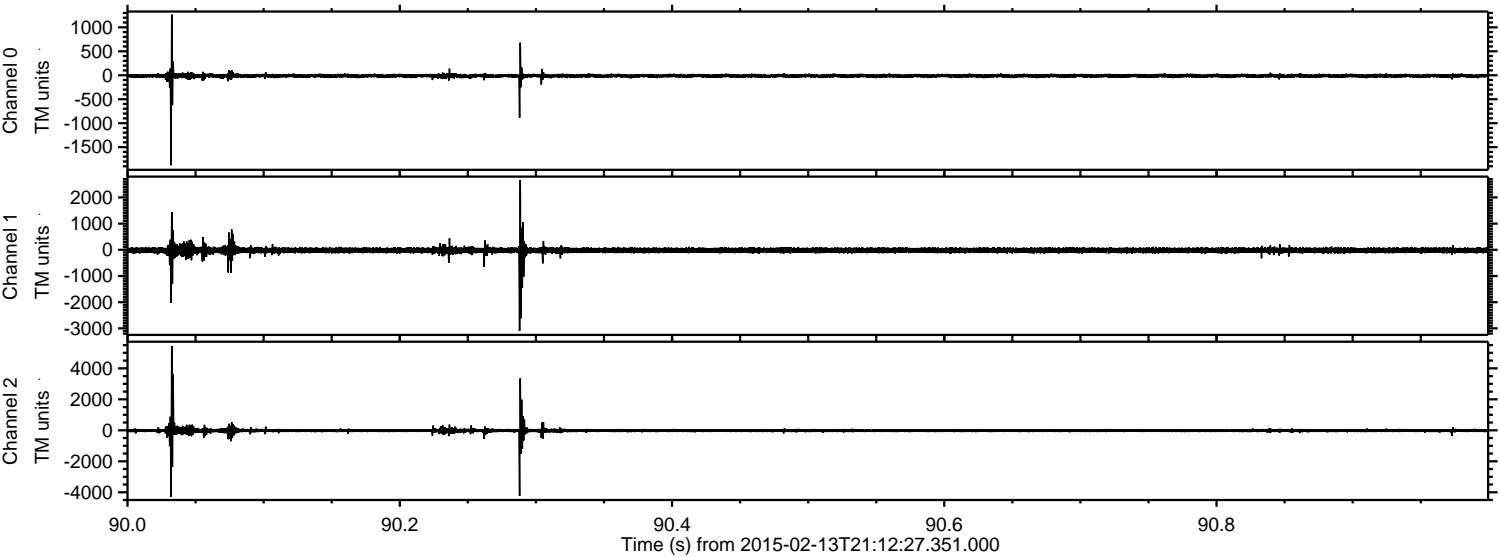
Processed Fri Feb 20 21:21:05 2015 by ELM ver.2012-10-06 from 001__elm20150213_211226__dat00.bin



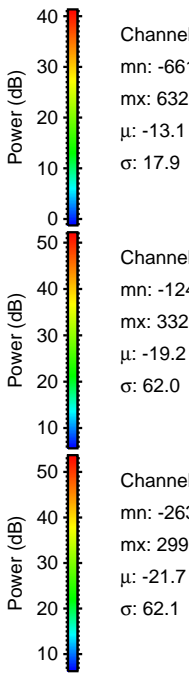
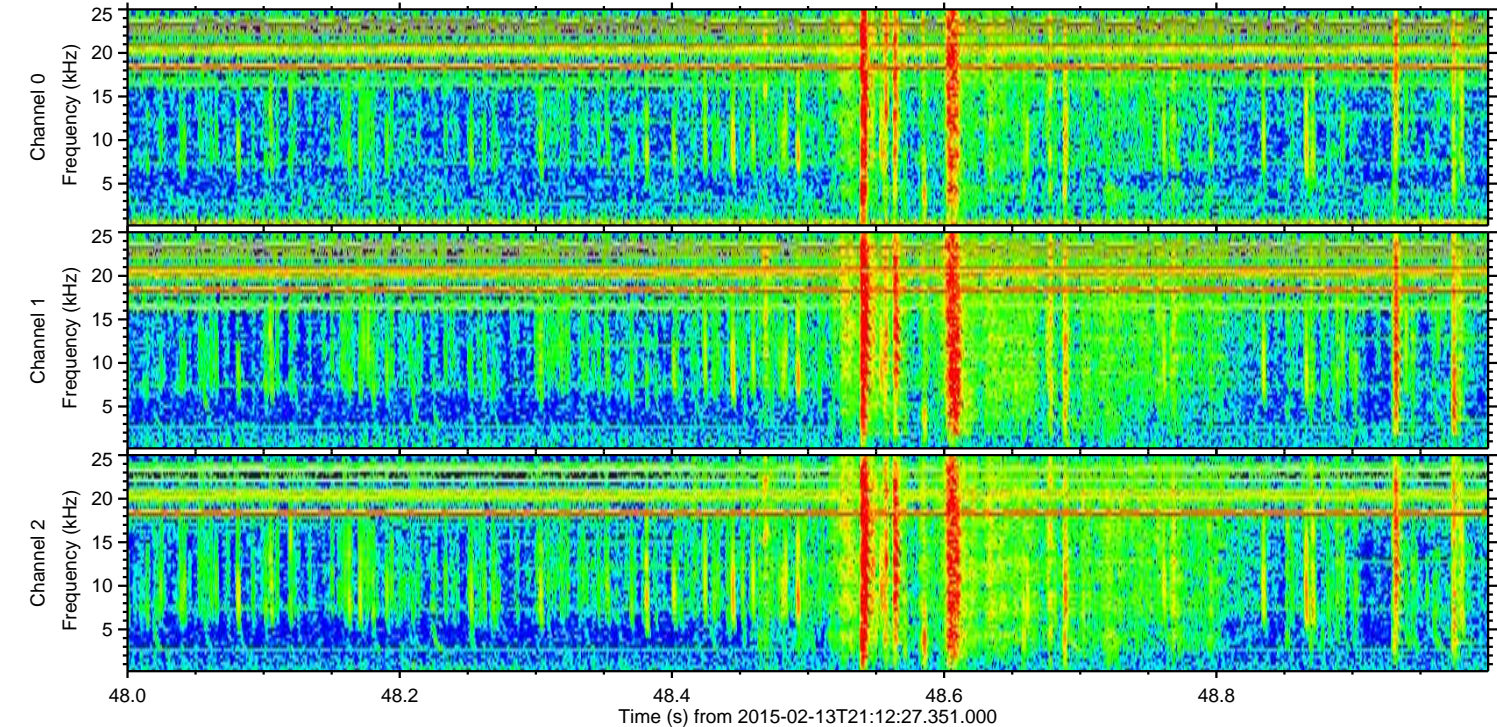
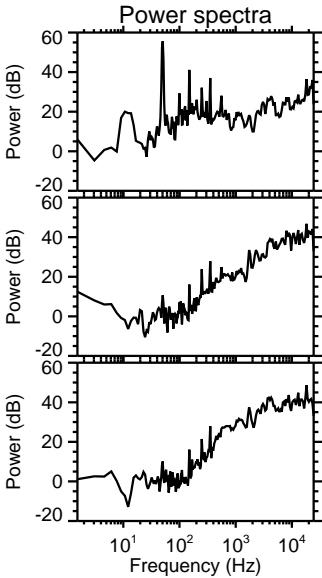
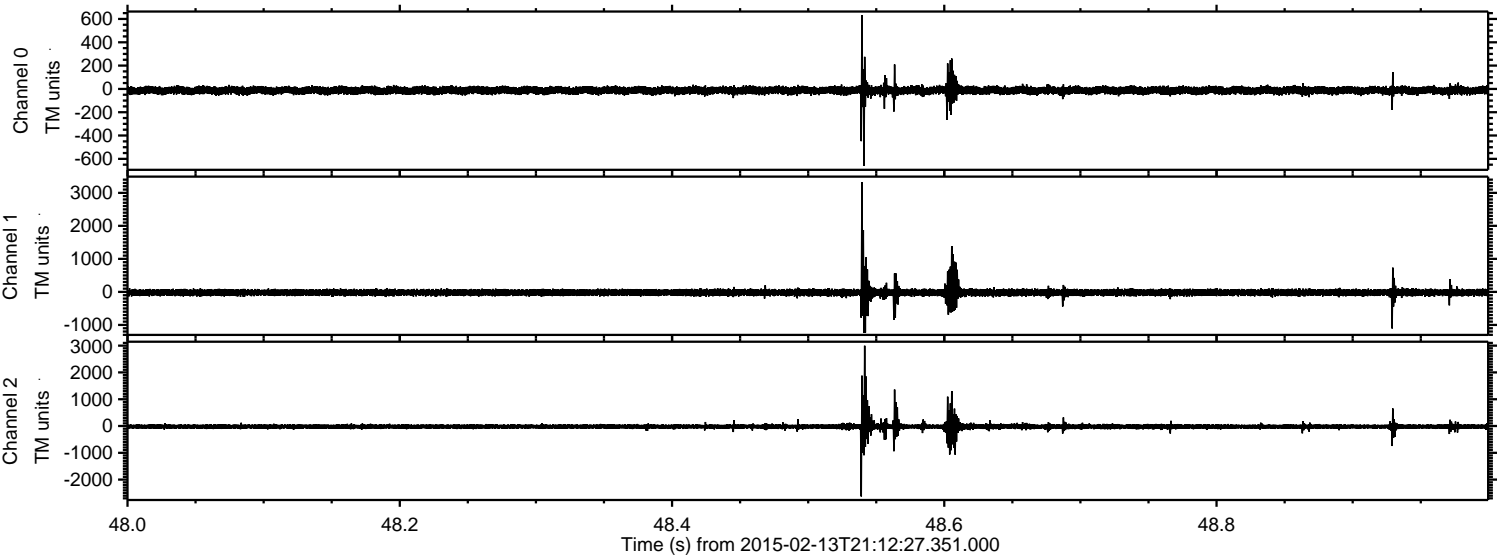
Processed Fri Feb 20 21:21:21 2015 by ELM ver.2012-10-06 from 001__elm20150213_211226__dat00.bin



Processed Fri Feb 20 21:21:22 2015 by ELM ver.2012-10-06 from 001__elm20150213_211226__dat00.bin



Processed Fri Feb 20 21:21:23 2015 by ELM ver.2012-10-06 from 001__elm20150213_211226__dat00.bin

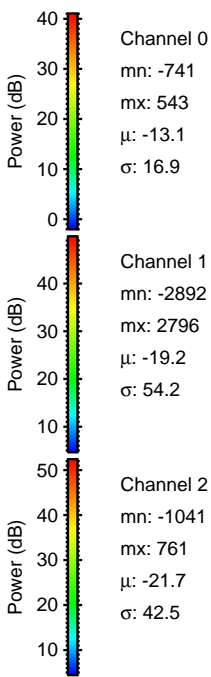
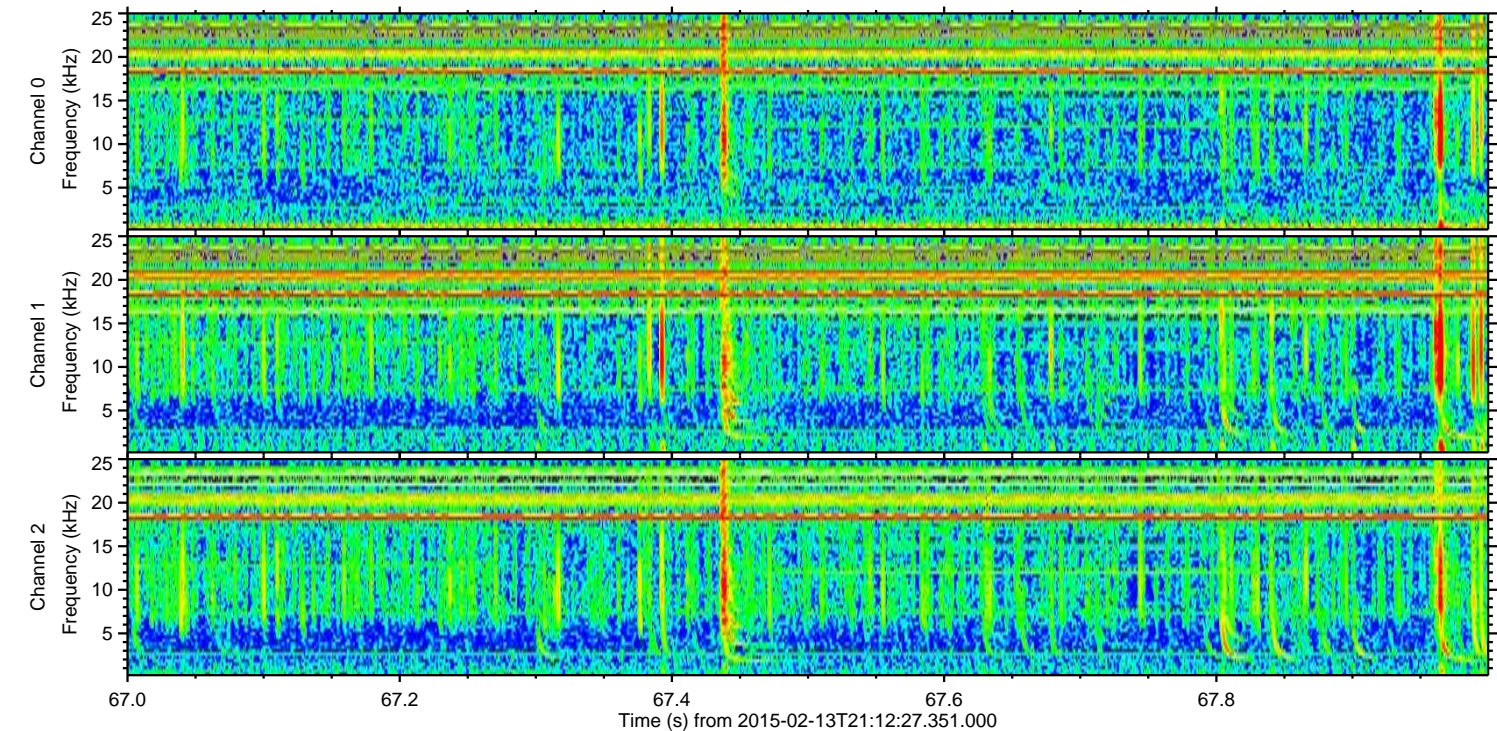
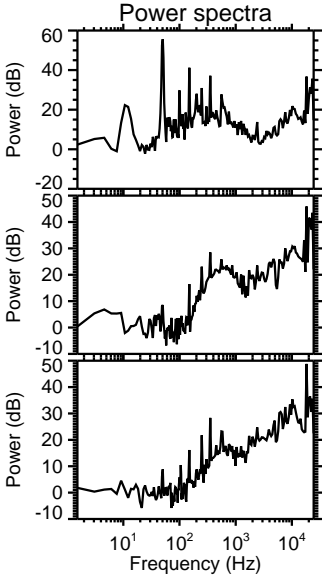
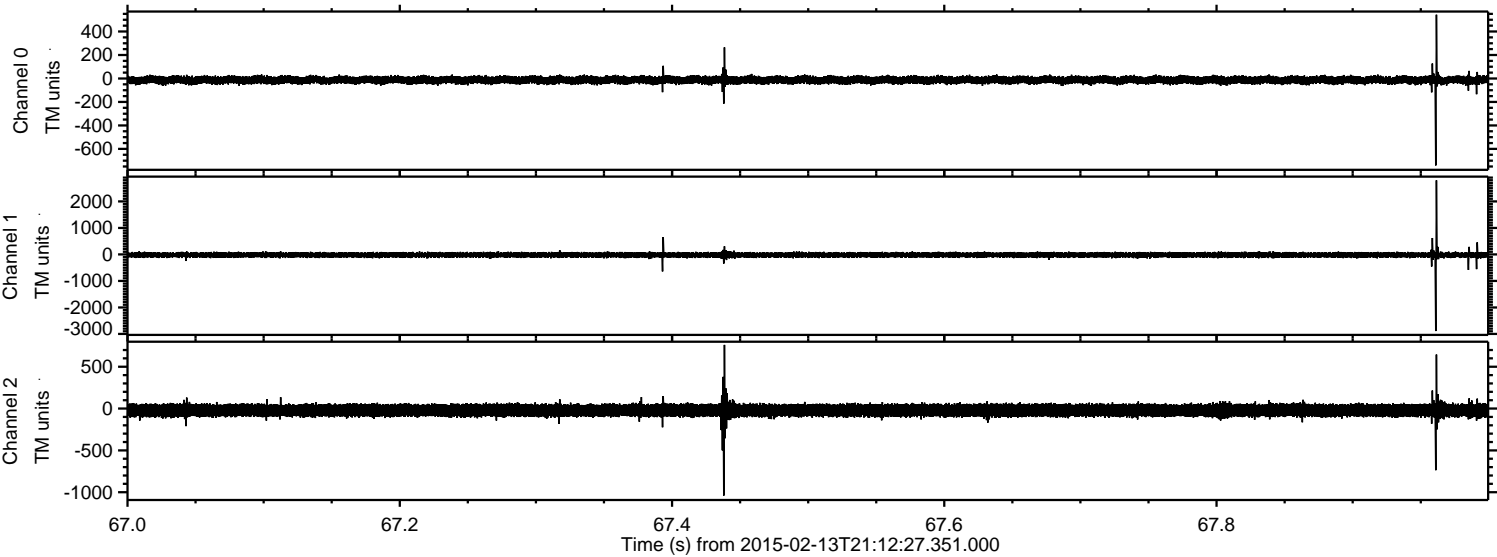


Channel 0
mn: -661
mx: 632
 μ : -13.1
 σ : 17.9

Channel 1
mn: -1240
mx: 3325
 μ : -19.2
 σ : 62.0

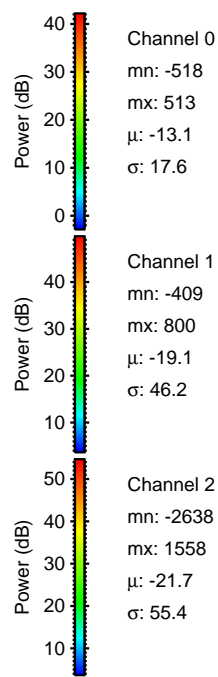
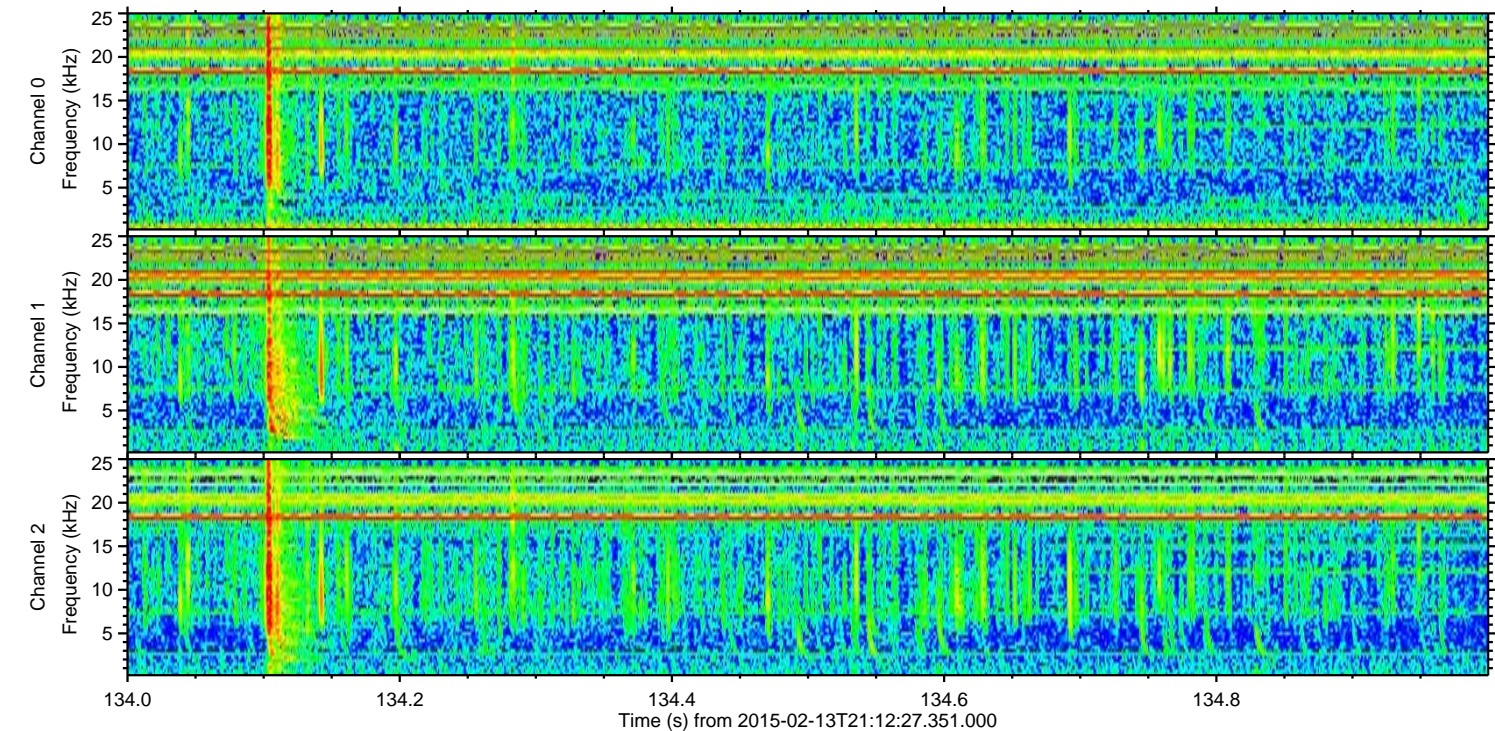
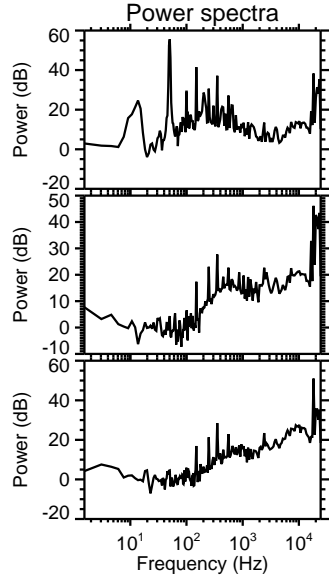
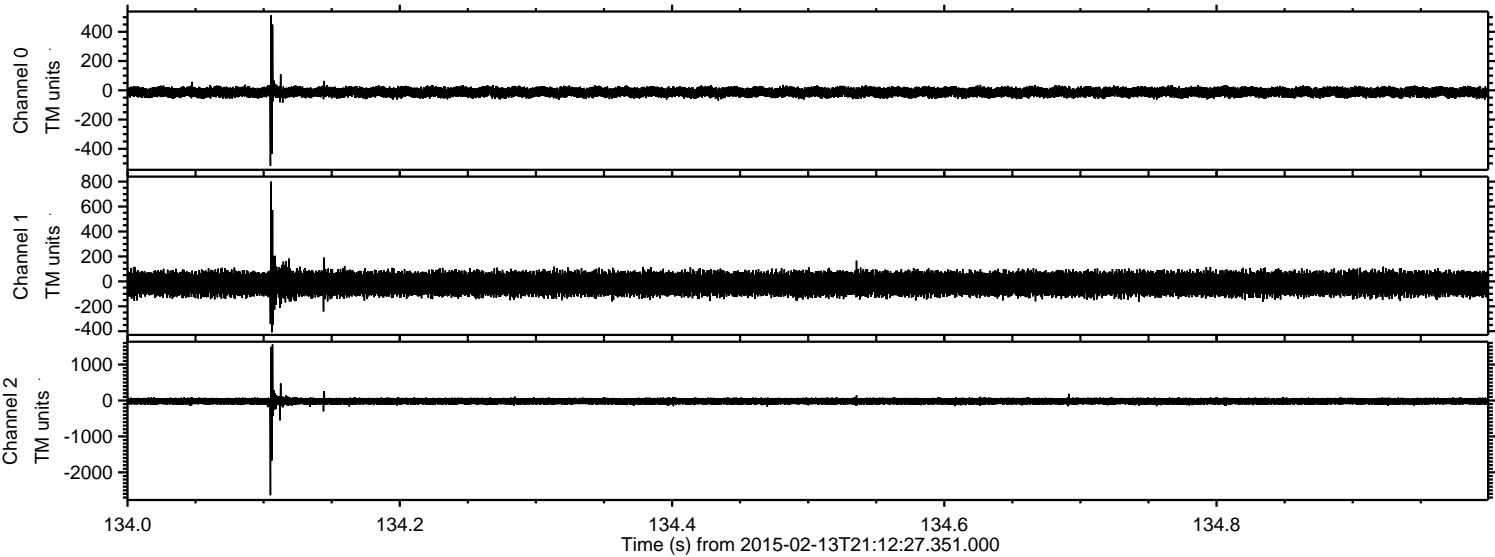
Channel 2
mn: -2630
mx: 2996
 μ : -21.7
 σ : 62.1

Processed Fri Feb 20 21:21:24 2015 by ELM ver.2012-10-06 from 001__elm20150213_211226__dat00.bin

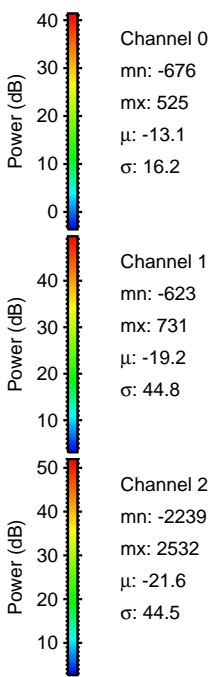
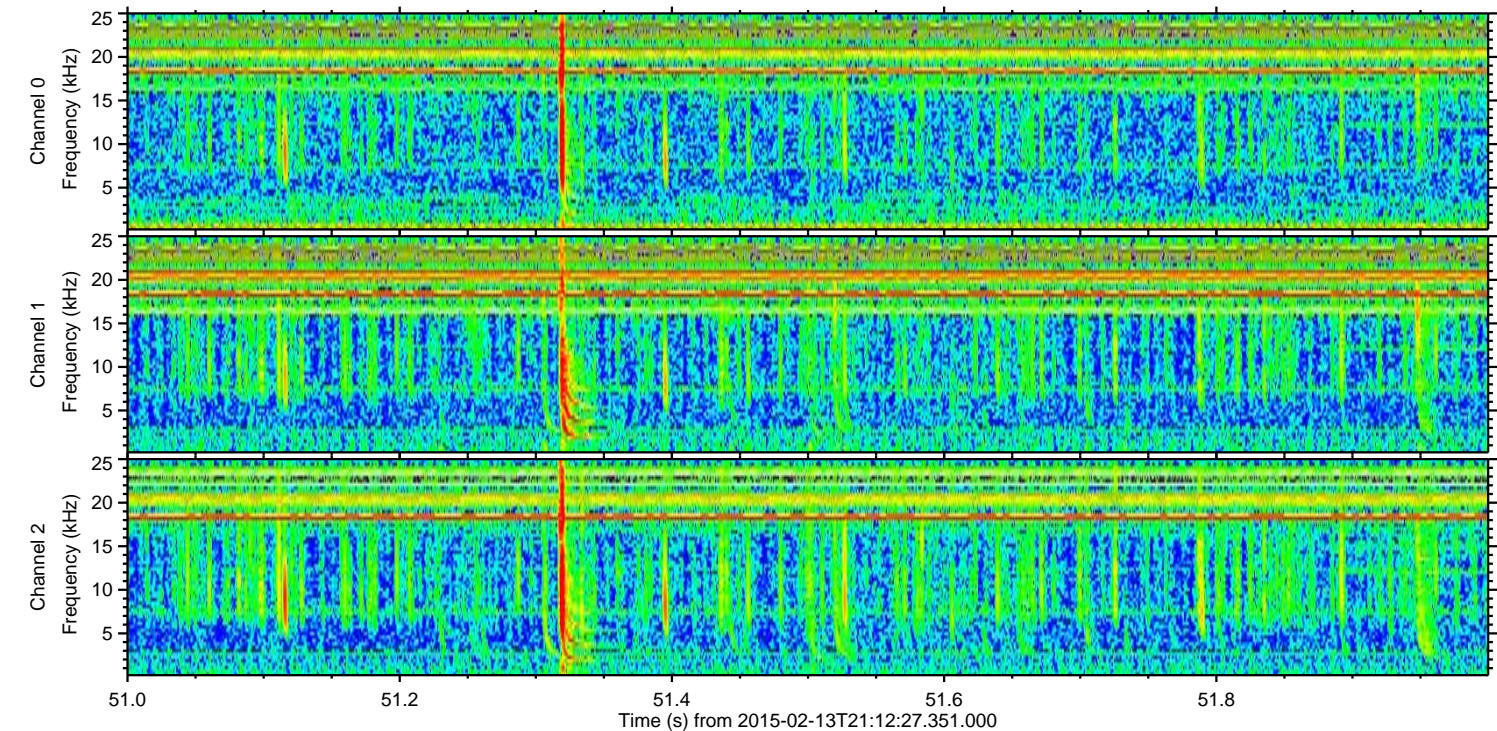
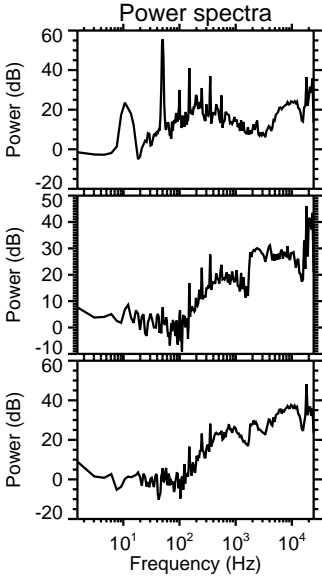
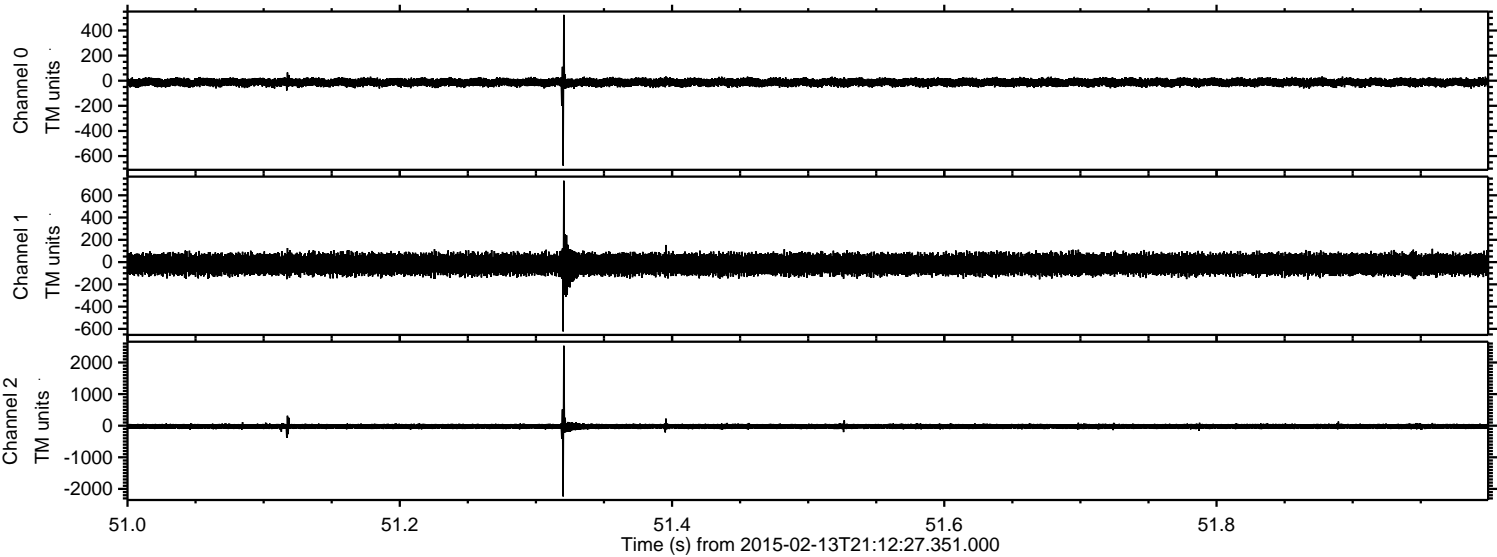


ELMAVAN 3D WAVEFORMS (Measured data sampled at 50 kHz) 49807 packets of 144 samples from 2015-02-13T21:12:27.351.000. Part 135/144

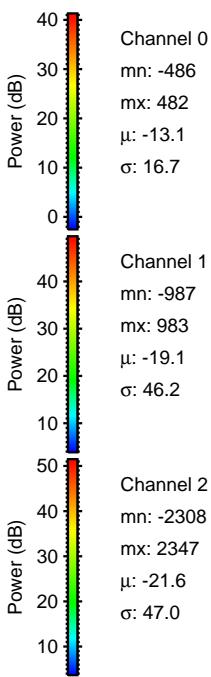
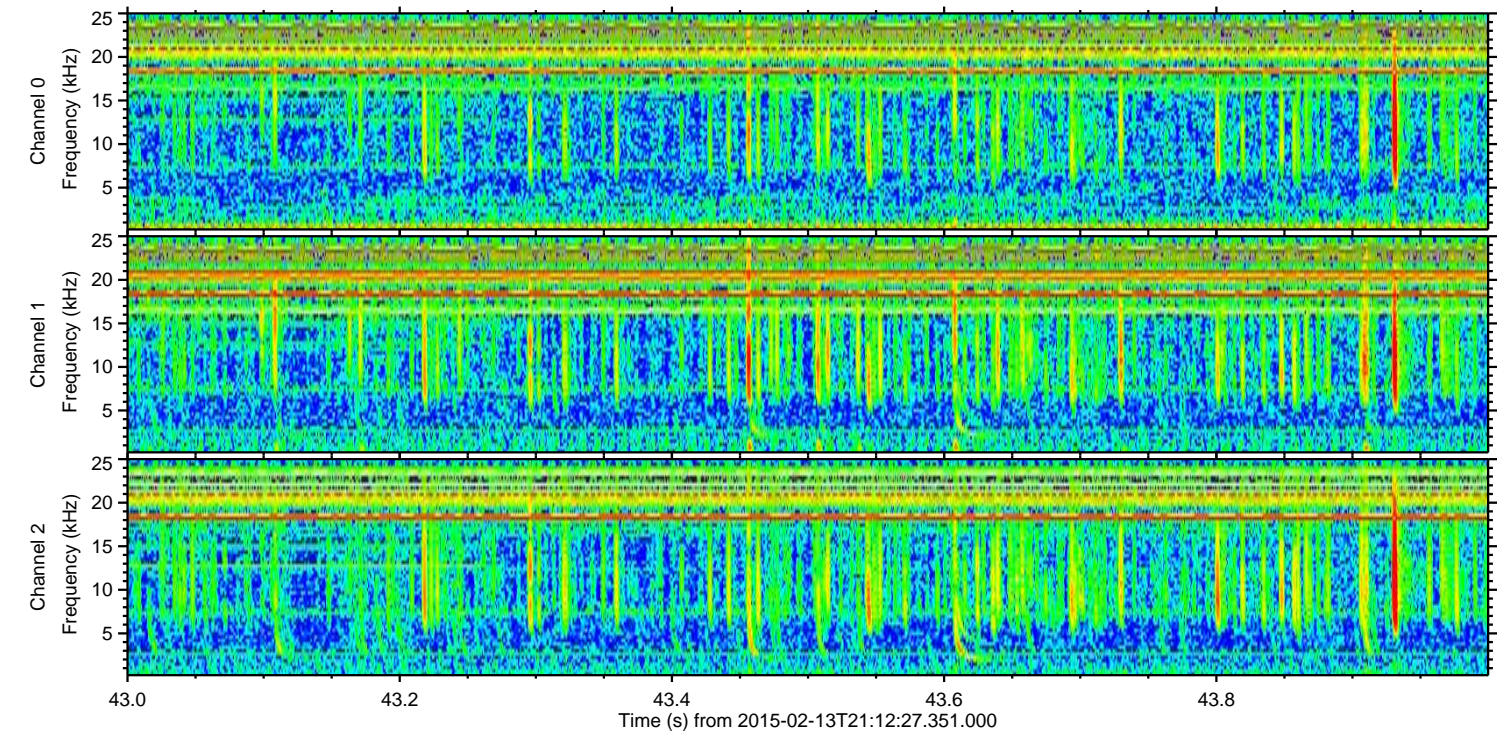
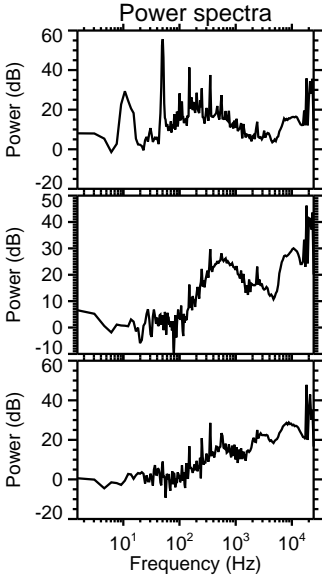
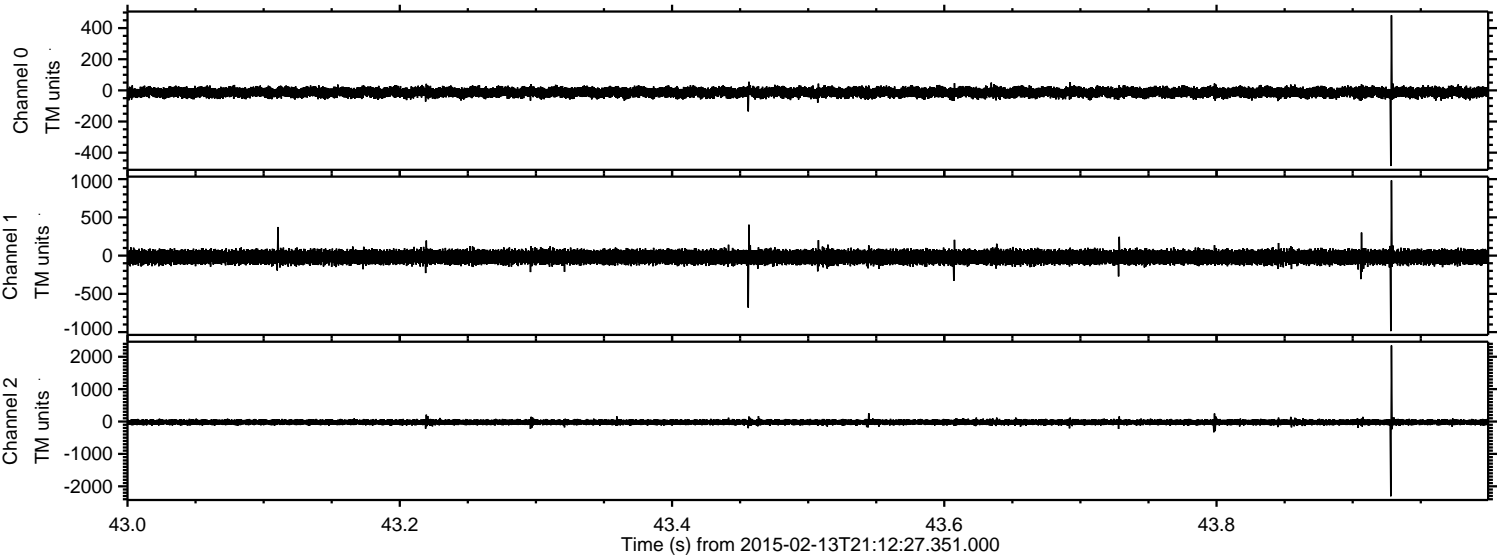
Processed Fri Feb 20 21:21:25 2015 by ELM ver.2012-10-06 from 001__elm20150213_211226__dat00.bin



Processed Fri Feb 20 21:21:26 2015 by ELM ver.2012-10-06 from 001__elm20150213_211226__dat00.bin

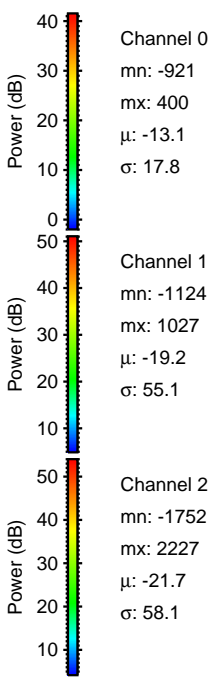
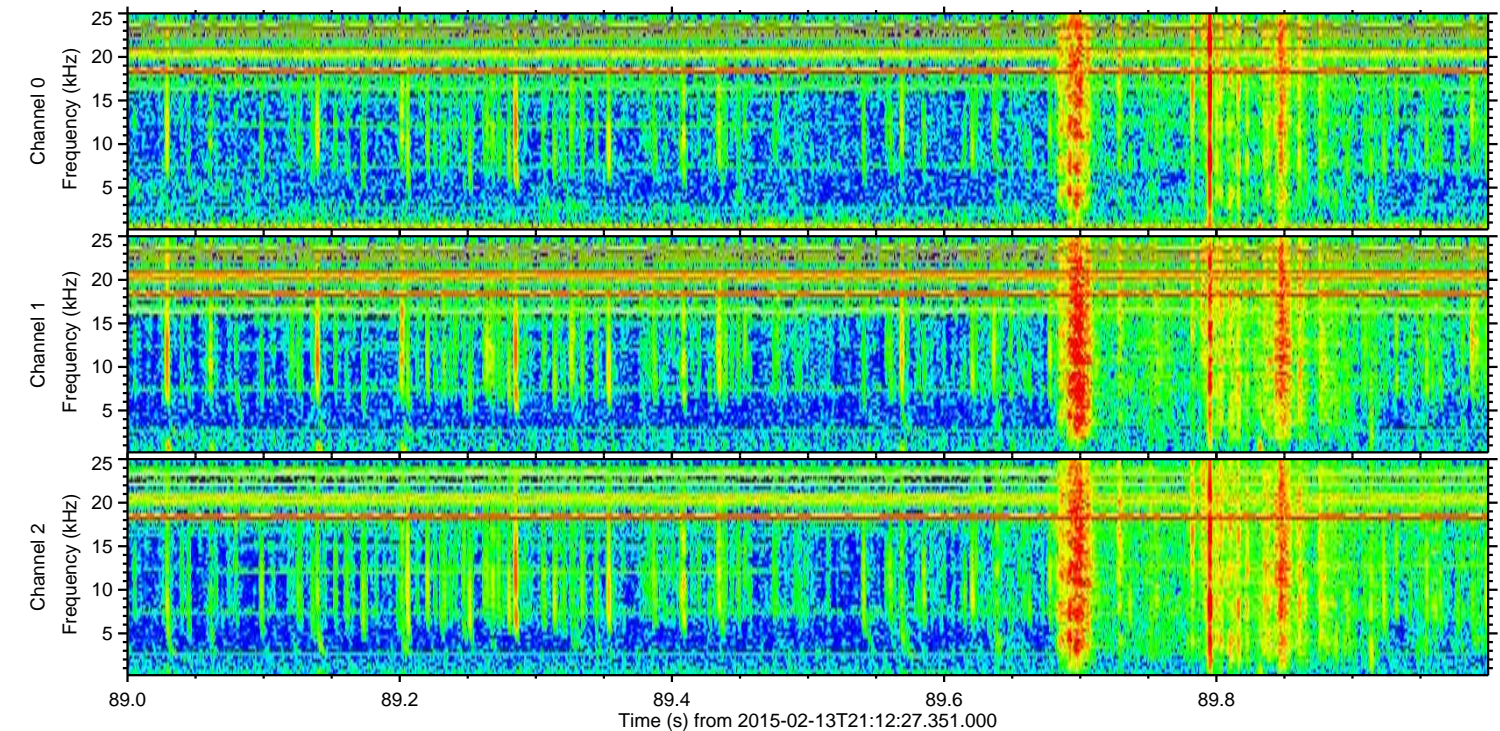
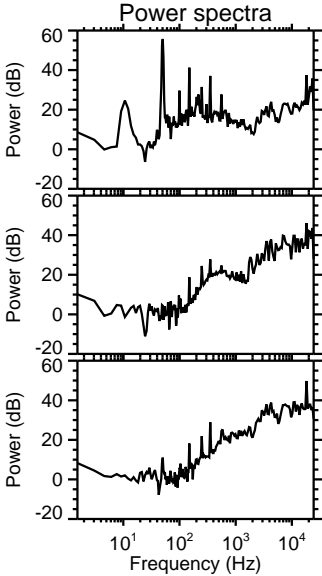
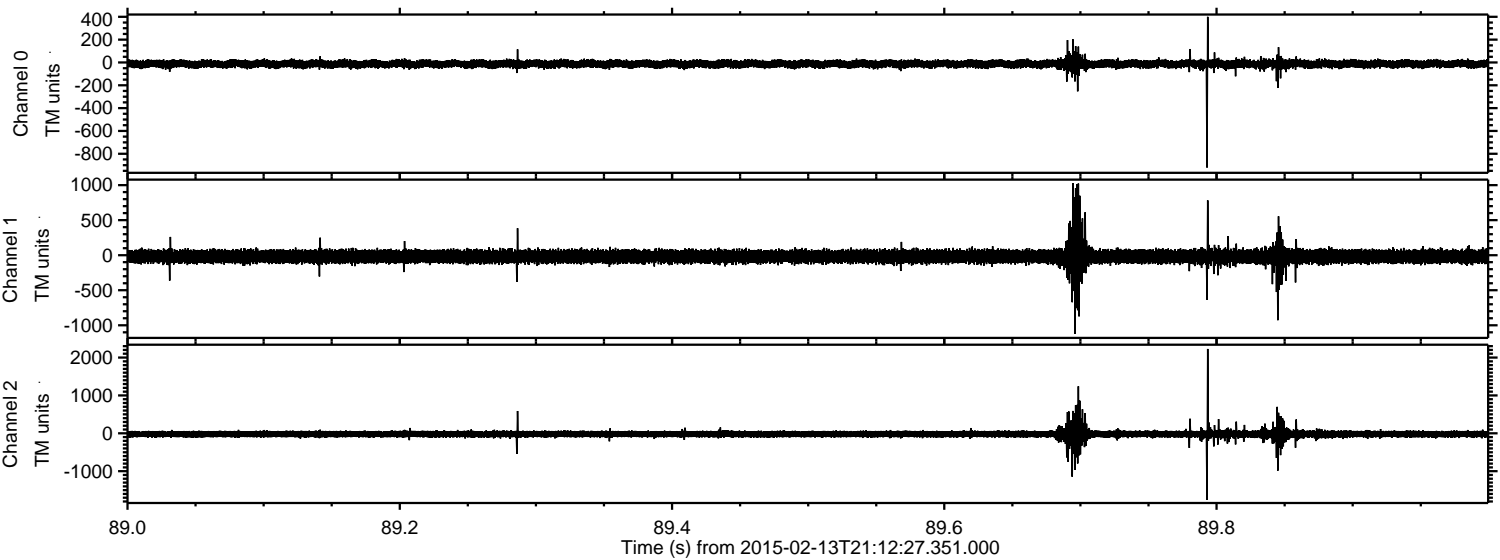


Processed Fri Feb 20 21:21:28 2015 by ELM ver.2012-10-06 from 001__elm20150213_211226__dat00.bin

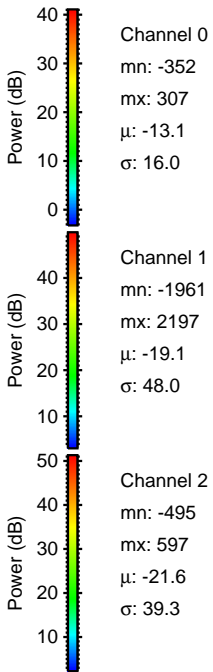
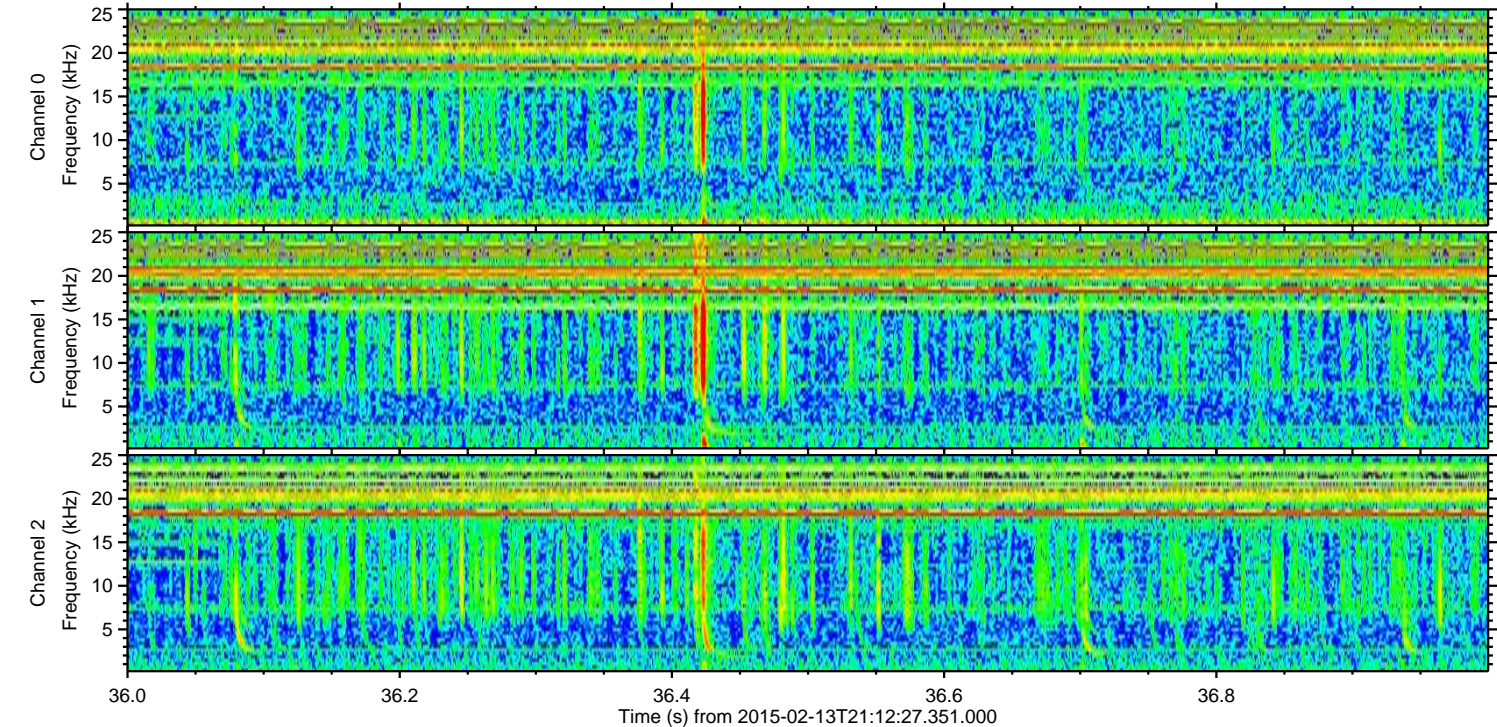
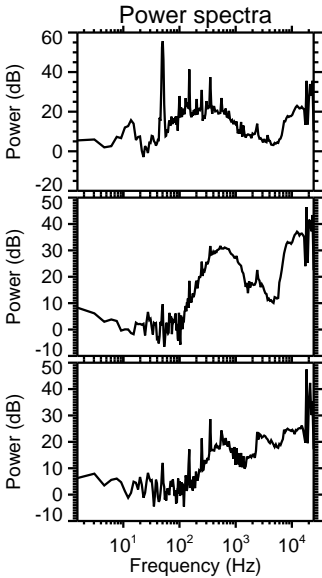
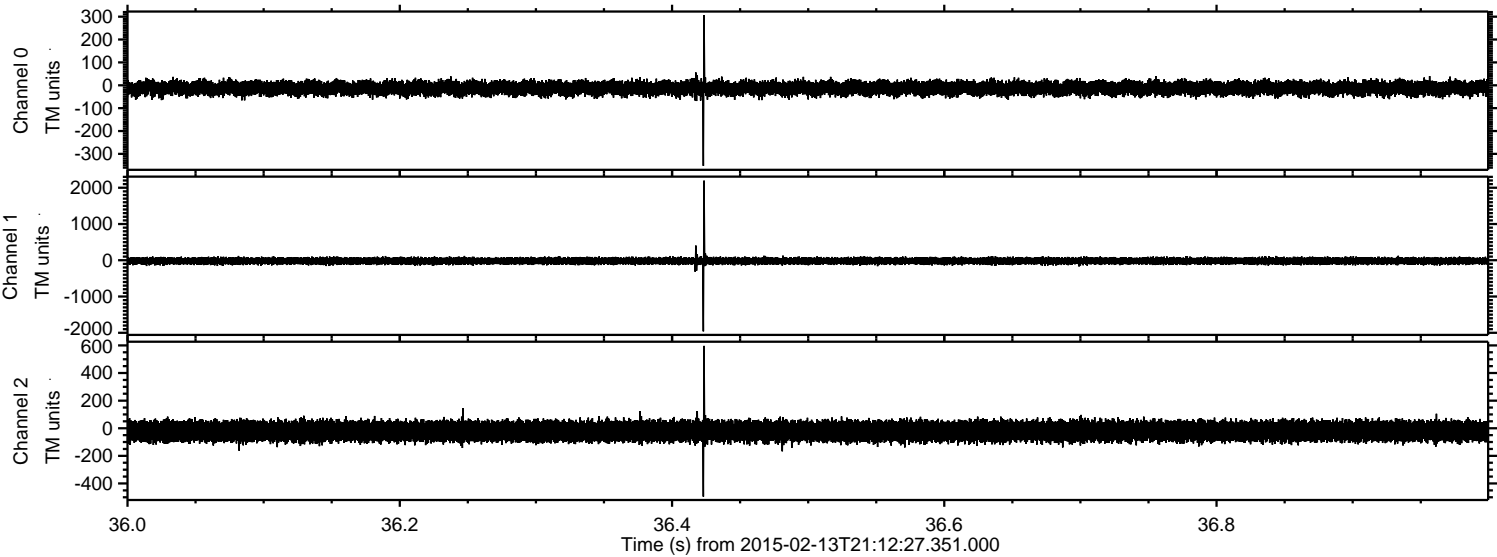


ELMAVAN 3D WAVEFORMS (Measured data sampled at 50 kHz) 49807 packets of 144 samples from 2015-02-13T21:12:27.351.000. Part 90/144

Processed Fri Feb 20 21:21:29 2015 by ELM ver.2012-10-06 from 001__elm20150213_211226__dat00.bin



Processed Fri Feb 20 21:21:30 2015 by ELM ver.2012-10-06 from 001__elm20150213_211226__dat00.bin



Channel 0
mn: -352
mx: 307
 μ : -13.1
 σ : 16.0

Channel 1
mn: -1961
mx: 2197
 μ : -19.1
 σ : 48.0

Channel 2
mn: -495
mx: 597
 μ : -21.6
 σ : 39.3

